

## FINAL SCORE



**(11) George Mason**

**59**



**(6) Florida St.**

**94**

**NCAA Division I Women's Basketball Championship Round 2  
BATON ROUGE REGION**

**March 22, 2025 • Maravich Assembly Center - Baton Rouge**



## FINAL STATISTICS

# FLORIDA STATE<sup>®</sup>

## BASKETBALL

### **FINAL: NO. 22 FSU 94, GEORGE MASON 59**

- » The Seminoles defeated George Mason, 96-59 in the First Round of the NCAA Tournament. It was the first win in the NCAA Tournament since 2019 and first March Madness win for head coach Brooke Wyckoff. 94 points marked the second-highest total for the Noles in an NCAA game in program history, and most away from Tallahassee
- » Ta'Niya Latson tallied her highest total in an NCAA game, scoring 28. It is the second-highest total next to April Traylor's 30 against Tulane in 2001 in the first round. Latson has 701 points this season, just nine shy of setting the single-season program record for scoring
- » Latson extended her program record in career free throws made to 511. With her 11 free throws made today, it is the most by a player in an NCAA Tournament game in FSU history
- » With two blocks today, Makayla Timpson extended her single season block record to 101. She became the seventh player in ACC history to have a 100-block season. She is 13 away from the career program record (301)
- » Timpson finished with her 16th double-double and 47th of her career behind 18 points and 11 rebounds. It was her second career NCAA Tournament double-double and 19th in program history
- » Timpson extended her career rebounds record to 1,084
- » Sydney Bowles registered five three-pointers, tying the program record for threes made in an NCAA game. FSU made nine, tying the program record. It was the most since sinking nine against North Carolina A&T in 2009. Bowles was 5-of-5 from three, tying a single-game record
- » Amaya Bonner had a career high in assists with six and tied her high with three steals
- » Holding the Patriots to 10 points in the first quarter and six in the fourth, it was the 37th time this season the Noles held the opponent to under 15 points in a quarter
- » In the fourth, FSU tallied 31 points marking the 14th time this season scoring about 30 in a single frame

### **FSU STARTERS**

Player	20-21	21-22	22-23	23-24	24-25	Tot
Ta'Niya Latson	-	-	31	33	28	92
Makayla Timpson	-	1	33	34	32	98
O'Mariah Gordon	-	20	2	34	30	85
*Malea Williams	0	3	4	31	21	57
Carla Viegas	-	-	-	0	17	17
^Sydney Bowles	-	-	29	1	17	46
Brianna Turnage	-	-	0	19	11	30
Amaya Bonner	-	-	-	1	3	2
Raiane Dos Santos	-	-	-	-	1	1

\*At Cincinnati, ^at Texas A&M

### **FSU TOP SCORERS**

Player	PTS	FGM	FT	3PT	AST	REB
Ta'Niya Latson	28	8-16	11-14	1-3	2	5
O'Mariah Gordon	18	8-13	0-0	2-5	4	6
Makayla Timpson	18	8-12	2-5	0-0	0	11
Sydney Bowles	15	5-7	0-0	5-5	3	7





Officials: Katie Lukanich, Sarah Williams, Jules Gallien

George Mason - 59

Record: 27-6

NO.	Name	Min	FG			3P			FT			Rebounds			Fouls		TP	AS	TO	ST	Blocks		+/-
			M-A	M-A	M-A	OR	DR	TOT	PF	FD	OR	DR	TOT	BS	BA								
2	Zahirah Walton	F 30:27	2-13	0-0	4-4	2	1	3	3	3	8	1	1	1	0	0	-38						
42	Nalani Kaysia	F 25:55	2-6	0-0	3-6	5	2	7	3	4	7	1	1	1	1	1	-20						
3	Kennedy Harris	G 32:45	4-14	1-5	3-3	1	3	4	0	3	12	5	1	1	0	3	-28						
14	Paula Suarez	G 33:52	9-21	5-9	2-3	0	3	3	2	3	25	3	6	3	1	1	-27						
22	Ta'Viyanna Habib	G 13:41	0-2	0-2	0-0	1	1	2	2	1	0	0	0	1	0	0	-8						
15	Louis Volker	20:57	0-4	0-2	0-0	1	2	3	3	0	0	0	0	0	0	0	-19						
11	Nekhu Mitchell	24:33	1-4	0-0	0-0	3	2	5	1	1	2	1	1	0	0	1	-20						
32	Page Greenburg	04:07	0-0	0-0	0-0	0	0	0	0	0	0	0	0	0	0	0	-2						
13	Jada Brown	08:04	1-4	1-3	0-0	0	0	0	1	0	3	0	0	1	0	0	-7						
10	Trinity Massenberg	01:53	0-1	0-0	0-0	0	0	0	0	0	0	0	0	1	0	0	-2						
21	Faith Okorie	01:53	1-1	0-0	0-0	0	0	0	0	0	2	0	0	0	0	0	-2						
23	Khamya McNeal	01:53	0-0	0-0	0-0	0	0	0	1	0	0	1	0	0	0	0	-2						
Team						4	0	4			0		0										
<b>Totals</b>			20-70	7-21	12-16	17	14	31	16	15	59	12	10	9	3	6	-35						

Technical Fouls::NONE

Dead Ball Rebounds: 1, 1

Shooting By Period		
1 <sup>st</sup> FG%	4-19	21.1%
3PT%	1-6	16.7%
FT%	1-1	100%
2 <sup>nd</sup> FG%	7-17	41.2%
3PT%	1-3	33.3%
FT%	4-5	80%
3 <sup>rd</sup> FG%	7-15	46.7%
3PT%	5-7	71.4%
FT%	5-6	83.3%
4 <sup>th</sup> FG%	2-19	10.5%
3PT%	0-5	0.0%
FT%	2-4	50%
GM FG%	20-70	28.6%
3PT%	7-21	33.3%
FT%	12-16	75.0%

Florida St. - 94

Record: 24-8

NO.	Name	Min	FG			3P			FT			Rebounds			Fouls		TP	AS	TO	ST	Blocks		+/-
			M-A	M-A	M-A	OR	DR	TOT	PF	FD	OR	DR	TOT	BS	BA								
21	Makayla Timpson	F 32:41	8-12	0-0	2-5	2	9	11	3	3	18	0	1	2	2	0	42						
22	Malea Williams	F 11:50	0-1	0-1	0-0	0	1	1	3	0	0	0	0	1	1	0	-7						
00	Ta'Niya Latson	G 33:07	8-16	1-3	11-14	2	3	5	0	9	28	2	5	2	1	2	15						
3	O'Mariah Gordon	G 33:29	8-13	2-5	0-0	1	5	6	1	0	18	4	0	1	0	0	33						
11	Sydney Bowles	G 25:13	5-7	5-5	0-0	0	7	7	2	1	15	3	2	0	0	1	26						
1	Brianna Turnage	13:55	1-1	0-0	0-0	2	3	5	1	0	2	2	0	0	2	0	19						
24	Amaya Bonner	22:42	1-2	0-1	2-2	1	2	3	2	1	4	6	1	3	0	0	40						
13	Carla Viegas	15:33	1-4	1-4	0-0	0	1	1	2	0	3	0	0	0	0	0	2						
32	Avery Treadwell	06:16	1-2	0-1	2-2	1	2	3	1	1	4	0	1	0	0	0	-2						
4	Raiane Dos Santos	03:39	0-0	0-0	2-2	1	0	1	0	1	2	0	1	0	0	0	7						
8	Morelia Chavez	01:35	0-0	0-0	0-0	0	0	0	0	0	0	0	0	0	0	0	0						
Team						1	2	3			0		0										
<b>Totals</b>			33-58	9-20	19-25	11	35	46	15	16	94	17	11	9	6	3	35						

Technical Fouls::NONE

Dead Ball Rebounds: 5, 1

Shooting By Period		
1 <sup>st</sup> FG%	9-14	64.3%
3PT%	1-3	33.3%
FT%	3-4	75%
2 <sup>nd</sup> FG%	8-15	53.3%
3PT%	2-4	50.0%
FT%	1-4	25%
3 <sup>rd</sup> FG%	6-15	40.0%
3PT%	2-7	28.6%
FT%	8-10	80%
4 <sup>th</sup> FG%	10-14	71.4%
3PT%	4-6	66.7%
FT%	7-7	100%
GM FG%	33-58	56.9%
3PT%	9-20	45.0%
FT%	19-25	76.0%

	GMU	FSU
Biggest lead	1 (1 <sup>st</sup> 9:05)	37 (4 <sup>th</sup> 0:59)
Best Scoring Run	7(2 <sup>nd</sup> 3:20)	14(1 <sup>st</sup> 4:02)
Lead Changes	2	
Times Tied	0	
Time with Lead	00:17	39:10

	GMU	FSU
Points from		
Turnovers	11	15
Paint	16	46
Second Chance	6	14
Fast Breaks	3	14
Bench	7	15

Period by Period Scoring					
	1st	2nd	3rd	4th	TOT
GMU	10	19	24	6	59
FSU	22	19	22	31	94



**Officials:** Katie Lukanich, Sarah Williams, Jules Gallien

**Period 1**

**Quarter Starters:**

<b>FSU</b>	00 Latson T	3 Gordon O	11 Bowles S	21 Timpson M	22 Williams M
<b>GMU</b>	2 Walton Z	3 Harris K	14 Suarez P	22 Habib T	42 Kaysia N

Game Time	FSU	Score	Diff	GMU
10:00	21 TIMPSON M jumpball lost			42 KAYSIA N jumpball won
09:39	22 WILLIAMS M steal (1)			14 SUAREZ P turnover lost ball (1)
09:30	21 TIMPSON M 2pt FG from turnover outside the paint, jump shot missed			
09:28	21 TIMPSON M offensive rebound (1)			
09:27	21 TIMPSON M 2pt FG from turnover second chance in the paint, layup made (2)	<b>2-0</b>	<b>2</b>	
09:05		<b>2-3</b>	<b>-1</b>	14 SUAREZ P 3pt FG , jump shot made (3)
09:05				3 HARRIS K assist (1)
08:48	3 GORDON O 2pt FG in the paint, jump shot made (2)	<b>4-3</b>	<b>1</b>	
08:48	11 BOWLES S assist (1)			
08:25				2 WALTON Z 2pt FG in the paint, jump shot missed
08:21				2 WALTON Z offensive rebound (1)
08:16				2 WALTON Z 2pt FG second chance in the paint, jump shot missed
08:13	21 TIMPSON M defensive rebound (2)			
08:05	jump ball situation			
08:00	00 LATSON T 2pt FG in the paint, layup made (2)	<b>6-3</b>	<b>3</b>	
07:42				2 WALTON Z 2pt FG outside the paint, jump shot missed
07:35				42 KAYSIA N offensive rebound (1)
07:29				3 HARRIS K 3pt FG second chance, jump shot missed
07:25	22 WILLIAMS M defensive rebound (1)			
07:19	3 GORDON O 3pt FG , jump shot missed			
07:15				14 SUAREZ P defensive rebound (1)
07:10				22 HABIB T 3pt FG , jump shot missed
07:06	3 GORDON O defensive rebound (1)			
06:45	00 LATSON T foul drawn (1)			22 HABIB T foul shooting (1 - 1)
06:45	22 WILLIAMS M substitution out			
06:45	1 TURNAGE B substitution in			
06:45	00 LATSON T free throw 1 - 2 made (3)	<b>7-3</b>	<b>4</b>	
06:45	00 LATSON T free throw 2 - 2 made (4)	<b>8-3</b>	<b>5</b>	
06:30				3 HARRIS K 2pt FG outside the paint, jump shot blocked
06:30	1 TURNAGE B block (1)			
06:28				3 HARRIS K offensive rebound (1)
06:28	1 TURNAGE B foul personal (1 - 1)			3 HARRIS K foul drawn (1)
06:25	21 TIMPSON M steal (1)			14 SUAREZ P turnover bad pass (2)
06:15	21 TIMPSON M turnover lost ball (1)			42 KAYSIA N steal (1)
06:10				2 WALTON Z 2pt FG from turnover outside the paint, jump shot missed
06:05	1 TURNAGE B defensive rebound (1)			
05:56	00 LATSON T foul drawn (2)			2 WALTON Z foul shooting (1 - 2)
05:56				22 HABIB T substitution out
05:56				15 VOLKER L substitution in
05:56	11 BOWLES S substitution out			



Official Basketball Play by Play - 1st Period  
**George Mason at Florida St.**  
 03/22/25 Maravich Assembly Center, Baton Rouge  
 2024-25 Women's Basketball

**Game Time:** 6:45 PM  
**Game Duration:** 1:55  
**Attendance:** 9,288

**Officials:** Katie Lukanich, Sarah Williams, Jules Gallien

Game Time	FSU	Score	Diff	GMU
05:56	24 BONNER A substitution in			
05:56	00 LATSON T free throw 1 - 2 missed			
05:56	offensive dead ball rebound (1)			
05:56	00 LATSON T free throw 2 - 2 made (5)	<b>9-3</b>	<b>6</b>	
05:35	24 BONNER A steal (1)			14 SUAREZ P turnover lost ball (3)
05:32	24 BONNER A 2pt FG fast break from turnover in the paint, layup made (2)	<b>11-3</b>	<b>8</b>	
05:14				3 HARRIS K 2pt FG in the paint, layup missed
05:11	1 TURNAGE B defensive rebound (2)			
05:06	00 LATSON T 3pt FG , jump shot missed			
05:02	1 TURNAGE B offensive rebound (3)			
04:55	00 LATSON T foul drawn (3)			15 VOLKER L foul personal (1 - 3)
04:55	Timeout media			
04:55	00 LATSON T substitution out			
04:55	13 VIEGAS C substitution in			
04:47	3 GORDON O 2pt FG second chance outside the paint, jump shot missed			
04:43				3 HARRIS K defensive rebound (2)
04:33	3 GORDON O steal (1)			42 KAYSIA N turnover lost ball (1)
04:23	1 TURNAGE B 2pt FG from turnover in the paint, jump shot made (2)	<b>13-3</b>	<b>10</b>	
04:09				14 SUAREZ P 2pt FG in the paint, layup missed
04:07	3 GORDON O defensive rebound (2)			
04:02	13 VIEGAS C 3pt FG fast break, jump shot made (3)	<b>16-3</b>	<b>13</b>	
04:02	3 GORDON O assist (1)			
03:48	3 GORDON O substitution out			
03:48	00 LATSON T substitution in			
03:48				3 HARRIS K substitution out
03:48				42 KAYSIA N substitution out
03:48				11 MITCHELL N substitution in
03:48				22 HABIB T substitution in
03:36				2 WALTON Z 2pt FG in the paint, layup missed
03:34				offensive rebound (6)
03:26				14 SUAREZ P 3pt FG second chance, jump shot missed
03:23				22 HABIB T offensive rebound (1)
03:23	21 TIMPSON M foul personal (1 - 2)			22 HABIB T foul drawn (1)
03:20		<b>16-5</b>	<b>11</b>	2 WALTON Z 2pt FG second chance in the paint, layup made (2)
03:20				14 SUAREZ P assist (1)
03:10	00 LATSON T 2pt FG in the paint, jump shot missed			
03:08				22 HABIB T defensive rebound (2)
03:01	21 TIMPSON M steal (2)			2 WALTON Z turnover lost ball (1)
02:56				2 WALTON Z substitution out
02:56				14 SUAREZ P substitution out
02:56				3 HARRIS K substitution in
02:56				42 KAYSIA N substitution in
02:53	21 TIMPSON M 2pt FG from turnover in the paint, layup made (4)	<b>18-5</b>	<b>13</b>	
02:53	1 TURNAGE B assist (1)			
02:35				3 HARRIS K 2pt FG outside the paint, jump shot blocked
02:35	21 TIMPSON M block (1)			



Official Basketball Play by Play - 1st Period  
**George Mason at Florida St.**  
 03/22/25 Maravich Assembly Center, Baton Rouge  
 2024-25 Women's Basketball

**Game Time:** 6:45 PM  
**Game Duration:** 1:55  
**Attendance:** 9,288

**Officials:** Katie Lukanich, Sarah Williams, Jules Gallien

Game Time	FSU	Score	Diff	GMU
02:35				offensive rebound (9)
02:35	1 TURNAGE B substitution out			
02:35	13 VIEGAS C substitution out			
02:35	21 TIMPSON M substitution out			
02:35	3 GORDON O substitution in			
02:35	22 WILLIAMS M substitution in			
02:35	32 TREADWELL A substitution in			
02:28		<b>18-7</b>	<b>11</b>	3 HARRIS K 2pt FG second chance outside the paint, jump shot made (2)
02:28	32 TREADWELL A foul shooting (1 - 3)			3 HARRIS K foul drawn (2)
02:28		<b>18-8</b>	<b>10</b>	3 HARRIS K free throw 1 - 1 made (3)
02:12	00 LATSON T turnover 3 seconds (1)			
01:53				3 HARRIS K 2pt FG from turnover outside the paint, jump shot missed
01:51	32 TREADWELL A defensive rebound (1)			
01:33	32 TREADWELL A turnover bad pass (1)			22 HABIB T steal (1)
01:21				15 VOLKER L 3pt FG from turnover, jump shot missed
01:16	24 BONNER A defensive rebound (1)			
01:15	00 LATSON T 2pt FG fast break in the paint, layup made (7)	<b>20-8</b>	<b>12</b>	
01:15	24 BONNER A assist (1)			
00:54		<b>20-10</b>	<b>10</b>	3 HARRIS K 2pt FG outside the paint, jump shot made (5)
00:26	32 TREADWELL A 2pt FG in the paint, jump shot made (2)	<b>22-10</b>	<b>12</b>	
00:26	24 BONNER A assist (2)			
00:00				15 VOLKER L 3pt FG , jump shot missed
00:00				42 KAYSIA N offensive rebound (2)
<b>END OF PERIOD</b>				
<b>FSU 22-10 GMU</b>				



**Officials:** Katie Lukanich, Sarah Williams, Jules Gallien

**George Mason - 10**

NO.	Name	F	Min	FG	3P	FT	Rebounds			Fouls		TP	AS	TO	ST	Blocks		+/-
				M-A	M-A	M-A	OR	DR	TOT	PF	FD					BS	BA	
2	Zahirah Walton	F	07:04	1-6	0-0	0-0	1	0	1	1	0	2	0	1	0	0	0	-11
42	Nalani Kaysia	F	09:08	0-0	0-0	0-0	2	0	2	0	0	0	0	1	1	0	0	-14
3	Kennedy Harris	G	09:08	2-7	0-1	1-1	1	1	2	0	2	5	1	0	0	0	2	-14
14	Paula Suarez	G	07:04	1-3	1-2	0-0	0	1	1	0	0	3	1	3	0	0	0	-11
22	Ta'Viyanna Habib	G	07:52	0-1	0-1	0-0	1	1	2	1	1	0	0	0	1	0	0	-4
15	Louis Volker		05:56	0-2	0-2	0-0	0	0	0	1	0	0	0	0	0	0	0	-7
11	Nekhu Mitchell		03:48	0-0	0-0	0-0	0	0	0	0	0	0	0	0	0	0	0	1
Team							2	0	2			0		0				
<b>Totals</b>				4-19	1-6	1-1	7	3	10	3	3	10	2	5	2	0	2	-12

Shooting By Period		
1st FG%	4-19	21.1%
3PT%	1-6	16.7%
FT%	1-1	100%
GM FG%	4-19	21.1%
3PT%	1-6	16.7%
FT%	1-1	100.0%

Dead Ball Rebounds: 0, 0

Technical Fouls::NONE

**Florida St. - 22**

NO.	Name	F	Min	FG	3P	FT	Rebounds			Fouls		TP	AS	TO	ST	Blocks		+/-
				M-A	M-A	M-A	OR	DR	TOT	PF	FD					BS	BA	
21	Makayla Timpson	F	07:25	2-3	0-0	0-0	1	1	2	1	0	4	0	1	2	1	0	13
22	Malea Williams	F	05:50	0-0	0-0	0-0	0	1	1	0	0	0	0	0	1	0	0	2
00	Ta'Niya Latson	G	08:53	2-4	0-1	3-4	0	0	0	0	3	7	0	1	0	0	0	7
3	O'Mariah Gordon	G	08:47	1-3	0-1	0-0	0	2	2	0	0	2	1	0	1	0	0	12
11	Sydney Bowles	G	04:04	0-0	0-0	0-0	0	0	0	0	0	0	1	0	0	0	0	5
1	Brianna Turnage		04:10	1-1	0-0	0-0	1	2	3	1	0	2	1	0	0	1	0	10
24	Amaya Bonner		05:56	1-1	0-0	0-0	0	1	1	0	0	2	2	0	1	0	0	7
13	Carla Viegas		02:20	1-1	1-1	0-0	0	0	0	0	0	3	0	0	0	0	0	5
32	Avery Treadwell		02:35	1-1	0-0	0-0	0	1	1	1	0	2	0	1	0	0	0	-1
Team							0	0	0			0		0				
<b>Totals</b>				9-14	1-3	3-4	2	8	10	3	3	22	5	3	5	2	0	12

Shooting By Period		
1st FG%	9-14	64.3%
3PT%	1-3	33.3%
FT%	3-4	75%
GM FG%	9-14	64.3%
3PT%	1-3	33.3%
FT%	3-4	75.0%

Dead Ball Rebounds: 1, 0

Technical Fouls::NONE

	GMU	FSU
<b>Biggest lead</b>	1 (1 <sup>st</sup> 9:05)	13 (1 <sup>st</sup> 4:02)
<b>Best Scoring Run</b>	3 (1 <sup>st</sup> 9:05)	14 (1 <sup>st</sup> 4:02)
<b>Lead Changes</b>	2	
<b>Times Tied</b>	0	
<b>Time with Lead</b>	00:17	09:10

Points from	GMU	FSU
<b>Turnovers</b>	0	8
<b>Paint</b>	2	16
<b>Second Chance</b>	5	2
<b>Fast Breaks</b>	0	7
<b>Bench</b>	0	9

	Period by Period Scoring				
	1st	2nd	3rd	4th	TOT
<b>GMU</b>	10	19	24	6	59
<b>FSU</b>	22	19	22	31	94



**Period 2**

**Quarter Starters:**

<b>FSU</b>	00 Latson T	3 Gordon O	11 Bowles S	21 Timpson M	22 Williams M
<b>GMU</b>	2 Walton Z	14 Suarez P	22 Habib T	32 Greenburg P	42 Kaysia N

Game Time	FSU	Score	Diff	GMU
10:00	24 BONNER A substitution out			
10:00	32 TREADWELL A substitution out			
10:00	11 BOWLES S substitution in			
10:00	21 TIMPSON M substitution in			
10:00				3 HARRIS K substitution out
10:00				11 MITCHELL N substitution out
10:00				15 VOLKER L substitution out
10:00				2 WALTON Z substitution in
10:00				14 SUAREZ P substitution in
10:00				32 GREENBURG P substitution in
09:49	22 WILLIAMS M foul shooting (1 - 1)			2 WALTON Z foul drawn (1)
09:49		<b>22-11</b>	<b>11</b>	2 WALTON Z free throw 1 - 2 made (3)
09:49		<b>22-12</b>	<b>10</b>	2 WALTON Z free throw 2 - 2 made (4)
09:41	00 LATSON T foul drawn (4)			22 HABIB T foul shooting (2 - 1)
09:41				22 HABIB T substitution out
09:41				11 MITCHELL N substitution in
09:41	00 LATSON T free throw fast break 1 - 2 missed			
09:41	offensive dead ball rebound (2)			
09:41	00 LATSON T free throw fast break 2 - 2 made (8)	<b>23-12</b>	<b>11</b>	
09:30	22 WILLIAMS M foul personal (2 - 2)			2 WALTON Z foul drawn (2)
09:30	22 WILLIAMS M substitution out			
09:30	1 TURNAGE B substitution in			
09:22	11 BOWLES S foul shooting (1 - 3)			42 KAYSIA N foul drawn (1)
09:22		<b>23-13</b>	<b>10</b>	42 KAYSIA N free throw 1 - 2 made (1)
09:22				42 KAYSIA N free throw 2 - 2 missed
09:20	21 TIMPSON M defensive rebound (3)			
09:10	00 LATSON T 2pt FG in the paint, layup made (10)	<b>25-13</b>	<b>12</b>	
08:55		<b>25-15</b>	<b>10</b>	14 SUAREZ P 2pt FG outside the paint, jump shot made (5)
08:41	00 LATSON T 2pt FG in the paint, layup made (12)	<b>27-15</b>	<b>12</b>	
08:24		<b>27-17</b>	<b>10</b>	11 MITCHELL N 2pt FG in the paint, layup made (2)
08:09	00 LATSON T 2pt FG outside the paint, jump shot made (14)	<b>29-17</b>	<b>12</b>	
07:53				2 WALTON Z 2pt FG outside the paint, jump shot missed
07:50	3 GORDON O defensive rebound (3)			
07:46	21 TIMPSON M foul drawn (1)			2 WALTON Z foul shooting (2 - 2)
07:46	00 LATSON T substitution out			
07:46	1 TURNAGE B substitution out			
07:46	13 VIEGAS C substitution in			
07:46	24 BONNER A substitution in			
07:46				32 GREENBURG P substitution out
07:46				42 KAYSIA N substitution out
07:46				3 HARRIS K substitution in
07:46				15 VOLKER L substitution in
07:46	21 TIMPSON M free throw fast break 1 - 2 missed			





Official Basketball Play by Play - 2nd Period  
**George Mason at Florida St.**  
 03/22/25 Maravich Assembly Center, Baton Rouge  
 2024-25 Women's Basketball

**Game Time:** 6:45 PM  
**Game Duration:** 1:55  
**Attendance:** 9,288

**Officials:** Katie Lukanich, Sarah Williams, Jules Gallien

Game Time	FSU	Score	Diff	GMU
07:46	offensive dead ball rebound (3)			
07:46	21 TIMPSON M free throw fast break 2 - 2 missed			
07:43				15 VOLKER L defensive rebound (1)
07:30				2 WALTON Z 2pt FG in the paint, layup missed
07:30	defensive dead ball rebound (4)			
07:17	3 GORDON O 2pt FG in the paint, layup made (4)	<b>31-17</b>	<b>14</b>	
06:51				14 SUAREZ P 2pt FG in the paint, layup missed
06:44				11 MITCHELL N offensive rebound (1)
06:42				3 HARRIS K 2pt FG second chance outside the paint, jump shot missed
06:36	21 TIMPSON M defensive rebound (4)			
06:17	11 BOWLES S 3pt FG , jump shot made (3)	<b>34-17</b>	<b>17</b>	
06:17	24 BONNER A assist (3)			
05:49				11 MITCHELL N 2pt FG in the paint, layup missed
05:46	3 GORDON O defensive rebound (4)			
05:40	11 BOWLES S 3pt FG , jump shot made (6)	<b>37-17</b>	<b>20</b>	
05:40	3 GORDON O assist (2)			
05:39				Timeout 30 Sec
05:39	3 GORDON O substitution out			
05:39	00 LATSON T substitution in			
05:39				2 WALTON Z substitution out
05:39				42 KAYSIA N substitution in
05:20		<b>37-19</b>	<b>18</b>	42 KAYSIA N 2pt FG in the paint, layup made (3)
05:20				14 SUAREZ P assist (2)
05:04	21 TIMPSON M 2pt FG in the paint, layup missed			
05:01				11 MITCHELL N defensive rebound (2)
04:41				42 KAYSIA N 2pt FG outside the paint, jump shot missed
04:38	21 TIMPSON M defensive rebound (5)			
04:34	24 BONNER A 3pt FG , jump shot missed			
04:31				42 KAYSIA N defensive rebound (3)
04:19				14 SUAREZ P 3pt FG , jump shot missed
04:16	11 BOWLES S defensive rebound (1)			
04:08	11 BOWLES S 2pt FG in the paint, layup blocked			
04:08				15 VOLKER L block (1)
04:04				3 HARRIS K defensive rebound (3)
03:58		<b>37-21</b>	<b>16</b>	14 SUAREZ P 2pt FG outside the paint, jump shot made (7)
03:37	11 BOWLES S turnover bad pass (1)			
03:37	Timeout media			
03:37	11 BOWLES S substitution out			
03:37	24 BONNER A substitution out			
03:37	1 TURNAGE B substitution in			
03:37	3 GORDON O substitution in			
03:37				42 KAYSIA N substitution out
03:37				2 WALTON Z substitution in
03:20		<b>37-24</b>	<b>13</b>	14 SUAREZ P 3pt FG from turnover, jump shot made (10)
03:20				3 HARRIS K assist (2)
03:06	00 LATSON T 2pt FG in the paint, jump shot missed			
03:03				2 WALTON Z defensive rebound (2)
02:43				2 WALTON Z 2pt FG in the paint, layup missed



Official Basketball Play by Play - 2nd Period  
**George Mason at Florida St.**  
 03/22/25 Maravich Assembly Center, Baton Rouge  
 2024-25 Women's Basketball

**Game Time:** 6:45 PM  
**Game Duration:** 1:55  
**Attendance:** 9,288

**Officials:** Katie Lukanich, Sarah Williams, Jules Gallien

Game Time	FSU	Score	Diff	GMU
02:38	00 LATSON T defensive rebound (1)			
02:29	00 LATSON T 2pt FG in the paint, layup made (16)	<b>39-24</b>	<b>15</b>	
02:05				14 SUAREZ P 2pt FG outside the paint, jump shot missed
01:59	13 VIEGAS C defensive rebound (1)			
01:58	jump ball situation			
01:47	13 VIEGAS C 3pt FG , jump shot missed			
01:42	21 TIMPSON M offensive rebound (6)			
01:42	21 TIMPSON M 2pt FG second chance in the paint, tip-in layup made (6)	<b>41-24</b>	<b>17</b>	
01:23				3 HARRIS K 3pt FG , jump shot missed
01:21	00 LATSON T defensive rebound (2)			
01:11	00 LATSON T turnover bad pass (2)			2 WALTON Z steal (1)
01:05		<b>41-26</b>	<b>15</b>	2 WALTON Z 2pt FG from turnover in the paint, layup made (6)
00:43	21 TIMPSON M 2pt FG in the paint, layup missed			
00:40				3 HARRIS K defensive rebound (4)
00:17		<b>41-28</b>	<b>13</b>	14 SUAREZ P 2pt FG in the paint, layup made (12)
00:17	13 VIEGAS C foul shooting (1 - 4)			14 SUAREZ P foul drawn (1)
00:17	1 TURNAGE B substitution out			
00:17	11 BOWLES S substitution in			
00:17		<b>41-29</b>	<b>12</b>	14 SUAREZ P free throw 1 - 1 made (13)
00:17				2 WALTON Z substitution out
00:17				3 HARRIS K substitution out
00:17				13 BROWN J substitution in
00:17				42 KAYSIA N substitution in
00:00	3 GORDON O 2pt FG in the paint, jump shot missed			
00:00				14 SUAREZ P defensive rebound (2)
<b>END OF PERIOD</b>				
<b>FSU 41-29 GMU</b>				



Officials: Katie Lukanich, Sarah Williams, Jules Gallien

George Mason - 19

NO.	Name	F	Min	FG			Rebounds			Fouls		TP	AS	TO	ST	Blocks		+/-
				M-A	M-A	M-A	OR	DR	TOT	PF	FD					BS	BA	
2	Zahirah Walton	F	07:41	1-4	0-0	2-2	0	1	1	1	2	4	0	0	1	0	0	-4
42	Nalani Kaysia	F	04:33	1-2	0-0	1-2	0	1	1	0	1	3	0	0	0	0	0	4
3	Kennedy Harris	G	07:29	0-2	0-1	0-0	0	2	2	0	0	0	1	0	0	0	0	0
14	Paula Suarez	G	10:00	4-7	1-2	1-1	0	1	1	0	1	10	1	0	0	0	0	0
22	Ta'Viyanna Habib	G	00:19	0-0	0-0	0-0	0	0	0	1	0	0	0	0	0	0	0	2
32	Page Greenburg		02:14	0-0	0-0	0-0	0	0	0	0	0	0	0	0	0	0	0	0
11	Nekhu Mitchell		09:41	1-2	0-0	0-0	1	1	2	0	0	2	0	0	0	0	0	-2
15	Louis Volker		07:46	0-0	0-0	0-0	0	1	1	0	0	0	0	0	0	1	0	0
13	Jada Brown		00:17	0-0	0-0	0-0	0	0	0	0	0	0	0	0	0	0	0	0
Team							0	0	0		0		0					
<b>Totals</b>				7-17	1-3	4-5	1	7	8	2	4	19	2	0	1	1	0	0

Shooting By Period		
2nd FG%	7-17	41.2%
3PT%	1-3	33.3%
FT%	4-5	80%
GM FG%	7-17	41.2%
3PT%	1-3	33.3%
FT%	4-5	80.0%

Dead Ball Rebounds: 0, 0

Technical Fouls::NONE

Florida St. - 19

NO.	Name	F	Min	FG			Rebounds			Fouls		TP	AS	TO	ST	Blocks		+/-
				M-A	M-A	M-A	OR	DR	TOT	PF	FD					BS	BA	
21	Makayla Timpson	F	10:00	1-3	0-0	0-2	1	3	4	0	1	2	0	0	0	0	0	0
22	Malea Williams	F	00:30	0-0	0-0	0-0	0	0	0	2	0	0	0	0	0	0	0	-1
00	Ta'Niya Latson	G	07:53	4-5	0-0	1-2	0	2	2	0	1	9	0	1	0	0	0	-8
3	O'Mariah Gordon	G	07:58	1-2	0-0	0-0	0	2	2	0	0	2	1	0	0	0	0	4
11	Sydney Bowles	G	06:40	2-3	2-2	0-0	0	1	1	1	0	6	0	1	0	0	1	3
32	Avery Treadwell		00:00	0-0	0-0	0-0	0	0	0	0	0	0	0	0	0	0	0	0
1	Brianna Turnage		05:04	0-0	0-0	0-0	0	0	0	0	0	0	0	0	0	0	0	-2
13	Carla Viegas		07:46	0-1	0-1	0-0	0	1	1	1	0	0	0	0	0	0	0	0
24	Amaya Bonner		04:09	0-1	0-1	0-0	0	0	0	0	0	0	1	0	0	0	0	4
Team							0	0	0		0		0					
<b>Totals</b>				8-15	2-4	1-4	1	9	10	4	2	19	2	2	0	0	1	0

Shooting By Period		
2nd FG%	8-15	53.3%
3PT%	2-4	50.0%
FT%	1-4	25%
GM FG%	8-15	53.3%
3PT%	2-4	50.0%
FT%	1-4	25.0%

Dead Ball Rebounds: 2, 1

Technical Fouls::NONE

	GMU	FSU
Biggest lead	0 (1 <sup>st</sup> 10:00)	20 (2 <sup>nd</sup> 5:40)
Best Scoring Run	7(2 <sup>nd</sup> 3:20)	10(2 <sup>nd</sup> 5:40)
Lead Changes	0	
Times Tied	0	
Time with Lead	00:00	09:49

	GMU	FSU
Points from		
Turnovers	5	0
Paint	8	10
Second Chance	0	2
Fast Breaks	0	1
Bench	2	0

	Period by Period Scoring				
	1st	2nd	3rd	4th	TOT
GMU	10	19	24	6	59
FSU	22	19	22	31	94



Officials: Katie Lukanich, Sarah Williams, Jules Gallien

George Mason - 29

NO.	Name	F	Min	FG			Rebounds			Fouls		TP	AS	TO	ST	Blocks		+/-
				M-A	M-A	M-A	OR	DR	TOT	PF	FD					BS	BA	
2	Zahirah Walton	F	14:45	2-10	0-0	2-2	1	1	2	2	2	6	0	1	1	0	0	-15
42	Nalani Kaysia	F	13:41	1-2	0-0	1-2	2	1	3	0	1	3	0	1	1	0	0	-10
3	Kennedy Harris	G	16:37	2-9	0-2	1-1	1	3	4	0	2	5	2	0	0	0	2	-14
14	Paula Suarez	G	17:04	5-10	2-4	1-1	0	2	2	0	1	13	2	3	0	0	0	-11
22	Ta'Viyanna Habib	G	08:11	0-1	0-1	0-0	1	1	2	2	1	0	0	0	1	0	0	-2
15	Louis Volker		13:42	0-2	0-2	0-0	0	1	1	1	0	0	0	0	0	1	0	-7
11	Nekhu Mitchell		13:29	1-2	0-0	0-0	1	1	2	0	0	2	0	0	0	0	0	-1
32	Page Greenburg		02:14	0-0	0-0	0-0	0	0	0	0	0	0	0	0	0	0	0	0
13	Jada Brown		00:17	0-0	0-0	0-0	0	0	0	0	0	0	0	0	0	0	0	0
Team							2	0	2			0		0				
<b>Totals</b>				11-36	2-9	5-6	8	10	18	5	7	29	4	5	3	1	2	-12

Shooting By Period		
1st FG%	4-19	21.1%
3PT%	1-6	16.7%
FT%	1-1	100%
2nd FG%	7-17	41.2%
3PT%	1-3	33.3%
FT%	4-5	80%
GM FG%	11-36	30.6%
3PT%	2-9	22.2%
FT%	5-6	83.3%

Dead Ball Rebounds: 0, 0

Technical Fouls::NONE

Florida St. - 41

NO.	Name	F	Min	FG			Rebounds			Fouls		TP	AS	TO	ST	Blocks		+/-
				M-A	M-A	M-A	OR	DR	TOT	PF	FD					BS	BA	
21	Makayla Timpson	F	17:25	3-6	0-0	0-2	2	4	6	1	1	6	0	1	2	1	0	13
22	Malea Williams	F	06:20	0-0	0-0	0-0	0	1	1	2	0	0	0	0	1	0	0	1
00	Ta'Niya Latson	G	16:46	6-9	0-1	4-6	0	2	2	0	4	16	0	2	0	0	0	-1
3	O'Mariah Gordon	G	16:45	2-5	0-1	0-0	0	4	4	0	0	4	2	0	1	0	0	16
11	Sydney Bowles	G	10:44	2-3	2-2	0-0	0	1	1	1	0	6	1	1	0	0	1	8
1	Brianna Turnage		09:14	1-1	0-0	0-0	1	2	3	1	0	2	1	0	0	1	0	8
24	Amaya Bonner		10:05	1-2	0-1	0-0	0	1	1	0	0	2	3	0	1	0	0	11
13	Carla Viegas		10:06	1-2	1-2	0-0	0	1	1	1	0	3	0	0	0	0	0	5
32	Avery Treadwell		02:35	1-1	0-0	0-0	0	1	1	1	0	2	0	1	0	0	0	-1
Team							0	0	0			0		0				
<b>Totals</b>				17-29	3-7	4-8	3	17	20	7	5	41	7	5	5	2	1	12

Shooting By Period		
1st FG%	9-14	64.3%
3PT%	1-3	33.3%
FT%	3-4	75%
2nd FG%	8-15	53.3%
3PT%	2-4	50.0%
FT%	1-4	25%
GM FG%	17-29	58.6%
3PT%	3-7	42.9%
FT%	4-8	50.0%

Dead Ball Rebounds: 3, 1

Technical Fouls::NONE

	GMU	FSU
Biggest lead	1 (1st 9:05)	20 (2nd 5:40)
Best Scoring Run	7(2nd 3:20)	14(1st 4:02)
Lead Changes	2	
Times Tied	0	
Time with Lead	00:17	19:10

	GMU	FSU
Points from		
Turnovers	5	8
Paint	10	26
Second Chance	5	4
Fast Breaks	0	8
Bench	2	9

Period by Period Scoring					
	1st	2nd	3rd	4th	TOT
GMU	10	19	24	6	59
FSU	22	19	22	31	94



**Period 3**

**Quarter Starters:**

<b>FSU</b>	00 Latson T	3 Gordon O	11 Bowles S	21 Timpson M	22 Williams M
<b>GMU</b>	2 Walton Z	3 Harris K	14 Suarez P	22 Habib T	42 Kaysia N

Game Time	FSU	Score	Diff	GMU
10:00	13 VIEGAS C substitution out			
10:00	22 WILLIAMS M substitution in			
10:00				11 MITCHELL N substitution out
10:00				13 BROWN J substitution out
10:00				15 VOLKER L substitution out
10:00				2 WALTON Z substitution in
10:00				3 HARRIS K substitution in
10:00				22 HABIB T substitution in
09:33				42 KAYSIA N 2pt FG outside the paint, jump shot missed
09:31	11 BOWLES S defensive rebound (2)			
09:24	21 TIMPSON M 2pt FG in the paint, layup made (8)	<b>43-29</b>	<b>14</b>	
09:24	11 BOWLES S assist (2)			
08:48				14 SUAREZ P 2pt FG in the paint, layup blocked
08:48	22 WILLIAMS M block (1)			
08:48				offensive rebound (19)
08:44				14 SUAREZ P 3pt FG second chance, jump shot missed
08:40	21 TIMPSON M defensive rebound (7)			
08:33	22 WILLIAMS M 3pt FG , jump shot missed			
08:29	3 GORDON O offensive rebound (5)			
08:26	11 BOWLES S 3pt FG second chance, jump shot made (9)	<b>46-29</b>	<b>17</b>	
08:26	3 GORDON O assist (3)			
08:05		<b>46-32</b>	<b>14</b>	14 SUAREZ P 3pt FG , jump shot made (16)
08:05				42 KAYSIA N assist (1)
07:55	00 LATSON T foul drawn (5)			42 KAYSIA N foul shooting (1 - 1)
07:55				22 HABIB T substitution out
07:55				11 MITCHELL N substitution in
07:55	00 LATSON T free throw 1 - 2 made (17)	<b>47-32</b>	<b>15</b>	
07:55	00 LATSON T free throw 2 - 2 made (18)	<b>48-32</b>	<b>16</b>	
07:41	21 TIMPSON M foul shooting (2 - 1)			3 HARRIS K foul drawn (3)
07:41		<b>48-33</b>	<b>15</b>	3 HARRIS K free throw 1 - 2 made (6)
07:41		<b>48-34</b>	<b>14</b>	3 HARRIS K free throw 2 - 2 made (7)
07:30	00 LATSON T 2pt FG in the paint, layup blocked			
07:30				42 KAYSIA N block (1)
07:26				11 MITCHELL N defensive rebound (3)
07:17		<b>48-36</b>	<b>12</b>	42 KAYSIA N 2pt FG outside the paint, jump shot made (5)
07:17				11 MITCHELL N assist (1)
07:02	21 TIMPSON M 2pt FG in the paint, layup missed			
07:00	00 LATSON T offensive rebound (3)			
07:00	00 LATSON T foul drawn (6)			2 WALTON Z foul personal (3 - 2)
07:00				2 WALTON Z substitution out
07:00				15 VOLKER L substitution in
06:58	21 TIMPSON M foul drawn (2)			42 KAYSIA N foul shooting (2 - 3)
06:58	21 TIMPSON M free throw 1 - 2 missed			



Official Basketball Play by Play - 3rd Period  
**George Mason at Florida St.**  
 03/22/25 Maravich Assembly Center, Baton Rouge  
 2024-25 Women's Basketball

**Game Time:** 6:45 PM  
**Game Duration:** 1:55  
**Attendance:** 9,288

**Officials:** Katie Lukanich, Sarah Williams, Jules Gallien

Game Time	FSU	Score	Diff	GMU
06:58	offensive dead ball rebound (5)			
06:58	21 TIMPSON M free throw 2 - 2 made (9)	<b>49-36</b>	<b>13</b>	
06:43		<b>49-39</b>	<b>10</b>	14 SUAREZ P 3pt FG , jump shot made (19)
06:43				3 HARRIS K assist (3)
06:25	3 GORDON O 3pt FG , jump shot missed			
06:23				15 VOLKER L defensive rebound (2)
06:13		<b>49-42</b>	<b>7</b>	14 SUAREZ P 3pt FG , jump shot made (22)
06:13				3 HARRIS K assist (4)
06:10	Timeout 30 Sec			
05:56	00 LATSON T 2pt FG in the paint, layup missed			
05:54	00 LATSON T offensive rebound (4)			
05:54	00 LATSON T foul drawn (7)			14 SUAREZ P foul shooting (1 - 4)
05:54	00 LATSON T free throw 1 - 2 missed			
05:54	offensive dead ball rebound (6)			
05:54	00 LATSON T free throw 2 - 2 made (19)	<b>50-42</b>	<b>8</b>	
05:26				3 HARRIS K 3pt FG , jump shot missed
05:24				11 MITCHELL N offensive rebound (4)
05:24	3 GORDON O foul personal (1 - 2)			11 MITCHELL N foul drawn (1)
05:24	11 BOWLES S substitution out			
05:24	22 WILLIAMS M substitution out			
05:24	1 TURNAGE B substitution in			
05:24	24 BONNER A substitution in			
05:11				11 MITCHELL N 2pt FG second chance in the paint, layup blocked
05:11	1 TURNAGE B block (2)			
05:06	21 TIMPSON M defensive rebound (8)			
05:03	3 GORDON O 2pt FG fast break in the paint, layup made (6)	<b>52-42</b>	<b>10</b>	
04:39				14 SUAREZ P 2pt FG in the paint, layup missed
04:35	1 TURNAGE B defensive rebound (4)			
04:35	jump ball situation			
04:35	Timeout media			
04:35				3 HARRIS K substitution out
04:35				15 VOLKER L substitution out
04:35				2 WALTON Z substitution in
04:35				13 BROWN J substitution in
04:25	00 LATSON T 2pt FG in the paint, layup missed			
04:23	24 BONNER A offensive rebound (2)			
04:16	21 TIMPSON M 2pt FG second chance in the paint, layup made (11)	<b>54-42</b>	<b>12</b>	
04:16	1 TURNAGE B assist (2)			
03:57				2 WALTON Z 2pt FG outside the paint, jump shot missed
03:55	21 TIMPSON M defensive rebound (9)			
03:40	24 BONNER A turnover lost ball (1)			13 BROWN J steal (1)
03:35	24 BONNER A steal (2)			11 MITCHELL N turnover bad pass (1)
03:24	3 GORDON O 3pt FG from turnover, jump shot made (9)	<b>57-42</b>	<b>15</b>	
03:24	24 BONNER A assist (4)			
03:05	00 LATSON T steal (1)			14 SUAREZ P turnover bad pass (4)
03:02	00 LATSON T 2pt FG fast break from turnover in the paint, layup made (21)	<b>59-42</b>	<b>17</b>	
02:36	21 TIMPSON M foul shooting (3 - 3)			42 KAYSIA N foul drawn (2)



Official Basketball Play by Play - 3rd Period  
**George Mason at Florida St.**  
 03/22/25 Maravich Assembly Center, Baton Rouge  
 2024-25 Women's Basketball

**Game Time:** 6:45 PM  
**Game Duration:** 1:55  
**Attendance:** 9,288

**Officials:** Katie Lukanich, Sarah Williams, Jules Gallien

Game Time	FSU	Score	Diff	GMU
02:36	1 TURNAGE B substitution out			
02:36	21 TIMPSON M substitution out			
02:36	24 BONNER A substitution out			
02:36	13 VIEGAS C substitution in			
02:36	22 WILLIAMS M substitution in			
02:36	32 TREADWELL A substitution in			
02:36				11 MITCHELL N substitution out
02:36				3 HARRIS K substitution in
02:36				42 KAYSIA N free throw 1 - 2 missed
02:36				offensive dead ball rebound (1)
02:36		<b>59-43</b>	<b>16</b>	42 KAYSIA N free throw 2 - 2 made (6)
02:26	00 LATSON T 3pt FG , jump shot missed			
02:20	32 TREADWELL A offensive rebound (2)			
02:15	00 LATSON T turnover lost ball (3)			3 HARRIS K steal (1)
02:08		<b>59-46</b>	<b>13</b>	3 HARRIS K 3pt FG from turnover, jump shot made (10)
02:08				14 SUAREZ P assist (3)
01:51	13 VIEGAS C 3pt FG , jump shot missed			
01:48				42 KAYSIA N defensive rebound (4)
01:42	22 WILLIAMS M foul shooting (3 - 4)			2 WALTON Z foul drawn (3)
01:42	13 VIEGAS C substitution out			
01:42	22 WILLIAMS M substitution out			
01:42	11 BOWLES S substitution in			
01:42	24 BONNER A substitution in			
01:42		<b>59-47</b>	<b>12</b>	2 WALTON Z free throw 1 - 2 made (7)
01:42		<b>59-48</b>	<b>11</b>	2 WALTON Z free throw 2 - 2 made (8)
01:42				42 KAYSIA N substitution out
01:42				15 VOLKER L substitution in
01:32	00 LATSON T foul drawn (8)			15 VOLKER L foul shooting (2 - 5)
01:32	00 LATSON T free throw 1 - 2 made (22)	<b>60-48</b>	<b>12</b>	
01:32	00 LATSON T free throw 2 - 2 made (23)	<b>61-48</b>	<b>13</b>	
01:10				14 SUAREZ P 2pt FG in the paint, layup missed
01:08	24 BONNER A defensive rebound (3)			
01:03	24 BONNER A foul drawn (1)			15 VOLKER L foul shooting (3 - 6)
01:03				15 VOLKER L substitution out
01:03				22 HABIB T substitution in
01:03	24 BONNER A free throw fast break 1 - 2 made (3)	<b>62-48</b>	<b>14</b>	
01:03	24 BONNER A free throw fast break 2 - 2 made (4)	<b>63-48</b>	<b>15</b>	
01:03	32 TREADWELL A substitution out			
01:03	13 VIEGAS C substitution in			
00:46		<b>63-50</b>	<b>13</b>	3 HARRIS K 2pt FG in the paint, jump shot made (12)
00:46				2 WALTON Z assist (1)
00:29	00 LATSON T turnover lost ball (4)			14 SUAREZ P steal (1)
00:24		<b>63-53</b>	<b>10</b>	13 BROWN J 3pt FG fast break from turnover, jump shot made (3)
00:24				3 HARRIS K assist (5)
00:00	3 GORDON O 3pt FG , jump shot missed			
00:00				defensive dead ball rebound (2)
<b>END OF PERIOD</b>				
<b>FSU 63-53 GMU</b>				



Officials: Katie Lukanich, Sarah Williams, Jules Gallien

George Mason - 24

NO.	Name	Min	FG			Rebounds			Fouls		TP	AS	TO	ST	Blocks		+/-
			M-A	3P	FT	OR	DR	TOT	PF	FD					BS	BA	
2	Zahirah Walton	F 07:35	0-1	0-0	2-2	0	0	0	1	1	2	1	0	0	0	0	0
42	Nalani Kaysia	F 08:18	1-2	0-0	1-2	0	1	1	2	1	3	1	0	0	1	0	1
3	Kennedy Harris	G 08:01	2-3	1-2	2-2	0	0	0	0	1	7	3	0	1	0	0	9
14	Paula Suarez	G 10:00	3-7	3-4	0-0	0	0	0	1	0	9	1	1	1	0	1	2
22	Ta'Viyanna Habib	G 03:08	0-0	0-0	0-0	0	0	0	0	0	0	0	0	0	0	0	1
11	Nekhu Mitchell	05:19	0-1	0-0	0-0	1	1	2	0	1	0	1	1	0	0	1	-3
15	Louis Volker	03:04	0-0	0-0	0-0	0	1	1	2	0	0	0	0	0	0	0	0
13	Jada Brown	04:35	1-1	1-1	0-0	0	0	0	0	0	3	0	0	1	0	0	0
Team						1	0	1			0						
<b>Totals</b>			7-15	5-7	5-6	2	3	5	6	4	24	7	2	3	1	2	2

Shooting By Period		
3rd FG%	7-15	46.7%
3PT%	5-7	71.4%
FT%	5-6	83.3%
GM FG%	7-15	46.7%
3PT%	5-7	71.4%
FT%	5-6	83.3%

Dead Ball Rebounds: 1, 1

Technical Fouls::NONE

Florida St. - 22

NO.	Name	Min	FG			Rebounds			Fouls		TP	AS	TO	ST	Blocks		+/-
			M-A	3P	FT	OR	DR	TOT	PF	FD					BS	BA	
21	Makayla Timpson	F 07:24	2-3	0-0	1-2	0	3	3	2	1	5	0	0	0	0	0	5
22	Malea Williams	F 05:30	0-1	0-1	0-0	0	0	0	1	0	0	0	0	0	1	0	-8
00	Ta'Niya Latson	G 10:00	1-5	0-1	5-6	2	0	2	0	4	7	0	2	1	0	1	-2
3	O'Mariah Gordon	G 10:00	2-4	1-3	0-0	1	0	1	1	0	5	1	0	0	0	0	-2
11	Sydney Bowles	G 06:18	1-1	1-1	0-0	0	1	1	0	0	3	1	0	0	0	0	-7
1	Brianna Turnage	02:48	0-0	0-0	0-0	0	1	1	0	0	0	1	0	0	1	0	9
24	Amaya Bonner	04:30	0-0	0-0	2-2	1	1	2	0	1	2	1	1	1	0	0	6
13	Carla Viegas	01:57	0-1	0-1	0-0	0	0	0	0	0	0	0	0	0	0	0	-9
32	Avery Treadwell	01:33	0-0	0-0	0-0	1	0	1	0	0	0	0	0	0	0	0	-2
Team						0	0	0			0						
<b>Totals</b>			6-15	2-7	8-10	5	6	11	4	6	22	4	3	2	2	1	-2

Shooting By Period		
3rd FG%	6-15	40.0%
3PT%	2-7	28.6%
FT%	8-10	80%
GM FG%	6-15	40.0%
3PT%	2-7	28.6%
FT%	8-10	80.0%

Dead Ball Rebounds: 2, 0

Technical Fouls::NONE

	GMU	FSU
Biggest lead	0 (1 <sup>st</sup> 10:00)	17 (3 <sup>rd</sup> 8:26)
Best Scoring Run	6(3 <sup>rd</sup> 6:13)	10(3 <sup>rd</sup> 3:02)
Lead Changes	0	
Times Tied	0	
Time with Lead	00:00	09:33

Points from	GMU	FSU
Turnovers	6	5
Paint	2	8
Second Chance	0	7
Fast Breaks	3	6
Bench	3	2

	Period by Period Scoring				
	1st	2nd	3rd	4th	TOT
GMU	10	19	24	6	59
FSU	22	19	22	31	94





**Period 4**

**Quarter Starters:**

<b>FSU</b>	00 Latson T	3 Gordon O	11 Bowles S	21 Timpson M	24 Bonner A
<b>GMU</b>	2 Walton Z	3 Harris K	14 Suarez P	22 Habib T	42 Kaysia N

Game Time	FSU	Score	Diff	GMU
10:00	13 VIEGAS C substitution out			
10:00	21 TIMPSON M substitution in			
10:00				13 BROWN J substitution out
10:00				42 KAYSIA N substitution in
09:58	24 BONNER A steal (3)			3 HARRIS K turnover bad pass (1)
09:49	11 BOWLES S 2pt FG from turnover in the paint, jump shot missed			
09:46				14 SUAREZ P defensive rebound (3)
09:28				3 HARRIS K 3pt FG , jump shot missed
09:23	21 TIMPSON M defensive rebound (10)			
09:23	jump ball situation			
09:13	11 BOWLES S 3pt FG , jump shot made (12)	<b>66-53</b>	<b>13</b>	
09:13	00 LATSON T assist (1)			
08:55				3 HARRIS K 2pt FG outside the paint, jump shot blocked
08:55	00 LATSON T block (1)			
08:52	21 TIMPSON M defensive rebound (11)			
08:44	3 GORDON O 2pt FG in the paint, layup made (11)	<b>68-53</b>	<b>15</b>	
08:33	11 BOWLES S foul personal (2 - 1)			14 SUAREZ P foul drawn (2)
08:31				22 HABIB T 3pt FG , jump shot missed
08:27	11 BOWLES S defensive rebound (3)			
08:11	3 GORDON O 2pt FG in the paint, layup made (13)	<b>70-53</b>	<b>17</b>	
07:47				2 WALTON Z 2pt FG in the paint, layup missed
07:44	11 BOWLES S defensive rebound (4)			
07:38	00 LATSON T 2pt FG in the paint, layup blocked			
07:38				14 SUAREZ P block (1)
07:38	offensive rebound (36)			
07:38	Timeout 30 Sec			
07:38	3 GORDON O substitution out			
07:38	13 VIEGAS C substitution in			
07:38				22 HABIB T substitution out
07:38				11 MITCHELL N substitution in
07:38				13 BROWN J substitution in
07:38				14 SUAREZ P substitution out
07:32	21 TIMPSON M 2pt FG second chance in the paint, layup made (13)	<b>72-53</b>	<b>19</b>	
07:32	21 TIMPSON M foul drawn (3)			42 KAYSIA N foul shooting (3 - 1)
07:32	21 TIMPSON M free throw 1 - 1 made (14)	<b>73-53</b>	<b>20</b>	
07:05				42 KAYSIA N 2pt FG in the paint, layup blocked
07:05	21 TIMPSON M block (2)			
07:01				42 KAYSIA N offensive rebound (5)
07:00				13 BROWN J 2pt FG second chance in the paint, layup missed
06:57				42 KAYSIA N offensive rebound (6)
06:57				42 KAYSIA N 2pt FG second chance in the paint, layup missed
06:54				2 WALTON Z offensive rebound (3)



Official Basketball Play by Play - 4th Period  
**George Mason at Florida St.**  
 03/22/25 Maravich Assembly Center, Baton Rouge  
 2024-25 Women's Basketball

**Game Time:** 6:45 PM  
**Game Duration:** 1:55  
**Attendance:** 9,288

**Officials:** Katie Lukanich, Sarah Williams, Jules Gallien

Game Time	FSU	Score	Diff	GMU
06:53				13 BROWN J 3pt FG second chance, jump shot missed
06:52	defensive rebound (37)			
06:32	21 TIMPSON M 2pt FG in the paint, layup made (16)	<b>75-53</b>	<b>22</b>	
06:32	00 LATSON T assist (2)			
06:22				13 BROWN J 3pt FG , jump shot missed
06:19				offensive rebound (28)
06:19	11 BOWLES S substitution out			
06:19	21 TIMPSON M substitution out			
06:19	3 GORDON O substitution in			
06:19	32 TREADWELL A substitution in			
06:19				13 BROWN J substitution out
06:19				14 SUAREZ P substitution in
06:14				2 WALTON Z 2pt FG second chance in the paint, layup missed
06:13				42 KAYSIA N offensive rebound (7)
06:12	13 VIEGAS C foul personal (2 - 2)			42 KAYSIA N foul drawn (3)
06:05	24 BONNER A foul shooting (1 - 3)			42 KAYSIA N foul drawn (4)
06:05	13 VIEGAS C substitution out			
06:05	11 BOWLES S substitution in			
06:05		<b>75-54</b>	<b>21</b>	42 KAYSIA N free throw 1 - 2 made (7)
06:05				42 KAYSIA N free throw 2 - 2 missed
06:04	11 BOWLES S defensive rebound (5)			
06:04	11 BOWLES S foul drawn (1)			11 MITCHELL N foul personal (1 - 2)
06:04	32 TREADWELL A substitution out			
06:04	21 TIMPSON M substitution in			
06:04				42 KAYSIA N substitution out
06:04				15 VOLKER L substitution in
05:56	00 LATSON T foul drawn (9)			14 SUAREZ P foul shooting (2 - 3)
05:56	00 LATSON T free throw 1 - 2 made (24)	<b>76-54</b>	<b>22</b>	
05:56	00 LATSON T free throw 2 - 2 made (25)	<b>77-54</b>	<b>23</b>	
05:46		<b>77-56</b>	<b>21</b>	14 SUAREZ P 2pt FG in the paint, layup made (24)
05:32	3 GORDON O 3pt FG , jump shot made (16)	<b>80-56</b>	<b>24</b>	
05:32	24 BONNER A assist (5)			
05:16	00 LATSON T steal (2)			14 SUAREZ P turnover bad pass (5)
05:13	00 LATSON T turnover bad pass (5)			14 SUAREZ P steal (2)
04:48				14 SUAREZ P 3pt FG from turnover, jump shot missed
04:45	00 LATSON T defensive rebound (5)			
04:27	3 GORDON O 2pt FG in the paint, layup made (18)	<b>82-56</b>	<b>26</b>	
04:09	24 BONNER A foul shooting (2 - 4)			14 SUAREZ P foul drawn (3)
04:09	3 GORDON O substitution out			
04:09	13 VIEGAS C substitution in			
04:09		<b>82-57</b>	<b>25</b>	14 SUAREZ P free throw 1 - 2 made (25)
04:09				14 SUAREZ P free throw 2 - 2 missed
04:06	defensive rebound (40)			
04:05				Timeout 60 Sec
04:05	13 VIEGAS C substitution out			
04:05	3 GORDON O substitution in			
03:49	00 LATSON T 3pt FG , jump shot made (28)	<b>85-57</b>	<b>28</b>	
03:49	3 GORDON O assist (4)			
03:39				14 SUAREZ P turnover bad pass (6)



Official Basketball Play by Play - 4th Period  
**George Mason at Florida St.**  
 03/22/25 Maravich Assembly Center, Baton Rouge  
 2024-25 Women's Basketball

**Game Time:** 6:45 PM  
**Game Duration:** 1:55  
**Attendance:** 9,288

**Officials:** Katie Lukanich, Sarah Williams, Jules Gallien

Game Time	FSU	Score	Diff	GMU
03:39	00 LATSON T substitution out			
03:39	4 DOS SANTOS R substitution in			
03:24	21 TIMPSON M 2pt FG from turnover in the paint, layup made (18)	<b>87-57</b>	<b>30</b>	
03:24	11 BOWLES S assist (3)			
03:09				14 SUAREZ P 2pt FG in the paint, jump shot missed
03:06	11 BOWLES S defensive rebound (6)			
02:57	11 BOWLES S turnover bad pass (2)			14 SUAREZ P steal (3)
02:46				15 VOLKER L 2pt FG from turnover in the paint, jump shot missed
02:44	11 BOWLES S defensive rebound (7)			
02:24	11 BOWLES S 3pt FG , jump shot made (15)	<b>90-57</b>	<b>33</b>	
02:24	24 BONNER A assist (6)			
02:06				14 SUAREZ P 2pt FG in the paint, layup missed
02:03				11 MITCHELL N offensive rebound (5)
02:03				11 MITCHELL N 2pt FG second chance in the paint, tip-in layup missed
02:00				15 VOLKER L offensive rebound (3)
01:59				15 VOLKER L 2pt FG second chance in the paint, layup missed
01:56	3 GORDON O defensive rebound (6)			
01:53				Timeout 30 Sec
01:53	3 GORDON O substitution out			
01:53	21 TIMPSON M substitution out			
01:53	24 BONNER A substitution out			
01:53	1 TURNAGE B substitution in			
01:53	13 VIEGAS C substitution in			
01:53	32 TREADWELL A substitution in			
01:53				2 WALTON Z substitution out
01:53				3 HARRIS K substitution out
01:53				11 MITCHELL N substitution out
01:53				14 SUAREZ P substitution out
01:53				15 VOLKER L substitution out
01:53				10 MASSENBURG T substitution in
01:53				13 BROWN J substitution in
01:53				21 OKORIE F substitution in
01:53				23 MCNEAL K substitution in
01:53				32 GREENBURG P substitution in
01:35	32 TREADWELL A foul drawn (1)			23 MCNEAL K foul shooting (1 - 4)
01:35	32 TREADWELL A free throw 1 - 2 made (3)	<b>91-57</b>	<b>34</b>	
01:35	32 TREADWELL A free throw 2 - 2 made (4)	<b>92-57</b>	<b>35</b>	
01:35	11 BOWLES S substitution out			
01:35	8 CHAVEZ M substitution in			
01:11				10 MASSENBURG T 2pt FG in the paint, jump shot missed
01:08	32 TREADWELL A defensive rebound (3)			
00:59	4 DOS SANTOS R foul drawn (1)			13 BROWN J foul shooting (1 - 5)
00:59	4 DOS SANTOS R free throw 1 - 2 made (1)	<b>93-57</b>	<b>36</b>	
00:59	4 DOS SANTOS R free throw 2 - 2 made (2)	<b>94-57</b>	<b>37</b>	
00:39		<b>94-59</b>	<b>35</b>	21 OKORIE F 2pt FG in the paint, layup made (2)
00:39				23 MCNEAL K assist (1)
00:26	32 TREADWELL A 3pt FG , jump shot missed			



Official Basketball Play by Play - 4th Period  
**George Mason at Florida St.**  
03/22/25 Maravich Assembly Center, Baton Rouge  
2024-25 Women's Basketball

**Game Time:** 6:45 PM  
**Game Duration:** 1:55  
**Attendance:** 9,288

**Officials:** Katie Lukanich, Sarah Williams, Jules Gallien

Game Time	FSU	Score	Diff	GMU
00:21	1 TURNAGE B offensive rebound (5)			
00:20	13 VIEGAS C 3pt FG second chance, jump shot missed			
00:17	4 DOS SANTOS R offensive rebound (1)			
00:02	4 DOS SANTOS R turnover lost ball (1)			10 MASSENBERG T steal (1)
<b>END OF GAME</b>				
<b>FSU 94-59 GMU</b>				



Officials: Katie Lukanich, Sarah Williams, Jules Gallien

George Mason - 6

NO.	Name	F	Min	FG			Rebounds			Fouls		TP	AS	TO	ST	Blocks		+/-
				M-A	M-A	M-A	OR	DR	TOT	PF	FD					BS	BA	
2	Zahirah Walton	F	08:07	0-2	0-0	0-0	1	0	1	0	0	0	0	0	0	0	-23	
42	Nalani Kaysia	F	03:56	0-2	0-0	1-2	3	0	3	1	2	1	0	0	0	1	-11	
3	Kennedy Harris	G	08:07	0-2	0-1	0-0	0	0	0	0	0	0	1	0	0	1	-23	
14	Paula Suarez	G	06:48	1-4	0-1	1-2	0	1	1	1	2	3	0	2	2	1	-18	
22	Ta'Viyanna Habib	G	02:22	0-1	0-1	0-0	0	0	0	0	0	0	0	0	0	0	-7	
11	Nekhu Mitchell		05:45	0-1	0-0	0-0	1	0	1	1	0	0	0	0	0	0	-16	
13	Jada Brown		03:12	0-3	0-2	0-0	0	0	0	1	0	0	0	0	0	0	-7	
15	Louis Volker		04:11	0-2	0-0	0-0	1	0	1	0	0	0	0	0	0	0	-12	
10	Trinity Massenberg		01:53	0-1	0-0	0-0	0	0	0	0	0	0	0	1	0	0	-2	
21	Faith Okorie		01:53	1-1	0-0	0-0	0	0	0	0	0	2	0	0	0	0	-2	
23	Khamya McNeal		01:53	0-0	0-0	0-0	0	0	0	1	0	0	1	0	0	0	-2	
32	Page Greenburg		01:53	0-0	0-0	0-0	0	0	0	0	0	0	0	0	0	0	-2	
Team							1	0	1			0			0			
<b>Totals</b>				2-19	0-5	2-4	7	1	8	5	4	6	1	3	3	1	2	-25

Shooting By Period		
4 <sup>th</sup> FG%	2-19	10.5%
3PT%	0-5	0.0%
FT%	2-4	50%
GM FG%	2-19	10.5%
3PT%	0-5	0.0%
FT%	2-4	50.0%

Dead Ball Rebounds: 0, 0

Technical Fouls::NONE

Florida St. - 31

NO.	Name	F	Min	FG			Rebounds			Fouls		TP	AS	TO	ST	Blocks		+/-
				M-A	M-A	M-A	OR	DR	TOT	PF	FD					BS	BA	
21	Makayla Timpson	F	07:52	3-3	0-0	1-1	0	2	2	0	1	7	0	0	0	1	0	24
22	Malea Williams	F	00:00	0-0	0-0	0-0	0	0	0	0	0	0	0	0	0	0	0	0
00	Ta'Niya Latson	G	06:21	1-2	1-1	2-2	0	1	1	0	1	5	2	1	1	1	1	18
3	O'Mariah Gordon	G	06:44	4-4	1-1	0-0	0	1	1	0	0	9	1	0	0	0	0	19
11	Sydney Bowles	G	08:11	2-3	2-2	0-0	0	5	5	1	1	6	1	1	0	0	0	25
24	Amaya Bonner		08:07	0-0	0-0	0-0	0	0	0	2	0	0	2	0	1	0	0	23
13	Carla Viegas		03:30	0-1	0-1	0-0	0	0	0	1	0	0	0	0	0	0	6	
32	Avery Treadwell		02:08	0-1	0-1	2-2	0	1	1	0	1	2	0	0	0	0	1	
4	Raiane Dos Santos		03:39	0-0	0-0	2-2	1	0	1	0	1	2	0	1	0	0	7	
1	Brianna Turnage		01:53	0-0	0-0	0-0	1	0	1	0	0	0	0	0	0	0	2	
8	Morelia Chavez		01:35	0-0	0-0	0-0	0	0	0	0	0	0	0	0	0	0	0	
Team							1	2	3			0			0			
<b>Totals</b>				10-14	4-6	7-7	3	12	15	4	5	31	6	3	2	2	1	25

Shooting By Period		
4 <sup>th</sup> FG%	10-14	71.4%
3PT%	4-6	66.7%
FT%	7-7	100%
GM FG%	10-14	71.4%
3PT%	4-6	66.7%
FT%	7-7	100.0%

Dead Ball Rebounds: 0, 0

Technical Fouls::NONE

	GMU	FSU
Biggest lead	0 (1 <sup>st</sup> 10:00)	37 (4 <sup>th</sup> 0:59)
Best Scoring Run	2(4 <sup>th</sup> 5:46)	12(4 <sup>th</sup> 6:32)
Lead Changes	0	
Times Tied	0	
Time with Lead	00:00	09:49

	GMU	FSU
Points from		
Turnovers	0	2
Paint	4	12
Second Chance	1	3
Fast Breaks	0	0
Bench	2	4

Period by Period Scoring					
	1st	2nd	3rd	4th	TOT
GMU	10	19	24	6	59
FSU	22	19	22	31	94



Officials: Katie Lukanich, Sarah Williams, Jules Gallien

George Mason - 30

NO.	Name	Min	FG			Rebounds			Fouls		TP	AS	TO	ST	Blocks		+/-
			M-A	M-A	M-A	OR	DR	TOT	PF	FD					BS	BA	
2	Zahirah Walton	F 15:42	0-3	0-0	2-2	1	0	1	1	1	2	1	0	0	0	0	-23
42	Nalani Kaysia	F 12:14	1-4	0-0	2-4	3	1	4	3	3	4	1	0	0	1	1	-10
3	Kennedy Harris	G 16:08	2-5	1-3	2-2	0	0	0	0	1	7	3	1	1	0	1	-14
14	Paula Suarez	G 16:48	4-11	3-5	1-2	0	1	1	2	2	12	1	3	3	1	1	-16
22	Ta'Viyanna Habib	G 05:30	0-1	0-1	0-0	0	0	0	0	0	0	0	0	0	0	0	-6
11	Nekhu Mitchell	11:04	0-2	0-0	0-0	2	1	3	1	1	0	1	1	0	0	1	-19
15	Louis Volker	07:15	0-2	0-0	0-0	1	1	2	2	0	0	0	0	0	0	0	-12
13	Jada Brown	07:47	1-4	1-3	0-0	0	0	0	1	0	3	0	0	1	0	0	-7
10	Trinity Massenberg	01:53	0-1	0-0	0-0	0	0	0	0	0	0	0	0	1	0	0	-2
21	Faith Okorie	01:53	1-1	0-0	0-0	0	0	0	0	0	2	0	0	0	0	0	-2
23	Khamya McNeal	01:53	0-0	0-0	0-0	0	0	0	1	0	0	1	0	0	0	0	-2
32	Page Greenburg	01:53	0-0	0-0	0-0	0	0	0	0	0	0	0	0	0	0	0	-2
Team						2	0	2			0			0			
<b>Totals</b>			9-34	5-12	7-10	9	4	13	11	8	30	8	5	6	2	4	-23

Shooting By Period		
3rd FG%	7-15	46.7%
3PT%	5-7	71.4%
FT%	5-6	83.3%
4th FG%	2-19	10.5%
3PT%	0-5	0.0%
FT%	2-4	50%
GM FG%	9-34	26.5%
3PT%	5-12	41.7%
FT%	7-10	70.0%

Dead Ball Rebounds: 1, 1

Technical Fouls::NONE

Florida St. - 53

NO.	Name	Min	FG			Rebounds			Fouls		TP	AS	TO	ST	Blocks		+/-
			M-A	M-A	M-A	OR	DR	TOT	PF	FD					BS	BA	
21	Makayla Timpson	F 15:16	5-6	0-0	2-3	0	5	5	2	2	12	0	0	0	1	0	29
22	Malea Williams	F 05:30	0-1	0-1	0-0	0	0	0	1	0	0	0	0	0	1	0	-8
00	Ta'Niya Latson	G 16:21	2-7	1-2	7-8	2	1	3	0	5	12	2	3	2	1	2	16
3	O'Mariah Gordon	G 16:44	6-8	2-4	0-0	1	1	2	1	0	14	2	0	0	0	0	17
11	Sydney Bowles	G 14:29	3-4	3-3	0-0	0	6	6	1	1	9	2	1	0	0	0	18
1	Brianna Turnage	04:41	0-0	0-0	0-0	1	1	2	0	0	0	1	0	0	1	0	11
24	Amaya Bonner	12:37	0-0	0-0	2-2	1	1	2	2	1	2	3	1	2	0	0	29
13	Carla Viegas	05:27	0-2	0-2	0-0	0	0	0	1	0	0	0	0	0	0	0	-3
32	Avery Treadwell	03:41	0-1	0-1	2-2	1	1	2	0	1	2	0	0	0	0	0	-1
4	Raiane Dos Santos	03:39	0-0	0-0	2-2	1	0	1	0	1	2	0	1	0	0	0	7
8	Morelia Chavez	01:35	0-0	0-0	0-0	0	0	0	0	0	0	0	0	0	0	0	0
Team						1	2	3			0			0			
<b>Totals</b>			16-29	6-13	15-17	8	18	26	8	11	53	10	6	4	4	2	23

Shooting By Period		
3rd FG%	6-15	40.0%
3PT%	2-7	28.6%
FT%	8-10	80%
4th FG%	10-14	71.4%
3PT%	4-6	66.7%
FT%	7-7	100%
GM FG%	16-29	55.2%
3PT%	6-13	46.2%
FT%	15-17	88.2%

Dead Ball Rebounds: 2, 0

Technical Fouls::NONE

	GMU	FSU
Biggest lead	0 (1 <sup>st</sup> 10:00)	37 (4 <sup>th</sup> 0:59)
Best Scoring Run	6(3 <sup>rd</sup> 6:13)	12(4 <sup>th</sup> 6:32)
Lead Changes	0	
Times Tied	0	
Time with Lead	00:00	19:33

	GMU	FSU
Points from		
Turnovers	6	7
Paint	6	20
Second Chance	1	10
Fast Breaks	3	6
Bench	5	6

	Period by Period Scoring				
	1st	2nd	3rd	4th	TOT
GMU	10	19	24	6	59
FSU	22	19	22	31	94



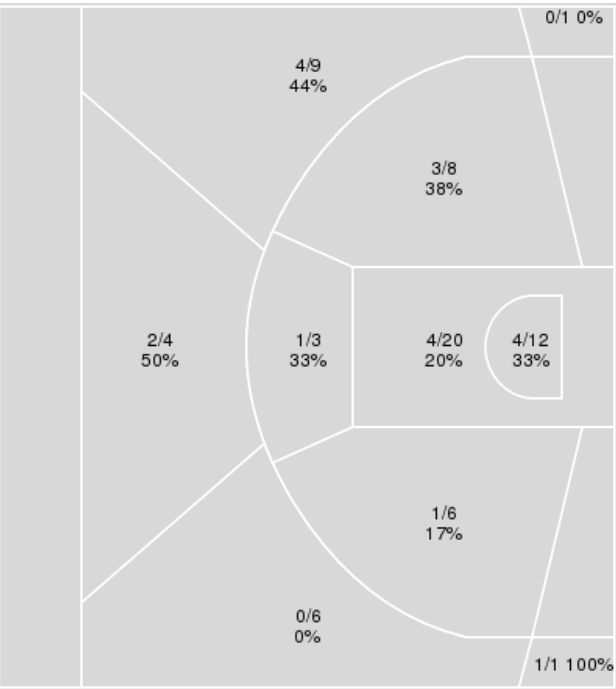
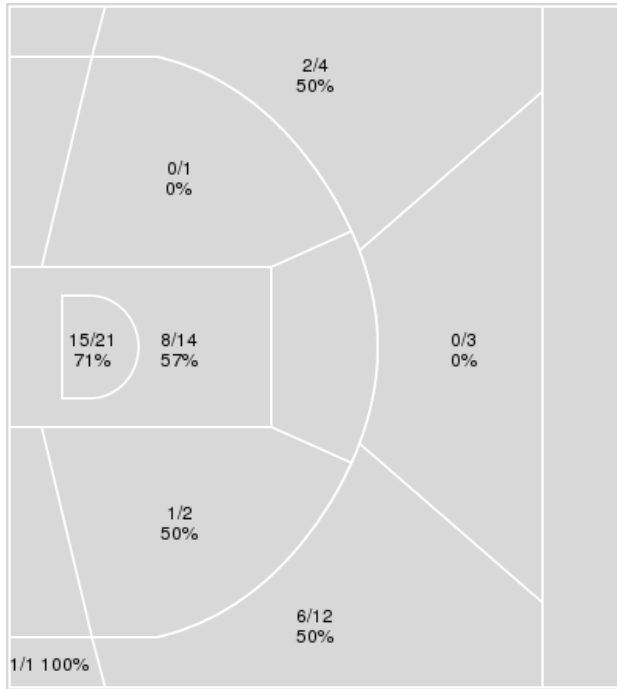
**Officials:** Katie Lukanich, Sarah Williams, Jules Gallien

{ Players => All; } FG Types => All; Results => All;

{ Players => 2, 3, 4, 10, 11, 13, 14, 15, 21, 22, 23, 24, 32, 42; } FG  
 Types => All; Results => All;

**Florida St.**

**George Mason**



Florida St.	M/A	%
Field Goals	33/58	57
2 Points	24/38	63
3 Points	9/20	45
Free Throws	19/25	76

George Mason	M/A	%
Field Goals	20/70	29
2 Points	13/49	27
3 Points	7/21	33
Free Throws	12/16	75



**George Mason at Florida St.**

03/22/25 Maravich Assembly Center, Baton Rouge  
2024-25 Women's Basketball

**Game Time:** 6:45 PM  
**Game Duration:** 1:55  
**Attendance:** 9,288

**Officials:** Katie Lukanich, Sarah Williams, Jules Gallien

**George Mason**

No	Name	Mins		Score		Points Diff		Points per Min		Assists		Rebounds		Steals		Turnovers	
		On	Off	On	Off	On	Off	On	Off	On	Off	On	Off	On	Off	On	Off
2	Zahirah Walton	30:27	09:33	42 - 80	17 - 14	-38	3	1.38	1.78	8	4	23	8	7	2	10	0
3	Kennedy Harris	32:45	07:15	48 - 76	11 - 18	-28	-7	1.47	1.52	10	2	27	4	7	2	7	3
10	Trinity Massenberg	01:53	38:07	2 - 4	57 - 90	-2	-33	1.06	1.50	1	11	0	31	1	8	0	10
11	Nekhu Mitchell	24:33	15:27	38 - 58	21 - 36	-20	-15	1.55	1.36	6	6	23	8	5	4	5	5
13	Jada Brown	08:04	31:56	13 - 20	46 - 74	-7	-28	1.61	1.44	4	8	6	25	4	5	2	8
14	Paula Suarez	33:52	06:08	52 - 79	7 - 15	-27	-8	1.54	1.14	11	1	25	6	7	2	10	0
15	Louis Volker	20:57	19:03	28 - 47	31 - 47	-19	-16	1.34	1.63	5	7	18	13	4	5	5	5
21	Faith Okorie	01:53	38:07	2 - 4	57 - 90	-2	-33	1.06	1.50	1	11	0	31	1	8	0	10
22	Ta'Viyanna Habib	13:41	26:19	20 - 28	39 - 66	-8	-27	1.46	1.48	5	7	11	20	3	6	4	6
23	Khamya McNeal	01:53	38:07	2 - 4	57 - 90	-2	-33	1.06	1.50	1	11	0	31	1	8	0	10
32	Page Greenburg	04:07	35:53	9 - 11	50 - 83	-2	-33	2.19	1.39	1	11	0	31	1	8	0	10
42	Nalani Kaysia	25:55	14:05	39 - 59	20 - 35	-20	-15	1.50	1.42	7	5	22	9	4	5	7	3

**Florida St.**

No	Name	Mins		Score		Points Diff		Points per Min		Assists		Rebounds		Steals		Turnovers	
		On	Off	On	Off	On	Off	On	Off	On	Off	On	Off	On	Off	On	Off
00	Ta'Niya Latson	33:07	06:53	72 - 57	22 - 2	15	20	2.17	3.20	12	5	37	9	8	1	9	2
1	Brianna Turnage	13:55	26:05	35 - 16	59 - 43	19	16	2.52	2.26	4	13	17	29	6	3	4	7
3	O'Mariah Gordon	33:29	06:31	83 - 50	11 - 9	33	2	2.48	1.69	15	2	39	7	8	1	9	2
4	Raiane Dos Santos	03:39	36:21	9 - 2	85 - 57	7	28	2.47	2.34	2	15	6	40	0	9	2	9
8	Morelia Chavez	01:35	38:25	2 - 2	92 - 57	0	35	1.26	2.39	0	17	3	43	0	9	1	10
11	Sydney Bowles	25:13	14:47	65 - 39	29 - 20	26	9	2.58	1.96	11	6	29	17	4	5	5	6
13	Carla Viegas	15:33	24:27	28 - 26	66 - 33	2	33	1.80	2.70	5	12	15	31	2	7	5	6
21	Makayla Timpson	32:41	07:19	82 - 40	12 - 19	42	-7	2.51	1.64	15	2	38	8	9	0	6	5
22	Malea Williams	11:50	28:10	20 - 27	74 - 32	-7	42	1.69	2.63	5	12	12	34	1	8	3	8
24	Amaya Bonner	22:42	17:18	62 - 22	32 - 37	40	-5	2.73	1.85	14	3	26	20	7	2	7	4
32	Avery Treadwell	06:16	33:44	12 - 14	82 - 45	-2	37	1.91	2.43	2	15	8	38	0	9	4	7

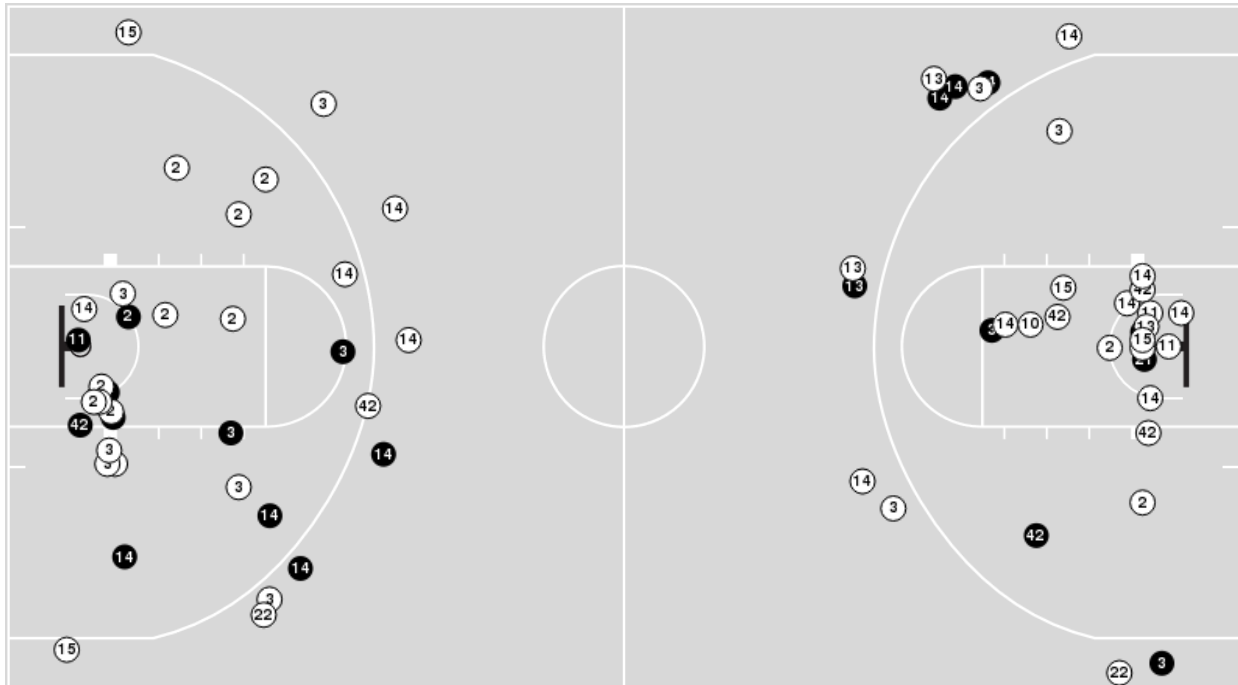




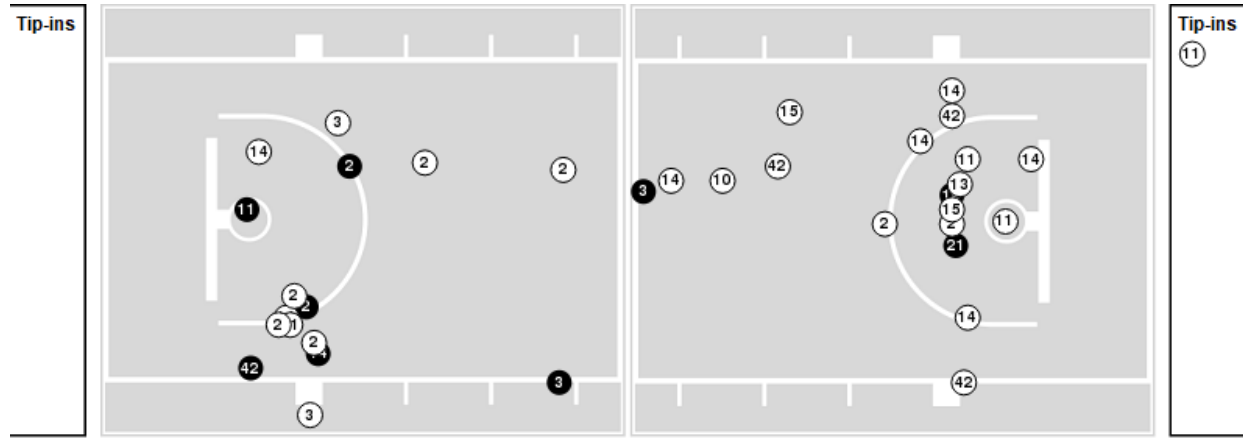
Players => 2, 3, 4, 10, 11, 13, 14, 15, 21, 22, 23, 24, 32, 42FG Types=>AllResults=>All

**George Mason**

**All Field Goals**



**Blow Up Chart**



● Made    ○ Missed    N - Player Number

George Mason	M/A	%
Field Goals	20/70	29
2 Points	13/49	27
3 Points	7/21	33
Free Throws	12/16	75

George Mason	M/A	%
Points in the Paint	16 (8 / 32)	25
Fast Break Points	3 (1/1)	100
Second Chance Points	6 (4/17)	24
Effective FG%	34	

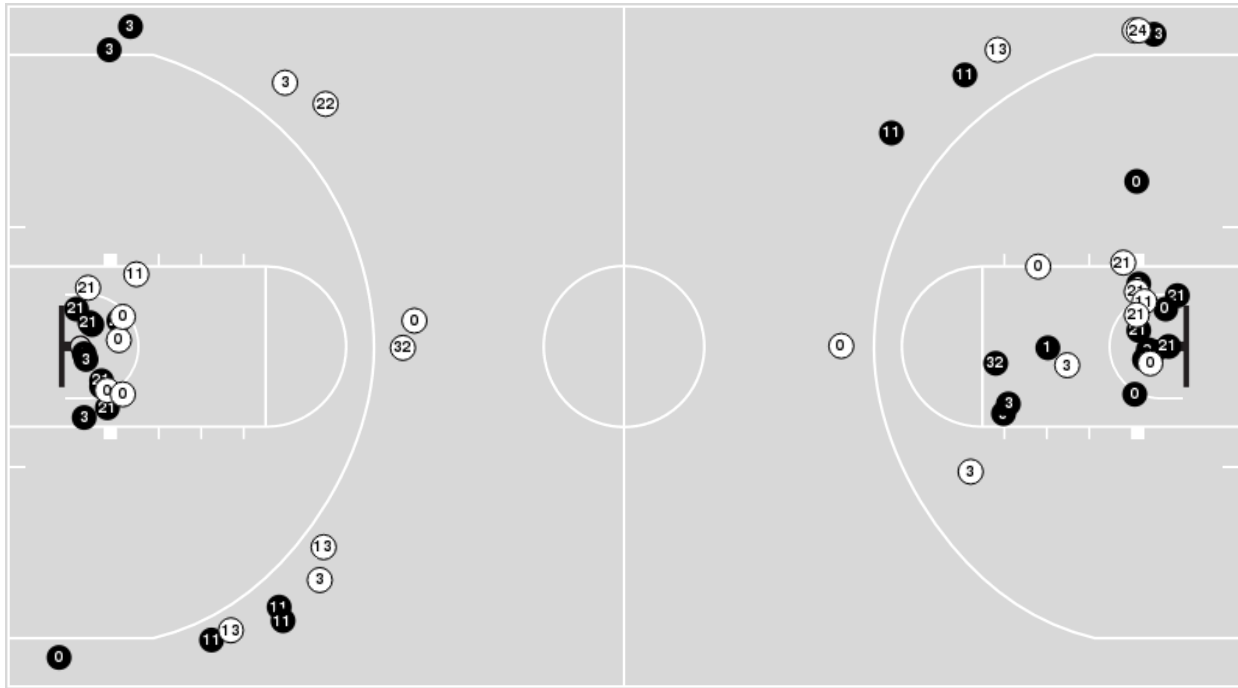


**Officials:** Katie Lukanich, Sarah Williams, Jules Gallien

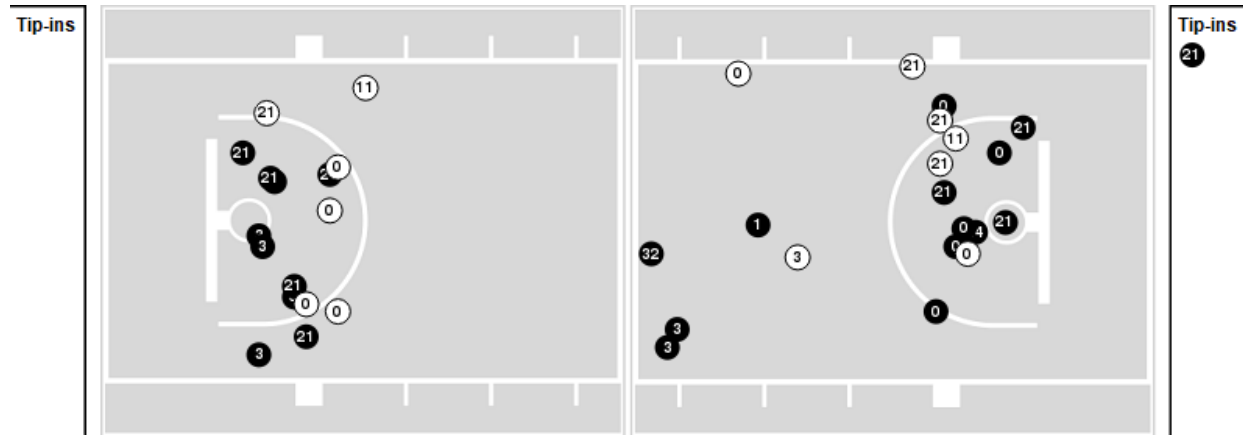
Players => AllFG Types=>AllResults=>All

**Florida St.**

**All Field Goals**



**Blow Up Chart**



● Made    ○ Missed    N - Player Number

Florida St.	M/A	%
Field Goals	33/58	57
2 Points	24/38	63
3 Points	9/20	45
Free Throws	19/25	76

Florida St.	M/A	%
Points in the Paint	46 (23 / 35)	66
Fast Break Points	14 (8/11)	73
Second Chance Points	14 (8/12)	67
Effective FG%	65	



**Officials:** Katie Lukanich, Sarah Williams, Jules Gallien

**George Mason**

Lineup	Quarter On	Time On	Quarter Off	Time Off	Time on Court	Score	Score Diff	Reb	Stl	Tov	Ass	PPP
2- Walton Z/ 3- Harris K/ 14- Suarez P/ 22- Habib T/ 42- Kaysia N/	1	10:00	1	05:56	04:04	3-8	-5	4	1	2	1	0.4286
2- Walton Z/ 3- Harris K/ 14- Suarez P/ 15- Volker L/ 42- Kaysia N/	1	05:56	1	03:48	02:08	0-8	-8	1	0	2	0	0.0000
2- Walton Z/ 11- Mitchell N/ 14- Suarez P/ 15- Volker L/ 22- Habib T/	1	03:48	1	02:56	00:52	2-0	2	3	0	1	1	1.0000
3- Harris K/ 11- Mitchell N/ 15- Volker L/ 22- Habib T/ 42- Kaysia N/	1	02:56	2	10:00	02:56	5-6	-1	2	1	0	0	1.1261
2- Walton Z/ 14- Suarez P/ 22- Habib T/ 32- Greenburg P/ 42- Kaysia N/	2	10:00	2	09:41	00:19	2-0	2	0	0	0	0	2.2727
2- Walton Z/ 11- Mitchell N/ 14- Suarez P/ 32- Greenburg P/ 42- Kaysia N/	2	09:41	2	07:46	01:55	5-7	-2	0	0	0	0	1.2887
2- Walton Z/ 3- Harris K/ 11- Mitchell N/ 14- Suarez P/ 15- Volker L/	2	07:46	2	05:39	02:07	0-8	-8	2	0	0	0	0.0000
3- Harris K/ 11- Mitchell N/ 14- Suarez P/ 15- Volker L/ 42- Kaysia N/	2	05:39	2	03:37	02:02	4-0	4	3	0	0	1	1.0000
2- Walton Z/ 3- Harris K/ 11- Mitchell N/ 14- Suarez P/ 15- Volker L/	2	03:37	2	00:17	03:19	8-4	4	2	1	0	1	1.2422
11- Mitchell N/ 13- Brown J/ 14- Suarez P/ 15- Volker L/ 42- Kaysia N/	2	00:17	3	10:00	00:17	0-0	0	1	0	0	0	0.0000
2- Walton Z/ 3- Harris K/ 14- Suarez P/ 22- Habib T/ 42- Kaysia N/	3	10:00	3	07:55	02:05	3-5	-2	1	0	0	1	1.0000
2- Walton Z/ 3- Harris K/ 11- Mitchell N/ 14- Suarez P/ 42- Kaysia N/	3	07:55	3	07:00	00:55	4-2	2	1	0	0	1	2.1277
3- Harris K/ 11- Mitchell N/ 14- Suarez P/ 15- Volker L/ 42- Kaysia N/	3	07:00	3	04:35	02:25	6-4	2	2	0	0	2	1.5000
2- Walton Z/ 11- Mitchell N/ 13- Brown J/ 14- Suarez P/ 42- Kaysia N/	3	04:35	3	02:36	01:59	0-7	-7	0	1	2	0	0.0000
2- Walton Z/ 3- Harris K/ 13- Brown J/ 14- Suarez P/ 42- Kaysia N/	3	02:36	3	01:42	00:54	6-0	6	1	1	0	1	2.1739
2- Walton Z/ 3- Harris K/ 13- Brown J/ 14- Suarez P/ 15- Volker L/	3	01:42	3	01:03	00:39	0-2	-2	0	0	0	0	0.0000
2- Walton Z/ 3- Harris K/ 13- Brown J/ 14- Suarez P/ 22- Habib T/	3	01:03	4	10:00	01:03	5-2	3	0	1	0	2	2.5000
2- Walton Z/ 3- Harris K/ 14- Suarez P/ 22- Habib T/ 42- Kaysia N/	4	10:00	4	07:38	02:22	0-7	-7	1	0	1	0	0.0000
2- Walton Z/ 3- Harris K/ 11- Mitchell N/ 13- Brown J/ 42- Kaysia N/	4	07:38	4	06:19	01:19	0-5	-5	4	0	0	0	0.0000
2- Walton Z/ 3- Harris K/ 11- Mitchell N/ 14- Suarez P/ 42- Kaysia N/	4	06:19	4	06:04	00:15	1-0	1	1	0	0	0	1.1364
2- Walton Z/ 3- Harris K/ 11- Mitchell N/ 14- Suarez P/ 15- Volker L/	4	06:04	4	01:53	04:11	3-15	-12	2	2	2	0	0.3807
10- Massenberg T/ 13- Brown J/ 21- Okorie F/ 23- McNeal K/ 32- Greenburg P/	4	01:53	4	00:00	01:53	2-4	-2	0	1	0	1	1.0000



**Officials:** Katie Lukanich, Sarah Williams, Jules Gallien

**Florida St.**

Lineup	Quarter On	Time On	Quarter Off	Time Off	Time on Court	Score	Score Diff	Reb	Stl	Tov	Ass	PPP
00- Latson T/ 3- Gordon O/ 11- Bowles S/ 21- Timpson M/ 22- Williams M/	1	10:00	1	06:45	03:15	6-3	3	4	1	0	1	1.5000
00- Latson T/ 1- Turnage B/ 3- Gordon O/ 11- Bowles S/ 21- Timpson M/	1	06:45	1	05:56	00:49	2-0	2	1	1	1	0	1.0638
00- Latson T/ 1- Turnage B/ 3- Gordon O/ 21- Timpson M/ 24- Bonner A/	1	05:56	1	04:55	01:01	3-0	3	2	1	0	0	1.5957
1- Turnage B/ 3- Gordon O/ 13- Viegas C/ 21- Timpson M/ 24- Bonner A/	1	04:55	1	03:48	01:07	5-0	5	1	1	0	1	1.6667
00- Latson T/ 1- Turnage B/ 13- Viegas C/ 21- Timpson M/ 24- Bonner A/	1	03:48	1	02:35	01:13	2-2	0	0	1	0	1	1.0000
00- Latson T/ 3- Gordon O/ 22- Williams M/ 24- Bonner A/ 32- Treadwell A/	1	02:35	2	10:00	02:35	4-5	-1	2	0	2	2	1.0000
00- Latson T/ 3- Gordon O/ 11- Bowles S/ 21- Timpson M/ 22- Williams M/	2	10:00	2	09:30	00:30	1-2	-1	0	0	0	0	1.1364
00- Latson T/ 1- Turnage B/ 3- Gordon O/ 11- Bowles S/ 21- Timpson M/	2	09:30	2	07:46	01:44	6-5	1	2	0	0	0	2.0000
3- Gordon O/ 11- Bowles S/ 13- Viegas C/ 21- Timpson M/ 24- Bonner A/	2	07:46	2	05:39	02:07	8-0	8	2	0	0	2	2.0619
00- Latson T/ 11- Bowles S/ 13- Viegas C/ 21- Timpson M/ 24- Bonner A/	2	05:39	2	03:37	02:02	0-4	-4	2	0	1	0	0.0000
00- Latson T/ 1- Turnage B/ 3- Gordon O/ 13- Viegas C/ 21- Timpson M/	2	03:37	2	00:17	03:19	4-7	-3	4	0	1	0	0.8000
00- Latson T/ 3- Gordon O/ 11- Bowles S/ 13- Viegas C/ 21- Timpson M/	2	00:17	3	10:00	00:17	0-1	-1	0	0	0	0	0.0000
00- Latson T/ 3- Gordon O/ 11- Bowles S/ 21- Timpson M/ 22- Williams M/	3	10:00	3	05:24	04:36	9-13	-4	5	0	0	2	1.3554
00- Latson T/ 1- Turnage B/ 3- Gordon O/ 21- Timpson M/ 24- Bonner A/	3	05:24	3	02:36	02:48	9-0	9	4	2	1	2	1.8000
00- Latson T/ 3- Gordon O/ 13- Viegas C/ 22- Williams M/ 32- Treadwell A/	3	02:36	3	01:42	00:54	0-4	-4	1	0	1	0	0.0000
00- Latson T/ 3- Gordon O/ 11- Bowles S/ 24- Bonner A/ 32- Treadwell A/	3	01:42	3	01:03	00:39	4-2	2	1	0	0	0	2.2727
00- Latson T/ 3- Gordon O/ 11- Bowles S/ 13- Viegas C/ 24- Bonner A/	3	01:03	4	10:00	01:03	0-5	-5	0	0	1	0	0.0000
00- Latson T/ 3- Gordon O/ 11- Bowles S/ 21- Timpson M/ 24- Bonner A/	4	10:00	4	07:38	02:22	7-0	7	5	1	0	1	1.7500
00- Latson T/ 11- Bowles S/ 13- Viegas C/ 21- Timpson M/ 24- Bonner A/	4	07:38	4	06:19	01:19	5-0	5	1	0	0	1	2.0492
00- Latson T/ 3- Gordon O/ 13- Viegas C/ 24- Bonner A/ 32- Treadwell A/	4	06:19	4	06:05	00:14	0-0	0	0	0	0	0	0.0000
00- Latson T/ 3- Gordon O/ 11- Bowles S/ 24- Bonner A/ 32- Treadwell A/	4	06:05	4	06:04	00:01	0-1	-1	1	0	0	0	0.0000
00- Latson T/ 3- Gordon O/ 11- Bowles S/ 21- Timpson M/ 24- Bonner A/	4	06:04	4	04:09	01:55	7-2	5	1	1	1	1	1.8041
00- Latson T/ 11- Bowles S/ 13- Viegas C/ 21- Timpson M/ 24- Bonner A/	4	04:09	4	04:05	00:04	0-1	-1	1	0	0	0	0.0000
00- Latson T/ 3- Gordon O/ 11- Bowles S/ 21- Timpson M/ 24- Bonner A/	4	04:05	4	03:39	00:26	3-0	3	0	0	0	1	3.0000
3- Gordon O/ 4- Dos Santos R/ 11- Bowles S/ 21- Timpson M/ 24- Bonner A/	4	03:39	4	01:53	01:46	5-0	5	3	0	1	2	1.6667
1- Turnage B/ 4- Dos Santos R/ 11- Bowles S/ 13- Viegas C/ 32- Treadwell A/	4	01:53	4	01:35	00:18	2-0	2	0	0	0	0	2.2727
1- Turnage B/ 4- Dos Santos R/ 8- Chavez M/ 13- Viegas C/ 32- Treadwell A/	4	01:35	4	00:00	01:35	2-2	0	3	0	1	0	1.0638



**Officials:** Katie Lukanich, Sarah Williams, Jules Gallien

**George Mason**

Lineup	Time	Score	Score Diff	Pts/Min	Reb	Stl	Tov	Ass	PPP
2- Walton Z/ 3- Harris K/ 11- Mitchell N/ 14- Suarez P/ 15- Volker L/	09:37	11-27	-16	1.1427	6	3	2	1	0.6351
2- Walton Z/ 3- Harris K/ 14- Suarez P/ 22- Habib T/ 42- Kaysia N/	08:31	6-20	-14	0.7045	6	1	3	2	0.4000
3- Harris K/ 11- Mitchell N/ 14- Suarez P/ 15- Volker L/ 42- Kaysia N/	04:27	10-4	6	2.2472	5	0	0	3	1.2500
3- Harris K/ 11- Mitchell N/ 15- Volker L/ 22- Habib T/ 42- Kaysia N/	02:56	5-6	-1	1.7045	2	1	0	0	1.1261
2- Walton Z/ 3- Harris K/ 14- Suarez P/ 15- Volker L/ 42- Kaysia N/	02:08	0-8	-8	0.0000	1	0	2	0	0.0000
2- Walton Z/ 11- Mitchell N/ 13- Brown J/ 14- Suarez P/ 42- Kaysia N/	01:59	0-7	-7	0.0000	0	1	2	0	0.0000
2- Walton Z/ 11- Mitchell N/ 14- Suarez P/ 32- Greenburg P/ 42- Kaysia N/	01:55	5-7	-2	2.6087	0	0	0	0	1.2887
10- Massenberg T/ 13- Brown J/ 21- Okorie F/ 23- McNeal K/ 32- Greenburg P/	01:53	2-4	-2	1.0619	0	1	0	1	1.0000
2- Walton Z/ 3- Harris K/ 11- Mitchell N/ 13- Brown J/ 42- Kaysia N/	01:19	0-5	-5	0.0000	4	0	0	0	0.0000
2- Walton Z/ 3- Harris K/ 11- Mitchell N/ 14- Suarez P/ 42- Kaysia N/	01:10	5-2	3	4.2857	2	0	0	1	1.8116
2- Walton Z/ 3- Harris K/ 13- Brown J/ 14- Suarez P/ 22- Habib T/	01:03	5-2	3	4.7619	0	1	0	2	2.5000
2- Walton Z/ 3- Harris K/ 13- Brown J/ 14- Suarez P/ 42- Kaysia N/	00:54	6-0	6	6.6667	1	1	0	1	2.1739
2- Walton Z/ 11- Mitchell N/ 14- Suarez P/ 15- Volker L/ 22- Habib T/	00:52	2-0	2	2.3077	3	0	1	1	1.0000
2- Walton Z/ 3- Harris K/ 13- Brown J/ 14- Suarez P/ 15- Volker L/	00:39	0-2	-2	0.0000	0	0	0	0	0.0000
2- Walton Z/ 14- Suarez P/ 22- Habib T/ 32- Greenburg P/ 42- Kaysia N/	00:19	2-0	2	6.3158	0	0	0	0	2.2727
11- Mitchell N/ 13- Brown J/ 14- Suarez P/ 15- Volker L/ 42- Kaysia N/	00:17	0-0	0	0.0000	1	0	0	0	0.0000



**Officials:** Katie Lukanich, Sarah Williams, Jules Gallien

**Florida St.**

Lineup	Time	Score	Score Diff	Pts/Min	Reb	Stl	Tov	Ass	PPP
00- Latson T/3- Gordon O/ 11- Bowles S/ 21- Timpson M/ 22- Williams M/	08:21	16-18	-2	1.9162	9	1	0	3	1.3889
00- Latson T/3- Gordon O/ 11- Bowles S/ 21- Timpson M/ 24- Bonner A/	04:43	17-2	15	3.6042	6	2	1	3	1.9144
00- Latson T/ 1- Turnage B/3- Gordon O/ 21- Timpson M/ 24- Bonner A/	03:49	12-0	12	3.1441	6	3	1	2	1.7442
00- Latson T/ 11- Bowles S/ 13- Viegas C/ 21- Timpson M/ 24- Bonner A/	03:25	5-5	0	1.4634	4	0	1	1	0.7764
00- Latson T/ 1- Turnage B/3- Gordon O/ 13- Viegas C/ 21- Timpson M/	03:19	4-7	-3	1.2024	4	0	1	0	0.8000
00- Latson T/3- Gordon O/ 22- Williams M/ 24- Bonner A/ 32- Treadwell A/	02:35	4-5	-1	1.5484	2	0	2	2	1.0000
00- Latson T/ 1- Turnage B/3- Gordon O/ 11- Bowles S/ 21- Timpson M/	02:33	8-5	3	3.1373	3	1	1	0	1.6393
3- Gordon O/ 11- Bowles S/ 13- Viegas C/ 21- Timpson M/ 24- Bonner A/	02:07	8-0	8	3.7795	2	0	0	2	2.0619
3- Gordon O/ 4- Dos Santos R/ 11- Bowles S/ 21- Timpson M/ 24- Bonner A/	01:46	5-0	5	2.8302	3	0	1	2	1.6667
1- Turnage B/ 4- Dos Santos R/ 8- Chavez M/ 13- Viegas C/ 32- Treadwell A/	01:35	2-2	0	1.2632	3	0	1	0	1.0638
00- Latson T/ 1- Turnage B/ 13- Viegas C/ 21- Timpson M/ 24- Bonner A/	01:13	2-2	0	1.6438	0	1	0	1	1.0000
1- Turnage B/3- Gordon O/ 13- Viegas C/ 21- Timpson M/ 24- Bonner A/	01:07	5-0	5	4.4776	1	1	0	1	1.6667
00- Latson T/3- Gordon O/ 11- Bowles S/ 13- Viegas C/ 24- Bonner A/	01:03	0-5	-5	0.0000	0	0	1	0	0.0000
00- Latson T/3- Gordon O/ 13- Viegas C/ 22- Williams M/ 32- Treadwell A/	00:54	0-4	-4	0.0000	1	0	1	0	0.0000
00- Latson T/3- Gordon O/ 11- Bowles S/ 24- Bonner A/ 32- Treadwell A/	00:40	4-3	1	6.0000	2	0	0	0	2.2727
1- Turnage B/ 4- Dos Santos R/ 11- Bowles S/ 13- Viegas C/ 32- Treadwell A/	00:18	2-0	2	6.6667	0	0	0	0	2.2727
00- Latson T/3- Gordon O/ 11- Bowles S/ 13- Viegas C/ 21- Timpson M/	00:17	0-1	-1	0.0000	0	0	0	0	0.0000
00- Latson T/3- Gordon O/ 13- Viegas C/ 24- Bonner A/ 32- Treadwell A/	00:14	0-0	0	0.0000	0	0	0	0	0.0000