

## FINAL SCORE



**Florida St.**

**86**



**Notre Dame**

**81**

February 27, 2025 • Purcell Pavilion at the Joyce Center - Notre Dame

## FINAL STATISTICS

# FLORIDA STATE<sup>®</sup>

## BASKETBALL

### **FINAL: NO.24/25 FSU 86, NO. 3/4 ND 81**

- » The Seminoles picked up its third win over a ranked team this season on Thursday, stunning No. 3 Notre Dame on the road. It was the first win against the Irish on the road in program history and second overall. Brooke Wyckoff now owns 11 wins over ranked teams, this being the highest
- » In program history, the Seminoles own 12 wins over teams ranked in the top 5 of the AP poll and just 4 on the road. It was the highest ranked win since the Noles defeated No. 3 Louisville in Tallahassee on February 21, 2021, 68-59
- » Ta'Niya Latson returned to the lineup and hit 2,000 points for her career and contributed 23 points, and now as 2, 015 for her career. She becomes the third player in ACC history to accomplish the feat in the first three seasons of play and first since 2004. Other players that have hit 2,000 in their first three seasons are Caitlin Clark, Kelsey Plum, Britney Griner and Candace Parker, among others
- » Latson also became the FSU all-time leader in free throws made, breaking the mark that Sue Galkantas set after the 1984 season with 485. She now has 492
- » Makayla Timpson secured 17 rebounds, establishing a new program record for career rebounds, breaking Natasha Howard's mark (1,046). She now has 1,058
- » Timpson contributed her 15th double-double of the season and 46th of her career behind 22 points and 17 rebounds

### **FSU STARTERS**

Player	20-21	21-22	22-23	23-24	24-25	Tot
Ta'Niya Latson	-	-	31	33	25	89
Makayla Timpson	-	1	33	34	29	95
O'Mariah Gordon	-	20	2	34	27	82
*Malea Williams	0	3	4	31	18	54
Carla Viegas	-	-	-	0	17	17
^Sydney Bowles	-	-	29	1	14	43
Brianna Turnage	-	-	0	19	11	30
Amaya Bonner	-	-	-	1	3	2
Raiane Dos Santos	-	-	-	-	1	1

\*At Cincinnati, ^ at Texas A&M

### **FSU TOP SCORERS**

Player	PTS	FGM	FT	3PT	AST	REB
Ta'Niya Latson	23	7-20	9-10	0-3	9	5
Makayla Timpson	22	9-15	4-5	0-0	0	17
O'Mariah Gordon	15	5-15	4-4	1-5	3	3
Carla Viegas	12	4-7	0-0	4-7	0	0





Officials: Angelica Suffren, Meadow Overstreet, Mark Berger

Florida St. - 86

Record: 23-6 (13-4)

NO.	Name	Min	FG	3P	FT	Rebounds			Fouls		TP	AS	TO	ST	Blocks		+/-
			M-A	M-A	M-A	OR	DR	TOT	PF	FD					BS	BA	
21	Makayla Timpson	F 35:12	9-15	0-0	4-5	6	11	17	3	6	22	0	3	1	0	0	5
22	Malea Williams	F 13:22	1-3	1-3	0-0	1	2	3	2	0	3	0	0	0	1	0	-1
00	Ta'Niya Latson	G 33:48	7-20	0-3	9-10	1	4	5	2	9	23	9	3	2	1	2	4
3	O'Mariah Gordon	G 33:02	5-15	1-5	4-4	2	1	3	3	2	15	3	4	1	0	0	5
11	Sydney Bowles	G 23:12	3-8	2-6	0-0	0	1	1	1	1	8	1	1	0	1	0	1
24	Amaya Bonner	16:41	0-2	0-1	0-2	2	1	3	3	1	0	0	1	0	0	0	-3
6	Mariana Valenzuela	07:28	1-1	1-1	0-0	0	0	0	4	0	3	0	0	0	0	0	-9
13	Carla Viegas	15:09	4-7	4-7	0-0	0	0	0	2	0	12	0	0	0	0	0	6
32	Avery Treadwell	02:01	0-0	0-0	0-0	0	0	0	0	0	0	0	0	0	0	0	-2
1	Brianna Turnage	20:05	0-0	0-0	0-0	1	4	5	1	0	0	1	0	1	0	0	19
Team						2	4	6			0		0				
<b>Totals</b>			30-71	9-26	17-21	15	28	43	21	19	86	14	12	5	3	2	5

Technical Fouls::NONE

Shooting By Period		
1st FG%	4-20	20.0%
3PT%	2-12	16.7%
FT%	4-4	100%
2nd FG%	11-21	52.4%
3PT%	6-8	75.0%
FT%	2-3	66.7%
3rd FG%	7-15	46.7%
3PT%	1-4	25.0%
FT%	8-8	100%
4th FG%	8-15	53.3%
3PT%	0-2	0.0%
FT%	3-6	50%
GM FG%	30-71	42.3%
3PT%	9-26	34.6%
FT%	17-21	81.0%

Dead Ball Rebounds: 1, 0

Notre Dame - 81

Record: 24-4 (15-2)

NO.	Name	Min	FG	3P	FT	Rebounds			Fouls		TP	AS	TO	ST	Blocks		+/-
			M-A	M-A	M-A	OR	DR	TOT	PF	FD					BS	BA	
20	Liatu King	F 33:24	8-15	0-1	1-1	4	7	11	4	1	17	4	2	1	1	1	0
21	Maddy Westbeld	F 13:00	2-4	1-1	0-0	0	2	2	4	2	5	0	1	0	1	1	11
3	Hannah Hidalgo	G 37:55	4-18	0-2	8-10	1	4	5	2	7	16	1	2	3	0	1	-4
5	Olivia Miles	G 31:33	3-7	0-3	4-6	0	4	4	3	4	10	6	3	3	0	0	-4
11	Sonia Citron	G 36:16	8-14	3-5	2-2	1	4	5	2	2	21	2	1	1	0	0	-2
8	Cassandre Prosper	14:16	0-1	0-0	2-2	2	1	3	1	2	2	0	0	0	0	0	-5
32	Liza Karlen	20:12	1-2	0-1	0-0	2	3	5	1	1	2	4	1	1	0	0	-7
13	Kate Koval	13:24	3-6	0-0	2-2	0	2	2	2	2	8	0	2	0	0	0	-14
Team						1	2	3			0		0				
<b>Totals</b>			29-67	4-13	19-23	11	29	40	19	21	81	17	12	9	2	3	-5

Technical Fouls::NONE

Shooting By Period		
1st FG%	7-13	53.8%
3PT%	2-3	66.7%
FT%	7-8	87.5%
2nd FG%	8-19	42.1%
3PT%	0-5	0.0%
FT%	1-2	50%
3rd FG%	5-17	29.4%
3PT%	1-3	33.3%
FT%	6-7	85.7%
4th FG%	9-18	50.0%
3PT%	1-2	50.0%
FT%	5-6	83.3%
GM FG%	29-67	43.3%
3PT%	4-13	30.8%
FT%	19-23	82.6%

Dead Ball Rebounds: 3, 0

	FSU	UND
Biggest lead	12 (4 <sup>th</sup> 2:32)	15 (2 <sup>nd</sup> 8:26)
Best Scoring Run	12 (2 <sup>nd</sup> 6:03)	9 (4 <sup>th</sup> 6:53)
Lead Changes	3	
Times Tied	3	
Time with Lead	23:49	13:39

	FSU	UND
Points from		
Turnovers	13	15
Paint	38	34
Second Chance	12	13
Fast Breaks	12	13
Bench	15	12

	Period by Period Scoring				
	1st	2nd	3rd	4th	TOT
FSU	14	30	23	19	86
UND	23	17	17	24	81



**Officials:** Angelica Suffren, Meadow Overstreet, Mark Berger

**Period 1**

**Quarter Starters:**

<b>UND</b>	3 Hidalgo H	5 Miles O	11 Citron S	20 King L	21 Westbeld M
<b>FSU</b>	00 Latson T	3 Gordon O	11 Bowles S	21 Timpson M	22 Williams M

Game Time	UND	Score	Diff	FSU
10:00	21 WESTBELD M jumpball lost			21 TIMPSON M jumpball won
09:54				00 LATSON T 2pt FG outside the paint, pull up jump shot missed
09:50	11 CITRON S defensive rebound (1)			
09:39	11 CITRON S 2pt FG outside the paint, pull up jump shot missed			
09:36				22 WILLIAMS M defensive rebound (1)
09:32	11 CITRON S foul personal (1 - 1)			00 LATSON T foul drawn (1)
09:23	5 MILES O steal (1)			3 GORDON O turnover lost ball (1)
09:14	20 KING L 2pt FG from turnover in the paint, layup blocked			
09:14				22 WILLIAMS M block (1)
09:10				00 LATSON T defensive rebound (1)
09:05				11 BOWLES S 3pt FG , jump shot missed
09:02	3 HIDALGO H defensive rebound (1)			
08:45	3 HIDALGO H 2pt FG in the paint, driving layup missed			
08:42	20 KING L offensive rebound (1)			
08:41	21 WESTBELD M 3pt FG second chance, jump shot made (3)	<b>3-0</b>	<b>3</b>	
08:41	20 KING L assist (1)			
08:25				11 BOWLES S 3pt FG , jump shot missed
08:22				offensive rebound (3)
08:14				00 LATSON T 3pt FG second chance, jump shot missed
08:10				22 WILLIAMS M offensive rebound (2)
08:05	5 MILES O foul shooting (1 - 2)			3 GORDON O foul drawn (1)
08:05				11 BOWLES S substitution out
08:05				24 BONNER A substitution in
08:05		<b>3-1</b>	<b>2</b>	3 GORDON O free throw 1 - 2 made (1)
08:05		<b>3-2</b>	<b>1</b>	3 GORDON O free throw 2 - 2 made (2)
07:51	21 WESTBELD M foul drawn (1)			00 LATSON T foul personal (1 - 1)
07:39	21 WESTBELD M 2pt FG in the paint, driving layup made (5)	<b>5-2</b>	<b>3</b>	
07:39	20 KING L assist (2)			
07:21		<b>5-5</b>	<b>0</b>	3 GORDON O 3pt FG , jump shot made (5)
07:21				00 LATSON T assist (1)
07:10	21 WESTBELD M foul drawn (2)			24 BONNER A foul personal (1 - 2)
06:58	20 KING L turnover bad pass (1)			00 LATSON T steal (1)
06:53				00 LATSON T 2pt FG from turnover in the paint, layup blocked
06:53	20 KING L block (1)			
06:49	21 WESTBELD M defensive rebound (1)			
06:45	21 WESTBELD M turnover travel (1)			
06:36				3 GORDON O 3pt FG from turnover, jump shot missed
06:32				21 TIMPSON M offensive rebound (1)
06:22				00 LATSON T turnover travel (1)
06:22	5 MILES O substitution out			
06:22	21 WESTBELD M substitution out			
06:22	8 PROSPER C substitution in			



Official Basketball Play by Play - 1st Period  
**Florida St. at Notre Dame**  
 02/27/25 Purcell Pavilion at the Joyce Center, Notre Dame  
 2024-25 Women's Basketball

**Game Time:** 8:00 PM  
**Game Duration:** 1:53  
**Attendance:** 8,761

**Officials:** Angelica Suffren, Meadow Overstreet, Mark Berger

Game Time	UND	Score	Diff	FSU
06:22	32 KARLEN L substitution in			
06:22				3 GORDON O substitution out
06:22				11 BOWLES S substitution in
06:22				22 WILLIAMS M substitution out
06:22				6 VALENZUELA M substitution in
06:08	3 HIDALGO H 2pt FG from turnover outside the paint, step back jump shot made (2)	<b>7-5</b>	<b>2</b>	
05:54	3 HIDALGO H steal (1)			00 LATSON T turnover bad pass (2)
05:51	3 HIDALGO H foul drawn (1)			6 VALENZUELA M foul shooting (1 - 3)
05:51	3 HIDALGO H free throw fast break 1 - 2 made (3)	<b>8-5</b>	<b>3</b>	
05:51	3 HIDALGO H free throw fast break 2 - 2 made (4)	<b>9-5</b>	<b>4</b>	
05:38				21 TIMPSON M 2pt FG in the paint, layup missed
05:35	32 KARLEN L defensive rebound (1)			
05:30	3 HIDALGO H foul offensive (1 - 3)			11 BOWLES S foul drawn (1)
05:30	3 HIDALGO H turnover offensive (1)			
05:30	20 KING L substitution out			
05:30	13 KOVAL K substitution in			
05:15				21 TIMPSON M 2pt FG from turnover in the paint, layup missed
05:12	3 HIDALGO H defensive rebound (2)			
05:03	13 KOVAL K 2pt FG in the paint, hook shot made (2)	<b>11-5</b>	<b>6</b>	
05:03	32 KARLEN L assist (1)			
04:44		<b>11-7</b>	<b>4</b>	00 LATSON T 2pt FG in the paint, layup made (2)
04:26	11 CITRON S 2pt FG in the paint, floating jump shot missed			
04:22	32 KARLEN L offensive rebound (2)			
04:18	3 HIDALGO H 2pt FG second chance outside the paint, floating jump shot missed			
04:16				defensive rebound (6)
04:16	Timeout media			
04:16	11 CITRON S substitution out			
04:16	5 MILES O substitution in			
04:16				00 LATSON T substitution out
04:16				24 BONNER A substitution out
04:16				3 GORDON O substitution in
04:16				13 VIEGAS C substitution in
04:08				13 VIEGAS C 3pt FG , jump shot missed
04:05	5 MILES O defensive rebound (1)			
03:55	32 KARLEN L 2pt FG outside the paint, jump shot made (2)	<b>13-7</b>	<b>6</b>	
03:55	5 MILES O assist (1)			
03:31		<b>13-9</b>	<b>4</b>	11 BOWLES S 2pt FG outside the paint, step back jump shot made (2)
03:14	13 KOVAL K turnover bad pass (1)			21 TIMPSON M steal (1)
03:06				3 GORDON O 2pt FG from turnover in the paint, floating jump shot missed
03:02				3 GORDON O offensive rebound (1)
03:01				3 GORDON O 2pt FG from turnover second chance in the paint, jump shot missed
02:58	13 KOVAL K defensive rebound (1)			
02:53	5 MILES O 3pt FG , jump shot missed			
02:50	32 KARLEN L offensive rebound (3)			
02:50	5 MILES O foul drawn (1)			21 TIMPSON M foul shooting (1 - 4)
02:50	32 KARLEN L substitution out			



Official Basketball Play by Play - 1st Period  
**Florida St. at Notre Dame**  
 02/27/25 Purcell Pavilion at the Joyce Center, Notre Dame  
 2024-25 Women's Basketball

**Game Time:** 8:00 PM  
**Game Duration:** 1:53  
**Attendance:** 8,761

**Officials:** Angelica Suffren, Meadow Overstreet, Mark Berger

Game Time	UND	Score	Diff	FSU
02:50	21 WESTBELD M substitution in			
02:50				6 VALENZUELA M substitution out
02:50				11 BOWLES S substitution out
02:50				00 LATSON T substitution in
02:50				22 WILLIAMS M substitution in
02:50	5 MILES O free throw 1 - 2 made (1)	<b>14-9</b>	<b>5</b>	
02:50	5 MILES O free throw 2 - 2 made (2)	<b>15-9</b>	<b>6</b>	
02:29				13 VIEGAS C 3pt FG , jump shot missed
02:26	13 KOVAL K defensive rebound (2)			
02:19	5 MILES O turnover bad pass (1)			
02:19	3 HIDALGO H substitution out			
02:19	13 KOVAL K substitution out			
02:19	11 CITRON S substitution in			
02:19	20 KING L substitution in			
02:06				22 WILLIAMS M 3pt FG from turnover, jump shot missed
02:04				21 TIMPSON M offensive rebound (2)
02:04	21 WESTBELD M foul shooting (1 - 4)			21 TIMPSON M foul drawn (1)
02:04		<b>15-10</b>	<b>5</b>	21 TIMPSON M free throw 1 - 2 made (1)
02:04		<b>15-11</b>	<b>4</b>	21 TIMPSON M free throw 2 - 2 made (2)
02:04				21 TIMPSON M substitution out
02:04				32 TREADWELL A substitution in
01:53	11 CITRON S 3pt FG , jump shot made (3)	<b>18-11</b>	<b>7</b>	
01:53	5 MILES O assist (2)			
01:41				13 VIEGAS C 3pt FG , jump shot missed
01:39	defensive rebound (12)			
01:39	8 PROSPER C substitution out			
01:39	3 HIDALGO H substitution in			
01:26	3 HIDALGO H foul drawn (2)			13 VIEGAS C foul shooting (1 - 5)
01:26				32 TREADWELL A substitution out
01:26				21 TIMPSON M substitution in
01:26				13 VIEGAS C substitution out
01:26				24 BONNER A substitution in
01:26	3 HIDALGO H free throw 1 - 2 made (5)	<b>19-11</b>	<b>8</b>	
01:26	3 HIDALGO H free throw 2 - 2 made (6)	<b>20-11</b>	<b>9</b>	
01:11				3 GORDON O 3pt FG , jump shot missed
01:08	20 KING L defensive rebound (2)			
01:04	20 KING L 2pt FG fast break in the paint, pull up jump shot made (2)	<b>22-11</b>	<b>11</b>	
00:36		<b>22-14</b>	<b>8</b>	22 WILLIAMS M 3pt FG , jump shot made (3)
00:36				00 LATSON T assist (2)
00:28	5 MILES O foul drawn (2)			24 BONNER A foul shooting (2 - 6)
00:28				24 BONNER A substitution out
00:28				11 BOWLES S substitution in
00:28	5 MILES O free throw 1 - 2 missed			
00:28	offensive dead ball rebound (1)			
00:28	5 MILES O free throw 2 - 2 made (3)	<b>23-14</b>	<b>9</b>	
00:00				3 GORDON O 3pt FG , jump shot missed
00:00				21 TIMPSON M offensive rebound (3)

END OF PERIOD



Official Basketball Play by Play - 1st Period  
**Florida St. at Notre Dame**  
02/27/25 Purcell Pavilion at the Joyce Center, Notre Dame  
2024-25 Women's Basketball

**Game Time:** 8:00 PM  
**Game Duration:** 1:53  
**Attendance:** 8,761

**Officials:** Angelica Suffren, Meadow Overstreet, Mark Berger

Game Time	UND	Score	Diff	FSU
UND 23-14 FSU				



Officials: Angelica Suffren, Meadow Overstreet, Mark Berger

Florida St. - 14

NO.	Name	Min	FG			Rebounds			Fouls		TP	AS	TO	ST	Blocks		+/-
			M-A	3P	FT	OR	DR	TOT	PF	FD					BS	BA	
21	Makayla Timpson	F 09:22	0-2	0-0	2-2	3	0	3	1	1	2	0	0	1	0	0	-6
22	Malea Williams	F 06:28	1-2	1-2	0-0	1	1	2	0	0	3	0	0	0	1	0	-5
00	Ta'Niya Latson	G 08:34	1-4	0-1	0-0	0	1	1	1	1	2	2	2	1	0	1	-9
3	O'Mariah Gordon	G 07:54	1-6	1-4	2-2	1	0	1	0	1	5	0	1	0	0	0	-5
11	Sydney Bowles	G 05:56	1-3	0-2	0-0	0	0	0	0	1	2	0	0	0	0	0	-8
24	Amaya Bonner	04:46	0-0	0-0	0-0	0	0	0	2	0	0	0	0	0	0	0	-2
6	Mariana Valenzuela	03:32	0-0	0-0	0-0	0	0	0	1	0	0	0	0	0	0	0	-4
13	Carla Viegas	02:50	0-3	0-3	0-0	0	0	0	1	0	0	0	0	0	0	0	-3
32	Avery Treadwell	00:38	0-0	0-0	0-0	0	0	0	0	0	0	0	0	0	0	0	-3
Team						1	1	2			0		0				
<b>Totals</b>			4-20	2-12	4-4	6	3	9	6	4	14	2	3	2	1	1	-9

Shooting By Period		
1st FG%	4-20	20.0%
3PT%	2-12	16.7%
FT%	4-4	100%
GM FG%	4-20	20.0%
3PT%	2-12	16.7%
FT%	4-4	100.0%

Dead Ball Rebounds: 0, 0

Technical Fouls::NONE

Notre Dame - 23

NO.	Name	Min	FG			Rebounds			Fouls		TP	AS	TO	ST	Blocks		+/-
			M-A	3P	FT	OR	DR	TOT	PF	FD					BS	BA	
20	Liatu King	F 06:49	1-2	0-0	0-0	1	1	2	0	0	2	2	1	0	1	1	7
21	Maddy Westbeld	F 06:28	2-2	1-1	0-0	0	1	1	1	2	5	0	1	0	0	0	5
3	Hannah Hidalgo	G 09:20	1-3	0-0	4-4	0	2	2	1	2	6	0	1	1	0	0	8
5	Olivia Miles	G 07:54	0-1	0-1	3-4	0	1	1	1	2	3	2	1	1	0	0	5
11	Sonia Citron	G 08:03	1-3	1-1	0-0	0	1	1	1	0	3	0	0	0	0	0	7
8	Cassandre Prosper	04:43	0-0	0-0	0-0	0	0	0	0	0	0	0	0	0	0	0	7
32	Liza Karlen	03:32	1-1	0-0	0-0	2	1	3	0	0	2	1	0	0	0	0	4
13	Kate Koval	03:11	1-1	0-0	0-0	0	2	2	0	0	2	0	1	0	0	0	2
Team						0	1	1			0		0				
<b>Totals</b>			7-13	2-3	7-8	3	10	13	4	6	23	5	5	2	1	1	9

Shooting By Period		
1st FG%	7-13	53.8%
3PT%	2-3	66.7%
FT%	7-8	87.5%
GM FG%	7-13	53.8%
3PT%	2-3	66.7%
FT%	7-8	87.5%

Dead Ball Rebounds: 1, 0

Technical Fouls::NONE

	FSU	UND
Biggest lead	0 (1 <sup>st</sup> 10:00)	11 (1 <sup>st</sup> 1:04)
Best Scoring Run	3(1 <sup>st</sup> 7:21)	7(1 <sup>st</sup> 1:04)
Lead Changes	0	
Times Tied	1	
Time with Lead	00:00	07:28

	FSU	UND
Points from		
Turnovers	2	4
Paint	2	6
Second Chance	4	5
Fast Breaks	0	4
Bench	0	4

	Period by Period Scoring				
	1st	2nd	3rd	4th	TOT
FSU	14	30	23	19	86
UND	23	17	17	24	81





**Period 2**

**Quarter Starters:**

<b>UND</b>	3 Hidalgo H	5 Miles O	11 Citron S	20 King L	21 Westbeld M
<b>FSU</b>	00 Latson T	1 Turnage B	3 Gordon O	11 Bowles S	21 Timpson M

Game Time	UND	Score	Diff	FSU
10:00				22 WILLIAMS M substitution out
10:00				1 TURNAGE B substitution in
09:45	20 KING L 2pt FG outside the paint, jump shot made (4)	<b>25-14</b>	<b>11</b>	
09:45	11 CITRON S assist (1)			
09:33				00 LATSON T 2pt FG in the paint, jump shot blocked
09:33	21 WESTBELD M block (1)			
09:29	21 WESTBELD M defensive rebound (2)			
09:25	20 KING L 3pt FG , jump shot missed			
09:22				1 TURNAGE B defensive rebound (1)
09:16				00 LATSON T 2pt FG in the paint, driving layup missed
09:16				offensive rebound (11)
09:16	21 WESTBELD M foul personal (2 - 1)			21 TIMPSON M foul drawn (2)
09:16	21 WESTBELD M substitution out			
09:16	32 KARLEN L substitution in			
09:06				21 TIMPSON M turnover travel (1)
08:50	3 HIDALGO H 2pt FG from turnover in the paint, jump shot made (8)	<b>27-14</b>	<b>13</b>	
08:36				00 LATSON T 2pt FG outside the paint, jump shot missed
08:33	32 KARLEN L defensive rebound (4)			
08:26	20 KING L 2pt FG in the paint, step back jump shot made (6)	<b>29-14</b>	<b>15</b>	
08:26	5 MILES O assist (3)			
08:25				Timeout 30 Sec
08:12				21 TIMPSON M 2pt FG in the paint, layup missed
08:09				21 TIMPSON M offensive rebound (4)
08:07		<b>29-16</b>	<b>13</b>	21 TIMPSON M 2pt FG second chance in the paint, layup made (4)
08:03	5 MILES O 3pt FG , jump shot missed			
08:01				21 TIMPSON M defensive rebound (5)
07:56		<b>29-19</b>	<b>10</b>	11 BOWLES S 3pt FG fast break, jump shot made (5)
07:56				3 GORDON O assist (1)
07:39	20 KING L turnover travel (2)			
07:28		<b>29-22</b>	<b>7</b>	11 BOWLES S 3pt FG from turnover, jump shot made (8)
07:28				00 LATSON T assist (3)
07:01	20 KING L 2pt FG outside the paint, jump shot missed			
06:58	11 CITRON S offensive rebound (2)			
06:54	5 MILES O 3pt FG second chance, jump shot missed			
06:51				11 BOWLES S defensive rebound (1)
06:46		<b>29-24</b>	<b>5</b>	21 TIMPSON M 2pt FG fast break in the paint, layup made (6)
06:46				11 BOWLES S assist (1)
06:46	Timeout 30 Sec			
06:46	5 MILES O substitution out			
06:46	8 PROSPER C substitution in			
06:34	3 HIDALGO H 2pt FG outside the paint, jump shot missed			
06:32				21 TIMPSON M defensive rebound (6)



Official Basketball Play by Play - 2nd Period  
**Florida St. at Notre Dame**  
 02/27/25 Purcell Pavilion at the Joyce Center, Notre Dame  
 2024-25 Women's Basketball

**Game Time:** 8:00 PM  
**Game Duration:** 1:53  
**Attendance:** 8,761

**Officials:** Angelica Suffren, Meadow Overstreet, Mark Berger

Game Time	UND	Score	Diff	FSU
06:32	20 KING L foul personal (1 - 2)			21 TIMPSON M foul drawn (3)
06:21				11 BOWLES S 3pt FG , jump shot missed
06:16	20 KING L defensive rebound (3)			
06:11	20 KING L 2pt FG in the paint, driving layup missed			
06:08				1 TURNAGE B defensive rebound (2)
06:03		<b>29-26</b>	<b>3</b>	21 TIMPSON M 2pt FG fast break in the paint, layup made (8)
06:03				00 LATSON T assist (4)
05:37	3 HIDALGO H foul drawn (3)			3 GORDON O foul shooting (1 - 1)
05:37	20 KING L substitution out			
05:37	13 KOVAL K substitution in			
05:37				3 GORDON O substitution out
05:37				21 TIMPSON M substitution out
05:37				6 VALENZUELA M substitution in
05:37				13 VIEGAS C substitution in
05:37	3 HIDALGO H free throw 1 - 2 missed			
05:37	offensive dead ball rebound (2)			
05:37	3 HIDALGO H free throw 2 - 2 made (9)	<b>30-26</b>	<b>4</b>	
05:21		<b>30-29</b>	<b>1</b>	6 VALENZUELA M 3pt FG , jump shot made (3)
05:21				00 LATSON T assist (5)
04:54	3 HIDALGO H 2pt FG in the paint, pull up jump shot missed			
04:50	3 HIDALGO H offensive rebound (3)			
04:48	3 HIDALGO H 3pt FG second chance, jump shot missed			
04:45	8 PROSPER C offensive rebound (1)			
04:42	13 KOVAL K foul drawn (1)			6 VALENZUELA M foul personal (2 - 2)
04:42				1 TURNAGE B substitution out
04:42				6 VALENZUELA M substitution out
04:42				21 TIMPSON M substitution in
04:42				22 WILLIAMS M substitution in
04:42	11 CITRON S foul drawn (1)			22 WILLIAMS M foul personal (1 - 3)
04:37	11 CITRON S 2pt FG second chance in the paint, layup made (5)	<b>32-29</b>	<b>3</b>	
04:37	32 KARLEN L assist (2)			
04:23		<b>32-31</b>	<b>1</b>	21 TIMPSON M 2pt FG in the paint, layup made (10)
04:23	13 KOVAL K foul shooting (1 - 3)			21 TIMPSON M foul drawn (4)
04:23				21 TIMPSON M free throw 1 - 1 missed
04:21	11 CITRON S defensive rebound (3)			
04:10	11 CITRON S 2pt FG in the paint, driving layup missed			
04:07				21 TIMPSON M defensive rebound (7)
03:59	32 KARLEN L foul shooting (1 - 4)			00 LATSON T foul drawn (2)
03:59	11 CITRON S substitution out			
03:59	5 MILES O substitution in			
03:59		<b>32-32</b>	<b>0</b>	00 LATSON T free throw 1 - 2 made (3)
03:59		<b>32-33</b>	<b>-1</b>	00 LATSON T free throw 2 - 2 made (4)
03:50	13 KOVAL K foul offensive (2 - 5)			00 LATSON T foul drawn (3)
03:50	13 KOVAL K turnover offensive (2)			
03:24		<b>32-35</b>	<b>-3</b>	21 TIMPSON M 2pt FG from turnover in the paint, layup made (12)
03:24				00 LATSON T assist (6)
03:04	13 KOVAL K 2pt FG in the paint, hook shot made (4)	<b>34-35</b>	<b>-1</b>	
03:04	32 KARLEN L assist (3)			



Official Basketball Play by Play - 2nd Period  
**Florida St. at Notre Dame**  
 02/27/25 Purcell Pavilion at the Joyce Center, Notre Dame  
 2024-25 Women's Basketball

**Game Time:** 8:00 PM  
**Game Duration:** 1:53  
**Attendance:** 8,761

**Officials:** Angelica Suffren, Meadow Overstreet, Mark Berger

Game Time	UND	Score	Diff	FSU
02:52		<b>34-38</b>	<b>-4</b>	13 VIEGAS C 3pt FG , jump shot made (3)
02:52				00 LATSON T assist (7)
02:24	3 HIDALGO H 2pt FG outside the paint, jump shot blocked			
02:24				00 LATSON T block (1)
02:20				21 TIMPSON M defensive rebound (8)
02:17				00 LATSON T 2pt FG in the paint, driving layup missed
02:13				21 TIMPSON M offensive rebound (9)
02:13				21 TIMPSON M 2pt FG second chance in the paint, tip-in layup missed
02:12				21 TIMPSON M offensive rebound (10)
02:12				21 TIMPSON M 2pt FG second chance in the paint, layup missed
02:12	8 PROSPER C defensive rebound (2)			
02:12	8 PROSPER C foul drawn (1)			22 WILLIAMS M foul personal (2 - 4)
02:12	8 PROSPER C substitution out			
02:12	13 KOVAL K substitution out			
02:12	11 CITRON S substitution in			
02:12	20 KING L substitution in			
02:12				00 LATSON T substitution out
02:12				1 TURNAGE B substitution in
02:12				3 GORDON O substitution in
02:12				22 WILLIAMS M substitution out
01:58	32 KARLEN L 3pt FG , jump shot missed			
01:53				21 TIMPSON M defensive rebound (11)
01:52				21 TIMPSON M substitution out
01:52				22 WILLIAMS M substitution in
01:44		<b>34-41</b>	<b>-7</b>	13 VIEGAS C 3pt FG , jump shot made (6)
01:44				1 TURNAGE B assist (1)
01:27	3 HIDALGO H 2pt FG outside the paint, jump shot made (11)	<b>36-41</b>	<b>-5</b>	
01:14				11 BOWLES S 2pt FG outside the paint, jump shot missed
01:10				1 TURNAGE B offensive rebound (3)
01:08				11 BOWLES S 3pt FG second chance, jump shot missed
01:05	32 KARLEN L defensive rebound (5)			
00:56	5 MILES O 2pt FG outside the paint, step back jump shot made (5)	<b>38-41</b>	<b>-3</b>	
00:33		<b>38-44</b>	<b>-6</b>	13 VIEGAS C 3pt FG , jump shot made (9)
00:33				3 GORDON O assist (2)
00:05	5 MILES O 2pt FG in the paint, driving layup made (7)	<b>40-44</b>	<b>-4</b>	
00:05	20 KING L assist (3)			
<b>END OF PERIOD</b>				
<b>UND 40-44 FSU</b>				



**Florida St. at Notre Dame**

02/27/25 Purcell Pavilion at the Joyce Center, Notre Dame  
2024-25 Women's Basketball

Game Time: 8:00 PM  
Game Duration: 1:53  
Attendance: 8,761

Officials: Angelica Suffren, Meadow Overstreet, Mark Berger

**Florida St. - 30**

NO.	Name	F	Min	FG			Rebounds			Fouls		TP	AS	TO	ST	Blocks		+/-
				M-A	M-A	M-A	OR	DR	TOT	PF	FD					BS	BA	
21	Makayla Timpson	F	07:13	5-8	0-0	0-1	3	5	8	0	3	10	0	1	0	0	0	11
22	Malea Williams	F	04:22	0-0	0-0	0-0	0	0	0	2	0	0	0	0	0	0	0	5
00	Ta'Niya Latson	G	07:48	0-4	0-0	2-2	0	0	0	0	2	2	5	0	0	1	1	13
3	O'Mariah Gordon	G	06:35	0-0	0-0	0-0	0	0	0	1	0	0	2	0	0	0	0	6
11	Sydney Bowles	G	10:00	2-5	2-4	0-0	0	1	1	0	0	6	1	0	0	0	0	13
1	Brianna Turnage		07:30	0-0	0-0	0-0	1	2	3	0	0	0	1	0	0	0	0	8
6	Mariana Valenzuela		00:55	1-1	1-1	0-0	0	0	0	1	0	3	0	0	0	0	0	2
13	Carla Viegas		05:37	3-3	3-3	0-0	0	0	0	0	0	9	0	0	0	0	0	7
Team							1	0	1			0						
<b>Totals</b>				11-21	6-8	2-3	5	8	13	4	5	30	9	1	0	1	1	13

Shooting By Period		
2nd FG%	11-21	52.4%
3PT%	6-8	75.0%
FT%	2-3	66.7%
GM FG%	11-21	52.4%
3PT%	6-8	75.0%
FT%	2-3	66.7%

Dead Ball Rebounds: 0, 0

Technical Fouls::NONE

**Notre Dame - 17**

NO.	Name	F	Min	FG			Rebounds			Fouls		TP	AS	TO	ST	Blocks		+/-
				M-A	M-A	M-A	OR	DR	TOT	PF	FD					BS	BA	
20	Liatu King	F	06:35	2-5	0-1	0-0	0	1	1	1	0	4	1	1	0	0	0	-6
21	Maddy Westbeld	F	00:44	0-0	0-0	0-0	0	1	1	1	0	0	0	0	0	1	0	2
3	Hannah Hidalgo	G	10:00	2-6	0-1	1-2	1	0	1	0	1	5	0	0	0	0	1	-13
5	Olivia Miles	G	07:13	2-4	0-2	0-0	0	0	0	0	0	4	1	0	0	0	0	-9
11	Sonia Citron	G	08:13	1-2	0-0	0-0	1	1	2	0	1	2	1	0	0	0	0	-8
32	Liza Karlen		09:16	0-1	0-1	0-0	0	2	2	1	0	0	2	0	0	0	0	-15
8	Cassandre Prosper		04:34	0-0	0-0	0-0	1	1	2	0	1	0	0	0	0	0	0	-9
13	Kate Koval		03:25	1-1	0-0	0-0	0	0	0	2	1	2	0	1	0	0	0	-7
Team							0	0	0			0						
<b>Totals</b>				8-19	0-5	1-2	3	6	9	5	4	17	5	2	0	1	1	-13

Shooting By Period		
2nd FG%	8-19	42.1%
3PT%	0-5	0.0%
FT%	1-2	50%
GM FG%	8-19	42.1%
3PT%	0-5	0.0%
FT%	1-2	50.0%

Dead Ball Rebounds: 1, 0

Technical Fouls::NONE

	FSU	UND
Biggest lead	7 (2 <sup>nd</sup> 1:44)	15 (2 <sup>nd</sup> 8:26)
Best Scoring Run	12(2 <sup>nd</sup> 6:03)	6(2 <sup>nd</sup> 8:26)
Lead Changes	1	
Times Tied	1	
Time with Lead	03:59	05:46

Points from	FSU	UND
Turnovers	5	2
Paint	10	10
Second Chance	2	2
Fast Breaks	7	0
Bench	12	2

	Period by Period Scoring				
	1st	2nd	3rd	4th	TOT
FSU	14	30	23	19	86
UND	23	17	17	24	81



Officials: Angelica Suffren, Meadow Overstreet, Mark Berger

Florida St. - 44

NO.	Name	Min	FG			Rebounds			Fouls		TP	AS	TO	ST	Blocks		+/-
			M-A	M-A	M-A	OR	DR	TOT	PF	FD					BS	BA	
21	Makayla Timpson	F 16:35	5-10	0-0	2-3	6	5	11	1	4	12	0	1	1	0	0	5
22	Malea Williams	F 10:50	1-2	1-2	0-0	1	1	2	2	0	3	0	0	0	1	0	0
00	Ta'Niya Latson	G 16:22	1-8	0-1	2-2	0	1	1	1	3	4	7	2	1	1	2	4
3	O'Mariah Gordon	G 14:29	1-6	1-4	2-2	1	0	1	1	1	5	2	1	0	0	0	1
11	Sydney Bowles	G 15:56	3-8	2-6	0-0	0	1	1	0	1	8	1	0	0	0	0	5
24	Amaya Bonner	04:46	0-0	0-0	0-0	0	0	0	2	0	0	0	0	0	0	0	-2
6	Mariana Valenzuela	04:27	1-1	1-1	0-0	0	0	0	2	0	3	0	0	0	0	0	-2
13	Carla Viegas	08:27	3-6	3-6	0-0	0	0	0	1	0	9	0	0	0	0	0	4
32	Avery Treadwell	00:38	0-0	0-0	0-0	0	0	0	0	0	0	0	0	0	0	0	-3
1	Brianna Turnage	07:30	0-0	0-0	0-0	1	2	3	0	0	0	1	0	0	0	0	8
Team						2	1	3			0		0				
<b>Totals</b>			15-41	8-20	6-7	11	11	22	10	9	44	11	4	2	2	2	4

Shooting By Period		
1st FG%	4-20	20.0%
3PT%	2-12	16.7%
FT%	4-4	100%
2nd FG%	11-21	52.4%
3PT%	6-8	75.0%
FT%	2-3	66.7%
GM FG%	15-41	36.6%
3PT%	8-20	40.0%
FT%	6-7	85.7%

Dead Ball Rebounds: 0, 0

Technical Fouls::NONE

Notre Dame - 40

NO.	Name	Min	FG			Rebounds			Fouls		TP	AS	TO	ST	Blocks		+/-
			M-A	M-A	M-A	OR	DR	TOT	PF	FD					BS	BA	
20	Liatu King	F 13:24	3-7	0-1	0-0	1	2	3	1	0	6	3	2	0	1	1	1
21	Maddy Westbeld	F 07:12	2-2	1-1	0-0	0	2	2	2	2	5	0	1	0	1	0	7
3	Hannah Hidalgo	G 19:20	3-9	0-1	5-6	1	2	3	1	3	11	0	1	1	0	1	-5
5	Olivia Miles	G 15:07	2-5	0-3	3-4	0	1	1	1	2	7	3	1	1	0	0	-4
11	Sonia Citron	G 16:16	2-5	1-1	0-0	1	2	3	1	1	5	1	0	0	0	0	-1
8	Cassandre Prosper	09:17	0-0	0-0	0-0	1	1	2	0	1	0	0	0	0	0	0	-2
32	Liza Karlen	12:48	1-2	0-1	0-0	2	3	5	1	0	2	3	0	0	0	0	-11
13	Kate Koval	06:36	2-2	0-0	0-0	0	2	2	2	1	4	0	2	0	0	0	-5
Team						0	1	1			0		0				
<b>Totals</b>			15-32	2-8	8-10	6	16	22	9	10	40	10	7	2	2	2	-4

Shooting By Period		
1st FG%	7-13	53.8%
3PT%	2-3	66.7%
FT%	7-8	87.5%
2nd FG%	8-19	42.1%
3PT%	0-5	0.0%
FT%	1-2	50%
GM FG%	15-32	46.9%
3PT%	2-8	25.0%
FT%	8-10	80.0%

Dead Ball Rebounds: 2, 0

Technical Fouls::NONE

	FSU	UND
Biggest lead	7 (2 <sup>nd</sup> 1:44)	15 (2 <sup>nd</sup> 8:26)
Best Scoring Run	12(2 <sup>nd</sup> 6:03)	7(1 <sup>st</sup> 1:04)
Lead Changes	1	
Times Tied	2	
Time with Lead	03:59	13:29

Points from	FSU	UND
Turnovers	7	6
Paint	12	16
Second Chance	6	7
Fast Breaks	7	4
Bench	12	6

	Period by Period Scoring				
	1st	2nd	3rd	4th	TOT
FSU	14	30	23	19	86
UND	23	17	17	24	81



**Period 3**

**Quarter Starters:**

<b>UND</b>	3 Hidalgo H	5 Miles O	11 Citron S	20 King L	21 Westbeld M
<b>FSU</b>	00 Latson T	3 Gordon O	11 Bowles S	21 Timpson M	22 Williams M

Game Time	UND	Score	Diff	FSU
10:00	32 KARLEN L substitution out			
10:00	21 WESTBELD M substitution in			
10:00				1 TURNAGE B substitution out
10:00				13 VIEGAS C substitution out
10:00				00 LATSON T substitution in
10:00				21 TIMPSON M substitution in
09:43				21 TIMPSON M 2pt FG outside the paint, jump shot missed
09:40	20 KING L defensive rebound (4)			
09:34	3 HIDALGO H 2pt FG outside the paint, floating jump shot missed			
09:30	20 KING L offensive rebound (5)			
09:30	20 KING L 2pt FG second chance in the paint, layup missed			
09:30				defensive rebound (23)
09:08				00 LATSON T 2pt FG in the paint, turnaround jump shot missed
09:05	11 CITRON S defensive rebound (4)			
09:00	11 CITRON S 2pt FG fast break in the paint, driving layup made (7)	<b>42-44</b>	<b>-2</b>	
08:47				3 GORDON O 3pt FG , jump shot missed
08:44	5 MILES O defensive rebound (2)			
08:37	5 MILES O foul drawn (3)			21 TIMPSON M foul shooting (2 - 1)
08:37	5 MILES O free throw 1 - 2 made (8)	<b>43-44</b>	<b>-1</b>	
08:36	5 MILES O free throw 2 - 2 missed			
08:35				21 TIMPSON M defensive rebound (12)
08:22	21 WESTBELD M foul shooting (3 - 1)			21 TIMPSON M foul drawn (5)
08:22		<b>43-45</b>	<b>-2</b>	21 TIMPSON M free throw 1 - 2 made (13)
08:22		<b>43-46</b>	<b>-3</b>	21 TIMPSON M free throw 2 - 2 made (14)
08:04	21 WESTBELD M 2pt FG in the paint, layup missed			
08:02				22 WILLIAMS M defensive rebound (3)
07:56				22 WILLIAMS M 3pt FG , jump shot missed
07:53	5 MILES O defensive rebound (3)			
07:43	3 HIDALGO H foul drawn (4)			00 LATSON T foul personal (2 - 2)
07:43				00 LATSON T substitution out
07:43				24 BONNER A substitution in
07:32	21 WESTBELD M 2pt FG in the paint, jump shot blocked			
07:32				11 BOWLES S block (1)
07:28				21 TIMPSON M defensive rebound (13)
07:28	21 WESTBELD M foul shooting (4 - 2)			3 GORDON O foul drawn (2)
07:28	21 WESTBELD M substitution out			
07:28	32 KARLEN L substitution in			
07:28				22 WILLIAMS M substitution out
07:28				1 TURNAGE B substitution in
07:28		<b>43-47</b>	<b>-4</b>	3 GORDON O free throw 1 - 2 made (6)
07:28		<b>43-48</b>	<b>-5</b>	3 GORDON O free throw 2 - 2 made (7)
07:09	11 CITRON S 3pt FG , jump shot made (10)	<b>46-48</b>	<b>-2</b>	



**Officials:** Angelica Suffren, Meadow Overstreet, Mark Berger

Game Time	UND	Score	Diff	FSU
07:09	20 KING L assist (4)			
06:58				3 GORDON O 2pt FG outside the paint, jump shot missed
06:55				3 GORDON O offensive rebound (2)
06:52		<b>46-50</b>	<b>-4</b>	3 GORDON O 2pt FG second chance in the paint, floating jump shot made (9)
06:26	3 HIDALGO H 2pt FG in the paint, driving layup missed			
06:24				21 TIMPSON M defensive rebound (14)
06:17				24 BONNER A 2pt FG in the paint, driving layup missed
06:14				24 BONNER A offensive rebound (1)
06:09				3 GORDON O 2pt FG second chance in the paint, driving layup missed
06:06	20 KING L defensive rebound (6)			
06:02	32 KARLEN L turnover lost ball (1)			1 TURNAGE B steal (1)
05:45		<b>46-52</b>	<b>-6</b>	21 TIMPSON M 2pt FG from turnover in the paint, turnaround jump shot made (16)
05:45				3 GORDON O assist (3)
05:25	20 KING L 2pt FG outside the paint, jump shot made (8)	<b>48-52</b>	<b>-4</b>	
05:25	11 CITRON S assist (2)			
05:09	32 KARLEN L steal (1)			3 GORDON O turnover bad pass (2)
05:09	32 KARLEN L foul drawn (1)			3 GORDON O foul personal (2 - 3)
05:09	32 KARLEN L substitution out			
05:09	13 KOVAL K substitution in			
05:09				1 TURNAGE B substitution out
05:09				3 GORDON O substitution out
05:09				11 BOWLES S substitution out
05:09				00 LATSON T substitution in
05:09				6 VALENZUELA M substitution in
05:09				13 VIEGAS C substitution in
04:55	20 KING L 2pt FG from turnover in the paint, driving layup made (10)	<b>50-52</b>	<b>-2</b>	
04:55	20 KING L foul drawn (1)			6 VALENZUELA M foul shooting (3 - 4)
04:55	Timeout media			
04:55	20 KING L free throw 1 - 1 made (11)	<b>51-52</b>	<b>-1</b>	
04:45	3 HIDALGO H foul personal (2 - 3)			00 LATSON T foul drawn (4)
04:28	5 MILES O steal (2)			24 BONNER A turnover bad pass (1)
04:22	11 CITRON S 2pt FG fast break from turnover in the paint, driving layup made (12)	<b>53-52</b>	<b>1</b>	
04:22	5 MILES O assist (4)			
04:12	5 MILES O foul shooting (2 - 4)			00 LATSON T foul drawn (5)
04:12		<b>53-53</b>	<b>0</b>	00 LATSON T free throw 1 - 2 made (5)
04:12		<b>53-54</b>	<b>-1</b>	00 LATSON T free throw 2 - 2 made (6)
04:08	5 MILES O turnover lost ball (2)			
04:08	5 MILES O substitution out			
04:08	8 PROSPER C substitution in			
03:47	3 HIDALGO H steal (2)			00 LATSON T turnover lost ball (3)
03:42	3 HIDALGO H 2pt FG from turnover in the paint, driving layup missed			
03:42				defensive rebound (30)
03:42				6 VALENZUELA M substitution out
03:42				24 BONNER A substitution out
03:42				1 TURNAGE B substitution in



Official Basketball Play by Play - 3rd Period  
**Florida St. at Notre Dame**  
 02/27/25 Purcell Pavilion at the Joyce Center, Notre Dame  
 2024-25 Women's Basketball

**Game Time:** 8:00 PM  
**Game Duration:** 1:53  
**Attendance:** 8,761

**Officials:** Angelica Suffren, Meadow Overstreet, Mark Berger

Game Time	UND	Score	Diff	FSU
03:42				3 GORDON O substitution in
03:25		<b>53-56</b>	<b>-3</b>	3 GORDON O 2pt FG in the paint, floating jump shot made (11)
03:08	11 CITRON S turnover bad pass (1)			3 GORDON O steal (1)
03:05		<b>53-58</b>	<b>-5</b>	3 GORDON O 2pt FG fast break from turnover in the paint, driving layup made (13)
02:50	3 HIDALGO H 3pt FG , jump shot missed			
02:48				defensive rebound (31)
02:48	3 HIDALGO H substitution out			
02:48	5 MILES O substitution in			
02:37	8 PROSPER C foul shooting (1 - 5)			00 LATSON T foul drawn (6)
02:37		<b>53-59</b>	<b>-6</b>	00 LATSON T free throw 1 - 2 made (7)
02:37		<b>53-60</b>	<b>-7</b>	00 LATSON T free throw 2 - 2 made (8)
02:18	20 KING L 2pt FG in the paint, driving layup missed			
02:15				21 TIMPSON M defensive rebound (15)
02:09				00 LATSON T 3pt FG , jump shot missed
02:06	20 KING L defensive rebound (7)			
02:01	13 KOVAL K 2pt FG in the paint, driving layup missed			
01:59	8 PROSPER C offensive rebound (3)			
01:58	8 PROSPER C 2pt FG second chance in the paint, layup missed			
01:55				1 TURNAGE B defensive rebound (4)
01:39		<b>53-62</b>	<b>-9</b>	00 LATSON T 2pt FG in the paint, driving layup made (10)
01:24	13 KOVAL K 2pt FG outside the paint, jump shot missed			
01:24	offensive rebound (31)			
01:23	8 PROSPER C foul drawn (2)			13 VIEGAS C foul personal (2 - 5)
01:23				21 TIMPSON M substitution out
01:23				32 TREADWELL A substitution in
01:23	8 PROSPER C free throw 1 - 2 made (1)	<b>54-62</b>	<b>-8</b>	
01:23	8 PROSPER C free throw 2 - 2 made (2)	<b>55-62</b>	<b>-7</b>	
01:23	8 PROSPER C substitution out			
01:23	3 HIDALGO H substitution in			
01:11		<b>55-64</b>	<b>-9</b>	3 GORDON O 2pt FG in the paint, driving layup made (15)
00:45	13 KOVAL K foul drawn (2)			1 TURNAGE B foul personal (1 - 6)
00:45	13 KOVAL K free throw 1 - 2 made (5)	<b>56-64</b>	<b>-8</b>	
00:45	13 KOVAL K free throw 2 - 2 made (6)	<b>57-64</b>	<b>-7</b>	
00:32		<b>57-67</b>	<b>-10</b>	13 VIEGAS C 3pt FG , jump shot made (12)
00:32				00 LATSON T assist (8)
00:02	11 CITRON S 3pt FG , jump shot missed			
00:00				00 LATSON T defensive rebound (2)
<b>END OF PERIOD</b>				
<b>UND 57-67 FSU</b>				





**Florida St. at Notre Dame**

02/27/25 Purcell Pavilion at the Joyce Center, Notre Dame  
2024-25 Women's Basketball

Game Time: 8:00 PM  
Game Duration: 1:53  
Attendance: 8,761

Officials: Angelica Suffren, Meadow Overstreet, Mark Berger

**Florida St. - 23**

NO.	Name	F	Min	FG			Rebounds			Fouls		TP	AS	TO	ST	Blocks		+/-
				M-A	3P	FT	OR	DR	TOT	PF	FD					BS	BA	
21	Makayla Timpson	F	08:37	1-2	0-0	2-2	0	4	4	1	1	4	0	0	0	0	0	5
22	Malea Williams	F	02:32	0-1	0-1	0-0	0	1	1	0	0	0	0	0	0	0	0	-1
00	Ta'Niya Latson	G	07:26	1-3	0-1	4-4	0	1	1	1	3	6	1	1	0	0	0	5
3	O'Mariah Gordon	G	08:33	4-7	0-1	2-2	1	0	1	1	1	10	1	1	1	0	0	9
11	Sydney Bowles	G	04:51	0-0	0-0	0-0	0	0	0	0	0	0	0	0	0	1	0	0
24	Amaya Bonner		04:01	0-1	0-0	0-0	1	0	1	0	0	0	0	1	0	0	0	-2
1	Brianna Turnage		06:01	0-0	0-0	0-0	0	1	1	1	0	0	0	0	1	0	0	10
6	Mariana Valenzuela		01:27	0-0	0-0	0-0	0	0	0	1	0	0	0	0	0	0	0	-3
13	Carla Viegas		05:09	1-1	1-1	0-0	0	0	0	1	0	3	0	0	0	0	0	6
32	Avery Treadwell		01:23	0-0	0-0	0-0	0	0	0	0	0	0	0	0	0	0	0	1
Team							0	3	3			0		0				
<b>Totals</b>				7-15	1-4	8-8	2	10	12	6	5	23	2	3	2	1	0	6

Shooting By Period		
3rd FG%	7-15	46.7%
3PT%	1-4	25.0%
FT%	8-8	100%
GM FG%	7-15	46.7%
3PT%	1-4	25.0%
FT%	8-8	100.0%

Dead Ball Rebounds: 0, 0

Technical Fouls::NONE

**Notre Dame - 17**

NO.	Name	F	Min	FG			Rebounds			Fouls		TP	AS	TO	ST	Blocks		+/-
				M-A	3P	FT	OR	DR	TOT	PF	FD					BS	BA	
20	Liatu King	F	10:00	2-4	0-0	1-1	1	3	4	0	1	5	1	0	0	0	0	-6
21	Maddy Westbeld	F	02:32	0-2	0-0	0-0	0	0	0	2	0	0	0	0	0	0	1	1
3	Hannah Hidalgo	G	08:35	0-4	0-1	0-0	0	0	0	1	1	0	0	0	1	0	0	-4
5	Olivia Miles	G	08:40	0-0	0-0	1-2	0	2	2	1	1	1	1	1	1	0	0	-2
11	Sonia Citron	G	10:00	3-4	1-2	0-0	0	1	1	0	0	7	1	1	0	0	0	-6
32	Liza Karlen		02:19	0-0	0-0	0-0	0	0	0	0	1	0	0	1	1	0	0	-1
13	Kate Koval		05:09	0-2	0-0	2-2	0	0	0	0	1	2	0	0	0	0	0	-6
8	Cassandre Prosper		02:45	0-1	0-0	2-2	1	0	1	1	1	2	0	0	0	0	0	-6
Team							1	0	1			0		0				
<b>Totals</b>				5-17	1-3	6-7	3	6	9	5	6	17	3	3	3	0	1	-6

Shooting By Period		
3rd FG%	5-17	29.4%
3PT%	1-3	33.3%
FT%	6-7	85.7%
GM FG%	5-17	29.4%
3PT%	1-3	33.3%
FT%	6-7	85.7%

Dead Ball Rebounds: 0, 0

Technical Fouls::NONE

	FSU	UND
Biggest lead	10 (3 <sup>rd</sup> 0:32)	1 (3 <sup>rd</sup> 4:22)
Best Scoring Run	10(3 <sup>rd</sup> 1:39)	7(3 <sup>rd</sup> 4:22)
Lead Changes	2	
Times Tied	1	
Time with Lead	09:33	00:10

Points from	FSU	UND
Turnovers	4	5
Paint	12	6
Second Chance	2	2
Fast Breaks	2	4
Bench	3	4

	Period by Period Scoring				
	1st	2nd	3rd	4th	TOT
FSU	14	30	23	19	86
UND	23	17	17	24	81



**Period 4**

**Quarter Starters:**

<b>UND</b>	3 Hidalgo H	5 Miles O	11 Citron S	20 King L	32 Karlen L
<b>FSU</b>	00 Latson T	1 Turnage B	3 Gordon O	13 Viegas C	21 Timpson M

Game Time	UND	Score	Diff	FSU
10:00	13 KOVAL K substitution out			
10:00	32 KARLEN L substitution in			
10:00				32 TREADWELL A substitution out
10:00				21 TIMPSON M substitution in
09:45	20 KING L 2pt FG in the paint, layup missed			
09:44				1 TURNAGE B defensive rebound (5)
09:44	jump ball situation			
09:24	20 KING L steal (1)			3 GORDON O turnover bad pass (3)
09:24	3 HIDALGO H foul drawn (5)			3 GORDON O foul personal (3 - 1)
09:12	11 CITRON S 2pt FG from turnover in the paint, layup made (14)	<b>59-67</b>	<b>-8</b>	
08:56				00 LATSON T 2pt FG in the paint, driving layup missed
08:53	11 CITRON S defensive rebound (5)			
08:47	5 MILES O 2pt FG in the paint, driving layup made (10)	<b>61-67</b>	<b>-6</b>	
08:27				3 GORDON O 2pt FG in the paint, floating jump shot missed
08:27	defensive rebound (33)			
08:27				1 TURNAGE B substitution out
08:27				13 VIEGAS C substitution out
08:27				6 VALENZUELA M substitution in
08:27				11 BOWLES S substitution in
08:15	11 CITRON S foul drawn (2)			11 BOWLES S foul shooting (1 - 2)
08:15	11 CITRON S free throw 1 - 2 made (15)	<b>62-67</b>	<b>-5</b>	
08:15	11 CITRON S free throw 2 - 2 made (16)	<b>63-67</b>	<b>-4</b>	
07:58	5 MILES O steal (3)			11 BOWLES S turnover lost ball (1)
07:54				11 BOWLES S substitution out
07:54				24 BONNER A substitution in
07:47	11 CITRON S 2pt FG from turnover in the paint, layup missed			
07:46				21 TIMPSON M defensive rebound (16)
07:46	jump ball situation			
07:46	11 CITRON S steal (1)			21 TIMPSON M turnover lost ball (2)
07:39	3 HIDALGO H 2pt FG from turnover outside the paint, jump shot missed			
07:36				24 BONNER A defensive rebound (2)
07:33	5 MILES O foul drawn (4)			21 TIMPSON M foul offensive (3 - 3)
07:33				21 TIMPSON M turnover offensive (3)
07:17	20 KING L 2pt FG from turnover outside the paint, jump shot made (13)	<b>65-67</b>	<b>-2</b>	
07:17	32 KARLEN L assist (4)			
07:03				00 LATSON T 2pt FG in the paint, driving layup missed
06:59	20 KING L defensive rebound (8)			
06:53	3 HIDALGO H foul drawn (6)			6 VALENZUELA M foul shooting (4 - 4)
06:53	Timeout media			
06:53				6 VALENZUELA M substitution out
06:53				1 TURNAGE B substitution in
06:53	3 HIDALGO H free throw 1 - 2 missed			



Official Basketball Play by Play - 4th Period  
**Florida St. at Notre Dame**  
 02/27/25 Purcell Pavilion at the Joyce Center, Notre Dame  
 2024-25 Women's Basketball

**Game Time:** 8:00 PM  
**Game Duration:** 1:53  
**Attendance:** 8,761

**Officials:** Angelica Suffren, Meadow Overstreet, Mark Berger

Game Time	UND	Score	Diff	FSU
06:53	offensive dead ball rebound (3)			
06:53	3 HIDALGO H free throw 2 - 2 made (12)	<b>66-67</b>	<b>-1</b>	
06:30		<b>66-69</b>	<b>-3</b>	21 TIMPSON M 2pt FG in the paint, turnaround jump shot made (18)
06:14	5 MILES O 2pt FG in the paint, driving layup missed			
06:11				00 LATSON T defensive rebound (3)
05:56		<b>66-71</b>	<b>-5</b>	21 TIMPSON M 2pt FG outside the paint, jump shot made (20)
05:56				00 LATSON T assist (9)
05:28	20 KING L 2pt FG outside the paint, jump shot made (15)	<b>68-71</b>	<b>-3</b>	
05:28	5 MILES O assist (5)			
05:11				00 LATSON T 3pt FG , jump shot missed
05:08	5 MILES O defensive rebound (4)			
05:02	3 HIDALGO H 2pt FG outside the paint, floating jump shot missed			
04:58				00 LATSON T defensive rebound (4)
04:55		<b>68-73</b>	<b>-5</b>	00 LATSON T 2pt FG fast break in the paint, driving layup made (12)
04:55	5 MILES O foul shooting (3 - 1)			00 LATSON T foul drawn (7)
04:55	Timeout media			
04:55	32 KARLEN L substitution out			
04:55	13 KOVAL K substitution in			
04:55		<b>68-74</b>	<b>-6</b>	00 LATSON T free throw fast break 1 - 1 made (13)
04:33	3 HIDALGO H 2pt FG outside the paint, jump shot missed			
04:31				3 GORDON O defensive rebound (3)
04:27				3 GORDON O 2pt FG in the paint, driving layup missed
04:24				24 BONNER A offensive rebound (3)
04:06		<b>68-76</b>	<b>-8</b>	00 LATSON T 2pt FG second chance in the paint, driving layup made (15)
03:50	13 KOVAL K 2pt FG outside the paint, jump shot missed			
03:47	20 KING L offensive rebound (9)			
03:35	13 KOVAL K 2pt FG second chance in the paint, floating jump shot made (8)	<b>70-76</b>	<b>-6</b>	
03:35	5 MILES O assist (6)			
03:16		<b>70-78</b>	<b>-8</b>	00 LATSON T 2pt FG in the paint, driving layup made (17)
03:16	11 CITRON S foul shooting (2 - 2)			00 LATSON T foul drawn (8)
03:16	13 KOVAL K substitution out			
03:16	21 WESTBELD M substitution in			
03:16				00 LATSON T free throw 1 - 1 missed
03:13				00 LATSON T offensive rebound (5)
03:11		<b>70-80</b>	<b>-10</b>	00 LATSON T 2pt FG second chance in the paint, layup made (19)
02:55	5 MILES O turnover bad pass (3)			
02:55	5 MILES O substitution out			
02:55	8 PROSPER C substitution in			
02:32		<b>70-82</b>	<b>-12</b>	00 LATSON T 2pt FG from turnover in the paint, driving layup made (21)
02:24	3 HIDALGO H foul drawn (7)			24 BONNER A foul shooting (3 - 5)
02:24	3 HIDALGO H free throw 1 - 2 made (13)	<b>71-82</b>	<b>-11</b>	
02:24	3 HIDALGO H free throw 2 - 2 made (14)	<b>72-82</b>	<b>-10</b>	
02:02				24 BONNER A 3pt FG , jump shot missed
01:59	3 HIDALGO H defensive rebound (4)			



Official Basketball Play by Play - 4th Period  
**Florida St. at Notre Dame**  
 02/27/25 Purcell Pavilion at the Joyce Center, Notre Dame  
 2024-25 Women's Basketball

**Game Time:** 8:00 PM  
**Game Duration:** 1:53  
**Attendance:** 8,761

**Officials:** Angelica Suffren, Meadow Overstreet, Mark Berger

Game Time	UND	Score	Diff	FSU
01:53	11 CITRON S 3pt FG fast break, jump shot made (19)	<b>75-82</b>	<b>-7</b>	
01:53	3 HIDALGO H assist (1)			
01:52	Timeout 30 Sec			
01:52				1 TURNAGE B substitution out
01:52				11 BOWLES S substitution in
01:39				00 LATSON T 2pt FG in the paint, driving layup missed
01:36	3 HIDALGO H defensive rebound (5)			
01:32	3 HIDALGO H 2pt FG fast break in the paint, driving layup made (16)	<b>77-82</b>	<b>-5</b>	
00:57		<b>77-84</b>	<b>-7</b>	21 TIMPSON M 2pt FG in the paint, jump shot made (22)
00:46	11 CITRON S 3pt FG , jump shot missed			
00:43				21 TIMPSON M defensive rebound (17)
00:40	20 KING L foul personal (2 - 3)			21 TIMPSON M foul drawn (6)
00:40	8 PROSPER C substitution out			
00:40	5 MILES O substitution in			
00:26	20 KING L foul shooting (3 - 4)			00 LATSON T foul drawn (9)
00:26		<b>77-85</b>	<b>-8</b>	00 LATSON T free throw 1 - 2 made (22)
00:26		<b>77-86</b>	<b>-9</b>	00 LATSON T free throw 2 - 2 made (23)
00:26	Timeout 30 Sec			
00:22	11 CITRON S 2pt FG in the paint, driving layup made (21)	<b>79-86</b>	<b>-7</b>	
00:18	3 HIDALGO H steal (3)			3 GORDON O turnover lost ball (4)
00:17	jump ball situation			
00:17	3 HIDALGO H turnover lost ball (2)			00 LATSON T steal (2)
00:17				Timeout 30 Sec
00:15	20 KING L foul personal (4 - 5)			24 BONNER A foul drawn (1)
00:15				24 BONNER A free throw 1 - 2 missed
00:15				offensive dead ball rebound (1)
00:14				24 BONNER A free throw 2 - 2 missed
00:13	20 KING L defensive rebound (10)			
00:05	3 HIDALGO H 2pt FG in the paint, driving layup missed			
00:04	20 KING L offensive rebound (11)			
00:04	20 KING L 2pt FG second chance in the paint, layup made (17)	<b>81-86</b>	<b>-5</b>	
<b>END OF GAME</b>				
<b>UND 81-86 FSU</b>				



Officials: Angelica Suffren, Meadow Overstreet, Mark Berger

Florida St. - 19

NO.	Name	F	Min	FG			Rebounds			Fouls		TP	AS	TO	ST	Blocks		+/-
				M-A	M-A	M-A	OR	DR	TOT	PF	FD					BS	BA	
21	Makayla Timpson	F	10:00	3-3	0-0	0-0	0	2	2	1	1	6	0	2	0	0	0	-5
22	Malea Williams	F	00:00	0-0	0-0	0-0	0	0	0	0	0	0	0	0	0	0	0	0
00	Ta'Niya Latson	G	10:00	5-9	0-1	3-4	1	2	3	0	3	13	1	0	1	0	0	-5
3	O'Mariah Gordon	G	10:00	0-2	0-0	0-0	0	1	1	1	0	0	0	2	0	0	0	-5
11	Sydney Bowles	G	02:25	0-0	0-0	0-0	0	0	0	1	0	0	0	1	0	0	0	-4
13	Carla Viegas		01:33	0-0	0-0	0-0	0	0	0	0	0	0	0	0	0	0	0	-4
32	Avery Treadwell		00:00	0-0	0-0	0-0	0	0	0	0	0	0	0	0	0	0	0	0
6	Mariana Valenzuela		01:34	0-0	0-0	0-0	0	0	0	1	0	0	0	0	0	0	0	-4
24	Amaya Bonner		07:54	0-1	0-1	0-2	1	1	2	1	1	0	0	0	0	0	0	1
1	Brianna Turnage		06:34	0-0	0-0	0-0	0	1	1	0	0	0	0	0	0	0	0	1
Team							0	0	0			0						
<b>Totals</b>				8-15	0-2	3-6	2	7	9	5	5	19	1	5	1	0	0	-5

Shooting By Period		
4 <sup>th</sup> FG%	8-15	53.3%
3PT%	0-2	0.0%
FT%	3-6	50%
GM FG%	8-15	53.3%
3PT%	0-2	0.0%
FT%	3-6	50.0%

Dead Ball Rebounds: 1, 0

Technical Fouls::NONE

Notre Dame - 24

NO.	Name	F	Min	FG			Rebounds			Fouls		TP	AS	TO	ST	Blocks		+/-
				M-A	M-A	M-A	OR	DR	TOT	PF	FD					BS	BA	
20	Liatu King	F	10:00	3-4	0-0	0-0	2	2	4	3	0	6	0	0	1	0	0	5
21	Maddy Westbeld	F	03:16	0-0	0-0	0-0	0	0	0	0	0	0	0	0	0	0	0	3
3	Hannah Hidalgo	G	10:00	1-5	0-0	3-4	0	2	2	0	3	5	1	1	1	0	0	5
5	Olivia Miles	G	07:46	1-2	0-0	0-0	0	1	1	1	1	2	2	1	1	0	0	2
11	Sonia Citron	G	10:00	3-5	1-2	2-2	0	1	1	1	1	9	0	0	1	0	0	5
32	Liza Karlen		05:05	0-0	0-0	0-0	0	0	0	0	0	0	1	0	0	0	0	5
13	Kate Koval		01:39	1-2	0-0	0-0	0	0	0	0	0	2	0	0	0	0	0	-3
8	Cassandre Prosper		02:14	0-0	0-0	0-0	0	0	0	0	0	0	0	0	0	0	0	3
Team							0	1	1			0						
<b>Totals</b>				9-18	1-2	5-6	2	7	9	5	5	24	4	2	4	0	0	5

Shooting By Period		
4 <sup>th</sup> FG%	9-18	50.0%
3PT%	1-2	50.0%
FT%	5-6	83.3%
GM FG%	9-18	50.0%
3PT%	1-2	50.0%
FT%	5-6	83.3%

Dead Ball Rebounds: 1, 0

Technical Fouls::NONE

	FSU	UND
Biggest lead	12 (4 <sup>th</sup> 2:32)	0 (1 <sup>st</sup> 10:00)
Best Scoring Run	6(4 <sup>th</sup> 2:32)	9(4 <sup>th</sup> 6:53)
Lead Changes	0	
Times Tied	0	
Time with Lead	09:45	00:00

	FSU	UND
Points from		
Turnovers	2	4
Paint	14	12
Second Chance	4	4
Fast Breaks	3	5
Bench	0	2

Period by Period Scoring					
	1st	2nd	3rd	4th	TOT
FSU	14	30	23	19	86
UND	23	17	17	24	81



**Officials:** Angelica Suffren, Meadow Overstreet, Mark Berger

**Florida St. - 42**

NO.	Name	F	Min	FG	3P	FT	Rebounds			Fouls		TP	AS	TO	ST	Blocks		+/-
				M-A	M-A	M-A	OR	DR	TOT	PF	FD					BS	BA	
21	Makayla Timpson	F	18:37	4-5	0-0	2-2	0	6	6	2	2	10	0	2	0	0	0	0
22	Malea Williams	F	02:32	0-1	0-1	0-0	0	1	1	0	0	0	0	0	0	0	0	-1
00	Ta'Niya Latson	G	17:26	6-12	0-2	7-8	1	3	4	1	6	19	2	1	1	0	0	0
3	O'Mariah Gordon	G	18:33	4-9	0-1	2-2	1	1	2	2	1	10	1	3	1	0	0	4
11	Sydney Bowles	G	07:16	0-0	0-0	0-0	0	0	0	1	0	0	0	1	0	1	0	-4
24	Amaya Bonner		11:55	0-2	0-1	0-2	2	1	3	1	1	0	0	1	0	0	0	-1
1	Brianna Turnage		12:35	0-0	0-0	0-0	0	2	2	1	0	0	0	0	1	0	0	11
6	Mariana Valenzuela		03:01	0-0	0-0	0-0	0	0	0	2	0	0	0	0	0	0	0	-7
13	Carla Viegas		06:42	1-1	1-1	0-0	0	0	0	1	0	3	0	0	0	0	0	2
32	Avery Treadwell		01:23	0-0	0-0	0-0	0	0	0	0	0	0	0	0	0	0	0	1
Team							0	3	3			0		0				
<b>Totals</b>				15-30	1-6	11-14	4	17	21	11	10	42	3	8	3	1	0	1

Shooting By Period		
3 <sup>rd</sup> FG%	7-15	46.7%
3PT%	1-4	25.0%
FT%	8-8	100%
4 <sup>th</sup> FG%	8-15	53.3%
3PT%	0-2	0.0%
FT%	3-6	50%
GM FG%	15-30	50.0%
3PT%	1-6	16.7%
FT%	11-14	78.6%

Dead Ball Rebounds: 1, 0

Technical Fouls::NONE

**Notre Dame - 41**

NO.	Name	F	Min	FG	3P	FT	Rebounds			Fouls		TP	AS	TO	ST	Blocks		+/-
				M-A	M-A	M-A	OR	DR	TOT	PF	FD					BS	BA	
20	Liatu King	F	20:00	5-8	0-0	1-1	3	5	8	3	1	11	1	0	1	0	0	-1
21	Maddy Westbeld	F	05:48	0-2	0-0	0-0	0	0	0	2	0	0	0	0	0	0	1	4
3	Hannah Hidalgo	G	18:35	1-9	0-1	3-4	0	2	2	1	4	5	1	1	2	0	0	1
5	Olivia Miles	G	16:26	1-2	0-0	1-2	0	3	3	2	2	3	3	2	2	0	0	0
11	Sonia Citron	G	20:00	6-9	2-4	2-2	0	2	2	1	1	16	1	1	1	0	0	-1
32	Liza Karlen		07:24	0-0	0-0	0-0	0	0	0	0	1	0	1	1	1	0	0	4
13	Kate Koval		06:48	1-4	0-0	2-2	0	0	0	0	1	4	0	0	0	0	0	-9
8	Cassandre Prosper		04:59	0-1	0-0	2-2	1	0	1	1	1	2	0	0	0	0	0	-3
Team							1	1	2			0		0				
<b>Totals</b>				14-35	2-5	11-13	5	13	18	10	11	41	7	5	7	0	1	-1

Shooting By Period		
3 <sup>rd</sup> FG%	5-17	29.4%
3PT%	1-3	33.3%
FT%	6-7	85.7%
4 <sup>th</sup> FG%	9-18	50.0%
3PT%	1-2	50.0%
FT%	5-6	83.3%
GM FG%	14-35	40.0%
3PT%	2-5	40.0%
FT%	11-13	84.6%

Dead Ball Rebounds: 1, 0

Technical Fouls::NONE

	FSU	UND
<b>Biggest lead</b>	12 (4 <sup>th</sup> 2:32)	1 (3 <sup>rd</sup> 4:22)
<b>Best Scoring Run</b>	10(3 <sup>rd</sup> 1:39)	9(4 <sup>th</sup> 6:53)
<b>Lead Changes</b>	2	
<b>Times Tied</b>	1	
<b>Time with Lead</b>	19:33	00:10

Points from	FSU	UND
<b>Turnovers</b>	6	9
<b>Paint</b>	26	18
<b>Second Chance</b>	6	6
<b>Fast Breaks</b>	5	9
<b>Bench</b>	3	6

	Period by Period Scoring				
	1st	2nd	3rd	4th	TOT
<b>FSU</b>	14	30	23	19	86
<b>UND</b>	23	17	17	24	81



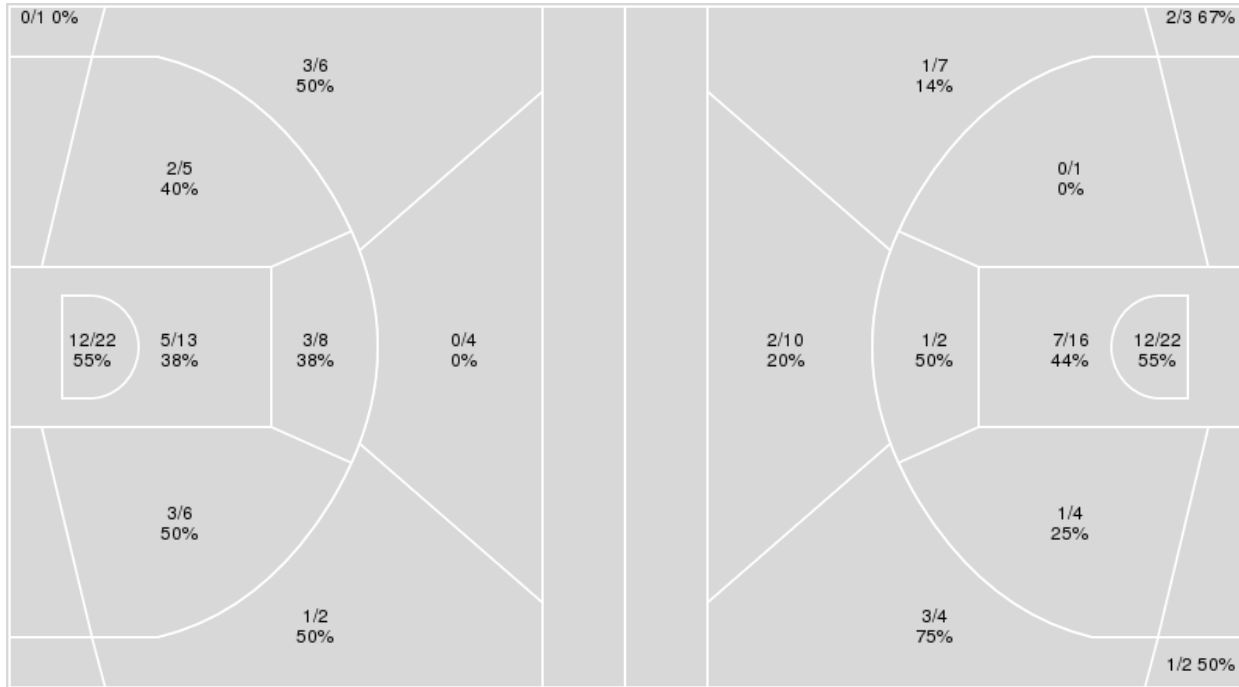
**Officials:** Angelica Suffren, Meadow Overstreet, Mark Berger

{ Players => 2, 3, 5, 8, 10, 11, 13, 14, 15, 20, 21, 22, 25, 32; } FG  
 Types => All; Results => All;

{ Players => All; } FG Types => All; Results => All;

**Notre Dame**

**Florida St.**



Notre Dame	M/A	%
Field Goals	29/67	43
2 Points	25/54	46
3 Points	4/13	31
Free Throws	19/23	83

Florida St.	M/A	%
Field Goals	30/71	42
2 Points	21/45	47
3 Points	9/26	35
Free Throws	17/21	81



**Florida St. at Notre Dame**

02/27/25 Purcell Pavilion at the Joyce Center, Notre Dame  
2024-25 Women's Basketball

Officials: Angelica Suffren, Meadow Overstreet, Mark Berger

**Florida St.**

No	Name	Mins		Score		Points Diff		Points per Min		Assists		Rebounds		Steals		Turnovers	
		On	Off	On	Off	On	Off	On	Off	On	Off	On	Off	On	Off	On	Off
00	Ta'Niya Latson	33:48	06:12	72 - 68	14 - 13	4	1	2.13	2.26	11	3	36	7	3	2	11	1
1	Brianna Turnage	20:05	19:55	55 - 36	31 - 45	19	-14	2.74	1.56	10	4	22	21	2	3	3	9
3	O'Mariah Gordon	33:02	06:58	70 - 65	16 - 16	5	0	2.12	2.30	11	3	37	6	5	0	9	3
6	Mariana Valenzuela	07:28	32:32	9 - 18	77 - 63	-9	14	1.21	2.37	1	13	5	38	1	4	6	6
11	Sydney Bowles	23:12	16:48	46 - 45	40 - 36	1	4	1.98	2.38	10	4	28	15	3	2	6	6
13	Carla Viegas	15:09	24:51	37 - 31	49 - 50	6	-1	2.44	1.97	6	8	14	29	2	3	3	9
21	Makayla Timpson	35:12	04:48	72 - 67	14 - 14	5	0	2.05	2.92	10	4	41	2	5	0	12	0
22	Malea Williams	13:22	26:38	27 - 28	59 - 53	-1	6	2.02	2.22	6	8	16	27	1	4	2	10
24	Amaya Bonner	16:41	23:19	37 - 40	49 - 41	-3	8	2.22	2.10	4	10	15	28	3	2	8	4
32	Avery Treadwell	02:01	37:59	5 - 7	81 - 74	-2	7	2.48	2.13	1	13	1	42	0	5	0	12

**Notre Dame**

No	Name	Mins		Score		Points Diff		Points per Min		Assists		Rebounds		Steals		Turnovers	
		On	Off	On	Off	On	Off	On	Off	On	Off	On	Off	On	Off	On	Off
3	Hannah Hidalgo	37:55	02:05	76 - 80	5 - 6	-4	-1	2.00	2.40	16	1	36	4	9	0	12	0
5	Olivia Miles	31:33	08:27	65 - 69	16 - 17	-4	-1	2.06	1.89	14	3	31	9	7	2	10	2
8	Cassandra Prosper	14:16	25:44	27 - 32	54 - 54	-5	0	1.89	2.10	6	11	18	22	2	7	5	7
11	Sonia Citron	36:16	03:44	75 - 77	6 - 9	-2	-3	2.07	1.61	15	2	35	5	9	0	9	3
13	Kate Koval	13:24	26:36	22 - 36	59 - 50	-14	9	1.64	2.22	6	11	14	26	2	7	5	7
20	Liatu King	33:24	06:36	70 - 70	11 - 16	0	-5	2.10	1.67	13	4	30	10	9	0	9	3
21	Maddy Westbeld	13:00	27:00	31 - 20	50 - 66	11	-16	2.38	1.85	5	12	17	23	2	7	5	7
32	Liza Karlen	20:12	19:48	39 - 46	42 - 40	-7	2	1.93	2.12	10	7	19	21	5	4	5	7

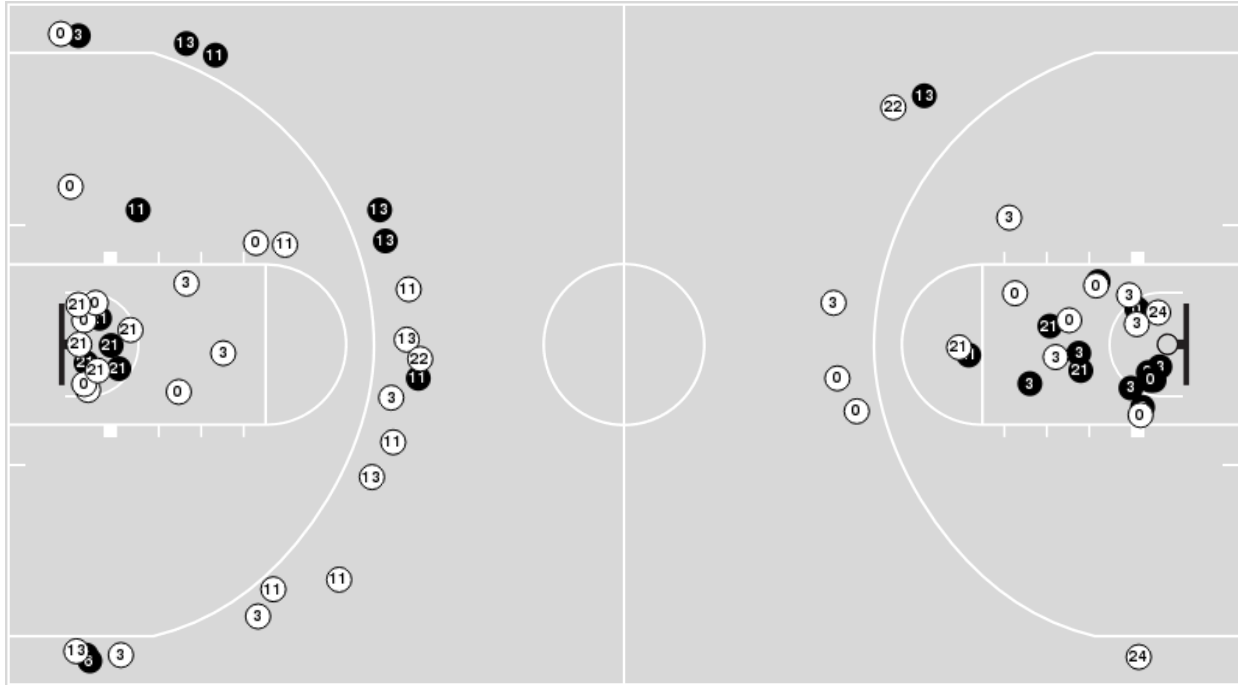




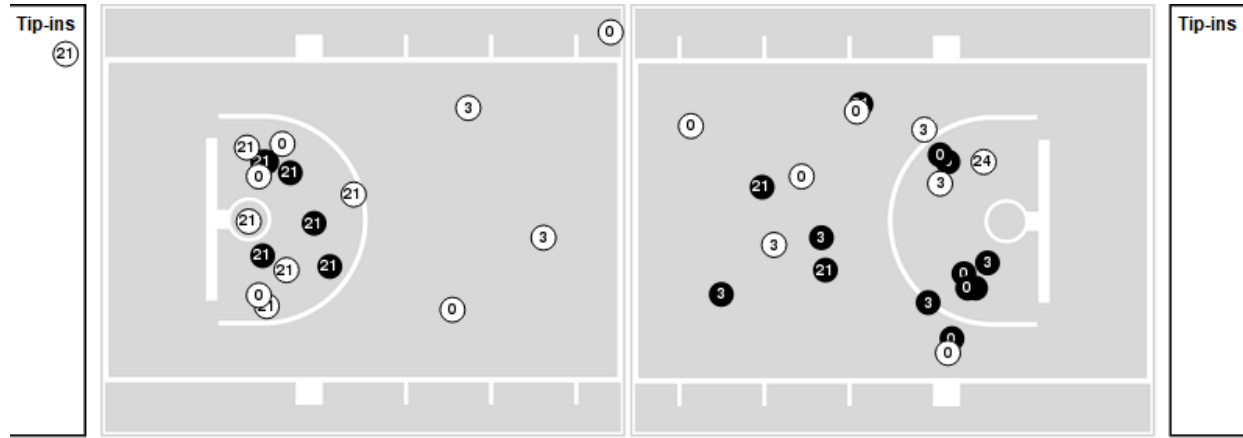
**Officials:** Angelica Suffren, Meadow Overstreet, Mark Berger

Players => AllFG Types=>AllResults=>All  
**Florida St.**

**All Field Goals**



**Blow Up Chart**



● Made    ○ Missed    N - Player Number

Florida St.	M/A	%
Field Goals	30/71	42
2 Points	21/45	47
3 Points	9/26	35
Free Throws	17/21	81

Florida St.	M/A	%
Points in the Paint	38 (19 / 38)	50
Fast Break Points	12 (6/6)	100
Second Chance Points	12 (8/14)	57
Effective FG%	49	

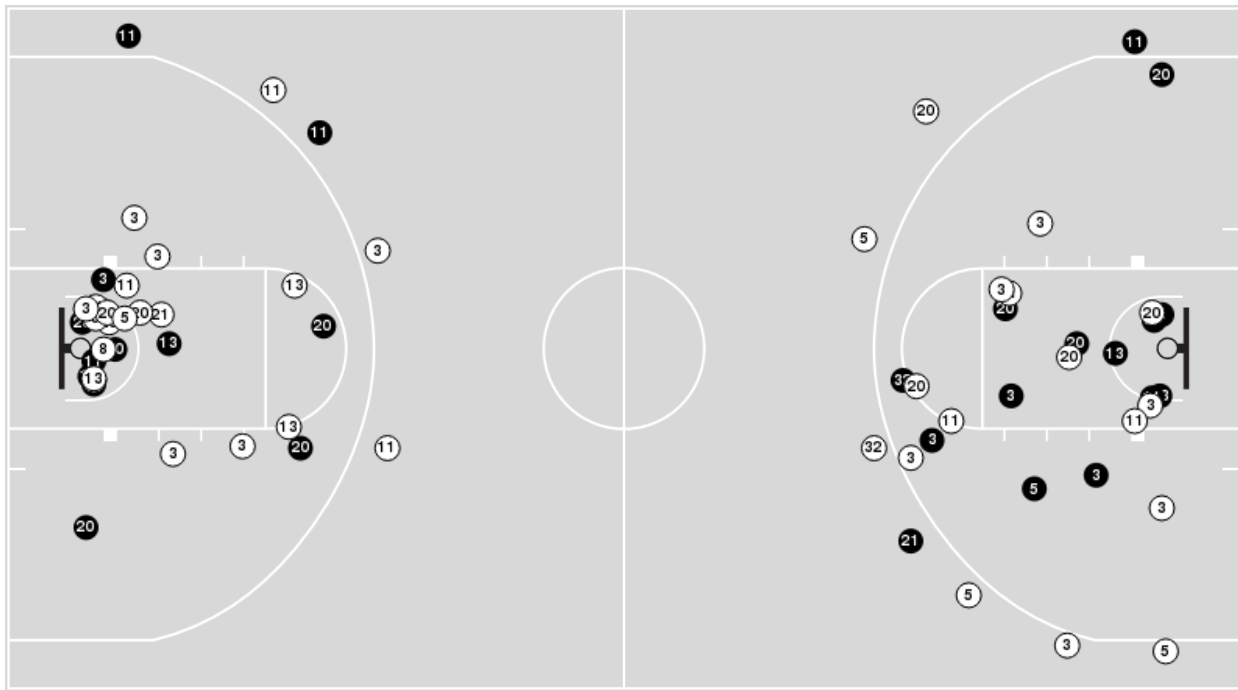


**Officials:** Angelica Suffren, Meadow Overstreet, Mark Berger

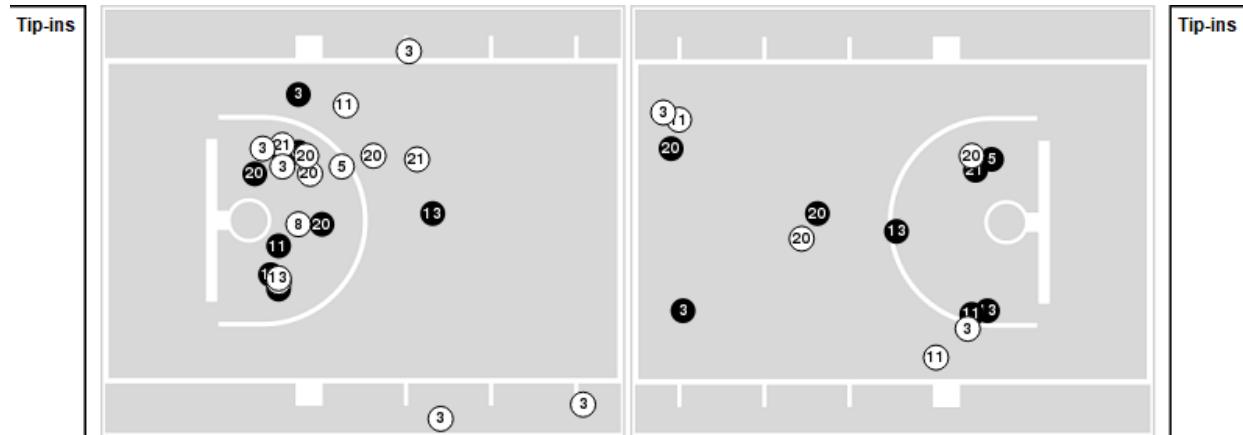
Players => 2, 3, 5, 8, 10, 11, 13, 14, 15, 20, 21, 22, 25, 32FG Types=>AllResults=>All

**Notre Dame**

**All Field Goals**



**Blow Up Chart**



● Made ○ Missed N - Player Number

Notre Dame	M/A	%
Field Goals	29/67	43
2 Points	25/54	46
3 Points	4/13	31
Free Throws	19/23	83

Notre Dame	M/A	%
Points in the Paint	34 (17 / 35)	49
Fast Break Points	13 (7/7)	100
Second Chance Points	13 (8/13)	62
Effective FG%	46	



**Officials:** Angelica Suffren, Meadow Overstreet, Mark Berger

**Florida St.**

Lineup	Quarter On	Time On	Quarter Off	Time Off	Time on Court	Score	Score Diff	Reb	Stl	Tov	Ass	PPP
00- Latson T/3- Gordon O/ 11- Bowles S/ 21- Timpson M/ 22- Williams M/	1	10:00	1	08:05	01:55	0-3	-3	4	0	1	0	0.0000
00- Latson T/3- Gordon O/ 21- Timpson M/ 22- Williams M/ 24- Bonner A/	1	08:05	1	06:22	01:43	5-2	3	1	1	1	1	1.2887
00- Latson T/ 11- Bowles S/ 21- Timpson M/ 22- Williams M/ 24- Bonner A/	1	06:22	1	06:22	00:00	0-0	0	0	0	0	0	0.0000
00- Latson T/ 6- Valenzuela M/ 11- Bowles S/ 21- Timpson M/ 24- Bonner A/	1	06:22	1	04:16	02:06	2-6	-4	1	0	1	0	0.5000
3- Gordon O/ 6- Valenzuela M/ 11- Bowles S/ 13- Viegas C/ 21- Timpson M/	1	04:16	1	02:50	01:26	2-2	0	1	1	0	0	0.6667
00- Latson T/3- Gordon O/ 13- Viegas C/ 21- Timpson M/ 22- Williams M/	1	02:50	1	02:04	00:46	2-2	0	1	0	0	0	1.0638
00- Latson T/3- Gordon O/ 13- Viegas C/ 22- Williams M/ 32- Treadwell A/	1	02:04	1	01:26	00:38	0-3	-3	0	0	0	0	0.0000
00- Latson T/3- Gordon O/ 13- Viegas C/ 21- Timpson M/ 22- Williams M/	1	01:26	1	01:26	00:00	0-0	0	0	0	0	0	0.0000
00- Latson T/3- Gordon O/ 21- Timpson M/ 22- Williams M/ 24- Bonner A/	1	01:26	1	00:28	00:57	3-4	-1	0	0	0	1	1.5000
00- Latson T/3- Gordon O/ 11- Bowles S/ 21- Timpson M/ 22- Williams M/	1	00:28	2	10:00	00:28	0-1	-1	1	0	0	0	0.0000
00- Latson T/ 1- Turnage B/ 3- Gordon O/ 11- Bowles S/ 21- Timpson M/	2	10:00	2	05:37	04:23	12-6	6	7	0	1	4	1.3333
00- Latson T/ 1- Turnage B/ 6- Valenzuela M/ 11- Bowles S/ 13- Viegas C/	2	05:37	2	04:42	00:55	3-1	2	0	0	0	1	3.0000
00- Latson T/ 11- Bowles S/ 13- Viegas C/ 21- Timpson M/ 22- Williams M/	2	04:42	2	02:12	02:30	9-4	5	4	0	0	2	1.6917
1- Turnage B/ 3- Gordon O/ 11- Bowles S/ 13- Viegas C/ 21- Timpson M/	2	02:12	2	01:52	00:20	0-0	0	1	0	0	0	0.0000
1- Turnage B/ 3- Gordon O/ 11- Bowles S/ 13- Viegas C/ 22- Williams M/	2	01:52	3	10:00	01:52	6-6	0	1	0	0	2	2.0000
00- Latson T/3- Gordon O/ 11- Bowles S/ 21- Timpson M/ 22- Williams M/	3	10:00	3	07:43	02:17	2-3	-1	3	0	0	0	0.4098
3- Gordon O/ 11- Bowles S/ 21- Timpson M/ 22- Williams M/ 24- Bonner A/	3	07:43	3	07:28	00:15	0-0	0	1	0	0	0	0.0000
1- Turnage B/ 3- Gordon O/ 11- Bowles S/ 21- Timpson M/ 24- Bonner A/	3	07:28	3	05:09	02:19	6-5	1	3	1	1	1	1.2295
00- Latson T/ 6- Valenzuela M/ 13- Viegas C/ 21- Timpson M/ 24- Bonner A/	3	05:09	3	03:42	01:27	2-5	-3	1	0	2	0	0.6944
00- Latson T/ 1- Turnage B/ 3- Gordon O/ 13- Viegas C/ 21- Timpson M/	3	03:42	3	01:23	02:19	8-0	8	3	1	0	0	1.6393
00- Latson T/ 1- Turnage B/ 3- Gordon O/ 13- Viegas C/ 32- Treadwell A/	3	01:23	4	10:00	01:23	5-4	1	1	0	0	1	2.5000
00- Latson T/ 1- Turnage B/ 3- Gordon O/ 13- Viegas C/ 21- Timpson M/	4	10:00	4	08:27	01:33	0-4	-4	1	0	1	0	0.0000
00- Latson T/ 3- Gordon O/ 6- Valenzuela M/ 11- Bowles S/ 21- Timpson M/	4	08:27	4	07:54	00:33	0-2	-2	0	0	1	0	0.0000
00- Latson T/ 3- Gordon O/ 6- Valenzuela M/ 21- Timpson M/ 24- Bonner A/	4	07:54	4	06:53	01:01	0-2	-2	2	0	2	0	0.0000
00- Latson T/ 1- Turnage B/ 3- Gordon O/ 21- Timpson M/ 24- Bonner A/	4	06:53	4	01:52	05:01	15-10	5	5	0	0	1	1.6892
00- Latson T/ 3- Gordon O/ 11- Bowles S/ 21- Timpson M/ 24- Bonner A/	4	01:52	4	00:00	01:52	4-6	-2	1	1	1	0	0.8403



Official Basketball Rotations Summary - Final  
**Florida St. at Notre Dame**  
 02/27/25 Purcell Pavilion at the Joyce Center, Notre Dame  
 2024-25 Women's Basketball

**Game Time:** 8:00 PM  
**Game Duration:** 1:53  
**Attendance:** 8,761

**Officials:** Angelica Suffren, Meadow Overstreet, Mark Berger

**Notre Dame**

Lineup	Quarter On	Time On	Quarter Off	Time Off	Time on Court	Score	Score Diff	Reb	Stl	Tov	Ass	PPP
3- Hidalgo H/ 5- Miles O/ 11- Citron S/ 20- King L/ 21- Westbeld M/	1	10:00	1	06:22	03:38	5-5	0	4	1	2	2	0.8333
3- Hidalgo H/ 8- Prosper C/ 11- Citron S/ 20- King L/ 32- Karlen L/	1	06:22	1	05:30	00:52	4-0	4	1	1	1	0	1.3889
3- Hidalgo H/ 8- Prosper C/ 11- Citron S/ 13- Koval K/ 32- Karlen L/	1	05:30	1	04:16	01:14	2-2	0	2	0	0	1	1.0000
3- Hidalgo H/ 5- Miles O/ 8- Prosper C/ 13- Koval K/ 32- Karlen L/	1	04:16	1	02:50	01:26	2-2	0	3	0	1	1	1.0000
3- Hidalgo H/ 5- Miles O/ 8- Prosper C/ 13- Koval K/ 21- Westbeld M/	1	02:50	1	02:19	00:31	2-0	2	1	0	1	0	1.0638
5- Miles O/ 8- Prosper C/ 11- Citron S/ 20- King L/ 21- Westbeld M/	1	02:19	1	01:39	00:40	3-2	1	1	0	0	1	3.0000
3- Hidalgo H/ 5- Miles O/ 11- Citron S/ 20- King L/ 21- Westbeld M/	1	01:39	2	09:16	02:23	7-3	4	2	0	0	1	1.4706
3- Hidalgo H/ 5- Miles O/ 11- Citron S/ 20- King L/ 32- Karlen L/	2	09:16	2	06:46	02:30	4-10	-6	2	0	1	1	0.8000
3- Hidalgo H/ 8- Prosper C/ 11- Citron S/ 20- King L/ 32- Karlen L/	2	06:46	2	05:37	01:09	0-2	-2	1	0	0	0	0.0000
3- Hidalgo H/ 8- Prosper C/ 11- Citron S/ 13- Koval K/ 32- Karlen L/	2	05:37	2	03:59	01:38	3-5	-2	3	0	0	1	1.0417
3- Hidalgo H/ 5- Miles O/ 8- Prosper C/ 13- Koval K/ 32- Karlen L/	2	03:59	2	02:12	01:47	2-7	-5	1	0	1	1	0.6667
3- Hidalgo H/ 5- Miles O/ 11- Citron S/ 20- King L/ 32- Karlen L/	2	02:12	3	10:00	02:12	6-6	0	1	0	0	1	1.5000
3- Hidalgo H/ 5- Miles O/ 11- Citron S/ 20- King L/ 21- Westbeld M/	3	10:00	3	07:28	02:32	3-2	1	5	0	0	0	0.6148
3- Hidalgo H/ 5- Miles O/ 11- Citron S/ 20- King L/ 32- Karlen L/	3	07:28	3	05:09	02:19	5-6	-1	1	1	1	2	1.2500
3- Hidalgo H/ 5- Miles O/ 11- Citron S/ 13- Koval K/ 20- King L/	3	05:09	3	04:08	01:01	5-2	3	0	1	1	1	1.4535
3- Hidalgo H/ 8- Prosper C/ 11- Citron S/ 13- Koval K/ 20- King L/	3	04:08	3	02:48	01:20	0-4	-4	0	1	1	0	0.0000
5- Miles O/ 8- Prosper C/ 11- Citron S/ 13- Koval K/ 20- King L/	3	02:48	3	01:23	01:25	2-4	-2	3	0	0	0	0.6944
3- Hidalgo H/ 5- Miles O/ 11- Citron S/ 13- Koval K/ 20- King L/	3	01:23	4	10:00	01:23	2-5	-3	0	0	0	0	1.0638
3- Hidalgo H/ 5- Miles O/ 11- Citron S/ 20- King L/ 32- Karlen L/	4	10:00	4	04:55	05:05	11-6	5	4	3	0	2	1.0223
3- Hidalgo H/ 5- Miles O/ 11- Citron S/ 13- Koval K/ 20- King L/	4	04:55	4	03:16	01:39	2-5	-3	1	0	0	1	1.0000
3- Hidalgo H/ 5- Miles O/ 11- Citron S/ 20- King L/ 21- Westbeld M/	4	03:16	4	02:55	00:21	0-2	-2	0	0	1	0	0.0000
3- Hidalgo H/ 8- Prosper C/ 11- Citron S/ 20- King L/ 21- Westbeld M/	4	02:55	4	00:40	02:14	7-4	3	2	0	0	1	1.8041
3- Hidalgo H/ 5- Miles O/ 11- Citron S/ 20- King L/ 21- Westbeld M/	4	00:40	4	00:00	00:40	4-2	2	2	1	1	0	1.3333



**Officials:** Angelica Suffren, Meadow Overstreet, Mark Berger

**Florida St.**

Lineup	Time	Score	Score Diff	Pts/Min	Reb	Stl	Tov	Ass	PPP
00- Latson T/ 1- Turnage B/ 3- Gordon O/ 21- Timpson M/ 24- Bonner A/	05:01	15-10	5	2.9900	5	0	0	1	1.6892
00- Latson T/ 3- Gordon O/ 11- Bowles S/ 21- Timpson M/ 22- Williams M/	04:40	2-7	-5	0.4272	8	0	1	0	0.2538
00- Latson T/ 1- Turnage B/ 3- Gordon O/ 11- Bowles S/ 21- Timpson M/	04:23	12-6	6	2.7376	7	0	1	4	1.3333
00- Latson T/ 1- Turnage B/ 3- Gordon O/ 13- Viegas C/ 21- Timpson M/	03:52	8-4	4	2.0690	4	1	1	0	1.0152
00- Latson T/ 3- Gordon O/ 21- Timpson M/ 22- Williams M/ 24- Bonner A/	02:40	8-6	2	2.9981	1	1	1	2	1.3605
00- Latson T/ 11- Bowles S/ 13- Viegas C/ 21- Timpson M/ 22- Williams M/	02:30	9-4	5	3.6000	4	0	0	2	1.6917
1- Turnage B/ 3- Gordon O/ 11- Bowles S/ 21- Timpson M/ 24- Bonner A/	02:19	6-5	1	2.5899	3	1	1	1	1.2295
00- Latson T/ 6- Valenzuela M/ 11- Bowles S/ 21- Timpson M/ 24- Bonner A/	02:06	2-6	-4	0.9524	1	0	1	0	0.5000
1- Turnage B/ 3- Gordon O/ 11- Bowles S/ 13- Viegas C/ 22- Williams M/	01:52	6-6	0	3.2143	1	0	0	2	2.0000
00- Latson T/ 3- Gordon O/ 11- Bowles S/ 21- Timpson M/ 24- Bonner A/	01:52	4-6	-2	2.1429	1	1	1	0	0.8403
00- Latson T/ 6- Valenzuela M/ 13- Viegas C/ 21- Timpson M/ 24- Bonner A/	01:27	2-5	-3	1.3793	1	0	2	0	0.6944
3- Gordon O/ 6- Valenzuela M/ 11- Bowles S/ 13- Viegas C/ 21- Timpson M/	01:26	2-2	0	1.3953	1	1	0	0	0.6667
00- Latson T/ 1- Turnage B/ 3- Gordon O/ 13- Viegas C/ 32- Treadwell A/	01:23	5-4	1	3.6145	1	0	0	1	2.5000
00- Latson T/ 3- Gordon O/ 6- Valenzuela M/ 21- Timpson M/ 24- Bonner A/	01:01	0-2	-2	0.0000	2	0	2	0	0.0000
00- Latson T/ 1- Turnage B/ 6- Valenzuela M/ 11- Bowles S/ 13- Viegas C/	00:55	3-1	2	3.2727	0	0	0	1	3.0000
00- Latson T/ 3- Gordon O/ 13- Viegas C/ 21- Timpson M/ 22- Williams M/	00:46	2-2	0	2.6087	1	0	0	0	1.0638
00- Latson T/ 3- Gordon O/ 13- Viegas C/ 22- Williams M/ 32- Treadwell A/	00:38	0-3	-3	0.0000	0	0	0	0	0.0000
00- Latson T/ 3- Gordon O/ 6- Valenzuela M/ 11- Bowles S/ 21- Timpson M/	00:33	0-2	-2	0.0000	0	0	1	0	0.0000
1- Turnage B/ 3- Gordon O/ 11- Bowles S/ 13- Viegas C/ 21- Timpson M/	00:20	0-0	0	0.0000	1	0	0	0	0.0000
3- Gordon O/ 11- Bowles S/ 21- Timpson M/ 22- Williams M/ 24- Bonner A/	00:15	0-0	0	0.0000	1	0	0	0	0.0000
00- Latson T/ 11- Bowles S/ 21- Timpson M/ 22- Williams M/ 24- Bonner A/	00:00	0-0	0	NaN	0	0	0	0	0.0000



**Officials:** Angelica Suffren, Meadow Overstreet, Mark Berger

**Notre Dame**

Lineup	Time	Score	Score Diff	Pts/Min	Reb	Stl	Tov	Ass	PPP
3- Hidalgo H/ 5- Miles O/ 11- Citron S/ 20- King L/ 32- Karlen L/	12:06	26-28	-2	2.1488	8	4	2	6	1.0943
3- Hidalgo H/ 5- Miles O/ 11- Citron S/ 20- King L/ 21- Westbeld M/	09:34	19-14	5	1.9840	13	2	4	3	0.9674
3- Hidalgo H/ 5- Miles O/ 11- Citron S/ 13- Koval K/ 20- King L/	04:03	9-12	-3	2.2222	1	1	1	2	1.2295
3- Hidalgo H/ 5- Miles O/ 8- Prosper C/ 13- Koval K/ 32- Karlen L/	03:13	4-9	-5	1.2435	4	0	2	2	0.8000
3- Hidalgo H/ 8- Prosper C/ 11- Citron S/ 13- Koval K/ 32- Karlen L/	02:52	5-7	-2	1.7442	5	0	0	2	1.0246
3- Hidalgo H/ 8- Prosper C/ 11- Citron S/ 20- King L/ 21- Westbeld M/	02:14	7-4	3	3.1250	2	0	0	1	1.8041
3- Hidalgo H/ 8- Prosper C/ 11- Citron S/ 20- King L/ 32- Karlen L/	02:01	4-2	2	1.9835	2	1	1	0	0.8197
5- Miles O/ 8- Prosper C/ 11- Citron S/ 13- Koval K/ 20- King L/	01:25	2-4	-2	1.4118	3	0	0	0	0.6944
3- Hidalgo H/ 8- Prosper C/ 11- Citron S/ 13- Koval K/ 20- King L/	01:20	0-4	-4	0.0000	0	1	1	0	0.0000
5- Miles O/ 8- Prosper C/ 11- Citron S/ 20- King L/ 21- Westbeld M/	00:40	3-2	1	4.5000	1	0	0	1	3.0000
3- Hidalgo H/ 5- Miles O/ 8- Prosper C/ 13- Koval K/ 21- Westbeld M/	00:31	2-0	2	3.8710	1	0	1	0	1.0638

**Official Box Score**  
**Florida St. vs Notre Dame**  
**Game Totals -- Final Statistics**  
**February 27, 2025 at Purcell Pavilion at the Joyce Center - Notre Dame**



**Florida St. 86**

No.	Player	S	Pts	FG	3FG	FT	OR	DR	TR	PF	A	TO	Blk	Stl	Min	+/-
00	LATSON, TA'NIYA	G	23	7-20	0-3	9-10	1	4	5	2	9	3	1	2	34	4
03	GORDON, O'MARIAH	G	15	5-15	1-5	4-4	2	1	3	3	3	4	0	1	33	5
11	BOWLES, SYDNEY	G	8	3-8	2-6	0-0	0	1	1	1	1	1	1	0	23	1
21	TIMPSON, MAKAYLA	F	22	9-15	0-0	4-5	6	11	17	3	0	3	0	1	35	5
22	WILLIAMS, MALEA	F	3	1-3	1-3	0-0	1	2	3	2	0	0	1	0	13	-1
01	TURNAGE, BRIANNA	G	0	0-0	0-0	0-0	1	4	5	1	1	0	0	1	20	19
06	VALENZUELA, MARIANA	F	3	1-1	1-1	0-0	0	0	0	4	0	0	0	0	7	-9
13	VIEGAS, CARLA	G	12	4-7	4-7	0-0	0	0	0	2	0	0	0	0	15	6
24	BONNER, AMAYA	G	0	0-2	0-1	0-2	2	1	3	3	0	1	0	0	17	-3
32	TREADWELL, AVERY	F	0	0-0	0-0	0-0	0	0	0	0	0	0	0	0	2	-2
<b>TEAM</b>							2	4	6	0		0				
<b>TOTALS</b>			<b>86</b>	<b>30-71</b>	<b>9-26</b>	<b>17-21</b>	<b>15</b>	<b>28</b>	<b>43</b>	<b>21</b>	<b>14</b>	<b>12</b>	<b>3</b>	<b>5</b>	<b>200</b>	

*Shooting By Period*

Period	FG	FG%	3FG	3FG%	FT	FT%
1st Qtr	4-20	20%	2-12	17%	4-4	100%
2nd Qtr	11-21	52%	6-8	75%	2-3	67%
3rd Qtr	7-15	47%	1-4	25%	8-8	100%
4th Qtr	8-15	53%	0-2	00%	3-6	50%
1st Half	15-41	37%	8-20	40%	6-7	86%
2nd Half	15-30	50%	1-6	17%	11-14	79%
<b>Game</b>	<b>30-71</b>	<b>42.3%</b>	<b>9-26</b>	<b>34.6%</b>	<b>17-21</b>	<b>81.0%</b>

*Deadball Rebounds: 1,0*  
*Last FG: 4th-00:57*  
*Biggest Run: 12-0*  
*Largest lead: By 12 at 4th-02:32*  
*Technical Fouls: None.*

**Notre Dame 81**

No.	Player	S	Pts	FG	3FG	FT	OR	DR	TR	PF	A	TO	Blk	Stl	Min	+/-
03	HIDALGO, HANNAH	G	16	4-18	0-2	8-10	1	4	5	2	1	2	0	3	38	-4
05	MILES, OLIVIA	G	10	3-7	0-3	4-6	0	4	4	3	6	3	0	3	31	-4
11	CITRON, SONIA	G	21	8-14	3-5	2-2	1	4	5	2	2	1	0	1	36	-2
20	KING, LIATU	F	17	8-15	0-1	1-1	4	7	11	4	4	2	1	1	33	0
21	WESTBELD, MADDY	F	5	2-4	1-1	0-0	0	2	2	4	0	1	1	0	13	11
08	PROSPER, CASSANDRE	G	2	0-1	0-0	2-2	2	1	3	1	0	0	0	0	14	-5
13	KOVAL, KATE	F	8	3-6	0-0	2-2	0	2	2	2	0	2	0	0	13	-14
32	KARLEN, LIZA	F	2	1-2	0-1	0-0	2	3	5	1	4	1	0	1	20	-7
<b>TEAM</b>							1	2	3	0		0				
<b>TOTALS</b>			<b>81</b>	<b>29-67</b>	<b>4-13</b>	<b>19-23</b>	<b>11</b>	<b>29</b>	<b>40</b>	<b>19</b>	<b>17</b>	<b>12</b>	<b>2</b>	<b>9</b>	<b>200</b>	

*Shooting By Period*

Period	FG	FG%	3FG	3FG%	FT	FT%
1st Qtr	7-13	54%	2-3	67%	7-8	88%
2nd Qtr	8-19	42%	0-5	00%	1-2	50%
3rd Qtr	5-17	29%	1-3	33%	6-7	86%
4th Qtr	9-18	50%	1-2	50%	5-6	83%
1st Half	15-32	47%	2-8	25%	8-10	80%
2nd Half	14-35	40%	2-5	40%	11-13	85%
<b>Game</b>	<b>29-67</b>	<b>43.3%</b>	<b>4-13</b>	<b>30.8%</b>	<b>19-23</b>	<b>82.6%</b>

*Deadball Rebounds: 3,0*  
*Last FG: 4th-00:04*  
*Biggest Run: 9-0*  
*Largest lead: By 15 at 2nd-08:26*  
*Technical Fouls: None.*

**Game Notes:**

Officials: **Angelica Suffren, Meadow Overstreet, Mark Berger**  
Attendance: **8761**

Start Time: **08:02 PM ET**  
End Time: **10:02 PM ET**  
Game Duration: **1:59**  
Conference Game;

Score	1st	2nd	3rd	4th	TOT
FSU	14	30	23	19	<b>86</b>
UND	23	17	17	24	<b>81</b>

**FSU led for 23:45. UND led for 13:39.**  
**Game was tied for 2:32.**  
Times tied: **3**      Lead Changes: **3**

Points	FSU	UND
In the Paint	38	34
Off Turns	13	15
2nd Chance	12	13
Fast Break	12	13
Bench	15	12
Per Poss	1.132 38/76	1.066 38/76

**Official Box Score**  
**Florida St. vs Notre Dame**  
**First Half Statistics Only**  
 February 27, 2025 at Purcell Pavilion at the Joyce Center - Notre Dame



**Florida St. 44**

No.	Player	S	Pts	FG	3FG	FT	OR	DR	TR	PF	A	TO	Blk	Stl	Min	+/-
00	LATSON, TA'NIYA	G	4	1-8	0-1	2-2	0	1	1	1	7	2	1	1	17	4
01	TURNAGE, BRIANNA	G	0	0-0	0-0	0-0	1	2	3	0	1	0	0	0	8	8
03	GORDON, O'MARIAH	G	5	1-6	1-4	2-2	1	0	1	1	2	1	0	0	15	1
06	VALENZUELA, MARIANA	F	3	1-1	1-1	0-0	0	0	0	2	0	0	0	0	5	-2
11	BOWLES, SYDNEY	G	8	3-8	2-6	0-0	0	1	1	0	1	0	0	0	16	5
13	VIEGAS, CARLA	G	9	3-6	3-6	0-0	0	0	0	1	0	0	0	0	9	4
21	TIMPSON, MAKAYLA	F	12	5-10	0-0	2-3	6	5	11	1	0	1	0	1	16	5
22	WILLIAMS, MALEA	F	3	1-2	1-2	0-0	1	1	2	2	0	0	1	0	10	0
24	BONNER, AMAYA	G	0	0-0	0-0	0-0	0	0	0	2	0	0	0	0	5	-2
32	TREADWELL, AVERY	F	0	0-0	0-0	0-0	0	0	0	0	0	0	0	0	1	-3
TEAM			0	0-0	0-0	0-0	2	1	3	0	0	0	0	0	0	
<b>TOTALS</b>			<b>44</b>	<b>15-41</b>	<b>8-20</b>	<b>6-7</b>	<b>11</b>	<b>11</b>	<b>22</b>	<b>10</b>	<b>11</b>	<b>4</b>	<b>2</b>	<b>2</b>	<b>100</b>	

*Shooting By Period*

Period	FG	FG%	3FG	3FG%	FT	FT%
1st Qtr	4-20	20%	2-12	17%	4-4	100%
2nd Qtr	11-21	52%	6-8	75%	2-3	67%
1st Half	15-41	37%	8-20	40%	6-7	86%
Game	30-71	42.3%	9-26	34.6%	17-21	81.0%

*Deadball Rebounds: 1,0*  
*Last FG Half: FSU 2nd-00:33*

**Notre Dame 40**

No.	Player	S	Pts	FG	3FG	FT	OR	DR	TR	PF	A	TO	Blk	Stl	Min	+/-
03	HIDALGO, HANNAH	G	11	3-9	0-1	5-6	1	2	3	1	0	1	0	1	19	-5
05	MILES, OLIVIA	G	7	2-5	0-3	3-4	0	1	1	1	3	1	0	1	15	-4
08	PROSPER, CASSANDRE	G	0	0-0	0-0	0-0	1	1	2	0	0	0	0	0	10	-2
11	CITRON, SONIA	G	5	2-5	1-1	0-0	1	2	3	1	1	0	0	0	16	-1
13	KOVAL, KATE	F	4	2-2	0-0	0-0	0	2	2	2	0	2	0	0	6	-5
20	KING, LIATU	F	6	3-7	0-1	0-0	1	2	3	1	3	2	1	0	14	1
21	WESTBELD, MADDY	F	5	2-2	1-1	0-0	0	2	2	2	0	1	1	0	7	7
32	KARLEN, LIZA	F	2	1-2	0-1	0-0	2	3	5	1	3	0	0	0	13	-11
TEAM			0	0-0	0-0	0-0	0	1	1	0	0	0	0	0	0	
<b>TOTALS</b>			<b>40</b>	<b>15-32</b>	<b>2-8</b>	<b>8-10</b>	<b>6</b>	<b>16</b>	<b>22</b>	<b>9</b>	<b>10</b>	<b>7</b>	<b>2</b>	<b>2</b>	<b>100</b>	

*Shooting By Period*

Period	FG	FG%	3FG	3FG%	FT	FT%
1st Qtr	7-13	54%	2-3	67%	7-8	88%
2nd Qtr	8-19	42%	0-5	00%	1-2	50%
1st Half	15-32	47%	2-8	25%	8-10	80%
Game	29-67	43.3%	4-13	30.8%	19-23	82.6%

*Deadball Rebounds: 3,0*  
*Last FG Half: UND 2nd-00:05*

Game Notes:

Officials: Angelica Suffren, Meadow Overstreet, Mark Berger  
 Attendance: 8761

Start Time: 08:02 PM ET  
 End Time: 10:02 PM ET  
 Game Duration: 1:59  
 Conference Game;

Score	1st	2nd	3rd	4th	TOT
FSU	14	30	23	19	<b>86</b>
UND	23	17	17	24	<b>81</b>

Points from (This Period)	FSU	UND
In the Paint	12	16
Off Turns	7	6
2nd Chance	6	7
Fast Break	7	4
Bench	12	6



**Official Box Score**  
**Florida St. vs Notre Dame**  
**First Quarter Statistics Only**  
 February 27, 2025 at Purcell Pavilion at the Joyce Center - Notre Dame



**Florida St. 14**

No.	Player	S	Pts	FG	3FG	FT	OR	DR	TR	PF	A	TO	Blk	Stl	Min	+/-
00	LATSON, TA'NIYA	G	2	1-4	0-1	0-0	0	1	1	1	2	2	0	1	9	-9
03	GORDON, O'MARIAH	G	5	1-6	1-4	2-2	1	0	1	0	0	1	0	0	8	-5
11	BOWLES, SYDNEY	G	2	1-3	0-2	0-0	0	0	0	0	0	0	0	0	6	-8
21	TIMPSON, MAKAYLA	F	2	0-2	0-0	2-2	3	0	3	1	0	0	0	1	9	-6
22	WILLIAMS, MALEA	F	3	1-2	1-2	0-0	1	1	2	0	0	0	1	0	6	-5
01	TURNAGE, BRIANNA	G	0	0-0	0-0	0-0	0	0	0	0	0	0	0	0	0	0
06	VALENZUELA, MARIANA	F	0	0-0	0-0	0-0	0	0	0	1	0	0	0	0	4	-4
13	VIEGAS, CARLA	G	0	0-3	0-3	0-0	0	0	0	1	0	0	0	0	3	-3
24	BONNER, AMAYA	G	0	0-0	0-0	0-0	0	0	0	2	0	0	0	0	5	-2
32	TREADWELL, AVERY	F	0	0-0	0-0	0-0	0	0	0	0	0	0	0	0	1	-3
TEAM							1	1	2	0						
<b>TOTALS</b>			<b>14</b>	<b>4-20</b>	<b>2-12</b>	<b>4-4</b>	<b>6</b>	<b>3</b>	<b>9</b>	<b>6</b>	<b>2</b>	<b>3</b>	<b>1</b>	<b>2</b>	<b>50</b>	

*Shooting By Period*

Period	FG	FG%	3FG	3FG%	FT	FT%
1st Qtr	4-20	20%	2-12	17%	4-4	100%
2nd Qtr	11-21	52%	6-8	75%	2-3	67%
1st Half	4-20	20%	2-12	17%	4-4	100%
1st Half	15-41	37%	8-20	40%	6-7	86%
Game	30-71	42.3%	9-26	34.6%	17-21	81.0%

Deadball Rebounds: 1,0

**Notre Dame 23**

No.	Player	S	Pts	FG	3FG	FT	OR	DR	TR	PF	A	TO	Blk	Stl	Min	+/-
03	HIDALGO, HANNAH	G	6	1-3	0-0	4-4	0	2	2	1	0	1	0	1	9	8
05	MILES, OLIVIA	G	3	0-1	0-1	3-4	0	1	1	1	2	1	0	1	8	5
11	CITRON, SONIA	G	3	1-3	1-1	0-0	0	1	1	1	0	0	0	0	8	7
20	KING, LIATU	F	2	1-2	0-0	0-0	1	1	2	0	2	1	1	0	7	7
21	WESTBELD, MADDY	F	5	2-2	1-1	0-0	0	1	1	1	0	1	0	0	6	5
08	PROSPER, CASSANDRE	G	0	0-0	0-0	0-0	0	0	0	0	0	0	0	0	5	7
13	KOVAL, KATE	F	2	1-1	0-0	0-0	0	2	2	0	0	1	0	0	3	2
32	KARLEN, LIZA	F	2	1-1	0-0	0-0	2	1	3	0	1	0	0	0	4	4
TEAM							0	1	1	0						
<b>TOTALS</b>			<b>23</b>	<b>7-13</b>	<b>2-3</b>	<b>7-8</b>	<b>3</b>	<b>10</b>	<b>13</b>	<b>4</b>	<b>5</b>	<b>5</b>	<b>1</b>	<b>2</b>	<b>50</b>	

*Shooting By Period*

Period	FG	FG%	3FG	3FG%	FT	FT%
1st Qtr	7-13	54%	2-3	67%	7-8	88%
2nd Qtr	8-19	42%	0-5	00%	1-2	50%
1st Half	7-13	54%	2-3	67%	7-8	88%
1st Half	15-32	47%	2-8	25%	8-10	80%
Game	29-67	43.3%	4-13	30.8%	19-23	82.6%

Deadball Rebounds: 3,0

Game Notes:

Officials: Angelica Suffren, Meadow Overstreet, Mark Berger  
 Attendance: 8761

Start Time: 08:02 PM ET  
 End Time: 10:02 PM ET  
 Game Duration: 1:59  
 Conference Game;

Score	1st	2nd	3rd	4th	TOT
FSU	14	30	23	19	<b>86</b>
UND	23	17	17	24	<b>81</b>

Points (This Period)	FSU	UND
In the Paint	2	6
Off Turns	2	4
2nd Chance	4	5
Fast Break	0	4
Bench	0	4
Per Poss	0.737 6/19	1.278 11/18

**Official Play-By-Play**  
**Florida St. vs Notre Dame**  
**First Quarter**

**February 27, 2025 at Purcell Pavilion at the Joyce Center - Notre Dame**



**Period 1**  
**Starters:**

**Florida St.:** 00 LATSON,TA'NIYA (G); 3 GORDON,O'MARIAH (G); 11 BOWLES,SYDNEY (G); 21 TIMPSON,MAKAYLA (F); 22 WILLIAMS,MALEA (F);  
**Notre Dame:** 3 HIDALGO,HANNAH (G); 5 MILES,OLIVIA (G); 11 CITRON,SONIA (G); 20 KING,LIATU (F); 21 WESTBELD,MADDY (F);

Time	VISITORS: Florida St.	Score	Margin	HOME: Notre Dame
09:54	MISSED JUMPER by LATSON, TA'NIYA			
09:50				REBOUND (DEF) by CITRON, SONIA
09:39				MISSED JUMPER by CITRON, SONIA
09:36	REBOUND (DEF) by WILLIAMS, MALEA			
09:32				FOUL (PERSONAL) by CITRON, SONIA
09:23	TURNOVER (LOSTBALL) by GORDON, O'MARIAH			
09:23				STEAL by MILES, OLIVIA
09:14				MISSED LAYUP by KING, LIATU
09:14	BLOCK by WILLIAMS, MALEA			
09:10	REBOUND (DEF) by LATSON, TA'NIYA			
09:05	MISSED 3PTR by BOWLES, SYDNEY			
09:02				REBOUND (DEF) by HIDALGO, HANNAH
08:45				MISSED LAYUP by HIDALGO, HANNAH
08:42				REBOUND (OFF) by KING, LIATU
08:41		3-0	H 3	GOOD! 3PTR by WESTBELD, MADDY
08:41				ASSIST by KING, LIATU
08:25	MISSED 3PTR by BOWLES, SYDNEY			
08:22	REBOUND (OFF) by TEAM			
08:14	MISSED 3PTR by LATSON, TA'NIYA			
08:10	REBOUND (OFF) by WILLIAMS, MALEA			
08:05				FOUL (PERSONAL) by MILES, OLIVIA
08:05	SUB OUT: BOWLES, SYDNEY			
08:05	SUB IN: BONNER, AMAYA			
08:05	GOOD! FT by GORDON, O'MARIAH	3-1	H 2	
08:05	GOOD! FT by GORDON, O'MARIAH	3-2	H 1	
07:51	FOUL (PERSONAL) by LATSON, TA'NIYA			
07:39		5-2	H 3	GOOD! LAYUP by WESTBELD, MADDY
07:39				ASSIST by KING, LIATU
07:21	GOOD! 3PTR by GORDON, O'MARIAH	5-5	T	
07:21	ASSIST by LATSON, TA'NIYA			
07:10	FOUL (PERSONAL) by BONNER, AMAYA			
06:58				TURNOVER (BADPASS) by KING, LIATU
06:58	STEAL by LATSON, TA'NIYA			
06:53	MISSED LAYUP by LATSON, TA'NIYA			
06:53				BLOCK by KING, LIATU
06:49				REBOUND (DEF) by WESTBELD, MADDY
06:45				TURNOVER (TRAVEL) by WESTBELD, MADDY
06:36	MISSED 3PTR by GORDON, O'MARIAH			
06:32	REBOUND (OFF) by TIMPSON, MAKAYLA			
06:22	TURNOVER (TRAVEL) by LATSON, TA'NIYA			
06:22				SUB OUT: MILES, OLIVIA
06:22				SUB OUT: WESTBELD, MADDY
06:22				SUB IN: PROSPER, CASSANDRE
06:22				SUB IN: KARLEN, LIZA
06:22	SUB OUT: GORDON, O'MARIAH			
06:22	SUB IN: BOWLES, SYDNEY			
06:22	SUB OUT: WILLIAMS, MALEA			
06:22	SUB IN: VALENZUELA, MARIANA			
06:08		7-5	H 2	GOOD! JUMPER by HIDALGO, HANNAH
05:54	TURNOVER (BADPASS) by LATSON, TA'NIYA			
05:54				STEAL by HIDALGO, HANNAH
05:51	FOUL (PERSONAL) by VALENZUELA, MARIANA			
05:51		8-5	H 3	GOOD! FT by HIDALGO, HANNAH [FB]
05:51		9-5	H 4	GOOD! FT by HIDALGO, HANNAH [FB]
05:38	MISSED LAYUP by TIMPSON, MAKAYLA			
05:35				REBOUND (DEF) by KARLEN, LIZA
05:30				FOUL (OFF) by HIDALGO, HANNAH
05:30				TURNOVER (OFFENSIVE) by HIDALGO, HANNAH
05:30				SUB OUT: KING, LIATU
05:30				SUB IN: KOVAL, KATE
05:15	MISSED LAYUP by TIMPSON, MAKAYLA			

Time	VISITORS: Florida St.	Score	Margin	HOME: Notre Dame
05:12				REBOUND (DEF) by HIDALGO, HANNAH
05:03		11-5	H 6	GOOD! JUMPER by KOVAL, KATE
05:03				ASSIST by KARLEN, LIZA
04:44	GOOD! LAYUP by LATSON, TA'NIYA	11-7	H 4	
04:26				MISSED JUMPER by CITRON, SONIA
04:22				REBOUND (OFF) by KARLEN, LIZA
04:18				MISSED JUMPER by HIDALGO, HANNAH
04:16	REBOUND (DEF) by TEAM			
04:16				
04:16				SUB OUT: CITRON, SONIA
04:16				SUB IN: MILES, OLIVIA
04:16	SUB OUT: LATSON, TA'NIYA			
04:16	SUB OUT: BONNER, AMAYA			
04:16	SUB IN: GORDON, O'MARIAH			
04:16	SUB IN: VIEGAS, CARLA			
04:08	MISSED 3PTR by VIEGAS, CARLA			
04:05				REBOUND (DEF) by MILES, OLIVIA
03:55		13-7	H 6	GOOD! JUMPER by KARLEN, LIZA
03:55				ASSIST by MILES, OLIVIA
03:31	GOOD! JUMPER by BOWLES, SYDNEY	13-9	H 4	
03:14				TURNOVER (BADPASS) by KOVAL, KATE
03:14	STEAL by TIMPSON, MAKAYLA			
03:06	MISSED JUMPER by GORDON, O'MARIAH			
03:02	REBOUND (OFF) by GORDON, O'MARIAH			
03:01	MISSED JUMPER by GORDON, O'MARIAH			
02:58				REBOUND (DEF) by KOVAL, KATE
02:53				MISSED 3PTR by MILES, OLIVIA
02:50				REBOUND (OFF) by KARLEN, LIZA
02:50	FOUL (PERSONAL) by TIMPSON, MAKAYLA			
02:50				SUB OUT: KARLEN, LIZA
02:50				SUB IN: WESTBELD, MADDY
02:50	SUB OUT: VALENZUELA, MARIANA			
02:50	SUB OUT: BOWLES, SYDNEY			
02:50	SUB IN: LATSON, TA'NIYA			
02:50	SUB IN: WILLIAMS, MALEA			
02:50		14-9	H 5	GOOD! FT by MILES, OLIVIA
02:50		15-9	H 6	GOOD! FT by MILES, OLIVIA
02:29	MISSED 3PTR by VIEGAS, CARLA			
02:26				REBOUND (DEF) by KOVAL, KATE
02:19				TURNOVER (BADPASS) by MILES, OLIVIA
02:19				SUB OUT: HIDALGO, HANNAH
02:19				SUB OUT: KOVAL, KATE
02:19				SUB IN: CITRON, SONIA
02:19				SUB IN: KING, LIATU
02:06	MISSED 3PTR by WILLIAMS, MALEA			
02:04	REBOUND (OFF) by TIMPSON, MAKAYLA			
02:04				FOUL (PERSONAL) by WESTBELD, MADDY
02:04	GOOD! FT by TIMPSON, MAKAYLA	15-10	H 5	
02:04	GOOD! FT by TIMPSON, MAKAYLA	15-11	H 4	
02:04	SUB OUT: TIMPSON, MAKAYLA			
02:04	SUB IN: TREADWELL, AVERY			
01:53		18-11	H 7	GOOD! 3PTR by CITRON, SONIA
01:53				ASSIST by MILES, OLIVIA
01:41	MISSED 3PTR by VIEGAS, CARLA			
01:39				REBOUND (DEF) by TEAM
01:39				SUB OUT: PROSPER, CASSANDRE
01:39				SUB IN: HIDALGO, HANNAH
01:26	FOUL (PERSONAL) by VIEGAS, CARLA			
01:26	SUB OUT: TREADWELL, AVERY			
01:26	SUB IN: TIMPSON, MAKAYLA			
01:26	SUB OUT: VIEGAS, CARLA			
01:26	SUB IN: BONNER, AMAYA			
01:26		19-11	H 8	GOOD! FT by HIDALGO, HANNAH
01:26		20-11	H 9	GOOD! FT by HIDALGO, HANNAH
01:11	MISSED 3PTR by GORDON, O'MARIAH			
01:08				REBOUND (DEF) by KING, LIATU
01:04		22-11	H 11	GOOD! JUMPER by KING, LIATU [FB/PNT]
00:36	GOOD! 3PTR by WILLIAMS, MALEA	22-14	H 8	
00:36	ASSIST by LATSON, TA'NIYA			
00:28	FOUL (PERSONAL) by BONNER, AMAYA			
00:28	SUB OUT: BONNER, AMAYA			
00:28	SUB IN: BOWLES, SYDNEY			

Time	VISITORS: Florida St.	Score	Margin	HOME: Notre Dame
00:28				MISSED FT by MILES, OLIVIA
00:28				REBOUND (OFF) by TEAM
00:28		23-14	H 9	GOOD! FT by MILES, OLIVIA
00:00	MISSED 3PTR by GORDON, O'MARIAH			
00:00	REBOUND (OFF) by TIMPSON, MAKAYLA			

**Florida St. 14, Notre Dame 23**

Points (This Period)	FSU	UND
In the Paint	2	6
Off Turns	2	4
2nd Chance	4	5
Fast Break	0	4
Bench	0	4
Per Poss	0.737 6/19	1.278 11/18

**Official Box Score**  
**Florida St. vs Notre Dame**  
**Second Quarter Statistics Only**  
February 27, 2025 at Purcell Pavilion at the Joyce Center - Notre Dame



**Florida St. 30**

No.	Player	S	Pts	FG	3FG	FT	OR	DR	TR	PF	A	TO	Blk	Stl	Min	+/-
00	LATSON, TA'NIYA	G	2	0-4	0-0	2-2	0	0	0	0	5	0	1	0	8	13
03	GORDON, O'MARIAH	G	0	0-0	0-0	0-0	0	0	0	1	2	0	0	0	7	6
11	BOWLES, SYDNEY	G	6	2-5	2-4	0-0	0	1	1	0	1	0	0	0	10	13
21	TIMPSON, MAKAYLA	F	10	5-8	0-0	0-1	3	5	8	0	0	1	0	0	7	11
22	WILLIAMS, MALEA	F	0	0-0	0-0	0-0	0	0	0	2	0	0	0	0	4	5
01	TURNAGE, BRIANNA	G	0	0-0	0-0	0-0	1	2	3	0	1	0	0	0	8	8
06	VALENZUELA, MARIANA	F	3	1-1	1-1	0-0	0	0	0	1	0	0	0	0	1	2
13	VIEGAS, CARLA	G	9	3-3	3-3	0-0	0	0	0	0	0	0	0	0	6	7
24	BONNER, AMAYA	G	0	0-0	0-0	0-0	0	0	0	0	0	0	0	0	0	0
32	TREADWELL, AVERY	F	0	0-0	0-0	0-0	0	0	0	0	0	0	0	0	0	0
TEAM							1	0	1	0						
<b>TOTALS</b>			<b>30</b>	<b>11-21</b>	<b>6-8</b>	<b>2-3</b>	<b>5</b>	<b>8</b>	<b>13</b>	<b>4</b>	<b>9</b>	<b>1</b>	<b>1</b>	<b>0</b>	<b>50</b>	

*Shooting By Period*

Period	FG	FG%	3FG	3FG%	FT	FT%
3rd Qtr	7-15	47%	1-4	25%	8-8	100%
4th Qtr	8-15	53%	0-2	00%	3-6	50%
2nd Half	11-21	52%	6-8	75%	2-3	67%
2nd Half	15-30	50%	1-6	17%	11-14	79%
Game	30-71	42.3%	9-26	34.6%	17-21	81.0%

Deadball Rebounds: 1,0

**Notre Dame 17**

No.	Player	S	Pts	FG	3FG	FT	OR	DR	TR	PF	A	TO	Blk	Stl	Min	+/-
03	HIDALGO, HANNAH	G	5	2-6	0-1	1-2	1	0	1	0	0	0	0	0	10	-13
05	MILES, OLIVIA	G	4	2-4	0-2	0-0	0	0	0	0	1	0	0	0	7	-9
11	CITRON, SONIA	G	2	1-2	0-0	0-0	1	1	2	0	1	0	0	0	8	-8
20	KING, LIATU	F	4	2-5	0-1	0-0	0	1	1	1	1	1	0	0	7	-6
21	WESTBELD, MADDY	F	0	0-0	0-0	0-0	0	1	1	1	0	0	1	0	1	2
08	PROSPER, CASSANDRE	G	0	0-0	0-0	0-0	1	1	2	0	0	0	0	0	5	-9
13	KOVAL, KATE	F	2	1-1	0-0	0-0	0	0	0	2	0	1	0	0	3	-7
32	KARLEN, LIZA	F	0	0-1	0-1	0-0	0	2	2	1	2	0	0	0	9	-15
TEAM							0	0	0	0						
<b>TOTALS</b>			<b>17</b>	<b>8-19</b>	<b>0-5</b>	<b>1-2</b>	<b>3</b>	<b>6</b>	<b>9</b>	<b>5</b>	<b>5</b>	<b>2</b>	<b>1</b>	<b>0</b>	<b>50</b>	

*Shooting By Period*

Period	FG	FG%	3FG	3FG%	FT	FT%
3rd Qtr	5-17	29%	1-3	33%	6-7	86%
4th Qtr	9-18	50%	1-2	50%	5-6	83%
2nd Half	8-19	42%	0-5	00%	1-2	50%
2nd Half	14-35	40%	2-5	40%	11-13	85%
Game	29-67	43.3%	4-13	30.8%	19-23	82.6%

Deadball Rebounds: 3,0

Game Notes:

Officials: Angelica Suffren, Meadow Overstreet, Mark Berger  
Attendance: 8761

Start Time: 08:02 PM ET  
End Time: 10:02 PM ET  
Game Duration: 1:59  
Conference Game;

Score	1st	2nd	3rd	4th	TOT
FSU	14	30	23	19	<b>86</b>
UND	23	17	17	24	<b>81</b>

Points (This Period)	FSU	UND
In the Paint	10	10
Off Turns	5	2
2nd Chance	2	2
Fast Break	7	0
Bench	12	2
Per Poss	1.667 12/18	0.895 9/19

**Official Play-By-Play  
Florida St. vs Notre Dame  
Second Quarter**

**February 27, 2025 at Purcell Pavilion at the Joyce Center - Notre Dame**



**Period 2**

**Starters:**

**Florida St.:** 00 LATSON,TA'NIYA (G); 3 GORDON,O'MARIAH (G); 11 BOWLES,SYDNEY (G); 21 TIMPSON,MAKAYLA (F); 22 WILLIAMS,MALEA (F);  
**Notre Dame:** 3 HIDALGO,HANNAH (G); 5 MILES,OLIVIA (G); 11 CITRON,SONIA (G); 20 KING,LIATU (F); 21 WESTBELD,MADDY (F);

Time	VISITORS: Florida St.	Score	Margin	HOME: Notre Dame
10:00	SUB OUT: WILLIAMS, MALEA			
10:00	SUB IN: TURNAGE, BRIANNA			
09:45		25-14	H 11	GOOD! JUMPER by KING, LIATU
09:45				ASSIST by CITRON, SONIA
09:33	MISSED JUMPER by LATSON, TA'NIYA			
09:33				BLOCK by WESTBELD, MADDY
09:29				REBOUND (DEF) by WESTBELD, MADDY
09:25				MISSED 3PTR by KING, LIATU
09:22	REBOUND (DEF) by TURNAGE, BRIANNA			
09:16	MISSED LAYUP by LATSON, TA'NIYA			
09:16	REBOUND (OFF) by TEAM			
09:16				FOUL (PERSONAL) by WESTBELD, MADDY
09:16				SUB OUT: WESTBELD, MADDY
09:16				SUB IN: KARLEN, LIZA
09:06	TURNOVER (TRAVEL) by TIMPSON, MAKAYLA			
08:50		27-14	H 13	GOOD! JUMPER by HIDALGO, HANNAH [PNT]
08:36	MISSED JUMPER by LATSON, TA'NIYA			
08:33				REBOUND (DEF) by KARLEN, LIZA
08:26		29-14	H 15	GOOD! JUMPER by KING, LIATU [PNT]
08:26				ASSIST by MILES, OLIVIA
08:25	TIMEOUT 30SEC			
08:12	MISSED LAYUP by TIMPSON, MAKAYLA			
08:09	REBOUND (OFF) by TIMPSON, MAKAYLA			
08:07	GOOD! LAYUP by TIMPSON, MAKAYLA	29-16	H 13	
08:03				MISSED 3PTR by MILES, OLIVIA
08:01	REBOUND (DEF) by TIMPSON, MAKAYLA			
07:56	GOOD! 3PTR by BOWLES, SYDNEY [FB]	29-19	H 10	
07:56	ASSIST by GORDON, O'MARIAH			
07:39				TURNOVER (TRAVEL) by KING, LIATU
07:28	GOOD! 3PTR by BOWLES, SYDNEY	29-22	H 7	
07:28	ASSIST by LATSON, TA'NIYA			
07:01				MISSED JUMPER by KING, LIATU
06:58				REBOUND (OFF) by CITRON, SONIA
06:54				MISSED 3PTR by MILES, OLIVIA
06:51	REBOUND (DEF) by BOWLES, SYDNEY			
06:46	GOOD! LAYUP by TIMPSON, MAKAYLA [FB]	29-24	H 5	
06:46	ASSIST by BOWLES, SYDNEY			
06:46				TIMEOUT 30SEC
06:46				SUB OUT: MILES, OLIVIA
06:46				SUB IN: PROSPER, CASSANDRE
06:34				MISSED JUMPER by HIDALGO, HANNAH
06:32	REBOUND (DEF) by TIMPSON, MAKAYLA			
06:32				FOUL (PERSONAL) by KING, LIATU
06:21	MISSED 3PTR by BOWLES, SYDNEY			
06:16				REBOUND (DEF) by KING, LIATU
06:11				MISSED LAYUP by KING, LIATU
06:08	REBOUND (DEF) by TURNAGE, BRIANNA			
06:03	GOOD! LAYUP by TIMPSON, MAKAYLA [FB]	29-26	H 3	
06:03	ASSIST by LATSON, TA'NIYA			
05:37	FOUL (PERSONAL) by GORDON, O'MARIAH			
05:37				SUB OUT: KING, LIATU
05:37				SUB IN: KOVAL, KATE
05:37	SUB OUT: GORDON, O'MARIAH			
05:37	SUB OUT: TIMPSON, MAKAYLA			
05:37	SUB IN: VALENZUELA, MARIANA			
05:37	SUB IN: VIEGAS, CARLA			
05:37				MISSED FT by HIDALGO, HANNAH
05:37				REBOUND (OFF) by TEAM
05:21	GOOD! 3PTR by VALENZUELA, MARIANA	30-26	H 4	GOOD! FT by HIDALGO, HANNAH
05:21	ASSIST by LATSON, TA'NIYA	30-29	H 1	
05:21				

Time	VISITORS: Florida St.	Score	Margin	HOME: Notre Dame
04:54				MISSED JUMPER by HIDALGO, HANNAH
04:50				REBOUND (OFF) by HIDALGO, HANNAH
04:48				MISSED 3PTR by HIDALGO, HANNAH
04:45				REBOUND (OFF) by PROSPER, CASSANDRE
04:42	FOUL (PERSONAL) by VALENZUELA, MARIANA			
04:42	SUB OUT: TURNAGE, BRIANNA			
04:42	SUB OUT: VALENZUELA, MARIANA			
04:42	SUB IN: TIMPSON, MAKAYLA			
04:42	SUB IN: WILLIAMS, MALEA			
04:42	FOUL (PERSONAL) by WILLIAMS, MALEA			
04:37		32-29	H 3	GOOD! LAYUP by CITRON, SONIA
04:37				ASSIST by KARLEN, LIZA
04:23	GOOD! LAYUP by TIMPSON, MAKAYLA	32-31	H 1	
04:23				FOUL (PERSONAL) by KOVAL, KATE
04:23	MISSED FT by TIMPSON, MAKAYLA			
04:21				REBOUND (DEF) by CITRON, SONIA
04:10				MISSED LAYUP by CITRON, SONIA
04:07	REBOUND (DEF) by TIMPSON, MAKAYLA			
03:59				FOUL (PERSONAL) by KARLEN, LIZA
03:59				SUB OUT: CITRON, SONIA
03:59				SUB IN: MILES, OLIVIA
03:59	GOOD! FT by LATSON, TA'NIYA	32-32	T	
03:59	GOOD! FT by LATSON, TA'NIYA	32-33	V 1	
03:50				FOUL (OFF) by KOVAL, KATE
03:50				TURNOVER (OFFENSIVE) by KOVAL, KATE
03:24	GOOD! LAYUP by TIMPSON, MAKAYLA	32-35	V 3	
03:24	ASSIST by LATSON, TA'NIYA			
03:04		34-35	V 1	GOOD! JUMPER by KOVAL, KATE
03:04				ASSIST by KARLEN, LIZA
02:52	GOOD! 3PTR by VIEGAS, CARLA	34-38	V 4	
02:52	ASSIST by LATSON, TA'NIYA			
02:24				MISSED JUMPER by HIDALGO, HANNAH
02:24	BLOCK by LATSON, TA'NIYA			
02:20	REBOUND (DEF) by TIMPSON, MAKAYLA			
02:17	MISSED LAYUP by LATSON, TA'NIYA			
02:13	REBOUND (OFF) by TIMPSON, MAKAYLA			
02:13	MISSED JUMPER by TIMPSON, MAKAYLA			
02:12	REBOUND (OFF) by TIMPSON, MAKAYLA			
02:12	MISSED LAYUP by TIMPSON, MAKAYLA			
02:12				REBOUND (DEF) by PROSPER, CASSANDRE
02:12	FOUL (PERSONAL) by WILLIAMS, MALEA			
02:12				SUB OUT: PROSPER, CASSANDRE
02:12				SUB OUT: KOVAL, KATE
02:12				SUB IN: CITRON, SONIA
02:12				SUB IN: KING, LIATU
02:12	SUB OUT: LATSON, TA'NIYA			
02:12	SUB IN: TURNAGE, BRIANNA			
02:12	SUB IN: GORDON, O'MARIAH			
02:12	SUB OUT: WILLIAMS, MALEA			
01:58				MISSED 3PTR by KARLEN, LIZA
01:53	REBOUND (DEF) by TIMPSON, MAKAYLA			
01:52	SUB OUT: TIMPSON, MAKAYLA			
01:52	SUB IN: WILLIAMS, MALEA			
01:44	GOOD! 3PTR by VIEGAS, CARLA	34-41	V 7	
01:44	ASSIST by TURNAGE, BRIANNA			
01:27		36-41	V 5	GOOD! JUMPER by HIDALGO, HANNAH
01:14	MISSED JUMPER by BOWLES, SYDNEY			
01:10	REBOUND (OFF) by TURNAGE, BRIANNA			
01:08	MISSED 3PTR by BOWLES, SYDNEY			
01:05				REBOUND (DEF) by KARLEN, LIZA
00:56		38-41	V 3	GOOD! JUMPER by MILES, OLIVIA
00:33	GOOD! 3PTR by VIEGAS, CARLA	38-44	V 6	
00:33	ASSIST by GORDON, O'MARIAH			
00:05		40-44	V 4	GOOD! LAYUP by MILES, OLIVIA
00:05				ASSIST by KING, LIATU

Florida St. 44, Notre Dame 40

<b>Points (This Period)</b>	<b>FSU</b>	<b>UND</b>
In the Paint	10	10
Off Turns	5	2
2nd Chance	2	2
Fast Break	7	0
Bench	12	2
Per Poss	1.667 12/18	0.895 9/19



**Official Box Score**  
**Florida St. vs Notre Dame**  
**Second Half Statistics Only**  
 February 27, 2025 at Purcell Pavilion at the Joyce Center - Notre Dame



**Florida St. 42**

No.	Player	S	Pts	FG	3FG	FT	OR	DR	TR	PF	A	TO	Blk	Stl	Min	+/-
00	LATSON, TA'NIYA	G	19	6-12	0-2	7-8	1	3	4	1	2	1	0	1	17	0
01	TURNAGE, BRIANNA	G	0	0-0	0-0	0-0	0	2	2	1	0	0	0	1	13	11
03	GORDON, O'MARIAH	G	10	4-9	0-1	2-2	1	1	2	2	1	3	0	1	19	4
06	VALENZUELA, MARIANA	F	0	0-0	0-0	0-0	0	0	0	2	0	0	0	0	3	-7
11	BOWLES, SYDNEY	G	0	0-0	0-0	0-0	0	0	0	1	0	1	1	0	7	-4
13	VIEGAS, CARLA	G	3	1-1	1-1	0-0	0	0	0	1	0	0	0	0	7	2
21	TIMPSON, MAKAYLA	F	10	4-5	0-0	2-2	0	6	6	2	0	2	0	0	19	0
22	WILLIAMS, MALEA	F	0	0-1	0-1	0-0	0	1	1	0	0	0	0	0	3	-1
24	BONNER, AMAYA	G	0	0-2	0-1	0-2	2	1	3	1	0	1	0	0	12	-1
32	TREADWELL, AVERY	F	0	0-0	0-0	0-0	0	0	0	0	0	0	0	0	1	1
	TEAM		0	0-0	0-0	0-0	0	3	3	0	0	0	0	0	0	
<b>TOTALS</b>			<b>42</b>	<b>15-30</b>	<b>1-6</b>	<b>11-14</b>	<b>4</b>	<b>17</b>	<b>21</b>	<b>11</b>	<b>3</b>	<b>8</b>	<b>1</b>	<b>3</b>	<b>100</b>	

*Shooting By Period*

Period	FG	FG%	3FG	3FG%	FT	FT%
3rd Qtr	7-15	47%	1-4	25%	8-8	100%
4th Qtr	8-15	53%	0-2	00%	3-6	50%
2nd Half	15-30	50%	1-6	17%	11-14	79%
Game	30-71	42.3%	9-26	34.6%	17-21	81.0%

*Deadball Rebounds: 1,0*  
*Last FG Half: FSU 4th-00:57*

**Notre Dame 41**

No.	Player	S	Pts	FG	3FG	FT	OR	DR	TR	PF	A	TO	Blk	Stl	Min	+/-
03	HIDALGO, HANNAH	G	5	1-9	0-1	3-4	0	2	2	1	1	1	0	2	19	1
05	MILES, OLIVIA	G	3	1-2	0-0	1-2	0	3	3	2	3	2	0	2	17	0
08	PROSPER, CASSANDRE	G	2	0-1	0-0	2-2	1	0	1	1	0	0	0	0	5	-3
11	CITRON, SONIA	G	16	6-9	2-4	2-2	0	2	2	1	1	1	0	1	20	-1
13	KOVAL, KATE	F	4	1-4	0-0	2-2	0	0	0	0	0	0	0	0	7	-9
20	KING, LIATU	F	11	5-8	0-0	1-1	3	5	8	3	1	0	0	1	20	-1
21	WESTBELD, MADDY	F	0	0-2	0-0	0-0	0	0	0	2	0	0	0	0	6	4
32	KARLEN, LIZA	F	0	0-0	0-0	0-0	0	0	0	0	1	1	0	1	7	4
	TEAM		0	0-0	0-0	0-0	1	1	2	0	0	0	0	0	0	
<b>TOTALS</b>			<b>41</b>	<b>14-35</b>	<b>2-5</b>	<b>11-13</b>	<b>5</b>	<b>13</b>	<b>18</b>	<b>10</b>	<b>7</b>	<b>5</b>	<b>0</b>	<b>7</b>	<b>100</b>	

*Shooting By Period*

Period	FG	FG%	3FG	3FG%	FT	FT%
3rd Qtr	5-17	29%	1-3	33%	6-7	86%
4th Qtr	9-18	50%	1-2	50%	5-6	83%
2nd Half	14-35	40%	2-5	40%	11-13	85%
Game	29-67	43.3%	4-13	30.8%	19-23	82.6%

*Deadball Rebounds: 3,0*  
*Last FG Half: UND 4th-00:04*

Game Notes:

Officials: Angelica Suffren, Meadow Overstreet, Mark Berger  
 Attendance: 8761

Start Time: 08:02 PM ET  
 End Time: 10:02 PM ET  
 Game Duration: 1:59  
 Conference Game;

Score	1st	2nd	3rd	4th	TOT
FSU	14	30	23	19	<b>86</b>
UND	23	17	17	24	<b>81</b>

Points from (This Period)	FSU	UND
In the Paint	26	18
Off Turns	6	9
2nd Chance	6	6
Fast Break	5	9
Bench	3	6

**Official Box Score**  
**Florida St. vs Notre Dame**  
**Third Quarter Statistics Only**  
 February 27, 2025 at Purcell Pavilion at the Joyce Center - Notre Dame



**Florida St. 42**

No.	Player	S	Pts	FG	3FG	FT	OR	DR	TR	PF	A	TO	Blk	Stl	Min	+/-
00	LATSON, TA'NIYA	G	6	1-3	0-1	4-4	0	1	1	1	1	1	0	0	7	5
03	GORDON, O'MARIAH	G	10	4-7	0-1	2-2	1	0	1	1	1	1	0	1	9	9
11	BOWLES, SYDNEY	G	0	0-0	0-0	0-0	0	0	0	0	0	0	1	0	5	0
21	TIMPSON, MAKAYLA	F	4	1-2	0-0	2-2	0	4	4	1	0	0	0	0	9	5
22	WILLIAMS, MALEA	F	0	0-1	0-1	0-0	0	1	1	0	0	0	0	0	3	-1
01	TURNAGE, BRIANNA	G	0	0-0	0-0	0-0	0	1	1	1	0	0	0	1	6	10
06	VALENZUELA, MARIANA	F	0	0-0	0-0	0-0	0	0	0	1	0	0	0	0	1	-3
13	VIEGAS, CARLA	G	3	1-1	1-1	0-0	0	0	0	1	0	0	0	0	5	6
24	BONNER, AMAYA	G	0	0-1	0-0	0-0	1	0	1	0	0	1	0	0	4	-2
32	TREADWELL, AVERY	F	0	0-0	0-0	0-0	0	0	0	0	0	0	0	0	1	1
TEAM							0	3	3	0	0					
<b>TOTALS</b>			<b>23</b>	<b>7-15</b>	<b>1-4</b>	<b>8-8</b>	<b>2</b>	<b>10</b>	<b>12</b>	<b>6</b>	<b>2</b>	<b>3</b>	<b>1</b>	<b>2</b>	<b>50</b>	

*Shooting By Period*

Period	FG	FG%	3FG	3FG%	FT	FT%
2nd Half	0-0	0%	0-0	0%	0-0	0%
Game	30-71	42.3%	9-26	34.6%	17-21	81.0%

Deadball Rebounds: 1,0

**Notre Dame 41**

No.	Player	S	Pts	FG	3FG	FT	OR	DR	TR	PF	A	TO	Blk	Stl	Min	+/-
03	HIDALGO, HANNAH	G	0	0-4	0-1	0-0	0	0	0	1	0	0	0	1	9	-4
05	MILES, OLIVIA	G	1	0-0	0-0	1-2	0	2	2	1	1	1	0	1	9	-2
11	CITRON, SONIA	G	7	3-4	1-2	0-0	0	1	1	0	1	1	0	0	10	-6
20	KING, LIATU	F	5	2-4	0-0	1-1	1	3	4	0	1	0	0	0	10	-6
21	WESTBELD, MADDY	F	0	0-2	0-0	0-0	0	0	0	2	0	0	0	0	3	1
08	PROSPER, CASSANDRE	G	2	0-1	0-0	2-2	1	0	1	1	0	0	0	0	3	-6
13	KOVAL, KATE	F	2	0-2	0-0	2-2	0	0	0	0	0	0	0	0	5	-6
32	KARLEN, LIZA	F	0	0-0	0-0	0-0	0	0	0	0	0	1	0	1	2	-1
TEAM							1	0	1	0	0					
<b>TOTALS</b>			<b>17</b>	<b>5-17</b>	<b>1-3</b>	<b>6-7</b>	<b>3</b>	<b>6</b>	<b>9</b>	<b>5</b>	<b>3</b>	<b>3</b>	<b>0</b>	<b>3</b>	<b>50</b>	

*Shooting By Period*

Period	FG	FG%	3FG	3FG%	FT	FT%
2nd Half	0-0	0%	0-0	0%	0-0	0%
Game	29-67	43.3%	4-13	30.8%	19-23	82.6%

Deadball Rebounds: 3,0

Game Notes:

Officials: Angelica Suffren, Meadow Overstreet, Mark Berger  
 Attendance: 8761

Start Time: 08:02 PM ET  
 End Time: 10:02 PM ET  
 Game Duration: 1:59  
 Conference Game;

Score	1st	2nd	3rd	4th	TOT
FSU	14	30	23	19	<b>86</b>
UND	23	17	17	24	<b>81</b>

Points (This Period)	FSU	UND
In the Paint	12	6
Off Turns	4	5
2nd Chance	2	2
Fast Break	2	4
Bench	3	4
Per Poss	1.211 11/19	0.850 8/20

**Official Play-By-Play**  
**Florida St. vs Notre Dame**  
**Third Quarter**

**February 27, 2025 at Purcell Pavilion at the Joyce Center - Notre Dame**



**Period 3**

**Starters:**

**Florida St.:** 00 LATSON,TA'NIYA (G); 3 GORDON,O'MARIAH (G); 11 BOWLES,SYDNEY (G); 21 TIMPSON,MAKAYLA (F); 22 WILLIAMS,MALEA (F);

**Notre Dame:** 3 HIDALGO,HANNAH (G); 5 MILES,OLIVIA (G); 11 CITRON,SONIA (G); 20 KING,LIATU (F); 21 WESTBELD,MADDY (F);

Time	VISITORS: Florida St.	Score	Margin	HOME: Notre Dame
10:00				SUB OUT: KARLEN, LIZA
10:00				SUB IN: WESTBELD, MADDY
10:00	SUB OUT: TURNAGE, BRIANNA			
10:00	SUB OUT: VIEGAS, CARLA			
10:00	SUB IN: LATSON, TA'NIYA			
10:00	SUB IN: TIMPSON, MAKAYLA			
09:43	MISSED JUMPER by TIMPSON, MAKAYLA			
09:40				REBOUND (DEF) by KING, LIATU
09:34				MISSED JUMPER by HIDALGO, HANNAH
09:30				REBOUND (OFF) by KING, LIATU
09:30				MISSED LAYUP by KING, LIATU
09:30	REBOUND (DEF) by TEAM			
09:08	MISSED JUMPER by LATSON, TA'NIYA			
09:05				REBOUND (DEF) by CITRON, SONIA
09:00		42-44	V 2	GOOD! LAYUP by CITRON, SONIA [FB]
08:47	MISSED 3PTR by GORDON, O'MARIAH			
08:44				REBOUND (DEF) by MILES, OLIVIA
08:37	FOUL (PERSONAL) by TIMPSON, MAKAYLA			
08:37		43-44	V 1	GOOD! FT by MILES, OLIVIA
08:36				MISSED FT by MILES, OLIVIA
08:35	REBOUND (DEF) by TIMPSON, MAKAYLA			
08:22				FOUL (PERSONAL) by WESTBELD, MADDY
08:22	GOOD! FT by TIMPSON, MAKAYLA	43-45	V 2	
08:22	GOOD! FT by TIMPSON, MAKAYLA	43-46	V 3	
08:04				MISSED LAYUP by WESTBELD, MADDY
08:02	REBOUND (DEF) by WILLIAMS, MALEA			
07:56	MISSED 3PTR by WILLIAMS, MALEA			
07:53				REBOUND (DEF) by MILES, OLIVIA
07:43	FOUL (PERSONAL) by LATSON, TA'NIYA			
07:43	SUB OUT: LATSON, TA'NIYA			
07:43	SUB IN: BONNER, AMAYA			
07:32				MISSED JUMPER by WESTBELD, MADDY
07:32	BLOCK by BOWLES, SYDNEY			
07:28	REBOUND (DEF) by TIMPSON, MAKAYLA			
07:28				FOUL (PERSONAL) by WESTBELD, MADDY
07:28				SUB OUT: WESTBELD, MADDY
07:28				SUB IN: KARLEN, LIZA
07:28	SUB OUT: WILLIAMS, MALEA			
07:28	SUB IN: TURNAGE, BRIANNA			
07:28	GOOD! FT by GORDON, O'MARIAH	43-47	V 4	
07:28	GOOD! FT by GORDON, O'MARIAH	43-48	V 5	
07:09		46-48	V 2	GOOD! 3PTR by CITRON, SONIA
07:09				ASSIST by KING, LIATU
06:58	MISSED JUMPER by GORDON, O'MARIAH			
06:55	REBOUND (OFF) by GORDON, O'MARIAH			
06:52	GOOD! JUMPER by GORDON, O'MARIAH [PNT]	46-50	V 4	
06:26				MISSED LAYUP by HIDALGO, HANNAH
06:24	REBOUND (DEF) by TIMPSON, MAKAYLA			
06:17	MISSED LAYUP by BONNER, AMAYA			
06:14	REBOUND (OFF) by BONNER, AMAYA			
06:09	MISSED LAYUP by GORDON, O'MARIAH			
06:06				REBOUND (DEF) by KING, LIATU
06:02				TURNOVER (LOSTBALL) by KARLEN, LIZA
06:02	STEAL by TURNAGE, BRIANNA			
05:45	GOOD! JUMPER by TIMPSON, MAKAYLA [PNT]	46-52	V 6	
05:45	ASSIST by GORDON, O'MARIAH			
05:25		48-52	V 4	GOOD! JUMPER by KING, LIATU
05:25				ASSIST by CITRON, SONIA
05:09	TURNOVER (BADPASS) by GORDON, O'MARIAH			
05:09				STEAL by KARLEN, LIZA
05:09	FOUL (PERSONAL) by GORDON, O'MARIAH			

Time	VISITORS: Florida St.	Score	Margin	HOME: Notre Dame
05:09				SUB OUT: KARLEN, LIZA
05:09				SUB IN: KOVAL, KATE
05:09	SUB OUT: TURNAGE, BRIANNA			
05:09	SUB OUT: GORDON, O'MARIAH			
05:09	SUB OUT: BOWLES, SYDNEY			
05:09	SUB IN: LATSON, TA'NIYA			
05:09	SUB IN: VALENZUELA, MARIANA			
05:09	SUB IN: VIEGAS, CARLA			
04:55		50-52	V 2	GOOD! LAYUP by KING, LIATU
04:55	FOUL (PERSONAL) by VALENZUELA, MARIANA			
04:55		51-52	V 1	GOOD! FT by KING, LIATU
04:45				FOUL (PERSONAL) by HIDALGO, HANNAH
04:28	TURNOVER (BADPASS) by BONNER, AMAYA			
04:28				STEAL by MILES, OLIVIA
04:22		53-52	H 1	GOOD! LAYUP by CITRON, SONIA [FB]
04:22				ASSIST by MILES, OLIVIA
04:12				FOUL (PERSONAL) by MILES, OLIVIA
04:12	GOOD! FT by LATSON, TA'NIYA	53-53	T	
04:12	GOOD! FT by LATSON, TA'NIYA	53-54	V 1	
04:08				TURNOVER (LOSTBALL) by MILES, OLIVIA
04:08				SUB OUT: MILES, OLIVIA
04:08				SUB IN: PROSPER, CASSANDRE
03:47	TURNOVER (LOSTBALL) by LATSON, TA'NIYA			
03:47				STEAL by HIDALGO, HANNAH
03:42				MISSED LAYUP by HIDALGO, HANNAH
03:42	REBOUND (DEF) by TEAM			
03:42	SUB OUT: VALENZUELA, MARIANA			
03:42	SUB OUT: BONNER, AMAYA			
03:42	SUB IN: TURNAGE, BRIANNA			
03:42	SUB IN: GORDON, O'MARIAH			
03:25	GOOD! JUMPER by GORDON, O'MARIAH [PNT]	53-56	V 3	
03:08				TURNOVER (BADPASS) by CITRON, SONIA
03:08	STEAL by GORDON, O'MARIAH			
03:05	GOOD! LAYUP by GORDON, O'MARIAH [FB]	53-58	V 5	
02:50				MISSED 3PTR by HIDALGO, HANNAH
02:48	REBOUND (DEF) by TEAM			
02:48				SUB OUT: HIDALGO, HANNAH
02:48				SUB IN: MILES, OLIVIA
02:37				FOUL (PERSONAL) by PROSPER, CASSANDRE
02:37	GOOD! FT by LATSON, TA'NIYA	53-59	V 6	
02:37	GOOD! FT by LATSON, TA'NIYA	53-60	V 7	
02:18				MISSED LAYUP by KING, LIATU
02:15	REBOUND (DEF) by TIMPSON, MAKAYLA			
02:09	MISSED 3PTR by LATSON, TA'NIYA			
02:06				REBOUND (DEF) by KING, LIATU
02:01				MISSED LAYUP by KOVAL, KATE
01:59				REBOUND (OFF) by PROSPER, CASSANDRE
01:58				MISSED LAYUP by PROSPER, CASSANDRE
01:55	REBOUND (DEF) by TURNAGE, BRIANNA			
01:39	GOOD! LAYUP by LATSON, TA'NIYA	53-62	V 9	
01:24				MISSED JUMPER by KOVAL, KATE
01:24				REBOUND (OFF) by TEAM
01:23	FOUL (PERSONAL) by VIEGAS, CARLA			
01:23	SUB OUT: TIMPSON, MAKAYLA			
01:23	SUB IN: TREADWELL, AVERY			
01:23		54-62	V 8	GOOD! FT by PROSPER, CASSANDRE
01:23		55-62	V 7	GOOD! FT by PROSPER, CASSANDRE
01:23				SUB OUT: PROSPER, CASSANDRE
01:23				SUB IN: HIDALGO, HANNAH
01:11	GOOD! LAYUP by GORDON, O'MARIAH [PNT]	55-64	V 9	
00:45	FOUL (PERSONAL) by TURNAGE, BRIANNA			
00:45		56-64	V 8	GOOD! FT by KOVAL, KATE
00:45		57-64	V 7	GOOD! FT by KOVAL, KATE
00:32	GOOD! 3PTR by VIEGAS, CARLA	57-67	V 10	
00:32	ASSIST by LATSON, TA'NIYA			
00:02				MISSED 3PTR by CITRON, SONIA
00:00	REBOUND (DEF) by LATSON, TA'NIYA			

## Florida St. 67, Notre Dame 57

<b>Points (This Period)</b>	<b>FSU</b>	<b>UND</b>
In the Paint	12	6
Off Turns	4	5
2nd Chance	2	2
Fast Break	2	4
Bench	3	4
Per Poss	1.211 11/19	0.850 8/20

**Official Box Score**  
**Florida St. vs Notre Dame**  
**Fourth Quarter Statistics Only**  
 February 27, 2025 at Purcell Pavilion at the Joyce Center - Notre Dame



**Florida St. 19**

No.	Player	S	Pts	FG	3FG	FT	OR	DR	TR	PF	A	TO	Blk	Stl	Min	+/-
00	LATSON, TA'NIYA	G	13	5-9	0-1	3-4	1	2	3	0	1	0	0	1	10	-5
03	GORDON, O'MARIAH	G	0	0-2	0-0	0-0	0	1	1	1	0	2	0	0	10	-5
11	BOWLES, SYDNEY	G	0	0-0	0-0	0-0	0	0	0	1	0	1	0	0	2	-4
21	TIMPSON, MAKAYLA	F	6	3-3	0-0	0-0	0	2	2	1	0	2	0	0	10	-5
22	WILLIAMS, MALEA	F	0	0-0	0-0	0-0	0	0	0	0	0	0	0	0	0	0
01	TURNAGE, BRIANNA	G	0	0-0	0-0	0-0	0	1	1	0	0	0	0	0	7	1
06	VALENZUELA, MARIANA	F	0	0-0	0-0	0-0	0	0	0	1	0	0	0	0	2	-4
13	VIEGAS, CARLA	G	0	0-0	0-0	0-0	0	0	0	0	0	0	0	0	2	-4
24	BONNER, AMAYA	G	0	0-1	0-1	0-2	1	1	2	1	0	0	0	0	8	1
32	TREADWELL, AVERY	F	0	0-0	0-0	0-0	0	0	0	0	0	0	0	0	0	0
TEAM							0	0	0	0	0	0				
<b>TOTALS</b>			<b>19</b>	<b>8-15</b>	<b>0-2</b>	<b>3-6</b>	<b>2</b>	<b>7</b>	<b>9</b>	<b>5</b>	<b>1</b>	<b>5</b>	<b>0</b>	<b>1</b>	<b>50</b>	

*Shooting By Period*

Period	FG	FG%	3FG	3FG%	FT	FT%
Game	30-71	42.3%	9-26	34.6%	17-21	81.0%

Deadball Rebounds: 1,0

**Notre Dame 24**

No.	Player	S	Pts	FG	3FG	FT	OR	DR	TR	PF	A	TO	Blk	Stl	Min	+/-
03	HIDALGO, HANNAH	G	5	1-5	0-0	3-4	0	2	2	0	1	1	0	1	10	5
05	MILES, OLIVIA	G	2	1-2	0-0	0-0	0	1	1	1	2	1	0	1	8	2
11	CITRON, SONIA	G	9	3-5	1-2	2-2	0	1	1	1	0	0	0	1	10	5
20	KING, LIATU	F	6	3-4	0-0	0-0	2	2	4	3	0	0	0	1	10	5
21	WESTBELD, MADDY	F	0	0-0	0-0	0-0	0	0	0	0	0	0	0	0	3	3
08	PROSPER, CASSANDRE	G	0	0-0	0-0	0-0	0	0	0	0	0	0	0	0	2	3
13	KOVAL, KATE	F	2	1-2	0-0	0-0	0	0	0	0	0	0	0	0	2	-3
32	KARLEN, LIZA	F	0	0-0	0-0	0-0	0	0	0	0	1	0	0	0	5	5
TEAM							0	1	1	0	0	0				
<b>TOTALS</b>			<b>24</b>	<b>9-18</b>	<b>1-2</b>	<b>5-6</b>	<b>2</b>	<b>7</b>	<b>9</b>	<b>5</b>	<b>4</b>	<b>2</b>	<b>0</b>	<b>4</b>	<b>50</b>	

*Shooting By Period*

Period	FG	FG%	3FG	3FG%	FT	FT%
Game	29-67	43.3%	4-13	30.8%	19-23	82.6%

Deadball Rebounds: 3,0

Game Notes:

Officials: Angelica Suffren, Meadow Overstreet, Mark Berger  
 Attendance: 8761

Start Time: 08:02 PM ET  
 End Time: 10:02 PM ET  
 Game Duration: 1:59  
 Conference Game;

Score	1st	2nd	3rd	4th	TOT
FSU	14	30	23	19	<b>86</b>
UND	23	17	17	24	<b>81</b>

Points (This Period)	FSU	UND
In the Paint	14	12
Off Turns	2	4
2nd Chance	4	4
Fast Break	3	5
Bench	0	2
Per Poss	0.950	1.200
	10/20	12/20

**Official Play-By-Play**  
**Florida St. vs Notre Dame**  
**Fourth Quarter**

**February 27, 2025 at Purcell Pavilion at the Joyce Center - Notre Dame**



**Period 4**

**Starters:**

**Florida St.:** 00 LATSON,TA'NIYA (G); 3 GORDON,O'MARIAH (G); 11 BOWLES,SYDNEY (G); 21 TIMPSON,MAKAYLA (F); 22 WILLIAMS,MALEA (F);

**Notre Dame:** 3 HIDALGO,HANNAH (G); 5 MILES,OLIVIA (G); 11 CITRON,SONIA (G); 20 KING,LIATU (F); 21 WESTBELD,MADDY (F);

Time	VISITORS: Florida St.	Score	Margin	HOME: Notre Dame
10:00				SUB OUT: KOVAL, KATE
10:00				SUB IN: KARLEN, LIZA
10:00	SUB OUT: TREADWELL, AVERY			
10:00	SUB IN: TIMPSON, MAKAYLA			
09:45				MISSED LAYUP by KING, LIATU
09:44	REBOUND (DEF) by TURNAGE, BRIANNA			
09:24	TURNOVER (BADPASS) by GORDON, O'MARIAH			
09:24				STEAL by KING, LIATU
09:24	FOUL (PERSONAL) by GORDON, O'MARIAH			
09:12		59-67	V 8	GOOD! LAYUP by CITRON, SONIA
08:56	MISSED LAYUP by LATSON, TA'NIYA			
08:53				REBOUND (DEF) by CITRON, SONIA
08:47		61-67	V 6	GOOD! LAYUP by MILES, OLIVIA
08:27	MISSED JUMPER by GORDON, O'MARIAH			
08:27				REBOUND (DEF) by TEAM
08:27	SUB OUT: TURNAGE, BRIANNA			
08:27	SUB OUT: VIEGAS, CARLA			
08:27	SUB IN: VALENZUELA, MARIANA			
08:27	SUB IN: BOWLES, SYDNEY			
08:15	FOUL (PERSONAL) by BOWLES, SYDNEY			
08:15		62-67	V 5	GOOD! FT by CITRON, SONIA
08:15		63-67	V 4	GOOD! FT by CITRON, SONIA
07:58	TURNOVER (LOSTBALL) by BOWLES, SYDNEY			
07:58				STEAL by MILES, OLIVIA
07:54	SUB OUT: BOWLES, SYDNEY			
07:54	SUB IN: BONNER, AMAYA			
07:47				MISSED LAYUP by CITRON, SONIA
07:46	REBOUND (DEF) by TIMPSON, MAKAYLA			
07:46	TURNOVER (LOSTBALL) by TIMPSON, MAKAYLA			
07:46				STEAL by CITRON, SONIA
07:39				MISSED JUMPER by HIDALGO, HANNAH
07:36	REBOUND (DEF) by BONNER, AMAYA			
07:33	FOUL (OFF) by TIMPSON, MAKAYLA			
07:33	TURNOVER (OFFENSIVE) by TIMPSON, MAKAYLA			
07:17		65-67	V 2	GOOD! JUMPER by KING, LIATU
07:17				ASSIST by KARLEN, LIZA
07:03	MISSED LAYUP by LATSON, TA'NIYA			
06:59				REBOUND (DEF) by KING, LIATU
06:53	FOUL (PERSONAL) by VALENZUELA, MARIANA			
06:53				
06:53	SUB OUT: VALENZUELA, MARIANA			
06:53	SUB IN: TURNAGE, BRIANNA			
06:53				MISSED FT by HIDALGO, HANNAH
06:53				REBOUND (OFF) by TEAM
06:53		66-67	V 1	GOOD! FT by HIDALGO, HANNAH
06:30	GOOD! JUMPER by TIMPSON, MAKAYLA [PNT]	66-69	V 3	
06:14				MISSED LAYUP by MILES, OLIVIA
06:11	REBOUND (DEF) by LATSON, TA'NIYA			
05:56	GOOD! JUMPER by TIMPSON, MAKAYLA	66-71	V 5	
05:56	ASSIST by LATSON, TA'NIYA			
05:28		68-71	V 3	GOOD! JUMPER by KING, LIATU
05:28				ASSIST by MILES, OLIVIA
05:11	MISSED 3PTR by LATSON, TA'NIYA			
05:08				REBOUND (DEF) by MILES, OLIVIA
05:02				MISSED JUMPER by HIDALGO, HANNAH
04:58	REBOUND (DEF) by LATSON, TA'NIYA			
04:55	GOOD! LAYUP by LATSON, TA'NIYA [FB]	68-73	V 5	
04:55				FOUL (PERSONAL) by MILES, OLIVIA
04:55				
04:55				SUB OUT: KARLEN, LIZA
04:55				SUB IN: KOVAL, KATE

Time	VISITORS: Florida St.	Score	Margin	HOME: Notre Dame
04:55	GOOD! FT by LATSON, TA'NIYA [FB]	68-74	V 6	
04:33				MISSED JUMPER by HIDALGO, HANNAH
04:31	REBOUND (DEF) by GORDON, O'MARIAH			
04:27	MISSED LAYUP by GORDON, O'MARIAH			
04:24	REBOUND (OFF) by BONNER, AMAYA			
04:06	GOOD! LAYUP by LATSON, TA'NIYA	68-76	V 8	
03:50				MISSED JUMPER by KOVAL, KATE
03:47				REBOUND (OFF) by KING, LIATU
03:35		70-76	V 6	GOOD! JUMPER by KOVAL, KATE [PNT]
03:35				ASSIST by MILES, OLIVIA
03:16	GOOD! LAYUP by LATSON, TA'NIYA	70-78	V 8	
03:16				FOUL (PERSONAL) by CITRON, SONIA
03:16				SUB OUT: KOVAL, KATE
03:16				SUB IN: WESTBELD, MADDY
03:16	MISSED FT by LATSON, TA'NIYA			
03:13	REBOUND (OFF) by LATSON, TA'NIYA			
03:11	GOOD! LAYUP by LATSON, TA'NIYA	70-80	V 10	
02:55				TURNOVER (BADPASS) by MILES, OLIVIA
02:55				SUB OUT: MILES, OLIVIA
02:55				SUB IN: PROSPER, CASSANDRE
02:32	GOOD! LAYUP by LATSON, TA'NIYA [PNT]	70-82	V 12	
02:24	FOUL (PERSONAL) by BONNER, AMAYA			
02:24		71-82	V 11	GOOD! FT by HIDALGO, HANNAH
02:24		72-82	V 10	GOOD! FT by HIDALGO, HANNAH
02:02	MISSED 3PTR by BONNER, AMAYA			
01:59				REBOUND (DEF) by HIDALGO, HANNAH
01:53		75-82	V 7	GOOD! 3PTR by CITRON, SONIA [FB]
01:53				ASSIST by HIDALGO, HANNAH
01:52				TIMEOUT 30SEC
01:52	SUB OUT: TURNAGE, BRIANNA			
01:52	SUB IN: BOWLES, SYDNEY			
01:39	MISSED LAYUP by LATSON, TA'NIYA			
01:36				REBOUND (DEF) by HIDALGO, HANNAH
01:32		77-82	V 5	GOOD! LAYUP by HIDALGO, HANNAH [FB/PNT]
00:57	GOOD! JUMPER by TIMPSON, MAKAYLA [PNT]	77-84	V 7	
00:46				MISSED 3PTR by CITRON, SONIA
00:43	REBOUND (DEF) by TIMPSON, MAKAYLA			
00:40				FOUL (PERSONAL) by KING, LIATU
00:40				SUB OUT: PROSPER, CASSANDRE
00:40				SUB IN: MILES, OLIVIA
00:26				FOUL (PERSONAL) by KING, LIATU
00:26	GOOD! FT by LATSON, TA'NIYA	77-85	V 8	
00:26	GOOD! FT by LATSON, TA'NIYA	77-86	V 9	
00:26				TIMEOUT 30SEC
00:22		79-86	V 7	GOOD! LAYUP by CITRON, SONIA
00:18	TURNOVER (LOSTBALL) by GORDON, O'MARIAH			
00:18				STEAL by HIDALGO, HANNAH
00:17				TURNOVER (LOSTBALL) by HIDALGO, HANNAH
00:17	STEAL by LATSON, TA'NIYA			
00:17	TIMEOUT 30SEC			
00:15				FOUL (PERSONAL) by KING, LIATU
00:15	MISSED FT by BONNER, AMAYA			
00:15	REBOUND (OFF) by TEAM			
00:14	MISSED FT by BONNER, AMAYA			
00:13				REBOUND (DEF) by KING, LIATU
00:05				MISSED LAYUP by HIDALGO, HANNAH
00:04				REBOUND (OFF) by KING, LIATU
00:04		81-86	V 5	GOOD! LAYUP by KING, LIATU

### Florida St. 86, Notre Dame 81

Points (This Period)	FSU	UND
In the Paint	14	12
Off Turns	2	4
2nd Chance	4	4
Fast Break	3	5
Bench	0	2
Per Poss	0.950 10/20	1.200 12/20



**Official Scoring/Possession Reference Chart  
Florida St. vs Notre Dame  
Period 1**

**February 27, 2025 at Purcell Pavilion at the Joyce Center - Notre Dame**



**Period 1**

**Starters:**

**Florida St.:** 00 LATSON,TA'NIYA (G); 3 GORDON,O'MARIAH (G); 11 BOWLES,SYDNEY (G); 21 TIMPSON,MAKAYLA (F); 22 WILLIAMS,MALEA (F);  
**Notre Dame:** 3 HIDALGO,HANNAH (G); 5 MILES,OLIVIA (G); 11 CITRON,SONIA (G); 20 KING,LIATU (F); 21 WESTBELD,MADDY (F);

Time	VISITORS: Florida St.	Score	Margin	HOME: Notre Dame
08:41		3-0	H 3	GOOD! 3PTR by WESTBELD, MADDY
08:05	GOOD! FT by GORDON, O'MARIAH	3-1	H 2	
08:05	GOOD! FT by GORDON, O'MARIAH	3-2	H 1	
07:39		5-2	H 3	GOOD! LAYUP by WESTBELD, MADDY
07:21	GOOD! 3PTR by GORDON, O'MARIAH	5-5	T	
06:08		7-5	H 2	GOOD! JUMPER by HIDALGO, HANNAH
05:51		8-5	H 3	GOOD! FT by HIDALGO, HANNAH [FB]
05:51		9-5	H 4	GOOD! FT by HIDALGO, HANNAH [FB]
05:03		11-5	H 6	GOOD! JUMPER by KOVAL, KATE
04:44	GOOD! LAYUP by LATSON, TA'NIYA	11-7	H 4	
03:55		13-7	H 6	GOOD! JUMPER by KARLEN, LIZA
03:31	GOOD! JUMPER by BOWLES, SYDNEY	13-9	H 4	
02:50		14-9	H 5	GOOD! FT by MILES, OLIVIA
02:50		15-9	H 6	GOOD! FT by MILES, OLIVIA
02:04	GOOD! FT by TIMPSON, MAKAYLA	15-10	H 5	
02:04	GOOD! FT by TIMPSON, MAKAYLA	15-11	H 4	
01:53		18-11	H 7	GOOD! 3PTR by CITRON, SONIA
01:26		19-11	H 8	GOOD! FT by HIDALGO, HANNAH
01:26		20-11	H 9	GOOD! FT by HIDALGO, HANNAH
01:04		22-11	H 11	GOOD! JUMPER by KING, LIATU [FB/PNT]
00:36	GOOD! 3PTR by WILLIAMS, MALEA	22-14	H 8	
00:28		23-14	H 9	GOOD! FT by MILES, OLIVIA

**Florida St. 14, Notre Dame 23**

**Official Scoring/Possession Reference Chart  
Florida St. vs Notre Dame  
Period 2**

**February 27, 2025 at Purcell Pavilion at the Joyce Center - Notre Dame**



**Period 2**

**Starters:**

**Florida St.:** 00 LATSON,TA'NIYA (G); 3 GORDON,O'MARIAH (G); 11 BOWLES,SYDNEY (G); 21 TIMPSON,MAKAYLA (F); 22 WILLIAMS,MALEA (F);  
**Notre Dame:** 3 HIDALGO,HANNAH (G); 5 MILES,OLIVIA (G); 11 CITRON,SONIA (G); 20 KING,LIATU (F); 21 WESTBELD,MADDY (F);

Time	VISITORS: Florida St.	Score	Margin	HOME: Notre Dame
09:45		25-14	H 11	GOOD! JUMPER by KING, LIATU
08:50		27-14	H 13	GOOD! JUMPER by HIDALGO, HANNAH [PNT]
08:26		29-14	H 15	GOOD! JUMPER by KING, LIATU [PNT]
08:07	GOOD! LAYUP by TIMPSON, MAKAYLA	29-16	H 13	
07:56	GOOD! 3PTR by BOWLES, SYDNEY [FB]	29-19	H 10	
07:28	GOOD! 3PTR by BOWLES, SYDNEY	29-22	H 7	
06:46	GOOD! LAYUP by TIMPSON, MAKAYLA [FB]	29-24	H 5	
06:03	GOOD! LAYUP by TIMPSON, MAKAYLA [FB]	29-26	H 3	
05:37		30-26	H 4	GOOD! FT by HIDALGO, HANNAH
05:21	GOOD! 3PTR by VALENZUELA, MARIANA	30-29	H 1	
04:37		32-29	H 3	GOOD! LAYUP by CITRON, SONIA
04:23	GOOD! LAYUP by TIMPSON, MAKAYLA	32-31	H 1	
03:59	GOOD! FT by LATSON, TA'NIYA	32-32	T	
03:59	GOOD! FT by LATSON, TA'NIYA	32-33	V 1	
03:24	GOOD! LAYUP by TIMPSON, MAKAYLA	32-35	V 3	
03:04		34-35	V 1	GOOD! JUMPER by KOVAL, KATE
02:52	GOOD! 3PTR by VIEGAS, CARLA	34-38	V 4	
01:44	GOOD! 3PTR by VIEGAS, CARLA	34-41	V 7	
01:27		36-41	V 5	GOOD! JUMPER by HIDALGO, HANNAH
00:56		38-41	V 3	GOOD! JUMPER by MILES, OLIVIA
00:33	GOOD! 3PTR by VIEGAS, CARLA	38-44	V 6	
00:05		40-44	V 4	GOOD! LAYUP by MILES, OLIVIA

**Florida St. 44, Notre Dame 40**

**Official Scoring/Possession Reference Chart  
Florida St. vs Notre Dame  
Period 3**

**February 27, 2025 at Purcell Pavilion at the Joyce Center - Notre Dame**



**Period 3**

**Starters:**

**Florida St.:** 00 LATSON,TA'NIYA (G); 3 GORDON,O'MARIAH (G); 11 BOWLES,SYDNEY (G); 21 TIMPSON,MAKAYLA (F); 22 WILLIAMS,MALEA (F);  
**Notre Dame:** 3 HIDALGO,HANNAH (G); 5 MILES,OLIVIA (G); 11 CITRON,SONIA (G); 20 KING,LIATU (F); 21 WESTBELD,MADDY (F);

Time	VISITORS: Florida St.	Score	Margin	HOME: Notre Dame
09:00		42-44	V 2	GOOD! LAYUP by CITRON, SONIA [FB]
08:37		43-44	V 1	GOOD! FT by MILES, OLIVIA
08:22	GOOD! FT by TIMPSON, MAKAYLA	43-45	V 2	
08:22	GOOD! FT by TIMPSON, MAKAYLA	43-46	V 3	
07:28	GOOD! FT by GORDON, O'MARIAH	43-47	V 4	
07:28	GOOD! FT by GORDON, O'MARIAH	43-48	V 5	
07:09		46-48	V 2	GOOD! 3PTR by CITRON, SONIA
06:52	GOOD! JUMPER by GORDON, O'MARIAH [PNT]	46-50	V 4	
05:45	GOOD! JUMPER by TIMPSON, MAKAYLA [PNT]	46-52	V 6	
05:25		48-52	V 4	GOOD! JUMPER by KING, LIATU
04:55		50-52	V 2	GOOD! LAYUP by KING, LIATU
04:55		51-52	V 1	GOOD! FT by KING, LIATU
04:22		53-52	H 1	GOOD! LAYUP by CITRON, SONIA [FB]
04:12	GOOD! FT by LATSON, TA'NIYA	53-53	T	
04:12	GOOD! FT by LATSON, TA'NIYA	53-54	V 1	
03:25	GOOD! JUMPER by GORDON, O'MARIAH [PNT]	53-56	V 3	
03:05	GOOD! LAYUP by GORDON, O'MARIAH [FB]	53-58	V 5	
02:37	GOOD! FT by LATSON, TA'NIYA	53-59	V 6	
02:37	GOOD! FT by LATSON, TA'NIYA	53-60	V 7	
01:39	GOOD! LAYUP by LATSON, TA'NIYA	53-62	V 9	
01:23		54-62	V 8	GOOD! FT by PROSPER, CASSANDRE
01:23		55-62	V 7	GOOD! FT by PROSPER, CASSANDRE
01:11	GOOD! LAYUP by GORDON, O'MARIAH [PNT]	55-64	V 9	
00:45		56-64	V 8	GOOD! FT by KOVAL, KATE
00:45		57-64	V 7	GOOD! FT by KOVAL, KATE
00:32	GOOD! 3PTR by VIEGAS, CARLA	57-67	V 10	

**Florida St. 67, Notre Dame 57**

**Official Scoring/Possession Reference Chart  
Florida St. vs Notre Dame  
Period 4**

**February 27, 2025 at Purcell Pavilion at the Joyce Center - Notre Dame**



**Period 4**

**Starters:**

**Florida St.:** 00 LATSON,TA'NIYA (G); 3 GORDON,O'MARIAH (G); 11 BOWLES,SYDNEY (G); 21 TIMPSON,MAKAYLA (F); 22 WILLIAMS,MALEA (F);  
**Notre Dame:** 3 HIDALGO,HANNAH (G); 5 MILES,OLIVIA (G); 11 CITRON,SONIA (G); 20 KING,LIATU (F); 21 WESTBELD,MADDY (F);

Time	VISITORS: Florida St.	Score	Margin	HOME: Notre Dame
09:12		59-67	V 8	GOOD! LAYUP by CITRON, SONIA
08:47		61-67	V 6	GOOD! LAYUP by MILES, OLIVIA
08:15		62-67	V 5	GOOD! FT by CITRON, SONIA
08:15		63-67	V 4	GOOD! FT by CITRON, SONIA
07:17		65-67	V 2	GOOD! JUMPER by KING, LIATU
06:53		66-67	V 1	GOOD! FT by HIDALGO, HANNAH
06:30	GOOD! JUMPER by TIMPSON, MAKAYLA [PNT]	66-69	V 3	
05:56	GOOD! JUMPER by TIMPSON, MAKAYLA	66-71	V 5	
05:28		68-71	V 3	GOOD! JUMPER by KING, LIATU
04:55	GOOD! LAYUP by LATSON, TA'NIYA [FB]	68-73	V 5	
04:55	GOOD! FT by LATSON, TA'NIYA [FB]	68-74	V 6	
04:06	GOOD! LAYUP by LATSON, TA'NIYA	68-76	V 8	
03:35		70-76	V 6	GOOD! JUMPER by KOVAL, KATE [PNT]
03:16	GOOD! LAYUP by LATSON, TA'NIYA	70-78	V 8	
03:11	GOOD! LAYUP by LATSON, TA'NIYA	70-80	V 10	
02:32	GOOD! LAYUP by LATSON, TA'NIYA [PNT]	70-82	V 12	
02:24		71-82	V 11	GOOD! FT by HIDALGO, HANNAH
02:24		72-82	V 10	GOOD! FT by HIDALGO, HANNAH
01:53		75-82	V 7	GOOD! 3PTR by CITRON, SONIA [FB]
01:32		77-82	V 5	GOOD! LAYUP by HIDALGO, HANNAH [FB/PNT]
00:57	GOOD! JUMPER by TIMPSON, MAKAYLA [PNT]	77-84	V 7	
00:26	GOOD! FT by LATSON, TA'NIYA	77-85	V 8	
00:26	GOOD! FT by LATSON, TA'NIYA	77-86	V 9	
00:22		79-86	V 7	GOOD! LAYUP by CITRON, SONIA
00:04		81-86	V 5	GOOD! LAYUP by KING, LIATU

**Florida St. 86, Notre Dame 81**

**Official Substitutions Log  
Florida St. vs Notre Dame  
Period 1**

**February 27, 2025 at Purcell Pavilion at the Joyce Center - Notre Dame**



<b>VISITORS: Florida St.</b>	<b>Time</b>	<b>Score</b>	<b>HOME: Notre Dame</b>
00 LATSON,TA'NIYA			3 HIDALGO,HANNAH
3 GORDON,O'MARIAH			5 MILES,OLIVIA
11 BOWLES,SYDNEY			11 CITRON,SONIA
21 TIMPSON,MAKAYLA			20 KING,LIATU
22 WILLIAMS,MALEA			21 WESTBELD,MADDY
SUB OUT: 11 BOWLES,SYDNEY	08:05	0-3	
SUB IN: 24 BONNER,AMAYA	08:05		
	06:22	5-5	SUB OUT: MILES,OLIVIA
	06:22		SUB OUT: WESTBELD,MADDY
	06:22		SUB IN: PROSPER,CASSANDRE
	06:22		SUB IN: KARLEN,LIZA
SUB OUT: 3 GORDON,O'MARIAH	06:22		
SUB IN: 11 BOWLES,SYDNEY	06:22		
SUB OUT: 22 WILLIAMS,MALEA	06:22		
SUB IN: 6 VALENZUELA,MARIANA	06:22		
	05:30	5-9	SUB OUT: KING,LIATU
	05:30		SUB IN: KOVAL,KATE
	04:16	7-11	SUB OUT: CITRON,SONIA
	04:16		SUB IN: MILES,OLIVIA
SUB OUT: 00 LATSON,TA'NIYA	04:16		
SUB OUT: 24 BONNER,AMAYA	04:16		
SUB IN: 3 GORDON,O'MARIAH	04:16		
SUB IN: 13 VIEGAS,CARLA	04:16		
	02:50	9-13	SUB OUT: KARLEN,LIZA
	02:50		SUB IN: WESTBELD,MADDY
SUB OUT: 6 VALENZUELA,MARIANA	02:50		
SUB OUT: 11 BOWLES,SYDNEY	02:50		
SUB IN: 00 LATSON,TA'NIYA	02:50		
SUB IN: 22 WILLIAMS,MALEA	02:50		
	02:19	9-15	SUB OUT: HIDALGO,HANNAH
	02:19		SUB OUT: KOVAL,KATE
	02:19		SUB IN: CITRON,SONIA
	02:19		SUB IN: KING,LIATU
SUB OUT: 21 TIMPSON,MAKAYLA	02:04	11-15	
SUB IN: 32 TREADWELL,AVERY	02:04		
	01:39	11-18	SUB OUT: PROSPER,CASSANDRE
	01:39		SUB IN: HIDALGO,HANNAH
SUB OUT: 32 TREADWELL,AVERY	01:26	11-18	
SUB IN: 21 TIMPSON,MAKAYLA	01:26		
SUB OUT: 13 VIEGAS,CARLA	01:26		
SUB IN: 24 BONNER,AMAYA	01:26		
SUB OUT: 24 BONNER,AMAYA	00:28	14-22	
SUB IN: 11 BOWLES,SYDNEY	00:28		

**Florida St. 14, Notre Dame 23**

**Official Substitutions Log  
Florida St. vs Notre Dame  
Period 2**

**February 27, 2025 at Purcell Pavilion at the Joyce Center - Notre Dame**



<b>VISITORS: Florida St.</b>	<b>Time</b>	<b>Score</b>	<b>HOME: Notre Dame</b>
00 LATSON,TA'NIYA			3 HIDALGO,HANNAH
3 GORDON,O'MARIAH			5 MILES,OLIVIA
11 BOWLES,SYDNEY			11 CITRON,SONIA
21 TIMPSON,MAKAYLA			20 KING,LIATU
22 WILLIAMS,MALEA			21 WESTBELD,MADDY
SUB OUT: 22 WILLIAMS,MALEA	10:00	-	
SUB IN: 1 TURNAGE,BRIANNA	10:00		
	09:16	14-25	SUB OUT: WESTBELD,MADDY
	09:16		SUB IN: KARLEN,LIZA
	06:46	24-29	SUB OUT: MILES,OLIVIA
	06:46		SUB IN: PROSPER,CASSANDRE
	05:37	26-29	SUB OUT: KING,LIATU
	05:37		SUB IN: KOVAL,KATE
SUB OUT: 3 GORDON,O'MARIAH	05:37		
SUB OUT: 21 TIMPSON,MAKAYLA	05:37		
SUB IN: 6 VALENZUELA,ARIANA	05:37		
SUB IN: 13 VIEGAS,CARLA	05:37		
SUB OUT: 1 TURNAGE,BRIANNA	04:42	29-30	
SUB OUT: 6 VALENZUELA,ARIANA	04:42		
SUB IN: 21 TIMPSON,MAKAYLA	04:42		
SUB IN: 22 WILLIAMS,MALEA	04:42		
	03:59	31-32	SUB OUT: CITRON,SONIA
	03:59		SUB IN: MILES,OLIVIA
	02:12	38-34	SUB OUT: PROSPER,CASSANDRE
	02:12		SUB OUT: KOVAL,KATE
	02:12		SUB IN: CITRON,SONIA
	02:12		SUB IN: KING,LIATU
SUB OUT: 00 LATSON,TA'NIYA	02:12		
SUB IN: 1 TURNAGE,BRIANNA	02:12		
SUB IN: 3 GORDON,O'MARIAH	02:12		
SUB OUT: 22 WILLIAMS,MALEA	02:12		
SUB OUT: 21 TIMPSON,MAKAYLA	01:52	38-34	
SUB IN: 22 WILLIAMS,MALEA	01:52		

**Florida St. 44, Notre Dame 40**

**Official Substitutions Log  
Florida St. vs Notre Dame  
Period 3**

**February 27, 2025 at Purcell Pavilion at the Joyce Center - Notre Dame**



<b>VISITORS: Florida St.</b>	<b>Time</b>	<b>Score</b>	<b>HOME: Notre Dame</b>
00 LATSON,TA'NIYA			3 HIDALGO,HANNAH
3 GORDON,O'MARIAH			5 MILES,OLIVIA
11 BOWLES,SYDNEY			11 CITRON,SONIA
21 TIMPSON,MAKAYLA			20 KING,LIATU
22 WILLIAMS,MALEA			21 WESTBELD,MADDY
	10:00	-	SUB OUT: KARLEN,LIZA
	10:00		SUB IN: WESTBELD,MADDY
SUB OUT: 1 TURNAGE,BRIANNA	10:00		
SUB OUT: 13 VIEGAS,CARLA	10:00		
SUB IN: 00 LATSON,TA'NIYA	10:00		
SUB IN: 21 TIMPSON,MAKAYLA	10:00		
SUB OUT: 00 LATSON,TA'NIYA	07:43	46-43	
SUB IN: 24 BONNER,AMAYA	07:43		
	07:28	46-43	SUB OUT: WESTBELD,MADDY
	07:28		SUB IN: KARLEN,LIZA
SUB OUT: 22 WILLIAMS,MALEA	07:28		
SUB IN: 1 TURNAGE,BRIANNA	07:28		
	05:09	52-48	SUB OUT: KARLEN,LIZA
	05:09		SUB IN: KOVAL,KATE
SUB OUT: 1 TURNAGE,BRIANNA	05:09		
SUB OUT: 3 GORDON,O'MARIAH	05:09		
SUB OUT: 11 BOWLES,SYDNEY	05:09		
SUB IN: 00 LATSON,TA'NIYA	05:09		
SUB IN: 6 VALENZUELA,MARIANA	05:09		
SUB IN: 13 VIEGAS,CARLA	05:09		
	04:08	54-53	SUB OUT: MILES,OLIVIA
	04:08		SUB IN: PROSPER,CASSANDRE
SUB OUT: 6 VALENZUELA,MARIANA	03:42	54-53	
SUB OUT: 24 BONNER,AMAYA	03:42		
SUB IN: 1 TURNAGE,BRIANNA	03:42		
SUB IN: 3 GORDON,O'MARIAH	03:42		
	02:48	58-53	SUB OUT: HIDALGO,HANNAH
	02:48		SUB IN: MILES,OLIVIA
SUB OUT: 21 TIMPSON,MAKAYLA	01:23	62-53	
SUB IN: 32 TREADWELL,AVERY	01:23		
	01:23		SUB OUT: PROSPER,CASSANDRE
	01:23		SUB IN: HIDALGO,HANNAH

**Florida St. 67, Notre Dame 57**

**Official Substitutions Log  
Florida St. vs Notre Dame  
Period 4**

February 27, 2025 at Purcell Pavilion at the Joyce Center - Notre Dame



VISITORS: Florida St.	Time	Score	HOME: Notre Dame
00 LATSON,TA'NIYA			3 HIDALGO,HANNAH
3 GORDON,O'MARIAH			5 MILES,OLIVIA
11 BOWLES,SYDNEY			11 CITRON,SONIA
21 TIMPSON,MAKAYLA			20 KING,LIATU
22 WILLIAMS,MALEA			21 WESTBELD,MADDY
	10:00	-	SUB OUT: KOVAL,KATE
	10:00		SUB IN: KARLEN,LIZA
SUB OUT: 32 TREADWELL,AVERY	10:00		
SUB IN: 21 TIMPSON,MAKAYLA	10:00		
SUB OUT: 1 TURNAGE,BRIANNA	08:27	67-61	
SUB OUT: 13 VIEGAS,CARLA	08:27		
SUB IN: 6 VALENZUELA,MARIANA	08:27		
SUB IN: 11 BOWLES,SYDNEY	08:27		
SUB OUT: 11 BOWLES,SYDNEY	07:54	67-63	
SUB IN: 24 BONNER,AMAYA	07:54		
SUB OUT: 6 VALENZUELA,MARIANA	06:53	67-65	
SUB IN: 1 TURNAGE,BRIANNA	06:53		
	04:55	73-68	SUB OUT: KARLEN,LIZA
	04:55		SUB IN: KOVAL,KATE
	03:16	78-70	SUB OUT: KOVAL,KATE
	03:16		SUB IN: WESTBELD,MADDY
	02:55	80-70	SUB OUT: MILES,OLIVIA
	02:55		SUB IN: PROSPER,CASSANDRE
SUB OUT: 1 TURNAGE,BRIANNA	01:52	82-75	
SUB IN: 11 BOWLES,SYDNEY	01:52		
	00:40	84-77	SUB OUT: PROSPER,CASSANDRE
	00:40		SUB IN: MILES,OLIVIA

**Florida St. 86, Notre Dame 81**



