

FINAL SCORE



Wake Forest

68



Florida State

97

February 02, 2025 • Donald L. Tucker Center

FINAL STATISTICS

FLORIDA STATE®

BASKETBALL

FINAL: NO. 25/24 FSU 97, WF 68

- » Florida State had played 16 times on Groundhog Day, producing a 10-6 record dating back to 1974. The Seminoles have played Wake Forest four times, moving to 3-1 when playing on Feb. 2 after a 97-68 victory at the Tucker Center
- » The Seminoles scored above 90 points 13 times this season. FSU also passed 50 points in the first half for the eighth time this season and third in ACC play (North Florida, Samford, NC Central, Drexel, Virginia Tech, Boston College, Wake Forest)
- » The Seminoles held the Demon Deacons to 13 points in the first quarter, it was the 29th time this season holding the opponent under 15 in a quarter
- » FSU turned the ball over nine times, the 11th time this season under 10
- » Ta'Niya Latson started her 85th career game, becoming the 23rd Seminole in history to start that many games
- » In 21 games played this season, Latson has scored above 20 points, 19 times. She finished the game with 25 points and five assists
- » Latson was 8-of-8 at the free throw line, moves to sole possession of second in Florida State history with 461 career FT made, passing Cierra Bravard (453) and eyes the leader, Sue Galkantas (485)
- » Makayla Timpson secured her 44th career double-double behind 12 points and 14 rebounds. She leads the ACC with 13 double-doubles this season. She ties her own mark and Kiah Gillespie with the third-high single season total. Timpson also has the program record at 18
- » Timpson has 10 straight games with at least one block, finishing the game with three. She has registered at least one block in 21 games this season and 14 with three or more
- » After scoring 12 points, Timpson surpassed the 1,500 career points barrier, becoming the 11th player in program history to reach the milestone. Timpson now ranks eighth in program history at 1,509
- » O'Mariah Gordon sank three three-point shots and now sits in seventh place in program history with 128 career threes. Gordon tied her career high with nine field goals made
- » Sydney Bowles scored a season-high, 20 points and was 5-of-9 from three
- » With Latson, Gordon and Bowles scoring above 20 points, it was the first time this season FSU had three scoring above 20

FSU STARTERS

Player	20-21	21-22	22-23	23-24	24-25	Tot
Ta'Niya Latson	-	-	31	33	21	85
Makayla Timpson	-	1	33	34	22	89
O'Mariah Gordon	-	20	2	34	22	77
*Malea Williams	0	3	4	31	11	48
Carla Viegas	-	-	-	0	16	16
^Sydney Bowles	-	-	29	1	7	37
Brianna Turnage	-	-	0	19	11	30

*At Cincinnati, ^ at Texas A&M

FSU TOP SCORERS

Player	PTS	FGM	FT	3PT	AST	REB
Ta'Niya Latson	25	8-23	8-8	1-4	5	1
O'Mariah Gordon	22	9-16	1-2	3-5	2	2
Sydney Bowles	20	6-10	3-4	5-9	0	3
Makayla Timpson	12	5-9	2-2	0-1	0	14



Officials: Ryan Durham, Toni Patillo, Nc Cappel

Wake Forest - 68

Record: 8-14 (1-10)

NO.	Name	Min	FG			Rebounds			Fouls		TP	AS	TO	ST	Blocks		+/-
			M-A	M-A	M-A	OR	DR	TOT	PF	FD					BS	BA	
25	Demeara Hinds	F 25:06	9-15	0-0	0-0	3	10	13	3	3	18	2	0	0	0	0	-19
2	Aurora Sørbye	G 34:44	1-5	0-1	0-1	1	2	3	1	3	2	5	5	0	0	0	-22
11	Raegyn Conley	G 26:38	4-5	2-3	0-0	0	5	5	2	1	10	4	2	1	0	0	-29
14	Rylie Theuerkauf	G 25:35	4-14	1-4	2-2	2	3	5	1	2	11	1	4	0	0	2	-21
21	Elise Williams	G 31:13	5-15	0-3	0-2	0	3	3	2	6	10	3	2	2	1	1	-31
5	Malaya Cowles	20:19	4-6	0-0	0-0	0	4	4	3	1	8	0	2	1	0	0	-7
0	Alyssa Andrews	20:14	3-4	0-0	0-0	2	4	6	1	1	6	1	1	0	0	0	-6
22	Madisyn Jordan	07:30	1-5	1-4	0-0	0	0	0	2	0	3	0	0	0	0	0	-5
12	Kennedy Moore	08:41	0-0	0-0	0-0	0	0	0	1	0	0	2	0	0	0	0	-5
Team						0	0	0			0		0				
Totals			31-69	4-15	2-5	8	31	39	16	17	68	18	16	4	1	3	-29

Technical Fouls: NONE

Shooting By Period		
1st FG%	5-17	29.4%
3PT%	1-6	16.7%
FT%	2-2	100%
2nd FG%	8-20	40.0%
3PT%	2-5	40.0%
FT%	0-0	0%
3rd FG%	8-17	47.1%
3PT%	0-1	0.0%
FT%	0-2	0%
4th FG%	10-15	66.7%
3PT%	1-3	33.3%
FT%	0-1	0%
GMFG%	31-69	44.9%
3PT%	4-15	26.7%
FT%	2-5	40.0%

Dead Ball Rebounds: 1, 0

Florida State - 97

Record: 18-4 (8-2)

NO.	Name	Min	FG			Rebounds			Fouls		TP	AS	TO	ST	Blocks		+/-
			M-A	M-A	M-A	OR	DR	TOT	PF	FD					BS	BA	
21	Makayla Timpson	F 26:00	5-9	0-1	2-2	2	12	14	2	3	12	0	1	1	3	0	23
22	Malea Williams	F 16:11	1-3	0-0	0-0	3	2	5	3	1	2	1	2	0	0	0	27
00	Ta'Niya Latson	G 26:26	8-23	1-4	8-8	0	1	1	2	6	25	5	0	1	0	1	21
3	O'Mariah Gordon	G 24:33	9-16	3-5	1-2	0	2	2	1	1	22	2	1	2	0	0	16
11	Sydney Bowles	G 24:12	6-10	5-9	3-4	0	3	3	2	2	20	0	1	1	0	0	27
6	Mariana Valenzuela	08:55	1-3	1-3	0-0	0	1	1	1	0	3	0	1	0	0	0	1
24	Amaya Bonner	18:28	0-2	0-0	0-0	1	3	4	2	0	0	3	1	2	0	0	21
13	Carla Viegas	18:40	3-5	3-5	0-0	0	0	0	0	0	9	1	0	1	0	0	0
4	Raiane Dos Santos	10:45	0-0	0-0	0-0	0	2	2	1	0	0	0	1	0	0	0	1
32	Avery Treadwell	11:59	1-3	0-1	2-2	0	2	2	2	3	4	0	0	0	0	0	9
1	Brianna Turnage	11:20	0-0	0-0	0-0	0	2	2	1	0	0	1	0	0	0	0	-2
8	Morelia Chavez	02:31	0-0	0-0	0-0	0	0	0	0	0	0	0	1	0	0	0	1
Team						4	2	6			0		0				
Totals			34-74	13-28	16-18	10	32	42	17	16	97	13	9	8	3	1	29

Technical Fouls: NONE

Shooting By Period		
1st FG%	11-20	55.0%
3PT%	4-9	44.4%
FT%	1-1	100%
2nd FG%	9-17	52.9%
3PT%	3-4	75.0%
FT%	3-4	75%
3rd FG%	8-21	38.1%
3PT%	3-6	50.0%
FT%	3-4	75%
4th FG%	6-16	37.5%
3PT%	3-9	33.3%
FT%	9-9	100%
GMFG%	34-74	45.9%
3PT%	13-28	46.4%
FT%	16-18	88.9%

Dead Ball Rebounds: 1, 0

	WFU	FSU
Biggest lead	0 (1 st 10:00)	31 (4 th 1:34)
Best Scoring Run	10 (2 nd 6:08)	14 (2 nd 2:42)
Lead Changes	0	
Times Tied	0	
Time with Lead	00:00	39:49

	WFU	FSU
Points from		
Turnovers	8	23
Paint	48	36
Second Chance	6	13
Fast Breaks	4	8
Bench	17	16

	Period by Period Scoring				
	1st	2nd	3rd	4th	TOT
WFU	13	18	16	21	68
FSU	27	24	22	24	97

Period 1

Period Starters:

FSU	00 Latson T	3 Gordon O	11 Bowles S	21 Timpson M	22 Williams M
WFU	2 Sørbye A	11 Conley R	14 Theuerkauf R	21 Williams E	25 Hinds D

Game Time	FSU	Score	Diff	WFU
10:00	21 TIMPSON M jumpball won			25 HINDS D jumpball lost
09:52	00 LATSON T 2pt FG in the paint, layup blocked			
09:52				21 WILLIAMS E block (1)
09:52	offensive rebound (1)			
09:49	21 TIMPSON M 2pt FG second chance in the paint, pull up jump shot made (2)	2-0	2	
09:32				11 CONLEY R 3pt FG , jump shot missed
09:29	21 TIMPSON M defensive rebound (1)			
09:23	00 LATSON T 3pt FG , jump shot made (3)	5-0	5	
09:00				14 THEUERKAUF R turnover travel (1)
08:49	3 GORDON O 2pt FG from turnover in the paint, pull up jump shot made (2)	7-0	7	
08:28		7-2	5	25 HINDS D 2pt FG in the paint, layup made (2)
08:28				21 WILLIAMS E assist (1)
08:15	00 LATSON T 2pt FG outside the paint, step back jump shot missed			
08:12				25 HINDS D defensive rebound (1)
08:08	21 TIMPSON M foul shooting (1 - 1)			14 THEUERKAUF R foul drawn (1)
08:08		7-3	4	14 THEUERKAUF R free throw 1 - 2 made (1)
08:08		7-4	3	14 THEUERKAUF R free throw 2 - 2 made (2)
08:02	11 BOWLES S 3pt FG , jump shot missed			
07:59				11 CONLEY R defensive rebound (1)
07:40				2 SØRBYE A 2pt FG in the paint, pull up jump shot missed
07:38				2 SØRBYE A offensive rebound (1)
07:36				2 SØRBYE A 3pt FG second chance, jump shot missed
07:33	3 GORDON O defensive rebound (1)			
07:25	3 GORDON O 2pt FG outside the paint, pull up jump shot made (4)	9-4	5	
07:07				14 THEUERKAUF R turnover bad pass (2)
06:59	00 LATSON T 3pt FG from turnover, jump shot missed			
06:56				14 THEUERKAUF R defensive rebound (1)
06:40				21 WILLIAMS E 2pt FG outside the paint, jump shot missed
06:35	11 BOWLES S defensive rebound (1)			
06:20	11 BOWLES S 2pt FG in the paint, driving layup made (2)	11-4	7	
06:20	11 BOWLES S foul drawn (1)			25 HINDS D foul shooting (1 - 1)
06:20	22 WILLIAMS M substitution out			
06:20	6 VALENZUELA M substitution in			
06:20	3 GORDON O substitution out			
06:20	24 BONNER A substitution in			
06:20				25 HINDS D substitution out
06:20				5 COMLES M substitution in
06:20	11 BOWLES S free throw 1 - 1 made (3)	12-4	8	
06:08				14 THEUERKAUF R 3pt FG , jump shot missed
06:03	24 BONNER A defensive rebound (1)			

Game Time	FSU	Score	Diff	WFU
05:55	11 BOWLES S 3pt FG , jump shot made (6)	15-4	11	
05:55	24 BONNER A assist (1)			
05:45				21 WILLIAMS E 3pt FG , pull up jump shot missed
05:41	11 BOWLES S defensive rebound (2)			
05:37	11 BOWLES S 3pt FG , jump shot missed			
05:34				11 CONLEY R defensive rebound (2)
05:15				11 CONLEY R turnover bad pass (1)
05:15	00 LATSON T substitution out			
05:15	3 GORDON O substitution in			
05:04	21 TIMPSON M foul drawn (1)			5 COWLES M foul personal (1 - 2)
04:59	21 TIMPSON M 2pt FG from turnover in the paint, pull up jump shot made (4)	17-4	13	
04:59				Timeout 30 Sec
04:59				Timeout media
04:59	11 BOWLES S substitution out			
04:59	13 VEGAS C substitution in			
04:59				11 CONLEY R substitution out
04:59				0 ANDREWS A substitution in
04:42				21 WILLIAMS E 3pt FG , jump shot missed
04:39	6 VALENZUELA M defensive rebound (1)			
04:26	6 VALENZUELA M 3pt FG , jump shot missed			
04:24				5 COWLES M defensive rebound (1)
03:59				14 THEUERKAUF R turnover travel (3)
03:48	13 VEGAS C 3pt FG from turnover, jump shot made (3)	20-4	16	
03:48	3 GORDON O assist (1)			
03:27				5 COWLES M 2pt FG outside the paint, jump shot missed
03:24				0 ANDREWS A offensive rebound (1)
03:24		20-6	14	0 ANDREWS A 2pt FG second chance in the paint, tip-in layup made (2)
03:17	6 VALENZUELA M 3pt FG , jump shot missed			
03:13				21 WILLIAMS E defensive rebound (1)
03:04		20-8	12	5 COWLES M 2pt FG in the paint, layup made (2)
02:47	6 VALENZUELA M turnover bad pass (1)			21 WILLIAMS E steal (1)
02:34				14 THEUERKAUF R 2pt FG from turnover in the paint, step back jump shot missed
02:31	21 TIMPSON M defensive rebound (2)			
02:28	3 GORDON O 2pt FG in the paint, driving layup missed			
02:26				5 COWLES M defensive rebound (2)
02:08		20-10	10	21 WILLIAMS E 2pt FG in the paint, driving layup made (2)
02:00	3 GORDON O 2pt FG in the paint, pull up jump shot missed			
01:56				2 SORBYE A defensive rebound (2)
01:32				5 COWLES M 2pt FG outside the paint, jump shot missed
01:28				14 THEUERKAUF R offensive rebound (2)
01:28				14 THEUERKAUF R 2pt FG second chance in the paint, tip-in layup missed
01:27	21 TIMPSON M defensive rebound (3)			
01:22	24 BONNER A turnover travel (1)			
01:22	3 GORDON O substitution out			
01:22	6 VALENZUELA M substitution out			
01:22	21 TIMPSON M substitution out			

Official Basketball PlaybyPlay- 1st Period
Wake Forest at Florida State
 02/02/25 Donald L. Tucker Center, Tallahassee
 2024-25 FSU Women's Basketball

Game Time: 6:00 PM
Game Duration: 1:48
Attendance: 2,139

Officials: Ryan Durham, Toni Patillo, Nc Cappel

Game Time	FSU	Score	Diff	WFU
01:22	24 BONNER A substitution out			
01:22	00 LATSON T substitution in			
01:22	4 DOS SANTOS R substitution in			
01:22	22 WILLIAMS M substitution in			
01:22	32 TREADWELL A substitution in			
01:22				5 COWLES M substitution out
01:22				14 THEUERKAUF R substitution out
01:22				11 CONLEY R substitution in
01:22				25 HINDS D substitution in
01:14				21 WILLIAMS E 2pt FG from turnover in the paint, pull up jump shot missed
01:14	defensive rebound (10)			
01:07	00 LATSON T 2pt FG in the paint, pull up jump shot made (5)	22-10	12	
00:49		22-13	9	11 CONLEY R 3pt FG , jump shot made (3)
00:49				2 SØRBYE A assist (1)
00:36	13 MEGAS C 3pt FG , jump shot made (6)	25-13	12	
00:36	00 LATSON T assist (1)			
00:25	32 TREADWELL A foul personal (1 - 2)			21 WILLIAMS E foul drawn (1)
00:14				2 SØRBYE A turnover bad pass (1)
00:02	00 LATSON T 2pt FG from turnover in the paint, driving layup made (7)	27-13	14	
END OF PERIOD				
FSU 27-13 WFU				

Officials: Ryan Durham, Toni Patillo, Nc Cappel

Wake Forest - 13

NO.	Name	Min	FG			Rebounds			Fouls		TP	AS	TO	ST	Blocks		+/-
			M-A	M-A	M-A	OR	DR	TOT	PF	FD					BS	BA	
25	Demeara Hinds	F 05:02	1-1	0-0	0-0	0	1	1	1	0	2	0	0	0	0	0	-11
2	Aurora Sørbye	G 10:00	0-2	0-1	0-0	1	1	2	0	0	0	1	1	0	0	0	-14
11	Raegyn Conley	G 06:23	1-2	1-2	0-0	0	2	2	0	0	3	0	1	0	0	0	-17
14	Rylie Theuerkauf	G 08:38	0-3	0-1	2-2	1	1	2	0	1	2	0	3	0	0	0	-10
21	Elise Williams	G 10:00	1-5	0-2	0-0	0	1	1	0	1	2	1	0	1	1	0	-14
5	Malaya Cowles	04:58	1-3	0-0	0-0	0	2	2	1	0	2	0	0	0	0	0	-3
0	Alyssa Andrews	04:59	1-1	0-0	0-0	1	0	1	0	0	2	0	0	0	0	0	-1
Team						0	0	0			0						
Totals			5-17	1-6	2-2	3	8	11	2	2	13	2	5	1	1	0	-14

Shooting By Period		
1st FG%	5-17	29.4%
3PT%	1-6	16.7%
FT%	2-2	100%
GMFG%	5-17	29.4%
3PT%	1-6	16.7%
FT%	2-2	100.0%

Dead Ball Rebounds: 0, 0

Technical Fouls: NONE

Florida State - 27

NO.	Name	Min	FG			Rebounds			Fouls		TP	AS	TO	ST	Blocks		+/-
			M-A	M-A	M-A	OR	DR	TOT	PF	FD					BS	BA	
21	Makayla Timpson	F 08:38	2-2	0-0	0-0	0	3	3	1	1	4	0	0	0	0	0	10
22	Malea Williams	F 05:02	0-0	0-0	0-0	0	0	0	0	0	0	0	0	0	0	0	11
00	Ta'Niya Latson	G 06:07	3-6	1-2	0-0	0	0	0	0	0	7	1	0	0	0	1	15
3	O'Mariah Gordon	G 07:33	2-4	0-0	0-0	0	1	1	0	0	4	1	0	0	0	0	6
11	Sydney Bowles	G 05:01	2-4	1-3	1-1	0	2	2	0	1	6	0	0	0	0	0	13
6	Mariana Valenzuela	04:58	0-2	0-2	0-0	0	1	1	0	0	0	0	1	0	0	0	3
24	Amaya Bonner	04:58	0-0	0-0	0-0	0	1	1	0	0	0	1	1	0	0	0	3
13	Carla Viegas	04:59	2-2	2-2	0-0	0	0	0	0	0	6	0	0	0	0	0	1
4	Raiane Dos Santos	01:22	0-0	0-0	0-0	0	0	0	0	0	0	0	0	0	0	0	4
32	Avery Treadwell	01:22	0-0	0-0	0-0	0	0	0	1	0	0	0	0	0	0	0	4
Team						1	1	2			0						
Totals			11-20	4-9	1-1	1	9	10	2	2	27	3	2	0	0	1	14

Shooting By Period		
1st FG%	11-20	55.0%
3PT%	4-9	44.4%
FT%	1-1	100%
GMFG%	11-20	55.0%
3PT%	4-9	44.4%
FT%	1-1	100.0%

Dead Ball Rebounds: 0, 0

Technical Fouls: NONE

	WFU	FSU
Biggest lead	0 (1 st 10:00)	16 (1 st 3:48)
Best Scoring Run	6 (1 st 2:08)	13 (1 st 3:48)
Lead Changes	0	
Times Tied	0	
Time with Lead	00:00	09:49

	WFU	FSU
Points from		
Turnovers	0	9
Paint	8	12
Second Chance	2	2
Fast Breaks	0	0
Bench	4	6

	Period by Period Scoring				
	1st	2nd	3rd	4th	TOT
WFU	13	18	16	21	68
FSU	27	24	22	24	97

Period 2

Period Starters:

FSU	00 Latson T	1 Turnage B	4 Dos Santos R	13 Viegas C	22 Williams M
WFU	0 Andrews A	2 Sørbye A	11 Conley R	21 Williams E	25 Hinds D

Game Time	FSU	Score	Diff	WFU
10:00	32 TREADWELL A substitution out			
10:00	1 TURNAGE B substitution in			
09:35		27-15	12	21 WILLIAMS E 2pt FG in the paint, layup made (4)
09:35				25 HINDS D assist (1)
09:22	13 VIEGAS C 3pt FG , jump shot made (9)	30-15	15	
09:22	00 LATSON T assist (2)			
09:03				2 SØRBYE A turnover travel (2)
08:52	22 WILLIAMS M 2pt FG from turnover in the paint, layup missed			
08:50				25 HINDS D defensive rebound (2)
08:39		30-17	13	25 HINDS D 2pt FG in the paint, layup made (4)
08:23	4 DOS SANTOS R turnover bad pass (1)			11 CONLEY R steal (1)
08:07		30-19	11	25 HINDS D 2pt FG from turnover in the paint, layup made (6)
08:07				11 CONLEY R assist (1)
07:59	22 WILLIAMS M foul offensive (1 - 1)			21 WILLIAMS E foul drawn (2)
07:59	22 WILLIAMS M turnover offensive (1)			
07:59	22 WILLIAMS M substitution out			
07:59	21 TIMPSON M substitution in			
07:59	4 DOS SANTOS R substitution out			
07:59	13 VIEGAS C substitution out			
07:59	11 BOWLES S substitution in			
07:59	3 GORDON O substitution in			
07:59				0 ANDREWS A substitution out
07:59				21 WILLIAMS E substitution out
07:59				22 JORDAN M substitution in
07:59				14 THEUERKAUF R substitution in
07:31				14 THEUERKAUF R 2pt FG from turnover outside the paint, jump shot blocked
07:31	21 TIMPSON M block (1)			
07:27	21 TIMPSON M defensive rebound (4)			
07:22	00 LATSON T 2pt FG in the paint, driving layup missed			
07:20				11 CONLEY R defensive rebound (3)
07:08				25 HINDS D 2pt FG in the paint, layup missed
07:06	21 TIMPSON M defensive rebound (5)			
07:00	00 LATSON T 2pt FG in the paint, driving layup missed			
06:58				25 HINDS D defensive rebound (3)
06:53	00 LATSON T foul personal (1 - 2)			2 SØRBYE A foul drawn (1)
06:53				25 HINDS D substitution out
06:53				5 COWLES M substitution in
06:34		30-22	8	14 THEUERKAUF R 3pt FG , jump shot made (5)
06:34				11 CONLEY R assist (2)
06:22	3 GORDON O 2pt FG in the paint, pull up jump shot missed			
06:19				14 THEUERKAUF R defensive rebound (3)

Official Basketball Play by Play - 2nd Period
Wake Forest at Florida State
 02/02/25 Donald L. Tucker Center, Tallahassee
 2024-25 FSU Women's Basketball

Game Time: 6:00 PM
Game Duration: 1:48
Attendance: 2,139

Officials: Ryan Durham, Toni Patillo, Nic Cappel

Game Time	FSU	Score	Diff	WFU
06:08		30-25	5	11 CONLEY R 3pt FG , jump shot made (6)
06:08				2 SØRBYE A assist (2)
06:07	Timeout 30 Sec			
06:07				Timeout media
06:06	00 LATSON T substitution out			
06:06	1 TURNAGE B substitution out			
06:06	22 WLLIAMS M substitution in			
06:06	24 BONNER A substitution in			
05:56	21 TIMPSON M 2pt FG outside the paint, turnaround jump shot missed			
05:55	22 WLLIAMS M offensive rebound (1)			
05:55	22 WLLIAMS M foul drawn (1)			22 JORDAN M foul personal (1 - 1)
05:51	21 TIMPSON M 2pt FG second chance outside the paint, jump shot missed			
05:50	offensive rebound (14)			
05:50				2 SØRBYE A substitution out
05:50				21 WLLIAMS E substitution in
05:44	3 GORDON O 2pt FG second chance in the paint, driving layup made (6)	32-25	7	
05:36				14 THEUERKAUF R 3pt FG , jump shot missed
05:33	defensive rebound (15)			
05:19	21 TIMPSON M 2pt FG in the paint, turnaround jump shot made (6)	34-25	9	
04:49				22 JORDAN M 2pt FG outside the paint, step back jump shot missed
04:47	24 BONNER A defensive rebound (2)			
04:42	3 GORDON O 3pt FG , jump shot made (9)	37-25	12	
04:42	24 BONNER A assist (2)			
04:12				14 THEUERKAUF R 2pt FG outside the paint, jump shot blocked
04:12	21 TIMPSON M block (2)			
04:08				14 THEUERKAUF R offensive rebound (4)
04:07				22 JORDAN M 3pt FG second chance, jump shot missed
04:03	21 TIMPSON M defensive rebound (6)			
04:02	3 GORDON O 2pt FG fast break in the paint, layup made (11)	39-25	14	
03:43				22 JORDAN M 3pt FG , jump shot missed
03:41	21 TIMPSON M defensive rebound (7)			
03:35	11 BOWLES S foul drawn (2)			22 JORDAN M foul shooting (2 - 2)
03:35	3 GORDON O substitution out			
03:35	00 LATSON T substitution in			
03:35				5 COWLES M substitution out
03:35				14 THEUERKAUF R substitution out
03:35				22 JORDAN M substitution out
03:35				0 ANDREWS A substitution in
03:35				2 SØRBYE A substitution in
03:35				25 HINDS D substitution in
03:35	11 BOWLES S free throw 1 - 3 missed			
03:35	offensive dead ball rebound (1)			
03:35	11 BOWLES S free throw 2 - 3 made (7)	40-25	15	
03:35	11 BOWLES S free throw 3 - 3 made (8)	41-25	16	

Official Basketball Playby Play - 2nd Period
Wake Forest at Florida State
 02/02/25 Donald L. Tucker Center, Tallahassee
 2024-25 FSU Women's Basketball

Game Time: 6:00 PM
Game Duration: 1:48
Attendance: 2,139

Officials: Ryan Durham, Toni Patillo, Nc Cappel

Game Time	FSU	Score	Diff	WFU
03:14	11 BOWLES S steal (1)			0 ANDREWS A turnover lost ball (1)
03:07	21 TIMPSON M foul offensive (2 - 3)			21 WILLIAMS E foul drawn (3)
03:07	21 TIMPSON M turnover offensive (1)			
03:07	21 TIMPSON M substitution out			
03:07	32 TREADWELL A substitution in			
02:52				21 WILLIAMS E 2pt FG from turnover outside the paint, pull up jump shot missed
02:50	24 BONNER A defensive rebound (3)			
02:42	11 BOWLES S 3pt FG , jump shot made (11)	44-25	19	
02:42	24 BONNER A assist (3)			
02:30	32 TREADWELL A foul personal (2 - 4)			25 HINDS D foul drawn (1)
02:27		44-27	17	21 WILLIAMS E 2pt FG in the paint, layup made (6)
02:27				2 SØRBYE A assist (3)
02:15	00 LATSON T 2pt FG in the paint, turnaround jump shot made (9)	46-27	19	
02:03				2 SØRBYE A 2pt FG in the paint, layup missed
02:01	11 BOWLES S defensive rebound (3)			
01:52	32 TREADWELL A 2pt FG outside the paint, jump shot missed			
01:52	offensive rebound (21)			
01:52	13 VEGAS C substitution in			
01:52	22 WILLIAMS M substitution out			
01:47	00 LATSON T 2pt FG second chance in the paint, pull up jump shot made (11)	48-27	21	
01:47	00 LATSON T foul drawn (1)			21 WILLIAMS E foul shooting (1 - 3)
01:47	24 BONNER A substitution out			
01:47	3 GORDON O substitution in			
01:47	00 LATSON T free throw 1 - 1 made (12)	49-27	22	
01:28				25 HINDS D 2pt FG in the paint, layup missed
01:26	32 TREADWELL A defensive rebound (1)			
01:18	00 LATSON T 3pt FG , jump shot missed			
01:16				0 ANDREWS A defensive rebound (2)
00:55				21 WILLIAMS E 2pt FG in the paint, driving layup missed
00:52				25 HINDS D offensive rebound (4)
00:52		49-29	20	25 HINDS D 2pt FG second chance in the paint, tip-in layup made (8)
00:37	11 BOWLES S foul offensive (1 - 5)			21 WILLIAMS E foul drawn (4)
00:37	11 BOWLES S turnover offensive (1)			
00:24				21 WILLIAMS E 2pt FG from turnover in the paint, jump shot missed
00:21				25 HINDS D offensive rebound (5)
00:21		49-31	18	25 HINDS D 2pt FG from turnover second chance in the paint, tip-in layup made (10)
00:04	32 TREADWELL A 2pt FG in the paint, layup made (2)	51-31	20	
00:04	00 LATSON T assist (3)			
END OF PERIOD				
FSU 51-31 WFU				

Officials: Ryan Durham, Toni Patillo, Nc Cappel

Wake Forest - 18

NO.	Name	Min	FG			Rebounds			Fouls		TP	AS	TO	ST	Blocks		+/-
			M-A	M-A	M-A	OR	DR	TOT	PF	FD					BS	BA	
25	Demeara Hinds	F 06:42	4-6	0-0	0-0	2	2	4	0	1	8	1	0	0	0	0	-3
2	Aurora Sørbye	G 07:45	0-1	0-0	0-0	0	0	0	0	1	0	2	1	0	0	0	3
11	Raegyn Conley	G 10:00	1-1	1-1	0-0	0	1	1	0	0	3	2	0	1	0	0	-6
14	Rylie Theuerkauf	G 04:24	1-4	1-2	0-0	1	1	2	0	0	3	0	0	0	0	2	-3
21	Elise Williams	G 07:51	2-5	0-0	0-0	0	0	0	1	3	4	0	0	0	0	0	-12
22	Madisyn Jordan	04:24	0-3	0-2	0-0	0	0	0	2	0	0	0	0	0	0	0	-3
5	Malaya Cowles	03:18	0-0	0-0	0-0	0	0	0	0	0	0	0	0	0	0	0	-3
0	Alyssa Andrews	05:36	0-0	0-0	0-0	0	1	1	0	0	0	0	1	0	0	0	-3
Team						0	0	0			0						
Totals			8-20	2-5	0-0	3	5	8	3	5	18	5	2	1	0	2	-6

Shooting By Period		
2 nd FG%	8-20	40.0%
3PT%	2-5	40.0%
FT%	0-0	0%
GMFG%	8-20	40.0%
3PT%	2-5	40.0%
FT%	0-0	0.0%

Dead Ball Rebounds: 0, 0

Technical Fouls: NONE

Florida State - 24

NO.	Name	Min	FG			Rebounds			Fouls		TP	AS	TO	ST	Blocks		+/-
			M-A	M-A	M-A	OR	DR	TOT	PF	FD					BS	BA	
21	Makayla Timpson	F 04:52	1-3	0-0	0-0	0	4	4	1	0	2	0	1	0	2	0	5
22	Malea Williams	F 06:15	0-1	0-0	0-0	1	0	1	1	1	0	0	1	0	0	0	11
00	Ta'Niya Latson	G 07:29	2-5	0-1	1-1	0	0	0	1	1	5	2	0	0	0	0	-3
3	O'Mariah Gordon	G 06:11	3-4	1-1	0-0	0	0	0	0	0	7	0	0	0	0	0	2
11	Sydney Bowles	G 07:59	1-1	1-1	2-3	0	1	1	1	1	5	0	1	1	0	0	9
4	Raiane Dos Santos	02:01	0-0	0-0	0-0	0	0	0	0	0	0	0	1	0	0	0	-3
1	Brianna Turnage	03:54	0-0	0-0	0-0	0	0	0	0	0	0	0	0	0	0	0	-9
24	Amaya Bonner	04:19	0-0	0-0	0-0	0	2	2	0	0	0	2	0	0	0	0	16
32	Avery Treadwell	03:07	1-2	0-0	0-0	0	1	1	1	0	2	0	0	0	0	0	4
13	Carla Viegas	03:53	1-1	1-1	0-0	0	0	0	0	0	3	0	0	0	0	0	-2
Team						2	1	3			0		0				
Totals			9-17	3-4	3-4	3	9	12	5	3	24	4	4	1	2	0	6

Shooting By Period		
2 nd FG%	9-17	52.9%
3PT%	3-4	75.0%
FT%	3-4	75%
GMFG%	9-17	52.9%
3PT%	3-4	75.0%
FT%	3-4	75.0%

Dead Ball Rebounds: 1, 0

Technical Fouls: NONE

	WFU	FSU
Biggest lead	0 (1 st 10:00)	22 (2 nd 1:47)
Best Scoring Run	10 (2 nd 6:08)	14 (2 nd 2:42)
Lead Changes	0	
Times Tied	0	
Time with Lead	00:00	09:35

	WFU	FSU
Points from		
Turnovers	4	0
Paint	12	12
Second Chance	4	4
Fast Breaks	0	2
Bench	0	5

	Period by Period Scoring				
	1st	2nd	3rd	4th	TOT
WFU	13	18	16	21	68
FSU	27	24	22	24	97

Officials: Ryan Durham, Toni Patillo, Nc Cappel

Wake Forest - 31

NO.	Name	Min	FG			3P			FT			Rebounds			Fouls		TP	AS	TO	ST	Blocks		+/-
			M-A	M-A	M-A	OR	DR	TOT	PF	FD	BS	BA											
25	Demeara Hinds	F 11:44	5-7	0-0	0-0	2	3	5	1	1	10	1	0	0	0	0	0	0	0	0	0	-14	
2	Aurora Sørbye	G 17:45	0-3	0-1	0-0	1	1	2	0	1	0	3	2	0	0	0	0	0	0	0	0	-11	
11	Raegyn Conley	G 16:23	2-3	2-3	0-0	0	3	3	0	0	6	2	1	1	0	0	0	0	0	0	-23		
14	Rylie Theuerkauf	G 13:02	1-7	1-3	2-2	2	2	4	0	1	5	0	3	0	0	2	0	0	0	2	-13		
21	Elise Williams	G 17:51	3-10	0-2	0-0	0	1	1	1	4	6	1	0	1	1	1	0	0	0	0	-26		
5	Malaya Cowles	08:16	1-3	0-0	0-0	0	2	2	1	0	2	0	0	0	0	0	0	0	0	0	-6		
0	Alyssa Andrews	10:35	1-1	0-0	0-0	1	1	2	0	0	2	0	1	0	0	0	0	0	0	0	-4		
22	Madisyn Jordan	04:24	0-3	0-2	0-0	0	0	0	2	0	0	0	0	0	0	0	0	0	0	0	-3		
Team											0	0	0										
Totals			13-37	3-11	2-2	6	13	19	5	7	31	7	7	2	1	2	-20						

Shooting By Period		
1st FG%	5-17	29.4%
3PT%	1-6	16.7%
FT%	2-2	100%
2nd FG%	8-20	40.0%
3PT%	2-5	40.0%
FT%	0-0	0%
GMFG%	13-37	35.1%
3PT%	3-11	27.3%
FT%	2-2	100.0%

Dead Ball Rebounds: 0, 0

Technical Fouls: NONE

Florida State - 51

NO.	Name	Min	FG			3P			FT			Rebounds			Fouls		TP	AS	TO	ST	Blocks		+/-
			M-A	M-A	M-A	OR	DR	TOT	PF	FD	BS	BA											
21	Makayla Timpson	F 13:30	3-5	0-0	0-0	0	7	7	2	1	6	0	1	0	2	0	15						
22	Malea Williams	F 11:17	0-1	0-0	0-0	1	0	1	1	1	0	0	1	0	0	22							
00	Ta'Niya Latson	G 13:36	5-11	1-3	1-1	0	0	0	1	1	12	3	0	0	0	12							
3	O'Mariah Gordon	G 13:44	5-8	1-1	0-0	0	1	1	0	0	11	1	0	0	0	8							
11	Sydney Bowles	G 13:00	3-5	2-4	3-4	0	3	3	1	2	11	0	1	1	0	22							
6	Mariana Valenzuela	04:58	0-2	0-2	0-0	0	1	1	0	0	0	0	1	0	0	3							
24	Amaya Bonner	09:17	0-0	0-0	0-0	0	3	3	0	0	0	3	1	0	0	19							
13	Carla Viegas	08:52	3-3	3-3	0-0	0	0	0	0	0	9	0	0	0	0	-1							
4	Raiane Dos Santos	03:23	0-0	0-0	0-0	0	0	0	0	0	0	0	1	0	0	1							
32	Avery Treadwell	04:29	1-2	0-0	0-0	0	1	1	2	0	2	0	0	0	0	8							
1	Brianna Turnage	03:54	0-0	0-0	0-0	0	0	0	0	0	0	0	0	0	0	-9							
Team											3	2	5										
Totals			20-37	7-13	4-5	4	18	22	7	5	51	7	6	1	2	1	20						

Shooting By Period		
1st FG%	11-20	55.0%
3PT%	4-9	44.4%
FT%	1-1	100%
2nd FG%	9-17	52.9%
3PT%	3-4	75.0%
FT%	3-4	75%
GMFG%	20-37	54.1%
3PT%	7-13	53.8%
FT%	4-5	80.0%

Dead Ball Rebounds: 1, 0

Technical Fouls: NONE

	WFU	FSU
Biggest lead	0 (1 st 10:00)	22 (2 nd 1:47)
Best Scoring Run	10 (2 nd 6:08)	14 (2 nd 2:42)
Lead Changes	0	
Times Tied	0	
Time with Lead	00:00	19:49

	WFU	FSU
Points from		
Turnovers	4	9
Paint	20	24
Second Chance	6	6
Fast Breaks	0	2
Bench	4	11

	Period by Period Scoring				
	1st	2nd	3rd	4th	TOT
WFU	13	18	16	21	68
FSU	27	24	22	24	97

Period 3

Period Starters:

FSU	00 Latson T	3 Gordon O	11 Bowles S	21 Timpson M	22 Williams M
WFU	2 Sørbye A	11 Conley R	14 Theuerkauf R	21 Williams E	25 Hinds D

Game Time	FSU	Score	Diff	WFU
10:00	13 VEGAS C substitution out			
10:00	32 TREADWELL A substitution out			
10:00	21 TIMPSON M substitution in			
10:00	22 WILLIAMS M substitution in			
10:00				0 ANDREWS A substitution out
10:00				14 THEUERKAUF R substitution in
09:47	00 LATSON T 2pt FG in the paint, pull up jump shot missed			
09:44	22 WILLIAMS M offensive rebound (2)			
09:42	11 BOWLES S 3pt FG second chance, jump shot made (14)	54-31	23	
09:42	22 WILLIAMS M assist (1)			
09:21	3 GORDON O steal (1)			11 CONLEY R turnover bad pass (2)
09:17	3 GORDON O 2pt FG fast break from turnover in the paint, layup made (13)	56-31	25	
08:48				21 WILLIAMS E 2pt FG in the paint, layup missed
08:45	22 WILLIAMS M defensive rebound (3)			
08:40	00 LATSON T 2pt FG in the paint, layup missed			
08:38				25 HINDS D defensive rebound (6)
08:29				25 HINDS D 2pt FG in the paint, jump shot missed
08:27	21 TIMPSON M defensive rebound (8)			
08:19	22 WILLIAMS M turnover bad pass (2)			21 WILLIAMS E steal (2)
08:14				2 SØRBYE A 2pt FG from turnover in the paint, layup missed
08:11	22 WILLIAMS M defensive rebound (4)			
08:01	21 TIMPSON M foul drawn (2)			25 HINDS D foul personal (2 - 1)
08:01	22 WILLIAMS M substitution out			
08:01	13 VEGAS C substitution in			
07:56	00 LATSON T 2pt FG in the paint, pull up jump shot missed			
07:53				21 WILLIAMS E defensive rebound (2)
07:44	3 GORDON O foul personal (1 - 1)			11 CONLEY R foul drawn (1)
07:41				2 SØRBYE A turnover bad pass (3)
07:29	3 GORDON O 3pt FG from turnover, jump shot missed			
07:26				25 HINDS D defensive rebound (7)
07:15	13 VEGAS C steal (1)			21 WILLIAMS E turnover bad pass (1)
07:12	21 TIMPSON M foul drawn (3)			11 CONLEY R foul shooting (1 - 2)
07:12	3 GORDON O substitution out			
07:12	24 BONNER A substitution in			
07:12				11 CONLEY R substitution out
07:12				12 MOORE K substitution in
07:12	21 TIMPSON M free throw fast break 1 - 2 made (7)	57-31	26	
07:12	21 TIMPSON M free throw fast break 2 - 2 made (8)	58-31	27	
06:55		58-33	25	25 HINDS D 2pt FG in the paint, layup made (12)
06:55				14 THEUERKAUF R assist (1)
06:43	00 LATSON T 2pt FG outside the paint, pull up jump shot missed			
06:38				25 HINDS D defensive rebound (8)

Official Basketball PlaybyPlay - 3rd Period
Wake Forest at Florida State
 02/02/25 Donald L. Tucker Center, Tallahassee
 2024-25 FSU Women's Basketball

Game Time: 6:00 PM
Game Duration: 1:48
Attendance: 2,139

Officials: Ryan Durham, Toni Patillo, Nc Cappel

Game Time	FSU	Score	Diff	WFU
06:29		58-35	23	25 HINDS D 2pt FG in the paint, layup made (14)
06:29				12 MOORE K assist (1)
06:12	11 BOWLES S 3pt FG , step back jump shot made (17)	61-35	26	
05:54		61-37	24	21 WILLIAMS E 2pt FG in the paint, layup made (8)
05:39	21 TIMPSON M 2pt FG outside the paint, turnaround jump shot made (10)	63-37	26	
05:39	00 LATSON T assist (4)			
05:21				25 HINDS D 2pt FG in the paint, layup missed
05:18	21 TIMPSON M defensive rebound (9)			
05:12	13 VIEGAS C 3pt FG , jump shot missed			
05:09	24 BONNER A offensive rebound (4)			
05:09	24 BONNER A 2pt FG second chance in the paint, tip-in layup missed			
05:09				25 HINDS D defensive rebound (9)
05:09	24 BONNER A foul personal (1 - 2)			25 HINDS D foul drawn (2)
05:09	00 LATSON T substitution out			
05:09	21 TIMPSON M substitution out			
05:09	3 GORDON O substitution in			
05:09	32 TREADWELL A substitution in			
05:09				21 WILLIAMS E substitution out
05:09				25 HINDS D substitution out
05:09				0 ANDREWS A substitution in
05:09				5 COWLES M substitution in
04:56				14 THEUERKAUF R 2pt FG in the paint, jump shot missed
04:53	3 GORDON O defensive rebound (2)			
04:50	3 GORDON O foul drawn (1)			12 MOORE K foul shooting (1 - 3)
04:50	Timeout media			
04:50	11 BOWLES S substitution out			
04:50	22 WILLIAMS M substitution in			
04:50	3 GORDON O free throw 1 - 2 made (14)	64-37	27	
04:50	3 GORDON O free throw 2 - 2 missed			
04:47	22 WILLIAMS M offensive rebound (5)			
04:47	22 WILLIAMS M 2pt FG second chance in the paint, tip-in layup made (2)	66-37	29	
04:32		66-39	27	5 COWLES M 2pt FG in the paint, layup made (4)
04:13	3 GORDON O 3pt FG , jump shot made (17)	69-39	30	
04:13	13 VIEGAS C assist (1)			
04:03		69-41	28	14 THEUERKAUF R 2pt FG in the paint, layup made (7)
04:03				2 SØRBYE A assist (4)
03:48	22 WILLIAMS M 2pt FG in the paint, layup missed			
03:46				0 ANDREWS A defensive rebound (3)
03:34				2 SØRBYE A substitution out
03:34				12 MOORE K substitution out
03:34				21 WILLIAMS E substitution in
03:34				25 HINDS D substitution in
03:32		69-43	26	0 ANDREWS A 2pt FG outside the paint, jump shot made (4)
03:32				21 WILLIAMS E assist (2)
03:20	3 GORDON O 2pt FG outside the paint, floating jump shot missed			
03:13				5 COWLES M defensive rebound (3)

Official Basketball PlaybyPlay - 3rd Period
Wake Forest at Florida State
 02/02/25 Donald L. Tucker Center, Tallahassee
 2024-25 FSU Women's Basketball

Game Time: 6:00 PM
Game Duration: 1:48
Attendance: 2,139

Officials: Ryan Durham, Toni Patillo, Nc Cappel

Game Time	FSU	Score	Diff	WFU
03:13	jump ball situation			
03:01				14 THEUERKAUF R 2pt FG outside the paint, turnaround jump shot missed
02:58				25 HINDS D offensive rebound (10)
02:57				25 HINDS D 2pt FG second chance outside the paint, jump shot missed
02:57				0 ANDREWS A offensive rebound (4)
02:57	22 WILLIAMS M foul personal (2 - 3)			0 ANDREWS A foul drawn (1)
02:57	3 GORDON O substitution out			
02:57	13 MEGAS C substitution out			
02:57	32 TREADWELL A substitution out			
02:57	00 LATSON T substitution in			
02:57	4 DOS SANTOS R substitution in			
02:57	21 TIMPSON M substitution in			
02:50				14 THEUERKAUF R 3pt FG second chance, jump shot missed
02:48	4 DOS SANTOS R defensive rebound (1)			
02:34	00 LATSON T 2pt FG in the paint, jump shot missed			
02:31	21 TIMPSON M offensive rebound (10)			
02:31	21 TIMPSON M 2pt FG second chance in the paint, tip-in layup made (12)	71-43	28	
02:16		71-45	26	21 WILLIAMS E 2pt FG outside the paint, step back jump shot made (10)
01:56	00 LATSON T 2pt FG outside the paint, jump shot missed			
01:55				21 WILLIAMS E defensive rebound (3)
01:55	22 WILLIAMS M foul personal (3 - 4)			21 WILLIAMS E foul drawn (5)
01:55	22 WILLIAMS M substitution out			
01:55	1 TURNAGE B substitution in			
01:31		71-47	24	14 THEUERKAUF R 2pt FG in the paint, jump shot made (9)
01:31				25 HINDS D assist (2)
01:21	00 LATSON T 2pt FG in the paint, driving layup made (14)	73-47	26	
00:47				21 WILLIAMS E 2pt FG outside the paint, jump shot blocked
00:47	21 TIMPSON M block (3)			
00:43	21 TIMPSON M defensive rebound (11)			
00:39	00 LATSON T 2pt FG in the paint, jump shot missed			
00:37				25 HINDS D defensive rebound (11)
00:33	00 LATSON T foul personal (2 - 5)			21 WILLIAMS E foul drawn (6)
00:33	00 LATSON T substitution out			
00:33	24 BONNER A substitution out			
00:33	3 GORDON O substitution in			
00:33	11 BOWLES S substitution in			
00:33				0 ANDREWS A substitution out
00:33				14 THEUERKAUF R substitution out
00:33				2 SØRBYE A substitution in
00:33				11 CONLEY R substitution in
00:33				21 WILLIAMS E free throw 1 - 2 missed
00:33				offensive dead ball rebound (1)
00:32				21 WILLIAMS E free throw 2 - 2 missed
00:31	21 TIMPSON M defensive rebound (12)			
00:24	jump ball situation			
00:04	21 TIMPSON M 3pt FG , jump shot missed			

Official Basketball PlaybyPlay - 3rd Period
Wake Forest at Florida State
02/02/25 Donald L. Tucker Center, Tallahassee
2024-25 FSU Women's Basketball

Game Time: 6:00 PM
Game Duration: 1:48
Attendance: 2,139

Officials: Ryan Durham, Toni Patillo, Nc Cappel

Game Time	FSU	Score	Diff	WFU
00:02				25 HINDS D defensive rebound (12)
END OF PERIOD				
FSU 73-47 WFU				

Officials: Ryan Durham, Toni Patillo, Nc Cappel

Wake Forest - 16

NO.	Name	Min	FG M-A	3P M-A	FT M-A	Rebounds OR DR TOT	Fouls PF FD	TP	AS	TO	ST	Blocks BS BA	+/-
25	Demeara Hinds	F 08:25	2-5	0-0	0-0	1 6 7	1 1	4	1	0	0	0 0	-4
2	Aurora Sørbye	G 06:59	0-1	0-0	0-0	0 0 0	0 0	0	1	1	0	0 0	-8
11	Raegyn Conley	G 03:21	0-0	0-0	0-0	0 0 0	1 1	0	0	1	0	0 0	-5
14	Rylie Theuerkauf	G 09:27	2-5	0-1	0-0	0 0 0	0 0	4	1	0	0	0 0	-6
21	Elise Williams	G 08:25	2-4	0-0	0-2	0 2 2	0 2	4	1	1	1	0 1	-4
12	Kennedy Moore	03:38	0-0	0-0	0-0	0 0 0	1 0	0	1	0	0	0 0	-3
0	Alyssa Andrews	04:36	1-1	0-0	0-0	1 1 2	0 1	2	0	0	0	0 0	0
5	Malaya Cowles	05:09	1-1	0-0	0-0	0 1 1	0 0	2	0	0	0	0 0	0
Team						0 0 0		0		0			
Totals			8-17	0-1	0-2	2 10 12	3 5	16	5	3	1	0 1	-6

Shooting By Period		
3rd FG%	8-17	47.1%
3PT%	0-1	0.0%
FT%	0-2	0%
GMFG%	8-17	47.1%
3PT%	0-1	0.0%
FT%	0-2	0.0%

Dead Ball Rebounds: 1, 0

Technical Fouls: NONE

Florida State - 22

NO.	Name	Min	FG M-A	3P M-A	FT M-A	Rebounds OR DR TOT	Fouls PF FD	TP	AS	TO	ST	Blocks BS BA	+/-
21	Makayla Timpson	F 07:48	2-3	0-1	2-2	1 4 5	0 2	6	0	0	0	1 0	6
22	Malea Williams	F 04:54	1-2	0-0	0-0	2 2 4	2 0	2	1	1	0	0 0	5
00	Ta'Niya Latson	G 07:15	1-8	0-0	0-0	0 0 0	1 0	2	1	0	0	0 0	6
3	O'Mariah Gordon	G 05:33	2-4	1-2	1-2	0 1 1	1 1	6	0	0	1	0 0	5
11	Sydney Bowles	G 05:43	2-2	2-2	0-0	0 0 0	0 0	6	0	0	0	0 0	6
13	Carla Viegas	05:04	0-1	0-1	0-0	0 0 0	0 0	0	1	0	1	0 0	1
24	Amaya Bonner	06:39	0-1	0-0	0-0	1 0 1	1 0	0	0	0	0	0 0	1
32	Avery Treadwell	02:12	0-0	0-0	0-0	0 0 0	0 0	0	0	0	0	0 0	0
4	Raiane Dos Santos	02:57	0-0	0-0	0-0	0 1 1	0 0	0	0	0	0	0 0	0
1	Brianna Turnage	01:55	0-0	0-0	0-0	0 0 0	0 0	0	0	0	0	0 0	0
Team						0 0 0		0		0			
Totals			8-21	3-6	3-4	4 8 12	5 3	22	3	1	2	1 0	6

Shooting By Period		
3rd FG%	8-21	38.1%
3PT%	3-6	50.0%
FT%	3-4	75%
GMFG%	8-21	38.1%
3PT%	3-6	50.0%
FT%	3-4	75.0%

Dead Ball Rebounds: 0, 0

Technical Fouls: NONE

	WFU	FSU
Biggest lead	0 (1 st 10:00)	30 (3 rd 4:13)
Best Scoring Run	4 (3 rd 6:29)	7 (3 rd 7:12)
Lead Changes	0	
Times Tied	0	
Time with Lead	00:00	09:47

Points from	WFU	FSU
Turnovers	0	4
Paint	12	8
Second Chance	0	7
Fast Breaks	0	4
Bench	4	0

Period by Period Scoring					
	1st	2nd	3rd	4th	TOT
WFU	13	18	16	21	68
FSU	27	24	22	24	97

Period 4

Period Starters:

FSU	1 Turnage B	3 Gordon O	4 Dos Santos R	11 Bowles S	21 Timpson M
WFU	2 Sørbye A	5 Cowles M	11 Conley R	21 Williams E	25 Hinds D

Game Time	FSU	Score	Diff	WFU
09:47	11 BOWLES S foul personal (2 - 1)			5 COWLES M foul drawn (1)
09:36	21 TIMPSON M steal (1)			21 WILLIAMS E turnover bad pass (2)
09:30	11 BOWLES S 3pt FG from turnover, jump shot made (20)	76-47	29	
09:30	3 GORDON O assist (2)			
09:10				25 HINDS D 2pt FG in the paint, layup missed
09:08	21 TIMPSON M defensive rebound (13)			
09:00	1 TURNAGE B substitution out			
09:00	6 VALENZUELA M substitution in			
08:49	3 GORDON O 3pt FG, jump shot missed			
08:47	offensive rebound (36)			
08:26	3 GORDON O turnover bad pass (1)			5 COWLES M steal (1)
08:17		76-49	27	11 CONLEY R 2pt FG fast break from turnover in the paint, layup made (8)
08:17				2 SØRBYE A assist (5)
08:01	3 GORDON O 2pt FG in the paint, floating jump shot missed			
07:58				5 COWLES M defensive rebound (4)
07:50	6 VALENZUELA M foul personal (1 - 2)			25 HINDS D foul drawn (3)
07:50	3 GORDON O substitution out			
07:50	4 DOS SANTOS R substitution out			
07:50	21 TIMPSON M substitution out			
07:50	00 LATSON T substitution in			
07:50	13 MEGAS C substitution in			
07:50	32 TREADWELL A substitution in			
07:45		76-51	25	25 HINDS D 2pt FG in the paint, layup made (16)
07:45				21 WILLIAMS E assist (3)
07:26	32 TREADWELL A foul drawn (1)			25 HINDS D foul personal (3 - 1)
07:26	32 TREADWELL A foul drawn (2)			5 COWLES M foul personal (2 - 2)
07:23	11 BOWLES S 3pt FG, jump shot missed			
07:21				11 CONLEY R defensive rebound (4)
07:17				5 COWLES M turnover travel (1)
06:58	00 LATSON T 3pt FG from turnover, jump shot missed			
06:55				2 SØRBYE A defensive rebound (3)
06:50				21 WILLIAMS E 3pt FG, jump shot missed
06:47	00 LATSON T defensive rebound (1)			
06:42	00 LATSON T foul drawn (2)			11 CONLEY R foul personal (2 - 3)
06:38	00 LATSON T 2pt FG in the paint, floating jump shot made (16)	78-51	27	
06:38	00 LATSON T foul drawn (3)			2 SØRBYE A foul shooting (1 - 4)
06:38	00 LATSON T free throw 1 - 1 made (17)	79-51	28	
06:21		79-53	26	5 COWLES M 2pt FG in the paint, jump shot made (6)
06:21				11 CONLEY R assist (3)
06:15	00 LATSON T foul drawn (4)			21 WILLIAMS E foul shooting (2 - 5)
06:15	00 LATSON T free throw 1 - 2 made (18)	80-53	27	
06:15	00 LATSON T free throw 2 - 2 made (19)	81-53	28	

Official Basketball Play by Play - 4th Period
Wake Forest at Florida State
 02/02/25 Donald L. Tucker Center, Tallahassee
 2024-25 FSU Women's Basketball

Game Time: 6:00 PM
Game Duration: 1:48
Attendance: 2,139

Officials: Ryan Durham, Toni Patillo, Nc Cappel

Game Time	FSU	Score	Diff	WFU
06:01		81-55	26	25 HINDS D 2pt FG in the paint, layup made (18)
05:44	11 BOWLES S 3pt FG , step back jump shot missed			
05:41				25 HINDS D defensive rebound (13)
05:24		81-57	24	11 CONLEY R 2pt FG in the paint, jump shot made (10)
05:11	6 VALENZUELA M 3pt FG , jump shot made (3)	84-57	27	
05:11	00 LATSON T assist (5)			
05:03				Timeout 30 Sec
05:03	Timeout media			
05:03	6 VALENZUELA M substitution out			
05:03	32 TREADWELL A substitution out			
05:03	21 TIMPSON M substitution in			
05:03	24 BONNER A substitution in			
05:03				21 WILLIAMS E substitution out
05:03				25 HINDS D substitution out
05:03				0 ANDREWS A substitution in
05:03				12 MOORE K substitution in
04:51	Timeout media			
04:44		84-59	25	5 COWLES M 2pt FG in the paint, layup made (8)
04:31	00 LATSON T foul drawn (5)			5 COWLES M foul shooting (3 - 6)
04:31	11 BOWLES S substitution out			
04:31	1 TURNAGE B substitution in			
04:31	00 LATSON T free throw 1 - 2 made (20)	85-59	26	
04:31	00 LATSON T free throw 2 - 2 made (21)	86-59	27	
04:21	00 LATSON T steal (1)			5 COWLES M turnover lost ball (2)
04:17	00 LATSON T 2pt FG fast break from turnover in the paint, layup made (23)	88-59	29	
04:03				0 ANDREWS A 2pt FG outside the paint, jump shot missed
04:01	1 TURNAGE B defensive rebound (1)			
03:50	00 LATSON T 2pt FG in the paint, pull up jump shot missed			
03:50	21 TIMPSON M offensive rebound (14)			
03:50	13 MEGAS C 3pt FG second chance, jump shot missed			
03:47				11 CONLEY R defensive rebound (5)
03:43		88-61	27	0 ANDREWS A 2pt FG fast break in the paint, layup made (6)
03:43				11 CONLEY R assist (4)
03:26	21 TIMPSON M 2pt FG in the paint, jump shot missed			
03:24				0 ANDREWS A defensive rebound (5)
03:07				Timeout 30 Sec
03:06	13 MEGAS C substitution out			
03:06	3 GORDON O substitution in			
03:06				5 COWLES M substitution out
03:06				11 CONLEY R substitution out
03:06				14 THEUERKAUF R substitution in
03:06				22 JORDAN M substitution in
03:02	24 BONNER A steal (1)			2 SORBYE A turnover lost ball (4)
02:59	24 BONNER A 2pt FG from turnover in the paint, jump shot missed			
02:54				14 THEUERKAUF R defensive rebound (5)
02:53	24 BONNER A steal (2)			14 THEUERKAUF R turnover lost ball (4)
02:49	3 GORDON O 3pt FG from turnover, jump shot made (20)	91-61	30	
02:49	1 TURNAGE B assist (1)			

Officials: Ryan Durham, Toni Patillo, Nc Cappel

Game Time	FSU	Score	Diff	WFU
02:35	24 BONNER A foul personal (2 - 3)			2 SØRBYE A foul drawn (2)
02:31		91-63	28	14 THEUERKAUF R 2pt FG outside the paint, jump shot made (11)
02:31	21 TIMPSON M substitution out			
02:31	24 BONNER A substitution out			
02:31	8 CHAVEZ M substitution in			
02:31	32 TREADWELL A substitution in			
02:15	00 LATSON T foul drawn (6)			14 THEUERKAUF R foul personal (1 - 7)
02:15	00 LATSON T free throw 1 - 2 made (24)	92-63	29	
02:15	00 LATSON T free throw 2 - 2 made (25)	93-63	30	
02:15	00 LATSON T substitution out			
02:15	4 DOS SANTOS R substitution in			
02:02		93-66	27	22 JORDAN M 3pt FG , jump shot made (3)
02:02				0 ANDREWS A assist (1)
01:52	32 TREADWELL A foul drawn (3)			0 ANDREWS A foul personal (1 - 8)
01:52	32 TREADWELL A free throw 1 - 2 made (3)	94-66	28	
01:52	32 TREADWELL A free throw 2 - 2 made (4)	95-66	29	
01:39	1 TURNAGE B foul personal (1 - 4)			14 THEUERKAUF R foul drawn (2)
01:38	3 GORDON O steal (2)			2 SØRBYE A turnover bad pass (5)
01:34	3 GORDON O 2pt FG from turnover outside the paint, jump shot made (22)	97-66	31	
01:17				22 JORDAN M 3pt FG , jump shot missed
01:14	1 TURNAGE B defensive rebound (2)			
01:04	8 CHAVEZ M turnover travel (1)			
00:48		97-68	29	2 SØRBYE A 2pt FG from turnover in the paint, layup made (2)
00:48				12 MOORE K assist (2)
00:48	4 DOS SANTOS R foul shooting (1 - 5)			2 SØRBYE A foul drawn (3)
00:48				2 SØRBYE A free throw 1 - 1 missed
00:45	4 DOS SANTOS R defensive rebound (2)			
00:35	32 TREADWELL A 3pt FG , jump shot missed			
00:32				0 ANDREWS A defensive rebound (6)
00:15				14 THEUERKAUF R 2pt FG outside the paint, jump shot missed
00:12	32 TREADWELL A defensive rebound (2)			
END OF GAME				
FSU 97-68 WFU				

Officials: Ryan Durham, Toni Patillo, Nc Cappel

Wake Forest - 21

NO.	Name	Min	FG			Rebounds			Fouls		TP	AS	TO	ST	Blocks		+/-
			M-A	M-A	M-A	OR	DR	TOT	PF	FD					BS	BA	
25	Demeara Hinds	F 04:57	2-3	0-0	0-0	0	1	1	1	1	4	0	0	0	0	0	-1
2	Aurora Sørbye	G 10:00	1-1	0-0	0-1	0	1	1	1	2	2	1	2	0	0	0	-3
11	Raegyn Conley	G 06:54	2-2	0-0	0-0	0	2	2	1	0	4	2	0	0	0	0	-1
14	Rylie Theuerkauf	G 03:06	1-2	0-0	0-0	0	1	1	1	1	2	0	1	0	0	0	-2
21	Elise Williams	G 04:57	0-1	0-1	0-0	0	0	0	1	0	0	1	1	0	0	0	-1
5	Malaya Cowles	06:54	2-2	0-0	0-0	0	1	1	2	1	4	0	2	1	0	0	-1
0	Alyssa Andrews	05:03	1-2	0-0	0-0	0	2	2	1	0	2	1	0	0	0	0	-2
12	Kennedy Moore	05:03	0-0	0-0	0-0	0	0	0	0	0	0	1	0	0	0	0	-2
22	Madisyn Jordan	03:06	1-2	1-2	0-0	0	0	0	0	0	3	0	0	0	0	0	-2
Team						0	0	0			0						
Totals			10-15	1-3	0-1	0	8	8	8	5	21	6	6	1	0	0	-3

Shooting By Period		
4th FG%	10-15	66.7%
3PT%	1-3	33.3%
FT%	0-1	0%
GMFG%	10-15	66.7%
3PT%	1-3	33.3%
FT%	0-1	0.0%

Dead Ball Rebounds: 0, 0

Technical Fouls: NONE

Florida State - 24

NO.	Name	Min	FG			Rebounds			Fouls		TP	AS	TO	ST	Blocks		+/-
			M-A	M-A	M-A	OR	DR	TOT	PF	FD					BS	BA	
21	Makayla Timpson	F 04:42	0-1	0-0	0-0	1	1	2	0	0	0	0	0	1	0	0	2
22	Malea Williams	F 00:00	0-0	0-0	0-0	0	0	0	0	0	0	0	0	0	0	0	0
00	Ta'Niya Latson	G 05:35	2-4	0-1	7-7	0	1	1	0	5	11	1	0	1	0	0	3
3	O'Mariah Gordon	G 05:16	2-4	1-2	0-0	0	0	0	0	0	5	1	1	1	0	0	3
11	Sydney Bowles	G 05:29	1-3	1-3	0-0	0	0	0	1	0	3	0	0	0	0	0	-1
6	Mariana Valenzuela	03:57	1-1	1-1	0-0	0	0	0	1	0	3	0	0	0	0	0	-2
13	Carla Viegas	04:44	0-1	0-1	0-0	0	0	0	0	0	0	0	0	0	0	0	0
32	Avery Treadwell	05:18	0-1	0-1	2-2	0	1	1	0	3	2	0	0	0	0	0	1
24	Amaya Bonner	02:32	0-1	0-0	0-0	0	0	0	1	0	0	0	0	2	0	0	1
1	Brianna Turnage	05:31	0-0	0-0	0-0	0	2	2	1	0	0	1	0	0	0	0	7
8	Morelia Chavez	02:31	0-0	0-0	0-0	0	0	0	0	0	0	0	1	0	0	0	1
4	Raiane Dos Santos	04:25	0-0	0-0	0-0	0	1	1	1	0	0	0	0	0	0	0	0
Team						1	0	1			0						
Totals			6-16	3-9	9-9	2	6	8	5	8	24	3	2	5	0	0	3

Shooting By Period		
4th FG%	6-16	37.5%
3PT%	3-9	33.3%
FT%	9-9	100%
GMFG%	6-16	37.5%
3PT%	3-9	33.3%
FT%	9-9	100.0%

Dead Ball Rebounds: 0, 0

Technical Fouls: NONE

	WFU	FSU
Biggest lead	0 (1 st 10:00)	31 (4 th 1:34)
Best Scoring Run	4 (4 th 7:45)	4 (4 th 4:17)
Lead Changes	0	
Times Tied	0	
Time with Lead	00:00	09:30

	WFU	FSU
Points from		
Turnovers	4	10
Paint	16	4
Second Chance	0	0
Fast Breaks	4	2
Bench	9	5

	Period by Period Scoring				
	1st	2nd	3rd	4th	TOT
WFU	13	18	16	21	68
FSU	27	24	22	24	97

Wake Forest - 37

NO.	Name	Min	FG			Rebounds			Fouls		TP	AS	TO	ST	Blocks		+/-
			M-A	M-A	M-A	OR	DR	TOT	PF	FD					BS	BA	
25	Demeara Hinds	F 13:22	4-8	0-0	0-0	1	7	8	2	2	8	1	0	0	0	0	-5
2	Aurora Sørbye	G 16:59	1-2	0-0	0-1	0	1	1	1	2	2	2	3	0	0	0	-11
11	Raegyn Conley	G 10:15	2-2	0-0	0-0	0	2	2	2	1	4	2	1	0	0	0	-6
14	Rylie Theuerkauf	G 12:33	3-7	0-1	0-0	0	1	1	1	1	6	1	1	0	0	0	-8
21	Elise Williams	G 13:22	2-5	0-1	0-2	0	2	2	1	2	4	2	2	1	0	1	-5
12	Kennedy Moore	08:41	0-0	0-0	0-0	0	0	0	1	0	0	2	0	0	0	0	-5
0	Alyssa Andrews	09:39	2-3	0-0	0-0	1	3	4	1	1	4	1	0	0	0	0	-2
5	Malaya Cowles	12:03	3-3	0-0	0-0	0	2	2	2	1	6	0	2	1	0	0	-1
22	Madisyn Jordan	03:06	1-2	1-2	0-0	0	0	0	0	0	3	0	0	0	0	0	-2
Team						0	0	0			0		0				
Totals			18-32	1-4	0-3	2	18	20	11	10	37	11	9	2	0	1	-9

Shooting By Period		
3 rd FG%	8-17	47.1%
3PT%	0-1	0.0%
FT%	0-2	0%
4 th FG%	10-15	66.7%
3PT%	1-3	33.3%
FT%	0-1	0%
GMFG%	18-32	56.3%
3PT%	1-4	25.0%
FT%	0-3	0.0%

Dead Ball Rebounds: 1, 0

Technical Fouls: NONE

Florida State - 46

NO.	Name	Min	FG			Rebounds			Fouls		TP	AS	TO	ST	Blocks		+/-
			M-A	M-A	M-A	OR	DR	TOT	PF	FD					BS	BA	
21	Makayla Timpson	F 12:30	2-4	0-1	2-2	2	5	7	0	2	6	0	0	1	1	0	8
22	Malea Williams	F 04:54	1-2	0-0	0-0	2	2	4	2	0	2	1	1	0	0	0	5
00	Ta'Niya Latson	G 12:50	3-12	0-1	7-7	0	1	1	1	5	13	2	0	1	0	0	9
3	O'Mariah Gordon	G 10:49	4-8	2-4	1-2	0	1	1	1	1	11	1	1	2	0	0	8
11	Sydney Bowles	G 11:12	3-5	3-5	0-0	0	0	0	1	0	9	0	0	0	0	0	5
13	Carla Viegas	09:48	0-2	0-2	0-0	0	0	0	0	0	0	1	0	1	0	0	1
24	Amaya Bonner	09:11	0-2	0-0	0-0	1	0	1	2	0	0	0	0	2	0	0	2
32	Avery Treadwell	07:30	0-1	0-1	2-2	0	1	1	0	3	2	0	0	0	0	0	1
4	Raiane Dos Santos	07:22	0-0	0-0	0-0	0	2	2	1	0	0	0	0	0	0	0	0
1	Brianna Turnage	07:26	0-0	0-0	0-0	0	2	2	1	0	0	1	0	0	0	0	7
6	Mariana Valenzuela	03:57	1-1	1-1	0-0	0	0	0	1	0	3	0	0	0	0	0	-2
8	Morelia Chavez	02:31	0-0	0-0	0-0	0	0	0	0	0	0	0	1	0	0	0	1
Team						1	0	1			0		0				
Totals			14-37	6-15	12-13	6	14	20	10	11	46	6	3	7	1	0	9

Shooting By Period		
3 rd FG%	8-21	38.1%
3PT%	3-6	50.0%
FT%	3-4	75%
4 th FG%	6-16	37.5%
3PT%	3-9	33.3%
FT%	9-9	100%
GMFG%	14-37	37.8%
3PT%	6-15	40.0%
FT%	12-13	92.3%

Dead Ball Rebounds: 0, 0

Technical Fouls: NONE

	WFU	FSU
Biggest lead	0 (1 st 10:00)	31 (4 th 1:34)
Best Scoring Run	4 (3 rd 6:29)	7 (3 rd 7:12)
Lead Changes	0	
Times Tied	0	
Time with Lead	00:00	19:47

Points from	WFU	FSU
Turnovers	4	14
Paint	28	12
Second Chance	0	7
Fast Breaks	4	6
Bench	13	5

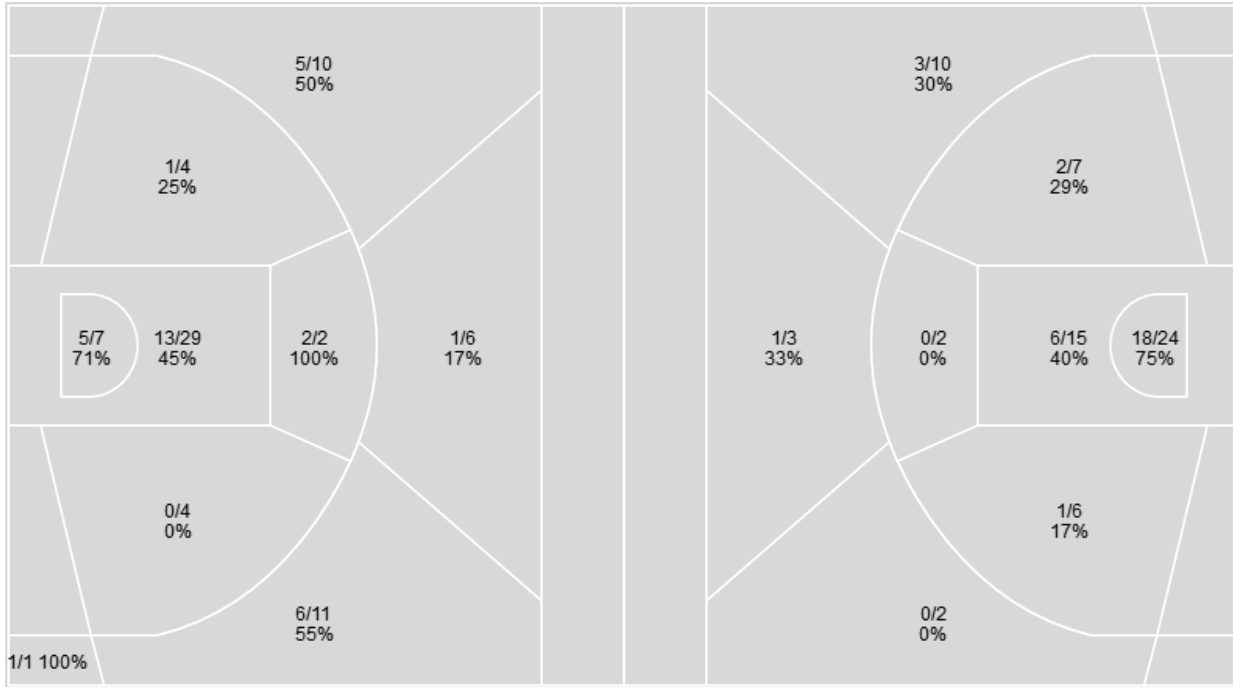
	Period by Period Scoring				
	1st	2nd	3rd	4th	TOT
WFU	13	18	16	21	68
FSU	27	24	22	24	97

Players => All; FG Types => All ; Results => All ;

Players => All; FG Types => All ; Results => All ;

Florida State

Wake Forest



Florida State	M/A	%
Field Goals	34/74	46
2 Points	21/46	46
3 Points	13/28	46
Free Throws	16/18	89

Wake Forest	M/A	%
Field Goals	31/69	45
2 Points	27/54	50
3 Points	4/15	27
Free Throws	2/5	40

Wake Forest

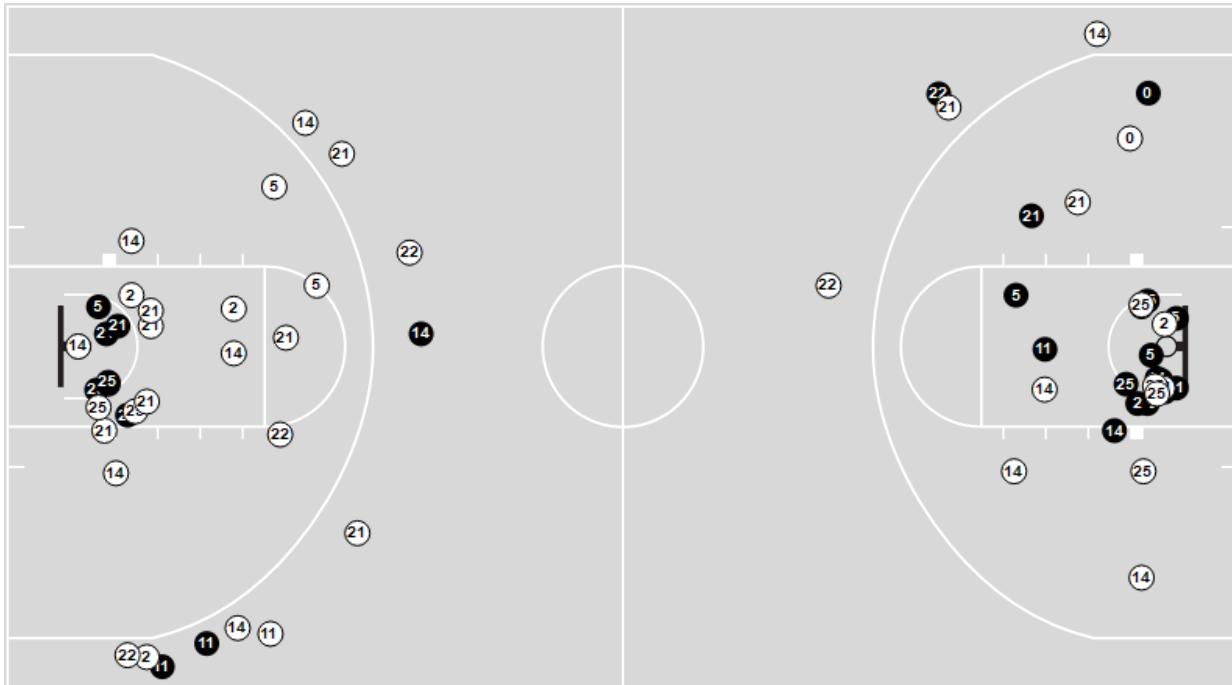
No	Name	Mins		Score		Points Diff		Points per Min		Assists		Rebounds		Steals		Turnovers	
		On	Off	On	Off	On	Off	On	Off	On	Off	On	Off	On	Off	On	Off
0	Alyssa Andrews	20:14	19:46	42-48	26-49	-6	-23	2.08	1.32	10	8	20	19	2	2	8	8
2	Aurora Sørbye	34:44	05:16	62-84	6-13	-22	-7	1.78	1.14	16	2	33	6	4	0	16	0
5	Malaya Cowles	20:19	19:41	36-43	32-54	-7	-22	1.77	1.63	9	9	22	17	2	2	5	11
11	Raegyn Conley	26:38	13:22	39-68	29-29	-29	0	1.46	2.17	11	7	23	16	3	1	12	4
12	Kennedy Moore	08:41	31:19	21-26	47-71	-5	-24	2.42	1.50	6	12	7	32	0	4	4	12
14	Rylie Theuerkauf	25:35	14:25	39-60	29-37	-21	-8	1.52	2.01	10	8	28	11	2	2	10	6
21	Elise Williams	31:13	08:47	47-78	21-19	-31	2	1.51	2.39	12	6	31	8	4	0	12	4
22	Madisyn Jordan	07:30	32:30	13-18	55-79	-5	-24	1.73	1.69	4	14	6	33	0	4	3	13
25	Demeara Hinds	25:06	14:54	41-60	27-37	-19	-10	1.63	1.81	12	6	25	14	3	1	10	6

Florida State

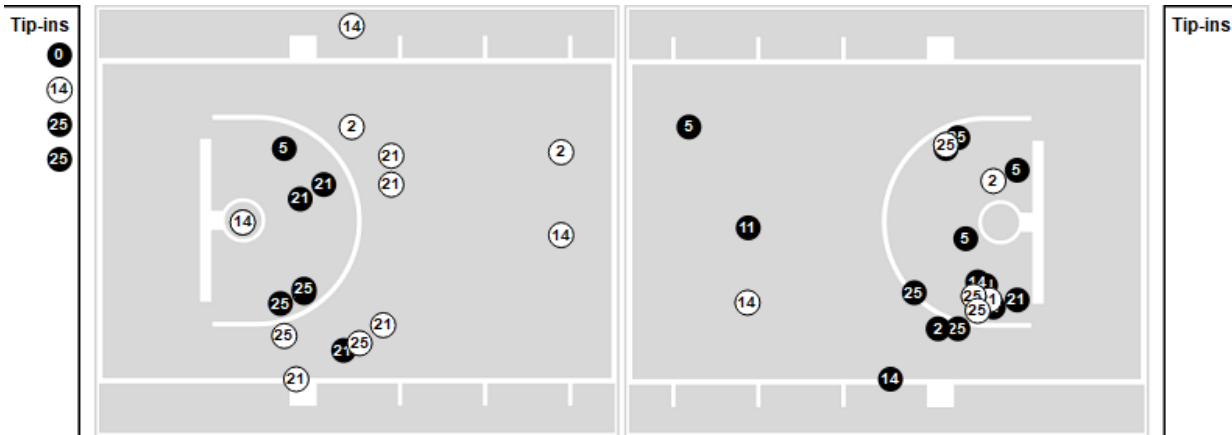
No	Name	Mins		Score		Points Diff		Points per Min		Assists		Rebounds		Steals		Turnovers	
		On	Off	On	Off	On	Off	On	Off	On	Off	On	Off	On	Off	On	Off
00	Ta'Niya Latson	26:26	13:34	70-49	27-19	21	8	2.65	1.99	9	4	25	17	6	2	5	4
1	Brianna Turnage	11:20	28:40	21-23	76-45	-2	31	1.85	2.65	3	10	10	32	5	3	3	6
3	O'Mariah Gordon	24:33	15:27	51-35	46-33	16	13	2.08	2.98	7	6	28	14	6	2	6	3
4	Raiane Dos Santos	10:45	29:15	21-20	76-48	1	28	1.95	2.60	3	10	10	32	2	6	4	5
6	Mariana Valenzuela	08:55	31:05	17-16	80-52	1	28	1.91	2.57	3	10	7	35	0	8	3	6
8	Morelia Chavez	02:31	37:29	6-5	91-63	1	28	2.38	2.43	0	13	3	39	1	7	1	8
11	Sydney Bowles	24:12	15:48	61-34	36-34	27	2	2.52	2.28	8	5	29	13	4	4	4	5
13	Carla Viegas	18:40	21:20	43-43	54-25	0	29	2.30	2.53	7	6	12	30	2	6	5	4
21	Makayla Timpson	26:00	14:00	57-34	40-34	23	6	2.19	2.86	7	6	31	11	7	1	5	4
22	Malea Williams	16:11	23:49	50-23	47-45	27	2	3.09	1.97	6	7	21	21	2	6	4	5
24	Amaya Bonner	18:28	21:32	51-30	46-38	21	8	2.76	2.14	7	6	23	19	4	4	3	6
32	Avery Treadwell	11:59	28:01	37-28	60-40	9	20	3.09	2.14	5	8	11	31	1	7	2	7

Players => All ; FG Types => All ; Results => All ;
Wake Forest

All Field Goals



Shots in the Paint



● Made ● Missed N - Player Number

Wake Forest	M/A	%
Field Goals	31/69	45
2 Points	27/54	50
3 Points	4/15	27
Free Throws	2/5	40

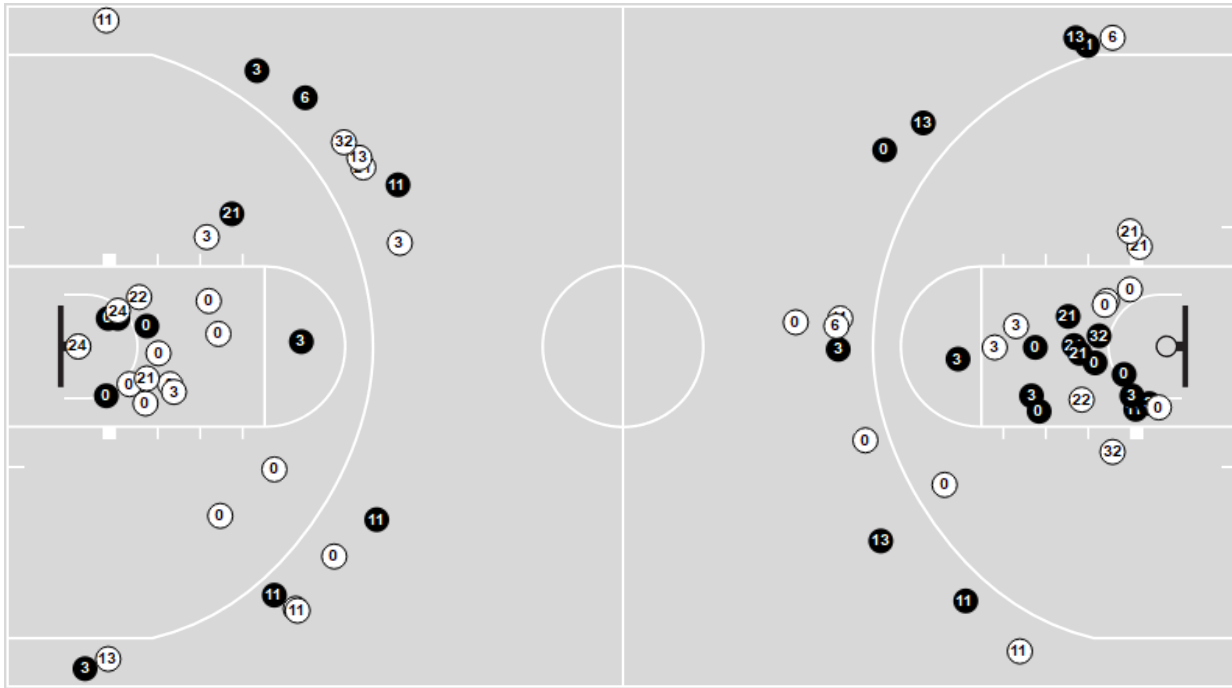
Wake Forest	M/A	%
Points in the Paint	48 (24/39)	62
Fast Break Points	4 (2/2)	100
Second Chance Points	6 (3/8)	38
Effective FG%	48	

Officials: Ryan Durham, Toni Patillo, Nc Cappel

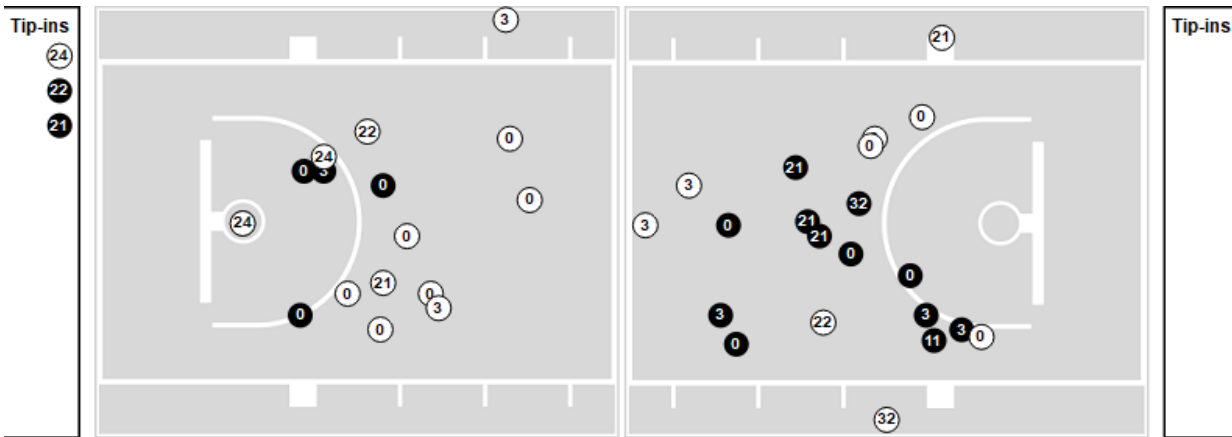
Players => All ; FG Types => All ; Results => All ;

Florida State

All Field Goals



Shots in the Paint



● Made ○ Missed N - Player Number

Florida State	M/A	%
Field Goals	34/74	46
2 Points	21/46	46
3 Points	13/28	46
Free Throws	16/18	89

Florida State	M/A	%
Points in the Paint	36 (18/36)	50
Fast Break Points	8 (5/5)	100
Second Chance Points	13 (6/9)	67
Effective FG%	55	

Wake Forest

Lineup	Quarter On	Time On	Quarter Off	Time Off	Time on Court	Score	Score Diff	Reb	Stl	Tov	Ast	PPP
2- Sørbye A/ 11- Conley R/ 14- Theuerkauf R/ 21- Williams E/ 25- Hinds D/	1	10:00	1	06:20	03:40	4-11	-7	4	0	2	1	0.5814
2- Sørbye A/ 5- Cowles M 11- Conley R/ 14- Theuerkauf R/ 21- Williams E/	1	06:20	1	04:59	01:21	0-6	-6	1	0	1	0	0.0000
0- Andrews A/ 2- Sørbye A/ 5- Cowles M 14- Theuerkauf R/ 21- Williams E/	1	04:59	1	01:22	03:37	6-3	3	6	1	1	0	0.8571
0- Andrews A/ 2- Sørbye A/ 11- Conley R/ 21- Williams E/ 25- Hinds D/	1	01:22	2	07:59	03:23	9-10	-1	1	1	2	3	1.2857
2- Sørbye A/ 11- Conley R/ 14- Theuerkauf R/ 22- Jordan M 25- Hinds D/	2	07:59	2	06:53	01:06	0-0	0	2	0	0	0	0.0000
2- Sørbye A/ 5- Cowles M 11- Conley R/ 14- Theuerkauf R/ 22- Jordan M/	2	06:53	2	05:50	01:03	6-0	6	1	0	0	2	3.0000
5- Cowles M 11- Conley R/ 14- Theuerkauf R/ 21- Williams E/ 22- Jordan M/	2	05:50	2	03:35	02:15	0-9	-9	1	0	0	0	0.0000
0- Andrews A/ 2- Sørbye A/ 11- Conley R/ 21- Williams E/ 25- Hinds D/	2	03:35	3	10:00	03:35	6-12	-6	3	0	1	1	0.8571
2- Sørbye A/ 11- Conley R/ 14- Theuerkauf R/ 21- Williams E/ 25- Hinds D/	3	10:00	3	07:12	02:48	0-5	-5	3	1	3	0	0.0000
2- Sørbye A/ 14- Theuerkauf R/ 12- Moore K/ 21- Williams E/ 25- Hinds D/	3	07:12	3	05:09	02:03	6-7	-1	2	0	0	2	1.5000
0- Andrews A/ 2- Sørbye A/ 5- Cowles M 14- Theuerkauf R/ 12- Moore K/	3	05:09	3	03:34	01:35	4-6	-2	1	0	0	1	1.3333
0- Andrews A/ 5- Cowles M 14- Theuerkauf R/ 21- Williams E/ 25- Hinds D/	3	03:34	3	00:33	03:00	6-4	2	5	0	0	2	1.2000
2- Sørbye A/ 5- Cowles M 11- Conley R/ 21- Williams E/ 25- Hinds D/	3	00:33	4	05:03	05:30	10-11	-1	5	1	2	3	1.0121
0- Andrews A/ 2- Sørbye A/ 5- Cowles M 11- Conley R/ 12- Moore K/	4	05:03	4	03:06	01:57	4-4	0	2	0	1	1	1.0000
0- Andrews A/ 2- Sørbye A/ 14- Theuerkauf R/ 12- Moore K/ 22- Jordan M/	4	03:06	4	00:00	03:06	7-9	-2	2	0	3	2	0.8294

Official Basketball Rotations Summary - Final
Wake Forest at Florida State
 02/02/25 Donald L. Tucker Center, Tallahassee
 2024-25 FSU Women's Basketball

Game Time: 6:00 PM
 Game Duration: 1:48
 Attendance: 2,139

Officials: Ryan Durham, Toni Patillo, Nc Cappel

Florida State

Lineup	Quarter On	Time On	Quarter Off	Time Off	Time on Court	Score	Score Diff	Reb	Stl	Tov	Ast	PPP
00- Latson T/3- Gordon O/11- Bowles S/21- Timpson M/22- Williams M	1	10:00	1	06:20	03:40	11-4	7	4	0	0	0	1.3750
00- Latson T/6- Valenzuela M 11- Bowles S/ 21- Timpson M 24- Bonner A	1	06:20	1	05:15	01:05	4-0	4	2	0	0	1	1.6393
3- Gordon O/6- Valenzuela M 11- Bowles S/ 21- Timpson M 24- Bonner A	1	05:15	1	04:59	00:16	2-0	2	0	0	0	0	2.0000
3- Gordon O/6- Valenzuela M 13- Viegas C/ 21- Timpson M 24- Bonner A	1	04:59	1	01:22	03:37	3-6	-3	3	0	2	1	0.4286
00- Latson T/4- Dos Santos R/ 13- Viegas C/ 22- Williams M 32- Treadwell A	1	01:22	2	10:00	01:22	7-3	4	1	0	0	1	2.3333
00- Latson T/1- Turnage B/ 4- Dos Santos R/ 13- Viegas C/ 22- Williams M	2	10:00	2	07:59	02:01	3-6	-3	0	0	2	1	0.7500
00- Latson T/1- Turnage B/ 3- Gordon O/ 11- Bowles S/ 21- Timpson M	2	07:59	2	06:06	01:53	0-6	-6	2	0	0	0	0.0000
3- Gordon O/ 11- Bowles S/ 21- Timpson M 22- Williams M 24- Bonner A	2	06:06	2	03:35	02:31	9-0	9	6	0	0	1	2.2500
00- Latson T/ 11- Bowles S/ 21- Timpson M 22- Williams M 24- Bonner A	2	03:35	2	03:07	00:28	2-0	2	0	1	1	0	0.8621
00- Latson T/ 11- Bowles S/ 22- Williams M 24- Bonner A 32- Treadwell A	2	03:07	2	01:52	01:15	5-2	3	3	0	0	1	2.5000
00- Latson T/ 11- Bowles S/ 13- Viegas C/ 24- Bonner A 32- Treadwell A	2	01:52	2	01:47	00:05	2-0	2	0	0	0	0	2.0000
00- Latson T/3- Gordon O/ 11- Bowles S/ 13- Viegas C/ 32- Treadwell A	2	01:47	3	10:00	01:47	3-4	-1	1	0	1	1	0.8721
00- Latson T/3- Gordon O/ 11- Bowles S/ 21- Timpson M 22- Williams M	3	10:00	3	08:01	01:59	5-0	5	4	1	1	1	1.2500
00- Latson T/3- Gordon O/ 11- Bowles S/ 13- Viegas C/ 21- Timpson M	3	08:01	3	07:12	00:49	0-0	0	0	1	0	0	0.0000
00- Latson T/ 11- Bowles S/ 13- Viegas C/ 21- Timpson M 24- Bonner A	3	07:12	3	05:09	02:03	7-6	1	2	0	0	1	1.4344
3- Gordon O/ 11- Bowles S/ 13- Viegas C/ 24- Bonner A 32- Treadwell A	3	05:09	3	04:50	00:19	0-0	0	1	0	0	0	0.0000
3- Gordon O/ 13- Viegas C/ 22- Williams M 24- Bonner A 32- Treadwell A	3	04:50	3	02:57	01:53	6-6	0	1	0	0	1	1.5464
00- Latson T/4- Dos Santos R/ 21- Timpson M 22- Williams M 24- Bonner A	3	02:57	3	01:55	01:02	2-2	0	2	0	0	0	1.0000
00- Latson T/ 1- Turnage B/ 4- Dos Santos R/ 21- Timpson M 24- Bonner A	3	01:55	3	00:33	01:21	2-2	0	1	0	0	0	1.0000
1- Turnage B/ 3- Gordon O/ 4- Dos Santos R/ 11- Bowles S/ 21- Timpson M	3	00:33	4	09:00	01:33	3-0	3	2	1	0	1	1.5000
3- Gordon O/ 4- Dos Santos R/ 6- Valenzuela M 11- Bowles S/ 21- Timpson M	4	09:00	4	07:50	01:10	0-2	-2	1	0	1	0	0.0000
00- Latson T/6- Valenzuela M 11- Bowles S/ 13- Viegas C/ 32- Treadwell A	4	07:50	4	05:03	02:47	8-8	0	1	0	0	1	1.2658
00- Latson T/ 11- Bowles S/ 13- Viegas C/ 21- Timpson M 24- Bonner A	4	05:03	4	04:31	00:32	0-2	-2	0	0	0	0	0.0000
00- Latson T/ 1- Turnage B/ 13- Viegas C/ 21- Timpson M 24- Bonner A	4	04:31	4	03:06	01:25	4-2	2	2	1	0	0	1.0309
00- Latson T/ 1- Turnage B/ 3- Gordon O/ 21- Timpson M 24- Bonner A	4	03:06	4	02:31	00:35	3-2	1	0	2	0	1	1.5000
00- Latson T/ 1- Turnage B/ 3- Gordon O/ 8- Chavez M 32- Treadwell A	4	02:31	4	02:15	00:16	2-0	2	0	0	0	0	2.2727
1- Turnage B/ 3- Gordon O/ 4- Dos Santos R/ 8- Chavez M 32- Treadwell A	4	02:15	4	00:00	02:15	4-5	-1	3	1	1	0	1.0309

Officials: Ryan Durham, Toni Patillo, Nc Cappel

Wake Forest

Lineup	Time	Score	Score Diff	Pts/Min	Reb	Stl	Tov	Ast	PPP
0- Andrews A/ 2- Sørbye A/ 11- Conley R/ 21- Williams E/ 25- Hinds D/	06:58	15-22	-7	2.1531	4	1	3	4	1.0714
2- Sørbye A/ 11- Conley R/ 14- Theuerkauf R/ 21- Williams E/ 25- Hinds D/	06:28	4-16	-12	0.6186	7	1	5	1	0.3106
2- Sørbye A/ 5- Cowles M/ 11- Conley R/ 21- Williams E/ 25- Hinds D/	05:30	10-11	-1	1.8165	5	1	2	3	1.0121
0- Andrews A/ 2- Sørbye A/ 5- Cowles M/ 14- Theuerkauf R/ 21- Williams E/	03:37	6-3	3	1.6590	6	1	1	0	0.8571
0- Andrews A/ 2- Sørbye A/ 14- Theuerkauf R/ 12- Moore K/ 22- Jordan M	03:06	7-9	-2	2.2581	2	0	3	2	0.8294
0- Andrews A/ 5- Cowles M/ 14- Theuerkauf R/ 21- Williams E/ 25- Hinds D/	03:00	6-4	2	1.9923	5	0	0	2	1.2000
5- Cowles M/ 11- Conley R/ 14- Theuerkauf R/ 21- Williams E/ 22- Jordan M	02:15	0-9	-9	0.0000	1	0	0	0	0.0000
2- Sørbye A/ 14- Theuerkauf R/ 12- Moore K/ 21- Williams E/ 25- Hinds D/	02:03	6-7	-1	2.9268	2	0	0	2	1.5000
0- Andrews A/ 2- Sørbye A/ 5- Cowles M/ 11- Conley R/ 12- Moore K/	01:57	4-4	0	2.0513	2	0	1	1	1.0000
0- Andrews A/ 2- Sørbye A/ 5- Cowles M/ 14- Theuerkauf R/ 12- Moore K/	01:35	4-6	-2	2.5263	1	0	0	1	1.3333
2- Sørbye A/ 5- Cowles M/ 11- Conley R/ 14- Theuerkauf R/ 21- Williams E/	01:21	0-6	-6	0.0000	1	0	1	0	0.0000
2- Sørbye A/ 11- Conley R/ 14- Theuerkauf R/ 22- Jordan M/ 25- Hinds D/	01:06	0-0	0	0.0000	2	0	0	0	0.0000
2- Sørbye A/ 5- Cowles M/ 11- Conley R/ 14- Theuerkauf R/ 22- Jordan M	01:03	6-0	6	5.7143	1	0	0	2	3.0000

Florida State

Lineup	Time	Score	Score Diff	Pts/Min	Reb	Stl	Tov	Ast	PPP
00- Latson T/3- Gordon O/ 11- Bowles S/ 21- Timpson M/ 22- Williams M	05:39	16-4	12	2.8319	8	1	1	1	1.3333
3- Gordon O/ 6- Valenzuela M/ 13- Viegas C/ 21- Timpson M/ 24- Bonner A/	03:37	3-6	-3	0.8295	3	0	2	1	0.4286
00- Latson T/ 6- Valenzuela M/ 11- Bowles S/ 13- Viegas C/ 32- Treadwell A/	02:47	8-8	0	2.8743	1	0	0	1	1.2658
00- Latson T/ 11- Bowles S/ 13- Viegas C/ 21- Timpson M/ 24- Bonner A/	02:35	7-8	-1	2.7097	2	0	0	1	1.4344
3- Gordon O/ 11- Bowles S/ 21- Timpson M/ 22- Williams M/ 24- Bonner A/	02:31	9-0	9	3.5762	6	0	0	1	2.2500
1- Turnage B/ 3- Gordon O/ 4- Dos Santos R/ 8- Chavez M/ 32- Treadwell A/	02:15	4-5	-1	1.7778	3	1	1	0	1.0309
00- Latson T/ 1- Turnage B/ 4- Dos Santos R/ 13- Viegas C/ 22- Williams M/	02:01	3-6	-3	1.4876	0	0	2	1	0.7500
00- Latson T/ 1- Turnage B/ 3- Gordon O/ 11- Bowles S/ 21- Timpson M/	01:53	0-6	-6	0.0000	2	0	0	0	0.0000
3- Gordon O/ 13- Viegas C/ 22- Williams M/ 24- Bonner A/ 32- Treadwell A/	01:53	6-6	0	3.1858	1	0	0	1	1.5464
00- Latson T/ 3- Gordon O/ 11- Bowles S/ 13- Viegas C/ 32- Treadwell A/	01:47	3-4	-1	1.6822	1	0	1	1	0.8721
1- Turnage B/ 3- Gordon O/ 4- Dos Santos R/ 11- Bowles S/ 21- Timpson M/	01:33	3-0	3	1.9293	2	1	0	1	1.5000
00- Latson T/ 1- Turnage B/ 13- Viegas C/ 21- Timpson M/ 24- Bonner A/	01:25	4-2	2	2.8235	2	1	0	0	1.0309
00- Latson T/ 4- Dos Santos R/ 13- Viegas C/ 22- Williams M/ 32- Treadwell A/	01:22	7-3	4	5.1220	1	0	0	1	2.3333
00- Latson T/ 1- Turnage B/ 4- Dos Santos R/ 21- Timpson M/ 24- Bonner A/	01:21	2-2	0	1.4688	1	0	0	0	1.0000
00- Latson T/ 11- Bowles S/ 22- Williams M/ 24- Bonner A/ 32- Treadwell A/	01:15	5-2	3	4.0000	3	0	0	1	2.5000
3- Gordon O/ 4- Dos Santos R/ 6- Valenzuela M/ 11- Bowles S/ 21- Timpson M/	01:10	0-2	-2	0.0000	1	0	1	0	0.0000
00- Latson T/ 6- Valenzuela M/ 11- Bowles S/ 21- Timpson M/ 24- Bonner A/	01:05	4-0	4	3.6923	2	0	0	1	1.6393
00- Latson T/ 4- Dos Santos R/ 21- Timpson M/ 22- Williams M/ 24- Bonner A/	01:02	2-2	0	1.9355	2	0	0	0	1.0000
00- Latson T/ 3- Gordon O/ 11- Bowles S/ 13- Viegas C/ 21- Timpson M/	00:49	0-0	0	0.0000	0	1	0	0	0.0000
00- Latson T/ 1- Turnage B/ 3- Gordon O/ 21- Timpson M/ 24- Bonner A/	00:35	3-2	1	5.1429	0	2	0	1	1.5000
00- Latson T/ 11- Bowles S/ 21- Timpson M/ 22- Williams M/ 24- Bonner A/	00:28	2-0	2	4.2857	0	1	1	0	0.8621
3- Gordon O/ 11- Bowles S/ 13- Viegas C/ 24- Bonner A/ 32- Treadwell A/	00:19	0-0	0	0.0000	1	0	0	0	0.0000
3- Gordon O/ 6- Valenzuela M/ 11- Bowles S/ 21- Timpson M/ 24- Bonner A/	00:16	2-0	2	7.5000	0	0	0	0	2.0000
00- Latson T/ 1- Turnage B/ 3- Gordon O/ 8- Chavez M/ 32- Treadwell A/	00:16	2-0	2	7.5000	0	0	0	0	2.2727
00- Latson T/ 11- Bowles S/ 13- Viegas C/ 24- Bonner A/ 32- Treadwell A/	00:05	2-0	2	24.0000	0	0	0	0	2.0000