

## FINAL SCORE



**Florida State**

**77**



**Tennessee**

**79**

December 05, 2024 • Food City Center

## FINAL STATISTICS

# FLORIDA STATE<sup>®</sup>

## BASKETBALL

### FINAL: RV TENNESSEE 79, RV FSU 77

- » Ta'Niya Latson led the Florida State against Tennessee with 38 points, setting a new career high. Her 38 points tie the third-best performance in program history, and tie for the fifth-best in the nation this year along with Makayla Timpson.
- » FSU is the only program in the nation to have two different players post performances ranking in the top five in the country this season.
- » Latson was 15-of-25 from the floor. Setting a career high at 15 field goals ties the most made in a single game this season in the nation, along with Timpson. 15 FGM also ties the third highest in program history.
- » Timpson added her fifth double-double of 2024-25, scoring 13 points and 11 rebounds. It was the 36th of her career. She needs five to tie the program record set by Natasha Howard at 41.
- » The Seminoles trailed by 20 with 2:09 to go in the first half. Out of the break, FSU went on 17-2 run to cut the Lady Vols lead to on at the media timeout. FSU would stretch the run to 23-4, scoring 30 points in a single quarter for the seventh time this season.
- » FSU turned in 54 points in the paint and contributed 25 fast break points.
- » FSU was 31-of-69 from the floor, shooting 45 percent.

### FSU STARTERS

Player	20-21	21-22	22-23	23-24	24-25	Tot
Ta'Niya Latson	-	-	31	33	9	73
Makayla Timpson	-	1	33	34	10	78
O'Mariah Gordon	-	20	2	34	10	66
*Malea Williams	0	3	4	31	6	44
Carla Viegas	-	-	-	0	10	10
^Sydney Bowles	-	-	29	1	1	31
Brianna Turnage	-	-	0	19	4	23

\*At Cincinnati, ^ at Texas A&M

### FSU TOP SCORERS

Player	PTS	FGM	FT	3PT	AST	REB
Ta'Niya Latson	38	15-25	5-6	3-6	1	4
O'Mariah Gordon	16	7-16	2-2	0-3	3	6
Makayla Timpson	13	5-11	3-4	0-0	2	11
Sydney Bowles	10	4-7	1-1	1-1	0	3





Officials: Gina Cross, Kevin Pethel, Brenda Pantoja

Florida State - 77

Record: 8-2

NO.	Name	Min	FG			3P			FT			Rebounds			Fouls		TP	AS	TO	ST	Blocks		+/-
			M-A	M-A	M-A	OR	DR	TOT	PF	FD	BS	BA											
21	Makayla Timpson	F 38:19	5-11	0-0	3-4	4	7	11	0	2	13	2	4	0	3	1	-4						
00	Ta'Niya Latson	G 33:17	15-25	3-6	5-6	0	4	4	1	7	38	1	4	3	1	1	-3						
1	Brianna Turnage	G 16:01	0-1	0-1	0-0	0	3	3	0	0	0	2	2	1	0	0	12						
3	O'Mariah Gordon	G 36:08	7-16	0-3	2-2	2	4	6	4	2	16	3	1	2	0	0	-1						
13	Carla Viegas	G 08:50	0-1	0-1	0-0	0	0	0	0	0	0	0	1	0	0	0	10						
11	Sydney Bowles	29:33	4-7	1-1	1-1	0	3	3	4	4	10	1	0	0	0	1	4						
24	Amaya Bonner	16:25	0-4	0-1	0-0	1	2	3	1	0	0	0	1	1	0	1	-11						
6	Mariana Valenzuela	12:33	0-2	0-2	0-0	0	3	3	0	0	0	1	2	0	1	0	-15						
32	Avery Treadwell	01:41	0-0	0-0	0-0	0	0	0	0	0	0	0	0	0	0	0	2						
4	Raiane Dos Santos	07:13	0-2	0-2	0-0	0	0	0	0	0	0	0	1	1	0	0	-4						
Team						3	3	6			0			0									
<b>Totals</b>			31-69	4-17	11-13	10	29	39	10	15	77	10	16	8	5	4	-2						

Technical Fouls::NONE

Shooting By Period		
1st FG%	6-18	33.3%
3PT%	0-2	0.0%
FT%	3-4	75%
2nd FG%	5-17	29.4%
3PT%	2-7	28.6%
FT%	0-0	0%
3rd FG%	11-18	61.1%
3PT%	1-3	33.3%
FT%	7-8	87.5%
4th FG%	9-16	56.3%
3PT%	1-5	20.0%
FT%	1-1	100%
GM FG%	31-69	44.9%
3PT%	4-17	23.5%
FT%	11-13	84.6%

Dead Ball Rebounds: 3, 0

Tennessee - 79

Record: 6-0

NO.	Name	Min	FG			3P			FT			Rebounds			Fouls		TP	AS	TO	ST	Blocks		+/-
			M-A	M-A	M-A	OR	DR	TOT	PF	FD	BS	BA											
11	Zee Spearman	F 15:31	6-14	1-6	0-0	3	2	5	4	0	13	0	0	0	0	0	-4						
2	Ruby Whitehorn	G 20:22	2-9	0-1	0-0	2	2	4	2	0	4	4	0	0	1	1	-5						
7	Samara Spencer	G 26:38	4-6	2-2	1-2	1	6	7	2	4	11	4	4	1	0	0	12						
21	Tess Darby	G 17:29	2-6	2-5	0-0	0	1	1	0	0	6	0	1	1	0	0	11						
55	Talaysia Cooper	G 24:22	10-17	1-4	1-3	4	3	7	3	4	22	3	3	2	2	1	7						
0	Jewel Spear	25:26	3-10	2-6	0-0	0	2	2	2	0	8	1	2	0	0	2	-6						
1	Sara Puckett	19:12	1-7	0-3	0-0	3	1	4	0	0	2	1	1	2	0	0	-4						
4	Kaniya Boyd	19:31	0-3	0-3	0-0	2	1	3	0	0	0	1	2	0	0	0	-12						
33	Alyssa Latham	17:18	4-8	1-3	0-2	3	4	7	1	2	9	0	1	0	1	1	-2						
53	Jillian Hollingshead	14:11	2-5	0-2	0-0	0	4	4	1	0	4	0	1	0	0	0	13						
Team						5	1	6			0			1									
<b>Totals</b>			34-85	9-35	2-7	23	27	50	15	10	79	14	16	6	4	5	2						

Technical Fouls::NONE

Shooting By Period		
1st FG%	9-24	37.5%
3PT%	2-12	16.7%
FT%	1-4	25%
2nd FG%	9-16	56.3%
3PT%	6-11	54.5%
FT%	0-0	0%
3rd FG%	5-23	21.7%
3PT%	1-7	14.3%
FT%	1-2	50%
4th FG%	11-22	50.0%
3PT%	0-5	0.0%
FT%	0-1	0%
GM FG%	34-85	40.0%
3PT%	9-35	25.7%
FT%	2-7	28.6%

Dead Ball Rebounds: 4, 0

	NOLES	TENN
Biggest lead	2 (1 <sup>st</sup> 9:50)	20 (2 <sup>nd</sup> 2:06)
Best Scoring Run	13(3 <sup>rd</sup> 6:45)	13(2 <sup>nd</sup> 2:06)
Lead Changes	5	
Times Tied	5	
Time with Lead	00:47	35:45

	NOLES	TENN
Points from		
Turnovers	10	21
Paint	54	46
Second Chance	6	19
Fast Breaks	25	16
Bench	10	23

	Period by Period Scoring				
	1st	2nd	3rd	4th	TOT
NOLES	15	12	30	20	77
TENN	21	24	12	22	79



**Officials:** Gina Cross, Kevin Pethel, Brenda Pantoja

**Period 1**

**Quarter Starters:**

**TENN**                      2 Whitehorn R                      7 Spencer S                      11 Spearman Z                      21 Darby T                      55 Cooper T  
**NOLES**                      00 Latson T                      1 Turnage B                      3 Gordon O                      13 Viegas C                      21 Timpson M

Game Time	TENN	Score	Diff	NOLES
10:00	11 SPEARMAN Z jumpball lost			21 TIMPSON M jumpball won
09:50		<b>0-2</b>	<b>-2</b>	3 GORDON O 2pt FG in the paint, floating jump shot made (2)
09:41	11 SPEARMAN Z 3pt FG , jump shot made (3)	<b>3-2</b>	<b>1</b>	
09:41	55 COOPER T assist (1)			
09:28				1 TURNAGE B 3pt FG , jump shot missed
09:23	7 SPENCER S defensive rebound (1)			
09:22	21 DARBY T 3pt FG , jump shot missed			
09:18				3 GORDON O defensive rebound (1)
09:08				1 TURNAGE B turnover bad pass (1)
09:08	2 WHITEHORN R substitution out			
09:08	7 SPENCER S substitution out			
09:08	21 DARBY T substitution out			
09:08	0 SPEAR J substitution in			
09:08	1 PUCKETT S substitution in			
09:08	4 BOYD K substitution in			
08:52	55 COOPER T 2pt FG from turnover in the paint, jump shot missed			
08:50	4 BOYD K offensive rebound (1)			
08:47	1 PUCKETT S 3pt FG from turnover second chance, jump shot missed			
08:43	55 COOPER T offensive rebound (1)			
08:43	55 COOPER T 2pt FG from turnover second chance in the paint, tip-in layup made (2)	<b>5-2</b>	<b>3</b>	
08:30				3 GORDON O 2pt FG in the paint, driving layup missed
08:27	1 PUCKETT S defensive rebound (1)			
08:20	0 SPEAR J substitution out			
08:20	1 PUCKETT S substitution out			
08:20	4 BOYD K substitution out			
08:20	11 SPEARMAN Z substitution out			
08:20	55 COOPER T substitution out			
08:20	2 WHITEHORN R substitution in			
08:20	7 SPENCER S substitution in			
08:20	21 DARBY T substitution in			
08:20	33 LATHAM A substitution in			
08:20	53 HOLLINGSHEAD J substitution in			
08:20				1 TURNAGE B substitution out
08:20				13 VIEGAS C substitution out
08:20				11 BOWLES S substitution in
08:20				24 BONNER A substitution in
08:10	21 DARBY T turnover bad pass (1)			
07:52				00 LATSON T turnover travel (1)
07:25	7 SPENCER S turnover bad pass (1)			00 LATSON T steal (1)
07:19				00 LATSON T 2pt FG from turnover in the paint, driving layup missed



**Officials:** Gina Cross, Kevin Pethel, Brenda Pantoja

Game Time	TENN	Score	Diff	NOLES
07:16	53 HOLLINGSHEAD J defensive rebound (1)			
07:11	33 LATHAM A foul drawn (1)			11 BOWLES S foul shooting (1 - 1)
07:11	2 WHITEHORN R substitution out			
07:11	7 SPENCER S substitution out			
07:11	21 DARBY T substitution out			
07:11	53 HOLLINGSHEAD J substitution out			
07:11	0 SPEAR J substitution in			
07:11	1 PUCKETT S substitution in			
07:11	11 SPEARMAN Z substitution in			
07:11	55 COOPER T substitution in			
07:11	33 LATHAM A free throw fast break 1 - 2 missed			
07:11	offensive dead ball rebound (1)			
07:11	33 LATHAM A free throw fast break 2 - 2 missed			
07:10				defensive rebound (2)
07:10	33 LATHAM A substitution out			
07:10	4 BOYD K substitution in			
07:05	1 PUCKETT S steal (1)			00 LATSON T turnover lost ball (2)
06:59	55 COOPER T 3pt FG from turnover, jump shot missed			
06:56				11 BOWLES S defensive rebound (1)
06:50		5-4	1	11 BOWLES S 2pt FG in the paint, driving layup made (2)
06:31	55 COOPER T 3pt FG , jump shot missed			
06:28				21 TIMPSON M defensive rebound (1)
06:28		5-6	-1	00 LATSON T 2pt FG fast break in the paint, driving layup made (2)
06:28				21 TIMPSON M assist (1)
06:18	11 SPEARMAN Z 3pt FG , jump shot missed			
06:15	1 PUCKETT S offensive rebound (2)			
06:12	1 PUCKETT S 2pt FG second chance in the paint, jump shot made (2)	7-6	1	
05:54				3 GORDON O 2pt FG outside the paint, jump shot missed
05:53	defensive rebound (7)			
05:53	0 SPEAR J substitution out			
05:53	1 PUCKETT S substitution out			
05:53	4 BOYD K substitution out			
05:53	11 SPEARMAN Z substitution out			
05:53	55 COOPER T substitution out			
05:53	2 WHITEHORN R substitution in			
05:53	7 SPENCER S substitution in			
05:53	21 DARBY T substitution in			
05:53	33 LATHAM A substitution in			
05:53	53 HOLLINGSHEAD J substitution in			
05:53				00 LATSON T substitution out
05:53				6 VALENZUELA M substitution in
05:43	2 WHITEHORN R 2pt FG in the paint, driving layup missed			
05:40	2 WHITEHORN R offensive rebound (1)			
05:39	2 WHITEHORN R 2pt FG second chance in the paint, layup made (2)	9-6	3	
05:19				11 BOWLES S 2pt FG in the paint, step back jump shot missed
05:14	7 SPENCER S defensive rebound (2)			
05:06	53 HOLLINGSHEAD J 3pt FG , jump shot missed			



**Officials:** Gina Cross, Kevin Pethtel, Brenda Pantoja

Game Time	TENN	Score	Diff	NOLES
05:01				24 BONNER A defensive rebound (1)
04:58				24 BONNER A 2pt FG in the paint, driving layup missed
04:53				21 TIMPSON M offensive rebound (2)
04:51	21 DARBY T steal (1)			21 TIMPSON M turnover bad pass (1)
04:46	53 HOLLINGSHEAD J 2pt FG fast break from turnover in the paint, layup made (2)	<b>11-6</b>	<b>5</b>	
04:46	2 WHITEHORN R assist (1)			
04:43				Timeout 30 Sec
04:43	2 WHITEHORN R substitution out			
04:43	7 SPENCER S substitution out			
04:43	21 DARBY T substitution out			
04:43	33 LATHAM A substitution out			
04:43	53 HOLLINGSHEAD J substitution out			
04:43	0 SPEAR J substitution in			
04:43	1 PUCKETT S substitution in			
04:43	4 BOYD K substitution in			
04:43	11 SPEARMAN Z substitution in			
04:43	55 COOPER T substitution in			
04:43				3 GORDON O substitution out
04:43				00 LATSON T substitution in
04:33		<b>11-8</b>	<b>3</b>	21 TIMPSON M 2pt FG in the paint, layup made (2)
04:27	55 COOPER T foul drawn (1)			00 LATSON T foul shooting (1 - 2)
04:27	55 COOPER T free throw fast break 1 - 2 missed			
04:27	offensive dead ball rebound (2)			
04:27	55 COOPER T free throw fast break 2 - 2 made (3)	<b>12-8</b>	<b>4</b>	
04:20	11 SPEARMAN Z foul shooting (1 - 1)			00 LATSON T foul drawn (1)
04:20		<b>12-9</b>	<b>3</b>	00 LATSON T free throw 1 - 2 made (3)
04:20		<b>12-10</b>	<b>2</b>	00 LATSON T free throw 2 - 2 made (4)
04:11	11 SPEARMAN Z 2pt FG in the paint, layup missed			
04:08				6 VALENZUELA M defensive rebound (1)
03:54				24 BONNER A 2pt FG in the paint, driving layup missed
03:50				21 TIMPSON M offensive rebound (3)
03:50				21 TIMPSON M 2pt FG second chance in the paint, tip-in layup missed
03:49	55 COOPER T defensive rebound (2)			
03:44	4 BOYD K 3pt FG , jump shot missed			
03:40				6 VALENZUELA M defensive rebound (2)
03:34	55 COOPER T steal (1)			00 LATSON T turnover lost ball (3)
03:29	0 SPEAR J 2pt FG fast break from turnover in the paint, driving layup made (2)	<b>14-10</b>	<b>4</b>	
03:15	11 SPEARMAN Z foul shooting (2 - 2)			21 TIMPSON M foul drawn (1)
03:15	0 SPEAR J substitution out			
03:15	1 PUCKETT S substitution out			
03:15	4 BOYD K substitution out			
03:15	11 SPEARMAN Z substitution out			
03:15	55 COOPER T substitution out			
03:15	2 WHITEHORN R substitution in			
03:15	7 SPENCER S substitution in			
03:15	21 DARBY T substitution in			
03:15	33 LATHAM A substitution in			



Official Basketball Play by Play - 1st Period  
**Florida State at Tennessee**  
 12/04/24 Food City Center, Knoxville, Tennessee  
 2024-2025 Women's Basketball

**Game Time:** 7:17 PM  
**Game Duration:** 1:48  
**Attendance:** 9,529

**Officials:** Gina Cross, Kevin Pethel, Brenda Pantoja

Game Time	TENN	Score	Diff	NOLES
03:15	53 HOLLINGSHEAD J substitution in			
03:15				6 VALENZUELA M substitution out
03:15				3 GORDON O substitution in
03:15				21 TIMPSON M free throw 1 - 2 missed
03:15				offensive dead ball rebound (1)
03:15		<b>14-11</b>	<b>3</b>	21 TIMPSON M free throw 2 - 2 made (3)
03:05	33 LATHAM A 3pt FG , jump shot made (3)	<b>17-11</b>	<b>6</b>	
03:05	2 WHITEHORN R assist (2)			
02:41		<b>17-13</b>	<b>4</b>	00 LATSON T 2pt FG in the paint, driving layup made (6)
02:30	2 WHITEHORN R 2pt FG in the paint, layup made (4)	<b>19-13</b>	<b>6</b>	
02:30	7 SPENCER S assist (1)			
02:10				11 BOWLES S 2pt FG outside the paint, jump shot missed
02:07	53 HOLLINGSHEAD J defensive rebound (2)			
02:02	33 LATHAM A 2pt FG in the paint, layup made (5)	<b>21-13</b>	<b>8</b>	
02:02	7 SPENCER S assist (2)			
01:41				24 BONNER A turnover travel (1)
01:41	2 WHITEHORN R substitution out			
01:41	7 SPENCER S substitution out			
01:41	21 DARBY T substitution out			
01:41	53 HOLLINGSHEAD J substitution out			
01:41	0 SPEAR J substitution in			
01:41	1 PUCKETT S substitution in			
01:41	4 BOYD K substitution in			
01:41	55 COOPER T substitution in			
01:41				21 TIMPSON M substitution out
01:41				32 TREADWELL A substitution in
01:23	0 SPEAR J 3pt FG from turnover, jump shot missed			
01:20				24 BONNER A defensive rebound (2)
01:17				3 GORDON O 3pt FG , jump shot missed
01:13	4 BOYD K defensive rebound (2)			
01:08	4 BOYD K turnover bad pass (1)			24 BONNER A steal (1)
01:02				24 BONNER A 2pt FG from turnover in the paint, driving layup missed
00:59	33 LATHAM A defensive rebound (1)			
00:52	4 BOYD K 3pt FG , jump shot missed			
00:49				3 GORDON O defensive rebound (2)
00:47		<b>21-15</b>	<b>6</b>	3 GORDON O 2pt FG fast break in the paint, driving layup made (4)
00:38	55 COOPER T 2pt FG in the paint, turnaround jump shot missed			
00:32				3 GORDON O defensive rebound (3)
00:17				00 LATSON T 2pt FG in the paint, driving layup missed
00:13	33 LATHAM A defensive rebound (2)			
00:07	1 PUCKETT S 3pt FG , jump shot missed			
00:03	1 PUCKETT S offensive rebound (3)			
00:03	1 PUCKETT S 2pt FG second chance in the paint, turnaround jump shot missed			
00:00	offensive dead ball rebound (3)			
<b>END OF PERIOD</b>				
<b>TENN 21-15 NOLES</b>				



Officials: Gina Cross, Kevin Pethel, Brenda Pantoja

Florida State - 15

NO.	Name	Min	FG			Rebounds			Fouls		TP	AS	TO	ST	Blocks		+/-
			M-A	3P	FT	OR	DR	TOT	PF	FD					BS	BA	
21	Makayla Timpson	F 08:19	1-2	0-0	1-2	2	1	3	0	1	3	1	1	0	0	0	-8
00	Ta'Niya Latson	G 08:50	2-4	0-0	2-2	0	0	0	1	1	6	0	3	1	0	0	-2
1	Brianna Turnage	G 01:40	0-1	0-1	0-0	0	0	0	0	0	0	0	1	0	0	0	-3
3	O'Mariah Gordon	G 08:32	2-5	0-1	0-0	0	3	3	0	0	4	0	0	0	0	0	-7
13	Carla Viegas	G 01:40	0-0	0-0	0-0	0	0	0	0	0	0	0	0	0	0	0	-3
11	Sydney Bowles	08:20	1-3	0-0	0-0	0	1	1	1	0	2	0	0	0	0	0	-3
24	Amaya Bonner	08:20	0-3	0-0	0-0	0	2	2	0	0	0	0	1	1	0	0	-3
6	Mariana Valenzuela	02:38	0-0	0-0	0-0	0	2	2	0	0	0	0	0	0	0	0	-3
32	Avery Treadwell	01:41	0-0	0-0	0-0	0	0	0	0	0	0	0	0	0	0	0	2
Team						0	1	1			0		0				
<b>Totals</b>			6-18	0-2	3-4	2	10	12	2	2	15	1	6	2	0	0	-6

Shooting By Period		
1st FG%	6-18	33.3%
3PT%	0-2	0.0%
FT%	3-4	75%
GM FG%	6-18	33.3%
3PT%	0-2	0.0%
FT%	3-4	75.0%

Dead Ball Rebounds: 1, 0

Technical Fouls::NONE

Tennessee - 21

NO.	Name	Min	FG			Rebounds			Fouls		TP	AS	TO	ST	Blocks		+/-
			M-A	3P	FT	OR	DR	TOT	PF	FD					BS	BA	
11	Zee Spearman	F 04:26	1-3	1-2	0-0	0	0	0	2	0	3	0	0	0	0	0	0
2	Ruby Whitehorn	G 04:45	2-3	0-0	0-0	1	0	1	0	0	4	2	0	0	0	0	9
7	Samara Spencer	G 04:45	0-0	0-0	0-0	0	2	2	0	0	0	2	1	0	0	0	9
21	Tess Darby	G 04:45	0-1	0-1	0-0	0	0	0	0	0	0	0	1	1	0	0	9
55	Talaysia Cooper	G 06:07	1-5	0-2	1-2	1	1	2	0	1	3	1	0	1	0	0	-2
0	Jewel Spear	05:15	1-2	0-1	0-0	0	0	0	0	0	2	0	0	0	0	0	-3
1	Sara Puckett	05:15	1-4	0-2	0-0	2	1	3	0	0	2	0	0	1	0	0	-3
4	Kaniya Boyd	05:14	0-2	0-2	0-0	1	1	2	0	0	0	0	1	0	0	0	-3
33	Alyssa Latham	05:35	2-2	1-1	0-2	0	2	2	0	1	5	0	0	0	0	0	6
53	Jillian Hollingshead	03:53	1-2	0-1	0-0	0	2	2	0	0	2	0	0	0	0	0	8
Team						0	1	1			0		0				
<b>Totals</b>			9-24	2-12	1-4	5	10	15	2	2	21	5	3	3	0	0	6

Shooting By Period		
1st FG%	9-24	37.5%
3PT%	2-12	16.7%
FT%	1-4	25%
GM FG%	9-24	37.5%
3PT%	2-12	16.7%
FT%	1-4	25.0%

Dead Ball Rebounds: 3, 0

Technical Fouls::NONE

	NOLES	TENN
Biggest lead	2 (1 <sup>st</sup> 9:50)	8 (1 <sup>st</sup> 2:02)
Best Scoring Run	4 (1 <sup>st</sup> 6:28)	6 (1 <sup>st</sup> 4:46)
Lead Changes	3	
Times Tied	0	
Time with Lead	00:25	09:25

	NOLES	TENN
Points from		
Turnovers	0	6
Paint	12	14
Second Chance	0	6
Fast Breaks	4	5
Bench	2	11

	Period by Period Scoring				
	1st	2nd	3rd	4th	TOT
NOLES	15	12	30	20	77
TENN	21	24	12	22	79





**Officials:** Gina Cross, Kevin Pethtel, Brenda Pantoja

**Period 2**

**Quarter Starters:**

<b>TENN</b>	1 Puckett S	2 Whitehorn R	7 Spencer S	21 Darby T	53 Hollingshead J
<b>NOLES</b>	1 Turnage B	3 Gordon O	4 Dos Santos R	11 Bowles S	21 Timpson M

Game Time	TENN	Score	Diff	NOLES
10:00	0 SPEAR J substitution out			
10:00	4 BOYD K substitution out			
10:00	33 LATHAM A substitution out			
10:00	55 COOPER T substitution out			
10:00	2 WHITEHORN R substitution in			
10:00	7 SPENCER S substitution in			
10:00	21 DARBY T substitution in			
10:00	53 HOLLINGSHEAD J substitution in			
10:00				00 LATSON T substitution out
10:00				24 BONNER A substitution out
10:00				32 TREADWELL A substitution out
10:00				1 TURNAGE B substitution in
10:00				4 DOS SANTOS R substitution in
10:00				21 TIMPSON M substitution in
09:35	1 PUCKETT S turnover bad pass (1)			
09:24		<b>21-17</b>	<b>4</b>	3 GORDON O 2pt FG from turnover in the paint, layup made (6)
09:24				21 TIMPSON M assist (2)
09:05	21 DARBY T 3pt FG , jump shot missed			
09:02				21 TIMPSON M defensive rebound (4)
09:02	jump ball situation			
09:02	1 PUCKETT S substitution out			
09:02	7 SPENCER S substitution out			
09:02	21 DARBY T substitution out			
09:02	53 HOLLINGSHEAD J substitution out			
09:02	0 SPEAR J substitution in			
09:02	4 BOYD K substitution in			
09:02	33 LATHAM A substitution in			
09:02	55 COOPER T substitution in			
09:02				11 BOWLES S substitution out
09:02				00 LATSON T substitution in
08:49				4 DOS SANTOS R 3pt FG , jump shot missed
08:46	33 LATHAM A defensive rebound (3)			
08:34	33 LATHAM A 3pt FG , jump shot missed			
08:31	offensive rebound (17)			
08:26	55 COOPER T turnover lost ball (1)			1 TURNAGE B steal (1)
08:22		<b>21-19</b>	<b>2</b>	3 GORDON O 2pt FG fast break from turnover in the paint, driving layup made (8)
08:22				1 TURNAGE B assist (1)
08:04	0 SPEAR J foul offensive (1 - 1)			3 GORDON O foul drawn (1)
08:04	0 SPEAR J turnover offensive (1)			
08:04	0 SPEAR J substitution out			
08:04	2 WHITEHORN R substitution out			
08:04	4 BOYD K substitution out			



**Officials:** Gina Cross, Kevin Pethel, Brenda Pantoja

Game Time	TENN	Score	Diff	NOLES
08:04	33 LATHAM A substitution out			
08:04	1 PUCKETT S substitution in			
08:04	7 SPENCER S substitution in			
08:04	21 DARBY T substitution in			
08:04	53 HOLLINGSHEAD J substitution in			
07:49				4 DOS SANTOS R 3pt FG from turnover, jump shot missed
07:44	53 HOLLINGSHEAD J defensive rebound (3)			
07:39	21 DARBY T 3pt FG fast break, jump shot made (3)	<b>24-19</b>	<b>5</b>	
07:39	1 PUCKETT S assist (1)			
07:21				21 TIMPSON M 2pt FG outside the paint, jump shot missed
07:18	7 SPENCER S defensive rebound (3)			
07:15	7 SPENCER S 2pt FG fast break in the paint, driving layup made (2)	<b>26-19</b>	<b>7</b>	
07:06	55 COOPER T foul personal (1 - 2)			00 LATSON T foul drawn (2)
07:06	1 PUCKETT S substitution out			
07:06	7 SPENCER S substitution out			
07:06	53 HOLLINGSHEAD J substitution out			
07:06	55 COOPER T substitution out			
07:06	0 SPEAR J substitution in			
07:06	2 WHITEHORN R substitution in			
07:06	4 BOYD K substitution in			
07:06	33 LATHAM A substitution in			
07:06				1 TURNAGE B substitution out
07:06				3 GORDON O substitution out
07:06				4 DOS SANTOS R substitution out
07:06				11 BOWLES S substitution in
07:06				13 VIEGAS C substitution in
07:06				24 BONNER A substitution in
06:58	2 WHITEHORN R foul personal (1 - 3)			11 BOWLES S foul drawn (1)
06:58	21 DARBY T substitution out			
06:58	7 SPENCER S substitution in			
06:51		<b>26-22</b>	<b>4</b>	00 LATSON T 3pt FG , jump shot made (9)
06:42	7 SPENCER S turnover dribbling violation (2)			
06:24				21 TIMPSON M turnover travel (2)
06:10	7 SPENCER S 3pt FG from turnover, jump shot made (5)	<b>29-22</b>	<b>7</b>	
06:10	2 WHITEHORN R assist (3)			
06:01	2 WHITEHORN R foul personal (2 - 4)			11 BOWLES S foul drawn (2)
06:01	0 SPEAR J substitution out			
06:01	2 WHITEHORN R substitution out			
06:01	4 BOYD K substitution out			
06:01	33 LATHAM A substitution out			
06:01	1 PUCKETT S substitution in			
06:01	21 DARBY T substitution in			
06:01	53 HOLLINGSHEAD J substitution in			
06:01	55 COOPER T substitution in			
05:50				00 LATSON T 3pt FG , jump shot missed
05:47				24 BONNER A offensive rebound (3)
05:44				13 VIEGAS C turnover bad pass (1)
05:38	53 HOLLINGSHEAD J turnover travel (1)			



Official Basketball Play by Play - 2nd Period  
**Florida State at Tennessee**  
 12/04/24 Food City Center, Knoxville, Tennessee  
 2024-2025 Women's Basketball

**Game Time:** 7:17 PM  
**Game Duration:** 1:48  
**Attendance:** 9,529

**Officials:** Gina Cross, Kevin Pethtel, Brenda Pantoja

Game Time	TENN	Score	Diff	NOLES
05:22				21 TIMPSON M turnover travel (3)
05:06	1 PUCKETT S 2pt FG from turnover in the paint, driving layup missed			
05:03				00 LATSON T defensive rebound (1)
04:59				24 BONNER A 3pt FG , jump shot blocked
04:59	55 COOPER T block (1)			
04:59				offensive rebound (16)
04:59	Timeout media			
04:59	7 SPENCER S substitution out			
04:59	21 DARBY T substitution out			
04:59	53 HOLLINGSHEAD J substitution out			
04:59	0 SPEAR J substitution in			
04:59	4 BOYD K substitution in			
04:59	33 LATHAM A substitution in			
04:59				24 BONNER A substitution out
04:59				3 GORDON O substitution in
04:53				3 GORDON O 2pt FG second chance in the paint, driving layup missed
04:51	33 LATHAM A defensive rebound (4)			
04:51	33 LATHAM A foul drawn (2)			3 GORDON O foul personal (1 - 1)
04:39	55 COOPER T 3pt FG , jump shot made (6)	<b>32-22</b>	<b>10</b>	
04:28		<b>32-25</b>	<b>7</b>	00 LATSON T 3pt FG fast break, jump shot made (12)
04:28				3 GORDON O assist (1)
04:19	55 COOPER T foul drawn (2)			11 BOWLES S foul personal (2 - 2)
04:19				3 GORDON O substitution out
04:19				11 BOWLES S substitution out
04:19				13 VIEGAS C substitution out
04:19				4 DOS SANTOS R substitution in
04:19				6 VALENZUELA M substitution in
04:19				24 BONNER A substitution in
04:15	55 COOPER T 2pt FG outside the paint, jump shot made (8)	<b>34-25</b>	<b>9</b>	
04:02				4 DOS SANTOS R turnover out of bounds (1)
04:02	1 PUCKETT S substitution out			
04:02	4 BOYD K substitution out			
04:02	33 LATHAM A substitution out			
04:02	7 SPENCER S substitution in			
04:02	21 DARBY T substitution in			
04:02	53 HOLLINGSHEAD J substitution in			
04:02				4 DOS SANTOS R substitution out
04:02				3 GORDON O substitution in
03:45	21 DARBY T 3pt FG from turnover, jump shot made (6)	<b>37-25</b>	<b>12</b>	
03:45	0 SPEAR J assist (1)			
03:34				00 LATSON T 2pt FG outside the paint, jump shot missed
03:30				21 TIMPSON M offensive rebound (5)
03:28	55 COOPER T steal (2)			21 TIMPSON M turnover lost ball (4)
03:23	0 SPEAR J 3pt FG fast break from turnover, jump shot made (5)	<b>40-25</b>	<b>15</b>	
03:23	55 COOPER T assist (2)			
03:23				Timeout 30 Sec
03:13				00 LATSON T 2pt FG in the paint, driving layup missed
03:09	21 DARBY T defensive rebound (1)			



**Florida State at Tennessee**

12/04/24 Food City Center, Knoxville, Tennessee  
2024-2025 Women's Basketball

Officials: Gina Cross, Kevin Pethel, Brenda Pantoja

Game Time	TENN	Score	Diff	NOLES
03:06	0 SPEAR J 3pt FG fast break, jump shot made (8)	<b>43-25</b>	<b>18</b>	
03:06	7 SPENCER S assist (3)			
02:47				21 TIMPSON M 2pt FG in the paint, jump shot missed
02:43	0 SPEAR J defensive rebound (1)			
02:42	21 DARBY T 3pt FG , jump shot missed			
02:38				defensive rebound (18)
02:38	21 DARBY T substitution out			
02:38	53 HOLLINGSHEAD J substitution out			
02:38	55 COOPER T substitution out			
02:38	1 PUCKETT S substitution in			
02:38	4 BOYD K substitution in			
02:38	33 LATHAM A substitution in			
02:38				24 BONNER A substitution out
02:38				4 DOS SANTOS R substitution in
02:22				6 VALENZUELA M 3pt FG , jump shot missed
02:20	7 SPENCER S defensive rebound (4)			
02:16	7 SPENCER S turnover bad pass (3)			4 DOS SANTOS R steal (1)
02:12				6 VALENZUELA M turnover travel (1)
02:06	7 SPENCER S 2pt FG from turnover in the paint, layup made (7)	<b>45-25</b>	<b>20</b>	
01:57				3 GORDON O 2pt FG in the paint, driving layup missed
01:54	0 SPEAR J defensive rebound (2)			
01:51				00 LATSON T substitution out
01:51				11 BOWLES S substitution in
01:41	33 LATHAM A 3pt FG , jump shot missed			
01:39				11 BOWLES S defensive rebound (2)
01:22		<b>45-27</b>	<b>18</b>	21 TIMPSON M 2pt FG in the paint, layup made (5)
00:56	0 SPEAR J foul offensive (2 - 5)			11 BOWLES S foul drawn (3)
00:56	0 SPEAR J turnover offensive (2)			
00:56	0 SPEAR J substitution out			
00:56	7 SPENCER S substitution out			
00:56	33 LATHAM A substitution out			
00:56	21 DARBY T substitution in			
00:56	53 HOLLINGSHEAD J substitution in			
00:56	55 COOPER T substitution in			
00:32				21 TIMPSON M 2pt FG from turnover in the paint, layup missed
00:28	53 HOLLINGSHEAD J defensive rebound (4)			
00:08	4 BOYD K 3pt FG , jump shot missed			
00:02	1 PUCKETT S offensive rebound (4)			
00:00	1 PUCKETT S 2pt FG second chance outside the paint, turnaround jump shot missed			
00:00	offensive dead ball rebound (4)			
<b>END OF PERIOD</b>				
<b>TENN 45-27 NOLES</b>				



Officials: Gina Cross, Kevin Pethel, Brenda Pantoja

Florida State - 12

NO.	Name	Min	FG	3P	FT	Rebounds			Fouls		TP	AS	TO	ST	Blocks		+/-
			M-A	M-A	M-A	OR	DR	TOT	PF	FD					BS	BA	
21	Makayla Timpson	F 10:00	1-4	0-0	0-0	1	1	2	0	0	2	1	3	0	0	0	-12
00	Ta'Niya Latson	G 07:11	2-5	2-3	0-0	0	1	1	0	1	6	0	0	0	0	0	-16
1	Brianna Turnage	G 02:54	0-0	0-0	0-0	0	0	0	0	0	0	1	0	1	0	0	-1
3	O'Mariah Gordon	G 07:36	2-4	0-0	0-0	0	0	0	1	1	4	1	0	0	0	0	-10
13	Carla Viegas	G 02:47	0-0	0-0	0-0	0	0	0	0	0	0	0	1	0	0	0	0
32	Avery Treadwell	00:00	0-0	0-0	0-0	0	0	0	0	0	0	0	0	0	0	0	0
4	Raiane Dos Santos	05:49	0-2	0-2	0-0	0	0	0	0	0	0	0	1	1	0	0	-3
11	Sydney Bowles	05:36	0-0	0-0	0-0	0	1	1	1	3	0	0	0	0	0	0	4
24	Amaya Bonner	03:48	0-1	0-1	0-0	1	0	1	0	0	0	0	0	0	0	1	-11
6	Mariana Valenzuela	04:19	0-1	0-1	0-0	0	0	0	0	0	0	0	1	0	0	0	-11
Team						1	1	2			0		0				
<b>Totals</b>			5-17	2-7	0-0	3	4	7	2	5	12	3	6	2	0	1	-12

Shooting By Period		
2 <sup>nd</sup> FG%	5-17	29.4%
3PT%	2-7	28.6%
FT%	0-0	0%
GM FG%	5-17	29.4%
3PT%	2-7	28.6%
FT%	0-0	0.0%

Dead Ball Rebounds: 0, 0

Technical Fouls::NONE

Tennessee - 24

NO.	Name	Min	FG	3P	FT	Rebounds			Fouls		TP	AS	TO	ST	Blocks		+/-
			M-A	M-A	M-A	OR	DR	TOT	PF	FD					BS	BA	
11	Zee Spearman	F 00:00	0-0	0-0	0-0	0	0	0	0	0	0	0	0	0	0	0	0
2	Ruby Whitehorn	G 03:01	0-0	0-0	0-0	0	0	0	2	0	0	1	0	0	0	0	-4
7	Samara Spencer	G 07:00	3-3	1-1	0-0	0	2	2	0	0	7	1	2	0	0	0	12
21	Tess Darby	G 05:27	2-4	2-4	0-0	0	1	1	0	0	6	0	0	0	0	0	12
55	Talaysia Cooper	G 06:16	2-2	1-1	0-0	0	0	0	1	1	5	1	1	1	1	0	14
53	Jillian Hollingshead	05:19	0-0	0-0	0-0	0	2	2	0	0	0	0	1	0	0	0	12
0	Jewel Spear	06:05	2-2	2-2	0-0	0	2	2	2	0	6	1	2	0	0	0	9
4	Kaniya Boyd	05:38	0-1	0-1	0-0	0	0	0	0	0	0	0	0	0	0	0	0
33	Alyssa Latham	04:41	0-2	0-2	0-0	0	2	2	0	1	0	0	0	0	0	0	0
1	Sara Puckett	06:33	0-2	0-0	0-0	1	0	1	0	0	0	1	1	0	0	0	5
Team						1	0	1			0		0				
<b>Totals</b>			9-16	6-11	0-0	2	9	11	5	2	24	5	7	1	1	0	12

Shooting By Period		
2 <sup>nd</sup> FG%	9-16	56.3%
3PT%	6-11	54.5%
FT%	0-0	0%
GM FG%	9-16	56.3%
3PT%	6-11	54.5%
FT%	0-0	0.0%

Dead Ball Rebounds: 1, 0

Technical Fouls::NONE

	NOLES	TENN
Biggest lead	0 (1 <sup>st</sup> 10:00)	20 (2 <sup>nd</sup> 2:06)
Best Scoring Run	4(2 <sup>nd</sup> 8:22)	13(2 <sup>nd</sup> 2:06)
Lead Changes	0	
Times Tied	0	
Time with Lead	00:00	09:24

	NOLES	TENN
Points from		
Turnovers	4	11
Paint	6	4
Second Chance	0	0
Fast Breaks	5	11
Bench	0	6

	Period by Period Scoring				
	1st	2nd	3rd	4th	TOT
NOLES	15	12	30	20	77
TENN	21	24	12	22	79



Officials: Gina Cross, Kevin Pethel, Brenda Pantoja

Florida State - 27

NO.	Name	Min	FG			Rebounds			Fouls		TP	AS	TO	ST	Blocks		+/-
			M-A	3P	FT	OR	DR	TOT	PF	FD					BS	BA	
21	Makayla Timpson	F 18:19	2-6	0-0	1-2	3	2	5	0	1	5	2	4	0	0	0	-20
00	Ta'Niya Latson	G 16:01	4-9	2-3	2-2	0	1	1	1	2	12	0	3	1	0	0	-18
1	Brianna Turnage	G 04:34	0-1	0-1	0-0	0	0	0	0	0	0	1	1	1	0	0	-4
3	O'Mariah Gordon	G 16:08	4-9	0-1	0-0	0	3	3	1	1	8	1	0	0	0	0	-17
13	Carla Viegas	G 04:27	0-0	0-0	0-0	0	0	0	0	0	0	0	1	0	0	0	-3
11	Sydney Bowles	13:56	1-3	0-0	0-0	0	2	2	2	3	2	0	0	0	0	0	1
24	Amaya Bonner	12:08	0-4	0-1	0-0	1	2	3	0	0	0	0	1	1	0	1	-14
6	Mariana Valenzuela	06:57	0-1	0-1	0-0	0	2	2	0	0	0	0	1	0	0	0	-14
32	Avery Treadwell	01:41	0-0	0-0	0-0	0	0	0	0	0	0	0	0	0	0	0	2
4	Raiane Dos Santos	05:49	0-2	0-2	0-0	0	0	0	0	0	0	0	1	1	0	0	-3
Team						1	2	3			0		0				
<b>Totals</b>			11-35	2-9	3-4	5	14	19	4	7	27	4	12	4	0	1	-18

Shooting By Period		
1st FG%	6-18	33.3%
3PT%	0-2	0.0%
FT%	3-4	75%
2nd FG%	5-17	29.4%
3PT%	2-7	28.6%
FT%	0-0	0%
GM FG%	11-35	31.4%
3PT%	2-9	22.2%
FT%	3-4	75.0%

Dead Ball Rebounds: 1, 0

Technical Fouls::NONE

Tennessee - 45

NO.	Name	Min	FG			Rebounds			Fouls		TP	AS	TO	ST	Blocks		+/-
			M-A	3P	FT	OR	DR	TOT	PF	FD					BS	BA	
11	Zee Spearman	F 04:26	1-3	1-2	0-0	0	0	0	2	0	3	0	0	0	0	0	0
2	Ruby Whitehorn	G 07:46	2-3	0-0	0-0	1	0	1	2	0	4	3	0	0	0	0	5
7	Samara Spencer	G 11:45	3-3	1-1	0-0	0	4	4	0	0	7	3	3	0	0	0	21
21	Tess Darby	G 10:12	2-5	2-5	0-0	0	1	1	0	0	6	0	1	1	0	0	21
55	Talaysia Cooper	G 12:23	3-7	1-3	1-2	1	1	2	1	2	8	2	1	2	1	0	12
0	Jewel Spear	11:20	3-4	2-3	0-0	0	2	2	2	0	8	1	2	0	0	0	6
1	Sara Puckett	11:48	1-6	0-2	0-0	3	1	4	0	0	2	1	1	1	0	0	2
4	Kaniya Boyd	10:52	0-3	0-3	0-0	1	1	2	0	0	0	0	1	0	0	0	-3
33	Alyssa Latham	10:16	2-4	1-3	0-2	0	4	4	0	2	5	0	0	0	0	0	6
53	Jillian Hollingshead	09:12	1-2	0-1	0-0	0	4	4	0	0	2	0	1	0	0	0	20
Team						1	1	2			0		0				
<b>Totals</b>			18-40	8-23	1-4	7	19	26	7	4	45	10	10	4	1	0	18

Shooting By Period		
1st FG%	9-24	37.5%
3PT%	2-12	16.7%
FT%	1-4	25%
2nd FG%	9-16	56.3%
3PT%	6-11	54.5%
FT%	0-0	0%
GM FG%	18-40	45.0%
3PT%	8-23	34.8%
FT%	1-4	25.0%

Dead Ball Rebounds: 4, 0

Technical Fouls::NONE

	NOLES	TENN
Biggest lead	2 (1st 9:50)	20 (2nd 2:06)
Best Scoring Run	6(2nd 8:22)	13(2nd 2:06)
Lead Changes	3	
Times Tied	0	
Time with Lead	00:25	19:25

Points from	NOLES	TENN
Turnovers	4	17
Paint	18	18
Second Chance	0	6
Fast Breaks	9	16
Bench	2	17

Period by Period Scoring					
	1st	2nd	3rd	4th	TOT
NOLES	15	12	30	20	77
TENN	21	24	12	22	79



**Officials:** Gina Cross, Kevin Pethel, Brenda Pantoja

**Period 3**

**Quarter Starters:**

<b>TENN</b>	0 Spear J	2 Whitehorn R	7 Spencer S	11 Spearman Z	55 Cooper T
<b>NOLES</b>	00 Latson T	1 Turnage B	3 Gordon O	13 Viegas C	21 Timpson M

Game Time	TENN	Score	Diff	NOLES
10:00	1 PUCKETT S substitution out			
10:00	4 BOYD K substitution out			
10:00	21 DARBY T substitution out			
10:00	53 HOLLINGSHEAD J substitution out			
10:00	0 SPEAR J substitution in			
10:00	2 WHITEHORN R substitution in			
10:00	7 SPENCER S substitution in			
10:00	11 SPEARMAN Z substitution in			
10:00				4 DOS SANTOS R substitution out
10:00				6 VALENZUELA M substitution out
10:00				11 BOWLES S substitution out
10:00				00 LATSON T substitution in
10:00				1 TURNAGE B substitution in
10:00				13 VIEGAS C substitution in
09:48	55 COOPER T 2pt FG in the paint, jump shot made (10)	<b>47-27</b>	<b>20</b>	
09:34		<b>47-29</b>	<b>18</b>	3 GORDON O 2pt FG in the paint, floating jump shot made (10)
09:21	55 COOPER T 2pt FG in the paint, jump shot missed			
09:15				21 TIMPSON M defensive rebound (6)
09:10	7 SPENCER S foul shooting (1 - 1)			00 LATSON T foul drawn (3)
09:10	2 WHITEHORN R substitution out			
09:10	7 SPENCER S substitution out			
09:10	1 PUCKETT S substitution in			
09:10	4 BOYD K substitution in			
09:10		<b>47-30</b>	<b>17</b>	00 LATSON T free throw 1 - 2 made (13)
09:10		<b>47-31</b>	<b>16</b>	00 LATSON T free throw 2 - 2 made (14)
08:54	0 SPEAR J 3pt FG , jump shot missed			
08:51	55 COOPER T offensive rebound (3)			
08:51	55 COOPER T foul drawn (3)			3 GORDON O foul personal (2 - 1)
08:51	4 BOYD K turnover bad pass (2)			00 LATSON T steal (2)
08:43		<b>47-33</b>	<b>14</b>	00 LATSON T 2pt FG fast break from turnover in the paint, driving layup made (16)
08:38	0 SPEAR J 2pt FG in the paint, layup blocked			
08:38				21 TIMPSON M block (1)
08:38	offensive rebound (28)			
08:31	11 SPEARMAN Z 2pt FG second chance in the paint, layup missed			
08:28	11 SPEARMAN Z offensive rebound (1)			
08:28	11 SPEARMAN Z 2pt FG second chance in the paint, tip-in layup missed			
08:25				00 LATSON T defensive rebound (2)
08:19				13 VIEGAS C 3pt FG , jump shot missed
08:16	11 SPEARMAN Z defensive rebound (2)			
08:09	11 SPEARMAN Z 3pt FG , jump shot missed			
08:06				3 GORDON O defensive rebound (4)



Official Basketball Play by Play - 3rd Period  
**Florida State at Tennessee**  
 12/04/24 Food City Center, Knoxville, Tennessee  
 2024-2025 Women's Basketball

**Game Time:** 7:17 PM  
**Game Duration:** 1:48  
**Attendance:** 9,529

**Officials:** Gina Cross, Kevin Pethel, Brenda Pantoja

Game Time	TENN	Score	Diff	NOLES
07:58	11 SPEARMAN Z foul shooting (3 - 2)			3 GORDON O foul drawn (2)
07:58	0 SPEAR J substitution out			
07:58	1 PUCKETT S substitution out			
07:58	4 BOYD K substitution out			
07:58	11 SPEARMAN Z substitution out			
07:58	55 COOPER T substitution out			
07:58	2 WHITEHORN R substitution in			
07:58	7 SPENCER S substitution in			
07:58	21 DARBY T substitution in			
07:58	33 LATHAM A substitution in			
07:58	53 HOLLINGSHEAD J substitution in			
07:58		<b>47-34</b>	<b>13</b>	3 GORDON O free throw 1 - 2 made (11)
07:58		<b>47-35</b>	<b>12</b>	3 GORDON O free throw 2 - 2 made (12)
07:33	2 WHITEHORN R 2pt FG in the paint, layup missed			
07:31	offensive rebound (31)			
07:22	2 WHITEHORN R 2pt FG second chance outside the paint, jump shot missed			
07:18				00 LATSON T defensive rebound (3)
07:14		<b>47-38</b>	<b>9</b>	00 LATSON T 3pt FG fast break, jump shot made (19)
07:01	53 HOLLINGSHEAD J 3pt FG , jump shot missed			
06:57				1 TURNAGE B defensive rebound (1)
06:45	53 HOLLINGSHEAD J foul shooting (1 - 3)			21 TIMPSON M foul drawn (2)
06:45	2 WHITEHORN R substitution out			
06:45	7 SPENCER S substitution out			
06:45	21 DARBY T substitution out			
06:45	53 HOLLINGSHEAD J substitution out			
06:45	0 SPEAR J substitution in			
06:45	1 PUCKETT S substitution in			
06:45	4 BOYD K substitution in			
06:45	55 COOPER T substitution in			
06:45		<b>47-39</b>	<b>8</b>	21 TIMPSON M free throw 1 - 2 made (6)
06:45		<b>47-40</b>	<b>7</b>	21 TIMPSON M free throw 2 - 2 made (7)
06:38	55 COOPER T 3pt FG , jump shot missed			
06:33	4 BOYD K offensive rebound (3)			
06:20	33 LATHAM A 2pt FG second chance in the paint, floating jump shot made (7)	<b>49-40</b>	<b>9</b>	
06:10				3 GORDON O 2pt FG in the paint, driving layup missed
06:08	55 COOPER T defensive rebound (4)			
06:05	1 PUCKETT S 3pt FG , jump shot missed			
06:00				00 LATSON T defensive rebound (4)
05:56		<b>49-42</b>	<b>7</b>	00 LATSON T 2pt FG fast break in the paint, driving layup made (21)
05:41	55 COOPER T turnover lost ball (2)			00 LATSON T steal (3)
05:37		<b>49-44</b>	<b>5</b>	00 LATSON T 2pt FG fast break from turnover in the paint, driving layup made (23)
05:37	Timeout 30 Sec			
05:37	1 PUCKETT S substitution out			
05:37	4 BOYD K substitution out			
05:37	33 LATHAM A substitution out			
05:37	55 COOPER T substitution out			





**Officials:** Gina Cross, Kevin Pethel, Brenda Pantoja

Game Time	TENN	Score	Diff	NOLES
05:37	2 WHITEHORN R substitution in			
05:37	7 SPENCER S substitution in			
05:37	21 DARBY T substitution in			
05:37	53 HOLLINGSHEAD J substitution in			
05:37				1 TURNAGE B substitution out
05:37				13 VIEGAS C substitution out
05:37				11 BOWLES S substitution in
05:37				24 BONNER A substitution in
05:21	53 HOLLINGSHEAD J 2pt FG in the paint, driving layup made (4)	<b>51-44</b>	<b>7</b>	
05:05				00 LATSON T 2pt FG in the paint, driving layup missed
05:02				21 TIMPSON M offensive rebound (7)
05:01				21 TIMPSON M 2pt FG second chance in the paint, driving layup blocked
05:01	2 WHITEHORN R block (1)			
05:01				offensive rebound (27)
04:59		<b>51-46</b>	<b>5</b>	00 LATSON T 2pt FG second chance in the paint, layup made (25)
04:59				11 BOWLES S assist (1)
04:38	0 SPEAR J 2pt FG outside the paint, jump shot blocked			
04:38				00 LATSON T block (1)
04:34				21 TIMPSON M defensive rebound (8)
04:27		<b>51-48</b>	<b>3</b>	21 TIMPSON M 2pt FG in the paint, layup made (9)
04:27				3 GORDON O assist (2)
04:17	2 WHITEHORN R 2pt FG in the paint, jump shot missed			
04:14				21 TIMPSON M defensive rebound (9)
03:58		<b>51-50</b>	<b>1</b>	21 TIMPSON M 2pt FG in the paint, turnaround jump shot made (11)
03:44	7 SPENCER S foul drawn (1)			24 BONNER A foul shooting (1 - 2)
03:44	Timeout media			
03:44	0 SPEAR J substitution out			
03:44	2 WHITEHORN R substitution out			
03:44	53 HOLLINGSHEAD J substitution out			
03:44	1 PUCKETT S substitution in			
03:44	33 LATHAM A substitution in			
03:44	55 COOPER T substitution in			
03:44	7 SPENCER S free throw 1 - 2 made (8)	<b>52-50</b>	<b>2</b>	
03:44	7 SPENCER S free throw 2 - 2 missed			
03:42				11 BOWLES S defensive rebound (3)
03:39	55 COOPER T foul personal (2 - 4)			00 LATSON T foul drawn (4)
03:39	7 SPENCER S substitution out			
03:39	4 BOYD K substitution in			
03:32	55 COOPER T foul personal (3 - 5)			00 LATSON T foul drawn (5)
03:32	55 COOPER T substitution out			
03:32	7 SPENCER S substitution in			
03:32				00 LATSON T free throw 1 - 2 missed
03:32				offensive dead ball rebound (2)
03:32		<b>52-51</b>	<b>1</b>	00 LATSON T free throw 2 - 2 made (26)
03:07	33 LATHAM A turnover bad pass (1)			3 GORDON O steal (1)
03:03		<b>52-53</b>	<b>-1</b>	3 GORDON O 2pt FG fast break from turnover in the paint, driving layup made (14)



Official Basketball Play by Play - 3rd Period  
**Florida State at Tennessee**  
 12/04/24 Food City Center, Knoxville, Tennessee  
 2024-2025 Women's Basketball

**Game Time:** 7:17 PM  
**Game Duration:** 1:48  
**Attendance:** 9,529

**Officials:** Gina Cross, Kevin Pethtel, Brenda Pantoja

Game Time	TENN	Score	Diff	NOLES
02:52	33 LATHAM A 2pt FG in the paint, layup blocked			
02:52				21 TIMPSON M block (2)
02:48	33 LATHAM A offensive rebound (5)			
02:41	7 SPENCER S 3pt FG second chance, jump shot made (11)	<b>55-53</b>	<b>2</b>	
02:17		<b>55-55</b>	<b>0</b>	00 LATSON T 2pt FG in the paint, turnaround jump shot made (28)
02:01	21 DARBY T 2pt FG outside the paint, turnaround jump shot missed			
01:58				21 TIMPSON M defensive rebound (10)
01:51				11 BOWLES S 2pt FG in the paint, layup blocked
01:51	33 LATHAM A block (1)			
01:47	7 SPENCER S defensive rebound (5)			
01:41	33 LATHAM A 2pt FG in the paint, layup made (9)	<b>57-55</b>	<b>2</b>	
01:41	4 BOYD K assist (1)			
01:20	7 SPENCER S foul drawn (2)			3 GORDON O foul offensive (3 - 3)
01:20				3 GORDON O turnover offensive (1)
01:20	1 PUCKETT S substitution out			
01:20	21 DARBY T substitution out			
01:20	33 LATHAM A substitution out			
01:20	0 SPEAR J substitution in			
01:20	2 WHITEHORN R substitution in			
01:20	11 SPEARMAN Z substitution in			
01:20				00 LATSON T substitution out
01:20				24 BONNER A substitution out
01:20				1 TURNAGE B substitution in
01:20				6 VALENZUELA M substitution in
01:06	0 SPEAR J 3pt FG from turnover, jump shot missed			
00:59				21 TIMPSON M defensive rebound (11)
00:49				3 GORDON O 2pt FG in the paint, layup missed
00:45				3 GORDON O offensive rebound (5)
00:45		<b>57-57</b>	<b>0</b>	3 GORDON O 2pt FG second chance in the paint, tip-in layup made (16)
00:26	7 SPENCER S 2pt FG in the paint, driving layup missed			
00:26	offensive rebound (36)			
00:09	2 WHITEHORN R 2pt FG second chance in the paint, jump shot blocked			
00:09				21 TIMPSON M block (3)
00:06	offensive rebound (37)			
00:06	turnover shot clock (14)			
00:00				3 GORDON O 3pt FG from turnover, jump shot missed
00:00				offensive dead ball rebound (3)
<b>END OF PERIOD</b>				
<b>TENN 57-57 NOLES</b>				



**Officials:** Gina Cross, Kevin Pethel, Brenda Pantoja

**Florida State - 30**

NO.	Name	Min	FG	3P	FT	Rebounds			Fouls		TP	AS	TO	ST	Blocks		+/-
			M-A	M-A	M-A	OR	DR	TOT	PF	FD					BS	BA	
21	Makayla Timpson	F 10:00	2-3	0-0	2-2	1	5	6	0	1	6	0	0	0	3	1	18
00	Ta'Niya Latson	G 08:40	6-7	1-1	3-4	0	3	3	0	3	16	0	0	2	1	0	16
1	Brianna Turnage	G 05:43	0-0	0-0	0-0	0	1	1	0	0	0	0	0	0	0	0	15
3	O'Mariah Gordon	G 10:00	3-6	0-1	2-2	1	1	2	2	1	8	1	1	1	0	0	18
13	Carla Viegas	G 04:23	0-1	0-1	0-0	0	0	0	0	0	0	0	0	0	0	0	13
4	Raiane Dos Santos	00:00	0-0	0-0	0-0	0	0	0	0	0	0	0	0	0	0	0	0
11	Sydney Bowles	05:37	0-1	0-0	0-0	0	1	1	0	0	0	1	0	0	0	1	5
24	Amaya Bonner	04:17	0-0	0-0	0-0	0	0	0	1	0	0	0	0	0	0	0	3
6	Mariana Valenzuela	01:20	0-0	0-0	0-0	0	0	0	0	0	0	0	0	0	0	0	2
Team						1	0	1			0		0				
<b>Totals</b>			11-18	1-3	7-8	3	11	14	3	5	30	2	1	3	4	2	18

Shooting By Period		
3rd FG%	11-18	61.1%
3PT%	1-3	33.3%
FT%	7-8	87.5%
GM FG%	11-18	61.1%
3PT%	1-3	33.3%
FT%	7-8	87.5%

Dead Ball Rebounds: 2, 0

Technical Fouls::NONE

**Tennessee - 12**

NO.	Name	Min	FG	3P	FT	Rebounds			Fouls		TP	AS	TO	ST	Blocks		+/-
			M-A	M-A	M-A	OR	DR	TOT	PF	FD					BS	BA	
11	Zee Spearman	F 03:22	0-3	0-1	0-0	1	1	2	1	0	0	0	0	0	0	0	-6
2	Ruby Whitehorn	G 05:16	0-4	0-0	0-0	0	0	0	0	0	0	0	0	0	1	1	-11
7	Samara Spencer	G 07:33	1-2	1-1	1-2	0	1	1	1	2	4	0	0	0	0	0	-10
21	Tess Darby	G 05:30	0-1	0-0	0-0	0	0	0	0	0	0	0	0	0	0	0	-8
55	Talaysia Cooper	G 03:22	1-3	0-1	0-0	1	1	2	2	1	2	0	1	0	0	0	-7
0	Jewel Spear	06:23	0-4	0-2	0-0	0	0	0	0	0	0	0	0	0	0	2	-14
1	Sara Puckett	04:44	0-1	0-1	0-0	0	0	0	0	0	0	0	0	0	0	0	-7
4	Kaniya Boyd	05:59	0-0	0-0	0-0	1	0	1	0	0	0	1	1	0	0	0	-10
33	Alyssa Latham	04:45	2-3	0-0	0-0	1	0	1	0	0	4	0	1	0	1	1	-8
53	Jillian Hollingshead	03:06	1-2	0-1	0-0	0	0	0	1	0	2	0	0	0	0	0	-9
Team						4	0	4			0		1				
<b>Totals</b>			5-23	1-7	1-2	8	3	11	5	3	12	1	4	0	2	4	-18

Shooting By Period		
3rd FG%	5-23	21.7%
3PT%	1-7	14.3%
FT%	1-2	50%
GM FG%	5-23	21.7%
3PT%	1-7	14.3%
FT%	1-2	50.0%

Dead Ball Rebounds: 0, 0

Technical Fouls::NONE

	NOLES	TENN
<b>Biggest lead</b>	1 (3 <sup>rd</sup> 3:03)	20 (3 <sup>rd</sup> 9:48)
<b>Best Scoring Run</b>	13(3 <sup>rd</sup> 6:45)	3(3 <sup>rd</sup> 2:41)
<b>Lead Changes</b>	2	
<b>Times Tied</b>	2	
<b>Time with Lead</b>	00:22	08:04

	NOLES	TENN
<b>Points from</b>		
<b>Turnovers</b>	6	0
<b>Paint</b>	20	8
<b>Second Chance</b>	4	5
<b>Fast Breaks</b>	11	0
<b>Bench</b>	0	6

Period by Period Scoring					
	1st	2nd	3rd	4th	TOT
<b>NOLES</b>	15	12	30	20	77
<b>TENN</b>	21	24	12	22	79



**Period 4**

**Quarter Starters:**

<b>TENN</b>	0 Spear J	2 Whitehorn R	7 Spencer S	11 Spearman Z	55 Cooper T
<b>NOLES</b>	00 Latson T	1 Turnage B	3 Gordon O	11 Bowles S	21 Timpson M

Game Time	TENN	Score	Diff	NOLES
10:00	4 BOYD K substitution out			
10:00	55 COOPER T substitution in			
10:00				6 VALENZUELA M substitution out
10:00				00 LATSON T substitution in
09:52				00 LATSON T 3pt FG , jump shot missed
09:49	2 WHITEHORN R defensive rebound (2)			
09:38	55 COOPER T 2pt FG in the paint, jump shot made (12)	<b>59-57</b>	<b>2</b>	
09:38	2 WHITEHORN R assist (4)			
09:16		<b>59-59</b>	<b>0</b>	00 LATSON T 2pt FG in the paint, driving layup made (30)
08:49	11 SPEARMAN Z 3pt FG , jump shot missed			
08:46				1 TURNAGE B defensive rebound (2)
08:41	0 SPEAR J substitution out			
08:41	11 SPEARMAN Z substitution out			
08:41	55 COOPER T substitution out			
08:41	21 DARBY T substitution in			
08:41	33 LATHAM A substitution in			
08:41	53 HOLLINGSHEAD J substitution in			
08:39				00 LATSON T 3pt FG , jump shot missed
08:35	7 SPENCER S defensive rebound (6)			
08:29	7 SPENCER S foul drawn (3)			11 BOWLES S foul personal (3 - 1)
08:29	21 DARBY T substitution out			
08:29	55 COOPER T substitution in			
08:23	55 COOPER T 2pt FG in the paint, jump shot made (14)	<b>61-59</b>	<b>2</b>	
08:23	7 SPENCER S assist (4)			
07:59	jump ball situation			
07:59	7 SPENCER S steal (1)			00 LATSON T turnover lost ball (4)
07:59	55 COOPER T substitution out			
07:59	21 DARBY T substitution in			
07:43	7 SPENCER S foul offensive (2 - 1)			00 LATSON T foul drawn (6)
07:43	7 SPENCER S turnover offensive (4)			
07:43	2 WHITEHORN R substitution out			
07:43	7 SPENCER S substitution out			
07:43	21 DARBY T substitution out			
07:43	33 LATHAM A substitution out			
07:43	53 HOLLINGSHEAD J substitution out			
07:43	0 SPEAR J substitution in			
07:43	1 PUCKETT S substitution in			
07:43	4 BOYD K substitution in			
07:43	11 SPEARMAN Z substitution in			
07:43	55 COOPER T substitution in			
07:27				1 TURNAGE B turnover travel (2)
07:10	11 SPEARMAN Z 3pt FG from turnover, jump shot missed			
07:06	55 COOPER T offensive rebound (5)			



**Officials:** Gina Cross, Kevin Pethtel, Brenda Pantoja

Game Time	TENN	Score	Diff	NOLES
07:06	55 COOPER T 2pt FG from turnover second chance in the paint, tip-in layup made (16)	<b>63-59</b>	<b>4</b>	
06:40		<b>63-61</b>	<b>2</b>	11 BOWLES S 2pt FG in the paint, turnaround jump shot made (4)
06:27	55 COOPER T turnover bad pass (3)			3 GORDON O steal (2)
06:27	0 SPEAR J substitution out			
06:27	1 PUCKETT S substitution out			
06:27	4 BOYD K substitution out			
06:27	11 SPEARMAN Z substitution out			
06:27	55 COOPER T substitution out			
06:27	2 WHITEHORN R substitution in			
06:27	7 SPENCER S substitution in			
06:27	21 DARBY T substitution in			
06:27	33 LATHAM A substitution in			
06:27	53 HOLLINGSHEAD J substitution in			
06:27				1 TURNAGE B substitution out
06:27				6 VALENZUELA M substitution in
06:16				6 VALENZUELA M 3pt FG from turnover, jump shot missed
06:12				3 GORDON O offensive rebound (6)
06:02				3 GORDON O 3pt FG from turnover second chance, jump shot missed
05:58	2 WHITEHORN R defensive rebound (3)			
05:48	53 HOLLINGSHEAD J 2pt FG outside the paint, jump shot missed			
05:43	33 LATHAM A offensive rebound (6)			
05:43	33 LATHAM A 2pt FG second chance in the paint, tip-in layup missed			
05:42	33 LATHAM A offensive rebound (7)			
05:33	7 SPENCER S 2pt FG second chance in the paint, floating jump shot missed			
05:32	7 SPENCER S offensive rebound (7)			
05:32	7 SPENCER S foul drawn (4)			3 GORDON O foul personal (4 - 2)
05:32	21 DARBY T substitution out			
05:32	33 LATHAM A substitution out			
05:32	53 HOLLINGSHEAD J substitution out			
05:32	0 SPEAR J substitution in			
05:32	11 SPEARMAN Z substitution in			
05:32	55 COOPER T substitution in			
05:25	55 COOPER T 2pt FG second chance in the paint, turnaround jump shot made (18)	<b>65-61</b>	<b>4</b>	
05:25	55 COOPER T foul drawn (4)			11 BOWLES S foul shooting (4 - 3)
05:25	55 COOPER T free throw 1 - 1 missed			
05:24				defensive rebound (36)
05:10		<b>65-63</b>	<b>2</b>	00 LATSON T 2pt FG in the paint, layup made (32)
05:10				6 VALENZUELA M assist (1)
04:51	11 SPEARMAN Z 2pt FG in the paint, layup made (5)	<b>67-63</b>	<b>4</b>	
04:32				21 TIMPSON M 2pt FG in the paint, turnaround jump shot missed
04:28	55 COOPER T defensive rebound (6)			
04:05	0 SPEAR J 2pt FG outside the paint, floating jump shot missed			
03:58	11 SPEARMAN Z offensive rebound (3)			



**Officials:** Gina Cross, Kevin Pethtel, Brenda Pantoja

Game Time	TENN	Score	Diff	NOLES
03:58	11 SPEARMAN Z 2pt FG second chance in the paint, tip-in layup made (7)	69-63	6	
03:51		69-65	4	00 LATSON T 2pt FG fast break in the paint, layup made (34)
03:42	11 SPEARMAN Z 3pt FG , jump shot missed			
03:39	55 COOPER T offensive rebound (7)			
03:38	55 COOPER T 2pt FG second chance in the paint, layup blocked			
03:38				6 VALENZUELA M block (1)
03:37	2 WHITEHORN R offensive rebound (4)			
03:35	2 WHITEHORN R 2pt FG second chance in the paint, layup missed			
03:35				6 VALENZUELA M defensive rebound (3)
03:35	jump ball situation			
03:35	Timeout media			
03:35	2 WHITEHORN R substitution out			
03:35	7 SPENCER S substitution out			
03:35	1 PUCKETT S substitution in			
03:35	4 BOYD K substitution in			
03:35				00 LATSON T substitution out
03:35				4 DOS SANTOS R substitution in
03:21		69-68	1	11 BOWLES S 3pt FG , jump shot made (7)
03:21				3 GORDON O assist (3)
03:08	0 SPEAR J 3pt FG , jump shot missed			
03:05	11 SPEARMAN Z offensive rebound (4)			
03:04	11 SPEARMAN Z 2pt FG second chance in the paint, layup made (9)	71-68	3	
02:39	1 PUCKETT S steal (2)			6 VALENZUELA M turnover lost ball (2)
02:21	55 COOPER T 2pt FG from turnover outside the paint, step back jump shot made (20)	73-68	5	
02:11				Timeout 30 Sec
02:11	0 SPEAR J substitution out			
02:11	1 PUCKETT S substitution out			
02:11	4 BOYD K substitution out			
02:11	11 SPEARMAN Z substitution out			
02:11	2 WHITEHORN R substitution in			
02:11	7 SPENCER S substitution in			
02:11	21 DARBY T substitution in			
02:11	33 LATHAM A substitution in			
02:11				4 DOS SANTOS R substitution out
02:11				6 VALENZUELA M substitution out
02:11				00 LATSON T substitution in
02:11				1 TURNAGE B substitution in
02:08				00 LATSON T 2pt FG in the paint, layup blocked
02:08	55 COOPER T block (2)			
02:08				offensive rebound (38)
02:06		73-70	3	21 TIMPSON M 2pt FG second chance in the paint, layup made (13)
01:54	55 COOPER T 2pt FG in the paint, turnaround jump shot made (22)	75-70	5	
01:47		75-72	3	11 BOWLES S 2pt FG fast break in the paint, layup made (9)
01:47				00 LATSON T assist (1)



**Officials:** Gina Cross, Kevin Pethtel, Brenda Pantoja

Game Time	TENN	Score	Diff	NOLES
01:47	33 LATHAM A foul shooting (1 - 2)			11 BOWLES S foul drawn (4)
01:47	21 DARBY T substitution out			
01:47	33 LATHAM A substitution out			
01:47	0 SPEAR J substitution in			
01:47	11 SPEARMAN Z substitution in			
01:47		<b>75-73</b>	<b>2</b>	11 BOWLES S free throw fast break 1 - 1 made (10)
01:42	2 WHITEHORN R 3pt FG , jump shot missed			
01:39				1 TURNAGE B defensive rebound (3)
01:18	11 SPEARMAN Z foul personal (4 - 3)			00 LATSON T foul drawn (7)
01:16		<b>75-75</b>	<b>0</b>	00 LATSON T 2pt FG in the paint, layup made (36)
01:16				1 TURNAGE B assist (2)
00:59	11 SPEARMAN Z 2pt FG in the paint, layup made (11)	<b>77-75</b>	<b>2</b>	
00:59	55 COOPER T assist (3)			
00:49		<b>77-77</b>	<b>0</b>	00 LATSON T 2pt FG in the paint, floating jump shot made (38)
00:48	Timeout 30 Sec			
00:24	11 SPEARMAN Z 2pt FG in the paint, step back jump shot made (13)	<b>79-77</b>	<b>2</b>	
00:17				Timeout 60 Sec
00:00				00 LATSON T 2pt FG in the paint, driving layup missed
00:00	11 SPEARMAN Z defensive rebound (5)			
<b>END OF GAME</b>				
<b>TENN 79-77 NOLES</b>				



Officials: Gina Cross, Kevin Pethel, Brenda Pantoja

Florida State - 20

NO.	Name	Min	FG			Rebounds			Fouls		TP	AS	TO	ST	Blocks		+/-
			M-A	3P	FT	OR	DR	TOT	PF	FD					BS	BA	
21	Makayla Timpson	F 10:00	1-2	0-0	0-0	0	0	0	0	0	2	0	0	0	0	0	-2
00	Ta'Niya Latson	G 08:36	5-9	0-2	0-0	0	0	0	0	2	10	1	1	0	0	1	-1
1	Brianna Turnage	G 05:44	0-0	0-0	0-0	0	2	2	0	0	0	1	1	0	0	0	1
3	O'Mariah Gordon	G 10:00	0-1	0-1	0-0	1	0	1	1	0	0	1	0	1	0	0	-2
13	Carla Viegas	G 00:00	0-0	0-0	0-0	0	0	0	0	0	0	0	0	0	0	0	0
11	Sydney Bowles	10:00	3-3	1-1	1-1	0	0	0	2	1	8	0	0	0	0	0	-2
6	Mariana Valenzuela	04:16	0-1	0-1	0-0	0	1	1	0	0	0	1	1	0	1	0	-3
4	Raiane Dos Santos	01:24	0-0	0-0	0-0	0	0	0	0	0	0	0	0	0	0	0	-1
Team						1	1	2			0		0				
<b>Totals</b>			9-16	1-5	1-1	2	4	6	3	3	20	4	3	1	1	1	-2

Shooting By Period		
4 <sup>th</sup> FG%	9-16	56.3%
3PT%	1-5	20.0%
FT%	1-1	100%
GM FG%	9-16	56.3%
3PT%	1-5	20.0%
FT%	1-1	100.0%

Dead Ball Rebounds: 0, 0

Technical Fouls::NONE

Tennessee - 22

NO.	Name	Min	FG			Rebounds			Fouls		TP	AS	TO	ST	Blocks		+/-
			M-A	3P	FT	OR	DR	TOT	PF	FD					BS	BA	
11	Zee Spearman	F 07:43	5-8	0-3	0-0	2	1	3	1	0	10	0	0	0	0	0	2
2	Ruby Whitehorn	G 07:20	0-2	0-1	0-0	1	2	3	0	0	0	1	0	0	0	0	1
7	Samara Spencer	G 07:20	0-1	0-0	0-0	1	1	2	1	2	0	1	1	1	0	0	1
21	Tess Darby	G 01:47	0-0	0-0	0-0	0	0	0	0	0	0	0	0	0	0	0	-2
55	Talaysia Cooper	G 08:37	6-7	0-0	0-1	2	1	3	0	1	12	1	1	0	1	1	2
33	Alyssa Latham	02:17	0-1	0-0	0-0	2	0	2	1	0	0	0	0	0	0	0	0
53	Jillian Hollingshead	01:53	0-1	0-0	0-0	0	0	0	0	0	0	0	0	0	0	0	2
0	Jewel Spear	07:43	0-2	0-1	0-0	0	0	0	0	0	0	0	0	0	0	0	2
1	Sara Puckett	02:40	0-0	0-0	0-0	0	0	0	0	0	0	0	0	1	0	0	1
4	Kaniya Boyd	02:40	0-0	0-0	0-0	0	0	0	0	0	0	0	0	0	0	0	1
Team						0	0	0			0		0				
<b>Totals</b>			11-22	0-5	0-1	8	5	13	3	3	22	3	2	2	1	1	2

Shooting By Period		
4 <sup>th</sup> FG%	11-22	50.0%
3PT%	0-5	0.0%
FT%	0-1	0%
GM FG%	11-22	50.0%
3PT%	0-5	0.0%
FT%	0-1	0.0%

Dead Ball Rebounds: 0, 0

Technical Fouls::NONE

	NOLES	TENN
Biggest lead	0 (1 <sup>st</sup> 10:00)	6 (4 <sup>th</sup> 3:58)
Best Scoring Run	5(4 <sup>th</sup> 3:21)	4(4 <sup>th</sup> 7:06)
Lead Changes	1	
Times Tied	3	
Time with Lead	00:00	08:04

Points from	NOLES	TENN
Turnovers	0	4
Paint	16	20
Second Chance	2	8
Fast Breaks	5	0
Bench	8	0

Period by Period Scoring					
	1st	2nd	3rd	4th	TOT
NOLES	15	12	30	20	77
TENN	21	24	12	22	79





**Florida State at Tennessee**

12/04/24 Food City Center, Knoxville, Tennessee  
2024-2025 Women's Basketball

Game Time: 7:17 PM  
Game Duration: 1:48  
Attendance: 9,529

Officials: Gina Cross, Kevin Pethel, Brenda Pantoja

**Florida State - 50**

NO.	Name	Min	FG			Rebounds			Fouls		TP	AS	TO	ST	Blocks		+/-
			M-A	M-A	M-A	OR	DR	TOT	PF	FD					BS	BA	
21	Makayla Timpson	F 20:00	3-5	0-0	2-2	1	5	6	0	1	8	0	0	0	3	1	16
00	Ta'Niya Latson	G 17:16	11-16	1-3	3-4	0	3	3	0	5	26	1	1	2	1	1	15
1	Brianna Turnage	G 11:27	0-0	0-0	0-0	0	3	3	0	0	0	1	1	0	0	0	16
3	O'Mariah Gordon	G 20:00	3-7	0-2	2-2	2	1	3	3	1	8	2	1	2	0	0	16
13	Carla Viegas	G 04:23	0-1	0-1	0-0	0	0	0	0	0	0	0	0	0	0	0	13
11	Sydney Bowles	15:37	3-4	1-1	1-1	0	1	1	2	1	8	1	0	0	0	1	3
24	Amaya Bonner	04:17	0-0	0-0	0-0	0	0	0	1	0	0	0	0	0	0	0	3
6	Mariana Valenzuela	05:36	0-1	0-1	0-0	0	1	1	0	0	0	1	1	0	1	0	-1
4	Raiane Dos Santos	01:24	0-0	0-0	0-0	0	0	0	0	0	0	0	0	0	0	0	-1
Team						2	1	3			0		0				
<b>Totals</b>			20-34	2-8	8-9	5	15	20	6	8	50	6	4	4	5	3	16

Shooting By Period		
3 <sup>rd</sup> FG%	11-18	61.1%
3PT%	1-3	33.3%
FT%	7-8	87.5%
4 <sup>th</sup> FG%	9-16	56.3%
3PT%	1-5	20.0%
FT%	1-1	100%
GM FG%	20-34	58.8%
3PT%	2-8	25.0%
FT%	8-9	88.9%

Dead Ball Rebounds: 2, 0

Technical Fouls::NONE

**Tennessee - 34**

NO.	Name	Min	FG			Rebounds			Fouls		TP	AS	TO	ST	Blocks		+/-
			M-A	M-A	M-A	OR	DR	TOT	PF	FD					BS	BA	
11	Zee Spearman	F 11:05	5-11	0-4	0-0	3	2	5	2	0	10	0	0	0	0	0	-4
2	Ruby Whitehorn	G 12:36	0-6	0-1	0-0	1	2	3	0	0	0	1	0	0	1	1	-10
7	Samara Spencer	G 14:53	1-3	1-1	1-2	1	2	3	2	4	4	1	1	1	0	0	-9
21	Tess Darby	G 07:17	0-1	0-0	0-0	0	0	0	0	0	0	0	0	0	0	0	-10
55	Talaysia Cooper	G 11:59	7-10	0-1	0-1	3	2	5	2	2	14	1	2	0	1	1	-5
0	Jewel Spear	14:06	0-6	0-3	0-0	0	0	0	0	0	0	0	0	0	0	2	-12
1	Sara Puckett	07:24	0-1	0-1	0-0	0	0	0	0	0	0	0	0	1	0	0	-6
4	Kaniya Boyd	08:39	0-0	0-0	0-0	1	0	1	0	0	0	1	1	0	0	0	-9
33	Alyssa Latham	07:02	2-4	0-0	0-0	3	0	3	1	0	4	0	1	0	1	1	-8
53	Jillian Hollingshead	04:59	1-3	0-1	0-0	0	0	0	1	0	2	0	0	0	0	0	-7
Team						4	0	4			0		1				
<b>Totals</b>			16-45	1-12	1-3	16	8	24	8	6	34	4	6	2	3	5	-16

Shooting By Period		
3 <sup>rd</sup> FG%	5-23	21.7%
3PT%	1-7	14.3%
FT%	1-2	50%
4 <sup>th</sup> FG%	11-22	50.0%
3PT%	0-5	0.0%
FT%	0-1	0%
GM FG%	16-45	35.6%
3PT%	1-12	8.3%
FT%	1-3	33.3%

Dead Ball Rebounds: 0, 0

Technical Fouls::NONE

	NOLES	TENN
Biggest lead	1 (3 <sup>rd</sup> 3:03)	20 (3 <sup>rd</sup> 9:48)
Best Scoring Run	13(3 <sup>rd</sup> 6:45)	4(4 <sup>th</sup> 7:06)
Lead Changes	2	
Times Tied	5	
Time with Lead	00:22	16:08

	NOLES	TENN
Points from		
Turnovers	6	4
Paint	36	28
Second Chance	6	13
Fast Breaks	16	0
Bench	8	6

Period by Period Scoring					
	1st	2nd	3rd	4th	TOT
NOLES	15	12	30	20	77
TENN	21	24	12	22	79



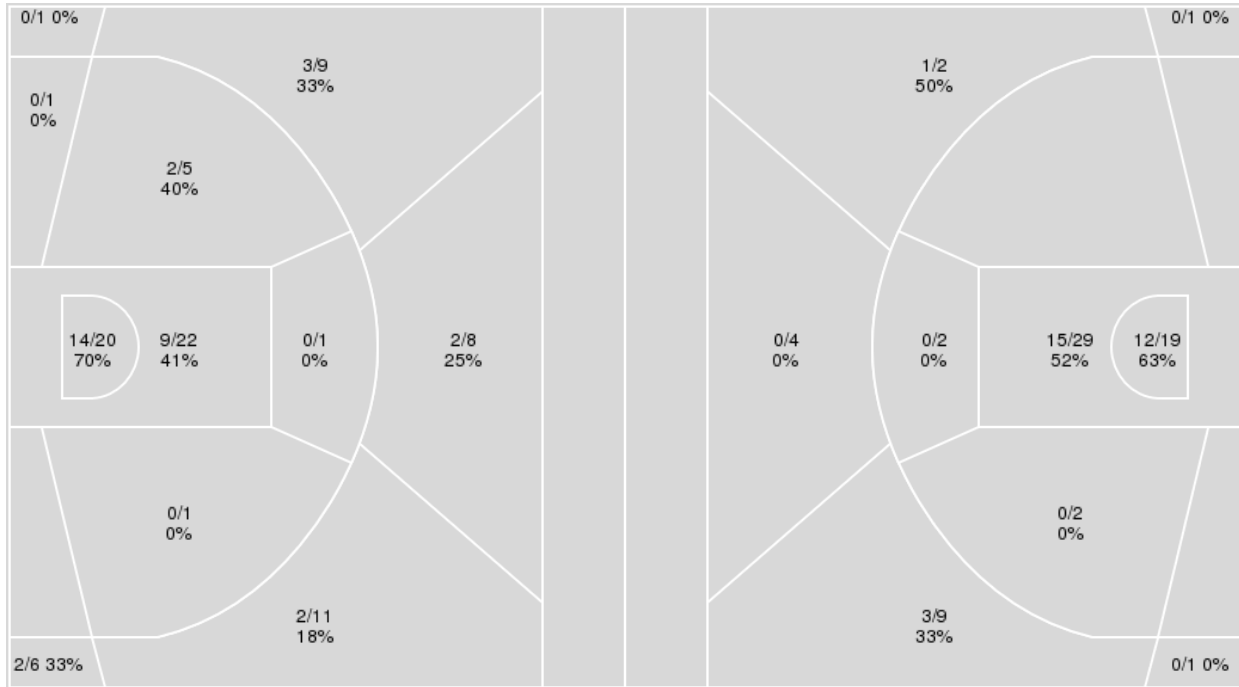
**Officials:** Gina Cross, Kevin Pethel, Brenda Pantoja

{ Players => All; } FG Types => All; Results => All;

{ Players => 00, 1, 3, 4, 6, 8, 11, 13, 21, 22, 24, 32; } FG Types => All;  
 Results => All;

**Tennessee**

**Florida State**



Tennessee	M/A	%
Field Goals	34/85	40
2 Points	25/50	50
3 Points	9/35	26
Free Throws	2/7	29

Florida State	M/A	%
Field Goals	31/69	45
2 Points	27/52	52
3 Points	4/17	24
Free Throws	11/13	85



**Florida State at Tennessee**

12/04/24 Food City Center, Knoxville, Tennessee  
2024-2025 Women's Basketball

Officials: Gina Cross, Kevin Pethel, Brenda Pantoja

**Florida State**

No	Name	Mins		Score		Points Diff		Points per Min		Assists		Rebounds		Steals		Turnovers	
		On	Off	On	Off	On	Off	On	Off	On	Off	On	Off	On	Off	On	Off
00	Ta'Niya Latson	33:17	06:43	68 - 71	9 - 8	-3	1	2.04	1.34	8	2	33	6	8	0	14	2
1	Brianna Turnage	16:01	23:59	38 - 26	39 - 53	12	-14	2.37	1.63	4	6	13	26	4	4	3	13
3	O'Mariah Gordon	36:08	03:52	70 - 71	7 - 8	-1	-1	1.94	1.81	10	0	33	6	8	0	11	5
4	Raiane Dos Santos	07:13	32:47	9 - 13	68 - 66	-4	2	1.25	2.07	3	7	2	37	2	6	3	13
6	Mariana Valenzuela	12:33	27:27	15 - 30	62 - 49	-15	13	1.20	2.26	2	8	13	26	1	7	6	10
11	Sydney Bowles	29:33	10:27	56 - 52	21 - 27	4	-6	1.90	2.01	9	1	30	9	4	4	12	4
13	Carla Viegas	08:50	31:10	25 - 15	52 - 64	10	-12	2.83	1.67	1	9	10	29	2	6	4	12
21	Makayla Timpson	38:19	01:41	75 - 79	2 - 0	-4	2	1.96	1.19	10	0	36	3	7	1	16	0
24	Amaya Bonner	16:25	23:35	27 - 38	50 - 41	-11	9	1.64	2.12	3	7	22	17	3	5	11	5
32	Avery Treadwell	01:41	38:19	2 - 0	75 - 79	2	-4	1.19	1.96	0	10	3	36	1	7	0	16

**Tennessee**

No	Name	Mins		Score		Points Diff		Points per Min		Assists		Rebounds		Steals		Turnovers	
		On	Off	On	Off	On	Off	On	Off	On	Off	On	Off	On	Off	On	Off
0	Jewel Spear	25:26	14:34	50 - 56	29 - 21	-6	8	1.97	1.99	6	8	33	17	4	2	10	6
1	Sara Puckett	19:12	20:48	33 - 37	46 - 40	-4	6	1.72	2.21	2	12	27	23	3	3	9	7
2	Ruby Whitehorn	20:22	19:38	37 - 42	42 - 35	-5	7	1.82	2.14	9	5	21	29	2	4	8	8
4	Kaniya Boyd	19:31	20:29	30 - 42	49 - 35	-12	14	1.54	2.39	2	12	29	21	3	3	11	5
7	Samara Spencer	26:38	13:22	59 - 47	20 - 30	12	-10	2.22	1.50	14	0	27	23	3	3	10	6
11	Zee Spearman	15:31	24:29	30 - 34	49 - 43	-4	6	1.93	2.00	3	11	21	29	3	3	3	13
21	Tess Darby	17:29	22:31	38 - 27	41 - 50	11	-9	2.17	1.82	10	4	19	31	2	4	6	10
33	Alyssa Latham	17:18	22:42	33 - 35	46 - 42	-2	4	1.91	2.03	7	7	23	27	2	4	11	5
53	Jillian Hollingshead	14:11	25:49	29 - 16	50 - 61	13	-11	2.04	1.94	9	5	16	34	3	3	5	11
55	Talaysia Cooper	24:22	15:38	56 - 49	23 - 28	7	-5	2.30	1.47	8	6	34	16	5	1	7	9

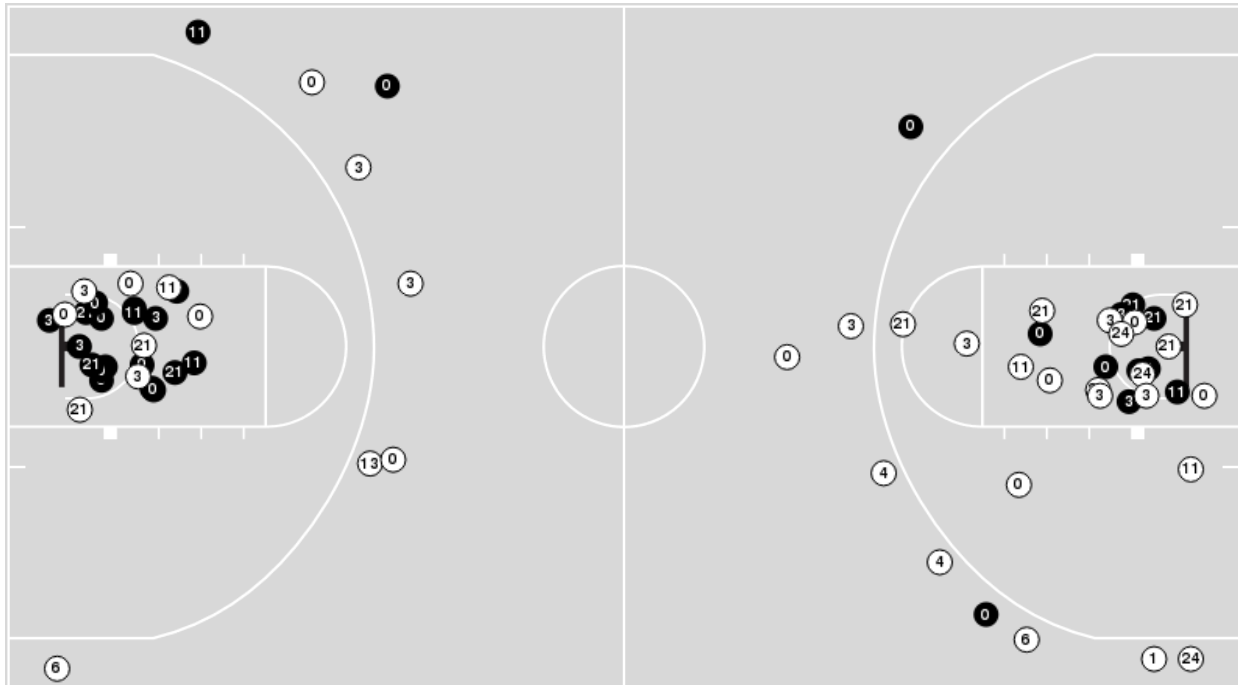


**Officials:** Gina Cross, Kevin Pethel, Brenda Pantoja

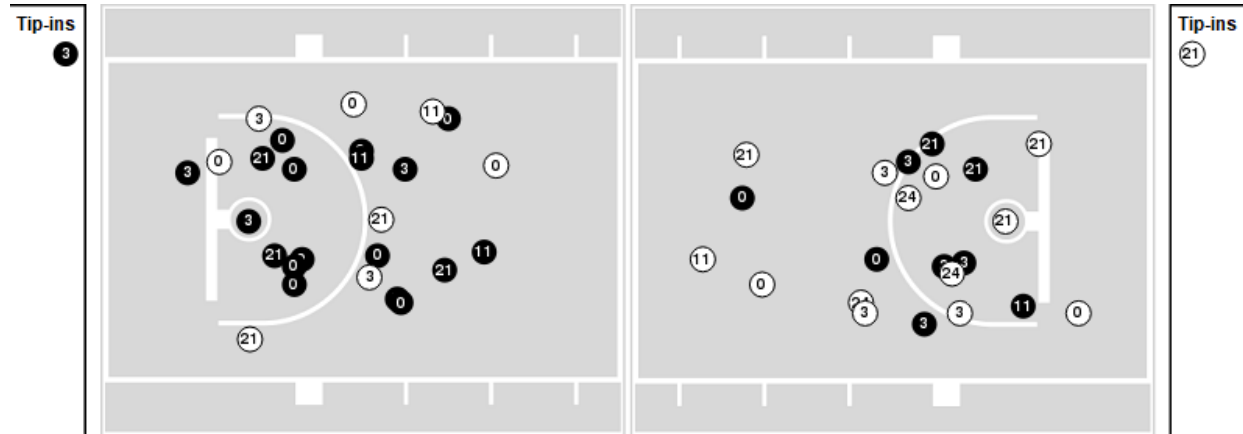
Players => 00, 1, 3, 4, 6, 8, 11, 13, 21, 22, 24, 32FG Types=>AllResults=>All

**Florida State**

**All Field Goals**



**Blow Up Chart**



● Made    ○ Missed    N - Player Number

Florida State	M/A	%
Field Goals	31/69	45
2 Points	27/52	52
3 Points	4/17	24
Free Throws	11/13	85

Florida State	M/A	%
Points in the Paint	54 (27 / 48)	56
Fast Break Points	25 (12/12)	100
Second Chance Points	6 (3/7)	43
Effective FG%	48	

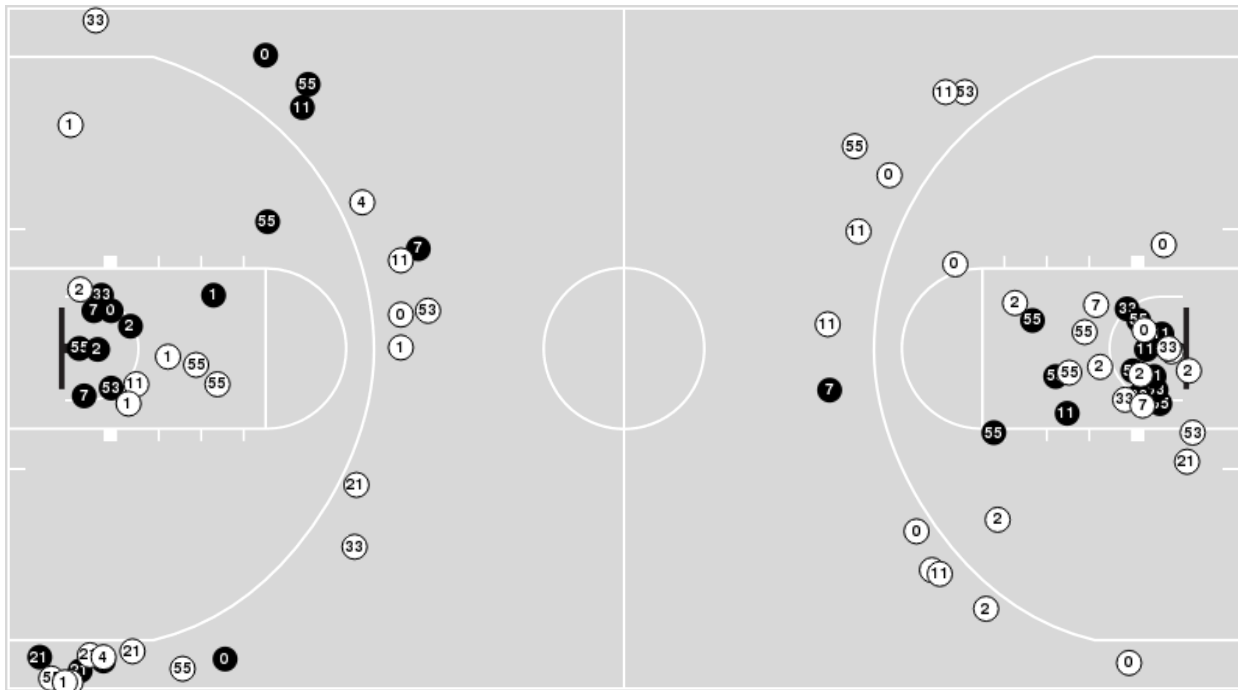


**Officials:** Gina Cross, Kevin Pethtel, Brenda Pantoja

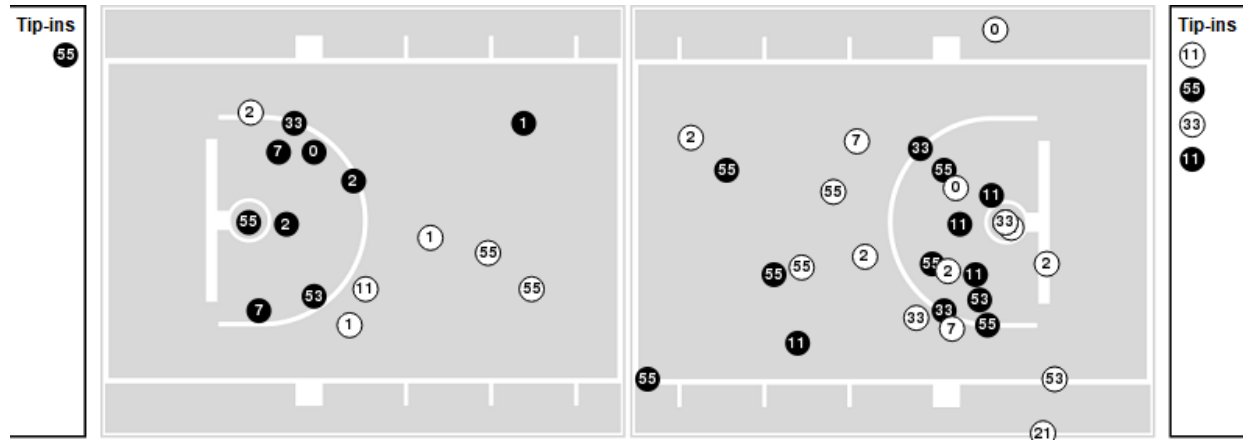
Players => AllFG Types=>AllResults=>All

**Tennessee**

**All Field Goals**



**Blow Up Chart**



● Made ○ Missed N - Player Number

Tennessee	M/A	%
Field Goals	34/85	40
2 Points	25/50	50
3 Points	9/35	26
Free Throws	2/7	29

Tennessee	M/A	%
Points in the Paint	46 (23 / 42)	55
Fast Break Points	16 (7/10)	70
Second Chance Points	19 (9/21)	43
Effective FG%	45	



**Florida State at Tennessee**

12/04/24 Food City Center, Knoxville, Tennessee  
2024-2025 Women's Basketball

Officials: Gina Cross, Kevin Pethel, Brenda Pantoja

**Florida State**

Lineup	Quarter On	Time On	Quarter Off	Time Off	Time on Court	Score	Score Diff	Reb	Stl	Tov	Ass	PPP
00- Latson T/ 1- Turnage B/ 3- Gordon O/ 13- Viegas C/ 21- Timpson M/	1	10:00	1	08:20	01:40	2-5	-3	1	0	1	0	0.5000
00- Latson T/ 3- Gordon O/ 11- Bowles S/ 21- Timpson M/ 24- Bonner A/	1	08:20	1	05:53	02:27	4-2	2	3	1	2	1	0.6667
3- Gordon O/ 6- Valenzuela M/ 11- Bowles S/ 21- Timpson M/ 24- Bonner A/	1	05:53	1	04:43	01:10	0-4	-4	2	0	1	0	0.0000
00- Latson T/ 6- Valenzuela M/ 11- Bowles S/ 21- Timpson M/ 24- Bonner A/	1	04:43	1	03:15	01:28	4-3	1	3	0	1	0	1.0309
00- Latson T/ 3- Gordon O/ 11- Bowles S/ 21- Timpson M/ 24- Bonner A/	1	03:15	1	01:41	01:34	3-7	-4	0	0	1	0	0.7732
00- Latson T/ 3- Gordon O/ 11- Bowles S/ 24- Bonner A/ 32- Treadwell A/	1	01:41	2	10:00	01:41	2-0	2	3	1	0	0	0.5000
1- Turnage B/ 3- Gordon O/ 4- Dos Santos R/ 11- Bowles S/ 21- Timpson M/	2	10:00	2	09:02	00:58	2-0	2	1	0	0	1	2.0000
00- Latson T/ 1- Turnage B/ 3- Gordon O/ 4- Dos Santos R/ 21- Timpson M/	2	09:02	2	07:06	01:56	2-5	-3	0	1	0	1	0.5000
00- Latson T/ 11- Bowles S/ 13- Viegas C/ 21- Timpson M/ 24- Bonner A/	2	07:06	2	04:59	02:07	3-3	0	3	0	3	0	0.7500
00- Latson T/ 3- Gordon O/ 11- Bowles S/ 13- Viegas C/ 21- Timpson M/	2	04:59	2	04:19	00:40	3-3	0	0	0	0	1	1.5000
00- Latson T/ 4- Dos Santos R/ 6- Valenzuela M/ 21- Timpson M/ 24- Bonner A/	2	04:19	2	04:02	00:17	0-2	-2	0	0	1	0	0.0000
00- Latson T/ 3- Gordon O/ 6- Valenzuela M/ 21- Timpson M/ 24- Bonner A/	2	04:02	2	02:38	01:24	0-9	-9	2	0	1	0	0.0000
00- Latson T/ 3- Gordon O/ 4- Dos Santos R/ 6- Valenzuela M/ 21- Timpson M/	2	02:38	2	01:51	00:47	0-2	-2	0	1	1	0	0.0000
3- Gordon O/ 4- Dos Santos R/ 6- Valenzuela M/ 11- Bowles S/ 21- Timpson M/	2	01:51	3	10:00	01:51	2-0	2	1	0	0	0	1.0000
00- Latson T/ 1- Turnage B/ 3- Gordon O/ 13- Viegas C/ 21- Timpson M/	3	10:00	3	05:37	04:23	17-4	13	6	2	0	0	1.7635
00- Latson T/ 3- Gordon O/ 11- Bowles S/ 21- Timpson M/ 24- Bonner A/	3	05:37	3	01:20	04:17	11-8	3	6	1	1	2	1.3959
1- Turnage B/ 3- Gordon O/ 6- Valenzuela M/ 11- Bowles S/ 21- Timpson M/	3	01:20	4	10:00	01:20	2-0	2	2	0	0	0	1.0000
00- Latson T/ 1- Turnage B/ 3- Gordon O/ 11- Bowles S/ 21- Timpson M/	4	10:00	4	06:27	03:33	4-6	-2	1	1	2	0	0.6667
00- Latson T/ 3- Gordon O/ 6- Valenzuela M/ 11- Bowles S/ 21- Timpson M/	4	06:27	4	03:35	02:52	4-6	-2	3	0	0	1	1.0000
3- Gordon O/ 4- Dos Santos R/ 6- Valenzuela M/ 11- Bowles S/ 21- Timpson M/	4	03:35	4	02:11	01:24	3-4	-1	0	0	1	1	1.5000
00- Latson T/ 1- Turnage B/ 3- Gordon O/ 11- Bowles S/ 21- Timpson M/	4	02:11	4	00:00	02:11	9-6	3	2	0	0	2	1.6544



**Florida State at Tennessee**

12/04/24 Food City Center, Knoxville, Tennessee  
2024-2025 Women's Basketball

**Game Time:** 7:17 PM  
**Game Duration:** 1:48  
**Attendance:** 9,529

**Officials:** Gina Cross, Kevin Pethel, Brenda Pantoja

**Tennessee**

Lineup	Quarter On	Time On	Quarter Off	Time Off	Time on Court	Score	Score Diff	Reb	Stl	Tov	Ass	PPP
2- Whitehorn R/ 7- Spencer S/ 11- Spearman Z/ 21- Darby T/ 55- Cooper T/	1	10:00	1	09:08	00:52	3-2	1	1	0	0	1	1.5000
0- Spear J/ 1- Puckett S/ 4- Boyd K/ 11- Spearman Z/ 55- Cooper T/	1	09:08	1	08:20	00:48	2-0	2	3	0	0	0	2.0000
2- Whitehorn R/ 7- Spencer S/ 21- Darby T/ 33- Latham A/ 53- Hollingshead J/	1	08:20	1	07:11	01:09	0-0	0	1	0	2	0	0.0000
0- Spear J/ 1- Puckett S/ 11- Spearman Z/ 33- Latham A/ 55- Cooper T/	1	07:11	1	07:10	00:01	0-0	0	0	0	0	0	0.0000
0- Spear J/ 1- Puckett S/ 4- Boyd K/ 11- Spearman Z/ 55- Cooper T/	1	07:10	1	05:53	01:17	2-4	-2	2	1	0	0	0.6667
2- Whitehorn R/ 7- Spencer S/ 21- Darby T/ 33- Latham A/ 53- Hollingshead J/	1	05:53	1	04:43	01:10	4-0	4	2	1	0	1	1.3333
0- Spear J/ 1- Puckett S/ 4- Boyd K/ 11- Spearman Z/ 55- Cooper T/	1	04:43	1	03:15	01:28	3-4	-1	1	1	0	0	0.7732
2- Whitehorn R/ 7- Spencer S/ 21- Darby T/ 33- Latham A/ 53- Hollingshead J/	1	03:15	1	01:41	01:34	7-3	4	1	0	0	3	2.3333
0- Spear J/ 1- Puckett S/ 4- Boyd K/ 33- Latham A/ 55- Cooper T/	1	01:41	2	10:00	01:41	0-2	-2	4	0	1	0	0.0000
1- Puckett S/ 2- Whitehorn R/ 7- Spencer S/ 21- Darby T/ 53- Hollingshead J/	2	10:00	2	09:02	00:58	0-2	-2	0	0	1	0	0.0000
0- Spear J/ 2- Whitehorn R/ 4- Boyd K/ 33- Latham A/ 55- Cooper T/	2	09:02	2	08:04	00:58	0-2	-2	2	0	2	0	0.0000
1- Puckett S/ 7- Spencer S/ 21- Darby T/ 53- Hollingshead J/ 55- Cooper T/	2	08:04	2	07:06	00:58	5-0	5	2	0	0	1	2.5000
0- Spear J/ 2- Whitehorn R/ 4- Boyd K/ 21- Darby T/ 33- Latham A/	2	07:06	2	06:58	00:08	0-0	0	0	0	0	0	0.0000
0- Spear J/ 2- Whitehorn R/ 4- Boyd K/ 7- Spencer S/ 33- Latham A/	2	06:58	2	06:01	00:57	3-3	0	0	0	1	1	1.5000
1- Puckett S/ 7- Spencer S/ 21- Darby T/ 53- Hollingshead J/ 55- Cooper T/	2	06:01	2	04:59	01:02	0-0	0	0	0	1	0	0.0000
0- Spear J/ 1- Puckett S/ 4- Boyd K/ 33- Latham A/ 55- Cooper T/	2	04:59	2	04:02	00:57	5-3	2	1	0	0	0	2.5000
0- Spear J/ 7- Spencer S/ 21- Darby T/ 53- Hollingshead J/ 55- Cooper T/	2	04:02	2	02:38	01:24	9-0	9	2	1	0	3	2.2500
0- Spear J/ 1- Puckett S/ 4- Boyd K/ 7- Spencer S/ 33- Latham A/	2	02:38	2	00:56	01:41	2-2	0	2	0	2	0	0.5000
1- Puckett S/ 4- Boyd K/ 21- Darby T/ 53- Hollingshead J/ 55- Cooper T/	2	00:56	3	10:00	00:56	0-0	0	2	0	0	0	0.0000
0- Spear J/ 2- Whitehorn R/ 7- Spencer S/ 11- Spearman Z/ 55- Cooper T/	3	10:00	3	09:10	00:50	2-2	0	0	0	0	0	1.0000
0- Spear J/ 1- Puckett S/ 4- Boyd K/ 11- Spearman Z/ 55- Cooper T/	3	09:10	3	07:58	01:12	0-4	-4	4	0	1	0	0.0000
2- Whitehorn R/ 7- Spencer S/ 21- Darby T/ 33- Latham A/ 53- Hollingshead J/	3	07:58	3	06:45	01:13	0-5	-5	1	0	0	0	0.0000
0- Spear J/ 1- Puckett S/ 4- Boyd K/ 33- Latham A/ 55- Cooper T/	3	06:45	3	05:37	01:08	2-6	-4	2	0	1	0	0.6667
0- Spear J/ 2- Whitehorn R/ 7- Spencer S/ 21- Darby T/ 53- Hollingshead J/	3	05:37	3	03:44	01:53	2-6	-4	0	0	0	0	0.6667
1- Puckett S/ 7- Spencer S/ 21- Darby T/ 33- Latham A/ 55- Cooper T/	3	03:44	3	03:39	00:05	1-0	1	0	0	0	0	1.1364
1- Puckett S/ 4- Boyd K/ 21- Darby T/ 33- Latham A/ 55- Cooper T/	3	03:39	3	03:32	00:07	0-0	0	0	0	0	0	0.0000
1- Puckett S/ 4- Boyd K/ 7- Spencer S/ 21- Darby T/ 33- Latham A/	3	03:32	3	01:20	02:12	5-5	0	2	0	1	1	1.2500
0- Spear J/ 2- Whitehorn R/ 4- Boyd K/ 7- Spencer S/ 11- Spearman Z/	3	01:20	4	10:00	01:20	0-2	-2	2	0	1	0	0.0000
0- Spear J/ 2- Whitehorn R/ 7- Spencer S/ 11- Spearman Z/ 55- Cooper T/	4	10:00	4	08:41	01:19	2-2	0	1	0	0	1	1.0000
2- Whitehorn R/ 7- Spencer S/ 21- Darby T/ 33- Latham A/ 53- Hollingshead J/	4	08:41	4	08:29	00:12	0-0	0	1	0	0	0	0.0000
2- Whitehorn R/ 7- Spencer S/ 33- Latham A/ 53- Hollingshead J/ 55- Cooper T/	4	08:29	4	07:59	00:30	2-0	2	0	1	0	1	2.0000
2- Whitehorn R/ 7- Spencer S/ 21- Darby T/ 33- Latham A/ 53- Hollingshead J/	4	07:59	4	07:43	00:16	0-0	0	0	0	1	0	0.0000
0- Spear J/ 1- Puckett S/ 4- Boyd K/ 11- Spearman Z/ 55- Cooper T/	4	07:43	4	06:27	01:16	2-2	0	1	0	1	0	1.0000
2- Whitehorn R/ 7- Spencer S/ 21- Darby T/ 33- Latham A/ 53- Hollingshead J/	4	06:27	4	05:32	00:55	0-0	0	4	0	0	0	0.0000
0- Spear J/ 2- Whitehorn R/ 7- Spencer S/ 11- Spearman Z/ 55- Cooper T/	4	05:32	4	03:35	01:57	6-4	2	4	0	0	0	1.3514
0- Spear J/ 1- Puckett S/ 4- Boyd K/ 11- Spearman Z/ 55- Cooper T/	4	03:35	4	02:11	01:24	4-3	1	1	1	0	0	2.0000
2- Whitehorn R/ 7- Spencer S/ 21- Darby T/ 33- Latham A/ 55- Cooper T/	4	02:11	4	01:47	00:24	2-4	-2	0	0	0	0	2.0000
0- Spear J/ 2- Whitehorn R/ 7- Spencer S/ 11- Spearman Z/ 55- Cooper T/	4	01:47	4	00:00	01:47	4-5	-1	1	0	0	1	1.3333



**Officials:** Gina Cross, Kevin Pethel, Brenda Pantoja

**Florida State**

Lineup	Time	Score	Score Diff	Pts/Min	Reb	Stl	Tov	Ass	PPP
00- Latson T/ 3- Gordon O/ 11- Bowles S/ 21- Timpson M/ 24- Bonner A/	08:18	18-17	1	2.1687	9	2	4	3	1.0135
00- Latson T/ 1- Turnage B/ 3- Gordon O/ 13- Viegas C/ 21- Timpson M/	06:03	19-9	10	3.1405	7	2	1	0	1.3930
00- Latson T/ 1- Turnage B/ 3- Gordon O/ 11- Bowles S/ 21- Timpson M/	05:44	13-12	1	2.2674	3	1	2	2	1.1364
3- Gordon O/ 4- Dos Santos R/ 6- Valenzuela M/ 11- Bowles S/ 21- Timpson M/	03:15	5-4	1	1.5385	1	0	1	1	1.2500
00- Latson T/ 3- Gordon O/ 6- Valenzuela M/ 11- Bowles S/ 21- Timpson M/	02:52	4-6	-2	1.3953	3	0	0	1	1.0000
00- Latson T/ 11- Bowles S/ 13- Viegas C/ 21- Timpson M/ 24- Bonner A/	02:07	3-3	0	1.4173	3	0	3	0	0.7500
00- Latson T/ 1- Turnage B/ 3- Gordon O/ 4- Dos Santos R/ 21- Timpson M/	01:56	2-5	-3	1.0345	0	1	0	1	0.5000
00- Latson T/ 3- Gordon O/ 11- Bowles S/ 24- Bonner A/ 32- Treadwell A/	01:41	2-0	2	1.1881	3	1	0	0	0.5000
00- Latson T/ 6- Valenzuela M/ 11- Bowles S/ 21- Timpson M/ 24- Bonner A/	01:28	4-3	1	2.7273	3	0	1	0	1.0309
00- Latson T/ 3- Gordon O/ 6- Valenzuela M/ 21- Timpson M/ 24- Bonner A/	01:24	0-9	-9	0.0000	2	0	1	0	0.0000
1- Turnage B/ 3- Gordon O/ 6- Valenzuela M/ 11- Bowles S/ 21- Timpson M/	01:20	2-0	2	1.5000	2	0	0	0	1.0000
3- Gordon O/ 6- Valenzuela M/ 11- Bowles S/ 21- Timpson M/ 24- Bonner A/	01:10	0-4	-4	0.0000	2	0	1	0	0.0000
1- Turnage B/ 3- Gordon O/ 4- Dos Santos R/ 11- Bowles S/ 21- Timpson M/	00:58	2-0	2	2.0690	1	0	0	1	2.0000
00- Latson T/ 3- Gordon O/ 4- Dos Santos R/ 6- Valenzuela M/ 21- Timpson M/	00:47	0-2	-2	0.0000	0	1	1	0	0.0000
00- Latson T/ 3- Gordon O/ 11- Bowles S/ 13- Viegas C/ 21- Timpson M/	00:40	3-3	0	4.5000	0	0	0	1	1.5000
00- Latson T/ 4- Dos Santos R/ 6- Valenzuela M/ 21- Timpson M/ 24- Bonner A/	00:17	0-2	-2	0.0000	0	0	1	0	0.0000





**Officials:** Gina Cross, Kevin Pethel, Brenda Pantoja

**Tennessee**

Lineup	Time	Score	Score Diff	Pts/Min	Reb	Stl	Tov	Ass	PPP
0- Spear J/ 1- Puckett S/ 4- Boyd K/ 11- Spearman Z/ 55- Cooper T/	07:25	13-17	-4	1.7528	12	3	2	0	0.8737
2- Whitehorn R/ 7- Spencer S/ 21- Darby T/ 33- Latham A/ 53- Hollingshead J/	06:29	11-8	3	1.6967	10	1	3	4	1.0000
0- Spear J/ 2- Whitehorn R/ 7- Spencer S/ 11- Spearman Z/ 55- Cooper T/	05:53	14-13	1	2.3796	6	0	0	2	1.2238
0- Spear J/ 1- Puckett S/ 4- Boyd K/ 33- Latham A/ 55- Cooper T/	03:46	7-11	-4	1.8584	7	0	2	0	0.7000
1- Puckett S/ 4- Boyd K/ 7- Spencer S/ 21- Darby T/ 33- Latham A/	02:12	5-5	0	2.2727	2	0	1	1	1.2500
1- Puckett S/ 7- Spencer S/ 21- Darby T/ 53- Hollingshead J/ 55- Cooper T/	02:00	5-0	5	2.5000	2	0	1	1	1.2500
0- Spear J/ 2- Whitehorn R/ 7- Spencer S/ 21- Darby T/ 53- Hollingshead J/	01:53	2-6	-4	1.0619	0	0	0	0	0.6667
0- Spear J/ 1- Puckett S/ 4- Boyd K/ 7- Spencer S/ 33- Latham A/	01:41	2-2	0	1.1869	2	0	2	0	0.5000
0- Spear J/ 7- Spencer S/ 21- Darby T/ 53- Hollingshead J/ 55- Cooper T/	01:24	9-0	9	6.4286	2	1	0	3	2.2500
0- Spear J/ 2- Whitehorn R/ 4- Boyd K/ 7- Spencer S/ 11- Spearman Z/	01:20	0-2	-2	0.0000	2	0	1	0	0.0000
1- Puckett S/ 2- Whitehorn R/ 7- Spencer S/ 21- Darby T/ 53- Hollingshead J/	00:58	0-2	-2	0.0000	0	0	1	0	0.0000
0- Spear J/ 2- Whitehorn R/ 4- Boyd K/ 33- Latham A/ 55- Cooper T/	00:58	0-2	-2	0.0000	2	0	2	0	0.0000
0- Spear J/ 2- Whitehorn R/ 4- Boyd K/ 7- Spencer S/ 33- Latham A/	00:57	3-3	0	3.1579	0	0	1	1	1.5000
1- Puckett S/ 4- Boyd K/ 21- Darby T/ 53- Hollingshead J/ 55- Cooper T/	00:56	0-0	0	0.0000	2	0	0	0	0.0000
2- Whitehorn R/ 7- Spencer S/ 11- Spearman Z/ 21- Darby T/ 55- Cooper T/	00:52	3-2	1	3.4615	1	0	0	1	1.5000
2- Whitehorn R/ 7- Spencer S/ 33- Latham A/ 53- Hollingshead J/ 55- Cooper T/	00:30	2-0	2	4.0000	0	1	0	1	2.0000
2- Whitehorn R/ 7- Spencer S/ 21- Darby T/ 33- Latham A/ 55- Cooper T/	00:24	2-4	-2	5.0000	0	0	0	0	2.0000
0- Spear J/ 2- Whitehorn R/ 4- Boyd K/ 21- Darby T/ 33- Latham A/	00:08	0-0	0	0.0000	0	0	0	0	0.0000
1- Puckett S/ 4- Boyd K/ 21- Darby T/ 33- Latham A/ 55- Cooper T/	00:07	0-0	0	0.0000	0	0	0	0	0.0000
1- Puckett S/ 7- Spencer S/ 21- Darby T/ 33- Latham A/ 55- Cooper T/	00:05	1-0	1	12.0000	0	0	0	0	1.1364
0- Spear J/ 1- Puckett S/ 11- Spearman Z/ 33- Latham A/ 55- Cooper T/	00:01	0-0	0	0.0000	0	0	0	0	0.0000