

FINAL SCORE



Florida

74



Florida State

98

November 23, 2024 • Donald L. Tucker Center

FINAL STATISTICS

FLORIDA STATE[®]

BASKETBALL

FINAL: RV FSU 98, FLORIDA 74

- » The Florida State Seminoles (5-1) picked up its third straight win over Florida, 98-74.
- » The Seminoles defeated the Gators by 24 points, marking the fourth-highest margin of victory over the in-state rival. FSU's 98 points were also the third-highest total scored against the Gators and most since the 1978-79 season.
- » Head Coach Brooke Wyckoff has won three straight against Florida and is 4-0 for her coaching career.
- » Trailing early in the second quarter, the Seminoles went on a 20-0 run to take the 47-31 lead into the locker room. FSU held the Gators to 33 percent shooting.
- » Ta'Niya Latson led the team in scoring, contributing 25 points, five assists and five rebounds.
- » Latson now has 1,498 career points and will look to become the 10th player in program history to score 1,500.
- » O'Mariah Gordon scored in double figures for the sixth straight game, contributing 19 points, 6 rebounds and four steals. She has 991 career points.
- » Makayla Timpson added 17 points, and seven rebounds. Timpson had four blocks in the first half, two while playing with two fouls.
- » Timpson made a career high nine free throws
- » Malea Williams led the team in rebounds, grabbing 11. which was a season high.
- » Despite scoring 38 points in the paint, the Seminoles earned 31 second chance points and 16 off turnovers.
- » The bench made key contributions, scoring 22 points.

FSU STARTERS

Player	20-21	21-22	22-23	23-24	24-25	Tot
Ta'Niya Latson	-	-	31	33	5	69
Makayla Timpson	-	1	33	34	6	74
O'Mariah Gordon	-	20	2	34	6	62
*Malea Williams	0	3	4	31	6	44
Carla Viegas	-	-	-	0	6	6
^Sydney Bowles	-	-	29	1	1	31

*At Cincinnati, ^ at Texas A&M

FSU TOP SCORERS

Player	PTS	FGM	FT	3PT	AST	REB
Ta'Niya Latson	25	6-19	13-14	0-3	5	5
O'Mariah Gordon	19	7-17	5-6	0-4	2	6
Makayla Timpson	17	4-11	9-10	0-1	0	7



Officials: Denise Brooks, Katie Lukanich, Talisa Green

Florida - 74

Record: 3-2

NO.	Name	Min	FG	3P	FT	Rebounds			Fouls		TP	AS	TO	ST	Blocks		+/-
			M-A	M-A	M-A	OR	DR	TOT	PF	FD					BS	BA	
24	Ra Shaya Kyle	C 36:14	8-14	0-0	5-10	3	8	11	4	7	21	1	0	0	1	2	-12
6	Kenza Salgues	G 13:37	0-1	0-0	0-0	0	1	1	2	0	0	0	1	0	0	1	-12
13	Laila Reynolds	G 29:27	2-10	0-1	2-6	1	3	4	4	5	6	3	4	0	1	3	-15
20	Jeriah Warren	G 30:06	3-7	1-2	2-2	3	3	6	4	1	9	0	3	1	0	0	-20
23	Liv McGill	G 39:29	11-17	2-3	4-6	1	2	3	3	6	28	5	7	1	0	1	-22
9	Alexia Dizeko	26:54	4-7	0-0	2-2	1	0	1	4	4	10	0	3	0	0	1	-13
3	Alexia Mobley	16:26	0-3	0-0	0-0	1	2	3	0	1	0	0	0	0	1	0	-23
12	Daviane Mindoudi	02:33	0-0	0-0	0-0	0	0	0	1	0	0	0	0	0	0	0	2
21	Eriny Kindred	05:15	0-1	0-0	0-0	0	2	2	3	0	0	0	0	0	0	0	-5
Team						3	3	6			0		0				
Totals			28-60	3-6	15-26	13	24	37	25	24	74	9	18	2	3	8	-24

Technical Fouls: Kindred 2nd 1:30

Shooting By Period		
1 st FG%	6-14	42.9%
3PT%	2-3	66.7%
FT%	2-4	50%
2 nd FG%	5-15	33.3%
3PT%	1-1	100.0%
FT%	4-8	50%
3 rd FG%	11-16	68.8%
3PT%	0-2	0.0%
FT%	1-4	25%
4 th FG%	6-15	40.0%
3PT%	0-0	0.0%
FT%	8-10	80%
GMFG%	28-60	46.7%
3PT%	3-6	50.0%
FT%	15-26	57.7%

Dead Ball Rebounds: 7, 0

Florida State - 98

Record: 5-1

NO.	Name	Min	FG	3P	FT	Rebounds			Fouls		TP	AS	TO	ST	Blocks		+/-
			M-A	M-A	M-A	OR	DR	TOT	PF	FD					BS	BA	
21	Makayla Timpson	F 29:45	4-11	0-1	9-10	5	2	7	3	5	17	0	2	1	4	0	19
22	Malea Williams	F 25:12	2-8	1-3	1-4	7	4	11	1	2	6	0	0	1	2	0	12
00	Ta'Niya Latson	G 27:01	6-19	0-3	13-14	1	4	5	5	9	25	5	2	1	1	2	18
3	O'Mariah Gordon	G 34:27	7-17	0-4	5-6	2	4	6	1	4	19	2	2	4	0	1	18
13	Carla Viegas	G 18:42	3-5	3-5	0-0	0	1	1	1	0	9	0	0	0	0	0	14
1	Brianna Turnage	12:56	0-1	0-1	0-0	2	2	4	2	0	0	0	0	1	1	0	8
11	Sydney Bowles	16:23	1-6	0-5	4-4	0	1	1	3	3	6	0	1	0	0	0	7
24	Amaya Bonner	20:38	1-6	1-6	0-0	1	1	2	3	0	3	0	0	0	0	0	14
4	Raiane Dos Santos	06:45	1-2	1-2	2-2	0	0	0	0	1	5	0	0	0	0	0	4
32	Avery Treadwell	08:12	4-4	0-0	0-0	4	0	4	5	0	8	0	1	0	0	0	6
Team						3	3	6			0		0				
Totals			29-79	6-30	34-40	25	22	47	24	24	98	7	8	8	8	3	24

Technical Fouls: NONE

Shooting By Period		
1 st FG%	6-22	27.3%
3PT%	1-11	9.1%
FT%	3-4	75%
2 nd FG%	10-22	45.5%
3PT%	1-5	20.0%
FT%	10-14	71.4%
3 rd FG%	6-17	35.3%
3PT%	2-6	33.3%
FT%	10-10	100%
4 th FG%	7-18	38.9%
3PT%	2-8	25.0%
FT%	11-12	91.7%
GMFG%	29-79	36.7%
3PT%	6-30	20.0%
FT%	34-40	85.0%

Dead Ball Rebounds: 7, 1

	UF	FSU
Biggest lead	5 (2 nd 8:33)	25 (4 th 5:02)
Best Scoring Run	7 (2 nd 8:33)	20 (2 nd 4:43)
Lead Changes	4	
Times Tied	4	
Time with Lead	02:29	36:04

	UF	FSU
Points from		
Turnovers	9	16
Paint	42	38
Second Chance	10	31
Fast Breaks	3	5
Bench	10	22

Period by Period Scoring					
	1st	2nd	3rd	4th	TOT
UF	16	15	23	20	74
FSU	16	31	24	27	98

Period 1

Period Starters:

FSU	00 Latson T	3 Gordon O	13 Megs C	21 Timpson M	22 Williams M
UF	6 Salgues K	13 Reynolds L	20 Warren J	23 McGill L	24 Kyle R

Game Time	FSU	Score	Diff	UF
10:00	21 TIMPSON M jumpball won			24 KYLE R jumpball lost
09:50	21 TIMPSON M 2pt FG outside the paint, turnaround jump shot missed			
09:49	22 WILLIAMS M offensive rebound (1)			
09:49	22 WILLIAMS M foul drawn (1)			13 REYNOLDS L foul shooting (1 - 1)
09:49	22 WILLIAMS M free throw 1 - 2 missed			
09:49	offensive dead ball rebound (1)			
09:49	22 WILLIAMS M free throw 2 - 2 made (1)	1-0	1	
09:38				13 REYNOLDS L 2pt FG in the paint, jump shot blocked
09:38	21 TIMPSON M block (1)			
09:32	3 GORDON O defensive rebound (1)			
09:30	13 MEGAS C 3pt FG , jump shot made (3)	4-0	4	
09:30	3 GORDON O assist (1)			
09:07		4-3	1	23 MCGILL L 3pt FG , jump shot made (3)
08:51	00 LATSON T 2pt FG in the paint, driving layup made (2)	6-3	3	
08:41		6-5	1	23 MCGILL L 2pt FG in the paint, layup made (5)
08:41				6 SALGUES K substitution out
08:41				9 DIZEKO A substitution in
08:30	00 LATSON T 3pt FG , jump shot missed			
08:25				defensive rebound (1)
08:21		6-7	-1	9 DIZEKO A 2pt FG outside the paint, jump shot made (2)
08:04	21 TIMPSON M 2pt FG in the paint, jump shot made (2)	8-7	1	
07:33				13 REYNOLDS L 2pt FG in the paint, pull up jump shot missed
07:30	22 WILLIAMS M defensive rebound (2)			
07:25	3 GORDON O 2pt FG in the paint, jump shot missed			
07:18				20 WARREN J defensive rebound (1)
06:59				23 MCGILL L 2pt FG in the paint, layup blocked
06:59	21 TIMPSON M block (2)			
06:53				9 DIZEKO A offensive rebound (1)
06:52				9 DIZEKO A 2pt FG second chance outside the paint, jump shot missed
06:47	defensive dead ball rebound (2)			
06:46				24 KYLE R substitution out
06:46				3 MOBLEY A substitution in
06:45	00 LATSON T foul drawn (1)			20 WARREN J foul shooting (1 - 2)
06:37	00 LATSON T free throw 1 - 2 made (3)	9-7	2	
06:31	00 LATSON T foul personal (1 - 1)			9 DIZEKO A foul drawn (1)
06:37	00 LATSON T free throw 2 - 2 made (4)	10-7	3	
06:31	22 WILLIAMS M substitution out			
06:31	1 TURNAGE B substitution in			
06:22	3 GORDON O steal (1)			23 MCGILL L turnover bad pass (1)
06:13	13 MEGAS C 3pt FG from turnover, jump shot missed			
06:09				3 MOBLEY A defensive rebound (1)

Official Basketball Play-by-Play - 1st Period
Florida at Florida State
 11/22/24 Donald L. Tucker Center, Tallahassee
 2024-25 Women's Basketball

Game Time: 7:00 PM
Game Duration: 2:04
Attendance: 2,894

Officials: Denise Brooks, Katie Lukanich, Talisa Green

Game Time	FSU	Score	Diff	UF
05:55				13 REYNOLDS L turnover travel (1)
05:55	3 GORDON O substitution out			
05:55	11 BOWLES S substitution in			
05:46	21 TIMPSON M foul offensive (1 - 2)			3 MOBLEY A foul drawn (1)
05:46	21 TIMPSON M turnover offensive (1)			
05:46				13 REYNOLDS L substitution out
05:46				24 KYLE R substitution in
05:32		10-9	1	9 DIZEKO A 2pt FG from turnover in the paint, jump shot made (4)
05:32				24 KYLE R assist (1)
05:21	00 LATSON T 2pt FG outside the paint, pull up jump shot missed			
05:17				24 KYLE R defensive rebound (1)
05:13				20 WARREN J 2pt FG outside the paint, jump shot missed
05:09	1 TURNAGE B defensive rebound (1)			
04:54	00 LATSON T 2pt FG outside the paint, pull up jump shot made (6)	12-9	3	
04:38	1 TURNAGE B steal (1)			9 DIZEKO A turnover bad pass (1)
04:24	21 TIMPSON M 2pt FG from turnover in the paint, turnaround jump shot missed			
04:21				24 KYLE R defensive rebound (2)
04:19				23 MCGILL L turnover bad pass (2)
04:19	Timeout media			
04:19	00 LATSON T substitution out			
04:19	13 MEGAS C substitution out			
04:19	3 GORDON O substitution in			
04:19	24 BONNER A substitution in			
04:19				20 WARREN J substitution out
04:19				13 REYNOLDS L substitution in
04:02	24 BONNER A 3pt FG from turnover, jump shot missed			
03:56	1 TURNAGE B offensive rebound (2)			
03:54	1 TURNAGE B 3pt FG from turnover second chance, jump shot missed			
03:52	1 TURNAGE B offensive rebound (3)			
03:50	11 BOWLES S 3pt FG from turnover second chance, jump shot missed			
03:47				24 KYLE R defensive rebound (3)
03:19		12-12	0	23 MCGILL L 3pt FG , step back jump shot made (8)
02:57	11 BOWLES S 3pt FG , jump shot missed			
02:51	3 GORDON O offensive rebound (2)			
02:51	3 GORDON O 2pt FG second chance in the paint, tip-in layup made (2)	14-12	2	
02:38				13 REYNOLDS L 2pt FG in the paint, jump shot blocked
02:38	1 TURNAGE B block (1)			
02:38				offensive rebound (8)
02:38				3 MOBLEY A substitution out
02:38				20 WARREN J substitution in
02:37				20 WARREN J 2pt FG second chance in the paint, jump shot missed
02:32				23 MCGILL L offensive rebound (1)
02:31	21 TIMPSON M steal (1)			23 MCGILL L turnover bad pass (3)
02:24	3 GORDON O 3pt FG from turnover, jump shot missed			

Game Time	FSU	Score	Diff	UF
02:20				20 WARREN J defensive rebound (2)
02:17				23 MCGILL L 3pt FG , jump shot missed
02:13				20 WARREN J offensive rebound (3)
02:09	11 BOWLES S foul personal (1 - 3)			23 MCGILL L foul drawn (1)
02:09	1 TURNAGE B substitution out			
02:09	24 BONNER A substitution out			
02:09	4 DOS SANTOS R substitution in			
02:09	22 WILLIAMS M substitution in			
02:09				13 REYNOLDS L substitution out
02:09				6 SALGUES K substitution in
02:03	21 TIMPSON M foul personal (2 - 4)			24 KYLE R foul drawn (1)
02:03	21 TIMPSON M substitution out			
02:03	32 TREADWELL A substitution in			
02:02				9 DIZEKO A turnover travel (2)
01:47	22 WILLIAMS M 3pt FG from turnover, jump shot missed			
01:44				24 KYLE R defensive rebound (4)
01:39	3 GORDON O steal (2)			20 WARREN J turnover bad pass (1)
01:39	4 DOS SANTOS R substitution out			
01:39	00 LATSON T substitution in			
01:29	00 LATSON T 2pt FG from turnover in the paint, turnaround jump shot missed			
01:27				24 KYLE R defensive rebound (5)
01:19		14-14	0	23 MCGILL L 2pt FG in the paint, driving layup made (10)
01:05	22 WILLIAMS M 2pt FG outside the paint, turnaround jump shot missed			
01:02	32 TREADWELL A offensive rebound (1)			
01:02	32 TREADWELL A 2pt FG second chance in the paint, tip-in layup made (2)	16-14	2	
00:43	32 TREADWELL A foul personal (1 - 5)			24 KYLE R foul drawn (2)
00:43				9 DIZEKO A substitution out
00:43				13 REYNOLDS L substitution in
00:43				24 KYLE R free throw 1 - 2 missed
00:43				offensive dead ball rebound (1)
00:43				24 KYLE R free throw 2 - 2 missed
00:42	22 WILLIAMS M defensive rebound (3)			
00:26	11 BOWLES S 3pt FG , jump shot missed			
00:23				23 MCGILL L defensive rebound (2)
00:16	11 BOWLES S foul shooting (2 - 6)			23 MCGILL L foul drawn (2)
00:16	11 BOWLES S substitution out			
00:16	13 MEGAS C substitution in			
00:16				13 REYNOLDS L substitution out
00:16				9 DIZEKO A substitution in
00:16				20 WARREN J substitution out
00:16				12 MINDOUDI D substitution in
00:16		16-15	1	23 MCGILL L free throw 1 - 2 made (11)
00:16		16-16	0	23 MCGILL L free throw 2 - 2 made (12)
00:16				24 KYLE R substitution out
00:16				3 MOBLEY A substitution in
00:03	13 MEGAS C 3pt FG , jump shot missed			
00:00	offensive dead ball rebound (3)			

Official Basketball PlaybyPlay- 1st Period

Florida at Florida State

11/22/24 Donald L. Tucker Center, Tallahassee
2024-25 Women's Basketball

Game Time: 7:00 PM

Game Duration: 2:04

Attendance: 2,894

Officials: Denise Brooks, Katie Lukanich, Talisa Green

Game Time	FSU	Score	Diff	UF
END OF PERIOD				
FSU 16-16 UF				

Officials: Denise Brooks, Katie Lukanich, Talisa Green

Florida - 16

NO.	Name	Min	FG M-A	3P M-A	FT M-A	Rebounds			Fouls		TP	AS	TO	ST	Blocks		+/-
						OR	DR	TOT	PF	FD					BS	BA	
24	Ra Shaya Kyle	C 08:43	0-0	0-0	0-2	0	5	5	0	2	0	1	0	0	0	0	2
6	Kenza Salgues	G 03:28	0-0	0-0	0-0	0	0	0	0	0	0	0	0	0	0	0	1
13	Laila Reynolds	G 06:51	0-3	0-0	0-0	0	0	0	1	0	0	0	1	0	0	2	-2
20	Jeriah Warren	G 08:02	0-2	0-0	0-0	1	2	3	1	0	0	0	1	0	0	0	-3
23	Liv McGill	G 10:00	4-6	2-3	2-2	1	1	2	0	2	12	0	3	0	0	1	0
9	Alexia Dizeko	08:15	2-3	0-0	0-0	1	0	1	0	1	4	0	2	0	0	0	1
3	Alexia Mobley	04:25	0-0	0-0	0-0	0	1	1	0	1	0	0	0	0	0	0	-1
12	Daviane Mindoudi	00:17	0-0	0-0	0-0	0	0	0	0	0	0	0	0	0	0	0	2
Team						1	1	2			0						
Totals			6-14	2-3	2-4	4	10	14	2	6	16	1	7	0	0	3	0

Shooting By Period		
1st FG%	6-14	42.9%
3PT%	2-3	66.7%
FT%	2-4	50%
GMFG%	6-14	42.9%
3PT%	2-3	66.7%
FT%	2-4	50.0%

Dead Ball Rebounds: 1, 0

Technical Fouls: NONE

Florida State - 16

NO.	Name	Min	FG M-A	3P M-A	FT M-A	Rebounds			Fouls		TP	AS	TO	ST	Blocks		+/-
						OR	DR	TOT	PF	FD					BS	BA	
21	Makayla Timpson	F 07:57	1-3	0-0	0-0	0	0	0	2	0	2	0	1	1	2	0	2
22	Malea Williams	F 05:38	0-2	0-1	1-2	1	2	3	0	1	1	0	0	0	0	0	1
00	Ta'Niya Latson	G 07:20	2-5	0-1	2-2	0	0	0	1	1	6	0	0	0	0	0	1
3	O'Mariah Gordon	G 08:24	1-3	0-1	0-0	1	1	2	0	0	2	1	0	2	0	0	0
13	Carla Viegas	G 05:58	1-3	1-3	0-0	0	0	0	0	0	3	0	0	0	0	0	1
1	Brianna Turnage	04:22	0-1	0-1	0-0	2	1	3	0	0	0	0	0	1	1	0	-1
11	Sydney Bowles	05:38	0-3	0-3	0-0	0	0	0	2	0	0	0	0	0	0	0	-1
24	Amaya Bonner	02:10	0-1	0-1	0-0	0	0	0	0	0	0	0	0	0	0	0	-1
4	Raiane Dos Santos	00:30	0-0	0-0	0-0	0	0	0	0	0	0	0	0	0	0	0	0
32	Avery Treadwell	02:03	1-1	0-0	0-0	1	0	1	1	0	2	0	0	0	0	0	-2
Team						0	0	0			0						
Totals			6-22	1-11	3-4	5	4	9	6	2	16	1	1	4	3	0	0

Shooting By Period		
1st FG%	6-22	27.3%
3PT%	1-11	9.1%
FT%	3-4	75%
GMFG%	6-22	27.3%
3PT%	1-11	9.1%
FT%	3-4	75.0%

Dead Ball Rebounds: 2, 1

Technical Fouls: NONE

	UF	FSU
Biggest lead	1 (1 st 8:21)	4 (1 st 9:30)
Best Scoring Run	4 (1 st 8:21)	4 (1 st 9:30)
Lead Changes	2	
Times Tied	3	
Time with Lead	00:17	08:30

	UF	FSU
Points from		
Turnovers	2	0
Paint	6	8
Second Chance	0	5
Fast Breaks	0	0
Bench	4	2

Period by Period Scoring					
	1st	2nd	3rd	4th	TOT
UF	16	15	23	20	74
FSU	16	31	24	27	98

Period 2

Period Starters:

FSU	00 Latson T	3 Gordon O	13 Vegas C	22 Williams M	32 Treadwell A
UF	6 Salgues K	9 Dizeko A	20 Warren J	23 McGill L	24 Kyle R

Game Time	FSU	Score	Diff	UF
10:00				3 MOBLEY A substitution out
10:00				12 MINDOUDI D substitution out
10:00				20 WARREN J substitution in
10:00				24 KYLE R substitution in
09:46	22 WILLIAMS M foul shooting (1 - 1)			24 KYLE R foul drawn (3)
09:46		16-17	-1	24 KYLE R free throw 1 - 2 made (1)
09:45				24 KYLE R free throw 2 - 2 missed
09:44	00 LATSON T defensive rebound (1)			
09:34	22 WILLIAMS M 3pt FG , jump shot missed			
09:29				6 SALGUES K defensive rebound (1)
09:09				23 MCGILL L 2pt FG outside the paint, pull up jump shot missed
09:06				24 KYLE R offensive rebound (6)
09:03		16-19	-3	24 KYLE R 2pt FG second chance in the paint, turnaround jump shot made (3)
08:56	32 TREADWELL A foul offensive (2 - 2)			9 DIZEKO A foul drawn (2)
08:56	32 TREADWELL A turnover offensive (1)			
08:33		16-21	-5	23 MCGILL L 2pt FG from turnover in the paint, driving layup made (14)
08:14	3 GORDON O 2pt FG in the paint, floating jump shot missed			
08:11	32 TREADWELL A offensive rebound (2)			
08:11	32 TREADWELL A 2pt FG second chance in the paint, tip-in layup made (4)	18-21	-3	
08:05				9 DIZEKO A turnover travel (3)
08:05	22 WILLIAMS M substitution out			
08:05	32 TREADWELL A substitution out			
08:05	21 TIMPSON M substitution in			
08:05	24 BONNER A substitution in			
08:05				23 MCGILL L substitution out
08:05				13 REYNOLDS L substitution in
07:53	3 GORDON O 2pt FG from turnover outside the paint, turnaround jump shot made (4)	20-21	-1	
07:47	13 MEGAS C substitution out			
07:47	1 TURNAGE B substitution in			
07:47				9 DIZEKO A 2pt FG in the paint, driving layup blocked
07:47	21 TIMPSON M block (3)			
07:47	00 LATSON T defensive rebound (2)			
07:34	00 LATSON T foul drawn (2)			6 SALGUES K foul shooting (1 - 1)
07:34				9 DIZEKO A substitution out
07:34				23 MCGILL L substitution in
07:34	00 LATSON T free throw 1 - 2 made (7)	21-21	0	
07:34	00 LATSON T free throw 2 - 2 made (8)	22-21	1	
07:21				6 SALGUES K 2pt FG in the paint, driving layup blocked
07:21	21 TIMPSON M block (4)			
07:21				offensive rebound (17)

Official Basketball Playby Play - 2nd Period
Florida at Florida State
 11/22/24 Donald L. Tucker Center, Tallahassee
 2024-25 Women's Basketball

Game Time: 7:00 PM
Game Duration: 2:04
Attendance: 2,894

Officials: Denise Brooks, Katie Lukanich, Talisa Green

Game Time	FSU	Score	Diff	UF
07:16				24 KYLE R 2pt FG second chance in the paint, turnaround jump shot missed
07:13	3 GORDON O defensive rebound (3)			
07:10	3 GORDON O foul offensive (1 - 3)			23 MCGILL L foul drawn (3)
07:10	3 GORDON O turnover offensive (1)			
07:01				13 REYNOLDS L turnover travel (2)
06:53	00 LATSON T 2pt FG from turnover in the paint, pull up jump shot made (10)	24-21	3	
06:30				24 KYLE R 2pt FG in the paint, layup missed
06:28	21 TIMPSON M defensive rebound (1)			
06:16	00 LATSON T 2pt FG in the paint, driving layup missed			
06:13	21 TIMPSON M offensive rebound (2)			
06:13	21 TIMPSON M 2pt FG second chance in the paint, tip-in layup made (4)	26-21	5	
06:13				Timeout 30 Sec
06:13				Timeout media
06:13				6 SALGUES K substitution out
06:13				24 KYLE R substitution out
06:13				3 MOBLEY A substitution in
06:13				9 DIZEKO A substitution in
06:13	21 TIMPSON M substitution out			
06:13	32 TREADWELL A substitution in			
05:59				13 REYNOLDS L 2pt FG in the paint, pull up jump shot blocked
05:59	00 LATSON T block (1)			
05:58	00 LATSON T defensive rebound (3)			
05:55	00 LATSON T 2pt FG in the paint, layup blocked			
05:55				13 REYNOLDS L block (1)
05:52	offensive rebound (17)			
05:52	00 LATSON T 2pt FG second chance in the paint, jump shot made (12)	28-21	7	
05:52	00 LATSON T foul drawn (3)			9 DIZEKO A foul shooting (1 - 2)
05:52	00 LATSON T free throw 1 - 1 missed			
05:52	offensive rebound (18)			
05:50	00 LATSON T foul drawn (4)			9 DIZEKO A foul shooting (2 - 3)
05:50	00 LATSON T free throw 1 - 2 made (13)	29-21	8	
05:50	00 LATSON T free throw 2 - 2 made (14)	30-21	9	
05:29				3 MOBLEY A 2pt FG outside the paint, jump shot missed
05:28	defensive rebound (19)			
05:22	00 LATSON T 3pt FG , jump shot missed			
05:18				3 MOBLEY A defensive rebound (2)
05:11	00 LATSON T steal (1)			23 MCGILL L turnover lost ball (4)
05:03	00 LATSON T 2pt FG from turnover in the paint, layup made (16)	32-21	11	
05:03	00 LATSON T foul drawn (5)			20 WARREN J foul shooting (2 - 4)
05:03	32 TREADWELL A substitution out			
05:03	21 TIMPSON M substitution in			
05:03				9 DIZEKO A substitution out
05:03				24 KYLE R substitution in
05:03	00 LATSON T free throw 1 - 1 made (17)	33-21	12	
04:50				20 WARREN J turnover bad pass (2)

Official Basketball Playby Play - 2nd Period
Florida at Florida State
 11/22/24 Donald L. Tucker Center, Tallahassee
 2024-25 Women's Basketball

Game Time: 7:00 PM
Game Duration: 2:04
Attendance: 2,894

Officials: Denise Brooks, Katie Lukanich, Talisa Green

Game Time	FSU	Score	Diff	UF
04:48				Timeout 30 Sec
04:43	24 BONNER A 3pt FG from turnover, jump shot made (3)	36-21	15	
04:43	00 LATSON T assist (1)			
04:23	1 TURNAGE B foul shooting (1 - 4)			13 REYNOLDS L foul drawn (1)
04:23				3 MOBLEY A substitution out
04:23				21 KINDRED E substitution in
04:23				13 REYNOLDS L free throw 1 - 2 missed
04:23				offensive dead ball rebound (2)
04:23		36-22	14	13 REYNOLDS L free throw 2 - 2 made (1)
04:10	24 BONNER A 3pt FG , jump shot missed			
04:07				24 KYLE R defensive rebound (7)
03:59		36-25	11	20 WARREN J 3pt FG , jump shot made (3)
03:59				23 MCGILL L assist (1)
03:54	00 LATSON T turnover bad pass (1)			20 WARREN J steal (1)
03:52	00 LATSON T foul personal (2 - 5)			13 REYNOLDS L foul drawn (2)
03:52				13 REYNOLDS L free throw 1 - 2 missed
03:52				offensive dead ball rebound (3)
03:52	00 LATSON T substitution out			
03:52	11 BOWLES S substitution in			
03:52		36-26	10	13 REYNOLDS L free throw 2 - 2 made (2)
03:34	21 TIMPSON M 2pt FG outside the paint, jump shot missed			
03:28				21 KINDRED E defensive rebound (1)
03:21		36-28	8	24 KYLE R 2pt FG in the paint, layup made (5)
03:21				13 REYNOLDS L assist (1)
03:00	3 GORDON O 2pt FG outside the paint, jump shot made (6)	38-28	10	
02:41				24 KYLE R 2pt FG in the paint, layup missed
02:39	1 TURNAGE B defensive rebound (4)			
02:25	11 BOWLES S 2pt FG in the paint, driving layup made (2)	40-28	12	
02:05		40-30	10	23 MCGILL L 2pt FG in the paint, driving layup made (16)
01:47	11 BOWLES S foul drawn (1)			13 REYNOLDS L foul personal (2 - 5)
01:47	1 TURNAGE B substitution out			
01:47	24 BONNER A substitution out			
01:47	13 MEGAS C substitution in			
01:47	22 WILLIAMS M substitution in			
01:47				13 REYNOLDS L substitution out
01:47				24 KYLE R substitution out
01:47				3 MOBLEY A substitution in
01:47				6 SALGUES K substitution in
01:47	11 BOWLES S free throw 1 - 2 made (3)	41-30	11	
01:47	11 BOWLES S free throw 2 - 2 made (4)	42-30	12	
01:34				21 KINDRED E 2pt FG outside the paint, pull up jump shot missed
01:30				3 MOBLEY A offensive rebound (3)
01:30				3 MOBLEY A 2pt FG second chance in the paint, tip-in layup missed
01:30	22 WILLIAMS M defensive rebound (4)			
01:30	22 WILLIAMS M foul drawn (2)			21 KINDRED E foul personal (1 - 6)
01:30				21 KINDRED E foul player technical (2 - 7)
01:30	21 TIMPSON M substitution out			
01:30	32 TREADWELL A substitution in			

Official Basketball Playby Play - 2nd Period
Florida at Florida State
 11/22/24 Donald L. Tucker Center, Tallahassee
 2024-25 Women's Basketball

Game Time: 7:00 PM
 Game Duration: 2:04
 Attendance: 2,894

Officials: Denise Brooks, Katie Lukanich, Talisa Green

Game Time	FSU	Score	Diff	UF
01:30				21 KINDRED E substitution out
01:30				24 KYLE R substitution in
01:30	22 WILLIAMS M free throw fast break 1 - 2 missed			
01:30	offensive dead ball rebound (4)			
01:30	22 WILLIAMS M free throw fast break 2 - 2 missed			
01:30	offensive dead ball rebound (5)			
01:30	3 GORDON O free throw 1 - 2 made (7)	43-30	13	
01:30	3 GORDON O free throw 2 - 2 missed			
01:30	offensive dead ball rebound (6)			
01:25	3 GORDON O 3pt FG second chance, jump shot missed			
01:24				24 KYLE R defensive rebound (8)
01:24	32 TREADWELL A foul personal (3 - 6)			24 KYLE R foul drawn (4)
01:24				24 KYLE R free throw 1 - 2 missed
01:24				offensive dead ball rebound (4)
01:24		43-31	12	24 KYLE R free throw 2 - 2 made (6)
01:13	3 GORDON O 2pt FG outside the paint, floating jump shot blocked			
01:13				3 MOBLEY A block (1)
01:13	32 TREADWELL A offensive rebound (3)			
01:13	32 TREADWELL A 2pt FG second chance in the paint, layup made (6)	45-31	14	
00:53	11 BOWLES S foul drawn (2)			20 WARREN J foul offensive (3 - 8)
00:53				20 WARREN J turnover offensive (3)
00:53	11 BOWLES S substitution out			
00:53	24 BONNER A substitution in			
00:53				20 WARREN J substitution out
00:53				13 REYNOLDS L substitution in
00:40	3 GORDON O 2pt FG from turnover outside the paint, jump shot missed			
00:39	22 WILLIAMS M offensive rebound (5)			
00:39	jump ball situation			
00:36	3 GORDON O foul drawn (1)			23 MCGILL L foul personal (1 - 9)
00:36	3 GORDON O free throw 1 - 2 made (8)	46-31	15	
00:36	3 GORDON O free throw 2 - 2 made (9)	47-31	16	
00:25	22 WILLIAMS M steal (1)			13 REYNOLDS L turnover lost ball (3)
00:25				13 REYNOLDS L substitution out
00:25				12 MINDOUDI D substitution in
00:01	3 GORDON O 2pt FG from turnover outside the paint, floating jump shot missed			
00:00	22 WILLIAMS M offensive rebound (6)			
00:01	22 WILLIAMS M 2pt FG from turnover second chance outside the paint, jump shot missed			
00:01	offensive dead ball rebound (7)			
END OF PERIOD				
FSU 47-31 UF				

Officials: Denise Brooks, Katie Lukanich, Talisa Green

Florida - 15

NO.	Name	Min	FG		3P	FT	Rebounds			Fouls		TP	AS	TO	ST	Blocks		+/-	
			M-A	M-A	M-A	OR	DR	TOT	PF	FD	BS					BA			
24	Ra Shaya Kyle	C 08:33	2-5	0-0	2-4	1	2	3	0	2	6	0	0	0	0	0	0	0	-8
6	Kenza Salgues	G 05:34	0-1	0-0	0-0	0	1	1	1	0	0	0	0	0	0	0	1	-11	
13	Laila Reynolds	G 06:46	0-1	0-0	2-4	0	0	0	1	2	2	1	2	0	1	1	-15		
20	Jeriah Warren	G 09:07	1-1	1-1	0-0	0	0	0	2	0	3	0	2	1	0	0	-14		
23	Liv McGill	G 09:29	2-3	0-0	0-0	0	0	0	1	1	4	1	1	0	0	0	-14		
3	Alexia Mobley	03:37	0-2	0-0	0-0	1	1	2	0	0	0	0	0	0	1	0	-16		
9	Alexia Dizeko	03:36	0-1	0-0	0-0	0	0	0	2	1	0	0	1	0	0	1	-5		
21	Eriny Kindred	02:53	0-1	0-0	0-0	0	1	1	2	0	0	0	0	0	0	0	3		
12	Daviane Mindoudi	00:26	0-0	0-0	0-0	0	0	0	0	0	0	0	0	0	0	0	0		
Team							1	0	1		0		0						
Totals			5-15	1-1	4-8	3	5	8	9	6	15	2	6	1	2	3	-16		

Shooting By Period		
2 nd FG%	5-15	33.3%
3PT%	1-1	100.0%
FT%	4-8	50%
GMFG%	5-15	33.3%
3PT%	1-1	100.0%
FT%	4-8	50.0%

Dead Ball Rebounds: 3, 0

Technical Fouls: Kindred 2nd 1:30

Florida State - 31

NO.	Name	Min	FG		3P	FT	Rebounds			Fouls		TP	AS	TO	ST	Blocks		+/-
			M-A	M-A	M-A	OR	DR	TOT	PF	FD	BS					BA		
21	Makayla Timpson	F 05:25	1-2	0-0	0-0	1	1	2	0	0	2	0	0	0	2	0	9	
22	Malea Williams	F 03:42	0-2	0-1	0-2	2	1	3	1	1	0	0	0	1	0	0	3	
00	Ta'Niya Latson	G 06:08	3-6	0-1	5-6	0	3	3	1	4	11	1	1	1	1	1	11	
3	O'Mariah Gordon	G 10:00	2-7	0-1	3-4	0	1	1	1	1	7	0	1	0	0	1	16	
13	Carla Viegas	G 04:00	0-0	0-0	0-0	0	0	0	0	0	0	0	0	0	0	0	5	
24	Amaya Bonner	07:12	1-2	1-2	0-0	0	0	0	0	0	3	0	0	0	0	0	15	
1	Brianna Turnage	06:00	0-0	0-0	0-0	0	1	1	1	0	0	0	0	0	0	0	11	
32	Avery Treadwell	04:35	2-2	0-0	0-0	2	0	2	2	0	4	0	1	0	0	0	7	
11	Sydney Bowles	02:59	1-1	0-0	2-2	0	0	0	0	2	4	0	0	0	0	0	3	
Team							2	1	3		0		0					
Totals			10-22	1-5	10-14	7	8	15	6	8	31	1	3	2	3	2	16	

Shooting By Period		
2 nd FG%	10-22	45.5%
3PT%	1-5	20.0%
FT%	10-14	71.4%
GMFG%	10-22	45.5%
3PT%	1-5	20.0%
FT%	10-14	71.4%

Dead Ball Rebounds: 4, 0

Technical Fouls: NONE

	UF	FSU
Biggest lead	5 (2 nd 8:33)	16 (2 nd 0:36)
Best Scoring Run	7 (2 nd 3:21)	20 (2 nd 4:43)
Lead Changes	2	
Times Tied	1	
Time with Lead	02:12	07:34

Points from	UF	FSU
Turnovers	3	12
Paint	8	14
Second Chance	2	12
Fast Breaks	0	0
Bench	0	11

Period by Period Scoring					
	1st	2nd	3rd	4th	TOT
UF	16	15	23	20	74
FSU	16	31	24	27	98

Officials: Denise Brooks, Katie Lukanich, Talisa Green

Florida - 31

NO.	Name	Min	FG	3P	FT	Rebounds			Fouls		TP	AS	TO	ST	Blocks		+/-
			M-A	M-A	M-A	OR	DR	TOT	PF	FD					BS	BA	
24	Ra Shaya Kyle	C 17:16	2-5	0-0	2-6	1	7	8	0	4	6	1	0	0	0	0	-6
6	Kenza Salgues	G 09:02	0-1	0-0	0-0	0	1	1	1	0	0	0	0	0	0	1	-10
13	Laila Reynolds	G 13:36	0-4	0-0	2-4	0	0	0	2	2	2	1	3	0	1	3	-17
20	Jeriah Warren	G 17:09	1-3	1-1	0-0	1	2	3	3	0	3	0	3	1	0	0	-17
23	Liv McGill	G 19:29	6-9	2-3	2-2	1	1	2	1	3	16	1	4	0	0	1	-14
9	Alexia Dizeko	11:51	2-4	0-0	0-0	1	0	1	2	2	4	0	3	0	0	1	-4
3	Alexia Mobley	08:02	0-2	0-0	0-0	1	2	3	0	1	0	0	0	0	1	0	-17
12	Daviane Mindoudi	00:43	0-0	0-0	0-0	0	0	0	0	0	0	0	0	0	0	0	2
21	Eriny Kindred	02:53	0-1	0-0	0-0	0	1	1	2	0	0	0	0	0	0	0	3
Team						2	1	3			0		0				
Totals			11-29	3-4	6-12	7	15	22	11	12	31	3	13	1	2	6	-16

Shooting By Period		
1st FG%	6-14	42.9%
3PT%	2-3	66.7%
FT%	2-4	50%
2nd FG%	5-15	33.3%
3PT%	1-1	100.0%
FT%	4-8	50%
GM FG%	11-29	37.9%
3PT%	3-4	75.0%
FT%	6-12	50.0%

Dead Ball Rebounds: 4, 0

Technical Fouls: Kindred 2nd 1:30

Florida State - 47

NO.	Name	Min	FG	3P	FT	Rebounds			Fouls		TP	AS	TO	ST	Blocks		+/-
			M-A	M-A	M-A	OR	DR	TOT	PF	FD					BS	BA	
21	Makayla Timpson	F 13:22	2-5	0-0	0-0	1	1	2	2	0	4	0	1	1	4	0	11
22	Malea Williams	F 09:20	0-4	0-2	1-4	3	3	6	1	2	1	0	0	1	0	0	4
00	Ta'Niya Latson	G 13:28	5-11	0-2	7-8	0	3	3	2	5	17	1	1	1	1	1	12
3	O'Mariah Gordon	G 18:24	3-10	0-2	3-4	1	2	3	1	1	9	1	1	2	0	1	16
13	Carla Viegas	G 09:58	1-3	1-3	0-0	0	0	0	0	0	3	0	0	0	0	0	6
1	Brianna Turnage	10:22	0-1	0-1	0-0	2	2	4	1	0	0	0	0	1	1	0	10
11	Sydney Bowles	08:37	1-4	0-3	2-2	0	0	0	2	2	4	0	0	0	0	0	2
24	Amaya Bonner	09:22	1-3	1-3	0-0	0	0	0	0	0	3	0	0	0	0	0	14
4	Raiane Dos Santos	00:30	0-0	0-0	0-0	0	0	0	0	0	0	0	0	0	0	0	0
32	Avery Treadwell	06:38	3-3	0-0	0-0	3	0	3	3	0	6	0	1	0	0	0	5
Team						2	1	3			0		0				
Totals			16-44	2-16	13-18	12	12	24	12	10	47	2	4	6	6	2	16

Shooting By Period		
1st FG%	6-22	27.3%
3PT%	1-11	9.1%
FT%	3-4	75%
2nd FG%	10-22	45.5%
3PT%	1-5	20.0%
FT%	10-14	71.4%
GM FG%	16-44	36.4%
3PT%	2-16	12.5%
FT%	13-18	72.2%

Dead Ball Rebounds: 6, 1

Technical Fouls: NONE

	UF	FSU
Biggest lead	5 (2 nd 8:33)	16 (2 nd 0:36)
Best Scoring Run	7 (2 nd 8:33)	20 (2 nd 4:43)
Lead Changes	4	
Times Tied	4	
Time with Lead	02:29	16:04

Points from	UF	FSU
Turnovers	5	12
Paint	14	22
Second Chance	2	17
Fast Breaks	0	0
Bench	4	13

Period by Period Scoring					
	1st	2nd	3rd	4th	TOT
UF	16	15	23	20	74
FSU	16	31	24	27	98

Period 3

Period Starters:

FSU	00 Latson T	3 Gordon O	13 Megas C	21 Timpson M	22 Williams M
UF	6 Salgues K	13 Reynolds L	20 Warren J	23 McGill L	24 Kyle R

Game Time	FSU	Score	Diff	UF
10:00	24 BONNER A substitution out			
10:00	32 TREADWELL A substitution out			
10:00	00 LATSON T substitution in			
10:00	21 TIMPSON M substitution in			
10:00				3 MOBLEY A substitution out
10:00				12 MINDOUDI D substitution out
10:00				13 REYNOLDS L substitution in
10:00				20 WARREN J substitution in
09:52				23 MCGILL L turnover bad pass (5)
09:46	00 LATSON T 2pt FG from turnover in the paint, jump shot missed			
09:42	22 WILLIAMS M offensive rebound (7)			
09:42	22 WILLIAMS M 2pt FG from turnover second chance in the paint, tip-in layup made (3)	49-31	18	
09:27				20 WARREN J 3pt FG , jump shot missed
09:24	13 MEGAS C defensive rebound (1)			
09:14	22 WILLIAMS M 3pt FG , jump shot made (6)	52-31	21	
09:14	00 LATSON T assist (2)			
08:44				23 MCGILL L 2pt FG in the paint, layup missed
08:42				20 WARREN J offensive rebound (4)
08:38		52-33	19	24 KYLE R 2pt FG second chance in the paint, layup made (8)
08:23	00 LATSON T 2pt FG outside the paint, turnaround jump shot missed			
08:19	00 LATSON T offensive rebound (4)			
08:19	00 LATSON T 2pt FG second chance in the paint, tip-in layup blocked			
08:19				24 KYLE R block (1)
08:19				defensive rebound (24)
08:09	3 GORDON O steal (3)			23 MCGILL L turnover lost ball (6)
08:03	3 GORDON O foul drawn (2)			6 SALGUES K foul personal (2 - 1)
08:01	21 TIMPSON M turnover travel (2)			
07:44				24 KYLE R 2pt FG from turnover in the paint, layup blocked
07:44	22 WILLIAMS M block (1)			
07:40				20 WARREN J offensive rebound (5)
07:40		52-35	17	20 WARREN J 2pt FG from turnover second chance in the paint, tip-in layup made (5)
07:30	00 LATSON T 2pt FG in the paint, turnaround jump shot missed			
07:28				13 REYNOLDS L defensive rebound (1)
07:22		52-37	15	23 MCGILL L 2pt FG in the paint, layup made (18)
07:15	00 LATSON T foul drawn (6)			13 REYNOLDS L foul shooting (3 - 2)
07:15				13 REYNOLDS L substitution out
07:15				9 DIZEKO A substitution in
07:15	00 LATSON T free throw fast break 1 - 2 made (18)	53-37	16	

Official Basketball Play-by-Play - 3rd Period
Florida at Florida State
 11/22/24 Donald L. Tucker Center, Tallahassee
 2024-25 Women's Basketball

Game Time: 7:00 PM
Game Duration: 2:04
Attendance: 2,894

Officials: Denise Brooks, Katie Lukanich, Talisa Green

Game Time	FSU	Score	Diff	UF
07:15	00 LATSON T free throw fast break 2 - 2 made (19)	54-37	17	
06:50				23 MCGILL L 2pt FG outside the paint, pull up jump shot missed
06:47	3 GORDON O defensive rebound (4)			
06:43	3 GORDON O 2pt FG in the paint, driving layup made (11)	56-37	19	
06:18		56-39	17	24 KYLE R 2pt FG outside the paint, floating jump shot made (10)
06:09	00 LATSON T foul drawn (7)			20 WARREN J foul personal (4 - 3)
06:09				20 WARREN J substitution out
06:09				13 REYNOLDS L substitution in
06:05	13 VEGAS C 3pt FG , jump shot made (6)	59-39	20	
06:05	00 LATSON T assist (3)			
05:49	00 LATSON T foul personal (3 - 1)			9 DIZEKO A foul drawn (3)
05:49	00 LATSON T substitution out			
05:49	11 BOWLES S substitution in			
05:45		59-41	18	13 REYNOLDS L 2pt FG in the paint, pull up jump shot made (4)
05:33	3 GORDON O 3pt FG , jump shot missed			
05:30				24 KYLE R defensive rebound (9)
05:25				6 SALGUES K turnover travel (1)
05:25				6 SALGUES K substitution out
05:25				12 MINDOUDI D substitution in
05:16	21 TIMPSON M 2pt FG from turnover in the paint, turnaround jump shot made (6)	61-41	20	
04:46		61-43	18	24 KYLE R 2pt FG in the paint, layup made (12)
04:46				23 MCGILL L assist (2)
04:28	Timeout 30 Sec			
04:28				Timeout media
04:28	13 VEGAS C substitution out			
04:28	24 BONNER A substitution in			
04:25	21 TIMPSON M 2pt FG in the paint, jump shot missed			
04:21	21 TIMPSON M offensive rebound (3)			
04:23	21 TIMPSON M foul drawn (1)			24 KYLE R foul shooting (1 - 4)
04:23				Timeout media
04:23	21 TIMPSON M free throw 1 - 2 made (7)	62-43	19	
04:23	21 TIMPSON M free throw 2 - 2 made (8)	63-43	20	
04:22	3 GORDON O steal (4)			13 REYNOLDS L turnover bad pass (4)
04:13	11 BOWLES S 3pt FG from turnover, jump shot missed			
04:11				defensive rebound (28)
03:41		63-45	18	24 KYLE R 2pt FG in the paint, jump shot made (14)
03:35	3 GORDON O foul drawn (3)			12 MINDOUDI D foul shooting (1 - 5)
03:35	22 WILLIAMS M substitution out			
03:35	00 LATSON T substitution in			
03:35	1 TURNAGE B substitution in			
03:35	11 BOWLES S substitution out			
03:35				12 MINDOUDI D substitution out
03:35				3 MOBLEY A substitution in
03:35	3 GORDON O free throw 1 - 2 made (12)	64-45	19	
03:35	3 GORDON O free throw 2 - 2 made (13)	65-45	20	
03:15	1 TURNAGE B foul shooting (2 - 2)			13 REYNOLDS L foul drawn (3)

Official Basketball PlaybyPlay - 3rd Period
Florida at Florida State
 11/22/24 Donald L. Tucker Center, Tallahassee
 2024-25 Women's Basketball

Game Time: 7:00 PM
Game Duration: 2:04
Attendance: 2,894

Officials: Denise Brooks, Katie Lukanich, Talisa Green

Game Time	FSU	Score	Diff	UF
03:15				13 REYNOLDS L free throw 1 - 2 missed
03:15				offensive dead ball rebound (5)
03:13				13 REYNOLDS L free throw 2 - 2 missed
03:13	defensive rebound (30)			
03:05	00 LATSON T turnover travel (2)			
02:37				13 REYNOLDS L 3pt FG from turnover, jump shot missed
02:36	defensive rebound (31)			
02:22	00 LATSON T 3pt FG , jump shot missed			
02:18	3 GORDON O offensive rebound (5)			
02:16	3 GORDON O 2pt FG second chance outside the paint, jump shot made (15)	67-45	22	
02:07		67-47	20	23 MCGILL L 2pt FG in the paint, driving layup made (20)
01:54	3 GORDON O turnover lost ball (2)			23 MCGILL L steal (1)
01:50		67-49	18	23 MCGILL L 2pt FG fast break from turnover in the paint, layup made (22)
01:33	24 BONNER A 3pt FG , jump shot missed			
01:31				23 MCGILL L defensive rebound (3)
01:14		67-51	16	24 KYLE R 2pt FG in the paint, layup made (16)
01:14				13 REYNOLDS L assist (2)
01:01	00 LATSON T foul drawn (8)			24 KYLE R foul shooting (2 - 6)
01:01	3 GORDON O substitution out			
01:01	1 TURNAGE B substitution out			
01:01	11 BOWLES S substitution in			
01:01	22 WILLIAMS M substitution in			
01:01	00 LATSON T free throw 1 - 2 made (20)	68-51	17	
01:01	00 LATSON T free throw 2 - 2 made (21)	69-51	18	
00:46		69-53	16	9 DIZEKO A 2pt FG in the paint, pull up jump shot made (6)
00:46				13 REYNOLDS L assist (3)
00:32	21 TIMPSON M 2pt FG in the paint, jump shot missed			
00:29				13 REYNOLDS L defensive rebound (2)
00:25	24 BONNER A foul shooting (1 - 3)			23 MCGILL L foul drawn (4)
00:25	24 BONNER A substitution out			
00:25	13 MEGAS C substitution in			
00:25				13 REYNOLDS L substitution out
00:25				21 KINDRED E substitution in
00:25		69-54	15	23 MCGILL L free throw fast break 1 - 2 made (23)
00:25				23 MCGILL L free throw fast break 2 - 2 missed
00:24	21 TIMPSON M defensive rebound (4)			
00:02	00 LATSON T 2pt FG in the paint, floating jump shot missed			
00:02	22 WILLIAMS M offensive rebound (8)			
00:01	11 BOWLES S foul drawn (3)			9 DIZEKO A foul shooting (3 - 7)
00:01	00 LATSON T substitution out			
00:01	4 DOS SANTOS R substitution in			
00:01	11 BOWLES S free throw 1 - 2 made (5)	70-54	16	
00:01	11 BOWLES S free throw 2 - 2 made (6)	71-54	17	
END OF PERIOD				
FSU 71-54 UF				

Officials: Denise Brooks, Katie Lukanich, Talisa Green

Florida - 23

NO.	Name	C/G	Min	FG			Rebounds			Fouls		TP	AS	TO	ST	Blocks		+/-
				M-A	M-A	M-A	OR	DR	TOT	PF	FD					BS	BA	
24	Ra Shaya Kyle	C	10:00	5-6	0-0	0-0	0	1	1	2	0	10	0	0	0	1	1	-1
6	Kenza Salgues	G	04:35	0-0	0-0	0-0	0	0	0	1	0	0	0	1	0	0	0	-2
13	Laila Reynolds	G	08:28	1-2	0-1	0-2	0	2	2	1	1	2	2	1	0	0	0	2
20	Jeriah Warren	G	03:51	1-2	0-1	0-0	2	0	2	1	0	2	0	0	0	0	0	-1
23	Liv McGill	G	10:00	3-5	0-0	1-2	0	1	1	0	1	7	1	2	1	0	0	-1
9	Alexia Dizeko		07:15	1-1	0-0	0-0	0	0	0	1	1	2	0	0	0	0	0	-2
12	Daviane Mindoudi		01:50	0-0	0-0	0-0	0	0	0	1	0	0	0	0	0	0	0	0
3	Alexia Mobley		03:35	0-0	0-0	0-0	0	0	0	0	0	0	0	0	0	0	0	1
21	Eriny Kindred		00:26	0-0	0-0	0-0	0	0	0	0	0	0	0	0	0	0	0	-1
Team							0	2	2		0		0					
Totals				11-16	0-2	1-4	2	6	8	7	3	23	3	4	1	1	1	-1

Shooting By Period		
3rd FG%	11-16	68.8%
3PT%	0-2	0.0%
FT%	1-4	25%
GMFG%	11-16	68.8%
3PT%	0-2	0.0%
FT%	1-4	25.0%

Dead Ball Rebounds: 1, 0

Technical Fouls: NONE

Florida State - 24

NO.	Name	C/G	Min	FG			Rebounds			Fouls		TP	AS	TO	ST	Blocks		+/-
				M-A	M-A	M-A	OR	DR	TOT	PF	FD					BS	BA	
21	Makayla Timpson	F	10:00	1-3	0-0	2-2	1	1	2	0	1	4	0	1	0	0	0	1
22	Malea Williams	F	07:26	2-2	1-1	0-0	2	0	2	0	0	5	0	0	0	1	0	3
00	Ta'Niya Latson	G	07:44	0-6	0-1	4-4	1	0	1	1	3	4	2	1	0	0	1	1
3	O'Mariah Gordon	G	08:59	2-3	0-1	2-2	1	1	2	0	2	6	0	1	2	0	0	0
13	Carla Viegas	G	05:58	1-1	1-1	0-0	0	1	1	0	0	3	0	0	0	0	0	3
32	Avery Treadwell		00:00	0-0	0-0	0-0	0	0	0	0	0	0	0	0	0	0	0	0
11	Sydney Bowles		03:15	0-1	0-1	2-2	0	0	0	0	1	2	0	0	0	0	0	-1
24	Amaya Bonner		04:02	0-1	0-1	0-0	0	0	0	1	0	0	0	0	0	0	0	-2
1	Brianna Turnage		02:34	0-0	0-0	0-0	0	0	0	1	0	0	0	0	0	0	0	-2
4	Raiane Dos Santos		00:02	0-0	0-0	0-0	0	0	0	0	0	0	0	0	0	0	0	2
Team							0	2	2		0		0					
Totals				6-17	2-6	10-10	5	5	10	3	7	24	2	3	2	1	1	1

Shooting By Period		
3rd FG%	6-17	35.3%
3PT%	2-6	33.3%
FT%	10-10	100%
GMFG%	6-17	35.3%
3PT%	2-6	33.3%
FT%	10-10	100.0%

Dead Ball Rebounds: 0, 0

Technical Fouls: NONE

	UF	FSU
Biggest lead	0 (1 st 10:00)	22 (3 rd 2:16)
Best Scoring Run	6 (3 rd 7:22)	5 (3 rd 9:14)
Lead Changes	0	
Times Tied	0	
Time with Lead	00:00	09:46

	UF	FSU
Points from		
Turnovers	4	4
Paint	20	6
Second Chance	4	8
Fast Breaks	3	2
Bench	2	2

Period by Period Scoring					
	1st	2nd	3rd	4th	TOT
UF	16	15	23	20	74
FSU	16	31	24	27	98

Period 4

Period Starters:

FSU	00 Latson T	11 Bowles S	13 Vegas C	21 Timpson M	22 Williams M
UF	3 Moblely A	9 Dizeko A	21 Kindred E	23 McGill L	24 Kyle R

Game Time	FSU	Score	Diff	UF
10:00	4 DOS SANTOS R substitution out			
10:00	00 LATSON T substitution in			
09:50	21 TIMPSON M foul drawn (2)			24 KYLE R foul shooting (3 - 1)
09:50	21 TIMPSON M free throw 1 - 2 made (9)	72-54	18	
09:50	21 TIMPSON M free throw 2 - 2 made (10)	73-54	19	
09:26				23 MCGILL L 2pt FG in the paint, layup missed
09:23	11 BOWLES S defensive rebound (1)			
09:19	13 VEGAS C 3pt FG fast break, jump shot made (9)	76-54	22	
09:19	00 LATSON T assist (4)			
09:06	11 BOWLES S foul personal (3 - 1)			23 MCGILL L foul drawn (5)
09:06	11 BOWLES S substitution out			
09:06	3 GORDON O substitution in			
09:06				9 DIZEKO A substitution out
09:06				21 KINDRED E substitution out
09:06				13 REYNOLDS L substitution in
09:06				20 WARREN J substitution in
08:53				24 KYLE R 2pt FG in the paint, layup missed
08:51				offensive rebound (31)
08:34		76-56	20	23 MCGILL L 2pt FG second chance outside the paint, jump shot made (25)
08:23	00 LATSON T 2pt FG in the paint, driving layup made (23)	78-56	22	
08:12	00 LATSON T foul personal (4 - 2)			13 REYNOLDS L foul drawn (4)
08:10		78-58	20	20 WARREN J 2pt FG outside the paint, jump shot made (7)
08:10				23 MCGILL L assist (3)
07:48	3 GORDON O 2pt FG in the paint, driving layup made (17)	80-58	22	
07:39		80-60	20	24 KYLE R 2pt FG in the paint, layup made (18)
07:39				23 MCGILL L assist (4)
07:24	21 TIMPSON M 2pt FG in the paint, turnaround jump shot made (12)	82-60	22	
07:24	00 LATSON T assist (5)			
07:14	13 VEGAS C foul personal (1 - 3)			13 REYNOLDS L foul drawn (5)
07:14	13 VEGAS C substitution out			
07:14	24 BONNER A substitution in			
07:11		82-62	20	13 REYNOLDS L 2pt FG in the paint, layup made (6)
07:11				23 MCGILL L assist (5)
06:54	00 LATSON T foul drawn (9)			13 REYNOLDS L foul shooting (4 - 2)
06:54	00 LATSON T free throw 1 - 2 made (24)	83-62	21	
06:54	00 LATSON T free throw 2 - 2 made (25)	84-62	22	
06:54				13 REYNOLDS L substitution out
06:54				9 DIZEKO A substitution in
06:40				20 WARREN J 2pt FG outside the paint, jump shot missed
06:39				24 KYLE R offensive rebound (10)
06:39	21 TIMPSON M foul personal (3 - 4)			24 KYLE R foul drawn (5)

Game Time	FSU	Score	Diff	UF
06:32				3 MOBLEY A 2pt FG second chance outside the paint, jump shot missed
06:29	00 LATSON T defensive rebound (5)			
06:20	24 BONNER A 3pt FG , jump shot missed			
06:16	21 TIMPSON M offensive rebound (5)			
06:13	21 TIMPSON M foul drawn (3)			24 KYLE R foul shooting (4 - 3)
06:13	00 LATSON T substitution out			
06:13	4 DOS SANTOS R substitution in			
06:13				24 KYLE R substitution out
06:13				21 KINDRED E substitution in
06:13	21 TIMPSON M free throw 1 - 2 made (13)	85-62	23	
06:13	21 TIMPSON M free throw 2 - 2 made (14)	86-62	24	
05:59	24 BONNER A foul personal (2 - 5)			9 DIZEKO A foul drawn (4)
05:59		86-63	23	9 DIZEKO A free throw 1 - 2 made (7)
05:59		86-64	22	9 DIZEKO A free throw 2 - 2 made (8)
05:56	3 GORDON O foul drawn (4)			23 MCGILL L foul personal (2 - 4)
05:51	3 GORDON O 2pt FG in the paint, layup missed			
05:48	21 TIMPSON M offensive rebound (6)			
05:48	21 TIMPSON M 2pt FG second chance in the paint, tip-in layup missed			
05:48	21 TIMPSON M offensive rebound (7)			
05:48	21 TIMPSON M foul drawn (4)			21 KINDRED E foul shooting (3 - 5)
05:48	21 TIMPSON M free throw 1 - 2 made (15)	87-64	23	
05:48	21 TIMPSON M free throw 2 - 2 made (16)	88-64	24	
05:31				9 DIZEKO A 2pt FG outside the paint, jump shot missed
05:28	22 WILLIAMS M defensive rebound (9)			
05:19	24 BONNER A 3pt FG , jump shot missed			
05:17	22 WILLIAMS M offensive rebound (10)			
05:15	22 WILLIAMS M 2pt FG second chance in the paint, turnaround jump shot missed			
05:15	offensive rebound (42)			
05:11	22 WILLIAMS M 2pt FG second chance in the paint, layup missed			
05:09				21 KINDRED E defensive rebound (2)
05:11	24 BONNER A foul personal (3 - 6)			23 MCGILL L foul drawn (6)
05:11				23 MCGILL L free throw 1 - 2 missed
05:11				offensive dead ball rebound (6)
05:11				3 MOBLEY A substitution out
05:11				21 KINDRED E substitution out
05:11				13 REYNOLDS L substitution in
05:11				24 KYLE R substitution in
05:11		88-65	23	23 MCGILL L free throw 2 - 2 made (26)
05:02	3 GORDON O 2pt FG in the paint, driving layup made (19)	90-65	25	
04:44		90-67	23	23 MCGILL L 2pt FG in the paint, driving layup made (28)
04:34	4 DOS SANTOS R 3pt FG , jump shot missed			
04:31	22 WILLIAMS M offensive rebound (11)			
04:22	3 GORDON O 3pt FG second chance, jump shot missed			
04:18	24 BONNER A offensive rebound (1)			
04:06	21 TIMPSON M 3pt FG second chance, jump shot missed			
04:01				13 REYNOLDS L defensive rebound (3)

Game Time	FSU	Score	Diff	UF
03:46				24 KYLE R 2pt FG outside the paint, jump shot blocked
03:46	22 WILLIAMS M block (2)			
03:42	24 BONNER A defensive rebound (2)			
03:37	21 TIMPSON M foul drawn (5)			9 DIZEKO A foul shooting (4 - 6)
03:37	Timeout media			
03:37	3 GORDON O substitution out			
03:37	22 WILLIAMS M substitution out			
03:37	00 LATSON T substitution in			
03:37	11 BOWLES S substitution in			
03:37	21 TIMPSON M free throw 1 - 2 missed			
03:37	offensive dead ball rebound (8)			
03:37	21 TIMPSON M free throw 2 - 2 made (17)	91-67	24	
03:37	21 TIMPSON M substitution out			
03:37	32 TREADWELL A substitution in			
03:26	32 TREADWELL A foul personal (4 - 7)			24 KYLE R foul drawn (6)
03:26				24 KYLE R free throw 1 - 2 missed
03:26				offensive dead ball rebound (7)
03:26		91-68	23	24 KYLE R free throw 2 - 2 made (19)
03:13	4 DOS SANTOS R foul drawn (1)			23 MCGILL L foul personal (3 - 7)
03:13	4 DOS SANTOS R free throw 1 - 2 made (1)	92-68	24	
03:13	4 DOS SANTOS R free throw 2 - 2 made (2)	93-68	25	
03:03		93-70	23	9 DIZEKO A 2pt FG in the paint, driving layup made (10)
02:27	00 LATSON T 2pt FG in the paint, driving layup missed			
02:24	32 TREADWELL A offensive rebound (4)			
02:24	32 TREADWELL A 2pt FG second chance in the paint, tip-in layup made (8)	95-70	25	
02:07				13 REYNOLDS L 2pt FG in the paint, layup missed
02:04				13 REYNOLDS L offensive rebound (4)
02:04				13 REYNOLDS L 2pt FG second chance in the paint, tip-in layup missed
02:03				24 KYLE R offensive rebound (11)
02:03	32 TREADWELL A foul personal (5 - 8)			24 KYLE R foul drawn (7)
02:03	32 TREADWELL A substitution out			
02:03	22 WILLIAMS M substitution in			
02:03		95-71	24	24 KYLE R free throw 1 - 2 made (20)
02:03		95-72	23	24 KYLE R free throw 2 - 2 made (21)
01:40	11 BOWLES S 3pt FG , jump shot missed			
01:36				20 WARREN J defensive rebound (6)
01:35	00 LATSON T foul personal (5 - 9)			20 WARREN J foul drawn (1)
01:35	00 LATSON T substitution out			
01:35	3 GORDON O substitution in			
01:35		95-73	22	20 WARREN J free throw 1 - 2 made (8)
01:35		95-74	21	20 WARREN J free throw 2 - 2 made (9)
01:05	4 DOS SANTOS R 3pt FG , jump shot made (5)	98-74	24	
01:05	3 GORDON O assist (2)			
00:47				13 REYNOLDS L 2pt FG outside the paint, jump shot missed
00:44	3 GORDON O defensive rebound (6)			
00:22	11 BOWLES S turnover travel (1)			
00:08				23 MCGILL L turnover travel (7)

Official Basketball PlaybyPlay - 4th Period

Florida at Florida State

11/22/24 Donald L. Tucker Center, Tallahassee
2024-25 Women's Basketball

Game Time: 7:00 PM

Game Duration: 2:04

Attendance: 2,894

Officials: Denise Brooks, Katie Lukanich, Talisa Green

Game Time	FSU	Score	Diff	UF
END OF GAME				
FSU 98-74 UF				

Officials: Denise Brooks, Katie Lukanich, Talisa Green

Florida - 20

NO.	Name	Min	FG			Rebounds			Fouls		TP	AS	TO	ST	Blocks		+/-
			M-A	3P	FT	OR	DR	TOT	PF	FD					BS	BA	
24	Ra Shaya Kyle	C 08:58	1-3	0-0	3-4	2	0	2	2	3	5	0	0	0	0	1	-5
6	Kenza Salgues	G 00:00	0-0	0-0	0-0	0	0	0	0	0	0	0	0	0	0	0	
13	Laila Reynolds	G 07:23	1-4	0-0	0-0	1	1	2	1	2	2	0	0	0	0	0	
20	Jeriah Warren	G 09:06	1-2	0-0	2-2	0	1	1	0	1	4	0	0	0	0	-2	
23	Liv McGill	G 10:00	2-3	0-0	1-2	0	0	0	2	2	5	3	1	0	0	-7	
3	Alexia Mobley	04:49	0-1	0-0	0-0	0	0	0	0	0	0	0	0	0	0	-7	
9	Alexia Dizeko	07:48	1-2	0-0	2-2	0	0	0	1	1	4	0	0	0	0	-7	
21	Eriny Kindred	01:56	0-0	0-0	0-0	0	1	1	1	0	0	0	0	0	0	-7	
Team						1	0	1			0		0				
Totals			6-15	0-0	8-10	4	3	7	7	9	20	3	1	0	0	1	-7

Shooting By Period		
4th FG%	6-15	40.0%
3PT%	0-0	0.0%
FT%	8-10	80.0%
GMFG%	6-15	40.0%
3PT%	0-0	0.0%
FT%	8-10	80.0%

Dead Ball Rebounds: 2, 0

Technical Fouls: NONE

Florida State - 27

NO.	Name	Min	FG			Rebounds			Fouls		TP	AS	TO	ST	Blocks		+/-
			M-A	3P	FT	OR	DR	TOT	PF	FD					BS	BA	
21	Makayla Timpson	F 06:23	1-3	0-1	7-8	3	0	3	1	4	9	0	0	0	0	0	7
22	Malea Williams	F 08:26	0-2	0-0	0-0	2	1	3	0	0	0	0	0	0	1	0	5
00	Ta'Niya Latson	G 05:49	1-2	0-0	2-2	0	1	1	2	1	4	2	0	0	0	0	5
3	O'Mariah Gordon	G 07:04	2-4	0-1	0-0	0	1	1	0	1	4	1	0	0	0	0	2
13	Carla Viegas	G 02:46	1-1	1-1	0-0	0	0	0	1	0	3	0	0	0	0	0	5
24	Amaya Bonner	07:14	0-2	0-2	0-0	1	1	2	2	0	0	0	0	0	0	0	2
4	Raiane Dos Santos	06:13	1-2	1-2	2-2	0	0	0	0	1	5	0	0	0	0	0	2
11	Sydney Bowles	04:31	0-1	0-1	0-0	0	1	1	1	0	0	0	1	0	0	0	6
32	Avery Treadwell	01:34	1-1	0-0	0-0	1	0	1	2	0	2	0	0	0	0	0	1
Team						1	0	1			0		0				
Totals			7-18	2-8	11-12	8	5	13	9	7	27	3	1	0	1	0	7

Shooting By Period		
4th FG%	7-18	38.9%
3PT%	2-8	25.0%
FT%	11-12	91.7%
GMFG%	7-18	38.9%
3PT%	2-8	25.0%
FT%	11-12	91.7%

Dead Ball Rebounds: 1, 0

Technical Fouls: NONE

	UF	FSU
Biggest lead	0 (1 st 10:00)	25 (4 th 5:02)
Best Scoring Run	4 (4 th 1:35)	5 (4 th 9:19)
Lead Changes	0	
Times Tied	0	
Time with Lead	00:00	09:50

	UF	FSU
Points from		
Turnovers	0	0
Paint	8	10
Second Chance	4	6
Fast Breaks	0	3
Bench	4	7

Period by Period Scoring					
	1st	2nd	3rd	4th	TOT
UF	16	15	23	20	74
FSU	16	31	24	27	98

Officials: Denise Brooks, Katie Lukanich, Talisa Green

Florida - 43

NO.	Name	Min	FG			Rebounds			Fouls		TP	AS	TO	ST	Blocks		+/-
			M-A	M-A	M-A	OR	DR	TOT	PF	FD					BS	BA	
24	Ra Shaya Kyle	C 18:58	6-9	0-0	3-4	2	1	3	4	3	15	0	0	0	1	2	-6
6	Kenza Salgues	G 04:35	0-0	0-0	0-0	0	0	0	1	0	0	0	1	0	0	0	-2
13	Laila Reynolds	G 15:51	2-6	0-1	0-2	1	3	4	2	3	4	2	1	0	0	0	2
20	Jeriah Warren	G 12:57	2-4	0-1	2-2	2	1	3	1	1	6	0	0	0	0	0	-3
23	Liv McGill	G 20:00	5-8	0-0	2-4	0	1	1	2	3	12	4	3	1	0	0	-8
9	Alexia Dizeko	15:03	2-3	0-0	2-2	0	0	0	2	2	6	0	0	0	0	0	-9
12	Daviane Mindoudi	01:50	0-0	0-0	0-0	0	0	0	1	0	0	0	0	0	0	0	0
3	Alexia Mobley	08:24	0-1	0-0	0-0	0	0	0	0	0	0	0	0	0	0	0	-6
21	Eriny Kindred	02:22	0-0	0-0	0-0	0	1	1	1	0	0	0	0	0	0	0	-8
Team						1	2	3			0		0				
Totals			17-31	0-2	9-14	6	9	15	14	12	43	6	5	1	1	2	-8

Shooting By Period		
3 rd FG%	11-16	68.8%
3PT%	0-2	0.0%
FT%	1-4	25%
4 th FG%	6-15	40.0%
3PT%	0-0	0.0%
FT%	8-10	80%
GMFG%	17-31	54.8%
3PT%	0-2	0.0%
FT%	9-14	64.3%

Dead Ball Rebounds: 3, 0

Technical Fouls: NONE

Florida State - 51

NO.	Name	Min	FG			Rebounds			Fouls		TP	AS	TO	ST	Blocks		+/-
			M-A	M-A	M-A	OR	DR	TOT	PF	FD					BS	BA	
21	Makayla Timpson	F 16:23	2-6	0-1	9-10	4	1	5	1	5	13	0	1	0	0	0	8
22	Malea Williams	F 15:52	2-4	1-1	0-0	4	1	5	0	0	5	0	0	0	2	0	8
00	Ta'Niya Latson	G 13:33	1-8	0-1	6-6	1	1	2	3	4	8	4	1	0	0	1	6
3	O'Mariah Gordon	G 16:03	4-7	0-2	2-2	1	2	3	0	3	10	1	1	2	0	0	2
13	Carla Viegas	G 08:44	2-2	2-2	0-0	0	1	1	1	0	6	0	0	0	0	0	8
11	Sydney Bowles	07:46	0-2	0-2	2-2	0	1	1	1	1	2	0	1	0	0	0	5
24	Amaya Bonner	11:16	0-3	0-3	0-0	1	1	2	3	0	0	0	0	0	0	0	0
1	Brianna Turnage	02:34	0-0	0-0	0-0	0	0	0	1	0	0	0	0	0	0	0	-2
4	Raiane Dos Santos	06:15	1-2	1-2	2-2	0	0	0	0	1	5	0	0	0	0	0	4
32	Avery Treadwell	01:34	1-1	0-0	0-0	1	0	1	2	0	2	0	0	0	0	0	1
Team						1	2	3			0		0				
Totals			13-35	4-14	21-22	13	10	23	12	14	51	5	4	2	2	1	8

Shooting By Period		
3 rd FG%	6-17	35.3%
3PT%	2-6	33.3%
FT%	10-10	100%
4 th FG%	7-18	38.9%
3PT%	2-8	25.0%
FT%	11-12	91.7%
GMFG%	13-35	37.1%
3PT%	4-14	28.6%
FT%	21-22	95.5%

Dead Ball Rebounds: 1, 0

Technical Fouls: NONE

	UF	FSU
Biggest lead	0 (1 st 10:00)	25 (4 th 5:02)
Best Scoring Run	6 (3 rd 7:22)	7 (4 th 9:19)
Lead Changes	0	
Times Tied	0	
Time with Lead	00:00	19:46

Points from	UF	FSU
Turnovers	4	4
Paint	28	16
Second Chance	8	14
Fast Breaks	3	5
Bench	6	9

Period by Period Scoring					
	1st	2nd	3rd	4th	TOT
UF	16	15	23	20	74
FSU	16	31	24	27	98

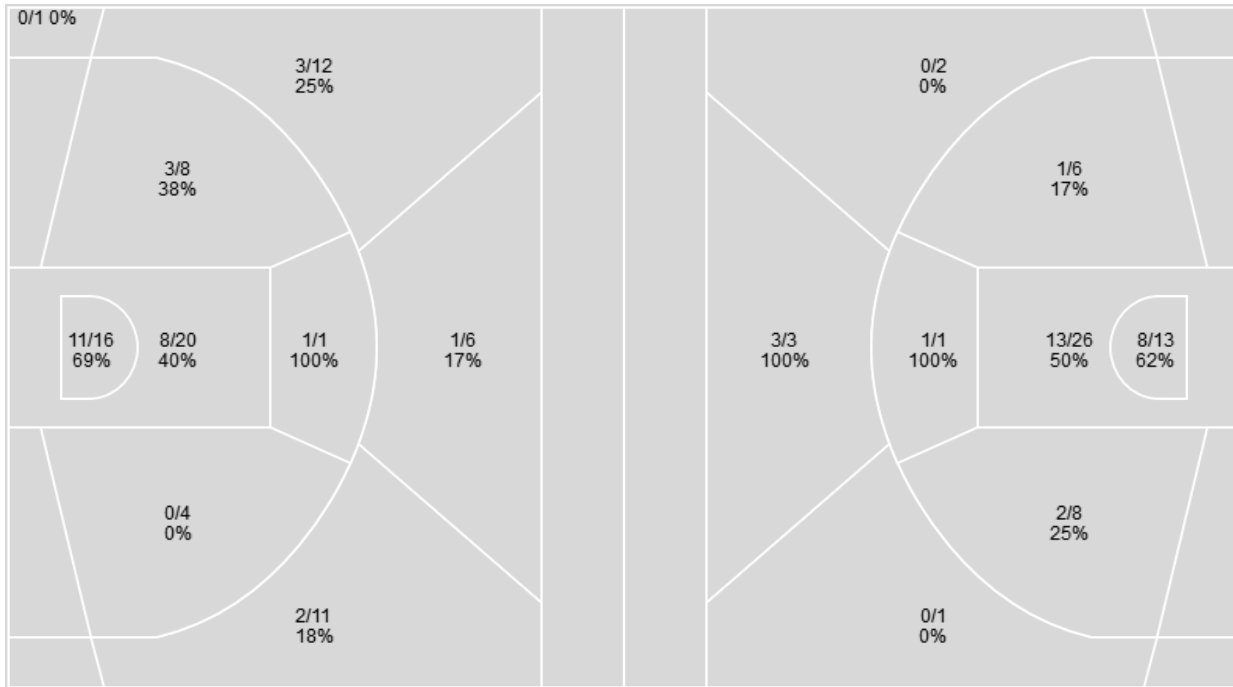
Officials: Denise Brooks, Katie Lukanich, Talisa Green

Players => All; FG Types => All ; Results => All ;

Players => All; FG Types => All ; Results => All ;

Florida State

Florida



Florida State	M/A	%
Field Goals	29/79	37
2 Points	23/49	47
3 Points	6/30	20
Free Throws	34/40	85

Florida	M/A	%
Field Goals	28/60	47
2 Points	25/54	46
3 Points	3/6	50
Free Throws	15/26	58

Florida at Florida State

11/22/24 Donald L. Tucker Center, Tallahassee
2024-25 Women's Basketball

Game Time: 7:00 PM

Game Duration: 2:04

Attendance: 2,894

Officials: Denise Brooks, Katie Lukanich, Talisa Green

Florida

No	Name	Mins		Score		Points Diff		Points per Min		Assists		Rebounds		Steals		Turnovers	
		On	Off	On	Off	On	Off	On	Off	On	Off	On	Off	On	Off	On	Off
3	Alexia Mbley	16:26	23:34	25-48	49-50	-23	-1	1.52	2.08	6	3	13	24	1	1	8	10
6	Kenza Salgues	13:37	26:23	25-37	49-61	-12	-12	1.84	1.86	0	9	13	24	0	2	9	9
9	Alexia Dizeko	26:54	13:07	45-58	29-40	-13	-11	1.67	2.21	4	5	26	11	1	1	12	6
12	Daviane Mindoudi	02:33	37:27	6-4	68-94	2	-26	2.36	1.82	1	8	1	36	0	2	1	17
13	Laila Reynolds	29:27	10:33	57-72	17-26	-15	-9	1.94	1.61	8	1	27	10	2	0	12	6
20	Jeriah Warren	30:06	09:54	54-74	20-24	-20	-4	1.79	2.02	6	3	31	6	1	1	15	3
21	Eriny Kindred	05:15	34:45	12-17	62-81	-5	-19	2.29	1.78	2	7	4	33	1	1	0	18
23	Liv McGill	39:29	00:31	74-96	0-2	-22	-2	1.87	0.00	9	0	37	0	2	0	18	0
24	Ra Shaya Kyle	36:14	03:46	72-84	2-14	-12	-12	1.99	0.53	9	0	33	4	2	0	15	3

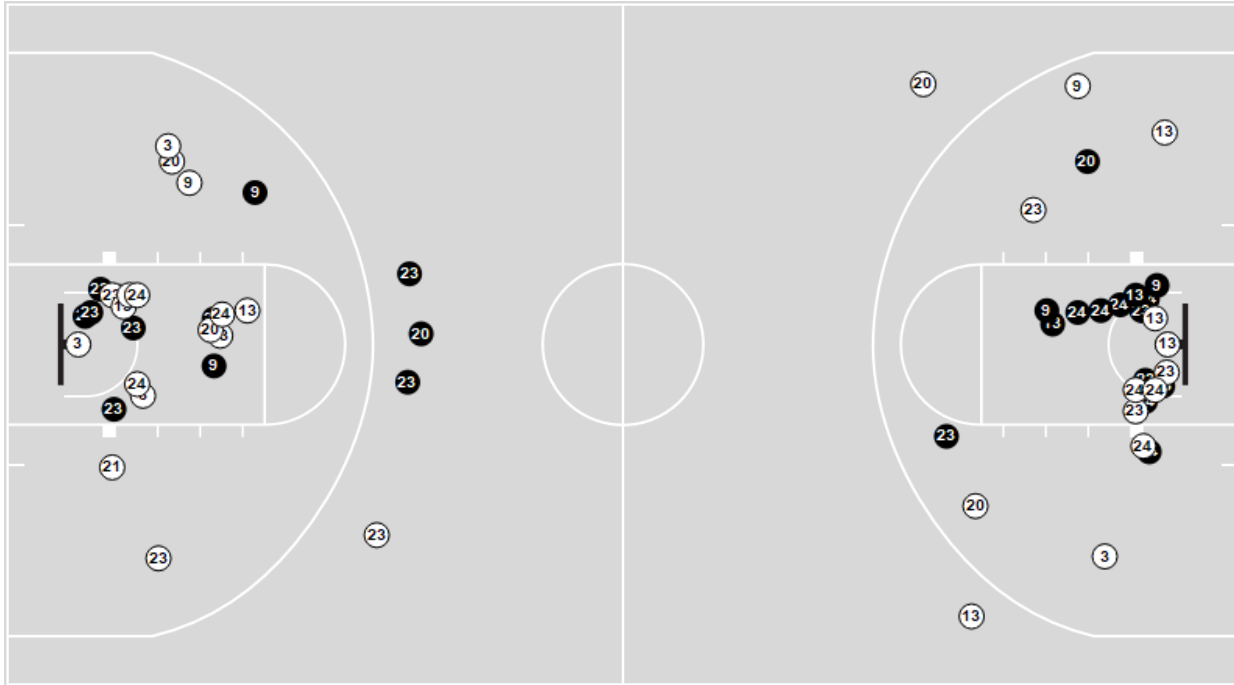
Florida State

No	Name	Mins		Score		Points Diff		Points per Min		Assists		Rebounds		Steals		Turnovers	
		On	Off	On	Off	On	Off	On	Off	On	Off	On	Off	On	Off	On	Off
00	Ta'Niya Latson	27:01	12:59	70-52	28-22	18	6	2.59	2.16	6	1	29	18	4	4	7	1
1	Brianna Turnage	12:56	27:04	28-20	70-54	8	16	2.16	2.59	1	6	16	31	4	4	5	3
3	O'Mariah Gordon	34:27	05:33	82-64	16-10	18	6	2.38	2.88	6	1	42	5	7	1	7	1
4	Raiane Dos Santos	06:45	33:15	16-12	82-62	4	20	2.37	2.47	1	6	10	37	1	7	1	7
11	Sydney Bowles	16:23	23:37	36-29	62-45	7	17	2.20	2.62	2	5	15	32	4	4	2	6
13	Carla Vegas	18:42	21:18	50-36	48-38	14	10	2.67	2.25	5	2	17	30	4	4	3	5
21	Makayla Timpson	29:45	10:15	76-57	22-17	19	5	2.55	2.15	6	1	34	13	5	3	6	2
22	Malea Williams	25:12	14:48	63-51	35-23	12	12	2.50	2.36	6	1	30	17	4	4	3	5
24	Amaya Bonner	20:38	19:22	50-36	48-38	14	10	2.42	2.48	2	5	30	17	4	4	5	3
32	Avery Treadwell	08:12	31:48	19-13	79-61	6	18	2.32	2.48	0	7	12	35	3	5	1	7

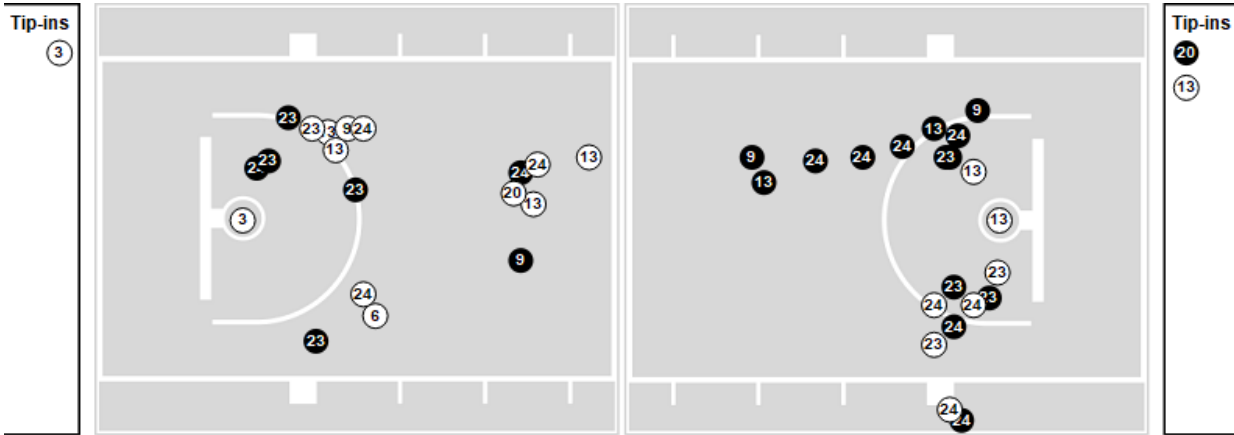
Officials: Denise Brooks, Katie Lukanich, Talisa Green

Players => All ; FG Types => All ; Results => All ;
Florida

All Field Goals



Shots in the Paint



● Made ● Missed N - Player Number

Florida	M/A	%
Field Goals	28/60	47
2 Points	25/54	46
3 Points	3/6	50
Free Throws	15/26	58

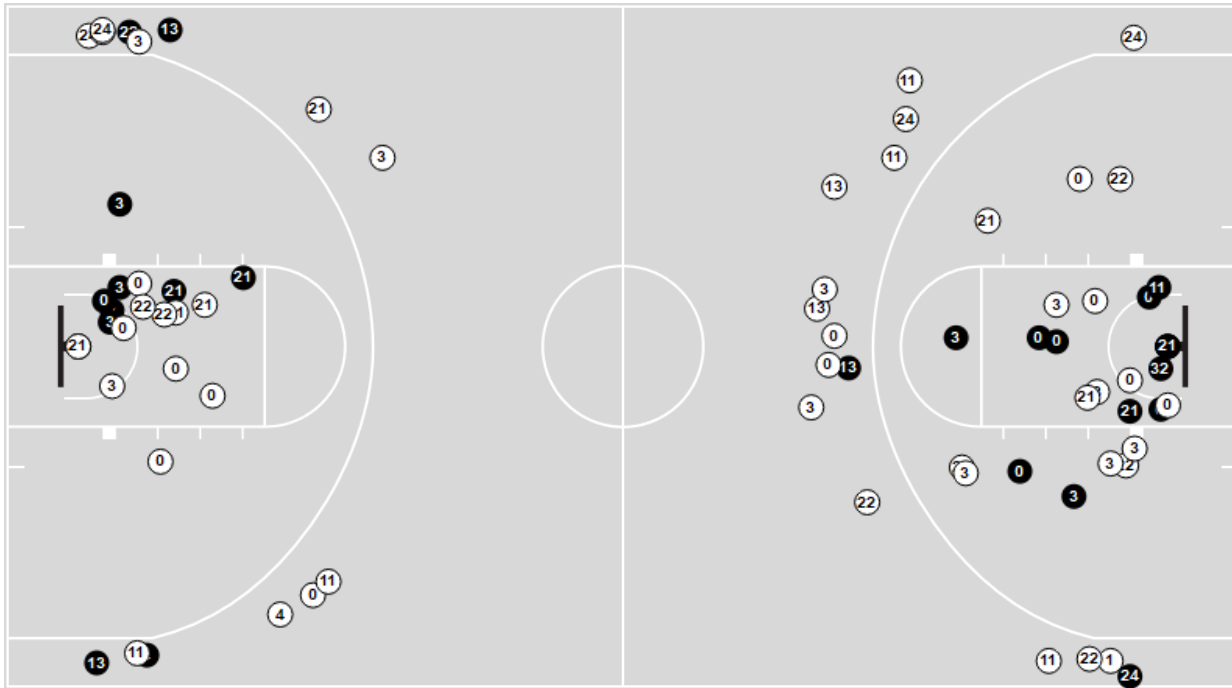
Florida	M/A	%
Points in the Paint	42 (21/39)	54
Fast Break Points	3 (2/3)	67
Second Chance Points	10 (6/12)	50
Effective FG%	49	

Officials: Denise Brooks, Katie Lukanich, Talisa Green

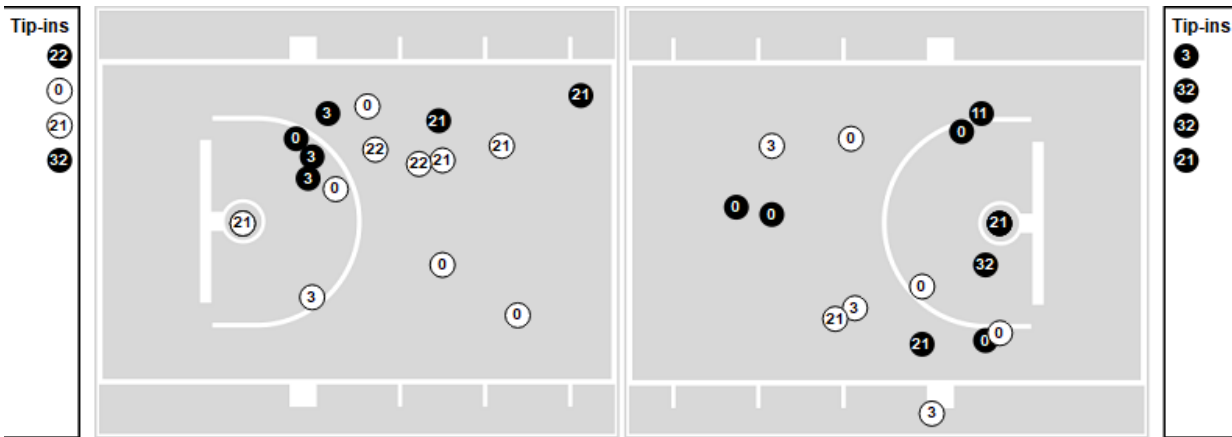
Players => All ; FG Types => All ; Results => All ;

Florida State

All Field Goals



Shots in the Paint



● Made ○ Missed N - Player Number

Florida State	M/A	%
Field Goals	29/79	37
2 Points	23/49	47
3 Points	6/30	20
Free Throws	34/40	85

Florida State	M/A	%
Points in the Paint	38 (19/36)	53
Fast Break Points	5 (3/5)	60
Second Chance Points	31 (22/33)	67
Effective FG%	41	

Florida

Lineup	Quarter On	Time On	Quarter Off	Time Off	Time on Court	Score	Score Diff	Reb	Stl	Tov	Ast	PPP
6- Salgues K/ 13- Reynolds L/ 20- Warren J/ 23- McGill L/ 24- Kyle R/	1	10:00	1	08:41	01:19	5-6	-1	0	0	0	0	1.6667
9- Dizeko A/ 13- Reynolds L/ 20- Warren J/ 23- McGill L/ 24- Kyle R/	1	08:41	1	06:46	01:55	2-2	0	3	0	0	0	0.6667
3- Mbley A/ 9- Dizeko A/ 13- Reynolds L/ 20- Warren J/ 23- McGill L/	1	06:46	1	05:46	01:00	0-2	-2	1	0	2	0	0.0000
3- Mbley A/ 9- Dizeko A/ 20- Warren J/ 23- McGill L/ 24- Kyle R/	1	05:46	1	04:19	01:27	2-2	0	2	0	2	1	0.5000
3- Mbley A/ 9- Dizeko A/ 13- Reynolds L/ 23- McGill L/ 24- Kyle R/	1	04:19	1	02:38	01:41	3-2	1	2	0	0	0	3.0000
9- Dizeko A/ 13- Reynolds L/ 20- Warren J/ 23- McGill L/ 24- Kyle R/	1	02:38	1	02:09	00:29	0-0	0	3	0	1	0	0.0000
6- Salgues K/ 9- Dizeko A/ 20- Warren J/ 23- McGill L/ 24- Kyle R/	1	02:09	1	00:43	01:25	2-2	0	2	0	2	0	0.6667
6- Salgues K/ 13- Reynolds L/ 20- Warren J/ 23- McGill L/ 24- Kyle R/	1	00:43	1	00:16	00:26	0-0	0	1	0	0	0	0.0000
6- Salgues K/ 9- Dizeko A/ 20- Warren J/ 23- McGill L/ 24- Kyle R/	1	00:16	1	00:16	00:00	0-0	0	0	0	0	0	0.0000
6- Salgues K/ 9- Dizeko A/ 12- Mindoudi D/ 23- McGill L/ 24- Kyle R/	1	00:16	1	00:16	00:00	2-0	2	0	0	0	0	2.2727
3- Mbley A/ 6- Salgues K/ 9- Dizeko A/ 12- Mindoudi D/ 23- McGill L/	1	00:16	2	10:00	00:16	0-0	0	0	0	0	0	0.0000
6- Salgues K/ 9- Dizeko A/ 20- Warren J/ 23- McGill L/ 24- Kyle R/	2	10:00	2	08:05	01:55	5-2	3	2	0	1	0	1.2887
6- Salgues K/ 9- Dizeko A/ 13- Reynolds L/ 20- Warren J/ 24- Kyle R/	2	08:05	2	07:34	00:31	0-2	-2	0	0	0	0	0.0000
6- Salgues K/ 13- Reynolds L/ 20- Warren J/ 23- McGill L/ 24- Kyle R/	2	07:34	2	06:13	01:21	0-6	-6	1	0	1	0	0.0000
3- Mbley A/ 9- Dizeko A/ 13- Reynolds L/ 20- Warren J/ 23- McGill L/	2	06:13	2	05:03	01:10	0-6	-6	1	0	1	0	0.0000
3- Mbley A/ 13- Reynolds L/ 20- Warren J/ 23- McGill L/ 24- Kyle R/	2	05:03	2	04:23	00:40	0-4	-4	0	0	1	0	0.0000
13- Reynolds L/ 20- Warren J/ 21- Kindred E/ 23- McGill L/ 24- Kyle R/	2	04:23	2	01:47	02:36	9-4	5	2	1	0	2	1.5625
3- Mbley A/ 6- Salgues K/ 20- Warren J/ 21- Kindred E/ 23- McGill L/	2	01:47	2	01:30	00:17	0-2	-2	1	0	0	0	0.0000
3- Mbley A/ 6- Salgues K/ 20- Warren J/ 23- McGill L/ 24- Kyle R/	2	01:30	2	00:53	00:36	1-3	-2	1	0	1	0	0.5319
3- Mbley A/ 6- Salgues K/ 13- Reynolds L/ 23- McGill L/ 24- Kyle R/	2	00:53	2	00:25	00:27	0-2	-2	0	0	1	0	0.0000
3- Mbley A/ 6- Salgues K/ 12- Mindoudi D/ 23- McGill L/ 24- Kyle R/	2	00:25	3	10:00	00:25	0-0	0	0	0	0	0	0.0000
6- Salgues K/ 13- Reynolds L/ 20- Warren J/ 23- McGill L/ 24- Kyle R/	3	10:00	3	07:15	02:45	6-5	1	4	0	2	0	1.0000
6- Salgues K/ 9- Dizeko A/ 20- Warren J/ 23- McGill L/ 24- Kyle R/	3	07:15	3	06:09	01:06	2-4	-2	0	0	0	0	1.0000
6- Salgues K/ 9- Dizeko A/ 13- Reynolds L/ 23- McGill L/ 24- Kyle R/	3	06:09	3	05:25	00:44	2-3	-1	1	0	1	0	1.0000
9- Dizeko A/ 12- Mindoudi D/ 13- Reynolds L/ 23- McGill L/ 24- Kyle R/	3	05:25	3	03:35	01:50	4-4	0	1	0	1	1	1.3333
3- Mbley A/ 9- Dizeko A/ 13- Reynolds L/ 23- McGill L/ 24- Kyle R/	3	03:35	3	00:25	03:09	8-6	2	2	1	0	2	1.3605
3- Mbley A/ 9- Dizeko A/ 21- Kindred E/ 23- McGill L/ 24- Kyle R/	3	00:25	4	09:06	01:19	1-7	-6	0	0	0	0	0.5319
3- Mbley A/ 13- Reynolds L/ 20- Warren J/ 23- McGill L/ 24- Kyle R/	4	09:06	4	06:54	02:12	8-8	0	1	0	0	3	2.0000
3- Mbley A/ 9- Dizeko A/ 20- Warren J/ 23- McGill L/ 24- Kyle R/	4	06:54	4	06:13	00:41	0-0	0	1	0	0	0	0.0000
3- Mbley A/ 9- Dizeko A/ 20- Warren J/ 21- Kindred E/ 23- McGill L/	4	06:13	4	05:11	01:02	2-4	-2	1	0	0	0	0.8621
9- Dizeko A/ 13- Reynolds L/ 20- Warren J/ 23- McGill L/ 24- Kyle R/	4	05:11	4	00:00	05:11	10-10	0	4	0	1	0	1.2376

Florida State

Lineup	Quarter On	Time On	Quarter Off	Time Off	Time on Court	Score	Score Diff	Reb	Stl	Tov	Ast	PPP
00- Latson T/ 3- Gordon O/ 13- Viegas C/ 21- Timpson M 22- Williams M	1	10:00	1	06:31	03:29	10-7	3	3	0	0	1	1.4793
00- Latson T/ 1- Turnage B/ 3- Gordon O/ 13- Viegas C/ 21- Timpson M	1	06:31	1	05:55	00:36	0-0	0	0	1	0	0	0.0000
00- Latson T/ 1- Turnage B/ 11- Bowles S/ 13- Viegas C/ 21- Timpson M	1	05:55	1	04:19	01:36	2-2	0	1	1	1	0	0.5000
1- Turnage B/ 3- Gordon O/ 11- Bowles S/ 21- Timpson M 24- Bonner A	1	04:19	1	02:09	02:10	2-3	-1	3	1	0	0	0.6667
3- Gordon O/ 4- Dos Santos R/ 11- Bowles S/ 21- Timpson M 22- Williams M	1	02:09	1	02:03	00:06	0-0	0	0	0	0	0	0.0000
3- Gordon O/ 4- Dos Santos R/ 11- Bowles S/ 22- Williams M 32- Treadwell A	1	02:03	1	01:39	00:24	0-0	0	0	1	0	0	0.0000
00- Latson T/ 3- Gordon O/ 11- Bowles S/ 22- Williams M 32- Treadwell A	1	01:39	1	00:16	01:22	2-2	0	2	0	0	0	0.6667
00- Latson T/ 3- Gordon O/ 13- Viegas C/ 22- Williams M 32- Treadwell A	1	00:16	2	08:05	02:11	2-7	-5	2	0	1	0	0.5000
00- Latson T/ 3- Gordon O/ 13- Viegas C/ 21- Timpson M 24- Bonner A	2	08:05	2	07:47	00:18	2-0	2	0	0	0	0	2.0000
00- Latson T/ 1- Turnage B/ 3- Gordon O/ 21- Timpson M 24- Bonner A	2	07:47	2	06:13	01:34	6-0	6	4	0	1	0	1.5464
00- Latson T/ 1- Turnage B/ 3- Gordon O/ 24- Bonner A 32- Treadwell A	2	06:13	2	05:03	01:10	6-0	6	4	1	0	0	1.8072
00- Latson T/ 1- Turnage B/ 3- Gordon O/ 21- Timpson M 24- Bonner A	2	05:03	2	03:52	01:11	4-4	0	0	0	1	1	1.1628
1- Turnage B/ 3- Gordon O/ 11- Bowles S/ 21- Timpson M 24- Bonner A	2	03:52	2	01:47	02:05	4-5	-1	1	0	0	0	1.3333
3- Gordon O/ 11- Bowles S/ 13- Viegas C/ 21- Timpson M 22- Williams M	2	01:47	2	01:30	00:17	2-0	2	1	0	0	0	2.2727
3- Gordon O/ 11- Bowles S/ 13- Viegas C/ 22- Williams M 32- Treadwell A	2	01:30	2	00:53	00:36	3-1	2	1	0	0	0	0.7979
3- Gordon O/ 13- Viegas C/ 22- Williams M 24- Bonner A 32- Treadwell A	2	00:53	3	10:00	00:53	2-0	2	2	1	0	0	1.0638
00- Latson T/ 3- Gordon O/ 13- Viegas C/ 21- Timpson M 22- Williams M	3	10:00	3	05:49	04:11	12-8	4	4	1	1	2	1.5228
3- Gordon O/ 11- Bowles S/ 13- Viegas C/ 21- Timpson M 22- Williams M	3	05:49	3	04:28	01:21	2-4	-2	0	0	0	0	1.0000
3- Gordon O/ 11- Bowles S/ 21- Timpson M 22- Williams M 24- Bonner A	3	04:28	3	03:35	00:53	2-2	0	1	1	0	0	1.0638
00- Latson T/ 1- Turnage B/ 3- Gordon O/ 21- Timpson M 24- Bonner A	3	03:35	3	01:01	02:34	4-6	-2	3	0	2	0	0.8197
00- Latson T/ 11- Bowles S/ 21- Timpson M 22- Williams M 24- Bonner A	3	01:01	3	00:25	00:35	2-2	0	0	0	0	0	1.0638
00- Latson T/ 11- Bowles S/ 13- Viegas C/ 21- Timpson M 22- Williams M	3	00:25	3	00:01	00:24	0-1	-1	2	0	0	0	0.0000
4- Dos Santos R/ 11- Bowles S/ 13- Viegas C/ 21- Timpson M 22- Williams M	3	00:01	4	10:00	00:01	2-0	2	0	0	0	0	2.2727
00- Latson T/ 11- Bowles S/ 13- Viegas C/ 21- Timpson M 22- Williams M	4	10:00	4	09:06	00:54	5-0	5	1	0	0	1	2.6596
00- Latson T/ 3- Gordon O/ 13- Viegas C/ 21- Timpson M 22- Williams M	4	09:06	4	07:14	01:52	6-6	0	0	0	0	1	2.0000
00- Latson T/ 3- Gordon O/ 21- Timpson M 22- Williams M 24- Bonner A	4	07:14	4	06:13	01:01	2-2	0	2	0	0	0	2.2727
3- Gordon O/ 4- Dos Santos R/ 21- Timpson M 22- Williams M 24- Bonner A	4	06:13	4	03:37	02:36	6-5	1	8	0	0	0	1.2605
00- Latson T/ 4- Dos Santos R/ 11- Bowles S/ 21- Timpson M 24- Bonner A	4	03:37	4	03:37	00:00	1-0	1	0	0	0	0	1.1364
00- Latson T/ 4- Dos Santos R/ 11- Bowles S/ 24- Bonner A 32- Treadwell A	4	03:37	4	02:03	01:34	4-3	1	1	0	0	0	2.1277
00- Latson T/ 4- Dos Santos R/ 11- Bowles S/ 22- Williams M 24- Bonner A	4	02:03	4	01:35	00:28	0-2	-2	0	0	0	0	0.0000
3- Gordon O/ 4- Dos Santos R/ 11- Bowles S/ 22- Williams M 24- Bonner A	4	01:35	4	00:00	01:35	3-2	1	1	0	1	1	1.5000

Florida

Lineup	Time	Score	Score Diff	Pts/Min	Reb	Stl	Tov	Ast	PPP
9- Dizeko A/ 13- Reynolds L/ 20- Warren J/ 23- McGill L/ 24- Kyle R/	07:35	12-12	0	1.5824	10	0	2	0	0.9934
6- Salgues K/ 13- Reynolds L/ 20- Warren J/ 23- McGill L/ 24- Kyle R/	05:51	11-17	-6	1.8777	6	0	3	0	0.8540
3- Mbley A/ 9- Dizeko A/ 13- Reynolds L/ 23- McGill L/ 24- Kyle R/	04:50	11-8	3	2.2751	4	1	0	2	1.5988
6- Salgues K/ 9- Dizeko A/ 20- Warren J/ 23- McGill L/ 24- Kyle R/	04:26	9-8	1	2.0240	4	0	3	0	1.0135
3- Mbley A/ 13- Reynolds L/ 20- Warren J/ 23- McGill L/ 24- Kyle R/	02:52	8-12	-4	2.7907	1	0	1	3	1.6000
13- Reynolds L/ 20- Warren J/ 21- Kindred E/ 23- McGill L/ 24- Kyle R/	02:36	9-4	5	3.4615	2	1	0	2	1.5625
3- Mbley A/ 9- Dizeko A/ 13- Reynolds L/ 20- Warren J/ 23- McGill L/	02:10	0-8	-8	0.0000	2	0	3	0	0.0000
3- Mbley A/ 9- Dizeko A/ 20- Warren J/ 23- McGill L/ 24- Kyle R/	02:08	2-2	0	0.9375	3	0	2	1	0.4000
9- Dizeko A/ 12- Mindoudi D/ 13- Reynolds L/ 23- McGill L/ 24- Kyle R/	01:50	4-4	0	2.1818	1	0	1	1	1.3333
3- Mbley A/ 9- Dizeko A/ 21- Kindred E/ 23- McGill L/ 24- Kyle R/	01:19	1-7	-6	0.7509	0	0	0	0	0.5319
3- Mbley A/ 9- Dizeko A/ 20- Warren J/ 21- Kindred E/ 23- McGill L/	01:02	2-4	-2	1.9355	1	0	0	0	0.8621
6- Salgues K/ 9- Dizeko A/ 13- Reynolds L/ 23- McGill L/ 24- Kyle R/	00:44	2-3	-1	2.7273	1	0	1	0	1.0000
3- Mbley A/ 6- Salgues K/ 20- Warren J/ 23- McGill L/ 24- Kyle R/	00:36	1-3	-2	1.6438	1	0	1	0	0.5319
6- Salgues K/ 9- Dizeko A/ 13- Reynolds L/ 20- Warren J/ 24- Kyle R/	00:31	0-2	-2	0.0000	0	0	0	0	0.0000
3- Mbley A/ 6- Salgues K/ 13- Reynolds L/ 23- McGill L/ 24- Kyle R/	00:27	0-2	-2	0.0000	0	0	1	0	0.0000
3- Mbley A/ 6- Salgues K/ 12- Mindoudi D/ 23- McGill L/ 24- Kyle R/	00:25	0-0	0	0.0000	0	0	0	0	0.0000
3- Mbley A/ 6- Salgues K/ 20- Warren J/ 21- Kindred E/ 23- McGill L/	00:17	0-2	-2	0.0000	1	0	0	0	0.0000
3- Mbley A/ 6- Salgues K/ 9- Dizeko A/ 12- Mindoudi D/ 23- McGill L/	00:16	0-0	0	0.0000	0	0	0	0	0.0000
6- Salgues K/ 9- Dizeko A/ 12- Mindoudi D/ 23- McGill L/ 24- Kyle R/	00:00	2-0	2	∞	0	0	0	0	2.2727

Florida State

Lineup	Time	Score	Score Diff	Pts/Min	Reb	Stl	Tov	Ast	PPP
00- Latson T/ 3- Gordon O/ 13- Viegas C/ 21- Timpson M/ 22- Williams M	09:32	28-21	7	2.9371	7	1	1	4	1.5873
00- Latson T/ 1- Turnage B/ 3- Gordon O/ 21- Timpson M/ 24- Bonner A/	05:19	14-10	4	2.6332	7	0	4	1	1.1475
1- Turnage B/ 3- Gordon O/ 11- Bowles S/ 21- Timpson M/ 24- Bonner A/	04:15	6-8	-2	1.4118	4	1	0	0	1.0000
3- Gordon O/ 4- Dos Santos R/ 21- Timpson M/ 22- Williams M/ 24- Bonner A/	02:36	6-5	1	2.3077	8	0	0	0	1.2605
00- Latson T/ 3- Gordon O/ 13- Viegas C/ 22- Williams M/ 32- Treadwell A/	02:11	2-7	-5	0.9112	2	0	1	0	0.5000
3- Gordon O/ 11- Bowles S/ 13- Viegas C/ 21- Timpson M/ 22- Williams M	01:38	4-4	0	2.4490	1	0	0	0	1.3889
00- Latson T/ 1- Turnage B/ 11- Bowles S/ 13- Viegas C/ 21- Timpson M/	01:36	2-2	0	1.2500	1	1	1	0	0.5000
3- Gordon O/ 4- Dos Santos R/ 11- Bowles S/ 22- Williams M/ 24- Bonner A/	01:35	3-2	1	1.8947	1	0	1	1	1.5000
00- Latson T/ 4- Dos Santos R/ 11- Bowles S/ 24- Bonner A/ 32- Treadwell A/	01:34	4-3	1	2.5532	1	0	0	0	2.1277
00- Latson T/ 3- Gordon O/ 11- Bowles S/ 22- Williams M/ 32- Treadwell A/	01:22	2-2	0	1.4581	2	0	0	0	0.6667
00- Latson T/ 11- Bowles S/ 13- Viegas C/ 21- Timpson M/ 22- Williams M	01:18	5-1	4	3.8314	3	0	0	1	2.6596
00- Latson T/ 1- Turnage B/ 3- Gordon O/ 24- Bonner A/ 32- Treadwell A/	01:10	6-0	6	5.1429	4	1	0	0	1.8072
00- Latson T/ 3- Gordon O/ 21- Timpson M/ 22- Williams M/ 24- Bonner A/	01:01	2-2	0	1.9672	2	0	0	0	2.2727
3- Gordon O/ 13- Viegas C/ 22- Williams M/ 24- Bonner A/ 32- Treadwell A/	00:53	2-0	2	2.2430	2	1	0	0	1.0638
3- Gordon O/ 11- Bowles S/ 21- Timpson M/ 22- Williams M/ 24- Bonner A/	00:53	2-2	0	2.2642	1	1	0	0	1.0638
3- Gordon O/ 11- Bowles S/ 13- Viegas C/ 22- Williams M/ 32- Treadwell A/	00:36	3-1	2	4.9315	1	0	0	0	0.7979
00- Latson T/ 1- Turnage B/ 3- Gordon O/ 13- Viegas C/ 21- Timpson M/	00:36	0-0	0	0.0000	0	1	0	0	0.0000
00- Latson T/ 11- Bowles S/ 21- Timpson M/ 22- Williams M/ 24- Bonner A/	00:35	2-2	0	3.4188	0	0	0	0	1.0638
00- Latson T/ 4- Dos Santos R/ 11- Bowles S/ 22- Williams M/ 24- Bonner A/	00:28	0-2	-2	0.0000	0	0	0	0	0.0000
3- Gordon O/ 4- Dos Santos R/ 11- Bowles S/ 22- Williams M/ 32- Treadwell A/	00:24	0-0	0	0.0000	0	1	0	0	0.0000
00- Latson T/ 3- Gordon O/ 13- Viegas C/ 21- Timpson M/ 24- Bonner A/	00:18	2-0	2	6.6667	0	0	0	0	2.0000
3- Gordon O/ 4- Dos Santos R/ 11- Bowles S/ 21- Timpson M/ 22- Williams M	00:06	0-0	0	0.0000	0	0	0	0	0.0000
4- Dos Santos R/ 11- Bowles S/ 13- Viegas C/ 21- Timpson M/ 22- Williams M	00:01	2-0	2	75.0000	0	0	0	0	2.2727
00- Latson T/ 4- Dos Santos R/ 11- Bowles S/ 21- Timpson M/ 24- Bonner A/	00:00	1-0	1	∞	0	0	0	0	1.1364