

Official Basketball Box Score -- GAME TOTALS -- FINAL STATISTICS

Florida St. vs Florida

11/22/04 7:00 pm ET at Gainesville, FL * O'Connell Center

VISITORS: Florida St. 2-0

			TOT-FG	3-PT	REBOUNDS										
##	Player Name		FG-FGA	FG-FGA	FT-FTA	OF	DE	TOT	PF	TP	A	TO	BLK	S	MIN
05	Hodges, Roneeka.....	f	4-12	0-2	1-7	2	1	3	3	9	2	2	1	0	36
31	Adeduntan, Ganiyat..	f	5-7	0-0	2-5	1	10	11	3	12	0	1	0	0	30
02	Neely, LaQuinta.....	g	1-3	0-0	5-7	3	5	8	2	7	2	5	2	0	29
12	Johnson, Holly.....	g	2-8	1-3	4-4	0	4	4	1	9	2	7	0	1	33
23	Gladden, Alicia.....	g	4-7	0-0	4-7	2	2	4	2	12	1	2	0	6	31
01	Liljestrand, Linnea.		7-11	3-6	3-3	1	3	4	3	20	1	1	0	0	27
21	Lautsch, Christie...		1-2	0-0	0-0	0	1	1	1	2	0	0	0	0	3
34	Linguist, Hannah....		0-0	0-0	0-0	0	0	0	0	0	0	0	0	0	2
44	Anthony, Nikki.....		0-1	0-0	1-2	1	2	3	0	1	0	0	0	1	9
TEAM.....						2	1	3				1			
Totals.....			24-51	4-11	20-35	12	29	41	15	72	8	19	3	8	200

TOTAL FG% 1st Half:	12-29	41.4%	2nd Half:	12-22	54.5%	Game:	47.1%	DEADB
3-Pt. FG% 1st Half:	3-9	33.3%	2nd Half:	1-2	50.0%	Game:	36.4%	REBS
F Throw % 1st Half:	9-13	69.2%	2nd Half:	11-22	50.0%	Game:	57.1%	7

HOME TEAM: Florida 0-1

		TOT-FG	3-PT	REBOUNDS											
##	Player Name	FG-FGA	FG-FGA	FT-FTA	OF	DE	TOT	PF	TP	A	TO	BLK	S	MIN	
33	Mosby, Bernice.....	f	3-13	0-1	3-4	2	8	10	3	9	1	2	0	0	36
45	Morehead, Tashia....	f	2-4	0-2	1-2	0	3	3	2	5	5	3	1	1	17
32	Davis, Brittany.....	c	2-5	0-0	0-1	1	2	3	5	4	0	0	0	1	15
03	Gregory, Tishona....	g	5-12	2-3	0-0	2	2	4	4	12	6	4	0	1	35
21	Santos, Danielle....	g	6-9	3-4	1-1	1	1	2	4	16	1	2	0	2	28
04	Dye, Kim.....		1-2	1-2	0-0	0	0	0	1	3	0	0	0	0	5
11	Lowe, Sarah.....		2-3	1-2	2-2	1	0	1	3	7	3	2	0	4	18
20	Bowden, Depree.....		0-1	0-0	0-0	1	0	1	1	0	0	0	0	0	4
23	Williams, Tamia.....		1-7	0-2	0-2	1	2	3	0	2	0	4	1	2	12
34	Eshe, Dalila.....		1-4	0-0	0-0	2	3	5	1	2	1	1	0	0	16
50	Phillips, Briana....		1-4	0-1	0-0	0	0	0	1	2	0	0	0	0	13
TEAM.....						2	2	4							
Totals.....			24-64	7-17	7-12	13	23	36	25	62	17	18	2	11	199

TOTAL FG% 1st Half:	9-30	30.0%	2nd Half:	15-34	44.1%	Game:	37.5%	DEADB
3-Pt. FG% 1st Half:	4-8	50.0%	2nd Half:	3-9	33.3%	Game:	41.2%	REBS
F Throw % 1st Half:	3-6	50.0%	2nd Half:	4-6	66.7%	Game:	58.3%	3

Officials: Bryan Enterline, Dennis Demayo, Sue Blauch
Technical fouls: Florida St.-None. Florida-None.
Attendance: 2043

Score by Periods	1st	2nd	Total
Florida St.....	36	36	- 72
Florida.....	25	37	- 62

Points in the paint-FSU 24,UF 26. Points off turnovers-FSU 19,UF 18.
2nd chance points-FSU 8,UF 9. Fast break points-FSU 8,UF 6.
Bench points-FSU 23,UF 16. Score tied-1 time. Lead changed-1 time.
Last FG-FSU 2nd-00:20, UF 2nd-00:07.

Play-By-Play

Florida St. vs Florida

11/22/04 7:00 pm ET at Gainesville, FL * O'Connell Center

2nd PERIOD Play-by-Play (Page 1)

HOME TEAM: Florida

	TIME	SCORE	MAR	VISITORS: Florida St.
-----	-----	-----	-----	-----
-----	-----	-----	-----	-----
-----	-----	-----	-----	-----
TURNOVR by Gregory, Tishona	19:49	25-36	V 11	
	19:48			STEAL by Gladden, Alicia
	19:45			MISSED LAYUP by Gladden, Alicia
REBOUND (DEF) by Davis, Brittany	19:45			
MISSED JUMPER by Mosby, Bernice	19:22			
	19:22			REBOUND (DEF) by Johnson, Holly
	19:18			TURNOVR by Johnson, Holly
STEAL by Santos, Danielle	19:17			
MISSED JUMPER by Santos, Danielle	19:04			
	19:04			REBOUND (DEF) by Adeduntan, Ganiyat
	18:48	25-38	V 13	GOOD! LAYUP by Adeduntan, Ganiyat [PNT]
	18:48			ASSIST by Neely, LaQuinta
MISSED 3 PTR by Morehead, Tashia	18:19			
	18:19			REBOUND (DEF) by Adeduntan, Ganiyat
	17:53			TURNOVR by Hodges, Roneeka
STEAL by Davis, Brittany	17:52			
GOOD! LAYUP by Santos, Danielle [PNT]	17:33	27-38	V 11	
ASSIST by Morehead, Tashia	17:33			
	17:17			MISSED JUMPER by Hodges, Roneeka
	17:17			REBOUND (OFF) by Gladden, Alicia
	17:11			MISSED JUMPER by Gladden, Alicia
REBOUND (DEF) by Gregory, Tishona	17:11			
GOOD! 3 PTR by Santos, Danielle	17:05	30-38	V 8	
ASSIST by Gregory, Tishona	17:05			
	16:53			TIMEOUT 30sec
	16:39			MISSED LAYUP by Gladden, Alicia
	16:39			REBOUND (OFF) by Neely, LaQuinta
	16:30	30-40	V 10	GOOD! JUMPER by Adeduntan, Ganiyat [PNT]
	16:30			ASSIST by Liljestrang, Linnea
TURNOVR by Santos, Danielle	16:19			
	16:00	30-42	V 12	GOOD! JUMPER by Gladden, Alicia [PNT]
MISSED 3 PTR by Santos, Danielle	15:47			
REBOUND (OFF) by Davis, Brittany	15:47			
MISSED LAYUP by Davis, Brittany	15:44			
	15:44			REBOUND (DEF) by Gladden, Alicia
	15:37	30-44	V 14	GOOD! JUMPER by Hodges, Roneeka
	15:17			FOUL by Neely, LaQuinta
TIMEOUT MEDIA	15:17			
MISSED JUMPER by Gregory, Tishona	15:09			
	15:09			REBOUND (DEF) by Neely, LaQuinta
	15:00			TURNOVR by Neely, LaQuinta
STEAL by Williams, Tamia	14:59			
TURNOVR by Williams, Tamia	14:55			
	14:42			TURNOVR by Neely, LaQuinta
STEAL by Gregory, Tishona	14:41			
MISSED JUMPER by Phillips, Briana	14:36			
REBOUND (OFF) by Mosby, Bernice	14:36			
MISSED JUMPER by Mosby, Bernice	14:33			
	14:33			REBOUND (DEF) by Adeduntan, Ganiyat
	14:04	30-46	V 16	GOOD! JUMPER by Hodges, Roneeka
MISSED 3 PTR by Phillips, Briana	13:51			
	13:51			REBOUND (DEF) by (TEAM)
	13:25	30-48	V 18	GOOD! LAYUP by Gladden, Alicia [PNT]
TURNOVR by Williams, Tamia	13:05			
	13:05			STEAL by Gladden, Alicia

2nd PERIOD Play-by-Play (Page 2)

HOME TEAM: Florida

TIME SCORE MAR VISITORS: Florida St.

	13:02	30-50	V 20	GOOD! LAYUP by Liljestrand, Linnea [FB/PNT]
FOUL by Mosby, Bernice	13:02			
TIMEOUT 30sec	13:02			
GOOD! JUMPER by Morehead, Tashia [PNT]	13:02	30-51	V 21	GOOD! FT SHOT by Liljestrand, Linnea
	12:44	32-51	V 19	
	12:18	32-53	V 21	GOOD! JUMPER by Adeduntan, Ganiyat
GOOD! JUMPER by Santos, Danielle	12:02	34-53	V 19	
	11:56			FOUL by Johnson, Holly
	11:56			TURNOVR by Johnson, Holly
TIMEOUT media	11:56			
	11:55			FOUL by Hodges, Roneeka
MISSED FT SHOT by Morehead, Tashia	11:55			
REBOUND (OFF) by (DEADBALL)	11:55			
GOOD! FT SHOT by Morehead, Tashia	11:55	35-53	V 18	
	11:35	35-55	V 20	GOOD! JUMPER by Liljestrand, Linnea
	11:35			ASSIST by Neely, LaQuinta
GOOD! LAYUP by Gregory, Tishona [PNT]	11:18	37-55	V 18	
	10:52			MISSED JUMPER by Anthony, Nikki
BLOCK by Williams, Tamia	10:52			
REBOUND (DEF) by Williams, Tamia	10:48			
MISSED JUMPER by Mosby, Bernice	10:30			
	10:30			REBOUND (DEF) by Anthony, Nikki
FOUL by Gregory, Tishona	10:13			
	10:10	37-58	V 21	GOOD! 3 PTR by Johnson, Holly
	10:10			ASSIST by Gladden, Alicia
MISSED 3 PTR by Williams, Tamia	09:54			
	09:54			REBOUND (DEF) by Neely, LaQuinta
	09:39			TIMEOUT 30sec
	09:28			MISSED JUMPER by Adeduntan, Ganiyat
REBOUND (DEF) by Williams, Tamia	09:28			
TURNOVR by Williams, Tamia	09:23			
	09:01	37-60	V 23	GOOD! JUMPER by Hodges, Roneeka
TURNOVR by Mosby, Bernice	08:45			
	08:44			STEAL by Gladden, Alicia
FOUL by Santos, Danielle	08:42			
	08:42	37-61	V 24	GOOD! FT SHOT by Gladden, Alicia
	08:42			MISSED FT SHOT by Gladden, Alicia
REBOUND (DEF) by Mosby, Bernice	08:42			
MISSED 3 PTR by Lowe, Sarah	08:22			
	08:22			REBOUND (DEF) by Johnson, Holly
	08:15			TURNOVR by Johnson, Holly
STEAL by Lowe, Sarah	08:14			
MISSED 3 PTR by Mosby, Bernice	08:09			
	08:09			REBOUND (DEF) by Adeduntan, Ganiyat
	07:38			MISSED 3 PTR by Johnson, Holly
REBOUND (DEF) by Mosby, Bernice	07:38			
MISSED JUMPER by Gregory, Tishona	07:19			
	07:19			REBOUND (DEF) by Adeduntan, Ganiyat
	06:58			MISSED LAYUP by Hodges, Roneeka
REBOUND (DEF) by Santos, Danielle	06:58			
TIMEOUT 30sec	06:52			
TURNOVR by Lowe, Sarah	06:38			
	06:38			TIMEOUT media
FOUL by Eshe, Dalila	06:28			
	06:28			MISSED FT SHOT by Hodges, Roneeka
	06:28			REBOUND (OFF) by (DEADBALL)

HOME TEAM: Florida

TIME SCORE MAR VISITORS: Florida St.

	06:28			MISSED FT SHOT by Hodges, Roneeka
REBOUND (DEF) by Eshe, Dalila	06:28			
MISSED LAYUP by Phillips, Briana	06:13			
REBOUND (OFF) by Lowe, Sarah	06:13			
GOOD! LAYUP by Santos, Danielle [PNT]	06:02	39-61	V 22	
ASSIST by Eshe, Dalila	06:02			
	06:02			FOUL by Hodges, Roneeka
GOOD! FT SHOT by Santos, Danielle	06:02	40-61	V 21	
	05:51			MISSED JUMPER by Johnson, Holly
REBOUND (DEF) by (TEAM)	05:51			
TURNOVR by Gregory, Tishona	05:33			
	05:09			MISSED JUMPER by Johnson, Holly
REBOUND (DEF) by Eshe, Dalila	05:09			
	04:55			FOUL by Liljestrand, Linnea
GOOD! FT SHOT by Lowe, Sarah	04:55	41-61	V 20	
GOOD! FT SHOT by Lowe, Sarah	04:55	42-61	V 19	
	04:41			TURNNOVR by Neely, LaQuinta
STEAL by Santos, Danielle	04:40			
MISSED LAYUP by Gregory, Tishona	04:37			
	04:37			BLOCK by Neely, LaQuinta
REBOUND (OFF) by (TEAM)	04:37			
MISSED JUMPER by Santos, Danielle	04:32			
	04:32			REBOUND (DEF) by Gladden, Alicia
FOUL by Lowe, Sarah	04:19			
TIMEOUT 30sec	04:19			
FOUL by Lowe, Sarah	03:54			
	03:54			TIMEOUT MEDIA
	03:54	42-62	V 20	GOOD! FT SHOT by Adeduntan, Ganiyat
	03:54			MISSED FT SHOT by Adeduntan, Ganiyat
REBOUND (DEF) by Mosby, Bernice	03:54			
GOOD! 3 PTR by Santos, Danielle	03:43	45-62	V 17	
ASSIST by Gregory, Tishona	03:43			
FOUL by Mosby, Bernice	03:32			
	03:32			MISSED FT SHOT by Neely, LaQuinta
	03:32			REBOUND (OFF) by (DEADBALL)
	03:32	45-63	V 18	GOOD! FT SHOT by Neely, LaQuinta
GOOD! LAYUP by Davis, Brittany [PNT]	03:22	47-63	V 16	
ASSIST by Lowe, Sarah	03:22			
FOUL by Lowe, Sarah	03:07			
	03:07			MISSED FT SHOT by Hodges, Roneeka
REBOUND (DEF) by Davis, Brittany	03:07			
GOOD! LAYUP by Davis, Brittany [PNT]	02:53	49-63	V 14	
ASSIST by Gregory, Tishona	02:53			
FOUL by Santos, Danielle	02:22			
	02:22			MISSED FT SHOT by Hodges, Roneeka
	02:22			REBOUND (OFF) by (DEADBALL)
	02:22			MISSED FT SHOT by Hodges, Roneeka
REBOUND (DEF) by Mosby, Bernice	02:22			
TURNNOVR by Santos, Danielle	02:10			
	02:01			TURNNOVR by Johnson, Holly
STEAL by Lowe, Sarah	02:00			
GOOD! LAYUP by Gregory, Tishona [FB/PNT]	01:57	51-63	V 12	
ASSIST by Lowe, Sarah	01:57			
	01:48			TURNNOVR by Gladden, Alicia
STEAL by Lowe, Sarah	01:47			
GOOD! LAYUP by Lowe, Sarah [FB/PNT]	01:46	53-63	V 10	

HOME TEAM: Florida

TIME SCORE MAR VISITORS: Florida St.

	01:45				TIMEOUT 30sec
	01:39				TURNOVR by Johnson, Holly
STEAL by Lowe, Sarah	01:39				
	01:37				FOUL by Neely, LaQuinta
GOOD! 3 PTR by Santos, Danielle	01:20	56-63	V 7		
ASSIST by Gregory, Tishona	01:20				
FOUL by Gregory, Tishona	01:13				
TURNOVR by Gregory, Tishona	01:13				
	01:13	56-64	V 8		GOOD! FT SHOT by Hodges, Roneeka
	01:13				MISSED FT SHOT by Hodges, Roneeka
	01:13				REBOUND (OFF) by (DEADBALL)
FOUL by Davis, Brittany	01:01				
	01:01	56-65	V 9		GOOD! FT SHOT by Gladden, Alicia
	01:01	56-66	V 10		GOOD! FT SHOT by Gladden, Alicia
	00:55				FOUL by Adeduntan, Ganiyat
MISSED FT SHOT by Davis, Brittany	00:55				
REBOUND (OFF) by Bowden, Depree	00:55				
GOOD! LAYUP by Mosby, Bernice [PNT]	00:48	58-66	V 8		
ASSIST by Gregory, Tishona	00:48				
FOUL by Davis, Brittany	00:45				
	00:45	58-67	V 9		GOOD! FT SHOT by Neely, LaQuinta
	00:45	58-68	V 10		GOOD! FT SHOT by Neely, LaQuinta
MISSED JUMPER by Mosby, Bernice	00:37				
	00:37				REBOUND (DEF) by Adeduntan, Ganiyat
FOUL by Davis, Brittany	00:34				
	00:34				MISSED FT SHOT by Adeduntan, Ganiyat
	00:34				REBOUND (OFF) by (DEADBALL)
	00:34	58-69	V 11		GOOD! FT SHOT by Adeduntan, Ganiyat
MISSED JUMPER by Gregory, Tishona	00:27				
	00:27				BLOCK by Neely, LaQuinta
REBOUND (OFF) by Gregory, Tishona	00:25				
GOOD! JUMPER by Gregory, Tishona [PNT]	00:23	60-69	V 9		
TIMEOUT TEAM	00:23				
	00:20	60-71	V 11		GOOD! LAYUP by Adeduntan, Ganiyat [FB/PNT]
GOOD! JUMPER by Mosby, Bernice	00:07	62-71	V 9		
FOUL by Davis, Brittany	00:06				
	00:06				MISSED FT SHOT by Neely, LaQuinta
	00:06				REBOUND (OFF) by (DEADBALL)
	00:06	62-72	V 10		GOOD! FT SHOT by Neely, LaQuinta

Florida St. 72, Florida 62

2nd period-only	InPaint	Pts-T/O	2nd-Chc	FastBrk	BnchPts	Ties	Leads
Florida St.	12	11	2	4	5	0	0
Florida	20	10	7	4	4	0	0

NCAA® BASKETBALL SHOT CHART

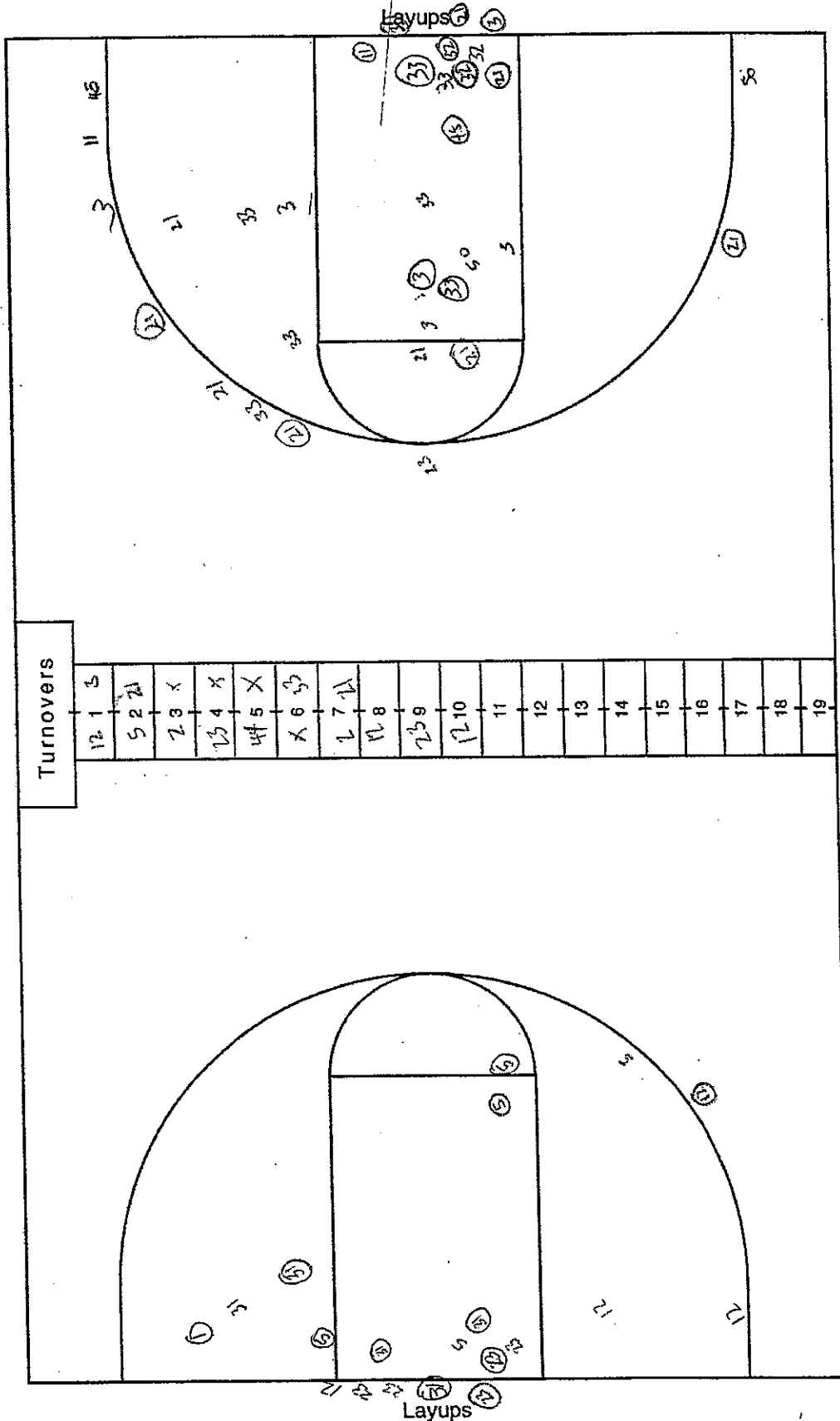
First Half

Second Half

(Circle one)

Team Florida

Team Florida State



Attempted _____

Made _____

Percentage _____

Attempted _____

Made _____

Percentage _____

Official Basketball Box Score -- GAME TOTALS -- 1st HALF
 Florida St. vs Florida
 11/22/04 7:00 pm ET at Gainesville, FL * O'Connell Center

VISITORS: Florida St.

		TOT-FG			3-PT		REBOUNDS									
##	Player Name	FG-FGA	FG-FGA	FT-FTA	OF	DE	TOT	PF	TP	A	TO	BLK	S	MIN		
05	Hodges, Roneeka.....	f	1-7	0-2	0-0	2	1	3	1	2	2	1	1	0	19	
31	Adeduntan, Ganiyat..	f	1-2	0-0	0-1	1	4	5	2	2	0	1	0	0	11	
02	Neely, LaQuinta.....	g	1-3	0-0	1-1	2	3	5	0	3	0	2	0	0	13	
12	Johnson, Holly.....	g	1-4	0-1	4-4	0	2	2	0	6	2	2	0	1	16	
23	Gladden, Alicia.....	g	2-2	0-0	1-3	1	0	1	2	5	0	1	0	3	14	
01	Liljestrand, Linnea.		5-9	3-6	2-2	1	3	4	2	15	0	1	0	0	16	
21	Lautsch, Christie...		1-2	0-0	0-0	0	1	1	1	2	0	0	0	0	3	
34	Linguist, Hannah....		0-0	0-0	0-0	0	0	0	0	0	0	0	0	0	2	
44	Anthony, Nikki.....		0-0	0-0	1-2	1	1	2	0	1	0	0	0	1	6	
TEAM.....						2		2				1				
Totals.....			12-29	3-9	9-13	10	15	25	8	36	4	9	1	5	100	

TOTAL FG% 1st Half: 12-29 41.4% 2nd Half: 0-0 0.0% Game: 41.4% DEADB
 3-Pt. FG% 1st Half: 3-9 33.3% 2nd Half: 0-0 0.0% Game: 33.3% REBS
 F Throw % 1st Half: 9-13 69.2% 2nd Half: 0-0 0.0% Game: 69.2% 1

HOME TEAM: Florida

HOME TEAM: FLORIDA			TOT-FG			3-PT			REBOUNDS							
##	Player Name		FG-FGA	FG-FGA	FT-FTA	OF	DE	TOT	PF	TP	A	TO	BLK	S	MIN	
33	Mosby, Bernice.....	f	1-6	0-0	3-4	1	4	5	1	5	1	1	0	0	18	
45	Morehead, Tashia....	f	1-2	0-1	0-0	0	3	3	2	2	4	3	1	1	13	
32	Davis, Brittany.....	c	0-2	0-0	0-0	0	0	0	1	0	0	0	0	0	6	
(Gregory, Tishona....	g	2-5	2-3	0-0	1	1	2	2	6	1	1	0	0	15	
2	Santos, Danielle....	g	0-0	0-0	0-0	1	0	1	2	0	1	0	0	0	8	
04	Dye, Kim.....		1-2	1-2	0-0	0	0	0	1	3	0	0	0	0	5	
11	Lowe, Sarah.....		1-1	1-1	0-0	0	0	0	0	3	1	1	0	0	9	
20	Bowden, Depree.....		0-1	0-0	0-0	0	0	0	1	0	0	0	0	0	4	
23	Williams, Tamia.....		1-6	0-1	0-2	1	0	1	0	2	0	1	0	1	6	
34	Eshe, Dalila.....		1-4	0-0	0-0	2	1	3	0	2	0	1	0	0	11	
50	Phillips, Briana....		1-1	0-0	0-0	0	0	0	1	2	0	0	0	0	5	
TEAM.....						1	1	2								
Totals.....			9-30	4-8	3-6	7	10	17	11	25	8	8	1	2	100	

TOTAL FG% 1st Half: 9-30 30.0% 2nd Half: 0-0 0.0% Game: 30.0% DEADB
 3-Pt. FG% 1st Half: 4-8 50.0% 2nd Half: 0-0 0.0% Game: 50.0% REBS
 F Throw % 1st Half: 3-6 50.0% 2nd Half: 0-0 0.0% Game: 50.0% 2

Officials: Bryan Enterline, Dennis Demayo, Sue Blauch
 Technical fouls: Florida St.-None. Florida-None.

Attendance:

Score by Periods	1st	Total
Florida St.....	36	- 36
Florida.....	25	- 25

Points in the paint-FSU 12,UF 6. Points off turnovers-FSU 8,UF 8.
 2nd chance points-FSU 6,UF 2. Fast break points-FSU 4,UF 2.
 Bench points-FSU 18,UF 12. Score tied-1 time. Lead changed-1 time.
 Last FG-FSU 1st-00:22, UF 1st-02:46.

Play-By-Play

Florida St. vs Florida

11/22/04 7:00 pm ET at Gainesville, FL * O'Connell Center

1st PERIOD Play-by-Play (Page 1)

HOME TEAM: Florida

TIME SCORE MAR VISITORS: Florida St.

GOOD! JUMPER by Morehead, Tashia	19:54	2-0	H 2	
ASSIST by Santos, Danielle	19:54			
	19:28			TURNOVR by Johnson, Holly
TURNOVR by Morehead, Tashia	19:17			
	19:15			STEAL by Johnson, Holly
	18:59			MISSED 3 PTR by Johnson, Holly
REBOUND (DEF) by Morehead, Tashia	18:59			
MISSED JUMPER by Gregory, Tishona	18:31			
	18:31			REBOUND (DEF) by Adeduntan, Ganiyat
	18:02	2-2	T 1	GOOD! LAYUP by Hodges, Roneeka [PNT]
MISSED JUMPER by Mosby, Bernice	17:41			
	17:41			REBOUND (DEF) by Adeduntan, Ganiyat
	17:33			MISSED LAYUP by Hodges, Roneeka
	17:33			REBOUND (OFF) by (TEAM)
	17:25			MISSED LAYUP by Hodges, Roneeka
	17:25			REBOUND (OFF) by Hodges, Roneeka
	17:20			MISSED JUMPER by Hodges, Roneeka
	17:20			REBOUND (OFF) by Gladden, Alicia
	17:15	2-4	V 2	GOOD! LAYUP by Gladden, Alicia [PNT]
MISSED JUMPER by Davis, Brittany	17:05			
	17:05			REBOUND (DEF) by Neely, LaQuinta
	16:59	2-6	V 4	GOOD! LAYUP by Neely, LaQuinta [PNT]
FOUL by Morehead, Tashia	16:59			
	16:59	2-7	V 5	GOOD! FT SHOT by Neely, LaQuinta
TURNOVR by Mosby, Bernice	16:45			
	16:44			STEAL by Gladden, Alicia
	16:42			TURNOVR by Gladden, Alicia
MISSED JUMPER by Williams, Tamia	16:21			
	16:21			REBOUND (DEF) by Hodges, Roneeka
FOUL by Santos, Danielle	15:53			
	15:53			TIMEOUT media
	15:53	2-8	V 6	GOOD! FT SHOT by Johnson, Holly
	15:53	2-9	V 7	GOOD! FT SHOT by Johnson, Holly
MISSED LAYUP by Williams, Tamia	15:36			
REBOUND (OFF) by Eshe, Dalila	15:36			
TURNOVR by Eshe, Dalila	15:33			
	15:01			MISSED JUMPER by Johnson, Holly
REBOUND (DEF) by Mosby, Bernice	15:01			
MISSED LAYUP by Eshe, Dalila	14:50			
REBOUND (OFF) by Mosby, Bernice	14:50			
MISSED 3 PTR by Williams, Tamia	14:48			
REBOUND (OFF) by Santos, Danielle	14:48			
GOOD! JUMPER by Williams, Tamia	14:28	4-9	V 5	
ASSIST by Lowe, Sarah	14:27			
	14:06			TURNOVR by Liljestrland, Linnea
STEAL by Williams, Tamia	14:06			
MISSED JUMPER by Mosby, Bernice	13:57			
	13:57			REBOUND (DEF) by Liljestrland, Linnea
	13:24	4-11	V 7	GOOD! JUMPER by Liljestrland, Linnea
TURNOVR by Williams, Tamia	13:06			
	13:04			STEAL by Gladden, Alicia
	13:03	4-13	V 9	GOOD! LAYUP by Gladden, Alicia [FB/PNT]
FOUL by Gregory, Tishona	13:03			
	13:03			MISSED FT SHOT by Gladden, Alicia
	13:03			REBOUND (OFF) by Hodges, Roneeka

HOME TEAM: Florida

TIME SCORE MAR VISITORS: Florida St.

	12:59	4-16	V 12	GOOD! 3 PTR by Liljestrand, Linnea
	12:59			ASSIST by Hodges, Roneeka
GOOD! LAYUP by Eshe, Dalila [PNT]	12:44	6-16	V 10	
ASSIST by Gregory, Tishona	12:44			
	12:12	6-18	V 12	GOOD! LAYUP by Adeduntan, Ganiyat [PNT]
FOUL by Mosby, Bernice	12:12			
	12:12			MISSED FT SHOT by Adeduntan, Ganiyat
REBOUND (DEF) by Eshe, Dalila	12:12			
	11:52			FOUL by Hodges, Roneeka
TIMEOUT media	11:52			
GOOD! FT SHOT by Mosby, Bernice	11:52	7-18	V 11	
GOOD! FT SHOT by Mosby, Bernice	11:52	8-18	V 10	
	11:20			MISSED JUMPER by Liljestrand, Linnea
REBOUND (DEF) by Morehead, Tashia	11:20			
MISSED 3 PTR by Gregory, Tishona	11:11			
	11:11			REBOUND (DEF) by Adeduntan, Ganiyat
	11:00	8-21	V 13	GOOD! 3 PTR by Liljestrand, Linnea
	11:00			ASSIST by Hodges, Roneeka
GOOD! LAYUP by Phillips, Briana [PNT]	10:39	10-21	V 11	
ASSIST by Morehead, Tashia	10:39			
	10:24			MISSED 3 PTR by Hodges, Roneeka
	10:24			REBOUND (OFF) by Adeduntan, Ganiyat
	10:18			FOUL by Adeduntan, Ganiyat
	10:18			TURNOVR by Adeduntan, Ganiyat
GOOD! 3 PTR by Dye, Kim	10:11	13-21	V 8	
ASSIST by Morehead, Tashia	10:11			
	09:56			MISSED 3 PTR by Liljestrand, Linnea
	09:56			REBOUND (OFF) by Neely, LaQuinta
	09:50			MISSED LAYUP by Neely, LaQuinta
	09:50			REBOUND (OFF) by Neely, LaQuinta
	09:49			TURNOVR by Neely, LaQuinta
TURNOVR by Morehead, Tashia	09:32			
	09:31			STEAL by Gladden, Alicia
FOUL by Davis, Brittany	09:22			
	09:22			MISSED FT SHOT by Gladden, Alicia
	09:22			REBOUND (OFF) by (DEADBALL)
	09:22	13-22	V 9	GOOD! FT SHOT by Gladden, Alicia
MISSED 3 PTR by Morehead, Tashia	09:03			
	09:03			REBOUND (DEF) by Johnson, Holly
	08:51	13-25	V 12	GOOD! 3 PTR by Liljestrand, Linnea
	08:51			ASSIST by Johnson, Holly
MISSED LAYUP by Davis, Brittany	08:37			
	08:37			REBOUND (DEF) by Liljestrand, Linnea
	08:27			MISSED JUMPER by Adeduntan, Ganiyat
REBOUND (DEF) by Morehead, Tashia	08:27			
TIMEOUT 30sec	08:13			
MISSED 3 PTR by Dye, Kim	08:02			
REBOUND (OFF) by (TEAM)	08:02			
	08:00			FOUL by Adeduntan, Ganiyat
MISSED JUMPER by Mosby, Bernice	07:56			
	07:56			REBOUND (DEF) by Adeduntan, Ganiyat
FOUL by Phillips, Briana	07:37			
	07:37			TIMEOUT media
	07:35			MISSED 3 PTR by Liljestrand, Linnea
REBOUND (DEF) by Mosby, Bernice	07:35			
GOOD! 3 PTR by Lowe, Sarah	07:26	16-25	V 9	

HOME TEAM: Florida

TIME SCORE MAR VISITORS: Florida St.

ASSIST by Mosby, Bernice	07:26			
	07:02	16-27	V 11	GOOD! JUMPER by Liljestrand, Linnea
	06:48			FOUL by Gladden, Alicia
TURNOVR by Lowe, Sarah	06:48			
	06:47			STEAL by Anthony, Nikki
	06:43	16-29	V 13	GOOD! JUMPER by Johnson, Holly [FB]
	06:24			FOUL by Gladden, Alicia
MISSED JUMPER by Mosby, Bernice	06:20			
REBOUND (OFF) by Eshe, Dalila	06:20			
MISSED JUMPER by Eshe, Dalila	06:16			
	06:16			REBOUND (DEF) by Neely, LaQuinta
	05:55			MISSED JUMPER by Hodges, Roneeka
	05:55			REBOUND (OFF) by Anthony, Nikki
FOUL by Santos, Danielle	05:54			
	05:54	16-30	V 14	GOOD! FT SHOT by Anthony, Nikki
	05:54			MISSED FT SHOT by Anthony, Nikki
	05:54			REBOUND (OFF) by Liljestrand, Linnea
	05:50			MISSED 3 PTR by Liljestrand, Linnea
REBOUND (DEF) by Mosby, Bernice	05:50			
GOOD! 3 PTR by Gregory, Tishona	05:32	19-30	V 11	
ASSIST by Morehead, Tashia	05:32			
	05:06			MISSED JUMPER by Neely, LaQuinta
REBOUND (DEF) by (TEAM)	05:06			
FOUL by Gregory, Tishona	04:46			
TURNOVR by Gregory, Tishona	04:46			
	04:29			TURNOVR by Hodges, Roneeka
STEAL by Morehead, Tashia	04:28			
GOOD! LAYUP by Mosby, Bernice [FB/PNT]	04:24	21-30	V 9	
ASSIST by Morehead, Tashia	04:24			
	03:49			TURNOVR by (TEAM)
TIMEOUT MEDIA	03:49			
	03:32			FOUL by Liljestrand, Linnea
MISSED JUMPER by Mosby, Bernice	03:19			
	03:19			REBOUND (DEF) by Lautsch, Christie
	03:13			TURNOVR by Johnson, Holly
GOOD! 3 PTR by Gregory, Tishona	02:46	24-30	V 6	
	02:37			TIMEOUT 30sec
	02:13			MISSED JUMPER by Lautsch, Christie
REBOUND (DEF) by Gregory, Tishona	02:13			
MISSED JUMPER by Bowden, Depree	02:04			
	02:04			BLOCK by Hodges, Roneeka
	02:01			REBOUND (DEF) by Liljestrand, Linnea
FOUL by Bowden, Depree	01:58			
	01:58	24-31	V 7	GOOD! FT SHOT by Liljestrand, Linnea
	01:58	24-32	V 8	GOOD! FT SHOT by Liljestrand, Linnea
FOUL by Morehead, Tashia	01:53			
TURNOVR by Morehead, Tashia	01:53			
	01:26			MISSED JUMPER by Johnson, Holly
BLOCK by Morehead, Tashia	01:26			
	01:25			REBOUND (OFF) by (TEAM)
	01:24			MISSED 3 PTR by Hodges, Roneeka
REBOUND (DEF) by Mosby, Bernice	01:24			
	01:20			FOUL by Liljestrand, Linnea
GOOD! FT SHOT by Mosby, Bernice	01:20	25-32	V 7	
MISSED FT SHOT by Mosby, Bernice	01:20			
	01:20			REBOUND (DEF) by Anthony, Nikki

	TIME	SCORE	MAR	VISITORS: Florida St.
	01:01			TURNOVR by Neely, LaQuinta
MISSED LAYUP by Eshe, Dalila	00:48			
	00:48			REBOUND (DEF) by Johnson, Holly
FOUL by Dye, Kim	00:46			
	00:46	25-33	V 8	GOOD! FT SHOT by Johnson, Holly
	00:46	25-34	V 9	GOOD! FT SHOT by Johnson, Holly
MISSED JUMPER by Williams, Tamia	00:31			
REBOUND (OFF) by Williams, Tamia	00:31			
MISSED JUMPER by Williams, Tamia	00:28			
	00:28			REBOUND (DEF) by Neely, LaQuinta
	00:22	25-36	V 11	GOOD! LAYUP by Lautsch, Christie [PNT]
	00:22			ASSIST by Johnson, Holly
	00:03			FOUL by Lautsch, Christie
MISSED FT SHOT by Williams, Tamia	00:03			
REBOUND (OFF) by (DEADBALL)	00:03			
MISSED FT SHOT by Williams, Tamia	00:03			
REBOUND (OFF) by Gregory, Tishona	00:03			
MISSED JUMPER by Gregory, Tishona	00:01			
REBOUND (OFF) by (DEADBALL)	00:01			

Florida St. 36, Florida 25

	1st period-only	InPaint	Pts-T/O	2nd-Chc	FastBrk	BnchPts	Ties	Leads
Florida St.		12	8	6	4	18	1	1
Florida		6	8	2	2	12	0	0

NCAA® BASKETBALL SHOT CHART

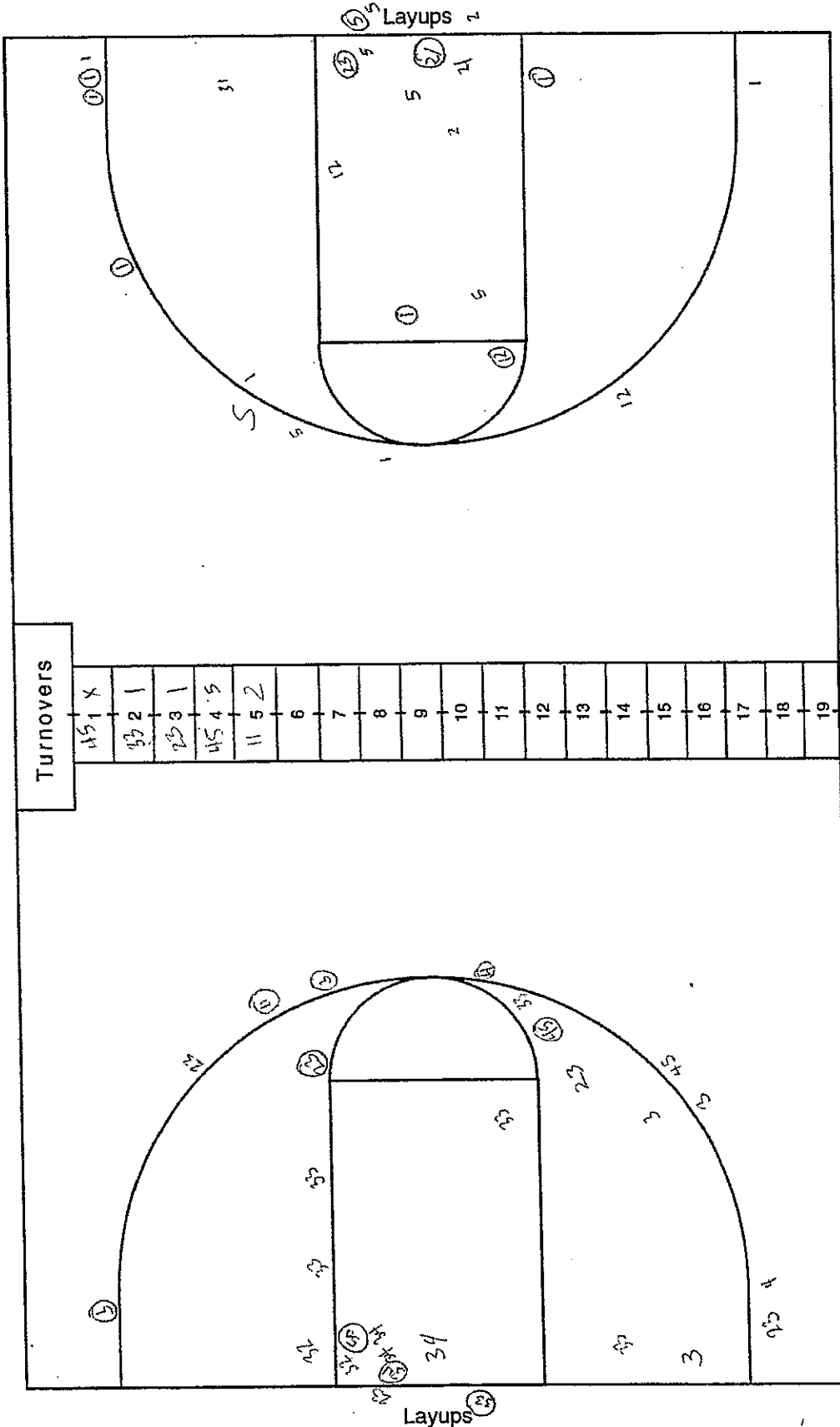
First Half

Second Half

(Circle one)

Team Florida State

Team Florida



Attempted _____

Made _____

Percentage _____

Attempted _____

Made _____

Percentage _____