

## FINAL SCORE



**Georgia Tech**

**78**



**Florida State**

**91**

January 18, 2025 • Donald L. Tucker Center

## FINAL STATISTICS



Officials: A.J. Desai, Jemel Spearman, Michael Kitts

Georgia Tech - 78

Record: 8-11 (2-6)

NO.	Name	F	Min	FG			3P			FT			Rebounds			Fouls		TP	AS	TO	ST	Blocks		+/-
				M-A	M-A	M-A	OR	DR	TOT	PF	FD	BS	BA											
11	Baye Ndongo	F	26:13	1-3	0-0	1-1	2	10	12	5	3	3	1	2	0	0	1	2	0	0	0	1	1	
30	Ibrahim Souare	F	27:15	1-1	0-0	0-2	1	1	2	4	2	2	0	2	0	2	0	2	0	0	0	0	-10	
0	Lance Terry	G	38:33	9-17	2-6	3-4	0	1	1	1	2	23	2	2	1	0	2	2	1	0	2	-15		
1	Naithan George	G	38:26	4-12	2-7	0-2	0	3	3	2	1	10	4	1	1	1	1	0	1	0	0	-9		
2	Javian McCollum	G	36:51	7-17	4-11	2-3	0	2	2	1	3	20	4	3	3	0	1	3	3	0	1	-17		
31	Duncan Powell		32:42	4-10	1-5	11-12	3	3	6	4	6	20	2	2	1	0	1	0	1	0	1	-15		
Team							4	2	6			0			0									
<b>Totals</b>				26-60	9-29	17-24	10	22	32	17	17	78	13	12	6	1	5						-13	

Shooting By Period		
1 <sup>st</sup> FG%	7-27	25.9%
3PT%	2-14	14.3%
FT%	8-10	80%
2 <sup>nd</sup> FG%	19-33	57.6%
3PT%	7-15	46.7%
FT%	9-14	64.3%
GM FG%	26-60	43.3%
3PT%	9-29	31.0%
FT%	17-24	70.8%

Technical Fouls: NONE

Dead Ball Rebounds: 4, 0

Florida State - 91

Record: 13-5 (4-3)

NO.	Name	F	Min	FG			3P			FT			Rebounds			Fouls		TP	AS	TO	ST	Blocks		+/-
				M-A	M-A	M-A	OR	DR	TOT	PF	FD	BS	BA											
1	Jamir Watkins	F	31:24	6-12	3-7	2-3	1	4	5	3	6	17	3	1	2	1	0	14	3	1	2	1	0	14
10	Taylor Bol Bowen	F	28:17	7-9	3-5	3-5	1	3	4	1	3	20	0	1	0	0	0	7	0	1	0	0	0	7
12	Malique Ewin	F	26:11	6-9	0-0	5-6	5	6	11	3	3	17	4	2	1	2	0	16	4	2	1	2	0	16
0	Chandler Jackson	G	20:15	4-9	0-2	0-0	0	1	1	1	0	8	1	1	1	0	4	4	1	1	1	0	0	4
5	Daquan Davis	G	21:20	3-8	0-3	1-1	0	1	1	2	1	7	3	0	0	1	19	0	0	0	1	1	19	
7	Jerry Deng		11:10	3-5	2-3	1-2	0	1	1	2	1	9	0	0	0	0	6	6	0	0	0	0	6	
25	Justin Thomas		23:11	0-2	0-2	0-0	2	6	8	3	3	0	5	0	3	0	11	0	5	0	3	0	0	11
3	Bostyn Holt		19:52	3-7	0-2	0-0	0	2	2	1	0	6	1	3	1	-1	0	-1	3	1	0	0	-1	
21	Alier Maluk		08:30	0-1	0-1	0-0	1	1	2	1	0	0	2	0	0	0	0	0	2	0	0	0	0	0
11	Christian Nitu		05:19	1-3	0-1	0-0	0	0	0	1	0	2	0	0	0	-3	-3	0	0	0	0	1	0	-3
9	Anastasios Rozakeas		01:59	2-2	1-1	0-0	1	0	1	0	0	5	0	0	0	-4	-4	0	0	0	0	0	0	-4
43	Jesse Jones		01:59	0-0	0-0	0-0	0	0	0	0	0	0	0	0	0	-4	-4	0	0	0	0	0	0	-4
15	Jalen Crawford		00:33	0-0	0-0	0-0	0	0	0	0	0	0	0	0	0	-4	-4	0	0	0	0	0	0	-4
Team							1	2	3			0			0									
<b>Totals</b>				35-67	9-27	12-17	12	27	39	18	17	91	19	8	8	5	1	13						

Shooting By Period		
1 <sup>st</sup> FG%	15-34	44.1%
3PT%	5-17	29.4%
FT%	2-4	50%
2 <sup>nd</sup> FG%	20-33	60.6%
3PT%	4-10	40.0%
FT%	10-13	76.9%
GM FG%	35-67	52.2%
3PT%	9-27	33.3%
FT%	12-17	70.6%

Dead Ball Rebounds: 3, 0

Technical Fouls: Davis 1<sup>st</sup>7:58 Bowen 2<sup>nd</sup>1:59

	GT	FSU
Biggest lead	0 (1 <sup>st</sup> 20:00)	17 (2 <sup>nd</sup> 1:59)
Best Scoring Run	13 (2 <sup>nd</sup> 18:06)	9 (2 <sup>nd</sup> 1:59)
Lead Changes	0	
Times Tied	0	
Time with Lead	00:00	39:38

	GT	FSU
Points from		
Turnovers	19	22
Paint	28	44
Second Chance	12	20
Fast Breaks	9	23
Bench	20	22

	Period by Period Scoring		
	1st	2nd	TOT
GT	24	54	78
FSU	37	54	91



**Period 1**

**Quarter Starters:**

<b>FSU</b>	0 Jackson C	1 Watkins J	5 Davis D	10 Bowen T	12 Ewin M
<b>GT</b>	0 Terry L	1 George N	2 McCollum J	11 Ndongo B	30 Square I

Game Time	FSU	Score	Diff	GT
20:00	12 EWIN M jumpball won			30 SQUARE I jumpball lost
19:38	12 EWIN M 2pt FG in the paint, turnaround jump shot made (2)	<b>2-0</b>	<b>2</b>	
19:14				0 TERRY L turnover bad pass (1)
18:53	10 BOWEN T 3pt FG from turnover, jump shot made (3)	<b>5-0</b>	<b>5</b>	
18:53	12 EWIN M assist (1)			
18:44				0 TERRY L 3pt FG , jump shot missed
18:42	12 EWIN M defensive rebound (1)			
18:36	0 JACKSON C turnover bad pass (1)			1 GEORGE N steal (1)
18:31		<b>5-2</b>	<b>3</b>	0 TERRY L 2pt FG fast break from turnover in the paint, driving layup made (2)
18:31				1 GEORGE N assist (1)
18:16	1 WATKINS J 3pt FG , jump shot missed			
18:14				2 MCCOLLUM J defensive rebound (1)
18:07				0 TERRY L 2pt FG in the paint, layup blocked
18:07	12 EWIN M block (1)			
18:03	0 JACKSON C defensive rebound (1)			
18:02	5 DAVIS D 2pt FG fast break in the paint, layup made (2)	<b>7-2</b>	<b>5</b>	
18:02	0 JACKSON C assist (1)			
17:45				1 GEORGE N 3pt FG , step back jump shot missed
17:42	12 EWIN M defensive rebound (2)			
17:30	5 DAVIS D 3pt FG , jump shot missed			
17:28				11 NDONGO B defensive rebound (1)
17:22				2 MCCOLLUM J 2pt FG outside the paint, step back jump shot missed
17:19	5 DAVIS D defensive rebound (1)			
17:17	5 DAVIS D 2pt FG fast break in the paint, driving layup made (4)	<b>9-2</b>	<b>7</b>	
16:53				1 GEORGE N 2pt FG outside the paint, step back jump shot missed
16:51	1 WATKINS J defensive rebound (1)			
16:43	1 WATKINS J 2pt FG in the paint, step back jump shot missed			
16:41				11 NDONGO B defensive rebound (2)
16:34				2 MCCOLLUM J 3pt FG , pull up jump shot missed
16:33	defensive rebound (6)			
16:33				1 GEORGE N substitution out
16:33				31 POWELL D substitution in
16:18	5 DAVIS D 3pt FG , step back jump shot missed			
16:14				11 NDONGO B defensive rebound (3)
16:07	5 DAVIS D foul shooting (1 - 1)			31 POWELL D foul drawn (1)
16:07		<b>9-3</b>	<b>6</b>	31 POWELL D free throw 1 - 3 made (1)
16:07		<b>9-4</b>	<b>5</b>	31 POWELL D free throw 2 - 3 made (2)
16:07	0 JACKSON C substitution out			
16:07	10 BOWEN T substitution out			
16:07	7 DENG J substitution in			
16:07	25 THOMAS J substitution in			



**Officials:** A.J. Desai, Jemel Spearman, Michael Kitts

Game Time	FSU	Score	Diff	GT
16:07				31 POWELL D free throw 3 - 3 missed
16:05	25 THOMAS J defensive rebound (1)			
16:05	25 THOMAS J foul drawn (1)			31 POWELL D foul personal (1 - 1)
15:46	1 WATKINS J 3pt FG , jump shot made (3)	<b>12-4</b>	<b>8</b>	
15:46	25 THOMAS J assist (1)			
15:23				0 TERRY L 3pt FG , step back jump shot blocked
15:23	12 EWIN M block (2)			
15:23				11 NDONGO B offensive rebound (4)
15:18	25 THOMAS J steal (1)			11 NDONGO B turnover lost ball (1)
15:08	5 DAVIS D 3pt FG from turnover, jump shot missed			
15:04	25 THOMAS J offensive rebound (2)			
15:02	7 DENG J 3pt FG from turnover second chance, jump shot made (3)	<b>15-4</b>	<b>11</b>	
15:02	25 THOMAS J assist (2)			
14:59				Timeout 30 Sec
14:59	Timeout media			
14:59	5 DAVIS D substitution out			
14:59	3 HOLT B substitution in			
14:59				30 SQUARE I substitution out
14:59				1 GEORGE N substitution in
14:43		<b>15-6</b>	<b>9</b>	2 MCCOLLUM J 2pt FG in the paint, pull up jump shot made (2)
14:17	7 DENG J foul drawn (1)			11 NDONGO B foul shooting (1 - 2)
14:17	7 DENG J free throw 1 - 2 made (4)	<b>16-6</b>	<b>10</b>	
14:17	7 DENG J free throw 2 - 2 missed			
14:16				11 NDONGO B defensive rebound (5)
13:59	7 DENG J foul shooting (1 - 2)			31 POWELL D foul drawn (2)
13:59		<b>16-7</b>	<b>9</b>	31 POWELL D free throw 1 - 2 made (3)
13:59	1 WATKINS J substitution out			
13:59	12 EWIN M substitution out			
13:59	0 JACKSON C substitution in			
13:59	21 MALUK A substitution in			
13:59		<b>16-8</b>	<b>8</b>	31 POWELL D free throw 2 - 2 made (4)
13:33	0 JACKSON C 2pt FG in the paint, pull up jump shot missed			
13:31				11 NDONGO B defensive rebound (6)
13:04				11 NDONGO B 2pt FG outside the paint, turnaround jump shot missed
13:01	21 MALUK A defensive rebound (1)			
12:43	3 HOLT B 3pt FG , jump shot missed			
12:40	21 MALUK A offensive rebound (2)			
12:33	7 DENG J 3pt FG second chance, jump shot made (7)	<b>19-8</b>	<b>11</b>	
12:33	21 MALUK A assist (1)			
11:57				11 NDONGO B turnover offensive goal tending (2)
11:57	Timeout media			
11:57				11 NDONGO B substitution out
11:57				30 SQUARE I substitution in
11:37	3 HOLT B 2pt FG from turnover in the paint, pull up jump shot missed			
11:34	25 THOMAS J offensive rebound (3)			
11:32	3 HOLT B 2pt FG from turnover second chance in the paint, layup made (2)	<b>21-8</b>	<b>13</b>	



**Officials:** A.J. Desai, Jemel Spearman, Michael Kitts

Game Time	FSU	Score	Diff	GT
11:32	25 THOMAS J assist (3)			
11:14	25 THOMAS J steal (2)			2 MCCOLLUM J turnover lost ball (1)
11:05	0 JACKSON C 2pt FG from turnover outside the paint, jump shot made (2)	<b>23-8</b>	<b>15</b>	
11:05	21 MALUK A assist (2)			
10:36				1 GEORGE N 3pt FG , jump shot missed
10:35				offensive dead ball rebound (1)
10:35	7 DENG J foul personal (2 - 3)			30 SQUARE I foul drawn (1)
10:35	7 DENG J substitution out			
10:35	10 BOWEN T substitution in			
10:35				0 TERRY L substitution out
10:35				11 NDONGO B substitution in
10:14				2 MCCOLLUM J 3pt FG second chance, jump shot missed
10:13	25 THOMAS J defensive rebound (4)			
10:13	25 THOMAS J foul drawn (2)			30 SQUARE I foul personal (1 - 3)
09:41	21 MALUK A 3pt FG , jump shot missed			
09:38				31 POWELL D defensive rebound (1)
09:25				2 MCCOLLUM J 3pt FG , jump shot missed
09:23				11 NDONGO B offensive rebound (7)
09:21		<b>23-10</b>	<b>13</b>	30 SQUARE I 2pt FG second chance in the paint, dunk, made (2)
09:21				11 NDONGO B assist (1)
09:08	25 THOMAS J foul drawn (3)			2 MCCOLLUM J foul personal (1 - 4)
09:08	3 HOLT B substitution out			
09:08	21 MALUK A substitution out			
09:08	25 THOMAS J substitution out			
09:08	1 WATKINS J substitution in			
09:08	5 DAVIS D substitution in			
09:08	12 EWIN M substitution in			
09:08				2 MCCOLLUM J substitution out
09:08				0 TERRY L substitution in
09:02	0 JACKSON C 2pt FG outside the paint, turnaround jump shot missed			
09:00				11 NDONGO B defensive rebound (8)
08:32				0 TERRY L turnover bad pass (2)
08:26	5 DAVIS D 2pt FG from turnover outside the paint, jump shot missed			
08:22				11 NDONGO B defensive rebound (9)
08:06	1 WATKINS J steal (1)			30 SQUARE I turnover bad pass (1)
08:02	1 WATKINS J 3pt FG fast break from turnover, jump shot made (6)	<b>26-10</b>	<b>16</b>	
07:58	5 DAVIS D foul class A technical (2 - 4)			
07:58	Timeout media			
07:58	5 DAVIS D substitution out			
07:58	3 HOLT B substitution in			
07:58		<b>26-11</b>	<b>15</b>	0 TERRY L free throw 1 - 2 made (3)
07:58		<b>26-12</b>	<b>14</b>	0 TERRY L free throw 2 - 2 made (4)
07:40				31 POWELL D 3pt FG , jump shot missed
07:37	1 WATKINS J defensive rebound (2)			
07:32	12 EWIN M 2pt FG in the paint, alleyoop missed			
07:21				30 SQUARE I defensive rebound (1)



**Officials:** A.J. Desai, Jemel Spearman, Michael Kitts

Game Time	FSU	Score	Diff	GT
07:11		<b>26-15</b>	<b>11</b>	1 GEORGE N 3pt FG , jump shot made (3)
06:47	10 BOWEN T 3pt FG , jump shot missed			
06:45	12 EWIN M offensive rebound (3)			
06:28	0 JACKSON C 3pt FG second chance, jump shot missed			
06:26				11 NDONGO B defensive rebound (10)
06:17		<b>26-17</b>	<b>9</b>	31 POWELL D 2pt FG in the paint, dunk, made (6)
06:17				1 GEORGE N assist (2)
05:59	3 HOLT B 3pt FG , jump shot missed			
05:59				defensive rebound (14)
05:59	0 JACKSON C substitution out			
05:59	12 EWIN M substitution out			
05:59	11 NITU C substitution in			
05:59	25 THOMAS J substitution in			
05:59				30 SQUARE I substitution out
05:59				2 MCCOLLUM J substitution in
05:41				31 POWELL D 3pt FG , jump shot missed
05:38	25 THOMAS J defensive rebound (5)			
05:32	1 WATKINS J foul drawn (1)			11 NDONGO B foul personal (2 - 5)
05:18	11 NITU C 2pt FG in the paint, layup made (2)	<b>28-17</b>	<b>11</b>	
05:18	1 WATKINS J assist (1)			
04:55				1 GEORGE N turnover bad pass (1)
04:55				11 NDONGO B substitution out
04:55				30 SQUARE I substitution in
04:27	3 HOLT B 2pt FG from turnover in the paint, floating jump shot made (4)	<b>30-17</b>	<b>13</b>	
03:58		<b>30-19</b>	<b>11</b>	0 TERRY L 2pt FG in the paint, dunk, made (6)
03:48	11 NITU C 3pt FG , jump shot missed			
03:46				31 POWELL D defensive rebound (2)
03:41				1 GEORGE N 2pt FG outside the paint, pull up jump shot missed
03:37	25 THOMAS J defensive rebound (6)			
03:21	10 BOWEN T 3pt FG , jump shot missed			
03:19				defensive rebound (16)
03:19				Timeout media
03:19	3 HOLT B substitution out			
03:19	0 JACKSON C substitution in			
03:04	25 THOMAS J foul personal (1 - 5)			0 TERRY L foul drawn (1)
02:55				31 POWELL D 2pt FG in the paint, layup blocked
02:55	11 NITU C block (1)			
02:55				offensive rebound (17)
02:47				2 MCCOLLUM J 2pt FG second chance outside the paint, turnaround jump shot missed
02:46				offensive rebound (18)
02:43				0 TERRY L 3pt FG second chance, jump shot missed
02:41				31 POWELL D offensive rebound (3)
02:39	11 NITU C foul shooting (1 - 6)			31 POWELL D foul drawn (3)
02:39		<b>30-20</b>	<b>10</b>	31 POWELL D free throw 1 - 2 made (7)
02:39	11 NITU C substitution out			
02:39	12 EWIN M substitution in			
02:39		<b>30-21</b>	<b>9</b>	31 POWELL D free throw 2 - 2 made (8)



**Officials:** A.J. Desai, Jemel Spearman, Michael Kitts

Game Time	FSU	Score	Diff	GT
02:09	0 JACKSON C 2pt FG outside the paint, jump shot missed			
02:06				1 GEORGE N defensive rebound (1)
02:02				0 TERRY L 2pt FG in the paint, layup missed
01:59	25 THOMAS J defensive rebound (7)			
01:57	10 BOWEN T 2pt FG fast break in the paint, dunk, made (5)	<b>32-21</b>	<b>11</b>	
01:57	25 THOMAS J assist (4)			
01:50				1 GEORGE N 3pt FG , pull up jump shot missed
01:46	10 BOWEN T defensive rebound (1)			
01:39	0 JACKSON C 2pt FG in the paint, layup made (4)	<b>34-21</b>	<b>13</b>	
01:39	12 EWIN M assist (2)			
01:37				Timeout 30 Sec
01:19				0 TERRY L 3pt FG , jump shot missed
01:16	12 EWIN M defensive rebound (4)			
01:10	1 WATKINS J 2pt FG in the paint, dunk, made (8)	<b>36-21</b>	<b>15</b>	
01:10	12 EWIN M assist (3)			
00:59	12 EWIN M foul personal (1 - 7)			2 MCCOLLUM J foul drawn (1)
00:58				2 MCCOLLUM J 1&1 free throw 1 missed
00:57	12 EWIN M defensive rebound (5)			
00:46	1 WATKINS J foul drawn (2)			31 POWELL D foul shooting (2 - 6)
00:46	1 WATKINS J free throw 1 - 2 made (9)	<b>37-21</b>	<b>16</b>	
00:46	12 EWIN M substitution out			
00:46	21 MALUK A substitution in			
00:46	1 WATKINS J free throw 2 - 2 missed			
00:45				0 TERRY L defensive rebound (1)
00:34		<b>37-24</b>	<b>13</b>	31 POWELL D 3pt FG , jump shot made (11)
00:34				0 TERRY L assist (1)
00:04	Timeout 30 Sec			
00:00	1 WATKINS J 3pt FG , jump shot missed			
00:00	offensive dead ball rebound (1)			
<b>END OF PERIOD</b>				
<b>FSU 37-24 GT</b>				



Officials: A.J. Desai, Jemel Spearman, Michael Kitts

Georgia Tech - 24

NO.	Name	Min	FG			Rebounds			Fouls		TP	AS	TO	ST	Blocks		+/-
			M-A	M-A	M-A	OR	DR	TOT	PF	FD					BS	BA	
11	Baye Ndongo	F 13:43	0-1	0-0	0-0	2	8	10	2	0	0	1	2	0	0	0	-7
30	Ibrahim Souare	F 15:54	1-1	0-0	0-0	0	1	1	1	1	2	0	1	0	0	0	-11
0	Lance Terry	G 18:33	2-8	0-4	2-2	0	1	1	0	1	6	1	2	0	0	2	-15
1	Naithan George	G 18:26	1-6	1-4	0-0	0	1	1	0	0	3	2	1	1	0	0	-9
2	Javian McCollum	G 16:51	1-6	0-3	0-1	0	1	1	1	1	2	0	1	0	0	0	-17
31	Duncan Powell	16:33	2-5	1-3	6-7	1	2	3	2	3	11	0	0	0	0	1	-6
Team						2	2	4			0		0				
<b>Totals</b>			7-27	2-14	8-10	5	16	21	6	6	24	4	7	1	0	3	-13

Shooting By Period		
1 <sup>st</sup> FG%	7-27	25.9%
3PT%	2-14	14.3%
FT%	8-10	80%
GM FG%	7-27	25.9%
3PT%	2-14	14.3%
FT%	8-10	80.0%

Dead Ball Rebounds: 1, 0

Technical Fouls: NONE

Florida State - 37

NO.	Name	Min	FG			Rebounds			Fouls		TP	AS	TO	ST	Blocks		+/-
			M-A	M-A	M-A	OR	DR	TOT	PF	FD					BS	BA	
1	Jamir Watkins	F 15:09	3-6	2-4	1-2	0	2	2	0	2	9	1	0	1	0	0	9
10	Taylor Bol Bowen	F 14:28	2-4	1-3	0-0	0	1	1	0	0	5	0	0	0	0	0	3
12	Malique Ewin	F 11:02	1-2	0-0	0-0	1	4	5	1	0	2	3	0	0	2	0	11
0	Chandler Jackson	G 15:12	2-6	0-1	0-0	0	1	1	0	0	4	1	1	0	0	0	7
5	Daquan Davis	G 06:11	2-6	0-3	0-0	0	1	1	2	0	4	0	0	0	0	0	14
7	Jerry Deng	05:32	2-2	2-2	1-2	0	0	0	2	1	7	0	0	0	0	0	10
25	Justin Thomas	12:58	0-0	0-0	0-0	2	5	7	1	3	0	4	0	2	0	0	12
3	Bostyn Holt	10:30	2-5	0-2	0-0	0	0	0	0	0	4	0	0	0	0	0	-3
21	Alier Maluk	05:38	0-1	0-1	0-0	1	1	2	0	0	0	2	0	0	0	0	1
11	Christian Nitu	03:20	1-2	0-1	0-0	0	0	0	1	0	2	0	0	0	1	0	1
Team						0	1	1			0		0				
<b>Totals</b>			15-34	5-17	2-4	4	16	20	7	6	37	11	1	3	3	0	13

Shooting By Period		
1 <sup>st</sup> FG%	15-34	44.1%
3PT%	5-17	29.4%
FT%	2-4	50%
GM FG%	15-34	44.1%
3PT%	5-17	29.4%
FT%	2-4	50.0%

Dead Ball Rebounds: 1, 0

Technical Fouls: Davis 1<sup>st</sup> 7:58

	GT	FSU
<b>Biggest lead</b>	0 (1 <sup>st</sup> 20:00)	16 (1 <sup>st</sup> 8:02)
<b>Best Scoring Run</b>	7(1 <sup>st</sup> 6:17)	7(1 <sup>st</sup> 11:05)
<b>Lead Changes</b>	0	
<b>Times Tied</b>	0	
<b>Time with Lead</b>	00:00	19:38

	GT	FSU
<b>Points from</b>		
<b>Turnovers</b>	2	15
<b>Paint</b>	10	18
<b>Second Chance</b>	4	8
<b>Fast Breaks</b>	2	9
<b>Bench</b>	11	13

	Period by Period Scoring		
	1st	2nd	TOT
<b>GT</b>	24	54	78
<b>FSU</b>	37	54	91





**Period 2**

**Quarter Starters:**

<b>FSU</b>	0 Jackson C	1 Watkins J	5 Davis D	10 Bowen T	12 Ewin M
<b>GT</b>	0 Terry L	1 George N	2 McCollum J	11 Ndongo B	30 Square I

Game Time	FSU	Score	Diff	GT
20:00	21 MALUK A substitution out			
20:00	25 THOMAS J substitution out			
20:00	5 DAVIS D substitution in			
20:00	12 EWIN M substitution in			
20:00				31 POWELL D substitution out
20:00				11 NDONGO B substitution in
19:36		<b>37-26</b>	<b>11</b>	1 GEORGE N 2pt FG outside the paint, step back jump shot made (5)
19:25	12 EWIN M turnover out of bounds (1)			
19:02		<b>37-28</b>	<b>9</b>	0 TERRY L 2pt FG from turnover outside the paint, pull up jump shot made (8)
19:02				2 MCCOLLUM J assist (1)
18:48	1 WATKINS J turnover bad pass (1)			0 TERRY L steal (1)
18:45		<b>37-30</b>	<b>7</b>	0 TERRY L 2pt FG fast break from turnover in the paint, layup made (10)
18:45	1 WATKINS J foul shooting (1 - 1)			0 TERRY L foul drawn (2)
18:45		<b>37-31</b>	<b>6</b>	0 TERRY L free throw fast break 1 - 1 made (11)
18:27	1 WATKINS J 3pt FG , jump shot missed			
18:24	10 BOWEN T offensive rebound (2)			
18:22	10 BOWEN T turnover lost ball (1)			2 MCCOLLUM J steal (1)
18:06		<b>37-33</b>	<b>4</b>	11 NDONGO B 2pt FG from turnover in the paint, layup made (2)
18:06	10 BOWEN T foul shooting (1 - 2)			11 NDONGO B foul drawn (1)
18:06		<b>37-34</b>	<b>3</b>	11 NDONGO B free throw 1 - 1 made (3)
17:56	1 WATKINS J foul drawn (3)			0 TERRY L foul personal (1 - 1)
17:56	0 JACKSON C 2pt FG in the paint, driving layup made (6)	<b>39-34</b>	<b>5</b>	
17:24	jump ball situation			
17:24	0 JACKSON C steal (1)			30 SQUARE I turnover lost ball (2)
17:13	1 WATKINS J foul drawn (4)			30 SQUARE I foul personal (2 - 2)
17:03	10 BOWEN T foul drawn (1)			30 SQUARE I foul personal (3 - 3)
17:03				30 SQUARE I substitution out
17:03				31 POWELL D substitution in
16:53	0 JACKSON C 3pt FG from turnover, jump shot missed			
16:52				11 NDONGO B defensive rebound (11)
16:30	0 JACKSON C foul personal (1 - 3)			11 NDONGO B foul drawn (2)
16:27				2 MCCOLLUM J 3pt FG , jump shot missed
16:24	10 BOWEN T defensive rebound (3)			
16:19	10 BOWEN T 3pt FG , jump shot made (8)	<b>42-34</b>	<b>8</b>	
16:19	5 DAVIS D assist (1)			
15:46				2 MCCOLLUM J 2pt FG outside the paint, step back jump shot missed
15:43	10 BOWEN T defensive rebound (4)			
15:41	5 DAVIS D 2pt FG in the paint, driving layup blocked			
15:41				1 GEORGE N block (1)
15:40	offensive rebound (24)			



**Georgia Tech at Florida State**

01/18/25 Donald L. Tucker Center, Tallahassee  
2024-25 FSU Men's Basketball

Officials: A.J. Desai, Jemel Spearman, Michael Kitts

Game Time	FSU	Score	Diff	GT
15:40	Timeout media			
15:40	0 JACKSON C substitution out			
15:40	25 THOMAS J substitution in			
15:39	10 BOWEN T foul drawn (2)			1 GEORGE N foul shooting (1 - 4)
15:39	10 BOWEN T free throw 1 - 2 made (9)	<b>43-34</b>	<b>9</b>	
15:39	10 BOWEN T free throw 2 - 2 made (10)	<b>44-34</b>	<b>10</b>	
15:15		<b>44-36</b>	<b>8</b>	0 TERRY L 2pt FG outside the paint, jump shot made (13)
15:15				31 POWELL D assist (1)
14:58	1 WATKINS J 3pt FG , jump shot made (12)	<b>47-36</b>	<b>11</b>	
14:49	1 WATKINS J foul personal (2 - 4)			2 MCCOLLUM J foul drawn (2)
14:30		<b>47-39</b>	<b>8</b>	2 MCCOLLUM J 3pt FG , jump shot made (5)
14:30				1 GEORGE N assist (3)
14:20	12 EWIN M turnover bad pass (2)			2 MCCOLLUM J steal (2)
14:16	25 THOMAS J foul shooting (2 - 5)			31 POWELL D foul drawn (4)
14:16	Timeout media			
14:16	Timeout 30 Sec			
14:16				11 NDONGO B substitution out
14:16				30 SQUARE I substitution in
14:16		<b>47-40</b>	<b>7</b>	31 POWELL D free throw 1 - 2 made (12)
14:16		<b>47-41</b>	<b>6</b>	31 POWELL D free throw 2 - 2 made (13)
14:06	25 THOMAS J 3pt FG , jump shot missed			
14:02	12 EWIN M offensive rebound (6)			
13:57	1 WATKINS J 2pt FG second chance outside the paint, turnaround jump shot missed			
13:53				1 GEORGE N defensive rebound (2)
13:45				0 TERRY L 2pt FG in the paint, driving layup missed
13:43	1 WATKINS J defensive rebound (3)			
13:43	1 WATKINS J foul drawn (5)			30 SQUARE I foul personal (4 - 5)
13:43				30 SQUARE I substitution out
13:43				11 NDONGO B substitution in
13:28	10 BOWEN T 3pt FG , jump shot made (13)	<b>50-41</b>	<b>9</b>	
13:28	1 WATKINS J assist (2)			
13:14				11 NDONGO B 2pt FG in the paint, layup blocked
13:14	1 WATKINS J block (1)			
13:14				offensive rebound (24)
13:08		<b>50-44</b>	<b>6</b>	0 TERRY L 3pt FG second chance, jump shot made (16)
13:08				2 MCCOLLUM J assist (2)
12:45	12 EWIN M 2pt FG in the paint, tip-in layup missed			
12:45	12 EWIN M offensive rebound (7)			
12:42	12 EWIN M foul drawn (1)			11 NDONGO B foul shooting (3 - 6)
12:42	12 EWIN M free throw 1 - 2 made (3)	<b>51-44</b>	<b>7</b>	
12:42	12 EWIN M free throw 2 - 2 made (4)	<b>52-44</b>	<b>8</b>	
12:42	5 DAVIS D substitution out			
12:42	10 BOWEN T substitution out			
12:42	12 EWIN M substitution out			
12:42	3 HOLT B substitution in			
12:42	7 DENG J substitution in			
12:42	21 MALUK A substitution in			
12:35	3 HOLT B steal (1)			2 MCCOLLUM J turnover lost ball (2)



**Georgia Tech at Florida State**

01/18/25 Donald L. Tucker Center, Tallahassee  
2024-25 FSU Men's Basketball

Officials: A.J. Desai, Jemel Spearman, Michael Kitts

Game Time	FSU	Score	Diff	GT
12:31	3 HOLT B 2pt FG fast break from turnover in the paint, layup made (6)	54-44	10	
12:06				2 MCCOLLUM J 3pt FG , jump shot missed
12:04	3 HOLT B defensive rebound (1)			
12:03	3 HOLT B turnover bad pass (1)			2 MCCOLLUM J steal (3)
11:58		54-46	8	2 MCCOLLUM J 2pt FG from turnover in the paint, pull up jump shot made (7)
11:46	7 DENG J 2pt FG outside the paint, floating jump shot made (9)	56-46	10	
11:33				31 POWELL D 2pt FG in the paint, driving layup missed
11:32	defensive rebound (29)			
11:32	Timeout media			
11:32	1 WATKINS J substitution out			
11:32	0 JACKSON C substitution in			
11:15	0 JACKSON C 2pt FG outside the paint, pull up jump shot made (8)	58-46	12	
10:53	25 THOMAS J steal (3)			2 MCCOLLUM J turnover bad pass (3)
10:49	3 HOLT B turnover (2)			
10:49	0 JACKSON C substitution out			
10:49	1 WATKINS J substitution in			
10:27		58-49	9	2 MCCOLLUM J 3pt FG from turnover, jump shot made (10)
10:27				31 POWELL D assist (2)
10:19	3 HOLT B 2pt FG in the paint, driving layup missed			
10:16				2 MCCOLLUM J defensive rebound (2)
10:13		58-51	7	0 TERRY L 2pt FG fast break in the paint, layup made (18)
10:13				2 MCCOLLUM J assist (3)
09:55	7 DENG J 3pt FG , jump shot missed			
09:52				11 NDONGO B defensive rebound (12)
09:50	21 MALUK A foul personal (1 - 6)			11 NDONGO B foul drawn (3)
09:50	3 HOLT B substitution out			
09:50	5 DAVIS D substitution in			
09:50	21 MALUK A substitution out			
09:50	12 EWIN M substitution in			
09:34				31 POWELL D 3pt FG , jump shot missed
09:32	7 DENG J defensive rebound (1)			
09:24	12 EWIN M foul drawn (2)			11 NDONGO B foul shooting (4 - 7)
09:24	12 EWIN M free throw 1 - 2 missed			
09:24	offensive dead ball rebound (2)			
09:24				11 NDONGO B substitution out
09:24				30 SQUARE I substitution in
09:24	12 EWIN M free throw 2 - 2 made (5)	59-51	8	
09:14	1 WATKINS J foul shooting (3 - 7)			2 MCCOLLUM J foul drawn (3)
09:14		59-52	7	2 MCCOLLUM J free throw 1 - 2 made (11)
09:14		59-53	6	2 MCCOLLUM J free throw 2 - 2 made (12)
08:56	7 DENG J 2pt FG in the paint, layup missed			
08:51	12 EWIN M offensive rebound (8)			
08:51	12 EWIN M 2pt FG second chance in the paint, tip-in dunk made (7)	61-53	8	
08:35				1 GEORGE N 3pt FG , jump shot missed
08:29				31 POWELL D offensive rebound (4)
08:30	12 EWIN M foul shooting (2 - 8)			31 POWELL D foul drawn (5)



**Georgia Tech at Florida State**

01/18/25 Donald L. Tucker Center, Tallahassee  
2024-25 FSU Men's Basketball

**Officials:** A.J. Desai, Jemel Spearman, Michael Kitts

Game Time	FSU	Score	Diff	GT
08:30	7 DENG J substitution out			
08:30	10 BOWEN T substitution in			
08:30		<b>61-54</b>	<b>7</b>	31 POWELL D free throw 1 - 2 made (14)
08:30		<b>61-55</b>	<b>6</b>	31 POWELL D free throw 2 - 2 made (15)
08:13	12 EWIN M 2pt FG in the paint, driving layup made (9)	<b>63-55</b>	<b>8</b>	
08:06				31 POWELL D 3pt FG , jump shot missed
08:02	25 THOMAS J defensive rebound (8)			
07:58	10 BOWEN T 2pt FG fast break in the paint, layup made (15)	<b>65-55</b>	<b>10</b>	
07:58	25 THOMAS J assist (5)			
07:54				Timeout 30 Sec
07:54				Timeout media
07:54				30 SQUARE I substitution out
07:54				11 NDONGO B substitution in
07:33		<b>65-57</b>	<b>8</b>	1 GEORGE N 2pt FG in the paint, driving layup made (7)
07:09	25 THOMAS J 3pt FG , jump shot missed			
07:06	1 WATKINS J offensive rebound (4)			
07:06	1 WATKINS J 2pt FG second chance in the paint, tip-in layup made (14)	<b>67-57</b>	<b>10</b>	
06:48				0 TERRY L 2pt FG in the paint, layup missed
06:46	12 EWIN M defensive rebound (9)			
06:37	12 EWIN M 2pt FG outside the paint, pull up jump shot missed			
06:35				31 POWELL D defensive rebound (5)
06:30	1 WATKINS J substitution out			
06:30	3 HOLT B substitution in			
06:21		<b>67-59</b>	<b>8</b>	31 POWELL D 2pt FG in the paint, driving layup made (17)
06:21	25 THOMAS J foul shooting (3 - 9)			31 POWELL D foul drawn (6)
06:21		<b>67-60</b>	<b>7</b>	31 POWELL D free throw 1 - 1 made (18)
06:21				31 POWELL D substitution out
06:21				30 SQUARE I substitution in
06:07	12 EWIN M 2pt FG in the paint, turnaround jump shot made (11)	<b>69-60</b>	<b>9</b>	
06:07	5 DAVIS D assist (2)			
05:55		<b>69-63</b>	<b>6</b>	1 GEORGE N 3pt FG , jump shot made (10)
05:28	10 BOWEN T foul drawn (3)			11 NDONGO B foul shooting (5 - 8)
05:27				11 NDONGO B substitution out
05:27				31 POWELL D substitution in
05:27	10 BOWEN T free throw 1 - 3 missed			
05:27	offensive dead ball rebound (3)			
05:27	10 BOWEN T free throw 2 - 3 made (16)	<b>70-63</b>	<b>7</b>	
05:27	25 THOMAS J substitution out			
05:27	1 WATKINS J substitution in			
05:27	10 BOWEN T free throw 3 - 3 missed			
05:26				1 GEORGE N defensive rebound (3)
05:09		<b>70-66</b>	<b>4</b>	0 TERRY L 3pt FG , jump shot made (21)
05:09				2 MCCOLLUM J assist (4)
04:47	12 EWIN M 2pt FG outside the paint, turnaround jump shot made (13)	<b>72-66</b>	<b>6</b>	
04:38				1 GEORGE N 2pt FG outside the paint, turnaround jump shot missed
04:35	1 WATKINS J defensive rebound (5)			
04:32	5 DAVIS D 2pt FG fast break in the paint, layup made (6)	<b>74-66</b>	<b>8</b>	



**Georgia Tech at Florida State**

01/18/25 Donald L. Tucker Center, Tallahassee  
2024-25 FSU Men's Basketball

Officials: A.J. Desai, Jemel Spearman, Michael Kitts

Game Time	FSU	Score	Diff	GT
04:32	1 WATKINS J assist (3)			
04:32	5 DAVIS D foul drawn (1)			1 GEORGE N foul shooting (2 - 9)
04:32	5 DAVIS D free throw fast break 1 - 1 made (7)	<b>75-66</b>	<b>9</b>	
04:22	3 HOLT B foul personal (1 - 10)			1 GEORGE N foul drawn (1)
04:22				1 GEORGE N free throw 1 - 2 missed
04:22				offensive dead ball rebound (2)
04:22				1 GEORGE N free throw 2 - 2 missed
04:20				31 POWELL D offensive rebound (6)
04:16				1 GEORGE N 3pt FG second chance, jump shot missed
04:12				30 SQUARE I offensive rebound (2)
04:12	12 EWIN M foul shooting (3 - 11)			30 SQUARE I foul drawn (2)
04:12				30 SQUARE I free throw 1 - 2 missed
04:12				offensive dead ball rebound (3)
04:12				30 SQUARE I free throw 2 - 2 missed
04:11	12 EWIN M defensive rebound (10)			
04:01	1 WATKINS J 3pt FG , jump shot missed			
04:01	12 EWIN M offensive rebound (11)			
04:01	12 EWIN M foul drawn (3)			31 POWELL D foul personal (3 - 10)
04:01	12 EWIN M free throw 1 - 2 made (14)	<b>76-66</b>	<b>10</b>	
04:01	12 EWIN M free throw 2 - 2 made (15)	<b>77-66</b>	<b>11</b>	
03:42	Timeout media			
03:31		<b>77-69</b>	<b>8</b>	2 MCCOLLUM J 3pt FG , jump shot made (15)
03:11	10 BOWEN T 2pt FG in the paint, dunk, made (18)	<b>79-69</b>	<b>10</b>	
03:11	12 EWIN M assist (4)			
02:53	12 EWIN M steal (1)			31 POWELL D turnover bad pass (1)
02:48	12 EWIN M 2pt FG fast break from turnover in the paint, dunk, made (17)	<b>81-69</b>	<b>12</b>	
02:25				2 MCCOLLUM J 3pt FG , jump shot blocked
02:25	5 DAVIS D block (1)			
02:25				offensive rebound (32)
02:14	1 WATKINS J steal (2)			31 POWELL D turnover lost ball (2)
02:12	1 WATKINS J 2pt FG fast break from turnover in the paint, dunk, made (16)	<b>83-69</b>	<b>14</b>	
02:12	1 WATKINS J foul drawn (6)			31 POWELL D foul shooting (4 - 11)
02:12	1 WATKINS J free throw fast break 1 - 1 made (17)	<b>84-69</b>	<b>15</b>	
02:04				2 MCCOLLUM J 3pt FG , jump shot missed
02:01	3 HOLT B defensive rebound (2)			
01:59	10 BOWEN T 2pt FG fast break in the paint, dunk, made (20)	<b>86-69</b>	<b>17</b>	
01:59	5 DAVIS D assist (3)			
01:59	10 BOWEN T foul class B technical (1 - 11)			
01:59	Timeout 30 Sec			
01:59	1 WATKINS J substitution out			
01:59	5 DAVIS D substitution out			
01:59	10 BOWEN T substitution out			
01:59	12 EWIN M substitution out			
01:59	7 DENG J substitution in			
01:59	9 ROZAKEAS A substitution in			
01:59	11 NITU C substitution in			
01:59	43 JONES J substitution in			
01:59				0 TERRY L free throw 1 - 1 missed



Official Basketball Play by Play - Second Half

### Georgia Tech at Florida State

01/18/25 Donald L. Tucker Center, Tallahassee  
2024-25 FSU Men's Basketball

Game Time: 12:00 PM

Game Duration: 2:12

Attendance: 6,751

Officials: A.J. Desai, Jemel Spearman, Michael Kitts

Game Time	FSU	Score	Diff	GT
01:59				offensive dead ball rebound (4)
01:51		<b>86-72</b>	<b>14</b>	2 MCCOLLUM J 3pt FG second chance, jump shot made (18)
01:51				1 GEORGE N assist (4)
01:21	9 ROZAKEAS A 3pt FG , jump shot made (3)	<b>89-72</b>	<b>17</b>	
01:21	3 HOLT B assist (1)			
01:09		<b>89-74</b>	<b>15</b>	31 POWELL D 2pt FG in the paint, layup made (20)
01:09				0 TERRY L assist (2)
00:37	3 HOLT B turnover lost ball (3)			31 POWELL D steal (1)
00:32		<b>89-76</b>	<b>13</b>	2 MCCOLLUM J 2pt FG fast break from turnover in the paint, driving layup made (20)
00:32	7 DENG J substitution out			
00:32	15 CRAWFORD J substitution in			
00:21	11 NITU C 2pt FG outside the paint, jump shot missed			
00:15	9 ROZAKEAS A offensive rebound (1)			
00:15	9 ROZAKEAS A 2pt FG second chance in the paint, tip-in layup made (5)	<b>91-76</b>	<b>15</b>	
00:08		<b>91-78</b>	<b>13</b>	0 TERRY L 2pt FG in the paint, driving layup made (23)
<b>END OF GAME</b>				
<b>FSU 91-78 GT</b>				



**Georgia Tech at Florida State**

01/18/25 Donald L. Tucker Center, Tallahassee  
2024-25 FSU Men's Basketball

Officials: A.J. Desai, Jemel Spearman, Michael Kitts

**Georgia Tech - 54**

NO.	Name	Min	FG			Rebounds			Fouls		TP	AS	TO	ST	Blocks		+/-
			M-A	M-A	M-A	OR	DR	TOT	PF	FD					BS	BA	
11	Baye Ndongo	F 12:30	1-2	0-0	1-1	0	2	2	3	3	3	0	0	0	0	1	8
30	Ibrahim Souare	F 11:21	0-0	0-0	0-2	1	0	1	3	1	0	0	1	0	0	0	1
0	Lance Terry	G 20:00	7-9	2-2	1-2	0	0	0	1	1	17	1	0	1	0	0	0
1	Naithan George	G 20:00	3-6	1-3	0-2	0	2	2	2	1	7	2	0	0	1	0	0
2	Javian McCollum	G 20:00	6-11	4-8	2-2	0	1	1	0	2	18	4	2	3	0	1	0
31	Duncan Powell	16:09	2-5	0-2	5-5	2	1	3	2	3	9	2	2	1	0	0	-9
Team						2	0	2			0						
<b>Totals</b>			19-33	7-15	9-14	5	6	11	11	11	54	9	5	5	1	2	0

Shooting By Period		
2 <sup>nd</sup> FG%	19-33	57.6%
3PT%	7-15	46.7%
FT%	9-14	64.3%
GM FG%	19-33	57.6%
3PT%	7-15	46.7%
FT%	9-14	64.3%

Dead Ball Rebounds: 3, 0

Technical Fouls: NONE

**Florida State - 54**

NO.	Name	Min	FG			Rebounds			Fouls		TP	AS	TO	ST	Blocks		+/-
			M-A	M-A	M-A	OR	DR	TOT	PF	FD					BS	BA	
1	Jamir Watkins	F 16:15	3-6	1-3	1-1	1	2	3	3	4	8	2	1	1	1	0	5
10	Taylor Bol Bowen	F 13:49	5-5	2-2	3-5	1	2	3	1	3	15	0	1	0	0	0	4
12	Malique Ewin	F 15:09	5-7	0-0	5-6	4	2	6	2	3	15	1	2	1	0	0	5
0	Chandler Jackson	G 05:03	2-3	0-1	0-0	0	0	0	1	0	4	0	0	1	0	0	-3
5	Daquan Davis	G 15:09	1-2	0-0	1-1	0	0	0	0	1	3	3	0	0	1	1	5
25	Justin Thomas	10:13	0-2	0-2	0-0	0	1	1	2	0	0	1	0	1	0	0	-1
3	Bostyn Holt	09:22	1-2	0-0	0-0	0	2	2	1	0	2	1	3	1	0	0	2
7	Jerry Deng	05:38	1-3	0-1	0-0	0	1	1	0	0	2	0	0	0	0	0	-4
21	Alier Maluk	02:52	0-0	0-0	0-0	0	0	0	1	0	0	0	0	0	0	0	-1
9	Anastasios Rozakeas	01:59	2-2	1-1	0-0	1	0	1	0	0	5	0	0	0	0	0	-4
11	Christian Nitu	01:59	0-1	0-0	0-0	0	0	0	0	0	0	0	0	0	0	0	-4
43	Jesse Jones	01:59	0-0	0-0	0-0	0	0	0	0	0	0	0	0	0	0	0	-4
15	Jalen Crawford	00:33	0-0	0-0	0-0	0	0	0	0	0	0	0	0	0	0	0	0
Team						1	1	2			0						
<b>Totals</b>			20-33	4-10	10-13	8	11	19	11	11	54	8	7	5	2	1	0

Shooting By Period		
2 <sup>nd</sup> FG%	20-33	60.6%
3PT%	4-10	40.0%
FT%	10-13	76.9%
GM FG%	20-33	60.6%
3PT%	4-10	40.0%
FT%	10-13	76.9%

Dead Ball Rebounds: 2, 0

Technical Fouls: Bowen 2<sup>nd</sup> 1:59

	GT	FSU
Biggest lead	0 (1 <sup>st</sup> 20:00)	17 (2 <sup>nd</sup> 1:59)
Best Scoring Run	10 (2 <sup>nd</sup> 18:06)	9 (2 <sup>nd</sup> 1:59)
Lead Changes	0	
Times Tied	0	
Time with Lead	00:00	19:36

	GT	FSU
Points from		
Turnovers	17	7
Paint	18	26
Second Chance	8	12
Fast Breaks	7	14
Bench	9	9

	Period by Period Scoring		
	1st	2nd	TOT
GT	24	54	78
FSU	37	54	91



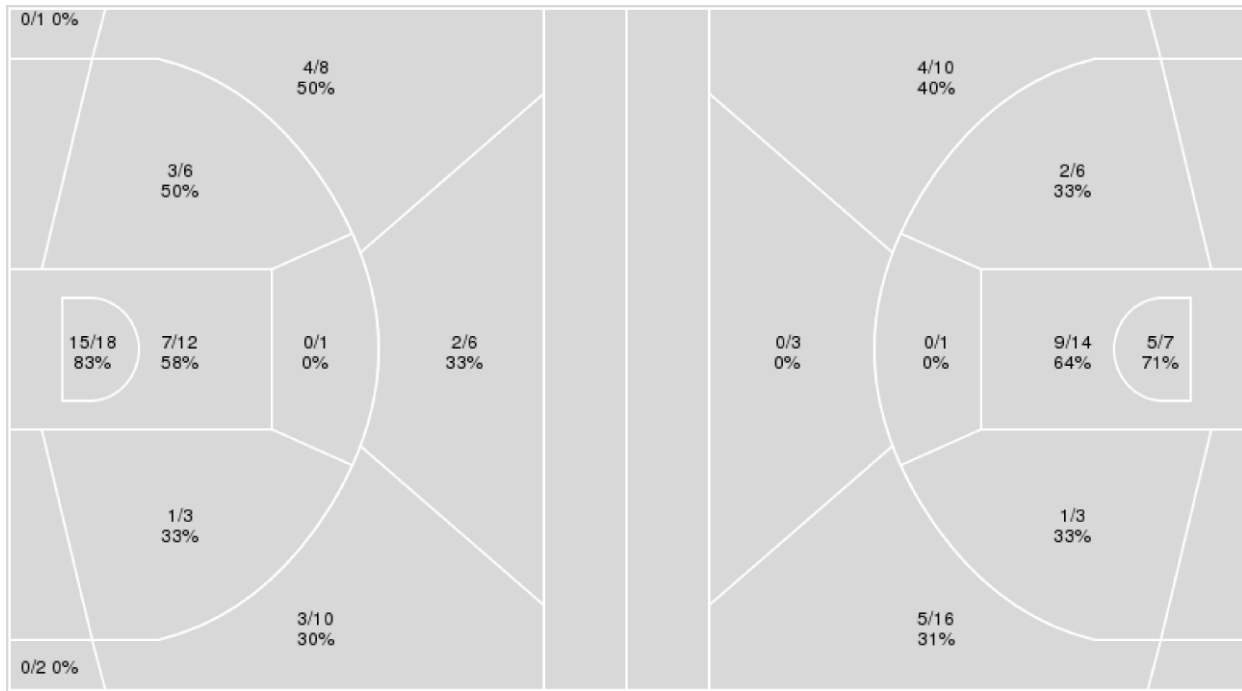
**Officials:** A.J. Desai, Jemel Spearman, Michael Kitts

{ Players => 0, 1, 3, 4, 5, 7, 9, 10, 11, 12, 15, 19, 21, 25, 35, 43; } FG  
 Types => All; Results => All;

{ Players => 0, 1, 2, 3, 9, 10, 11, 12, 14, 30, 31, 32, 33, 35, 45; } FG  
 Types => All; Results => All;

**Florida State**

**Georgia Tech**



Florida State	M/A	%
Field Goals	35/67	52
2 Points	26/40	65
3 Points	9/27	33
Free Throws	12/17	71

Georgia Tech	M/A	%
Field Goals	26/60	43
2 Points	17/31	55
3 Points	9/29	31
Free Throws	17/24	71





**Georgia Tech at Florida State**

01/18/25 Donald L. Tucker Center, Tallahassee  
2024-25 FSU Men's Basketball

Officials: A.J. Desai, Jemel Spearman, Michael Kitts

**Georgia Tech**

No	Name	Mins		Score		Points Diff		Points per Min		Assists		Rebounds		Steals		Turnovers	
		On	Off	On	Off	On	Off	On	Off	On	Off	On	Off	On	Off	On	Off
0	Lance Terry	38:33	01:27	76 - 91	2 - 0	-15	2	1.97	1.38	12	1	30	2	6	0	12	0
1	Naithan George	38:26	01:34	76 - 85	2 - 6	-9	-4	1.98	1.28	13	0	30	2	6	0	11	1
2	Javian McCollum	36:51	03:09	71 - 88	7 - 3	-17	4	1.93	2.22	12	1	27	5	6	0	10	2
11	Baye Ndongo	26:13	13:47	50 - 49	28 - 42	1	-14	1.91	2.03	9	4	19	13	5	1	9	3
30	Ibrahim Souare	27:15	12:45	54 - 64	24 - 27	-10	-3	1.98	1.88	8	5	25	7	4	2	8	4
31	Duncan Powell	32:42	07:18	63 - 78	15 - 13	-15	2	1.93	2.05	11	2	29	3	3	3	10	2

**Florida State**

No	Name	Mins		Score		Points Diff		Points per Min		Assists		Rebounds		Steals		Turnovers	
		On	Off	On	Off	On	Off	On	Off	On	Off	On	Off	On	Off	On	Off
0	Chandler Jackson	20:15	19:45	33 - 29	58 - 49	4	9	1.63	2.94	9	10	20	19	4	4	5	3
1	Jamir Watkins	31:24	08:36	74 - 60	17 - 18	14	-1	2.36	1.98	14	5	34	5	6	2	6	2
3	Bostyn Holt	19:52	20:08	42 - 43	49 - 35	-1	14	2.11	2.43	9	10	15	24	5	3	3	5
5	Daquan Davis	21:20	18:40	61 - 42	30 - 36	19	-6	2.86	1.61	11	8	24	15	5	3	5	3
7	Jerry Deng	11:10	28:50	26 - 20	65 - 58	6	7	2.33	2.25	6	13	9	30	4	4	3	5
9	Anastasios Rozakeas	01:59	38:01	5 - 9	86 - 69	-4	17	2.52	2.26	1	18	1	38	0	8	1	7
10	Taylor Bol Bowen	28:17	11:43	63 - 56	28 - 22	7	6	2.23	2.39	13	6	29	10	4	4	5	3
11	Christian Nitu	05:19	34:41	9 - 12	82 - 66	-3	16	1.69	2.36	2	17	3	36	0	8	1	7
12	Malique Ewin	26:11	13:49	69 - 53	22 - 25	16	-3	2.63	1.59	14	5	30	9	5	3	5	3
15	Jalen Crawford	00:33	39:27	2 - 2	89 - 76	0	13	3.66	2.26	0	19	1	38	0	8	0	8
21	Alier Maluk	08:30	31:30	13 - 13	78 - 65	0	13	1.53	2.48	3	16	6	33	3	5	2	6
25	Justin Thomas	23:11	16:49	53 - 42	38 - 36	11	2	2.29	2.26	12	7	22	17	4	4	3	5
43	Jesse Jones	01:59	38:01	5 - 9	86 - 69	-4	17	2.52	2.26	1	18	1	38	0	8	1	7

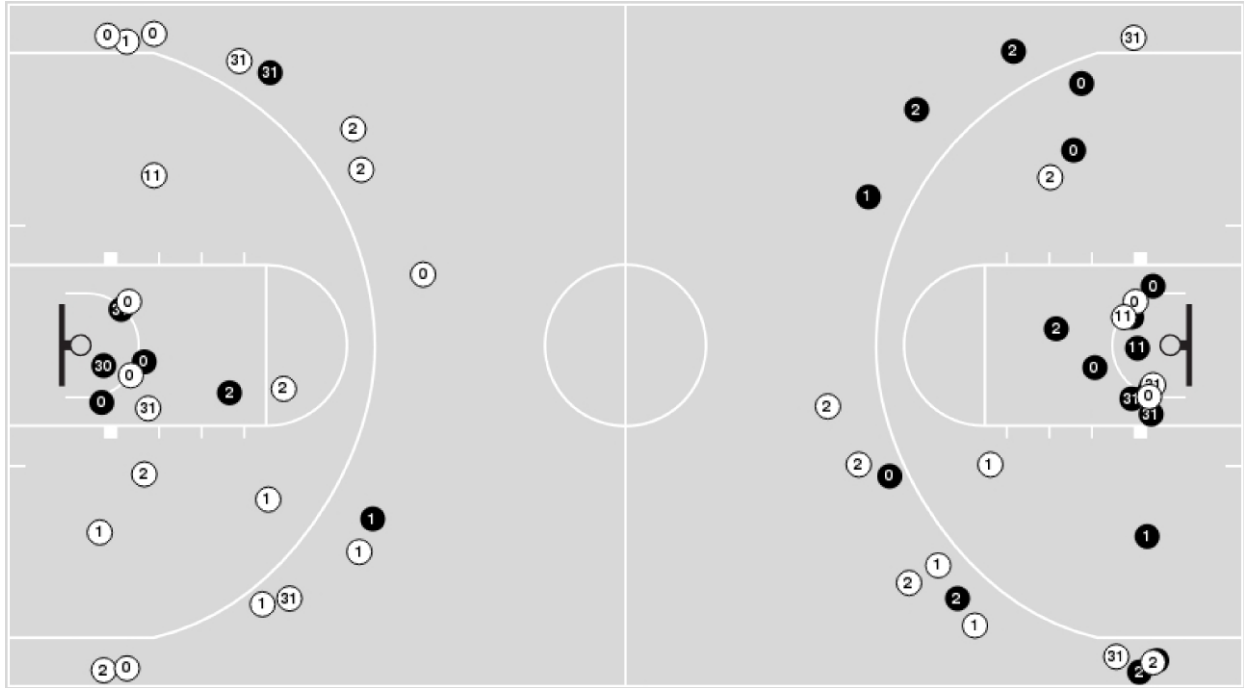


**Officials:** A.J. Desai, Jemel Spearman, Michael Kitts

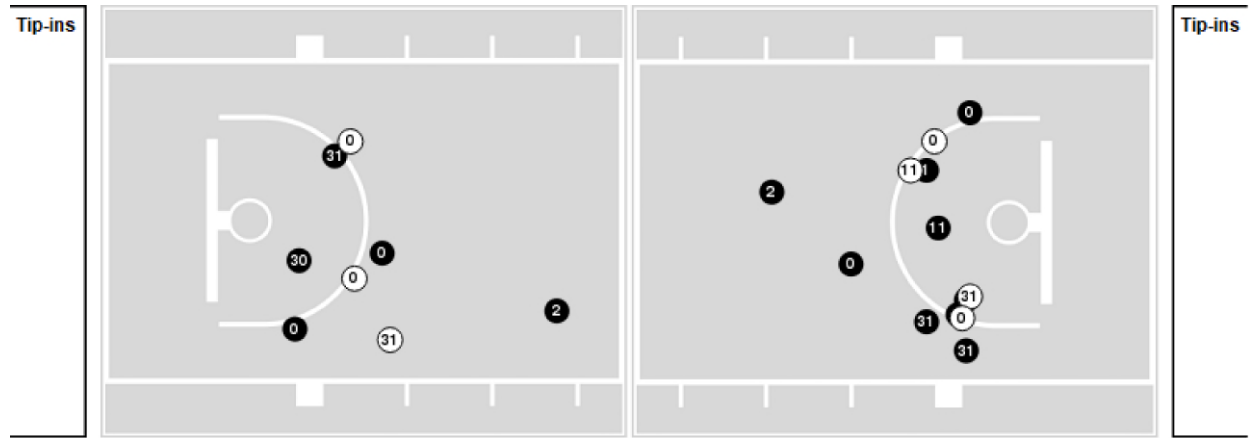
Players => 0, 1, 2, 3, 9, 10, 11, 12, 14, 30, 31, 32, 33, 35, 45FG Types=>AllResults=>All

**Georgia Tech**

**All Field Goals**



**Blow Up Chart**



**N** Made    **O** Missed    **N** - Player Number

Georgia Tech	M/A	%
Field Goals	26/60	43
2 Points	17/31	55
3 Points	9/29	31
Free Throws	17/24	71

Georgia Tech	M/A	%
Points in the Paint	28 (14 / 21)	67
Fast Break Points	9 (5/5)	100
Second Chance Points	12 (7/13)	54
Effective FG%	51	

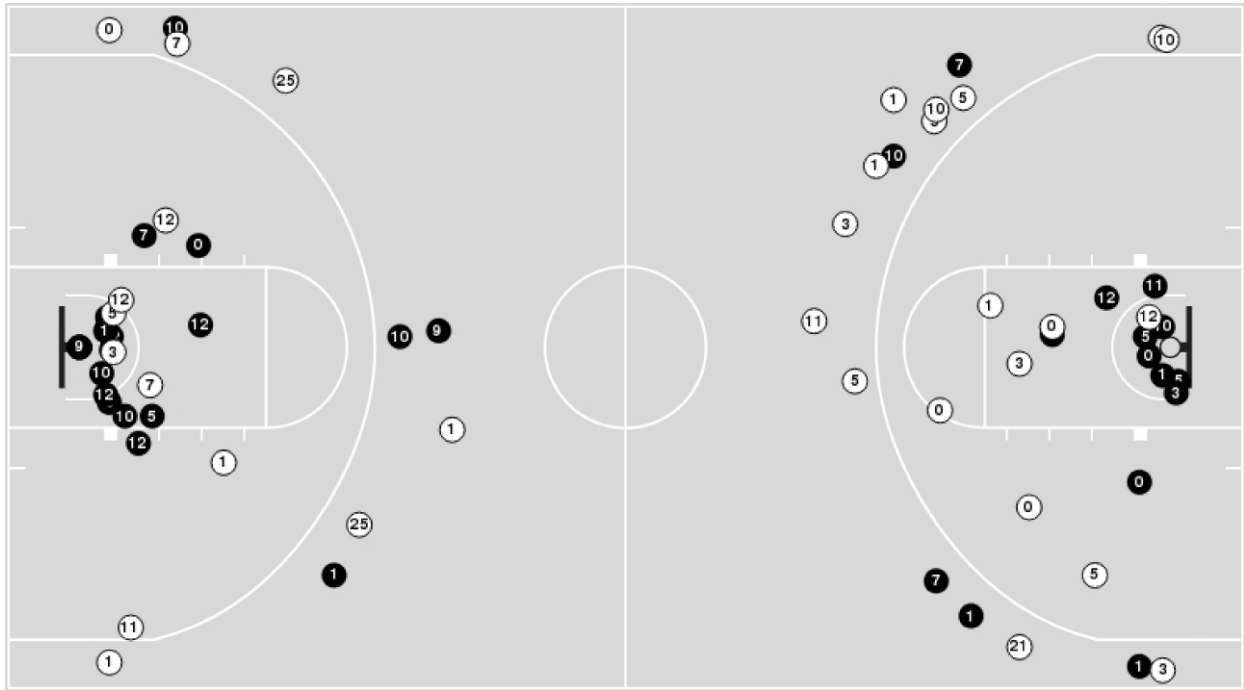


**Officials:** A.J. Desai, Jemel Spearman, Michael Kitts

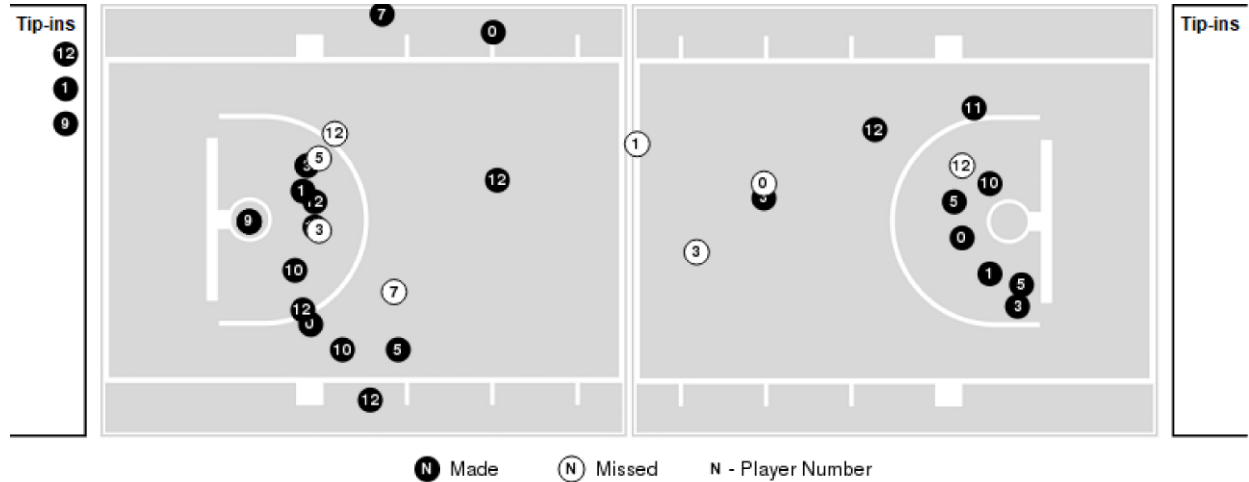
Players => 0, 1, 3, 4, 5, 7, 9, 10, 11, 12, 15, 19, 21, 25, 35, 43FG Types=>AllResults=>All

### Florida State

#### All Field Goals



#### Blow Up Chart



● Made    ○ Missed    N - Player Number

Florida State	M/A	%
Field Goals	35/67	52
2 Points	26/40	65
3 Points	9/27	33
Free Throws	12/17	71

Florida State	M/A	%
Points in the Paint	44 (22 / 30)	73
Fast Break Points	23 (12/12)	100
Second Chance Points	20 (12/14)	86
Effective FG%	59	



**Georgia Tech at Florida State**

01/18/25 Donald L. Tucker Center, Tallahassee  
2024-25 FSU Men's Basketball

Officials: A.J. Desai, Jemel Spearman, Michael Kitts

**Georgia Tech**

Lineup	Quarter On	Time On	Quarter Off	Time Off	Time on Court	Score	Score Diff	Reb	Stl	Tov	Ass	PPP
0- Terry L/ 1- George N/ 2- McCollum J/ 11- Ndongo B/ 30- Souare I/	1	20:00	1	16:33	03:27	2-9	-7	3	1	1	1	0.2500
0- Terry L/ 2- McCollum J/ 11- Ndongo B/ 30- Souare I/ 31- Powell D/	1	16:33	1	14:59	01:34	2-6	-4	2	0	1	0	0.8621
0- Terry L/ 1- George N/ 2- McCollum J/ 11- Ndongo B/ 31- Powell D/	1	14:59	1	11:57	03:02	4-4	0	2	0	1	0	1.0309
0- Terry L/ 1- George N/ 2- McCollum J/ 30- Souare I/ 31- Powell D/	1	11:57	1	10:35	01:22	0-4	-4	0	0	1	0	0.0000
1- George N/ 2- McCollum J/ 11- Ndongo B/ 30- Souare I/ 31- Powell D/	1	10:35	1	09:08	01:27	2-0	2	2	0	0	1	1.0000
0- Terry L/ 1- George N/ 11- Ndongo B/ 30- Souare I/ 31- Powell D/	1	09:08	1	05:59	03:09	7-3	4	5	0	2	1	1.1905
0- Terry L/ 1- George N/ 2- McCollum J/ 11- Ndongo B/ 31- Powell D/	1	05:59	1	04:55	01:04	0-2	-2	0	0	1	0	0.0000
0- Terry L/ 1- George N/ 2- McCollum J/ 30- Souare I/ 31- Powell D/	1	04:55	2	20:00	04:55	7-9	-2	7	0	0	1	0.9563
0- Terry L/ 1- George N/ 2- McCollum J/ 11- Ndongo B/ 30- Souare I/	2	20:00	2	17:03	02:57	10-2	8	0	2	1	1	1.7007
0- Terry L/ 1- George N/ 2- McCollum J/ 11- Ndongo B/ 31- Powell D/	2	17:03	2	14:16	02:47	5-8	-3	1	1	0	2	1.2500
0- Terry L/ 1- George N/ 2- McCollum J/ 30- Souare I/ 31- Powell D/	2	14:16	2	13:43	00:33	2-0	2	1	0	0	0	1.0638
0- Terry L/ 1- George N/ 2- McCollum J/ 11- Ndongo B/ 31- Powell D/	2	13:43	2	09:24	04:19	10-11	-1	3	1	2	3	1.1111
0- Terry L/ 1- George N/ 2- McCollum J/ 30- Souare I/ 31- Powell D/	2	09:24	2	07:54	01:30	4-7	-3	1	0	0	0	1.4493
0- Terry L/ 1- George N/ 2- McCollum J/ 11- Ndongo B/ 31- Powell D/	2	07:54	2	06:21	01:33	5-2	3	1	0	0	0	1.4535
0- Terry L/ 1- George N/ 2- McCollum J/ 11- Ndongo B/ 30- Souare I/	2	06:21	2	05:27	00:54	3-2	1	0	0	0	0	3.0000
0- Terry L/ 1- George N/ 2- McCollum J/ 30- Souare I/ 31- Powell D/	2	05:27	2	00:00	05:27	15-22	-7	4	1	2	3	1.3393



**Georgia Tech at Florida State**

01/18/25 Donald L. Tucker Center, Tallahassee  
2024-25 FSU Men's Basketball

Officials: A.J. Desai, Jemel Spearman, Michael Kitts

**Florida State**

Lineup	Quarter On	Time On	Quarter Off	Time Off	Time on Court	Score	Score Diff	Reb	Stl	Tov	Ass	PPP
0- Jackson C/ 1- Watkins J/ 5- Davis D/ 10- Bowen T/ 12- Ewin M/	1	20:00	1	16:07	03:53	9-4	5	6	0	1	2	1.0000
1- Watkins J/ 5- Davis D/ 7- Deng J/ 12- Ewin M/ 25- Thomas J/	1	16:07	1	14:59	01:08	6-0	6	2	1	0	2	3.0000
1- Watkins J/ 3- Holt B/ 7- Deng J/ 12- Ewin M/ 25- Thomas J/	1	14:59	1	13:59	01:00	1-3	-2	0	0	0	0	1.1364
0- Jackson C/ 3- Holt B/ 7- Deng J/ 21- Maluk A/ 25- Thomas J/	1	13:59	1	10:35	03:24	7-1	6	3	1	0	3	1.7500
0- Jackson C/ 3- Holt B/ 10- Bowen T/ 21- Maluk A/ 25- Thomas J/	1	10:35	1	09:08	01:27	0-2	-2	1	0	0	0	0.0000
0- Jackson C/ 1- Watkins J/ 5- Davis D/ 10- Bowen T/ 12- Ewin M/	1	09:08	1	07:58	01:10	3-0	3	0	1	0	0	1.0000
0- Jackson C/ 1- Watkins J/ 3- Holt B/ 10- Bowen T/ 12- Ewin M/	1	07:58	1	05:59	01:59	0-7	-7	2	0	0	0	0.0000
1- Watkins J/ 3- Holt B/ 10- Bowen T/ 11- Nitu C/ 25- Thomas J/	1	05:59	1	03:19	02:40	4-2	2	2	0	0	1	1.0000
0- Jackson C/ 1- Watkins J/ 10- Bowen T/ 11- Nitu C/ 25- Thomas J/	1	03:19	1	02:39	00:40	0-1	-1	0	0	0	0	0.0000
0- Jackson C/ 1- Watkins J/ 10- Bowen T/ 12- Ewin M/ 25- Thomas J/	1	02:39	1	00:46	01:52	7-1	6	4	0	0	3	1.5766
0- Jackson C/ 1- Watkins J/ 10- Bowen T/ 21- Maluk A/ 25- Thomas J/	1	00:46	2	20:00	00:46	0-3	-3	0	0	0	0	0.0000
0- Jackson C/ 1- Watkins J/ 5- Davis D/ 10- Bowen T/ 12- Ewin M/	2	20:00	2	15:40	04:20	5-10	-5	4	1	3	1	0.8333
1- Watkins J/ 5- Davis D/ 10- Bowen T/ 12- Ewin M/ 25- Thomas J/	2	15:40	2	12:42	02:58	10-10	0	3	0	1	1	1.7361
1- Watkins J/ 3- Holt B/ 7- Deng J/ 21- Maluk A/ 25- Thomas J/	2	12:42	2	11:32	01:10	4-2	2	2	1	1	0	1.3333
0- Jackson C/ 3- Holt B/ 7- Deng J/ 21- Maluk A/ 25- Thomas J/	2	11:32	2	10:49	00:43	2-0	2	0	1	1	0	1.0000
1- Watkins J/ 3- Holt B/ 7- Deng J/ 21- Maluk A/ 25- Thomas J/	2	10:49	2	09:50	00:59	0-5	-5	0	0	0	0	0.0000
1- Watkins J/ 5- Davis D/ 7- Deng J/ 21- Maluk A/ 25- Thomas J/	2	09:50	2	09:50	00:00	0-0	0	0	0	0	0	0.0000
1- Watkins J/ 5- Davis D/ 7- Deng J/ 12- Ewin M/ 25- Thomas J/	2	09:50	2	08:30	01:20	3-2	1	2	0	0	0	1.5957
1- Watkins J/ 5- Davis D/ 10- Bowen T/ 12- Ewin M/ 25- Thomas J/	2	08:30	2	06:30	02:00	6-4	2	3	0	0	1	1.5000
3- Holt B/ 5- Davis D/ 10- Bowen T/ 12- Ewin M/ 25- Thomas J/	2	06:30	2	05:27	01:03	3-6	-3	0	0	0	1	1.5957
1- Watkins J/ 3- Holt B/ 5- Davis D/ 10- Bowen T/ 12- Ewin M/	2	05:27	2	01:59	03:28	16-6	10	4	2	0	3	1.9512
3- Holt B/ 7- Deng J/ 9- Rozakeas A/ 11- Nitu C/ 43- Jones J/	2	01:59	2	00:32	01:26	3-7	-4	0	0	1	1	1.5000
3- Holt B/ 9- Rozakeas A/ 11- Nitu C/ 15- Crawford J/ 43- Jones J/	2	00:32	2	00:00	00:32	2-2	0	1	0	0	0	2.0000



**Officials:** A.J. Desai, Jemel Spearman, Michael Kitts

**Georgia Tech**

Lineup	Time	Score	Score Diff	Pts/Min	Reb	Stl	Tov	Ass	PPP
0- Terry L/ 1- George N/ 2- McCollum J/ 30- Souare I/ 31- Powell D/	13:47	28-42	-14	2.0314	13	1	3	4	1.1129
0- Terry L/ 1- George N/ 2- McCollum J/ 11- Ndongo B/ 31- Powell D/	12:45	24-27	-3	1.8824	7	2	4	5	1.0753
0- Terry L/ 1- George N/ 2- McCollum J/ 11- Ndongo B/ 30- Souare I/	07:18	15-13	2	2.0548	3	3	2	2	1.0081
0- Terry L/ 1- George N/ 11- Ndongo B/ 30- Souare I/ 31- Powell D/	03:09	7-3	4	2.2222	5	0	2	1	1.1905
0- Terry L/ 2- McCollum J/ 11- Ndongo B/ 30- Souare I/ 31- Powell D/	01:34	2-6	-4	1.2766	2	0	1	0	0.8621
1- George N/ 2- McCollum J/ 11- Ndongo B/ 30- Souare I/ 31- Powell D/	01:27	2-0	2	1.3793	2	0	0	1	1.0000



**Officials:** A.J. Desai, Jemel Spearman, Michael Kitts

**Florida State**

Lineup	Time	Score	Score Diff	Pts/Min	Reb	Stl	Tov	Ass	PPP
0- Jackson C/ 1- Watkins J/ 5- Davis D/ 10- Bowen T/ 12- Ewin M/	09:23	17-14	3	1.8117	10	2	4	3	0.9444
1- Watkins J/ 5- Davis D/ 10- Bowen T/ 12- Ewin M/ 25- Thomas J/	04:58	16-14	2	3.2215	6	0	1	2	1.6393
0- Jackson C/ 3- Holt B/ 7- Deng J/ 21- Maluk A/ 25- Thomas J/	04:07	9-1	8	2.1862	3	2	1	3	1.5000
1- Watkins J/ 3- Holt B/ 5- Davis D/ 10- Bowen T/ 12- Ewin M/	03:28	16-6	10	4.6154	4	2	0	3	1.9512
1- Watkins J/ 3- Holt B/ 10- Bowen T/ 11- Nitu C/ 25- Thomas J/	02:40	4-2	2	1.5000	2	0	0	1	1.0000
1- Watkins J/ 5- Davis D/ 7- Deng J/ 12- Ewin M/ 25- Thomas J/	02:28	9-2	7	3.6486	4	1	0	2	2.3196
1- Watkins J/ 3- Holt B/ 7- Deng J/ 21- Maluk A/ 25- Thomas J/	02:09	4-7	-3	1.8605	2	1	1	0	0.8000
0- Jackson C/ 1- Watkins J/ 3- Holt B/ 10- Bowen T/ 12- Ewin M/	01:59	0-7	-7	0.0000	2	0	0	0	0.0000
0- Jackson C/ 1- Watkins J/ 10- Bowen T/ 12- Ewin M/ 25- Thomas J/	01:52	7-1	6	3.7367	4	0	0	3	1.5766
0- Jackson C/ 3- Holt B/ 10- Bowen T/ 21- Maluk A/ 25- Thomas J/	01:27	0-2	-2	0.0000	1	0	0	0	0.0000
3- Holt B/ 7- Deng J/ 9- Rozakeas A/ 11- Nitu C/ 43- Jones J/	01:26	3-7	-4	2.0882	0	0	1	1	1.5000
3- Holt B/ 5- Davis D/ 10- Bowen T/ 12- Ewin M/ 25- Thomas J/	01:03	3-6	-3	2.8571	0	0	0	1	1.5957
1- Watkins J/ 3- Holt B/ 7- Deng J/ 12- Ewin M/ 25- Thomas J/	01:00	1-3	-2	1.0000	0	0	0	0	1.1364
0- Jackson C/ 1- Watkins J/ 10- Bowen T/ 21- Maluk A/ 25- Thomas J/	00:46	0-3	-3	0.0000	0	0	0	0	0.0000
0- Jackson C/ 1- Watkins J/ 10- Bowen T/ 11- Nitu C/ 25- Thomas J/	00:40	0-1	-1	0.0000	0	0	0	0	0.0000
3- Holt B/ 9- Rozakeas A/ 11- Nitu C/ 15- Crawford J/ 43- Jones J/	00:32	2-2	0	3.6585	1	0	0	0	2.0000
1- Watkins J/ 5- Davis D/ 7- Deng J/ 21- Maluk A/ 25- Thomas J/	00:00	0-0	0	NaN	0	0	0	0	0.0000