

FOOTBALL MAGAZINE

\$2.00

TUT ANNE

Nº 5254



FLORIDA STATE

SEPT. 17, 1983


**THIS BUD'S FOR EVERYONE
WHO KEEPS COOL WHEN THE
GAME GETS HOT.**





**PROUD SPONSOR OF
THE 1984 OLYMPIC TEAM.**

The First Team

Teamwork

It's the secret of success in any team sport. And it's also the secret of success at First NBC. 

When you've got teamwork—people working together—you've got a better chance of accomplishing your goals. And a better chance of coming out on top.  In other words, when a team works the way a team should work, it's got all the makings of a winner.

We've known that from the very start at  First NBC. Call or drop by your nearest First NBC office. Find out how to get the First Team working for you.

**First
NBC**

les must® de *Cartier*

Paris



From our elegant selection of Les Must®
de Cartier watches. Each timepiece is
a classic. It's little wonder they're
among the most asked-for watches in
the world.

Hausmann's

Fine Jewelers Since 1870

732 Canal Street (504) 581-9581 • New Orleans
6 convenient locations in Greater New Orleans
Also Houma • Hammond

Worldwide Full Lifetime Warranty

This warranty covers all manufacturing defects and includes the free repair of any mechanical deficiency.

WELCOME TO TULANE

Dear College Football Fan:

I am pleased to extend to students, faculty, staff, alumni and friends a warm welcome to today's contest. Tulane has a long history of participation in collegiate athletics—in fact, our students were among those who played in the city's first organized football game in 1888. Since that time the University has developed an outstanding and varied program of athletics for men and women, and today's game is a part of that tradition.

Intercollegiate athletics attract a wider audience than any other activity the University sponsors, and for many are a key point of identification with Tulane. Moreover, intercollegiate sports promote cooperation, self-discipline, and a healthy competitive spirit among team members. For spectators and players alike, our rivalries with other colleges and universities foster an important feeling of community as our attention is fixed upon a common interest—*our* teams.

Tulane has clearly demonstrated that a small, highly selective, academically distinguished private university can maintain a first rate athletic program, and that athletics and academics do go hand in hand. For example, we can take great pride in Tulane athletes' graduation rate of 93% over the past five years.

A continuity of athletic excellence has tremendous impact on all aspects of university life: admissions, academics, fund raising, and public awareness of who we are. Outstanding academics create our reputation among scholars as a major research and teaching institution, and outstanding athletics bolster public recognition among the general populace.

Enjoy the game. To those of you who help make a strong sports program possible at Tulane through your generous support and exceptional dedication to our teams, I offer my special thanks.



Sincerely,

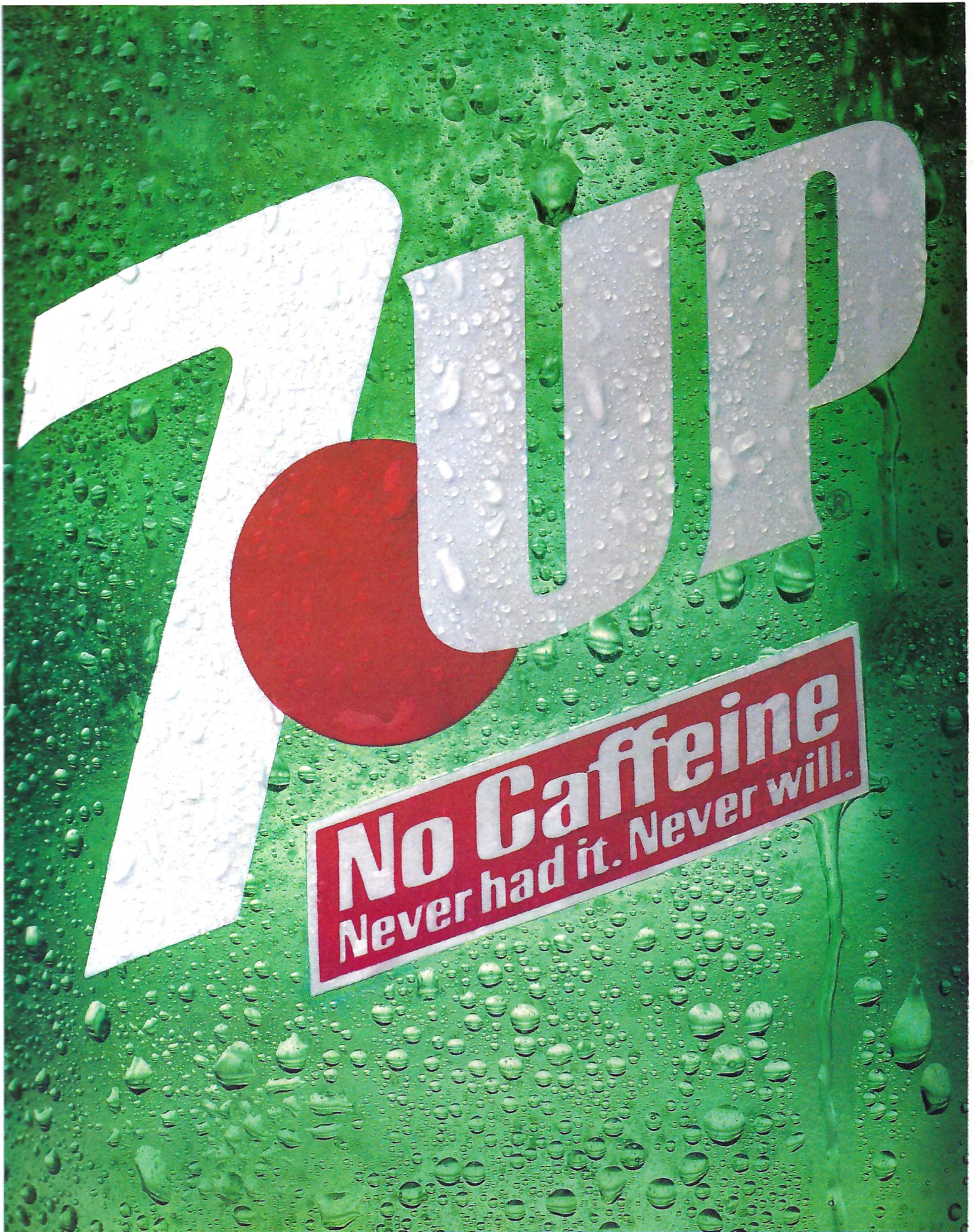
A handwritten signature in black ink that reads "Eamon M. Kelly". The signature is written in a cursive style with a large, sweeping flourish at the end.

Eamon M. Kelly
President
Tulane University

Wendy's



**22 CONVENIENT LOCATIONS
IN THE NEW ORLEANS AREA**

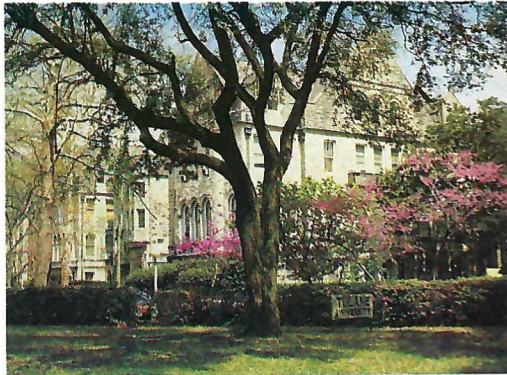


Don't you feel good about 7UP?

SEVEN UP AND 7UP ARE TRADEMARKS IDENTIFYING THE PRODUCT OF THE SEVEN UP COMPANY © 1982



TULANE UNIVERSITY



Tulane University has a tradition of excellence in academic and extracurricular areas which reaches back almost 150 years.

Founded in 1834 as a private medical school, the university has grown to include more than 10,000 students, over 900 faculty members, and 11 schools and colleges: undergraduate liberal arts divisions the College of Arts and Sciences and Newcomb College; The Graduate School; professional schools in architecture, business, engineering, law, medicine, public health and tropical medicine, and social work; and The University College, which offers courses for the general public.

Most divisions are located on the university's 110-acre uptown campus, five miles from downtown New Orleans. The Medical School, School of Public Health and Tropical Medicine, and the Tulane Hospital are located in the Medical Complex downtown; the Hebert Research Center, located on 500 acres in nearby Belle Chasse, provides research facilities for environmental sciences, aerospace engineering, nuclear physics, medicine, behavioral science and computer science; and the Delta Regional Primate Center, a unit of the Tulane Medical Complex, occupies a 500-acre tract near Covington.

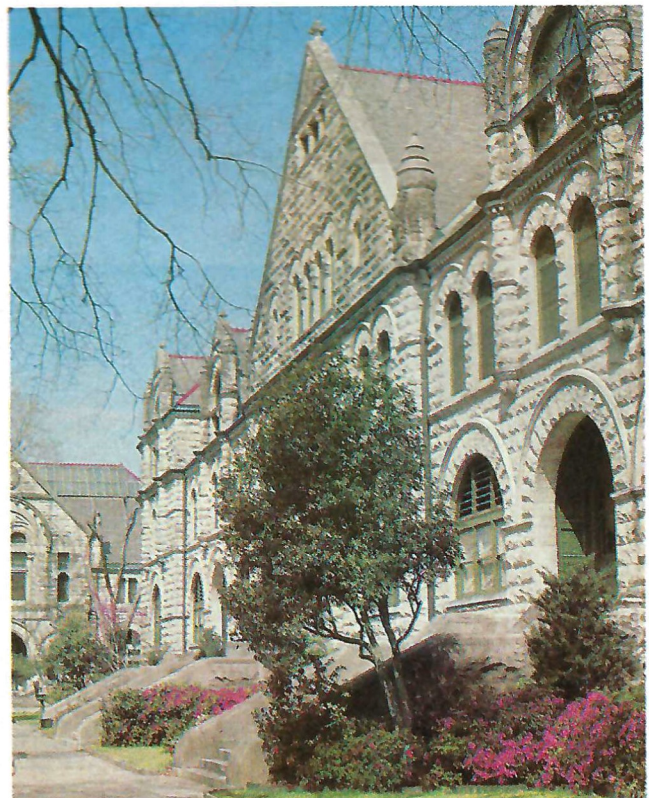
Tulane is nationally recognized for its academic excellence. A 1980 study by the American Council on Education ranked Tulane among the 24 most highly selective private institutions in America.

Many areas of special expertise stand out in a fine overall academic program. The university's reputation for outstanding medical training, unusual tropical medicine studies, and offerings in civil (European) and common (British and American) law are well-known.

Tulane's new Murphy Program in Political Economy is devoted to research and training in that important academic area. The university's Center for Latin American Studies is ranked as one of the top three such centers in the nation. The William Ransom Hogan Jazz Archive boasts one of the most extensive jazz collections in the world as well as an associated band—the Louisiana Repertory Jazz Ensemble—and a newly-formed gospel archive.

The university fields 11 intercollegiate sports teams, 18 club sports teams, and 27 intramural sports teams. The Green Wave football team is an independent NCAA Division I member, and Tulane's basketball and baseball teams are members of the Metro Eight Conference. The football and basketball teams are on their home turf in the Louisiana Superdome. Not far behind are top programs in track, sailing, lacrosse, tennis, volleyball, rugby, fencing, soccer, and skeet and trap shooting. Women's teams in volleyball, basketball, tennis, and swimming led by top grant-in-aid athletes, have captured championships throughout the south.

President of Tulane is Dr. Eamon M. Kelly, whose academic field is economics. Kelly served as executive vice-president of Tulane when he was chosen for the presidency April 1981.

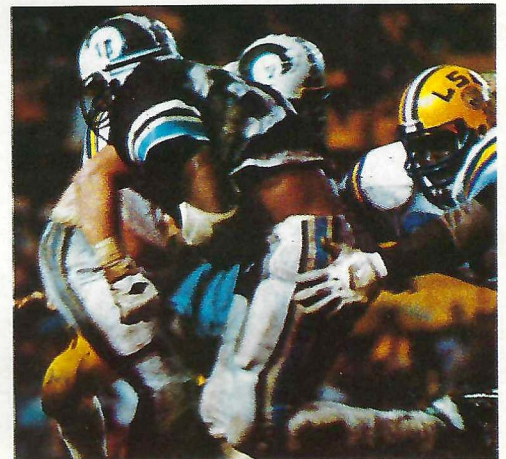
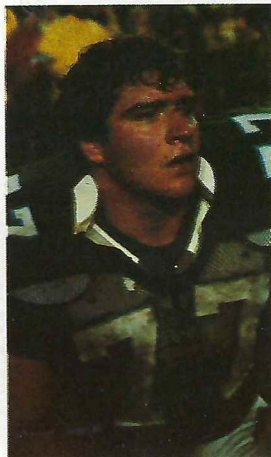
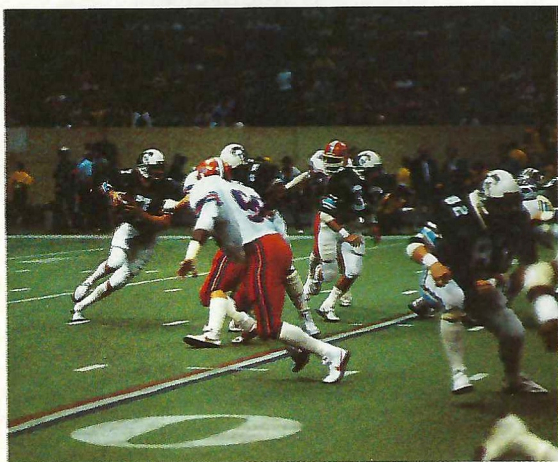
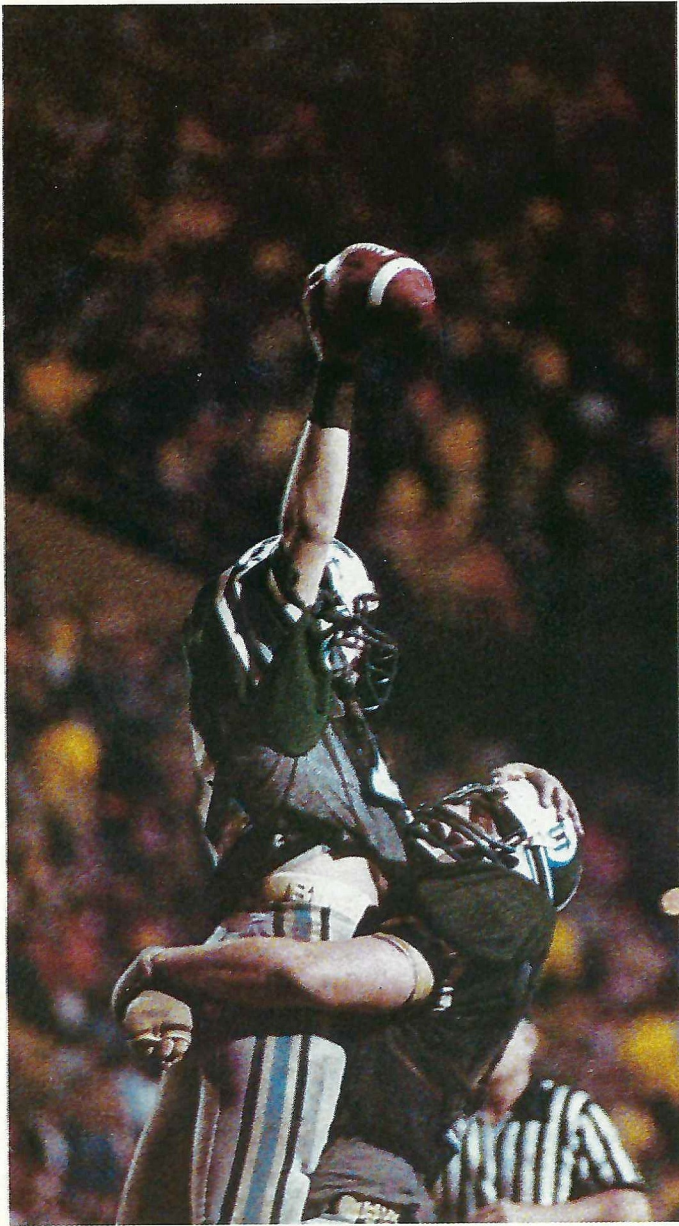




CBS Sports presents the pageantry, excitement and historical rivalries of NCAA Football. The tradition continues weekly on CBS Sports.

Check local listings for the game and time in your market.

CATCH THE WAVE



CROWN BUICK THE RIGHT CHOICE



CROWN
BUICK

2121 Clearview at I-10 • Phone 455-6666

TULANE

FOOTBALL MAGAZINE

FLORIDA STATE GAME

SEPTEMBER 17, 1983

SUPERDOME, NEW ORLEANS

CONTENTS

	page
TULANE UNIVERSITY	6
TODAY'S GAME	11
STARS OF YESTERYEAR	
Eddie Khayat	12
COACH WALLY ENGLISH	13
ATHLETIC DIRECTORS	17
GREEN WAVE PLAYERS	21-27
FROM THE SCRAPEBOOK	
Rick Kingrea	29-31
TULANE ROSTER	32
STARTING LINEUPS	CENTERSPREAD
OLE MISS ROSTER	33
UNIVERSITY OF MISSISSIPPI	34-35
RADIO AS A LEARNING 'TUL	36
TULANE BASEBALL:	
Building a Winning Tradition	53-55

COVER ILLUSTRATION: Tony Champagne

STARS OF YESTERYEAR ILLUSTRATION:

Prime Graphics

PHOTOGRAPHY: Robert Moldaner, Bob Kottler,
Armand Bertin, Matt Anderson, Jack Pickett, Jeff
Barca, Lane Mooch, Wayne Shepherd

Candace Blancher, Program Manager

Candace Blancher, Advertising Sales

Arthur Triche, Editorial Assistant

Gayle Letulle, Editorial Assistant

Lenny Vangilder, Editorial Assistant



The Spirit of Delta.™
**You get better service from
people who love their work.**
And their company.

Delta people love Delta. Ask them why and you hear things like “family.” Delta people feel — feel very honestly — that they work for something far more personal than a corporation.

Fine. But what’s that get you?

Great service. Because when people feel good, it shows. When people love their work, it’s all over their faces, all over their attitude, even in the way they say “Good morning and thank you for flying Delta.”

When people feel good, they have more to give, and Delta has over 35,000 professionals who give their best every day. That’s the Spirit of Delta.

Delta is ready when you are.®

Left to right: Captain Charles Kordowski, Reservations Sales Agent Judy Roan-McIntire, Flight Attendant Jeannette Trussell York, Line Mechanic Brad Patch, Passenger Services Agent Reggie Boykin.

TODAY'S GAME

By Arthur Triche

A new and entertaining rivalry begins today as the Florida State Seminoles face the Tulane Green Wave in the Superdome. The 2-0 Seminoles are coming off of a 40-35 win over Louisiana State last week in Baton Rouge, while the Green Wave (1-1) defeated the Ole Miss Rebels 27-23 last Saturday here in New Orleans.

Tulane will attempt to halt the highly productive offense of Florida State, which has averaged 43.5 points in the first two games of this season. Head Coach Bobby Bowden has potential in every key area of his offensive unit.

Meanwhile, Tulane will hope that last-minute heroics aren't in order once again this week. For the second week in a row, the outcome wasn't decided until the last minute and a half of the game. Against Ole Miss, Tulane overcame a ten point deficit to defeat the Rebels. Jon English spearheaded the Wave comeback teaming up with receivers Wayne Smith and Craig Harrison to lead the Greenies to victory number one for first-year coach Wally English.

Tulane will try to deny the Seminoles the ball on offense and control the time possession the entire game. Florida State averages 33:23 minutes while giving their opponents 26:27 minutes to work. The ability by FSU to control the clock gives them opportunities to wear out any defense.

The attack of the Seminole offense is balanced. Total yardage per game for Florida State is 547 yards. They have gained an average of 270 yards on rushing plays and 278 yards through the air. Florida State does have a tendency to turn the ball over as they have seven miscues so far this season (four interceptions, three fumbles).

Tulane's offense averages 330-plus yards a contest, but in 1983 thus far, most of the yardage is from the air. The Green Wave has 566 net yards of passing yards compared with 95 yards on the ground. Wally English has used some of the Miami Dolphin coaching philosophy at quarterback by using a starter and a relief man in the later stages of the contest. Bubba Brister has been used as the starter in the first two games, but Jon English has been the Green Wave's Captain Hook.

There is no doubt that the Tulane defense must be prepared to stop the potent Seminole offense. Against the Rebels, the Wave showed tendencies to miss easy tackles, but against Florida State today they can't afford to miss any if they expect to survive sixty minutes of action.

WAVE STATS: Mike Jones is the leading ball carrier for the Wave gaining 80 yards in two games. Jon English has thrown 27 completions of 51 attempts for 370 yards and two touchdowns and two interceptions. Bubba Brister is 25 of 50 for 197 yards with one TD and one interception. The leading receiver is Wayne Smith, who last week tied Robert Griffin's record for yardage in a game with 183 yards from seven receptions. Smith has caught eight passes for 214 yards and two TDs.

THE SEMINOLES: Bobby Bowden brings his Top Twenty-ranked team into the Superdome unbeaten and hopes to stay that way today. This is his eighth season at FSU, where he has a 61-22-0 record. Bowden has a 134-54-0 record overall with stops at Samford and West Virginia before going to Tallahassee. He has directed Florida State to four bowl appearances in seven years. Last year's 9-3 squad went to the Gator Bowl, where they defeated West Virginia 31-12.

Heisman Trophy candidate Greg Allen heads up the Seminole running attack. Allen has gained 355 yards on 55 attempts and four touchdowns. He is gaining 6.5 yards per carry. Quarterback Kelly Lowery is the catalyst. His leadership led to the win over LSU last week, when he ran for three TDs and threw for two more. He has completed 71.2 percent of his passes (47-66) and five touchdowns.

Wide receiver Weegie Thompson has caught 13 passes for 182 yards to lead Florida State in that category. Allen is the leading scorer with 24 points from four rushing scores.

FSU's "Secretary of Defense" is defensive tackle Alphonso Carreker, a 6-6, 250-pound senior.

NEXT WEEK: The Wave will travel to Lexington, Kentucky to play the Kentucky Wildcats in an afternoon game (12:30 CDT) which should be an exciting contest. coach Jerry Claiborne will try for win number three today against Indiana. After an 0-10-1 season last year, the Wildcats have looked impressive thus far.

1983 Schedule and Results

Miss. State 14, Tulane 9

Tulane 27, Ole Miss 23

Sept. 17 FLORIDA STATE

Sept. 24 at Kentucky

Oct. 1 VANDERBILT

Oct. 8 at Memphis State

Oct. 15 USL (homecoming)

Oct. 22 at Southern Miss.

Oct. 29 at Baylor

Nov. 5 VA. TECH

Nov. 12 Open Date

Nov. 24 LSU

TULANE WELCOMES CHIQUITA BRANDS

**THE TULANE
CHEERLEADERS WISH TO
THANK THE FOLLOWING
FOR THEIR ASSISTANCE
IN MAKING THEIR
PROGRAM SUCCESSFUL
THIS YEAR**

*Ben Weiner, President of the Green
Wave Club*

Betsy Dyer, Cheerleader Advisor

*Candace Blancher, Athletic
Promotions*

*Vincent Buffa, President, Tulane
Boosters*

*Richard Jacoves, LA State
Distributors*

Warren Evans, Tulane Boosters

Security Sporting Goods

Athlete's Foot

Dance Ranch

STARS OF YESTERYEAR



EDDIE KHAYAT

Eddie Khayat lettered two years in football at Tulane in 1955 and 1956. He also lettered one year in baseball, 1956. He came to Tulane from Perkinson Junior College where he lettered in football and basketball. Eddie was later to be selected to the Mississippi Gulf Coast Junior College Hall of Fame in 1976. He was chosen to the Tulane All Time Team in 1979. He played professional football for the Washington Redskins in 1957 and four years with the Philadelphia Eagles, 1958-61. The Eagle team he played on was the world champion team. He returned to the Eagles once more from 1964 through 1965. He finished his 10 years as a player by playing his final season in 1966 with the Boston Patriots. He has 15 years of professional coaching under his belt. He was with the Saints, Eagles, Detroit Lions, Atlanta Falcons, and his present position is with the Baltimore Colts.

United Gas Pipe Line Company

A United Energy Resources Company



Where the search for new energy never stops

South Region Offices
Post Office Box 51628
New Orleans, Louisiana 70151

HEAD COACH

WALLY ENGLISH

As Wally English begins his first season as a head coach at Tulane, he has finally achieved one of his goals.

"My goal was always to become a head coach," said English, "I've had that in mind for a long time and I've moved around the country doing what I had to do to attain that goal. In doing so, I've learned a great deal from many people."

The 44-year old English comes to the Green Wave with a wealth of experience from the professional and collegiate ranks. His 16 years of experience includes three years with the Detroit Lions and 11 years at six major colleges. During his college years, he coached three All-American quarterbacks in a row. Brigham Young's Mark Wilson and Jim McMahon, and Pittsburgh's Dan Marino were tutored by English as they achieved their All-American status. The past two seasons he has served as the Miami Dolphins' quarterback and receiver coach.

In taking over the Tulane helm, English inherits a squad that ended the 1982 season with a 4-7 mark. With 38 returning lettermen, he has the nucleus for a good year. Coming off a season-ending win over LSU in Baton Rouge, Tulane faithful hopes the *English Approach* may be the lesson to success.



But English admits the road will be tough. "I'm willing to be patient and hopefully Tulane can become one of the winningest football programs in America."

H. G. BAUER

MOVING & STORAGE, INC.

1111 BARRACKS ST.

SERVING THE PUBLIC SINCE 1923

World-wide Pre-Planned Moving. Facts about your new city from the Betty Malone Relocation Center. Safe-Guard service for special shipments.

- Local & Long Distance Moving
- Containerized storage
- Export packing & crating
- Office & commercial moves
- Estimates without obligation

Inquire about use of
BankAmericard, Mr. BOL and Master Charge

522-1388

UNITED
UNITED
UNITED
Van Lines

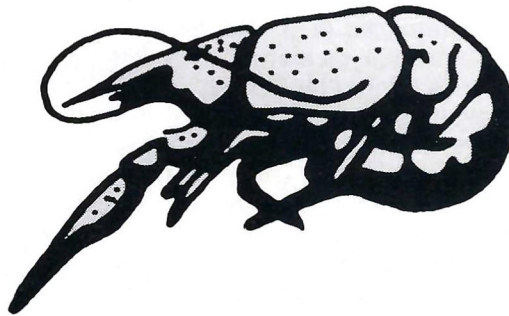
ICCMC31644

ICC NO.67234

The Official Louisiana Crawfish Shirt



100% Cotton Knit Year-Round Classic



Mail orders to:
PERLIS.

6070 Magazine St., New Orleans LA 70118

\$25.00

Please add \$1.50 shipping and handling · N.O. residents 8% sales tax; LA residents 3% sales tax.

Start Your Collection Now

Colors: khaki, white, navy, light blue, midnight blue, yellow, kelly green, red, plum, pink, olive drab.

Mens

S. M. L. XL

Ladies

S. M. L.

Visa
Master Charge

Diners

Carte Blanche

American Express

Qty	Size	Color

Please Print Your Name _____

Address _____

Signature _____

Card # _____ Expiration date _____

PERLIS

TU-01-F

6070 Magazine Street New Orleans, La. 70118 895-8661

PERLIS is also located at The Plaza in Lake Forest

COACHING STAFF



Kneeling (left to right): **Kenny Bowles, Jerry McManus, Garth Hall, Wally English (Head Coach), Bob Davie, Kurt Schottenheimer.** Standing: **Jerry Materne, Rick Gaille, Vic King, Duriel Harris, Bryant Pool, Tony Yelovich, Greg Olejack, Ted Heath, Mike Sherman**

wajiv
fm 102

•Playing your favorites•

If your goal is Used Car Value...

We'll give you Value Plus.[®] If you're tired of playing the field for a real used car deal, let National lay it on the line for you. Our low mileage, top-condition used cars are just over a year old, and with our high maintenance standards, they've had better care than most privately owned cars. And we give you the security of the longest, most comprehensive warranty in our field. Our 24-month/24,000 mile limited warranty covers engine, drivetrain, steering, brakes, major

electrical components, front suspension, and even factory-installed air.

Most of our cars come equipped with automatic transmission, air-conditioning, power steering, and power brakes at no additional cost. Some have added popular options like tilt steering wheel, cruise control, and AM/FM stereo radio. Make yourself a winner; get extra value with National's Value Plus used cars. For more information call or stop by our airport location, 466-4335.



We feature
GM cars like this
Buick Century.

National Car Rental[®]

value plus[®]
USED CARS

ATHLETIC STAFF



**DIRECTOR
OF ATHLETICS**
Hindman Wall



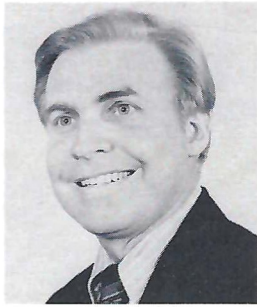
**WOMEN'S
ATHLETIC DIRECTOR**
Elizabeth Delery

**WWL
Newsradio
87**



The News Authority

ATHLETIC STAFF



Bud Johnson
Assistant AD
Marketing



Charles "Kim" Tidd
Associate AD
Business Manager



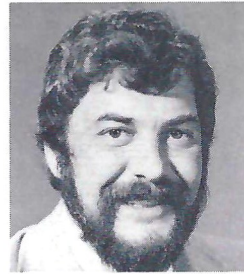
Roy Danforth
Assistant AD
Green Wave Club



Henry J. Bodenheimer
Ass't to the AD for
Capital Development



M. L. Lagarde
SID



Dr. Richard D. Lumsden
Faculty Chairman



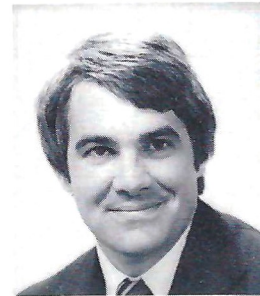
Rommie Catlett
Ticket Manager



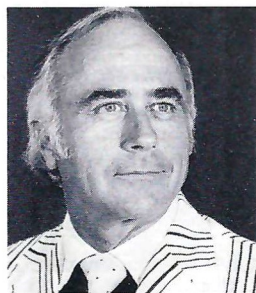
Dr. Peter Riehl
Dr. of Ath. Medicine



Dr. Ray Haddad
Team Physician



Dr. Michael Brunet
Team Physician



Dr. Harvey Jessup
Athletic Counselor



Ken Wenn
Athletic Counselor



John Joseph
Equipment Manager



Fred Roll
Strength-Conditioning
Coach



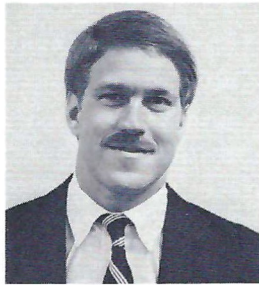
Milton Retif
Special Assistant AD



Shuell Jones
Adm. Ass't to
Head Coach



Don Crockett
Radio Broadcast
Coordinator



Sam Kiefer
Ass't Director
Green Wave Club



Arthur Triche
Ass't SID



Candace Blancher
Marketing



Most Valuable Price: \$59

Family or friends coming in for the game? Then put 'em up at Hyatt Regency. Our \$59 weekend room rate* makes it affordable and the Hyatt Regency touch makes it unforgettable.

Stop in for pre-game and post-game cheer — complete with live entertainment. Then, at game time, take our connecting walkway to your seat in the Superdome.

Celebrate victory over dinner at Jonah's, our elegant seafood restaurant and Oyster Bar, or enjoy the spectacular view from the Top of the Dome, New Orleans' only revolving rooftop restaurant and lounge.

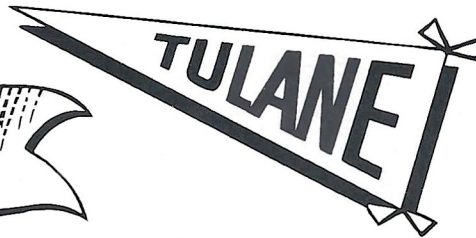
Cap off your weekend with great food and great fun at our Sunday Jazz Brunch.

If the game's in the Dome, make Hyatt Regency your home. You'll enjoy our fan-fare.

*\$59 per night, single or double occupancy, subject to availability and bookable no more than two weeks' in advance.

HYATT REGENCY  NEW ORLEANS

One Great Team!



Victor I. Pelican

Coach Wally English
Tulane Green Wave

FOOTBALL generates a lot of interest
throughout Louisiana.
And so does **PELICAN HOMESTEAD!**



Offices open
Saturday 9-1

PELICAN HOMESTEAD & Savings Association *Established 1922*

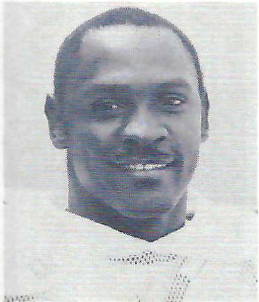
OAKLAWN: 1000 Veterans, 834-7283
Drive Thru: 834-7283
LAKEVIEW: 734 Robert E. Lee, 283-8883
LAKEVIEW: 2920 Severn, 888-7283
DE GAULLE DR.: 4450 De Gaulle, 394-2700
MARAHAN: 7129 Jefferson Hwy., 737-7283

UPTOWN: 5001 Prytania, 899-7283
GENTILLY: 5301 Elysian Fields, 282-0282
SLIDELL: 1401 Gause Blvd., 641-6000
MANDENVILLE: 900 N. Causeway, 626-5631
DOWNTOWN: 334 Carondelet, 581-7283
(Closed Saturday)

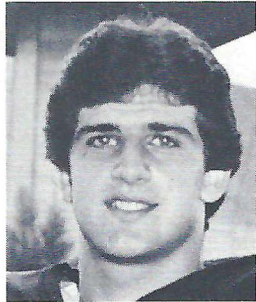


24 office throughout
Louisiana serving the
New Orleans
Metropolitan Areas,
Monroe, Alexandria
and Baton Rouge

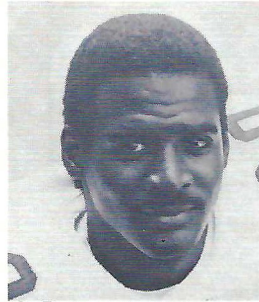
GREEN WAVE



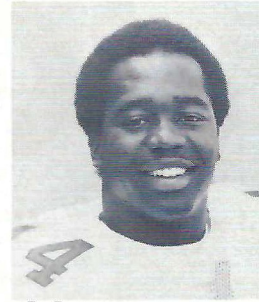
24 James Alexis
RB, New Iberia, LA



Sammy Amarena
P, Metairie



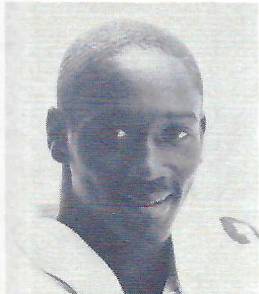
20 Carl Ambrose
WR, Lake Charles



44 Laraun Ambrose
RB, Monroe, LA



55 John Angelo
OLB, Youngstown, OH



27 Curt Baham
DB, Folsom, LA



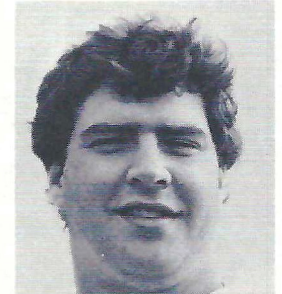
16 Jim Barkey
SR, Monogahela, PA



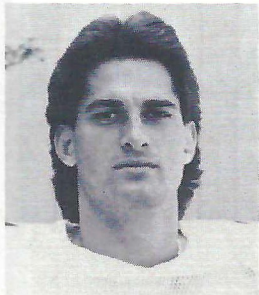
61 Mark Benzio
DL, Beaver, PA



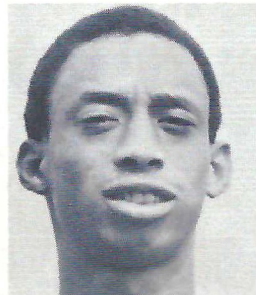
Mark Borne
DT, New Orleans, LA



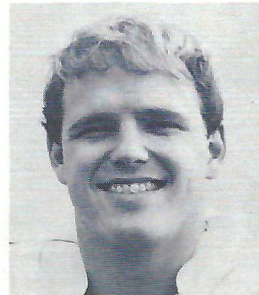
77 Jim Boyle
OL, Cincinnati, OH



7 Bubba Brister
QB, Monroe, LA



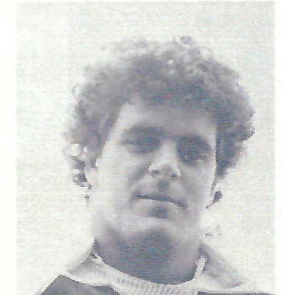
13 Gerald Broussard
DB, New Iberia, LA



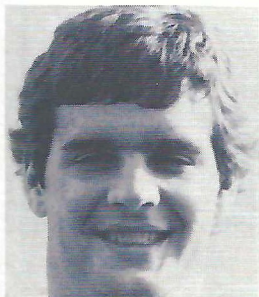
72 Mike Burnett
OL, Jacksonville, FL



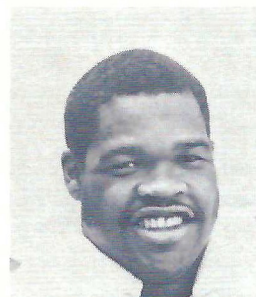
40 Benny Burst
DB, New Orleans, LA



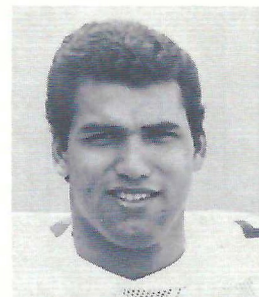
97 Chris Cannon
DL, Merion, PA



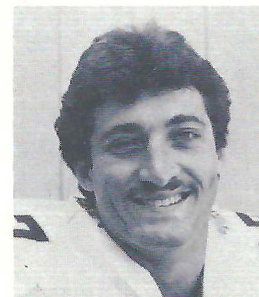
70 Lindsey Cooper
DL, Baton Rouge



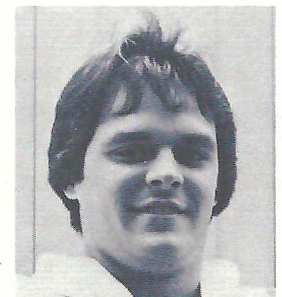
36 Melvin Cormier
OLB, Lake Charles



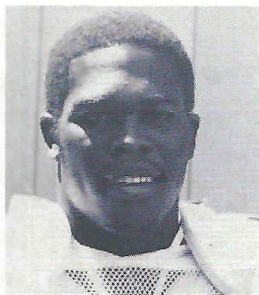
54 Harvey Cox
DL, Tampa, FL



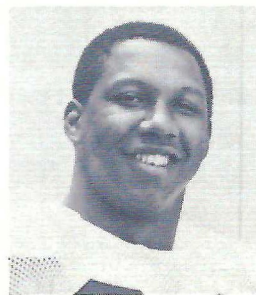
87 Jeff Davis
TE, Okeechobee, FL



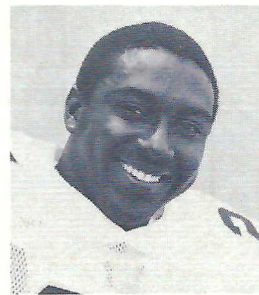
91 Artie DeLaneville
TE, Norco, LA



43 Burnell Dent
LB, Destrehan, LA



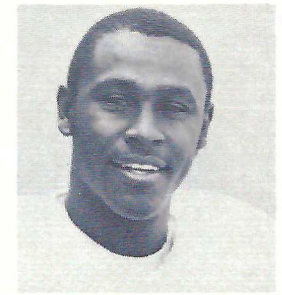
92 Zack Dixon
OLB, Franklin, LA



25 Eddie Dowell
DB, Linden, TX



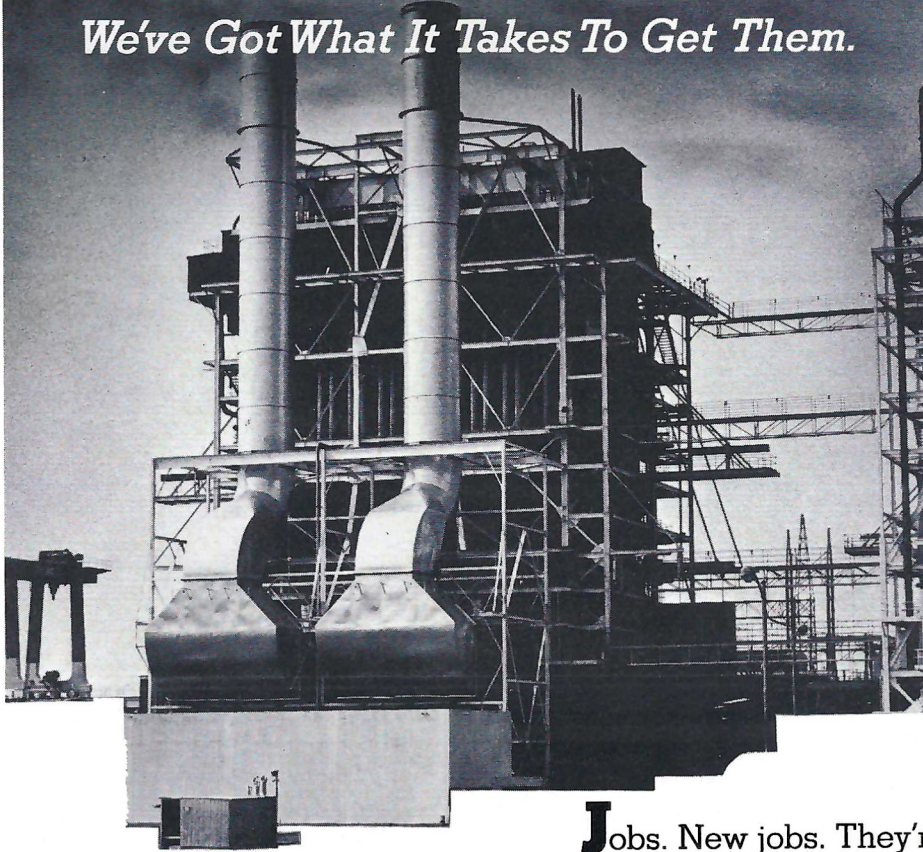
51 Charles Dunn
LB, Springfield, OH



1 Wade Elmore
QB, New Orleans

Jobs.

We've Got What It Takes To Get Them.



Jobs. New jobs. They're essential if our area is going to grow and expand economically. We have the natural resources and labor force necessary to attract new industries to our state. We also have an expert team of industrial specialists who are continually discussing plant expansion with in-state industries and re-location with out-of-state firms. We're going to need additional energy to supply power to these new industries and the investor-owned electric companies of Louisiana are planning and building new, more efficient facilities to handle these demands.

No single source of energy can supply all the electric power for our future needs. Our best energy strategy is to develop all existing resources especially nuclear power and coal. A balance of nuclear and coal is essential if we're going to grow and prosper.

LOUISIANA'S INVESTOR-OWNED ELECTRIC COMPANIES

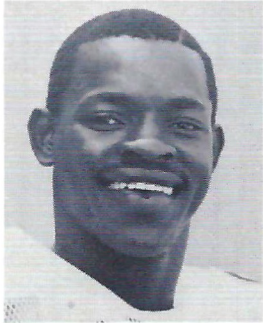
- INVESTING IN YOUR ENERGY FUTURE

Central Louisiana Electric Company / Gulf States Utilities Company / Louisiana Power & Light Company
New Orleans Public Service Inc. / Southwestern Electric Power Company

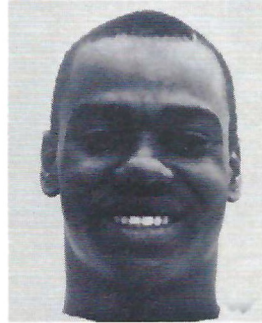
GREEN WAVE



32 Toddy Francis
RB, New Orleans, LA



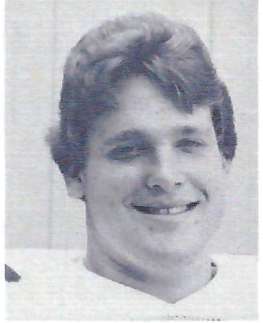
83 Robert Griffin
WR, Lake Charles, LA



15 Gene Harris
DB, Okeechobee, FL



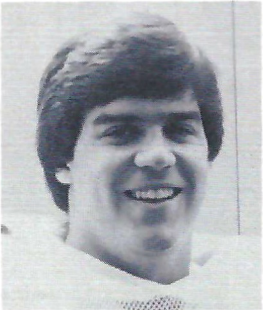
81 Craig Harrison
WR, St. James, LA



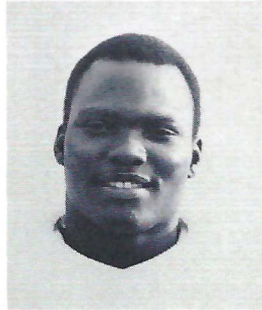
56 Bob Hirschfeld
OL, Miami, FL



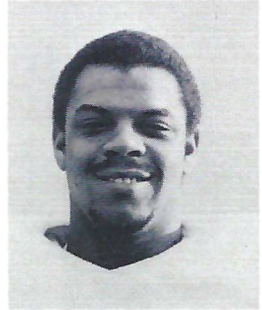
26 Randy Hubbell
DB, New Orleans, LA



41 David Jackson
LB, Norco, LA



34 Earl Jenkins
LB, Monroe, LA



50 Deno Jeter
LB, Atlanta, GA



42 Mike Jones
RB, Jacksonville, FL

Sunbeam

New Orleans' largest line of fine bakery products



Baked fresh daily in New Orleans

HOLSUM BAKERIES NEW ORLEANS



Nothing else comes close



The Beef People

W-D BRAND U. S. CHOICE BEEF
available at your nearby

WINN-DIXIE

GREEN WAVE



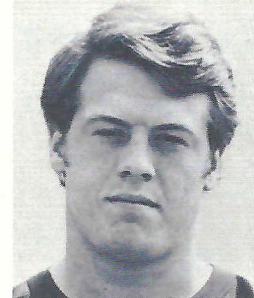
49 Mike Landry
LB, Biloxi, MS



94 Lester Lavalais
DT, Folsom, LA



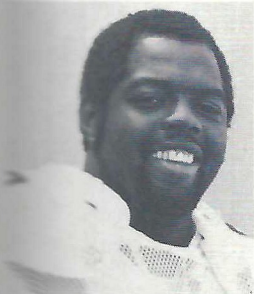
19 Reggie LeBray
DB, Litcher, LA



47 Tim McConnell
LB, Louisville, KY



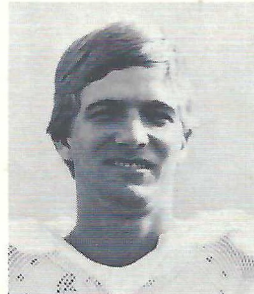
48 Harold McGrew
LB, Harvey, LA



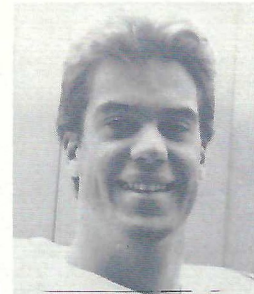
68 Ken Mackey
OL, Auburndale, FL



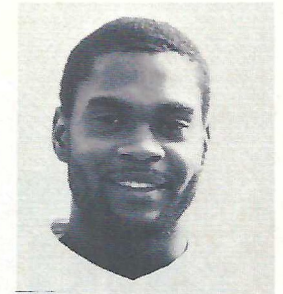
76 Don Maggs
OL, Youngstown, OH



4 Mark Massey
QB, Pensacola, FL



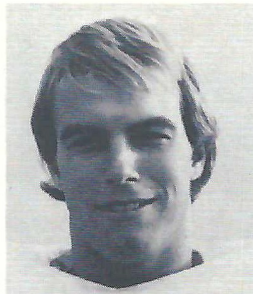
62 Max Mitchell
DT, Pittsburgh, PA



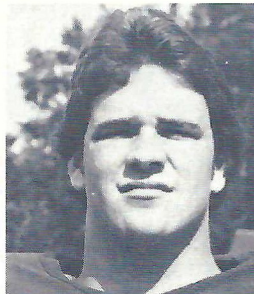
99 Eddie Neal
OLB, Okeechobee, FL



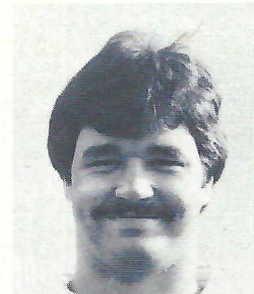
69 Vic Perez
DL, West New York



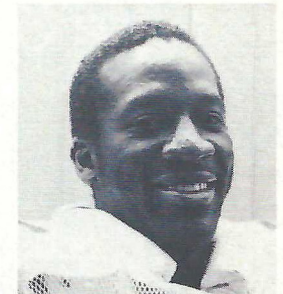
95 Mike Popko
OLB, Smithtown, NY



82 Jay Rhodes
TE, Baton Rouge



58 Frank Roberts
OL, Texarkana, TX



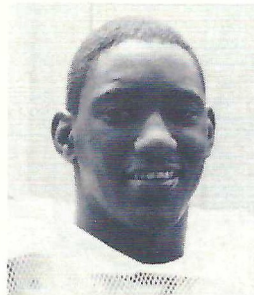
35 Kelvin Robinson
RB, Denham Springs



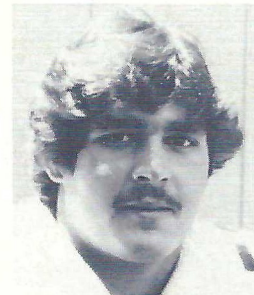
73 Raoul Rodriguez
OL, New Orleans, LA



63 Tommy Rose
OL, Atlanta, GA



84 Larry Route
WR, Covington, LA



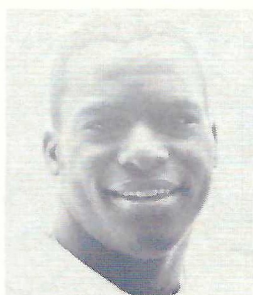
71 Randy Saffy
OL, Jacksonville, FL



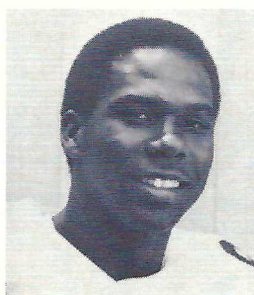
89 Mark Savini
TE, Radnor, PA



3 Wayne Smith
WR, New Orleans, LA



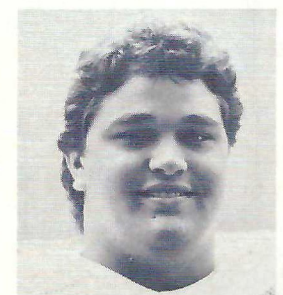
14 Treg Songy
DB, New Orleans, LA



8 Kevin Tate
DB, Morgan City, LA



22 Donald Ray Thomas
DB, Donaldsonville, LA



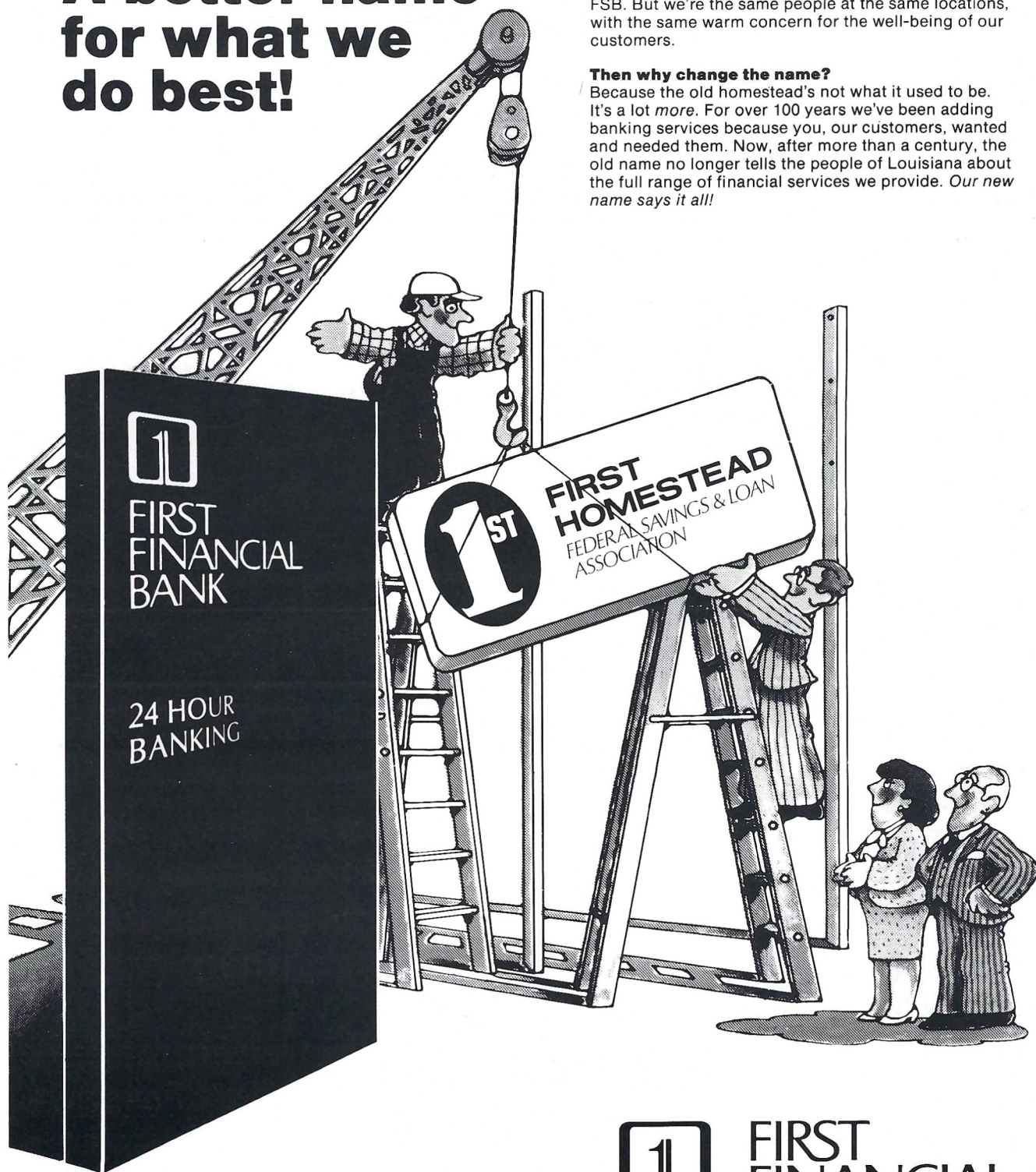
74 Ronald Tilton
OL, Tampa, FL

A better name for what we do best!

The only thing we're changing about First Homestead is the name. We're now officially First Financial Bank, FSB. But we're the same people at the same locations, with the same warm concern for the well-being of our customers.

Then why change the name?

Because the old homestead's not what it used to be. It's a lot *more*. For over 100 years we've been adding banking services because you, our customers, wanted and needed them. Now, after more than a century, the old name no longer tells the people of Louisiana about the full range of financial services we provide. *Our new name says it all!*



FIRST FINANCIAL BANK, FSB Member FSLIC



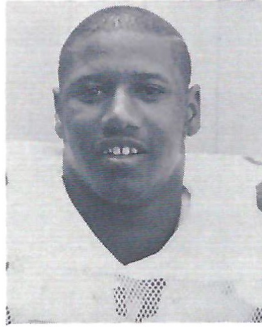
FIRST
FINANCIAL
BANK, FSB

The thing we do best is banking.
581-9285

GREEN WAVE



98 Darryl Tipton
LB, Ypsilanti, MI



38 Elton Veals
RB, Baton Rouge, LA



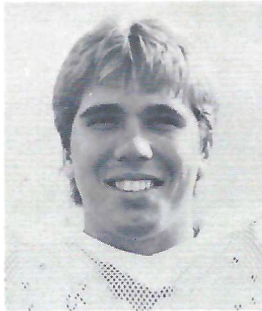
80 Clint Wenzel
DT, New Orleans



75 Jeff Wenzel
OL, New Orleans, LA



90 Richard Williams
DL, Covington, LA



2 Tony Wood
PK, Cape Coral, FL



78 Kevin Young
DL, New Orleans, LA



The 1984 Olympics start today.

To reach the Olympics, the athlete began training long ago. Years ago. Probably the better part of his or her life.

Your participation must also begin early—today—because most of the money for the U.S. Olympic effort will be spent long before the Games ever begin.

You can help the U.S. Olympic effort by making a contribution that directly helps our athletes. Send in your tax-deductible donation today, and we'll award you an Olympic gift of your choice. All gifts bear the U.S. Olympic emblem (as shown in the coupon below), and are yours to display as proudly as any athlete displays an Olympic medal.

Team up, America! The 1984 Olympics start today.



TEAM UP, LOUISIANA!

*Yes, I want to make the 1984 Olympics start today for America's athletes. Here's my contribution of _____ .
I've marked the awards I'd like to receive.*

- | | |
|--|---|
| <input type="checkbox"/> Desk Pen and Calendar (\$250) | <input type="checkbox"/> Tote Bag (\$25) |
| <input type="checkbox"/> Solid Brass Box (\$250) | <input type="checkbox"/> Brass Belt Buckle (\$25) |
| <input type="checkbox"/> Kangaroo Tote (\$250) | <input type="checkbox"/> Ceramic Mug (\$25) |
| <input type="checkbox"/> Club Bag (\$100) | <input type="checkbox"/> Key Clip (\$10) |
| <input type="checkbox"/> Sport Umbrella (\$100) | <input type="checkbox"/> Stick Pin (\$10) |
| <input type="checkbox"/> Drinking Glasses (\$50) | <input type="checkbox"/> Olympic Patch (\$5) |
| <input type="checkbox"/> Black Gold Pen (\$50) | <input type="checkbox"/> Lapel Pin (\$5) |
| <input type="checkbox"/> Ski Hat (\$35) | <input type="checkbox"/> Do not desire an award |

(Please print clearly and include your zip.)

Name _____

Address _____

City _____

State _____ Zip _____

Kindly make your check payable to: U.S. Olympic Committee.

Please mail this coupon with your check to:

Louisiana Olympic Headquarters
Att: Marianne Higgins
Hausmann's
Lakeside Shopping Center
Metairie, LA 70002

**U.S. OLYMPIC COMMITTEE
LOUISIANA OLYMPIC
VOLUNTEERS**



"If somebody in these United States has a better linebacker than Ricky Kingrea, then I'm glad we didn't play them this year," Tulane Head Coach Jim Pittman grinned just after the Green Wave had stifled Colorado, 17-3, in the 1970 Liberty Bowl.

Nicknamed "The Walrus" by teammates for his obvious good looks, Kingrea led his defensive teammates in taking charge of the offensive-minded Buffaloes that chilly, but bright, Memphis afternoon. Tulane, in its first-ever nationally-televised football game, showed the college football world that the Green Wave was for real.

Kingrea was named the Outstanding Defensive Player in the 1970 Liberty Bowl as he made 12 tackles and returned an interception 44 yards to set up the game's first score. Teaming with the late Ray Hester in the middle of the Green Wave's split-four defense, Kingrea led a Tulane defensive effort that limited a Colorado team averaging 30.6 points a game to a first half field goal. Colorado came into the game averaging 422.9 yards of total offense and managed only 175 yards against the Green Wave, penetrating the Tulane 45 yard line only once all afternoon.

The performance of Kingrea and the Tulane defense was not an exceptional one when measured by the standard established during the course of a 7-4 1970 season. When you ran against this Tulane defense you probably didn't run very far. If you went to the air, the chances for an

Rick Kingrea: 1970 All-America



interception were good if you got it off at all.

How did such a defense manage to lose four times? In a 21-14 loss to

Texas Tech, two of the scores came on an interception return and a 14 yard drive after a fumble recovery. In a 24-3 loss to Air Force, Tulane lost six fumbles. In a 20-6 loss to Georgia Tech, a 0-0 fourth quarter tie turned into disaster when a bad punt snap and an interception return resulted in two Tech TDs. In a 26-14 loss to LSU, fumble recoveries at the Tulane 10 and 11 yard lines, plus an interception returned to the Tulane 30, set up three of the Tigers' four touchdowns.

Through it all, the Tulane defense held firm and a fourth-quarter goal line stand (Kingrea was in on the third and fourth down tackles) against LSU was a key factor in the Liberty Bowl bid being extended, despite a two touchdown loss. Liberty Bowl head Bud Dudley had seen the Tulane defense in person against the Orange Bowl-bound Tigers and he wanted the Green Wave in Memphis.

Kingrea averaged better than 15 tackles a game in that 1970 season and had 10 tackles behind the line of scrimmage. He was voted the team's Most Valuable Player by his teammates and was tied with defensive back David Hebert in the team's vote for the Most Unselfish Player. That MVP and Most Unselfish designation tells a lot about the man.

Another thing that tells a lot about the man is the fact that Kingrea, who



was honored in 1969 and 1970, was the first football player since 1904 to serve Tulane as Captain for two years.

The Rick Kingrea-Tulane connection began in an unlikely place, as he was recruited out of the shadows of Tiger Stadium after a fine career at Baton Rouge High. Kingrea, Hester and defensive tackle Mike Walker turned out to be the plums in Pittman's first full recruiting season for the Green Wave.

The progress was slow, if not non-existent, in the early going as Tulane's 1968 team wound up 2-8 in Kingrea's sophomore year (freshmen were not eligible at the time). A starter and linebacker in a 5-2 defense, a bruised thigh in the second game of the 1968 season sidelined him for the next four games.

Pittman revealed later that the injury shelved plans to make Kingrea a rare two-way player. He had been toying with the idea of taking advantage of Kingrea's athletic ability in the offensive backfield at fullback. "When you have a good horse you ride it," was the way Coach Pitt put it.

To take advantage of the presence of Kingrea and Hester, Tulane went to the split-four defense for the 1969 season and began building a defensive team that jelled into a big winner in 1970. The 1969 team finished 3-7, but there was a lot of heartbreak in that record with losses like 24-28, 17-18 and 23-26 marring the proceedings.



Kingrea led Tulane with 145 tackles in 1969 and was named first unit All-South Independent for his play on a losing team (he repeated that honor in 1970).

When 1970 rolled around, seniors like Kingrea, Hester and Walker had their fill of losing football and were not to be denied. Tulane defensive coordinator Frank Young positioned Kingrea and Hester in the middle of the defense, split the tackles extra wide and dared you to run up the middle. They allowed only 15 touchdowns

from scrimmage that season, and only seven scoring drives were for more than 30 yards.

After graduation, Kingrea went on to a fine career in the National Football league. Most of that NFL play came with the New Orleans Saints, and Kingrea did more than play football during this period. He attended Law School at night during the latter part of his career and he is now a member of the law firm of Gelpi, Sullivan, Carroll and Laborde in New Orleans.



*the Monteleone's steak place
celebrated near and far
for its Louisiana*

*Wetlands decor, delicious
U.S. Prime steaks,
Quail, strolling musicians
and the Chefs*

*Nightly Seafood Special.
Free parking for
dinner guests, 6-11 P.M.*

Reservations 524-1044

*The
Monteleone*

214 ROYAL ST., NEW ORLEANS, LA.

Telephone 924-8555

**B. EISNER
PRODUCE
CORP.**

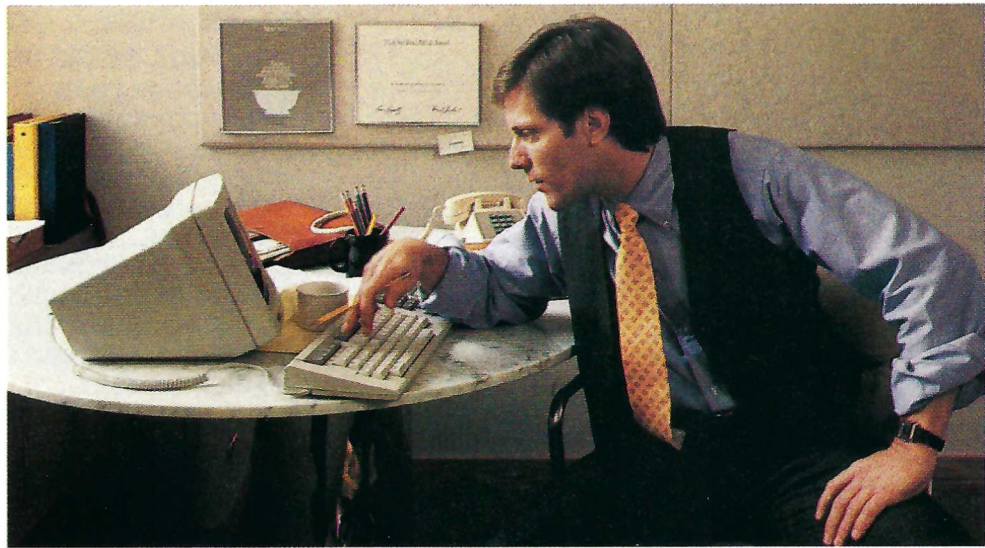
**FRUITS
AND
PRODUCE
FRESH FROZEN
FRUITS AND
VEGETABLES**

50 Vandam Street
New York, N.Y. 10013

TULANE ROSTER 1983

No.	PLAYER	Pos.	Yr.	Ht.	Wt.	Hometown
1	ELMORE, Wade	QB	Jr.	6-1	205	New Orleans
2	WOOD, Tony	PK	Jr.	5-8	190	Cape Coral, FL
3	SMITH, Wayne	WR	Sr.	6-2½	190	New Orleans
4	MASSEY, Mark	QB	Jr.	6-1	188	Pensacola, FL
5	AMARENA, Sammy	P	Fr.	6-2	183	Metairie
6	ALLEN, Tyrus	DB	Fr.	6-1	175	Jasper, TX
8	TATE, Kevin	DB	So.	6-0	186	Morgan City
9	ENGLISH, John	QB	Sr.	6-3	205	New Orleans
10	VAUGHNS, Tyrone	WR	Fr.	6-1	180	New Orleans
11	ZENO, Marc	WR	Fr.	6-3	185	Gramercy
13	BROUSSARD, Gerald	DB	Jr.	6-½	160	New Iberia
14	SONGY, Treg	DB	Jr.	6-2	195	New Orleans
15	HARRIS, Gene	DB	Fr.	5-11	187	Okeechobee, FL
16	BARKEY, Jim	P	Sr.	6-1½	208	Monogahela, PA
17	HOWARD, Casey	DB	So.	6-0	200	Baton Rouge
18	MILLER, Bryan	DB	Fr.	6-1	175	MacMurray, PA
19	LeBRAY, Reggie	DB	Sr.	6-2	189	Lutcher
20	AMBROSE, Carl	WR	Sr.	6-4	194	Lake Charles
21	LAVALAIS, Lester	DT	Jr.	6-2½	255	Folsom
22	THOMAS, Donald Ray	DB	Sr.	6-1½	180	Donaldsonville
23	SLINGER, Frank	LB	Fr.	6-1¼	212	Pittsburgh, PA
24	ALEXIS, James	RB	Fr.	5-10	188	New Iberia
25	DOWELL, Eddie	DB	So.	6-1	200	Linden, TX
26	HUBBELL, Randy	DB	Jr.	6-1½	185	New Orleans
27	BAHAM, Curt	DB	Jr.	5-11	178	Folsom
28	HULBERT, Jonathan	DB	Fr.	6-3	187	New Orleans
29	WENHOLD, Jeff	WR	So.	5-10	175	Tallahassee, FL
30	ALEXANDER, Jeff	RB	Fr.	6-2	195	Baker
31	NETTLES, Troy	FB/LB	Fr.	6-0	220	Baker
32	FRANCIS, Toddy	RB	Fr.	6-1	203	New Orleans
33	VELLENGA, Sean	LINE	Fr.	6-3	215	Tampa, FL
34	JENKINS, Earl	LB	Sr.	6-0	215	Monroe
35	ROBINSON, Kelvin	RB	Sr.	6-1	201	Denham Springs
36	CORMIER, Melvin	OLB	So.	5-11½	215	Lake Charles
38	VEALS, Elton	RB	Sr.	5-11	217	Baton Rouge
39	WETZEL, Troy	LB	Fr.	6-2	198	Metairie
40	BURST, Benny	DB	Jr.	6-0	190	New Orleans
41	JACKSON, David	LB	Sr.	6-2	223	Norco
42	JONES, Mike	RB	Jr.	5-10½	183	Jacksonville, FL
43	DENT, Burnell	LB	So.	6-½	218	Destrehan
44	AMBROSE, Laraun	RB	So.	5-9	195	Monroe
45	WENZEL, Harrison	DE	Fr.	6-3	210	New Orleans
46	BENWARD, Donelle	DE	Jr.	6-2½	230	New Orleans
47	McCONNELL, Tim	LB	So.	5-11	212	Louisville, KY
48	McGREW, Harold	LB	Jr.	5-11½	204	Harvey
49	LANDRY, Mike	LB	Fr.	6-1	214	Biloxi, MS
50	JETER, Dino	LB	Jr.	6-2	235	Atlanta, GA
51	DUNN, Charles	LB	So.	6-1	230	Springfield, OH
52	BECK, Chuck	LINE	Fr.	6-3	250	Houston, TX
53	KIEFFER, Peter	DL	Fr.	6-2	220	Tampa, FL
54	COX, Harvey	DL	Jr.	6-3½	230	Tampa, FL
55	ANGELO, John	OLB	Jr.	6-¼	207	Youngstown, OH
56	HIRSCHFELD, Bob	OL	Fr.	6-2¼	249	Miami, FL
58	ROBERTS, Frank	OL	Sr.	6-3	250	Texarkana, TX
59	JORDAN, Greg	C	Fr.	6-2	230	New Orleans
60	BOURNE, Mark	DT	Sr.	6-4	235	New Orleans
61	BENZIO, Mark	DL	Fr.	6-2	253	Beaver, PA
62	MITCHELL, Max	C	So.	6-5	245	Pittsburgh, PA
63	ROSE, Tommy	OL	Sr.	6-1	248	Atlanta, GA
64	HOWLEY, Tom	LINE	Fr.	6-5	230	Youngstown, OH
65	CORCORAN, Hugh	OL	Fr.	6-3	235	Bethel Park, PA
66	LOCKLEY, Andre	OL	Fr.	6-6	226	Jeanerette
67	McCULLY, Don	LINE	Fr.	6-3½	240	St. Petersburg, FL
68	MACKEY, Ken	OL	Sr.	6-3	265	Auburndale, FL
69	PEREZ, Vic	DL	Sr.	6-0	270	West New York, NJ
70	COOPER, Lindsey	DL	Jr.	6-2	238	Baton Rouge
71	SAFFY, Randy	OL	Jr.	6-5	257	Jacksonville, FL
72	BURNETT, Mike	OL	Jr.	6-4	237	Jacksonville, FL
73	RODRIGUEZ, Raoul	OL	So.	6-3	265	New Orleans
74	TILTON, Ronald	OL	So.	6-3	253	Tampa, FL
75	WENZEL, Jeff	OL	Jr.	6-7	253	New Orleans
76	MAGGS, Don	OL	Sr.	6-5	277	Youngstown, OH
77	BOYLE, Jim	OL	Sr.	6-5	270	Cincinnati, OH
78	YOUNG, Kevin	DL	Fr.	6-5	260	New Orleans
79	COTTINGHAM, John	LINE	Fr.	6-3	280	Dallas, TX
80	WENZEL, Clinton	DL	Sr.	6-3½	246	New Orleans
81	HARRISON, Craig	WR	Sr.	5-11	170	St. James
82	RHODES, Jay	TE	So.	6-2	220	Baton Rouge
83	GRIFFIN, Robert	WR	Sr.	6-1½	190	Lake Charles
84	ROUTE, Larry	WR	Fr.	6-1	200	Covington
85	WALL, Ralph	NG	Fr.	6-2	238	New Orleans
86	JACKSON, Scott	LINE	Fr.	6-3	235	Birmingham, AL
87	DAVIS, Jeff	TE	Fr.	6-3	230	Okeechobee, FL
88	SUTTON, Reginald	TE	Jr.	6-3¼	210	Port Arthur, TX
89	SAVINI, Mark	TE	Jr.	6-4	226	Radnor, PA
90	WILLIAMS, Richard	DL	So.	6-2	225	Covington
91	DeLANEUVILLE, Artie	TE	Fr.	6-3	219	Norco
92	DIXON, Zack	OLB	Sr.	6-1	205	Franklin
93	SCAGLIONE, Vincent	LINE	Fr.	6-4	245	Pittsburgh, PA
95	POPKO, Mike	OLB	So.	6-1	212	Smithtown, NY
96	CHAMBERS, Karl	DT	Fr.	6-4	235	New Orleans
97	CANNON, Chris	DL	Jr.	6-4	231	Merion, PA
98	TIPTON, Darryl	LB	Sr.	6-2	230	Ypsilanti, MI
99	NEAL, Eddie	OLB	Jr.	6-2½	230	Okeechobee, FL

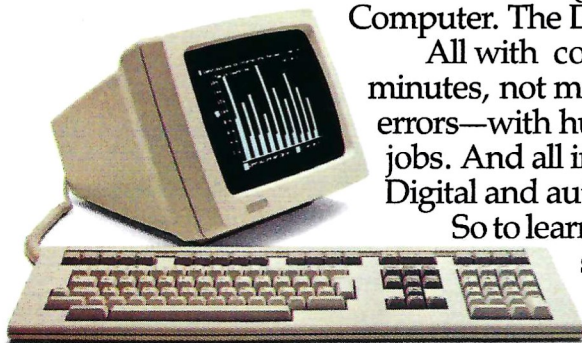
Run Digital's personal computer in minutes. No fumbles.



You could fumble around for days learning how to use a personal computer. Not so with one of Digital's Personal Computers. The Rainbow™ Personal Computer. The DECmate™. Or the Professional™ Series.

All with computer-based instruction on screen, so you can learn in minutes, not months. All with easy-to-use keyboards, to guard against errors—with hundreds of software applications to tackle the toughest jobs. And all include expert service and support in the backfield by Digital and authorized dealers.

So to learn the plays quicker, and score more points for your team, see one of Digital's Personal Computers today. To learn where, call 1-800-DIGITAL, or write Digital Equipment Corporation, 200 Baker Avenue, Concord, MA 01742.



COCA-COLA. AN OLYMPIC PARTNER

Part of the Olympic line



WHEN TULANE HAS THE BALL

TULANE OFFENSE

81	CRAIG HARRISON	FL
76	DON MAGGS	LT
68	KEN MACKEY	LG
58	FRANK ROBERTS	C
74	RANDY SAFFY	RG
77	JIM BOYLE	RT
89	MARK SAVINI	TE
9	JON ENGLISH	QB
38	ELTON VEALS	FB
42	MIKE JONES	HB
3	WAYNE SMITH	FL
16	JIM BARKEY	P
2	TONY WOOD	K

FLORIDA STATE DEFENSE

47	BRIAN WILLIAMS	OLB
76	ALPHONSO CARREKER	DT
98	BRAD FIJTIK	NG
85	DAVID PONDER	DT
86	JOHN MCLEAN	OLB
38	KEN ROE	LB
58	HENRY TAYLOR	LB
8	ERIC RILEY	DB
19	PAT MILLIGAN	DB
43	BRIAN McCRARY	DB
28	RICKY KINSEY	DB

THE GREEN WAVE

1	Elmore	QB	35	Robinson	RB	68	Mackey	
2	Wood	PK	36	Cormier	OLB	69	Perez	
3	Smith	WR	38	Veals	RB	70	Cooper	
4	Massey	QB	39	Wetzel	LB	71	Saffy	
5	Amarena	P	40	Burst	DB	72	Burnett	
6	Allen	DB	41	Jackson	LB	73	Rodriguez	
7	Brister	QB	42	Jones	RB	74	Tilton	
8	Tate	DB	43	Dent	LB	75	Wenzel	
9	English	QB	44	Ambrose	DE	76	Maggs	
10	Vaughans	WR	45	Wenzel	DE	77	Boyle	
11	Zeno	WR	46	Benward	DE	78	Young	
13	Broussard	DB	47	McConnell	LB	79	Cottingham	
14	Songy	DB	48	McGrew	LB	80	Wenzel	
15	Harris	DB	49	Landry	LB	81	Harrison	
16	Barkey	P	50	Jeter	LB	82	Rhodes	
17	Howard	DB	51	Dunn	LB	83	Griffin	
18	Miller	DB	52	Beck	LINE	84	Route	
19	LeBray	DB	53	Kieffer	DL	85	Wall	
20	Ambrose	WR	54	Cox	DL	86	Jackson	
22	Thomas	DB	55	Angelo	OLB	87	Davis	
23	Slinger	LB	56	Hirschfeld	OL	88	Sutton	
24	Alexis	RB	57	Tortorich	LB	89	Savini	
25	Dowell	DB	58	Roberts	OL	90	Williams	
26	Hubbell	DB	59	Jordan	DT	91	DeLaneuville	
28	Baham	DB	60	Borne	DT	92	Dixon	
29	Hulbert	DB	61	Benizio	DL	93	Scaglione	
29	Wenhold	WR	62	Mitchell	DT	94	Lavalais	
30	Alexander	RB	63	Rose	OL	95	Popko	
31	Nettles	FB/LB	64	Howley	LINE	96	Chambers	
32	Francis	RB	65	Corcoran	OL	97	Cannon	
33	Vellenga	LINE	66	Lockley	OL	98	Tipton	
34	Jenkins	LB	67	McCully	LINE	99	Neal	

BOTTLED BY THE LOUISIANA STATE COCA-COLA BOTTLING PLANT



OLYMPIC TRADITION.

lineup for over 50 years.

WHEN FLORIDA STATE HAS THE BALL

FLORIDA STATE OFFENSE

88	HASSAN JONES	SE
77	JOHN IONATA	QT
61	DAN MORRIS	QG
69	TOM McCORMICK	C
64	JAMIE DUKES	SG
75	HERBERT HARP	ST
89	TOM WHEELER	TE
12	KELLY LOWERY	QB
26	GREG ALLEN	RB
41	CEDRIC JONES	FB
18	WEEGIE THOMPSON	FL

TULANE DEFENSE

34	EARL JENKINS	LE
54	HARVEY COX	LT
69	VIC PEREZ	NG
80	CLINTON WENZEL	RT
99	EDDIE NEAL	RE
41	DAVID JACKSON	LLB
98	DARRYL TIPTON	RLB
13	GERALD BROUSSARD	LC
26	RANDY HUBBELL	SS
27	CURT BAHAM	FS
22	DONALD RAY THOMAS	RC

THE SEMINOLES

41	Jones, Cedric	RB	76	Carreker	DT
42	Jones, Cletis	LB	77	Ionata	OT
43	McCrary	DB	78	Widner	OT
44	Wells	DB	79	Nichols	DL
45	Williams, I.	DT	81	Griffis	TE
46	Wyatt	LB	82	Johnson	WR
47	Williams, B.	OLB	83	Scott	OLB
48	Matt	DL	84	Jax	OLB
51	Cullifer	DL	85	Ponder	DT
52	Restivo	C	86	McLean	OLB
53	Riopelle	OG	88	Jones, H.	WR
55	Jones, F.	LB	89	Wheeler	TE
56	Kostka	OL	90	Martin	DL
58	Taylor, H.	LB	92	Lantrip	OLB
59	Flasher	OL	93	Hendley	DT
60	Bamber	OL	95	Hebron	TE
61	Morris	OL	96	Panton	TE
62	Lopez	OG	97	Jackson	WR
63	Render	OG	98	Fojtik	NG
64	Dukes	OG	99	Heggie	OLB
66	Barwick	OG			
67	Roberson	LB			
68	Chavers	NG			
69	McCormick	C			
70	Agne	OL			
71	Stroud	NG			
72	Dowell	OL			
73	Thompson	OT			
74	Carter	OL			
75	Harp	OT			



OL DL DL OL OL OL OL OL DL INE WR TE WR WR INE TE TE DL TE OLB INE DT OLB DL OLB

IANA COCA-COLA BOTTLING CO.



CIMARRON '84 THIS ONE'S GOT THE TOUCH.

The Cadillac touch. It's everywhere. You can feel it when you put Cadillac's road-hugging Touring Suspension to the test. You can see it ... inside and out. From leather-faced front buckets with lumbar support to a hand-buffed exterior finish. It's attention to detail, too. Like push-button air. And aluminum alloy wheels. You've got to drive this car ... and experience the Cadillac touch. Cimarron '84.

BEST OF ALL... IT'S A CADILLAC.

Let's Get It Together ... Buckle Up.



FLORIDA STATE ROSTER

No.	PLAYER	Pos.	Yr.	Ht.	Wt.	Hometown
1	THOMAS, Eric	QB	So.	6-0	192	Lake Park, GA
2	NICKLAUS, Steve	WR	So.	6-2	190	N. Palm Beach
3	GAINER, Herb	WR	Fr.	6-2	180	Sarasota
4	HESTER, Jessie	WR	Jr.	6-0	173	Belle Glade
5	WESSEL, Joe	DB	Sr.	5-11	183	Miami
6	BERRY, Louis	P	Fr.	6-0	180	Panama City
7	BARCO, Barry	KS	Fr.	5-9	166	Orange Park
8	RILEY, Eric	DB	Jr.	6-0	164	Ft. Myers
10	DAVIS, Bob	QB	Jr.	6-4	189	Warner Robins, GA
12	LOWREY, Kelly	QB	Sr.	6-1	225	Lake City
13	MACK, Kim	LB	Sr.	6-0	192	Port Orange
14	HANDEL, Greg	DB	Jr.	6-0	180	Largo
16	TAYLOR, Rick	QB	Jr.	6-4	197	Port St. Joe
17	WILLIAMS, Eric	WR-DB	Fr.	5-9	175	Clearwater
18	THOMPSON, Weegie	WR	Sr.	6-6	218	Midlothian, VA
19	MILLIGAN, Pat	DB	Sr.	5-11	172	Ft. Lauderdale
20	SNIPES, Roosevelt	RB	So.	5-9	172	Sarasota
21	PIUROWSKI, John	DB	So.	6-0	167	Sarasota
22	HALL, Philip	KS	Jr.	5-10	148	Tallahassee
23	ASHLEY, Tracy	DB	Jr.	5-10	183	Cochran, GA
24	HOLLOMAN, Darrin	RB	Fr.	5-7	165	Tallahassee
26	ALLEN, Greg	RB	Jr.	6-0	201	Milton
27	WHITE, Randy	DB-WR	Fr.	6-0	165	Marianna
28	KINSEY, Rocky	DB	So.	5-9	173	Greenville
31	ALLEN, Billy	DB-RB	Jr.	6-1	204	Cleveland, OH
32	MAYHEW, Martin	DB	Fr.	5-8	164	Tallahassee
35	WILMOT, Horace	FB	So.	5-11	223	Delray Beach
37	McNABB, Cleveland	DB	Fr.	6-1	179	Ft. Walton Beach
38	ROE, Ken	LB	Sr.	6-0	207	Cropwell, AL
40	NEWELL, Greg	DB	Fr.	5-11	195	Panama City
41	JONES, Cedric	RB	Jr.	5-9	187	Valdosta, GA
42	JONES, Cletis	LB	So.	6-0	215	Miami
43	McCRARY, Brian	DB	Jr.	5-11	167	Germantown, TN
44	WELLS, Chuck	DB	Fr.	6-0	200	Jacksonville
45	WILLIAMS, Isaac	DT	So.	6-1	249	Sanford
46	WYATT, Stuart	LB	So.	6-0	205	Columbus, OH
47	WILLIAMS, Brian	OLB	Jr.	6-0	210	Winter Haven
48	MATT, Prince	LB	Jr.	5-10	178	Bradenton
51	CULLIFER, Richard	DL	Fr.	6-2	237	Winter Haven
52	RESTIVO, Sam	C	Sr.	6-0	247	Jamestown, NY
53	RIOPELLE, Gerry	OG	Jr.	6-1	258	Wyandotte, MI
55	JONES, Fred	LB	Fr.	6-3	225	Miami
56	KOSTKA, Joe	OL	Fr.	6-2	245	Chicago, IL
58	TAYLOR, Henry	LB	Jr.	6-0	211	Milledgeville, GA
59	FLASHER, Tim	OL	So.	6-6	218	Hollywood
60	BAMBER, John	OL	So.	6-5	257	Philadelphia, PA
61	MORRIS, Dan	OL	So.	6-1	238	Longwood
62	LOPEZ, Pablo	OL	Fr.	6-6	245	Miami
63	RENDER, Ricky	OG	Sr.	6-4	256	Newton, AL
64	DUKES, Jamie	OG	So.	6-1	289	Orlando
66	BARWICK, Parrish	OG	So.	6-0	284	Crawfordville
67	ROBERSON, Ulysses	LB	Fr.	6-4	215	Auburndale
68	CHAVERS, Lenny	NG	So.	6-0	247	Osteen
69	McCORMICK, Tom	C	Sr.	6-2	242	Panama City
70	AGNE, Roger	OL	So.	6-4	260	Jacksonville
71	STROUD, Todd	NG	So.	5-11	217	St. Petersburg
72	DOWELL, J. D.	OL	So.	6-2	215	Tampa
73	THOMPSON, Jim	OT	Jr.	6-7	234	Midlothian, VA
74	CARTER, Randy	OL	So.	6-3	252	Jacksonville
75	HARP, Herbert	OT	Sr.	6-3	295	Winter Garden
76	CARREKER, Alphonso	DT	Sr.	6-6	259	Columbus, OH
77	IONATA, John	OT	So.	6-3	263	Dunedin
78	WIDNER, Terry	OT	Sr.	6-4	266	Donaldsonville, GA
79	NICHOLS, Gerald	DL	So.	6-2	251	St. Louis, MO
81	GRIFFIS, Kevin	TE	Sr.	6-2	219	Raiford
82	JOHNSON, Tony	WR	Sr.	6-1	180	Dothan, AL
83	SCOTT, Stanley	OLB	So.	6-3	232	Brandon
84	JAX, Garth	OLB	So.	6-2	207	Houston, TX
85	PONDER, David	DT	Sr.	6-3	251	Cairo, GA
86	McLEAN, John	OLB	Sr.	6-3	221	Clermont
88	JONES, Hassan	WR	So.	6-1	203	Clearwater
89	WHEELER, Tom	TE	Sr.	6-2	227	Port Orange
90	MARTIN, Grady	DL	Fr.	6-3	245	Orlando
92	LANTRIP, Mac	OLB	So.	6-2	224	Lake Brantley
93	HENDLEY, Jim	DT	So.	6-3	249	Nashville, GA
95	HEBRON, Tim	DL	Fr.	6-5	256	St. Louis, MO
96	PANTON, Pete	TE	So.	6-2	232	Laurel
97	JACKSON, Lenx	WR	Sr.	6-3	210	Tallahassee
98	FOJTIK, Brad	NG	Sr.	6-5	250	Auburndale
99	HEGGIE, Bruce	OLB	Fr.	6-4	235	St. Louis, MO

Mc Dougall's

TRAVEL SERVICE, INC.

Travel
for the discriminating . . .
TULANE GREEN WAVE
BOOSTERS

Certified Travel Counsellors are delighted to give you professional advice . . . For over 36 years we have offered the finest in travel service.

MONTELEONE HOTEL

NEW ORLEANS, LA. 70140

(504) 523-3461

* McDougall's is the authorized coordinator and booking agent handling Green Wave supporters to out of town games . . . and Football Week-end packages in New Orleans for visiting fans to the Home games.

After the Game
meet at

Cafe
Banquette
The Fun Place To Be
UPTOWN
NEW ORLEANS

Sunday thru Thursday

- 11:00 PM-1:00 AM 2 for 1 drinks
- Thursday Night is Ladies Night
8:00 PM-12 Midnight

Every Saturday

- Bonus Balloon Nite
- Food and Beverage

3445 PRYTANIA
(ACROSS FROM TOURO)
891-2227

FLORIDA STATE UNIVERSITY



FLORIDA STATE UNIVERSITY CAMPUS



Dr. Bernard F. Sliger
President



C.W. "Hootie" Ingram
Athletic Director



Bobby Bowden
Head Coach

GREAT USED CARS



CROWN
BUICK

2121 Clearview at I-10 • Phone 455-6666

Holiday Travels
719 ADAMS STREET
NEW ORLEANS, LOUISIANA 70118
PHONE: (504) 861-2512

**GOOD LUCK
GREEN WAVE!**

CALL US AT
861-2512

FOR:

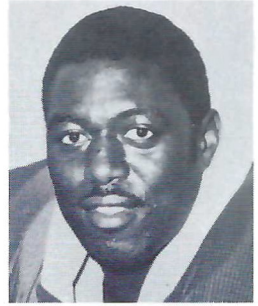
- AIRLINE TICKETS
- RAILROAD TICKETS
- CRUISES • TOURS • HOTELS
- RENTAL CARS

Major credit cards accepted
NO ADDITIONAL CHARGE TO YOU!

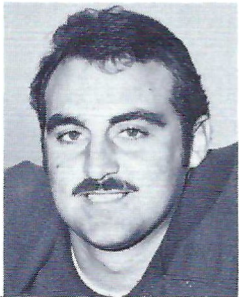
SEMINOLES



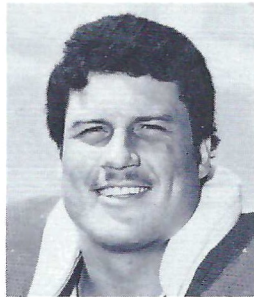
Greg Allen
Tail Back



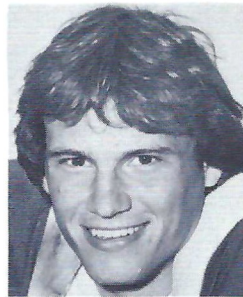
Alphonso Carreker
Defensive Tackle



Kelly Lowrey
Quarter Back



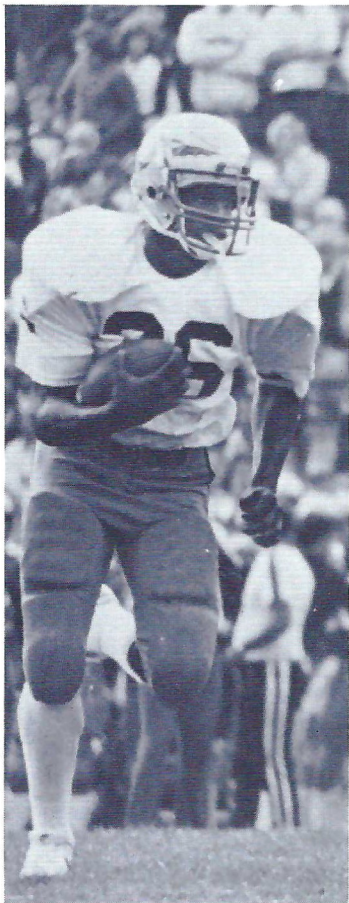
David Ponder
Tackle



Ken Roe
Inside Linebacker



Tom McCormick
Center



26 Greg Allen
TB



76 Alphonso Carreker
DT



A student at the WTUL controls.

You might not expect one of New Orleans' top FM radio stations to have offices tucked away in the basement of Tulane University Student Center.

The middle office shows signs of years of college students, quips, and cartoons cover a disheveled bulletin board. Peeling bumper stickers, de-

classical, Broadway, folk, reggae, new wave and country music, as well as "oldies" and various specialty shows. It also broadcasts Tulane football, basketball and (sometimes) baseball games. News is aired five times a day.

The station's reach extends through most of the city, but there are

Some financial support comes from local businesses who sponsor programs.

The rest of the station's money comes from the annual three-day "Survival Marathon," in which three DJ's each take 24-hour shifts on the air, playing requests in return for pledges. Listeners pledge \$5 to hear the song of their choice, or \$25 to hear an album side. In this year's March marathon, Plottner says, pledges totalled \$9,500, though not all the money was actually collected.

DJ's responsible for TUL's success are not broadcast journalism students—Tulane doesn't have a broadcast journalism program. The only radio training most of them have is what they learn at TUL.

Plottner, for example, is a fifth-year architecture student. Some DJ's are former Tulane students who stayed with the station. The executive staff, all students, changes every April, when the 100 to 150 staff members elect a station manager, who appoints directors of the 11 departments.

"Everything is done by students," Plottner says. "Maybe that's why we're successful."

By Tina Evans

Radio as a learning 'TUL

corate lockers and walls. A worn speaker blares the stations's current program as another disc jockey tests records for later play.

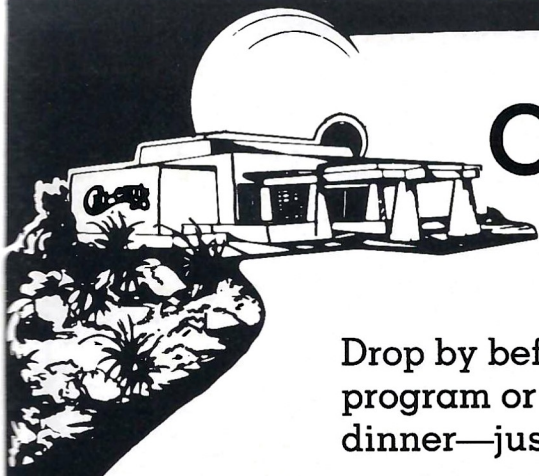
WTUL, Tulane's student-run radio station found at 91.5 on the FM dial, is hardly your typical radio station. It is non-commercial and plays "progressive music," according to Kevin Plottner, TUL program director. "We're concerned with playing good music that you won't hear somewhere else. It's music that takes chances, tries something new. It's something that aims to be more than just music to make money," he says.

TUL programming includes jazz,

a few areas in Metairie that find it hard to receive a clear signal, the program director pointed out. Another power increase is planned for the near future, however.

The alternative format apparently appeals to lots of listeners. Last summer, Plottner says, WTUL was ranked third in popularity among New Orleans' 13 FM radio stations. "We're in the top 10 college stations in the country, for sure. We see that at conventions," he says.

The station, which went on the air in 1960 and expanded its power in 1971 and again in 1976, is funded partially with money from Tulane student fees.



Chi Chi's For Dinner After The Game

Drop by before or after any Tulane home game, bring in this program or your ticket, and enjoy a free margarita with your dinner—just for being a Green Wave fan.

Joe Davenport, Mexican Restaurant Critic: "The best Mexican food in New Orleans."



OAKWOOD SHOPPING CTR. • GRETNA
2421 VETERANS BLVD. • KENNER



ROLL GREEN WAVE



1535 Westbank Expressway • 362-9200

A COMMITMENT TO EXCELLENCE

SECRETARIES



Standing: June Temples, Dawn Ducombs, Lurlyn Fitzpatrick, Earlene Zeaman, Gloria Ballestas, Sheila Favalora; Seated: Ruth Schotts; Missing: Rita Lopiccolo, Kim Martin, Lisa Legier.

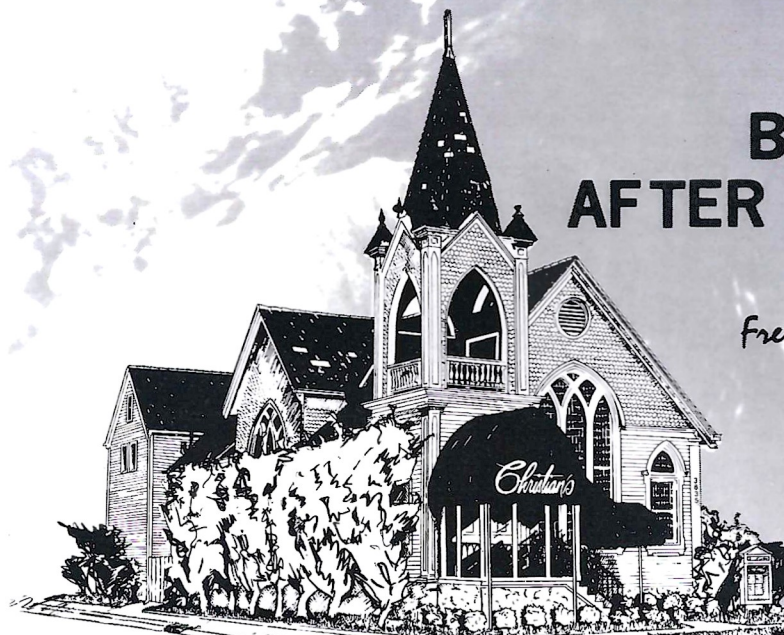
every
**Spend the season
with
Channel 4!**

*Jim Henderson...
Chris Myers...
Larry Matson...
your best source
for every sport!*

**Eyewitness
Sports4**



Touchdown At *Christian's*



**BEFORE OR
AFTER THE GAME**

*Specializing in
French and Creole Cuisine*

**DRESS CODE
REQUIRED**

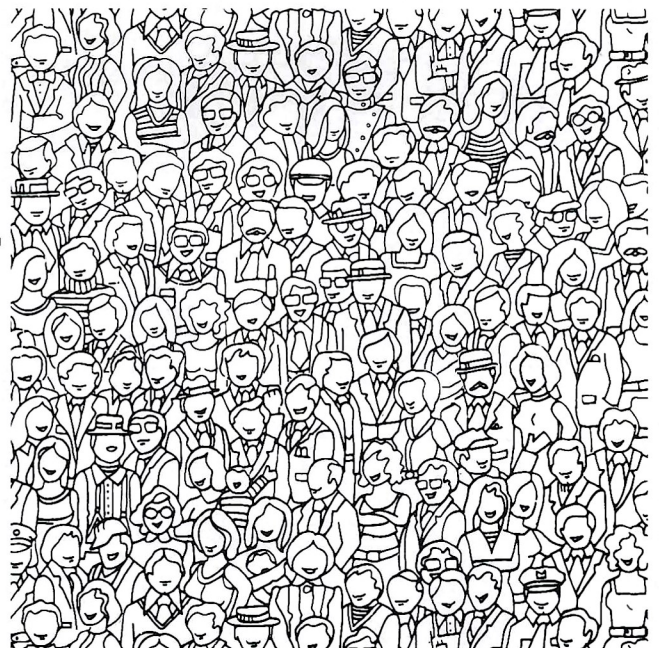
Tues.-Sat. Lunch 11:30-2:00 Dinner 5:30-10:00 Dinner Reservations Recommended 3835 Iberville 482-4924

IT'S MORE FUN IN A GROUP!

**Attend Tulane Green Wave
games as part of a group...**

**It's more fun
and you'll save!**

**You can also make money
for your club or
organization by attending
as a group.**



**Contact the Sports Marketing Department at 865-5505 for
information on how to attend Tulane games as part of a group**

TULANE'S ALL-AMERICANS

1925 — Charles Flournoy, back
 1929 — Willis Banker, back
 1930 — Jerry Dalrymple, end
 1931 — Don Zimmerman, back
 1934 — Claude Simons, Jr., back
 1939 — Ralph Wenzel, end
 1940 — Tommy O'Boyle, guard
 1943 — Lester Gatewood, center
 1944 — W. A. Jones, back
 1949 — Eddie Price, back
 1950 — Jerome Helluin, tackle
 1955 — Tony Sardisco, guard
 1960 — Tommy Mason, back
 1967 — Bobby Duhon, back
 1970 — Rick Kingrea, linebacker
 1973 — Charles Hall, tackle

GO WAVE



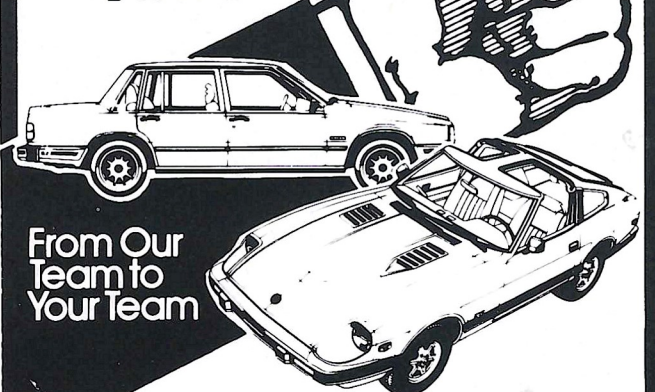
Royall

OLDSMOBILE

Across from Lakeside Shopping Center

The dealership that's different

Good Luck



From Our
Team to
Your Team

DIAMOND
DATSUN VOLVO

3101 Tulane Avenue Phone 821-8570
 above Broad New Orleans

FRANK HILLE
Chevrolet-Oldsmobile
 Bay St. Louis, Mississippi
 A Gerry Lane Enterprise

TURAN-LANE
Chevrolet-Buick
 Gulfport, Mississippi
 A Gerry Lane Enterprise

GERRY LANE
Chevrolet-Datsun
 Pascagoula, Mississippi
 Get in the Right Lane for a
 Gerry Lane Enterprise Deal

GREEN WAVE FANS

Enjoy a fabulous
Chinese Lunch
before or after
the game

From **\$4.95**

Lorraine Lee's
*Imperial Palace
Regency*



For Reservations Call 522-8666

Elegant Chinese Dining
in the CBD
Open for Breakfast,
Lunch and Dinner

**Saints Champagne
Brunch 10 a.m.
Adults 10.95
Children 6.00**

Loyola Street entrance to the Hyatt Regency
First Floor • 601 Loyola Avenue

**FREE BLOODY MARY
WITH CHINESE LUNCH**

From 11 a.m. to 6 p.m., Game Days Only

Good only with this coupon

MANAGERS



Top Row (L-R): **Eliot Gross, Dan English, Kurt Kirsch**
Bottom Row (L-R): **Terc Martinez, Larry Smith**



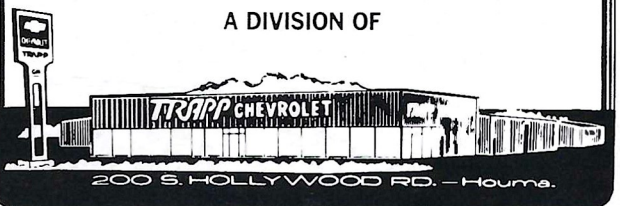
**Daily, Weekly, Monthly Rentals
and Long Term Leasing of
Chevrolet Cars and Trucks**

Phone:
Houma 876-0250 • New Orleans 522-7168
Harvey 366-4111

Quality Rentals—Westside
533 Manhattan Blvd.
Harvey, LA. 70058

**QUALITY
RENTALS**

A DIVISION OF

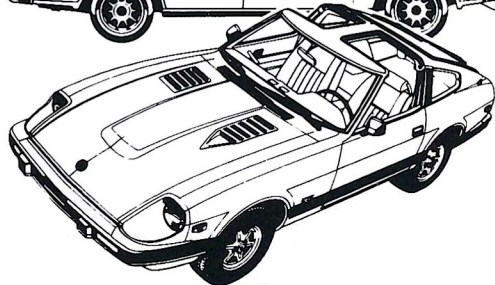


TRAINERS



(left to right): Ed Leonard, Gary Perez, Mike Hill, Bubba Porche (Head Trainer), Todd DeMeza, Bucky Buxton, Kirk Hill.

Nobody Backs
Their Deals Like
Diamond



DIAMOND
DATSUN VOLVO

3101 Tulane Avenue Phone 821-8570
above Broad New Orleans

Johnson-Cefalu
Co., Inc.

HWY. 51 - AMITE, LA. - PH: 748-8138



BUICK



TRUCKS

GMC TRUCKS

Come to the country
where you get
something
extra!

1983 TULANE RADIO NETWORK

FOLLOW THE GREEN WAVE
WITH DON CROCKETT

STATION LIST

WWL-AM870 (FLAGSHIP STATION)	New Orleans, LA	KDXI-AM1360/FM93	Mansfield, LA
WLCS-AM910	Baton Rouge, LA	KLIC-AM1230	Monroe, LA
WIKC-AM1490	Bogalusa, LA	KLIL-FM92	Moreauville, LA
KSIG-AM1450	Crowley, LA	KMRC-AM1430	Morgan City, LA
WLBI-AM1220	Denham Springs, LA	KDEA-FM99	New Iberia, LA
KFRA-AM1390/FM105	Franklin, LA	KOGM-FM107	Opelousas, LA
WFCG-AM1110	Franklinton, LA	KPAL-AM1110	Pineville, LA
WGUF-AM1130/FM96	Gulfport, MS	KXLA-AM990	Rayville, LA
KLOU-AM1580	Lake Charles, LA	KEPT-FM96	Shreveport, LA
WCKW-FM92	LaPlace, LA	WSDL-AM1560	Slidell, LA
WNSL-FM100	Laurel, Ms	KBSF-AM1460	Springhill, LA
		KXOR-FM106	Thibodaux, LA

SPONSORED IN PART BY:

Budweiser	National Car Rental
Gulf Oil	Howard, Weil, Labouisse,
Safety Supply House	Friedrichs, Inc.
First Financial Bank	Sunbeam Bread
J. C. Penney	First National Bank of Commerce
Delta Airlines	Diamond Datsun



GET
HIGH
ON
SPORTS
NOT
DRUGS



Oldsmobile



HONDA



Mercedes-Benz

WALKER
oldsmobile

FOSTER WALKER, JR. • FOSTER WALKER, III
1616 MACARTHUR DRIVE
(318) 445-6421
ALEXANDRIA, LOUISIANA 71306

**We do
business
your way!**

In the Spirit of Old New Orleans
HERITAGE BUICK

4600 Chef Highway
at I-10/Louisiana Street Exit 947-0611

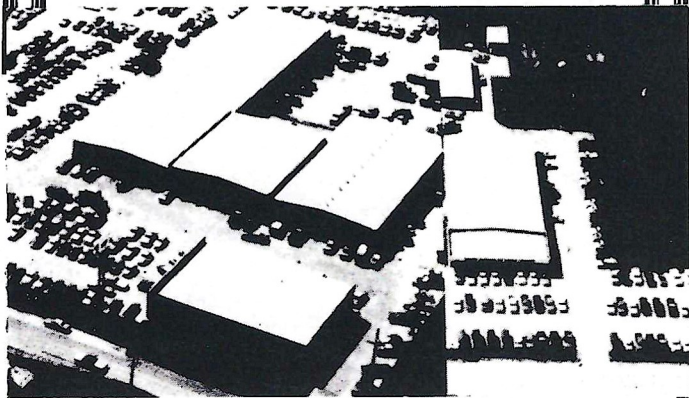




14 ACRES TO SERVE YOU BETTER

ONE OF THE LARGEST REGIONAL
AUTOMOBILE AND TRUCK SERVICE
AND SALES FACILITIES IN LOUISIANA.

200 S. HOLLYWOOD, HOUMA, LA.



Worth cheering about...
the Green Wave
and SUPERIOR PONTIAC



SUPERIOR
PONTIAC · GMC

YOUR TOTAL TRANSPORTATION DEALER
200 WRIGHT AVE., GRETNA · 368-5900

HONDA ISUZU

THE WALLY ENGLISH SHOW

TAKES YOU BEHIND THE SCENES
OF TULANE FOOTBALL

WATCH IT EACH SUNDAY IMMEDIATELY
PRECEDING THE
NFL 83' SHOW ON WDSU TV6



Rent quality furniture!

There's no better way to rent home, apartment or office furniture

- wide choice of styles and prices
- option to buy
- short and long term rentals
- prompt and courteous delivery

WEINER-CORT

Furniture Rental

733-8381

5035 Bloomfield, Jefferson
605 Lapalco, Gretna
4640 S. Carrollton Ave., N.O.

THE FURNITURE RENTAL PROFESSIONALS IN OVER 60 CITIES

BROUGHT TO YOU IN PART
BY:

HIBERNIA BANK
BUDWEISER
ZETZ 7-UP BOTTLING CO., INC.
McILWAIN CADILLAC
NBC OF JEFFERSON
EASTERN AIRLINES
COCA COLA
N.O. METRO FORD DEALERS
PELICAN HOMESTEAD
BENSON IMPORTS-PEUGEOT
HAUSMANN'S

WOMEN'S ATHLETICS

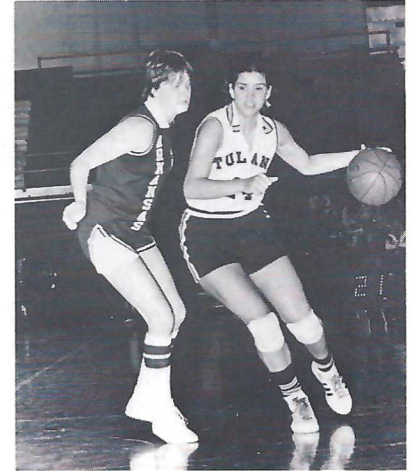
Women's athletics at Newcomb/Tulane University is directed by Elizabeth Delery, who is a graduate of the University of North Carolina at Greensboro. Newcomb/Tulane competes in NCAA Division I competition comprising of four varsity sports, volleyball, basketball, tennis, and swimming.

Newcomb/Tulane is affiliated with the Metropolitan Collegiate Athletic Conference in all four sports. There are conference championships in each sport.

Newcomb/Tulane offers both partial and full athletic scholarships. Full scholarships include tuition, University fees, room and board. Newcomb/Tulane offers the maximum number of scholarships allowed in basketball (12), volleyball (12), and tennis (8). Some scholarships are also offered in swimming and diving. Financial aid is awarded for one academic year and renewed yearly if the student is making normal progress as determined by the University.

Kathy Trosclair begins her third year as volleyball coach at Tulane. Julia Yeater is the basketball coach of the Lady Green Wave, this will be her third season. Peter Curtis is in his third season as

the tennis coach, while Scott Hammond is in his third year as swimming coach at Tulane.



WE ARE THE CHAMPIONS!
LAMARQUE
FORD I-10 AT WILLIAMS
 PHONE 443-2500



Lamarque Ford has sold more new cars and trucks than any other Ford dealer in the New Orleans area.

We are the Champions! We are the #1 Ford Dealer in New Orleans! It's worth the short drive to get our commitment to service that goes beyond selling a car.

And that's a commitment you can count on, because these days you've got to get the most for your dollar.

*1 Ford claim based on La Motor Veh. Reg Ser and Ford Motor Co. Reg figures

THE

CAMERA Shop

24 HOUR
 COLOR PRINT SERVICE
 24 HOUR
 EKTACHROME SLIDES

Complete Darkroom Section,
 Bags, Frames, Mats

Serving
 the University Section
 for Ten Years

7505 Maple St., 861-0277

WHAT IT TAKES TO MAKE WINNERS

Staying power. Dedication. Drive. These are qualities we value at Pan-American Life. Qualities that build winners, great sports events, and great communities. Values like fair play and service. Healthy values that make a team, a city and a company thrive.



PAN AMERICAN LIFE CENTER, NEW ORLEANS, LA 70130



Ted Collins, Mascot and Ben Weiner, President of the Green Wave Club.



OLDSMOBILE is proud to provide the Tulane Athletic Department with an Oldsmobile Toronado for the 1984 model year.

We're pleased to be associated with Tulane University in this manner.

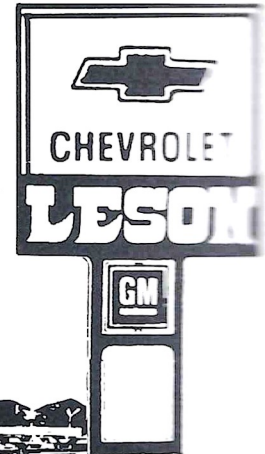


1700 Westbank Expressway
Harvey, La. 367-1700

OVER 50 YEARS

of Business on the Westbank

366-4381



CHEERLEADERS



Bottom Row (L-R): Lil Story, Kevin Carroll, Holly Edgerton, Mike Lerner, Jill Jacoves, Willie Balch Middle Row: Barry Munkasy, Tom Hewett, Bob Gerlach, Jay Binder (Co-Captain) Top Row: Erica Poleschner, Jessica Waters, Kim Holak (Co-Captain), Pauline Termini Missing: Stuart Chirls (Mike Man)

ALMA MATER

We praise thee for thy past, O Alma Mater!
Thy hand hath done its work full faithfully.
The incense of thy spirit hath ascended
And filled America from sea to sea.

CHORUS

Olive Green and Blue, we love thee
Pledge we now our fealty true
Where the trees are ever greenest,
Where the skies are purest blue.
Hear us now. O Tulane, hear us
As we proudly sing to thee!
Take from us our hearts' devotion!
Thine we are, and thine shall be!

HULLABALOO

A one, a two,
A helluva hullabaloo,
A Hu-la-ba-loo Ray-Ray!
Hu-la-ba-loo Ray-Ray!
Hoo-Ray! Hoo-Ray!
Vars, vars, tee-ay!
Tee-ay! Tee-ay!
Vars, vars, tee-ay!
Tulane!

GUEYDAN LUMBER

QUALITY LUMBER SINCE 1947

SPECIALIZING IN:

- ARKANSAS PINE
- DOUGLAS FIR
- SPANISH CEDAR
- HONDURAS MAHOGANY
- CYPRESS
- TEAK
- VARIOUS TROPICAL HARDWOODS
- HARDWOOD PLYWOOD
- MARINE PLYWOOD

4300 AIRLINE HWY., P. O. BOX 455
METAIRIE, LA. 70004 833-2828

PLAQUES • TROPHIES • AWARDS
EMBLEMATIC JEWELRY
CUSTOM ENGRAVING

JACK PETTY AWARDS, INC.

Dave Smith

Paul Costanza

4164 CANAL STREET
PHONE (504) 482-5767

GO GREEN WAVE!

Telephone (212) 589-1000

POST & TABACK INCORPORATED

COMMISSION MERCHANTS

FRUITS AND PRODUCE

Row B 253-256
New York City
Terminal Market

HUNTS POINT
BRONX, N. Y. 10474

GREEN WAVE CLUB

The Green Wave Club consists of 1200 alumni and friends of Tulane University that are committed to Green Wave athletics. GWC contributions provide the outside revenue needed to offset the escalating costs of tuition, housing, food, textbooks and activity fees for Tulane's student athletes. A total contribution of over three million dollars in the past decade has established the GWC as one of Tulane's most generous benefactors. That's something we're proud of. Join us.



1983-84 ACTIVE MEMBERS

(Members listed as "ACTIVE" as of August 3, 1983)

THE BEN WEINER FOUNDATION FOR TULANE ATHLETICS ENDOWED SCHOLARSHIPS ESTABLISHED

FOOTBALL

1. W. K. McWilliams, Jr.
2. Ben A. Martinez
3. Louis W. McFaul, Jr.
4. Carden Family
5. Lucas Jay Cuccia
6. John Charles Carden
7. Mr. & Mrs. C. T. Carden
8. Edna Carden
9. Earl Burke, Jr.
10. Mr. & Mrs. Frederick Stouder
11. Anonymous
12. Edmond Orgeron, Jr.
13. Louis Vidrine
14. Ben Weiner
15. Rene Curry, Sr.
16. Mr. & Mrs. A. C. Suhren, Sr.
17. First NBC (Tom Rapier)
18. Mr. & Mrs. A. Lane Plauche
19. Mr. & Mrs. John Q. Bass
20. Mr. & Mrs. Wilsie J. Picou, Jr.
21. Archie Lowery
22. E. Warren Eisner
23. Marion "Hoss" Kessler

TRACK & FIELD

1. Kennon Courtney Pennington
2. Douglas William Polen
3. William B. Reily, Jr.

WOMEN'S ATHLETICS

1. Eleanora P. McWilliams/Anne Many

BASKETBALL

1. W. K. McWilliams, Jr.
2. William Kennon McWilliams, Sr.
3. Thelma McLelland McWilliams
4. Rebecca McWilliams Prehn
5. Paul Felix Perrilliat
6. Werner "Dutch" Luchsinger
7. Vernon "Lefty" Haynes
8. C. T. Carden
9. Janette Andra Carden
10. Mr. & Mrs. Arthur J. Brown
11. Mr. & Mrs. Wilsie Picou, Jr.

BASEBALL

1. W. K. McWilliams, Jr.
2. Annie Mosely McLelland
3. Rex White, Sr.
4. Mr. & Mrs. Edward DeMartini
5. Peyton Hines

TENNIS

1. Williams, Inc.
2. Goldring Family

MEMORIAL SCHOLARSHIPS

1. Clifford Wells for Basketball
2. John Oelkers for Track & Field
3. Francis Payne for Football
4. Bill Svoboda for Football

ENDOWED

John Q. Bass
Arthur S. Brown
Earl P. Burke, Jr.
C. T. Carden
Rene Curry, Sr.
E. J. DeMartini
E. Warren Eisner
Anonymous
Goldring Family
Stephen Goldring

Peyton H. Hines
Lowery Brothers
Archie Lowery
W. K. Mc Williams, Jr.
Edmond Orgeron, Jr.
Wilsie Picou, Jr.
A. Lane Plauche
Thomas G. Rapier
W. Boatner Reily, III
A. C. Suhren, Jr.
Louis Vidrine

Ben Weiner
Rex White, Sr.
F. B. Williams

SCHOLARSHIP

Leroy S. Close
G. S. Friedrichs
Harold Halter
Halter Marine Serv.
Bill Hines
John J. Housey, Sr.

F. B. Ingram
Robert T. Jones
Alden J. Laborde
Gerry Lane Chevrolet
Stanley S. Morris
R. A. Rayne
Jack B. St. Clair
George Westfeldt, Jr.
Robert H. Young

NEPTUNE

William Baker
Bayou Green Wave Club
Steve Caldarera
Richard J. Brennan
Everett J. Caballero
Chiquita Brand
R. H. Carnesi
James J. Coleman, Jr.
Mrs. Ervin S. Cooper
John H. Counce, II M.D.
John W. Deming, M.D.
Thorne B. Donnelley
George Engine Co., Inc.
Louis Frierson
Thomas L. Habig
Erik Johnsen
Norman Johnson
Arthur L. Jung, Jr.
Dr. Aaron Kimche, D.D.S.
E. James Kock, Jr.
John P. Labouisse
I. Ricardo Martinez, M.D.
Mississippi River Grain
Alfonso DiBenedetto
Modern Marine Power
Frank Basile
Stanley Muller
River Road GWC
H. Vicknair
Lee H. Schlesinger
John H. Sims, Jr.
William R. Sorum, M.D.
Paul Westfeldt
A. Cecil Zeringue

SPECIAL

Chateau Golf & Country Club
Al Huddleston

Don Martin
Michael Coons
Eddie Polk
H. E. Trapp Chevrolet

TIDAL WAVE

S. T. Alcus, III
Dr. Emile Bernard, Jr.
Harry J. Blumenthal
Robert H. Boh
John Bretz
Richard Bretz, Jr.
Joe Bullard
William Burkenroad, Jr.
R. M. Burton
J. Randolph Butts, Jr.
Cajun Booster Club
H. B. Cammatte
Joseph C. Canizaro
Robert L. Carey
Chevrolet Motor Div.
Clark Pipe & Supply
J. B. Clark
Carl W. Cleveland
Charles Corona
Tucker Couvillion, III
Crescent Distributing, Co.
Robert Cudd, III
Mrs. Robert Cudd, III
Mrs. Jane D. Culver
Richard M. Currence
Joseph C. Ditta
Dr. James Dowling
Mayer Dresner
Ronald C. Durham
J. Everett Eaves, Jr.
Mrs. Anthony Failla
Clifford Favrot, Sr.
D. Blair Favrot
Charles Fridge, Jr.
G. S. Friedrichs, Jr.
James W. Fullington
Garyville Chapter GWC
Garland Landry
W. Gerald Gaudet
E. J. Gibert, III
Dr. Jack R. Goodman
Mrs. Benjamin C. Gore
Ray J. Haddad, Jr. M.D.

Henry Haller, Sr.
Theo Harvey, Jr.
Gerald Haydel
Alwyn Hebert
Dr. Aynaud M. Hebert
Jimmy Heymann
W. Thomas Hopkins
Wendle Huddleston
Daniel P. Hurley
Warren M. Jacobs, M.D.
Dr. J. Harvey Johnston
Owen L. Jones, Jr.
Dr. Leon J. Joseph
Samuel B. Katz
Burt H. Keenan
Harry B. Kelleher, Jr.
Dr. Eamon Kelly
Karl J. Kirchberg
Arthur G. Kleinschmidt, M.D.
Robert E. Kocke
Edward F. Kohnke, IV
Stanley Kottemann
LA 1 Chapter of GWC
Robert Kocke
John P. Laborde
Dr. J. Monroe Laborde
Jacob S. Landry
Gerald Lane
Lester L. Lautenschlaeger Sr.
Robert Leonard
Dr. Julius L. Levy, Jr.
Clay I. Lewis, Jr.
Alfred S. Lippmann
John Locantro
Robert E. Smith Lupo
Lykes Brothers
Barton Jahncke
Thomas C. McClellan
Harold E. McConnell
H. Edwin McGlasson, Jr.
Mrs. Edwin H. McGlasson, Jr.
Robert E. McHale
E. J. McNamara
Wiley G. Magee
Thomas L. Mahfouz
R. V. Martinez
Mrs. Ernest L. Masson, Sr.
John Meade
Metropolitan Erection Co.
Mike Lanier
Gregory L. Miner
Yahoux Partners II
Bernard D. Mintz
William G. Moran
Thomas J. Morel
Moss Point Marine, Inc.
John Dane
Joseph F. Myers
Norton England, III
James F. O'Neil, Jr.
John J. Owens
Dr. F. E. Palomeque
Pelican Homestead
Robert Shofstahl
James Pellerin
Norvin L. Pellerin
Shep Perrin
Edward Poitevent
John B. Postell
Bennett Powell
John B. Regan
Yahoux Partners
James C. Roddy
Michael Rodrigue
Samuel Romano, Jr.
Paul S. Rosenblum
Joe B. Schmidt, Jr.
Cicero C. Sessions
F. W. Sewart
Roger P. Sharp, Jr.
Al Sheets
Simon Shlenker, III
William B. Slatten
William S. Smith, Jr.
H. William Starr

R. P. Starr, Jr.
Richard M. Starr
Andrew Stewart
Earl A. Stolz, Jr.
Dr. Victor Tedesco, III
Tradigrain, Inc.
Ray Fretz
Nat Troy
Randy Ungar
Hebert W. Van Horn, Jr.
Cliff Van Meter
Bryan Wagner
Douglas E. Wagner
J. Mort Walker, Jr.
William R. White
William R. White
Rex White, Jr.
James T. Williams, M.D.
William E. Wright
Alexander Yedmak
Yahoux Partners, II

BIG GREEN

Lester Alexander, Jr.
George S. Allen
Henry B. Alsobrook, Jr.
Arthur Anderson & Co.
William W. Gahagan
Richard E. Anderson
Paul Arnold
Dr. William M. Bagnetto
Jeffrey D. Barter
Dr. Woodard D. Beacham
Richard E. Beltz
Buddy Berthelot
James Besselman
Henry J. Bodenheimer
Robert J. Boudreau
Dr. Frem. F. Boustany, Jr.
Philip Breitmeyer, II
Edward G. Brennan
Louis D. Brown
Michael Burke
James M. Burlingame
Mike E. Cahn
Odell F. Caillet
John V. Caldwell
Canteen Service of N.O.
Canteen Company of

Syracuse

Henry Wells
L. W. Cary
William Church
C. C. Clifton, Jr.
Clover Contractors, Inc.
Richard P. Colomes
Rene A. Curry, Jr.
Carl F. Dailey
Gayle Dalferes
Bercham H. DeHart, Jr.
Frank M. Dennis
Jack D. Dienes
Dixie Plastics, Inc.
Thomas P. Breslin
Calvin Doell
Domestic Fuels, Co.
Joe Sheldon
Arthur A. Lancaster
Charles E. Dunbar, III
Brooke H. Duncan
Max H. Durham Jr.
John W. Dussouy & Co.
Lloyd Eagan
T.C.W. Ellis
H. M. Favrot, Jr.
Darwin C. Fenner, Jr.
Fitzgerald Advertising
Buzzy Killeen
Roy J. Ford
J. M. Gore Friedrichs
Leonard Fuhrer
Harry P. Gamble, Jr.
Gertler and Gertler
David Gertler

Jerome S. Glazer
William F. Grace
Dr. Tom Graves
Dr. Thomas H. Grimstad
Floyd Guillot
Victor J. Gustitus
D. Marshall Haas
Dr. Terry L. Habig
Robert Hargrove
Hargrove Oil Co.
Odum B. Heebe
R. L. Hindermann
Dr. George W. Hoffman
E. H. Igleheart
Inds. Growth & Devel.
Lyle Degelos
Ives Business Forms
Charles Ives
Dr. Henry Jackson
Roger B. Jacobs
Richard B. Jacoves
C. Gordon Johnson, Jr.
Harry B. Kelleher, Sr.
Charles Keller, Jr.
Claude J. Kelly, Sr.
Claude J. Kelly, Jr.
Marion Kessler
J. B. Kiefer
Thomas M. Kilgore, Sr.
Louis C. Kliebert
Russel E. Kliebert
Karen L. Knight
Andrew J. Kreller, Jr.
Kenneth Kuebel
Dr. Elmo Laborde
LaTech Chapter GWC
Ray Mullins
Larry Reynolds Foundt.
David Stone
Sidney W. Lassen
Joseph Laughlin
James R. Leach, Jr.
James V. LeBreton
F. Rivers Lelong
Jack T. Lengsfeld
Gayle P. Letulle
Nathan Levy
Floyd Lewis
Robert L. Lobrano
Frederick H. Lotz, Jr.
Grant Mac Diarmid
Martin MacDiarmid, Jr.
Pamela Mac Diarmid
J. T. Mahoney
Robert H. Marshall
Joseph Maselli
John G. Massey
Capt. E. C. Mayfield
Howard C. McAfee
Dr. James Comiskey
Samuel J. McGrey
Dr. Lee D. McLean
Joffre Mercier
Frederick W. Miller
Robert C. Milton
John A. Mmahat
Anees Mogabgab, Jr.
Northrop Inc.
Malcolm W. Monroe
Albert S. Montgomery
L. L. Morgan
Sheldon L. Morgan, Jr.
Charles T. Morse
Paul Morphy, Jr.
Donald J. Nalty
R. P. Naquin
Richard S. Near
Howard A. Nelson, Jr. M.D.
William D. Norman, Jr.
Eugene C. Nunez
James Orth
Orthopedic & Fracture
Dr. Walter Brent, Jr.
Waldo Otis, Jr.
Max Paillet, M.D.

Harold F. Parker
Rene S. Paysse
A. N. Pierce, III
Gerald Pelias
Pel-Tex Oil Co.
Gene Rogas
Andrew L. Plauche, Jr.
Ponchartrain Materials
George Douglas, Jr.
Paul J. Ramirez
Michael J. Rapier
NBC of Jefferson
Rick Rees
Dr. Frank P. Rizzo, Jr.
Mrs. Frances S. Robinson
Dr. William M. Roeling, Jr.
E. P. Roth, Jr.
George A. Rowley
Ralph Rugan, Jr.
Peter J. Sacco, Sr.
Stephen A. Schmedtje, Jr.
John F. Schumacher, M.D.
Paul B. Selley
James L. Selman, II
Louis G. Shushan
Ms. Anna Silbernagel
Mrs. Cecilia Slatten, Jr.
J. Edward Slatten, Jr.
Thomas E. Sova
Pat Strickland
Philip Sullivan, M.D.
Teche Chapter of GWC
Moon Mullins
Robert H. Thomas
Dr. Henry K. Threefoot
John M. Trenchard, Jr.
Dr. Charles Tyler
Dr. L. Terrell Tyler
Bernard Van Der Linden
Raymond Ventura
J. Michael Veron
R. Wayne Vincent
William S. Vincent
A. J. Waechter, Jr.
Hughes Walmsley, Jr.
Walter Parkerson & Co.
Fred Corroll
William W. Watson
Edward L. Weitz
Wendy's of N.O.
Ray Dan
Edwin E. White, Jr.
Mrs. Robt. J. A. Williams
Dr. Paul R. Winder
James A. Wysocki
J. Randolph Young, Jr., M.D.
Anton N. Zanki

SURFER

Herschel L. Abbott, Jr.
John Abbott
Abbott Tours
Robert B. Acomb, Jr.
Alfred Africh
Alexander Industries
Roy Perrin
Al Andrews
C. W. Andrews, Jr.
James C. Arceneueax, III
Gerald L. Andrus
D. D. Archer, M.D.
Robert E. Argote
John S. Arthur
Albert Aschaffenburg
Peter Asher
Jerry Ashley
Tom Axelrad
Larry E. Baker, M.D.
Albert Baldwin, Jr.
Robert J. Bannon
Frank M. Barnes
John O. Barnes
Joe Barone
Gerard W. Barousse
Robert Barousse

Cameron Barr
Alan Bartlett
Henry G. Bauer, III
George V. Baus
Garnett Bedenbaugh
Donald E. Beery
William R. Bell
Upton Printing
Emile "Mutt" Bellavia
Edmond Bendernagel
Edward B. Benjamin, Jr.
Jack C. Benjamin
W. Mente Benjamin
Henry J. Bergeron, Jr.
A. J. Berner, Jr.
Henry Bernstein
Philip Beron, Jr.
Wayne Bienvenu
Edel Blanks, Jr.
Moise B. Bloch
John A. Bolles
William Bologna
A. M. Bolton
John F. Bookout
Brunette Bordelon, Jr.
Export Am. Trading
H. G. Bourgeois, Jr.
G. Michael Bourgeois
Jerry Boyce
Pat Brackley
Dr. Henry E. Braden
Henry E. Braden, IV
Hjalmar E. Breit, III
Michel Brenner
Robert O. Briere
Henry Broad, Jr.
Charles L. Brooks
Ollie D. Brown, Jr.
Warren J. Brunner
Frank S. Bruno
A. Owen Bunn
Howard B. Burch, M.D.
Dr. Robert R. Burch
Peter G. Burke
George N. Byram, M.D.
J. Breck Cabell
Leon S. Cahn
James Cain
James G. Caire, Jr.
Charles Calderwood
Albert B. Caldwell
Kenneth Caldwell
Dr. Arthur A. Calix
Jerrold L. Carpenter
James D. Carriere
Pierre F. Carriere
Judge Fred. J. Cassibry
Wm. K. Catching, Jr.
John C. Centanni
Arthur D. Chang, M.D.
Cameron Chappuis
Kenny M. Charbonnet
Dr. Victor Chisesi
R. K. Christovich
Walter W. Christy
John M. Church, Jr., M.D.
Anthony J. Clesi, Jr.
Karl Clifford
Julius M. Cohn
Bob Cole
Peter Coleman
Wm. B. Coleman, III
Forres M. Collins
Jay J. Collins
Fred J. Corales
Henry Corder, Jr.
Phil Del Corral
Alan Cosse
Theodore Cotonio, III
Gregory J. Cotter
Terry L. Crouch
Douglas Cullen
Katie Parker Curren
W. Kent Cutrer, M.D.

Camille Cutrone
 Dr. Jos. R. Dalovisio
 Dr. S. J. Danna
 Sandmann G. Davies
 Dr. Frank H. Davis, Jr.
 Dr. Paul M. Davis, Jr.
 Walter Davis
 Hani E. Dehan
 Elson Delaune
 Gustave F. Delery
 George Denegre
 Dr. Stephen Depner
 Dr. Edward J. Derbes, Jr.
 Gayden Derickson
 Byron J. Dore
 A. William Dunn, M.D.
 Ralph E. Dunn, M.D.
 F. Clancy Dupepe
 Valentine A. Earhart, M.D.
 David G. Easker
 Dr. J. Ollie Edmunds
 Tom Edwards
 Frederick S. Ellis
 David F. Edwards
 Harry M. England
 N. E. England Assoc.
 Joe Epstein
 Richard Epstein
 William R. Erwin
 Blackwell B. Evans, M.D.
 William Everett
 David M. Falgoust
 C. Allen Favrot
 Gervais Favrot
 Thomas B. Favrot
 Bruce L. Feingerts
 William H. Ferguson
 Dr. W. J. Fernandez
 C. R. Ferris
 Beatrice Field
 Frank Field
 Dr. R. J. Field, Jr.

David C. Flettrich
 Lionel E. Flotte & Assoc.
 Kenneth W. Fonte
 Dr. Julian B. Foreman
 Herb Forster
 Business Sound, Inc.
 Jack V. Foster
 Barry Fox & Co.
 Dr. Ronald French
 Randolph Freret
 Reuben I. Friedman
 Richard S. Friedman
 John C. Fuch, Jr.
 Norman R. Galen
 Gambino's Baker's
 Joe Gambino
 Harry Gamble, IV
 Warren Gardner
 Glass & Mirror Co.
 John V. Garoutte, M.D.
 Lloyd F. Gaubert
 G. Louis Gaudet
 Charles F. Gay, Jr.
 Lawrence Gettys
 Gettys Insurance
 Gary L. Gibbs
 Gillis, Ellis, & Baker
 Richard Ellis
 Wm. A. Baker
 Dr. Clyde A. Giordano
 Ben Golivas
 M. Field Gomila
 John A. Gordon
 Dr. Warren Gottsegen
 Louis B. Graham
 Marion J. Grammerse
 Southern Belle Cleaners
 Warren L. Green, Jr.
 David N. Greiner
 Frank Griffin, Jr.
 C.K.D. Guice
 Friedrich W. L. Gurtler

Mrs. Sam G. Haddad
 W. M. Haile
 Mrs. Florence L. Hall
 Henry Haller, Jr.
 John H. Hammel, III
 Keith Hammett
 John P. Hammond
 R. Vaclac Hamsa, M.D.
 Ralph M. Hanle
 Edwin Harbuck
 Charles K. Hardin
 James A. Hardy
 Dr. Friedrichs Harris, Sr.
 William J. Hartley
 Jos. Haspel, Jr.
 Mrs. Hurst B. Hatch
 W. Paul Hawley, II
 Robert A. Hayden
 Dr. Chas. Heidingsfelder
 Lonnie R. Henry
 Mark B. Herman
 Russ Herman
 Dr. Robt. J. Hewitt
 Rudolph Holzer
 Daniel H. Housey
 John J. Housey, Jr.
 Harley B. Howcott, Jr.
 John T. Hunley
 Dr. Jack Hyman
 P. Choby Impastato
 Leon Irwin, Jr.
 Thomas M. Irwin, Jr. M.D.
 Jos. L. Isaacson
 Leonards S. Isacks
 Mrs. Merryll Isreal
 Jerry Jacobs
 Gordon B. Hyde
 Philip E. James, Jr.
 George Janvier, III
 J. P. Jarrell, M.D.
 N. Lee Jarrell, M.D.
 Jefferson Bank & Trust

Mike Casey
 Charles B. Johnson
 Charles L. Johnson, M.D.
 Lawrence N. Johnson
 Hans Jonassen
 Alvin E. Jones
 Richard Kahle, M.D.
 Dr. Murrel H. Kaplan
 Dr. M. D. Kappelman
 Richard L. Katten
 Michael J. Keeffe
 Walter c. Keenan, III
 Claude J. Kelly
 Clifford H. Kern, Jr.
 Richard Keyworth
 Thomas M. Killgore, Jr.
 Donald J. King
 Dorothy King
 Leonard M. King, Jr.
 Rick Kingrea
 Victor Kirschman
 Klinessmith, Laudeman &
 Talbot E. Laudeman
 Dr. James D. Knoepp
 Harvey Kock
 Earl Koerner
 Herman S. Kohlmeyer, Jr.
 Ronald Krajewski
 George E. Kreider
 J. V. Leclere Krentel
 Harry E. Kuhnner, II
 Owen J. LaCour
 Robert Lacroix
 Jeron J. LaFargue
 Lakeside Camera Center
 Rod Guidry
 Edward D. Lamar
 Dr. Gerald Lanasa
 Landis Constr. Co.
 Jim Landis
 Alfred Smith Landry
 Paul A. Landry, III

Charles W. Lane, III
 H. J. Lane, Jr.
 D. Andrew Lang
 M. F. Lang
 Langlois Foundation
 Nathaniel Langlois
 Dr. Paul Lansing
 J. J. LaPlace, Jr.
 L. Kent LaPlace
 Stephanie Lasseigne
 L. J. Lautenschlaeger, Jr.
 Henry Lazarus
 Isadore Lazarus
 Dr. Dwight LeBlanc, Jr.
 G. H. Leidenheimer Bakers
 Mrs. Frances LeJeune
 Dr. Francis LeJeune, Jr.
 Ed Lennox
 Jacques F. Levy
 Harvey J. Lewis
 Mrs. Ann Leyens
 Liberty Title Agency
 Peter Keenan
 Herman S. Lindy
 David L. Lippmann
 Douglas C. Longman, Jr.
 Joseph W. McCarron
 John J. McCollam
 Eugene F. McCormick
 Frank V. McDonnell
 James McGill
 Mike McGinnis
 Mimi McGlasson
 McGlinchey, Stafford & Mintz
 D. S. McGlinchey
 Charles E. McHale, Jr.
 Robert McIntyre
 Michael McNulty, III
 Dr. Norman McSwain, Jr.
 Julia MacNicholl
 R. L. Manard, Jr.
 Manny's Sanitary Supply

GWC MEMBERSHIP APPLICATION

NAME _____ (PLEASE PRINT)

ADDRESS _____

CITY/STATE _____ ZIP _____

HOME PHONE _____ OFFICE PHONE _____

INDICATE MEMBERSHIP LEVEL

- ENDOWED - \$50,000
- SCHOLARSHIP - \$5,000
- NEPTUNE - \$2,500
- TIDAL WAVE - \$1,000
- BIG GREEN - \$500
- SURFER - \$250
- ASSOCIATE - \$125
- GREEN WAVE - \$25-124
- CONTRIBUTOR - Below \$25

GWC Benefits for 1983-84

BENEFITS	\$5,000	\$2500	\$1000	\$500	\$250	\$125	\$25
Tax Deduction	yes	yes	yes	yes	yes	yes	yes
Decal	yes	yes	yes	yes	yes	yes	yes
Membership Card	yes	yes	yes	yes	yes	yes	yes
Program Listing (If Desired)	yes	yes	yes	yes	yes	yes	yes
Stadium Club Membership	yes	yes	yes	yes	yes	yes	yes
Superdome Parking	yes	yes	yes	yes	yes	yes	yes*
Season Ticket Priority	yes	yes	yes	yes	yes	yes	yes*
LSU & Post-season GameTickets	yes	yes	yes	yes	yes	yes	yes*
Lapel Pin	yes	yes	yes	yes	yes	yes	yes
Press Guides — Football & Basketball	yes	yes	yes	yes	yes	yes	yes
Invitation to Away Game (Football)	yes	yes	yes	yes	yes	yes	yes

* If available

GWC OFFICE: TULANE UNIVERSITY • MONK SIMONS ATHLETIC BLDG. • NOLA 70118 • 504 865-5505

E. J. Guillot, Jr.
Marine Engineered Products
James Tranchin
Monroe Marsh
Alan P. Marx
Albert V. Masson
Mathes, Bergman & Assoc.
Edward Mathes
Creed Bergman
Chas. Montgomery
Adrien A. Maught
W. H. Maxwell
George J. Mayer
Milo Meacham, Jr.
Peter E. Menge
Andy Messina
Metairie Phys. Therapy
Bubba Porche, Jr.
Metal Bldg. Prod. Co.
Mr. Christman, Jr.
Conrad Meyer, III
Neme Mickal
Odette Mickal
Gordon D. Miller
Aaron Mintz
Donald R. Mintz
Lucien S. Miranne
James R. Moffett
Kermit Mogilles
Harry Molaison
Dr. R. M. Montemayor
Dr. Howard Moore
Dr. John L. Moore
E. Lee Mowe, III
John W. Muery
Ray Mullins
Joseph A. Murphy, Jr.
Stephen B. Murray
Claude J. Naquin
Dr. Lee Nesbitt
Mrs. Isidore Newman, II
Leon Newman
Dr. K. G. Nix
Dr. Ruary C. O'Connell
Oil Field Marine
Malcolm Burke
Joseph Onebane
Robt. E. O'Neill, Jr.
Louis P. Orth, Jr.
John L. Overby, M.D.
H. Frellsen Page, Sr.
John M. Page
David Painter
Wm. J. Palermo
P. Craig Parker
Samuel F. Parker
David A. Paysse
Peter M. Pellegrini, Sr.
Peoples Bank & Trust
N. P. rist
Bernard E. Peres
Ronald E. Peres
Perlis, Inc.
David Perlis
Desmond Perschall
Dr. Ben Phillips
John G. Phillips
LA Land & Exploration
Nathaniel P. Phillips, Jr.
Maurice J. Picheloup
Courtney F. Picou
William D. Pierce
K. G. Pinter, M.D.
Dr. Jack W. Pou
Prager, Inc.
Herman J. Prager
J. B. Prager
LeDoux R. Provosty
Warren J. Prudhomme
Ward C. Purdum, Sr.
Nigel E. Rafferty
Dr. Andrew Ranier
Mrs. Joseph Rault, Jr.
Joseph E. Redmond, Jr.
Judge Edmund M. Reggie
J. W. Reilly, Jr.
Leon Reymond, Jr.

John J. Richards
Stephanie L. Richards
Thomas F. Ridgley
Lou Rippner
Broussard E. Rivet
Kenneth M. Rivet
John H. Robichaux, Sr.
Dr. Raoul Rodriguez
James Rogers
Kenneth A. Rolfs
Curtis P. Rome
Wm. E. Rooney
Thomas E. Rose
Charles Rosen, II
A. Charles Rosenburg
Dr. Randolph J. Ross
Richard J. Roth, Jr.
Norton D. Roussel
Perry Roussel, Jr.
Richard D. Roussel
Wayne C. Rovira
Willie J. Rucker, Jr.
Ryan-Walsh Stevedoring
John E. Ryan
Robert N. Ryan
Dr. Kenneth Saer
Nicole R. Salomon
Jerry L. Saporito
Robert Sarpy
D. R. Sartor, Jr.
Sam Z. Scandalianto
Sam Scelfo, Jr.
Eugene Schager
Stanley Scherr
Robert A. Schimek, Jr.
A. L. Schlesinger
Miss Adah R. Schneider
Dr. George T. Schneider
Gerard Schoen
Thomas J. Schoen
Donald F. Schultz
W. C. Schweickhardt
Walter Irving Scott, Jr.
C. F. Seeman
John Seht
Solis Seiferth
Aaron Selber, Jr.
Mitch Serio
Gilbert J. Sevier, Jr.
Theo. Shepard, Jr.
Edward F. Simmons
E. Kelleher Simon
Eugene Simon
Mrs. Claude Monk Simons
Frank R. Simpson
Vincent L. Slagel
George W. Small
Derwin Smith
Howard Smith, Jr.
James Smith, III
Dr. Earl J. Sonnier
Julian Steinberg
Dr. James H. Stewart
Russel R. Stewart
Edward Stolley
The Sugar Bowl
Mickey Holmes
John Sutherland, Jr.
Carleton M. Sweeney
Timony F. Swoop
Charles F. Taylor
Mark A. Tessier
Leon Theriot
N. Scott Thomas
Harold A. Thomas
Dr. Stephen R. Thomas
Horace Thompson
James Thompson
C. L. Tillman, III
Melvin Toca
Accurate Letter Co.
The Travel Club
William Fink
Dalton L. Truax, Jr.
Sal J. Trupiano
Tulane Booster Club
Vincent Buffa, Jr.

E. A. Vaughey
Freddie Vaughns
Ted Veillon
Stephen Victory
C. J. Vigo Tobacco, Co.
Pierre M. Viguerie
Rick Vita
Normal Voelkel
Mrs. Irwin E. Volker
William Von Heone
Gilbert Vorhoff
Al Wachenheim, Jr.
Wayne Wagner
Mike Wahler
Craig E. Waller
Philip B. Watson, Jr.
Edward P. Watts, Jr.
Mike Weaver
John J. Weigel
Hebert Weil
John J. Weil
John G. Weinmann
Dr. Samuel Welborn
James W. Welch, Jr.
Westside Camera Center
Claude Aucoin
Dr. James A. White, III
Judge Thomas C. Wicker, Jr.
Irvin Wilhite
Williams Foods Inc.
Conrad Hock, Jr.
Mrs. Betty A. Wilson
John Victor Wilson
Louis A. Wilson, Jr.
Carol B. Wise
John Wittenberg
William E. Wright
Dr. Isadore Yager
Robert J. Young, Jr.
Lanny R. Zatzkis
Dr. C. J. Zeringue
Robert Zetzman
Dr. Jack Zoller

ASSOCIATE

Robert B. Acomb, III
Bruce Adams
Kevin A. Anello
Peter A. Aron
William J. Atkins
J. Dudley Atkinson, Jr.
Timothy Avegno
Lawrence F. Babst, Jr.
Daniel P. Baker
James M. Baldwin, Jr.
E. G. Barnes
Richard O. Baumback
William T. Beam, Jr.
C. A. Beaulieu
Everett W. Beelman
Michael A. Berenson
Philip Bertucci
Sterling Bigner
Adolph C. Billet
Clem Binnings
Paul G. Bitter, Sr.
Stanley Blend
Richard K. Blum
G. Robert Boasberg
John Bobzien
Robert S. Boh
Bruce Bolyard
Scott Bourdreaux
Kevin L. Bowman
Dr. Wm. Bradburn, III
David B. Bradley
Robaert E. Brandt
Dr. Patrick C. Breaux
Moses E. Brenner
Ralph O. Brennan
Guy P. Brierre
G. Gernon Brown, Jr., M.D.
Ronald E. Brumley
William Buchsbaum
Frank Tucker Burge
R. W. Calhoun, M.D.
Larry Case

Taylor Casey
Clayton Charbonnet
Edgar J. Chauvin
Rutledge Clement, Jr.
Stanley J. Cohn
Kevin Cole
Lawrence A. Comiskey, III
Jeff Crevoiserat
Ernest Bubba Crouchett
William J. Curry, Jr.
Dan Daddario
H. Crawford Davidson
Dr. F. H. Davis, Sr.
Wayne M. Dawson
Mrs. Lillian R. DeEscot
Mrs. Theodore Denney
Ladd Dinkins, Jr.
William C. Dodenhoff
Douglas Dougherty
Neal Dunaway
W. C. Ellis, Jr.
Homer J. Dupuy, III
Dr. Samuel M. Emerson
Charles L. Eshleman, Jr.
John R. Eustis
Steven R. Fader
Dr. Gerald P. Falletta
Richard C. Farmer
John D. Fernandez, Jr.
Edward R. Ferry
Michael Fitzpatrick
Paul H. Flower
E. M. Fogelman
Robert M. Foley
Richard A. Frazer, III
Mrs. Nat Friedler
Wynne P. Friedrichs
J. Peter Gaffney
Cameron B. Gamble
Dan Gerson
Keith Gordon
Karen Gore
Robert H. Grehan
Gordon B. Gsell, Jr.
Rolando G. Guerra, Jr.
Gulf Port Crating Co.
Jerry Trauth
John C. Hadden
Mac Hadden
Stephen P. Hall
William T. Hardie
Grady Harper
Robert P. Harper
Maurice J. Hartson, III
Maurice J. Hattier
Thomas F. Heausler
William A. Heausler
James E. Heimdal
Edward J. Hemard, III
Barry Hickman
Phillip J. Hicks
Thorn B. Himel, Sr.
Norwood N. Hingle, Jr.
Robert R. Hippler, III
Mitchell Hoffman
Jim Holden
Harry R. Holladay
C. Manly Horton, Jr.
Bill Hughs
Grady S. Harper
Timothy P. Hurley
Henry A. Hymel
Tom Jack
William A. James, Jr.
Robert R. Johnson
Terry Johnson
Warren Johnson
Steven L. Jones
Richard N. Kammer
T. Harry Kaplyn
Jory Katlin
Albert A. Kattine
Phil Katz
Stephen Katz
Robert J. Keller
George Kleinschmidt
Mark B. Kline

John E. Koerner, III
Richard V. Kohnke
Charles H. Kurzweg, Jr.
Paul G. Lacroix, Jr.
Paul G. Lacroix, III
Leonard Lala
H. Merritt Lane, Jr.
J. M. Lapeyre, Jr.
J. H. Lashover
John F. LeBlanc
Armand LeGardeur
Russell Levy, M.D.
Charles L. Lilly, M.D.
Roger C. Linde
Steven G. Little
T. Ben Lockett
George R. Lopez
Fernand D. Lorio
Clarence G. Loup
Stanley McDermott, Jr.
Frank M. McDonnell
Solomon R. McKenny
Oscar McMillan
Gaynell J. Martin
J. Richard Mayer, Jr.
Robert K. Mayo
Christopher M. Meeks
Rev. Leo Meyer
Donald E. Mickal, Sr. M.D.
Ellis Mintz
Harold A. Moise, Jr.
Marion S. Monk, Jr.
Robert D. Montgomery
John G. Murray, Jr.
John H. Musser, IV
Sidney Nathansen
Dr. Harold Neitzschman, Sr.
George D. Nelson, Jr.
James W. Newman, Jr.
Thomas C. Nice
James R. Nieset
Richard P. O'Brien
Thomas G. O'Brien
David James O'Leary
Shannon C. O'Neill
Joseph F. O'Rourke
Andrew Orth, Jr.
Mike Paton
Arthur F. Paulina, Jr. M.D.
Michael Pearce
Dr. Jon B. Peebles
William A. Percy, III
Arthur Val Perkins
John C. Pervel, Jr.
James R. Pick
Dick Pierce
Robert L. Pierpoint
Earl G. Pitre
Ponchartrain Materials
Alvin T. Prechter
Michael Price
Robert R. PUNCHES
Justin Querbes, III
John A. Raber
W. Boyd Reeves
Steven R. Reisig
Herschel Richard, Jr.
Robert R. Richmond, III
Frank Riess
Dr. Robert E. Rogers
Dr. L. J. Rolfes
Calvin Rolland
Timothy Roniger
Mr. William Roohi
Thomas G. Ross, M.D.
Richard A. Sabalot
Jerald Schenken
Edwin Schlesinger
Charles Schwartz, Jr.
Jeffrey S. Seligman
Francis T. Selman, Jr.
Joseph E. Sexton
Marc Shachar
Wiley H. Sharp, Jr.
Paula Shield
Sonny Shields
Catchings B. Smith

Mrs. Charles Smither
 Anne B. Smythe
 Gerard J. Sonnier
 J. Wesley Stewart
 Robert J. Stumm, Jr.
 Jami Summersgill
 William C. Super, M.D.
 Roland Sigmond Szubinski
 Tano Corporation
 John S. Taylor
 Ba. A. Templeton
 W. M. Templeton
 Lt. Col. T. J. Terrebonne
 Donald Theriot
 Charles Tillis
 Dr. A. J. Tillinghast
 Dr. Hyman Tolmas
 Patrick Toole
 Andre C. Touzet, M.D.
 John H. Truett
 Ralph Turner
 Robert W. Uly
 Mark King Upperco
 Lawrence Usner
 Charles D. Viccellio
 Frank M. Wagar
 John A. Wall
 Dr. Michael Wall
 James O. Wallace, M.D.
 Robert Warren
 Howard Waugh
 Joseph D. Weed
 Craig Bryan Weil
 Thomas D. Westfeldt
 Aldelbert E. Whitehurst
 Jack Wickstrom, M.D.
 Dr. Lyal G. Williams
 John Wilson
 Jeffrey D. Winchester
 Jeffrey D. Windes
 J. Gregory Wyrick
 Alan A. Zaunbrecher

CAR DEALERS

Bohn Ford
 Bob Bohn
 Crown Buick
 Larry Oggs
 Diamond Datsun
 Dick Mazzetti
 Eagle Buick
 Ben Carollo
 Estes Cadillac
 Bill Estes
 Gerry Lane Chevrolet
 Gerry Lane
 Heritage Buick
 Joe Bonura
 Johnson-Cefalu
 Earle Cefalu
 Lamarque Ford
 Ronnie Lamarque
 Leson Chevrolet
 H. E. Trapp
 Mcllwain Cadillac
 M. R. Mcllwain
 Magruder, Inc.
 Ray Starr, Jr.
 Mossy Motors
 Roy Mossy
 National Car Rental
 Gerry Foster
 Rainbow Oldsmobile
 Lloyd Guillot
 Royal Oldsmobile
 Vernon Brinson
 Stephens Chevrolet
 MacDonald Stephens
 Superior Pontiac
 Jim Holcomb
 Trapp Chevrolet
 H. E. Trapp
 Walker Oldsmobile
 Foster Walker, III

McILWAIN.

The New Orleans name for Cadillac.

A Cadillac dealership offers luxury cars. At McIlwain Cadillac, we take "luxury" seriously. Our customers get the very best prices, efficient and expert service, and all the personal attention and concern they deserve. For your next luxury car, come to McIlwain.

McILWAIN Cadillac

3100 Lime Street, Metairie, Louisiana



See the New Chevrolets

The new Chevrolets are truly wonderful. Come in and drive one. You can get a new Chevrolet car or truck or a used car or truck from a dealer who really cares about you. A good deal to begin with and good service after your purchase.

LOW, LOW PRICES FROM
 DEPENDABLE PEOPLE SINCE 1933.

Stephens

Chevrolet

840 Carondelet Street • 581-7171

Winners Wear BIKE



*Sportsman's
 Corner*

"Everything for the Individual as well as the Team Athlete"
 1611 24th Avenue - Gulfport, Mississippi 39501-7854
 Phone 863-1612

TULANE BASEBALL . . .

By Lenny Vangilder
Tulane Sports Information Office

The years 1982 and 1983 were memorable ones for Tulane Head Baseball Coach Joe Brockhoff.

In the past two seasons the Green Wave accomplished enough to establish that a winning tradition is beginning to form.

Results speak loudly. In 1982 . . .

●Tulane won its second Metro Conference championship. Going into the tournament as the fourth seed, the Wave knocked off Louisville, Virginia Tech, Memphis State and Florida State on consecutive days, all in comeback fashion. In the final against the Seminoles, catcher Eric Lane hit three home runs and had seven runs batted in. Both are school and Metro tournament records, and the performance earned Lane the tournament's Most Valuable Player award.

●The Wave won its first game ever in NCAA tournament play. After losing a heartbreaker to the University of New Orleans the night before, the Wave defeated Jackson State, 11-5, for its first-ever win in NCAA action. The Wave bowed out of the regional play the next evening when Paul Fitch balked in the winning run against host UNO.

●Tulane broke the school record for wins with 41.

If that wasn't enough, things were better in 1983 . . .

●Tulane made its second consecutive appearance in the NCAA tournament. The Greenies got into the tournament with an at-large bid, after finishing second in the Metro to Florida State. Once in the tournament, the team lost the opener of double-elimination event, 4-2 to Mississippi State, before coming back in the loser's bracket to take an 8-7, 10-inning win over Grambling. Once again, the

Wave ended the season by losing to the host team of the regionals, falling 7-5 to eventual national champion Texas.

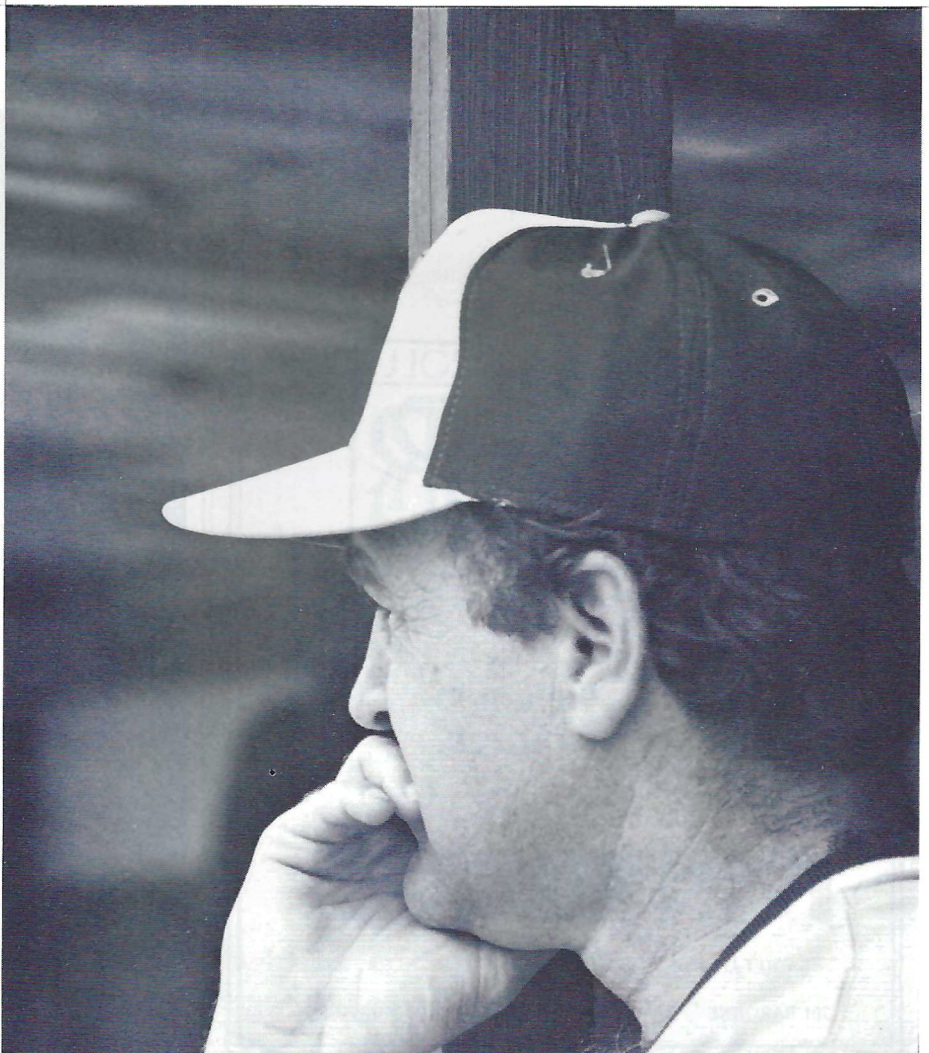
●Brockhoff's nine captured the Pelican Cup trophy with a 3-1 win over UNO in the deciding game of the three-game series. The Greenies won the opener in the Superdome, 7-1, before UNO tied the series with a 14-6 victory at Privateer Park. When the Bucs came to Tulane diamond,

Marc Desjardins pitched the Wave to victory.

●Tulane broke the school record for wins again, raising the record by four with a 45-victory season. Other records also fell. The big record-setter was first baseman Tommy Mathews, who shattered school marks with 20 home runs and 71 RBI's.

●The Greenies moved into the highest ranking the school has ever

Coach Joe Brockhoff

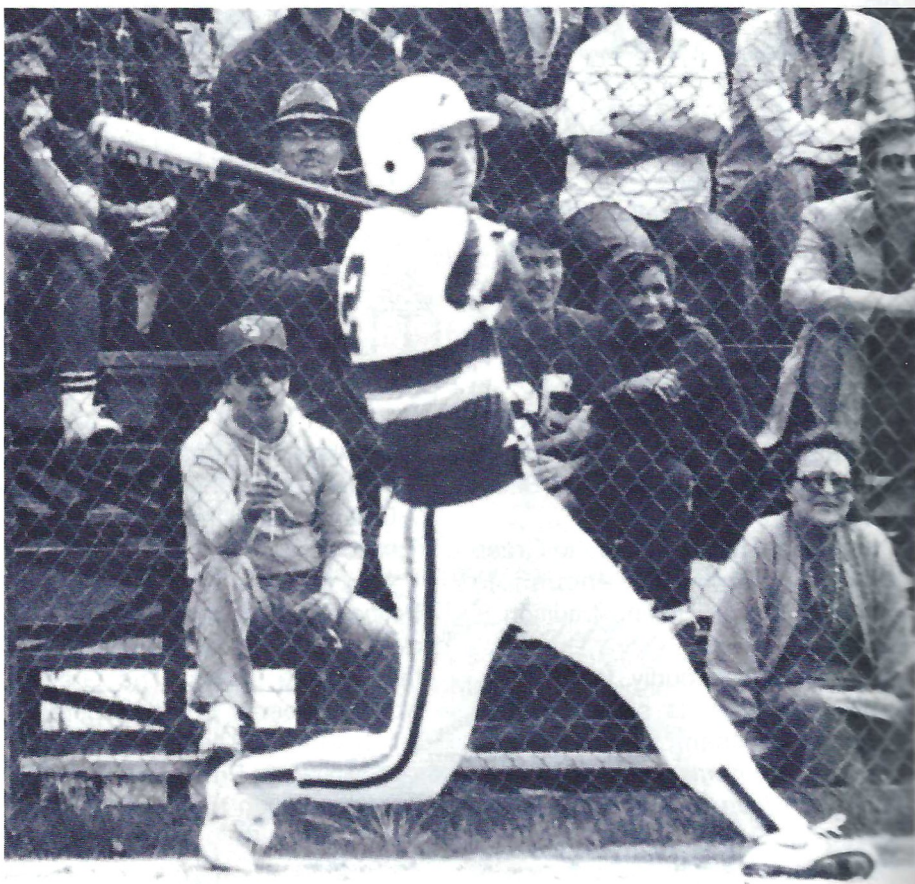


achieved in baseball, rising to fourth place in the nation in the *Collegiate Baseball* poll. The Wave spent eight weeks in top 10 before falling in the rankings late in the season.

As good as these facts are, they are now in the past. Coach Brockhoff knows that it will be tough to match the 1982 and 1983 records in 1984. With a solid pitching nucleus returning, and four regulars in the field, the picture isn't bad at all, though.

The returning pitchers are headed by senior Desjardins, who had one of the best pitching seasons ever at Tulane by winning 12 games in 1983. Sophomores Mike Borgatti, Tommy Little and Kevin Burdine, who all pitched sparingly last year, are expected to contribute. Freshman transfer Jim Sexton, redshirt Kevin Mmahat and signees Barry Grinnell of Delgado Junior College and Ricky Pursell of Ecole Classique can make the pitching staff one of the team's strong points.

Mathews heads the returnees on the field, the other veterans are Glen



Glen Fourmaux unloading



Estes

CADILLAC • ROLLS ROYCE

701 BARONNE

NEW ORLEANS

**T. Smith
STEVEDORES**

T. SMITH & SON, INC.

416 Common Street
New Orleans, LA 70130
Phone 504/524-0611, Telex 58205



Ace Southpaw Marc Desjardins

Fourmaux at shortstop, catcher/designated hitter Steve Riley, and outfielder Dan Wagner. All are seniors except for Wagner, who is a sophomore.

Also returning are infielder Joe Scheuermann, outfielder J.B. Mahoney, first baseman John Reich, infielder/outfielder Chris Rivette, and catchers Scott Barbier and Lenny Edelman.

Signees Billy Rapp of Holy Cross and Ronald Marigny of St. Augustine are expected to contribute in the infield. Transfer Gerald Williams, who prepped at Newman but attended Vanderbilt as a freshman, will bring experience to the squad.

As is usually the case in the fall, Brockhoff has a lot of unanswered questions. If records indicate anything, he should have them answered long before he opens his schedule early next spring.

Coach Brockhoff has a knack for coming up with the right answers. His goal is clear: to continue Tulane's winning tradition.

Roll Green Wave ... and Roll on Bohn Ford Wheels

All the New Ones are here —
The Big, the Medium and the Small
The Wild Ones, The Cool Ones,
The Smooth Ones.

All with Bohn's long terms and
low monthly payments.

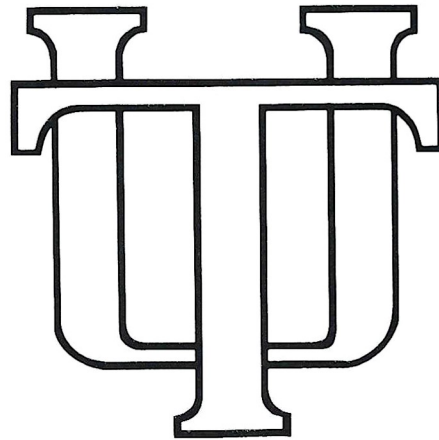
BOHN FORD

Over 50 years of service

S. Broad at Washington • 822-4600

dameron  **pierson**
400 Camp Street 525-1203

**complete office -
design services**



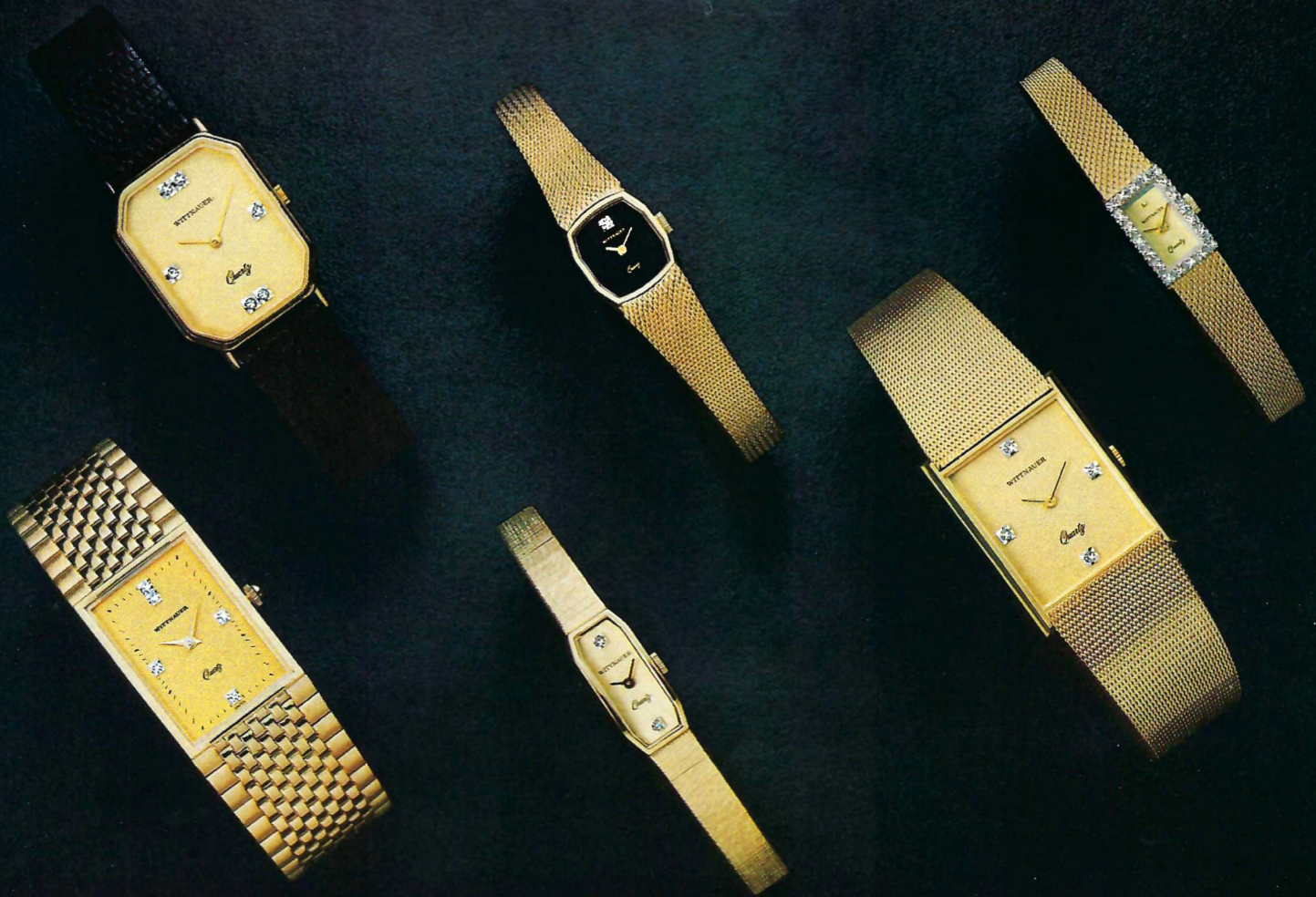
Wittnauer
Official Award
Timepiece of
1983 Tulane Athletics

LONGINES

WITTNAUER

Time can be beautiful

diamond
"I want a Wittnauer!"



Of course, there are lots more Wittnauer Watches in our 1983 Collection. Each with style, quartz and quality, many with diamonds. Each designed to generate traffic, turn and profits. Your Longines-Wittnauer Representative will be delighted to show you the entire 1983 Collection.

LONGINES

WITTNAUER

Time can be beautiful

*From \$120. to \$395.
Manufacturer's suggested retail price.

 *Eta Swiss Quartz*



We feature GM cars like this Pontiac Phoenix.

LET'S HEAR IT FOR GREEN TEAMWORK!

When you follow the "Green Wave" to out-of-town games, put our green team to work for you. National Car Rental is the official car rental company for Tulane Athletics. Our low weekend rates and top-condition cars will keep you in good cheer.

And with our free unlimited mileage you can wander far afield. So put some fun and freedom in your weekends —whether it's for team spirit or just high spirits. Our National team makes weekend break-aways easy. If you're 18 or older, all you need is a current student I.D., a valid driver's license,

and a small cash deposit. Or use a major credit card if you wish. Cheers to green teamwork—on the field and on-the-road. For special and unlimited mileage rates, cars must be returned to rental city. You deserve National attention.®



We feature GM cars like this Pontiac Grand Prix.

National Car Rental®

324 So. Rampart St., 525-0416.

There's one airline that offers you low fares and more flights to most of our cities than any other airline in America.

"Love that Spirit!"



One airline that serves you with genuine Southwest hospitality, whether you're going to work, or going to play.

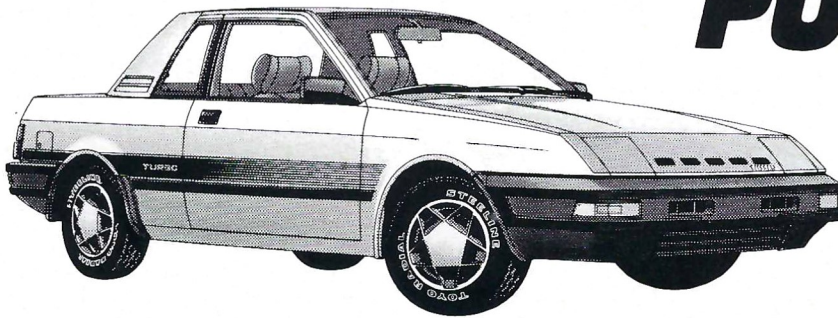
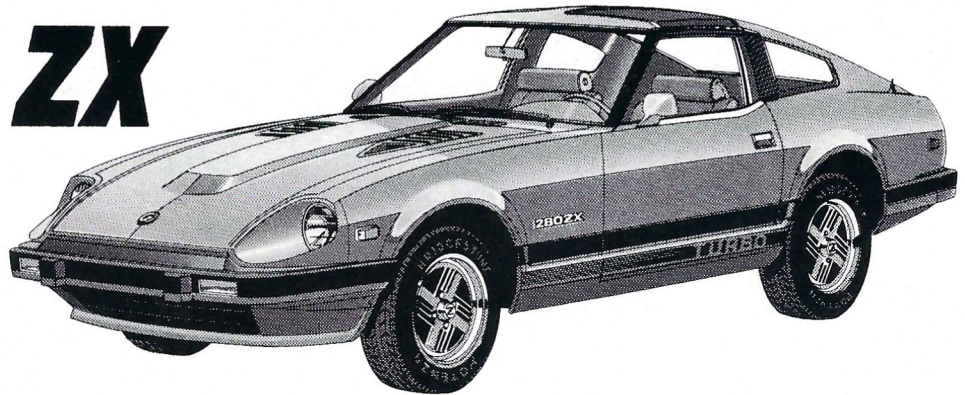
You know who we are. Southwest Airlines. And you're gonna love our Southwest Spirit! ❤️ Call Southwest Airlines or your travel agent for reservations.

SOUTHWEST AIRLINES
"Love that Spirit!"

A Double Degree in Performance.

TURBO ZX

Fire up the engine and you'll hear mechanical precision. Accelerate and feel what it's like to go from 0 to 50 in 5.1 seconds flat. The Datsun 280-ZX . . . maximum performance and efficiency. Until you've driven it, you don't know what awesome really means.



These Turbo beauties earned their degree on the highways of the world. Come on down to our showroom and test drive them both.

PULSAR NX TURBO.

IT'S NEW! IT'S HOT! IT'S HERE!
This hot new Nissan moves out with a powerful, 1.5 liter, overhead cam, Turbocharged engine. It's got a 5-speed overdrive manual transaxle, steel belted radial tires, AM-FM 4-speaker Stereo Radio . . . all as standard equipment . . . and much more! Take a test drive soon at Bankston.

"BANKSTON DATSUN DEALS!"

W. O. BANKSTON DATSUN

3727 VETERANS BLVD. IN METAIRIE 455-5800



KENTWOOD

100% SPRING WATER

SALT-FREE

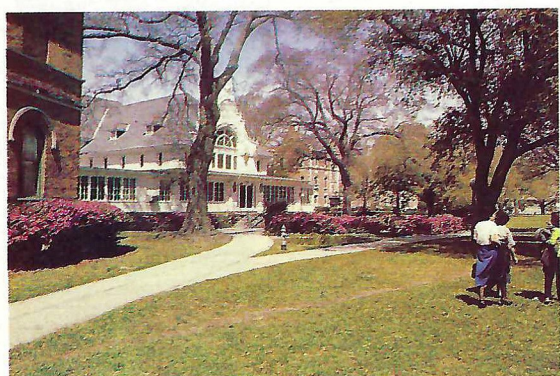
It's a natural.

For Home or Office Delivery

Call 821-3333

The Campus...

Most of the University's activities are centered at the main campus, a 100-acre site in uptown New Orleans. Scholars also pursue their interest at the downtown Medical School campus; at the Delta Regional Primate Research Center in Covington, La., 35 miles from the main campus; at the International Center for Medical Research at Cali, Colombia, and at the University's newest campus—the F. Edw. Hebert Center, across the Mississippi River from downtown New Orleans, a development devoted to scientific research.



Social Science Building



Tilton Memorial Building



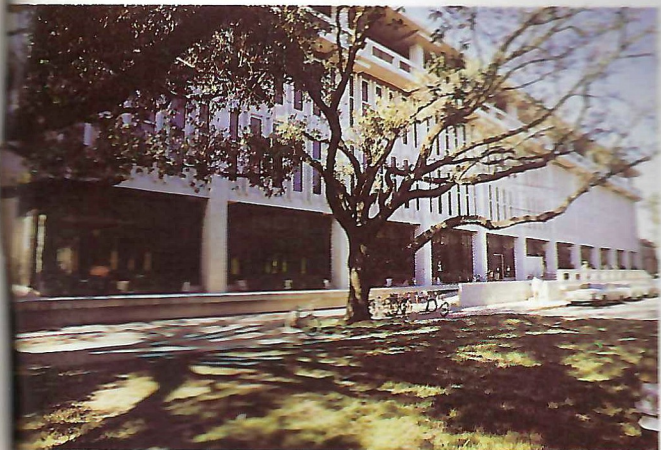
Gibson Hall Quadrangle



Monroe Hall



School of Architecture



Howard Tilton Library



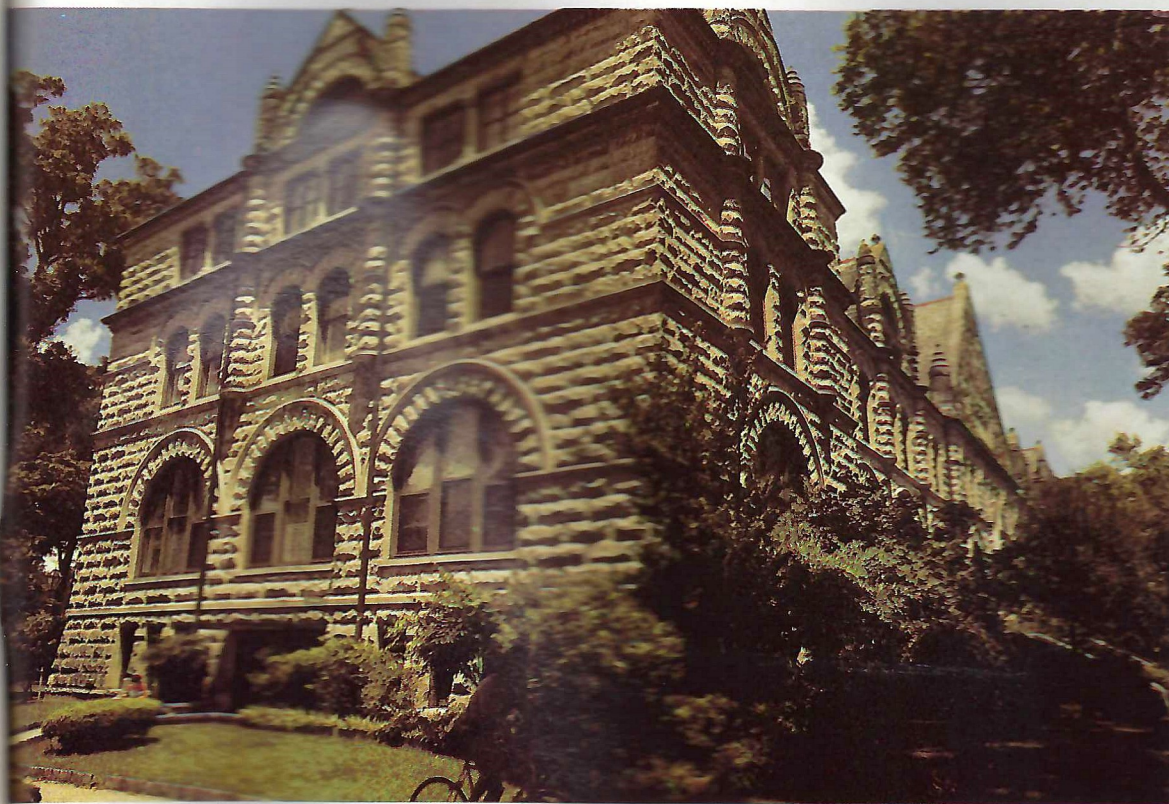
Business School



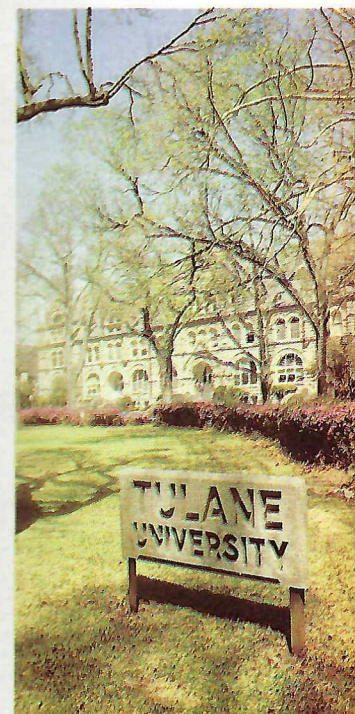
School of Law



Tulane Tennis Courts



Gibson Hall



Gibson Hall



CHIQUITA® is a registered trademark of United Brands Company.

DEPEND ON DELTA FOR THE BEST PASSENGER SERVICE IN THE SKY.



The Delta professionals, like Cynthia Tompkins, go all-out to give you a great trip.

35,000 professionals. The best passenger service in the sky, including superb dining. Wherever you fly Delta, you'll find its 35,000 men and women couldn't care more. Their spirit of service is the Spirit of Delta.

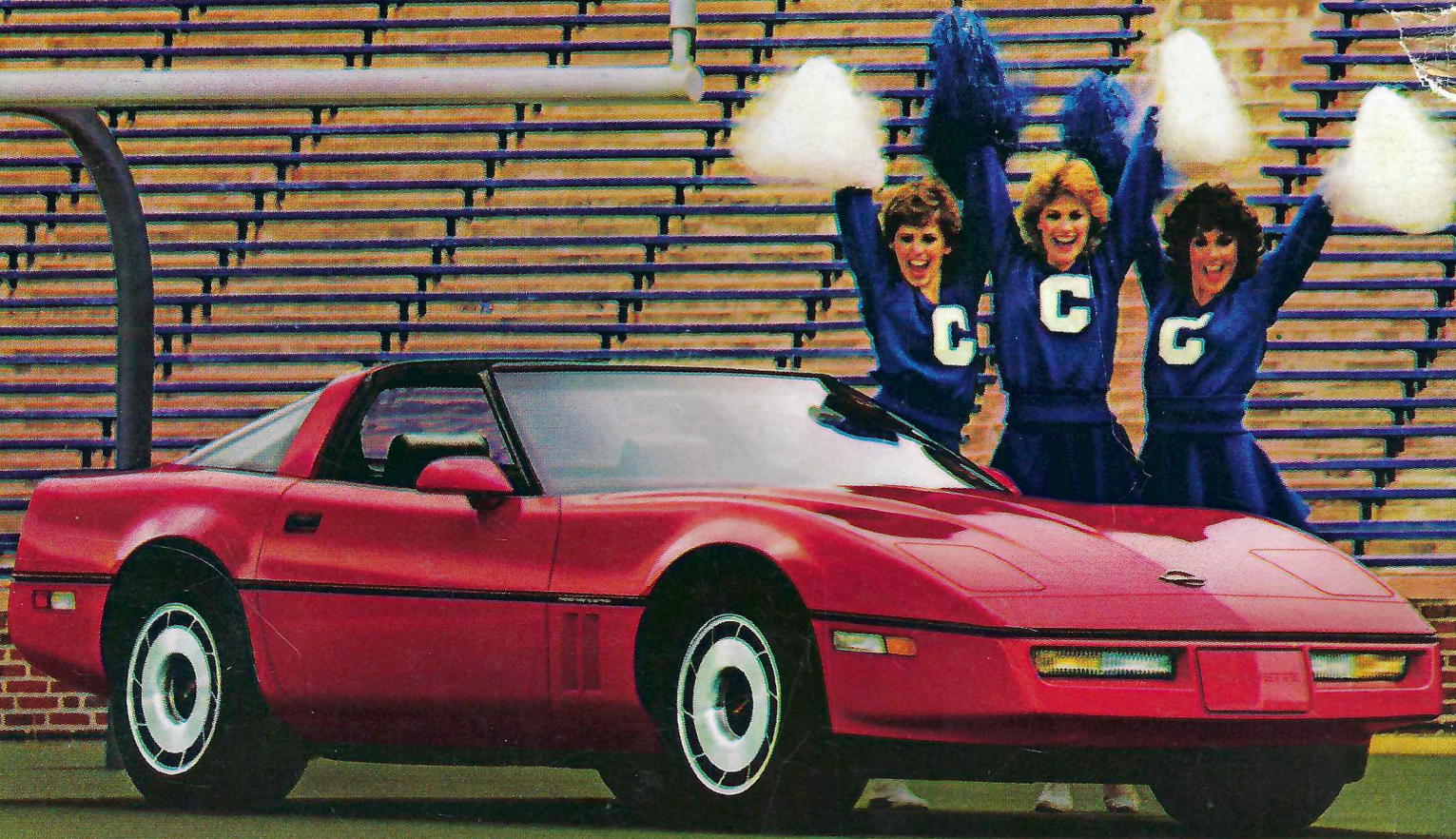
Frequent schedules. Delta has 1400 take-offs daily to over 90 cities in the U.S.A. and abroad. Including the major business and vacation areas in the U.S.A. Nonstops from Atlanta to both London and Frankfurt.

200 modern jets. You'll like the comfort and spaciousness of Delta's Wide-Ride L-1011 TriStars and 727s with Wide-Ride cabins. And the greatest of the new generation of jets, the Boeing 767.

Choice of fares. From First Class to Tourist, with a choice of discount fares. Medallion Business Class to and from Europe, for luxury at a saving. Discount fares for travel in the U.S.A. **DELTA**
The airline run by professionals.

For flight information, see your Travel Agent or call Delta in New Orleans at 529-2431.

DELTA IS READY WHEN YOU ARE®



Chevrolet's M.V.P.

We're proud of our newest Most Valuable Performer—the new Corvette. The sporting analysts of the automotive world, the enthusiast magazines, are pretty impressed with it, too. *Car and Driver* magazine called it, "The most advanced production car on the planet."

That makes us feel pretty good at Chevrolet. Because a lot of deep thinking and hard work went into creating the new Corvette.

The dedication that went into Corvette is the same dedication demonstrated by the athletes of the National Collegiate Athletic Association. And since we know

what hard work is all about, we established the Chevrolet Scholarship Program back in 1971. This awards the Most Valuable Players in NCAA football and basketball games with a donation to their respective school's general scholarship fund.

To date, over 1,800 scholarships, totaling over 1.9 million dollars, have been donated to assist men and women in furthering their educations.

At Chevrolet, we strive for excellence. That's why we support the goals of the NCAA and that's why we offer cars like our Most Valuable Performer—the new Corvette.



Let's get it together... buckle up.

CHEVROLET IS TAKING CHARGE 