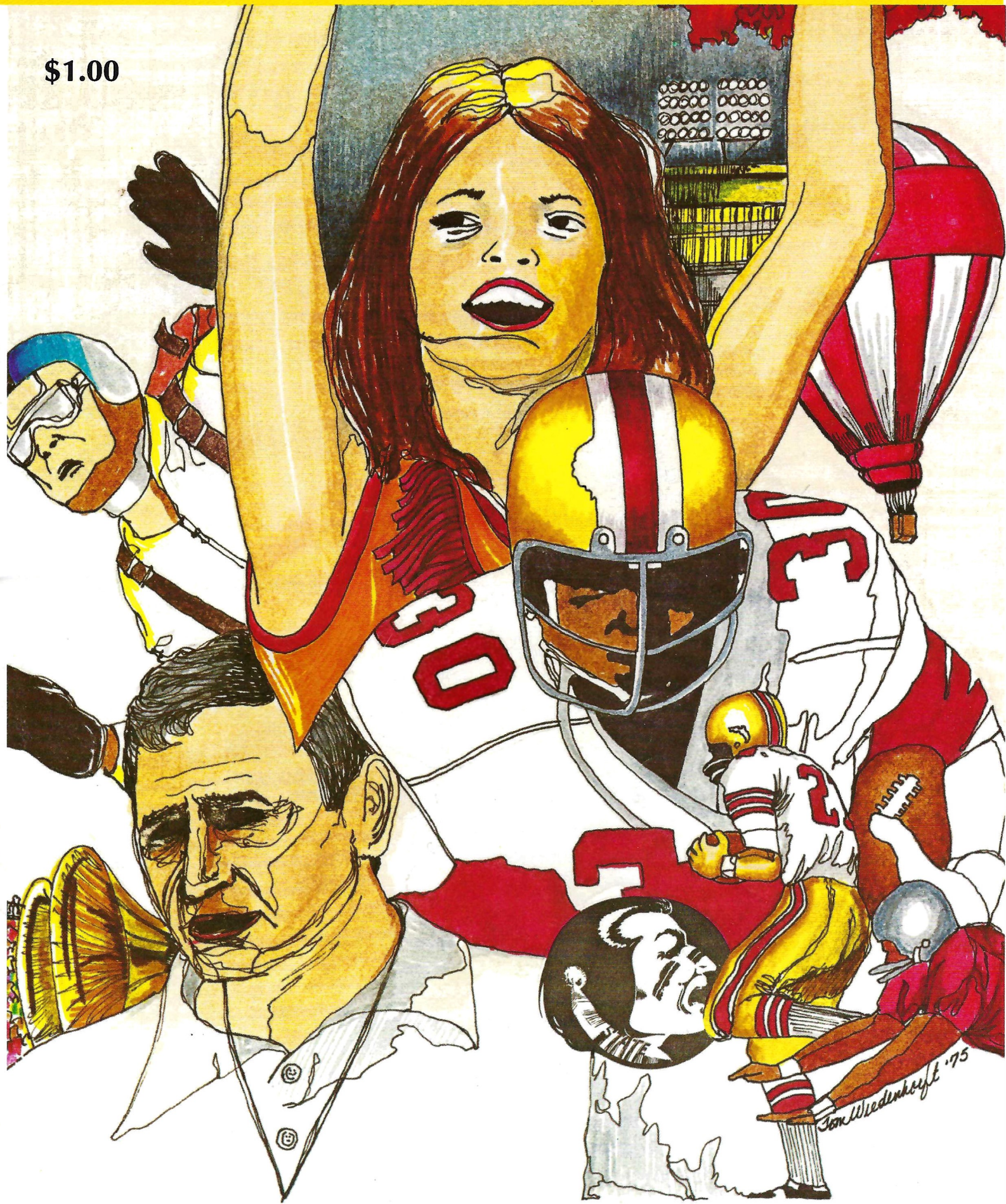


SEMINOLE FOOTBALL

FLORIDA STATE vs. UTAH STATE

SEPTEMBER 20, 1975

\$1.00



SEMINOLE SATURDAY NIGHT—SEE INSIDE

Flagship Banks
of Tallahassee

LEAD THE WAY
WITH
SERVICE
& CONVENIENT
HOURS



FLAGSHIP AMERICAN BANK
216 West College Avenue / 222-1422

Flagship Peoples Bank
1136 Thomasville Road / 224-5151

Members F.D.I.C.



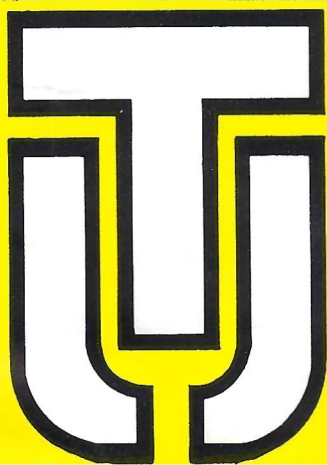
University Shop Ltd.

From Levi Jeans
to 3-piece Suits—
headquarters for the
latest styles.



NORTHWOOD MALL
TALLAHASSEE, FLORIDA

AUBURN MALL
AUBURN, ALABAMA



SEMINOLE STATE

Welcome To The South's Friendliest

Florida State University is a study in contrasts, its palm trees and oaks shading charming old buildings with Gothic spires and striking contemporary structures of brick and steel.

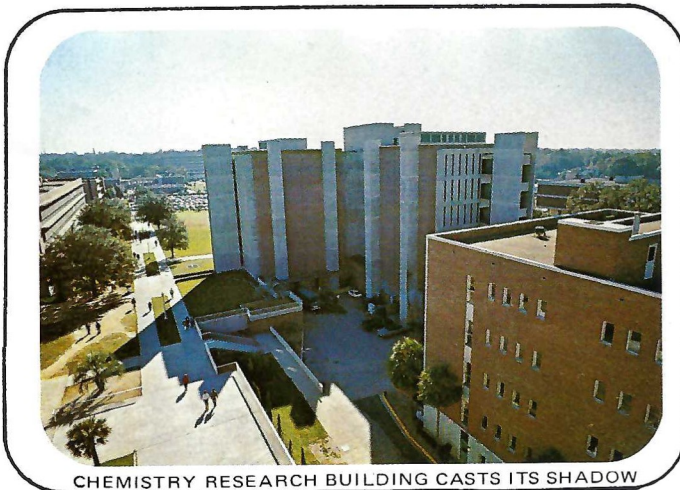
Its history dates back to 1857, when the state legislature named it the Seminary West of the Suwanee. Later it became Florida State College for Women but in 1947, that venerable institution became coeducational Florida State University and a growth spurt started that hasn't stopped yet. Enrollment this year has topped 21,000.

The University has a total population larger than many towns. Add the staff of over 7,100 employees, including some 1,300 faculty members and you have a nearly 30,000 members of an active, vital community.

Contract and grant expenditures for 1974-75 for research and training at Florida State amounted to \$17,285,000. The University has an operating



A MIGRATION BETWEEN CL



CHEMISTRY RESEARCH BUILDING CASTS ITS SHADOW

budget of \$81 million, which state, federal and private sources.

The University's 14 schools include Arts and Sciences, Business Administration, Criminology, Communication, Library Science, Horticulture, Theatre, Law, Music and more. In these fields there are 52 departments and more than 80 bachelor's and graduate programs.

Florida State was one of the first in the nation to have its affirmative action program approved by the U. S. Department of Education and Welfare. The University has built a community in which all are equalized and uses its faculty and staff resources to develop the skills of the members of all groups so that they can play a visible and productive role in society.

From One Seminole Fan to Another

Florida State football fans are looking to the 1975 season with a high degree of optimism.

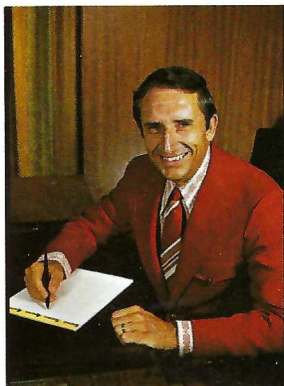
That optimistic feeling is stronger than ever in 1975. Darrell Mudra, in his second year as head coach, began the 1974 season with, for the most part, a team of young, unseasoned players. He enters this season with many of the same players — only this year they have the experience and knowledge of veterans. And when you add the talented freshmen players who chose Florida State, you have what promises to be a very exciting season.

Enthusiasm and spirit among the players, coaches and fans is at an all-time high. The 1975 Seminoles want to win. Winning has been a tradition at Florida State. Everyone is anxious to return to those winning ways!

The 1974 schedule was a rugged one and this year's schedule is no less demanding. Over the past seasons, alumni, students, faculty, staff, friends and seminole boosters have shown their loyalty through increased attendance and continued financial support. This year is no exception.

The enthusiasm emanating from loyal fans is reflected on the field of play. The fans reach back, so to speak, for that extra drive that often provides the margin. No one can deny that fans play a very important part in any team's success.

Let's show our Seminoles and their coaches that they have our full confidence and support.



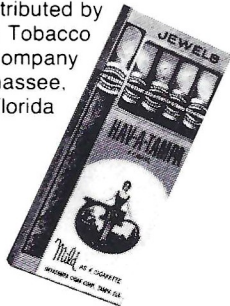
DR. MARSHALL

Sincerely yours,
Stanley Marshall
President

PLAY OUR DOUBLE OPTION

THE FLORIDA
TIMES-UNION
&
JACKSONVILLE
JOURNAL

Distributed by
Eli Witt Tobacco
& Candy Company
Tallahassee,
Florida



Hav-A-Tampa JEWELS

*The Cigar for Men . . .
that Ladies Love —*

WELCOME ANYWHERE

for their man-size flavor and gentle aroma



SEMINOLE COACHING STAFF: Front Row (left to right)—David Snell, Jim Gladden, Ned Austin, Frank Vohun. Second Row—Cal Jones, Pete Rodriguez, Gary Grouwinkle, Larry Rayes, Carl Wade, Rick Schachner and Don Fauls. Third Row—Frank DeBord, Bob Harbison, Head Coach Darrell Mudra, Eddie Wilson, Gene McDowell, Larry Pendleton and Deek Pollard.

Seminole Boosters

LIFE TIME MEMBERS

Bill Cartee, Tallahassee
Charles S. Coble, Tallahassee
Syde P. Deeb, Tallahassee
Burt Reynolds, Los Angeles, CA

FULL SCHOLARSHIP DONOR

TALLAHASSEE
A.B. Dick Products Company
Albritton-Williams, Inc.
Charles H. Alford
Compliments of a Friend
Mr. A's Mendelson's
Barnett Bank North
Barnett Bank of Tallahassee
Barrett, Daffin & Figg
Bill's Bookstore
William Bishop Consulting Engineers
Brown Derby
Brown, Smith, Young & Pelham Attorneys
Buddy's Sporting Goods
Dr. Emory Cain
Capital City First National Bank
Capital City Second National Bank
Capital City Sporting Goods
Chenoweth Distributing Company
J. Kinson Cook, Inc.
Bertha Cooke, Inc.
Cosby-Langston Development Corp.
Courtesy Corporation
Crossland Realty, Inc.
Dr. Gene L. Davidson
Drake Management, Inc.
Dr. Evan E. Dussia
Walter Eason Realty
Elberta Crate & Box Company
Equity Resources, Inc.
Flagship American Bank
Flagship Peoples Bank
Florida Federal Savings & Loan Assoc.
B. Kenneth Gatlin
Hammons Equipment Sales & Leasing
Dr. Tom C. Haney
Dr. William D. Henderson, Jr.
J. Harvey Hill
Hilton Hotel
Holiday Inns
H.S.E. & M.
Industrial National Bank
Jax Liquors
Kinnebrew Motors, Inc.
Landrum and Associates
Leon Federal Savings & Loan Assoc.

Lewis State Bank
Leon Realty, Inc.
Dr. Stanley Marshall
Buddy Martin
Bruce McIver, Southeastern Realty
Bill McKemie Chevrolet
John W. Mettler
Midyette-Moor Insurance Agency, Inc.
Millard Noblin Realty, Inc.
Mobile Home Industries, Inc.
Dr. Coyle E. Moore
Moore Family Trust
Coach Darrell Mudra
Municipal Code Corporation
Northwood Mall Merchants Association
George E. Palmer
Palmer-Harrell Buick, Inc.
Jesse C. Palmer
Julius F. Parker, Jr.
Parkway National Bank
Nat Polak Insurance Agency
Mel Pope
Mrs. E. T. Pridgeon, Jr.
Proctor & Proctor, Inc.
Ramada Inn
Ryals Lee Sales Company
Seminole Distributors, Inc.
Robert Shackleton
Silver Slipper, North
James C. Smith
Southeastern Asphalt Company
Southeastern Surgical Supply
Stafford Jewelry Company
Symon, Ryals & Days Inns
Tallahassee Builders Supply, Inc.
Tallahassee Democrat
Tallahassee Federal
Tallahassee Ford Motors
Tallahassee News Company, Inc.
Tallahassee Restaurant & Lodging Assoc.
Terra-Rosa Hardware
Van Brunt & Yon, Inc.
WGLF Radio
WTNT Radio
George A. Weeks
Wheeler Builders Supply, Inc.
Dan Whitehurst, Southeastern Realty
Wholesale Foods

**we're on top
of every
game**

Florida's Most Interesting Newspaper

Sentinel Star
Orlando, Florida

The Florida State University Football Program is published by the Florida State University Dept. Business Manager—Claude Thigpen. Advertising Coordinator—John Sheffield. Sales Department of Intercollegiate Athletics. National Advertising Representative is Spencer Mar Tallahassee; Typography by Canon Graphics, Tallahassee.

TURDAY NIGHT

ampus!

Tonight's Halftime

Music, color and motion highlight both the pre-game and halftime performances as the Marching Chiefs open a season of Bicentennial Musical Salutes.

This evening The Chiefs kickoff the new year with a salute to the "Hits of Broadway". This evening's extravaganza begins with two tunes from the popular musical "Funny Girl", *Don't Rain On My Parade* and *People*. From one of Broadway's biggest hits, "Fiddler On The Roof", The Chiefs next feature *Miracle of Miracles* and *If I Were A Rich Man*. The Chiefs conclude the Salute with the theme from "The Man of La Mancha" and *Impossible Dream*. Reversing the field, The Chiefs pay tribute to the rock hits of the past and present. Things begin with a number from the rock group "Chicago" entitled *Fancy Colours*, followed by the hit from "Santana", *Oye Como Va*. Tonight's Halftime Spectacular closes with one of Elton John's biggest hits, *Don't Let the Sun Go Down on Me*.

WELCOME TO SEMINOLE SATURDAY NIGHT! Tonight Campbell Stadium comes alive with the excitement of college football, an outstanding half-time performance by the Marching Chiefs, sensational skydivers who will guide their shoots to the 50-yard line and a host of other entertaining events. It is part of a package to make this and every Florida State home game a really special occasion for the whole family.

While there are a number of things planned for tonight the "main attraction" remains Florida State's football squad. Head Coach Darrell Mudra and the Seminoles host Utah State, one of the better teams from the rugged Rocky Mountain region, and it promises to be the first of five exciting home games this season.

The Seminoles will have a new look for 1975, switching to the Garnet jersey for a majority of their home games. Also a new offensive formation that promises to unleash a bevy of exciting running backs, while keeping the pass as an integral part of the attack.

The 1975 Seminole game program is also all new. This is a brand new concept in game programs with special features we think will not only make it handier during the game, but also make you want to take it home and start a collection of programs.

The most unique aspect of this program is that you will find it contains four, full-color poster pictures of your favorite Seminoles on the inside. Each game we will feature a different set of pictures and we are sure you will want to collect them all.

Also, you will note, the "centerspread" area has been redesigned to provide finger tip reference to the starting line-ups and full player rosters. No more harried page flipping to discover who that new substitute is.

In this section you will find information about tonight's teams, their schools, game information and descriptions of Seminole Saturday Night activities. All presented in an easy to handle, readable package.

Like any new product, we are interested in your reaction to the Seminole Poster Program. We do not believe you will find anything like it at any other stadium in the country. If you have an opinion about the new format, please drop a note to Hank Schomber Room 200 Tully Gym, Florida State University, Tallahassee, FL 32306.

Southernair MOTEL

Across from F.S.U.

Tallahassee, Florida 32304
904/224-7116



and *Skyline*
Motor Lodge

U. S. 90 West
904/576-2157

Quality Inns for Quality People

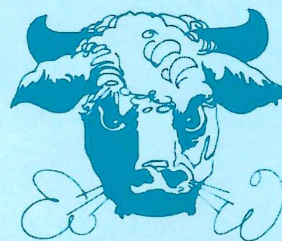
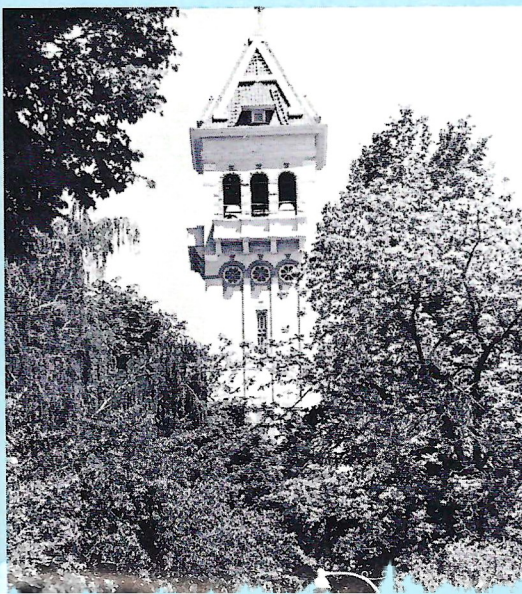


We Work At It!

That's why nobody else covers FSU football with the same skill, power or dash. Here's the best, most colorfully complete coverage of every Seminole game.

St. Petersburg Times
FLORIDA'S BEST NEWSPAPER

UTAH STATE



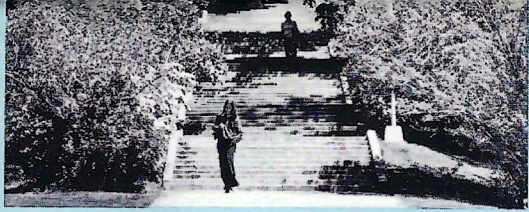
With a student body of 8,805, Utah State has advantages of both the large and small schools, with such features as a spacious library, excellent laboratories, and top-rated cultural attractions, including world-famous symphonies, ballets, pianists, singers, and lecturers. These advantages are combined with individualized programs characterized by close personal attention.

This University was founded in 1888 as a part of the public educational system of Utah and operates under the constitution and laws of the state. It belongs to a great family of institutions known as land grant universities, which had their origin in

Miami Concessions, Inc.

Your
Campbell Stadium
Concessionaire

Soft Drinks, Hot Dogs,



"OLD MAIN" ON THE HILL.

1862. A rich curriculum is offered in the arts and sciences, in both undergraduate and graduate programs. Degrees granted include the Bachelor's and Master's degrees, Doctor of Education (Ed.D.), and Doctor of Philosophy (Ph.D.).

Logan, Utah, home of Utah State University, is a town of 25,000 population located in northern Utah, 80 miles north of Salt Lake City.



DR. GLEN L. TAGGERT
President



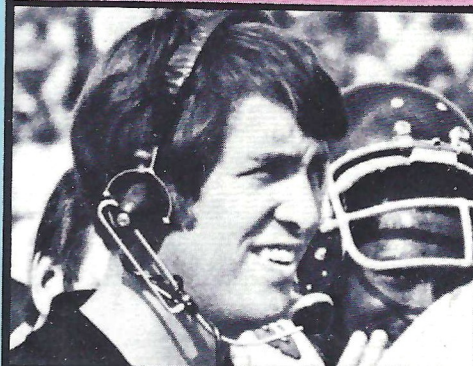
LADELL ANDERSEN
Athletic Director



PHIL KRUGH
Head Coach

Peanuts, Pop Corn,
Sandwiches, Potato Chips
Candy, Coffee
and other
Refreshments
and Novelties

Available at Popular Prices



A WHOLE NEW BALL GAME

Steve Sloan

One of the most exciting football coaches on the American college scene shares his witness as a Christian in his newest book. Using the terms and strategy of the game itself, Sloan presents his philosophy of life in an inspiring and uplifting manner.

\$4.95

At your favorite book store

BROADMAN

rs, Inc.

Richard W. Wolfe
W. S. Lee Company, Inc.

ST. PETERSBURG
Dr. Eugene C. Alver
Philip A. Browning
Peninsular Sign Company

BAINBRIDGE
Aragon Farms

ATLANTA
Winfred L. Bailey
Michael E. Pou

PENSACOLA
Brown and Reeves
Ronald E. Swaine

NORTH PALM BEACH
Karle Bucklew

MIAMI
Calder Race Course, Inc.
Walter L. Revell

TAMPA
Manuel Corral
Nelson A. Italiano
Compliments of a Friend
Charles F. Mixon, Jr.
West Coast Transport, Inc.

LAKELAND
Frank C. Decker
Publix Super Markets, Inc.

PERRY
Faircloth Ford
Donald E. Grant
John E. Loughridge

CLEARWATER
Crockett Farnell, Jr.
William M. Parker

QUINCY
First Federal Savings & Loan Assoc.

Fryer-Thomas Motor Company
W. L. Montague
Ralph Morang
Niagara Wires, Inc.
Doyle Pope
Talquin Electric Cooperative, Inc.

THOMASVILLE
Holiday Inn
Spence Oldsmobile Company

MILTON
Compliments of a Friend
Locklin Brothers
Claude Locklin, Jr.
Al Moran, Halls Ace Hardware

DELAND
Wendell Jarrard

FORT WASHINGTON, PA
Keith Nichols Company

OCALA
Jim Kirk

CHIPLEY
Roger L. Laney

WINTER HAVEN
Lyons Industrial Corporation

QUEBEC, CANADA
John J. McHale

ATHENS, GA
Y. C. McNease

MARYLAND HEIGHTS, MO
Hank J. Mercer

HAVANA
Miller Chevrolet Company

JACKSONVILLE
Pal Equipment Company, Inc.
Herb Swisher

PANAMA CITY
John and Jim Patronis
WDBT-TV

MONTICELLO
Bill Peacock Chevrolet

LIVE OAK
Ratliff Ford Motors

PLANT CITY
Harold C. Taylor

MADISON
Robert R. Toomey

ST. AUGUSTINE
Yarbrough Oldsmobile Cadillac, Inc.

Look up America. Enjoy the real things.



Coca-Cola® and "Coke" are registered trade-marks which identify the same product of The Coca-Cola Company

partment of Intercollegiate Athletics. Editor—Hank Schomber. Program Manager—Lonnie
Coordinator—Jack Ibach. Local Advertising is contracted by the Florida State University
keting Services, New York. The 1975 Seminole Poster Program is printed by Grafcom, Inc.,

FLORIDA STATE Seminoles

Offense

SE	20	Mike Shumann
	32	Mike Barnes
	11	Jim Everett
QT	69	Bruce Harrison
	75	Doug Dane
QG	64	Jeff Gardner
	60	Mike Kissner
C	72	Smokey Ragins
	50	Bill Sawyer
SG	79	Tony Falvo
	70	Vic Ravis
ST	71	Tom Rushing
	66	Charlie Barnes
TE	80	Billy McPhillips
	81	Ed Beckman
QB	18	Clyde Walker
	12	Steve Mathieson
	16	Jimmy Black
HB	35	Leon Bright
	33	Rudy Thomas
	30	Jeff Leggett
Z	44	Larry Key
	22	Bobby McKinnon
	21	Lloyd Kelly
FB	29	Fred Miller
	36	Jimmy Heggins
	31	Gator Cherry

Defense

LE	73	Randy Coffield
	82	Keith Tuten
LT	88	Willie Jones
	76	Phil Jones
MG	63	Jon Thames
	62	Abe Smith
RT	78	Greg Johnson
	91	Nat Henderson
RE	85	Dave Porter
	87	Rudy Maloy
LB	51	Aaron Carter
	53	Brian Schmidt
LB	58	Waldo Williams
	83	Detroit Reynolds
LC	40	Bobby Jackson
	47	Nat Terry
RC	46	Lee Nelson
	27	Joe Joyner
SS	42	Joe Camps
	24	Andy Stockton
FS	41	Gary Woolford
	22	Jeff Smith

Be Choosy

Whether you like your pizza thin or thick, you'll like Pizza Hut. Because now that's where you can get both kinds. If you like it thin, you'll love our famous Thin 'n Crispy* Pizza. If you like it thick, you'll be wild about our new Thick 'n Chewy* Pizza. And we make them both one at a time, by hand, using only the freshest

dough and ingredients. If you're choosy about your pizza, you'll choose the Pizza Hut Restaurant. Stop by after the game for a delicious snack. When you experience our service, our atmosphere, and our great choice of pizzas, you'll find out why we say at... Pizza Hut, our people make it better.

Thin 'n Crispy



Thick 'n Chewy



UTAH STATE Aggies

Offense

TE	88	Orlando Nelson
	86	John Hooks
ST	76	Scott Parrish
	79	Kim Wallace
SG	70	Keith Mullins
	67	Ed Collins
C	52	Barry Grasseschi
	66	Curt Hough
QG	56	Eldon Messersmith
	53	Charley Haynes
QT	72	Randy Tuft
	77	Bill Haynes
SE	26	Kory Coles
	25	Greg Daly
QB	12	Greg Van Ness
	19	Chris DeWan
TB	43	Louie Giammona
	44	Dan Cox
FB	31	Paul Tidwell
	49	Steve Smith
	32	Jesse Kemp
FL	48	Paul Tippetts
	87	Bradd Clifford

Defense

LE	55	Steve Maughan
	54	Ron Holmes
LT	75	Wayne Womack
	78	Pat Wilson
MG	62	Jim Samaduroff
	71	Jim Hough
RT	74	Bob Dzierzak
	73	Paul Stephenson
RE	63	Randy Stockham
	61	Tom Richert
LB	59	Brian Longuevan
	57	Joel Watson
LB	60	Al Bettman
	58	John O'Donnell
LC	13	Dave Williams
	46	Dave Parkin
RC	21	Mike Masson
	40	Dave Niuro
SS	28	John Dodge
	33	Jamie Marsh
FS	22	Ron McCloud
	24	Steve Coleman

PUNT	—	16	Don Schnell
		28	John Dodge

Placements—1 Keith Singletary.
 Kickoffs—1 Keith Singletary.
 KO Returns—33 Rudy Thomas.
 Punt Returns—40 Bobby Jackson
 41 Gary Woolford.

FLORIDA STATE

NO.	NAME	POS.	HT.	WT.	CL.	HOMETOWN
1	Keith Singletary	PK	6-0	194	Fr.	Thomasville, Ga.
3	Bill Duley	P	6-0	170	So.	Ocala
11	Jim Everett	SE	6-3	181	Sr.	Tallahassee
12	Steve Mathieson	QB	6-5	213	Jr.	Rockville, Md.
16	Jimmy Black	QB	6-0	188	Jr.	Merritt Island
17	Wally Woodham	QB	5-11	178	Fr.	Tallahassee
18	Clyde Walker	QB	6-4	189	So.	Chapel Hill, N.C.
20	Mike Shumann	SE	6-1	164	Jr.	Tallahassee
21	Lloyd Kelly	FL	6-0	200	Fr.	Miami
22	Bobby McKinnon	FL	6-1	186	Sr.	Lake Worth
23	Chris Griffin	DB	5-11	168	Sr.	Tampa
24	Andy Stockton	DB	6-0	183	Sr.	St. Petersburg
26	Hector Gray	SE	6-1	192	Fr.	Miami Springs
29	Fred Miller	FB	6-0	203	Jr.	Jacksonville
30	Jeff Leggett	HB	6-0	193	Jr.	Miami
31	Gator Cherry	FB	6-0	209	Fr.	Lake Wales
32	Mike Barnes	SE	5-11	177	So.	Titusville
33	Rudy Thomas	HB	5-11	189	Jr.	Quincy
35	Leon Bright	HB	5-9	180	So.	Merritt Island
36	Jimmy Heggins	FB	5-11	197	So.	Salisbury, N.C.
37	Greg Ramsey	DB	5-11	175	Fr.	Dothan, Ala.
38	Mike Kincaid	DB	6-1	176	So.	Waukegan, Ill.
39	Jeff Ridings	DB	6-0	183	Jr.	Marietta, Ga.
40	Bobby Jackson	DB	5-10	179	So.	Albany, Ga.
41	Gary Woolford	DB	6-1	180	Jr.	Joliet, Ill.
42	Joe Camps	DB	6-2	199	Jr.	Gainesville
44	Larry Key	FL	5-9	181	So.	Inverness
46	Lee Nelson	DB	5-10	188	Sr.	Melbourne
47	Nat Terry	DB	6-1	160	So.	Tampa
50	Bill Sawyer	C	6-3	243	Jr.	Cordele, Ga.
51	Aaron Carter	LB	5-9	186	So.	Gainesville
53	Brian Schmidt	LB	6-2	219	Jr.	Lehigh Acres
55	Mike Stewart	LB	6-1	196	Fr.	Hazlehurst, Ga.
57	David Hanks	LB	6-2	209	So.	Orlando
58	Waldo Williams	LB	6-0	227	Fr.	Merritt Island
60	Mike Kissner	OG	6-2	240	Jr.	Delray Beach
62	Abe Smith	OG	6-0	240	Fr.	Tallahassee
63	Jon Thames	MG-T	6-1	228	Jr.	Gainesville
64	Jeff Gardner	OG	5-11	218	Sr.	Miami
65	Billy McPhillips	OT	6-2	249	Jr.	Tampa
66	Charlie Barnes	OT	6-4	256	Fr.	Thomasville, Ga.
67	Gary Rose	DT	6-4	238	So.	East St. Louis, Ill.
69	Bruce Harrison	OT	6-1	245	Jr.	Vero Beach
70	Vic Rivas	OG	6-2	240	Jr.	Miami
71	Tom Rushing	OG	6-4	267	Jr.	Blythe, Calif.
72	Smoke Ragins	C	6-2	255	Sr.	Plant City
73	Randy Coffield	DE	6-3	226	Sr.	Hialeah
74	Jim Keyton	OT	6-5	240	So.	Thomasville, Ga.
75	Doug Dane	OT	6-4	238	Jr.	Altamonte Springs
76	Phil Jones	MG	6-3	260	Jr.	Miami
77	Mark Messeroll	DT	6-7	277	Jr.	Piscataway, N.J.
78	Greg Johnson	DT	6-5	244	Sr.	Fruitland Park
79	Tony Falvo	OG	6-0	354	Sr.	Wexford, Pa.
80	Billy McPhillips	TE	6-2	249	Jr.	Tampa
81	Ed Beckman	TE	6-4	217	Jr.	Miami
82	Keith Tuten	DE	6-5	211	Jr.	Indianatlantic
83	Detroit Reynolds	LB	6-1	226	Jr.	Tallahassee
84	Rudolph Thomas	TE	6-3	215	Fr.	Fort Valley, Ga.
85	Dave Porter	DE	6-4	197	Jr.	St. Petersburg
87	Rudy Maloy	DE	6-4	219	Jr.	Frostproof
88	Willie Jones	DE	6-5	212	Fr.	Miami
89	Mark Marshall	TE	6-5	210	Sr.	Cape Coral
90	Louis Richardson	DT	6-5	230	Jr.	Crystal River
91	Nat Henderson	DT	6-6	245	So.	Albany, Ga.

Try Thick 'n Chewy

at the Following Locations:

TALLAHASSEE

2148 W. Tennessee Street
576-2911

2011 N. Monroe Street
385-7636

1241 E. Lafayette Street
878-1124

THOMASVILLE, GA.

322 E. Jackson
226-9166

BAINBRIDGE, GA.

1238 Shotwell

VALDOSTA, GA.

1616 N. Ashley Drive
244-7720

3024 N. Ashley Drive
244-9484

OFFICIALS: Referee—James Harper (SEC) Atlanta, GA; Umpire—John Griggs (SEC) Lexington, KY; Linesman—Robert Towns (SEC) Athens, GA; Line Judge—Edward Dudley (SEC) Atlanta, GA; Field Judge—John Foster (SEC) Gulfport, MS; Back Judge—Robert Patrick (SEC) Kennesaw, GA; ECO—Ned Wilford (SEC) Daytona Beach, FL.

UTAH STATE

NO.	NAME	POS.	WT.	HT.	CL.	AGE	HOMETOWN
10	Eric Hipple	QB	180	6-1	Fr.	18	Downey, CA
12	Greg Van Ness	QB	184	6-1	Jr.	20	Goleta, CA
13	Dave Williams	CB	174	5-8	Sr.	22	Daly City, CA
14	Cary Palmer	QB	175	6-0	Fr.	18	Mesa, AR
15	Tom Mayes	K	178	5-10	Jr.	19	Apache Jct., AR
16	Don Schnell	P	177	5-10	So.	19	Chesterfield, MO
19	Chris DeWan	QB	180	6-0	Sr.	22	Torrance, CA
20	Craig Adford	TB	178	6-1	Fr.	18	Simi Valley, CA
21	Mark Masson	CB	178	5-11	Jr.	21	Idaho Falls, ID
22	Ron McCloud	FS	167	5-8	So.	20	Riverside, CA
24	Steve Coleman	FS	166	5-11	Jr.	21	Anaheim, CA
25	Greg Daley	FI-SE	205	6-2	Jr.	22	Tempe, AR
26	Kory Coles	SE	162	5-11	Jr.	21	Salt Lake City
27	Jake Smith	SE	189	5-10	So.	19	Clearfield
28	John Dodge	P-SS	190	6-3	Jr.	20	San Luis Obispo, CA
31	Paul Tidwell	FB	208	6-1	Jr.	20	Ogden
32	Jesse Kemp	TB	206	5-10	Jr.	21	Alhambra, CA
33	Jamie Marsh	SS	192	6-2	So.	19	Tacoma, WA
35	Rick Jones	FS	190	6-6	Fr.	18	Antioch, CA
38	Gary Wellborn	FB	205	6-2	Fr.	19	Monterey, CA
40	Dave Niuro	CB	176	5-11	Jr.	21	Downey, CA
41	Benjie Lawrence	FI	190	6-1	Fr.	18	Piedmont, CA
43	Louie Giammona	TB	176	5-9	Sr.	22	Calistoga, CA
44	Dan Cox	TB	173	5-10	Jr.	21	Salt Lake City
45	Scott Tillotson	SS	180	6-0	So.	19	Salt Lake City
46	Dave Parkin	CB	179	6-0	So.	19	Salt Lake City
48	Paul Tippets	FI	197	6-0	Jr.	21	Ogden
49	Steve Smith	FB	194	5-10	Jr.	20	Roy
50	Paul Cummings	OC	220	6-3	Fr.	18	Susanville, CA
51	Bob Fisher	LB	220	6-0	So.	19	Morgan
52	Barry Grasseschi	OC	229	6-1	Sr.	20	Black Eagle, MT
53	Charley Haynes	OG	232	6-1	Sr.	24	Beaumont, TX
54	Ron Holmes	DE	201	6-1	Sr.	22	Oakland, CA
55	Steve Maughan	DE	215	6-2	Sr.	22	Logan
56	Eldon Messersmith	OG	226	6-1	Jr.	21	Layton
57	Joel Watson	LB	200	5-11	Jr.	21	Buhl, ID
58	John O'Donnell	LB	209	5-11	So.	19	San Ramon, CA
59	Brian Longuevan	LB	216	5-11	Sr.	21	Rosemead, CA
60	Al Bettman	LB	229	6-2	Sr.	20	Petaluma, CA
61	Tom Richert	DE	190	6-2	So.	19	Pocatello, ID
62	Jim Samaduroff	MG	218	6-0	Sr.	21	Pico Rivera, CA
63	Randy Stockham	DE	187	6-1	Jr.	21	Highland, IN
64	Claude Nelson	DE	205	6-1	Jr.	20	Layton
65	Dennis Cunningham	OT	248	6-4	So.	19	Reno, NV
66	Curt Hough	OC	240	6-2	So.	20	LaMirada, CA
67	Ed Collins	OG	233	6-4	So.	19	Simi Valley, CA
68	Fred Zweifel	OG	223	5-10	Jr.	20	Northbrook, IL
69	Tom Bohmer	DT	243	6-3	So.	20	West Allis, WI
70	Keith Mullins	OG	238	6-0	Sr.	21	Phoenix, AR
71	Jim Hough	MG	259	6-3	So.	19	LaMirada, CA
72	Randy Tuft	OT	250	6-3	Jr.	21	Salt Lake City
73	Paul Stephenson	DT	257	6-3	Jr.	22	Grundy Center, IO
74	Bob Dzierzak	DT	247	6-3	Sr.	23	Danvers, MA
75	Wayne Womack	DT	235	6-1	Sr.	22	Phoenix, AR
76	Scott Parrish	OT	268	6-6	Sr.	22	Logan, UT
77	Bill Haynes	OT	249	6-3	Jr.	21	Lafayette, CA
78	Pat Wilson	DT	242	6-3	So.	19	Salt Lake City
79	Kim Wallace	OT	246	6-4	Sr.	21	LaMesa, CA
85	Kelly Treseder	TE	210	6-2	Fr.	18	Salt Lake City
86	John Hooks	TE	209	6-2	Jr.	20	Torrance, CA
87	Bradd Clifford	FI	204	6-2	So.	19	Clinton
88	Orlando Nelson	TE	211	6-4	Sr.	21	Layton

DO YOU HAVE WHAT IT TAKES TO BE A LEADER?

YOU are good enough to be a leader, Don't settle for less!

You have a Program leading to an **ARMY ROTC** Commission for **YOU**.

Room 201
C Building



FLORIDA STATE UNIVERSITY

Call 644-1016
644-2784

GO 'NOLES

CITY-WIDE AND
SURROUNDING AREAS



'BUDDY STEWART'
"WORKING FOR BETTER
COMMUNITY HEALTH"
HAVE YOUR DOCTOR CALL US

NO CHARGE FOR
DELIVERY SERVICE

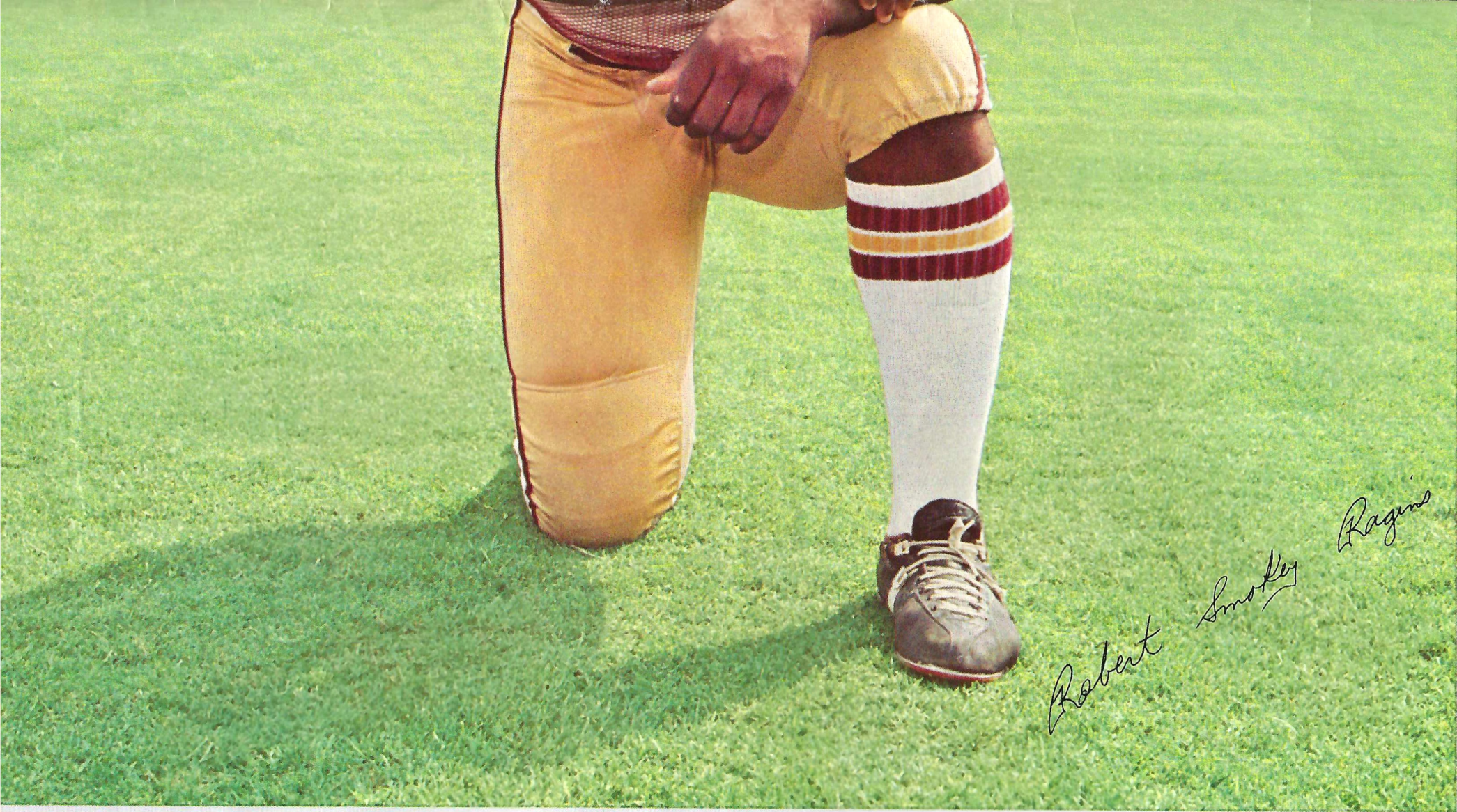
UNIVERSITY REXALL PHARMACY

WEST TENNESSEE AND HIGH ROAD
TELEPHONE 224-5011



2121 West Tennessee
Tallahassee, FL
Phone 904-224-5011
Gen. Mgr. H. H. Stewart
stay an extra day
You're welcome!





Robert Smokey Ragins

Smokey Ragins

**Nobody's
second string on**

CAPITAL CITY FIRST
NATIONAL BANK

CAPITAL CITY SECOND
NATIONAL BANK

CITY
NATIONAL BANK

INDUSTRIAL
NATIONAL BANK

**WE'RE
ON THE BALL**

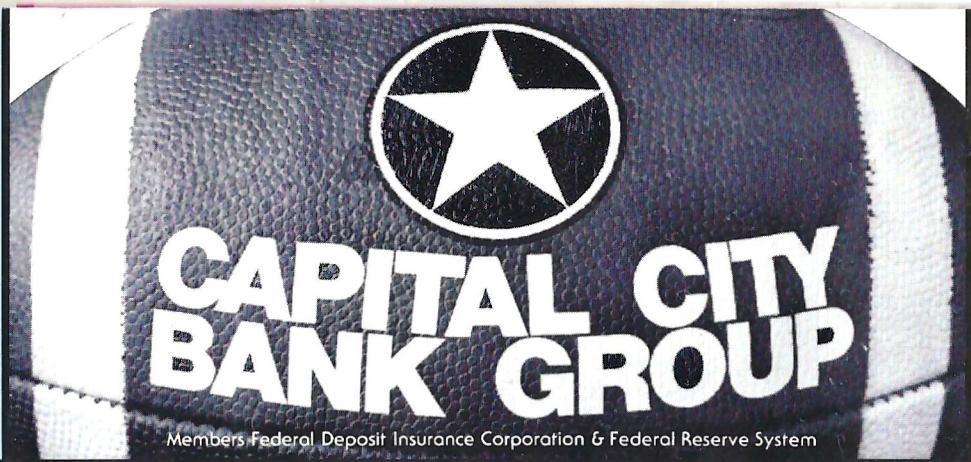
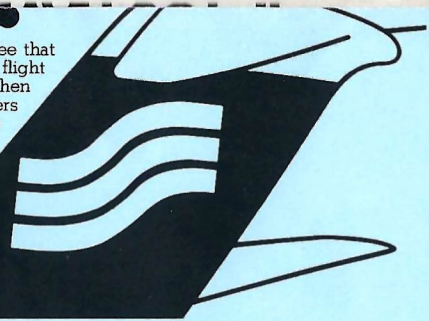
**COMPLETE S
COVERAGE E**

The Tampa Tribune's 1
of sports reporters lea
editor Tom McEwen an
assistant editor Jim S
bring you complete co
all sports.

Read the Sports p

WORLDWIDE AIR

As soon as you step on board a Southern jet, you'll see that there's no "First Class" and no "Tourist Class." So no flight attendant will send you to the rear of the plane and then pull that curtain in your face. Every one of our passengers enjoys the same delicious food, the same comfortable legroom and the same courteous attention from our flight attendants. Because on Southern, there's just one class of service. And it definitely isn't second.



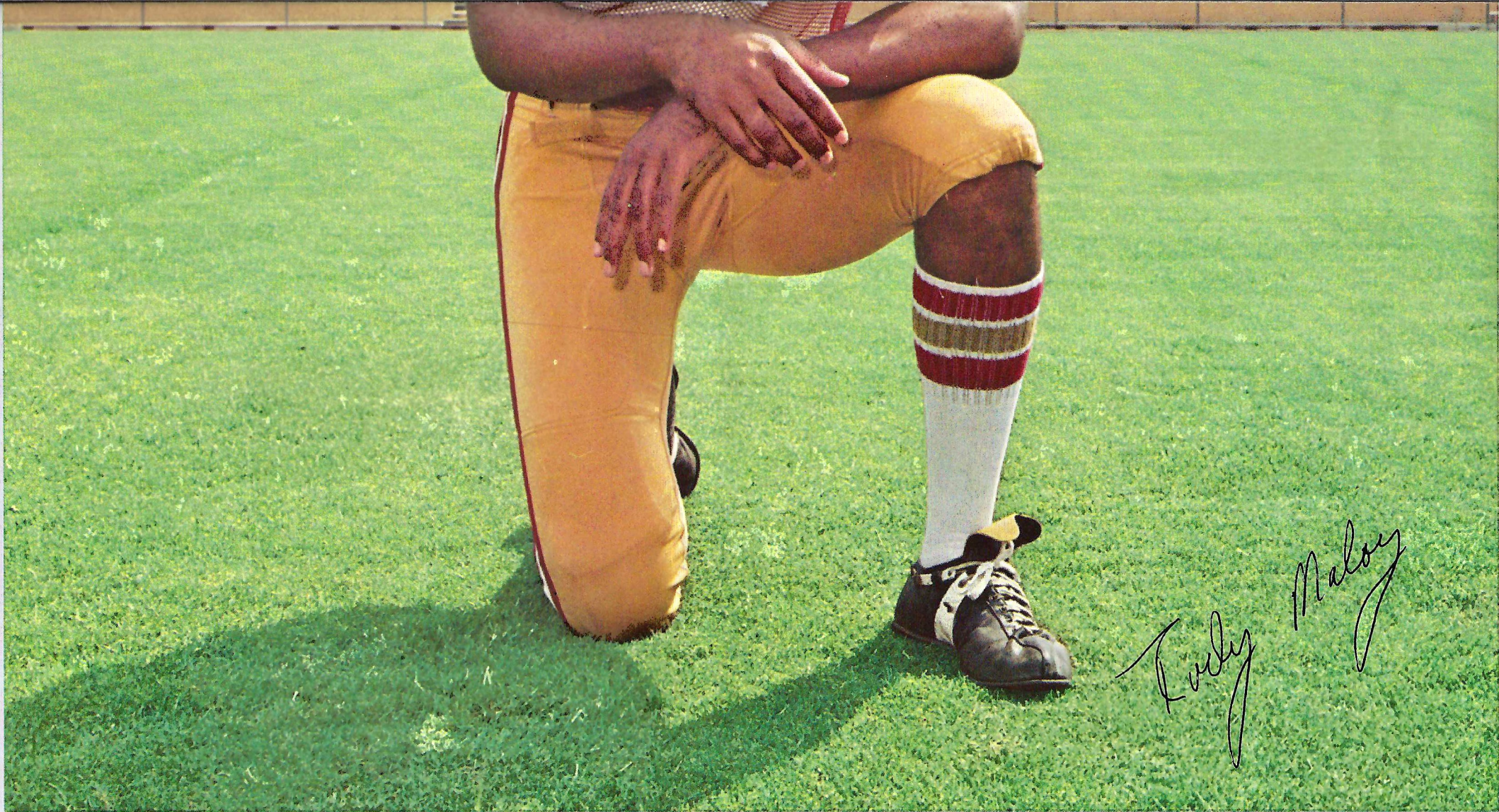
Members Federal Deposit Insurance Corporation & Federal Reserve System

**Follo
Semi**

WTNT a

1270





Rudy Maloy



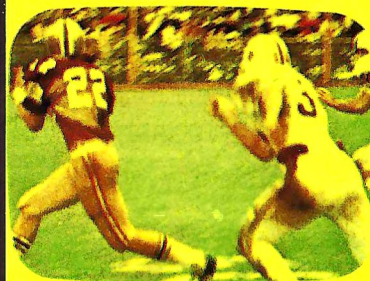
Record Your Memories On Film

TAKE YOUR CAMERA ALONG!

For the Finest in Processing and the
Largest Selection of Photo Equipment —
See the Friendly Folks at . . .

Tallahassee Camera Center

117 North Monroe • Phone 222-8771



Seminole 75

Florida State Football

with

Head Coach Darrell Mudra

on WDTB, Channel 13, Panama City.
Check local listings for time and day.

**Take A Vacation
From In**



The Smart Place To Go



nessee Street
orida 32304
576-6121
b Chandler
y for pleasure
at Ramada Inn

Tallahassee Travel & Tours, inc.



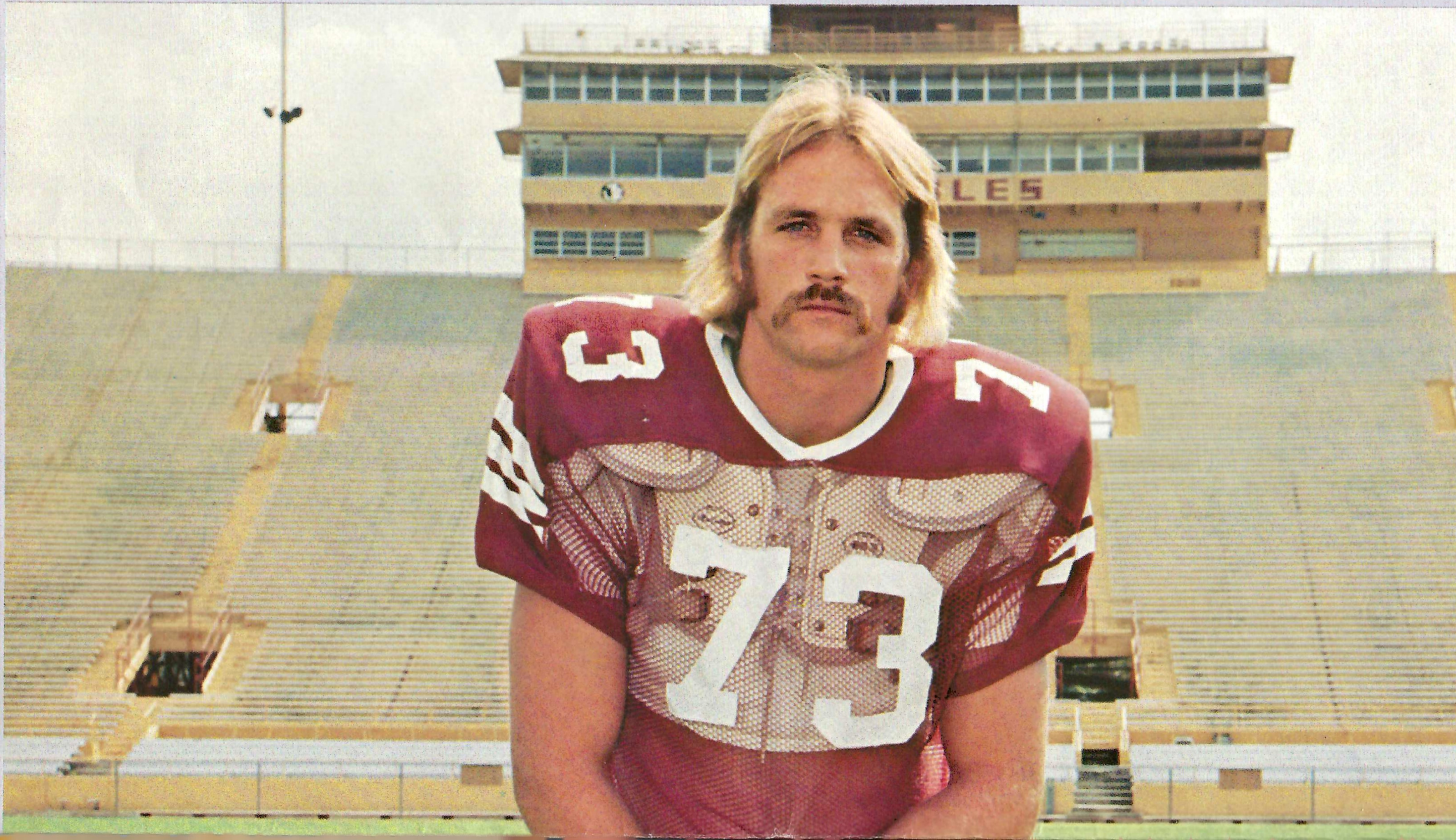
Travel Service

Calhoun at Call

224-4161

Miller Chevrolet Company

15 miles north of Tallahassee on U.S. 27
Havana, Florida
Telephone 539-6376
(call toll-free from Tallahassee 224-1317)





Randy Coffield

SPORTS
EVERYDAY!

the team
by

man
erage of

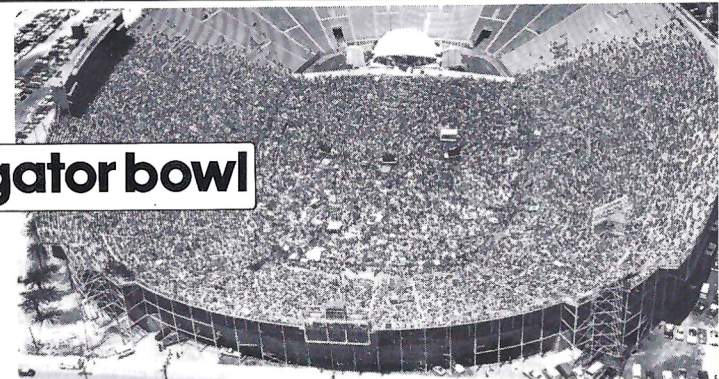
ges of

TAMPA

TRIBUNE

Special FSU Hours

Open 'till Midnight Game Nights
Featuring, the Best Salad Bar in Town,
Table Service, USDA Choice Steaks
and Your Favorite Cocktail.
Family Atmosphere, Five Minutes from the Stadium



gator bowl

IF YOU HAVE AN ATTRACTION

w the
noles

on

nd **WOMA**

Stereo 95

1921 W. Tennessee
(U.S. 90W.)
Phone 224-2415



**Mr.
Steak**

AMERICA'S STEAK EXPERT

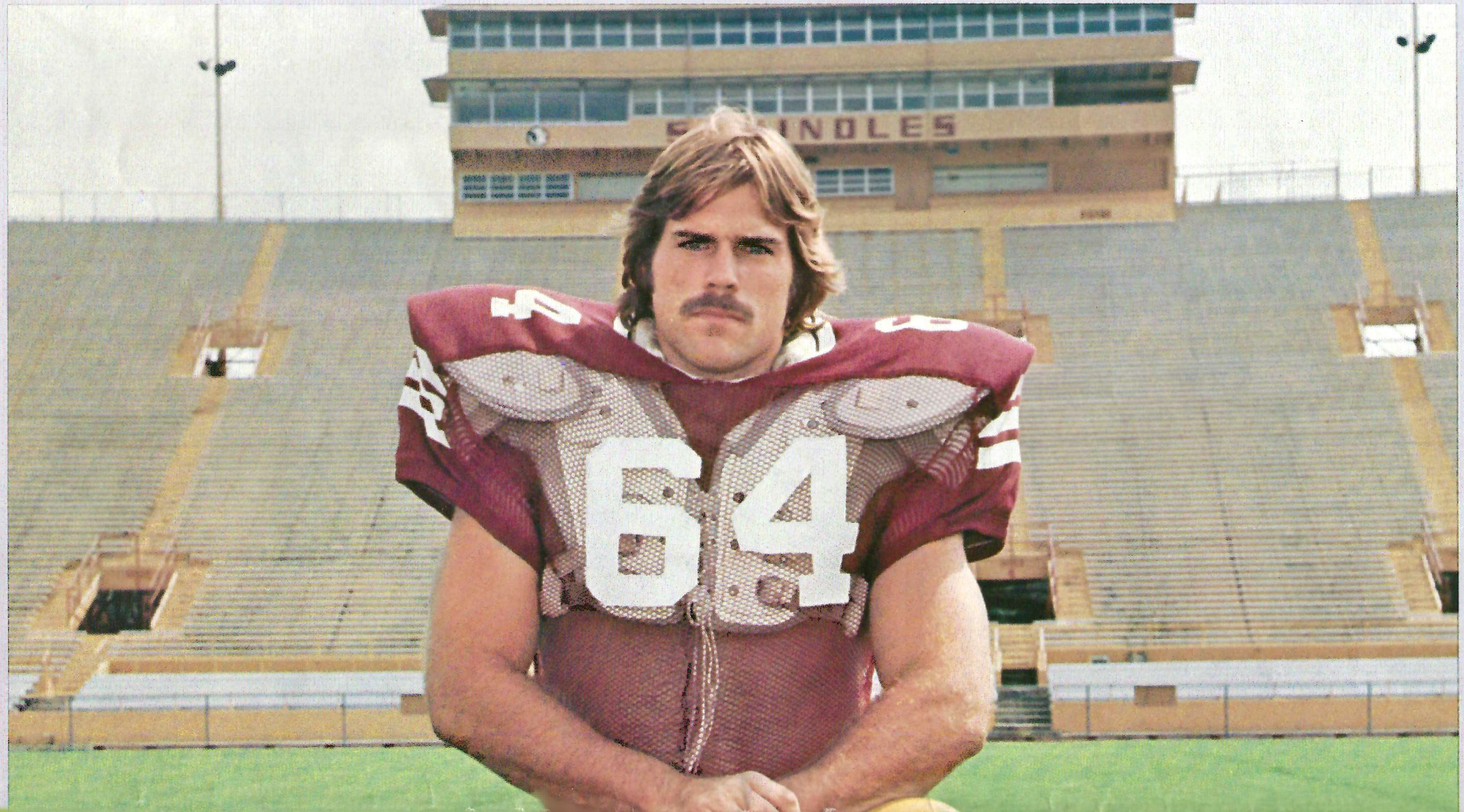


**WE
HAVE
THE
FACILITIES!**



Coliseum Rentals 633-2105; Gator Bowl Rentals 633-3806
Auditorium, Little Theatre, and Exhibition Hall Rentals 633-2592

CITY OF JACKSONVILLE





Jeff
T. Gardner

Jeff Gardner

ation
flation . . .



WE WANT YOUR BUSINESS FOR A LIFETIME
SO WE TAKE BETTER CARE OF YOU DAY BY DAY.



Barnett Banks of Tallahassee



GRAFCOM, INC.

4970 Capital Circle NW • Tallahassee, Florida 32303

Manufacturers of fine printing, with one of the most modern, well-equipped printing facilities in the Southeast to service all your printing needs.

Four-color process • multi-color • single color • books
magazines • booklets • pamphlets • annual reports

385-5195

Holiday Inn®



316 West Tennessee Street
Tallahassee, Florida 32301
Telephone (904) 222-8000