

November 23, 1974

# FLORIDA STATE

# HOUSTON

\$1.00

the college  
**GAME**®



referee photo

# Holiday Inn®



## Two Inns To Serve You In Tallahassee

316 West Tennessee Street  
222-8000

1302 Apalachee Parkway  
877-3141

Banquet Rooms, Meeting and Conference Rooms with Complete Facilities, Dining Rooms and Lounges.

# Nobody's second string on Southern.

Jet Southern and see that there's no "First Class," and no "Tourist Class." No stewardess will send you to the rear of the plane and then pull that curtain in your face so you can't see what's happening when the corks start popping at a party you weren't invited to. On Southern there's just one class of service. And that's high class.



**always**

**ST**

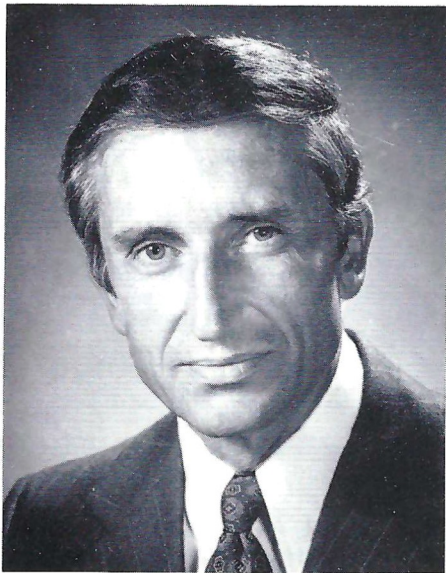


**in  
sports  
coverage**

*Florida's Most Interesting Newspaper*

**Sentinel Star**

Orlando, Florida



Dr. Marshall

If ever there is an element of the unknown in collegiate football, it is present when a new coach sends a young team on to the field. When Darrell Mudra came to Florida State as Head Coach last winter, it was not to inherit a veteran team with a winning record. It was to restore and rebuild—to recover the winning tradition to which those of us at Florida State have become accustomed.

From all reports Coach Mudra is just what we needed, and from my personal observations of the man and his management of the team, I am convinced that the reports were well founded.

The 1974 Seminoles want to win. They have worked hard to master new strategies of play introduced by Coach Mudra and his able young coaching staff. Many of the players you will see in action this year are new—some are freshmen. They will be full of surprises. But the returning players will surprise you too. They have added the sharp edge of superior training and conditioning to their ability and previous experience.

The challenge of '74 is evident in the roster of teams the Seminoles will play this season. We welcome that challenge and look forward to renewing the fun and excitement of football in each new contest. Regardless of the final outcome of the games, I know that the Seminoles will give their best efforts, and with that commitment we are ready for 1974.

Those of us in the stands—alumni, students, faculty, staff, friends, and Seminole Boosters have an important role to play. The energy emanating from a full stadium of loyal, appreciative fans cannot be overestimated as a factor in the morale of a team and its willingness to push for the extra yard, the all-but-impossible play, and the winning margin. In short, the fans have a share in the success of every team. We look forward to making that difference at every home contest.

Let's show our young Seminoles and their coaches that they have our full confidence and our full support.

Sincerely,

Stanley Marshall  
President

## From One Seminole Fan To Another . . .

# . . . Welcome To The South's Friendliest Campus

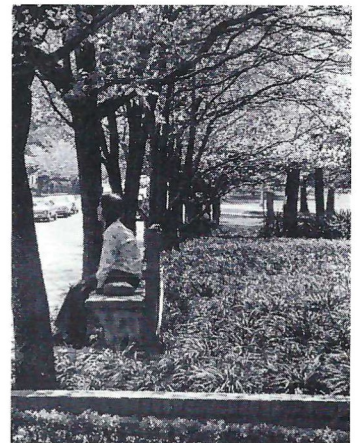
When the Seminary West of the Suwannee was founded in 1857, no one guessed that it would eventually become a large state university with a student enrollment of over 20,000.

But from that small school for men, Florida State University evolved as one of the largest state institutions of higher learning in Florida and from its Gothic entranceway, has grown westward, sprinkling its skyline with modern, highrise architecture.

The University's 14 schools and colleges include Arts and Sciences, Business, Social Sciences, Criminology, Communication, Nursing, Social Work, Library Science, Home Economics, Education, Theatre, Law, Music and Visual Arts. Within these fields there are 52 doctoral programs and more than 80 bachelor's and master's degree programs. Funds for University research totaled some \$13 million in 1973-74, resulting in many projects having practical applications for Florida's industries, environment and social welfare.

With a staff of over 7,000 employees, including more than 1,300 faculty members, the University has an operating budget of \$77 million, which includes funds from state, federal and private sources.

Florida State was one of the first universities in the nation to have its affirmative action plan approved by the U. S. Department of Health, Education, and Welfare. The University actively strives to build a community in which opportunity is equalized and uses its facilities and human resources to develop the skills and opportunities of the members of all groups so they may play responsible and productive roles in society.

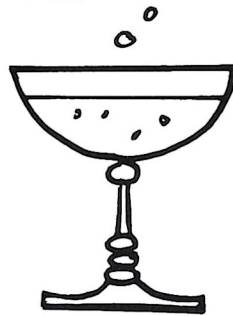


# Special FSU Hours

Open 'till 1:00 a.m.  
game nites



and



plus other fine foods and fresh seafood!

FIVE MINUTES FROM THE STADIUM

1921 West  
Tennessee  
U.S. 90W  
Phone  
224-2415

**Mr.  
Steak**

AMERICA'S STEAK EXPERT

OPEN  
FOR LUNCH  
AND DINNER  
7 DAYS A WEEK



# FLORIDA STATE

# HOUSTON STATE

## FOOTBALL MAGAZINE

VOL. XXVIII

November 23, 1974

No. 6

### IN THIS ISSUE . . .

**SOUTHERN SCHOLARSHIP RESEARCH FOUNDATION** .....8-9  
Florida State's most unique scholarship program.

**SEMINOLE BASKETBALL** .....10  
The season opens one week from tonight and Coach Hugh Durham's cagers are primed for action.

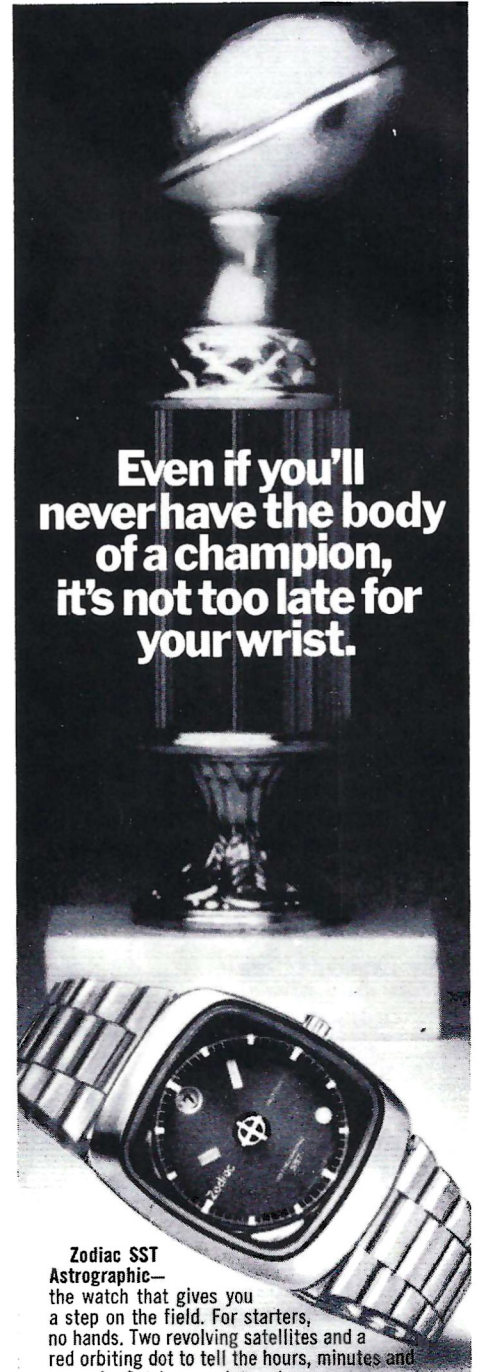
**WINTER SPORTS SCHEDULE** .....11  
Whatever your sport, you're likely to find an event to your liking as Florida State's sports schedule takes to the upswing during the winter months.

**FUTURE FOOTBALL SCHEDULES** .....11  
When is Florida State's first game next year? What new teams will be on the schedule? When is the Florida Game? The answers for next year and 1976 and '77 are here.

Florida State University	3	Football Terms	37
Seminole Boosters, Inc.		1974 Seminole Squad	38
Full Scholarship Donors	6-7	Stadium Information	40
Southern Scholarship		Seminole Auto Dealers	42
Research Foundation	8-9	Seminole Trainers	43
Seminole Basketball	10	Seminole Managers	44
Winter Sports Schedule	11	Board of Regents	45
1974 Seminoles	12-14	Seminole Head Coaches	46
Athletic Department Administration	15	Sports Spotlight: Swimming	47
The Football Coaching Staff	16	The Marching Chiefs	48
Future Football Schedules	20	FSU Football Flashback	49
Graduate Assistant Coaches	21	Coaches' Close-up	50-51
Head Coach Darrell Mudra	22-23	Seminole Booster Highlights	52
Seminole Songs	24	Houston	53-55
Keep Your Own Statistics	27	Wake Forest Finds Friends	56
Tonight's Teams	28	Seminole Cheerleaders	58
Starting Line-ups	31	Seminole Radio Network	59
Rosters	33-34	Advertising Directory	60
Officials Signals	36	Seminole Basketball	61



The Florida State Football Magazine is published by the Florida State University Department of Intercollegiate Athletics. Editor—Hank Schomber. Program Manager Lonnie Burt. Business Manager—Claude Thigpen. Sales Coordinator—Jack Ibach. Local Advertising is contracted by the Florida State University Department of Intercollegiate Athletics. National Advertising Representative is Spencer Marketing Services, New York. The 1974 Florida State Football Magazine is printed by Grafcom, Inc., Tallahassee; Typography by Canon Graphics, Tallahassee.



**Even if you'll never have the body of a champion, it's not too late for your wrist.**

**Zodiac SST Astrographic**—the watch that gives you a step on the field. For starters, no hands. Two revolving satellites and a red orbiting dot to tell the hours, minutes and seconds. Set in a sculptured case. Inside, a 17-jewel split-second-timing movement. Guaranteed\* to within a minute a month. Self-winding. Stainless steel or 18k gold electroplate case. Stainless steel back. Automatic calendar with push button date changer. Shock and water resistant. A touch of glory for your wrist. Priced from \$165.

**Zodiac**

\*Adjustments to this tolerance, if necessary, will be made at no cost for a period of one year.

Ask for ZODIAC where you buy fine watches.



Seminole Boosters, Inc., on behalf of the Florida State University, wishes to express its sincere gratitude to the following Full Scholarship donors, who have contributed at least \$1,000 each to the Booster Scholarship Fund.

**A. B. Dick Products Company**  
Tallahassee

**Albritton-Williams, Inc.**  
Tallahassee

**Charles H. Alford**  
Tallahassee

**American Communications, Inc.**  
Tallahassee

**Aragon Farms**  
Bainbridge, Georgia

**Compliments of a Friend**

**Winfred L. Bailey**  
Atlanta, Georgia

**Barnett Bank**  
Tallahassee

**Barrett, Daffin & Figg**  
Tallahassee

**Dr. John Bemby**  
Tallahassee

**Brown Derby Restaurant**  
Tallahassee

**Brown, Smith, Young & Pelham**  
Tallahassee

**Philip A. Browning**  
Atlanta, Georgia

**Karle Bucklew**  
North Palm Beach

**Buddy's Sporting Goods**  
Tallahassee

**Compliments of a Friend**

**Dr. Emory Cain**  
Quincy

**Capital City First National Bank**  
Tallahassee

**Capital City Sporting Goods**  
Tallahassee

**Bill Cartee**  
Tallahassee

**Chenoweth Distributing Company**  
Tallahassee

**Charles S. Coble**  
Tallahassee

**Dr. James K. Conn**  
Tallahassee

**Courtesy Oldsmobile**  
Tallahassee

**Crossland Realty, Inc.**  
Tallahassee

**Tom Cundy**  
Ft. Lauderdale

**Dr. Gene L. Davidson**  
Tallahassee

**Frank Decker Construction Co.**  
Lakeland

**Syde P. Deeb**  
Tallahassee

**Drake Management, Inc.**  
Tallahassee

**Dr. Evan E. Dussia**  
Tallahassee

**Walter Eason Realty, Inc.**  
Tallahassee

**Elberta Crate & Box Company**  
Tallahassee

**Equity Resources, Inc.**  
Tallahassee

**The Essex Corporation**  
Tallahassee

**Crockett Farnell, Jr.**  
Clearwater

**Florida Federal Savings & Loan Assn.**  
Tallahassee

**First Federal Savings & Loan Assn.**  
of Gadsden County Quincy

**Fryer-Thomas Co.**  
Quincy

**B. Kenneth Gatlin**  
Tallahassee

**Donald E. Grant**  
Perry

**Douglas D. Hammons**  
Tallahassee

**Arthur E. Hempel, Jr.**  
St. Petersburg

**J. Harvey Hill**  
**Western Sizzlin Steak House**  
Tallahassee

**Holiday Inns of Tallahassee**  
Tallahassee

**HSE & M**  
Tallahassee

**George Hunt, Jr.**  
Clearwater

**Industrial National Bank**  
Tallahassee

**Nelson A. Italiano**  
Tampa

**Compliments of a Friend**  
**Wendell Jarrard**

DeLand

**Lakeland Auto Auction**  
Lakeland

**Ed Kercher**  
Bradenton

**Kinnebrew Motors, Inc.**  
Tallahassee

**Jim Kirk**  
Ocala

**Landrum Realty**  
Tallahassee

**Ryals Lee Sales Co.**  
Tallahassee

**W. S. Lee Company, Inc.**  
Tallahassee

**Leon Federal Savings & Loan Assn.**  
Tallahassee

**Leon Realty, Inc.**  
Tallahassee

**Lewis State Bank**  
Tallahassee

**Locklin Brothers**  
Milton

**John E. Loughridge**  
Perry

**Lyons Industrial Corporation**  
Winter Haven

**Hilton Hotel**  
Tallahassee

**J. Stanley Marshall**  
Tallahassee

**Vernon L. McCord**  
Tallahassee





**Bruce McIver, Realtor**  
Tallahassee

**McKemie Chevrolet**  
Tallahassee

**John W. Mettler**  
Tallahassee

**Midyette-Moor Insurance Agency, Inc.**  
Tallahassee

**Miller Chevrolet,**  
Havana

**Mobile Home Industries**  
Tallahassee

**W. L. Montague**  
Quincy

**Dr. Coyle E. Moore**  
Tallahassee

**Ralph Morang**  
Quincy

**Darrell Mudra**  
Tallahassee

**Municipal Code Corporation**  
Tallahassee

**Niagara Wires, Inc.**  
Quincy

**Keith Nichols Co.**  
Ft. Washington, Pa.

**Millard Noblin Realty, Inc.**  
Tallahassee

**Northwood Mall Merchants Assn., Inc.**  
Tallahassee

**Pal Equipment Co., Inc.**  
Jacksonville

**George E. Palmer**  
Tallahassee

**Jesse C. Palmer**  
Tallahassee

**Palmer-Harrell, Inc.**  
Tallahassee

**Julius F. Parker, Jr.**  
Tallahassee

**Peninsular Sign Company**  
St. Petersburg

**Peoples Bank of Tallahassee**  
Tallahassee

**Nat Polak Insurance Agency**  
Tallahassee

**Doyle Pope**  
Quincy

**Mel Pope**  
Tallahassee

**Michael E. Pou**  
Atlanta, Georgia

**E. T. Pridgeon, Jr.**  
Tallahassee

**Proctor's Pontiac-Cadillac**  
Tallahassee

**Publix Super Markets**  
Lakeland

**Ramada Inn**  
Tallahassee

**James J. Reeves & Berton L. Brown**  
Pensacola

**Walter L. Revell**  
Tallahassee

**Burt Reynolds**  
Los Angeles, California

**A. F. Rich**  
Tallahassee

**Royal Sandwich Co.**  
Tallahassee

**Seminole Distributors, Inc.**  
Tallahassee

**Bob Shackleton**  
Tallahassee

**Silver Slipper, North**  
Tallahassee

**Simon, Ryals & Day's Inns**  
Tallahassee

**Gary Smith Ford, Co.**  
Ft. Walton Beach

**James C. Smith**  
Tallahassee

**Southeastern Asphalt Company**  
Tallahassee

**Southern Electric**  
Tallahassee

**Ronald E. Swaine**  
Pensacola

**Compliments of a Friend**  
Jacksonville

**Tallahassee Builders Supply, Inc.**  
Tallahassee

**Tallahassee Democrat**  
Tallahassee

**Tallahassee Federal Savings & Loan Assn.**  
Tallahassee

**Tallahassee Motors**  
Tallahassee

**Tallahassee News Company, Inc.**  
Tallahassee

**Tallahassee Restaurant & Lodging Assn.**  
Tallahassee

**Talquin Electric Cooperative, Inc.**  
Quincy

**Terra-Rosa Hardware**  
Tallahassee

**Van Brunt & Yon, Inc.**  
Tallahassee

**WGLF Radio Station**  
Tallahassee

**Dr. Francis H. Watt (Hank)**  
Tallahassee

**George A. Weeks**  
Tallahassee

**West Coast Transport, Inc.**  
Tampa

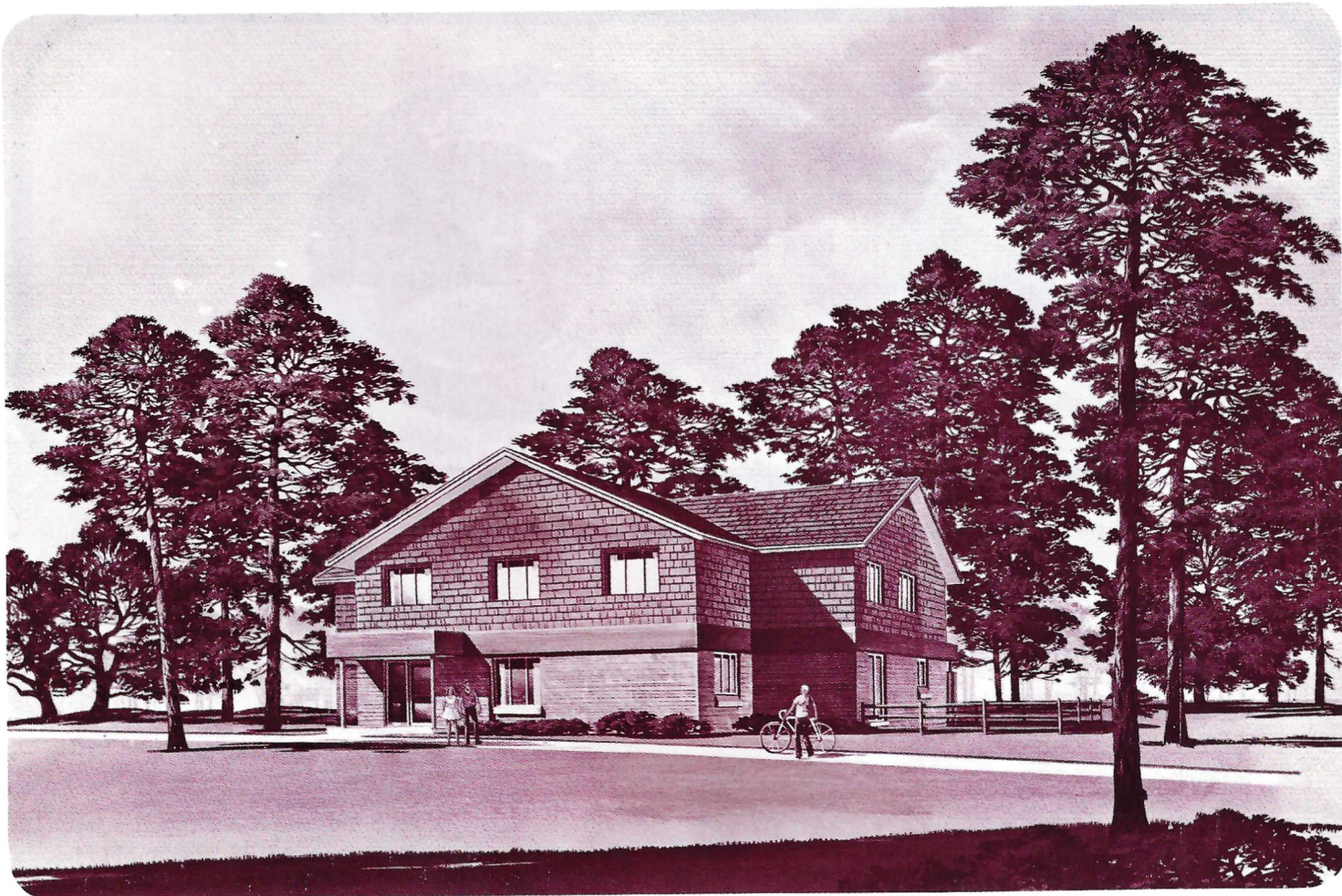
**Wheeler Builder Supply**  
Tallahassee

**Dan Whitehurst, Investors Realty**  
Tallahassee

**Wholesale Foods**  
Tallahassee

**Winewood Companies**  
Tallahassee

**Richard W. Wolfe**  
Tallahassee



Polk County Scholarship House

# Cooperative Living For Education

Florida State's most unique scholarship program — one where students help themselves through college — is in the middle of an expansion program that will double its ability to offer aid to deserving students.

**Southern Scholarship  
&  
Research Foundation**

The Southern Scholarship and Research Foundation (SSRF) provides housing for students who then do all their own cooking and cleaning, thus saving a considerable amount of money.

Two years ago the Foundation traded three lots of land around the campus to the University for a seven-acre site on Stadium Drive. Plans are to build at least 14 new scholarship houses there.

At the present time the SSRF owns 14 old homes around the campus which have been converted into scholarship houses. An average of 15 students lives in each house, none of which was designed for cooperative living and life in them is often hectic.

In January the Foundation will open its first new house, the Polk County Scholarship House, which will accommodate 27 students, including a graduate student and a head resident.

This weekend the annual meeting of the Board of Directors of the Foundation is being held in Tallahassee. They are guests of President Stanley Marshall in his box during this football game.

New board members this year include Wayne Cook, Ms. Anne Burnette, Elliot Messer, Jimmy Carr, J. Vern Williamson and Bill Jameson, all of Tallahassee, and Dr. Hugh Adams, president of Broward Community College in Ft. Lauderdale.

William H. Bevis is president and Dr. Marshall Hamilton is vice president. Both are from Tallahassee. Executive director is Dr. Don Veller.

"The new scholarship house to open in two months is the realization of a longtime dream of many thoughtful and sympathetic citizens of Polk County," said Dr. Veller.

He explained that the Southern Scholarship and Research Foundation is not tax supported but depends entirely on private contributions of cash, property, bequests, memorials and other gifts — particularly from those who believe in the work ethic.

The original philosophy of the Foundation, which was begun in 1950, was that society should not lose the potential of highly promising youth merely because their parents, for various reasons, could not afford to send them to college.

There are many unique aspects of the SSRF which make it impressingly different from other scholarship programs. Here are a few:

\* In lieu of cash assistance, the Foundation provides rent free, furnished houses to highly intelligent, but financially deprived, students who reduce their expenses by buying their own groceries cooperatively, taking turns cooking, washing dishes, doing housework and laundry and maintaining the house for future use.

\* If a student does not uphold the ideals of good citizenship, he or she may be dismissed from the program.



**On target for a January opening**

\* The houses are inspected regularly for cleanliness, sanitation and general decorum.

\* The cooperative living aspect provides excellent opportunities for sharing and learning to live in a give-and-take democratic society.

\* By virtue of the "no-cash-to-students" concept, a donor's contribution to this Foundation goes farther than under most scholarship plans because the same money can be used year after year.

Contributions may be sent to Southern Scholarship and Research Foundation, P.O. Box 2372, Tallahassee, Fla. 32304.

## Students "Rest Easier" With New Furnishings

Students attending Florida State University on the Southern Scholarship and Research Foundation program will now be able to rest easier — literally, thanks to a new shipment of furniture from a long-standing friend.

The SSRF, the state's most unique scholarship program, is chartered as a charitable foundation and is therefore dependent on contributions from individuals and organizations. Badcock Furniture Company of Mulberry, Fla., has been a major contributor over the past several years, donating some \$10,000 in household furnishings annually.

Items such as dryers, refrigerators, stoves, television sets, sofas, chairs and desks will be distributed among the 14 scholarship houses located adjacent to the campus. Presently, there are 250 students occupying the houses.

"We are extremely grateful to organizations such as Badcock Furniture," said Dr. Don Veller, executive director of SSRF and professor of physical education, health and recreation. "Through this generosity and that of individuals, many talented young people attend Florida State and receive the education they wouldn't otherwise get."

Since its inception in 1950, some 4,000 student-scholars have attended Florida State through the help of SSRF.

The Foundation's program is essentially a joint, work-scholarship plan in which students live in rent-free houses, purchase and prepare their own food, share in household duties and accept the responsibility for maintaining high grade averages.

To be considered for a scholarship an applicant must have an outstanding academic average in high school or junior college and be recommended by school officials and community leaders as having demonstrated outstanding integrity and citizenship and be unable to attend college without substantial outside financial help.

Although no monetary aid is given these students, on the average they save approximately \$1,200 per year per student.

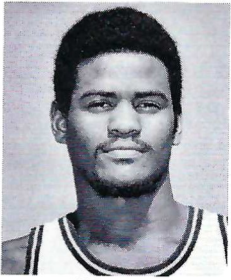
Recently, the SSRF completed a land swap with Florida State which will enable it to build 15 new houses for another 300 students, providing funds become available.



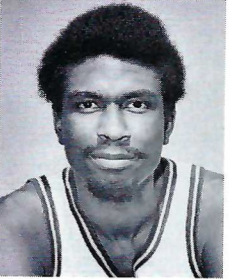
**"Moving In"**

# Seminole Basketball

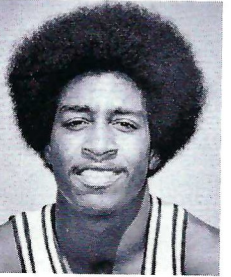
## THE ACTION GAME



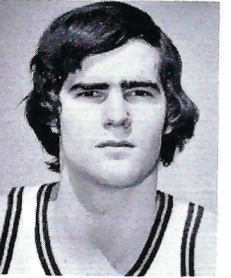
Warren



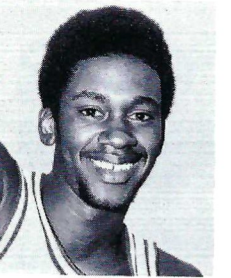
Grady



Harris



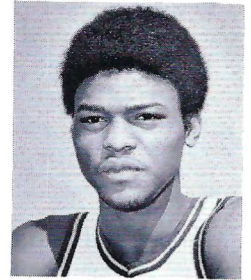
Chassee



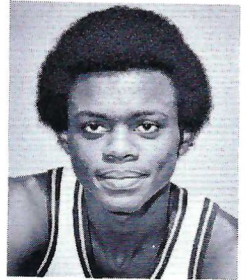
Harrison



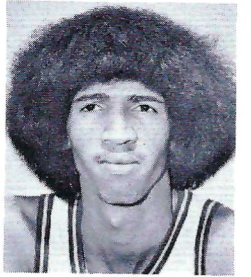
Davis



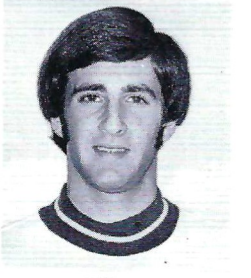
Smalls



Byrd



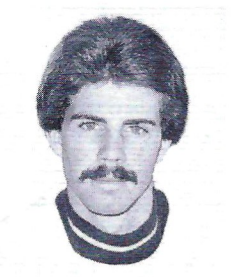
Perkins



Gilbert



Mann



Smith

Florida State's basketball season opens one week from tonight when the Seminoles host Valdosta State in Tully Gym. That will be the first of 16 action-packed home games the Tribe will play this season.

The theme this year is "The Action Game" and the Seminoles are "Thinking Big." The goal is neither startling, nor unreasonable — National ranking and a post season tournament bid.

Head Coach Hugh Durham will field a team that looks young on paper, inasmuch as there is only one senior among the top 12 players. However, the team will not be inexperienced.

The Seminoles return six of the top eight players from last season and a total of seven lettermen. Bolstering this nucleus is another talented group of freshmen and transfers.

Among the leading returnees are juniors Larry Warren, who led the Seminoles in scoring last season with a 16.9 average, Greg Grady, who averaged 10.6 points and 9.6 rebounds as the Tribe's high post man, and Zach Perkins, who was a most valuable "sixth man" averaging 8.8 points and 8.0 rebounds while substituting at both post spots.

Last year's fabulous freshman trio of Eugene Harris, Carlton Byrd and Wayne Smalls returns to give the Seminoles a solid collection of guards.

Counted on for big contributions in the year ahead are sophomore Bob Chassee and senior John Harrison, both of whom will fill in at the post spots.

The Seminoles have been working since Oct. 15 in preparation for next week's opener. Except for a few minor injuries the pre-season practices have gone smoothly. There have been several bright spots, including the emergence of freshmen Harry Davis, Mark Gilbert, Hank Mann, and Mark Brodie plus junior college transfer Bruce Boyd who all appear ready to make a contribution this season.

Another performer making his presence known is transfer James Smith. However, he will have to sit out this season under NCAA regulations.

The Seminole schedule will provide a good test, while not being overbearing. Among the top contests will be games with Louisville, Memphis State, Marshall, Ohio University, Illinois State, Purdue, Canisius, New Mexico and Jacksonville.

Only one tournament is on tap for regular season play, but it is one of the better ones with Purdue, Louisville and Western Kentucky at the Holiday Classic in Louisville.

The big home slate, which should be an advantage for the Seminoles, includes games against Illinois State (Dec. 3), Marshall (Dec. 7), Louisville (Dec. 14), Cal State Bakersfield (Dec. 18), Ohio University (Dec. 21), Eastern Kentucky (Jan. 4), Wisconsin-Milwaukee (Jan. 7), Biscayne (Jan. 11), Hofstra (Jan. 18), UT Chattanooga (Feb. 1), Jacksonville (Feb. 6), Georgia State (Feb. 13), Georgia Southern (Feb. 22), Mercer (Feb. 24) and South Florida (Feb. 28).

Season tickets for all 16 games are still available for \$42 — that's less than \$2.63 a game. They will be sold at the Athletic Ticket Office all next week (9 a.m. to 4:30 p.m.) and also before Saturday's season opener.

# Florida State Winter Sports Schedules

Football may be closing its season, but the sports schedule at Florida State is just beginning to get into full swing. No matter the temperature, the competition will be hot and heavy for the Seminoles' winter quarter sports teams. The following is a composite schedule of Florida State's intercollegiate athletic teams between now and March 15.

Date	Sport	Event or Opponent	Site	Date	Sport	Event or Opponent	Site
Nov. 30	Basketball	Valdosta State	Tallahassee	Feb. 9	Basketball	Georgia Southern	Savannah, Ga.
Dec. 3	Basketball	Illinois State	Tallahassee	Feb. 11	L. S. Bskbl	Valdosta State	Tallahassee
Dec. 7	Basketball	Marshall	Tallahassee	Feb. 13	Basketball	Georgia State	Tallahassee
	*L. S. Swim	Indian River JC	Tallahassee	Feb. 15	Swimming	Florida Tech	Tallahassee
	L. S. Tennis	Flaglar College	Tallahassee		Track	Invitational Meet	Greenville, N.C.
Dec. 9	Basketball	Memphis State	Tallahassee	Feb. 19	Basketball	Jacksonville	Jacksonville
Dec. 14	Basketball	Louisville	Tallahassee	Feb. 21	Swimming	Georgia	Athens, Ga.
	Swimming	South Florida	Tallahassee	Feb. 22	Basketball	Georgia Southern	Tallahassee
Dec. 18	Basketball	Cal St.-Bakersfield	Tallahassee		Swimming	South Carolina	Columbia, S.C.
Dec. 21	Basketball	Ohio University	Tallahassee		Track	LSU	Baton Rouge, La.
Dec. 26	Basketball	Holiday Classic	Louisville, Ky.		L. S. Swim	Miami	Coral Gables
Dec. 27	Basketball	Holiday Classic	Louisville, Ky.		L. S. Tennis	Georgia Southern	Statesboro, Ga.
Jan. 4	Swimming	North Carolina	Tallahassee	Feb. 24	L. S. Golf	Miami Invitational	Coral Gables
	Basketball	Eastern Kentucky	Tallahassee		Basketball	Mercer	Tallahassee
Jan. 7	Basketball	Wisconsin-Mil.	Tallahassee	Feb. 25	L. S. Golf	Miami Invitational	Coral Gables
Jan. 11	L. S. Swim	Florida	Tallahassee		Baseball	St. Leo	Dade City
	Swimming	Florida	Tallahassee	Feb. 26	Baseball	St. Leo	Dade City
	Basketball	Biscayne	Tallahassee		L. S. Tennis	South Florida	Tallahassee
Jan. 15	L. S. Bskbl	Valdosta State	Valdosta, Ga.	Feb. 27	L. S. Tennis	Invitational Tourney	Tallahassee
	Basketball	South Florida	Tampa	Feb. 28	L. S. Tennis	Invitational Tourney	Tallahassee
	Track	Senior Bowl	Mobile, Al.		Basketball	State Tournament	TBA
Jan. 17	Swimming	Tulane	New Orleans, La.	Mar. 1	Baseball	South Florida	Tallahassee
	L. S. Tennis	Rollins	Orlando		L. S. Tennis	Florida	Tallahassee
Jan. 18	L. S. Tennis	South Florida	Tampa		L. S. Bskbl	Invitational Tourney	Tallahassee
	Swimming	LSU	Baton Rouge, La.		L. S. Swim	State Tournament	TBA
	Track	USTFF Invt.	Jackson, Ms.		Baseball	South Florida	Tallahassee
	Basketball	Hofstra	Tallahassee	Mar. 2	Baseball	Florida	Tallahassee
Jan. 20	Basketball	Biscayne	Ft. Lauderdale		L. S. Tennis	Invitational Tourney	Tallahassee
Jan. 21	L. S. Bskbl	Athens Georgia	Tallahassee	Mar. 5	Basketball	Stetson	Deland
Jan. 24	L. S. Bskbl	Shorter College	Tallahassee	Mar. 6	Baseball	Jacksonville (2)	Tallahassee
Jan. 25	Swimming	Miami-Ala. Meet	Tallahassee		Swimming	Nat'l. Independent Champ.	New Orleans, La.
	L. S. Swim	Miami-Alabama	Tallahassee		L. S. Bskbl	Regional Tournament	TBA
	L. S. Tennis	Florida	Tallahassee	Mar. 7	Baseball	Jacksonville	Tallahassee
	Basketball	Canisius	Buffalo, Ny.		Swimming	Nat'l. Independent Champ.	New Orleans, La.
	Track	All Comers Meet	Knoxville, Tn.		L. S. Bskbl	Regional Tournament	TBA
Jan. 27	Basketball	New Mexico	Albuquerque, N.M.	Mar. 8	Swimming	Nat'l. Independent Champ.	New Orleans, La.
Jan. 31	Swimming	Tennessee	Tallahassee		Track	All Comers Meet	Baton Rouge, La.
	L. S. Bskbl	Flaglar Invt.	St. Augustine		L. S. Bskbl	Regional Tournament	TBA
Feb. 1	Basketball	UT Chattanooga	Tallahassee		L. S. Tennis	Florida	Gainesville
	Swimming	Auburn	Tallahassee		Baseball	Valdosta State	Tallahassee
	Track	Ohio St., Penn St.	Columbus, Oh.	Mar. 9	Baseball	Valdosta State	Valdosta, Ga.
	L. S. Bskbl	Flaglar Invt.	St. Augustine	Mar. 12	Baseball	Mercer	Tallahassee
Feb. 2	L. S. Bskbl	Flaglar Invt.	St. Augustine	Mar. 13	Baseball	Mercer	Tallahassee
Feb. 6	Basketball	Jacksonville	Tallahassee		L. S. Swim	AIAW Champ.	Tempe, Ar.
Feb. 7	L. S. Bskbl	Shorter Invt.	Rome, Ga.	Mar. 14	L. S. Swimming	AIAW Champ.	Tempe, Ar.
Feb. 8	Swimming	Florida	Gainesville	Mar. 15	Baseball	Florida International	Tallahassee
	L. S. Swim	Florida	Gainesville		Track	NCAA Indoor Champ.	Detroit, Mi.
	Track	USTFF Meet	Baton Rouge, La.		Swimming	AAU Region 4 Champ.	Tampa
	L. S. Tennis	Flaglar College	St. Augustine		L. S. Swim	AIAW Nat'l. Champ.	Tempe, Ar.
	L. S. Bskbl	Shorter Invt.	Rome, Ga.			(and 16th)	

\*L.S. — Lady Seminole

# The 1974 Seminoles



Go  
Seminoles!

**Sears**

**Tallahassee's Complete  
Department Store**

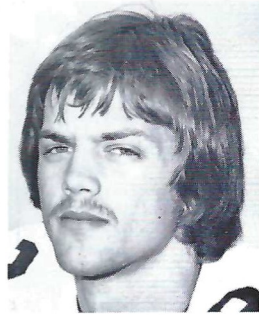
- Everything You Need  
For Your Home  
Family or Car!

**OPEN 9:30 a.m. 'til 9:30 p.m.  
Monday thru Saturday**

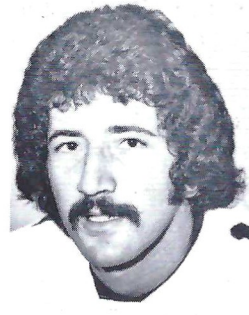
**SHOP AT SEARS  
AND SAVE**

**Sears**

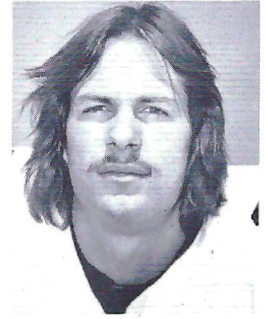
SEARS, ROEBUCK AND CO.



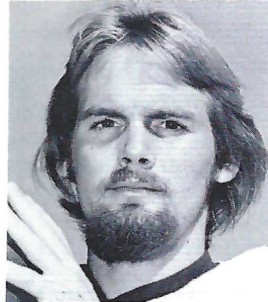
Mike Allen



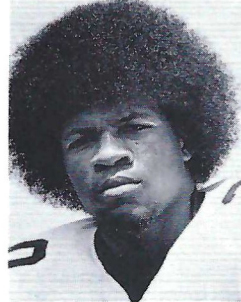
Ahmet Askin



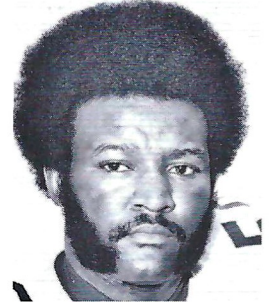
Ed Beckman



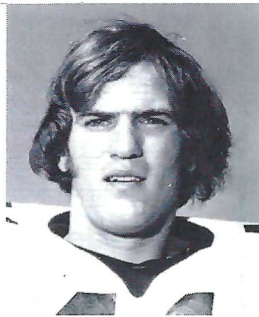
Jimmy Black



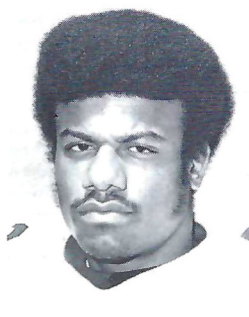
Leon Bright



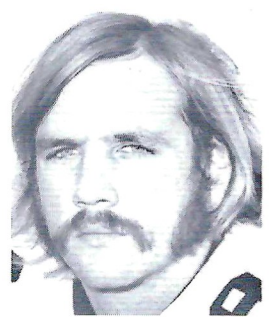
Brooks Burroughs



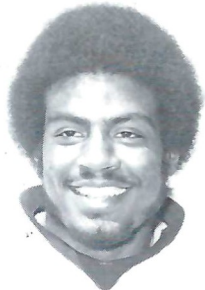
Phil Cahoon



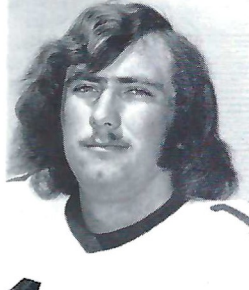
Joe Camps



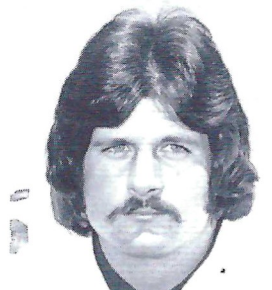
Randy Coffield



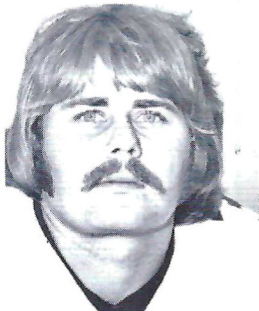
Bert Cooper



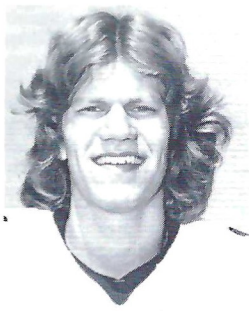
Ron Coppess



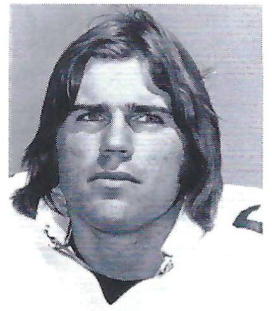
Mike Davison



Joe Downey

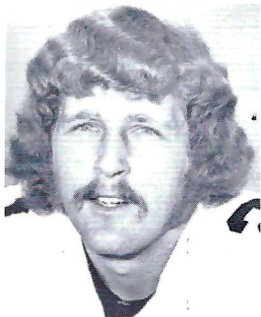


Jim Everett

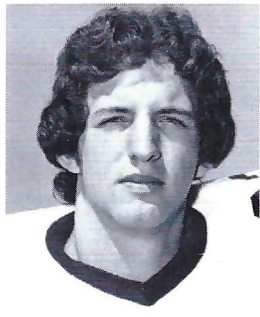


Jeff Gardner

# The 1974 Seminoles



Joe Goldsmith



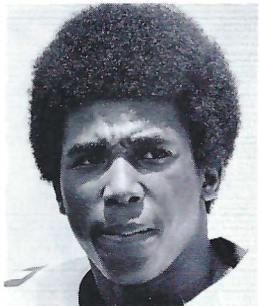
Chris Griffin



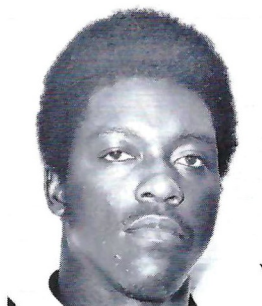
Curtis Harris



Bruce Harrison



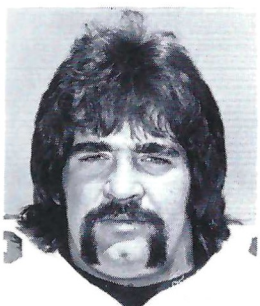
Robert Jackson



Greg Johnson



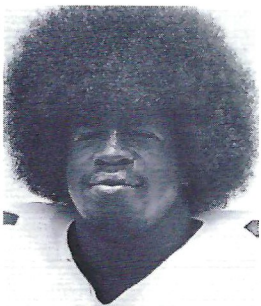
Wade Johnson



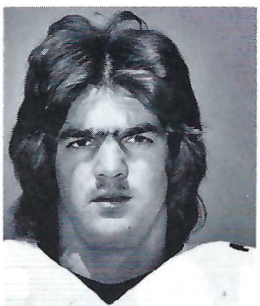
Bob Jones



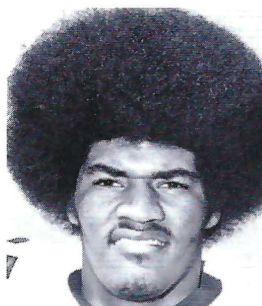
Phil Jones



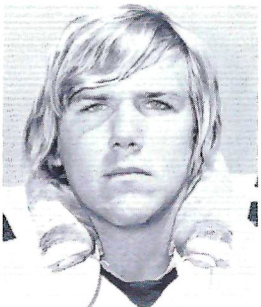
Larry Key



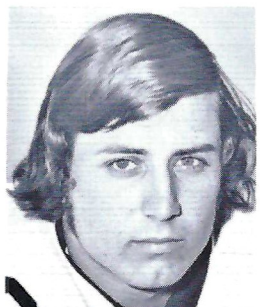
Jeff Leggett



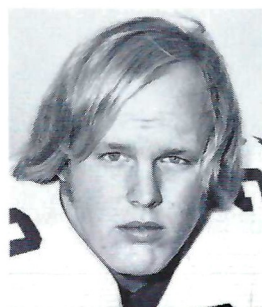
Rudy Maloy



Billy McPhillips



Scott Meseroll



Fred Miller

## The Last Word In Riding Herd



Seminole action is fast and mean. Takes exceptional men to climb in there with it, let alone keep it sorted out. But Times Sports' grid wranglers have the belly for it. And when they've put their words and pictures together, there's nothing more to say. For the best, most colorfully complete coverage of FSU football, read Florida's Best Newspaper.

**St. Petersburg Times**  
FLORIDA'S BEST NEWSPAPER

Travel Is Our Profession



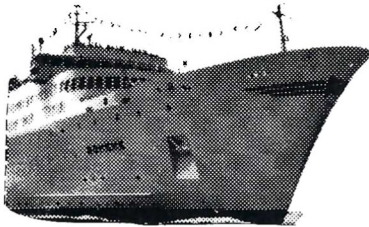
Business  
or  
Pleasure



We have  
the places  
you want



to visit on all  
Continents



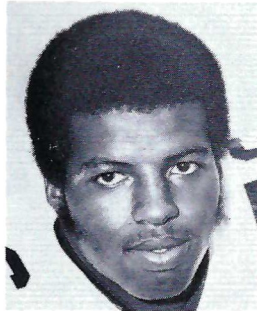
Air, Steamship, Amtrak,  
Cruise tickets are sold at  
printed tariff rates.



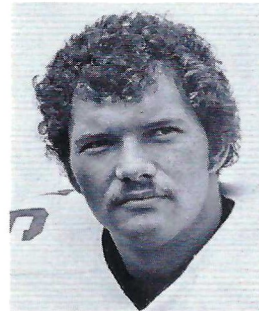
There is no charge  
for our services.

**Tallahassee  
Travel &  
Tours, Inc.**  
Tel. 224-4161

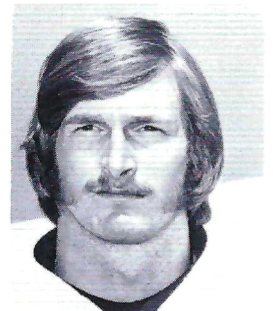
# The 1974 Seminoles



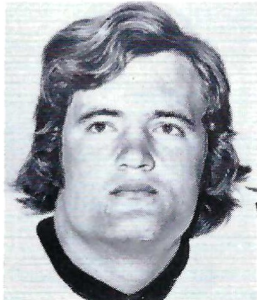
John Murphy



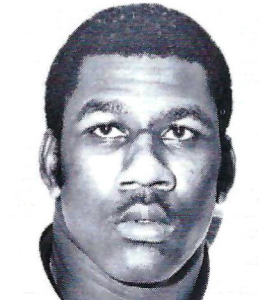
Lee Nelson



David Porter



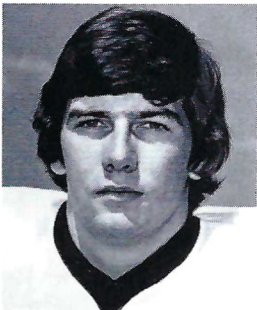
Greg Pounds



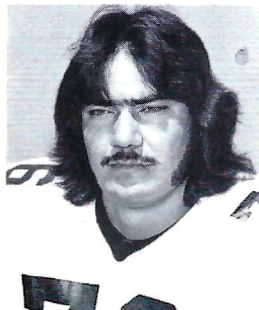
Smokey Ragins



Detroit Reynolds



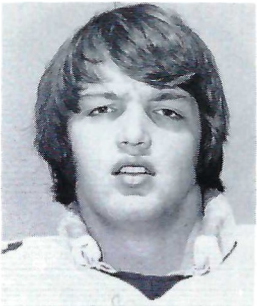
Jeff Ridings



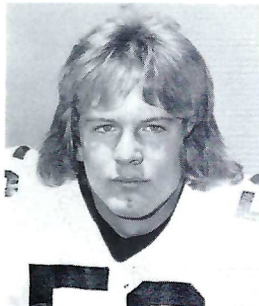
Vic Rivas



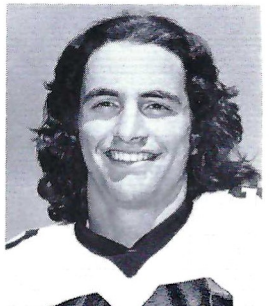
Gary Rose



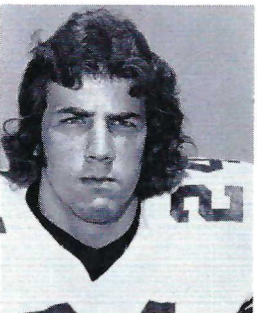
Bill Sawyer



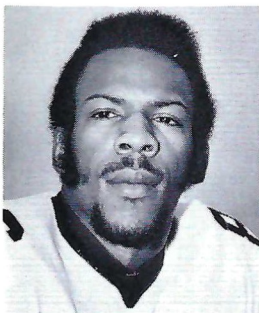
Brian Schmidt



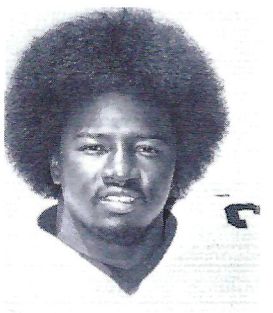
Mike Shumann



Andy Stockton



Joe Thomas



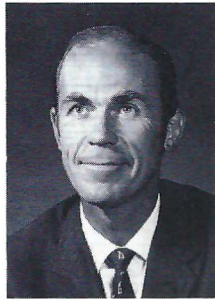
Rudy Thomas



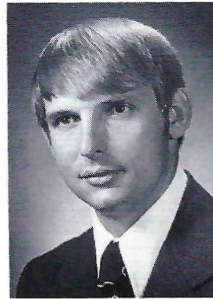
# INTERCOLLEGIATE ATHLETIC STAFF



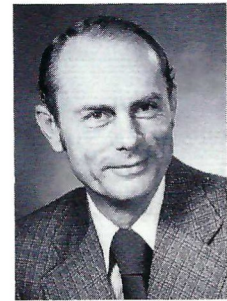
**JOHN BRIDGERS**  
Athletic Director



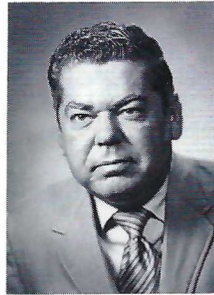
**DR. RICHARD BAKER**  
Chairman, Athletic Comm.



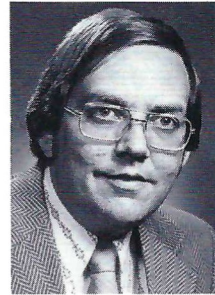
**BILL ROWE**  
Assistant AD



**CLAUDE THIGPEN**  
Business Manager



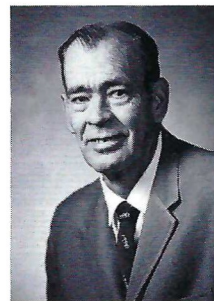
**LONNIE BURT**  
Sports Information Director



**HANK SCHOMBER**  
Assistant SID



**CHARLIE DURBIN**  
Cinematographer



**WOODY SAUCIER**  
Tully Gym Equipment Mgr.

# Varsity Coaching Staff



Front Row (left to right): Eddie Feely, Mike Pope, Gene McDowell, Cal Jones, Don Pollard, Head Coach Darrell Mudra. Second Row: Sam Elliott, Pete Rodriguez, Frank DeBord, Dan Henning, Larry Pendleton and Bob Harbison. For a close-up of the Seminole coaches, see pages 50 and 51 of tonight's program.

*A Dimension of Leadership for  
Men and Women*



*The more you look at it, the better it looks.  
Military Science Building, Florida State University 644-1016*

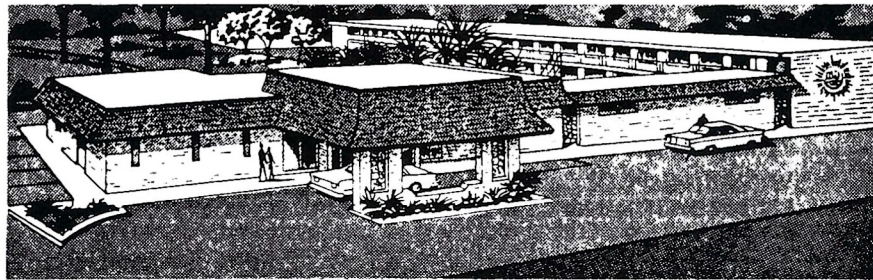


# QUALITY INN

**COLOR TV**

"We Cater to  
Commercial Men"

Phone 877-6171



*On the Parkway...* 1027 APALACHEE PKWY. US 27 So.

*The Chez Napoleon Room*

*Complete Banquet and Meeting Facilities*

*Cocktail Lounge - Bonaparte's Retreat*

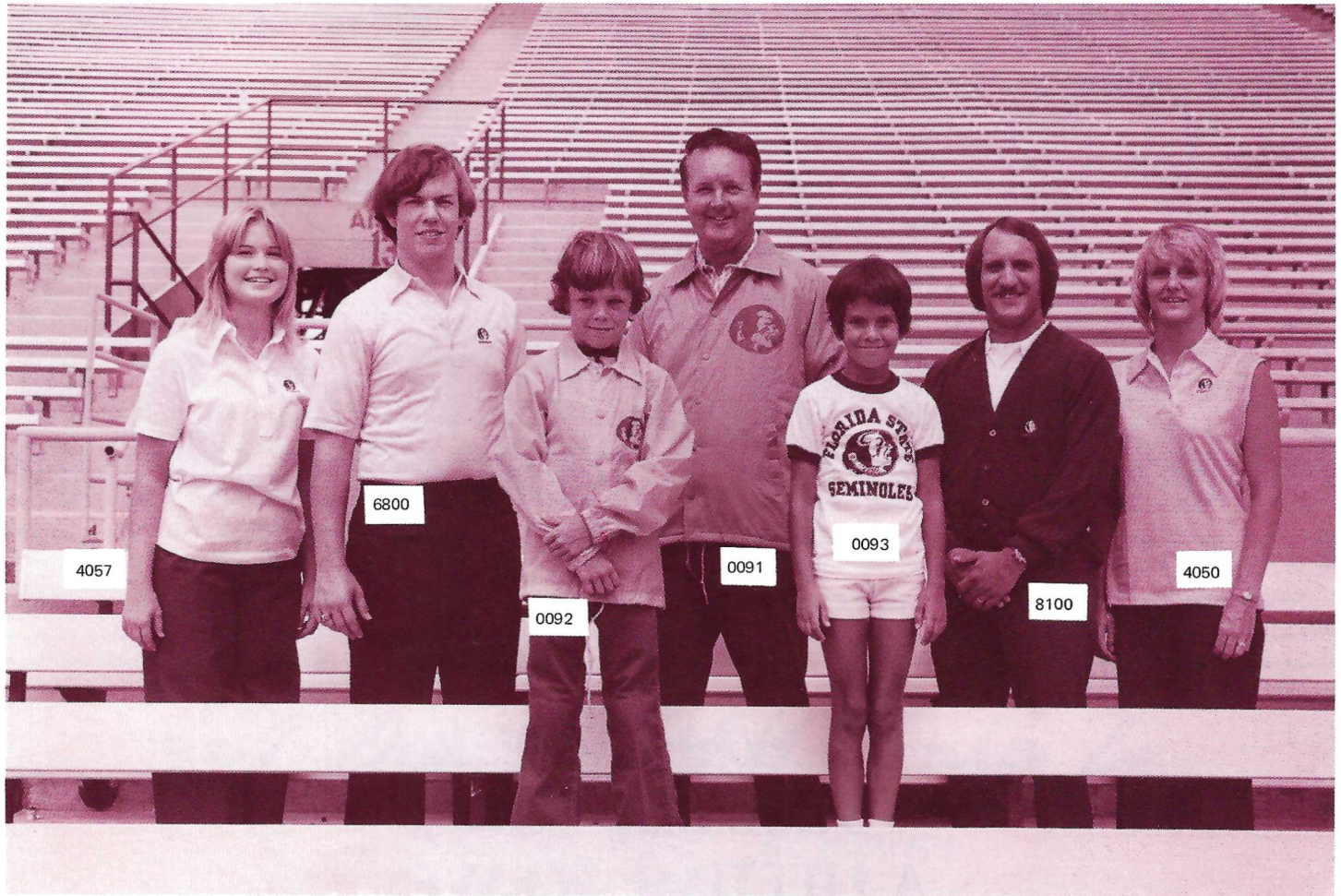
**WE WANT YOUR  
BUSINESS FOR  
A LIFETIME SO WE  
TAKE BETTER CARE OF  
YOU DAY BY DAY.**



## **Barnett Banks of Tallahassee**

# Show Your Colors

## Official Seminole Sportswear



### LADIES' AND MEN'S KNIT SHIRTS

100% cotton lisle shirts available in white or garnet (men's style only) with contrasting Seminole emblem. Full fashion collar and button placket. State size and color.

- 4050 Women's Sleeveless Shell ..... \$14.70  
Sizes: S-M-L
- 4057 Women's Cuffed Short Sleeve ... \$16.70  
Sizes: S-M-L
- 6800 Men's Short Sleeve ..... \$17  
Sizes: S-M-L-XL  
(XXL available on special order)

Men's Arnel Plus short sleeve shirt 91% Arnel, 9% nylon shirt available in Garnet, Gold or White with contrasting Seminole emblem. Completely full fashion. State size and color.

- 7010 Men's Arnel Shirt ..... \$18.80  
Sizes: S-M-L-XL

### LINED COACHING JACKET

Full cut 100% nylon water repellent outer shell. Pole lining with quilted nylon sleeve lining. Hood concealed in unique compartment inside the lining. Slashed Pockets, elasticized cuffs. Completely washable. Order in Garnet or Gold with contrasting Seminole emblem.

- 0091 Coaching Jacket ..... \$24.20  
Sizes: S-M-L-XL-XXL

### ORLON CARDIGAN SWEATERS

100% Orlon Links-N-Links Classic Button front Cardigan Sweaters. Cut extra full for added comfort. Wash and wear. Comes with contrasting Seminole Emblem in gold, white or garnet (men's only).

- 1825 Women's Sweater ..... \$23.20  
Sizes: 34-36-38-40  
Color: Gold, White
- 8100 Men's Sweater ..... \$23.20  
Sizes: S-M-L-XL  
Color: Garnet, Gold, White

### FOR THE KIDS

**Nylon Warm-Up Jacket**—just like the warm-up jackets worn by the Seminole athletes. 100% single ply tefeta nylon shell jacket with Byron collars. Color matched gripper snap front. Set in sleeves with elasticized cuffs. Comes in Gold only with contrasting Seminole emblem.

- 0092 Warm-up Jacket ..... \$12.20  
Sizes: XS(2-4), S(6-8), M(10-12), L(14-16)

**Child's Cotton Shirt**—100% cotton T-shirt with Seminole emblem. Just the thing for the Junior Seminole.

- 0093 Child's Shirt ..... \$3.50  
Sizes: S-M-L

### SEMINOLE ACCESSORIES

**Zippo Lighter**—famous Zippo lighter with colorful Seminole Indian crest. Perfect for gifts.

- 0010 Zippo Lighter ..... \$7.50

**Key Chain**—super Loop Key Chain with colorful Seminole Indian crest. Sturdy-key ring holds many keys. Perfect for pocket or purse.

- 0020 Key Chain ..... \$ 3

### Seminole Charms

- 0024 Indian Head Charms ..... \$ 2
- 0025 Running Indian Charm ..... \$ 2

### Men's Jewelry

- 0028 Indianhead Cufflinks ..... \$3.50
- 0029 Indianhead Tie Tac ..... \$2.50

### Blazer Pocket Emblems

- 0011 3-in. Seminole Blazer Emblem with pin-on feature ..... \$ 8
- 0012 1½-in. Seminole Blazer Emblem to be sewn on ..... \$ 1

# DARITY LTD. BLAZERS \$55.

ADD .04 SALES TAX IF IN N.C.



	36	37	38	39	40	41	42	43	44	46	48	50	52
R													
L													
XL													
S													

ADD \$2.00 ON SIZES 48-52 & ON ALL EXTRA LONGS  
Coats offered in Garnet or Gold.

NAME \_\_\_\_\_

ADDRESS \_\_\_\_\_

TOWN \_\_\_\_\_ STATE \_\_\_\_\_ ZIP \_\_\_\_\_

COLOR \_\_\_\_\_ NO. OF COATS \_\_\_\_\_

TOTAL MONEY ENCLOSED \_\_\_\_\_ DATE \_\_\_\_\_

NAME OF SCHOOL \_\_\_\_\_

Make Checks Payable To: **Executive Wardrobe, Inc.**

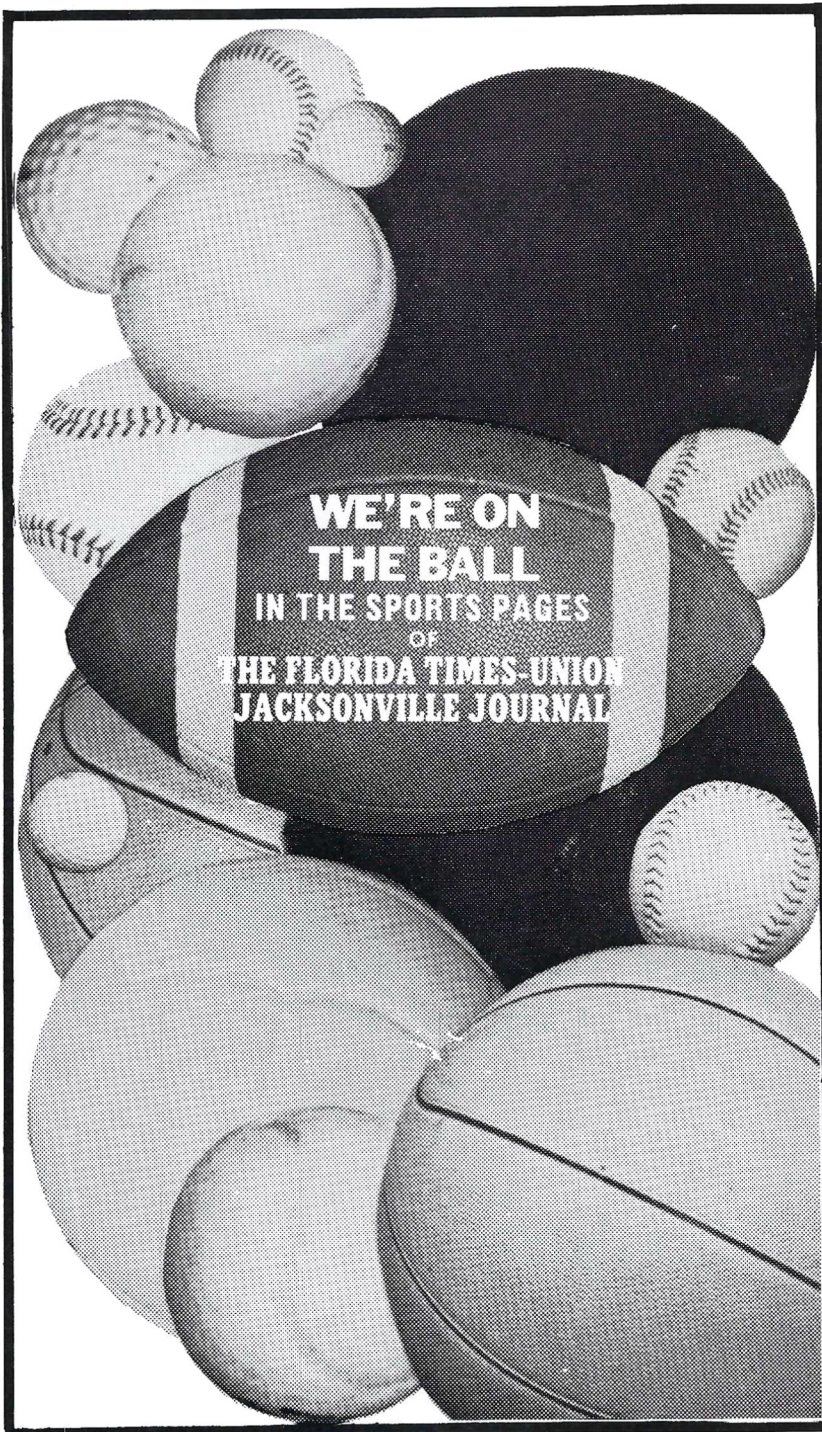
Highway 601 By Pass West P.O. Box 970  
Concord, N.C. 28025 ph. 704-786-8311

Cat. No.	Item	Quantity	Color	Size	Price	Total
4057	Women's Short Sleeve Cot.				\$16.70	
4050	Women's Shell				\$14.70	
6800	Men's Cotton Shirt				\$17.00	
7010	Men's Arnel Shirt				\$18.80	
8100	Men's Cardigan				\$23.20	
1825	Women's Cardigan				\$23.20	
0091	Coaching Jacket				\$24.70	
0092	Warm-up Jacket				\$12.20	
0093	Child's Shirt				\$ 3.50	
0010	Zippo Lighter				\$ 7.50	
0011	3" Blazer Emblem				\$ 8	
0012	1½" Blazer Emblem				\$ 1	
0020	Key Chain				\$ 3	
0024	Indian Head Charm				\$ 2	
0025	Running Indian Charm				\$ 2	
0028	Indian Head Cuff Links				\$3.50	
0029	Indian Head Tie Tac				\$2.50	
					SUB-TOTAL:	
Four percent Florida Sales Tax:						
					TOTAL:	



Make Check payable to:  
**FLORIDA STATE UNIVERSITY**

Mail Order To:  
Athletic Business Office  
Florida State University  
Tallahassee, Florida 32306



We've a team of action photographers and writers that is unbeatable . . . covering every important athletic event in the South . . . getting the exclusive stories and photographs that make our sports pages come alive.

**The Florida Times-Union  
Jacksonville Journal** 

# SEMINOLE SCHEDULES

## 1974

Sept. 14 .....PITTSBURGH  
 Sept. 21 .....COLORADO STATE  
 Sept. 28 .....at Kansas  
 Oct. 5 .....BAYLOR  
 Oct. 12 .....at Alabama  
 Oct. 19 .....FLORIDA  
 Oct. 26 .....at Auburn  
 Nov. 2 .....at Memphis State  
 Nov. 8 (Fri.) .....at Miami  
 Nov. 16 .....VIRGINIA TECH  
 Nov. 23 .....HOUSTON

## 1975

Sept. 13 .....at Texas Tech  
 Sept. 20 .....Open Date  
 Sept. 27 .....IOWA STATE  
 Oct. 4 .....at Georgia Tech  
 Oct. 11 .....at Virginia Tech  
 Oct. 18 .....at Florida  
 Oct. 25 .....AUBURN  
 Nov. 1 .....at Clemson  
 Nov. 8 .....MEMPHIS STATE  
 Nov. 15 .....MIAMI  
 Nov. 22 .....at Houston  
 Nov. 29 .....UTAH STATE

## 1976

Sept. 11 .....Memphis State at Jax  
 Sept. 18 .....at Miami  
 Sept. 25 .....at Oklahoma  
 Oct. 2 .....KANSAS STATE  
 Oct. 9 .....at Boston College  
 Oct. 16 .....FLORIDA  
 Oct. 23 .....at Auburn  
 Oct. 30 .....CLEMSON  
 Nov. 6 .....Open Date  
 Nov. 13 .....at Tampa  
 Nov. 20 .....HOUSTON  
 Nov. 27 .....VIRGINIA TECH

## 1977

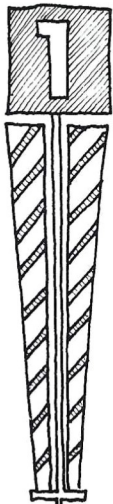
Sept. 10 .....IOWA STATE  
 Sept. 17 .....at Kansas State  
 Sept. 24 .....MIAMI  
 Oct. 1 .....at Oklahoma State  
 Oct. 8 .....CINCINNATI  
 Oct. 15 .....at Florida  
 Oct. 22 .....AUBURN  
 Oct. 29 .....at Houston  
 Nov. 5 .....at Virginia Tech  
 Nov. 12 .....MEMPHIS STATE  
 Nov. 19 .....at San Diego

# Graduate Assistants



Mack Brown, Rick Schlachner, Billy Joe Breakhouse

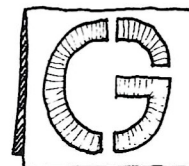
## First and Goal



It's the best way to reach a financial objective.

Why try to do it alone when **First National Bank** has a staff of professionals that can help you design a scoring play.

Whether it's big or small... make it **First and Goal**



Capital City



**FIRST**  
NATIONAL BANK

217 North Monroe Street Tallahassee, Florida 224-1171 Member FDIC

# Head Coach Darrell Mudra

Darrell Mudra is a winner!

He is the man Florida State University has picked to lead the Seminoles out of the wilderness of defeat.

One of Coach Mudra's strongest selling points was the fact that he has turned football programs around with almost instant success, something Florida State desperately needs.

The 44-year-old Omaha, Neb., native came to Florida State from Western Illinois with extremely high recommendations. "Darrell Mudra is one of the outstanding football coaches in the country," says former Nebraska Head Coach Bob Devaney, now that school's athletic director. "He has been able to win wherever he has gone and in many cases despite great obstacles."

Tommy Prothro, ex-college coaching standout, now boss of the San Diego Chargers, is another who thinks Mudra was the man for the Florida State job. "I believe Darrell Mudra is a very, very superior coach. I would have been surprised if any candidate for the Florida State job was the caliber of Darrell Mudra."

Coach Mudra's record speaks for itself. He has turned five losers into big winners. In 15 years of college coaching, the soft-spoken educator has recorded 106 victories against only 32 losses and two ties.

Mudra attended Peru State College in Nebraska where he was an all-conference halfback. He received a masters degree from Omaha University and his doctorate from Colorado State. He served in the Air Force during 1950 and '51.

He was an assistant coach at Hurrion (S.D.) and Colorado State before becoming head coach at Adams State, Alamosa, Colo., in 1959. The previous season Adams State had gone 1-9 but in Mudra's first year the Colorado school gained eight victories against one loss. In four seasons there, Mudra-coached teams never lost more than two games in a single year and he lead the Indians to a bowl game.

In 1963, he moved to North Dakota State, a team which had been 0-10 the previous year. In three seasons his records were 3-5, 10-1, and 11-0, including two bowl games.

The next challenge was the Montreal club of the Canadian professional league. In 1965 the Alouettes were 3-11 but under Mudra in '66 they went 7-7 and made the playoffs.

The University of Arizona was the next program Mudra turned around. It took him two seasons to do this, but in the second year he directed the Wildcats to an 8-3 record and a spot in the Sun Bowl.

Western Illinois gained his services in 1969 and in five years at the McComb institution Mudra's clubs went 39-13.

Coach Mudra is married to the former Jean Marie King of Omaha, Neb. They are the parents of four children, Darrell Jr., 20; Stephen, 19; Sherry, 18; and Michele, 14.

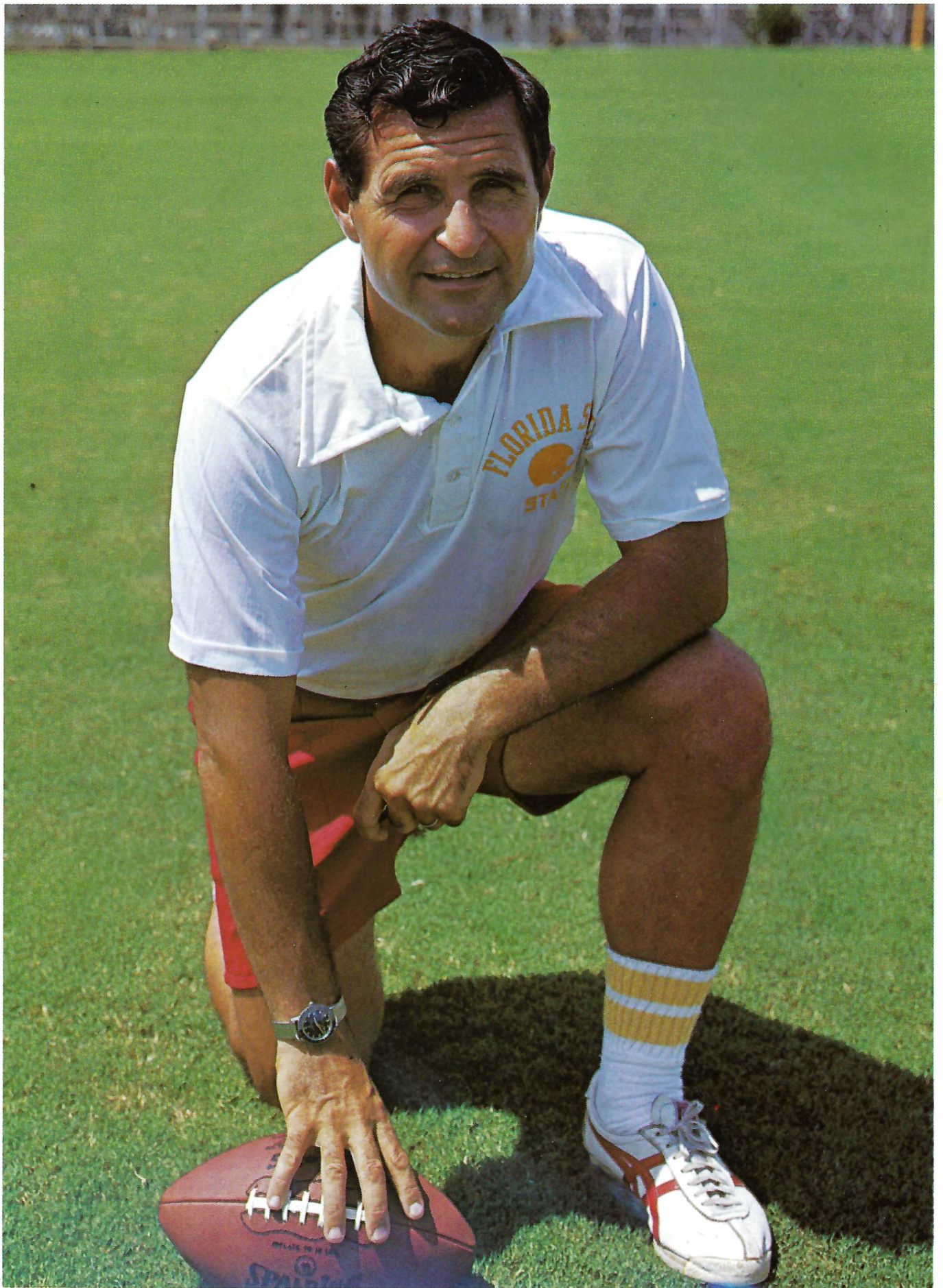


## THE MUDRA RECORD

Team	Previous Record	Mudra's Record
Adams State	1-9, 1958	1959 — 8-1 1960 — 7-0-1 1961 — 8-2 1962 — 9-1 (Mineral Bowl)
North Dakota State	0-10, 1962	1963 — 3-5 1964 — 10-1 (Mineral Bowl) 1965 — 11-0 (Pecan Bowl) Nat'l Champions
Montreal Alouettes	3-11, 1965	1966 — 7-7 (Made playoffs. Defeated Bud Grant's Winnipeg team)
University of Arizona	3-7, 1966	1967 — 3-6-1 (Defeated Ohio State at Columbus) 1968 — 8-4 (Sun Bowl)
Western Illinois	2-8, 1968	1969 — 8-2 1970 — 7-3 1971 — 8-2 1972 — 9-2 1973 — 7-4

Total 113 wins, 39 defeats, 2 ties







# The Star Spangled Banner

O, say! can you see, by the dawn's early light,  
What so proudly we hailed at the twilight's last gleaming?  
Whose broad stripes and bright stars, thro' the perilous fight,  
O'er the ramparts we watch'd, were so gallantly streaming?  
And the rockets' red glare, the bombs bursting in air,  
Gave proof thro' the night that our flag was still there.  
Oh, say, does that Star-spangled Banner yet wave  
O'er the land of the free and home of the brave?

## Seminole Songs

### ALMA MATER

High o'er the towering pines our  
voices swell,  
Praising those Gothic spires we  
love so well;  
Here sons and daughters stand,  
faithful and true.  
Hailing our ALMA MATER,  
F . . . S . . . U . . .

### HYMN TO THE GARNET AND GOLD

Here's a hymn to the garnet and the gold,  
Ringing to the sky.  
Here's a song for our men and women bold,  
Sing with heads held high.  
Striving ere to seek to know fight for victory.  
Alma Mater, this our song to you,  
Echoes, F . . . S . . . U . . .

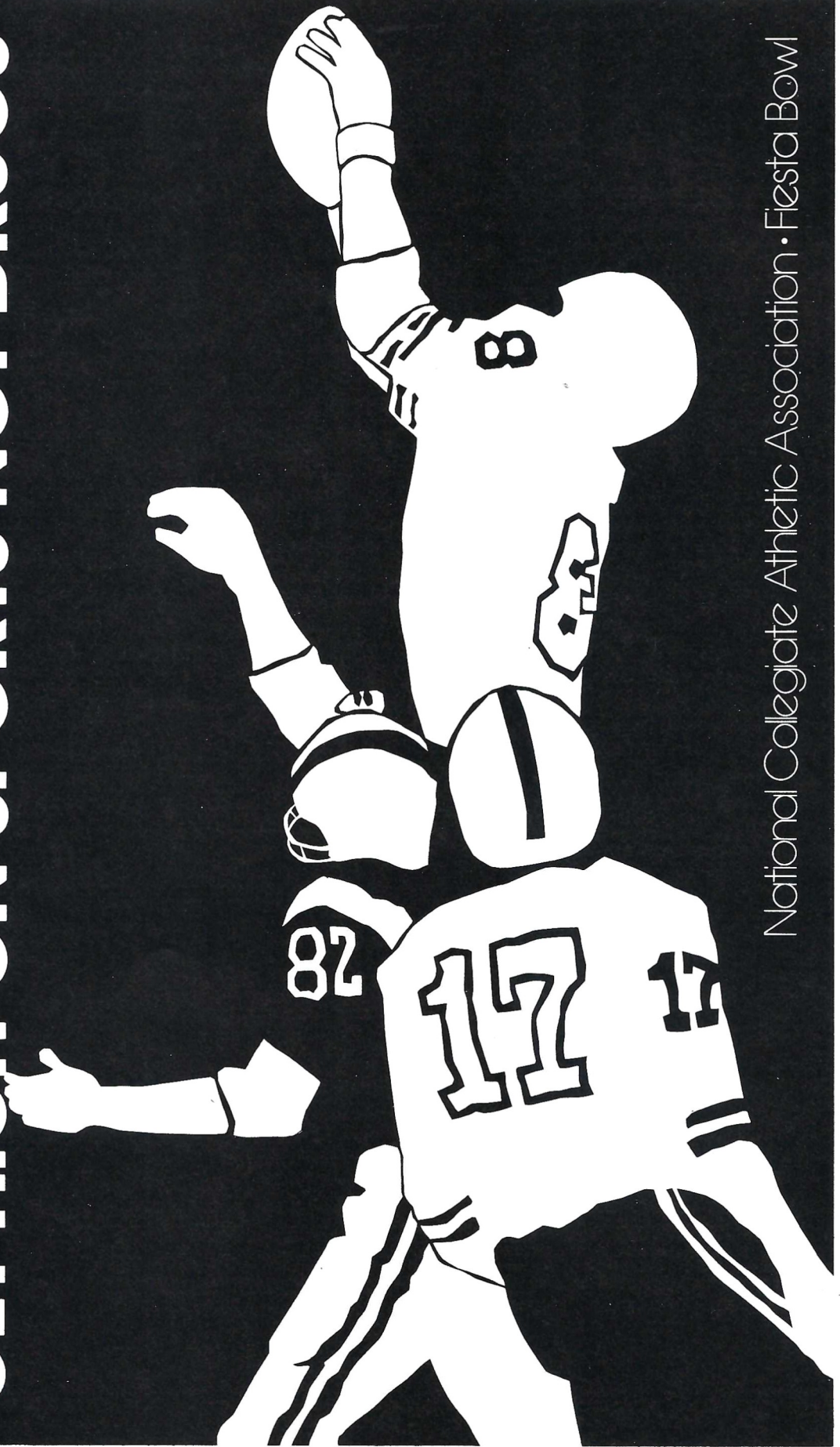
### FSU FIGHT SONG

You got to fight, fight, fight for FSU.  
You got to scalp 'em Seminoles.  
You got to win, win, win, win, win this game  
and roll on down and make those goals.  
For FSU is on the war path now, and at the  
battle's end she's great:  
So fight, fight, fight, fight, to victory,  
our Seminoles from Florida State.  
(Yell) F-L-O-R-I-D-A S-T-A-T-E  
Florida State! Florida State!  
Florida State!  
(repeat song)

### FLORIDA STATE VICTORY SONG

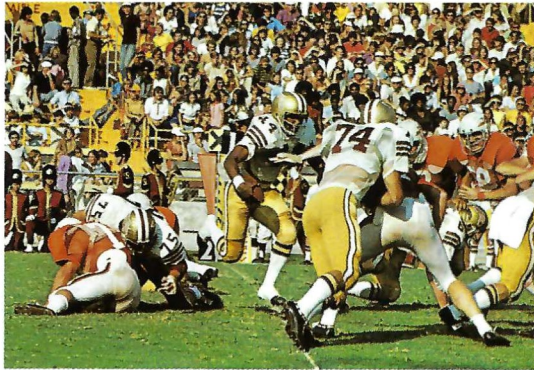
We are on the warpath tonight.  
Onward, Florida State.  
Show all the world the spirit and might  
that the Seminoles create.  
Stand up for the Garnet and Gold.  
Ever loyal we shall be.  
We are proud to shout,  
"The Warriors are out." And they will  
lead us to victory.

**GET HIGH ON SPORTS NOT DRUGS**



National Collegiate Athletic Association • Fiesta Bowl

# SUPPORT . . .



## THE SEMINOLES

### SEMINOLE BOOSTERS, INC.

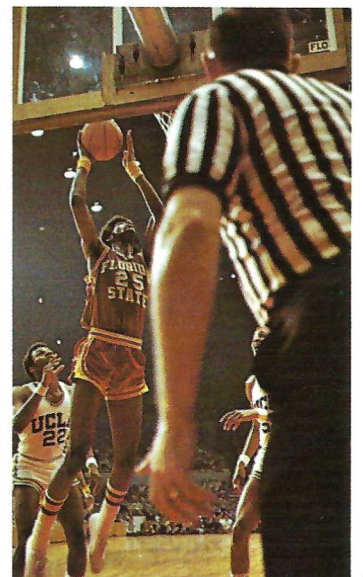
One of the most fundamental programs within any athletic department is that of providing funds to pay the educational expenses of the student-athletes participating in all sports. Through voluntary support, the Seminole Boosters, Inc. hope to provide such support.

"Now is the time for friends and alumni of Florida State to pull together," says Doyle Pope, Chairman of the Board of Directors. "The potential of the University is tremendous. Through Seminole Boosters, we hope to organize the thousands of those who are concerned with building the best athletic program in the nation."



Seminole Boosters, Inc., a private Corporation, is made up of member representatives from throughout the Southeast. In addition to Chairman Pope of Quincy, other members of the Executive Committee are Jimmy Carter, Panama City, Treasurer; Don Grant, Perry, Secretary; John Harllee, Bradenton; Theo Proctor, Jr., Tallahassee; Charles Booth, Orlando; and Harry Massey, Palm Beach.

Individuals interested in more information concerning the Seminole Boosters, Inc. should contact Executive Director Ted Ouzts, P.O. Box 1353, Tallahassee, FL 32301 or call 904/644-3484.



# KEEP YOUR OWN STATISTICS

Every football fan knows that the score doesn't always give a good picture of a game. A few statistics, like those that can be kept on this page, can make the picture clearer, show what the individual stars contribute and help to win post-game "debates." Besides, it can be fun to second guess the official scorer whose statistics will appear in tomorrow's papers. But before you start, here are some pointers on being a statistician:

1. Keep cumulative totals to be informed "up to the minute" and to simplify our figuring of team totals. Example: Jones gains 3, 6, 9, 2 yards and you write 3, 9, 18, 20 on his line.
2. Be satisfied if you come within 10-15 yards of the official team totals. Individual judgments as to the line of scrimmage can make quite a difference in the totals.

3. Remember that it takes 10 yards to make a first down—that last inch can be as important as a yard and must be scored as one. Wait until the official places the ball and then go by the official down/yard marker on the sidelines.
4. Be sure to credit first downs on scoring plays originating from lines of scrimmage beyond the 10-yard line.
5. On plays involving penalties measured from the point of the foul, credit the rusher or pass receiver with yardage only to the point of the infraction.
6. Charge gains and losses on fumbles to the player who, in your judgment, contributed most to the error.
7. Don't score two-point conversion attempts after touchdowns as rushing or passing plays.

Florida State

SCORING BY PERIODS						RUSHING (Use cumulative yardage, circle scoring plays)														
1	2	3	4	F																
TD SCORERS PAT																				
						PASSING (Use cumulative yardage for completions; - for incomplete; x for interceptions)														
						RECEIVING (Use cumulative yardage, circle scoring plays)														
FIRST DOWNS																				
RUSH		PASS		PEN																

## Take A Vacation From Inflation

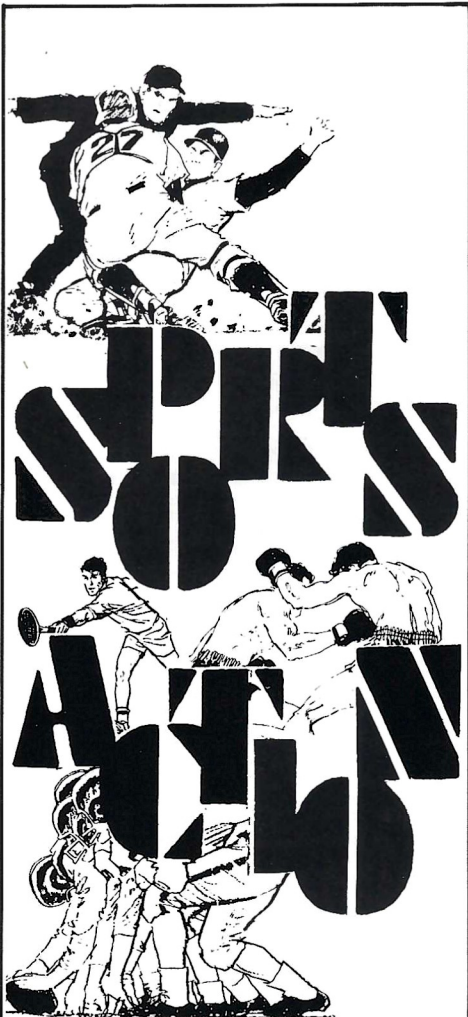
Shop Your Friendly . . .

**WINN-DIXIE**  
SAVE AT  
FOOD STORES

*The Smart Place To Go . . . For Good Things To Eat*

Houston

SCORING BY PERIODS						RUSHING (Use cumulative yardage, circle scoring plays)														
1	2	3	4	F																
TD SCORERS PAT																				
						PASSING (Use cumulative yardage for completions; - for incomplete; x for interceptions)														
						RECEIVING (Use cumulative yardage, circle scoring plays)														
FIRST DOWNS																				
RUSH		PASS		PEN																



## Complete sports coverage everyday

The Tampa Tribune's fine team of sports reporters led by editor Tom McEwen and assistant editor Jim Selman bring you complete coverage of all sports.

Read the Sports pages of

# THE TAMPA TRIBUNE

# TONIGHT'S TEAMS

**FLORIDA STATE**

**1-9**

**HOUSTON**

**7-2**

### 1974 Schedule and Results

6 Pittsburgh	9
7 Colorado State	14
9 Kansas	40
17 Baylor	21
7 Alabama	8
14 Florida	24
6 Auburn	38
14 Memphis State	42
21 Miami	14
21 Virginia Tech	56
Nov. 23 Houston	

9 Arizona State	30
21 Rice	0
3 Miami	20
49 Virginia Tech	12
24 South Carolina	14
35 Villanova	0
27 Cincinnati	6
31 Georgia	24
13 Memphis State	10
Nov. 23 at Florida State	
Nov. 30 at Tulsa	

### 1974 Stats

FSU	OPP		UH	OPP
157	190	<b>First Downs</b>	181	119
400	561	<b>Rushing Attempts</b>	574	413
1632	2603	<b>Rushing Yardage</b>	2650	1168
267-140-18	149-77-8	<b>Passes Att.-Comp.-Int.</b>	112-48-9	188-76-14
1590	1348	<b>Passing Yardage</b>	852	1022
3222	3951	<b>Total Yardage</b>	3502	2190
53-37.3	42-37.9	<b>Punts-Avg.</b>	38-38.5	65-38.9
29-18	39-22	<b>Fumbles-Lost</b>	51-26	22-16

### INDIVIDUAL LEADERS

#### Florida State

Rushing	Att.	Net.	Avg.	TD			
Larry Key	121	594	4.9	3			
R. Thomas	78	336	4.4	0			
Leon Bright	45	234	5.2	2			
Fred Miller	26	140	5.4	1			
Passing	Att.	Comp.	Pct.	Int.	Yds.	TD	
Ron Coppess	135	73	54.1	5	768	2	
Randy Mathieson	81	40	49.4	6	544	3	
Jimmy Black	46	25	54.3	6	255	1	
Receiving	No.	Yds.	Avg.	TD			
Joe Goldsmith	39	510	13.1	2			
Mike Shumann	39	424	10.9	2			
R. Thomas	15	98	6.5	1			
Leon Bright	9	171	19.0	1			

#### Houston

Rushing	Att.	Yds.	Avg.	TD		
John Housman	142	746	5.3	7		
Marshall Johnson	118	672	5.7	6		
Donny McGraw	76	454	6.0	3		
Reggie Cherry	71	380	5.4	3		
Passing	Att.	Comp.	Pct.	Int.	Yds.	TD
David Hussmann	69	31	44.9	6	418	1
Bubba McGallion	30	12	40.0	1	266	2
Receiving	No.	Yds.	Avg.	TD		
Robert Lavergne	12	169	14.1	0		
Frank Scalise	9	223	24.8	2		
Eddie Foster	9	125	13.9	1		

# ECONOMY. PLUS LIBERAL FRINGE BENEFITS.



Good gas mileage is still the thing you want most in a little car, of course. But we know you'd like more.

Like sporty looks and colors and models to choose from.

Bucket seats that fit you comfortably.

Nice soft carpeting.

A floor-mounted shift control and an instrument panel with dials and

gauges instead of flashing lights.

Really good handling.

An engine with a little bit of varroom going for it.

A rear seat that folds down and a rear door that opens up, so you can use your little car almost like a station wagon.

The Vega GT.

An economy car-and-a-half.

This year's version of last year's *Motor Trend* Economy Car of the Year. *Car & Driver* Readers' Choice, Best Economy Sedan, '71, '72, '73. *Motor Service & Service Station Management* mechanic survey, Easiest Subcompact to Service, '72. *Motor Trend*, Car of the Year, '71.

**VEGA**  
**Chevrolet**

**CHEVROLET MAKES SENSE FOR AMERICA.**



*Coca*

*Cola*

*Coca-Cola*

Trade-mark ®

Enjoy



"Coca-Cola" and "Coke" are registered trade-marks which identify the same product of The Coca-Cola Company.

# FLORIDA STATE

## Offense

WR	86	Roger Overby Fr., 6-0, 175
LT	69	Bruce Harrison So., 6-2, 235
LG	64	Jeff Gardner Jr., 5-11, 214
C	72	Smokey Ragins Jr., 6-1, 245
RG	61	Wade Johnson So., 6-2, 213
RT	65	Billy McPhillips So., 6-2, 222
TE	21	Joe Goldsmith Sr., 6-1, 180
QB	12	Steve Mathieson So., 6-4, 215
RB	35	Leon Bright Fr., 5-9, 175
RB	44	Larry Key Fr., 5-9, 181
WR	20	Mike Shumann So., 6-0, 163

## Defense

LE	83	Detroit Reynolds So., 6-1, 213
LT	75	Doug Dane So., 6-5, 222
LB	56	John Murphy Sr., 5-10, 210
NG	63	Jon Thames So., 5-11, 225
LB	90	Bert Cooper Sr., 6-1, 236
RT	78	Greg Johnson Jr., 6-4, 235
RE	73	Randy Coffield Jr., 6-3, 218
LC	46	Lee Nelson So., 5-10, 183
RC	40	Bobby Jackson Fr., 5-10, 164
SS	24	Andy Stockton Jr., 6-0, 176
FS	42	Joe Camps So., 6-2, 186

# HOUSTON

## Offense

SE	23	Bryan Williamson Sr., 6-0, 175
LT	73	Don McIntosh Sr., 6-3, 230
LG	68	Val Belcher So., 6-3, 240
C	55	Bert Schupp Sr., 6-3, 230
RG	69	Max Vater Sr., 6-2, 242
RT	71	David Brooks So., 6-5, 285
TE	16	Marty Watts Sr., 6-3, 210
QB	1	Bubba McGallion So., 5-10, 185
RB	13	Marshall Johnson Sr., 6-1, 195
FB	44	John Housman So., 6-3, 205
FL	6	Frank Scalise Jr., 6-0, 170

## Defense

LE	64	Larry Keller Sr., 6-2, 224
LT	78	Wilson Whitley So., 6-3, 285
LLB	59	Harold Evans Sr., 6-4, 215
RLB	2	Bubba Broussard Sr., 6-2, 235
MLB	57	Paul Humphreys So., 6-2, 212
RT	75	Lee Canalito So., 6-4, 269
RE	83	Mack Mitchell Sr., 6-8, 250
LC	34	Todd Williamson Sr., 5-11, 180
RC	35	Larry Houston Sr., 6-0, 175
SS	39	Mark Mohr So., 5-10, 176
FS	49	Gary Drake So., 6-0, 185

## Officials

Referee	Richard Bureson, Birmingham, Ala.
Umpire	Robert Knowles, Waco, Texas
Linesman	Joe Stephenson, Memphis, Tenn.
Line Judge	Horton Nesrsta, Marble Falls, Texas
Field Judge	Jime Evans, Waco, Texas
Back Judge	Edward Dudley, Atlanta, Ga.
ECO	Ned Wilford, Lakeland

TALLAHASSEE COCA-COLA BOTTLING CO.

# It's the real thing. Coke.

Trade-mark ®



# WE DON'T SETTLE FOR FIELD GOALS.

That's why the United States Marine Corps is a tough team to beat. And a tough team to make.

We want quality, not quantity.

If you've finished high school but haven't finished learning...

Or if you're a college man who is ready for leadership and responsibility...

If you've got it and you want to stand with the Marines, you'll be welcome.

Just keep one thing in mind: we make no compromises, no shortcuts, and only one promise—You'll be a Marine.

One of the few, and one of the finest.

**THE MARINES  
ARE LOOKING  
FOR A FEW  
GOOD MEN.**

Call  
800-423-2600,  
toll free, for  
more information.



# FLORIDA STATE

NO.	NAME	POS.	HT.	WT.	CLASS	HOMETOWN
1	Ahmet Askin	PK	6-2	174	Jr.	Tallahassee
3	Joe Downey	P	6-0	193	Sr.	Mobile, Ala.
12	Steve Mathieson	QB	6-4	210	So.	Rockville, Md.
14	Billy Prescott	QB	6-0	171	So.	Ft. Walton Beach
15	Garry Halfacre	P	5-11	191	So.	Cantonment
16	Jimmy Black	QB	6-0	179	So.	Merritt Island
17	Ron Coppess	QB	6-3	215	Jr.	Escondido, Calif.
18	Joe Joyner	DB	5-10	168	So.	Orlando
19	Jack Maynard	PK	6-0	175	So.	Tallahassee
20	Mike Shumann	WR	6-0	163	So.	Tallahassee
21	Joe Goldsmith	TE	6-1	180	Sr.	Lakeland
22	Bobby McKinnon	RB	6-1	175	Jr.	Lake Worth
23	Chris Griffin	DB	5-11	168	Jr.	Tampa
24	Andy Stockton	DB	6-0	176	Jr.	St. Petersburg
27	Mike Harder	WR	6-3	183	So.	Bristol, Pa.
28	Mike Davison	RB	5-11	197	Sr.	Bradenton
29	Fred Miller	RB	6-1	207	So.	Jacksonville
30	Jeff Leggett	RB	5-11	176	So.	Miami
31	Rudy Falana	WR	5-11	165	Sr.	Largo
33	Rudy Thomas	RB	5-11	193	So.	Quincy
35	Leon Bright	RB	5-9	175	Fr.	Merritt Island
36	Jim Higgins	RB	5-11	200	Fr.	Salisbury, N.C.
39	Jeff Ridings	DB	6-0	178	So.	Marietta, Ga.
40	Robert Jackson	DB	5-10	164	Fr.	Albany, Ga.
41	Phil Cahoon	DB	5-10	182	Jr.	Mobile, Ala.
42	Joe Camps	DB	6-2	186	So.	Gainesville
44	Larry Key	RB	5-9	181	Fr.	Inverness
46	Lee Nelson	DB	5-10	183	So.	Melbourne
47	Nat Terry	DB	6-0	175	Fr.	Tampa
48	Steve Vickers	DB	5-11	167	Jr.	Tampa
49	Brooks Burroughs	NG	6-0	227	Sr.	Somerset, N.J.
50	Bill Sawyer	C	6-4	228	So.	Cordele, Ga.
51	Aaron Carter	DB	5-9	180	Fr.	Gainesville
52	Gino Bennie	C	6-2	215	Fr.	Orlando
53	Brian Schmidt	LB	6-1	220	So.	Lehigh Acres
54	Garis Shaw	NG	6-2	236	So.	Clearwater
55	Milton Wilkerson	NG	6-0	230	Fr.	Dolton, Ill.
56	John Murphy	LB	5-10	210	Sr.	Albany, Ga.
57	Steve Hanks	LB	5-11	184	So.	Orlando
58	Greg Pounds	LB	6-1	206	Jr.	Daytona Beach
59	Scott Meseroll	LB	6-1	210	Sr.	Piscataway, N.J.
60	Mike Kissner	OG	6-2	239	So.	Delray Beach
61	Wade Johnson	OG	6-2	213	So.	Valdosta, Ga.
62	Bob Jones	OG	6-4	233	Sr.	Lighthouse Point
63	Jon Thames	NG	5-11	225	So.	Gainesville
64	Jeff Gardner	OG	5-11	214	Jr.	Miami
65	Billy McPhillips	OT	6-2	222	So.	Tampa
66	Curtis Harris	DT	6-3	230	Fr.	Dolton, Ill.
67	Gary Rose	DT	6-4	225	Fr.	East St. Louis, Ill.
68	Alan Risk	NG	6-2	216	So.	Miami
69	Bruce Harrison	OG	6-2	235	So.	Vero Beach
70	Vic Rivas	OT	6-2	234	So.	Miami
71	Herman Brown	OT	6-3	218	Fr.	Ft. Lauderdale
72	Smokey Ragins	OT-C	6-1	245	Jr.	Plant City
73	Randy Coffield	DE	6-3	218	Jr.	Hialeah
74	Jim Keyton	OT	6-4	240	Fr.	Thomasville, Ga.
75	Doug Dane	DT	6-5	222	So.	Ft. Lauderdale
76	Phil Jones	DT	6-2	244	So.	Miami Springs
77	Len Harvey	DT	6-4	217	So.	Tallahassee
78	Greg Johnson	DT	6-4	236	Jr.	Fruitland Park
79	Tony Falvo	OG	6-0	240	Jr.	Wexford, Pa.
80	Joe Thomas	WR	6-1	178	Sr.	Tallahassee
81	Ed Beckman	TE	6-5	210	So.	Miami
82	Mike Allen	WR	6-4	178	Sr.	Willoughby, Ohio
83	Detroit Reynolds	DE	6-1	213	So.	Tallahassee
85	Dave Porter	DE	6-3	200	So.	St. Petersburg
86	Roger Overby	WR	6-0	175	Fr.	Tampa
87	Rudy Maloy	DE	6-4	208	So.	Frostproof
88	Danny Witcher	TE	6-2	216	Fr.	Toledo, Ohio
89	John Kilmurray	DE	6-2	208	So.	Lanoka Harbor, N.J.
90	Bert Cooper	LB	6-1	236	Sr.	Tallahassee
91	Nat Henderson	DT	6-4	235	Fr.	Albany, Ga.

## Tallahassee Democrat

Prize Winning Sports Coverage

### NATIONAL NEWSPAPER ASSOCIATION

- 1st — Best Sports Section, 1973
- 1st — Best Sports Section, 1972
- 1st — Best Sports Columnist, 1971
- 1st — Best Sports Section, 1970
- 3rd — Best Sports Picture, 1970

### FLORIDA SPORTS WRITERS ASSOCIATION

- 1st — Best Sports Typography, 1973
- 1st — Best Sports Columnist, 1971
- 1st — General Writing Excellence, 1971
- 1st — General Section Excellence, 1970
- 2nd — General Writing Excellence, 1974
- 2nd — General Excellence of Section, 1974
- 2nd — Sports Section Makeup, 1974
- 2nd — Overall General Excellence, 1971

### ASSOCIATED PRESS OF FLORIDA

- 1st—Best Sport Color Picture, 1970

## Tallahassee Democrat

# HOUSTON

NO.	NAME	POS.	HT.	WT.	CLASS	HOMETOWN
1	Bobby McGallion	QB	5-10	185	So.	Silsbee
2	Bubba Broussard	RLB	6-2	235	Sr.	Brookshire
3	Robert Lavergne	FLK	5-11	185	So.	Lake Charles, La.
4	Jerry Hamrick	SS	6-0	180	So.	Corpus Christi
6	Frank Scalise	FLK	6-0	170	Jr.	Houston
7	Chuck Fairbanks	QB	6-2	180	Jr.	Norman, Okla.
8	Guy Brown	DE	6-4	220	So.	Palestine
9	John Ilaoa	RCB	5-11	175	Jr.	Dallas
10	David Husmann	QB	6-2	195	Jr.	Houston
12	Kenny Pridgeon	QB	6-2	180	So.	Cypress-Fairbanks
13	Marshall Johnson	RB	6-1	195	Sr.	Jacksonville
16	Marty Watts	TE	6-3	210	Sr.	Houston
17	Joe Rust	FS	5-11	170	Jr.	Dallas
21	Donnie McGraw	FB	5-11	185	Jr.	Dallas
22	Clarence Shelmon	FB	6-0	202	Sr.	Bossier, La.
23	Bryan Willingham	SE	6-0	175	Sr.	Pasadena
24	Robert Giblin	RCB	6-2	205	Sr.	Port Neches
27	Reggie Cherry	RB	6-1	195	Sr.	Lake Helen, Fla.
34	Todd Williamson	LCB	5-11	180	Sr.	San Antonio
35	Larry Houston	FS	6-0	175	Sr.	Austin
36	Mike Woodriddle	SS	6-1	170	Jr.	Houston
39	Mark Mohr	FS	5-10	176	So.	Arlington
40	Roger Mayes	LCB	6-2	180	Sr.	Houston
41	Eddie Foster	SE	6-1	190	So.	Houston
42	Ronnie Joyce	SE	6-0	175	Sr.	Carrollton
44	John Housman	FB	6-3	205	So.	Killeen
45	Tom Staudt	FLK	6-0	195	So.	Converse
49	Gary Drake	SS	6-0	185	So.	Pt. Arthur
51	Mike Rinehart	C	6-1	185	Jr.	Yoakum
55	Bert Schupp	C	6-3	230	Sr.	Lake Jackson
56	Mike Ilaoa	LT	6-0	215	Sr.	Dallas
57	Paul Humphreys	MLB	6-2	212	So.	El Campo
58	Mike Spradlin	C	6-2	230	So.	Dallas
59	Harold Evans	LLB	6-4	215	Sr.	Aldine
60	Gerald Hill	MLB	6-1	216	Sr.	Corpus Christi
61	Buddy Stohler	RLB	6-0	200	So.	LaFeria
64	Larry Keller	DE	6-2	224	Sr.	Orange
65	Richard Henkel	DT	6-4	235	Jr.	Pensacola, Fla.
67	Larry George	OG	6-4	235	So.	Houston
68	Val Belcher	OG	6-3	240	So.	Houston
69	Max Vater	OG	6-2	242	Sr.	Houston
70	Robert Orr	OT	6-6	235	So.	Yoakum
71	David Brooks	OT	6-5	285	So.	San Angelo
72	Charles McKinney	OG	5-11	230	Sr.	Sherman
73	Don McIntosh	OT	6-3	230	Sr.	Waco
74	Mickey Colquitt	DT	6-5	235	Jr.	Lufkin
75	Lee Canalito	DT	6-4	269	So.	Houston
76	Willis Williams	RLB	6-0	215	So.	Marlin
77	Everett Little	OG	6-5	280	Jr.	Lufkin
78	Wilson Whitley	DT	6-3	285	So.	Brenham
79	Kevin Rollwage	OG	6-3	240	So.	Dallas
81	Phillip Brown	TE	6-4	215	So.	Aransas Pass
83	Mack Mitchell	DE	6-8	250	Sr.	Diboll
84	Don Bass	TE	6-2	215	Fr.	Ft. Worth
85	Paul Morrison	LLB	6-2	210	Sr.	Abilene
86	Miller Bassler	TE	6-4	215	Sr.	Somerville
90	Lennard Coplin	K	5-10	170	So.	Port Neches

# Florida State

## Offense

WR	86	Roger Overby
	80	Joe Thomas
LT	69	Bruce Harrison
	50	Bill Sawyer
LG	64	Jeff Gardner
	79	Tony Falvo
C	72	Smokey Ragins
	52	Gino Bennie
RG	62	Bob Jones
	61	Wade Johnson
RT	65	Billy McPhillips
	60	Mike Kissner
TE	21	Joe Goldsmith
	81	Ed Beckman
QB	12	Steve Mathieson
	17	Ron Coppess
RB	35	Leon Bright
	30	Jeff Leggett
RB	44	Larry Key
	29	Fred Miller
WR	20	Mike Shumann
	11	Jim Everett

## Defense

LE	83	Detroit Reynolds
	87	Rudy Maloy
LT	75	Doug Dane
	91	Nat Henderson
LB	56	John Murphy
	53	Brian Schmidt
NG	63	Jon Thames
	49	Brooks Burroughs
LB	90	Bert Cooper
	59	Scott Meseroll
RT	78	Greg Johnson
	77	Len Harvey
RE	73	Randy Coffield
	85	Dave Porter
LC	46	Lee Nelson
	23	Chris Griffin
RC	40	Bobby Jackson
	39	Jeff Ridings
SS	24	Andy Stockton
	51	Aaron Carter
FS	42	Joe Camps
	41	Phil Cahoon

**Punts** — 3 Joe Downey; **Kickoffs and Placements** — 1 Ahmet Askin

# Houston

## Offense

SE	23	Bryan Williamson
	41	Eddie Foster
LT	73	Don McIntosh
	58	Mike Spradlin
LG	68	Val Belcher
	72	Charles McKinney
C	55	Bert Schupp
	51	Mike Rinehart
RG	69	Max Vater
	77	Everett Little
RT	71	David Brooks
	56	Mike Ilaoa
TE	16	Marty Watts
	86	Miller Bassler
	84	Don Bass
QB	1	Bubba McGallion
	10	David Husmann
RB	13	Marshall Johnson
	27	Reggie Cherry
FB	44	John Housman
	21	Donnie McGraw
FL	6	Frank Scalise
	3	Robert Lavergne

## Defense

LE	64	Larry Keller
	8	Guy Brown
LT	78	Wilson Whitley
	74	Mickey Colquitt
LLB	59	Harold Evans
	85	Paul Morrison
MLB	57	Paul Humphreys
	60	Gerald Hill
RLB	2	Bubba Broussard
	76	Willis Williams
RT	75	Lee Canalito
	60	Gerald Hill
RE	83	Mack Mitchell
	60	Gerald Hill
LC	34	Todd Williamson
	40	Roger Mayes
RC	35	Larry Houston
	24	Robert Giblin
SS	39	Mark Mohr
	36	Mike Woolridge
FS	49	Gary Drake
	17	Joe Rust

**Punts** — 12 Ken Pridgeon; **Placements** — 90 Lennard Coplin

*for in depth coverage  
of today's game . . . see tomorrow's*

# Tallahassee Democrat

featuring Florida's prize winningest sports editor . . . Bill McGrotha



**When you celebrate today's victory,**



**Treat yourself to tender, tasty...**

# **BEEF**

*As Delicious as it is Nutritious!*

---

**FLORIDA BEEF COUNCIL**

---

A Committee of The Florida Cattlemen's Association



Miss Diane Mikell  
Florida Cattlemen's Association  
1974-75 Sweetheart



Touchdown or Field Goal



Helping the Runner, or Interlocked Interference



Ball Ready for Play



Grasping Face Mask



Delay of Game



Roughing the Kicker



Ball Dead; If Hand is Moved from Side to Side: Touchback

# RAGANS & ROBERTS INC.

Area's Largest

Goodyear & Fina Oil Dealer

5 Locations To Serve You



Clipping



Illegal Procedure or Position



Illegally Passing or Handling Ball Forward

2065  
W. Pensacola St.  
576-9945

826  
Lake Bradford Rd.  
576-3908

2501  
N. Monroe St.  
385-3615

1031  
S. Magnolia Dr.  
878-4582



Offside (Infraction of scrimmage or free kick formation)



Safety

# GOOD YEAR



First Down



Illegal Shift



Illegal Motion

More People Ride on  
Goodyear Tires  
Than Any Other



Loss of Down



Personal Foul



Ineligible Receiver Down Field on Pass



Ball Illegally Touched, Kicked, or Batted



Time out; Referee's Discretionary or Excess Time Out followed with tapping hands on chest.



Forward Pass or Kick Catching Interference



Start the Clock



Intentional Grounding

# Football Terminology

**Audible** — A vocal signal by the quarterback changing the play called in the huddle.

**Blitz** — Commitment by defensive backs and/or linebackers to rush the passer.

**Blocking** — Legally hindering the progress of an opponent by contacting him with any part of the blocker's body.

**Bomb** — A long pass attempt for a touchdown.

**Buttonhook** — A pass pattern in which the receiver goes downfield and U-turns back sharply to receive the ball.

**Clipping** — Running or diving into the back of an opponent, or throwing the body across the back of the leg or legs of an opponent other than the ball carrier.

**Corner Back** — Defensive back who usually lines up across from wide receiver.

**Dive-Tackle Play** — A quick-handoff running play over tackle.

**Draw-Play** — Quarterback drops back as if to pass but instead hands ball to running back, after quarterback's teammates have assumed pass-blocking positions.

**Fair Catch** — The opportunity for a player of the receiving team to catch a kicked ball that has crossed the scrimmage line without being tackled or blocked by an opponent, after signaling his intention by completely extending one arm above his head.

**Flanker** — Offensive back deployed as a wide receiver. Must line up one yard behind line of scrimmage.

**Free Safety** — Same as weak safety.

**Fullback** — A running back who usually lines up behind strong side of the offensive line.

**Kickoff** — A free kick with which each half is opened, and which is employed also following each try-for-point or Field Goal. A kickoff must be either a Placekick or a Dropkick.

**Lateral Pass** — A live ball thrown toward or parallel with the passer's own goal line.

**Linebacker** — A defensive player operating immediately behind his line where he can either aid linemen in stopping a running play or cover an opponent's receiver if a pass develops.

**Look-In Pass** — Receiver runs straight pattern and looks for the ball immediately over his inside shoulder.

**Man-to-Man Coverage** — Pass defense plan wherein defensive backs cover receivers wherever they go, rather than field areas.

**Middle Linebacker** — So designated because he usually lines up across from the opposing center.

**Mike** — Nickname for middle linebacker.

**Monster** — Same as strong safety.

**Neutral Zone** — The space between the scrimmage lines of the offense and defense. Approximately 11 inches.

**Nose Guard** — Defensive lineman who lines up directly in front of opposing center on line of scrimmage.

**Onside Kick** — A kickoff that travels 10 yards or more is anybody's ball. The so-called "onside kick" is an effort by the kicking team to kick the ball barely beyond 10 yards and recover it before the receiving team can do so.

**Pocket** — Area of protection for the passer formed by blockers. Passer drops straight back from scrimmage behind the blocking shield into what resembles a "cup" or pocket.

**Post** — A pass pattern in which the receiver goes downfield to pre-determined depth then cuts at an angle toward the goalposts.

**Prevent Defense** — A strategem replacing linebackers with additional backfield pass defenders, sacrificing strength against short gainers in order to prevent a long pass completion. Most often employed by a team protecting a lead late in either half.

**Pulling Guard** — Guard who pulls out behind scrimmage line for a trap block or to lead sweep blocking for ball carrier.

**Reverse Play** — A running play with backfield action suggesting one direction while ball carrier goes in opposite direction.

**Roll-Out Pass** — Quarterback runs laterally with blockers before throwing, instead of dropping straight back to pass.

**Running Back** — Member of the offensive backfield who primarily carries the ball. Also used as a receiver and blocker. Can be either tailback or fullback.

**Sam** — Nickname for strong linebacker.

**Screen Pass** — Pass to a receiver behind a wall of blockers, who have permitted defenders to penetrate.

**Scrimmage Line** — The yard line (marked or unmarked) that passes through point of the ball nearest a team's own goal line.

**Slot Back** — Back stationed in slot between interior linemen and end. Must be one yard behind the line of scrimmage.

**Split End** — Offensive lineman deployed as a wide receiver. Must line up on line of scrimmage.

**Strong Linebacker** — So designated because he usually lines up across from the strong side of the offensive line.

**Strong Guard** — Offensive guard playing on the strong side of the line.

**Strong Safety** — Defensive back who usually lines up deeper than corner backs and across from strong side of offensive line.

**Strong Side** — The side of the offensive line where the tight end lines up.

**Strong Tackle** — Offensive tackle playing on the strong side of the line.

**Stunting** — Defensive players changing positions as the ball is snapped, to confuse offensive strategy.

**Sweep** — End run with wave of blockers leading the ball carrier.

**Tailback** — A running back who usually lines up behind the weak side of the line.

**Tight End** — Offensive end who lines up in close formation (as opposed to Split End's wide set) where he can either block for a ball carrier or be employed as a pass receiver.

**Trap Block** — Tactic whereby offensive lineman pulls out of position at the snap allowing man he would usually block to come through line and be blocked (or "trapped") by another blocker.

**Unbalanced Line** — Offensive line deployment whereby more blocking linemen are lined up on one side of the center than on the other.

**Weak Guard** — Offensive guard playing on the weak side of the line.

**Weak Linebacker** — So designated because he usually lines up across from the weak side of the Offensive line.

**Weak Safety** — Defensive back who usually lines up deeper than corner backs and across from weak side of offensive line.

**Wide Receiver** — A lineman and/or a back who is set wide for pass receiving purposes. Also called Split End, Flanker or Wideout.

**Zone Coverage** — Plan of pass defense wherein areas are covered rather than individual receivers. Opposite of Man-To-Man.

Textbooks

\*

Art and  
School Supplies

\*

FSU

Sweatshirts

T Shirts

Glassware

Mugs

\*

Seminole  
Uprising



SUPPORTED BY



WHEN YOU THINK OF BOOKS, THINK OF BILL'S

107 SOUTH COPELAND ST.  
TALLAHASSEE-FLA. 32304

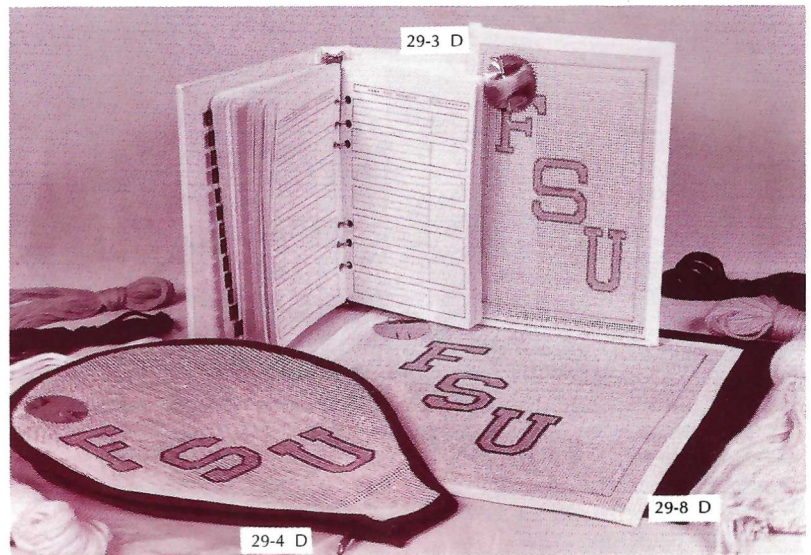
# 1974 SEMINOLES



**FRONT ROW** (Left to Right)—Head Coach Darrell Mudra, Cahoon, Corner, Gardner, Griffin, Halfacre, Joyner, Leggett, Bright, Carter, R. Jackson, Murphy, Nelson, Holley, Turner, H. Brown, Dennison, Will, Sekul, Pete Rodriguez. **SECOND ROW**—Don Pollard, Ed Feely, Barnes, Black, Burroughs, Cheeseborough, Davison, Falvo, Humes, Kaiser, Kettman, Petrillo, Prescott, Ridings, Thames, R. Thomas, Vickers, Crosby, Heggins, Overby, Wilkerson, Kincaid, Falana, J. Thomas, Cal Jones, Frank DeBord. **THIRD ROW**—Bill Baggett, Sam Elliott, Askin, Bibler, Blythe, Cooper, Cunningham, Downey, Galen, Goldsmith, D. Hanks, Horton, Mercer, Pavlovich, McKinnon, Meseroll, Miller, O'Leary, Orlando, Pounds, Reynolds, Rogozinski, Schmidt, Shaw, Shumann, Stockton, Bob Harbison, Gene McDowell. **FOURTH ROW**—Brodzik, Camps, Coffield, Coppess, Corcoran, Everett, Fucarino, Greene, B. Harrison, Holcomb, Falkenstein, Keyton, Witcher, W. Johnson, L. Jones, P. Jones, Kilmurray, Kissner, McPhillips, Pitt, Porter, Risk, Rivas, Mike Pope. **FIFTH ROW**—Larry Pendleton, Allen, Beckman, Caven, Dane, Harder, Harmeling, Harvey, G. Johnson, B. Jones, Boscaccy, Harris, Henderson, Rose, Spotts, Maloy, Marshall, McDougal, Prior, Rushing, Sawyer, Slagle, Tuten, Dan Henning.



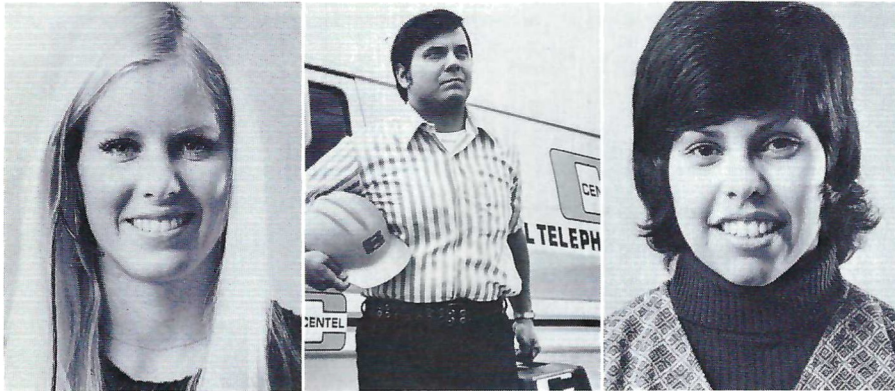
# Seminole Gift Shopper:



- 26-1 D MEN'S DOUBLE KNIT BLAZERS**  
Handsomely styled in 100% polyester. Available in garnet or gold; Regular 36-46; Short 36-42, 44, 46; Long 38-46 ..... **\$81.00**
- 26-2 D** Also available in sizes 48, 50, 52, and all extra long sizes **\$87.00**
- 26-3 D WOMEN'S DOUBLE KNIT BLAZERS** ..... **\$70.00**  
Handsomely styled in 100% polyester. Available in garnet or gold. Sizes 8-20. Even sizes only.
- 09-1 D DELUXE BLAZER EMBLEMS** ..... **\$12.50**  
Imported from India. Hand-embroidered with silver and gold thread. Tie-tac back allows for easy attachment or removal from any blazer pocket. FSU seal—gold lettering on garnet background, gold border.
- 13-1 D ARC GOLF BALLS** ..... **\$13.95**  
Conform to all USGA specifications. FSU seal in garnet. Box of 12.
- 21-1 D SET OF THREE LUGGAGE TAGS** ..... **\$ 6.75**  
Leather straps. Guaranteed indestructible plexiglass. Striking gold FSU logo displayed on one side. Three lines of personalization stamped in gold on reverse. One name and address per set.
- 21-2 D** Also available in set of six ..... **\$11.00**
- 29-3 D ADDRESS BOOK, NEEDLEPOINT COVER INSET** ..... **\$19.50**  
Complete kit includes persian yarn, needles, FSU logo, instructions, hand-painted on canvas, leatherette book cover with alphabetical address index and looseleaf address pages. Kit includes everything needed for at home finishing. FSU garnet and gold on white.
- 29-4 D ZIPPERED TENNIS RACQUET COVER** ..... **\$21.50**  
Complete kit includes persian yarn, needles, FSU logo, instructions, hand-painted on canvas, canvas fabric backed, completely zips apart. FSU garnet and gold on white.
- 29-8 D SQUARE PILLOW** ..... **\$17.85**  
Kit includes persian yarn, needles, FSU logo, hand-painted on canvas, backing fabric and instructions for complete at home finishing. Completed pillow is 10" X 10". FSU garnet and gold on white.
- 01-7 D 8" EXECUTIVE ASHTRAY** ..... **\$10.45**  
Heavy glass. Rich and distinctive. Adds to any decorative scheme. Great for your office or den. FSU seal appears on bottom in silver.
- 07-1 D FSU TIE** ..... **\$ 8.25**  
Striking garnet tie with letters FSU in gold. 4" width.
- 12-1 D PLASTIC TUMBLERS** ..... **\$20.75**  
12 oz. Clear styrene imprinted with FSU; 10 sleeves of 20 glasses each, case of 200. Great for Seminole parties and get-togethers.
- 03-5 D SILVER DEPOSIT CRYSTAL CANDY DISH** ..... **\$17.00**  
Sterling silver, non-tarnish, rhodium plated finish with FSU logo.
- 03-1 D SILVER DEPOSIT CRYSTAL 12 OZ. BEVERAGE GLASSES** ..... **\$28.55**  
Set of 4. Sterling silver, non-tarnish, rhodium plated finish with FSU logo.
- 03-2 D SILVER DEPOSIT CRYSTAL DOUBLE OLD FASHIONED GLASSES** ..... **\$28.55**  
Set of 4. Sterling silver, non-tarnish, rhodium plated finish with FSU logo.
- 03-6 D SILVER DEPOSIT CRYSTAL 32 OZ. BRANDY INHALER** ..... **\$15.75**  
Sterling silver, non-tarnish, rhodium plated finish with FSU logo.

Now is the time to start thinking of Christmas gifts. These items should be ideal for this occasion and birthdays or other special times. This merchandise is available through the FSU Alumni Association, 114 Longmire Alumni Building, Tallahassee, Florida, 32306, telephone number (904) 644-4064 or 644-4065. Upon request an order form will be sent to you.

**In a world filled with machines and computers, there are still some jobs that let you work with people.**



If you find satisfaction in helping people, there could be a place for you at Centel. As an operator. An office worker. Or in one of many other positions with unlimited career potential.

Whatever you're looking for, we think you'll find it at Centel. A well-paying job. A growth job. A challenging job. And best of all, a people job. *An Equal Opportunity Employer*



CENTRAL TELEPHONE COMPANY OF FLORIDA



**You're Always A Winner at**



Industrial National Bank

2111 N. Monroe Tallahassee, Fla.

"Between the Malls" 385-1111

**We're Here on Your Account!**

## STADIUM INFORMATION

**REST ROOMS** are located on concourse and ground levels of both the east and west stands.

**FIRST AID** station is located at the southwest corner of the stadium opposite gate five. A registered nurse is on duty at all times.

**PUBLIC TELEPHONES** are located on the ground levels of the east and west stands.

**PUBLIC ADDRESS** will make special announcements in cases of emergency only.

**DOCTORS** receiving calls will be paged by number.

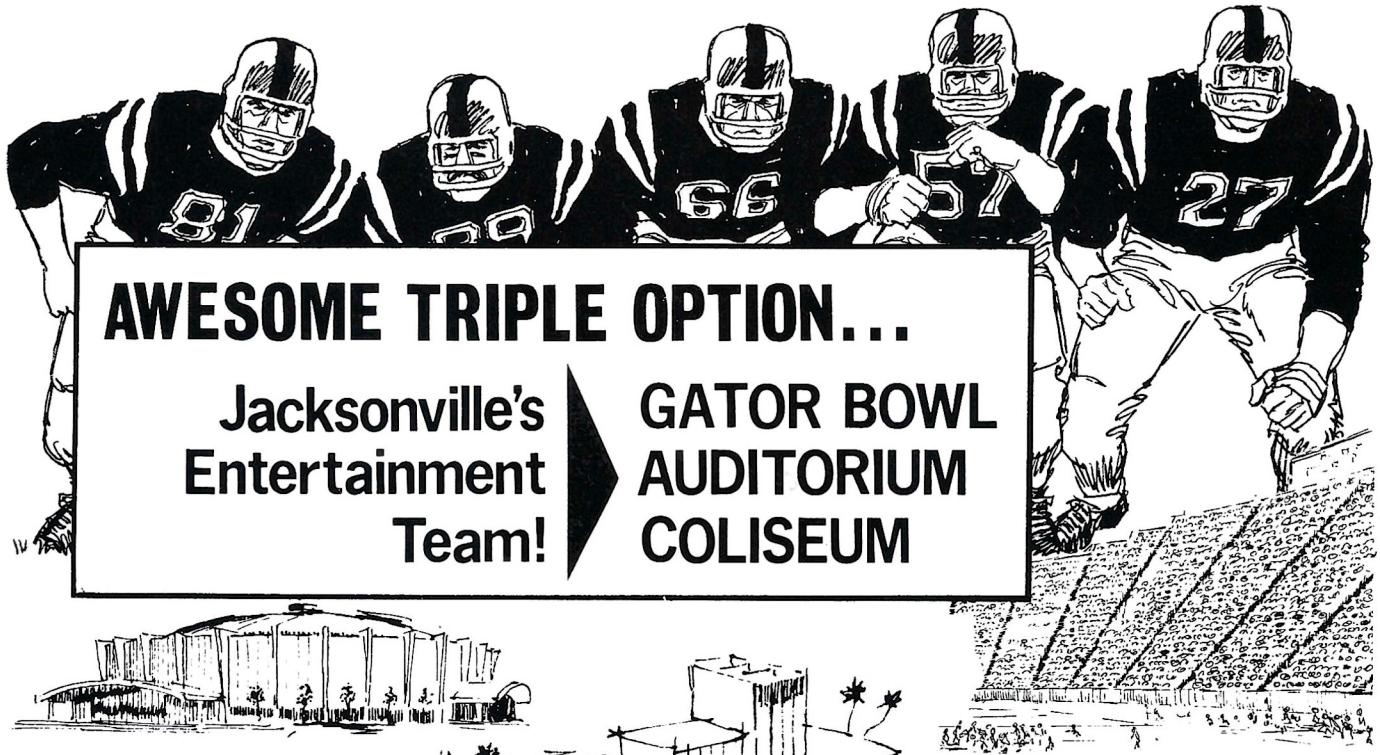
**LOST AND FOUND** items may be turned in and claimed at the ticket-booth at gate three under the west stands by the press box elevator.

**ALCOHOLIC BEVERAGES** are prohibited. Your cooperation is appreciated.

**FIELD REGULATIONS** prohibit unauthorized persons on the field during or after the game. Please leave the Stadium by the ramp and section exits.

**REFRESHMENTS** are available in the stands and at locations on the concourse and ground levels of the east and west stands.

Please pay no more than established prices.



# AWESOME TRIPLE OPTION...

**Jacksonville's  
Entertainment  
Team!**



**GATOR BOWL  
AUDITORIUM  
COLISEUM**

## COLISEUM

### SEPTEMBER

- 18-22 Disney on Parade
- 24 TV Closed Circuit  
Mohammed Ali fight
- 27-29 Shrine Circus

### OCTOBER

- 4 Rock Show — WAR
- 5 Country Western
- 16-26 Greater Jacksonville Fair

### NOVEMBER

- 1 Country Western Show
- 2 Rock Show — TRAFFIC
- 29 Basketball

### DECEMBER

- 2 Basketball
- 6 Basketball — J.U. vs. Univ. of Fla.
- 7 WQIK Country Western
- 9 Basketball — J.U. vs. Oklahoma
- 14 Rock Concert
- 15 Country Music
- 16 Basketball — J.U. vs. So. Cal. State
- 18 Country Western Music
- 25 Basketball
- 26-27 Gator Bowl Basketball Tourney
- 28 Rock Concert — Black Oak  
Arkansas

### JANUARY

- 4 Basketball — J.U. vs. Wisconsin
- 6 Basketball — J.U. vs. Geo. Southern
- 10 Basketball — J.U.  
Bethune Cookman Tourney
- 11 Basketball
- 13 Basketball — J.U. vs. Nebraska
- 15 Basketball

- 17 Lipizzan Stallion Show
- 22 Basketball — J.U. vs. Hustra
- 24-26 Custom Auto Show
- 29 Basketball — J.U. vs. Richmond
- 30-31 Ringling Brothers Circus

### FEBRUARY

- 1 - 2 Ringling Brothers Circus
- 13 Boat Show
- 23 Guy Lombardo

### MARCH

- 6 - 8 State High School Basketball
- 10 Globetrotters
- 11-16 Holiday on Ice

## AUDITORIUM

### SEPTEMBER

- 20-22 Ceramic Show

### OCTOBER

- 1 Mary Costa
- 18 RARE EARTH — Play

### NOVEMBER

- 7 Olivia DeHaviland
- 8 The Letterman

### DECEMBER

- 21-22 Nutcracker Suite

### JANUARY

- 4 WQIK — Country Western  
Charlie Pride
- 11 SEE SAW — Play

## GATOR BOWL

### SEPTEMBER

- 18 PORTLAND vs. SHARKS 8:00 PM
- 20 White vs. Jackson 7:30 PM
- 21 Ribault vs. Stanton 7:30 PM
- 27 Paxon vs. Wolfson 7:30 PM
- 28 Sandalwood vs. Jackson 7:30 PM

### OCTOBER

- 4 Lee vs. White 7:30 PM
- 5 Raines vs. Jackson 7:30 PM
- 9 ORLANDO vs. SHARKS 8:00 PM
- 11 Wolfson vs. Raines 7:30 PM
- 12 BETHUNE COOKMAN vs.  
ALBANY STATE 8:00 PM
- 16-26 GREATER  
JACKSONVILLE FAIR
- 30 DETROIT vs. SHARKS 8:00 PM
- 31 Stanton vs. Jackson 7:30 PM

### NOVEMBER

- 1 Ribault vs. Lee 7:30 PM
- 2 Lake City vs. Wolfson 7:30 PM
- 9 GEORGIA vs. FLORIDA 2:30 PM
- 9 Fletcher vs. Raines 7:30 PM
- 13 CHICAGO vs. SHARKS 8:00 PM
- 14 Sandalwood vs. Wolfson 7:30 PM
- 15 White vs. Stanton 7:30 PM
- 16 Ribault vs. Raines 7:30 PM
- 28 THANKSGIVING DAY  
Wolfson vs. Englewood 10:30 AM  
Lee vs. Jackson 2:00 PM  
Stanton vs. Raines 7:30 PM
- 30 WFL PLAY-OFF GAME (TV) 9:00 PM

### DECEMBER

- 7 MENINAK CHARITY GAME 7:30 PM
- 30 GATOR BOWL GAME 9:00 PM

Wrestling in Coliseum every Thursday night.

Public Ice Skating periodically scheduled each month.  
Call 633-3650 or 633-2350 for current information.



**For tickets:**  
**Civic Auditorium: 633-2900**  
**Memorial Coliseum: 633-2900**  
**Gator Bowl: 633-3806**

# CITY OF JACKSONVILLE

# SEMINOLE AUTO DEALERS

These are the men who help keep Florida State's Athletic Program "on the go" in a very real sense. The importance of the Seminoles' courtesy car program cannot be overemphasized and without the cooperation of these gentlemen, it would never reach the degree of success it has. We salute each and every one of these community minded men.



**Theo and Julian Proctor**  
Proctor and Proctor  
Pontiac/Cadillac  
Tallahassee



**Neil Palmer and E. K. Harrell**  
Palmer-Harrell Buick Co.  
Tallahassee



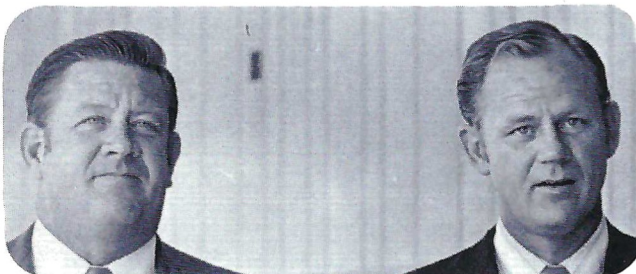
**Tom Kinnebrew**  
Kinnebrew Motors  
Tallahassee



**Sam Shovlain**  
Courtesy Oldsmobile  
Tallahassee

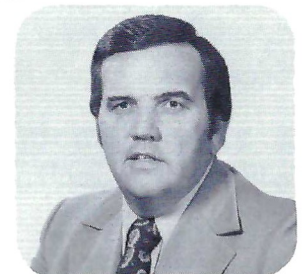


**Bill McKemie**  
McKemie Chevrolet  
Tallahassee

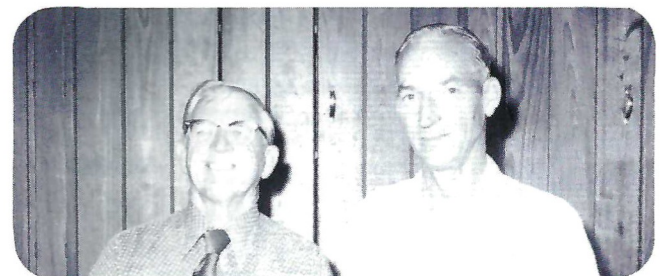


**Bill and Bob Miller**  
Miller Chevrolet  
Havana

**Gary Smith**  
Gary Smith Ford Company  
Fort Walton Beach



**Ed Richardson and Frank Shaw**  
Tallahassee (Ford) Motors  
Tallahassee



**Howard Thomas and Carl Fryer**  
Fryer Thomas Motor Company  
Quincy

# Trainers



*Kneeling:* Head Trainer Bill Baggett (left) and Rich Lief. *Standing (left to right):* John Mooney, Dave Darovec and Jack Mansfield.

## PRESCRIPTIONS

- COSMETICS
- GREETING CARDS
- TOYS
- FILMS & CAMERAS



"BUDDY STEWART"  
"WORKING FOR BETTER  
COMMUNITY HEALTH"  
HAVE YOUR DOCTOR CALL US

- VITAMINS
- CANDY
- GIFTS
- HOSPITAL SUPPLIES

224-5011

NO CHARGE FOR  
DELIVERY SERVICE

UNIVERSITY  
*Rexall*  
PHARMACY  
W. Tenn. & High Road

CITY WIDE AND  
SURROUNDING AREAS

# Student Managers



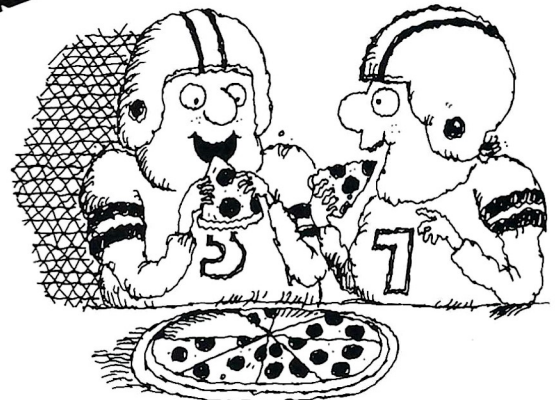
*Kneeling (left to right): Jack McCambridge and Mark Ryan. Standing: Mel Brown, Ray Parker and Chip Johnson.*

# Roast the referee over a hot pizza.

It's a Tallahassee favorite—  
replaying the game at the Pizza Hut.  
Tackle one of our famous Pizza Hut pizzas.  
Or try our Cavatini, sandwiches, salads, and  
your favorite beverage. When the game ends,  
the fun begins at any of the Pizza Huts listed below.

2148 W. Tennessee . . . 576-2911  
2011 N. Monroe . . . 385-7636  
1241 E. Lafayette . . . 877-0432  
322 E. Jackson, Thomasville . . . 226-9166

©1974 Pizza Hut, Inc.



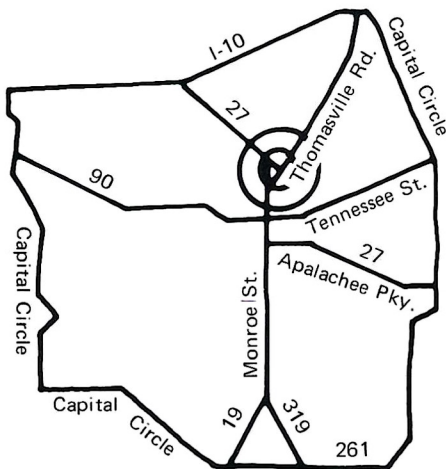
**Our people make our pizza better**

# Board of Regents



Bottom row, left to right: Jack McGriff, Gainesville; Dr. Burke Kibler, III, Lakeland; Mrs. E. D. Pearce, Coral Gables; Julius F. Parker, Jr., Tallahassee; Chancellor Robert B. Mautz.  
 Top row, left to right: Marshall M. Criser, Chairman, Palm Beach; E. W. Hopkins, Jr., Pensacola; Chester H. Ferguson, Tampa; J. J. Daniel, Jacksonville; James J. Gardener, Vice Chairman, Ft. Lauderdale

## welcome, neighbor



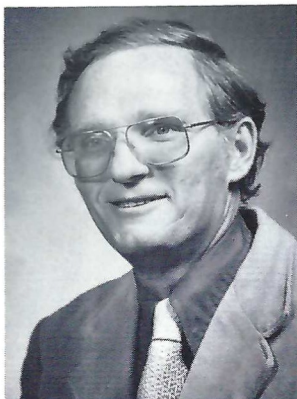
If you're a newcomer to Tallahassee, or if you've just moved into a new neighborhood, stop in for a warm welcome at centrally located PEOPLES BANK. Stop by this week. Get acquainted with our full line of services. Look into FREE CHECKING WITH AUTOMATIC SAVINGS. And get a fresh new start—with us. We're glad you're in the neighborhood.

Member F.D.I.C.

**PEOPLES**

the people's bank • 1136 Thomasville Rd. • Tallahassee, Fla. • 224-5151

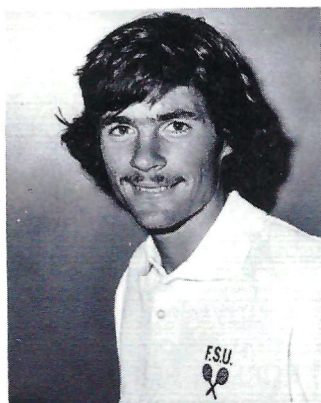
# Seminole Head Coaches



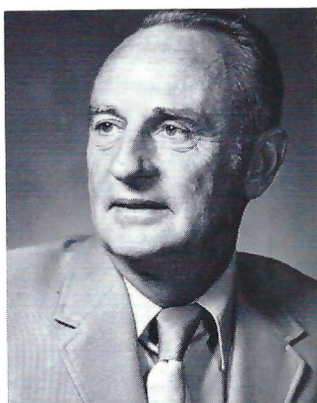
**TERRY CARLISLE**  
Swimming



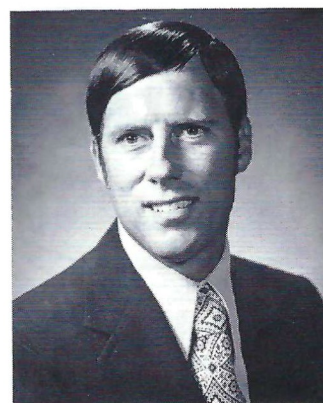
**HUGH DURHAM**  
Basketball



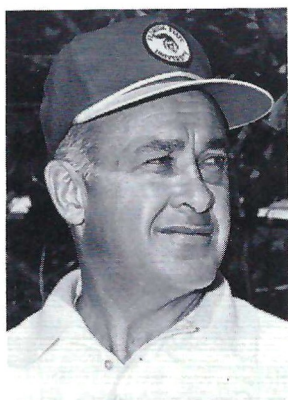
**RANDY JOBSON**  
Tennis



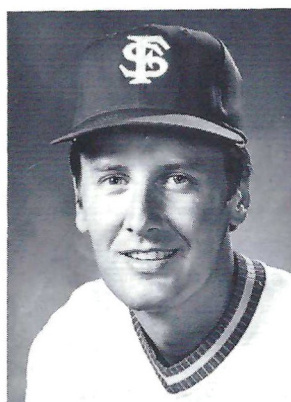
**MIKE LONG**  
Track



**DICK ROBERTS**  
Cross Country & Academic Advisor



**DON VELLER**  
Golf



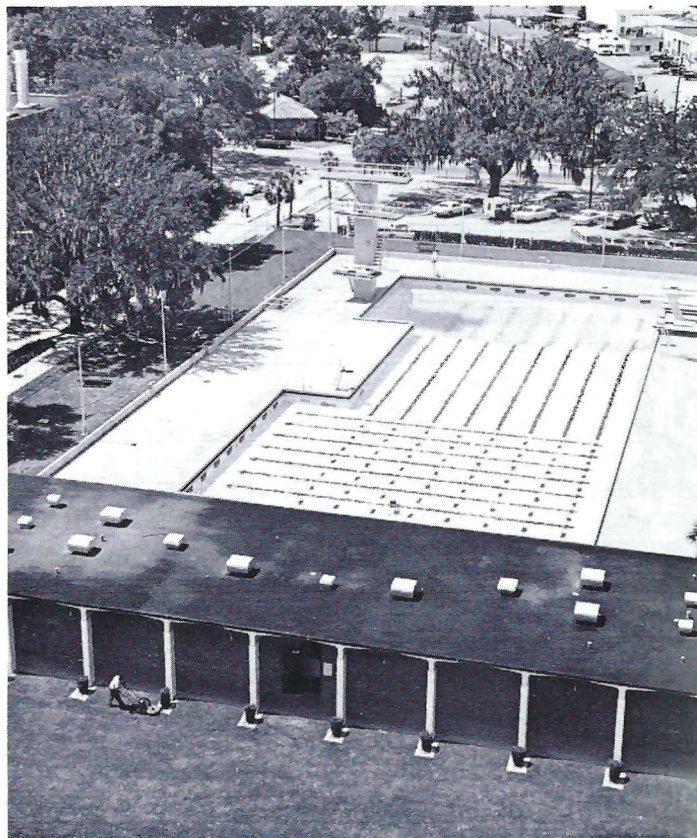
**WOODY WOODWARD**  
Baseball



# Spotlight On . . .

## Swimming

Each week this space will feature one of Florida State's eight intercollegiate sports. This week the spotlight falls on Coach Terry Carlisle's swimming team.



Swimming is a traditional winner in Florida State's intercollegiate history. Twenty-six years of competition has produced a 189-53-2 record. In other words, 77% of the time Florida State took to the water they won.

Bim Stults built the bulk of that record in twenty-five years as head coach. Only twice in his career did the Seminoles finish with a losing season. And, only six times did they even lose as many as three meets.

During that quarter century of victory, the Seminoles produced nearly two dozen All-Americans. Included are a pair of National Championship awards, one earned by Curt Genders in one meter diving (1969) and the other by Phil Boggs in three meter competition (1971).

The winning tradition is just one part of Florida State's success story. Many former Seminoles have gone on to become outstanding coaches in both high school and college. It's believed that more FSU graduates are now coaching, than from any other school in the country.

Coach Stults retired at the end of the 1973 season and FSU hired Terry Carlisle, assistant swimming coach at the University of Tennessee. Coach Carlisle came with every intention of continuing the winning tradition. He set two major goals for the future: bringing Florida State to National Championship status was one and breaking all standing records was the other.

The 1973 Seminole swimmers hit the water with records in mind and came out with nine new ones. The only swimming records left untouched were the 50 and 100 yard freestyle events both held by All-American Dean Jerger. Three members of the '74 All-American 800-yd Free Relay team return this year and should be the nucleus of an even more balanced squad.

Success for the future looms bright as displayed by the Seminoles at the end of last year's rebuilding effort. Coach Carlisle's swimmers came on strong to push Miami for the National Independent Championship title.

This season challenges Carlisle's second team with the toughest schedule in F.S.U.'s swimming history. Thirteen returning lettermen will be called on to providing the leadership needed to face teams the caliber of Tennessee, Florida, Miami, Alabama and North Carolina.

The Seminoles will be taking to the water at home for their first three meets opening the season Dec. 14 at the Union Aquatic Center against South Florida. After a break for the Holidays, they get back into action Jan. 4 against North Carolina, then comes a Jan. 11 date against state rival Florida.

The heart of the schedule falls in a 14-day period from Jan. 25 to Feb. 8 with four extremely tough meets. A triangular meet with Alabama and Miami (Jan. 25) in Tallahassee followed by a big dual meet (Jan. 31) against Tennessee kick off the two week period.

Then comes a Feb. 1 meet against Auburn here before winding up with a return dual meet at Florida Feb. 8.

Two "top 10" teams and four in the "top 20" from last year's NCAA Championships are included in this year's schedule. The Seminoles believe that if they compete with the best from the beginning they will have a better chance of being among the best in the four big championships at the end of the season.

Those championships include the National Independent's (Mar. 6-8) Region 4 AAU's (Mar. 15-16), NCAA Championships (Mar. 27-29) and National AAU's (Apr. 10-13).

1974-75Swimming		Schedule	
Date	Opponent	Site	Time
Nov. 22	Garnet and Gold	Tallahassee	2:00 PM
Dec. 14	South Florida	Tallahassee	1:00 PM
Jan. 4	North Carolina	Tallahassee	1:00 PM
Jan. 11	Florida	Tallahassee	1:00 :M
Jan. 17	Tulane	New Orleans	2:00 PM
Jan. 18	L.S.U.	Baton Rouge	2:00 PM
Jan. 25	Miami, Alabama Triangular	Tallahassee	1:00 PM
Jan. 31	Tennessee	Tallahassee	1:00 PM
Feb. 1	Auburn	Tallahassee	1:00 PM
Feb. 8	Florida	Gainesville	1:00 PM
Feb. 15	Florida Tech	Tallahassee	1:00 PM
Feb. 21	Georgia	Athens	4:00 PM
Feb. 22	South Carolina	Columbia	4:00 PM
Mar. 6-8	National Independent Championships	New Orleans	All Day
Mar. 15-16	Region 4 AAU Championships For Non-NCAA	Tampa	All Day
Mar. 27-29	NCAA Championships	Cleveland	All Day
Apr. 10-13	National AAU Championships	Cincinnati	All Day

# Marching Chiefs

## Reflections on the Past Season

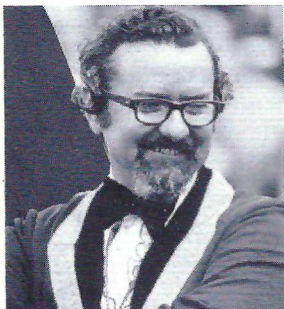
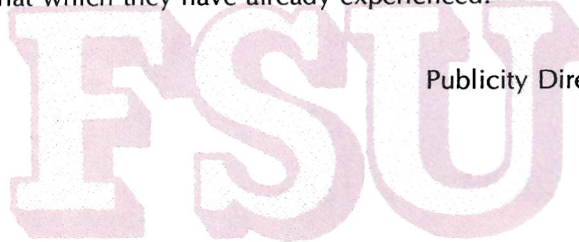
This evening, I depart from the traditional format of this page of the football program. Instead of presenting an outline of the pre game and half time performances as has been the case in the past, I would like to take this opportunity to reflect upon the past season of the Marching Chiefs.

It seems as if September 9th was only yesterday, when in actuality it was over two months ago. The veteran members of the Marching Chiefs returned for pre season practice, rich in the memories of a trip that saw them performing at the International Trade Exposition, in Damascus, Syria, and before King Hussien and other dignitaries in Amman, Jordan. These 150 old members were met upon their arrival for practice by the faces of the future, a talented group of over 140 musicians who hoped to earn their place in the ranks of the Marching Chiefs. And so, for a period of one week, old and new members competed, hoping to become one of the 234 marching members of Chiefs.

With the nucleus of the band selected, the staff and members turned their attention to the urgent task of preparing both pre game and half time shows for the season just ahead. To practice, practice, and practice, striving all the while for perfection, which down through the years has been a hallmark of the Chiefs performances. Under the watchful eye of Mr. Richard D. Mayo, a fair performance becomes an excellent one and finally, superior. With musical arrangements provided by one of the nation's best arrangers, Mr. Charles Carter, you some how felt that you had an advantage over any college band in the nation everytime you stepped on to the field.

All too suddenly the season seems to have vanished. The memories of each weeks performance seem to fade, but always there are the memories that can never be forgotten. The six home games and the two performances in Auburn and Miami, bring back pleasant thoughts of one type or another to everyone. For some members of the Chiefs the memories of this year and the past will have to span a life time, for this is their final year as a Chief. For others, there still is the future in which to build upon that which they have already experienced.

James T. Barefield  
Publicity Director, Marching Chiefs



MAYO

### Coordinator of Bands

Richard D. Mayo, Assistant Professor of Music is beginning his fourth year as Coordinator of University Bands and director of the Marching Chiefs. Mr. Mayo received his B.M.E.

from Florida State in 1955 and his M.A. Degree from Columbia University. For 14 years he was band director in high schools in Florida and New York. Most recently he was District Coordinator of Bands at Plainedge Schools on Long Island. Besides his interest in the Marching and Symphonic Bands, Mr. Mayo has been highly active in the jazz field, coordinating and directing the Jazz Lab Bands. The growth of jazz has been accentuated by performances with Count Basie, Buddy Rich, Stan Kenton, and Don Ellis.

### Assistant Director and Arranger

Charles Carter received his Bachelor of Music from Ohio State University in 1950, majoring in theory and composition. The Oklahoma native furthered his education at Eastman School

CARTER



of Music where in 1951 he received his Master of Music, followed by Doctoral work here at Florida State University from 1953 until 1956.

Before becoming staff arranger at Florida State University in 1953, Mr. Carter arranged for the Ohio State University Band and also taught lower brass. Presently here at Florida State, Mr. Carter teaches theory, composition, and arranging, plus his arranging for the University Bands. Mr. Carter now has over twenty original compositions on the market in all fields of music.

# FSU FOOTBALL FLASHBACK

A Look at Florida State Games, 5, 10, and 25 Years Ago This Week

## 1969

**Florida State 33  
N. C. State 22**

TALLAHASSEE (Nov. 22, 1969)—ABC called this one their “wild card game” and it was a wild, wild one. The first three series resulted in scores and TV fans really got their monies’ worth.

A four-yard Bill Cappleman to Jim Tyson pass kicked off the scoring. The Wolfpack came back with a field goal only to have the Seminoles retaliate with another touchdown, this one by James Jarrett.

N C State cut the lead to three when Gary Yount scampered 24 yards with a Cappleman interception but the Tribe added ten points before the end of the half.

Big defensive tackle Frank Vohun made the play every tackle dreams about when he intercepted a pass and lumbered 22 yards into the end zone. He refused to give up the ball after the score, forcing Guthrie to kick a 35-yard extra point. At the close of the half, Guthrie booted a mere 31-yard field goal to give the Seminoles a 23-10 advantage.

In the third period Phil Abriara took a Yount punt on his eight and streaked 92 yards down the sideline for a touchdown. It was the longest in Florida State history.

The Wolfpack scored once in the third quarter and again in the fourth period while the Seminoles wound up their scoring on a 25-yard field goal by Guthrie.

Despite the score, it was not a big offensive show. The Seminoles had 243 total yards to 244 for the Wolfpack. Cappleman passed for 149 yards on 13 completions. Bailey was the leading rusher with 44 yards and again Tyson was the leading receiver with six receptions.

## 1964

**Florida State 16  
Florida 7**

TALLAHASSEE (Nov. 21, 1964)—The largest crowd ever to see a football game here watched Florida State’s Seminoles win their first game over cross-state rival Florida.

It was a red-letter day for Seminoles as the team dominated every phase of play and unanimously accepted a Gator Bowl invitation following the victory.

Steve Tensi riddled Florida’s pass defense—first in the nation at the time—for 190 yards on 11 completions in 22 attempts.

Don Floyd was his favorite receiver with seven receptions for 85 yards. Fred Biletnikoff caught two for 78 yards, one a back-breaking 55-yard touchdown pass in the second quarter.

Heroes were numerous, not the least of which was Les Murdock who kicked field goals of 24, 36 and 40 yards to ice the game for the Seminoles.

Wayne Giardino and Phil Spooner gained 72 and 71 yards respectively. Each totaled more than the entire Gator effort on the ground.

Jack Shinholser’s play in the middle of the line was so outstanding he was named “Lineman of the Week” by the Associated Press.

Dick Hermann played the greatest game of his career, making 13 tackles and assisting of six others.

The Seminoles made 15 first downs to eight for Florida and outgained the Gators 332 to 244.

Florida’s touchdown came in the fourth quarter on a six-yard run by Jack Harper and made the score 13-7.

The Gators’ inside kick was recovered by guard Larry Williamson at the Florida 49. A Tensi pass to Floyd good for 27 yards set up Murdock’s final field goal—a 40-yard kick into the wind with 6:42 remaining.

## 1949

**Florida State 34  
Tampa 7**

(From Tallahassee Democrat Reports)

PHILLIPS FIELD, TAMPA (Nov. 19, 1949)—Florida State climaxed a meteoric three-year ascension through the ranks of the state college football teams Friday night, by downing the University of Tampa, 34-7, then accepting a bid to play in the Fourth Annual Cigar Bowl here, Jan. 2.

In just their third season of modern-day intercollegiate football, the Seminoles are sitting in the middle of a post season classic. The official invitation was extended by Rex Fariior, chairman of the Shrine’s selection committee and well known state’s attorney.

Head Coach Don Veller accepted the bid. It had been cleared by the school’s athletic committee and accepted by a unanimous vote of the players earlier in the week after the Tampa authorities sent an “inquiry” of availability.

The win over Tampa raised the Seminoles record to 7-1 for the season and clinched their second straight Dixie Conference crown.

The Seminoles broke the game open with three second period touchdowns, then salted the big victory away with two more scores in the fourth stanza. The running of fleet footed Red Parrish and the passing of Buddy Strauss and Dick Peterson set up or scored four of the five Seminole touchdowns.

Parrish picked up 101 yards on 13 carries, scoring one TD on a 20 yard run and setting up a second on a 23-yard scamper to the two yard line.

Strauss completed four passes for 131 yards, one of them a 69-yard scoring strike to Norman Eubanks and another for 28 yards to set up a second score.

Bill Dawkins and Dub Kendrick paced the Seminoles’ forward wall. Ted Hewitt and Ralph Chaudron sparked the secondary. Chaudron alone stole three Tampa passes.

*Miller*

**CHEVROLET**

**COMPANY**

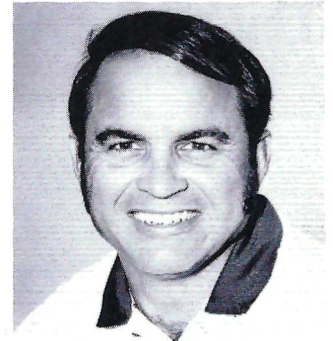
**Havana, Florida**

**539-6376**

**15 Miles North  
of Tallahassee  
on U.S. 27**

**Phone Toll Free  
224-1317**

**EDDIE FEELY**  
**Varsity Offensive Assistant**



**Eddie Feely**

Eddie is one of three assistants retained by Coach Darrell Mudra. The former Seminole quarterback joined the previous staff last spring after leading his Merritt Island High School team to the State 4A championship.

Feely's jayvee team scored a 27-7 victory over Florida in 1973.

Eddie played his final season for the Seminoles in 1962 and began his prep coaching career following graduation in 1963. After one year as an assistant at Samford University, he took over the head coaching spot at Cocoa Beach High School in 1964 and in 1966 moved to Merritt Island.

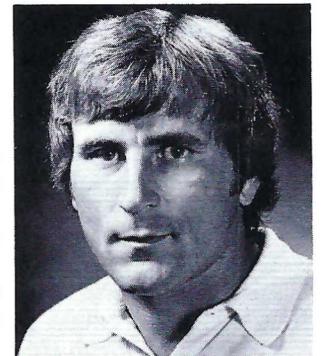
He led his Merritt Island teams to the State playoffs in 1970, '71 and '72, winning the title with a 13-0 record on his final try. In 1971 his club had an 11-0 record before losing to eventual champion Fort Pierce Central and in 1970 he was eliminated by state champ Tallahassee Leon.

At Florida State, Feely was the last scrambler style quarterback to direct the Seminoles before Steve Tensi ushered in the pro-style, dropback quarterback, the trademark of Florida State's defense.

Eddie and his wife Myra Lou, a former Florida State cheerleader, have four children.

# COACHES'

**SAM ELLIOTT**  
**Offensive Backs**



**Sam Elliott**

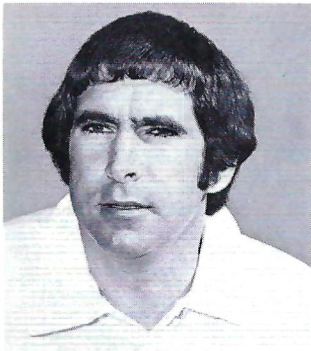
Sam comes to the Seminoles from Kent State where he coached under Don James, a former Florida State assistant.

The California native was at Kent State three seasons during which the football program became a winner. In 1972, Kent won the Mid-American Conference title and gained a berth in the Tangerine Bowl. In 1973, the Golden Flashes were again in contention for the title.

Elliott served as a graduate assistant at Florida State in 1969 after performing in the same capacity at his alma mater, Ohio State, for one year. During his coaching stint with the Buckeyes, Ohio State played in the Rose Bowl.

During his playing days, he lettered three seasons as a defensive back, being selected the Buckeyes' captain in his senior year.

Sam, 27, is married to the former Judy Wuille of Columbus, Ohio.



### Assistant Coach In Charge of Recruiting

For the last three seasons Mike has been in charge of Seminole recruiting. He will continue in this key role but at the same time will become more involved with on the field coaching.

Mike moved to the permanent staff in 1971 after spending the previous season working as a graduate assistant helping with the freshman squad.

The North Carolina native was born in Monroe and played his college ball at Lenoir Rhyne where he

performed at both quarterback and fullback in the Bears' single wing attack.

After three years as head coach in North Carolina high schools, he went to Jacksonville where he was offensive coordinator at Wolfson High. He became head coach and athletic director at Lake Wales High School in 1968 before coming to Florida State.

In college, Mike was the Lenoir Rhyne captain in 1963 and voted the team's most valuable player.

He is married to the former Lee Lambie of Arlington, Va.

**Mike Pope**

# CLOSE-UPS



### BILL BAGGETT Head Trainer

Bill comes back to Florida State as head trainer following a one-year stint as assistant at Northern Arizona.

Before going to Arizona, the 24-year-old native of Panama City put in one year as a graduate assistant trainer at Florida State.

Bill spent most of his young life in Ozark, Ala., although he graduated from Miami Palmetto High School. He then attended Indiana State University, gaining his B.S. in 1972. He lettered as a baseball catcher while in college.

He is married to the former Marilyn Gann of Miami.

**Bill Baggett**

## The TRAWLER'S Seafood Restaurant ★



and  
*Lounge*

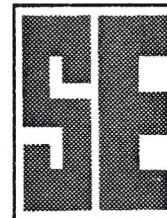
- Delicious SEAFOODS
- Luscious STEAKS
- Seven DINING ROOMS
- Large BANQUET ROOM
- OYSTER & SALAD BARS

Entertainment  
*Elegant Gourmet Dining*

*...at One of North Florida's Finest Restaurants*

★ For Reservations Call 385-2127

★ 2696 N. Monroe TALLAHASSEE, FLA.



**SOUTHERN  
ELECTRIC**



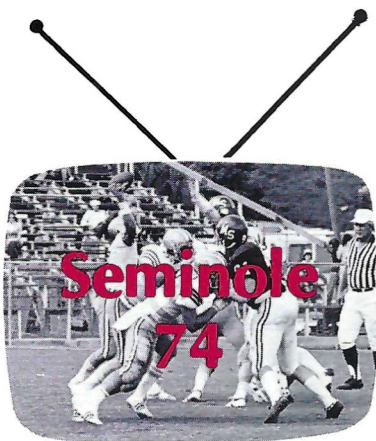
APPLIANCES  
STEREO  
TELEVISION

**FURNITURE**

**Compliments  
of  
Spurgeon  
Camp**

**Go  
Seminoles**

The **BIG** Plays  
are played again  
on



Highlights  
and  
Insights  
of

**Florida State  
Football**  
with  
**Head Coach  
Darrell Mudra**  
and host  
**Bob Shackleton**  
at  
**10:30 p.m. Sunday**  
on  
**WCTV**

Ch. 6 in Tallahassee  
Check local listings for time  
and station in other areas.

# SUMMER FOOTBALL PLANNED

Head Football Coach Darrell Mudra has announced that plans are underway to set up a Florida State Summer Football Camp for high school and junior high aged youngsters next summer. Two two-week camps are tentatively planned at this point, although the dates are not yet firm.

Florida State assistant Coach Cal Jones will be in charge of the camps and all the Seminole coaches will take part. Also taking part in the camp will be several professional players who played their college ball at Florida State.

The camps will be held on campus and those attending will be housed on campus.

Keep a look out for the dates which will be announced later.

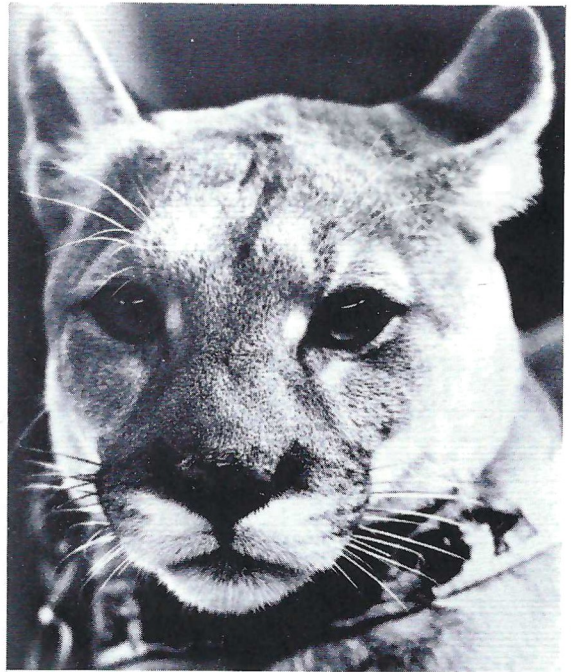
## Seminole Booster Highlights



Members of the Seminole Boosters Board of Directors at a recent meeting are: (left to right): Jimmy Carter, Panama City; Don Grant, Perry; Doyle Pope, Quincy; John Harllee, Bradenton and Harry Massey, West Palm Beach. In the foreground is Jim Williams of St. Petersburg.



# HOUSTON



**Shasta III**  
Mascot



**Dr. Hoffman**



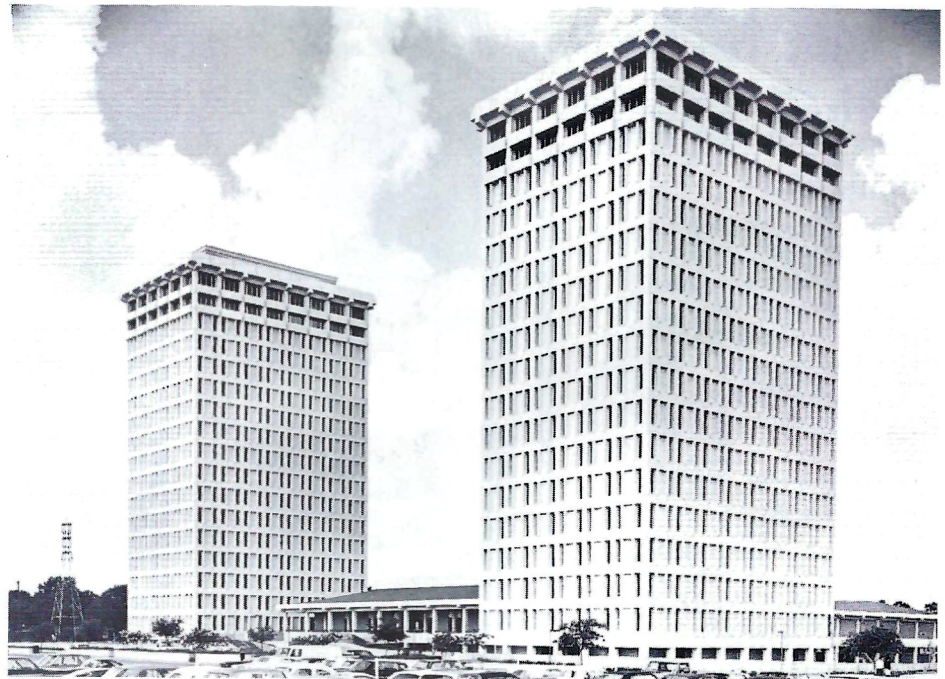
**Bill Yeoman**  
Head Football Coach



**Harry Fouke**  
Athletic Director

Established in 1927 as a junior college, the University of Houston became a four-year institution in 1934. In September 1963 it became the 20th member of the Texas State system of higher education. The University's 383-acre campus, occupied in 1939, is three miles southeast of Houston's central business district.

With a total enrollment of 27,550, the University offers 17 undergraduate degrees in 78 fields of study, operating out of 13 colleges and schools. The graduate enrollment of 3,696 can choose from programs leading to 21 master's degrees in 46 fields and four doctorates in 24 fields. In addition to its main campus, the University operates at four branches.

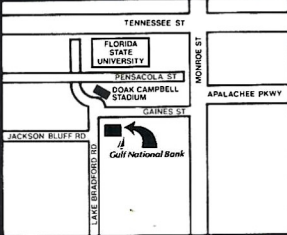


**Moody Towers — Residential Center — University of Houston**

# THE COUGARS

**TIME IS MONEY.**

**Gulf National Bank**



**SAVE BOTH.**



Member F. D. I. C.

P. O. Box 5767 / Tallahassee, Florida 32301

## Enjoy football more with the Official NCAA Football Guide

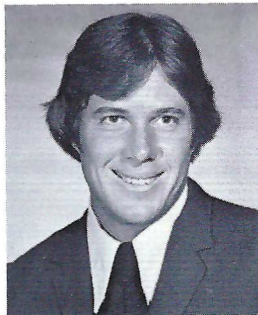
Containing . . .

- Schedules of more than 400 teams
- Sectional previews by prominent writers
- 1973 statistics and scores
- Read-easy rules
- Review of bowl games

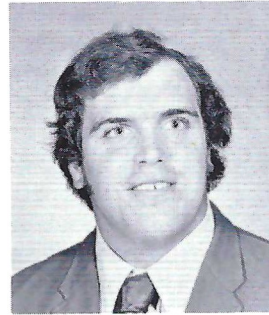
**\$2.00**

Send check or money order to:  
 NCAA Publishing Service  
 P.O. Box 1906  
 Shawnee Mission, Kansas 66222

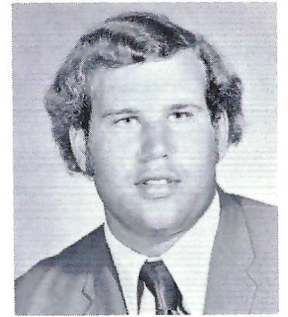
For a listing of all NCAA publications, write to the address above.



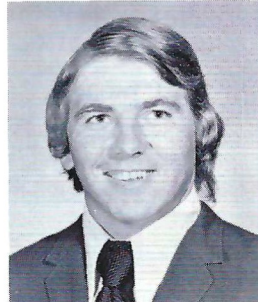
Miller Bassler



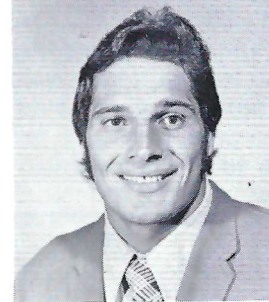
Val Belcher



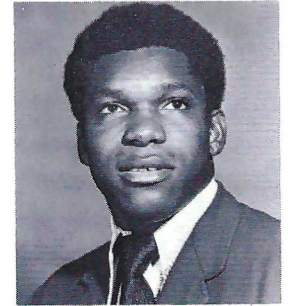
David Brooks



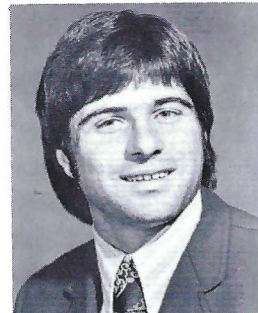
Bubba Broussard



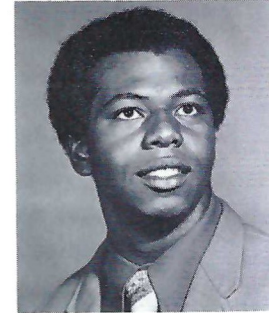
Lee Canalito



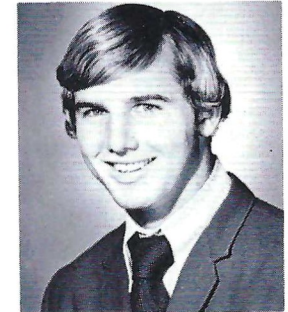
Reggie Cherry



Lennard Coplin



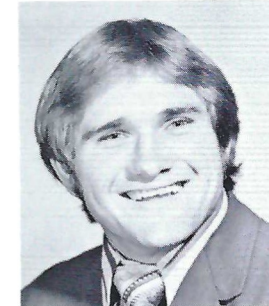
Harold Evans



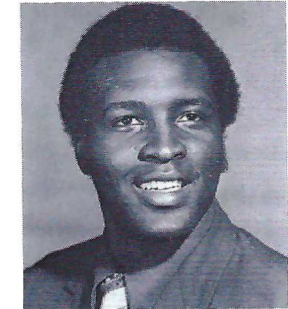
Chuck Fairbanks



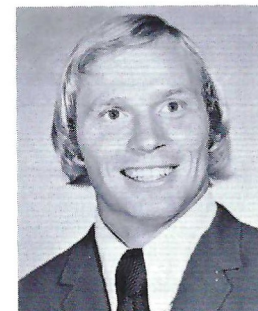
Eddie Foster



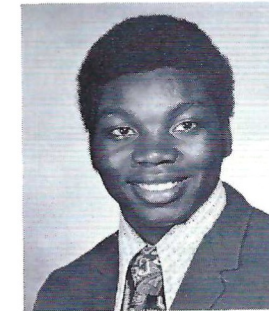
Robert Giblin



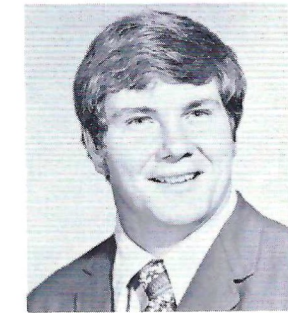
Gerald Hill



David Husmann



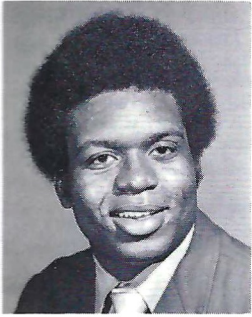
Marshall Johnson



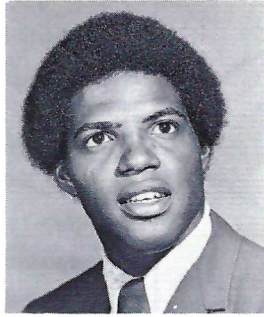
Larry Keller



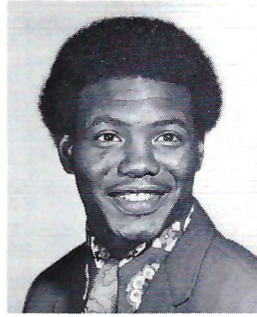
# THE COUGARS



Everett Little



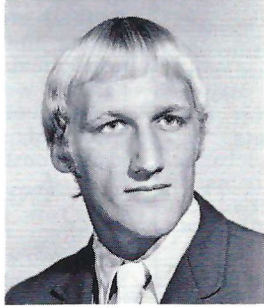
Roger Mayes



Donnie McGraw



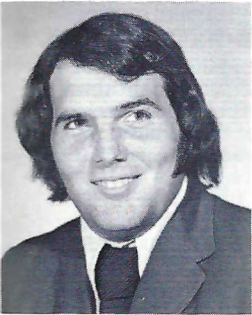
Mack Mitchell



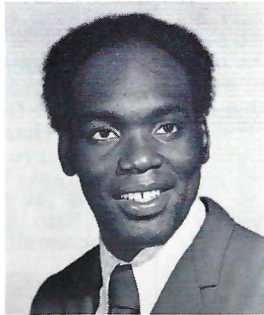
Joe Rust



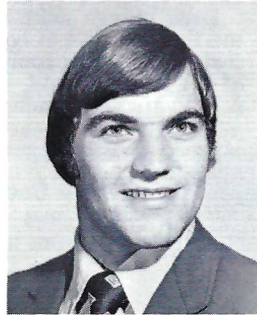
Frank Scalise



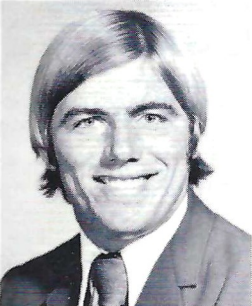
Bert Schupp



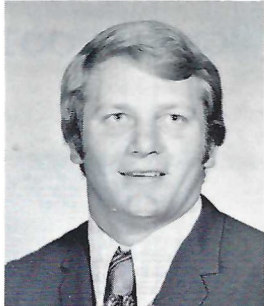
Clarence Shelmon



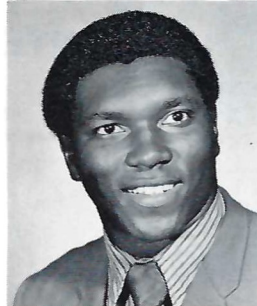
Max Vater



Mike Welch



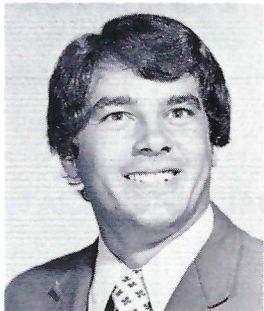
Marty Watts



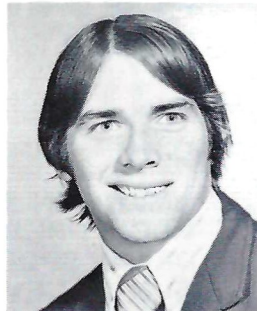
Wilson Whitley



Barney Williams



Todd Williamson



Bryan Willingham



Two Locations in  
Tallahassee  
U.S. 27 North at I-10  
U.S. 27 South at Capital Circle

Toll Free Reservations  
800-241-7111

"TALLAHASSEE'S OLDEST FLORIST"  
SINCE 1930

**FLOWERS**  
by  
*Elinor Doyle*



**COMPLETE FLORAL SERVICE**

SERVING SATISFIED CUSTOMERS  
SINCE 1930

• CORSAGES • BOUQUETS • WEDDINGS  
• CUT FLOWERS • FUNERAL DESIGNS

Master Charge • BankAmericard  
American Express • Carte Blanche • Diner's Club

**DELIVERY SERVICE**

222-1298  
222-1297

202 S. Adams St.

# Wake Forest Finds Japanese Friends

by MEL DERRICK

As the Wake Forest football team filed through Immigration into the sealed-off area at Tokyo International Airport, one of the Deacons turned and waved to the Japanese players who had come to see them off.

"Sayonara," he said. "Domo arigato gozaimasu. Subarashi."

Back came the reply from a Japanese. Same words. Different language. "Goodbye. Thank you very much. It was wonderful."

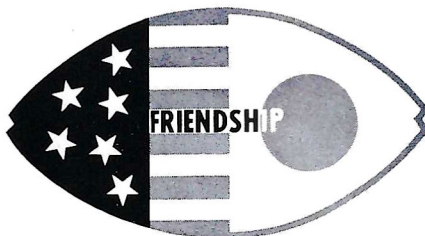
It was the final link in the bonds of friendship which were forged on Wake Forest's 13-day goodwill tour of Japan last January—an American saying farewell in Japanese; a Japanese repeating the words in English.

## Football Friendship

And, somehow, it was typical of the entire trip—young college players, bridging 8,000 miles and centuries of culture, becoming friends through football.

**The Deacons played two games in Japan, beating the Osaka All-Stars 28-3 and the Tokyo All-Stars 35-0. The victories were expected . . . and unimportant.**

Expected because Japanese football is approximately on the same level as high school football in the U.S. Unimportant because the games were just a few hours of competition in almost two weeks of beautiful memories . . .



**This symbol was the result of a joint effort by Wake Forest and the Japanese teams it played on the trip to the Far East.**

Wake Forest and Japanese players standing at attention as the national anthem of each country was played . . . hugging each other after the games . . . exchanging presents . . . swapping jerseys . . . taking pictures of each other . . . cheering each other . . . trying out each other's language . . . speaking in broken phrases but getting the message across.

"It was," says Frank Mariana, a middle guard, summing it up for the rest of the Deacons, "the greatest experience in my life."

Each player paid his own way on the tour. He had to come up with \$400 cash, then find a sponsor to take care of the rest. All told, there were some 50 players and coaches, and some 100 members of the Deacon Club, Wake's athletic booster organization.

## Hop Scotch

The tour included stops in Anchorage, Alaska, Osaka and Tokyo, with

side visits to Kyoto, Takarazuka, Kamakura and Enoshima. In Osaka, the players spent three nights in the homes of Japanese players, living native style, eating native food, visiting areas of the city few foreigners see.

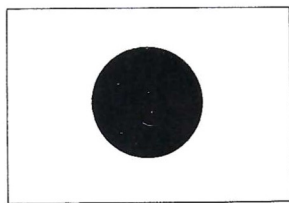
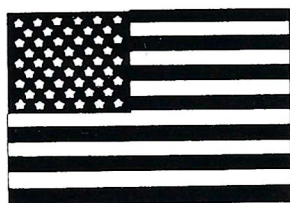
Certain moments stand out . . .

. . . Doc Martin, the Wake Forest trainer, taping ankles in his hotel room while a Kabuki drama played on the television set.

. . . National Stadium in Tokyo, where the track and field events of the 1964 Olympics were held, the football crowd of 25,000 almost lost among the 80,000 seats but a Japanese official gazing up and saying, "This is wonderful; this is the largest crowd ever to see a football game in Japan, bigger than even our national championship game."

. . . The boiling hot Japanese baths . . . raw fish and dried squid . . . pachinko (pinball machine) parlors . . . Kyoto and its temples and shrines . . . the unbelievably packed subway trains in Tokyo . . . Kamikaze taxi drivers . . . the giant Buddha at Kamakura . . . the Lone Ranger on TV speaking Japanese. "Hayaku, Silver-san!" Heigh-yo, Silver!

The bonds of friendship will continue. Tom Ikaku, who captained Kwansei Gakuin to the Japanese national championship two years ago, will serve as a graduate assistant coach at Wake Forest this fall. "I hope," he said that final day in Tokyo, "to make as many friends in your country as you made in mine."



**INTERNATIONAL FOOTBALL GAME**

**招待券**

**'DEMON DEACONS'**

**WAKE FOREST UNIVERSITY vs ALL KANSAI**

**2: 00PM JANUARY 5, 1974**

[Postpone to Jan. 6 if it rains]

**AT AMAGASAKI CITY STADIUM**

**AUSPIECES: AMERICAN FOOTBALL ASSOCIATION OF JAPAN  
KOBE PRESS  
DAILY SPORTS  
SUN TELEVISION**

# Tallahassee Motor Hotel

FOOD & LODGING

Master Hosts



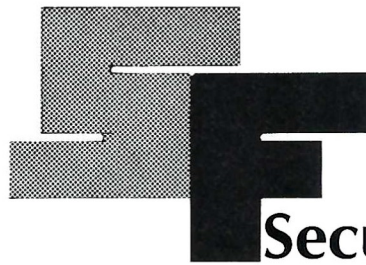
and

AAA Approved



224-6183

1630 North Monroe



## Security Federal

### Savings and Loan Association of Tallahassee

**"Go Seminoles in  
'74"**



# TACO BELL

1218 North Monroe

Sunday - Thursday

10:30 a.m. - 11:00 p.m.

Friday - Saturday

10:30 a.m. - 1:00 a.m.

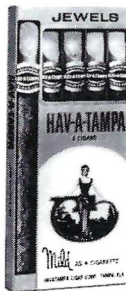
Tacos - Tostatos -

Burritos - Enchirito -

Frijoles - Pepsis

Root Beer - Orange

7-Up -



Distributed by  
Eli Witt Tobacco  
& Candy Company  
Tallahassee,  
Florida



# HAV-A-TAMPA

# JEWELS

*The Cigar for Men . . .  
that Ladies Love —*

**WELCOME ANYWHERE**

for their man-size flavor and gentle aroma

# 1974 Seminole Cheerleaders



Front: Virginia Chapman. Second Row (left to right): Lisa Tamargo, Davis Gains, Captain Larry Shoeman, and Liz Recher. Standing in the Third Row: Dell Dahl, Jim Williams, Ken Barela, and Jim Crooke. Up on their Shoulders: Barbara Robinson, Loretta Johnson, Melinda Maurer, and Elaine Evans.

# SEMINOLE RADIO NETWORK



Shackleton



Owens

Florida State's football games will be heard throughout most of the Southeast again this fall over the SEMINOLE RADIO NETWORK.

With WTNT in Tallahassee serving as the originating station, Florida State games are carried on network stations in Florida. In addition, many of the Seminole games are broadcasted regularly over the wide-ranging Pick-Of-Dixie network.

Bob Shackleton, Florida State's director of Alumni Affairs, is the new "Voice of the Seminoles." Before coming to Florida State, Shackleton served for 19 years as the play-by-play announcer for Michigan State football.

Returning to do the "color", is Bill Owens, a veteran of Florida State announcing which includes football, basketball and baseball.

Follow The Seminoles

ON WTNT 1270 ON YOUR DIAL

Brought to you by



AND YOUR  
NEIGHBORHOOD TEXACO DEALER

and by

THE BARNETT BANKS OF TALLAHASSEE



## Go Seminoles!

FANS, Record the Seminoles on Film . . .

For the Largest Selection of  
Photographic Equipment and Supplies  
In North Florida, see the  
Friendly Folks at

### Tallahassee Camera Center

117 North Monroe

Phone 222-8771

Downtown Tallahassee Across From the Florida Theater  
Cameras — Film — Darkroom Equipment & Supplies  
Binoculars — Recorders — Rentals

# Electrical Contractors

- INDUSTRIAL
- COMMERCIAL

Licensed & Bonded

222-5494

# CLARK

ELECTRIC CO.  
OF FLORIDA

702 West Madison Street  
TALLAHASSEE, FLORIDA



2121 West Tennessee Street  
Tallahassee, Florida 32304  
Phone 904/576-6121  
Gen. Mgr. Herb Chandler

Ramada Inn of Tallahassee is an ideal gathering place for meetings and banquets. The King's Banquet Room offers every convenience, and accommodates up to 128 persons for dining. Divisible meeting rooms are available for smaller groups. For leisure hours, there are golfing privileges at fine nearby courses. Just four hours drive brings you to the wondrous kingdom of Walt Disney World.

Innumerable famous Florida attractions are within driving distance. Come for business . . . stay an extra day for pleasure. You're welcome at Ramada Inn of Tallahassee.

## Advertisers Directory

Alumni Seminole Shopper	39
Army ROTC	16
Artistic Flowers	60
Barnett Bank	17
Bill's Bookstore	37
Capital City First Nat'l Bank	21
Central Telephone Co.	40
Chevrolet	29
Clark Electric	60
Coca-Cola	30
8 Days Inn	55
Elinor Doyle Florists	55
Eli Witt	57
Florida Beef Council	35
Florida Publishing Co.	20
Gulf National Bank	54
Holiday Inn	IFC
Industrial National Bank	40
Jacksonville City of	41
Miller Chevrolet	50
Mr. Steak	4
NCAA Football Guide	54
Orlando Sentinel	2
Peoples Bank	45
Pizza Hut	44
Quality Inn	17
Ragans & Roberts	36
Ramada Inn	60
St. Petersburg Times	13
Sears	12
Security Federal Savings	57
Seminole Basketball	IBC
Seminole Boosters, Inc.	26
Seminole Sportswear	18-19
Southernair-Skyline	60
Southern Airways	1
Southern Electric	51
Taco Bell	57
Tallahassee Camera Center	59
Tallahassee Democrat	33-34
Tallahassee Motor Hotel	57
Tallahassee Travel and Tours	14
Tampa Tribune	28
Trawlers Restaurant	51
U.S. Marine Corps	32
University Rexall	43
Winn-Dixie	27
WTNT Radio	59
Zenith	BC
Zodiac Watches	5

# Southernair MOTEL

Across from F.S.U.

Tallahassee, Florida 32304  
904/224-7116



and

# Skyline

## Motor Lodge

U. S. 90 West  
904/576-2157

Quality Inns

for Quality People

"When it's

# FLOWERS

Say it with Ours"



DELIVERY SERVICE

# Artistic Flowers

777 MICCOSUKEE RD.

224-0105

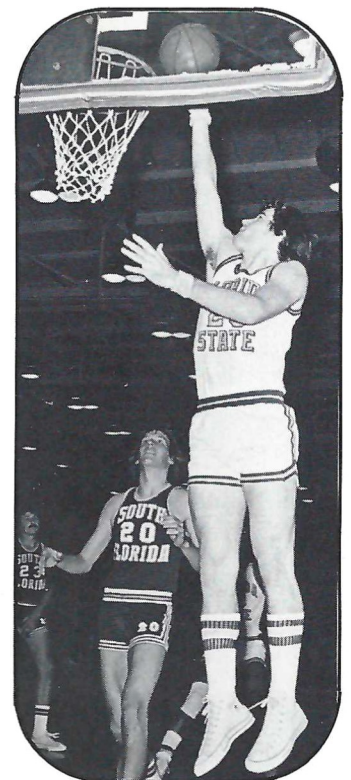
# FLORIDA STATE

## we've got the action

### BASKETBALL SCHEDULE 1974-75

DATE	OPPONENT
Nov. 30	VALDOSTA STATE
Dec. 3	ILLINOIS STATE
Dec. 7	MARSHALL
Dec. 9	Memphis State
Dec. 14	LOUISVILLE
Dec. 18	CALIFORNIA STATE
Dec. 21	OHIO UNIVERSITY
Dec. 26	Holiday Classic
27	(Louisville, Purdue, W. Ky.)
Jan. 4	EASTERN KENTUCKY
Jan. 7	WISCONSIN (Milwaukee)
Jan. 11	BISCAYNE COLLEGE
Jan. 15	South Florida
Jan. 18	HOFSTRA
Jan. 20	Biscayne College
Jan. 25	Canisius
Jan. 27	New Mexico
Feb. 1	TENNESSEE (Chattanooga)
Feb. 6	JACKSONVILLE UNIVERSITY
Feb. 9	Georgia Southern
Feb. 13	GEORGIA STATE
Feb. 19	Jacksonville University
Feb. 22	GEORGIA SOUTHERN
Feb. 24	MERCER
Feb. 28	SOUTH FLORIDA
Mar. 5	Stetson

Home games listed in boldface type.



# Seminole Basketball

With seven of 11 lettermen returning from last year's 18-8 squad, plus 16 big home games lined up for the season, Coach Hugh Durham views the 1974-75 campaign with "guarded optimism." At the very least it should be one of the biggest and most exciting for Seminole fans in recent seasons. With the 16 home games, the Seminoles will be playing before the home folks more than ever before and the schedule includes a solid lineup of top teams, including Marshall, Louisville, Jacksonville and Eastern Kentucky. Among the returning veterans are postmen Greg Grady and Zach Perkins, wingmen Larry Warren and Wayne Smalls and pointmen Eugene Harris and Carlton Byrd, all of whom thrilled Seminole fans last season. The only sure way to see all the Action this year is to buy season tickets. They are on sale now at the Athletic Ticket Office in Tully Gym. Season Tickets are \$42 each, plus 50 cents per order for handling. Order your Basketball Season Tickets now by sending a check payable to Florida State University: Athletic Ticket Office, 100 Tully Gym, Florida State University, Tallahassee, FL 32306. Or phone 904/644-1830 for more information.

# The All-American Receiver.

Over the years, Zenith color TV has earned a reputation for dependability and picture excellence no other color TV can match.\*

And today's Zenith solid-state Chromacolor II backs up that reputation with a combination of features no other color TV can offer.

The famous Chromacolor picture tube

that set a new standard of excellence in color TV. A patented Power Sentry voltage regulator that protects components. And a rugged, 100% solid-state modular chassis for long-life dependability.

It's the best way we know to make sure, at Zenith, the quality goes in before the name goes on.®

Model shown: F4752P, the Reynolds. TV picture simulated.



**ZENITH**  
SOLID STATE  
**CHROMACOLOR® II**

\*For the third straight year, a nationwide survey of independent TV service technicians has named Zenith, by more than 2 to 1 over the next best brand, as the color TV needing fewest repairs. The same survey rated Zenith as the highest-quality color TV, as the one with the best picture, and as the one service technicians would buy for themselves today. Survey details on request.