

October 19, 1974

# FLORIDA STATE FLORIDA

\$1.00

the college  
**GAME**®



# Holiday Inn®



## Two Inns To Serve You In Tallahassee

316 West Tennessee Street  
222-8000

1302 Apalachee Parkway  
877-3141

Banquet Rooms, Meeting and Conference Rooms with Complete Facilities, Dining Rooms and Lounges.

# Nobody's second string on Southern.

Jet Southern and see that there's no "First Class," and no "Tourist Class." No stewardess will send you to the rear of the plane and then pull that curtain in your face so you can't see what's happening when the corks start popping at a party you weren't invited to. On Southern there's just one class of service. And that's high class.



**always**

**ST**

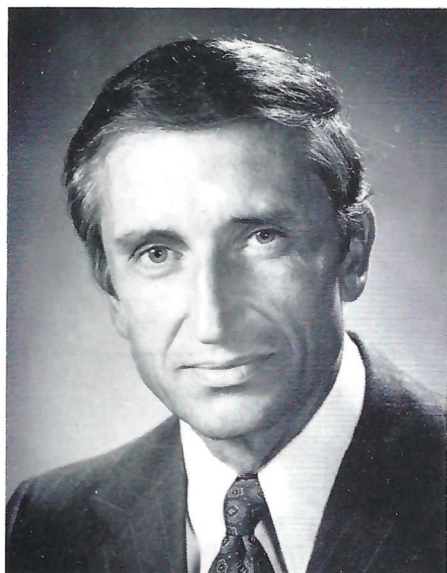


**in  
sports  
coverage**

*Florida's Most Interesting Newspaper*

**Sentinel Star**

Orlando, Florida



Dr. Marshall

If ever there is an element of the unknown in collegiate football, it is present when a new coach sends a young team on to the field. When Darrell Mudra came to Florida State as Head Coach last winter, it was not to inherit a veteran team with a winning record. It was to restore and rebuild—to recover the winning tradition to which those of us at Florida State have become accustomed.

From all reports Coach Mudra is just what we needed, and from my personal observations of the man and his management of the team, I am convinced that the reports were well founded.

The 1974 Seminoles want to win. They have worked hard to master new strategies of play introduced by Coach Mudra and his able young coaching staff. Many of the players you will see in action this year are new—some are freshmen. They will be full of surprises. But the returning players will surprise you too. They have added the sharp edge of superior training and conditioning to their ability and previous experience.

The challenge of '74 is evident in the roster of teams the Seminoles will play this season. We welcome that challenge and look forward to renewing the fun and excitement of football in each new contest. Regardless of the final outcome of the games, I know that the Seminoles will give their best efforts, and with that commitment we are ready for 1974.

Those of us in the stands—alumni, students, faculty, staff, friends, and Seminole Boosters have an important role to play. The energy emanating from a full stadium of loyal, appreciative fans cannot be overestimated as a factor in the morale of a team and its willingness to push for the extra yard, the all-but-impossible play, and the winning margin. In short, the fans have a share in the success of every team. We look forward to making that difference at every home contest.

Let's show our young Seminoles and their coaches that they have our full confidence and our full support.

Sincerely,  
Stanley Marshall  
President

## From One Seminole Fan To Another . . .

# . . . Welcome To The South's Friendliest Campus

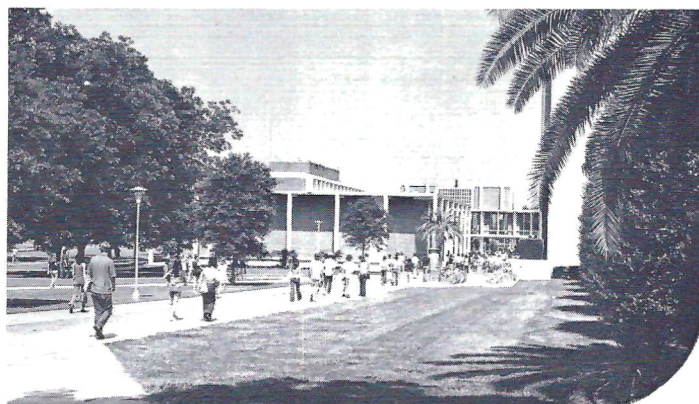
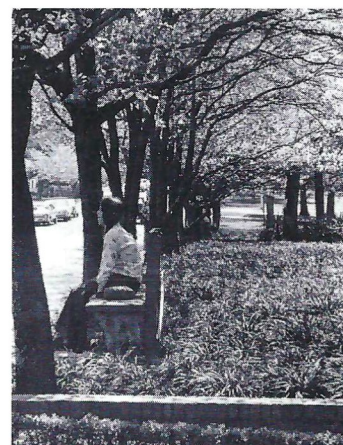
When the Seminary West of the Suwannee was founded in 1857, no one guessed that it would eventually become a large state university with a student enrollment of over 20,000.

But from that small school for men, Florida State University evolved as one of the largest state institutions of higher learning in Florida and from its Gothic entranceway, has grown westward, sprinkling its skyline with modern, highrise architecture.

The University's 14 schools and colleges include Arts and Sciences, Business, Social Sciences, Criminology, Communication, Nursing, Social Work, Library Science, Home Economics, Education, Theatre, Law, Music and Visual Arts. Within these fields there are 52 doctoral programs and more than 80 bachelor's and master's degree programs. Funds for University research totaled some \$13 million in 1973-74, resulting in many projects having practical applications for Florida's industries, environment and social welfare.

With a staff of over 7,000 employees, including more than 1,300 faculty members, the University has an operating budget of \$77 million, which includes funds from state, federal and private sources.

Florida State was one of the first universities in the nation to have its affirmative action plan approved by the U. S. Department of Health, Education, and Welfare. The University actively strives to build a community in which opportunity is equalized and uses its facilities and human resources to develop the skills and opportunities of the members of all groups so they may play responsible and productive roles in society.

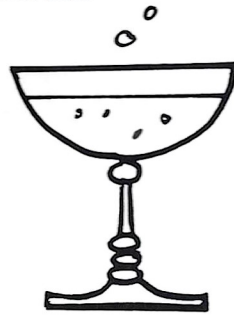


# Special FSU Hours

Open 'till 1:00 a.m.  
game nites



and



plus other fine foods and fresh seafood!  
FIVE MINUTES FROM THE STADIUM

1921 West  
Tennessee  
U.S. 90W  
Phone  
224-2415

**Mr.  
Steak**

AMERICA'S STEAK EXPERT

OPEN  
FOR LUNCH  
AND DINNER  
7 DAYS A WEEK



# FLORIDA STATE

# FLORIDA

## FOOTBALL MAGAZINE

VOL. XXVIII

October 19, 1974

No. 4

### IN THIS ISSUE . . .

#### MUSIC FIT FOR A KING . . . . .8-9

This summer Florida State's Marching Chiefs, Symphonic Band and Stage Band became International Ambassadors of goodwill in the Mideast.

#### SEMINOLE SCHOLAR ATHLETES . . . . .10-11

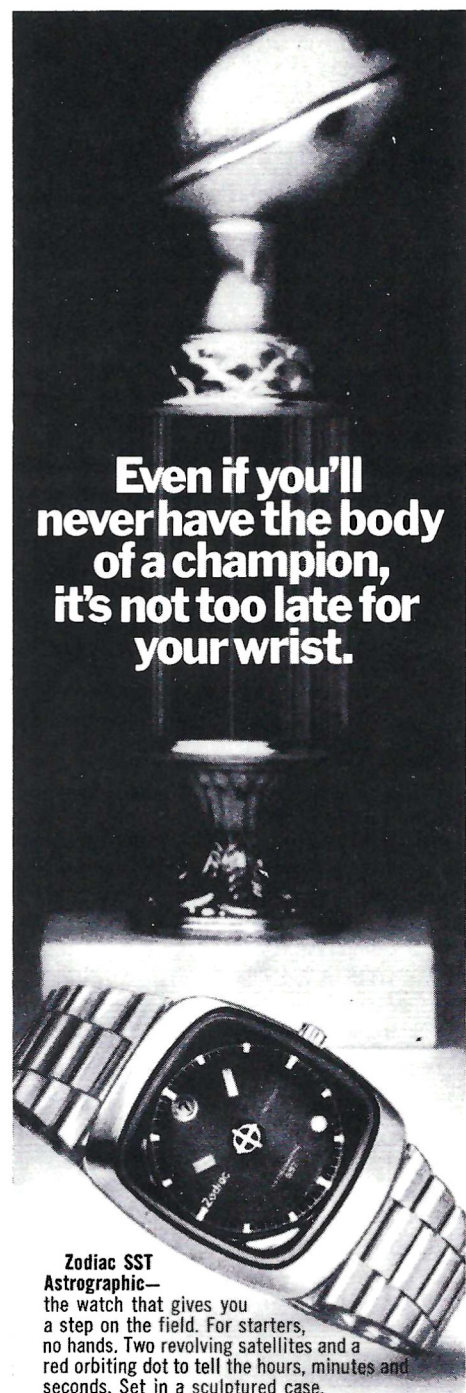
The Athletic Department salutes the Seminole Scholar Athletes.

#### SPORTS SPOTLIGHT: BASEBALL . . . . .47

A look at Florida State's Baseball program under new Head Coach Woody Woodward.

Photo Credits: Barry Mittan, and Irv "Doc" Kokol

Florida State University	3	1974 Seminole Squad	38
Seminole Boosters, Inc.		Stadium Information	40
Full Scholarship Donors	6-7	Seminole Auto Dealers	42
Music Fit For A King	8-9	Seminole Trainers	43
Scholar Athletes	10-11	Seminole Managers	44
1974 Seminoles	12-14	Board of Regents	45
Athletic Department Administration	15	Seminole Head Coaches	46
The Football Coaching Staff	16	Sports Spotlight: Baseball	47
Future Football Schedules	20	The Marching Chiefs	48
Graduate Assistant Coaches	21	FSU Football Flashback	49
Head Coach Darrell Mudra	22-23	Coaches' Close-up	50-51
Seminole Songs	24	Seminole Booster Highlights	52
Keep Your Own Statistics	27	University of Florida	53-55
Tonight's Teams	28	Wave At The Folks, Catch the Ball, Run	56
Starting Line-ups	31	Seminole Cheerleaders	58
Rosters	33-34	Seminole Radio Network	59
Officials Signals	36	Advertising Directory	60
Football Terms	37	Seminole Basketball	61



**Even if you'll never have the body of a champion, it's not too late for your wrist.**

**Zodiac SST Astrographic**—the watch that gives you a step on the field. For starters, no hands. Two revolving satellites and a red orbiting dot to tell the hours, minutes and seconds. Set in a sculptured case. Inside, a 17-jewel split-second-timing movement. Guaranteed\* to within a minute a month. Self-winding. Stainless steel or 18k gold electroplate case. Stainless steel back. Automatic calendar with push button date changer. Shock and water resistant. A touch of glory for your wrist. Priced from \$165.

**Zodiac**

\*Adjustments to this tolerance, if necessary, will be made at no cost for a period of one year.



The Florida State Football Magazine is published by the Florida State University Department of Intercollegiate Athletics. Editor—Hank Schomber. Program Manager Lonnie Burt. Business Manager—Claude Thigpen. Sales Coordinator—Jack Ibach. Local Advertising is contracted by the Florida State University Department of Intercollegiate Athletics. National Advertising Representative is Spencer Marketing Services, New York. The 1974 Florida State Football Magazine is printed by Grafcom, Inc., Tallahassee; Typography by Canon Graphics, Tallahassee.

Ask for ZODIAC where you buy fine watches.



Seminole Boosters, Inc., on behalf of the Florida State University, wishes to express its sincere gratitude to the following Full Scholarship donors, who have contributed at least \$1,000 each to the Booster Scholarship Fund.

**A. B. Dick Products Company**

Tallahassee

**Albritton-Williams, Inc.**

Tallahassee

**Charles H. Alford**

Tallahassee

**American Communications, Inc.**

Tallahassee

**Aragon Farms**

Bainbridge, Georgia

**Compliments of a Friend**

**Winfred L. Bailey**

Atlanta, Georgia

**Barnett Bank**

Tallahassee

**Barrett, Daffin & Figg**

Tallahassee

**Dr. John Bemby**

Tallahassee

**Brown Derby Restaurant**

Tallahassee

**Brown, Smith, Young & Pelham**

Tallahassee

**Philip A. Browning**

Atlanta, Georgia

**Karle Bucklew**

North Palm Beach

**Buddy's Sporting Goods**

Tallahassee

**Compliments of a Friend**

**Dr. Emory Cain**

Quincy

**Capital City First National Bank**

Tallahassee

**Capital City Sporting Goods**

Tallahassee

**Bill Cartee**

Tallahassee

**Chenoweth Distributing Company**

Tallahassee

**Charles S. Coble**

Tallahassee

**Dr. James K. Conn**

Tallahassee

**Courtesy Oldsmobile**

Tallahassee

**Crossland Realty, Inc.**

Tallahassee

**Tom Cundy**

Ft. Lauderdale

**Dr. Gene L. Davidson**

Tallahassee

**Frank Decker Construction Co.**

Lakeland

**Syde P. Deeb**

Tallahassee

**Drake Management, Inc.**

Tallahassee

**Dr. Evan E. Dussia**

Tallahassee

**Walter Eason Realty, Inc.**

Tallahassee

**Elberta Crate & Box Company**

Tallahassee

**Equity Resources, Inc.**

Tallahassee

**The Essex Corporation**

Tallahassee

**Crockett Farnell, Jr.**

Clearwater

**Florida Federal Savings & Loan Assn.**

Tallahassee

**First Federal Savings & Loan Assn.**

of Gadsden County Quincy

**Fryer-Thomas Co.**

Quincy

**B. Kenneth Gatlin**

Tallahassee

**Donald E. Grant**

Perry

**Douglas D. Hammons**

Tallahassee

**Arthur E. Hempel, Jr.**

St. Petersburg

**Hilton Hotel**

Tallahassee

**Holiday Inns of Tallahassee**

Tallahassee

**HSE & M**

Tallahassee

**George Hunt, Jr.**

Clearwater

**Industrial National Bank**

Tallahassee

**Nelson A. Italiano**

Tampa

**Compliments of a Friend**

**Wendell Jarrard**

DeLand

**Lakeland Auto Auction**

Lakeland

**Ed Kercher**

Bradenton

**Kinnebrew Motors, Inc.**

Tallahassee

**Jim Kirk**

Ocala

**Landrum Realty**

Tallahassee

**Ryals Lee Sales Co.**

Tallahassee

**W. S. Lee Company, Inc.**

Tallahassee

**Leon Federal Savings & Loan Assn.**

Tallahassee

**Leon Realty, Inc.**

Tallahassee

**Lewis State Bank**

Tallahassee

**Locklin Brothers**

Milton

**John E. Loughridge**

Perry

**Lyons Industrial Corporation**

Winter Haven

**J. Stanley Marshall**

Tallahassee

**Vernon L. McCord**

Tallahassee





**Bruce McIver, Realtor**  
Tallahassee

**McKemie Chevrolet**  
Tallahassee

**John W. Mettler**  
Tallahassee

**Midyette-Moor Insurance Agency, Inc.**  
Tallahassee

**Miller Chevrolet,**  
Havana

**Mobile Home Industries**  
Tallahassee

**W. L. Montague**  
Quincy

**Dr. Coyle E. Moore**  
Tallahassee

**Ralph Morang**  
Quincy

**Darrell Mudra**  
Tallahassee

**Municipal Code Corporation**  
Tallahassee

**Niagara Wires, Inc.**  
Quincy

**Keith Nichols Co.**  
Ft. Washington, Pa.

**Millard Noblin Realty, Inc.**  
Tallahassee

**Northwood Mall Merchants Assn., Inc.**  
Tallahassee

**Pal Equipment Co., Inc.**  
Jacksonville

**George E. Palmer**  
Tallahassee

**Jesse C. Palmer**  
Tallahassee

**Palmer-Harrell, Inc.**  
Tallahassee

**Julius F. Parker, Jr.**  
Tallahassee

**Peninsular Sign Company**  
St. Petersburg

**Peoples Bank of Tallahassee**  
Tallahassee

**Nat Polak Insurance Agency**  
Tallahassee

**Doyle Pope**  
Quincy

**Mel Pope**  
Tallahassee

**Michael E. Pou**  
Atlanta, Georgia

**E. T. Pridgeon, Jr.**  
Tallahassee

**Proctor's Pontiac-Cadillac**  
Tallahassee

**Publix Super Markets**  
Lakeland

**Ramada Inn**  
Tallahassee

**James J. Reeves & Berton L. Brown**  
Pensacola

**Walter L. Revell**  
Tallahassee

**Burt Reynolds**  
Los Angeles, California

**A. F. Rich**  
Tallahassee

**Royal Sandwich Co.**  
Tallahassee

**Seminole Distributors, Inc.**  
Tallahassee

**Bob Shackleton**  
Tallahassee

**Silver Slipper, North**  
Tallahassee

**Simon, Ryals & Day's Inns**  
Tallahassee

**Gary Smith Ford, Co.**  
Ft. Walton Beach

**James C. Smith**  
Tallahassee

**Southeastern Asphalt Company**  
Tallahassee

**Southern Electric**  
Tallahassee

**Ronald E. Swaine**  
Pensacola

**Compliments of a Friend**  
Jacksonville

**Tallahassee Builders Supply, Inc.**  
Tallahassee

**Tallahassee Democrat**  
Tallahassee

**Tallahassee Federal Savings & Loan Assn.**  
Tallahassee

**Tallahassee Motors**  
Tallahassee

**Tallahassee News Company, Inc.**  
Tallahassee

**Tallahassee Restaurant & Lodging Assn.**  
Tallahassee

**Talquin Electric Cooperative, Inc.**  
Quincy

**Terra-Rosa Hardware**  
Tallahassee

**Van Brunt & Yon, Inc.**  
Tallahassee

**WGLF Radio Station**  
Tallahassee

**Dr. Francis H. Watt (Hank)**  
Tallahassee

**George A. Weeks**  
Tallahassee

**West Coast Transport, Inc.**  
Tampa

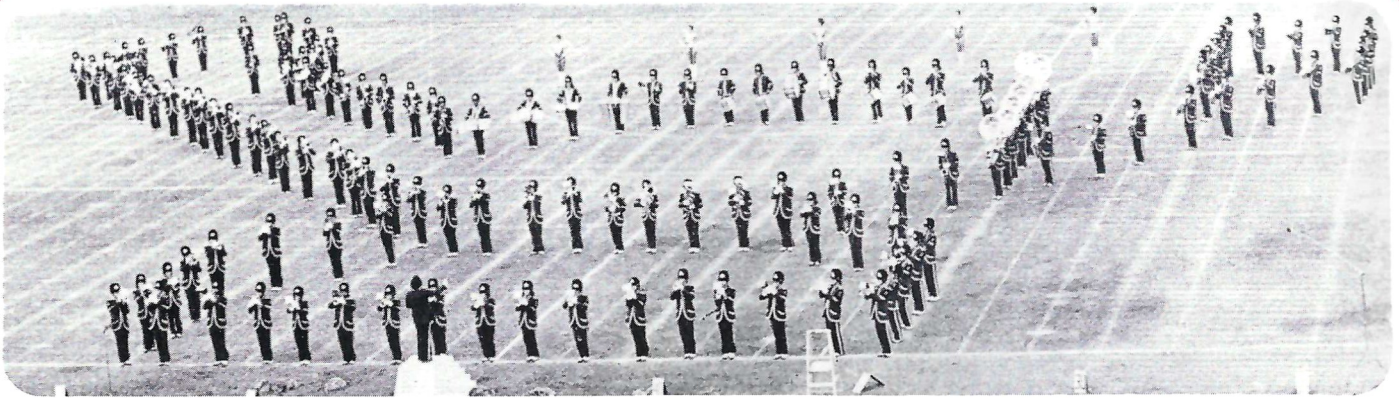
**Wheeler Builder Supply**  
Tallahassee

**Dan Whitehurst, Investors Realty**  
Tallahassee

**Wholesale Foods**  
Tallahassee

**Winewood Companies**  
Tallahassee

**Richard W. Wolfe**  
Tallahassee



# THE MARCHING CHIEFS INTERNATIONAL GOODWILL AMBASSADORS



Dick Mayo rehearses the Symphonic Band in the Azem Palace in Damascus, Syria.

Football fans know the Marching Chiefs for their consistently superb halftime shows but not many realize they also are being hailed as goodwill ambassadors for the United States.

After traveling a third of the way around the world to spend a week and a half in Damascus, one of the world's oldest cities, the Chiefs are taking a new look at their homeland.

In honor of the resumption of diplomatic relations between the United States and Syria, after a seven-year hiatus, the Department of State invited the Marching Chiefs whose members also comprise the Jazz and Symphonic Bands, to perform at the International Trade Fair for twelve days in August.

The government of Jordan also invited the Chiefs to appear jointly with the Jordanian Army Band during a two-day stopover at the conclusion of the Damascus stay.

They played to standing ovations and heartwarming applause and the accolades are still coming in. Letters of appreciation have come from Thomas Pickering, U. S. Ambassador to Jordan, and his public affairs officer, Richard E. Undeland.

Undeland wrote from the U. S. Embassy in Jordan that the Bands' visit was "far and away the most successful program" he has had anything to do with. He remarked: "Splendid musicianship, striking show and what fine young people. Jordanians continue to talk about it."



# MUSIC FIT FOR A KING

However, perhaps the essence of the trip was best captured by Assistant Secretary of State Alfred L. Atherton Jr., who wrote to President Stanley Marshall of the band members:

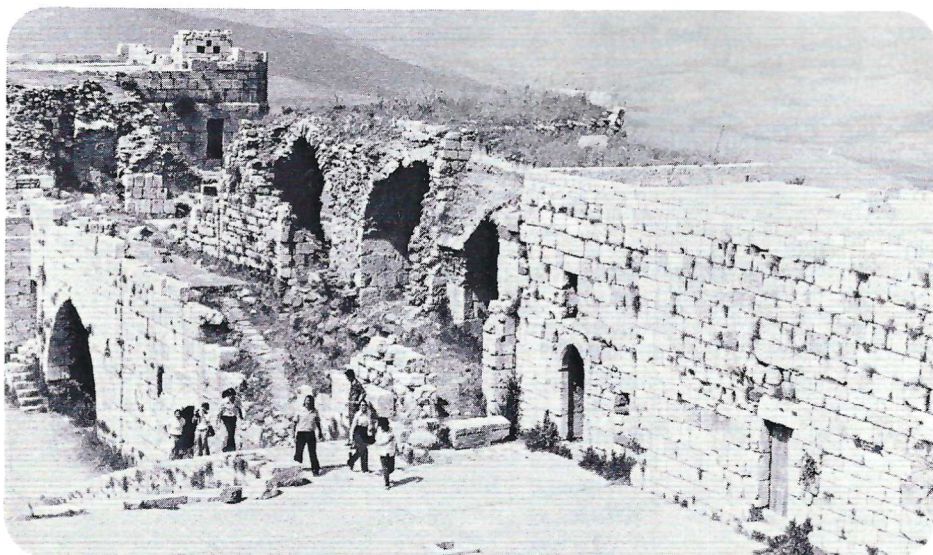
“Their behavior off the playing field was as impressive as it was during performances. They certainly fulfilled their role as student ambassadors and each one deserves a special commendation.”

“The Bands gave the Syrians during its marching, symphonic and jazz performances, as well as in the streets and souks (bazaars), a very positive idea of what Americans are like. After an absence of diplomatic relations between the United States and Syria for seven years this was particularly important. In Jordan, the Bands’ presence reaffirmed our warm and close personal ties with that country.”

Dr. Marshall, who with Mrs. Marshall, accompanied the Bands to Syria and Jordan, found the reception in both countries so rewarding that he reported on the trip to the Board of Regents.



FSU President (left) and Mrs. Stanley Marshall (far right) join Jordan’s King Hussein and his wife in the Royal Box at the Chiefs’ performance in Amman.



The Chiefs take time out to tour an ancient Syrian village.

Marching Chief Oliver Roosevelt tells of the performance there:

“We apelled out our words in Arabic script and the audience roared their approval. The Jordanian Army Band (which was fantastic and had a section of 48 bagpipes) performed after we did and then the two bands played “Stars and Stripes Forever” together, led by their director. At the conclusion of the concert, we each played the other’s national anthem. The Jordanians went bananas.”

Mayo agreed that the performance was memorable and claimed a first for Florida State. He’s convinced the Chiefs are the first marching band anywhere to perform in Arabic script. Actually, they also are the first marching band to take part in State Department affairs.

Dr. and Mrs. Marshall traveled extensively around Syria while the band was there giving its daily performances at the fair. They were the first American visitors to Syria’s nearly completed Euphrates Dam. The Director General himself gave them a full tour of the dam, which is larger than Egypt’s High Dam on the Aswan.

**Travel by Donkey was not the prime mode of transportation for the Chiefs during their Middle East stay, but it was perhaps one of the more enjoyable moments if the expression on School of Music Faculty member Janet Worth’s face is any indication.**

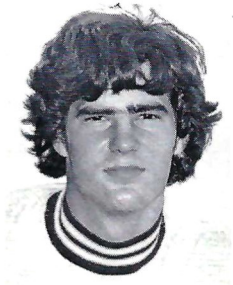
He told the Regents, “As Richard Mayo, the director of the University Bands, said, ‘Music is a universal language — it transcends customs and cultures’ and in this sense we expected to be understood and appreciated. But the enthusiasm and the expressions of gratitude and affection went well beyond anything we could have expected.”

President and Mrs. Marshall watched the band perform in Amman, sharing the royal box with Jordan’s King Hussein and his wife, who had just returned home from Washington.

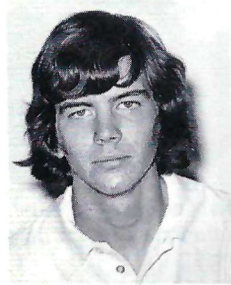


# Seminole Scholar Athletes

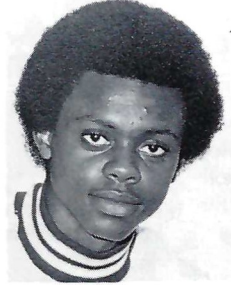
The Florida State Athletic Department and Seminole Boosters, Inc. salute the Seminole Scholar-Athletes. The young men listed on these pages have dedicated themselves not only in the athletic arena, but also in the classroom. The upper classmen listed here have compiled between a 2.75 and 4.0 academic average in all University level work attempted. The freshman athletes have graduated with a 3.0 or higher average in all high school work. These young men are all recipients of Florida State Athletic Scholarships.



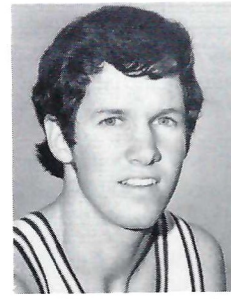
Bob Chassee



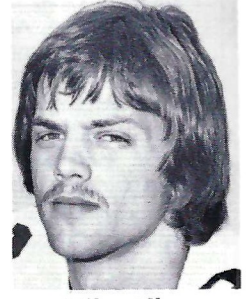
Dave Calvert



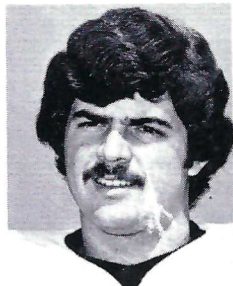
Carlton Byrd



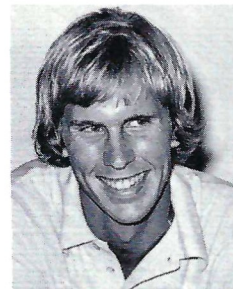
David Brownyard



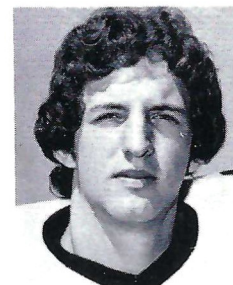
Mike Allen



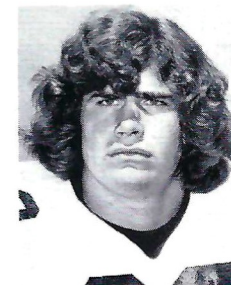
Dan Fucarino



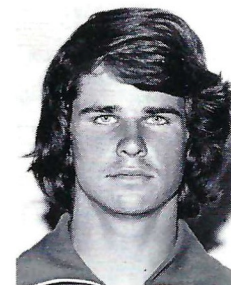
Sterling Gibson



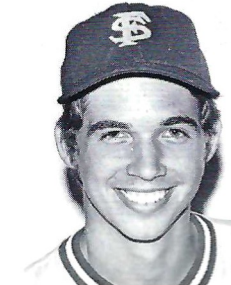
Chris Griffin



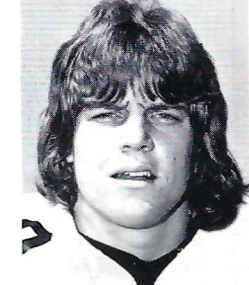
Bruce Harrison



Mark Herman



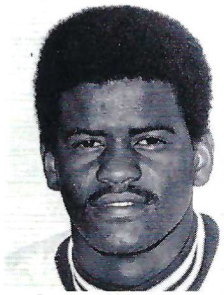
Windle Higginbotham



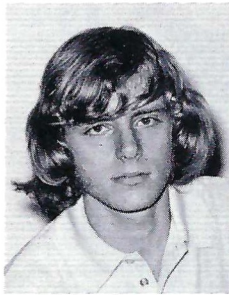
John Holcomb

## Upperclassmen Scholar Athletes

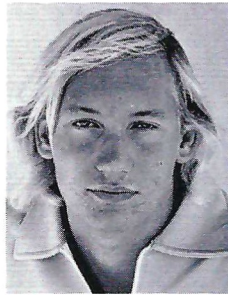
NAME	SPORT	HOMETOWN	CLASS
Mike Allen	Football	Willoughby, Oh.	Sr.
Bob Anderson	Football	Rockledge	Sr.
Jimmy Black	Football	Merritt Island	Soph.
David Brownyard	Basketball	Winter Haven	Sr.
Carlton Byrd	Basketball	Dania	Soph.
Dave Calvert	Tennis	Charleston, W. Va.	Soph.
Bob Chassee	Basketball	Covington, La.	Soph.
Steve Collins	Swimming	Millers Place L.I., N.Y.	Soph.
Walt Fletcher	Swimming	Birmingham, Ala.	Jr.
Dan Fucarino	Football	Tampa	Jr.
Sterling Gibson	Tennis	Pensacola	Soph.
Chris Griffin	Football	Tampa	Jr.
Bruce Harrison	Football	Vero Beach	Soph.
Mark Herman	Track	Winter Park	Jr.
Windle Higginbotham	Baseball	Fernandino Beach	Sr.
John Holcomb	Football	Tampa	Soph.
Robert Horne	Swimming	Coral Gables	Soph.
Bob James	Track	Milton	Jr.
Richard Jeffers	Golf	Birmingham, Al.	Soph.



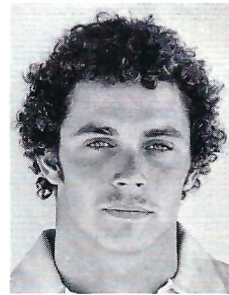
Larry Warren



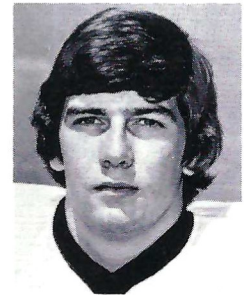
Rich Thomas



Cliff Schlak

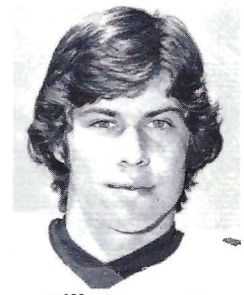


Steve Rosenbaum

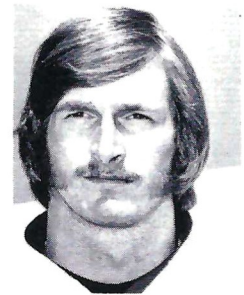


Jeff Ridings

NAME	SPORT	HOMETOWN	CLASS
Gordon Jones	Tennis	Arlington, Va.	Soph.
Wes Koenig	Track	Largo	Jr.
Rob McKay	Swimming	Cedar Rapids, Ia.	Sr.
Steve Meisel	Swimming	Winter Park	Soph.
Matt Mosteller	Swimming	Mobile, Al.	Sr.
Dave Porter	Football	St. Petersburg	Soph.
Billy Prescott	Football	Ft. Walton Beach	Soph.
Brad Prior	Football	St. Petersburg	Soph.
Jeff Ridings	Football	Marietta, Ga.	Soph.
Steve Rosenbaum	Swimming	Sarasota	Soph.
Cliff Schlak	Swimming	Des Plaines, Ill.	Jr.
Rick Thomas	Tennis	Charleston, W. Va.	Soph.
Tom Truscott	Swimming	Sarasota	Soph.
Keith Tuten	Football	Indianalantic	Soph.
Larry Warren	Basketball	Lake Worth	Jr.



Billy Prescott



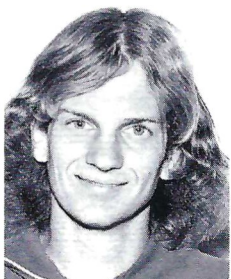
David Porter

### Incoming Scholar Athletes

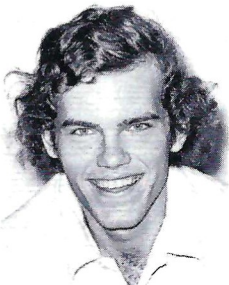
NAME	SPORT	CLASS
Terry Anton	Golf	Fr.
Vincent Bilotto	Track	Fr.
Marty Crosby	Football	Fr.
Harry Davis	Basketball	Fr.
Craig Eaton	Baseball	Jr.
Ely Falkenstein	Football	Fr.
Glenn Kettenacker	Track	Fr.
Greg Mach	Golf	Fr.
Angus Morrison	Golf	Fr.
Dan Owen	Baseball	Jr.
Carlos Rodriguez	Baseball	Fr.
James Ruth	Track	Fr.
Paul Young	Golf	Fr.



Matt Mosteller



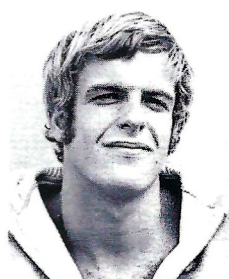
Bob James



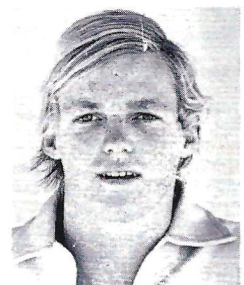
Gordon Jones



Wes Koenig



Bob McKay



Steve Meisel

# The 1974 Seminoles



Go  
Seminoles!



## Sears

Tallahassee's Complete  
Department Store

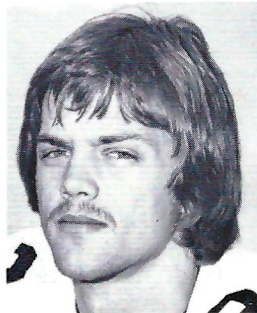
- Everything You Need  
For Your Home  
Family or Car!

OPEN 9:30 a.m. 'til 9:30 p.m.  
Monday thru Saturday

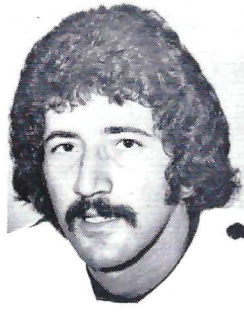
SHOP AT SEARS  
AND SAVE

## Sears

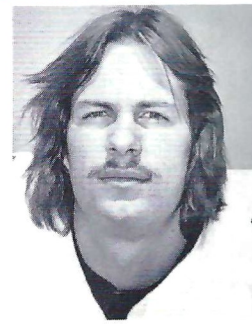
SEARS, ROEBUCK AND CO.



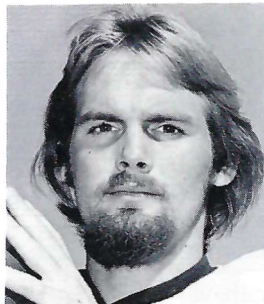
Mike Allen



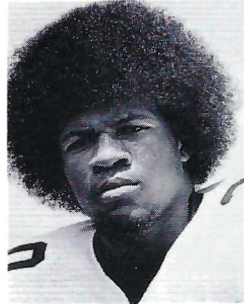
Ahmet Askin



Ed Beckman



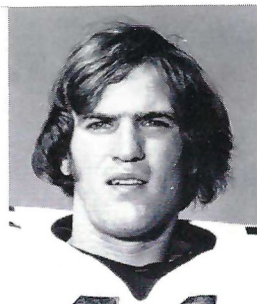
Jimmy Black



Leon Bright



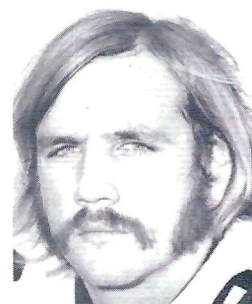
Brooks Burroughs



Phil Cahoon



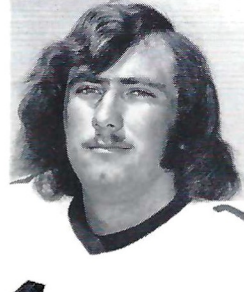
Joe Camps



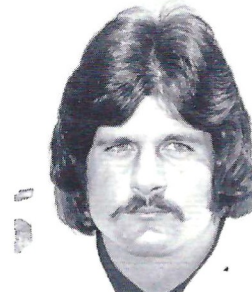
Randy Coffield



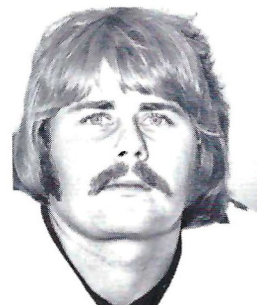
Bert Cooper



Ron Coppess



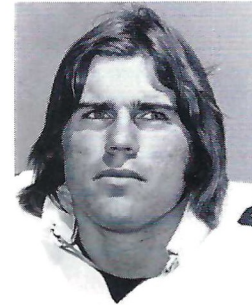
Mike Davison



Joe Downey



Jim Everett

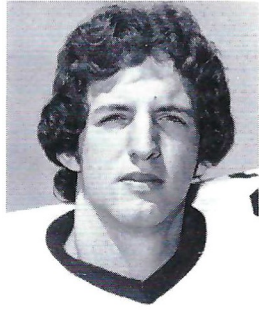


Jeff Gardner

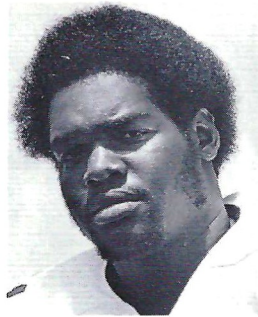
# The 1974 Seminoles



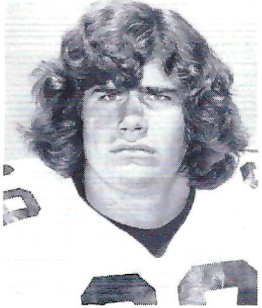
Joe Goldsmith



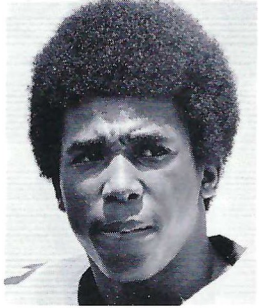
Chris Griffin



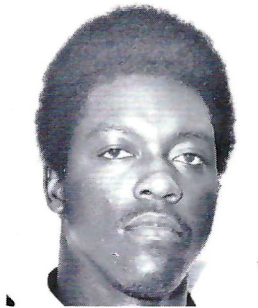
Curtis Harris



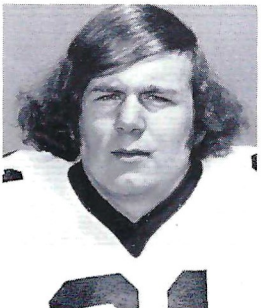
Bruce Harrison



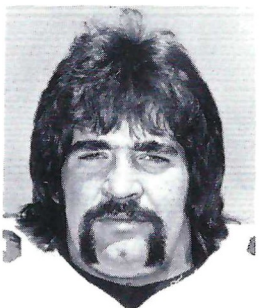
Robert Jackson



Greg Johnson



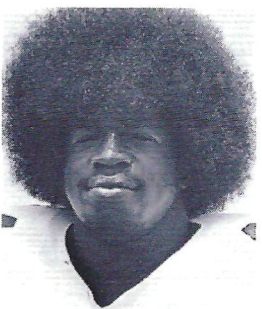
Wade Johnson



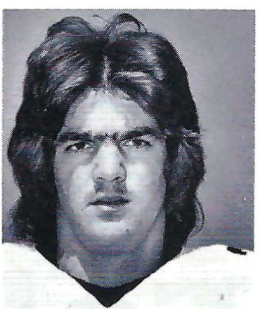
Bob Jones



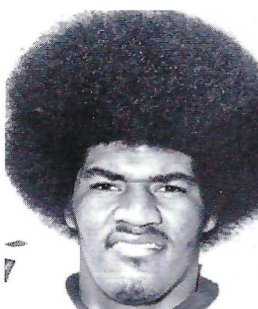
Phil Jones



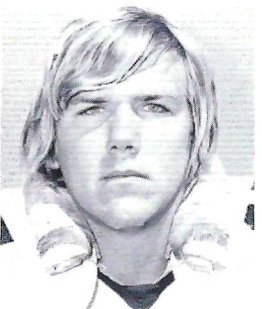
Larry Key



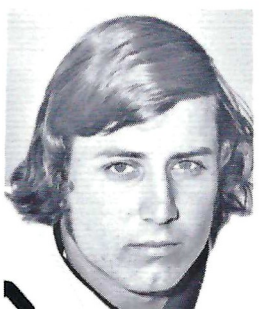
Jeff Leggett



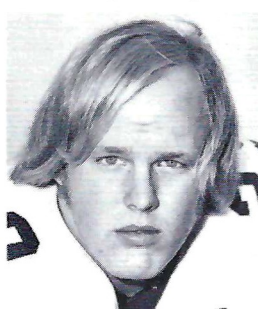
Rudy Maloy



Billy McPhillips



Scott Meseroll



Fred Miller

## The Last Word In Riding Herd



Seminole action is fast and mean. Takes exceptional men to climb in there with it, let alone keep it sorted out. But Times Sports' grid wranglers have the belly for it. And when they've put their words and pictures together, there's nothing more to say. For the best, most colorfully complete coverage of FSU football, read Florida's Best Newspaper.

**St. Petersburg Times**  
FLORIDA'S BEST NEWSPAPER

Travel Is Our Profession



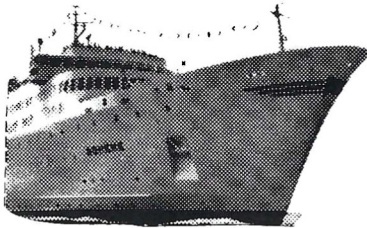
Business  
or  
Pleasure



We have  
the places  
you want



to visit on all  
Continents



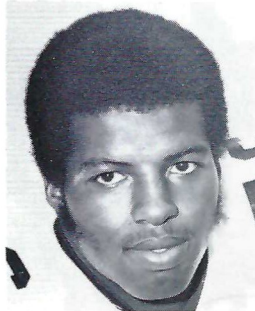
Air, Steamship, Amtrak,  
Cruise tickets are sold at  
printed tariff rates.



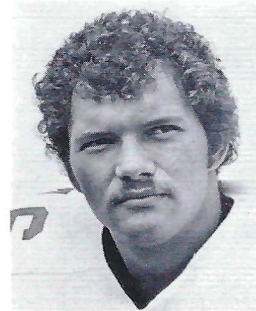
There is no charge  
for our services.

**Tallahassee  
Travel &  
Tours, INC.**  
Tel. 224-4161

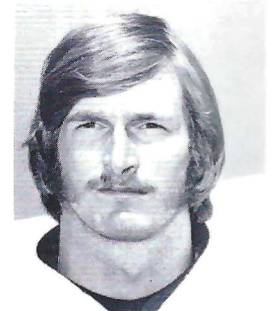
# The 1974 Seminoles



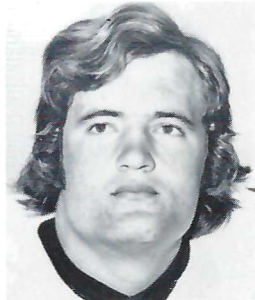
John Murphy



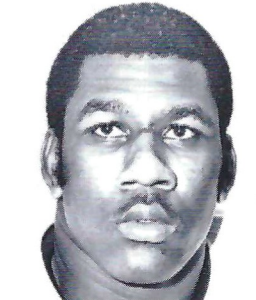
Lee Nelson



David Porter



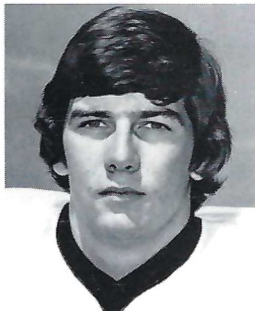
Greg Pounds



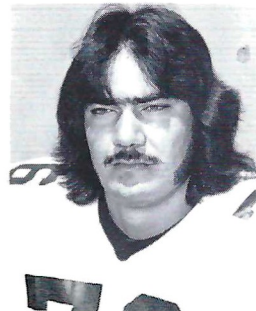
Smokey Ragins



Detroit Reynolds



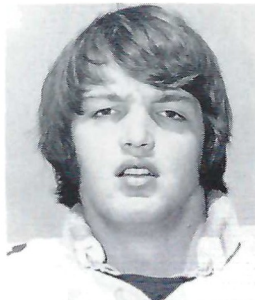
Jeff Ridings



Vic Rivas



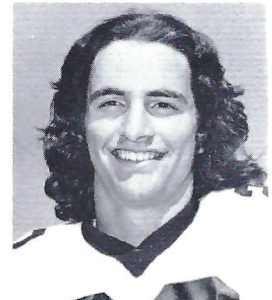
Gary Rose



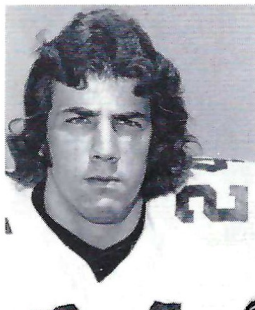
Bill Sawyer



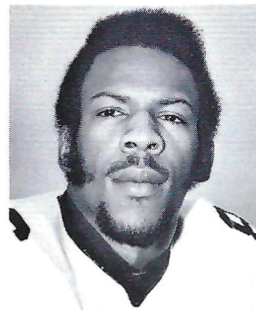
Brian Schmidt



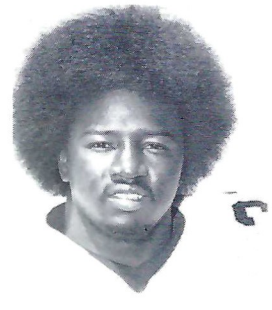
Mike Shumann



Andy Stockton



Joe Thomas



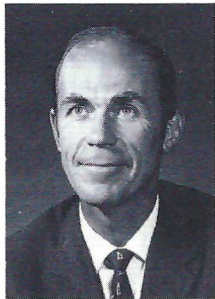
Rudy Thomas



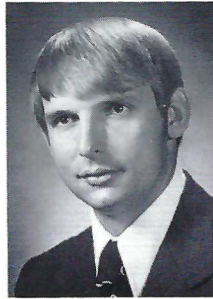
# INTERCOLLEGIATE ATHLETIC STAFF



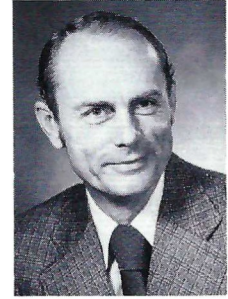
**JOHN BRIDGERS**  
Athletic Director



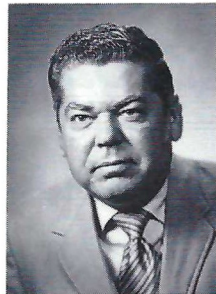
**DR. RICHARD BAKER**  
Chairman, Athletic Comm.



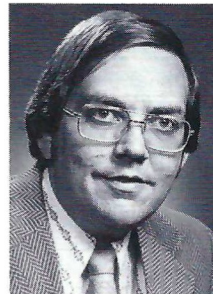
**BILL ROWE**  
Assistant AD



**CLAUDE THIGPEN**  
Business Manager



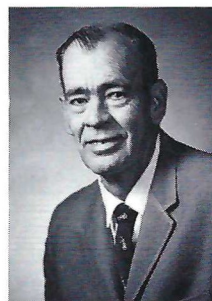
**LONNIE BURT**  
Sports Information Director



**HANK SCHOMBER**  
Assistant SID



**CHARLIE DURBIN**  
Cinematographer



**WOODY SAUCIER**  
Tully Gym Equipment Mgr.

# Varsity Coaching Staff



Front Row (left to right): Eddie Feely, Mike Pope, Gene McDowell, Cal Jones, Don Pollard, Head Coach Darrell Mudra. Second Row: Sam Elliott, Pete Rodriguez, Frank DeBord, Dan Henning, Larry Pendleton and Bob Harbison. For a close-up of the Seminole coaches, see pages 50 and 51 of tonight's program.

*A Dimension of Leadership for  
Men and Women*



*The more you look at it, the better it looks.  
Military Science Building, Florida State University 644-1016*

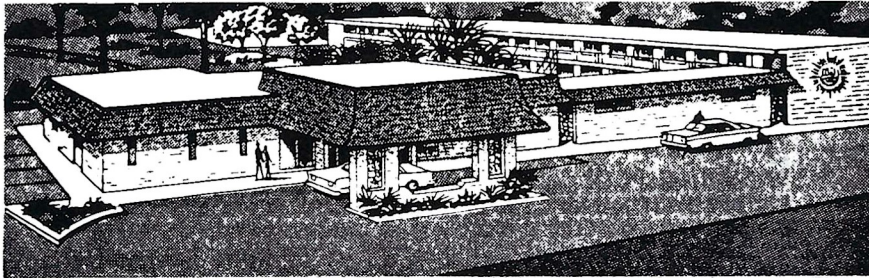


# QUALITY INN

**COLOR TV**

"We Cater to  
Commercial Men"

Phone 877-6171



*On the Parkway...* 1027 APALACHEE PKWY. US 27 So.

*The Chez Napoleon Room*

*Complete Banquet and Meeting Facilities*

*Cocktail Lounge - Bonaparte's Retreat*

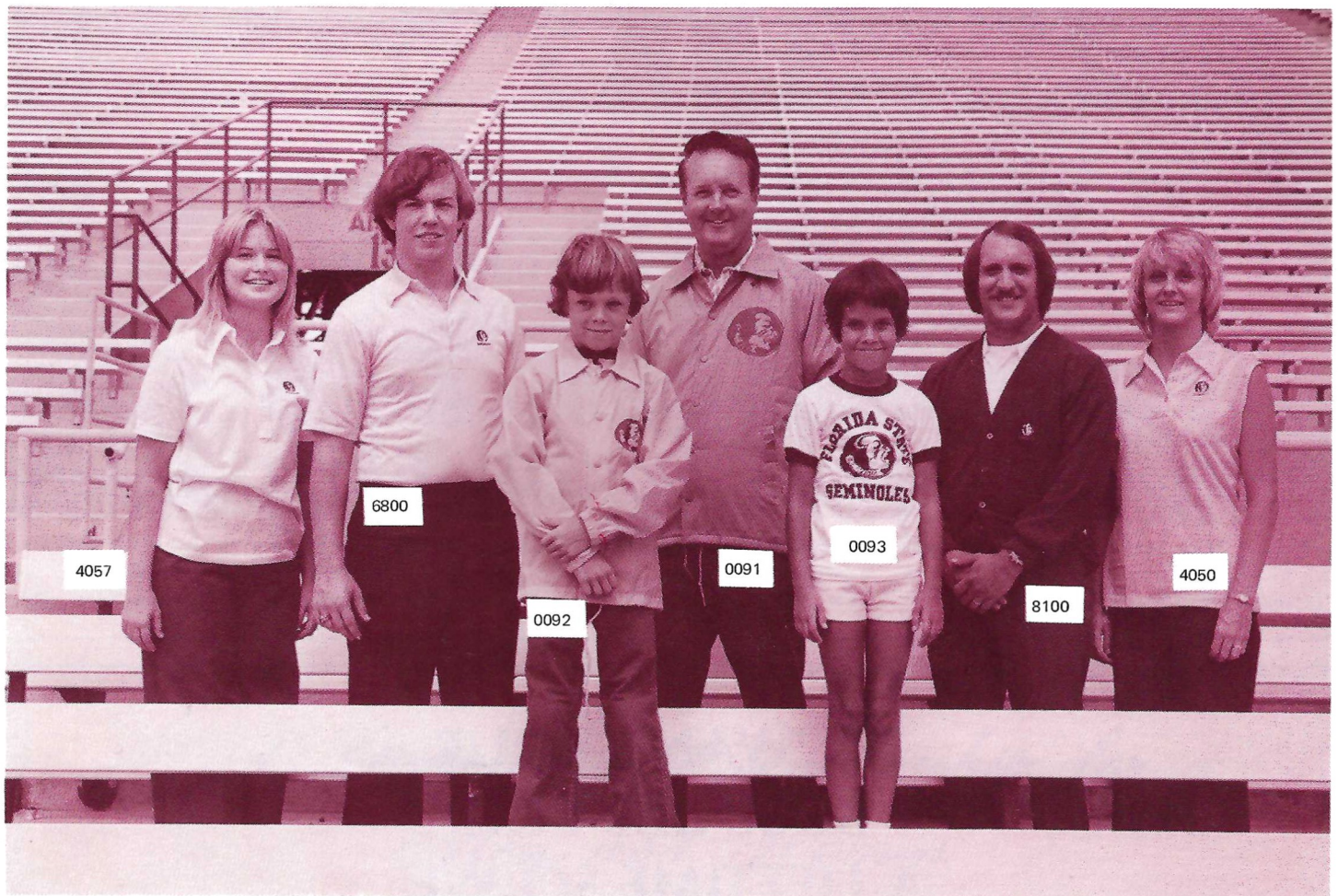
**WE WANT YOUR  
BUSINESS FOR  
A LIFETIME SO WE  
TAKE BETTER CARE OF  
YOU DAY BY DAY.**



## **Barnett Banks of Tallahassee**

# Show Your Colors

## Official Seminole Sportswear



### LADIES' AND MEN'S KNIT SHIRTS

100% cotton lisle shirts available in white or garnet (men's style only) with contrasting Seminole emblem. Full fashion collar and button placket. State size and color.

- 4050 Women's Sleeveless Shell . . . . . \$14.70  
Sizes: S-M-L
- 4057 Women's Cuffed Short Sleeve . . . \$16.70  
Sizes: S-M-L
- 6800 Men's Short Sleeve . . . . . \$17  
Sizes: S-M-L-XL  
(XXL available on special order)

Men's Arnel Plus short sleeve shirt 91% Arnel, 9% nylon shirt available in Garnet, Gold or White with contrasting Seminole emblem. Completely full fashion. State Size and color.

- 7010 Men's Arnel Shirt . . . . . \$18.80  
Sizes: S-M-L-XL

### LINED COACHING JACKET

Full cut 100% nylon water repellant outer shell. Pole lining with quilted nylon sleeve lining. Hood concealed in unique compartment inside the lining. Slashed Pockets, elasticized cuffs. Completely washable. Order in Garnet or Gold with contrasting Seminole emblem.

- 0091 Coaching Jacket . . . . . \$24.20  
Sizes: S-M-L-XL-XXL

### ORLON CARDIGAN SWEATERS

100% Orlon Links-N-Links Classic Button front Cardigan Sweaters. Cut extra full for added comfort. Wash and wear. Comes with contrasting Seminole Emblem in gold, white or garnet (men's only).

- 1825 Women's Sweater . . . . . \$23.20  
Sizes: 34-36-38-40  
Color: Gold, White
- 8100 Men's Sweater . . . . . \$23.20  
Sizes: S-M-L-XL  
Color: Garnet, Gold, White

### FOR THE KIDS

**Nylon Warm-Up Jacket**—just like the warm-up jackets worn by the Seminole athletes. 100% single ply tefeta nylon shell jacket with Byron collars. Color matched gripper snap front. Set in sleeves with elasticized cuffs. Comes in Gold only with contrasting Seminole emblem.

- 0092 Warm-up Jacket . . . . . \$12.20  
Sizes: XS(2-4), S(6-8), M(10-12), L(14-16)

**Child's Cotton Shirt**—100% cotton T-shirt with Seminole emblem. Just the thing for the Junior Seminole.

- 0093 Child's Shirt . . . . . \$3.50  
Sizes: S-M-L

### SEMINOLE ACCESSORIES

**Zippo Lighter**—famous Zippo lighter with colorful Seminole Indian crest. Perfect for gifts.

- 0010 Zippo Lighter . . . . . \$7.50

**Key Chain**—super Loop Key Chain with colorful Seminole Indian crest. Sturdy-key ring holds many keys. Perfect for pocket or purse.

- 0020 Key Chain . . . . . \$ 3

### Seminole Charms

- 0024 Indian Head Charms . . . . . \$ 2
- 0025 Running Indian Charm . . . . . \$ 2

### Men's Jewelry

- 0028 Indianhead Cufflinks . . . . . \$3.50
- 0029 Indianhead Tie Tac . . . . . \$2.50

### Blazer Pocket Emblems

- 0011 3-in. Seminole Blazer Emblem with pin-on feature . . . . . \$ 8
- 0012 1½-in. Seminole Blazer Emblem to be sewn on . . . . . \$ 1

# DARITY LTD. BLAZERS \$55.

ADD .04 SALES TAX IF IN N.C.



	36	37	38	39	40	41	42	43	44	46	48	50	52
R													
L													
XL													
S													

ADD \$2.00 ON SIZES 48-52 & ON ALL EXTRA LONGS  
Coats offered in Garnet or Gold.

NAME \_\_\_\_\_  
 ADDRESS \_\_\_\_\_  
 TOWN \_\_\_\_\_ STATE \_\_\_\_\_ ZIP \_\_\_\_\_  
 COLOR \_\_\_\_\_ NO. OF COATS \_\_\_\_\_  
 TOTAL MONEY ENCLOSED \_\_\_\_\_ DATE \_\_\_\_\_  
 NAME OF SCHOOL \_\_\_\_\_

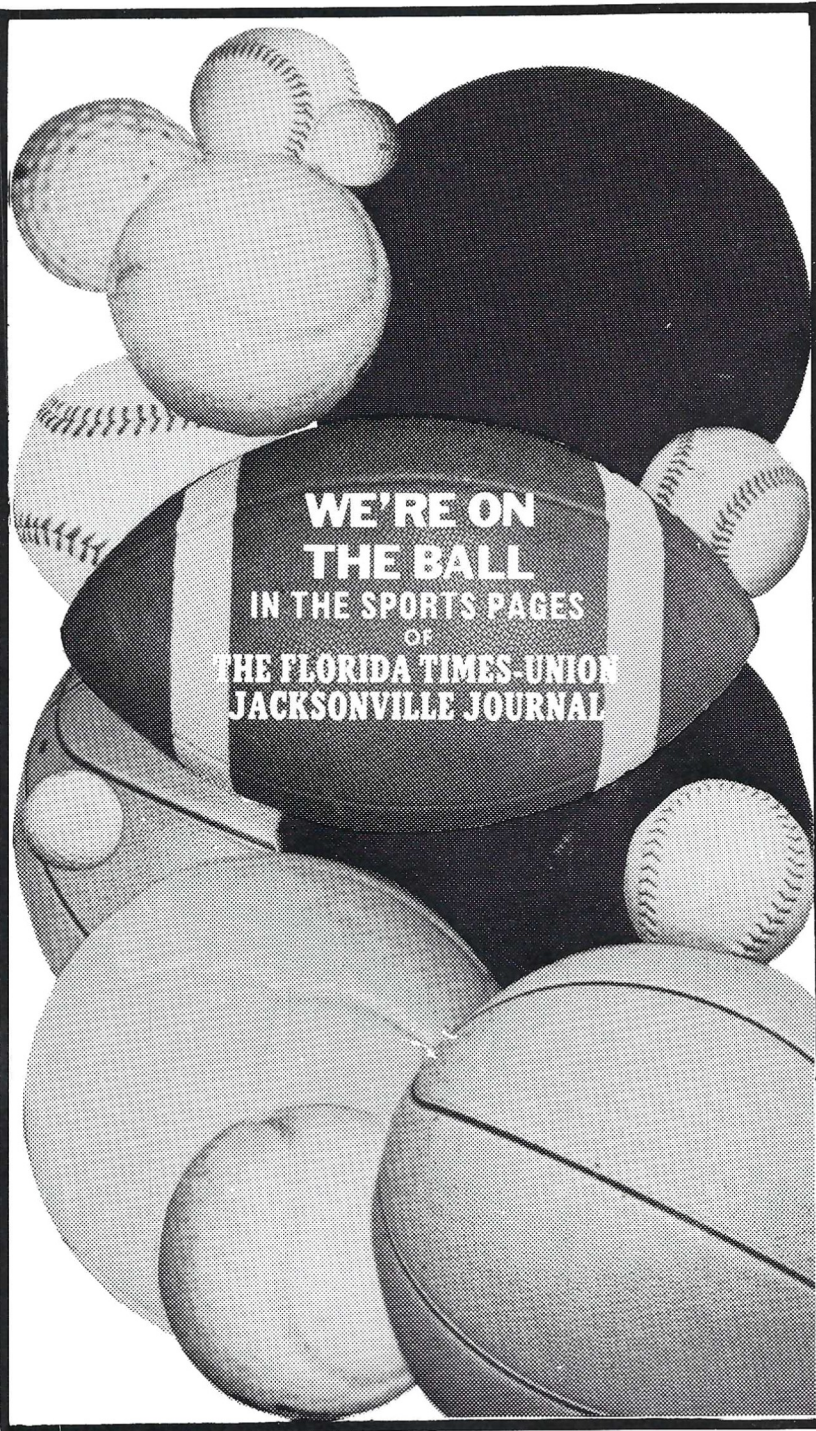
Make Checks Payable To: **Executive Wardrobe, Inc.**  
 Highway 601 By Pass West P.O. Box 970  
 Concord, N.C. 28025 ph. 704-786-8311

Cat. No.	Item	Quantity	Color	Size	Price	Total
4057	Women's Short Sleeve Cot.				\$16.70	
4050	Women's Shell				\$14.70	
6800	Men's Cotton Shirt				\$17.00	
7010	Men's Arnel Shirt				\$18.80	
8100	Men's Cardigan				\$23.20	
1825	Women's Cardigan				\$23.20	
0091	Coaching Jacket				\$24.70	
0092	Warm-up Jacket				\$12.20	
0093	Child's Shirt				\$ 3.50	
0010	Zippo Lighter				\$ 7.50	
0011	3" Blazer Emblem				\$ 8	
0012	1½" Blazer Emblem				\$ 1	
0020	Key Chain				\$ 3	
0024	Indian Head Charm				\$ 2	
0025	Running Indian Charm				\$ 2	
0028	Indian Head Cuff Links				\$3.50	
0029	Indian Head Tie Tac				\$2.50	
					SUB-TOTAL:	
Four percent Florida Sales Tax:						
					TOTAL:	



Make Check payable to:  
**FLORIDA STATE UNIVERSITY**

Mail Order To:  
 Athletic Business Office  
 Florida State University  
 Tallahassee, Florida 32306



We've a team of action photographers and writers that is unbeatable . . . covering every important athletic event in the South . . . getting the exclusive stories and photographs that make our sports pages come alive.

**The Florida Times-Union  
Jacksonville Journal** 

# SEMINOLE SCHEDULES

## 1974

Sept. 14 . . . . .PITTSBURGH  
 Sept. 21 . . . . .COLORADO STATE  
 Sept. 28 . . . . .at Kansas  
 Oct. 5 . . . . .BAYLOR  
 Oct. 12 . . . . .at Alabama  
 Oct. 19 . . . . .FLORIDA  
 Oct. 26 . . . . .at Auburn  
 Nov. 2 . . . . .at Memphis State  
 Nov. 8 (Fri.) . . . . .at Miami  
 Nov. 16 . . . . .VIRGINIA TECH  
 Nov. 23 . . . . .HOUSTON

## 1975

Sept. 13 . . . . .at Texas Tech  
 Sept. 20 . . . . .Open Date  
 Sept. 27 . . . . .IOWA STATE  
 Oct. 4 . . . . .at Georgia Tech  
 Oct. 11 . . . . .at Virginia Tech  
 Oct. 18 . . . . .at Florida  
 Oct. 25 . . . . .AUBURN  
 Nov. 1 . . . . .at Clemson  
 Nov. 8 . . . . .MEMPHIS STATE  
 Nov. 15 . . . . .MIAMI  
 Nov. 22 . . . . .at Houston  
 Nov. 29 . . . . .UTAH STATE

## 1976

Sept. 11 . . . . .Memphis State at Jax  
 Sept. 18 . . . . .at Miami  
 Sept. 25 . . . . .at Oklahoma  
 Oct. 2 . . . . .KANSAS STATE  
 Oct. 9 . . . . .at Boston College  
 Oct. 16 . . . . .FLORIDA  
 Oct. 23 . . . . .at Auburn  
 Oct. 30 . . . . .CLEMSON  
 Nov. 6 . . . . .Open Date  
 Nov. 13 . . . . .at Tampa  
 Nov. 20 . . . . .HOUSTON  
 Nov. 27 . . . . .VIRGINIA TECH

## 1977

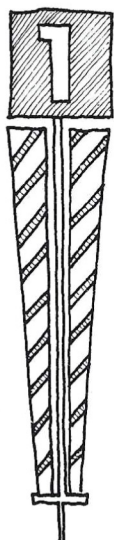
Sept. 10 . . . . .IOWA STATE  
 Sept. 17 . . . . .at Kansas State  
 Sept. 24 . . . . .MIAMI  
 Oct. 1 . . . . .at Oklahoma State  
 Oct. 8 . . . . .CINCINNATI  
 Oct. 15 . . . . .at Florida  
 Oct. 22 . . . . .AUBURN  
 Oct. 29 . . . . .at Houston  
 Nov. 5 . . . . .at Virginia Tech  
 Nov. 12 . . . . .MEMPHIS STATE  
 Nov. 19 . . . . .at San Diego

# Graduate Assistants



Mack Brown, Rick Schlachner, Billy Joe Breakhouse

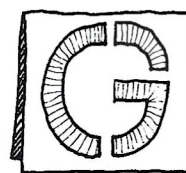
## First and Goal



It's the best way to reach a financial objective.

Why try to do it alone when **First National Bank** has a staff of professionals that can help you design a scoring play.

Whether it's big or small... make it **First and Goal**



Capital City



**FIRST**  
NATIONAL BANK

217 North Monroe Street Tallahassee, Florida 224-1171 Member FDIC

# Head Coach Darrell Mudra

Darrell Mudra is a winner!

He is the man Florida State University has picked to lead the Seminoles out of the wilderness of defeat.

One of Coach Mudra's strongest selling points was the fact that he has turned football programs around with almost instant success, something Florida State desperately needs.

The 44-year-old Omaha, Neb., native came to Florida State from Western Illinois with extremely high recommendations. "Darrell Mudra is one of the outstanding football coaches in the country," says former Nebraska Head Coach Bob Devaney, now that school's athletic director. "He has been able to win wherever he has gone and in many cases despite great obstacles."

Tommy Prothro, ex-college coaching standout, now boss of the San Diego Chargers, is another who thinks Mudra was the man for the Florida State job. "I believe Darrell Mudra is a very, very superior coach. I would have been surprised if any candidate for the Florida State job was the caliber of Darrell Mudra."

Coach Mudra's record speaks for itself. He has turned five losers into big winners. In 15 years of college coaching, the soft-spoken educator has recorded 106 victories against only 32 losses and two ties.

Mudra attended Peru State College in Nebraska where he was an all-conference halfback. He received a masters degree from Omaha University and his doctorate from Colorado State. He served in the Air Force during 1950 and '51.

He was an assistant coach at Hurrion (S.D.) and Colorado State before becoming head coach at Adams State, Alamosa, Colo., in 1959. The previous season Adams State had gone 1-9 but in Mudra's first year the Colorado school gained eight victories against one loss. In four seasons there, Mudra-coached teams never lost more than two games in a single year and he lead the Indians to a bowl game.

In 1963, he moved to North Dakota State, a team which had been 0-10 the previous year. In three seasons his records were 3-5, 10-1, and 11-0, including two bowl games.

The next challenge was the Montreal club of the Canadian professional league. In 1965 the Alouettes were 3-11 but under Mudra in '66 they went 7-7 and made the playoffs.

The University of Arizona was the next program Mudra turned around. It took him two seasons to do this, but in the second year he directed the Wildcats to an 8-3 record and a spot in the Sun Bowl.

Western Illinois gained his services in 1969 and in five years at the McComb institution Mudra's clubs went 39-13.

Coach Mudra is married to the former Jean Marie King of Omaha, Neb. They are the parents of four children, Darrell Jr., 20; Stephen, 19; Sherry, 18; and Michele, 14.

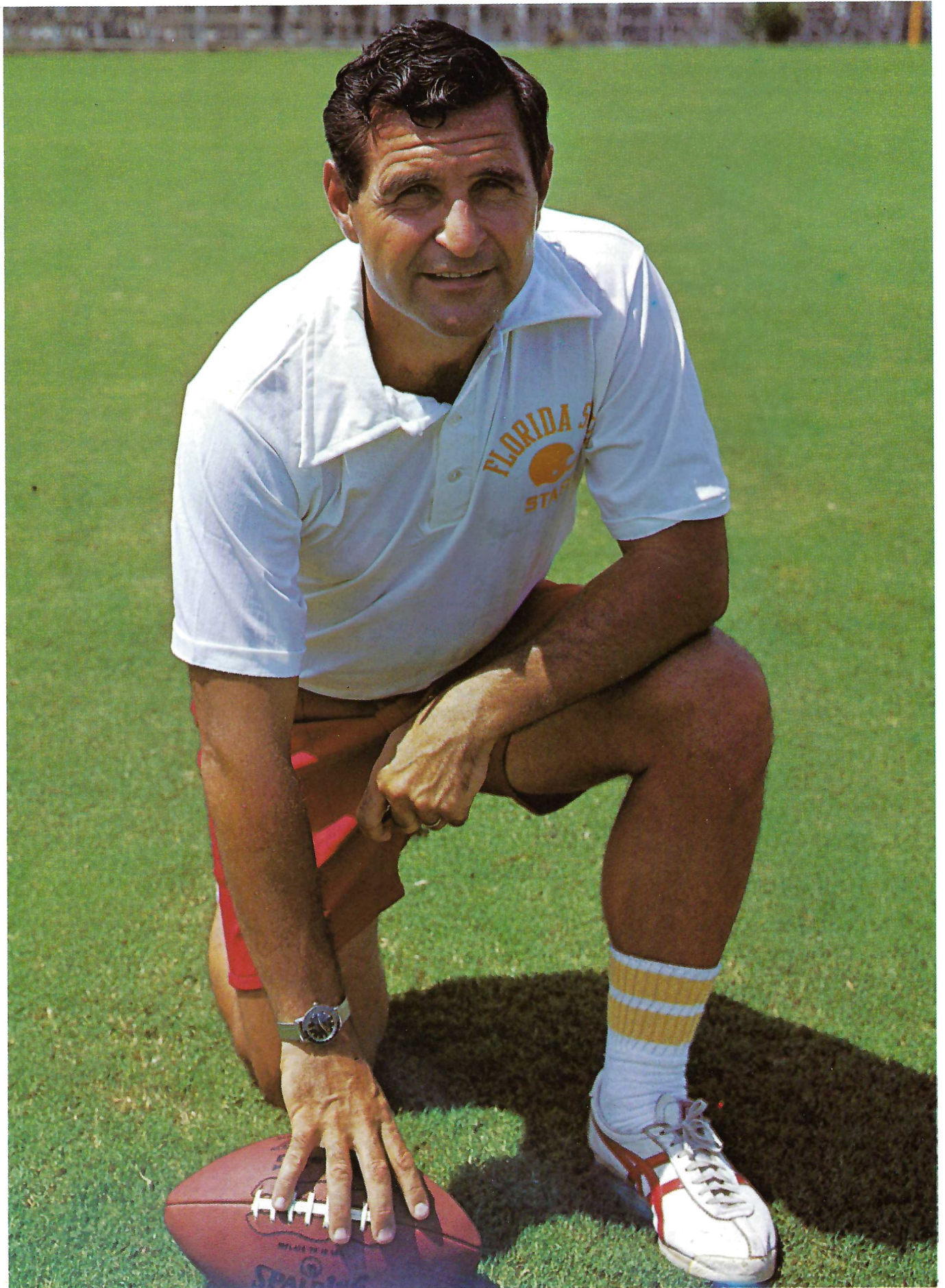


## THE MUDRA RECORD

Team	Previous Record	Mudra's Record
Adams State	1-9, 1958	1959 — 8-1 1960 — 7-0-1 1961 — 8-2 1962 — 9-1 (Mineral Bowl)
North Dakota State	0-10, 1962	1963 — 3-5 1964 — 10-1 (Mineral Bowl) 1965 — 11-0 (Pecan Bowl) Nat'l Champions
Montreal Alouettes	3-11, 1965	1966 — 7-7 (Made playoffs. Defeated Bud Grant's Winnipeg team)
University of Arizona	3-7, 1966	1967 — 3-6-1 (Defeated Ohio State at Columbus) 1968 — 8-4 (Sun Bowl)
Western Illinois	2-8, 1968	1969 — 8-2 1970 — 7-3 1971 — 8-2 1972 — 9-2 1973 — 7-4

Total 113 wins, 39 defeats, 2 ties





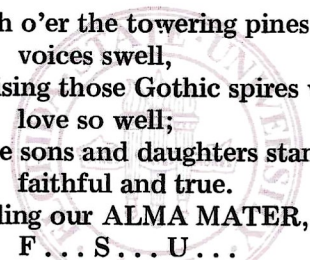


# The Star Spangled Banner

O, say! can you see, by the dawn's early light,  
What so proudly we hailed at the twilight's last gleaming?  
Whose broad stripes and bright stars, thro' the perilous fight,  
O'er the ramparts we watch'd, were so gallantly streaming?  
And the rockets' red glare, the bombs bursting in air,  
Gave proof thro' the night that our flag was still there.  
Oh, say, does that Star-spangled Banner yet wave  
O'er the land of the free and home of the brave?

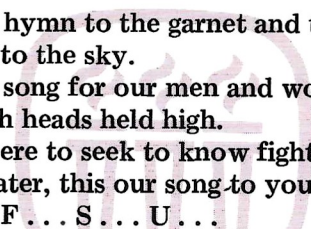
## Seminole Songs

### ALMA MATER



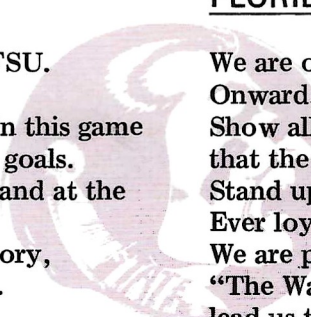
High o'er the towering pines our  
voices swell,  
Praising those Gothic spires we  
love so well;  
Here sons and daughters stand,  
faithful and true.  
Hailing our ALMA MATER,  
F . . . S . . . U . . .

### HYMN TO THE GARNET AND GOLD



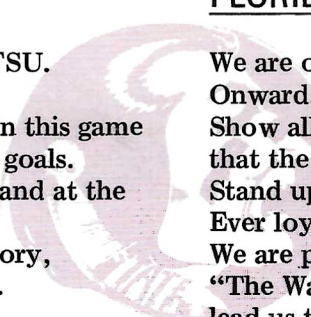
Here's a hymn to the garnet and the gold,  
Ringing to the sky.  
Here's a song for our men and women bold,  
Sing with heads held high.  
Striving ere to seek to know fight for victory.  
Alma Mater, this our song to you,  
Echoes, F . . . S . . . U . . .

### FSU FIGHT SONG



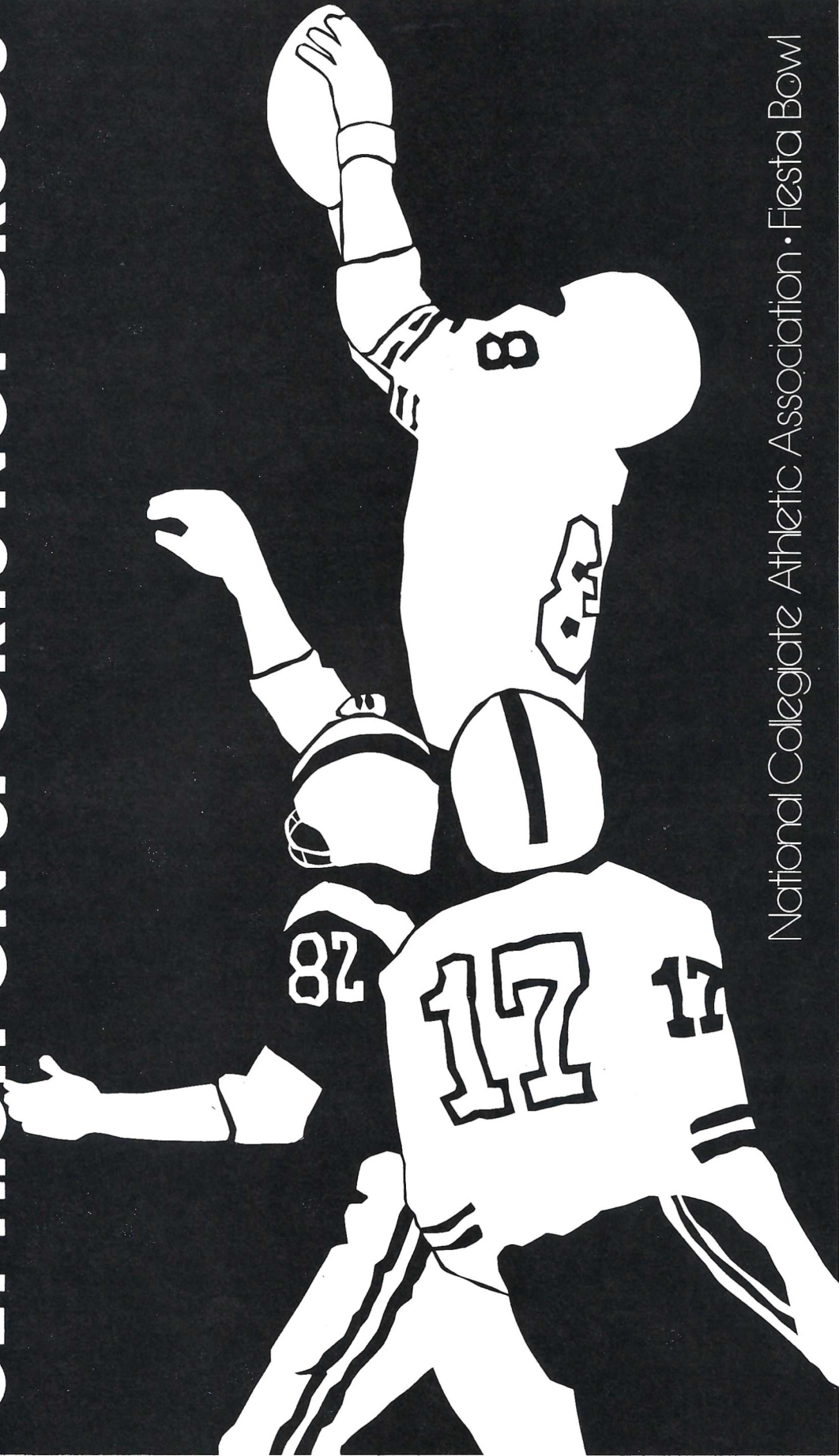
You got to fight, fight, fight for FSU.  
You got to scalp 'em Seminoles.  
You got to win, win, win, win, win this game  
and roll on down and make those goals.  
For FSU is on the war path now, and at the  
battle's end she's great:  
So fight, fight, fight, fight, to victory,  
our Seminoles from Florida State.  
(Yell) F-L-O-R-I-D-A S-T-A-T-E  
Florida State! Florida State!  
Florida State!  
(repeat song)

### FLORIDA STATE VICTORY SONG



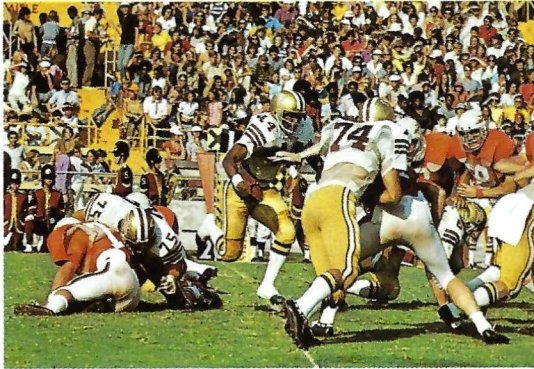
We are on the warpath tonight.  
Onward, Florida State.  
Show all the world the spirit and might  
that the Seminoles create.  
Stand up for the Garnet and Gold.  
Ever loyal we shall be.  
We are proud to shout,  
"The Warriors are out." And they will  
lead us to victory.

**GET HIGH ON SPORTS NOT DRUGS**



National Collegiate Athletic Association • Fiesta Bowl

# SUPPORT . . .



## THE SEMINOLES

### SEMINOLE BOOSTERS, INC.

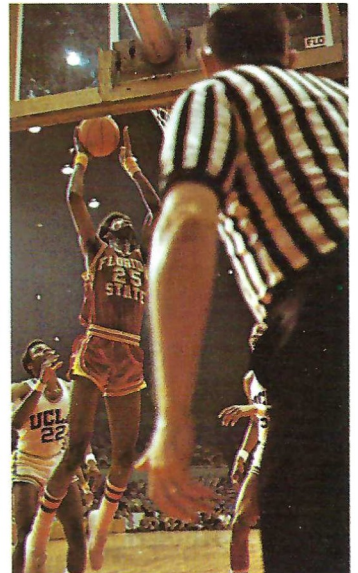
One of the most fundamental programs within any athletic department is that of providing funds to pay the educational expenses of the student-athletes participating in all sports. Through voluntary support, the Seminole Boosters, Inc. hope to provide such support.

"Now is the time for friends and alumni of Florida State to pull together," says Doyle Pope, Chairman of the Board of Directors. "The potential of the University is tremendous. Through Seminole Boosters, we hope to organize the thousands of those who are concerned with building the best athletic program in the nation."



Seminole Boosters, Inc., a private Corporation, is made up of member representatives from throughout the Southeast. In addition to Chairman Pope of Quincy, other members of the Executive Committee are Jimmy Carter, Panama City, Treasurer; Don Grant, Perry, Secretary; John Harlee, Bradenton; Theo Proctor, Jr., Tallahassee; Charles Booth, Orlando; and Harry Massey, Palm Beach.

Individuals interested in more information concerning the Seminole Boosters, Inc. should contact Executive Director Ted Ouzts, P.O. Box 1353, Tallahassee, FL 32301 or call 904/644-3484.



# KEEP YOUR OWN STATISTICS

Every football fan knows that the score doesn't always give a good picture of a game. A few statistics, like those that can be kept on this page, can make the picture clearer, show what the individual stars contribute and help to win post-game "debates." Besides, it can be fun to second guess the official scorer whose statistics will appear in tomorrow's papers. But before you start, here are some pointers on being a statistician:

1. Keep cumulative totals to be informed "up to the minute" and to simplify our figuring of team totals. Example: Jones gains 3, 6, 9, 2 yards and you write 3, 9, 18, 20 on his line.

2. Be satisfied if you come within 10-15 yards of the official team totals. Individual judgments as to the line of scrimmage can make quite a difference in the totals.

3. Remember that it takes 10 yards to make a first down—that last inch can be as important as a yard and must be scored as one. Wait until the official places the ball and then go by the official down/yard marker on the sidelines.

4. Be sure to credit first downs on scoring plays originating from lines of scrimmage beyond the 10-yard line.

5. On plays involving penalties measured from the point of the foul, credit the rusher or pass receiver with yardage only to the point of the infraction.

6. Charge gains and losses on fumbles to the player who, in your judgment, contributed most to the error.

7. Don't score two-point conversion attempts after touchdowns as rushing or passing plays.

Florida State

SCORING BY PERIODS					RUSHING (Use cumulative yardage, circle scoring plays)									
1	2	3	4	F										
TD SCORERS PAT														
					PASSING (Use cumulative yardage for completions; – for incomplete; x for interceptions)									
					RECEIVING (Use cumulative yardage, circle scoring plays)									
FIRST DOWNS														
RUSH		PASS		PEN										

## Take A Vacation From Inflation . . .

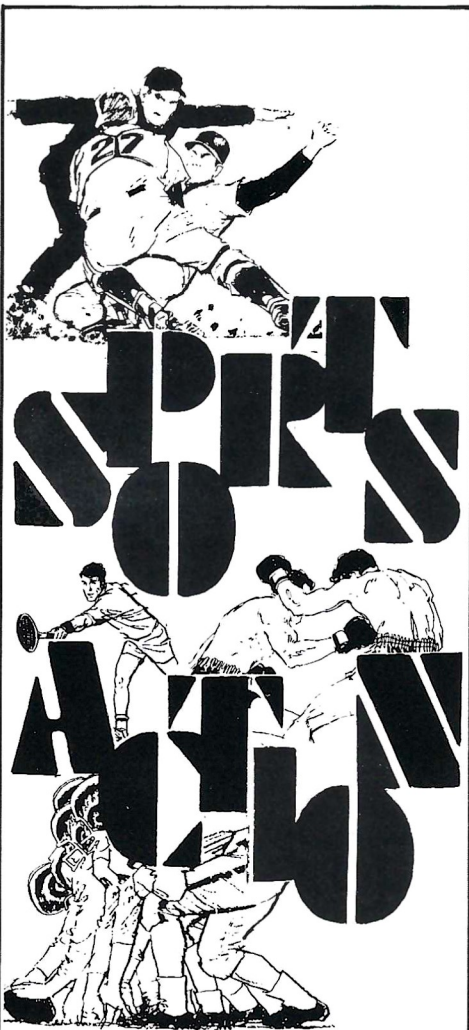
Shop Your Friendly . . .



*The Smart Place To Go . . . For Good Things To Eat*

Florida

SCORING BY PERIODS					RUSHING (Use cumulative yardage, circle scoring plays)									
1	2	3	4	F										
TD SCORERS PAT														
					PASSING (Use cumulative yardage for completions; – for incomplete; x for interceptions)									
					RECEIVING (Use cumulative yardage, circle scoring plays)									
FIRST DOWNS														
RUSH		PASS		PEN										



## Complete sports coverage everyday

The Tampa Tribune's fine team of sports reporters led by editor Tom McEwen and assistant editor Jim Selman bring you complete coverage of all sports.

Read the Sports pages of

# THE TAMPA TRIBUNE

## TONIGHT'S TEAMS

**Florida State  
(0-5)**

**Florida  
(4-1)**

### 1974 Schedule and Results

6 Pittsburgh	9	21 California	17
7 Colorado State	14	17 Maryland	10
9 Kansas	40	29 Mississippi St.	13
17 Baylor	21	24 LSU	14
7 Alabama	8	10 Vanderbilt	24
Oct. 19 Florida		Oct. 19 at Florida State	
Oct. 26 at Auburn		Oct. 26 Duke	
Nov. 2 at Memphis State		Nov. 2 Auburn	
Nov. 8 at Miami		Nov. 9 Georgia (at Jax)	
Nov. 16 Virginia Tech		Nov. 16 at Kentucky	
Nov. 23 Houston		Nov. 30 Miami	

### 1974 Stats

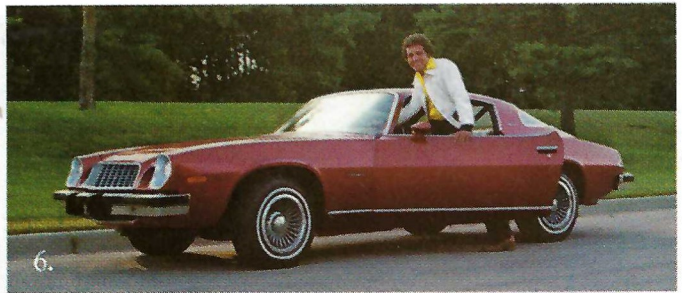
FSU	Opp.		Florida	Opp.
79	91	<b>First Downs</b>	77	88
208	259	<b>Rushing Attempts</b>	276	242
825	1125	<b>Rushing Yardage</b>	1129	835
116-66-3	81-40-4	<b>Passes</b>	66-26-2	130-61-8
661	624	<b>Passing Yardage</b>	452	800
1486	1749	<b>Total Offense</b>	1581	1635
27-35.0	18-34.6	<b>Punting</b>	35-38.0	32-37.6
17-10	17-11	<b>Fumbles-Lost</b>	21-7	21-13

### Individual Statistics Florida State

Rushing	Att.	Net	Avg.	TD		
Larry Key	79	338	4.3	2		
Rudy Thomas	49	242	4.9	0		
Passing	Att.	Comp.	Pct.	Int.	Yds.	TD
Ron Coppess	97	56	57.7	2	675	2
Jimmy Black	13	7	53.8	1	63	0
Receiving	No.	Yds.	TD			
Joe Goldsmith	20	221	1			
Mike Shumann	20	193	0			
Rudy Thomas	11	96	1			
Punting	No.	Yds.	Avg.			
Joe Downey	27	946	35.0			

### Florida

Rushing	Att.	Yds.	Avg.	TD		
Tony Green	54	363	6.7	3		
Jimmy DuBose	47	185	3.9	1		
James Richards	24	135	5.6	1		
Passing	Att.	Comp.	Pct.	Int.	Yds.	TD
Jimmy Fisher	30	18	60.0	1	332	4
Don Gaffney	35	8	22.9	0	120	1
Receiving	No.	Yds.	TD			
Lee McGriff	17	349	4			
Alvis Darby	4	45	0			
Punting	No.	Yds.	Avg.			
Buster Morrison	35	1330	38.0			



## 1975 CHEVROLET. ALL KINDS OF CARS FOR ALL KINDS OF PEOPLE.

Small Size. Mid Size. Full Size. Whatever your needs, Chevrolet builds a car for you.

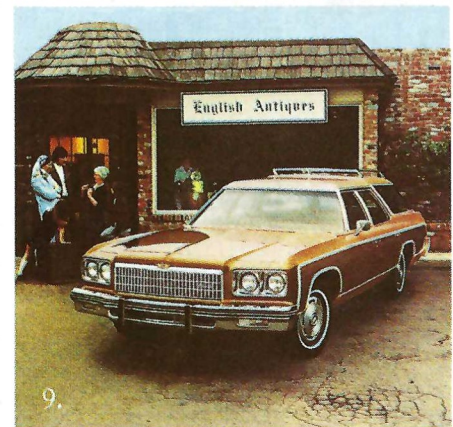
And in 1975, every Chevrolet offers engine improvements designed to help deliver smooth, responsive, efficient performance.

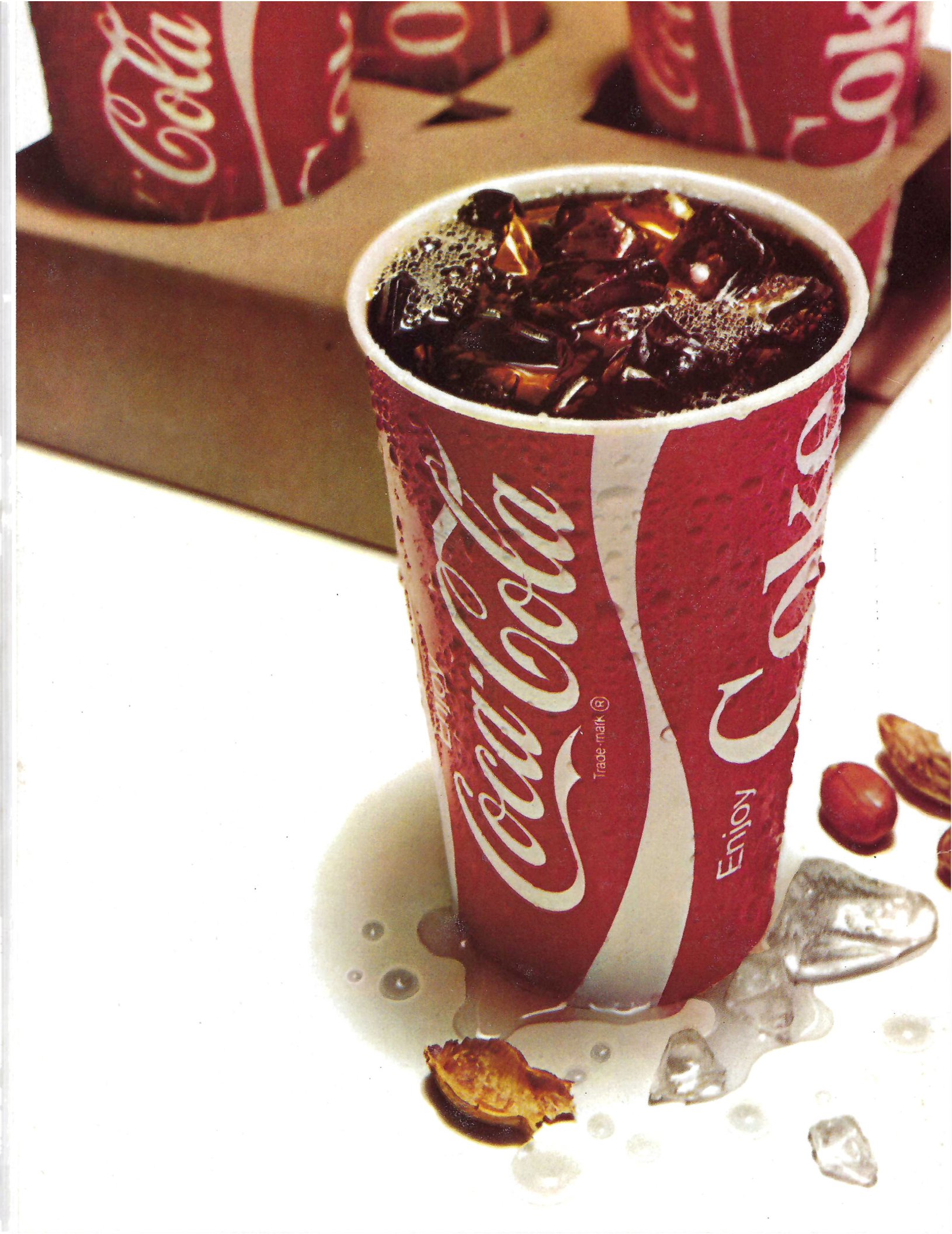
This year take a special look at our two new Chevy models: The sporty little Monza 2+2 and the luxurious Nova LN.

Here's just a part of our Chevy roster:

1. Nova LN Sedan.
2. Monza 2+2.
3. Impala Custom Coupe.
4. Chevelle Malibu Classic Landau Coupe.
5. Monte Carlo Landau.
6. Camaro Type LT Coupe.
7. Corvette.
8. Vega Hatchback GT.
9. Caprice Estate Wagon.
10. Caprice Classic Sport Sedan.

**CHEVROLET MAKES SENSE FOR AMERICA**





*Coca*

o

Cola

*Coca-Cola*

Trade-mark ®

Enjoy

*Cola*



# FLORIDA STATE

## Offense

WR	82	Mike Allen Sr., 6-4, 178
LT	69	Bruce Harrison So., 6-2, 222
LG	64	Jeff Gardner Jr., 5-11, 214
C	72	Smokey Ragins Jr., 6-1, 245
RG	62	Bob Jones Sr., 6-4, 233
RT	65	Billy McPhillips So., 6-2, 222
TE	21	Joe Goldsmith Sr., 6-1, 180
QB	17	Ron Coppess Jr., 6-3, 215
RB	33	Rudy Thomas So., 5-11, 193
RB	44	Larry Key Fr., 5-9, 181
WR	20	Mike Shumann So., 6-0, 163

## Defense

LE	87	Rudy Maloy So., 6-4, 208
LT	76	Phil Jones So., 6-2, 244
LB	53	Brian Schmidt So., 6-1, 220
NG	63	Jon Thames So., 5-11, 225
LB	90	Bert Cooper Sr., 6-1, 236
RT	76	Greg Johnson Jr., 6-4, 235
RE	73	Randy Coffield Jr., 6-3, 218
LC	40	Robert Jackson Fr., 5-10, 164
RC	46	Lee Nelson So., 5-10, 183
SS	51	Aaron Carter Fr., 5-9, 180
FS	42	Joe Camps So., 6-2, 186

# FLORIDA

## Offense

SE	23	Lee McGriff Sr., 5-9, 169
QT	63	Mike Williams Jr., 6-4, 244
QG	64	Burton Lawless Sr., 6-4, 251
C	56	Jimmy Kynes Sr., 6-0, 220
RG	77	Mike Stanfield Sr., 6-2, 251
RT	76	Paul Parker Sr., 6-4, 238
TE	88	Alan Darby Jr., 6-6, 219
QB	8	Don Gaffney Jr., 6-0, 174
LHB	33	Tony Green Fr., 5-9, 180
RHB	39	Larry Brinson So., 6-0, 202
FB	35	Jimmy DuBose Jr., 6-0, 210

## Defense

LE	90	Preston Kendrick Sr., 6-2, 231
LT	67	Darrell Carpenter So., 6-3, 231
LB	55	Ralph Ortega Sr., 6-2, 231
MG	99	Sammy Green Jr., 6-2, 227
LB	43	Glenn Cameron Sr., 6-2, 229
RT	78	Clint Griffith Sr., 6-6, 236
RE	52	Vernon Barber So., 5-11, 198
LC	21	Tyson Sever Sr., 5-11, 188
RC	28	Randy Talbot Sr., 6-0, 170
SAF	24	Alvin Cowans So., 6-0, 180
MON	1	Wayne Fields Jr., 6-1, 198

## Officials

Referee .....	Morris Harrison, Decatur, Ga.
Umpire .....	Robert Boylston, Atlanta, Ga.
Linesman .....	Joe Curtis, Birmingham, Ala.
Line Judge .....	Led Pasley, Tupelo, Miss.
Field Judge .....	Joe DeLany, Atlanta, Ga.
Back Judge .....	Charles Horton, Morganton, N.C.
ECO .....	Edward Cassidy, Columbus, Miss.

TALLAHASSEE COCA-COLA BOTTLING CO.

**It's the real thing. Coke.**

Trade-mark ®


"Coca-Cola" and "Coke" are registered trade-marks which identify the same product of The Coca-Cola Company.



# WE LOOK FOR A FEW GOOD MEN.



# AND WE FIND THEM.

**MARINES**   
Quality, not quantity

Call 800-423-2600, toll free, for more information. (In California, call 800-252-0241.)

# FLORIDA STATE

NO.	NAME	POS.	HT.	WT.	CLASS	HOMETOWN
1	Ahmet Askin	PK	6-2	174	Jr.	Tallahassee
3	Joe Downey	P	6-0	193	Sr.	Mobile, Ala.
11	Jimmy Everett	WR	6-3	177	Jr.	Tallahassee
14	Billy Prescott	QB	6-0	171	So.	Ft. Walton Beach
15	Garry Halfacre	P	5-11	191	So.	Cantonment
16	Jimmy Black	QB	6-0	179	So.	Merritt Island
17	Ron Coppess	QB	6-3	215	Jr.	Escondido, Calif.
19	Jack Maynard	PK	6-0	175	So.	Tallahassee
20	Mike Shumann	WR	6-0	163	So.	Tallahassee
21	Joe Goldsmith	TE	6-1	180	Sr.	Lakeland
22	Bobby McKinnon	RB	6-1	175	Jr.	Lake Worth
23	Chris Griffin	DB	5-11	168	Jr.	Tampa
24	Andy Stockton	DB	6-0	176	Jr.	St. Petersburg
27	Mike Harder	WR	6-3	183	So.	Bristol, Pa.
28	Mike Davison	RB	5-11	197	Sr.	Bradenton
29	Fred Miller	RB	6-1	207	So.	Jacksonville
30	Jeff Leggett	RB	5-11	176	So.	Miami
31	Rudy Falana	WR	5-11	165	Sr.	Largo
33	Rudy Thomas	RB	5-11	193	So.	Quincy
35	Leon Bright	RB	5-9	175	Fr.	Merritt Island
36	Jim Heggins	RB	5-11	200	Fr.	Salisbury, N.C.
37	Sylvester Triplett	RB	6-0	175	Fr.	Columbus, Ohio
39	Jeff Ridings	DB	6-0	178	So.	Marietta, Ga.
40	Robert Jackson	DB	5-10	164	Fr.	Albany, Ga.
41	Phil Cahoon	DB	5-10	182	Jr.	Mobile, Ala.
42	Joe Camps	DB	6-2	186	So.	Gainesville
44	Larry Key	RB	5-9	181	Fr.	Inverness
46	Lee Nelson	DB	5-10	183	So.	Melbourne
47	Nat Terry	DB	6-0	175	Fr.	Tampa
48	Steve Vickers	DB	5-11	167	Jr.	Tampa
49	Brooks Burroughs	NG	6-0	227	Sr.	Somerset, N.J.
50	Bill Sawyer	C	6-4	228	So.	Cordele, Ga.
51	Aaron Carter	DB	5-9	180	Fr.	Gainesville
52	Gino Bennie	C	6-2	215	Fr.	Orlando
53	Brian Schmidt	LB	6-1	220	So.	Lehigh Acres
54	Garis Shaw	NG	6-2	236	So.	Clearwater
55	Milton Wilkerson	NG	6-0	230	Fr.	Dolton, Ill.
56	John Murphy	LB	5-10	210	Sr.	Albany, Ga.
57	Steve Hanks	LB	5-11	184	So.	Orlando
59	Scott Meseroll	LB	6-1	210	Sr.	Piscataway, N.J.
60	Mike Kissner	OG	6-2	239	So.	Delray Beach
61	Wade Johnson	OG	6-2	213	So.	Valdosta, Ga.
62	Bob Jones	OG	6-4	233	Sr.	Lighthouse Point
63	Jon Thames	NG	5-11	225	So.	Gainesville
64	Jeff Gardner	OG	5-11	214	Jr.	Miami
65	Billy McPhillips	OT	6-2	222	So.	Tampa
66	Jay Caven	OG	6-4	242	So.	St. Petersburg
67	Gary Rose	DT	6-4	225	Fr.	East St. Louis, Ill.
68	Alan Risk	NG	6-2	216	So.	Miami
69	Bruce Harrison	OG	6-2	235	So.	Vero Beach
70	Vic Rivas	OT	6-2	234	So.	Miami
71	Herman Brown	OT	6-3	218	Fr.	Ft. Lauderdale
72	Smokey Ragins	OT-C	6-1	245	Jr.	Plant City
73	Randy Coffield	DE	6-3	218	Jr.	Hialeah
74	Jim Keyton	OT	6-4	240	Fr.	Thomasville, Ga.
75	Doug Dane	DT	6-5	222	So.	Ft. Lauderdale
76	Phil Jones	DT	6-2	244	So.	Miami Springs
77	Len Harvey	DT	6-4	217	So.	Tallahassee
78	Greg Johnson	DT	6-4	236	Jr.	Fruitland Park
79	Tony Falvo	OG	6-0	240	Jr.	Wexford, Pa.
80	Joe Thomas	WR	6-1	178	Sr.	Tallahassee
81	Ed Beckman	TE	6-5	210	So.	Miami
82	Mike Allen	WR	6-4	178	Sr.	Willoughby, Ohio
83	Detroit Reynolds	DE	6-1	213	So.	Tallahassee
84	Blaise Boscassy	DE	6-3	225	Fr.	St. Charles, Ill.
85	Dave Porter	DE	6-3	200	So.	St. Petersburg
86	Roger Overby	WR	6-0	175	Fr.	Tampa
87	Rudy Maloy	DE	6-4	208	So.	Frostproof
88	Danny Witcher	TE	6-2	216	Fr.	Toledo, Ohio
89	John Kilmurray	DE	6-2	208	So.	Lanoka Harbor, N.J.
90	Bert Cooper	LB	6-1	236	Sr.	Tallahassee
91	Nat Henderson	DT	6-4	235	Fr.	Albany, Ga.

## Tallahassee Democrat

### Prize Winning Sports Coverage

#### NATIONAL NEWSPAPER ASSOCIATION

- 1st — Best Sports Section, 1973
- 1st — Best Sports Section, 1972
- 1st — Best Sports Columnist, 1971
- 1st — Best Sports Section, 1970
- 3rd — Best Sports Picture, 1970

#### FLORIDA SPORTS WRITERS ASSOCIATION

- 1st — Best Sports Typography, 1973
- 1st — Best Sports Columnist, 1971
- 1st — General Writing Excellence, 1971
- 1st — General Section Excellence, 1970
- 2nd — General Writing Excellence, 1974
- 2nd — General Excellence of Section, 1974
- 2nd — Sports Section Makeup, 1974
- 2nd — Overall General Excellence, 1971

#### ASSOCIATED PRESS OF FLORIDA

- 1st—Best Sport Color Picture, 1970

## Tallahassee Democrat

# FLORIDA

NO.	NAME	POS.	HT.	WT.	CLASS	HOMETOWN
1	Wayne Fields	DB	6-1	198	Jr.	Gainesville
2	Berj Yepremian	KS	5-5	148	Fr.	Miami
3	David Posey	KS	5-10	157	So.	Boca Raton
8	Don Gaffney	QB	6-0	174	Jr.	Jacksonville
9	Buster Morrison	KS	6-1	188	Sr.	Orlando
10	Jimmy Fisher	QB	6-1	184	So.	Tampa
12	Robbie Davis	TE	6-1	198	Sr.	Savannah, Ga.
14	David Wright	QB	6-2	188	So.	Tampa
15	Mark Newman	QB	6-5	195	So.	Belle Glade
16	Howard Seal	DB	5-11	175	So.	East Islip, N.Y.
17	Thom Clifford	RB	6-2	197	Jr.	Coral Gables
18	John Williams	KS	5-11	186	Jr.	Cross City
19	Scott Schuler	WR	6-0	186	So.	Orlando
20	Robert Morgan	RB	6-1	223	So.	Pensacola
21	Tyson Sever	DB	5-11	188	Sr.	Clearwater
22	Glenn Sever	RB	5-10	181	Jr.	Clearwater
23	Derrick Gaffney	WR	6-0	174	So.	Jacksonville
24	Alvin Cowans	DB	6-0	180	So.	Alexandria, Va.
25	Lee McGriff	WR	5-9	169	Sr.	Tampa
27	Henry Davis	RB	5-10	193	So.	Panama City
28	Randy Talbot	DB	6-0	170	Sr.	Coral Gables
29	Robby Ball	DB	6-2	185	Jr.	Eustis
30	Earl Carr	RB	6-0	208	Fr.	Orlando
31	James Richards	RB	5-11	211	Jr.	Marietta, Ga.
32	Andy Summers	DB	5-11	180	Sr.	Bristol
33	Tony Green	RB	5-9	180	Fr.	Sarasota
35	Jimmy DuBose	RB	6-0	210	Jr.	Sarasota
37	Ron Enclade	RB	6-3	229	Fr.	Ft. Walton Beach
38	Alvin Butler	DB	5-11	180	Sr.	Gainesville
39	Larry Brinson	RB	6-0	202	So.	Miami
41	Andrew Wade	RB	5-9	167	Jr.	Orlando
42	Don Dickey	DB	6-4	176	So.	Gainesville
43	Glenn Cameron	LB	6-2	229	Sr.	Coral Gables
44	Willie Wilder	RB	6-1	183	Fr.	Haines City
45	Bobby Swanz	LB	6-0	205	Fr.	Tampa
47	Alvin Parrish	DB	6-1	175	Fr.	Palm Beach
48	Joe Allen	DE	6-1	221	Jr.	Troy, Ohio
50	Kevin Logan	LB	6-0	203	Fr.	Delray Beach
51	Robbie Moore	C	6-3	219	So.	Kingsport, Tenn.
52	Vernon Barber	DE	5-11	198	So.	Lawtey
53	Charles Williams	LB	6-1	215	Fr.	Jacksonville
55	Ralph Ortega	LB	6-2	231	Sr.	Coral Gables
56	Jimmy Kynes	C	6-0	220	Sr.	Tampa
57	Pat Floyd	LB	6-0	198	Jr.	Apalachicola
58	Melvin Flournoy	LB	6-1	218	Fr.	Gainesville
59	Mark Maynor	LB	6-2	203	So.	Belle Glade
60	Larry Cline	C	6-1	205	Fr.	Montgomery, Ala.
61	Gerald Loper	OG	6-3	238	Jr.	Eustis
63	Mike Williams	OT	6-4	244	Jr.	Orlando
64	Burton Lawless	OG	6-4	251	Sr.	Punta Gorda
65	Robert Adkins	DE	6-0	215	So.	Orlando
66	Scott Hutchinson	DT	6-3	240	Fr.	Winter Park
67	Darrell Carpenter	DT	6-3	231	So.	Jacksonville
68	Gary Chotiner	OG	6-1	229	So.	Pompano Beach
69	Dennis Forrester	DT	6-3	233	Fr.	Alachua
71	Mike Smith	DE	6-4	224	Jr.	Miami
72	Dan Grebe	DE	6-6	224	So.	Plant City
74	Bruce Mulliniks	OT	6-5	260	So.	Winter Haven
76	Paul Parker	OT	6-4	238	Sr.	Clearwater
77	Mike Stanfield	OG	6-2	251	Sr.	Pensacola
78	Clint Griffith	DT	6-6	236	Sr.	Baker
79	Joe Wunderly	OT	6-3	226	Sr.	Gainesville
80	Tony Anderson	TE	6-2	198	Jr.	Bristol
85	Keith Tribble	TE	6-2	224	So.	Miami
88	Alvis Darby	TE	6-6	219	Jr.	Miami
89	Wes Chandler	WR	6-0	166	Fr.	New Smyrna Beach
90	Preston Kendrick	DE	6-2	231	Sr.	Miami
97	Fred Wildman	DT	6-2	237	Jr.	Knoxville, Tenn.
98	Joe Reynolds	LB	6-1	201	So.	Jacksonville Beach
99	Sammy Green	MG	6-2	227	Jr.	Ft. Meade

# FLORIDA STATE

## Offense

WR	82	Mike Allen
	11	Jimmy Everett
LT	69	Bruce Harrison
	60	Mike Kissner
LG	64	Jeff Gardner
	61	Wade Johnson
C	72	Smokey Ragins
	50	Bill Sawyer
RG	62	Bob Jones
	66	Jay Caven
RT	65	Billy McPhillips
	50	Bill Sawyer
TE	21	Joe Goldsmith
	81	Ed Beckman
QB	17	Ron Coppess
	16	Jimmy Black
RB	33	Rudy Thomas
	35	Leon Bright
RB	44	Larry Key
	29	Fred Miller
WR	20	Mike Shumann
	80	Joe Thomas

## Defense

LE	87	Rudy Maloy
	85	Dave Porter
LT	76	Phil Jones
	75	Doug Dane
LB	53	Brian Schmidt
	56	John Murphy
NG	63	Jon Thames
	49	Brooks Burroughs
LB	90	Bert Cooper
	59	Scott Messroll
RT	78	Greg Johnson
	67	Gary Rose
RE	73	Randy Coffield
	83	Detroit Reynolds
LC	40	Robert Jackson
	23	Chris Griffin
RC	46	Lee Nelson
	23	Chris Griffin
SS	51	Aaron Carter
	24	Andy Stockton
FS	42	Joe Camps
	41	Phil Cahoon

**Punts** — 3 Joe Downey; **Placements** — 1 Ahmet Askin; **Kickoffs** — 1 Ahmet Askin; **KO Returns** — 35 Leon Bright, 40 Robert Jackson, 47 Nat Terry; **Punt Returns** — 40 Robert Jackson, 47 Nat Terry.

# FLORIDA

## Offense

SE	23	Lee McGriff
	89	Wes Chandler
QT	63	Mike Williams
	79	Joe Wunderly
QG	64	Burton Lawless
	70	Joe Pupello
C	56	Jimmy Kynes
	51	Robbie Moore
RG	77	Mike Stanfield
	61	Gerald Loper
RT	76	Paul Parker
	74	Bruce Mullinkas
TE	88	Alan Darby
	85	Keith Tribble
QB	8	Don Gaffney
	10	Jimmy Fisher
LHB	33	Tony Green
	27	Henry Davis
RHB	39	Larry Brinson
	31	James Richards
FB	35	Jimmy DuBose
	20	Robert Morgan

## Defense

LE	90	Preston Kendrick
	65	Robert Adkins
LT	67	Darrell Carpenter
	66	Scott Hutchinson
LB	55	Ralph Ortega
	57	Pat Floyd
MG	99	Sammy Green
	58	Melvin Flournoy
LB	43	Glenn Cameron
	45	Bobby Swanz
RT	78	Clint Griffith
	97	Fred Wildman
RE	52	Vernon Barber
	48	Joe Allen
LC	21	Tyson Sever
	16	Howard Seal
RC	28	Randy Talbot
	38	Alvin Butler
SAF	24	Alvin Cowans
	29	Robby Ball
MON	1	Wayne Fields
	32	Andy Summers

**Punts** — 9 Buster Morrison; **Placements** — 3 David Posey; **Kickoffs** — 18 John Williams.

for in depth coverage  
of today's game . . . see tomorrow's

# Tallahassee Democrat

featuring Florida's prize winningest sports editor . . . Bill McGroth



**When you celebrate today's victory,**



***Treat yourself to tender, tasty...***

# **BEEF**

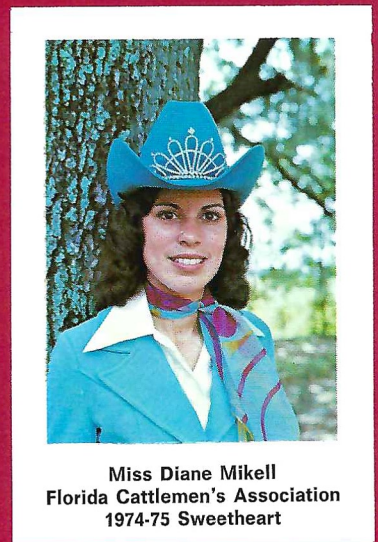
***As Delicious as it is Nutritious!***

---

**FLORIDA BEEF COUNCIL**

---

A Committee of The Florida Cattlemen's Association



Miss Diane Mikell  
Florida Cattlemen's Association  
1974-75 Sweetheart



Touchdown or Field Goal



Helping the Runner, or Interlocked Interference



Ball Ready for Play



Grasping Face Mask



Delay of Game



Roughing the Kicker



Ball Dead; If Hand is Moved from Side to Side: Touchback



Illegal Procedure or Position

# RAGANS & ROBERTS INC.

Area's Largest

Goodyear & Fina Oil Dealer

5 Locations To Serve You



Clipping



Illegally Passing or Handling Ball Forward

609  
W. Tennessee St.  
224-8156

2065  
W. Pensacola St.  
576-9945

826  
Lake Bradford Rd.  
576-3908



Offside (Infraction of scrimmage or free kick formation)

2501  
N. Monroe St.  
385-3615

1031  
S. Magnolia Dr.  
878-4582



Safety



First Down



Illegal Shift



Illegal Motion

More People Ride on  
Goodyear Tires  
Than Any Other



Loss of Down



Personal Foul



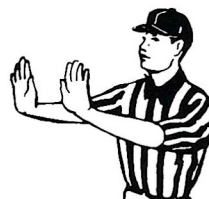
Ineligible Receiver Down Field on Pass



Ball Illegally Touched, Kicked, or Batted



Time out; Referee's Discretionary or Excess Time Out followed with tapping hands on chest.



Forward Pass or Kick Catching Interference



Start the Clock



Intentional Grounding

# Football Terminology

**Audible** — A vocal signal by the quarterback changing the play called in the huddle.

**Blitz** — Commitment by defensive backs and/or linebackers to rush the passer.

**Blocking** — Legally hindering the progress of an opponent by contacting him with any part of the blocker's body.

**Bomb** — A long pass attempt for a touchdown.

**Buttonhook** — A pass pattern in which the receiver goes downfield and U-turns back sharply to receive the ball.

**Clipping** — Running or diving into the back of an opponent, or throwing the body across the back of the leg or legs of an opponent other than the ball carrier.

**Corner Back** — Defensive back who usually lines up across from wide receiver.

**Dive-Tackle Play** — A quick-handoff running play over tackle.

**Draw-Play** — Quarterback drops back as if to pass but instead hands ball to running back, after quarterback's teammates have assumed pass-blocking positions.

**Fair Catch** — The opportunity for a player of the receiving team to catch a kicked ball that has crossed the scrimmage line without being tackled or blocked by an opponent, after signaling his intention by completely extending one arm above his head.

**Flanker** — Offensive back deployed as a wide receiver. Must line up one yard behind line of scrimmage.

**Free Safety** — Same as weak safety.

**Fullback** — A running back who usually lines up behind strong side of the offensive line.

**Kickoff** — A free kick with which each half is opened, and which is employed also following each try-for-point or Field Goal. A kickoff must be either a Placekick or a Dropkick.

**Lateral Pass** — A live ball thrown toward or parallel with the passer's own goal line.

**Linebacker** — A defensive player operating immediately behind his line where he can either aid linemen in stopping a running play or cover an opponent's receiver if a pass develops.

**Look-In Pass** — Receiver runs straight pattern and looks for the ball immediately over his inside shoulder.

**Man-to-Man Coverage** — Pass defense plan wherein defensive backs cover receivers wherever they go, rather than field areas.

**Middle Linebacker** — So designated because he usually lines up across from the opposing center.

**Mike** — Nickname for middle linebacker.

**Monster** — Same as strong safety.

**Neutral Zone** — The space between the scrimmage lines of the offense and defense. Approximately 11 inches.

**Nose Guard** — Defensive lineman who lines up directly in front of opposing center on line of scrimmage.

**Onside Kick** — A kickoff that travels 10 yards or more is anybody's ball. The so-called "onside kick" is an effort by the kicking team to kick the ball barely beyond 10 yards and recover it before the receiving team can do so.

**Pocket** — Area of protection for the passer formed by blockers. Passer drops straight back from scrimmage behind the blocking shield into what resembles a "cup" or pocket.

**Post** — A pass pattern in which the receiver goes downfield to pre-determined depth then cuts at an angle toward the goalposts.

**Prevent Defense** — A strategem replacing linebackers with additional backfield pass defenders, sacrificing strength against short gainers in order to prevent a long pass completion. Most often employed by a team protecting a lead late in either half.

**Pulling Guard** — Guard who pulls out behind scrimmage line for a trap block or to lead sweep blocking for ball carrier.

**Reverse Play** — A running play with backfield action suggesting one direction while ball carrier goes in opposite direction.

**Roll-Out Pass** — Quarterback runs laterally with blockers before throwing, instead of dropping straight back to pass.

**Running Back** — Member of the offensive backfield who primarily carries the ball. Also used as a receiver and blocker. Can be either tailback or fullback.

**Sam** — Nickname for strong linebacker.

**Screen Pass** — Pass to a receiver behind a wall of blockers, who have permitted defenders to penetrate.

**Scrimmage Line** — The yard line (marked or unmarked) that passes through point of the ball nearest a team's own goal line.

**Slot Back** — Back stationed in slot between interior linemen and end. Must be one yard behind the line of scrimmage.

**Split End** — Offensive lineman deployed as a wide receiver. Must line up on line of scrimmage.

**Strong Linebacker** — So designated because he usually lines up across from the strong side of the offensive line.

**Strong Guard** — Offensive guard playing on the strong side of the line.

**Strong Safety** — Defensive back who usually lines up deeper than corner backs and across from strong side of offensive line.

**Strong Side** — The side of the offensive line where the tight end lines up.

**Strong Tackle** — Offensive tackle playing on the strong side of the line.

**Stunting** — Defensive players changing positions as the ball is snapped, to confuse offensive strategy.

**Sweep** — End run with wave of blockers leading the ball carrier.

**Tailback** — A running back who usually lines up behind the weak side of the line.

**Tight End** — Offensive end who lines up in close formation (as opposed to Split End's wide set) where he can either block for a ball carrier or be employed as a pass receiver.

**Trap Block** — Tactic whereby offensive lineman pulls out of position at the snap allowing man he would usually block to come through line and be blocked (or "trapped") by another blocker.

**Unbalanced Line** — Offensive line deployment whereby more blocking linemen are lined up on one side of the center than on the other.

**Weak Guard** — Offensive guard playing on the weak side of the line.

**Weak Linebacker** — So designated because he usually lines up across from the weak side of the Offensive line.

**Weak Safety** — Defensive back who usually lines up deeper than corner backs and across from weak side of offensive line.

**Wide Receiver** — A lineman and/or a back who is set wide for pass receiving purposes. Also called Split End, Flanker or Wideout.

**Zone Coverage** — Plan of pass defense wherein areas are covered rather than individual receivers. Opposite of Man-To-Man.

Textbooks  
\*  
Art and  
School Supplies

\*  
**FSU**

Sweatshirts  
T Shirts  
Glassware  
Mugs

\*  
**Seminole  
Uprising**



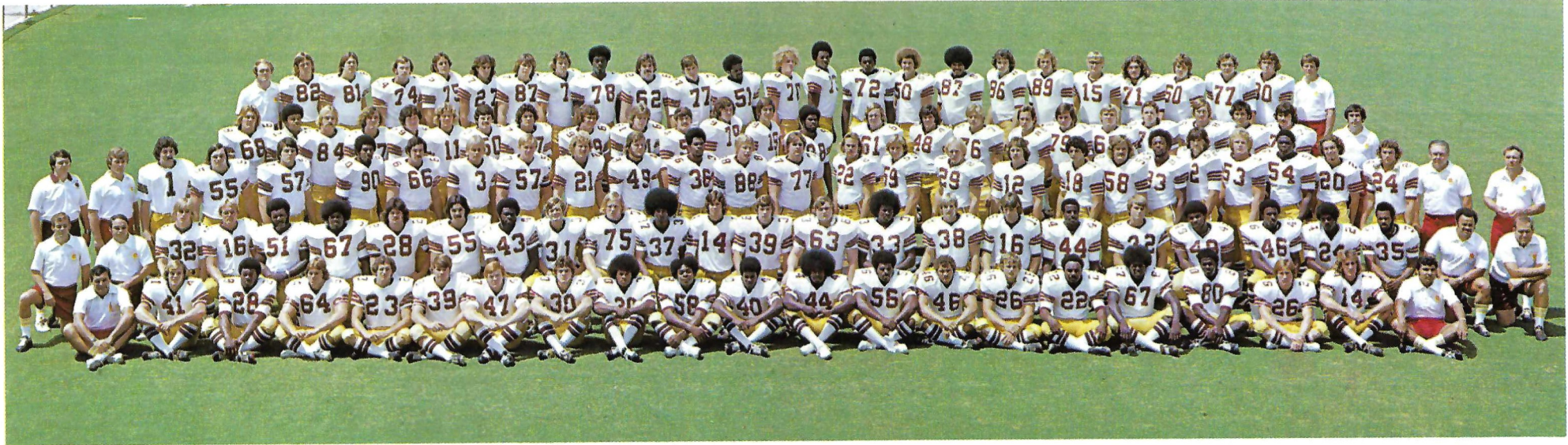
SUPPORTED BY



WHEN YOU THINK OF BOOKS, THINK OF BILL'S

107 SOUTH COPELAND ST.  
TALLAHASSEE-FLA. 32304

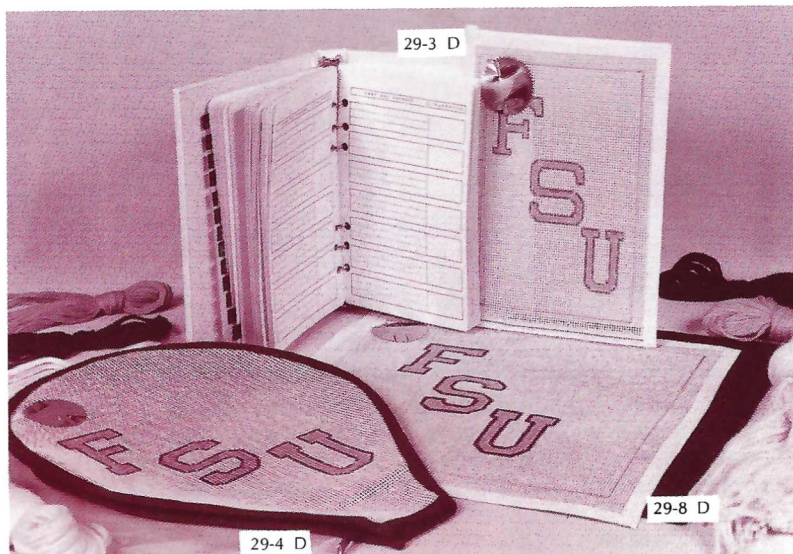
# 1974 SEMINOLES



**FRONT ROW** (Left to Right)—Head Coach Darrell Mudra, Cahoon, Corner, Gardner, Griffin, Halfacre, Joyner, Leggett, Bright, Carter, R. Jackson, Murphy, Nelson, Holley, Turner, H. Brown, Dennison, Will, Sekul, Pete Rodriguez. **SECOND ROW**—Don Pollard, Ed Feely, Barnes, Black, Burroughs, Cheeseborough, Davison, Falvo, Humes, Kaiser, Kettman, Petrillo, Prescott, Ridings, Thames, R. Thomas, Vickers, Crosby, Heggins, Overby, Wilkerson, Kincaid, Falana, J. Thomas, Cal Jones, Frank DeBord. **THIRD ROW**—Bill Baggett, Sam Elliott, Askin, Bibler, Blythe, Cooper, Cunningham, Downey, Galen, Goldsmith, D. Hanks, Horton, Mercer, Pavlovich, McKinnon, Meseroll, Miller, O'Leary, Orlando, Pounds, Reynolds, Rogozinski, Schmidt, Shaw, Shumann, Stockton, Bob Harbison, Gene McDowell. **FOURTH ROW**—Brodzik, Camps, Coffield, Coppess, Corcoran, Everett, Fucarino, Greene, B. Harrison, Holcomb, Falkenstein, Keyton, Witcher, W. Johnson, L. Jones, P. Jones, Kilmurray, Kissner, McPhillips, Pitt, Porter, Risk, Rivas, Mike Pope. **FIFTH ROW**—Larry Pendleton, Allen, Beckman, Caven, Dane, Harder, Harmeling, Harvey, G. Johnson, B. Jones, Boscacay, Harris, Henderson, Rose, Spotts, Maloy, Marshall, McDougal, Prior, Rushing, Sawyer, Slagle, Tuten, Dan Henning.



# Seminole Gift Shopper:

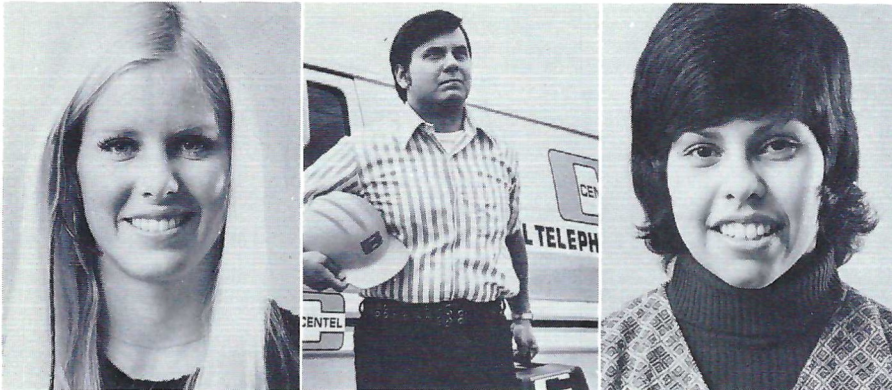


- 26-1 D MEN'S DOUBLE KNIT BLAZERS**  
 Handsomely styled in 100% polyester. Available in garnet or gold; Regular 36-46; Short 36-42, 44, 46; Long 38-46 ..... **\$81.00**
- 26-2 D** Also available in sizes 48, 50, 52, and all extra long sizes **\$87.00**
- 26-3 D WOMEN'S DOUBLE KNIT BLAZERS** ..... **\$70.00**  
 Handsomely styled in 100% polyester. Available in garnet or gold. Sizes 8-20. Even sizes only.
- 09-1 D DELUXE BLAZER EMBLEMS** ..... **\$12.50**  
 Imported from India. Hand-embroidered with silver and gold thread. Tie-tac back allows for easy attachment or removal from any blazer pocket. FSU seal—gold lettering on garnet background, gold border.
- 13-1 D ARC GOLF BALLS** ..... **\$13.95**  
 Conform to all USGA specifications. FSU seal in garnet. Box of 12.
- 21-1 D SET OF THREE LUGGAGE TAGS** ..... **\$ 6.75**  
 Leather straps. Guaranteed indestructible plexiglass. Striking gold FSU logo displayed on one side. Three lines of personalization stamped in gold on reverse. One name and address per set.
- 21-2 D** Also available in set of six ..... **\$11.00**
- 29-3 D ADDRESS BOOK, NEEDLEPOINT COVER INSET** ..... **\$19.50**  
 Complete kit includes persian yarn, needles, FSU logo, instructions, hand-painted on canvas, leatherette book cover with alphabetical address index and looseleaf address pages. Kit includes everything needed for at home finishing. FSU garnet and gold on white.
- 29-4 D ZIPPERED TENNIS RACQUET COVER** ..... **\$21.50**  
 Complete kit includes persian yarn, needles, FSU logo, instructions, hand-painted on canvas, canvas fabric backed, completely zips apart. FSU garnet and gold on white.

- 29-8 D SQUARE PILLOW** ..... **\$17.85**  
 Kit includes persian yarn, needles, FSU logo, hand-painted on canvas, backing fabric and instructions for complete at home finishing. Completed pillow is 10" X 10". FSU garnet and gold on white.
- 01-7 D 8" EXECUTIVE ASHTRAY** ..... **\$10.45**  
 Heavy glass. Rich and distinctive. Adds to any decorative scheme. Great for your office or den. FSU seal appears on bottom in silver.
- 07-1 D FSU TIE** ..... **\$ 8.25**  
 Striking garnet tie with letters FSU in gold. 4" width.
- 12-1 D PLASTIC TUMBLERS** ..... **\$20.75**  
 12 oz. Clear styrene imprinted with FSU; 10 sleeves of 20 glasses each, case of 200. Great for Seminole parties and get-togethers.
- 03-5 D SILVER DEPOSIT CRYSTAL CANDY DISH** ..... **\$17.00**  
 Sterling silver, non-tarnish, rhodium plated finish with FSU logo.
- 03-1 D SILVER DEPOSIT CRYSTAL 12 OZ. BEVERAGE GLASSES** ..... **\$28.55**  
 Set of 4. Sterling silver, non-tarnish, rhodium plated finish with FSU logo.
- 03-2 D SILVER DEPOSIT CRYSTAL DOUBLE OLD FASHIONED GLASSES** ..... **\$28.55**  
 Set of 4. Sterling silver, non-tarnish, rhodium plated finish with FSU logo.
- 03-6 D SILVER DEPOSIT CRYSTAL 32 OZ. BRANDY INHALER** ..... **\$15.75**  
 Sterling silver, non-tarnish, rhodium plated finish with FSU logo.

Now is the time to start thinking of Christmas gifts. These items should be ideal for this occasion and birthdays or other special times. This merchandise is available through the FSU Alumni Association, 114 Longmire Alumni Building, Tallahassee, Florida, 32306, telephone number (904) 644-4064 or 644-4065. Upon request an order form will be sent to you.

In a world filled with machines and computers, there are still some jobs that let you work with people.



If you find satisfaction in helping people, there could be a place for you at Centel. As an operator. An office worker. Or in one of many other positions with unlimited career potential.

Whatever you're looking for, we think you'll find it at Centel. A well-paying job. A growth job. A challenging job. And best of all, a people job. *An Equal Opportunity Employer*



CENTRAL TELEPHONE COMPANY OF FLORIDA



You're Always A Winner at



Industrial National Bank

2111 N. Monroe Tallahassee, Fla.

"Between the Malls" 385-1111

We're Here on Your Account!

## STADIUM INFORMATION

**REST ROOMS** are located on concourse and ground levels of both the east and west stands.

**FIRST AID** station is located at the southwest corner of the stadium opposite gate five. A registered nurse is on duty at all times.

**PUBLIC TELEPHONES** are located on the ground levels of the east and west stands.

**PUBLIC ADDRESS** will make special announcements in cases of emergency only.

**DOCTORS** receiving calls will be paged by number.

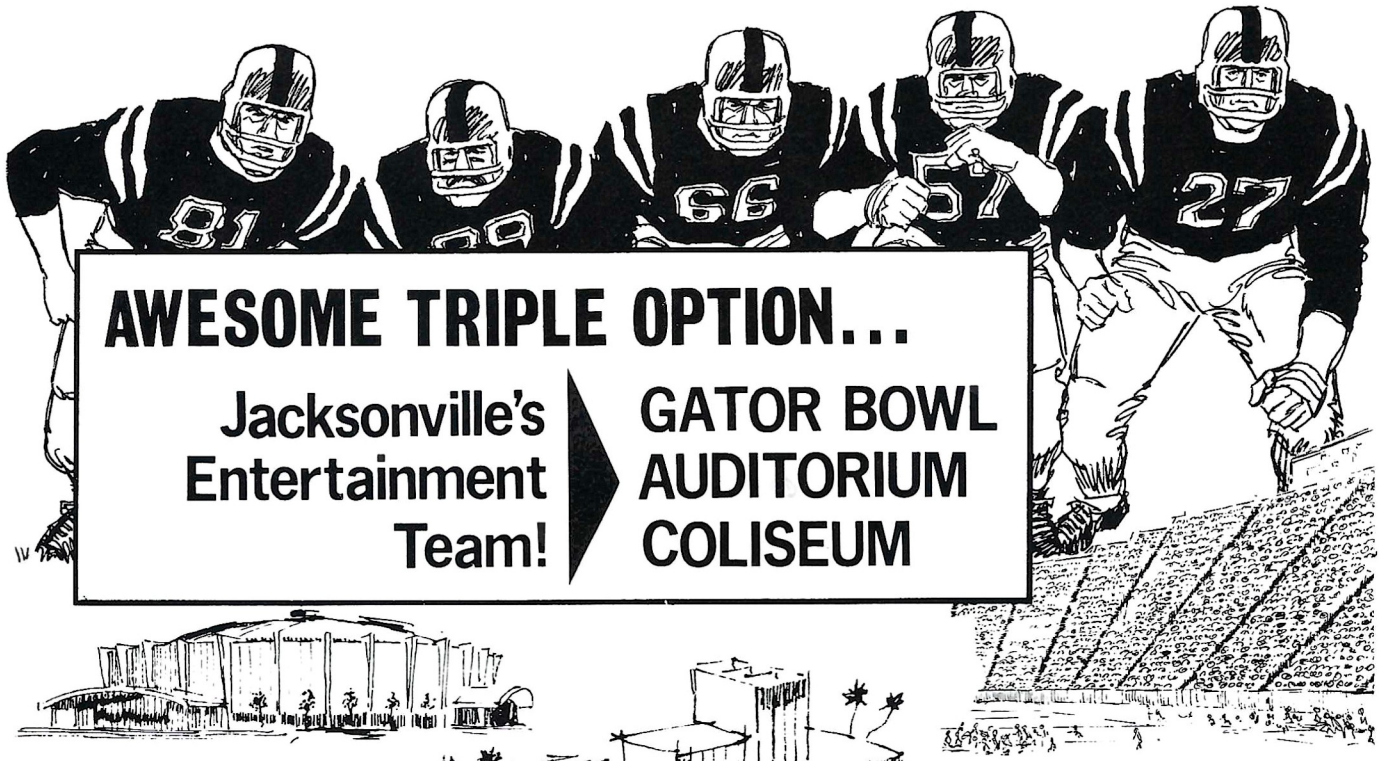
**LOST AND FOUND** items may be turned in and claimed at the ticket-booth at gate three under the west stands by the press box elevator.

**ALCOHOLIC BEVERAGES** are prohibited. Your cooperation is appreciated.

**FIELD REGULATIONS** prohibit unauthorized persons on the field during or after the game. Please leave the Stadium by the ramp and section exits.

**REFRESHMENTS** are available in the stands and at locations on the concourse and ground levels of the east and west stands.

Please pay no more than established prices.



# AWESOME TRIPLE OPTION...

**Jacksonville's  
Entertainment  
Team!**



**GATOR BOWL  
AUDITORIUM  
COLISEUM**

## COLISEUM

### SEPTEMBER

- 18-22 Disney on Parade
- 24 TV Closed Circuit  
Mohammed Ali fight
- 27-29 Shrine Circus

### OCTOBER

- 4 Rock Show — WAR
- 5 Country Western
- 16-26 Greater Jacksonville Fair

### NOVEMBER

- 1 Country Western Show
- 2 Rock Show — TRAFFIC
- 29 Basketball

### DECEMBER

- 2 Basketball
- 6 Basketball — J.U. vs. Univ. of Fla.
- 7 WQIK Country Western
- 9 Basketball — J.U. vs. Oklahoma
- 14 Rock Concert
- 15 Country Music
- 16 Basketball — J.U. vs. So. Cal. State
- 18 Country Western Music
- 25 Basketball
- 26-27 Gator Bowl Basketball Tourney
- 28 Rock Concert — Black Oak  
Arkansas

### JANUARY

- 4 Basketball — J.U. vs. Wisconsin
- 6 Basketball — J.U. vs. Geo. Southern
- 10 Basketball — J.U.  
Bethune Cookman Tourney
- 11 Basketball
- 13 Basketball — J.U. vs. Nebraska
- 15 Basketball

- 17 Lipizzan Stallion Show
- 22 Basketball — J.U. vs. Hustra
- 24-26 Custom Auto Show
- 29 Basketball — J.U. vs. Richmond
- 30-31 Ringling Brothers Circus

### FEBRUARY

- 1 - 2 Ringling Brothers Circus
- 13 Boat Show
- 23 Guy Lombardo

### MARCH

- 6 - 8 State High School Basketball
- 10 Globetrotters
- 11-16 Holiday on Ice

## AUDITORIUM

### SEPTEMBER

- 20-22 Ceramic Show

### OCTOBER

- 1 Mary Costa
- 18 RARE EARTH — Play

### NOVEMBER

- 7 Olivia DeHaviland
- 8 The Letterman

### DECEMBER

- 21-22 Nutcracker Suite

### JANUARY

- 4 WQIK — Country Western  
Charlie Pride
- 11 SEE SAW — Play

## GATOR BOWL

### SEPTEMBER

- 18 PORTLAND vs. SHARKS 8:00 PM
- 20 White vs. Jackson 7:30 PM
- 21 Ribault vs. Stanton 7:30 PM
- 27 Paxon vs. Wolfson 7:30 PM
- 28 Sandalwood vs. Jackson 7:30 PM

### OCTOBER

- 4 Lee vs. White 7:30 PM
- 5 Raines vs. Jackson 7:30 PM
- 9 ORLANDO vs. SHARKS 8:00 PM
- 11 Wolfson vs. Raines 7:30 PM
- 12 BETHUNE COOKMAN vs.  
ALBANY STATE 8:00 PM
- 16-26 GREATER  
JACKSONVILLE FAIR
- 30 DETROIT vs. SHARKS 8:00 PM
- 31 Stanton vs. Jackson 7:30 PM

### NOVEMBER

- 1 Ribault vs. Lee 7:30 PM
- 2 Lake City vs. Wolfson 7:30 PM
- 9 GEORGIA vs. FLORIDA 2:30 PM
- 9 Fletcher vs. Raines 7:30 PM
- 13 CHICAGO vs. SHARKS 8:00 PM
- 14 Sandalwood vs. Wolfson 7:30 PM
- 15 White vs. Stanton 7:30 PM
- 16 Ribault vs. Raines 7:30 PM
- 28 THANKSGIVING DAY  
Wolfson vs. Englewood 10:30 AM  
Lee vs. Jackson 2:00 PM  
Stanton vs. Raines 7:30 PM
- 30 WFL PLAY-OFF GAME (TV) 9:00 PM

### DECEMBER

- 7 MENINAK CHARITY GAME 7:30 PM
- 30 GATOR BOWL GAME 9:00 PM

Wrestling in Coliseum every Thursday night.

Public Ice Skating periodically scheduled each month.  
Call 633-3650 or 633-2350 for current information.



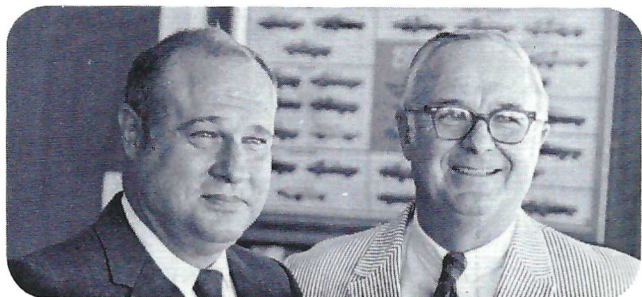
**For tickets:**

**Civic Auditorium: 633-2900**  
**Memorial Coliseum: 633-2900**  
**Gator Bowl: 633-3806**

# CITY OF JACKSONVILLE

# SEMINOLE AUTO DEALERS

These are the men who help keep Florida State's Athletic Program "on the go" in a very real sense. The importance of the Seminoles' courtesy car program cannot be overemphasized and without the cooperation of these gentlemen, it would never reach the degree of success it has. We salute each and every one of these community minded men.



**Theo and Julian Proctor**  
Proctor and Proctor  
Pontiac/Cadillac  
Tallahassee



**Neil Palmer and E. K. Harrell**  
Palmer-Harrell Buick Co.  
Tallahassee



**Tom Kinnebrew**  
Kinnebrew Motors  
Tallahassee



**Sam Shovlain**  
Courtesy Oldsmobile  
Tallahassee

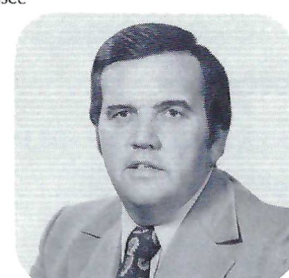


**Bill McKemie**  
McKemie Chevrolet  
Tallahassee



**Bill and Bob Miller**  
Miller Chevrolet  
Havana

**Gary Smith**  
Gary Smith Ford Company  
Fort Walton Beach



**Ed Richardson and Frank Shaw**  
Tallahassee (Ford) Motors  
Tallahassee



**Howard Thomas and Carl Fryer**  
Fryer Thomas Motor Company  
Quincy

# Trainers



*Kneeling:* Head Trainer Bill Baggett (left) and Rich Lief. *Standing (left to right):* John Mooney, Dave Darovec and Jack Mansfield.

## PRESCRIPTIONS

- COSMETICS
- GREETING CARDS
- TOYS
- FILMS & CAMERAS



"BUDDY STEWART"  
"WORKING FOR BETTER  
COMMUNITY HEALTH"  
HAVE YOUR DOCTOR CALL US

- VITAMINS
- CANDY
- GIFTS
- HOSPITAL SUPPLIES

224-5011

NO CHARGE FOR  
DELIVERY SERVICE

UNIVERSITY  
*Rexall*  
PHARMACY

W. Tenn. & High Road

CITY WIDE AND  
SURROUNDING AREAS

# Student Managers



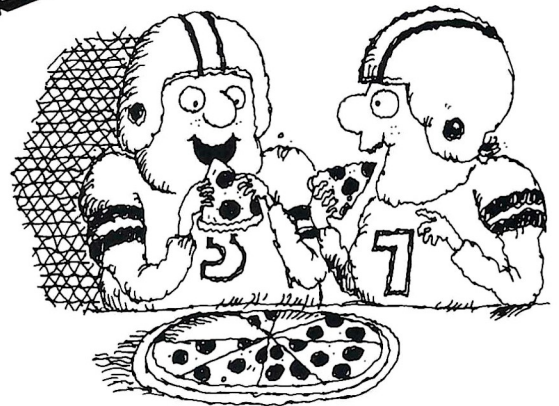
*Kneeling (left to right): Jack McCambridge and Mark Ryan. Standing: Mel Brown, Ray Parker and Chip Johnson.*

**Roast  
the referee  
over a hot pizza.**

It's a Tallahassee favorite—  
replaying the game at the Pizza Hut.  
Tackle one of our famous Pizza Hut pizzas.  
Or try our Cavatini, sandwiches, salads, and  
your favorite beverage. When the game ends,  
the fun begins at any of the Pizza Huts listed below.

2148 W. Tennessee . . . 576-2911  
2011 N. Monroe . . . 385-7636  
1241 E. Lafayette . . . 877-0432  
322 E. Jackson, Thomasville . . . 226-9166

©1974 Pizza Hut, Inc.



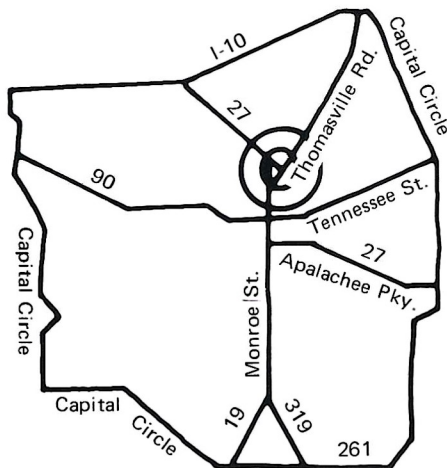
**Our people make our pizza better**

# Board of Regents



Bottom row, left to right: Jack McGriff, Gainesville; Dr. Burke Kibler, III, Lakeland; Mrs. E. D. Pearce, Coral Gables; Julius F. Parker, Jr., Tallahassee; Chancellor Robert B. Mautz.  
 Top row, left to right: Marshall M. Criser, Chairman, Palm Beach; E. W. Hopkins, Jr., Pensacola; Chester H. Ferguson, Tampa; J. J. Daniel, Jacksonville; James J. Gardener, Vice Chairman, Ft. Lauderdale

## welcome, neighbor



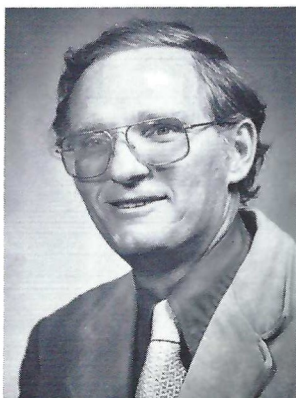
If you're a newcomer to Tallahassee, or if you've just moved into a new neighborhood, stop in for a warm welcome at centrally located PEOPLES BANK. Stop by this week. Get acquainted with our full line of services. Look into FREE CHECKING WITH AUTOMATIC SAVINGS. And get a fresh new start—with us. We're glad you're in the neighborhood.

Member F.D.I.C.

# PEOPLES

the people's bank • 1136 Thomasville Rd. • Tallahassee, Fla. • 224-5151

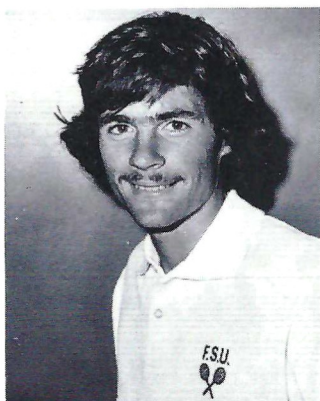
# Seminole Head Coaches



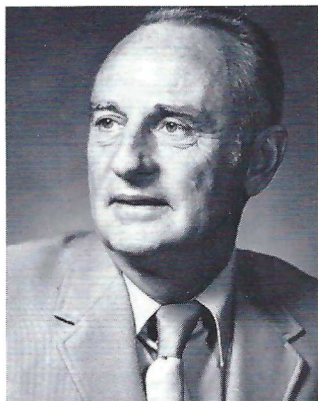
**TERRY CARLISLE**  
Swimming



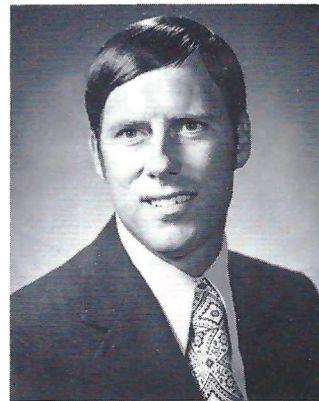
**HUGH DURHAM**  
Basketball



**RANDY JOBSON**  
Tennis



**MIKE LONG**  
Track



**DICK ROBERTS**  
Cross Country & Academic Advisor



**DON VELLER**  
Golf



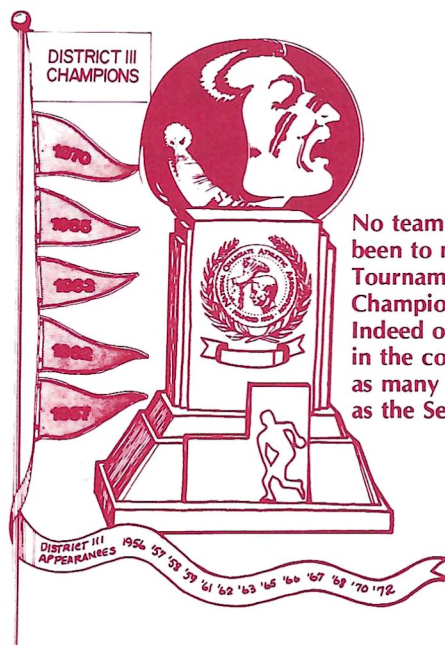
**WOODY WOODWARD**  
Baseball



# Spotlight On . . .

## Baseball

Each week this space will feature one of Florida State's eight intercollegiate sports. This week the spotlight falls on Coach Woody Woodward's baseball team.



No team in the Southeast has been to more District III Tournaments or has had more Championships than FSU. Indeed only two teams in the country have as many wins in the playoffs as the Seminoles.

Those who make the criticism that baseball is losing its appeal as a sport apparently have not spent much time around the Florida State campus. A prime example came earlier this fall.

When Head Coach Woody Woodward sent out word for returning varsity baseball players and new scholarship players to report for practice a few weeks ago, 48 candidates showed up. A week later, when the word for tryouts went out Seminole Field was filled with 70 prospective candidates.

"The enthusiasm for baseball at Florida State is overwhelming," said Woodward. "Not only among the students, but also among the older fans, the administration and the athletic department."

That enthusiasm carries right over to the field, where "hustle" is the byword for the Seminole program and this year is no exception.

Most of last year's young team returns and Woodward is using his fall sessions for a complete evaluation of his personal. "Although we have most of our regulars back," said the first year Tribe coach, "we have actually thrown every position open to give all our people a chance to prove themselves."

On the mound, Woodward has 18 candidates for the varsity pitching staff. Among them are veterans Danny O'Brien (7-6 in 1974), Larry Jones (6-3), Mike Kelley (4-3 and seven saves), and Larry Rothschild (5-2). Newcomers who bear watching are junior college transfers Mike McLeod, Craig Eaton and Dan Owen.

Catcher is one of two spots Woodward is taking an especially hard look at. Among the candidates here are veterans Jeff Tandlich and Jose Lugo and newcomers Steve Debler and Terry Kennedy.

The other spot getting a watchful eye is shortstop where former JC All-America Windle Higginbotham has returned after playing first base last season.

The vacated firstbase spot is up for grabs among veterans Jim Foxwell and Bill Daniel and newcomer Ben Curry.

The secondbase spot has All-District performer Randy Davidson, who was recently named team captain, returning and it may be the most secure spot on the club.

The Seminoles' leading hitter of last spring, Guillermo Bonilla returns to his thirdbase spot, but he is receiving a strong challenge from Randy Kaiser.

Returning outfielders Steve Tebbetts, Carlos Lezcano and Jim Busby are the front runners in their old spots, but they too receive a strong challenge from a number of newcomers.

When Woody Woodward stepped in as the sixth head coach of Florida State's Baseball program last summer, he inherited the challenge of following in the footsteps of some of the nation's most respected college baseball coaches. His predecessors, including men like Jack Stallings, Fred Hatfield and Danny Litwhiler, who have built and maintained the Florida State program at the very top of collegiate programs around the country. Consider the following checklist of Florida State baseball history:

- Never a losing season in the program's 27-year history.
- More than 100 players have stepped from the Florida State program to the pros.
- Over a dozen of those players have played in the major leagues or signed "big league" contracts.
- Eighteen Seminoles have been selected to All-America teams.
- The Seminoles have won five championships in District III, generally agreed to be the toughest and most competitive of the eight NCAA districts.

... the list goes on, but these few facts give the idea of the kind of challenge and tradition that faces Woodward. However, the young Seminole Coach is well up to that task.

A graduate of Florida State, Woodward, himself is a part of that tradition. A former Seminole All-America, he played on two District III championship teams and went on to play major league ball with first Milwaukee then the Atlanta Braves and Cincinnati Reds.

During his years in pro ball, Woodward never lost touch with his alma mater and was a prime figure in the establishment of the Seminoles' Varsity-Alumni Game played each fall at Homecoming.

Although classes have been in session for just a little more than a month, and the opening of the season is not until next March, Woodward has had his Seminole squad working four days a week. The schedule will continue through the Alumni game Nov. 16.

### Florida State Fall Tournament Schedule

TIME	GAME
<b>Oct. 25</b>	
3:00 p.m.	Gulf Coast JC vs. FSU Garnet
5:30 p.m.	Gulf Coast JC vs. Manatee JC
8:00 p.m.	Manatee JC vs. FSU Gold
<b>Oct. 26</b>	
10:00 a.m.	Manatee JC vs. FSU Garnet
12:30 p.m.	Chipola JC vs. Manatee JC
3:00 p.m.	Chipola JC vs. Gulf Coast JC
5:30 p.m.	Gulf Coast JC vs. FSU Gold
<b>Oct. 27</b>	
12:30 p.m.	Central Fla. JC vs. Chipola JC
3:00 p.m.	Gulf Coast JC vs. Central Fla. JC
5:30 p.m.	FSU Golf vs. FSU Garnet

# Marching Chiefs

Music, color, and motion, highlight the Chiefs' performances this year. Tonight we incorporate all three around the theme **The Pop Hits of the 70's**.

**Pre-game:** Featuring the combined bands of the University of Florida and Florida State University.

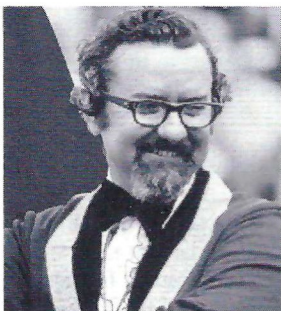
**Half-time:** Featuring the University of Florida Band, and the "World Renown" Florida State University Marching Chiefs.

Colorful and dynamic, the Chiefs begin this evening's performance with a spectacular fanfare from "Court of the Crimson King". Patterns in Motion follow as the Chiefs swing into the Blood, Sweat, and Tears selection "House in the Country". Turning from the rock sounds of the 70's, the Chiefs form a huge derby and cane on the field as we feature our beautiful "Garnet and Golf" girls to the theme from the motion picture *The Sting*. As the saying goes "you ain't seen nothin' yet", and the Chiefs prove it as we reverse the field in a unique manner to Don Ellis' "Great Divide". We turn our attention back to the pop rock hits of the 70's beginning with music by the popular recording group the Doobie Brothers, featuring "Listen to the Music" and "Long Train Running". Moving into concert formation the Chiefs conclude this evening's performance with the ballad by David Gates and Bread, "If".

**Post-game:** Tradition plays an important part in the Florida — Florida State rivalry. We invite you to join our annual "Battle of the Bands" at game's end.

## The Marching Chiefs: Around the Nation, Around the World

Over the years the Marching Chiefs have made appearances that have taken them all over the world. Time has seen the Chiefs perform in such places as the Sun Bowl, in El Paso, Tx.; the Astrodome, in Houston, Tx.; the Peach Bowl, in Atlanta, Ga.; and two appearances in the Gator Bowl, in Jacksonville, Florida. This past August the Chiefs were "on the road" again, this time representing the United States at the International Trade Exposition in Damascus, Syria. (For highlights of this trip see pages 8 and 9.) The Chiefs, on invitation of the Jordanian government, extended their tour to Amman, Jordan, with a command performance before the King and Queen of Jordan. Preserving the tradition of the past and incorporating new ideas for the future, the Chiefs continue their belief in the "World of Music."



MAYO

### Coordinator of Bands

Richard D. Mayo, Assistant Professor of Music is beginning his fourth year as Coordinator of University Bands and director of the Marching Chiefs. Mr. Mayo received his B.M.E.

from Florida State in 1955 and his M.A. Degree from Columbia University. For 14 years he was band director in high schools in Florida and New York. Most recently he was District Coordinator of Bands at Plainedge Schools on Long Island. Besides his interest in the Marching and Symphonic Bands, Mr. Mayo has been highly active in the jazz field, coordinating and directing the Jazz Lab Bands. The growth of jazz has been accentuated by performances with Count Basie, Buddy Rich, Stan Kenton, and Don Ellis.

### Assistant Director and Arranger

Charles Carter received his Bachelor of Music from Ohio State University in 1950, majoring in theory and composition. The Oklahoma native furthered his education at Eastman School

CARTER

of Music where in 1951 he received his Master of Music, followed by Doctoral work here at Florida State University from 1953 until 1956.

Before becoming staff arranger at Florida State University in 1953, Mr. Carter arranged for the Ohio State University Band and also taught lower brass. Presently here at Florida State, Mr. Carter teaches theory, composition, and arranging, plus his arranging for the University Bands. Mr. Carter now has over twenty original compositions on the market in all fields of music.



# FSU FOOTBALL FLASHBACK

A Look at Florida State Games, 5, 10, and 25 Years Ago This Week

## 1969

**Florida State 38  
Tulsa 20**

TULSA, Okla. (Oct. 18, 1969) — The Golden Hurricane stirred up a few early breezes, but finally succumbed before the Seminole onslaught, 38-20.

A little razzle-dazzle by the host team resulted in a Tulsa score when the Hurricanes passed off a field goal formation. But in less than a full quarter's playing time, the Seminoles had a 31-point advantage.

With less than a minute left in the first quarter, Tom Bailey scored on an 11-yard run. In the second period, Bill Cappleman hit Don Pederson with a 73-yard scoring pass.

Cappleman then hit Jim Tyson, who weaved his way to a 51-yard touchdown. The same duo teamed up again before the end of the half for a 14-yard TD as the Seminoles enjoyed a 28-7 bulge.

Tulsa began pecking away in the second half, with two touchdowns surrounding a Duane Carrell 37-yard field goal for the Tribe. That cut the lead to 11 points with six and a half minutes left.

But the Seminoles came back for a score on Arthur Munroe's seven-yard run to make the final margin, 38-20.

Cappleman completed 19 of 37 passes for 372 yards. Jim Tyson caught eight for 137 yards. Bailey, with 67 yards on 15 carries and Munroe, with 50 on 16, showed balance in the Seminole running attack.

## 1964

**Florida State 17  
Georgia 14**

ATHENS, Ga. (Oct. 17, 1964) — Trailing for the first time during the season, Steve Tensi and Fred Biletnikoff delivered a 79 yard drive in the closing minutes to rescue the Seminoles' fifth straight victory from a fired-up Georgia team.

Florida State had a 10-0 lead in the second quarter on a field goal by Les Murdock and a one yard touchdown by Lee Narramore. However, the Bulldogs came back with a touchdown by quarterback Preston Ridlehuber to cut the half-time lead to three points, then banged across another early in the fourth quarter.

The Seminoles went all the way after receiving the kickoff with Tensi mixing passes to Biletnikoff, Don Floyd and Bill Dawson along with runs by Narramore and Phil Spooner. Biletnikoff took the 20-yard payoff pitch between two defenders and fell into the end zone with 6:21 left.

Bill McDowell recovered two fumbles for Florida State and Jack Shinholser won the Savage Award for his middle guard play. Center Jack Edwards won the blocking ward.

Tensi hit 14 of 24 passes for 193 yards, while Biletnikoff caught eight for 114 yards. His performance against Georgia gave Biletnikoff perhaps his biggest boost toward All America honors.

Phil Spooner again led Seminole rushers with 62 yards in 14 carries.

## 1949

**Florida State 6  
Sewanee 0**

(From Associated Press Reports)

SEWANEE, Tenn. (Oct. 22, 1949) — Undeclared Florida State University punched out a fourth period touchdown to defeat the University of the South (Sewanee) 6-0 in a mountain-top football game played in fog here.

The victory was the tenth straight for Florida State and was Sewanee's first loss of the year. Both teams are in the vanguard of the nation's non-subsidized football squads.

Early in the fourth period Wyatt (Red) Parish, 175-pound speedster from Bonifay, swept over the soft-footing on a 12-yard touchdown jaunt.

State racked up 179 yards rushing and six passing for nine first downs. Sewanee managed only 57 yards along the ground and 23 by air for six first downs. Each team averaged 34 yards on 11 kicks by State and 10 by Sewanee.

Sewanee's line outweighed some 20 pounds to the man, was paced by hard-cracking Nick Willard and Cotton Richardson up front. Prince McDavid made several nice runs.

State threats in the backfield were Walter Foy and Buddy Strauss, along with Parish.

Late in the third period Parish set off the touchdown drive with a 28-yard dash around left end to the Sewanee 43. Foy followed with a sprint to the 30. Parish added five as the quarter ended.

The heavy fog lifted somewhat when State continued the drive with a first down on the 20. Strauss hit the line for eight and then Parish circled the flank for the only touchdown of the game. Hanson's kick was no good.

State drove to the Sewanee four just before the game ended, but lost the ball on a fumble.

*Miller*

CHEVROLET

COMPANY

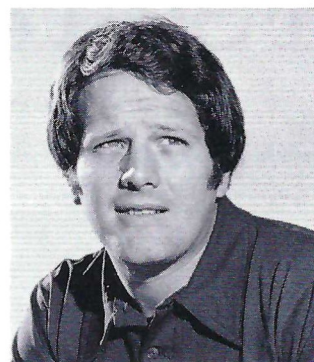
Havana, Florida

539-6376

15 Miles North  
of Tallahassee  
on U.S. 27

Phone Toll Free  
224-1317

**DAN HENNING**  
**Offensive Coordinator,**  
**Quarterbacks and Receivers**



Henning

The man who helped develop ex-Seminole quarterback Bill Cappleman returns for his second tour of duty at Florida State.

Henning was the Seminoles' offensive coordinator in 1968 and '69 before joining the Virginia Tech staff in 1970 in the same capacity.

Dan, 31 and a William and Mary graduate, left the Gobblers after one season to join Bill Peterson and the National Football League Houston Oilers where he tutored the quarterbacks.

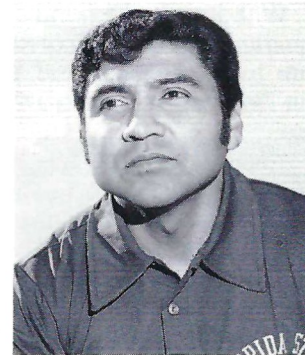
He returned to Virginia Tech in 1973 when he again headed up the Gobbler offense before rejoining the Seminoles.

Henning was standout quarterback at William and Mary before graduating in 1964. The New York City native spent the next four seasons dividing his time between the American Football League San Diego Chargers and two teams in the Continental League.

Dan and his wife, Sandy, have five children.

# COACHES'

**PETE RODRIGUEZ**  
**Defensive Coordinator, Linemen**



Rodriguez

Pete is one of three coaches Coach Mudra brought with him from Western Illinois. He assumes the same role at Florida State as he did at WIU, that of defensive coordinator along with tutoring the interior defensive line.

The 34-year-old Chicago native joined Mudra's staff at Arizona where he coached the linebackers. Arizona's 1968 Sun Bowl club was considered one of the nation's better defensive outfits.

Mudra calls Rodriguez "one of the really great strategists in the game today."

Pete played his prep ball at Kelly High School in Chicago before gaining a scholarship to Western State College in Colorado. He received his B.A. in 1963 and M.A. in 1964 from his alma mater.

Earlier in his career he was defensive coordinator at Stratton (Colo.) HS in 1964 before taking the same position in 1965 at Harrison HS in Colorado Springs. He served as head coach at Harrison in 1966-67 before going to Arizona the next season.

He and his wife, Linda, have two children.



## GENE McDOWELL Defensive Ends

Gene returns to his alma mater after four seasons as an assistant at Kansas State.

He will coach the Seminole defensive ends, an assignment he also had at K. State.

McDowell, 33, is a native of Quincy although he was a prep standout at Waycross, Ga. High School. After coming to Florida State, he lettered three seasons (1960-62) and was named third string Associated Press All-American as a linebacker in his senior campaign. In 1962 he was named the State's Most Out-

**McDowell**  
standing College Player by the Daytona Beach Quarterback Club.

Following graduation in 1963 he spent two seasons in the service before returning to Florida State in 1965 as a graduate assistant. The next season he was named freshman coach and retained that post until 1969 when he became the Seminole's chief recruiter.

# CLOSE-UPS



## FRANK DeBORD Equipment, Kickers

Now in his seventh season with the Seminoles, Frank was elevated to assistant coach this past spring. He will help with the weight program as well as oversee the Florida State equipment room and practice fields.

A native of Virginia, he resides in Quincy.

Frank is a Virginia Tech graduate where he lettered in football and wrestling. He served as assistant football coach at Franklin, Va., High School and also played two seasons for Norfolk in the Continental

**DeBord**

League.

Frank and his wife, the former Marian Bradshaw of Franklin, Va., have three children.

## The TRAWLER'S Seafood Restaurant ★



### and Lounge

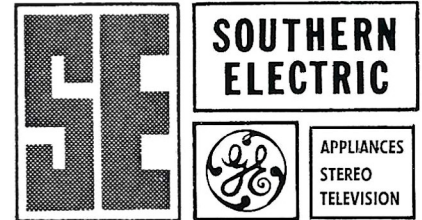
- Delicious SEAFOODS
- Luscious STEAKS
- Seven DINING ROOMS
- Large BANQUET ROOM
- OYSTER & SALAD BARS

Entertainment  
*Elegant Gourmet Dining*

*...at One of North Florida's Finest Restaurants*

★ For Reservations Call 385-2127

★ 2696 N. Monroe TALLAHASSEE, FLA.

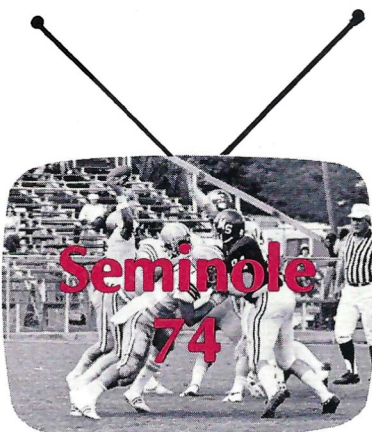


FURNITURE

Compliments  
of  
Spurgeon  
Camp

Go  
Seminoles

The **BIG** Plays  
are played again  
on



Highlights  
and  
Insights  
of

**Florida State  
Football**  
with  
**Head Coach  
Darrell Mudra**  
and host  
**Bob Shackleton**  
at  
**10:30 p.m. Sunday**  
on  
**WCTV**

Ch. 6 in Tallahassee  
Check local listings for time  
and station in other areas.

# SEMINOLES SALUTE LEON COUNTY

Along with the other festivities tonight, the Seminoles wish to take the time to salute all their friends right here in the heart of "Seminole Territory".

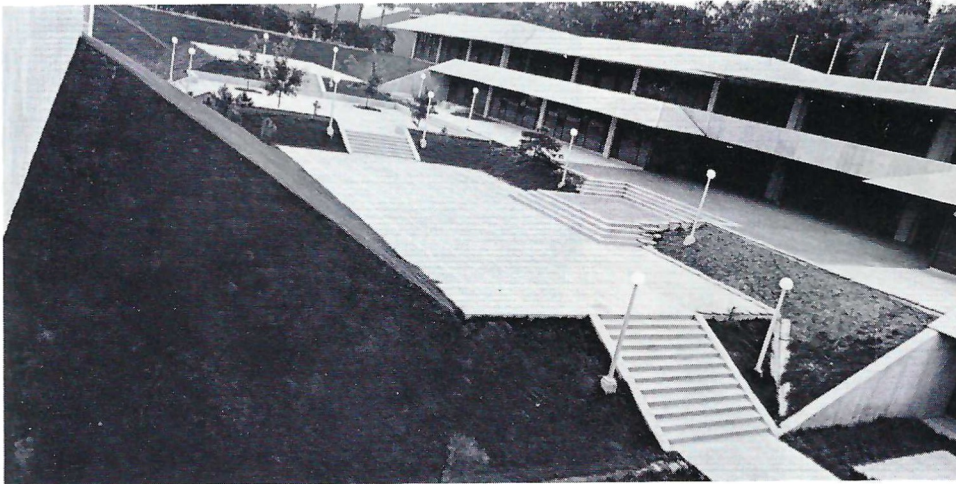
There is no larger or stronger group of Seminole supporters than those that live right here in Tallahassee and Leon County. They are here tonight, as they are every week, and the Seminoles give a hearty "thanks" for their continued support of Florida State University.

## Seminole Booster Highlights



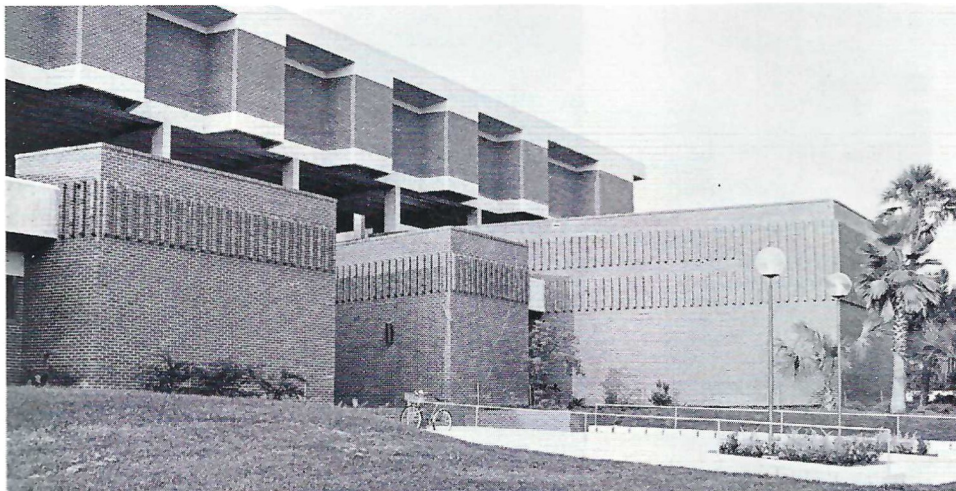
The Seminole Boosters, Inc. Board of Directors met recently at Tallahassee and these members were photographed: Sitting (left to right) — Claude Locklin of Milton, Athletic Director John Bridgers, Sidney Rayburn of Tallahassee. Standing — Executive Director Ted Ouzts; Vice President for University Relations Steve McClellan; Ken Gatlin, Tallahassee, President of the FSU Alumni Association; Louis Hill, Tallahassee and Jim Kirk, Ocala.

# University of Florida

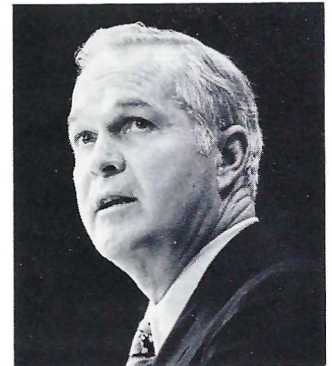


**Florida State Museum**

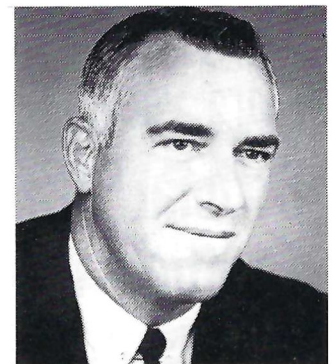
In 1853 the foundation work of the present University of Florida was laid in Ocala when a small private school, East Florida Seminary, was opened. Florida Agricultural College was established at Lake City in 1883 and by 1905 six colleges were at least partially state-supported. With the passage of the Buckman Act in 1905, the University of Florida was established at Gainesville. It is one of the largest landgrant institutions in the South with a faculty of 2,500 and student body of more than 25,000.



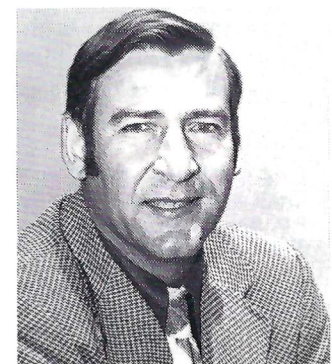
**Music Building**



**Dr. Robert Marston**  
President



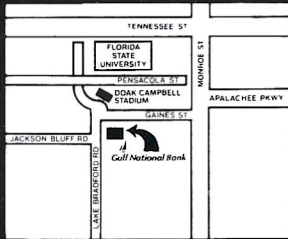
**Ray Graves**  
Athletic Director



**Doug Dickey**  
Head Football Coach

**TIME IS MONEY.**

**Gulf National Bank**



**SAVE BOTH.**



Member F. D. I. C.

P. O. Box 5767 / Tallahassee, Florida 32301

**Enjoy football more with the Official NCAA Football Guide**

Containing . . .

- Schedules of more than 400 teams
- Sectional previews by prominent writers
- 1973 statistics and scores
- Read-easy rules
- Review of bowl games

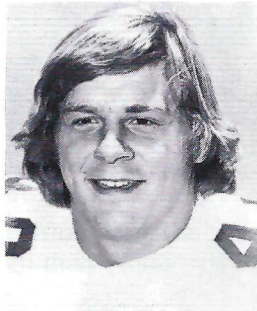
**\$2.00**

Send check or money order to:  
**NCAA Publishing Service**  
 P.O. Box 1906  
 Shawnee Mission, Kansas 66222

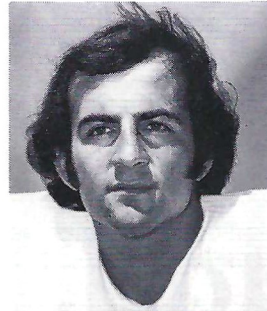
For a listing of all NCAA publications, write to the address above.



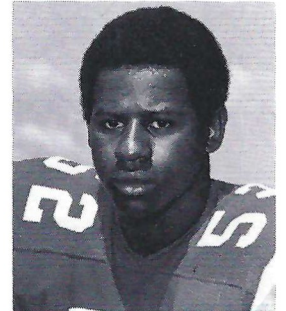
**THE GATORS**



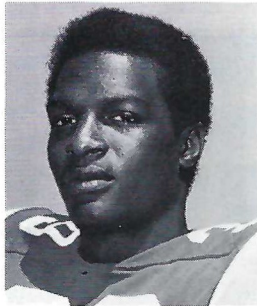
Joe Allen



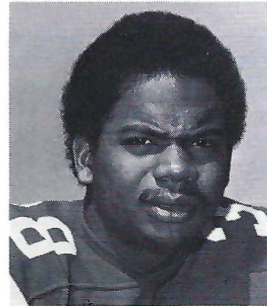
Robby Ball



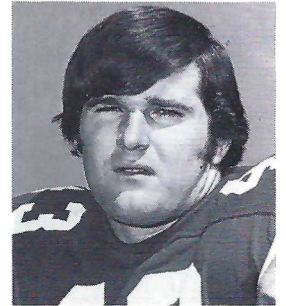
Vernon Barber



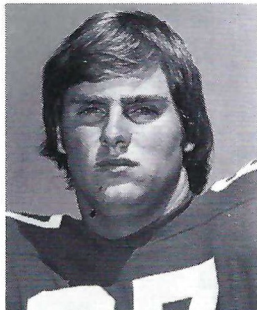
Larry Brinson



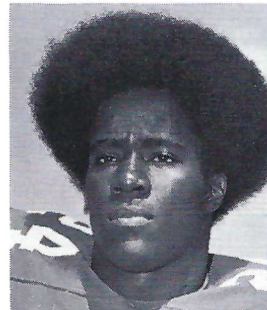
Alvin Butler



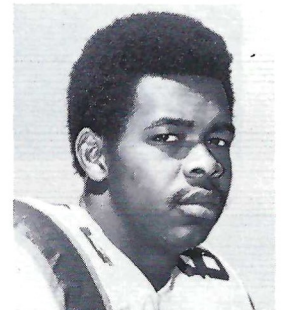
Glenn Cameron



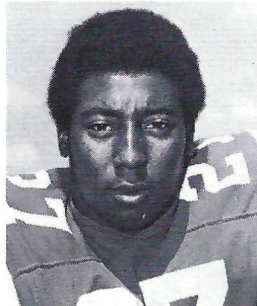
Darrell Carpenter



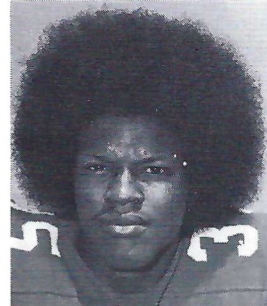
Alvin Cowans



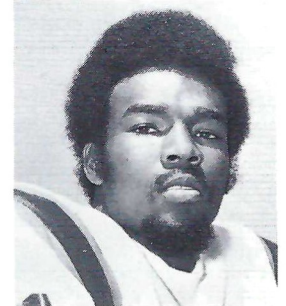
Alvis Darby



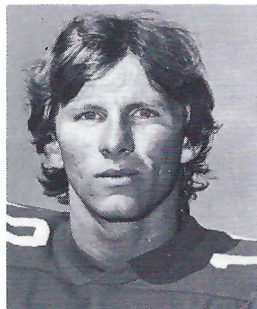
Henry Davis



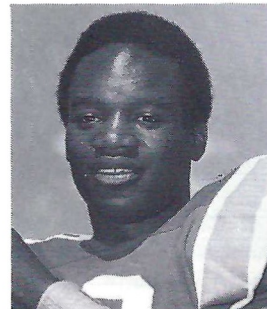
Jimmy DuBose



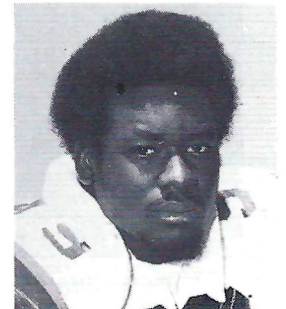
Wayne Fields



Jimmy Fisher



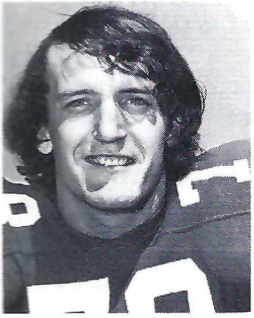
Don Gaffney



Sammy Green



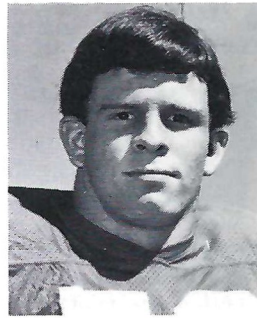
# THE GATORS



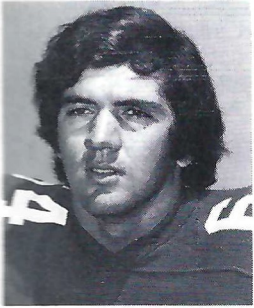
Clint Griffith



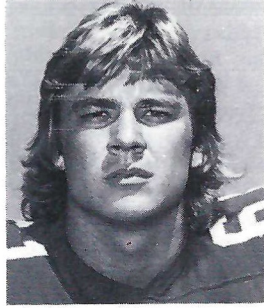
Preston Kendrick



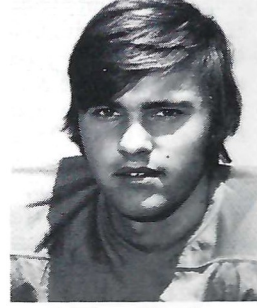
James Kynes



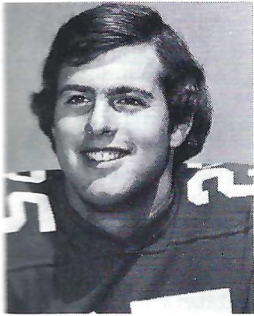
Burton Lawless



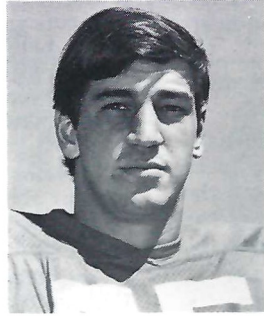
Gerald Loper



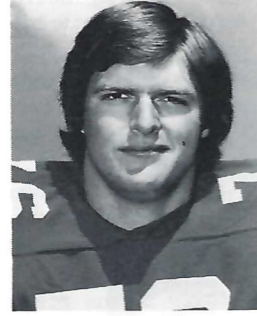
Buster Morrison



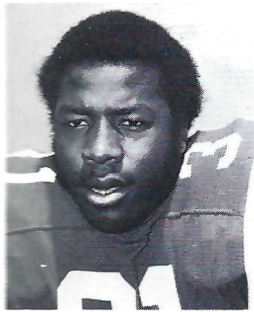
Lee McGriff



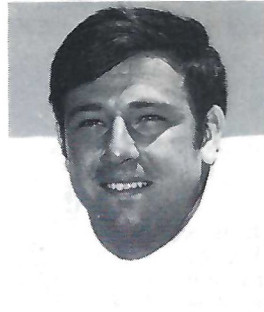
Ralph Ortega



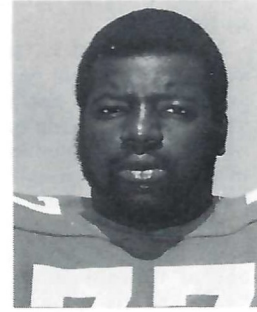
Paul Parker



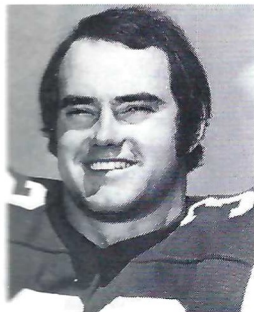
James Richards



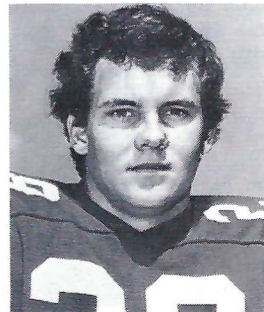
Tyson Sever



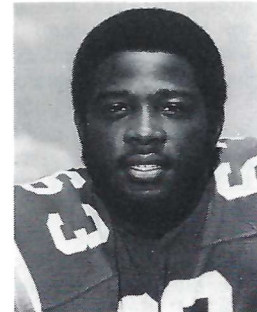
Mike Stanfield



Andy Summers



Randy Talbot



Mike Williams



Two Locations in  
Tallahassee  
U.S. 27 North at I-10  
U.S. 27 South at Capital Circle

Toll Free Reservations  
800-241-7111

"TALLAHASSEE'S OLDEST FLORIST"  
SINCE 1930

**FLOWERS**  
by  
*Elinor Doyle*



COMPLETE FLORAL SERVICE

SERVING SATISFIED CUSTOMERS  
SINCE 1930

- CORSAGES • BOUQUETS • WEDDINGS
- CUT FLOWERS • FUNERAL DESIGNS

Master Charge • BankAmericard  
American Express • Carte Blanche • Diner's Club

DELIVERY SERVICE

222-1298  
222-1297

202 S. Adams St.

# Wave at the Folks, Catch the Ball, Run

by TOM McEWEN, Tampa Tribune Sports Editor  
President, Football Writers of America

This year the receiver of a punt in college football may shade his eyes from the sun, or scratch his neck, catch the oncoming ball, and then run with it.

Last year he couldn't. In fact, if he shaded his eyes, or scratched his neck, or both, caught the ball, and ran with it, the ball wasn't just returned to the spot of his reception. It was returned there, and then the receiver and his team were penalized for his *illegal fair catch*.

Rule was that a Fair Catch Signal meant waving the upraised hand, and arm, back and forth above the head. Any other act with the hand and arm above the receiver's waist wasn't just a no Fair Catch signal, it was an illegal, invalid Fair Catch signal, punishable in yards.

Last January, John Waldorf's NCAA Football Rules Committee figured it was unjust to prevent the shading of eyes (some safetymen resorted to visors), and made a change in College Football Rule 2, Section 7, titled "Fair Catch." The hand (not arm) must still be waved above the head and clearly, but a receiver with a sudden itch above the waist may scratch it, or he may shade his eyes, catch the ball and hot-foot it towards the enemy goal. Specifically, the interpretation now is:

*A valid fair catch signal or any other waving signal deprives the receiver of the opportunity to advance the ball and the ball is declared dead at the spot of the catch. If the receiver shades his eyes, or makes any signal other than a waving signal and catches the ball, the ball is live and may be advanced.*

## Why Get Excited?

Why all this attention to what appears to be a yawner of a rule change?

Because that change represented the 65th alteration in the "Fair Catch" Rule in the 99 years there have been college football rules of any kind. No other single part of the game, a part so seemingly insignificant, has required so much attention, if it can be called insignificant because the truth is that just maybe football as we know it probably was born out of a violation of the Fair Catch rule.

It was 150 years ago when one

**William Webb Ellis, playing for Old Bigside Prep School in Rugby, England, violated the rules of rugby when after signalling for a fair catch, instead of legally kicking it back, he ran with it! It wasn't just a rule violation and very unsportsmanlike deed, it was an act that suggested the modern game of football.**

On Nov. 23, 1876, the first rules committee met at the Messasoit House in Springfield, Mass. Sixty-one rules were passed at that first conference. Rule No. 28 read: *A Fair Catch is a catch made direct from a kick or a throw forward, or a knock on by one of the opposite side, or from a punt-out or a punt-on, provided the catcher makes a mark with his heel, at the spot where he made the catch and no other of his side touch the ball.*

Yes, the early signal for fair-catching was heel-marking. Later, he'd have to raise his hand, and heel-mark.

Why not eliminate the rule completely and have no Fair Catch?

Well, that was tried too. It happened in 1954. It lasted one year when cries of outrage arose at the abuse safety men were taking. The step-child rule went back on the books in 1955.

Some of the previous changes:

Oct. 14, 1884—First penalty was put in for interference with a Fair Catch.

May 10, 1890 — If a fair catcher after making his mark be deliberately thrown to the ground, he shall be given five yards unless this would carry the ball across the goal line, in which case one-half of the remaining difference shall be given.

May 8, 1894—A Fair Catch is a catch made direct from a kick by one of the opponents, or a punt-out by one of the same side, provided the man intending to make the catch indicates that intention by holding up his hand when running for the ball and also makes mark with his heel upon catching it.

March 31, 1895—The player making a Fair Catch need not signal with his hand, but must mark with his heel. If he makes no mark, he may run with the ball.

Jan. 12, 1906—A Fair Catch consists in catching the ball, provided the player while advancing towards the ball signals his intention of making a Fair Catch, by raising his hand

above his head and does not take more than two steps after catching the ball.

## Alfonse and Gaston

March, 1907—Opportunity to make a Fair Catch is where the player is in such a position it would be possible for him to reach the ball before it touches the ground . . . In case a signal is made for a Fair Catch by any player who has the opportunity for a fair catch and another player of his side who had not signalled for a Fair Catch, catches the ball, no run shall be made, nor shall a Fair Catch be allowed.

And so it went, even to last January, when the committee, essentially, made these five changes: (1) Waving the hand (not arm) above the head from side to side more than once is a legal Fair Catch signal; (2) There will no longer be a penalty for an Invalid Fair Catch signal; (3) A player may shade his eyes, catch the ball, and run with it; (4) Any fair catch signal behind the line of scrimmage is ignored; (5) On a Fair Catch, only the player who has given a Fair Catch signal is given Fair Catch protection.

It seems clear that the only thing certain about the Fair Catch Rule is that it will be changed again, and again, and again.

And while we're on the subject, I'd like to suggest one alteration.

The name—Fair Catch—is misleading.

Ought to be Free Catch.



Tom McEwen

# Tallahassee Motor Hotel

FOOD & LODGING

Master Hosts



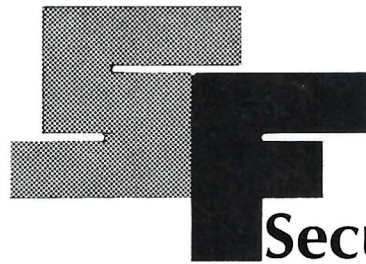
and

AAA Approved



224-6183

1630 North Monore



## Security Federal

### Savings and Loan Association of Tallahassee

**"Go Seminoles in '74"**



# TACO BELL

1218 North Monroe

Sunday - Thursday

10:30 a.m. - 11:00 p.m.

Friday - Saturday

10:30 a.m. - 1:00 a.m.

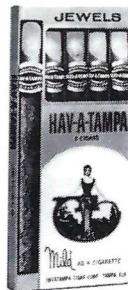
Tacos - Tostatos -

Burritos - Enchirito -

Frijoles - Pepsis

Root Beer - Orange

7-Up -



Distributed by  
Eli Witt Tobacco  
& Candy Company  
Tallahassee,  
Florida



## HAV-A-TAMPA

# JEWELS

*The Cigar for Men ...  
that Ladies Love —*

**WELCOME ANYWHERE**

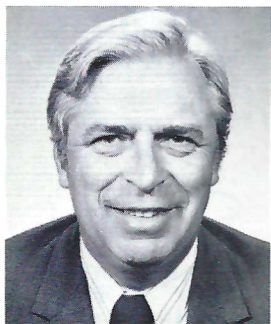
for their man-size flavor and gentle aroma

# 1974 Seminole Cheerleaders



Front: Virginia Chapman. Second Row (left to right): Lisa Tamargo, Davis Gains, Captain Larry Shoeman, and Liz Recher. Standing in the Third Row: Dell Dahl, Jim Williams, Ken Barela, and Jim Crooke. Up on their Shoulders: Barbara Robinson, Loretta Johnson, Melinda Maurer, and Elaine Evans.

# SEMINOLE RADIO NETWORK



Shackleton



Owens

Florida State's football games will be heard throughout most of the Southeast again this fall over the SEMINOLE RADIO NETWORK.

With WTNT in Tallahassee serving as the originating station, Florida State games are carried on network stations in Florida. In addition, many of the Seminole games are broadcasted regularly over the wide-ranging Pick-Of-Dixie network.

Bob Shackleton, Florida State's director of Alumni Affairs, is the new "Voice of the Seminoles." Before coming to Florida State, Shackleton served for 19 years as the play-by-play announcer for Michigan State football.

Returning to do the "color", is Bill Owens, a veteran of Florida State announcing which includes football, basketball and baseball.

Follow The Seminoles

## ON WTNT 1270 ON YOUR DIAL

Brought to you by



AND YOUR  
NEIGHBORHOOD TEXACO DEALER

and by

THE BARNETT BANKS OF TALLAHASSEE



## Go Seminoles!

FANS, Record the Seminoles on Film . . .

For the Largest Selection of  
Photographic Equipment and Supplies  
In North Florida, see the  
Friendly Folks at

## Tallahassee Camera Center

117 North Monroe

Phone 222-8771

Downtown Tallahassee Across From the Florida Theater  
Cameras — Film — Darkroom Equipment & Supplies  
Binoculars — Recorders — Rentals

## Electrical Contractors

- INDUSTRIAL
- COMMERCIAL

Licensed & Bonded

222-5494

# CLARK

ELECTRIC CO.  
OF FLORIDA

702 West Madison Street  
TALLAHASSEE, FLORIDA



2121 West Tennessee Street  
Tallahassee, Florida 32304  
Phone 904/576-6121  
Gen. Mgr. Herb Chandler

Ramada Inn of Tallahassee is an ideal gathering place for meetings and banquets. The King's Banquet Room offers every convenience, and accommodates up to 128 persons for dining. Divisible meeting rooms are available for smaller groups. For leisure hours, there are golfing privileges at fine nearby courses. Just four hours drive brings you to the wondrous kingdom of Walt Disney World.

Innumerable famous Florida attractions are within driving distance. Come for business . . . stay an extra day for pleasure. You're welcome at Ramada Inn of Tallahassee.

## Advertisers Directory

Alumni Seminole Shopper	39
Army ROTC	16
Artistic Flowers	60
Barnett Bank	17
Bill's Bookstore	37
Capital City First Nat'l Bank	21
Central Telephone Co.	40
Chevrolet	29
Clark Electric	60
Coca-Cola	30
8 Days Inn	55
Elinor Doyle Florists	55
Eli Witt	57
Florida Beef Council	35
Florida Publishing Co.	20
Gulf National Bank	54
Holiday Inn	IFC
Industrial National Bank	40
Jacksonville City of	41
Miller Chevrolet	50
Mr. Steak	4
NCAA Football Guide	54
Orlando Sentinel	2
Peoples Bank	45
Pizza Hut	44
Quality Inn	17
Ragans & Roberts	36
Ramada Inn	60
St. Petersburg Times	13
Sears	12
Security Federal Savings	57
Seminole Basketball	IBC
Seminole Boosters, Inc.	26
Seminole Sportswear	18-19
Southernair-Skyline	60
Southern Airways	1
Southern Electric	51
Taco Bell	57
Tallahassee Camera Center	59
Tallahassee Democrat	33-34
Tallahassee Motor Hotel	57
Tallahassee Travel and Tours	14
Tampa Tribune	28
Trawlers Restaurant	51
U.S. Marine Corps	32
University Rexall	43
Winn-Dixie	27
WTNT Radio	59
Zenith	BC
Zodiac Watches	5

## Southernair MOTEL

Across from F.S.U.

Tallahassee, Florida 32304  
904/224-7116



and

## Skyline

### Motor Lodge

U. S. 90 West  
904/576-2157

Quality Inns

for Quality People

"When it's

## FLOWERS

Say it with Ours"



DELIVERY SERVICE

## Artistic Flowers

777 MICCOSUKEE RD.

224-0105

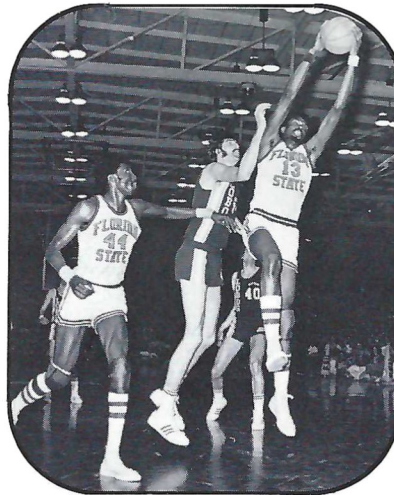
# FLORIDA STATE

## we've got the action

### BASKETBALL SCHEDULE 1974-75

DATE	OPPONENT
Nov. 30	VALDOSTA STATE
Dec. 3	ILLINOIS STATE
Dec. 7	MARSHALL
Dec. 9	Memphis State
Dec. 14	LOUISVILLE
Dec. 18	CALIFORNIA STATE
Dec. 21	OHIO UNIVERSITY
Dec. 26	Holiday Classic
27	(Louisville, Purdue, W. Ky.)
Jan. 4	<b>EASTERN KENTUCKY</b>
Jan. 7	<b>WISCONSIN (Milwaukee)</b>
Jan. 11	<b>BISCAYNE COLLEGE</b>
Jan. 15	South Florida
Jan. 18	<b>HOFSTRA</b>
Jan. 20	Biscayne College
Jan. 25	Canisius
Jan. 27	New Mexico
Feb. 1	<b>TENNESSEE (Chattanooga)</b>
Feb. 6	<b>JACKSONVILLE UNIVERSITY</b>
Feb. 9	Georgia Southern
Feb. 13	<b>GEORGIA STATE</b>
Feb. 19	Jacksonville University
Feb. 22	<b>GEORGIA SOUTHERN</b>
Feb. 24	<b>MERCER</b>
Feb. 28	<b>SOUTH FLORIDA</b>
Mar. 5	Stetson

Home games listed in boldface type.



# Seminole Basketball

With seven of 11 lettermen returning from last year's 18-8 squad, plus 16 big home games lined up for the season, Coach Hugh Durham views the 1974-75 campaign with "guarded optimism." At the very least it should be one of the biggest and most exciting for Seminole fans in recent seasons. With the 16 home games, the Seminoles will be playing before the home folks more than ever before and the schedule includes a solid lineup of top teams, including Marshall, Louisville, Jacksonville and Eastern Kentucky. Among the returning veterans are postmen Greg Grady and Zach Perkins, wingmen Larry Warren and Wayne Smalls and pointmen Eugene Harris and Carlton Byrd, all of whom thrilled Seminole fans last season. The only sure way to see all the Action this year is to buy season tickets. They are on sale now at the Athletic Ticket Office in Tully Gym. Season Tickets are \$42 each, plus 50 cents per order for handling. Order your Basketball Season Tickets now by sending a check payable to Florida State University: Athletic Ticket Office, 100 Tully Gym, Florida State University, Tallahassee, FL 32306. Or phone 904/644-1830 for more information.

# The All-American Receiver.

Over the years, Zenith color TV has earned a reputation for dependability and picture excellence no other color TV can match.\*

And today's Zenith solid-state Chromacolor II backs up that reputation with a combination of features no other color TV can offer.

The famous Chromacolor picture tube

that set a new standard of excellence in color TV. A patented Power Sentry voltage regulator that protects components. And a rugged, 100% solid-state modular chassis for long-life dependability.

It's the best way we know to make sure, at Zenith, the quality goes in before the name goes on.®

Model shown: F4752P, the Reynolds TV picture simulated



**ZENITH**  
SOLID STATE  
**CHROMACOLOR II**

\*For the third straight year, a nationwide survey of independent TV service technicians has named Zenith, by more than 2 to 1 over the next best brand, as the color TV needing fewest repairs. The same survey rated Zenith as the highest-quality color TV, as the one with the best picture, and as the one service technicians would buy for themselves today. Survey details on request.