

September 21, 1974

# FLORIDA STATE COLORADO ST.

\$1.00

the college  
**GAME**®



# Holiday Inn®



## Two Inns To Serve You In Tallahassee

316 West Tennessee Street  
222-8000

1302 Apalachee Parkway  
877-3141

Banquet Rooms, Meeting and Conference Rooms with Complete Facilities, Dining Rooms and Lounges.

# Nobody's second string on Southern.

Jet Southern and see that there's no "First Class," and no "Tourist Class." No stewardess will send you to the rear of the plane and then pull that curtain in your face so you can't see what's happening when the corks start popping at a party you weren't invited to. On Southern there's just one class of service. And that's high class.



**always**

**ST**

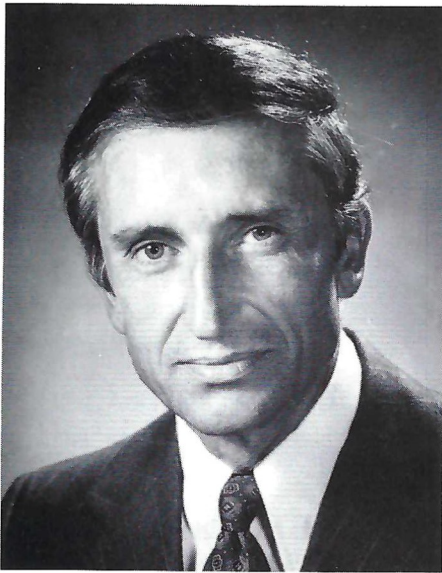


**in  
sports  
coverage**

*Florida's Most Interesting Newspaper*

**Sentinel Star**

Orlando, Florida



Dr. Marshall

If ever there is an element of the unknown in collegiate football, it is present when a new coach sends a young team on to the field. When Darrell Mudra came to Florida State as Head Coach last winter, it was not to inherit a veteran team with a winning record. It was to restore and rebuild—to recover the winning tradition to which those of us at Florida State have become accustomed.

From all reports Coach Mudra is just what we needed, and from my personal observations of the man and his management of the team, I am convinced that the reports were well founded.

The 1974 Seminoles want to win. They have worked hard to master new strategies of play introduced by Coach Mudra and his able young coaching staff. Many of the players you will see in action this year are new—some are freshmen. They will be full of surprises. But the returning players will surprise you too. They have added the sharp edge of superior training and conditioning to their ability and previous experience.

The challenge of '74 is evident in the roster of teams the Seminoles will play this season. We welcome that challenge and look forward to renewing the fun and excitement of football in each new contest. Regardless of the final outcome of the games, I know that the Seminoles will give their best efforts, and with that commitment we are ready for 1974.

Those of us in the stands—alumni, students, faculty, staff, friends, and Seminole Boosters have an important role to play. The energy emanating from a full stadium of loyal, appreciative fans cannot be overestimated as a factor in the morale of a team and its willingness to push for the extra yard, the all-but-impossible play, and the winning margin. In short, the fans have a share in the success of every team. We look forward to making that difference at every home contest.

Let's show our young Seminoles and their coaches that they have our full confidence and our full support.

Sincerely,

Stanley Marshall  
President

**From One Seminole Fan  
To Another . . .**

## **. . . Welcome To The South's Friendliest Campus**

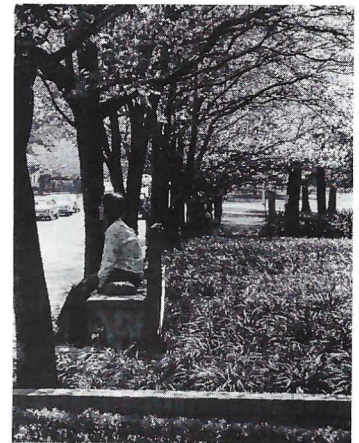
When the Seminary of the Suwannee was founded in 1857, no one guessed that it would eventually become a large state university with a student enrollment of over 20,000.

But from that small school for men, Florida State University evolved as one of the largest state institutions of higher learning in Florida and from its Gothic entranceway, has grown westward, sprinkling its skyline with modern, highrise architecture.

The University's 14 schools and colleges include Arts and Sciences, Business, Social Sciences, Criminology, Communication, Nursing, Social Work, Library Science, Home Economics, Education, Theatre, Law, Music and Visual Arts. Within these fields there are 52 doctoral programs and more than 80 bachelor's and master's degree programs. Funds for University research totaled some \$13 million in 1973-74, resulting in many projects having practical applications for Florida's industries, environment and social welfare.

With a staff of over 7,000 employees, including more than 1,300 faculty members, the University has an operating budget of \$77 million, which includes funds from state, federal and private sources.

Florida State was one of the first universities in the nation to have its affirmative action plan approved by the U. S. Department of Health, Education, and Welfare. The University actively strives to build a community in which opportunity is equalized and uses its facilities and human resources to develop the skills and opportunities of the members of all groups so they may play responsible and productive roles in society.

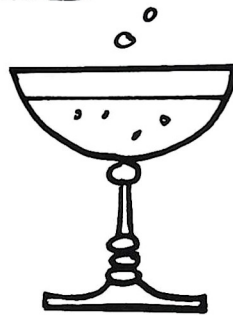


# Special FSU Hours

Open 'till 1:00 a.m.  
game nites



and



plus other fine foods and fresh seafood!

FIVE MINUTES FROM THE STADIUM

1921 West  
Tennessee  
U.S. 90W  
Phone  
224-2415

**Mr.  
Steak**

® AMERICA'S STEAK EXPERT

OPEN  
FOR LUNCH  
AND DINNER  
7 DAYS A WEEK



# FLORIDA STATE / COLORADO STATE

FOOTBALL MAGAZINE

VOL. XXVIII

September 21, 1974

No. 2

IN THIS ISSUE . . .

**FLORIDA STATE AROUND THE WORLD . . . . . 8-11**

By studying in one of six overseas programs offered by Florida State, students can have the kind of experience they could have only read about previously.

**FUTURE SEMINOLE SCHEDULE . . . . . 20**

What Big Eight Conference power will the Seminoles be playing in 1976? The answer is here with FSU schedules through 1977.

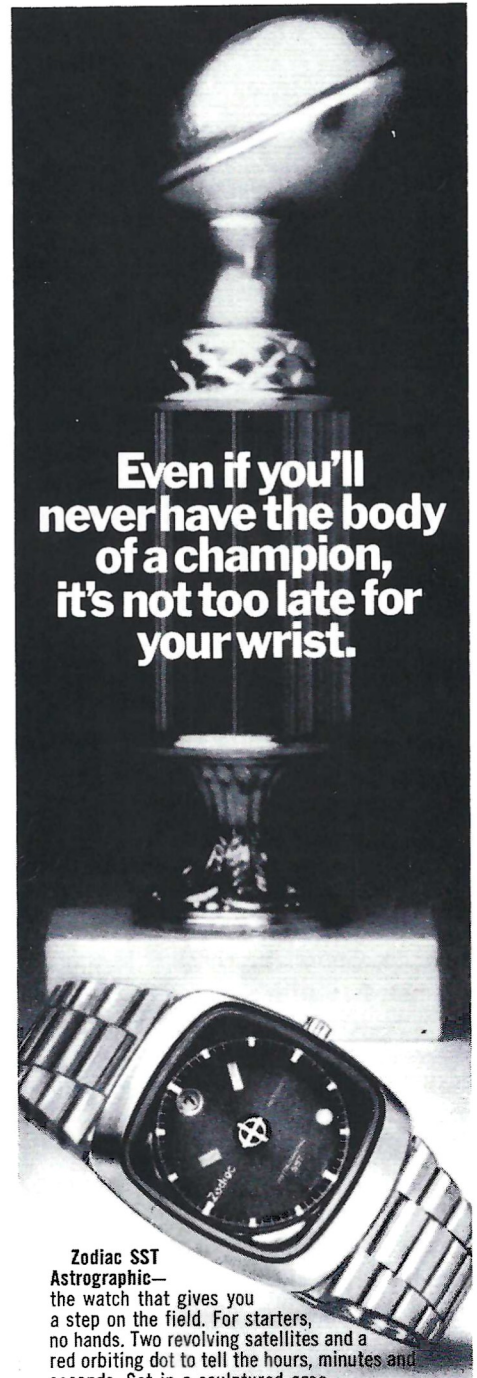
**OFFICIALS SIGNALS AND TERMINOLOGY . . . . . 37-38**

Confused by all that arm waving going on by the "guys in the striped shirts"? You can find an explanation here.

Photo Credits: Barry Mittan, and Irv "Doc" Kokol

Florida State University	3	1974 Seminole Squad	38
Seminole Boosters, Inc.		Stadium Information	40
Full Scholarship Donors	6-7	Seminole Auto Dealers	42
FSU Around the World	8-11	Seminole Trainers	43
1974 Seminoles	12-14	Seminole Managers	44
Athletic Department Administration	15	Board of Regents	45
The Football Coaching Staff	16	Seminole Head Coaches	46
Future Football Schedules	20	Sports Spotlight: Golf	47
Graduate Assistant Coaches	21	The Marching Chiefs	48
Head Coach Darrell Mudra	22-23	FSU Football Flashback	49
Seminole Songs	24	Coaches' Close-up	50-51
Keep Your Own Statistics	27	Seminole Booster Highlights	52
Tonight's Teams	28	Colorado State University	53-55
Starting Line-ups	31	At MSU, Male Chauvinism	
Rosters	33-34	Tapers Off	56
Officials Signals	36	Seminole Cheerleaders	58
Football Terms	37	Seminole Radio Network	59

Advertising Directory 60  
Seminole Basketball Inside Back Cover



**Zodiac SST Astrographic**—the watch that gives you a step on the field. For starters, no hands. Two revolving satellites and a red orbiting dot to tell the hours, minutes and seconds. Set in a sculptured case. Inside, a 17-jewel split-second-timing movement. Guaranteed\* to within a minute a month. Self-winding. Stainless steel or 18k gold electroplate case. Stainless steel back. Automatic calendar with push button date changer. Shock and water resistant. A touch of glory for your wrist. Priced from \$165.

**Zodiac**

\*Adjustments to this tolerance, if necessary, will be made at no cost for a period of one year.

Ask for ZODIAC where you buy fine watches.



The Florida State Football Magazine is published by the Florida State University Department of Intercollegiate Athletics. Editor—Hank Schomber. Program Manager Lonnie Burt. Business Manager—Claude Thigpen. Sales Coordinator—Jack Ibach. Local Advertising is contracted by the Florida State University Department of Intercollegiate Athletics. National Advertising Representative is Spencer Marketing Services, New York. The 1974 Florida State Football Magazine is printed by Grafcom, Inc., Tallahassee; Typography by Canon Graphics, Tallahassee.



Seminole Boosters, Inc., on behalf of the Florida State University, wishes to express its sincere gratitude to the following Full Scholarship donors:

**A.B. Dick Products Company**  
Tallahassee

**Albritton-Williams, Inc.**  
Tallahassee

**Charles H. Alford**  
Tallahassee

**American Communications, Inc.**  
Tallahassee

**Aragon Farms**  
Bainbridge, Georgia

**Compliments of a Friend**

**Winfred L. Bailey**  
Atlanta, Georgia

**Barnett Bank**  
Tallahassee

**Barrett, Daffin & Figg**  
Tallahassee

**Dr. John Bembrly**  
Tallahassee

**Brown, Smith, Young & Pelham**  
Tallahassee

**Philip A. Browning**  
Atlanta, Georgia

**Karle Bucklew**  
North Palm Beach

**Buddy's Sporting Goods**  
Tallahassee

**Compliments of a Friend**

**Dr. Emory Cain**  
Quincy

**Capital City First National Bank**  
Tallahassee

**Capital City Sporting Goods**  
Tallahassee

**Bill Cartee**  
Tallahassee

**Bob Shackleton,**  
Tallahassee, Fla.

**Southern Electric,**  
Tallahassee, Fla.

**Chenoweth Distributing Company**  
Tallahassee

**Charles S. Coble**  
Tallahassee

**Dr. James K. Conn**  
Tallahassee

**Crossland Realty, Inc.**  
Tallahassee

**Tom Cundy**  
Ft. Lauderdale

**Dr. Gene L. Davidson**  
Tallahassee

**Frank Decker Construction Co.**  
Lakeland

**Syde P. Deeb**  
Tallahassee

**Drake Management, Inc.**  
Tallahassee

**Dr. Evan E. Dussia**  
Tallahassee

**Elberta Crate & Box Company**  
Tallahassee

**Equity Resources, Inc.**  
Tallahassee

**The Essex Corporation**  
Tallahassee

**Crockett Farnell, Jr.**  
Clearwater

**Florida Federal Savings & Loan Assn.**  
Tallahassee

**First Federal Savings & Loan Assn.**  
of Gadsden County Quincy

**B. Kenneth Gatlin**  
Tallahassee

**Donald E. Grant**  
Perry

**Palmer-Harrell, Inc.,**  
Tallahassee, Fla.

**Courtesy Oldsmobile,**  
Tallahassee, Fla.

**Douglas D. Hammons**  
Tallahassee

**Arthur E. Hempel, Jr.**  
St. Petersburg

**Holiday Inns of Tallahassee**  
Tallahassee

**HSE & M**  
Tallahassee

**George Hunt, Jr.**  
Clearwater

**Industrial National Bank**  
Tallahassee

**Nelson A. Italiano**  
Tampa

**Compliments of a Friend**

**Wendell Jarrard**  
DeLand

**Lakeland Auto Auction**  
Lakeland

**Ed Kercher**  
Bradenton

**Jim Kirk**  
Ocala

**Ryals Lee Sales Co.**  
Tallahassee

**W.S. Lee Company, Inc.**  
Tallahassee

**Leon Federal Savings & Loan Assn.**  
Tallahassee

**Locklin Brothers**  
Milton

**Kinnebrew Motors, Inc.**  
Tallahassee

**Landrum Realty**  
Tallahassee

**Miller Chevrolet,**  
Havana, Fla.

**Gary Smith Ford, Co.,**  
Ft. Walton Beach, Fla.





**Leon Realty, Inc.**

Tallahassee

**Lewis State Bank**

Tallahassee

**John E. Loughridge**

Perry

**Lyons Industrial Corporation**

Winter Haven

**Vernon L. McCord**

Tallahassee

**Bruce McIver, Realtor**

Tallahassee

**J. Stanley Marshall**

Tallahassee

**John W. Mettler**

Tallahassee

**Midyette-Moor Insurance Agency, Inc.**

Tallahassee

**Mobile Home Industries**

Tallahassee

**W.L. Montague**

Quincy

**Dr. Coyle E. Moore**

Tallahassee

**Ralph Morang**

Quincy

**Darrell Mudra**

Tallahassee

**Municipal Code Corporation**

Tallahassee

**Niagara Wires, Inc.**

Quincy

**Keith Nichols Co.**

Ft. Washington, Pa.

**Millard Noblin Realty, Inc.**

Tallahassee

**Northwood Mall Merchants Assn., Inc.**

Tallahassee

**Pal Equipment Co., Inc.**

Jacksonville

**Fryer-Thomas Co.,**

Quincy, Fla.

**Proctor's Pontiac-Cadillac,**

Tallahassee, Fla.

**George E. Palmer**

Tallahassee

**Jesse C. Palmer**

Tallahassee

**Julius F. Parker, Jr.**

Tallahassee

**Parkway National Bank**

Tallahassee

**Peninsular Sign Company**

St. Petersburg

**Peoples Bank of Tallahassee**

Tallahassee

**Nat Polak Insurance Agency**

Tallahassee

**Doyle Pope**

Quincy

**Mel Pope**

Tallahassee

**Michael E. Pou**

Atlanta, Georgia

**E.T. Pridgeon, Jr.**

Tallahassee

**Publix Super Markets**

Lakeland

**Ramada Inn**

Tallahassee

**James J. Reeves & Berton L. Brown**

Pensacola

**Walter L. Revell**

Tallahassee

**Burt Reynolds**

Los Angeles, California

**Royal Sandwich Co.**

Tallahassee

**Seminole Distributors, Inc.**

Tallahassee

**Silver Slipper, North**

Tallahassee

**James C. Smith**

Tallahassee

**Tallahassee Motors,**

Tallahassee, Fla.

**Southeastern Asphalt Company**

Tallahassee

**Ronald E. Swaine**

Pensacola

**Anonymous**

Jacksonville

**Tallahassee Builders Supply, Inc.**

Tallahassee

**Tallahassee Democrat**

Tallahassee

**Tallahassee Federal Savings & Loan Assn.**

Tallahassee

**Tallahassee News Company, Inc.**

Tallahassee

**Tallahassee Restaurant & Lodging Assn.**

Tallahassee

**Talquin Electric Cooperative, Inc.**

Quincy

**Terra-Rosa Hardware**

Tallahassee

**Van Brunt & Yon, Inc.**

Tallahassee

**WGLF Radio Station**

Tallahassee

**Dr. Francis H. Watt (Hank)**

Tallahassee

**George A. Weeks**

Tallahassee

**West Coast Transport, Inc.**

Tampa

**Wheeler Builder Supply**

Tallahassee

**Dan Whitehurst, Investors Realty**

Tallahassee

**Wholesale Foods**

Tallahassee

**Winewood Companies**

Tallahassee

**Richard W. Wolfe**

Tallahassee

**McKemie-Alford Chevrolet,**

Tallahassee, Fla.

# Florida State Around the World



At the Canal Zone Branch in Panama, students can earn degrees in seven majors. Classes attract a number of military personnel.

Law classes from Oxford dons. Art classes at the feet of Michelangelo's David. Tropical biology in the jungles of Panama.

By studying abroad in one of six overseas programs offered by Florida State University, students in the State University System can have the kinds of experiences most students only read about.

Programs are offered in England, Italy, Yugoslavia, Switzerland and Panama.

The purpose?

"Each one has a different purpose," said Dr. Robert Coyne, Director of International Programs.

"The programs in Florence and London are geared more to liberal studies. Any student with at least a 2.0 grade point average and who has attained sophomore status is eligible to enroll.

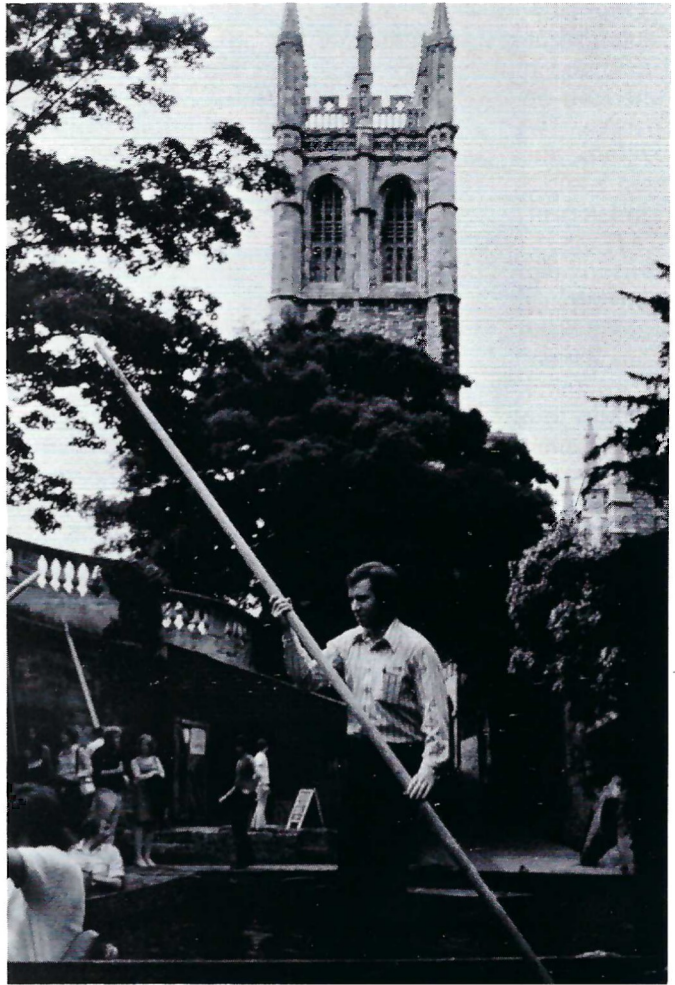
"In Panama, most of the students are military personnel—although the program attracts a number of FSU students interested in such things as Spanish or tropical biology."

The programs in Oxford, Belgrade, and Leysin, Coyne said, are geared to students in specific fields, namely, law; comparative studies in business, economics or government; and hotel and restaurant administration, respectively.

What each of the programs have in common is what some call the "laboratory" approach to learning.

Lectures and reading assignments are supplemented with field trips to libraries, museums, historic sites, and whenever possible, guest speakers from the host country.

"In a different culture," Coyne said, "everyday events become learning experiences. Students and faculty not only gain depth and perspective in their studies, they also learn from first hand observation of the economic, political and social changes taking place outside the United States."



Punting down the River Cam, a London Study Center student takes in flavor of Cambridge.



Law students studying in Oxford have an opportunity to observe the British judicial system and study under Oxford dons.

THE CANAL ZONE PROGRAM, established in 1957, is the longest running of the six international programs.

Originally started through a contract with the Army, the Center became a degree-granting branch of the University in 1967, and now offers majors in economics, English, Inter-American Studies, International Affairs, Social Science and Spanish. Twenty percent of the students are Panamanian civilians; the rest are military personnel and students from the main campus.

In 1966, in its first year of operation, students in the FLORIDA STATE UNIVERSITY CENTER IN FLORENCE volunteered many hours in helping to salvage priceless art collections which had been damaged by flooding. In gratitude, the Italian government presented them with a plaque.

Since then, students enrolled in the six month program have gained admission to collections and archeological digs often off-limits to tourists.

The center director is Dr. Fred Licht, an art scholar who was instrumental in the restoration of Florentine art after the flood and who is active in the Florence community. Classes are taught by faculty members from the State University System who serve on a rotating basis, usually for one term (six months). Academic emphasis of the center is on humanities.

A program based on the same six-month, open enrollment concept was opened in London in 1971. Though emphasizing the social sciences, THE LONDON PROGRAM offers courses in education, business, and theater.

Student complaints that they "weren't meeting enough British people" led to the formation of a Council of Advisors in 1973. This all-British council uses its influence to bring FSU students into closer contact with the British culture.

The center is housed in the Monarch hotel, on Cromwell road, just minutes from central London. During each quarter, students take center-sponsored trips to historical sites in Great Britain, including Greenwich, Hampton Court, Stratford-on-Avon and Stonehenge.

The remaining study abroad programs are held only in the summer and enrollment is limited to students with particular interests and qualifications.

Students attending the Summer Quarter in Law at Oxford have an opportunity to study international law, comparative law, and the history and development of English Common Law and common law institutions. Classes are taught by Oxford dons and FSU faculty members. Only law students are eligible to attend.

The hotel and restaurant administration program in Leysin, Switzerland provides a first-hand study of the operations and administrative policies of several European hotels. The course is taught through formal seminars and on-site visits and lasts five weeks.

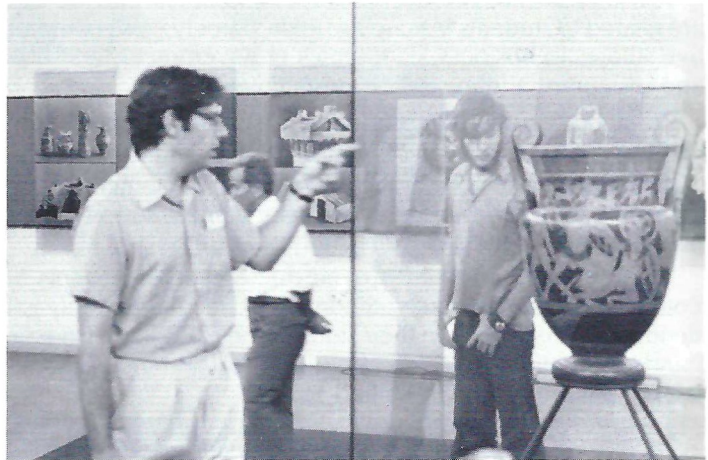
The Summer Program in Yugoslavia, open to a limited number of qualified students, is an integral part of FSU's Center for Slavic and East European Studies. Conducted as a seminar, the program allows for comparative study in business, economics or government. Students live and study together with Yugoslav students in a cooperative program between FSU and the University of Belgrade.

Further information about study abroad programs is available in the International Programs Office, 210A Williams, Florida State University.

## The Florence Program



Dr. Robert Strane of the Asolo Theatre offers final comments before the performance of *Oedipus Rex* in ancient Greek theatre at Syracuse, Sicily.



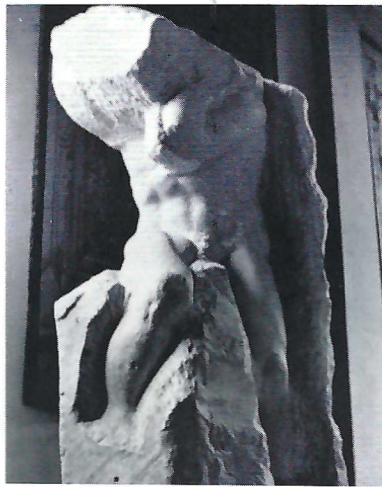
Dr. John Reich discusses Greek vase at the museum at Agrigento, Sicily.



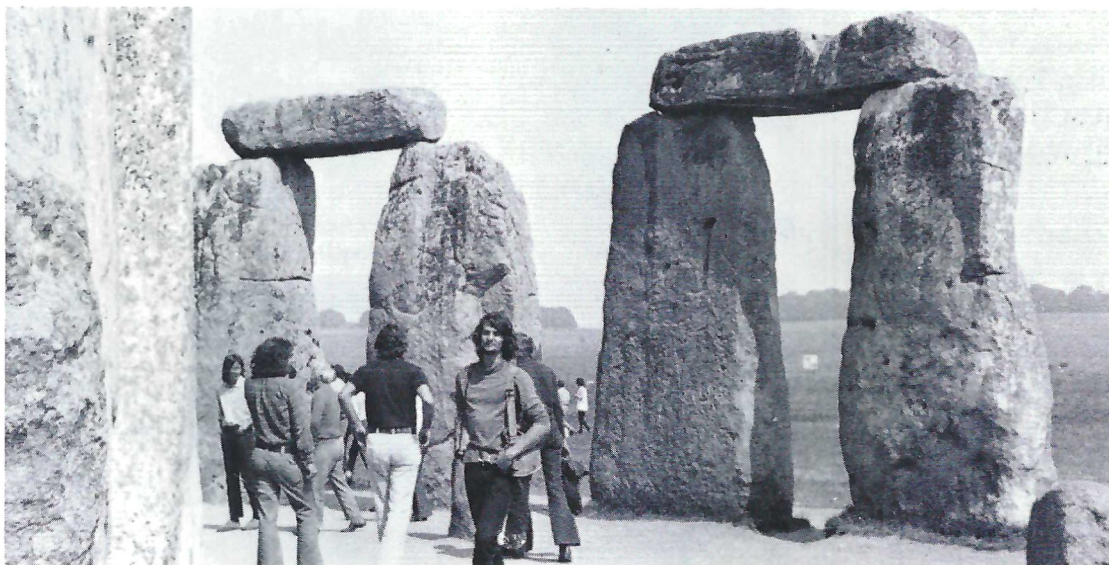
Dr. Fred Licht, director of the Florence program, leads discussion on the site of sixth century Greek temples at Agrigento, Sicily.



Students in the Panama program discover a rich cultural heritage.



Work by Michelangelo, Florence, Italy.



Students from the London Study Center examine the mysteries of the prehistoric Stonehenge on group field trip in England.

# The 1974 Seminoles



Go  
Seminoles!



**Sears**

**Tallahassee's Complete  
Department Store**

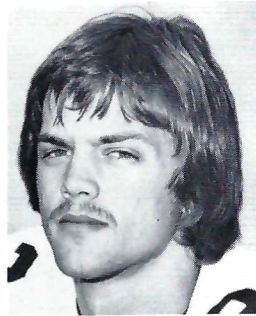
- Everything You Need  
For Your Home  
Family or Car!

**OPEN 9:30 a.m. 'til 9:30 p.m.  
Monday thru Saturday**

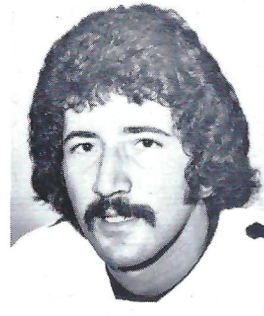
**SHOP AT SEARS  
AND SAVE**

**Sears**

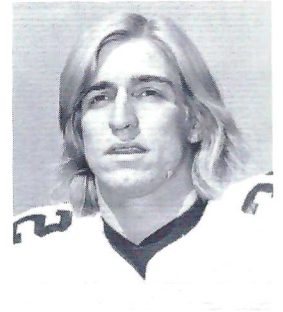
SEARS, ROEBUCK AND CO.



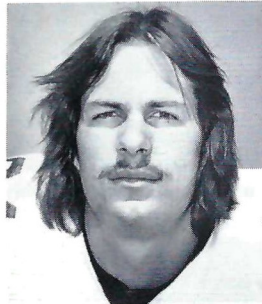
Mike Allen



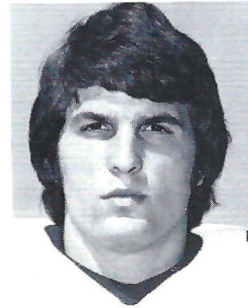
Ahmet Askin



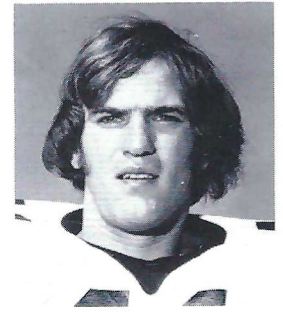
Mike Barnes



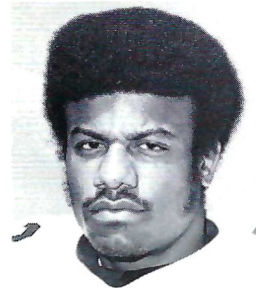
Ed Beckman



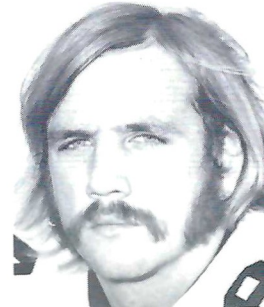
Ricky Blythe



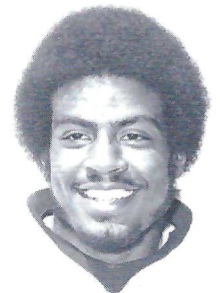
Phil Cahoon



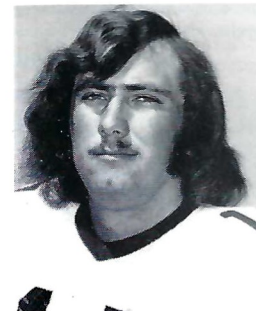
Joe Camps



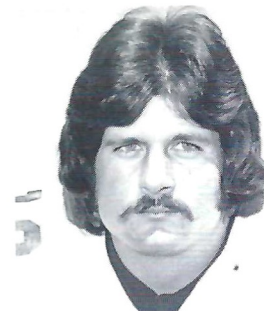
Randy Coffield



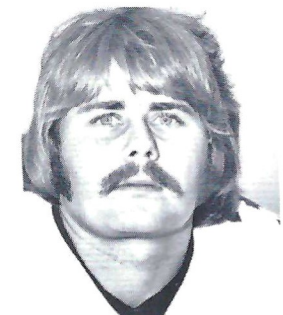
Bert Cooper



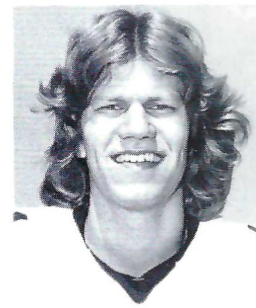
Ron Coppess



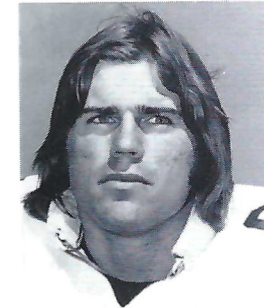
Mike Davison



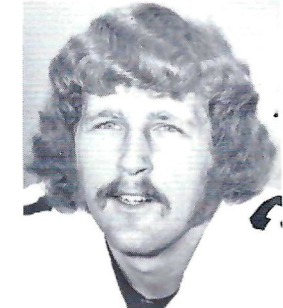
Joe Downey



Jim Everett

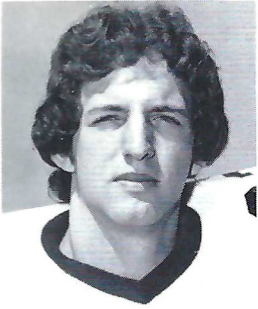


Jeff Gardner

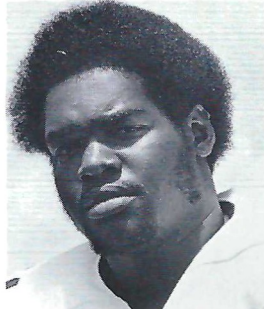


Joe Goldsmith

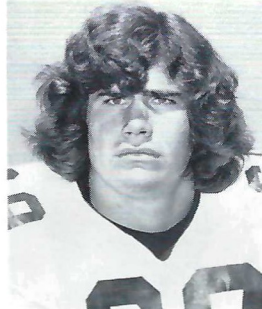
# The 1974 Seminoles



Chris Griffin



Curtis Harris



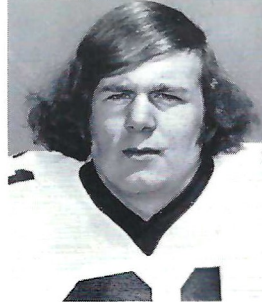
Bruce Harrison



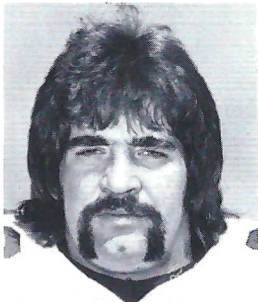
Earl Humes



Greg Johnson



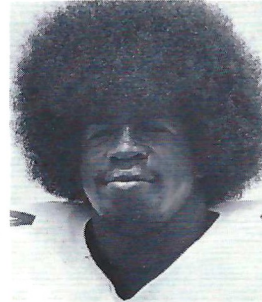
Wade Johnson



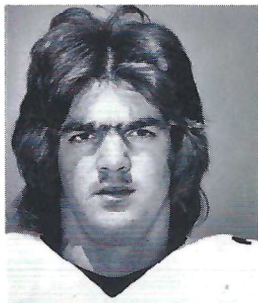
Bob Jones



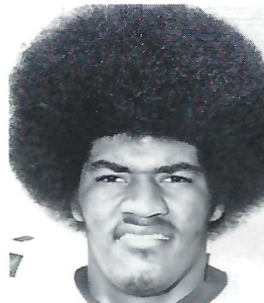
Phil Jones



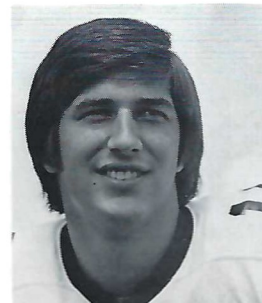
Larry Key



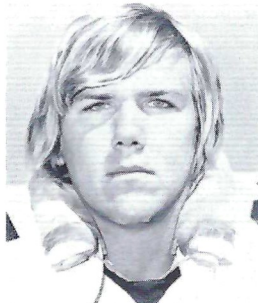
Jeff Leggett



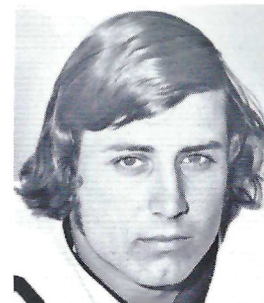
Rudy Maloy



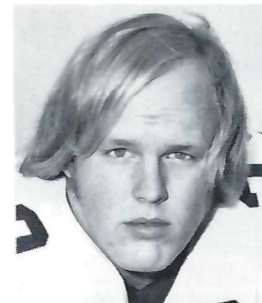
Steve Mathieson



Billy McPhillips



Scott Meseroll



Fred Miller

## The Last Word In Riding Herd



Seminole action is fast and mean. Takes exceptional men to climb in there with it, let alone keep it sorted out. But Times Sports' grid wranglers have the belly for it. And when they've put their words and pictures together, there's nothing more to say. For the best, most colorfully complete coverage of FSU football, read Florida's Best Newspaper.

**St. Petersburg Times**  
FLORIDA'S BEST NEWSPAPER

Travel Is Our Profession



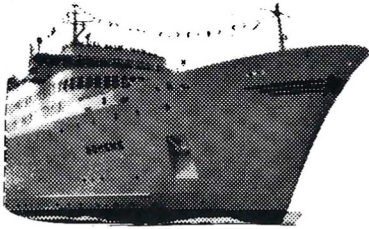
Business  
or  
Pleasure



We have  
the places  
you want



to visit on all  
Continents



Air, Steamship, Amtrak,  
Cruise tickets are sold at  
printed tariff rates.

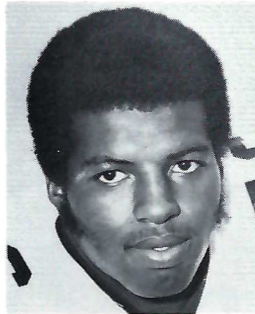


There is no charge  
for our services.

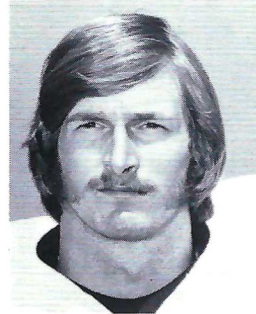
**Tallahassee  
Travel &  
Tours, Inc.**

Tel. 224-4161

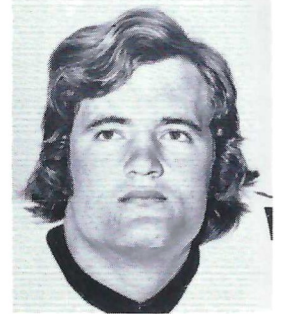
# The 1974 Seminoles



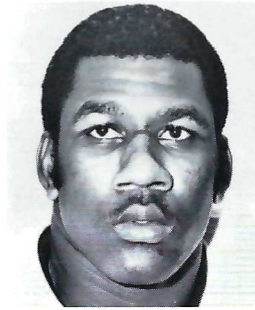
John Murphy



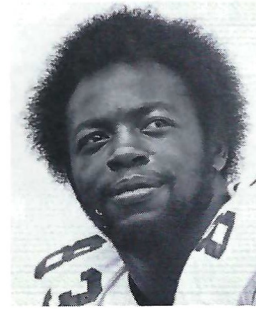
David Porter



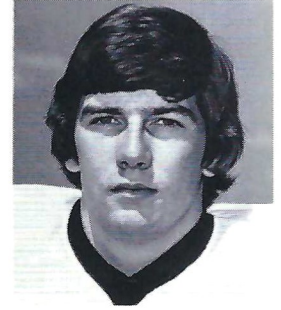
Greg Pounds



Smokey Ragins



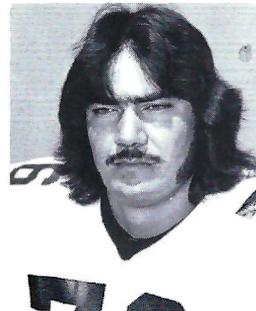
Detroit Reynolds



Jeff Ridings



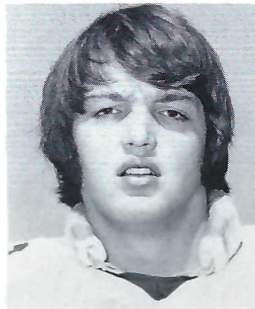
Alan Risk



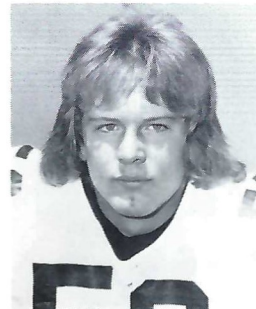
Vic Rivas



Gary Rose



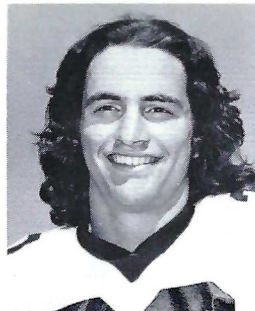
Bill Sawyer



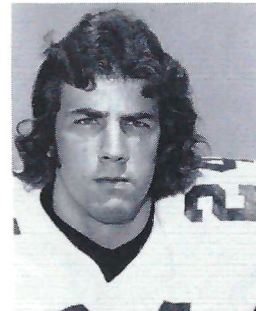
Brian Schmidt



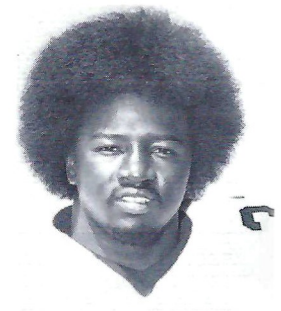
Garis Shaw



Mike Shumann



Andy Stockton



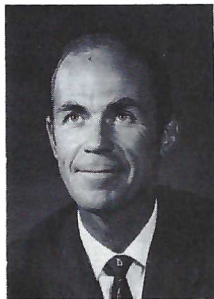
Rudy Thomas



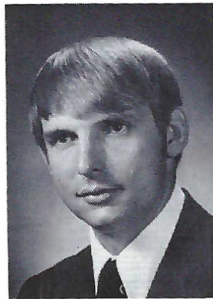
# INTERCOLLEGIATE ATHLETIC STAFF



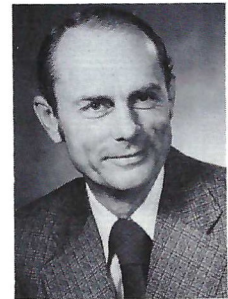
**JOHN BRIDGERS**  
Athletic Director



**DR. RICHARD BAKER**  
Chairman, Athletic Comm.



**BILL ROWE**  
Assistant AD



**CLAUDE THIGPEN**  
Business Manager



**LONNIE BURT**  
Sports Information Director



**HANK SCHOMBER**  
Assistant SID



**CHARLIE DURBIN**  
Cinematographer



**WOODY SAUCIER**  
Tully Gym Equipment Mgr.

# Varsity Coaching Staff



Front Row (left to right): Eddie Feely, Mike Pope, Gene McDowell, Cal Jones, Don Pollard, Head Coach Darrell Mudra. Second Row: Sam Elliott, Pete Rodriguez, Frank DeBord, Dan Henning, Larry Pendleton and Bob Harbison. For a close-up of the Seminole coaches, see pages 50 and 51 of tonight's program.

*A Dimension of Leadership for  
Men and Women*



*The more you look at it, the better it looks.*  
Military Science Building, Florida State University 644-1016

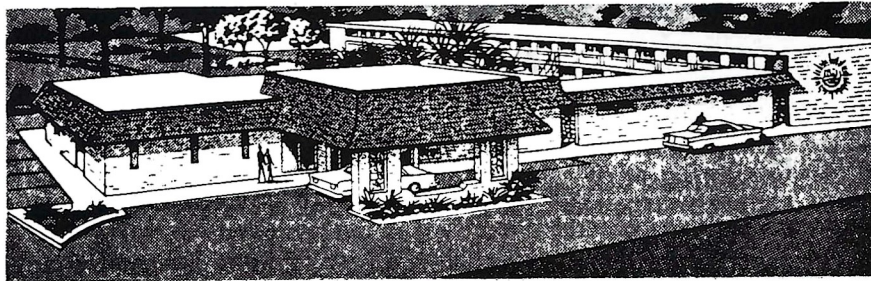


# QUALITY INN

**COLOR TV**

"We Cater to  
Commercial Men"

Phone 877-6171



*On the Parkway...* 1027 APALACHEE PKWY. US 27 So.

## *The Chez Napoleon Room*

*Complete Banquet and Meeting Facilities*

*Cocktail Lounge - Bonaparte's Retreat*

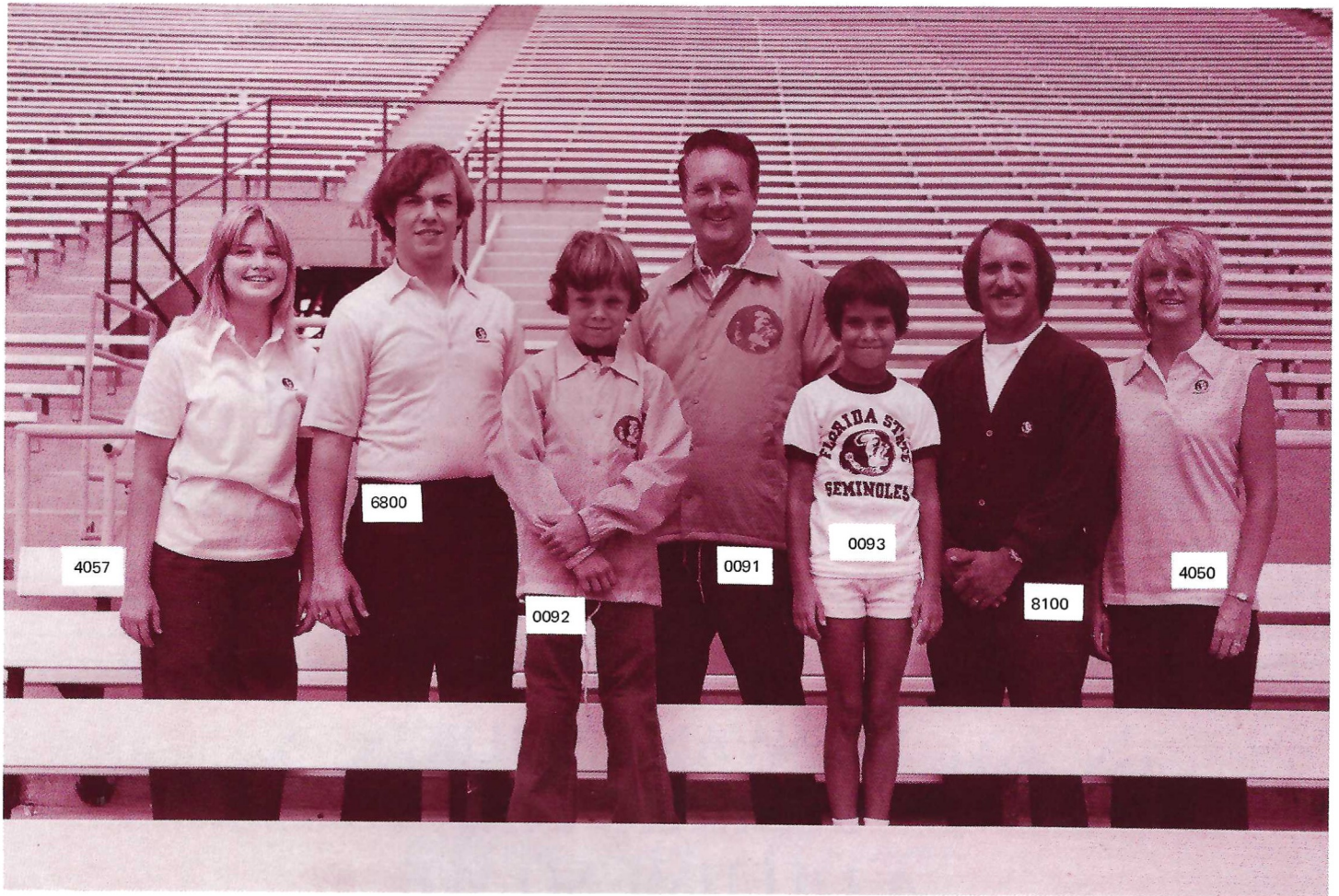
**WE WANT YOUR  
BUSINESS FOR  
A LIFETIME SO WE  
TAKE BETTER CARE OF  
YOU DAY BY DAY.**



# **Barnett Banks of Tallahassee**

# Show Your Colors

## Official Seminole Sportswear



### LADIES' AND MEN'S KNIT SHIRTS

100% cotton lisle shirts available in white or garnet (men's style only) with contrasting Seminole emblem. Full fashion collar and button placket. State size and color.

- 4050 Women's Sleeveless Shell . . . . . \$14.70  
Sizes: S-M-L
- 4057 Women's Cuffed Short Sleeve . . . \$16.70  
Sizes: S-M-L
- 6800 Men's Short Sleeve . . . . . \$17  
Sizes: S-M-L-XL  
(XXL available on special order)

Men's Arnel Plus short sleeve shirt 91% Arnel, 9% nylon shirt available in Garnet, Gold or White with contrasting Seminole emblem. Completely full fashion. State Size and color.

- 7010 Men's Arnel Shirt . . . . . \$18.80  
Sizes: S-M-L-XL

### LINED COACHING JACKET

Full cut 100% nylon water repellant outer shell. Pole lining with quilted nylon sleeve lining. Hood concealed in unique compartment inside the lining. Slashed Pockets, elasticized cuffs. Completely washable. Order in Garnet or Gold with contrasting Seminole emblem.

- 0091 Coaching Jacket . . . . . \$24.20  
Sizes: S-M-L-XL-XXL

### ORLON CARDIGAN SWEATERS

100% Orlon Links-N-Links Classic Button front Cardigan Sweaters. Cut extra full for added comfort. Wash and wear. Comes with contrasting Seminole Emblem in gold, white or garnet (men's only).

- 1825 Women's Sweater . . . . . \$23.20  
Sizes: 34-36-38-40  
Color: Gold, White
- 8100 Men's Sweater . . . . . \$23.20  
Sizes: S-M-L-XL  
Color: Garnet, Gold, White

### FOR THE KIDS

**Nylon Warm-Up Jacket**—just like the warm-up jackets worn by the Seminole athletes. 100% single ply tefeta nylon shell jacket with Byron collars. Color matched gripper snap front. Set in sleeves with elasticized cuffs. Comes in Gold only with contrasting Seminole emblem.

- 0092 Warm-up Jacket . . . . . \$12.20  
Sizes: XS(2-4), S(6-8), M(10-12), L(14-16)

**Child's Cotton Shirt**—100% cotton T-shirt with Seminole emblem. Just the thing for the Junior Seminole.

- 0093 Child's Shirt . . . . . \$3.50  
Sizes: S-M-L

### SEMINOLE ACCESSORIES

**Zippo Lighter**—famous Zippo lighter with colorful Seminole Indian crest. Perfect for gifts.

- 0010 Zippo Lighter . . . . . \$7.50

**Key Chain**—super Loop Key Chain with colorful Seminole Indian crest. Sturdy-key ring holds many keys. Perfect for pocket or purse.

- 0020 Key Chain . . . . . \$ 3

### Seminole Charms

- 0024 Indian Head Charms . . . . . \$ 2
- 0025 Running Indian Charm . . . . . \$ 2

### Men's Jewelry

- 0028 Indianhead Cufflinks . . . . . \$3.50
- 0029 Indianhead Tie Tac . . . . . \$2.50

### Blazer Pocket Emblems

- 0011 3-in. Seminole Blazer Emblem with pin-on feature . . . . . \$ 8
- 0012 1½-in. Seminole Blazer Emblem to be sewn on . . . . . \$ 1

# DARITY LTD. BLAZERS \$55.

ADD .04 SALES TAX IF IN N.C.

	36	37	38	39	40	41	42	43	44	46	48	50	52
R													
L													
XL													
S													

ADD \$2.00 ON SIZES 48-52 & ON ALL EXTRA LONGS  
Coats offered in Garnet or Gold.

NAME \_\_\_\_\_  
 ADDRESS \_\_\_\_\_  
 TOWN \_\_\_\_\_ STATE \_\_\_\_\_ ZIP \_\_\_\_\_  
 COLOR \_\_\_\_\_ NO. OF COATS \_\_\_\_\_  
 TOTAL MONEY ENCLOSED \_\_\_\_\_ DATE \_\_\_\_\_  
 NAME OF SCHOOL \_\_\_\_\_

Make Checks Payable To: **Executive Wardrobe, Inc.**  
 Highway 601 By Pass West P.O. Box 970  
 Concord, N.C. 28025 ph. 704-786-8311

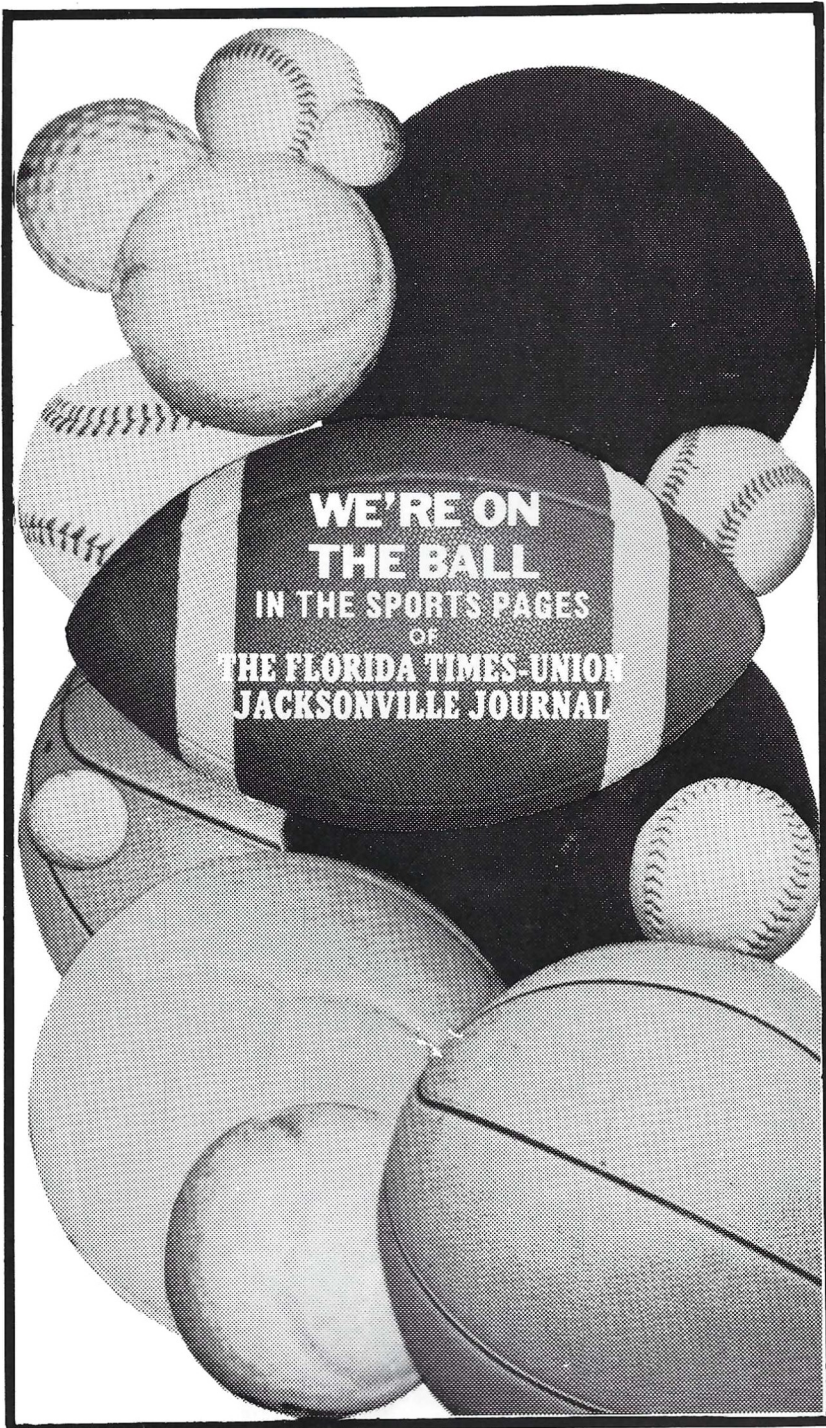


Cat. No.	Item	Quantity	Color	Size	Price	Total
4057	Women's Short Sleeve Cot.				\$16.70	
4050	Women's Shell				\$14.70	
6800	Men's Cotton Shirt				\$17.00	
7010	Men's Arnel Shirt				\$18.80	
8100	Men's Cardigan				\$23.20	
1825	Women's Cardigan				\$23.20	
0091	Coaching Jacket				\$24.70	
0092	Warm-up Jacket				\$12.20	
0093	Child's Shirt				\$ 3.50	
0010	Zippo Lighter				\$ 7.50	
0011	3" Blazer Emblem				\$ 8	
0012	1½" Blazer Emblem				\$ 1	
0020	Key Chain				\$ 3	
0024	Indian Head Charm				\$ 2	
0025	Running Indian Charm				\$ 2	
0028	Indian Head Cuff Links				\$3.50	
0029	Indian Head Tie Tac				\$2.50	
					SUB-TOTAL:	
Four percent Florida Sales Tax:						
					TOTAL:	



Make Check payable to:  
**FLORIDA STATE UNIVERSITY**

Mail Order To:  
 Athletic Business Office  
 Florida State University  
 Tallahassee, Florida 32306



We've a team of action photographers and writers that is unbeatable . . . covering every important athletic event in the South . . . getting the exclusive stories and photographs that make our sports pages come alive.

**The Florida Times-Union  
Jacksonville Journal**



## SEMINOLE SCHEDULES

### 1974

Sept. 14 .....PITTSBURGH  
 Sept. 21 .....COLORADO STATE  
 Sept. 28 .....at Kansas  
 Oct. 5 .....BAYLOR  
 Oct. 12 .....at Alabama  
 Oct. 19 .....FLORIDA  
 Oct. 26 .....at Auburn  
 Nov. 2 .....at Memphis State  
 Nov. 8 (Fri.) .....at Miami  
 Nov. 16 .....VIRGINIA TECH  
 Nov. 23 .....HOUSTON

### 1975

Sept. 13 .....at Texas Tech  
 Sept. 20 .....Open Date  
 Sept. 27 .....IOWA STATE  
 Oct. 4 .....at Georgia Tech  
 Oct. 11 .....at Virginia Tech  
 Oct. 18 .....at Florida  
 Oct. 25 .....AUBURN  
 Nov. 1 .....at Clemson  
 Nov. 8 .....MEMPHIS STATE  
 Nov. 15 .....MIAMI  
 Nov. 22 .....at Houston  
 Nov. 29 .....UTAH STATE

### 1976

Sept. 11 .....Memphis State at Jax  
 Sept. 18 .....at Miami  
 Sept. 25 .....at Oklahoma  
 Oct. 2 .....KANSAS STATE  
 Oct. 9 .....at Boston College  
 Oct. 16 .....FLORIDA  
 Oct. 23 .....at Auburn  
 Oct. 30 .....CLEMSON  
 Nov. 6 .....Open Date  
 Nov. 13 .....at Tampa  
 Nov. 20 .....HOUSTON  
 Nov. 27 .....VIRGINIA TECH

### 1977

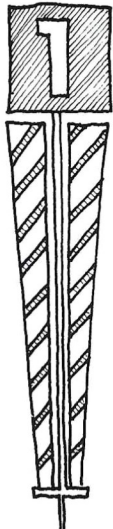
Sept. 10 .....IOWA STATE  
 Sept. 17 .....at Kansas State  
 Sept. 24 .....MIAMI  
 Oct. 1 .....at Oklahoma State  
 Oct. 8 .....CINCINNATI  
 Oct. 15 .....at Florida  
 Oct. 22 .....AUBURN  
 Oct. 29 .....at Houston  
 Nov. 5 .....at Virginia Tech  
 Nov. 12 .....MEMPHIS STATE  
 Nov. 19 .....at San Diego

# Graduate Assistants



Mack Brown, Rick Schlachner, Billy Joe Breakhouse

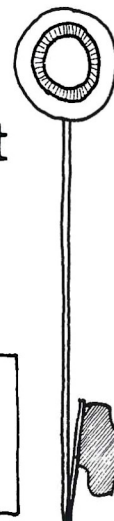
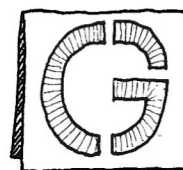
## First and Goal



It's the best way to reach a financial objective.

Why try to do it alone when **First National Bank** has a staff of professionals that can help you design a scoring play.

Whether it's big or small... make it **First and Goal**



217 South Orange Street Tallahassee, Florida 32311-1171 Member FDIC

# Head Coach Darrell Mudra

Darrell Mudra is a winner!

He is the man Florida State University has picked to lead the Seminoles out of the wilderness of defeat.

One of Coach Mudra's strongest selling points was the fact that he has turned football programs around with almost instant success, something Florida State desperately needs.

The 44-year-old Omaha, Neb., native came to Florida State from Western Illinois with extremely high recommendations. "Darrell Mudra is one of the outstanding football coaches in the country," says former Nebraska Head Coach Bob Devaney, now that school's athletic director. "He has been able to win wherever he has gone and in many cases despite great obstacles."

Tommy Prothro, ex-college coaching standout, now boss of the San Diego Chargers, is another who thinks Mudra was the man for the Florida State job. "I believe Darrell Mudra is a very, very superior coach. I would have been surprised if any candidate for the Florida State job was the caliber of Darrell Mudra."

Coach Mudra's record speaks for itself. He has turned five losers into big winners. In 15 years of college coaching, the soft-spoken educator has recorded 106 victories against only 32 losses and two ties.

Mudra attended Peru State College in Nebraska where he was an all-conference halfback. He received a masters degree from Omaha University and his doctorate from Colorado State. He served in the Air Force during 1950 and '51.

He was an assistant coach at Huron (S.D.) and Colorado State before becoming head coach at Adams State, Alamosa, Colo., in 1959. The previous season Adams State had gone 1-9 but in Mudra's first year the Colorado school gained eight victories against one loss. In four seasons there, Mudra-coached teams never lost more than two games in a single year and he led the Indians to a bowl game.

In 1963, he moved to North Dakota State, a team which had been 0-10 the previous year. In three seasons his records were 3-5, 10-1, and 11-0, including two bowl games.

The next challenge was the Montreal club of the Canadian professional league. In 1965 the Alouettes were 3-11 but under Mudra in '66 they went 7-7 and made the playoffs.

The University of Arizona was the next program Mudra turned around. It took him two seasons to do this, but in the second year he directed the Wildcats to an 8-3 record and a spot in the Sun Bowl.

Western Illinois gained his services in 1969 and in five years at the McComb institution Mudra's clubs went 39-13.

Coach Mudra is married to the former Jean Marie King of Omaha, Neb. They are the parents of four children, Darrell Jr., 20; Stephen, 19; Sherry, 18; and Michele, 14.

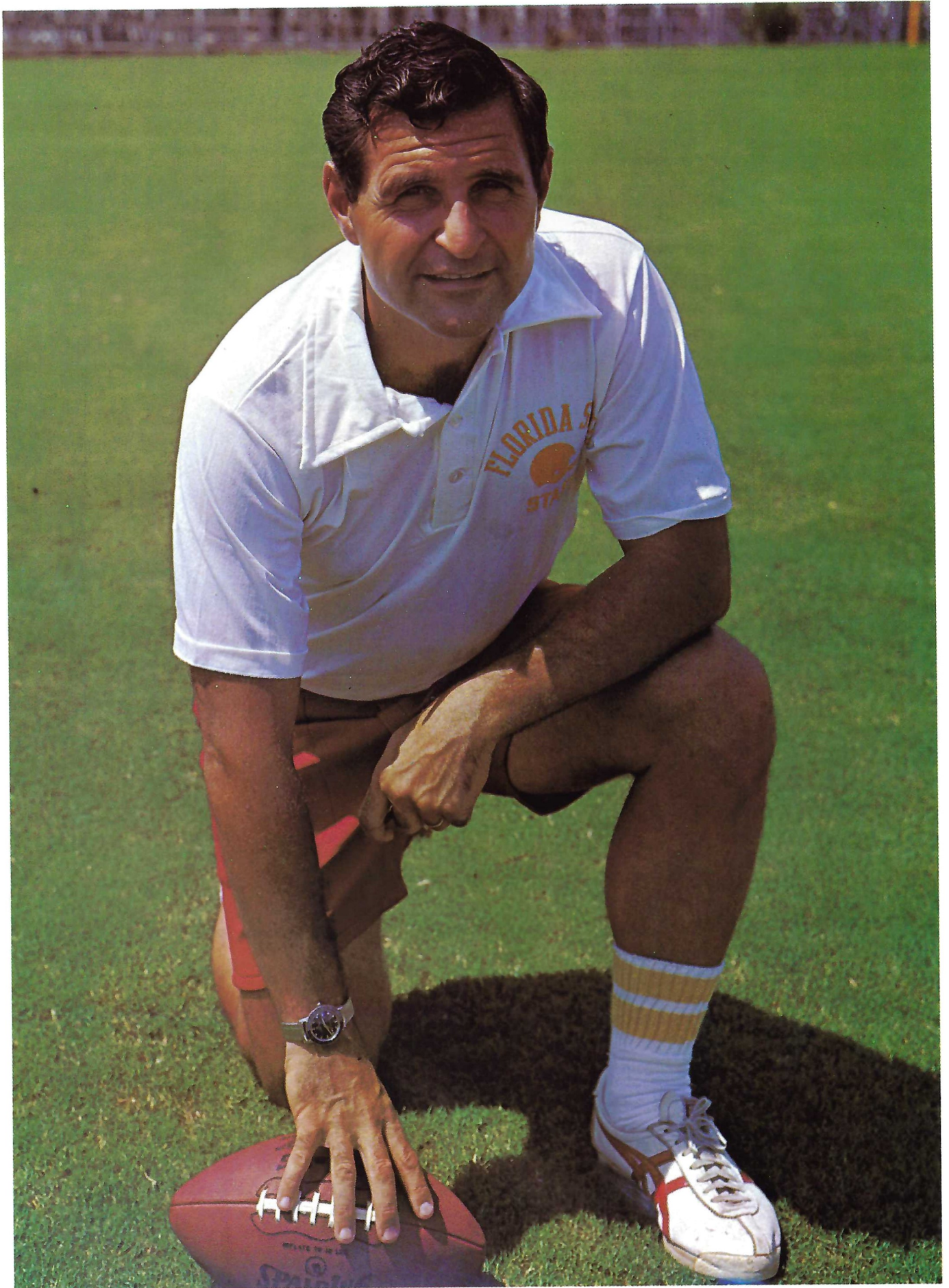


## THE MUDRA RECORD

Team	Previous Record	Mudra's Record
Adams State	1-9, 1958	1959 — 8-1 1960 — 7-0-1 1961 — 8-2 1962 — 9-1 (Mineral Bowl)
North Dakota State	0-10, 1962	1963 — 3-5 1964 — 10-1 (Mineral Bowl) 1965 — 11-0 (Pecan Bowl) Nat'l Champions
Montreal Alouettes	3-11, 1965	1966 — 7-7 (Made playoffs. Defeated Bud Grant's Winnipeg team)
University of Arizona	3-7, 1966	1967 — 3-6-1 (Defeated Ohio State at Columbus) 1968 — 8-4 (Sun Bowl)
Western Illinois	2-8, 1968	1969 — 8-2 1970 — 7-3 1971 — 8-2 1972 — 9-2 1973 — 7-4

Total 113 wins, 39 defeats, 2 ties





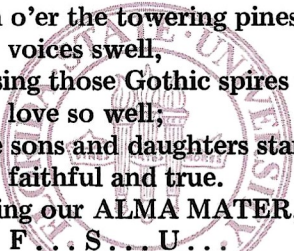


# The Star Spangled Banner

O, say! can you see, by the dawn's early light,  
What so proudly we hailed at the twilight's last gleaming?  
Whose broad stripes and bright stars, thro' the perilous fight,  
O'er the ramparts we watch'd, were so gallantly streaming?  
And the rockets' red glare, the bombs bursting in air,  
Gave proof thro' the night that our flag was still there.  
Oh, say, does that Star-spangled Banner yet wave  
O'er the land of the free and home of the brave?

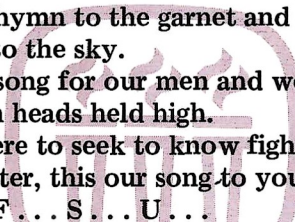
## Seminole Songs

### ALMA MATER



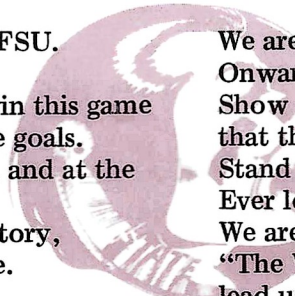
High o'er the towering pines our  
voices swell,  
Praising those Gothic spires we  
love so well;  
Here sons and daughters stand,  
faithful and true.  
Hailing our ALMA MATER,  
F . . . S . . . U . . .

### HYMN TO THE GARNET AND GOLD



Here's a hymn to the garnet and the gold,  
Ringing to the sky.  
Here's a song for our men and women bold,  
Sing with heads held high.  
Striving ere to seek to know fight for victory.  
Alma Mater, this our song to you,  
Echoes, F . . . S . . . U . . .

### FSU FIGHT SONG

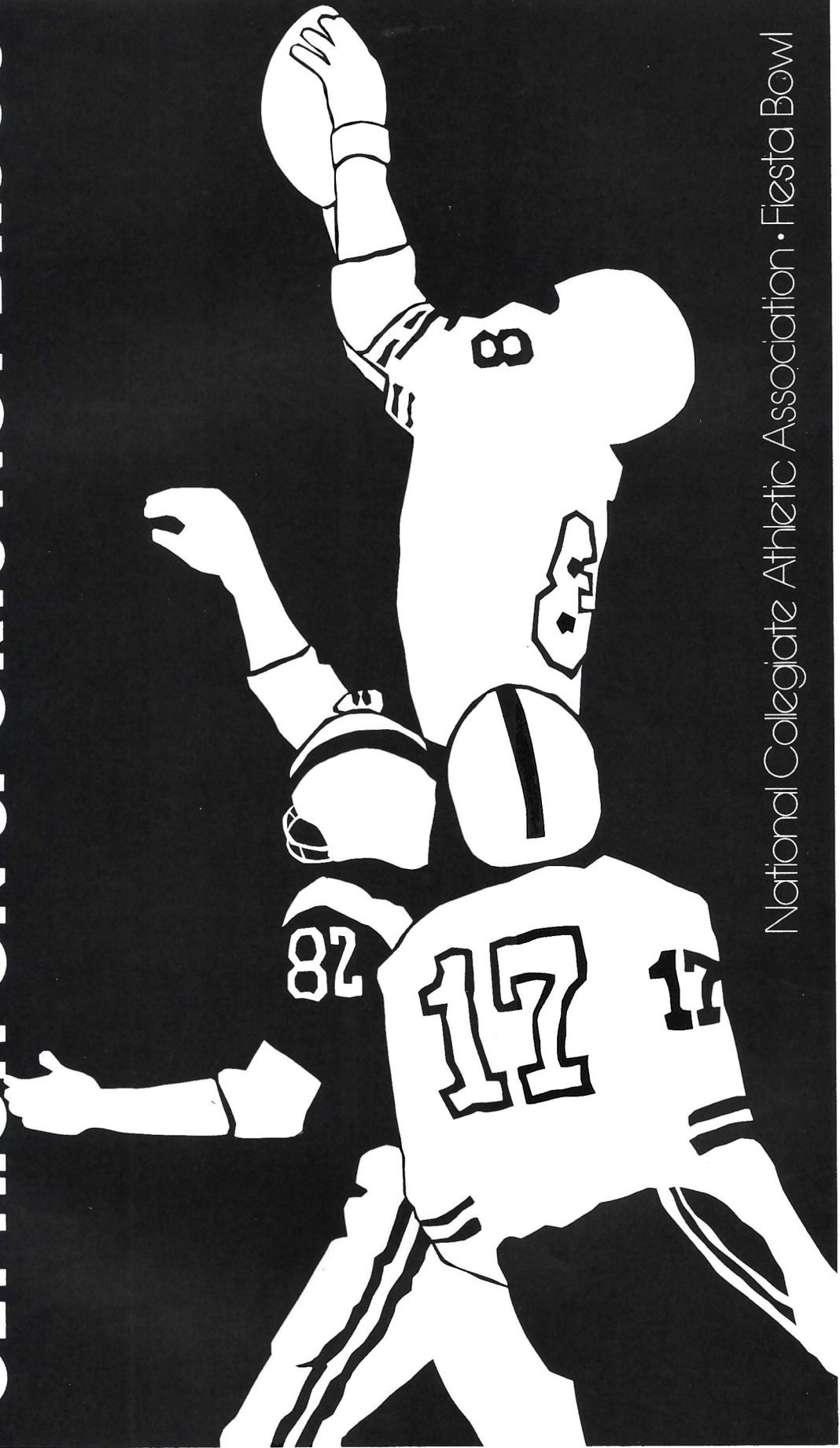


You got to fight, fight, fight for FSU.  
You got to scalp 'em Seminoles.  
You got to win, win, win, win, win this game  
and roll on down and make those goals.  
For FSU is on the war path now, and at the  
battle's end she's great:  
So fight, fight, fight, fight, to victory,  
our Seminoles from Florida State.  
(Yell) F-L-O-R-I-D-A S-T-A-T-E  
Florida State! Florida State!  
Florida State!  
(repeat song)

### FLORIDA STATE VICTORY SONG

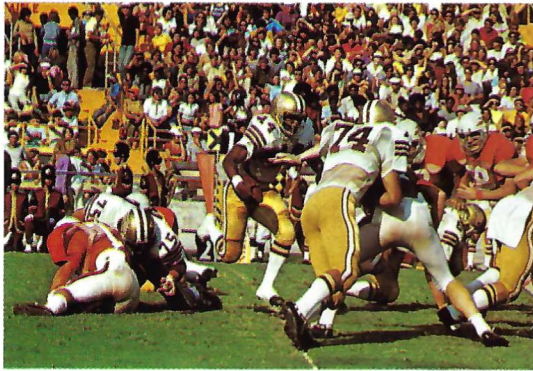
We are on the warpath tonight.  
Onward, Florida State.  
Show all the world the spirit and might  
that the Seminoles create.  
Stand up for the Garnet and Gold.  
Ever loyal we shall be.  
We are proud to shout,  
"The Warriors are out." And they will  
lead us to victory.

**GET HIGH ON SPORTS NOT DRUGS**



National Collegiate Athletic Association • Fiesta Bowl

# SUPPORT . . .



## THE SEMINOLES

### SEMINOLE BOOSTERS, INC.

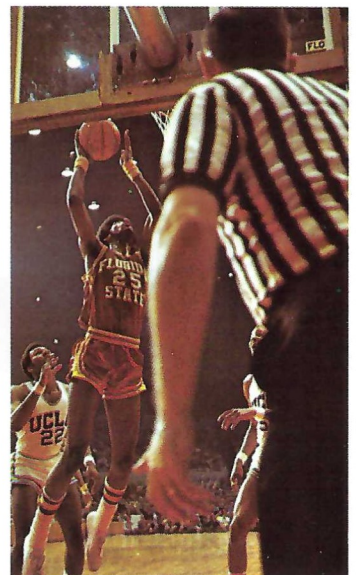
One of the most fundamental programs within any athletic department is that of providing funds to pay the educational expenses of the student-athletes participating in all sports. Through voluntary support, the Seminole Boosters, Inc. hope to provide such support.

"Now is the time for friends and alumni of Florida State to pull together," says Doyle Pope, Chairman of the Board of Directors. "The potential of the University is tremendous. Through Seminole Boosters, we hope to organize the thousands of those who are concerned with building the best athletic program in the nation."



Seminole Boosters, Inc., a private Corporation, is made up of member representatives from throughout the Southeast. In addition to Chairman Pope of Quincy, other members of the Executive Committee are Jimmy Carter, Panama City, Treasurer; Don Grant, Perry, Secretary; John Harlee, Bradenton; Theo Proctor, Jr., Tallahassee; Charles Booth, Orlando; and Henry Massey, Palm Beach.

Individuals interested in more information concerning the Seminole Boosters, Inc. should contact Executive Director Ted Ouzts, P.O. Box 1353, Tallahassee, FL 32301 or call 904/224-4494.



# KEEP YOUR OWN STATISTICS

Every football fan knows that the score doesn't always give a good picture of a game. A few statistics, like those that can be kept on this page, can make the picture clearer, show what the individual stars contribute and help to win post-game "debates." Besides, it can be fun to second guess the official scorer whose statistics will appear in tomorrow's papers. But before you start, here are some pointers on being a statistician:

1. Keep cumulative totals to be informed "up to the minute" and to simplify our figuring of team totals. Example: Jones gains 3, 6, 9, 2 yards and you write 3, 9, 18, 20 on his line.

2. Be satisfied if you come within 10-15 yards of the official team totals. Individual judgments as to the line of scrimmage can make quite a difference in the totals.

3. Remember that it takes 10 yards to make a first down—that last inch can be as important as a yard and must be scored as one. Wait until the official places the ball and then go by the official down/yard marker on the sidelines.

4. Be sure to credit first downs on scoring plays originating from lines of scrimmage beyond the 10-yard line.

5. On plays involving penalties measured from the point of the foul, credit the rusher or pass receiver with yardage only to the point of the infraction.

6. Charge gains and losses on fumbles to the player who, in your judgment, contributed most to the error.

7. Don't score two-point conversion attempts after touchdowns as rushing or passing plays.

Florida State

SCORING BY PERIODS					RUSHING (Use cumulative yardage, circle scoring plays)															
1	2	3	4	F																
TD SCORERS PAT																				
					PASSING (Use cumulative yardage for completions; - for incomplete; x for interceptions)															
					RECEIVING (Use cumulative yardage, circle scoring plays)															
FIRST DOWNS																				
RUSH	PASS	PEN																		

## Take A Vacation From Inflation . . .

**Winn-Dixie**  
FOOD STORES

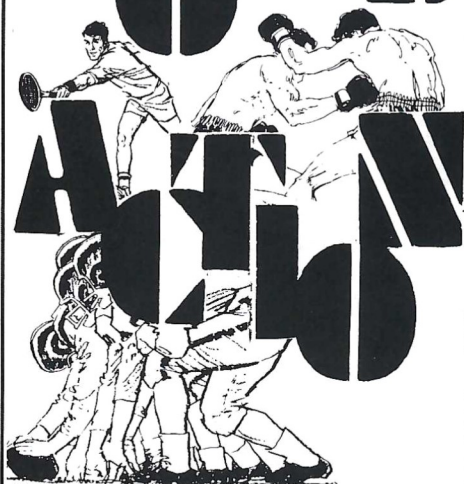
*The Smart Place To Go . . . For Good Things To Eat*

Colorado State

SCORING BY PERIODS					RUSHING (Use cumulative yardage, circle scoring plays)															
1	2	3	4	F																
TD SCORERS PAT																				
					PASSING (Use cumulative yardage for completions; - for incomplete; x for interceptions)															
					RECEIVING (Use cumulative yardage, circle scoring plays)															
FIRST DOWNS																				
RUSH	PASS	PEN																		



**SPORTS**



**ALL**

## Complete sports coverage everyday

The Tampa Tribune's fine team of sports reporters led by editor Tom McEwen and assistant editor Jim Selman bring you complete coverage of all sports.

Read the Sports pages of

**THE  
TAMPA  
TRIBUNE**

# TONIGHT'S TEAMS

**Florida State**

**Colorado State**

## 1974 Schedule and Results

6 Pittsburgh 9	23 New Mexico 32
Sept. 21 Colorado State	Sept. 21 at Florida State
Sept. 28 at Kansas	Sept. 28 Memphis State
Oct. 5 Baylor	Oct. 5 Brigham Young
Oct. 12 at Alabama	Oct. 12 at Utah State
Oct. 19 Florida	Oct. 19 Nevada-Reno
Oct. 26 at Auburn	Oct. 26 at Arkansas
Nov. 2 at Memphis State	Nov. 2 Wyoming
Nov. 8 at Miami	Nov. 9 at Arizona
Nov. 16 Virginia Tech	Nov. 16 Texas-Elpaso
Nov. 23 Houston	Nov. 23 at Arizona State

## 1974 Stats

<b>FSU</b>	<b>Opp.</b>		<b>CSU</b>	<b>Opp.</b>
12	20	<b>First Downs</b>	24	24
38	50	<b>Rushing Attempts</b>	44	45
140	121	<b>Rushing Yardage</b>	247	156
10-22-0	10-19-1	<b>Passes</b>	27-15-3	22-16-0
122	135	<b>Passing Yardage</b>	294	221
262	256	<b>Total Offense</b>	441	377
8-36.1	5-29.2	<b>Punting</b>	2-31.0	3-42.7
6-3	4-2	<b>Fumbles-Lost</b>	3-2	3-2

## Individual Leaders (Returning Players)

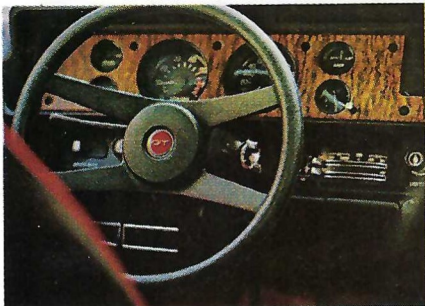
### Florida State

<b>Rushing</b>	<b>Att.</b>	<b>Net.</b>	<b>Avg.</b>	<b>TD</b>		
Key	16	63	3.9	0		
Thomas	11	45	4.1	0		
Coppess	9	21	2.3	0		
<b>Passing</b>	<b>Att.</b>	<b>Comp.</b>	<b>Pct.</b>	<b>Int.</b>	<b>Yds.</b>	<b>TD</b>
Coppess	9	19	.474	0	116	1
Mathieson	3	1	.333	0	6	0
<b>Receiving</b>	<b>No.</b>	<b>Yds.</b>	<b>TD</b>			
Thomas	6	50				
Four with one each						
<b>Punting</b>	<b>No.</b>	<b>Yds.</b>	<b>Avg.</b>			
Downey	8	289	36.1			

### Colorado State

<b>Rushing</b>	<b>Att.</b>	<b>Net.</b>	<b>Avg.</b>	<b>TD</b>		
Harris	27	139		2		
McKenzie	12	35		0		
<b>Passing</b>	<b>Att.</b>	<b>Comp.</b>	<b>Pct.</b>	<b>Yds.</b>	<b>Int.</b>	<b>TD</b>
Graham	27	15	.556	294	3	1
<b>Receiving</b>	<b>No.</b>	<b>Yds.</b>	<b>TD</b>			
Miller	6	121	1			
O'Rourke	3	96	0			
Larson	2	34	0			
<b>Punting</b>	<b>No.</b>	<b>Yds.</b>	<b>Avg.</b>			
Judah	2	62	31.0			

# ECONOMY. PLUS LIBERAL FRINGE BENEFITS.



Good gas mileage is still the thing you want most in a little car, of course. But we know you'd like more.

Like sporty looks and colors and models to choose from.

Bucket seats that fit you comfortably.

Nice soft carpeting.

A floor-mounted shift control and an instrument panel with dials and

gauges instead of flashing lights.

Really good handling.

An engine with a little bit of varroom going for it.

A rear seat that folds down and a rear door that opens up, so you can use your little car almost like a station wagon.

The Vega GT.

An economy car-and-a-half.

This year's version of last year's *Motor Trend* Economy Car of the Year. *Car & Driver* Readers' Choice, Best Economy Sedan, '71, '72, '73. *Motor Service & Service Station Management* mechanic survey, Easiest Subcompact to Service, '72. *Motor Trend*, Car of the Year, '71.

**VEGA**  
Chevrolet

**CHEVROLET MAKES SENSE FOR AMERICA.**



*Coca-Cola*

Trade-mark ®

Enjoy



"Coca-Cola" and "Coke" are registered trade-marks which identify the same product of The Coca-Cola Company.

# FLORIDA STATE

DEFENSE			OFFENSE		
WR	82	Mike Allen Sr., 6-4, 178	LE	87	Rudy Maloy So., 6-4, 208
LT	69	Bruce Harrison So., 6-2, 222	LT	76	Phil Jones So., 6-2, 244
LG	64	Jeff Gardner Jr., 5-11, 214	SLB	53	Brian Schmidt So., 6-1, 220
C	50	Bill Sawyer So., 6-4, 228	NG	49	Brooks Burroughs Sr., 6-0, 227
RG	62	Bob Jones Sr., 6-4, 233	WLB	90	Bert Cooper Sr., 6-1, 236
RT	70	Vic Rivas So., 6-2, 234	RT	78	Greg Johnson Jr., 6-4, 236
TE	21	Joe Goldsmith Sr., 6-1, 180	RE	83	Detroit Reynolds So., 6-1, 213
QB	17	Ron Coppess Jr., 6-3, 215	LC	46	Lee Nelson So., 5-10, 183
RB	33	Rudy Thomas So., 5-11, 193	or	23	Chris Griffin Jr., 5-11, 168
RB	44	Larry Key Fr., 5-9, 181	RC	40	Robert Jackson Fr., 5-10, 164
WR	20	Mike Shumann So., 6-0, 163	SS	42	Joe Camps So., 6-2, 186
			FS	39	Jeff Ridings So., 6-0, 178

# COLORADO STATE

DEFENSE			OFFENSE		
SE	87	Dan O'Rourke Jr., 5-11, 185	LE	85	Jim Opperman Sr., 6-3, 231
LT	72	Al Simpson Sr., 6-5, 262	LT	60	Loren Mulkins Sr., 6-1, 259
LG	63	Bill Gray Jr., 6-1, 227	SLB	5	Steve Krum So., 6-1, 211
C	66	Jim Tracey Sr., 6-1, 239	MLB	3	Kevin McLain Jr., 6-2, 237
RG	76	Jim Craig Sr., 6-2, 238	WLB	2	Greg Poppino Jr., 6-1, 214
RT	77	Mark Mullaney Sr., 6-6, 237	RT	83	Gary Paulson Jr., 6-5, 239
TE	89	Pete Clark Sr., 6-4, 233	RE	82	Dave Duncan Sr., 6-4, 232
QB	6	Jack Graham Sr., 6-4, 196	LC	48	Jerome Dove Jr., 6-2, 180
RB	30	Ron Harris Fr., 5-10, 196	RC	28	David Norman Sr., 5-10, 192
FB	41	Jim McKenzie Jr., 5-11, 196	SS	31	Keith King So., 6-5, 202
FL	13	Willie Miller Sr., 5-9, 172	FS	17	Eric Wilk Jr., 5-11, 175

## Officials

Referee ..... Morris Harrison, Decatur, Ala.  
 Umpire ..... Rudy Marich, Greeley, Colo.  
 Linesman ..... T. K. Winingder, Atlanta, Ga.  
 Field Judge ..... John Cobb, Lubbock, Tx.  
 Back Judge ..... Laurien Stapp, Birmingham, Ala.  
 ECO ..... Butch Lambert, Jr., Jackson, Ms.

TALLAHASSEE COCA-COLA BOTTLING CO.

# It's the real thing. Coke.

Trade-mark ®



# WE DON'T SETTLE FOR FIELD GOALS.

That's why the United States Marine Corps is a tough team to beat. And a tough team to make.

We want quality, not quantity.

If you've finished high school but haven't finished learning...

Or if you're a college man who is ready for leadership and responsibility...

If you've got it and you want to stand with the Marines, you'll be welcome.

Just keep one thing in mind: we make no compromises, no shortcuts, and only one promise—You'll be a Marine.

One of the few, and one of the finest.

**THE MARINES  
ARE LOOKING  
FOR A FEW  
GOOD MEN.**

Call  
800-423-2600,  
toll free, for  
more information.



# FLORIDA STATE

NO.	NAME	POS.	HT.	WT.	CLASS	HOMETOWN
1	Ahmet Askin	PK	6-2	174	Jr.	Tallahassee
3	Joe Downey	P	6-0	193	Sr.	Mobile, Ala.
11	Jimmy Everett	WR	6-3	177	Jr.	Tallahassee
12	Steve Mathieson	QB	6-4	210	So.	Rockville, Md.
14	Billy Prescott	QB	6-0	171	So.	Ft. Walton Beach
15	Garry Halfacre	P	5-11	191	So.	Cantonment
16	Jimmy Black	QB	6-0	179	So.	Merritt Island
17	Ron Coppess	QB	6-3	215	Jr.	Escondido, Calif.
19	Jack Maynard	PK	6-0	175	So.	Tallahassee
20	Mike Shumann	WR	6-0	163	So.	Tallahassee
21	Joe Goldsmith	TE	6-1	180	Sr.	Lakeland
22	Bobby McKinnon	RB	6-1	175	Jr.	Lake Worth
23	Chris Griffin	DB	5-11	168	Jr.	Tampa
24	Andy Stockton	DB	6-0	176	Jr.	St. Petersburg
26	Donnie Holley	RB	5-11	180	Jr.	Elba, Ala.
27	Mike Harder	WR	6-3	183	So.	Bristol, Pa.
28	Mike Davison	RB	5-11	197	Sr.	Bradenton
29	Fred Miller	RB	6-1	207	So.	Jacksonville
30	Jeff Leggett	RB	5-11	176	So.	Miami
31	Rudy Falana	WR	5-11	165	Sr.	Largo
32	Mike Barnes	WR	5-11	174	So.	Titusville
33	Rudy Thomas	RB	5-11	193	So.	Quincy
35	Leon Bright	RB	5-9	175	Fr.	Merritt Island
36	Jim Heggins	RB	5-11	200	Fr.	Salisbury, N.C.
37	Sylvester Triplett	RB	6-0	175	Fr.	Columbus, Ohio
38	Aaron Carter	DB	5-9	180	Fr.	Gainesville
39	Jeff Ridings	DB	6-0	178	So.	Marietta, Ga.
40	Robert Jackson	DB	5-10	164	Fr.	Albany, Ga.
41	Phil Cahoon	DB	5-10	182	Jr.	Mobile, Ala.
42	Joe Camps	DB	6-2	186	So.	Gainesville
43	Earl Humes	DB	6-0	166	Sr.	Miami
44	Larry Key	RB	5-9	181	Fr.	Inverness
46	Lee Nelson	DB	5-10	183	So.	Melbourne
47	Nat Terry	DB	6-0	175	Fr.	Tampa
48	Steve Vickers	DB	5-11	167	Jr.	Tampa
49	Brooks Burroughs	NG	6-0	227	Sr.	Somerset, N.J.
50	Bill Sawyer	C	6-4	228	So.	Cordele, Ga.
51	Ricky Blythe	C	6-2	220	Jr.	Winter Park
52	Gino Bennie	C	6-2	215	Fr.	Orlando
53	Brian Schmidt	LB	6-1	220	So.	Lehigh Acres
54	Garis Shaw	NG	6-2	236	So.	Clearwater
55	Milton Wilkerson	NG	6-0	230	Fr.	Dolton, Ill.
56	John Murphy	LB	5-10	210	Sr.	Albany, Ga.
57	Steve Hanks	LB	5-11	184	So.	Orlando
58	Greg Pounds	LB	6-1	206	Jr.	Daytona Beach
59	Scott Meseroll	LB	6-1	210	Sr.	Piscataway, N.J.
60	Mike Kissner	OG	6-2	239	So.	Delray Beach
61	Wade Johnson	OG	6-2	213	So.	Valdosta, Ga.
62	Bob Jones	OG	6-4	233	Sr.	Lighthouse Point
63	Jon Thames	NG	5-11	225	So.	Gainesville
64	Jeff Gardner	OG	5-11	214	Jr.	Miami
65	Billy McPhillips	OT	6-2	222	So.	Tampa
66	Curtis Harris	DT	6-3	230	Fr.	Dolton, Ill.
67	Gary Rose	DT	6-4	225	Fr.	East St. Louis, Ill.
68	Alan Risk	NG	6-2	216	So.	Miami
69	Bruce Harrison	OG	6-2	235	So.	Vero Beach
70	Vic Rivas	OT	6-2	234	So.	Miami
71	Herman Brown	OT	6-3	218	Fr.	Ft. Lauderdale
72	Smokey Ragins	OT-C	6-1	245	Jr.	Plant City
73	Dan Corcoran	C	6-2	230	Jr.	Holley, N.Y.
74	Jim Keyton	OT	6-4	240	Fr.	Thomasville, Ga.
75	Doug Dane	DT	6-5	222	So.	Ft. Lauderdale
76	Phil Jones	DT	6-2	244	So.	Miami Springs
77	Len Harvey	DT	6-4	217	So.	Tallahassee
78	Greg Johnson	DT	6-4	236	Jr.	Fruitland Park
79	Tony Falvo	OG	6-0	240	Jr.	Wexford, Pa.
80	Joe Thomas	WR	6-1	178	Sr.	Tallahassee
81	Ed Beckman	TE	6-5	210	So.	Miami
82	Mike Allen	WR	6-4	178	Sr.	Willoughby, Ohio
83	Detroit Reynolds	DE	6-1	213	So.	Tallahassee
84	Randy Coffield	DE	6-3	218	Jr.	Hialeah
85	Dave Porter	DE	6-3	200	So.	St. Petersburg
86	Roger Overby	WR	6-0	175	Fr.	Tampa
87	Rudy Maloy	DE	6-4	208	So.	Frostproof
88	Danny Witcher	TE	6-2	216	Fr.	Toledo, Ohio
89	John Kilmurray	DE	6-2	208	So.	Lanoka Harbor, N.J.
90	Bert Cooper	LB	6-1	236	Sr.	Tallahassee
91	Nat Henderson	DT	6-4	235	Fr.	Albany, Ga.

## Tallahassee Democrat Prize Winning Sports Coverage

### NATIONAL NEWSPAPER ASSOCIATION

- 1st — Best Sports Section, 1973
- 1st — Best Sports Section, 1972
- 1st — Best Sports Columnist, 1971
- 1st — Best Sports Section, 1970
- 3rd — Best Sports Picture, 1970

### FLORIDA SPORTS WRITERS ASSOCIATION

- 1st — Best Sports Typography, 1973
- 1st — Best Sports Columnist, 1971
- 1st — General Writing Excellence, 1971
- 1st — General Section Excellence, 1970
- 2nd — General Writing Excellence, 1974
- 2nd — General Excellence of Section, 1974
- 2nd — Sports Section Makeup, 1974
- 2nd — Overall General Excellence, 1971

### ASSOCIATED PRESS OF FLORIDA

- 1st — Best Sport Color Picture, 1970

Tallahassee  
Democrat

# COLORADO STATE

NO.	NAME	POS.	HT.	WT.	CLASS	HOMETOWN
1	Carl Willmott	LB	6-2	219	Sr.	Puyallup, Wash.
2	Greg Poppino	LB	6-1	214	Jr.	Snohomish, Wash.
3	Kevin McLain	LB	6-2	237	Jr.	Anaheim, Calif.
4	Bo Warren	LB	6-2	206	Jr.	Rillito, Ariz.
5	Steve Krum	LB	6-1	211	So.	Littleton, Colo.
6	Jack Graham	QB	6-4	196	Sr.	Palo Alto, Calif.
8	Larry Olson	LB	6-1	209	So.	Kalispell, Mont.
9	Clark Kemble	K	5-10	172	Jr.	Fort Worth, Tex.
10	Rich Judah	QB	6-2	196	So.	Hillsboro, Ore.
12	Mark Driscoll	QB	6-2	181	Jr.	Lajunta, Colo.
13	Willie Miller	FL	5-9	172	Sr.	Birmingham, Ala.
16	Daryl Powers	QB	6-1	186	Fr.	Stockton, Calif.
17	Eric Wilk	DS	5-11	175	Jr.	Calumet City, Ill.
18	Dave Waite	LB	6-3	212	So.	Seattle, Wash.
19	Jeff Schrecengost	FL	6-1	174	Jr.	Anaheim, Calif.
20	Johnny Square	RB	5-9	168	Jr.	Houston, Tex.
22	Mark Thomson	FL	5-11	163	So.	Garland, Tex.
24	Dano Bivins	SE	5-9	174	Fr.	Riviera Beach, Fla.
26	Mel Washington	DC	5-11	168	Jr.	San Francisco, Calif.
28	David Norman	DC	5-10	192	Sr.	Barstow, Calif.
30	Ron Harris	RB	5-10	196	Fr.	Sioux Falls, S.D.
31	Keith King	DS	6-5	202	So.	Colorado Springs, Colo.
32	Charles Kovac	RB	6-1	206	Fr.	Orange, Calif.
33	Gene Butler	RB	5-8	176	So.	Asbury Park, N.J.
36	Kevin Hamrah	DS	6-1	181	Jr.	Dunellen, N.J.
39	Bruce Johnson	DS	6-4	209	Jr.	Seattle, Wash.
41	Jim McKenzie	FB	5-11	196	Jr.	Plant City, Fla.
42	Dan Zeller	DC	6-0	184	So.	Fort Worth, Tex.
44	Kim Jones	RB	6-4	238	Jr.	Waterloo, Iowa
46	Mike Deutsch	RB	6-1	197	So.	Tacoma, Wash.
47	Steve Bender	DS	6-1	188	Fr.	Richfield, Minn.
48	Jerome Dove	DC	6-2	180	Jr.	Newport News, Va.
49	Dan Patrone	LB	6-1	214	Jr.	Englewood, Colo.
51	Bruce Stoeklen	OC	6-1	233	So.	Westminster, Colo.
53	Fred Paoli	DT	5-11	237	Jr.	Great Falls, Mont.
54	Wayne Parkins	OC	6-4	232	Jr.	Long Beach, Calif.
55	Wes Cerveney	LB	6-1	229	Sr.	Fairfax, Iowa
56	Larry Tam	DE	6-6	212	Fr.	Ogden, Utah
60	Loren Mulkins	DT	6-1	259	Sr.	Puyallup, Wash.
61	Dan Gallas	OG	6-3	237	Jr.	Denver, Colo.
62	Dave Bosley	OG	6-3	214	So.	Tacoma, Wash.
63	Bill Gray	OG	6-1	227	Jr.	Davenport, Iowa
66	Jim Tracey	OC	6-1	239	Sr.	Rochester, Mich.
67	Dan Dubishar	OG	6-2	242	Jr.	Amana, Iowa
68	Virgil Smock	OG	6-3	257	Jr.	Los Angeles, Calif.
72	Al Simpson	OT	6-5	262	Sr.	Pittsburgh, Pa.
74	Ty VerValin	OT	6-2	234	So.	Lakewood, Colo.
75	Steve Anderson	OG	6-3	234	So.	Tacoma, Wash.
76	Jim Craig	OG	6-2	238	Sr.	Livonia, Mich.
77	Mark Mullaney	OT	6-6	237	Sr.	Denver, Colo.
78	Al Baker	OT	6-6	264	Fr.	Newark, N.J.
79	Doug Bonk	OT	6-4	243	Jr.	Elizabeth, N.J.
80	Fred Babich	TE	6-3	232	Jr.	Mount Clemens, Mich.
82	Dave Duncan	DE	6-4	232	Sr.	Littleton, Colo.
83	Gary Paulson	DE	6-5	239	Jr.	Northglenn, Colo.
85	Jim Opperman	DE	6-3	231	Sr.	Lakewood, Colo.
86	Bill Price	SE	6-1	203	Sr.	Santa Rosa, Calif.
87	Dan O'Rourke	SE	5-11	185	Jr.	Worthington, Ohio
88	Bill Larson	TE	6-3	222	Sr.	Wichita, Kan.
89	Pete Clark	TE	6-4	233	Fr.	Bountiful, Utah
92	Ken Nau	DT	6-3	219	Fr.	Kalispell, Mont.
96	Dan Arthur	DT	6-3	243	So.	Clovis, Calif.

# FLORIDA STATE

## Offense

WR	82	Mike Allen
	31	Rudy Falana
LT	69	Bruce Harrison
	65	Billy McPhillips
LG	64	Jeff Gardner
	61	Wade Johnson
C	50	Bill Sawyer
	72	Smokey Ragins
RG	62	Bob Jones
	64	Jeff Gardner
RT	70	Vic Rivas
	60	Mike Kissner
TE	21	Joe Goldsmith
	81	Ed Beckman
QB	17	Ron Coppess
	12	Steve Mathieson
RB	44	Larry Key
	29	Fred Miller
RB	33	Rudy Thomas
	28	Mike Davison
WR	20	Mike Shumann
	80	Joe Thomas

## Defense

LE	87	Rudy Maloy
	85	Dave Porter
LT	76	Phil Jones
	66	Curtis Harris
SLB	53	Brian Schmidt
	56	John Murphy
NG	49	Brooks Burroughs
	68	Alan Risk
WLB	90	Bert Cooper
	58	Greg Pounds
RT	78	Greg Johnson
	67	Gary Rose
RE	83	Detroit Reynolds
	73	Randy Coffield
LC	46	Lee Nelson or
	23	Chris Griffin
RC	40	Robert Jackson
	46	Lee Nelson or
	23	Chris Griffin
SS	42	Joe Camps
	24	Andy Stockton
FS	39	Jeff Ridings
	41	Phil Cahoon

**Punts** — 3 Joe Downey; **Placements** — 1 Ahmet Askin, 19 Jack Maynard; **Kickoffs** — 1 Ahmet Askin; **KO Returns** — 40 Robert Jackson, 47 Nat Terry, 31 Rudy Falana, 21 Joe Goldsmith; **Punt Returns** — 31 Rudy Falana, 40 Robert Jackson, 47 Nat Terry.

# COLORADO ST.

## Offense

SE	87	Dan O'Rourke
	86	Bill Price
LT	72	Al Simpson
	79	Doug Bonk
LG	63	Bill Gray
	61	Dan Gallas
C	66	Jim Tracey
	51	Bruce Stoeklen
RG	76	Jim Craig
	67	Dan Dubishar
RT	77	Mark Mullaney
	79	Doug Bonk
TE	89	Pete Clark
	88	Bill Larson
	80	Fred Babich
QB	6	Jack Graham
	12	Mark Driscoll
	10	Rich Judah
RB	30	Ron Harris
	20	Johnny Square
	33	Gene Butler
FB	41	Jim McKenzie
	44	Kim Jones
	42	Chuck Kovac

## Defense

FL	13	Willie Miller
	19	Jeff Schrecengost
	22	Mark Thomson
LE	85	Jim Opperman
	84	Steve Cipher
LT	60	Loren Mulkins
	53	Fred Paoli
SLB	5	Steve Krum
	1	Carl Willmott
MLB	3	Kevin McLain
	55	Wes Cerveny
WLB	2	Greg Poppino
	8	Larry Olson
RT	83	Gary Paulson
	96	Dan Arthur
RE	82	Dave Duncan
	18	David Waite
LC	48	Jerome Dove
	42	Dan Zeller
RC	28	David Norman
	26	Mel Washington
SS	31	Keith King
	39	Bruce Johnson
FS	17	Eric Wilk
	36	Kevin Hamrah

**Punts** — 16 Daryl Powers, 10 Rich Judah; **Placements** — 9 Clark Kemble; **Punt and Kickoff Returns** — 20 Johnny Square, 28 David Norman, 87 Dan O'Rourke, 19 Jeff Schrecengost.

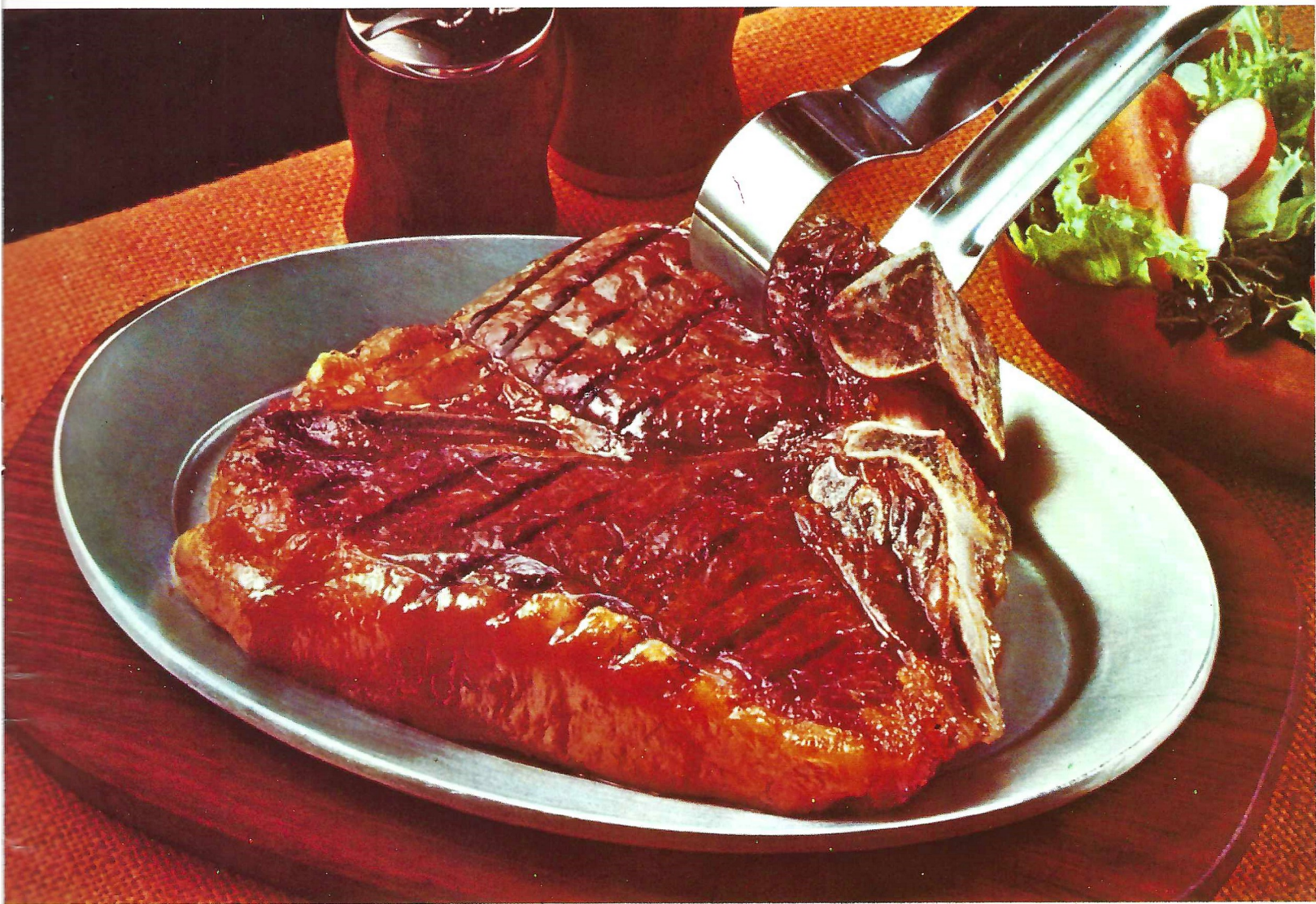
for in depth coverage  
of today's game . . . see tomorrow's

Tallahassee Democrat

featuring Florida's prize winningest sports editor . . . Bill McGroth



**When you celebrate today's victory,**



**Treat yourself to tender, tasty...**

# **BEEF**

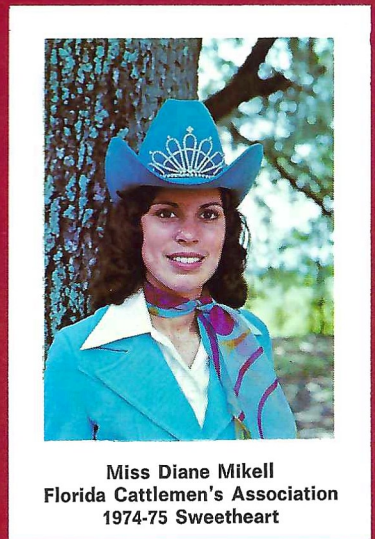
*As Delicious as it is Nutritious!*

---

**FLORIDA BEEF COUNCIL**

---

A Committee of The Florida Cattlemen's Association



Miss Diane Mikell  
Florida Cattlemen's Association  
1974-75 Sweetheart



Touchdown or Field Goal



Helping the Runner, or Interlocked Interference



Ball Ready for Play



Grasping Face Mask



Delay of Game



Roughing the Kicker



Ball Dead; If Hand is Moved from Side to Side: Touchback



Illegal Procedure or Position

# RAGANS & ROBERTS INC.

Area's Largest

Goodyear & Fina Oil Dealer

5 Locations To Serve You



Clipping



Illegally Passing or Handling Ball Forward

609  
W. Tennessee St.  
224-8156

2065  
W. Pensacola St.  
576-9945

826  
Lake Bradford Rd.  
576-3908



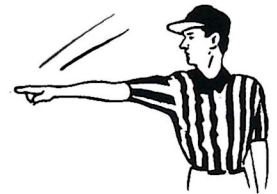
Offside (Infraction of scrimmage or free kick formation)



Safety

2501  
N. Monroe St.  
385-3615

1031  
S. Magnolia Dr.  
878-4582



First Down

## GOOD YEAR



Illegal Shift



Illegal Motion

More People Ride on  
Goodyear Tires  
Than Any Other



Loss of Down



Personal Foul



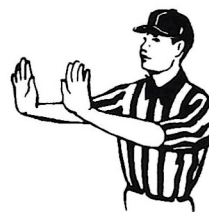
Ineligible Receiver Down Field on Pass



Ball Illegally Touched, Kicked, or Batted



Time out; Referee's Discretionary or Excess Time Out followed with tapping hands on chest.



Forward Pass or Kick Catching Interference



Start the Clock



Intentional Grounding

## Football Terminology

**Audible** — A vocal signal by the quarterback changing the play called in the huddle.

**Blitz** — Commitment by defensive backs and/or linebackers to rush the passer.

**Blocking** — Legally hindering the progress of an opponent by contacting him with any part of the blocker's body.

**Bomb** — A long pass attempt for a touchdown.

**Buttonhook** — A pass pattern in which the receiver goes downfield and U-turns back sharply to receive the ball.

**Clipping** — Running or diving into the back of an opponent, or throwing the body across the back of the leg or legs of an opponent other than the ball carrier.

**Corner Back** — Defensive back who usually lines up across from wide receiver.

**Dive-Tackle Play** — A quick-handoff running play over tackle.

**Draw-Play** — Quarterback drops back as if to pass but instead hands ball to running back, after quarterback's teammates have assumed pass-blocking positions.

**Fair Catch** — The opportunity for a player of the receiving team to catch a kicked ball that has crossed the scrimmage line without being tackled or blocked by an opponent, after signaling his intention by completely extending one arm above his head.

**Flanker** — Offensive back deployed as a wide receiver. Must line up one yard behind line of scrimmage.

**Free Safety** — Same as weak safety.

**Fullback** — A running back who usually lines up behind strong side of the offensive line.

**Kickoff** — A free kick with which each half is opened, and which is employed also following each try-for-point or Field Goal. A kickoff must be either a Placekick or a Dropkick.

**Lateral Pass** — A live ball thrown toward or parallel with the passer's own goal line.

**Linebacker** — A defensive player operating immediately behind his line where he can either aid linemen in stopping a running play or cover an opponent's receiver if a pass develops.

**Look-In Pass** — Receiver runs straight pattern and looks for the ball immediately over his inside shoulder.

**Man-to-Man Coverage** — Pass defense plan wherein defensive backs cover receivers wherever they go, rather than field areas.

**Middle Linebacker** — So designated because he usually lines up across from the opposing center.

**Mike** — Nickname for middle linebacker.

**Monster** — Same as strong safety.

**Neutral Zone** — The space between the scrimmage lines of the offense and defense. Approximately 11 inches.

**Nose Guard** — Defensive lineman who lines up directly in front of opposing center on line of scrimmage.

**Onside Kick** — A kickoff that travels 10 yards or more is anybody's ball. The so-called "onside kick" is an effort by the kicking team to kick the ball barely beyond 10 yards and recover it before the receiving team can do so.

**Pocket** — Area of protection for the passer formed by blockers. Passer drops straight back from scrimmage behind the blocking shield into what resembles a "cup" or pocket.

**Post** — A pass pattern in which the receiver goes downfield to pre-determined depth then cuts at an angle toward the goalposts.

**Prevent Defense** — A strategem replacing linebackers with additional backfield pass defenders, sacrificing strength against short gainers in order to prevent a long pass completion. Most often employed by a team protecting a lead late in either half.

**Pulling Guard** — Guard who pulls out behind scrimmage line for a trap block or to lead sweep blocking for ball carrier.

**Reverse Play** — A running play with backfield action suggesting one direction while ball carrier goes in opposite direction.

**Roll-Out Pass** — Quarterback runs laterally with blockers before throwing, instead of dropping straight back to pass.

**Running Back** — Member of the offensive backfield who primarily carries the ball. Also used as a receiver and blocker. Can be either tailback or fullback.

**Sam** — Nickname for strong linebacker.

**Screen Pass** — Pass to a receiver behind a wall of blockers, who have permitted defenders to penetrate.

**Scrimmage Line** — The yard line (marked or unmarked) that passes through point of the ball nearest a team's own goal line.

**Slot Back** — Back stationed in slot between interior linemen and end. Must be one yard behind the line of scrimmage.

**Split End** — Offensive lineman deployed as a wide receiver. Must line up on line of scrimmage.

**Strong Linebacker** — So designated because he usually lines up across from the strong side of the offensive line.

**Strong Guard** — Offensive guard playing on the strong side of the line.

**Strong Safety** — Defensive back who usually lines up deeper than corner backs and across from strong side of offensive line.

**Strong Side** — The side of the offensive line where the tight end lines up.

**Strong Tackle** — Offensive tackle playing on the strong side of the line.

**Stunting** — Defensive players changing positions as the ball is snapped, to confuse offensive strategy.

**Sweep** — End run with wave of blockers leading the ball carrier.

**Tailback** — A running back who usually lines up behind the weak side of the line.

**Tight End** — Offensive end who lines up in close formation (as opposed to Split End's wide set) where he can either block for a ball carrier or be employed as a pass receiver.

**Trap Block** — Tactic whereby offensive lineman pulls out of position at the snap allowing man he would usually block to come through line and be blocked (or "trapped") by another blocker.

**Unbalanced Line** — Offensive line deployment whereby more blocking linemen are lined up on one side of the center than on the other.

**Weak Guard** — Offensive guard playing on the weak side of the line.

**Weak Linebacker** — So designated because he usually lines up across from the weak side of the Offensive line.

**Weak Safety** — Defensive back who usually lines up deeper than corner backs and across from weak side of offensive line.

**Wide Receiver** — A lineman and/or a back who is set wide for pass receiving purposes. Also called Split End, Flanker or Wideout.

**Zone Coverage** — Plan of pass defense wherein areas are covered rather than individual receivers. Opposite of Man-To-Man.

Textbooks

\*

Art and  
School Supplies

\*

FSU

Sweatshirts

T Shirts

Glassware

Mugs

\*

Seminole  
Uprising



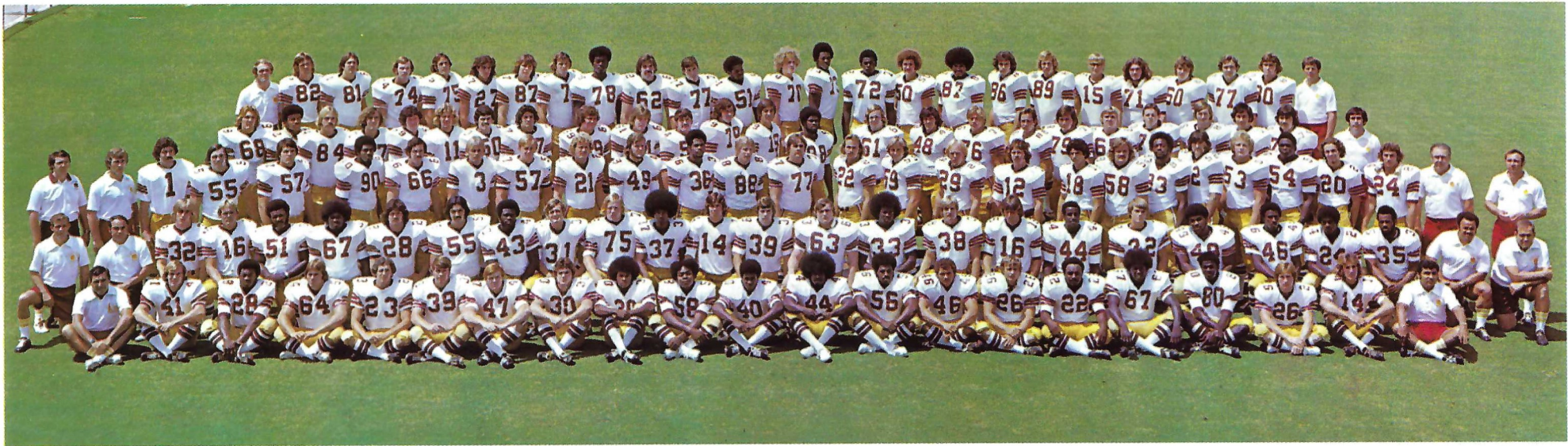
SUPPORTED BY



WHEN YOU THINK OF BOOKS, THINK OF BILL'S

107 SOUTH COPELAND ST.  
TALLAHASSEE - FLA. 32304

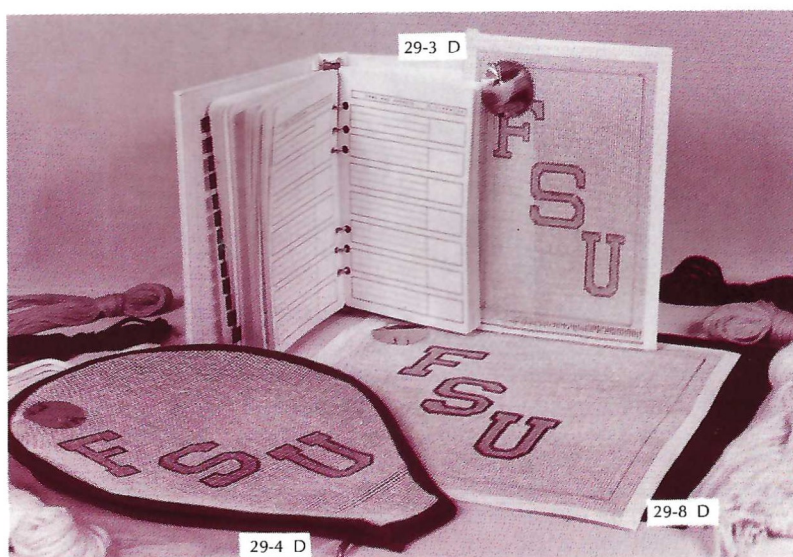
# 1974 SEMINOLES



**FRONT ROW** (Left to Right)—Head Coach Darrell Mudra, Cahoon, Corner, Gardner, Griffin, Halfacre, Joyner, Leggett, Bright, Carter, R. Jackson, Murphy, Nelson, Holley, Turner, H. Brown, Dennison, Will, Sekul, Pete Rodriguez. **SECOND ROW**—Don Pollard, Ed Feely, Barnes, Black, Burroughs, Cheeseborough, Davison, Falvo, Humes, Kaiser, Kettman, Petrillo, Prescott, Ridings, Thames, R. Thomas, Vickers, Crosby, Heggins, Overby, Wilkerson, Kincaid, Falana, J. Thomas, Cal Jones, Frank DeBord. **THIRD ROW**—Bill Baggett, Sam Elliott, Askin, Bibler, Blythe, Cooper, Cunningham, Downey, Galen, Goldsmith, D. Hanks, Horton, Mercer, Pavlovich, McKinnon, Meseroll, Miller, O'Leary, Orlando, Pounds, Reynolds, Rogozinski, Schmidt, Shaw, Shumann, Stockton, Bob Harbison, Gene McDowell. **FOURTH ROW**—Brodzik, Camps, Coffield, Coppess, Corcoran, Everett, Fucarino, Greene, B. Harrison, Holcomb, Falkenstein, Keyton, Witcher, W. Johnson, L. Jones, P. Jones, Kilmurray, Kissner, McPhillips, Pitt, Porter, Risk, Rivas, Mike Pope. **FIFTH ROW**—Larry Pendleton, Allen, Beckman, Caven, Dane, Harder, Harmeling, Harvey, G. Johnson, B. Jones, Boscaccy, Harris, Henderson, Rose, Spotts, Maloy, Marshall, McDougal, Prior, Rushing, Sawyer, Slagle, Tuten, Dan Henning.



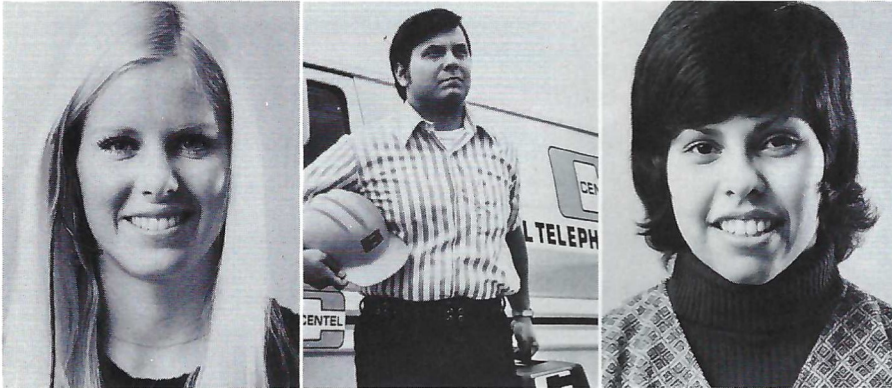
# Seminole Gift Shopper:



- 26-1 D MEN'S DOUBLE KNIT BLAZERS**  
 Handsomely styled in 100% polyester. Available in garnet or gold; Regular 36-46; Short 36-42, 44, 46; Long 38-46 ..... **\$81.00**
- 26-2 D** Also available in sizes 48, 50, 52, and all extra long sizes **\$87.00**
- 26-3 D WOMEN'S DOUBLE KNIT BLAZERS** ..... **\$70.00**  
 Handsomely styled in 100% polyester. Available in garnet or gold. Sizes 8-20. Even sizes only.
- 09-1 D DELUXE BLAZER EMBLEMS** ..... **\$12.50**  
 Imported from India. Hand-embroidered with silver and gold thread. Tie-tac back allows for easy attachment or removal from any blazer pocket. FSU seal—gold lettering on garnet background, gold border.
- 13-1 D ARC GOLF BALLS** ..... **\$13.95**  
 Conform to all USGA specifications. FSU seal in garnet. Box of 12.
- 21-1 D SET OF THREE LUGGAGE TAGS** ..... **\$ 6.75**  
 Leather straps. Guaranteed indestructible plexiglass. Striking gold FSU logo displayed on one side. Three lines of personalization stamped in gold on reverse. One name and address per set.
- 21-2 D** Also available in set of six ..... **\$11.00**
- 29-3 D ADDRESS BOOK, NEEDLEPOINT COVER INSET** ..... **\$19.50**  
 Complete kit includes persian yarn, needles, FSU logo, instructions, hand-painted on canvas, leatherette book cover with alphabetical address index and looseleaf address pages. Kit includes everything needed for at home finishing. FSU garnet and gold on white.
- 29-4 D ZIPPERED TENNIS RACQUET COVER** ..... **\$21.50**  
 Complete kit includes persian yarn, needles, FSU logo, instructions, hand-painted on canvas, canvas fabric backed, completely zips apart. FSU garnet and gold on white.
- 29-8 D SQUARE PILLOW** ..... **\$17.85**  
 Kit includes persian yarn, needles, FSU logo, hand-painted on canvas, backing fabric and instructions for complete at home finishing. Completed pillow is 10" X 10". FSU garnet and gold on white.
- 01-7 D 8" EXECUTIVE ASHTRAY** ..... **\$10.45**  
 Heavy glass. Rich and distinctive. Adds to any decorative scheme. Great for your office or den. FSU seal appears on bottom in silver.
- 07-1 D FSU TIE** ..... **\$ 8.25**  
 Striking garnet tie with letters FSU in gold. 4" width.
- 12-1 D PLASTIC TUMBLERS** ..... **\$18.75**  
 12 oz. Clear styrene imprinted with FSU; 10 sleeves of 20 glasses each, case of 200. Great for Seminole parties and get-togethers.
- 03-5 D SILVER DEPOSIT CRYSTAL CANDY DISH** ..... **\$17.00**  
 Sterling silver, non-tarnish, rhodium plated finish with FSU logo.
- 03-1 D SILVER DEPOSIT CRYSTAL 12 OZ. BEVERAGE GLASSES** ..... **\$28.55**  
 Set of 4. Sterling silver, non-tarnish, rhodium plated finish with FSU logo.
- 03-2 D SILVER DEPOSIT CRYSTAL DOUBLE OLD FASHIONED GLASS** ..... **\$28.55**  
 Set of 4. Sterling silver, non-tarnish, rhodium plated finish with FSU logo.
- 03-6 D SILVER DEPOSIT CRYSTAL 32 OZ. BRANDY INHALER** ..... **\$15.75**  
 Sterling silver, non-tarnish, rhodium plated finish with FSU logo.

Now is the time to start thinking of Christmas gifts. These items should be ideal for this occasion and birthdays or other special times. This merchandise is available through the FSU Alumni Association, 114 Longmire Alumni Building, Tallahassee, Florida, 32306, telephone number (904) 644-4064 or 644-4065. Upon request an order form will be sent to you.

In a world filled with machines and computers, there are still some jobs that let you work with people.



If you find satisfaction in helping people, there could be a place for you at Centel. As an operator. An office worker. Or in one of many other positions with unlimited career potential.

Whatever you're looking for, we think you'll find it at Centel. A well-paying job. A growth job. A challenging job. And best of all, a people job. *An Equal Opportunity Employer*



CENTRAL TELEPHONE COMPANY OF FLORIDA



You're Always A Winner at



Industrial National Bank

2111 N. Monroe Tallahassee, Fla.

"Between the Malls" 385-1111

We're Here on Your Account!

## STADIUM INFORMATION

**REST ROOMS** are located on concourse and ground levels of both the east and west stands.

**FIRST AID** station is located at the southwest corner of the stadium opposite gate five. A registered nurse is on duty at all times.

**PUBLIC TELEPHONES** are located on the ground levels of the east and west stands.

**PUBLIC ADDRESS** will make special announcements in cases of emergency only.

**DOCTORS** receiving calls will be paged by number.

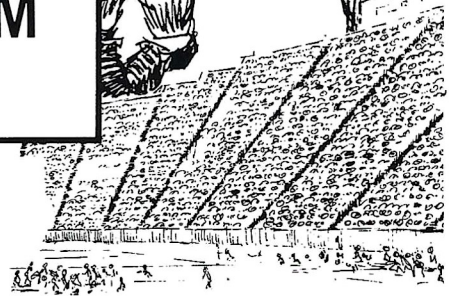
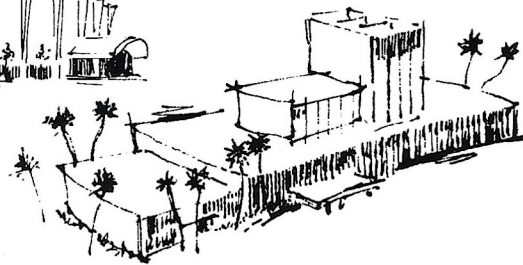
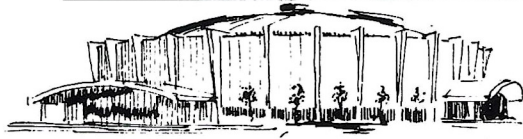
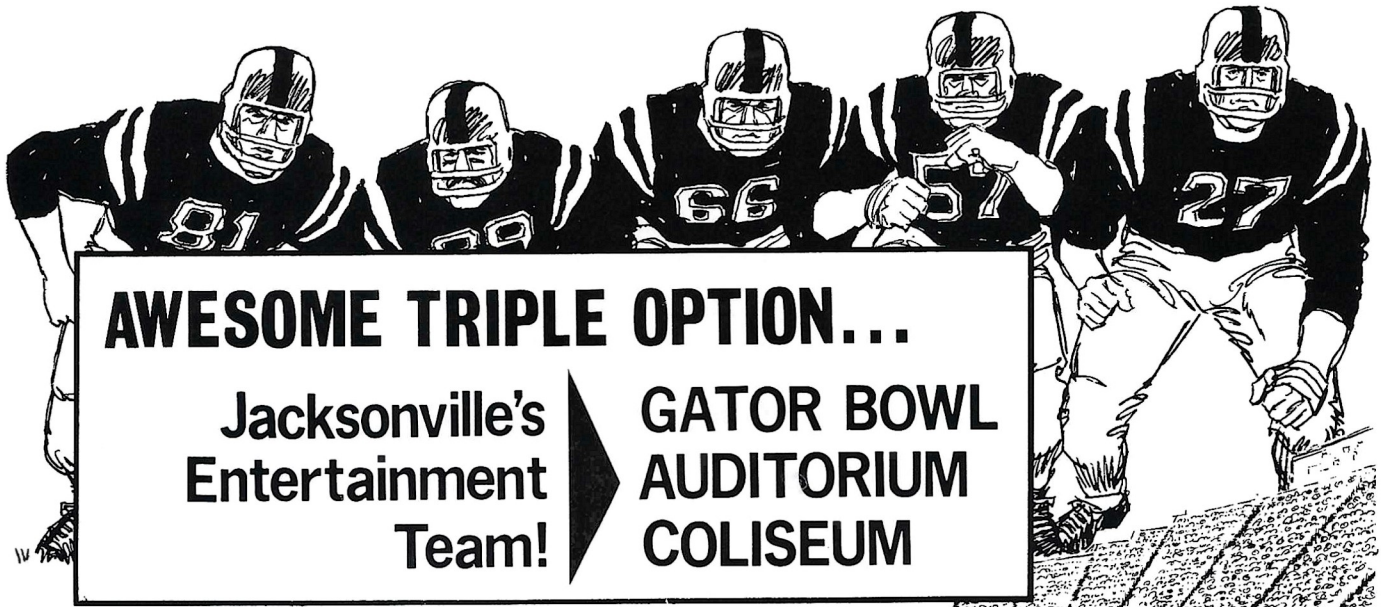
**LOST AND FOUND** items may be turned in and claimed at the ticket-booth at gate three under the west stands by the press box elevator.

**ALCOHOLIC BEVERAGES** are prohibited. Your cooperation is appreciated.

**FIELD REGULATIONS** prohibit unauthorized persons on the field during or after the game. Please leave the Stadium by the ramp and section exits.

**REFRESHMENTS** are available in the stands and at locations on the concourse and ground levels of the east and west stands.

Please pay no more than established prices.



**COLISEUM**

- SEPTEMBER**  
 18-22 Disney on Parade  
 24 TV Closed Circuit  
     Mohammed Ali fight  
 27-29 Shrine Circus
- OCTOBER**  
 4 Rock Show — WAR  
 5 Country Western  
 16-26 Greater Jacksonville Fair
- NOVEMBER**  
 1 Country Western Show  
 2 Rock Show — TRAFFIC  
 29 Basketball
- DECEMBER**  
 2 Basketball  
 6 Basketball — J.U. vs. Univ. of Fla.  
 7 WQIK Country Western  
 9 Basketball — J.U. vs. Oklahoma  
 14 Rock Concert  
 15 Country Music  
 16 Basketball — J.U. vs. So. Cal. State  
 18 Country Western Music  
 25 Basketball  
 26-27 Gator Bowl Basketball Tourney  
 28 Rock Concert — Black Oak  
     Arkansas
- JANUARY**  
 4 Basketball — J.U. vs. Wisconsin  
 6 Basketball — J.U. vs. Geo. Southern  
 10 Basketball — J.U.  
     Bethune Cookman Tourney  
 11 Basketball  
 13 Basketball — J.U. vs. Nebraska  
 15 Basketball

- 17 Lipizzan Stallion Show  
 22 Basketball — J.U. vs. Hustra  
 24-26 Custom Auto Show  
 29 Basketball — J.U. vs. Richmond  
 30-31 Ringling Brothers Circus
- FEBRUARY**  
 1 - 2 Ringling Brothers Circus  
 13 Boat Show  
 23 Guy Lombardo
- MARCH**  
 6 - 8 State High School Basketball  
 10 Globetrotters  
 11-16 Holiday on Ice

**AUDITORIUM**

- SEPTEMBER**  
 20-22 Ceramic Show
- OCTOBER**  
 1 Mary Costa  
 18 RARE EARTH — Play
- NOVEMBER**  
 7 Olivia DeHaviland  
 8 The Letterman
- DECEMBER**  
 21-22 Nutcracker Suite
- JANUARY**  
 4 WQIK — Country Western  
     Charlie Pride  
 11 SEE SAW — Play

**GATOR BOWL**

- SEPTEMBER**  
 18 PORTLAND vs. SHARKS 8:00 PM  
 20 White vs. Jackson 7:30 PM  
 21 Ribault vs. Stanton 7:30 PM  
 27 Paxon vs. Wolfson 7:30 PM  
 28 Sandalwood vs. Jackson 7:30 PM
- OCTOBER**  
 4 Lee vs. White 7:30 PM  
 5 Raines vs. Jackson 7:30 PM  
 9 ORLANDO vs. SHARKS 8:00 PM  
 11 Wolfson vs. Raines 7:30 PM  
 12 BETHUNE COOKMAN vs.  
     ALBANY STATE 8:00 PM  
 16-26 GREATER  
     JACKSONVILLE FAIR  
 30 DETROIT vs. SHARKS 8:00 PM  
 31 Stanton vs. Jackson 7:30 PM
- NOVEMBER**  
 1 Ribault vs. Lee 7:30 PM  
 2 Lake City vs. Wolfson 7:30 PM  
 9 GEORGIA vs. FLORIDA 2:30 PM  
 9 Fletcher vs. Raines 7:30 PM  
 13 CHICAGO vs. SHARKS 8:00 PM  
 14 Sandalwood vs. Wolfson 7:30 PM  
 15 White vs. Stanton 7:30 PM  
 16 Ribault vs. Raines 7:30 PM  
 28 THANKSGIVING DAY  
     Wolfson vs. Englewood 10:30 AM  
     Lee vs. Jackson 2:00 PM  
     Stanton vs. Raines 7:30 PM  
 30 WFL PLAY-OFF GAME (TV) 9:00 PM
- DECEMBER**  
 7 MENINAK CHARITY GAME 7:30 PM  
 30 GATOR BOWL GAME 9:00 PM

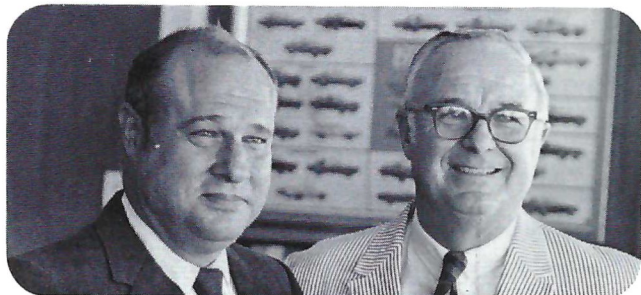
Wrestling in Coliseum every Thursday night.  
 Public Ice Skating periodically scheduled each month.  
 Call 633-3650 or 633-2350 for current information.



**For tickets:**  
**Civic Auditorium:** 633-2900  
**Memorial Coliseum:** 633-2900  
**Gator Bowl:** 633-3806

# SEMINOLE AUTO DEALERS

These are the men who help keep Florida State's Athletic Program "on the go" in a very real sense. The importance of the Seminoles' courtesy car program cannot be overemphasized and without the cooperation of these gentlemen, it would never reach the degree of success it has. We salute each and every one of these community minded men.



**Theo and Julian Proctor**  
Proctor and Proctor  
Pontiac/Cadillac  
Tallahassee



**Neil Palmer and E. K. Harrell**  
Palmer-Harrell Buick Co.  
Tallahassee



**Tom Kinnebrew**  
Kinnebrew Motors  
Tallahassee



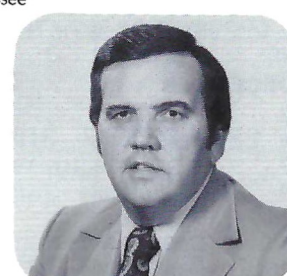
**Sam Shovlain**  
Courtesy Oldsmobile  
Tallahassee



**Bill McKemie**  
McKemie-Alford Chevrolet  
Tallahassee



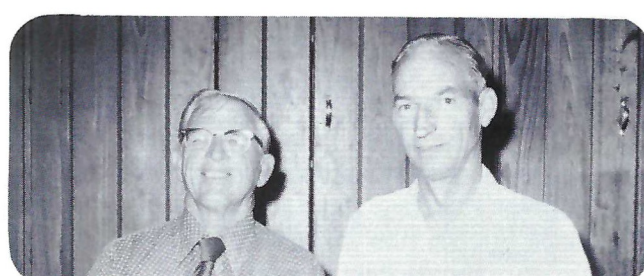
**Bob and Bill Miller**  
Miller Chevrolet  
Havana



**Gary Smith**  
Gary Smith Ford Company  
Fort Walton Beach



**Ed Richardson and Frank Shaw**  
Tallahassee (Ford) Motors  
Tallahassee



**Howard Thomas and Carl Fryer**  
Fryer Thomas Motor Company  
Quincy

# Trainers



*Kneeling:* Head Trainer Bill Baggett (left) and Rich Lief. *Standing (left to right):* John Mooney, Dave Darovec and Jack Mansfield.

## PRESCRIPTIONS

- COSMETICS
- GREETING CARDS
- TOYS
- FILMS & CAMERAS



"BUDDY STEWART"  
"WORKING FOR BETTER  
COMMUNITY HEALTH"  
HAVE YOUR DOCTOR CALL US

- VITAMINS
- CANDY
- GIFTS
- HOSPITAL SUPPLIES

224-5011

NO CHARGE FOR  
DELIVERY SERVICE

UNIVERSITY  
*Rexall*  
PHARMACY

W. Tenn. & High Road

CITY WIDE AND  
SURROUNDING AREAS

# Student Managers



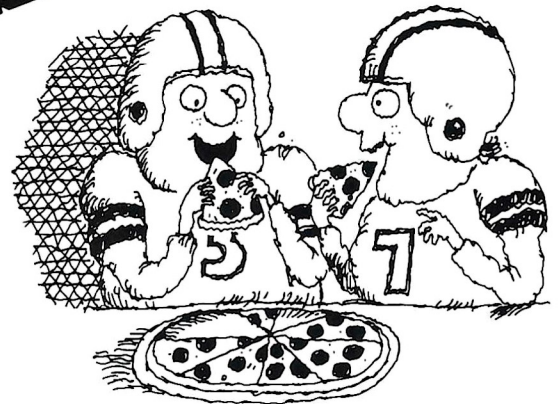
*Kneeling (left to right): Jack McCambridge and Mark Ryan. Standing: Mel Brown, Ray Parker and Chip Johnson.*

**Roast  
the referee  
over a hot pizza.**

It's a Tallahassee favorite—  
replaying the game at the Pizza Hut.  
Tackle one of our famous Pizza Hut pizzas.  
Or try our Cavatini, sandwiches, salads, and  
your favorite beverage. When the game ends,  
the fun begins at any of the Pizza Huts listed below.

2148 W. Tennessee . . . 576-2911  
2011 N. Monroe . . . 385-7636  
1241 E. Lafayette . . . 877-0432  
322 E. Jackson, Thomasville . . . 226-9166

© 1974 Pizza Hut, Inc.



**Our people make our pizza better**

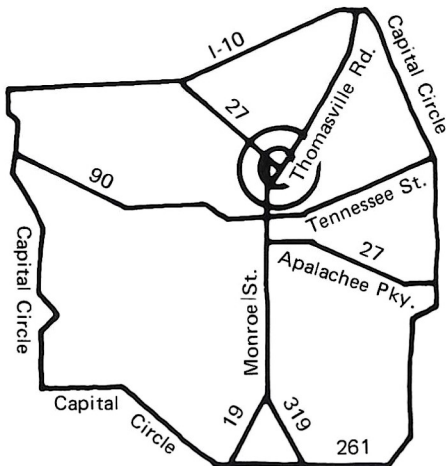
# Board of Regents



*Bottom row, left to right:* Jack McGriff, Gainesville; Dr. Burke Kibler, III, Lakeland; Mrs. E. D. Pearce, Coral Gables; Julius F. Parker, Jr., Tallahassee; Chancellor Robert B. Mautz.

*Top row, left to right:* Marshall M. Criser, Chairman, Palm Beach; E. W. Hopkins, Jr., Pensacola; Chester H. Ferguson, Tampa; J. J. Daniel, Jacksonville; James J. Gardener, Vice Chairman, Ft. Lauderdale

## welcome, neighbor



If you're a newcomer to Tallahassee, or if you've just moved into a new neighborhood, stop in for a warm welcome at centrally located PEOPLES BANK. Stop by this week. Get acquainted with our full line of services. Look into FREE CHECKING WITH AUTOMATIC SAVINGS. And get a fresh new start—with us. We're glad you're in the neighborhood.

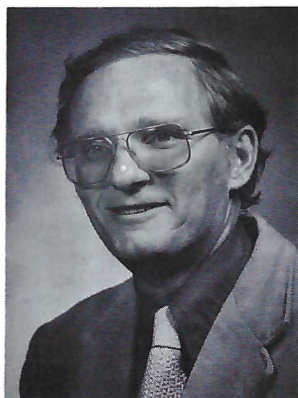
"Soon. . . Tallahassee's first 24-hour teller"

Member F.D.I.C.

# PEOPLES

the people's bank • 1136 Thomasville Rd. • Tallahassee, Fla. • 224-5151

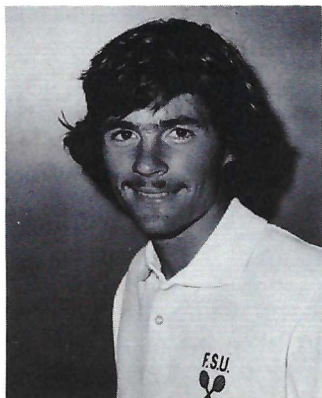
# Seminole Head Coaches



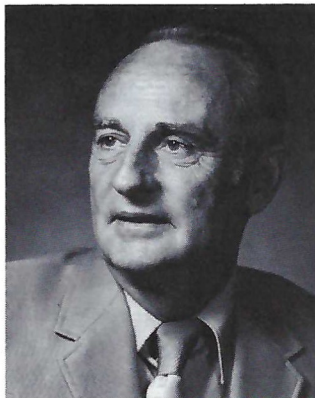
**TERRY CARLISLE**  
Swimming



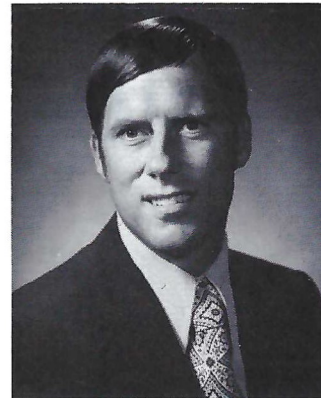
**HUGH DURHAM**  
Basketball



**RANDY JOBSON**  
Tennis



**MIKE LONG**  
Track



**DICK ROBERTS**  
Cross Country & Academic Advisor



**DON VELLER**  
Golf



**WOODY WOODWARD**  
Baseball



# Spotlight On . . .

Each week this space will feature one of Florida State's eight intercollegiate sports. This week the spotlight falls on Coach Don Veller's golf team.

## Golf

Outstanding weather and a superb facility are two of the prime factors that help make Florida State's golf program one of the better ones in the country.

The Seminoles, who this year will be under the guidance of Dr. Don Veller, annually play one of the toughest tournament schedules in the country and usually cap the season with an entry in NCAA National Championships.

The golf season is fast becoming a year round proposition. The Seminoles will be playing several fall tournaments, including the All-Dixie at Callaway Gardens, Ga. and the Florida Intercollegiate at Port Malibar.

With the emphasis on tournaments now, the collegiate golfers usually do not compete as often and intra-squad competition becomes an important factor in keeping a keen edge. This is where the Seminoles, with a highly competitive squad and an excellent "home course" have been able to build their strength.

Seminole Golf Course, located just off Lake Bradford Road, about three miles from the heart of the campus, is a challenging 6,900 yard, 18 hole layout. Many of the visiting teams, after playing the course have labeled it "one of the finest university-owned courses in the nation."

The scenic layout includes fairways that are long and challenging, the greens are well trapped making for careful approach shots. A modern club house and snack bar are conveniently located and ample paved parking is available.

Veller returns for his third term as Florida State's Golf Coach. He first took the golfers' reins in 1953 and served in that capacity through '57. His second tenure was for two seasons in 1968-69.

Dual matches were still the norm for collegiate golfers during that period, and Veller built an enviable record with his teams going undefeated in 1956 and losing just one match in the 1955, '57 and '69 seasons. His overall record for seven years is 52-12 in dual matches.

Of course Veller is also well remembered at Florida State as the man who laid the ground work for the Seminoles' football program, serving as head coach from 1948-52. His five year record in football was 30-12 and included the Seminoles' only undefeated season (8-0 in 1950) and their first bowl game (Cigar Bowl in Tampa in 1949).

In addition to his duties as golf coach, Veller serves the University as a full professor in Physical Education, where he developed Florida State's Coaching Minor program.

He also serves as Executive Director of the Southern Scholarship Research Foundation which provides housing in 14 separate scholarship houses within the Florida State community.



### 1974 ROSTER

NAME	CLASS	HOMETOWN
Dennis Allen	Jr.	Crystal River, Fl.
Tim Allen	Jr.	Chattahoochee, Fl.
Terry Anton	Fr.	Columbus, Ga.
Tom Anton	Fr.	Columbus, Ga.
Jim Bachemin	Fr.	Tallahassee, Fl.
Resty Cappelen	So.	Vero Beach, Fl.
Todd Crandall	Sr.	Ashtabula, Oh.
Bob DeFranco	Fr.	Norristown, Pa.
Jack Ferenz	So.	Parma, Oh.
Doug Fischesser	Sr.	N. Palm Beach, Fl.
Geroge Gavalas	Fr.	Tallahassee, Fl.
Kim Heisler	Sr.	Aurora, Oh.
Gary Iannuzzelli	Fr.	Hamburg, N.Y.
Rick Jeffers	Jr.	Birmingham, Al.
David Kissell	Fr.	Warsaw, In.
Ken Knox	Fr.	Tallahassee, Fl.
Greg Mach	Fr.	Marshall, Mo.
Angus Morrison	Fr.	Tallahassee, Fl.
Paul Rankin	Jr.	Bethesda, Md.
Ken Szuch	Jr.	Pensacola, Fl.
Paul Young	Fr.	Lake Wales, Fl.

# Marching Chiefs

## Themes "Off the Record"

### Opening

Music, color, and motion, highlight half-time this season with the Marching Chiefs. Tonight the Chiefs incorporate all three around the theme "Off the Record". Hits from the record industry suddenly come alive in a way only the Chiefs know how to present.

### Half time "Off the Record"

Tonight the Chiefs take a spin with the best from the record industry. The show begins with a special Charles Carter fanfare "Court of the Crimson King". During the course of the show the Chiefs turn their attention to a medley of songs from the popular recording group The Doobie Brothers, headlined by "Long Train Running" and "Listen to the Music". Continuing "Off the Record", the Chiefs present their own version of the theme from the Academy Award winning motion picture "The Sting". Another popular motion picture furnishes our next selection of the evening "The Way We Were". "Off the Record" next features the popular pop hit of this year "Eres Tue", and concludes with the ever popular "Gypsy Rose".

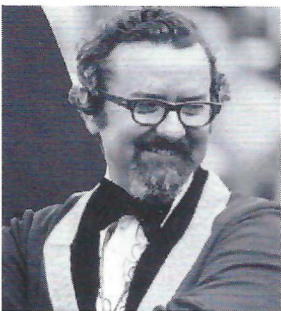
### Special Feature

#### The Florida State University Majorette Corp

The majorette corp of the Florida State Marching Chiefs is well known for its unique military style. Throughout the years, its members have developed and carried on a tradition of combining twirling and dance movements with precision and accuracy. The members of the corp are selected each spring, with judgement based upon appearance, twirling ability, and adaptability to the style.

The head majorette for the 1974 season is Nancy Hoffman, a Junior from Ormond Beach, Florida. The co-head majorettes for this year are Marilyn Miller, a Sophomore from North Miami, Florida, and Roanna Combs, a Sophomore from Lakeland, Florida. These three girls are responsible for coordinating and directing the marching routines of the other 15 girls in the corp.

This year's feature twirler is Cheryl Ann Nelson, a Junior from Ormond Beach, Florida. Recently crowned as Majorette Queen of America for 1975, Cheryl is also three time National Twirling Champion. With a collection of over 800 trophies, some of her many titles include five consecutive years as Florida State Champion in one baton, two baton, and strutting, as well as third runner-up World Champion in the same three categories.



MAYO

### Coordinator of Bands

Richard D. Mayo, Assistant Professor of Music is beginning his fourth year as Coordinator of University Bands and director of the Marching Chiefs. Mr. Mayo received his B.M.E.

from Florida State in 1955 and his M.A. Degree from Columbia University. For 14 years he was band director in high schools in Florida and New York. Most recently he was District Coordinator of Bands at Plainedge Schools on Long Island. Besides his interest in the Marching and Symphonic Bands, Mr. Mayo has been highly active in the jazz field, coordinating and directing the Jazz Lab Bands. The growth of jazz has been accentuated by performances with Count Basie, Buddy Rich, Stan Kenton, and Don Ellis.

### Assistant Director and Arranger

Charles Carter received his Bachelor of Music from Ohio State University in 1950, majoring in theory and composition. The Oklahoma native furthered his education at Eastman School

CARTER



of Music where in 1951 he received his Master of Music, followed by Doctoral work here at Florida State University from 1953 until 1956.

Before becoming staff arranger at Florida State University in 1953, Mr. Carter arranged for the Ohio State University Band and also taught lower brass. Presently here at Florida State, Mr. Carter teaches theory, composition, and arranging, plus his arranging for the University Bands. Mr. Carter now has over twenty original compositions on the market in all fields of music.

# FSU FOOTBALL FLASHBACK

A Look at Florida State Games, 5, 10, and 25 Years Ago This Week

The Seminoles like most teams around the country did not begin their seasons this early in the year until just a few seasons ago. However, openers are openers. So this week we take a look at the first games of 1969, 1964 and 1949. In future weeks we will be looking at other Florida State games from these seasons.

## 1969

**Florida State 16  
Miami 14**

MIAMI (Sept. 26, 1969)—The Seminoles got "their foot in the door" in this one and that was all they needed to subdue Miami's Hurricanes 16-14 in a see-saw contest.

The foot belonged to Grant Guthrie, who accounted for 10 of the Tribe's points with three field goals and one PAT.

Miami opened the scoring with a one-yard touchdown plunge by Tom Sullivan, capping an 84-yard drive.

Early in the second stanza, Miami threatened to stretch its lead as Jim Huff lined up for a 33-yard field goal try. But Ron Lowe broke in and blocked it. Phil Abraira picked it up and with the help of a 15-yard penalty the Seminoles were in possession at the Miami 40.

Three plays netted just four yards and the Seminoles set up for a field goal. Guthrie booted the ball and it sailed through the uprights 53 yards away.

Sullivan fumbled on the first play after the kickoff and the Seminoles took over on the Hurricane 16. Four plays later Guthrie was again called on, this time for a 27-yard field goal to cut Miami's lead to one, 7-6.

Almost like an instant replay the Hurricanes' Vince Olpalsky made a first play fumble at the Hurricane 13. Three plays later Bill Cappleman hit Kent Gaydos with an "alley-oop" pass and the Seminoles led 13-7 as the half ended.

A scoreless third quarter set up a tension packed finale. David Teal passed to Lew Strawbridge for a Miami TD and Huff's PAT put the 'Canes back on top 14-13.

With less than nine minutes remaining the Seminoles started driving from their own 10. Seventeen plays later they had a fourth and 12 at Miami's 17. Guthrie came on and with 1:55 left in the game, kicked a 31-yard field goal to win it.

Tom Bailey again led the Seminole rushers with 44 yards in nine carries. Cappleman completed 24 of 38 passes for 209 yards. Rhett Dawson caught six of them for 63 yards and Gaydos had five receptions for 51 yards.

## 1964

**Florida State 10  
TCU 0**

FORT WORTH (Sept. 26, 1964)—Bill McDowell crashed through to block a fourth quarter field goal attempt as Florida State showed its defensive muscle in a second straight shutout and the school's first victory over a major Texas team.

Leading with the "Seven Magnificents" all the way, the Seminoles negotiated a slippery field for a first quarter field goal and a fourth quarter touchdown. The TD drive started from the FSU 37 following McDowell's blocked kick.

Florida State's offense had yet to become a lethal scoring weapon and a containing TCU defense kept the Tensi-Biletnikoff combo under wraps for most of the game.

However, with his favorite target double and triple covered throughout most of the game, Tensi scattered ten completions to seven different receivers and accounted for 49 of the 63 yard touchdown drive.

Les Murdock kicked his first field goal of the year, a 33-yard effort with 2:20 remaining in the first quarter.

TCU's Jim Fauver's 93 yards on 19 carries earned him the individual rushing crown against the Seminoles last year. No other back and few teams were able to equal his yardage during the remainder of the season.

Linebacker Dick Hermann was the

"Savage" and tight end Bill Dawson won "Tomahawk" laurels. Middle guard Jack Shinholser showed early form with his play against Ken Henson, the Frogs' 260 pound center.

Lee Narramore again led the Seminoles on the ground with 47 yards in 15 attempts.

## 1949

**Florida State 33  
Mississippi College 12**

(From Tallahassee Democrat Reports)

Clinton, Miss. (Oct. 8, 1949)—The Florida State University Seminoles opened defense of their Dixie Conference championship in impressive fashion here tonight, rumbling over Mississippi College's Choctaws 33-12 with a power-packed running attack headed by fullback Buddy Strauss.

The big Indians from Tallahassee ripped and tore through the Choc forward wall for 375 yards as they stomped up and down the field scoring in every quarter.

Strauss, a driving, punishing plunger, continually blasted his way through the Mississippians every time it appeared that the Seminoles were beginning to lag. The hard running fullback scored only once, but he played a key role in setting up all the other four touchdowns.

Ken MacLean scored the Seminoles first touchdown, following an interception in the first period, then Strauss picked up his TD early in the second quarter.

The Chocs rebounded strong, scoring two quick touchdowns, cutting the lead to 14-12. However the Seminoles marched 75-yards with the kickoff following the second score and Red Parrish capped the drive to make the halftime scoreboard read 21-12.

The lone third period touchdown came on a Strauss to Ted Hewitt jump pass. The Indians final score came in the fourth quarter when Dick Peterson burst over tackle at his own 37, cut back nicely and raced 63 yards to score.

*Miller*

**CHEVROLET**

**COMPANY**

**Havana, Florida**

**539-6376**

**15 Miles North  
of Tallahassee  
on U.S. 27**

**Phone Toll Free  
224-1317**

## **BOB HARBISON** **Offensive Line**

"Mr. Seminole" is back and the Indians couldn't be happier.

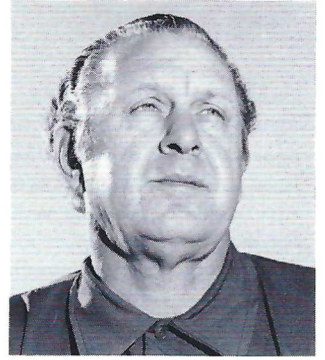
Bob Harbison, associated with Florida State football for 25 of its 27 seasons, returns to the only football job he has ever known after leaving following the 1972 campaign to enter private business.

During Harbie's 25 seasons with the Seminoles he coached both offense and defense. He directed the offensive line during the 1972 campaign and Head Coach Darrell Mudra has turned that assignment back over to him.

During Harbison's 25-year career at Florida State, the Seminoles were in eight bowl games. Mudra becomes the sixth Florida State head coach Harbie has served under. The one time University of Indiana guard came to the Seminoles in 1947 under Don Veller. He later worked with Tom Nugent, Perry Moss, Bill Peterson and Larry Jones.

A native of Evansville, Ind., Harbie was the defensive line coach in 1964 when his "Magnificent Seven" was considered by many to be Florida State's finest defensive outfit.

Bob and his wife, the former Jane McEntee of Washington, D.C., have four children.



**Harbison**

# COACHES'

## **CAL JONES** **Linebackers**

After serving as Coach Mudra's assistant at Western Illinois for three seasons, Cal accompanied his boss to Florida State.

In his first two years at Western, Cal coached one All-American, two All-State college selections and a most valuable player.

Before going into college coaching, he was an extremely successful prep coach in California. At Central Union HS in El Centro, Calif., Cal's teams compiled a record of 43 victories against 13 defeats from 1966-70. His squads won conference championships in each of those seasons and he was named Imperial Valley Coach of the Year in 1968.

Cal, a Pittsburgh, Pa., native is a member of the National Association of Intercollegiate Athletic's Hall of Fame and was named first team NAIA All-America as a guard at Adams State in 1964.

He was captain of the Adams State clubs in both 1963 and '64. He received his B.A. and M.A. degrees from his alma mater and has done advance work at Northern Colorado.

He and his wife Elaine have two children.



**Jones**



## DONALD (DEEK) POLLARD Defensive Backs

This newest member of Mudra's staff also served under the Seminole head coach at Western Illinois.

A former Illinois high school coaching standout, Deek is that state's winningest prep mentor. Before joining the Western staff in 1971, Pollard recorded a 55-4-3 record at Pittsfield (Ill.) High School after being named head coach in 1965.

Pollard's Saukees were undefeated in their last 54 games, a winning streak which represented the longest string in state history until the team stretched the record to 64 in 1972.

**Pollard**

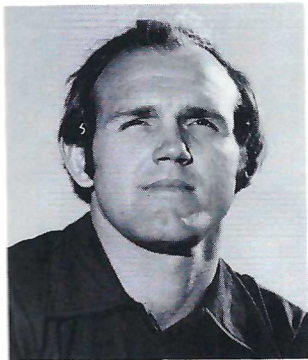
He was named Illinois' prep coach of the year in 1970.

While coaching the Western defensive backs in 1972, opponents averaged only 97 yards per game via the passing game and his defensive secondary registered 17 interceptions.

Deek received his B.S. degree from Western in 1961 and then gained a M.A. from Northeast Missouri State in 1968.

A Southern Illinois native, he and his wife Brenda have two children.

# CLOSE-UPS



## LARRY PENDLETON Offensive Line, Academics

Larry is the newest varsity assistant, joining the staff fulltime in June.

He will assist with the offensive line and also handle any of the gridgers' academic problems.

Larry returned to his alma mater in 1973 as a graduate assistant and last season tutored the junior varsity offensive line.

The Winter Garden native attended Lakeview High School in that city where he gained 10 letters before coming to Florida State from 1964-68. He was a three-year starter for the Seminoles, two on offense and one on defense.

**Pendleton**

During his three-year varsity career the Seminoles were in three bowl games — the Sun, Gator and Peach.

After graduation, he was an assistant coach at Colonial High School in Orlando from 1969-72.

He is married to the former Carolyn Chalk of Fort Walton Beach.

## The TRAWLER'S Seafood Restaurant ★



and  
*Lounge*

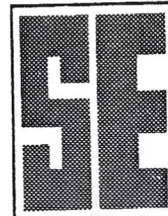
- Delicious SEAFOODS
- Luscious STEAKS
- Seven DINING ROOMS
- Large BANQUET ROOM
- OYSTER & SALAD BARS

Entertainment  
*Elegant Gourmet Dining*

...at One of North Florida's Finest Restaurants.

★ For Reservations Call 385-2127

★ 2696 N. Monroe TALLAHASSEE, FLA.



**SOUTHERN  
ELECTRIC**



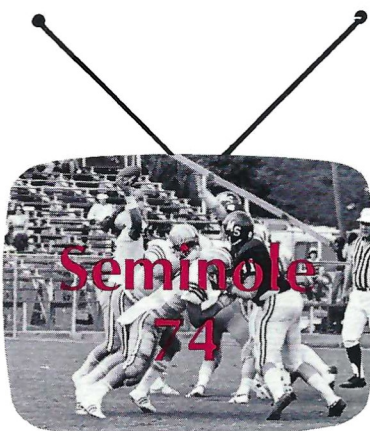
APPLIANCES  
STEREO  
TELEVISION

**FURNITURE**

Compliments  
of  
Spurgeon  
Camp

Go  
Seminoles

The **BIG** Plays  
are played again  
on



Highlights

and

Insights

of

**Florida State  
Football**

with

**Head Coach  
Darrell Mudra**

and host

**Bob Shackleton**

at

**10:30 p.m. Sunday**

on

**WCTV**

Ch. 6 in Tallahassee  
Check local listings for time  
and station in other areas.

## SEMINOLES SALUTE GRADY COUNTY, GA.

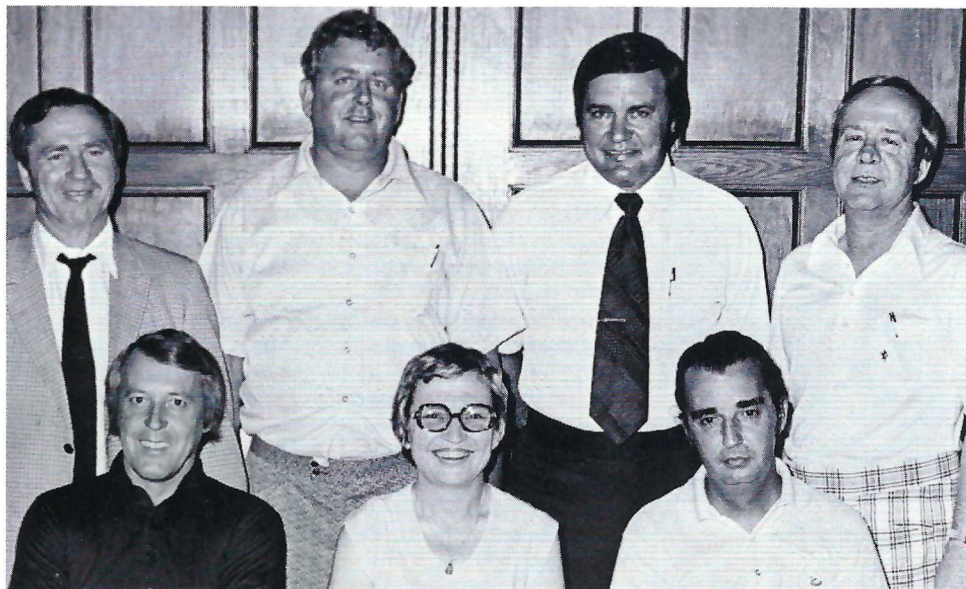
Tonight, Seminole Boosters, Inc. and the Florida State Athletic Department extend a hearty welcome to the Seminole fans from Cairo and surrounding Grady County, Ga.

Representatives from the Chamber of Commerce, local Seminole Boosters, alumni, and business men are all here tonight for the festivities as the Seminoles say "thanks" for their continued support of Florida State.

Mr. Slater Wight, Jr. deserves much of the credit for the enthusiastic program of "Seminole Support" throughout the area. A member of the Board of Directors of Seminole Boosters, Inc., Slater also heads the Cairo High School Booster Program and devotes nearly all his free time to sports related activities.

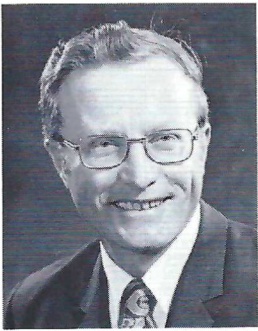
He and his wife Ann have led the Seminole effort in South Georgia for many years. To all our South Georgia friends we say "Welcome" and give a special "Thank You" for your continued support.

### Seminole Booster Highlights



Caught "Off Guard" at a recent Board Meeting, these Seminole Booster directors are (front row, left to right): John W. Jack Maurer of Tampa, Ms. Mina Jo Powell of Thomasville, Ga., and John F. Morgan of Jacksonville. In the back row are George Langford of Tallahassee, Slater Wight, Jr. of Cairo, Ga., Charles Booth of Orlando and J. O. Jim Williams of St. Petersburg.

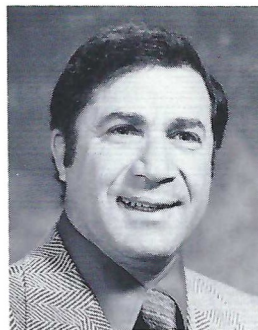
# Colorado State University



**Dr. A. A. Chamberlain**  
President



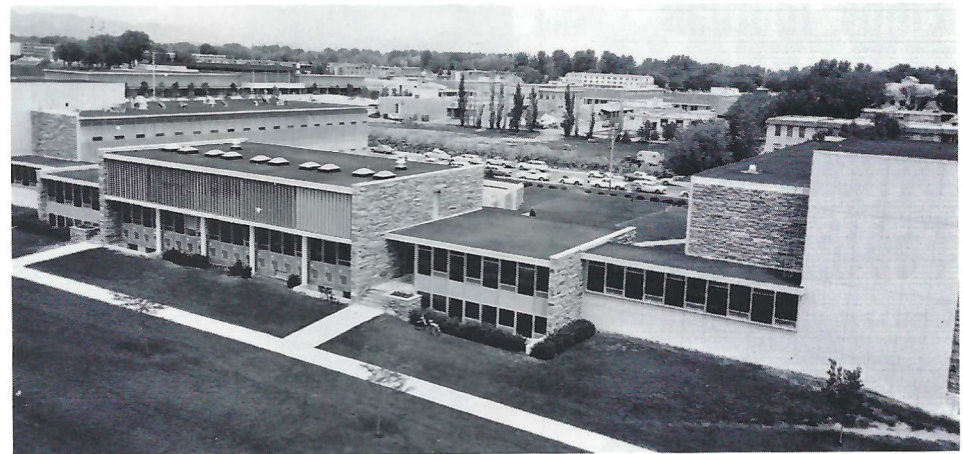
**Dr. Jack O'Leary**  
Acting Athletic Director



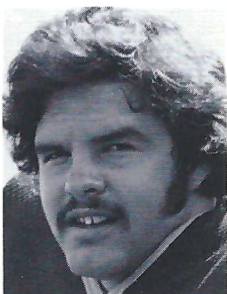
**Sark Arslanian**  
Head Football Coach



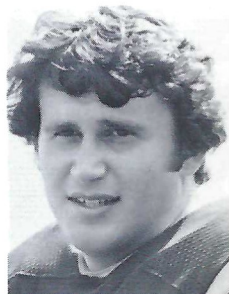
**Morgan Library**



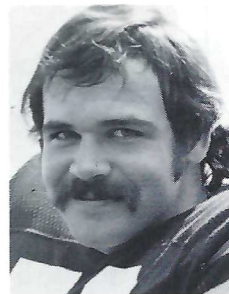
**Plant Science**



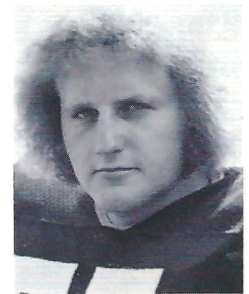
**Dan Arthur**



**Fred Babich**



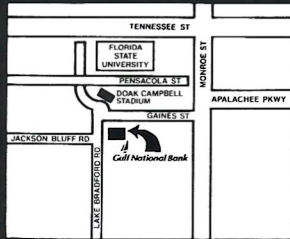
**Doug Bonk**



**Wes Cervany**

**TIME IS MONEY.**

**Gulf National Bank**



**SAVE BOTH.**



Member F. D. I. C.

P. O. Box 5767 / Tallahassee, Florida 32301

**Enjoy football more with the Official NCAA Football Guide**

Containing . . .

- Schedules of more than 400 teams
- Sectional previews by prominent writers
- 1973 statistics and scores
- Read-easy rules
- Review of bowl games

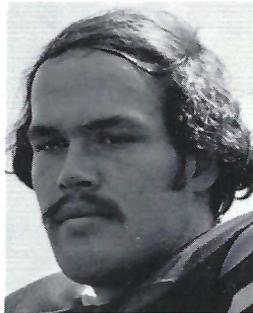
**\$2.00**

Send check or money order to:  
**NCAA Publishing Service**  
 P.O. Box 1906  
 Shawnee Mission, Kansas 66222

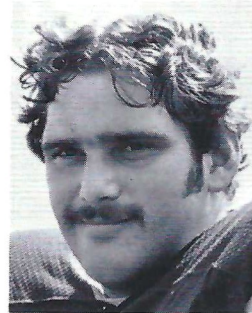
For a listing of all NCAA publications, write to the address above.



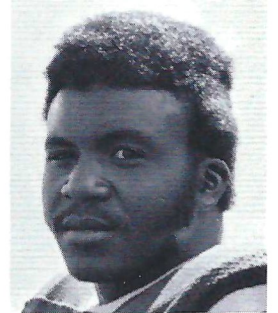
**THE RAMS**



Pete Clark



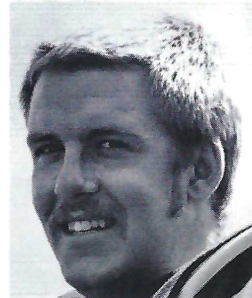
Jim Craig



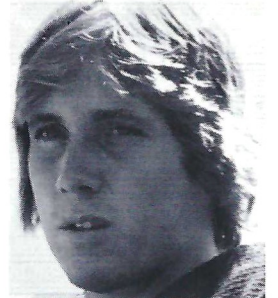
Jerome Dove



Mark Driscoll



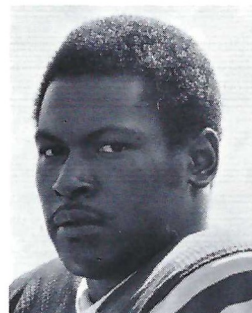
Dave Duncan



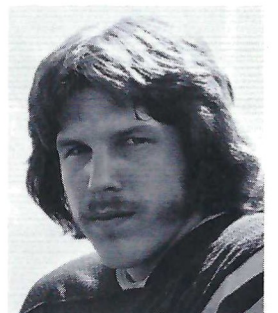
Jack Graham



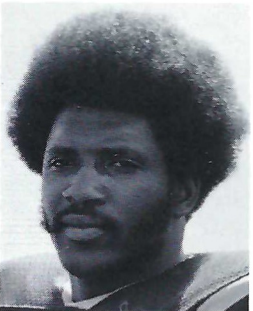
Bill Gray



Ron Harris



Bruce Johnson



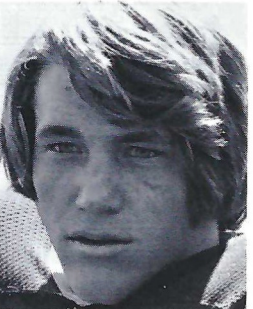
Kim Jones



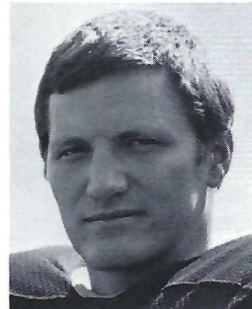
Clark Kemble



Keith King



Steve Kram



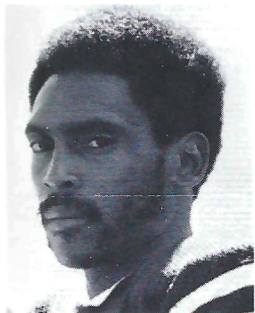
Bill Larson



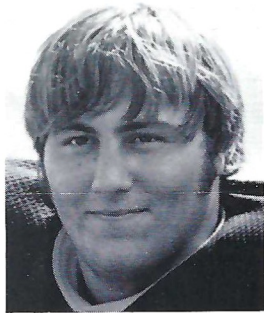
Jim McKenzie



# THE RAMS



Willie Miller



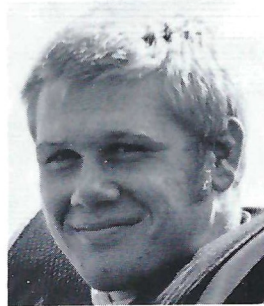
Loren Mulkins



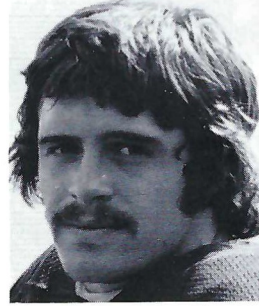
Mark Mullaney



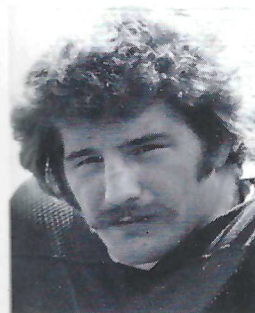
Dave Norman



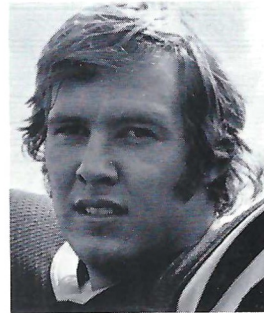
Jim Opperman



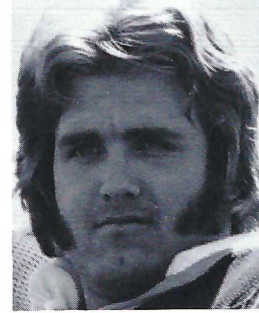
Dan O'Rourke



Fred Paoli



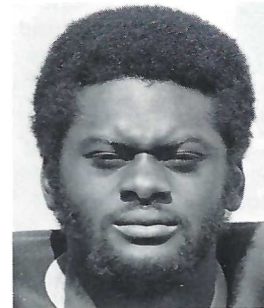
Gay Paulson



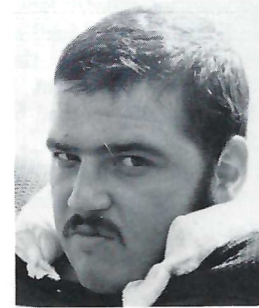
Greg Poppino



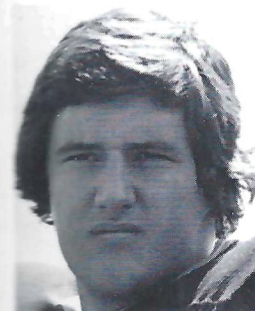
Al Simpson



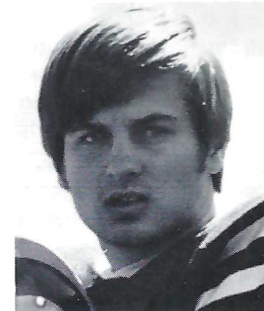
Johnny Square



Jim Tracey



Dave Waite



Eric Wilk



Carl Willmott



Two Locations in  
Tallahassee  
U.S. 27 North at I-10  
U.S. 27 South at Capital Circle

Toll Free Reservations  
800-241-7111

"TALLAHASSEE'S OLDEST FLORIST"  
SINCE 1930

# FLOWERS

by  
*Elinor Doyle*



### COMPLETE FLORAL SERVICE

SERVING SATISFIED CUSTOMERS  
SINCE 1930

- CORSAGES • BOUQUETS • WEDDINGS
- CUT FLOWERS • FUNERAL DESIGNS

Master Charge • BankAmericard  
American Express • Carte Blanche • Diner's Club

### DELIVERY SERVICE

222-1298  
222-1297

202 S. Adams St.

# At MSU, Male Chauvinism "Tapers" Off

by FRED STABLEY JR., Sports Writer, Lansing State Journal



Sue Schneider, Michigan State's first female trainer, applies tape to the ankle of all-America defensive back Bill Simpson.

There were a few anxious moments in the Michigan State football training room during early drills last fall.

As Spartan gridders meandered in to get ankles taped and sore muscles rubbed, they were stopped in their tracks by an unusual sight.

Busy wrapping ankles and scurrying around was a girl—right there in the heretofore sacred domain of the male athlete.

"What's a girl doing here?" many blurted out.

None of this bothered Sue Schneider. She kept on taping without looking up.

"The guys were pretty hesitant at first. So was I, to tell you the truth, but soon they became accustomed to seeing me around," said the 23-year-old blonde from Traverse City, Mich.

**Sue Schneider is another prodigy of Women's Lib. She's the first female trainer in the United States for a men's football team. She does everything her male counterparts do for the players, from taping to treating injuries to general "housework" around the training room.**

"It is a great experience for me because I come in contact with all

types of injuries," Miss Schneider said. "I was kind of leery about the whole thing at first, but head trainer Clint Thompson pushed me through the door and that was that."

### Sign of the Times

Signs were placed around the locker room to remind the MSU gridders about being decent before entering the training room, but occasionally they forgot.

"It embarrassed them a lot more than it did me," Sue said, matter-of-factly.

Miss Schneider, who traveled with Michigan State to three games as well as working all the home grid contests, is a graduate assistant and is mainly responsible for tending to the women athletes in their budding program at MSU.

While attending Central Michigan University, Sue took a class for athletic trainers, enjoyed it immensely and became a student trainer, working with male and female athletes alike.

### Closed Door Policy

Her entrance into the training room at CMU was not without its

problems, as the only door to the facility opened right into the locker room and showers.

"I'd have to wait for five minutes until the shower was cleared and everyone was dressed or hiding before I could come in," she said, her blue eyes twinkling. "They finally put up a big curtain so I could walk right in."

**Working with the Michigan State Football team hasn't been nearly the hassle for Sue as has been the volumes of publicity she's received. "It was kind of fun at first, a small town girl getting interviewed," Sue said. "But, then it got to be kind of boring with the same old prying questions.**

"I figured it was a way of promoting women's athletics and female trainers so I always tried to be as accommodating as possible."

Sue must get her master's degree to become a certified trainer, and then she hopes to become a head trainer of a women's program.

"It's an interesting career and it can only get better with the emergence of women's athletics," she said.

# Tallahassee Motor Hotel

FOOD & LODGING

Master Hosts



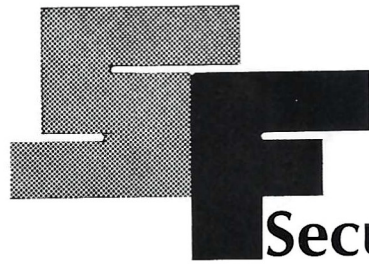
and

AAA Approved



224-6183

1630 North Monore



## Security Federal

### Savings and Loan Association of Tallahassee

**"Go Seminoles in '74"**



# TACO BELL

1218 North Monroe

Sunday - Thursday

10:30 a.m. - 11:00 p.m.

Friday - Saturday

10:30 a.m. - 1:00 a.m.

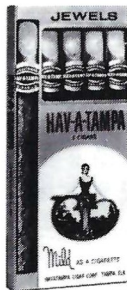
Tacos - Tostatos -

Burritos - Enchirito -

Frijoles - Pepsis

Root Beer - Orange

7-Up -



Distributed by  
Eli Witt Tobacco  
& Candy Company  
Tallahassee,  
Florida



## HAV-A-TAMPA

# JEWELS

*The Cigar for Men . . .  
that Ladies Love —*

**WELCOME ANYWHERE**

for their man-size flavor and gentle aroma

# 1974 Seminole Cheerleaders



# SEMINOLE RADIO NETWORK



Shackleton



Owens

Florida State's football games will be heard throughout most of the Southeast again this fall over the SEMINOLE RADIO NETWORK.

With WTNT in Tallahassee serving as the originating station, Florida State games are carried on network stations in Florida. In addition, many of the Seminole games are broadcasted regularly over the wide-ranging Pick-Of-Dixie network.

Bob Shackleton, Florida State's director of Alumni Affairs, is the new "Voice of the Seminoles." Before coming to Florida State, Shackleton served for 19 years as the play-by-play announcer for Michigan State football.

Returning to do the "color", is Bill Owens, a veteran of Florida State announcing which includes football, basketball and baseball.

Follow The Seminoles

ON WTNT 1270 ON YOUR DIAL

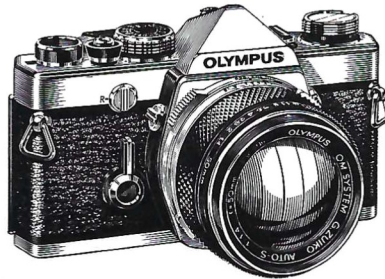
Brought to you by



AND YOUR  
NEIGHBORHOOD TEXACO DEALER

and by

THE BARNETT BANKS OF TALLAHASSEE



## Go Seminoles!

FANS, Record the Seminoles on Film . . .

For the Largest Selection of  
Photographic Equipment and Supplies  
In North Florida, see the  
Friendly Folks at

### Tallahassee Camera Center

117 North Monroe

Phone 222-8771

Downtown Tallahassee Across From the Florida Theater  
Cameras — Film — Darkroom Equipment & Supplies  
Binoculars — Recorders — Rentals

# Electrical Contractors

- INDUSTRIAL
- COMMERCIAL

Licensed & Bonded

222-5494

# CLARK

ELECTRIC CO.  
OF FLORIDA

702 West Madison Street  
TALLAHASSEE, FLORIDA



2121 West Tennessee Street  
Tallahassee, Florida 32304  
Phone 904/576-6121  
Gen. Mgr. Herb Chandler

Ramada Inn of Tallahassee is an ideal gathering place for meetings and banquets. The King's Banquet Room offers every convenience, and accommodates up to 128 persons for dining. Divisible meeting rooms are available for smaller groups. For leisure hours, there are golfing privileges at fine nearby courses. Just four hours drive brings you to the wondrous kingdom of Walt Disney World.

Innumerable famous Florida attractions are within driving distance. Come for business . . . stay an extra day for pleasure. You're welcome at Ramada Inn of Tallahassee.

## Advertisers Directory

Alumni Seminole Shopper	39
Army ROTC	16
Artistic Flowers	60
Barnett Bank	17
Bill's Bookstore	37
Capital City First Nat'l Bank	21
Central Telephone Co.	40
Chevrolet	29
Clark Electric	60
Coca-Cola	30
8 Days Inn	55
Elinor Doyle Florists	55
Eli Witt	57
Florida Beef Council	35
Florida Publishing Co.	20
Gulf National Bank	54
Holiday Inn	IFC
Industrial National Bank	40
Jacksonville City of	41
Miller Chevrolet	50
Mr. Steak	4
NCAA Football Guide	54
Orlando Sentinel	2
Peoples Bank	45
Pizza Hut	44
Quality Inn	17
Ragans & Roberts	36
Ramada Inn	60
St. Petersburg Times	13
Sears	12
Security Federal Savings	57
Seminole Basketball	IBC
Seminole Boosters, Inc.	26
Seminole Sportswear	18-19
Southernair-Skyline	60
Southern Airways	1
Southern Electric	51
Taco Bell	57
Tallahassee Camera Center	59
Tallahassee Democrat	33-34
Tallahassee Motor Hotel	57
Tallahassee Travel and Tours	14
Tampa Tribune	28
Trawlers Restaurant	51
U.S. Marine Corps	32
University Rexall	43
Winn-Dixie	27
WTNT Radio	59
Zenith	BC
Zodiac Watches	5

# Southernair MOTEL

Across from F.S.U.  
Tallahassee, Florida 32304  
904/224-7116



and

# Skyline

## Motor Lodge

U. S. 90 West  
904/576-2157

Quality Inns

for Quality People

"When it's

# FLOWERS

Say it with Ours"



DELIVERY SERVICE

# Artistic Flowers

777 MICCOSUKEE RD.

224-0105

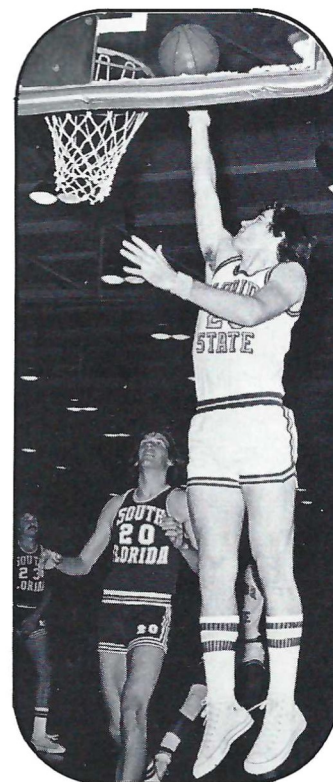
# FLORIDA STATE

## we've got the action

### BASKETBALL SCHEDULE 1974-75

DATE	OPPONENT
Nov. 30	VALDOSTA STATE
Dec. 3	ILLINOIS STATE
Dec. 7	MARSHALL
Dec. 9	Memphis State
Dec. 14	LOUISVILLE
Dec. 18	CALIFORNIA STATE
Dec. 21	OHIO UNIVERSITY
Dec. 26	Holiday Classic
27	(Louisville, Purdue, W. Ky.)
Jan. 4	<b>EASTERN KENTUCKY</b>
Jan. 7	<b>WISCONSIN (Milwaukee)</b>
Jan. 11	<b>BISCAYNE COLLEGE</b>
Jan. 15	South Florida
Jan. 18	<b>HOFSTRA</b>
Jan. 20	Biscayne College
Jan. 25	Canisius
Jan. 27	New Mexico
Feb. 1	<b>TENNESSEE (Chattanooga)</b>
Feb. 6	<b>JACKSONVILLE UNIVERSITY</b>
Feb. 9	Georgia Southern
Feb. 13	<b>GEORGIA STATE</b>
Feb. 19	Jacksonville University
Feb. 22	<b>GEORGIA SOUTHERN</b>
Feb. 24	MERCER
Feb. 28	<b>SOUTH FLORIDA</b>
Mar. 5	Stetson

Home games listed in boldface type.



# Seminole Basketball

With seven of 11 lettermen returning from last year's 18-8 squad, plus 16 big home games lined up for the season, Coach Hugh Durham views the 1974-75 campaign with "guarded optimism." At the very least it should be one of the biggest and most exciting for Seminole fans in recent seasons. With the 16 home games, the Seminoles will be playing before the home folks more than ever before and the schedule includes a solid lineup of top teams, including Marshall, Louisville, Jacksonville and Eastern Kentucky. Among the returning veterans are postmen Greg Grady and Zach Perkins, wingmen Larry Warren and Wayne Smalls and pointmen Eugene Harris and Carlton Byrd, all of whom thrilled Seminole fans last season. The only sure way to see all the Action this year is to buy season tickets. They are on sale now at the Athletic Ticket Office in Tully Gym. Season Tickets are \$42 each, plus 50 cents per order for handling. Order your Basketball Season Tickets now by sending a check payable to Florida State University: Athletic Ticket Office, 100 Tully Gym, Florida State University, Tallahassee, FL 32306. Or phone 904/644-1830 for more information.

# The All-American Receiver.

Over the years, Zenith color TV has earned a reputation for dependability and picture excellence no other color TV can match.\*

And today's Zenith solid-state Chromacolor II backs up that reputation with a combination of features no other color TV can offer.

The famous Chromacolor picture tube

that set a new standard of excellence in color TV. A patented Power Sentry voltage regulator that protects components. And a rugged, 100% solid-state modular chassis for long-life dependability.

It's the best way we know to make sure, at Zenith, the quality goes in before the name goes on.®

Model shown, F4752P, the Reynolds. TV picture simulated.



**ZENITH**

SOLID STATE

**CHROMACOLOR® II**

\*For the third straight year, a nationwide survey of independent TV service technicians has named Zenith, by more than 2 to 1 over the next best brand, as the color TV needing fewest repairs. The same survey rated Zenith as the highest-quality color TV, as the one with the best picture, and as the one service technicians would buy for themselves today. Survey details on request.