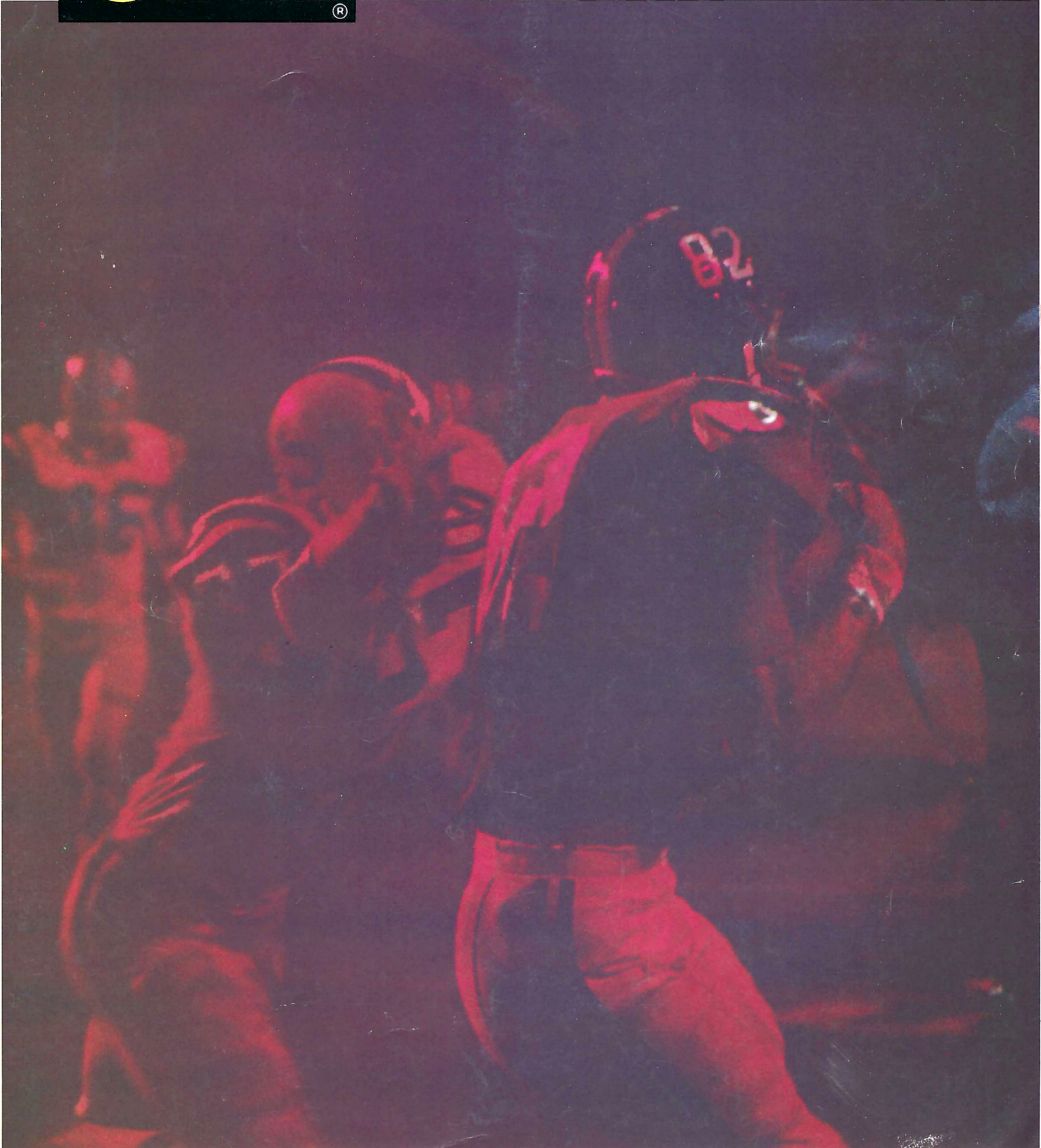


September 14, 1974 **FLORIDA STATE**

\$1.00

the college
GAME®

PITTSBURGH



Holiday Inn®



Two Inns To Serve You In Tallahassee

316 West Tennessee Street
222-8000

1302 Apalachee Parkway
877-3141

Banquet Rooms, Meeting and Conference Rooms with Complete Facilities, Dining Rooms and Lounges.

Nobody's second string on Southern.

Jet Southern and see that there's no "First Class," and no "Tourist Class." No stewardess will send you to the rear of the plane and then pull that curtain in your face so you can't see what's happening when the corks start popping at a party you weren't invited to. On Southern there's just one class of service. And that's high class.



always

ST

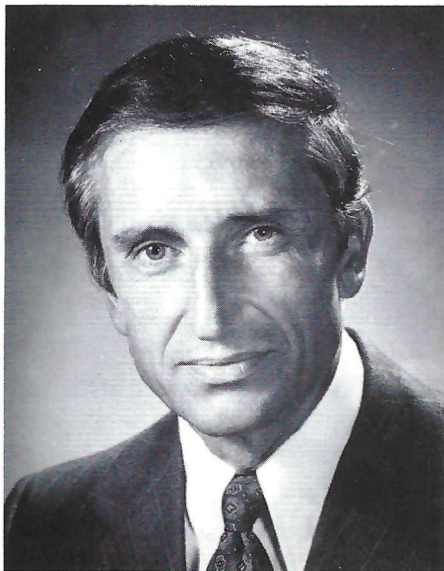


**in
sports
coverage**

Florida's Most Interesting Newspaper

Sentinel Star

Orlando, Florida



Dr. Marshall

If ever there is an element of the unknown in collegiate football, it is present when a new coach sends a young team on to the field. When Darrell Mudra came to Florida State as Head Coach last winter, it was not to inherit a veteran team with a winning record. It was to restore and rebuild—to recover the winning tradition to which those of us at Florida State have become accustomed.

From all reports Coach Mudra is just what we needed, and from my personal observations of the man and his management of the team, I am convinced that the reports were well founded.

The 1974 Seminoles want to win. They have worked hard to master new strategies of play introduced by Coach Mudra and his able young coaching staff. Many of the players you will see in action this year are new—some are freshmen. They will be full of surprises. But the returning players will surprise you too. They have added the sharp edge of superior training and conditioning to their ability and previous experience.

The challenge of '74 is evident in the roster of teams the Seminoles will play this season. We welcome that challenge and look forward to renewing the fun and excitement of football in each new contest. Regardless of the final outcome of the games, I know that the Seminoles will give their best efforts, and with that commitment we are ready for 1974.

Those of us in the stands—alumni, students, faculty, staff, friends, and Seminole Boosters have an important role to play. The energy emanating from a full stadium of loyal, appreciative fans cannot be overestimated as a factor in the morale of a team and its willingness to push for the extra yard, the all-but-impossible play, and the winning margin. In short, the fans have a share in the success of every team. We look forward to making that difference at every home contest.

Let's show our young Seminoles and their coaches that they have our full confidence and our full support.

Sincerely,
Stanley Marshall
President

From One Seminole Fan To Another . . .

. . . Welcome To The South's Friendliest Campus

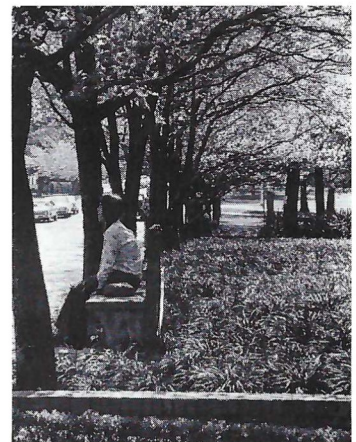
When the Seminary of the Suwannee was founded in 1857, no one guessed that it would eventually become a large state university with a student enrollment of over 20,000.

But from that small school for men, Florida State University evolved as one of the largest state institutions of higher learning in Florida and from its Gothic entranceway, has grown westward, sprinkling its skyline with modern, highrise architecture.

The University's 14 schools and colleges include Arts and Sciences, Business, Social Sciences, Criminology, Communication, Nursing, Social Work, Library Science, Home Economics, Education, Theatre, Law, Music and Visual Arts. Within these fields there are 52 doctoral programs and more than 80 bachelor's and master's degree programs. Funds for University research totaled some \$13 million in 1973-74, resulting in many projects having practical applications for Florida's industries, environment and social welfare.

With a staff of over 7,000 employees, including more than 1,300 faculty members, the University has an operating budget of \$77 million, which includes funds from state, federal and private sources.

Florida State was one of the first universities in the nation to have its affirmative action plan approved by the U. S. Department of Health, Education, and Welfare. The University actively strives to build a community in which opportunity is equalized and uses its facilities and human resources to develop the skills and opportunities of the members of all groups so they may play responsible and productive roles in society.

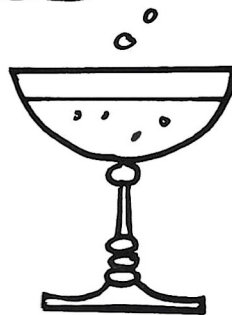


Special FSU Hours

Open 'till 1:00 a.m.
game nites



and



plus other fine foods and fresh seafood!

FIVE MINUTES FROM THE STADIUM

1921 West
Tennessee
U.S. 90W
Phone
224-2415

**Mr.
Steak**

AMERICA'S STEAK EXPERT

OPEN
FOR LUNCH
AND DINNER
7 DAYS A WEEK



FLORIDA STATE

PITTSBURGH

FOOTBALL MAGAZINE

VOL. XXVIII

September 14, 1974

No. 1

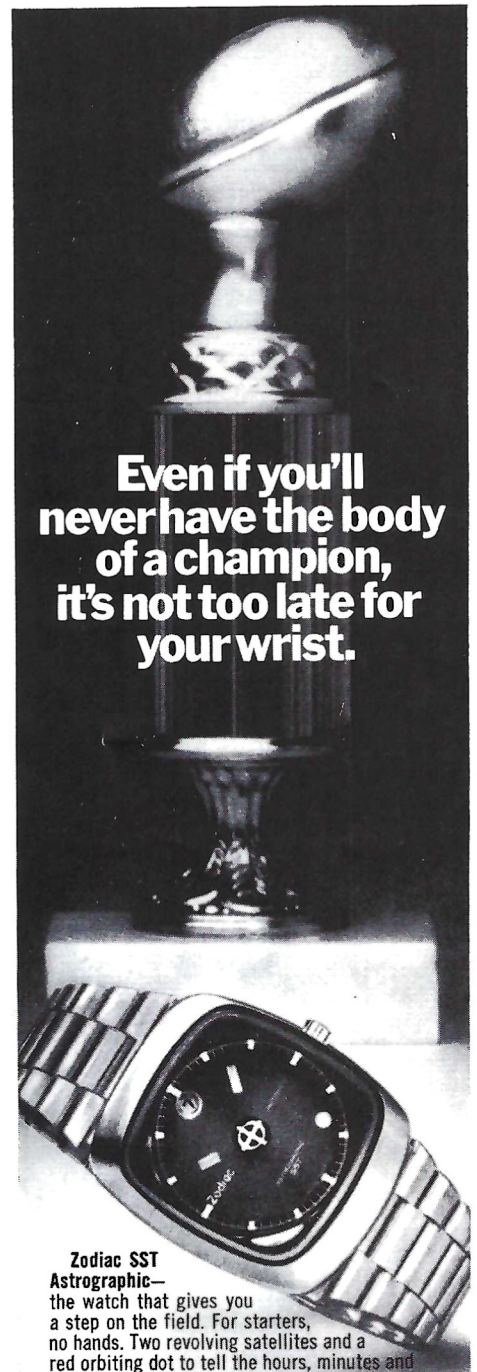
IN THIS ISSUE . . .

- RESEARCHING HEAT SENSITIVITY** 6-7
Florida State's 1974 Distinguished Professor of the Year studies heat sensitivity in humans and animals.
- NEVER WAS THERE A SPORT SO INTENSELY THRILLING** 10-11
That's what the members of the Swamp Hollow Skydivers claim and they back it up with a pregame performance tonight prior to kickoff.
- TONIGHT'S TEAMS** 28, 31, 33-34
Complete Rosters, Depth charts and statistical information of both the Seminoles and the Pitt Panthers.
- SPORT SPOTLIGHT: CROSS COUNTRY** 47
Football is not the only Seminole Sport to have its season in the fall. Coach Dick Roberts' Cross-country runners will be off to the races as well.

Florida State University	3	Officials Signals	36
Dr. Daniel Kenshale:		Football Terms	37
1974's Distinguished Professor	6-7	1974 Seminole Squad	38
Seminole Boosters, Inc.		Stadium Information	40
Full Scholarship Donors	8-9	Seminole Auto Dealers	42
The Swamp Hollow Skydivers	10-11	Seminole Trainers	43
1974 Seminoles	12-14	Seminole Managers	44
Athletic Department Administration	15	Board of Regents	45
The Football Coaching Staff	16	Seminole Head Coaches	46
Future Football Schedules	20	Sport Spotlight: Cross Country	47
Graduate Assistant Coaches	21	The Marching Chiefs	48
Head Coach Darrell Mudra	22-23	FSU Football Flashback	49
Seminole Songs	24	Coaches' Close-up	50-51
Keep Your Own Statistics	27	Seminole Booster Highlights	52
Tonight's Teams	28	University of Pittsburgh	53-55
Starting Line-ups	31	Underdog Role Leaves President	
Rosters	33-34	Undaunted	56
Fitness Program Rewards Persistence		58	
Seminole Radio Network		59	
Advertising Directory		60	
Seminole Basketball		Inside Back Cover	



The Florida State Football Magazine is published by the Florida State University Department of Intercollegiate Athletics. Editor—Hank Schomber. Program Manager Lonnie Burt. Business Manager—Claude Thigpen. Sales Coordinator—Jack Ibach. Local Advertising is contracted by the Florida State University Department of Intercollegiate Athletics. National Advertising Representative is Spencer Marketing Services, New York. The 1974 Florida State Football Magazine is printed by Grafcom, Inc., Tallahassee; Typography by Canon Graphics, Tallahassee.



Even if you'll never have the body of a champion, it's not too late for your wrist.

Zodiac SST Astrographic—the watch that gives you a step on the field. For starters, no hands. Two revolving satellites and a red orbiting dot to tell the hours, minutes and seconds. Set in a sculptured case. Inside, a 17-jewel split-second-timing movement. Guaranteed* to within a minute a month. Self-winding. Stainless steel or 18k gold electroplate case. Stainless steel back. Automatic calendar with push button date changer. Shock and water resistant. A touch of glory for your wrist. Priced from \$165.

Zodiac

*Adjustments to this tolerance, if necessary, will be made at no cost for a period of one year.

Ask for ZODIAC where you buy fine watches.

Dr. Daniel R. Kenshalo

Researching Temperature Sensitivity

Florida State's 1974 Distinguished Professor Of The Year

Dr. Daniel R. Kenshalo, professor of psychology, is Florida State University's Distinguished Professor of the Year (1974).

This is the highest honor FSU faculty members can bestow on one of their fellow members and is granted each year to someone "whose extraordinary accomplishments have contributed significantly to the University's quest for excellence."

Dr. Kenshalo's accomplishments certainly are far from ordinary, a fact which has brought him worldwide recognition.

He is considered one of the leading researchers and authorities on temperature sensitivity in humans and animals . . . a psychologist who dons lab coat and surgical gloves to conduct his experiments.

That's not so strange when he reminds you that psychology started as a young science investigating sensations and all psychologists are interested in sensory processes.

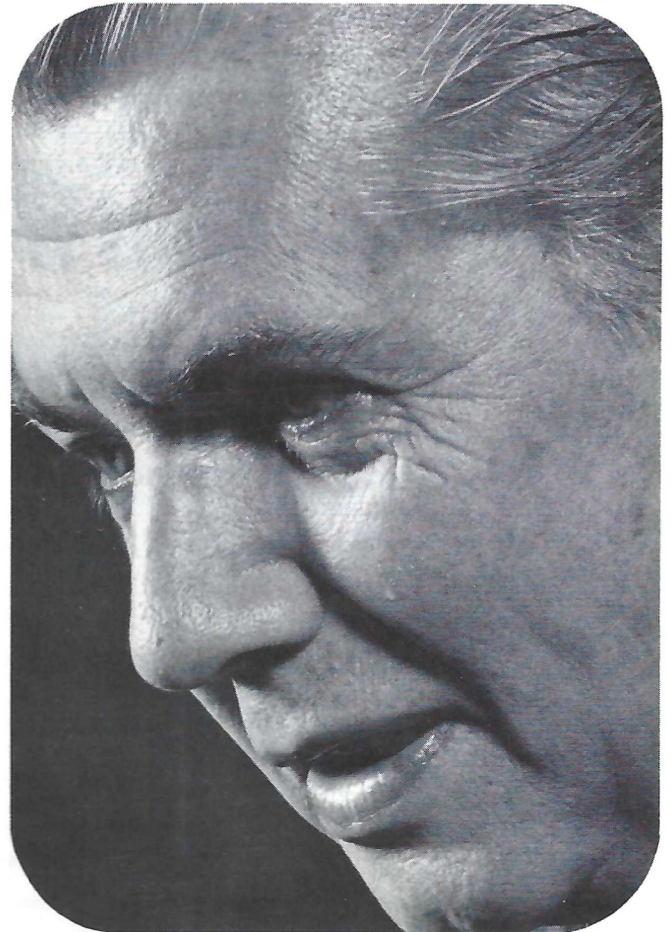
Others have done similar experiments but not with the sophisticated equipment he and his associates use at Florida State, where most of it is developed, designed and built.

Nobody has ever seen a human heat or cold receptor, though it has been established that they are different. The same receptor does not receive both heat and cold and simply transmit different messages to the brain.

. . . a psychologist who dons lab coat and surgical gloves to conduct his experiments.

Dr. Kenshalo hopes to be the first person ever to see such a receptor. He is currently tagging nerves in anesthetized monkeys with radioactive isotopes which he will later examine under the electron microscope.

So far, the Florida State scientists have not managed to get the



isotope into a single cell but for the past two years they have been building equipment for this project.

Dr. Lloyd Beidler, professor of biological science, and Dr. Kenshalo started the psychobiology program in order to take advantage of crossing disciplines. The use of the biology department's electron microscope is an example.

Quite extensive machine and electronic shops are located in the University Psychology Research Building and it is here that the complicated and specialized equipment is constructed for Florida State research.

Because of his international reputation for his pioneering investigation of skin senses, he has been invited to take part in a

Symposium on Tissue Reception in Leningrad next month as a guest of the Soviet Academy of Sciences.

On the way back to Tallahassee, he and his wife Jan will go to New Delhi, India, for a meeting of the Commission on Somatosensory Processes for the International Union of Physiological Sciences.

The commission is made up of five persons from different parts of the world who meet once every three years and sponsor international symposia, publishing the results to stimulate research into this field. Dr. Kenshalo is the only member of the commission from the United States.

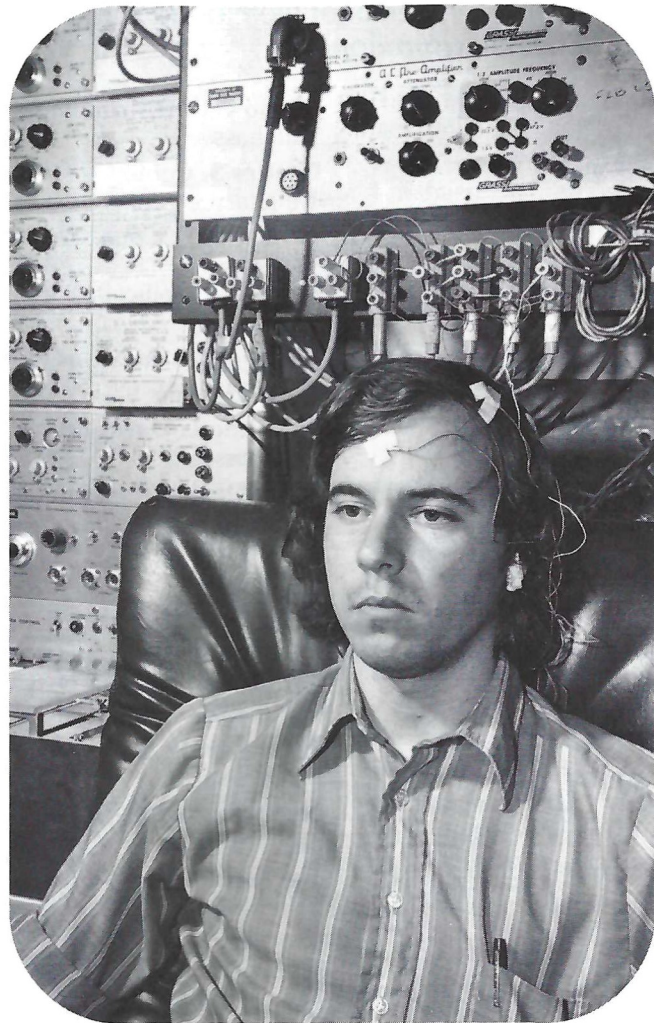
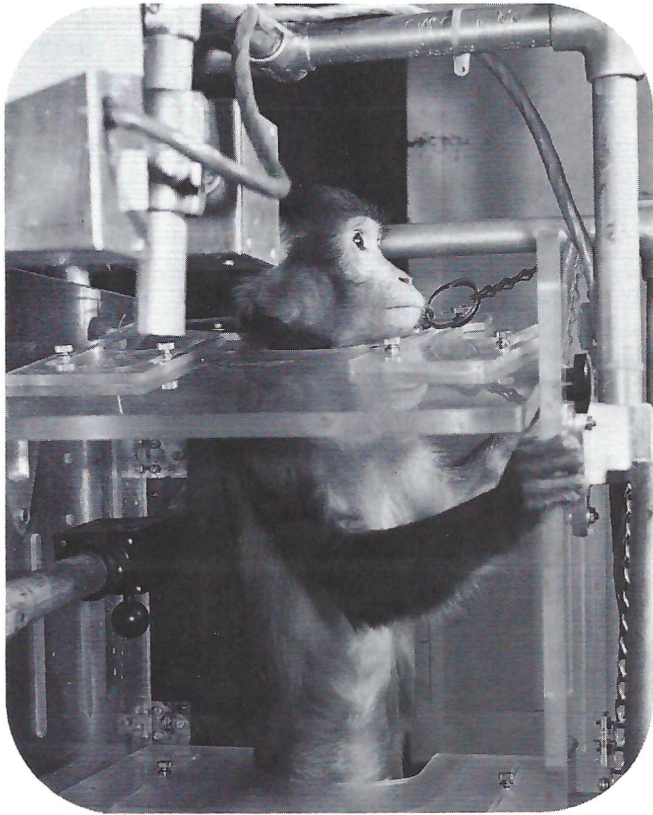
Dr. J. R. Grosslight wrote:

"As chairman of this department (Psychology), I have been able to observe that there is no member who approaches Dr. Kenshalo in his understanding of the complex inter-relations that are necessary to run a successful department this size. His awareness of the complexity has always let him, by whatever means he possesses, to be of assistance and examine the larger good over his own immediate needs. Frankly, this department could not have run or flourished as well as it has without his considerable assistance and advice."

Kenshalo, who came to Florida State as an assistant professor in 1950, was cited for outstanding service to students, the University and his profession.

His awareness of the complexity has always let him, by whatever means he possesses, to be of assistance and examine the larger good over his own immediate needs. Frankly this department could not have run or flourished as well as it has without his considerable assistance and advice.

—Dr. J.R. Grosslight
Chairman, Department of Psychology



In spite of the complexity of the experimental equipment, much of which is developed and built on campus, neither "Baby" the rhesus monkey, nor student Ron Palmer are subjected to painful experiments, but are tested for sensitivity to heat and cold.



Seminole Boosters, Inc., on behalf of the Florida State University, wishes to express its sincere gratitude to the following Full Scholarship donors:

A.B. Dick Products Company

Tallahassee

Albritton-Williams, Inc.

Tallahassee

Charles H. Alford

Tallahassee

American Communications, Inc.

Tallahassee

Aragon Farms

Bainbridge, Georgia

Compliments of a Friend

Winfred L. Bailey

Atlanta, Georgia

Barnett Bank

Tallahassee

Barrett, Daffin & Figg

Tallahassee

Dr. John Bembrly

Tallahassee

Brown, Smith, Young & Pelham

Tallahassee

Philip A. Browning

Atlanta, Georgia

Karle Bucklew

North Palm Beach

Buddy's Sporting Goods

Tallahassee

Compliments of a Friend

Dr. Emory Cain

Quincy

Capital City First National Bank

Tallahassee

Capital City Sporting Goods

Tallahassee

Bill Cartee

Tallahassee

Chenoweth Distributing Company

Tallahassee

Charles S. Coble

Tallahassee

Dr. James K. Conn

Tallahassee

Crossland Realty, Inc.

Tallahassee

Tom Cundy

Ft. Lauderdale

Dr. Gene L. Davidson

Tallahassee

Frank Decker Construction Co.

Lakeland

Syde P. Deeb

Tallahassee

Drake Management, Inc.

Tallahassee

Dr. Evan E. Dussia

Tallahassee

Elberta Crate & Box Company

Tallahassee

Equity Resources, Inc.

Tallahassee

The Essex Corporation

Tallahassee

Crockett Farnell, Jr.

Clearwater

Florida Federal Savings & Loan Assn.

Tallahassee

**First Federal Savings & Loan Assn.
of Gadsden County Quincy**

B. Kenneth Gatlin

Tallahassee

Donald E. Grant

Perry

Douglas D. Hammons

Tallahassee

Arthur E. Hempel, Jr.

St. Petersburg

Holiday Inns of Tallahassee

Tallahassee

HSE & M Satterfield, Evans

Tallahassee

George Hunt, Jr.

Clearwater

Industrial National Bank

Tallahassee

Nelson A. Italiano

Tampa

Compliments of a Friend

Wendell Jarrard

DeLand

Lakeland Auto Auction

Lakeland

Ed Kercher

Bradenton

Jim Kirk

Ocala

Ryals Lee Sales Co.

Tallahassee

W.S. Lee Company, Inc.

Tallahassee

Leon Federal Savings & Loan Assn.

Tallahassee

Locklin Brothers

Milton

Kinnebrew Motors, Inc.

Tallahassee

Landrum Realty

Tallahassee



Leon Realty, Inc.
Tallahassee

Lewis State Bank
Tallahassee

John E. Loughridge
Perry

Lyons Industrial Corporation
Winter Haven

Vernon L. McCord
Tallahassee

Bruce McIver, Realtor
Tallahassee

J. Stanley Marshall
Tallahassee

John W. Mettler
Tallahassee

Midyette-Moor Insurance Agency, Inc.
Tallahassee

Mobile Home Industries
Tallahassee

W.L. Montague
Quincy

Dr. Coyle E. Moore
Tallahassee

Ralph Morang
Quincy

Darrell Mudra
Tallahassee

Municipal Code Corporation
Tallahassee

Niagara Wires, Inc.
Quincy

Keith Nichols Co.
Ft. Washington, Pa.

Millard Noblin Realty, Inc.
Tallahassee

Northwood Mall Merchants Assn., Inc.
Tallahassee

Pal Equipment Co., Inc.
Jacksonville

George E. Palmer
Tallahassee

Jesse C. Palmer
Tallahassee

Julius F. Parker, Jr.
Tallahassee

Parkway National Bank
Tallahassee

Peninsular Sign Company
St. Petersburg

Peoples Bank of Tallahassee
Tallahassee

Nat Polak Insurance Agency
Tallahassee

Doyle Pope
Quincy

Mel Pope
Tallahassee

Michael E. Pou
Atlanta, Georgia

E.T. Pridgeon, Jr.
Tallahassee

Publix Super Markets
Lakeland

Ramada Inn
Tallahassee

James J. Reeves & Berton L. Brown
Pensacola

Walter L. Revell
Tallahassee

Burt Reynolds
Los Angeles, California

Royal Sandwich Co.
Tallahassee

Seminole Distributors, Inc.
Tallahassee

Silver Slipper, North
Tallahassee

James C. Smith
Tallahassee

Southeastern Asphalt Company
Tallahassee

Ronald E. Swaine
Pensacola

H.H. (Herb) Swisher
Jacksonville

Tallahassee Builders Supply, Inc.
Tallahassee

Tallahassee Democrat
Tallahassee

Tallahassee Federal Savings & Loan Assn.
Tallahassee

Tallahassee News Company, Inc.
Tallahassee

Tallahassee Restaurant & Lodging Assn.
Tallahassee

Talquin Electric Cooperative, Inc.
Quincy

Terra-Rosa Hardware
Tallahassee

Van Brunt & Yon, Inc.
Tallahassee

WGLF Radio Station
Tallahassee

Dr. Francis H. Watt (Hank)
Tallahassee

George A. Weeks
Tallahassee

West Coast Transport, Inc.
Tampa

Wheeler Builder Supply
Tallahassee

Dan Whitehurst, Investors Realty
Tallahassee

Wholesale Foods
Tallahassee

Winewood Companies
Tallahassee

Richard W. Wolfe
Tallahassee



NEVER WAS THERE A SPORT SO INTENSELY THRILLING

Soar through the air, mocking gravity . . . free, totally, utterly, joyously free.

This is the thrill of skydiving and there is nothing that man has ever dared to do which resembles it.

The Sport Parachutist will try to tell you of the all-encompassing sensation of free fall. For as he jumps he is inextricably encompassed by it.

Who are the jumpers? Local people, Tallahasseeans, like you —workers, students, “regular folks”, who having jumped are infatuated with its sense rewarding stimulation.

They watch the sky each week with hope and when the weekend comes they go to Swamp Hollow, the local drop zone, don their parachutes and escape from the common place into (or should it be said *up to*) the extraordinary. This extraordinary experience begins at Swamp Hollow. There hundreds of local jumpers have been trained, safely and inexpensively. If you hanker to feel the total thrill of this most gratifying sport call Terry McDonald 877-9936, Bill Cauley 385-4741, or Jeff Fuller 575-7472. They are instructors, jumpmasters and skydivers. They will get you started.



Descending with a ram air type parachute. This extra high performance chute is essentially a wing and it can be flown in a similar manner as a plane. The parachutist can attain forwards speeds of 25-30 mph with this type chute.



A pair of jumpers descend with para commander type chutes. These are high performance type chutes with greater maneuverability.

Skydivers exiting a C-46



As a part of tonight's pregame show, four members of the Swamp Hollow Skydivers will put on a thrilling skydiving exhibition for the Campbell Stadium crowd. From a plane circling high over head Terry McDonald, Jeff Fuller, Bill Cauley and Tony Abbott will jump and maneuver in formation during their three minute descent to the ground.

Swamp Hollow parachutist Terry McDonald, who coordinated tonight's jump, grew up in Tallahassee and has been sport jumping for the last five years. He serves as Area Safety Officer for the North Florida, South Georgia region for the United States Parachutist Association. He is also pretty handy with a camera as the photos on these two pages indicate.



The "Parachute Star", is the most common formation of relative work when two or more jumpers exiting singularly work together in formation.

The 1974 Seminoles



Go
Seminoles!



Sears

**Tallahassee's Complete
Department Store**

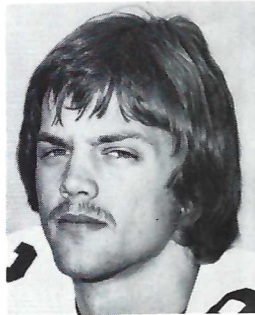
- Everything You Need
For Your Home
Family or Car!

**OPEN 9:30 a.m. 'til 9:30 p.m.
Monday thru Saturday**

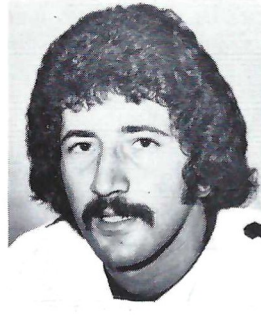
**SHOP AT SEARS
AND SAVE**

Sears

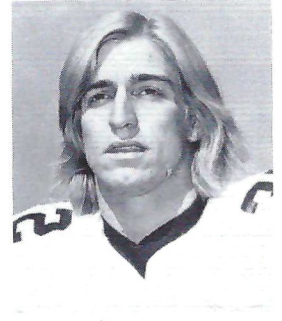
SEARS, ROEBUCK AND CO.



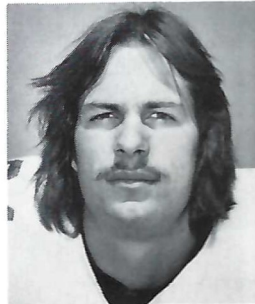
Mike Allen



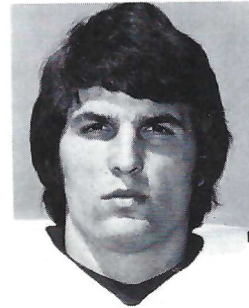
Ahmet Askin



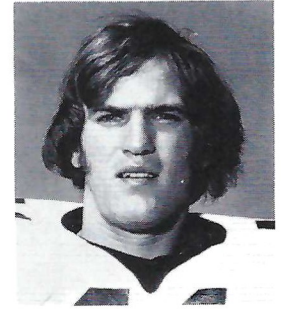
Mike Barnes



Ed Beckman



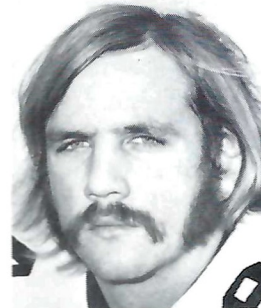
Ricky Blythe



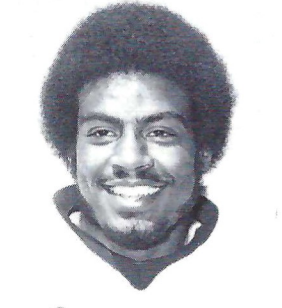
Phil Cahoon



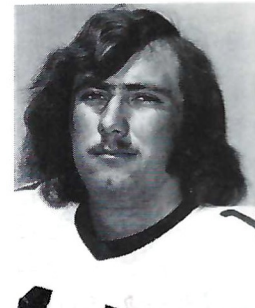
Joe Camps



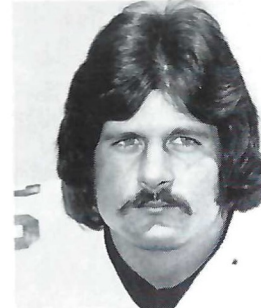
Randy Coffield



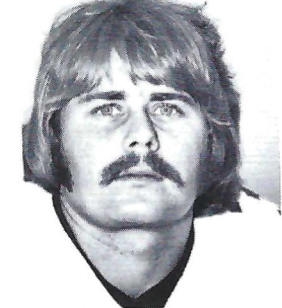
Bert Cooper



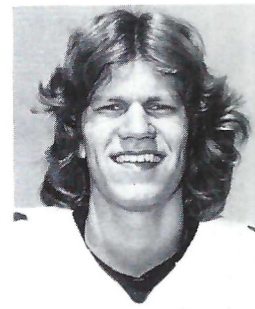
Ron Coppess



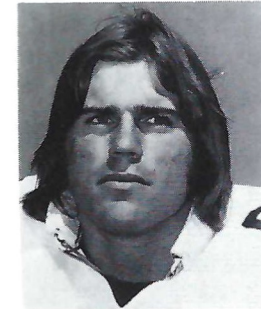
Mike Davison



Joe Downey



Jim Everett

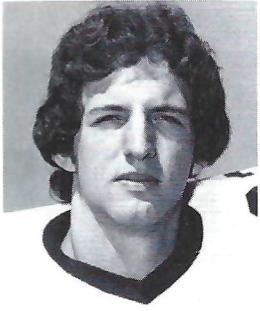


Jeff Gardner

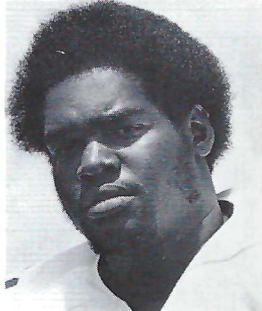


Joe Goldsmith

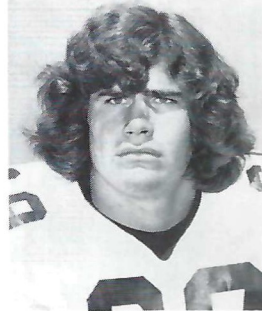
The 1974 Seminoles



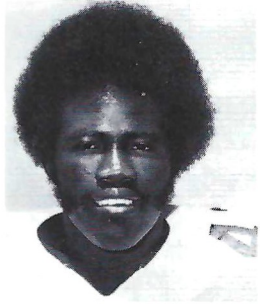
Chris Griffin



Curtis Harris



Bruce Harrison



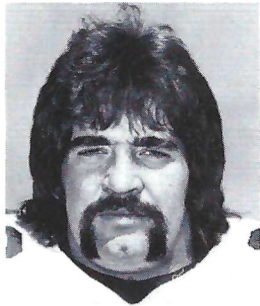
Earl Humes



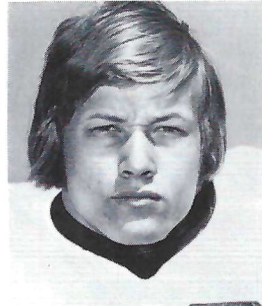
Greg Johnson



Wade Johnson



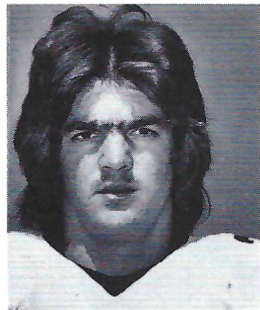
Bob Jones



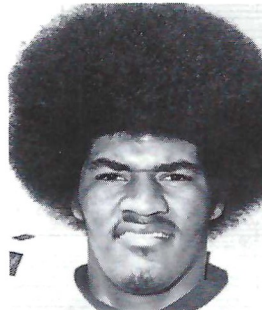
Phil Jones



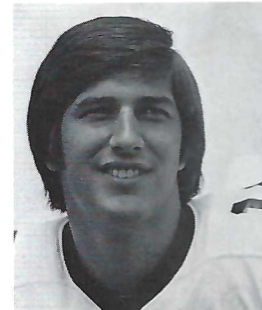
Larry Key



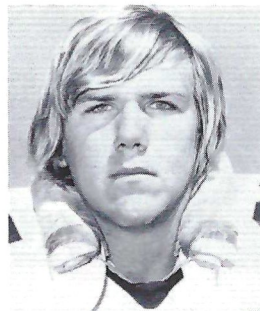
Jeff Leggett



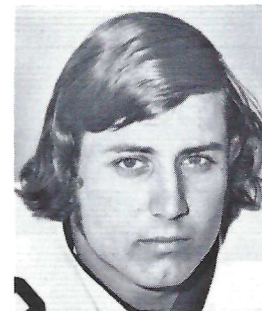
Rudy Maloy



Steve Mathieson



Billy McPhillips



Scott Meseroll



Fred Miller

The Last Word In Riding Herd



Seminole action is fast and mean. Takes exceptional men to climb in there with it, let alone keep it sorted out. But Times Sports' grid wranglers have the belly for it. And when they've put their words and pictures together, there's nothing more to say. For the best, most colorfully complete coverage of FSU football, read Florida's Best Newspaper.

St. Petersburg Times
FLORIDA'S BEST NEWSPAPER

Travel Is Our Profession



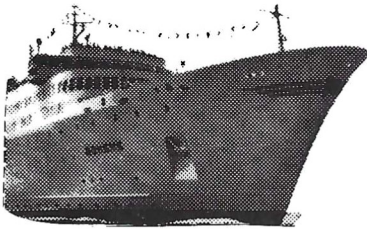
Business
or
Pleasure



We have
the places
you want



to visit on all
Continents



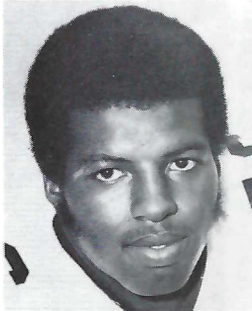
Air, Steamship, Amtrak,
Cruise tickets are sold at
printed tariff rates.



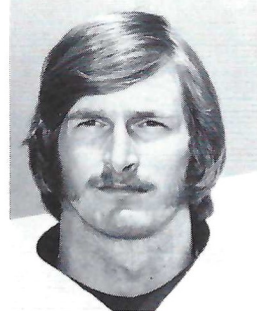
There is no charge
for our services.

**Tallahassee
Travel &
Tours, Inc.**
Tel. 224-4161

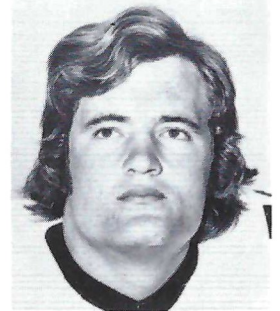
The 1974 Seminoles



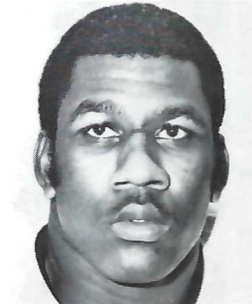
John Murphy



David Porter



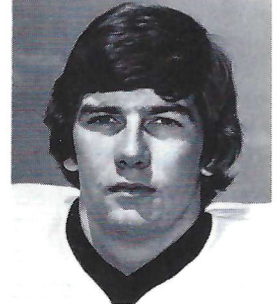
Greg Pounds



Smokey Ragins



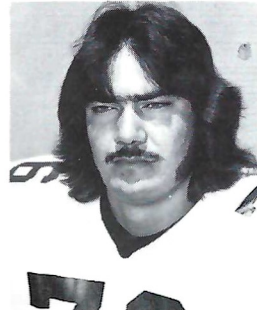
Detroit Reynolds



Jeff Ridings



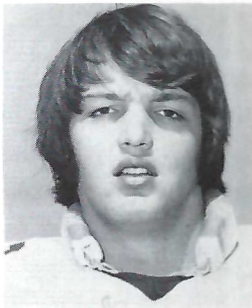
Alan Risk



Vic Rivas



Gary Rose



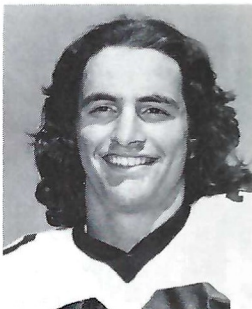
Bill Sawyer



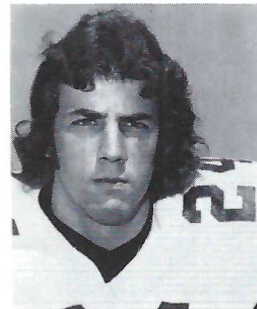
Brian Schmidt



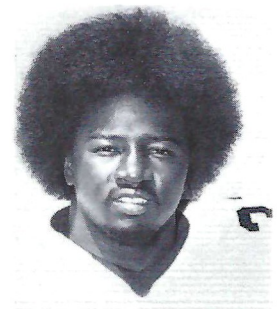
Garis Shaw



Mike Shumann



Andy Stockton

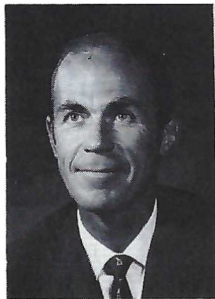


Rudy Thomas

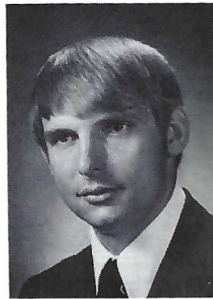
INTERCOLLEGIATE ATHLETIC STAFF



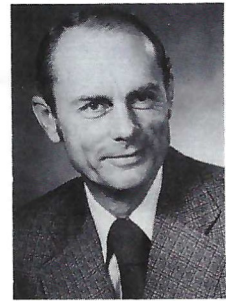
JOHN BRIDGERS
Athletic Director



DR. RICHARD BAKER
Chairman, Athletic Comm.



BILL ROWE
Assistant AD



CLAUDE THIGPEN
Business Manager



LONNIE BURT
Sports Information Director



HANK SCHOMBER
Assistant SID



CHARLIE DURBIN
Cinematographer



WOODY SAUCIER
Tully Gym Equipment Mgr.

Varsity Coaching Staff



Front Row (left to right): Eddie Feely, Mike Pope, Gene McDowell, Cal Jones, Don Pollard, Head Coach Darrell Mudra. Second Row: Sam Elliott, Pete Rodriguez, Frank DeBord, Dan Henning, Larry Pendleton and Bob Harbison. For a close-up of the Seminole coaches, see pages 50 and 51 of tonight's program.

*A Dimension of Leadership for
Men and Women*



The more you look at it, the better it looks.
Military Science Building, Florida State University 644-1016

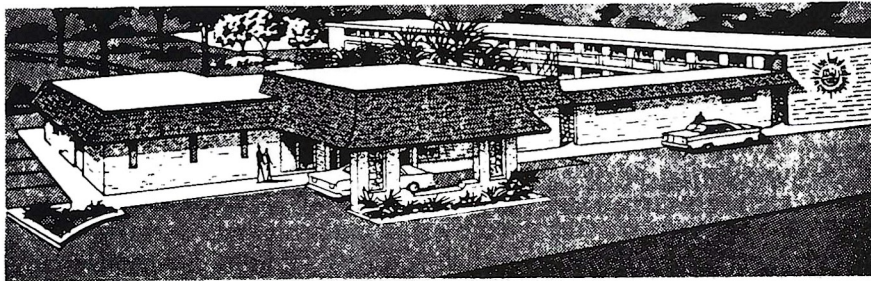


QUALITY INN

COLOR TV

"We Cater to
Commercial Men"

Phone 877-6171



On the Parkway... 1027 APALACHEE PKWY. US 27 So.

The Chez Napoleon Room

Complete Banquet and Meeting Facilities

Cocktail Lounge - Bonaparte's Retreat

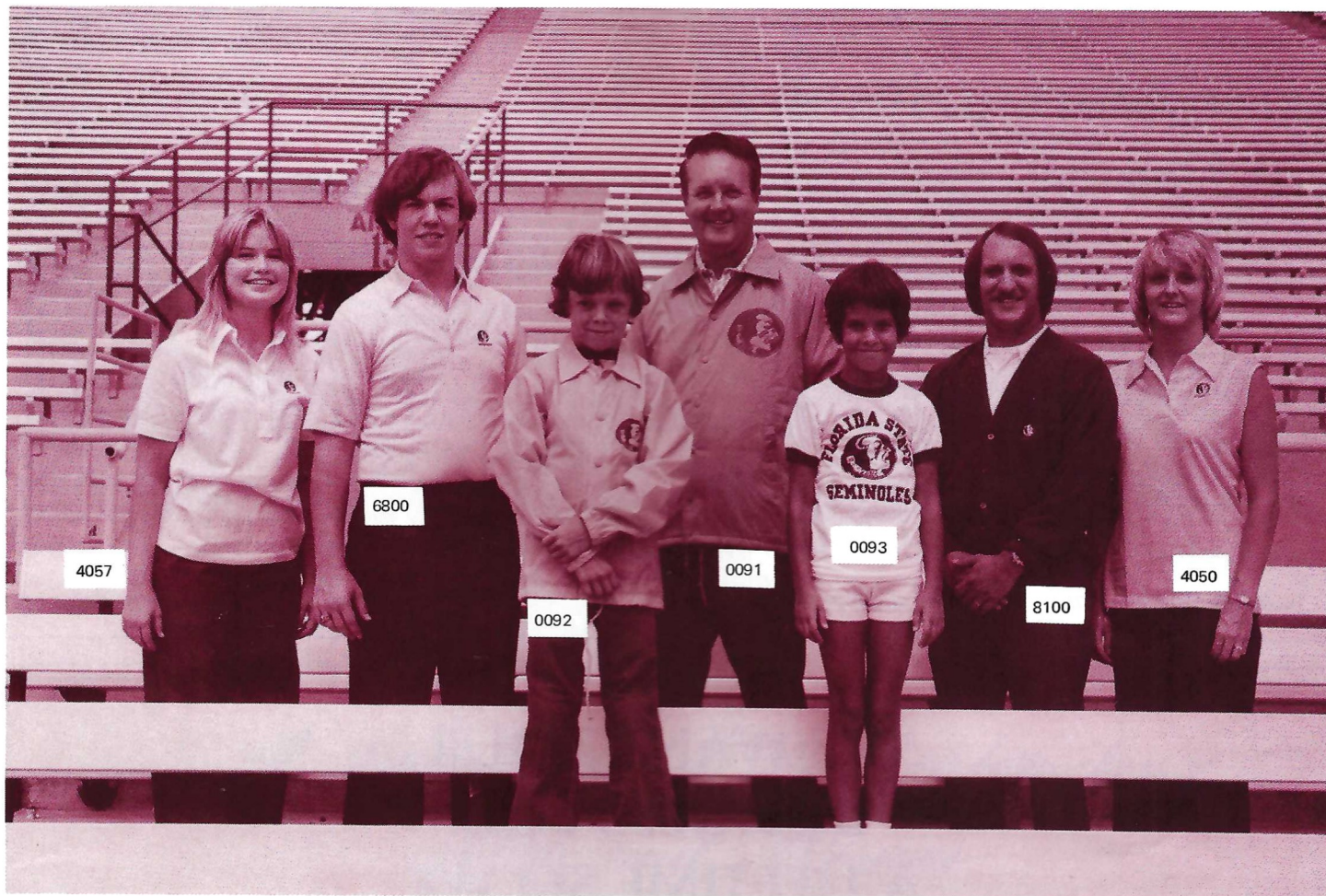
**WE WANT YOUR
BUSINESS FOR
A LIFETIME SO WE
TAKE BETTER CARE OF
YOU DAY BY DAY.**



Barnett Banks of Tallahassee

Show Your Colors

Official Seminole Sportswear



LADIES' AND MEN'S KNIT SHIRTS

100% cotton lisle shirts available in white or garnet (men's style only) with contrasting Seminole emblem. Full fashion collar and button placket. State size and color.

- 4050 Women's Sleeveless Shell \$14.70
Sizes: S-M-L
- 4057 Women's Cuffed Short Sleeve ... \$16.70
Sizes: S-M-L
- 6800 Men's Short Sleeve \$17
Sizes: S-M-L-XL
(XXL available on special order)

Men's Arnel Plus short sleeve shirt 91% Arnel, 9% nylon shirt available in Garnet, Gold or White with contrasting Seminole emblem. Completely full fashion. State Size and color.

- 7010 Men's Arnel Shirt \$18.80
Sizes: S-M-L-XL

LINED COACHING JACKET

Full cut 100% nylon water repellent outer shell. Pole lining with quilted nylon sleeve lining. Hood concealed in unique compartment inside the lining. Slashed Pockets, elasticized cuffs. Completely washable. Order in Garnet or Gold with contrasting Seminole emblem.

- 0091 Coaching Jacket \$24.20
Sizes: S-M-L-XL-XXL

ORLON CARDIGAN SWEATERS

100% Orlon Links-N-Links Classic Button front Cardigan Sweaters. Cut extra full for added comfort. Wash and wear. Comes with contrasting Seminole Emblem in gold, white or garnet (men's only).

- 1825 Women's Sweater \$23.20
Sizes: 34-36-38-40
Color: Gold, White
- 8100 Men's Sweater \$23.20
Sizes: S-M-L-XL
Color: Garnet, Gold, White

FOR THE KIDS

Nylon Warm-Up Jacket—just like the warm-up jackets worn by the Seminole athletes. 100% single ply tefeta nylon shell jacket with Byron collars. Color matched gripper snap front. Set in sleeves with elasticized cuffs. Comes in Gold only with contrasting Seminole emblem.

- 0092 Warm-up Jacket \$12.20
Sizes: XS(2-4), S(6-8), M(10-12), L(14-16)

Child's Cotton Shirt—100% cotton T-shirt with Seminole emblem. Just the thing for the Junior Seminole.

- 0093 Child's Shirt \$3.50
Sizes: S-M-L

SEMINOLE ACCESSORIES

Zippo Lighter—famous Zippo lighter with colorful Seminole Indian crest. Perfect for gifts.

- 0010 Zippo Lighter \$7.50

Key Chain—super Loop Key Chain with colorful Seminole Indian crest. Sturdy-key ring holds many keys. Perfect for pocket or purse.

- 0020 Key Chain \$ 3

Seminole Charms

- 0024 Indian Head Charms \$ 2
- 0025 Running Indian Charm \$ 2

Men's Jewelry

- 0028 Indianhead Cufflinks \$3.50
- 0029 Indianhead Tie Tac \$2.50

Blazer Pocket Emblems

- 0011 3-in. Seminole Blazer Emblem with pin-on feature \$ 8
- 0012 1½-in. Seminole Blazer Emblem to be sewn on \$ 1

DARITY LTD. BLAZERS \$55.

ADD .04 SALES TAX IF IN N.C.

	36	37	38	39	40	41	42	43	44	46	48	50	52
R													
L													
XL													
S													

ADD \$2.00 ON SIZES 48-52 & ON ALL EXTRA LONGS
Coats offered in Garnet or Gold.

NAME _____

ADDRESS _____

TOWN _____ STATE _____ ZIP _____

COLOR _____ NO. OF COATS _____

TOTAL MONEY ENCLOSED _____ DATE _____

NAME OF SCHOOL _____

Make Checks Payable To: **Executive Wardrobe, Inc.**
Highway 601 By Pass West P.O. Box 970
Concord, N.C. 28025 ph. 704-786-8311

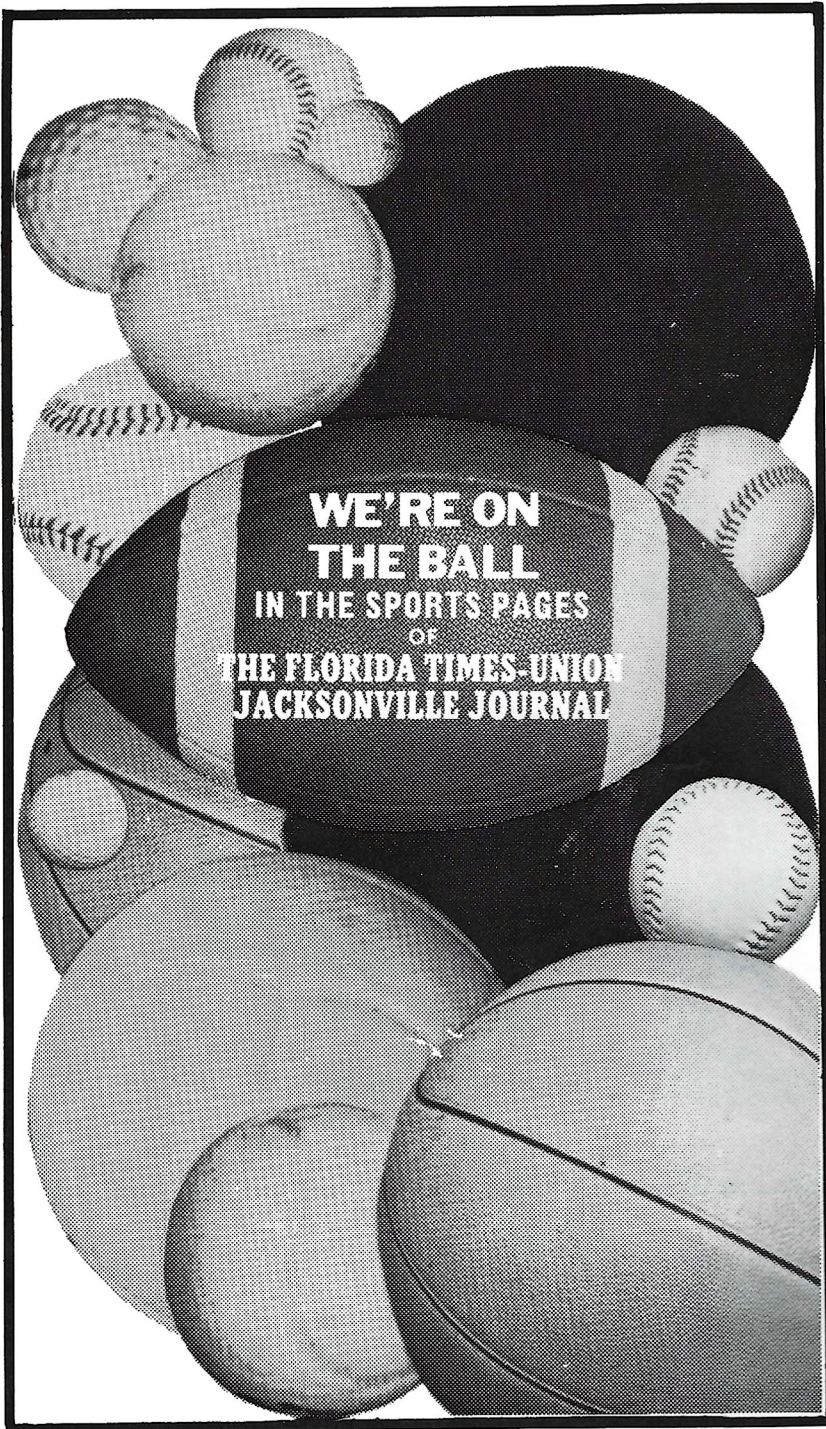


Cat. No.	Item	Quantity	Color	Size	Price	Total
4057	Women's Short Sleeve Cot.				\$16.70	
4050	Women's Shell				\$14.70	
6800	Men's Cotton Shirt				\$17.00	
7010	Men's Arnel Shirt				\$18.80	
8100	Men's Cardigan				\$23.20	
1825	Women's Cardigan				\$23.20	
0091	Coaching Jacket				\$24.70	
0092	Warm-up Jacket				\$12.20	
0093	Child's Shirt				\$ 3.50	
0010	Zippo Lighter				\$ 7.50	
0011	3" Blazer Emblem				\$ 8	
0012	1½" Blazer Emblem				\$ 1	
0020	Key Chain				\$ 3	
0024	Indian Head Charm				\$ 2	
0025	Running Indian Charm				\$ 2	
0028	Indian Head Cuff Links				\$3.50	
0029	Indian Head Tie Tac				\$2.50	
					SUB-TOTAL:	
Four percent Florida Sales Tax:						
					TOTAL:	



Make Check payable to:
FLORIDA STATE UNIVERSITY

Mail Order To:
Athletic Business Office
Florida State University
Tallahassee, Florida 32306



We've a team of action photographers and writers that is unbeatable . . . covering every important athletic event in the South . . . getting the exclusive stories and photographs that make our sports pages come alive.

**The Florida Times-Union
Jacksonville Journal** 

SEMINOLE SCHEDULES

1974

Sept. 14 PITTSBURGH
 Sept. 21 COLORADO STATE
 Sept. 28 at Kansas
 Oct. 5 BAYLOR
 Oct. 12 at Alabama
 Oct. 19 FLORIDA
 Oct. 26 at Auburn
 Nov. 2 at Memphis State
 Nov. 8 (Fri.) at Miami
 Nov. 16 VIRGINIA TECH
 Nov. 23 HOUSTON

1975

Sept. 13 at Texas Tech
 Sept. 20 Open Date
 Sept. 27 IOWA STATE
 Oct. 4 at Georgia Tech
 Oct. 11 at Virginia Tech
 Oct. 18 at Florida
 Oct. 25 AUBURN
 Nov. 1 at Clemson
 Nov. 8 MEMPHIS STATE
 Nov. 15 MIAMI
 Nov. 22 at Houston
 Nov. 29 UTAH STATE

1976

Sept. 11 Memphis State at Jax
 Sept. 18 at Miami
 Sept. 25 at Oklahoma
 Oct. 2 KANSAS STATE
 Oct. 9 at Boston College
 Oct. 16 FLORIDA
 Oct. 23 at Auburn
 Oct. 30 CLEMSON
 Nov. 6 Open Date
 Nov. 13 at Tampa
 Nov. 20 HOUSTON
 Nov. 27 VIRGINIA TECH

1977

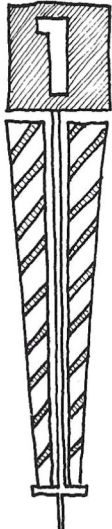
Sept. 10 IOWA STATE
 Sept. 17 at Kansas State
 Sept. 24 MIAMI
 Oct. 1 at Oklahoma State
 Oct. 8 CINCINNATI
 Oct. 15 at Florida
 Oct. 22 AUBURN
 Oct. 29 at Houston
 Nov. 5 at Virginia Tech
 Nov. 12 MEMPHIS STATE
 Nov. 19 at San Diego

Graduate Assistants



Mack Brown, Rick Schlachner, Billy Joe Breakhouse

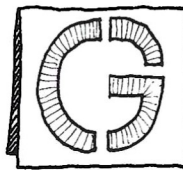
First and Goal



It's the best way to reach a financial objective.

Why try to do it alone when **First National Bank** has a staff of professionals that can help you design a scoring play.

Whether it's big or small... make it **First and Goal**



Capital City



FIRST
NATIONAL BANK

217 East Monroe Street Tallahassee, Florida 32311-1171 Member FDIC

Head Coach Darrell Mudra

Darrell Mudra is a winner!

He is the man Florida State University has picked to lead the Seminoles out of the wilderness of defeat.

One of Coach Mudra's strongest selling points was the fact that he has turned football programs around with almost instant success, something Florida State desperately needs.

The 44-year-old Omaha, Neb., native came to Florida State from Western Illinois with extremely high recommendations. "Darrell Mudra is one of the outstanding football coaches in the country," says former Nebraska Head Coach Bob Devaney, now that school's athletic director. "He has been able to win wherever he has gone and in many cases despite great obstacles."

Tommy Prothro, ex-college coaching standout, now boss of the San Diego Chargers, is another who thinks Mudra was the man for the Florida State job. "I believe Darrell Mudra is a very, very superior coach. I would have been surprised if any candidate for the Florida State job was the caliber of Darrell Mudra."

Coach Mudra's record speaks for itself. He has turned five losers into big winners. In 15 years of college coaching, the soft-spoken educator has recorded 106 victories against only 32 losses and two ties.

Mudra attended Peru State College in Nebraska where he was an all-conference halfback. He received a masters degree from Omaha University and his doctorate from Colorado State. He served in the Air Force during 1950 and '51.

He was an assistant coach at Huron (S.D.) and Colorado State before becoming head coach at Adams State, Alamosa, Colo., in 1959. The previous season Adams State had gone 1-9 but in Mudra's first year the Colorado school gained eight victories against one loss. In four seasons there, Mudra-coached teams never lost more than two games in a single year and he led the Indians to a bowl game.

In 1963, he moved to North Dakota State, a team which had been 0-10 the previous year. In three seasons his records were 3-5, 10-1, and 11-0, including two bowl games.

The next challenge was the Montreal club of the Canadian professional league. In 1965 the Alouettes were 3-11 but under Mudra in '66 they went 7-7 and made the playoffs.

The University of Arizona was the next program Mudra turned around. It took him two seasons to do this, but in the second year he directed the Wildcats to an 8-3 record and a spot in the Sun Bowl.

Western Illinois gained his services in 1969 and in five years at the McComb institution Mudra's clubs went 39-13.

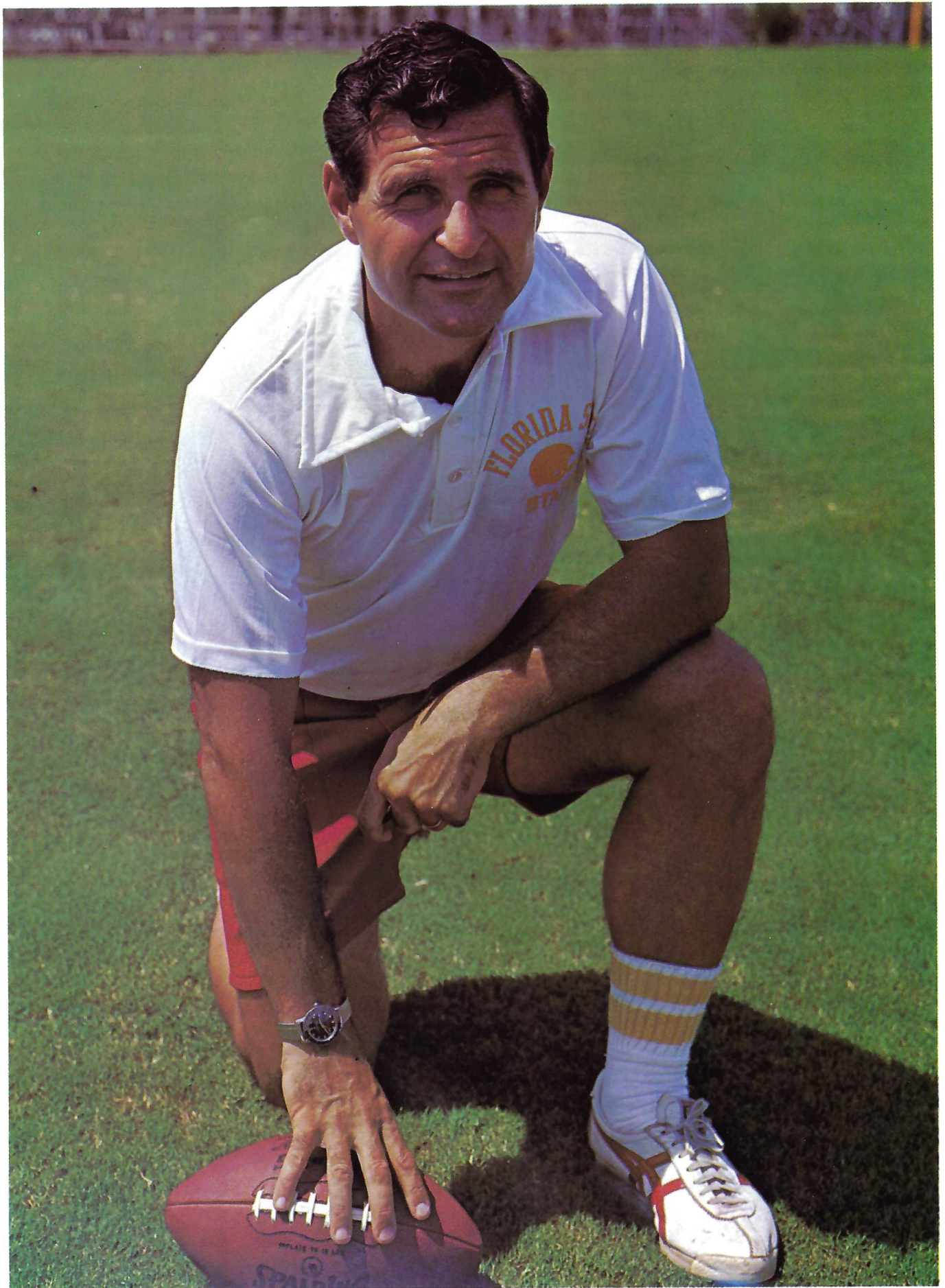
Coach Mudra is married to the former Jean Marie King of Omaha, Neb. They are the parents of four children, Darrell Jr., 20; Stephen, 19; Sherry, 18; and Michele, 14.



THE MUDRA RECORD

Team	Previous Record	Mudra's Record
Adams State	1-9, 1958	1959 — 8-1
		1960 — 7-0-1
		1961 — 8-2
		1962 — 9-1
		(Mineral Bowl)
North Dakota State	0-10, 1962	1963 — 3-5
		1964 — 10-1
		(Mineral Bowl)
		1965 — 11-0
Montreal Alouettes	3-11, 1965	(Pecan Bowl)
		Nat'l Champions
		1966 — 7-7
University of Arizona	3-7, 1966	(Made playoffs. Defeated Bud Grant's Winnipeg team)
		1967 — 3-6-1
		(Defeated Ohio State at Columbus)
		1968 — 8-4
Western Illinois	2-8, 1968	(Sun Bowl)
		1969 — 8-2
		1970 — 7-3
		1971 — 8-2
		1972 — 9-2
		1973 — 7-4

Total 113 wins, 39 defeats, 2 ties



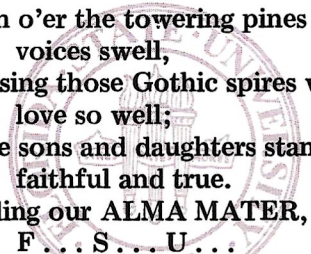


The Star Spangled Banner

O, say! can you see, by the dawn's early light,
What so proudly we hailed at the twilight's last gleaming?
Whose broad stripes and bright stars, thro' the perilous fight,
O'er the ramparts we watch'd, were so gallantly streaming?
And the rockets' red glare, the bombs bursting in air,
Gave proof thro' the night that our flag was still there.
Oh, say, does that Star-spangled Banner yet wave
O'er the land of the free and home of the brave?

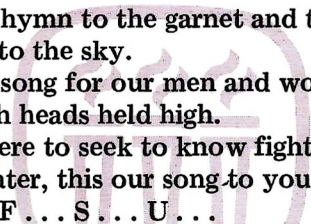
Seminole Songs

ALMA MATER



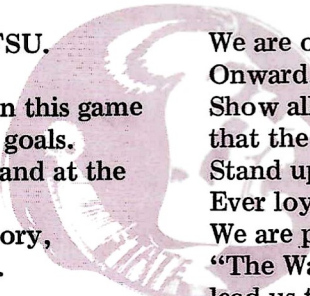
High o'er the towering pines our
voices swell,
Praising those Gothic spires we
love so well;
Here sons and daughters stand,
faithful and true.
Hailing our ALMA MATER,
F . . . S . . . U . . .

HYMN TO THE GARNET AND GOLD



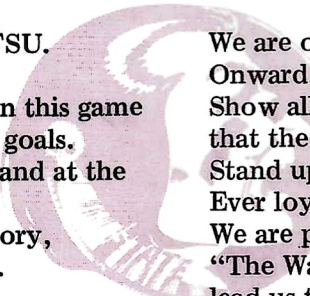
Here's a hymn to the garnet and the gold,
Ringing to the sky.
Here's a song for our men and women bold,
Sing with heads held high.
Striving ere to seek to know fight for victory.
Alma Mater, this our song to you,
Echoes, F . . . S . . . U . . .

FSU FIGHT SONG



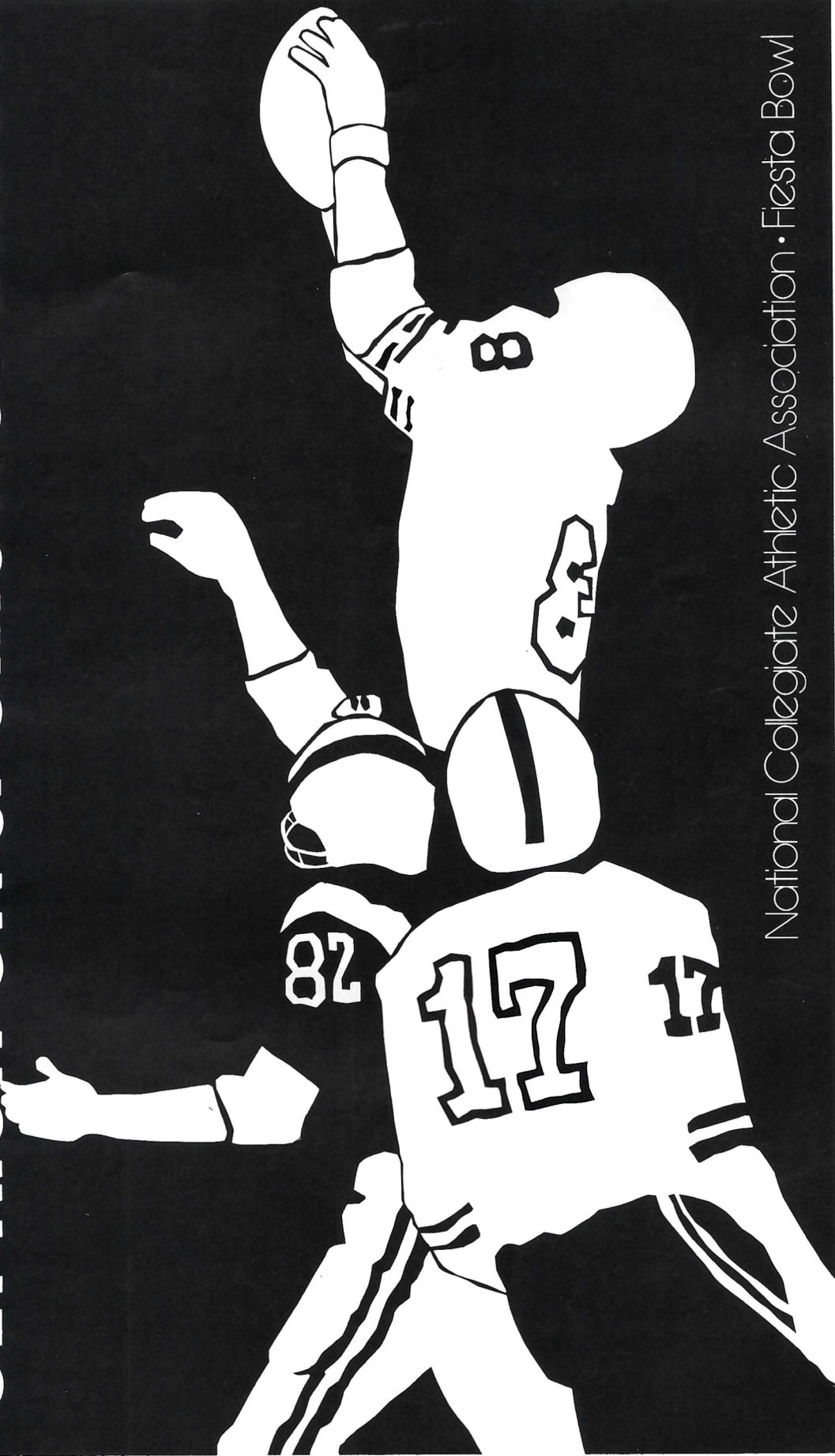
You got to fight, fight, fight for FSU.
You got to scalp 'em Seminoles.
You got to win, win, win, win, win this game
and roll on down and make those goals.
For FSU is on the war path now, and at the
battle's end she's great:
So fight, fight, fight, fight, to victory,
our Seminoles from Florida State.
(Yell) F-L-O-R-I-D-A S-T-A-T-E
Florida State! Florida State!
Florida State!
(repeat song)

FLORIDA STATE VICTORY SONG



We are on the warpath tonight.
Onward, Florida State.
Show all the world the spirit and might
that the Seminoles create.
Stand up for the Garnet and Gold.
Ever loyal we shall be.
We are proud to shout,
"The Warriors are out." And they will
lead us to victory.

GET HIGH ON SPORTS NOT DRUGS



National Collegiate Athletic Association • Fiesta Bowl

SUPPORT . . .



THE SEMINOLES

SEMINOLE BOOSTERS, INC.

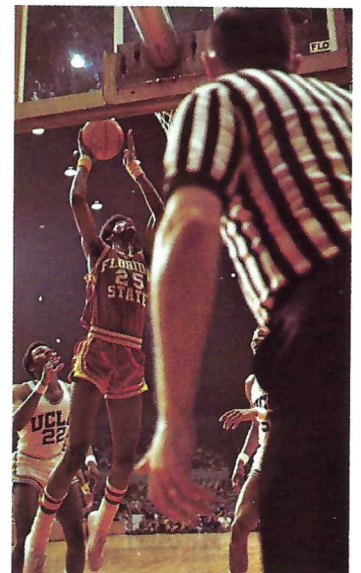
One of the most fundamental programs within any athletic department is that of providing funds to pay the educational expenses of the student-athletes participating in all sports. Through voluntary support, the Seminole Boosters, Inc. hope to provide such support.

"Now is the time for friends and alumni of Florida State to pull together," says Doyle Pope, Chairman of the Board of Directors. "The potential of the University is tremendous. Through Seminole Boosters, we hope to organize the thousands of those who are concerned with building the best athletic program in the nation."



Seminole Boosters, Inc., a private Corporation, is made up of member representatives from throughout the Southeast. In addition to Chairman Pope of Quincy, other members of the Executive Committee are Jimmy Carter, Panama City, Treasurer; Don Grant, Perry, Secretary; John Harlee, Bradenton; Theo Proctor, Jr., Tallahassee; Charles Booth, Orlando; and Henry Massey, Palm Beach.

Individuals interested in more information concerning the Seminole Boosters, Inc. should contact Executive Director Ted Ouzts, P.O. Box 1353, Tallahassee, FL 32301 or call 904/224-4494.



KEEP YOUR OWN STATISTICS

Every football fan knows that the score doesn't always give a good picture of a game. A few statistics, like those that can be kept on this page, can make the picture clearer, show what the individual stars contribute and help to win post-game "debates." Besides, it can be fun to second guess the official scorer whose statistics will appear in tomorrow's papers. But before you start, here are some pointers on being a statistician:

1. Keep cumulative totals to be informed "up to the minute" and to simplify our figuring of team totals. Example: Jones gains 3, 6, 9, 2 yards and you write 3, 9, 18, 20 on his line.
2. Be satisfied if you come within 10-15 yards of the official team totals. Individual judgments as to the line of scrimmage can make quite a difference in the totals.

3. Remember that it takes 10 yards to make a first down—that last inch can be as important as a yard and must be scored as one. Wait until the official places the ball and then go by the official down/yard marker on the sidelines.
4. Be sure to credit first downs on scoring plays originating from lines of scrimmage beyond the 10-yard line.
5. On plays involving penalties measured from the point of the foul, credit the rusher or pass receiver with yardage only to the point of the infraction.
6. Charge gains and losses on fumbles to the player who, in your judgment, contributed most to the error.
7. Don't score two-point conversion attempts after touchdowns as rushing or passing plays.

Florida State

SCORING BY PERIODS					RUSHING (Use cumulative yardage, circle scoring plays)															
1	2	3	4	F																
TD SCORERS PAT																				
					PASSING (Use cumulative yardage for completions; - for incomplete; x for interceptions)															
					RECEIVING (Use cumulative yardage, circle scoring plays)															
FIRST DOWNS																				
RUSH PASS PEN																				

Take A Vacation From Inflation . . .

Winn-Dixie
FOOD STORES
SAVE AT

The Smart Place To Go . . . For Good Things To Eat

Pittsburgh

SCORING BY PERIODS					RUSHING (Use cumulative yardage, circle scoring plays)															
1	2	3	4	F																
TD SCORERS PAT																				
					PASSING (Use cumulative yardage for completions; - for incomplete; x for interceptions)															
					RECEIVING (Use cumulative yardage, circle scoring plays)															
FIRST DOWNS																				
RUSH PASS PEN																				



SPORTS

ACTS



Complete sports coverage everyday

The Tampa Tribune's fine team of sports reporters led by editor Tom McEwen and assistant editor Jim Selman bring you complete coverage of all sports.

Read the Sports pages of

**THE
TAMPA
TRIBUNE**

TONIGHT'S TEAMS

Florida State

Pittsburgh

1974 Schedule and Results

Sept. 14	Pittsburgh	Sept. 14	Florida State
Sept. 21	Colorado State	Sept. 21	at Georgia Tech
Sept. 28	at Kansas	Sept. 28	Southern California
Oct. 5	Baylor	Oct. 5	at North Carolina
Oct. 12	at Alabama	Oct. 12	West Virginia
Oct. 19	Florida	Oct. 19	Boston College
Oct. 26	at Auburn	Oct. 26	at Navy
Nov. 2	at Memphis State	Nov. 2	at Syracuse
Nov. 8	at Miami	Nov. 9	Temple
Nov. 16	Virginia Tech	Nov. 16	at Notre Dame
Nov. 23	Houston	Nov. 23	Penn State

1973 Stats

FSU	Opp.		Pitt	Opp.
141	226	First Downs	194	174
377	605	Rushing Attempts	569	578
1166	3041	Rushing Yardage	2612	2039
138-325-21	130-252-15	Passes	85-178-14	80-160-13
1698	1855	Passing Yardage	1193	1131
2864	4896	Total Offense	3508	3170
81-38.2	53-37.0	Punting	63-36.8	74-38.1
39-22	36-15	Fumbles-Lost	36-21	33-15

Individual Leaders (Returning Players)

Florida State

Rushing	Att.	Net.	Avg.	TD		
McKinnon	57	224	3.9	1		
Davison	55	170	3.1	0		
R. Thomas	15	58	3.9	0		
Passing	Att.	Comp.	Pct.	Int.	Yds.	TD
Orlando	153	71	46.4	8	709	4
Prescott	43	16	37.2	1	235	1
Receiving	No.	Yds.	TD			
Shumann	21	380	2			
Allen	19	279	1			
Davison	15	75	0			
Punting	No.	Yds.	Avg.			
Downey	81	3092	38.2			

Pittsburgh

Rushing	Att.	Net.	Avg.	TD		
Dorsett	288	1586	5.4	12		
Janasek	61	292	4.7	2		
Daniels	149	440	2.9	10		
Passing	Att.	Comp.	Pct.	Int.	Yds.	TD
Daniels	176	84	.477	14	1170	3
Receiving	No.	TD	Yds.			
Murphy	20	0	325			
Toerper	16	0	228			
Dorsett	12	0	84			
Punting	No.	Yds.	Avg.			
Swider	61	2253	36.9			

ECONOMY. PLUS LIBERAL FRINGE BENEFITS.



Good gas mileage is still the thing you want most in a little car, of course. But we know you'd like more.

Like sporty looks and colors and models to choose from.

Bucket seats that fit you comfortably.

Nice soft carpeting.

A floor-mounted shift control and an instrument panel with dials and

gauges instead of flashing lights.

Really good handling.

An engine with a little bit of varroom going for it.

A rear seat that folds down and a rear door that opens up, so you can use your little car almost like a station wagon.

The Vega GT.

An economy car-and-a-half.

This year's version of last year's *Motor Trend* Economy Car of the Year. *Car & Driver* Readers' Choice, Best Economy Sedan, '71, '72, '73. *Motor Service & Service Station* Management mechanic survey, Easiest Subcompact to Service, '72. *Motor Trend*, Car of the Year, '71.

VEGA
Chevrolet

CHEVROLET MAKES SENSE FOR AMERICA.



Coca

Cola

Coca-Cola

Trade-mark ®

Enjoy

Cola

"Coca-Cola" and "Coke" are registered trade-marks which identify the same product of The Coca-Cola Company.

FLORIDA STATE

DEFENSE

LE	87	Rudy Maloy So., 6-4, 208
LT	76	Phil Jones So., 6-2, 244
SLB	53	Brian Schmidt So., 6-1, 220
NG	54	Garis Shaw So., 6-2, 236
WLB	90	Bert Cooper Sr., 6-1, 236
RT	78	Greg Johnson Jr., 6-4, 236
RE	83	Detroit Reynolds So., 6-1, 213
LC	43	Earl Humes Sr., 6-0, 213
SS	42	Joe Camps So., 6-2, 186
FS	39	Jeff Ridings So., 6-0, 178
RC	23	Chris Griffin Jr., 5-11, 168

OFFENSE

WR	82	Mike Allen Sr., 6-4, 178
LT	65	Billy McPhillips So., 6-2, 222
LG	69	Bruce Harrison So., 6-2, 235
C	50	Bill Sawyer So., 6-4, 228
RG	62	Bob Jones Sr., 6-4, 233
RT	70	Vic Rivas So., 6-2, 234
TE	81	Ed Beckman So., 6-5, 210
QB	17	Ron Coppess Jr., 6-3, 215
RB	33	Rudy Thomas So., 5-11, 193
RB	44	Larry Key Fr., 5-9, 181
WR	20	Mike Shumann So., 6-0, 163

PITTSBURGH

DEFENSE

LE	85	Tom Perko Jr., 6-4, 230
LT	78	Dave Jancisin Sr., 6-5, 245
NG	77	Gary Burley Sr., 6-3, 250
RT	68	Don Parrish So., 6-3, 240
RE	94	Bill Vitalie So., 6-3, 215
LLB	59	A. Weatherington So., 6-0, 202
MON	21	Mike Bulino Sr., 6-0, 195
RLB	58	Cecil Johnson So., 6-2, 220
LHB	26	Glenn Hodge Sr., 6-1, 172
RHB	30	David Spates Sr., 6-0, 168
S	13	Dennis Moorhead Jr., 6-1, 195

OFFENSE

FL	24	Bruce Murphy Sr., 5-10, 170
LT	72	Theo Lawrence Jr., 6-6, 230
LG	63	Reynold Stoner Sr., 6-3, 230
C	52	Mike Carey Jr., 6-3, 230
RG	50	John Peiusi So., 6-3, 218
RT	65	Joe Stone So., 6-4, 240
TE	81	Jim Corbett So., 6-4, 215
QB	7	Bill Daniels Sr., 6-0, 180
TB	33	Tony Dorsett So., 5-11, 175
FB	43	Dave Janasek Sr., 6-1, 210
SE	88	Todd Toerper Sr., 6-3, 190

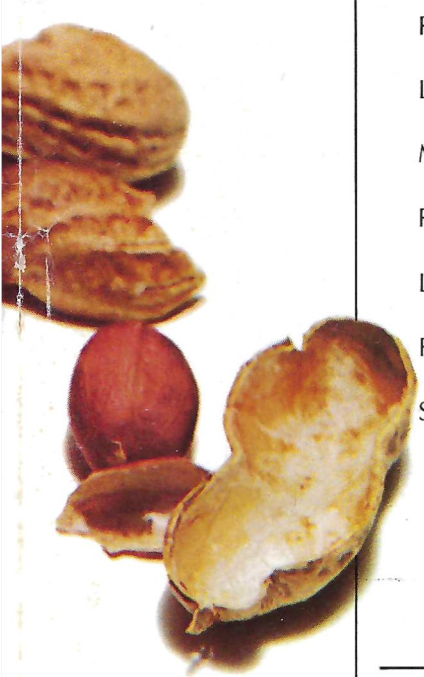
Officials

Referee	Joe Hicks, Birmingham, Al.
Umpire	Foster Grose, Pittsburgh, Pa.
Linesman	Joe Stephenson, Memphis, Tn.
Field Judge	Joseph Brownlee, Montclair, N.J.
Back Judge	Laurien Stapp, Birmingham, Al.
ECO	John Foster, Gulfport, Ms.

TALLAHASSEE COCA-COLA BOTTLING CO.

It's the real thing. Coke.

Trade-mark ®



WE DON'T SETTLE FOR FIELD GOALS.

That's why the United States Marine Corps is a tough team to beat. And a tough team to make.

We want quality, not quantity.

If you've finished high school but haven't finished learning...

Or if you're a college man who is ready for leadership and responsibility...

If you've got it and you want to stand with the Marines, you'll be welcome.

Just keep one thing in mind: we make no compromises, no shortcuts, and only one promise—You'll be a Marine.

One of the few, and one of the finest.

**THE MARINES
ARE LOOKING
FOR A FEW
GOOD MEN.**

Call
800-423-2600,
toll free, for
more information.



FLORIDA STATE

NO.	NAME	POS.	HT.	WT.	CLASS	HOMETOWN
1	Ahmet Askin	PK	6-2	174	Jr.	Tallahassee
3	Joe Downey	P	6-0	193	Sr.	Mobile, Ala.
11	Jimmy Everett	WR	6-3	177	Jr.	Tallahassee
12	Steve Mathieson	QB	6-4	210	So.	Rockville, Md.
14	Billy Prescott	QB	6-0	171	So.	Ft. Walton Beach
16	Jimmy Black	QB	6-0	179	So.	Merritt Island
17	Ron Coppess	QB	6-3	215	Jr.	Escondido, Calif.
19	Jack Maynard	PK	6-0	175	So.	Tallahassee
20	Mike Shumann	WR	6-0	163	So.	Tallahassee
21	Joe Goldsmith	TE	6-1	180	Sr.	Lakeland
22	Bobby McKinnon	RB	6-1	175	Jr.	Lake Worth
23	Chris Griffin	DB	5-11	168	Jr.	Tampa
24	Andy Stockton	DB	6-0	176	Jr.	St. Petersburg
26	Donnie Holley	RB	5-11	180	Jr.	Elba, Ala.
27	Mike Harder	WR	6-3	183	So.	Bristol, Pa.
28	Mike Davison	RB	5-11	197	Sr.	Bradenton
29	Fred Miller	RB	6-1	207	So.	Jacksonville
30	Jeff Leggett	RB	5-11	176	So.	Miami
31	Rudy Falana	WR	5-11	165	Sr.	Largo
32	Mike Barnes	WR	5-11	174	So.	Titusville
33	Rudy Thomas	RB	5-11	193	So.	Quincy
35	Leon Bright	RB	5-9	175	Fr.	Merritt Island
36	Jim Heggins	RB	5-11	200	Fr.	Salisbury, N.C.
37	Danny Greene	DB	6-2	191	So.	Miami
38	Aaron Carter	DB	5-9	180	Fr.	Gainesville
39	Jeff Ridings	DB	6-0	178	So.	Marietta, Ga.
40	Robert Jackson	DB	5-10	164	Fr.	Albany, Ga.
41	Phil Cahoon	DB	5-10	182	Jr.	Mobile, Ala.
42	Joe Camps	DB	6-2	186	So.	Gainesville
43	Earl Humes	DB	6-0	166	Sr.	Miami
44	Larry Key	RB	5-9	181	Fr.	Inverness
46	Lee Nelson	DB	5-10	183	So.	Melbourne
47	Nat Terry	DB	6-0	175	Fr.	Tampa
48	Greg Pittman	DB	6-0	163	So.	Monticello
49	Brooks Burroughs	NG	6-0	227	Sr.	Somerset, N.J.
50	Bill Sawyer	C	6-4	228	So.	Cordele, Ga.
51	Ricky Blythe	C	6-2	220	Jr.	Winter Park
52	Gino Bennie	C	6-2	215	Fr.	Orlando
53	Brian Schmidt	LB	6-1	220	So.	Lehigh Acres
54	Garis Shaw	NG	6-2	236	So.	Clearwater
55	Milton Wilkerson	NG	6-0	230	Fr.	Dolton, Ill.
56	John Murphy	LB	5-10	210	Sr.	Albany, Ga.
57	Blaise Boscacay	LB	6-3	225	Fr.	St. Charles, Ill.
58	Greg Pounds	LB	6-1	206	Jr.	Daytona Beach
59	Scott Meseroll	LB	6-1	210	Sr.	Piscataway, N.J.
60	Mike Kissner	OG	6-2	239	So.	Delray Beach
61	Wade Johnson	OG	6-2	213	So.	Valdosta, Ga.
62	Bob Jones	OG	6-4	233	Sr.	Lighthouse Point
63	Jon Thames	NG	5-11	225	So.	Gainesville
64	Jeff Gardner	OG	5-11	214	Jr.	Miami
65	Billy McPhillips	OT	6-2	222	So.	Tampa
66	Curtis Harris	DT	6-3	230	Fr.	Dolton, Ill.
67	Gary Rose	DT	6-4	225	Fr.	East St. Louis, Ill.
68	Alan Risk	NG	6-2	216	So.	Miami
69	Bruce Harrison	OG	6-2	235	So.	Vero Beach
70	Vic Rivas	OT	6-2	234	So.	Miami
71	Herman Brown	OT	6-3	218	Fr.	Ft. Lauderdale
72	Smokey Ragins	OT-C	6-1	245	Jr.	Plant City
73	Dan Corcoran	C	6-2	230	Jr.	Holley, N.Y.
74	Jim Keyton	OT	6-4	240	Fr.	Thomasville, Ga.
75	Doug Dane	DT	6-5	222	So.	Ft. Lauderdale
76	Phil Jones	DT	6-2	244	So.	Miami Springs
77	Harry Slagle	OT	6-5	220	So.	Phenix City, Ala.
78	Greg Johnson	DT	6-4	236	Jr.	Fruitland Park
79	Tony Falvo	OG	6-0	240	Jr.	Wexford, Pa.
80	Joe Thomas	WR	6-1	178	Sr.	Tallahassee
81	Ed Beckman	TE	6-5	210	So.	Miami
82	Mike Allen	WR	6-4	178	Sr.	Willoughby, Ohio
83	Detroit Reynolds	DE	6-1	213	So.	Tallahassee
84	Randy Colfield	DE	6-3	218	Jr.	Hialeah
85	Dave Porter	DE	6-3	200	So.	St. Petersburg
86	Tom McDougal	TE	6-5	218	So.	Miami
87	Rudy Maloy	DE	6-4	208	So.	Frostproof
88	Danny Witcher	TE	6-2	216	Fr.	Toledo, Ohio
89	Collis Dennison	DE	6-3	210	So.	Gainesville
90	Bert Cooper	LB	6-1	236	Sr.	Tallahassee
91	Nat Henderson	DT	6-4	235	Fr.	Albany, Ga.

PITTSBURGH

NO.	NAME	POS.	CLASS	HT.	WT.	HOMETOWN
5	Carson Long	K	So	6-0	200	Ashland, Pa.
7	Bill Daniels	QB	Sr	6-0	179	Coraopolis, Pa.
8	Bob Medwid	QB	Sr	6-2	190	McKees Rocks, Pa.
10	Bob Haygood	QB	So	6-0	179	East Point, Ga.
13	Dennis Moorhead	S	Jr	6-1	192	Indiana, Pa.
15	George O'Korn	MON	So	5-10	190	Lawrence, Pa.
17	Karl Farmer	SE	Jr	6-0	167	Cordelle, Ga.
20	Mike Prokopovich	LHB	So	6-0	174	Baden, Pa.
21	Mike Bulino	MON	Sr	6-0	188	St. Clair, Pa.
22	Rodney Clark	SE	Sr	6-0	172	Miami, Fla.
23	Melvin Howard	HB	So	5-8	175	Warner Robins, Ga.
24	Bruce Murphy	WB	Sr	5-10	172	Struthers, Ohio
26	Glenn Hodge	DB	Sr	6-1	172	Youngstown, Ohio
27	Carlton Williams	RHB	So	5-11	165	Pahokee, Fla.
28	Larry Felton	S	So	6-4	185	Cordelle, Ga.
30	David Spates	RHB	Sr	6-0	160	Seattle, Wash.
32	Leverga Walker	HB	So	5-11	185	Miami, Fla.
33	Tony Dorsett	HB	So	5-11	170	Aliquippa, Pa.
34	Elliot Walker	HB	Fr	5-11	190	Miami, Fla.
36	Allen Webster	WB	Jr	5-10	174	Waco, Texas
38	Curtis Smith	FB	Jr	6-0	202	Brentwood, N.Y.
40	Chuck Bonasorte	LE	Jr	6-0	175	Pittsburgh, Pa.
41	Larry Swider	P	So	6-2	188	Rockton, Pa.
42	Bob Hutton	FB	So	6-0	200	Wycoff, N.J.
43	Dave Janasek	FB	Sr	6-1	205	Lyndhurst, Ohio
50	John Pelusi	C	So	6-3	215	Youngstown, Ohio
51	Mike Shaffer	C	Jr	6-2	209	Akron, Ohio
52	Mike Carey	C	Jr	6-3	230	Warrington, Pa.
55	Kelcy Daviston	LB	Sr	6-3	210	Duquesne, Pa.
58	Bob Flanigan	LB	Jr	6-3	205	West Mifflin, Pa.
59	Arnie Weatherington	LB	So	6-0	183	Miami, Fla.
60	Cecil Johnson	LB	So	6-2	205	Miami, Fla.
62	Ed Kucharick	OG	Jr	6-6	234	Lorain, Ohio
63	Reynold Stoner	OG	Sr	6-3	235	New Castle, Pa.
66	Joe Stone	OT	So	6-4	237	Vandergrift, Pa.
67	Tom Brozoza	OG	Fr	6-3	215	New Castle, Pa.
68	Don Parrish	DT	So	6-3	243	Tallahassee, Fla.
72	Theo Lawrence	OT	Jr	6-6	226	Clarion, Pa.
74	Willie Tolbert	DT	So	6-3	225	Atlanta, Ga.
75	Pat Gleich	DT	Jr	6-4	245	Grove City, Ohio
76	Dan Zelahy	DT	Fr	6-3	218	Verona, Pa.
77	Gary Burley	MG	Sr	6-3	250	Urbancrest, Ohio
78	Dave Jancisin	DT	Sr	6-5	242	West Mifflin, Pa.
79	Dave Trieber	OG	Jr	6-3	230	Laurel, Md.
80	Ed Wiliamowski	DE	So	6-3	200	Aliquippa, Pa.
81	Jim Corbett	TE	So	6-4	212	Erie, Pa.
82	Jim Farley	TE	Sr	6-3	205	Miami, Fla.
84	Randy Cozens	DE	Jr	6-4	215	Phoenix, Ariz.
85	Tom Perko	DE	Jr	6-4	225	Steubenville, Ohio
88	Todd Toerper	SE	Sr	6-3	183	Pittsburgh, Pa.
91	Al Romano	MG	So	6-3	220	Solvay, N.Y.
92	Bill Vitalie	DE	So	6-3	221	Indiana, Pa.
96	Randy Holloway	DT	Fr	6-6	222	Sharon, Pa.

Tallahassee Democrat

Prize Winning Sports Coverage

NATIONAL NEWSPAPER ASSOCIATION

- 1st — Best Sports Section, 1973
- 1st — Best Sports Section, 1972
- 1st — Best Sports Columnist, 1971
- 1st — Best Sports Section, 1970
- 3rd — Best Sports Picture, 1970

FLORIDA SPORTS WRITERS ASSOCIATION

- 1st — Best Sports Typography, 1973
- 1st — Best Sports Columnist, 1971
- 1st — General Writing Excellence, 1971
- 1st — General Section Excellence, 1970
- 2nd — General Writing Excellence, 1974
- 2nd — General Excellence of Section, 1974
- 2nd — Sports Section Makeup, 1974
- 2nd — Overall General Excellence, 1971

ASSOCIATED PRESS OF FLORIDA

- 1st—Best Sport Color Picture, 1970

Tallahassee Democrat

FLORIDA STATE

Offense

WR	82	Mike Allen
	31	Rudy Falana
LT	65	Billy McPhillips
	72	Smokey Ragins
LG	69	Bruce Harrison
	61	Wade Johnson
C	50	Bill Sawyer
	52	Gino Bennie
RG	62	Bob Jones
	64	Jeff Gardner
RT	70	Vic Rivas
	71	Herman Brown
TE	81	Ed Beckman
	21	Joe Goldsmith
QB	17	Ron Coppess
	12	Steve Mathieson
RB	33	Rudy Thomas
	28	Mike Davison
RB	44	Larry Key
	29	Fred Miller
WR	20	Mike Shumann
	80	Joe Thomas

Defense

LE	87	Rudy Maloy
	85	Dave Porter
LT	76	Phil Jones
	66	Curtis Harris
SLB	53	Brian Schmidt
	56	John Murphy
NG	54	Garis Shaw
	55	Milt Wilkerson
WLB	90	Bert Cooper
	58	Greg Pounds
RT	78	Greg Johnson
	67	Gary Rose
RE	83	Detroit Reynolds
	84	Randy Coffield
LC	43	Earl Humes
	46	Lee Nelson
SS	42	Joe Camps
	24	Andy Stockton
FS	39	Jeff Ridings
	41	Phil Cahoon
RC	23	Chris Griffin
	40	Robert Jackson

Punts — 3 Joe Downey; **Placements** — 7 Ahmet Askin, 19 Jack Maynard; **Kickoffs** — 7 Ahmet Askin; **KO Returns** — 40 Robert Jackson, 47 Nat Terry, 31 Rudy Falana, 21 Joe Goldsmith; **Punt Returns** — 31 Rudy Falana, 40 Robert Jackson, 47 Nat Terry.

PITTSBURGH

Offense

FL	24	Bruce Murphy
	36	Allen Webster
LT	72	Theo Lawrence
LG	63	Reynold Stoner
	90	John Hanhauser
C	52	Mike Carey
	51	Mike Shaffer
RG	50	John Pelusi
	74	Willie Tolbert
RT	65	Joe Stone
	62	Ed Kucharick
TE	81	Jim Corbett
	82	Jim Farley
QB	7	Bill Daniels
	8	Bob Medwid
TB	33	Tony Dorsett
	34	Elliott Walker
FB	43	Dave Janasek
	38	Curtis Smith
SE	88	Todd Toerper
	17	Karl Farmer

Defense

LE	85	Tom Perko
	80	Ed Wilamowski
LT	78	Dave Jancisin
	76	Dan Zelahy
MG	77	Gary Burley
	91	Al Romano
RT	68	Don Parrish
	75	Pat Gleich
RE	94	Bill Vitalie
	84	Randy Cozens
LLB	59	A. Weatherington
	55	Kelcy Daviston
MON	21	Mike Bulino
	15	George O'Korn
RLB	58	Cecil Johnson
	92	Bob Flanigan
LHB	26	Glenn Hodge
	20	Mike Prokopovich
RHB	30	David Spates
	27	C. Williams
S	13	Dennis Moorhead
	28	Larry Felton

Punts — 41 Larry Swider; **Placements** — 5 Carson Long; **Kickoffs** — 5 Carson Long; **KO Returns** — 17 Karl Farmer, 34 Elliott Walker; **Punt Returns** — 13 Dennis Moorhead, 17 Karl Farmer.

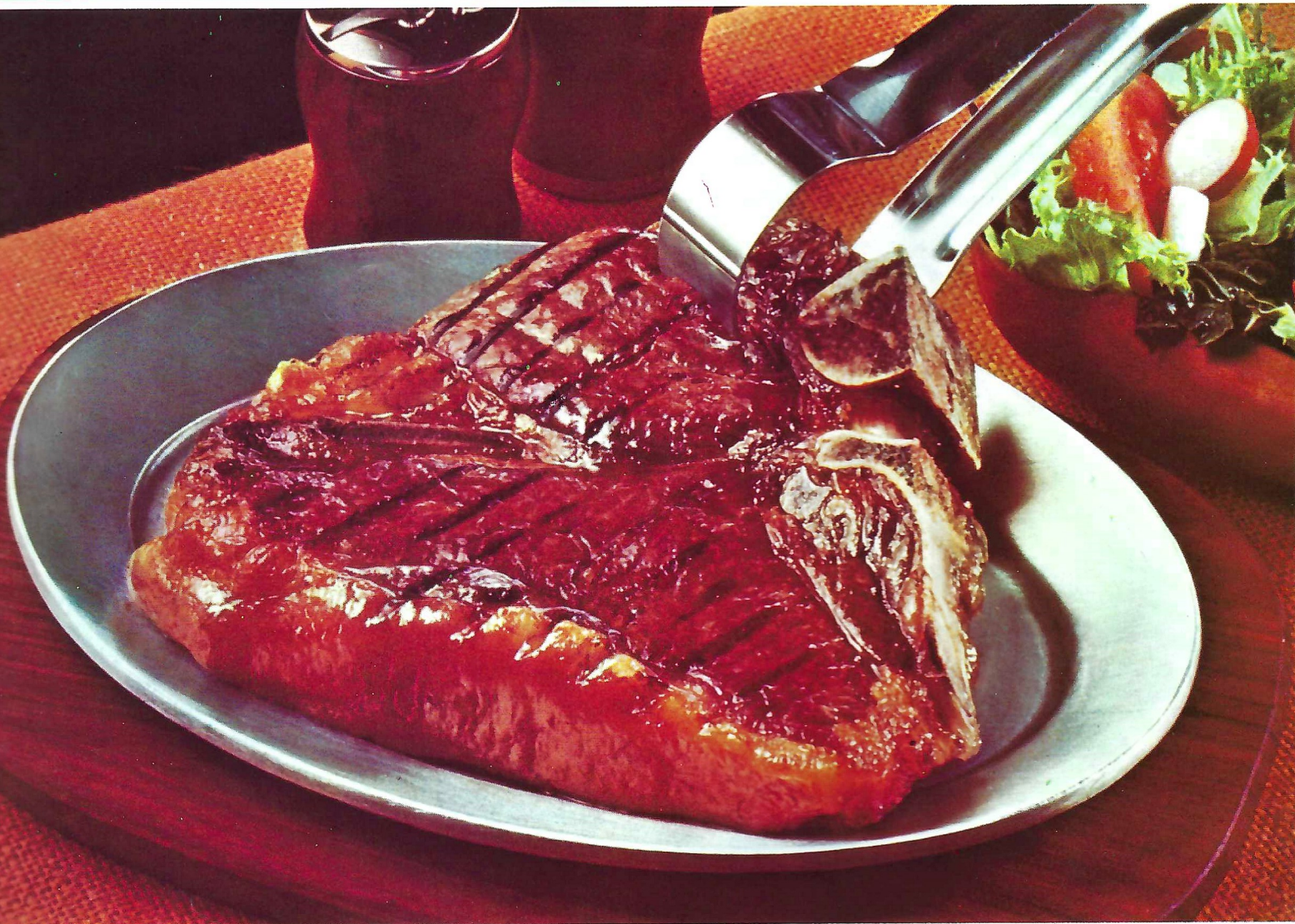
for in depth coverage
of today's game . . . see tomorrow's

Tallahassee Democrat

featuring Florida's prize winningest sports editor . . . Bill McGrotha



When you celebrate today's victory,



Treat yourself to tender, tasty...

BEEF

As Delicious as it is Nutritious!

FLORIDA BEEF COUNCIL

A Committee of The Florida Cattlemen's Association



Miss Diane Mikell
Florida Cattlemen's Association
1974-75 Sweetheart



Touchdown or Field Goal



Helping the Runner, or Interlocked Interference



Ball Ready for Play



Grasping Face Mask



Delay of Game



Roughing the Kicker



Ball Dead; If Hand is Moved from Side to Side: Touchback



Illegal Procedure or Position

RAGANS & ROBERTS INC.

Area's Largest

Goodyear & Fina Oil Dealer

5 Locations To Serve You



Clipping

609
W. Tennessee St.
224-8156

2065
W. Pensacola St.
576-9945

826
Lake Bradford Rd.
576-3908



Offside (Infraction of scrimmage or free kick formation)



Illegally Passing or Handling Ball Forward

2501
N. Monroe St.
385-3615

1031
S. Magnolia Dr.
878-4582



Safety



First Down

GOODYEAR



Illegal Shift



Illegal Motion

More People Ride on
Goodyear Tires
Than Any Other



Loss of Down



Personal Foul



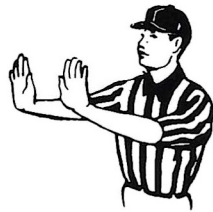
Ineligible Receiver Down Field on Pass



Ball Illegally Touched, Kicked, or Batted



Time out; Referee's Discretionary or Excess Time Out followed with tapping hands on chest.



Forward Pass or Kick Catching Interference



Start the Clock



Intentional Grounding

Football Terminology

Audible — A vocal signal by the quarterback changing the play called in the huddle.

Blitz — Commitment by defensive backs and/or linebackers to rush the passer.

Blocking — Legally hindering the progress of an opponent by contacting him with any part of the blocker's body.

Bomb — A long pass attempt for a touchdown.

Buttonhook — A pass pattern in which the receiver goes downfield and U-turns back sharply to receive the ball.

Clipping — Running or diving into the back of an opponent, or throwing the body across the back of the leg or legs of an opponent other than the ball carrier.

Corner Back — Defensive back who usually lines up across from wide receiver.

Dive-Tackle Play — A quick-handoff running play over tackle.

Draw-Play — Quarterback drops back as if to pass but instead hands ball to running back, after quarterback's teammates have assumed pass-blocking positions.

Fair Catch — The opportunity for a player of the receiving team to catch a kicked ball that has crossed the scrimmage line without being tackled or blocked by an opponent, after signaling his intention by completely extending one arm above his head.

Flanker — Offensive back deployed as a wide receiver. Must line up one yard behind line of scrimmage.

Free Safety — Same as weak safety.

Fullback — A running back who usually lines up behind strong side of the offensive line.

Kickoff — A free kick with which each half is opened, and which is employed also following each try-for-point or Field Goal. A kickoff must be either a Placekick or a Dropkick.

Lateral Pass — A live ball thrown toward or parallel with the passer's own goal line.

Linebacker — A defensive player operating immediately behind his line where he can either aid linemen in stopping a running play or cover an opponent's receiver if a pass develops.

Look-In Pass — Receiver runs straight pattern and looks for the ball immediately over his inside shoulder.

Man-to-Man Coverage — Pass defense plan wherein defensive backs cover receivers wherever they go, rather than field areas.

Middle Linebacker — So designated because he usually lines up across from the opposing center.

Mike — Nickname for middle linebacker.

Monster — Same as strong safety.

Neutral Zone — The space between the scrimmage lines of the offense and defense. Approximately 11 inches.

Nose Guard — Defensive lineman who lines up directly in front of opposing center on line of scrimmage.

Onside Kick — A kickoff that travels 10 yards or more is anybody's ball. The so-called "onside kick" is an effort by the kicking team to kick the ball barely beyond 10 yards and recover it before the receiving team can do so.

Pocket — Area of protection for the passer formed by blockers. Passer drops straight back from scrimmage behind the blocking shield into what resembles a "cup" or pocket.

Post — A pass pattern in which the receiver goes downfield to pre-determined depth then cuts at an angle toward the goalposts.

Prevent Defense — A strategem replacing linebackers with additional backfield pass defenders, sacrificing strength against short gainers in order to prevent a long pass completion. Most often employed by a team protecting a lead late in either half.

Pulling Guard — Guard who pulls out behind scrimmage line for a trap block or to lead sweep blocking for ball carrier.

Reverse Play — A running play with backfield action suggesting one direction while ball carrier goes in opposite direction.

Roll-Out Pass — Quarterback runs laterally with blockers before throwing, instead of dropping straight back to pass.

Running Back — Member of the offensive backfield who primarily carries the ball. Also used as a receiver and blocker. Can be either tailback or fullback.

Sam — Nickname for strong linebacker.

Screen Pass — Pass to a receiver behind a wall of blockers, who have permitted defenders to penetrate.

Scrimmage Line — The yard line (marked or unmarked) that passes through point of the ball nearest a team's own goal line.

Slot Back — Back stationed in slot between interior linemen and end. Must be one yard behind the line of scrimmage.

Split End — Offensive lineman deployed as a wide receiver. Must line up on line of scrimmage.

Strong Linebacker — So designated because he usually lines up across from the strong side of the offensive line.

Strong Guard — Offensive guard playing on the strong side of the line.

Strong Safety — Defensive back who usually lines up deeper than corner backs and across from strong side of offensive line.

Strong Side — The side of the offensive line where the tight end lines up.

Strong Tackle — Offensive tackle playing on the strong side of the line.

Stunting — Defensive players changing positions as the ball is snapped, to confuse offensive strategy.

Sweep — End run with wave of blockers leading the ball carrier.

Tailback — A running back who usually lines up behind the weak side of the line.

Tight End — Offensive end who lines up in close formation (as opposed to Split End's wide set) where he can either block for a ball carrier or be employed as a pass receiver.

Trap Block — Tactic whereby offensive lineman pulls out of position at the snap allowing man he would usually block to come through line and be blocked (or "trapped") by another blocker.

Unbalanced Line — Offensive line deployment whereby more blocking linemen are lined up on one side of the center than on the other.

Weak Guard — Offensive guard playing on the weak side of the line.

Weak Linebacker — So designated because he usually lines up across from the weak side of the Offensive line.

Weak Safety — Defensive back who usually lines up deeper than corner backs and across from weak side of offensive line.

Wide Receiver — A lineman and/or a back who is set wide for pass receiving purposes. Also called Split End, Flanker or Wideout.

Zone Coverage — Plan of pass defense wherein areas are covered rather than individual receivers. Opposite of Man-To-Man.

Textbooks



Art and School Supplies



FSU

Sweatshirts

T Shirts

Glassware

Mugs



Seminole Uprising



SUPPORTED BY



WHEN YOU THINK OF BOOKS, THINK OF BILL'S

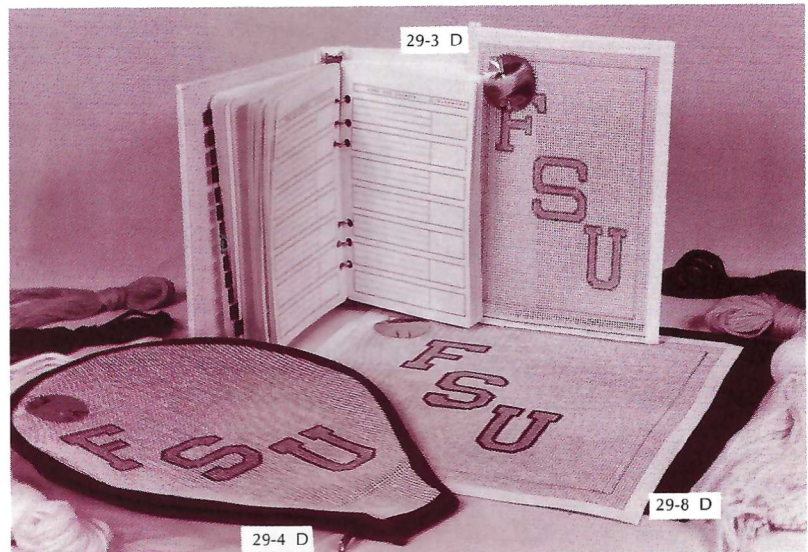
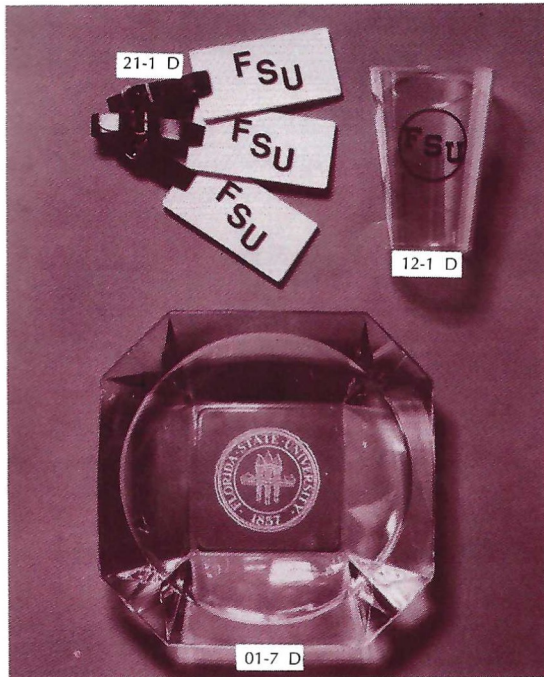
107 SOUTH COPELAND ST.
TALLAHASSEE-FLA. 32304

1974 SEMINOLES



FRONT ROW (Left to Right)—Head Coach Darrell Mudra, Cahoon, Corner, Gardner, Griffin, Halfacre, Joyner, Leggett, Bright, Carter, R. Jackson, Murphy, Nelson, Holley, Turner, H. Brown, Dennison, Will, Sekul, Pete Rodriguez. **SECOND ROW**—Don Pollard, Ed Feely, Barnes, Black, Burroughs, Cheeseborough, Davison, Falvo, Humes, Kaiser, Kettman, Petrillo, Prescott, Ridings, Thames, R. Thomas, Vickers, Crosby, Heggins, Overby, Wilkerson, Kincaid, Falana, J. Thomas, Cal Jones, Frank DeBord. **THIRD ROW**—Bill Baggett, Sam Elliott, Askin, Bibler, Blythe, Cooper, Cunningham, Downey, Galen, Goldsmith, D. Hanks, Horton, Mercer, Pavlovich, McKinnon, Meseroll, Miller, O'Leary, Orlando, Pounds, Reynolds, Rogozinski, Schmidt, Shaw, Shumann, Stockton, Bob Harbison, Gene McDowell. **FOURTH ROW**—Brodzik, Camps, Coffield, Coppess, Corcoran, Everett, Fucarino, Greene, B. Harrison, Holcomb, Falkenstein, Keyton, Witcher, W. Johnson, L. Jones, P. Jones, Kilmurray, Kissner, McPhillips, Pitt, Porter, Risk, Rivas, Mike Pope. **FIFTH ROW**—Larry Pendleton, Allen, Beckman, Caven, Dane, Harder, Harmeling, Harvey, G. Johnson, B. Jones, Boscaccy, Harris, Henderson, Rose, Spotts, Maloy, Marshall, McDougal, Prior, Rushing, Sawyer, Slagle, Tuten, Dan Henning.

Seminole Gift Shopper:

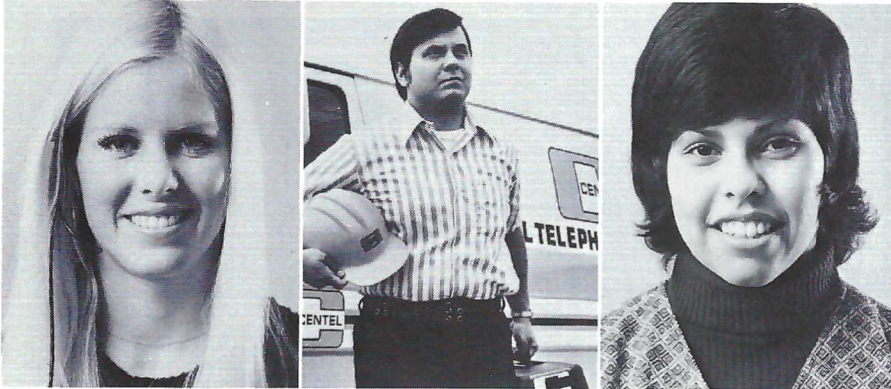


- 26-1 D MEN'S DOUBLE KNIT BLAZERS**
Handsomely styled in 100% polyester. Available in garnet or gold; Regular 36-46; Short 36-42, 44, 46; Long 38-46 **\$81.00**
- 26-2 D** Also available in sizes 48, 50, 52, and all extra long sizes **\$87.00**
- 26-3 D WOMEN'S DOUBLE KNIT BLAZERS** **\$70.00**
Handsomely styled in 100% polyester. Available in garnet or gold. Sizes 8-20. Even sizes only.
- 09-1 D DELUXE BLAZER EMBLEMS** **\$12.50**
Imported from India. Hand-embroidered with silver and gold thread. Tie-tac back allows for easy attachment or removal from any blazer pocket. FSU seal—gold lettering on garnet background, gold border.
- 13-1 D ARC GOLF BALLS** **\$13.95**
Conform to all USGA specifications. FSU seal in garnet. Box of 12.
- 21-1 D SET OF THREE LUGGAGE TAGS** **\$ 6.75**
Leather straps. Guaranteed indestructible plexiglass. Striking gold FSU logo displayed on one side. Three lines of personalization stamped in gold on reverse. One name and address per set.
- 21-2 D** Also available in set of six **\$11.00**
- 29-3 D ADDRESS BOOK, NEEDLEPOINT COVER INSET** **\$19.50**
Complete kit includes persian yarn, needles, FSU logo, instructions, hand-painted on canvas, leatherette book cover with alphabetical address index and looseleaf address pages. Kit includes everything needed for at home finishing. FSU garnet and gold on white.
- 29-4 D ZIPPERED TENNIS RACQUET COVER** **\$21.50**
Complete kit includes persian yarn, needles, FSU logo, instructions, hand-painted on canvas, canvas fabric backed, completely zips apart. FSU garnet and gold on white.

- 29-8 D SQUARE PILLOW** **\$17.85**
Kit includes persian yarn, needles, FSU logo, hand-painted on canvas, backing fabric and instructions for complete at home finishing. Completed pillow is 10" X 10". FSU garnet and gold on white.
- 01-7 D 8" EXECUTIVE ASHTRAY** **\$10.45**
Heavy glass. Rich and distinctive. Adds to any decorative scheme. Great for your office or den. FSU seal appears on bottom in silver.
- 07-1 D FSU TIE** **\$ 8.25**
Striking garnet tie with letters FSU in gold. 4" width.
- 12-1 D PLASTIC TUMBLERS** **\$18.75**
12 oz. Clear styrene imprinted with FSU; 10 sleeves of 20 glasses each, case of 200. Great for Seminole parties and get-togethers.
- 03-5 D SILVER DEPOSIT CRYSTAL CANDY DISH** **\$17.00**
Sterling silver, non-tarnish, rhodium plated finish with FSU logo.
- 03-1 D SILVER DEPOSIT CRYSTAL 12 OZ. BEVERAGE GLASSES** **\$28.55**
Set of 4. Sterling silver, non-tarnish, rhodium plated finish with FSU logo.
- 03-2 D SILVER DEPOSIT CRYSTAL DOUBLE OLD FASHIONED GLASSES** **\$28.55**
Set of 4. Sterling silver, non-tarnish, rhodium plated finish with FSU logo.
- 03-6 D SILVER DEPOSIT CRYSTAL 32 OZ. BRANDY INHALER** **\$15.75**
Sterling silver, non-tarnish, rhodium plated finish with FSU logo.

Now is the time to start thinking of Christmas gifts. These items should be ideal for this occasion and birthdays or other special times. This merchandise is available through the FSU Alumni Association, 114 Longmire Alumni Building, Tallahassee, Florida, 32306, telephone number (904) 644-4064 or 644-4065. Upon request an order form will be sent to you.

In a world filled with machines and computers, there are still some jobs that let you work with people.



If you find satisfaction in helping people, there could be a place for you at Centel. As an operator. An office worker. Or in one of many other positions with unlimited career potential.

Whatever you're looking for, we think you'll find it at Centel. A well-paying job. A growth job. A challenging job. And best of all, a people job. *An Equal Opportunity Employer*



CENTRAL TELEPHONE COMPANY OF FLORIDA



You're Always A Winner at



Industrial National Bank

2111 N. Monroe Tallahassee, Fla.

"Between the Malls" 385-1111

We're Here on Your Account!

STADIUM INFORMATION

REST ROOMS are located on concourse and ground levels of both the east and west stands.

FIRST AID station is located at the southwest corner of the stadium opposite gate five. A registered nurse is on duty at all times.

PUBLIC TELEPHONES are located on the ground levels of the east and west stands.

PUBLIC ADDRESS will make special announcements in cases of emergency only.

DOCTORS receiving calls will be paged by number.

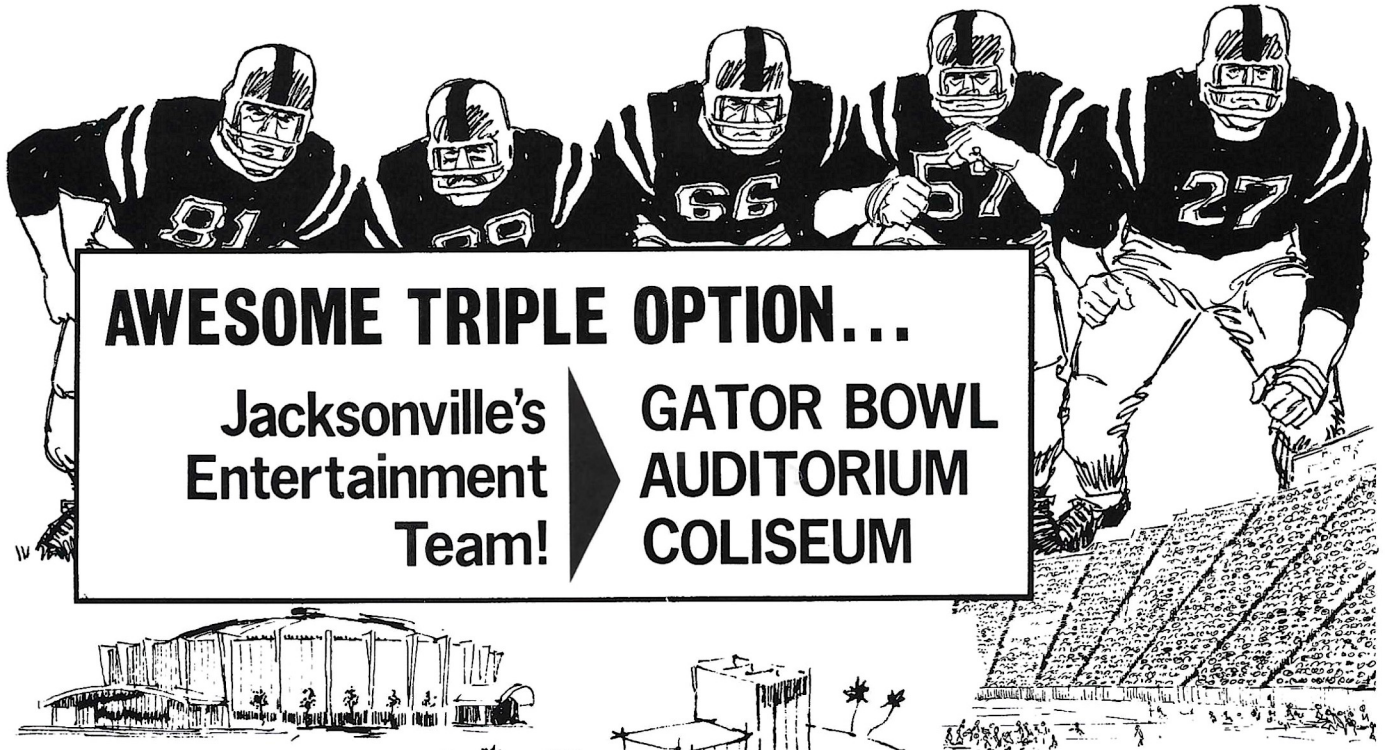
LOST AND FOUND items may be turned in and claimed at the ticket-booth at gate three under the west stands by the press box elevator.

ALCOHOLIC BEVERAGES are prohibited. Your cooperation is appreciated.

FIELD REGULATIONS prohibit unauthorized persons on the field during or after the game. Please leave the Stadium by the ramp and section exits.

REFRESHMENTS are available in the stands and at locations on the concourse and ground levels of the east and west stands.

Please pay no more than established prices.



AWESOME TRIPLE OPTION...

Jacksonville's Entertainment Team! **GATOR BOWL AUDITORIUM COLISEUM**

COLISEUM

SEPTEMBER

- 18-22 Disney on Parade
- 24 TV Closed Circuit
- Mohammed Ali fight
- 27-29 Shrine Circus

OCTOBER

- 4 Rock Show — WAR
- 5 Country Western
- 16-26 Greater Jacksonville Fair

NOVEMBER

- 1 Country Western Show
- 2 Rock Show — TRAFFIC
- 29 Basketball

DECEMBER

- 2 Basketball
- 6 Basketball — J.U. vs. Univ. of Fla.
- 7 WQIK Country Western
- 9 Basketball — J.U. vs. Oklahoma
- 14 Rock Concert
- 15 Country Music
- 16 Basketball — J.U. vs. So. Cal. State
- 18 Country Western Music
- 25 Basketball
- 26-27 Gator Bowl Basketball Tourney
- 28 Rock Concert — Black Oak
- Arkansas

JANUARY

- 4 Basketball — J.U. vs. Wisconsin
- 6 Basketball — J.U. vs. Geo. Southern
- 10 Basketball — J.U.
- Bethune Cookman Tourney
- 11 Basketball
- 13 Basketball — J.U. vs. Nebraska
- 15 Basketball

- 17 Lipizzan Stallion Show
- 22 Basketball — J.U. vs. Hustra
- 24-26 Custom Auto Show
- 29 Basketball — J.U. vs. Richmond
- 30-31 Ringling Brothers Circus

FEBRUARY

- 1 - 2 Ringling Brothers Circus
- 13 Boat Show
- 23 Guy Lombardo

MARCH

- 6 - 8 State High School Basketball
- 10 Globetrotters
- 11-16 Holiday on Ice

AUDITORIUM

SEPTEMBER

- 20-22 Ceramic Show

OCTOBER

- 1 Mary Costa
- 18 RARE EARTH — Play

NOVEMBER

- 7 Olivia DeHaviland
- 8 The Letterman

DECEMBER

- 21-22 Nutcracker Suite

JANUARY

- 4 WQIK — Country Western
- Charlie Pride
- 11 SEE SAW — Play

GATOR BOWL

SEPTEMBER

- 18 PORTLAND vs. SHARKS 8:00 PM
- 20 White vs. Jackson 7:30 PM
- 21 Ribault vs. Stanton 7:30 PM
- 27 Paxon vs. Wolfson 7:30 PM
- 28 Sandalwood vs. Jackson 7:30 PM

OCTOBER

- 4 Lee vs. White 7:30 PM
- 5 Raines vs. Jackson 7:30 PM
- 9 ORLANDO vs. SHARKS 8:00 PM
- 11 Wolfson vs. Raines 7:30 PM
- 12 BETHUNE COOKMAN vs. ALBANY STATE 8:00 PM
- 16-26 GREATER JACKSONVILLE FAIR
- 30 DETROIT vs. SHARKS 8:00 PM
- 31 Stanton vs. Jackson 7:30 PM

NOVEMBER

- 1 Ribault vs. Lee 7:30 PM
- 2 Lake City vs. Wolfson 7:30 PM
- 9 GEORGIA vs. FLORIDA 2:30 PM
- 9 Fletcher vs. Raines 7:30 PM
- 13 CHICAGO vs. SHARKS 8:00 PM
- 14 Sandalwood vs. Wolfson 7:30 PM
- 15 White vs. Stanton 7:30 PM
- 16 Ribault vs. Raines 7:30 PM
- 28 THANKSGIVING DAY
- Wolfson vs. Englewood 10:30 AM
- Lee vs. Jackson 2:00 PM
- Stanton vs. Raines 7:30 PM
- 30 WFL PLAY-OFF GAME (TV) 9:00 PM

DECEMBER

- 7 MENINAK CHARITY GAME 7:30 PM
- 30 GATOR BOWL GAME 9:00 PM

Wrestling in Coliseum every Thursday night.

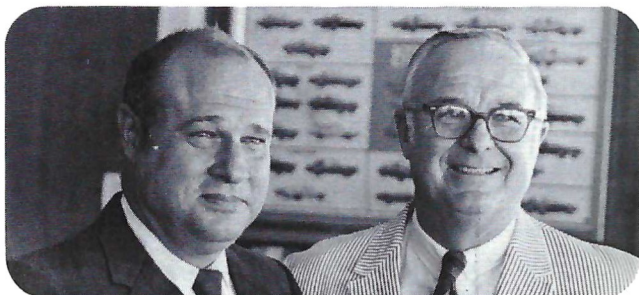
Public Ice Skating periodically scheduled each month. Call 633-3650 or 633-2350 for current information.



For tickets:
Civic Auditorium: 633-2900
Memorial Coliseum: 633-2900
Gator Bowl: 633-3806

SEMINOLE AUTO DEALERS

These are the men who help keep Florida State's Athletic Program "on the go" in a very real sense. The importance of the Seminoles' courtesy car program cannot be overemphasized and without the cooperation of these gentlemen, it would never reach the degree of success it has. We salute each and every one of these community minded men.



Theo and Julian Proctor
Proctor and Proctor
Pontiac/Cadillac
Tallahassee



Neil Palmer and E. K. Harrell
Palmer-Harrell Buick Co.
Tallahassee



Tom Kinnebrew
Kinnebrew Motors
Tallahassee



Sam Shovlain
Courtesy Oldsmobile
Tallahassee

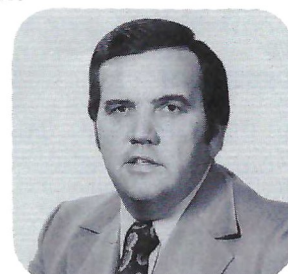


Bill McKemie
McKemie-Alford Chevrolet
Tallahassee



Bob and Bill Miller
Miller Chevrolet
Havana

Gary Smith
Gary Smith Ford Company
Fort Walton Beach



Ed Richardson and Frank Shaw
Tallahassee (Ford) Motors
Tallahassee



Howard Thomas and Carl Fryer
Fryer Thomas Motor Company
Quincy

Trainers



Kneeling: Head Trainer Bill Baggett (left) and Rich Lief. *Standing (left to right):* John Mooney, Dave Darovec and Jack Mansfield.

PRESCRIPTIONS

- COSMETICS
- GREETING CARDS
- TOYS
- FILMS & CAMERAS



"BUDDY STEWART"
"WORKING FOR BETTER
COMMUNITY HEALTH"
HAVE YOUR DOCTOR CALL US

- VITAMINS
- CANDY
- GIFTS
- HOSPITAL SUPPLIES

224-5011

NO CHARGE FOR
DELIVERY SERVICE

UNIVERSITY
Rexall
PHARMACY

W. Tenn. & High Road

CITY WIDE AND
SURROUNDING AREAS

Student Managers



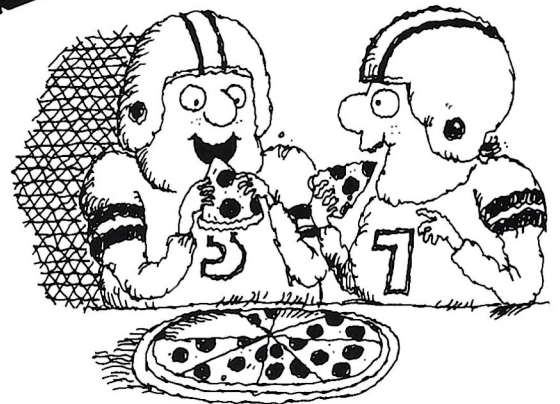
Kneeling (left to right): Jack McCambridge and Mark Ryan. Standing: Mel Brown, Ray Parker and Chip Johnson.

Roast the referee over a hot pizza.

It's a Tallahassee favorite—
replaying the game at the Pizza Hut.
Tackle one of our famous Pizza Hut pizzas.
Or try our Cavatini, sandwiches, salads, and
your favorite beverage. When the game ends,
the fun begins at any of the Pizza Huts listed below.

2148 W. Tennessee . . . 576-2911
2011 N. Monroe . . . 385-7636
1241 E. Lafayette . . . 877-0432
322 E. Jackson, Thomasville . . . 226-9166

©1974 Pizza Hut, Inc.



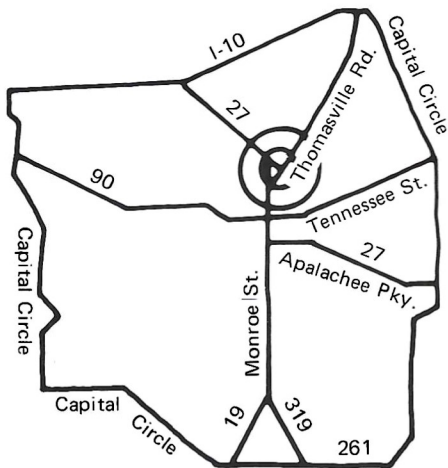
Our people make our pizza better

Board of Regents



Bottom row, left to right: Jack McGriff, Gainesville; Dr. Burke Kibler, III, Lakeland; Mrs. E. D. Pearce, Coral Gables; Julius F. Parker, Jr., Tallahassee; Chancellor Robert B. Mautz.
 Top row, left to right: Marshall M. Criser, Chairman, Palm Beach; E. W. Hopkins, Jr., Pensacola; Chester H. Ferguson, Tampa; J. J. Daniel, Jacksonville; James J. Gardener, Vice Chairman, Ft. Lauderdale

welcome, neighbor



If you're a newcomer to Tallahassee, or if you've just moved into a new neighborhood, stop in for a warm welcome at centrally located PEOPLES BANK. Stop by this week. Get acquainted with our full line of services. Look into FREE CHECKING WITH AUTOMATIC SAVINGS. And get a fresh new start—with us. We're glad you're in the neighborhood.

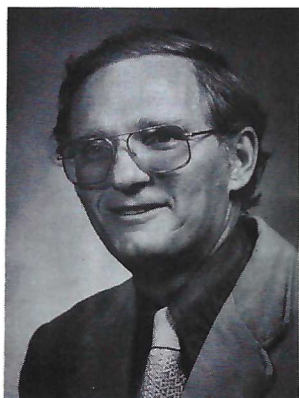
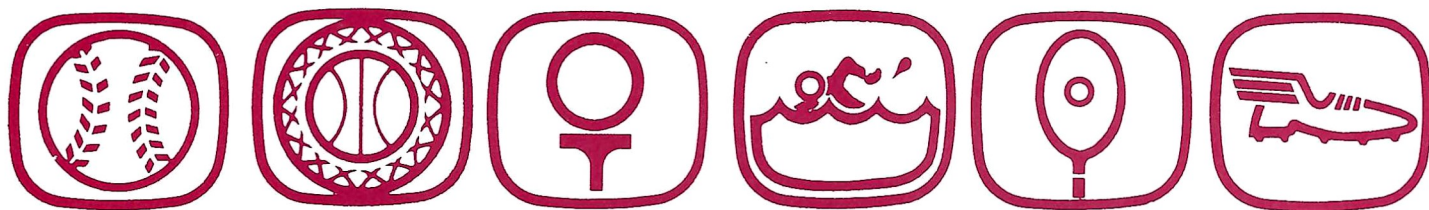
"Soon. . . Tallahassee's first 24-hour teller"

Member F.D.I.C.

PEOPLES

the people's bank • 1136 Thomasville Rd. • Tallahassee, Fla. • 224-5151

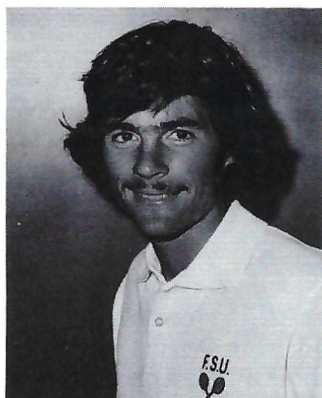
Seminole Head Coaches



TERRY CARLISLE
Swimming



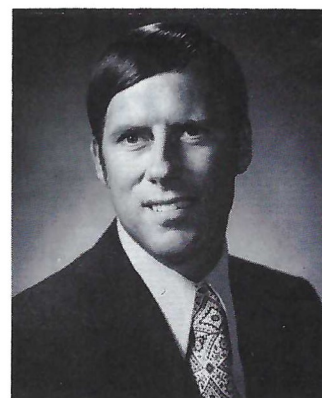
HUGH DURHAM
Basketball



RANDY JOBSON
Tennis



MIKE LONG
Track



DICK ROBERTS
Cross Country & Academic Advisor



DON VELLER
Golf



WOODY WOODWARD
Baseball

Spotlight On . . .

Cross Country

Each week this space will feature one of Florida State's eight intercollegiate sports. This week the spotlight falls on Coach Dick Roberts' cross-country team.

Cross country is the youngest of the eight intercollegiate sports under NCAA sanction at Florida State. The long distance runners got their competitive start back in 1962, as a part of the track program, but it was not until last season that the cross-country team "went on its own" and began awarding letters based on that season alone.

Head Coach Dick Roberts, has been associated with 10 of the 13 Seminole cross-country teams as either a runner or in a coaching capacity.

One of four Florida State graduates who now holds a head coach position (basketball's Hugh Durham, baseball's Woody Woodward and tennis' Randy Jobsen are the others), Roberts competed on the Seminoles' first two cross-country squads in 1962 and '63.

Following his graduation in 1964, Dick worked for two seasons as a graduate assistant to Track Coach Mike Long and his duties included the distance runners and the cross-country program.

After a three year stint as one of the state's more successful high school coaches at Dunedin, Dick returned to Florida State in 1969 and once again served under Mike Long with responsibilities including the distance runners and the cross-country program.

In addition to his coaching duties, Dick also serves as Academic advisor to Seminole athletes, counseling them in the scheduling of classes, and helping solve whatever academic problems they may have. Also he is charged with coordinating the grades and transcripts of athletes and recruits with the registrars office, according to NCAA regulations.

1974 Cross-Country Schedule

Sept. 21	St. Mountain Road Race	Atlanta, Ga.
28	Sou. Alabama Invit.	Mobile, Ala.
Oct. 4 5	Fla. State Invit.	Tallahassee
12	Florida Invit.	Gainesville
19	Callaway Gardens Invit.	Pine Mtn., Ga.
26	Florida	Perry



The field of nearly 300 runners remains tightly bunched after the first mile of the National Junior College Championships at Florida State last fall.

Florida State's cross country team boasts one of the finest courses in the nation. Carefully laid out at the Seminole Golf Course off Lake Bradford Road, it can be easily adjusted to lengths anywhere from two and one-half to six miles.

The circuit takes advantage of both the golf course fairway areas and the more rugged adjacent pasture land. The course boasts extremely fine starting and finishing areas.

The starting chute is a half mile in length before the runners are required to narrow down for the first turn. This is a big plus for large fields, giving the runners ample time to fall into place after the start.

The finishing area is also a big plus, with a 300-yard upgrade finishing chute that is a demanding challenge at the end of the five or six mile race. Both the start and finish areas are adjacent to the Golf Course Club House and the entire cross-country circuit is laid out to provide a maximum of spectator viewing from a single location.

Last fall the Seminoles were selected as the site of both the State and National Junior College Cross Country Championships. Some 300 runners were on hand for the National meet run last November.

The highlight of the Seminoles' regular cross-country season is their own Invitational, which this year will be held, Oct. 4-5, with divisions for Youth Age Group runners, high school entrants, junior college runners, university runners and an open division.

1974 Seminole Outlook

The Seminoles return two of their top four runners from 1973, giving Coach Dick Roberts an advantageous nucleus to build around.

The two men lost, Del Ramers and Bobby Brooks, never finished out of the top five last season, so their loss will be felt, but Roberts is confident that the returnees, led by St. Petersburg Senior Bob Burr and junior Bobby James of Milton have progressed enough to fill in the void.

In addition new comers like George West from Florida Junior College in Jacksonville, Zadock Coxwell from Lake City JC and Donny Cook a freshman from Winter Park should make this squad potentially as strong as last year and perhaps give it more depth than a year ago.

In 1973 the Seminoles captured both the South Alabama and Florida Invitationals, defeating Southeastern Conference Champion Alabama for the title at Mobile.

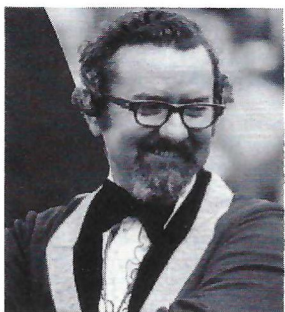
They will be out to defend their titles at those meets, as well as try to avenge a narrow loss to Alabama at their own Invitational, Oct. 5.

In addition to those named above, other members of this year's squad are expected to be: Herman Kooymans (Sr., Jacksonville), Rick Sheridan (Jr., Ft. Lauderdale), Perry Shaw (Jr., Tallahassee), Shannon Sullivan (Soph., Ft. Lauderdale), Mark O'Brien (Soph., Tallahassee), and Steve Cornwall (Fr., West Palm Beach).

Marching Chiefs



FSU



MAYO

Coordinator of Bands

Richard D. Mayo, Assistant Professor of Music is beginning his fourth year as Coordinator of University Bands and director of the Marching Chiefs. Mr. Mayo received his B.M.E.

from Florida State in 1955 and his M.A. Degree from Columbia University. For 14 years he was band director in high schools in Florida and New York. Most recently he was District Coordinator of Bands at Plainedge Schools on Long Island. Besides his interest in the Marching and Symphonic Bands, Mr. Mayo has been highly active in the jazz field, coordinating and directing the Jazz Lab Bands. The growth of jazz has been accentuated by performances with Count Basie, Buddy Rich, Stan Kenton, and Don Ellis.

Assistant Director and Arranger

Charles Carter received his Bachelor of Music from Ohio State University in 1950, majoring in theory and composition. The Oklahoma native furthered his education at Eastman School



CARTER

of Music where in 1951 he received his Master of Music, followed by Doctoral work here at Florida State University from 1953 until 1956.

Before becoming staff arranger at Florida State University in 1953, Mr. Carter arranged for the Ohio State University Band and also taught lower brass. Presently here at Florida State, Mr. Carter teaches theory, composition, and arranging, plus his arranging for the University Bands. Mr. Carter now has over twenty original compositions on the market in all fields of music.

FSU FOOTBALL FLASHBACK

A Look at Florida State Games, 5, 10, and 25 Years Ago This Week

The Seminoles like most teams around the country did not begin their seasons this early in the year until just a few seasons ago. However, openers are openers. So this week we take a look at the first games of 1969, 1964 and 1949. In future weeks we will be looking at other Florida State games from these seasons.

1969

Florida State 24 Wichita State 0

TALLAHASSEE (Sept. 20, 1969) — Like Butch Cassidy and the Sundance Kid, Florida State's 1969 football team had "Rain Drops Falling on My Head" from beginning to end in its season opener.

The game was marked by an NCAA record 27 fumbles, 17 of which changed hands. But in the end, the Seminoles prevailed over both the Shockers and the weather for a 24-0 win.

The Tribe drove to field goal range the first time it had the ball, but the game's first fumble aborted the threat. The Shockers were forced to punt, however, and on the second play Bill Cappleman hit Tom Bailey on a deep sideline pattern for the season's first score.

The quarter ended 10-0 after Grant Guthrie booted a 40-yard field goal. Arthur Munroe capped a 65-yard drive that spanned the first and second periods with an 18-yard run for the Seminoles second TD. At halftime the Tribe led 17-0.

The rain picked up during the second half and the only score came on a Cappleman-Don Pederson pass in the final quarter. Guthrie added the point and final tally stood at 24-0.

Cappleman completed 12 of 27 passes for 180 very wet yards. Tom

Bailey was the leading rusher with 93 yards in 20 carries. Jim Tyson led all pass receivers with five catches good for 65 yards.

The Seminoles lost seven of 10 fumbles while the Shockers lost 10 of 17.

1964

Florida State 14 Miami 0

MIAMI (Sept. 19, 1964) — Steve Tensi and Fred Biletnikoff turned Miami's beautiful Orange Bowl into their personal playground for the second straight year, as Florida State opened its second straight season with a shutout over Miami's Hurricanes.

Both Seminole touchdowns came on passes from Tensi to Biletnikoff, each covering 15 yards. Les Murdock kicked both extra points.

It was like Homecoming for Biletnikoff who had scored three touchdowns against the Hurricanes in 1963, taking two passes from Tensi and one from Miami's George Mira, returning it 99 yards in the fourth quarter.

In opening his bid for 1964 All America honors, the "Bullet" broke a ten year old school record with nine receptions for 165 yards—a mark he was to top several times during the ensuing season.

Equally as important as the passing arsenal was a stern Seminole defense which allowed the Hurricanes past midfield only three times, choking off the threat each time. Linebacker Bill McDowell received the weekly "Savage" award for defensive excellence and guard Dale MacKenzie the "Tomahawk" or blocking award.

Sophomore fullback Lee Narramore was the leading rusher for Florida State with 56 yards in ten carries. Tensi hit nine of 12 passes and Ed Pritchett seven of nine for a total of 226 yards.

1949

Florida State 74 Whiting Field 0

(Condensed from Tallahassee Democrat reports)

TALLAHASSEE (Oct. 1, 1949) — Florida State opened its 1949 grid season with a dazzling display of scoring strength here as the Seminoles buried Whiting Field under an avalanche of touchdowns and crushed the service eleven from West Florida under a score of 74-0.

A crowd of around 6,800 fans watched the Seminoles roll relentlessly up and down Centennial Field as they scored in every period to set a new modern high scoring mark for the school. The old record was established in the 33-12 victory over Tampa University in 1948.

The victory was the seventh in a row over a two year span for Coach Don Veller's defending Dixie Conference champions who won their last six games in 1948.

The Seminoles scored in every period and from almost every point on the field as they rolled up 393 yards along the ground and added 111 more yards through the airways.

The scoring spree was started as the Seminoles marched the opening kickoff back down field with Ken MacLean scoring. The second came on the Seminoles' next possession with Buddy Strauss scoring and FSU led 13-0 at the quarter.

The Tribe broke the game open with 35 points in the second period and added 20 more in the third. Placekicking specialist Irwin Hanson added the game's final touchdown on the first play of the fourth quarter.

Every man in uniform on both squads got in the game.

Miller

CHEVROLET

COMPANY

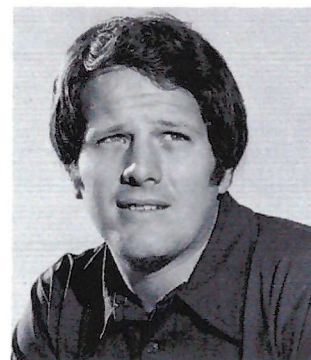
Havana, Florida

539-6376

15 Miles North
of Tallahassee
on U.S. 27

Phone Toll Free
224-1317

DAN HENNING
Offensive Coordinator,
Quarterbacks and Receivers



Henning

The man who helped develop ex-Seminole quarterback Bill Cappleman returns for his second tour of duty at Florida State.

Henning was the Seminoles' offensive coordinator in 1968 and '69 before joining the Virginia Tech staff in 1970 in the same capacity.

Dan, 31 and a William and Mary graduate, left the Gobblers after one season to join Bill Peterson and the National Football League Houston Oilers where he tutored the quarterbacks.

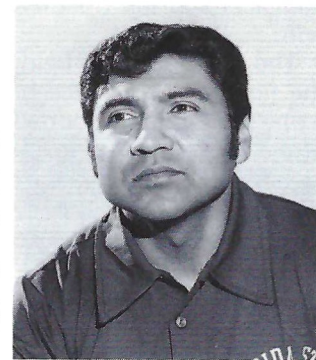
He returned to Virginia Tech in 1973 when he again headed up the Gobbler offense before rejoining the Seminoles.

Henning was standout quarterback at William and Mary before graduating in 1964. The New York City native spent the next four seasons dividing his time between the American Football League San Diego Chargers and two teams in the Continental League.

Dan and his wife, Sandy, have five children.

COACHES'

PETE RODRIGUEZ
Defensive Coordinator, Linemen



Rodriguez

Pete is one of three coaches Coach Mudra brought with him from Western Illinois. He assumes the same role at Florida State as he did at WIU, that of defensive coordinator along with tutoring the interior defensive line.

The 34-year-old Chicago native joined Mudra's staff at Arizona where he coached the linebackers. Arizona's 1968 Sun Bowl club was considered one of the nation's better defensive outfits.

Mudra calls Rodriguez "one of the really great strategists in the game today."

Pete played his prep ball at Kelly High School in Chicago before gaining a scholarship to Western State College in Colorado. He received his B.A. in 1963 and M.A. in 1964 from his alma mater.

Earlier in his career he was defensive coordinator at Stratton (Colo.) HS in 1964 before taking the same position in 1965 at Harrison HS in Colorado Springs. He served as head coach at Harrison in 1966-67 before going to Arizona the next season.

He and his wife, Linda, have two children.



GENE McDOWELL
Defensive Ends

Gene returns to his alma mater after four seasons as an assistant at Kansas State.

He will coach the Seminole defensive ends, an assignment he also had at K. State.

McDowell, 33, is a native of Quincy although he was a prep standout at Waycross, Ga. High School. After coming to Florida State, he lettered three seasons (1960-62) and was named third string Associated Press All-American as a linebacker in his senior campaign. In 1962 he was named the State's Most Outstanding College Player by the Daytona Beach Quarterback Club.

McDowell
standing College Player by the Daytona Beach Quarterback Club.

Following graduation in 1963 he spent two seasons in the service before returning to Florida State in 1965 as a graduate assistant. The next season he was named freshman coach and retained that post until 1969 when he became the Seminole's chief recruiter.

CLOSE-UPS



FRANK DeBORD
Equipment, Kickers

Now in his seventh season with the Seminoles, Frank was elevated to assistant coach this past spring. He will help with the weight program as well as oversee the Florida State equipment room and practice fields.

A native of Virginia, he resides in Quincy.

Frank is a Virginia Tech graduate where he lettered in football and wrestling. He served as assistant football coach at Franklin, Va., High School and also played two seasons for Norfolk in the Continental

DeBord

League.

Frank and his wife, the former Marian Bradshaw of Franklin, Va., have three children.

The TRAWLER'S Seafood Restaurant ★



and
Lounge

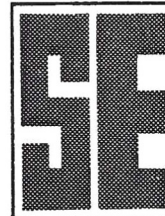
- Delicious SEAFOODS
- Luscious STEAKS
- Seven DINING ROOMS
- Large BANQUET ROOM
- OYSTER & SALAD BARS

Entertainment
Elegant Gourmet Dining

... at One of North Florida's Finest Restaurants

★ For Reservations Call **385-2127**

★ 2696 N. Monroe TALLAHASSEE, FLA.



**SOUTHERN
ELECTRIC**



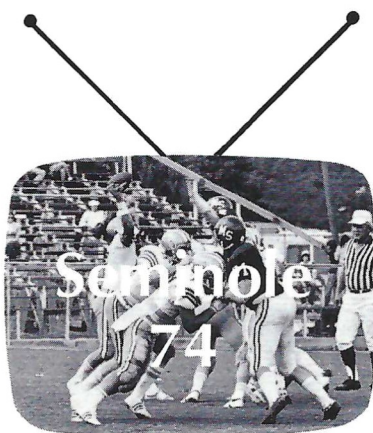
APPLIANCES
STEREO
TELEVISION

FURNITURE

**Compliments
of
Spurgeon
Camp**

**Go
Seminoles**

The **BIG** Plays
are played again
on



Highlights

and

Insights

of

**Florida State
Football**

with

Head Coach

Darrell Mudra

and host

Bob Shachleton

at

10:30 p.m. Sunday

on

WCTV

Ch. 6 in Tallahassee

**Check local listings for time
and station in other areas.**

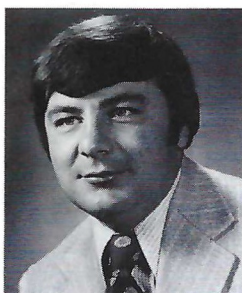
Seminole Salute Thomas County, Ga.

The Florida State Department of Intercollegiate Athletics and Seminole Boosters, Inc. salute the residents of Thomas County, Ga., tonight, for their continued support of Florida State.

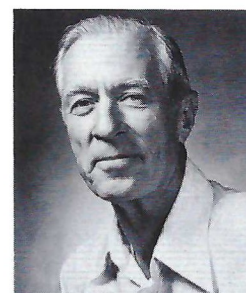
Representatives from the Chamber of Commerce, local Seminole Boosters, alumni and businessmen are all here tonight for the special festivities.

Miss Mina Jo Powell and Mr. J. C. Redding deserve much credit for a super program of "Seminole Support" in the South Georgia portion of Seminole Territory.

To all our South Georgia friends we say "Welcome" and give a special "Thank You" for your continued support.



Ouzts



Pope

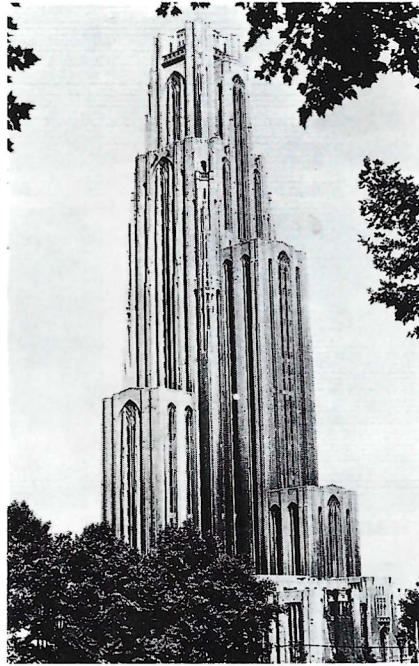
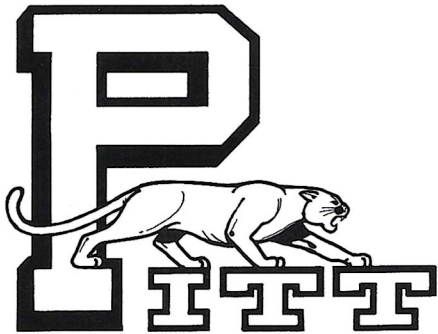
Seminole Booster Highlights

Seminole Boosters, Inc. is made up of member representatives from throughout the southeast. Mr. Doyle Pope, businessman from Quincy, is chairman of the Board of Directors. Other officers of the Board include Mr. Jimmy Carter, treasurer, Panama City businessman, Class of 1958, Mr. Don Grant, secretary, Perry businessman, Class of 1949.

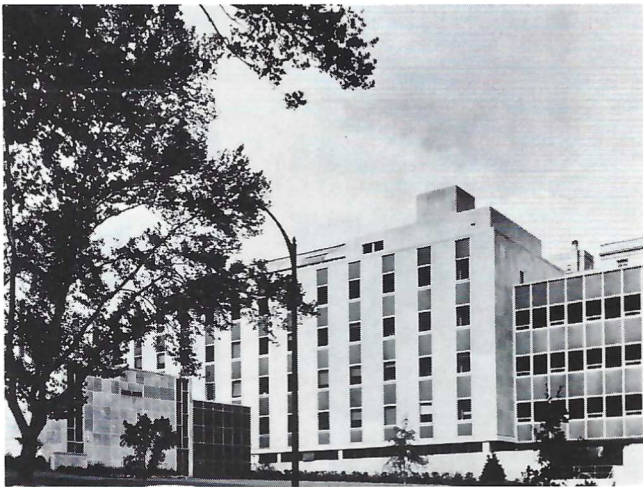
In addition to the officers, four other Directors make up the executive committee. They are Theo Proctor, Jr. (FSU class of 1953) of Tallahassee; State Representative John Harllee ('64) of Bradenton; Mr. Charles Booth ('54) of Orlando, and Mr. Harry Massey of West Palm Beach ('55). Other members of the Board are: Mr. Ben Bailey, III ('66) of Vero Beach; Mr. P. A. Browning ('63) of Atlanta; Mr. Jimmy Christo of Panama City; Mr. Thomas C. Cundy ('55) of Ft. Lauderdale; Mr. Crockett Farnell ('62) of Clearwater; Mr. B. Kenneth Gatlin ('55) of Tallahassee; Mr. Louis Hill of Tallahassee; Mr. Wendall Jarrard of Deland; Mr. Jim Kirk ('52) of Ocala; Mr. Ryals Lee of Tallahassee; Mr. Claude Locklin ('51) of Milton; Mr. John W. Maurer ('51) of Tampa; Mr. Allan McCorkle ('56) of Jacksonville; Mr. John Morgan ('64) of Jacksonville; Ms. Mina Jo Powell ('50) of Thomasville; Mr. Sidney Rayborn of Tallahassee; Mr. Hans W. Tews ('56) of Ft. Pierce; Mr. Slater Wight, Jr. ('58) of Cairo; Mr. Jim Williams of St. Petersburg; and Mr. George Langford of Tallahassee.

Individuals interested in further information concerning the Seminole Boosters, Inc. should write Ted Ouzts, P. O. Box 1353, Tallahassee, FL 32301, or call 904-644-3484.

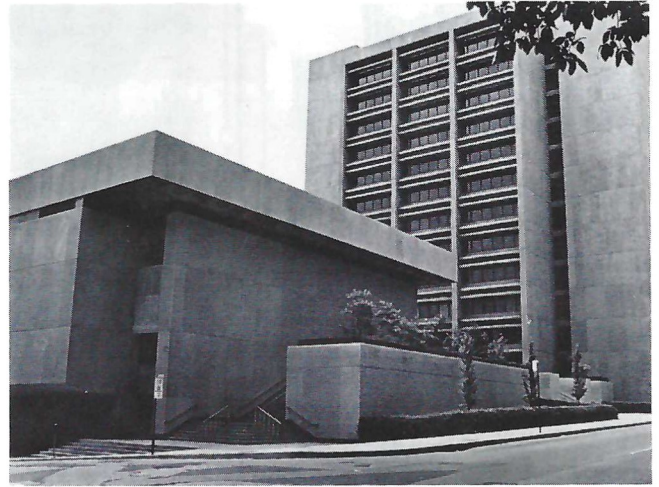
University of Pittsburgh



CATHEDRAL OF LEARNING



LANGLEY HALL



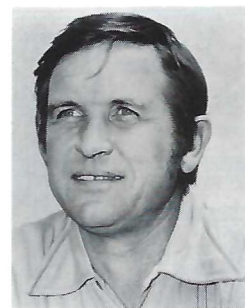
SCHOOL OF ENGINEERING



DR. WESLEY W. POSVAR
Chancellor



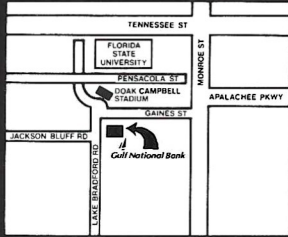
CASIMIR MYSLINSKI
Athletic Director



JOHN MAJORS
Head Coach

**TIME
IS MONEY.**

Gulf National Bank



**SAVE
BOTH.**



Member F. D. I. C.

P. O. Box 5767 / Tallahassee, Florida 32301

**Enjoy football
more with the
Official NCAA
Football Guide**

Containing . . .

- Schedules of more than 400 teams
- Sectional previews by prominent writers
- 1973 statistics and scores
- Read-easy rules
- Review of bowl games

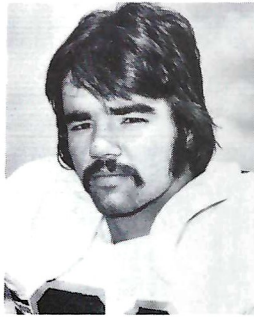
\$2.00

Send check or money order to:
NCAA Publishing Service
P.O. Box 1906
Shawnee Mission, Kansas 66222

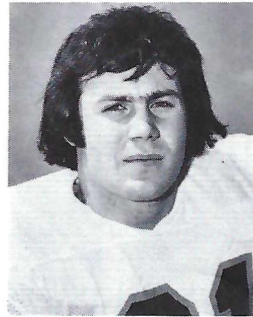
For a listing of all NCAA publications,
write to the address above.



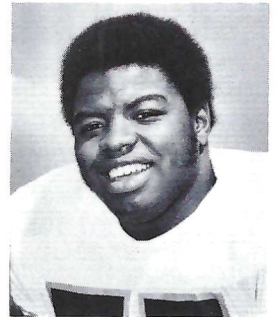
THE PANTHERS



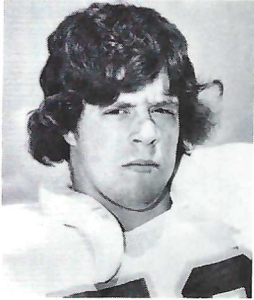
Chuck Bonasorte



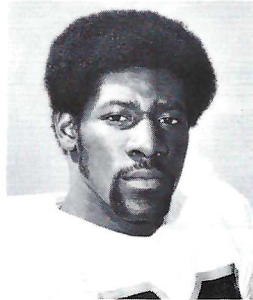
Mike Bulino



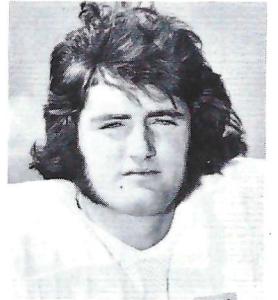
Gary Burley



Mike Carey



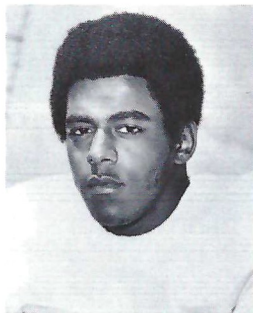
Rodney Clark



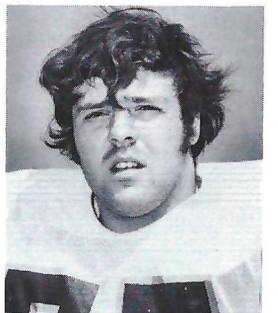
Jim Corbett



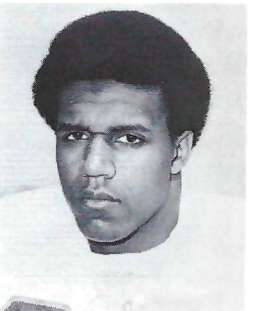
Bill Daniels



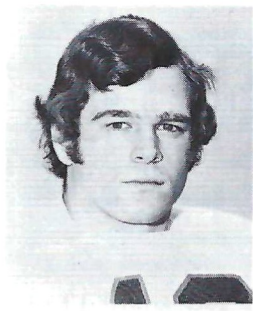
Tony Dorsett



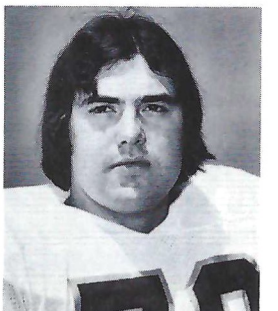
Pat Gleich



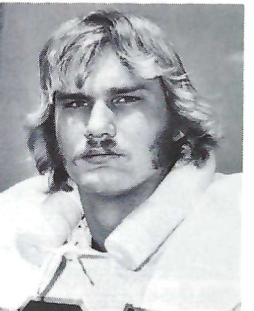
Glenn Hodge



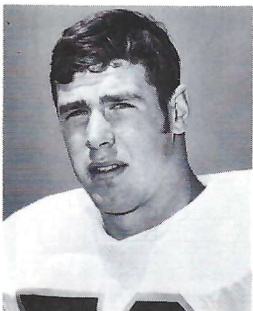
Dave Janasek



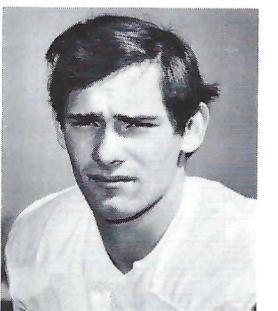
Dave Jancisin



Ed Kucharik

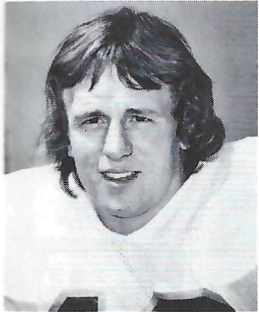


Theo Lawrence

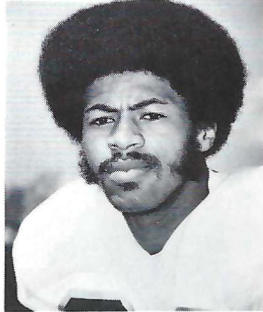


Carson Long

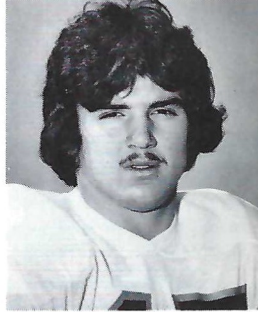
THE PANTHERS



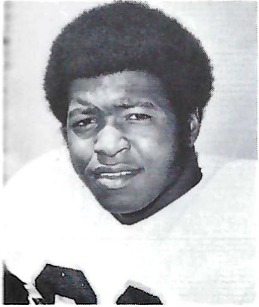
Dennis Moorehead



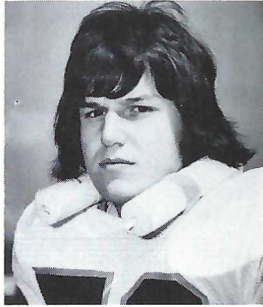
Bruce Murphy



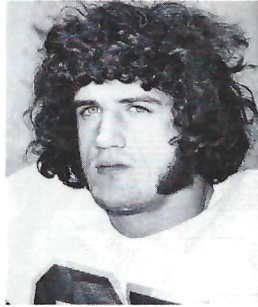
George O'Korn



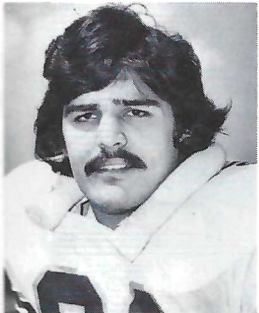
Don Parrish



John Pelusi



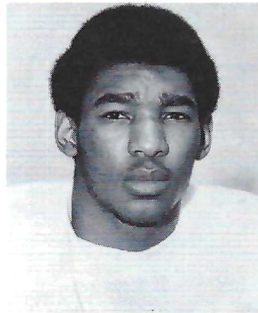
Tom Perko



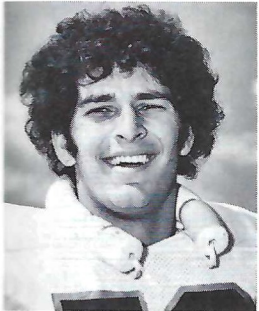
Al Romano



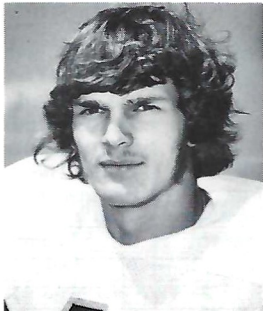
Curtis Smith



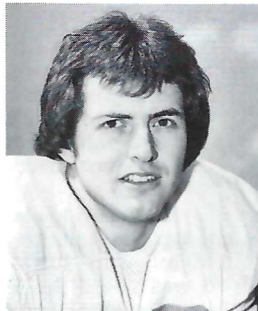
David Spates



Joe Stone



Larry Swider



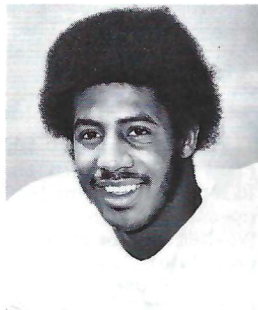
Todd Toerper



Arnie Weatherington



Al Webster



Carlton Williams



Two Locations in
Tallahassee
U.S. 27 North at I-10
U.S. 27 South at Capital Circle

Toll Free Reservations
800-241-7111

"TALLAHASSEE'S OLDEST FLORIST"
SINCE 1930

FLOWERS
by
Elinor Doyle



COMPLETE FLORAL SERVICE

SERVING SATISFIED CUSTOMERS
SINCE 1930

• CORSAGES • BOUQUETS • WEDDINGS
• CUT FLOWERS • FUNERAL DESIGNS

Master Charge • BankAmericard
American Express • Carte Blanche • Diner's Club

DELIVERY SERVICE

222-1298
222-1297

202 S. Adams St.

Underdog Role Leaves President Undaunted

EDITOR'S NOTE: President Gerald R. Ford, a center-linebacker on the 1932-33-34 football teams at the University of Michigan, often has drawn parallels between politics and athletics. As a freshman congressman, House Minority Leader and now President, he has maintained, "Thanks to my football experience, I know the value of team play. It is, I believe, one of the most important lessons to be learned and practiced in our lives."

Gerald Ford knew he faced a challenge. The scouting reports by the Michigan coaches left little doubt that Minnesota would be the finest team the Wolverines would meet all season. And the Gophers were a running team, a fact that particularly concerned him.

Six-foot-two and a deceptive 198 pounds, Ford was Michigan's linebacker and center. His prime assignment that Saturday against Minnesota would be to help contain the running of all-America Pug Lund and Stan Kostka, a sophomore sensation at fullback.

Ford had played on Michigan's two national championship teams of 1932 and 1933, but now in his senior year the Wolverines were struggling with just one victory in four games. The Gophers, headed directly for the Big Ten title, were four to five touchdown favorites.

The unbeaten Gophers had not defeated the Wolverines in Minneapolis in 41 years, and the Twin Cities were alive with a week-long battle cry of "Mangle Michigan." A record 60,000 fans turned out to watch their Gophers end that long era of frustration.

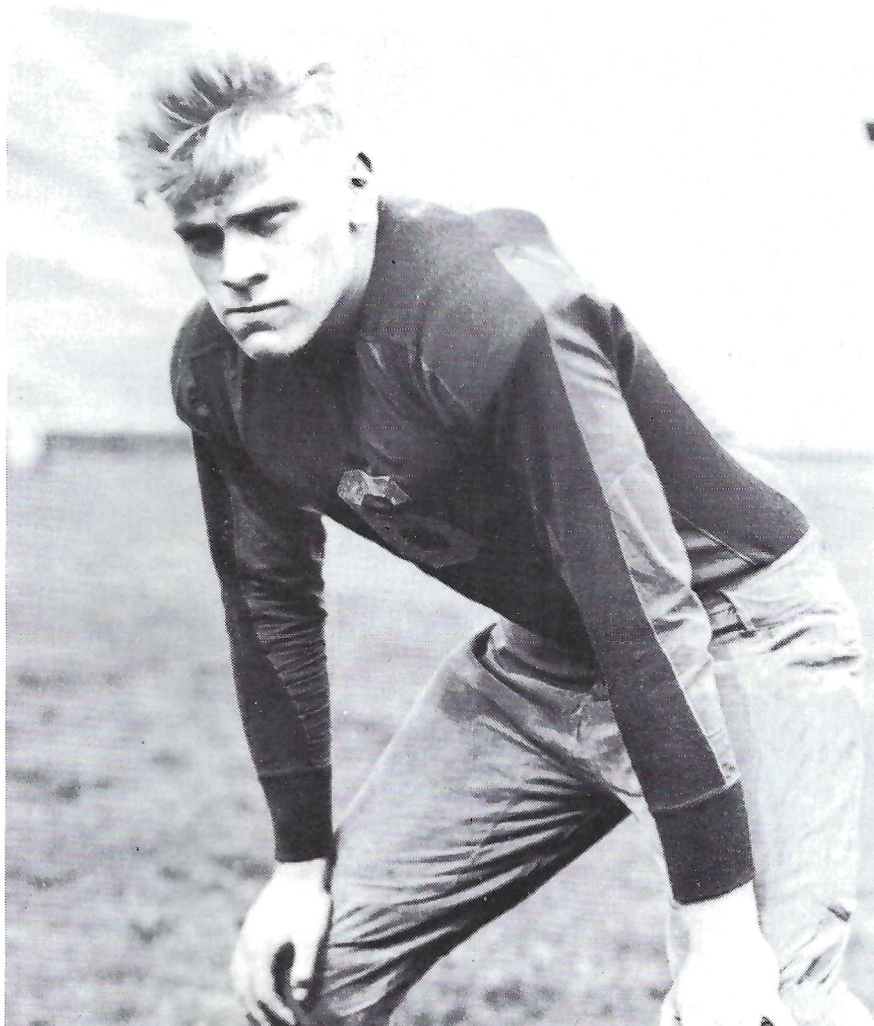
Michigan's Blitz

Michigan's defense, however, with Ford and his linebacking mate Cefric Sweet playing inspired football, continually stopped the Minnesota attack by using the new technique of blitzing. Surprisingly, the half ended in a scoreless tie.

"I knew how good they were," recalled Bennie Oosterbaan, Michigan's assistant coach who had scouted the Gophers. "They were heavy favorites and when I walked into the dressing room at halftime, I had tears in my eyes I was so proud of them. Ford and Sweet played their hearts out. They were everywhere on defense."

Minnesota eventually won that game, 34-0, and went on to the national championship, but that cold November afternoon in Memorial Stadium has remained very special for Ford.

"During 25 years in the rough-and-tumble world of politics, I often thought of the experiences before, during and after that game in 1934," Ford says. "Remembering them has helped me many times to face a tough situation, take action and make every effort possible despite adverse odds.



President Gerald R. Ford

"I remember how Michigan students and people in Ann Arbor met us at the train station that Sunday. There was a rousing parade and this was a meaningful tribute to the fight the Wolverines had put up against Minnesota."

His teammates also paid Ford a meaningful tribute that season. Michigan won just one game, but Ford was voted the Wolverines most valuable player. As Francis Wistert, an all-America who played with Ford on two championship teams, later was to observe, "They felt Jerry was one guy who would stay and fight in a losing cause."

Rich Blood

Michigan coach Harry Kipke recruited Ford with the promise of a job. He waited on tables and cleaned up dishes at the University Hospital, washed dishes at his fraternity house and later became manager of the DEKE House. "I also was able to sell blood at \$25 a bottle twice a month and that money came in mighty

handy," said Ford of those depression years.

Ford played in the East-West Shrine and College All-Star games and received offers from two professional football teams. The young economics major, however, decided to study law, and Kipke helped him obtain a coaching job on the Yale football staff.

"I was an assistant line coach and also head coach of the junior varsity," Ford offered. "And we had some pretty fine young men on that JV team, too. Bob Taft and Bill Proxmire, both now U.S. Senators, played on my JV team and later on the Yale varsity."

President Ford received a law degree at Yale in 1941, served four years in the Navy, then in 1948 started his political career by upsetting the incumbent Republican representative in Michigan's Fifth Congressional District. Again, he had faced long odds against success, but as his teammates knew years before, Jerry Ford was never intimidated by a challenge.

Tallahassee Motor Hotel

FOOD & LODGING

Master Hosts



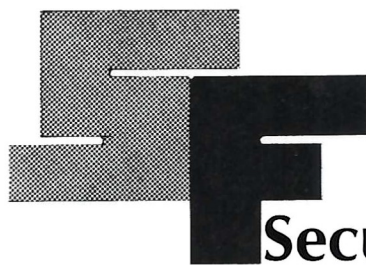
and

AAA Approved



224-6183

1630 North Monore



Security Federal

Savings and Loan Association of Tallahassee

"Go Seminoles in '74"



TACO BELL

1218 North Monroe

Sunday - Thursday

10:30 a.m. - 11:00 p.m.

Friday - Saturday

10:30 a.m. - 1:00 a.m.

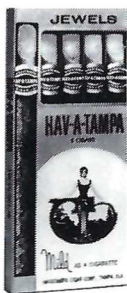
Tacos - Tostatos -

Burritos - Enchirito -

Frijoles - Pepsis

Root Beer - Orange

7-Up -



Distributed by
Eli Witt Tobacco
& Candy Company
Tallahassee,
Florida



HAV-A-TAMPA JEWELS

*The Cigar for Men ...
that Ladies Love —*

WELCOME ANYWHERE

for their man-size flavor and gentle aroma

Fitness Program Rewards Persistence

If you're one of those athletes who never earned your letter in school, college or club sports (or even if you did), the President's Council on Physical Fitness and Sports is offering you a second chance to become a "star."

Men and women aged 18 years and up can win the Presidential Sports Award simply by participating regularly in their sports. Upon completion of the award requirements and payment of a \$3 fee, participants will receive an enameled pin, and embroidered emblem and a certificate bearing the Presidential seal.

The object of the program is to get more adults to enjoy regular participation in active sports. The Council believes that the physical and mental benefits resulting from vigorous exercise contribute significantly to personal health, appearance and performance.

"Sticktoitiveness"

You don't have to be good to win a Presidential Sports Award—just persistent. The standards have been set to require approximately 50 hours of participation, spread over at least 50 sessions, within a period of four months. This figures out to roughly three sessions per week. Hopefully, by the time you've earned your award, the sports activity will have become a regular part of your routine and a habit you'll keep.

For example, the standards for jogging require the participant to jog a minimum of 125 miles, with no more than 2½ miles in any one day credited to the total. For the tennis award, the participant is required to play tennis a minimum of 50 hours, with no more than 1½ hours in any one day credited to the total. The total must include at least 25 sets of singles and/or doubles and tie-break rules may apply.

Requirements have been modified in some sports where seasons are short or access to facilities is diffi-

cult (skiing, mountain climbing, etc.).

The program operates on the honor system. Applicants keep their own records and sign their own applications.

Standards for the Presidential Sports Award program were developed by the Council in cooperation with the major sports governing bodies and coaches' associations for each sport. The award presently is offered in these 38 sports: archery, back packing, badminton, basketball, biathlon.

Bicycling, bowling, canoe-kayak, climbing, equitation, fencing, figure skating, golf, handball, ice skating, jogging, judo, karate, orienteering, pentathlon.

Racquetball, rifle, rowing, rugby, scuba-skin, skeet-trap, skiing (Alpine) skiing (Nordic), soccer, soft-

ball, squash, swimming, table tennis, team handball, tennis, volleyball, water skiing and weight training.

Materials Furnished

Personal logbooks including application forms and qualifying standards are available free upon request from: Presidential Sports Award, P.O. Box 129, Radio City Station, New York, N.Y. 10019. Colleges, athletic clubs, military installations, YMCAs, pro shops, recreation agencies, etc., may obtain the materials, plus large display posters in quantities.

The President's Council on Physical Fitness and Sports operates the Presidential Sports Award program on a self-sustaining basis. Fees are used to pay for award materials and to cover other program expenses, including promotion and advertising.



SEMINOLE RADIO NETWORK



Shackleton



Owens

Florida State's football games will be heard throughout most of the Southeast again this fall over the SEMINOLE RADIO NETWORK.

With WTNT in Tallahassee serving as the originating station, Florida State games are carried on network stations in Florida. In addition, many of the Seminole games are broadcasted regularly over the wide-ranging Pick-Of-Dixie network.

Bob Shackleton, Florida State's director of Alumni Affairs, is the new "Voice of the Seminoles." Before coming to Florida State, Shackleton served for 19 years as the play-by-play announcer for Michigan State football.

Returning to do the "color", is Bill Owens, a veteran of Florida State announcing which includes football, basketball and baseball.

Follow The Seminoles

ON WTNT 1270 ON YOUR DIAL

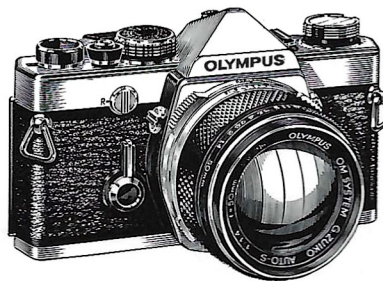
Brought to you by



AND YOUR
NEIGHBORHOOD TEXACO DEALER

and by

THE BARNETT BANKS OF TALLAHASSEE



Go Seminoles!

FANS, Record the Seminoles on Film . . .

For the Largest Selection of
Photographic Equipment and Supplies
In North Florida, see the
Friendly Folks at

Tallahassee Camera Center

117 North Monroe

Phone 222-8771

Downtown Tallahassee Across From the Florida Theater
Cameras — Film — Darkroom Equipment & Supplies
Binoculars — Recorders — Rentals

Electrical Contractors

- INDUSTRIAL
- COMMERCIAL

Licensed & Bonded

222-5494

CLARK

ELECTRIC CO.
OF FLORIDA

702 West Madison Street
TALLAHASSEE, FLORIDA



2121 West Tennessee Street
Tallahassee, Florida 32304
Phone 904/576-6121
Gen. Mgr. Herb Chandler

Ramada Inn of Tallahassee is an ideal gathering place for meetings and banquets. The King's Banquet Room offers every convenience, and accommodates up to 128 persons for dining. Divisible meeting rooms are available for smaller groups. For leisure hours, there are golfing privileges at fine nearby courses. Just four hours drive brings you to the wondrous kingdom of Walt Disney World.

Innumerable famous Florida attractions are within driving distance. Come for business . . . stay an extra day for pleasure. You're welcome at Ramada Inn of Tallahassee.

Advertisers Directory

Alumni Seminole Shopper	39
Army ROTC	16
Artistic Flowers	60
Barnett Bank	17
Bill's Bookstore	37
Capital City First Nat'l Bank	21
Central Telephone Co.	40
Chevrolet	29
Clark Electric	60
Coca-Cola	30
8 Days Inn	55
Elinor Doyle Florists	55
Eli Witt	57
Florida Beef Council	35
Florida Publishing Co.	20
Gulf National Bank	54
Holiday Inn	IFC
Industrial National Bank	40
Jacksonville City of	41
Miller Chevrolet	50
Mr. Steak	4
NCAA Football Guide	54
Orlando Sentinel	2
Peoples Bank	45
Pizza Hut	44
Quality Inn	17
Ragans & Roberts	36
Ramada Inn	60
St. Petersburg Times	13
Sears	12
Security Federal Savings	57
Seminole Basketball	IBC
Seminole Boosters, Inc.	26
Seminole Sportswear	18-19
Southernair-Skyline	60
Southern Airways	1
Southern Electric	51
Taco Bell	57
Tallahassee Camera Center	59
Tallahassee Democrat	33-34
Tallahassee Motor Hotel	57
Tallahassee Travel and Tours	14
Tampa Tribune	28
Trawlers Restaurant	51
U.S. Marine Corps	32
University Rexall	43
Winn-Dixie	27
WTNT Radio	59
Zenith	BC
Zodiac Watches	5

Southernair MOTEL

Across from F.S.U.

Tallahassee, Florida 32304
904/224-7116



and

Skyline

Motor Lodge

U. S. 90 West
904/576-2157

Quality Inns

for Quality People

"When it's

FLOWERS

Say it with Ours"



DELIVERY SERVICE

Artistic Flowers

777 MICCOSUKEE RD.

224-0105

FLORIDA STATE

We've got the action

BASKETBALL SCHEDULE 1974-75

DATE	OPPONENT
Nov. 30	VALDOSTA STATE
Dec. 3	ILLINOIS STATE
Dec. 7	MARSHALL
Dec. 9	Memphis State
Dec. 14	LOUISVILLE
Dec. 18	CALIFORNIA STATE
Dec. 21	OHIO UNIVERSITY
Dec. 26	Holiday Classic
27	(Louisville, Purdue, W. Ky.)
Jan. 4	EASTERN KENTUCKY
Jan. 7	WISCONSIN (Milwaukee)
Jan. 11	BISCAYNE COLLEGE
Jan. 15	South Florida
Jan. 18	HOFSTRA
Jan. 20	Biscayne College
Jan. 25	Canisius
Jan. 27	New Mexico
Feb. 1	TENNESSEE (Chattanooga)
Feb. 6	JACKSONVILLE UNIVERSITY
Feb. 9	Georgia Southern
Feb. 13	GEORGIA STATE
Feb. 19	Jacksonville University
Feb. 22	GEORGIA SOUTHERN
Feb. 24	MERCER
Feb. 28	SOUTH FLORIDA
Mar. 5	Stetson

Home games listed in boldface type.



Seminole Basketball

With seven of 11 lettermen returning from last year's 18-8 squad, plus 16 big home games lined up for the season, Coach Hugh Durham views the 1974-75 campaign with "guarded optimism." At the very least it should be one of the biggest and most exciting for Seminole fans in recent seasons. With the 16 home games, the Seminoles will be playing before the home folks more than ever before and the schedule includes a solid lineup of top teams, including Marshall, Louisville, Jacksonville and Eastern Kentucky. Among the returning veterans are postmen Greg Grady and Zach Perkins, wingmen Larry Warren and Wayne Smalls and pointmen Eugene Harris and Carlton Byrd, all of whom thrilled Seminole fans last season. The only sure way to see all the Action this year is to buy season tickets. They are on sale now at the Athletic Ticket Office in Tully Gym. Season Tickets are \$42 each, plus 50 cents per order for handling. Order your Basketball Season Tickets now by sending a check payable to Florida State University: Athletic Ticket Office, 100 Tully Gym, Florida State University, Tallahassee, FL 32306. Or phone 904/644-1830 for more information.

The All-American Receiver.

Over the years, Zenith color TV has earned a reputation for dependability and picture excellence no other color TV can match.*

And today's Zenith solid-state Chromacolor II backs up that reputation with a combination of features no other color TV can offer.

The famous Chromacolor picture tube

that set a new standard of excellence in color TV. A patented Power Sentry voltage regulator that protects components. And a rugged, 100% solid-state modular chassis for long-life dependability.

It's the best way we know to make sure, at Zenith, the quality goes in before the name goes on.[®]

Model shown: F4752P, the Reynolds TV picture simulated



ZENITH
SOLID STATE
CHROMACOLOR II

*For the third straight year, a nationwide survey of independent TV service technicians has named Zenith, by more than 2 to 1 over the next best brand, as the color TV needing fewest repairs. The same survey rated Zenith as the highest-quality color TV, as the one with the best picture, and as the one service technicians would buy for themselves today. Survey details on request.