

**THE
COLLEGE
GAME**

*Welcome Alumni
Homecoming 1968*

NOVEMBER 23, 1968

75 CENTS



FLORIDA

STATE /

**WAKE
FOREST**

Football Magazine



HAMS • BACON • SAUSAGE • WIENERS

FROSTY MORN MEATS

TODAY

by Hank Schomber

Homecoming is the time for renewing old memories and this this year the Seminoles are recalling one of their greatest moments. On the field today are members of two of Florida's State's finest football teams.

One will do battle this afternoon with the Demon Deacons from Wake Forest. The other will watch from the sidelines, recalling their days of glory in 1950.

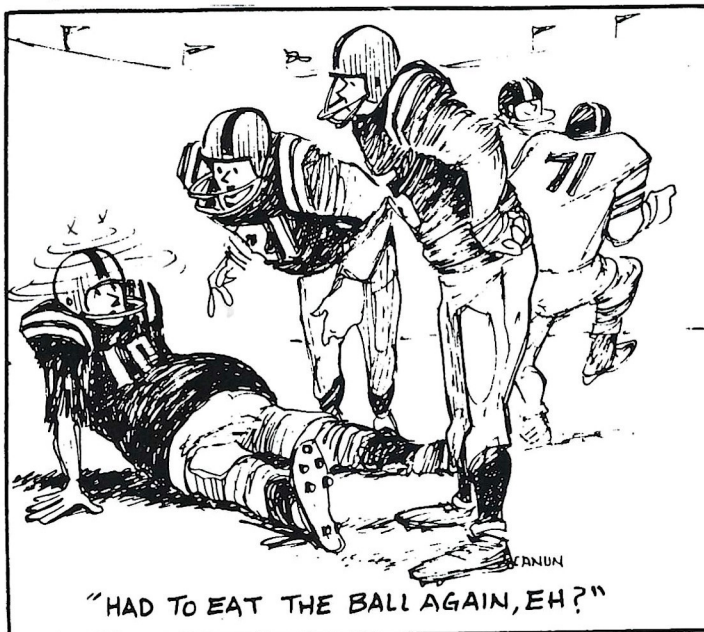
The 1950 Florida State unit is the school's only undefeated team. Although this year's Seminole aggregation will not be able to match the goose-egg in the loss column, they could equal the eight wins registered by the 1950 squad.

A special reunion for the 1950 team has been in the works for months, and special thanks are due chairman Tommy Brown, and his committee of Nat Pollock, Billy Bishop and Buddy Strauss, for their efforts in piecing together this weekend's activities.

A tip of the hat is also due to the members of the Alumni office and 1950 team captain Duke Maltby for their efforts.

There are ten classes holding reunions this weekend and to them and all alumni we welcome you back to campus.

In addition a special salute is made to this year's honor class of 1918.



WAKE FOREST Scouting Report

Nov. 23, 1968

Kickoff 2:00 P.M.

Location: Winston Salem, N.C.

Enrollment: 3,162

Nickname: Demon Deacons

Colors: Old Gold and Black

Home Field: Wake Forest Stadium
(31,000)

1967 Record: 4-6

Series: 5-1-1, Florida State leads

No game was played in 1967—the
Seminoles won in 1966 28-0

THE DEACONS under the tutelage of Head Coach Bill Tate (17-38-1, going into today's game which closes his fifth season) have suffered a frustrating season. Hopes were high at the start. A strong veteran nucleus was returning from 1967 when the Deacs won their last four games. After their first five games, however, they were winless. A tie with Clemson was the closest to victory the Deacs came, although they needed a total of only 16 points in the right places to have won them all. The Deacons are an explosive team that can strike swiftly—they have been held to less than 19 points only three times this year.

WAKE FOREST, founded in 1834 by the Baptist State Convention of North Carolina, prospered for more than 100 years at its original site in Wake County. Then in 1946 the Z. Smith Reynolds foundation agreed to pay Wake Forest \$350,000 annually if other friends of the university would provide new buildings at a new site in Winston-Salem. Ten years later the historic 110 mile move was made from Wake Forest to Winston-Salem. Now firmly established in its new home under new President Dr. James Ralph Scales, the university continues to make progressive strides.

1968 RESULTS

6	N.C. State	10
20	Clemson	20
19	Minnesota	24
6	Va. Tech	7
27	Purdue	28
48	N. Carolina	31
38	Maryland	14
21	S. Carolina	34
3	Duke	18

Nov. 23 at Florida State

NEXT WEEK: The Seminoles close out their regular season against high powered Houston at the Gator Bowl in Jacksonville. Plenty of good tickets are still available for this one and if you don't have any yet, pick them up soon. The Seminoles are still looking for their first win over the Cougars and this one promises to be a real donny-brook.

OFFICIAL WATCH FOR THIS GAME

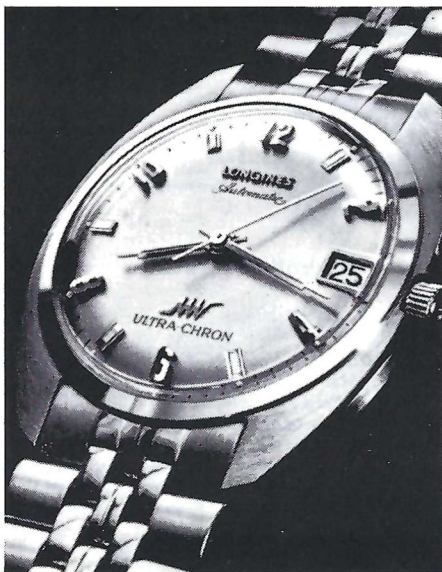


LONGINES THE WORLD'S MOST HONORED WATCH®

10 world's fair grand prizes
28 gold medals



Longines watches are recognized as OFFICIAL for timing world championships and Olympic sports in all fields throughout the world.



Longines Ultra-Chron #8205, automatic with calendar, \$175.
Other Ultra-Chron Models, \$115 to \$595.

the fabulous, new LONGINES ULTRA-CHRON®

Guaranteed Accurate To A Minute A Month*

The ultimate personal chronometer, guaranteed accurate to a minute a month—a mean average of 2 seconds per day. Ultra-Chron tells the date, hour, minute, second. Never needs batteries. Winds automatically while you wear it. All Proof® construction defeats water, dust, shock, magnetism. At Longines-Wittnauer Franchised Jewelers, coast-to-coast.

*Your Longines-Wittnauer Franchised Jeweler will adjust your Ultra-Chron to this accuracy, if necessary. Guarantee is for one year.

LONGINES-WITTAUER WATCH CO.
NEW YORK • MONTREAL • GENEVA
Maker of Watches Of The Highest Character
For Over A Century

FLORIDA STATE / WAKE FOREST





Football Magazine

Vol. XXII

November 23, 1968

No. 5

In This Issue . . .

	Florida State University	3
	The 1950 Seminoles: 8-0-0	4
	State and University Officials	6
	Football: The Raw Force	9
P. 4	Officials Signals	11
	Head Coach Bill Peterson	12
	The Football Family	13
	1968 Seminoles	14
	Today's Game	21
P. 9	Stat Facts	22
	Rosters	25
	Flip Card	27
	Stadium Information	30
Points ays & Rushi Att./Comp/ assing Yards Total Yards Fumbles	Seminole Basketball	31
P. 22	Seminole Cheerleaders	32
	Seminole Boosters	34
	Penalty Explanations	36
P. 42	Seminole Radio Network	37
	Wake Forest	39
	Chilly Climax to a Hot Season	44
	Florida State Salutes	45
P. 46	Focus on 1918	46
	Reunion Classes and Their Presidents	47
	Directory of Advertisers	48

Florida State Athletic Committee

Dr. Robert Earnest, Chairman, Ralph Bradley, William W. Rogers, Charles Grigg, William H. Long, John Carey, Fred W. Metzke, J. Stanley Marshall, Harold Goldstein, Charles Ehrhardt.



The Florida State Football Magazine is published by the Florida State University Department of Intercollegiate Athletics. Hank Schomber, Editor; Ken MacLean, Program Manager; Lonnie Burt, Executive Editor; Jayleen Woods, Associate Editor; Carl Haire, Associate Editor; Jack Ibach, Circulation Manager.

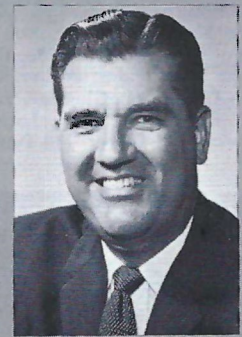


FLORIDA STATE's "pro-style of leadership is not limited to athletics. It permeates the 350-acre campus and characterizes the University's 41,000 alumni, 16,000 students and more than 3,000 dedicated members of the faculty and staff.

FOUNDED IN 1857, the University has grown to a complement of 10 colleges and schools, winning All-America honors both in arts and sciences as well as athletics. Moving rapidly upward in the national leagues of innovative institutions, Florida State is one of the 24 universities in this country which confers more than 100 Ph.D. degrees each year. It also has the distinction of holding one of the National Science Foundation's largest (\$4.8 million) grants for development as a "center of excellence" in four science areas—physics, statistics, psychobiology and chemistry.

AS THE WINTER HOME of the 1966 Nobel Laureate in Chemistry (Dr. Robert S. Mulliken), and as year-round headquarters for a faculty team with Nobel Prize potential, the University is one in which excellence in classroom teaching is its most important goal. Constantly experimenting with new formations in its educational teaching patterns, Florida State is preparing for a yearly enrollment of 28,000 by 1975.

WELCOME TO FLORIDA STATE UNIVERSITY



Dr. John E. Champion
President

President John E. Champion began his fourth year as Florida State University's chief executive in June of 1968. Having served the University previously as assistant dean of the School of Business and as Vice President for Administration, the 46-year-old business administrator and educator has an extensive and exemplary background in the fields of business education and accounting.

Cited as Distinguished Alumnus of the University of Georgia's Graduate School of Business Administration, he holds the bachelor's and master's degrees from that institution and the Ph.D. from the University of Michigan. He came to Florida State in 1956, following eight years of teaching at Georgia.

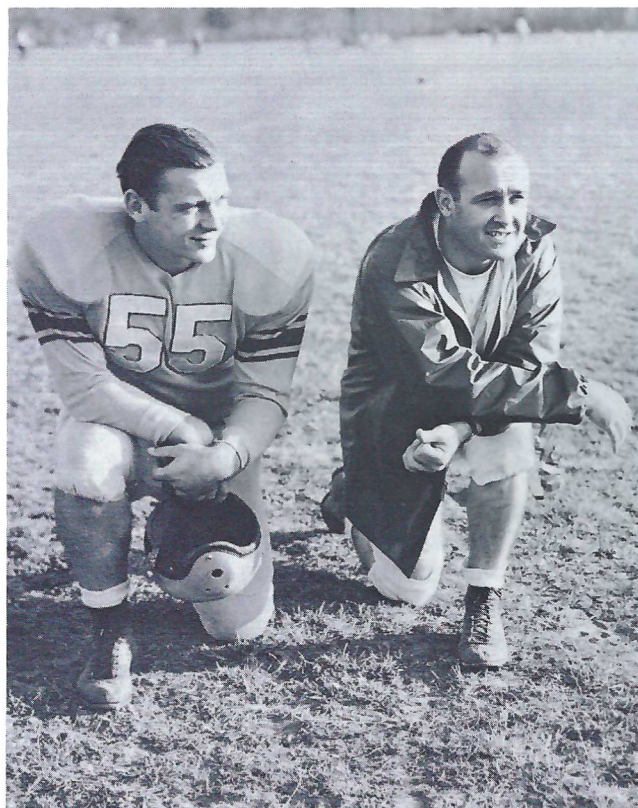
THE 1950 SEMINOLES: 8-0-0

A New Stadium, An Inspiration and Perfection



1950 FLORIDA STATE UNIVERSITY FOOTBALL

Front Row, Left to Right—Harold Farmer, Nelson Italiano, Jack Phillips, Vic Sczcepanik, Bob Schmelz, Duke Maltby (Capt), Dwight Osha, Monte May, Tal Henry, Don Linton, Bob O'Connell, Wm. Hoppe, Norman Eubanks, Victor McHargue, Lawrence Mero, Second Row—Tommy Owens, Preston Bradley, Fred Mootes, George Spuring, Earl Brown, Gary Folsom, Wayne Benner, John Hedrick, Phil Alvers, Pat Harris, Walt Miller, Leslie High, Earl O'Neal, Cliff Powell, Third Row—George Kinnear, Dudley Thomas, Walker Morris, Clint Thomas, Eddie Gray, Don Gladden, Harry Bringger, Dick Peterson, Tommy Brown, Ernie Huggett, Dick Sutherland, Dick Turk, Jack Smith, Fourth Row—Russ Cook (Mgr), Lonnie McLellane, Ray Inlow, Jim Arnold, Carmen Lombardi, Wendell Dennis, Jack Barker, Mac Huey, Dub Kendrick, Bill Driver, Bill Dawkins, Sam Baker, Steve Kalenich, Mike Sellars.



Team Captain Duke Maltby and Head Coach Don Veller.

The Record

Sept. 30 at Troy State	26-7
Oct. 7 Randolph Macon	40-7
Oct. 14 Howard College	20-6
Oct. 21 at Newberry	24-0
Oct. 28 Sewanee (HC)	14-8
Nov. 10 at Stetson	27-7
Nov. 18 Mississippi Col.	33-0
Nov. 25 Tampa	35-19

In 1950 it was a non-sportswriter who made what was perhaps the most astonishing football prediction. At the start of the season, Florida State dedicated its new football stadium. Finding a name for the new complex, which would eventually grow into today's 40,000-plus construction, was not a big problem. University President Doak S. Campbell who had done so much in such a short time (this was just the fourth season for the Seminoles) was an almost automatic choice.

Florida Times-Union Managing Editor Sam Butz was the unsuspecting writer who made the eye opening prophecy when he wrote of the dedication:

(Dr. Campbell) has seen that sports had a good sound growth at Tallahassee since the school first took in boys to raise. But at no time has he sacrificed any principles for athletics. Sports are still on an amateur basis at FSU (Ed. Note: The first athletic scholarships were not awarded until 1951) and the Seminoles are doing very well indeed. May they do even better with the inspiration of Doak S. Campbell Stadium.

The Seminoles did indeed do well that first season in Campbell Stadium as they rolled up an 8-0-0 record.

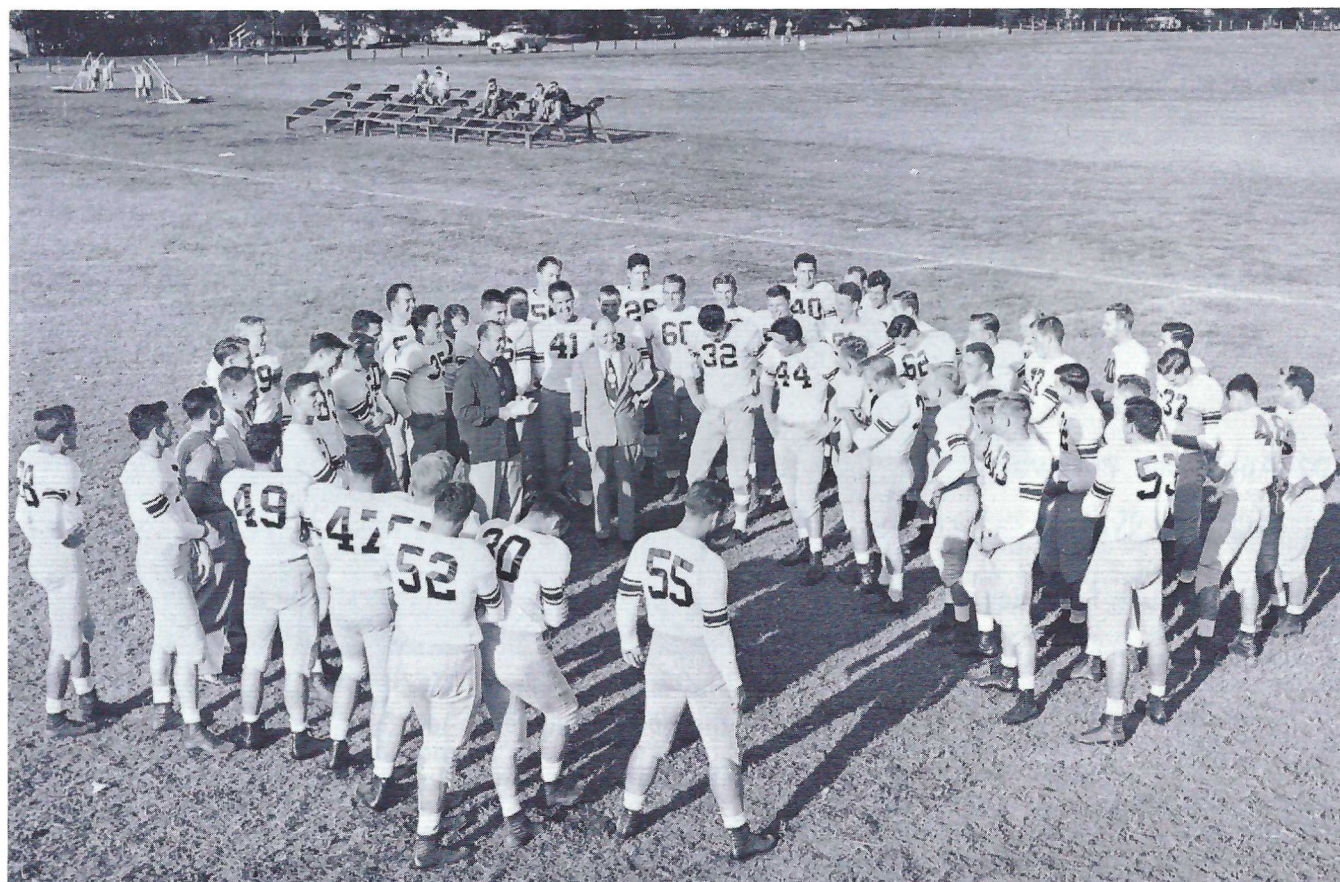
The year was probably best summarized by Furman Bisher of the Atlanta Journal who wrote:

Veller's list of victims will not be found high on anybody's rating system, except Dr. Veller's . . . but you would be surprised how impressive it is when Veller is introduced as the coach of the unbeaten Florida State team. . . Veller didn't slay any dragons, but perfection is still perfection.

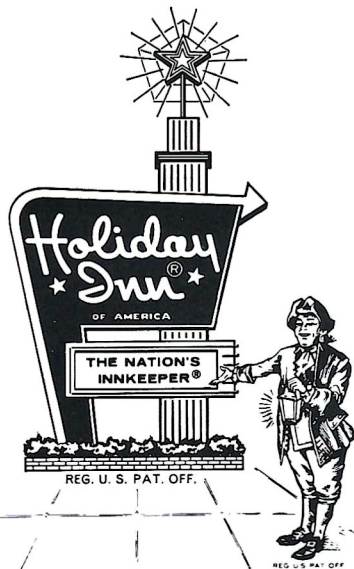


THE COACHES

Back Row: Graduate Assistants, Dave Thomas, John Westberg and Ralph Matherly; Front Row: Charlie Armstrong, Ass't., Don Veller, Head Coach, and Bob Harbison, Ass't.



The Seminoles gather to hear President Doak S. Campbell before an afternoon practice session.



Your Host from Coast to Coast®

1302 Apalachee Parkway

Tele. 877-3141

Complete Banquet Facilities

STATE OFFICIALS

STATE BOARD OF EDUCATION

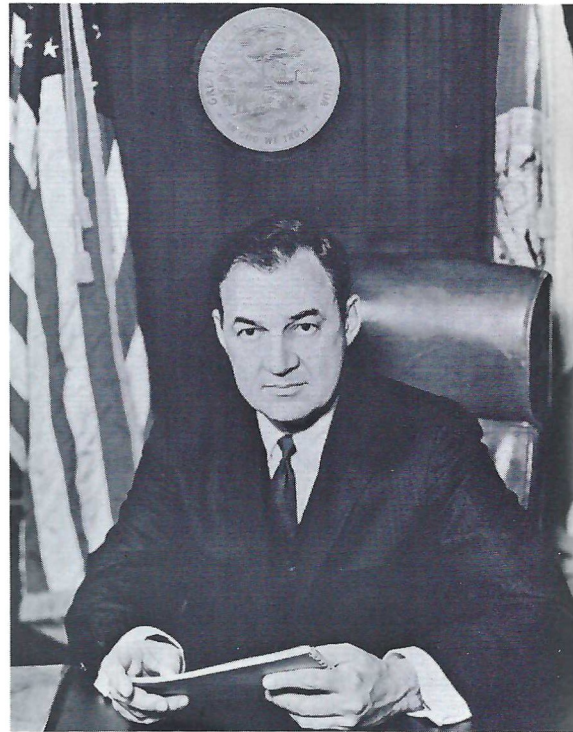
Claude R. Kirk, Jr.
Governor

Floyd T. Christian
Superintendent of Public Instruction

Tom Adams
Secretary of State

Earl Faircloth
Attorney General

Broward Williams
Treasurer



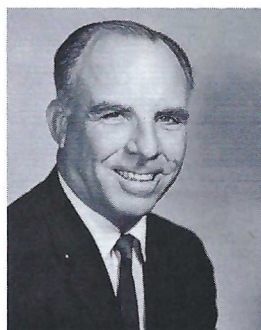
Hon. Claude R. Kirk, Jr.
GOVERNOR

UNIVERSITY OFFICIALS



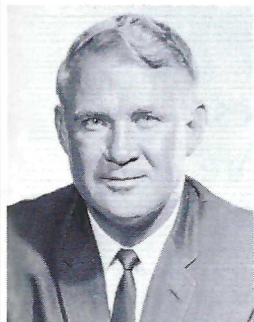
BOARD OF REGENTS—STATE UNIVERSITY SYSTEM

Members of the Board of Regents, left to right, back row: Dr. Louis C. Murray, Dr. Clarence L. Menser, Chancellor Robert B. Mautz, D. Burke Kibler, III, Julius F. Parker, Jr.; Front Row, left to right: Mrs. E. D. Pearce, Henry Kramer, Vice Chairman; Chairman Chester H. Ferguson and John C. Pace. Another Board Member, not present, was Mrs. John C. Behringer.



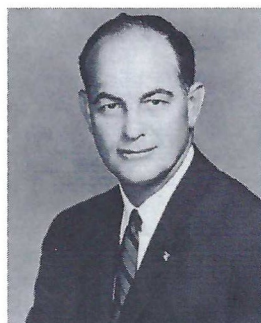
Tom Adams
Secretary of State

Floyd T. Christian
Supt. of Public Instr.



Earl Faircloth
Attorney General

Broward Williams
Treasurer



Doyle Conner
Comm. of Agriculture

Fred O. Dickinson, Jr.
Comptroller

FLORIDA STATE UNIVERSITY

Dr. John E. Champion
President

Dr. E. Laurence Chalmers, Jr.
Vice President for Academic Affairs

Dr. H. Odell Waldby
Vice President for Administration

John K. Arnold, Jr.
Acting VP for Student Affairs

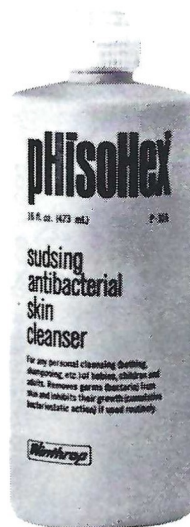
Dr. Juanita Gibson
Executive Assistant to the President

Patrick W. Hogan
Director of University Relations



We're proud...

that pHisoHex® has been selected as the antibacterial wash to be used by the U.S. Team for the 1968 Olympic Games!



A winning athlete takes special care of his skin. Above all, he protects it against bacteria that can cause infections and lead to missed practice sessions and games.

If you've ever tried to play with an infected blister on your heel or an abscess on your finger, then you know the role of healthy skin in sports. And that's why pHisoHex is an important part of an athlete's daily health routine. pHisoHex is America's leading liquid antibacterial skin cleanser in homes and in hospitals. Used regularly in place of soap, pHisoHex produces a superclean skin and builds up an invisible antibacterial film of hexa-

chlorophene to protect your skin against germs between washings.

And if you have problem skin, pHisoHex is often valuable. The antibacterial film it leaves on your face will ward off blemish-infecting bacteria. pHisoHex also helps to soften and wash away blackheads.

Use pHisoHex, the skin cleanser of winning athletes.

Made by Winthrop Laboratories, 90 Park Avenue, New York, N.Y. 10016. Available in drugstores in 5 oz. and 16 oz. plastic squeeze bottles.

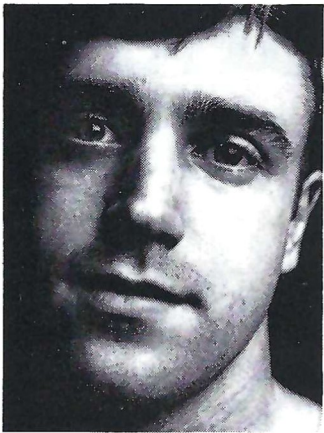


Winthrop Laboratories, New York, N.Y. 10016

Break your beard in right.

Right now your beard is in the formative stage.

You can shave it with a razor blade like your father does. And each time you do your beard will grow back a little more difficult. Until one day shaving's no longer a chore. It's an agony.



Look no further than your father's face for proof.

But fortunately, you're catching your beard at an early age. You can break it in to be just as shaveable 10 and 20 years from now as it is today.

With a REMINGTON® shaver.

And if you think the kind of shave we're selling won't be close enough for you, you're wrong.

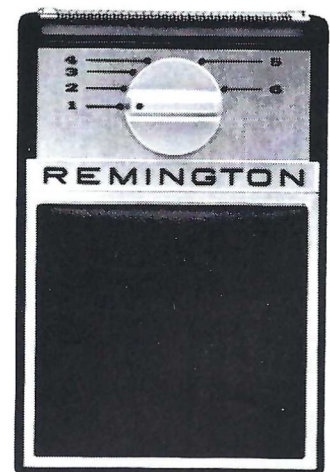
Our new blades are sharper than anything that's been in an electric shaver before. And there's a dial that lets you adjust them for your skin and beard.

What's more, you can dial a REMINGTON electric shaver into a sideburn trimmer.

Admittedly, it costs more to buy our electric shaver than a razor and some blades.

But it's a good investment.

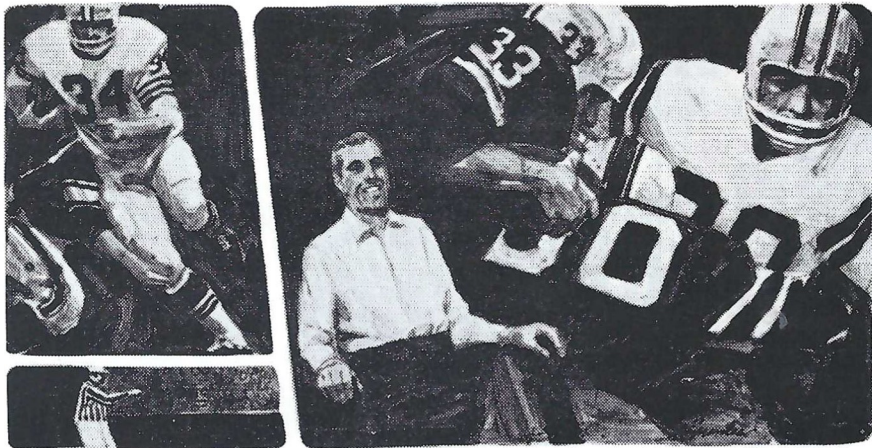
These next few years will determine how you and your beard will get along for the rest of your lives. † SPERRY RAND™ ©1968, SPERRY RAND CORP.



REMINGTON
ELECTRIC SHAVERS DIVISION, BRIDGEPORT, CONNECTICUT.

FOOTBALL: The Raw Force

by GEORGE STADE



THERE ARE many ways in which football is unique among sports, and as many others in which it is the fullest expression of what is at the heart of all sports. There is no other major sport so dependent upon raw force, nor any so dependent on a complex and delicate strategy; none so wide in the range of specialized functions demanded from its players; none so dependent upon the undifferentiated athletic *sine qua non*, a quick-witted body; none so primitive; none so futuristic; none so American.

Football is first of all a form of play, something one engages in instinctively and only for the sake of performing the activity in question. Among forms of play, football is a game, which means that it is built on communal needs, rather than on private evasions, like mountain climbing. Among games it is a sport; it requires athletic ability, unlike checkers. And among sports, it is one whose mode is violence and whose violence is its special glory.

In some sports—basketball, baseball, soccer — violence is occasional (and usually illegal); in others, like hockey, it is incidental; in others still, car racing, for example, it is accidental. Definitive violence football shares alone with boxing and bullfighting, among major sports. But in bullfighting a man is pitted not against another man, but against an animal, and boxing is a competition between individuals, not teams, and that makes a great difference.

If shame is the proper and usual penalty for failures in sporting competitions between individuals, guilt is the consequence of failing not only oneself and one's fans, but also one's teammates. Failure in football, moreover, seems more related to a failure of courage, seems more unmanning

than in any other sport outside of bullfighting. In other sports one loses a knack, is outsmarted, or is merely inferior in ability, but in football, on top of these, a player fails because he "lacks desire," or "can't take it anymore," or "hears footsteps," as his teammates will put it.

These physical and mental risks, the fact that pain and injury are not only commonplace but inevitable, dignify the game, give the playing of it gravity and the watching of it zest. For in sports, as in gambling, and as in most of the activities that we think of as peculiarly masculine, the greater the risk, the more serious the play, the keener the fun. The football player risks the violation of his being, and risks it in public. Every forty-five seconds or so he must endure the intimacy of a violent collision with another man; he must pit his skill, courage, and strength, the qualities that define him, against another's, and then consult his flesh and emotions to see whether he has been diminished or increased in the process.

Many sports, especially those in which there is a goal to be defended, seem enactments of the games animals play under the stimulus of what ethnologists, students of animal behavior, call *territory*—"the drive to gain, maintain, and defend the exclusive right to a piece of property," as Robert Ardrey puts it. The most striking symptom of this drive is aggressiveness, but among social animals, such as primates, it leads to "amity for the social partner, hostility for the territorial neighbor."

The territorial basis of certain kinds of sports is closest to the surface in football, whose plays are all attempts to gain and defend property through aggression. Does this not make football *par excellence* the game of in-

stinctual satisfactions, especially for Americans, who are notorious as violent patriots and instinctive defenders of private property? And what is it that corresponds in football to the various feathers, furs, fins, gorgeous colors by means of which animals puff themselves into exaggerated gestures of masculine potency? The football player's equipment, of course. His cleats raise him an inch off the ground. Knee and thigh pads thrust the force lines of his legs forward. His pants are tight against his rump and the back of his thighs, portions of his body which the requirements of the game stuff with muscle. Even the tubby guard looks slim of waist by comparison with his shoulders, extended half a foot on each side by padding. Finally the helmet, which from the esthetic point of view most clearly expresses the genius of the sport. Not only does the helmet make the player inches taller and give his head a size proportionate to the rest of him; it makes him anonymous, inscrutable, more serviceable as a symbol. The football player in uniform strikes the eye in a succession of gestalt shifts: first a hooded phantom out of the paleolithic past of the species; then a premonition of a future of spacemen.

In sum, and I am almost serious about this, football players are to America what tragic actors were to ancient Athens and gladiators to Rome: models of perennially heroic, aggressive, violent humanity, but adapted to the social realities of the times and places that formed them.

For only American money, only the American educational system, only the American life-style could have produced football or created an audience capable of responding to its unique beauty. Who else but a people now grown sedentary on profits from the violence that continues to be their national habit are likely to feel the psychosocial relevance of football with any sort of poignancy or see in football the testing of their national aspirations? Only Americans could. And that is why, every year from September through January, American men neglect their wives and daydream at their jobs.

Football is at once the expression of what has made us Americans and our human response to what has made us Americans. It is the product of a perfect fusion of our human nature with our national character.

So there is no use asking whether football is immoral or brutal or costly. No use asking whether it is a sign of health or disease in our civilization. It is a part of things as here and now they necessarily are. And it is one of the few things of that sort that can make you feel good.

Electrical Contractors

- INDUSTRIAL
- COMMERCIAL



Licensed & Bonded

J. B. CLARK,
President

LEE H. TOWNSEND,
Vice President

576-3727

IF NO ANSWER DIAL 385-4030

CLARK ELECTRIC CO.
OF FLORIDA

1133 Kissimmee St.
TALLAHASSEE, FLORIDA

BENNETT'S DISCOUNT DRUG STORE

- Prescriptions
- Cameras
- Sundries
- Gifts
- Fountain
- Cafe
- Cosmetics
- Drugs

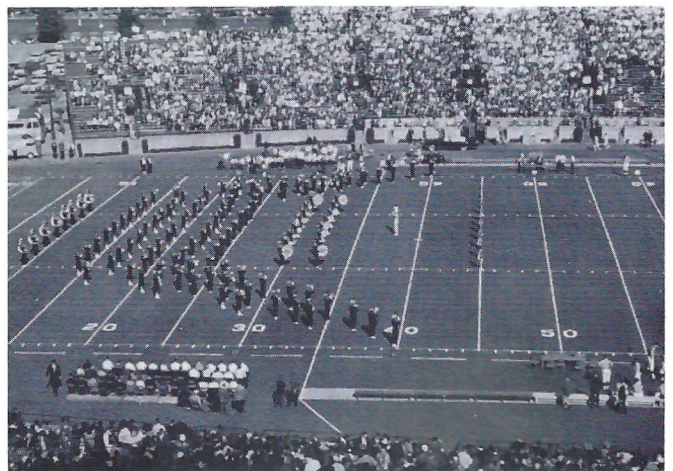
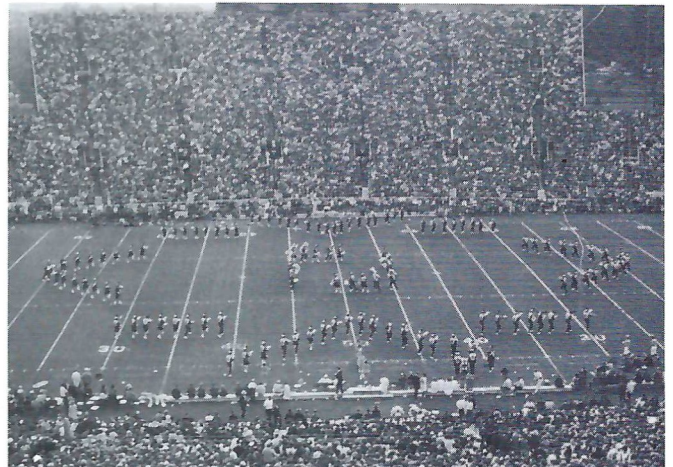
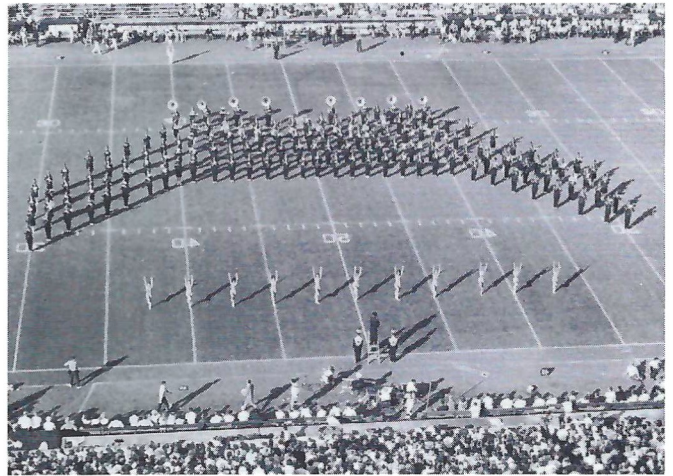
MEET ME AT BENNETT'S

BEFORE AND AFTER THE GAME!

Corner Monroe and College Streets

Phone 222-8980 — 222-4450

The Marching Chiefs Salute the Alumni





Illegal Use of Hands & Arms



Ball Illegally Touched, Kicked or Batted



Touchdown or Field Goal



Forward Pass or Kick Catching Interference



Personal Foul (Tripping, hurdling, tackling out of bounds)



Ball Ready-for-Play



Ball Dead; If Hand is Moved from Side to Side: Touchback



Crawling, Helping the Runner or Interlocked Interference



RAGANS and ROBERTS TIRE COMPANY



Big Bend's Largest Goodyear & Sinclair Dealer

James W. Ragans — OWNERS — Eli P. Roberts

Complete Service Department
Including Front End and Brake Rebuilding
Tires - Batteries - Accessories - Toys
— Philco Appliances —

— USE OUR BUDGET PLAN —

Fuel Oils For Home, Business and Farm

for AUTOMOTIVE SERVICE
call

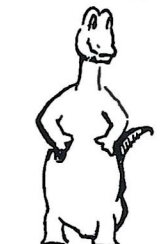
224-8156

for FUEL OIL
call

576-3145

609 W. Tennessee Street
2203 Lake Bradford Rd.
1031 South Magnolia

DRIVE WITH CARE AND BUY SINCLAIR



Offside (Violation of scrimmage or free kick formation)



Ineligible Receiver Down Field on Pass



Illegal Position, Procedure or Motion



Delay of Game



Sinclair

OFFICIAL SIGNALS



Intentional Grounding



First Down



Incomplete Forward Pass, Penalty Declined, No Play or No Score



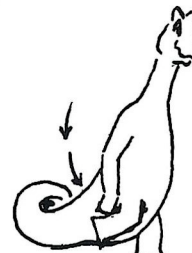
Start the Clock or No More Time-Outs Allowed



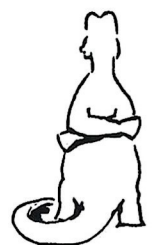
Time-Out



Unsportsmanlike Conduct



Clipping



Illegally Passing or Handing Ball Forward



Illegal Motion



Safety



Roughing the Kicker



**GLOBE
CLEANERS**

OPEN
7a.m. to 6p.m.
Mon. thru Sat.

**WITH 2 CONVENIENT
LOCATIONS TO
SERVE YOU**

LOCATION NO. 1
1001 W. PENSACOLA ST.
PHONE 224-0731

LOCATION NO. 2
836 LAKE BRADFORD RD.
PHONE 222-3523

Coach Peterson

by **BILL MCGROTHA**
Sports Editor, Tallahassee Democrat



A fellow on the phone asked would I write a story about Bill Peterson for this program, make it personal, tell it like I know him . . . and hold it to 250 words.

There ain't no way.

There is hardly any way to explain Florida State's head football coach in 250,000 words. He lends himself not at all well to telling about in words, period. You have to have a "feel" for knowing about Pete, and for most it comes only from being around him a long, long time.

He is what you call a walking paradox. More than most, he is not always what he seems.

Sometimes he kind of reminds me of a woman, the way he talks. You see, when something crosses his mind he often blurts it out. He's always thinking out loud. He is emotional; it is a way of getting things out of his system. Because he does this, some call him a cry baby . . . He is that and much in the manner of Georgia's Wallace Butts, another renowned weeper. Like Butts, Pete will use any convenient shoulder.

Also like Butts, he's much of a man . . . which they don't make many of anymore. Thoroughly rugged with more energy than a 2-year-old colt, Peterson can be terribly impatient with the little annoying things that get in his way—and these are the molehills he sometimes makes mountains out of. Of course, some of the mountains are very real ones.

But give the man some real trouble, the kind that makes mice out of men, and he's got his cup of tea. He's one of those who reacts better with a crisis. If he doesn't have a ready-made crisis, you can give points on his manufacturing one—or more.

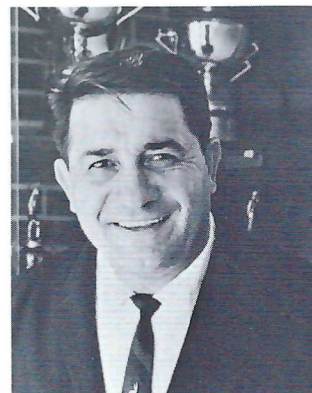
What he does to the English language, on occasion, only Casey Stengel before him has done. Yet, when he's at ease, with his busy mind firmly on the matter at hand, he can be among the most articulate of speakers.

He enjoys life, and he tackles it with the same zest that he does football. The only "name" of any game with him is winning. Yet, he likes his fun with it, and he is totally obsessed.

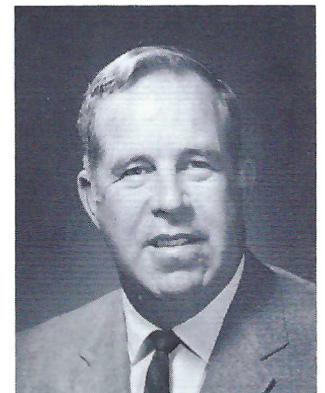
Only he, I think, could have accomplished what he has in FSU football with the same resources. Despite his yelps, he's never recognized the odds, really. He has never stopped believing that he could, despite all, make his football team No. 1. He's one to find a way.

He summed himself up really well, paradoxes and all, one day during the summer when near the end of a particularly long lament over the telephone, he said: "Hell, Bill, I don't want to be no Knute Rockne—I just want to win!"

That's Pete!



Vaughn Mancha
Athletic Director



Ken MacLean
Assistant to A.D.

Football Family



Bob Harbison
Defensive Chief



Joe Gibbs
Offensive Chief



Gary Wyant
Defensive Backs



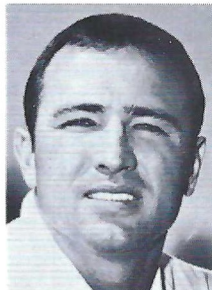
Bobby Jackson
Def. Ends,
Linebackers



Dan Henning
Quarterbacks,
Receivers



Al Conover
Running Backs



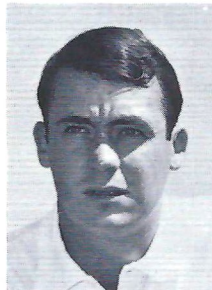
Gene McDowell
Freshmen



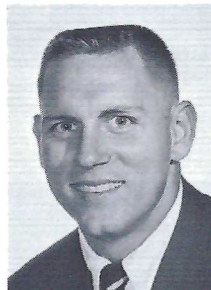
Doug Hafner
Recruiter



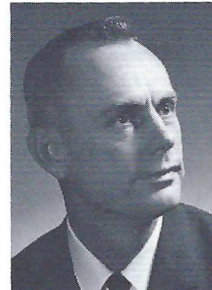
Don Fauls
Head Trainer



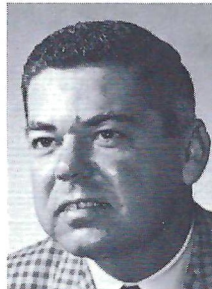
Bill Zeigler
Asst. Trainer



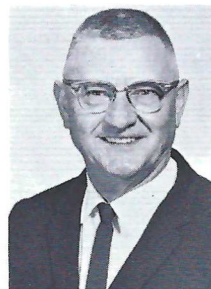
T. K. Wetherell
Acad. Advisor



Claude Thigpen
Ticket Mgr.



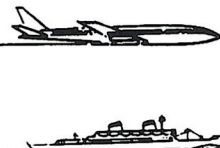
Lonnie Burt
Sports Info. Dir.



Tillman Dixon
Equip. Mgr.



Dr. Dale Maxwell
Team Physician



GOING
PLACES
?

ATHENS, GEORGIA? ATHENS, GREECE?
NEW YORK? NASSAU? NEPAL?

TRAVEL IS OUR PROFESSION

No Charge For Our Services
Tickets - Reservations At Printed Rates

MARION HAY
TOM LYLE
JEANNIE SMITH

TALLAHASSEE TRAVEL AND TOURS, INC.

Formerly Hay Travel Service

Established 1930

CALHOUN AT CALL STREET

TELEPHONE 224-4161



WHERE YOU
WILL FIND
YOUR FRIENDS

701 W. JEFFERSON
South Gate F.S.U.

**MIDYETTE-MOOR
Insurance Agency**

"Ask Those We Serve"

Complete Insurance and Bond Service

PHONE 222-3456



**MIDYETTE-MOOR BUILDING
TALLAHASSEE, FLORIDA**

SAYS

SCALP 'EM SEMINOLES!



Payne Midyette
Frank Moor
Ed Clark
Winslow Sullivan
Paul Lewis
Payne Midyette, Jr.
Bill Moor
Bill Franklin

Jim Woods
Glenn Sears
Jerry Darnell
Ron Davis
Richard Lobb
Rex Sikes
Walt Young

Miller
CHEVROLET COMPANY

Havana, Florida

539-6376

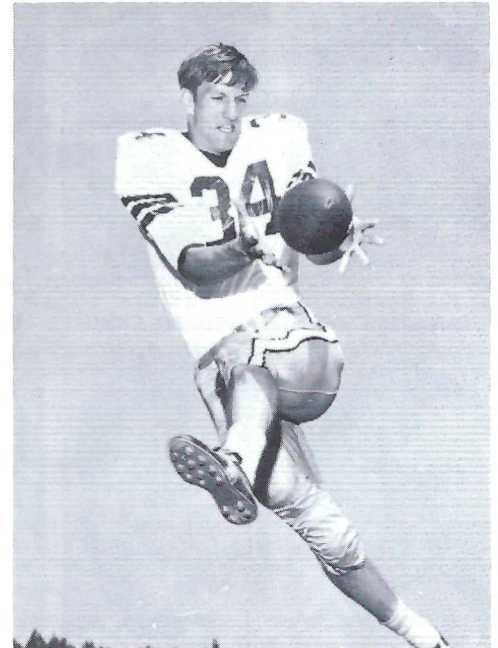
15 Miles North of Tallahassee

on U. S. 27

Phone Toll Free

224-1317

The 1968 Seminoles



Ron Sellers—Jacksonville
Sr.—Business



Dale McCullers—Live Oak
Sr.—Criminology

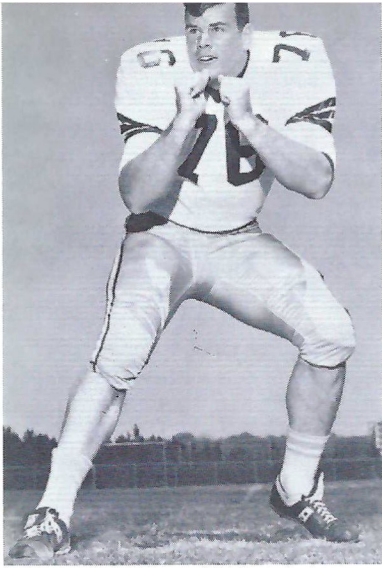


Randy Logan
Seal Beach, Calif.
Sr.—Business

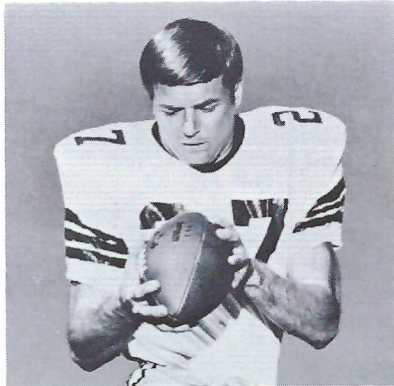


Chip Glass—Tampa
Sr.—Soc. St. Ed.

The 1968 Seminoles



Jack Fenwick—Norwood, Ohio
Sr.—Criminology



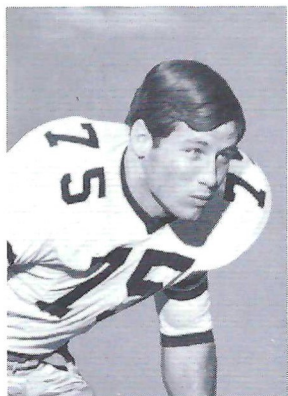
Billy Cox—Atlanta, Ga.
Sr.—Business



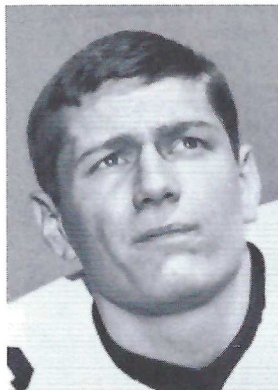
Chuck Eason—Tallahassee
Sr.—Business



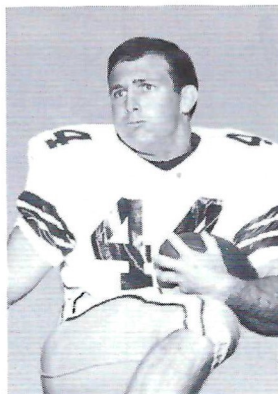
Larry Pendleton—Winter Garden
Sr.—Soc. St. Ed.



Billy Rhodes—Eustis
Sr.—Hotel & Rest. Mgt.



Gary Pajcic—Jacksonville
Sr.—Pre Law



John Pittman
Brunswick, Ga.
Sr.—Business

Compliments of a Fan.....

The folks at DOLIME who supply . . . Florida's agricultural soil with dolomite and high calcium lime (as well as the soil in the field in Campbell Stadium) . . . wish the Florida State "Seminoles" best of luck for a winning season.



DOLIME

MINERALS COMPANY

P. O. Box 1441
Bartow, Florida 33830
Phone 813/533-8144

**DOLIME MAKES
YOUR GOOD EARTH
EVEN SWEETER!**



SPURGEON CAMP

*"Let's Be
#1
In 1968"*

★
NOBODY...
BUT NOBODY
UNDERSELLS.
★

**SOUTHERN
ELECTRIC INC.**

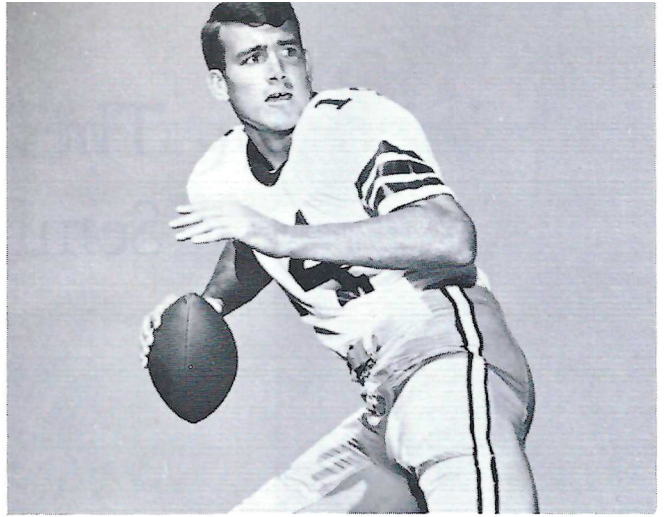


**TIME!
OUT!**

FOR
YOUR FAVORITE

**Meal
or
Snack**

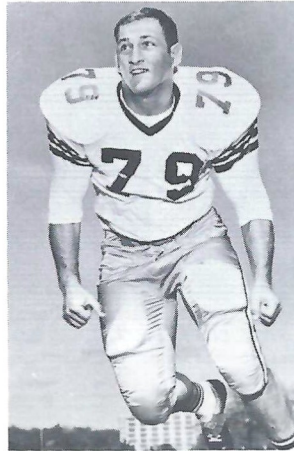
AFTER THE GAME AT
THE **UNIVERSITY UNION**
FSU FOOD SERVICE



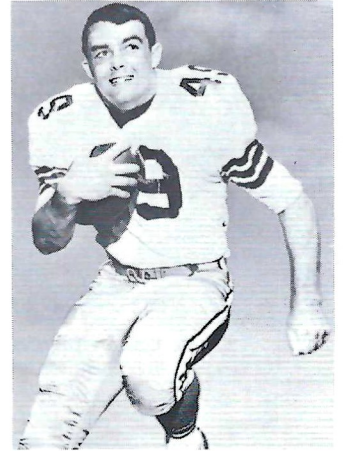
Bill Cappleman—Dunedin
Jr.—Business



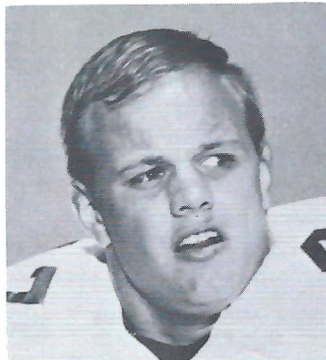
Jeff Curchin—Ocala
Jr.—Criminology



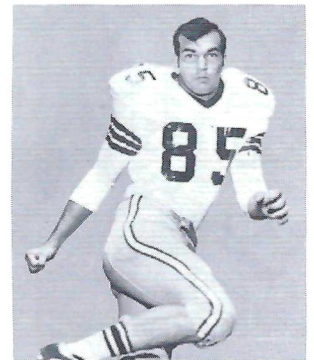
Frank Vohun—Brooksville
Jr.—Phys. Educ.



Terry Eagerton—Jacksonville
Jr.—Business



Joe Benson—Birmingham, Ala.
Sr.—Accounting

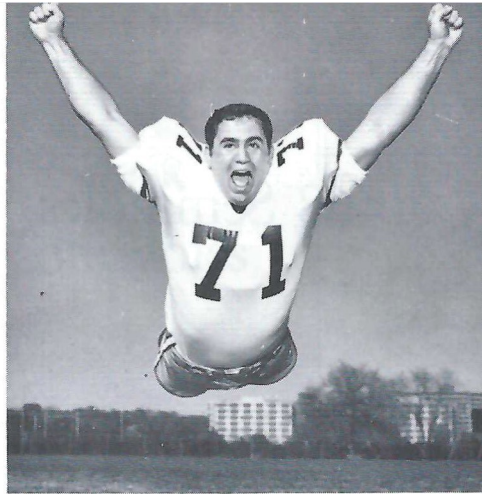


Floyd Ratliff—Jesup, Ga.
Jr.—Psychology

1968 Seminoles



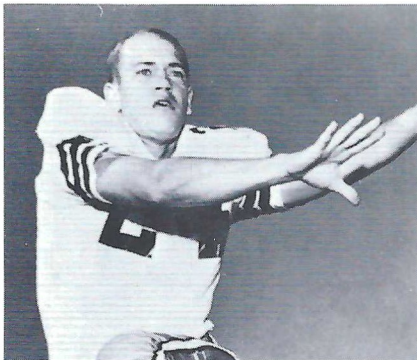
Phil Abreira—Ft. Lauderdale
Jr.—Engr. Sc.



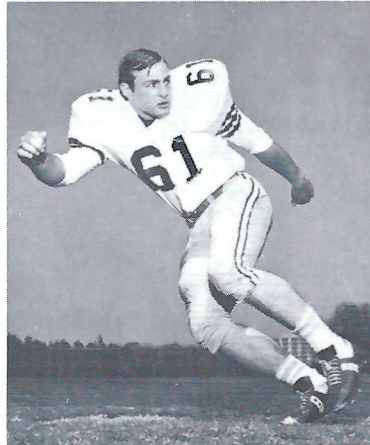
Harvey Zion—Atlanta, Ga.
Sr.—Pre Med



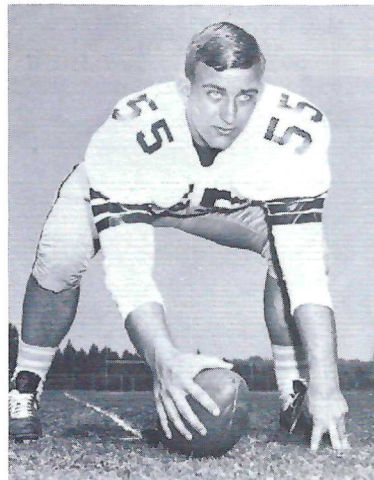
Bill Gunter—Dothan, Ala.
Sr.—Business



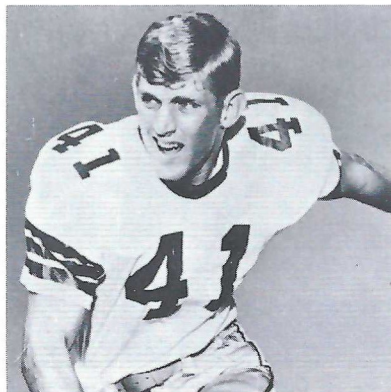
Walt Sumner—Ocilla, Ga.
Sr.—Business



Chuck Elliott—Troy, Ohio
Sr.—Business



Ted Mosley—Tampa
Sr.—Business



John Crowe—St. Cloud
Sr.—Math



why pay **MORE** when you
can buy for **LESS** at

A B C
Mobile Homes
2737 W. Tennessee
Tallahassee, Florida

HERSCHEL COOK
Manager

Phone 576-5146

Southernair
MOTEL

Across from F.S.U.
Tallahassee, Florida 32304



and

Skyline
Motor Lodge

U. S. 90 West

Quality Courts
for **Quality People**

Best Wishes for a successful season, and we are proud to have had a part in furnishing the football equipment for the Seminoles

OWENS Inc.

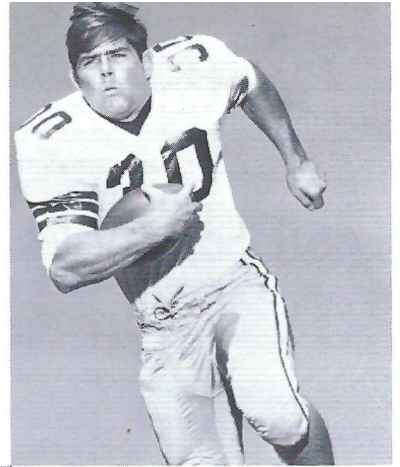
Sporting Goods — Hardware
ALBANY, GEORGIA

Joby's
SEAFOOD HOUSE

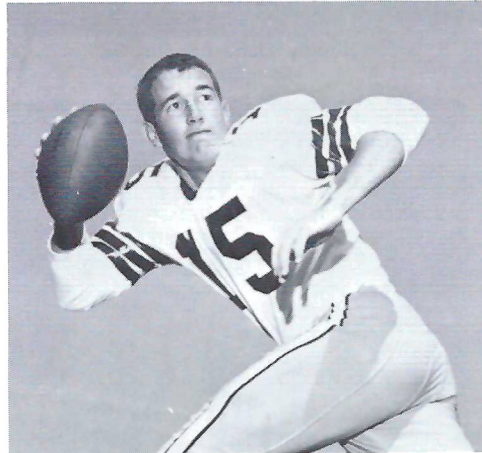
1425 W. TENNESSEE ST.
 TALLAHASSEE, FLORIDA
 222-1929

OYSTERS ON THE HALF SHELL

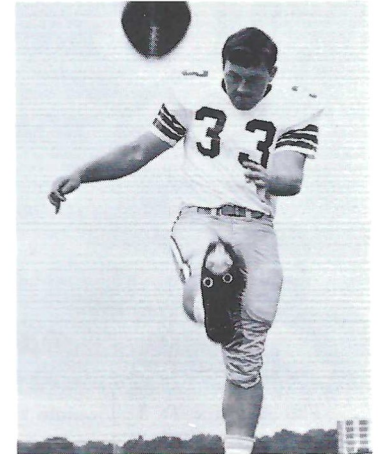
1968 Seminoles



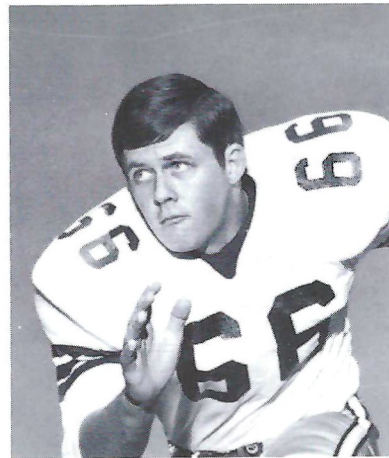
Tom Bailey—Miami
 So.—Business



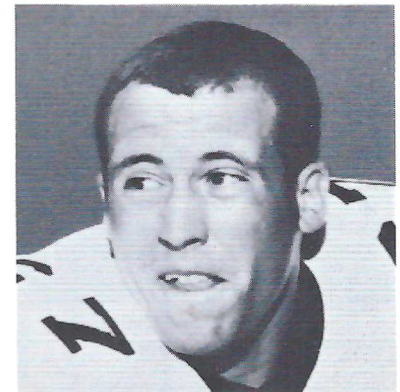
Tommy Warren—Miami
 Jr.—Business



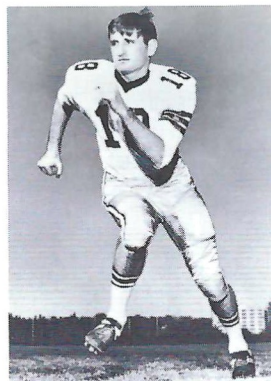
Grant Guthrie—Claymont, Del.
 Jr.—Business



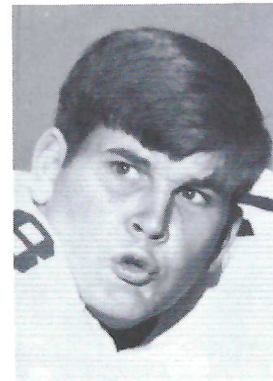
Ken Hart—Groveland
 Sr.—Pre Law



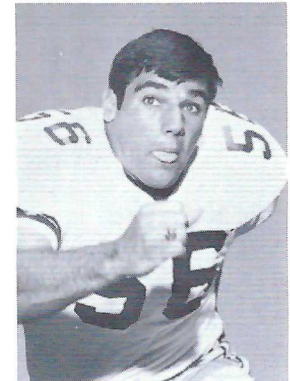
Mike Bugar—Youngstown, Ohio
 Sr.—Phys. Educ.



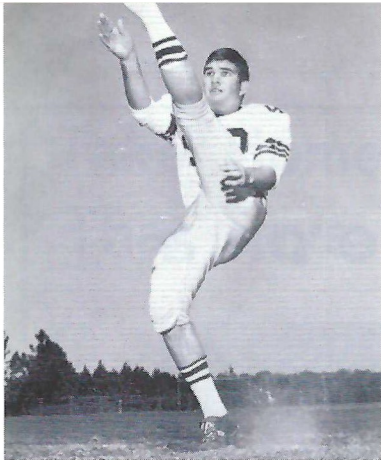
Clint Burton
 Atlanta, Ga.
 Sr.—Phys. Educ.



Wayne Johnson
 Macon, Ga.
 Jr.—Business



Bill Lohse—St. Petersburg
 So.—Undec.



Bill Cheshire—Odum, Ga.
Jr.—Pre Med

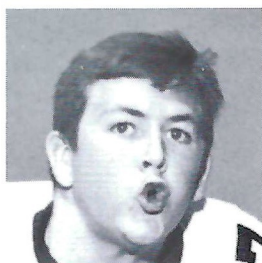
1968 Seminoles



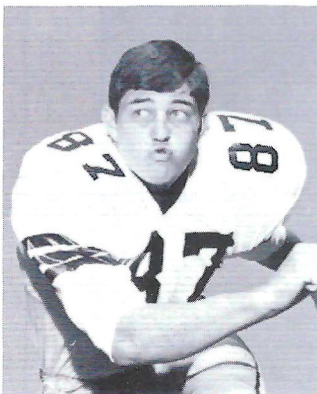
Brent Gilman
Long Beach, Calif.
Jr.—Business



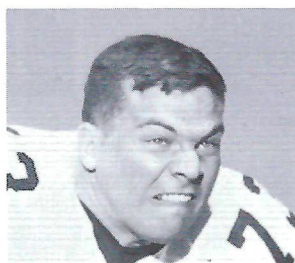
Mike Page—Winter Haven
Jr.—Psychology



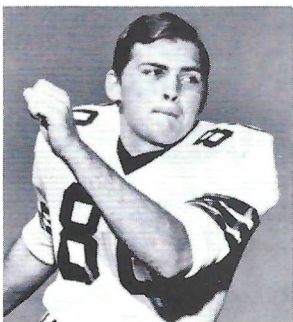
Robert McEachern
Tallahassee
So.—Undec.



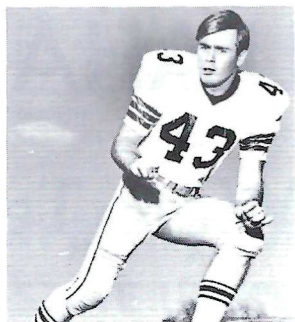
Ronnie Wallace—Macon, Ga.
So.—Undec.



Duke Johnston
Ft. Lauderdale
Jr.—Business



Doug Gurr—Albany, Ga.
Sr.—Business



Howell Montgomery
Blountstown
Sr.—Business

Go

Seminoles

We'll help all we can

Tallahassee Automobile Dealers Association

- ALFORD CHEVROLET CO.
- COURTESY RAMBLER—DATSUN
- PROCTER & PROCTER, INC.
- CAPITAL LINCOLN—MERCURY, INC.
- BOB DRAKE DODGE, INC.
- TOYOTA OF TALLAHASSEE
- COURTESY OLDSMOBILE—VOLVO
- PALMER—HARRELL BUICK CO.
- CAPITAL CHRYSLER—PLYMOUTH, INC.
- TALLAHASSEE MOTORS, INC.
- KINNEBREW MOTORS, INC.
- MINGLEDORFF MOTORS, INC.

"You meet the nicest people on a

H O N D A

World's largest seller"



HONDA OF TALLAHASSEE

At the Underpass on West Tennessee

Phone 576-1020

TODAY'S GAME

By **LONNIE BURT**

Sports Information Director

It's a good thing Campbell Stadium has lights because today's contest between Florida State and Wake Forest could be a long affair, lasting until the sun goes down.

Both the Seminoles and Deacons have aerial attacks which can lengthen games considerably. The contest stacks up as a passing duel featuring Florida State quarterback Bill Cappleman against Wake's Freddie Summers.

Cappleman, a junior from Dunedin, has completed 115 passes in 220 attempts with two games to go while Summers winds up his career this afternoon. Coming into today, he has 118 completions in 229 attempts for 1,552 yards.

This has been a season of frustration for the Winston-Salem, N.C., club. Picked by many to win the Atlantic Coast Conference, the Deacons started by dropping a slim 10-6 decision to North Carolina State. Then they tied Clemson 20-20 and proceeded to drop three in a row by a total of seven points.

Wake Forest bowed to Big Ten powers Minnesota (24-19) and Purdue (28-27) sandwiched around a 7-6 loss to Virginia Tech. Thus, in their first five games, the Deacs lost four by a total of 11 points.

Some observers figure Wake has more backfield speed than any other ACC club. Summers not only is a talented passer, he's an outstanding runner. In 147 rushes, primarily option plays, the 6-1, 187 pounder from Dorchester, Mass., has gained 420 yards and scored seven touchdowns.

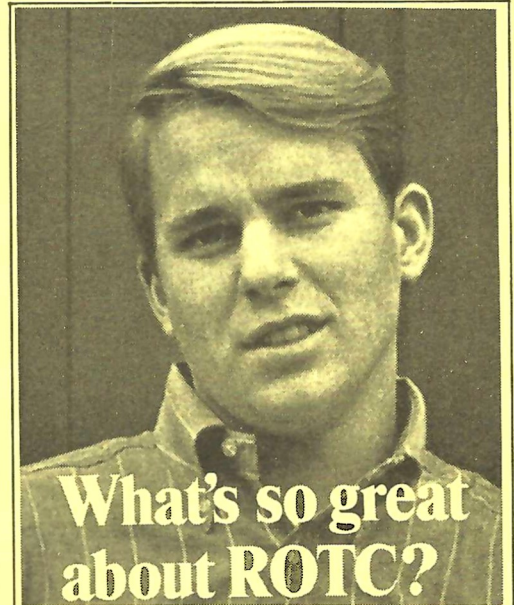
The Deacons' other two top rushers are tailbacks Jack Dolbin (4.6) average and Lee Clymer (3.4).

On the other hand, Florida State had its finest hour of the season last week when the Seminoles put it all together for a 48-7 victory over N.C. State. Cappleman threw for three touchdowns, Bill Gunter scored three and Phil Abaira caught a pair of TD passes.

Seminole defenders put on their finest show by recovering three fumbles, intercepting four passes and blocking a field goal attempt for a touchdown.

All-America flanker Ron Sellers goes into today's contest as the second leading pass receiver college football has ever known. In a three-year span (not including bowl games), Sellers has caught 184 passes for 3,124 yards. In his last two games, the 6-4 Jacksonville senior needs catches good for 220 yards to become the all-time reception yardage king.

This is the eighth meeting between Wake Forest and Florida State with the Seminoles owning a 5-1-1 edge. The Deacs haven't scored on the Seminoles in the last three games, something that will undoubtedly end today.



What's so great about ROTC?

Check 'em.

Great opportunity. You earn a commission while you earn your college degree. Graduate —you start at the top. Fulfill your military obligation as an Army officer. With officer's pay. Officer's privileges.

Great advantages. Employers prefer a college graduate with service as an officer. Pay more to get him. Because he's a trained, experienced leader. Can handle heavier responsibilities.

Great success. From the 5% of college men who had ROTC training have come 24% of our state governors, 28% of executives earning \$100,000 to \$325,000 per year, 10% of Congress, 15% of our ambassadors.

Great guys. ROTC men are campus leaders—in ROTC, athletics, extracurricular activities. And they do better scholastically than non-ROTC students.

Great extras. \$50 per month in junior and senior years. Scholarships for outstanding students. Free flight training at over 125 colleges. Extra social activities—military balls, honor societies, bands, rifle teams.

Any way you look at it, there's a lot more going for you when you're in ROTC.

Your future, your decision . . .

choose **Army ROTC.**

Army ROTC	CP 69
P.O. Box 12703	
Philadelphia, Pa. 19134	
I want to know more about Army ROTC.	
Send me your free brochure.	
Name _____	Age _____
Address _____	
City _____	
State _____	Zip _____



REMEMBER THE DAY WITH PICTURES !!

For All Of Your Photographic Needs Remember

Tallahassee Camera Center

117 NORTH MONROE STREET
Across From The Florida Theater

CAMERAS • FILM • BINOCULARS • RECORDERS • RENTALS

Fast, Fast, Black & White and Color Processing



STAT FACTS

FLORIDA STATE			RESULTS		WAKE FOREST	
24	Maryland	14	6	N.C. State	10	
3	Florida	9	20	Clemson	20	
20	Texas A&M	14	19	Minnesota	24	
20	Memphis St.	10	6	Va. Tech	7	
35	South Carolina	28	27	Purdue	28	
22	Va. Tech	40	48	N. Carolina	31	
27	Miss. State	14	38	Maryland	14	
48	N.C. State	7	21	S. Carolina	34	
			3	Duke	18	
FSU	OPP		Points	WF	OPP	
199	136		188	188	186	
341/3.2	369/3.9	No. Plays & Rushing Avg.	447/3.6	471/3.9		
286/146/12	184/94/21	Passes Att./Comp/Had Int.	240/124/21	204/101/9		
2106	1054	Passing Yardage	1609	1289		
3185	2487	Total Yardage	3220	3112		
8	19	Fumbles	21	18		
5	9	Fumbles Lost	16	13		

INDIVIDUAL LEADERS

FLORIDA STATE						WAKE FOREST					
PASSING	ATT.	COMP.	INT.	YDS.	TD	PASSING	ATT.	COMP.	INT.	YARDS	TD
Cappleman	220	115	10	1694	16	Summers	229	118	21	1552	6
Pajcic	51	25	1	332	2	RECEIVING	NO.	YARDS	TD	LG	
Warren	11	5	1	75	2	Jurewicz	27	423	1	32	
RECEIVING	NO.	YDS.	TD	LG		White	25	395	1	53	
Sellers	58	1022	6	82		Angerman	18	244	2	47	
Cox	18	238	2	33		RUSHING	TC	NET	AVG.	TD	LG
Bailey	17	187	1	16		Summers	147	420	2.9	7	90
Tyson	11	151	4	34		Dolbin	70	325	4.6	1	67
RUSHING	TC	NET	AVG.	TD	LG	Clymer	96	325	3.4	6	20
Bailey	84	412	4.7	1	22	SCORING	TD	FGM	XPM	TP	
Gunter	109	351	3.2	2	22	Summers	7	0	0	42	
Pittman	49	182	3.7	0	24	Clymer	6	0	0	36	
SCORING	TD	FG	EPM	TP		Deacon	0	5	15	30	
Guthrie	0	8	23	47							
Sellers	6	0	0	36							
Gunter	4	0	0	24							
Tyson	4	0	0	24							



BIG "B" Cleaners

1100 W. Tennessee

1405 S. Adams

324 N. Monroe

Student and Faculty Discounts Every Thursday

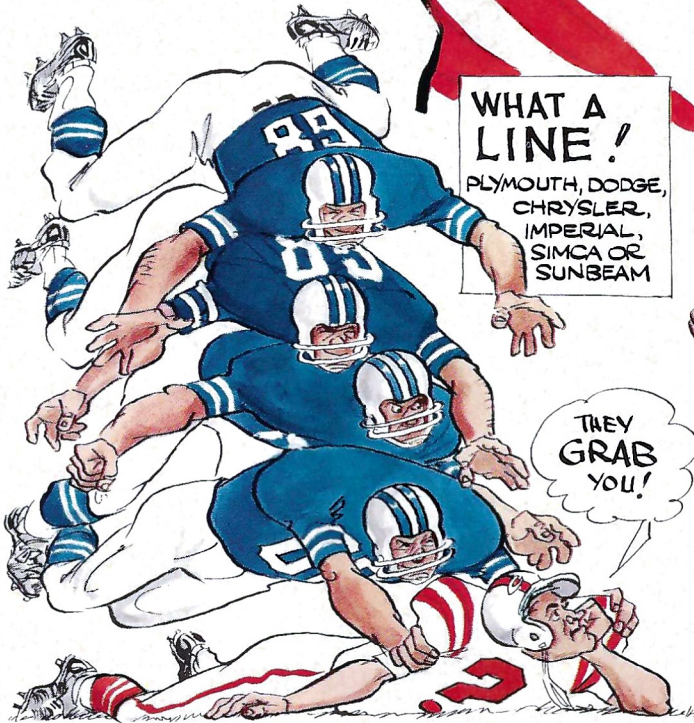
SAVE



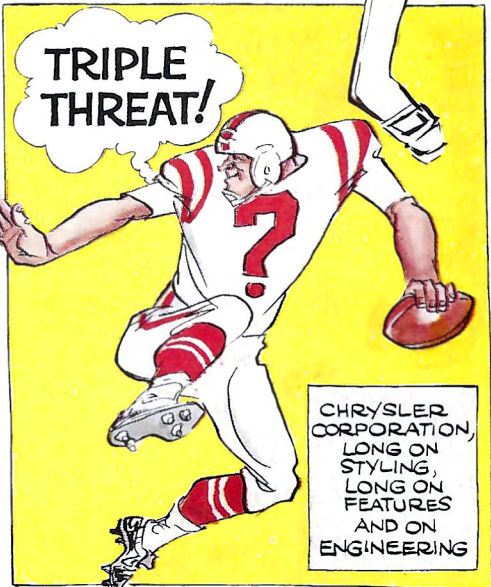


BEFORE YOU BUY, SEE YOUR CHRYSLER-PLYMOUTH OR DODGE DEALER

...BE THE CENTER OF ATTENTION IN A NEW CAR FROM CHRYSLER CORPORATION!



WHAT A LINE!
PLYMOUTH, DODGE, CHRYSLER, IMPERIAL, SIMCA OR SUNBEAM



CHRYSLER CORPORATION, LONG ON STYLING, LONG ON FEATURES AND ON ENGINEERING

Plymouth • Dodge • Chrysler • Imperial • Dodge Trucks • Simca • Sunbeam



CHRYSLER CORPORATION

SEE THE AFL IN ACTION EACH WEEK ON NBC-TV.



Coca-Cola

TRADE-MARK ®

Coca-Cola

Coke

Coca-Cola

Coke has the taste

TRADE-MARK ®

COCA-COLA™ AND "COKE" ARE REGISTERED TRADE MARKS WHICH IDENTIFY ONLY THE PRODUCT OF THE COCA-COLA COMPANY. PRINTED IN U.S.A.



FLORIDA STATE

DEFENSE

67 MIKE BUGAR	LE
73 DUKE JOHNSTON	LT
47 JOE BENSON	LLB
50 DALE McCULLERS	MLB
61 CHUCK ELLIOTT	RLB
74 ROBERT McEACHERN	RT
83 RON WALLACE	RE
41 JOHN CROWE	LS
24 WALT SUMNER	LC
17 MIKE PAGE	RC
18 CLINT BURTON	RS

OFFENSE

27 BILLY COX	LE
76 JACK FENWICK	LT
64 STAN WALKER	LG
55 TED MOSLEY	C
68 LARRY PENDLETON	RG
75 BILLY RHODES	RT
84 CHIP GLASS	RE
31 BILL GUNTER	LH
14 BILL CAPPLEMAN	QB
30 TOM BAILEY	FB
34 RON SELLERS	FL

FLORIDA STATE SQUAD

11 Anderson, QB	53 Cassidy, DT
12 Hiatt, SE	54 Burt, LB
14 Cappleman, QB	55 Mosley, C
15 Warren, QB	56 Lohse, LB
16 Pajcic, QB	57 Lowe, LB
17 Page, DB	58 Gildea, LB
18 Burton, DB	59 Loner, PK
19 Abaira, SE	60 Barry Rice, LB
20 Thomas, DB	61 Elliott, LB
21 Pell, DB	62 Bass, LB
22 Eason, DB	64 Walker, OG
23 Pederson, FL	66 Hart, OG
24 Sumner, DB	67 Bugar, DE
26 Wenhold, FB	68 Pendleton, OG
27 Cox, SE	69 White, DT
28 Lanahan, DB	70 Sewell, OT
29 Rust, DB	71 Zion, DT
30 Bailey, RB	72 Logan, OG
31 Gunter, RB	73 Johnston, DT
32 Chereschkoff, RB-P	74 McEachern, DT
33 Guthrie, PK	75 Rhodes, OT
34 Sellers, FL	76 Fenwick, OT
35 Gray, SE	77 Curchin, OT
40 Gilman, FB	78 Johnson, OT
41 Crowe, DB	79 Vohun, DT
42 Cheshire, P	80 Gurr, DE
43 Montgomery, DB	81 Tyson, TE
44 Pittman, FB	82 Dawson, FL
46 Munroe, RB	83 Wallace, DE
47 Benson, LB	84 Glass, TE
48 Jarrett, FB	85 Ratliff, DE
49 Eagerton, FB	86 Hall, DE
50 McCullers, LB	87 Rimby, TE
51 Hughes, C	88 Beryl Rice, DE
52 Sammons, OG	89 Richardson, PK

WAKE FOREST

OFFENSE

40 FRED ANGERMAN	LE
71 LLOYD HALVORSON	LT
64 LARRY HAMBRICK	LG
51 JOE DOBNER	C
62 HOWARD STANBACK	RG
70 JIMMY CLACK	RT
36 RON JUREWICZ	RE
35 LEE CLYMER	IB
7 FREDDIE SUMMERS	QB
24 BUZ LEAVITT	FB
43 RICK WHITE	FL

DEFENSE

78 GERALD MCGOWAN	LE
75 WIN HEADLEY	LT
23 JIM SCHUBERT	LLB
55 JOHN MAZELEWSKI	MLB
89 IVEY SMITH	RLB
60 JOHN McQUEENEY	RT
73 ED GEORGE	RE
11 LARRY PONS	LC
14 GARY WILLARD	RC
44 DIGIT LAUGHRIDGE	LS
15 TERRY KUHARCHEK	RS

WAKE FOREST SQUAD

3 Gavin, DB	56 George, LB
5 Russell, QB	57 Pope, LB
7 Summers, QB	60 McQueeney, DT
9 Connors, QB	61 Nedimyer, OG
10 Deacon, DB	62 Stanback, OG
11 Pons, DB	63 Magnot, DT
12 Bozoian, DB	64 Hambrick, OG
14 Willard, DB	65 Freedlund, OG
15 Kuharchek, DB	66 Jones, OG
20 Bowden, DB	67 White, OT
21 Ward, DB	68 Keenan, C
22 Dolbin, IB	69 Sklutas, OT
23 Schubert, DB	70 Clack, OT
24 Leavitt, FB	71 Halvorson, OT
30 Johnson, FB	72 Bachovchin, OT
32 Angle, LB	73 George, DE
34 Hemphill, LB	74 Chulada, OT
35 Clymer, IB	75 Headley, DT
36 Jurewicz, OE	76 Scheib, DT
40 Angerman, FLK	77 Logan, DT
41 Arrington, FLK	78 McGowan, DE
42 Kobos, FLK	79 Carter, OT
43 White, FLK	81 Floyd, DE
44 Laughridge, DB	82 Winrow, OE
50 White, LB	83 Beard, DE
51 Dobner, C	84 Cooke, OE
52 Wilson, OG	85 Wszelaki, DE
53 Brown, C	86 Stout, DT
54 Pate, LB	87 Brenner, FLK
55 Mazalewski, LB	89 Smith, LB

OFFICIALS: Referee—Jimmy Harper, Atlanta, Ga.; Umpire—Jim Collier, Greenville, S. C.; Linesman—Gilbert Hastings, Atlanta, Ga.; Field Judge—Nelvin Cooper, Cary, N. C.; Back Judge—Ned Searcy, Jacksonville, Fla.; E.C.O.—Bill Henderson, Tuscaloosa, Ala.

ste you never get tired of.

Oldsmobile recreates a scene from the classic movies.



Olds Delta 88 Royale: The bold and the beautiful.

Meet our new top-of-the-line 88. Big-car room and ride on a longer 124-inch wheelbase. Vinyl roof, pin-striping, fender louvers, big Rocket 455 V-8 and much more, standard. All for little more than you'd pay for an ordinary car! **Escape from the ordinary.**



Wake Forest Basic Defense

RIGHT END

73 ED GEORGE
81 CHUCK FLOYD

RIGHT CORNERBACK

14 GARY WILLARD
23 JIM SCHUBERT

RIGHT TACKLE

60 JOHN MCQUEENEY
76 BILL SCHIEB

RIGHT SAFETY

15 TERRY KUHARCHEK
3 TOM GAVIN

RIGHT LINEBACKER

89 IVEY SMITH
34 KEN HEMPHILL

LEFT SAFETY

44 DIGIT LAUGHRIDGE
10 TOM DEACON

MIDDLE LINEBACKER

55 JOHN MAZELEWSKI
56 CHICK GEORGE

LEFT CORNERBACK

11 LARRY PONS
12 DICK BOZOIAN

LEFT LINEBACKER

23 JIM SCHUBERT
50 DAN WHITE

LEFT TACKLE

75 WIN HEADLEY
63 MIKE MAGNOT

LEFT END

78 GERALD MCGOWAN
85 ROMAN WSZELAKI

LEFT END

27 BILLY COX
19 PHIL ABRAIRA

LEFT TACKLE

76 JACK FENWICK
78 WAYNE JOHNSON

LEFT GUARD

64 STAN WALKER
66 KEN HART

CENTER

55 TED MOSLEY
51 BILL HUGHES

RIGHT GUARD

68 LARRY PENDLETON
72 RANDY LOGAN

RIGHT TACKLE

75 BILLY RHODES
77 JEFF CURCHIN

RIGHT END

84 CHIP GLASS
81 JIM TYSON

FLORIDA STATE Basic Offense

LEFT HALFBACK

31 BILL GUNTER
44 JOHN PITTMAN

FULLBACK

30 TOM BAILEY
40 BRENT GILMAN

QUARTERBACK

14 BILL CAPPLEMAN
15 TOMMY WARREN

FLANKER

34 RON SELLERS
23 DON PEDERSON

FLORIDA STATE SPECIALISTS: PUNTS—42 BILL CHESHIRE; KO—89 JOHN RICHARDSON; or 59 FRANK LONER; FG-PAT—33 GRANT GUTHRIE; PUNT RET.—15 TOMMY WARREN, 41 JOHN CROWE; KO RET.—15 TOMMY WARREN, 23 DON PEDERSON

FLORIDA STATE Basic Defense

RIGHT CORNERBACK

17 MIKE PAGE
21 JOHN PELL

RIGHT SAFETY

18 CLINT BURTON
22 CHUCK EASON

LEFT SAFETY

41 JOHN CROWE
43 HOWELL MONTGOMERY

LEFT CORNERBACK

24 WALT SUMNER
20 DANNY THOMAS

RIGHT END

83 RON WALLACE
80 DOUG GURR

RIGHT TACKLE

74 ROBERT McEACHERN
71 HARVEY ZION

RIGHT LINEBACKER

61 CHUCK ELLIOTT
58 STEVE GILDEA

MIDDLE LINEBACKER

50 DALE McCULLERS
62 THERON BASS

LEFT LINEBACKER

47 JOE BENSON
56 BILLY LOHSE

LEFT TACKLE

73 DUKE JOHNSTON
79 FRANK VOHUN

LEFT END

67 MIKE BUGAR
85 FLOYD RATLIFF

LEFT END

40 FRED ANGERMAN
42 DON KOBOS

LEFT TACKLE

71 LLOYD HALVORSON
79 RON CARTER

LEFT GUARD

64 LARRY HAMBRICK
61 VINCE NEDIMEYER

CENTER

51 JOE DOBNER
53 BILL BROWN

RIGHT GUARD

62 HOWARD STANBACK
66 TOM JONES

RIGHT TACKLE

70 JIMMY CLACK
67 CHUCK WHITE

RIGHT END

36 RON JUREWICZ
82 GARY WINROW

Wake Forest Basic Offense

I-BACK

35 LEE CLYMER
22 JACK DOLBIN

QUARTERBACK

7 FREDDIE SUMMERS
9 DAVID CONNORS

FULLBACK

24 BUZ LEAVITT
30 JIM JOHNSON

FLANKER

43 RICK WHITE
41 EDDIE ARRINGTON

WAKE FOREST SPECIALISTS: PUNTS—44 DIGIT LAUGHRIDGE; KO—56 CHICK GEORGE; FG-PAT—10 TOM DEACON; PUNT RET.—44 DIGIT LAUGHRIDGE; KO RET.—35 LEE CLYMER, 40 FRED ANGERMAN

- CABLE COLOR TV IN ALL ROOMS RECEIVING NINE CHANNELS

- POOL

- Northwest corner of Campus on U.S. 90; Fla. 20 West



DRIFTWOOD MOTEL and RESTAURANT

AMERICAN EXPRESS - DINERS - AMERICAN OIL - PHILLIPS 66 CREDIT CARDS HONORED

- AIR CONDITIONED
- DIRECT DIAL PHONES
- Se habla Español

1402 W. TENN. (U.S. 90)

(904) 224-4174

1968 FLORIDA STATE FOOTBALL ROSTER

No.	Name	Pos.	Class	Ht.	Wt.	Hometown
11	Rick Anderson	QB	Soph.	6-2	213	Winter Haven
12	Phil Hiatt	SE	Jr.	6-4	205	Tipp City, Ohio
14	Bill Cappleman	QB	Jr.	6-3	207	Dunedin
15	Tommy Warren	QB	Jr.	6-1	185	Miami
16	Gary Pajcic	QB	Sr.	6-2	188	Jacksonville
17	Mike Page	DB	Jr.	5-11	175	Winter Haven
18	Clint Burton	DB	Sr.	6-1	180	Atlanta, Ga.
19	Phil Abraria	SE	Jr.	6-0	184	Ft. Lauderdale
20	Danny Thomas	DB	Soph.	5-9	178	West Palm Beach
21	John Pell	DB	Jr.	5-11	173	Pahokee
22	Chuck Eason	DB	Sr.	5-10	192	Tallahassee
23	Don Pederson	FL	Soph	6-0	174	Groveland
24	Walt Sumner	DB	Sr.	6-1	178	Ocala, Ga.
26	Barry Wenhold	FB	Jr.	5-10	200	Souderton, Pa.
27	Billy Cox	SE	Sr.	6-1	182	Atlanta, Ga.
28	John Lanahan	DB	Soph.	6-0	196	Jacksonville
29	Ben Rust	DB	Soph.	6-0	183	West Palm Beach
30	Tom Bailey	RB	Soph.	6-2	212	Miami
31	Bill Gunter	RB-P	Sr.	6-0	171	Dothan, Ala.
32	Ed Chereskoff	RB-P	Soph.	5-11	195	Hollywood
33	Grant Guthrie	PK	Jr.	6-0	204	Claymont, Del.
34	Ron Sellers	FL	Sr.	6-4	187	Jacksonville
35	Mike Gray	SE	Soph.	6-3	198	Lake Mary
40	Brent Gilman	FB	Jr.	6-2	210	Long Beach, Calif.
41	John Crowe	DB	Sr.	6-0	178	St. Cloud
42	Bill Cheshire	P	Jr.	6-1	193	Odum, Ga.
43	Howell Montgomery	DB	Sr.	5-11	182	Blountstown
44	John Pittman	FB	Sr.	5-11	195	Brunswick, Ga.
46	Authur Monroe	RB	Soph.	6-0	188	Quincy
47	Joe Benson	LB	Sr.	5-11	199	Birmingham, Ala.
48	James Jarrett	FB	Soph.	6-1	194	Elizabethton, Tenn.
49	Terry Eagerton	FB	Jr.	5-10	194	Jacksonville
50	Dale McCullers	LB	Sr.	6-1	207	Live Oak
51	Billy Hughes	C	Jr.	6-0	230	Rockledge
52	Mike Sammons	OG	Soph.	6-1	208	Atlanta, Ga.
53	Randy Cassady	DT	Jr.	6-2	225	Floral, Ala.
54	Bobby Burt	LB	Soph.	6-2	210	Cairo, Ga.
55	Ted Mosley	C	Sr.	6-1	213	Tampa
56	Bill Lohse	LB	Soph.	6-0	225	St. Petersburg
57	Ronnie Lowe	LB	Jr.	6-0	175	Thomaston, Ga.
58	Steve Gildea	LB	Soph.	6-0	190	Daytona Beach
59	Frank Loner	PK	Sr.	6-0	200	Atlanta, Ga.
60	Barry Rice	LB	Soph.	6-1	203	Fernandina Beach
61	Chuck Elliott	LB	Sr.	6-0	195	Troy, Ohio
62	Theron Bass	LB	Soph.	5-10	200	Live Oak
64	Stan Walker	OG	Jr.	6-2	220	Tallahassee
66	Ken Hart	OG	Sr.	6-3	217	Groveland
67	Mike Bugar	DE	Sr.	5-10	206	Youngstown, Ohio
68	Larry Pendleton	OG	Sr.	6-0	212	Winter Garden
69	Tom White	DT	Soph.	6-0	238	West Palm Beach
70	Tony Sewell	OT	Jr.	6-4	228	Union Springs, Ala.
71	Harvey Zion	DT	Sr.	5-11	210	Atlanta, Ga.
72	Randy Logan	OG	Sr.	6-3	230	Seal Beach, Calif.
73	Duke Johnston	DT	Jr.	6-2	252	Ft. Lauderdale
74	Robert McEachern	DT	Soph.	6-2	219	Tallahassee
75	Billy Rhodes	OT	Sr.	6-3	240	Eustis
76	Jack Fenwick	OT	Sr.	6-4	226	Norwood, Ohio
77	Jeff Curchin	OT	Jr.	6-7	268	Ocala
78	Wayne Johnson	OT	Jr.	6-2	238	Macon, Ga.
79	Frank Vohun	DT	Jr.	6-3	225	Brooksville
80	Doug Gurr	DE	Sr.	6-0	208	Albany, Ga.
81	Jim Tyson	TE	Soph.	6-1	196	Pahokee
82	Rhett Dawson	FL	Soph.	6-1	184	Valdosta, Ga.
83	Ron Wallace	DE	Soph.	6-2	193	Macon, Ga.
84	Chip Glass	TE	Sr.	6-4	231	Tampa
85	Floyd Ratliff	DE	Sr.	6-3	195	Jesup, Ga.
86	Randy Hall	DE	Soph.	6-0	198	Miami
87	Bill Rimby	TE	Soph.	6-4	205	St. Petersburg
88	Beryl Rice	DE	Soph.	6-1	211	Fernandina Beach
89	John Richardson	PK	Jr.	6-0	205	Jacksonville

1968 WAKE FOREST FOOTBALL ROSTER

No.	Name	Pos.	Class	Ht.	Wt.	Hometown
3	Tom Gavin	DB	Jr.	5-10	170	Fayetteville, N. C.
5	Larry Russell	QB	Soph.	5-11	180	Newburyport, Mass.
7	Freddie Summers	QB	Sr.	6-1	187	Dorchester, Mass.
9	David Connors	QB	Jr.	6-1	195	New London, Conn.
10	Tom Deacon	DB	Jr.	6-1	190	Ottawa, Canada
11	Larry Pons	DB	Jr.	5-10	173	Valdese, N. C.
12	Dick Bozoian	DB	Soph.	6-0	193	Manchester, N. H.
14	Gary Williard	DB	Jr.	6-1	197	Yadkinville, N. C.
15	Terry Kuharchek	DB	Sr.	6-1	175	Tire Hill, Pa.
20	Joel Bowden	DB	Soph.	6-1	173	Liberty, N. C.
21	Randy Ward	DB	Soph.	5-11	176	Advance, N. C.
22	Jack Dolbin	IB	Jr.	5-10	184	Pottsville, Pa.
23	Jim Schubert	DB	Jr.	5-11	190	Manchester, N. H.
24	Buz Leavitt	FB	Jr.	6-0	206	Weston, Conn.
30	Jimmy Johnson	FB	Sr.	5-11	196	Lynchburg, Va.
32	Bill Angle	LB	Soph.	6-0	207	Youngstown, Ohio
34	Ken Hemphill	LB	Jr.	6-3	200	Thomasville, N. C.
35	Lee Clymer	IB	Soph.	5-10	172	Allentown, Pa.
36	Ron Jurewicz	OE	Jr.	6-0	220	Milwaukee, Wis.
40	Fred Angerman	FLK	Jr.	5-10	163	Monongahela, Pa.
41	Eddie Arrington	FLK	Sr.	5-10	160	Winston-Salem, N. C.
42	Don Kobos	FLK	Jr.	6-0	171	Salem, Mass.
43	Rick White	FLK	Sr.	6-4	215	Naperville, Ill.
44	Digit Laughridge	DB	Sr.	5-10	187	Rocky Mount, N. C.
50	Dan White	LB	Jr.	6-0	185	Charlotte, N. C.
51	Joe Dobner	C	Jr.	6-1	202	Melrose Park, Ill.
52	Steve Wilson	OG	Soph.	5-10	190	Charlotte, N. C.
53	Bill Brown	C	Jr.	6-1	204	Murfreesboro, N. C.
54	Carlyle Pate	LB	Jr.	6-1	198	Burlington, N. C.
55	John Mazalewski	LB	Jr.	6-0	210	Manchester, N. H.
56	Chick George	LB	Sr.	6-0	207	Brunswick, Ga.
57	James Pope	LB	Soph.	6-1	197	Weldon, N. C.
60	John McQueeney	DT	Sr.	6-0	213	Roslindale, Mass.
61	Vince Nedimyer	OG	Soph.	6-0	206	Altoona, Pa.
62	Howard Stanback	OG	Sr.	6-0	211	Durham, N. C.
63	Mike Magnot	DT	Soph.	6-1	210	Peckville, Pa.
64	Larry Hambrick	OG	Jr.	6-0	205	Timonium, Md.
65	Lowell Freedlund	OG	Jr.	6-1	206	Rockton, Ill.
66	Tom Jones	OG	Jr.	5-11	204	Decatur, Ga.
67	Chuck White	OT	Jr.	5-11	202	Haverhill, Mass.
68	Mike Keenan	C	Soph.	6-3	205	Newton, N. C.
69	Tom Sklutas	OT	Jr.	5-11	211	Manchester, N. H.
70	Jimmy Clack	OT	Sr.	6-4	216	Rocky Mount, N. C.
71	Lloyd Halvorson	OT	Sr.	6-0	224	McLean, Va.
72	Bill Bachovchin	OT	Soph.	6-2	202	Johnstown, Pa.
73	Ed George	DE	Jr.	6-4	245	Lynchburg, Va.
74	Dick Chulada	OT	Soph.	6-5	245	Wilkes-Barre, Pa.
75	Win Headley	DT	Soph.	6-3	230	Westport, Conn.
76	Bill Scheib	DT	Sr.	6-3	221	Leetsdale, Pa.
77	Doyster Logan	DT	Soph.	6-2	210	Reidsville, N. C.
78	Gerald McGowan	DE	Soph.	6-5	222	Dedham, Mass.
79	Ron Carter	OT	Soph.	6-3	212	Newton, N. C.
81	Chuck Floyd	DE	Soph.	6-4	200	Chatham, Va.
82	Gary Winrow	OE	Soph.	6-1	200	Naperville, Ill.
83	Al Beard	DE	Soph.	6-2	205	Fayetteville, N. C.
84	Fred Cooke	OE	Jr.	6-4	210	Salisbury, N. C.
85	Roman Wszelaki	DE	Soph.	6-5	215	So. Milwaukee, Wis.
86	Bill Stout	DT	Soph.	6-2	221	Souderton, Pa.
87	Bob Brenner	FLK	Jr.	6-3	202	Fort Lauderdale, Fla.
89	Ivey Smith	LB	Sr.	6-1	209	Farmville, N. C.

- CABLE COLOR TV IN ALL ROOMS RECEIVING NINE CHANNELS
- POOL
- Northwest corner of Campus on U.S. 90; Fla. 20 West



DRIFTWOOD

MOTEL and RESTAURANT

- AIR CONDITIONED
- DIRECT DIAL PHONES
- Se habla Espanol

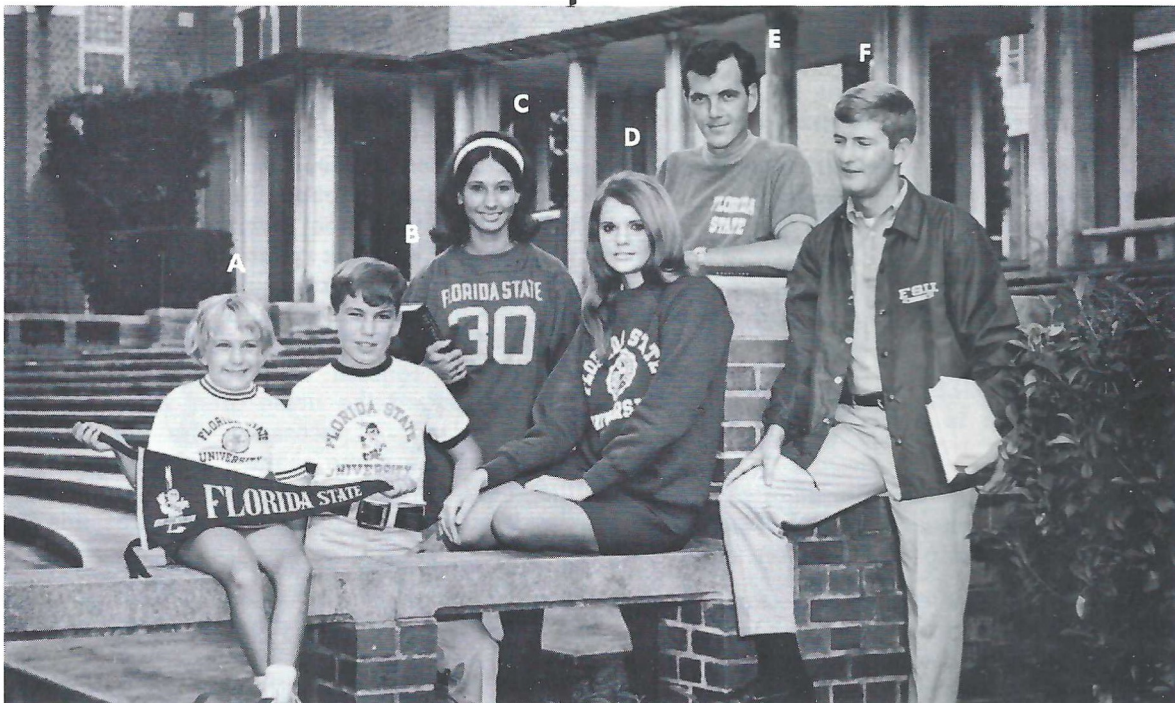
1402 W. TENN. (U.S. 90)

AMERICAN EXPRESS - DINERS - AMERICAN OIL - PHILLIPS 66 CREDIT CARDS HONORED

(904) 224-4174

Take Home a GIFT That Says FLORIDA STATE

From the *Champion* KNITWEAR LINE



C

The real McCoy. Authentic cotton football jersey with three-quarter length sleeves and double shoulder and elbow pads. School name on front and numbers on front and back.

Style P12¾ S/C (41054)
COLORS: Cardinal with Gold Trim.
SIZES: S, M, L, XL.
\$4.50

D

Heavyweight, fleece-lined sweat shirt in a Kingsized cut that Queens like too. Crew neck and raglan sleeves. Ribbed neck, cuffs and bottom.

Style CRSS (S1603)
COLORS: Loden, Maroon, Powder Blue, Buff.
SIZES: S, M, L, XL.
\$2.95

E

A new sweater shirt flare adds sparkle to the campus fashion world. Woven vertical stripes. Contrast color mock turtle collar, sleeve cuffs and bottom trim provide the color accent in setting this new stripe in motion as a star performer.

Style 7343 (T1737)
COLORS: NuBlue stripes, Whiskey stripes.
SIZES: S, M, L, XL.
\$3.95

F

THE COACH

A lightweight, two-ply Nylon winner. Snap-button front, Byron collar, draw-string bottom, and elastic cuffs. Athletic cut; extra full and long.

Style Coach (B1366)
COLORS: Navy, Maroon.
SIZES: S, M, L, XL.
\$8.95

FOR THE FUTURE SEMINOLES

A

Color-trimmed sweatshirt. Standard weight, full cut, and short raglan sleeves. Knit trim on neck and cuffs.

Style J/OLYMPIC (S1665).

SIZES: 4, 6, 8.

Style B/OLYMPIC (S1664).

SIZES: 10, 12, 14.

Colors for Both Styles: White body with Red/White/Blue trim.

\$2.00

B

T-SHIRTS

The trim is the thing in this youth version of an all-time Champion best seller. Soft, fine quality cotton with color fast trim on neck and sleeve ends.

Style TJ78 (T1753)

COLORS: White body with Dark Red.

SIZES: 2, 4, 6, 8.

Style TB78

COLORS: White body with Dark Red.

SIZES: 10, 12, 14, 16.

\$1.40

**APPEALING
GIFTS
FROM**

The University Book Store on the Campus
FLORIDA STATE UNIVERSITY—TALLAHASSEE, FLA. 32306

MAIL ORDERS WELCOME—PRICE INCLUDES POSTAGE

STADIUM INFORMATION

REST ROOMS are located on concourse and ground levels of both the east and west stands.

FIRST AID station is located at the southwest corner of the stadium opposite gate five. A registered nurse is on duty at all times.

PUBLIC TELEPHONES are located on the ground levels of the east and west stands.

PUBLIC ADDRESS will make special announcements in cases of emergency only.

DOCTORS receiving calls will be paged by number.

LOST AND FOUND items may be turned in and claimed at the ticketbooth at three under the west stands by the press box elevator.

ALCOHOLIC BEVERAGES are prohibited by state law. Your cooperation in enforcing this law is appreciated.

FIELD REGULATIONS prohibit unauthorized persons on the field during or after the game. Please leave the Stadium by the ramp and section exits.

REFRESHMENTS are available in the stands and at locations on the concourse and ground levels of the east and west stands. Established prices are: soft drinks small 15¢, large 25¢; coffee 25¢; sandwiches

35¢; hot dogs 25¢; peanuts 25¢; pop corn 25¢; cigarettes 50¢. Please pay no more.

STUDENTS, SPECTATORS!

Make **Sportsmanship** a Part of Your Game
Equipment

NOISE is a serious problem at many intercollegiate football games, and on some occasions in the past has prevented the Quarterback's signals from being heard. Such a situation may be interpreted as "interference" with the conduct of the game, and penalized. We seek your assistance in preventing excessive noise, which could cause a penalty against your team. Should unusual noise develop, the referee will call "Time-Out" and instruct the Defensive Captain to request **QUIET**, which he will do by moving toward the noise area with both arms and hands raised. If necessary, the Offensive Captain will make the same request on the opposite side of the field. We shall appreciate your respect for Sportsmanship in remaining quiet at this time.

In all games the Referee is authorized to inflict a penalty based on noise developments. Please cooperate. Don't help to draw a penalty against your team.

CHEER TO HELP, NOT TO HURT

Exciting, instructive baseball and football films available free.

See famous professional athletes show you how they do it.

Each film is in color, 16 mm and runs about 28 minutes. A terrific program for your youth group, civic club or Phys. Ed. class. With each film you get valuable instruction booklets, 36 pages of inside information and expert advice on how to stay in peak physical shape.

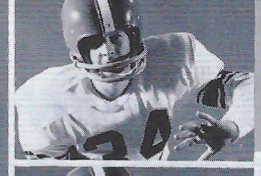
It's part of Prudential's contribution to the President's Council on Physical Fitness.

For information about a free loan of the films, contact your local Prudential office. Or write Public Relations Dept., The Prudential Insurance Company of America, P.O. Box 4579, Jacksonville, Fla. 32201.

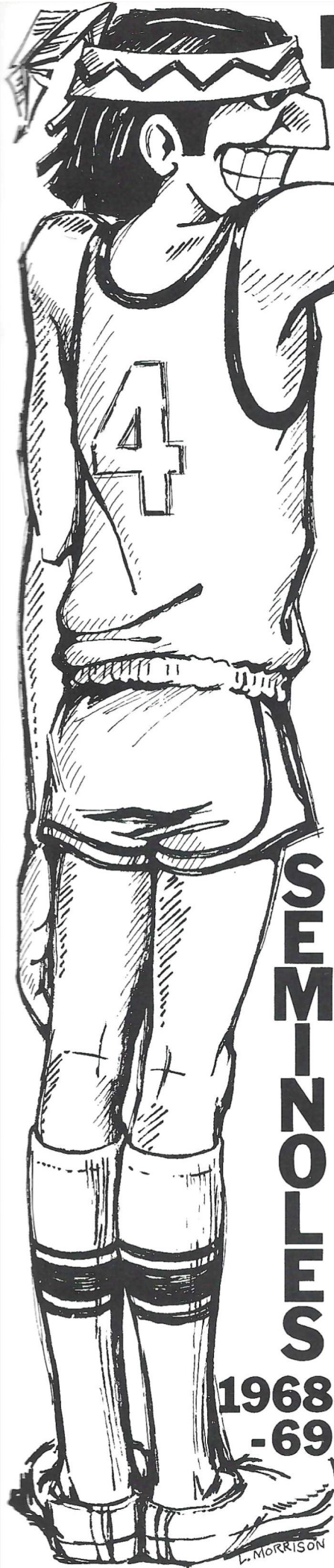


**THE PRUDENTIAL
INSURANCE COMPANY
OF AMERICA**

SOUTH-CENTRAL HOME OFFICE
JACKSONVILLE, FLORIDA



FLORIDA STATE BASKETBALL BIGGER & BETTER!



SEMINOLES

**1968
-69**

1968-69 BASKETBALL SCHEDULE

HOME GAMES

Dec. 2	Valdosta State
Dec. 21	Southern Cal.
Dec. 27	Ohio State
Dec. 30	New Hampshire
Jan. 10	Miami
Jan. 13	Kent State
Jan. 18	Tulane
Jan. 23	Hawaii
Jan. 28	South Carolina
Feb. 1	Jacksonville U.
Feb. 10	Stetson
Feb. 15	Dayton
Feb. 18	Georgia Tech

AWAY GAMES

Dec. 6-7	Florida Sunshine Classic
Dec. 14	Virginia Tech
Dec. 16	Louisville
Jan. 4	Jacksonville U.
Jan. 8	Tulane
Jan. 20	Rice
Feb. 3	Valdosta State
Feb. 7	Clemson
Feb. 8	North Carolina
Feb. 22	Georgia Tech
Feb. 27	Florida Southern
Mar. 1	Miami

Game Time: 7:30
Freshman Games: 5:30

ORDER SEASON TICKETS NOW!

Individual game tickets \$2.50 each. Season Ticket (for 13 home games) \$20.00 (save \$12.50). For group seating send orders in single envelope and mark order "group seating".

Name _____

Address _____

City and State _____ (Zip) _____

Phone-Bus _____ Home _____

Check correct group(s)

- 1967-68 season ticket holder
- Tipoff Club Member
- New Purchaser

All orders must be accompanied by check made payable to FLORIDA STATE UNIVERSITY. Mail orders to the ATHLETIC TICKET OFFICE TULLY GYM

FAVORITE OF THE BIG BRAVES!



Frisch's

THE ORIGINAL

BIG BOY

RESTAURANT

**GREAT PLACE FOR POW WOWS
AND GOOD FOOD**

SERVING:

- Breakfast
- Lunch
- Dinner
- Snacks

Open 7 A.M. to Midnight
'Til 2 A.M. Fridays and Saturdays

1775 W. Tennessee Street

TALLAHASSEE — TELEPHONE 224-1246

TRY FRISCH'S CARRY-OUT

TALQUIN ELECTRIC Cooperative, Inc.

Helping

Gadsden, Leon, Liberty
and Wakulla Counties

LIVE BETTER . . . Electrically

1968 SEMINOLE CHEERLEADERS



Front Row: Rich Chichetti, Jim Sharp, Zan Tracy. Standing Lee Clifton, Bill Reilly. On ladder Top to bottom: Cherry Hand (Head Cheerleader), Jann Berry, Karen Jalko, Charolette Baker.

**WAKULLA
SPRINGS**
14 MILES SOUTH OF TALLAHASSEE

Glass Bottom Boats

WORLD'S LARGEST AND DEEPEST SPRING

1968 SEMINOLE
CHEERLEADERS
REMINDE YOU
CHEER TO HELP
NOT TO HURT

SEMINOLE SONGS

THE ALMA MATER

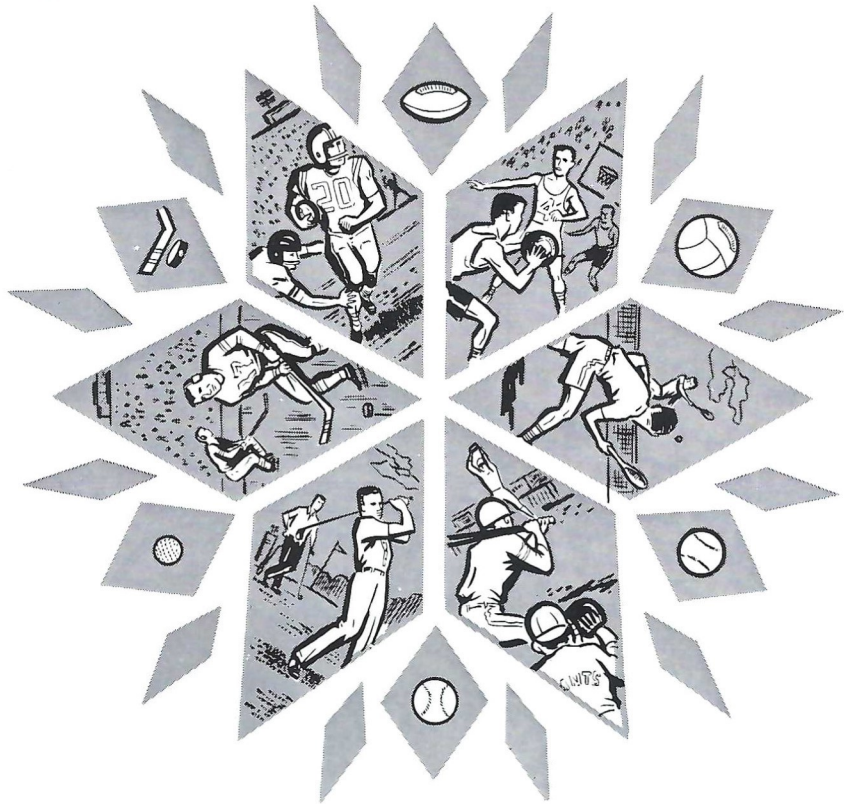
High o'er the towering pines
our voices swell
Praising these Gothic spires we
love so well;
Here sons and daughters
stand . . .
Faithful and True, Hailing our
Alma Mater
F . . . S . . . U . . .

FSU FIGHT SONG

You're going to FIGHT, FIGHT,
FIGHT for FSU
You're going to scalp 'em
Seminoles.
You're going to WIN, WIN,
WIN, WIN, WIN this game . . .
and roll on down and
make those goals!
For FSU is on the warpath now,
and at the battle's end she's
great . . .
So FIGHT, FIGHT, FIGHT, FIGHT
for victory
The Seminoles of Florida
State . . .
F-L-O-R-I-D-A S-T-A-T-E
FLORIDA STATE (3 times)
(repeat verse)

HYMN TO THE GARNET AND GOLD

Here's a hymn to the Garnet
and the Gold
Ringing to the sky.
Here's a song for our men and
women bold
Sing with heads held high.
Striving e'er to seek, to know,
Fight for victory.
Alma Mater, this, our song to
you,
Echoes FSU.

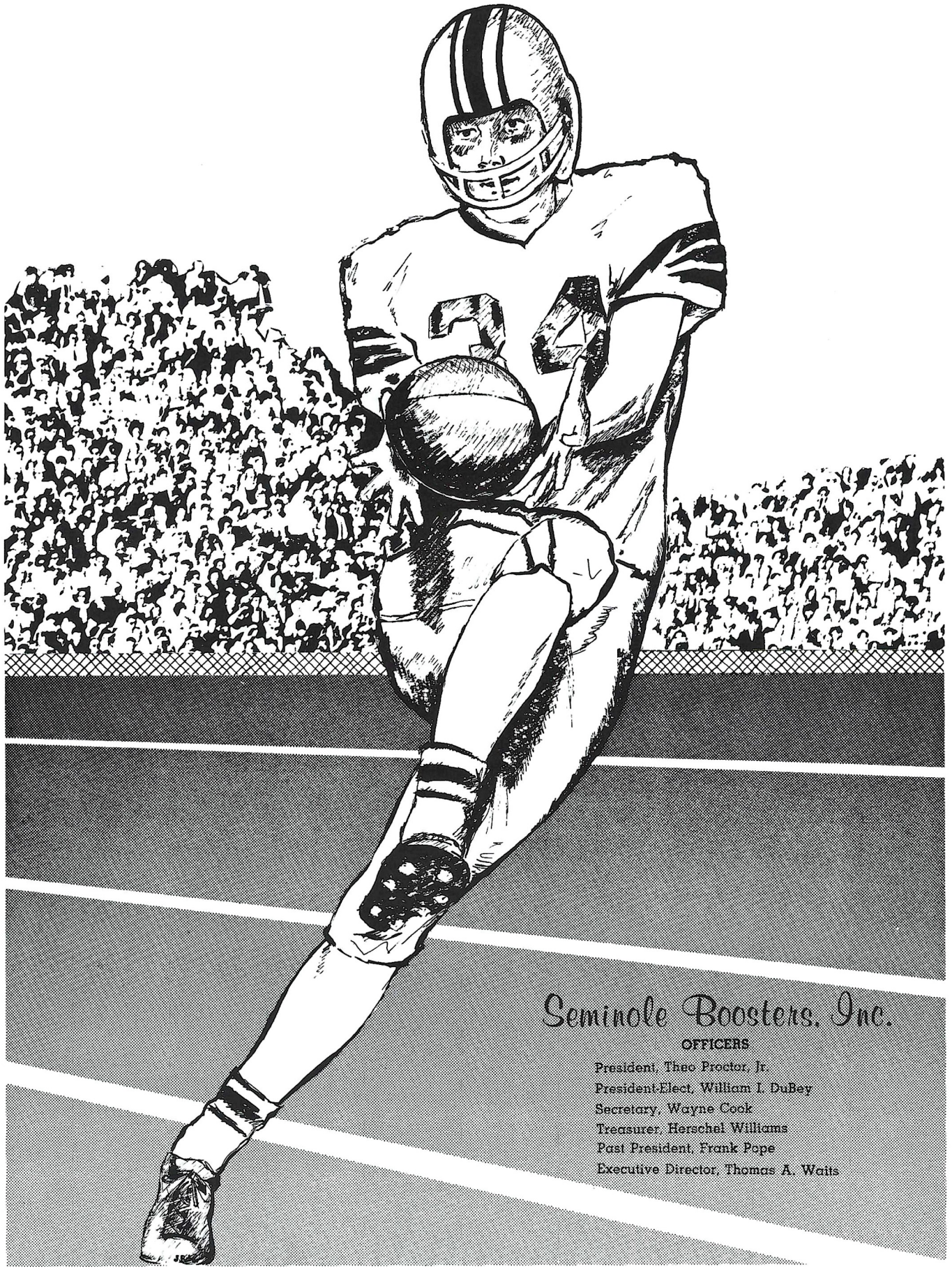


SPORTS WORLD KALEIDOSCOPE

All season long — any time of the year — the Florida Times-Union and Jacksonville Journal report, in depth, on everything in the sports world. It's that "extra margin of effort" that makes these daily sports pages so interesting and informative. That's why sports fans who like to read an accurate analysis of the team BEFORE the game, then settle down to pinpoint descriptions AFTER the game, look forward to the kind of reporting done by real pros. Be there, with us, for every piece of the action.

The Florida Times-Union
EVERY MORNING
Jacksonville Journal
WEEKDAY AFTERNOONS

ONE RIVERSIDE AVENUE • JACKSONVILLE, FLORIDA



Seminole Boosters, Inc.

OFFICERS

President, Thaco Proctor, Jr.
President-Elect, William I. DuBey
Secretary, Wayne Cook
Treasurer, Herschel Williams
Past President, Frank Pope
Executive Director, Thomas A. Waits

Support Football's Finest

Football has come of age at Florida State University and outstanding players like All America Ron Sellers have helped make this possible. As any coach will tell you, much of the secret in fielding winning teams is recruiting top-flight student-athletes.

Seminole Boosters was founded for the sole purpose of providing Coach Bill Peterson with financial support in his recruiting program. Membership in the Boosters is open to anyone with a sincere interest in Florida State's football progress. Minimum contribution

for membership is \$30.

Contributions are administered in accordance with NCAA regulations and in conjunction with the Florida State Department of Intercollegiate Athletics.

Boosters receive a colorful automobile license plate which can be used for admission to a special reserved parking lot at Campbell Stadium, a membership card, a weekly football season publication, "The Grandstand Coach," and certain priorities on season and single game football tickets.

JOIN THE BOOSTERS!

SEMINOLE BOOSTERS, INCORPORATED

FLORIDA STATE UNIVERSITY TALLAHASSEE, FLORIDA 32306

Check attached for \$ _____
 Pledge to pay \$ _____, Bill me for \$ _____;
 (TOTAL AMT.) (PAYMENTS) MONTHLY QUARTERLY OTHER _____
 (SPECIFY)

Minimum Contribution of \$30 Required for Membership Privileges.

NAME _____ DATE _____

ADDRESS _____

CITY, STATE _____ ZIP _____

Make check payable to Seminole Boosters, Inc.
 Mail To: 114 Longmire Alumni Bldg., FSU
 TALLAHASSEE, Florida 32306

ARE YOU AN F.S.U. ALUMNUS? Yes No

CONTRIBUTOR'S SIGNATURE _____



Lindy's

Fried Chicken

FRIED IN PURE VEGETABLE OIL AND TESTED TO BE 90 TO 95 % FAT FREE, SERVED TO YOU GOLDEN BROWN, TENDER AND CRISP.

SPECIAL BOX

3 pcs. chicken, F.F.,
 cole slaw & rolls 1.10

1/2 FRY CHICKEN

4 pcs. chicken, F.F.,
 cole slaw & rolls 1.35

WHOLE CHICKEN

serves 3 to 4 2.00

BUCKET'O CHICKEN

serves 5 to 7 3.75

BARREL'O CHICKEN

serves 7 to 10 5.00

1447 Thomasville Rd.
 Ph. 224-5811

OPEN 7 Days a Week
 10:00 AM-9:00 PM

PENALTIES

1. **OFFSIDE** by either team; Violation of scrimmage or free kick formation; Encroachment on neutral zone—Loss of Five Yards.
2. **ILLEGAL PROCEDURE, POSITION OR SUBSTITUTION**—Putting ball in play before Referee signals "Ready-for-play"; Failure to complete substitution before play starts; Player out of bounds when scrimmage begins; Failure to maintain proper alignment of offensive team when ball is snapped; False start or simulating start of a play; Taking more than two steps after Fair Catch is made; Player on line receiving snap—Loss of Five Yards.
3. **ILLEGAL MOTION**—Offensive player illegally in motion when ball is snapped—Loss of Five Yards.
4. **ILLEGAL SHIFT**—Failure to stop one full second following shift—Loss of Fifteen Yards.
5. **ILLEGAL RETURN** of substitute not previously disqualified—Loss of Fifteen Yards.
6. **ILLEGAL DELAY OF GAME**; Taking more than four times out during either half (except for replacement of injured player)—Loss of Five Yards. Team not ready to play at start of either half—Loss of Fifteen Yards.
7. **PERSONAL FOUL** — Tackling or blocking defensive player who has made fair catch; Piling on; Hurdling; Grasping face mask of opponent; Tackling player out of bounds, or running into player obviously out of play; Striking an opponent with fist, forearm, elbow or locked hands; Kicking or kneeling—Loss of Fifteen Yards (Flagrant offenders will be disqualified.)
8. **CLIPPING**—Loss of Fifteen Yards.
9. **ROUGHING THE KICKER** or holder—Loss of Fifteen Yards.
10. **UNSPORTSMANLIKE CONDUCT**—Violation of rules during intermission; Illegal return of suspended player; Coaching from sidelines; Invalid signal for Fair Catch; Persons illegally on field—Loss of Fifteen Yards. (Flagrant offenders will be disqualified.)
11. **ILLEGAL USE OF HANDS AND ARMS** by offensive or defensive player; Defensive holding—Loss of Fifteen Yards.
12. **INTENTIONAL GROUNDING** of forward pass—Loss of Five Yards Plus Loss of Down.
13. **ILLEGALLY PASSING OR HANDING BALL FORWARD**—Loss of Five Yards Plus Loss of Down.
14. **FORWARD PASS OR KICK CATCHING INTERFERENCE**—Interference with opportunity of player of receiving team to catch a kick—Loss of Fifteen Yards. Interference by member of offensive team with defensive player making pass interception—Loss of Fifteen Yards Plus Loss of Down. Interference by defensive team on forward pass—Passing Team's Ball at Spot of Foul and First Down.
15. **INELIGIBLE RECEIVER DOWN-FIELD ON PASS**—Loss of Fifteen Yards.
16. **BALL ILLEGALLY TOUCHED, KICKED OR BATTED**—Forward pass being touched by ineligible receiver beyond the line of scrimmage—Loss of Fifteen Yards from Spot of Preceding Down and Loss of a Down. Eligible pass receiver who goes out of bounds and later touches a forward pass—Loss of Down. Illegal touching of kicked ball within opponent's ten yard line—Touchback.
17. **PENALTY DECLINED**; Incomplete forward pass; No play or no score.
18. **CRAWLING** by runner—Loss of Five Yards. Interlocked Interference—Loss of Fifteen Yards.

WHEN YOU GET HUNGRY WHY NOT TRY SOME COLONEL SANDERS RECIPE KENTUCKY FRIED CHICKEN ©

three sizes to choose from:

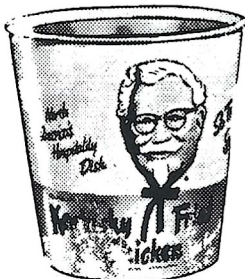
Individual Box
3 Big Pieces of Chicken,
Cole Slaw, French Fries,
Rolls, Gravy
\$1.10

Family Bucket
Serves 5 to 7
\$3.75

Barrel O' Chicken
Serves 8 to 10
\$5.00
Gravy & Rolls 5.40

Bar-B-Q Chicken Sandwich
French Fries—Jumbo Shake

60c



or if you prefer!

- Jumbo Shrimp Boxes
- Chicken Gizzard Boxes
- Filet of Fish Boxes
- Famous Home-Made Pies
- Chicken Liver Boxes

Holland's Carry Out

THREE LOCATIONS TO SERVE YOU

Take Home Service No. 1
1002 N. Monroe—224-1645

Take Home Service No. 2
1603 W. Tenn. St.—224-4313

Take Home Service No. 3
1583 Apalachee Parkway—877-7620

SEMINOLE FOOTBALL NETWORK

Handling the play-by-play for the ever-expanding Seminole Football Network will be Bo Mitchell, in his sixth season as the Seminoles' announcer.

An 18-year veteran in broadcasting, Mitchell is vice-president and station manager of WKIS in Orlando.

Dr. Don Veller, former head football coach and presently serving as the golf coach at Florida State will assist Bo with the color analysis on the Seminole Network this year.

More than 30 stations carry Florida State's 1968 season to all parts of Florida as well as Southern Georgia and Alabama. Originating station for the Seminole Football Network is WTNT in Tallahassee.



Bo Mitchell



Dr. Don Veller

THE SEMINOLE NETWORK

- | | |
|-----------------------|----------------------|
| WTNT—Tallahassee | WDSR—Lake City |
| WROD—Daytona Beach | WCOA—Pensacola |
| WPRY—Perry | WJAX—Jacksonville |
| WLAK—Lakeland | WKIS—Orlando |
| WSPE—Sarasota | WGBS—Miami |
| WCNH—Quincy | WDAE—Tampa |
| WMMB—Melbourne | WEAT—West Palm Beach |
| WPAX—Thomasville, Ga. | WSIR—Winter Haven |
| WMYR—Ft. Myers | WTRR—Sanford |
| WMOP—Ocala | WRUF—Gainesville |
| WOOO—Deland | WSBR—Boca Raton |
| WTOT—Marianna | WNOG—Naples |
| WFTW—Ft. Walton Beach | WMGA—Moultrie, Ga. |
| WAAZ—Crestview | WKMK—Blountstown |
| WFOY—St. Augustine | WJOE—Port St. Joe |

Come to Chevron Island

...and follow the SEMINOLES in '68



ON
THE
**STANDARD
OIL**
RADIO
NETWORK

WTNT
Tallahassee

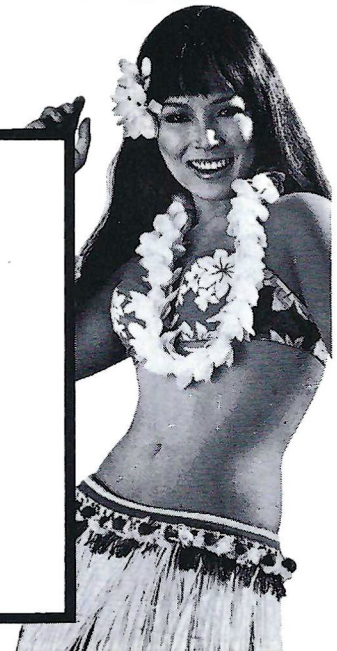
WJAX
Jacksonville

WGBS
Miami

WKIS
Orlando

WCOA
Pensacola

WDAE
Tampa



CAMP.O.TEL CORP

NORTH FLORIDA'S ONLY COMPLETE FULL TIME

CAMPER CENTER

2720 W. Tennessee St.

P. O. Box 2235 Tallahassee, Fla. 32304

Telephone 576-4545 AC 904



5 STAR RATING

Mobile Life's

HIGHEST AWARD

INVITES YOU TO VISIT OUR FACTORY AND INSPECT THE ONLY BRAND OF PICKUP CAMPER MANUFACTURED IN THE STATE OF FLORIDA THAT IS 5 STAR RATED BY MOBILE HOME JOURNAL-MOBILE LIFE MAGAZINE.

WE ARE A COMPLETE CAMPER SHOPPING CENTER—PICKUP CAMPERS, TRAVEL TRAILERS, CAMP TRAILERS. WE DISTRIBUTE FULTON FIBERGLASS MODELS PLUS OUR OWN AWARD WINNING CAMP-O-TEL. YOU SIMPLY OWE IT TO YOURSELF TO MAKE A THOROUGH COMPARISON OF QUALITY AND VALUE.

HUNTING, FISHING, VACATION ECONOMY

. . . Harvest the fun with the whole family anywhere you go with home-based comfort. Ride or sleep—cook and eat enroute—take your boat or trailer. Your Camp-O-Tel puts your family in this picture. Special jacks to load or unload your Camp-O-Tel.

National rally

free camp Vacation

National caravan club



WAKE



Dr. James R. Scales—President



FOREST



Coach Bill Tate

DEMON DEACONS



**get off the
bench, join us
at...**

Jerry's
RESTAURANTS

**445 West Tennessee St.
Tallahassee, Florida**

Wake Forest



*
*The cigar for men
that ladies love*

HAV-A-TAMPA JEWELS

WITH EXCLUSIVE BIRCHWOOD TIP

2 for 15c

or new Push-Pak of five 36c
(Plus state and local taxes, if any)



FROM HAVATAMPA-TAMPA'S LARGEST MANUFACTURER OF FINE CIGARS

Distributed by **Eli Witt Tobacco & Candy Co.**
Tallahassee, Florida

Le Roc Cocktail Lounge

Tallahassee's Finest . . .

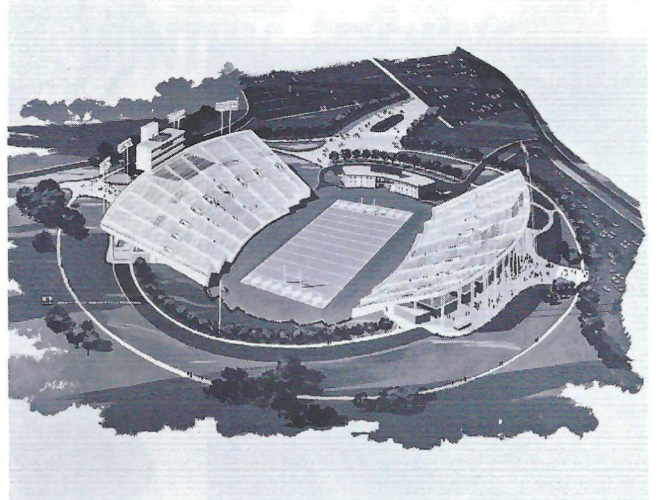
Located in the
DUVAL HOTEL

For an evening of relaxed
entertainment — enjoy your
favorite beverage

No cover charge

Entertainment nightly

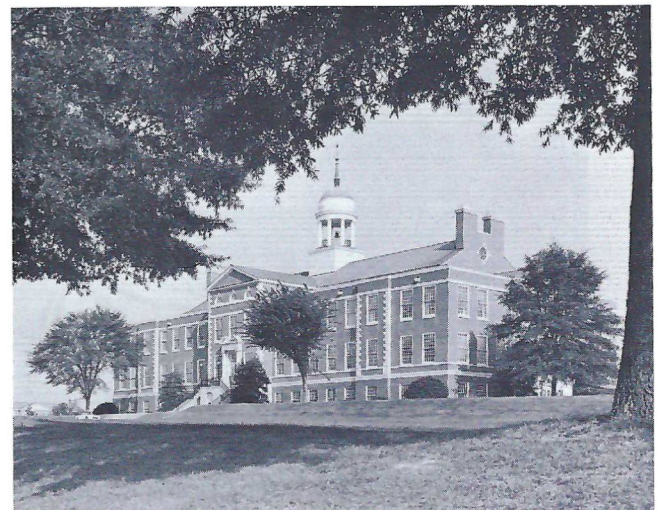
Open daily 11 A.M. to 2 A.M. — except Sunday



Groves Stadium



Wait Chapel



Z. Smith Reynolds Library

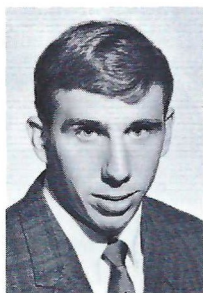
Spend less of your parents' money on weekends.

Hertz

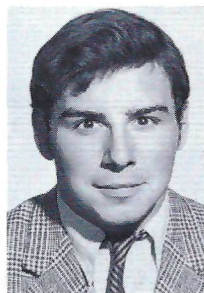


Rent a Ford Mustang or another good car from Hertz at a special low weekend rate: \$15 and 12¢ a mile including gas, oil and insurance, from noon Friday to noon Monday. To reserve a car call: 222-1686. To pick it up come to the Duval Hotel.

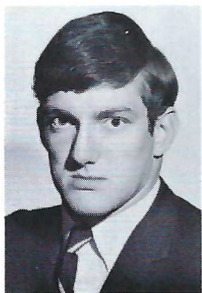
The Demon Deacons



Fred Angerman



Dick Bozoian



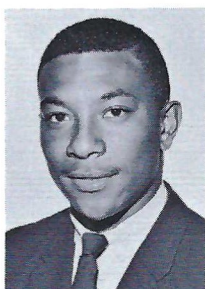
Jimmy Clack



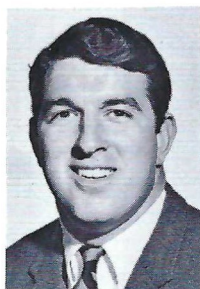
Joe Dobner



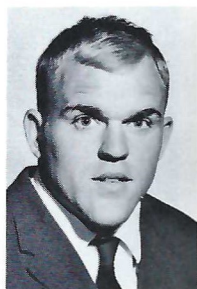
Jack Dolbin



Tom Gaven



Chick George



Ed George



Lloyd Halvorson

The Vogue

TALLAHASSEE, FLORIDA

GOOD LUCK SEMINOLES!

Varsity
THEATRE

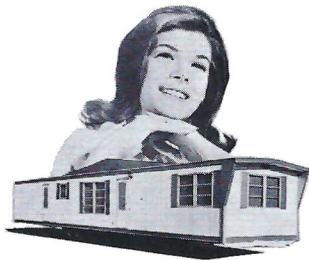
1833 W. Tennessee

Phone 224-8636

Miracle
THEATRE

Thomasville Road

Opening This Fall

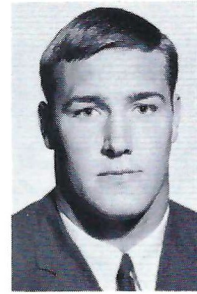


BAIRD
MOBILE HOMES
2901 Apalachee Parkway
877-4524
TALLAHASSEE

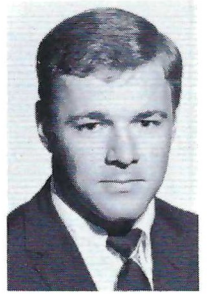
The Demon Deacons



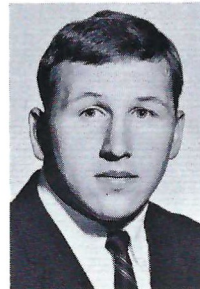
Larry Hambrick



Win Headley



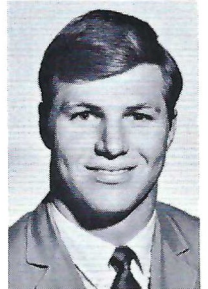
Digit Laughridge



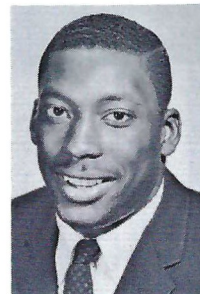
John Mazalewski



John McQueeney



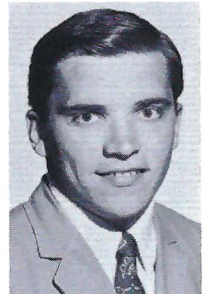
Carlyle Pate



Jimmy Johnson



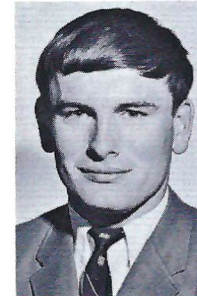
Tom Jones



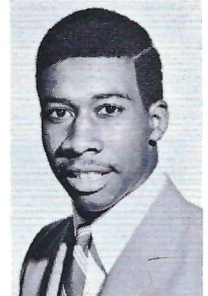
Ron Jurewicz



Howard Stanback



Ivey Smith



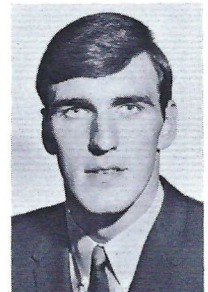
Freddie Summers



Rick White



Gary Williard



Roman Wszelaki

The mini-color portable with the maxi-color screen from RCA.



RCA engineers have pared pounds to make this a truly portable color TV—with no sacrifice in the quality of its sharp, clear 18" diag., 180-sq. in. color picture. Weighs less than some other sets with smaller screens. Carry the Candidate home from your RCA dealer's today.

RCA

Rainey Cawthon's
700 N. MONROE • 222-1865

Yesterday

Chilly Climax To A Hot Season

*The Seminoles won the "Ice Box Bowl" to cinch an 8-0-0 record,
but the Refrigerator Bowl got a cold No.*

It was cold in Tallahassee on Nov. 25, 1950—colder than the Florida Chamber of Commerce likes to admit. The temperature at game time was anywhere from 12 to 28 degrees depending on your source.

From the old water tower that overlooked the brand new Campbell Stadium turf, huge icicles captured nearly as much attention as the players on the field.

Florida State played Tampa that day in what one fellow termed "the ice box bowl."

"If we had any sense at all, we would have called the game off," says former Seminole Coach Don Veller, looking back on it all.

"There were more people watching the game from their cars parked around the end zones than there were in the stands. The pressbox at that time was not heated, and those few hearty souls that sat up there with all that wind had to borrow some of the team's warm ups to survive."

While the day may have been on the chilly side, the game certainly was not. Tampa had its fires stoked. A year earlier the Seminoles downed the Spartans, 34-7, to gain a berth in the Cigar Bowl.

The visitors, looking for revenge, were anxious to spoil the Seminoles perfect record.

A Mike Sellers' plunge and a Nelson Italiano to Harry Bringger pass gave the Seminoles a 13-7 halftime lead. However, early in the third period Tampa tied it up.

On the second play of the final period Italiano and Bringger teamed up again to put the Tribe out front. In quick succession the

Seminoles hit for two more scores before the Spartans could recover.

The final of that wild, frozen contest was 35-19 and Florida State became the only college team in the state other than Florida A&M to record an undefeated year.

Coincidentally, the biggest challenge to the Tribe's unbeaten record came in that same year

when Miami went through its regular season undefeated (9-0-1). But the Hurricanes lost to Clemson in the Orange Bowl 15-14.

The Seminoles received several bowl invitations, but turned them all down. One of the offers was from the Evansville, Ind., "Refrigerator Bowl." The squad figured one frozen game a year was enough.

Five For Five: Perfection From Within



Italiano



Bringger

No one is really sure when Florida State quarterback Nelson Italiano first decided that Harry Bringger would make a good target for his passes, or for that matter why—they only wish he had started throwing to him a little earlier in the season.

The 1950 Seminoles were primarily noted for their undefeated, 8-0-0, season, but that club also boasted a passing combination with a record that will rival any.

Five games had gone by in the 1950 season before Italiano called Bringger's number on the last play of the first half of the Stetson game. The Seminoles were leading 14-7 at the time and they had the ball on their own 43. The pass was good for 53 yards and a touchdown.

During the second half Italiano

passed Bringger by in favor of other receivers. But a week later he tried Bringger early in the first period. This time the play covered 76 yards and six points. That effort apparently spurred Italiano to try his new found batterymate again, because in the second quarter the duo hooked up again for a touchdown.

There was just one game left in the season now, but Italiano and Bringger were determined to make the most of it. In the first half they connected on a 27-yard scoring play. Then in the fourth period with the game tied and the Tribe's perfect season in jeopardy, Italiano was tempted to try the magic touch just one more time.

A betting man would have warned against it—already they had pushed the odds, but Italiano went through with it. The result was another touchdown and momentum enough to carry the Seminoles to a 35-13 win and a perfect year.

As difficult as it may seem those are the only five passes Italiano threw to Bringger all year. They were also the only receptions Bringger recorded all season. Italiano was not quite that finicky—he threw three TD passes to other teammates.

FLORIDA STATE UNIVERSITY

DEPARTMENT OF INTERCOLLEGIATE ATHLETICS

Salutes



DR. MARY V. ALEXANDER
Associate Professor, Physical
Education and Recreation



DR. MASON LADD
Dean, College of Law



DR. COYLE MOORE
Professor, School of Social Welfare

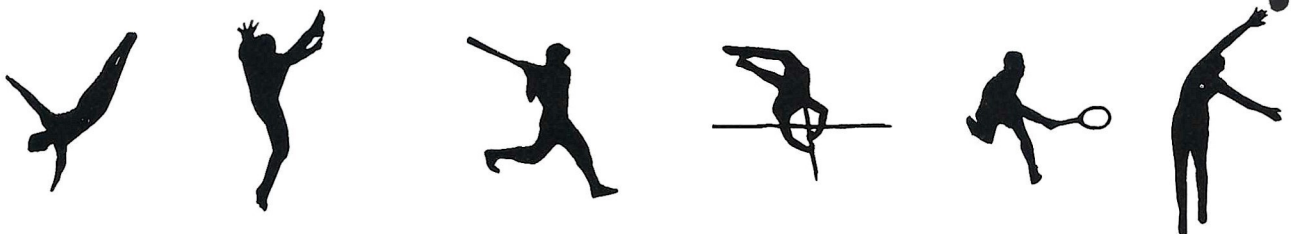


DR. MODE L. STONE
Professor, School of Education

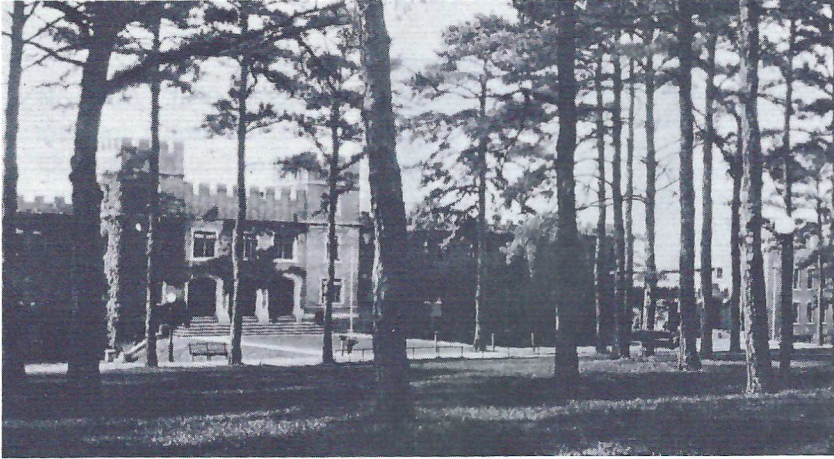
In appreciation of their untiring interest in building a stronger athletic program at Florida State, the Athletic Department salutes these four members of the University Faculty, who have just retired from the Athletic Board.

Their dedication and persistent effort have helped Florida State attain a high and proper place in intercollegiate athletic circles.

For your contributions, we salute you.



Focus On 1918



Bryan Hall



Arthur "Pie" Williams

This year's honor class graduated in one of the most stormy years of American history—1918. As a gesture of patriotism the members of that class decided against having an annual. Along with their older sisters of the Class of 1916, the 1918 graduates donated one of Tallahassee's most familiar landmarks, the Westcott Gates. Arthur "Pie" Williams was a favorite professor of the 1918 class.



The Westcott Gates



The Gymnasium

Reunion Classes and Their Presidents

HONOR CLASS—1918

Mrs. J. Edward Martin

Class	President
1921	Mrs. R. C. Sharpe
1923	Mrs. Ralph J. Bennett
1939	Mrs. H. G. Hutchinson, Jr.
1940	Mrs. J. C. Crichton
1958	William B. Weaver
1959	Philip J. Knight
1960	Mattox Hair
1961	Carl H. Butler, III
1968	Bruce B. Blackwell

1950 Football Team

(First Undefeated Team)

Duke Maltby, Captain

The Florida University Alumni Association Board of Directors

Welcomes All Alumni Back to Campus . . .

OFFICERS

GORDON D. GASTER
West Palm Beach, Florida
President

MELVIN L. POPE, JR.
Tallahassee, Florida
President-Elect

MRS. CARROLL F. BROWN
Ocala, Florida
Secretary

JAMES R. CRABTREE
Pensacola, Florida
Treasurer

SENATOR MALLORY E. HORNE
Tallahassee, Florida
Immediate Past President

THOMAS A. WAITS
Tallahassee, Florida
Executive Director

DIRECTORS

AUTHUR E. HEIMPEL, JR.
St. Petersburg, Florida
District I

THOMAS W. DONOVAN
Jacksonville, Florida
District II

D. L. MIDDLEBROOKS, JR.
Pensacola, Florida
District III

JUDGE DONALD E. STONE
Coral Gables, Florida
District IV

WILLIAM S. BYERS
Altamonte Springs, Florida
District V

ARTHUR H. BOUGAE
West Palm Beach, Florida
District VI

(VACANT)
District VII

MRS. JAMES E. CLAYTON
Gainesville, Florida
District VIII

JAMES E. JOANOS
Tallahassee, Florida
District IX

ROBERT G. OLIVE
Winter Haven, Florida
District X

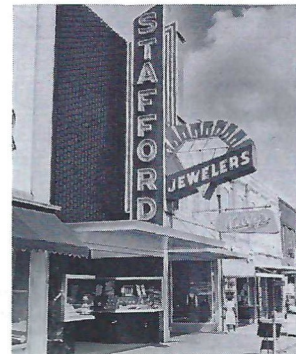
FLOYD D. JORDAN, JR.
Atlanta, Georgia
Out-of-State

DR. JAMES D. BOOTH
Orlando, Florida
At Large

ROBERT F. WAITS
Jacksonville, Florida
At Large

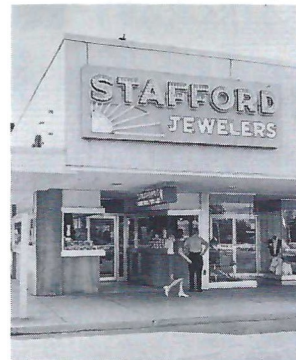
Let's Go Seminoles

From the friendly folks
at STAFFORD JEWELERS



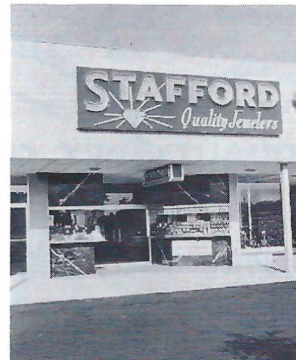
DOWNTOWN

Vernon Stevens, Manager



PARKWAY

Amos Stevens, Manager



THOMASVILLE, GEORGIA

Nathan Braswell, Manager

STAFFORD
Quality Jewelers

Now with three fine stores
for your
shopping convenience

Learn to Fly at Seminole Flying Service, Inc.

Municipal Airport

Phone 576-5151

Tallahassee, Fla.

- STUDENT CLUBS
- AIRPLANE RIDES
- FLIGHT INSTRUCTION
- AERIAL PHOTOGRAPHY
- CHARTER FLIGHTS
- AIRCRAFT RENTAL

FLY the best—A New Cessna

"Look up—a new CESSNA will be overhead"

DIRECTORY OF 1968 PROGRAM ADVERTISERS

FIRM	LOCATION
ABC Mobile Homes	17
Army ROTC	21
Baird Mobile Homes	42
Big B Cleaners	22
Bill Peacock Chevrolet	48
Bennetts Drugs	10
Camp O Tel	38
Chevrolet	Back Cover
Chrysler Corp.	BCS
Clark Electric	10
Coca Cola	24-25
Dolime	15
Driftwood	27-28
Eli Witt Tobacco	40
Florida Times-Union	33
Frisch's	31
Frosty Morn	Inside Front Cover
Globe Cleaners	12
Hertz	41
Holiday Inn	6
Holland's	36
Honda	30
Jerry's	59
Joby's Seafood	18
LeRoc	40
Lindy's	35
Longines	2
McDonalds	Inside Back Cover
Midyette-Moor	14
Miller Chevrolet	14
Morrison's	16
Oldsmobile	FCS
Owens, Inc.	18
Phisohex	50
Prudential	48
Quality Cleaners	48
Rainey Cawthon—RCA	43
Seminole Flying Service	48
Silver Slipper	Inside Back Cover
Sinclair	11
Southern Electric	16
Southernair—Skyline	17
Sperry Rand	8
Stafford Jewelry	46
Standard Oil	37
Sweet Shop	13
Tallahassee Auto Dealers	19
Tallahassee Camera	22
Tallahassee Travel & Tours	13
Talquin Electric	32
University Bookstore	29
Varsity Theatre	42
Vogue	41
Wakulla Springs	32

Stadium Ambulance Service courtesy of Bevis Funeral Home

QUALITY CLEANERS

215 W. COLLEGE AVE.—DIAL 222-5097

ONE DAY SERVICE

QUALITY DRY CLEANING

PICK-UP and DELIVERY

One Day Shirt Service

Quality Laundry Work

Fluff Dry Service



BILL PEACOCK CHEVROLET, INC.

300 West Washington St.
MONTICELLO, FLORIDA

We *Might* not be the biggest and we *Might* not be the best, although we leave this open for question, with your continued patronage and our dedication to serve we feel sure that we're well on the way to being both.

Growing With the Seminoles!

TALLAHASSEE

Phone 224-8827

MONTICELLO

Phone 997-2513

FOOD FOR FUN!

While you're waiting for the kick-off, live it up with delicious fun food from McDonald's on West Tennessee Street near Seminole Country. Four speedy service windows and extra crewmen for the games guarantee you a quick pick-up for hot, wholesome food to go . . . or eat on the patio.



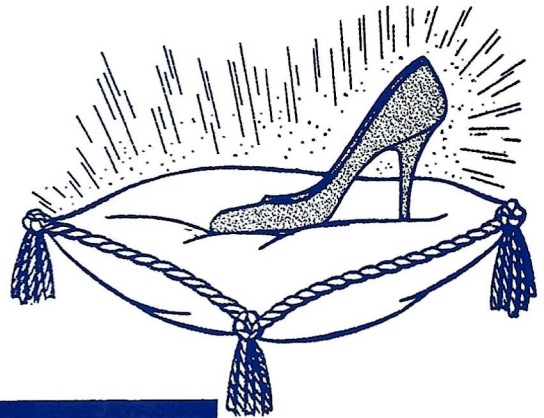
©McDonald's Corp. 1968

McDonald's is your kind of place.™

1701 W. Tennessee Street near Seminole Country

Tallahassee's Most Exclusive
Steak House

the Silver Slipper



RESTAURANT

DELICIOUS CHARCOAL BROILED STEAKS

SEA FOODS CHICKEN

25 PRIVATE DINING ROOMS — BANQUET ROOM SEATING 100

CALL JIMMIE OR CHRIS
KALFAS FOR RESERVATIONS
FOR PRIVATE PARTIES
AND BANQUETS

224-1266

OPEN 5 P.M. TILL 11:30
OPEN EVERYDAY & SUNDAY

2000 S. MONROE • One Mile From Capitol On So. Monroe St. U.S. 319 S.
BEHIND S.&S. PACKAGE STORE



Z/28 Camaro



Putting you first vaaarrrrrrroooooooooommm

keeps us first.



*Special offer from the Chevrolet Sports Art Collection:
18" x 24" prints of four Arthur Friberg paintings
portraying the 100 years of college football:
(1) The First Game; (2) Knute Rockne—The Coach;*

*(3) Howell to Hutson—The Passing Game; (4) O.J. Runs for Daylight.
Send \$3.00 in cash, check or money order to L. G. Balfour
Company, P.O. Box 11608. Salt Lake City, Utah 84111.*