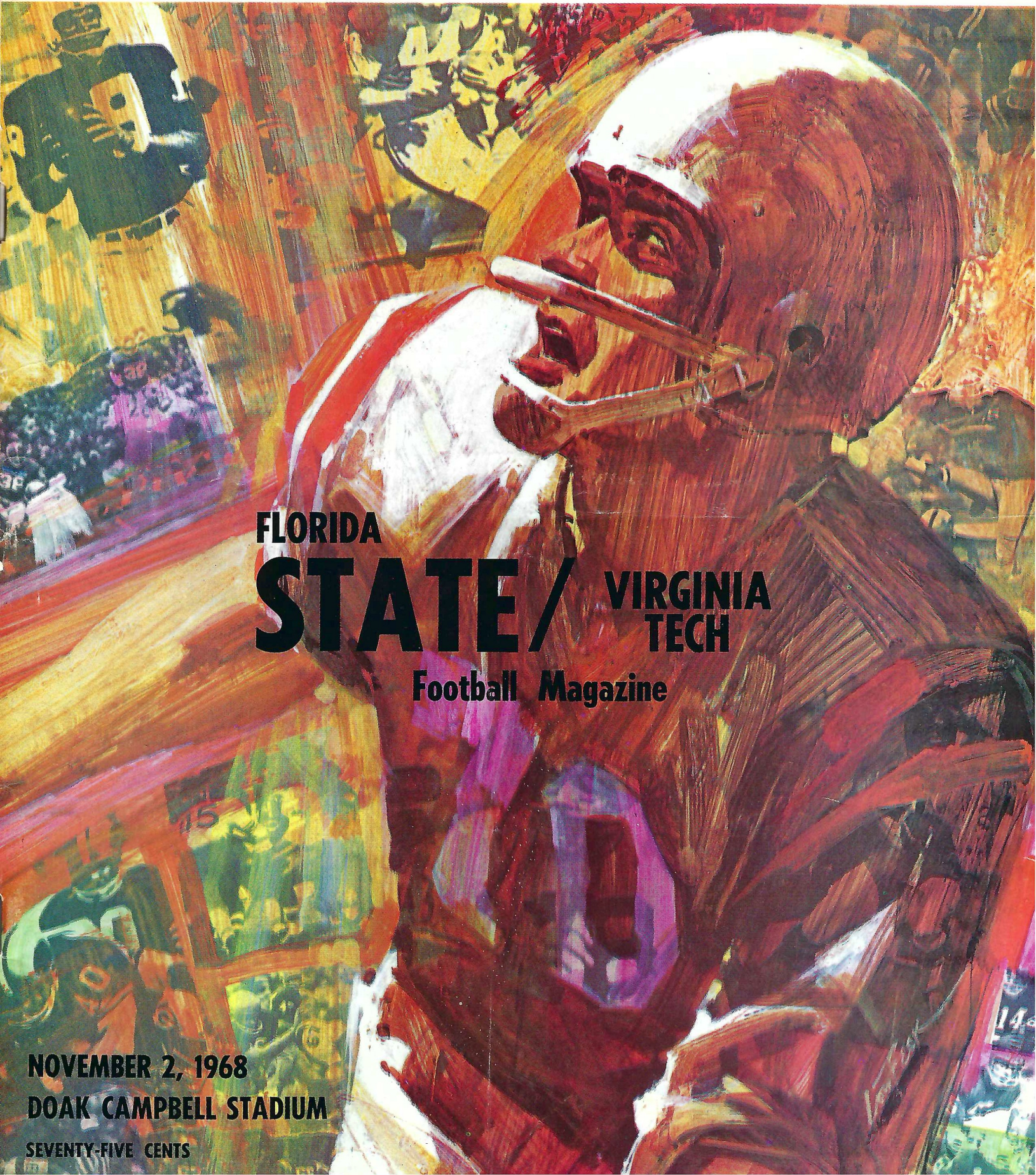


**THE
COLLEGE
GAME**

Seminole Players Score
Academic First Downs p. 4



**FLORIDA
STATE / VIRGINIA
TECH**

Football Magazine

**NOVEMBER 2, 1968
DOAK CAMPBELL STADIUM
SEVENTY-FIVE CENTS**



HAMS • BACON • SAUSAGE • WIENERS

FROSTY MORN MEATS

TONIGHT

by Hank Schomber

Big Game?

"They're all big," Coach Bill Peterson will tell you. And he is right.

But you can believe that the Seminoles would like to win tonight just a little more than usual.

Halloween is usually a time for ghouls, goblins and the such, but for the Seminoles over the past few years it has also been a time for the Gobblers and their bag of tricks.

This is the oldest of Florida State's current series, dating back to 1955. There have been 12 games, with each side showing, six wins.

The Hokies' bag of tricks have never proven too much of a treat for the Seminoles, who have not been on top of the series since 1962.

The Techmen won the first two games, and the Tribe the next three—the longest win skein yet put together. The teams traded wins the next two times out. Then VPI went on top with two straight wins. Since 1964, the clubs have traded wins each year.

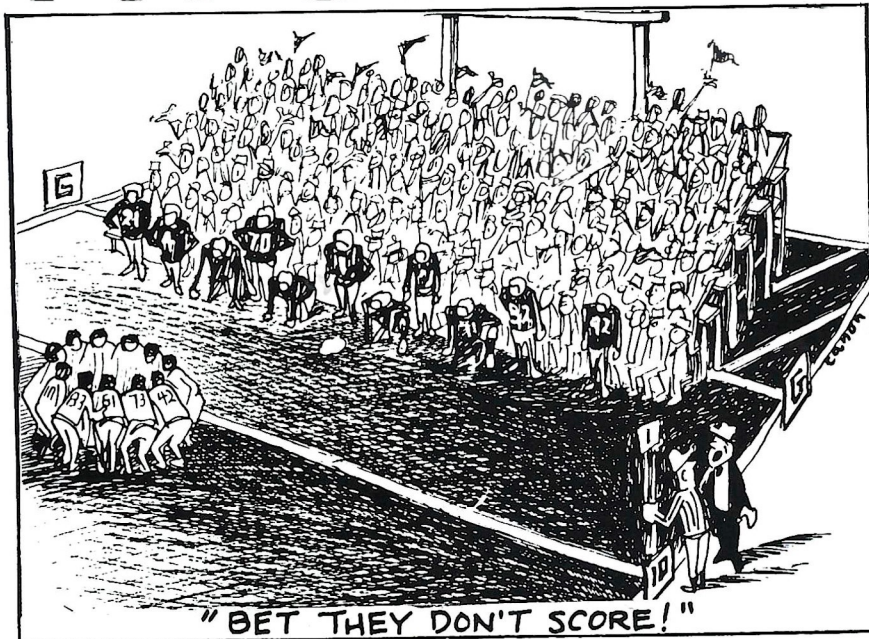
If a team has ever had a nemesis, Tech would have to be the one for the Tribe. The Gobblers were the only team to defeat the Seminoles' 1964 Gator Bowl Champions, and then in 1966 upset the Tribe 23-21 on a regionally televised game.

Last year the Seminoles won 38-15 which was the most one-sided game of the series, as well as being the largest number of points scored by a winning club.

This year they would like to repeat the victory to get back on top of the Gobblers.

You'll have to excuse the players and coaches then if they tend to think that this one is just a little bigger than the Seminoles' other "big games."

NEXT WEEK: The Seminoles take to the road for the first of a two game road trip. The destination is Mississippi State. The Bulldogs had yet to win a game going into this week's encounter with Alabama, but have been surprisingly strong in several games. The following week the Tribe journeys to Raleigh, N.C. and a game with North Carolina State, a team that beat the Tribe 20-10 last year in Tallahassee. Florida State's next home game is Nov. 23, against Wake Forest at Homecoming.



VIRGINIA TECH Scouting Report

November 2, 1968

Kickoff 7:30 p.m.

Location: Blacksburg, Va.

Enrollment: 10,200

Nickname: Gobblers, Techmen, Hokies

Colors: Orange and Maroon

Band: Highy Tighties

Stadium: Lane Stadium (35,000)

1967 Record: 7-3

Series: Tied, six games each

1967 score: 38-15, Florida State

VIRGINIA TECH was founded in 1872 as the land grant university of the state. Located in the Alleghany Mountains, the University is 38 miles west of Roanoke at an altitude of 2100-feet. Under the direction of President T. Marshall Hahn, Jr., the University continues to grow. Its divisions and schools include, Graduate, Research, Arts and Sciences, Engineering, Home Economics, Architecture and Business. Virginia Tech also has a large, spirited ROTC Cadet corps.

THE GOBBLERS are on the rebound. 1968 was billed as Head Coach Jerry Claiborne's (seven years, 45-24-1) "biggest rebuilding job in five years." Biggest question mark was the interior offensive line where only two veterans returned.

The defensive front was also in doubt with just two starters back. The pieces apparently have fallen into place for the Techmen, however, as evidenced by last week's 27-12 win over a strong West Virginia squad. The offensive backfield from last year's 7-3 team returned intact. Quarterbacking chores are handled by junior Al Kincaid, a good passer and team leader. Running game is built around tailback Terry Smoot. All-American Frank Loria is gone from the secondary, but is still tough with pass theft artist (nine interceptions in 1967) Ron Davidson and Frank Beamer back. Sophomore John Simcsak takes over all the kicking chores, but he should be a seasoned performer by the encounter with the Seminoles.

1968 RESULTS AND SCHEDULE

7	Alabama	14
12	William & Mary	0
19	Kansas State	34
7	Wake Forest	6
8	Miami	13
27	West Virginia	12
Nov. 2	at FLORIDA STATE	
Nov. 9	Richmond	
Nov. 16	at S. Carolina	
Nov. 28	VMI	

OFFICIAL WATCH FOR THIS GAME



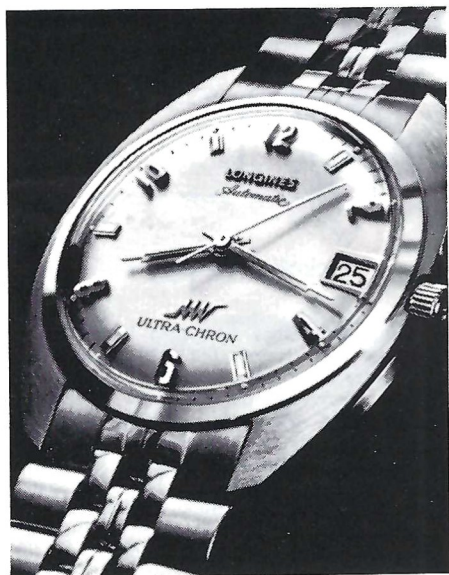
LONGINES

THE WORLD'S
MOST HONORED
WATCH®

10 world's fair grand prizes
28 gold medals



Longines watches are recognized as OFFICIAL for timing world championships and Olympic sports in all fields throughout the world.



Longines Ultra-Chron #8205, automatic with calendar, \$175.
Other Ultra-Chron Models, \$115 to \$595.

the fabulous, new LONGINES ULTRA-CHRON®

Guaranteed Accurate To A Minute A Month*

The ultimate personal chronometer, guaranteed accurate to a minute a month—a mean average of 2 seconds per day. Ultra-Chron tells the date, hour, minute, second. Never needs batteries. Winds automatically while you wear it. All Proof® construction defeats water, dust, shock, magnetism. At Longines-Wittnauer Franchised Jewelers, coast-to-coast.

*Your Longines-Wittnauer Franchised Jeweler will adjust your Ultra-Chron to this accuracy, if necessary. Guarantee is for one year.

LONGINES-WITTAUER WATCH CO.
NEW YORK • MONTREAL • GENEVA
Maker of Watches Of The Highest Character
For Over A Century

FLORIDA STATE / VIRGINIA TECH


Football Magazine

Vol. XXII

November 2, 1968

No. 4

In This Issue . . .

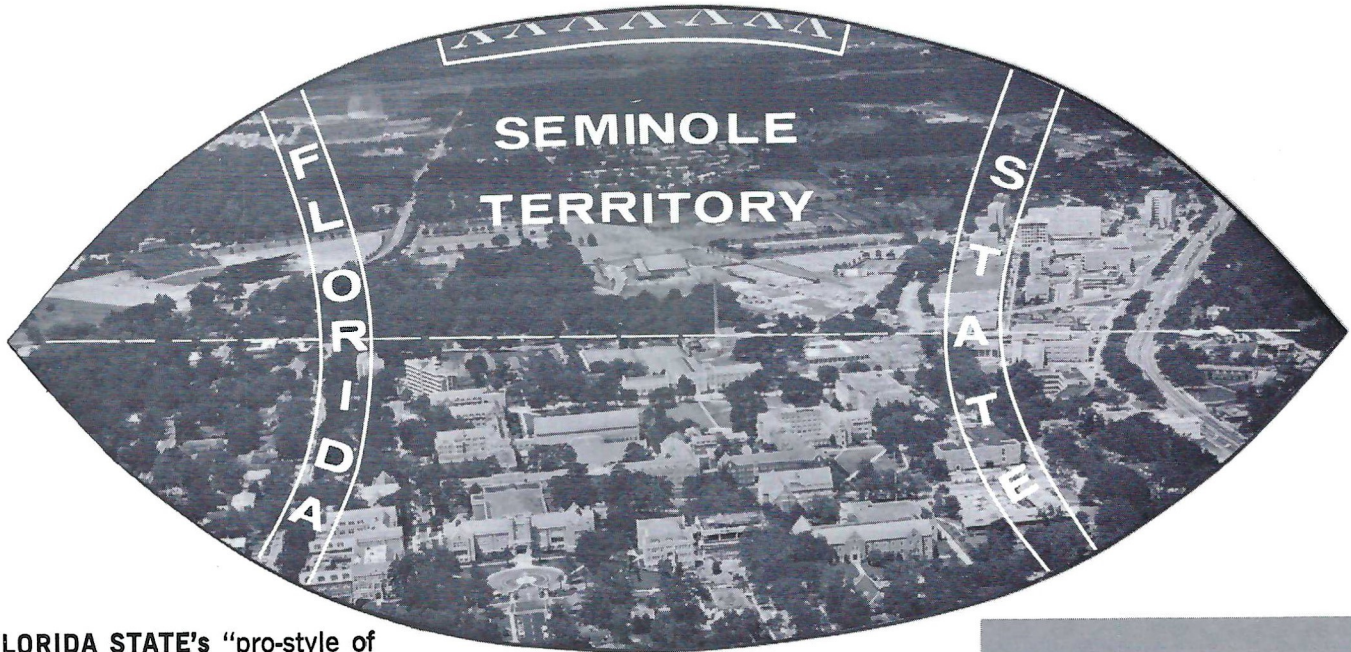
	Florida State University	3
	Progress Is A Matter of People	4
	State and University Officials	6
	Sure Hands McColl	9
	Tonight's Halftime	10
	Officials Signals	11
	Head Coach Bill Peterson	12
	The Football Family	13
	1968 Seminoles	14
	Tonight's Game	21
	Stat Facts	22
	Rosters	25
	Flip Card	27
	Stadium Information	30
	Seminole Basketball	31
	Seminole Cheerleaders	32
	Seminole Boosters	34
	Penalty Explanations	36
	Seminole Radio Network	37
	Virginia Tech	39
	Fundamental Football: Defensive	
	Backs and Linemen	44
	Florida State's Basketball Team	45
	Gymkana Proudly Presents Atlantis	46
	Football Play on Words	47
	Directory of Advertisers	48

Florida State Athletic Committee

Dr. Robert Earnest, Chairman, Ralph Bradley, William W. Rogers, Charles Grigg, William H. Long, John Carey, Fred W. Metzke, J. Stanley Marshall, Harold Goldstein, Charles Ehrhardt.



The Florida State Football Magazine is published by the Florida State University Department of Intercollegiate Athletics. Hank Schamber, Editor; Ken MacLean, Program Manager; Lonnie Burt, Executive Editor; Jayleen Woods, Associate Editor; Carl Haire, Associate Editor; Jack Ibach, Circulation Manager.



FLORIDA STATE's "pro-style of leadership is not limited to athletics. It permeates the 350-acre campus and characterizes the University's 41,000 alumni, 16,000 students and more than 3,000 dedicated members of the faculty and staff.

FOUNDED IN 1857, the University has grown to a complement of 10 colleges and schools, winning All-America honors both in arts and sciences as well as athletics. Moving rapidly upward in the national leagues of innovative institutions, Florida State is one of the 24 universities in this country which confers more than 100 Ph.D. degrees each year. It also has the distinction of holding one of the National Science Foundation's largest (\$4.8 million) grants for development as a "center of excellence" in four science areas—physics, statistics, psychobiology and chemistry.

AS THE WINTER HOME of the 1966 Nobel Laureate in Chemistry (Dr. Robert S. Mulliken), and as year-round headquarters for a faculty team with Nobel Prize potential, the University is one in which excellence in classroom teaching is its most important goal. Constantly experimenting with new formations in its educational teaching patterns, Florida State is preparing for a yearly enrollment of 28,000 by 1975.

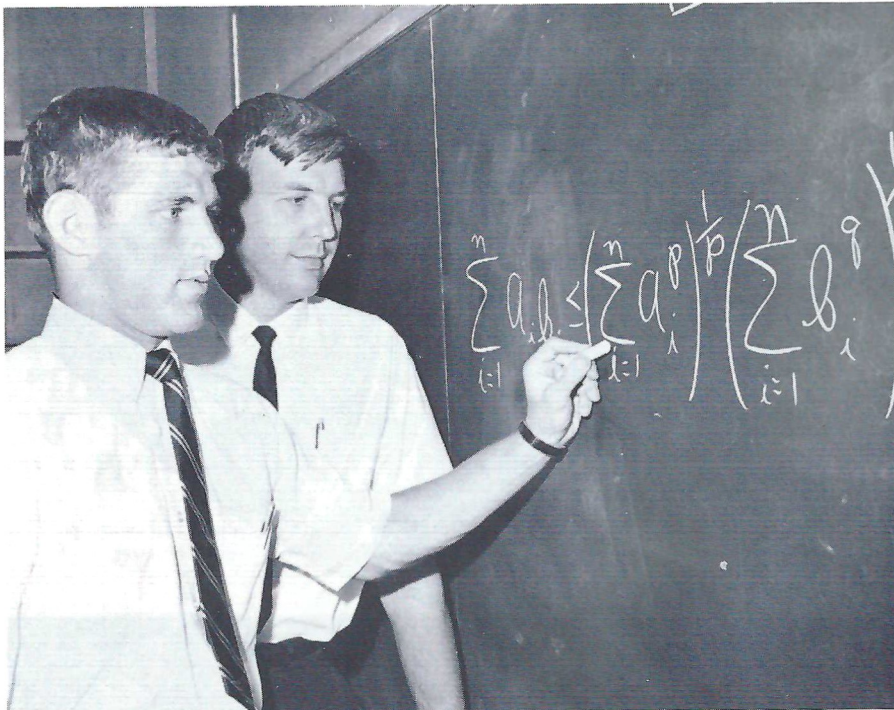
WELCOME TO FLORIDA STATE UNIVERSITY



Dr. John E. Champion
President

President John E. Champion began his fourth year as Florida State University's chief executive in June of 1968. Having served the University previously as assistant dean of the School of Business and as Vice President for Administration, the 46-year-old business administrator and educator has an extensive and exemplary background in the fields of business education and accounting.

Cited as Distinguished Alumnus of the University of Georgia's Graduate School of Business Administration, he holds the bachelor's and master's degrees from that institution and the Ph.D. from the University of Michigan. He came to Florida State in 1956, following eight years of teaching at Georgia.



John Crowe Tries A New "Chalkplay" With Dr. Carl Sikkema

FLORIDA STATE UNIVERSITY believes that "Progress Is A Matter of People," whether one is talking about athletics or academics . . . and in its 1968 football programs seeks to introduce its fans to the many people who matter in the progress of a great institution. Florida State's finest one-two combination—the student and the teacher—are featured this week. Football players team up with faculty members in fields from physical education to chemistry and achieve some envious academic records.

Seminole Players Score



Dr. Janet Wells Advises Billy Cox On His Graduate Program

OFFENSIVE END BILLY COX changed academic areas this year to start graduate school in physical education, after majoring in business as an undergraduate.

Billy, whose major professor is Dr. Janet Wells, may be a seasoned veteran on the football team; but he calls himself "just a rookie" in the physical education department.

He had always been interested in teaching, and had been in some sort of athletic program, from the YMCA to college football, ever since elementary school. Therefore, it was natural for him to choose physical education this year . . . and to achieve a 3.5 graduate grade average.



OFF THE FIELD, defensive back John Crowe leads the squad with a 3.7 overall average in the tough major of mathematics and a minor in chemistry.

John is also one of the top cadet officers in Air Force ROTC, and plans to be a pilot. Graduate work in mathematics is scheduled for either before or after the Air Force, with an eye on a career in industrial mathematics.

Football and scholastics have gone hand-in-hand for John. Because of the big-time demands of football during the season, John's need for budgeting time keeps him self-disciplined all during the rest of the year. "One thing's for sure. When you've played football here, you know how it is to work," he said.

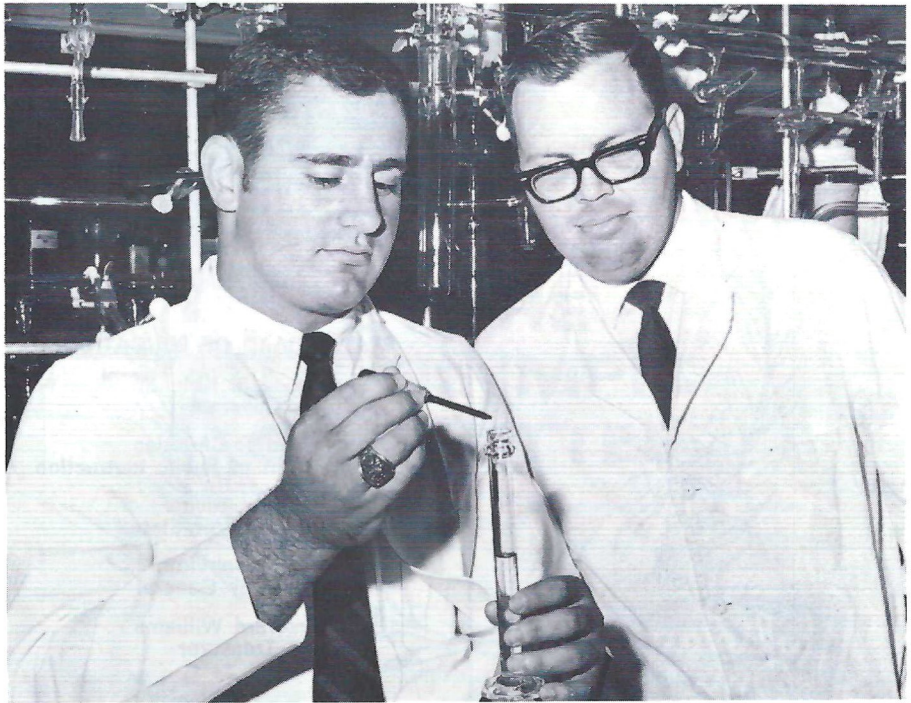
Professors can help, too, he adds. Dr. Carl D. Sikkema, one of John's math teachers, helps him work out a schedule that keeps football and his studies out of conflict, and lends a helping hand with math problems when they arise. "I spend about three hours each night studying," said John, who also manages to squeeze in a couple more hours between classes and daily five-hour practice football sessions.

BIG DEFENSIVE TACKLE Harvey Zion is counting on admission to dental school at Emory University or the Medical College of Georgia so he can follow in his father's profession.

Harvey is a senior, majoring in sociology although he has taken the rugged, pre-dental curriculum of chemistry (his minor), physics, zoology and botany. When he ran into trouble with tough chemistry problems, Harvey sought help from Dr. Thomas J. Vickers, assistant professor. "Dr. Vickers spent some long hours with me, helping to get some ideas across to me when I needed help," said Harvey.

Harvey reports he's received a lot of help from other professors who understand the demands football makes on his time—particularly during the season. "Most professors seem to understand the situation; but I had one who told us on the first day of class that intercollegiate athletics should be abolished. Needless to say, I didn't tell him I played football," he noted.

Football has helped him in college, Harvey figures. "It's shown me that to get anything worthwhile you have to work for it."



Harvey Zion Tackles Chemistry With Dr. Thomas Vickers

Academic First Downs

Progress
Is A
Matter
Of People

Dr. Homer Black And Ken Hart Bone Up On Business



STAR OFFENSIVE GUARD Ken Hart took his 3.6 undergraduate grade average out of competition with defensive back John Crowe when he entered graduate school this fall.

Ken is working on a master of accountancy degree at Florida State's School of Business, under the tutelage of Dr. Homer Black, co-author with President John E. Champion, of "Accounting in Business Decisions," one of the nation's most widely used accounting textbooks.

Ken also is considering working toward a doctorate in business if his plans work out. The Army will claim two of his years after completion of his ROTC program in 1970.



Your Host from Coast to Coast®

1302 Apalachee Parkway

Tele. 877-3141

Complete Banquet Facilities

STATE OFFICIALS

STATE BOARD OF EDUCATION

Claude R. Kirk, Jr.
Governor

Floyd T. Christian
Superintendent of Public Instruction

Tom Adams
Secretary of State

Earl Faircloth
Attorney General

Broward Williams
Treasurer



Hon. Claude R. Kirk, Jr.
GOVERNOR

UNIVERSITY OFFICIALS

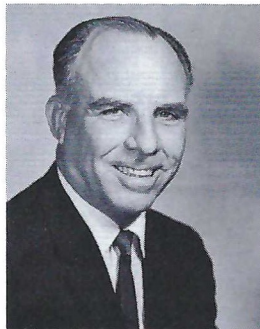


BOARD OF REGENTS—STATE UNIVERSITY SYSTEM

Members of the Board of Regents, left to right, back row: Dr. Louis C. Murray, Dr. Clarence L. Menser, Chancellor Robert B. Mautz, D. Burke Kibler, III, Julius F. Parker, Jr.; Front Row, left to right: Mrs. E. D. Pearce, Henry Kramer, Vice Chairman; Chairman Chester H. Ferguson and John C. Pace. Another Board Member, not present, was Mrs. John C. Behringer.



Tom Adams
Secretary of State



Floyd T. Christian
Supt. of Public Instr.



Earl Faircloth
Attorney General



Broward Williams
Treasurer



Doyle Conner
Comm. of Agriculture



Fred O. Dickinson, Jr.
Comptroller

FLORIDA STATE UNIVERSITY

Dr. John E. Champion
President

Dr. E. Laurence Chalmers, Jr.
Vice President for Academic Affairs

Dr. H. Odell Waldby
Vice President for Administration

John K. Arnold, Jr.
Acting VP for Student Affairs

Dr. Juanita Gibson
Executive Assistant to the President

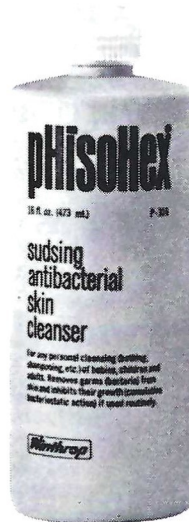
Patrick W. Hogan
Director of University Relations



**SELECTED
BY THE
U.S. OLYMPIC
COMMITTEE**

We're proud...

that pHisoHex® has been selected as the antibacterial wash to be used by the U.S. Team for the 1968 Olympic Games!



A winning athlete takes special care of his skin. Above all, he protects it against bacteria that can cause infections and lead to missed practice sessions and games.

If you've ever tried to play with an infected blister on your heel or an abscess on your finger, then you know the role of healthy skin in sports. And that's why pHisoHex is an important part of an athlete's daily health routine.

pHisoHex is America's leading liquid antibacterial skin cleanser in homes and in hospitals. Used regularly in place of soap, pHisoHex produces a superclean skin and builds up an invisible antibacterial film of hexa-

chlorophene to protect your skin against germs between washings.

And if you have problem skin, pHisoHex is often valuable. The antibacterial film it leaves on your face will ward off blemish-infecting bacteria. pHisoHex also helps to soften and wash away blackheads.

Use pHisoHex, the skin cleanser of winning athletes.

Made by Winthrop Laboratories, 90 Park Avenue, New York, N.Y. 10016. Available in drugstores in 5 oz. and 16 oz. plastic squeeze bottles.

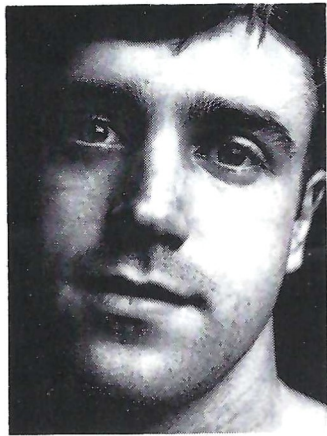


Winthrop Laboratories, New York, N.Y. 10016

Break your beard in right.

Right now your beard is in the formative stage.

You can shave it with a razor blade like your father does. And each time you do your beard will grow back a little more difficult. Until one day shaving's no longer a chore. It's an agony.



Look no further than your father's face for proof.

But fortunately, you're catching your beard at an early age. You can break it in to be just as shaveable 10 and 20 years from now as it is today.

With a REMINGTON® shaver.

And if you think the kind of shave we're selling won't be close enough for you, you're wrong.

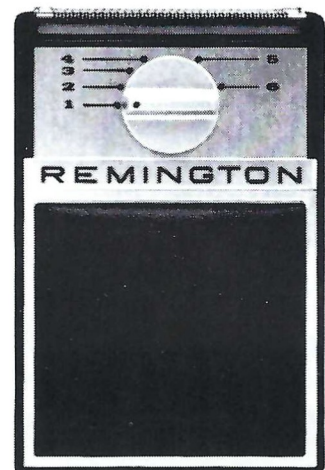
Our new blades are sharper than anything that's been in an electric shaver before. And there's a dial that lets you adjust them for your skin and beard.

What's more, you can dial a REMINGTON electric shaver into a sideburn trimmer.

Admittedly, it costs more to buy our electric shaver than a razor and some blades.

But it's a good investment.

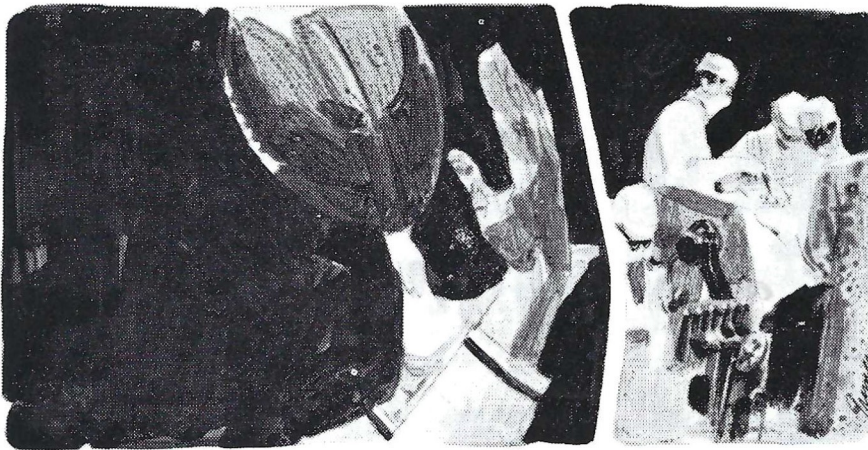
These next few years will determine how you and your beard will get along for the rest of your lives. ⁺SPERRY RAND™ ©1968, SPERRY RAND CORP.



REMINGTON
ELECTRIC SHAVER DIVISION, BRIDGEPORT, CONNECTICUT.

SURE HANDS McCOLL

by RUBE SAMUELSEN



HE HAS the surest hands I have ever seen. If he got anywhere near the football, he'd catch it to complete a pass. He was aggressive, fought like a tiger and had a tremendous desire to help others."

That was Clark Shaughnessy, the veteran coach of more than half a century, saluting Bill McColl, former Stanford football player, now Dr. William Frazer McColl, Orthopedic surgeon.

In 1950 and 1951, Dr. McColl was an All-American end at Stanford. During the next decade, he combined a pro career with intensive medical studies as well as internship. Today he has his private practice in West Covina, Calif.

But his finest achievement involved none of these things.

From 1962 to 1964, between his gridiron days and the time he tacked up his shingle, Dr. McColl served as a medical missionary in Korea, under the aegis of two Chicago Presbyterian churches. Using those same "sure" hands there, he ministered without salary to the crippled, the leprous and the deformed. He took his entire family—his wife Barbara and six children, all under the age of seven—to Taegu with him. Of deep religious conviction, the tall, husky surgeon interspersed his medical diagnosis with assurances from the Great Book.

"In a country where medicine is frustrated by tradition, prejudice and ignorance," Dr. McColl observes, **"it is difficult to function unless convinced your duty is to serve God. Until I became a medical missionary, the words of Grantland Rice hadn't struck home. As Rice emphasized, it is not whether you win or lose, but how you play that really is the essence of the way the Great Scorer expects one to live his life."**

How well Dr. McColl "played" is reflected by some of his experiences in Korea. He operated between eight and ten times a week, mostly on reconstruction cases, to correct severe physical handicaps. They concerned crippled orphans, leprosy cases and adults felled by tuberculosis of the joints. Frequently he paid the bill out of his own pocket when the patient couldn't afford the fees.

Besides surgery, Dr. McColl's other medical ministrations were many. There was the case of . . . but let him tell it:

"One day, when driving my family through a village near Sin Chun in the southern tip of Korea, I saw a group of women wailing near the roadside. Wailing is the eerie sound of the mourning for the dead which occurs in primitive cultures. I stopped our car and saw a woman holding an eight-year-old boy who was blue, frothing at the mouth and had stopped breathing. After cleansing his mouth, I started mouth-to-mouth resuscitation. Gradually the boy began to breathe. I literally had the feeling that I had brought him back from the dead. Putting the boy and his mother in the back of our car, we headed for the nearest hospital, 100 miles away."

Mrs. McColl, who worked devotedly with her husband, especially in his religious phase, tells of another experience.

"Just as we were driving out of the hospital grounds, this day," she began, "Bill saw a cute teenage girl walking with a drop foot and considerable limp. In a minute's time, he was out of the car, into the hospital and back again with a Korean doctor who could interpret for him. At Bill's request, the girl returned with her father the next day for an examina-

tion. Upon recovery after the surgery, she sent Bill a letter in her best English, telling how grateful she was to him and to God 'for the new stream of hope in my life.'"

Sure hands and a desire to help others . . .

The leprous touched Dr. McColl deeply. He puts it simply, saying: "I doubt if any group of people have given me more satisfaction in treating, or to whom Christ has meant more, than people afflicted with leprosy." Compounding the meaning is the surgeon's compassion, as well, for the homeless (in Taegu alone there are 80 orphanages), not to mention the myriad amputees, resulting from children stepping on land mines and grenades, cruel reminders of the Korean War.

While the eight McColls did not suffer hardships, comforts were in short supply. Water was rationed at times, electricity was frequently unavailable and the lack of sufficient refrigeration compelled rigid diet changes. Such items as dried squib, octopus and seaweed were among the entrees. But the McColls did have their own garden, plowed by an ox.

"Oh, for a good hamburger!" Mrs. McColl wrote, jokingly, to a friend at the time.

Appreciation of the Korean people for the six-four, 240-pound grider turned medical missionary was expressed by Kim In, Governor of Kyongsang Pukto Province, in behalf of its 4,000,000 inhabitants. Cited he: "Dr. William McColl, in promoting friendship between the peoples of the United States and the Republic of Korea, gave the joy of new life to hundreds of poor people, both physically and economically."

Upon his return in 1964, Dr. McColl was named one of the nation's ten outstanding young men under 35 by the United States Jaycees.

One of the key influences—perhaps the most significant—upon the humanitarian-grider's life was McColl's mother, obviously a most unusual person. Esther Anna McColl died last year, and her son gave a moving eulogy at her funeral. In part, Dr. McColl said:

"My mother is the only really mature person I have ever known. Greatness is determined by the things you try to do, for the people you try to serve. Maturity occurs when a man or woman becomes the person God intended them to be. My mother was both great and mature. Within limits of her strength, she thought only of how she could serve. I'm glad that I realized this. She rejoiced in the accomplishments and good fortune of those about her, with even more enthusiasm than in any of her own."

Like mother, like son.

Electrical Contractors

- INDUSTRIAL
- COMMERCIAL



Licensed & Bonded

J. B. CLARK,
President

LEE H. TOWNSEND,
Vice President

576-3727

IF NO ANSWER DIAL 385-4030

CLARK ELECTRIC CO.
OF FLORIDA

1133 Kissimmee St.
TALLAHASSEE, FLORIDA

BENNETT'S DISCOUNT DRUG STORE

- Prescriptions
- Cameras
- Sundries
 - Gifts
 - Fountain
 - Cafe
 - Cosmetics
 - Drugs

MEET ME AT BENNETT'S

BEFORE AND AFTER THE GAME!

Corner Monroe and College Streets

Phone 222-8980 — 222-4450

Music at Halftime

Virginia Tech vs. FSU

November 2, 1968

The Florida State University School of Music

Dr. Wiley Housewright, Dean

presents

THE MARCHING CHIEFS

Robert T. Braunagel, Director of Bands
Charles Carter, Ass't Director and Arranger
Alvin Wardle, Assistant Director

Herschel Beazley, Drum Major
Kathy Smith, Head Majorette
Will Shurley, Solo Twirler

Music

Fanfare
Hard Days Night
She Loves You

Good day Sunshine
A Little Help from my Friend

All My Lovin
Sgt. Peppers Lonely Hearts
Club Band

Yellow Submarine
Magical Mystery Tour

Medley
Norweigen Wood
When I'm 64

Yesterday

Formation

Company Front moving into Diamond. The chiefs salute the music of the Beatles forming patterns of circles and designs to suggest the spirit of the music.

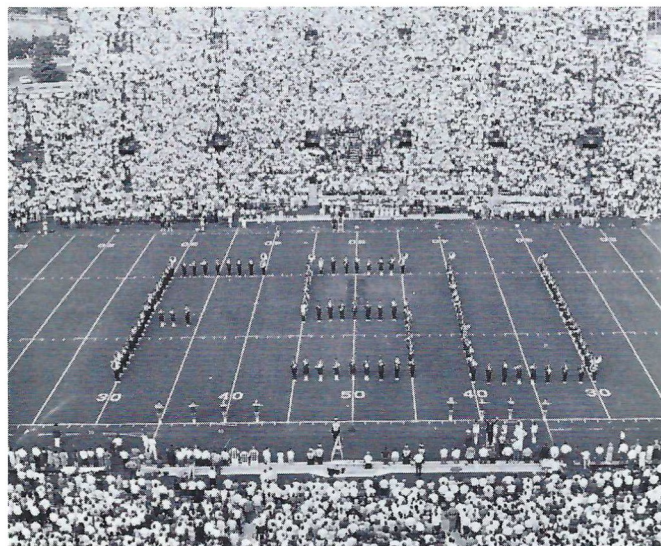
Circles—Continuous moving patterns of Circles

Patterns in Designs—we feature the majorettes

Changing Patterns in Design—as we feature one of our majorettes, Bev Dobbins, in a dance interpretation of Magical Mystery Tour.

Concert Formation—Taking an unusual Jazz Waltz setting of Norweigen Wood and a concert version of When I'm 64

Beatles—We close our salute to the Beatles with "Yesterday".





Illegal Use of Hands & Arms



Ball Illegally Touched, Kicked or Batted



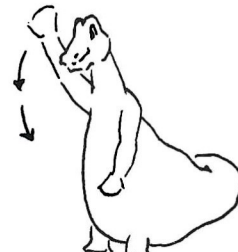
Touchdown or Field Goal



Forward Pass or Kick Catching Interference



Personal Foul (Tripping, hurdling, tackling out of bounds)



Ball Ready-for-Play



Ball Dead; If Hand is Moved from Side to Side: Touchback



Crawling, Helping the Runner or Interlocked Interference



RAGANS and ROBERTS TIRE COMPANY



Big Bend's Largest Goodyear & Sinclair Dealer

James W. Ragans — OWNERS — Eli P. Roberts

Complete Service Department
Including Front End and Brake Rebuilding
Tires - Batteries - Accessories - Toys
— Philco Appliances —
— USE OUR BUDGET PLAN —

Fuel Oils For Home, Business and Farm

for AUTOMOTIVE SERVICE call

for FUEL OIL call

224-8156

576-3145

609 W. Tennessee Street
2203 Lake Bradford Rd.
1031 South Magnolia

DRIVE WITH CARE AND BUY SINCLAIR



Offside (Violation of scrimmage or free kick formation)



Illegal Motion



Safety



Roughing the Kicker



Ineligible Receiver Down Field on Pass



Illegal Position, Procedure or Motion

Delay of Game



Intentional Grounding



First Down

Sinclair

OFFICIAL SIGNALS



Incomplete Forward Pass, Penalty Declined, No Play or No Score



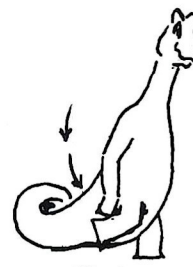
Start the Clock or No More Time-Outs Allowed



Time-Out



Unsportsmanlike Conduct



Clipping



Illegally Passing or Handing Ball Forward



**GLOBE
CLEANERS**

OPEN
7a.m. to 6p.m.
Mon. thru Sat.

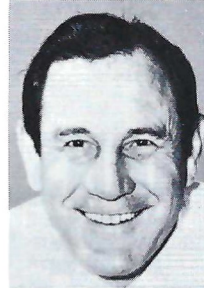
**WITH 2 CONVENIENT
LOCATIONS TO
SERVE YOU**

LOCATION NO. 1
1001 W. PENSACOLA ST.
PHONE 224-0731

LOCATION NO. 2
836 LAKE BRADFORD RD.
PHONE 222-3523

Coach Peterson

by **BILL McGROTHA**
Sports Editor, Tallahassee Democrat



A fellow on the phone asked would I write a story about Bill Peterson for this program, make it personal, tell it like I know him . . . and hold it to 250 words.

There ain't no way.

There is hardly any way to explain Florida State's head football coach in 250,000 words. He lends himself not at all well to telling about in words, period. You have to have a "feel" for knowing about Pete, and for most it comes only from being around him a long, long time.

He is what you call a walking paradox. More than most, he is not always what he seems.

Sometimes he kind of reminds me of a woman, the way he talks. You see, when something crosses his mind he often blurts it out. He's always thinking out loud. He is emotional; it is a way of getting things out of his system. Because he does this, some call him a cry baby . . . He is that and much in the manner of Georgia's Wallace Butts, another renowned weeper. Like Butts, Pete will use any convenient shoulder.

Also like Butts, he's much of a man . . . which they don't make many of anymore. Thoroughly rugged with more energy than a 2-year-old colt, Peterson can be terribly impatient with the little annoying things that get in his way—and these are the molehills he sometimes makes mountains out of. Of course, some of the mountains are very real ones.

But give the man some real trouble, the kind that makes mice out of men, and he's got his cup of tea. He's one of those who reacts better with a crisis. If he doesn't have a ready-made crisis, you can give points on his manufacturing one—or more.

What he does to the English language, on occasion, only Casey Stengel before him has done. Yet, when he's at ease, with his busy mind firmly on the matter at hand, he can be among the most articulate of speakers.

He enjoys life, and he tackles it with the same zest that he does football. The only "name" of any game with him is winning. Yet, he likes his fun with it, and he is totally obsessed.

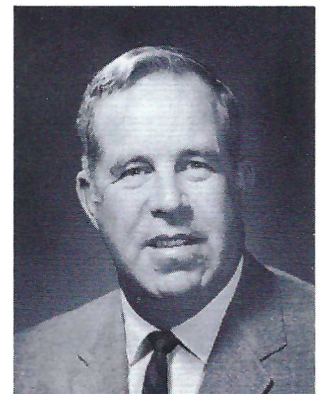
Only he, I think, could have accomplished what he has in FSU football with the same resources. Despite his yelps, he's never recognized the odds, really. He has never stopped believing that he could, despite all, make his football team No. 1. He's one to find a way.

He summed himself up really well, paradoxes and all, one day during the summer when near the end of a particularly long lament over the telephone, he said: "Hell, Bill, I don't want to be no Knute Rockne—I just want to win!"

That's Pete!



Vaughn Mancha
Athletic Director



Ken MacLean
Assistant to A.D.

Football Family



Bob Harbison
Defensive Chief



Joe Gibbs
Offensive Chief



Gary Wyant
Defensive Backs



Bobby Jackson
Def. Ends,
Linebackers



Dan Henning
Quarterbacks,
Receivers



Al Conover
Running Backs



Gene McDowell
Freshmen



Doug Hafner
Recruiter



Don Fauls
Head Trainer



Bill Zeigler
Asst. Trainer



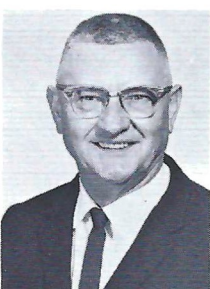
T. K. Wetherell
Acad. Advisor



Claude Thigpen
Ticket Mgr.



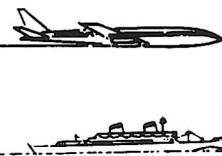
Lonnie Burt
Sports Info. Dir.



Tillman Dixon
Equip. Mgr.



Dr. Dale Maxwell
Team Physician



GOING
PLACES
?

ATHENS, GEORGIA? ATHENS, GREECE?
NEW YORK? NASSAU? NEPAL?

TRAVEL IS OUR PROFESSION

No Charge For Our Services
Tickets - Reservations At Printed Rates

MARION HAY
TOM LYLE
JEANNIE SMITH

TALLAHASSEE TRAVEL AND TOURS, INC.

Formerly Hay Travel Service

Established 1930

CALHOUN AT CALL STREET

TELEPHONE 224-4161



WHERE YOU
WILL FIND
YOUR FRIENDS

701 W. JEFFERSON
South Gate F.S.U.

**MIDYETTE-MOOR
Insurance Agency**

"Ask Those We Serve"

Complete Insurance and Bond Service

PHONE 222-3456



**MIDYETTE-MOOR BUILDING
TALLAHASSEE, FLORIDA**

SAYS

SCALP 'EM SEMINOLES!



Payne Midyette
Frank Moor
Ed Clark
Winslow Sullivan
Paul Lewis
Payne Midyette, Jr.
Bill Moor
Bill Franklin

Jim Woods
Glenn Sears
Jerry Darnell
Ron Davis
Richard Lobb
Rex Sikes
Walt Young

Miller
CHEVROLET COMPANY

Havana, Florida

539-6376

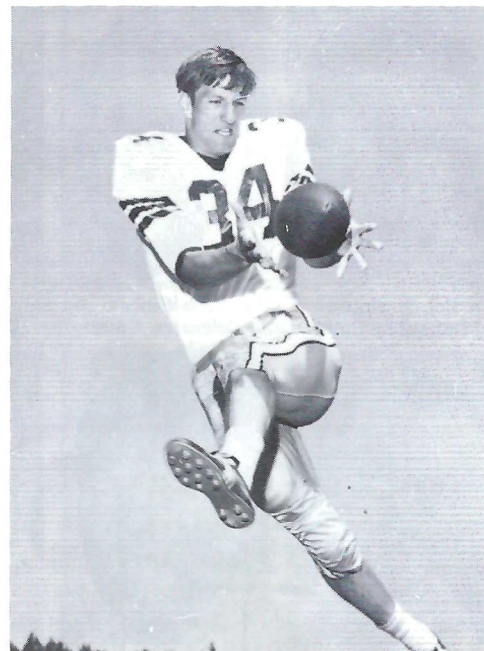
15 Miles North of Tallahassee

on U. S. 27

Phone Toll Free

224-1317

The 1968 Seminoles



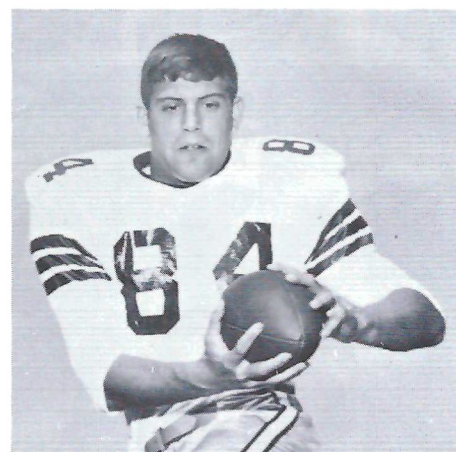
Ron Sellers—Jacksonville
Sr.—Business



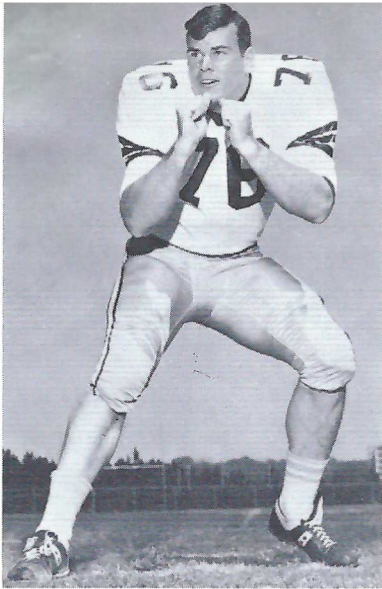
Dale McCullers—Live Oak
Sr.—Criminology



Randy Logan
Seal Beach, Calif.
Sr.—Business

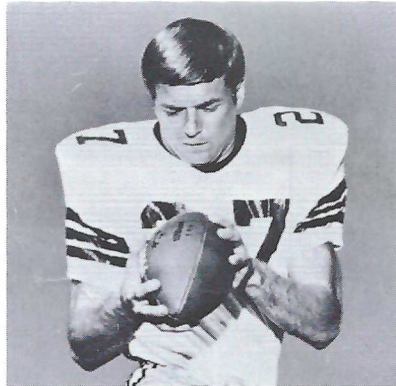


Chip Glass—Tampa
Sr.—Soc. St. Ed.

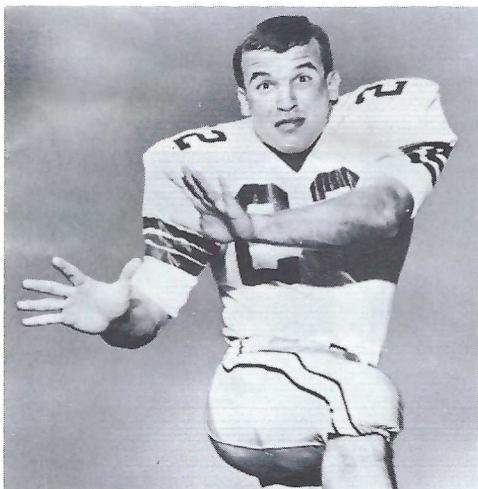


Jack Fenwick—Norwood, Ohio
Sr.—Criminology

The 1968 Seminoles



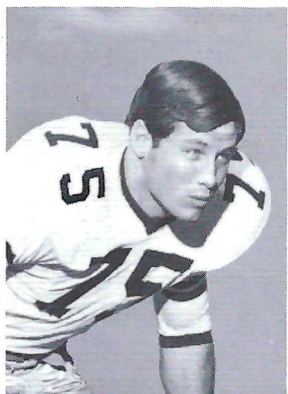
Billy Cox—Atlanta, Ga.
Sr.—Business



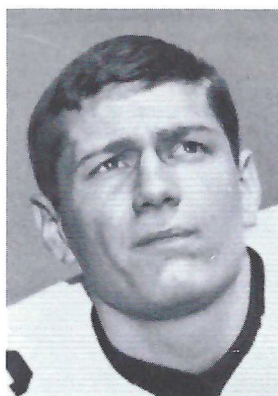
Chuck Eason—Tallahassee
Sr.—Business



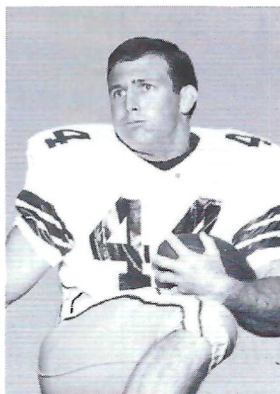
Larry Pendleton—Winter Garden
Sr.—Soc. St. Ed.



Billy Rhodes—Eustis
Sr.—Hotel & Rest. Mgt.



Gary Pajcic—Jacksonville
Sr.—Pre Law



John Pittman
Brunswick, Ga.
Sr.—Business

Compliments of a Fan.....

The folks at DOLIME who supply . . . Florida's agricultural soil with dolomite and high calcium lime (as well as the soil in the field in Campbell Stadium) . . . wish the Florida State "Seminoles" best of luck for a winning season.



DOLIME

MINERALS COMPANY

P. O. Box 1441
Bartow, Florida 33830
Phone 813/533-8144

*DOLIME MAKES
YOUR GOOD EARTH
EVEN SWEETER!*

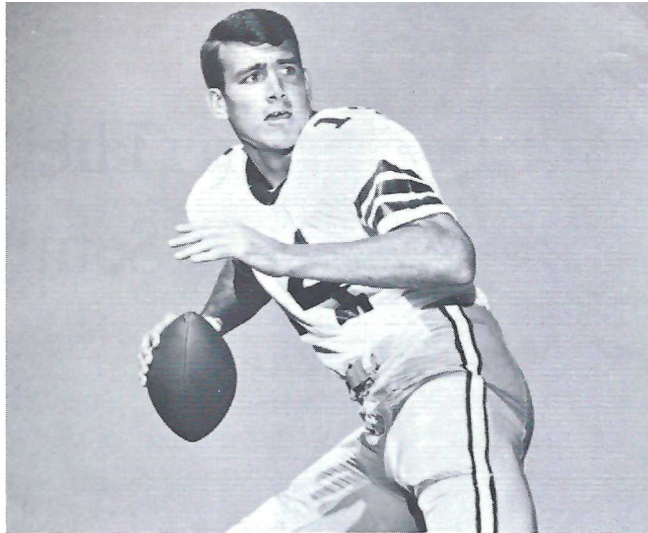


SPURGEON CAMP

*"Let's Be
#1
In 1968"*



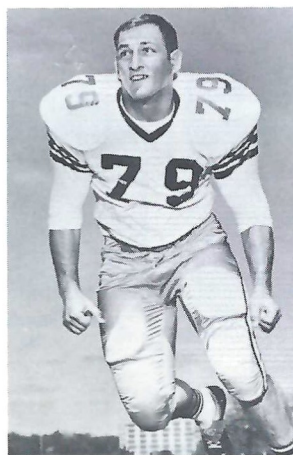
**SOUTHERN
ELECTRIC INC.**



Bill Cappleman—Dunedin
Jr.—Business



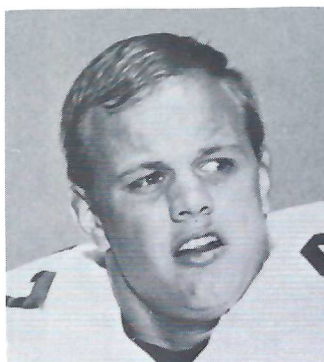
Jeff Curchin—Ocala
Jr.—Criminology



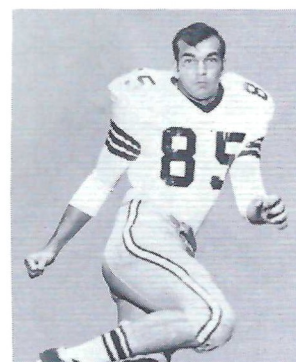
Frank Vohun—Brooksville
Jr.—Phys. Educ.



Terry Eagerton—Jacksonville
Jr.—Business



Joe Benson—Birmingham, Ala.
Sr.—Accounting



Floyd Ratliff—Jesup, Ga.
Jr.—Psychology



**TIME!
OUT!**

FOR
YOUR FAVORITE

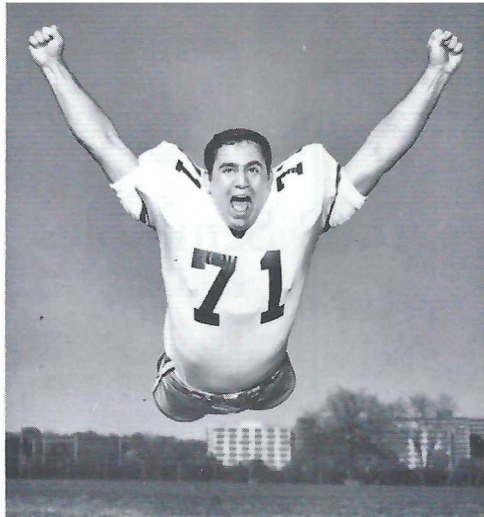
*Meal
or
Snack*

AFTER THE GAME AT
THE **UNIVERSITY UNION**
FSU FOOD SERVICE

1968 Seminoles



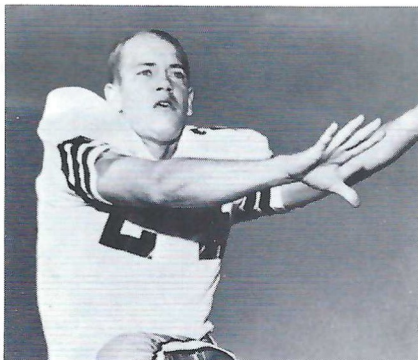
Phil Abraira—Ft. Lauderdale
Jr.—Engr. Sc.



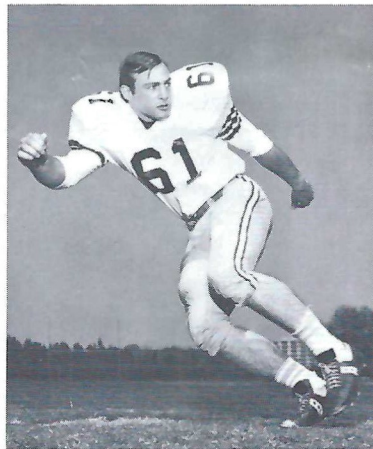
Harvey Zion—Atlanta, Ga.
Sr.—Pre Med



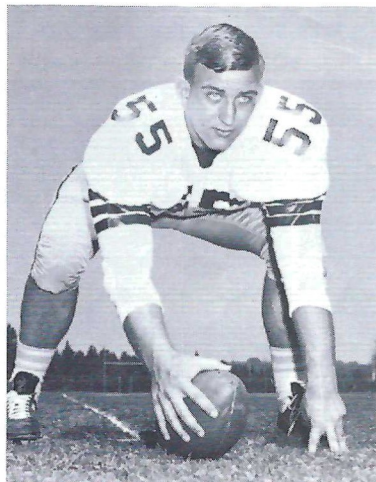
Bill Gunter—Dothan, Ala.
Sr.—Business



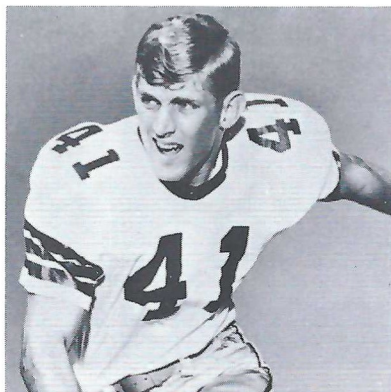
Walt Sumner—Ocilla, Ga.
Sr.—Business



Chuck Elliott—Troy, Ohio
Sr.—Business



Ted Mosley—Tampa
Sr.—Business



John Crowe—St. Cloud
Sr.—Math



why pay **MORE** when you
can buy for **LESS** at

ABC
Mobile Homes

2737 W. Tennessee
Tallahassee, Florida

HERSCHEL COOK
Manager

Phone 576-5146

Southernair
MOTEL

Across from F.S.U.
Tallahassee, Florida 32304



and

Skyline

Motor Lodge

U. S. 90 West

Quality Courts

for **Quality People**

Best Wishes for a successful season, and we are proud to have had a part in furnishing the football equipment for the Seminoles

OWENS Inc.

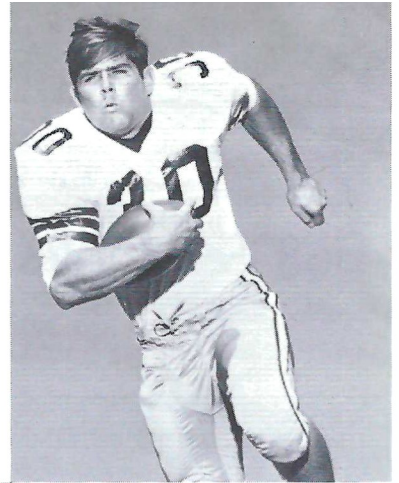
Sporting Goods — Hardware
ALBANY, GEORGIA

Joby's
SEAFOOD HOUSE

1425 W. TENNESSEE ST.
 TALLAHASSEE, FLORIDA
 222-1929

OYSTERS ON THE HALF SHELL

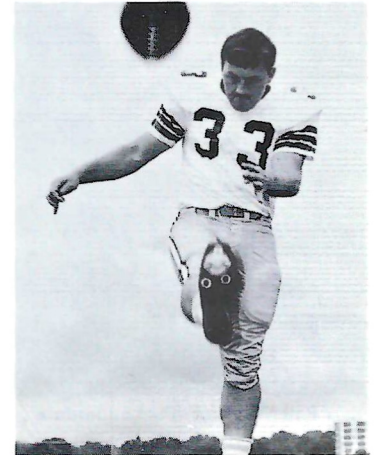
1968 Seminoles



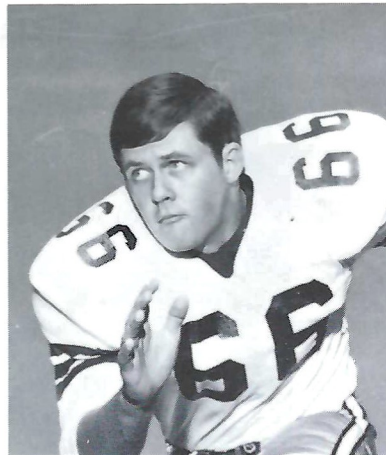
Tom Bailey—Miami So.—Business



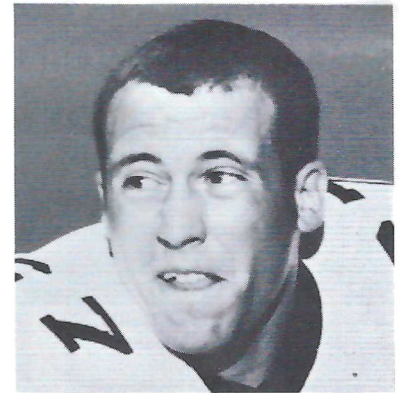
Tommy Warren—Miami Jr.—Business



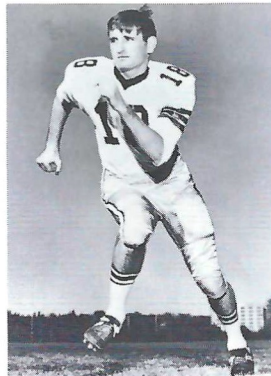
Grant Guthrie—Claymont, Del. Jr.—Business



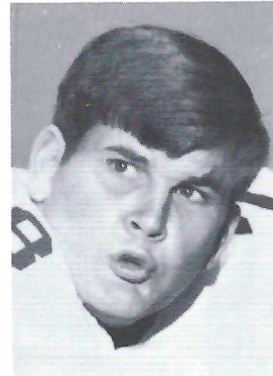
Ken Hart—Groveland Sr.—Pre Law



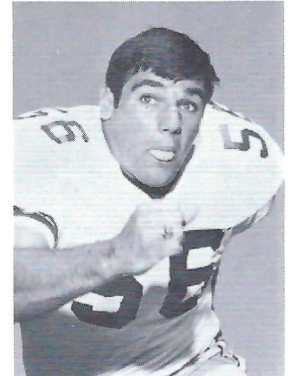
Mike Bugar—Youngstown, Ohio Sr.—Phys. Educ.



Clint Burton
 Atlanta, Ga.
 Sr.—Phys. Educ.



Wayne Johnson
 Macon, Ga.
 Jr.—Business



Bill Lohse—St. Petersburg So.—Undec.



Bill Cheshire—Odum, Ga.
Jr.—Pre Med

1968 Seminoles



Brent Gilman
Long Beach, Calif.
Jr.—Business



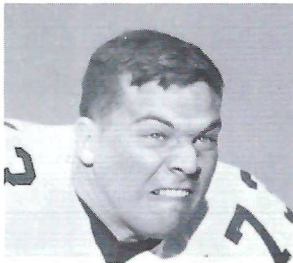
Mike Page—Winter Haven
Jr.—Psychology



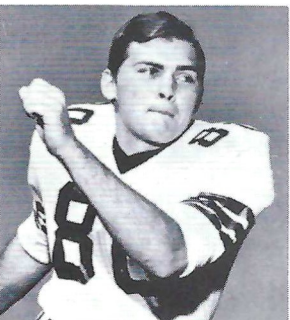
Robert McEachern
Tallahassee
So.—Undec.



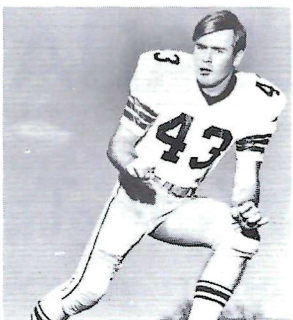
Ronnie Wallace—Macon, Ga.
So.—Undec.



Duke Johnston
Ft. Lauderdale
Jr.—Business



Doug Gurr—Albany, Ga.
Sr.—Business



Howell Montgomery
Blountstown
Sr.—Business

Go

Seminoles

We'll help all we can

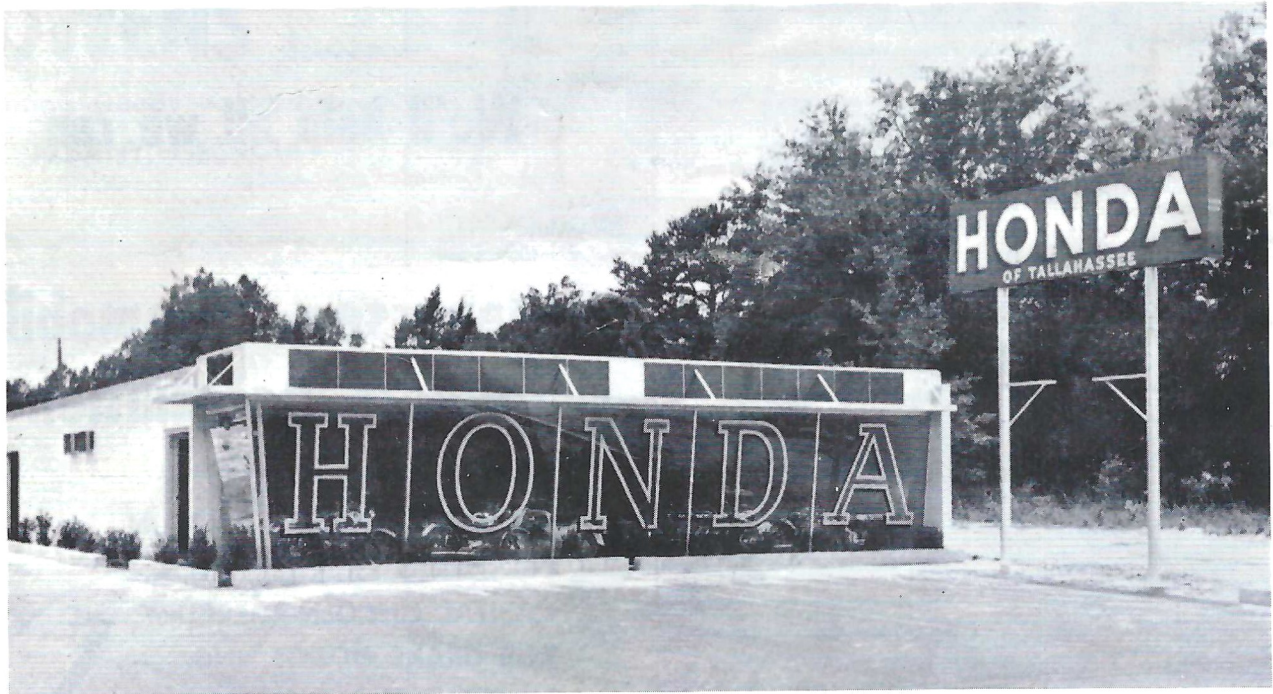
Tallahassee Automobile Dealers Association

- ALFORD CHEVROLET CO.
- COURTESY RAMBLER—DATSUN
- PROCTER & PROCTER, INC.
- CAPITAL LINCOLN—MERCURY, INC.
- BOB DRAKE DODGE, INC.
- TOYOTA OF TALLAHASSEE
- COURTESY OLDSMOBILE—VOLVO
- PALMER—HARRELL BUICK CO.
- CAPITAL CHRYSLER—PLYMOUTH, INC.
- TALLAHASSEE MOTORS, INC.
- KINNEBREW MOTORS, INC.
- MINGLEDORFF MOTORS, INC.

"You meet the nicest people on a

H O N D A

World's largest seller"



HONDA OF TALLAHASSEE

At the Underpass on West Tennessee

Phone 576-1020

TONIGHT'S GAME

By LONNIE BURT

Sports Information Director

If tonight's contest is anything like the past 12 Florida State-Virginia Tech games, it will be a real "headknocker."

The series is even at 6-6 and seldom has a Seminole-Gobbler tussle been anything but exciting.

The Gobblers, before last week's 27-12 victory over a good West Virginia outfit, had relied on defense as an offensive weapon as well as to stop the enemy. Virginia Tech has crossed the goal line nine times this season and four of these touchdowns have been scored by the defenders.

However, it was a different story against the Mountaineers as the Hokies generated an attack for the first time this year. Leading the way were quarterback Al Kincaid and converted fullback Ken Edwards. The 5-11, Tuscaloosa, Ala., quarterback hit 10 of 20 passes for 116 yards and Edwards carried 9 times for 74 yards, plus performing 25 defensive plays at linebacker.

Gobbler tailback Terry Smoot has returned to the all-star form he showed before an injury sidelined him prior to the Florida State game in 1967. Smoot, 190 pounder from Charleston, W. Va., ran the ball 30 times against the Mountaineers for 122 yards.

Virginia Tech's defense is an aggressive outfit headed by linebacker Mike Widger, 200-pound junior from Pennsville, N.J. To date, Widger is credited with 30 tackles and 92 assists.

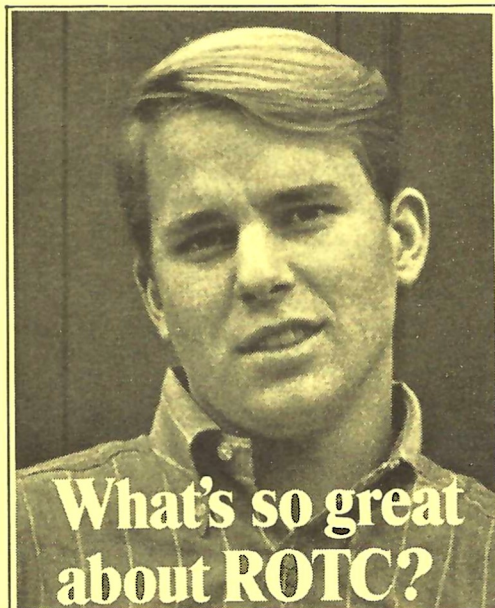
On the other hand, Florida State's offense apparently jelled in its 35-28 victory over South Carolina. However, the defense had a troubled night as the Gamecocks picked up 484 yards on their way to four touchdowns.

The passing combination of quarterback Bill Cappleman to flanker Ron Sellers had the greatest game in Florida State history. Sellers, All-America from Jacksonville, broke his own records with 16 receptions for 259 yards and three touchdowns. Cappleman shattered Kim Hammond's old mark with passing yardage good for 437 yards.

Sellers is moving near the top in the all-time college receiving race. Presently, he is fourth on the list with 169 career receptions and third in yardage with 2,861. He needs eight catches to move into third and 13 to move into second. A 22-yard reception would place him second behind all-time leader Howard Twilley of Tulsa and if he catches passes for 483 yards the remainder of this season he will be the most prolific receiver in college football history.

Virginia Tech has a 3-3 record going into the contest with victories over William & Mary (12-0), Wake Forest (7-6) and West Virginia (27-12). The Gobbler losses have been to Alabama (14-7), Kansas State (34-19) and Miami (13-8).

The Seminoles are 4-1.



What's so great about ROTC?

Check 'em.

Great opportunity. You earn a commission while you earn your college degree. Graduate—you start at the top. Fulfill your military obligation as an Army officer. With officer's pay. Officer's privileges.

Great advantages. Employers prefer a college graduate with service as an officer. Pay more to get him. Because he's a trained, experienced leader. Can handle heavier responsibilities.

Great success. From the 5% of college men who had ROTC training have come 24% of our state governors, 28% of executives earning \$100,000 to \$325,000 per year, 10% of Congress, 15% of our ambassadors.

Great guys. ROTC men are campus leaders—in ROTC, athletics, extracurricular activities. And they do better scholastically than non-ROTC students.

Great extras. \$50 per month in junior and senior years. Scholarships for outstanding students. Free flight training at over 125 colleges. Extra social activities—military balls, honor societies, bands, rifle teams.

Any way you look at it, there's a lot more going for you when you're in ROTC.

Your future, your decision . . .

choose **Army ROTC.**

Army ROTC CP 69
P.O. Box 12703
Philadelphia, Pa. 19134
I want to know more about Army ROTC.
Send me your free brochure.
Name _____ Age _____
Address _____
City _____
State _____ Zip _____



REMEMBER THE DAY WITH PICTURES !!

For All Of Your Photographic Needs Remember

Tallahassee Camera Center

117 NORTH MONROE STREET
Across From The Florida Theater

CAMERAS • FILM • BINOCULARS • RECORDERS • RENTALS

Fast, Fast, Black & White and Color Processing



STAT FACTS

RESULTS

FLORIDA STATE			RESULTS			VIRGINIA TECH		
24	Maryland	14	7	Alabama	14			
3	Florida	9	12	Wm. & Mary	0			
20	Texas A&M	14	19	Kansas State	34			
20	Memphis St.	10	7	Wake Forest	6			
35	South Carolina	28	8	Miami	13			
			27	W. Virginia	12			
FSU	OPP			VPI	OPP			
102	75	Points	80	79				
104	88	First Downs	66	92				
222	229	Rushing Plays	290	272				
716	844	Net Yards Rushing	551	691				
3.2	3.7	Rushing Avg.	1.9	2.5				
176/89/5	108/49/12	Passes Att/comp/hd Int	118/47/8	158/79/12				
1329	645	Passing Yardage	578	971				
2044	1389	Total Yardage	1129	1662				
5	12	Fumbles	8	17				
3	5	Fumbles Lost	3	9				

INDIVIDUAL LEADERS

FLORIDA STATE						VIRGINIA TECH					
PASSING	ATT.	COMP.	INT.	YDS.	TD	PASSING	ATT.	COMP.	INT.	YARDS	TD
Cappleman	123	64	4	997	8	Kincaid	63	31	4	391	1
Pajcic	50	25	1	332	2	Schwabe	49	15	4	155	0
RECEIVING	NO.	YDS.	TD	LG		RECEIVING	NO.	YARDS	TD		
Sellers	43	759	6	82		Cupp	16	238	0		
Cox	12	149	1	33		Smoot	8	48	0		
Glass	7	103	0	22		Piland	6	75	1		
RUSHING	TC	NET	AVG.	TD	LG	RUSHING	TC	NET	AVG.	TD	
Gunter	92	299	3.6	0	22	Smoot	103	327	3.2	2	
Bailey	48	217	4.5	1	20	Edwards	9	74	8.2	0	
Pittman	30	139	4.6	0	24	SCORING	TD	FG	EPM	TP	
SCORING	TD	FG	EPM	TP		Simcsak	0	5	7	22	
Sellers	6	0	0	36		Edwards	2	0	0	12	
Guthrie	0	6	12	30		Widger	2	0	0	12	
						Smoot	2	0	0	12	



BIG "B" Cleaners

1100 W. Tennessee

1405 S. Adams

324 N. Monroe

Student and Faculty Discounts Every Thursday

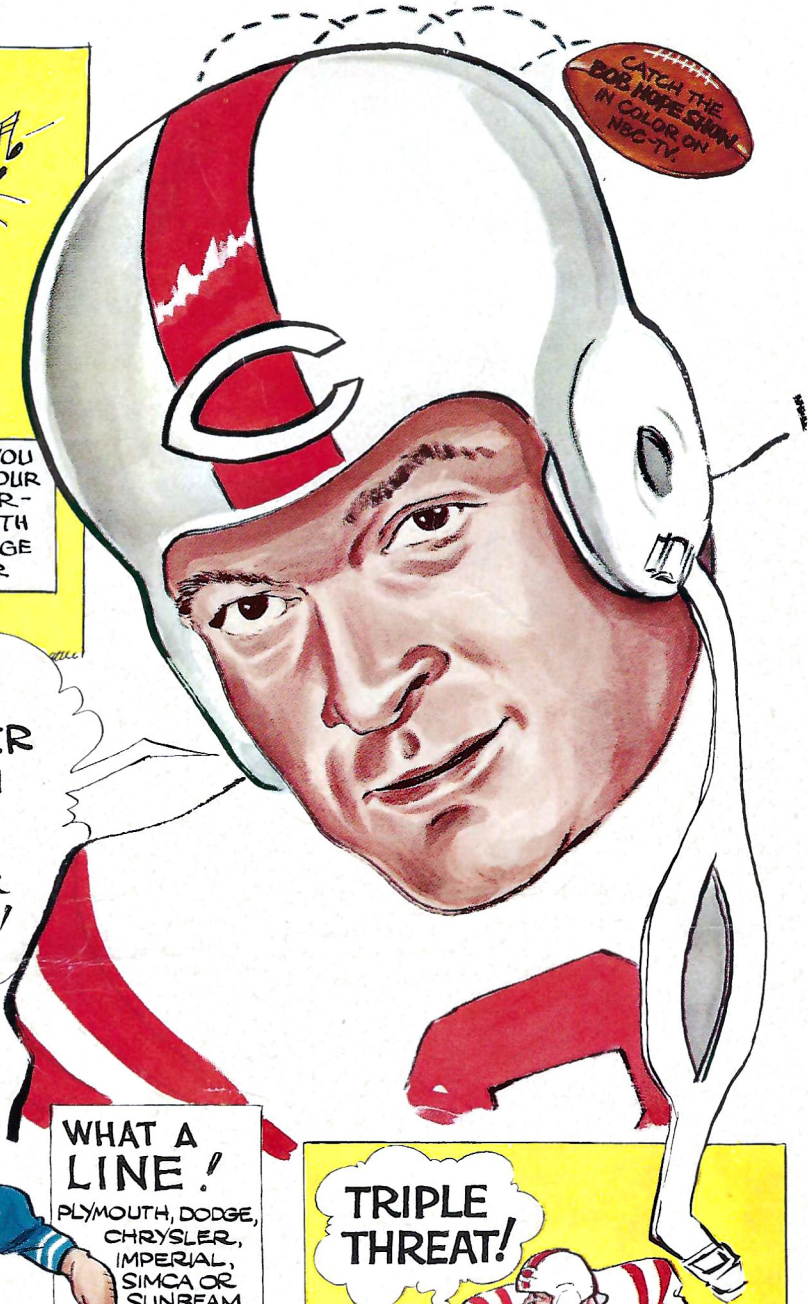
SAVE



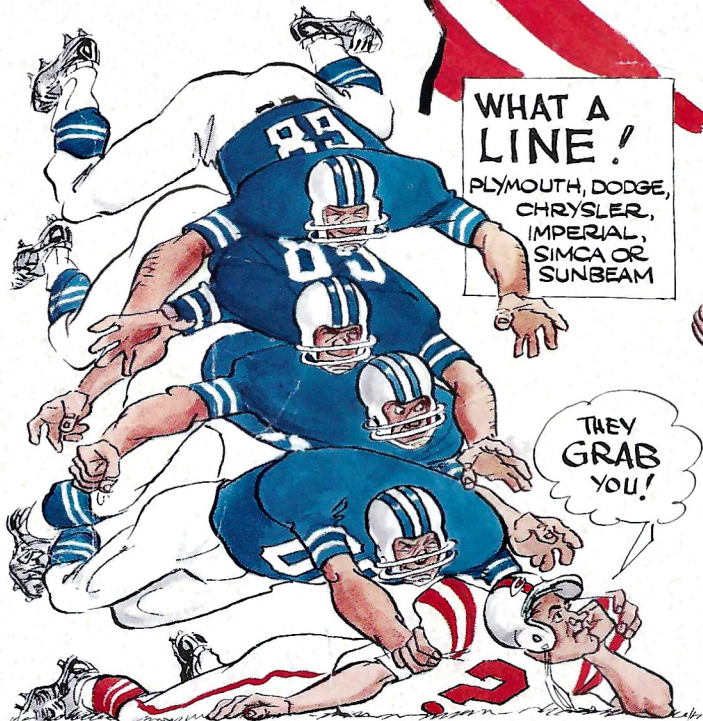


BEFORE YOU BUY, SEE YOUR CHRYSLER-PLYMOUTH OR DODGE DEALER.

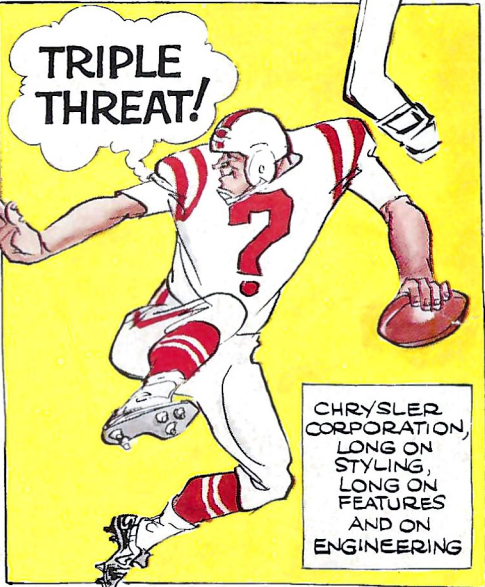
...BE THE CENTER OF ATTENTION IN A NEW CAR FROM CHRYSLER CORPORATION!



CATCH THE DODGE HOPE SHOW IN COLOR ON NBC-TV



WHAT A LINE!
PLYMOUTH, DODGE, CHRYSLER, IMPERIAL, SIMCA OR SUNBEAM



CHRYSLER CORPORATION, LONG ON STYLING, LONG ON FEATURES AND ON ENGINEERING

Plymouth • Dodge • Chrysler • Imperial • Dodge Trucks • Simca • Sunbeam



CHRYSLER CORPORATION

SEE THE AFL IN ACTION EACH WEEK ON NBC-TV.



Coke has the taste

TRADE-MARK®

"COCA-COLA" AND "COKE" ARE REGISTERED TRADE-MARKS WHICH IDENTIFY ONLY THE PRODUCT OF THE COCA-COLA COMPANY. PRINTED IN U.S.A.

FLORIDA STATE

DEFENSE

85 FLOYD RATLIFF	LE
79 FRANK VOHUN	LT
47 JOE BENSON	LL
50 DALE McCULLERS	ML
61 CHUCK ELLIOTT	RL
71 HARVEY ZION	RT
83 RON WALLACE	RE
41 JOHN CROWE	LS
24 WALT SUMNER	LC
21 JOHN PELL	RC
22 CHUCK EASON	RS

OFFENSE

27 BILLY COX	LE
76 JACK FENWICK	LT
64 STAN WALKER	LG
55 TED MOSLEY	C
68 LARRY PENDLETON	RG
75 BILLY RHODES	RT
84 CHIP GLASS	RE
31 BILL GUNTER	LH
14 BILL CAPPLEMAN	QB
30 TOM BAILEY	FB
34 RON SELLERS	FL

FLORIDA STATE SQUAD

11 Anderson, QB	53 Cassady, DT
12 Hiatt, SE	54 Burt, LB
14 Cappleman, QB	55 Mosley, C
15 Warren, QB	56 Lohse, LB
16 Pajcic, QB	57 Lowe, LB
17 Page, DB	58 Gildea, LB
18 Burton, DB	59 Loner, PK
19 Abraira, SE	60 Barry Rice, LB
20 Thomas, DB	61 Elliott, LB
21 Pell, DB	62 Bass, LB
22 Eason, DB	64 Walker, OG
23 Pederson, FL	66 Hart, OG
24 Sumner, DB	67 Bugar, DE
26 Wenhold, FB	68 Pendleton, OG
27 Cox, SE	69 White, DT
28 Lanahan, DB	70 Sewell, OT
29 Rust, DB	71 Zion, DT
30 Bailey, RB	72 Logan, OG
31 Gunter, RB	73 Johnston, DT
32 Chereschkoff, RB-P	74 McEachern, DT
33 Guthrie, PK	75 Rhodes, OT
34 Sellers, FL	76 Fenwick, OT
35 Gray, SE	77 Curchin, OT
40 Gilman, FB	78 Johnson, OT
41 Crowe, DB	79 Vohun, DT
42 Cheshire, P	80 Gurr, DE
43 Montgomery, DB	81 Tyson, TE
44 Pittman, FB	82 Dawson, FL
46 Munroe, RB	83 Wallace, DE
47 Benson, LB	84 Glass, TE
48 Jarrett, FB	85 Ratliff, DE
49 Eagerton, FB	86 Hall, DE
50 McCullers, LB	87 Rimby, TE
51 Hughes, C	88 Beryl Rice, DE
52 Sammons, OG	89 Richardson, PK

VIRGINIA TECH

OFFENSE

85 DANNY CUPP	LE
62 PRESTON BLACKBURN	LT
69 BUTCH HALL	LG
56 DAVE BAILEY	C
71 JOHN MAXWELL	RG
76 JERRY GREEN	RT
81 RICK PILAND	RE
44 TERRY SMOOT	TB
11 AL KINCAID	QB
33 KEN EDWARDS	FB
26 HANK IMMEL	WB

DEFENSE

82 JUD BROWNELL	LE
77 PETE DAWYOT	LT
75 PAUL RIPLEY	LG
63 LARRY CREEKMORE	RG
70 WADDY HARVEY	RT
80 JOE TUCKER	RE
51 NICK DEL VISCIO	LL
55 MIKE WIDGER	RL
24 RON DAVIDSON	LH
10 LENNY SMITH	S
25 FRANK BEAMER	RH

VIRGINIA TECH SQUAD

10 Smith, DB	60 Pigninelli, DG
11 Kincaid, QB	62 Blackburn, OT
12 Humphries, QB	63 Creekmore, DG
13 Schwabe, QB	65 Aguilar, OG-T
14 Treadwell, DB	66 Luongo, OG-C
15 Skinner, DB	67 Swords, OG
20 Longerbeam, OB	68 Hall, OG
22 Cooke, DB	70 Harvey, DT
23 Womack, DB	71 Maxwell, OG
24 Davidson, DB	72 Strager, DT
25 Beamer, DB	74 Bocko, DG-T
26 Immel, WB	75 Ripley, DG
31 Tiberio, FB	76 Green, OT
33 Edwards, FB-LB	77 Dawyot, DT
34 Constantinides, FB	78 Parks, OT
35 Mooney, LB	80 Tucker, DE
36 Gainous, DC	81 Piland, TE
37 Collis, LB	82 Brownell, DE
40 Kushner, TB	83 Crigger, OE
43 Simcsak, K	85 Cupp, OE
44 Smoot, TB	86 Mikulski, DE
45 Henderson, OB	87 Carter, OT
51 Del Viscio, LB	88 Hickman, OE
53 Ivanac, LB	89 Slaughter, OE
55 Widger, LB	90 MacDonald
56 Bailey, C	

OFFICIALS: Referee—Don Orr, Nashville, Tenn.;
 Umpire—V. E. Baugh, Orangeburg, S. C.; Linesman
 —Jack Jordan, Atlanta, Ga.; Field Judge—Mark
 Kane, Charlotte, N. C.; Back Judge—Dick Pace,
 Maitland, Fla.; E.C.O.—Troy Carter, Macon, Ga.

ste you never get tired of.

Oldsmobile recreates a scene from the classic movies.

GM

MARK OF EXCELLENCE



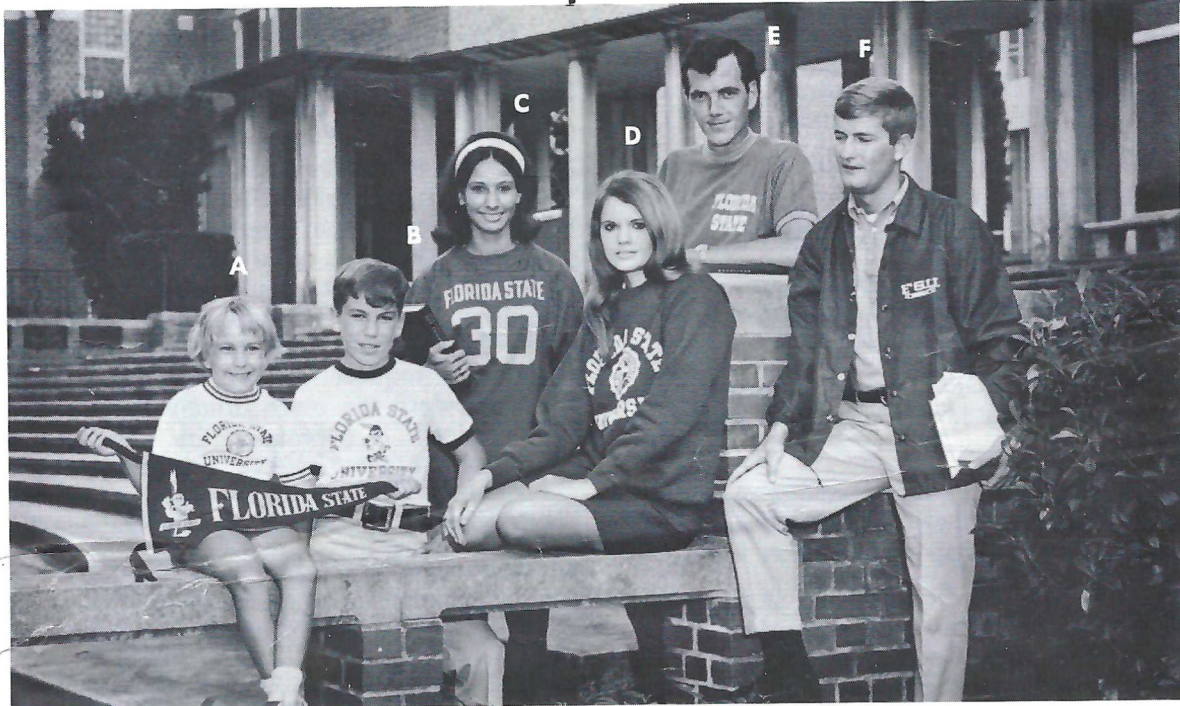
Olds Delta 88 Royale: The bold and the beautiful.

Meet our new top-of-the-line 88. Big-car room and ride on a longer 124-inch wheelbase. Vinyl roof, pin-striping, fender louvers, big Rocket 455 V-8 and much more, standard. All for little more than you'd pay for an ordinary car! **Escape from the ordinary.**



Take Home a GIFT That Says FLORIDA STATE

From the *Champion* KNITWEAR LINE



C

The real McCoy. Authentic cotton football jersey with three-quarter length sleeves and double shoulder and elbow pads. School name on front and numbers on front and back.

Style P12³/₄S/C (41054)
COLORS: Cardinal with Gold Trim.
SIZES: S, M, L, XL.
\$4.50

D

Heavyweight, fleece-lined sweat shirt in a Kingsized cut that Queens like too. Crew neck and raglan sleeves. Ribbed neck, cuffs and bottom.

Style CRSS (S1603)
COLORS: Loden, Maroon, Powder Blue, Buff.
SIZES: S, M, L, XL.
\$2.95

E

A new sweater shirt flare adds sparkle to the campus fashion world. Woven vertical stripes. Contrast color mock turtle collar, sleeve cuffs and bottom trim provide the color accent in setting this new stripe in motion as a star performer.

Style 7343 (T1737)
COLORS: NuBlue stripes, Whiskey stripes.
SIZES: S, M, L, XL.
\$3.95

F

THE COACH

A lightweight, two-ply Nylon winner. Snap-button front, Byron collar, draw-string bottom, and elastic cuffs. Athletic cut; extra full and long.

Style Coach (B1366)
COLORS: Navy, Maroon.
SIZES: S, M, L, XL.
\$8.95

FOR THE FUTURE SEMINOLES

A

Color-trimmed sweatshirt. Standard weight, full cut, and short raglan sleeves. Knit trim on neck and cuffs.

Style J/OLYMPIC (S1665).
SIZES: 4, 6, 8.
Style B/OLYMPIC (S1664).
SIZES: 10, 12, 14.
Colors for Both Styles: White body with Red/White/Blue trim.
\$2.00

B

T-SHIRTS

The trim is the thing in this youth version of an all-time Champion best seller. Soft, fine quality cotton with color fast trim on neck and sleeve ends.

Style TJ78 (T1753)
COLORS: White body with Dark Red.
SIZES: 2, 4, 6, 8.
Style TB78
COLORS: White body with Dark Red.
SIZES: 10, 12, 14, 16.
\$1.40

**APPEALING
GIFTS
FROM**

The University Book Store on the Campus
FLORIDA STATE UNIVERSITY—TALLAHASSEE, FLA. 32306

MAIL ORDERS WELCOME—PRICE INCLUDES POSTAGE

STADIUM INFORMATION

REST ROOMS are located on concourse and ground levels of both the east and west stands.

FIRST AID station is located at the southwest corner of the stadium opposite gate five. A registered nurse is on duty at all times.

PUBLIC TELEPHONES are located on the ground levels of the east and west stands.

PUBLIC ADDRESS will make special announcements in cases of emergency only.

DOCTORS receiving calls will be paged by number.

LOST AND FOUND items may be turned in and claimed at the ticketbooth at three under the west stands by the press box elevator.

ALCOHOLIC BEVERAGES are prohibited by state law. Your cooperation in enforcing this law is appreciated.

FIELD REGULATIONS prohibit unauthorized persons on the field during or after the game. Please leave the Stadium by the ramp and section exits.

REFRESHMENTS are available in the stands and at locations on the concourse and ground levels of the east and west stands. Established prices are: soft drinks small 15¢, large 25¢; coffee 25¢; sandwiches

35¢; hot dogs 25¢; peanuts 25¢; pop corn 25¢; cigarettes 50¢. Please pay no more.

STUDENTS, SPECTATORS!

Make **Sportsmanship** a Part of Your Game
Equipment

NOISE is a serious problem at many intercollegiate football games, and on some occasions in the past has prevented the Quarterback's signals from being heard. Such a situation may be interpreted as "interference" with the conduct of the game, and penalized. We seek your assistance in preventing excessive noise, which could cause a penalty against your team. Should unusual noise develop, the referee will call "Time-Out" and instruct the Defensive Captain to request **QUIET**, which he will do by moving toward the noise area with both arms and hands raised. If necessary, the Offensive Captain will make the same request on the opposite side of the field. We shall appreciate your respect for Sportsmanship in remaining quiet at this time.

In all games the Referee is authorized to inflict a penalty based on noise developments. Please cooperate. Don't help to draw a penalty against your team.

CHEER TO HELP, NOT TO HURT

Exciting, instructive baseball and football films available free.

See famous professional athletes show you how they do it.

Each film is in color, 16 mm and runs about 28 minutes. A terrific program for your youth group, civic club or Phys. Ed. class. With each film you get valuable instruction booklets, 36 pages of inside information and expert advice on how to stay in peak physical shape.

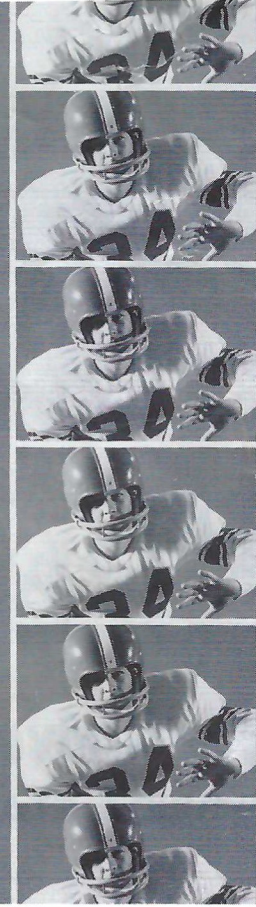
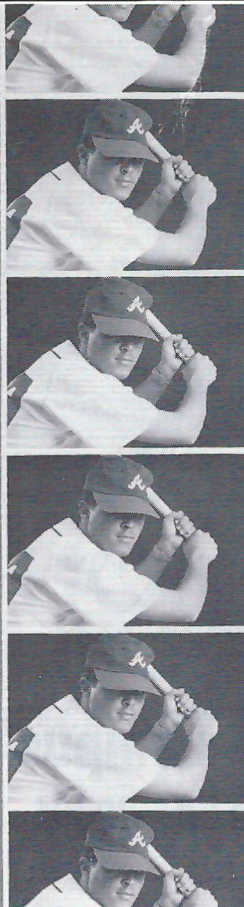
It's part of Prudential's contribution to the President's Council on Physical Fitness.

For information about a free loan of the films, contact your local Prudential office. Or write Public Relations Dept., The Prudential Insurance Company of America, P.O. Box 4579, Jacksonville, Fla. 32201.

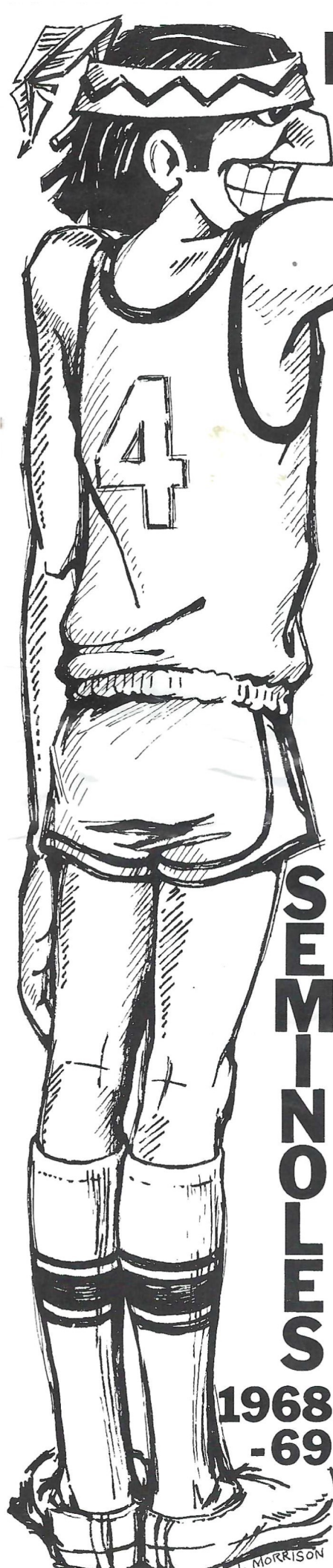


**THE PRUDENTIAL
INSURANCE COMPANY
OF AMERICA**

**SOUTH-CENTRAL HOME OFFICE
JACKSONVILLE, FLORIDA**



FLORIDA STATE BASKETBALL BIGGER & BETTER!



SEMINOLES

**1968
-69**

MORRISON

1968-69 BASKETBALL SCHEDULE

HOME GAMES

Dec. 2 Valdosta State
Dec. 21 Southern Cal.
Dec. 27 Ohio State
Dec. 30 New Hampshire
Jan. 10 Miami
Jan. 13 Kent State
Jan. 18 Tulane
Jan. 23 Hawaii
Jan. 28 South Carolina
Feb. 1 Jacksonville U.
Feb. 10 Stetson
Feb. 15 Dayton
Feb. 18 Georgia Tech

AWAY GAMES

Dec. 6-7 Florida Sunshine Classic
Dec. 14 Virginia Tech
Dec. 16 Louisville
Jan. 4 Jacksonville U.
Jan. 8 Tulane
Jan. 20 Rice
Feb. 3 Valdosta State
Feb. 7 Clemson
Feb. 8 North Carolina
Feb. 22 Georgia Tech
Feb. 27 Florida Southern
Mar. 1 Miami
Game Time: 7:30
Freshman Games: 5:30

ORDER SEASON TICKETS NOW!

Individual game tickets \$2.50 each. Season Ticket (for 13 home games) \$20.00 (save \$12.50). For group seating send orders in single envelope and mark order "group seating".

Name _____

Address _____

City and State _____ (Zip) _____

Phone-Bus _____ Home _____

Check correct group(s)

- 1967-68 season ticket holder
- Tipoff Club Member
- New Purchaser

All orders must be accompanied by check made payable to FLORIDA STATE UNIVERSITY. Mail orders to the ATHLETIC TICKET OFFICE TULLY GYM

FAVORITE OF THE BIG BRAVES!



Frisch's

THE ORIGINAL

BIG BOY

RESTAURANT

**GREAT PLACE FOR POW WOWS
AND GOOD FOOD**

SERVING:

- Breakfast
- Lunch
- Dinner
- Snacks

Open 7 A.M. to Midnight
'Til 2 A.M. Fridays and Saturdays

1775 W. Tennessee Street

TALLAHASSEE — TELEPHONE 224-1246

TRY FRISCH'S CARRY-OUT

**TALQUIN ELECTRIC
Cooperative, Inc.**

Helping

**Gadsden, Leon, Liberty
and Wakulla Counties**

LIVE BETTER . . . Electrically

**1968 SEMINOLE
CHEERLEADERS**



Front Row: Rich Chichetti, Jim Sharp, Zan Tracy. Standing Lee Clifton, Bill Reilly. On ladder Top to bottom: Cherry Hand (Head Cheerleader), Jann Berry, Karen Jalko, Charolette Baker.

**WAKULLA
SPRINGS**
14 MILES SOUTH OF TALLAHASSEE

Glass Bottom Boats

WORLD'S LARGEST AND DEEPEST SPRING

**1968 SEMINOLE
CHEERLEADERS
REMINDE YOU
CHEER TO HELP
NOT TO HURT**

SEMINOLE SONGS

THE ALMA MATER

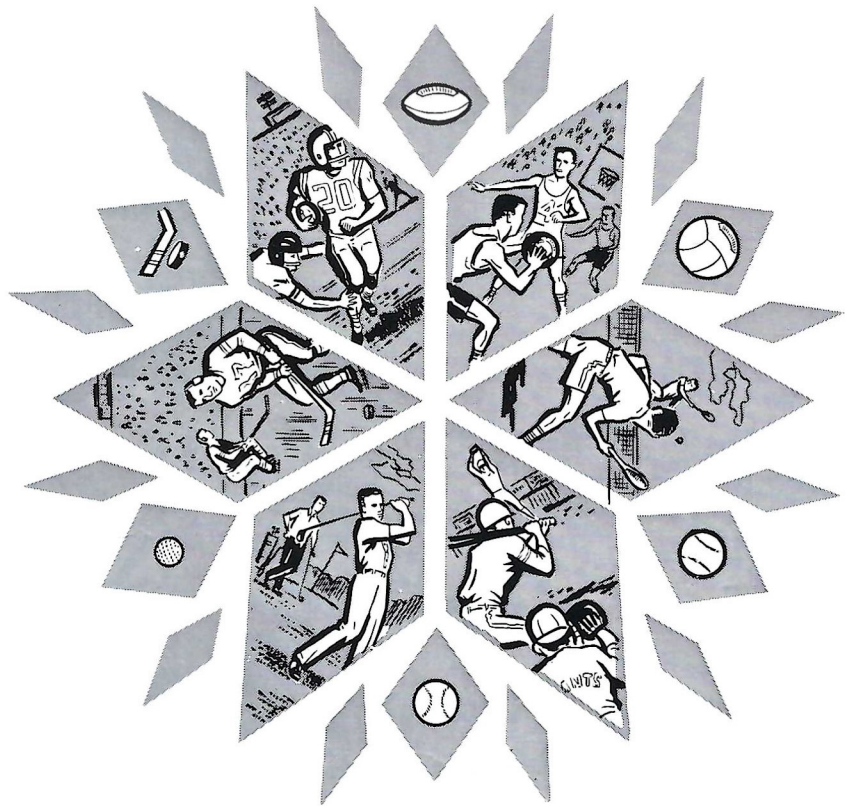
High o'er the towering pines
our voices swell
Praising these Gothic spires we
love so well;
Here sons and daughters
stand . . .
Faithful and True, Hailing our
Alma Mater
F . . . S . . . U . . .

FSU FIGHT SONG

You're going to FIGHT, FIGHT,
FIGHT for FSU
You're going to scalp 'em
Seminoles.
You're going to WIN, WIN,
WIN, WIN, WIN this game . . .
and roll on down and
make those goals!
For FSU is on the warpath now,
and at the battle's end she's
great . . .
So FIGHT, FIGHT, FIGHT, FIGHT
for victory
The Seminoles of Florida
State . . .
F-L-O-R-I-D-A S-T-A-T-E
FLORIDA STATE (3 times)
(repeat verse)

HYMN TO THE GARNET AND GOLD

Here's a hymn to the Garnet
and the Gold
Ringing to the sky.
Here's a song for our men and
women bold
Sing with heads held high.
Striving e'er to seek, to know,
Fight for victory.
Alma Mater, this, our song to
you,
Echoes FSU.



SPORTS WORLD KALEIDOSCOPE

All season long — any time of the year — the Florida Times-Union and Jacksonville Journal report, in depth, on everything in the sports world. It's that "extra margin of effort" that makes these daily sports pages so interesting and informative. That's why sports fans who like to read an accurate analysis of the team BEFORE the game, then settle down to pinpoint descriptions AFTER the game, look forward to the kind of reporting done by real pros. Be there, with us, for every piece of the action.

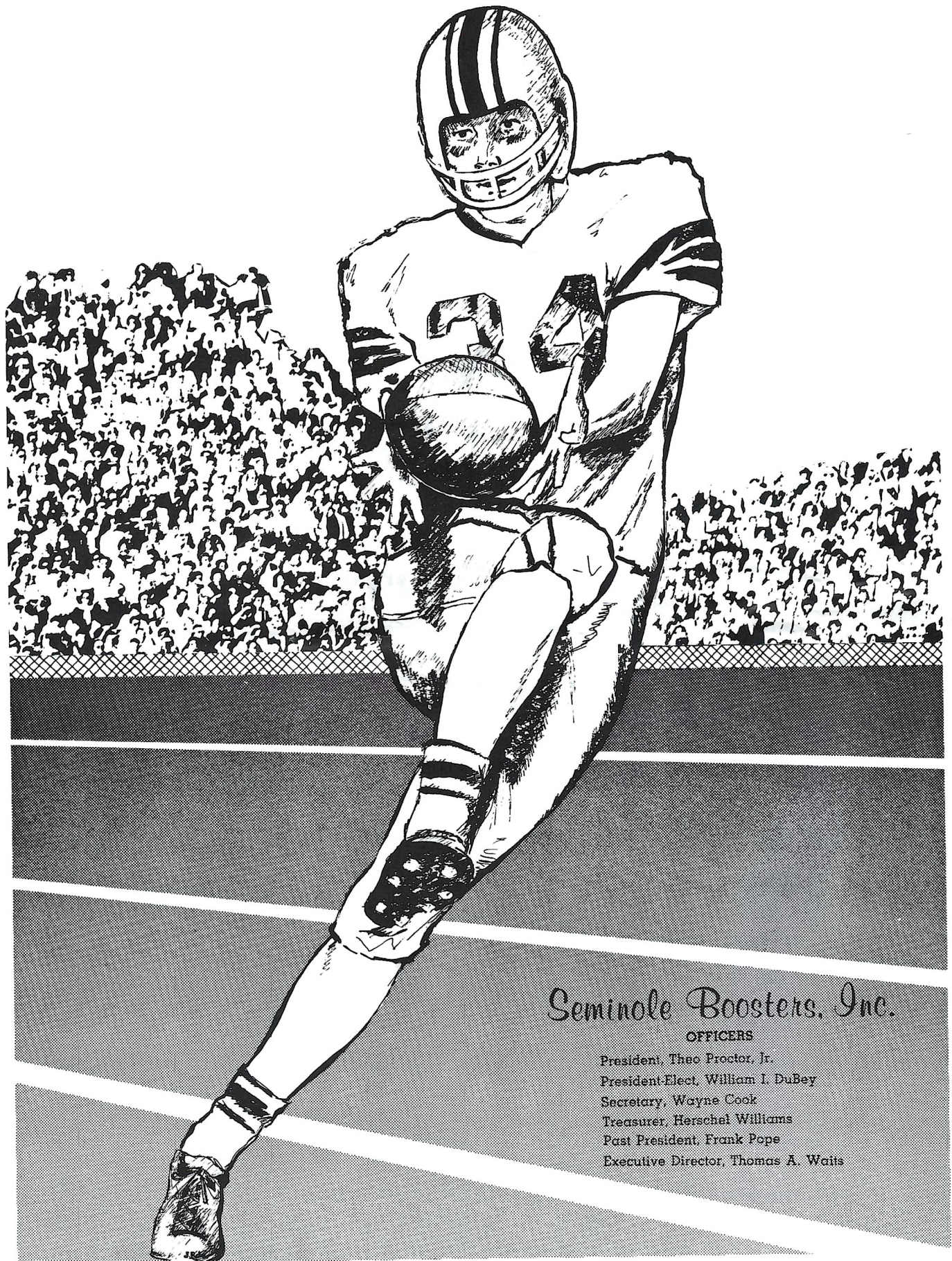
The Florida Times-Union

EVERY MORNING

Jacksonville Journal

WEEKDAY AFTERNOONS

ONE RIVERSIDE AVENUE ■ JACKSONVILLE, FLORIDA



Seminole Boosters, Inc.

OFFICERS

President, Theo Proctor, Jr.
President-Elect, William I. DuBey
Secretary, Wayne Cook
Treasurer, Herschel Williams
Past President, Frank Pope
Executive Director, Thomas A. Waits

Support Football's Finest

Football has come of age at Florida State University and outstanding players like All America Ron Sellers have helped make this possible. As any coach will tell you, much of the secret in fielding winning teams is recruiting top-flight student-athletes.

Seminole Boosters was founded for the sole purpose of providing Coach Bill Peterson with financial support in his recruiting program. Membership in the Boosters is open to anyone with a sincere interest in Florida State's football progress. Minimum contribution

for membership is \$30. Contributions are administered in accordance with NCAA regulations and in conjunction with the Florida State Department of Intercollegiate Athletics.

Boosters receive a colorful automobile license plate which can be used for admission to a special reserved parking lot at Campbell Stadium, a membership card, a weekly football season publication, "The Grandstand Coach," and certain priorities on season and single game football tickets.

JOIN THE BOOSTERS!

SEMINOLE BOOSTERS, INCORPORATED

FLORIDA STATE UNIVERSITY TALLAHASSEE, FLORIDA 32306

Check attached for \$ _____
 Pledge to pay \$ _____ Bill me for \$ _____
 (TOTAL AMT.) (PAYMENTS) MONTHLY QUARTERLY OTHER _____
 (SPECIFY)

Minimum Contribution of \$30 Required for Membership Privileges.

NAME _____ DATE _____

ADDRESS _____

CITY, STATE _____ ZIP _____

Make check payable to Seminole Boosters, Inc.
 Mail To: 114 Longmire Alumni Bldg., FSU
 TALLAHASSEE, Florida 32306

ARE YOU AN F.S.U. ALUMNUS? Yes No

CONTRIBUTOR'S SIGNATURE _____



Lindy's

Fried Chicken

FRIED IN PURE VEGETABLE OIL AND TESTED TO BE 90 TO 95 % FAT FREE, SERVED TO YOU GOLDEN BROWN, TENDER AND CRISP.

SPECIAL BOX

3 pcs. chicken, F.F.,
 cole slaw & rolls 1.10

1/2 FRY CHICKEN

4 pcs. chicken, F.F.,
 cole slaw & rolls 1.35

WHOLE CHICKEN

serves 3 to 4 2.00

BUCKET'O CHICKEN

serves 5 to 7 3.75

BARREL'O CHICKEN

serves 7 to 10 5.00

1447 Thomasville Rd.
 Ph. 224-5811

OPEN 7 Days a Week
 10:00 AM-9:00 PM

PENALTIES

1. **OFFSIDE** by either team; Violation of scrimmage or free kick formation; Encroachment on neutral zone—Loss of Five Yards.
2. **ILLEGAL PROCEDURE, POSITION OR SUBSTITUTION**—Putting ball in play before Referee signals "Ready-for-play"; Failure to complete substitution before play starts; Player out of bounds when scrimmage begins; Failure to maintain proper alignment of offensive team when ball is snapped; False start or simulating start of a play; Taking more than two steps after Fair Catch is made; Player on line receiving snap—Loss of Five Yards.
3. **ILLEGAL MOTION**—Offensive player illegally in motion when ball is snapped—Loss of Five Yards.
4. **ILLEGAL SHIFT**—Failure to stop one full second following shift—Loss of Fifteen Yards.
5. **ILLEGAL RETURN** of substitute not previously disqualified—Loss of Fifteen Yards.
6. **ILLEGAL DELAY OF GAME**; Taking more than four times out during either half (except for replacement of injured player)—Loss of Five Yards. Team not ready to play at start of either half—Loss of Fifteen Yards.
7. **PERSONAL FOUL** — Tackling or blocking defensive player who has made fair catch; Piling on; Hurdling; Grasping face mask of opponent; Tackling player out of bounds, or running into player obviously out of play; Striking an opponent with fist, forearm, elbow or locked hands; Kicking or kneeling—Loss of Fifteen Yards (Flagrant offenders will be disqualified.)
8. **CLIPPING**—Loss of Fifteen Yards.
9. **ROUGHING THE KICKER** or holder—Loss of Fifteen Yards.
10. **UNSPORTSMANLIKE CONDUCT**—Violation of rules during intermission; Illegal return of suspended player; Coaching from sidelines; Invalid signal for Fair Catch; Persons illegally on field—Loss of Fifteen Yards. (Flagrant offenders will be disqualified.)
11. **ILLEGAL USE OF HANDS AND ARMS** by offensive or defensive player; Defensive holding—Loss of Fifteen Yards.
12. **INTENTIONAL GROUNDING** of forward pass—Loss of Five Yards Plus Loss of Down.
13. **ILLEGALLY PASSING OR HANDING BALL FORWARD**—Loss of Five Yards Plus Loss of Down.
14. **FORWARD PASS OR KICK CATCHING INTERFERENCE**—Interference with opportunity of player of receiving team to catch a kick—Loss of Fifteen Yards. Interference by member of offensive team with defensive player making pass interception—Loss of Fifteen Yards Plus Loss of Down. Interference by defensive team on forward pass—Passing Team's Ball at Spot of Foul and First Down.
15. **INELIGIBLE RECEIVER DOWNFIELD ON PASS**—Loss of Fifteen Yards.
16. **BALL ILLEGALLY TOUCHED, KICKED OR BATTED**—Forward pass being touched by ineligible receiver beyond the line of scrimmage—Loss of Fifteen Yards from Spot of Preceding Down and Loss of a Down. Eligible pass receiver who goes out of bounds and later touches a forward pass—Loss of Down. Illegal touching of kicked ball within opponent's ten yard line—Touchback.
17. **PENALTY DECLINED**; Incomplete forward pass; No play or no score.
18. **CRAWLING** by runner—Loss of Five Yards. Interlocked Interference—Loss of Fifteen Yards.

WHEN YOU GET HUNGRY WHY NOT TRY SOME COLONEL SANDERS RECIPE KENTUCKY FRIED CHICKEN ©

three sizes to choose from:

Individual Box
3 Big Pieces of Chicken,
Cole Slaw, French Fries,
Rolls, Gravy
\$1.10

Family Bucket
Serves 5 to 7
\$3.75

Barrel O' Chicken
Serves 8 to 10
\$5.00
Gravy & Rolls 5.40

Bar-B-Q Chicken Sandwich
French Fries—Jumbo Shake

60c



or if you prefer!

- Jumbo Shrimp Boxes
- Chicken Gizzard Boxes
- Filet of Fish Boxes
- Famous Home-Made Pies
- Chicken Liver Boxes

Holland's Carry Out

THREE LOCATIONS TO SERVE YOU

Take Home Service No. 1
1002 N. Monroe—224-1645

Take Home Service No. 2
1603 W. Tenn. St.—224-4313

Take Home Service No. 3
1583 Apalachee Parkway—877-7620

SEMINOLE FOOTBALL NETWORK

Handling the play-by-play for the ever-expanding Seminole Football Network will be Bo Mitchell, in his sixth season as the Seminoles' announcer.

An 18-year veteran in broadcasting, Mitchell is vice-president and station manager of WKIS in Orlando.

Dr. Don Veller, former head football coach and presently serving as the golf coach at Florida State will assist Bo with the color analysis on the Seminole Network this year.

More than 30 stations carry Florida State's 1968 season to all parts of Florida as well as Southern Georgia and Alabama. Originating station for the Seminole Football Network is WTNT in Tallahassee.



Bo Mitchell



Dr. Don Veller

THE SEMINOLE NETWORK

WTNT—Tallahassee	WDSR—Lake City
WROD—Daytona Beach	WCOA—Pensacola
WPRY—Perry	WJAX—Jacksonville
WLAK—Lakeland	WKIS—Orlando
WSPB—Sarasota	WGBS—Miami
WCNH—Quincy	WDAE—Tampa
WMMB—Melbourne	WEAT—West Palm Beach
WPAX—Thomasville, Ga.	WSIR—Winter Haven
WMYR—Ft. Myers	WTRR—Sanford
WMOP—Ocala	WRUF—Gainesville
WOOO—Deland	WSBR—Boca Raton
WTOT—Marianna	WNOG—Naples
WFTW—Ft. Walton Beach	WMGA—Moultrie, Ga.
WAAZ—Crestview	WKMK—Blountstown
WFOY—St. Augustine	WJOE—Port St. Joe

Come to Chevron Island

...and follow the SEMINOLES in '68



ON
THE
**STANDARD
OIL**
RADIO
NETWORK

WTNT
Tallahassee

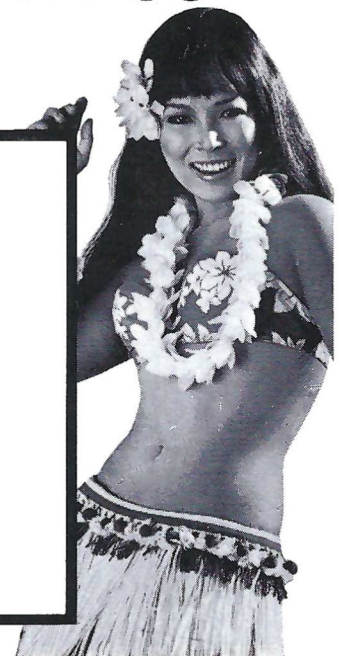
WJAX
Jacksonville

WGBS
Miami

WKIS
Orlando

WCOA
Pensacola

WDAE
Tampa



CAMP.O.TEL CORP

NORTH FLORIDA'S ONLY COMPLETE FULL TIME

CAMPER CENTER

2720 W. Tennessee St.

P. O. Box 2235 Tallahassee, Fla. 32304

Telephone 576-4545 AC 904

HUNTING, FISHING, VACATION ECONOMY

... Harvest the fun with the whole family anywhere you go with home-based comfort. Ride or sleep—cook and eat enroute—take your boat or trailer. Your Camp-O-Tel puts your family in this picture. Special jacks to load or unload your Camp-O-Tel.

National rally

free camp Vacation

National caravan club



5 STAR RATING

Mobile Life's

HIGHEST AWARD

INVITES YOU TO VISIT OUR FACTORY AND INSPECT THE ONLY BRAND OF PICKUP CAMPER MANUFACTURED IN THE STATE OF FLORIDA THAT IS 5 STAR RATED BY MOBILE HOME JOURNAL-MOBILE LIFE MAGAZINE.

WE ARE A COMPLETE CAMPER SHOPPING CENTER—PICKUP CAMPERS, TRAVEL TRAILERS, CAMP TRAILERS. WE DISTRIBUTE FULTON FIBERGLASS MODELS PLUS OUR OWN AWARD WINNING CAMP-O-TEL. YOU SIMPLY OWE IT TO YOURSELF TO MAKE A THOROUGH COMPARISON OF QUALITY AND VALUE.





Dr. T. Marshall Hahn—President



VIRGINIA
TECH



Coach Jerry Claiborne



**get off the
bench, join us
at...**



**445 West Tennessee St.
Tallahassee, Florida**

Virginia Tech



*
*The cigar for men
that ladies love*

HAV-A-TAMPA JEWELS

WITH EXCLUSIVE BIRCHWOOD TIP

2 for 15c

or new Push-Pak of five 36c
(Plus state and local taxes, if any)



FROM HAVATAMPA-TAMPA'S LARGEST MANUFACTURER OF FINE CIGARS

Distributed by **Eli Witt Tobacco & Candy Co.**
Tallahassee, Florida

Le Roc Cocktail Lounge

Tallahassee's Finest . . .

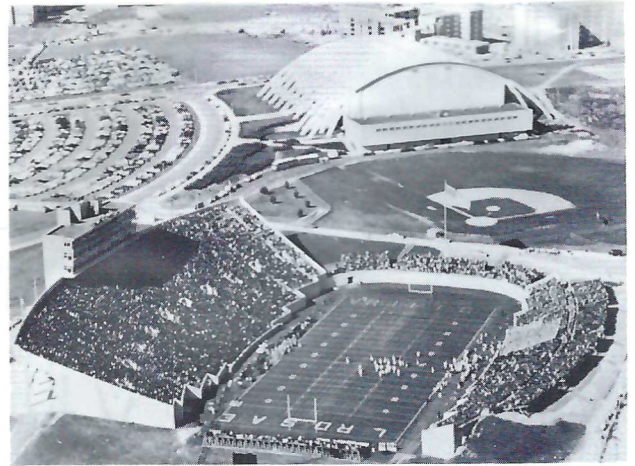
Located in the
DUVAL HOTEL

For an evening of relaxed
entertainment – enjoy your
favorite beverage

No cover charge

Entertainment nightly

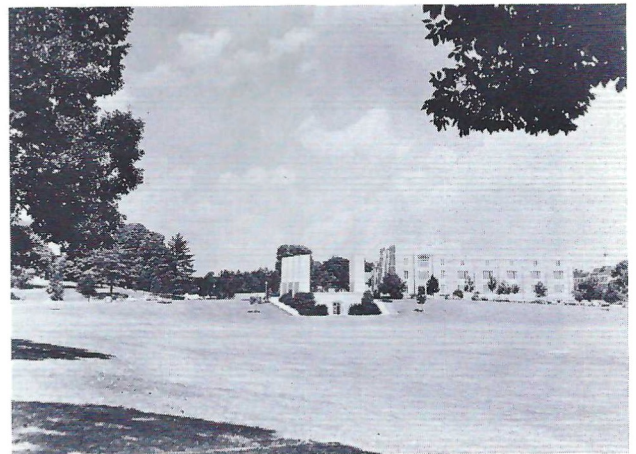
Open daily 11 A.M. to 2 A.M. – except Sunday



Virginia Tech's Athletic Complex



Virginia Tech Campus Scene: Commerce Hall is at right;
the Physics Building is at upper right.



War Memorial Chapel & Carol M. Newman Library

Spend less of your parents' money on weekends.

Hertz



Rent a Ford Mustang or another good car from Hertz at a special low weekend rate: \$15 and 12¢ a mile including gas, oil and insurance, from noon Friday to noon Monday. To reserve a car call: 222-1686. To pick it up come to the Duval Hotel.

The Gobblers



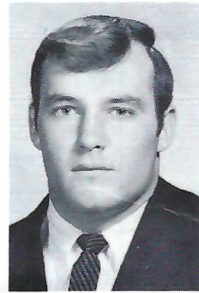
Frank Beamer



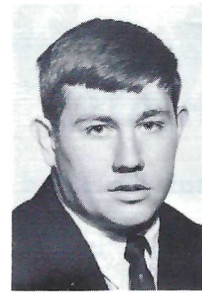
Preston Blackburn



Steve Bocko



Jud Brownell



Eddie Carter



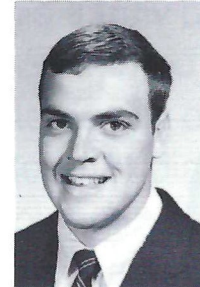
George Constantinides



Larry Creekmore



Dee Crigger



Danny Cupp

The Vogue

TALLAHASSEE, FLORIDA

GOOD LUCK SEMINOLES!

Varsity
THEATRE

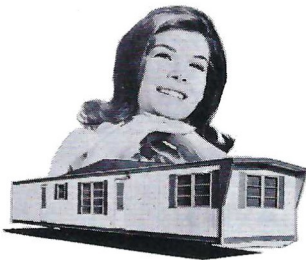
1833 W. Tennessee

Phone 224-8636

Miracle
THEATRE

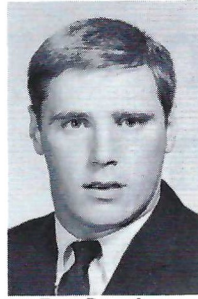
Thomasville Road

Opening This Fall

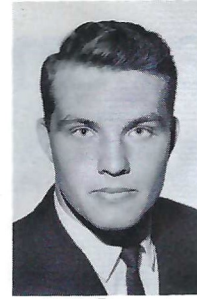


BAIRD
MOBILE HOMES
2901 Apalachee Parkway
877-4524
TALLAHASSEE

The Gobblers



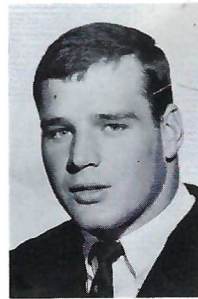
Ron Davidson



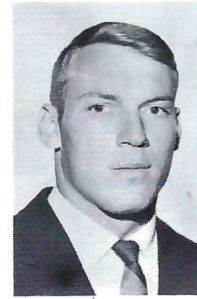
Pete Dawyot



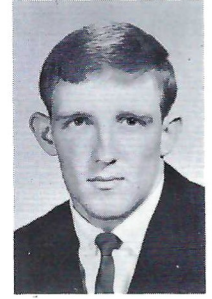
Ken Edwards



Jerry Green



Bert Henderson



Al Kincaid



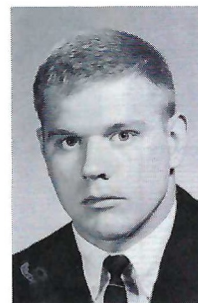
Dickie Longbeam



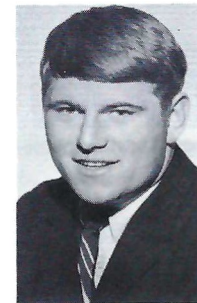
Len Luongo



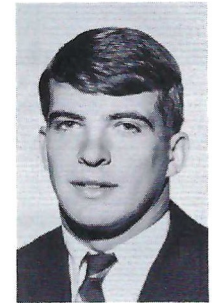
John Maxwell



Rick Piland



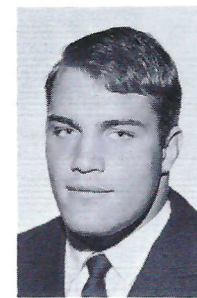
Paul Ripley



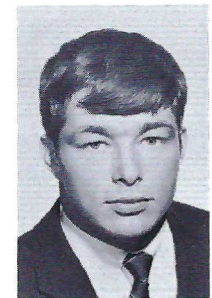
Bob Slaughter



Terry Smoot

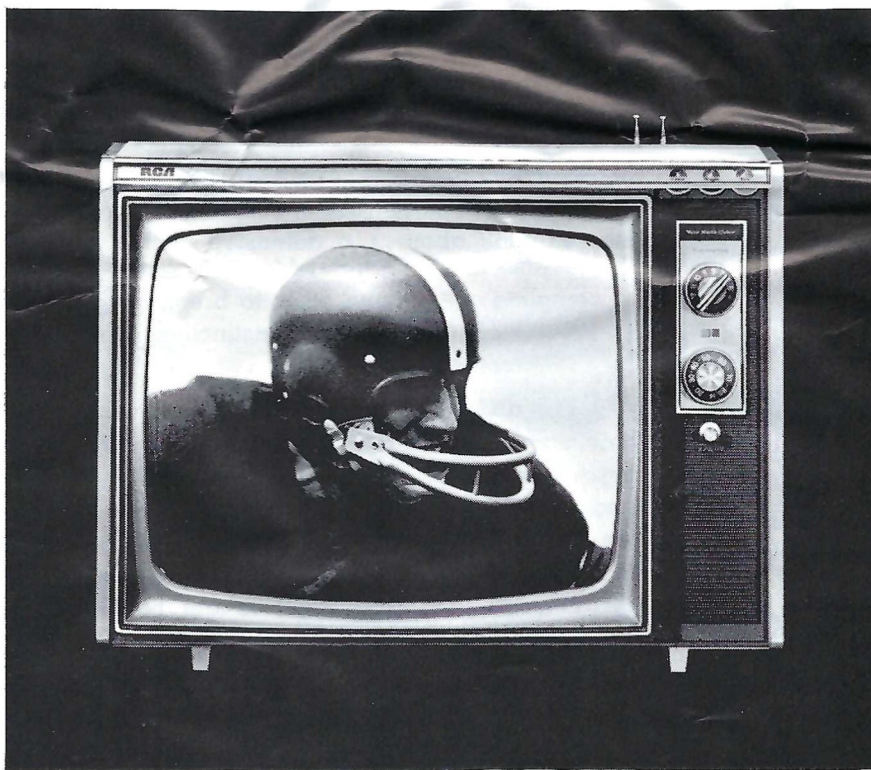


Lee Stonesifer



Mike Widger

The mini-color portable with the maxi-color screen from RCA.



RCA engineers have pared pounds to make this a truly portable color TV—with no sacrifice in the quality of its sharp, clear 18" diag., 180-sq. in. color picture. Weighs less than some other sets with smaller screens. Carry the Candidate home from your RCA dealer's today.

RCA

Rainey Cawthon's

700 N. MONROE • 222-1865

PART FOUR:
FUNDAMENTAL FOOTBALL

Defensive Backs and Linemen

By Gary Wyant and Bob Harbison

The line and secondary form the first and last lines of defense. The lineman makes the initial contact with the offense and the secondary is responsible for any play that gets beyond the line.

The individual interior lineman is probably more overlooked by the casual fan than any other position. This usually is the case because the lineman's play takes place within a relatively confined area where there is a lot of action at the same moment.

The lineman's job however, is no less important because of this. His primary responsibility on any given play is to "hold that line." It is up to the defensive line to keep the offense from a ball control game by holding the line of scrimmage.

If the line can do this, then it must also become acutely aware of the passing situation. When the offense goes with the pass, then the defensive line has the responsibility of the pass rush.

A good lineman has to be a big, strong boy. Ideally he would be about 6-2 and weigh 220, but it's sometimes hard to come up with the ideal. He should have quickness, but it's not necessary for him to have a lot of speed. A lineman is not expected to have to make plays all over the field, but he does have to react quickly and you want him to be able to pursue the passer.

He must be strong enough to keep from being knocked back into the linebackers. His height is especially advantageous on the pass rush when he will force the quarterback to throw over him.

To prepare for a game, the lineman drills on the opposition's offensive blocking styles and patterns. He works against them on the field and studies them in game films. It is necessary that the lineman become familiar with the patterns if he hopes to avoid a block. He is always on the lookout for "keys", some unconscious signal the opposition might give to tip off play, especially whether it is a pass or run.

The defensive back has the toughest job, physically, on the football team. It is toughest because he has more area to cover than any man on the field.

The secondary man is responsible for the entire football field from the line of scrimmage back. This is compounded by the fact that he is also the least buffered. If a lineman or linebacker makes a mistake or slips, there is usually another man within a step or two who can help him recover. But the defensive back is usually 15 yards or more from the nearest teammate. If he makes a mistake, the chances are pretty good it will result in a touchdown.

With the emphasis in the college game switching to passing, the secondary is becoming increasingly more important to the winning team. Not only is more pressure being applied to the secondary, but the receivers are getting bigger and more sophisticated in moves and patterns.

Against the pass the secondary has three objectives: eliminate the deep pass, stop the intermediate pass and try to stop the short pass. The secondary has a containing role on sweeps and wide running plays. That is, they are trying to turn the play toward the rest of the defense. On all running plays the defensive back should take proper pursuit to insure against a long run.

The defensive back is usually one of the best athletes on the field. You often find former high school quarterbacks playing in the secondary in college. This is because a high school quarterback is usually one of his team's best athletes. Also if you stop to think about it, a defensive back's job is just the reverse of a quarterback's—one seeks a receiver to complete a pass, the other to break it up. The defensive back will have an instinctive advantage if he is a former quarterback.

Speed and quickness are the physical keys for a defensive back. He must have maneuverability and a lot of emphasis is put on his footwork. The defensive back often will be running a pass pattern backward while the receiver runs it forward. Size is becoming more of a factor among the defensive backs, especially as the receivers tend to get bigger. A size handicap, however, can be overcome with ability.

The one factor for a good secondary that can not be overemphasized is esprit de corps. A defensive back must believe in himself and his fellow backs. They must have a lot of pride in their work—pride enough that they know, no matter who the receiver is, they can cover him.

Unity then is a big part of the secondary. Our defensive backs at Florida State have been playing together now for three years and they have that unity and confidence. They have been labeled the "Rat Pack" and everyone of them prides himself to be a member. It is this type of pride that leads to that little something extra that can mean the difference in a play or a ball game. **END**

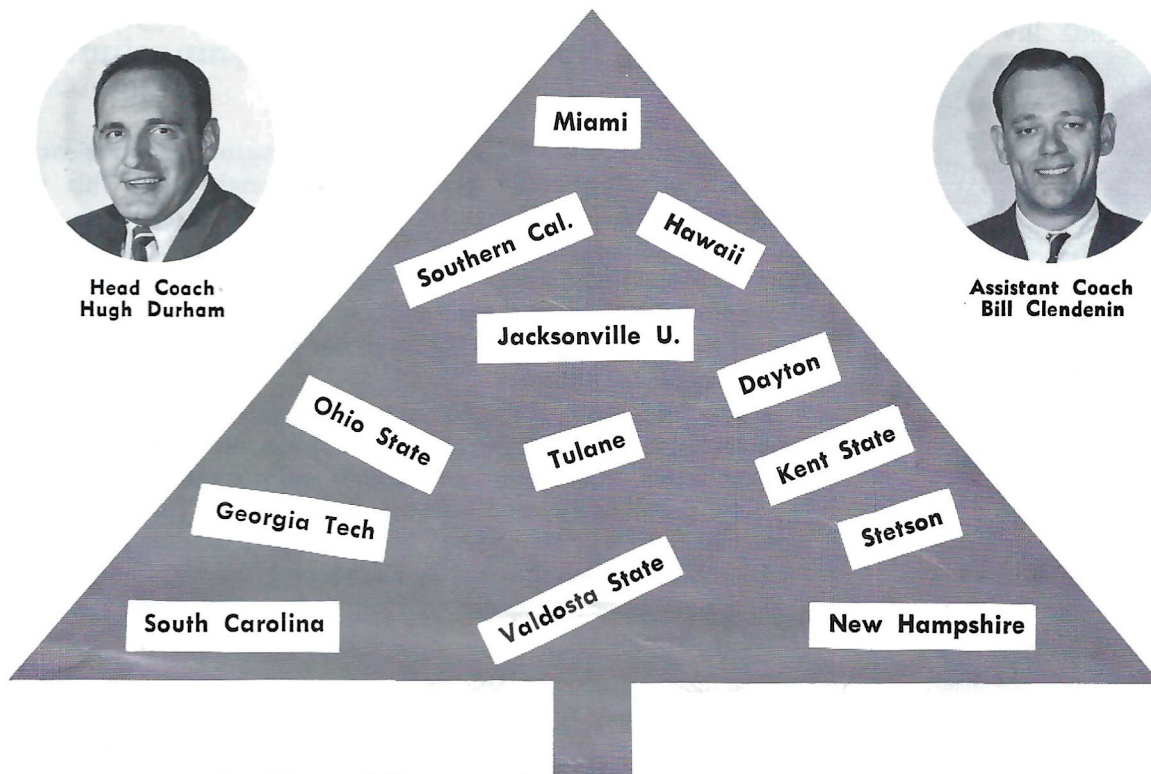
PUT FLORIDA STATE'S BASKETBALL TEAM
 UNDER YOUR CHRISTMAS TREE . . .
 . . . AND WE'LL GIVE YOU A PRESENT



Head Coach
 Hugh Durham



Assistant Coach
 Bill Clendenin

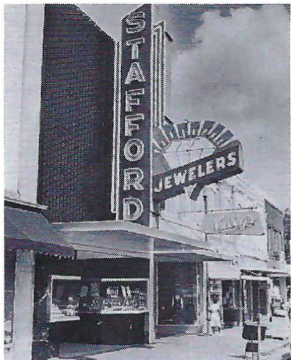


The 1968-69 Seminoles are the best in Florida State history, and the home schedule includes some of the best teams in the nation. Among those coming to Tallahassee this winter are NCAA finalist Ohio State, NIT runner-up Dayton, West Coast power Southern California, and Southern independent powers Miami and Georgia Tech. A Seminole season ticket is just the right gift for that hard-to-please sports fan of the family. And by purchasing a season ticket, we'll give you \$12.50. Single game general admission prices for this seasons games is \$2.50, for 13 games that comes to \$32.50. A season ticket, however, is just \$20.00—the \$12.50 difference is yours. To order your season tickets, just send a check made payable to Florida State University to: Athletic Ticket Office, Tully Gym, Florida State University, Tallahassee, Fla. 32306

P.S. The season opens Dec. 2, so make Christmas a little early this year.

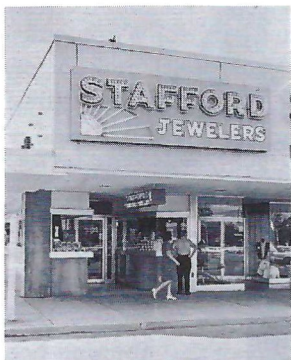
Let's Go Seminoles

From the friendly folks
at STAFFORD JEWELERS



DOWNTOWN

Vernon Stevens, Manager



PARKWAY

Amos Stevens, Manager



THOMASVILLE, GEORGIA

Nathan Braswell, Manager

STAFFORD
Quality Jewelers

Now with three fine stores
for your
shopping convenience

Gymkana Proudly Presents

Atlantis

Nov. 6-9 in Tully Gymnasium

The Florida State Gymnastics Team, long a nationally acclaimed club, presents an outstanding gymkana show each year. This year the club presents "Atlantis." The show is divided into three parts—internationally known gymnasts, talented Seminole coeds, and the nationally famous Tallahassee Tumbling Tots. This year the Gymkana production will be held November 6-9 starting 8 p.m., nightly. Tickets are on sale at the University Union ticket office. They are \$1.25 for general admission, 75-cents for students and 50-cents for children.

A special feature of the Gymkana program is the annual Miss Gymkana contest. More than three hundred Florida State coeds took part in the preliminaries, from which 19 finalists have been chosen on the basis of beauty, poise and charm. On the final night of the show Miss Gymkana and her court will be chosen, based on their costume design, cooperation and enthusiasm toward the Gymkana program.

The gymnastics program at Florida State is under the direction of Dr. Hartley Price.



One of these 19 coeds will be selected Miss Gymkana during the final performance. The beauties here were picked from a field of several hundred entries. Court members are, from left:

Front row: Ginger Houser, Jacksonville; Gina Kantor, Hallandale; Carolyn Cooper, Daytona Beach; Charnell Aycock, Ft. Lauderdale; Linda Kazimar, Jacksonville; Krista Garrett, Pensacola; Lynn Huggan, Brandon; Adrian Walker, Miami.

Second row: Kaye Hartley, St. Augustine; Susan Hancock, Ft. Lauderdale; Gabriela C. Rotter, Vero Beach; Bobbi Beals, Tullahoma, Tenn.; Carole Ward, Venice; Patricia Hancock, Palatka; Celia Lawhorn, Haines City.

Third row: Lynn Owens, Clearwater; Linda Atnip, Winchester, Tenn.; Cathy George, Pittsburgh, Pa.; Ellen Osborne, New Smyrna Beach.

FOOTBALL PLAY ON WORDS

Catch the clues and dash your answers down the field of football terms.

1. Type of pin	G	S _ _ _ _ Y	G
2. Deodorant	5	R _ _ _ _ A _ _	5
3. Eligible bachelor	10	_ _ I _ _ _ T _ _	10
4. Change for a dollar	15	Q _ _ _ _ _ _ C _ _	15
5. Irritated male deer	20	C _ _ _ _ U _ _	20
6. Frankenstein	25	_ _ N _ _ _ _	25
7. Dater's indiscretion	30	_ _ _ S _ _ _	30
8. Mother-in-law's visit	35	P _ _ _ L _ _	35
9. Pop top tab	40	_ U _ _ _ _ P _ _ _ R	40
10. Inebriated receiver	45	_ _ _ _ T _ _ _ D	45
11. An uncalled play	50	_ _ M _ L _ _	50
12. Digital command by co-ed	45	H _ N _ _ O _ _	45
13. Beer joint	40	_ I _ E _ _ _	40
14. Love triangle	35	I _ _ _ R _ _ _ T _ _ _	35
15. Lying on your back or stomach	30	_ F _ S _ _ _	30
16. Area for falsies	25	F _ A _ _ Z _ _ _	25
17. Ulysses S. to the rescue	20	G _ _ _ _ - N - A _ _	20
18. Quarterback with two dates	15	O _ T _ _ _ _ _ Y	15
19. Barbershop tactics	10	_ _ _ P P _ _ _	10
20. Chip off the old	5	_ L _ _ _ _	5
21. To feel a duck	G	_ _ _ H _ W _	G

Answers: 1. Safety; 2. Right Guard; 3. Fair Catch; 4. Quarterback; 5. Cross Buck; 6. Monster; 7. Pass; 8. Penalty; 9. Quick Opener; 10. Tight End; 11. Fumble; 12. Hand Off; 13. Dive; 14. Interception; 15. Offside; 16. Flat Zone; 17. Grant-in-Aid; 18. Option Play; 19. Clipping; 20. Block; 21. Touchdown.

Learn to Fly at Seminole Flying Service, Inc.

Municipal Airport

Phone 576-5151

Tallahassee, Fla.

- STUDENT CLUBS
- AIRPLANE RIDES
- FLIGHT INSTRUCTION
- AERIAL PHOTOGRAPHY
- CHARTER FLIGHTS
- AIRCRAFT RENTAL

FLY the best—A New Cessna

"Look up—a new CESSNA will be overhead"

DIRECTORY OF 1968 PROGRAM ADVERTISERS

FIRM	LOCATION
ABC Mobile Homes	17
Army ROTC	21
Baird Mobile Homes	42
Big B Cleaners	22
Bill Peacock Chevrolet	48
Bennetts Drugs	10
Camp O Tel	38
Chevrolet	Back Cover
Chrysler Corp.	BCS
Clark Electric	10
Coca Cola	24-25
Dolime	15
Driftwood	17-28
Eli Witt Tobacco	40
Florida Times-Union	33
Frisch's	31
Frosty Morn	Inside Front Cover
Globe Cleaners	12
Hertz	41
Holiday Inn	6
Holland's	36
Honda	20
Jerry's	39
Joby's Seafood	18
LeRoc	40
Lindy's	35
Longines	Inside Back Cover
McDonalds	14
Midyette-Moor	14
Miller Chevrolet	16
Morrison's	FCS
Oldsmobile	18
Owens, Inc.	7
Phisohex	30
Prudential	48
Quality Cleaners	43
Rainey Cawthon—RCA	48
Seminole Flying Service	Inside Back Cover
Silver Slipper	11
Sinclair	16
Southern Electric	17
Southernair—Skyline	8
Sperry Rand	46
Stafford Jewelry	37
Standard Oil	13
Sweet Shop	19
Tallahassee Auto Dealers	22
Tallahassee Camera	13
Tallahassee Travel & Tours	32
Talquin Electric	29
University Bookstore	41
Varsity Theatre	41
Vogue	32
Wakulla Springs	32

Stadium Ambulance Service courtesy of Bevis Funeral Home

QUALITY CLEANERS

215 W. COLLEGE AVE.—DIAL 222-5097

ONE DAY SERVICE

QUALITY DRY CLEANING

PICK-UP and DELIVERY

One Day Shirt Service

Quality Laundry Work

Fluff Dry Service



BILL PEACOCK CHEVROLET, INC.

300 West Washington St.
MONTICELLO, FLORIDA

We *Might* not be the biggest and we *Might* not be the best, although we leave this open for question, with your continued patronage and our dedication to serve we feel sure that we're well on the way to being both.

Growing With the Seminoles!

TALLAHASSEE
Phone 224-8827

MONTICELLO
Phone 997-2513

FOOD FOR FUN!

While you're waiting for the kick-off, live it up with delicious fun food from McDonald's on West Tennessee Street near Seminole Country. Four speedy service windows and extra crewmen for the games guarantee you a quick pick-up for hot, wholesome food to go . . . or eat on the patio.



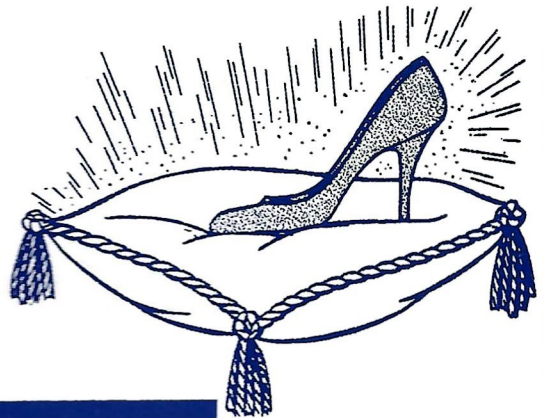
©McDonald's Corp. 1968

McDonald's is your kind of place.

1701 W. Tennessee Street near Seminole Country

Tallahassee's Most Exclusive
Steak House

the Silver Slipper



RESTAURANT

DELICIOUS CHARCOAL BROILED STEAKS

SEA FOODS CHICKEN

25 PRIVATE DINING ROOMS — BANQUET ROOM SEATING 100

CALL JIMMIE OR CHRIS
KALFAS FOR RESERVATIONS
FOR PRIVATE PARTIES
AND BANQUETS

224-1266

OPEN 5 P.M. TILL 11:30
OPEN EVERYDAY & SUNDAY

2000 S. MONROE • One Mile From Capitol On So. Monroe St. U.S. 319 S.
BEHIND S.&S. PACKAGE STORE



"Bill
the
Bank"
Hilton
Cote Blanche



Z/28 Camaro



Putting you first vaaarrrrrrroooooooooomm

keeps us first.



*Special offer from the Chevrolet Sports Art Collection:
18" x 24" prints of four Arthur Friberg paintings
portraying the 100 years of college football:
(1) The First Game; (2) Knute Rockne—The Coach;*

*(3) Howell to Hutson—The Passing Game; (4) O. J. Runs for Daylight.
Send \$3.00 in cash, check or money order to L. G. Balfour
Company, P.O. Box 11608. Salt Lake City, Utah 84111.*