



OFFICIAL PROGRAM • FIFTY CENTS

*“Homecoming”*

**FLORIDA STATE / VA. TECH**

MILES STADIUM

BLACKSBURG, VIRGINIA

OCTOBER 24, 1964

*Tom Weaver*



### **HARMAN FURS FIND HAPPY OWNERS**

For a third of a century Harman Mink and Fox furs have delighted well-dressed women over much of the world.

Here at the farm standard colors and rare new color types are bred and improved. Visit our Retail Fur Shop in Christiansburg and see the lovely coats, stoles, capes and jackets, available for your selection at Farm Prices.



**HARMAN FUR FARMS**

CHRISTIANSBURG, VIRGINIA

*First in Furs and Fashions*

LOC  
EN  
HIS  
AT  
ST  
CO  
NI  
BA  
SC  
SC  
ST



DR. G. B. JOHNSTON



DR. T. MARSHALL HAHN  
*President*



FRANK O. MOSELEY  
*Director of Athletics*



DR. CLARENCE P. MILES

Dr. G. B. Johnston, Chairman, Athletic Association Board—Dr. T. Marshall Hahn, President of Va. Tech—Frank O. Moseley, Athletic Director.

Dr. Clarence P. Miles, Chairman, Faculty Committee; Athletics—William B. Matthews, Assistant Athletic Director.



WILLIAM B. MATTHEWS  
*Assistant Athletic Director*

## Facts About Va. Tech

LOCATION: Blacksburg, Va.; population: 7,200; 2,100 feet above sea level; 38 miles west of Roanoke.

ENROLLMENT: 6,500.

HISTORY: Established in 1872 as the Virginia Agricultural and Mechanical College, under provisions of the Land-Grant Act of 1862. School opened on October 1, 1872, with 132 students.

ATHLETIC CONFERENCE: NCAA and the only remaining charter member of the Southern Conference.

STADIUM: Miles Stadium, built in 1926, with bleachers can seat 16,000.

COLORS: Orange and Maroon.

NICKNAMES: Gobblers, Techmen, Hokies.

BAND: "Highly Tighties," first-place winner in the last three Presidential Inaugural Parades, this year has been expanded to 150 members.

SCHOOL PAPER: *The Virginia Tech.*

SCHOOL YEARBOOK: *The Bugle.*

STUDENT RADIO STATION: WUVT.



# FOOTBALL *for* '64

*Channel 7* Sports Exclusive!



## VIRGINIA TECH. FOOTBALL

*with* COACH JERRY CLAIBORNE

An exciting look at each week's game, captured on film only the day before and coupled with an informative analysis of games to come. Hal Grant serves as anchor-man for the series.

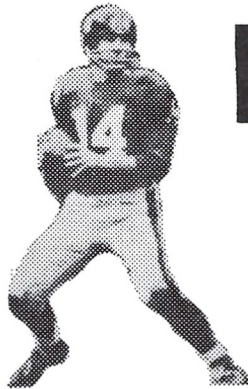
*Immediately following Sunday NFL games!*

## GEO. PREAS & PRO FOOTBALL



A comprehensive discussion of last week's Pro Football highlights, plus exciting previews of games to follow by the great Baltimore Colts' lineman and former VPI star.

*Preceding NFL Pro games every Sunday on WDBJ-TV!*

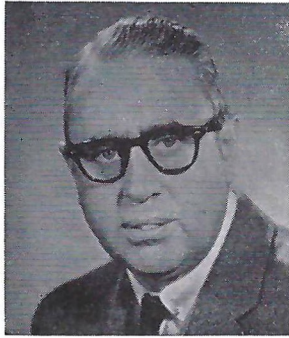


## NFL (PRO) FOOTBALL

The world's best players competing in the toughest of all football leagues, The National Football League! Tune in for spectacular action every Sunday afternoon.

# Channel 7 WDBJ-TV

*"Your Year-Round Sports Station"*



**Dr. Emory Irvin**  
Physician



**Luke Lindon**  
Equipment



**Wendy Weisend**  
Sports Information



**Sam Lankford**  
Trainer

## Va. Tech Athletic Department

ATHLETIC DIRECTOR—Frank O. Moseley

ASSISTANT ATHLETIC DIRECTOR—William B. Matthews

SPORTS INFORMATION DIRECTOR—Wendell H. Weisend

### ATHLETIC STAFF

FOOTBALL—Jerry D. Claiborne, head coach

#### FOOTBALL ASSISTANTS

Bill (Moon) Conde—def. line  
Bobby Collins—def. backs  
Alf Satterfield—off. line  
Dick Redding—frosh  
John Shelton—off. backs  
Doug Shively—ends  
Sam Lankford—trainer

#### BASKETBALL

Head coach: Howard Shannon (Kan. St.)  
Assistant: Charles Moir (Appalachian State)

BASEBALL Head coach: G. F. (Red) Laird (Davidson)

#### TRACK (Outdoor, indoor and cross country)

Head coach: Martin (Marty) Pushkin (W. Va.)

WRESTLING Head coach: Frank Teske (Mich. St.)

SWIMMING Head Coach: H. Richard Redding (Springfield)

GOLF Head Coach: Preston Newman (Va. Tech)

TENNIS Head coach: Bill Buchanan (Va. Tech)

RIFLE Maj. James Anderson (Pitt.)

TRAINER Ed Motley (Wm & Mary)

EQUIPMENT MANAGER Luke Lindon (Ky.)



# DAVIDSONS CHARWOOD SHOP

BLACKSBURG, VIRGINIA

## CLOTHING

IN QUIET GOOD TASTE

FOR THE COLLEGE MAN

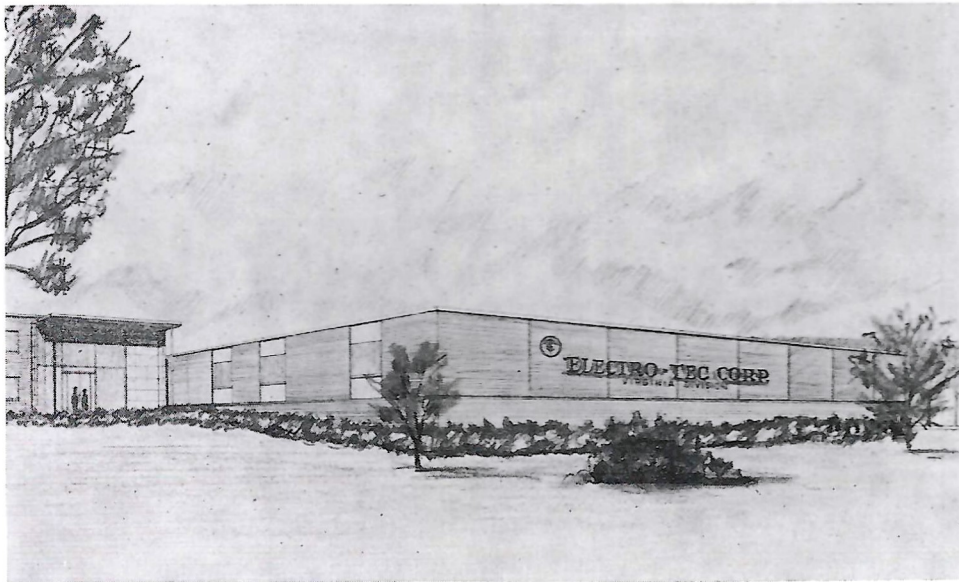


The Hotel Roanoke's tradition of friendliness and service began more than 80 years ago. Today, as Virginia's oldest and most experienced convention center, it offers every modern convenience and service—from olympic swimming pool to closed circuit TV. It's a pleasure to do business at this beautiful 425-room, air-conditioned version of an Old English Inn. Write today for our new convention brochure.



### Hotel Roanoke AND MOTOR INN

Roanoke, Virginia



## ELECTRO-TEC IS MOVING FORWARD WITH THE AERO-SPACE INDUSTRY

Engineers and Technicians Wanting to Move With Us Are Invited to Discuss Growth Opportunities

**ELECTRO-TEC CORPORATION**  
BLACKSBURG, VA.

Jerr  
guidir  
by Te  
was lo  
Alt  
and i  
believ  
Th  
sociat  
tactic  
'62 le  
in pas  
Cla  
caree:  
serve  
Texas  
1957,  
His  
his fo  
At  
South  
defen  
Du  
defen  
At  
defen  
the r  
As  
sever  
Clait  
Op  
a dov  
A  
A  
to be  
A  
again

# Jerry D. Claiborne

Head Football Coach

Virginia Tech

Jerry Claiborne, named 1963 Southern Conference Coach of the Year after guiding Tech to its first-ever SC football championship, last Spring was presented by Tech alumni a VPI chair "on which to rest his laurels," but Claiborne already was looking to laurels ahead, not behind.

Although last year's 8-2 record was one of the finest in the history of the school and included the league crown, as Spring drills began Claiborne declared, "We believe we can come up with a defense that will yield less yardage per play."

Throughout his coaching career, which now spans 14 years, he has been associated with and often directly responsible for good defensive techniques and tactics. His Tech teams have shown this trademark. The Gobblers in '61 and '62 led the SC in total and pass defense, and in '63 Tech was second in the nation in pass interceptions and fourth in punt return defense.

Claiborne, who played his college football at Kentucky, began his coaching career in 1950 as football and basketball coach at Augusta Military Academy. He served eight campaigns under Paul (Bear) Bryant — two at Kentucky, three at Texas A&M and three as Bryant's chief assistant at Alabama. One season, 1957, he was head defensive coach under Frank Broyles at Missouri.

His AMA cage team won the military league championship, and the next Fall his football squad won the league title.

At A&M, Claiborne was in charge of the defense as the '56 Aggies won the Southwest Conference championship and ranked 6th in the nation in rushing defense and 8th in total defense.

During his year at Missouri, the Tigers were second in the nation on pass defense.

At Alabama, Claiborne's primary responsibility was the defensive secondary which was second in 1958 and then led the nation in 1959 in pass defense.

As for his ability as a game-plan strategist and tactician, several successful maneuvers by the 1963 Techmen carried the Claiborne mark:

Opening with an aerial game against Wake Forest, despite a downpour of rain;

A special punt return which paid off handsomely against GW;

A new punt rush which paid off in a blocked punt and proved to be the turning point in defeating Florida State;

A game-opening inside kick which sent the Gobblers winging against West Virginia;



Jerry Claiborne

Against VMI, a special kickoff return which sprung Tommy Walker loose on a 99-yard record-breaking return and quickly nullified a Keydet advantage.

Claiborne and his wife, the former Faye Hooks, are natives of Hopkinsville, Ky., and both attended UK, where Jerry compiled an excellent 2.7 academic average and was voted the most valuable senior football player on the 1949 Wildcat squad. The Claibornes have two sons and two daughters:

David, November 21, 1952, at Lexington, Kentucky  
Jonathan, May 26, 1955, at College Station, Texas  
Kathy, August 1, 1957, at Columbia, Missouri  
Eileen, September 18, 1961, at Radford, Virginia



VIRGINIA TECH'S 1964 FOOTBALL STAFF

Left to right: John Shelton, offensive backs; Bobby Collins, defensive backs; Doug Shively, ends; trainer Sam Lankford; head coach Jerry Claiborne; Alf Satterfield, offensive line; Dick Redding, freshman; and Bill Conde, defensive line.

# **VA. TECH BOOSTERS**

**OF BLACKSBURG, VA.**

\*

W. Bane Atkinson, Ins. & Real Estate

Blacksburg Esso Station

Blacksburg Feed & Seed Company

Blacksburg Household Appliance & Furniture

Blacksburg Lumber Company

Blacksburg Motor Company

Blue Grass Market

Cecil's Place

Center Drug Store

Central Service, Inc.

College Inn

Corner Drug

Guyann Dept. Store





**STUDENT COACHES**

Head varsity coach Jerry Claiborne with student coaches, all playing members of Tech's 1963 Southern Conference champs. Left to right: Mike Cahill, Dave Green, Larry Philpot, Kyle Albright, Newt Green, Alex Camaioni and Buddy Weihe. (Inset) Randall Edwards, who has served as a varsity assistant since 1962.

FOR THE EIGHTH STRAIGHT SEASON

**VIRGINIA TECH FOOTBALL**

**TAKES TO THE AIR**

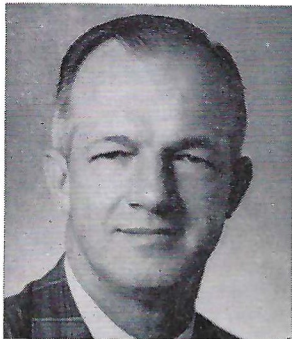
over

910 AM

**WRNL**

102.1 FM

And the Va. Tech Football Network



Charlie Harville  
Play-by-Play



Frank Soden, Color

Presented by

**PORTLAND CEMENT ASSOCIATION**

&

**MONROE AUTO EQUIPMENT CO.**

# THE FARMHOUSE



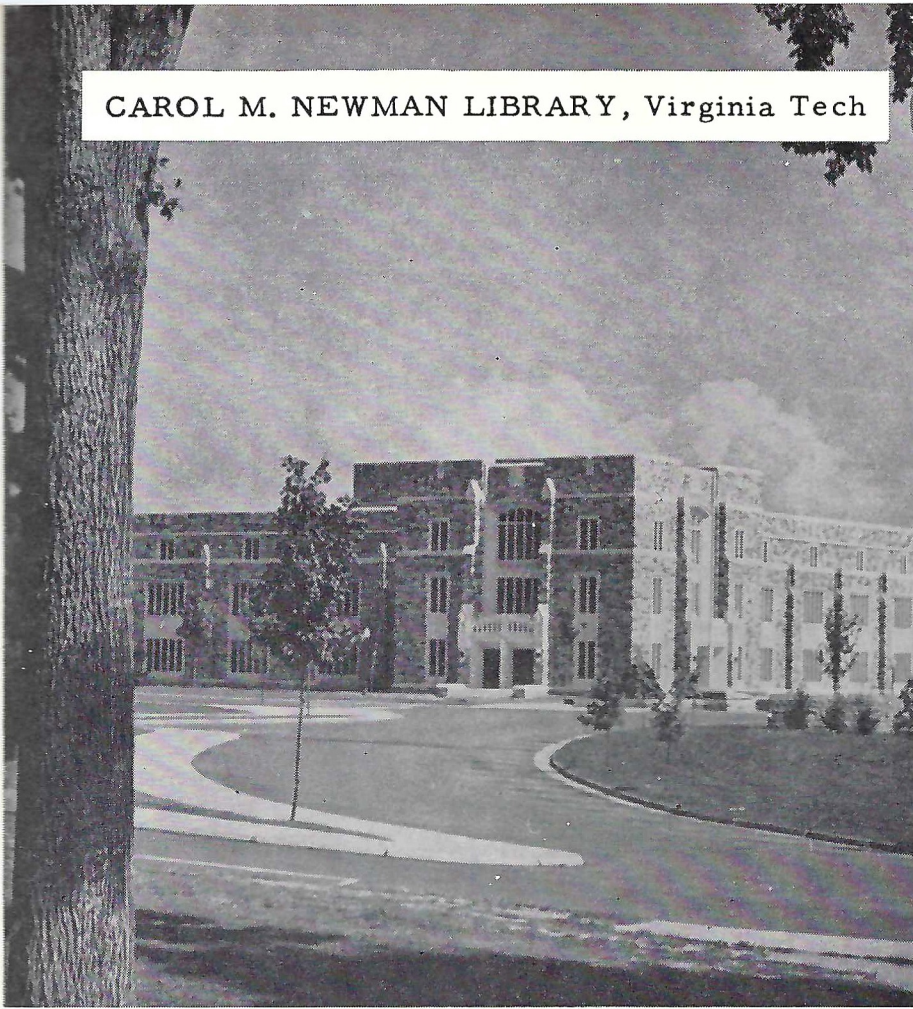
Pioneers in sub-miniaturized electro-mechanical components for missile inertial guidance systems.

Engineers are invited to examine the interesting challenge of the space age offered by Poly-Scientific.

**POLY-SCIENTIFIC CORPORATION**

Blacksburg, Virginia

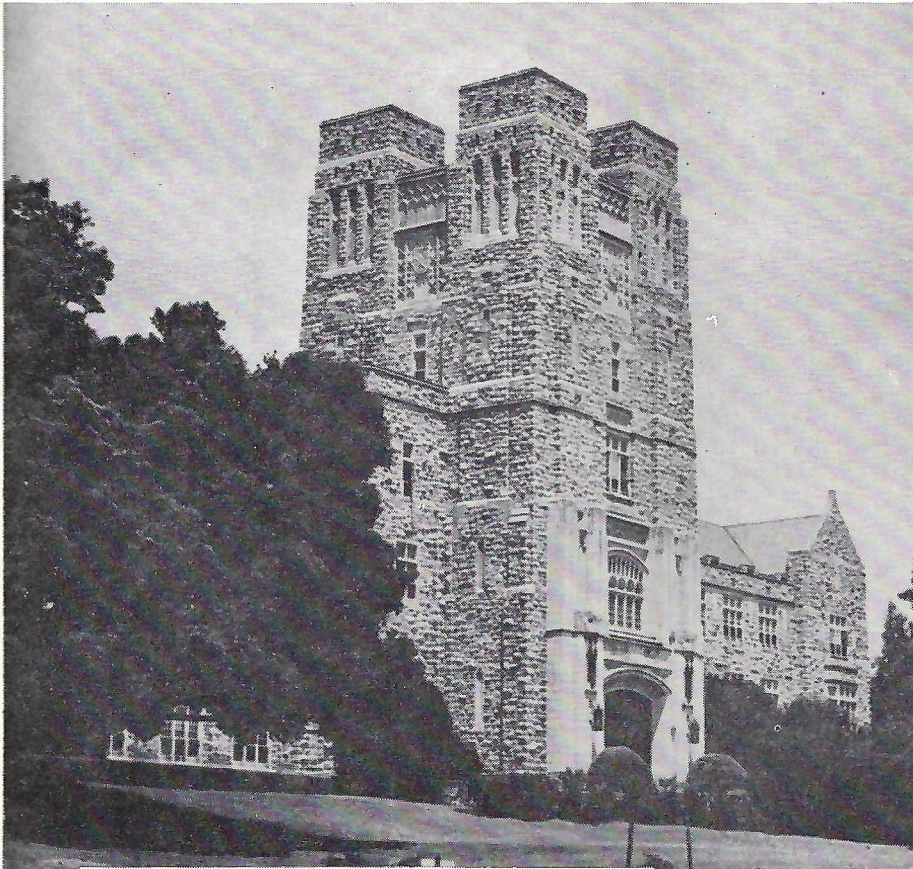
CAROL M. NEWMAN LIBRARY, Virginia Tech



### Tech Triumph

CHORUS

Just watch our men so big and as - tive, Sup - port the O - range and Ma -  
room, Let's go, Tech! we know our ends and backs are strong - er, With win - ing  
hopes, we fear do - feat no long - er, To see our team plow thru the line, boys,  
De - term - ined now to win or die; So give a Ho - kie, Ho - kie, Ho - kie,  
Hi - Ho, Hi, old V. T. I. I.

A musical score for the song 'Tech Triumph'. It includes a vocal line with lyrics, a piano accompaniment, and a bass line. The score is arranged in a standard musical notation format with treble and bass clefs.

BURRUSS HALL - Virginia Tech

# **Cooks Clean Center**

ACROSS FROM V. P. I. MALL

\*

SELF SERVICE LAUNDRY

Open 24 Hours A Day

\*

*Support*

**Va. Tech Student Aid Association**

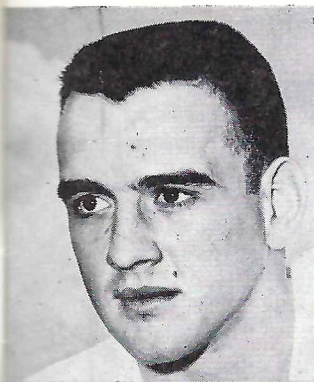


DAR

Vi  
7  
Se  
]



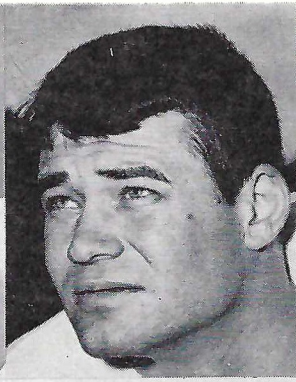
WYNS



DARRYL BAILEY



JOE BLOOMER



BOB CHURCHILL

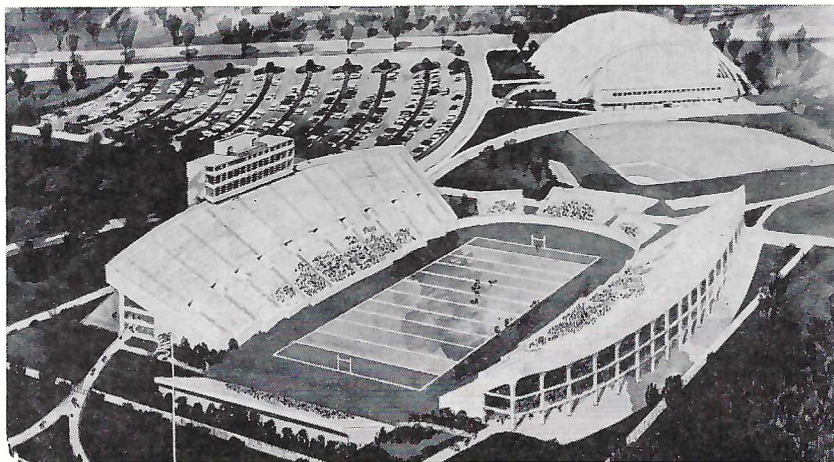


DICKIE CRANWELL



LACY EDWARDS

# Virginia Tech Seniors 1964



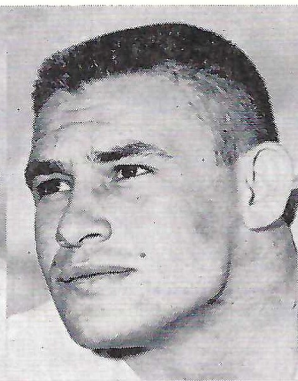
Lane Stadium, Now Under Construction



WAYNE HEWITT



WYNSTON HOLBROOK



MIKE HVOZDOVIC



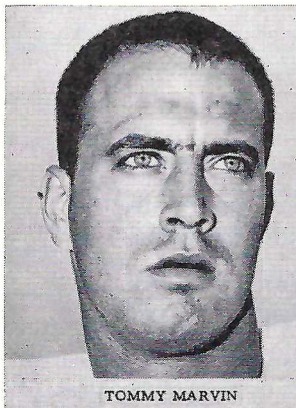
LYNN JONES



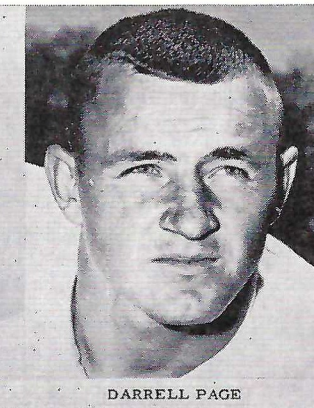
DICKIE KELLY



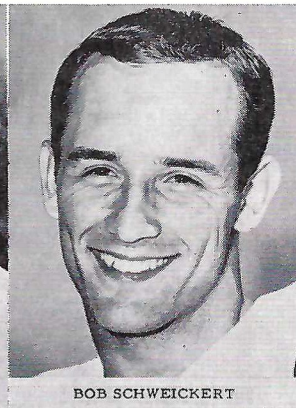
VIC KREITER



TOMMY MARVIN



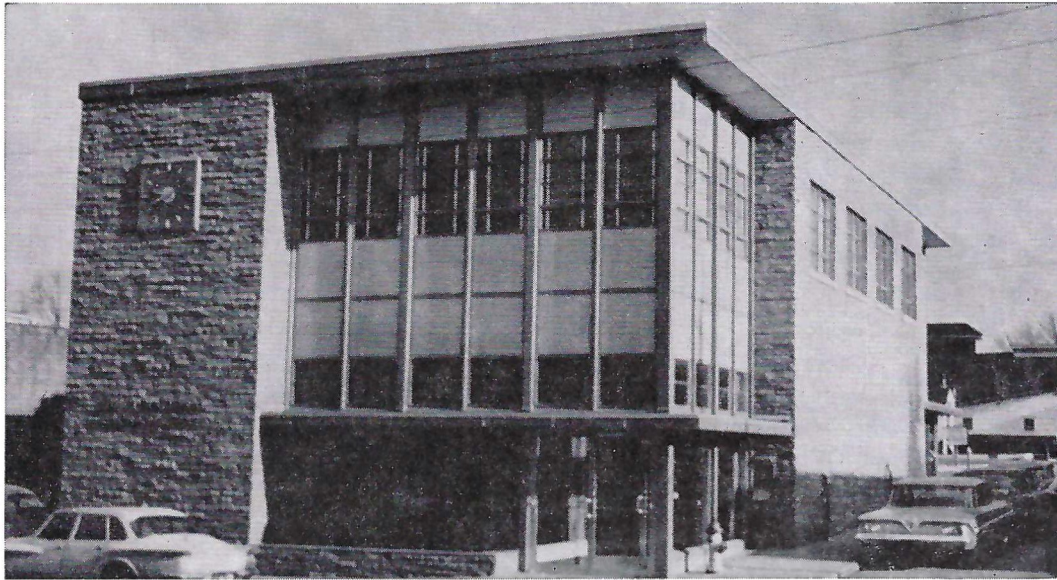
DARRELL PAGE



BOB SCHWEICKERT



SONNY UTZ



**FIRST NATIONAL EXCHANGE BANK OF VA.  
BLACKSBURG OFFICE**

TWO OFFICES TO SERVE YOU

**BLACKSBURG, VIRGINIA**

**"THE FRIENDLY BANK"**

**PHONE 2-8241**

# THE OUTPOST



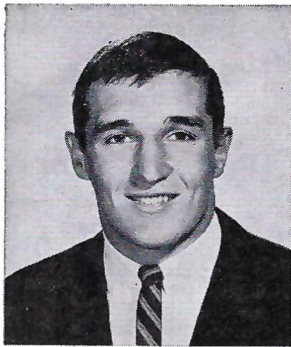
Specializing in  
CHARCOAL STEAKS  
PIZZAS  
AND  
SPAGHETTI



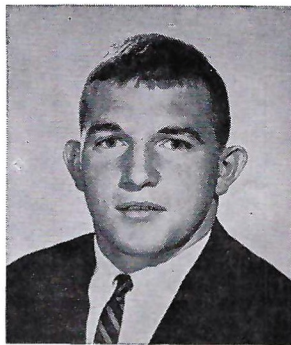
**Phone EV 2-9830**

**Christiansburg, Va.**

## VIRGINIA TECH 1964



**Bud Browning**



**Ron McGuigan**



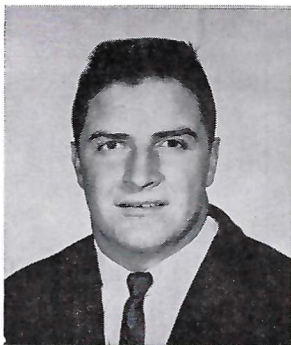
**Billy Edwards**



**Bill Gordon**



**Tommy Stafford**



**Milt Miller**



**Dick Anderson**



**Jack Evan**

## VIRGINIA TECH PLAYER SKETCHES

### ENDS

**Bailey, Samuel Darryl** . . . (Darryl) . . . Senior, 21 (July 16, 1943), 5-10½, 180, Tuscaloosa, Ala. . . a two-year letterman . . . missed last part of Spring practice, including the Spring game, due to a shoulder separation . . . as representative a competitor as Tech's '63 champs had . . . should be as good a leader as the Gobblers will have in '64.

**Churchill, Robert Carr** . . . (Bob) . . . Senior, 21 (May 21, 1943), 5-11, 185, Roanoke, Va. . . played at Jefferson High and then for Bill Ralph at AMA . . . a 1962 letterman who saw very little action last season . . . still one of the better pass receivers . . . likely to play with offensive unit.

**Edwards, William Howard** . . . (Bill) . . . Junior, 20 (Oct. 11, 1943), 6-1, 195, Orange, Va. . . All-American and All-State under Paul Sizemore at Orange County . . . 1963 letterman (only four sophs lettered) . . . probably most consistent of last year's sophs . . . figures to hold '64 starting job due to all-around play . . . (starred in basketball and track at Orange) . . . fine student in mechanical engineering.

**Holbrook, Wynston Dale** . . . (Wynston) . . . Senior, 21 (May 22, 1943), 6-2, 200, Eunice, W. Va. . . lettered as soph in 1962 and had just won a starting berth when sidelined by a late-season knee injury . . . saw limited action last season . . . an academic casualty this Spring . . . has to regain eligibility . . . and subsequently will have to battle his way back into a job . . . a four-sport man for Dewey Romine at Marsh Fork High.

**Jennings, Basil Graves, Jr.** . . . (B. G.) . . . Sophomore, 20 (Aug. 26, 1944), 6-0, 185, Wise, Va., captain and all-state for Harold Lester at J. J. Kelly High School . . . also a track man . . . a tackle in high school . . . tried center job in Spring of '63 . . . red-shirted last season . . . slowed down by back injury last Fall and again in Spring . . . but has good speed and could win a job, particularly on offensive unit.

**Kegley, James William** . . . (Bill) . . . Sophomore, 20 (Jan. 29, 1944), 5-11, 190, Rand, W. Va. . . captain under Tom Bossie at DuPont High . . . also took part in basketball and track . . . was injured during much of '62 frosh season . . . red-shirted last year . . . an academic casualty this past Spring . . . if he regains eligibility, has ability to play.

THE **GOBBLER'S  
ROOST**



*Quality Mens Wear at Popular Prices*

**Blacksburgs Newest Traditional Mens Shop**

▼  
**SHOP WITH US**

*We Appreciate Your Business...And We Show It*

▼  
**HOME OWNED — HOME OPERATED**  
Located Right Next Door to the Sport Center



**Va. Tech  
Pronunciation Guide**

|             |                |
|-------------|----------------|
| Kreiter     | CRY-ter        |
| Hvozdovic   | hass-DOUGH-vic |
| McGuigan    | mac-WIG-an     |
| Messamore   | MESS-uh-more   |
| Mollo       | MAUL-o         |
| Raible      | RAY-bull       |
| Schweickert | Sch-Y-kurt     |
| Semones     | seh-MOAN-is    |
| Sheehy      | SHE-he         |
| Ulery       | YULE-ree       |
| Voight      | VOYT           |
| Utz         | UHTZ           |

**HOY**  
**FUNERAL HOME**

**24 Hour Ambulance Service**

**Blacksburg, Virginia**

**Phone 772-8295**

D. A. CRISMOND, Manager

**Phone PR 2-8251 or 2-8252**

\*

**Lake Terrace Motel, Inc.**

**53 MODERN UNITS**

"Home of V.P.I."  
BLACKSBURG, VA.

\*

U. S. 460 SOUTH

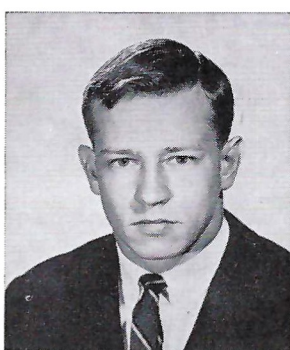
½ Mile From Downtown



## VIRGINIA TECH 1964



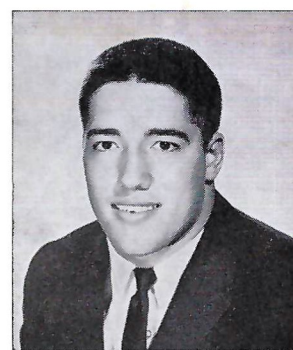
**Eddie Bulheller**



**Rusty Fife**



**Erick Johnson**



**Judson Bigelow**



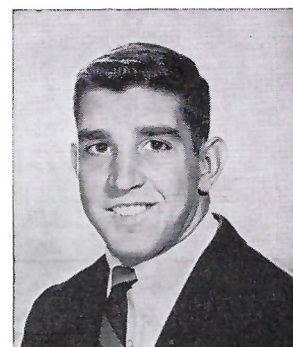
**Andy Bowling**



**Raleigh Voight**



**Jim Reba**



**Tom Groom**

## VIRGINIA TECH PLAYER SKETCHES

### ENDS—Con.

**Browning, Maurice Eugene, Jr.** . . . (Bud) . . . Sophomore, 19 (Jan. 15, 1945), 6-0, 185, South Holland, Ill. . . . fullback-linebacker at Thornridge High School . . . captain and MVP in conference . . . named to *Chicago Tribune's* all-suburban team.

**Marvin, Thomas Calvin** . . . (Tommy) . . . Senior, 23 (Aug. 18, 1941), 6-0, 180, Williamsburg, Va. . . . all-state football and basketball at James Blair High . . . also won high jump in Group II track . . . led last two seasons in pass receptions . . . including a Tech record of 28 in 1963 . . . cited several times by Claiborne during last two seasons . . . a real competitor . . . and one of Tech's '64 leaders.

**Shipley, John George** . . . (Johnny) . . . Junior, 21 (Aug. 9, 1963), 6-1, 195, Kingsport, Tenn. . . . played under Bill Jasper at Dobyns-Bennett . . . also baseball and basketball player . . . a tackle for '62 frosh . . . won an end spot on '63 traveling squad . . . could win a berth, probably on defense in '64.

### TACKLES

**Anderson, Richard Neal** . . . (Dick) . . . Sophomore, 19 (Apr. 22, 1945), 6-4, 215, Raleigh, N. C. . . . all-eastern under Clyde Walker at Needham Broughton High . . . put forth good effort in Spring drills.

**Bloomer, Joseph Monroe** . . . (Joe) . . . Senior, 20 (Oct. 29, 1943), 6-1½, 212, Williamson, W. Va. . . . lettered as guard in '62 . . . played only a few minutes last season . . . attending a Summer session of the Fellowship of Christian Athletes might have given him the stimulus he needs to plug the tackle gap on the Gobblers' offensive unit in '64.

**Bowling, Andrew Walter** . . . (Andy) . . . Sophomore, 18 (Sept. 25, 1945), 6-3, 216, Lynchburg, Va. . . . all-western district under Vince Bradford at E. C. Glass . . . set state indoor shot put record (56' 3") . . . ran high hurdles . . . has the physical equipment, including fine speed, to develop into top-notch player.

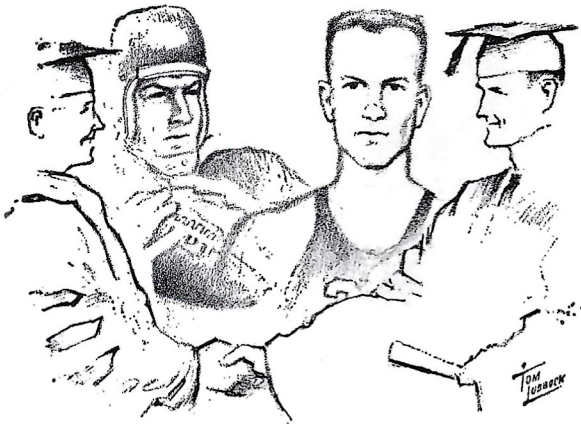
**Bruce, Donald Lewis** . . . (Donnie) . . . Sophomore, 19 (Aug. 18, 1945), 6-4, 206, Fairlawn, Va. . . . an all-state guard for Dave Brown at Dublin High . . . performed well for '63 frosh . . . and was one of the most consistently cited sophs in Spring practice . . . could win defensive job.

**Mollo, Richard James** . . . (Mo) . . . Sophomore, 20 (Jan. 22, 1944), 5-10½, 205, Cedarhurst, N. Y. . . . all-league guard at Lawrence High . . . made good progress in Spring practice . . . and could be on Gobblers' defensive unit.

# Scholarship System—The NCAA Way

by WILES HALLOCK

National Collegiate Athletic Association



**I**N AN ERA of amazing physical and intellectual accomplishment on the part of our college-age young men (and women), specialization seems almost of necessity the rule. Academic excellence and athletic prowess aren't often enough found in the same person. Or are they?

The answer is a resounding, "Yes, they are, a great many times." And the National Collegiate Athletic Association aims not only to spotlight the nation's outstanding football and basketball players who have demonstrated their classroom superiority, but to reward them in a meaningful way.

The NCAA will award top scholar-athletes graduating during the 1964-65 college year a total of 32 one-thousand dollar grants for post graduate and professional study.

The \$35,000 necessary to finance this new scholarship program (the additional \$3,000 is administrative expense) has been appropriated by the Executive Committee from football television receipts which will accrue to the NCAA this fall from the National Broadcasting Company. Participating colleges on the NCAA football TV schedule receive 96 per cent of the \$6,522,000 NBC will pay as rights for the 1964 telecasts and the NCAA four per cent.

The 32 grants can only be awarded for post graduate study. Twenty-two of them will go to top football players — 11 each in the University and College Division, with the remaining 10 going to stellar cage athlete-scholars—five apiece in the major and college division basketball classifications.

Though no scholar-athletes in other sports are now included in the NCAA scholarship program, the Executive Committee has provided indirect benefit to all athletes in other sports with an appropriation of \$84,088 from the TV revenue source to support instructional clinics and encourage increased participation in those sports.

The remainder of the NCAA's four per cent will go to pay for the entire administrative expense of the football television program—\$81,000—and to the College Division's regional football championship reserve fund—\$60,000.

Administration of the NCAA scholarship program is not established in all its detail, but the grants will be made directly to the universities or professional schools of the recipients' choice.

"A program of scholarship awards for distinguished academic achievement has been discussed from time to time for some years in the NCAA," Executive Director Walter Byers stated at the time the grants were approved last April, and NCAA President Robert F. Ray of the University of Iowa observed:

"Thirty-two scholarships are a good start, but they won't begin to take care of the number of senior football and basketball players in our member institutions who are honor students in all fields of study."

In retrospect the list of great athletes who might have qualified for such an award is legion. The Byron (Whizzer) Whites and Barry Woods of football's past, the Jerry Lucases and John Richters of basketball's present and annually the Academic All American teams would have qualified as prime candidates.

So too the National Football Foundation and Hall of Fame scholar-athlete award winners annually honored might well be among those considered.

To reemphasize the point, a listing of both 1963 Academic All America and Hall of Fame scholar-athlete winners might well be appropriate in conclusion. Their counterparts of 1964 will be equally distinguished.

### Hall of Fame Scholar-Athletes

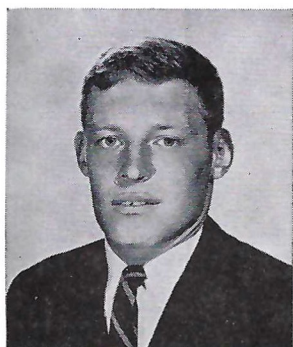
| Name              | School         |
|-------------------|----------------|
| Kenneth Ancell    | Colorado Mines |
| Mike Briggs       | Washington     |
| Richard Deller    | Illinois       |
| Frank Drigotas    | Bowdoin        |
| Dave Gill         | Missouri       |
| Algis Grigaliunas | Pittsburgh     |
| Joe Ince          | Navy           |
| Don Trull         | Baylor         |
| Russell Walls     | Davidson       |

### All-Academic Team

| Pos. | Name            | School         |
|------|-----------------|----------------|
| E    | Vince Petno     | The Citadel    |
| E    | George Burman   | Northwestern   |
| T    | Mike Briggs     | Washington     |
| T    | Gerry Philbin   | Buffalo        |
| G    | Bob Lehman      | Notre Dame     |
| G    | Newt Burton     | Oklahoma       |
| C    | Ken Bowman      | Wisconsin      |
| B    | Don Trull       | Baylor         |
| B    | Dennis Claridge | Nebraska       |
| B    | Joe Scarpati    | North Carolina |
| B    | Duke Carlisle   | Texas          |

Je  
(Ma  
polit  
som  
enti  
Spri  
on t  
  
Je  
21 (a  
rou  
year  
have  
lette  
engi  
Con  
  
W  
19 (a  
cap  
2nd  
Spri  
tack  
  
W  
19 (a  
all-s

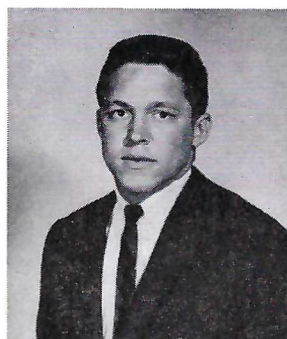
## VIRGINIA TECH 1964



**Mike Price**



**John Shipley**



**Fred Cobb**



**Dennis Semones**



**Sal Garcia**



**Bill Kegley**

## VIRGINIA TECH PLAYER SKETCHES

### TACKLES—Con.

**Jeffrey, Harold Edwin, Jr.** . . . (Ed) . . . Junior, 20 (Mar. 31, 1944), 6-1, 222, Springfield, Va. . . all-metropolitan under Ed Henry at Annandale High . . . saw some action last season although he had missed entire Spring practice . . . blocked very well in '64 Spring drills . . . and likely will hold the left tackle spot on the offensive unit.

**Jones, James Lingon, Jr.** . . . (Lynn) . . . Senior, 21 (Jan. 6, 1943), 6-1½, 220, Bayside, Va. . . an all-around sports star at Princess Anne High . . . two-year letterman and as stable a performer as the Techs have . . . good blocker . . . solid defense . . . the only letterman tackle on the '64 squad . . . mechanical engineering student . . . and a member of the Southern Conference '63 all-academic team.

**Wenderoth, John E.** . . . (Jack) . . . Sophomore, 19 (June 25, 1945), 6-3, 205, Pennsauken, N. J. . . co-captain for John Harbison at Pennsauken High . . . 2nd team center, South Jersey . . . worked hard in Spring . . . could help bolster Tech's questionable tackle situation.

**Woody, Oliver Sands** . . . (Sands) . . . Sophomore, 19 (Mar. 22, 1945), 5-11½, 205, Roanoke, Va. . . twice all-state under Bill Edmonds at Cave Spring High

. . . cage captain . . . weight man in track . . . one of brightest spots of last year's freshman team . . . and the only soph with an apparently good chance of landing a '64 starting berth.

### GUARDS

**Griffith, Bob Lee** . . . (Bob, Griff) . . . Sophomore, 20 (July, 1944), 5-11, 198, Louisville, Ky. . . tackle-linebacker and captain for Jack Kleier at Atherton High . . . third team, all-state . . . held a spot on the Gobblers' defensive unit at the end of Spring drills.

**Hvozdovic, Michael Joseph** . . . (Mike) . . . Senior, 21 (Apr. 1, 1943), 5-10½, 200, Wilkes-Barre, Pa. . . offensive guard and defensive tackle for Joe Moran at Coughlin High . . . two-year letterman . . . probably the best lineman on the field in spring practice . . . exceptionally aggressive and well-rounded football player . . . should help stabilize whichever non-letterman tackle is playing next to him . . . a likely candidate for post-season honors.

**Johnson, Erick Gunnar** . . . (Erick) . . . Sophomore, 19 (Mar. 30, 1945), 5-11, 190, Barrington, Pa. . . an all-around athlete at Haddon Heights High . . . captain of Paul Massey's football squad . . . developed well in the Spring . . . and is counted on for duty on Tech's offensive unit.



## You look good with a Robt. Burns Cigarillo

Here's flavor you don't have to inhale to enjoy.  
A short smoke when time is precious. Long  
enough to satisfy. Ideal for the man on the move.  
Smoke it. You'll look good with it.  
Robt. Burns Cigarillo . . . for the "mover."  
Cigarillos are on sale at this stadium.



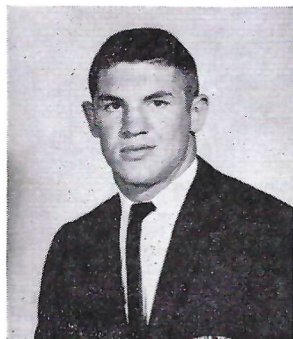
K  
22  
stat  
lett  
Spr  
Mik

L  
mo  
cap  
for  
Luk  
wa  
sea

M  
19  
yea  
Hig  
. .  
en  
bel

F  
19  
for  
Gr

# VIRGINIA TECH 1964



**B. G. Jennings**



**James Simmons**



**Jack Wenderoth**



**Richard Mollo**

## GUARDS—Con.

**Kreiter, Victor William, Jr.** . . . (Vic) . . . Senior, 22 (June 10, 1942), 5-11, 212, Sandston, Va. . . . all-state center at Highland Springs High . . . two-year letterman . . . ran into academic trouble and missed Spring practice . . . if he regains eligibility, will battle Mike Saunders for starting spot.

**Lindon, Ronald Vaughan** . . . (Ronnie) . . . Sophomore, 20 (Nov. 26, 1943), 5-10, 190, Hazard, Ky. . . . captain at Hazard where he played center and tackle for Paul Wright . . . nephew of Tech equipment man Luke Lindon . . . saw plenty of action as frosh . . . but was injured in '63 Spring drills . . . red-shirted last season.

**McGuigan, Ronald Lee** . . . (Ron) . . . Sophomore, 19 (Sept. 18, 1945), 6-0, 195, North Wales, Pa. . . . two-year letterman under Al Brodhag at North Penn Joint High . . . got plenty of experience with '63 Tech frosh . . . one of the bright spots in Spring practice . . . at end of drills, had inside track on defensive job behind Hvozdovic.

**Miller, Milt Edward, III** . . . (Milt) . . . Sophomore, 19 (Feb. 27, 1945), 5-11, 200, Louisville, Ky. . . . captain for Ron Cain at Seneca High . . . was vying with Griffith for a right guard spot in Spring drills.

**Saunders, Fred Michael** . . . (Mike) . . . Junior, 20 (Apr. 3, 1944), 6-0, 200, Lynchburg, Va. . . . played under Vince Bradford at E. C. Glass, where he was all-state guard-linebacker . . . switched to center in '63 Spring practice . . . but moved back to guard in Fall and got some varsity experience . . . although he didn't letter in '63, he could turn out to be one of Tech's busiest and most versatile linemen.

**Sheehy, John Francis** . . . (John) . . . Junior, 22 (Sept. 20, 1942), 5-11, 195, New York City . . . played under Dick Steinberg at SMA, where he was an all-league guard . . . was center-linebacker for '62 Tech frosh . . . played tackle in '63 Spring work . . . moved to guard after '63 season opened . . . saw action but not enough to letter . . . should win an offensive position in '64.

**Simmons, James Ralph, Jr.** . . . (James) . . . Sophomore, 20 (Feb. 12, 1944), 5-11, 190, Church Hill, Tenn. . . . captain under J. W. Salley at Church Hill High . . . was red-shirted last season . . . has added some beef in last year . . . will have to battle other sophs for a job.

## CENTERS

**Evan, John Louis** . . . (Jack) . . . Sophomore, 20 (Apr. 2, 1944), 5-11, 195, West Mifflin, Pa. . . . center and captain for Dick Scherribbaum at North High . . . honorable mention, WPIAL.

**Farmer, David Lowell** . . . (Dave) . . . Sophomore, 19 (Aug. 29, 1945), 5-11, 190, Greenville, Ohio . . . tackle-linebacker at Greenville Senior High under Blair Irvin (brother of Tech's team physician) . . . captain, all-league, all-star alternate . . . one of Tech's most promising sophomores . . . although he might have a tough time cracking the lineup in the Fall.

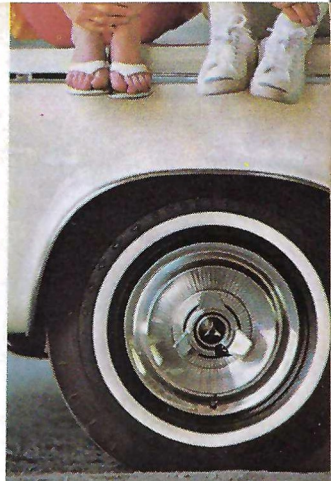
**Hanly, Leslie Edward** . . . (Les) . . . Junior, 21 (June 17, 1943), 5-10½, 203, Waycross, Ga. . . . played end under Earl O'Neal at Waycross High . . . where he was a teammate of Darrell Page . . . one of four sophs to letter for Tech in '63 . . . slowed down in late season by a foot injury . . . should be the snapper for the Gobblers' offensive unit.

**Whitely, Kenneth Boyce** . . . (Ken) . . . Junior, 20 (Nov. 25, 1943), 5-8, 206, Norfolk, Va. . . . all-state fullback-linebacker at Norview High for Charlie McClurg . . . twice state heavyweight wrestling champ . . . first-rate baseball catcher . . . carried a heavy load for '62 frosh . . . only soph back to letter in '63 . . . in the spring was converted to center post . . . and is being counted on for rugged linebacking ability he displayed last season . . . still needs work as a snapper.

# Virginia Tech's 1964 Football Roster

|                     |           | ENDS |       |     |                           |
|---------------------|-----------|------|-------|-----|---------------------------|
|                     | Class     | Age  | Ht.   | Wt. | Hometown                  |
| *Darryl Bailey      | Senior    | 21   | 5-10½ | 180 | Tuscaloosa, Alabama       |
| Bud Browning        | Sophomore | 19   | 6-0   | 185 | South Holland, Ill.       |
| Bob Churchill       | Senior    | 22   | 5-11  | 185 | Roanoke, Virginia         |
| *Bill Edwards       | Junior    | 20   | 6-1   | 195 | Orange, Virginia          |
| Bill Gordon         | Sophomore | 22   | 6-0   | 186 | Waynesboro, Virginia      |
| Wynston Holbrook    | Senior    | 21   | 6-2   | 200 | Eunice, West Virginia     |
| B. G. Jennings      | Sophomore | 20   | 6-0   | 185 | Wise, Virginia            |
| Bill Kegley         | Sophomore | 20   | 5-11  | 190 | Rand, West Virginia       |
| *Tommy Marvin       | Senior    | 23   | 6-0   | 180 | Williamsburg, Virginia    |
| John Shipley        | Junior    | 21   | 6-1   | 195 | Kingsport, Tennessee      |
| <b>TACKLES</b>      |           |      |       |     |                           |
| Dick Anderson       | Sophomore | 19   | 6-4   | 215 | Raleigh, North Carolina   |
| Joe Bloomer         | Senior    | 20   | 6-1½  | 212 | Williamson, West Virginia |
| Andy Bowling        | Sophomore | 18   | 6-3   | 216 | Lynchburg, Virginia       |
| Donnie Bruce        | Sophomore | 19   | 6-4   | 206 | Fairlawn, Virginia        |
| Ed Jeffrey          | Junior    | 20   | 6-1   | 222 | Springfield, Virginia     |
| *Lynn Jones         | Senior    | 21   | 6-1½  | 220 | Bayside, Virginia         |
| Richard Mollo       | Sophomore | 20   | 5-10½ | 205 | Cedarhurst, New York      |
| Jack Wenderoth      | Sophomore | 19   | 6-3   | 205 | Pennsauken, New Jersey    |
| Sands Woody         | Sophomore | 19   | 5-11½ | 205 | Roanoke, Virginia         |
| <b>GUARDS</b>       |           |      |       |     |                           |
| Bob Griffith        | Sophomore | 20   | 5-11  | 198 | Louisville, Kentucky      |
| *Mike Hvozdovic     | Senior    | 21   | 5-10½ | 200 | Wilkes-Barre, Pa.         |
| Erick Johnson       | Sophomore | 19   | 5-11  | 190 | Barrington, Pa.           |
| *Vic Kreiter        | Senior    | 22   | 5-11  | 212 | Highland Springs, Va.     |
| Ronnie Lindon       | Sophomore | 20   | 5-10  | 190 | Hazard, Kentucky          |
| Ron McGuigan        | Sophomore | 19   | 6-0   | 195 | North Wales, Pa.          |
| Jim Reba            | Sophomore | 19   | 5-9   | 181 | McAdoo, Pennsylvania      |
| Mike Saunders       | Junior    | 20   | 6-0   | 200 | Lynchburg, Virginia       |
| John Sheehy         | Junior    | 22   | 5-11  | 195 | New York, New York        |
| James Simmons       | Sophomore | 20   | 5-11  | 190 | Churchill, Tenn.          |
| <b>CENTERS</b>      |           |      |       |     |                           |
| Jack Evan           | Sophomore | 20   | 5-11  | 195 | West Mifflin, Pa.         |
| Dave Farmer         | Sophomore | 19   | 5-11  | 190 | Greenville, Ohio          |
| *Les Hanly          | Junior    | 21   | 5-10½ | 203 | Waycross, Georgia         |
| Milt Miller         | Sophomore | 19   | 5-11  | 200 | Louisville, Kentucky      |
| *Ken Whitley        | Junior    | 20   | 5-8   | 206 | Norfolk, Virginia         |
| <b>QUARTERBACKS</b> |           |      |       |     |                           |
| *Dickie Cranwell    | Senior    | 21   | 5-11  | 172 | Richlands, Virginia       |
| *Lacy Edwards       | Senior    | 22   | 5-8   | 187 | Roanoke, Virginia         |
| Bobby Owens         | Junior    | 20   | 5-10½ | 178 | Richmond, Virginia        |
| *Bob Schweickert    | Senior    | 22   | 6-1   | 191 | Bon Air, Virginia         |
| Tom Stafford        | Sophomore | 19   | 6-0½  | 180 | Birmingham, Alabama       |
| <b>FULLBACKS</b>    |           |      |       |     |                           |
| Judson Bigelow      | Sophomore | 19   | 6-1   | 195 | Washington, D. C.         |
| Wayne Hewitt        | Senior    | 21   | 5-8   | 175 | Waynesboro, Virginia      |
| *Darrell Page       | Senior    | 21   | 5-8   | 169 | Waycross, Georgia         |
| Dennis Semones      | Sophomore | 19   | 6-0   | 195 | Hillsville, Virginia      |
| *Sonny Utz          | Senior    | 22   | 5-11  | 205 | Annandale, Virginia       |
| <b>TAILBACKS</b>    |           |      |       |     |                           |
| Rusty Fife          | Sophomore | 20   | 5-10  | 165 | Bluefield, Virginia       |
| Tommy Francisco     | Sophomore | 19   | 6-1   | 190 | Damascus, Virginia        |
| Sal Garcia          | Sophomore | 20   | 5-10  | 190 | Brooklyn, New York        |
| Claude Messamore    | Junior    | 20   | 5-9   | 186 | Knoxville, Tennessee      |
| Mike Price          | Sophomore | 18   | 5-9   | 168 | Utica, New York           |
| Raleigh Voight      | Sophomore | 21   | 5-8½  | 180 | Norfolk, Virginia         |
| <b>WINGBACKS</b>    |           |      |       |     |                           |
| Jay Barfield        | Junior    | 20   | 5-10  | 188 | Orlando, Fla.             |
| Eddie Bulheller     | Sophomore | 19   | 6-1   | 186 | Richmond, Virginia        |
| Fred Cobb           | Sophomore | 21   | 5-11  | 182 | Suffolk, Virginia         |
| Tom Groom           | Sophomore | 18   | 6-0   | 180 | St. Albans, W. Va.        |
| *Dick Kelly         | Senior    | 21   | 5-10  | 175 | Front Royal, Virginia     |
| John Raible         | Sophomore | 20   | 6-0½  | 185 | Louisville, Kentucky      |

\*Denotes Lettermen



# Hotnew!

**Dodge at a  
new lower price.**

**Coronet '65.**

**Bigger? Than the both  
of them: Chevelle and  
Fairlane. In wheelbase. In power.**

**Inside.  
Buckets.  
Bomb.  
Bonus.**

**Check the price.  
Surprise again. Right  
down with the little ones.  
It figures. It comes from  
Dodge.**

**And Dodge comes on big  
for 1965.**

## '65 Dodge Coronet

DODGE COMES ON BIG FOR '65 • DART • CORONET • POLARA • CUSTOM 880 • MONACO

DODGE DIVISION  **CHRYSLER**  
MOTORS CORPORATION



## VA. TECH

### PROBABLE STARTING LINE-UP

| No. | Name        | Position |
|-----|-------------|----------|
| 85  | MARVIN      | LE       |
| 61  | JOHNSON     | LT       |
| 65  | SHEEHY      | LG       |
| 51  | FARMER      | C        |
| 66  | SAUNDERS    | RG       |
| 76  | BLOOMER     | RT       |
| 83  | CHURCHILL   | RE       |
| 10  | SCHWEICKERT | QB       |
| 20  | GARCIA      | TB       |
| 34  | UTZ         | FB       |
| 27  | GROOM       | WB       |

|    |                 |
|----|-----------------|
| 10 | Schweickert, QB |
| 11 | Owens, QB       |
| 12 | L. Edwards, QB  |
| 13 | Hewitt, FB      |
| 14 | Stafford, QB    |
| 20 | Garcia, TB      |
| 22 | Francisco, TB   |
| 23 | Voight, TB      |
| 24 | Messamore, TB   |
| 25 | Fife, TB        |
| 27 | Groom, WB       |
| 30 | Bigelow, FB     |
| 31 | Page, FB        |
| 32 | Barfield, FB    |
| 33 | Cranwell, QB    |
| 34 | Utz, FB         |
| 40 | Cobb, WB        |

## THE GOBLER SQUAD

|    |               |    |               |
|----|---------------|----|---------------|
| 43 | Raible, WB    | 70 | Jeffrey, T    |
| 44 | Bulheller, WB | 71 | Wenderoth, T  |
| 45 | Kelly, WB     | 72 | Bowling, T    |
| 50 | Hanly, C      | 73 | Jones, T      |
| 51 | Farmer, C     | 74 | Bruce, T      |
| 52 | Miller, C     | 75 | Mollo, T      |
| 53 | Evan, C       | 76 | Bloomer, T    |
| 55 | Whitley, C    | 77 | Woody, T      |
| 60 | Hvozdovic, G  | 80 | Shiple, E     |
| 61 | Johnson, G    | 81 | Kegley, E     |
| 63 | McGuigan, G   | 82 | Jennings, E   |
| 64 | Lindon, G     | 83 | Churchill, E  |
| 65 | Sheehy, G     | 85 | Marvin, E     |
| 66 | Saunders, G   | 86 | Gordon, E     |
| 67 | Simmons, G    | 87 | Holbrook, E   |
| 68 | Kreiter, G    | 88 | B. Edwards, E |

N  
8  
7  
5  
5  
7  
7  
8  
1  
2  
2  
4





## FLORIDA STATE

### PROBABLE STARTING LINE-UP

| No. | Name                 | Position |
|-----|----------------------|----------|
| 81  | DON FLOYD.....       | LE       |
| 70  | DEL WILLIAMS.....    | LT       |
| 51  | JOE AVEZZANO.....    | LG       |
| 55  | JACK EDWARDS.....    | C        |
| 75  | DALE MacKENZIE.....  | RG       |
| 76  | TOM WEST.....        | RT       |
| 83  | BILL DAWSON.....     | RE       |
| 13  | STEVE TENSI.....     | QB       |
| 27  | PHIL SPOONER.....    | LH       |
| 25  | FRED BILETNIKOFF.... | RH       |
| 40  | LEE NARRAMORE.....   | FB       |

## THE SEMINOLE SQUAD

|                    |                  |                     |
|--------------------|------------------|---------------------|
| 12 Gero, QB        | 42 Murdock, FB   | 74 Matthews, T      |
| 13 Tensi, QB       | 43 Ehler, FB     | 75 MacKenzie, G     |
| 14 Massey, QB      | 44 Mankins, FB   | 76 West, T          |
| 15 Conway, HB      | 51 Avezzano, G   | 77 Mangan, T        |
| 16 Pritchett, QB   | 53 Pitts, C      | 78 G. Pennie, T     |
| 20 Green, HB       | 54 Stephens, C   | 79 F. Pennie, T     |
| 21 D. Jones, HB    | 55 Edwards, C    | 80 Wachtel, E       |
| 22 Bibent, HB      | 60 Williamson, G | 81 Floyd, E         |
| 23 Giardino, FB    | 61 Shinholser, C | 82 McDuffie, E      |
| 24 Revell, HB      | 62 Lurie, G      | 83 Dawson, E        |
| 25 Biletnikoff, HB | 63 McDowell, G   | 84 D'Allessandro, E |
| 26 Campbell, HB    | 64 Braggins, T   | 85 Hosack, HB       |
| 27 Spooner, HB     | 66 Hermann, G    | 86 Blankenship, E   |
| 28 Bailey, HB      | 68 Parrish, G    | 87 Garvin, E        |
| 29 Petko, FB       | 69 Pope, G       | 88 Gunter, E        |
| 40 Narramore, FB   | 70 Williams, T   | 89 Wettstein, E     |
| 41 Menendez, HB    | 73 Sumner, T     |                     |

# Plymouth roars into '65 with 4 great new sports!



## '65 Sport Fury

The biggest, plushest Plymouth ever. A brand-new "ultra-everything" Plymouth that's still solidly in the low-price field.



## '65 Valiant Signet

The compact that hasn't forgotten why you buy a compact. Still the best all-around compact, proving that Valiant didn't have to go big-car in price or size to give you big-car performance.



## '65 Belvedere Satellite

A new way to swing without going out on a limb. For the buyer who knows that, when it's Plymouth, pride of ownership can still go hand-in-hand with low price.



## '65 Barracuda Fastback

The fast-moving fastback at a spectacular low price. America's best combination yet of sports-car look, youthful vitality, all-purpose versatility, and all-around economy.

Get your free copy of the NCAA Football Almanac at your nearest participating Plymouth Dealer's.

THE ROARING '65s  
FURY  
BELVEDERE  
VALIANT  
BARRACUDA  
**Plymouth**

PLYMOUTH DIVISION  CHRYSLER  
MOTORS CORPORATION

No.  
12  
13  
14  
15  
16  
  
20  
21  
22  
23  
24  
25  
26  
27  
28  
29  
  
40  
41  
42  
43  
44  
  
51  
53  
54  
55  
  
60  
61  
62  
63  
64  
66  
68  
69  
  
70  
73  
74  
75  
76  
77  
78  
79  
  
80  
81  
82  
83  
84  
85  
86  
87  
88  
89

# Florida State's 1964 Football Roster

| No. | Name                 | Position | Class     | Age | Height | Weight | Hometown          |
|-----|----------------------|----------|-----------|-----|--------|--------|-------------------|
| 12  | Tony Gero            | QB       | Sophomore | 20  | 5-10   | 183    | Madison, N. J.    |
| 13  | Steve Tensi          | QB       | Senior    | 21  | 6-5    | 194    | Cincinnati, Ohio  |
| 14  | Jim Massey           | QB       | Junior    | 21  | 5-11   | 181    | Cairo, Ga.        |
| 15  | Pat Conway           | HB       | Sophomore | 19  | 5-10   | 186    | Miami             |
| 16  | Ed Pritchett         | QB       | Junior    | 23  | 6-2    | 185    | Decatur, Ga.      |
| 20  | Larry Green          | HB       | Sophomore | 19  | 5-10   | 181    | Cairo, Ga.        |
| 21  | Donovan Jones        | HB       | Sophomore | 19  | 6-1    | 193    | Lakeland          |
| 22  | Maury Bibent         | HB       | Junior    | 21  | 6-0    | 188    | Cincinnati, Ohio  |
| 23  | Wayne Giardino       | FB       | Sophomore | 20  | 5-10   | 190    | W. Palm Beach     |
| 24  | Elton Revel          | HB       | Sophomore | 20  | 6-0    | 176    | Tallahassee       |
| 25  | Fred Biletnikoff     | HB       | Senior    | 21  | 6-1    | 192    | Erie, Pa.         |
| 26  | Bill Campbell        | HB       | Sophomore | 19  | 5-9    | 180    | Tampa             |
| 27  | Phil Spooner         | HB       | Junior    | 20  | 5-11   | 182    | Fort Myers        |
| 28  | Winfred Bailey       | HB       | Senior    | 22  | 6-0    | 183    | Atlanta           |
| 29  | Joe Petko            | HB       | Junior    | 21  | 5-9    | 185    | Cincinnati, Ohio  |
| 40  | Lee Narramore        | FB       | Sophomore | 19  | 5-10   | 209    | Pensacola         |
| 41  | Bob Menendez         | HB       | Sophomore | 19  | 5-10   | 185    | Key West          |
| 42  | Les Murdock          | FB       | Senior    | 23  | 6-2    | 233    | Hollywood         |
| 43  | Howard Ehler         | FB       | Junior    | 20  | 5-10   | 195    | Tavares           |
| 44  | Jim Mankins          | FB       | Junior    | 20  | 6-2    | 228    | King City, Cal.   |
| 51  | Joe Avezzano         | G        | Junior    | 20  | 6-2    | 228    | Miami             |
| 53  | David Pitts          | C        | Sophomore | 20  | 5-9    | 223    | Blountstown       |
| 54  | John Stephens        | C        | Sophomore | 18  | 6-1    | 198    | Tallahassee       |
| 55  | Jack Edwards         | C        | Senior    | 21  | 6-1    | 217    | Tampa             |
| 60  | Larry Williamson     | G        | Sophomore | 19  | 5-11   | 200    | Macon             |
| 61  | Jack Shinholser      | C        | Junior    | 22  | 6-1    | 212    | Tampa             |
| 62  | Howard Lurie         | G        | Junior    | 20  | 6-0    | 205    | Northridge, Cal.  |
| 63  | Bill McDowell        | G        | Junior    | 20  | 6-1    | 201    | Tallahassee       |
| 64  | David Braggins       | T        | Sophomore | 19  | 6-2    | 226    | Lake Wales        |
| 66  | Dick Hermann         | G        | Senior    | 22  | 6-0    | 200    | Marianna          |
| 68  | Joe Parrish          | G        | Junior    | 21  | 6-1    | 194    | Auburndale        |
| 69  | Ed Pope              | G        | Sophomore | 20  | 6-1    | 196    | Waycross, Ga.     |
| 70  | Del Williams         | T        | Sophomore | 18  | 6-2    | 213    | Live Oak          |
| 73  | Avery Sumner         | T        | Senior    | 22  | 6-2    | 219    | Adel, Ga.         |
| 74  | Jay Mac Matthews     | T        | Sophomore | 20  | 6-1    | 219    | Chiefland         |
| 75  | Dale MacKenzie       | G        | Senior    | 21  | 6-2    | 218    | Clearwater        |
| 76  | Tom West             | T        | Senior    | 21  | 6-4    | 216    | Headland, Ala.    |
| 77  | Bob Mangan           | T        | Junior    | 22  | 6-1    | 222    | Atlanta, Ga.      |
| 78  | Charles Pennie       | T        | Sophomore | 19  | 6-4    | 221    | Hollywood         |
| 79  | Frank Pennie         | T        | Junior    | 21  | 6-4    | 242    | Hollywood         |
| 80  | John Wachtel         | E        | Senior    | 22  | 6-1    | 203    | Massilon, Ohio    |
| 81  | Don Floyd            | E        | Senior    | 22  | 6-1    | 195    | Madison           |
| 82  | Wayne McDuffie       | E        | Sophomore | 19  | 6-2    | 198    | Hawkinsville, Ga. |
| 83  | Bill Dawson          | E        | Senior    | 21  | 6-3    | 220    | Valdosta, Ga.     |
| 84  | George D'Allessandro | E        | Junior    | 21  | 5-10   | 195    | Fort Myers        |
| 85  | John Hosack          | HB       | Sophomore | 19  | 5-11   | 192    | Miami             |
| 86  | Bud Blankenship      | E        | Sophomore | 20  | 6-3    | 200    | Atlanta, Ga.      |
| 87  | Terry Garvin         | E        | Junior    | 21  | 5-11   | 190    | Pensacola         |
| 88  | Cliff Gunter         | E        | Senior    | 22  | 6-3    | 187    | Dothan, Ala.      |
| 89  | Max Wettstein        | E        | Junior    | 20  | 6-3    | 206    | Leesburg          |

it  
that,  
nip  
rice.

65s

7



**Dr. Gordon W. Blackwell**  
**President**  
**Florida State University**



**Vaughn Mancha**  
**Athletic Director**  
**Florida State University**

# Florida State University

LOC  
ENR  
SCH  
NIC  
CON  
ATH  
SPO  
HEA  
1963  
SER

Enrollment at Florida State has skyrocketed—from 9,000 students just four years ago, to a record 12,137 this fall.

Keeping up with these increases is no small problem for the University. Each year brings new demands for more dormitories, classrooms, laboratories and teaching facilities and staff, to meet the continuing needs for quality in the face of quantity demands.

Construction just completed, underway, and still on the architects' drafting boards amounts to a \$26 million building program, largest in the University's history. Yet that sum is but a beginning in terms of meeting the demands ahead.

Florida State University's intercollegiate athletic program is one of the most complete in the nation, with varsity sports competition in football, basketball, baseball, swimming, golf, track, tennis and cross country. The finest facilities are provided, including 40,500 seat football stadium, 4,200-seat field house, major league quality baseball diamond, olympic-sized swimming pool, excellent clay track, and numerous clay and asphalt tennis courts. The completion of a new football field house with coaches' offices and dressing facilities, coupled with the existing facilities in Tully Gymnasium, insure that Seminole athletes are among the most comfortable in the South.



**Tully Gymnasium, Florida State University, Tallahassee, Florida**

# Florida State University

LOCATION: Tallahassee, Fla.  
 ENROLLMENT: 10,500  
 SCHOOL COLORS: Garnet and gold  
 NICKNAME: Seminoles  
 CONFERENCE: None  
 ATHLETIC DIRECTOR: Vaughn Mancha  
 SPORTS INFORMATION: Bill Bunker  
 HEAD COACH: Bill Peterson (Ohio Northern)  
 1963 RECORD: 4-5-1  
 SERIES STANDING: Tech 4, FSU 4

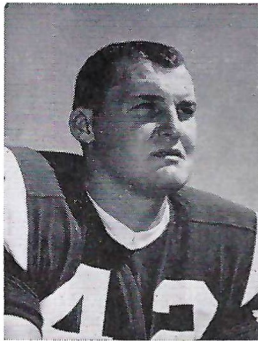


**Bill Peterson**  
 Head Football Coach

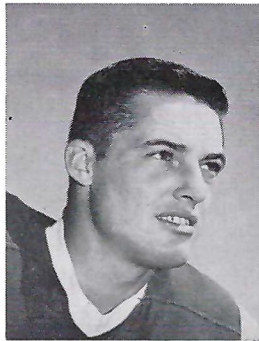
## ALL TIME RECORD

|      | Va. Tech | FSU |        | Va. Tech | FSU |
|------|----------|-----|--------|----------|-----|
| 1955 | 24       | 20  | 1961   | 10       | 7   |
| 1956 | 20       | 7   | 1962   | 7        | 20  |
| 1957 | 7        | 20  | 1963   | 31       | 23  |
| 1958 | 0        | 28  |        |          |     |
| 1959 | 6        | 7   | Totals | 105      | 132 |

## The 1964 Seminoles



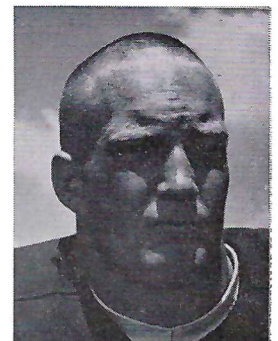
**Les Murdock**



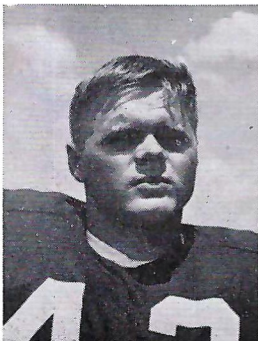
**Ed Pritchett**



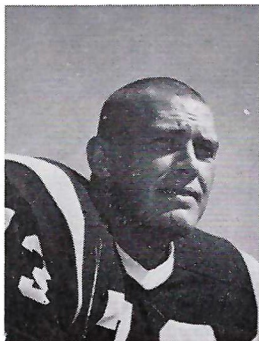
**Del Williams**



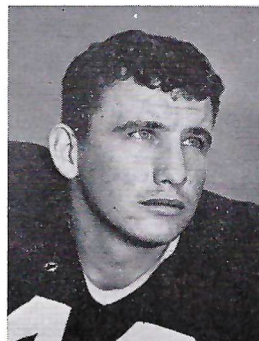
**Bill Dawson**



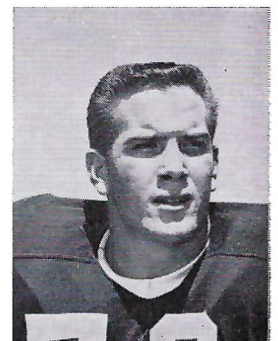
**Howard Ehler**



**Avery Sumner**

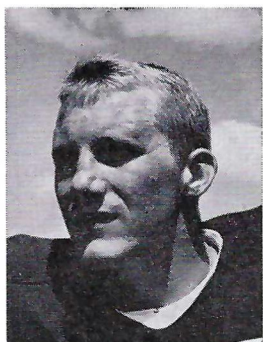


**Lee Narramore**

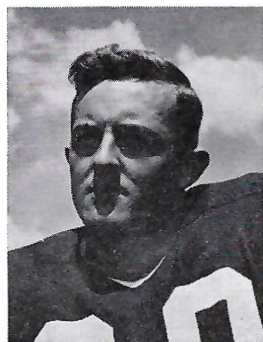


**Tom West**

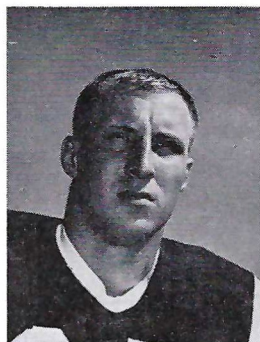
# The 1964 Seminoles



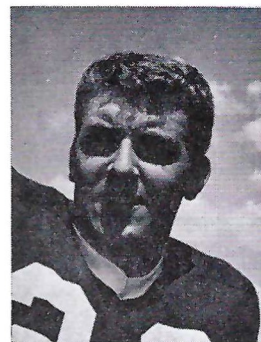
Dick Hermann



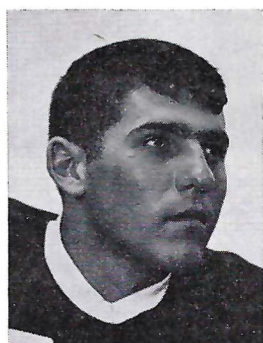
Larry Green



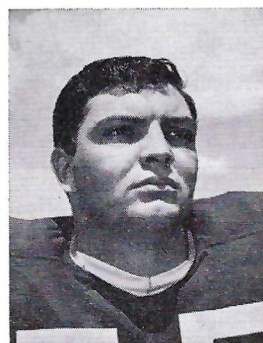
Fred Biletnikoff



Maury Bibent



Wayne Giardino



Jack Edwards



Bill McDowell



Phil Spooner



## FLORIDA STATE COACHING STAFF

Front row, l. to r.: John Coatta, Bill Peterson, Don James, Bobby Bowden, Don Powell. Second row: Bill Crutchfield, Bob Vogt, Steve Medwid, Bob Harbison. Not pictured: Bill Proctor, Ken McLean

Te  
fire .  
the  
... t  
Un  
pass  
giver  
Semi  
(Fla  
...  
mean  
... a  
Te  
1963  
eveni  
season  
the C  
are f  
has m  
It's  
Hom  
7-6 .  
the C  
on a  
Th  
can r  
a bar

2  
c  
1  
2  
3  
4  
5  
6  
7  
8  
9  
10  
11  
12  
13  
14  
15  
16  
17  
18  
19  
20  
21  
22  
23  
24  
25  
26  
27  
28  
29  
30  
31  
32  
33  
34  
35  
36  
37  
38  
39  
40  
41  
42  
43  
44  
45  
46  
47  
48  
49  
50  
51  
52  
53  
54  
55  
56  
57  
58  
59  
60  
61  
62  
63  
64  
65  
66  
67  
68  
69  
70  
71  
72  
73  
74  
75  
76  
77  
78  
79  
80  
81  
82  
83  
84  
85  
86  
87  
88  
89  
90  
91  
92  
93  
94  
95  
96  
97  
98  
99  
100

# Today's Game

BY WENDELL WEISEND

Tech will be jumping from the frying pan into the fire . . . having won only two of their first five games, the Techmen now take on one of the nation's top 10 . . . the Florida State Seminoles.

Undefeated FSU . . . with one of the nation's finest passers, Steve Tensi . . . not only is undefeated but has given up grudgingly both ground and points. . . . The Seminoles shut out their first three opponents (Miami (Fla.), 14-0; TCU, 10-0; New Mexico State, 36-0) . . . annihilated Kentucky, 48-6, although yielding a meaningless TD in the last 30 seconds to the Wildcats . . . and then dropped Georgia, 17-14.

Tech got what probably was its biggest win of the 1963 season at the expense of FSU, a 31-23 upset . . . evening the series at 4-4. . . . The Seminoles for several seasons now have been an opponent most respected by the Gobblers . . . and the Techmen today in FSU likely are facing as high-ranked a team as a Tech squad ever has met.

It's Homecoming . . . and the last time Tech lost a Homecoming game was in 1959 . . . to Florida State, 7-6 . . . in a regionally televised game . . . which saw the Gobblers score in the fourth quarter and then miss on a two-point conversion attempt.

The biggest question for the Techmen is whether they can regain their 1963 character . . . which was basically a band of opportunists, particularly against FSU . . .

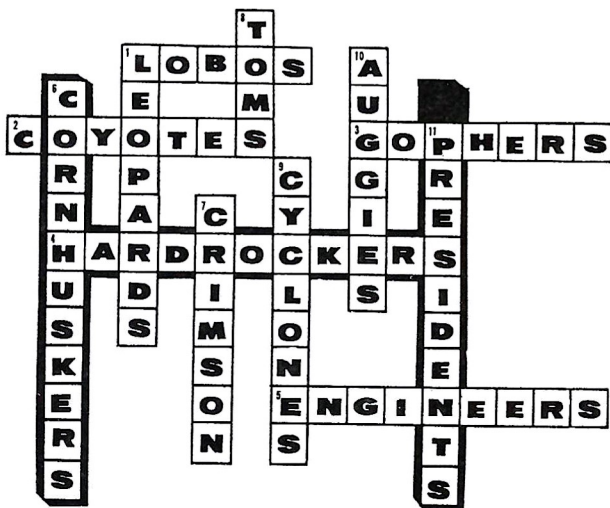
or whether they will continue to beat themselves with mistakes . . . as last week against West Virginia.

The Gobblers last Saturday actually did many things well . . . but they made just enough glaring mistakes to defeat their own purpose . . . and Coach Jerry Claiborne is counting on the Techmen to redeem themselves.

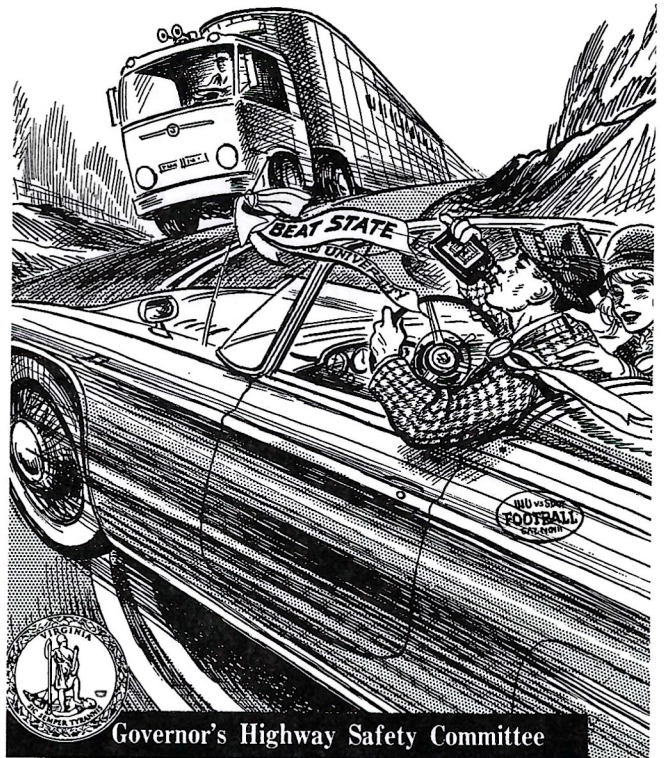
Tech will be looking in particular to stop FSU's great passing combination of Tensi to Fred Biletnikoff. . . . And the Gobblers will be attempting to run against FSU's "Magnificent Seven" (the Seminoles' defensive line).

Tech got some fine performances last week from several players . . . including several sophomores (backs Sal Garcia, Tommy Francisco and Tommy Stafford, tackles Richard Mollo and Andy Bowling and Erick Johnson, normally a guard who played tackle last week). . . . The Gobblers will need many more fine performances today if they hope to keep the Seminoles from a full-dress parade on the warpath.

Answers to **FIELD GOAL** Game 4



## Do-It-Yourself DEATH



# VA. TECH BOOSTERS

OF BLACKSBURG, VA.

\*

Hummel's Jewelry

Ideal Barber Shop

Kessler Supply—Mary Ava's Gift Shop

W. C. Loop Realty Company

Lyric Theater

Pete's Shell Service

Price's Gulf Service

Ridinger Hardware & Gift Company

Roselawn Memory Garden

Silvey-Hutcheson Motor Company

Star Barber Shop

Steel Enterprise, Inc.

Tom Pierce, Ins. & Real Estate

So  
22 (S  
of M  
... r  
to sh  
and  
run  
seve

Ex  
quot

Joh

a

c

h

Jin

y

c

s

t

Bill

a

c

Pro

what

"In

Whe

field.

"H

him

of Pa

"H



# VIRGINIA TECH 1964

## QUARTERBACKS

**Schweickert, Robert Lynn** . . . (Bob) . . . Senior, 22 (Sept. 17, 1942), 6-1, 191, Bon Air, Va. . . . captain of Midlothian High's football and basketball teams . . . missed first four games of his soph year ('62) due to shoulder injury . . . later that season set a Tech and Southern Conference mark with a 96-yard TD run against Wake Forest . . . then last season set seven Tech and two SC records:

Excerpts from some of last season's most typical quotes regarding Schweickert:

John McKenna, VMI Coach: "Schweickert is amazing. He's big and he's lucky. But then most of the great ones are. That is the stuff of which heroes are made."

Jim Camp, GW Coach: "It's easy to stop Tech. All you have to do is contain Schweickert's sprint-outs, stop Schweickert's passes, and keep Schweickert from punting deep into your territory. He's one helluva football player."

Bill Peterson, Florida State Coach: "We ran into a fine quarterback today—especially on third down. It's enough to give a man nightmares."

Pro scouts like the Techman's versatility, and here's what they've said about him:

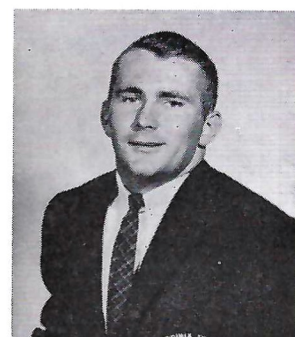
"In addition to his ability, he's a great leader. When he calls signals it's like having a coach on the field.

"He's a fine runner and his ability to throw gives him possibilities as a pro option back on the order of Paul Hornung.

"He has a knack of cutting which makes him a



**Ronnie Lindon**



**John Sheehy**



**Ed Jeffrey**

fine running quarterback. There's no doubt he can make the pros.

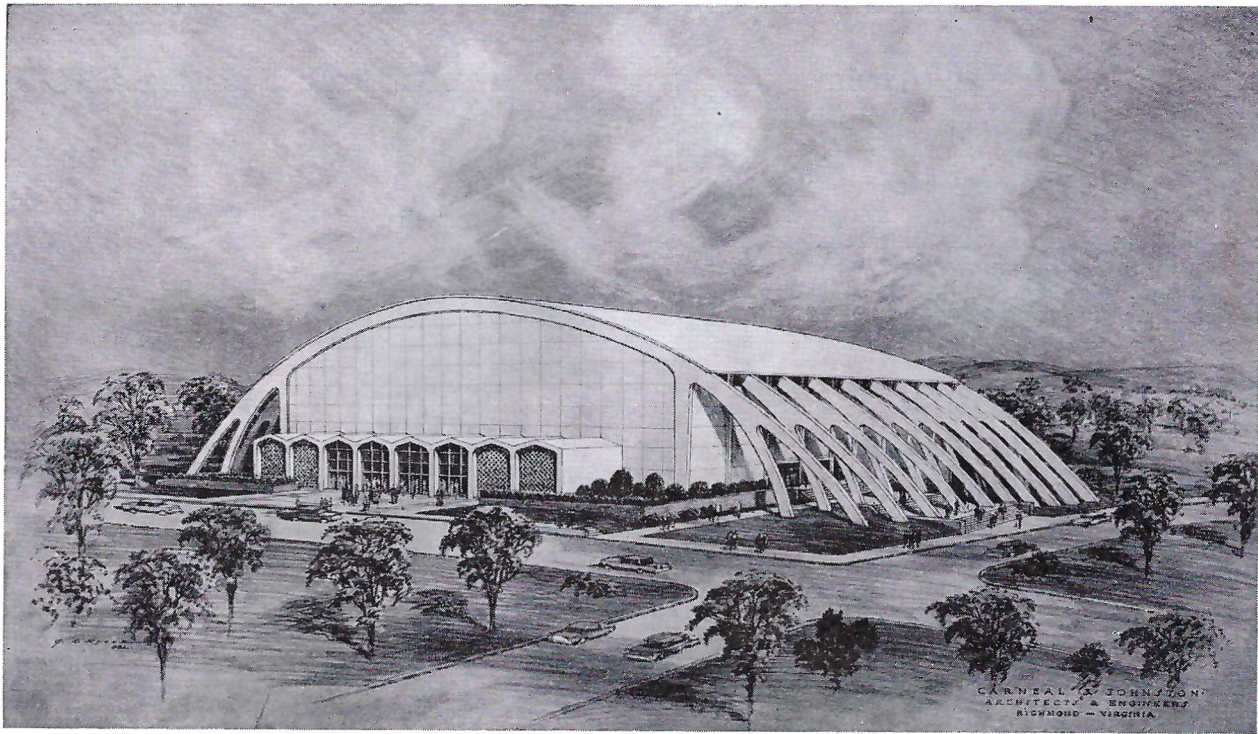
"He's quick enough to play in a pro defensive backfield, and he also has strong enough hands to try a flanker position."

|                        |             |      |  |
|------------------------|-------------|------|--|
| Most Rushes            | Single game | 29   | vs. Richmond                                     |
|                        | Season      | 155  |  |
| Most Net Yards Rushing | Single game | 204  | vs. Richmond                                     |
|                        | Season      | 839  | ..... (former SC mark was 807)                   |
| Total Offense          | Single game | 282  | vs. Richmond                                     |
|                        | Season      | 1526 | ..... (former SC mark was 1478)                  |
| Longest TD Punt Return |             | 82   | vs. VMI (1st punt return of his varsity career). |

### Schweickert Game-by-Game in '63

| vs.           | TOTAL   | RUSHING |     | PASSING  |      |    | PUNTING TDs |                 |
|---------------|---------|---------|-----|----------|------|----|-------------|-----------------|
|               | Offense | TC Net  | Lr  | Comp-Att | Yds. | TD | Int.        | No.-Avg. Scored |
| Kentucky      | 205     | 19-102  | 21  | 10- 23   | 103  | 1  | 2           | 3-30.0 0        |
| Wake Forest   | 153     | 16-105  | 63  | 5- 9     | 48   | 0  | 0           | 3-38.7 2        |
| U. Virginia   | 154     | 16- 63  | 68* | 7- 14    | 91   | 0  | 2           | 5-44.6 0        |
| G-W           | 126     | 8- 30   | 19  | 7- 11    | 96   | 2  | 0           | 4-41.0 0        |
| Wm & Mary     | 159     | 11- 87  | 59  | 4- 7     | 72   | 0  | 2           | 5-38.8 2        |
| Fla. State    | 62      | 17- 47  | 20  | 2- 7     | 15   | 0  | 1           | 5-43.4 1        |
| Richmond      | 282     | 29-204  | 69* | 7- 19    | 78   | 0  | 0           | 5-32.0 1        |
| N. C. State   | 98      | 15- 86  | 59  | 3- 4     | 12   | 0  | 1           | 3-30.3 1        |
| West Virginia | 157     | 13- 43  | 16  | 13- 16   | 114  | 1  | 0           | 5-41.2 0        |
| VMI           | 130     | 11- 72  | 41  | 4- 6     | 58   | 2  | 0           | 7-43.9 1        |
| Totals        | 1526    | 155-839 |     | 62-116   | 687  | 6  | 8           | 45-39.1 8       |

\*—two of greatest runs called back  
 SC Football Player of the Year  
 SC Athlete of the Year (won by a football player for the first time in 11 years)  
 Associated Press All-American, 3rd team



Va. Tech's Coliseum (Seating Capacity 10,000)

## DICKERSON'S JEWELRY



Phone PR 2-3361

127 College Avenue Blacksburg, Virginia

## KANODE MOTOR CO.

PLYMOUTH

VALIANT

SALES & SERVICE

So. Main St.

Blacksburg, Va.

**Cr**  
22 (D  
of th  
Hick  
Dick  
and  
reco  
seas  
did t  
lede  
to in

**Ed**  
(Dec  
athle  
at Te  
lede  
milit  
half t  
... in  
playi  
big p  
team  
minis  
to the

**Ov**  
20 (N  
all-ar  
been  
seaso  
if an  
Schw  
first  
a 38-  
stand

**St:**  
Soph  
Ala.  
Jones  
star  
show

**Bi**  
more  
... f  
Chev  
name  
ball p  
Sprin  
defer  
'64 fo

**Pa**  
Senic  
footb

# VIRGINIA TECH 1964

## QUARTERBACKS—Con.

**Cranwell, Charles Richard** . . . (Dickie) . . . Senior, 22 (Dec. 8, 1941), 5-11, 172, Richlands, Va. . . youngest of three brothers (Billy, Bob) who played for Ernie Hicks at Richlands . . . after three frustrating years, Dickie came into his own in '63 as Tech's extra-point and field goal specialist . . . broke his own Tech record with 40-yard field goal against Virginia last season . . . 14th among the nation's collegians who did their scoring strictly by EPs and FGs . . . a senior leader . . . whose '64 duties likely will be expanded to include kickoffs . . . and maybe even some punting.

**Edwards, Lacy Lee, Jr.** . . . (Lacy) . . . Senior, 22 (Dec. 8, 1941), 5-8, 187, Roanoke, Va. . . all-around athlete at Jefferson Senior . . . now a red-shirt senior at Tech . . . with a red-letter record . . . a campus leader (amongst other things, ODK and most every military honor in sight) . . . lettered in '62 after playing half the season on offense, the other half on defense . . . in '63 was the "other half" of Bob Schweickert . . . playing strictly defense . . . and coming up with some big plays . . . still perfectly capable of running the team offensively . . . a fine student in business administration . . . a real credit to the school . . . and to the game.

**Owens, Robert Wayne** . . . (Bobby) . . . Junior, 20 (Nov. 16, 1943), 5-10½, 178, Richmond, Va. . . an all-around athlete at Highland Springs High . . . has been slowed by injuries at times . . . but after mid-season last year was perfectly capable of taking over if and when needed . . . not only on offense for Schweickert but also on defense for Edwards . . . in his first varsity appearance (against Wake Forest) threw a 38-yard TD pass to Dickie Kelly . . . had an outstanding Spring game.

**Stafford, Tommy Edward** . . . (Tommy) . . . Sophomore, 19 (Apr. 19, 1945), 6-0½, 180, Birmingham, Ala. . . captain and MVP under W. E. McLain at Jones Valley High . . . also basketball and baseball star . . . saw plenty of action for '63 Goblets . . . and showed good promise in Spring practice.

## FULLBACKS

**Bigelow, Judson Allen** . . . (Judson) . . . Sophomore, 19 (Oct. 18, 1944), 6-1, 195, Washington, D. C. . . fullback and end under Lee Jones at Bethesda-Chevy Chase (Md.) High, where he was captain . . . named to all-metropolitan team . . . lefthanded baseball pitcher . . . was hampered throughout much of Spring practice by injury . . . but showed well on defense and could see action in that department in '64 for the Gobblers.

**Page, John Darrell** . . . (Darrell, Peaches) . . . Senior, 21 (Aug. 31, 1943), 5-8, 169, Waycross, Ga. . . football, basketball, and baseball player at Waycross



Mike Saunders



Bobby Owens



Tommy Francisco



Donnie Bruce

High . . . qb for '61 Tech frosh . . . lettered as defensive wingback in '62 . . . and as fullback in '63 . . . one of the smallest fullbacks in major college football . . . but every ounce a competitor . . . lettered for Tech's '64 tennis team . . . leadershipwise, he's cut from the same mold as most of Tech's '63 seniors, who brought Hokieland the SC championship.

**Semones, Dennis Michael** . . . (Dennis) . . . Sophomore, 19 (Jan. 20, 1945), 6-0, 195, Hillsville, Va. . . a fullback-linebacker under Tommy Thompson at Hillsville . . . showed some quick-footed wrinkles last Fall . . . and then was a pleasant surprise, both offensively and defensively, in Spring practice . . . missed Spring game due to cracked collarbone . . . might wind up on the '64 offensive unit.

**Utz, Silas A.** . . . (Sonny) . . . Senior, 22 (May 21, 1942), 5-11, 205, Annandale, Va. . . All-Southern Conference in '63 . . . a Spring academic casualty . . . must regain eligibility in Summer school . . . which won't be determined until just about the time the Gobblers open practice on Sept. 1 . . . all-state hb under Ed Henry at Annandale . . . workhorse for '61 frosh . . . lettered as hb in '62 . . . but didn't really hit his stride until mid-season . . . then busted 'em in '63 . . . 9th among the nation's leading scorers (60 points on 10 TDs) . . . 37th in rushing (567 yards . . . 4.2 a try) . . . powers his way inside with authority . . . quick enough to break away outside . . . a rugged, all-around performer whose loss would be greatly felt if he didn't become eligible again.

## ANDREW LEWIS TAVERN

Salem, Virginia

"FAMOUS FOR STEAKS"

SEA FOODS — SOUTHERN FRIED CHICKEN

VIRGINIA HAM

HOME MADE CAKES AND PIES



AIR CONDITIONED

2101 W. Main Street

Phone Salem DU 9-7854

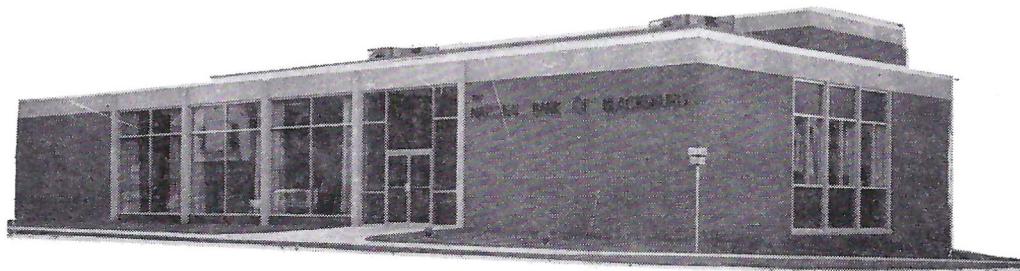
## McIlhany Equipment Company, Inc.

\*

CONSTRUCTION & INDUSTRIAL  
EQUIPMENT SALES—RENTALS  
SERVICE

\*

Roanoke—Lynchburg—Richmond—Hampton



ENJOY *The Best* IN MODERN AND CONVENIENT  
BANKING FACILITIES

THE NATIONAL BANK OF BLACKSBURG

Blacksburg, Va.

MEMBER FEDERAL DEPOSIT INSURANCE CORPORATION

**Fif**  
20 (M  
and c  
ham  
reco  
show  
action

**Fra**  
more,  
all-sta  
cage  
track  
fros  
times  
... bu

**Gar**  
20 (A  
for La  
Stein  
offens  
and g  
for '64

**Me:**  
Junio  
two y  
High  
'62 fr  
impro  
one.

**Pri**  
(Feb.  
under  
count

**Voi**  
21 (M  
hb un  
track  
Fall p  
quarte  
the or  
return  
Gobbl

# VIRGINIA TECH 1964

## TAILBACKS

**Fife, Robert Russell** . . . (Rusty) . . . Sophomore, 20 (Mar. 4, 1944), 5-10, 165, Bluefield, Va. . . . captain and outstanding back for Lawrence Bradley at Graham High . . . broke school's basketball scoring record . . . holds school record for 50-yard dash . . . showed good wrinkles in Spring game . . . could see action in '64 as spot runner.

**Francisco, Thomas Paul** . . . (Tommy) . . . Sophomore, 19 (Mar. 16, 1945), 6-1, 190, Damascus, Va. . . . all-state hb under E. A. Hill at Damascus High . . . cage captain . . . baseball shortstop . . . one-man track gang . . . looked sensational at times for '63 frosh . . . good speed . . . showed running ability at times in the Spring . . . needs experience on defense . . . but has the potential to play for the Techs in '64.

**Garcia, Salvador, M., Jr.** . . . (Sal) . . . Sophomore, 20 (Apr. 5, 1944), 5-10, 190, Brooklyn, N. Y. . . . played for Larry Sotori at Don Bosco High and for Dick Steinberg at Staunton Military Academy . . . best offensive back for '63 Tech frosh . . . packs power and good speed . . . could well wind up at tailback for '64 Techmen.

**Messamore, Claude Earl, Jr.** . . . (Claude) . . . Junior, 20 (May 17, 1944), 5-9, 186, Knoxville, Tenn. . . . two years all-AAA hb for Ralph Hutchins at Fulton High . . . 9.9 in 100-yd. dash . . . flashed at times as '62 frosh . . . slow developing in '63 . . . considerably improved in '64 Spring drills . . . could be number one.

**Price J. Michael** . . . (Mike) . . . Sophomore, 18 (Feb. 2, 1946), 5-9, 168, Utica, N. Y. . . . all-state under Fred Grant at Miami Military Academy . . . led county in scoring and rushing.

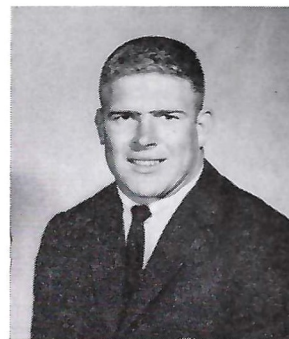
**Voight, Raleigh Lee** . . . (Raleigh) . . . Sophomore, 21 (May 24, 1943), 5-8½, 180, Norfolk, Va. . . . all-state hb under Billy O'Brien at Great Bridge High . . . also track man . . . came a cropper academically just as Fall practice opened in '63 . . . returned in Winter quarter . . . worked hard in Spring drills . . . and made the only TD of the Spring game on a 48-yard punt return . . . has size and running ability to help '64 Gobblers on either offense or defense.



Claude Messamore



John Raible



Ken Whitley



Dave Farmer

## WINGBACKS

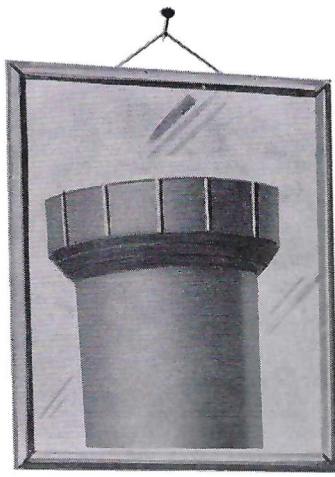
**Barfield, Jesse Cleveland** . . . (Jay) . . . Junior, 19 (July 16, 1944), 5-10, 188, Orlando, Florida . . . played for Jack O'Brien at Boone High . . . a graduate of Orlando Junior College . . . an excellent student . . . will be competing for one of Tech's most unsettled positions.

**Bulheller, Edward James, Jr.** . . . (Eddie) . . . Sophomore, 19 (Feb. 6, 1945), 6-1, 186, Richmond, Va. . . . received district honors as back under Ellet McGeorge at Varina High . . . basketball captain . . . track man . . . was doing well in Tech's '64 Spring drills until sidelined by a broken collarbone.

**Cobb, Paul Frederick** . . . (Fred) . . . Sophomore, 21 (July 26, 1943), 5-11, 182, Suffolk, Va. . . . captain at Wilson High . . . captain and all-state at Fork Union . . . red-shirted last year . . . showed well on defense at times in Spring drills.

**Groom, Harry Thomas** . . . (Tom) . . . Sophomore, 18 (Oct. 1945), 6-0, 180, St. Albans, W. Va. . . . captain of Mickey McDade's Charleston Catholic High team . . . also basketball player . . . was still far behind veterans at end of Spring drills.





# This pipe will never look its age!

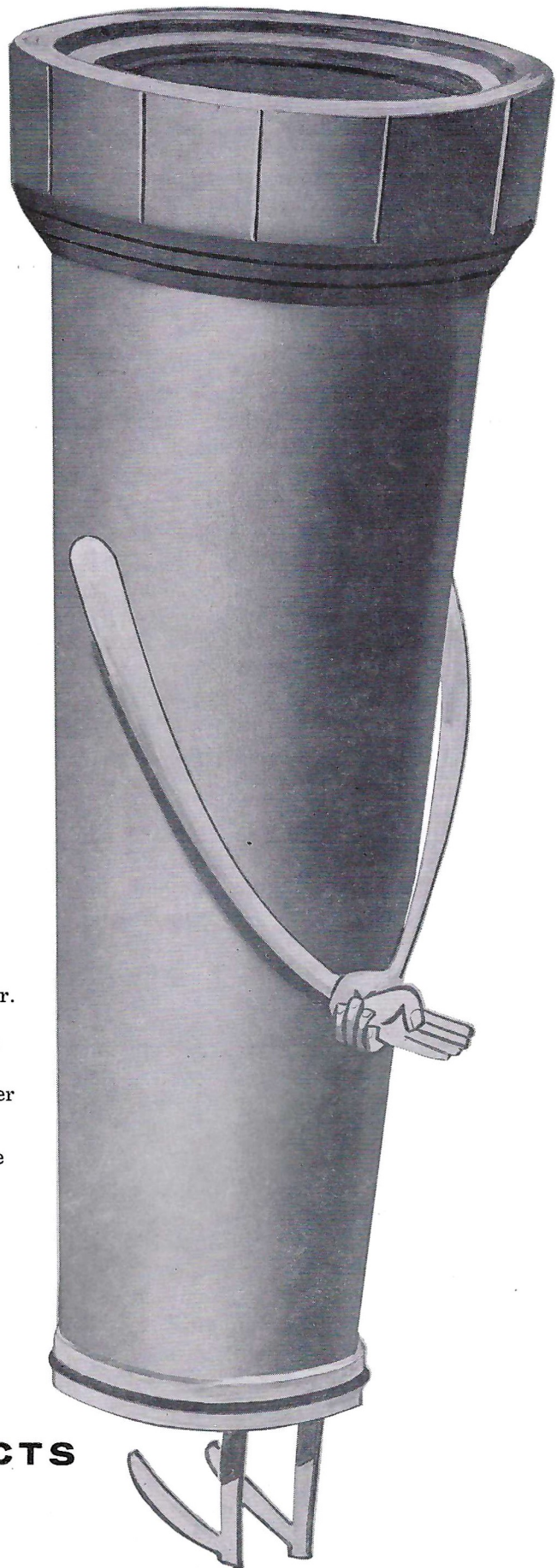
Vitrified Clay Pipe is chemically inert, lasts forever. Acidic wastes and vicious corrosives from industrial plants don't affect it. Domestic wastes can't erode it. In addition, POMON-O-LOK compression joints defy infiltration. No other sewer pipe can match this performance.

Vitrified Clay Pipe is the most economical because you install it only *once*. Don't gamble on substitutes. Insist on Clay Pipe!



**POMONA PIPE PRODUCTS**

Greensboro, N. C.



VI

Ed

Ke

(Feb.  
hb at  
all-co  
hande  
injury  
cialis  
TD a  
positi

Ra

20 (Ja  
under  
letter  
to win  
to sho  
in Sp  
to the  
years

Ule

20 (Ju  
under  
man  
but d  
and c

## VIRGINIA TECH PLAYERS



**Les Hanly**



**Sands Woody**



**Edgar Campbell, Mgr.**



**Gregg Mills  
Student Trainer**

### WINGBACKS—Con.

**Kelly, Richard L., Jr.** . . . (Dickie) . . . Senior, 21 (Feb. 10, 1943), 5-10, 175, Front Royal, Va. . . all-state hb at Garinger (N. C.) High . . . where he also was all-conference in both basketball and baseball (left-handed pitcher) . . . a willing competitor who has been injury-plagued . . . lettered in '63 as defensive specialist . . . although he caught one pass—that for a TD against Wake Forest . . . the only veteran at this position.

**Raible, John William** . . . (John) . . . Sophomore, 20 (Jan. 5, 1944), 6-0½, 185, Louisville, Ky. . . captain under John Meihaus at St. Xavier . . . three-year track letterman . . . played end for '62 Tech frosh . . . moved to wingback in '63 but missed the entire season due to shoulder injury and operation . . . performed well in Spring practice . . . and looks like heir apparent to the defensive safety job held down the past three years by Mike Cahill (also a St. X product).

**Ulery, Douglas Lee** . . . (Doug) . . . Sophomore, 20 (June 21, 1944), 5-9, 176, Springfield, Va. . . captain under Ed Henry at Annandale High . . . also track man . . . made several varsity trips last season . . . but did not play . . . did well in Spring practice . . . and could make a big difference in Tech's '64 fortunes.

## Radio Network

For the 8th consecutive year Station WRNL, Richmond, will originate the Virginia Tech football network.

Joining the Tech broadcasting team as play-by-play man will be Charlie Harville, a veteran sportscaster in this area and sports director of WGHP-TV, High Point, N. C.

Color man, as in the past, will be Frank Soden, vice president and general manager of WRNL, to whom inquiries regarding the network should be addressed. His address is WRNL, Box 6792, Richmond, Va.

As this program went to press, stations contracted to carry all of Tech's 1964 games included:

|                     |                     |
|---------------------|---------------------|
| WDKE—Altavista      | WMEV—Marion         |
| WODY—Bassett        | WSIG—Mount Jackson  |
| WKLW—Blackstone     | WNRV—Narrows        |
| WOPI—Bristol        | WGH-FM—Newport News |
| WKEY—Covington      | WPVA—Petersburg     |
| WCVA—Culpeper       | WRAD—Radford        |
| WDVA—Danville       | WPIC—Richlands      |
| WFLO—Farmville      | WRNL—Richmond       |
| WFLS—Fredericksburg | WSLS—Roanoke        |
| WFTR—Front Royal    | WTON—Staunton       |
| WBOB—Galax          | WLPM—Suffolk        |
| WWOD—Lynchburg      | WNNT—Warsaw         |
| WPRW—Manassas       | WHPL—Winchester     |

## THE SPORTCENTER RESTAURANT

PIZZA . . . . SANDWICH BAR

BLACKSBURG, VA.

The "grass roots" of Tech's scholarship program is

# The Virginia Tech Student Aid Association

WHICH CONSISTS OF TWO TYPES OF MEMBERSHIPS:



## HOKIE CLUB

(contributors of \$100 or more a year)

## GOBBLER CLUB

(contributors of \$10 or more a year)



### MEMBERS RECEIVE:

The annual **Gridiron Guide**

The SAA news publication **Tech Sports**, weekly during football season and every other week during basketball season

First **priority** (after students and faculty) **on** the purchase of football and basketball **tickets**

The satisfaction of helping and watching Tech athletics grow

Next priority period for Student Aid Association members: from now to November 1 for the purchase of **season basketball tickets** (application forms will be mailed to members within the next few weeks)

---

## TECH'S 1964-65 BASKETBALL SCHEDULE

December 1—Duke at Greensboro, N. C.  
December 4-5—Steel Bowl at Pittsburgh, Pa.....(with Pitt, Duquesne & Miami of Florida)  
December 12—Vanderbilt.....HOME  
December 14—at Wake Forest  
December 18-19—TECH TOURNAMENT.....HOME  
(with UNC, Alabama & Miss. State)  
December 31—Citadel.....HOME  
January 4—Virginia.....HOME  
January 9—Wake Forest.....HOME  
January 11—at Wm & Mary  
January 14—Richmond.....HOME  
January 23—East Carolina.....HOME  
January 28—Furman.....HOME  
January 30—West Virginia.....HOME  
February 2—at Richmond  
February 4—at Furman  
February 6—George Washington.....HOME  
February 13—at George Washington  
February 16—Wm & Mary.....HOME  
February 20—at West Virginia  
February 25-27—Southern Conference Tournament at Charlotte, N. C.



## The College Book Store



"ON THE CAMPUS"



**Where Service Meets the Students**

## GREEN ACRES MOTEL

2 MILES EAST OF CHRISTIANSBURG

## TECH MOTEL

BLACKSBURG'S FINEST  
DOWNTOWNER

Adjacent to VPI Campus



Corner Jackson and Water Streets  
BACK OF ROSE'S 5 & 10

## THE FLOWER BOX

PR 2-9041

BLACKSBURG, VA.



"your time is our time,  
day or nite."

## SHELTON & WALTERS

Men's & Boys' Shop

Telephone EV 2-3122

HOME OF QUALITY MERCHANDISE  
SINCE — 1906

SEE US FOR FALL OUTFIT

CHRISTIANSBURG, VIRGINIA

MOBIL HEAT



MOBIL KEROSENE

WE GIVE TOP VALUE STAMPS

**NEW RIVER OILS, Inc.**

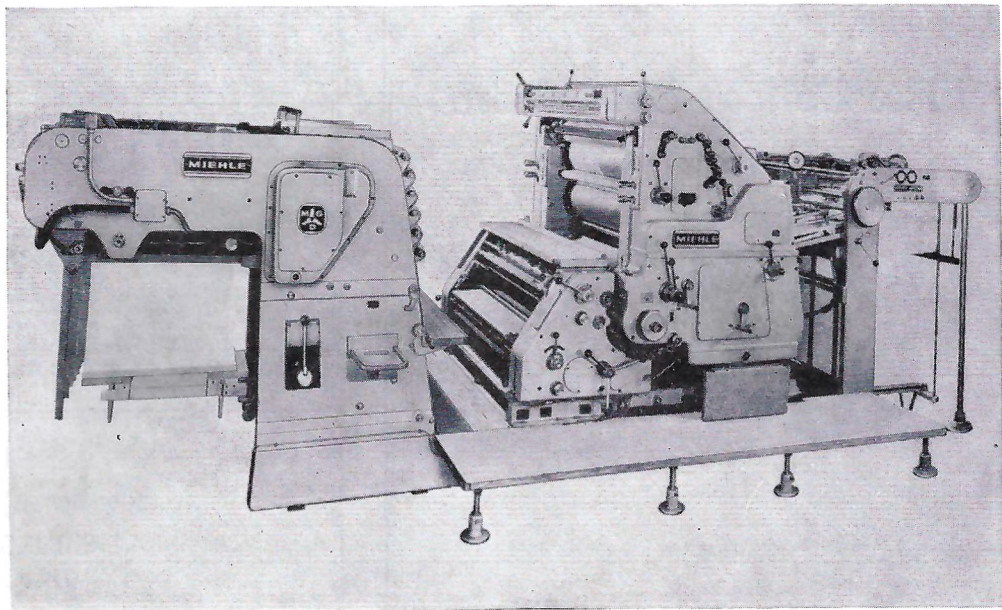
Christiansburg Road

Blacksburg, Va.

## Va. Tech

### 1964 Freshman Schedule

|          |                |                       |           |
|----------|----------------|-----------------------|-----------|
| Sept. 25 | Lees-McRae     | HOME                  | 3 p.m.    |
| Oct. 23  | Marshall Univ. | at Williamson, W. Va. | 8 p.m.    |
| Oct. 31  | V. M. I.       | at Roanoke            | 2:30 p.m. |
| Nov. 13  | Tennessee      | HOME                  | 2 p.m.    |



## 750 Letterheads a Minute . . .

*45,000 an hour . . . in two colors!* This is what just one of our modern Lithographing presses, shown above, will produce for the progressive businessman. Our twenty-four other presses are designed to give you the best in printing — from business cards to publications such as Magazines, Annual Reports, Yearbooks, Brochures or Calendars. Each order, regardless of size, will get the professional attention necessary to produce quality printing.

Our more than 1,500 type faces and combinations were carefully chosen to give you a well-balanced selection of design and weight for any job. Let our representative and complete Art Department help you plan your next printing job.

Phone 344-6688

## THE STONE PRINTING AND MANUFACTURING COMPANY

116-132 NORTH JEFFERSON STREET

• P. O. Box 1600 •

ROANOKE, VIRGINIA

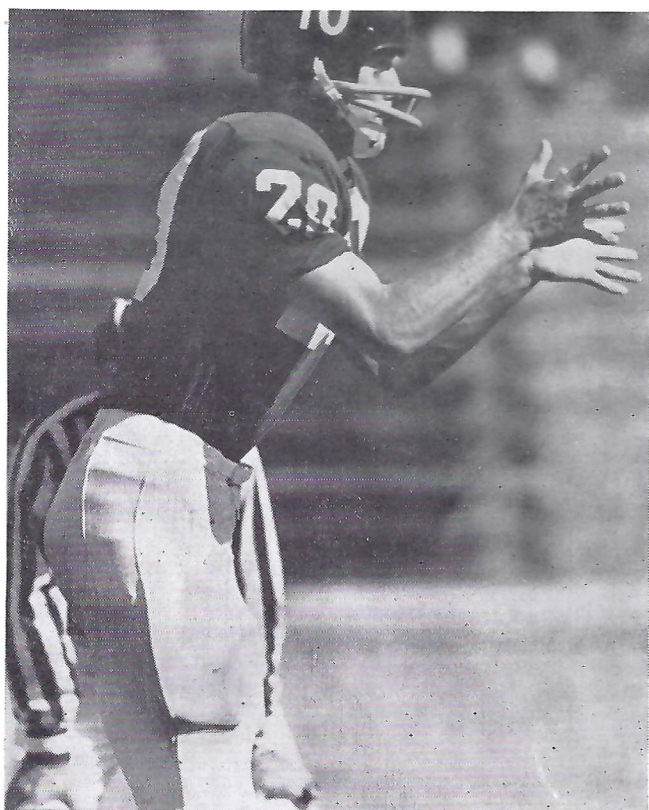
Dis

After  
boome

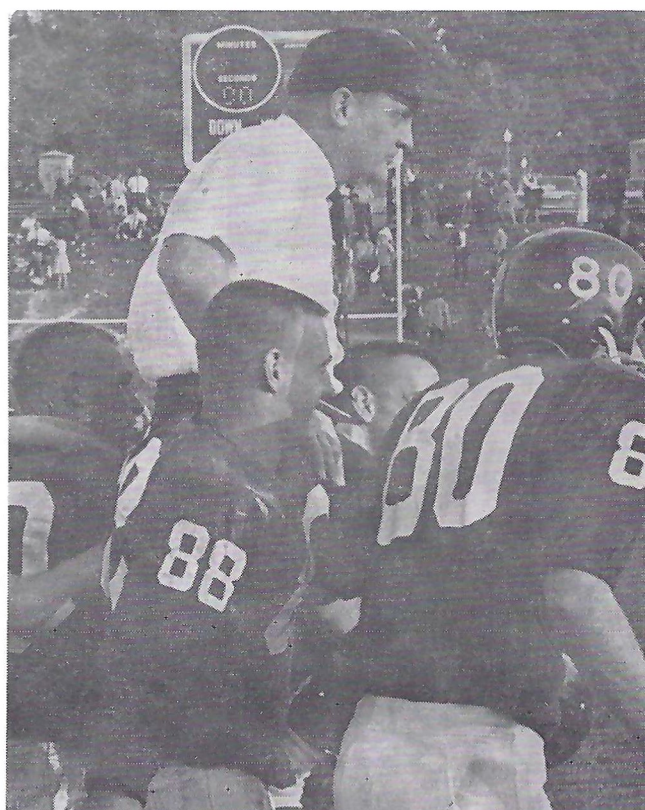
## Highlights of Tech's Championship 1963 Season



**GOAL-LINE STAND IN 28-3 WIN OVER WEST VIRGINIA. Gene Breen (74) leads charge to stop Mountaineer FB Dick Leftridge.**



**After tremendous goal-line stand against Virginia, Schweickert boomed a 62-yd. punt from end zone to Cavaliers' 38-yd. line.**



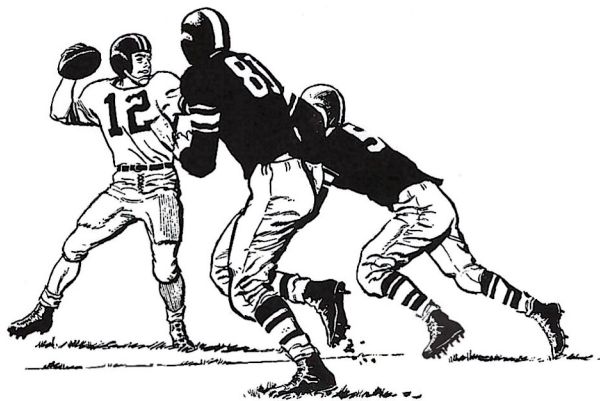
**Claiborne gets Homecoming victory ride after 28-13 win over William & Mary before one of largest crowds in history of Miles Stadium.**

# FOOTBALL NEWS

fully and completely reported . . .  
plus the best in news throughout  
the world of sports

The sports pages of The Roanoke Times and The Roanoke World-News bring you the details, the action pictures, background stories and informative columns so important to complete sports reporting.

Our capable and experienced staffs are often on the spot to add those extra colorful details. The Associated Press high speed sports wire and wirephoto are used to bring you full coverage of all the sports everywhere. Enjoy your favorite sports more with . . .



**THE ROANOKE TIMES • The Roanoke World-News**

Carrier delivery and special rates for students

**ARE YOU GOOD ENOUGH  
TO BE AN ARMY OFFICER?  
IF YOU ARE, DON'T SETTLE  
FOR LESS!**



**STAY  
IN  
ARMY R.O.T.C.**

## Tech's All-Conference Players

- |   |  |
|---|--|
| 1933—Red Negri, end<br>Al Casey, back                           | 1958—Carroll Dale, end<br>Billy Holsclaw, qb   |
| 1934—Dave Thomas, end   | 1959—Carroll Dale, end<br>Alger Pugh, hb<br>Mike Zeno, guard                         |
| 1935—Foots Dickerson, fb  |  |
| 1946—John Maskas, tackle  | 1960—Allen Whittier, tackle<br>Mike Zeno, guard                                      |
| 1954—Tom Petty, end<br>George Preas, tackle<br>Dickie Beard, hb | 1961—Gene Breen, tackle  |
|   | 1962—Newt Green, guard   |
| 1955—Jim Locke, guard<br>Jack Prater, center                    | 1963—Gene Breen, tackle<br>Newt Green, guard<br>Bob Schweickert, qb<br>Sonny Utz, fb |
| 1956—Jimmy Lugar, qb  |  |

Listen to Tech's Road Games at

# **GOLDEN GOBBLER**



Via Grundig FM  
from  
Carver's  
College Ave.

---

---

# **GRANT'S TAVERN**

## **RESTAURANT**

"A place to eat you will always remember"



Rt. 11  
CHRISTIANSBURG

Chas. P. Lunsford  
W. Bolling Izard

James J. Izard  
J. Irving Slaydon

# CHAS. LUNSFORD SONS & IZARD

INCORPORATED



## GENERAL INSURANCE AND BONDS

Since 1870

**As an independent insurance agency,** our job is to see that you get continuing personal attention—  
**The Big Difference** in car, home and business insurance. Let us prove what it can mean to you.



Associates:

Harold N. Hoback  
T. W. Jamison

James I. Slaydon, Jr.  
Ronald E. Broyles

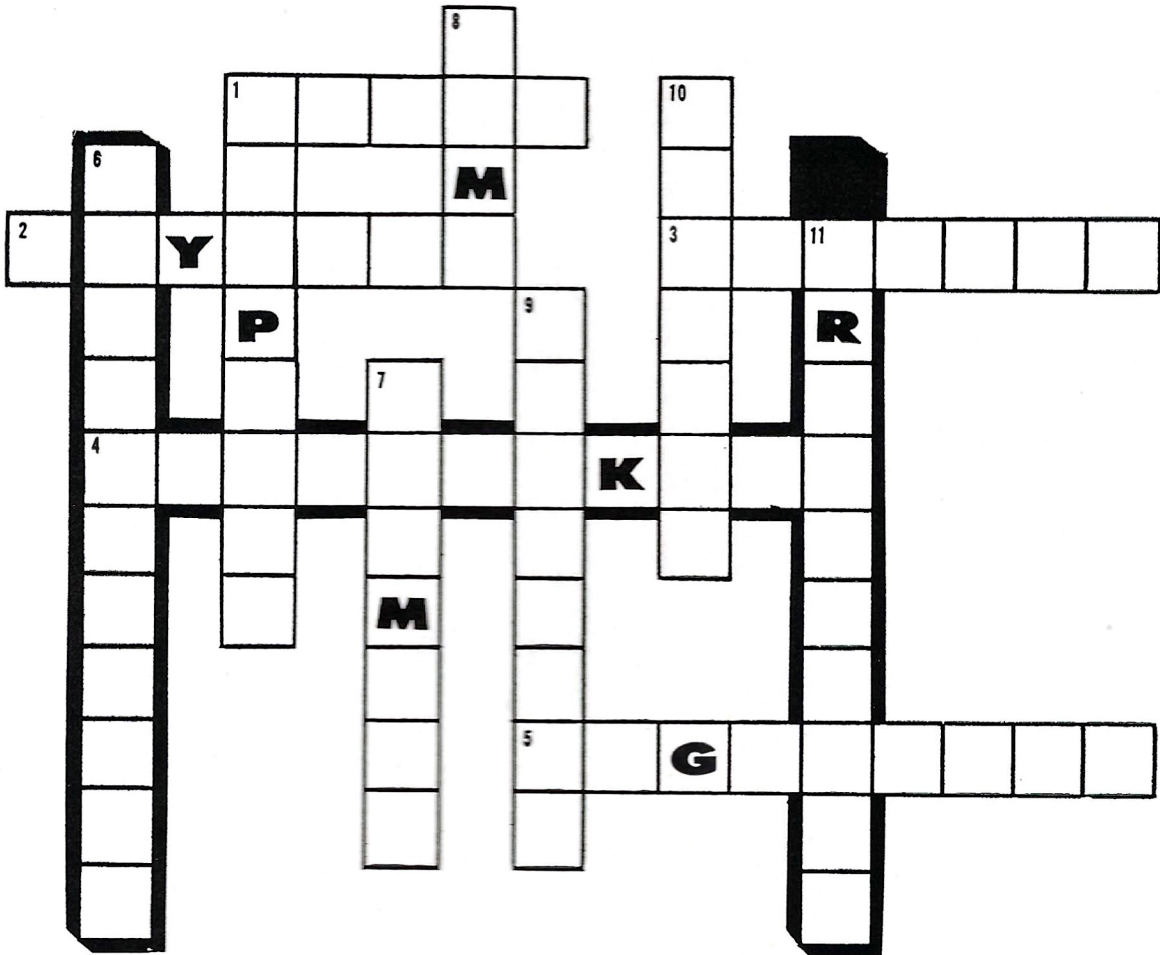
**Colonial-American National Bank Building**

**Dial 345-1515**

**ROANOKE, VIRGINIA**

# Play **FIELD GOAL**

**A crossword game with college team nicknames**



Fill in the nicknames for the college football teams listed below. Score three points for each correct answer.

### Across

1. University of New Mexico
2. University of South Dakota
3. University of Minnesota
4. South Dakota Tech
5. Lehigh University

### Down

1. Lafayette College
6. University of Nebraska
7. Harvard University
8. College of St. Thomas (Minn.)
9. Iowa State University
10. Augsburg (Minn.) College
11. Washington & Jefferson College

### SCOREBOARD

|                      |           |
|----------------------|-----------|
| 9 points.....        | Fair      |
| 12-18 points.....    | Average   |
| 21-24 points.....    | Good      |
| Above 24 points..... | Excellent |
| 36 points.....       | Perfect   |

**YOUR SCORE** \_\_\_\_\_



## PUT VITALITY ON YOUR TEAM!

Drink Milk, the Vitality Beverage! It's your ticket to vigor and verve that really lasts. And cool, refreshing milk helps keep you bright and in the fun game all day long. So heed the cheer for milk—"put vitality on your team!"



a message from dairy farmer members of  
**american dairy association**