

---

# SOUTHERN MISS.

---

VS

---

# FLORIDA STATE U.

---

OCTOBER 19, 1963 — 8:00 P.M.  
LADD MEMORIAL STADIUM

---

OFFICIAL PROGRAM 50c



---

# WELCOME

## TO THE UNIVERSITY OF SOUTHERN MISSISSIPPI AND FLORIDA STATE UNIVERSITY

WE ARE PROUD TO PLAY HOST TO YOU AND YOUR MANY FRIENDS



**CHARLES S. TRIMMIER**  
Commissioner



**JOSEPH N. LANGAN**  
Mayor



**GEORGE E. McNALLY**  
Commissioner

Mobilians are proud of their city and want their visitors to know it, enjoy it and remember it affectionately.

There are many old, beautifully restored homes, a bustling modern dock with a book value of 25 million dollars, and a replacement value of 75 million dollars. A Forward-looking City Government, gives Mobile a healthy and progressive image. In short, all of these things, and many more, are what Mobilians mean when they say warmly . . .

“WELCOME, EACH AND EVERY ONE OF YOU”

---

*Words of  
Welcome  
From  
University  
Of  
Southern  
Mississippi*



**DR. WILLIAM D. McCain, President**

The University of Southern Mississippi and its Athletic Association are aware of the support of many friends in the Mobile area. It is always a pleasure to bring a football game to beautiful Ladd Memorial Stadium.

Only through the support of you and our many other friends will we be able to attain the goals we seek.

Tonight's game is the eleventh the Soutrenners have played in Mobile and they won eight of the previous ten.

Special thanks to Stadium officials, the City of Mobile, Mobile County, both Chambers of Commerce, and various other civic organizations that have contributed greatly to our efforts.

Consider this my personal invitation to visit Mississippi's friendliest and fastest growing institution of higher learning at every opportunity.

*William D. McCain*

# WELCOME TO MOBILE

University of Southern Mississippi and Florida State University

MAKE YOUR HOME AWAY FROM HOME WITH US

## MOBILE INNKEEPER'S ASSOCIATION

---

---

Admiral Semmes Hotel  
and Motel

Albert Pick Motel

Bama Motel

Bamboo Motel

Cawthon Hotel

Downtown Hotel Courts

Grand Hotel

Holiday Inn

Holiday Inn Riviera

La Capri Motel

La Clede Hotel

Malbis Motel

Palms Motel

Sheraton-Battle House

Spanish Fort Motel

St. Francis Hotel Courts

Taylor Motel

Thunderbird Motel

Town House Motel

Travelodge Motel



Dr. Gordon W. Blackwell, President

# FLORIDA STATE UNIVERSITY



Main Administration Building, FLORIDA STATE UNIVERSITY

**B. R. WILSON, JR.**

INSURANCE AGENCY, INC.

GENERAL INSURANCE

Telephone HE 3-2647

Mobile, Alabama

## DELCHAMPS

- Mobile
- Hattiesburg
- Laurel
- Biloxi
- Gulfport
- Pensacola
- Milton
- Montgomery
- Selma

# Natural GAS



## THE DEPENDABLE FUEL

Serving Homes, Commerce and Industry with an unlimited supply of the Jet Age Fuel . . . Clean, Modern Natural Gas.

ALL-YEAR AIR CONDITIONING • COOKING • HEATING  
WATER HEATING • CLOTHES DRYING  
BARBECUING • GAS LIGHTING

Now in our 127th year of continuous, dependable service.



## MOBILE GAS SERVICE

C O R P O R A T I O N

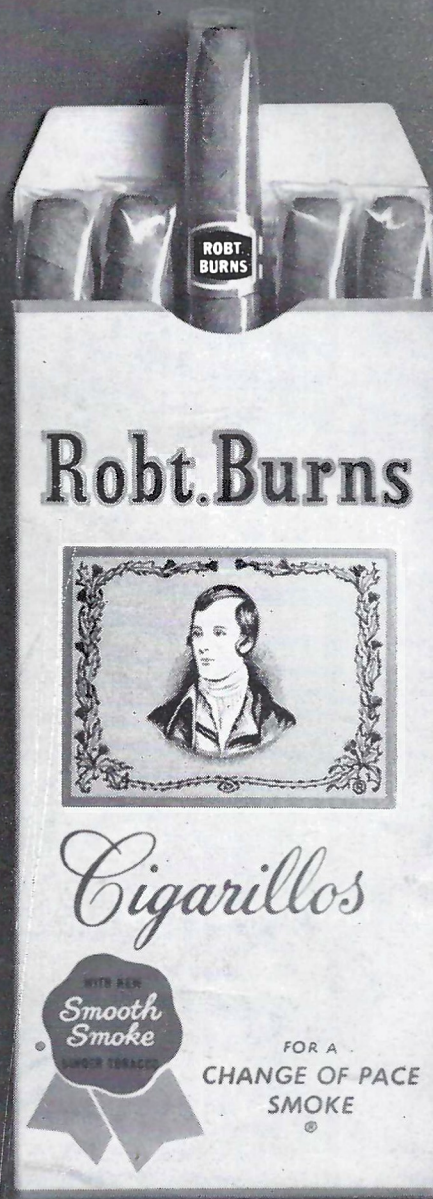
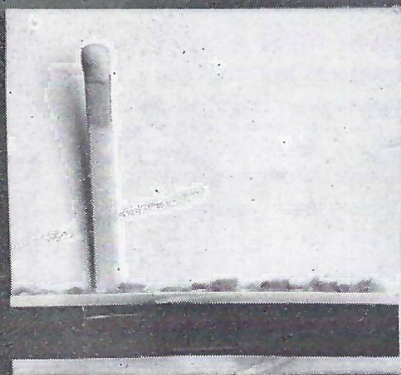
DOWNTOWN MOBILE    PRICHARD    SPRINGDALE PLAZA



USM 1963-64 DIXIE DARLINGS—Left to right: Harley Ruth Burford, Mobile, Ala.; Theate White, Silverhill, Ala.; Caro Henning, Mobile, Ala.; Joyce Betancourt, Mobile, Ala.; Susan Risher, Mobile, Ala.; Dianne Moore, Theodore, Ala.



USM 1963-64 DIXIE DARLINGS—Left to right: Clemie Graves, Pascagoula, Miss.; Lanelle Dunn, Ocean Springs, Miss.; Betty Johnston, Pascagoula, Miss.; Phyllis Coulter, Pascagoula, Miss.



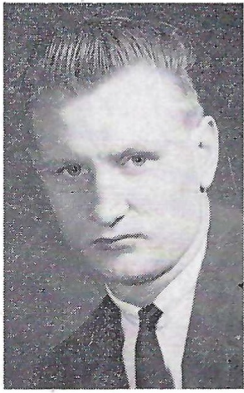
Let your next match start  
you on a change of pace.

You'll be striking up a lasting friendship, too. You'll discover Robt. Burns Cigarillos are just different enough to provide a stimulating change of pace. Size it up. The Cigarillo is not so long you need a lurch hour to enjoy it. Not too long. Not too short. Just the right size. Just the right mildness, too. Cigarillo's fine blend of tobaccos sees to that. It's mild but full of flavor—the kind of flavor you don't have to inhale to enjoy. Change of pace. Peace of mind. Only 5¢ each. Remember, if it's not a Robt. Burns, it's not the Cigarillo.

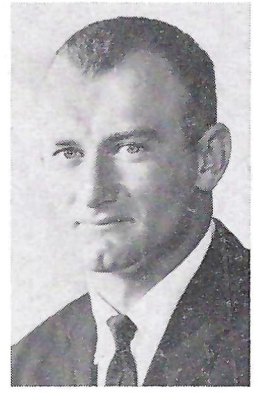
**Robt. Burns Cigarillos are on sale at this stadium.**



# FLORIDA STATE U. STARTERS



**STEVE TENSI**  
Quarterback



**MARION ROBERTS**  
Fullback



**JACK EDWARDS**  
Center



**FRED BILETNIKOFF**  
Halfback



**DAVE SNYDER**  
Halfback



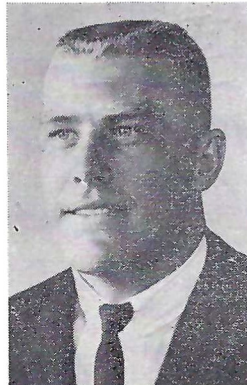
**CHUCK ROBINSON**  
Guard



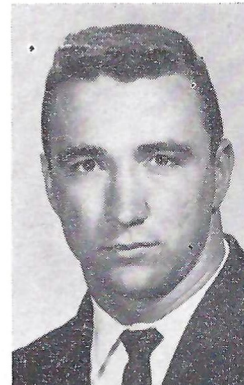
**DICK HERMANN**  
Guard



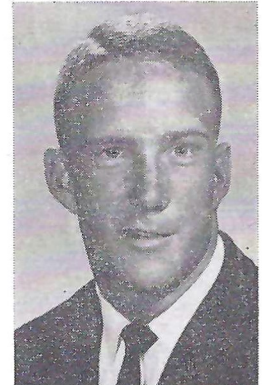
**JERRY BRUNER**  
Tackle



**AVERY SUMNER**  
Tackle



**DON FLOYD**  
End



**BILL DAWSON**  
End

The South's historic "City of Six Flags,"  
azalea trails and home of

HOTEL  
*Admiral Semmes*  
& MOTOR HOTEL

Charming Southern hospitality in the heart of downtown Mobile • 350 choice guest rooms & suites • Excellent meeting rooms • Tropical patio & swimming pool • Attractive cocktail lounges • Delightful food & service • TV-Radio-Air conditioned • Family rates

Frank C. Drane, Manager  
Hotel 205-342-0315  
Motor Hotel 205-342-1434



**AFFILIATED NATIONAL HOTELS:** ALABAMA; MOBILE the Admiral Semmes, BIRMINGHAM the Thomas Jefferson. WASHINGTON, D.C. the Washington. INDIANA; INDIANAPOLIS the Claypool. LOUISIANA; NEW ORLEANS the Jung, the DeSoto. NEBRASKA; OMAHA the Paxton. NEW MEXICO; CLOVIS the Clovis. SOUTH CAROLINA; COLUMBIA the Wade Hampton. VIRGINIA; MOUNTAIN LAKE the Mountain Lake, NORFOLK the Monticello. TEXAS; AUSTIN the Stephen F. Austin, DALLAS the Baker, the Travis, EL PASO the Cortez, GALVESTON the Galvez, the Jean Lafitte, Coronado Courts, LAREDO the Plaza, MARLIN the Falls, SAN ANGELO the Cactus, SAN ANTONIO the Menger, Angeles Courts.

MOBILE

**"INSURED SAVINGS**

Earn 4 1/2 Percent

at

**HOME SAVINGS**

59 St. Joseph St.      4419 Old Shell Road  
DOWNTOWN              SPRING HILL

Mobile, Alabama

Everything in  
BUILDING MATERIALS

*Underwood*

BUILDERS SUPPLY  
401 S. ROYAL ST.

HE 2-3581

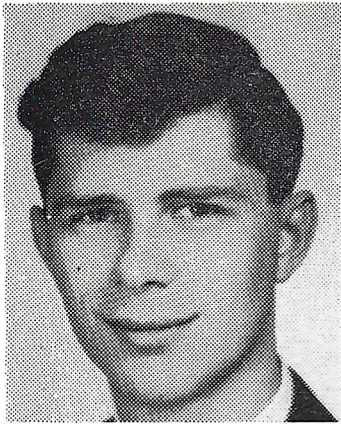
MOBILE'S HOME PLANNING  
CENTER



*Woodhaven Dairy*



Dedicated to Quality

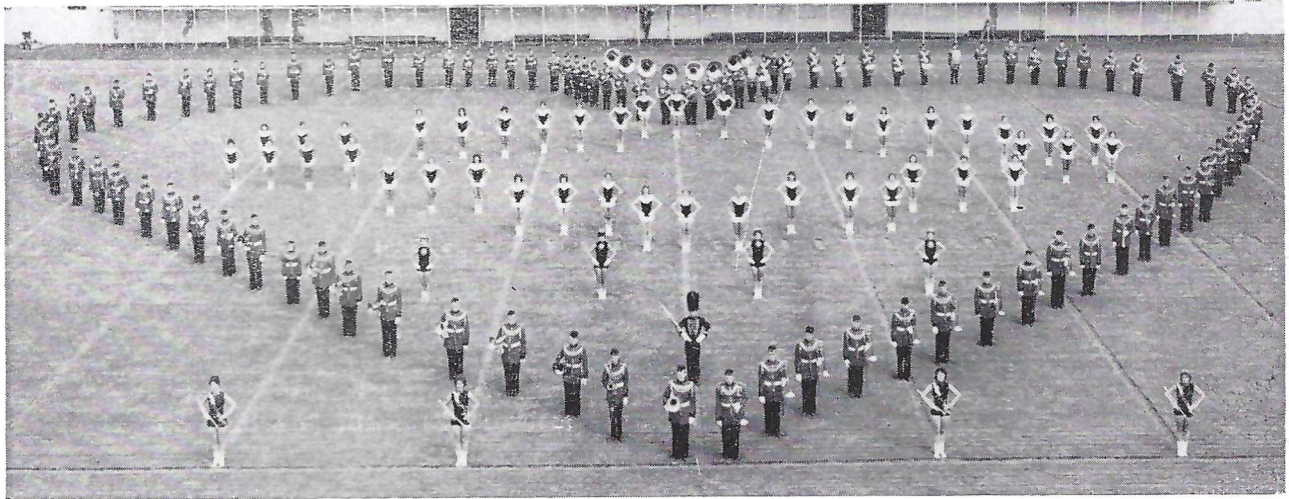


William J. Moody  
Director of Bands

*The Pride of  
Mississippi  
Marching Band  
Dixie Darlings  
Featurettes*



Mrs. Frances Myers  
Director of the Dixie  
Darlings



DIXIE DARLING OFFICERS from left: Susan Bolen, Jackson, Ala.; Jinny Windham, Mobile, Ala.; Olivia Johnston, Pascagoula, Miss., and Sylvia Keeton, Birmingham, Ala.

# USM ATHLETIC STAFF



REED GREEN  
Athletic Director



COACHES—Kneeling: left to right: C. J. (Pete) Taylor, end coach; Thad (Pie) Vann, head coach; P. W. Underwood, line coach. Standing: Maxie Lambright, backfield coach.

# FORREST COUNTY

# INVITES YOU

To visit its friendly atmosphere where the best in educational facilities — including the University of Southern Mississippi — prevails; where living costs are low; where there is an ideal climate; and where there is an abundance of recreational and civic activities.

The County offers: Plentiful labor supply with 99 per cent native-born Americans; adequate low-cost fuel and power; plentiful raw materials for manufacturing; one-third of the market area of Mississippi by population.

Let's have a good time together and get home safely!

## FLORIDA STATE ROSTER

No.	Name	Pos.	Ht.	Wt.	Class	Hometown
11	Calhoun, Charlie	QB	5-10	171	Sr.	Tallahassee, Fla.
12	Gero, Tony	QB	5-10	183	Soph.	Madison, N. J.
13	Tensi, Steve	QB	6-5	201	Jr.	Cincinnati, O.
14	Massey, Jim	QB	5-11	176	Soph.	Cairo, Ga.
15	Fischer, Russ	QB	6-1	184	Soph.	Melbourne, Fla.
16	Pritchett, Ed	QB	6-2	177	Soph.	Decatur, Ga.
20	Snyder, Dave	HB	5-10	184	Sr.	Jacksonville, Fla.
21	Brinkley, Larry	FB	5-11	190	Sr.	Willoughby, O.
22	Bibent, Maury	HB	6-0	186	Soph.	Cincinnati, O.
23	Loflin, Jim	HB	6-1	181	Jr.	Pensacola, Fla.
24	DeLiberty Mario	HB	5-9	184	Soph.	Havertown, Pa.
25	Bilernikoff, Fred	HB	6-1	186	Jr.	Erie, Pa.
26	Hammond, Bill	HB	5-11	181	Soph.	Melbourne, Fla.
28	Bailey, Winfred	HB	6-0	186	Jr.	Atlanta, Ga.
29	Peiko, Joe	HB	5-9	185	Soph.	Shaker Heights, O.
40	Messer, Doug	HB	6-1	188	Sr.	LaGrange, Ga.
41	Roberts, Gene	FB	6-0	200	Sr.	High Springs, Fla.
42	Murdock, Les	FB	6-2	213	Jr.	Hollywood, Fla.
43	Ehler, Howard	FB	6-1	190	Soph.	Tavares, Fla.
44	Roberts, Marion	FB	6-0	197	Sr.	Ocilla, Ga.
51	Avezzano, Joe	C	6-1	223	Soph.	Miami, Fla.
52	Robinson, Chuck	G	5-11	218	Sr.	E. Palestine, O.
53	Daly, Bill	C	6-1	209	Sr.	Jacksonville, Fla.
54	MacMatthews, Jay	C	6-1	216	Soph.	Chiefland, Fla.
55	Edwards, Jack	C	6-1	221	Jr.	Tampa, Fla.
60	Henry, Ferrell	C	6-1	212	Sr.	Colquitt, Ga.
61	Shinholser, Jack	G	6-1	200	Soph.	Tampa, Fla.
62	Parish, Gene	G	6-3	196	Soph.	Headland, Ala.
63	McDowell, Bill	G	6-1	191	Soph.	Tallahassee, Fla.
64	Pitts, David	G	5-9	211	Soph.	Blountstown, Fla.
65	Wooten, Jerry	G	6-1	195	Soph.	Geneva, Ala.
66	Hermann, Dick	G	6-0	200	Jr.	Marianna, Fla.
67	Bruner, Jerry	T	5-10	232	Sr.	Evansville, Ind.
68	Parrish, Joe	G	6-1	193	Soph.	Auburndale, Fla.
69	Watson, Steve	T	5-10	215	Soph.	Rosford, O.
70	Strobel, Larry	T	5-11	227	Soph.	Massilon, O.
71	Willett, Darrell	T	6-1	231	Soph.	Tifton, Ga.
73	Sumner, Avery	T	6-2	216	Jr.	Adel, Ga.
75	MacKenzie, Dale	T	6-2	227	Jr.	Clearwater, Fla.
76	West, Tom	T	6-4	222	Jr.	Headland, Ala.
77	Mangan, Bob	T	6-1	231	Soph.	Atlanta, Ga.
78	Andrews, Max	T	6-1	203	Soph.	Rehobeth, Ala.
79	Pennie, Frank	T	6-4	242	Soph.	Hollywood, Fla.
80	Wachtel, John	E	6-1	193	Jr.	Massilon, O.
81	Floyd, Don	E	6-1	197	Jr.	Madison, Fla.
82	Causey, Jim	E	6-1	209	Jr.	Miami, Fla.
83	Dawson, Bill	E	6-3	231	Jr.	Valdosta, Ga.
84	D'Allessandro, G.	E	5-10	205	Soph.	Fort Myers, Fla.
85	Twitchell, Dale	E	6-1	205	Soph.	Florala, Ala.
86	Blankenship, Buddy	E	6-3	200	Soph.	Atlanta, Ga.
87	Garvin, Terry	E	5-11	206	Soph.	Pensacola, Fla.
88	Roberts, John	E	6-0	190	Soph.	Orlando, Fla.
89	Wettstein, Max	E	6-3	203	Soph.	Leesburg, Fla.

## FORREST COUNTY BOARD OF SUPERVISORS

COURT HOUSE, MAIN STREET — HATTIESBURG

SELBY C. BOWLING, President  
Beat Three

H. H. BELL  
Beat One

LUTHER G. LEE  
Beat Two

J. A. P. CARTER, JR.  
Beat Four

W. H. BUTLER  
Beat Five

things go  
better  
with  
**Coke**

TRADE-MARK®



TRADE-MARK®

**UNIVERSITY OF  
SOUTHERN MISSISSIPPI**

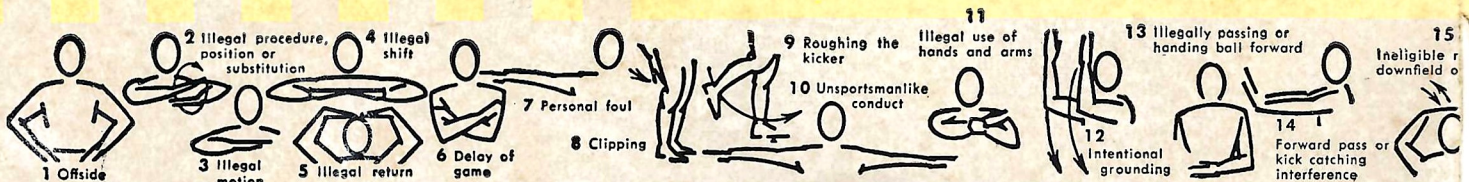
Probable Starting Lineup

80	BILL GORNEY	.....	LE
74	SAM BELLA	.....	LT
65	TONY DeFRANCO	.....	LG
56	LARRY ECUYER	.....	C
68	NICK KOLINSKY	.....	RG
61	CHARLEY PARKER	.....	RT
85	BEN McLEOD	.....	RE
15	VIC PURVIS	.....	QB
36	TOMMY WALTERS	.....	LH
40	HERMAN NALL	.....	RH
28	HARMON BRANNON	.....	FB

10 Harmon, QB	50 Waites, C	73 Pigott, T
11 Berry, QB	51 Laird, C	74 Bella, T
12 Atkins, QB	55 D. Martin, C	75 Freeman, T
15 Purvis, QB	56 Ecuyer, C	76 Brechtel, T
20 Poirier, FB	57 Armstrong, G	78 Armand, T
21 K. Martin, FB	58 Avery, C	79 Melton, T
26 Sekul, FB	60 Owens, G	80 Gorney, E
28 Brannon, FB	61 Parker, T	81 Hultz, E
30 Lippincott, FB	62 King, G	82 J. Brown, E
36 Walters, HB	63 Hancock, C	83 Skinner, E
37 White, HB	64 Stringfellow, G	84 Holmes, E
40 Nall, HB	65 DeFranco, G	85 McLeod, E
41 Sumrall, HB	67 Satcher, G	86 Bankston, E
42 R. Brown, HB	68 Kolinsky, G	87 Hitt, E
43 Brennan, HB	69 Long, G	88 Rice, E
44 Little HB	72 Willoughby, G	89 Rodman, E
45 Youmans, HB		

**OFFICIALS**

Referee: Joe Hicks, Birmingham, Ala.  
 Umpire: Charles V. Cusimano, Metairie, La.  
 Linesman: Troy H. Carter, Macon, Ga.  
 Field Judge: A. C. (Butch) Lambert, Tupelo, Miss.  
 Back Judge: Charles W. Erdmann, New Orleans, La.



P  
81 DO  
67 JE  
66 DI  
55 JA  
52 CH  
73 AV  
83 BI  
13 ST  
20 DA  
44 M  
25 FF  
11 Cal  
12 Ger  
13 Tex  
14 Ma  
15 Fis  
16 Pri  
20 Sny  
21 Bri  
22 Bib  
23 Lo  
24 De  
25 Bil  
26 Ha  
28 Bai  
29 Pe  
40 Me  
41 Ro



# Pause for Coke

TRADE-MARK ®

## FLORIDA STATE

### Probable Starting Lineup

81	DON FLOYD	.....	LE
67	JERRY BRUNER	.....	LT
66	DICK HERMANN	.....	LG
55	JACK EDWARDS	.....	C
52	CHUCK ROBINSON	.....	RG
73	AVERY SUMNER	.....	RT
83	BILL DAWSON	.....	RE
13	STEVE TENSI	.....	QB
20	DAVE SNYDER	.....	LH
44	MARION ROBERTS	.....	FB
25	FRED BILETNIKOFF	.....	RH

11 Calhoun, QB	42 Murdock, FB	70 Strobel, T
12 Gero, QB	43 Ehler, FB	71 Willett, T
13 Tensi, QB	44 Roberts, FB	73 Sumner, T
14 Massey, QB	51 Avezzano, C	75 MacKenzie, T
15 Fischer, QB	52 Robinson, G	76 West, T
16 Pritchett, QB	53 Daly, C	77 Mangan, T
20 Snyder, HB	54 MacMatthews C	78 Andrews, T
21 Brinkley, FB	55 Edwards, C	79 Pennie, T
22 Bibent, HB	60 Henry, C	80 Wachtel, E
23 Loftin, HB	61 Shinholser, G	81 Floyd, E
24 DeLiberty, HB	62 Parish, G	82 Causey, E
25 Biletnikoff, HB	63 McDowell, G	83 Dawson, E
26 Hammond, HB	64 Pitts, G	84 D'Allessandro E
28 Bailey, HB	65 Wooten, G	85 Twitchell, E
29 Petko, HB	66 Hermann, G	86 Blankenship, E
40 Messer, HB	67 Bruner, T	87 Garvin, E
41 Roberts, FB	68 Parrish, G	88 Roberts, E
	69 Watson, T	89 Wettstein, E

### Coca-Cola Bottling Co.

Incorporated

MOBILE, ALABAMA



15 Ineligible r downfield o

16 Legally touched, r batted

17 Incomplete forward pass, penalty declined, no play or no score

18 Helping runner or interlocked interference

19 Ball dead; if hand is moved from side to side: touchback

20 Touchdown or field goal

21 Safety

22 Time out; referee's discretionary or excess time-out followed with tapping hands on chest

23 First down

24 Ball ready for play

25 Start the clock

# HATTIESBURG

"THE CITY OF  
PROGRESS"

wishes to take this opportunity to thank the citizens of Mobile and the surrounding area for their loyal support of the University of Southern Mississippi football team and to extend them an invitation to visit our city and "Mississippi's Finest and Friendliest University."

MISSISSIPPI

The Progress State

HATTIESBURG

The City of Progress

## U. OF SOUTHERN MISSISSIPPI ROSTER

No.	Name	Pos.	Ht.	Wt.	Class	Hometown
10	Bob Harmon	QB	5-11	176	So.	Houston, Miss.
11	James Berry	QB	6-2	200	Sr.	Panama City, Fla.
12	Sid Atkins	QB	6-0	180	So.	Columbus, Miss.
15	Vic Purvis	QB	5-11	170	So.	Puckett, Miss.
20	Ron Poirier	FB	5-8	170	So.	N. Attelboro, Mass.
21	Ken Martin	FB	5-11	180	Jr.	New Orleans, La.
26	Gorge Sekul	FB	5-11	180	Sr.	Biloxi, Miss.
28	Harmon Brannon	FB	5-10	190	So.	Rocky Creek, Miss.
30	Dooney Lippincott	FB	5-8	165	So.	Hattiesburg, Miss.
36	Tommy Walters	HB	6-2	181	Sr.	Petal, Miss.
37	Jack White	HB	6-0	185	Sr.	Blakely, Ga.
40	Herman Nall	HB	5-10	190	Jr.	Alexandria, La.
41	George Sumrall	HB	5-10	180	So.	Biloxi, Miss.
42	Rabbit Brown	HB	5-11	193	So.	Pensacola, Fla.
43	Tommy Brennan	HB	5-10	201	So.	Savannah, Ga.
44	Bobby Little	HB	5-10	161	Jr.	Jackson, Miss.
45	Tommy Youmans	HB	5-11	172	So.	Quitman, Ga.
50	Skeeter Waites	C	6-0	187	So.	Birmingham, Ala.
51	John Laird	C	6-0	180	Jr.	Smithdale, Miss.
55	Dwayne Martin	C	6-0	185	Sr.	Albany, Ga.
56	Larry Ecuyer	C	6-0	205	Jr.	New Orleans, La.
57	Andy Armstrong	G	6-0	205	So.	Meridian, Miss.
58	Ken Avery	C	6-0	190	So.	Miami, Fla.
60	Joe Owen	G	5-9	200	Sr.	Blakely, Ga.
61	Charley Parker	T	6-2	232	Sr.	Chickasaw, Ala.
62	James King	G	6-0	210	Jr.	Adamsville, Ala.
63	Larry Hancock	C	5-11	203	Sr.	Gulfport, Miss.
64	Poochie Stringfellow	G	5-9	193	So.	Lucedale, Miss.
65	Tony DeFranco	G	5-11	208	Sr.	Patterson, N. J.
67	Doug Satcher	G	5-11	198	So.	Sandersville, Miss.
68	Nick Kolinsky	G	6-2	225	Sr.	McKees Rocks, Pa.
69	Terry Long	G	5-11	190	Sr.	Carbon Hill, Ala.
72	Will Willoughby	G	6-1	205	So.	Liberiy, Miss.
73	Bud Pigott	T	6-2	208	Sr.	Picayune, Miss.
74	Sam Bella	T	6-2	230	Sr.	Arabi, La.
75	Bill Freeman	T	6-4	225	Sr.	Milton, Fla.
76	Berengher Brechtel	T	6-0	220	Jr.	New Orleans, La.
78	Chuck Armand	T	6-1	220	So.	Chalmette, La.
79	John Melton	T	6-2	225	So.	Baker, Fla.
80	Bill Gorney	E	6-1	195	So.	Orland Park, Ill.
81	Wilford Hultz	E	6-3	195	Sr.	Grand Bay, Ala.
82	Jesse Brown	E	6-0	180	So.	Georgianna, Ala.
83	Tony Skinner	E	6-2	205	Jr.	Gulfport, Miss.
84	Bobby Holmes	E	6-1	190	So.	McComb, Miss.
85	Ben McLeod	E	6-0	195	Sr.	Leakesville, Miss.
86	Ronnie Bankston	E	6-1	205	Jr.	Hammond, La.
87	Harold Hitt	E	6-0	200	Jr.	Mobile, Ala.
88	Wiley Rice	E	6-1	197	Sr.	Hemphill, Tex.
89	George Rodman	E	6-3	205	So.	Levittown, Pa.

# The City of Hattiesburg

CLAUDE F. PITTMAN, JR., Mayor  
C. B. PATTERSON, Commissioner      W. P. HARRINGTON, Commissioner



*Florida State Athletic Bosses - - - -*



VAUGHN MANCHA  
Athletic Director



BILL PETERSON, Head Coach



Front row L-R: Bobby Bowden, Bubba McGowan, Head Coach Bill Peterson, Vince Gibson. Back row L-R: Y. C. McNease, Bill Proctor, Don James, John Coatta, Bob Harbison, Lou Luce.

## Pancakes

16  
VARIETIES

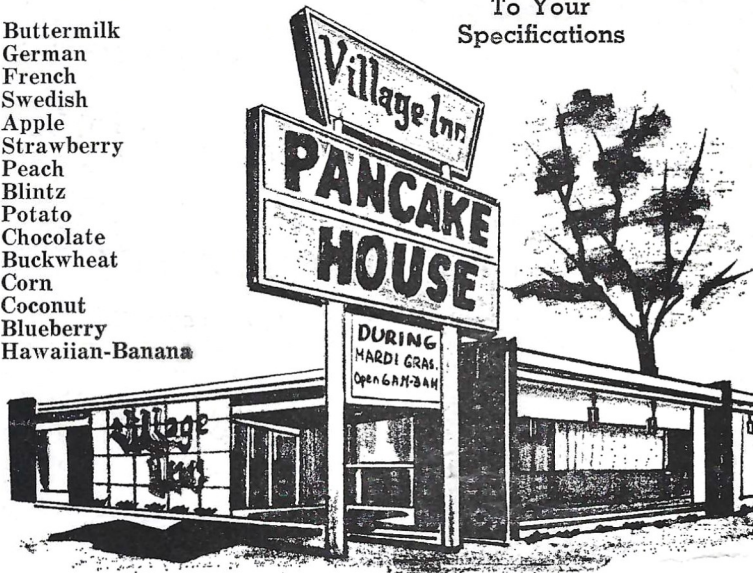
Buttermilk  
German  
French  
Swedish  
Apple  
Strawberry  
Peach  
Blintz  
Potato  
Chocolate  
Buckwheat  
Corn  
Coconut  
Blueberry  
Hawaiian-Banana

## Steaks

Prepared  
To Your  
Specifications

## Seafood

Fresh  
and  
Delicious



Open 6:00 a.m. till 2:00 a.m.

Hiway 90 West

DIAL 477-5289

At Pleasant Valley Rd.

## BOLTON FORD

YOUR FRIENDLY FORD DEALER

**Quality Parts  
And Royal Service**

SALES DEPARTMENT OPEN

TILL 9:00 P.M.

FOR YOUR SHOPPING

CONVENIENCE

Best of Luck to

SOUTHERNERS

**Club Royal**

and

**Royal Cafe**

76 South Royal

# Waterman LINE



Your Best Course  
To World Markets

CONTINENTAL EUROPE  
UNITED KINGDOM  
MEDITERRANEAN  
INDIA-PAKISTAN  
FAR EAST

**WATERMAN  
STEAMSHIP CORPORATION**  
61 ST. JOSEPH ST., MOBILE, ALA.

Compliments of

**HARDY MOTOR CO.**

803 Dauphin

Phone HE 2-7521

# Sunbeam

**BATTER-WHIPPED BREAD  
IS BETTER**

Compare and See



BAKED BY

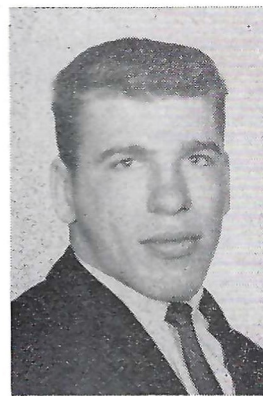
# Smith's Bakery

QUALITY AND PURITY FOR 63 YEARS

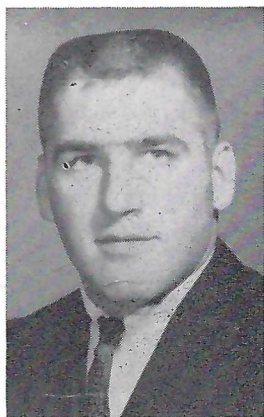
# SOUTHERN MISS. STARTERS



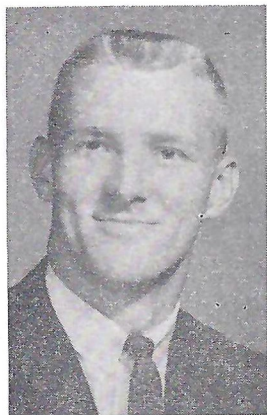
**VIC PURVIS**  
Quarterback



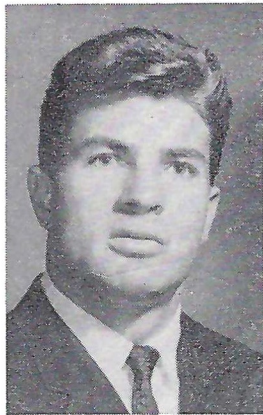
**HARMON BRANNON**  
Fullback



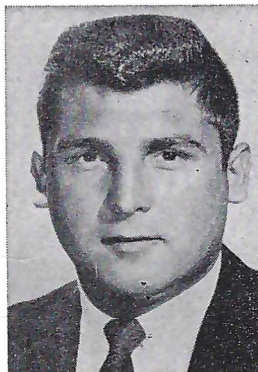
**LARRY ECUYER**  
Center



**TOMMY WALTERS**  
Left Halfback



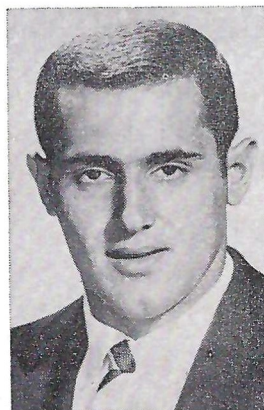
**HERMAN NALL**  
Right Halfback



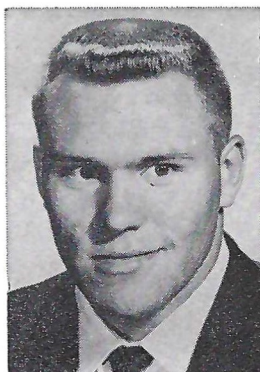
**NICK KOLINSKY**  
Right Guard



**TONY DeFRANCO**  
Left Guard



**SAM BELLA**  
Left Tackle



**CHARLEY PARKER**  
Right Tackle



**BEN McLEOD**  
Right End



**BILL GORNEY**  
Left End



***Sports lovers of the world, unite . . . let's all go Wildcat-ing!***

Face it—if you're the rocking chair, watch-it-on-TV type, forget the wild, wild '64 Buick Wildcat. But if you like your action furious and first-hand, Wildcat is for you! You can bark your signals to a regular 325 hp V-8 formation, or really take to the air with a 340\* or 360\* hp passer. Three scat-back transmissions add to your fun: 3-speed synchromesh; 4-speed synchro stick shift on the floor\*, or Buick's new trigger-quick Super Turbine 400 automatic\* (very sparing with gas, too!). Four new models: 4-dr. hardtop; 2-dr. sport coupe; 4-dr. sedan; convertible. Give one a workout; see why we say . . .

\*Optional at extra cost.

Buick Motor Division

***above all, it's a BUICK!***

Restaurant — Lounge

## **THE METRO**

**10 NORTH ROYAL STREET**

(Next to Battle House)

Food — Drinks — Shows

**OPEN 24 HOURS**

---

Floor Shows

## **THE ESQUIRE HOUSE**

**13 SOUTH JOACHIM STREET**

(Across from Saenger Theatre)

**MOBILE'S ONLY "FUN" SPOT**

Girls! Girls! Girls!

---

Steaks — Steaks

## **UNCLE BILL'S STEAK LOFT**

**9 SOUTH JOACHIM STREET**

(Across from Saenger Theatre)

Steaks and Beverages Exclusively

## Moore-Handley, Inc.

401 N. WATER STREET

MOBILE, ALABAMA

Phone HE 3-7411

Mark Lyons, Jr.—Manager

H. E. "Red" Ross—Assistant Manager

**Serving The Southeast Since 1882**

MACHINE TOOLS—INDUSTRIAL AND

ELECTRICAL SUPPLIES—HARDWARE

—BUILDING MATERIALS—

HOUSEWARES AND APPLIANCES

The

FLORIDA STATE  
SOUTHERN MISSISSIPPI  
GAME AT LADD STADIUM  
REPLAYS BEST

over dinner at the . . .

**TOWN**  
*and*  
**COUNTRY**  
RESTAURANT

and drinks in the . . .

**GILDED SURREY**

THE HOTEL IN MOBILE



**SHERATON**  
**BATTLE HOUSE**



## RYAN STEVEDORING COMPANY, Inc.

CONTRACTING STEVEDORE • GENERAL AND BULK CARGO

MAIN OFFICE

MOBILE, ALABAMA

BRANCH OPERATIONS AT

New Orleans, La.

Pascagoula, Miss.

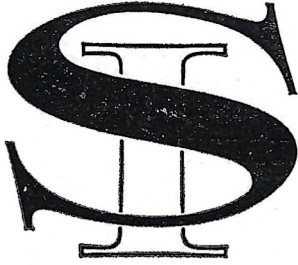
Panama City, Fla.

Gulfport, Miss.

Baton Rouge, La.

Georgetown, S. C.

*The Southern Industries Corporation family of growing companies  
dedicated to progress in the South...*



Southern Oyster Shell Milling Corporation

Oyster Shell Corporation

Oyster Shell Products Corporation

Mayo Shell Company\*

Pelican State Lime Company\*

Radcliff Materials, Inc.

Henderson Sugar Refinery, Inc.

Alabama Docks Refinery Operating Company

Grand Hotel Development Corporation

Lakewood Golf Club

McPhillips Packing Corporation

\*Divisions of Southern Oyster Shell Milling Corporation

## SOUTHERN INDUSTRIES CORPORATION

GENERAL OFFICES • MOBILE ALABAMA

Enjoy  
Finest  
Foods  
at

**Constantine's**

Mobile's World-Famous Restaurant

11 No. Royal St. and  
1500 Government St.  
Ramada Motor Hotel

## Weatherby Furniture Company

"Where you pay LESS for the BEST"

309 Government Mobile    374 Springdale Plaza  
Mobile    Mobile

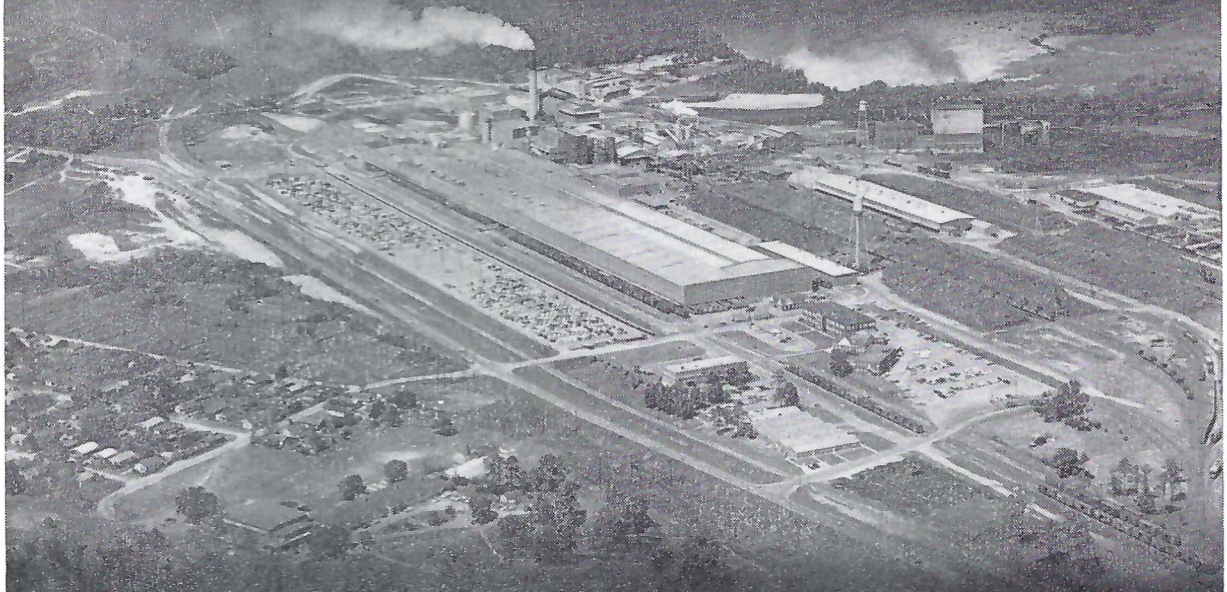
150 N. Craft Hi-Way    63 So. Wilson Ave.

Chickasaw

Prichard



**PAPERS OF QUALITY**



**INTERNATIONAL PAPER**  
MOBILE, ALABAMA

**WONDERFUL  
MEALS!**

**MORRISON'S**  
*Cafeterias*

Highway 90 West  
and  
GM&O Building, Downtown

"Since 1920. No Fast Food... ANYWHERE!"

**FLORSHEIM  
SHOES**

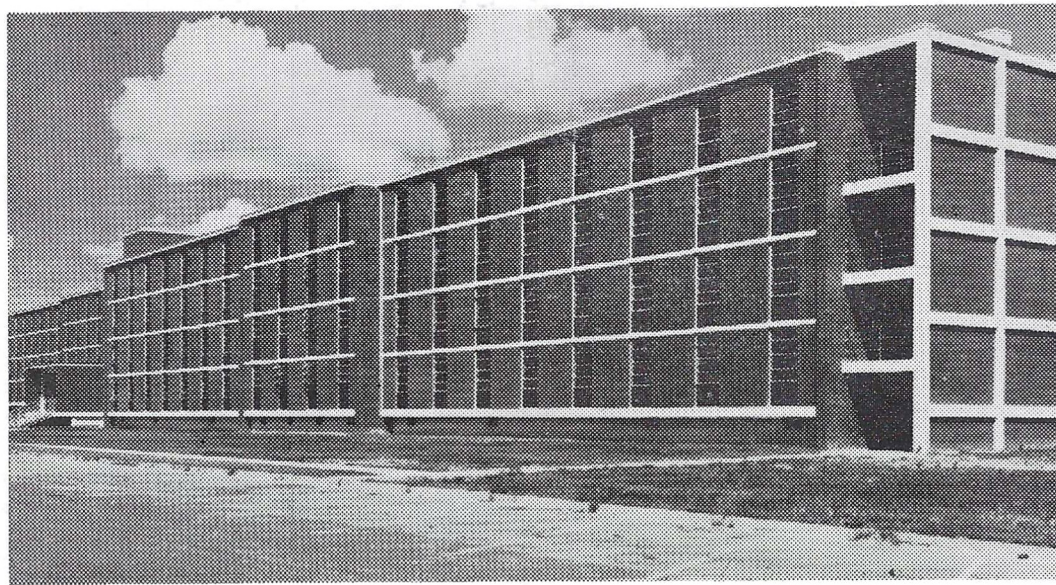
*Cost Less  
in the Long Run*



**DAMRICH  
SHOE COMPANY**

205 Dauphin

Springdale Plaza



BOND HALL — USM

ENJOY THE GAME MORE!

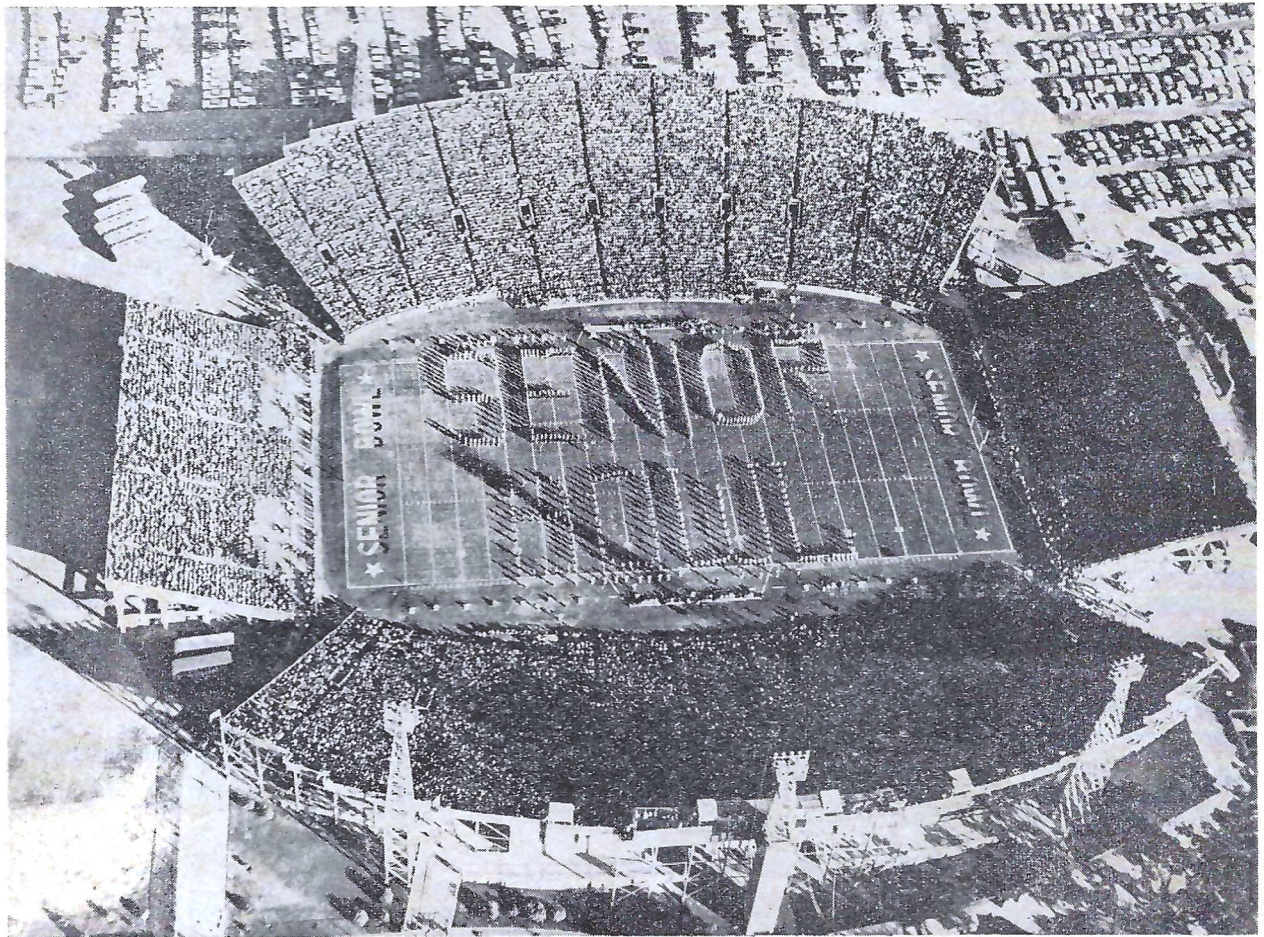
Treat yourself to **m&m's** *Candies*



**ON SALE AT THIS STADIUM NOW!**

# WELCOME TO . . .

## LADD MEMORIAL STADIUM



### HOME OF MOBILE'S ANNUAL SENIOR BOWL

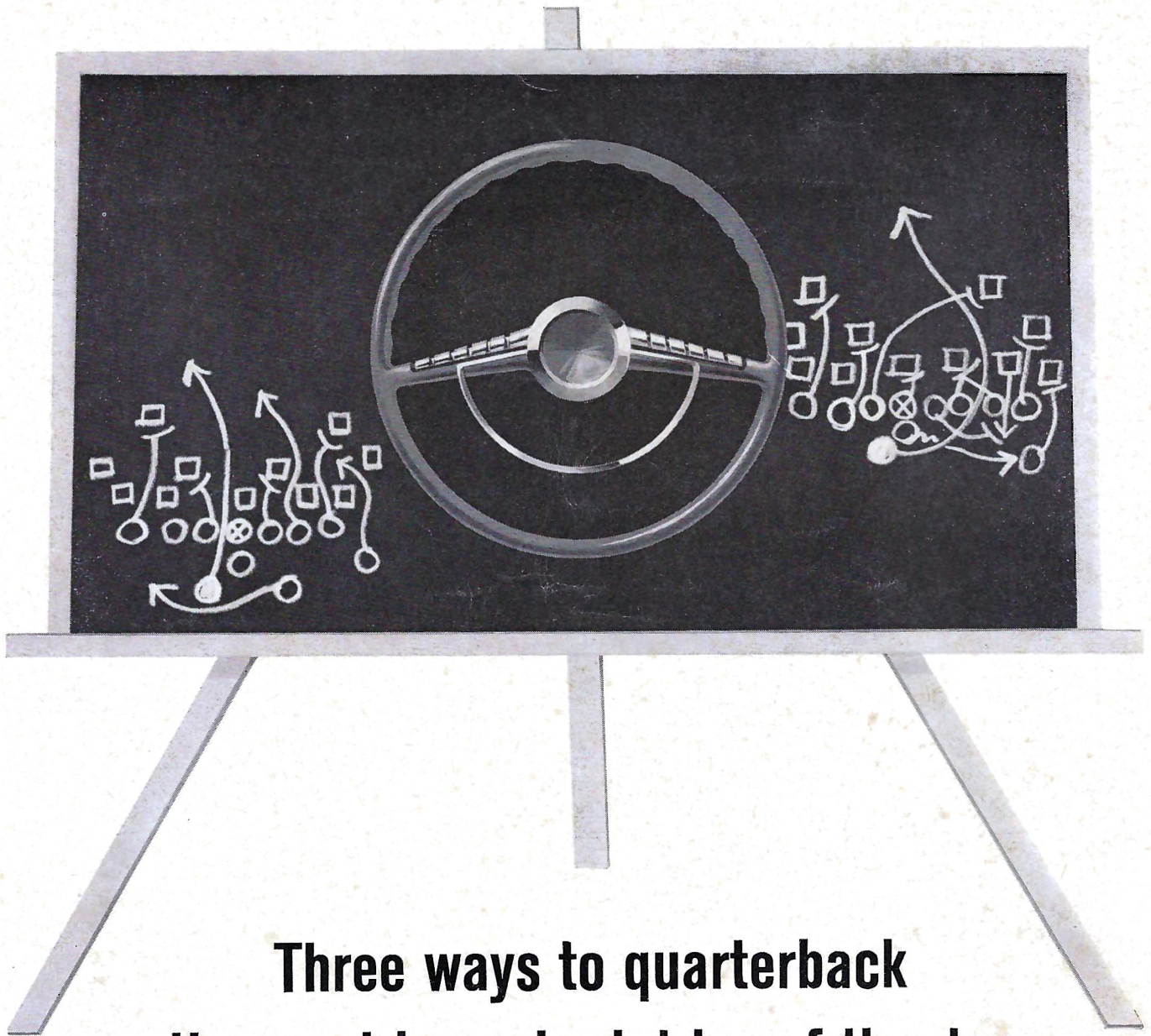
Ernest F. Ladd Memorial Stadium, home of the annual Senior Bowl game, is unique among major stadia in the country in its origination, operation and purpose. Dedicated on October 2, 1948, Ladd Stadium was financed as a non-profit undertaking by a group of Mobile business interests and individuals who recognized the value of such a structure to the recreational, health and economic interests of the community. A memorial to the late Ernest F. Ladd, prominent business and civic leader who served as president of the Merchants National Bank of Mobile from 1915 until his death in 1941, the stadium is administered by a non-profit corporation directed by a board of seven trustees headed by J. Finley McRae, president of the Merchants National Bank.

Although used primarily by Mobile area high schools, the 40,605 capacity structure is also the scene of major collegiate contests and pre-season professional games. Such well-known schools as Alabama, Auburn, Clemson,

Maryland, North Carolina State, Florida, Florida State, Louisiana State, Tulane, Vanderbilt, Texas A. & M., Ole Miss and University of Southern Mississippi have played here. Professional teams that have played at Ladd include the Washington Redskins, Detroit Lions, Los Angeles Rams and the Chicago (now St. Louis) Cardinals from the National league and Houston, Denver, and Buffalo, from the American league. During spring and summer months Ladd Stadium has been the scene of such varied events as ice shows, rodeos, boxing and wrestling matches, musical and variety shows and numerous other events for which adequate indoor facilities are unavailable.

The stadium's original capacity of 35,486 was increased to its current 40,605 in 1958 when permanent 41-row concrete north and south stands were constructed. Since its dedication more than 3,500,000 fans have attended various events at Ladd Stadium.

**ORDER YOUR TICKETS NOW FOR:**  
**15th ANNUAL SENIOR BOWL ALL-STAR GAME — SAT., JAN. 4, 1964**  
**Reserved Seats: \$5.00 . . . Send Check or Money Order**  
**To: LADD STADIUM, P. O. BOX 1229, MOBILE, ALA.**



## Three ways to quarterback the most important drive of the day —your drive home

1. Don't buck the line of traffic, stay in it. Fancy open field running doesn't pay on the highway.
2. When dusk falls and your visibility is limited, slow down and turn on your lights. What you can't see can hurt you.
3. Don't try to beat the clock by speeding. Remember, when time runs out on the highway, everybody loses.

*Presented in the interest of safe and sane driving  
by the R. J. Reynolds Tobacco Company.*