



FLORIDA STATE UNIVERSITY

SPORTS INFORMATION



OCTOBER 23, 1996

FLORIDA STATE SOCCER

FOR IMMEDIATE RELEASE

FLORIDA STATE FALLS TO FLORIDA 3-0

TALLAHASSEE, FL -- Despite holding the Florida Lady Gators (15-1) scoreless in the first half, FSU (11-5-1) was shut out in the second half as UF put in three goals in a 19-minute span, winning by a final of 3-0 at the Seminole Intramural Soccer Complex. Florida was led by All-American Danielle Fotopoulos' two goals and Melissa Pini's lone unassisted score. Pini also added the assist on Fotopoulos' second goal.

FSU had their largest attendance in program history at 1,123 fans. The Lady Gators outshot the Seminoles 19-9 and a 7 to 1 corner kick advantage to lead the way.

The Lady Seminoles held UF scoreless in the first half for the first time in nine matches. The last time this happened was the Georgia game on September 27th, UF won 1-0.

The highly defensive battle between the two state rivals heated up in the beginning of the second half when UF assistant coach Victor Campbell was red carded following a referee call, soon after two UF players were yellow carded. UF had 20 fouls to FSU's five.

FSU was led by freshman midfielder Angela Bonaffino's three shots on goal. FSU goalkeeper Melissa Juhl had 10 saves in the effort. Four of FSU's five losses have come by shut out.

FSU next plays N.C. State at the SISC on Sunday, October 27th at 2 p.m.

--30--

0.75

VISITOR		HOME	
University of Florida		FSU	
DATE	10/23/96	OFFICIALS	Federico Ruiz Charles Kummer Peter Griffith
WEATHER		ATTENDANCE	
Sunny, light breeze, cool		1123	

	1	2	OT	OT	
VISITOR U of Florida	0	3			3
HOME FSU	0	0			0

SHOT CHART

1st

2nd

19

VISITOR				HOME						
SHOTS	GOALS	ASSTS	NO.	NAME	POS.	NAME	NO.	SHOTS	GOALS	ASSTS
			1	Lyan Pathishall	GR	Melissa Juhl	13			
			10	Adrienne Moreira	MF	Justina Torres	1			
			3	Leah Bridges	D	Molly NYC	3			
			2	Lisa Olinyk	MF	Nicole Sedgwick	4	11		
11	1	1	13	Melissa Pini	F	Alexandra Odorio	5	1		
			22	Kelly Maher	D	Janine Lavioie	7	1		
1			16	Heather Mills	MF	Erin Grimsley	9			
11	11		9	Danielle Fotopoulos	F	Anna Walkup	10			
1			23	Erin Baxter	MF	Angela Bonaffino	12	11		
			27	Melanie Freeman	MF	Jennifer Vocca	21			
11			33	Alison Benoit	MF	Kelley Poole	27	1		

The diagram shows two targets, labeled '1st' and '2nd', mounted on a horizontal bar. Below the '2nd' target, there are three circular markers containing the numbers 9, 17, and 13, arranged vertically. The entire diagram is enclosed in a rectangular frame.

SHOTS										
1	2	3	4	5	6	7	8	9	10	
11	12	13	14	15	16	17	18	19	20	
21	22	23	24	25	26	27	28	29	30	
31	32	33	34	35	36	37	38	39	40	

CORNER KICKS										
1	2	3	4	5	6	7	8	9	10	
11	12	13	14	15	16	17	18	19	20	

GOALIE SAVES										
1	2	3	4	5	6	7	8	9	10	
11	12	13	14	15	16	17	18	19	20	

FOULS										
1	2	3	4	5	6	7	8	9	10	
11	12	13	14	15	16	17	18	19	20	
21	22	23	24	25	26	27	28	29	30	

SUBSTITUTIONS									
			11	Whitney White		Allison Hogan	17		
			20	Sarah Yobe		Lauren Lynch	6	1	
			4	Katie Tullis					
			30	Randee Koepfel		Katie Lynn	19		
			1	Michelle Harris	GR				

GOAL BY	TEAM	TIME	ASST(S)	DESCRIPTION
Melissa Pini	VF	61:00	—	Beat defender shot at 20 yds
Danielle Fotopoulas	VF	78:00	—	4yds in box on second effort
Danielle Fotopoulas	VF	80:00	Melissa Pini	through ball shot at top 9 yds

SHOTS									
1	2	3	4	5	6	7	8	9	10
11	12	13	14	15	16	17	18	19	20
21	22	23	24	25	26	27	28	29	30
31	32	33	34	35	36	37	38	39	40

CORNER KICKS									
1	2	3	4	5	6	7	8	9	10
11	12	13	14	15	16	17	18	19	20

GOALIE SAVES									
1	2	3	4	5	6	7	8	9	10
11	12	13	14	15	16	17	18	19	20

FOULS									
1	2	3	4	5	6	7	8	9	10
11	12	13	14	15	16	17	18	19	20
21	22	23	24	25	26	27	29	29	30

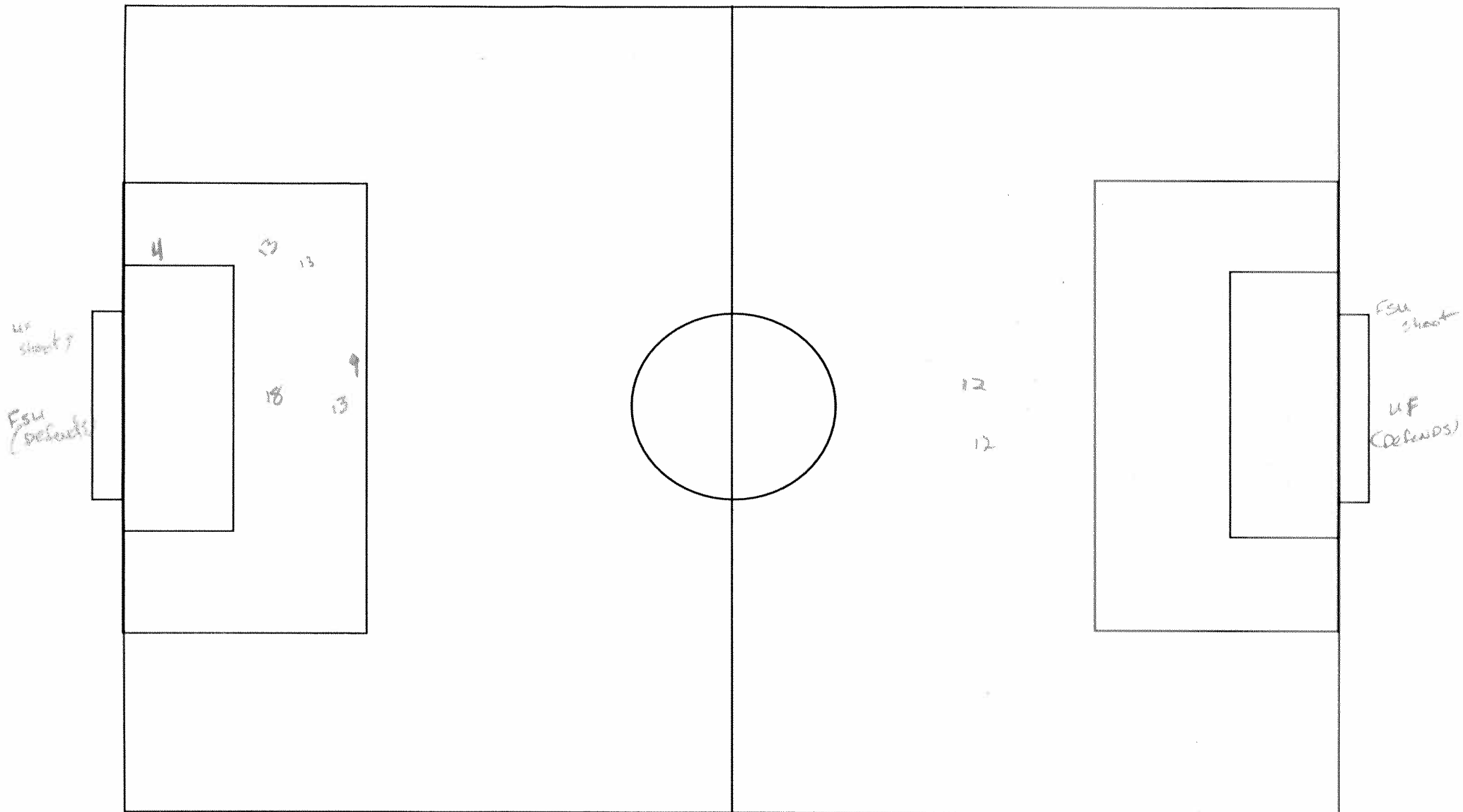
CAUTIONS & EJECTIONS:

Victor Campbell - red card	59:00
Sarah yone - yellow card	60:00
Danielle Fotopoulos - yellow card	80:00

*NOTE: Time indicated should be total minutes and seconds to match.

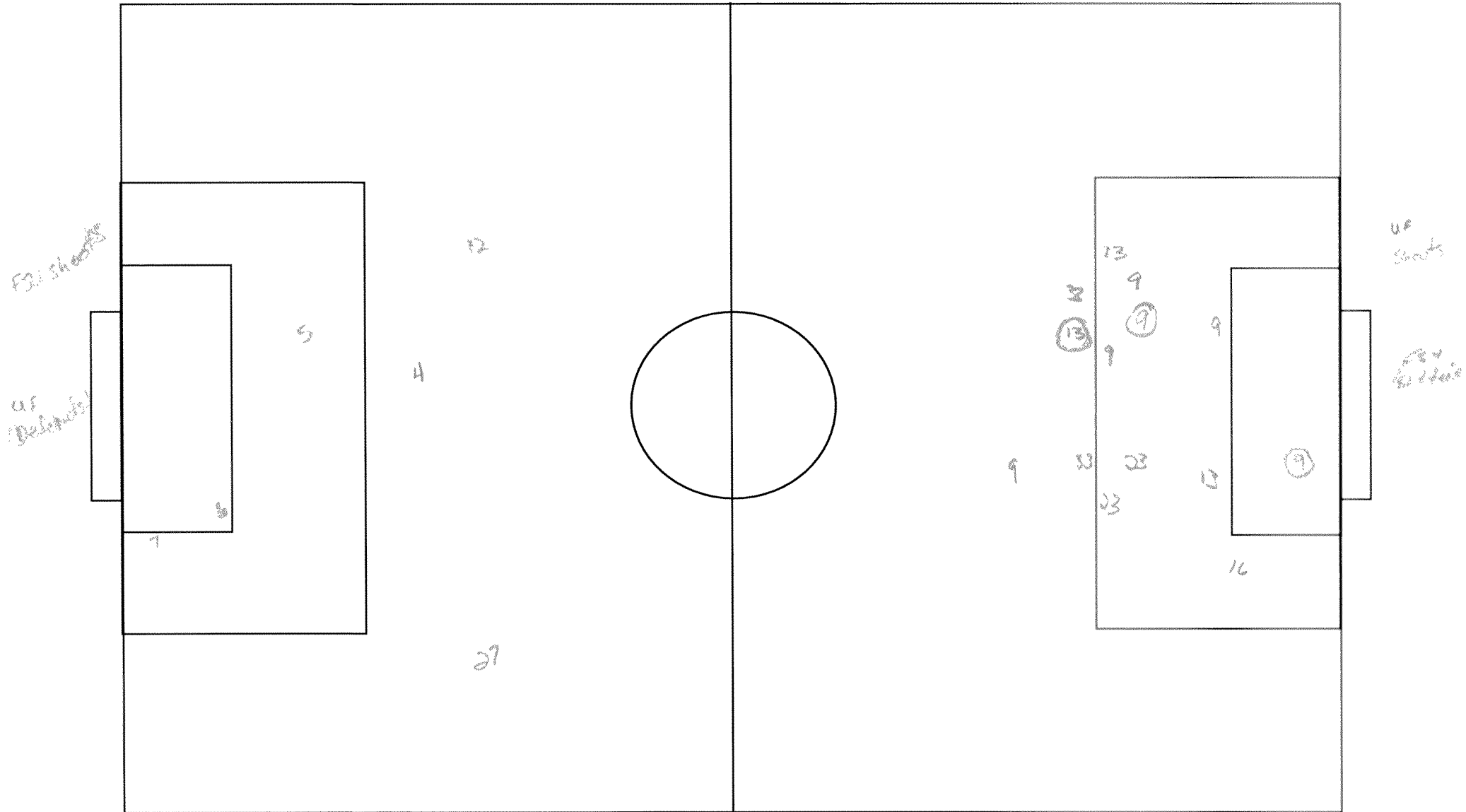
OPPONENT: U OF FLORIDA

HALF: 1st



OPPONENT: U OF FLORIDA

HALF: 2ND



NCAA Soccer Game Roster

Team Florida

Opponent FLORIDA STATE

Division I

Date 10/23/96

Field SEMINOLE INTRAMURAL FIELD

Note: In accordance with Rule 2-2-a from the 1996 NCAA Men's and Women's Soccer Rules, a completed roster form, including the names of all players, coaches and other bench personnel, must be submitted to the referee, official scorekeeper and opposing coach no later than 15 minutes before game time. The game roster submitted to the official scorekeeper and the opposing coach must include each player's total number of cautions and ejections in the columns beside the players' names; however, the copy submitted to the referee should not include each player's total number of cautions and ejections.

Jersey No.	PLAYER	Total Cautions	Total Ejections
1	Michelle Harris		
(1)	Lynn Pattishall		
(2)	Lisa Olinyk		
(3)	Leah Bridges		
4	Katie Tullis		
5	Rebecca Hidalgo		
6	Denise Alverio		
8	Marci Stark		
(9)	Danielle Fotopoulos		
(10)	Adrienne Moreira		
11	Whitney White		
12	Gerie Leonard		
(13)	Melissa Pini		
14	Tracy Ward		
15	Carolyn Grosso		
(16)	Heather Mitts		
17	Renee Vinnedge		
18	Danielle Wren		
19	Jessica Fraser		
20	Sarah Yohe		
21	Angie Olson		
(22)	Kelly Maher		
(23)	Erin Baxter		
24	Emily Oswald		
25	Sabrina Thompson		
26	Karah Smith		
(27)	Melanie Freeman		
28	Sarah Currie		
29	Tina Brendel		
30	Randee Koeppel		
31 Duties (33)	Danielle Bass		
	Alison Benoit		
Head Coach	Becky Burleigh		
Asst. Coach	Vic Campbell		
Asst. Coach	Tiffany Thompson		
Manager	Scott Barbee		
Trainer	Lisa Lowe		
Trainer	Megan Carey		

Signed _____
Coach

NCAA Soccer Team Roster

Note: This roster must be submitted to the official scorekeeper and opposing coach no later than 15 minutes before game time. Failure to do so may result in forfeiture (see NCAA Men's and Women's Soccer Rule 2-2). Rosters submitted to the referee before game time should not include each player's total number of cautions and ejections. A copy of this form that includes each player's cautions and ejections shall be made available at the end of the game should the referee need to file a written report to the governing sports authority.

Team Florida State University

Opponent University of Florida

Division I

Date 23 Oct 96

Field FSU

[illegible]

Duties	BENCH PERSONNEL	Total Cautions	Total Ejections	Referee's Remarks
Head Coach	Heather Kerby			
Asst. Coach	Kerry Dziczkaniec			
Asst. Coach	Paul Nelson			
Trainers	Janet Brown & Greg Morgan			
Sports Writer	Joe Hornstein			
Team Manager	Jason Knowles			

Signed

Coach