



Officials: Jamie Luckie, John Gaffney, Doug Shows

Pittsburgh - 56

Record: 9-16 (4-10)

NO.	Name	Min	FG			Rebounds			Fouls		TP	AS	TO	ST	Blocks		+/-
			M-A	M-A	M-A	OR	DR	TOT	PF	FD					BS	BA	
15	Mouhamadou Gueye	F 34:35	2-8	0-5	2-4	3	3	6	4	3	6	2	1	0	8	0	7
23	John Hugley	F 35:16	3-9	0-0	1-6	5	3	8	2	8	7	0	0	1	1	2	6
2	Femi Odukale	G 40:00	0-8	0-3	3-7	0	7	7	2	6	3	6	5	0	0	1	5
11	Jamarius Burton	G 27:36	5-9	1-2	2-3	0	0	0	2	3	13	1	3	0	0	1	8
12	Ithiel Horton	G 37:11	8-16	7-13	2-2	2	3	5	2	1	25	0	2	0	0	0	4
3	Noah Collier	04:44	0-0	0-0	0-0	0	2	2	0	1	0	0	0	0	0	0	1
31	Onyebuchi Ezeakudo	08:41	0-1	0-1	0-0	0	1	1	3	0	0	0	0	0	0	0	0
24	William Jeffress	10:05	0-2	0-0	2-2	1	5	6	1	1	2	0	0	1	0	0	-5
5	Nate Santos	01:52	0-1	0-1	0-0	0	0	0	0	0	0	0	0	0	0	0	-1
Team						1	5	6			0						
Totals			18-54	8-25	12-24	12	29	41	16	23	56	9	11	2	9	4	5

Shooting By Period		
1 st FG%	7-28	25.0%
3PT%	2-13	15.4%
FT%	5-9	55.6%
2 nd FG%	11-26	42.3%
3PT%	6-12	50.0%
FT%	7-15	46.7%
GM FG%	18-54	33.3%
3PT%	8-25	32.0%
FT%	12-24	50.0%

Dead Ball Rebounds: 4, 1

Technical Fouls: Hugley 2nd 7:35

Florida State - 51

Record: 13-10 (6-7)

NO.	Name	Min	FG			Rebounds			Fouls		TP	AS	TO	ST	Blocks		+/-
			M-A	M-A	M-A	OR	DR	TOT	PF	FD					BS	BA	
22	John Butler	F 26:06	0-2	0-2	2-2	0	6	6	5	1	2	1	1	2	1	0	2
11	Tanor Ngom	C 05:58	0-0	0-0	0-0	0	0	0	2	2	0	0	2	0	1	0	-3
0	RayQuan Evans	G 24:55	2-6	0-1	0-0	1	1	2	4	0	4	5	2	0	0	1	-5
4	Caleb Mills	G 33:52	6-16	4-8	3-5	0	3	3	2	3	19	1	2	0	0	1	-7
35	Matthew Cleveland	G 35:06	4-13	1-3	3-4	3	4	7	2	3	12	1	3	1	0	2	-5
15	Quincy Ballard	06:45	0-0	0-0	0-0	0	3	3	1	0	0	0	0	0	1	0	-1
1	Jalen Warley	17:10	0-2	0-0	1-2	0	1	1	2	2	1	2	0	1	0	1	0
21	Cam'Ron Fletcher	17:12	3-7	1-3	2-2	0	7	7	3	3	9	1	3	0	0	2	1
30	Harrison Prieto	17:38	0-5	0-3	1-3	1	2	3	1	2	1	0	0	0	0	1	-3
31	Wyatt Wilkes	15:18	1-5	1-4	0-0	2	1	3	1	0	3	0	0	1	1	1	-4
Team						3	3	6			0						
Totals			16-56	7-24	12-18	10	31	41	23	16	51	11	13	5	4	9	-5

Shooting By Period		
1 st FG%	5-28	17.9%
3PT%	2-11	18.2%
FT%	8-13	61.5%
2 nd FG%	11-28	39.3%
3PT%	5-13	38.5%
FT%	4-5	80%
GM FG%	16-56	28.6%
3PT%	7-24	29.2%
FT%	12-18	66.7%

Dead Ball Rebounds: 6, 1

Technical Fouls: NONE

	Pitt	FSU
Biggest lead	8 (2 nd 12:20)	2 (1 st 19:29)
Best Scoring Run	6 (1 st 14:08)	6 (2 nd 7:54)
Lead Changes	1	
Times Tied	6	
Time with Lead	33:08	00:24

Points from	Pitt	FSU
Turnovers	5	10
Paint	14	16
Second Chance	9	13
Fast Breaks	2	7
Bench	2	14

	Period by Period Scoring		
	1st	2nd	TOT
Pitt	21	35	56
FSU	20	31	51



Period 1

Quarter Starters:

FSU	0 Evans R	4 Mills C	11 Ngom T	22 Butler J	35 Cleveland M
Pitt	2 Odukale F	11 Burton J	12 Horton I	15 Gueye M	23 Hugley J

Game Time	FSU	Score	Diff	Pitt
20:00	22 BUTLER J jumpball won			15 GUEYE M jumpball lost
19:35	0 EVANS R 3pt FG , jump shot missed			
19:32	0 EVANS R offensive rebound (1)			
19:29	35 CLEVELAND M 2pt FG second chance in the paint, layup made (2)	2-0	2	
19:29	0 EVANS R assist (1)			
19:05		2-3	-1	12 HORTON I 3pt FG , jump shot made (3)
19:05				15 GUEYE M assist (1)
18:43	4 MILLS C turnover lost ball (1)			
18:29				15 GUEYE M 3pt FG from turnover, jump shot missed
18:26	4 MILLS C defensive rebound (1)			
18:18	35 CLEVELAND M 2pt FG in the paint, jump shot blocked			
18:18				15 GUEYE M block (1)
18:13	35 CLEVELAND M offensive rebound (1)			
18:11	0 EVANS R 2pt FG second chance in the paint, pull up jump shot missed			
18:09				2 ODUKALE F defensive rebound (1)
18:08				12 HORTON I 3pt FG , jump shot missed
18:05	22 BUTLER J defensive rebound (1)			
17:54	4 MILLS C 2pt FG outside the paint, jump shot missed			
17:52				defensive dead ball rebound (1)
17:52	11 NGOM T foul personal (1 - 1)			2 ODUKALE F foul drawn (1)
17:52	11 NGOM T substitution out			
17:52	15 BALLARD Q substitution in			
17:29		2-5	-3	12 HORTON I 2pt FG outside the paint, floating jump shot made (5)
17:11	4 MILLS C 3pt FG , jump shot made (3)	5-5	0	
17:11	0 EVANS R assist (2)			
16:43				2 ODUKALE F 3pt FG , jump shot missed
16:41	35 CLEVELAND M defensive rebound (2)			
16:28	22 BUTLER J 3pt FG , jump shot missed			
16:26				12 HORTON I defensive rebound (1)
16:16				12 HORTON I 3pt FG , step back jump shot missed
16:10	15 BALLARD Q defensive rebound (1)			
16:06	0 EVANS R foul offensive (1 - 2)			2 ODUKALE F foul drawn (2)
16:06	0 EVANS R turnover offensive (1)			
15:55				11 BURTON J 2pt FG from turnover outside the paint, pull up jump shot missed
15:52	15 BALLARD Q defensive rebound (2)			
15:44	35 CLEVELAND M 2pt FG outside the paint, jump shot missed			
15:42				23 HUGLEY J defensive rebound (1)
15:26		5-7	-2	11 BURTON J 2pt FG in the paint, layup made (2)
15:26	Timeout media			
15:26	0 EVANS R substitution out			



Officials: Jamie Luckie, John Gaffney, Doug Shows

Game Time	FSU	Score	Diff	Pitt
15:26	4 MILLS C substitution out			
15:26	15 BALLARD Q substitution out			
15:26	22 BUTLER J substitution out			
15:26	1 WARLEY J substitution in			
15:26	21 FLETCHER C substitution in			
15:26	30 PRIETO H substitution in			
15:26	31 WILKES W substitution in			
15:08	31 WILKES W 3pt FG , jump shot missed			
15:03				12 HORTON I defensive rebound (2)
14:40		5-9	-4	15 GUEYE M 2pt FG in the paint, layup made (2)
14:18	21 FLETCHER C 2pt FG in the paint, layup blocked			
14:18				15 GUEYE M block (2)
14:15				12 HORTON I defensive rebound (3)
14:13				12 HORTON I 2pt FG in the paint, layup missed
14:08				15 GUEYE M offensive rebound (1)
14:08		5-11	-6	15 GUEYE M 2pt FG fast break second chance in the paint, dunk, made (4)
14:06	Timeout 30 Sec			
13:59	30 PRIETO H 3pt FG , jump shot missed			
13:55				15 GUEYE M defensive rebound (2)
13:38	1 WARLEY J foul personal (1 - 3)			23 HUGLEY J foul drawn (1)
13:24				15 GUEYE M 2pt FG in the paint, layup missed
13:23	defensive rebound (8)			
13:02	1 WARLEY J 2pt FG in the paint, layup missed			
12:56	35 CLEVELAND M offensive rebound (3)			
12:55	21 FLETCHER C 2pt FG second chance in the paint, dunk, made (2)	7-11	-4	
12:55	35 CLEVELAND M assist (1)			
12:45	1 WARLEY J steal (1)			2 ODUKALE F turnover bad pass (1)
12:42	21 FLETCHER C foul drawn (1)			11 BURTON J foul personal (1 - 1)
12:42				23 HUGLEY J substitution out
12:42				3 COLLIER N substitution in
12:36	21 FLETCHER C foul offensive (1 - 4)			11 BURTON J foul drawn (1)
12:36	21 FLETCHER C turnover offensive (1)			
12:36				12 HORTON I substitution out
12:36				31 EZEAKUDO O substitution in
12:24	1 WARLEY J foul drawn (1)			11 BURTON J foul offensive (2 - 2)
12:24				11 BURTON J turnover offensive (1)
12:24	1 WARLEY J substitution out			
12:24	21 FLETCHER C substitution out			
12:24	30 PRIETO H substitution out			
12:24	31 WILKES W substitution out			
12:24	0 EVANS R substitution in			
12:24	4 MILLS C substitution in			
12:24	11 NGOM T substitution in			
12:24	22 BUTLER J substitution in			
12:24				11 BURTON J substitution out
12:24				24 JEFFRESS W substitution in
12:07	11 NGOM T foul offensive (2 - 5)			3 COLLIER N foul drawn (1)
12:07	11 NGOM T turnover offensive (1)			



Official Basketball Play by Play - First Half
Pittsburgh at Florida State
 02/09/22 Donald L. Tucker Center, Tallahassee
 2021-22 ACC Men's Basketball

Game Time: 9:00 PM
Game Duration: 2:16
Attendance: 6,891

Officials: Jamie Luckie, John Gaffney, Doug Shows

Game Time	FSU	Score	Diff	Pitt
12:07	11 NGOM T substitution out			
12:07	30 PRIETO H substitution in			
11:55	22 BUTLER J steal (1)			2 ODUKALE F turnover lost ball (2)
11:38	30 PRIETO H 2pt FG from turnover outside the paint, turnaround jump shot missed			
11:36				3 COLLIER N defensive rebound (1)
11:24				2 ODUKALE F turnover lost ball (3)
11:09	35 CLEVELAND M 2pt FG from turnover outside the paint, pull up jump shot missed			
11:04				24 JEFFRESS W defensive rebound (1)
10:49	30 PRIETO H foul shooting (1 - 6)			2 ODUKALE F foul drawn (3)
10:49		7-12	-5	2 ODUKALE F free throw 1 - 2 made (1)
10:49				2 ODUKALE F free throw 2 - 2 missed
10:49	22 BUTLER J defensive rebound (2)			
10:49	Timeout media			
10:49	35 CLEVELAND M substitution out			
10:49	1 WARLEY J substitution in			
10:31	4 MILLS C 2pt FG outside the paint, pull up jump shot missed			
10:29				3 COLLIER N defensive rebound (2)
10:10				15 GUEYE M 3pt FG , jump shot missed
10:08	22 BUTLER J defensive rebound (3)			
09:53	30 PRIETO H 3pt FG , jump shot missed			
09:48				defensive rebound (11)
09:47				3 COLLIER N substitution out
09:47				31 EZEAKUDO O substitution out
09:47				12 HORTON I substitution in
09:47				23 HUGLEY J substitution in
09:34				15 GUEYE M 3pt FG , jump shot missed
09:31	4 MILLS C defensive rebound (2)			
09:24	30 PRIETO H 2pt FG in the paint, layup blocked			
09:24				23 HUGLEY J block (1)
09:21				24 JEFFRESS W defensive rebound (2)
09:08				2 ODUKALE F 2pt FG outside the paint, jump shot blocked
09:08	22 BUTLER J block (1)			
09:04	1 WARLEY J defensive rebound (1)			
08:57	4 MILLS C foul drawn (1)			15 GUEYE M foul shooting (1 - 3)
08:57	4 MILLS C free throw 1 - 2 missed			
08:57	offensive dead ball rebound (1)			
08:57				15 GUEYE M substitution out
08:57				31 EZEAKUDO O substitution in
08:57	4 MILLS C free throw 2 - 2 made (4)	8-12	-4	
08:37				31 EZEAKUDO O 3pt FG , jump shot missed
08:34	22 BUTLER J defensive rebound (4)			
08:32	22 BUTLER J turnover bad pass (1)			24 JEFFRESS W steal (1)
08:27				24 JEFFRESS W 2pt FG from turnover in the paint, floating jump shot missed
08:22				24 JEFFRESS W offensive rebound (3)
08:22				24 JEFFRESS W 2pt FG from turnover second chance in the paint, layup missed
08:21	0 EVANS R defensive rebound (2)			



Officials: Jamie Luckie, John Gaffney, Doug Shows

Game Time	FSU	Score	Diff	Pitt
08:12	4 MILLS C foul drawn (2)			31 EZEAKUDO O foul shooting (1 - 4)
08:12	4 MILLS C free throw 1 - 2 missed			
08:12	offensive dead ball rebound (2)			
08:12	22 BUTLER J substitution out			
08:12	30 PRIETO H substitution out			
08:12	15 BALLARD Q substitution in			
08:12	21 FLETCHER C substitution in			
08:12	4 MILLS C free throw 2 - 2 made (5)	9-12	-3	
07:57				23 HUGLEY J 2pt FG outside the paint, jump shot blocked
07:57	15 BALLARD Q block (1)			
07:53	4 MILLS C defensive rebound (3)			
07:42	21 FLETCHER C 3pt FG , jump shot missed			
07:40	offensive rebound (17)			
07:40	Timeout media			
07:40				24 JEFFRESS W substitution out
07:40				15 GUEYE M substitution in
07:34	4 MILLS C 3pt FG second chance, jump shot made (8)	12-12	0	
07:34	0 EVANS R assist (3)			
07:09		12-15	-3	12 HORTON I 3pt FG , jump shot made (8)
07:09				2 ODUKALE F assist (1)
06:54	1 WARLEY J 2pt FG in the paint, driving layup blocked			
06:54				15 GUEYE M block (3)
06:47				31 EZEAKUDO O defensive rebound (1)
06:39				12 HORTON I 3pt FG , jump shot missed
06:37	15 BALLARD Q defensive rebound (3)			
06:30	4 MILLS C 3pt FG , jump shot missed			
06:28				2 ODUKALE F defensive rebound (2)
06:15		12-17	-5	23 HUGLEY J 2pt FG in the paint, layup made (2)
06:15				2 ODUKALE F assist (2)
06:00	21 FLETCHER C turnover lost ball (2)			
05:55				2 ODUKALE F 2pt FG from turnover in the paint, layup missed
05:55	defensive rebound (19)			
05:55	1 WARLEY J substitution out			
05:55	4 MILLS C substitution out			
05:55	15 BALLARD Q substitution out			
05:55	21 FLETCHER C substitution out			
05:55	22 BUTLER J substitution in			
05:55	30 PRIETO H substitution in			
05:55	31 WILKES W substitution in			
05:55	35 CLEVELAND M substitution in			
05:38	35 CLEVELAND M 2pt FG in the paint, pull up jump shot made (4)	14-17	-3	
05:21	0 EVANS R foul shooting (2 - 7)			15 GUEYE M foul drawn (1)
05:21				15 GUEYE M free throw 1 - 2 missed
05:21				offensive dead ball rebound (2)
05:21	0 EVANS R substitution out			
05:21	1 WARLEY J substitution in			
05:21				31 EZEAKUDO O substitution out
05:21				24 JEFFRESS W substitution in



Officials: Jamie Luckie, John Gaffney, Doug Shows

Game Time	FSU	Score	Diff	Pitt
05:21		14-18	-4	15 GUEYE M free throw 2 - 2 made (5)
05:05	35 CLEVELAND M 2pt FG in the paint, layup missed			
05:04	30 PRIETO H offensive rebound (1)			
05:04	30 PRIETO H foul drawn (1)			24 JEFFRESS W foul shooting (1 - 5)
05:04	30 PRIETO H free throw 1 - 2 missed			
05:04	offensive dead ball rebound (3)			
05:04	30 PRIETO H free throw 2 - 2 made (1)	15-18	-3	
04:43	22 BUTLER J steal (2)			12 HORTON I turnover lost ball (1)
04:39	22 BUTLER J foul drawn (1)			2 ODUKALE F foul shooting (1 - 6)
04:39	22 BUTLER J free throw fast break 1 - 2 made (1)	16-18	-2	
04:39	22 BUTLER J free throw fast break 2 - 2 made (2)	17-18	-1	
04:13				15 GUEYE M turnover bad pass (1)
04:08	1 WARLEY J foul drawn (2)			15 GUEYE M foul shooting (2 - 7)
04:08	1 WARLEY J free throw 1 - 2 missed			
04:08	offensive dead ball rebound (4)			
04:08				15 GUEYE M substitution out
04:08				31 EZEAKUDO O substitution in
04:08	1 WARLEY J free throw 2 - 2 made (1)	18-18	0	
03:41				2 ODUKALE F 3pt FG , jump shot missed
03:39	30 PRIETO H defensive rebound (2)			
03:38	30 PRIETO H foul drawn (2)			31 EZEAKUDO O foul personal (2 - 8)
03:38	Timeout media			
03:37	30 PRIETO H 1&1 free throw 1 missed			
03:34				23 HUGLEY J defensive rebound (2)
03:20	35 CLEVELAND M foul personal (1 - 8)			23 HUGLEY J foul drawn (2)
03:20				23 HUGLEY J 1&1 free throw 1 missed
03:19	35 CLEVELAND M defensive rebound (4)			
03:14	35 CLEVELAND M 2pt FG in the paint, driving layup missed			
03:12				24 JEFFRESS W defensive rebound (4)
02:49	1 WARLEY J foul shooting (2 - 9)			24 JEFFRESS W foul drawn (1)
02:49		18-19	-1	24 JEFFRESS W free throw 1 - 2 made (1)
02:49	1 WARLEY J substitution out			
02:49	4 MILLS C substitution in			
02:49		18-20	-2	24 JEFFRESS W free throw 2 - 2 made (2)
02:30	22 BUTLER J 3pt FG , jump shot missed			
02:27				2 ODUKALE F defensive rebound (3)
02:27	jump ball situation			
02:27	30 PRIETO H substitution out			
02:27	15 BALLARD Q substitution in			
02:09	31 WILKES W steal (1)			12 HORTON I turnover lost ball (2)
01:52	35 CLEVELAND M foul drawn (1)			31 EZEAKUDO O foul personal (3 - 9)
01:52				31 EZEAKUDO O substitution out
01:52				5 SANTOS N substitution in
01:52	35 CLEVELAND M 1&1 free throw 1 made (5)	19-20	-1	
01:52	35 CLEVELAND M 1&1 free throw 2 made (6)	20-20	0	
01:31				12 HORTON I 3pt FG , jump shot missed
01:28				23 HUGLEY J offensive rebound (3)
01:25				23 HUGLEY J 2pt FG second chance in the paint, layup missed
01:22				23 HUGLEY J offensive rebound (4)



Official Basketball Play by Play - First Half
Pittsburgh at Florida State
 02/09/22 Donald L. Tucker Center, Tallahassee
 2021-22 ACC Men's Basketball

Game Time: 9:00 PM
Game Duration: 2:16
Attendance: 6,891

Officials: Jamie Luckie, John Gaffney, Doug Shows

Game Time	FSU	Score	Diff	Pitt
01:22				23 HUGLEY J 2pt FG second chance in the paint, layup missed
01:22				offensive rebound (21)
01:21				Timeout 30 Sec
01:21	22 BUTLER J substitution out			
01:21	21 FLETCHER C substitution in			
01:04				5 SANTOS N 3pt FG second chance, jump shot missed
00:55	21 FLETCHER C defensive rebound (1)			
00:46	4 MILLS C 2pt FG outside the paint, jump shot missed			
00:42				24 JEFFRESS W defensive rebound (5)
00:24	15 BALLARD Q foul shooting (1 - 10)			2 ODUKALE F foul drawn (4)
00:24		20-21	-1	2 ODUKALE F free throw 1 - 2 made (2)
00:24	15 BALLARD Q substitution out			
00:24	30 PRIETO H substitution in			
00:24				2 ODUKALE F free throw 2 - 2 missed
00:23	31 WILKES W defensive rebound (1)			
00:05	35 CLEVELAND M 3pt FG , jump shot missed			
00:00				24 JEFFRESS W defensive rebound (6)
END OF PERIOD				
FSU 20-21 Pitt				



Officials: Jamie Luckie, John Gaffney, Doug Shows

Pittsburgh - 21

NO.	Name	Min	FG	3P	FT	Rebounds			Fouls		TP	AS	TO	ST	Blocks		+/-
			M-A	M-A	M-A	OR	DR	TOT	PF	FD					BS	BA	
15	Mouhamadou Gueye	F 14:35	2-6	0-3	1-2	1	1	2	2	1	5	1	1	0	3	0	3
23	John Hugley	F 17:05	1-4	0-0	0-1	2	2	4	0	2	2	0	0	0	1	1	0
2	Femi Odukale	G 20:00	0-4	0-2	2-4	0	3	3	1	4	2	2	3	0	0	1	1
11	Jamarius Burton	G 07:36	1-2	0-0	0-0	0	0	0	2	1	2	0	1	0	0	0	4
12	Ithiel Horton	G 17:11	3-8	2-6	0-0	0	3	3	0	0	8	0	2	0	0	0	0
3	Noah Collier	02:55	0-0	0-0	0-0	0	2	2	0	1	0	0	0	0	0	0	1
31	Onyebuchi Ezeakudo	08:41	0-1	0-1	0-0	0	1	1	3	0	0	0	0	0	0	0	0
24	William Jeffress	10:05	0-2	0-0	2-2	1	5	6	1	1	2	0	0	1	0	0	-3
5	Nate Santos	01:52	0-1	0-1	0-0	0	0	0	0	0	0	0	0	0	0	0	-1
Team						1	1	2			0		0				
Totals			7-28	2-13	5-9	5	18	23	9	10	21	3	7	1	4	2	1

Shooting By Period		
1st FG%	7-28	25.0%
3PT%	2-13	15.4%
FT%	5-9	55.6%
GM FG%	7-28	25.0%
3PT%	2-13	15.4%
FT%	5-9	55.6%

Dead Ball Rebounds: 1, 1

Technical Fouls::NONE

Florida State - 20

NO.	Name	Min	FG	3P	FT	Rebounds			Fouls		TP	AS	TO	ST	Blocks		+/-
			M-A	M-A	M-A	OR	DR	TOT	PF	FD					BS	BA	
22	John Butler	F 13:20	0-2	0-2	2-2	0	4	4	0	1	2	0	1	2	1	0	3
11	Tanor Ngom	C 02:25	0-0	0-0	0-0	0	0	0	2	0	0	0	1	0	0	0	-1
0	RayQuan Evans	G 11:37	0-2	0-1	0-0	1	1	2	2	0	0	3	1	0	0	0	-1
4	Caleb Mills	G 13:52	2-6	2-3	2-4	0	3	3	0	2	8	0	1	0	0	0	-3
35	Matthew Cleveland	G 15:06	2-8	0-1	2-2	2	2	4	1	1	6	1	0	0	0	1	-1
15	Quincy Ballard	06:45	0-0	0-0	0-0	0	3	3	1	0	0	0	0	0	1	0	-1
1	Jalen Warley	10:28	0-2	0-0	1-2	0	1	1	2	2	1	0	0	1	0	1	0
21	Cam'Ron Fletcher	06:40	1-3	0-1	0-0	0	1	1	1	1	2	0	2	0	0	1	-4
30	Harrison Prieto	10:50	0-4	0-2	1-3	1	1	2	1	2	1	0	0	0	0	1	1
31	Wyatt Wilkes	08:57	0-1	0-1	0-0	0	1	1	0	0	0	0	0	1	0	0	2
Team						1	2	3			0		0				
Totals			5-28	2-11	8-13	5	19	24	10	9	20	4	6	4	2	4	-1

Shooting By Period		
1st FG%	5-28	17.9%
3PT%	2-11	18.2%
FT%	8-13	61.5%
GM FG%	5-28	17.9%
3PT%	2-11	18.2%
FT%	8-13	61.5%

Dead Ball Rebounds: 4, 0

Technical Fouls::NONE

	Pitt	FSU
Biggest lead	6 (1 st 14:08)	2 (1 st 19:29)
Best Scoring Run	6(1 st 14:08)	5(1 st 7:34)
Lead Changes	1	
Times Tied	4	
Time with Lead	14:09	00:24

	Pitt	FSU
Points from		
Turnovers	0	5
Paint	8	6
Second Chance	2	8
Fast Breaks	2	2
Bench	2	4

	Period by Period Scoring		
	1st	2nd	TOT
Pitt	21	35	56
FSU	20	31	51



Pittsburgh at Florida State

02/09/22 Donald L. Tucker Center, Tallahassee
2021-22 ACC Men's Basketball

Game Time: 9:00 PM
Game Duration: 2:16
Attendance: 6,891

Officials: Jamie Luckie, John Gaffney, Doug Shows

Period 2

Quarter Starters:

FSU	0 Evans R	4 Mills C	11 Ngom T	22 Butler J	35 Cleveland M
Pitt	2 Odukale F	11 Burton J	12 Horton I	15 Gueye M	23 Hugley J

Game Time	FSU	Score	Diff	Pitt
20:00	21 FLETCHER C substitution out			
20:00	30 PRIETO H substitution out			
20:00	31 WILKES W substitution out			
20:00	0 EVANS R substitution in			
20:00	11 NGOM T substitution in			
20:00	22 BUTLER J substitution in			
20:00				5 SANTOS N substitution out
20:00				24 JEFFRESS W substitution out
20:00				11 BURTON J substitution in
20:00				15 GUEYE M substitution in
19:42	11 NGOM T foul drawn (1)			2 ODUKALE F foul personal (2 - 1)
19:37	11 NGOM T turnover lost ball (2)			
19:26	22 BUTLER J foul personal (1 - 1)			23 HUGLEY J foul drawn (3)
19:18		20-24	-4	12 HORTON I 3pt FG from turnover, jump shot made (11)
19:18				2 ODUKALE F assist (3)
19:00	4 MILLS C 2pt FG in the paint, jump shot missed			
19:00				23 HUGLEY J defensive rebound (5)
18:23	22 BUTLER J foul shooting (2 - 2)			23 HUGLEY J foul drawn (4)
18:23	11 NGOM T substitution out			
18:23	30 PRIETO H substitution in			
18:23				23 HUGLEY J free throw 1 - 2 missed
18:23				offensive dead ball rebound (3)
18:23				23 HUGLEY J free throw 2 - 2 missed
18:21	22 BUTLER J defensive rebound (5)			
18:16	4 MILLS C 2pt FG in the paint, floating jump shot made (10)	22-24	-2	
18:16	22 BUTLER J assist (1)			
17:49				11 BURTON J 3pt FG , jump shot missed
17:46				15 GUEYE M offensive rebound (3)
17:46	4 MILLS C foul shooting (1 - 3)			15 GUEYE M foul drawn (2)
17:46		22-25	-3	15 GUEYE M free throw 1 - 2 made (6)
17:46				15 GUEYE M free throw 2 - 2 missed
17:43	30 PRIETO H defensive rebound (3)			
17:30	35 CLEVELAND M 3pt FG , jump shot made (9)	25-25	0	
17:30	0 EVANS R assist (4)			
17:10	22 BUTLER J foul personal (3 - 4)			23 HUGLEY J foul drawn (5)
16:53		25-28	-3	12 HORTON I 3pt FG , pull up jump shot made (14)
16:28	4 MILLS C 2pt FG in the paint, jump shot blocked			
16:28				15 GUEYE M block (4)
16:28	offensive rebound (27)			
16:21	0 EVANS R 2pt FG second chance in the paint, layup made (2)	27-28	-1	
16:07				15 GUEYE M 3pt FG , jump shot missed
16:04				12 HORTON I offensive rebound (4)



Pittsburgh at Florida State

02/09/22 Donald L. Tucker Center, Tallahassee
2021-22 ACC Men's Basketball

Game Time: 9:00 PM
Game Duration: 2:16
Attendance: 6,891

Officials: Jamie Luckie, John Gaffney, Doug Shows

Game Time	FSU	Score	Diff	Pitt
16:02				12 HORTON I 2pt FG second chance outside the paint, jump shot missed
16:00				15 GUEYE M offensive rebound (4)
15:55		27-31	-4	12 HORTON I 3pt FG second chance, jump shot made (17)
15:55				15 GUEYE M assist (2)
15:40	30 PRIETO H 3pt FG , jump shot missed			
15:37				defensive rebound (28)
15:37	Timeout media			
15:37	0 EVANS R substitution out			
15:37	22 BUTLER J substitution out			
15:37	1 WARLEY J substitution in			
15:37	31 WILKES W substitution in			
15:24				2 ODUKALE F turnover bad pass (4)
15:05	35 CLEVELAND M 2pt FG from turnover in the paint, jump shot blocked			
15:05				15 GUEYE M block (5)
15:01				2 ODUKALE F defensive rebound (4)
14:42		27-34	-7	12 HORTON I 3pt FG , jump shot made (20)
14:42				2 ODUKALE F assist (4)
14:35	Timeout 30 Sec			
14:35	Timeout media			
14:17	35 CLEVELAND M 2pt FG in the paint, dunk, made (11)	29-34	-5	
14:17	1 WARLEY J assist (1)			
13:57				2 ODUKALE F turnover travel (5)
13:45	4 MILLS C 2pt FG from turnover outside the paint, floating jump shot made (12)	31-34	-3	
13:15				15 GUEYE M 3pt FG , jump shot missed
13:15				offensive dead ball rebound (4)
13:15	jump ball situation			
13:05		31-37	-6	12 HORTON I 3pt FG second chance, jump shot made (23)
13:05				11 BURTON J assist (1)
12:43	4 MILLS C 2pt FG outside the paint, pull up jump shot missed			
12:41				2 ODUKALE F defensive rebound (5)
12:20		31-39	-8	23 HUGLEY J 2pt FG in the paint, jump shot made (4)
12:20				2 ODUKALE F assist (5)
12:20	31 WILKES W foul shooting (1 - 5)			23 HUGLEY J foul drawn (6)
12:19				23 HUGLEY J free throw 1 - 1 missed
12:18	35 CLEVELAND M defensive rebound (5)			
12:00	31 WILKES W 2pt FG in the paint, layup blocked			
12:00				15 GUEYE M block (6)
11:56				15 GUEYE M defensive rebound (5)
11:37				23 HUGLEY J 2pt FG in the paint, layup blocked
11:37	31 WILKES W block (1)			
11:35	defensive rebound (29)			
11:35	Timeout media			
11:35	30 PRIETO H substitution out			
11:35	31 WILKES W substitution out			
11:35	21 FLETCHER C substitution in			
11:35	22 BUTLER J substitution in			
11:18	4 MILLS C 3pt FG , jump shot made (15)	34-39	-5	



Pittsburgh at Florida State

02/09/22 Donald L. Tucker Center, Tallahassee
2021-22 ACC Men's Basketball

Game Time: 9:00 PM
Game Duration: 2:16
Attendance: 6,891

Officials: Jamie Luckie, John Gaffney, Doug Shows

Game Time	FSU	Score	Diff	Pitt
11:18	21 FLETCHER C assist (1)			
10:43				12 HORTON I 3pt FG , jump shot missed
10:43	defensive dead ball rebound (5)			
10:43	1 WARLEY J substitution out			
10:43	0 EVANS R substitution in			
10:25	21 FLETCHER C 3pt FG , jump shot missed			
10:23	35 CLEVELAND M offensive rebound (6)			
10:23	35 CLEVELAND M foul drawn (2)			15 GUEYE M foul personal (3 - 2)
10:10	4 MILLS C 3pt FG second chance, jump shot missed			
10:08				15 GUEYE M defensive rebound (6)
09:42				12 HORTON I 3pt FG , jump shot missed
09:39	22 BUTLER J defensive rebound (6)			
09:30	0 EVANS R 2pt FG in the paint, pull up jump shot blocked			
09:30				15 GUEYE M block (7)
09:30	offensive rebound (32)			
09:28	35 CLEVELAND M turnover (1)			
09:05				2 ODUKALE F 2pt FG from turnover in the paint, layup missed
09:02				23 HUGLEY J offensive rebound (6)
09:02	22 BUTLER J foul personal (4 - 6)			23 HUGLEY J foul drawn (7)
08:47				2 ODUKALE F 3pt FG from turnover second chance, jump shot missed
08:45				12 HORTON I offensive rebound (5)
08:26				11 BURTON J turnover (2)
08:07	4 MILLS C foul drawn (3)			12 HORTON I foul personal (1 - 3)
07:54	21 FLETCHER C 3pt FG from turnover, jump shot made (5)	37-39	-2	
07:54	4 MILLS C assist (1)			
07:35		37-41	-4	23 HUGLEY J 2pt FG in the paint, dunk, made (6)
07:35				2 ODUKALE F assist (6)
07:35				23 HUGLEY J foul class B technical (0 - 3)
07:35	4 MILLS C free throw 1 - 1 made (16)	38-41	-3	
07:35	Timeout media			
07:15	0 EVANS R 2pt FG outside the paint, jump shot missed			
07:14				defensive rebound (35)
06:47				11 BURTON J 2pt FG in the paint, jump shot missed
06:44	21 FLETCHER C defensive rebound (2)			
06:41	4 MILLS C 3pt FG , jump shot missed			
06:39	offensive dead ball rebound (6)			
06:38	21 FLETCHER C foul drawn (2)			12 HORTON I foul personal (2 - 4)
06:25	35 CLEVELAND M 3pt FG second chance, jump shot missed			
06:25				2 ODUKALE F defensive rebound (6)
06:18	21 FLETCHER C foul personal (2 - 7)			2 ODUKALE F foul drawn (5)
06:18	0 EVANS R substitution out			
06:18	22 BUTLER J substitution out			
06:18	1 WARLEY J substitution in			
06:18	11 NGOM T substitution in			
06:18				2 ODUKALE F 1&1 free throw 1 missed
06:18	21 FLETCHER C defensive rebound (3)			
06:03	4 MILLS C turnover bad pass (2)			23 HUGLEY J steal (1)
05:41				11 BURTON J 2pt FG from turnover in the paint, jump shot blocked



Pittsburgh at Florida State

02/09/22 Donald L. Tucker Center, Tallahassee
2021-22 ACC Men's Basketball

Game Time: 9:00 PM
Game Duration: 2:16
Attendance: 6,891

Officials: Jamie Luckie, John Gaffney, Doug Shows

Game Time	FSU	Score	Diff	Pitt
05:41	11 NGOM T block (1)			
05:39	35 CLEVELAND M defensive rebound (7)			
05:40	35 CLEVELAND M foul drawn (3)			23 HUGLEY J foul flagrant 1 (1 - 5)
05:40	35 CLEVELAND M free throw fast break 1 - 2 missed			
05:40	offensive dead ball rebound (7)			
05:40	35 CLEVELAND M free throw fast break 2 - 2 made (12)	39-41	-2	
05:30	11 NGOM T foul drawn (2)			23 HUGLEY J foul personal (2 - 6)
05:30				23 HUGLEY J substitution out
05:30				3 COLLIER N substitution in
05:22	21 FLETCHER C 2pt FG in the paint, layup made (7)	41-41	0	
05:22	1 WARLEY J assist (2)			
04:58		41-43	-2	11 BURTON J 2pt FG in the paint, jump shot made (4)
04:45	35 CLEVELAND M turnover bad pass (2)			
04:30	4 MILLS C foul personal (2 - 8)			11 BURTON J foul drawn (2)
04:30	1 WARLEY J substitution out			
04:30	0 EVANS R substitution in			
04:30				11 BURTON J 1&1 free throw 1 missed
04:30	21 FLETCHER C defensive rebound (4)			
04:22	35 CLEVELAND M foul offensive (2 - 9)			15 GUEYE M foul drawn (3)
04:22	35 CLEVELAND M turnover offensive (3)			
04:22	11 NGOM T substitution out			
04:22	22 BUTLER J substitution in			
04:22				Timeout 30 Sec
04:22				Timeout media
03:49				2 ODUKALE F 2pt FG from turnover in the paint, jump shot missed
03:45	21 FLETCHER C defensive rebound (5)			
03:44	4 MILLS C 3pt FG , jump shot missed			
03:44				defensive rebound (37)
03:41				3 COLLIER N substitution out
03:41				23 HUGLEY J substitution in
03:19		41-46	-5	11 BURTON J 3pt FG , jump shot made (7)
03:02	21 FLETCHER C 2pt FG in the paint, layup blocked			
03:02				15 GUEYE M block (8)
03:02				defensive rebound (38)
02:48	35 CLEVELAND M steal (1)			11 BURTON J turnover bad pass (3)
02:44	35 CLEVELAND M 2pt FG from turnover in the paint, layup missed			
02:44				2 ODUKALE F defensive rebound (7)
02:28				2 ODUKALE F 2pt FG outside the paint, jump shot missed
02:25				23 HUGLEY J offensive rebound (7)
02:25				23 HUGLEY J 2pt FG second chance in the paint, layup missed
02:24				23 HUGLEY J offensive rebound (8)
02:24				23 HUGLEY J 2pt FG second chance in the paint, layup missed
02:24	21 FLETCHER C defensive rebound (6)			
02:19	21 FLETCHER C foul drawn (3)			15 GUEYE M foul shooting (4 - 7)
02:19	21 FLETCHER C free throw fast break 1 - 2 made (8)	42-46	-4	
02:19	21 FLETCHER C free throw fast break 2 - 2 made (9)	43-46	-3	
02:19	21 FLETCHER C substitution out			
02:19	31 WILKES W substitution in			

**Pittsburgh at Florida State**02/09/22 Donald L. Tucker Center, Tallahassee
2021-22 ACC Men's Basketball

Game Time: 9:00 PM

Game Duration: 2:16

Attendance: 6,891

Officials: Jamie Luckie, John Gaffney, Doug Shows

Game Time	FSU	Score	Diff	Pitt
01:54		43-48	-5	11 BURTON J 2pt FG outside the paint, floating jump shot made (9)
01:39	0 EVANS R turnover bad pass (2)			
01:38	Timeout 30 Sec			
01:16	22 BUTLER J foul personal (5 - 10)			2 ODUKALE F foul drawn (6)
01:16	22 BUTLER J substitution out			
01:16	21 FLETCHER C substitution in			
01:16		43-49	-6	2 ODUKALE F free throw 1 - 2 made (3)
01:16				2 ODUKALE F free throw 2 - 2 missed
01:15	21 FLETCHER C defensive rebound (7)			
00:59	31 WILKES W 3pt FG , jump shot made (3)	46-49	-3	
00:58	Timeout 60 Sec			
00:34		46-51	-5	11 BURTON J 2pt FG outside the paint, pull up jump shot made (11)
00:33				Timeout 30 Sec
00:29				23 HUGLEY J substitution out
00:29				24 JEFFRESS W substitution in
00:29	0 EVANS R 2pt FG fast break in the paint, driving layup made (4)	48-51	-3	
00:28				24 JEFFRESS W substitution out
00:28				23 HUGLEY J substitution in
00:25	0 EVANS R foul personal (3 - 11)			11 BURTON J foul drawn (3)
00:25		48-52	-4	11 BURTON J free throw 1 - 2 made (12)
00:25		48-53	-5	11 BURTON J free throw 2 - 2 made (13)
00:21	21 FLETCHER C turnover travel (3)			
00:20	21 FLETCHER C foul personal (3 - 12)			23 HUGLEY J foul drawn (8)
00:20				23 HUGLEY J free throw 1 - 2 missed
00:20				offensive dead ball rebound (5)
00:20		48-54	-6	23 HUGLEY J free throw 2 - 2 made (7)
00:14	31 WILKES W 3pt FG , jump shot missed			
00:12	31 WILKES W offensive rebound (2)			
00:11	31 WILKES W 3pt FG second chance, jump shot missed			
00:05	31 WILKES W offensive rebound (3)			
00:05	jump ball situation			
00:02	4 MILLS C 3pt FG second chance, jump shot made (19)	51-54	-3	
00:02	0 EVANS R assist (5)			
00:00	0 EVANS R foul personal (4 - 13)			12 HORTON I foul drawn (1)
00:00		51-55	-4	12 HORTON I free throw 1 - 2 made (24)
00:00		51-56	-5	12 HORTON I free throw 2 - 2 made (25)
END OF GAME				
FSU 51-56 Pitt				



Officials: Jamie Luckie, John Gaffney, Doug Shows

Pittsburgh - 35

NO.	Name	Min	FG			Rebounds			Fouls		TP	AS	TO	ST	Blocks		+/-
			M-A	M-A	M-A	OR	DR	TOT	PF	FD					BS	BA	
15	Mouhamadou Gueye	F 20:00	0-2	0-2	1-2	2	2	4	2	2	1	1	0	0	5	0	4
23	John Hugley	F 18:11	2-5	0-0	1-5	3	1	4	2	6	5	0	0	1	0	1	6
2	Femi Odukale	G 20:00	0-4	0-1	1-3	0	4	4	1	2	1	4	2	0	0	0	4
11	Jamarius Burton	G 20:00	4-7	1-2	2-3	0	0	0	0	2	11	1	2	0	0	1	4
12	Ithiel Horton	G 20:00	5-8	5-7	2-2	2	0	2	2	1	17	0	0	0	0	0	4
5	Nate Santos	00:00	0-0	0-0	0-0	0	0	0	0	0	0	0	0	0	0	0	0
3	Noah Collier	01:49	0-0	0-0	0-0	0	0	0	0	0	0	0	0	0	0	0	0
24	William Jeffress	00:00	0-0	0-0	0-0	0	0	0	0	0	0	0	0	0	0	0	-2
Team						0	4	4			0		0				
Totals			11-26	6-12	7-15	7	11	18	7	13	35	6	4	1	5	2	4

Shooting By Period		
2 nd FG%	11-26	42.3%
3PT%	6-12	50.0%
FT%	7-15	46.7%
GM FG%	11-26	42.3%
3PT%	6-12	50.0%
FT%	7-15	46.7%

Dead Ball Rebounds: 3, 0

Technical Fouls:Hugley 2nd7:35

Florida State - 31

NO.	Name	Min	FG			Rebounds			Fouls		TP	AS	TO	ST	Blocks		+/-
			M-A	M-A	M-A	OR	DR	TOT	PF	FD					BS	BA	
22	John Butler	F 12:46	0-0	0-0	0-0	0	2	2	5	0	0	1	0	0	0	0	-1
11	Tanor Ngom	C 03:33	0-0	0-0	0-0	0	0	0	0	2	0	0	1	0	1	0	-2
0	RayQuan Evans	G 13:18	2-4	0-0	0-0	0	0	0	2	0	4	2	1	0	0	1	-4
4	Caleb Mills	G 20:00	4-10	2-5	1-1	0	0	0	2	1	11	1	1	0	0	1	-4
35	Matthew Cleveland	G 20:00	2-5	1-2	1-2	1	2	3	1	2	6	0	3	1	0	1	-4
30	Harrison Prieto	06:48	0-1	0-1	0-0	0	1	1	0	0	0	0	0	0	0	0	-4
1	Jalen Warley	06:42	0-0	0-0	0-0	0	0	0	0	0	0	2	0	0	0	0	0
31	Wyatt Wilkes	06:21	1-4	1-3	0-0	2	0	2	1	0	3	0	0	0	1	1	-6
21	Cam'Ron Fletcher	10:32	2-4	1-2	2-2	0	6	6	2	2	7	1	1	0	0	1	5
Team						2	1	3			0		0				
Totals			11-28	5-13	4-5	5	12	17	13	7	31	7	7	1	2	5	-4

Shooting By Period		
2 nd FG%	11-28	39.3%
3PT%	5-13	38.5%
FT%	4-5	80%
GM FG%	11-28	39.3%
3PT%	5-13	38.5%
FT%	4-5	80.0%

Dead Ball Rebounds: 2, 1

Technical Fouls::NONE

	Pitt	FSU
Biggest lead	8 (2 nd 12:20)	0 (1 st 20:00)
Best Scoring Run	6(2 nd 14:42)	6(2 nd 7:54)
Lead Changes	0	
Times Tied	2	
Time with Lead	18:17	00:00

Points from	Pitt	FSU
Turnovers	5	5
Paint	6	10
Second Chance	7	5
Fast Breaks	0	5
Bench	0	10

	Period by Period Scoring		
	1st	2nd	TOT
Pitt	21	35	56
FSU	20	31	51



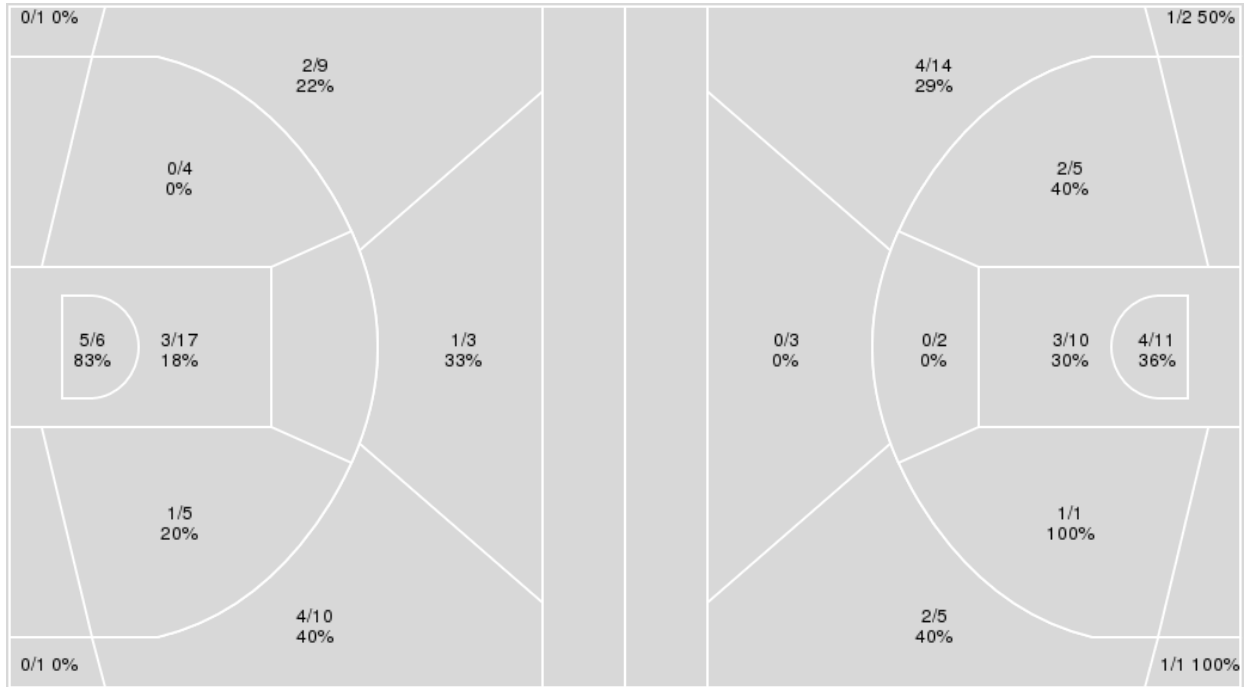
Officials: Jamie Luckie, John Gaffney, Doug Shows

{ Players => 0, 1, 2, 4, 5, 10, 11, 12, 15, 21, 22, 24, 25, 30, 31, 34, 35,
 40, 42, 44; } FG Types => All; Results => All;

{ Players => 1, 2, 3, 4, 5, 11, 12, 13, 14, 15, 21, 22, 23, 24, 31, 35, 42; }
 FG Types => All; Results => All;

Florida State

Pittsburgh



Florida State	M/A	%
Field Goals	16/56	29
2 Points	9/32	28
3 Points	7/24	29
Free Throws	12/18	67

Pittsburgh	M/A	%
Field Goals	18/54	33
2 Points	10/29	34
3 Points	8/25	32
Free Throws	12/24	50



Pittsburgh at Florida State

02/09/22 Donald L. Tucker Center, Tallahassee
2021-22 ACC Men's Basketball

Game Time: 9:00 PM
Game Duration: 2:16
Attendance: 6,891

Officials: Jamie Luckie, John Gaffney, Doug Shows

Pittsburgh

No	Name	Mins		Score		Points Diff		Points per Min		Assists		Rebounds		Steals		Turnovers	
		On	Off	On	Off	On	Off	On	Off	On	Off	On	Off	On	Off	On	Off
2	Femi Odukale	40:00	00:00	56 - 51	0 - 0	5	0	1.40	0.00	9	0	41	0	2	0	11	0
3	Noah Collier	04:44	35:16	3 - 2	53 - 49	1	4	0.63	1.50	0	9	5	36	0	2	3	8
5	Nate Santos	01:52	38:08	1 - 2	55 - 49	-1	6	0.54	1.44	0	9	5	36	0	2	0	11
11	Jamarius Burton	27:36	12:24	46 - 38	10 - 13	8	-3	1.67	0.81	7	2	25	16	1	1	6	5
12	Ithiel Horton	37:11	02:49	55 - 51	1 - 0	4	1	1.48	0.36	9	0	37	4	2	0	8	3
15	Mouhamadou Gueye	34:35	05:25	53 - 46	3 - 5	7	-2	1.53	0.55	9	0	32	9	1	1	10	1
23	John Hugley	35:16	04:44	53 - 47	3 - 4	6	-1	1.50	0.63	9	0	36	5	2	0	8	3
24	William Jeffress	10:05	29:55	5 - 10	51 - 41	-5	10	0.50	1.70	0	9	14	27	1	1	5	6
31	Onyebuchi Ezeakudo	08:41	31:19	8 - 8	48 - 43	0	5	0.92	1.53	2	7	10	31	1	1	4	7

Florida State

No	Name	Mins		Score		Points Diff		Points per Min		Assists		Rebounds		Steals		Turnovers	
		On	Off	On	Off	On	Off	On	Off	On	Off	On	Off	On	Off	On	Off
0	RayQuan Evans	24:55	15:05	33 - 38	18 - 18	-5	0	1.32	1.19	7	4	30	11	2	3	10	3
1	Jalen Warley	17:10	22:50	21 - 21	30 - 35	0	-5	1.22	1.31	5	6	18	23	2	3	5	8
4	Caleb Mills	33:52	06:08	43 - 50	8 - 6	-7	2	1.27	1.30	10	1	36	5	3	2	12	1
11	Tanor Ngom	05:58	34:02	5 - 8	46 - 48	-3	-2	0.84	1.35	2	9	7	34	0	5	6	7
15	Quincy Ballard	06:45	33:15	9 - 10	42 - 46	-1	-4	1.33	1.26	2	9	8	33	1	4	2	11
21	Cam'Ron Fletcher	17:12	22:48	26 - 25	25 - 31	1	-6	1.51	1.10	6	5	20	21	2	3	7	6
22	John Butler	26:06	13:54	30 - 28	21 - 28	2	-7	1.15	1.51	6	5	25	16	4	1	7	6
30	Harrison Prieto	17:38	22:22	20 - 23	31 - 33	-3	-2	1.13	1.39	4	7	17	24	3	2	2	11
31	Wyatt Wilkes	15:18	24:42	22 - 26	29 - 30	-4	-1	1.44	1.17	3	8	12	29	3	2	3	10
35	Matthew Cleveland	35:06	04:54	46 - 51	5 - 5	-5	0	1.31	1.02	10	1	32	9	5	0	11	2

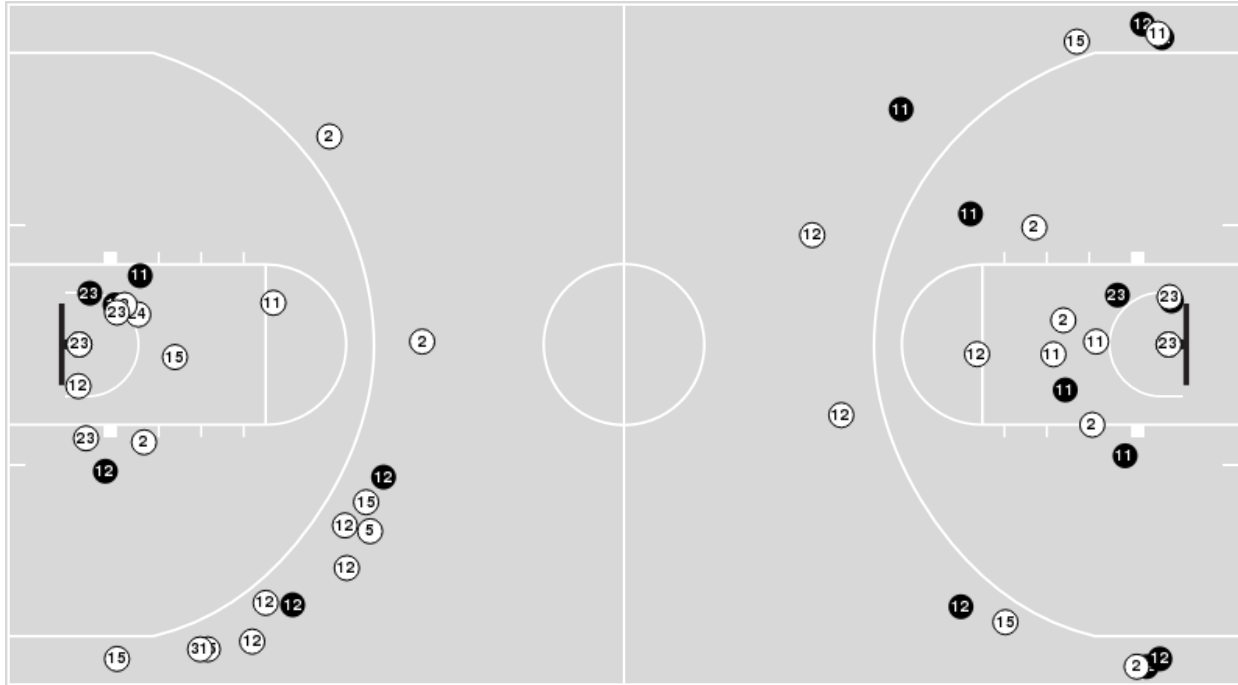


Officials: Jamie Luckie, John Gaffney, Doug Shows

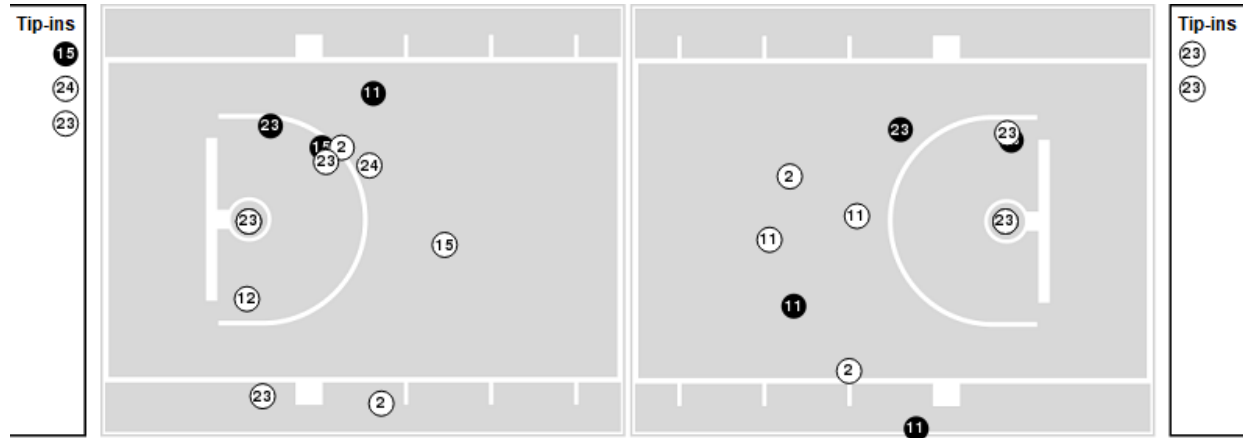
Players => 1, 2, 3, 4, 5, 11, 12, 13, 14, 15, 21, 22, 23, 24, 31, 35, 42FG Types=>AllResults=>All

Pittsburgh

All Field Goals



Blow Up Chart



● Made ○ Missed N - Player Number

Pittsburgh	M/A	%
Field Goals	18/54	33
2 Points	10/29	34
3 Points	8/25	32
Free Throws	12/24	50

Pittsburgh	M/A	%
Points in the Paint	14 (7 / 21)	33
Fast Break Points	2 (1/1)	100
Second Chance Points	9 (4/13)	31
Effective FG%	41	

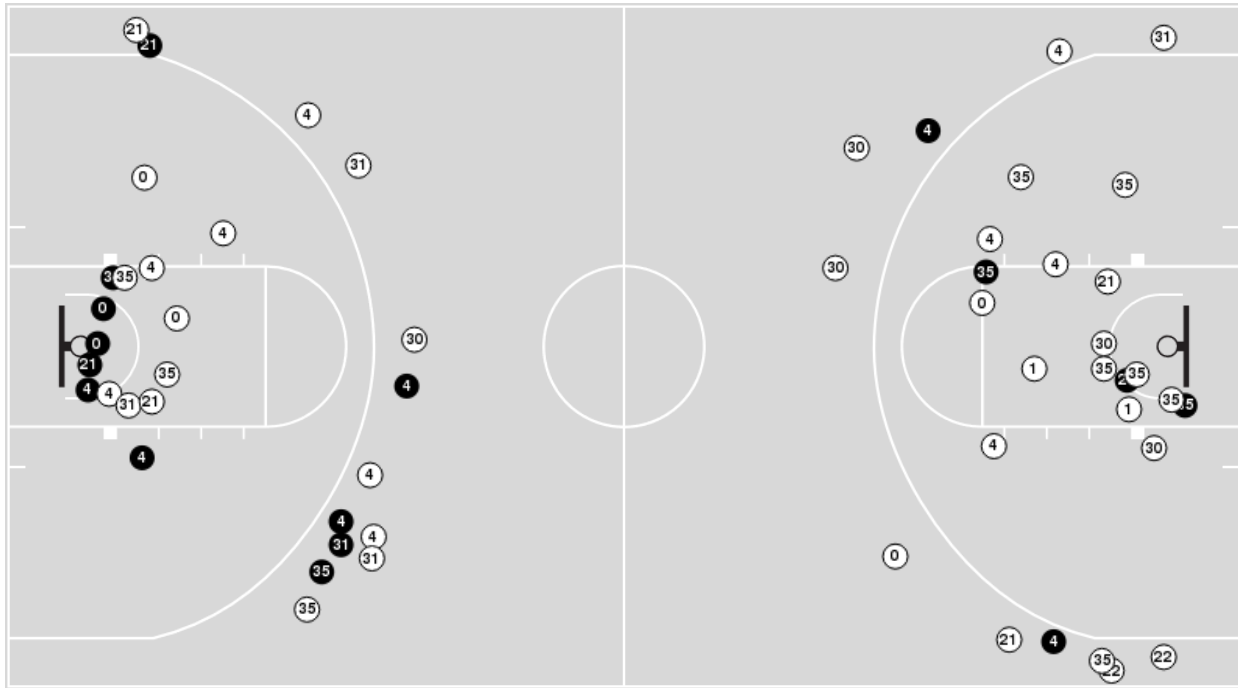


Officials: Jamie Luckie, John Gaffney, Doug Shows

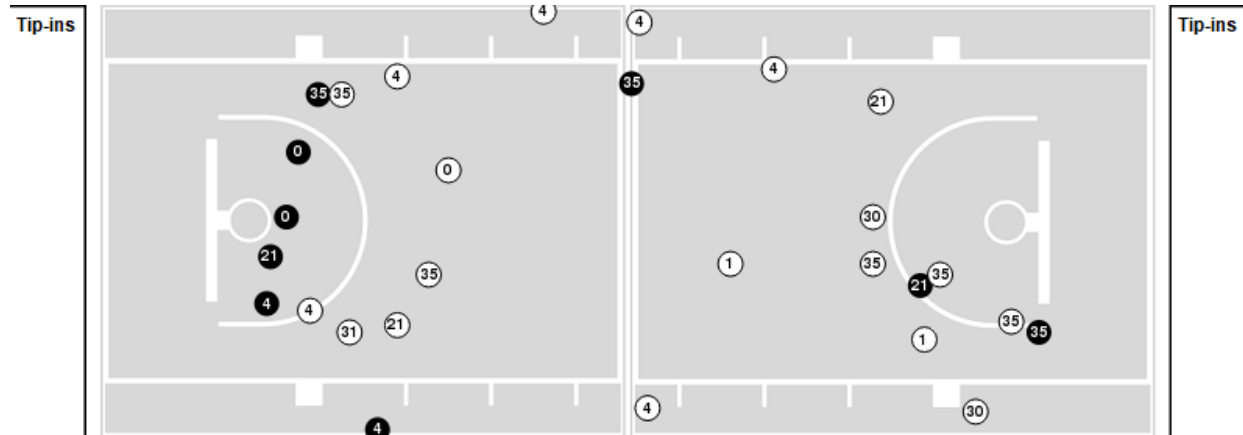
Players => 0, 1, 2, 4, 5, 10, 11, 12, 15, 21, 22, 24, 25, 30, 31, 34, 35, 40, 42, 44FG Types=>AllResults=>All

Florida State

All Field Goals



Blow Up Chart



● Made ○ Missed N - Player Number

Florida State	M/A	%
Field Goals	16/56	29
2 Points	9/32	28
3 Points	7/24	29
Free Throws	12/18	67

Florida State	M/A	%
Points in the Paint	16 (8 / 23)	35
Fast Break Points	7 (6/7)	86
Second Chance Points	13 (6/11)	55
Effective FG%	35	



Pittsburgh at Florida State

02/09/22 Donald L. Tucker Center, Tallahassee
2021-22 ACC Men's Basketball

Game Time: 9:00 PM
Game Duration: 2:16
Attendance: 6,891

Officials: Jamie Luckie, John Gaffney, Doug Shows

Pittsburgh

Lineup	Quarter On	Time On	Quarter Off	Time Off	Time on Court	Score	Score Diff	Reb	Stl	Tov	Ass	PPP
2- Odukale F/ 11- Burton J/ 12- Horton I/ 15- Gueye M/ 23- Hugley J/	1	20:00	1	12:42	07:18	11-7	4	7	0	1	1	0.9167
2- Odukale F/ 3- Collier N/ 11- Burton J/ 12- Horton I/ 15- Gueye M/	1	12:42	1	12:36	00:06	0-0	0	0	0	0	0	0.0000
2- Odukale F/ 3- Collier N/ 11- Burton J/ 15- Gueye M/ 31- Ezeakudo O/	1	12:36	1	12:24	00:12	0-0	0	0	0	1	0	0.0000
2- Odukale F/ 3- Collier N/ 15- Gueye M/ 24- Jeffress W/ 31- Ezeakudo O/	1	12:24	1	09:47	02:37	1-0	1	4	0	2	0	0.2577
2- Odukale F/ 12- Horton I/ 15- Gueye M/ 23- Hugley J/ 24- Jeffress W/	1	09:47	1	08:57	00:50	0-0	0	1	0	0	0	0.0000
2- Odukale F/ 12- Horton I/ 23- Hugley J/ 24- Jeffress W/ 31- Ezeakudo O/	1	08:57	1	07:40	01:17	0-2	-2	1	1	0	0	0.0000
2- Odukale F/ 12- Horton I/ 15- Gueye M/ 23- Hugley J/ 31- Ezeakudo O/	1	07:40	1	05:21	02:19	5-5	0	2	0	0	2	1.1261
2- Odukale F/ 12- Horton I/ 15- Gueye M/ 23- Hugley J/ 24- Jeffress W/	1	05:21	1	04:08	01:13	1-3	-2	0	0	2	0	0.4098
2- Odukale F/ 12- Horton I/ 23- Hugley J/ 24- Jeffress W/ 31- Ezeakudo O/	1	04:08	1	01:52	02:16	2-1	1	3	0	1	0	0.6024
2- Odukale F/ 5- Santos N/ 12- Horton I/ 23- Hugley J/ 24- Jeffress W/	1	01:52	2	20:00	01:52	1-2	-1	5	0	0	0	0.5319
2- Odukale F/ 11- Burton J/ 12- Horton I/ 15- Gueye M/ 23- Hugley J/	2	20:00	2	05:30	14:30	20-19	1	13	1	3	6	1.0730
2- Odukale F/ 3- Collier N/ 11- Burton J/ 12- Horton I/ 15- Gueye M/	2	05:30	2	03:41	01:49	2-2	0	1	0	0	0	0.8197
2- Odukale F/ 11- Burton J/ 12- Horton I/ 15- Gueye M/ 23- Hugley J/	2	03:41	2	00:29	03:12	8-5	3	4	0	1	0	1.3605
2- Odukale F/ 11- Burton J/ 12- Horton I/ 15- Gueye M/ 24- Jeffress W/	2	00:29	2	00:28	00:00	0-2	-2	0	0	0	0	0.0000
2- Odukale F/ 11- Burton J/ 12- Horton I/ 15- Gueye M/ 23- Hugley J/	2	00:28	2	00:00	00:29	5-3	2	0	0	0	0	1.8939



Pittsburgh at Florida State

02/09/22 Donald L. Tucker Center, Tallahassee
2021-22 ACC Men's Basketball

Game Time: 9:00 PM
Game Duration: 2:16
Attendance: 6,891

Officials: Jamie Luckie, John Gaffney, Doug Shows

Florida State

Lineup	Quarter On	Time On	Quarter Off	Time Off	Time on Court	Score	Score Diff	Reb	Stl	Tov	Ass	PPP
0- Evans R/ 4- Mills C/ 11- Ngom T/ 22- Butler J/ 35- Cleveland M/	1	20:00	1	17:52	02:08	2-3	-1	4	0	1	1	0.5000
0- Evans R/ 4- Mills C/ 15- Ballard Q/ 22- Butler J/ 35- Cleveland M/	1	17:52	1	15:26	02:26	3-4	-1	3	0	1	1	0.7500
1- Warley J/ 21- Fletcher C/ 30- Prieto H/ 31- Wilkes W/ 35- Cleveland M/	1	15:26	1	12:24	03:02	2-4	-2	2	1	1	1	0.4000
0- Evans R/ 4- Mills C/ 11- Ngom T/ 22- Butler J/ 35- Cleveland M/	1	12:24	1	12:07	00:17	0-0	0	0	0	1	0	0.0000
0- Evans R/ 4- Mills C/ 22- Butler J/ 30- Prieto H/ 35- Cleveland M/	1	12:07	1	10:49	01:18	0-1	-1	1	1	0	0	0.0000
0- Evans R/ 1- Warley J/ 4- Mills C/ 22- Butler J/ 30- Prieto H/	1	10:49	1	08:12	02:37	1-0	1	5	0	1	0	0.1880
0- Evans R/ 1- Warley J/ 4- Mills C/ 15- Ballard Q/ 21- Fletcher C/	1	08:12	1	05:55	02:17	4-5	-1	4	0	1	1	0.9009
0- Evans R/ 22- Butler J/ 30- Prieto H/ 31- Wilkes W/ 35- Cleveland M/	1	05:55	1	05:21	00:34	2-0	2	0	0	0	0	2.0000
1- Warley J/ 22- Butler J/ 30- Prieto H/ 31- Wilkes W/ 35- Cleveland M/	1	05:21	1	02:49	02:32	4-2	2	3	1	0	0	0.9804
4- Mills C/ 22- Butler J/ 30- Prieto H/ 31- Wilkes W/ 35- Cleveland M/	1	02:49	1	02:27	00:22	0-1	-1	0	0	0	0	0.0000
4- Mills C/ 15- Ballard Q/ 22- Butler J/ 31- Wilkes W/ 35- Cleveland M/	1	02:27	1	01:21	01:06	2-0	2	0	1	0	0	2.2727
4- Mills C/ 15- Ballard Q/ 21- Fletcher C/ 31- Wilkes W/ 35- Cleveland M/	1	01:21	1	00:24	00:56	0-1	-1	1	0	0	0	0.0000
4- Mills C/ 21- Fletcher C/ 30- Prieto H/ 31- Wilkes W/ 35- Cleveland M/	1	00:24	2	20:00	00:25	0-0	0	1	0	0	0	0.0000
0- Evans R/ 4- Mills C/ 11- Ngom T/ 22- Butler J/ 35- Cleveland M/	2	20:00	2	18:23	01:37	0-3	-3	0	0	1	0	0.0000
0- Evans R/ 4- Mills C/ 22- Butler J/ 30- Prieto H/ 35- Cleveland M/	2	18:23	2	15:37	02:46	7-7	0	3	0	0	2	1.7500
1- Warley J/ 4- Mills C/ 30- Prieto H/ 31- Wilkes W/ 35- Cleveland M/	2	15:37	2	11:35	04:02	4-8	-4	2	0	0	1	0.8000
1- Warley J/ 4- Mills C/ 21- Fletcher C/ 22- Butler J/ 35- Cleveland M/	2	11:35	2	10:43	00:52	3-0	3	0	0	0	1	3.0000
0- Evans R/ 4- Mills C/ 21- Fletcher C/ 22- Butler J/ 35- Cleveland M/	2	10:43	2	06:18	04:25	4-2	2	4	0	1	1	0.6211
1- Warley J/ 4- Mills C/ 11- Ngom T/ 21- Fletcher C/ 35- Cleveland M/	2	06:18	2	04:30	01:48	3-2	1	2	0	2	1	0.7732
0- Evans R/ 4- Mills C/ 11- Ngom T/ 21- Fletcher C/ 35- Cleveland M/	2	04:30	2	04:22	00:08	0-0	0	1	0	1	0	0.0000
0- Evans R/ 4- Mills C/ 21- Fletcher C/ 22- Butler J/ 35- Cleveland M/	2	04:22	2	02:19	02:03	2-3	-1	2	1	0	0	0.5155
0- Evans R/ 4- Mills C/ 22- Butler J/ 31- Wilkes W/ 35- Cleveland M/	2	02:19	2	01:16	01:03	0-2	-2	0	0	1	0	0.0000
0- Evans R/ 4- Mills C/ 21- Fletcher C/ 31- Wilkes W/ 35- Cleveland M/	2	01:16	2	00:00	01:16	8-8	0	3	0	1	1	2.0000



Officials: Jamie Luckie, John Gaffney, Doug Shows

Pittsburgh

Lineup	Time	Score	Score Diff	Pts/Min	Reb	Stl	Tov	Ass	PPP
2- Odukale F/ 11- Burton J/ 12- Horton I/ 15- Gueye M/ 23- Hugley J/	25:29	44-34	10	1.7266	24	1	5	7	1.1236
2- Odukale F/ 12- Horton I/ 23- Hugley J/ 24- Jeffress W/ 31- Ezeakudo O/	03:33	2-3	-1	0.5634	4	1	1	0	0.3165
2- Odukale F/ 3- Collier N/ 15- Gueye M/ 24- Jeffress W/ 31- Ezeakudo O/	02:37	1-0	1	0.3822	4	0	2	0	0.2577
2- Odukale F/ 12- Horton I/ 15- Gueye M/ 23- Hugley J/ 31- Ezeakudo O/	02:19	5-5	0	2.1583	2	0	0	2	1.1261
2- Odukale F/ 12- Horton I/ 15- Gueye M/ 23- Hugley J/ 24- Jeffress W/	02:03	1-3	-2	0.4878	1	0	2	0	0.2252
2- Odukale F/ 3- Collier N/ 11- Burton J/ 12- Horton I/ 15- Gueye M/	01:55	2-2	0	1.0435	1	0	0	0	0.8197
2- Odukale F/ 5- Santos N/ 12- Horton I/ 23- Hugley J/ 24- Jeffress W/	01:52	1-2	-1	0.5357	5	0	0	0	0.5319
2- Odukale F/ 3- Collier N/ 11- Burton J/ 15- Gueye M/ 31- Ezeakudo O/	00:12	0-0	0	0.0000	0	0	1	0	0.0000
2- Odukale F/ 11- Burton J/ 12- Horton I/ 15- Gueye M/ 24- Jeffress W/	00:00	0-2	-2	NaN	0	0	0	0	0.0000



Officials: Jamie Luckie, John Gaffney, Doug Shows

Florida State

Lineup	Time	Score	Score Diff	Pts/Min	Reb	Stl	Tov	Ass	PPP
0- Evans R/ 4- Mills C/ 21- Fletcher C/ 22- Butler J/ 35- Cleveland M/	06:28	6-5	1	0.9278	6	1	1	1	0.5814
0- Evans R/ 4- Mills C/ 22- Butler J/ 30- Prieto H/ 35- Cleveland M/	04:04	7-8	-1	1.7213	4	1	0	2	1.1667
0- Evans R/ 4- Mills C/ 11- Ngom T/ 22- Butler J/ 35- Cleveland M/	04:02	2-6	-4	0.4959	4	0	3	1	0.2857
1- Warley J/ 4- Mills C/ 30- Prieto H/ 31- Wilkes W/ 35- Cleveland M/	04:02	4-8	-4	0.9917	2	0	0	1	0.8000
1- Warley J/ 21- Fletcher C/ 30- Prieto H/ 31- Wilkes W/ 35- Cleveland M/	03:02	2-4	-2	0.6593	2	1	1	1	0.4000
0- Evans R/ 1- Warley J/ 4- Mills C/ 22- Butler J/ 30- Prieto H/	02:37	1-0	1	0.3822	5	0	1	0	0.1880
1- Warley J/ 22- Butler J/ 30- Prieto H/ 31- Wilkes W/ 35- Cleveland M/	02:32	4-2	2	1.5789	3	1	0	0	0.9804
0- Evans R/ 4- Mills C/ 15- Ballard Q/ 22- Butler J/ 35- Cleveland M/	02:26	3-4	-1	1.2329	3	0	1	1	0.7500
0- Evans R/ 1- Warley J/ 4- Mills C/ 15- Ballard Q/ 21- Fletcher C/	02:17	4-5	-1	1.7518	4	0	1	1	0.9009
1- Warley J/ 4- Mills C/ 11- Ngom T/ 21- Fletcher C/ 35- Cleveland M/	01:48	3-2	1	1.6667	2	0	2	1	0.7732
0- Evans R/ 4- Mills C/ 21- Fletcher C/ 31- Wilkes W/ 35- Cleveland M/	01:16	8-8	0	6.3158	3	0	1	1	2.0000
4- Mills C/ 15- Ballard Q/ 22- Butler J/ 31- Wilkes W/ 35- Cleveland M/	01:06	2-0	2	1.8182	0	1	0	0	2.2727
0- Evans R/ 4- Mills C/ 22- Butler J/ 31- Wilkes W/ 35- Cleveland M/	01:03	0-2	-2	0.0000	0	0	1	0	0.0000
4- Mills C/ 15- Ballard Q/ 21- Fletcher C/ 31- Wilkes W/ 35- Cleveland M/	00:56	0-1	-1	0.0000	1	0	0	0	0.0000
1- Warley J/ 4- Mills C/ 21- Fletcher C/ 22- Butler J/ 35- Cleveland M/	00:52	3-0	3	3.4615	0	0	0	1	3.0000
0- Evans R/ 22- Butler J/ 30- Prieto H/ 31- Wilkes W/ 35- Cleveland M/	00:34	2-0	2	3.5294	0	0	0	0	2.0000
4- Mills C/ 21- Fletcher C/ 30- Prieto H/ 31- Wilkes W/ 35- Cleveland M/	00:25	0-0	0	0.0000	1	0	0	0	0.0000
4- Mills C/ 22- Butler J/ 30- Prieto H/ 31- Wilkes W/ 35- Cleveland M/	00:22	0-1	-1	0.0000	0	0	0	0	0.0000
0- Evans R/ 4- Mills C/ 11- Ngom T/ 21- Fletcher C/ 35- Cleveland M/	00:08	0-0	0	0.0000	1	0	1	0	0.0000