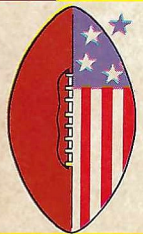
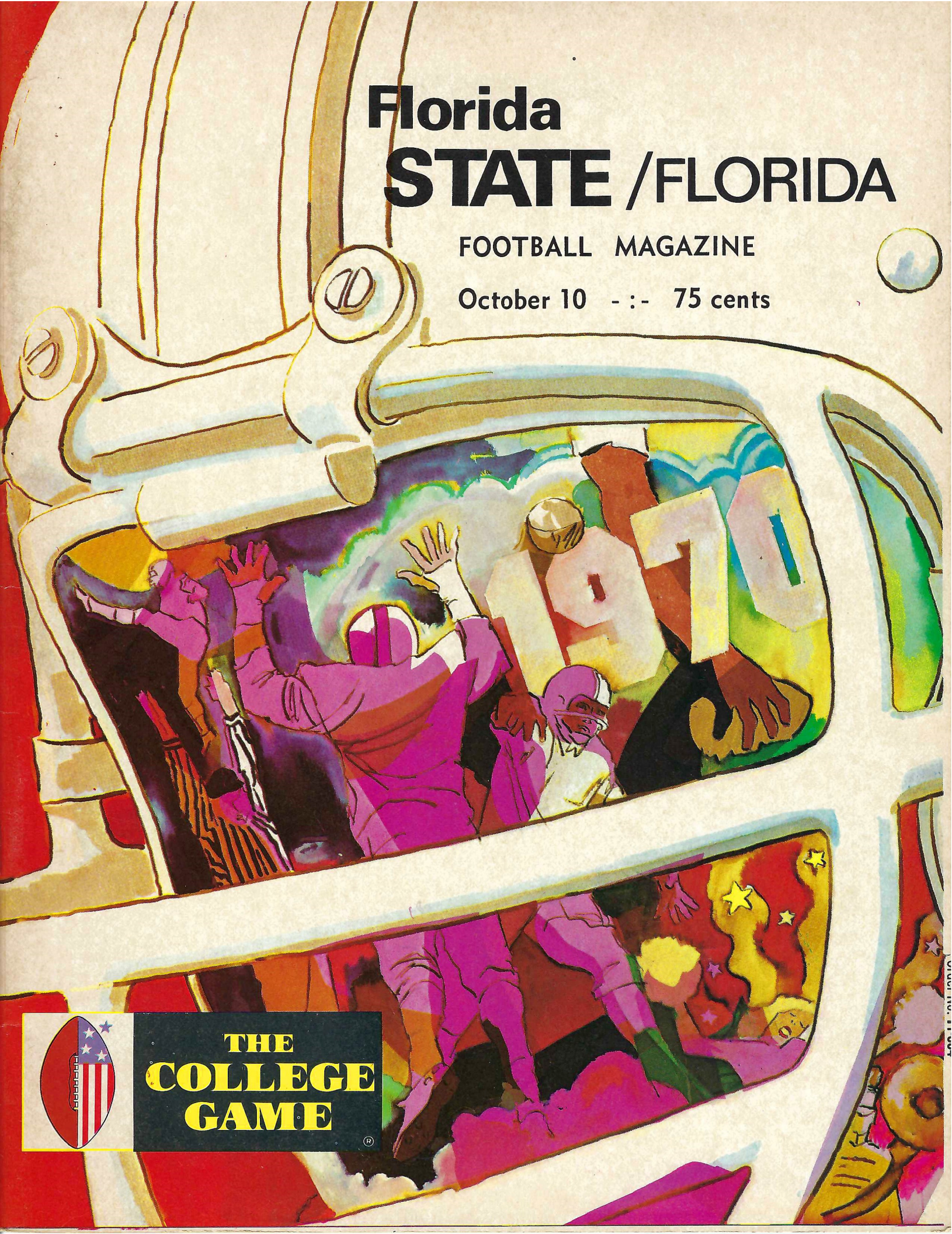


Florida STATE / FLORIDA

FOOTBALL MAGAZINE

October 10 - :- 75 cents



**THE
COLLEGE
GAME**



HAMS • BACON • SAUSAGE • WIENERS

FROSTY MORN MEATS





Oaks, rolling hills
a shady glen, a jogging path,
timeless Williamsburg traditional styling
provide secluded country living
only moments away from
Downtown, the University
and Tallahassee's
two new shopping malls
. . . incomparable apartment living.

Woodcrest

on John Knox Road

e

Occupancy December 1st

GET CLOSE-UP, IN-DEPTH COVERAGE OF ALL SPORTS YEAR 'ROUND

At every important athletic event in the South, there's at least one TU-JJ staffer in the press box to report the action, to dig beneath the surface to give you the in-depth coverage that makes sports pages come alive. Follow your sports favorites closely year 'round in . . .

The Florida Times-Union

EVERY MORNING

Jacksonville Journal

WEEKDAY AFTERNOONS
COMBINED ON SUNDAY





WELCOME TO FLORIDA STATE

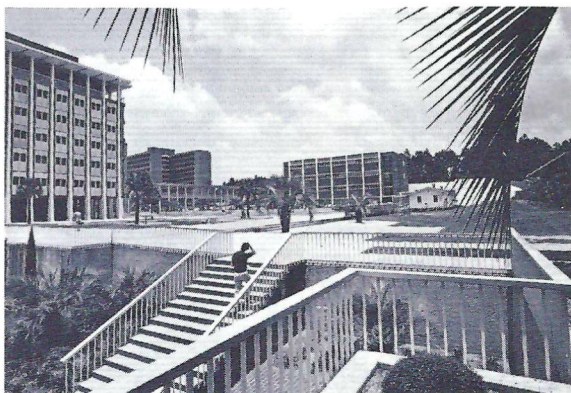
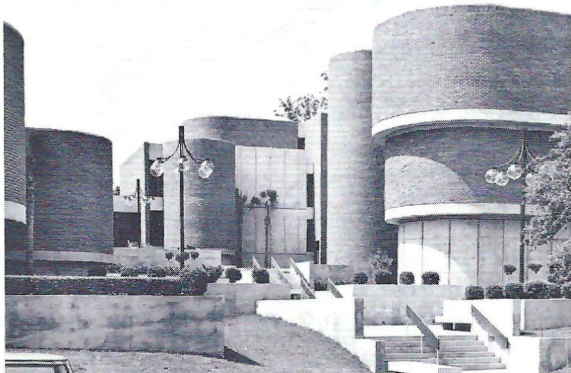
THE 21st CENTURY'S GOALPOST: FLORIDA STATE

Florida State's position on the 30-yard-line of the 21st Century, in terms of academic research and instruction, places the University within field-goal distance of international distinction in 1970.

Already nationally recognized as a center of excellence in vital areas of scientific and technological progress, Florida State enters the decade of the 1970's with a momentum gained in more than a century of service to the state and nation. Founded in 1857 as the Seminary West of the Suwannee, and elevated to coeducational university status in 1947, the University has a current enrollment approaching 18,000 students in its 10 schools and colleges.

Its \$100 million physical plant creates a skyline of research towers on the western quadrangle of the campus—visible from the west stands of Campbell Stadium—and reaches eastward to a stone's-throw of the State Supreme Court, where the new College of Law Building is under construction. Now graduating some 5,000 students each year, Florida State is one of only two dozen universities in the country annually producing more than 100 doctorates.

The University's role as a senior leader among the State's nine-institution University System is one in which it takes great pride. More than 100 specialized fields of study are represented in the University's schools and colleges of arts and sciences, business, education, engineering science, home economics, law, library science, music, nursing and social welfare.



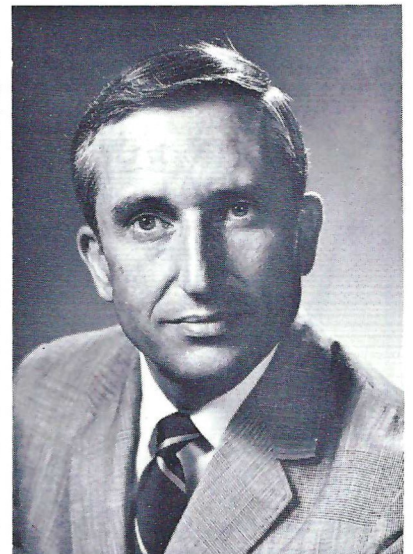
A SALUTE TO THE FRIENDS OF THE SEMINOLES

There are many reasons for the outstanding record of growth and achievement of the Florida State University in intercollegiate athletics during the past 23 years. Paramount among these are the loyal Seminole fans who fill the stands of Campbell Stadium for our home football games. The University is deeply grateful for the strong support our athletic programs have enjoyed through the years.

Seminole fans have responded magnificently to the University's need for additional financial support during this period of increased athletic costs. On behalf of the football team and our outstanding coaching staff—indeed of the entire University—I thank all of those in Campbell Stadium today. In particular, the contributors to the Athletic Scholarship Fund who are seated between the 40-yard lines in the west stand are deserving of special recognition; in addition, I want to recognize the many faculty and staff who have purchased season tickets and the uncounted number of students, alumni, and Seminole Boosters whose steadfast support means so much to the football team and the coaches.

This evidence of continued support of an athletic program geared to match dynamic programs in the academic areas is what keeps Florida State in the winners' circle on both counts. Such success comes only with teamwork; and it is this teamwork, on and off the playing field, that assures Florida State's continuing excellence.

—Stanley Marshall
President
Florida State University



the

Q

UINCY

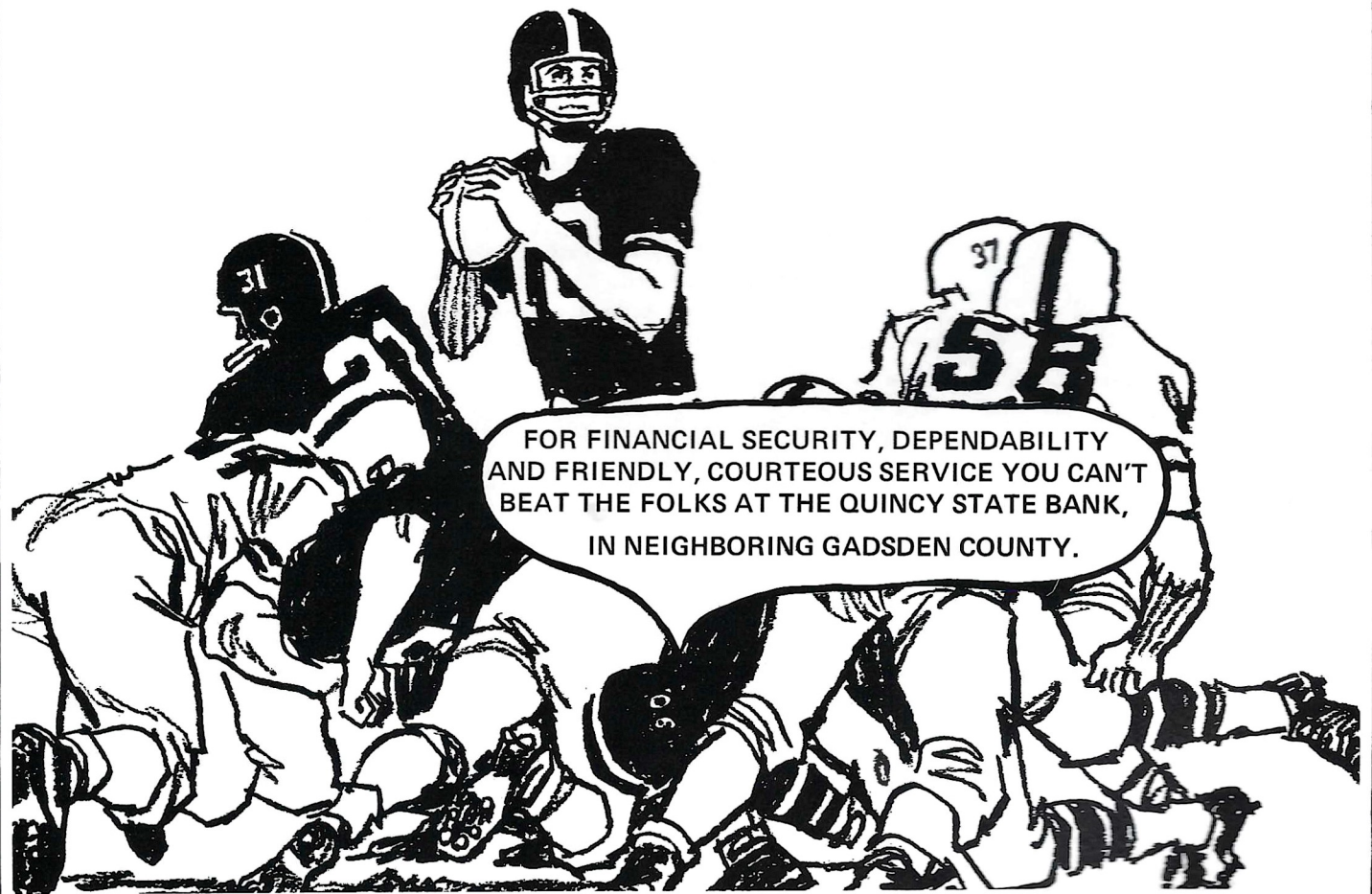
S

TATE

B

ANK

Quincy, Florida



Florida STATE / FLORIDA

Football Magazine

Vol. XXIV

October 10, 1970

No. 3

In This Issue . . .

In the Spirit of the Times 10

The look and feel of the University and its programs are summarized in this photo feature.

Meet the Seminoles 16

Florida State's defensive backs are featured today.

Football's Amazing Majors Family 43

Brother Joe played for Florida State, the others for Tennessee, where youngest brother Bobby is still playing. Tom Siler of the Knoxville Journal writes about this most amazing family.

You Can't Run in Pro Football 47

That's what they said 10 years ago, then came a guy named Lombardi . . . And what about some of the other myths the experts are trying to tell?

Yesterday 49

The intra family battle became just a sidelight as the Seminoles won their first game from the SEC, 10-0 over Tennessee.

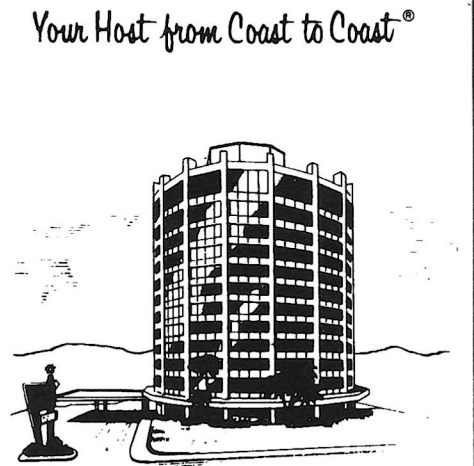
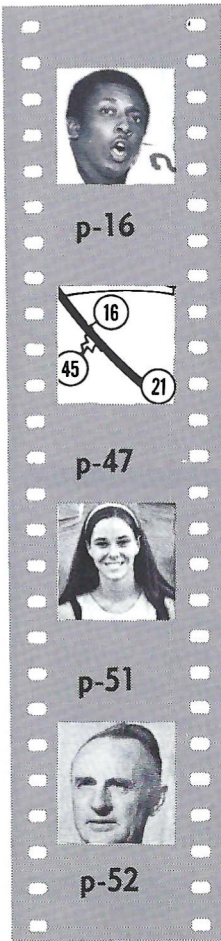
Spirit 51

. . . is their cause. Meet Florida State's 1970 cheerleaders.

Spotlight 52

Today spotlight zeroes in on Mike Long, Florida State's track coach.

The University	5	Depth Charts	34
Today's Game	9	Signals & Penalties	37
Today at Halftime	13	State Officials	39
Meet the Coaches	14	Seminole Radio Network	41
The Football Family	15	Florida	44
The Seminoles	16	Seminole Songs	48
Composite Schedule	18	Cheerleaders	51
Seminole Records	27	Spotlight: Track	52
Statistics	28	Seminole Varsity Coaches	53
Lineups	31	Basketball '70	54
Rosters	33	Stadium Information	57



TWO LOCATIONS
TO SERVE YOU

☆☆☆☆

316 W. Tennessee St.

Viking Lounge

With Live Entertainment

Camelot Dining Room

☆☆☆☆

1302 Apalachee Parkway

Tele. 877-3141

Complete Banquet Facilities



The Florida State Football Magazine is published by the Florida State University Department of Intercollegiate Athletics and printed in Tallahassee, Fla. by the Dye Printing Company. Editor—Hank Schomber. Program Manager—Lonnie Burt. Business Manager—Doug Messer. Contributing Editors—Mike Beaudoin and Jayleen Woods. Sales Coordinator—Jack Ibach. Production Supervisor—Gary Easom. Artist—Suzie Jennings.

MIDYETTE-MOOR Insurance Agency

"Ask Those We Serve"

Complete Insurance and Bond Service

PHONE 222-3456



MIDYETTE-MOOR BUILDING
TALLAHASSEE, FLORIDA

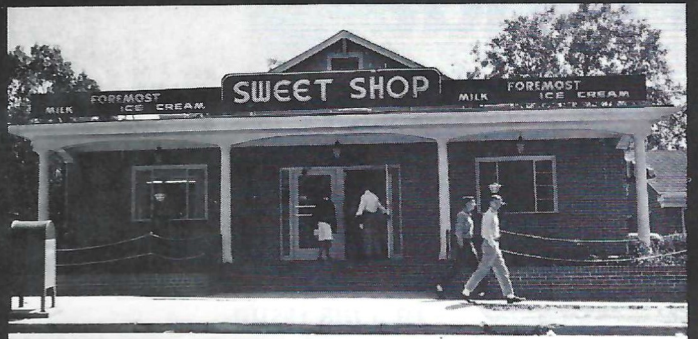
SAYS

SCALP 'EM SEMINOLES!



Payne Midyette
Frank Moor
Ed Clark
Winslow Sullivan
Paul Lewis
Payne Midyette, Jr.
Bill Moor
Bill Franklin

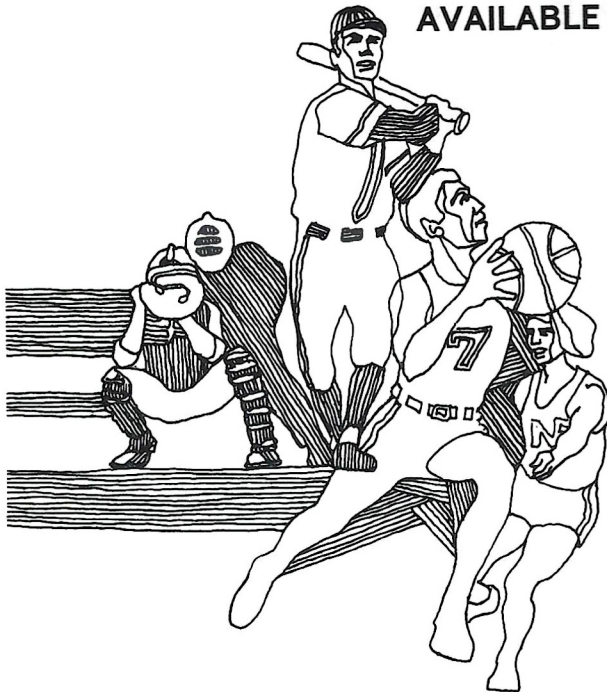
Jim Woods
Gordon Henkel
Glenn Sears
Moffett Warren
Chick Prosser
Dave McKinnon
Rex Sikes
John Wymess



WHERE YOU WILL FIND YOUR FRIENDS

701 W. JEFFERSON
South Gate F.S.U.

EXCITING, INSTRUCTIVE BASEBALL AND BASKETBALL FILMS AVAILABLE FREE



See famous professional athletes show you how they do it.

Each film is in color, 16 mm. and runs about 28 minutes. A terrific program for your youth group, civic club or phys ed class. With each film you get valuable instruction booklets, 36 pages of inside information and expert advice on how to stay in peak physical shape.

It's part of Prudential's contribution to the President's Council on Physical Fitness. For information about a free loan of the films, contact your local Prudential office. Or write Public Relations Dept., The Prudential Insurance Company of America, P. O. Box 4579, Jacksonville, Fla. 32201.



Prudential

SOUTH-CENTRAL HOME OFFICE
JACKSONVILLE, FLORIDA

TODAY'S GAME

By **Lonnie Burt**

Sports Information Director

It's THE GAME in Florida! When you get Florida and Florida State together on the gridiron, expect the unexpected.

Florida comes into this contest with a 3-1 record following its 14-6 victory over North Carolina State last Saturday, while the Seminoles were taking the day off.

The Gators registered triumphs over Duke and Mississippi State before bowing the Alabama two Saturdays ago. To its credit, Florida State has defeated Louisville and Wake Forest. The Seminoles dropped a regionally televised game to Georgia Tech three weeks ago.

In quarterback John Reaves, Florida has one of the nation's best passers. As a sophomore last season, he teamed with All-America receiver Carlos Alvarez for a 21-6 decision over the Seminoles at Florida Field. In that one, Reaves had touchdown passes of 10 and 30 yards to the Cuban Comet.

This season, sophomore Willie Jackson has added still another receiving threat to the Gator offense. And with junior Andy Cheney healthy, Florida has even more pass catching ability.

Tommy Durrance and Mike Rich return from a 1969 Florida rushing game which out-gained the Seminoles 153 yards to minus 18.

Against N.C. State last week, Florida showed it can play pass defense and turned in seven interceptions.

Florida State has had two weeks to try and get its offensive ducks in order. Junior quarterback Frank Whigham, who took over for senior Tommy Warren in the second quarter of the Tech loss, has been working on his timing and hopefully this additional work will sharpen an aerial game which hasn't been as potent as in the past.

This will be the 13th meeting between Florida and Florida State but only the fourth played in Campbell Stadium. The Gators own a 9-2-1 edge with the Seminoles' lone victories coming in 1964 and '67.

1970 FLORIDA STATE SCHEDULE

- 9 Louisville 7
- 13 Georgia Tech 23
- 19 Wake Forest 14
- Oct. 10 Florida
- Oct. 17 @ Memphis State
- Oct. 24 @ South Carolina
- Oct. 30 @ Miami
- Nov. 7 Clemson
- Nov. 14 Virginia Tech (HC)
- Nov. 21 Kansas State
- Nov. 26 Houston (@ Tampa)

1970 FLORIDA SCHEDULE

- 21 Duke (Jacksonville) 19
- 34 Mississippi State 13
- 15 Alabama 46
- 14 North Carolina State 6
- Oct. 10 at FLORIDA STATE
- Oct. 17 Richmond
- Oct. 24at Tennessee
- Oct. 31 Auburn (Homecoming)
- Nov. 7 Georgia (Jacksonville)
- Nov. 14 Kentucky (Tampa)
- Nov. 28 Miami

THE FSU-FLORIDA SERIES

	FSU	Florida
1958	7	21
1959	8	18
1960	0	3
1961	3	3
1962	7	20
1963	0	7
1964	16	7
1965	17	30
1966	19	22
1967	21	16
1968	3	9
1969	6	21

— NEXT WEEK —

The Seminoles open a three week road swing against Memphis State. Last year the Tigers battled the Tribe down to the wire for a 28-26 win in Campbell Stadium. A special **Alumni-Seminole Booster** plane will be flying out to the game. Contact the Florida State Alumni Office for more details.

For All Your Photo Needs

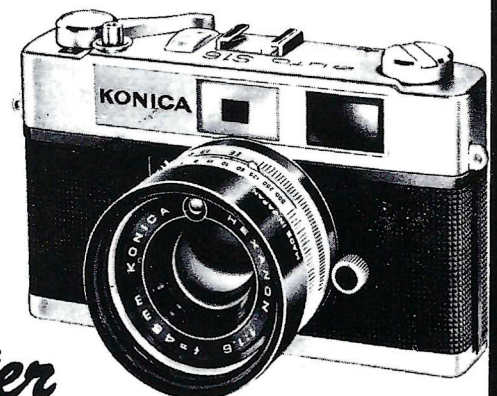
Camera's
Film

Darkroom Equipment
Binoculars
Recorders
Rentals

See The Friendly Folks At

Tallahassee Camera Center

117 NORTH MONROE



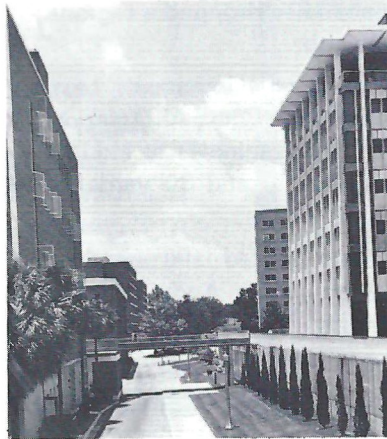
Educating Students . . .

"IN THE SPIRIT OF THE TIMES"

AT

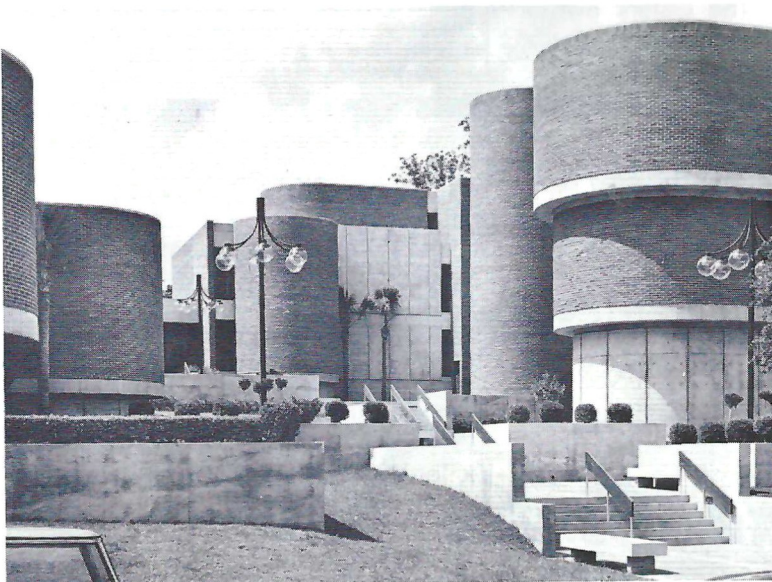
FLORIDA

STATE

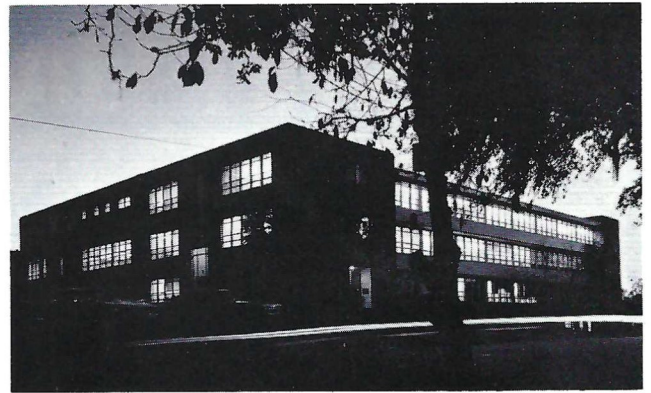


THE COLLEGE OF ARTS AND SCIENCES IS the largest of 10 colleges and schools at Florida State University, whose combined programs of study

lead to 58 doctoral degrees, 87 different types of master's degrees and 96 kinds of bachelor's degrees. In this College alone, more than 25 departments — ranging from aerospace studies, anthropology and art to oceanography, theatre, urban and regional planning — are educating some 5,000 undergraduate students and nearly 2,000 graduate students for 21st Century professions. Recognition of social, economic and environmental problems, and research toward their solutions, is moving a number of departments in new directions. The Institute of Social Research, for example, has regrouped social scientists and government analysts for specializations in the study of mental health, education, policy analysis, survey data, urban research, and minority affairs. Coming next year is a biomedical sciences program designed to increase the state's number of physicians by letting future M.D.'s begin their medical education at Florida State. The cooperative program involves Florida A & M and the University of Florida's College of Medicine. A new overseas study center will open next year in London, patterned after the successful Florence program in Italy, and confirming the University's interest in trans-continental, rather than provincial, educational interests.

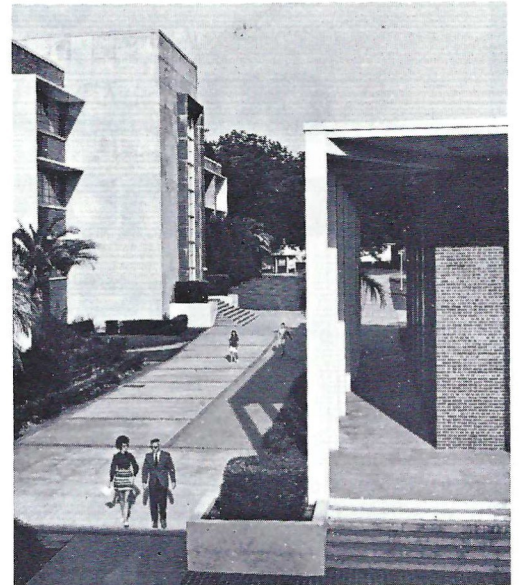


THE SCHOOL OF HOME ECONOMICS bears no resemblance to the stereotyped "cooking and sewing" image of old. Implications of the population explosion on members of the family and society at large are very much in the forefront of this school's educational programs — nutrition and health, food consumption and preservation practices, inflationary economics, and the problems of housing and clothing the world.



THE SCHOOL OF ENGINEERING SCIENCE represents still another departure from traditional engineering educational concepts in its efforts to train students for the nation's continuing ventures into new technology. Hence, its graduates are given backgrounds flexible enough to transcend any obsolescence in astronautics, electronics, materials science and systems science.

THE SCHOOL OF BUSINESS, which now offers graduate programs for administrator scientists at Cape Kennedy, is concerned with training hotel and restaurant managers for Florida's tourist industries as it is with giving its students a multinational perspective of business operations. The world of computers is no mystery to this school's future specialists in accounting, marketing, management, insurance, advertising, finance, business law and education.

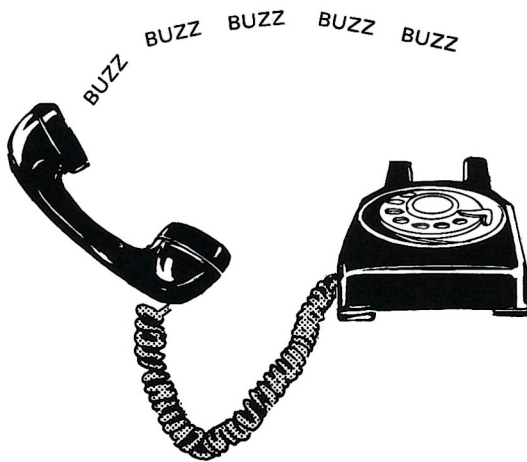


THE COLLEGE OF EDUCATION produces some 1,000 teachers per year whose specializations range from pre-school education to the complex problems of administration in universities. Concepts and methodology for education in the year 2,000 are subjects of the College's several-million-dollar research programs in curriculum development, human development and computer-assisted instruction.

THE SCHOOL OF LIBRARY SCIENCE takes the nation's knowledge revolution seriously, training its graduates to cope with concepts of computerized libraries and information retrieval systems in an age when facts and discoveries are multiplying more quickly than they can be stored, filed and used as reference and research resources.



listen to the sounds of an out dated Tallahassee business.



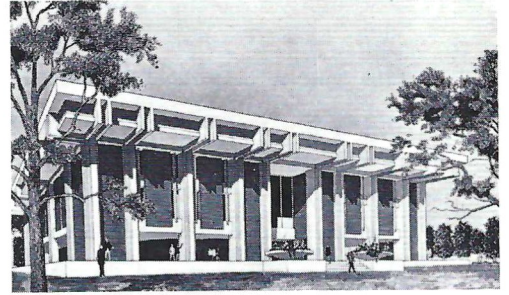
Sound familiar? In today's fast-paced world, a busy line could signal a loss of business. When a modern system from Southeastern Telephone could automatically transfer incoming calls to other lines, should the main line be in use.

Installation is really a simple procedure, and a new system costs just pennies a day. Far less than lost business or an irate customer. Call us, and keep your lines busy. As well as your help.

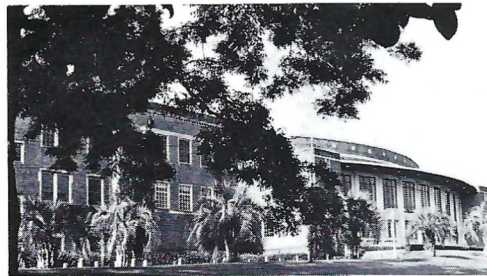


southeastern telephone company
A Tradition of Sound Service

College of Law



Florida State's College of Law, which came of age with full accreditation this year, seeks to prepare its graduates for the changing nature of legalities in the complex social and economic affairs of business, government and society in the 1970's. Completion of the college's new quarters, a stone's throw from the State Supreme Court, will soon be another milestone in its four-year history.



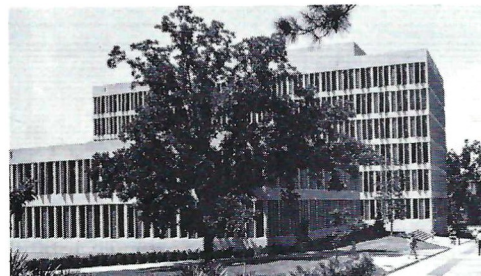
School of Music

From the modern notes of a "moog synthesizer" to the use of music as therapy for the mentally ill, this School keeps abreast with the currents of the times and the classics of the past. As one of the half-dozen major schools of its kind in the country, Florida State's School of Music enriches the nation's supply of professional performers, teachers and scholars.

School of Nursing



Best news of the year for the School of Nursing is the planned renovation next Spring of DeGraff Hall, which will be the long-awaited new home-of-its-own for this 20-year old program, which has sharpened its training techniques to televised perfection for use in other schools and colleges.



School of Social Welfare

Criminology and social work have their vital roles cut out for them by the very nature of the country's increasing concerns with the social welfare and safety of its citizens. The School of Social Welfare is the home of a regional research center in criminology, and a major contributor to the supply of trained personnel needed to make the nation's law enforcement systems, health and poverty programs effective.

TODAY AT HALFTIME

The School of Music — Dean Wiley L. Housewright — presents . . .

THE MARCHING CHIEFS

Robert T. Braunagel, Director
Charles Carter, Arranging, Assistant Director

Richard D. Mayo, Assistant Director
George, Drum Major

Mary Lynn Hendrickson, Head Majorette
Mike Moore, Feature Twirler

The Marching Chiefs continue their new format of halftime entertainment with their four spirited and lively segments: **Those Were The Days** — when jazz was king, **The Bent Arrow Award** — presented to all litterbugs, **The Spirit of Our Times** — brotherly love, **Happiness Is** — FSU being the number one university.

Music

Formation

THOSE WERE THE DAYS

Fanfare

DIAMOND DRILL SEQUENCE

The Chiefs open with diamond entrance and continue their pattern of four segments opening with Drill Sequence.

Those Were The Days
South Rampart Street

Those were the days when jazz was king, with a drill sequence to **Those Were The Days** and **South Rampart Street Parade**.

BENT ARROW AWARD

Bent Arrow Music

BOW AND ARROW — LITTERBURG

Call Me Irresponsible

This week's bent arrow award goes to all litterbugs, as the Chiefs form a litterbug and play **Call Me Irresponsible**.

SPIRIT OF OUR TIMES

Get Together

SHIELD — LUV

Tap Roots

As the Chief form a shield we hope all people will "Get Together" in this time of strife with the rumble of wars (Tap Roots), and that soon in the future the spirit of brotherly love (Luv) will be the prevailing spirit of the times, as the Chiefs play

Love Is a Many Splendored Thing

Love Is A Many Splendored Thing.

HAPPINESS IS

Mah-Na Mah-Na

FSU

There's A New World Coming
Alma Mater

Happiness is being a student on the number one campus in the country.

Taylor Chevrolet-Buick, Inc.



Sales



Service



Body Shop

Telephones:

QUINCY, FLORIDA 627-9621
TALLAHASSEE (Toll Free) 222-8200

New Location:

2039 West Jefferson St.
Quincy, Florida 32351

A SHORT DRIVE FOR A BETTER BUY

See Our Completely New Facilities on Highway 90 West, Quincy, Fla.

We're The Warpath Watchers



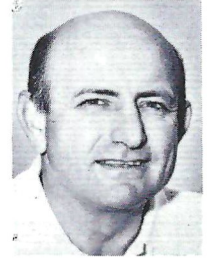
The way those Seminoles play the game, it takes The Times to tell it! If you'll settle for no less than the best, most colorfully complete coverage of every FSU game, look to Florida's Best Newspaper.

St. Petersburg Times
FLORIDA'S BEST NEWSPAPER

MEET THE COACHES



BOB HARBISON



BILL CRUTCHFIELD

BILL CRUTCHFIELD Administrative Assistant

This is Crutchfield's second tour of duty at Florida State. He served as an offensive assistant for the Seminoles from 1964-66.

The Orangeburg, S. C., native is a North Carolina graduate, having also gained a Masters at his Alma Mater in 1949.

"Crutch" served under Coach Peterson at Mansfield, Ohio, High School. He has been head coach at Atlantic Christian and Presbyterian Colleges and been assistant at Furman, Wake Forest, Miami and Georgia Tech, plus being on the Atlanta Falcons' staff for one season.

He returns to Florida State after two years at Tech.

Crutchfield and wife Rachel have four children.

BOB HARBISON Defensive Chief

This is the former University of Indiana guard's 22nd year as an assistant on the Florida State staff. He has worked under four Seminole head coaches — Don Veller, Tom Nugent, Perry Moss and Bill Peterson.

Although he now heads up the Tribe's defense, "Harby" has also coached offense at Florida State.

A native of Evansville, Ind., Harbison has been an outstanding recruiter. He's also considered one of the staff's better scouts although he spends less time scouting now than in former years.

Harbison played his college ball under the late Bob McMillin and following his senior season he performed in the Blue-Gray All-Star Game in Montgomery, Ala.

He and wife Jayne have four children.



Frisch's

THE ORIGINAL

BIG BOY RESTAURANT

GREAT PLACE FOR POW WOWS AND GOOD FOOD

SERVING:

- Breakfast
- Lunch
- Dinner
- Snacks

Open 7 A.M. to Midnight
'Til 2 A.M. Fridays and Saturdays

1775 W. Tennessee Street

TALLAHASSEE — TELEPHONE 224-1246

TRY FRISCH'S CARRY-OUT

FOOTBALL FAMILY



Vaughn Mancha
Athletic Director



Bill Peterson
Head Coach



Front row, left to right: Don Blackwelder, Larry Peccatiello, Head Coach Bill Peterson, Bob Harbison, Bill Crutchfield. Back row: Sam Elliott, Les Hanly, Dan Henning, Bill Parcels, Al Conover, Billy Cox and Bud Whitehead.



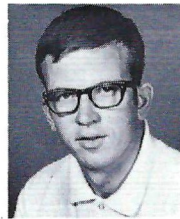
Doug Messer
Business Manager



Claude Thigpen
Ticket Manager



Don Fauls
Head Trainer



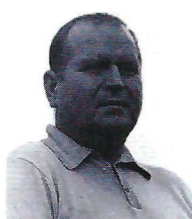
Doug May
Ass't. Trainer



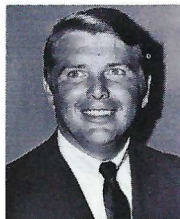
Lonnie Burt
Sports Info. Director



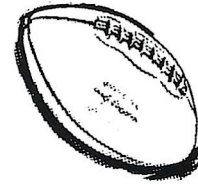
Hank Schomber
Ass't. SID



Frank DeBord
Equipment Manager



David "Bucky" Wagner
Academic Advisor



Go
Seminoles!



Sears

Tallahassee's Complete
Department Store

- Everything You Need
For Your Home
Family or Car!

OPEN 9:30 a.m. 'til 9:30 p.m.
Monday thru Saturday

SHOP AT SEARS
AND SAVE

Sears

SEARS, ROEBUCK AND CO.

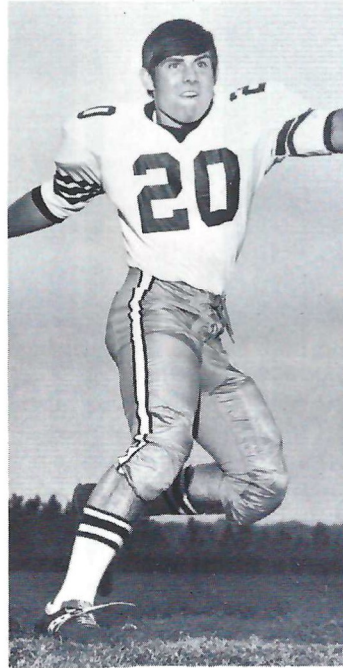
SEMINOLE FANS!



**YOU
ARE
THERE!**

MEET THE 1970

DAVID SNELL
Sophomore
Slocomb, Ala.
Business



**D
E
F
E
N
S
I
V
E**

**COMPLETE
FOOTBALL
COVERAGE**

IN THE

**TAMPA
TRIBUNE**

READ

JIM

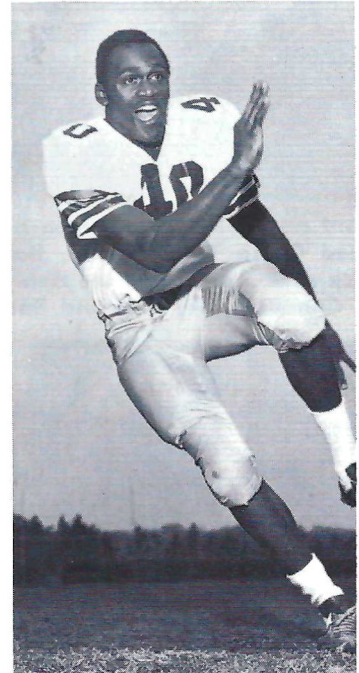
SELMAN

**ASS'T. SPORTS EDITOR
EVERY
MORNING**



JAMES THOMAS
Sophomore
Macon, Ga.
Criminology

BENNY RUST
Junior
Miami
Business



EDDIE McMILLAN
Sophomore
Tampa
Criminology

SEMINOLE

BACKS

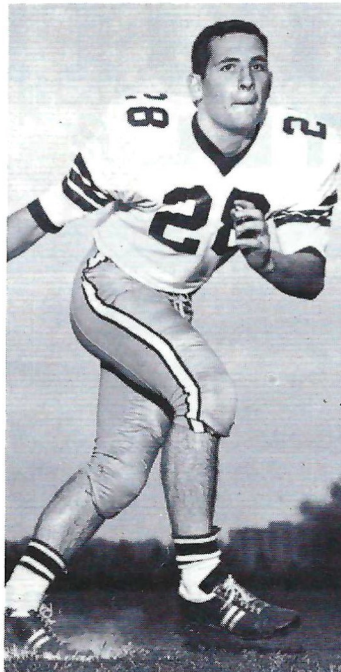


BUDDY GRIDLEY
Junior
Tallahassee
Biology



JOHN MONTGOMERY
Junior
Jacksonville
Business

ROBERT ASHMORE
Junior
Tallahassee
Pre-dentistry



CAPT'N LOUIE'S GALLEY

**THE FINEST
SEAFOOD & CHICKEN**

TAKE OUT OR DINE IN

EXPERTS IN THE PREPARATION OF FINE
SEAFOOD AND CHICKEN FOR OVER 20 YEARS

**NOW
TWO LOCATIONS
IN
TALLAHASSEE**

**100 W. Tharpe
385-1179**

**620 W. Tenn.
224-1181**



TALLAHASSEE

1970 Composite Schedule

DATE	LOUISVILLE	GEORGIA TECH	WAKE FOREST	FLORIDA	MEMPHIS STATE	SO. CAROLINA	MIAMI	CLEMSON	VIRGINIA TECH	KANSAS STATE	HOUSTON
SEPT. 12	AT FLORIDA STATE	SO. CAROLINA	AT NEBRASKA	DUKE*		AT GEORGIA TECH		THE CITADEL	VIRGINIA	UTAH STATE	
SEPT. 19	AT SO. ILLINOIS	FLORIDA STATE	AT SO. CAROLINA	MISS. STATE	MISSISSIPPI	WAKE FOREST	SEPT. 18 WM. & MARY	VIRGINIA	AT ALABAMA††	AT KENTUCKY	SYRACUSE
SEPT. 26	NO. TEXAS	MIAMI	AT FLORIDA STATE	AT ALABAMA	AT VIRGINIA TECH	AT N. C. STATE	AT GEORGIA TECH	AT GEORGIA	MEMPHIS ST.	AT ARIZONA STATE	AT OKLAHOMA ST.
OCT. 3	AT DAYTON	CLEMSON	AT VIRGINIA	N. C. STATE	AT TULSA	VIRGINIA TECH	OCT. 2 MARYLAND	AT GEORGIA TECH	AT SO. CAROLINA	COLORADO	
OCT. 10	TULSA	TENNESSEE	VIRGINIA TECH	AT FLORIDA STATE		AT NO. CAROLINA		AUBURN	AT WAKE FOREST	KANSAS	AT MISS. STATE
OCT. 17	AT MARSHALL	AT Auburn	CLEMSON	RICHMOND	FLORIDA STATE	AT MARYLAND	OCT. 16 TAMPA	AT WAKE FOREST	TULSA	AT IOWA STATE	OREGON STATE
OCT. 24		TULANE	NO. CAROLINA	AT TENNESSEE	AT NO. TEXAS ST.	FLORIDA STATE	AT PITTSBURGH	DUKE	BUFFALO	AT OKLAHOMA	ALABAMA
OCT. 31	KENT STATE	AT DUKE	AT TENNESSEE†	AUBURN	SO. MISS.	AT GEORGIA	OCT. 30 FLORIDA STATE	AT MARYLAND	AT WM. & MARY	MISSOURI	TULSA
NOV. 7	MEMPHIS ST.	NAVY	AT DUKE	GEORGIA*	AT LOUISVILLE	TENNESSEE	AT TULANE	AT FLORIDA STATE	VILLANOVA	OKLAHOMA ST.	AT MISSISSIPPI
NOV. 14	AT CINCINNATI	AT NOTRE DAME	N. C. STATE	KENTUCKY†	WICHITA STATE	DUKE	ALABAMA	NO. CAROLINA	AT FLORIDA STATE	AT NEBRASKA	WYOMING
NOV. 21	10:00 AM DRAKE		AT HOUSTON		UTAH STATE	AT CLEMSON	SYRACUSE	SO. CAROLINA	V.M.I.**	AT FLORIDA STATE	WAKE FOREST
NOV. 28	AT WICHITA STATE	AT GEORGIA		MIAMI	CINCINNATI		AT FLORIDA				NOV. 26 FLORIDA STATE†
DEC. 5							HOUSTON				AT MIAMI

†† Birmingham, Ala.

† Memphis, Tenn.

* Jacksonville

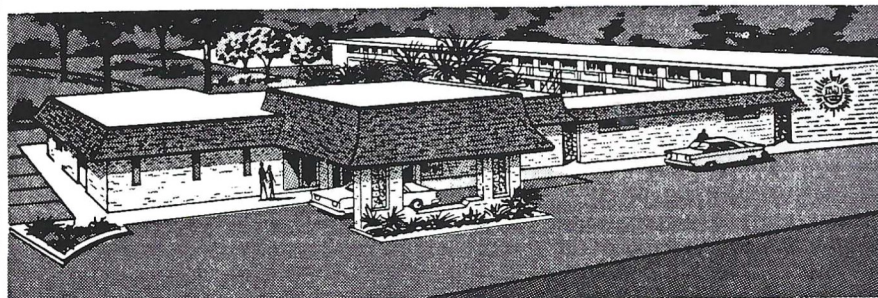
† Tampa

** Roanoke, Va.



QUALITY MOTEL

*The Chez Napoleon Room
Complete Banquet and Meeting Facilities
Cocktail Lounge - Bonaparte's Retreat*



COLOR TV

"We Cater to
Commercial Men"

Phone 877-6171

On the Parkway... 1027 APALACHEE PKWY. US 27 So.



DELICIOUS ITALIAN FOOD
!!Finest Sandwiches in the World!!

Pizza
ALL VARIETIES

Hot Poor Boy Sandwiches

SERVED ON FRESH OVEN-BAKED BREAD

Stromboli

Roast Beef

Hoggie

Pizza Burger

Meat Ball Hoggie

SPAGHETTI

RAVIOLI

FISH ● SHRIMP ● CHICKEN BASKETS

Come By After The Game And Enjoy

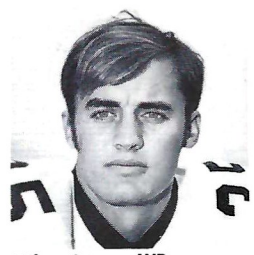
The Best Food In Town

1800 WEST TENNESSEE STREET

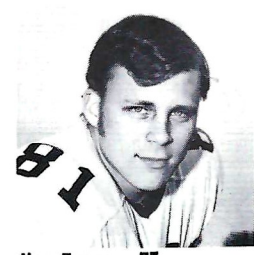
PHONE 222-5166 – YOUR ORDER READY IN MINUTES

'70 SEMINOLEES

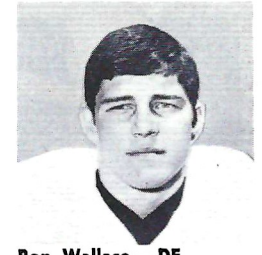
Sr.



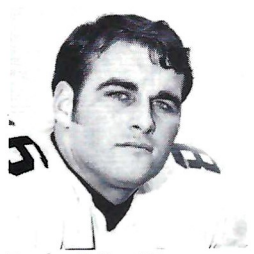
Mike Gray — WR
Lake Mary



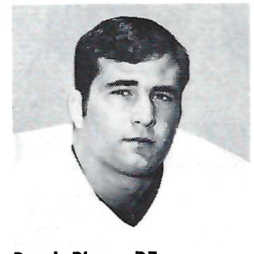
Jim Tyson — TE
Pahokee



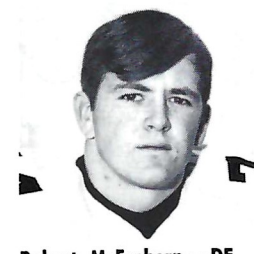
Ron Wallace — DE
Macon, Ga.



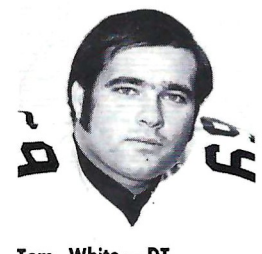
Randy Hall — DE
Miami



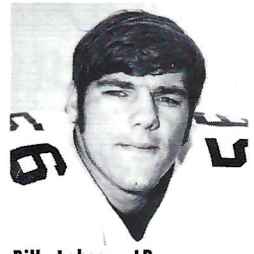
Beryl Rice — DE
Fernandina Beach



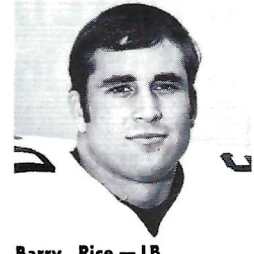
Robert McEachern — DE
Tallahassee



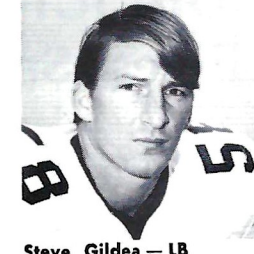
Tom White — DT
West Palm Beach



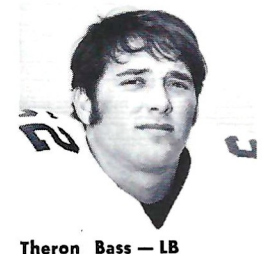
Bill Lohse — LB
St. Petersburg



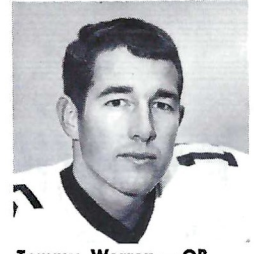
Barry Rice — LB
Fernandina Beach



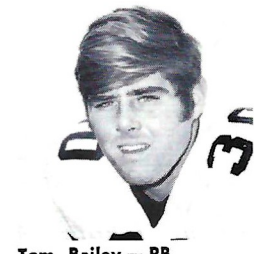
Steve Gildea — LB
Daytona Beach



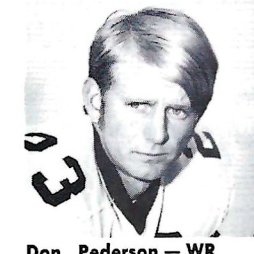
Theron Bass — LB
Live Oak



Tommy Warren — QB
Coral Gables



Tom Bailey — RB
Coral Gables



Don Pederson — WR
Groveland



Big "B" One Hour Cleaners

ONE HOUR CLEANING • THREE HOUR SHIRT SERVICE

Monday thru Saturday

Students and Faculty Discounts Every Thursday

FIVE CONVENIENT LOCATIONS

1405 S. Adams St.
Northwood Mall

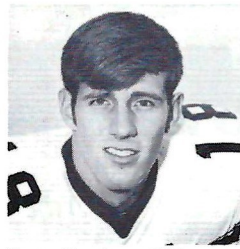
1245 E. Lafayette St. Across From Sears

1100 W. Tenn. St.
324 N. Monroe St.

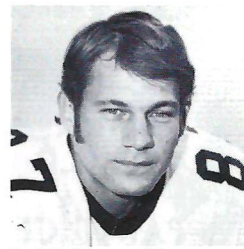




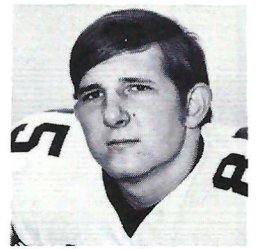
Rhett Dawson — WR
Valdosta, Ga.



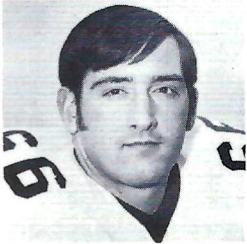
Kent Gaydos — WR
Dallas, Tex.



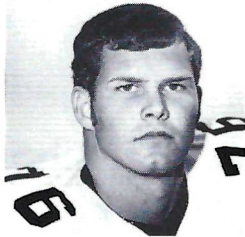
Ted Zaffran — TE
Orlando



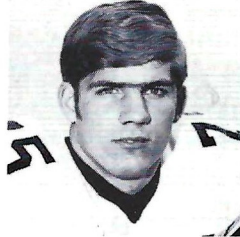
Bill Shaw — DE
Marietta, Ga.



Joe Strickler — OT
Avon Park



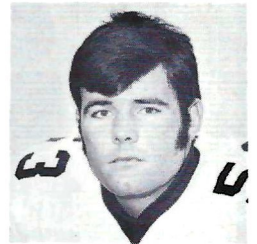
Bill Rimby — OT
St. Petersburg



Richard Amman — DT
Cocoa Beach



Bill Henson — DT
Hyattsville, Md.



Jay Stokes — OG
Sanford



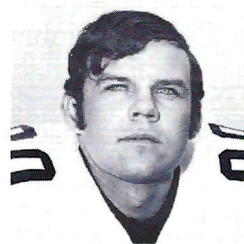
George Montgomery — OG
Coral Gables



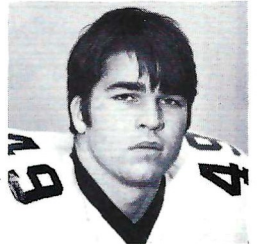
Mike Sammons — OG
Atlanta, Ga.



J. W. McKinnie — OG
Macon, Ga.



Steve Beville — OG
Fernandina Beach



Guy Glisson — LB
Tampa

PARKWAY NATIONAL BANK



BANK THE QUICK WAY - BANK THE PARKWAY
COURTESY · CONFIDENCE · CO-OPERATION

Telephone: 877-4121
1407 East Lafayette Street
Tallahassee, Florida

Miller CHEVROLET COMPANY

Havana, Florida

539-6376

15 Miles North of Tallahassee

on U. S. 27

Phone Toll Free

224-1317

**EPPE-EDENFIELD
HARDWARE & PAINT CENTER**

PHONE 222-3311

— CITY WIDE DELIVERY —

- Benjamin Moore Paints
- Garden Supplies
- Plumbing & Electrical Supplies
- Complete Line of Hardware

Open Mon. - Sat. 7:30 to 6:00

1334 N. MONROE

WHEN YOU THINK OF BOOKS, THINK OF BILLS

**FSU SPIRIT
HEADQUARTERS**

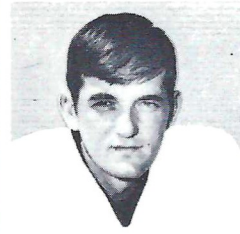
**FSU SWEAT SHIRTS,
T-SHIRTS
& NOVELTIES**

**ART SUPPLIES
TEXTBOOKS,
NEW & USED**

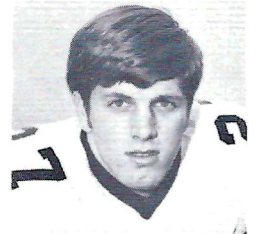
BOOK STORE

"ACROSS FROM WESTCOTT GATE"

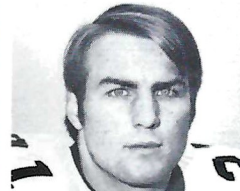
107 SOUTH COPELAND ST. TALLAHASSEE-FLA. 32304



Frank Whigham — QB
Sanford



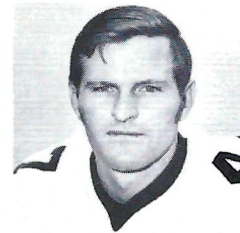
Arthur Munroe — RB
Quincy



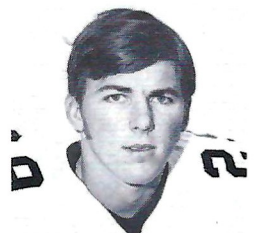
Paul Magalski — FB
Garfield Heights, Ohio



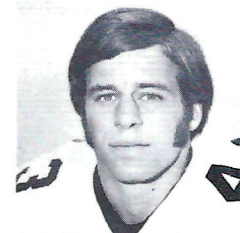
James Jarrett — FB
Elizabethton, Tenn.



George Davis — WR
Winter Haven



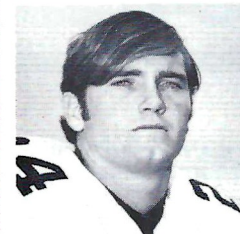
Benny Rust — DB
Miami



John Montgomery — DB
Jacksonville



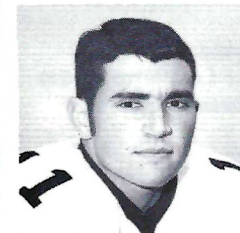
Robert Ashmore — DB
Tallahassee



John Lanahan — DB
Jacksonville



Buddy Gridley — DB
Tallahassee



Duane Carrell — K
Washington, D.C.



after the game

HURRY ON DOWN TO HARDEE'S
for

- HAMBURGERS – Charco Broiled
- CHEESEBURGERS – Meltin' Good
- HARDEE HUSKEE – A Meal In Itself
- ROAST BEEF SANDWICH – Heaped High
- HARDEE HOT DOG – Tender & Delicious
- FISH SANDWICH – Mouthwatering Fish Fillet
- APPLE TURNOVERS – Steaming Hot
- FRENCH FRIES – Golden Crisp
- SHAKES – Extra Thick & Creamy
- SOFT DRINKS – Frosty Cold
- COFFEE – Freshly Brewed



1818 WEST TENNESSEE STREET



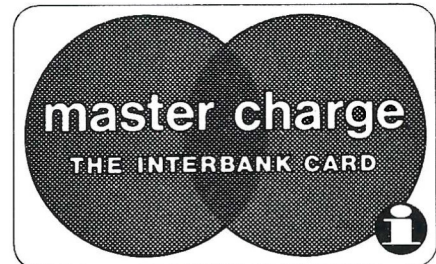
After the game

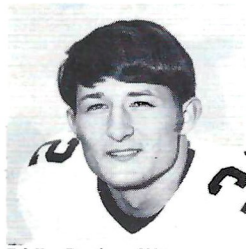
EAT OUT...

Make today an even more festive occasion with dinner tonight at one of the many fine Tallahassee restaurants which honor your Master Charge card.

...wherever you see this emblem

The Lewis State Bank is your Mastercharge Bank in Tallahassee
215 S. Monroe 224-2121

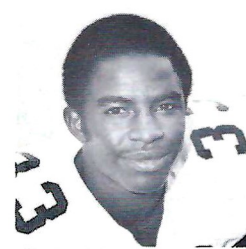




Eddie Davis — WR
Atlanta, Ga.



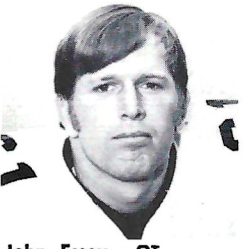
Mike Glass — TE
Tampa



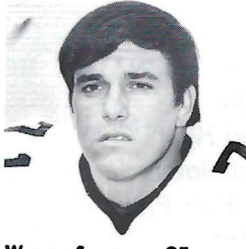
Charlie Hunt — DE
Jacksonville



Roger Minor — OT
Delray Beach



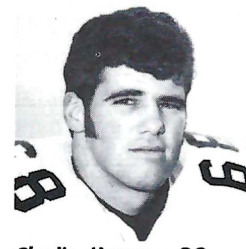
John Essex — OT
Miami



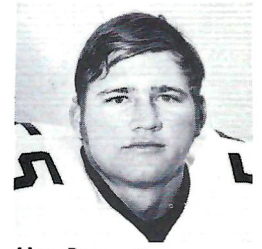
Wayne Spence — OT
Macon, Ga.



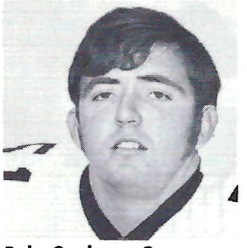
Larry Strickland — DT
Tallahassee



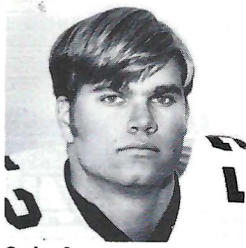
Charlie Musser — OG
Graceville



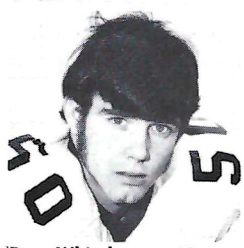
Alan Dees — C
Lakeland



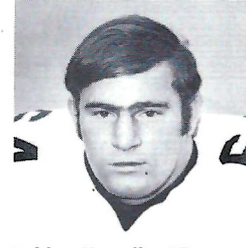
Bob Carden — C
Edgewater



Craig Sowers — C
Fort Lauderdale



Dan Whitehurst — LB
Adel, Ga.



Bobby Howell — LB
Decatur, Ga.

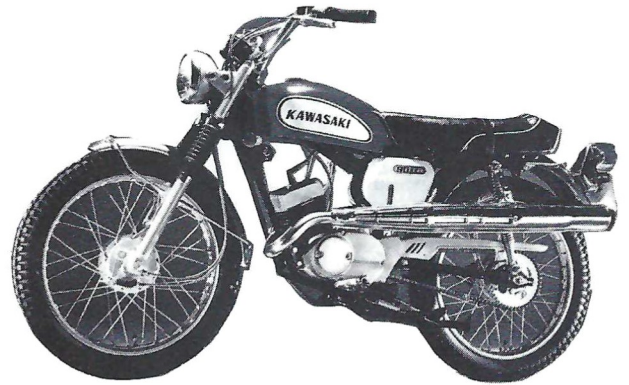


Gary Parris — LB
Vero Beach

TALLHASSEE'S SPORT CYCLE
HEADQUARTERS



SALES & SERVICE ON MOST MAKES



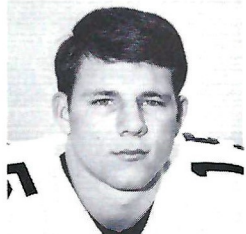
Norton
Ducati KAWASAKI
BULTACO BSA

W. M.
POGGIE
owner
Just Past Tallahassee Jr. College W. Pensacola

576-6326



Gary Huff — QB
Tampa



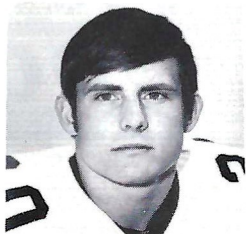
Rick Oreair — FB
Jacksonville



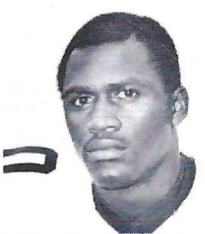
Barry Smith — WR
Miami



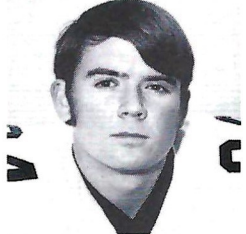
James Thomas — DB
Macon, Ga.



David Snell — DB
Slocomb, Ala.



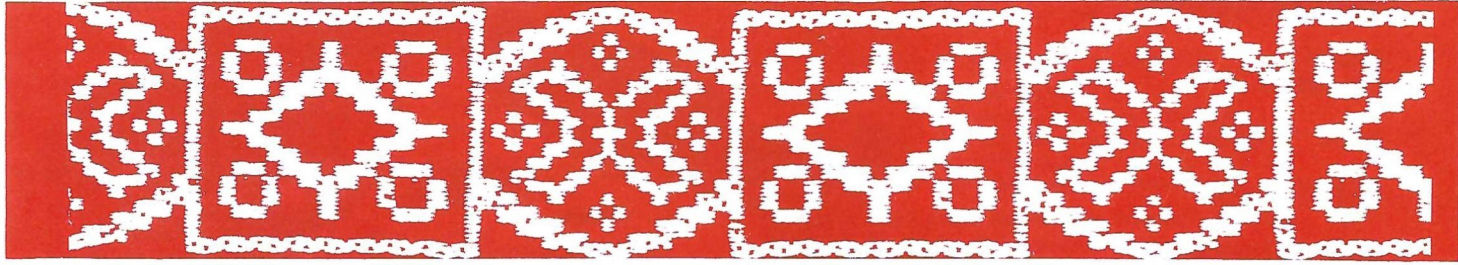
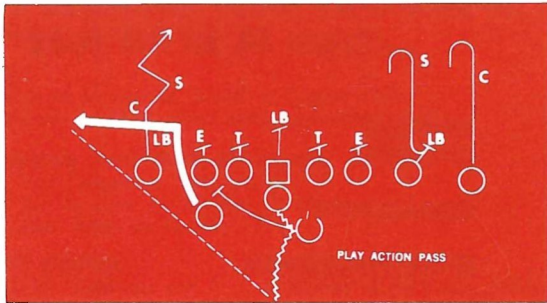
Eddie McMillan — DB
Tampa



Brian Bengtson — K
Green Bay, Wisc.

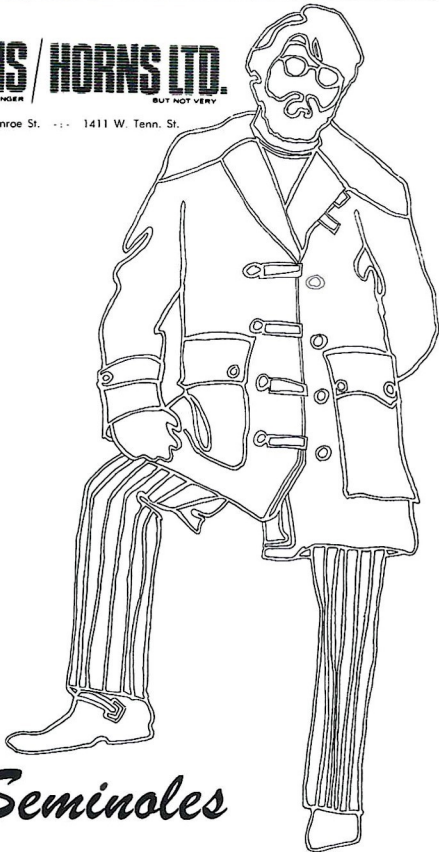


Johnny Martin — P
Elba, Ala.



BROWNS / HORNS LTD.
WE'VE BEEN EXPERTS LONGER. BUT NOT VERY.

100 South Monroe St. ... 1411 W. Tenn. St.



Go Seminoles



**HAV-A-TAMPA
JEWELS**

*The Cigar for Men...
that Ladies Love —*

WELCOME ANYWHERE

for their man-size flavor and gentle aroma

Distributed by **Eli Witt Tobacco & Candy Company**
Tallahassee, Florida

COMPLIMENTS OF

Sport-craft

THE COMPLETE LINE
...from 14 to 40 feet

EXPRESS
CRUISERS

RUNABOUTS

SPORTFISHERMEN

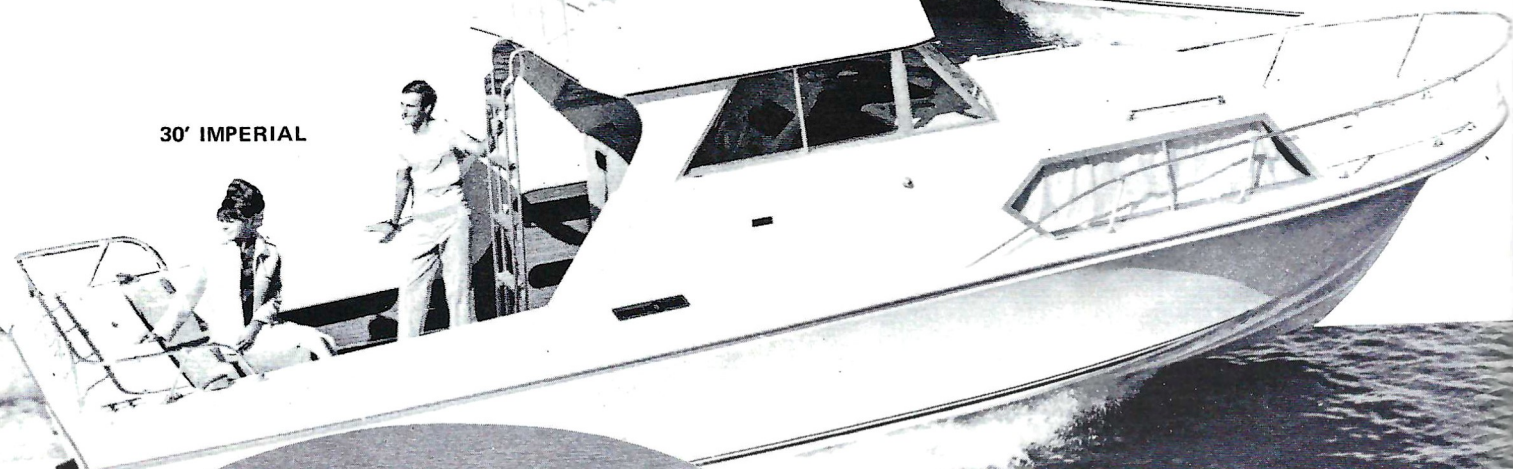
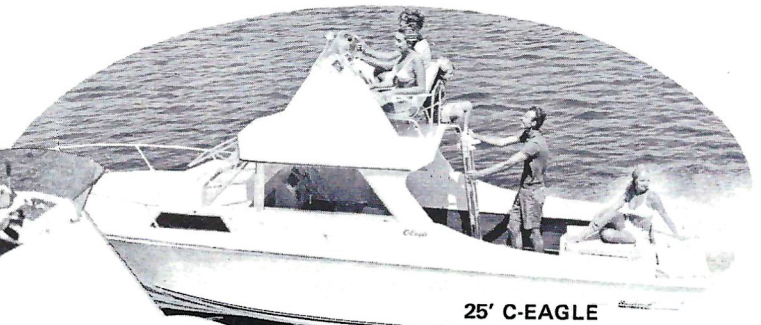
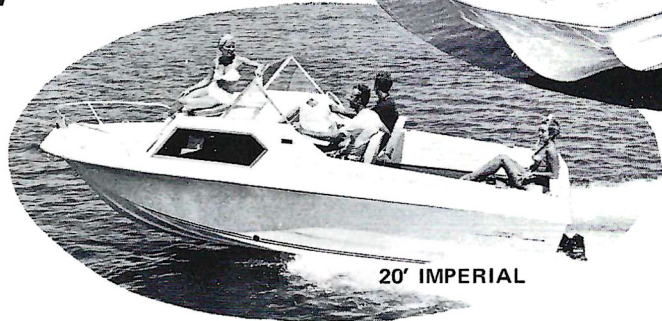
H-O-U-S-E-B-O-A-T-S

CABIN
CRUISERS

DEEP "V"'S

CATHEDRALS

CONVENTIONALS



P.O. BOX 351 PERRY, FLORIDA 32347 - PHONE (904) 457-4701

THE RECORD BOOK

BEST SINGLE GAME PERFORMANCES

TOTAL OFFENSE

- 490 yards by Bill Cappleman vs Memphis State, 1969 (minus 18 rush, 508 pass)
- 431 yards by Bill Cappleman vs South Carolina, 1968 (minus 6 rush, 437 pass)
- 369 yards by Joe Majors vs Tampa, 1959 (56 rush, 313 pass)
- 367 yards by Bill Cappleman vs Wake Forest, 1968 (2 rush, 365 pass)

YARDS GAINED PASSING

- 508 yards by Bill Cappleman vs Memphis State, 1969
- 437 yards by Bill Cappleman vs South Carolina, 1968
- 372 yards by Bill Cappleman vs Tulsa, 1969
- 369 yards by Kim Hammond vs Mississippi State, 1967

PASSES ATTEMPTED

- 53 by Kim Hammond vs Penn State (Gator Bowl 1967) (completed 37)
- 53 by Gary Pajcic vs VPI, 1966 (completed 28)
- 50 by Bill Cappleman vs Memphis State (completed 31)

PASSES COMPLETED

- 37 by Kim Hammond vs Penn State (Gator Bowl, 1967) (attempted 53)
- 31 by Bill Cappleman vs Memphis State, 1969 (attempted 50)
- 28 by Gary Pajcic vs VPI, 1966 (attempted 53)
- 25 by Bill Cappleman vs South Carolina, 1968 (attempted 42)

PASSES CAUGHT

- 16 by Ron Sellers vs South Carolina, 1968 (259 yards)
- 14 by Ron Sellers vs Wake Forest, 1968 (260 yards)
- 14 by Ron Sellers vs Penn State (Gator Bowl, 1967) (192 yards)

YARDS RECEIVING PASSES

- 260 by Ron Sellers vs Wake Forest, 1968 (14 receptions)
- 259 yards by Ron Sellers vs South Carolina, 1968 (16 receptions)
- 229 yards by Ron Sellers vs VPI, 1967
- 218 yards by Ron Sellers vs Memphis State, 1968 (13 receptions)

YARDS GAINED RUSHING

- 161 by Buddy Strauss vs Mississippi College, 1949
- 152 by Mike Sellers vs Sul Ross, 1951
- 150 by Bobby Renn vs Abilene Christian, 1957
- 142 by Keith Kinderman vs Richmond, 1961
- 142 by Phil Spooner vs Houston, 1965

OTHER SINGLE GAME RECORDS

- Most Punts—11 vs Baylor, 1965
- Most Field Goals—4 vs Wake Forest 1970
- Most Field Goals Attempted—Eight vs Wake Forest 1970
- Most Points Scored—74 vs Whiting Field, 1949
- Most Points Scored by An Individual—30 by Ron Sellers vs Wake Forest, 1968
- Most TD's Scored by An Individual—5 by Ron Sellers vs Wake Forest, 1968
- Most TD Passes Thrown—5 by Steve Tensi vs Oklahoma (Gator Bowl) 1965 and by Bill Cappleman vs Wake Forest, 1968

- Greatest Margin of Victory—74-0 vs Whiting Field, 1949
- Greatest Margin of Defeat—0-49 vs Georgia, 1959
- Total Offense—626 yards vs Memphis State, 1969
- Passing Yardage—508 vs Memphis State, 1969
- Rushing Yardage—383 vs Abilene Christian, 1957
- Times Rushing—29 by Fred Pickard vs Georgia, 1959 and by Larry Green vs Memphis State, 1967
- Passes Attempted—56 vs VPI, 1966
- Passes Completed—38 vs Penn State (Gator Bowl) 1967,
- Most Fumbles—10 vs Wichita State, 1969
- Most Fumbles Lost—7 vs Wichita State, 1969
- Most Fumbles Recovered—10 vs Wichita State, 1969
- Most Passes Intercepted—7 vs VPI, 1959
- Most Passes Intercepted by an Individual—3 by Tommy Brown (twice) vs Stetson, 1950, and Georgia Tech, 1952; Lee Corso vs Georgia, 1954, and Bud Whitehead vs VPI, 1959

LONGEST PLAYS

- Longest Punt—84 yards by Tommy Brown vs Tampa, 1950
- Longest Field Goal—53 yards by Grant Guthrie vs Miami, 1969.

LONGEST TOUCHDOWN RUNS FROM SCRIMMAGE

- 81 yards by Fred Pickard vs VPI, 1957
- 80 yards by Phil Spooner vs Houston, 1965
- 78 yards by Buck Metts vs Stetson, 1964

LONGEST KICKOFF RETURNS

- 100 yards by Bill Moremen and T. K. Wetherell vs Kentucky, 1965 (TD, lateral)
- 94 yards by Bill Moremen and T. K. Wetherell vs Miami, 1966 (TD, lateral)
- 89 yards by Bill Odom vs VPI, 1955 (TD)

LONGEST INTERCEPTION RETURNS

- 99 yards by Ted Hewitt vs Stetson, 1948 (TD)
- 99 yards by Fred Biletnikoff vs Miami, 1963 (TD)
- 86 yards by Tom Hillabrand vs Auburn, 1960 (TD)
- 81 yards by Bud Whitehead vs Wake Forest, 1959 (TD)

LONGEST RUNS FROM SCRIMMAGE WITHOUT SCORING

- 76 yards by Roy Thompson vs Stetson, 1951
- 65 yards by Wayne Giardino vs Oklahoma (Gator Bowl), 1965
- 64 yards by Nelson Italiano vs Troy State, 1951

LONGEST PUNT RETURNS

- 92 yards by Phil Abraira vs North Carolina State, 1969 (TD)
- 80 yards by Bill Odom vs Stetson, 1954 (TD)
- 75 yards by Walt Sumner vs Alabama, 1967 (TD)
- 75 yards by Ralph Claudron vs Whiting Field, 1949 (TD)

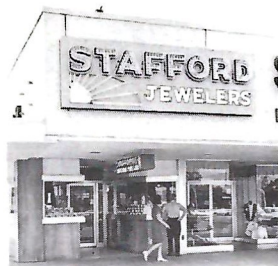
LONGEST TOUCHDOWN PASSES

- 86 yards from Gary Pajcic to Ron Sellers vs Wake Forest, 1966
- 82 yards from Gary Pajcic to Ron Sellers vs Maryland, 1968
- 80 yards from Bill Cappleman to Don Pederson vs Memphis State, 1969
- 80 yards from Nelson Italiano to Eddie Gray vs Newberry, 1950

OUR TEAM SAYS "LET'S GO SEMINOLES"



DOWNTOWN
VERNON STEVENS
Manager



PARKWAY
AMOS STEVENS
Manager



THOMASVILLE
M. WILLIAMSON
Manager



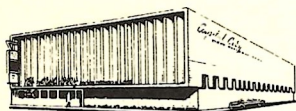
NORTHWOOD MALL
NATHAN BRASWELL
Manager

STAFFORD QUALITY JEWELERS

Be on the FIRST Team!



We extend our warmest welcome to the Students and Faculty of FSU, TCC and FAMU... When it comes to Banking... Depend on a Solid Favorite... a PRO Team of Bankers and Financial Coaches that can help you with any Banking Need. So when GOOD Banking is what YOU want... Be on the FIRST TEAM at FIRST NATIONAL... where our Gimmick is Better Banking.



Capital City
FIRST NATIONAL BANK

STATISTICS

OPP	FSU (2-1)	1970 TEAM STATS	FLA. (3-1)	OPP
41	44	Total Points	84	84
22/20/0	24/19/3	First Downs, Run/Pass/Pen	25/50/7	31/38/7
127/3.6	144/3.9	Rushing Play/Avg.	143/3.0	172/3.4
73/34/4	54/26/3	Passes Att./Comp./Int.	159/76/7	30/65/9
487	328	Passing Yardage	1,402	1,288
940/313	889/296	Total Yardage/Per Game	1,826/457	1,879/470
9/6	6/6	Fumbles/Lost	9/6	5/2
17/44.7	24/38.8	Punts/Avg.	27/37.5	22/40.2

INDIVIDUAL LEADERS FLORIDA STATE

Passing	Att.	Comp.	Int.	Yards.	TD	Lg.
Whigham	55	24	3	411	1	39
Warren	18	10	1	76	0	29

Receiving	No.	Yds.	Avg.	TD	Long
Dawson	9	184	20.4	0	39
Tyson	8	129	16.1	1	27
Bailey	4	54	13.5	0	36
Munroe	4	28	7.0	0	14

Rushing	TC	Net	Avg.	TD	Long
Bailey	47	155	3.3	1	19
Munroe	25	99	3.9	1	29
Whigham	14	68	4.9	0	20
Magalski	10	56	5.6	0	46

Scoring	TD	FGA/M	XPA/M	TP
Fontes	0	11-5	3-2	17
Bailey	1	0/0	0/0	6
Munroe	1	0/0	0/0	6
Snell	1	0/0	0/0	6
Tyson	1	0/0	0/0	6

FLORIDA

Passing	Att.	Comp.	Int.	Yds.	TD
Reaves	149	74	6	954	3

Receiving	No.	Yds.	Avg.	TD
Alvarez	16	218	13.6	2
Rich	14	206	14.7	1
Yancey	12	140	11.7	0
Jackson	11	132	12.0	0

Rushing	TC	Net	Avg.	TD	Long
Durrance	61	192	3.2	5	30
Rich	26	80	3.1	1	15
George	14	48	3.4	1	15

Scoring	TD	FGA/M	XPA/M	TP
Durrance	5	0/0	0/0	30
Alvarez	3	0/0	0/0	18
Franco	0	3/2	10/10	16
Rich	2	0/0	0/0	12



THE BANK THAT OFFERS A

**NO
SERVICE
CHARGE**

PERSONAL CHECKING ACCOUNT

(with \$200 minimum balance)

**THE TALLAHASSEE BANK
and Trust Company**

CALHOUN AT JEFFERSON

Wouldn't an ice cold Coke
taste good right now?



Enjoy

Coca-Cola

OFFENSE

18 KENT GAYDOS WR
 66 JOE STRICKLER LT
 65 J. W. McKINNIE LG
 55 ALLEN DEES C
 76 BILL RIMBY RG
 77 ROGER MINOR RT
 81 JIM TYSON TE
 12 FRANK WHIGHAM QB
 30 TOM BAILEY RB
 48 JAMES JARRETT FB
 82 RHETT DAWSON WR

SEMINOLES

DEFENSE

85 BILL SHAW LE
 74 ROBERT McEACHERN LT
 56 STEVE GILDEA LLB
 56 BILL LOHSE MLB
 50 DAN WHITEHURST RLB
 75 RICHARD AMMAN RT
 83 RON WALLACE RE
 44 BUDDY GRIDLEY MON
 26 JAMES THOMAS LC
 20 DAVID SNELL SAF
 29 BENNY RUST RC

THE SEMINOLE SQUAD

3 Carrell, P-PK	53 Stokes, OG
11 Fontes, PK	54 Glass, LB
12 Whigham, QB	55 Dees, C
14 Forey, QB	56 Lohse, LB
15 Warren, QB	57 Carden, C
16 Shively, QB	58 Gildea, LB
18 Gaydos, WR	59 Strickland, OT
19 Huff, QB	60 Ba. Rice, LB
20 Snell, DB	61 Essex, OT
22 Smith, WR	62 Bass, LB
23 Pederson, WR	63 G. Montg'ry, OG
24 Lanahan, FB	64 Musser, OG
26 Thomas, DB	65 McKinnie, OG
27 Munroe, RB	66 Strickler, OT
28 Ashmore, DB	67 Sammons, OG
29 Rust, DB	68 Beville, C
30 Bailey, RB	69 White, DT
31 Magalski, FB	70 Henson, DT
33 Parker, LB	72 Gibbs, OT
35 Gray, WR	74 McEachern, DT
36 Orear, RB	75 Amman, DT
40 McMillan, DB	76 Rimby, OT
42 Ratliff, DB	77 Minor, OT
43 J. Montg'ry, DB	80 Hunt, DE
44 Gridley, DB	81 Tyson, TE
46 Bengtson, PK	82 Dawson, WR
47 Harris, RB-P	83 Wallace, DE
48 Jarrett, FB	84 Parris, DE
49 Glisson, LB	85 Shaw, DE
50 Whitehurst, LB	87 Zaffran, TE
51 Howell, LB	88 Be. Rice, DE
52 Sowers, C	

OFFICIALS —

Referee Morris E. Harrison, Decatur, Ga.
 Umpire Oscar H. Edmonds, Jr., Memphis, Tenn.
 Linesman Robert W. Gaston, Atlanta, Ga.

DEFENSE

74 JACK YOUNGBLOOD LE
 68 ALAN COLE LT
 48 GARY PETERSEN SLB
 64 ERIC TAGGART MLB
 88 RICHARD BUCHANAN WLB
 70 DANNY WILLIAMS RT
 77 ROBERT HARRELL RE
 38 HARVIN CLARK LHB
 43 JOHN FAIX RHB
 36 JACK BURNS MON
 34 JOHN CLIFFORD SAF

GATORS

OFFENSE

45 CARLOS ALVAREZ LE
 77 BILL DOWDY QT
 69 DALE HUTCHERSON QG
 56 DAVID PEEK C
 61 GENE CONRAD SG
 58 FRED ABBOTT ST
 87 JIM YANCEY TE
 7 JOHN REAVES QB
 33 TOMMY DURRANCE TB
 42 GARY WALKER FB
 22 WILLIE JACKSON FL

THE GATOR SQUAD

6 James, KS	53 Morris, C
7 Reaves, QB	54 Harlow, C
8 Franco, KS	55 Kensler, C
9 Schnebly, QB	56 Peek, C
20 Ash, SE	57 Poff, LB
21 Gunter, SE	58 Abbott, LB
22 Jackson, FL	59 Condon, OT
23 George, TB	60 Do. Williams, OG
24 Vinesett, FL	61 Conrad, OG
26 Buell, FB	62 Tucker, OG
27 Doddridge, S	63 Hutchinson, DT
28 Sorensen, M	64 Taggart, OG
30 Doel, TB	65 Pilcher, OT
31 Cheney, SE	66 Warbritton, OG
32 Hood, TB	68 Cole, DT
33 Rurrance, TB	69 Hutcherson, OG
34 Clifford, S	70 Da. Williams, DT
35 Silman, M	71 Hackney, OT
36 Burns, M	72 Fuller, DT
37 Bowen, KS	73 Field, OT
38 Clark, DB	74 Youngblood, DE
40 Rich, FB	75 Moore, DT
42 Walker, FB	77 Harrell, DE
43 Faix, DHB	79 Dowdy, OT
44 Hager, S	80 Good, DE
45 Alvarez, FL	81 Gowland, DE
47 Cutright, LB	84 Coker, TE
48 Peterson, LB	87 Yancey, TE
49 Kelly, LB	88 Buchanan, LB
50 Kelley, LB	89 Gurkin, DT
51 Powell, LB	

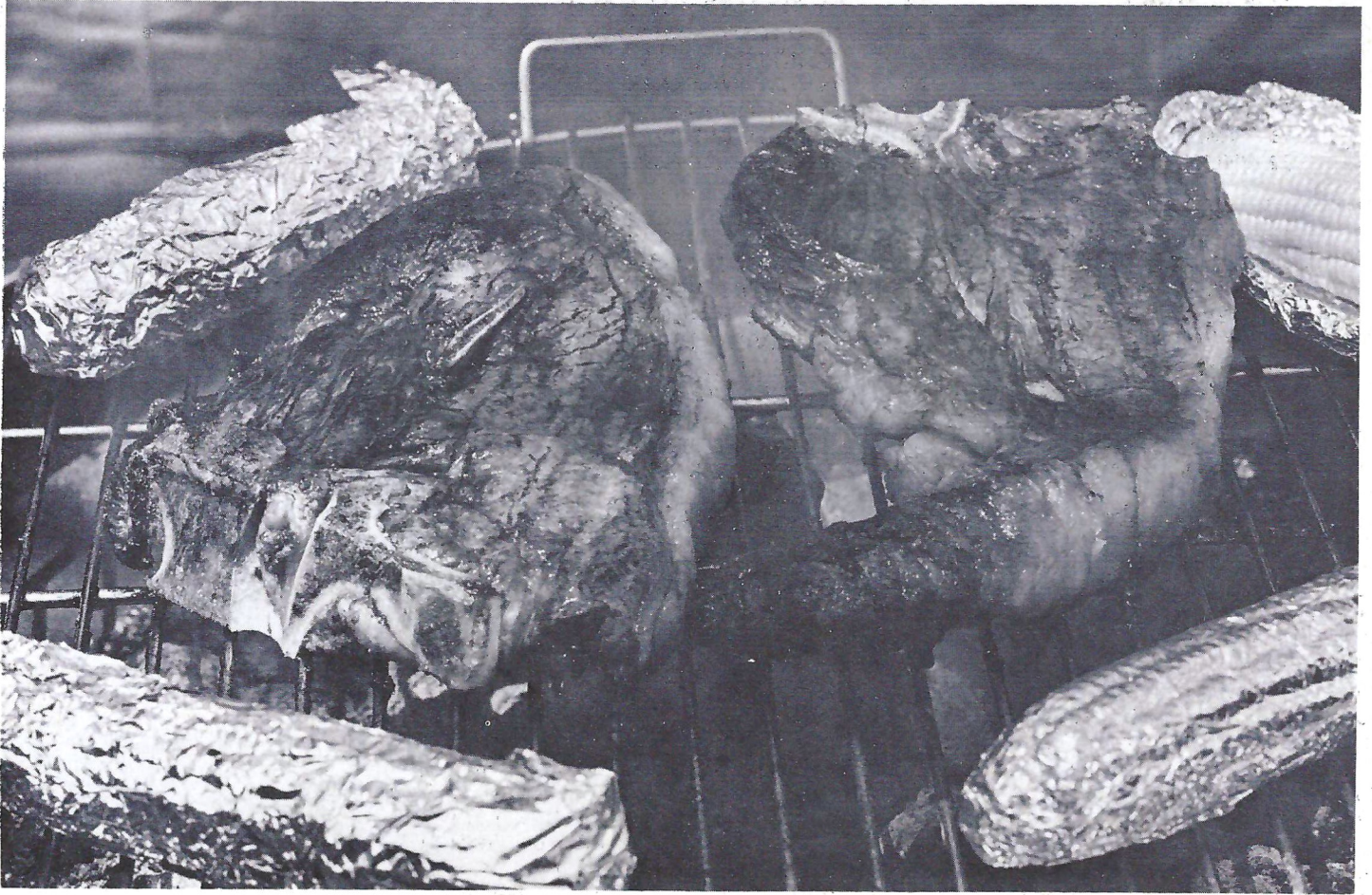
Field Judge Jack Langford, Atlanta, Ga.
 Back Judge Gordon Pettus, Alton, Ala.
 E.C.O. Ted Thomas, Hixson, Tenn.

TALLAHASSEE COCA-COLA BOTTLING CO.

"COCA-COLA" AND "COKE" ARE REGISTERED TRADE-MARKS OF THE COCA-COLA COMPANY.



It's the real thing. Coke.
 Trade-mark®



When You Celebrate FSU's victory,
Treat Yourself to a Juicy

S T E A K

BEEF—As delicious as it is nutritious!

FLORIDA BEEF COUNCIL

FLORIDA STATE

- 3 Carrell, Duane—P-PK
- 11 Fontes, Frank—PK
- 12 Whigham, Frank—QB
- 14 Forey, Dan—QB
- 15 Warren, Tommy—QB
- 16 Shively, Randy—QB
- 18 Gaydos, Kent—WR
- 19 Huff, Gary—QB
- 20 Snell, David—DB
- 22 Smith, Barry—WR
- 23 Pederson, Don—WR
- 24 Lanahan, John—FB
- 26 Thomas, James—DB
- 27 Munroe, Arthur—RB
- 28 Ashmore, Robert—DB
- 29 Rust, Benny—DB
- 30 Bailey, Tom—RB
- 31 Magalski, Paul—FB
- 33 Parker, Clint—LB
- 35 Gray, Mike—WR
- 36 Orear, Rick—RB
- 40 McMillan, Eddie—DB
- 42 Ratliff, Ron—DB
- 43 Montgomery, John—DB
- 44 Gridley, Buddy—DB
- 46 Bengtson, Brian—PK
- 47 Chip Harris—RB-P
- 48 Jarrett, James—FB
- 49 Glisson, Guy—LB
- 50 Whitehurst, Dan—LB
- 51 Howell, Bobby—LB
- 52 Sowers, Craig—C
- 53 Stokes, Jay—OG
- 54 Glass, Mike—LB
- 55 Dees, Allen—C
- 56 Lohse, Bill—LB
- 57 Carden, Robert—OT
- 58 Gildea, Steve—LB
- 59 Strickland, Larry—OT
- 60 Rice, Barry—LB
- 61 Essex, John—OT
- 62 Bass, Theron—LB
- 63 Montgomery, George—OG
- 64 Musser, Charley—OG
- 65 McKinnie, J. W.—OG
- 66 Strickler, Joe—OT
- 67 Sammons, Mike—OG
- 68 Beville, Steve—C
- 69 White, Tom—DT
- 70 Henson, Bill—DT
- 72 Gibbs, Shane—OT
- 74 McEachern, Robert—DT
- 75 Amman, Richard—DT
- 76 Rimby, Bill—OT
- 77 Minor, Roger—OT
- 80 Hunt, Charlie—DE
- 81 Tyson, Jim—TE
- 82 Dawson, Rhett—WR
- 83 Wallace, Ron—DE
- 84 Parris, Gary—TE
- 85 Shaw, Bill—DE
- 87 Zaffran, Ted—TE
- 88 Rice, Beryl—DE

FLORIDA STATE

"Seminoles"

Offense		Defense	
WR 18	Kent Gaydos	LE 85	Bill Shaw
22	Barry Smith	80	Charlie Hunt
LT 66	Joe Strickler	LT 74	Robert McEachern
72	Shane Gibbs	69	Tom White
LG 65	J. W. McKinnie	LLB 58	Steve Gildea
67	Mike Sammons	54	Mike Glass
C 55	Allen Dees	MLB 56	Bill Lohse
68	Steve Beville	51	Bobby Howell
RG 76	Bill Rimby	RLB 50	Dan Whitehurst
63	G. Montgomery	62	Theron Bass
RT 77	Roger Minor	RT 75	Richard Amman
53	Jay Stokes	59	Larry Strickland
TE 81	Jim Tyson	RE 83	Ron Wallace
87	Ted Zaffran	88	Beryl Rice
QB 12	Frank Whigham	MON 44	Buddy Gridley
15	Tommy Warren	49	Guy Glisson
RB 30	Tom Bailey	LC 26	James Thomas
27	Arthur Munroe	40	Eddie McMillan
FB 48	James Jarrett	SAF 20	David Snell
24	John Lanahan	28	Robert Ashmore
31	Paul Magalski	43	J. Montgomery
WR 82	Rhett Dawson	RC 29	Benny Rust
35	Mike Gray	42	Ron Ratliff

PUNTS — 3 Duane Carrell

PUNT RETURNS — 20 David Snell

PLACEMENTS — 11 Frank Fontes

KICKOFF RETURNS — 27 Arthur Munroe, 20 David Snell

FLORIDA

"Gators"

Offense		Defense	
SE 45	Carlos Alvarez	LE 74	J. Youngblood
20	Terry Ash	81	Jan Gowland
QT 79	Billy Dowdy	LT 68	Alan Cole
65	Ray Pilcher	89	Mike Gurkin
QG 69	Dale Hutcherson	LLB 48	Gary Petersen
62	Dennis Tucker	51	Brad Powell
C 56	David Peek	MLB 64	Eric Taggart
55	Richard Kensler	50	Mike Kelley
SG 61	Gene Conrad	75	Eddy Moore
60	Donny Williams	RLB 88	R. Buchanan
ST 58	Fred Abbott	49	Jim Kelly
73	Mike Field	RT 70	Dan Williams
TE 87	Jim Yancey	72	Len Fuller
32	Charles Hood	RE 77	Robert Harrell
QB 7	John Reaves	63	W. Hutchinson
9	John Schnebly	MON 38	Harvin Clark
TB 33	Tommy Durrance	41	Danny Flanders
24	Jerry Vinesett	LCB 43	John Faix
FB 42	Gary Walker	44	Ted Hager
40	Mike Rich	RCB 36	Jack Burns
FL 22	Willie Jackson	35	John Silman
31	Andy Cheney	SAF 34	John Clifford
		27	R. Doddridge

PUNTS—6 John James, 37 Hunter Bowen

PLACEMENTS—8 Richard Franco, 86 George Webster

PUNT RETURNS—36 Jack Burns, 45 Carlos Alvarez

KO RETURNS—22 Willie Jackson, 30 Duane Doel

FLORIDA

- 6 John James—KS
- 7 John Reaves—QB
- 8 Rich Franco—KS
- 9 John Schnebly—QB
- 20 Terry Ash—SE
- 21 Bruce Gunter—SE
- 22 Willie Jackson—FL
- 23 Leonard George—TB
- 24 Jerry Vinesett—FL
- 26 Mark Buell—FB
- 27 Rocky Doddridge—S
- 28 Doug Sorensen—M
- 30 Duane Doel—TB
- 31 Andy Cheney—SE
- 32 Charles Hood—TB
- 33 Tommy Durrance—TB
- 34 John Clifford—S
- 35 John Silman—M
- 36 Jack Burns—M
- 37 Hunter Bowen—KS
- 38 Harvin Clark—DB
- 40 Mike Rich—FB
- 42 Garry Walker—FB
- 43 John Faix—DHB
- 44 Ted Hager—S
- 45 Carlos Alvarez—FL
- 47 Bruce Cutright—LB
- 48 Gary Peterson—LB
- 49 Jim Kelly—LB
- 50 Mike Kelley—LB
- 51 Brad Powell—LB
- 53 Larry Morris—C
- 54 Greg Harlow—C
- 55 Richard Kensler—C
- 56 David Peek—C
- 57 David Poff—LB
- 58 Fred Abbott—LB
- 59 Tom Condon—OT
- 60 Donny Williams—OG
- 61 Gene Conrad—OG
- 62 Dennis Tucker—OG
- 63 Walter Hutchinson—DT
- 64 Eric Taggart—OG
- 65 Ray Pilcher—OT
- 66 Randy Warbritton—OG
- 68 Alan Cole—DT
- 69 Dale Hutcherson—OG
- 70 Danny Williams—DT
- 71 Bob Hackney—OT
- 72 Len Fuller—DT
- 73 Mike Field—OT
- 74 Jack Youngblood—DE
- 75 Eddy Moore—DT
- 77 Robert Harrell—DE
- 79 Bill Dowdy—OT
- 80 Tim Good—DE
- 81 Jan Gowland—DE
- 84 Jerry Coker—TE
- 87 Jim Yancey—TE
- 88 Richard Buchanan—LB
- 89 Mike Gurkin—DT



DRIFTWOOD MOTEL and RESTAURANT

AMERICAN EXPRESS - DINERS - AMERICAN OIL - PHILLIPS 66 CREDIT CARDS HONORED

1402 W. TENN. (U.S. 90)

(904) 224-4174

- AIR CONDITIONED
- DIRECT DIAL PHONES
- Se habla Espanol
- CABLE COLOR TV
- POOL
- Northwest corner of Campus on U.S. 90; Fla. 20 West

FLORIDA STATE

1969						
NO.	NAME	POS.	CLASS	HT.	WT.	STATUS HOMETOWN
75	AMMAN, RICHARD	DT	Jr.	6-6	234	1VL Cocoa Beach
28	ASHMORE, ROBERT	DB	Jr.	6-0	189	1VL Tallahassee
30	BAILEY, TOM	RB	Sr.	6-2	215	2VL Coral Gables
62	BASS, THERON	LB	Sr.	5-11	200	2VL Live Oak
46	BENGTSON, BRIAN	PK	Soph.	6-3	204	Squad Green Bay, Wis.
68	BEVILLE, STEVE	C	Jr.	6-2	215	1VL Fernandina Beach
57	CARDEN, ROBERT	C	Soph.	6-3	238	Frosh Edgewater
3	CARRELL, DUANE	P-PK	Jr.	5-11	171	1VL Washington, D.C.
82	DAWSON, RHETT	WR	Jr.	6-1	185	1VL Valdosta, Ga.
55	DEES, ALLEN	C	Soph.	6-2	195	RS Lakeland
61	ESSEX, JOHN	OT	Soph.	6-2	236	Squad Miami
11	FONTES, FRANK	PK	Jr.	5-6	155	JC Perth Amboy, N.J.
14	FOREY, DAN	QB	Jr.	6-5	205	JC Denver, Colo.
10	GAYDOS, KENT	WR	Jr.	6-6	209	1VL Dallas, Tex.
72	GIBBS, SHANE	OT	Soph.	6-3	209	Frosh Bay Minette, Ala.
58	GILDEA, STEVE	LB	Sr.	6-0	194	2VL Daytona Beach
54	GLASS, MIKE	LB	Soph.	6-3	203	RS Tampa
49	GLISSON, GUY	LB	Jr.	6-0	205	1VL Tampa
35	GRAY, MIKE	WR	Sr.	6-3	200	2VL Lake Mary
44	GRIDLEY, BUDDY	DB	Jr.	5-11	203	1VL Tallahassee
47	HARRIS, CHIP	RB-P	Jr.	6-0	205	JC Live Oak
70	HENSON, BILL	DT	Jr.	6-1	230	JC Hyattsville, Md.
51	HOWELL, BOBBY	LB	Soph.	6-0	215	Frosh Decatur, Ga.
19	HUFF, GARY	QB	Soph.	6-1	185	Frosh Tampa
80	HUNT, CHARLIE	DE	Soph.	6-4	202	Frosh Jacksonville
48	JARRETT, JAMES	FB	Jr.	6-2	202	1VL Elizabethton, Tenn.
24	LANAHAN, JOHN	FB	Jr.	6-0	197	1VL Jacksonville
56	LOHSE, BILL	LB	Sr.	6-1	228	1VL St. Petersburg
74	McEACHERN, ROBERT	DT	Sr.	6-2	234	2VL Tallahassee
65	McKINNIE, J.W.	OG	Jr.	6-2	210	1VL Macon, Ga.
40	McMILLAN, EDDIE	DB	Soph.	6-2	172	Frosh Tampa
31	MAGALSKI, PAUL	FB	Jr.	5-11	208	1VL Garfield Hts. Ohio
77	MINOR, ROGER	OT	Soph.	6-3	242	RS Delray Beach
63	MONTGOMERY, GEORGE	OG	Jr.	6-2	229	1VL Coral Gables
43	MONTGOMERY, JOHN	DB	Jr.	6-1	193	1VL Jacksonville
27	MUNROE, ARTHUR	RB	Jr.	6-1	186	1VL Quincy
64	MUSSER, CHARLEY	OG	Soph.	6-1	215	Frosh Graceville
36	OREAIR RICK	RB	Soph.	6-1	190	Frosh Jacksonville
33	PARKER, CLINT	LB	Soph.	6-2	190	Frosh Daytona Beach
84	PARRIS, GARY	TE	Soph.	6-3	220	Frosh Vero Beach
23	PEDERSON, DON	WR	Sr.	6-1	184	2VL Groveland
42	RATLIFF, RON	DB	Soph.	6-0	183	Squad West Palm Beach
60	RICE, BARRY	LB	Sr.	6-2	210	2VL Fernandina Beach
88	RICE, BERYL	DE	Sr.	6-1	204	2VL Fernandina Beach
76	RIMBY, BILL	OG	Jr.	6-4	224	1VL St. Petersburg
29	RUST, BENNY	DB	Jr.	6-0	193	1VL Miami
67	SAMMONS, MIKE	OG	Jr.	6-1	210	1VL Atlanta, Ga.
85	SHAW, BILL	DE	Jr.	6-2	215	1VL Marietta, Ga.
16	SHIVELY, RANDY	QB	Soph.	6-0	164	Frosh St. Petersburg
22	SMITH, BARRY	WR	Soph.	6-0	184	Frosh Miami
20	SNELL, DAVID	DB	Soph.	5-8	175	Frosh Slocomb, Ala.
52	SOWERS, CRAIG	C	Soph.	6-4	231	RS Ft. Lauderdale
53	STOKES, JAY	OT	Jr.	6-4	229	1VL Sanford
59	STRICKLAND, LARRY	DT	Soph.	6-1	220	RS Tallahassee
66	STRICKLER, JOE	OT	Jr.	6-2	235	1VL Avon Park
26	THOMAS, JAMES	DB	Soph.	6-1	188	Frosh Macon, Ga.
81	TYSON, JIM	TE	Sr.	6-1	213	2VL Pahokee
83	WALLACE, RON	DE	Sr.	6-2	187	2VL Macon, Ga.
15	WARREN, TOMMY	QB	Sr.	5-11	169	2VL Coral Gables
12	WHIGHAM, FRANK	QB	Jr.	6-0	184	Squad Sanford
69	WHITE, TOM	DT	Sr.	6-0	225	1VL West Palm Beach
50	WHITEHURST, DAN	LB	Soph.	6-4	215	RS Adel, Ga.
87	ZAFFRAN, TED	TE	Jr.	6-3	190	1VL Orlando



● CABLE COLOR TV IN ALL ROOMS
RECEIVING NINE CHANNELS

● POOL

● AIR CONDITIONED

● DIRECT DIAL PHONES

● Se habla Espanol

AMERICAN EXPRESS - DINERS - AMERICAN OIL
PHILLIPS 66 - BANKAMERICARD
MASTER CHARGE - CARTE BLANCHE

DRIFTWOOD MOTEL and RESTAURANT

Cocktails - Banquet Room

● Northwest corner of Campus
on U.S. 90; Fla. 20 West

1402 W. TENN. (U.S. 90)
(904) 224-4174

FLORIDA

No.	Name	Pos.	Hgt.	Wgt.	Hometown	Class-Exp.
6	John James	KS	6-1	165	Panama City, Fla.	So.-TR
7	John Reaves	QB	6-3	210	Tampa, Fla.	Jr.-1VL
8	Rich Franco	KS	5-9	167	Melbourne, Fla.	Jr.-1VL
9	John Schnebly	QB	5-10	177	Daytona Beach, Fla.	Jr.-1VL
20	Terry Ash	SE	5-8	175	Afton, Okla.	Sr.-SQ
21	Bruce Gunter	SE	5-10	168	Satellite Beach, Fla.	Jr.-SQ
22	Willie Jackson	FL	6-2	210	Sarasota, Fla.	So.-FR
23	Leonard George	TB	5-10	178	Tampa, Fla.	So.-FR
24	Jerry Vinesett	FL	5-11	193	Savannah, Ga.	Sr.-2VL
26	Mark Buell	FB	6-1	193	Gainesville, Fla.	So.-FR
27	Rocky Doddridge	S	6-1	178	Miami, Fla.	Jr.-SQ
28	Doug Sorensen	M	5-10	193	Melbourne, Fla.	Jr.-1VL
30	Duane Doel	TB	6-0	182	Plantation, Fla.	So.-FR
31	Andy Cheney	SE	6-0	180	Branford, Fla.	Jr.-1VL
32	Charles Hood	TB	6-2	207	Palatka, Fla.	Jr.-1VL
33	Tommy Durrance	TB	6-0	204	Daytona Beach, Fla.	Jr.-1VL
34	John Clifford	S	6-2	157	Coral Gables, Fla.	So.-FR
35	John Silman	M	5-10	179	Norman, Okla.	So.-FR
36	Jack Burns	M	5-11	181	Tampa, Fla.	Sr.-2VL
37	Hunter Bowen	KS	5-11	174	Ocala, Fla.	Sr.-1VL
38	Harvin Clark	DB	6-0	188	New Smyrna Bch., Fla.	Jr.-1VL
40	Mike Rich	FB	6-3	217	Dublin, Ga.	Jr.-1VL
42	Garry Walker	FB	6-1	203	Winter Haven, Fla.	Sr.-2VL
43	John Faix	DHB	6-0	191	Miami, Fla.	Jr.-1VL
44	Ted Hager	S	6-0	177	Homestead, Fla.	Sr.-2VL
45	Carlos Alvarez	FL	6-0	181	Miami, Fla.	Jr.-1VL
47	Bruce Cutright	LB	6-1	192	Titusville, Fla.	So.-SQ
48	Gary Peterson	LB	6-1	204	Bradenton, Fla.	Jr.-SQ
49	Jim Kelly	LB	6-0	206	Sebring, Fla.	Sr.-SQ
50	Mike Kelley	LB	6-1	220	Orlando, Fla.	Sr.-2VL
51	Brad Powell	LB	5-11	192	W. Palm Beach, Fla.	Sr.-2VL
53	Larry Morris	C	6-1	210	Pensacola, Fla.	So.-FR
54	Greg Harlow	C	6-0	212	Tampa, Fla.	So.-FR
55	Richard Kensler	C	6-1	214	Gainesville, Fla.	Jr.-SQ
56	David Peek	C	6-2	219	Ocala, Fla.	Jr.-SQ
57	David Poff	LB	6-1	206	Titusville, Fla.	So.-FR
58	Fred Abbott	LB	6-3	232	Brooksville, Fla.	So.-SQ
59	Tom Condon	OT	6-4	221	Pensacola, Fla.	So.-SQ
60	Donny Williams	OG	6-0	224	Lake City, Fla.	Sr.-2VL
61	Gene Conrad	OG	5-10	209	Hialeah, Fla.	Jr.-SQ
62	Dennis Tucker	OG	6-0	213	Crestview, Fla.	So.-FR
63	Walter Hutchinson	DT	6-3	227	Tampa, Fla.	So.-FR
64	Eric Taggart	OG	6-1	212	Decatur, Ga.	Jr.-SQ
65	Ray Pilcher	OT	6-2	221	Panama City, Fla.	Jr.-SQ
66	Randy Warbritton	OG	6-1	215	Jacksonville, Fla.	Sr.-SQ
68	Alan Cole	DT	6-1	226	Decatur, Ga.	Sr.-2VL
69	Dale Hutcherson	OG	6-1	202	Eau Gallie, Fla.	Jr.-1VL
70	Danny Williams	DT	6-1	230	Valdosta, Ga.	Jr.-1VL
71	Bob Hackney	OT	6-3	221	Jacksonville, Fla.	So.-FR
72	Len Fuller	DT	5-10	238	Gainesville, Fla.	Sr.-SQ
73	Mike Field	OT	6-3	230	Ft. Lauderdale, Fla.	Sr.-SQ
74	Jack Youngblood	DE	6-5	246	Monticello, Fla.	Sr.-2VL
75	Eddy Moore	DT	6-2	234	Orlando, Fla.	So.-FR
77	Robert Harrell	DE	6-2	221	Jacksonville, Fla.	Jr.-1VL
79	Bill Dowdy	OT	6-3	224	W. Palm Beach, Fla.	Jr.-1VL
80	Tim Good	DE	6-0	212	Gainesville, Fla.	So.-SQ
81	Jan Gowland	DE	6-0	212	Winter Garden, Fla.	So.-FR
84	Jerry Coker	TE	6-2	204	Hollywood, Fla.	So.-SQ
87	Jim Yancey	TE	6-4	214	Miami, Fla.	Jr.-1VL
88	Richard Buchanan	LB	6-2	206	Pensacola, Fla.	Jr.-1VL
89	Mike Gurkin	DT	6-6	231	W. Palm Beach, Fla.	Sr.-SQ

THINK

Think
Very simple advice—yet incredibly important.
Because those who do, make it.
Those who don't, don't.
Think about it.

IBM[®]

660 APALACHEE PARKWAY
TALLAHASSEE, FLORIDA
PHONE 224-9120



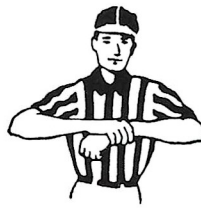
Touchdown or Field Goal



Safety



Offside (Infraction of scrimmage or free kick formation)



Illegal use of Hands and Arms



Illegal Procedure or Position



Ineligible Receiver Down Field on Pass



Delay of Game



Clipping



Illegal Motion



Roughing the Kicker

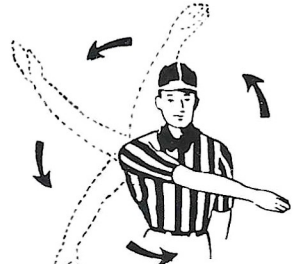


Illegal Shift

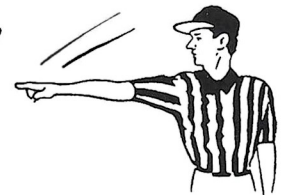
**BP
SETS
THE
PACE**



Substitution Infractions



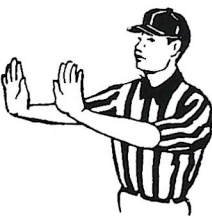
Start the Clock



First Down



Time out; Referee's Discretionary or Excess Time Out followed with tapping hands on chest.



Forward Pass or Kick Catching Interference



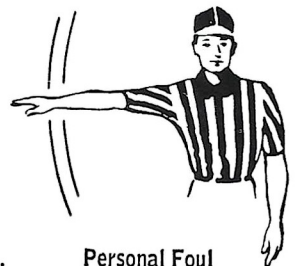
Intentional Grounding



Loss of Down



Ball Ready for Play



Personal Foul



RAGANS and ROBERTS TIRE COMPANY



Big Bends Largest Goodyear & BP Oil Dealer

James W. Ragans — OWNERS — Eli P. Roberts

Complete Service Department Including:

Front End and Brake Rebuilding
Tires · Batteries · Accessories

Fuel Oils For Home, Business and Farm

for AUTOMOTIVE SERVICE call
224-8156

for FUEL OIL call
576-3145

609 W. Tennessee Street

Incomplete Forward Pass,
Penalty Declined,
No Play, or No Score



Ball Dead; If Hand
is Moved from Side
to Side: Touchback



PENALTIES

1. **OFFSIDE** by either team; Violation of scrimmage or free kick formation; Encroachment on neutral zone—Loss of Five Yards.
2. **ILLEGAL PROCEDURE, POSITION OR SUBSTITUTION**—Putting ball in play before Referee signals "Ready-for-play"; Failure to complete substitution before play starts; Player out of bounds when scrimmage begins; Failure to maintain proper alignment of offensive team when ball is snapped; False start or simulating start of a play; Taking more than two steps after Fair Catch is made; Player on line receiving snap—Loss of Five Yards.
3. **ILLEGAL MOTION**—Offensive player illegally in motion when ball is snapped—Loss of Five Yards.
4. **ILLEGAL SHIFT**—Failure to stop one full second following shift—Loss of Fifteen Yards.
5. **ILLEGAL RETURN** of substitute not previously disqualified—Loss of Fifteen Yards.
6. **ILLEGAL DELAY OF GAME**; Taking more than four times out during either half (except for replacement of injured player)—Loss of Five Yards. Team not ready to play at start of either half—Loss of Fifteen Yards.
7. **PERSONAL FOUL** — Tackling or blocking defensive player who has made fair catch; Piling on; Hurdling; Grasping face mask of opponent; Tackling player out of bounds, or running into player obviously out of play; Striking an opponent with fist, forearm, elbow or locked hands; Kicking or kneeing—Loss of Fifteen Yards (Flagrant offenders will be disqualified.)
8. **CLIPPING**—Loss of Fifteen Yards.
9. **ROUGHING THE KICKER** or holder—Loss of Fifteen Yards.
10. **UNSPORTSMANLIKE CONDUCT**—Violation of rules during intermission; Illegal return of suspended player; Coaching from sidelines; Invalid signal for Fair Catch; Persons illegally on field—Loss of Fifteen Yards. (Flagrant offenders will be disqualified.)
11. **ILLEGAL USE OF HANDS AND ARMS** by offensive or defensive player; Defensive holding—Loss of Fifteen Yards.
12. **INTENTIONAL GROUNDING** of forward pass—Loss of Five Yards Plus Loss of Down.
13. **ILLEGALLY PASSING OR HANDING BALL FORWARD**—Loss of Five Yards Plus Loss of Down.
14. **FORWARD PASS OR KICK CATCHING INTERFERENCE**—Interference with opportunity of player of receiving team to catch a kick—Loss of Fifteen Yards. Interference by member of offensive team with defensive player making pass interception—Loss of Fifteen Yards Plus Loss of Down. Interference by defensive team on forward pass—Passing Team's Ball at Spot of Foul and First Down.
15. **INELIGIBLE RECEIVER DOWN-FIELD ON PASS**—Loss of Fifteen Yards.
16. **BALL ILLEGALLY TOUCHED, KICKED OR BATTED**—Forward pass being touched by ineligible receiver beyond the line of scrimmage—Loss of Fifteen Yards from Spot of Preceding Down and Loss of a Down. Eligible pass receiver who goes out of bounds and later touches a forward pass—Loss of Down. Illegal touching of kicked ball within opponent's ten yard line—Touchback.
17. **PENALTY DECLINED**; Incomplete forward pass; No play or no score.
18. **CRAWLING** by runner—Loss of Five Yards. Interlocked Interference—Loss of Fifteen Yards.



ready any time you are

—THE SNACK, THE BOX, THE BUCKET OR THE BARREL

America's No. 1 hospitality dish for sports fans and busy people on the go.

3 locations to serve you:

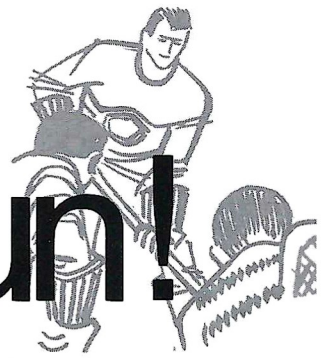
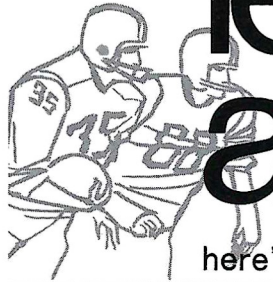
1002 N. MONROE, 224-1645

1603 W. TENN. ST., 224-4313

1583 APALACHEE PARKWAY, 877-7620



let's go out and have fun!



here's your winter sports and entertainment program . . .

AUGUST

8	Miami Dolphins vs. Pittsburg Steelers	Gator Bowl
12	Library-Children's Program	Auditorium
13	Wrestling	Coliseum
14	Starlight Symphonette	Auditorium
15	Creedence Clearwater	Coliseum
20	Wrestling	Coliseum
22	Soul Rock	Coliseum
22	Miss Jax. Contest- Jax. JC's	Auditorium
27	Wrestling	Coliseum
28	Starlight Symphonette	Auditorium

SEPTEMBER

3	Wrestling	Coliseum
3	Senior Citizens	Auditorium
5	Steppenwolf	Coliseum
10	Wrestling	Coliseum
11	Starlight Symphonette	Auditorium
12	Florida vs. Duke	Gator Bowl
15	United Fund	Coliseum
17	Wrestling	Coliseum
19	Rock (Mountain)	Coliseum
23	Atlanta Hawks vs. Boston Celtics	Coliseum
24	Wrestling	Coliseum
25	WQIK- Porter Wagoner	Coliseum
25	Pat Paulson-FJC	Auditorium
26	Soul Rock-WOBS	Coliseum

OCTOBER

1	Wrestling	Coliseum
2	Donavan	Coliseum
8	Wrestling	Coliseum
9	WOBS-Stage Show	Coliseum
10	WVOJ- Country Music Show	Coliseum
10-11	Festival of Arts	Auditorium
15	Wrestling	Coliseum
16	Sweetwater-FJC	Auditorium
16-17	Hockey	Coliseum
17-20	Festival of Arts	Auditorium
17	Bethune Cookman vs. Savannah St	Gator Bowl
22	Jose Feliciano	Auditorium
23-31	Greater Jacksonville Fair	Gator Bowl/Coliseum
24	Miss Teenage-Jax WPDQ	Auditorium
30	Ebony Fashion Show	Auditorium
31	Blues Band	Auditorium

NOVEMBER

2	Supremes	Auditorium
5	Wrestling	Coliseum

6	Hockey	Coliseum
7	Fla. Alumni Bar-B-Que	Coliseum
7	Georgia vs. Florida	Gator Bowl
8-18	Floridians	Coliseum
10	Symphony	Auditorium
10	Hockey	Coliseum
13-15	Jehovah's Witnesses	Auditorium
13-16	Boat Show	Coliseum
17	Hockey	Coliseum
19	Wrestling	Coliseum
20	Blood Sweat & Tears	Coliseum
21	Al Hirt-FJC	Auditorium
21	Hockey	Coliseum
22	Hockey	Coliseum
24	Zorba	Auditorium
24	Hockey	Coliseum
25	Hockey	Coliseum
26	Wrestling	Coliseum
26	Wolfson vs. Englewood	Gator Bowl
26	Lee vs. Jackson	Gator Bowl
26	Stanton vs. Gilbert	Gator Bowl
27-29	Loretta Lynn Rodeo	Coliseum

DECEMBER

1	JU Basketball	Coliseum
3	Wrestling	Coliseum
4	Glenn Campbell	Coliseum
4	The Band	Auditorium
5	Hockey	Coliseum
5	Light Rock Group "It's a Beautiful Day"	Auditorium
6	Floridians	Coliseum
7-8	Civitan Basketball Tournament	Coliseum
10	Wrestling	Coliseum
11	Hockey	Coliseum
13	Hockey	Coliseum
16	Hockey	Coliseum
17	Wrestling	Coliseum
18	Temptations	Coliseum
19	Hockey	Coliseum
21	Gator Bowl President's Ball	Coliseum
24	Wrestling	Coliseum
25	Hockey	Coliseum
28-29	Gator Bowl BB Tournament	Coliseum
31	Hockey	Coliseum

JANUARY

1	Gator Bowl Assn. Brunch	Auditorium
2	Gator Bowl Game	Gator Bowl



for tickets

civic auditorium - 354-2041
 memorial coliseum - 354-2041
 gator bowl - 354-5678

Consolidated City of Jacksonville



THE STATE BOARD OF EDUCATION

Members of the Florida Cabinet serve as the State Board of Education. Left to right, above, they are Commissioner of Agriculture Doyle Conner; Comptroller Fred O. Dickinson, Jr.; Secretary of State Tom Adams; Governor Claude R. Kirk, Jr.; Attorney General Earl Faircloth; Treasurer Broward Williams and Commissioner of Education Floyd T. Christian.



STATE & UNIVERSITY SYSTEM OFFICIALS



THE FLORIDA BOARD OF REGENTS

The State University System Board of Regents serve staggered terms of membership, ranging from one-year to nine-year appointments. The current Board members are shown above. Seated, left to right, are Dr. Louis C. Murray, Orlando, Vice Chairman; D. Burke Kibler III, Lakeland, Chairman; Robert B. Mautz, Tallahassee, Chancellor; and Julius F. Parker, Jr., of Tallahassee. Standing, left to right, are Chester H. Ferguson, Tampa; Henry D. Kramer, Jacksonville; Mrs. E. D. Pearce, Miami; Miss Elizabeth A. Kovachevich, St. Petersburg; Milton N. Weir, Jr., Boca Raton; and E. W. Hopkins, Jr., Pensacola.

MOBILE HOME INDUSTRIES, INC.



salutes

Florida State's Seminoles

*Mobile Home Industries
Nations Largest in Retail Sales
125 Outlets — 10 States

2 Manufacturing Plants
Housing by Vogue & Housing by Tiffany

Parks & Subdivisions
Paradise Villages

*Member of American Stock Exchange
(Our AMEX symbol is MH)



Senior, get a Seminoles Poncho

Senioritas too. Great for football games where you don't want to have to carry bulky umbrellas or rainwear. They are heavyduty white plastic and have a built-on hood.

As Seminole Pancho says, "The rain in Tallahassee, it falls mainly in the football stadium."

Get yours for only \$2.25 at any Leon Federal Savings office. 1706 West Tennessee, 111 S. Monroe or in the Parkway Center.



LEON FEDERAL SAVINGS

**AFFILIATES
SEMINOLE RADIO NETWORK
1970**

WGBS, 50,000 Watts, Miami	WMOP, 5,000 Watts, Ocala
WXVI, 5,000 Watts, W. P. Beach	WKIS, 5,000 Watts, Orlando
WTTB, 1,000 Watts, Vero Beach	WDAE, 5,000 Watts, Tampa
WMMB, 1,000 Watts, Melbourne	WTRL, 250 Watts, Bradenton
WROD, 1,000 Watts, Daytona Beach	WSPB, 1,000 Watts, Sarasota
WFOY, 1,000 Watts, St. Augustine	WLAK, 1,000 Watts, Lakeland
WJAX, 5,000 Watts, Jacksonville	WTRS FM 3,000 Watts, Dunnellon
WTNT, 5,000 Watts, Tallahassee	WSIR, 1,000 Watts, Winter Haven
WPCF, 5,000 Watts, Panama City	WTRR, 1,000 Watts, Sanford
WCOA, 5,000 Watts, Pensacola	WRUF, 5,000 Watts, Gainesville
WBGC, 1,000 Watts, Chipley	



Bo Mitchell



Bill Owens

Florida State's football games, whether played at home or away, will be heard throughout "Seminole Territory" on the Seminole Football Network.

With Tallahassee's WTNT acting as the originating station, 30 stations will carry every play to Seminole fans in Florida, South Georgia and South Alabama. In addition, several Florida State games will be heard from time to time as "Pick of Dixie" games.

Heading up the Seminole Network broadcast team once again will be Bo Mitchell. A veteran of more than 20 years broadcasting, Mitchell will be in his eighth season as the Seminoles play-by-play man. In addition to Seminole games Mitchell has also done play-by-play for the AFL All Star game, Senior Bowl and Tangerine Bowl games.

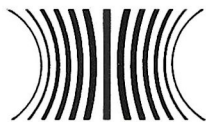
Joining the former Florida Sportscaster of the Year and station manager of WKIS in Orlando will be Bill Owens of Tallahassee. A Florida State graduate, Owens has handled the play-by-play for the Seminole basketball and baseball broadcasts the last two years, but this is his first season at the football mike.

SEMINOLE FOOTBALL NETWORK

Originating Station of the Seminole Sports Network

WTNT

OUR TWENTY-FIFTH YEAR OF SPORTS COVERAGE



CBS RADIO NETWORK

FLORIDA STATE UNIVERSITY FOOTBALL SPONSORED ON WTNT BY

ALFORD BROTHERS MEN'S WEAR
CLEARVIEW CABLE TV
POPE TRACTOR COMPANY
SKYLINE RESTAURANT
THE TALLAHASSEE BANK & TRUST CO.

ATLANTA HAWKS BASKETBALL • FLORIDA STATE FOOTBALL

FLA. A & M FOOTBALL • BRAVES BASEBALL • SEC FOOTBALL

PREP FOOTBALL • AUTO RACING • SEMINOLE BASEBALL • ALL STAR GAMES • SEMINOLE BASKETBALL

"You meet the nicest people on a

H O N D A

World's largest seller"



HONDA OF TALLAHASSEE

At the Underpass on West Tennessee

Phone 576-1020

FOOTBALL'S AMAZING MAJORS FAMILY

by TOM SILER, Sports Editor, Knoxville News-Sentinel

The Majors football story began 30 years ago. It still goes on and on, chapter after chapter, sequel added to sequel.

Father Shirley Majors started it all in 1941. And he still coaches, turning out distinguished teams at the University of the South (Sewanee).

John, eldest of five sons and now head coach at Iowa State, was a great All-America runner at Tennessee in 1956. Bobby, the youngest son, now a junior at Tennessee, also is a dazzling runner, safetyman and punter.

It all began because the father, Shirley, married to the former Elizabeth Bobo, detested farming.

He had a "piece of ground," as he puts it, in Middle Tennessee, not far from Nashville, but he hated to farm. He loved football. Shirley, a taciturn fellow who likes to hunt quail and rabbits and chew tobacco, didn't even have a college degree, but he got a chance to coach in 1941. He grabbed it.

Just One Loss

He coached at Franklin County High and at Lynchburg. Huntland (population 258) lured him away in 1949, by which time Johnny was ready to ramble with a football. Johnny scored an incredible 564 points while he played for his father, going on to the University of Tennessee in 1953. Huntland went on winning, losing one game in six years.

There was always a Majors in the lineup. Joe played next for his father, then Bill. Just to break the "monotony" there was a daughter, too — pretty Shirley Ann, and, as you might guess, she was a cheer leader and later married a football player. Larry starred for his father, too, but Bobby, the one now at Ten-

nessee, did not. He came along too late.

In 1957, Sewanee hired Shirley Majors. Sewanee gives no athletic aid, has lofty academic levels, and stresses classical studies as a sort of prep for the Episcopalian ministry. But Shirley cracked the whip and won with the players available. He had an undefeated team his second year there, now has a 13-year record of 66-34-5.

John led Tennessee to an undefeated season in 1956 and the No. 2 ranking in the nation. He finished second in the Heisman Trophy voting and ranks as one of the brilliant single wing tailbacks of all time.

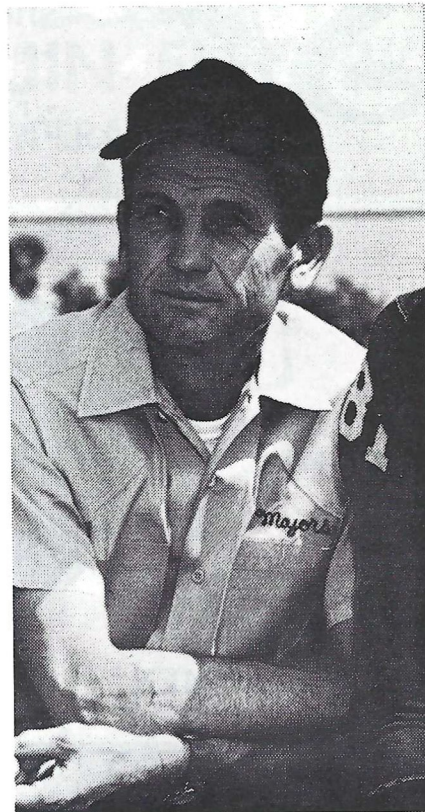
Brother Joe shunned Tennessee, figuring he was too slow for the single wing. He tried Alabama, then transferred to Florida State. His greatest thrill there was in quarterbacking his team to a 10-0 victory over Tennessee in 1958. He's now a lawyer in Tullahoma, Tenn.

Bill Vs. Joe

Bill enrolled at Tennessee in 1957, playing against Brother Joe in that big upset a year later. Bill was a great defensive player and single-wing tailback, finishing in 1960. UT hired him as a coach. He lost his life along with two other coaches in 1965 when their car was hit by a train at a grade crossing in suburban Knoxville.

Larry, considerably smaller than John, Joe or Bill, played for his father at Sewanee, helping to defeat Washington and Lee, Hampden-Sydney, Millsaps and such. He went into coaching, too, and has produced fine teams for high schools in East Tennessee.

Bobby, the baby of the family and the largest as a college player, rolled up fantastic feats in high school in football, basketball, baseball and



SHIRLEY MAJORS

golf. He finished up at Castle Heights Military Academy in 1967, and followed John and Bill to Tennessee the next fall.

As a 195-pound sophomore, Bobby was used as a flanker back and punt returner. He is not particularly fast but he has a deceptive gait that leaves tacklers reaching. This fall he'll return punts again, do the punting and play the all-important safety position on defense.

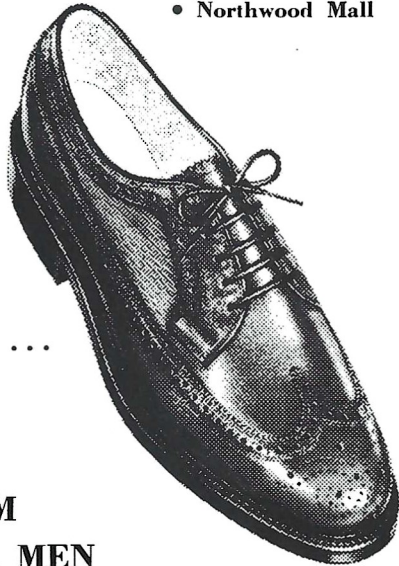
Saturday is always an exciting day to the Majors family. No one can rest until he gets the news on Shirley's Sewanee team, on how Bobby and the Tennessee Vols did and how Johnny's Iowa State team came out.

The Majors thrill to every victory and suffer in every defeat, and it'll be that way until their unique story ends—which is likely to be a long way off.

Strickland's

SHOE STORES

- Downtown
- Capital Plaza
- Parkway Center
- Northwood Mall



NOW

at Strickland's ...

**FLORSHEIM
SHOE FOR MEN**



**GOING
PLACES
?**

**ATHENS, GEORGIA? ATHENS, GREECE?
NEW YORK? NASSAU? NEPAL?**

TRAVEL IS OUR PROFESSION

*No Charge For Our Services
Tickets - Reservations At Printed Rates*



**MARION HAY, PRESIDENT
TOM LYLE**

TALLAHASSEE TRAVEL AND TOURS, INC.

Formerly Hay Travel Service

Established 1930

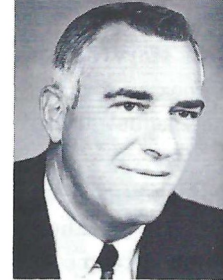
CALHOUN AT CALL STREET

TELEPHONE 224-4161

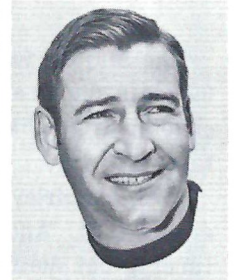
FLORIDA



Stephen O'Connell
Florida President



Ray Graves
Athletic Director



Doug Dickey
Head Coach

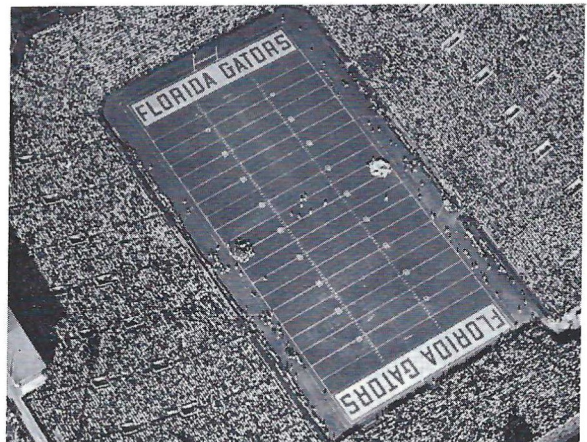


Dan McCarty Hall

The University of Florida is one of the largest land-grant institutions in the South with nearly 1,500 faculty members and a student body of more than 19,500. Extensive building and modernization in the last 15 years has resulted in a physical plant valued at approximately \$140 million.

In addition to numerous special research projects in the various colleges, schools and divisions, the University has established a number of independent laboratories. These agencies carry on continuous basic research in the fields of engineering, science, agriculture, forestry, business, economics, public administration, communications and statistics, making significant contributions to private industry and government research.

A broad program in medical education, research, and patient care is being carried out in the University's J. Hillis Miller Health Center. Encompassing the Colleges of Dentistry, Health Related Professions, Medicine, Nursing and Pharmacy, the Health Center is housed in a \$26 million facility.



Florida Field

GATORS



Willie Jackson



Eddy Moore



Carlos Alvarez



Richard Buchanan



Tommy Durrance



Robert Harrell



David Peek



John Reaves



Mike Rich



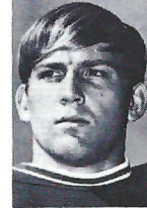
Jim Yancey



Jack Burns



Ted Hager



Mike Kelley



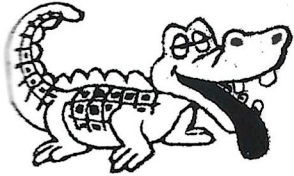
Garry Walker



Donny Williams



Jack Youngblood



TEC TALQUIN ELECTRIC COOPERATIVE, INC.

"OWNED BY THOSE WE SERVE"

IN
GADSDEN, LEON, LIBERTY
AND WAKULLA COUNTIES



LIVE BETTER... ELECTRICALLY

WAKULLA SPRINGS

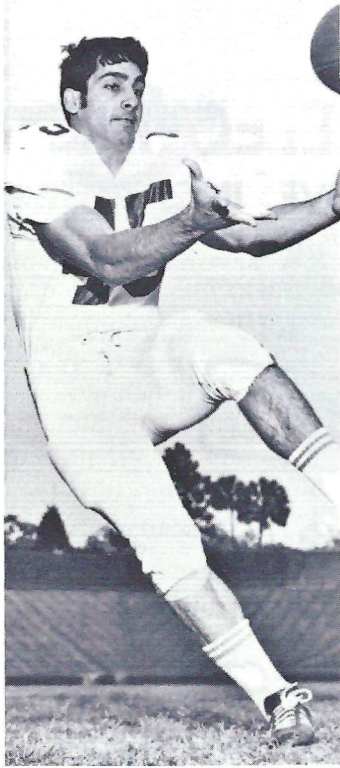
14 MILES SOUTH OF TALLAHASSEE



Glass Bottom Boats

WORLD'S LARGEST AND DEEPEST SPRING

UNIVERSITY OF FLORIDA GATORS



Carlos Alvarez



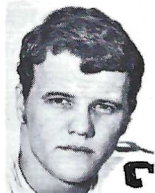
Gary Peterson



Fred Abbott



Andy Cheney



Harvin Clark



Bill Dowdy



Dale Hutcherson



Doug Sorensen



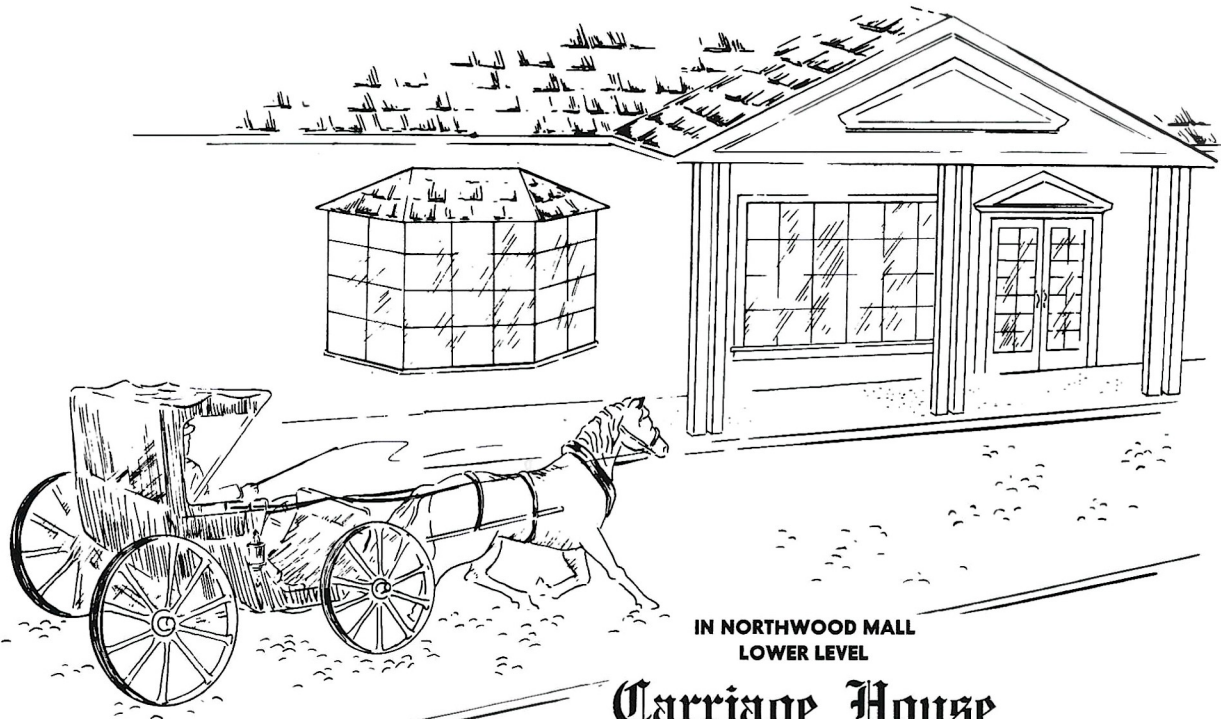
Bob Stephens



Danny Williams



John Reaves



IN NORTHWOOD MALL
LOWER LEVEL

Carriage House

RESTAURANT & LOUNGE

TALLAHASSEE
PHONE 385-7612

' 'YOU CAN'T RUN IN PRO FOOTBALL' '

That's what "the experts" were saying a decade ago, but then came a guy named Lombardi with a team called the Packers and laid to rest a myth. But what about some of that "expert analysis"? How does it stand up to "the facts"?

by Beano Cook

(Editor's Note: Beano Cook is the American Broadcasting Company's head of press information for the NCAA College Football broadcasts. His myriad duties have brought him to discover some interesting statistical comparisons, which he reports here.)

Spiro Agnew, the household name who became Vice President, caused more than a few Americans to wonder if everything they read in the paper or see and hear on television and radio is true.

Well, if we've been slow to question the words of editorial writers and news commentators, we've been downright immobile when it comes to sports writers and broadcasters. These "experts," plus a few hidden persuaders, have convinced many people that pro football is superior to anything — except sex and peanut butter.

How much do sports writers know?

About ten years ago they told us that it was impossible to run in pro football. Vince Lombardi and a bunch of guys called the Packers laid that myth to rest.

Another great line is: Scrambling quarterbacks can't win in pro football. Len Dawson of Kansas City and Joe Kapp of Minnesota opposed each other in the 1970 Super Bowl and anybody who dares call them classic, drop-back quarterbacks better turn in his pass to the press lounge.

The media, especially in the East, favors pro football over the collegiate brand and delights in pointing out the All-America players who are out by the pros. "Joe Blotz, everybody's All-America and the Heisman Trophy winner, was released by . . ." they report with glee. Two questions, please. Who picks the All-America teams? Who picks the Heisman Trophy winner?

Maybe you like pre-game forecast stories better. On the college side, Team A kills Team B which in turn murders Team C; then Team A should

have no trouble with Team C. At least that's the way the writers tell it, even though the two teams in question are meeting for the one and only time of the season.

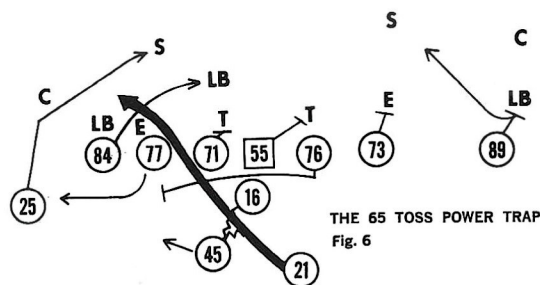
The pro stories are a little different. Last year the Minnesota Vikings ripped the Cleveland Browns, 51-3, in a regular season game. The week before the NFL championship, however, we were all being told what a great game we were going to see between Minnesota and Cleveland. Final score: Minnesota 27, Cleveland 7.

The media would also like us to believe that a man has to be a great tactician, organizer, and leader of men to coach in the pros. Sure, the pros have had Lombardi, Paul Brown, Hank Stram and a few others. But if you had the money to buy a pro franchise, how many pro coaches would you prefer over Bear Bryant of Alabama, Frank Broyles of Arkansas, Woody Hayes of Ohio State, Joe Paterno of Penn State, Darrell Royal of Texas, Tommy Prothro of UCLA, or John McKay of Southern California? Just asking.

No story about football would be complete without a few statistics. Every sports writer and broadcaster — especially broadcasters! — loves statistics. Close your eyes and recall the announcer saying, "The pros sure get off a lot of plays in these last two minutes." Or, "The pros don't make many mistakes."

Well, we heard so many announcers say these things for so long that we believed them until we did some research.

In the seven major bowl games last year there were an average of 149.8 plays per game and 37.9 points per game. There were 25 fumbles and 24 interceptions. In the seven pro playoff games — including the Super Bowl — there were an average of 123



plays per game and 37.9 points per game. There were 25 fumbles and 24 interceptions!

"A fluke," the pro booster cries. Maybe. Let's try out a few more "stats" comparing the pro and college games.

During the 1969 season, Ohio State ran an average of 92.1 plays per game. The highest average for any pro team was 68.9 by the Houston Oilers. Ranking below the Buckeyes but well ahead of the Oilers were Louisiana State, Missouri, Arkansas, Michigan, Texas, USC and Penn State. The "offense-minded" Los Angeles Rams ran a paltry 58.2 plays per game.

Let's take a look at fumbles. In 1969 Ohio State fumbled just once in every 35 rushing plays. Then came Arkansas, Minnesota (Vikings), Michigan and Penn State. Kansas City, champions of the pro world, finished 16th (last) in our study with a fumble rate of one for every 16 running plays.

A dishonest reporter might leave out the figures on interceptions, but we're for truth, justice and the American way, so here they are.

In 1969 the LA Rams had only one pass intercepted in every 59 attempts, that's far and away the best record of the teams we studied. Guess who was second. Arkansas. Third place went to Michigan and fourth to LSU. The team with the worst record in this department was Texas which had a pass picked off one out of every 11 times. How's **that** for honesty, sports fans?

Don't get us wrong. We love pro football (beats raking leaves on Sunday), and sports writers (history's most successful freeloaders), and a lot of other people in this country. Just watch out for the myth-makers and remember the words of Casey Stengel: "You could look it up."

Best Wishes for a successful season, and we are proud to have had a part in furnishing the football equipment for the Seminoles

OWENS Inc.
Sporting Goods — Hardware
ALBANY, GEORGIA

GOOD LUCK SEMINOLES!



DōLIME MINERALS COMPANY
P.O. BOX 1441
BARTOW, FLORIDA 33830

SEMINOLE SONGS

THE ALMA MATER

High o'er the towering pines our voices swell
Praising these Gothic spires we love so well;
Here sons and daughters stand . . .
Faithful and True, Hailing our Alma Mater
F . . . S . . . U . . .

FSU FIGHT SONG

You got to FIGHT, FIGHT, FIGHT for FSU
You got to scalp 'em Seminoles.
You got to WIN, WIN, WIN, WIN,
WIN this game
and roll on down and make those goals
For FSU is on the warpath now,
and at the battle's end she's great . . .
So FIGHT, FIGHT, FIGHT, FIGHT for victory
Our Seminoles of Florida State . . . (Yell)
F-L-O-R-I-D-A S-T-A-T-E
FLORIDA STATE (3 times)
(repeat verse)

HYMN TO THE GARNET AND GOLD

Here's a hymn to the Garnet and the Gold
Ringing to the sky.
Here's a song for our men and women bold
Sing with heads held high.
Striving e'er to seek, to know,
Fight for victory.
Alma Mater, this our song to you,
Echoes FSU.

Southernaire MOTEL

Across from F.S.U.
Tallahassee, Florida 32304



and

Skyline Motor Lodge

U. S. 90 West

Quality Courts
for Quality People

GOOD LUCK SEMINOLES!

Varsity THEATRE

PHONE 224-8636

1833 W. TENNESSEE

Miracle THEATRE

PHONE 224-2617

1815 THOMASVILLE ROAD

Operated by

EASTERN FEDERAL CORPORATION

YESTERDAY

TAKE TEN TO WIN

Back in 1958 as the football season grew near, Florida State Head Coach Tom Nugent summarized, "We've been seeking a big time schedule since football began here and certainly we have it now."

Most fans were quick to agree with the "experts" that the aggressive Seminoles had overstepped their bounds somewhat and in 1958, at least, were "out-classed by the likes of Tennessee, Georgia Tech, Miami, Georgia and Florida."

Although the Seminoles lost the first two "biggies" (Georgia Tech and Georgia), they carried a 4-2 record into the third "big one" against Tennessee in Knoxville.

The Vols, champions of the Gator Bowl the year before, were 2-2, but were favored. The Big Orange was led by Bill Majors who directed Tennessee's famed single wing offense.

The Seminoles, with Bill's younger brother Joe at quarterback, were a natural for pregame publicity about a battle within one of football's most famous families. The game was the Tribe's tenth against an SEC team and Florida State was still looking for its first win.

The Vols drove inside the Seminole 30 twice in the first period, but each time the Florida State defense rose to the occasion. Field position switched in the second quarter as Bobby Renn's punts kept Tennessee backed up against its goal line.

The third period was all Florida State. The Seminoles took the second half kickoff and drove to a score. Fred Pickard, who totaled 133-yards for the afternoon, picked up 51 to the Vol's 30. Renn and Pickard then moved the ball to the Tennessee nine in four plays and John Sheppard booted a 26-yard field goal for a 3-0 lead.

Three plays after the kickoff the Seminoles were threatening again. Al Ulmer picked off a Bill Majors pass. Vic Prinzi passed 27-yards to Tony Romeo for a firstdown on the one. Renn bucked in for the touchdown and it was 10-0 Florida State.

Then the Seminole defense took over. Tennessee punted on third down following the kickoff, but a Joe Major's pass was intercepted at the UT six. This time the Vols quick kicked on first down. After the Seminoles punted back, Tennessee ran on play, their sixth of the quarter and kicked. Florida State controled the ball to the end of the period.

The Vols made one last ditch drive, moving from their own 24 to the Seminoles 15 with time running out. But Prinzi intercepted a pass at the two and four plays later the gun sounded.

Tennessee's proud offense was stunned. UT gained only 29-yards rushing and just 82 passing, winding up 21 short of Pickard's individual total. The Seminoles meanwhile had a total net gain of 309 yards.

Back in Tallahassee, Seminole fans swarmed to the airport where a huge throng awaited their arrival. As the charter plane taxied up to the terminal one fan very innocently summed up the big day when he said, "The Seminoles have arrived."

GARNET - GOLD

WEAR YOUR COLORS PROUD

BLAZER



\$60.00

Garnet or Gold Blazer of Dac-Wool blend for year round comfort. Sizes; Reg: 36-48, Shorts: 36-42, Longs 38-50, XL 40-48.

SAMMY SEMINOLE TIE



Tie one on! A garnet background with the authentic Sammy Seminole Mongram on the tie.

\$4.50

NAME: _____
ADDRESS: _____
CITY: _____
COLOR: _____ SIZE: _____
TIE ONLY: _____

NIC'S TOGGERY

115 S. Monroe St.
Tallahassee, Florida

HOLD That Line

If you're losing the battle of the creeping waistline, visit the SPA for the relaxing change of pace you deserve. Take time out to DO what Hundreds of Tallahasseeans have found to be a new lease on life. Use the Spa's fabulous facilities and see the results yourself.

Phone 385-1108
2005 N. Monroe St.

Spa

Nationwide
health beauty system



APOLLO CLUB



VENUS CLUB



Lindy's Fried Chicken

Call 224-5811 YOUR ORDER WILL BE WAITING

SPECIAL BOX — 3 PCS. CHICKEN F.F., COLE SLAW & ROLLS.....	1.20
½ FRY CHICKEN — 4 PCS. CHICKEN, F.F. COLE SLAW & ROLLS.....	1.45
WHOLE CHICKEN — 8 PCS. (CHICKEN ONLY).....	2.25
BUCKET 'O CHICKEN — 15 PCS. (W/CHOICE OF SLAW OR GRAVY & ROLLS).....	4.15
BARREL 'O CHICKEN — 21 PCS.....	5.50

1447 THOMASVILLE RD. PHONE 224-5811
OPEN 7 DAYS A WEEK — INCLUDING SUNDAY

Go Seminoles

We'll help all we can

Tallahassee Automobile Dealers Association

ALFORD CHEVROLET CO.
COURTESY RAMBLER—DATSUN
PROCTOR & PROCTOR, INC.
CAPITAL LINCOLN—MERCURY, INC.
BOB DRAKE DODGE, INC.
TOYOTA OF TALLAHASSEE

COURTESY OLDSMOBILE—VOLVO
PALMER—HARRELL BUICK CO.
CAPITAL CHRYSLER—PLYMOUTH, INC.
TALLAHASSEE MOTORS, INC.
KINNEBREW MOTORS, INC.
MINGLEDORFF MOTORS, INC.
CONTINENTAL CARS OF TALLAHASSEE, INC.



Spirit

Boosting Seminole spirit at all games,
home and away,
are the Florida State cheerleaders.

- :-

Above From left to right:
Front Row — Gail Andrews, Cindy Barton, Karen Jalko, Mary Webb Ellis and Ginger Delong.
Back Row — Bill Travers, Greg Graybeal, Will Law and captain Rich Chichetti.

Southern is scoring in the big-time now!



Just two, short years ago, Southern played in the confines of its own backyard . . . an eight-state region in the mid-South. But that's all changed now. Today, Southern is showing its winning ways in New York, Newark, Washington, St. Louis, Miami, Orlando, Tallahassee and Chicago.

Next trip, check Southern's fly pattern to any of the 66 cities it serves. See if Southern's own brand of service doesn't score points with you, too.

SOUTHERN AIRWAYS

General Offices: Atlanta Airport, Atlanta, Georgia 30320

SPOTLIGHT

- TRACK -

For the last 16 seasons, Florida State's Mike Long has built one of the finest track and field programs in the South. The Seminoles' track record under his guidance is one of the best in the nation.

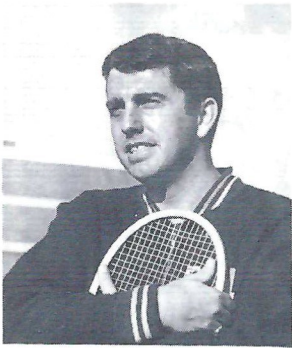
Overall Mike Long coached Seminole teams have won 62 of 76 meets. In 12 of his 16 seasons, the Seminoles have lost no more than one meet and six times they have been undefeated in dual competition. In 1964 and '65, the Seminoles went through a total of 10 dual meets without a loss.

Coach Long is considered one of the nation's finest "on the field" coaches in the country by his contemporaries. He has a knack that brings out the very best that a young prospect has to offer. Also, he has been able to develop a spirit of camaraderie that makes the Seminoles an even stronger dual meet team.

Long came to Florida State in 1953 as an assistant coach in track, football and basketball. He brought with him 16 years coaching experience, 10 in Florida and 6 in Minnesota high schools. After one year here he assumed full responsibility of the Seminole Track program.

The personable, well liked track mentor was given a special honor in 1968 when the former members of his track teams contributed to a fund to provide Mike and his wife an all expense paid trip to the Olympic Games in Mexico City.

VARSITY COACHES



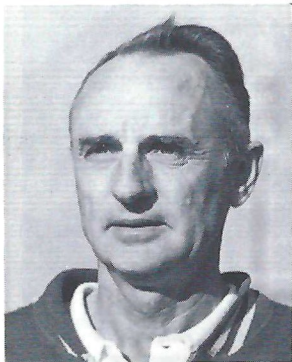
Pete Barizon
Tennis



Hugh Durham
Basketball



Scott Fletcher
Golf



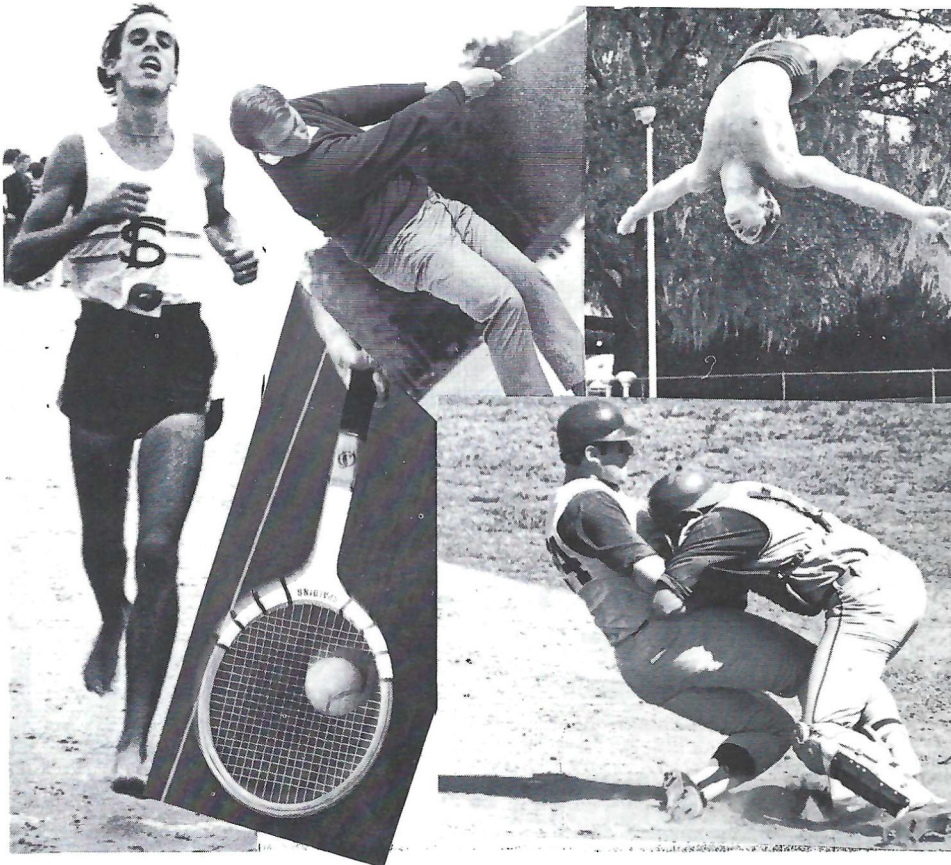
Mike Long
Track



Jack Stallings
Baseball



"Bim" Stults
Swimming



Jim & Milt's Bar-B-Q

RIBS – CHICKEN
PORK – BEEF SANDWICHES
CARRY OUT SERVICE
Sunday Thru Thurs 11 AM - 11 PM
Friday & Sat. 11 AM - 1 AM

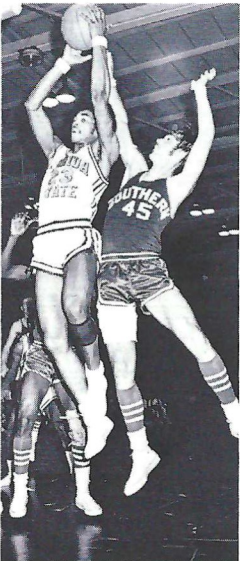
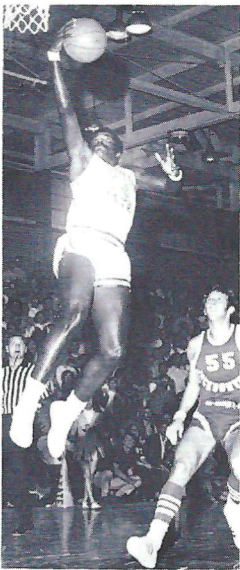
1923 W. Pensacola . . .576-3998

Go Seminoles!

Compliments of
Tallahassee
Flowers
and
Candy

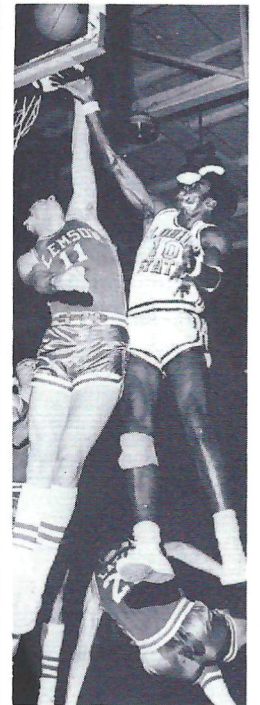
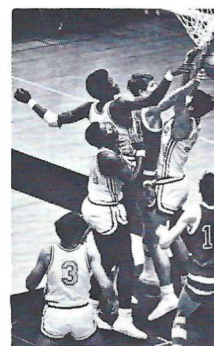
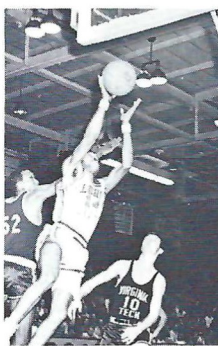
328 South Adams
222-3840

BASKETBALL AT ITS BEST



FLORIDA STATE UNIVERSITY BASKETBALL AT ITS BEST

EXCITING is the description for Florida State's Basketball team. High-scoring, run-and-shoot, offense; tenacious, pressing defense is the Seminole brand of basketball. Last year the Seminoles streaked to a 23-3 record with one of the nation's finest offensive teams. This year, despite the loss of big Dave Cowens and several other outstanding seniors, Coach Hugh Durham expects to have another high-scoring, banner year. Skip Young will be back to lead the attack along with Vernell Ellzy, Rowland Garrett and Ron Harris. Also the Seminoles will have the graduates of perhaps their finest freshman team ever. Sensational Ron King, Reggie Royals, Larry Gay and little Otto Petty, the 5-8 guard, who plays like he is a foot taller, will join the varsity. The schedule includes the likes of Texas, Miami of Ohio, Southern California, Miami (Fla.), Jacksonville, Georgia Tech and North Carolina. To order your season tickets stop by the Athletic Ticket Office in Tully Gym or mail the coupon.



ORDER SEASON TICKETS NOW!

Individual game tickets \$2.50 each. Season Ticket (for 13 home games) \$21.00 (save \$11.50). For group seating send orders in single envelope and mark order "group seating."

Name _____

Address _____

City and State _____ (Zip) _____

Phone-Bus. _____ Home _____

Check correct group(s)

- 1969-70 season ticket holder
- Tipoff Club Member
- New Purchaser

All orders must be accompanied by check made payable to **Florida State University**. Mail orders to the **Athletic Ticket Office Tully Gym**.

Hertz Special Rates in Tallahassee

For a Weekend: \$7.47 a day + 10¢ a mile for 2 or more days. Any time Friday to the same time Monday. Insurance is included; gas isn't.

Each special rate is for an intermediate or standard Ford sedan or similar car. These rates are not available at all locations.

To reserve a car, or for more information, call us at **222-1686**
(Two locations: Downtown Holiday Inn and at the Airport.)



Renting you a good, clean Ford is just where we begin.

**X
L
S
T
O
R
E
S**



Inc.

EVERY ITEM
DISCOUNTED
EVERY DAY

- :-

LOW
PRESCRIPTION
PRICES

- :-

212 S. Adams
Phone 224-5280



SERVING THE SOUTH
SINCE 1875

Nationally Famous Furniture, Appliances, Carpet,
Accessories — 63-Store Buying Power Savings!—
3 Convenient, Rhodes-Financed Payment Plans—
Take Up to 24 Months to Pay!

“WHERE TO BUY IT”

1122 Thomasville Road Phone 224-1128

HOWARD JOHNSON'S MOTOR LODGE
W. Tennessee St.
AT THE UNIVERSITY

HOWARD JOHNSON'S MOTOR LODGE
Apalachee Parkway
NEAREST THE CAPITOL

Featuring the
EXECUTIVE LOUNGE
“The Popular Spot”
Entertainment Nightly



Accommodations

motor lodges



Mike's Texaco
Presto Car Wash
556 West Tenn. St.

SCALP 'EM SEMINOLES!

PHONE 224-7989 • 224-4420



3212 E. Apalachee Parkway
TALLAHASSEE
5101 E. Colonial Drive
ORLANDO
1708 S. Ridgewood
EDGEWATER (NEW SMYRNA)
5299 E. Busch Boulevard
TEMPLE TERRACE (TAMPA)

BARBEQUE
PORK • BEEF • RIBS • CHICKEN
"Smell that Smoke!"

Electrical Contractors

- INDUSTRIAL
- COMMERCIAL



Licensed & Bonded

J. B. CLARK,
President

LEE H. TOWNSEND,
Vice President

222 - 5494

IF NO ANSWER DIAL 385-4030

CLARK ELECTRIC CO.
OF FLORIDA

702 West Madison Street
TALLAHASSEE, FLORIDA

=Mendelson's=

Your Personal
Department Store

SAYS

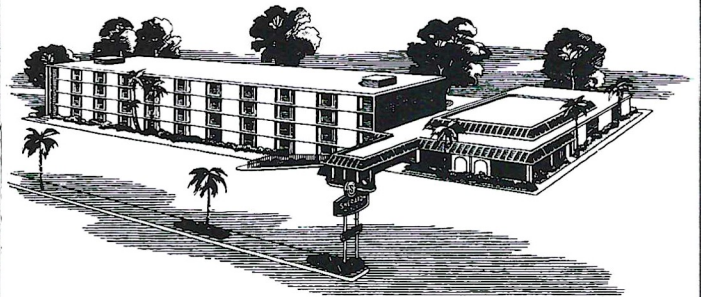
GO
SEMINOLES!

Mendelson's
Downtown
208 So. Monroe
385-6121

Mendelson's
Northwood Mall
385-6121

=Mendelson's=

Sheraton in Tallahassee



Located just one mile from the
business district and close to
the capitol, the Sheraton Motor
Inn is completely air-conditioned.
All 151 rooms with color TV.
Swimming pool.

Banquet and meeting
facilities available for any group,
up to 250. Restaurant and
Lounge in the Motor Inn.
For further information,
call 877-3171.



Sheraton Motor Inn
U.S. 27 AND LA FAYETTE ST. TALLAHASSEE, FLORIDA 32301
SHERATON HOTELS AND MOTOR INNS A WORLDWIDE SERVICE OF ITC

STADIUM INFORMATION & CONCESSIONS

REST ROOMS are located on concourse and ground levels of both the east and west stands.

FIRST AID station is located at the southwest corner of the stadium opposite gate five. A registered nurse is on duty at all times. Ambulance Service courtesy of Bevis Funeral Homes.

PUBLIC TELEPHONES are located on the ground levels of the east and west stands.

PUBLIC ADDRESS will make special announcements in cases of emergency only.

DOCTORS receiving calls will be paged by number.

LOST AND FOUND items may be turned in and claimed at the ticketbooth at gate three under the west stands by the press box elevator

ALCOHOLIC BEVERAGES are prohibited by state law. Your cooperation in enforcing this law is appreciated.

FIELD REGULATIONS prohibit unauthorized persons on the field during or after the game. Please leave the Stadium by the ramp and section exits.

REFRESHMENTS are available in the stands and at locations on the concourse and ground levels of the east and west stands.

COLD DRINKS	25¢
HOT COFFEE	25¢
SANDWICHES	50¢
HOT DOGS	25¢
PEANUTS	25¢
POP CORN	25¢
CIGARETTES	60¢

SOUVENIR ITEMS - PENNANTS - BADGES
SUN VISORS - ASPIRIN

**Please pay no more than
ESTABLISHED PRICES**

SPORTSMANSHIP

STUDENTS, SPECTATORS!

Make **Sportsmanship** a Part of Your Game
Equipment

NOISE is a serious problem at many intercollegiate football games, and on some occasions in the past has prevented the Quarterback's signals from being heard. Such a situation may be interpreted as "interference" with the conduct of the game, and penalized. We seek your assistance in preventing excessive noise, which could cause a penalty against your team. Should unusual noise develop, the referee will call "Time-Out" and instruct the Defensive Captain to request **QUIET**, which he will do by moving toward the noise area with both arms and hands raised. If necessary, the Offensive Captain will make the same request on the opposite side of the field. We shall appreciate your respect for Sportsmanship in remaining **quiet** at this time.

In all games the Referee is authorized to inflict a penalty based on noise developments. Please cooperate. Don't help to draw a penalty against your team.

CHEER TO HELP. NOT TO HURT

*Go
Seminoles*

ROYAL
SANDWICH CO.
904 Gamble • 222-0699

Slim & Rebels Hamburger Haven

GO SEMINOLES!

1040 W. PENSACOLA ST.
1/2 Block East of Cambell Stadium

Phone 222-5913

Homemade Chili • Home Cooking

BEST DOG EVER BIT BY MAN!!

Take out or eat on our Patio

AD DIRECTORY

Big B Cleaners
Bill's Bookstore
Brown's Men's Wear
Capital City First National
Bank
Captain Louies Galley
Carriage House Restaurant
Clark Electric
Concrete Products
Cycle Shop
Dolime Minerals
Driftwood Motel
Eli Witt
Eppes-Edenfield
Everhart Construction
Fat Man's Barbeque
Florida Cattleman's Assoc.
Florida Times-Union
Frisch's
Frosty Morn
Hardee's
Hertz
Holiday Inn
Honda
Howard Johnson's
International Business Machines
Jacksonville (City of)
Jim and Milt's
Kentucky Fried Chicken
Leon Federal Savings
Lewis State Bank
Lindy's Fried Chicken
McDonald's Hamburgers
Mendleson's
Midyette-Moor
Mike's Texaco
Miller Chevrolet

Mobile Home Industries
Nic's Toggerly
Owen's Inc.
Parkway National Bank
Pasquales
Peacock Chevrolet
Prudential Insurance
Quality Courts
Quincy State Bank
Ragans and Roberts
Rhodes, Inc.
Royal Sandwich Co.
St. Petersburg Times
Sears, Roebuck and Co.
Sheraton Motor Inn
Slim and Rebel's
Southeastern Telephone
Southern Airways
Southernair-Skyline
SPA
Sportscraft,
Stafford's
Strickland's
Sweetshop
Tallahassee Auto Dealers
Tallahassee Bank and Trust Co.
Tallahassee Camera Center
Tallahassee Flowers and Candy
Tallahassee Travel and Tours
Talquin Electric
Tampa Tribune
Taylor Chevrolet
Varsity Theatre
Wakulla Springs
WTNT Radio
XL Stores, Inc.

Concrete Products Co., Inc.

READY MIXED CONCRETE

CEMENT
SAND
GRAVEL

Phones: Plant 222-3367
Office 222-4472
P. O. Box 1122

GAINES AND WOODWARD STREETS
TALLAHASSEE, FLORIDA



BILL PEACOCK CHEVROLET, INC.

300 West Washington St.
MONTICELLO, FLORIDA

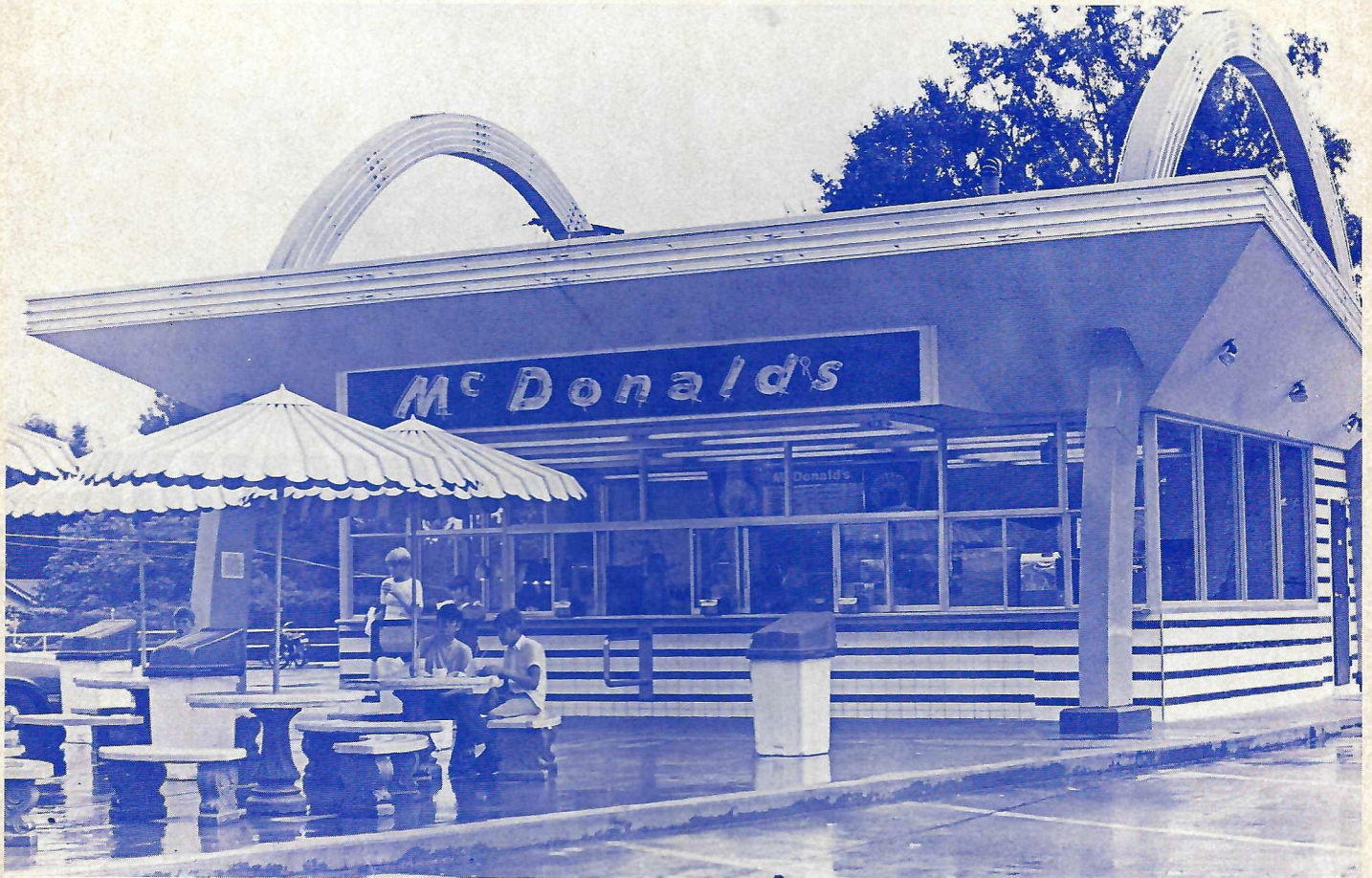
The reason people pass one door
To patronize another store,
Is not because the busier place
Has better silks, or gloves, or lace,
Or special prices, but it lies
In pleasant words and smiling eyes;
The only difference, we believe
Is in the treatment folks receive!

Growing With the Seminoles!

TALLAHASSEE
Phone 224-8827

MONTICELLO
Phone 997-2513

McDonald's and FSU, BOTH No. 1!



Speedy Seminole Service is the word at our *Re-Newed* West Tennessee Street location. Get to the game early—enjoy easy parking—walk right through the gate—and feast on a Value Packed Meal from McDonald's where we put *Food in Your Family and Change in your Pocket*.

Our *Re-Newed* McDonald's in Seminole Country has an enlarged Patio Area with new tables and seating. Also 4 extra window-additions have been made to get you to the game in a hurry.



1701 W. Tennessee St. (US 90 W) • Northwood Mall (US 27 N)

CHEVY'S NEW LITTLE CAR IS OPEN FOR BUSINESS.

Vega 2300 is here at last.

We'd have brought it out sooner, but you know how it is. We've got a lot riding on this little car and we wanted it to be right, really right, before turning it over to you.

Now we're ready.

And you were wise to wait.

Because now you can buy what we at Chevrolet have come to modestly believe is the best little car in the world.

We don't expect this ad to convince you.

We expect the car to, though.

Vega. The little car that does everything well. Look into it.

