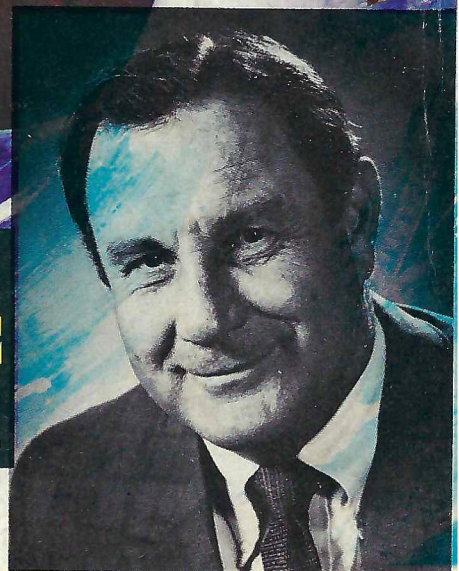


**THE  
COLLEGE  
GAME**



# Florida **STATE / WAKE FOREST**

Football Magazine

75 CENTS - : - September 26, 1970





**HAMS • BACON • SAUSAGE • WIENERS**

**FROSTY MORN MEATS**







Oaks, rolling hills  
a shady glen, a jogging path,  
timeless Williamsburg traditional styling  
provide secluded country living  
only moments away from  
Downtown, the University  
and Tallahassee's  
two new shopping malls  
... incomparable apartment living.

# Woodcrest

on John Knox Road

*e*

Occupancy December 1st



# GET CLOSE-UP, IN-DEPTH COVERAGE OF ALL SPORTS YEAR 'ROUND

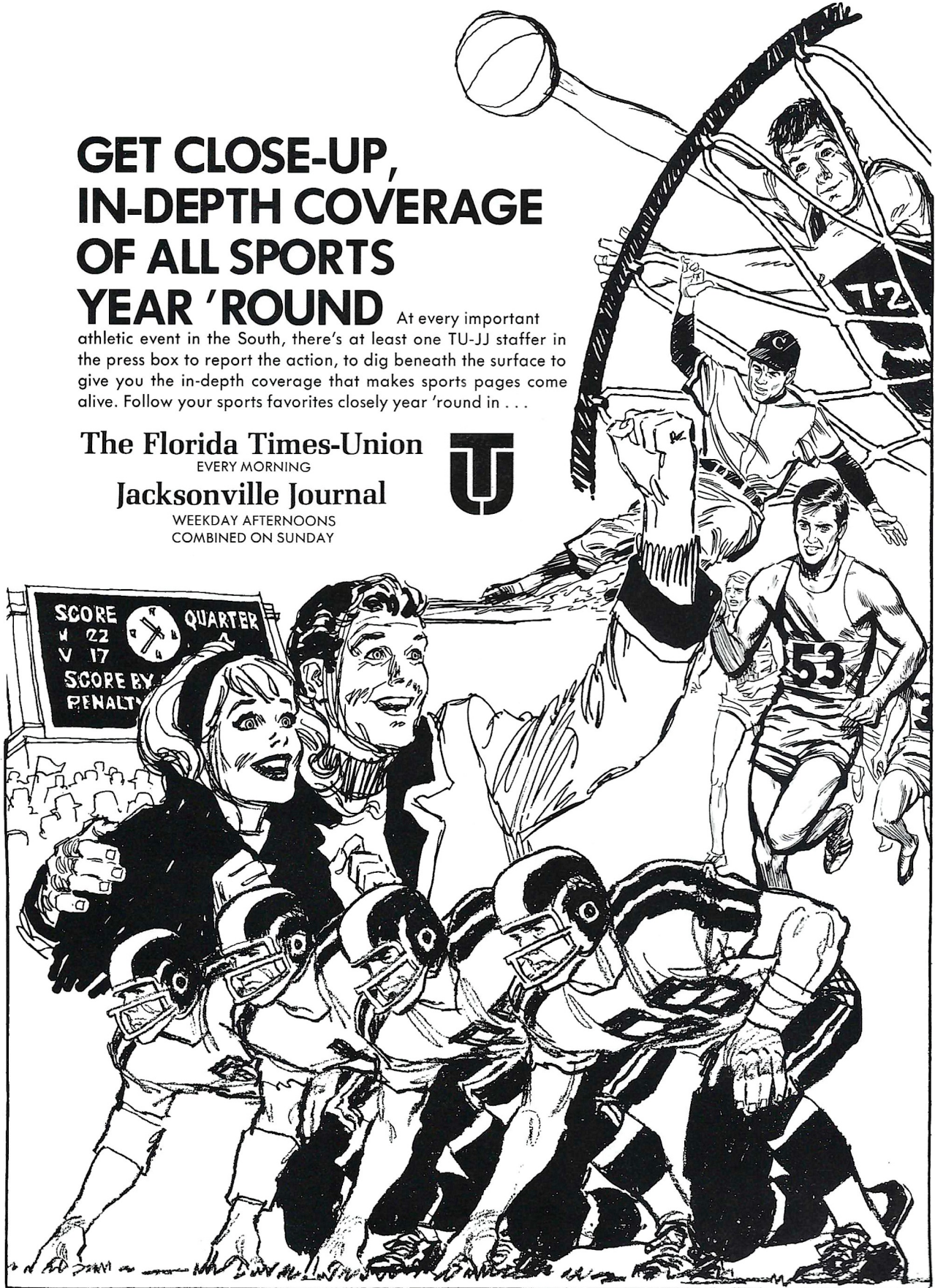
At every important athletic event in the South, there's at least one TU-JJ staffer in the press box to report the action, to dig beneath the surface to give you the in-depth coverage that makes sports pages come alive. Follow your sports favorites closely year 'round in . . .

**The Florida Times-Union**

EVERY MORNING

**Jacksonville Journal**

WEEKDAY AFTERNOONS  
COMBINED ON SUNDAY







# WELCOME TO FLORIDA STATE

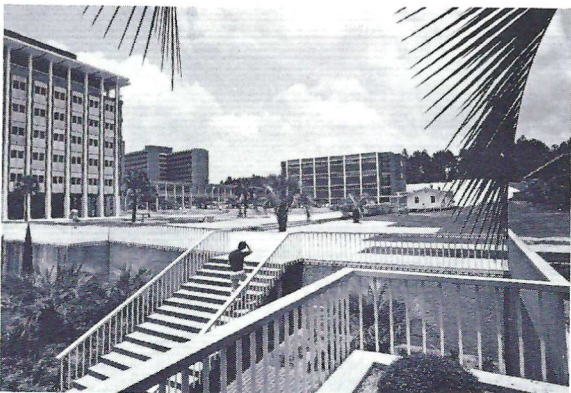
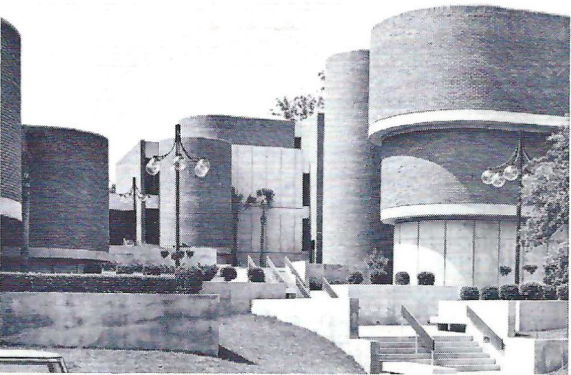
## THE 21st CENTURY'S GOALPOST: FLORIDA STATE

Florida State's position on the 30-yard-line of the 21st Century, in terms of academic research and instruction, places the University within field-goal distance of international distinction in 1970.

Already nationally recognized as a center of excellence in vital areas of scientific and technological progress, Florida State enters the decade of the 1970's with a momentum gained in more than a century of service to the state and nation. Founded in 1857 as the Seminary West of the Suwannee, and elevated to coeducational university status in 1947, the University has a current enrollment approaching 18,000 students in its 10 schools and colleges.

Its \$100 million physical plant creates a skyline of research towers on the western quadrangle of the campus—visible from the west stands of Campbell Stadium—and reaches eastward to a stone's-throw of the State Supreme Court, where the new College of Law Building is under construction. Now graduating some 5,000 students each year, Florida State is one of only two dozen universities in the country annually producing more than 100 doctorates.

The University's role as a senior leader among the State's nine-institution University System is one in which it takes great pride. More than 100 specialized fields of study are represented in the University's schools and colleges of arts and sciences, business, education, engineering science, home economics, law, library science, music, nursing and social welfare.



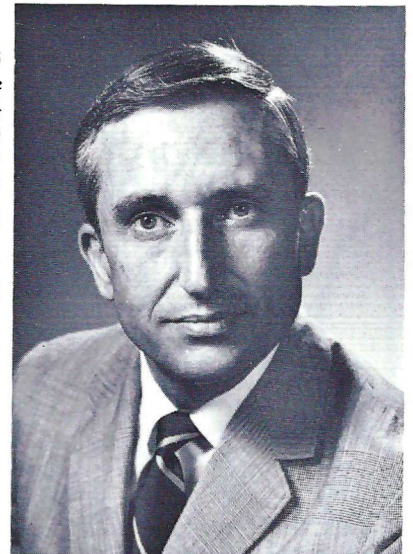
### A SALUTE TO THE FRIENDS OF THE SEMINOLES

There are many reasons for the outstanding record of growth and achievement of the Florida State University in intercollegiate athletics during the past 23 years. Paramount among these are the loyal Seminole fans who fill the stands of Campbell Stadium for our home football games. The University is deeply grateful for the strong support our athletic programs have enjoyed through the years.

Seminole fans have responded magnificently to the University's need for additional financial support during this period of increased athletic costs. On behalf of the football team and our outstanding coaching staff—indeed of the entire University—I thank all of those in Campbell Stadium today. In particular, the contributors to the Athletic Scholarship Fund who are seated between the 40-yard lines in the west stand are deserving of special recognition; in addition, I want to recognize the many faculty and staff who have purchased season tickets and the uncounted number of students, alumni, and Seminole Boosters whose steadfast support means so much to the football team and the coaches.

This evidence of continued support of an athletic program geared to match dynamic programs in the academic areas is what keeps Florida State in the winners' circle on both counts. Such success comes only with teamwork; and it is this teamwork, on and off the playing field, that assures Florida State's continuing excellence.

—Stanley Marshall  
President  
Florida State University





the

Q

UINCY

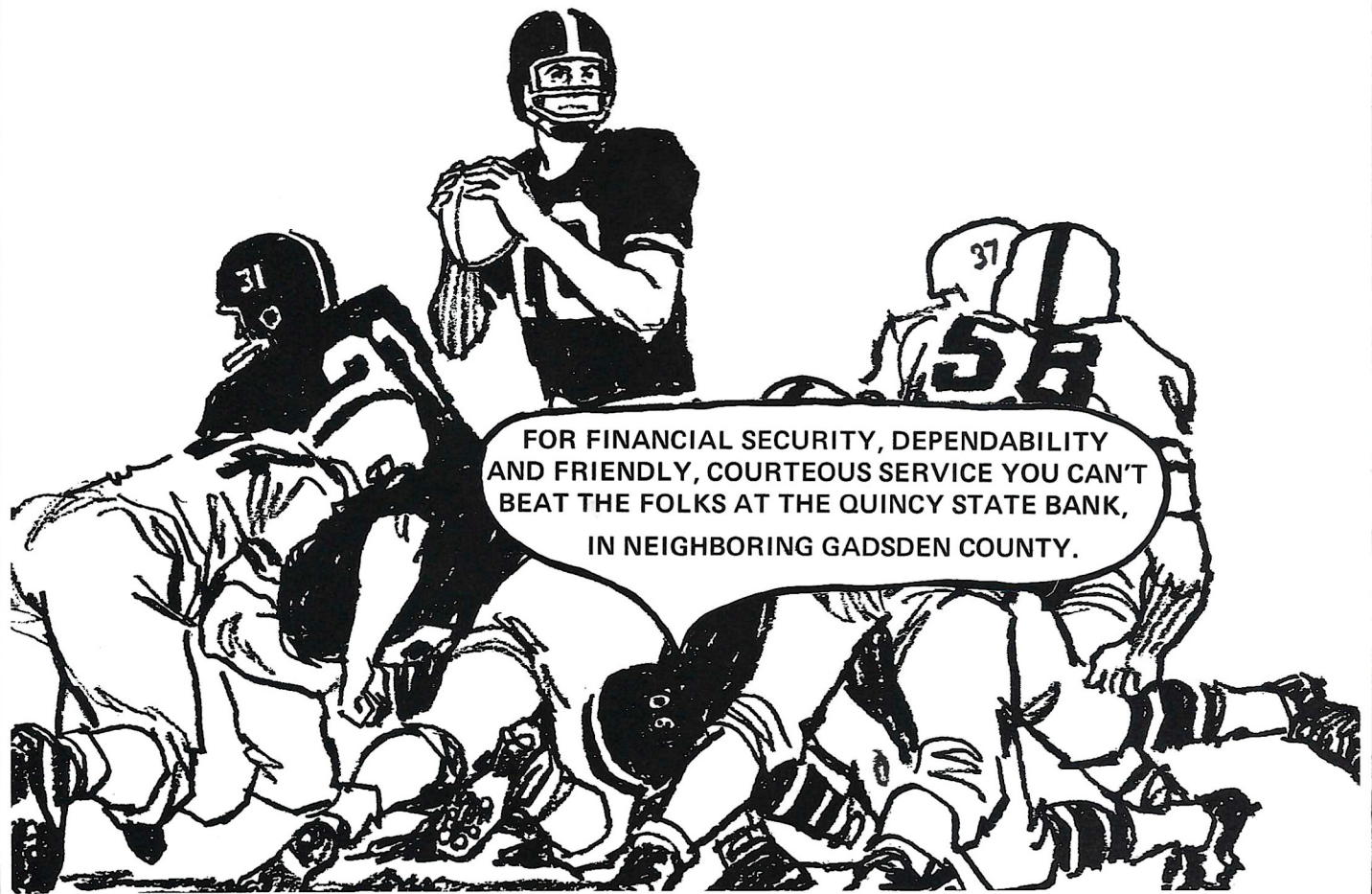
S

TATE

B

ANK

Quincy, Florida



FOR FINANCIAL SECURITY, DEPENDABILITY  
AND FRIENDLY, COURTEOUS SERVICE YOU CAN'T  
BEAT THE FOLKS AT THE QUINCY STATE BANK,  
IN NEIGHBORING GADSDEN COUNTY.



# Florida STATE / WAKE FOREST

Football Magazine

Vol. XXIV

September 26, 1970

No. 2

## In This Issue . . .

<b>Fun For Everyone</b> .....	10
Nothing to do in Tallahassee? If you believe that take a look at Florida State's activity calendar for the fall quarter. Plenty to do and see here for town and gown alike.	
<b>Tonight at Halftime</b> .....	13
The Marching Chiefs under the direction of Robert Braunagel open another halftime campaign tonight. A rundown of tonight's show and music is provided.	
<b>Meet the Coaches</b> .....	14
Now the "dean" of the state's football coaches, Bill Peterson is in his second decade as the Seminoles' mentor.	
<b>The Record Book</b> .....	27
They say records are made to be broken. Will any of these marks fall tonight?	
<b>A Bug Beats a Football Team</b> .....	43
It was just a year ago that Holy Cross was forced to cancel its season when struck by an epidemic.	
<b>Freshman 1970</b> .....	47
Today's freshmen are tomorrow's varsity. See them in action next week at Campbell Stadium when the Baby Seminoles open their season against Georgia Tech.	
<b>Yesterday</b> .....	49
It took a year, but when the Seminoles got their first win, they did it in a big way.	
<b>The University</b> .....	5
<b>Tonight's Game</b> .....	9
<b>Tonight at Halftime</b> .....	13
<b>Meet the Coaches</b> .....	14
<b>The Football Family</b> .....	15
<b>The Seminoles</b> .....	16
<b>Seminole Records</b> .....	27
<b>Statistics</b> .....	28
<b>Lineups</b> .....	31
<b>Rosters</b> .....	33
<b>Depth Charts</b> .....	34
<b>Signals &amp; Penalties</b> .....	37
<b>State Officials</b> .....	39
<b>Seminole Radio Network</b> .....	41
<b>Wake Forest University</b> .....	44
<b>Seminole Songs</b> .....	48
<b>Seminole Boosters</b> .....	51
<b>Spotlight: Swimming</b> .....	52
<b>Seminole Varsity Coaches</b> .....	53
<b>Basketball '70</b> .....	54
<b>Stadium Information</b> .....	57

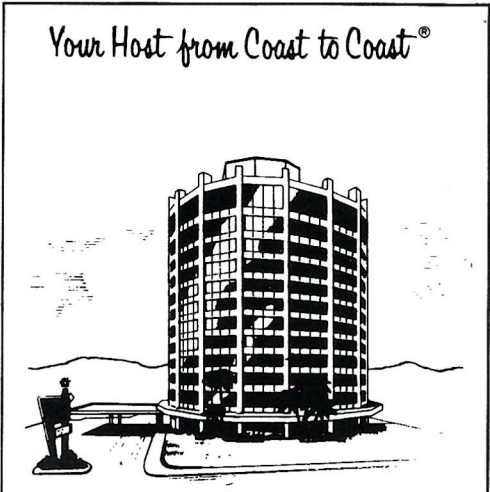
p-10

p-14

p-43

15 Dowey,  
41 Downey,  
68 Drews,  
21 Eddy,  
72 Fourake

p-47



TWO LOCATIONS  
TO SERVE YOU



316 W. Tennessee St.  
Viking Lounge  
With Live Entertainment  
Camelot Dining Room



1302 Apalachee Parkway  
Tele. 877-3141  
Complete Banquet Facilities



The Florida State Football Magazine is published by the Florida State University Department of Intercollegiate Athletics and printed in Tallahassee, Fla. by the Dye Printing Company. Editor - Hank Schomber. Program Manager - Lonnie Burt. Business Manager - Doug Messer. Contributing Editors - Mike Beaudoin and Jayleen Woods. Sales Coordinator - Jack Ibach. Production Supervisor - Gary Easom. Artist - Suzie Jennings.



# MIDYETTE-MOOR Insurance Agency

"Ask Those We Serve"

Complete Insurance and Bond Service

PHONE 222-3456



MIDYETTE-MOOR BUILDING  
TALLAHASSEE, FLORIDA

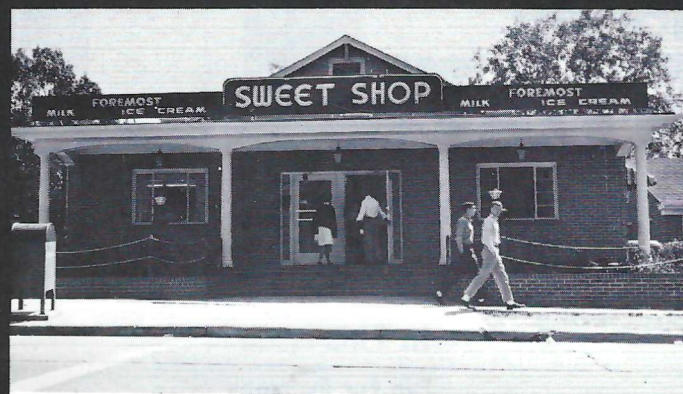
SAYS

## SCALP 'EM SEMINOLES!



Payne Midyette  
Frank Moor  
Ed Clark  
Winslow Sullivan  
Paul Lewis  
Payne Midyette, Jr.  
Bill Moor  
Bill Franklin

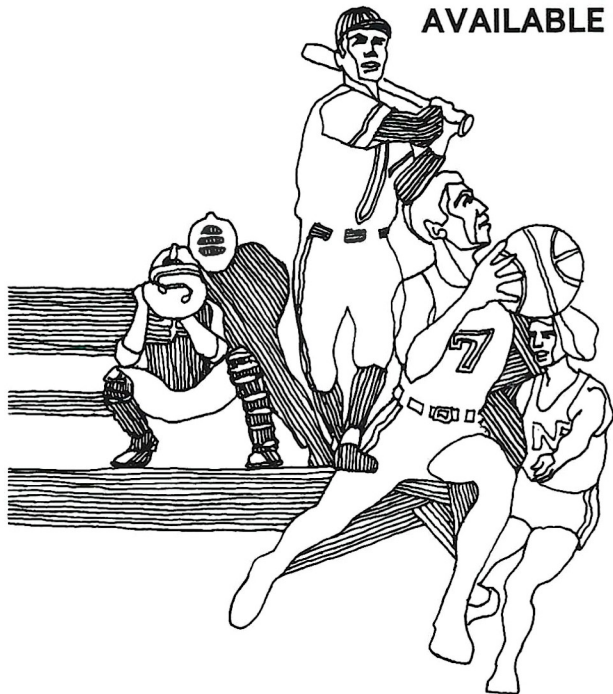
Jim Woods  
Gordon Henkel  
Glenn Sears  
Moffett Warren  
Chick Prosser  
Dave McKinnon  
Rex Sikes  
John Wymess



# WHERE YOU WILL FIND YOUR FRIENDS

701 W. JEFFERSON  
South Gate F.S.U.

## EXCITING, INSTRUCTIVE BASEBALL AND BASKETBALL FILMS AVAILABLE FREE



See famous professional athletes show you how they do it.

Each film is in color, 16 mm. and runs about 28 minutes. A terrific program for your youth group, civic club or phys ed class. With each film you get valuable instruction booklets, 36 pages of inside information and expert advice on how to stay in peak physical shape.

It's part of Prudential's contribution to the President's Council on Physical Fitness.

For information about a free loan of the films, contact your local Prudential office. Or write Public Relations Dept., The Prudential Insurance Company of America, P. O. Box 4579, Jacksonville, Fla. 32201.



**Prudential**

SOUTH-CENTRAL HOME OFFICE  
JACKSONVILLE, FLORIDA



# TONIGHT'S GAME

By **Lonnie Burt**  
Sports Information Director

After a year's layoff, Atlantic Coast Conference Wake Forest and independent Florida State get back together on the gridiron. In eight previous meetings, the Seminoles own a 6-1-1 edge.

Coach Cal Stoll was hired before the 1969 season to straighten out the Deacons' football fortunes. In his campaign, Stoll directed the Deacs to a 3-7 record including a 22-21 upset over ACC rival North Carolina State.

Wake Forest expected to have a green offensive team and an experienced defensive outfit this year. However, lack of depth has hurt the defense, especially in their 43-7 loss to South Carolina last Saturday night.

Wake Forest trailed 10-7 at halftime before the Gamecock legions applied the pressure. Six turnovers — three fumbles and three interceptions by South Carolina — in the final 30 minutes made the Deacons' struggle impossible.

In junior college transfer Larry Hopkins, Wake Forest has one of the ACC's better runners. The 203-pound fullback had a 61-yard touchdown run last Saturday night.

Sophomore Jim McMahan and junior Larry Russell have been sharing the Deacons' quarterback duties. Russell has started both Wake Forest games and is a threat as a runner while McMahan is the stronger passer.

Defensively, tackle Win Headley, 6-3, 240 pounds, is an All-America candidate and in two games has 12 tackles and 11 assists.

Prior to the South Carolina contest, Wake Forest bowed to mighty Nebraska 36-12 in its opener.

Florida State will be trying to bounce back from its 23-13 loss to Georgia Tech last week. And at the same time, the Seminoles will be starting a new quarterback in junior Frank Whigham.

Whigham entered the Tech game in the first quarter and wound up with 10 pass completions in 25 attempts. These were good for 201 yards and one touchdown. The Sanford native also showed talent as a runner, racing for 62 yards in six carries.

Wake's only victory over Florida State came in 1958 when the Deacons claimed a 27-24 triumph. The series tie came in 1956, the teams' first meeting which ended in a 14-14 standoff.

## 1970 FLORIDA STATE SCHEDULE

9 Louisville 7  
13 Georgia Tech 23  
Sept. 26 Wake Forest  
Oct. 3 Open  
Oct. 10 Florida  
Oct. 17 @ Memphis State  
Oct. 24 @ South Carolina  
Oct. 30 @ Miami  
Nov. 7 Clemson  
Nov. 14 Virginia Tech (HC)  
Nov. 21 Kansas State  
Nov. 26 Houston (@ Tampa)

## 1970 WAKE FOREST SCHEDULE

12 Nebraska 36  
7 South Carolina 43  
Sept. 26 Florida State  
Oct. 3 at Virginia  
Oct. 10 Virginia Tech  
Oct. 17 Clemson  
Oct. 24 North Carolina  
Oct. 31 at Tennessee  
Nov. 7 at Duke  
Nov. 14 N. C. State  
Nov. 21 at Houston

### — NEXT WEEK —

The Florida State varsity has an off week, but there will be plenty of action in Campbell Stadium as the Seminole freshman team opens its schedule against the Baby Yellow Jackets of Georgia Tech. Kickoff for the Saturday contest is slated for 7:30 p.m. The varsity swings back into action Oct. 10 when rival Florida comes to town for the annual intra-state battle. The first of three afternoon contests, kickoff for the Florida game is 2 p.m.

For All Your Photo Needs

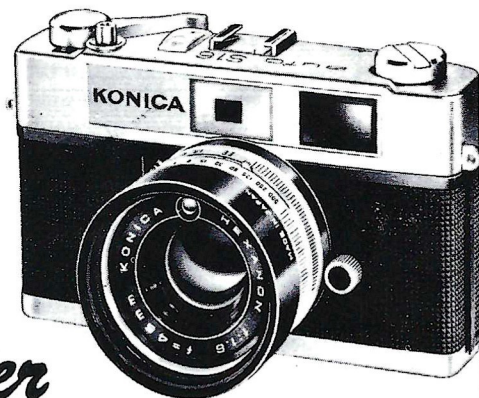
Camera's  
Film

Darkroom Equipment  
Binoculars  
Recorders  
Rentals

See The Friendly Folks At

# Tallahassee Camera Center

117 NORTH MONROE





# There's fun for everyone at florida state

By **Colia Ansley**

**Office of Information Services**

Florida State University would like to help put to rest the old myth that "there is nothing to do in Tallahassee."

Aside from the football games which draw thousands of people to town on Saturdays throughout the Fall, there is usually a full calendar of University-sponsored events ranging from lectures and drama to opera, art, jazz and rock concerts.

The fall quarter events calendar has representatives of a number of such annual favorites as the Artist Series, Seminole Spotlight Series, University Lecture Series, Theater and Opera Guild productions, Faculty Recitals and the Madrigal Christmas Dinners.

This season the University Art Gallery in the Fine Arts Building will have new exhibits on a monthly basis, with both professional and student works being featured; and the School of Music is offering several new adult enrichment courses, including a lecture series and piano lessons.

In addition to major productions, some type of music is performed every week on campus often with as many as two or three concerts from which to select. The Studio Theater presents plays of an experimental nature, often using student, rather than faculty, directors.

The Artist Series brings to campus some of the best professional entertainment available today. The 1970-71 Series will include such renowned performers as Metropolitan Opera Star Marilyn Horne and Dame Judith Anderson as "Hamlet." Two leading American orchestras—the Detroit Symphony Orchestra and the Minnesota Symphony—will appear, as will the classic jazz group, The New Orleans Preservation Hall Jazz Band. Musical comedy will be represented in a roadshow performance of the lively Broadway hit, "Zorba" with drama represented by Shaw's "Candida" to be presented by the Asolo State Theater of Florida. An evening of dance will be performed by the American Ballet Theater.

During the fall quarter, Miss Horne will appear on Oct. 29; "Zorba" will be presented on Nov. 18; and the New Orleans Preservation Jazz Hall Band will perform on Nov. 24.

All Artist Series programs are at 8:15 p.m. in Ruby Diamond Auditorium (formerly Westcott.)

General public season tickets for all eight productions are available for \$25 at the University Union Ticket Office, or by mail, through Oct. 15. Student season tickets are \$8 and student spouse tickets, \$12.50.

A variety of quality drama by the University Theater will have something to offer for the whole family.

Highlighting the 1970-71 theater season will be five "Main Stage" productions. The opening show, Oct. 16-24, will be the hit 1950's musical "Guys and Dolls," produced in conjunction with the School of Music and Opera Guild. The avant garde "Rosencrantz and Guildenstern are Dead," which is based on Shakespeare's "Hamlet," will follow on Nov. 12-15.

The Annual Children's Show will be that classic tale for youngsters, "Peter Pan." Two plays will be premiered by "Main Stage" during the year. One, by Joseph Hayes, will headline the 1971 Fine Arts Festival, and another by FSU playwright-in-residence Frank Gagliano will be presented in late spring.

Season tickets for the five shows are \$10.95 for the general public and \$6.95 for students. They may be purchased at the University Union Ticket Office or by mail through the Department of Theater.

Main Stage productions are held in the Fine Arts Building Theater with curtain time at 8:15 p.m. Studio Theater shows, which this year

will feature a series of plays by Gagliano, are at 8:15 p.m. in Conradi Theater. Tickets for these shows are available at the box office prior to each performance.

The University Lecture Series brings to campus experts on subjects ranging in scope from government to the arts. The lectures, which are held at 8 p.m. in Diamond Auditorium, are free and open to area residents as well as University students and personnel.

The lineup for the academic year includes Dr. Robert Weaver, former Secretary of HUD on Oct. 6; Dr. Barry Commoner, an expert on environmental problems, on Nov. 10; the Rev. Jesse Jackson, Southern Christian Leadership Conference, on Nov. 19; Kenneth Tynan, leading British theater critic and expert on op art, on Feb. 9; Julian Bond, an expert on Black Politics, on Apr. 15; and Dr. John Kenneth Galbraith, whose field is the economy, on May 11.

The Art Gallery will offer everything from ancient artifacts to modern art with exhibits featuring professional talent in the upper gallery and student works in the lower. Among the Gallery's offerings will be the opening show in October featuring selected works from FSU's permanent art collection, in the upper gallery; and in the lower gallery, a photography display of works by students of Evon Streetman.

In November the upper gallery will show works by faculty artists from various Florida universities and junior colleges, while the December exhibit will be devoted to art appropriate to the holiday season.

The gallery is open from 10 a.m. to 4 p.m., Monday through Friday, and from 1 p.m. to 4 p.m. on weekends. It is closed during academic holidays, and there is no admission cost at any time.

Throughout the year Strozier Library's Undergraduate Division sponsors a Library Lecture Series presenting authors from among the FSU faculty. Lectures are held monthly on a Wednesday at 3 p.m. The lectures are free and area residents are invited to attend along with members of the University community.

The School of Music will offer two new programs this fall, in addition to such traditional favorites as the Faculty Recital Series, the Women's Glee Club Christmas Vespers, the Choral Union Concert in December and the University Symphony Concert in November.

"Music in Our Changing World" will provide the theme for the Music Lecture Series, to be held 10 consecutive Monday nights beginning Sept. 28 at 7:30 p.m. Led by prominent members of the music faculty, the series is designed to help participants gain a new perspective on the contemporary trends and future prospects of music in our rapidly changing society. The \$7.50 registration fee is payable during the first class session, in Room 205 of the Music Building.

"Piano for Pleasure," designed for adults with little or no piano background, will be offered as a 10 week course starting Sept. 29 at 7:30 p.m. Dr. Jack Swartz, who will conduct the class, said it can also be taken as a refresher course for those who have been away from the keyboard since childhood. Simple piano literature will be used with an emphasis on popular music. The \$50 tuition fee is payable at the first session in the Music Building.

Ending the quarter on a merry note will be the Annual Christmas Madrigal dinners, sponsored jointly by the School of Music, the University Food Services and the University Union. Dates for the old English Style holiday event are Nov. 29-30, Dec. 1-2 and 4-7.

Further information about the Dinners, which are at 6:30 p.m. in the Union Ballrooms, will be announced later in the quarter.

So come join us at Florida State where there is always something going on.



# events in preview.....



**MUSIC** — The combined choral forces of the School of Music join the State Symphony of Florida in concert. The FSU School of Music is the home of the State Symphony and the State Opera Association, with the organizations' members coming from the faculty and student ranks.



**OPERA** — The Florida State University Opera Guild annually presents two or three quality productions ranging from grand opera to lighter or romantic operas or musical comedy. This season the Guild will work with the Theater to produce "Guys and Dolls," the hit musical from the '50's. The Opera Guild will produce Carlisle Floyd's opera "Of Mice and Men" as the highlight of the 1971 Fine Arts Festival in February. The scene shown is from the opera

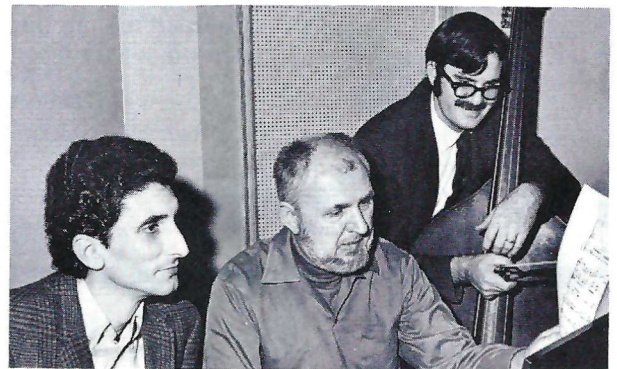


"Amelia Goes to the Ball," which was presented during the 1970 Fine Arts Festival.

**LECTURES** — Former Ambassador to the United Nations Arthur Goldberg, right, was among the speakers featured during the 1969-70 Lecture series. Here he is greeted by FSU government professor Elston Rody. The series is designed to bring to campus persons knowledgeable in a wide variety of subjects ranging from government to the arts.



**ARTIST SERIES** — The hit Broadway musical "Zorba" will be a highlight of the 1970-71 Artist Series. The lusty show, based on the novel "Zorba the Greek," is highlighted by energetic Greek songs and dances and reflects the fierce joys and harsh sorrows of life in Greece today. It will be presented on Nov. 18.



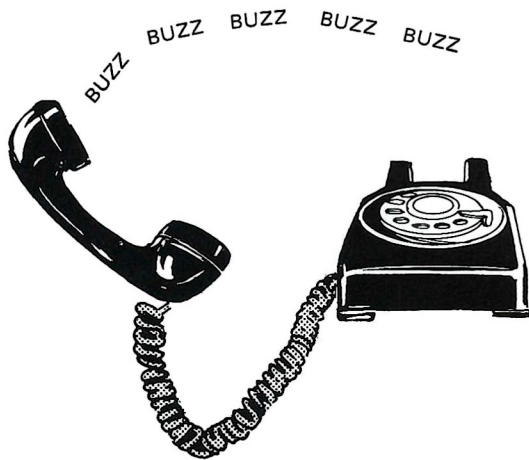
**FACULTY RECITALS** — The School of Music Annually presents a series of recitals featuring the many talents of its faculty. Here Mario Abril, John Boda and Victor Ellsworth rehearse for a joint program they presented last season.

**BAND** — The Marching Chiefs provide color and atmosphere at all Florida State home football games and band members are on hand to musically boost FSU's basketball team. After the football season the Chiefs disband and regroup as several different concert organizations which perform during winter and spring quarters.





listen to  
the sounds  
of an  
out dated  
Tallahassee  
business.



Sound familiar? In today's fast-paced world, a busy line could signal a loss of business. When a modern system from Southeastern Telephone could automatically transfer incoming calls to other lines, should the main line be in use.

Installation is really a simple procedure, and a new system costs just pennies a day. Far less than lost business or an irate customer. Call us, and keep your lines busy. As well as your help.



**southeastern telephone company**  
A Tradition of Sound Service

# EVENTS CALENDAR

FALL QUARTER 1970

## SEPTEMBER

- 28 7:30 p.m.—First in a ten week lecture series, "Music in Our Changing World." Room 205 Music Building  
29 7:30 p.m.—First in a ten week series, "Piano for Pleasure." Music Building  
8:15 p.m.—Faculty Recital, Edward Kilenyi and John Boda. Opperman Music Hall

## OCTOBER

- 6 8 p.m.—Lecture Series, Dr. Robert Weaver (former HUD Secretary)—Diamond Auditorium  
9 8 p.m.—Seminole Spotlight Series—Tully Gym  
8:15 p.m.—Chamber Orchestra Concert—Opperman Music Hall  
12-16 Matinee—Studio Theater—"Androcles and the Lion" — Conradi Theater  
16-24 8:15 p.m.—Theater and Opera Guild production of "Guys and Dolls"—Fine Arts Building Theater  
29 8:15 p.m.—Artist Series—Marilyn Horne—Diamond Auditorium  
30-31 8:15 p.m.—Studio Theater—"City Scene" by Gagliano—Conradi Theater

October Art Gallery Exhibit—Selected works from FSU's permanent collection and Cypriot Antiquities collection in upper gallery—Student photography exhibit in lower gallery.

## NOVEMBER

- 1 8:15 p.m.—"City Scene"—Conradi  
6 8:15 p.m.—University Singers and Chamber Choir Concert—Opperman Music Hall  
8 8:15 p.m.—Percussion Ensemble Concert—Opperman Music Hall  
10 8 p.m.—Lecture Series—Dr. Barry Commoner (environment) — Diamond Auditorium  
12-15 8:15 p.m.—Main Stage Production—"Rosencrantz and Guildenstern are Dead"—Fine Arts Building Theater  
18 8:15 p.m.—Artist Series—"Zorba"—Diamond Auditorium  
19 8 p.m.—Lecture Series—Rev. Jesse Jackson (S.C.L.C.)—Diamond Auditorium  
20 8:15 p.m.—Collegians and University Singers in an all Stravinsky program—Opperman Music Hall  
22-24 8:15 p.m.—Studio Theater—"Night School"—Conradi Theater  
22 8:15 p.m.—An all Wagner Concert—Diamond Auditorium  
23 8:15 p.m.—University Symphony Concert—Diamond Auditorium  
24 8:15 p.m.—Artist Series—New Orleans Preservation Hall Jazz Band Concert—Diamond Auditorium  
29-30 6:30 p.m.—Madrigal Dinners in Student Union

November Art Gallery Exhibit—Faculty Artists from various Florida universities and junior colleges in upper gallery

## DECEMBER

- 1 8:15 p.m.—Choral Union Concert—Opperman Music Hall  
1-2 6:30 p.m.—Madrigal Dinners in Student Union  
4 8:15 p.m.—Wind Ensemble and Symphonic Band Concert—Opperman Music Hall  
4-7 6:30 p.m.—Madrigal Dinners—Student Union  
6 2 p.m.—Lab Band Concert—Opperman Music Hall  
5 p.m.—Women's Glee Club Christmas Vespers — Diamond Auditorium

December Art Gallery Exhibit—a display appropriate to the holiday season in the upper gallery



# TONIGHT AT HALFTIME

## The Marching Chiefs

### MUSIC AT HALFTIME

Robert T. Braunagel, Director  
Charles Carter, Arranging, Assistant Director  
Richard D. Mayo, Assistant Director  
George Rosete, Drum Major  
Mary Lynn Hendrickson, Head Majorette  
Mike Moore, Feature Twirler

### Theme: GOT A GROOVY THING GOING

Seminole football fans can look forward to seeing as a show-time first a most exciting and innovative season of half-time entertainment created by the widely renowned Florida State Marching Chiefs Band.

The imaginative new approach will feature as part of the overall theme four spirited and lively segments in each weeks show.

Opening up the activities is the section billed "Spirit of Our Times." It will feature ideas relevant to what's happening today, capturing the current feelings in a reflective mood and with perhaps a new twist here and there.

"The Bent Arrow Award," the second part of the show, will highlight each weeks half-time activities as all will no doubt want to know who is struck by the precarious direction of the formidable shaft.

Flashback to the time when things were really happening will highlight the third part of the show in the alike will be able to join in seeing what was relevant segment called "Those were the Days." Young and old then, in the "good old days" as the Band goes through its paces.

Rounding up the half-time activities in the sequence

"Happiness Is . . ." Only the boundaries of the imagination will limit the possibilities as to what will happen here each week.

Join in the big half-time Pow Wow each time the Marching Chiefs take to the field. Don't be a renegade. Scout for the Marching Chiefs in the next Seminole encounter.

### THE SHOW

#### The Spirit of Our Times

Got A Groovy Thing Going — (Teepee) — One of the prevailing spirits of our times is involvement. Introducing a new cheer, the band and cheerleaders hope to involve everyone in the spirit and excitement of the hour.

#### Bent Arrow Award

Bent Arrow Music; Bewitched, Bothered and Bewildered — (Bow and Arrow) — The Chiefs form a bow and arrow, and salute the gunky freshmen.

#### Those Were The Days

Those Were The Days; Hut Sut Medley — (Drill Sequence) — The days of the older generation will remember the era of radio and the fabulous hit parade. The days of relevant tunes such as **The Little Fishes, Mairzy-Doats, and Hut Sut Ralston.** The Chiefs do a drill sequence to these oldies but goodies.

#### Happiness Is

Mah-Na Mah-Na; Let It Be Me — (Concert Formation)— Happiness is a blind date with a girl as beautiful as our twelve majorettes. In concert formation, we close with **Let It Be Me** and feature our majorettes.

## Taylor Chevrolet-Buick, Inc.



Sales



Service



Body Shop

Telephones:

QUINCY, FLORIDA 627-9621  
TALLAHASSEE (Toll Free) 222-8200

New Location:

2039 West Jefferson St.  
Quincy, Florida 32351

A SHORT DRIVE FOR A BETTER BUY

See Our Completely New Facilities on Highway 90 West, Quincy, Fla.



## We're The Warpath Watchers



The way those Seminoles play the game, it takes The Times to tell it! If you'll settle for no less than the best, most colorfully complete coverage of every FSU game, look to Florida's Best Newspaper.



## MEET THE COACHES

### BILL PETERSON HEAD FOOTBALL COACH

Coach "Pete" moves into his second decade as the Seminoles "Big Chief" this season and is faced with as big a challenge as ever before.

When Bill Peterson resigned as an LSU assistant coach under Paul Dietzel to take over the Florida State head coach spot in 1960, he vowed to take the then struggling Seminoles to national prominence.

Through a decade of dedication, hardwork and desire, Peterson has succeeded in lifting the Tribe from depths of the "have nots" to the door step of the "haves."

Four of the last six years Peterson has led Florida State to bowl games. Opponents no longer look upon the Seminoles as a "breather." Their wide-open "pro style" of play has made them a favorite of national and regional television audiences, as well as bowl games.

Three Tribe quarterbacks are on pro rosters and former Seminoles Fred Biletnikoff and Ron Sellers are considered among the best in the NFL. In all, there are nearly a dozen former Bill Peterson players in the pro ranks this fall.

Peterson played his college ball at Ohio Northern University, graduating in 1946. During his tenure at LSU he was credited with recruiting and developing many members of the Tigers' 1958 national championship squad.

Now the "dean" of the state's coaches, Peterson led the Seminoles to 55 wins, 38 defeats and 11 ties in his first decade. In the last half dozen years they have been consistently ranked in or around the nation's "top 20" teams.

A member of the Methodist Church, he and wife Marjorie have five sons, Ron, Tommy, Jon, Billy and David.



THE ORIGINAL  
**BIG BOY  
RESTAURANT**

**GREAT PLACE FOR POW WOWS  
AND GOOD FOOD**

SERVING:

- Breakfast
- Lunch
- Dinner
- Snacks

Open 7 A.M. to Midnight  
'Til 2 A.M. Fridays and Saturdays

1775 W. Tennessee Street

TALLAHASSEE — TELEPHONE 224-1246

TRY FRISCH'S CARRY-OUT





# FOOTBALL FAMILY



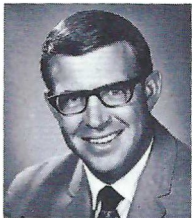
**Vaughn Mancha**  
Athletic Director



**Bill Peterson**  
Head Coach



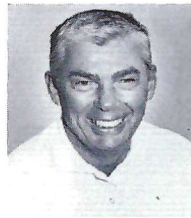
Front row, left to right: Don Blackwelder, Larry Peccatiello, Head Coach Bill Peterson, Bob Harbison, Bill Crutchfield. Back row: Sam Elliott, Les Hanly, Dan Henning, Bill Parcels, Al Conover, Billy Cox and Bud Whitehead.



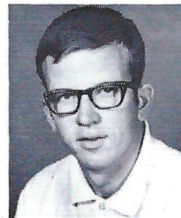
**Doug Messer**  
Business Manager



**Claude Thigpen**  
Ticket Manager



**Don Fauls**  
Head Trainer



**Doug May**  
Ass't. Trainer



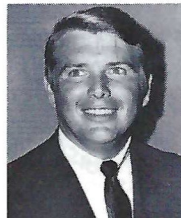
**Lonnie Burt**  
Sports Info. Director



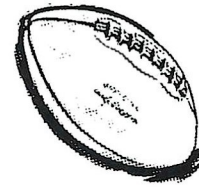
**Hank Schomber**  
Ass't. SID



**Frank DeBord**  
Equipment Manager



**David "Bucky" Wagner**  
Academic Advisor



Go  
Seminoles!



**Sears**

Tallahassee's Complete  
Department Store

- Everything You Need  
For Your Home  
Family or Car!

OPEN 9:30 a.m. 'til 9:30 p.m.  
Monday thru Saturday

SHOP AT SEARS  
AND SAVE

**Sears**

SEARS, ROEBUCK AND CO.



**SEMINOLE FANS!**



**YOU  
ARE  
THERE!**

**COMPLETE  
FOOTBALL  
COVERAGE**

**IN THE**

**TAMPA  
TRIBUNE**

**READ**

**JIM**

**SELMAN**

**ASS'T. SPORTS EDITOR  
EVERY  
MORNING**



# MEET THE 1970

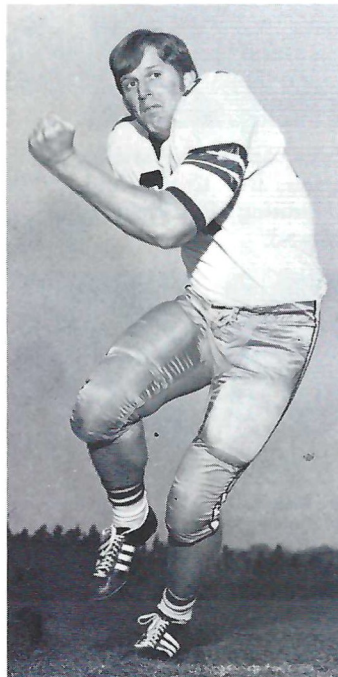


**ROGER MINOR**  
Sophomore Tackle  
Delray Beach  
Business



**BILL RIMBY**  
Junior Tackle  
St. Petersburg  
Business

**OFFENSIVE**



**JOHN ESSEX**  
Sophomore Tackle  
Miami  
Business

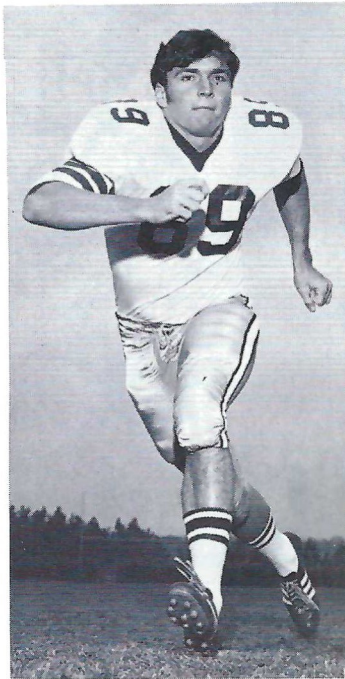


**JOE STRICKLER**  
Junior Tackle  
Avon Park  
Mathematics



# SEMINOLE

## LINEMEN



**J. W. McKinnie**  
Junior Guard  
Macon, Ga.  
Business



**MIKE SAMMONS**  
Junior Guard  
Atlanta  
Business



**JAY STOKES**  
Junior Guard  
Sanford  
Business



**GEORGE MONTGOMERY**  
Junior Guard  
Coral Gables  
Hotel-Rest. Mgt.



## CAPTAIN LOUIE'S GALLEY

THE FINEST  
SEAFOOD & CHICKEN

TAKE OUT OR DINE IN

EXPERTS IN THE PREPARATION OF FINE  
SEAFOOD AND CHICKEN FOR OVER 20 YEARS

NOW  
TWO LOCATIONS  
IN  
TALLAHASSEE

100 W. Tharpe  
385-1179

620 W. Tenn.  
224-1181



TALLAHASSEE



# OFFENSIVE LINEMEN CONT'D

**ALAN DEES**  
 Sophomore Center  
 Lakeland  
 Criminology



**STEVE BEVILLE**  
 Junior Guard  
 Fernandina Beach  
 Criminology

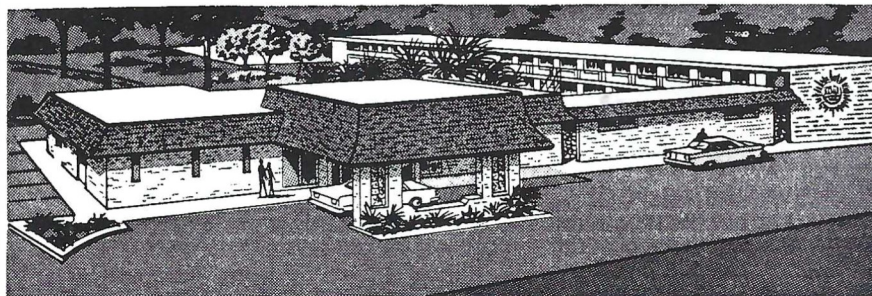


**CRAIG SOWERS**  
 Sophomore Center  
 Fort Lauderdale  
 Industrial Arts



# QUALITY MOTEL

*The Chez Napoleon Room  
 Complete Banquet and Meeting Facilities  
 Cocktail Lounge - Bonaparte's Retreat*



**COLOR TV**

"We Cater to  
 Commercial Men"

Phone 877-6171

*On the Parkway...* 1027 APALACHEE PKWY. US 27 So.





**DELICIOUS ITALIAN FOOD**  
**!! Finest Sandwiches in the World!!**

**Pizza**  
ALL VARIETIES

**Hot Poor Boy Sandwiches**

**SERVED ON FRESH OVEN-BAKED BREAD**

**Stromboli**

**Roast Beef**

**Hoggie**

**Pizza Burger**

**Meat Ball Hoggie**

**SPAGHETTI**

**RAVIOLI**

**FISH • SHRIMP • CHICKEN BASKETS**

**Come By After The Game And Enjoy**

**The Best Food In Town**

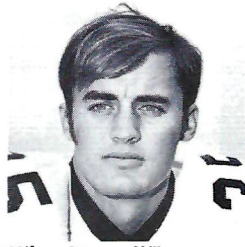
**1800 WEST TENNESSEE STREET**

**PHONE 222-5166 – YOUR ORDER READY IN MINUTES**



# '70 SEMINOLE

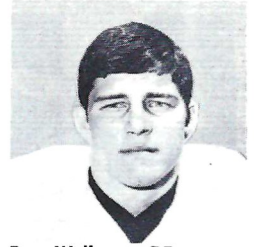
**Sr.**



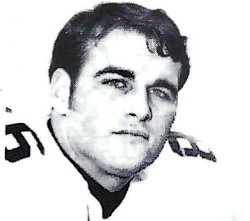
Mike Gray — WR  
Lake Mary



Jim Tyson — TE  
Pahokee



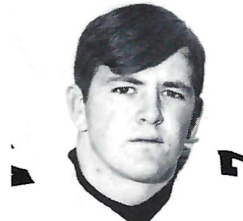
Ron Wallace — DE  
Macon, Ga.



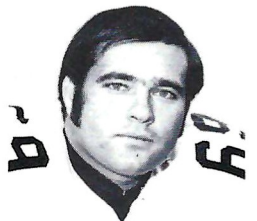
Randy Hall — DE  
Miami



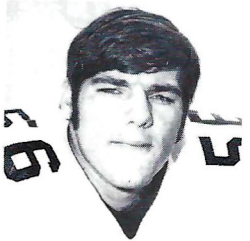
Beryl Rice — DE  
Fernandina Beach



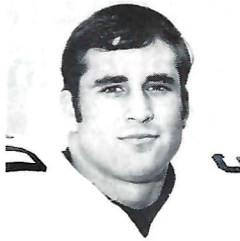
Robert McEachern — DE  
Tallahassee



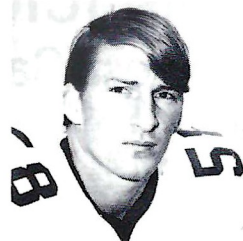
Tom White — DT  
West Palm Beach



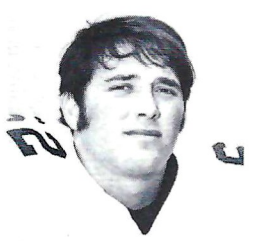
Bill Lohse — LB  
St. Petersburg



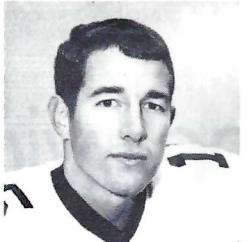
Barry Rice — LB  
Fernandina Beach



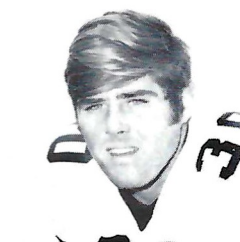
Steve Gildea — LB  
Daytona Beach



Theron Bass — LB  
Live Oak



Tommy Warren — QB  
Coral Gables



Tom Bailey — RB  
Coral Gables



Don Pederson — WR  
Groveland



## Big "B" One Hour Cleaners



ONE HOUR CLEANING • THREE HOUR SHIRT SERVICE

Monday thru Saturday

Students and Faculty Discounts Every Thursday

FIVE CONVENIENT LOCATIONS

1405 S. Adams St.  
Northwood Mall

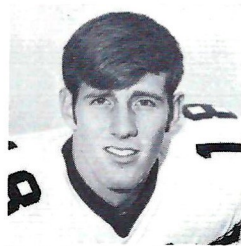
1100 W. Tenn. St.  
324 N. Monroe St.

1245 E. Lafayette St. Across From Sears

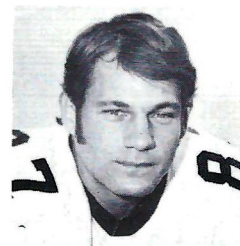




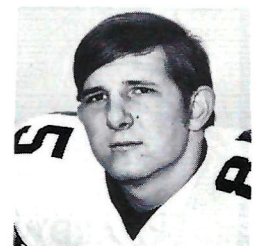
Rhett Dawson — WR  
Valdosta, Ga.



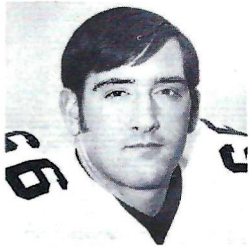
Kent Gaydos — WR  
Dallas, Tex.



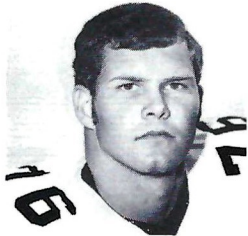
Ted Zaffran — TE  
Orlando



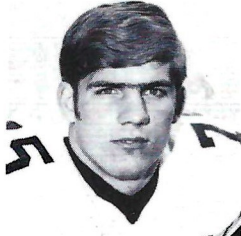
Bill Shaw — DE  
Marietta, Ga.



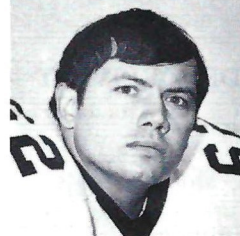
Joe Strickler — OT  
Avon Park



Bill Rimby — OT  
St. Petersburg



Richard Amman — DT  
Cocoa Beach



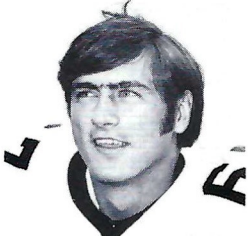
Bill Henson — DT  
Hyattsville, Md.



Jay Stokes — OG  
Sanford



George Montgomery — OG  
Coral Gables



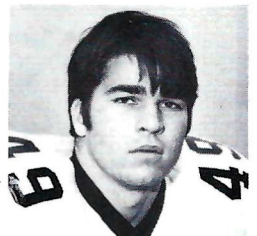
Mike Sammons — OG  
Atlanta, Ga.



J. W. McKinnie — OG  
Macon, Ga.



Steve Beville — OG  
Fernandina Beach



Guy Glisson — LB  
Tampa

## PARKWAY NATIONAL BANK



BANK THE QUICK WAY - BANK THE PARKWAY  
COURTESY · CONFIDENCE · CO-OPERATION

Telephone: 877-4121  
1407 East Lafayette Street  
Tallahassee, Florida

## *Miller* CHEVROLET COMPANY

Havana, Florida

539-6376

15 Miles North of Tallahassee

on U. S. 27

Phone Toll Free

224-1317



**EPPE-EDENFIELD  
HARDWARE & PAINT CENTER**

PHONE 222-3311

— CITY WIDE DELIVERY —

- Benjamin Moore Paints
- Garden Supplies
- Plumbing & Electrical Supplies
- Complete Line of Hardware

Open Mon. - Sat. 7:30 to 6:00

1334 N. MONROE

WHEN YOU THINK OF BOOKS, THINK OF BILL'S

**FSU SPIRIT  
HEADQUARTERS**

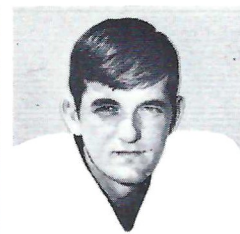
**FSU SWEAT SHIRTS,  
T-SHIRTS  
& NOVELTIES**

**ART SUPPLIES  
TEXTBOOKS,  
NEW & USED**

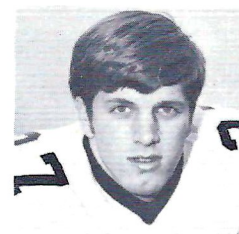
**BILL'S  
BOOK STORE**

"ACROSS FROM WESTCOTT GATE"

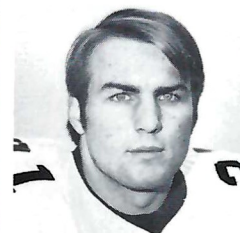
107 SOUTH COPELAND ST. TALLAHASSEE-FLA. 32304



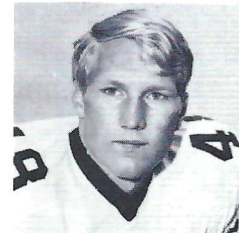
Frank Whigham — QB  
Sanford



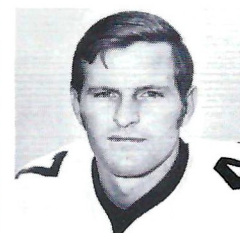
Arthur Munroe — RB  
Quincy



Paul Magalski — FB  
Garfield Heights, Ohio



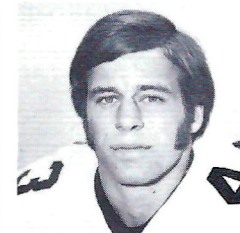
James Jarrett — FB  
Elizabethton, Tenn.



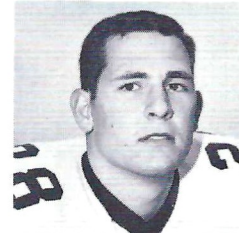
George Davis — WR  
Winter Haven



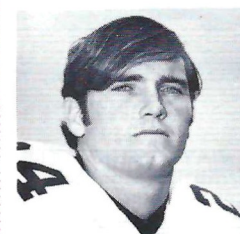
Benny Rust — DB  
Miami



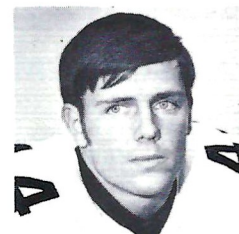
John Montgomery — DB  
Jacksonville



Robert Ashmore — DB  
Tallahassee



John Lanahan — DB  
Jacksonville



Buddy Gridley — DB  
Tallahassee



Duane Carrell — K  
Washington, D.C.





after the game

# HURRY ON DOWN TO HARDEE'S

for

- HAMBURGERS – Charco Broiled
- CHEESEBURGERS – Meltin' Good
- HARDEE HUSKEE – A Meal In Itself
- ROAST BEEF SANDWICH – Heaped High
- HARDEE HOT DOG – Tender & Delicious
- FISH SANDWICH – Mouthwatering Fish Fillet
- APPLE TURNOVERS – Steaming Hot
- FRENCH FRIES – Golden Crisp
- SHAKES – Extra Thick & Creamy
- SOFT DRINKS – Frosty Cold
- COFFEE – Freshly Brewed



1818 WEST TENNESSEE STREET



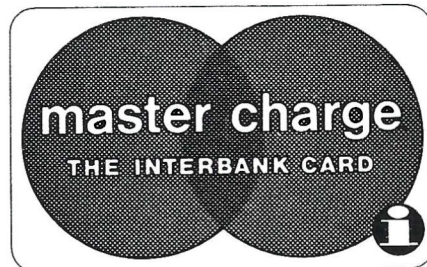
After the game

# EAT OUT...

Make today an even more festive occasion with dinner tonight at one of the many fine Tallahassee restaurants which honor your Master Charge card.

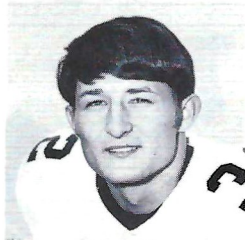
...wherever you see this emblem

The Lewis State Bank is your Mastercharge Bank in Tallahassee  
215 S. Monroe 224-2121

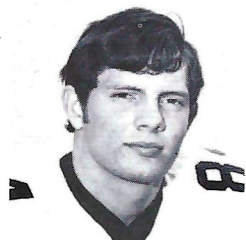




**So  
PH.**



**Eddie Davis — WR**  
Atlanta, Ga.



**Mike Glass — TE**  
Tampa



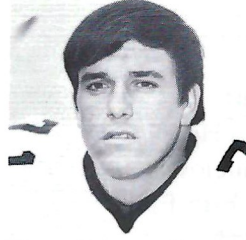
**Charlie Hunt — DE**  
Jacksonville



**Roger Minor — OT**  
Delray Beach



**John Essex — OT**  
Miami



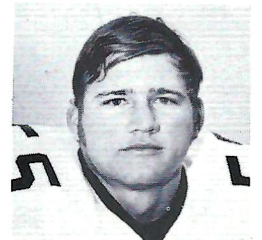
**Wayne Spence — OT**  
Macon, Ga.



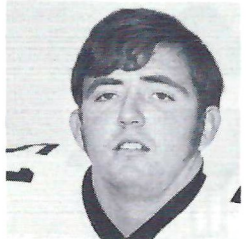
**Larry Strickland — DT**  
Tallahassee



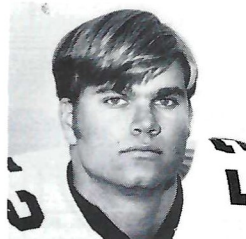
**Charlie Musser — OG**  
Graceville



**Alan Dees — C**  
Lakeland



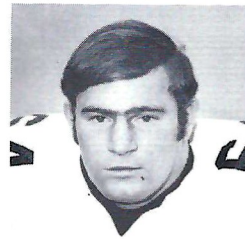
**Bob Carden — C**  
Edgewater



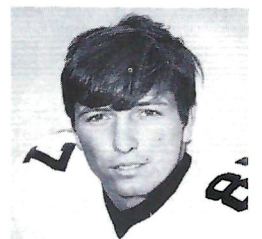
**Craig Sowers — C**  
Fort Lauderdale



**Dan Whitehurst — LB**  
Adel, Ga.



**Bobby Howell — LB**  
Decatur, Ga.

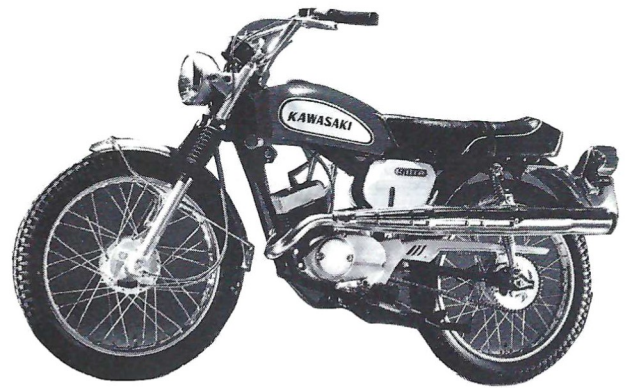


**Gary Parris — LB**  
Vero Beach

TALLAHASSEE'S SPORT CYCLE  
HEADQUARTERS



SALES & SERVICE ON MOST MAKES

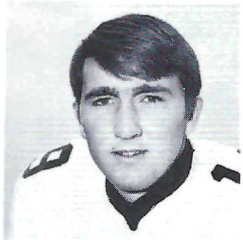


**Norton**  
**Ducati KAWASAKI**  
**BULTACO BSA**

**W. M. POGGIE**  
owner  
Just Past Tallahassee Jr. College W. Pensacola

**576-6326**





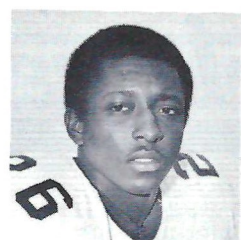
Gary Huff — QB  
Tampa



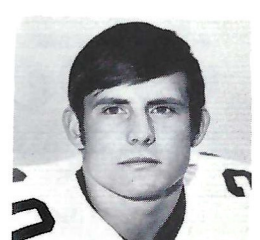
Rick Oreair — FB  
Jacksonville



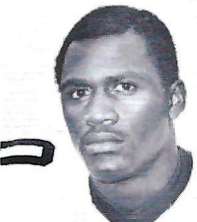
Barry Smith — WR  
Miami



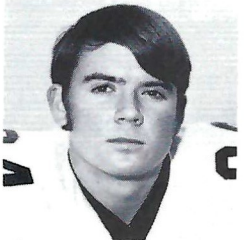
James Thomas — DB  
Macon, Ga.



David Snell — DB  
Slocomb, Ala.



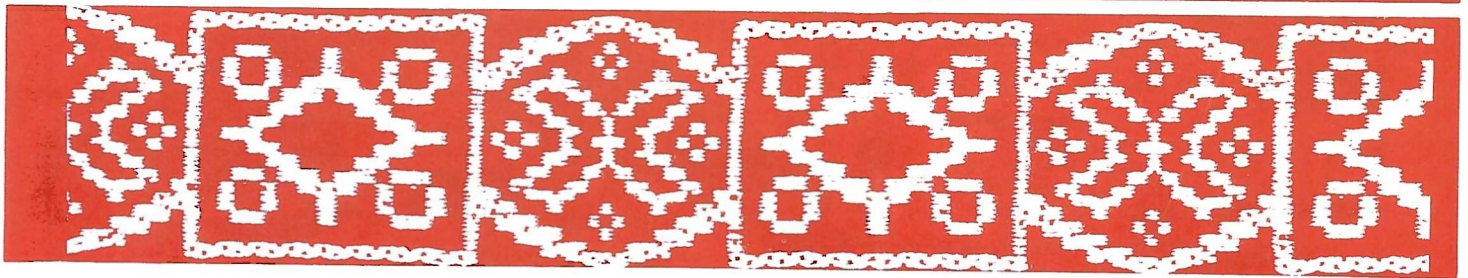
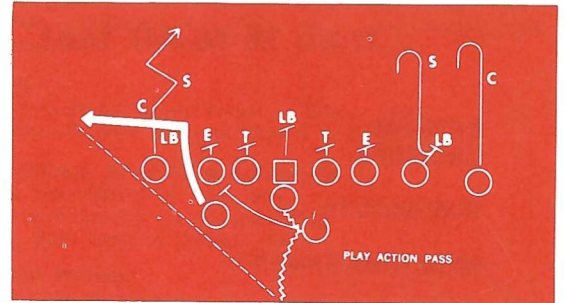
Eddie McMillan — DB  
Tampa



Brian Bengtson — K  
Green Bay, Wisc.

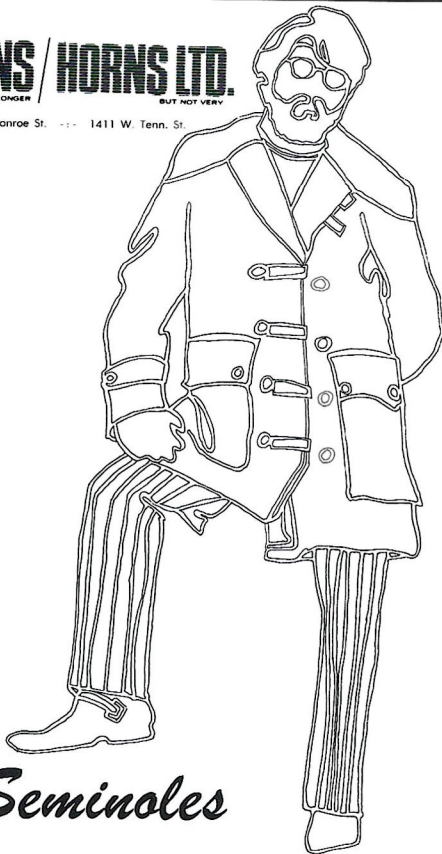


Johnny Martin — P  
Elba, Ala.



**BROWNS / HORNS LTD.**  
WE'VE BEEN EXPERTS LONGER BUT NOT VERY

100 South Monroe St. ... 1411 W. Tenn. St.



*Go Seminoles*



**HAV-A-TAMPA  
JEWELS**

*The Cigar for Men ...  
that Ladies Love —*

**WELCOME ANYWHERE**  
for their man-size flavor and gentle aroma

Distributed by **Eli Witt Tobacco & Candy Company**  
Tallahassee, Florida



COMPLIMENTS OF

# Sport-craft

THE COMPLETE LINE  
...from 14 to 40 feet

EXPRESS  
CRUISERS

RUNABOUTS

SPORTFISHERMEN

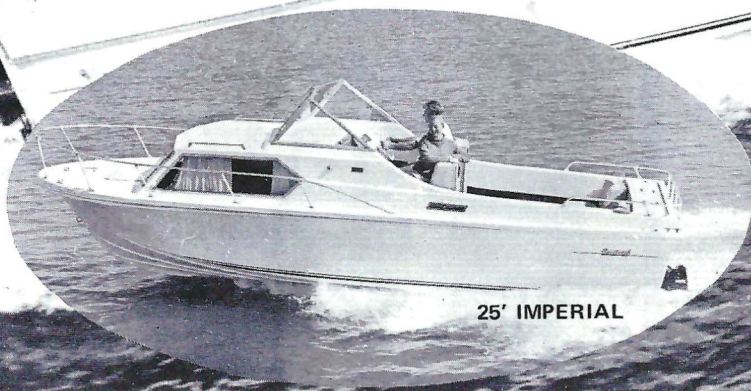
H-O-U-S-E-B-O-A-T-S

CABIN  
CRUISERS

DEEP "V"'S

CATHEDRALS

CONVENTIONALS



P.O. BOX 351 PERRY, FLORIDA 32347 - PHONE (904) 457-4701



# THE RECORD BOOK

## BEST SINGLE GAME PERFORMANCES

### TOTAL OFFENSE

- 490 yards by Bill Cappleman vs Memphis State, 1969 (minus 18 rush, 508 pass)
- 431 yards by Bill Cappleman vs South Carolina, 1968 (minus 6 rush, 437 pass)
- 369 yards by Joe Majors vs Tampa, 1959 (56 rush, 313 pass)
- 367 yards by Bill Cappleman vs Wake Forest, 1968 (2 rush, 365 pass)

### YARDS GAINED PASSING

- 508 yards by Bill Cappleman vs Memphis State, 1969
- 437 yards by Bill Cappleman vs South Carolina, 1968
- 372 yards by Bill Cappleman vs Tulsa, 1969
- 369 yards by Kim Hammond vs Mississippi State, 1967

### PASSES ATTEMPTED

- 53 by Kim Hammond vs Penn State (Gator Bowl 1967) (completed 37)
- 53 by Gary Pajcic vs VPI, 1966 (completed 28)
- 50 by Bill Cappleman vs Memphis State (completed 31)

### PASSES COMPLETED

- 37 by Kim Hammond vs Penn State (Gator Bowl, 1967) (attempted 53)
- 31 by Bill Cappleman vs Memphis State, 1969 (attempted 50)
- 28 by Gary Pajcic vs VPI, 1966 (attempted 53)
- 25 by Bill Cappleman vs South Carolina, 1968 (attempted 42)

### PASSES CAUGHT

- 16 by Ron Sellers vs South Carolina, 1968 (259 yards)
- 14 by Ron Sellers vs Wake Forest, 1968 (260 yards)
- 14 by Ron Sellers vs Penn State (Gator Bowl, 1967) (192 yards)

### YARDS RECEIVING PASSES

- 260 by Ron Sellers vs Wake Forest, 1968 (14 receptions)
- 259 yards by Ron Sellers vs South Carolina, 1968 (16 receptions)
- 229 yards by Ron Sellers vs VPI, 1967
- 218 yards by Ron Sellers vs Memphis State, 1968 (13 receptions)

### YARDS GAINED RUSHING

- 161 by Buddy Strauss vs Mississippi College, 1949
- 152 by Mike Sellers vs Sul Ross, 1951
- 150 by Bobby Renn vs Abilene Christian, 1957
- 142 by Keith Kinderman vs Richmond, 1961
- 142 by Phil Spooner vs Houston, 1965

### OTHER SINGLE GAME RECORDS

- Most Punts—11 vs Baylor, 1965  
 Most Field Goals—3 vs Florida, 1964; Alabama, 1967; Miami, 1969.  
 Most Points Scored—74 vs Whiting Field, 1949  
 Most Points Scored by An Individual—30 by Ron Sellers vs Wake Forest, 1968  
 Most TD's Scored by An Individual—5 by Ron Sellers vs Wake Forest, 1968  
 Most TD Passes Thrown—5 by Steve Tensi vs Oklahoma (Gator Bowl) 1965 and by Bill Cappleman vs Wake Forest, 1968

- Greatest Margin of Victory—74-0 vs Whiting Field, 1949  
 Greatest Margin of Defeat—0-49 vs Georgia, 1959  
 Total Offense—626 yards vs Memphis State, 1969  
 Passing Yardage—508 vs Memphis State, 1969  
 Rushing Yardage—383 vs Abilene Christian, 1957  
 Times Rushing—29 by Fred Pickard vs Georgia, 1959 and by Larry Green vs Memphis State, 1967  
 Passes Attempted—56 vs VPI, 1966  
 Passes Completed—38 vs Penn State (Gator Bowl) 1967,  
 Most Fumbles—10 vs Wichita State, 1969  
 Most Fumbles Lost—7 vs Wichita State, 1969  
 Most Fumbles Recovered—10 vs Wichita State, 1969  
 Most Passes Intercepted—7 vs VPI, 1959  
 Most Passes Intercepted by an Individual—3 by Tommy Brown (twice) vs Stetson, 1950, and Georgia Tech, 1952; Lee Corso vs Georgia, 1954, and Bud Whitehead vs VPI, 1959

### LONGEST PLAYS

- Longest Punt—84 yards by Tommy Brown vs Tampa, 1950  
 Longest Field Goal—53 yards by Grant Guthrie vs Miami, 1969.

### LONGEST TOUCHDOWN RUNS FROM SCRIMMAGE

- 81 yards by Fred Pickard vs VPI, 1957
- 80 yards by Phil Spooner vs Houston, 1965
- 78 yards by Buck Metts vs Stetson, 1964

### LONGEST KICKOFF RETURNS

- 100 yards by Bill Moremen and T. K. Wetherell vs Kentucky, 1965 (TD, lateral)
- 94 yards by Bill Moremen and T. K. Wetherell vs Miami, 1966 (TD, lateral)
- 89 yards by Bill Odom vs VPI, 1955 (TD)

### LONGEST INTERCEPTION RETURNS

- 99 yards by Ted Hewitt vs Stetson, 1948 (TD)
- 99 yards by Fred Biletznikoff vs Miami, 1963 (TD)
- 86 yards by Tom Hillabrand vs Auburn, 1960 (TD)
- 81 yards by Bud Whitehead vs Wake Forest, 1959 (TD)

### LONGEST RUNS FROM SCRIMMAGE WITHOUT SCORING

- 76 yards by Roy Thompson vs Stetson, 1951
- 65 yards by Wayne Giardino vs Oklahoma (Gator Bowl), 1965
- 64 yards by Nelson Italiano vs Troy State, 1951

### LONGEST PUNT RETURNS

- 92 yards by Phil Abraira vs North Carolina State, 1969 (TD)
- 80 yards by Bill Odom vs Stetson, 1954 (TD)
- 75 yards by Walt Sumner vs Alabama, 1967 (TD)
- 75 yards by Ralph Claudron vs Whiting Field, 1949 (TD)

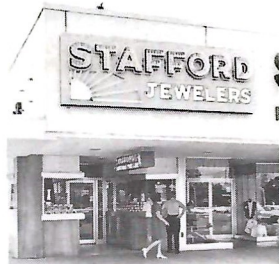
### LONGEST TOUCHDOWN PASSES

- 86 yards from Gary Pajcic to Ron Sellers vs Wake Forest, 1966
- 82 yards from Gary Pajcic to Ron Sellers vs Maryland, 1968
- 80 yards from Bill Cappleman to Don Pederson vs Memphis State, 1969
- 80 yards from Nelson Italiano to Eddie Gray vs Newberry, 1950

OUR TEAM SAYS . . . . . "LET'S GO SEMINOLES"



**DOWNTOWN**  
**VERNON STEVENS**  
 Manager



**PARKWAY**  
**AMOS STEVENS**  
 Manager



**THOMASVILLE**  
**M. WILLIAMSON**  
 Manager



**NORTHWOOD MALL**  
**NATHAN BRASWELL**  
 Manager

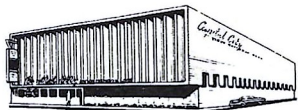
**STAFFORD QUALITY JEWELERS**



# Be on the FIRST Team!



We extend our warmest welcome to the Students and Faculty of FSU, TCC and FAMU... When it comes to Banking... Depend on a Solid Favorite... a PRO Team of Bankers and Financial Coaches that can help you with any Banking Need. So when GOOD Banking is what YOU want... Be on the FIRST TEAM at FIRST NATIONAL... where our Gimmick is Better Banking.



*Capital City*  
FIRST NATIONAL BANK

# STATISTICS

Two Games		1970 TEAM STATS			Two Games	
FSU	OPP	WF	OPP			
22	30	Total Points	19	79		
13/10/0	15/16/2	First Downs, Run/Pass/Pen	10/12/2	26/16/1		
70/3.8	100/3.9	Rushing Play/Avg.	77/1.9	114/4.4		
43/20/3	43/22/2	Passes Att./Comp./Int.	36/20/4	46/24/1		
276	273	Passing Yardage	236	382		
541	595	Total Yardage	380	889		
6/6	2/2	Fumbles/Lost	9/7	4/4		
14/44.3	17/39.0	Punts/Avg.	16/41.7	8/38.1		

## INDIVIDUAL LEADERS

### FLORIDA STATE

Passing	Att.	Comp.	Int.	Yds.	TD
Whigham	25	10	2	201	1
Warren	17	9	1	77	0

Receiving	No.	Yds.	Avg.	TD
Tyson	6	97	16.2	1
Dawson	5	123	24.6	0
Pederson	2	17	8.5	0
Bailey	2	13	6.5	0

Rushing	TC	Net	Avg.	TD
Bailey	28	106	3.8	1
Whigham	6	64	10.3	0
Warren	13	50	4.6	0
Munroe	9	26	2.7	0

Scoring	TD	FGA/M	XPA/M	TP
Bailey	1	0/0	0/0	6
Snell	1	0/0	0/0	6
Tyson	1	0/0	0/0	6
Fontes	0	3/1	2/1	4

### WAKE FOREST

Passing	Att.	Comp.	Int.	Yds.	TD
Russell	20	11	0	136	0
McMahan	16	9	2	100	1

Receiving	No.	Yds.	Avg.	TD
Bowden	8	93	11.6	0
Johnson	5	49	9.8	1
Winrow	3	39	13.0	0

Rushing	TC	Net	Avg.	TD
Hopkins	24	128	5.3	1
Johnson	15	65	4.3	0

Scoring	TD	FGA/M	XPA/M	TP
Johnson	1	0/0	0/0	6
Hopkins	1	0/0	0/0	6
Loundsbury	0	2/2	1/1	5





THE BANK THAT OFFERS A

**NO  
SERVICE  
CHARGE**

**PERSONAL CHECKING ACCOUNT**

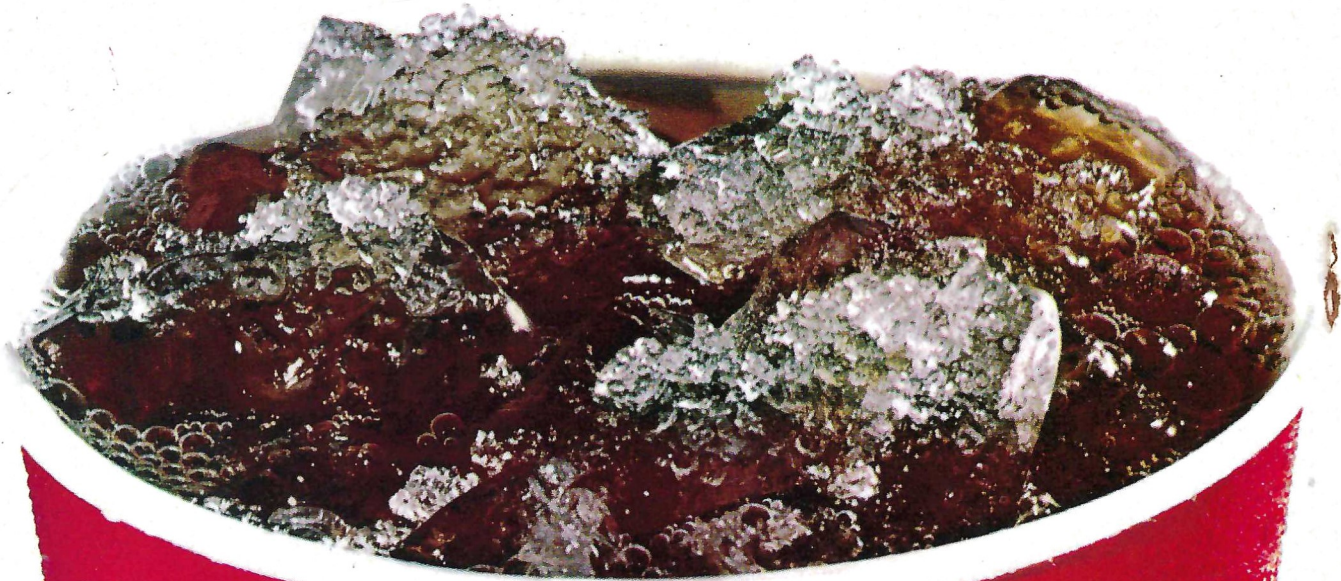
**(with \$200 minimum balance)**

**THE TALLAHASSEE BANK  
and Trust Company**

CALHOUN AT JEFFERSON



Wouldn't an ice cold Coke  
taste good right now?



Enjoy

Coca-Cola

Enjoy



**OFFENSE**

22 BARRY SMITH ..... WR  
 66 JOE STRICKLER ..... LT  
 65 J. W. McKINNIE ..... LG  
 55 ALLEN DEES ..... C  
 76 BILL RIMBY ..... RG  
 77 ROGER MINOR ..... RT  
 81 JIM TYSON ..... TE  
 12 FRANK WHIGHAM ..... QB  
 30 TOM BAILEY ..... RB  
 24 JOHN LANAHAN ..... FB  
 82 RHETT DAWSON ..... WR

**SEMINOLES****DEFENSE**

86 RANDY HALL ..... LE  
 74 ROBERT McEACHERN ..... LT  
 54 MIKE GLASS ..... LLB  
 56 BILL LOHSE ..... MLB  
 50 DAN WHITEHURST ..... RLB  
 75 RICHARD AMMAN ..... RT  
 83 RON WALLACE ..... RE  
 44 BUDDY GRIDLEY ..... MON  
 26 JAMES THOMAS ..... LC  
 29 BENNY RUST ..... RC  
 20 DAVID SNELL ..... SAF

**THE SEMINOLE SQUAD**

3 Carrell, P-PK	53 Stokes, OG
11 Fontes, PK	54 Glass, LB
12 Whigham, QB	55 Dees, C
14 Forey, QB	56 Lohse, LB
15 Warren, QB	57 Carden, C
16 Shively, QB	58 Gildea, LB
18 Gaydos, WR	59 Strickland, OT
19 Huff, QB	60 Ba. Rice, LB
20 Snell, DB	61 Essex, OT
22 Smith, WR	62 Bass, LB
23 Pederson, WR	63 G. Montg'ry, OG
24 Lanahan, FB	64 Musser, OG
26 Thomas, DB	65 McKinnie, OG
27 Munroe, RB	66 Strickler, OT
28 Ashmore, DB	67 Sammons, OG
29 Rust, DB	68 Beville, C
30 Bailey, RB	69 White, DT
31 Magalski, FB	70 Henson, DT
33 Parker, LB	72 Gibbs, OT
35 Gray, WR	74 McEachern, DT
36 Oreair, RB	75 Amman, DT
40 McMillan, DB	76 Rimby, OT
42 Ratliff, DB	77 Minor, OT
43 J. Montg'ry, DB	80 Hunt, DE
44 Gridley, DB	81 Tyson, TE
46 Bengtson, PK	82 Dawson, WR
47 Harris, RB-P	83 Wallace, DE
48 Jarrett, FB	84 Parris, TE
49 Glisson, LB	85 Shaw, DE
50 Whitehurst, LB	86 Hall, DE
51 Howell, LB	87 Zaffran, TE
52 Sowers, C	88 Be. Rice, DE

**OFFICIALS —**

Referee ..... Johnny Cook, Rome Ga.  
 Umpire ..... Bradley Faircloth, Greensboro, N.C.  
 Linesman ..... Henry Hair, Atlanta, Ga.

**DEFENSE**

75 WIN HEADLEY ..... LE  
 76 DICK CHULADA ..... LT  
 56 ED BRADLEY ..... LLB  
 52 ED STETZ ..... MLB  
 55 CARLYLE PATE ..... RLB  
 63 MIKE MAGNOT ..... RT  
 83 JOHN PHILLIPS ..... RE  
 34 PAT McHENRY ..... LCB  
 12 DICK BOZOIAN ..... RCB  
 15 TERRY KUHARCHEK ..... LS  
 14 FRANK FUSSELL ..... RS

**DEACONS****OFFENSE**

82 GARY WINROW ..... TE  
 78 GERALD McGOWAN ..... LT  
 64 TED WAITE ..... LG  
 53 NICK VRHOVAC ..... C  
 69 BILL BOBBORA ..... RG  
 61 VINCE NEDIMYER ..... RT  
 11 JUNIOR MOORE ..... SE  
 5 LARRY RUSSELL ..... QB  
 32 GARY JOHNSON ..... RB  
 44 LARRY HOPKINS ..... FB  
 35 STEVE BOWDEN ..... FL

**THE DEACON SQUAD**

5 Russell, QB	57 Brown, LB
7 McMahan, QB	59 Grundies, OT
8 Hogan, FB	61 Nedimyer, OT
10 Ryan, QB	62 Spencer, C
11 Moore, RB	63 Magnot, DT
12 Bozoian, DB	64 Waite, OG
14 Fussell, DB	65 Martin, OG
15 Kuharchek, DB	69 Bobbora, OG
16 Bowden, J. DB	70 Koch, DT
20 Holt, RB	71 Bennett, DT
21 McCoy, SE	72 Komondorea, DT
22 Campbell, RB	73 Mangiaracina, OG
23 Arcaro, DB	74 Pope, LB
24 Lindsay, DB	75 Headley, DT
32 Johnson, RB	76 Chulada, DT
34 McHenry, DB	77 Logan, DT
35 Bowden, S. RB	78 McGowan, OT
36 Jakubovic, DB	79 Caywood, DT
40 Garrett, RB	80 Godfrey, DE
41 Causey, LB	82 Winrow, TE
43 Howlette, SE	83 Phillips, DT
44 Hopkins, FB	84 Theriault, OT
50 German, C	86 Lounsbury, K
51 Cox, C	87 Doda, TE
52 Stetz, LB	88 Teague, DE
53 Vrhovac, C	89 Mellon, SE
55 Pate, LB	95 Rothrock, DB
56 Bradley, LB	

**TALLAHASSEE COCA-COLA BOTTLING CO.**

"COCA-COLA" AND "COKE" ARE REGISTERED TRADE-MARKS OF THE COCA-COLA COMPANY.



# It's the real thing. Coke.

Trade-mark ®





**When You Celebrate FSU's victory,  
Treat Yourself to a Juicy**

**S T E A K**

**BEEF—As delicious as it is nutritious!**

**FLORIDA BEEF COUNCIL**



# FLORIDA STATE

NO.	NAME	POS.	CLASS	HT.	1969		HOMETOWN
					WT.	STATUS	
75	AMMAN, RICHARD	DT	Jr.	6-6	234	1VL	Cocoa Beach
28	ASHMORE, ROBERT	DB	Jr.	6-0	189	1VL	Tallahassee
30	BAILEY, TOM	RB	Sr.	6-2	215	2VL	Coral Gables
62	BASS, THERON	LB	Sr.	5-11	200	2VL	Live Oak
46	BENGTSON, BRIAN	PK	Soph.	6-3	204	Squad	Green Bay, Wis.
68	BEVILLE, STEVE	C	Jr.	6-2	215	1VL	Fernandina Beach
57	CARDEN, ROBERT	C	Soph.	6-3	238	Frost	Edgewater
3	CARRELL, DUANE	P-PK	Jr.	5-11	171	1VL	Washington, D.C.
82	DAWSON, RHETT	WR	Jr.	6-1	185	1VL	Valdosta, Ga.
55	DEES, ALLEN	C	Soph.	6-2	195	RS	Lakeland
61	ESSEX, JOHN	OT	Soph.	6-2	236	Squad	Miami
11	FONTES, FRANK	PK	Jr.	5-6	155	JC	Perth Ampoy, N.J.
14	FOREY, DAN	QB	Jr.	6-5	205	JC	Denver, Colo.
10	GAYDOS, KENT	WR	Jr.	6-6	209	1VL	Dallas, Tex.
72	GIBBS, SHANE	OT	Soph.	6-3	209	Frosh	Bay Minette, Ala.
58	GILDEA, STEVE	LB	Sr.	6-0	194	2VL	Daytona Beach
54	GLASS, MIKE	LB	Soph.	6-3	203	RS	Tampa
49	GLISSON, GUY	LB	Jr.	6-0	205	1VL	Tampa
35	GRAY, MIKE	WR	Sr.	6-3	200	2VL	Lake Mary
44	GRIDLEY, BUDDY	DB	Jr.	5-11	203	1VL	Tallahassee
86	HALL, RANDY	DE	Sr.	6-0	207	2VL	Miami
47	HARRIS, CHIP	RB-P	Jr.	6-0	205	JC	Live Oak
70	HENSON, BILL	DT	Jr.	6-1	230	JC	Hyattsville, Md.
51	HOWELL, BOBBY	LB	Soph.	6-0	215	Frosh	Decatur, Ga.
19	HUFF, GARY	QB	Soph.	6-1	185	Frosh	Tampa
80	HUNT, CHARLIE	DE	Soph.	6-4	202	Frosh	Jacksonville
48	JARRETT, JAMES	FB	Jr.	6-2	202	1VL	Elizabethton, Tenn.
24	LANAHAN, JOHN	FB	Jr.	6-0	197	1VL	Jacksonville
56	LOHSE, BILL	LB	Sr.	6-1	228	1VL	St. Petersburg
74	McEACHERN, ROBERT	DT	Sr.	6-2	234	2VL	Tallahassee
65	McKINNIE, J.W.	OG	Jr.	6-2	210	1VL	Macon, Ga.
40	McMILLAN, EDDIE	DB	Soph.	6-2	172	Frosh.	Tampa
31	MAGALSKI, PAUL	FB	Jr.	5-11	208	1VL	Garfield Hts. Ohio
77	MINOR, ROGER	OT	Soph.	6-3	242	RS	De'ray Beach
63	MONTGOMERY, GEORGE	OG	Jr.	6-2	229	1VL	Coral Gables
43	MONTGOMERY, JOHN	DB	Jr.	6-1	193	1VL	Jacksonville
27	MUNROE, ARTHUR	RB	Jr.	6-1	186	1VL	Quincy
64	MUSSER, CHARLEY	OG	Soph.	6-1	215	Frosh	Graceville
36	OREAIR RICK	RB	Soph.	6-1	190	Frosh	Jacksonville
33	PARKER, CLINT	LB	Soph.	6-2	190	Frosh	Daytona Beach
84	PARRIS, GARY	TE	Soph.	6-3	220	Frosh	Vero Beach
23	PEDERSON, DON	WR	Sr.	6-1	184	2VL	Groveland
42	RATLIFF, RON	DB	Soph.	6-0	183	Squad	West Palm Beach
60	RICE, BARRY	LB	Sr.	6-2	210	2VL	Fernandina Beach
88	RICE, BERYL	DE	Sr.	6-1	204	2VL	Fernandina Beach
76	RIMBY, BILL	OT	Jr.	6-4	224	1VL	St. Petersburg
29	RUST, BENNY	DB	Jr.	6-0	193	1VL	Miami
67	SAMMONS, MIKE	OG	Jr.	6-1	210	1VL	Atlanta, Ga.
85	SHAW, BILL	DE	Jr.	6-2	215	1VL	Marietta, Ga.
16	SHIVELY, RANDY	QB	Soph.	6-0	164	Frosh	St. Petersburg
22	SMITH, BARRY	WR	Soph.	6-0	184	Frosh	Miami
20	SNELL, DAVID	DB	Soph.	5-8	175	Frosh	Slocomb, Ala.
52	SOWERS, CRAIG	C	Soph.	6-4	231	RS	Ft. Lauderdale
53	STOKES, JAY	OG	Jr.	6-4	229	1VL	Sanford
59	STRICKLAND, LARRY	DT	Soph.	6-1	220	RS	Tallahassee
66	STRICKLER, JOE	OT	Jr.	6-2	235	1VL	Avon Park
26	THOMAS, JAMES	DB	Soph.	6-1	188	Frosh	Macon, Ga.
81	TYSON, JIM	TE	Sr.	6-1	213	2VL	Pahokee
83	WALLACE, RON	DE	Sr.	6-2	187	2VL	Macon, Ga.
15	WARREN, TOMMY	QB	Sr.	5-11	169	2VL	Coral Gables
12	WHIGHAM, FRANK	QB	Jr.	6-0	184	Squad	Sanford
69	WHITE, TOM	DT	Sr.	6-0	225	1VL	West Palm Beach
50	WHITEURST, DAN	LB	Soph.	6-4	215	RS	Adel, Ga.
87	ZAFFRAN, TED	TE	Jr.	6-3	190	1VL	Orlando



● CABLE COLOR TV IN ALL ROOMS  
RECEIVING NINE CHANNELS

● POOL

● AIR CONDITIONED

● DIRECT DIAL PHONES

● Se habla Espanol

AMERICAN EXPRESS - DINERS - AMERICAN OIL  
PHILLIPS 66 - BANKAMERICARD  
MASTER CHARGE - CARTE BLANCHE

## DRIFTWOOD MOTEL and RESTAURANT

Cocktails - Banquet Room

● Northwest corner of Campus  
on U.S. 90; Fla. 20 West

1402 W. TENN. (U.S. 90)  
(904) 224-4174

# WAKE FOREST

No.	Name	Pos.	Class	Hgt.	Wgt.	Hometown
23	ARCARO, NICK	DB	Soph.	5-11	185	Princeton, N. J.
71	BENNETT, TERRY	DT	Jr.	6-1	215	McDonald, Pa.
69	*BOBBORA, BILL	OG	Jr.	6-1	215	Chicago, Ill.
16	BOWDEN, JOEL	DB	Sr.	6-1	190	Liberty, N. C.
35	*BOWDEN, STEVE	RB	Jr.	6-1	186	Liberty, N.C.
12	*BOZOIAN, DICK	DB	Sr.	6-0	195	Manchester, N. H.
56	*BRADLEY, ED	LB	Jr.	6-2	225	Stratford, Conn.
57	BROWN, DON	LB	Soph.	5-11	190	Butler, Pa.
22	CAMPBELL, TOMMY	RB	Sr.	5-11	185	Luray, Virginia
41	*CAUSEY, LARRY	LB	Jr.	5-10	200	Greensboro, N. C.
79	CAYWOOD, JAMES	DT	Soph.	5-11	198	Rockville, Maryland
76	CHULADA, DICK	DT	Jr.	6-5	250	Wilkes-Barre, Pa.
51	COX, RANDY	C	Soph.	6-2	200	Monroe, N. C.
87	DODA, DAVE	TE	Sr.	6-2	195	Franklin Lakes, N. J.
14	FUSSELL, FRANK	DB	Jr.	5-10	180	Burgaw, N. C.
40	GARRETT, KEN	RB	Soph.	6-2	200	Fayetteville, N. C.
50	GERMAN, GARY	C	Soph.	6-4	210	Kettering, Ohio
80	GODFREY, NEIL	DE	Soph.	6-5	205	Sanford, N. C.
59	GRUNDIES, DAVE	OT	Soph.	6-3	210	Newark, Ohio
75	*HEADLEY, WIN	DT	Sr.	6-3	239	Westport, Conn.
8	HOGAN, STEVE	FB	Soph.	6-1	195	Burlington, N. C.
20	HOLT, PHIL	RB	Jr.	6-1	180	Hazel Crest, Illinois
44	HOPKINS, LARRY	FB	Jr.	5-10	190	Panama City, Fla.
43	HOWLETTE, MIKE	SE	Soph.	6-1	185	Richmond, Virginia
36	JAKUBOVIC, ERNIE	DB	Soph.	6-2	190	West Mifflin, Pa.
32	JOHNSON, GARY	RB	Jr.	6-2	200	Shiocton, Wisconsin
70	KOCH, CALVIN	DT	Soph.	6-0	215	Wayne, New Jersey
72	KOMONDOR, STEVE	DT	Jr.	6-1	225	Chicago, Illinois
15	*KUHARCHEK, TERRY	DB	Sr.	6-1	190	Tire Hill, Pa.
24	LINDSAY, DAVE	DB	Soph.	6-1	180	Fairfield, Conn.
77	LOGAN, ARCHIE	DT	Sr.	6-2	220	Reidsville, N. C.
86	*LOUNSBURY, TRACY	K	Jr.	6-1	185	Winston-Salem, N. C.
63	*MAGNOT, MIKE	DT	Sr.	6-1	215	Peckville, Pa.
73	MANGIARACINA, TONY	OG	Soph.	6-2	200	Bristol, Pa.
65	MARTIN, TOM	OG	Jr.	6-1	205	Verona, Pa.
21	McCOY, GARY	SE	Soph.	6-0	170	Aliquippa, Pa.
78	*McGOWAN, GERRY	OT	Sr.	6-5	225	Dedham, Mass.
34	*McHENRY, PAT	DB	Jr.	6-0	175	Altoona, Pa.
7	McMAHEN, JIM	QB	Soph.	6-2	175	Chicago, Ill.
89	MELLON, JOHN	SE	Soph.	6-3	200	Bethpage, New York
11	MOORE, JUNIOR	RB	Soph.	5-11	175	Wheeling, W. Va.
61	*NEDIMYER, VINCE	OT	Sr.	6-0	220	Altoona, Pa.
55	*PATE, CARLYLE	LB	Sr.	6-1	215	Burlington, N. C.
83	PHILLIPS, JOHN	DT	Soph.	6-3	220	Levittown, Pa.
74	POPE, JIM	LB	Jr.	6-1	205	Weldon, N.C.
95	ROTHROCK, SAMMY	DB	Soph.	6-1	185	Enfield, N. C.
5	*RUSSELL, LARRY	QB	Jr.	5-11	185	Newburyport, Mass.
10	RYAN, JAMES	QB	Soph.	6-0	185	Levittown, Pa.
62	SPENCOR, MIKE	C	Jr.	6-3	200	Naperville, Ill.
52	*STETZ, ED	LB	Jr.	5-11	195	Johnstown, Pa.
88	TEAGUE, CHRIS	DE	Soph.	6-1	210	Roxboro, N. C.
84	*THERIAULT, JOE	OT	Sr.	6-4	250	Nashua, N. H.
53	*VRHOVAC, NICK	C	Jr.	6-3	230	Brownsville, Pa.
64	*WAITE, TED	OG	Jr.	6-2	220	Canton, Mass.
82	*WINROW, GARY	TE	Sr.	6-1	200	Naperville, Ill.

\*Letterman



# FLORIDA STATE

- 3 Carrell, Duane—P-PK
- 11 Fontes, Frank—PK
- 12 Whigham, Frank—QB
- 14 Forey, Dan—QB
- 15 Warren, Tommy—QB
- 16 Shively, Randy—QB
- 18 Gaydos, Kent—WR
- 19 Huff, Gary—QB
- 20 Snell, David—DB
- 22 Smith, Barry—WR
- 23 Pederson, Don—WR
- 24 Lanahan, John—FB
- 26 Thomas, James—DB
- 27 Munroe, Arthur—RB
- 28 Ashmore, Robert—DB
- 29 Rust, Benny—DB
- 30 Bailey, Tom—RB
- 31 Magalski, Paul—FB
- 33 Parker, Clint—LB
- 35 Gray, Mike—WR
- 36 Orear, Rick—RB
- 40 McMillan, Eddie—DB
- 42 Ratliff, Ron—DB
- 43 Montgomery, John—DB
- 44 Gridley, Buddy—DB
- 46 Bengtson, Brian—PK
- 47 Chip Harris—RB-P
- 48 Jarrett, James—FB
- 49 Glisson, Guy—LB
- 50 Whitehurst, Dan—LB
- 51 Howell, Bobby—LB
- 52 Sowers, Craig—C
- 53 Stokes, Jay—OG
- 54 Glass, Mike—LB
- 55 Dees, Allen—C
- 56 Lohse, Bill—LB
- 57 Carden, Robert—OT
- 58 Gildea, Steve—LB
- 59 Strickland, Larry—OT
- 60 Rice, Barry—LB
- 61 Essex, John—OT
- 62 Bass, Theron—LB
- 63 Montgomery, George—OG
- 64 Musser, Charley—OG
- 65 McKinnie, J. W.—OG
- 66 Strickler, Joe—OT
- 67 Sammons, Mike—OG
- 68 Beville, Steve—C
- 69 White, Tom—DT
- 70 Henson, Bill—DT
- 72 Gibbs, Shane—OT
- 74 McEachern, Robert—DT
- 75 Amman, Richard—DT
- 76 Rimby, Bill—OT
- 77 Minor, Roger—OT
- 80 Hunt, Charlie—DE
- 81 Tyson, Jim—TE
- 82 Dawson, Rhett—WR
- 83 Wallace, Ron—DE
- 84 Parris, Gary—TE
- 85 Shaw, Bill—DE
- 86 Hall, Randy—DE
- 87 Zaffran, Ted—TE
- 88 Rice, Beryl—DE

# FLORIDA STATE

“Seminoles”

Offense		Defense	
<b>WR</b> 22 Barry Smith	<b>LE</b> 86 Randy Hall	<b>LT</b> 74 Robert McEachern	<b>SE</b> 82 Garry Winrow
35 Mike Gray	85 Bill Shaw	69 Tom White	87 Dave Doda
<b>LT</b> 66 Joe Strickler	<b>LT</b> 74 Robert McEachern	<b>LG</b> 64 Ted Waite	<b>LT</b> 78 Gerald McGowan
72 Shane Gibbs	69 Tom White	73 T. Mangiaracina	65 Tom Martin
<b>LG</b> 65 J. W. McKinnie	<b>LLB</b> 58 Steve Gildea	<b>C</b> 53 Nick Vrhovac	<b>LG</b> 64 Ted Waite
67 Mike Sammons	54 Mike Glass	50 Gary German	73 T. Mangiaracina
<b>C</b> 55 Allen Dees	<b>MLB</b> 56 Bill Lohse	<b>RG</b> 69 Bill Bobbora	<b>C</b> 53 Nick Vrhovac
68 Steve Beville	51 Bobby Howell	74 Jim Pope	50 Gary German
<b>RG</b> 76 Bill Rimby	<b>RLB</b> 50 Dan Whitehurst	<b>RT</b> 61 Vince Nedimyer	<b>RG</b> 69 Bill Bobbora
63 G. Montgomery	62 Theron Bass	71 Terry Bennett	74 Jim Pope
<b>RT</b> 77 Roger Minor	<b>RE</b> 83 Ron Wallace	<b>TE</b> 11 Junior Moore	<b>RT</b> 61 Vince Nedimyer
53 Jay Stokes	88 Beryl Rice	22 Tommy Campbell	71 Terry Bennett
<b>TE</b> 81 Jim Tyson	<b>MON</b> 44 Buddy Gridley	<b>QB</b> 5 Larry Russell	<b>TE</b> 11 Junior Moore
87 Ted Zaffran	49 Guy Glisson	7 Jim McMahan	22 Tommy Campbell
<b>QB</b> 12 Frank Whigham	<b>LC</b> 26 James Thomas	<b>MON</b> 34 Pat McHenry	<b>QB</b> 5 Larry Russell
15 Tommy Warren	40 Eddie McMillan	23 Nick Arcaro	7 Jim McMahan
<b>RB</b> 30 Tom Bailey	<b>SAF</b> 20 David Snell	<b>LCB</b> 12 Dick Bozoian	<b>RB</b> 30 Tom Bailey
27 Arthur Munroe	28 Robert Ashmore	16 Joel Bowden	27 Arthur Munroe
<b>FB</b> 24 John Lanahan	43 J. Montgomery	<b>RCB</b> 15 Terry Kuharchek	<b>FB</b> 24 John Lanahan
48 James Jarrett	<b>RC</b> 29 Benny Rust	95 Sammy Rothrock	48 James Jarrett
31 Paul Magalski	42 Ron Ratliff	<b>Saf</b> 14 Frank Fussell	31 Paul Magalski
<b>WR</b> 82 Rhett Dawson		36 Ernie Jakubovic	<b>WR</b> 82 Rhett Dawson
18 Kent Gaydos			18 Kent Gaydos

**PUNTS** — 3 Duane Carrell  
**PUNT RETURNS** — 20 David Snell  
**PLACEMENTS** — 11 Frank Fontes, 3 Duane Carrell,  
**KICKOFF RETURNS** — 27 Arthur Munroe, 20 David Snell

# WAKE FOREST

“Deacons”

Offense		Defense	
<b>SE</b> 82 Garry Winrow	<b>LE</b> 75 Win Headley	<b>LT</b> 76 Dick Chulada	<b>SE</b> 82 Garry Winrow
87 Dave Doda	70 Cal Koch	79 James Caywood	87 Dave Doda
<b>LT</b> 78 Gerald McGowan	<b>LT</b> 76 Dick Chulada	<b>LLB</b> 63 Mike Magnot	<b>LT</b> 78 Gerald McGowan
65 Tom Martin	79 James Caywood	84 Joe Theriault	65 Tom Martin
<b>LG</b> 64 Ted Waite	<b>MLB</b> 83 John Phillips	<b>C</b> 53 Nick Vrhovac	<b>LG</b> 64 Ted Waite
73 T. Mangiaracina	88 Chris Teague	50 Gary German	73 T. Mangiaracina
<b>C</b> 53 Nick Vrhovac	<b>RLB</b> 56 Ed Bradley	<b>RG</b> 69 Bill Bobbora	<b>C</b> 53 Nick Vrhovac
50 Gary German	57 Don Brown	74 Jim Pope	50 Gary German
<b>RG</b> 69 Bill Bobbora	<b>RT</b> 52 Ed Stetz	<b>RT</b> 61 Vince Nedimyer	<b>RG</b> 69 Bill Bobbora
74 Jim Pope	51 Randy Cox	71 Terry Bennett	74 Jim Pope
<b>RT</b> 61 Vince Nedimyer	<b>RE</b> 55 Carlye Pate	<b>TE</b> 11 Junior Moore	<b>RT</b> 61 Vince Nedimyer
71 Terry Bennett	41 Larry Causey	22 Tommy Campbell	71 Terry Bennett
<b>TE</b> 11 Junior Moore	<b>MON</b> 34 Pat McHenry	<b>QB</b> 5 Larry Russell	<b>TE</b> 11 Junior Moore
22 Tommy Campbell	23 Nick Arcaro	7 Jim McMahan	22 Tommy Campbell
<b>QB</b> 5 Larry Russell	<b>LCB</b> 12 Dick Bozoian	<b>TB</b> 32 Gary Johnson	<b>QB</b> 5 Larry Russell
7 Jim McMahan	16 Joel Bowden	40 Ken Garrett	7 Jim McMahan
<b>TB</b> 32 Gary Johnson	<b>RCB</b> 15 Terry Kuharchek	<b>FB</b> 44 Larry Hopkins	<b>TB</b> 32 Gary Johnson
40 Ken Garrett	95 Sammy Rothrock	8 Steve Hogan	40 Ken Garrett
<b>FB</b> 44 Larry Hopkins	<b>Saf</b> 14 Frank Fussell	<b>FL</b> 35 Steve Bowden	<b>FB</b> 44 Larry Hopkins
8 Steve Hogan	36 Ernie Jakubovic	24 Dave Lindsay	8 Steve Hogan
<b>FL</b> 35 Steve Bowden			<b>FL</b> 35 Steve Bowden
24 Dave Lindsay			24 Dave Lindsay

**PUNTS** — 86 Tracy Loundsbury  
**PLACEMENTS** — 86 Tracy Loundsbury  
**PUNT RETURNS** — 15 Terry Kuharchek, 14 Frank Fussell  
**KICKOFF RETURNS** — 40 Mike Garrett, 32 Gary Johnson, 11 Junior Moore

# WAKE FOREST

- 5 Russell, Larry—QB
- 7 McMahan, Jim—QB
- 8 Hogan, Steve—FB
- 10 Ryan, James—QB
- 11 Moore, Junior—RB
- 12 Bozoian, Dick—DB
- 14 Fussell, Frank—DB
- 15 Kuharchek, Terry—DB
- 16 Bowden, Joel—DB
- 20 Holt, Phil—RB
- 21 McCoy, Gary—SE
- 22 Campbell, Tommy—RB
- 23 Arcaro, Nick—DB
- 24 Lindsay, Dave—DB
- 32 Johnson, Garf—RB
- 34 McHenry, Pat—DB
- 35 Bowden, Steve—RB
- 36 Jakubovic, Ernie—DB
- 40 Garrett, Ken—RB
- 41 Causey, Larry—LB
- 43 Howlette, Mike—SE
- 44 Hopkins, Larry—FB
- 50 German, Gary—C
- 51 Cox, Randy—C
- 52 Stetz, Ed—LB
- 53 Vrhovac, Nick—C
- 55 Pate, Carlye—LB
- 56 Bradley, Ed—LB
- 57 Brown, Don—LB
- 59 Grundies, Dave—OT
- 61 Nedimyer, Vice—OT
- 62 Spencer, Mike—C
- 63 Magnot, Mike—DT
- 64 Waite, Ted—OG
- 65 Martin, Tom—OG
- 69 Bobbora, Bill—OG
- 70 Koch, Calvin—DT
- 71 Bennett, Terry—DT
- 72 Komondorea, Steve—DT
- 73 Mangiaracina, Tony—OG
- 74 Pope, Jim—LB
- 75 Headley, Win—DT
- 76 Chulada, Dick—DT
- 77 Logan, Archie—DT
- 78 McGowan, Gerry—OT
- 79 Caywood, James—DT
- 80 Godfrey, Neil—DE
- 82 Winrow, Gary—TE
- 83 Phillips, John—DT
- 84 Theriault, Joe—OT
- 86 Loundsbury, Tracy—K
- 87 Doda, David—TE
- 88 Teague, Chris—DE
- 89 Mellon, John—SE
- 95 Rothrock, Sammy—DB



# DRIFTWOOD MOTEL and RESTAURANT

AMERICAN EXPRESS - DINERS - AMERICAN OIL - PHILLIPS 66 CREDIT CARDS HONORED

1402 W. TENN. (U.S. 90)

(904) 224-4174

- AIR CONDITIONED
- DIRECT DIAL PHONES
- Se habla Espanol
- CABLE COLOR TV
- POOL
- Northwest corner of Campus on U.S. 90; Fla. 20 West



**THINK**

**Think**

Very simple advice—yet incredibly important.

Because those who do, make it.

Those who don't, don't.

Think about it.

**IBM®**

660 APALACHEE PARKWAY  
TALLAHASSEE, FLORIDA  
PHONE 224-9120





Touchdown or Field Goal



Safety



Offside (Infraction of scrimmage or free kick formation)



Illegal use of Hands and Arms



Illegal Procedure or Position



Ineligible Receiver Down Field on Pass



Delay of Game



Clipping



Illegal Motion



Roughing the Kicker



Illegal Shift

**BP  
SETS  
THE  
PACE**



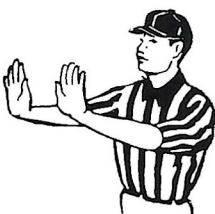
Substitution Infractions



First Down



Time out; Referee's Discretionary or Excess Time Out followed with tapping hands on chest.



Forward Pass or Kick Catching Interference



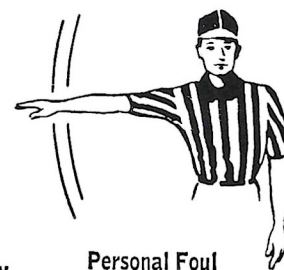
Intentional Grounding



Loss of Down



Ball Ready for Play



Personal Foul



# RAGANS and ROBERTS TIRE COMPANY



## Big Bends Largest Goodyear & BP Oil Dealer

James W. Ragans — OWNERS — Eli P. Roberts

Complete Service Department Including:  
Front End and Brake Rebuilding  
Tires · Batteries · Accessories

Fuel Oils For Home, Business and Farm

for AUTOMOTIVE SERVICE call  
224-8156

for FUEL OIL call  
576-3145

609 W. Tennessee Street

Ball Dead; If Hand is Moved from Side to Side; Touchback



Incomplete Forward Pass, Penalty Declined, No Play, or No Score



Start the Clock



# PENALTIES

1. **OFFSIDE** by either team; Violation of scrimmage or free kick formation; Encroachment on neutral zone—Loss of Five Yards.
2. **ILLEGAL PROCEDURE, POSITION OR SUBSTITUTION**—Putting ball in play before Referee signals "Ready-for-play"; Failure to complete substitution before play starts; Player out of bounds when scrimmage begins; Failure to maintain proper alignment of offensive team when ball is snapped; False start or simulating start of a play; Taking more than two steps after Fair Catch is made; Player on line receiving snap—Loss of Five Yards.
3. **ILLEGAL MOTION**—Offensive player illegally in motion when ball is snapped—Loss of Five Yards.
4. **ILLEGAL SHIFT**—Failure to stop one full second following shift—Loss of Fifteen Yards.
5. **ILLEGAL RETURN** of substitute not previously disqualified—Loss of Fifteen Yards.
6. **ILLEGAL DELAY OF GAME**; Taking more than four times out during either half (except for replacement of injured player)—Loss of Five Yards. Team not ready to play at start of either half—Loss of Fifteen Yards.
7. **PERSONAL FOUL** — Tackling or blocking defensive player who has made fair catch; Piling on; Hurdling; Grasping face mask of opponent; Tackling player out of bounds, or running into player obviously out of play; Striking an opponent with fist, forearm, elbow or locked hands; Kicking or kneeling—Loss of Fifteen Yards (Flagrant offenders will be disqualified.)
8. **CLIPPING**—Loss of Fifteen Yards.
9. **ROUGHING THE KICKER** or holder—Loss of Fifteen Yards.
10. **UNSPORTSMANLIKE CONDUCT**—Violation of rules during intermission; Illegal return of suspended player; Coaching from sidelines; Invalid signal for Fair Catch; Persons illegally on field—Loss of Fifteen Yards. (Flagrant offenders will be disqualified.)
11. **ILLEGAL USE OF HANDS AND ARMS** by offensive or defensive player; Defensive holding—Loss of Fifteen Yards.
12. **INTENTIONAL GROUNDING** of forward pass—Loss of Five Yards Plus Loss of Down.
13. **ILLEGALLY PASSING OR HANDING BALL FORWARD**—Loss of Five Yards Plus Loss of Down.
14. **FORWARD PASS OR KICK CATCHING INTERFERENCE**—Interference with opportunity of player of receiving team to catch a kick—Loss of Fifteen Yards. Interference by member of offensive team with defensive player making pass interception—Loss of Fifteen Yards Plus Loss of Down. Interference by defensive team on forward pass—Passing Team's Ball at Spot of Foul and First Down.
15. **INELIGIBLE RECEIVER DOWNFIELD ON PASS**—Loss of Fifteen Yards.
16. **BALL ILLEGALLY TOUCHED, KICKED OR BATTED**—Forward pass being touched by ineligible receiver beyond the line of scrimmage—Loss of Fifteen Yards from Spot of Preceding Down and Loss of a Down. Eligible pass receiver who goes out of bounds and later touches a forward pass—Loss of Down. Illegal touching of kicked ball within opponent's ten yard line—Touchback.
17. **PENALTY DECLINED**; Incomplete forward pass; No play or no score.
18. **CRAWLING** by runner—Loss of Five Yards. Interlocked Interference—Loss of Fifteen Yards.

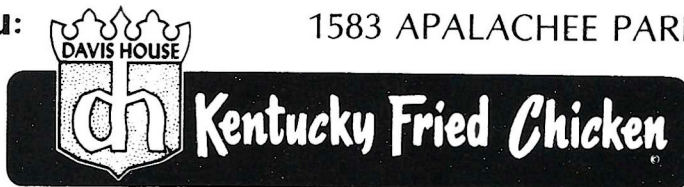


# ready any time you are

—THE SNACK, THE BOX, THE BUCKET OR THE BARREL

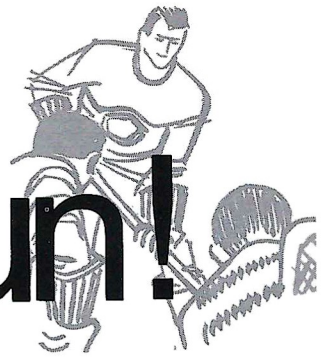
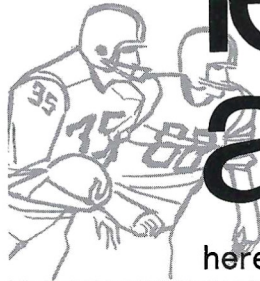
America's No. 1 hospitality dish for  
sports fans and busy people on the go.  
3 locations to serve you:

1002 N. MONROE, 224-1645  
1603 W. TENN. ST., 224-4313  
1583 APALACHEE PARKWAY, 877-7620





# let's go out and have fun!



here's your winter sports and entertainment program . . .

## AUGUST

8	Miami Dolphins vs. Pittsburg Steelers	Gator Bowl
12	Library-Children's Program	Auditorium
13	Wrestling	Coliseum
14	Starlight Symphonette	Auditorium
15	Creedence Clearwater	Coliseum
20	Wrestling	Coliseum
22	Soul Rock	Coliseum
22	Miss Jax. Contest- Jax. JC's	Auditorium
27	Wrestling	Coliseum
28	Starlight Symphonette	Auditorium

## SEPTEMBER

3	Wrestling	Coliseum
3	Senior Citizens	Auditorium
5	Steppenwolf	Coliseum
10	Wrestling	Coliseum
11	Starlight Symphonette	Auditorium
12	Florida vs. Duke	Gator Bowl
15	United Fund	Coliseum
17	Wrestling	Coliseum
19	Rock (Mountain)	Coliseum
23	Atlanta Hawks vs. Boston Celtics	Coliseum
24	Wrestling	Coliseum
25	WQIK- Porter Wagoner	Coliseum
25	Pat Paulson-FJC	Auditorium
26	Soul Rock-WOBS	Coliseum

## OCTOBER

1	Wrestling	Coliseum
2	Donavan	Coliseum
8	Wrestling	Coliseum
9	WOBS-Stage Show	Coliseum
10	WVOJ- Country Music Show	Coliseum
10-11	Festival of Arts	Auditorium
15	Wrestling	Coliseum
16	Sweetwater-FJC	Auditorium
16-17	Hockey	Coliseum
17-20	Festival of Arts	Auditorium
17	Bethune Cookman vs. Savannah St	Gator Bowl
22	Jose Feliciano	Auditorium
23-31	Greater Jacksonville Fair	Gator Bowl/Coliseum
24	Miss Teenage-Jax WPDQ	Auditorium
30	Ebony Fashion Show	Auditorium
31	Blues Band	Auditorium

## NOVEMBER

2	Supremes	Auditorium
5	Wrestling	Coliseum

6	Hockey	Coliseum
7	Fla. Alumni Bar-B-Que	Coliseum
7	Georgia vs. Florida	Gator Bowl
8-18	Floridians	Coliseum
10	Symphony	Auditorium
10	Hockey	Coliseum
13-15	Jehovah's Witnesses	Auditorium
13-16	Boat Show	Coliseum
17	Hockey	Coliseum
19	Wrestling	Coliseum
20	Blood Sweat & Tears	Coliseum
21	Al Hirt-FJC	Auditorium
21	Hockey	Coliseum
22	Hockey	Coliseum
24	Zorba	Auditorium
24	Hockey	Coliseum
25	Hockey	Coliseum
26	Wrestling	Coliseum
26	Wolfson vs. Englewood	Gator Bowl
26	Lee vs. Jackson	Gator Bowl
26	Stanton vs. Gilbert	Gator Bowl
27-29	Loretta Lynn Rodeo	Coliseum

## DECEMBER

1	JU Basketball	Coliseum
3	Wrestling	Coliseum
4	Glenn Campbell	Coliseum
4	The Band	Auditorium
5	Hockey	Coliseum
5	Light Rock Group "It's a Beautiful Day"	Auditorium
6	Floridians	Coliseum
7-8	Civitan Basketball Tournament	Coliseum
10	Wrestling	Coliseum
11	Hockey	Coliseum
13	Hockey	Coliseum
16	Hockey	Coliseum
17	Wrestling	Coliseum
18	Temptations	Coliseum
19	Hockey	Coliseum
21	Gator Bowl President's Ball	Coliseum
24	Wrestling	Coliseum
25	Hockey	Coliseum
28-29	Gator Bowl BB Tournament	Coliseum
31	Hockey	Coliseum

## JANUARY

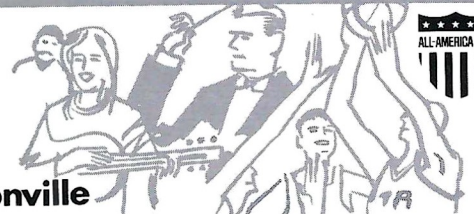
1	Gator Bowl Assn. Brunch	Auditorium
2	Gator Bowl Game	Gator Bowl



### for tickets

civic auditorium - 354-2041  
 memorial coliseum - 354-2041  
 gator bowl - 354-5678

**Consolidated City of Jacksonville**





## THE STATE BOARD OF EDUCATION

Members of the Florida Cabinet serve as the State Board of Education. Left to right, above, they are Commissioner of Agriculture Doyle Conner; Comptroller Fred O. Dickinson, Jr.; Secretary of State Tom Adams; Governor Claude R. Kirk, Jr.; Attorney General Earl Faircloth; Treasurer Broward Williams and Commissioner of Education Floyd T. Christian.



# STATE & UNIVERSITY SYSTEM OFFICIALS



## THE FLORIDA BOARD OF REGENTS

The State University System Board of Regents serve staggered terms of membership, ranging from one-year to nine-year appointments. The current Board members are shown above. Seated, left to right, are Dr. Louis C. Murray, Orlando, Vice Chairman; D. Burke Kibler III, Lakeland, Chairman; Robert B. Mautz, Tallahassee, Chancellor; and Julius F. Parker, Jr., of Tallahassee. Standing, left to right, are Chester H. Ferguson, Tampa; Henry D. Kramer, Jacksonville; Mrs. E. D. Pearce, Miami; Miss Elizabeth A. Kovachevich, St. Petersburg; Milton N. Weir, Jr., Boca Raton; and E. W. Hopkins, Jr., Pensacola.



# MOBILE HOME INDUSTRIES, INC.



salutes  
Florida State's Seminoles

\*Mobile Home Industries  
Nations Largest in Retail Sales  
125 Outlets — 10 States

2 Manufacturing Plants  
Housing by Vogue & Housing by Tiffany

Parks & Subdivisions  
Paradise Villages

\*Member of American Stock Exchange  
(Our AMEX symbol is MH)



## Senor, get a Seminole Poncho

*Senoritas too. Great for football games where you don't want to have to carry bulky umbrellas or rainwear. They are heavyduty white plastic and have a built-on hood.*

*As Seminole Pancho says, "The rain in Tallahassee, it falls mainly in the football stadium."*

*Get yours for only \$2.25 at any Leon Federal Savings office. 1706 West Tennessee, 111 S. Monroe or in the Parkway Center.*



# LEON FEDERAL SAVINGS



**AFFILIATES  
SEMINOLE RADIO NETWORK  
1970**

WGBS, 50,000 Watts, Miami  
WXVI, 5,000 Watts, W. P. Beach  
WTTB, 1,000 Watts, Vero Beach  
WMMB, 1,000 Watts, Melbourne  
WROD, 1,000 Watts, Daytona Beach  
WFOY, 1,000 Watts, St. Augustine  
WJAX, 5,000 Watts, Jacksonville  
WTNT, 5,000 Watts, Tallahassee  
WPCF, 5,000 Watts, Panama City  
WCOA, 5,000 Watts, Pensacola  
WBGC, 1,000 Watts, Chipley

WMOP, 5,000 Watts, Ocala  
WKIS, 5,000 Watts, Orlando  
WDAE, 5,000 Watts, Tampa  
WTRL, 250 Watts, Bradenton  
WSPB, 1,000 Watts, Sarasota  
WLAK, 1,000 Watts, Lakeland  
WTRS FM 3,000 Watts, Dunnellon  
WSIR, 1,000 Watts, Winter Haven  
WTRR, 1,000 Watts, Sanford  
WRUF, 5,000 Watts, Gainesville



Bo Mitchell



Bill Owens

Florida State's football games, whether played at home or away, will be heard throughout "Seminole Territory" on the Seminole Football Network.

With Tallahassee's WTNT acting as the originating station, 30 stations will carry every play to Seminole fans in Florida, South Georgia and South Alabama. In addition, several Florida State games will be heard from time to time as "Pick of Dixie" games.

Heading up the Seminole Network broadcast team once again will be Bo Mitchell. A veteran of more than 20 years broadcasting, Mitchell will be in his eighth season as the Seminoles play-by-play man. In addition to Seminole games Mitchell has also done play-by-play for the AFL All Star game, Senior Bowl and Tangerine Bowl games.

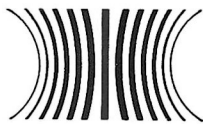
Joining the former Florida Sportscaster of the Year and station manager of WKIS in Orlando will be Bill Owens of Tallahassee. A Florida State graduate, Owens has handled the play-by-play for the Seminole basketball and baseball broadcasts the last two years, but this is his first season at the football mike.

# SEMINOLE FOOTBALL NETWORK

Originating Station of the Seminole Sports Network

# WTNT

OUR TWENTY-FIFTH YEAR OF SPORTS COVERAGE



CBS RADIO NETWORK

FLORIDA STATE UNIVERSITY FOOTBALL SPONSORED ON WTNT BY

ALFORD BROTHERS MEN'S WEAR  
CLEARVIEW CABLE TV  
POPE TRACTOR COMPANY  
SKYLINE RESTAURANT  
THE TALLAHASSEE BANK & TRUST CO.

ATLANTA HAWKS BASKETBALL • FLORIDA STATE FOOTBALL

FLA. A & M FOOTBALL • BRAVES BASEBALL • SEC FOOTBALL

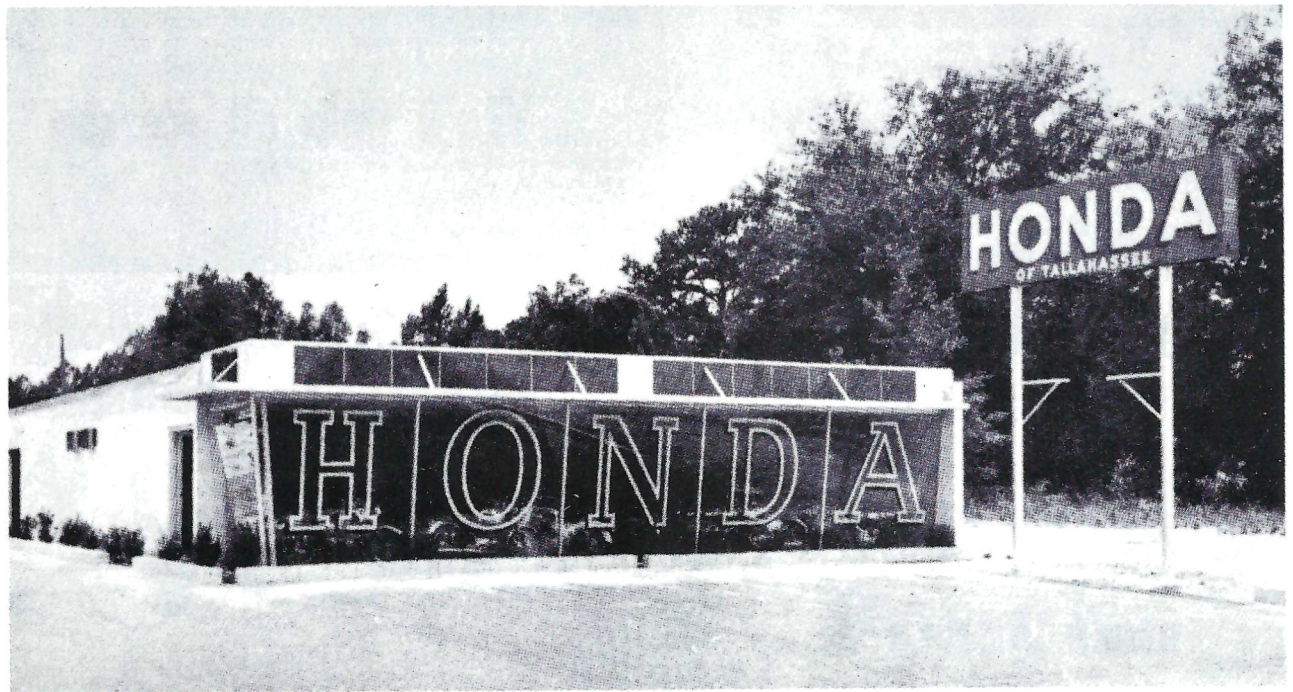
PREP FOOTBALL • AUTO RACING • SEMINOLE BASEBALL • ALL STAR GAMES • SEMINOLE BASKETBALL



"You meet the nicest people on a

# HONDA

World's largest seller"



## HONDA OF TALLAHASSEE

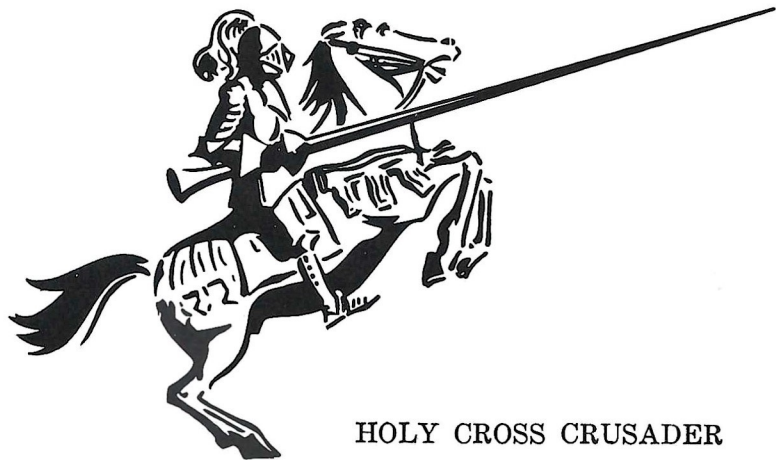
At the Underpass on West Tennessee

Phone 576-1020



# Holy Cross—A Bug Beats a Football Team

by ROY MUMPTON, Executive Sports Editor, Worcester Telegram-Gazette



HOLY CROSS CRUSADER

It was shortly after noon on Sunday, September 28, 1969. Coach Bill Whitton appeared in a stage of shock. His hair was mussed. His shirt collar was open and crumpled. His tie was askew.

He had just watched, for the third time, the films of his first Holy Cross football team's 13-0 hiding by Harvard the afternoon before. It was a horror movie. Always the Crimson defenders were swarming all over his Crusaders. Harvard's aggressiveness, so sharp in contrast, made it appear that HC had no offense at all.

"I can't believe what I see," said Whitton, who had been lured from a top assistant's post at Princeton to revive Holy Cross' fallen football fortunes and had watched his team stumble badly in its first game.

"These are good kids; I'm sure of that. I just can't understand it," he mumbled repeatedly.

**Only a few days later Bill Whitton did understand.**

His players, who had worked so hard to learn the new unbalanced-line T-attack and had been mighty impressive in a full dress rehearsal earlier, had been so lethargic simply because they were ill. They had been bitten by the hepatitis bug—a slow destroyer of energy.

Whitton, of course, had no way of knowing this.

Sure, Bob Cooney, a junior defensive end, had been hospitalized several days before the Harvard opener with what was thought to be a severe case of influenza. Other HC players became ill during the next week. There was suspicion of a flu epidemic.

## Infectious Hepatitis

It wasn't until Thursday that Cooney's illness was diagnosed as infectious hepatitis. The next day, a few hours before the departure for Hanover, N.H., and the game with Dartmouth, the entire squad was given immunization shots. Four boys were so sick they were hurried from the line to the college infirmary.

Three others became violently ill at Hanover that night and were rushed

back to Worcester. Several others faced Dartmouth but had to leave after a few plays. The Indians' strong Ivy Leaguers rolled up a 38-6 score against a HC team which started without 11 regulars.

Back home again, the entire HC squad took a hurried blood test on Sunday morning. All were found infected, to some degree, with hepatitis. Some 25 were to spend several weeks in isolation in the college infirmary.

**"It's a disaster," sighed Coach Whitton, who himself had been very sick, but had carried on during the week of preparations for Dartmouth.**

Holy Cross, the next day, was forced to cancel the remaining eight games of its schedule. So far as can be learned, this had never happened to a college football team before. So Whitton had encountered more hard luck than any new head coach in history.

## Costly Illness

The disaster cost Holy Cross at least \$200,000 in revenue from football, which had supported many minor sports. There were all the usual expenses, but no gate receipts for eight games, including the finale with Boston College which had been HC's home game and always a sellout as early as September.

But the rough setback hasn't discouraged Holy Cross authorities in their determination to build their football back to the high plane where Dr. Eddie Anderson placed it in the golden 1930s.

There had been rumors in the years before that HC might abandon football as had many other Jesuit Colleges. Some long-haired dissidents and a noisy professor or two had been taking pot shots at HC football and lobbying against continuing it.

**Their voices became whispers once disaster hit the football squad. The hepatitis epidemic may have proved a blessing in disguise.**

Alumni and friends rallied their sympathies and their dollars and made it clear that they wanted Holy Cross to stay in football.

Dartmouth, an almost annual rival of the Crusaders the last 33 seasons, sent a check to Holy Cross for \$1,000 and suggested that other ECAC colleges also contribute to ease the emergency. Boston College, HC's dearest enemy, sent \$2,000. Army and Navy each put \$1,000 checks towards the continuance of Crusader football. Brigham Young University, a Mormon institution, sent \$500 to the Catholic school. South Carolina, which had never played HC in any sport, was a contributor, too. So were others.

More than 500 alumni sent \$15 checks for souvenir season's tickets when there wasn't a single home game.

## Jerseys See Action

Sacramento State, which had dedicated its season to Holy Cross and wore the Crusaders' jerseys in its final game, launched a campaign to help. Mike Carter, the team captain, Coach Ray Clemons and publicist Phil Dynard created so much interest in HC at Sacramento that hundreds of students and friends made contributions. The HC co-captains flew to Sacramento and sat on the team's bench for its final game. Later Carter, Clemons and Dynard were feted in Boston at the Holy Cross Club's annual O'Melia dinner.

**Fans in all parts of the country sent checks of \$1, \$5 and \$10 with their sympathies. The fund welled. It is not nearly the \$200,000 HC lost, but it all helped.**

It was a water fountain on the hill-top practice field, half a mile above the campus, which led to the hepatitis epidemic. Neighborhood kids, a whole family of which had been infected by hepatitis, had been at the fountain during the summer.

Most of the HC players were infected on their very first day of practice. (Federal, state and civic health officials, who probed the situation intensely because it was unprecedented, agreed to this. None of the freshman squad, which reported ten days later, became ill.)

At least 10 HC varsity footballers were so sick that they missed a semester. The ECAC granted three seniors another year of eligibility, and will consider the cases of the afflicted underclassmen later.

## Held Spring Practice

Holy Cross, for the first time in some 20 years, had spring practice. "It was an absolute necessity," explained Whitton, "Our squad has the equivalent of two sophomore classes so far as football experience is concerned. Our seniors of this fall have played only two games, or less, in two years."

**The Crusaders may have been down, but they seem to have everybody behind them. The road back will be steep, but they hope to climb it. HC is looking to the future and ready to forget the nightmare of hepatitis with a conviction that happier days are just around the corner.**



# Strickland's

## SHOE STORES

- Downtown
- Capital Plaza
- Parkway Center
- Northwood Mall



NOW

at Strickland's ...

**FLORSHEIM  
SHOE FOR MEN**



**GOING  
PLACES  
?**

**ATHENS, GEORGIA? ATHENS, GREECE?  
NEW YORK? NASSAU? NEPAL?**

**TRAVEL IS OUR PROFESSION**

*No Charge For Our Services  
Tickets - Reservations At Printed Rates*



**MARION HAY, PRESIDENT  
TOM LYLE**

**TALLAHASSEE TRAVEL AND TOURS, INC.**

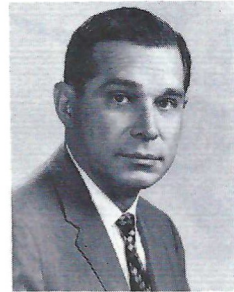
*Formerly Hay Travel Service*

*Established 1930*

**CALHOUN AT CALL STREET**

**TELEPHONE 224-4161**

# Wake Forest



**Dr. James Ralph Scales**  
President



**Cal Stoll**  
Coach

## WAKE FOREST

Good educational institutions become more interesting each year. But they don't seem to mellow. Instead they grow more vibrant.

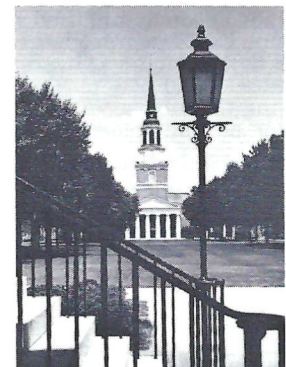
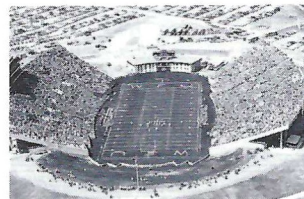
Increasingly, individuals, corporations and governments demand more of this nation's college and universities, and it seems that the institutions demand more of themselves.

Founded in 1834 by the Baptist State Convention of North Carolina, Wake Forest has had a long history of service. It was established on a 600-acre farm in Wake County. It prospered there, despite wars, depressions and other ailments that afflict but rarely kill educational institutions.

In 1946 Wake Forest encountered an opportunity that was to lead it to greater prominence and greater ability to serve an ever broadening area. That year the Z. Smith Reynolds Foundation offered to pay Wake Forest \$350,000 annually if other friends of the institution would provide necessary buildings at a new site in Winston-Salem. The annual grant was increased to \$500,000 in 1955 and to \$620,200 in 1968.

In 1956, Wake Forest made the historic, 110-mile move and is now firmly established in its new \$30 million home. The Bowman Gray School of Medicine of the institution had been moved to Winston-Salem in 1941 when it received the resources of the Bowman Gray Foundation.

This fall Wake Forest is beginning its fourth year under the presidency of Dr. James Ralph Scales, its 16th year in Winston-Salem, and its 136th year as a North Carolina institution of higher learning.



**Wait Chapel**



# Deacons



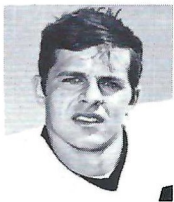
Frank Fussell



Win Headley



Mike Magnot



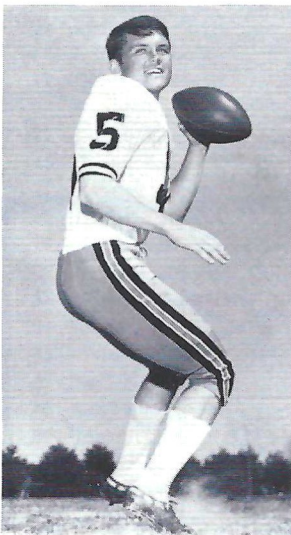
Pat McHenry



Tom Martin



T. Mangiaracina



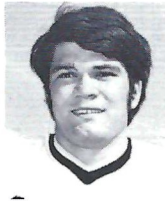
Larry Russell



Mike Howlette



Jim McMahan



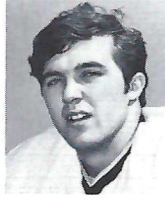
Tracy Lounsbury



Vince Nedimyer



Terry Kuharchek



Gary Johnson



Dick Bozoian

## TEC TALQUIN ELECTRIC COOPERATIVE, INC.

"OWNED BY THOSE WE SERVE"

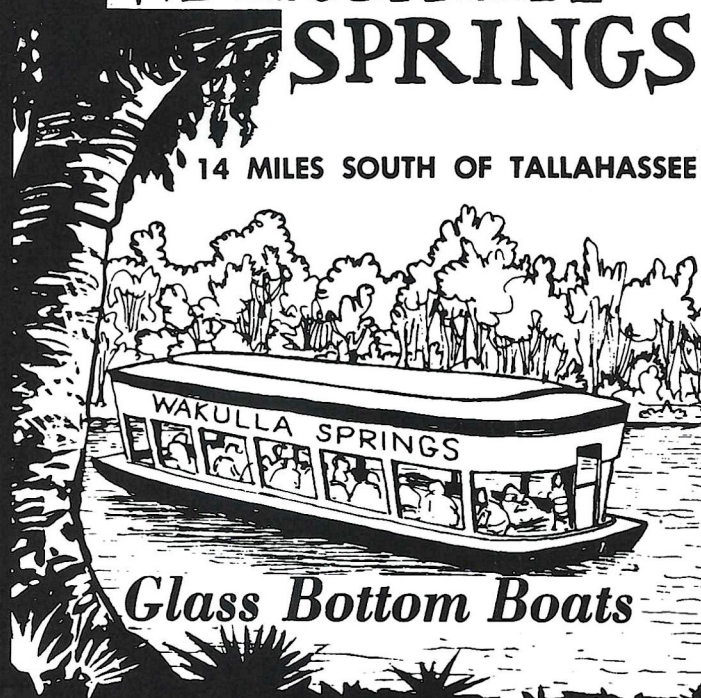
IN  
GADSDEN, LEON, LIBERTY  
AND WAKULLA COUNTIES



LIVE BETTER... *ELECTRICALLY*

## WAKULLA SPRINGS

14 MILES SOUTH OF TALLAHASSEE



*Glass Bottom Boats*

WORLD'S LARGEST AND DEEPEST SPRING



# Wake Forest Deacons



Ed Bradley



Bill Bobbora



Gerald McGowan



Nick Vrhovac



Carlye Pate



Steve Bowden



Larry Hopkins



Ed Stetz



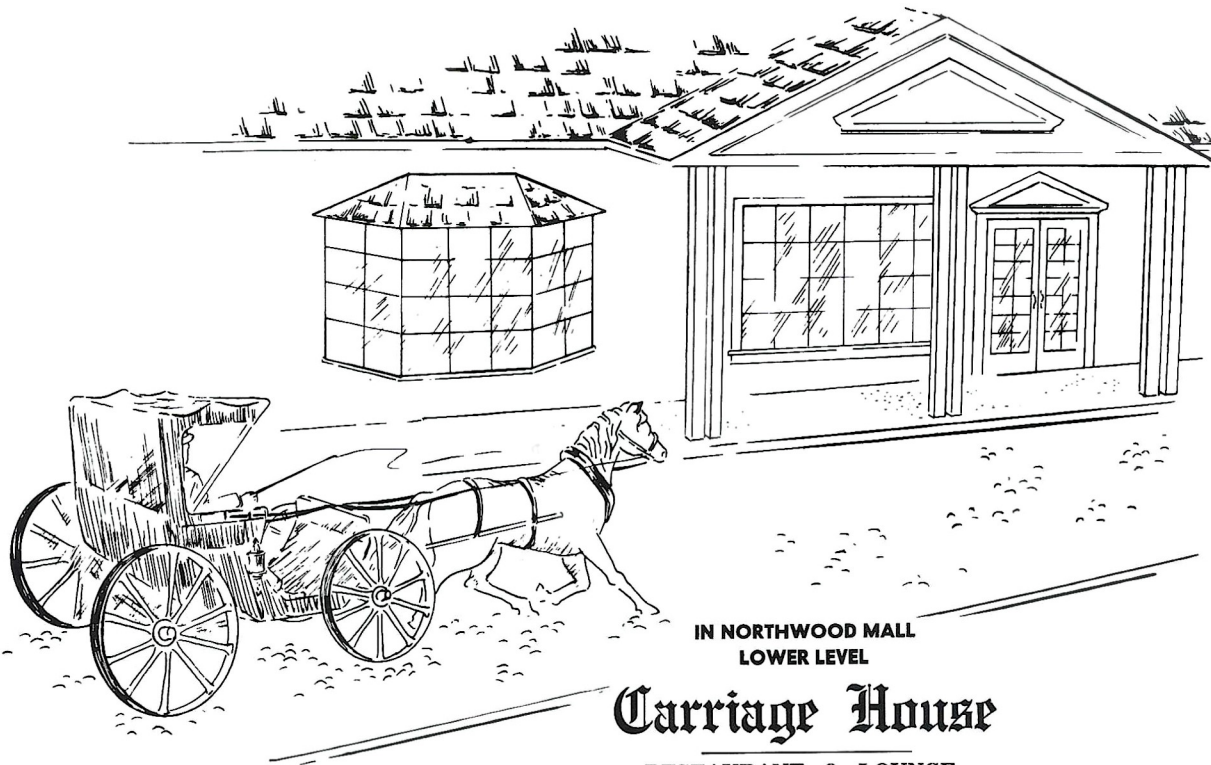
Ted Waite



Chris Teague



Gary Winrow



IN NORTHWOOD MALL  
LOWER LEVEL

**Carriage House**

RESTAURANT & LOUNGE

TALLAHASSEE  
PHONE 385-7612





### 1970 FRESHMAN FOOTBALL ROSTER

Name	Ht.	Wt.	Hometown
29 Abbott, Tommy	6-2	190	West Palm Beach
62 Arnold, Phil	6-0	210	Hollywood
52 Biles, Bayless	6-0	205	Bay Minette, Ala.
35 Burgess, Bobby	6-2	200	Decatur, Ga.
75 Burton, Albert	6-5	245	Daytona Beach
69 Carter, Jerry	5-11	180	Jacksonville
88 Castleberry, Rusty	6-0	200	Palatka
40 Cowart, Sam	6-0	170	Lithia
15 Dowey, Mark	6-0	190	Mobile, Ala.
41 Downey, Joe	6-1	194	Mobile, Ala.
68 Drews, John	5-11	185	Hollywood
21 Eddy, David	6-0	185	Miami
72 Fouraker, Earl	6-5	210	Bryceville
11 Geisler, Fred	6-1	190	Orlando
27 Goldsmith, Joe	6-0	180	Lakeland
22 Gould, George	6-0	170	Tallahassee
46 Green, Bob	6-0	170	Miami
71 Hensley, Jimbo	6-3	215	Orlando
65 Hogue, Dennis	6-1	205	Smyrna, Ga.
19 Hopkins, Dick	6-2	190	West Palm Beach
89 Howard, Jim	6-5	210	Jacksonville
57 Howton, Darrell	6-0	185	Tampa
31 Hunter, Mike	5-11	190	Lake City
86 Jones, Ralph	6-1	175	Cairo, Ga.
32 Kelley, Allan	6-0	190	Ozark, Ala.
63 Lawhorne, Steve	6-1	200	Albany, Ga.
80 Lee, Johnny	6-4	215	Eastman, Ga.
24 Lewis, Buzzy	6-1	177	Bristol
28 Lindsey, Walt	6-2	185	Bay Minette, Ala.
67 Lingerfelt, Ron	6-0	190	Tallahassee
20 Loucks, Gary	6-2	195	Merritt Island
85 Lucas, Carl	5-11	180	Jupiter
74 Macaulay, Steve	6-1	210	Atlanta, Ga.
56 Miles, David	5-10	185	Tallahassee
83 Murphy, John	5-11	185	Albany, Ga.
84 O'steen, Wyant	6-0	180	Mayo
51 Ottman, Keith	6-1	200	Vero Beach
82 Rooks, Scott	6-2	195	Jacksonville
26 Sanders, Jerry	6-2	188	Adel, Ga.
12 Satterfield, Ricky	6-4	210	Jonesboro, Ga.
53 Schmidt, Andy	6-1	200	Brandon
70 Sparkman, Don	6-5	225	Jacksonville
48 Sparling, George	6-1	185	Boca Raton
58 Strauss, Ted	5-10	190	Tallahassee
44 Walter, Steve	6-2	202	Jacksonville
43 Webb, Tom	5-10	185	St. Augustine
61 Wilkinson, John	6-0	210	Cassleberry
64 Wimberly, Terry	6-2	200	Jacksonville
73 Wood, Barry	6-2	215	Smyrna, Ga.
Mitchell, Mark	6-0	180	Auburn, Ala.

## 1970 Florida State Freshman Football

The 1970 Florida State freshman team takes over the spotlight next week with its season opener against the Georgia Tech freshman in Campbell Stadium.

The Seminoles of tomorrow are directed by first year mentor Don Blackwelder and it appears there will be a good deal of aerial action during the freshman season.

Among the many standouts on this year's freshman club are quarterback Fred Geisler from Orlando and receiver Joe Goldsmith from Lakeland.

Although a good deal of the freshman's time has been spent working with the varsity, Blackwelder has seen enough to feel he has a top group gathered.

Kickoff for Saturday's contest is slated for 7:30 p.m.

Tickets will be available all this week at the Athletic Ticket Offices in Tully Gym. Admission for adults will be \$2 and 50-cents for children. Florida State students will be admitted free upon showing their student ID card.

### 1970 FRESHMAN FOOTBALL SCHEDULE

Date	Opponent	Site	Time
Oct. 3	GEORGIA TECH	Tallahassee	7:30 p.m.
Oct. 31	GORDON MILITARY	Moultrie, Ga.	7:30 p.m.
Nov. 7	MIAMI	Vero Beach	8:00 p.m.
Nov. 20	FLORIDA	Gainesville	2:00 p.m.



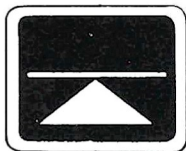
**Don Blackwelder**  
Freshman Coach



*Best Wishes for a successful season, and we are proud to have had a part in furnishing the football equipment for the Seminoles*

**OWENS Inc.**  
*Sporting Goods — Hardware*  
**ALBANY, GEORGIA**

**GOOD LUCK SEMINOLES!**



TM

**DOLIME MINERALS COMPANY**

P.O. BOX 1441  
 BARTOW, FLORIDA 33830

## SEMINOLE SONGS

### THE ALMA MATER

High o'er the towering pines our voices swell  
 Praising these Gothic spires we love so well;  
 Here sons and daughters stand . . .  
 Faithful and True, Hailing our Alma Mater  
 F . . . S . . . U . . .



### FSU FIGHT SONG

You got to FIGHT, FIGHT, FIGHT for FSU  
 You got to scalp 'em Seminoles.  
 You got to WIN, WIN, WIN, WIN,  
 WIN this game  
 and roll on down and make those goals  
 For FSU is on the warpath now,  
 and at the battle's end she's great . . .  
 So FIGHT, FIGHT, FIGHT, FIGHT for victory  
 Our Seminoles of Florida State . . . (Yell)

F-L-O-R-I-D-A S-T-A-T-E  
 FLORIDA STATE (3 times)  
 (repeat verse)



### HYMN TO THE GARNET AND GOLD

Here's a hymn to the Garnet and the Gold  
 Ringing to the sky.  
 Here's a song for our men and women bold  
 Sing with heads held high.  
 Striving e'er to seek, to know,  
 Fight for victory.  
 Alma Mater, this our song to you,  
 Echoes FSU.

## Southernaire MOTEL

Across from F.S.U.  
 Tallahassee, Florida 32304



and

*Skyline*

**Motor Lodge**

U. S. 90 West

**Quality Courts**  
*for Quality People*

**GOOD LUCK SEMINOLES!**

*Varsity*  
**THEATRE**

PHONE 224-8636

1833 W. TENNESSEE

*Miracle*  
**THEATRE**

PHONE 224-2617

1815 THOMASVILLE ROAD

*Operated by*

**EASTERN FEDERAL CORPORATION**



# YESTERDAY

## A WINNING TRADITION ESTABLISHED

Florida State's modern football history resumed in 1947, when the Seminoles quickly formed a team and a schedule. The result was, as could be expected, an agonizing 0-5 record.

But the Tribe was not to be down for long. The 1948 season brought a new coach, a new conference and the Seminoles first win.

Don Veller was the new coach. He came to the Seminoles from Indiana University, where he was an outstanding scholar-athlete, during the mid-thirties.

He brought with him the "cockeyed-T" first introduced by his former coach and then boss at Indiana, Bo McMillan. In addition Veller had added a few new wrinkles, like an unbalanced line.

The Seminoles' first opponent in 1948 was Cumberland University. The visitors certainly were not a national power, but they presented a formidable opening opponent, one which had beaten the Tribe, 6-0, a year before.

Veller had the Seminoles ready, however. While the defense kept Cumberland scoreless the "cockeyed-T" rolled up five touchdowns, for a 30-0 win.

Red Parrish and Ken MacLean set the pace for a devastating Tribe ground assault that netted 426 yards.

Each scored twice, leaving the final touchdown to reserve back Ernie Reddick.

A 31-yard dash by MacLean put the Tribe on the board. Later he sprinted 52-yards setting up a Parrish plunge for a score.

Parrish also showed speed by driving 60-yards for a touchdown.

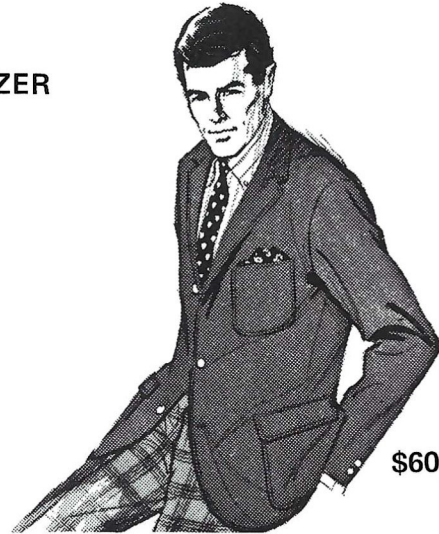
The Seminoles missed all five extra point attempts in the Cumberland game and one more in a 14-6 loss to Erskine the following week running their two-year famine to nine. But that string stopped against Millsaps when Joe Crona kicked the winning point in a 7-6 victory.

Although the Seminoles lost their second outing, that "first ever" victory set the pace for the season. The Millsaps win started a six game streak as the Tribe finished up 7-1 and captured the first "Dixie Conference" title with a 4-0 mark.

# GARNET - GOLD

WEAR YOUR COLORS PROUD

BLAZER



\$60.00

Garnet or Gold Blazer of Dac-Wool blend for year round comfort. Sizes; Reg: 36-48, Shorts: 36-42, Longs 38-50, XL 40-48.

# SAMMY SEMINOLE TIE



Tie one on! A garnet background with the authentic Sammy Seminole Monogram on the tie.

\$4.50

NAME: \_\_\_\_\_  
ADDRESS: \_\_\_\_\_  
CITY: \_\_\_\_\_  
COLOR: \_\_\_\_\_ SIZE: \_\_\_\_\_  
TIE ONLY: \_\_\_\_\_

# NIC'S TOGGERY

115 S. Monroe St.  
Tallahassee, Florida



# HOLD That Line

If you're losing the battle of the creeping waistline, visit the SPA for the relaxing change of pace you deserve. Take time out to DO what Hundreds of Tallahasseeans have found to be a new lease on life. Use the Spa's fabulous facilities and see the results yourself.

Phone 385-1108  
2005 N. Monroe St.



APOLLO CLUB

# Spa



VENUS CLUB

Nationwide  
health beauty system

## Lindy's Fried Chicken

Call 224-5811 YOUR ORDER WILL BE WAITING

SPECIAL BOX — 3 PCS. CHICKEN F.F., COLE SLAW & ROLLS .....	1.20
½ FRY CHICKEN — 4 PCS. CHICKEN, F.F. COLE SLAW & ROLLS .....	1.45
WHOLE CHICKEN — 8 PCS. (CHICKEN ONLY) .....	2.25
BUCKET 'O CHICKEN — 15 PCS. (W/CHOICE OF SLAW OR GRAVY & ROLLS) .....	4.15
BARREL 'O CHICKEN — 21 PCS. ....	5.50

1447 THOMASVILLE RD. PHONE 224-5811  
OPEN 7 DAYS A WEEK — INCLUDING SUNDAY

# Go Seminoles

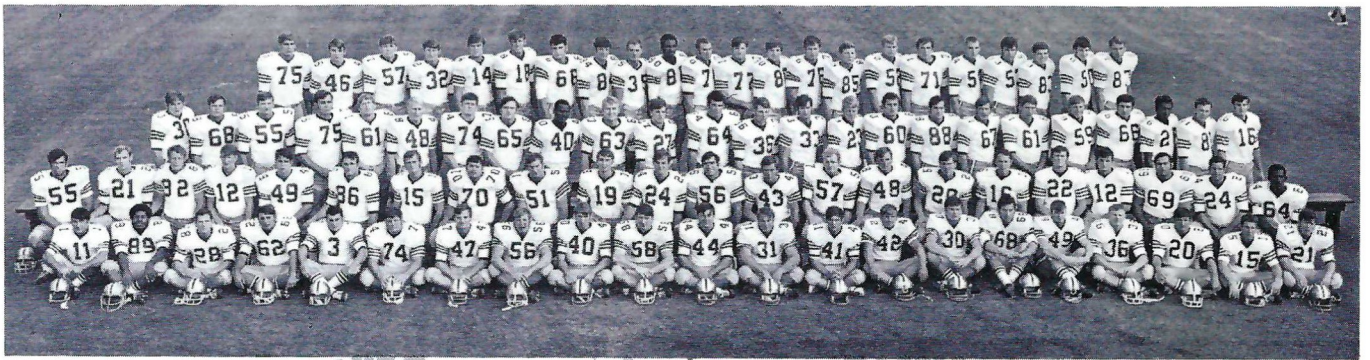
We'll help all we can

## Tallahassee Automobile Dealers Association

ALFORD CHEVROLET CO.  
COURTESY RAMBLER—DATSUN  
PROCTOR & PROCTOR, INC.  
CAPITAL LINCOLN—MERCURY, INC.  
BOB DRAKE DODGE, INC.  
TOYOTA OF TALLAHASSEE

COURTESY OLDSMOBILE—VOLVO  
PALMER—HARRELL BUICK CO.  
CAPITAL CHRYSLER—PLYMOUTH, INC.  
TALLAHASSEE MOTORS, INC.  
KINNEBREW MOTORS, INC.  
MINGLEDORFF MOTORS, INC.  
CONTINENTAL CARS OF TALLAHASSEE, INC.





## JOIN SEMINOLE BOOSTERS

Head Coach Bill Peterson has set a goal to have Florida State's football team become a national champion. This year nearly 1,300 Seminole fans have helped bring that goal closer to reality by joining Seminole Boosters. Officially called the Athletic Scholarship Fund, Seminole Boosters' purpose is to raise scholarship funds for the Florida State athletes in action tonight. Among the benefits a Seminole Booster receives is priority seating at all games—home and away, but the biggest benefit is knowing he has helped the Seminoles take a step closer to that national championship. If you have not yet joined the Boosters, you can do so by filling out this application and sending it with your contribution to the Athletic Department Office in Tully Gym.

Yes, I would like to contribute to the Athletic Scholarship Fund and herewith enclose my contribution for \$ \_\_\_\_\_ (note: \$40 is the minimum contribution for full membership benefits.)

I am interested in the Athletic Scholarship Program. Please send me additional information.

Name \_\_\_\_\_

Address \_\_\_\_\_

City \_\_\_\_\_ State \_\_\_\_\_ Zip \_\_\_\_\_

Please make check payable to: Athletic Scholarship Fund. Send check and application to: Athletic Ticket Office, Tully Gym, Florida State University, Tallahassee, Fla. 32306



# Southern is scoring in the big-time now!



Just two, short years ago, Southern played in the confines of its own backyard . . . an eight-state region in the mid-South. But that's all changed now. Today, Southern is showing its winning ways in New York, Newark, Washington, St. Louis, Miami, Orlando, Tallahassee and Chicago.

Next trip, check Southern's fly pattern to any of the 66 cities it serves. See if Southern's own brand of service doesn't score points with you, too.

**SOUTHERN AIRWAYS**

General Offices: Atlanta Airport, Atlanta, Georgia 30320

## SPOTLIGHT

### - Swimming -

The Dean of Florida State's head coaches is swimming mentor N. B. "Bim" Stults.

The personable boss of the Tribe's "aquanauts" is the first and only swimming coach in Seminole history. His initial team, in 1948, won only three of eight dual meet, but that was the only time he has suffered a losing season.

In 22 seasons, the Seminoles have amassed a 170-34 record for a winning percentage of well over 80% and have established themselves as a perennial Southern power.

Stults coaching abilities have not gone unnoticed. Several times he has been nominated for Olympic and Pan American game coaching positions in both swimming and diving. In 1968 he was the only coach nominated for both spots on the Olympic team.

He has taken all star teams on world tours and served as a diving judge at many national meets. He is a past president of the College Swimming Coaches Association and a member of the Board of Directors of the Swimming Hall of Fame in Fort Lauderdale.

A graduate of Washington and Lee, Stults' first coaching position was an assistant's spot at Ohio State. His double tenure there was sandwiched around naval duty during World War II. A veteran line officers in both the Atlantic and Pacific, Stults is a retired Lt. Commander.

The Ohio native is acknowledged as one of the finest "in the pool" coaches in the country, getting maximum effort, dedication and ability from his swimmers, many of whom have gone on to be outstanding coaches in their own right.

Diving is a specialty with Stults and the Seminoles have gained 14 diving All-America certificates, including one national champion. Stults latest All-America diver, Phil Boggs, has already earned three awards and will be back for his senior season this winter.



# VARSITY COACHES



**Pete Barizon**  
Tennis



**Hugh Durham**  
Basketball



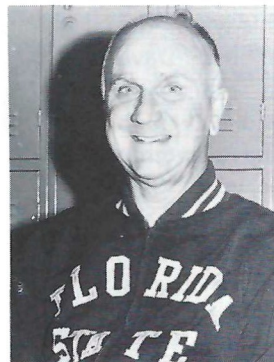
**Scott Fletcher**  
Golf



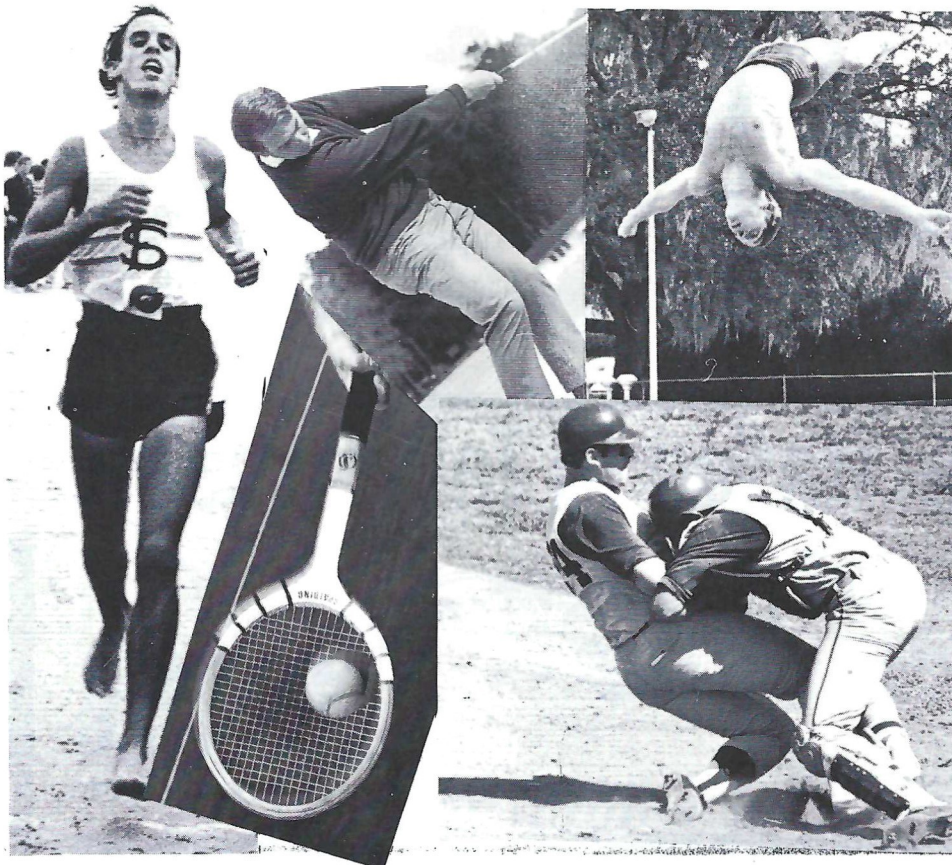
**Mike Long**  
Track



**Jack Stallings**  
Baseball



**"Bim" Stults**  
Swimming



## Jim & Milt's Bar-B-Q

RIBS – CHICKEN  
PORK – BEEF SANDWICHES  
CARRY OUT SERVICE  
Sunday Thru Thurs 11 AM - 11 PM  
Friday & Sat. 11 AM - 1 AM

1923 W. Pensacola . . .576-3998

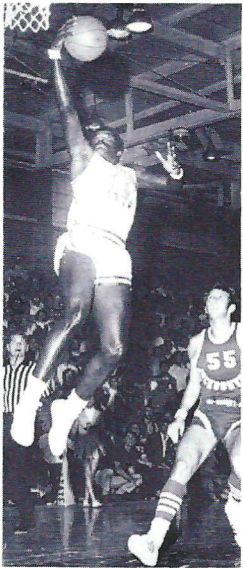
**Go Seminoles!**

Compliments of  
Tallahassee  
Flowers  
and  
Candy

**328 South Adams  
222-3840**

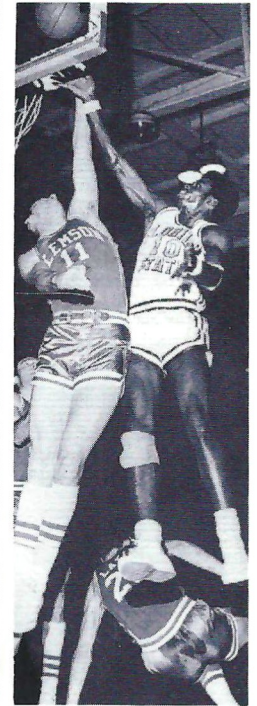
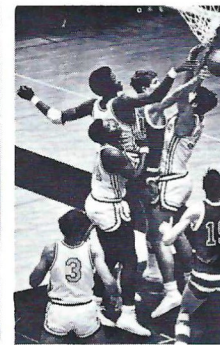
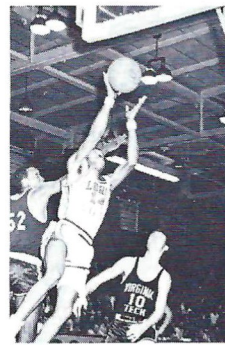
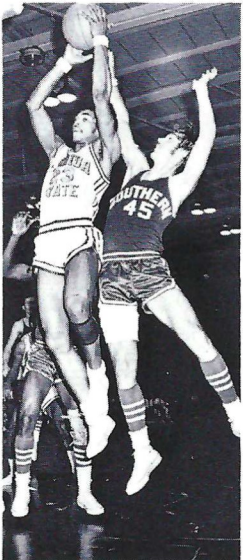


# BASKETBALL AT ITS BEST



## FLORIDA STATE UNIVERSITY BASKETBALL AT ITS BEST

EXCITING is the description for Florida State's Basketball team. High-scoring, run-and-shoot, offense; tenacious, pressing defense is the Seminole brand of basketball. Last year the Seminoles streaked to a 23-3 record with one of the nation's finest offensive teams. This year, despite the loss of big Dave Cowens and several other outstanding seniors, Coach Hugh Durham expects to have another high-scoring, banner year. Skip Young will be back to lead the attack along with Vernell Ellzy, Rowland Garrett and Ron Harris. Also the Seminoles will have the graduates of perhaps their finest freshman team ever. Sensational Ron King, Reggie Royals, Larry Gay and little Otto Petty, the 5-8 guard, who plays like he is a foot taller, will join the varsity. The schedule includes the likes of Texas, Miami of Ohio, Southern California, Miami (Fla.), Jacksonville, Georgia Tech and North Carolina. To order your season tickets stop by the Athletic Ticket Office in Tully Gym or mail the coupon.



### ORDER SEASON TICKETS NOW!

Individual game tickets \$2.50 each. Season Ticket (for 13 home games) \$21.00 (save \$11.50). For group seating send orders in single envelope and mark order "group seating."

Name \_\_\_\_\_

Address \_\_\_\_\_

City and State \_\_\_\_\_ (Zip) \_\_\_\_\_

Phone-Bus. \_\_\_\_\_ Home \_\_\_\_\_

Check correct group(s)

- 1969-70 season ticket holder
- Tipoff Club Member
- New Purchaser

All orders must be accompanied by check made payable to **Florida State University**. Mail orders to the **Athletic Ticket Office Tully Gym**.

# Hertz Special Rates in Tallahassee

**For a Weekend:** \$7.47 a day + 10¢ a mile for 2 or more days. Any time Friday to the same time Monday. Insurance is included; gas isn't.

Each special rate is for an intermediate or standard Ford sedan or similar car. These rates are not available at all locations.

To reserve a car, or for more information, call us at **222-1686**  
(Two locations: Downtown Holiday Inn and at the Airport.)



**Renting you a good, clean Ford is just where we begin.**



**X  
L  
S  
T  
O  
R  
E  
S**



**Inc.**

EVERY ITEM  
DISCOUNTED  
EVERY DAY

-:-

LOW  
PRESCRIPTION  
PRICES

-:-

212 S. Adams  
Phone 224-5280



SERVING THE SOUTH  
SINCE 1875

Nationally Famous Furniture, Appliances, Carpet,  
Accessories — 63-Store Buying Power Savings!—  
3 Convenient, Rhodes-Financed Payment Plans—  
Take Up to 24 Months to Pay!

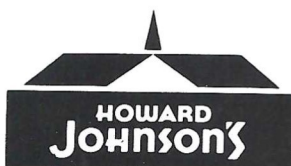
*“WHERE TO BUY IT”*

1122 Thomasville Road Phone 224-1128

HOWARD JOHNSON'S MOTOR LODGE  
W. Tennessee St.  
AT THE UNIVERSITY

HOWARD JOHNSON'S MOTOR LODGE  
Apalachee Parkway  
NEAREST THE CAPITOL

Featuring the  
EXECUTIVE LOUNGE  
“The Popular Spot”  
Entertainment Nightly



Accommodations

*motor lodges*



Mike's Texaco  
Presto Car Wash  
556 West Tenn. St.

SCALP 'EM SEMINOLES!

PHONE 224-7989 • 224-4420





**FAT MAN'S  
BAR·B·QUE**

**SMELL THAT SMOKE**

3212 E. Apalachee Parkway  
TALLAHASSEE  
5101 E. Colonial Drive  
ORLANDO  
1708 S. Ridgewood  
EDGEWATER (NEW SMYRNA)  
5299 E. Busch Boulevard  
TEMPLE TERRACE (TAMPA)

BARBEQUE  
PORK ● BEEF ● RIBS ● CHICKEN  
"Smell that Smoke!"

## Electrical Contractors

- INDUSTRIAL
- COMMERCIAL



Licensed & Bonded

J. B. CLARK,  
President

LEE H. TOWNSEND,  
Vice President

222 - 5494

IF NO ANSWER DIAL 385-4030

**CLARK** ELECTRIC CO.  
OF FLORIDA

702 West Madison Street  
TALLAHASSEE, FLORIDA

## =Mendelson's=

Your Personal  
Department Store

SAYS

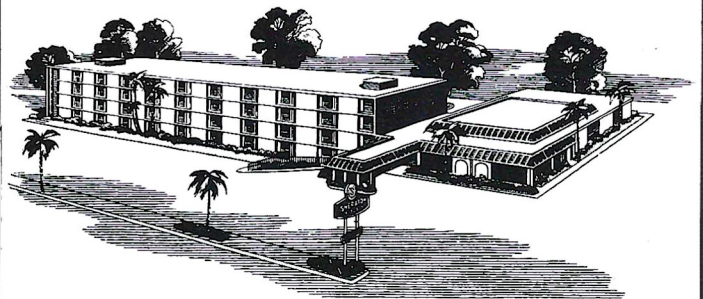
GO  
SEMINOLES!

Mendelson's  
Downtown  
208 So. Monroe  
385-6121

Mendelson's  
Northwood Mall  
385-6121

**=Mendelson's=**

## Sheraton in Tallahassee



Located just one mile from the business district and close to the capitol, the Sheraton Motor Inn is completely air-conditioned. All 151 rooms with color TV. Swimming pool.

Banquet and meeting facilities available for any group, up to 250. Restaurant and Lounge in the Motor Inn. For further information, call 877-3171.



**Sheraton Motor Inn**  
U.S. 27 HOLIDAY SQUARES LTD. TALLAHASSEE, FLORIDA 32304-8717  
SHERATON HOTELS AND MOTOR INNS A WORLDWIDE SERVICE OF ITC



# STADIUM INFORMATION & CONCESSIONS

**REST ROOMS** are located on concourse and ground levels of both the east and west stands.

**FIRST AID** station is located at the southwest corner of the stadium opposite gate five. A registered nurse is on duty at all times. Ambulance Service courtesy of Bevis Funeral Homes.

**PUBLIC TELEPHONES** are located on the ground levels of the east and west stands.

**PUBLIC ADDRESS** will make special announcements in cases of emergency only.

**DOCTORS** receiving calls will be paged by number.

**LOST AND FOUND** items may be turned in and claimed at the ticketbooth at gate three under the west stands by the press box elevator

**ALCOHOLIC BEVERAGES** are prohibited by state law. Your cooperation in enforcing this law is appreciated.

**FIELD REGULATIONS** prohibit unauthorized persons on the field during or after the game. Please leave the Stadium by the ramp and section exits.

**REFRESHMENTS** are available in the stands and at locations on the concourse and ground levels of the east and west stands.

<b>COLD DRINKS</b> .....	<b>25¢</b>
<b>HOT COFFEE</b> .....	<b>25¢</b>
<b>SANDWICHES</b> .....	<b>50¢</b>
<b>HOT DOGS</b> .....	<b>25¢</b>
<b>PEANUTS</b> .....	<b>25¢</b>
<b>POP CORN</b> .....	<b>25¢</b>
<b>CIGARETTES</b> .....	<b>60¢</b>

SOUVENIR ITEMS - PENNANTS - BADGES  
SUN VISORS - ASPIRIN

Please pay no more than  
**ESTABLISHED PRICES**

## SPORTSMANSHIP

**STUDENTS, SPECTATORS!**

Make **Sportsmanship** a Part of Your Game  
Equipment

**NOISE** is a serious problem at many intercollegiate football games, and on some occasions in the past has prevented the Quarterback's signals from being heard. Such a situation may be interpreted as "interference" with the conduct of the game, and penalized. We seek your assistance in preventing excessive noise, which could cause a penalty against your team. Should unusual noise develop, the referee will call "Time-Out" and instruct the Defensive Captain to request **QUIET**, which he will do by moving toward the noise area with both arms and hands raised. If necessary, the Offensive Captain will make the same request on the opposite side of the field. We shall appreciate your respect for Sportsmanship in remaining **quiet** at this time.

In all games the Referee is authorized to inflict a penalty based on noise developments. Please cooperate. Don't help to draw a penalty against your team.

**CHEER TO HELP. NOT TO HURT**

Go  
Seminoles



**ROYAL SANDWICH CO.**  
904 Gamble • 222-0699



# AD DIRECTORY

## Slim & Rebels Hamburger Haven

GO SEMINOLES!

1040 W. PENSACOLA ST.  
1/2 Block East of Cambell Stadium

Phone 222-5913

Homemade Chili • Home Cooking

BEST DOG EVER BIT BY MAN !!

Take out or eat on our Patio

Big B Cleaners  
Bill's Bookstore  
Brown's Men's Wear  
Capital City First National Bank  
Captain Louies Galley  
Carriage House Restaurant  
Clark Electric  
Concrete Products  
Cycle Shop  
Dolime Minerals  
Driftwood Motel  
Eli Witt  
Eppes-Edenfield  
Everhart Construction  
Fat Man's Barbeque  
Florida Cattleman's Assoc.  
Florida Times-Union  
Frisch's  
Frosty Morn  
Hardee's  
Hertz  
Holiday Inn  
Honda  
Howard Johnson's  
International Business Machines  
Jacksonville (City of)  
Jim and Milt's  
Kentucky Fried Chicken  
Leon Federal Savings  
Lewis State Bank  
Lindy's Fried Chicken  
McDonald's Hamburgers  
Mendleson's  
Midyette-Moor  
Mike's Texaco  
Miller Chevrolet

Mobile Home Industries  
Nic's Toggery  
Owen's Inc.  
Parkway National Bank  
Pasquales  
Peacock Chevrolet  
Prudential Insurance  
Quality Courts  
Quincy State Bank  
Ragans and Roberts  
Rhodes, Inc.  
Royal Sandwich Co.  
St. Petersburg Times  
Sears, Roebuck and Co.  
Sheraton Motor Inn  
Slim and Rebel's  
Southeastern Telephone  
Southern Airways  
Southernaire-Skyline  
SPA  
Sportscraft,  
Stafford's  
Strickland's  
Sweetshop  
Tallahassee Auto Dealers  
Tallahassee Bank and Trust Co.  
Tallahassee Camera Center  
Tallahassee Flowers and Candy  
Tallahassee Travel and Tours  
Talquin Electric  
Tampa Tribune  
Taylor Chevrolet  
Varsity Theatre  
Wakulla Springs  
WTNT Radio  
XL Stores, Inc.

## Concrete Products Co., Inc.

READY MIXED CONCRETE

CEMENT  
SAND  
GRAVEL

Phones: Plant 222-3367  
Office 222-4472  
P. O. Box 1122

GAINES AND WOODWARD STREETS  
TALLAHASSEE, FLORIDA



## BILL PEACOCK CHEVROLET, INC.

300 West Washington St.  
MONTICELLO, FLORIDA

The reason people pass one door  
To patronize another store,  
Is not because the busier place  
Has better silks, or gloves, or lace,  
Or special prices, but it lies  
In pleasant words and smiling eyes;  
The only difference, we believe  
Is in the treatment folks receive!

*Growing With the Seminoles!*

**TALLAHASSEE**  
Phone 224-8827

**MONTICELLO**  
Phone 997-2513



# McDonald's and FSU, BOTH No. 1!



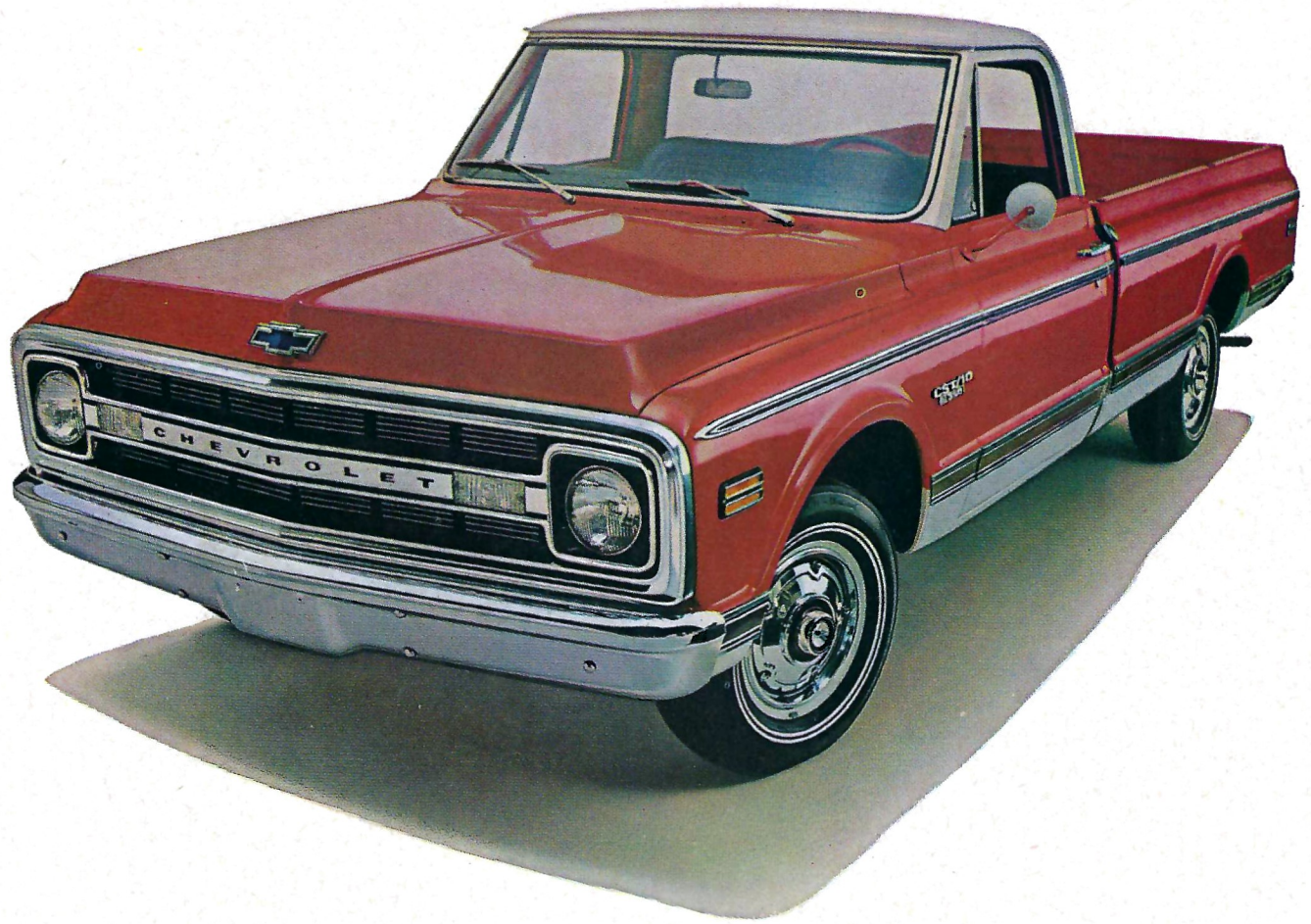
Speedy Seminole Service is the word at our *Re-Newed* West Tennessee Street location. Get to the game early—enjoy easy parking—walk right through the gate—and feast on a Value Packed Meal from McDonald's where we put *Food in Your Family and Change in your Pocket*.

Our *Re-Newed* McDonald's in Seminole Country has an enlarged Patio Area with new tables and seating. Also 4 extra window-additions have been made to get you to the game in a hurry.



1701 W. Tennessee St. (US 90 W) • Northwood Mall (US 27 N)





## Get a status symbol that carries some weight.

The time is past when people thought of a truck as strictly a workhorse.

In fact, Chevy pickups are being used for so many personal and leisure time activities that they've become a kind of symbol for a new life-style.

It's easy to see why.

Our pickups combine the luxury and utility today's on-the-go

generation wants. You can order such conveniences as an automatic transmission, power steering and power brakes.

Even air conditioning, bucket seats and carpeting.

And with it all you get the practicality of a "trunk" up to 8½ feet long. Try that out for size on your next shopping trip. Or vacation

trip. Or football outing.

The man to see is your Chevrolet dealer. He'll show you more reasons why Chevy pickups are so popular.



**Putting you first, keeps us first.**