
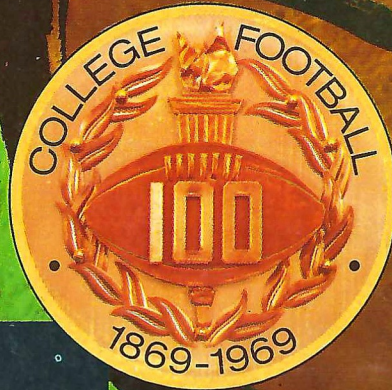


HOMECOMING 1969

FLORIDA

STATE / SOUTH CAROLINA

Football Magazine



THE COLLEGE GAME

SEE
HOMECOMING
QUEEN
PAGE
12

NOVEMBER 1, 1969

75 CENTS



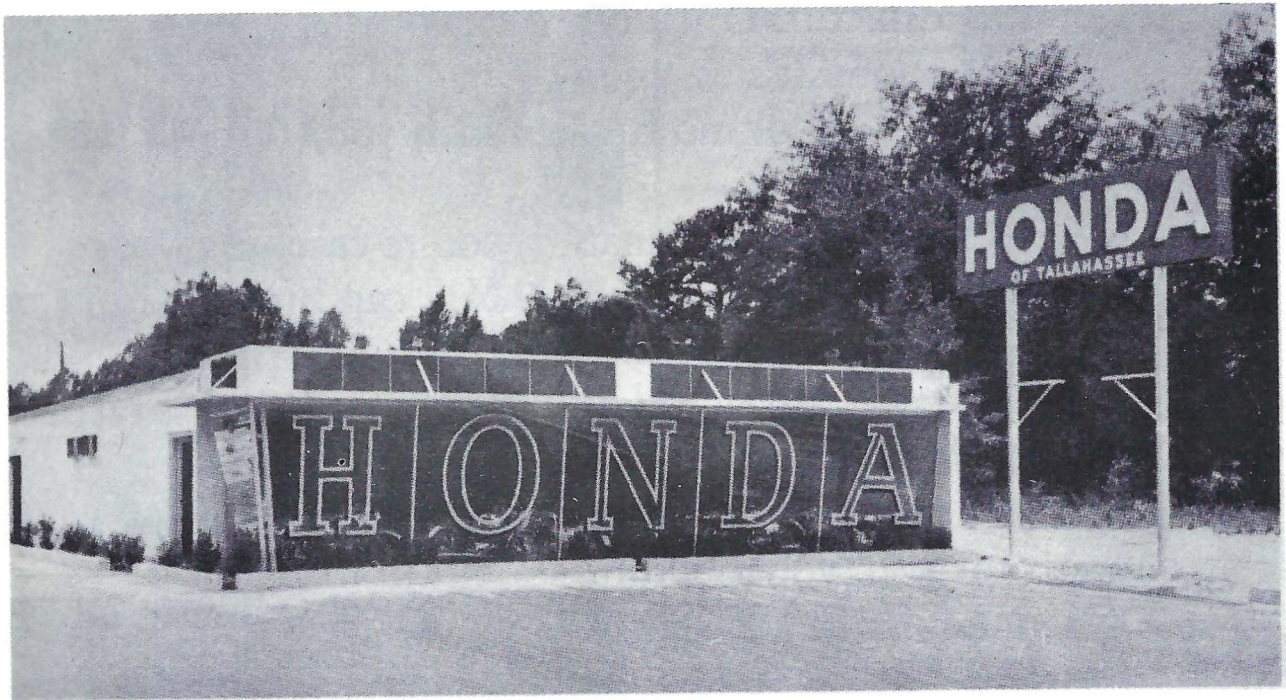
HAMS • BACON • SAUSAGE • WIENERS

FROSTY MORN MEATS

"You meet the nicest people on a

H O N D A

World's largest seller"



HONDA OF TALLAHASSEE

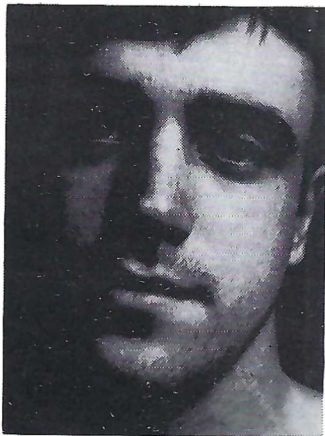
At the Underpass on West Tennessee

Phone 576-1020

Break your beard in right.

Right now your beard is in the formative stage.

You can shave it with a razor blade like your father does. And each time you do your beard will grow back a little more difficult. Until one day shaving's no longer a chore. It's an agony.



Look no further than your father's face for proof.

But fortunately, you're catching your beard at an early age. You can break it in to be just as shaveable 10 and 20 years from now as it is today.

With a REMINGTON® *Lektro Blade* shaver.

And if you think the kind of shave we're selling won't be close enough for you, you're wrong.

Our new Lektro Blade shaver has very sharp disposable blades. Just like a razor. So it gives very close shaves. Just like a razor.

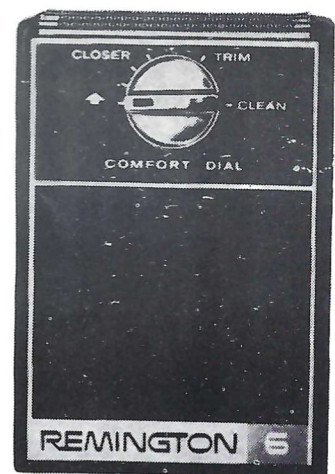
What's more, you can dial a Lektro Blade shaver into a sideburn trimmer.

Admittedly, it costs more to buy our electric shaver than a razor and some blades.

But it's a good investment.

These next few years will determine how you and your beard will get along for the rest of your lives. †SPERRY RAND®

LEKTRO BLADE: TRADEMARK OF SPERRY RAND CORP. ©1969 S. R.



REMINGTON
ELECTRIC SHAVERS DIVISION, BRIDGEPORT, CONNECTICUT.

Welcome To Florida State University



A UNIVERSITY ON THE "GROW"

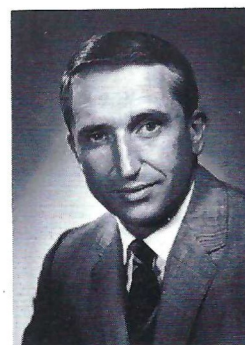
The competition for "All-America" standing is not limited to the football field at Florida State University, which seeks a "10-0" season each year in academics as well as athletics. Field goals, first downs and touchdowns in the classrooms and labs of Florida State's ten schools and colleges are setting pro-style records of achievement at the national and international levels as the University moves into the 112th year of its history. More than 42,000 alumni, more than 17,000 students and more than 3,000 faculty and staff form the dedicated, 1969 scholarship and support teams of this public, coeducational University which expects to have 28,000 students in 1975.

A SALUTE TO FOOTBALL FANS

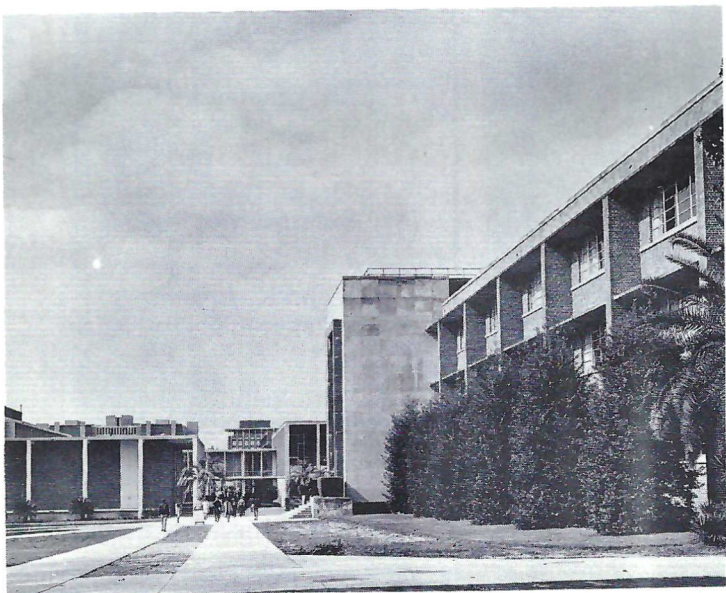
FROM STATE'S

PRESIDENT:

The sight of a full stadium at Florida State's football games is one which affords great satisfaction — both to me, and to the Seminole team, because it represents one of the very few times in the year that all of the University's thousands of supporters are able to assemble in one place at one time. This very visible and public demonstration of your faith in the athletics and academics of a great University calls for the highest commendation and encouragement. On behalf of Florida State's faculty, staff, students and athletes, let me assure you that we are honored by the presence of each Seminole fan and visitor in Campbell Stadium today. Your individual and collective support is vital to the continued growth and success of Florida State.

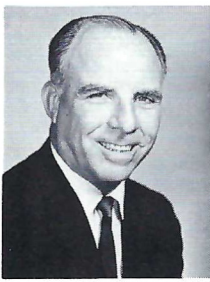


Dr. Stanley Marshall
President





Adams



Christian



Faircloth



Williams



Conner



Dickinson



Hon. Claude R. Kirk, Jr., Governor



Hon. Ray Osborne, Lt. Governor

STATE BOARD OF EDUCATION

- Claude R. Kirk, Jr.
Governor
- Floyd T. Christian
Commissioner of Education
- Tom Adams
Secretary of State
- Earl Faircloth
Attorney General
- Broward Williams
Treasurer
- Doyle Conner
Commissioner of Agriculture
- Fred O. Dickinson, Jr.
Comptroller

STATE AND UNIVERSITY SYSTEM

OFFICIALS

FLORIDA STATE UNIVERSITY

Dr. Stanley Marshall
President

Dr. M. Cecil Mackey
Executive Vice President

John K. Arnold, Jr.
Vice President, Student Affairs

Dr. Juanita Gibson
Executive Assistant to the President

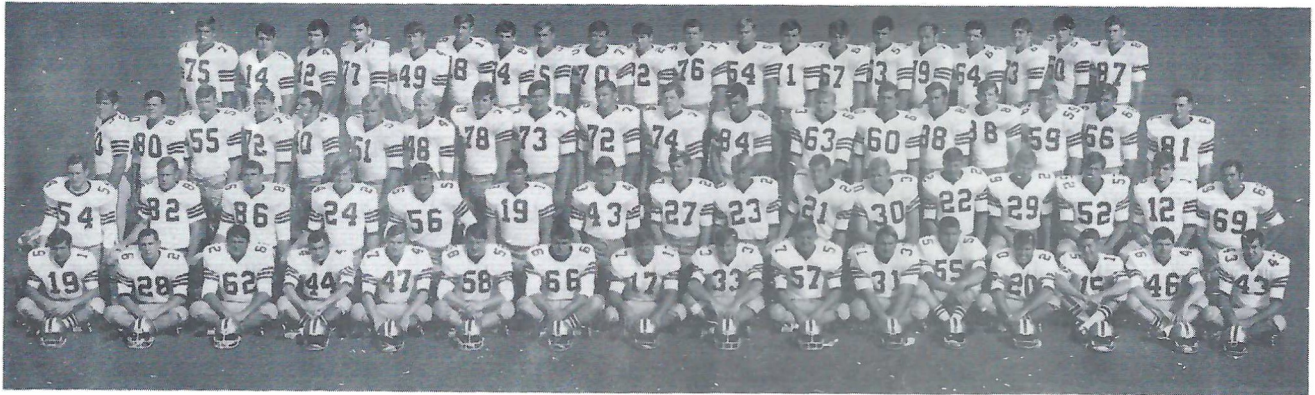
Patrick W. Hogan
Director of University Relations



BOARD OF REGENTS – STATE UNIVERSITY SYSTEM

The Florida Board of Regents supervises the operations of all State Universities. Left to right, seated, are: Julius F. (Fred) Parker, Jr., of Tallahassee; Vice Chairman, Dr. Louis C. Murray of Orlando; Chairman D. Burke Kibler III of Lakeland; Henry D. Kramer of Jacksonville; and, Mrs. E. D. Pearce of Miami. Standing, left to right, are: John C. Behringer (resigned) of Ft. Lauderdale, Dr. Clarence L. Menser of Vero Beach, Chester Ferguson of Tampa, Mayhew W. (Pat) Dodson of Pensacola and Chancellor Robert B. Mautz.

We Serve the Seminoles



THE 1969 SEMINOLES

FRONT ROW—Abraira, Ashmore, Bass, Carrell, G. Davis, Gildea, Glisson, Gridley, Guthrie, Lowe, Magalski, Roatche, Thomas, Warren, Barnes, Stupakis. SECOND ROW—Burt, Dawson, Hall, Lanahan, Lohse, Maynard, J. Montgomery, Munroe, Pederson, Pell, Rainey, Ratliff, Rust, Sammons, Whigham, White. THIRD ROW—Bailey, Beville, Dees, Essex, Gilman, Hughes, Jarrett, Johnson, Johnston, Logan, McEachern, McKinnie, G. Montgomery, Barry Rice, Beryl Rice, Shaw, Strickland, Strickler, Tyson. FOURTH ROW—Amman, Cappleman, Cheshire, Curchin, E. Davis, Gaydos, Glass, Gray, Minor, Mitchell, Rimby, Sowers, Spence, Speer, Stokes, Vohun, Walker, Wallace, Whitehurst, Zaffran.

CAMPUS FOOD SERVICE

MIDYETTE-MOOR Insurance Agency

"Ask Those We Serve"

Complete Insurance and Bond Service

PHONE 222-3456



MIDYETTE-MOOR BUILDING
TALLAHASSEE, FLORIDA

SAYS

SCALP 'EM SEMINOLES!



Payne Midyette
Frank Moor
Ed Clark
Winslow Sullivan
Paul Lewis
Payne Midyette, Jr.
Bill Moor
Bill Franklin

Jim Woods
Gordon Henkel
Glenn Sears
Moffett Warren
Chick Prosser
Richard Lobb
Rex Sikes
Walt Young

Electrical Contractors

- INDUSTRIAL
- COMMERCIAL



Licensed & Bonded

J. B. CLARK,
President

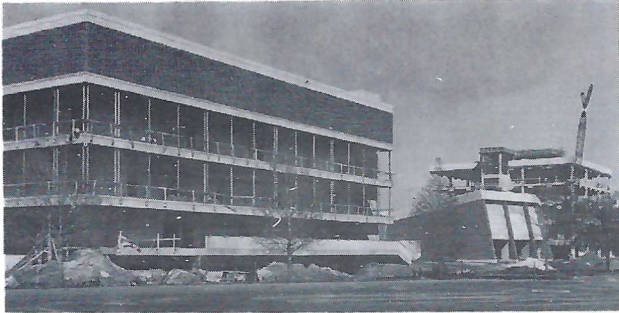
LEE H. TOWNSEND,
Vice President

576-3727

IF NO ANSWER DIAL 385-4030

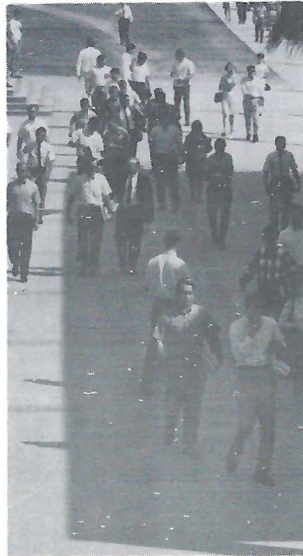
CLARK ELECTRIC CO.
OF FLORIDA

1133 Kissimmee St.
TALLAHASSEE, FLORIDA



IT TAKES ABOUT FOUR YEARS TO GET A CLASS-ROOM BUILDING READY FOR STUDENTS FROM THE TIME IT IS FUNDED. . . and the State of Florida expects to have FOUR HUNDRED AND TEN THOUSAND STUDENTS in universities, junior colleges and vocational schools by 1975! The 1969 Florida Legislature PROVIDED NO FUNDS FOR CAPITAL OUTLAY for any of these public institutions; and it will be up to the citizens of Florida to VOTE YES on a constitutional amendment in November that will make bond issues for construction possible WITHOUT NEW TAXES! Total construction needs for 1975 amount to more than \$443 MILLION DOLLARS!!

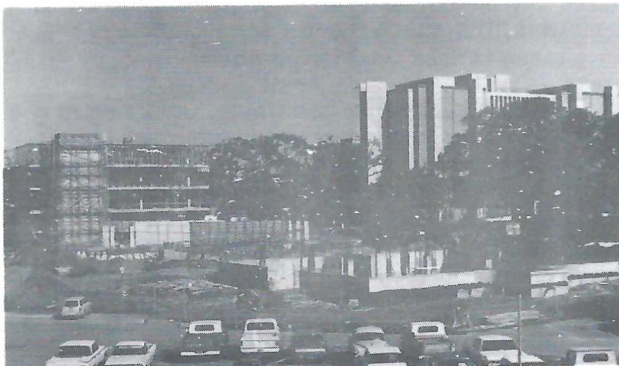
TAKE
THE SHADOWS
OUT OF
YOUR CHILD'S
COLLEGE
FUTURE!



**VOTE
YES**

For Construction Bonds

ON NOVEMBER 4th



OPEN

**7a.m. to 6p.m.
Mon. thru Sat.**

**WITH 2 CONVENIENT
LOCATIONS TO
SERVE YOU**

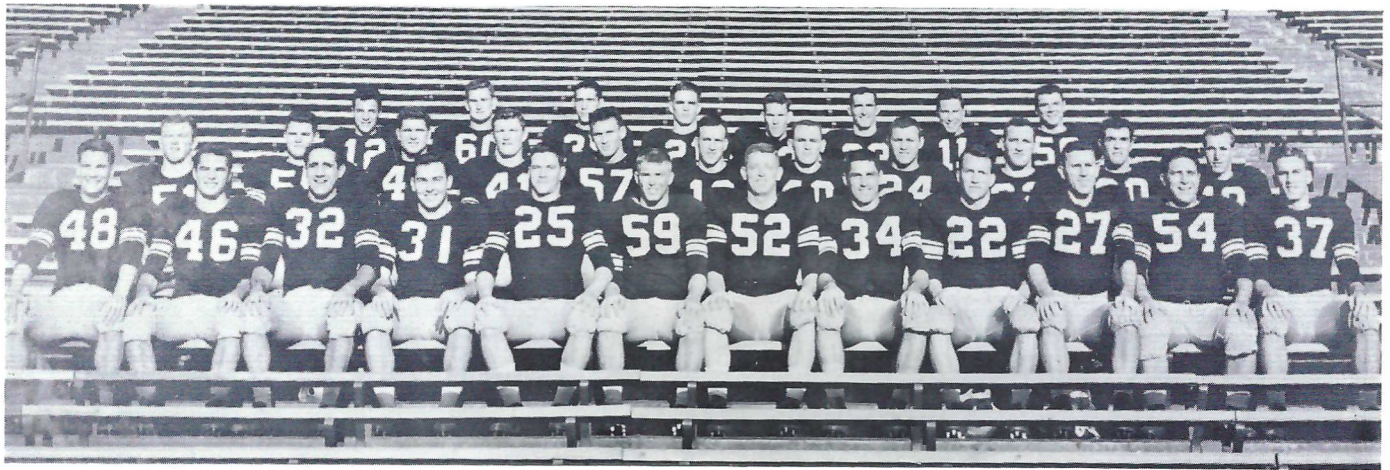
LOCATION NO. 1

**1001 W. PENSACOLA ST.
PHONE 224-0731**

LOCATION NO. 2

**836 LAKE BRADFORD RD.
PHONE 222-3523**

1954 SEMINOLES: HEART, CO



1954: A Little Heart Goes a Long Way

Perhaps no Florida State football team ever deserved a bowl game more than the 1954 Seminoles. The Tribe struggled through, not 10, but 11 regular season games in a schedule that was more “class” than common sense for a struggling college division team seeking “major” status.

The Seminoles opened with Georgia and went against North Carolina State, and Auburn, among seven schools of “major” classification. Before the year got underway most Seminole followers felt it was suicidal. In its initial six seasons the Tribe, under Dr. Don Veller’s guidance, had become the class of the Deep South small colleges.

In 1953 a new coach was brought in to initiate a new era. Tom Nugent was off to a good start, chalking up a 5-5 record in his first year against a “respectable” major schedule which included Miami and N. C. State. Now the idea was to “establish” Florida State as a potential “major college factor in the South”. But against this schedule? Perhaps Nugent had bitten off more than he could chew.

There were nine starters gone from the 1953 team and the '54 group was predominantly a freshman-sophomore group. Of the 43 men listed on the pre-season roster just 16 were upperclassmen. There were 27 first or second-year players and more were added before the season was very old.

At best, thought most followers, this team was a year away from making its move.

“But,” said Coach Nugent, recently, “we couldn’t be choosy about our scheduling. If a major college team wanted to play us, I would have moved mountains to fit them into the schedule.

“There was only one way to show you were ready for major college ball—that was to play them and play them respectably. If I even heard a rumor someone wanted a game—with us or anyone—I was on the phone immediately trying to set up a date.

“That’s how we ended up with 11 games in 1954. Auburn was having problems with one of its opponents and decided to cancel the series. They had open dates then in 1954 and '55. Well, with a year to go it wasn’t hard for them to fill that '55 date, but going into the summer they were still looking for a tenth game in 1954.

“I got on the phone and found out their open date. We had a game with Tampa scheduled, but if we could switch it or cancel it, Auburn would play us. I would have promised Tampa almost anything to move that game. They were very generous, agreed to switch to a December date and we had a game with Auburn.

The next step was getting the squad ready to play. It was still the era of limited substitution which meant a man had to play both ways. Even at that, the Tribe was short of manpower.

Bill McGrotha, Tallahassee Democrat Sports Editor recalls, “the Seminoles had several outstanding players they couldn’t use, because they couldn’t go both ways. They were fine offensively, but they couldn’t play defense, or they would do the job defensively but not on offense.”

So the squad of 43 was limited even more. “We were so thin in places,” said Nugent, “I would have to switch men from one position to another if someone got hurt. There was no ‘second team’.”

As the season got underway, however, things began to brighten. The opening game was a 14-0 loss to Georgia, but the Tribe was far from disappointed.

“That game may have been our best effort of the year,” said Nugent. “Georgia was expected to run all over us, but our kids got in there and fought them tooth and nail all night. Nobody felt like he lost that one.”

The Seminoles were shut out by Abilene Christian the next week, but then exploded for 112 points in their next three games to take a 3-2 record into the Auburn game.

“This team showed me something,” said Nugent proudly. “They were the most courageous group of players I have ever coached. They weren’t big, in number or in size, but they had a lot of heart, dedication and courage.

“Of the 24 teams I have coached, I don’t think there is one that stands out in my mind any more than this one does. They knew we were short-handed and worked hard—individually and as a group—to overcome that fact. Just as one example, after practice they used to run wind sprints, on their own, to get in better shape.”

(Continued on page 48)

COURAGE AND THE SUN BOWL

Perhaps no player exemplified the heart and courage of the 1954 Seminole football team than little Bob Crenshaw. Listed at 5-10, 178, he was one of the fiercest competitors to play for the Tribe. "Bob was our center," said Coach Tom Nugent, "and he never weighed 178 pounds. I would list him at that as a favor to him. I doubt if he weighed more than 160 or 165, but when he hit you, you thought it was by a 200-plus tackle."

"He was the most courageous football player I ever coached. He never gave up. If we had six kickoffs in a game, Bob would make the tackle on five of them."

"His heart was as big as he was. If he had been bigger, he would have been on everybody's All-America."

Bob was a junior in 1954 and played another outstanding season in 1955. In 1958 he was killed in a jet crash. His memory did not die with him, however, and since 1958 the Florida State players have annually chosen one of their teammates as recipient of the "Bob Crenshaw Award". The inscription on the award plaque reads simply: "To the Football Player With the Biggest Heart."



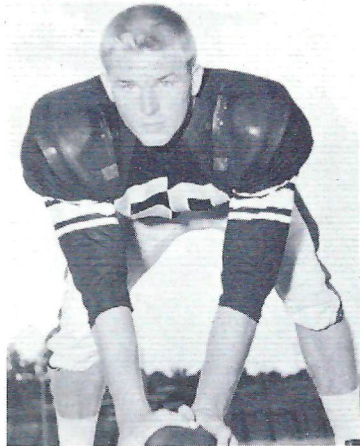
Head Coach Tom Nugent, Winston Siegfried, Frank Twoomey, Vaughn Mancha, Bob Harbison, Vince Ragunas.

The individual players on the 1954 team learned their trade well. Several have gone on to become coaches at both college and high school level.

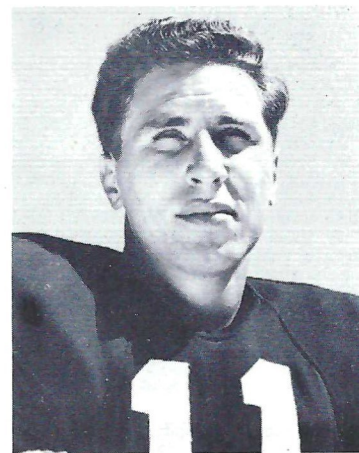
Vince Gibson was a junior guard in 1954. Later he was an assistant coach for the Seminoles and now is head coach at Kansas State. His Wildcat team took a giant step toward a Big-Eight Championship last weekend with a 59-21 victory over Oklahoma.

Lee Corso, a sophomore halfback in '54, is in his first season as head coach at Louisville and has built a 3-1-1 record thus far. His only loss came last weekend to North Texas State.

Don Powell, like Gibson, was a tackle in 1954, and the two are still teammates, with Don serving as an assistant at Kansas State.



Bob Crenshaw



Lee Corso

1954 Results

FSU		Opp.
0	Georgia	14
0	Abilene Christian	13
47	Louisville	6
52	Villanova	13
13	N. C. State	7
0	Auburn	33
33	VMI	19
33	Furman	14
47	Stetson	6
19	Miss. Southern	18
13	Tampa	0
20	Texas Western	47



Vince Gibson

Don Powell

FLORIDA STATE UNIVERSITY

ALUMNI ASSOCIATION

1969

BOARD OF DIRECTORS



Seated, left to right, officers: Hans W. Tews, Treasurer; Mrs. Randall Chase II, Secretary; Melvin L. Pope, Jr., President; James E. Joanos, President-Elect; Gordon D. Gaster, Immediate Past President; Thomas A. Waits, Executive Director. Standing, left to right, directors: Arthur E. Hempel, Jr., St. Petersburg; Johnnie A. Fortune, Ft. Walton Beach; Donald E. Stone, Coral Gables; William S. Byers, Altamonte Springs; Arthur H. Bougae, West Palm Beach; Edward J. Kercher, Bradenton; Mrs. Carroll F. Brown, Ocala; James D. Booth, Orlando; Walter L. Revell, Hialeah. Directors not present are: Thomas W. Donovan, Jacksonville; Ronald J. Schomburger, Tallahassee; Robert G. Olive, Winter Haven; Carmelo Battaglia, Tucker, Georgia.

"BUILDING A BETTER UNIVERSITY"

ALUMNI AFFAIRS

Homecoming—just one of the many activities for the alumni and friends of Florida State University in which the Office of Alumni Affairs participates. With over 40,000 alumni, you can imagine the complexity of this campus office.

The Office of Alumni Affairs has the primary responsibility for coordinating a diversified program of alumni service for Florida State which includes service of alumni to the University and also service rendered by the University to alumni.

Three organizations headquarter and coordinate their activities through the alumni office. These are the Florida State University Alumni Association, Seminole Boosters, Inc. and the Seminole Tipoff Club.

The Alumni Association is the largest of these organizations and is composed of alumni and friends of Florida State who contribute to the University annual giving program which is called the Greater Florida State Fund. The Association is a non-profit organization, governed by an elected board of directors.

Contributions to the Association through the Greater Florida State Fund are used in many areas of the University where financial assistance is needed. In the past few years the Association has provided help to the National Merit Scholar Program, thereby helping to recruit superior high school students for the University. Specific programs designated by the University president also receive financial support from the Association.

Within the Alumni Association are 25 alumni clubs, the majority of which are located in Florida, but some out-of-state. These clubs are engaged in a year-round calendar of events directed at serving the best interests of Florida State.

Some of the activities in which these clubs participate are the Talented Student Program and New Student Receptions. The objective of the Talented Student Program is to interest outstanding high school students in enrolling at Florida State. Students are invited by the alumni club to meet with University officials and learn of the educational advantages offered by Florida State. At the beginning of the fall quarter, alumni clubs host a reception for freshmen in their area, and tell the new students what they can expect when they arrive on campus for the first time.

Seminole Boosters, Inc. and the Seminole Tipoff Club are special interest groups composed of alumni and friends who are athletically oriented. Both of these groups have a close alliance with the Alumni Association. All three organizations have the same objective and are dedicated to serving Florida State.



**GOING
PLACES
?**

**ATHENS, GEORGIA? ATHENS, GREECE?
NEW YORK? NASSAU? NEPAL?**

TRAVEL IS OUR PROFESSION

**No Charge For Our Services
Tickets - Reservations At Printed Rates**



**MARION HAY, PRESIDENT
TOM LYLE**

TALLAHASSEE TRAVEL AND TOURS, INC.

Formerly Hay Travel Service

Established 1930

CALHOUN AT CALL STREET

TELEPHONE 224-4161



**Lindy's
Fried Chicken**

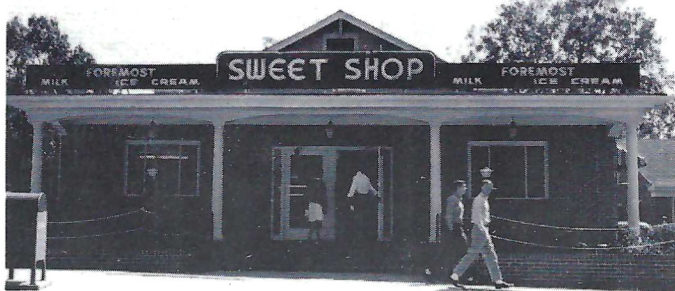
Call 224-5811 YOUR ORDER WILL BE WAITING

SPECIAL BOX — 3 PCS. CHICKEN F.F., COLE SLAW & ROLLS	1.20
½ FRY CHICKEN — 4 PCS. CHICKEN, F.F. COLE SLAW & ROLLS	1.45
WHOLE CHICKEN — 8 PCS. (CHICKEN ONLY)	2.25
BUCKET 'O CHICKEN — 15 PCS. (W/CHOICE OF SLAW OR GRAVY & ROLLS)	4.15
BARREL 'O CHICKEN — 21 PCS.	5.50

1447 THOMASVILLE RD.

PHONE 224-5811

OPEN 7 DAYS A WEEK — INCLUDING SUNDAY



**WHERE YOU
WILL FIND
YOUR FRIENDS**

**701 W. JEFFERSON
South Gate F.S.U.**

PARKWAY NATIONAL BANK



**BANK THE QUICK WAY - BANK THE PARKWAY
COURTESY · CONFIDENCE · CO-OPERATION**

**Telephone: 877-4121
1407 East Lafayette Street
Tallahassee, Florida**

TODAY'S HALF-TIME

The Marching Chiefs

**Robert T. Braunagel, Director of Bands
Charles Carter, Ass't. Director and Arranger
Richard D. Mayo, Assistant Director
Herschel Beazley, Drum Major
Mary Lynn Hendrickson, Head Majorette**

THEME: THOSE WERE THE DAYS

Music Idea

Fanfare

Those Were The Days A salute to the FSCW days of 1919.

Charleston The 1919 mode of transportation and style of dance. Majorette dance routine.

Brother Can You Spare A Dime 1929 Stock Market Crash. Depression.

Shake Rattle & Roll Elevation 1949 Dress style of the "Zoot Suit."

Aquarius 1969 A look at the Broadway show "Hair" and its affect on hair style.

Let The Sun Shine In More music from the show "Hair."

Get Together A salute to the 1969 Homecoming theme, "Peace is Relevant."

Hymn To The Garnet and Gold FSU in the year 1969.

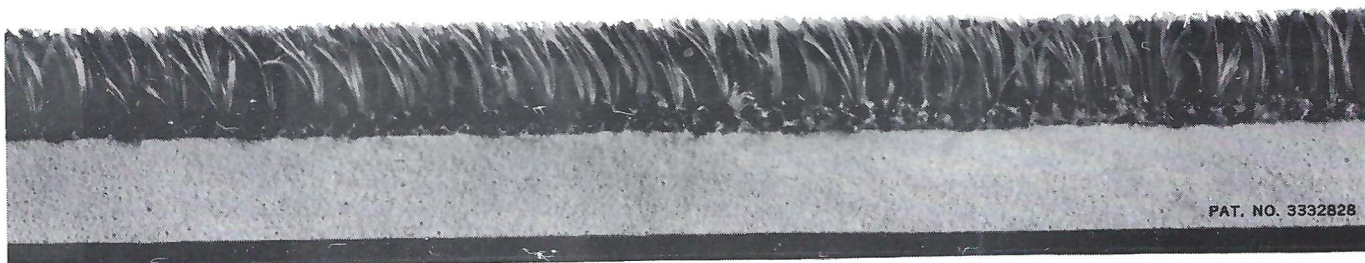
1969 HOMECOMING QUEEN



Lyn Owens

**Hundreds of thousands
of lucky fans are
watching faster, safer football
every weekend this year.**

**On Astro Turf,[®]
Monsanto's amazing nylon field.**



Even the best natural turf fields can't give players and fans—as well as schools, colleges and cities—all the advantages of AstroTurf. Here's why:

Better-than-grass footing.

The Astro Turf field gives your team faster, surer footing—rain, sleet or shine. Players can cut sharper, run faster. Kickers can concentrate on the kick without worrying about footing. And quarterbacks can get set faster, and pass better—and they can see their receivers more clearly.

No mud. Ever.

Nylon AstroTurf can't turn to mud. Even if it rains buckets, your team

has the footing to play fast, precision football—and keep on passing. Another advantage of the mudproof field: you'll always be able to tell who's who, because uniforms stay clean and bright all game long.

Fewer injuries.

Player's cleats can't lock in AstroTurf so player's feet are free to move when hit, eliminating the twists and wrenches responsible for most knee and ankle injuries. And with fewer injuries, there are fewer time outs to delay your game. AstroTurf helps take the crunch out of hard falls, too. With a thick shock-absorbing pad just underneath the

layer of grasslike AstroTurf nylon. Sure, there are some injuries on AstroTurf, but not as many.

Tremendous stamina.

An AstroTurf field can be used 24 hours a day, 7 days a week. For lots of things besides football, too. This can mean great dollar savings for schools, colleges and cities faced with a growing land squeeze. AstroTurf can take all you can dish out.

Amazing AstroTurf.

Maybe your school will have it soon. Want more information? Write Monsanto, AstroTurf, Dept. D, 800 N. Lindbergh Blvd., St. Louis, Mo. 63166.

AstroTurf[®]
RECREATIONAL SURFACES BY **Monsanto**



Why we have a special interest in serving you

Ours is an independent telephone company which means we're really part of this community. Many of you have a direct interest in our company. We have to work harder and do more to merit your confidence. And since 40% of the area of the growing United States (including Alaska and Hawaii) is served by Independent companies, we must be doing something right.



southeastern
telephone company

Bill Peterson

by JACK HAIRSTON

Sports Editor, Jacksonville Journal



Jack Hairston

Lonnie Burt did me no favor when he asked me to write this page about Florida State University Football Coach Bill Peterson.

Not that Pete and I aren't old friends, going back to the days when he was an assistant at Louisiana State University and I was a New Orleans sports writer who covered the Bayou Bengals regularly.

But what in the devil's name can you tell an FSU fan about the winningest Seminole football coach ever?

The average FSU fan knows almost everything there is to know about Bill Peterson, right down to which house he lives in (because the FSU fan has marched out there to participate in a demonstration designed to persuade Pete from leaving for a pro job), and he knows Pete is a mixture of charm and fire, gross pessimism and unbeatable determination (because he's heard him speak before many a group and watched him pace the sidelines during many a game), and he already knows Pete is one of the four or five best coaches in the business (because he's got eyes and can see for himself by what goes on right out here at Doak Campbell Stadium).

But I don't give up easily, so I'm going to reach way down deep and try to come up with a few things you haven't heard before, or if you have heard a couple of 'em, maybe you've forgotten them.

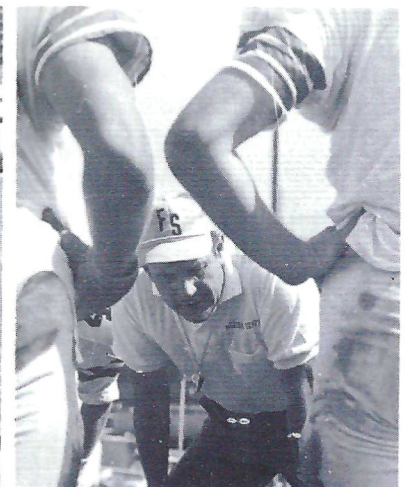
Such as:

The first year he coached a high-school football team, he did double duty, putting in part of each afternoon coaching that team and part of each afternoon playing end for Ohio Northern, where he was a senior gridder. . .

While a high-school coach, he spent part of each summer at the camp of the Cleveland Browns, watching Paul Brown build those great teams, and he's never forgotten Brown's kindness in permitting him the inside view.

While producing state-championship teams at Mansfield (O.) High, he became offseason friends with a Mansfield native named Paul Dietzel, and when Dietzel moved from an Army assistant job to head coach at LSU, he gave Pete his first college coaching opportunity. Hanging up the phone after Dietzel called, Pete told his wife, Marge, "Get the curtain rods down and the stuff packed. We're going to LSU." He didn't hesitate on the breakthrough chance, and he never gave her a chance to discuss it, as he did regarding recent opportunities when she talked him out of two lucrative pro head-coach jobs (for which every true FSU fan will always be indebted to her). . .

The day Pete signed to coach FSU, he almost got back on the plane to return to Baton Rouge before the final interview. A mysterious phone caller identified himself (incorrectly) as a member of the athletic committee and told Pete there'd been a complete change in plans. Half enraged, half dumbfounded, Pete considered flying out, but he somehow wound up going to the committee meeting, quite possibly to give the committee a piece of his mind for the way they were running things. To his surprise, he was greeted with open arms, and when he left the room, he was FSU's head coach.



Athletic Director Vaughn Mancha

The guiding hand in building Florida State's nationally prominent athletic program has been Athletic Director Vaughn Mancha.

A graduate of Alabama where he was an All-America lineman, Mancha first came to Florida State in 1952. After five seasons as assistant football coach, he went to Columbia University to work on his doctorate. He returned to the Seminoles in 1959 as Athletic Director.

His ultimate goal is to provide Florida State students, alumni and supporters with the strongest over-all athletic program in the nation.



Vaughn Mancha



Assistant to AD
Ken MacLean

Assisting Mancha with the complex administrative duties is former Seminole player and coach, Ken MacLean. He moved into administration three years ago after several seasons as head recruiter.

A successful high school football coach, MacLean's 1961 Florida High (of Tallahassee) squad was unbeaten and unscored upon in ten games.

FAVORITE OF THE BIG BRAVES!



Frisch's

THE ORIGINAL

BIG BOY

RESTAURANT

**GREAT PLACE FOR POW WOWS
AND GOOD FOOD**

SERVING:

- Breakfast
- Lunch
- Dinner
- Snacks

Open 7 A.M. to Midnight
'Til 2 A.M. Fridays and Saturdays

1775 W. Tennessee Street

TALLAHASSEE — TELEPHONE 224-1246

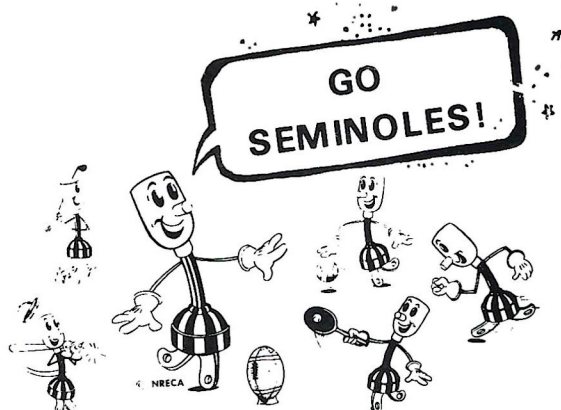
TRY FRISCH'S CARRY-OUT

TEC TALQUIN ELECTRIC COOPERATIVE, INC.

"OWNED BY THOSE WE SERVE"

IN

GADSDEN, LEON, LIBERTY
AND WAKULLA COUNTIES



LIVE BETTER... ELECTRICALLY

A B C

MOBILE HOMES

why pay **MORE** when you
can buy for **LESS** at

A B C

Mobile Homes

2737 W. Tennessee
Tallahassee, Florida

HERSCHEL COOK
Manager

Phone 576-5146

OPEN 365 DAYS 7:30 AM To 10:00 PM (Downtown Location)



Ask
Your Doctor
To Call Us.

Brown's

PHARMACY

Prescriptions

FILLED ACCURATELY
AND PROMPTLY

Fast Delivery
Service



TO ALL
SUBDIVISIONS

- Sick Room Supplies
- Baby Department
- Vitamins
- Sundries
- Fountain Service
- Greeting Cards

VISIT OUR GIFT SHOP
GIFTS FOR ALL OCCASIONS
FREE GIFT WRAPPING

COMPLETE LINE:
Elastic Stockings, Anklets
and Knee Caps



RALPH BROWN, PHARMACISTS

FREE CUSTOMER PARKING

DOWNTOWN

222-3431
224-1921

EMERGENCY PHONE 385-3368

NORTHSIDE

385-6531

EMERGENCY PHONE 385-3368

441 N. MONROE

2057 N. MONROE

"CENTRALLY LOCATED - SERVING ENTIRE CITY" "CONVENIENTLY LOCATED - SERVING NORTHSIDE"

ONE OF THE FINEST and MOST COMPLETE
COSMETICS DEPARTMENTS IN TALLAHASSEE

Assistant Coaches



Gary Wyant
First Assistant,
Defensive Backs



Bob Harbison
Defensive Chief



Bobby Jackson
Linebackers



Al Conover
Offensive Line



Dan Henning
Quarterbacks,
Receivers



Bud Whitehead
Running Backs



Charlie Wright
Freshman



John McGregor
Recruiting Ass't.

Athletic Staff



Gene McDowell
Head Recruiter



T. K. Wetherell
Academic Advisor



Dr. James D. Maxwell
Team Physician



Don Fauls
Head Trainer



Bill Zeigler
Assistant Trainer



Tillman Dixon
Equipment Manager



Claude Thigpen
Ticket Manager



Lonnie Burt
Sports Info. Dir.



Hank Schomber
Ass't. Sports Info. Dir.

Le Roc Cocktail Lounge

Tallahassee's Finest . . .

Located in the
DUVAL HOTEL

For an evening of relaxed
entertainment – enjoy your
favorite beverage

No cover charge

Entertainment nightly

Open daily 12 Noon to 1 A.M. – except Sunday

=Mendelson's=

Your Personal
Department Store

SAYS

GO
SEMINOLES!

Mendelson's
Downtown

9 A.M. to 6 P.M.
208 So. Monroe

Mendelson's
Northwood

(Opens
Sept. 30th)

=Mendelson's=

Southernair MOTEL

Across from F.S.U.
Tallahassee, Florida 32304



and

Skyline

Motor Lodge

U. S. 90 West

Quality Courts

for Quality People

GOOD LUCK SEMINOLES!

Varsity THEATRE

PHONE 224-8636

1833 W. TENNESSEE

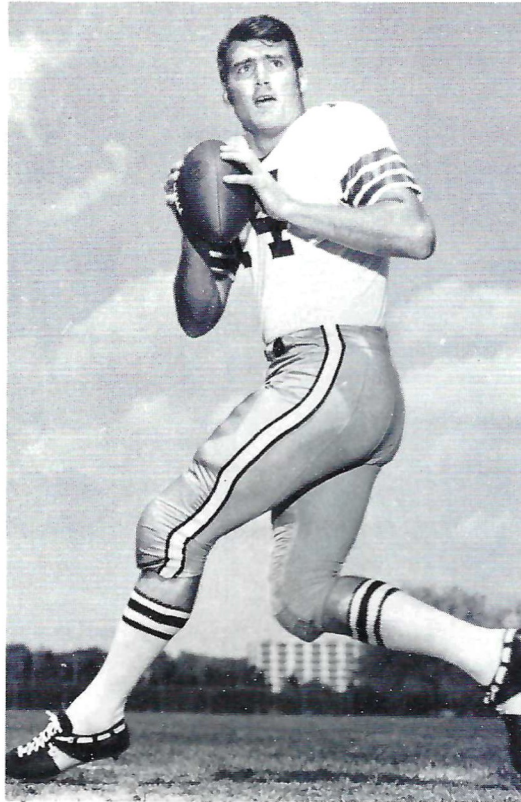
Miracle THEATRE

PHONE 224-2617

1815 THOMASVILLE ROAD

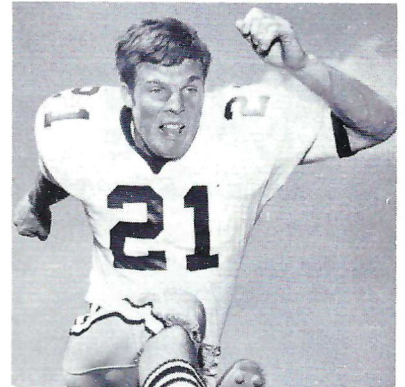
Operated by

**EASTERN FEDERAL
CORPORATION**



Bill Cappleman—Dunedin
Senior—Marketing

THE 1969 SEMINOLES



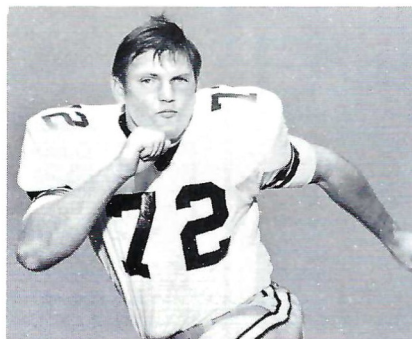
John Pell—Pahokee
Senior—Education



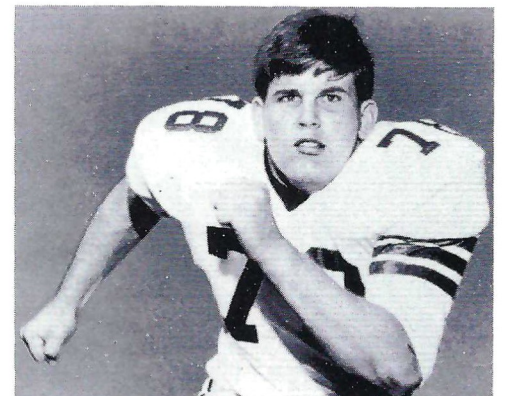
Phil Abaira—Ft. Lauderdale
Senior—Business



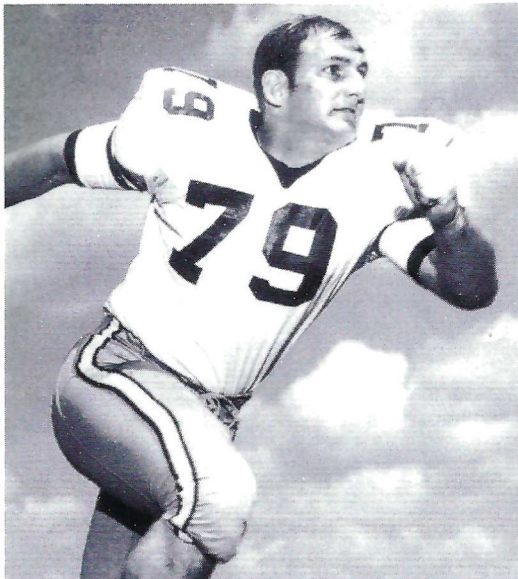
Duke Johnston—Ft. Lauderdale
Senior—Criminology



Randy Logan—Seal Beach, Calif.
Senior—Radio & TV



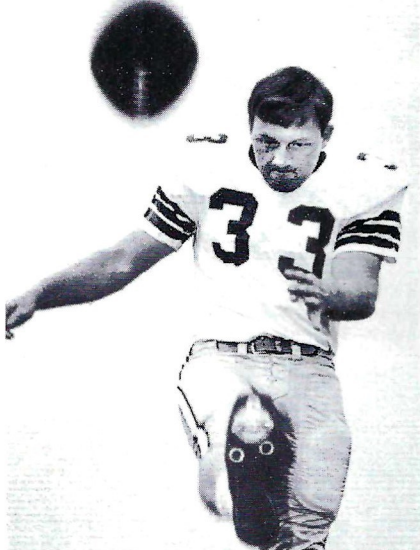
Wayne Johnson—Macon, Ga.
Senior—Business



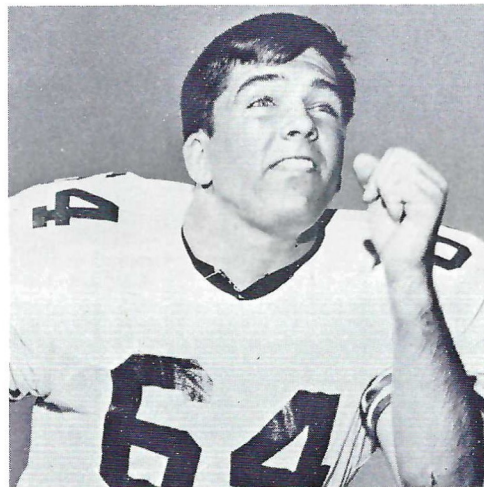
Frank Vohun—Brooksville
Senior—Phys. Ed.



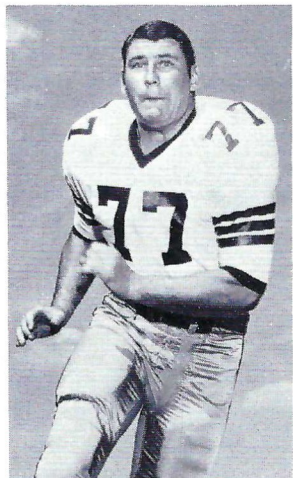
Brent Gilman—Long Beach, Calif.
Senior—Political Science



Grant Guthrie—Claymont, Del.
Senior—Criminology



Stan Walker—Tallahassee
Senior—Business



Jeff Curchin—Ocala
Senior—Phys. Ed.



Tommy Warren—Coral Gables
Senior—Business

OPEN MONDAY thru SATURDAY



If she's *Lovely*...
she just came from a

Suburban Salon



Mrs. Stan Walker

Parkway

Suburban Salon

**APPALACHEE
PARKWAY
SHOPPING CENTER**

877-4173

Gladys Brown
Co-Owner, Mgr.

A Joyous Way of Life

Luxurious

Carefree

Detroit **Statler**
Plantation

Crestview
Mobile Housing, Inc.

2530 W. Tennessee St.

Tallahassee, Fla.

GO

Seminoles!...

GO

Arthur Munroe!

GO

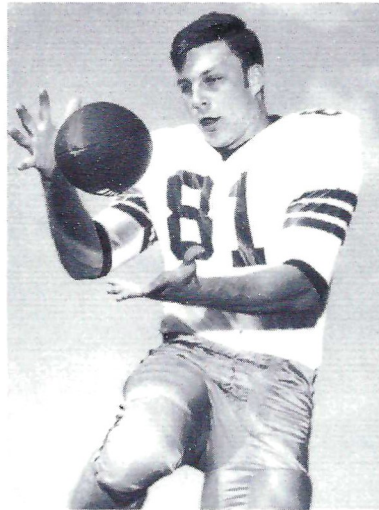
Pontiac!

the Best to you from . . .

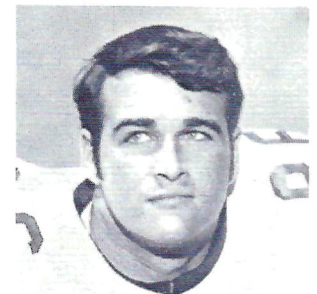
FRYER-THOMAS MOTORS

PONTIAC • OLDSMOBILE • GMC

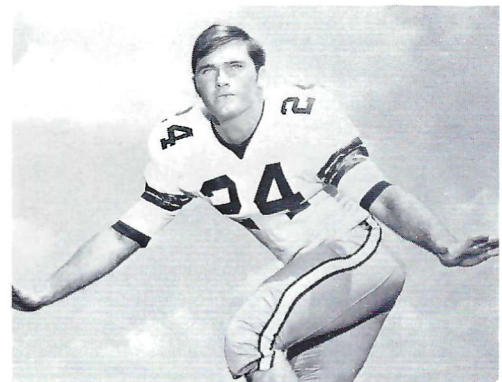
QUINCY, FLORIDA



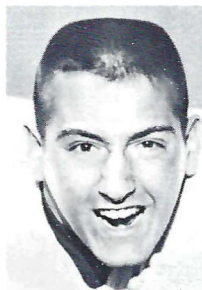
Jim Tyson—Pahokee
Junior—Business



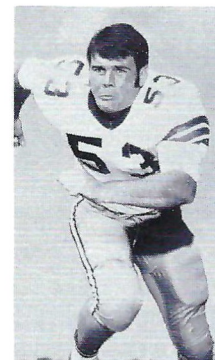
Randy Hall—Miami
Junior—Business



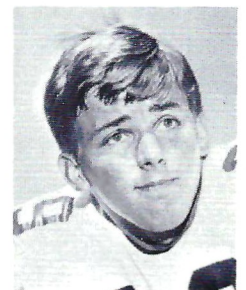
John Lanahan—Jacksonville
Sophomore—Business



Joe Strickler—Avon Park
Sophomore—Math



Jay Stokes—Sanford
Sophomore—Business



Benny Rust—West Palm Beach
Sophomore—Undecided



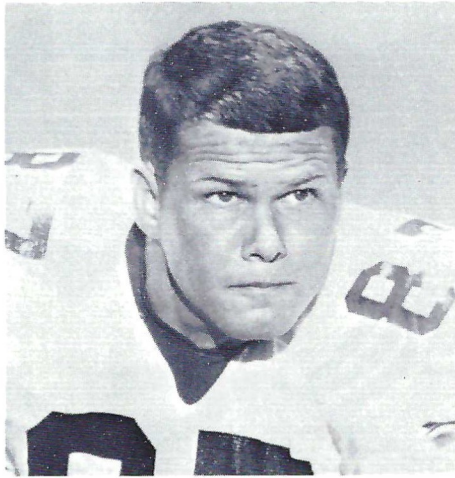
Don Pederson—Groveland
Junior—Hotel Restr. Mgt.



Theron Bass—Live Oak
Junior—Criminology



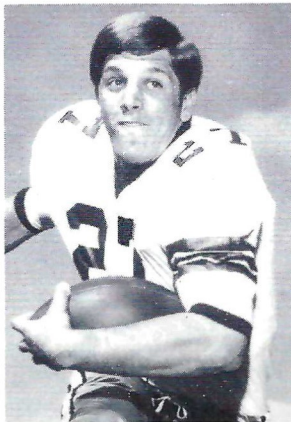
Ron Wallace—Macon, Ga.
Junior—Business



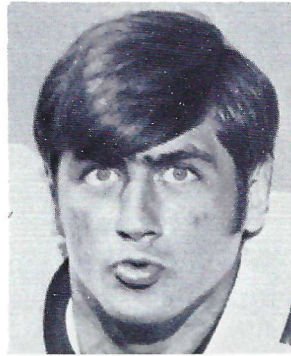
Bill Rimby—St. Petersburg
Sophomore—Business



Larry Strickland—Tallahassee
Sophomore—Undecided



Arthur Munroe—Quincy
Sophomore—Pre Med



Mike Sammons—Atlanta, Ga.
Sophomore—Business



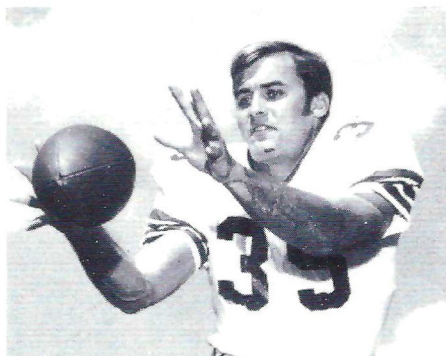
Steve Gildea—Daytona Beach
Junior—Business



John Montgomery—Jacksonville
Sophomore—Undecided



Richard Amman—Cocoa Beach
Sophomore—Undecided



Mike Gray—Lake Mary
Junior—Phys. Ed.

OPEN MONDAY thru SATURDAY



If she's *Lovely*...
she just came from a

Suburban Salon



Mrs. Arthur Munroe

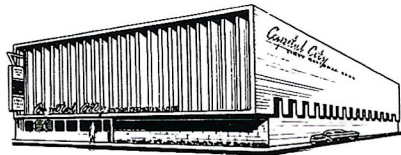
Tony's
Suburban Salon

1859 W
TENNESSEE

224-3135

Tony DeMaria
Co-Owner, Mgr.

Have
a
Nice
Day



Capital City

FIRST

NATIONAL BANK

MEMBER FDIC - FRS



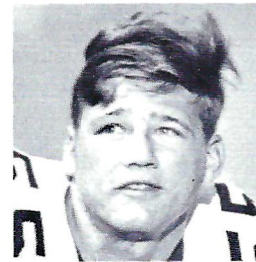
Bobby Burt—Cairo, Ga.
Junior—Criminology



James Jarrett—Elizabethton, Tenn.
Sophomore—Business



Rhett Dawson—Valdosta, Ga.
Sophomore—Education



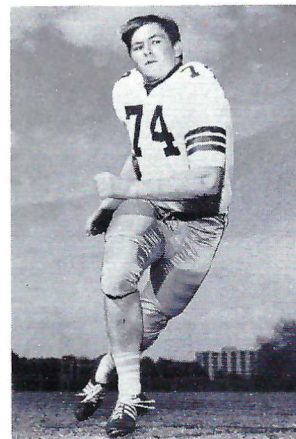
Allen Dees—Lakeland
Sophomore—Undecided



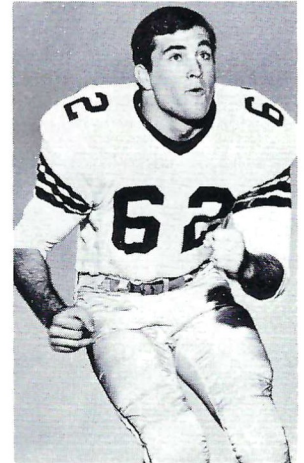
Dan Whitehurst—Adel, Ga.
Sophomore—Criminology



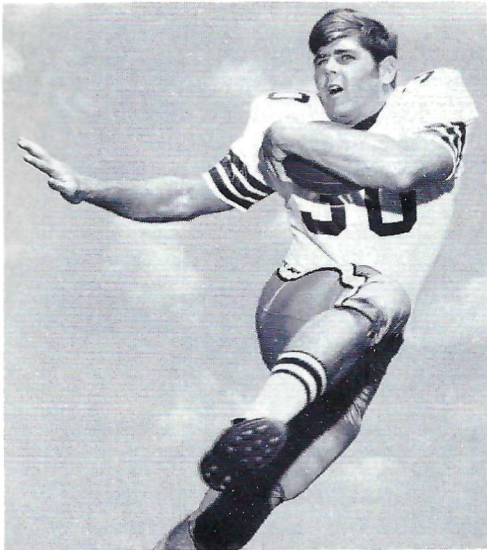
Billy Hughes—Rockledge
Junior—Phys. Ed.



Robert McEachern—Tallahassee
Junior—Undecided



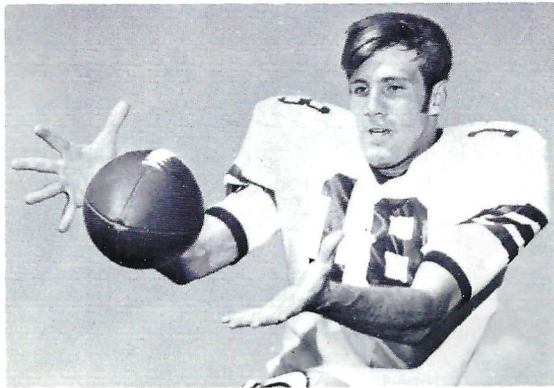
Beryl Rice—Fernandina Beach
Junior—Criminology



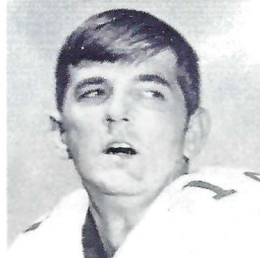
Tom Bailey—Coral Gables
Junior—Business



Bill Lohse—St. Petersburg
Junior—Criminology



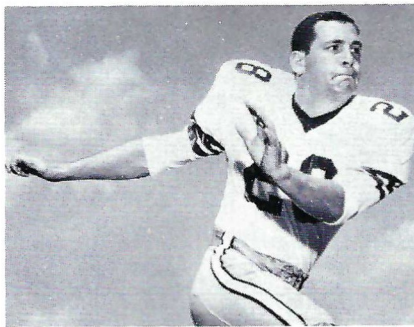
Kent Gaydos—Dallas, Tex.
Sophomore—Business



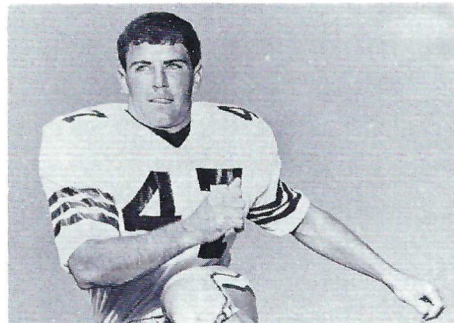
Frank Whigham—Sanford
Sophomore—Business



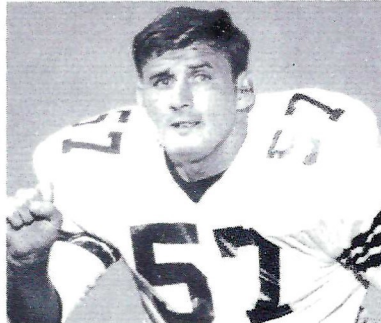
Barry Rice—Fernandina Beach
Junior—Math. Ed.



Robert Ashmore—Tallahassee
Sophomore—Pre Dental



Danny Thomas—West Palm Beach
Junior—Phys. Ed.



Ron Lowe—Thomaston, Ga.
Junior—Education

OPEN MONDAY thru SATURDAY



If she's *Lovely...*
she just came from a

Suburban Salon



Mrs. Robert Ashmore

suburban
Hair Fashions

CAPITOL PLAZA
SHOPPING CENTER

224-2169

Carolyn Brown
Co-Owner, Mgr.

COMPLIMENTS OF

Sport-craft

THE COMPLETE LINE
....from 14 to 40 feet

**EXPRESS
CRUISERS**

RUNABOUTS

SPORTFISHERMEN

H-O-U-S-E-B-O-A-T-S

**CABIN
CRUISERS**

DEEP "V"'S

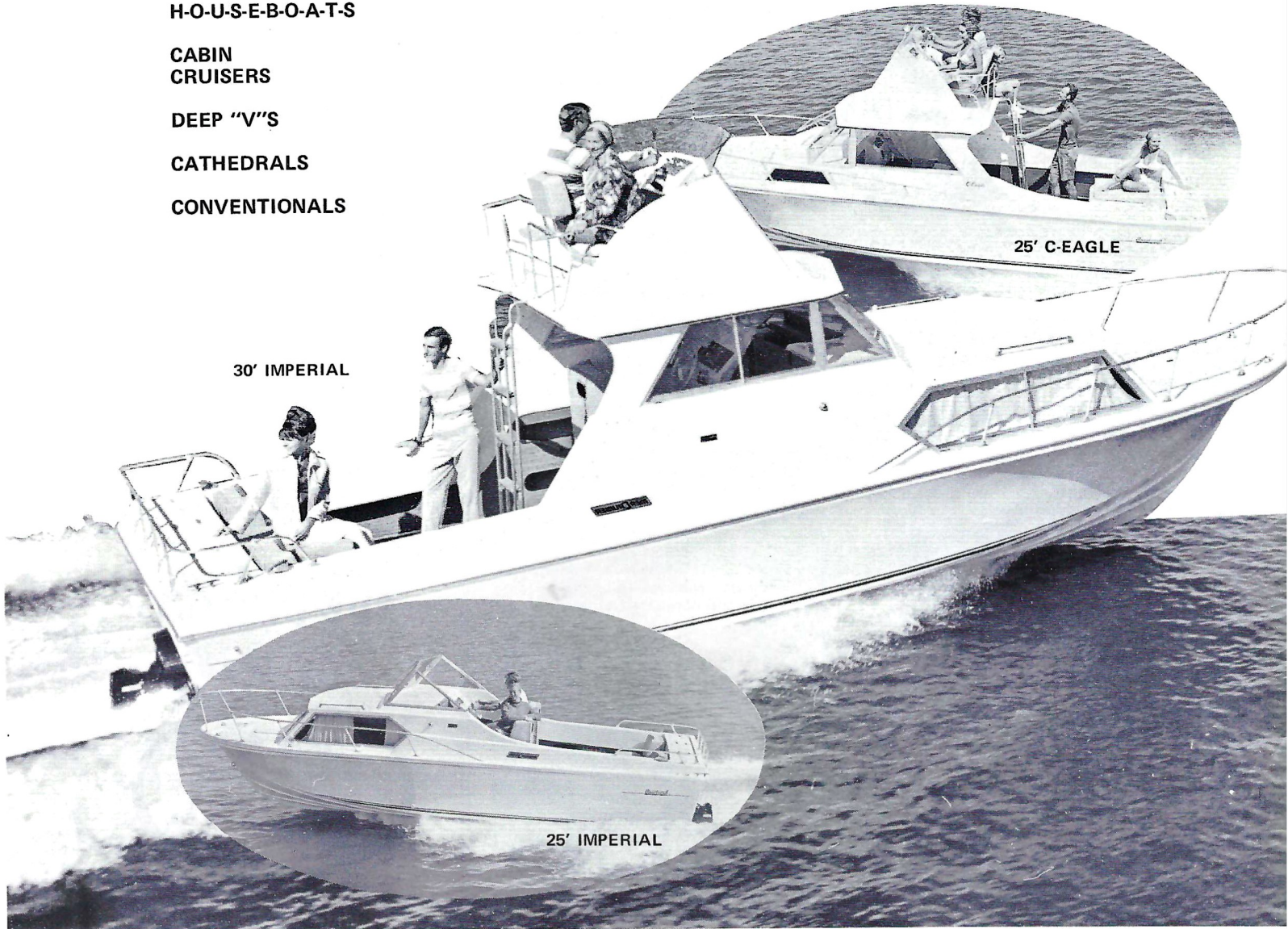
CATHEDRALS

CONVENTIONALS



19' IMPER
C-GUL

20' IMPERIAL



30' IMPERIAL

25' C-EAGLE

25' IMPERIAL

P.O. BOX 351 PERRY, FLORIDA 32347 - PHONE (904) 457-4701

TODAY'S GAME

By **LONNIE BURT**

Sports Information Director

South Carolina, like Florida State, has won some cliff-hangers on its way to a 5-1 record this season.

In fact, the Gamecocks have trailed in every contest with the exception of their 17-0 triumph over Maryland last Saturday night.

Coach Paul Dietzel's club went down to the final nine seconds against Virginia Tech before placekicker Billy DuPre booted a 47-yard field goal for a 17-16 win in Blacksburg, Va.

"This is the best club I've had since I've been at South Carolina," says Dietzel. This is easy to understand since the Gamecocks haven't been this well off this deep in the season since 1946 when they won five of their first six and lost their final two in an abbreviated eight-game schedule.

In quarterback Tommy Suggs, the Gamecocks have a scrambling-type quarterback which forces enemy defenses into quail-like coverage. The 178-pound junior is still fresh in the minds of the 1968 Seminoles since he caused great concern before Florida State pulled out a 35-28 verdict in Columbia.

In that contest, Suggs connected on 24 of 37 passes for 324 yards and two touchdowns.

Hopefully, South Carolina's interior offensive line will be the biggest Florida State faces this year. The Gamecock tackles are 245 and 234, the guards 238 and 235 and the center 258 for an average of 242 pounds per man.

Fullback Warren Muir, a senior transfer from Army, missed last year's S.C.-Florida State contest due to injuries. But he's healthy now and figures to be a big factor in today's contest since he's the Gamecocks' leading rusher with a 4.2-yard average.

If the Seminoles remember Suggs, South Carolina must recall Florida State quarterback Bill Cappleman. In the 1968 contest, the Dunedin senior threw 42 times with 25 completions for a school-record 437 yards and four touchdowns. Three of Cappleman's TD passes went to the graduated Ron Sellers.

The Seminoles came up with their best rushing game in some time during last Saturday night's 20-17 win over Mississippi State. With Tom Bailey and Arthur Munroe working in the same backfield for the first time, Florida State traveled 226 yards on the ground. Both Bailey (131) and Munroe (103) went over the 100-yard figure.

Today will be Seminole Coach Bill Peterson's 100th game as head man at Florida State. Nothing would be sweeter than to gain his 54th victory over his old LSU coaching boss, Dietzel.

The South Carolina-Florida State series stands at 3-0, Seminoles.



Established 1891

GOODBODY & CO.

MEMBERS OF LEADING STOCK

and

COMMODITY EXCHANGES

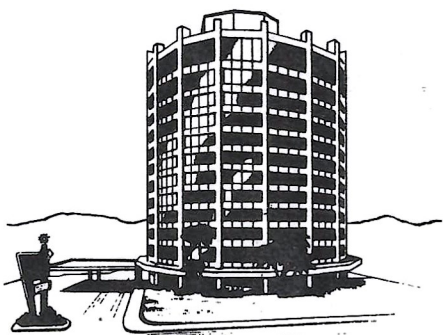
Telephone 222-4380

P. O. Box 810

Tallahassee Bank & Trust
Building

TALLAHASSEE, FLORIDA 32302

Your Host from Coast to Coast®



TWO LOCATIONS
TO SERVE YOU

☆☆☆☆☆

316 W. Tennessee St.

Viking Lounge

With Live Entertainment

Camelot Dining Room

☆☆☆☆☆

1302 Apalachee Parkway

Tele. 877-3141

Complete Banquet Facilities



TODAY'S TEAMS

FLORIDA STATE (4-1)

24	Wichita State (H)	0
16	Miami (A)	14
6	Florida (A)	21
38	Tulsa (A)	20
20	Mississippi St. (H)	17

SOUTH CAROLINA (5-1)

Duke (H)	20
N. Carolina (H)	6
Georgia (A)	41
N. C. State (H)	16
Va. Tech (A)	16
Maryland (H)	0

FSU	OPP	TEAM STATS	USC	OPP
104	72	Points	112	99
213/2.3	215/2.3	Rushing Plays/Avg.	281/3.5	362/3.6
177/94/11	142/62/10	Passes Att./Comp./Hd.Int.	115/64/4	112/52/7
1248	715	Passing Yardage	821	625
1732	1211	Total Yardage	1809	1913
15	14	Fumbles Lost	6	9
28/33.6	35/37.9	Punts/Avg.	45/38.6	35/40.9

INDIVIDUAL LEADERS

FLORIDA STATE

PASSING	ATT.	COMP.	INT.	YDS.	TD
Cappleman	174	92	11	1220	7

RECEIVING	NO.	YDS.	AVG.	TD
Tyson	29	457	15.8	2
Pederson	13	204	15.7	3
Dawson	12	152	12.7	0
Gaydos	9	139	15.4	1

RUSHING	TC	NET	AVG.	TD
Bailey	76	378	4.7	2
Munroe	47	198	3.9	2
Jarrett	26	61	2.4	

SCORING	TD	FG	XP	TP
Bailey	3	0	0	18
Munroe	3	0	0	18
Pederson	3	0	0	18
Guthrie	0	4	4	16

SOUTH CAROLINA

PASSING	ATT.	COMP.	INT.	YDS.	TD
Suggs	106	60	4	759	3

RECEIVING	NO.	YDS.	AVG.	TD
Zeigler	28	355	12.7	2
Holloman	12	174	14.5	1
Hamrick	8	99	12.4	0
Muir	6	69	11.5	0

RUSHING	TC	NET	AVG.	TD
Muir	113	475	4.2	6
Holloman	65	253	3.9	1
B. R. Rice	23	102	4.4	1

SCORING	TD	FG	XP	TP
Muir	6	0	0	36
DuPre	0	5	13	28
Zeigler	2	0	0	12
Holloman	2	0	0	12

Valiant Duster 340

Plymouth GTX



Dodge Challenger



Plymouth Barracuda



Dodge Charger 500

**OUR
SPORTS PROGRAM
FOR
THIS SEASON**

Chrysler weather has arrived. Falling leaves take off on the wind—and our 1970 Chrysler Corporation lineup takes the field.

For a starter, Plymouth 1970 makes it with the Rapid Transit System: The fabulous Barracuda Series. Valiant Duster 340. And the imperturbable Plymouth GTX.

Or you could be Dodge material. Find out

with a run in the cars with the bumblebee stripe: The Challenger. Charger 500. Dart Swinger 340. Coronet Super Bee.

The loaded lineup. Performance on wheels, waiting for the moment you take over.

And while you're thinking about it—relax, sit back and enjoy the game.

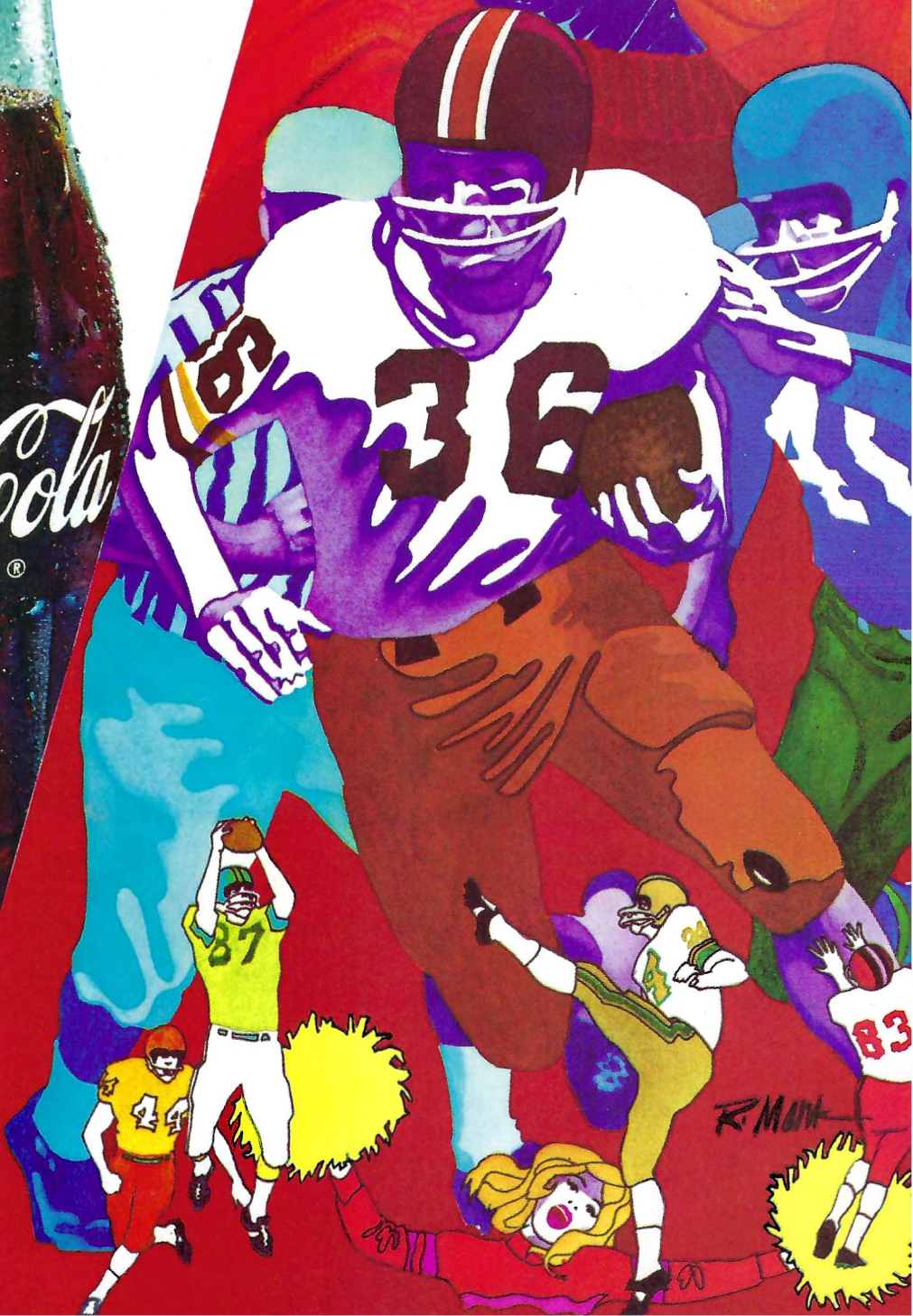


**CHRYSLER
CORPORATION**

Plymouth • Dodge • Chrysler • Imperial • Dodge Trucks • Simca • Sunbeam

Things
go better
with Coke.

TRADE-MARK®



R. MATH

OFFENSE

- 18 KENT GAYDOS SE
- 76 BILL RIMBY LT
- 64 STAN WALKER LG
- 51 BILL HUGHES C
- 63 GEORGE MONTGOMERY ... RG
- 77 JEFF CURCHIN RT
- 81 JIM TYSON TE
- 14 BILL CAPPLEMAN QB
- 27 ARTHUR MUNROE RB
- 30 TOM BAILEY..... FB
- 23 DON PEDERSON FL

DEFENSE

- 89 LYNN HODGE LE
- 75 JIMMY POSTON LT
- 55 MACK LEE THARPE LLB
- 62 DON BUCKNER MLB
- 47 GREGG CRABB RLB
- 71 RUSTY GANAS..... RT
- 84 DAVE LUCAS RE
- 43 DICK HARRIS LHB
- 15 PAT WATSON RHB
- 3 JIMMY NASH S
- 18 BO DAVIES ROVER

Florida State

DEFENSE

- 86 RANDY HALL LE
- 74 ROBERT McEACHERN LT
- 60 BARRY RICE LLB
- 56 BILL LOHSE MLB
- 62 THERON BASS..... RLB
- 79 FRANK VOHUN LT
- 83 RON WALLACE RE
- 43 JOHN MONTGOMERY LC
- 29 BENNY RUST RC
- 28 ROBERT ASHMORE LS
- 24 JOHN LANHAN RS

S. Carolina

OFFENSE

- 80 FRED ZEIGLER SE
- 76 DAVE DeCAMILLA LT
- 73 TONY FUSARO LG
- 70 DANNY DYCHES C
- 66 CHRIS BANK RG
- 77 RICK HIPKINS RT
- 87 DOUG HAMRICK TE
- 12 TOMMY SUGGS QB
- 24 RUDY HOLLOWMAN TB
- 36 WARREN MUIR FB
- 40 TOM TREVILLIAN FL

FLORIDA STATE SQUAD

- | | |
|---------------------|---------------------|
| 11 Carrell-PK-P | 56 Lohse-LB |
| 12 Whigham-QB | 57 Lowe-LB |
| 14 Cappleman-QB | 58 Gildea-LB |
| 15 Warren-QB | 59 Strickland-LB |
| 16 Barnes-DB | 60 Barry Rice-LB |
| 17 Speer-DB | 61 Essex-OT |
| 18 Gaydos-SE | 62 Bass-LB |
| 19 Abraira-DB | 63 G. Montgomery-OG |
| 20 Thomas-DB | 64 Walker-OG |
| 21 Pell-DB | 65 Shaw-DT |
| 22 Mitchell-DB | 66 Strickler-OT |
| 23 Pederson-FL | 67 Sammons-OG |
| 24 Lanahan-DB | 68 Roatche-C |
| 27 Munroe-RB | 69 White-DT |
| 28 Ashmore-DB | 70 Minor-OT |
| 29 Rust-DB | 71 Spence-DT |
| 30 Bailey-RB | 72 Logan-OG |
| 31 Magalski-FB | 73 Johnston-DT |
| 32 E. Davis-FL | 74 McEachern-DT-DE |
| 33 Guthrie-PK | 75 Amman-DT |
| 35 Gray-FL | 76 Rimby-OT |
| 40 Gilman-FB | 77 Curchin-OT |
| 43 J. Montgomery-DB | 78 Johnson-OT |
| 44 Gridley-DB | 79 Vohun-DT |
| 47 G. Davis-FL | 80 Beville-DE |
| 48 Jarrett-FB | 81 Tyson-TE |
| 49 Glisson-LB | 82 Dawson-SE |
| 50 Whitehurst-LB | 83 Wallace-DE |
| 51 Hughes-C | 84 Glass-TE |
| 52 Sowers-C | 86 Hall-DE |
| 53 Stokes-OG | 87 Zaffran-TE |
| 54 Burt-LB | 88 Beryl Rice-DE |
| 55 Dees-C | 89 McKinnie-DE |

SOUTH CAROLINA SQUAD

- | | |
|------------------|-----------------|
| 1 DuPre-PK | 50 Stone-C |
| 2 Bell-PK | 52 Kohout-MG |
| 3 Nash-DB | 53 Padgett-LB |
| 10 Rhodes-QB | 54 Ross-C |
| 11 Hellams-DB | 55 Tharpe-LB |
| 12 Suggs-QB | 57 Vasgaard-C |
| 14 B. Jones-FL | 58 Holstad-OG |
| 15 Watson-DB | 60 Boyte-OT |
| 16 Yoakum-QB | 61 Moye-OG |
| 17 Morris-QB | 62 Buckner-MG |
| 18 Davies-DB | 65 Wright-DT |
| 19 Parker-LB-PNT | 66 Bank-OG |
| 20 Mitchell-SE | 67 Johnson-OG |
| 21 O'Harra-DB | 68 Regalis-DT |
| 22 Bailey-DB | 69 King-OT |
| 23 Jetton-TB | 70 Dyches-C |
| 24 Holloman-TB | 71 Ganas-DT |
| 28 C. Jones-DB | 72 McCarthy-DT |
| 29 Chavous-DB | 73 Fusaro-OG |
| 30 Rice-TB | 75 Poston-DT |
| 31 Miranda-TB | 76 DeCamilla-OT |
| 32 Cleckler-FL | 77 Hipkins-OT |
| 33 Usher-LB | 78 Wheat-OG |
| 34 Simmons-FB | 80 Zeigler-SE |
| 35 Boyd-DB | 81 Duffie-FL |
| 36 Muir-FB | 82 Black-SE |
| 38 Montgomery-DB | 83 Freeman-TE |
| 40 Trevillian-FL | 84 Lucas-DE |
| 41 Sistare-FB | 85 Wingard-DE |
| 42 Walkup-FL | 86 Pope-DE |
| 43 Harris-DB | 87 Hamrick-TE |
| 46 Beasley-LB | 88 Hall-DE |
| 47 Crabb-MG | 89 Hodge-DE |
| 48 Stirling-TE | 90 Bolton-SE |
| | 91 Brant-DE |

OFFICIALS

- Referee—Art Hodges, Winston-Salem, North Carolina
- Umpire—Oscar H. Edmonds, Jr., Memphis, Tennessee
- Linesman—Tom Harris, Charlotte, North Carolina
- Field Judge—Jack Langford, Atlanta, Georgia
- Back Judge—Gordon Pettus, Alton, Alabama
- E.C.O.—Morris E. Harrison, Decatur, Georgia



CHANGE IS IN THE WIND

Shaped in a wind tunnel...
Refined by the wind
at Daytona, Riverside, and Darlington.
Wind-shaped. Aerodynamic. Made to move.



1970 FORD TORINO

The most completely changed new cars of the year—Torino. New size. Longer. Lower. Wider. Quick and quiet. New shape. Shaped in a wind tunnel for a new, low-drag silhouette.

Torino Brougham. Here's the one that has it all. Distinctive new grille with Hideaway Head-

lamps. New interiors to surround you with luxury. More luxurious than any other car in its class. Top performance from a choice of five new V-8's, including the super efficient 351-cu. in. 4V. Top it all off with a glamorous vinyl-covered roof. Torino Brougham—sweeping its class.

1970 Torino Brougham 2-Door

More luxurious than any other car in its class. One of the 13 new 1970 Torino models—the most completely changed new cars of the year.

TORINO



FLORIDA STATE

NO.	NAME	POS.	CLASS	HT.	WT.	1968 STATUS	HOMETOWN
19	PHIL ABRAIRA	DB	Sr.	6-0	180	2VL	Ft. Lauderdale
75	RICHARD AMMAN	DT	Soph.	6-6	220	Frosh	Cocoa Beach
28	ROBERT ASHMORE	DB	Soph.	6-0	185	RS	Tallahassee
30	TOM BAILEY	RB	Jr.	6-2	212	1VL	Coral Gables
16	DAVID BARNES	DB	Soph.	5-11	175	Frosh	Maple Heights, O.
62	THERON BASS	LB	Jr.	5-11	200	1VL	Live Oak
80	STEVE BEVILLE	DE	Soph.	6-2	205	Squad	Fernandina Beach
54	BOBBY BURT	LB	Jr.	6-1	210	1VL	Cairo, Ga.
14	BILL CAPPLEMAN	QB	Sr.	6-3	210	1VL	Dunedin
11	DUANE CARRELL	PK-P	Soph.	5-10	170	Squad	Washington, D.C.
77	JEFF CURCHIN	OT	Sr.	6-6	255	1VL	Ocala
32	EDDIE DAVIS	FL	Soph.	6-3	179	Frosh	Atlanta, Ga.
47	GEORGE DAVIS	FL	Soph.	6-0	180	RS	Winter Haven
82	RHETT DAWSON	SE	Soph.	6-1	187	RS	Valdosta, Ga.
55	ALLEN DEES	C	Soph.	6-2	196	Frosh	Lakeland
61	JOHN ESSEX	OT	Soph.	6-2	226	Frosh	Miami
18	KENT GAYDOS	SE	Soph.	6-6	209	RS	Dallas, Tex.
58	STEVE GILDEA	LB	Jr.	6-0	197	1VL	Daytona Beach
40	BRENT GILMAN	FB	Sr.	6-2	205	1VL	Long Beach, Calif.
84	MIKE GLASS	TE	Soph.	6-3	202	Frosh	Tampa
49	GUY GLISSON	LB	Soph.	6-0	195	Frosh	Tampa
35	MIKE GRAY	FL	Jr.	6-3	201	1VL	Lake Mary
44	BUDDY GRIDLEY	DB	Soph.	5-11	195	Frosh	Tallahassee
33	GRANT GUTHRIE	PK	Sr.	6-0	204	2VL	Claymont, Del.
86	RANDY HALL	DE	Jr.	6-0	206	1VL	Miami
51	BILL HUGHES	C	Jr.	6-1	225	1VL	Rockledge
48	JAMES JARRETT	FB	Soph.	6-2	207	RS	Elizabethhton, Tenn.
78	WAYNE JOHNSON	OT	Sr.	6-2	238	2VL	Macon, Ga.
73	DUKE JOHNSTON	DT	Sr.	6-2	247	2VL	Ft. Lauderdale
24	JOHN LANAHAN	DB	Soph.	6-0	196	RS	Jacksonville
72	RANDY LOGAN	OG	Sr.	6-3	230	1VL	Seal Beach, Calif.
56	BILL LOHSE	LB	Jr.	6-1	221	1VL	St. Petersburg
57	RON LOWE	LB	Jr.	5-11	184	Squad	Thomaston, Ga.
74	ROBERT McEACHERN	DT-DE	Jr.	6-2	221	1VL	Tallahassee
89	J. W. McKINNIE	DE	Soph.	6-2	195	Frosh	Macon, Ga.
31	PAUL MAGALSKI	FB	Soph.	5-11	210	Frosh	Garfield Hts., O.
70	ROGER MINOR	OT	Soph.	6-3	241	Frosh	Delray Beach
22	DOUG MITCHELL	DB	Jr.	6-3	198	Squad	Williston
63	GEORGE MONTGOMERY	OG	Soph.	6-2	220	RS	Coral Gables
43	JOHN MONTGOMERY	DB	Soph.	6-1	191	Frosh	Jacksonville
27	ARTHUR MUNROE	RB	Soph.	6-1	184	RS	Quincy
23	DON PEDERSON	FL	Jr.	6-0	181	1VL	Groveland
21	JOHN PELL	DB	Jr.	6-1	178	1VL	Pahokee
60	BARRY RICE	LB	Jr.	6-2	207	1VL	Fernandina Beach
88	BERYL RICE	DE	Jr.	6-0	201	1VL	Fernandina Beach
76	BILL RIMBY	OT	Soph.	6-4	221	RS	St. Petersburg
68	DAN ROATCHE	C	Soph.	5-10	198	Frosh	Hatboro, Pa.
29	BENNY RUST	DB	Soph.	6-0	188	RS	West Palm Beach
67	MIKE SAMMONS	OG	Soph.	6-1	206	Squad	Atlanta, Ga.
65	BILL SHAW	DT	Soph.	6-2	219	Frosh	Marietta, Ga.
52	CRAIG SOWERS	C	Soph.	6-4	224	Frosh	Ft. Lauderdale
71	WAYNE SPENCE	DT	Soph.	6-3	235	Frosh	Macon, Ga.
17	JACKIE SPEER	DB	Soph.	6-3	181	Frosh	Groveland
53	JAY STOKES	OG	Soph.	6-4	222	RS	Sanford
59	LARRY STRICKLAND	LB	Soph.	6-1	206	Frosh	Tallahassee
66	JOE STRICKLER	OT	Soph.	6-2	235	Squad	Avon Park
20	DANNY THOMAS	DB	Sr.	5-10	184	1VL	West Palm Beach
81	JIM TYSON	TE	Jr.	6-1	208	1VL	Pahokee
79	FRANK VOHUN	DT	Sr.	6-2	225	2VL	Brooksville
64	STAN WALKER	OG	Sr.	6-3	219	2VL	Tallahassee
83	RON WALLACE	DE	Jr.	6-2	187	1VL	Macon, Ga.
15	TOMMY WARREN	QB	Sr.	5-11	163	2VL	Coral Gables
12	FRANK WHIGHAM	QB	Soph.	6-0	181	Squad	Sanford
69	TOM WHITE	DT	Jr.	6-0	248	Squad	West Palm Beach
50	DAN WHITEHURST	LB	Soph.	6-4	207	Frosh	Adel, Ga.
87	TED ZAFFRAN	TE	Soph.	6-3	202	Squad	Orlando



● CABLE COLOR TV IN ALL ROOMS
RECEIVING NINE CHANNELS

● POOL

● AIR CONDITIONED

● DIRECT DIAL PHONES

● Se habla Espanol

AMERICAN EXPRESS - DINERS - AMERICAN OIL
PHILLIPS 66 - BANKAMERICARD
MASTER CHARGE - CARTE BLANCHE

DRIFTWOOD MOTEL and RESTAURANT

Cocktails — Banquet Room

● Northwest corner of Campus
on U.S. 90; Fla. 20 West

1402 W. TENN. (U.S. 90)
(904) 224-4174

SOUTH CAROLINA

NO.	NAME	POS.	CLASS	HT.	WT.	HOMETOWN
1	BILLY DuPRE	PK	Jr.	5-6	145	Columbia, S. C.
2	TOMMY BELL	PK	Soph.	5-10	157	Walhalla, S. C.
3	JIMMY NASH	DB	Soph.	5-11	165	Charlotte, N. C.
10	TOMMY RHODES	QB	Soph.	6-2	200	Chesapeake, Va.
11	TYLER HELLAMS	DB	Jr.	5-11	166	Greenwood, S. C.
12	TOMMY SUGGS	QB	Jr.	5-9	178	Lamar, S. C.
14	BUTCH JONES	FL	Soph.	6-2	187	Bamberg, S. C.
15	PAT WATSON	DB	Sr.	5-11	151	Myrtle Beach, S. C.
16	RANDY YOAKUM	QB	Jr.	6-1	192	Columbus, Ohio
17	GLENN MORRIS	QB	Soph.	6-3	192	Charlotte, N. C.
18	BO DAVIES	DB	Soph.	6-1	170	Gettysburg, Pa.
19	BILL PARKER	LB-PNT	Jr.	6-1	194	Kershaw, S. C.
20	JIM MITCHELL	SE	Soph.	5-11	155	Greensboro, N. C.
21	BOB O'HARRA	DB	Soph.	6-1	185	Florence, S. C.
22	DON BAILEY	DB	Jr.	6-0	188	Johns Island, S. C.
23	CHARLIE JETTON	TB	Soph.	5-9	174	Charlotte, N. C.
24	RUDY HOLLOMAN	TB	Sr.	5-10	170	Hartsville, S. C.
28	CARROLL JONES	DB	Soph.	5-11	171	Canton, N. C.
29	ANDY CHAVOUS	DB	Sr.	6-2	180	Hepzibah, Ga.
30	BILLY RAY RICE	TB	Soph.	6-0	187	Gaffney, S. C.
31	BOB MIRANDA	TB	Jr.	5-11	190	E. Haven, Conn.
32	JIM CLECKLER	FL	Soph.	6-2	181	West Columbia, S. C.
33	AL USHER	LB	Jr.	5-11	201	Pageland, S. C.
34	TOMMY SIMMONS	FB	Soph.	5-10	198	Buffalo, S. C.
35	CANDLER BOYD	DB	Jr.	5-9	173	Hinesville, Ga.
36	WARREN MUIR	FB	Sr.	5-10	195	Fitchburg, Mass.
38	DON MONTGOMERY	DB	Soph.	5-10	190	Kingstree, S. C.
40	TOM TREVILLIAN	FL	Jr.	6-0	192	Hampton, Va.
41	BYRON SISTARE	FB	Soph.	6-0	202	West Columbia, S. C.
42	KEN WALKUP	FL	Jr.	5-9	187	Timmonsville, S. C.
43	DICK HARRIS	DB	Soph.	5-11	159	Pt. Pleas. Beach, N. J.
46	CHAN BEASLEY	LB	Soph.	5-10	192	Dublin, Ga.
47	GREG CRABB	MG	Soph.	5-10	202	Dublin, Ga.
48	MIKE STIRLING	TE	Soph.	6-4	209	Charlotte, N. C.
50	MACK STONE	C	Soph.	6-3	202	Greenwood, S. C.
52	PAT KOHOUT	MG	Soph.	5-11	204	Hampton, Va.
53	BENNY PADGETT	LB	Jr.	5-11	194	Rome, Ga.
54	KEN ROSS	C	Sr.	6-1	202	Williamston, S. C.
55	MACK LEE THARPE	LB	Jr.	6-1	219	Greenwood, S. C.
57	STEVE VASGAARD	C	Soph.	6-3	218	Winston-Salem, N. C.
58	STEVE HOLSTAD	OG	Soph.	5-10	202	Orangeburg, S. C.
60	BILL BOYTE	OT	Soph.	6-1	222	Camden, S. C.
61	RICHE MOYE	OG	Soph.	6-0	203	West Columbia, S. C.
62	DON BUCKNER	MG	Sr.	5-11	195	Cleveland, Tenn.
65	JAKE WRIGHT	DT	Soph.	6-5	220	Varnville, S. C.
66	CHRIS BANK	OG	Jr.	6-2	235	Joliet, Ill.
67	JIMMY JOHNSON	OG	Soph.	6-0	200	Jacksonville, Fla.
68	JOE REGALIS	DT	Jr.	6-1	237	Tomaqua, Pa.
69	JOHN KING	OT	Sr.	6-4	220	Lancaster, S. C.
70	DANNY DYCHES	C	Jr.	6-5	258	Hanahan, S. C.
71	RUSTY GANAS	DT	Jr.	6-6	237	Waycross, Ga.
72	GEORGE McARTHUR	DT	Sr.	6-3	217	Washington, D. C.
73	TONY FUSARO	OG	Sr.	6-2	238	Huntington, N. Y.
75	JIMMY POSTON	DT	Jr.	6-4	245	Canton, N. C.
76	DAVE DeCAMILLA	OT	Jr.	6-2	234	Hudson Falls, N. Y.
77	RICK HIPKINS	OT	Jr.	6-4	245	Boothwyn, Pa.
78	KEN WHEAT	OG	Soph.	6-2	233	Milledgeville, Ga.
80	FRED ZEIGLER	SE	Sr.	5-10	183	Reevesville, S. C.
81	BILL DUFFLE	FL	Soph.	6-4	188	Atlanta, Ga.
82	GREG BLACK	SE	Soph.	6-3	192	Bamberg, S. C.
83	BILL FREEMAN	TE	Soph.	6-3	202	Clinton, S. C.
84	DAVE LUCAS	DE	Sr.	6-5	194	Bishopville, S. C.
85	JOE WINGARD	DE	Jr.	6-4	206	Brevard, N. C.
86	JIMMY POPE	DE	Jr.	6-4	207	Rock Hill, S. C.
87	DOUG HAMRICK	TE	Jr.	6-3	213	Cliffside, N. C.
88	DEANE HALL	DE	Soph.	6-0	203	Elkin, N. C.
89	LYNN HODGE	DE	Sr.	6-4	202	Union, S. C.
90	EDDIE BOLTON	SE	Jr.	6-3	211	Greenwood, S. C.
91	DON BRANT	DE	Jr.	6-5	186	Sycamore, S. C.

FLORIDA STATE

- 11 Carrell-PK-P
- 12 Whigham-QB
- 14 Cappleman-QB
- 15 Warren-QB
- 16 Barnes-DB
- 17 Speer-DB
- 18 Gaydos-SE
- 19 Abraira-DB
- 20 Thomas-DB
- 21 Poll-DB
- 22 Mitchell-DB
- 23 Pederson-FL
- 24 Lanahan-DB
- 27 Munroe-RB
- 28 Ashmore-DB
- 29 Rust-DB
- 30 Bailey-RB
- 31 Magalski-FB
- 32 E. Davis-FL
- 33 Guthrie-PK
- 35 Gray-FL
- 40 Gilman-FB
- 43 J. Montgomery-DB
- 44 Gridley-DB
- 47 G. Davis-FL
- 48 Jarrett-FB
- 49 Glisson-LB
- 50 Whitehurst-LB
- 51 Hughes-C
- 52 Sowers-C
- 53 Stokes-OG
- 54 Burt-LB
- 55 Dees-C
- 56 Lohse-LB
- 57 Lowe-LB
- 58 Gildea-LB
- 59 Strickland-LB
- 60 Barry Rice-LB
- 61 Essex-OT
- 62 Bass-LB
- 63 G. Montgomery-OG
- 64 Walker-OG
- 65 Shaw-DT
- 66 Strickler-OT
- 67 Sammons-OG
- 68 Roatche-C
- 69 White-DT
- 70 Minor-OT
- 71 Spence-DT
- 72 Logan-OG
- 73 Johnston-DT
- 74 McEachern-DT-DE
- 75 Amman-DT
- 76 Rimby-OT
- 77 Curchin-OT
- 78 Johnson-OT
- 79 Vohun-DT
- 80 Beville-DE
- 81 Tyson-TE
- 82 Dawson-SE
- 83 Wallace-DE
- 84 Glass-TE
- 86 Hall-DE
- 87 Zaffran-TE
- 88 Beryl Rice-DE
- 89 McKinnie-DE

FLORIDA STATE

'Seminoles'

OFFENSE		DEFENSE	
SE	18 Kent Gaydos 47 George Davis	LE	86 Randy Hall 89 J. W. McKinnie
LT	76 Bill Rimby 78 Wayne Johnson	LT	74 Robert McEachern 75 Richard Amman
LG	64 Stan Walker 53 Jay Stokes	LLB	60 Barry Rice 49 Guy Glisson
C	51 Bill Hughes 55 Allen Dees	MLB	56 Bill Lohse 58 Steve Gildea
RG	63 George Montgomery 67 Mike Sammons	RLB	62 Theron Bass 57 Ron Lowe
RT	77 Jeff Curchin 66 Joe Strickler	RT	79 Frank Vohun 69 Tom White
TE	81 Jim Tyson 87 Ted Zaffran	RE	83 Ron Wallace 80 Steve Beville
QB	14 Bill Cappleman 12 Frank Whigham	LC	43 John Montgomery 21 John Pell
RB	27 Arthur Munroe 30 Tom Bailey	RC	29 Benny Rust 20 Danny Thomas
FB	30 Tom Bailey 48 James Jarrett	LS	28 Robert Ashmore 19 Phil Abraira
FL	23 Don Pederson 35 Mike Gray	RS	24 John Lanhan 44 Buddy Gridley

PUNTS-11 Duane Carrell, 12 Frank Whigham
PLACEMENTS-33 Grant Guthrie, 11 Duane Carrell

SOUTH CAROLINA

'Gamecocks'

OFFENSE		DEFENSE	
SE	80 Fred Zeigler 20 Jim Mitchell	LE	89 Lynn Hodge 86 Jimmy Pope
LT	76 Dave DeCamilla 68 Joe Regalis	LT	75 Jimmy Poston 65 Jake Wright
LG	73 Tony Fusaro 61 Richie Moye	LLB	55 Mack Lee Tharpe 53 Benny Padgett
C	70 Danny Dyches 54 Ken Ross	MLB	62 Don Buckner 52 Pat Kohout
RG	66 Chris Bank 78 Ken Wheat	RLB	47 Gregg Crabb 19 Bill Parker
RT	77 Rick Hipkins 60 Bill Boyte	RT	71 Rusty Ganas 72 George McCarthy
TE	87 Doug Hamrick 83 Billy Freeman	RE	84 Dave Lucas 85 Joe Wingard
QB	12 Tommy Suggs 16 Randy Yoakum	LHB	43 Dick Harris 22 Don Bailey
TB	24 Rudy Holloman 30 Billy Ray Rice	RHB	15 Pat Watson 81 Bill Duffie
FB	36 Warren Muir 34 Tommy Simmons	S	3 Jimmy Nash 29 Andy Chavous
FL	40 Tom Trevillian 42 Ken Walkup	Rover	18 Bo Davies 35 Chandler Boyd

PUNTS-19 Bill Parker
PLACEMENTS-1 Billy DuPre

SOUTH CAROLINA

- 1 DuPre-PK
- 2 Bell-PK
- 3 Nash-DB
- 10 Rhodes-QB
- 11 Hellams-DB
- 12 Suggs-QB
- 14 B. Jones-FL
- 15 Watson-DB
- 16 Yoakum-QB
- 17 Morris-QB
- 18 Davies-DB
- 19 Parker-LB-PNT
- 20 Mitchell-SE
- 21 O'Harra-DB
- 22 Bailey-DB
- 23 Jetton-TB
- 24 Holtoman-TB
- 28 C. Jones-DB
- 29 Chavous-DB
- 30 Rice-TB
- 31 Miranda-TB
- 32 Cleckler-FL
- 33 Usher-LB
- 34 Simmons-FB
- 35 Boyd-DB
- 36 Muir-FB
- 38 Montgomery-DB
- 40 Trevillian-FL
- 41 Sistare-FB
- 42 Walkup-FL
- 43 Harris-DB
- 46 Beasley-LB
- 47 Crabb-MG
- 48 Stirling-TE
- 50 Stone-C
- 52 Kohout-MG
- 53 Padgett-LB
- 54 Ross-C
- 55 Tharpe-LB
- 57 Vasgaard-C
- 58 Holstad-OG
- 60 Boyte-OT
- 61 Moye-OG
- 62 Buckner-MG
- 65 Wright-DT
- 66 Bank-OG
- 67 Johnson-OG
- 68 Regalis-DT
- 69 King-OT
- 70 Dyches-C
- 71 Ganas-DT
- 72 McCarthy-DT
- 73 Fusaro-OG
- 75 Poston-DT
- 76 DeCamilla-OT
- 77 Hipkins-OT
- 78 Wheat-OG
- 80 Zeigler-SE
- 81 Duffie-FL
- 82 Black-SE
- 83 Freeman-TE
- 84 Lucas-DE
- 85 Wingard-DE
- 86 Pope-DE
- 87 Hamrick-TE
- 88 Hall-DE
- 89 Hodge-DE
- 90 Bolton-SE
- 91 Brant-DE



DRIFTWOOD

MOTEL and RESTAURANT

Cocktails - Banquet Room

- CABLE COLOR TV
- POOL
- Northwest corner of Campus on U.S. 90; Fla. 20 West

1402 W. TENN. (U.S. 90)

AMERICAN EXPRESS - DINERS - AMERICAN OIL - PHILLIPS 66
BANKAMERICARD - MASTER CHARGE - CARTE BLANCHE

- AIR CONDITIONED
- DIRECT DIAL PHONES
- Se habla Espanol

(904) 224-4174

Take Home a GIFT That Says FLORIDA STATE

From the *Champion* KNITWEAR LINE



C

The real McCoy. Authentic cotton football jersey with three-quarter length sleeves and double shoulder and elbow pads. School name on front and numbers on front and back.

Style P12³/₄ S/C (41054)
COLORS: Cardinal with Gold Trim.
SIZES: S, M, L, XL.
\$4.65

D

Heavyweight, fleece-lined sweat shirt in a Kingsized cut that Queens like too. Crew neck and raglan sleeves. Ribbed neck, cuffs and bottom.

Style CRSS (S1603)
COLORS: Loden, Maroon, Powder Blue, Buff.
SIZES: S, M, L, XL.
\$3.25

E

A new sweater shirt flare adds sparkle to the campus fashion world. Woven vertical stripes. Contrast color mock turtle collar, sleeve cuffs and bottom trim provide the color accent in setting this new stripe in motion as a star performer.

Style 7343 (T1737)
COLORS: NuBlue stripes, Whiskey stripes.
SIZES: S, M, L, XL.
\$5.95

F

THE COACH

A lightweight, two-ply Nylon winner. Snap-button front, Byron collar, draw-string bottom, and elastic cuffs. Athletic cut; extra full and long.

Style Coach (B1366)
COLORS: Navy, Maroon.
SIZES: S, M, L, XL.
\$9.50

FOR THE FUTURE SEMINOLES

A

Color-trimmed sweatshirt. Standard weight, full cut, and short raglan sleeves. Knit trim on neck and cuffs.

Style J/OLYMPIC (S1665).
SIZES: 4, 6, 8.

Style B/OLYMPIC (S1664).
SIZES: 10, 12, 14.

Colors for Both Styles: White body with Red/White/Blue trim.

\$2.25

B

T-SHIRTS

The trim is the thing in this youth version of an all-time Champion best seller. Soft, fine quality cotton with color fast trim on neck and sleeve ends.

Style TJ78 (T1753)

COLORS: White body with Dark Red.
SIZES: 2, 4, 6, 8.

Style TB78

COLORS: White body with Dark Red.
SIZES: 10, 12, 14, 16.

\$1.50

**APPEALING
GIFTS
FROM**

The University Book Store on the Campus

FLORIDA STATE UNIVERSITY—TALLAHASSEE, FLA. 32306

MAIL ORDERS WELCOME—PRICE INCLUDES POSTAGE



Illegal Use of Hands & Arms



Ball Illegally Touched, Kicked or Batted



Touchdown or Field Goal



Forward Pass or Kick Catching Interference



Personal Foul (Tripping, hurdling, tackling out of bounds)



Ball Ready-for-Play



Ball Dead; If Hand is Moved from Side to Side: Touchback



Crawling, Helping the Runner or Interlocked Interference



RAGANS and ROBERTS TIRE COMPANY

*Big Bend's Largest
Goodyear & Sinclair Dealer*

James W. Ragans — OWNERS — Eli P. Roberts

Complete Service Department Including:

Front End and Brake Rebuilding

Tires · Batteries · Accessories

Toys · Philco Appliances



Illegal Motion



Offside (Violation of scrimmage or free kick formation)



Safety

USE OUR BUDGET PLAN

Fuel Oils For Home, Business and Farm

for AUTOMOTIVE SERVICE call

224-8156

for FUEL OIL call

576-3145

609 W. Tennessee Street

1031 South Magnolia Drive

DRIVE WITH CARE AND BUY SINCLAIR



Roughing the Kicker



Ineligible Receiver Down Field on Pass



Illegal Position, Procedure or Motion



Delay of Game



Intentional Grounding



First Down



Incomplete Forward Pass, Penalty Declined, No Play or No Score



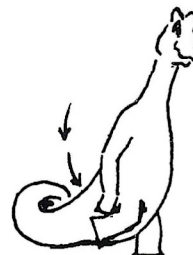
Start the Clock or No More Time-Outs Allowed



Time-Out



Unsportsmanlike Conduct



Clipping



Illegally Passing or Handing Ball Forward

Sinclair

OFFICIAL SIGNALS

PENALTIES

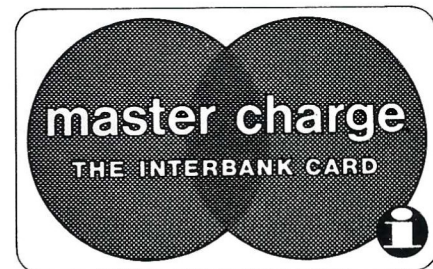
1. **OFFSIDE** by either team; Violation of scrimmage or free kick formation; Encroachment on neutral zone—Loss of Five Yards.
2. **ILLEGAL PROCEDURE, POSITION OR SUBSTITUTION**—Putting ball in play before Referee signals "Ready-for-play"; Failure to complete substitution before play starts; Player out of bounds when scrimmage begins; Failure to maintain proper alignment of offensive team when ball is snapped; False start or simulating start of a play; Taking more than two steps after Fair Catch is made; Player on line receiving snap—Loss of Five Yards.
3. **ILLEGAL MOTION**—Offensive player illegally in motion when ball is snapped—Loss of Five Yards.
4. **ILLEGAL SHIFT**—Failure to stop one full second following shift—Loss of Fifteen Yards.
5. **ILLEGAL RETURN** of substitute not previously disqualified—Loss of Fifteen Yards.
6. **ILLEGAL DELAY OF GAME**; Taking more than four times out during either half (except for replacement of injured player)—Loss of Five Yards. Team not ready to play at start of either half—Loss of Fifteen Yards.
7. **PERSONAL FOUL** — Tackling or blocking defensive player who has made fair catch; Piling on; Hurdling; Grasping face mask of opponent; Tackling player out of bounds, or running into player obviously out of play; Striking an opponent with fist, forearm, elbow or locked hands; Kicking or kneeling—Loss of Fifteen Yards (Flagrant offenders will be disqualified.)
8. **CLIPPING**—Loss of Fifteen Yards.
9. **ROUGHING THE KICKER** or holder—Loss of Fifteen Yards.
10. **UNSPORTSMANLIKE CONDUCT**—Violation of rules during intermission; Illegal return of suspended player; Coaching from sidelines; Invalid signal for Fair Catch; Persons illegally on field—Loss of Fifteen Yards. (Flagrant offenders will be disqualified.)
11. **ILLEGAL USE OF HANDS AND ARMS** by offensive or defensive player; Defensive holding—Loss of Fifteen Yards.
12. **INTENTIONAL GROUNDING** of forward pass—Loss of Five Yards Plus Loss of Down.
13. **ILLEGALLY PASSING OR HANDING BALL FORWARD**—Loss of Five Yards Plus Loss of Down.
14. **FORWARD PASS OR KICK CATCHING INTERFERENCE**—Interference with opportunity of player of receiving team to catch a kick—Loss of Fifteen Yards. Interference by member of offensive team with defensive player making pass interception—Loss of Fifteen Yards Plus Loss of Down. Interference by defensive team on forward pass—Passing Team's Ball at Spot of Foul and First Down.
15. **INELIGIBLE RECEIVER DOWNFIELD ON PASS**—Loss of Fifteen Yards.
16. **BALL ILLEGALLY TOUCHED, KICKED OR BATTED**—Forward pass being touched by ineligible receiver beyond the line of scrimmage—Loss of Fifteen Yards from Spot of Preceding Down and Loss of a Down. Eligible pass receiver who goes out of bounds and later touches a forward pass—Loss of Down. Illegal touching of kicked ball within opponent's ten yard line—Touchback.
17. **PENALTY DECLINED**; Incomplete forward pass; No play or no score.
18. **CRAWLING** by runner—Loss of Five Yards. Interlocked Interference—Loss of Fifteen Yards.

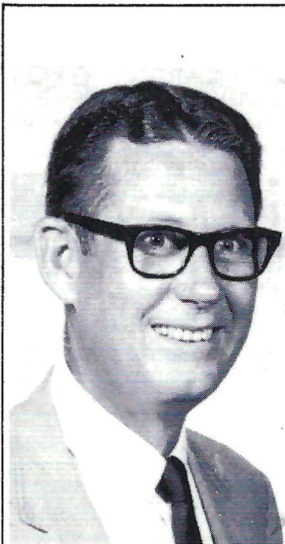
After the game

EAT OUT...

Make today an even more festive occasion with dinner tonight at one of the many fine Tallahassee restaurants which honor your Master Charge card.

...wherever you see this emblem





*"Let's Be
#1
In 1969"*

SPURGEON CAMP

★
NOBODY...
BUT NOBODY
UNDERSELLS.
★

**SOUTHERN
ELECTRIC INC.**

Freeway National **SAVE UP TO 40%**

EVERY ITEM DISCOUNTED EVERY DAY

VITAMINS
COSMETICS
SHAMPOOS
HEADACHE PREPARATIONS
COLD REMEDIES

FIRST AID NEEDS
TOOTH PASTE
ANTISEPTICS
MEN'S SUPPLIES
RAZOR BLADES

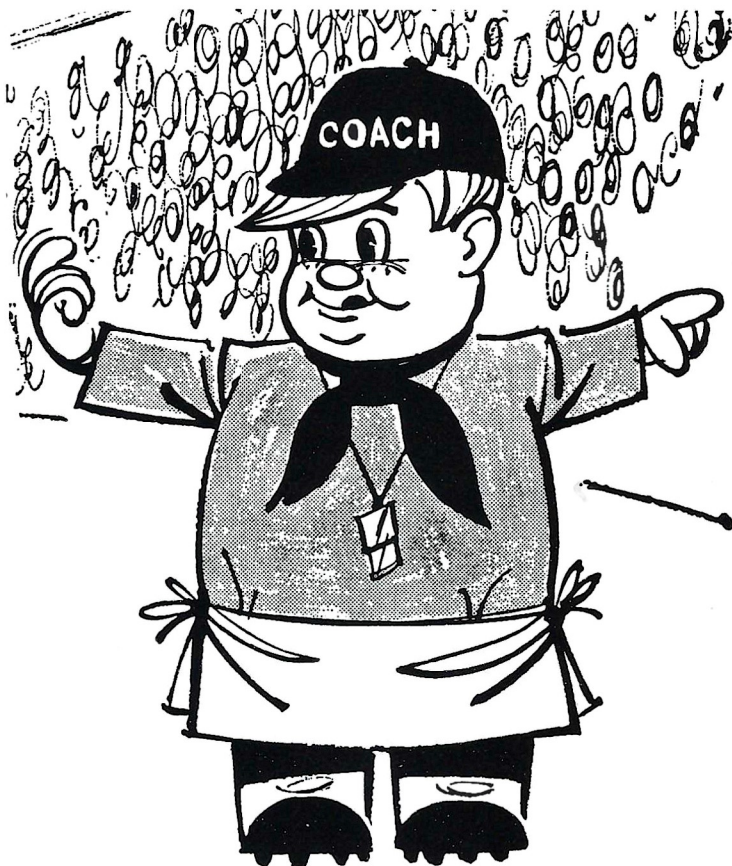
FAMOUS BRANDS
FROM AMERICAS
FINEST MANUFACTURERS
AT PRICES
YOU CAN AFFORD

OTHER STORES
SPECIALS ARE
OUR EVERYDAY
DISCOUNT
PRICES

*The Store that Invites
You to Compare*

100 E. College Ave. - Downtown
673 W. Jefferson St. - Campus

LOWEST PRESCRIPTION PRICES
IN TOWN



**get off the
bench, join us
at...**

Jerry's
RESTAURANTS

471 WEST TENNESSEE STREET
TALLAHASSEE, FLORIDA



BIG "B" Cleaners

1100 W. Tennessee
1405 S. Adams
324 N. Monroe
Northwood Mall

Student and Faculty Discounts Every Thursday

SAVE



Seminole Songs

THE ALMA MATER

High o'er the towering pines our voices swell
Praising these Gothic spires we love so well;
Here sons and daughters stand . . .
Faithful and True, Hailing our Alma Mater
F . . . S . . . U . . .

HYMN TO THE GARNET AND GOLD

Here's a hymn to the Garnet and the Gold
Ringing to the sky.
Here's a song for our men and women bold
Sing with heads held high.
Striving e'er to seek, to know,
Fight for victory.
Alma Mater, this our song to you,
Echoes FSU.

FSU FIGHT SONG

You got to FIGHT, FIGHT, FIGHT for FSU
You got to scalp 'em Seminoles.
You got to WIN, WIN, WIN, WIN, WIN this game
and roll on down and make those goals
For FSU is on the warpath now,
and at the battle's end she's great . . .
So FIGHT, FIGHT, FIGHT, FIGHT for victory
Our Seminoles of Florida State . . . (Yell)
F-L-O-R-I-D-A S-T-A-T-E
FLORIDA STATE (3 times)
(repeat verse)

The Vogue

TALLAHASSEE, FLORIDA

Seminole Boosters, Incorporated



Present for a recent Seminole Booster Board of Directors meeting were:
 Standing, left to right: W. S. "Bill" Lee, Robert Camp, Leo Crutchfield, Thomas N. Kinnebrew, Godfrey Smith, Mike Norman, Ronald J. Schomburger, Dr. Edward G. Haskell, Jr., and J. Edwin White; directors.
 Seated, left to right: Thomas A. Waits, Executive Director; Wayne Cook, Secretary; William I. DuBey, President; Doyle Pope, President-Elect; Herschel Williams, Treasurer; and Theo Proctor, Jr., Past President.

BOARD OF DIRECTORS

Officers

WILLIAM I. DuBEY, President
 DOYLE POPE, President Elect
 WAYNE COOK '50, Secretary

HERSCHEL WILLIAMS '63, Treasurer
 THOMAS A. WAITS '56, Executive Director
 THEO PROCTOR, JR. '53, Past President

Directors

Ad Brautigam '51
 Robert Camp '57
 Bill Carraway '57
 Bill Cartee
 Dr. James Conn
 Leo Crutchfield '54
 Syde P. Deeb '35
 Hugh Donovan
 Donald Grant '49
 Tim Harris '56
 J. C. "Red" Hartsfield '49

Dr. Edward G. Haskell, Jr.
 Louis Hill
 Ed Hughes
 Tom Humphress
 Nelson Italiano '53
 Thomas N. Kinnebrew
 George Langford
 Ryals Lee
 W. S. "Bill" Lee
 Duke McCallister
 Guy McKenzie

Payne Midyette, Jr.
 Mike Norman '56
 Daniel J. Patterson
 Nat Polak '61
 Ronald J. Schomburger '58
 Godfrey Smith
 William "Curt" Smith '49
 T. J. Wetherell
 J. Edwin White
 Slater Wight '58

Support Football's Finest

Seminole Boosters was founded for the sole purpose of providing Coach Bill Peterson with financial support in his recruiting program. Membership in the Boosters is open to anyone with a sincere interest in Florida State's football progress. Minimum contribution for membership is \$30.

Contributions are administered in accordance with NCAA regulations and in conjunction with the Florida State Department of Intercollegiate Athletics.

Boosters receive a colorful automobile license plate which can be used for admission to a special reserved parking lot at Campbell Stadium, a membership card, a weekly football season publication, "The Grandstand Coach," and certain priorities on season and single game football tickets.

JOIN THE BOOSTERS!

SEMINOLE BOOSTERS, INCORPORATED

FLORIDA STATE UNIVERSITY TALLAHASSEE, FLORIDA 32306

Check attached for \$ _____
 Pledge to pay \$ _____ Bill me for \$ _____ (TOTAL AMT.) (PAYMENTS) MONTHLY QUARTERLY OTHER _____ (SPECIFY)

Minimum Contribution of \$30 Required for Membership Privileges.

NAME _____ DATE _____

ADDRESS _____

CITY, STATE _____ ZIP _____

Make check payable to Seminole Boosters, Inc.
 Mail To: 114 Longmire Alumni Bldg., FSU
 TALLAHASSEE, Florida 32306

ARE YOU AN F.S.U. ALUMNUS? Yes No

CONTRIBUTOR'S SIGNATURE _____



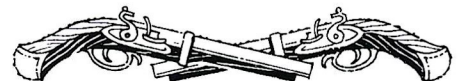
CAPT'N LOUIE'S GALLEY

THE FINEST
SEAFOOD & CHICKEN
TAKE-OUT ORDERS
A SPECIALTY

EXPERTS IN THE PREPARATION OF FINE
SEAFOOD AND CHICKEN FOR OVER 20 YEARS

Tallahassee — 620 W. Tenn.
224-1181

For Franchise Information
Write (Capt'n Louie's Galley)
P.O. Box 747
Gainesville, Fla. 32601



STADIUM INFORMATION

REST ROOMS are located on concourse and ground levels of both the east and west stands.

FIRST AID station is located at the southwest corner of the stadium opposite gate five. A registered nurse is on duty at all times. Ambulance Service courtesy of Bevis Funeral Homes.

PUBLIC TELEPHONES are located on the ground levels of the east and west stands.

PUBLIC ADDRESS will make special announcements in cases of emergency only.

DOCTORS receiving calls will be paged by number.

LOST AND FOUND items may be turned in and claimed at the ticketbooth at gate three under the west stands by the press box elevator.

ALCOHOLIC BEVERAGES are prohibited by state law. Your cooperation in enforcing this law is appreciated.

FIELD REGULATIONS prohibit unauthorized persons on the field during or after the game. Please leave the Stadium by the ramp and section exits.

REFRESHMENTS are available in the stands and at locations on the concourse and ground levels of the east and west

stands. Established prices are: soft drinks 25c; coffee 25c; sandwiches 50c; hot dogs 25c; peanuts 25c; pop corn 25c; cigarettes 60c. Please pay no more.

STUDENTS, SPECTATORS!

Make Sportsmanship a Part of Your Game
Equipment

NOISE is a serious problem at many intercollegiate football games, and on some occasions in the past has prevented the Quarterback's signals from being heard. Such a situation may be interpreted as "interference" with the conduct of the game, and penalized. We seek your assistance in preventing excessive noise, which could cause a penalty against your team. Should unusual noise develop, the referee will call "Time-Out" and instruct the Defensive Captain to request **QUIET**, which he will do by moving toward the noise area with both arms and hands raised. If necessary, the Offensive Captain will make the same request on the opposite side of the field. We shall appreciate your respect for Sportsmanship in remaining quiet at this time.

In all games the Referee is authorized to inflict a penalty based on noise developments. Please cooperate. Don't help to draw a penalty against your team.

CHEER TO HELP, NOT TO HURT



ready any time you are

—THE SNACK, THE BOX, THE BUCKET OR THE BARREL

**America's No. 1 hospitality dish for
sports fans and busy people on the go.
3 locations to serve you:**

1002 N. MONROE, 224-1645
1603 W. TENN. ST., 224-4313
1583 APALACHEE PARKWAY, 877-7620





PHONE 222-0327
1201 NORTH MONROE
TALLAHASSEE, FLORIDA

TIRES

*Complete
Safety Service*

- WHEEL ALIGNING
and BALANCING
- BRAKE SERVICE



100% F.S.U.

"All The - - - Time"

		Class of
Leo Crutchfield	- Realtor	FSU 1954
J. M. Boynton	- Realtor	FSU 1955
Robert G. Holt	- Associate	FSU 1964
A. Gene Langston	- Associate	FSU 1962
C. R. "Bubba" Boynton	- Associate	FSU 1958

Leon Realty, Inc.

"Leon for Land"

823 Thomasville Rd.
Tallahassee, Florida

*Complete Real Estate
Service*



222-4210



**EXCITING, INSTRUCTIVE
FOOTBALL, BASEBALL AND BASKETBALL FILMS
AVAILABLE FREE**



See famous professional athletes show you how they do it.

Each film is in color, 16 mm. and runs about 28 minutes. A terrific program for your youth group, civic club or phys ed class. With each film you get valuable instruction booklets, 36 pages of inside information and expert advice on how to stay in peak physical shape.

It's part of Prudential's contribution to the President's Council on Physical Fitness.

For information about a free loan of the films, contact your local Prudential office. Or write Public Relations Dept., The Prudential Insurance Company of America, P. O. Box 4579, Jacksonville, Fla. 32201.



**THE PRUDENTIAL
INSURANCE COMPANY
OF AMERICA**

SOUTH-CENTRAL HOME OFFICE
JACKSONVILLE, FLORIDA

LIVE LOBSTER

Lobster Reef

(Formerly Joby's)

1425 W. TENNESSEE ST.
TALLAHASSEE, FLORIDA
222-1929

Your Favorite Beverage

OYSTERS ON THE
HALF SHELL



BILL PEACOCK CHEVROLET, INC.

300 West Washington St.
MONTICELLO, FLORIDA

The reason people pass one door
To patronize another store,
Is not because the busier place
Has better silks, or gloves, or lace,
Or special prices, but it lies
In pleasant words and smiling eyes;
The only difference, we believe
Is in the treatment folks receive!

Growing With the Seminoles!

TALLAHASSEE
Phone 224-8827

MONTICELLO
Phone 997-2513

Go Seminoles

We'll help all we can

Tallahassee Automobile Dealers Association

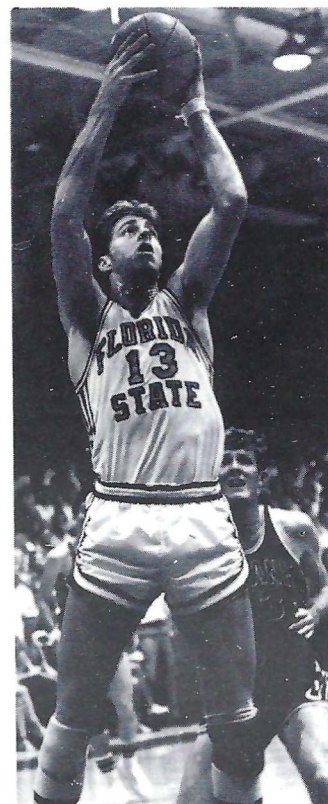
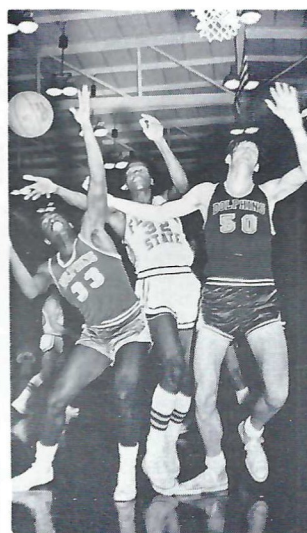
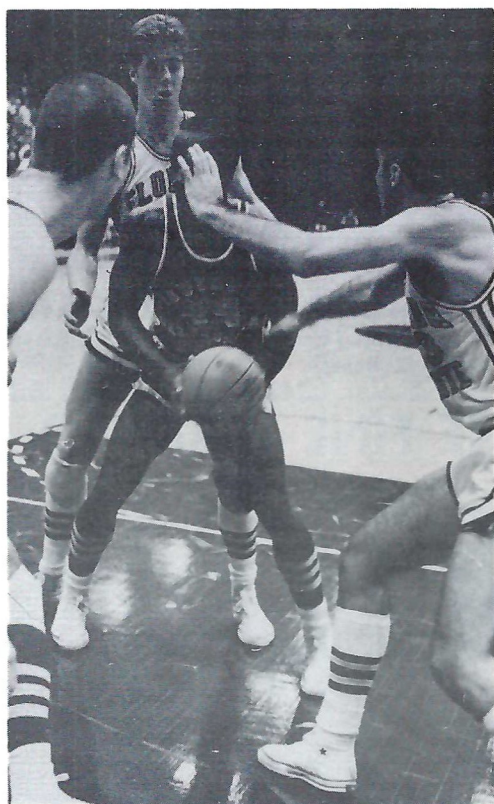
ALFORD CHEVROLET CO.
COURTESY RAMBLER-DATSUN
PROCTOR & PROCTOR, INC.
CAPITAL LINCOLN-MERCURY, INC.
BOB DRAKE DODGE, INC.
TOYOTA OF TALLAHASSEE

COURTESY OLDSMOBILE-VOLVO
PALMER-HARRELL BUICK CO.
CAPITAL CHRYSLER-PLYMOUTH, INC.
TALLAHASSEE MOTORS, INC.
KINNEBREW MOTORS, INC.
MINGLEDORFF MOTORS, INC.
CONTINENTAL CARS OF TALLAHASSEE, INC.

FLORIDA STATE BASKETBALL

BIGGER AND BETTER

PRESSURE BASKETBALL—run on offense, press on defense and never let up on the opposition. For the fan this is the most exciting style of play and it is exactly what Seminole followers will be seeing this winter. All-America candidate Dave Cowens leads a solid returning nucleus including Skip Young, Randy Cable and Willie Williams. In addition the graduates of one of the finest freshman teams in school history move up to the varsity. Rowland Garrett and Ron Harris are two sophomores who stand an excellent chance of breaking into the starting lineup as does All-America junior college transfer Vernell Ellzy. The schedule Coach Hugh Durham has lined up presents a stern test. The home slate includes contests with Louisville, Texas, Jacksonville, Miami and Georgia Tech. Season tickets are now on sale at the athletic ticket office. To order your tickets stop by the ticket office in Tully Gym or mail the coupon below.



HOME GAMES

- Dec. 2 Oregon State
- Dec. 4 Oregon
- Dec. 20 Georgetown University
- Dec. 22 Louisville
- Dec. 27 Texas
- Jan. 9 Miami
- Jan. 22 Clemson
- Jan. 27 Jacksonville
- Jan. 31 Virginia Tech
- Feb. 10 Florida Southern
- Feb. 14 Tulane
- Feb. 21 Georgia Tech

Game Times: 7:30

Freshman Games: 5:15

ORDER SEASON TICKETS NOW!

Individual game tickets \$2.50 each. Season Ticket (for 13 home games) \$20.00 (save \$10). For group seating send orders in single envelope and mark order "group seating".

Name _____

Address _____

City and State _____ (Zip) _____

Phone-Bus _____ Home _____

Check correct group(s)

- 1968-69 season ticket holder
- Tipoff Club Member
- New Purchaser

All orders must be accompanied by check made payable to FLORIDA STATE UNIVERSITY. Mail orders to the ATHLETIC TICKET OFFICE TULLY GYM

AWAY GAMES

- Dec. 8 Rollins College
- Dec. 13 North Carolina
- Dec. 29-30 Gator Bowl
- Jan. 2 Pepperdine
- Jan. 3 Southern California
- Jan. 5 Arizona
- Jan. 17 Tulane
- Jan. 24 Georgia Tech
- Feb. 5 Kent State
- Feb. 7 Dayton
- Feb. 18 Jacksonville
- Feb. 26 Stetson
- Feb. 28 Miami

PRESCRIPTIONS

- COSMETICS
- GREETING CARDS
- TOYS
- FILMS & CAMERAS



"BUDDY STEWART"
 "WORKING FOR BETTER
 COMMUNITY HEALTH"
 HAVE YOUR DOCTOR CALL US

- VITAMINS
- CANDY
- GIFTS
- HOSPITAL SUPPLIES

224-9031
SOUTHSIDE
Rexall
PHARMACY
 1549 S. Monroe

NO CHARGE FOR
 DELIVERY SERVICE



224-5011
UNIVERSITY
Rexall
PHARMACY
 W. Tenn. & High Road

CITY WIDE AND
 SURROUNDING AREAS

MIRACLE LIGGETT REXALL PHARMACY
 Miracle Plaza Shopping Center
 Thomasville Road

BEST WISHES FROM ONE FINE TEAM TO ANOTHER!



"ONE OF FLORIDA'S FINE STORES"

Quincy

Fletcher-Cantey

Florida

Men's Wear

JUST 15 MINUTES BY FOUR LANES FROM TALLAHASSEE

THE EVOLUTION OF FOOTBALL RULES

by BLACKIE SHERROD

Executive Sports Editor, Dallas Times Herald



THE WAY the story goes, a posse of cowboys moseyed out of the neighborhood watering hole to hear the dude explain this new game of football.

"When you get hold of the ball, kick it hard as you can," said he. "If you can't reach the ball, kick somebody on the other team hard as you can. Now soon as I blow up this pig bladder, we'll get on with it."

"To heck with the ball!" whooped a waddy. "Let's start the game!"

The toastmaster may use this with cowboys or Polish miners or Italian sailors or Irish hodcarriers. The idea is that college football was played with considerably more force than finesse in the earlier portion of its 100 years. Anyone who got through a season with both ears still attached was branded a sissy. If an oldtimer like Pudge Heffelfinger or Charlie Gelbert had seen the padded, helmeted, tightly wrapped product of today, with eyeshadow and teeth-guard, he would have excused himself and gone behind the nearest bush. The only concession the oldtimers made to physical protection, to hear them tell it, was to tape an old copy of *The Saturday Evening Post* over their shinbones on sub-freezing days.

Collision, Exhaustion

Actually, the pioneers didn't have much choice. In those days, a century ago, you ran until you collided with someone or fell down through

exhaustion. The evolution of the game is such that young citizens now often run long distances without making contact with other young citizens. And they have enough stamina left at the end of the afternoon, thanks to large squads and liberal substitution, to lead the bugaloo at the fraternity bash that evening.

Dave Nelson, the erudite secretary of the NCAA rules committee, is properly immodest in discussing his group's therapy.

"No game has adapted to the times, the situations and the talent as has football," says the Delaware athletic director, "primarily because it was born and raised on the college campuses where change is a way of life." *Brother, he can say that again.*

As all of you industrialists know, when you remodel a product, the first step is redesign the tools. And this tells the story of modern football—the change in the shape of the instrument itself. The American game was first played with a round ball, then evolved into a fat egg that lent itself mostly to drop-kicks (you could hardly miss it) and provided a convenient cushion for the falling masses. Oldtimers like Walter Eckersall of Chicago regularly drop-kicked field goals from a block or two away, simply because they didn't know what else to do with the blamed thing. In fact, if you didn't rid yourself of the ball, you were apt to be maimed beyond recognition. So many young citizens were being maimed

beyond recognition that Theodore Roosevelt instituted the Big Stick policy.

Clean up your game, he warned the college deans, or the feds will get you for anti-trust or income tax evasion or maybe even jaywalking. This is about the time some cautious lads had begun tossing the ball back and forth to each other, strictly as a matter of self-preservation.

The forward pass, a scarcely recognizable forefather of today's maneuver, was legalized in 1906 but it wasn't until the rulesmakers slimmed down the ball that the practice became popular. In 1912 a new regulation specified that the ball could be no more than 23 inches around the waist. Every few years, they'd scale it down a few more centimeters. In 1934, there came the big, final reduction—no more than 21½ inches around the middle. It wasn't just coincidence that Sammy Baugh and Davey O'Brien and the like came along a couple years later and began threading needles.

Passing Us Dizzy

With the popularization of the pass came the faking and trickery off the threat of the pass, until we all became quite dizzy and remain so until this very day.

Likewise the rules committees, over the years, have advanced the cause of passing. Along with the change of the shape of the ball in 1934 came a couple more rule alterations. You could now throw the ball incomplete in the end zone without loss of possession, for heaven sakes, and you were no longer punished five yards for more than one incomplete pass in the same series.

In immediate post-war years, a rule was changed to allow passes thrown from anywhere behind the line (instead of five yards) and encouraged use of the modern T formation. The penalty for intentional grounding of a pass was reduced from 15 yards to 5 yards and it has actually been called a couple of times.

As Mr. Nelson says, "Through its one hundred years, intercollegiate football has been a game of dynamic changes in systems, techniques and rules."

How about that dynamic change in 1939 when it became mandatory to wear a helmet? No longer could the fullback raise to his full height, tear off his helmet and fling it to the sideline to show the crowd ole Bronk was getting down to the nitty-gritty. That rule did away with a lotta dynamic drama, but it saved a lotta dynamic ole Bronks.

Best Wishes for a successful season, and we are proud to have had a part in furnishing the football equipment for the Seminoles

OWENS Inc.
Sporting Goods — Hardware
ALBANY, GEORGIA

**GOOD
LUCK
SEMINOLES!**



**DōLIME
MINERALS
COMPANY**

P.O. BOX 1441
BARTOW, FLORIDA 33830

GYMKANA PROUDLY PRESENTS ACRO-GYPSY

Nov. 5-8 in Tully Gymnasium

The Florida State Gymnastics Team, long a nationally acclaimed club, presents an outstanding gymkana show each year. This year the club presents "Acro-Gypsy." The show is divided into three parts—internationally known gymnasts, talented Seminole coeds, and the nationally famous Tallahassee Tumbling Tots. This year the Gymkana production will be held November 5-8 starting 8 p.m., nightly. Tickets are on sale at the University Union ticket office. They are \$1.25 for general admission, 75-cents for students and 50-cents for children.

A special feature of the Gymkana program is the annual Miss Gymkana contest. More than three hundred Florida State coeds took part in the preliminaries, from which 23 finalists have been chosen on the basis of beauty, poise and charm. On the final night of the show Miss Gymkana and her court will be chosen, based on their costume design, cooperation and enthusiasm toward the Gymkana program.

The gymnastics program at Florida State is under the direction of Dr. Hartley Price.

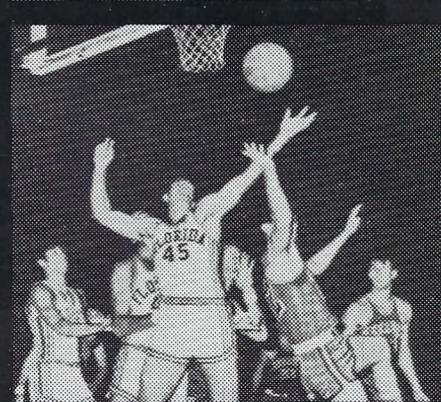
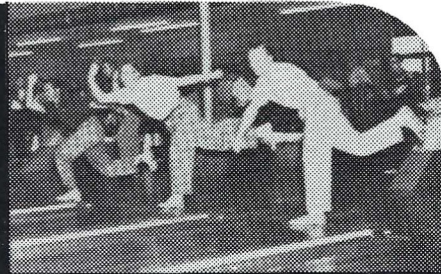


One of these 23 coeds will be selected Miss Gymkana during the final performance. The beauties here were picked from a field of several hundred entries. Court members are, from left to right:

Front Row: Chris Dietrick, Orlando; Ginger Delong, Gainesville, Ga.; De De Sullivan, Jacksonville; Charla Brackin, Tallahassee; Paula Stratton, Jacksonville; Marty Peagler and Mary Gregory, Pensacola; Mary Fletcher, Quincy.

Second Row: Mary Bauer, Ft. Pierce; Gale Walden, Ocala; Cathy Cooper, Ormond Beach; Jann Van Dusen, Jacksonville; Mary Clark, Perry; Linda Cross, Quincy; Jeannine Phipps, Tampa; Barbara Poe, Pensacola.

Third Row: Carol Castleberry, Ft. Walton Beach; Rosemary Stone, Boaz, Ala.; Darlene Culler, Jacksonville; Barbara Wallace, St. Albans, W. Va.; Linda Magness, Pensacola; Carolyn Crum, Albany, Ga.; Becky Ennis, Tampa.



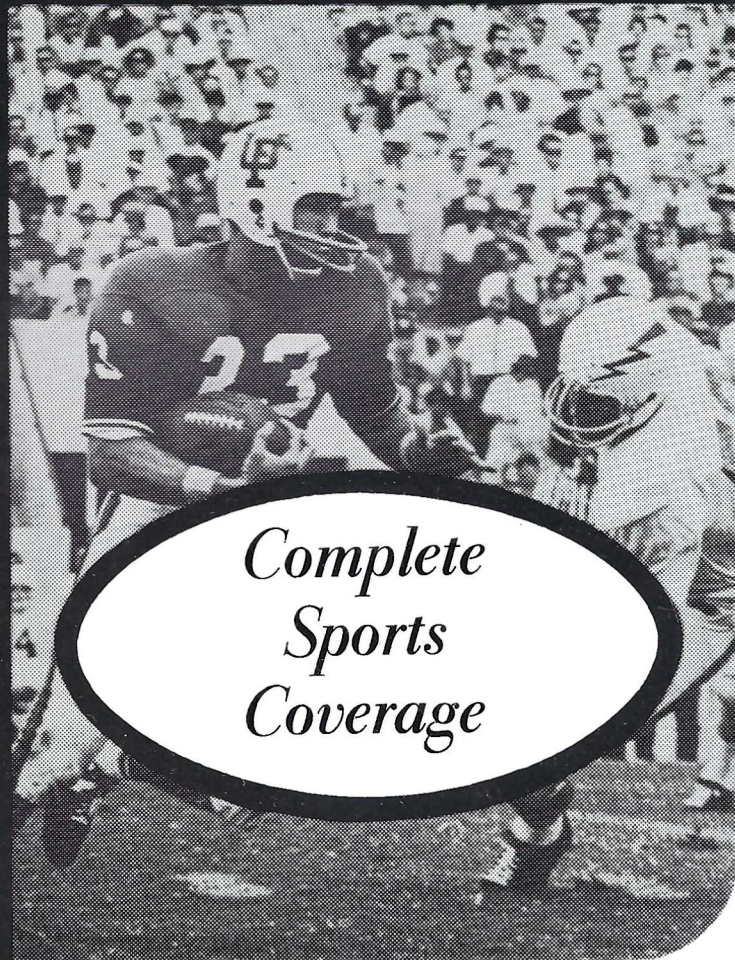
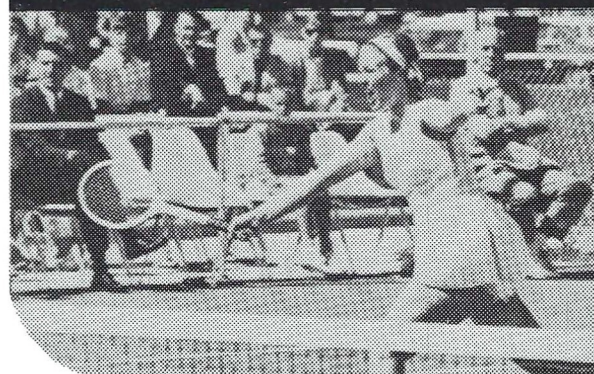
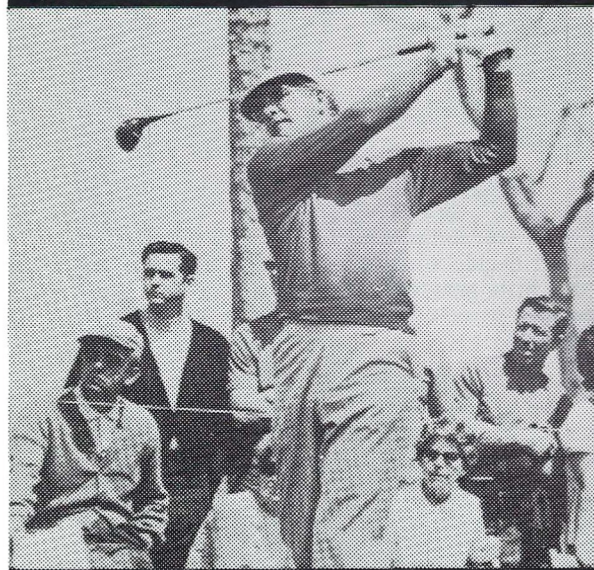
Our sports writers go to any lengths to cover sports in Dixie. This year we traveled more than 80,000 miles to write more than 100,000 words. At every important athletic event in the South, there's always at least one TU-JJ staffer in the press box to report the action. It's the extra digging that goes beyond the surface news that makes the sports pages of The Florida Times-Union and Jacksonville Journal come alive. People get a lot more out of these two great daily newspapers — because we're putting a lot more into them.

The Florida Times-Union / Jacksonville Journal

EVERY MORNING

WEEKDAY AFTERNOONS

COMBINED ON SUNDAY



*Complete
Sports
Coverage*

STEWART TV AND APPLIANCES

24 West Washington Street

Phone 627-7126

QUINCY, FLORIDA 32351



FRIGIDAIRE



EPPESE-EDENFIELD HARDWARE & PAINT CENTER

FREE 222-3311

CITY WIDE DELIVERY

- BENJAMIN MOORE PAINTS
- GARDEN SUPPLIES
- FERTILIZER
- PLUMBING & ELEC SUPPLIES
- BARBECUE EQUIP & SUPPLIES
- LAWN MOWERS
- COMPLETE LINE OF HARDWARE

Open Mon - Sat 7:30 To 6:00

1334 N. MONROE



Al Makowiecki
... Little All America



Harry Massey
... 10 TD Passes

1954 SEMINOLES

(Continued from page 8)

On the field the team was led by quarterback Harry Massey, and he personified the desire in this club to make good. Originally signed by Mississippi State, Massey was let go, because the coaches there thought "he would never make a college quarterback. He can't run and he'll never pass well enough," they explained.

Massey turned to Florida State and the Seminoles never regretted giving him a second chance. Although he rarely threw for more than 15 yards, Massey established passing records at Florida State that stood until the Seminoles' pro-style offense under Bill Peterson moved into high gear during the '60's.

The Seminoles again tasted a shutout defeat when Auburn beat them 33-0, but behind Massey, Lee Corso, Al Makowiecki, Tom Feamster, Bobby Crenshaw and a host of others they came storming back to win all five remaining games and an invitation to the Sun Bowl.

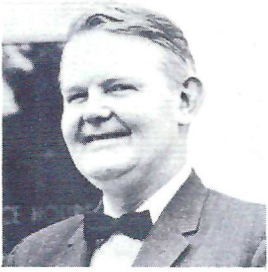
"That invitation was the culmination of what we were shooting for," said Nugent. "People had noticed us. Not only were we considered, but we won the invitation. I let the squad decide whether we should go or not. Oh, I admit, I used a little persuasion, telling them that if they elected to go I would promise them the greatest time of their lives, but I don't think there was ever any doubt in their minds."

So in mid-December the Seminoles packed and left for El Paso, Tex., and the Sun Bowl. "I think," said Nugent tactfully, "we had a little too much pre-game training out there. As I recall we were there eight or nine days before the game. Everyone had a good time, but we were 'over-trained' for the game itself."

Nevertheless the Seminoles gave a respectable account of themselves despite losing to hometown Texas Western 47-20. "Actually the game was closer than that," Nugent explained. "We had two touchdowns called back and on one of them the officials that came with us from the east got into an argument with the Texas Western officials over who the penalty was against."

"I don't think we would have won the game, anyway, but it was the darndest thing I ever saw. Then again, I never had a team like this one either."

"I never saw anything like it. When it was all over, they called both coaches to the center of the field and asked us to talk to our squads, that 'the game was getting out of hand'.



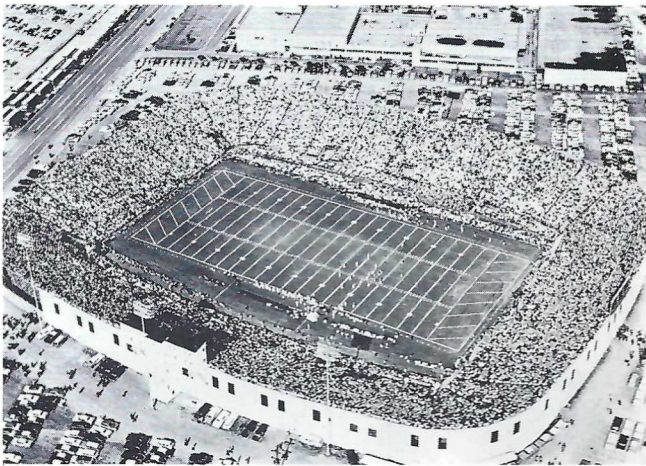
Dr. Thomas F. Jones
President



◀ Paul Dietzel—Head Coach

UNIVERSITY OF SOUTH CAROLINA

The University of South Carolina was chartered in 1801 by the General Assembly of South Carolina. The oldest state-established and fully state-supported institution of higher learning in the United States, it opened its doors January 10, 1805. Situated downtown in the state capital of South Carolina, the campus of the University is spacious, well-maintained and close to the principal governmental and shopping areas of Columbia, which has twice been named an All-America City. Enrollment for the 1969-70 fall semester is expected to total 12,800 on the main campus in Columbia. In addition, 2,700 will study at branch campuses throughout the state for a total enrollment of 15,500.

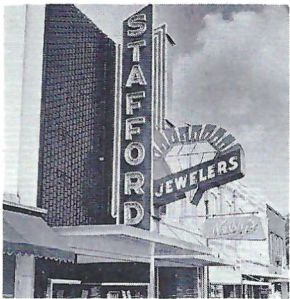


Carolina Stadium

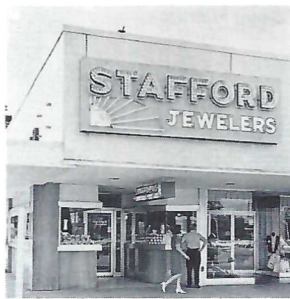


Physical Science Center

OUR TEAM SAYS "LET'S GO SEMINOLES"



DOWNTOWN
VERNON STEVENS
Manager



PARKWAY
AMOS STEVENS
Manager



THOMASVILLE
M. WILLIAMSON
Manager

**OPENING
SOON**

Our 4th
Store In
The Beautiful
New
Northwood
Mall

NATHAN BRASWELL
Manager

STAFFORD QUALITY JEWELERS

For the best meat in Seminole territory call

385-3410

or come see us at the . . .

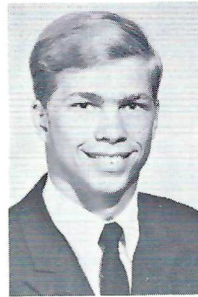
COUNTRY SMOKEHOUSE

— MEAT MARKET —

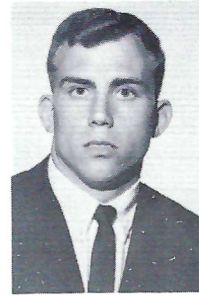
824 W. Tharpe St.

- largest selection of delicatessen items in town
- delicious prime steaks cut to your order
- excellent choice of good country smoked hams & sausage
- complete line of party snacks & cold cuts to suit your fancy

Y'all Come—We'll Be Looking For You



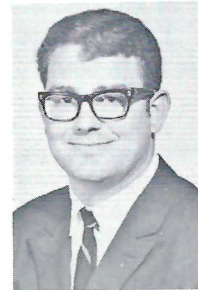
Bo Davies



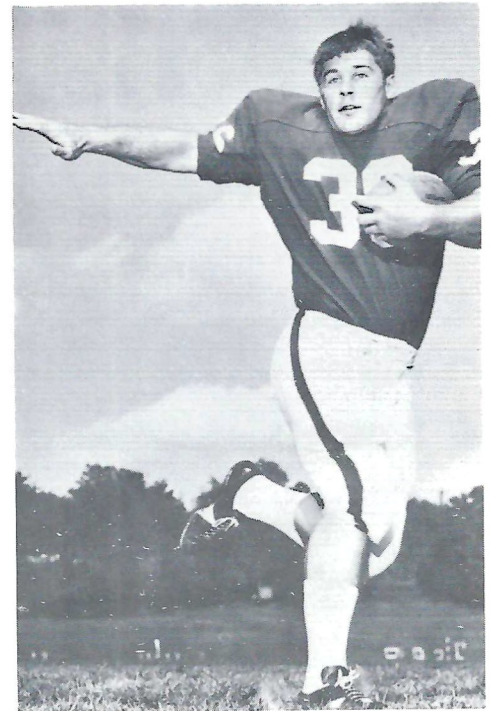
Don Buckner



Chris Bank



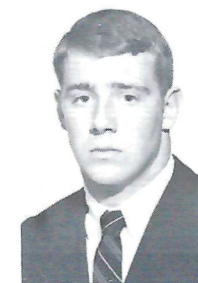
Danny Dyches



Warren Muir



Doug Hamrick



Rusty Ganas



Lynn Hodge



Rudy Holloman

WHEN YOU THINK OF BOOKS, THINK OF BILL'S

FSU SPIRIT
HEADQUARTERS

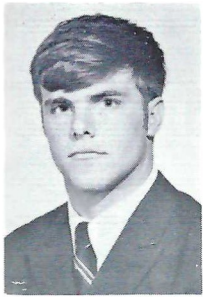
FSU SWEAT SHIRTS,
T-SHIRTS
& NOVELTIES

ART SUPPLIES
TEXTBOOKS,
NEW & USED

ill's
BOOK STORE

"ACROSS FROM WESTCOTT GATE"

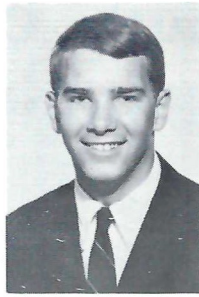
107 SOUTH COPELAND ST. TALLAHASSEE-FLA. 32304



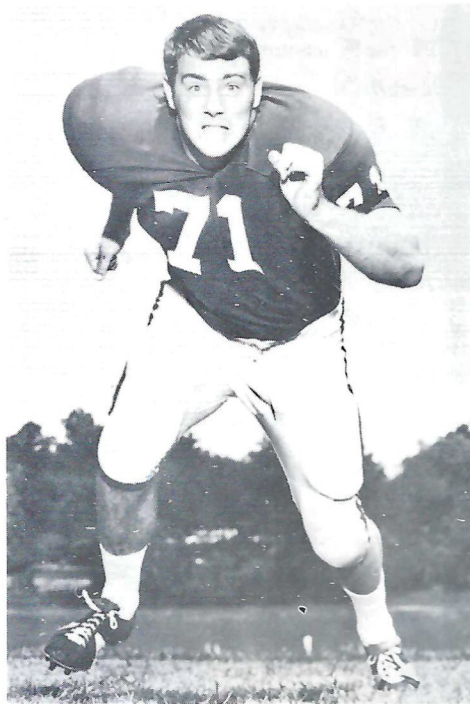
Don Bailey



Dave De Camilla



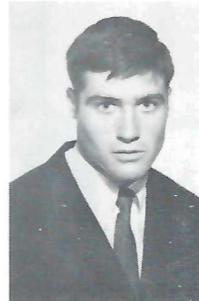
Billy DuPre



Rusty Ganas



Tony Fusaro



Tyler Hellams



Dave Lucas



Benny Padgett



Warren Muir

SEMINOLE TERRITORY



Seminole

MOBILE HOMES

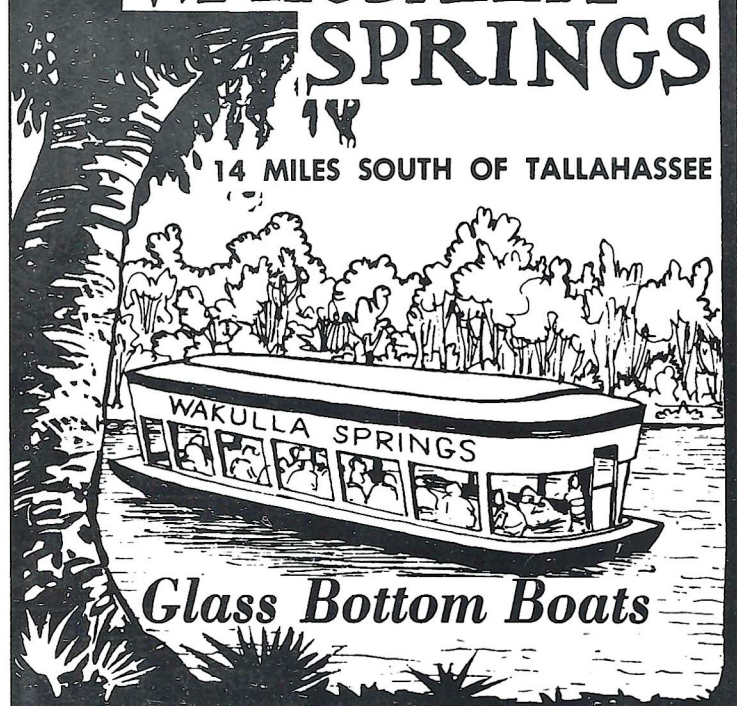
1710 West Tennessee St.

Across from Frisch's Restaurant

Ph. 224-5319

WAKULLA SPRINGS

14 MILES SOUTH OF TALLAHASSEE



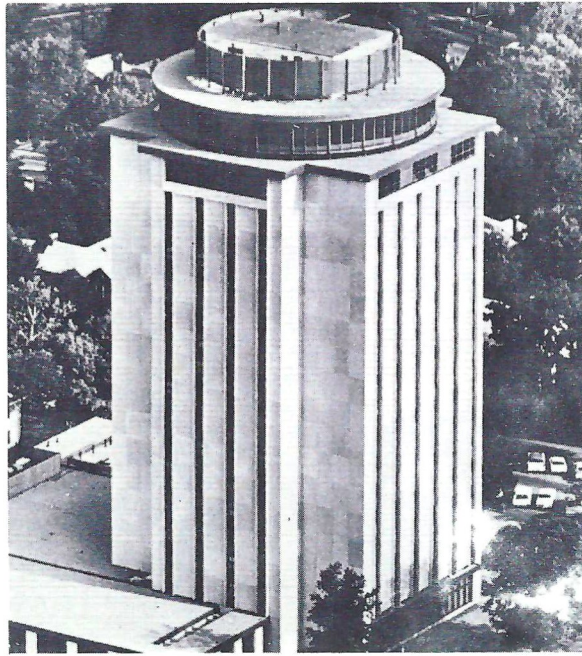
Glass Bottom Boats

WORLD'S LARGEST AND DEEPEST SPRING

University of South Carolina

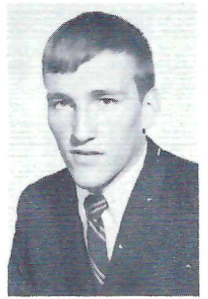


Bill Parker

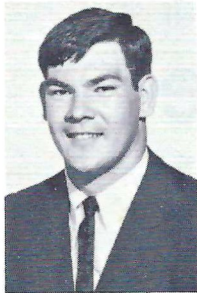


CAPSTONE HOUSE

The Capstone House, completed in the fall of 1967, is one of the tallest and most imposing structures on the University of South Carolina campus in Columbia. The 18 story structure is an honors residence hall for women students and the top floor houses the only university campus revolving restaurant in the world.



Jimmy Pope



Jimmy Poston



Tommy Suggs



Al Usher



Ken Walkup



Pat Watson



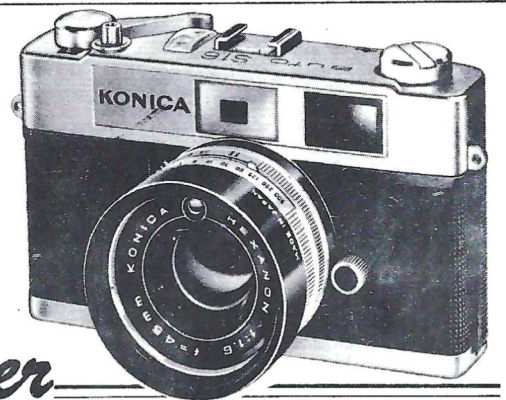
Fred Zeigler

For All Your Photo Needs
 Camera's
 Film
 Darkroom Equipment
 Binoculars
 Recorders
 Rentals

See The Friendly Folks At

Tallahassee Camera Center

117 NORTH MONROE



Concrete Products Co., Inc.

READY MIXED CONCRETE

CEMENT

SAND

GRAVEL

Phones: Plant 222-3367
Office 222-4472
P. O. Box 1122

GAINES AND WOODWARD STREETS

TALLAHASSEE, FLORIDA



1. The only public stock company in the retail mobile home business.
2. Service Guaranteed
3. Insurance written by MHB Agency
4. Finance thru Commercial Credit Corporation
5. Questionnaire directly from the President of our Company.

LARRY DODSON, Manager
1804 S. Monroe Street
Tallahassee, Florida 32301
Phone 222-4100

JOIN THE VICTORY PARTY AT THE RED DOOR

The Best In Entertainment And Dance To The Music Of

NED HAFNER & THE TYMES

2 Shows Nightly 9:30 - 11:30



TALLAHASSEE DINING ROOM

1630 North Monroe Street

We Honor - Diners Club - American Express -
Carte Blanche - BankAmericard - Shell - Enco -
Master Charge - Citgo - Conoco Credit Cards



HAV-A-TAMPA JEWELS

*The Cigar for Men...
that Ladies Love —
WELCOME ANYWHERE*

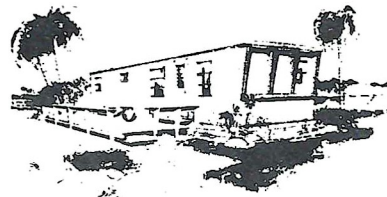
for their man-size flavor and gentle aroma

Distributed by **Eli Witt Tobacco & Candy Company**
Tallahassee, Florida

Today's best housing Investment

MODEL MOBILE HOMES

... Service is how we sell ...



Tallahassee's
Oldest and Most reliable
Mobile Home
Dealer

Choose from the wide selection of 2 and 3 bed- Exciting new dimensions in low-cost mobile
room floor plans to suit your family's needs. All living ... high grade materials, skilled workman-
are furnished with fully equipped kitchens and ship and nationally proved and recognized
the latest furniture styles. See us soon. equipment are combined to make this one of
the best housing investments available today.

1430 South Monroe Street, Tallahassee—Telephone 222-4146

Miller CHEVROLET COMPANY

Havana, Florida

539-6376

15 Miles North of Tallahassee

on U. S. 27

Phone Toll Free

224-1317



SERVING THE SOUTH

SINCE 1875

Nationally Famous Furniture, Appliances, Carpet,
Accessories — 63-Store Buying Power Savings!—
3 Convenient, Rhodes-Financed Payment Plans—
Take Up to 24 Months to Pay!

“WHERE TO BUY IT”

1122 Thomasville Road Phone 224-1128

SEMINOLE NETWORK

WCOA—Pensacola	WMMB—Melbourne
WTNT—Tallahassee	WMOP—Ocala
WJAX—Jacksonville	WPCF—Panama City
WKIS—Orlando	WPRY—Perry
WDAE—Tampa	WROD—Daytona Beach
WGBS—Miami	WSIR—Winter Haven
WKMK—Blountstown	WSPB—Sarasota
WBGC—Chipley	WTOT—Marianna
WCNH—Quincy	WTRL—Bradenton
WDSR—Lake City	WXVI—West Palm Beach
WFSH—Valparaiso	WAAZ—Crestview
WLAK—Lakeland	WJHR—Miami
WMAF—Madison	



Lou Creekmur

Bo Mitchell

SEMINOLE FOOTBALL NETWORK

Bo Mitchell enters his seventh season as “the voice of the Seminoles” on the ever expanding Florida State football network.

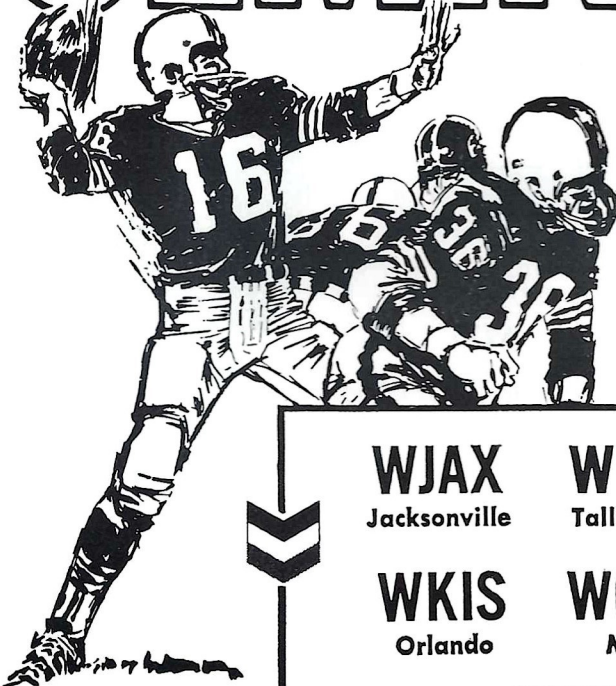
A veteran of 22 years of radio broadcasting, Mitchell is vice-president and station manager of WKIS in Orlando. The former “Florida Sportscaster of the Year” has also done the network play-by-play for three post season games—the AFL All-Star game, the Senior Bowl and the Tangerine Bowl.

Joining the veteran play-by-play announcer this season is former all-pro lineman Lou Creekmur. The ten year veteran with the Detroit Lions, handles the “color” commentary and analysis.

More than 30 stations are carrying the Seminoles’ games to all of Florida and parts of Georgia and Alabama. Originating station for the Seminole Football Network is WTNT in Tallahassee.

FOLLOW THE

SEMINOLES



ON THE

**STANDARD
OIL**

NETWORK

Come to Chevron Island

WJAX
Jacksonville

WTNT
Tallahassee

WDAE
Tampa

WKIS
Orlando

WGBS
Miami

WCOA
Pensacola



The Quincy State Bank

INCORPORATED UNDER THE LAWS OF FLORIDA
CAPITAL \$400,000.00 – SURPLUS \$600,000.00

QUINCY, FLA.

ADVERTISERS DIRECTORY

ABC Mobile Homes	16	McDonald's Hamburgers	IBC
Al Moran's Car Care	41	Mendelson's	17
Big B Cleaners	37	Midyette-Moor Ins. Agency	6
Bill's Book Store	50	Miller Chevrolet Company	54
Brown's Pharmacy	16	Model Mobile Homes	54
Campus Food Service	6	Monsanto	13
Capital City First National Bank	22	Owens, Inc.	46
Captain Louis's Galley	48	Parkway National Bank	12
Chevrolet	BC	Parkway Suburban Salon	19
Chrysler	27	Peacock Chevrolet	42
Clark Electric Company	6	Prudential	41
Coca Cola	28-29	Quincy State Bank	56
Concrete Products Company	53	Ragan & Roberts	34
Country Smoke House	50	Remington	2
Crestview Mobile Homes	20	Rhodes, Inc.	54
Dolime Minerals Company	46	Seminole Mobile Homes	51
Driftwood Motel and Restaurant	31-32	Silver Slipper	IBC
Eli Witt Tobacco & Candy	54	Southeastern Telephone Company	14
Eppes-Edenfield Hardware	48	Southernair - Skyline Motel	18
Fletcher-Cantey Men's Wear	44	Southern Electric	36
Florida Times Union-Journal	47	Southern Mobile Home Brokers	53
Ford Motor Company	30	Sports Craft, Inc.	24
Freeway National	36	Stafford Jewelry Co.	49
Frisch's Restaurant	15	Standard Oil Company	55
Frosty Morn Meats	IFC	Stewart TV & Appliances	39
Fryer-Thomas Motor Company	20	Strickland's Shoe Stores	56
Globe Cleaners	10	Suburban Hair Fashions	23
Goodbody & Company	25	Sweet Shop	12
Holiday Inn	26	Tallahassee Auto Dealers	42
Honda of Tallahassee	1	Tallahassee Camera Center	52
Jerry's Restaurant	36	Tallahassee Dining Room	53
Kentucky Fried Chicken	40	Tallahassee Travel & Tours	11
Leon Realty Inc.	41	Talquin Electric Co-op.	15
LeRoc	17	Tony's Suburban Salon	21
Lewis State Bank - Master Charge	35	University Book Store	33
Lindy's Fried Chicken	11	University Rexall Pharmacy	44
Lobster Reef	42	Varsity Theatre	18
Longines	5	Vogue	37
Manning Taylor Chevrolet	56	Wakulla Springs Hotel	51

MANNING TAYLOR CHEVROLET COMPANY



*A short drive
For a better buy*



TALLAHASSEE
Phone 222-8200

QUINCY
Phone 627-7185

223 North Adams Street
Quincy, Florida

Strickland's

SHOE STORES

- Downtown
- Capital Plaza
- Parkway Center
- Northwood Mall



*NOW
at Stricklands ...*

**FLORSHEIM
SHOE FOR MEN**

NOW 2 TALLAHASSEE LOCATIONS!

Get to the game early—enjoy easy parking—walk right through the gate—and feast on a hot McDonald's meal while you wait for the kickoff. Extra crewmen and speedy service windows guarantee you a quick pick-up for food to go—or eat on the patio.



Northwood Mall (US 27 N) • 1701 W. Tennessee St. (US 90 W)

Tallahassee's Most Exclusive
Steak House

the Silver Slipper



RESTAURANT



DELICIOUS CHARCOAL BROILED STEAKS

SEA FOODS CHICKEN
25 PRIVATE DINING ROOMS — BANQUET ROOM SEATING 100

CALL JIMMIE OR CHRIS
KALFAS FOR RESERVATIONS
FOR PRIVATE PARTIES
AND BANQUETS

224-1266

OPEN 5 P.M. TILL 11:30
OPEN SEVEN DAYS PER WEEK

2000 S. MONROE • One Mile From Capitol On So. Monroe St. U.S. 319 S.
BEHIND S & S. PACKAGE STORE

MASTER CHARGE
BANK AMERICARD

*Hilton
Cote Blanche*





**Big cars cost big money...
That's the way it was.**



O. J. Simpson with his big, reasonably priced 1970 Chevrolet Impala Sport Coupe.