

## CHEER FOR MILK'S VITALITY

Put Vitality on your team... drink milk! A glass of cool, refreshing milk with meals and snacks helps see you through the busiest fall schedule. No other beverage helps you get the lasting energy found only in nature's Vitality drink... Milk. You'll cheer for milk's Vitality.

a message from dairy farmer members of



american  
dairy  
association

**Official Program**  
**50c**

**FLORIDA STATE**  
**vs.**  
**WAKE FOREST**

*Homecoming*

**November 19, 1966**

**DOAK S. CAMPBELL  
STADIUM**

**Tallahassee,  
Florida**





AFTER THE GAME GO...

# Jerry's



Beautiful  
Dining Room

★  
Convenient  
Curb Service

★  
Prompt Carry-Out  
Orders

★  
445 W. Tennessee St.  
Tallahassee  
224-5104

STRAWBERRY  
PIE

CHAMP

J-BOY

# Florida State University ...

## In This Issue . . .

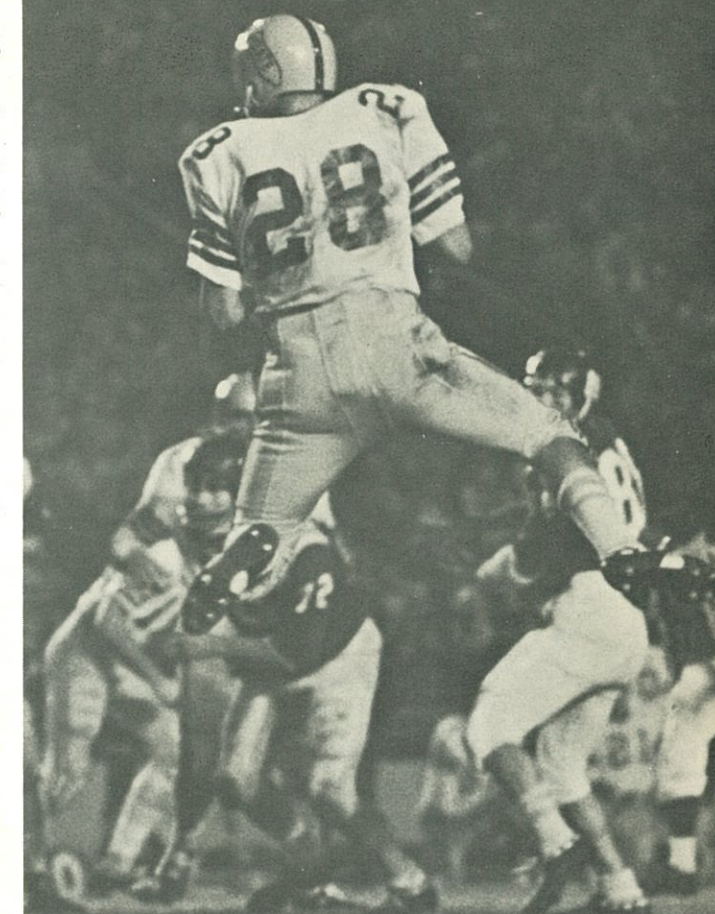
Today's Game	4
University Features	5
Guest Column	8
Seminole Football Family	9
Statistics	10
FSU All Time Records	11
Athletic Committee	12
The Four P's of College Football	13
FSU News Briefs	14
State Officials	15
FSU Player Photos	17
Officials' Signals	22
Starting Lineups	25
Penalties	27
Seminole Boosters, Inc.	28
Freshman Squad, Roster	31
Cheerleaders	33
Seminole Radio Network	35
Tensi and Biletnikoff—A Victory Combination	36
FSU Basketball	38
Stadium Information	39
Tonite's Opponents	41
The Marching Chiefs	44
Rosters, Depth Charts	45

## SEMINOLES ON THE WARPATH

Date	Opponent	Site	Time
Sept. 17	Houston	Tallahassee	8:00 p.m. EST
Sept. 24	Miami	Miami	8:00 p.m. EST
Oct. 1	Open Date		
Oct. 8	Florida	Tallahassee	2:00 p.m. EST
Oct. 15	Texas Tech	Lubbock	7:30 p.m. CST
Oct. 22	Mississippi State	Tallahassee	8:00 p.m. EST
Oct. 29	Virginia Tech	Blacksburg	2:00 p.m. EST
Nov. 5	South Carolina	Columbia	2:00 p.m. EST
Nov. 12	Syracuse	Syracuse	1:30 p.m. EST
*Nov. 19	Wake Forest	Tallahassee	2:00 p.m. EST
Nov. 26	Maryland	Tallahassee	8:00 p.m. EST

\* (Homecoming)

# FOOTBALL



# 1966

Compliments and  
Best Wishes from



YOUR APPLIANCE  
HEADQUARTERS  
611 N. Monroe St.



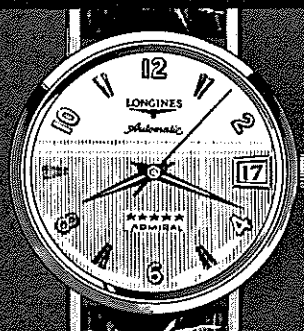
# OFFICIAL WATCH FOR THIS GAME



## LONGINES THE WORLD'S MOST HONORED WATCH

10 WORLD'S FAIR  
GRAND PRIZES  
28 GOLD MEDALS

Longines watches are  
recognized as OFFICIAL  
for timing world  
championships and Olympic  
sports in all fields  
throughout the world.



Longines 5-Star Admiral Automatic with Calendar,  
All-Proof®, sweep-second, 14K gold strap—\$185.00

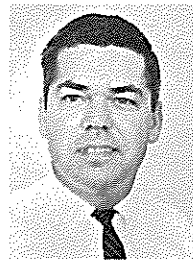
### *The Longines Credo*

Every Longines watch,  
whatever its type, for whatever  
its use, today, as for almost  
a century, is manufactured to  
be the finest of its kind and  
worthy in every respect to be called  
The World's Most Honored Watch

**LONGINES-WITNAUER WATCH CO.**  
MONTREAL • NEW YORK • GENEVA  
Maker of Watches of the Highest Character Since 1867

## Today's Game

By **LONNIE BURT**  
Sports Information Director  
Florida State University



Wake Forest Coach Bill Tate says now that his club has jelled he would "like to start the season all over again."

In their first two games, the Deacons were whipped 24-10 by Virginia and 34-7 by Maryland. They dropped their next two contests by a total of 11 points.

Tate figures his squad began to come around when sophomore quarterback Ken Erickson went to work under the center.

Last Saturday's 21-7 victory over Memphis State shows just how far the Deacons have progressed since the start of the campaign.

Today's Campbell Stadium game shapes up as a contest between Wake Forest's fine rushing game against Florida State's passing attack. In tailback Andy Heck, the Deacs have one of the Atlantic Coast Conference's best runners.

The 5-9 senior is second in the ACC in total rushing yardage but his 4.9 average is the conference's best. Erickson's combined total of 789 yards rushing and passing makes him fourth in league figures.

Two of Wake Forest's top defenders are tackles Robert Grant and Bill Overton. Both had outstanding games last week against Memphis State, as did cornerback Butch Baker. Tallahassee won't be a strange spot for Baker and Grant since they're both Jacksonville natives.

In Gary Pajcic and Kim Hammond, Florida State Coach Bill Peterson thinks he has as good a one-two quarterback combination as there is in the country.

Hammond relieved Pajcic during the third period in last week's Syracuse game and hit 11 of 16 passes for 131 yards. He tossed for one touchdown and his aeriels helped set up another. Pajcic, who has completed 108 of 201 passes for 1,292 yards this season, had pitched for one TD before turning things over to Hammond.

If Ron Sellers' shoulder has healed enough so that he can play today, Florida State grads will see one of the top young receivers in the nation. The lanky Jacksonville native is within shouting distance of the great Fred Biletnikoff's season reception record of 57. "Jangle Joints" has 47 catches for 671 yards and he got only three against Syracuse before leaving with a separated shoulder.

This will be the seventh meeting between Wake Forest and Florida State with the Seminoles owning a 4-1-1 edge. In the last two meetings (1963 and 1965), the Seminoles won by identical 35-0 scores.

1966

## FLORIDA STATE UNIVERSITY

*National*

## ALUMNI ASSOCIATION

*Officers*

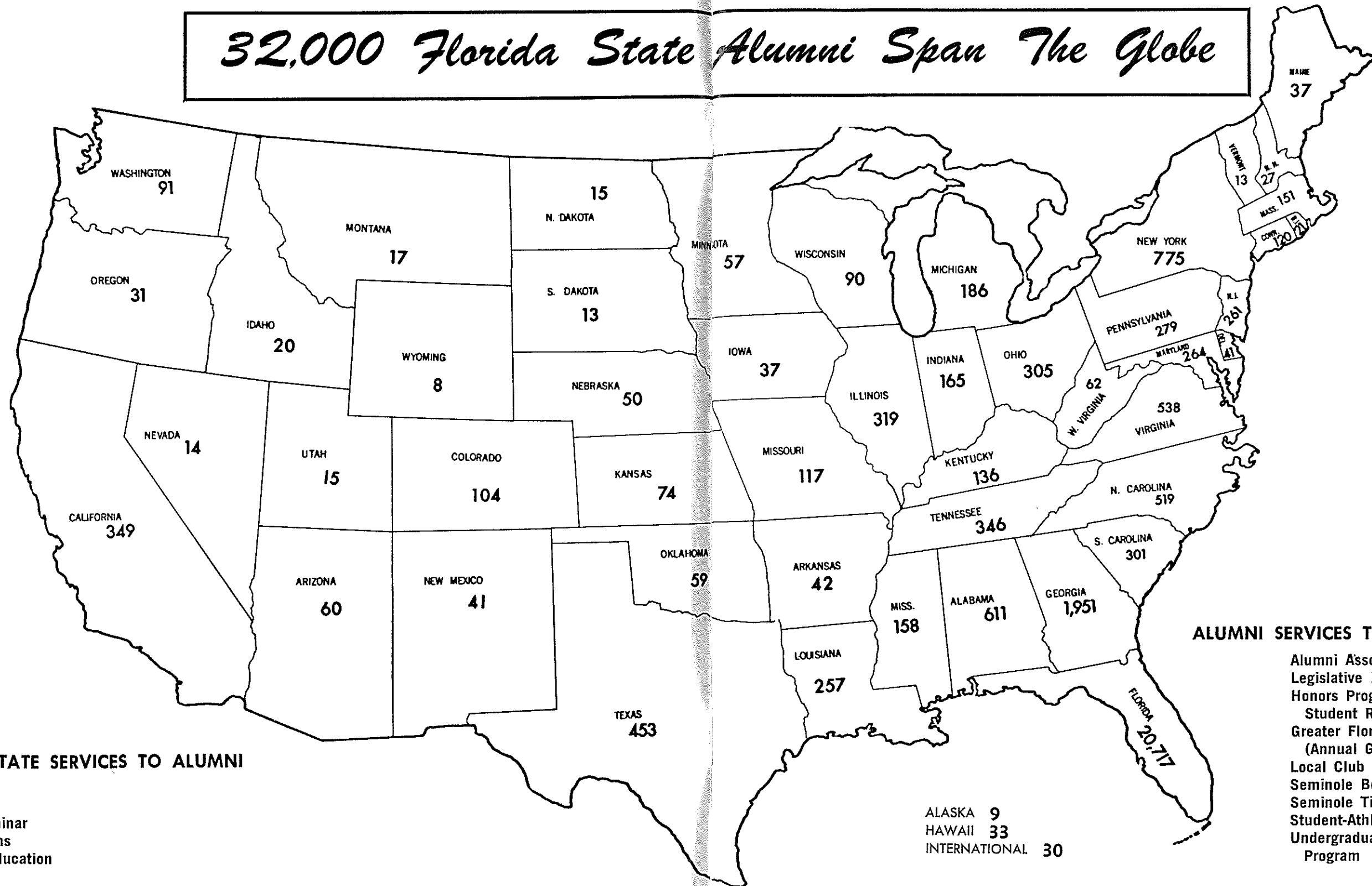


**OFFICERS**—left to right—Gordon D. Gaster, Daytona Beach, Treasurer; Thomas A. Waits, Tallahassee, Executive Director; Mallory E. Horne, Tallahassee, President-Elect; Mrs. Carroll F. Brown, Ocala, Secretary; Harry W. Massey, Palm Beach, President; and Charles F. Mixon, Jr., Tampa, Immediate Past President.

### *Board of Directors*

**BOARD OF DIRECTORS:** Arthur E. Hempel, Jr., St. Petersburg, District I; Robert F. Waits, Jacksonville, District II; James R. Crabtree, Pensacola, District III; Judge Donald E. Stone, Coral Gables, District IV; H. Radford Bishop, Holly Hill, District V; Robert P. Foley, West Palm Beach, District VI; Frederick L. Mansfield, Sarasota, District VII; Mrs. James E. Clayton, Gainesville, District VIII; Melvin E. Pope, Jr., Tallahassee, District IX; William R. McKemie, Lakeland, District X; Floyd D. Jordan, Jr., Decatur, Ga., District XI (out of state); David T. Kennedy, Miami, Director-at-large; and Mrs. Randall Chase II, Sanford, Director-at-large.

# 32,000 Florida State Alumni Span The Globe



## FLORIDA STATE SERVICES TO ALUMNI

Publications  
Homecoming  
Alumnae Seminar  
Class Reunions  
Continuing Education  
Employment  
Use of University Facilities  
Ticket Priorities

## ALUMNI SERVICES TO FLORIDA STATE

Alumni Association  
Legislative Program  
Honors Program and Superior  
Student Recruiting  
Greater Florida State Fund  
(Annual Giving Program)  
Local Club Projects  
Seminole Boosters, Inc.  
Seminole Tip-off Club  
Student-Athletic Recruiting  
Undergraduate Alumni-Student  
Program



# Champions of the Future

By JIM SELMAN

Tampa Tribune Assistant Sports Editor



You're sitting among more than 30,000 others in Doak Campbell Stadium today and you're part of a growing football program at Florida State University.

Look around. Remember when 5,000, 10,000, 15,000 came to homecoming?

Soon now, another 10,000 seats may be added to this stadium. Then, crowds of 55,000 will see the big games here and there will be more of the big ones because the increased attendance will bring them.

Florida State has been playing football only 20 years, 15 in the major ranks.

Few schools have climbed this fast. Not so long ago the Seminole defense was among the best in the country, then came a Gator Bowl win. This year the offense is nationally ranked and there aren't many football teams playing this exciting pro-type offense as well as Florida State.

Today, the Seminoles try to win their fifth game and assure at least a break-even season, if not 6-4 which is far superior to what had been expected of this sophomore-dotted team.

But this is a brash, saucy, upstart bunch of Seminoles who have emerged fairly well without much given to them.

To come back at all from the disappointing finish with Florida required a lot of courage, but it was done overwhelmingly well.

One of the young Seminole coaches, charged mostly with producing freshmen, told me a year ago, "we're building a national champion here."

He may not be far from wrong because 21 of the 47 who have done most of the playing this year are sophomores and another 10 are juniors.

But Florida State football is not going to continue to flourish without you.

Recruiting the new talent is difficult in the face of the competition.

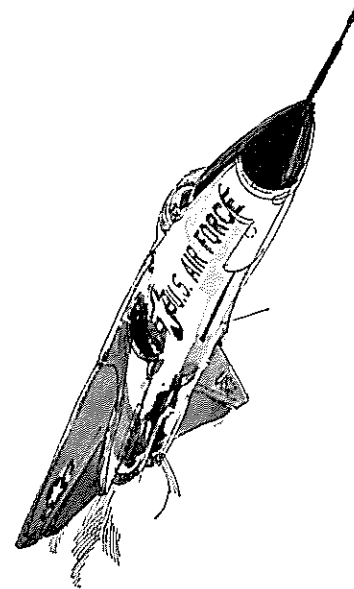
The FSU alumni ranks are comparatively thin, though growing steadily. You need to make more noise in your home area.

With quarterback Gary Pajcic passing, flankerback Ron Sellers catching, halfbacks Bill Moreman and Larry Green running and guard Del Williams blocking, you've got an explosive, exciting football team.

With Mike Blatt at linebacker, Frank Pennie at tackle, Larry Pendleton at middle guard and Marty Kolbus at safety, you've got a tough team.

So enjoy it today, 1966 homecoming.

And support it tomorrow for a better 1967.



## Have astronauts made pilots old hat?

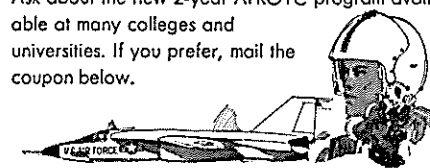
Sure, the boys who go off the "pads" get the big, bold headlines. But if you want to fly, the big opportunities are still with the aircraft that take off and land on several thousand feet of runway.

Who needs pilots? TAC does. And MAC. And SAC. And ADC.

There's a real future in Air Force flying. In years to come aircraft may fly higher, faster, and further than we dare dream of. But they'll be flying, with men who've had Air Force flight training at the controls. Of course the Air Force also has plenty of jobs for those who won't be flying. As one of the world's largest and most advanced research and development organizations, we have a continuing need for scientists and engineers.

Young college graduates in these fields will find that they'll have the opportunity to do work that is both interesting and important. The fact is, nowhere will you have greater latitude or responsibility right from the start than on the Aerospace Team—the U.S. Air Force!

Interested? The place to find out more is at the office of the Professor of Aerospace Studies, if there is an Air Force ROTC unit on your campus. Ask about the new 2-year AFROTC program available at many colleges and universities. If you prefer, mail the coupon below.



Air Force ROTC  
Maxwell Air Force Base, Ala. 36112

Name \_\_\_\_\_ Please Print

College \_\_\_\_\_ Class of 19 \_\_\_\_\_

Address \_\_\_\_\_

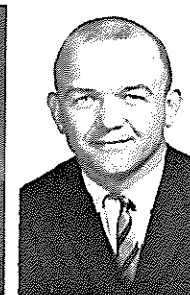
City \_\_\_\_\_ State \_\_\_\_\_ Zip \_\_\_\_\_

UNITED STATES AIR FORCE

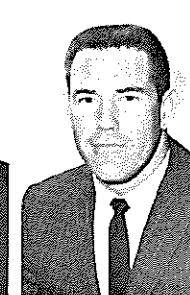
BILL CRUTCHFIELD  
First Assistant  
Offensive Chief



DON POWELL  
Offensive Line



DON BREAUX  
Receivers



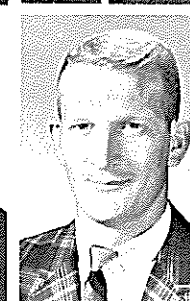
KEN MacLEAN  
Head Recruiter



BOB HARBISON  
Defensive Chief



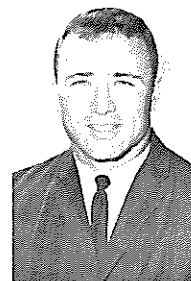
NEIL SCHMIDT  
Defensive Backs



GARY WYANT  
Linebackers

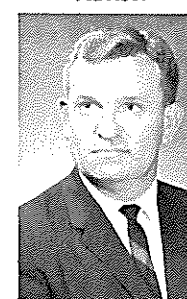


BOBBY JACKSON  
Defensive Ends

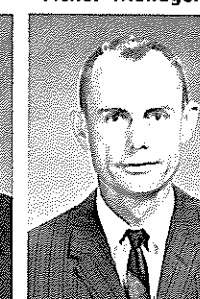


GENE McDOWELL  
Freshmen

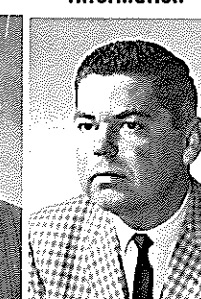
JEFF SAVAGE  
Academic  
Advisor



CLAUDE THIGPEN  
Ticket Manager



LONNIE BURT  
Sports  
Information



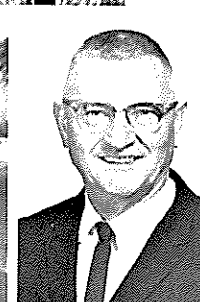
H. WINTER  
GRIFFITH  
Team Physician



DON FAULS  
Head Trainer



ROY DON WILSON  
Trainer



TILLMAN DIXON  
Equipment  
Manager



BILL PETERSON  
Head Football Coach

# THE SEMINOLE FOOTBALL FAMILY

VAUGHN MANCHA  
Director of Athletics







H. Davis (left), Alcoa's General Manager—Industrial Relations, says: "We've found that my ROTC graduates with active duty experience as officers possess better than average initiative, foresight, and responsibility. These qualities we rate very highly, and we gladly pay a premium to get them."

# Why did Alcoa hire Rod Wilson?

Because Alcoa needs men to fill key positions—men capable of moving to the top; men who seek and measure up to responsibility. Rod Wilson is that kind of man. An Army ROTC Distinguished Military Graduate at Colorado State University, Rod won an officer's commission in the Regular Army along with his degree. Forty-four months of active duty, including 16 months overseas as an artillery commander, earned Rod Wilson 24-carat credentials as a leader, a man schooled in the demanding disciplines of command, the kind of man Alcoa looks for. If you're this kind of man, prove it to yourself, and to the companies like Alcoa who are looking for you. How? Stay in Army ROTC. Stay with Army ROTC, all the way to success.

**ARMY ROTC**

## TODAY'S TEAMS

### 1966 Statistics

FLORIDA STATE			WAKE FOREST		
13	Houston	21	10	Virginia	24
23	Miami	20	7	Maryland	34
19	Florida	22	12	N.C. State	15
42	Texas Tech	33	6	Auburn	14
10	Miss. State	0	10	South Carolina	6
21	Virginia Tech	23	3	N. Carolina	0
33	South Carolina	10	21	Clemson	23
21	Syracuse	37	0	Virginia Tech	11
			21	Memphis State	7

#### TEAM STATISTICS

159	First Downs	106
1023	Yards Rushing	1281
1919	Yards Passing	891
2942	Total Offense	2172
291	Passes Attempted	144
153	Passes Completed	65
13	Passes Had Intercepted	9
4	Fumbles Lost	12
41	Punts	65
36.6	Punting Average	38.2

#### INDIVIDUAL LEADERS

##### Rushing

Name	Att.	Yds.	Avg.	Name	Att.	Yds.	Avg.
Mankins	95	389	4.1	Heck	118	576	4.9
Moreman	106	405	3.8	Johnson	94	373	4.0
Green	28	124	4.4	Hauswald	59	153	2.6

##### Passing

Name	Att.	Comp.	Yds.	TD	Name	Att.	Comp.	Yds.	TD
Pajcic	201	108	1292	6	Erickson	107	52	728	3
Hammond	79	38	491	3	Arrington	25	10	100	1

##### Pass Receiving

Name	Cgt.	Yds.	TD	Name	Cgt.	Yds.	TD
Sellers	47	671	2	Henry	14	222	2
Taylor	23	317	2	Hauswald	13	244	0
Cox	12	172	0	Decker	13	181	0
Mankins	21	162	2				
Wetherell	13	151	0				

##### Scoring

Name	TD	FG	PAT	TP	Name	TD	FG	PAT	TP
Mankins	8	0	0	48	George	0	5	7	22
Moreman	6	0	0	36	Hauswald	2	0	2	14
Roberts	0	4	14	26	Henry	2	0	0	12
Green	3	0	0	18	Arrington	2	0	0	12
Sellers	2	0	0	12	Erickson	2	0	0	12
Taylor	2	0	0	12	Heck	2	0	0	12

# The Vogue

TALLAHASSEE, FLORIDA

TRAVELING  
DESSERT TRAYS

FAMOUS  
TOWN HOUSE  
ROAST  
PRIME RIB  
OF BEEF



## ALL TIME FLORIDA STATE RECORDS SINGLE GAME Individual

TOUCHDOWNS SCORED—4 by Fred Biletnikoff vs. Oklahoma Gator Bowl, 1965; and Jim Mankins vs. Texas Tech, 1966

LONGEST TOUCHDOWN RUN FROM SCRIMMAGE—81 yards by Fred Pickard vs. Virginia Tech, 1957

LONGEST TOUCHDOWN PASS—80 yards, Nelson Italiano to Eddie Gray vs. Newberry, 1950

LONGEST TOUCHDOWN RUN ANY SITUATION—99 yards by Ted Hewitt vs. Stetson, 1948 and Fred Biletnikoff vs. Miami, 1963 (interception return)

LONGEST TOUCHDOWN PLAY—100 yards by Bill Moreman and T. K. Wetherell (lateral on kickoff return) vs. Kentucky, 1965

LONGEST RUN FROM SCRIMMAGE WITHOUT SCORING—76 yards by Roy Thompson vs. Stetson, 1951

LONGEST INTERCEPTION RETURN—99 yards by Ted Hewitt vs. Stetson, 1948 and Fred Biletnikoff vs. Miami, 1963

LONGEST PUNT RETURN—80 yards by Billy Odom vs. Stetson, 1954

LONGEST KICKOFF RETURN—89 yards by Billy Odom vs. Va. Tech, 1955

LONGEST PUNT—84 yards by Tommy Brown vs. Tampa, 1950

LONGEST FIELD GOAL—44 yards by Les Murdock vs. Virginia Tech, 1963

TIMES RUSHING—29 by Fred Pickard vs. Georgia, 1949

YARDS RUSHING—161 by Buddy Strauss vs. Mississippi College, 1949

PASSES ATTEMPTED—53 by Gary Pajcic vs. Virginia Tech, 1966

PASSES COMPLETED—28 by Gary Pajcic vs. Virginia Tech, 1966

YARDS PASSING—313 by Joe Majors vs. Tampa, 1959

TOUCHDOWN PASSES—5 by Steve Tensi vs. Oklahoma, Gator Bowl, 1965

TOTAL OFFENSE—369 yards by Joe Majors vs. Tampa, 1959 (56 rush, 313 pass)

PASSES CAUGHT—13 by Fred Biletnikoff vs. Oklahoma, Gator Bowl, 1965, and Ron Sellers vs. Virginia Tech, 1966

YARDS RECEIVING PASSES—192 by Fred Biletnikoff vs. Oklahoma, Gator Bowl, 1965

TOUCHDOWN PASSES CAUGHT—4 by Fred Biletnikoff vs. Oklahoma, Gator Bowl, 1965

PASSES INTERCEPTED—3 by Tommy Brown vs. Stetson, 1950; and Georgia Tech, 1952; Lee Corso vs. Georgia, 1954; and Bud Whitehead vs. Virginia Tech, 1959

FIELD GOALS—3 by Les Murdock vs. Florida, 1964.

PUNTS—11 by John Hosack vs. Baylor, 1965 (40.8 average)

#### TEAM

POINTS SCORED—74 vs. Whiting Field, 1949

MARGIN OF VICTORY—74-0 vs. Whiting Field, 1949

MARGIN OF DEFEAT—0-42 vs. Georgia, 1959

YARDS RUSHING—383 vs. Abilene Christian, 1957

YARDS PASSING—355 vs. Villanova, 1954

TOTAL OFFENSE—526 vs. Furman, 1962 (277 rush, 239 pass)

PASSES ATTEMPTED—56 vs. Virginia Tech, 1966

PASSES COMPLETED—29 vs. Virginia Tech, 1966

PASSES INTERCEPTED—7 vs. Virginia Tech, 1959

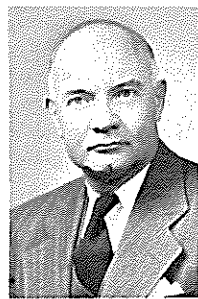
PUNTS—11 vs. Baylor, 1965



# FLORIDA STATE'S ATHLETIC COMMITTEE



**Robert Earnest**  
Chairman  
Professor, Business



**Mode L. Stone**  
Dean, School of  
Education



**Coyle E. Moore**  
Dean, School of  
Social Welfare



**Claude Flory**  
Professor, English



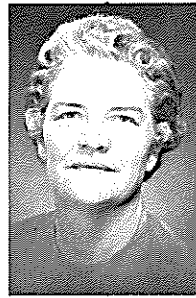
**Thomas Wright**  
Professor, Music



**Elston Roady**  
Professor,  
Government



**J. M. Plant**  
Assoc. Professor  
Engineering Science



**Mary Alexander**  
Assoc. Professor  
Physical Education  
and Recreation



**Mason Ladd**  
Dean, College  
of Law



**John Carey**  
Dean of Students

## MIDYETTE-MOOR Insurance Agency

"Ask Those We Serve"

Complete Insurance and Bond Service

PHONE 222-3456



MIDYETTE-MOOR BUILDING  
TALLAHASSEE, FLORIDA

SAYS

SCALP 'EM SEMINOLES!

★

Payne Midyette	Bill Moor
Frank Moor	Bill Franklin
Ed Clark	Glenn Sears
Winslow Sullivan	Dick Wall
Bob Dickinson	Don Northcut
Paul Lewis	Rex Sikes
Payne Midyette, Jr.	Mike Lee

## BENNETT'S DISCOUNT DRUG STORE

- Prescriptions
- Cameras
- Sundries
- Gifts
- Fountain
- Cafe
- Cosmetics
- Drugs

MEET ME AT BENNETT'S

BEFORE AND AFTER THE GAME!

Corner Monroe and College Streets

Phone 222-8980 — 222-4450

# The Four P's of College Football

by ARNIE BURDICK

Sports Editor, Syracuse (N.Y.) Herald-Journal  
President, Football Writers Association of America

**W**HEN Northwestern spoiled "Hurry-Up" Yost's unbeaten Michigan season of 1925, 3-2, more than one writer inquired, "Who pitched?"

Last fall, after West Virginia out-touched Pitt, 63-48, one disbelieving editor wired back, "Get that Western Union operator off the bottle and give me the correct score!"

A great many changes have been taking place in college football over the years, and those two divergent results certainly point it up.

"Way back in the Depression Days of the '30's, money was not the only hard thing to come by. Touchdowns were mighty scarce, too. Now, they often come in bunches.

How come?

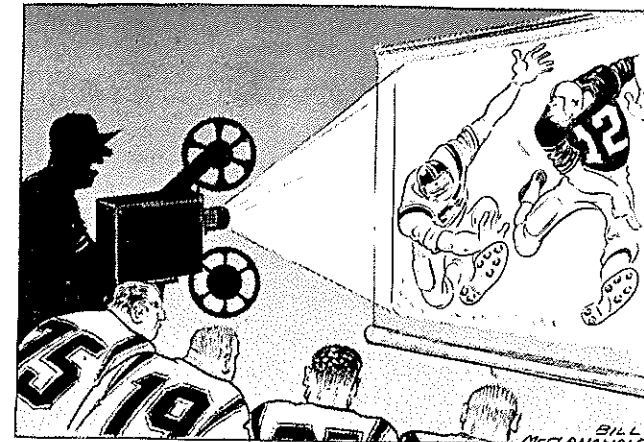
There are several theories, but most of the nation's finest football brains agree that the old "Punt-Pass-and-Prayer" era has given way to four new "P's."

"Passing, Platoons and Pictures," they say, "add up to Points!"

West Virginia and Pitt were not the only college teams busy scoring last fall. The National Collegiate Athletic Bureau reveals that a 32.1 points-per-game average was posted in major contests during 1965. That's better than two and a half touchdowns per team.

Paul (Bear) Bryant, who's been cranking out championship teams with regularity at Alabama was always known as "Mr. Defense" until recently when Joe Namath and Steve Sloan began authoring a bushelful of touchdown passes. 'Bama's 39-28 conquest of Nebraska in the last Orange Bowl game emphasizes this dramatic turn of events.

"The past couple of years," Bear feels, "we have scored a lot but haven't played much defense. Probably because we have used our best



"Films have helped us, too."

football players on offense and have had great quarterbacks.

"Two-platoon football definitely should make it a higher scoring game, since the offensive specialists should be further advanced than the defensive men most of the time."

Syracuse's Benny Schwartzwalder believes that scores have gone up "because quarterbacks have become so good. They come to us from the high schools today better prepared. There are so many good passers. They're so skilled, so accurate. And they're throwing to more skillful receivers.

"As a result they've simply opened up the game. It's sideline to sideline now, and this puts the offense ahead of the defense. You can't defend from one sideline to the other. And remember," says the veteran Orange mentor who's been reluctant to throw the ball, "excellence in the passing game helps the running game. The defense just can't crowd you... Films have helped us, too."

"A few years ago," observed Texas' Darrell Royal, "it was nothing unusual at all to see a tight formation with no backfield men flanked. Most all of us now are using at least one flanked receiver. Not only does this added passing and loosened-up formation give more striking power, but it also is dangerous in that the ball may be intercepted, which in turn gives up an easy touchdown. In most cases you find the better ath-

letes playing offensively, rather than defensively. It is plain to see how this works to the advantage of the offense."

Notre Dame's Ara Parseghian feels strongly about the effect the return of platoon football has had on scoring. "The players have more time to specialize in their skills," observes Ara, "and a coach can utilize completely the individual ability of his players. And we also have more players today, due to the increase in population. The players today are bigger, stronger and faster."

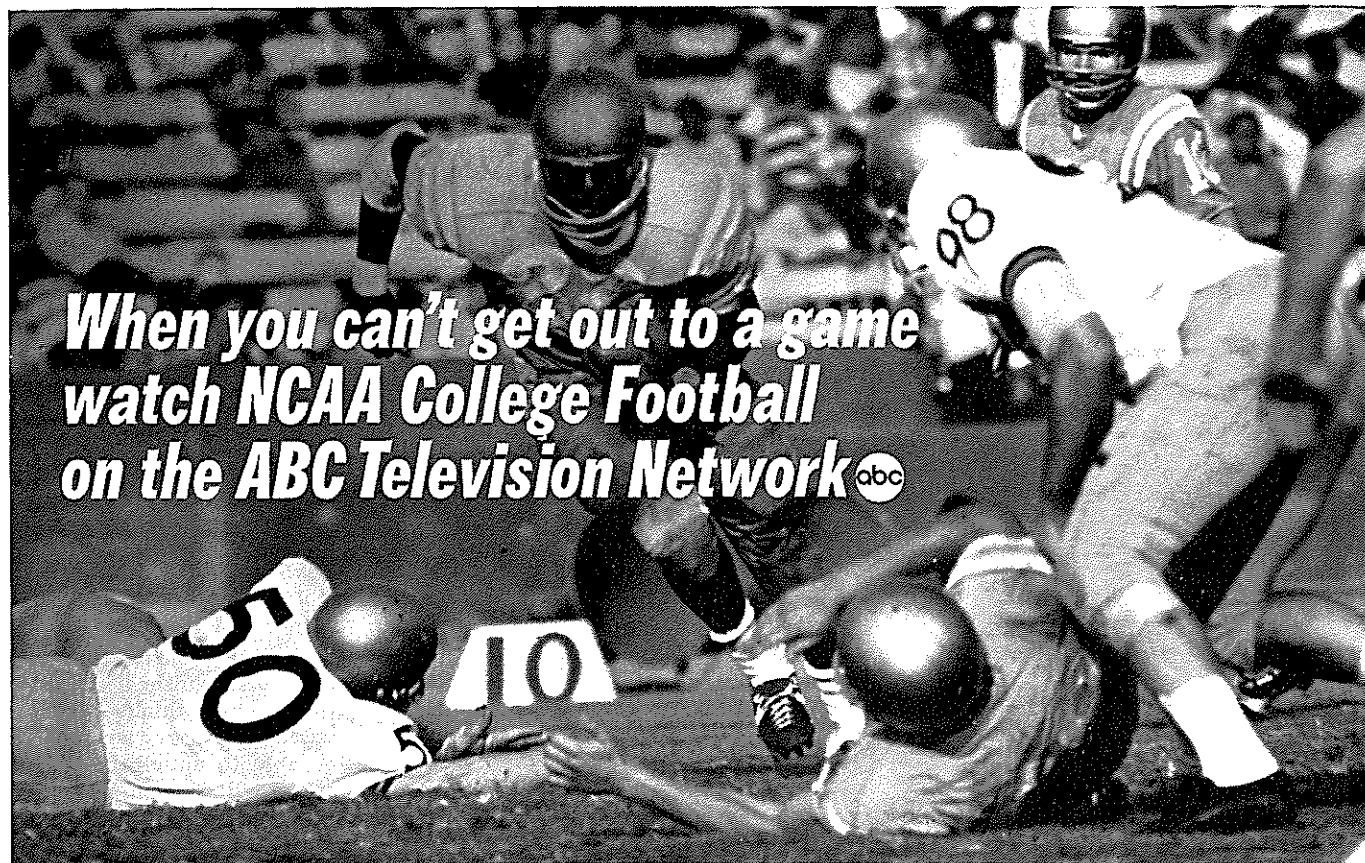
Dartmouth's Bob Blackman, who has had such distinguished success in the Ivy League, thinks scores have mounted because "we have been better able to anticipate what our opponents will do on defense than on offense. Most teams will stem from one basic defense. On the other hand, it is very easy for a team on offense to run from several different formations from which they had run the previous week, and to also put in several completely new plays that they haven't shown before. Coaches also feel freer to make a change in offense than on defense, on the theory that if you make a mistake on offense, you may lose five yards, but if you make a mistake on defense it may give your opponent six points."

Ohio State's Woody Hayes, master of the "Three-Yards-and-a-Cloud-of-Dust" school recognizes "that defensive trends have taken a great deal of our offensive initiative away from us. We are no longer able to grind it out on the ground; thus the need for a passing game arises, and the increased use of the passing game has made for more scoring. Also, we have gotten more plays per game by mixing it up more which in turn gives us more opportunities to score."

Dad may have courted Mom back when a buck was a buck and when one touchdown won a ball game, but no more. "We used to think 14 points," the coaches chorused, "would win a game, but now we know we need 21. And 28 to be sure."

Sounds like a good many Western Union operators may be accused of drinking before this season is history.





See Florida State vs. Virginia Tech from Blacksburg, Va. over the ABC television network, Oct. 29, 1966

## Campus Headlines and Coming Events

### A WORD FROM ALUMNI PRESIDENT HARRY MASSEY . . .

The thousands gathered in Campbell Stadium for the 1966 Homecoming football game represent far more to Florida State University than just a group of excited gridiron fans. They are visual evidence of the growing body of sons and daughters of the University. Each year the number of alumni who return to campus for Homecoming grows by fantastic proportions. Ten to twelve thousand of those present this weekend come from the University's alumni family. With such support and interest, we are assured of continued fulfillment of the mission of your Alumni Association to serve higher education and our Alma Mater.

In the midst of this fine weekend, I pause to express the appreciation of the alumni to the faculty, staff, and students for the hard work and diligent effort they have put forth to make this occasion truly a Homecoming to remember for all of us. To President Champion, I renew our pledge of continued support. Under his outstanding leadership, the future cannot help but provide a champion year every year at Florida State.



1966 HOMECOMING COURT

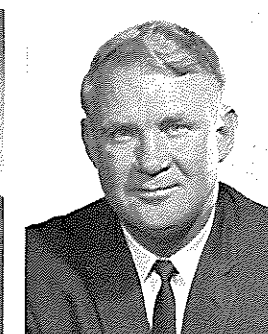
**THE QUEEN AND HER COURT**—One of these five lovely Florida State coeds was crowned as FSU's 1966 Homecoming Queen at exactly 9:20 p.m. last night during the annual POW-WOW ceremonies in Campbell Stadium. Left to right, are the Misses Diana Tegtmeyer of Cocoa Beach, Toni Beals of St. Augustine, Jackie Fain of Atlanta, Barbara Huntress of Miami and Janet Dunn of Daytona Beach.



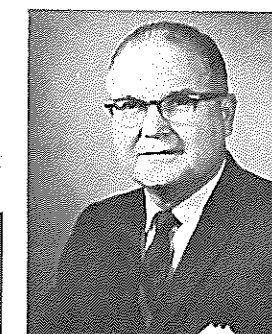
Haydon Burns\*  
Governor



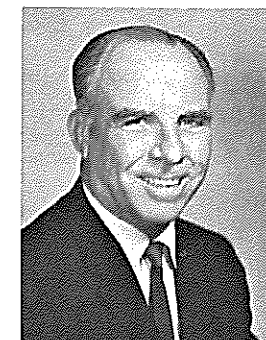
Tom Adams\*  
Secretary of State



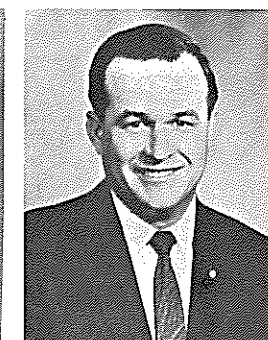
Earl Faircloth\*  
Attorney General



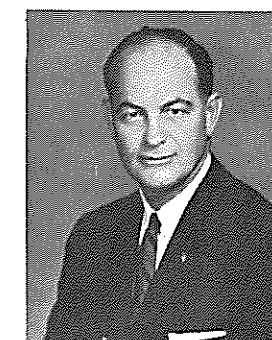
Broward Williams\*  
Treasurer



Floyd T. Christian\*  
Supt. of Public Instr.



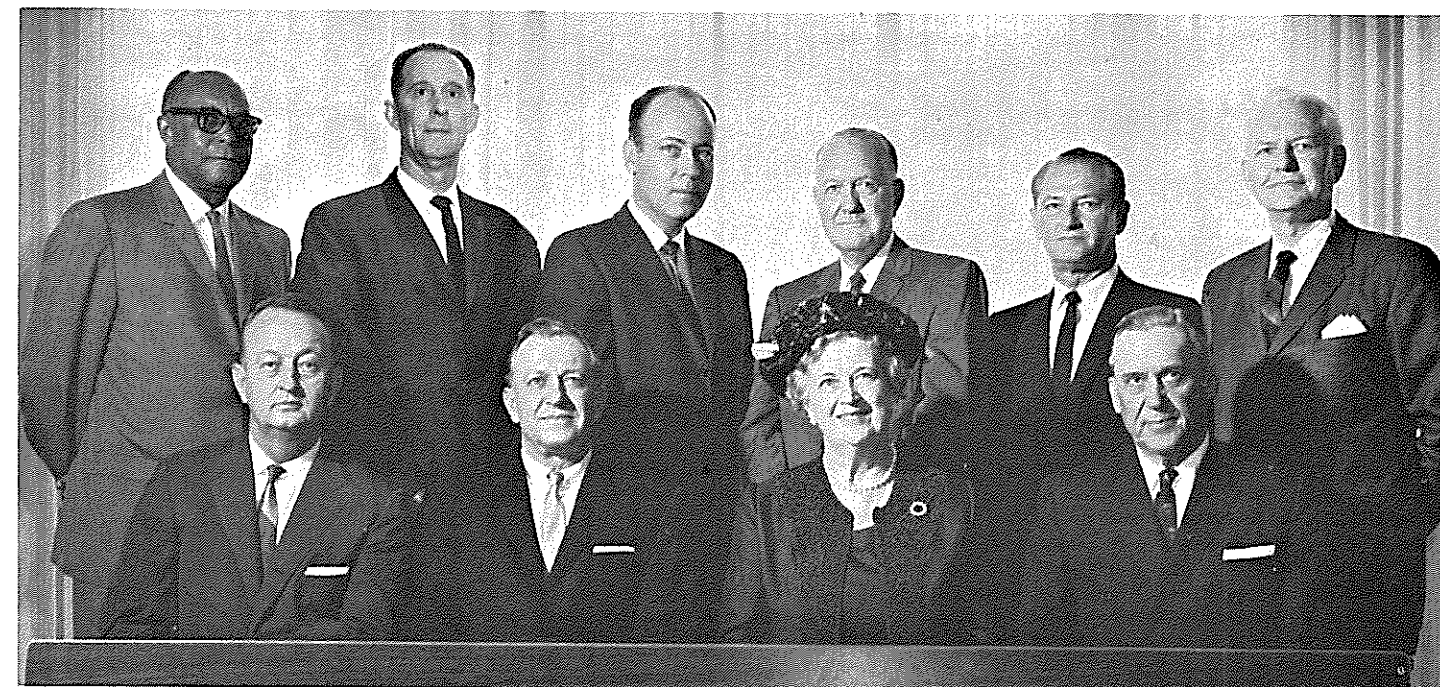
Doyle Conner  
Comm. of Agriculture



Fred O. Dickinson, Jr.  
Comptroller

## State Officials

\*Indicates membership on the State Board of Education.



BOARD OF REGENTS—STATE UNIVERSITY SYSTEM

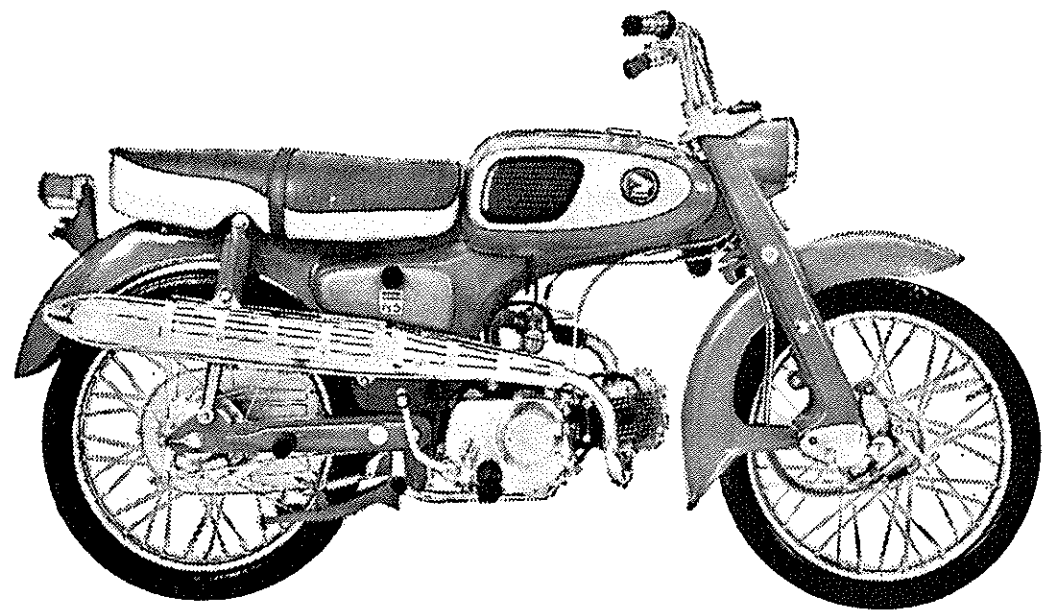
**Left to right, front row:** Wayne C. McCall, D.D.S., vice chairman, Ocala; Chester H. Ferguson, chairman, Tampa; Mrs. E. D. Pearce, Coral Gables; and John C. Pace, Pensacola. **Left to right, back row:** Clifton G. Dyson, W. Palm Beach; Woodrow J. Darden, Titusville; Louis C. Murray, M.D., Orlando; Clarence L. Menser, D. Litt., Vero Beach; Henry Kramer, Jacksonville; and J. Broward Culpepper, Ed.D.



"You meet the nicest people on a

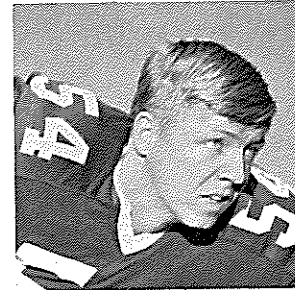
# HONDA

World's largest seller"

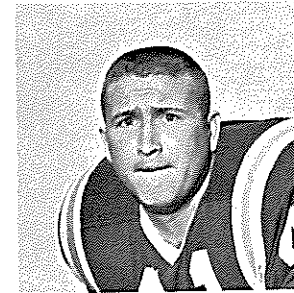


## HONDA OF TALLAHASSEE

At the Underpass on West Tennessee



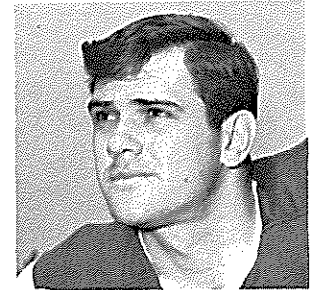
John Stephens



Bob Menendez

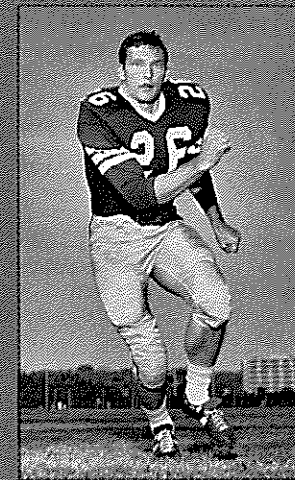


Wayne Giardino

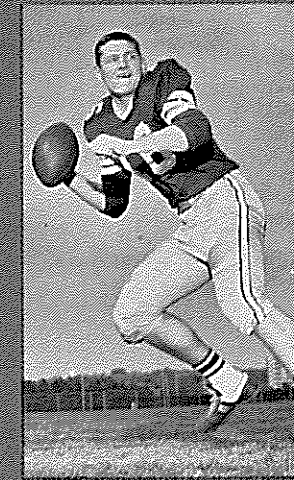


John Hosack

FLORIDA STATE  
UNIVERSITY  
66 SEMINOLES



Bill Campbell



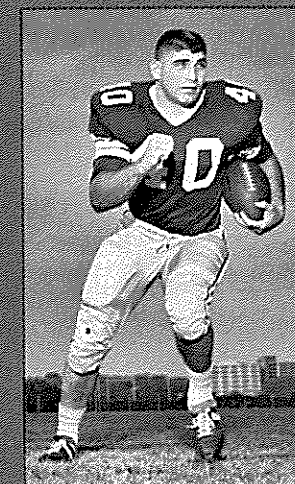
Gary Pajcic



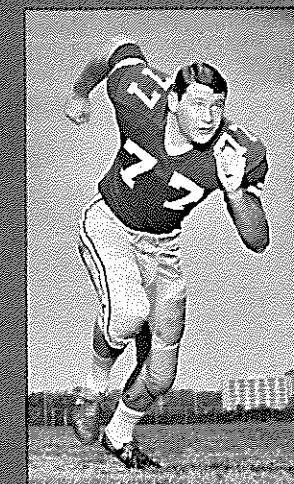
David Braggins



Bill Cox



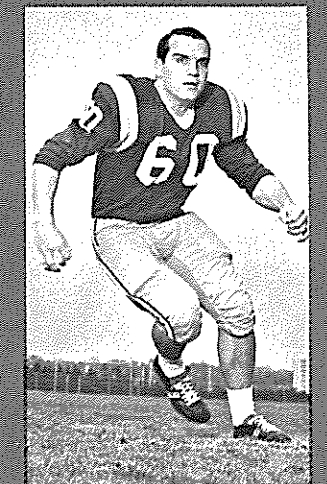
Mike Blott



Jeff Curchin

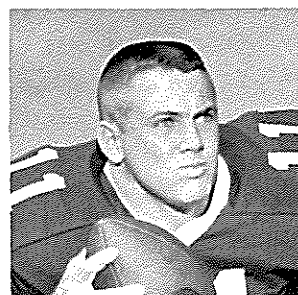


Ron Sellers

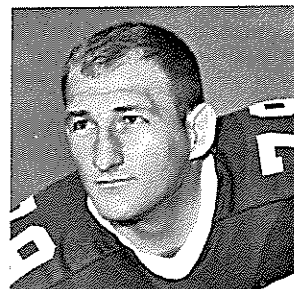


Larry Williamson

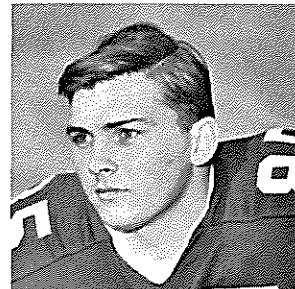




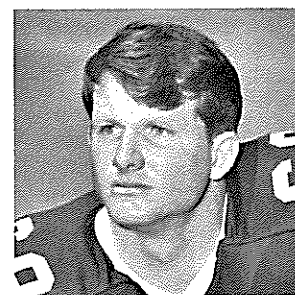
Kim Hammond



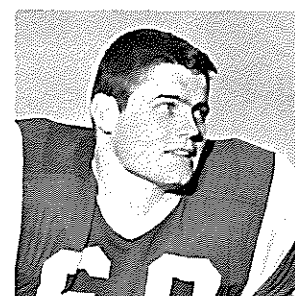
Frank Yohun



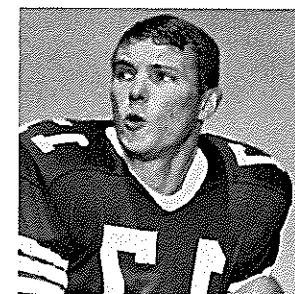
Doug Gurr



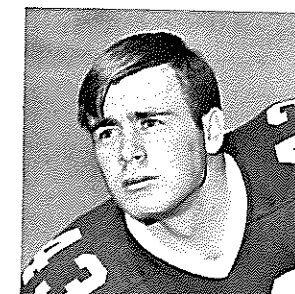
Jeff Chapman



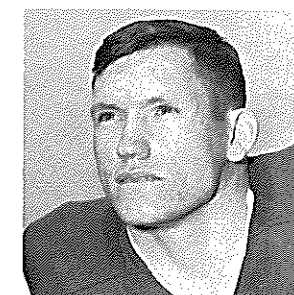
Edwin Pope



Marty Kolbus

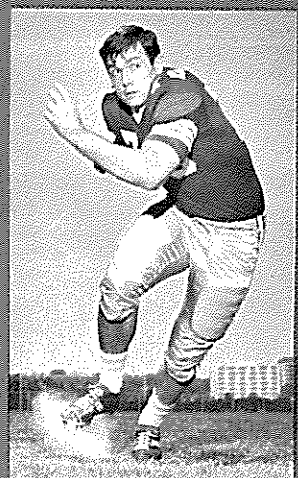


Howell Montgomery

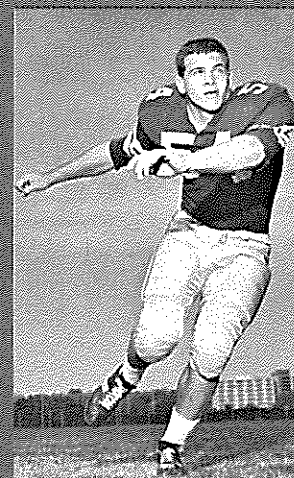


H. T. Waller

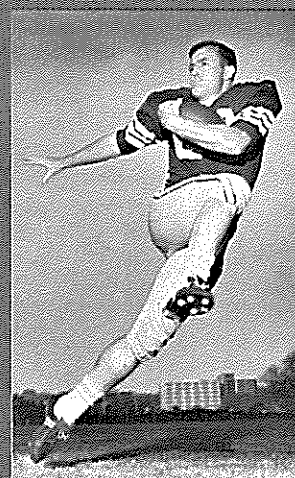
# the FLORIDA STATE UNIVERSITY 1966 SEMINOLES



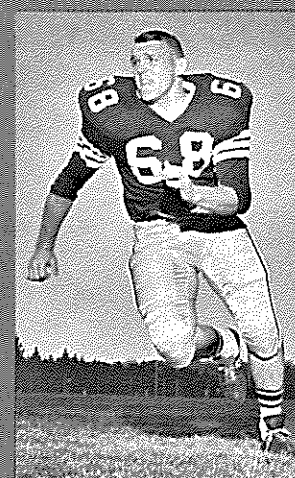
Charles Pennie



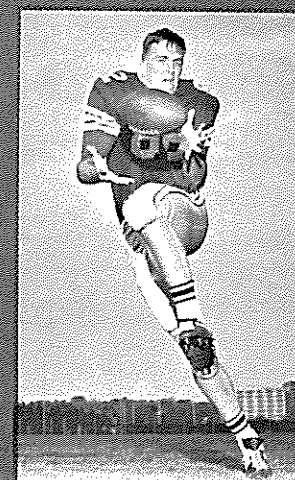
Billy Joe Jones



Larry Green



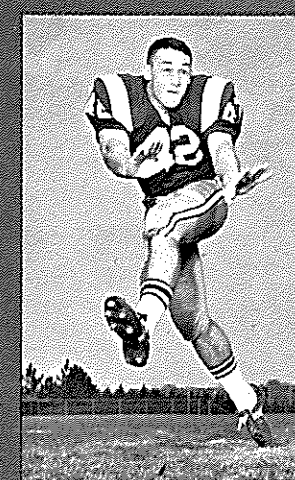
Larry Pendleton



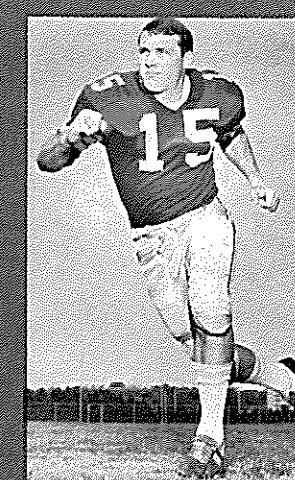
Lane Fenner



Bill Cappleman



Bill Richardson



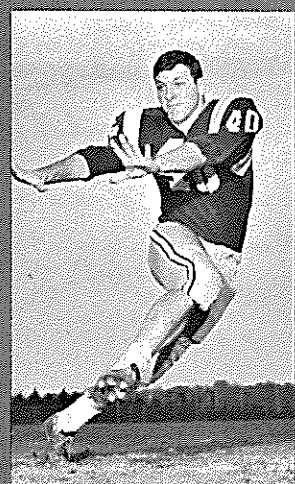
Pat Conway



Donovan Jones



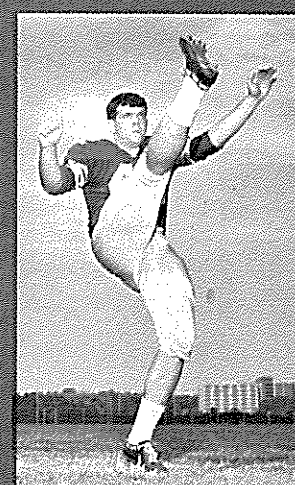
Larry Kissam



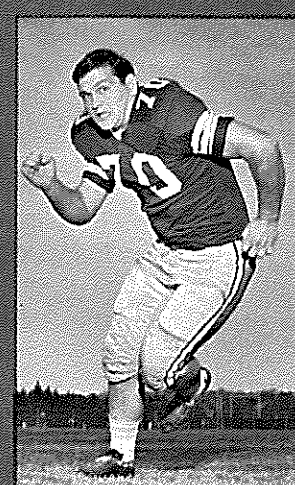
James Riser



Chip Glass



Pete Roberts



Del Williams

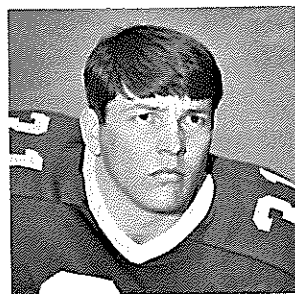


Thurston Taylor

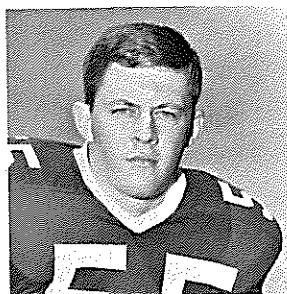


Harvey Zion

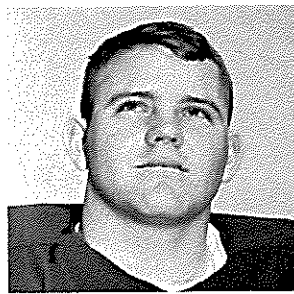




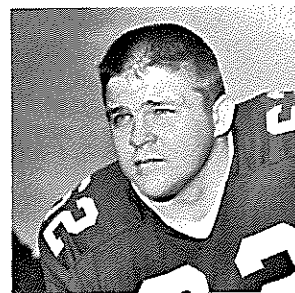
John Hurst



Ken Hart

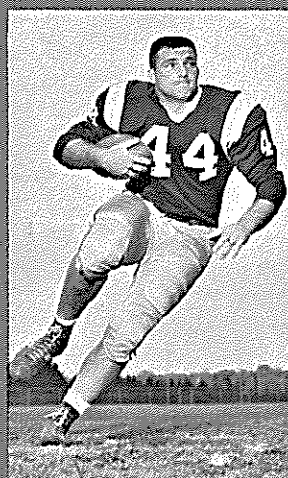


Jerry Jones

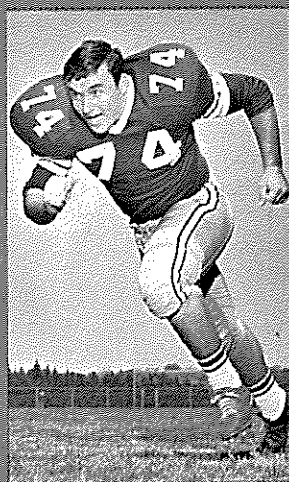


Dan Douglas

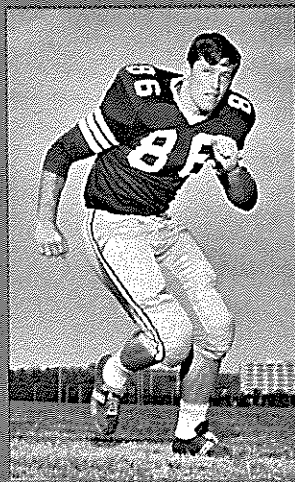
## FLORIDA STATE UNIVERSITY 66 SEMINOLES



Jim Mankins



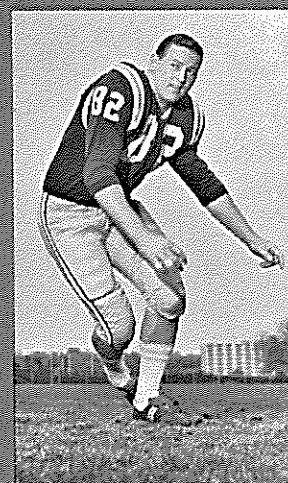
Jay Mac Matthews



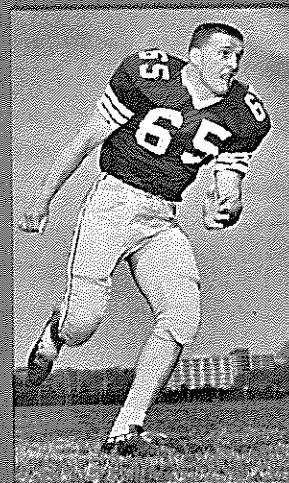
Billy Rhodes



T. K. Wetherell



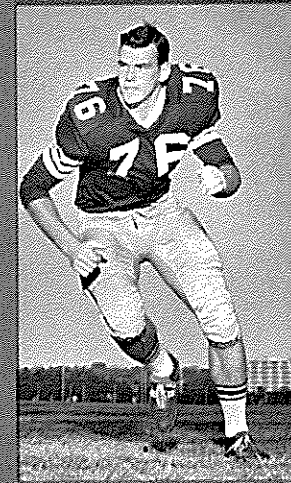
Wayne McDuffie



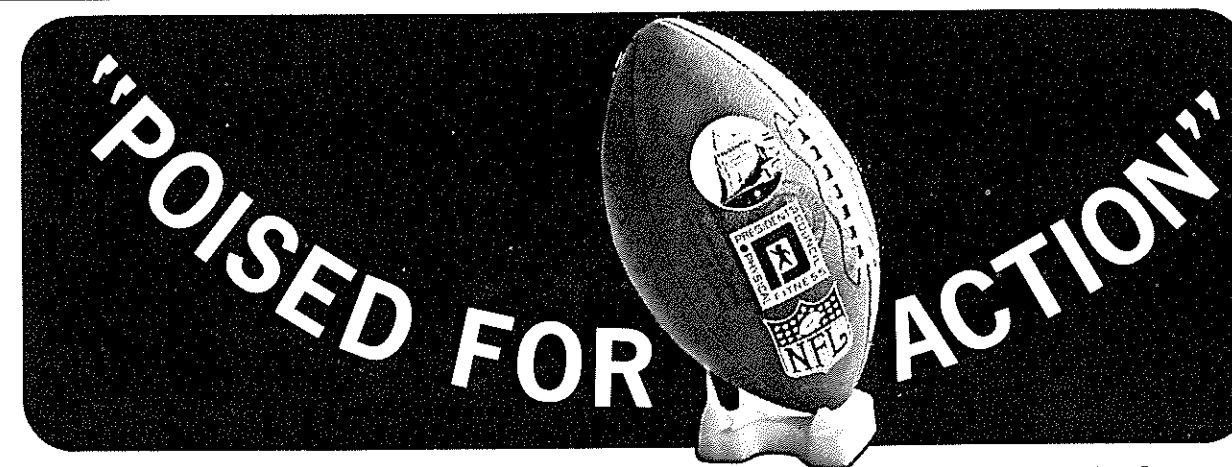
Dale McCullers



Bill Moreman



Jack Fenwick



## Football and Fitness Film Now Available!

This brand-new, exciting 28-minute color film captures the thrills of professional football. It shows 13 N.F.L. stars in action, in some of their biggest moments of play last year. In addition, the 16 mm. sound film depicts these same players in "how-we-do-it" demonstrations of these plays, as well as their own favorite methods of staying in peak physical shape.

The film and an accompanying 36-page booklet outlines football-oriented plays, exercises, fundamentals and skills.

The film, sponsored by Prudential in cooperation with the President's Council on Physical Fitness and the National Football League, is available for free loan. It will make a terrific program for your civic club, youth group or physical education class.

For information, contact your local Prudential office. Or write Public Relations Dept., The Prudential Insurance Co. of America, P. O. Box 4579, Jacksonville, Florida 32201.



**THE PRUDENTIAL INSURANCE COMPANY OF AMERICA**  
SOUTH-CENTRAL HOME OFFICE • JACKSONVILLE, FLORIDA

**Collins furniture co.**  
INCORPORATED

1117 THOMASVILLE ROAD  
PH. 222-1415

## TALQUIN INN

West Tennessee Street

Open Daily 5:00 p.m.

*Closed Sundays*

*Learn to Fly at*  
G. C. Shuler  
**Seminole Flying Service, Inc.**

Municipal Airport

Phone 222-3121

Tallahassee, Fla.

- STUDENT CLUBS
- AIRPLANE RIDES
- FLIGHT INSTRUCTION
- AERIAL PHOTOGRAPHY
- CHARTER FLIGHTS
- AIRCRAFT RENTAL

FLY the best—A New Cessna

"Look up—a new CESSNA will be overhead"



# Go Seminoles

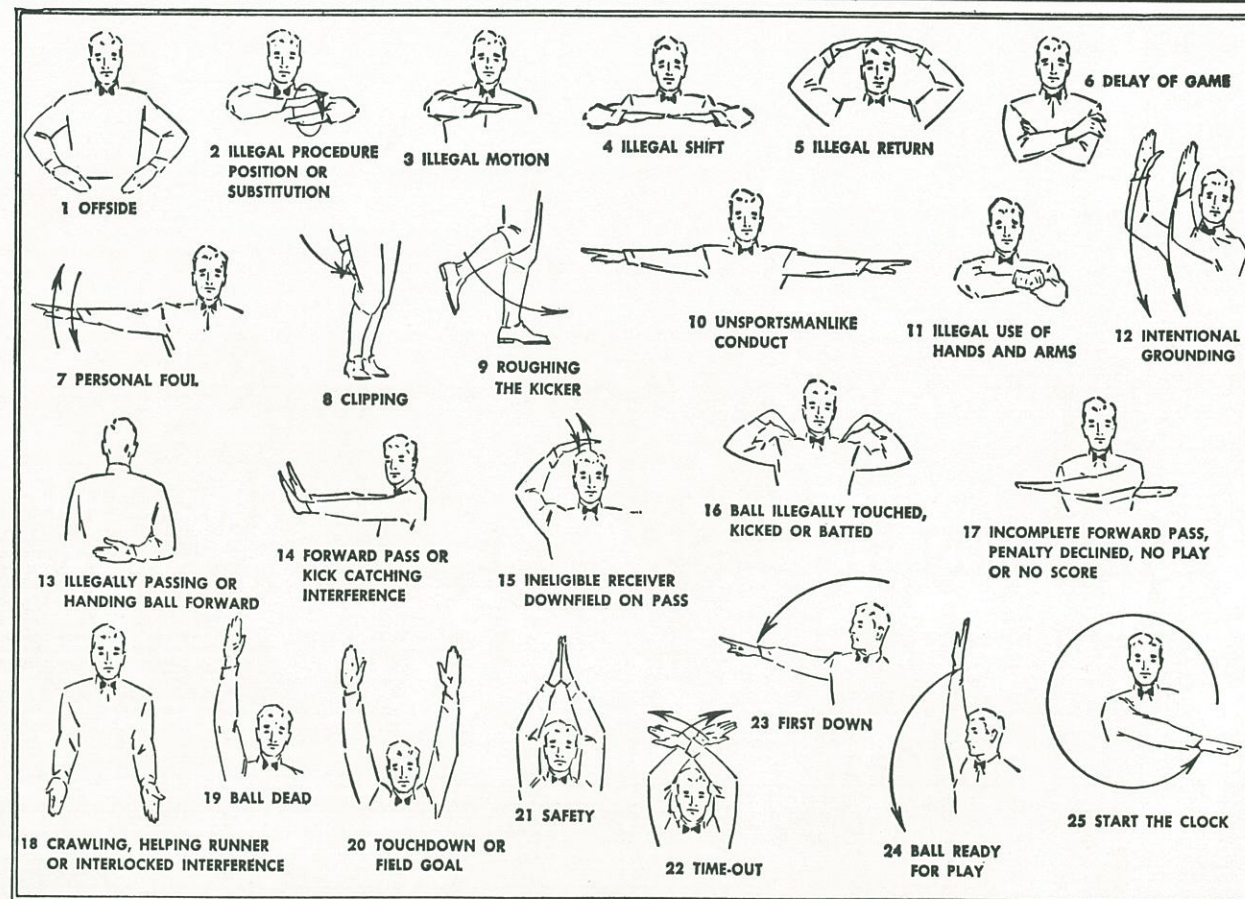
OWNED AND OPERATED BY FRANK, RICHARD & RAYMOND CHASE



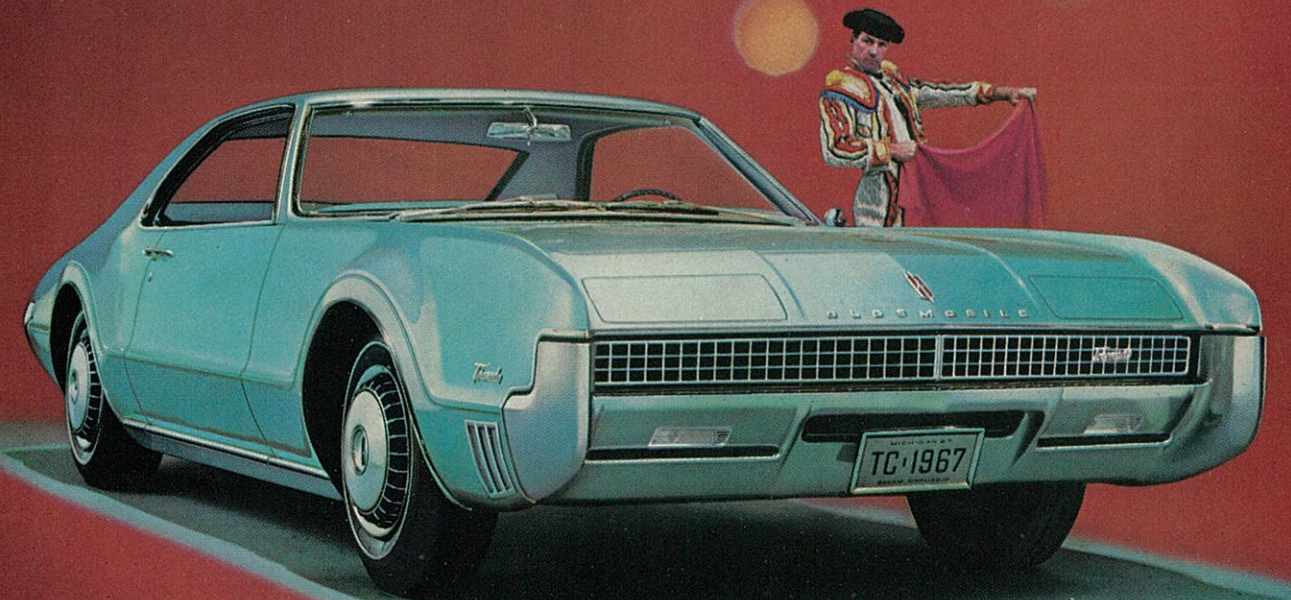
*"Serving Good Food for Fine People"*

Private Rooms and Banquet Facilities

FOR RESERVATIONS CALL: 599-9460 — 224-9546



*The Rocket Action Cars are out front again!*



After you've walked off with all the honors,  
what do you do for an encore?

Meet Olds Toronado—'67 edition.

*Awards for this. Awards for that. Awards for just about everything. But rest on its laurels? Not Toronado. Swinging new look outside. Posh new detailing inside. Doors with torsion-bar spring assists that open easier than ever to the flat-floored, room-for-six interior. Even that fabulous front-wheel-drive ride is smoother and quieter for '67. And front disc brakes and radial ply tires are available. Trend-setting Toronado: Proved and applauded by tens of thousands of satisfied owners. Greater than ever the second time around!*

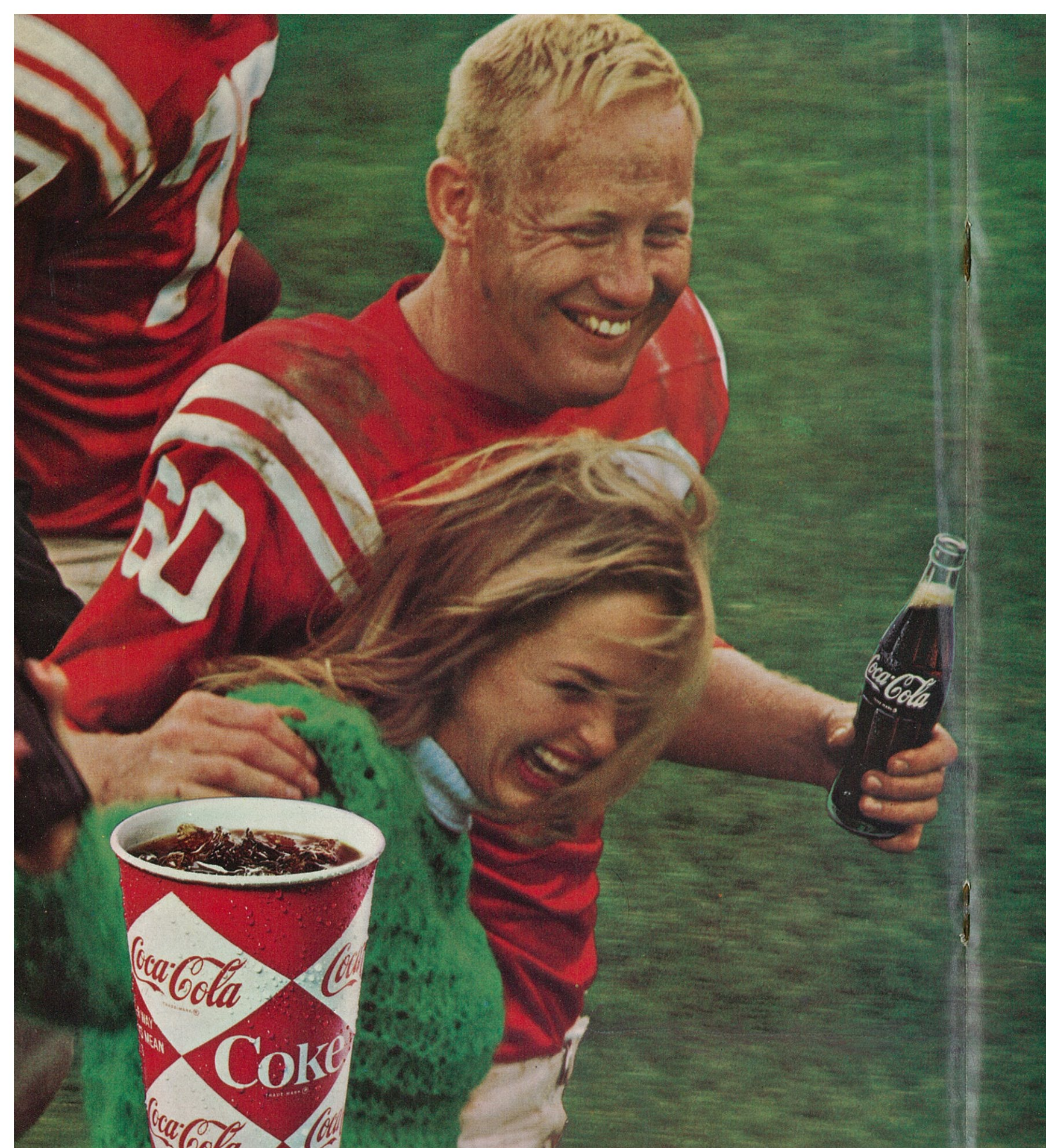
**OBEY LAWS DRIVE SAFELY** Olds thinks of your safety, too, with the GM-developed energy-absorbing steering column that can compress on severe impact up to 8½ inches; with four-way hazard warning flasher; outside rearview mirror; dual master cylinder brake system, plus many other safety features—all standard for '67.

Engineered for excitement . . . Toronado-style!

**'67 OLDSMOBILE**







OFFENSE		
80	KEN HENRY	WE
76	BILL SCHEIB	LT
66	DON McMURRY	LG
51	BOB OPLINGER	C
61	DON HENSLEY	RG
75	LYNN NESBITT	RT
83	RICK DECKER	SE
9	KEN ERICKSON	QB
41	EDDIE ARRINGTON	FLK
42	ANDY HECK	I-B
30	KEN HAUSWALD	FB

## WAKE FOREST

DEFENSE		
86	RAY SLONE	LE
77	ROBERT GRANT	LT
70	JOHN SNOW	LG
60	JOHN McQUEENEY	RG
88	BILL OVERTON	RT
85	TOM STUETZER	RE
53	JIMMY CLACK	LLB
50	BO WILLIAMS	RLB
40	DIGIT LAUGHRIDGE	LC
12	BUTCH BAKER	RC
11	ANDY HARPER	SFT

### THE DEACON SQUAD

3	Atkinson, DB	66	McMurry, G
5	Cheatwood, QB	67	Stanback, G
7	Wilson, QB	68	Brown, G
9	Erickson, QB	69	Vosters, G
10	J. Arrington, QB	70	Snow, T
11	Harper, DB	71	Halvorson, DG
12	Baker, DB	72	Ferezan, T
14	Brookshire, DB	74	Graves, T
22	Johnson, HB	75	Nesbitt, T
24	Dixon, HB	76	Scheib, T
30	Houswald, FB	77	Grant, T
34	George, BI	78	Hames, T
35	D. Smith, FB	79	Freedlund, G
36	I. Smith, HB	80	Henry, E
40	Laughridge, DB	81	D. White, DB
41	E. Arrington, HB	82	Sepic, E
42	Heck, HB	83	Decker, E
44	Walt, DB	84	R. White, E
50	Williams, IB	85	Stuetzer, E
51	Oplinger, C	86	Slone, E
52	Penn, C	87	Brenner, E
53	Clack, C	88	Overton, DT
54	Anderson, C	89	Wiest, E
56	Sasser, G		
57	Sklutas, T		
60	McQueeney, G		
61	Hensley, G		
62	Perretz, G		
63	Blasiole, IB		
65	Hessler, G		

### GAME OFFICIALS:

Referee	R. P. (Pete) Williams, Miami
Umpire	Charles Ellinger, Lutherville, Md.
Linesman	A. C. Williams, Jr., Memphis, Tenn.

DEFENSE		
87	WAYNE McDUFFIE	LE
78	CHARLES PENNIE	LT
23	WAYNE GIARDINO	LB
68	LARRY PENDLETON	MG
40	MIKE BLATT	LB
57	JOE KINNAN	RT
89	BOB MENENDEZ	RE
33	BUTCH RISER	CB
22	CHUCK EASON	CB
17	MARTY KOLBUS	S
24	WALTER SUMNER	S

## FSU

OFFENSE		
28	T. K. WETHERELL	SE
76	JACK FENWICK	LT
69	EDWIN POPE	LG
54	JOHN STEPHENS	C
70	DEL WILLIAMS	RG
73	LARRY KISSAM	RT
83	THURSTON TAYLOR	TE
16	GARY PAJCIC	QB
30	BILL MOREMAN	LH
44	JIM MANKINS	FB
34	RON SELLERS	FL

### FLORIDA STATE SQUAD

11	Hammond, QB	52	Zion, MG
12	Burkhardt, QB	54	Stephens, C
14	Cappleman, QB	55	Mosley, C
15	Conway, DB	57	Kinnan, DT
16	Pajcic, QB	59	Loner, MG
17	Kolbus, DB	60	Williamson, OG
18	Burton, DB	61	Elliott, OG
19	Roberts, K	62	Douglas, OG
20	Green, HB	64	Braggins, DT
21	Jones, FL	65	McCullers, LB
22	Eason, DB	66	Hart, OG
23	Giardino, LB	68	Pendleton, MG
24	Sumner, DB	69	Pope, OG
26	Campbell, DB	70	Williams, OG
27	Cox, OE	71	Albritton, C
28	Wetherell, OE	73	Kissam, OT
29	Hurst, HB	74	Matthews, DT
30	Moreman, HB	75	Rhodes, OT
31	Gunter, HB	76	Fenwick, OT
32	Richardson, DB	77	Curchin, OT
33	Riser, DB	78	Pennie, DT
34	Sellers, FL	79	Vohun, DT
35	Hosack, K	80	Gurr, DE
40	Blatt, FB	81	Waller, DE
41	Crowe, FL	82	Fenner, SE
43	Montgomery, DB	83	Taylor, OE
44	Mankins, FB	84	Glass, OE
47	Benson, LB	87	McDuffie, DE
50	Janes, MG	88	Jones, LB
51	Richardson, C	89	Menendez, DE

Field Judge	O. V. Player, Sumter, S. C.
Back Judge	Dick Pace, Maitland
ECO	C. E. Schroll, Montgomery, Ala.

"COCA-COLA" AND "COKE" ARE REGISTERED TRADE-MARKS WHICH IDENTIFY ONLY THE PRODUCT OF THE COCA-COLA COMPANY. PRINTED IN U.S.A.



# FOR THE TASTE YOU NEVER GET TIRED OF







# IN '67 BUICK

Get in with the In Crowd in a GS-400



BUICK MOTOR DIVISION

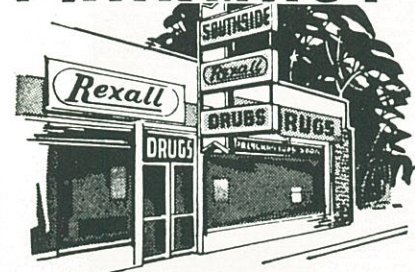
## PENALTIES

1. **OFFSIDE** by either team; Violation of scrimmage or free kick formation; Encroachment on neutral zone—Loss of Five Yards.
2. **ILLEGAL PROCEDURE, POSITION OR SUBSTITUTION**—Putting ball in play before Referee signals "Ready-for-play"; Failure to complete substitution before play starts; Player out of bounds when scrimmage begins; Failure to maintain proper alignment of offensive team when ball is snapped; False start or simulating start of a play; Taking more than two steps after Fair Catch is made; Player on line receiving snap—Loss of Five Yards.
3. **ILLEGAL MOTION**—Offensive player illegally in motion when ball is snapped—Loss of Five Yards.
4. **ILLEGAL SHIFT**—Failure to stop one full second following shift—Loss of Fifteen Yards.
5. **ILLEGAL RETURN** of substitute not previously disqualified—Loss of Fifteen Yards.
6. **ILLEGAL DELAY OF GAME**; Taking more than four times out during either half (except for replacement of injured player)—Loss of Five Yards. Team not ready to play at start of either half—Loss of Fifteen Yards.
7. **PERSONAL FOUL** — Tackling or blocking defensive player who has made fair catch; Piling on; Hurdling; Grasping face mask of opponent; Tackling player out of bounds, or running into player obviously out of play; Striking an opponent with fist, forearm, elbow or locked hands; Kicking or kneeing—Loss of Fifteen Yards (Flagrant offenders will be disqualified.)
8. **CLIPPING**—Loss of Fifteen Yards.
9. **ROUGHING THE KICKER** or holder—Loss of Fifteen Yards.
10. **UNSPORTSMANLIKE CONDUCT**—Violation of rules during intermission; Illegal return of suspended player; Coaching from sidelines; Invalid signal for Fair Catch; Persons illegally on field—Loss of Fifteen Yards. (Flagrant offenders will be disqualified.)
11. **ILLEGAL USE OF HANDS AND ARMS** by offensive or defensive player; Defensive holding—Loss of Fifteen Yards.
12. **INTENTIONAL GROUNDING** of forward pass—Loss of Five Yards Plus Loss of Down.
13. **ILLEGALLY PASSING OR HANDING BALL FORWARD**—Loss of Five Yards Plus Loss of Down.
14. **FORWARD PASS OR KICK CATCHING INTERFERENCE**—Interference with opportunity of player of receiving team to catch a kick—Loss of Fifteen Yards. Interference by member of offensive team with defensive player making pass interception—Loss of Fifteen Yards Plus Loss of Down. Interference by defensive team on forward pass—Passing Team's Ball at Spot of Foul and First Down.
15. **INELIGIBLE RECEIVER DOWN-FIELD ON PASS**—Loss of Fifteen Yards.
16. **BALL ILLEGALLY TOUCHED, KICKED OR BATTED**—Forward pass being touched by ineligible receiver beyond the line of scrimmage—Loss of Fifteen Yards from Spot of Preceding Down and Loss of a Down. Eligible pass receiver who goes out of bounds and later touches a forward pass—Loss of Down. Illegal touching of kicked ball within opponent's ten yard line—Touchback.
17. **PENALTY DECLINED**; Incomplete forward pass; No play or no score.
18. **CRAWLING** by runner—Loss of Five Yards. Interlocked Interference—Loss of Fifteen Yards.

## PRESCRIPTIONS

- COSMETICS
- GREETING CARDS
- TOYS
- FILMS & CAMERAS

224-9031  
**SOUTHSIDE**  
*Rexall*  
**PHARMACY**



1549 S. MONROE



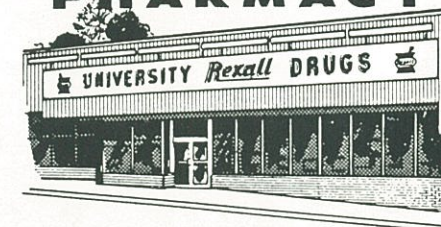
"BUDDY STEWART"  
WE BILL THE BANK  
"WORKING FOR BETTER  
COMMUNITY HEALTH"  
HAVE YOUR DOCTOR CALL US

NO CHARGE FOR  
DELIVERY SERVICE

CITY WIDE AND  
SURROUNDING AREAS

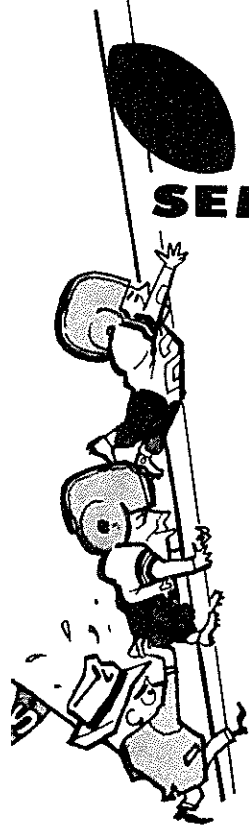
- VITAMINS
- CANDY
- GIFTS
- HOSPITAL SUPPLIES

224-5011  
**UNIVERSITY**  
*Rexall*  
**PHARMACY**

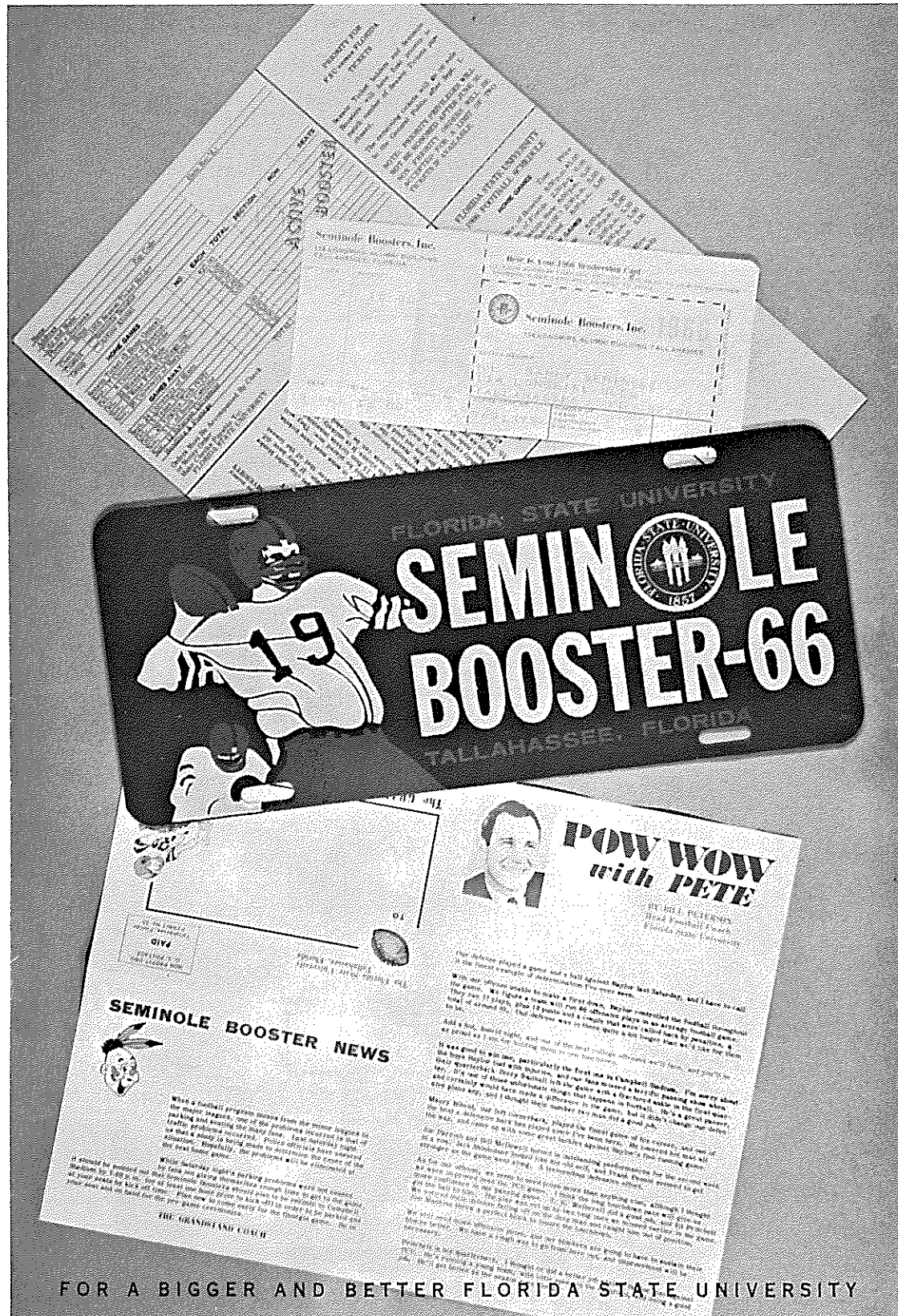


W. TENN & HIGH RD.





## SEMINOLE BOOSTERS, INCORPORATED



### SEMINOLE BOOSTERS, INC. BOARD OF DIRECTORS 1966

Seated, left to right: Weldon G. Starry, Director; Hank Mannheimer, Secretary; W. S. "Bill" Lee, President; Herschel Williams, Treasurer; and Dr. Ed Haskell, Jr., Immediate Past President.

Standing, left to right: Rainey Cawthon, Director; Louis Hill, Director; Tom Feamster, Jr., Director; Godfrey Smith, Director; J. T. Williams, Jr., Director; Theo Proctor, Jr., Director; William I. DuBey, Director; Wayne Cook, Director; Dr. Laurence Chalmers, Director; and Dan Wright, Director.

Not present when picture was taken were: T. A. Waits, Executive Director; J. Edwin White, President-Elect; Guy McKenzie, Director; Dr. Francis H. Watt, Director; F. W. "Bill" Carraway, Jr., Director; and Robert B. Drake, Director.

Seminole Boosters, Inc. is an organization devoted entirely to the support of the Florida State University athletic program with emphasis on football.

Membership in the Boosters—the group numbers approximately 1,400—is open to anyone with a sincere interest in the University's athletic progress. Minimum contribution for an individual membership is \$15. A business membership costs \$30.

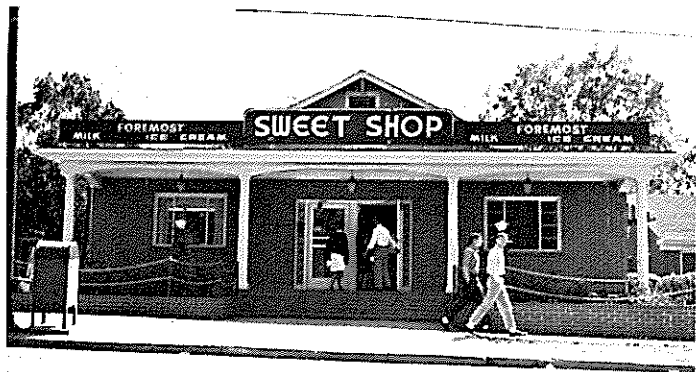
Contributions are administered in accordance with NCAA regulations and in conjunction with the Florida State Department of Intercollegiate Athletics.

Boosters receive a colorful automobile license plate which can be used for admission to special reserved parking lot at the stadium, a membership card, a weekly fall publication, "The Grandstand Coach," and certain priorities on season and single game football tickets.

SEMINOLE BOOSTERS, INCORPORATED	
FLORIDA STATE UNIVERSITY	TALLAHASSEE, FLORIDA 32306
<p>My 1966 gift is:</p> <p><input type="checkbox"/> Check attached for \$ _____</p> <p><input type="checkbox"/> Pledge to pay \$ _____ Bill me for \$ _____ (TOTAL AMT.) (PAYMENTS) <input type="checkbox"/> MONTHLY <input type="checkbox"/> QUARTERLY <input type="checkbox"/> OTHER _____ (SPECIFY)</p> <p>MEMBERSHIP: Individual - \$15 minimum Business - \$30 minimum</p> <p>(PLEASE CORRECT ANY ERRORS IN YOUR ADDRESS)</p> <p>NAME _____</p> <p>ADDRESS _____</p> <p>CITY, STATE _____</p> <p>ZIP _____</p> <p>ARE YOU AN F.S.U. ALUMNUS? Yes <input type="checkbox"/> No <input type="checkbox"/></p> <p>Make check payable to Seminole Boosters, Inc. Mail To: 114 Longmire Alumni Bldg., FSU TALLAHASSEE, Florida 32306</p> <p>SOLICITOR'S SIGNATURE _____ CONTRIBUTOR'S SIGNATURE _____ DATE _____</p>	







WHERE YOU  
WILL FIND  
YOUR FRIENDS

701 W. JEFFERSON  
South Gate F.S.U.



SPURGEON CAMP

"Let's Be  
#1  
In 1966"

NOBODY...  
BUT NOBODY  
UNDERSELLS

**SOUTHERN  
ELECTRIC INC.**




\*  
*The cigar for men  
that ladies love*

**HAV-A-TAMPA  
JEWELS**

WITH EXCLUSIVE BIRCHWOOD TIP

2 for 15c  
or new Push-Pak of five 36c  
(Plus state and local taxes, if any)



FROM HAVATAMPA—TAMPA'S LARGEST MANUFACTURER OF FINE CIGARS  
Distributed by **Eli Witt Tobacco & Candy Co.**  
Tallahassee, Florida

**QUALITY CLEANERS**  
215 W. COLLEGE AVE.—DIAL 222-5097

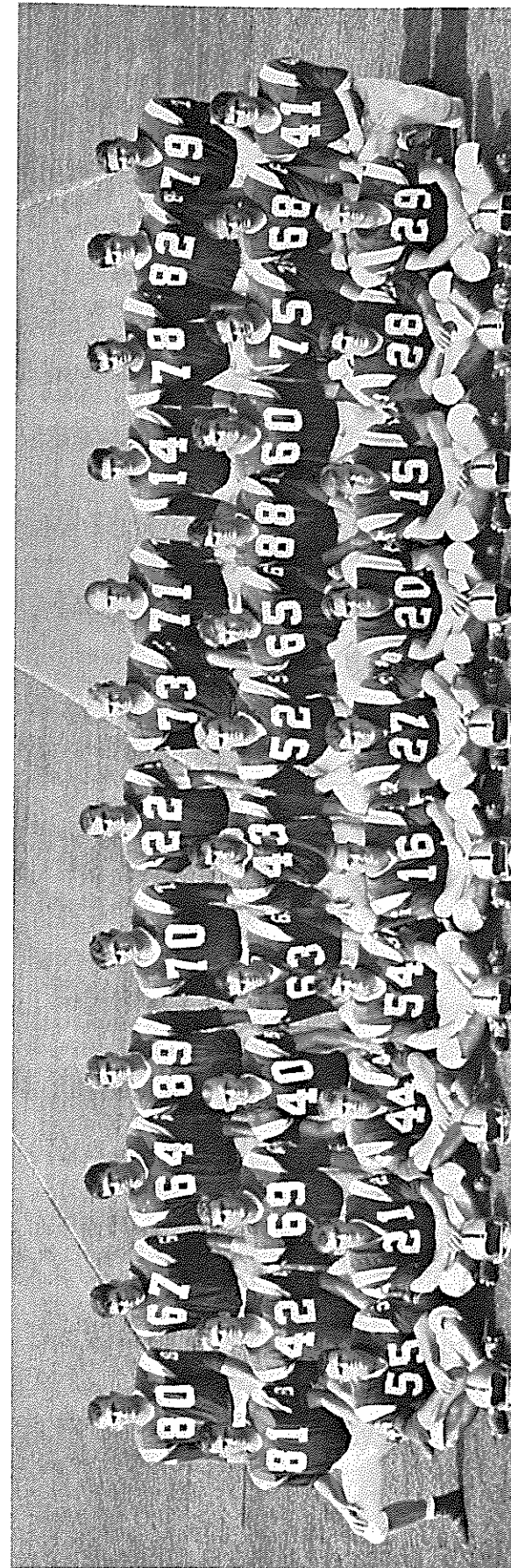
**ONE DAY SERVICE**  
**PICK-UP and DELIVERY**

*Quality Laundry Work*

*Fluff Dry Service*

EXPERT TAILORING and ALTERATIONS

ZIPPERS REPAIRED



## FLORIDA STATE'S 1966 FRESHMAN SQUAD

No.	Name	Pos.	Ht.	Wt.	Hometown
14	Doug Mitchell	QB	6-0	185	Williston
15	Bobby Burt	E	6-0	185	Cairo, Ga.
16	Tommy Warren	QB	5-11	175	Coral Gables
20	Phil Abraira	FL	6-0	180	Ft. Lauderdale
21	Randy Hodges	HB	5-10	170	Tallahassee
22	Mike Gray	E	6-3	180	Sanford
27	Barry Wenhold	HB	5-10	190	Sauderton, Pa.
28	Bill Donohoe	QB	6-0	180	North Miami
29	Bob Flynn	QB	6-0	190	Akron, O.
40	Ed Gibson	FB	5-10	195	Orlando
41	Bill Cheshire	QB	6-0	180	Jesup, Ga.
42	Ron Montford	QB	6-0	195	Blountstown
43	Ray Gruber	QB	6-1	175	Ft. Myers
44	Mike Page	HB	5-10	170	Winter Haven
52	Bill Hughes	C	6-1	205	Cocoa
54	Pete Rupp	FL	5-10	180	Evansville, Ind.
55	Ed Chereskoff	HB	5-10	180	Pembroke Pine
60	Barry Rice	HB	5-10	185	Fernandina Beach
63	David Worral	LB	5-10	160	Fort Walton Beach
64	Stan Walker	T	6-2	205	Tallahassee
65	Dick Johnson	G	6-1	180	Miami Springs
67	Paul Fuder	C	6-2	190	Marianna
68	Jim Bracken	T	6-2	215	Canton, O.
69	Beryl Rice	HB	6-0	180	Fernandina Beach

No.	Name	Pos.	Ht.	Wt.	Hometown
70	Terry Fisher	T	6-3	235	North Miami
71	Bill Lee	C	6-3	220	Chipley
73	Keith Kleinbach	T	6-3	230	Green Lane, Pa.
75	Tom White	T	6-1	240	West Palm Beach
78	Floyd Ratliff	FB	6-4	195	Jesup, Ga.
79	Duke Johnston	T	6-1	210	Ft. Lauderdale
80	Bob Eschelmann	E	6-2	215	Coral Gables
81	Jimmy Tyson	E	5-11	187	Pahokee
82	Jim Rust	T	6-3	200	Ft. Lauderdale
88	Lamar Munroe	HB	6-1	175	Quincy
89	Rick Anderson	QB	6-3	190	Winter Haven
	Robert Webb	QB	6-1	185	St. Augustine
	Cecil Presnell	C	5-10	180	Miami
	Skipper Babb	DB	5-11	165	Umatilla
	Jimmy Bird	DB	5-10	155	Bronson

### 1966 FRESHMAN FOOTBALL SCHEDULE

DATE	OPPONENT	SITE	TIME
Sept. 24	Miami	Sarasota	8:15 p.m.
Oct. 15	Florida	Gainesville	2:00 p.m.
Oct. 29	Southern Mississippi	Tallahassee	8:00 p.m.
Nov. 12	Georgia Tech	Moultrie, Georgia	8:00 p.m.

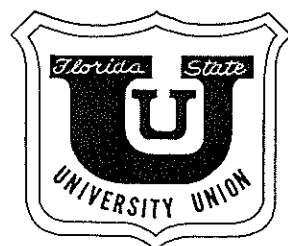




## ROSE PRINTING COMPANY, INC.

TALLAHASSEE, WASHINGTON, NEW YORK AND CHICAGO

# Your University Union....



*is more than a beautiful complex of buildings — it is an organization of a Union Board — Committees comprised of over 200 students — a professional staff — and YOU! It is an organization designed to serve you — the students, faculty, staff and members of the Alumni Association — with*

### PROGRAMS ★ SERVICES ★ FACILITIES

Beginning its third year and already an FSU campus tradition

**Activities Night — Union Birthday Party — President's Ball  
Madrigal Christmas Dinners**

*Operated entirely without the use of any state tax funds*

**FOR ALL CAMPUS INFORMATION**

**CALL THE UNION**

**599-3317**



### SEMINOLE CHEERLEADERS

Left to right: Dixie Wilcoxin, Jacksonville; Bruce Turner, Jacksonville; Judy Holman, Albany, Ga.; Doug Traxler, Boca Raton; Head Cheerleader Toni Beals, Sumter, S. C.; John Mullins, Tallahassee; Peggy Thompson, Ormond Beach; Bill Abney, Jacksonville; Doreen Brown, Manassas Park, Va.; Dave Deutsch, Palatka.

### THE ALMA MATER

High o'er the towering pines our  
voices swell  
Praising these Gothic spires we love  
so well;  
Here sons and daughters stand . . .  
Faithful and True, Hailing our Alma  
Mater  
F . . . S . . . U . . .

### FSU FIGHT SONG\*

We're going to FIGHT, FIGHT,  
FIGHT for FSU  
We're going to scalp 'em Seminoles.  
We're going to WIN, WIN, WIN,  
WIN, WIN this game . . . and  
roll on down and make those  
goals!  
For FSU is on the warpath now, and  
and at the battle's end she's  
great . . .  
So FIGHT, FIGHT, FIGHT, FIGHT  
for victory  
Our Seminoles of Florida State . . .  
F-L-O-R-I-D-A S-T-A-T-E  
FLORIDA STATE (3 times)

### THE FLORIDA STATE VICTORY MARCH\*

Onward to victory, Seminoles, GO! FORWARD MARCH, we must move  
out together and . . . FORWARD MARCH, it's always marching weather  
when thousands strong, we swing along. All in step for VIC . . . TO . . . RY.  
Our F-S-U and all our loyal Seminoles, ON-WARD GO . . . To conquer all  
our savage foes . . . won't be long . . . we can't go wrong . . . we will crush  
the EN . . . E . . . MY . . . So SCALP'EM . . . SCALP'EM . . . SCALP'EM  
. . . it's a case of do or die . . .  
Strike the fatal thrust, we'll be victorious; with terrible tenacity we can,  
we will, we must!

FORWARD MARCH, we'll ride the swelling battle tide  
FORWARD MARCH, we'll face the future side by side  
With our might, we'll FIGHT, FIGHT, FIGHT!  
. . . For Florida State University.

\*Written by Thomas G. Wright,  
Professor of Music at Florida State University.

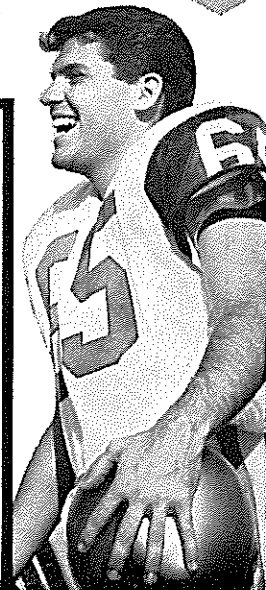


# YOUNG HO! GO CHEVRON!

Follow the SEMINOLES in '66



<b>WTNT</b> Tallahassee	<b>WJAX</b> Jacksonville
<b>WGBS</b> Miami	<b>WKIS</b> Orlando
<b>WCOA</b> Pensacola	<b>WDAE</b> Tampa



**Enjoy a Treat  
after the Game!**



**OPEN 7a.m. To 12 Midnight  
'TIL 2 a.m. Friday & Saturday**

**Diningroom & In-Car Service  
Plenty of Easy Parking**

**For CARRY-OUT Orders Telephone 224-1246**

**RESTAURANT**  
**1175 WEST TENNESSEE STREET**  
**TALLAHASSEE**

## THE SEMINOLE FOOTBALL NETWORK

Popular Bo Mitchell returns to the Seminole microphone for the fourth straight season, bringing play-by-play action to every corner of the Sunshine State.

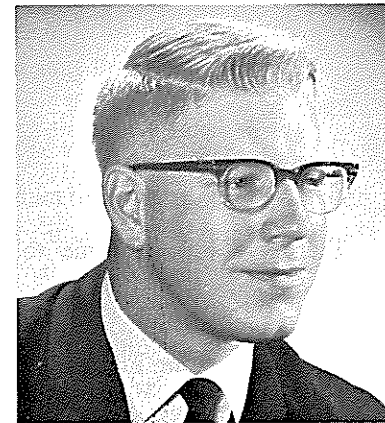
The energetic Mitchell, an ex-naval aviator with more than 17 years broadcasting experience, is vice-president and station manager of station WCOA, Pensacola.

His partner at the mike this season will be Bud Kaatz, a native of Ohio who was formerly color man for the University of Michigan Football Network and play by play announcer for Ohio University and Marietta College. Kaatz will handle pre-game, halftime and time out commentary on the Seminoles.

Originating station for the Seminole Network is WTNT, Tallahassee. The network consisted of 29 stations in Georgia and Florida.



Bo Mitchell



Bud Kaatz

### THE SEMINOLE NETWORK

WCOA Pensacola	WPCF Panama City
WTNT Tallahassee	WROD Daytona Beach
WJAX Jacksonville	WSPB Sarasota
WKIS Orlando	WTOT Marianna
WDAE Tampa	WZET Defuniak Springs
WGBS Miami	WTTB Vero Beach
WARN Ft. Pierce	WPAX Thomasville, Ga.
WDSR Lake City	WINK Ft. Myers
WEBY Milton	WTRR Sanford
WFOY St. Augustine	WPRY Perry
WGGG Gainesville	WFTW Ft. Walton Beach
WTRK West Palm Beach	WMAF Madison
WLAK Lakeland	WMGA Moultrie, Ga.
WLCO Eustis	WSIR Winter Haven
WMOP Ocala	WCNH Quincy

**BOWLING'S GREAT**

the Perfect date

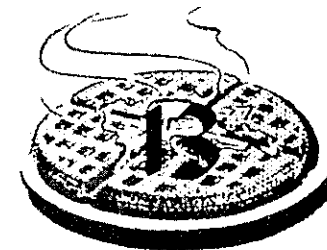
**AFTER THE GAME  
MEET YOUR FRIENDS  
AT THE**

*Parkway Bowl*

**COFFEE SHOP**

1230 Apalachee Parkway  
TALLAHASSEE, FLORIDA

**And Enjoy**



**WAFFLE VARIETIES**  
**With Your Favorite Beverage**  
**or Rich Creamy Hot Chocolate**

**GOOD LUCK SEMINOLES!**

**VARSITY THEATRE**

1833 W. Tennessee

Phone 224-8636

**PLEASE!**

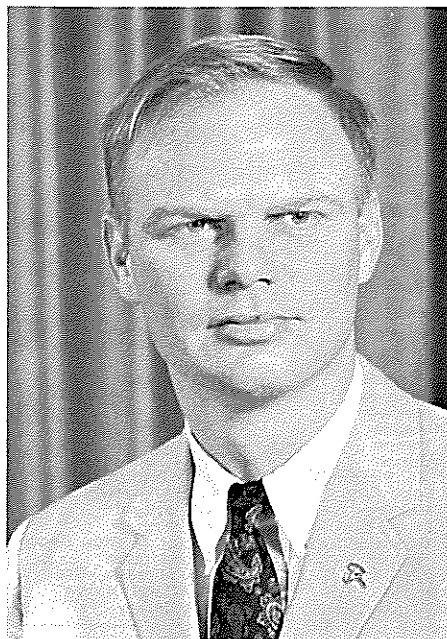
**CONSUMPTION OF ALCOHOLIC  
BEVERAGES IS PROHIBITED  
ON UNIVERSITY PROPERTY**

University regulations, and those of the State Board of Regents prohibit the consumption of alcoholic beverages on any part of the campus of Florida State University.

Please cooperate and abide by these regulations. Enjoy the game in the true spirit under which collegiate athletic contests are held, and be mindful of the rights of others.



# Tensi and Biletnikoff—A Victory Combination



Bill Bunker

By **BILL BUNKER**  
Former Sports Information Director

regarded with awe. The overall story has been well-recorded—the 9-1-1 record, a first victory over Florida, a triumph in the Gator Bowl. Within the patina of success, however, are the smaller individual triumphs that supply the building blocks of a deeper than obvious satisfaction.

The focal point of that season was one of the most devastating passing combination ever produced by a southern football team. Steve Tensi and Fred Biletnikoff left the Gator Bowl turf arm in arm and walked into the Florida State record books. They were, and always will be, an entity in the minds of Seminole fans, as indivisible as apple pie and vanilla ice cream.

Neither was a ready-made star, and few realize the long hours of practice these two spent in making the difficult look easy. Tensi in particular had a rough way to go that year. Public sentiment was divided as to the big fellow's ability, and though he broke

Florida State's all time total offense record on his first pass completion of 1964, he had to prove himself to a lot of people during his senior year.

Prove it he did—to 11 opponents, the Gator Bowl selection committee, professional football, and finally to the Florida State fans.

Tensi was found by accident when a Florida State recruiter went to Cincinnati, Ohio to look at another quarterback, Roger Staubach by name. The two were opponents that day and the Seminole coach came away with the utmost respect for Tensi, who incidentally turned down some 70 offers to attend Florida State.

Biletnikoff was another story. Considered too small for college football, he was given a scholarship to Florida State after being passed over by most of the big colleges in his home area of Erie, Pa. It was a chance, but one which gave Florida State its first All American.

Outside of their obvious physical ability, the thing that set Tensi and Biletnikoff apart was the feeling on the part of the observer that each knew what the other was about to do. Florida State fans came to sense "the bomb" when Tensi took the ball from center. Was there any doubt in anyone's mind that a touchdown was on its way when Tensi dropped back into the pocket that first time against Florida?

More than the actual performance of the two, it seems that the anticipation of what could happen caused a large part of the excitement generated by the 1964 Seminoles. An example of this came in the Houston game, when Biletnikoff was sidelined with a painful charley horse. Tensi's passing was as good as usual and split end Don Floyd did a magnificent job taking up the slack, but somehow the electricity was missing, and it was just another ball game.

As is the case many times, the personalities of the two were totally different. Tensi reminded one of an overgrown kid, friendly, outgoing, easy to talk to. Biletnikoff was the more intense type. You could almost feel the energy coiled inside, looking for an outlet. Modest to a fault, both seemed embarrassed at the attention he received.

If Tensi and Biletnikoff received most of the attention and credit for Seminole success, there were other elements in 1964 which made Florida State one of the nation's most colorful teams.



Biletnikoff and Tensi Share MVP Gator Bowl Award

"The Seven Magnificents" they called themselves, and a brasher bunch of upstarts never lived. Laughter and scoffing was the reaction when tackle Avery Sumner first promoted shaved heads for the Seminole defensive line, but by the third game Florida State was the only major college football team in the country which hadn't allowed a point on the scoreboard.

Pride was their byword, and they lived fiercely on Saturday. The first touchdown scored against the Seminoles in 1964 brought tears to the eyes of the "Seven," though the score at the time was 48-0 in favor of Florida State.

Tensi and Biletnikoff broke almost every record the Gator Bowl had on that banner afternoon against Oklahoma, but who can forget the goal line stand by the Seminoles in the final moments? Oklahoma was on the short end of the final 36-19 score, and another touchdown would have made no difference one way or the other. The

Sooners wanted it to save face before a national TV audience, but they were denied by one final display of the pride which characterized the "Seven Magnificents" throughout the 1964 season.

Also taking a secondary role were the members of an offensive line which allowed Tensi to be thrown for a loss while passing only six times the entire season. This is the group which told Steve he could wear a tuxedo before the Florida game. In typical Tensi fashion, the FSU quarterback's first words following the game were:

"I could have worn a tux, that's how good my protection was."

Though some will deplore reminiscence as backward thinking, it's good to reach back for past success occasionally if for no other reason than to regain confidence in the fact that what has happened once can happen again.

It happened in 1964.



1966-1967 BASKETBALL SCHEDULE

DATE	OPPONENT	SITE
Dec. 1 (Thurs.)	Valdosta	Tallahassee
Dec. 5 (Mon.)	Rice University	Tallahassee
Dec. 7 (Wed.)	University of Florida	Gainesville
Dec. 9 (Fri.)	SUNFLOWER CLASSIC—Kansas State U.	Manhattan, Kan.
Dec. 10 (Sat.)	SUNFLOWER CLASSIC—Univ. of Kansas	Lawrence, Kan.
Dec. 16 (Fri.)	V.P.I. TOURNAMENT	Blacksburg, Va.
Dec. 17 (Sat.)	V.P.I. TOURNAMENT	Blacksburg, Va.
Dec. 19 (Mon.)	TAMPA INVITATIONAL	Tampa
Dec. 20 (Tues.)	TAMPA INVITATIONAL (Columbia, North Carolina & The Citadel)	Tampa
Dec. 27 (Tues.)	MOBILE INVITATIONAL	Mobile, Ala.
Dec. 28 (Wed.)	MOBILE INVITATIONAL (Auburn, Alabama & T.C.U.)	Mobile, Ala.
Jan. 7 (Sat.)	University of Miami	Tallahassee
Jan. 14 (Sat.)	Tulane University	New Orleans, La.
Jan. 16 (Mon.)	Memphis State	Memphis, Tenn.
Jan. 23 (Mon.)	Jacksonville University	Tallahassee
Jan. 25 (Wed.)	Marshall University	Tallahassee
Jan. 28 (Sat.)	Georgia Tech	Tallahassee
Jan. 30 (Mon.)	Tampa	Tallahassee
Feb. 4 (Sat.)	Memphis State	Tallahassee
Feb. 8 (Wed.)	Jacksonville University	Jacksonville
Feb. 11 (Sat.)	Tulane University	Tallahassee
Feb. 18 (Sat.)	Florida Southern	Lakeland
Feb. 22 (Wed.)	University of Florida	Tallahassee
Feb. 25 (Sat.)	Georgia Tech	Atlanta, Ga.
Feb. 27 (Mon.)	Tampa	Tampa
March 1 (Wed.)	University of Miami	Miami

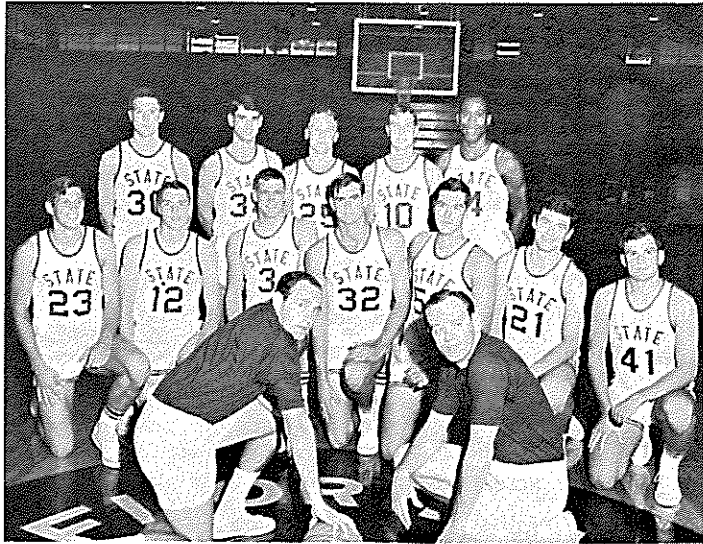


Photo By W. G. Shaver

1966 Florida State Varsity Basketball Team  
First Row (left to right): Bill Glenn, Dave Ross, Don Biggs, Dick Danford, Ken Doyle, Russ Forkey, Don Hilsmier; Second Row: Ian Morrison, Darrel Stewart, Brian Murphy, Jeff Hogan, Lenny Hall. In front: Hugh Durham, Head Coach, and Bill Clendinen, Ass't.

COMPLIMENTS  
OF  
TALLAHASSEE AUTOMOBILE DEALERS  
ASSOCIATION

ALFORD CHEVROLET COMPANY	KINNEBREW MOTORS, INC.
CAPITAL LINCOLN & MERCURY, INC.	MINGLEDORFF MOTORS, INC.
CAPITAL PLYMOUTH, INC.	PALMER-HARRELL BUICK COMPANY
COURTESY OLDSMOBILE, INC.	PROCTOR & PROCTOR, INC.
BOB DRAKE DODGE, INC.	TALLAHASSEE MOTORS, INC.

STADIUM INFORMATION

- Rest Rooms**—Located on concourse and on ground level on both east and west sides.
- First Aid**—Located in southwest corner of stadium. Registered nurse on duty.
- Lost and Found:** Items may be claimed or turned in at the ticket booth next to the press box elevator, west side.
- Public Telephones:** Located ground level, west side.
- Public Address:** No special announcements are made over the stadium public address system except in cases of emergency.
- Field Regulations:** No spectators are allowed on the field, either during or after the game. Please leave the stadium by ramp and section exits rather than field level exits.
- Drive Carefully**—Your cooperation with law enforcement officers will help speed the flow of traffic away from the stadium.

Patronize Stadium

**CONCESSIONS**

Located beneath the stands on each side of stadium

COLD DRINKS	small 15¢ large 25¢
HOT COFFEE	15¢
SANDWICHES	30¢
HOT DOGS	25¢
PEANUTS	25¢
POP CORN	15¢
CIGARETTES	40¢

SOUVENIR ITEMS - PENNANTS - BADGES

SUN VISORS - ASPIRIN

Please pay no more than

**ESTABLISHED PRICES**

CAPTAIN LOUIE'S GALLEY

"A Treasure Chest Full o' Fried Fish and Fancy Fowl"

DELIVERY CAN BE ARRANGED 224-1181

TO GO

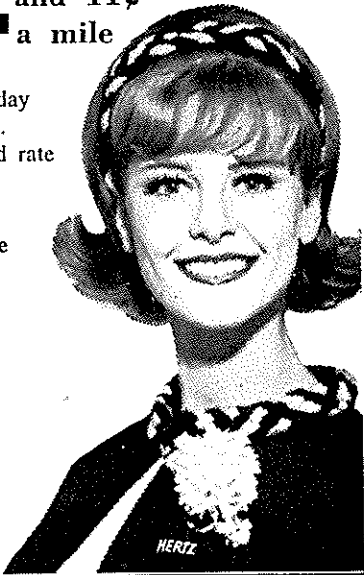
620 W. TENN. ST.

Drive a bargain  
with Hertz  
this weekend.  
Only \$14<sup>95</sup> and 11¢  
a mile

rents a Ford Galaxie or similar sedan from Friday noon to Monday 9 A.M. (And this low weekend rate includes insurance, gas, and oil.)

Let Hertz put you in the driver's seat. (Isn't that where you belong?)

For details, call:  
**222-1686**





WHEN YOU GET HUNGRY WHY NOT TRY SOME  
COLONEL SANDERS RECIPE KENTUCKY FRIED CHICKEN ©

three sizes to choose from:

Individual Box

3 Big Pieces of Chicken,  
Cole Slaw, French Fries,  
Rolls, Gravy

\$1.10

Family Bucket

Serves 5 to 7

\$3.75

Barrel O' Chicken

Serves 8 to 10

\$5.00

Gravy & Rolls 5.40

Bar-B-Q Chicken Sandwich  
French Fries—Jumbo Shake

60c



or if you prefer!

- Jumbo Shrimp Boxes
- Chicken Gizzard Boxes
- Filet of Fish Boxes
- Famous Home-Made Pies
- Chicken Liver Boxes

Holland's Drive In

TWO LOCATIONS TO SERVE YOU

Drive in No. 1  
1002 N. Monroe—224-1645

Drive in No. 2  
1603 W. Tenn. St.—224-4313

Tenn. St. Location Open 'Til 11 P.M.

Home Owned and Operated by Mr. & Mrs. N. T. Holland

The  
Association  
of  
Tallahassee Banks

Lewis State Bank  
The Peoples Bank  
Industrial Savings Bank  
Parkway National Bank  
The Tallahassee Bank & Trust Co.  
Capital City First National Bank

All Members of F.D.I.C.

Go Injun's

Pike's Studio

CHICK-N-TREAT  
Fried Chicken Takeout

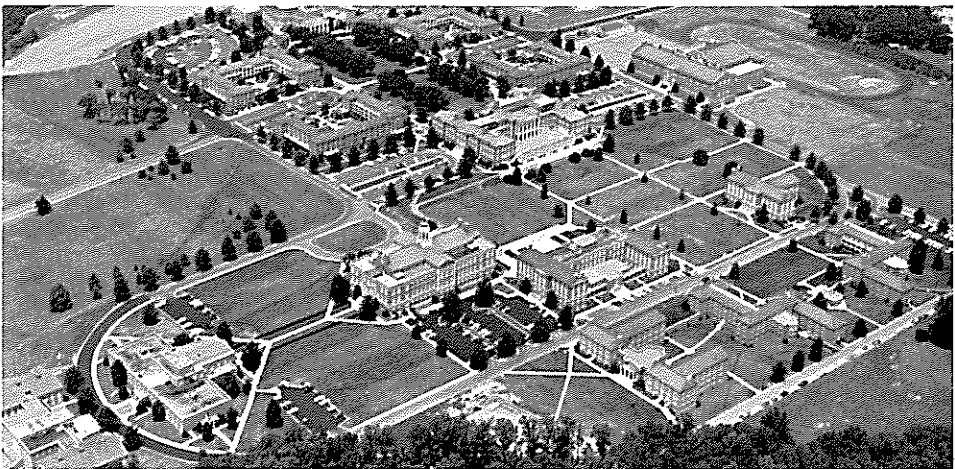
- 3 Pieces Chicken
- French Fries
- Cole Slaw
- Hot Rolls—Honey

\$1.00

LOCATED TWO BLOCKS FROM STADIUM

1342 Jackson Bluff Road  
Phone 224-4425

Go Seminoles! Go!



AERIAL VIEW OF WAKE FOREST COLLEGE CAMPUS

WAKE FOREST COLLEGE

At a time when education has claimed its rightfully important place in this country, Wake Forest College has staked out its own claim to extraordinary accomplishment and excellence, particularly in the last decade.

An institution with the usual rich trappings of tradition, Wake Forest has made unusual strides in recent years. It has had, as have other colleges, the impetus provided by Russia's sputnik and the subsequent wave of public interest in education.

Additionally, it has had the unusual experience of moving 110 miles from its original site to its present new campus at Winston-Salem, N. C. The move and the growing interest in education stimulated a chain reaction which has made Wake Forest one of the outstanding institutions in the South.

Wake Forest was founded in 1834 by the Baptist State Convention of North Carolina in a grove of trees sixteen miles north of Raleigh, the state capital. Enrollment that first semester was 16 but the college grew and prospered.

In 1946 the college encountered a new opportunity when the Z. Smith Reynolds Foundation offered to pay Wake Forest \$350,000 annually if the friends of the college would provide necessary buildings at a site in Winston-Salem. The grant was increased to \$500,000 annually in 1956. Ten years later the college made the historic move and now occupies a new campus valued at more than \$25 million. The Bowman Gray School of Medicine of the college had been moved to Winston-Salem in 1941 when it received the resources of the Bowman Gray Foundation.

Wake Forest consists of the following divisions: the School of Arts and Sciences, the School of Law, the Bowman Gray School of Medicine, the School of Business Administration and the Division of Graduate Studies. The College and its schools are approved by the standard accrediting agencies. The College has chapters of the principal national social fraternities, professional fraternities and honor societies, including Phi Beta Kappa.

The College believes that its emphasis on the basic liberal arts is the avenue to training for successful living whatever the graduate plans to do. One of the attractions Wake Forest offers to the exceptional student is an honors program which has two phases. One crosses departmental lines and consists of such courses as Approaches to Human Experience, Darwinism and the Modern World, The Ideal Society, Romanticism and the Comic View. The second phase of the honors program is departmental and is reserved for highly qualified majors who undertake research projects and are given a comprehensive oral examination.

Each year the college attracts outstanding speakers and entertainers. It also offers a number of art exhibits and a series of the world's best movies.

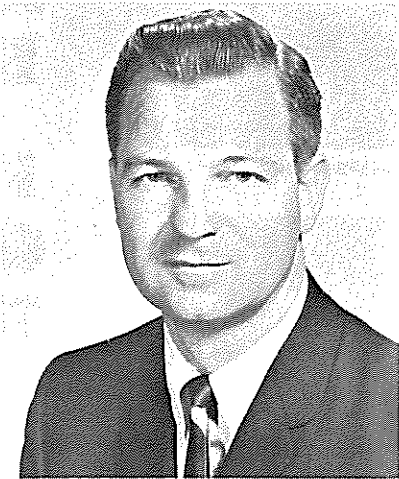
The college, which now has an enrollment of about 3,000, distributes over \$250,000 in the form of scholarships. In the School of Arts and Sciences, the School of Business Administration and the School of Law they range up to \$1,500 annually and in the School of Medicine up to \$4,800 annually.

Wake Forest participates in all major intercollegiate sports. As a member of the Atlantic Coast Conference, it competes with some of the best teams in the country. Its 1961-62 basketball team ranked third in the NCAA finals. An extensive intramural program is offered for all men and women.

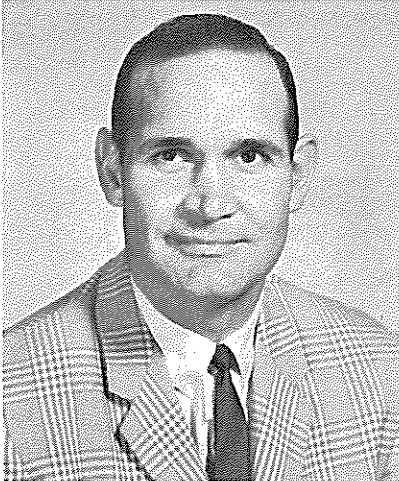
Wake Forest's current president is Dr. Harold W. Tribble who is the 10th man to lead the institution since it was founded.



DR. HAROLD W. TRIBBLE  
Wake Forest President



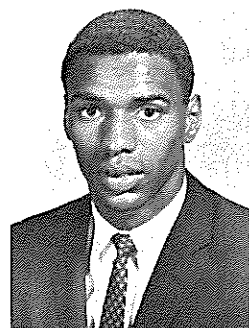
DR. GENE HOOKS  
Wake Forest Athletic Director



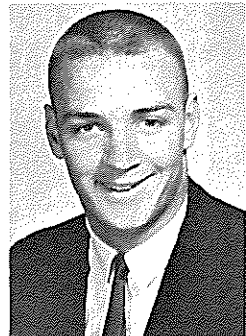
COACH BILL TATE



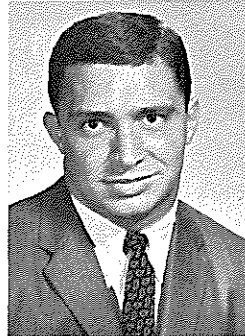
KEN HENRY



DICK HESSLER



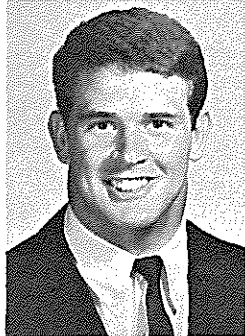
LARRY HAMBRICK



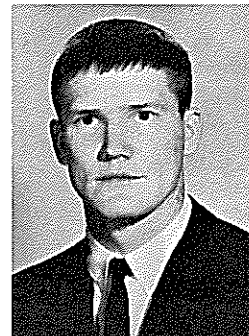
JIMMY CLACK



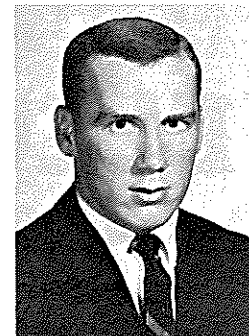
DON HENSLEY



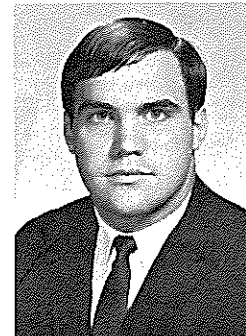
JIMMY DIXON



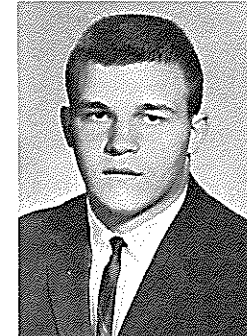
ANDY HARPER



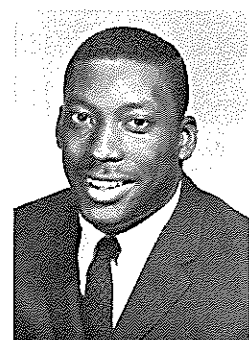
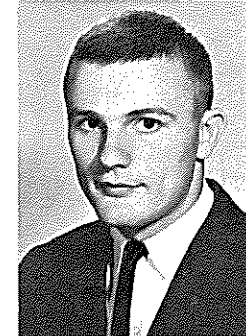
DICK CRITZ



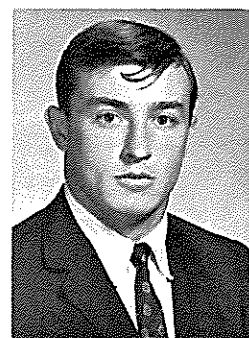
DAN FEREZAN



JOE SEPIC



JIMMY JOHNSON



JOHN McQUEENEY

WAKE FOREST

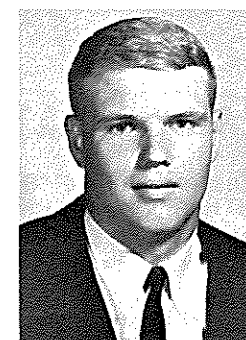


Z. SMITH REYNOLDS LIBRARY

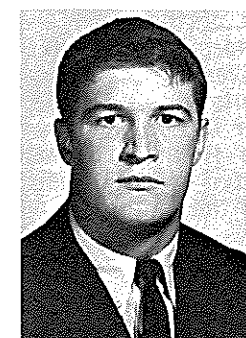


LAW BUILDING

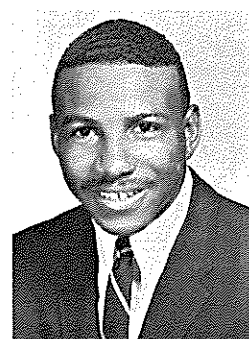
WAKE FOREST



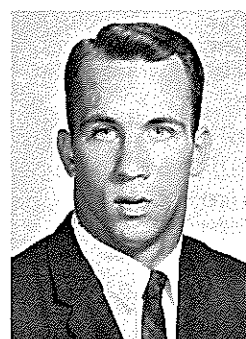
DICK PENN



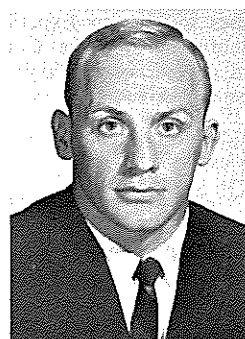
RICHARD DECKER



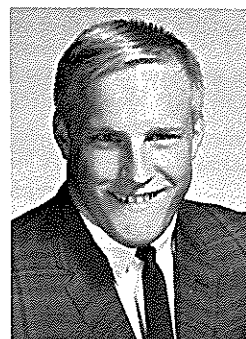
ROBERT GRANT



KENNY HAUSWALD



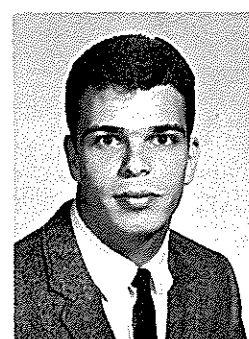
ANDY HECK



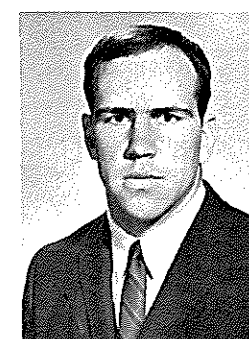
RUNO ANDERSON



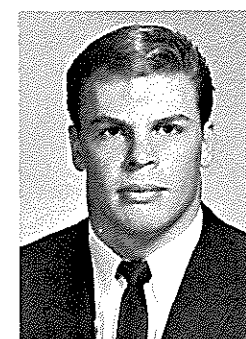
BOB BRENNER



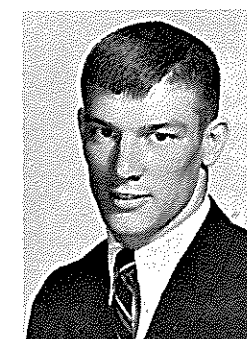
KEN ERICKSON



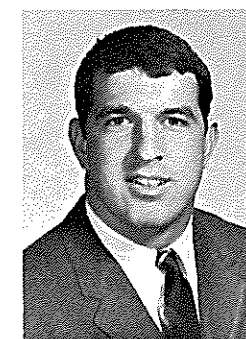
JAMES HOBBS



LLOYD HALVORSON



EDDIE ARRINGTON



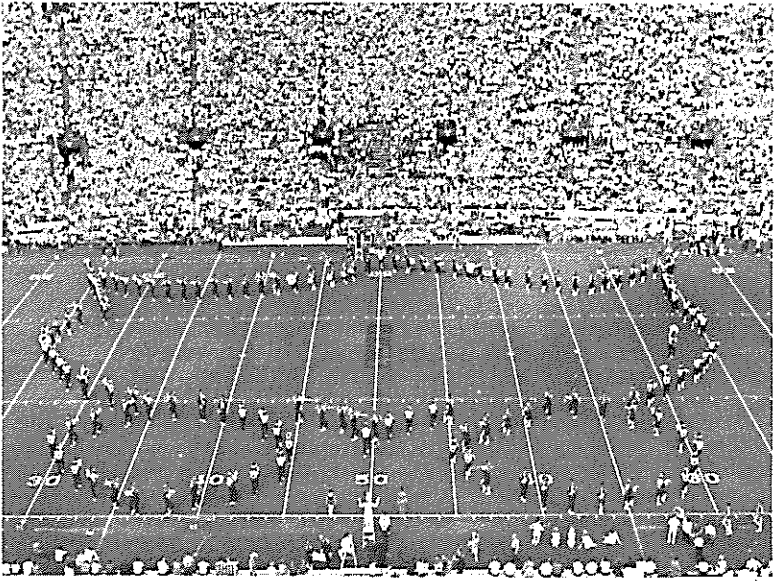
CHICK GEORGE



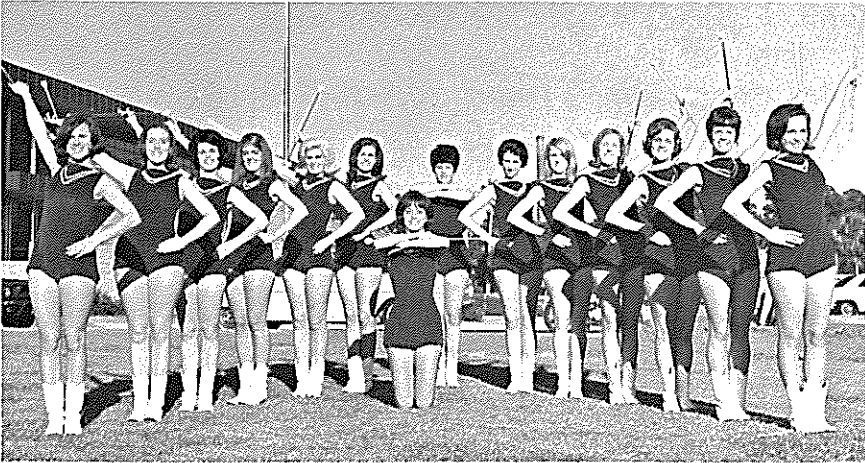


### MUSIC AT HALF-TIME

The band plays "Dixie" to welcome back alumni and friends. The Chiefs salute Dr. Karl O. Kuersteiner, professor and former dean of the School of Music, with the march from "Carmen" and excerpts from the New World Symphony by Dvorak. The band presents concert versions of music from Bach to Stravinski to honor Dr. Manley R. Whitcomb, founder of the current Marching Chiefs. For Dr. Ross R. Oglesby the band plays "Blue and White," one of the more than 100 songs he has written. Honoring Dr. John E. Champion, President of the University, the band salutes a "Champion" year in sports with "Mr. Touchdown," and a "Champion" year in education, with "Pomp and Circumstance." The Homecoming Queen and her court are presented to the music of "Queens Fanfare." Honoring the students and faculty of FSU, the band plays the school's Fight Song and Alma Mater.



FSU Majorettes



## WELCOME ALUMNI

### THE MARCHING CHIEFS

Robert T. Braunagel, Director  
James Moody, Assistant Director  
Charles Carter, Assistant Director and Arranger  
Camp Kirkland, Drum Major  
Seminole Twins, Bookie Reynolds and Jerry Williams

#### FLORIDA STATE

##### OFFENSE

SE	28	T. K. Wetherell	82	Lane Fenner
LT	76	Jack Fenwick	75	Billy Rhodes
LG	69	Edwin Pope	60	Larry Williamson
C	54	John Stephens	51	John Richardson
RG	70	Del Williams	66	Ken Hart
RT	73	Larry Kissam	79	Frank Vohun
TE	83	Thurston Taylor	84	Chip Glass
QB	16	Gary Pajcic	11	Kim Hammond
LH	30	Bill Moreman	20	Larry Green
FB	44	Jim Mankins	29	John Hurst
FL	34	Ron Sellers	27	Bill Cox

##### DEFENSE

LE	88	Jerry Jones	87	Wayne McDuffie
LT	78	Charles Pennie	64	David Braggins
LB	23	Wayne Giardino	61	Chuck Elliott
MG	68	Larry Pendleton	52	Harvey Zion
LB	40	Mike Blatt	65	Dale McCullers
RT	57	Joe Kinnan	74	Jay Mac Matthews
RE	89	Bob Menendez	81	H. T. Waller
CB	33	Butch Riser	18	Clint Burton
CB	22	Chuck Eason	18	Clint Burton
S	17	Marty Kolbus	41	John Crowe
S	24	Walter Sumner	41	John Crowe

#### CAPTAINS All Seniors SPECIALISTS

Punters: 35 John Hosack, 83 Thurston Taylor  
Placements: 59 Frank Loner  
Holder: 14 Bill Burkhardt

#### WAKE FOREST

##### OFFENSE

WE	80	Ken Henry	87	Bob Brenner
LT	76	Bill Scheib	70	John Snow
LG	66	Don McMurry	67	Howard Stanback
C	51	Bob Oplinger	53	Jimmy Clack
RG	61	Don Hensley	65	Dick Hessler
RT	75	Lynn Nesbitt	72	Dan Ferezan
SE	83	Rick Decker	84	Rick White
QB	9	Ken Erickson	10	Jimmy Arrington
FLK	41	Eddie Arrington	36	Ivey Smith
FB	30	Ken Hauswald	35	David Smith
I-B	42	Andy Heck	22	Jimmy Johnson

##### DEFENSE

LE	86	Ray Stone	82	Joe Sepic
LT	77	Robert Grant	61	Don Hensley
LG	70	John Snow	71	Lloyd Halvorson
RG	60	John McQueeney	75	Lynn Nesbitt
RT	88	Bill Overton	66	Don McMurry
RE	85	Tom Stuetzer	84	Rick White
LLB	53	Jimmy Clack	63	Mike Blasiole
RLB	50	Bo Williams	34	Chick George
LC	40	Digit Laughridge	12	Butch Baker
S	11	Andy Harper	12	Butch Baker
RC	12	Butch Baker	3	Ed Atkinson

#### WAKE FOREST SPECIALISTS

Punters: 40 Digit Laughridge, 34 Chick George  
Place-Kickers: 34 Chick George, 65 Dick Hessler  
Holders: Quarterbacks  
Kickoffs: 34 Chick George, 65 Dick Hessler

TALLAHASSEE FEDERAL SAVINGS & LOAN ASSOCIATION

MEMBER  
FEDERAL HOME LOAN BANK SYSTEM  
INSURED  
SAFETY OF YOUR SAVINGS  
UP TO \$10,000  
FEDERAL SAVINGS AND LOAN - HOLLYWOOD, FL





Your local *McDonald's* which has sold over 6 million Hamburgers has three new products . . .

- • • Double Hamburgers ..... 29¢
- • • Fish Sandwich ..... 29¢
- • • Hot Apple Pie ..... 15¢

**McDONALD'S** 1701 W. TENNESSEE ST.



FOR ALL YOUR PHOTO NEEDS FOCUS ON

TALLAHASSEE  
**CAMERA CENTER, INC.**

117 North Monroe  
Across From The Florida Theatre

- CAMERAS
- FILM
- BINOCULARS
- FAST PHOTO FINISHING
- RENTALS

*A Complete Line of Equipment and Supplies for the Amateur & Professional*

FLORIDA STATE'S 1966 VARSITY FOOTBALL ROSTER

No.	Name	Pos.	Class	Age	Ht.	Wt.	Hometown
11	Kim Hammond	QB	Jr.	22	6-1	185	Homestead
12	Bill Burkhardt	QB	Soph.	20	6-1	185	Rocky River, O.
13	Bill Cappelman	QB	Soph.	19	6-3	194	Meibourne
14	Pet Conway	QB	Sr.	21	5-10	204	Dunedin
15	Gary Polce	QB	Soph.	19	6-2	176	Miami
16	Marty Kolbus	QB	Soph.	20	6-2	192	Jacksonville
17	Clint Burton	QB	Soph.	19	6-2	186	E. Chicago, Ind.
18	Pete Roberts	QB	Soph.	21	5-11	175	Atlanta, Ga.
19	Larry Green	QB	Jr.	21	5-10	205	Gainesville
20	Donovan Jones	QB	Sr.	21	6-1	180	Calverton, Ga.
21	Chuck Eason	QB	Soph.	21	5-10	206	Lakeland
22	Wayne Giardino	QB	Sr.	23	5-10	187	Tallahassee
23	Walter Sumner	QB	Soph.	19	5-9	179	West Palm Beach
24	Bill Campbell	QB	Sr.	21	6-1	195	Ocala, Fla.
25	T. K. Coyle	QB	Soph.	20	5-9	188	Tampa
26	John Hester	QB	Soph.	20	5-10	180	Atlanta, Ga.
27	Bill Moore	QB	Sr.	21	6-0	183	Daytona Beach
28	Bill Gunter	QB	Soph.	19	6-0	200	Live Oak
29	John Hester	QB	Soph.	21	6-0	188	Daytona Beach
30	Billy Richardson	QB	Soph.	19	6-0	182	Jesup, Ala.
31	Butch Riser	QB	Soph.	21	6-4	189	Sanford
32	Ron Sellers	QB	Soph.	19	5-10	185	Jacksonville
33	John Hosack	QB	Sr.	21	5-11	195	Key West
34	Mike Blatter	QB	Jr.	20	6-2	168	St. Cloud
35	John Crowe	QB	Soph.	19	5-11	183	Blountstown
36	Howell Montgomery	QB	Sr.	22	6-2	220	King City, Calif.
37	Jim Jenkins	QB	Soph.	19	6-1	197	Birmingham, Ala.
38	Billy Joe Jones	QB	Soph.	20	6-1	215	Live Oak
39	John Richardson	QB	Soph.	19	6-0	199	Jacksonville
40	Harvey Zion	QB	Soph.	19	5-11	195	Atlanta, Ga.
41	John Stephens	QB	Soph.	21	6-1	201	Tallahassee
42	Ted Mosley	QB	Sr.	21	6-2	202	Tampa
43	Joe Kinman	QB	Soph.	21	6-0	206	Bradenton
44	Frank Loner	QB	Soph.	21	6-0	196	Atlanta, Ga.
45	Larry Elliott	QB	Soph.	21	6-0	202	Macon, Ga.
46	Chuck Williams	QB	Soph.	21	6-0	207	Troy, O.
47	David McLean	QB	Soph.	21	6-0	224	Daytona Beach
48	David Breagins	QB	Soph.	21	6-2	187	Lake Wales
49	Ken McCallers	QB	Soph.	21	6-0	203	Live Oak
50	Ken Holt	QB	Soph.	21	6-0	219	Groveland
51	David McCallers	QB	Soph.	21	6-0	206	Weycross, Ga.
52	David McCallers	QB	Soph.	21	6-0	206	Weycross, Ga.
53	David McCallers	QB	Soph.	21	6-0	206	Weycross, Ga.
54	David McCallers	QB	Soph.	21	6-0	206	Weycross, Ga.
55	David McCallers	QB	Soph.	21	6-0	206	Weycross, Ga.
56	David McCallers	QB	Soph.	21	6-0	206	Weycross, Ga.
57	David McCallers	QB	Soph.	21	6-0	206	Weycross, Ga.
58	David McCallers	QB	Soph.	21	6-0	206	Weycross, Ga.
59	David McCallers	QB	Soph.	21	6-0	206	Weycross, Ga.
60	David McCallers	QB	Soph.	21	6-0	206	Weycross, Ga.
61	David McCallers	QB	Soph.	21	6-0	206	Weycross, Ga.
62	David McCallers	QB	Soph.	21	6-0	206	Weycross, Ga.
63	David McCallers	QB	Soph.	21	6-0	206	Weycross, Ga.
64	David McCallers	QB	Soph.	21	6-0	206	Weycross, Ga.
65	David McCallers	QB	Soph.	21	6-0	206	Weycross, Ga.
66	David McCallers	QB	Soph.	21	6-0	206	Weycross, Ga.
67	David McCallers	QB	Soph.	21	6-0	206	Weycross, Ga.
68	David McCallers	QB	Soph.	21	6-0	206	Weycross, Ga.
69	David McCallers	QB	Soph.	21	6-0	206	Weycross, Ga.
70	David McCallers	QB	Soph.	21	6-0	206	Weycross, Ga.
71	David McCallers	QB	Soph.	21	6-0	206	Weycross, Ga.
72	David McCallers	QB	Soph.	21	6-0	206	Weycross, Ga.
73	David McCallers	QB	Soph.	21	6-0	206	Weycross, Ga.
74	David McCallers	QB	Soph.	21	6-0	206	Weycross, Ga.
75	David McCallers	QB	Soph.	21	6-0	206	Weycross, Ga.
76	David McCallers	QB	Soph.	21	6-0	206	Weycross, Ga.
77	David McCallers	QB	Soph.	21	6-0	206	Weycross, Ga.
78	David McCallers	QB	Soph.	21	6-0	206	Weycross, Ga.
79	David McCallers	QB	Soph.	21	6-0	206	Weycross, Ga.
80	David McCallers	QB	Soph.	21	6-0	206	Weycross, Ga.
81	David McCallers	QB	Soph.	21	6-0	206	Weycross, Ga.
82	David McCallers	QB	Soph.	21	6-0	206	Weycross, Ga.
83	David McCallers	QB	Soph.	21	6-0	206	Weycross, Ga.
84	David McCallers	QB	Soph.	21	6-0	206	Weycross, Ga.
85	David McCallers	QB	Soph.	21	6-0	206	Weycross, Ga.
86	David McCallers	QB	Soph.	21	6-0	206	Weycross, Ga.
87	David McCallers	QB	Soph.	21	6-0	206	Weycross, Ga.
88	David McCallers	QB	Soph.	21	6-0	206	Weycross, Ga.
89	David McCallers	QB	Soph.	21	6-0	206	Weycross, Ga.

\*Denotes letters won.

1966 WAKE FOREST FOOTBALL ROSTER

No.	Name	Pos.	Class	Age	Ht.	Wt.	Hometown
1	Ed Atkinson	DB	Soph.	19	6-1	182	Charlotte
2	Phil Cheatwood	QB	Soph.	20	6-2	186	Charlotte
3	Jon Wilson	QB	Sr.	21	6-1	192	S. Milwaukee, Wis.
4	Ken Erickson	QB	Soph.	19	6-1	200	Park Forest, Ill.
5	Jimmy Arrington	QB	Soph.	19	5-9	180	Hialeah, Fla.
6	Andy Harper	QB	Sr.	21	5-10	187	Jacksonville, Fla.
7	Carlton Baker	QB	Jr.	20	5-11	174	N. Wilkesboro
8	Homeer Brookshire	QB	Soph.	20	6-4	197	Lynchburg, Va.
9	Jimmy Johnson	QB	Soph.	19	5-11	188	Clark, N. J.
10	Ken Hauswald	QB	Sr.	20	6-0	195	Brunswick, Ga.
11	Chuck George	QB	Soph.	19	6-0	201	Atlanta, Ga.
12	David Smith	QB	Soph.	19	6-0	206	Fountain
13	Ivey Smith	QB	Soph.	19	6-1	205	Rocky Mount
14	Digit Laughride	QB	Soph.	19	5-10	187	Winston-Salem
15	Eddie Arrington	QB	Soph.	20	5-10	161	North Bergen, N. J.
16	Andy Heck	QB	Sr.	22	5-9	207	Alexandria, Va.
17	Larry Walt	QB	Soph.	19	6-1	180	Perrine, Fla.
18	Bo Williams	QB	Sr.	21	6-2	225	Northampton, Pa.
19	Bob Ollinger	QB	Soph.	20	6-4	210	Miami, Fla.
20	Jimmy Clark	QB	Soph.	20	6-4	210	Rocky Mount
21	Mike Sasser	QB	Soph.	20	6-4	210	Lagrange, Ill.
22	Tom Skuttes	QB	Soph.	20	6-4	210	Manhasset, N. H.
23	John McQueeney	QB	Soph.	20	6-4	210	Kosjuszko, Mass.
24	Don Hensley	QB	Soph.	20	6-4	210	Pok, Pa.
25	Bob Perretz	QB	Soph.	20	6-4	210	Roanoke, Va.
26	Mike Blasie	QB	Soph.	20	6-4	210	Ft. Lauderdale, Fla.
27	Dick Hessler	QB	Soph.	20	6-4	210	Jefferson City, Mo.
28	Don McMurry	QB	Soph.	20	6-4	210	Durham
29	Howard Stanback	QB	Soph.	20	6-4	210	Murphy
30	Bill Brown	QB	Soph.	20	6-4	210	McLean, Va.
31	Jim Vosters	QB	Soph.	20	6-4	210	Albuquerque, N.M.
32	Lloyd Holvorson	QB	Soph.	20	6-4	210	Leedsdale, Pa.
33	John Snow	QB	Soph.	20	6-4	210	Jacksonville, Fla.
34	Bill Greaves	QB	Soph.	20	6-4	210	Marquette, Ga.
35	Robert Grant	QB	Soph.	20	6-4	210	Rockford, Ill.
36	Bill Scheib	QB	Soph.	20	6-4	210	Greensboro
37	Ken Nesbitt	QB	Soph.	20	6-4	210	York Run, Pa.
38	Robert Holmes	QB	Soph.	20	6-4	210	Atlanta, Ga.
39	Lowell Fredlund	QB	Soph.	20	6-4	210	Naperville, Ill.
40	Ken White	QB	Soph.	20	6-4	210	Waukegan, Ill.
41	John Soper	QB	Soph.	20	6-4	210	Rockford, Ill.
42	Richard Decker	QB	Soph.	20	6-4	210	Greensboro
43	Rich White	QB	Soph.	20	6-4	210	Atlanta, Ga.
44	Tom Stutz	QB	Soph.	20	6-4	210	Rockford, Ill.
45	Bob Stutz	QB	Soph.	20	6-4	210	Greensboro
46	Bob Brenner	QB	Soph.	20	6-4	210	Atlanta, Ga.
47	Bill Overton	QB	Soph.	20	6-4	210	Rockford, Ill.
48	Forest West	QB	Soph.	20	6-4	210	Greensboro
49	Forest West	QB	Soph.	20	6-4	210	Atlanta, Ga.
50	Forest West	QB	Soph.	20	6-4	210	Rockford, Ill.
51	Forest West	QB	Soph.	20	6-4	210	Greensboro
52	Forest West	QB	Soph.	20	6-4	210	Atlanta, Ga.
53	Forest West	QB	Soph.	20	6-4	210	Rockford, Ill.
54	Forest West	QB	Soph.	20	6-4	210	Greensboro
55	Forest West	QB	Soph.	20	6-4	210	Atlanta, Ga.
56	Forest West	QB	Soph.	20	6-4	210	Rockford, Ill.
57	Forest West	QB	Soph.	20	6-4	210	Greensboro
58	Forest West	QB	Soph.	20	6-4	210	Atlanta, Ga.
59	Forest West	QB	Soph.	20	6-4	210	Rockford, Ill.
60	Forest West	QB	Soph.	20	6-4	210	Greensboro
61	Forest West	QB	Soph.	20	6-4	210	Atlanta, Ga.
62	Forest West	QB	Soph.	20	6-4	210	Rockford, Ill.
63	Forest West	QB	Soph.	20	6-4	210	Greensboro
64	Forest West	QB	Soph.	20	6-4	210	Atlanta, Ga.
65	Forest West	QB	Soph.	20	6-4	210	Rockford, Ill.
66	Forest West	QB	Soph.	20	6-4	210	Greensboro
67	Forest West	QB	Soph.	20	6-4	210	Atlanta, Ga.
68	Forest West	QB	Soph.	20	6-4	210	Rockford, Ill.
69	Forest West	QB	Soph.	20	6-4	210	Greensboro
70	Forest West	QB	Soph.	20	6-4	210	Atlanta, Ga.
71	Forest West	QB	Soph.	20	6-4	210	Rockford, Ill.
72	Forest West	QB	Soph.	20	6-4	210	Greensboro
73	Forest West	QB	Soph.	20	6-4	210	Atlanta, Ga.
74	Forest West	QB	Soph.	20	6-4	210	Rockford, Ill.
75	Forest West	QB	Soph.	20	6-4	210	Greensboro
76	Forest West	QB	Soph.	20	6-4	210	Atlanta, Ga.
77	Forest West	QB	Soph.	20	6-4	210	Rockford, Ill.
78	Forest West	QB	Soph.	20	6-4	210	Greensboro
79	Forest West	QB	Soph.	20	6-4	210	Atlanta, Ga.
80	Forest West	QB	Soph.	20	6-4	210	Rockford, Ill.
81	Forest West	QB	Soph.	20	6-4	210	Greensboro
82	Forest West	QB	Soph.	20	6-4	210	Atlanta, Ga.
83	Forest West	QB	Soph.	20	6-4	210	Rockford, Ill.
84	Forest West	QB	Soph.	20	6-4	210	Greensboro
85	Forest West	QB	Soph.	20	6-4	210	Atlanta, Ga.
86	Forest West	QB	Soph.	20	6-4	210	Rockford, Ill.
87	Forest West	QB	Soph.	20	6-4	210	Greensboro
88	Forest West	QB	Soph.	20	6-4	210	Atlanta, Ga.
89	Forest West	QB	Soph.	20	6-4	210	Rockford, Ill.

\*Denotes letters won.

# Tallahassee Federal

440 N. Monroe Street

Tallahassee, Florida

HOURS: Monday-Thursday, 8:30 a.m. to 3 p.m.—Friday, 8:30 a.m. to 6 p.m.

SAVINGS AND LOAN  
ASSOCIATION

TELEPHONE 224-2161

