



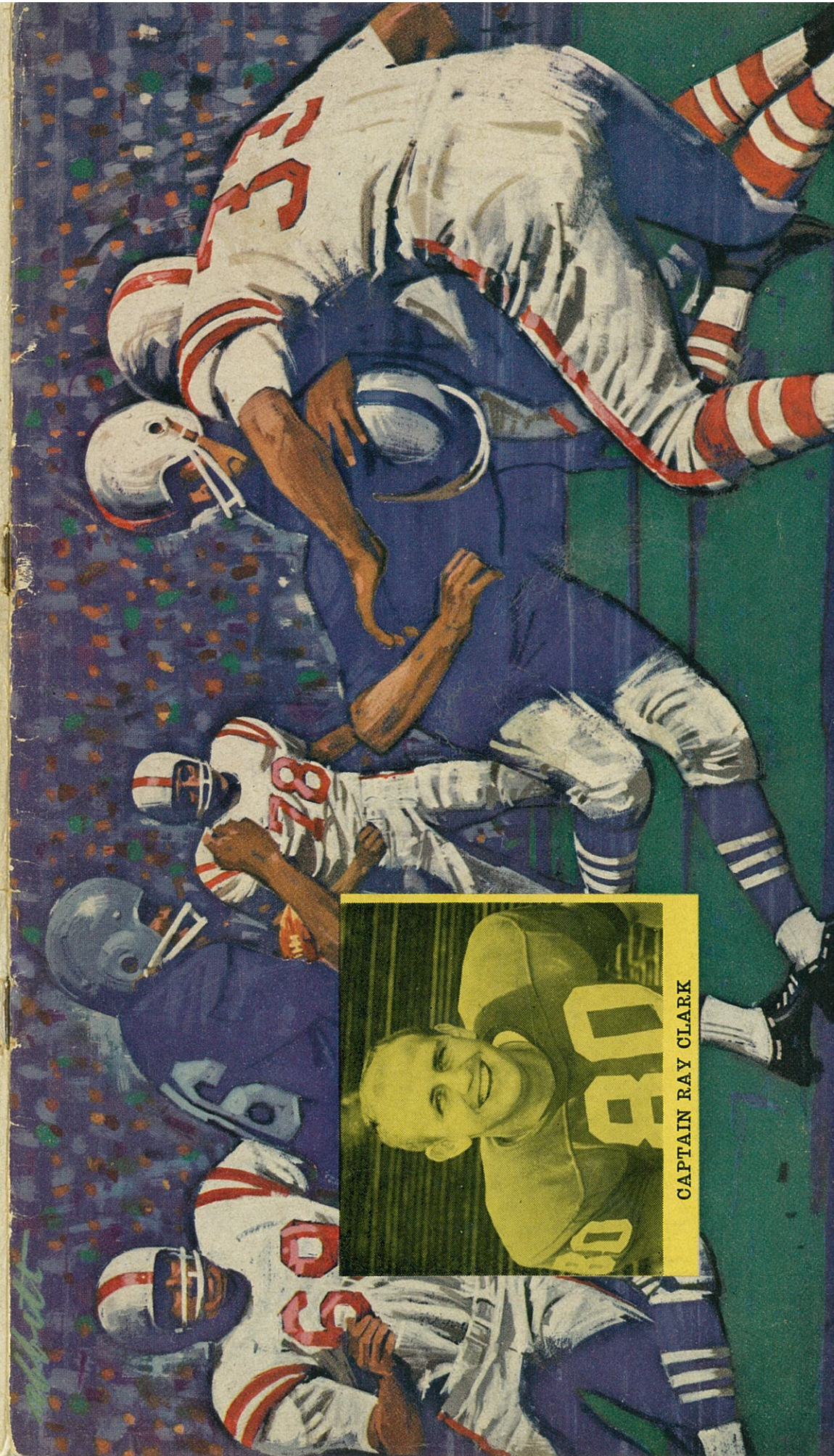
Take a puff...it's Springtime!

Salem refreshes your taste —air-softens— every puff

In the rich taste of a Salem cigarette, you'll notice
a softness very like the clear, mild springtime air. You'll find Salem refreshes
your taste, just as springtime refreshes you.

- menthol fresh
- rich tobacco taste
- modern filter, too

Created by R. J. Reynolds Tobacco Company



CAPTAIN RAY CLARK

OFFICIAL
PROGRAM

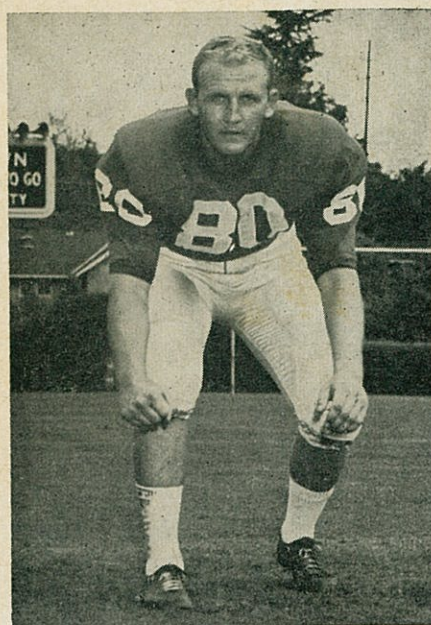
FIFTY
CENTS

GEORGIA / F. S. U.

OCTOBER 20, 1962

SANFORD STADIUM

*There is
always a
leader . . .*



RAY CLARK
End

*the
Varsity!*



ATHENS :: ATLANTA

HOT DOGS

SANDWICHES

HAMBURGERS

Varsity ORANGE

THE BULLDOG

SEASON OF 1962

STADIUM INFORMATION

Ladies' Rest Rooms are located at the North-east, Northwest, Southeast and Southwest Ends of the Stadium. Also Top Level South Stands, Southeast and Southwest Corners.

Men's Rest Rooms are located back of the North Side Concession Stands, back of the West Entrance, and under the clock at the East End of the Field. Also Top Level South Stands.

FIRST AID STATION

In case of emergency, First Aid Station and Ambulance may be found at the West End of Stadium.

DOCTORS

Should leave location of seat with the P. A. announcer at the Press Box. You will be paged by number.

LOST AND FOUND

Lost and found articles should be reported or returned in to Ticket Office at Gate No. 2 or to a Boy Scout Usher.

RADIOS

Keep portable radios at low volume. Do not disturb your neighbor.

CONCESSIONS

| | |
|---------------------------|-----|
| Drinks | 15c |
| Peanuts | 10c |
| Barbecue Sandwiches | 35c |
| Hot Dogs | 25c |
| Cigarettes | 35c |
| Bulldog Program | 50c |

PAY NO MORE

PLEASE DO NOT TRAMPLE SHRUBBERY

GEORGIA'S 1962 FOOTBALL SCHEDULE

- *Sept. 22—ALABAMA at Birmingham
- *Sept. 29—VANDERBILT at Nashville
- *Oct. 6—SOUTH CAROLINA at Columbia
- Oct. 13—CLEMSON at Clemson
- Oct. 20—FLORIDA STATE in Athens
- Oct. 27—KENTUCKY in Athens
- Nov. 3—N. C. STATE in Athens
- Nov. 10—FLORIDA at Jacksonville
- Nov. 17—AUBURN at Auburn
- Dec. 1—GEORGIA TECH in Athens

* Night Game

G

GEORGIA'S 1961 FOOTBALL RECORD

| | |
|------------------|---------------------|
| Georgia 6 | Alabama 32 |
| Georgia 0 | Vanderbilt 21 |
| Georgia 17 | South Carolina 14 |
| Georgia 0 | Florida State 3 |
| Georgia 10 | Mississippi State 7 |
| Georgia 16 | Kentucky 15 |
| Georgia 7 | Miami 32 |
| Georgia 14 | Florida 21 |
| Georgia 7 | Auburn 10 |
| Georgia 7 | Georgia Tech 22 |

Published by the
University of Georgia Athletic Association
This program or any part thereof must not be reproduced in any form without the written permission of the Publisher.

Represented for National Advertising by SPENCER ADVERTISING COMPANY, INC., 271 Madison Ave., New York City
Represented for Local and Regional Advertising by WILLIAMS & COMPANY, Advertising, 673 N. Milledge Ave., Athens, Ga.



... the most natural thing in the world is for a man to
want to look his success ... to stand out ... and that is where
Hickey-Freeman customized clothes can do so much.



ATLANTA

the style center of the South
downtown, peachtree, walton & broad ... and lenox-square

Omer Clyde Aderhold, President

"We are moving into an age which demands a higher degree of quality education for more and more people," President O. C. Aderhold has said. "To meet this challenge, we must have a great state university."

He has devoted more than 12 years as president to building and strengthening his alma mater, the only institution of its kind in Georgia: the state university.

"Our graduates represent a large proportion of the agriculturists, bankers, business and industrial administrators, foresters, home economists, lawyers, teachers, journalists, pharmacists, and veterinarians in Georgia," he has emphasized. "Our research and extension programs reach into every town and county. As Georgia grows and changes in this day of scientific advance and technological achievement, our vital relationship to the welfare and progress of the state becomes increasingly evident."

Stronger, expanded undergraduate programs; greater opportunity for graduate study, particularly at the doctoral level; expanded library resources; a rapidly improving physical plant: the Science Center, the Art Building, Coliseum, School of Pharmacy, and student housing; a faculty of advanced academic background and increasing eminence in many and varied fields; the largest student body in the University's history, a group with the intellectual potential to achieve standards required by a great state university; these are some of the marks of President Aderhold's tenure.

A native of Franklin county, a northeast Georgian who has devoted his life to working with students, teachers, and programs at all levels of education, President Aderhold believes that the University is on the threshold of greatness, but many problems press, and time and change are swift.

The key to greatness: full support of the people of Georgia. There is impressive testimony of success, but a firm foothold must be gained so that the institution may look ahead to an age which doubtless will demand more of higher education than any previous era.



Wallace Butts, Director of Athletics

James Wallace Butts, who retired as Georgia head football coach in January 1961 to devote full time to the job of athletic director, has begun a new term as the South's representative on the powerful National Football Rules Committee—one of the top honors in American football.

Coach Butts has succeeded the late General Robert R. Neyland of Tennessee on the Rules Committee.

In 1960 Coach Butts served as President of the American Football Coaches' Assn. In 1959 he completed a three-year term on the National Football Rules Committee, to which he again has been named this year.

His achievements as head coach of the Bulldogs from 1939-60 pile up mountain high:

Southeastern Conference Championship Teams: 1942-46-48-49. Only three other coaches have turned out as many championship clubs in the rugged SEC: Bob Neyland, Tennessee, had five; Frank Thomas, Alabama, and John Vaught, Ole Miss, four each.

Bowl Teams: 1941, Orange; 1942, Rose; 1945, Oil; 1946, Sugar; 1947, Gator; 1948, Orange; 1950, Presidential Cup; 1949, Orange. He won five, lost two, and tied one.

All-Star Games: College all-stars vs. pro champions, 1943-46-47-48; Blue-Gray game, 1944-50-60; North-South game, 1953-55. He lost only twice, winning seven times.

All-Americans: Frank Sinkwich, LH; George Poschner, E; Mike Castronis, T; Charley Trippi, LH; Herb St. John, G; Dan Edwards, E; John Rauch, QB; Harry Babcock, E; John Carson, E; Zeke Bratkowski, QB; Pat Dye, G; Francis Tarkenton, QB.

All-Pro: Frank Sinkwich, Detroit Lions, LH; Joe Geri, Pittsburgh Steelers, LH; Charles Trippi, Chicago Cardinals, LH; Dan Edwards, New York Yanks, E; Bob Walston, Philadelphia Eagles, E; Jimmy Orr, Pittsburgh Steelers, E-HB; Marion Campbell, Philadelphia Eagles, T.

Life-Time Georgia Record: (Including Bowl Games) Won 140, Lost 86, Tied 9 for winning percentage of .614—a remarkable record when it is considered that his teams—in order to balance the budget—played two-thirds of their games on the road!

In 1942-46-59 he was named the SEC Coach-of-the-Year. In 1959 he was runner-up as coach-of-the-year in the nation.

Notre Dame's Frank Leahy, a close friend of Butts who often visited him in Athens appraised Butts as "college football's finest drill master and passing coach."

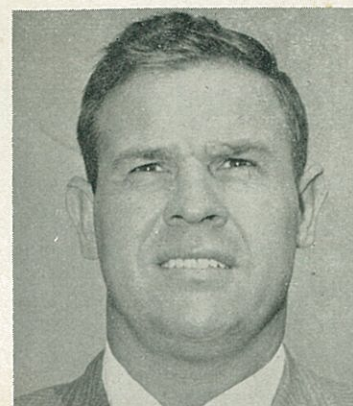




MIKE CASTRONIS
Freshman Coach



H. B. LAWSON
Basketball Coach



JOHN TILLITSKI
Linebackers and Centers



DR. B. W. GABRIELSEN
Swimming Coach

GEORGIA COACHES

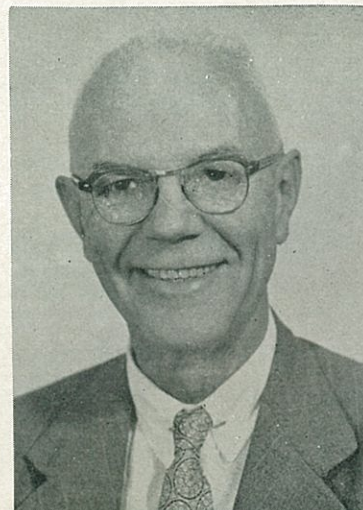


SAM RICHWINE
Trainer

ADMINISTRATION



DAN MAGILL
Athletic Publicity
Director and Tennis Coach



DR. ALFRED W. SCOTT
Faculty Chaiarman of
Athletics



HOWELL T. HOLLIS
Business Manager
Asst. Athletic Director and
Golf Coach



tune in the GEORGIA

FOOTBALL GAMES ON RADIO



presented by your
TEXACO DEALER
...the best friend your car will ever have

Your Sportscasters are... Ed Thilenius • Bill Munday

Radio Station WGPC
Albany, Ga.

Radio Station WSB
Atlanta, Ga.

Radio Station WRBL
Columbus, Ga.

Radio Station WSAV
Savannah, Ga.

Radio Station WRFC
Athens, Ga.

Radio Station WRDW
Augusta, Ga.

Radio Station WMAZ
Macon, Ga.

Radio Station WACL
Waycross, Ga.

Georgia's All Americans

Collegiate

| | | |
|------|-----------------------------|-------------|
| 1913 | Bob McWhorter..... | Halfback |
| 1927 | Ivey (Chick) Shiver..... | End |
| 1927 | Tom Nash..... | End |
| 1930 | Herb Maffett..... | End |
| 1931 | Vernon (Catfish) Smith..... | End |
| 1941 | Frank Sinkwich..... | Halfback |
| 1942 | Frank Sinkwich..... | Halfback |
| 1942 | George Poschner..... | End |
| 1946 | Mike Castronis..... | Tackle |
| 1946 | Charles Trippi..... | Halfback |
| 1946 | Herb St. John..... | Guard |
| 1947 | Dan Edwards..... | End |
| 1948 | John Rauch..... | Quarterback |
| 1952 | Harry Babcock..... | End |
| 1953 | John Carson..... | End |
| 1953 | Zeke Bratkowski..... | Quarterback |
| 1959 | Pat Dye..... | Guard |
| 1960 | Pat Dye..... | Guard |
| 1960 | Francis Tarkenton..... | T-QB |

Professional

| | | |
|------|---|---------------|
| 1930 | Tom Nash, Green Bay Packers..... | End |
| 1931 | Tom Nash, Green Bay Packers..... | End |
| 1943 | Frank Sinkwich, Detroit Lions..... | Halfback |
| 1947 | Charles Trippi, Chicago Cardinals..... | Halfback |
| 1950 | Joe Geri, Pittsburgh Steelers..... | Halfback |
| 1950 | Dan Edwards, New York Yanks..... | End |
| 1954 | Bob Walston, Philadelphia Eagles..... | End |
| 1959 | Jimmy Orr, Pittsburgh Steelers..... | End |
| 1960 | Marion Campbell, Philadelphia Eagles..... | Defensive End |

All-Time Georgia Team Record

SEASON

Rushing Defense: 596 yards in 1941 (10 games), average 59.6.

Passing Defense: 679 yards in 1947 (11 games), average 61.7.

Total Defense (Rushing and Passing): 1,429 yards in 1941 (10 games), average 142.9.

Rushing Offense: 2,397 yards in 1941 (10 games), average 239.7.

Passing Offense: 2,101 yards in 1942 (11 games), average 191.0*

Passing Percentage: 57.9 on 117 x 202 attempts in 1960.*

Total Offense: 4,725 yards in 1942 (11 games), average 429.5.* (2,624 rushing, 2,101 passing).

Most Plays from Scrimmage: 747 by Georgia in 1947 (549 rushes, 198 passes) in 11 games.

Most Passes Intercepted: 33 in 1946 (10 games).*

Most Scoring Passes: 23 in 1946 (10 games).*

Most Points: 372 in 1946 (10 games), average 37.2.

Team Punting: 43.7 on 39 kicks in 1960.*

*Still Southeastern Conference record.

Much Ado in '62

by TED SMITS

General Sports Editor, The Associated Press

College football in 1962 is being moulded by the personalities of the men who coach it, by the talent of the men who play it, and by one interesting change in the rules.

The rule change permits the kicking team to down the ball within the opponent's 10 yard line. Previously this was a touchback, bringing the ball out to the 20 yard line. The new refinement puts an even high premium on punting, and brings into play downfield blocking where previously a polite game of tag was played.

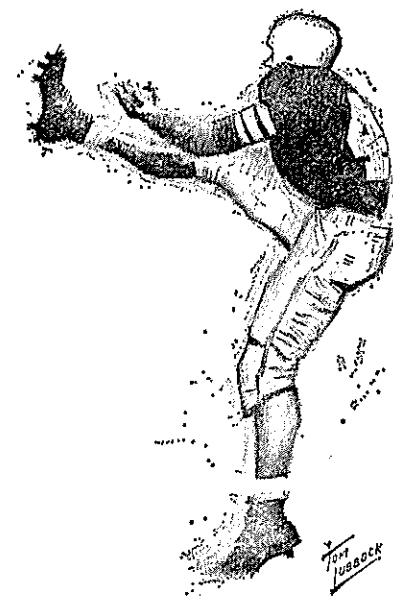
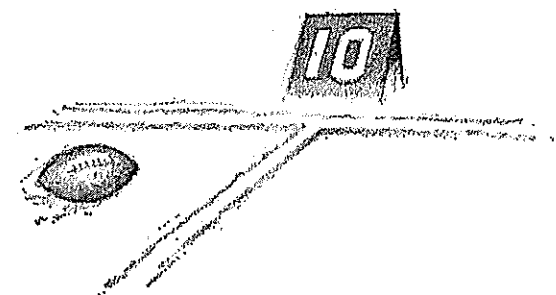
It puts a premium, too, on catching the ball and running it out—and that could make for excitement in the form of fumbles and more scoring opportunities.

There now seems to be general agreement that the rule on substitutions is free enough to bring into action all the talent that a team has, when it needs it. It isn't platoon football. It is tribe football.

There is a subtle change that has been under way for some time and only now is coming into full flower. That is the requirement that a quarterback should be something more than just a good thrower. He must be a tailback as well, a resourceful and heady runner, particularly if effective passes are to develop out of plays that start out as sweeps.

All this put together—more punting, more opportunities for fumbles in the shadow of the goal line, fluid substitutions, quarterbacks who both pass and run—adds up to a sparkling offensive game.

Wider use of the winged-T and of the lone-some end has also opened up the college game for the better. Although the single wing still has its staunch adherents—and when beautifully executed there isn't a prettier game—the trend to the T with all its variations continues unabated.



Just as the offense has become more brilliant, so, too, has the defense. The "Oklahoma style" defense of five men on the line with the other six positioned to guard against passes or runs has been giving way to a six-man front with the tackles wide. There is even a tendency to an eight-man front line on defense.

Along with all these theories and the touchback rule change making for an open, interesting game there has been a determination on the part of officialdom to protect the players from injury. Too many men were hurt last year, with the result that orders went out to enforce to the letter the rules against piling on the ball carrier, and clipping. That explains the whistle blowing you hear.

There is mathematical proof that all these developments are a delight to behold. Attendance at college football games in 1961 increased for the eighth consecutive year to an all-time record total of 20,677,604 in games at 616 senior colleges. This was 274,195 more spectators than set the previous attendance record in 1960. Everything points to another new high mark in 1962.

So now spread before you is the game of football. It is as old as recorded history—the combination of willing men and a ball that can be kicked. It is also eternally new, changing subtly through the years, but retaining an emotional hold on spectators and participants alike. The bond that unites everyone within a stadium, regardless of partisanship, comes from the season of the year, from friendships and campus memories, from the vivid colors on the field, and above all from the high drama of the game itself.

THE OFFICIAL WATCH
FOR THIS GAME

LONGINES

The World's Most Honored Watch

- * Winner of 10 World's Fair Grand Prizes
- * 28 World's Fair Gold Medals
- * Highest Observatory Honors for Accuracy

Premier Product of
Longines-Wittnauer
WATCH COMPANY

For Almost 100 Years, Maker of Watches
of the Highest Character

Throughout the world, no other
name on a watch means so much as

LONGINES

The World's Most Honored Watch
OFFICIAL WATCH

1960 OLYMPIC WINTER GAMES • 1959 PAN AMERICAN GAMES • 1960 U. S. OLYMPIC TRIALS • MAJOR NATIONAL AND WORLD CHAMPIONSHIPS IN ALL FIELDS BOTH HERE AND ABROAD

At Authorized
Longines-Wittnauer
JEWELERS

ALUMNI SUPPORT
 Helps to make a
GREAT UNIVERSITY
Express your support through
Alumni Society Membership

HOW YOUR CONTRIBUTION WILL BE USED:

1. Undergraduate scholarships
2. Graduate fellowships
3. Faculty salary supplements
4. Microfilming of early Georgia newspapers
5. Acquisitions for University Library
6. Printing and mailing ALUMNI RECORD
7. Holding alumni chapter and class meetings
8. Building the Endowment Fund
9. Maintenance of your personal file folder
10. General promotion of

THE UNIVERSITY OF GEORGIA

YOUR 1962 ALUMNI SOCIETY OFFICERS

PRESIDENT: Marvin B. Perry.....Athens FIRST VICE PRESIDENT: Joe H. Gerson.....Atlanta
 SECOND VICE PRESIDENT: Mrs. R. L. Brophy.....Atlanta

OUT-OF-STATE VICE PRESIDENTS:
 James Pert, Nashville, Tenn.
 John Tillman, Jacksonville, Fla.
 Conoly Phillips, Norfolk, Va.
 EXECUTIVE BOARD CHAIRMAN:
 John A. Sibley, Atlanta
 FUND-MEMBERSHIP:
 René Hawkins, Macon
 BOARD OF MANAGERS, STATE AT LARGE:
 Erle Cocke, Jr., Washington, D.C.
 Rankin M. Smith, Atlanta
 Frank S. Cheatham, Jr., Savannah
 René Hawkins, Macon
 Robert C. Dunlap, Macon
 DeJongh Franklin, Atlanta

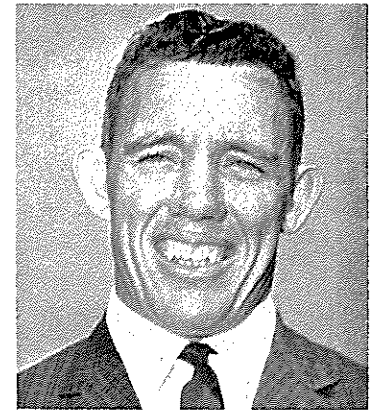
FACULTY REPRESENTATIVES:
 Franklin Campus:
 J. T. Askew, University of Ga.
 South Campus:
 J. W. Lassiter, University of Ga.
 DISTRICT VICE PRESIDENTS:
 First, Irvin Wofford, Savannah
 Second, Calhoun Bowen, Tifton
 Third, J. H. Neisler, Reynolds
 Fourth, Edgar Blalock, Jonesboro
 Fifth, Sam Wells, Decatur
 Sixth, W. M. Towson, Dublin
 Seventh, J. Beverly Langford,
 Calhoun
 Eighth, Mac Barnes, Waycross

Ninth, Ben Carter, Gainesville
 Tenth, Julius Bishop, Athens
 REPRESENTATIVES TO ATHLETIC BOARD:
 George Fesperman, Waycross
 George A. Sancken, Augusta
 RECORDING SECRETARY:
 William Tate, Athens
 ORGANIZED GROUP PRESIDENTS:
 Agriculture: Hulan Hall, Duluth
 Forestry: W. H. McComb, Macon
 Law: Harry S. Baxter, Atlanta
 Pharmacy: Heyward L. Woodward,
 Avondale Estates
 Veterinary Medicine: Dr. William
 A. Elinburg, Jr., Lawrenceville

GEORGIA COACHES



WYATT POSEY
Offensive Line



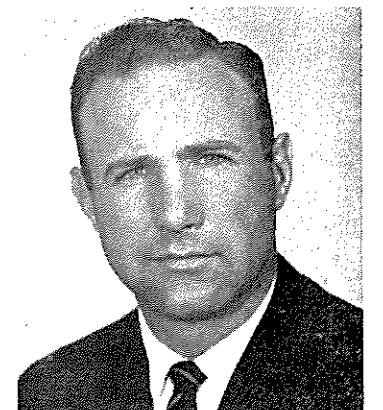
BOBBY PROCTOR
Defensive Backs



CHARLEY TRIPPI
Offensive Coach



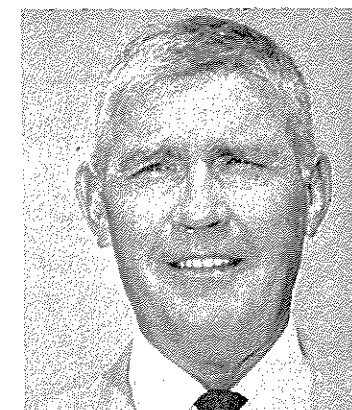
FRANK INMAN
Director of Recruiting and
Asst. Backfield Coach



LeROY PEARCE
End Coach



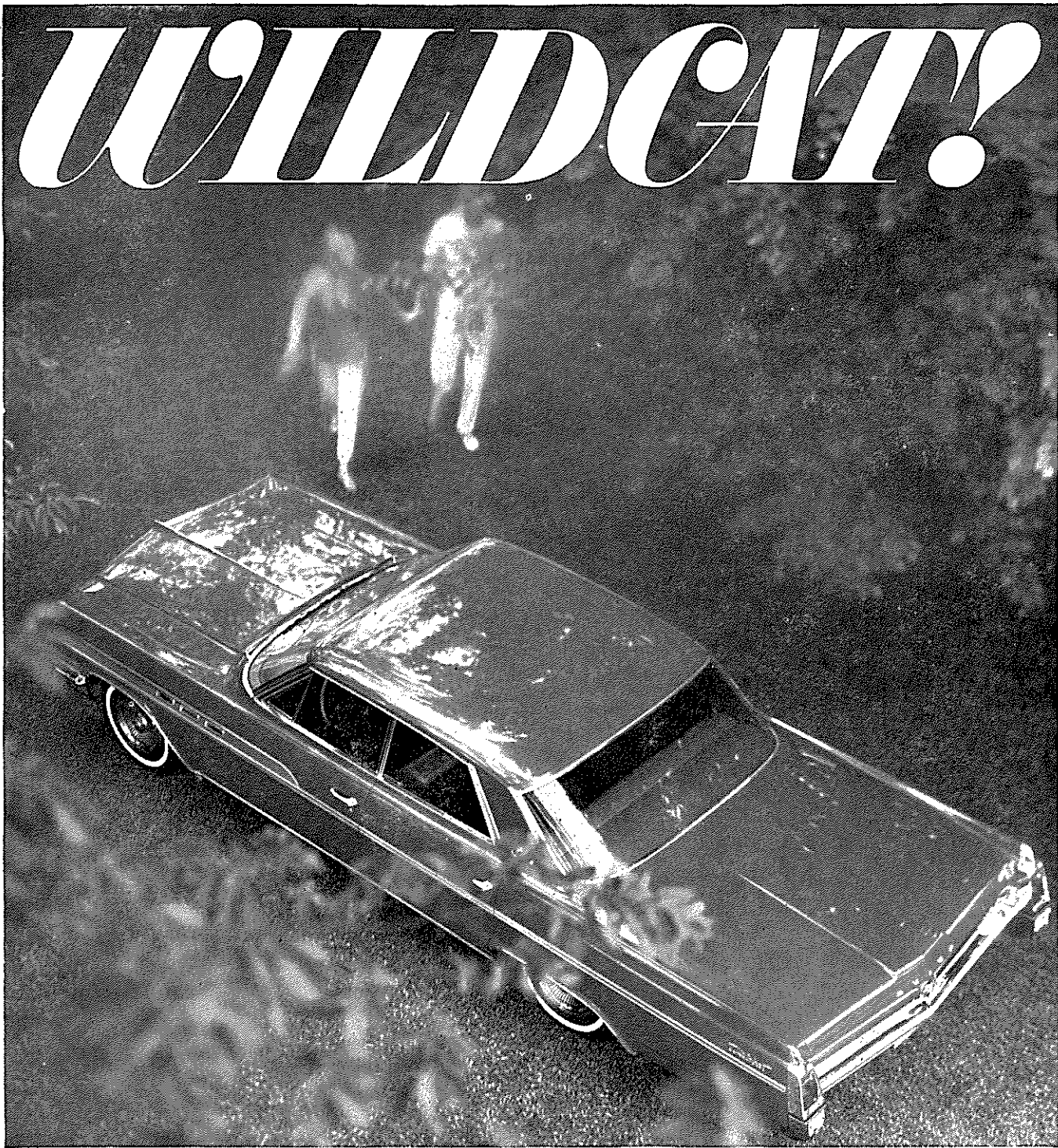
JIM WHATLEY
Recruiting Assistant
Baseball Coach



FORREST TOWNS
Asst. to Recruiting Chief
and Equipment Chief
Track Coach



JOHN GREGORY
Defensive Coach



All new! All muscle! All glamour! That's the '63 Buick WILDCAT! America's only luxury sports car with Advanced Thrust engineering now features three new models—convertible, hardtop, coupe; room for five fullbacks; colorful vinyl bucket seat interior; and an almost neurotic urge to get going! Very definitely for the sports-minded male and his equally adventuresome mate. There's a WILDCAT at your dealer's now—just rarin' for someone like you to give it a brisk workout. Why not take time out to do it this weekend?

Buick Motor Division—General Motors Corporation



Anatomy of a Buick WILDCAT!
Engine: 90° V-8 valve in head. Displacement: 401 cu. in. Maximum h.p.: 325 @ 4400 rpm. Maximum torque: 445 ft.-lbs. @ 2800 rpm. Compression: 10.25:1. Bore and stroke: 4.3125x3.64. Carburetor: one 4-bbl. downdraft. Valves: hydraulic lifter type. Rear Axle: hypoid semi-floating. Gear ratio: 3.42. Transmission: automatic, torque converter type. Brakes: 12" Duo-servo. Finned aluminum up front. Advanced Thrust engineering gives straight tracking, flat cornering.

833 Points in 11 Years

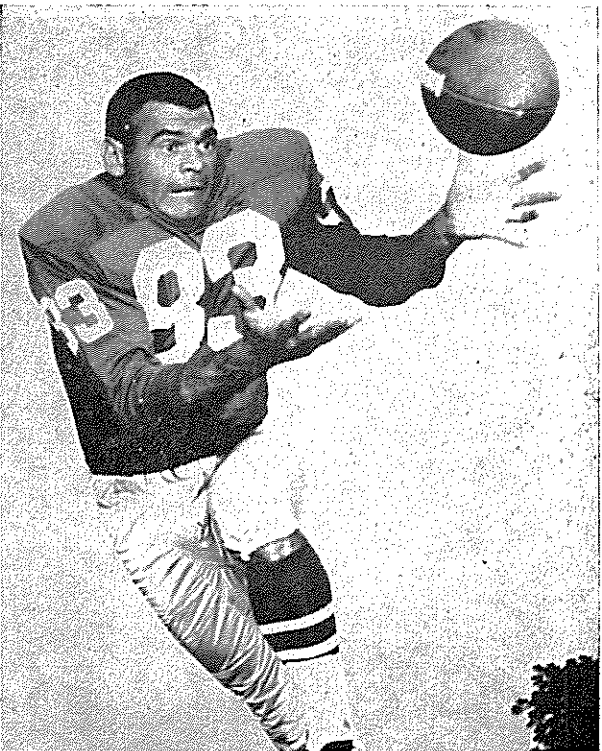
Georgia's Walston Highest Scorer In NFL

The greatest scorer in the history of the National Football League is right end Bobby Walston of the Philadelphia Eagles, who starred four years for the Georgia Bulldogs.

Bobby was the regular safety man on Georgia's varsity as a freshman in 1947. Switched to end in 1948 he led the SEC in receiving with 25 catches for 525 yards and 4 TDs. He was enjoying a good season in 1949 until a broken foot sidelined him the last two games. Still he caught 17 for 382 yards and 4 TDs. The Bulldogs were short of good passers in 1950 and he caught only 12 for 168 yards.

He did the Bulldog place-kicking for PATs in 1949 (14x16) and 1950 (10x17).

Walston's 11-year NFL career point total is 833. Lou Groza of Cleveland is second with 827, followed by retired Don Hutson (the old record-holder) of Green Bay with 825. Both their totals were for 11 seasons.



Walston's Receiving and Place-Kicking Record in NFL

| Year | No. | Yds. | TDs | PATs | FGs | Tot. Pts. |
|--------|-----|------|-----|------|-----|-----------|
| 1951 | 31 | 512 | 8 | 28 | 6 | 94 |
| 1952 | 26 | 469 | 3 | 31 | 11 | 82 |
| 1953 | 41 | 750 | 5 | 45 | 4 | 87 |
| 1954 | 31 | 581 | 11 | 36 | 4 | 114 |
| 1955 | 27 | 443 | 3 | 6 | 2 | 30 |
| 1956 | 39 | 590 | 3 | 17 | 6 | 53 |
| 1957 | 11 | 266 | 1 | 20 | 9 | 53 |
| 1958 | 21 | 298 | 3 | 31 | 6 | 67 |
| 1959 | 16 | 279 | 3 | 33 | 0 | 51 |
| 1960 | 30 | 563 | 4 | 39 | 14 | 105 |
| 1961 | 34 | 569 | 2 | 43 | 14 | 97 |
| Totals | 307 | 5320 | 46 | 329 | 76 | 833 |

Native Georgian Johnny Griffith Begins Second Season at Helm

Johnny Leonard Griffith, the University of Georgia's 19th head football coach, learned the game from two of Georgia's greatest teachers—R. L. (Shorty) Doyal, who produced some of the South's most powerful prep school teams at Boys' High in Atlanta, and Wallace Butts, who produced four SEC championship elevens and eight bowl teams during his successful 22-year tenure as head Bulldog coach.

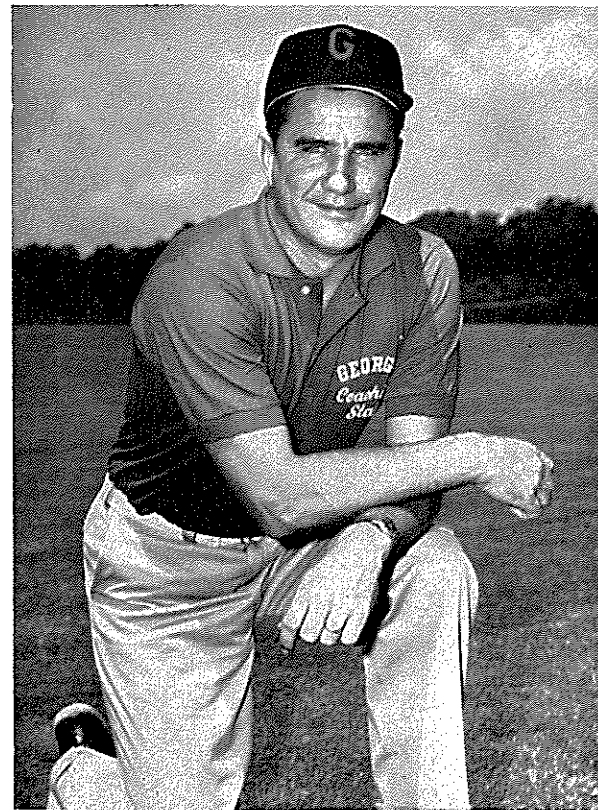
Griffith starts his second season as Georgia head coach hoping for better luck, both for the team and personally, than he enjoyed in his first year. The Bulldogs won only three, lost squeakers to FSU, Florida and Auburn and suffered the loss of a key player every game of the season.

Personally, Johnny's luck was little better. He underwent an appendectomy the day before the opening game with Alabama and it was the third game of the season before he could actively return to the helm. During the season, his father, M. F. Griffith of Atlanta, passed away.

Johnny was born May 27, 1924, in Crawfordville, Ga., and his family moved to Atlanta when he was a youngster. He played at Boys' High under Doyal, who shifted him from guard to halfback because of his sprinter's speed. He was a standout on the great juggernauts Doyal was producing annually at Boys' High.

After serving in the U. S. Navy, 1943-46, Johnny entered Georgia and was a substitute back as a freshman on Georgia's great undefeated and untied SEC and Sugar Bowl champions of 1946. Against Furman that season he set the Georgia school record for a rushing touchdown play by scoring on an 89-yard gallop.

He switched to South Georgia, a junior college, in 1947 and made the All-America junior college team.



He graduated from Georgia in 1949 and joined the South Georgia College staff as an assistant to Wyatt Posey. When Posey moved to Yale as an aide to Herman Hickman in 1950, Griffith was made head coach at the Douglas (Ga.) school. Johnny won four straight state junior college championships at South Georgia before joining the Georgia staff as freshman backfield coach in 1954.

He shifted to Furman as varsity backfield coach under head coach Homer Hobbs, also an ex-Bulldog, in 1955. He returned to Georgia in 1956 as varsity defensive backfield coach and also headed the important recruiting program. He was head freshman coach and director of recruiting in 1959 and 1960.

Johnny and his wife, the former Miss Dorothy Cowart of Douglas, have four children—Susan, 14; John, 11; Virginia, 6, and Melissa Georgia, 4.

❖ "OFFICIAL WATCH FOR THIS GAME — LONGINES — THE WORLD'S MOST HONORED WATCH" ❖



Munch a bunch of Fritos corn chips!



Enjoy the game more . . . by enjoying the lightly-toasted, lightly-roasted flavor of Fritos corn chips. *Everybody* wins with Fritos . . . 'cause they're *made to munch!*

NOW ON SALE IN THIS STADIUM

FRITOS IS A REGISTERED TRADEMARK OF FRITO-LAY, INC.



a business executive tells

“What the University of Georgia Means to Me”

“As an ex-patriot whose entire post-graduate life has been spent in other parts of our nation, the University is to me the image of that which is best in my native state, as well as the jeweled setting for the memorable years of my youth for which I am eternally grateful.

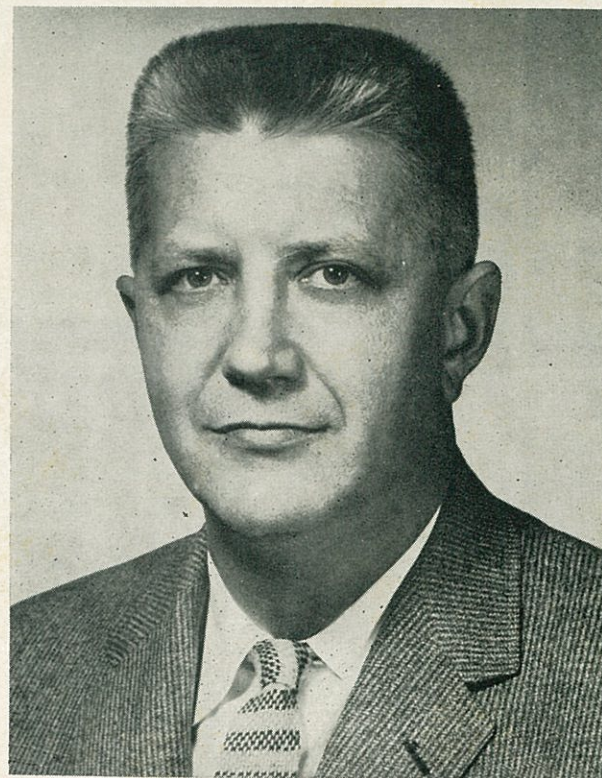
“I see the old campus and its hallowed halls where sons of Georgia assembled have kept the lamp of learning bright for almost two centuries.

“I hear the Chapel Bell and see The Arch, Herty and Sanford Fields where great Georgia teams have fought for the Red and Black as the student body and Georgians old and young, from Rabun Gap to the Okefenokee, have rallied in the common cause — “Glory,” “Hail to Georgia!”

“I see the South Campus, new buildings rising everywhere, research and continuing education centers, a great faculty and a great University operating in an atmosphere of academic freedom and dedicated to the purpose of preserving truth, advancing and disseminating knowledge.

“I see a proud record of past achievements and an even greater role in the future.”

—John Brown



John C. Brown

Georgia '35

John C. Brown, Georgia '35, was named in 1959 by SPORTS ILLUSTRATED Magazine to its Silver Anniversary All-America. This is a group of twenty-five men honored for outstanding achievement in business and public life since college.

Mr. Brown, who is now Southwestern Regional Manager of The Coca-Cola Company's Bottler Sales, was selected to the All-SEC team his senior college year for his play at guard, as well as making honorable mention All-American. Raised on a farm near Athens, he had played only one year of high school football and that with the intent to win a scholarship enabling him to attend college.

The same determination and ambition have been reflected in his business life and his public service activities. He joined Coca-Cola immediately following graduation and has steadily moved up the ladder. Before receiving his latest promotion earlier this year, he had served as president of the company's organization in both Ohio and California.

During World War II he rose to the rank of Colonel and served with distinction in the European Theatre, receiving the Distinguished Service Cross, the Silver Star with cluster, the Bronze Star with cluster, the Purple Heart with two clusters and both the French and Belgium Croix de Guerre.

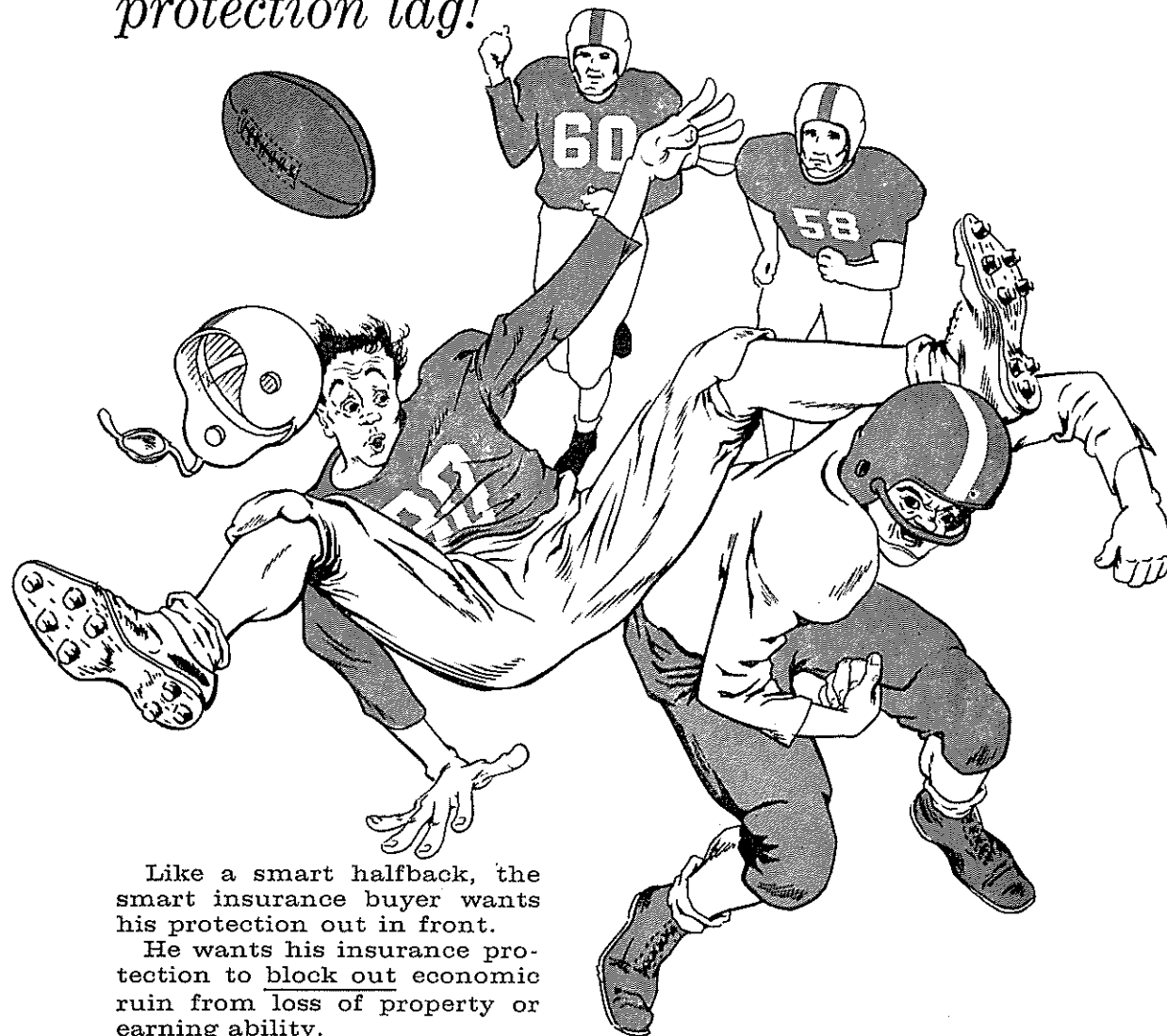
He has headed civic drives and organizations in every community in which he has lived. He is married to his college sweetheart and they have four children.

a **LEADER**
for over
12 years
in cold
control...
CORICIDIN[®]

(brand of antihistamine-analgesic-antipyretic compound)

A SMART RULE...

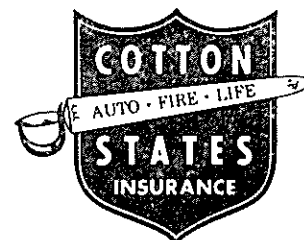
*never let your
protection lag!*



Like a smart halfback, the smart insurance buyer wants his protection out in front.

He wants his insurance protection to block out economic ruin from loss of property or earning ability.

That's why more and more smart insurance buyers are insuring with Cotton States Insurance Companies. They prefer the modern, money-saving way of providing complete personal insurance protection through a helpful teammate—your local Cotton States agent.



Cotton States Insurance

ATLANTA, GEORGIA

Georgia-Florida State Series

Georgia leads Florida State, 5-1-0, in their short but exciting football series.

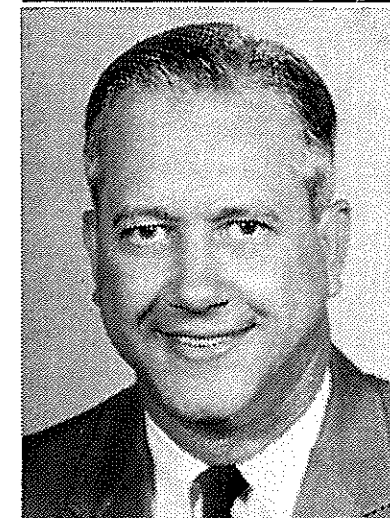
Two of the games have been decided on field goals. Georgia won in the closing minutes of the 1956 game on Sanford Field with a 36-yard boot by Ken Cooper, now Georgia frosh end coach. The Seminoles won in Tallahassee last year with a first quarter kick of 23 yards by Doug Messer.

The 1955 game in Tallahassee was a memorable one in which Georgia fullback Bobby Garrard rushed for 128 yards including a 67-yard TD jaunt.

The 1959 game in Athens featured the SEC champion Bulldogs at their red-hot best as Francis Tarkenton, Charley Britt and Tommy Lewis piloted the home team to a 42-0 victory.

Past Bulldog-Seminole scores:

| | | | | | | | |
|------|------------|------------------|----------------|------|------------|------------------|-----------------|
| 1954 | Georgia 14 | Florida State 0 | at Tallahassee | 1958 | Georgia 28 | Florida State 13 | at Jacksonville |
| 1955 | Georgia 47 | Florida State 14 | at Tallahassee | 1959 | Georgia 42 | Florida State 0 | in Athens |
| 1956 | Georgia 3 | Florida State 0 | in Athens | 1961 | Georgia 0 | Florida State 3 | at Tallahassee |



Heyward Allen

HEYWARD ALLEN MOTOR CO.

TELEPHONE LI. 3-5258



257 WEST BROAD ST. • ATHENS, GEORGIA

see films of

GEORGIA FOOTBALL REVIEW

with
Ed Thilenius
and
Coach Griffith



TODAY'S GAME TOMORROW 3:30 p. m.

 **waga•tv**

Channel 5



Should a gentleman offer a Tiparillo to a lady?

What is the story of this remarkable new smoke by Robt. Burns? If she enjoys smoking a cigarette, why not? The Tiparillo* is slim, neat, mild as mild can be. Go ahead, offer her one. But although Tiparillo is not "men only" it is "men mainly." And that new pliable, pearly tip pays more than just lip service to your smoking pleasure. It's your mouthpiece to the careful blending-of-choicest imported tobaccos. Tiparillo has

the kind of flavor you don't have to inhale to enjoy... peace of mind in every puff. Moreover, there's the exclusive veinless Ultra Cigar Wrapper* that burns so evenly and smoothly it insures complete mildness. The surprisingly whiter ash is visible evidence of Tiparillo mildness. And that's your best smoking tip for today. Only 5¢ each. ONLY 5¢? Yes, only 5¢.

Tiparillos are on sale at this stadium.

*T. H. GENERAL CIGAR CO., INC.

1962 Georgia Varsity Roster

| No. | Name | Pos. | Age | Ht. | Wt. | Class | Home Town |
|-----|--------------------|-------|-----|------|-----|-------|--------------------|
| 10 | Larry Rakestraw | QB | 20 | 6-2 | 198 | Jr. | Atlanta, Ga. |
| 15 | Pete Dickens | QB | 19 | 6-1 | 185 | So. | Athens, Ga. |
| 17 | Pat Hunnicutt | QB | 19 | 5-9 | 161 | So. | LaGrange, Ga. |
| 18 | Jake Saye | QB | 21 | 5-11 | 175 | Sr. | Rutledge, Ga. |
| 20 | Joe Burson | LH | 19 | 6-0 | 171 | So. | Newnan, Ga. |
| 22 | Carlton Guthrie | RH | 21 | 6-1 | 167 | Jr. | Blue Ridge, Ga. |
| 23 | Wayne Swinford | LH | 19 | 6-0 | 175 | So. | Munford, Ala. |
| 26 | Richard Boykin | RH-LH | 20 | 5-8 | 166 | Jr. | Sylvania, Ga. |
| 27 | Frank Lankewicz | LH | 20 | 6-0 | 190 | So. | Butler, Pa. |
| 28 | Don Blackburn | LH-RH | 22 | 6-0 | 183 | Sr. | Smyrna, Ga. |
| 33 | Billy Knowles | RH | 20 | 5-10 | 169 | Jr. | Ozark, Ala. |
| 35 | Don Porterfield | LH | 21 | 5-11 | 178 | So. | Moultrie, Ga. |
| 36 | Brigham Woodward | RH | 20 | 6-0 | 168 | Jr. | Augusta, Ga. |
| 37 | Doug McFalls | LH | 21 | 6-1 | 176 | So. | Rome, Ga. |
| 39 | Grady Luckey | RH | 19 | 5-10 | 176 | So. | Augusta, Ga. |
| 42 | LeRoy Dukes | FB | 23 | 5-9 | 187 | So. | Patterson, Ga. |
| 43 | Gary Glover | FB | 21 | 6-0 | 190 | Jr. | Waynesboro, Ga. |
| 44 | Ralph Westmoreland | FB | 22 | 6-1 | 190 | Jr. | Griffin, Ga. |
| 45 | Leon Armbrester | FB | 19 | 6-0 | 186 | So. | Childersburg, Ala. |
| 46 | Fred Barber | FB | 19 | 5-11 | 195 | So. | Bainbridge, Ga. |
| 47 | Al Hammock | FB | 20 | 5-10 | 175 | So. | Blakely, Ga. |
| 48 | Mack Faircloth | FB | 20 | 6-1 | 192 | Jr. | Moultrie, Ga. |
| 50 | Len Hauss | C | 20 | 6-2 | 213 | Jr. | Jesup, Ga. |
| 53 | Bobby Allen | C | 22 | 6-2 | 220 | Sr. | Columbus, Ga. |
| 54 | Bobby Coleman | C | 19 | 6-0 | 195 | So. | Roswell, Ga. |
| 55 | Joel Darden | C | 20 | 5-11 | 210 | So. | LaGrange, Ga. |
| 60 | Johnny Wells | RG | 20 | 5-11 | 199 | Jr. | Savannah, Ga. |
| 63 | Jim Wilson | RT | 21 | 6-3 | 259 | So. | Pittsburgh, Pa. |
| 64 | Benny Boyd | LT | 20 | 6-3 | 215 | Jr. | Haines City, Fla. |
| 65 | Terry Scott | LG | 20 | 6-1 | 205 | Jr. | Atlanta, Ga. |
| 66 | Richard Kelly | RG | 21 | 6-1 | 218 | Jr. | Savannah, Ga. |
| 68 | Wally Williamson | RG | 22 | 5-10 | 206 | Sr. | Coral Gables, Fla. |
| 69 | Melvin Crook | LG | 20 | 6-1 | 215 | Jr. | Enka, N. C. |
| 70 | Ray Rissmiller | LT | 20 | 6-4 | 225 | So. | Easton, Pa. |
| 71 | Mike Cole | LT | 20 | 6-3 | 216 | So. | Austell, Ga. |
| 72 | Bill Ivey | RG | 23 | 6-2 | 216 | Sr. | Albany, Ga. |
| 73 | Gerald Winsett | LT | 22 | 6-3 | 231 | So. | Auburndale, Fla. |
| 75 | Jimmy Whitehead | RT | 20 | 6-5 | 269 | So. | Augusta, Ga. |
| 76 | Kenneth Vann | LG | 23 | 6-2 | 215 | Sr. | Columbus, Ga. |
| 77 | Paul Holmes | RT | 22 | 6-5 | 231 | Sr. | Atlanta, Ga. |
| 81 | Ray Crawford | RE | 19 | 6-0 | 198 | So. | Columbus, Ga. |
| 82 | Ray Maddox | RE | 21 | 6-3 | 212 | Jr. | Miami, Fla. |
| 83 | George Nowicki | RE | 20 | 6-3 | 198 | So. | Miami, Fla. |
| 84 | Mickey Babb | RE | 20 | 6-3 | 227 | Jr. | Atlanta, Ga. |
| 85 | *Bill McCullough | LE | 21 | 5-10 | 200 | Jr. | Macon, Ga. |
| 86 | Barry Wilson | LE | 19 | 6-0 | 190 | So. | Savannah, Ga. |
| 87 | Mike Cahoon | RE | 21 | 6-0 | 202 | So. | Rome, Ga. |
| 88 | John McEachern | LE | 21 | 6-2 | 205 | Jr. | Tallahassee, Fla. |

*McCullough is place-kicking specialist.

"OFFICIAL WATCH FOR THIS GAME - LONGINES - THE WORLD'S MOST HONORED WATCH"

DEDICATED TO THRIFT

One of the largest Federal chartered Savings & Loan Associations in the state.

Organized for the purpose of stimulating Thrift and Home Ownership. We have paid our savers over \$9¼ million in dividends and have financed over 10,260 homes in Fulton, Cobb and DeKalb counties, involving approximately \$71,313,000.



JOHN L. CONNER
PRES. FOUNDER

Out-of-town savings accounts solicited.

Savings insured up to \$10,000



4½ %

per annum, anticipated rate payable for the period from July 1st, 1962, to December 31st, 1962.

SOUTHERN FEDERAL SAVINGS & LOAN
ASSOCIATION OF ATLANTA
Ground Floor Hurt Bldg. (Est. 1936) MU. 8-1935



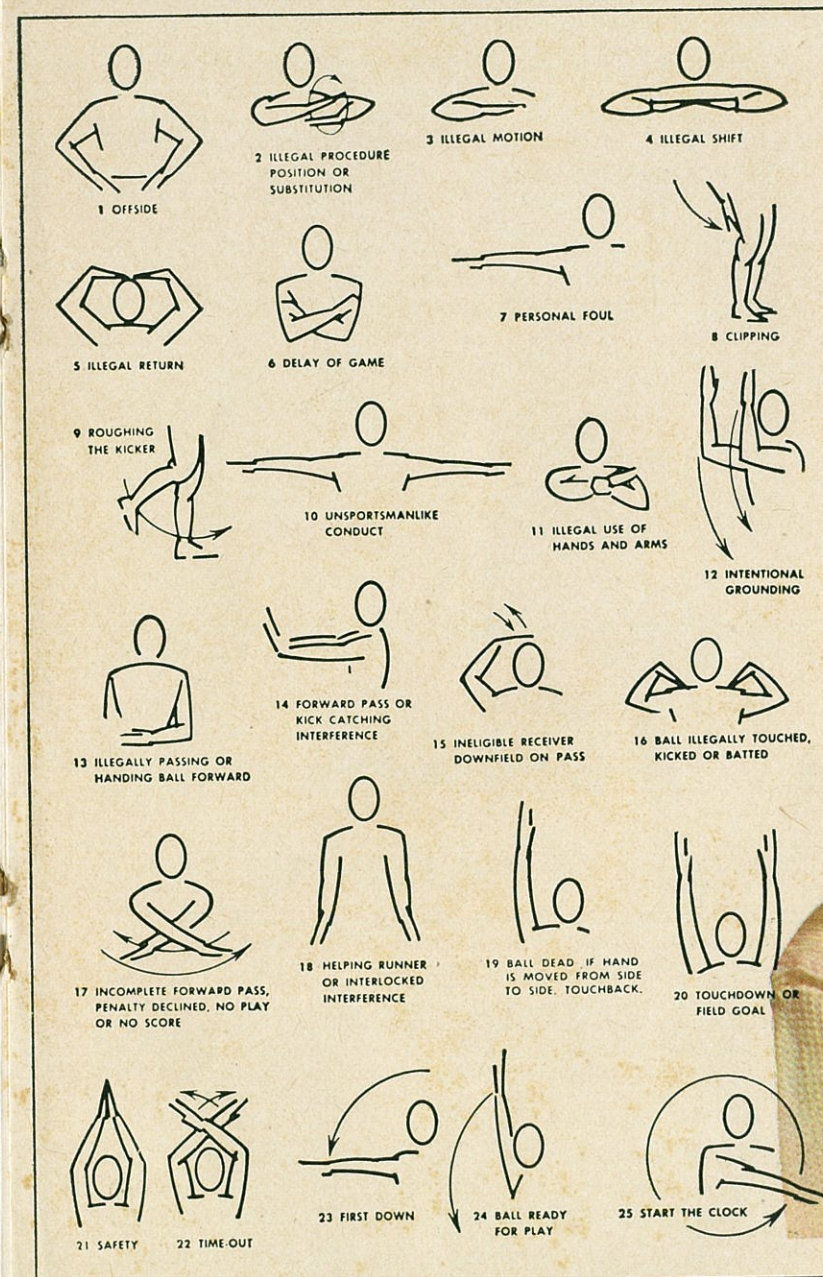
We'll mind him for you if he's house-broke! When in Atlanta, make Jarrell's your headquarters. We'll kennel your pup, mail packages for you, sew on a button; go all out to make you welcome. So come have a soft drink on the house, use the 'phone, meet your friends here. While waiting get familiar with some of our newer developments. The Cross Roads shop for young men, ladies' department under operation of Casual Corner, formal wear rental service, and at the Lenox Square store a new boys' department. Jarrell's downtown is the Atlanta ticket office for Georgia home games. Call on us.

John Jarrell INC.

Broad at Peachtree • Lenox Square

Enjoy that **REFRESHING** **NEW FEELING** with **COKE**

TRADE-MARK ®



THE ATHENS COCA-COLA BOTTLING CO., ATHENS, GA.

"Viceroy's got the taste that's right!"

Smoke all seven filter
brands and you'll agree:
some taste too strong
... some too light ...
but Viceroy's got
the taste that's
right!

That's right!



Georgia

PROBABLE STARTING LINEUP

| No. | Name | Pos. |
|-----|------------------|------|
| 86 | BARRY WILSON | LE |
| 70 | RAY RISSMILLER | LT |
| 76 | KENNETH VANN | LG |
| 50 | LEN HAUSS | C |
| 68 | WALLY WILLIAMSON | RG |
| 77 | PAUL HOLMES | RT |
| 84 | MICKEY BABB | RE |
| 10 | LARRY RAKESTRAW | QB |
| 27 | FRANK LANKEWICZ | LH |
| 33 | BILLY KNOWLES | RH |
| 45 | LEON ARMBRESTER | FB |

THE GEORGIA SQUAD

| | | |
|--------------------|---------------------|-------------------|
| 10 Rakestraw, QB | 43 Glover, FB | 69 Crook, LG |
| 15 Dickens, QB | 44 Westmoreland, FB | 70 Rissmiller, LT |
| 17 Hunnicutt, QB | 45 Armbruster, FB | 71 Cole, LT |
| 18 Saye, QB | 46 Barber, FB | 72 Ivey, RG |
| 20 Burson, LH | 47 Hammock, FB | 73 Winsett, LT |
| 22 Guthrie, RH | 48 Faircloth, FB | 75 Whitehead, RT |
| 23 Swinford, LH | 50 Hauss, C | 76 Vann, LG |
| 26 Boykin, RH | 53 Allen, C | 77 Holmes, RT |
| 27 Lankewicz, LH | 54 Coleman, C | 81 Crawford, RE |
| 28 Blackburn, LH | 55 Darden, C | 82 Maddox, RE |
| 33 Knowles, RH | 60 Wells, RG | 83 Nowicki, RE |
| 35 Porterfield, LH | 63 Wilson, J., RT | 84 Babb, RE |
| 36 Woodward, RH | 64 Boyd, LT | 85 McCullough, LE |
| 37 McFalls, LH | 65 Scott, LG | 86 Wilson, B., LE |
| 39 Luckey, RH | 66 Kelly, RG | 87 Cahoon, RE |
| 42 Dukes, FB | 68 Williamson, RG | 88 McEachern, LE |

OFFICIALS

Referee—Charles R. Bowen, Ft. Lauderdale, Fla.
Umpire—Charles Brown, Atlanta, Ga.
Linesman—Davis Scobey, Nashville, Tenn.
Field Judge—A. C. Lambert, Tupelo, Miss.
Back Judge—Jimmy Cole, Memphis, Tenn.
Electric Clock Operator—Billy Teas, Atlanta, Ga.

Florida State

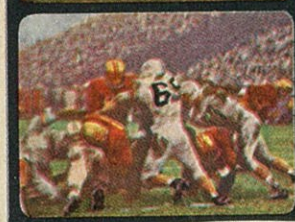
PROBABLE STARTING LINEUP

| No. | Name | Pos. |
|-----|-----------------|------|
| 89 | J. McCONNAUGHAY | LE |
| 70 | TOM SLICKER | LT |
| 52 | CHUCK ROBINSON | LG |
| 64 | BRUCE DARSEY | C |
| 63 | GENE McDOWELL | RG |
| 71 | JIM SIMS | RT |
| 20 | DAVE SNYDER | LH |
| 14 | EDDIE FEELY | QB |
| 84 | HANK SYTSMA | LH |
| 22 | KEN RUSSOM | RH |
| 44 | MARION ROBERTS | FB |

THE SEMINOLE SQUAD

| | | |
|-------------------|-------------------|--------------------|
| 10 Eckert, QB | 42 Norman, FB | 70 Slicker, T |
| 11 Calhoun, QB | 44 M. Roberts, FB | 71 Sims, T |
| 12 Harlee, KS | 51 McNease, C | 73 Sumner, T |
| 13 Tensi, QB | 52 Robinson, G | 74 Tyre, T |
| 14 Feely, QB | 53 Daly, C | 75 MacKenzie, T |
| 15 Massey, QB | 55 Edwards, C | 76 Andrews, T |
| 20 Snyder, B | 60 Henry, G | 80 Wachtel, E |
| 21 Brinkley, HB | 61 Klores, T | 79 Blazovich, T |
| 22 Russom, HB | 62 Slay, G | 81 Floyd, E |
| 23 Loftin, HB | 63 McDowell, G | 82 Causey, E |
| 24 J. Roberts, FB | 64 Dorsey, G | 83 Dawson, E |
| 26 Kinderman, HB | 65 Levings, G | 84 Sytsma, E |
| 27 Spooner, HB | 66 Hermann, G | 85 Biletnikoff, E |
| 28 Hollman, HB | 67 Bruner, G | 87 Garvin, E |
| 29 Hillabrand, HB | 68 Shinholser, G | 88 Gunter, E |
| 40 Messer, HB | 69 Wade, G | 89 McConnaughay, E |
| 41 G. Roberts, FB | | |

ZING! with Coca-Cola



PENALTIES

1. OFFSIDE by either team; Violation of scrimmage or free kick formation; Encroachment on neutral zone — Loss of Five Yards.
2. ILLEGAL PROCEDURE, POSITION OR SUBSTITUTION — Putting ball in play before Referee signals "Ready-for-Play"; Failure to complete substitution before play starts; Player out-of-bounds when scrimmage begins; Failure to maintain proper alignment of offensive team when ball is snapped; False start or simulating start of a play; Taking more than two steps after Fair Catch is made; Player on line receiving snap; Free kick out-of-bounds — Loss of Five Yards.
3. ILLEGAL MOTION — Offensive player illegally in motion when ball is snapped — Loss of Five Yards.
4. ILLEGAL SHIFT — Failure to stop one full second following shift — Loss of Five Yards.
5. ILLEGAL RETURN of ineligible substitute — Loss of 15 Yards.
6. DELAY OF GAME — Consuming more than 25 seconds in putting the ball in play after it is declared ready for play; Interrupting the 25-second count for any reason other than a free or excess time out granted by Referee; Failure to remove injured player for whom excess time out was granted; Crawling — Loss of Five Yards. Team not ready to play at start of either half — Loss of 15 Yards.
7. PERSONAL FOUL — Tackling or blocking defensive player who has made fair catch; Piling on; Hurdling; Grasping face mask of opponent; Tackling player out of bounds, or running into player obviously out of play; Striking an opponent with fist, forearm, elbow or locked hands; Kicking or kneeing — Loss of 15 Yards. (Flagrant offenders will be disqualified.)

8. CLIPPING — Loss of 15 Yards.
9. ROUGHING THE KICKER or holder — Loss of 15 Yards.
10. UNSPORTSMANLIKE CONDUCT — Violation of rules during intermission; Illegal return of suspended player; Coaching from side lines; Invalid signal for Fair Catch; Persons illegally on field — Loss of 15 Yards. (Flagrant offenders will be disqualified.)
11. ILLEGAL USE OF HANDS AND ARMS by offensive or defensive player — Loss of 15 Yards.
12. INTENTIONAL GROUNDING of forward pass — Loss of Five Yards from spot of pass Plus Loss of Down.
13. ILLEGALLY PASSING OR HANDING BALL FORWARD — Loss of Five Yards from spot of foul Plus Loss of Down.
14. FORWARD PASS OR KICK CATCHING INTERFERENCE — Interference with opportunity of player of receiving team to catch a kick — Loss of 15 Yards. Interference by member of offensive team with defensive player making pass interception — Loss of 15 Yards Plus Loss of Down. Interference by defensive team on forward pass — Passing Team's Ball at Spot of Foul and First Down.
15. INELIGIBLE RECEIVER DOWNFIELD ON PASS — Loss of 15 Yards.
16. BALL ILLEGALLY TOUCHED, KICKED OR BATTED — Forward pass being touched by ineligible receiver beyond the line of scrimmage — Loss of 15 Yards from Spot of Preceding Down and Loss of a Down. Eligible pass receiver going out-of-bounds and later touching a forward pass — Loss of Down; Illegally kicking a free ball — Loss of 15 Yards.
17. INCOMPLETE FORWARD PASS — Penalty declined; No play or no score.
18. HELPING THE RUNNER, or interlocked interference — Loss of 15 Yards.

People Who Help Create the Home-like Atmosphere at the CO-ED RESTAURANT



Ray Clark



Sandra Tally



Emma Jo Jones



Nelson Elder



Margaret Addington



Cindy Elder



Gloria Elder



Harold Benton



Donna Hickman



Faye Porterfield



Elaine Arrendale

THE ATHENS COCA-COLA BOTTLING CO., ATHENS, GA.

1962 Florida State Football Roster

| No. | Name | Pos. | Age | Ht. | Wt. | Class | Hometown |
|-----|-----------------------|------|-----|------|-----|-------|--------------------|
| 10 | Tom Eckert | QB | 19 | 6-0 | 190 | So. | Massillon, O. |
| 11 | Charlie Calhoun | QB | 19 | 5-10 | 180 | Jr. | Tallahassee, Fla. |
| 12 | John Harllee | QB | 19 | 6-1 | 209 | Jr. | Palmetto, Fla. |
| 13 | Steve Tensi | QB | 19 | 6-5 | 195 | So. | Cincinnati, O. |
| 14 | Eddie Feely | QB | 21 | 5-7 | 159 | Sr. | Gainesville, Fla. |
| 15 | Jim Massey | QB | 19 | 5-11 | 178 | So. | Cairo, Ga. |
| 20 | Dave Snyder | FB | 20 | 5-10 | 180 | Jr. | Jacksonville, Fla. |
| 21 | Larry Brinkley | HB | 20 | 6-0 | 185 | Jr. | Willoughby, O. |
| 22 | Ken Russom | HB | 21 | 6-0 | 179 | Sr. | Gainesville, Fla. |
| 23 | Jim Loftin | HB | 19 | 6-1 | 180 | So. | Pensacola, Fla. |
| 24 | John Roberts | FB | 19 | 6-0 | 190 | So. | Orlando, Fla. |
| 26 | Keith Kinderman | HB | 22 | 6-0 | 205 | Sr. | Chicago, Ill. |
| 27 | Phil Spooner | HB | 18 | 5-11 | 170 | So. | Ft. Myers, Fla. |
| 28 | Winfred Bailey | HB | 20 | 6-1 | 182 | So. | Atlanta, Ga. |
| 29 | Tom Hillabrand | HB | 21 | 6-0 | 175 | Sr. | Perrysburg, O. |
| 40 | Doug Messer | HB | 20 | 6-0 | 183 | Jr. | LaGrange, Ga. |
| 41 | Gene Roberts | FB | 20 | 6-1 | 210 | Jr. | High Springs, Fla. |
| 42 | Ralph Norman | FB | 20 | 5-11 | 180 | So. | Thomasville, Ga. |
| 44 | Marion Roberts | FB | 19 | 6-0 | 190 | Jr. | Ocilla, Ga. |
| 51 | Y. C. McNease | C | 26 | 6-0 | 220 | Sr. | Leland, Miss. |
| 52 | Chuck Robinson | G | 20 | 5-11 | 215 | Jr. | East Palestine, O. |
| 53 | Bill Daly | C | 19 | 6-1 | 195 | Jr. | Jacksonville, Fla. |
| 55 | Jack Edwards | C | 19 | 6-2 | 215 | So. | Tampa, Fla. |
| 60 | Ferrell Henry | G | 20 | 6-1 | 195 | Jr. | Colquitt, Ga. |
| 61 | Jeff Klores | T | 21 | 6-0 | 204 | Jr. | Miami, Fla. |
| 62 | Steve Slay | G | 19 | 5-10 | 206 | So. | Atlanta, Ga. |
| 62 | Gene McDowell (Capt.) | G | 22 | 5-11 | 195 | Sr. | Waycross, Ga. |
| 64 | Bruce Darsey | C | 21 | 5-11 | 205 | Sr. | Largo, Fla. |
| 65 | John Levnigs | G | 21 | 6-0 | 214 | Sr. | Ft. Worth, Texas |
| 66 | Dick Hermann | G | 20 | 5-0 | 198 | So. | Marianna, Fla. |
| 67 | Jerry Bruner | G | 20 | 5-10 | 220 | Jr. | Evansville, Ind. |
| 68 | Jack Shinholser | G | 20 | 6-2 | 210 | So. | Tampa, Fla. |
| 69 | Jim Wade | G | 20 | 5-10 | 174 | Sr. | Atlanta, Ga. |
| 70 | Tom Slicker | T | 21 | 6-2 | 220 | Sr. | Massillon, O. |
| 71 | Jim Sims | T | 23 | 6-0 | 205 | Sr. | LaGrange, Ga. |
| 73 | Avery Sumner | T | 20 | 6-10 | 217 | So. | Adel, Ga. |
| 74 | Bill Tyre | T | 22 | 6-1 | 210 | Sr. | Sanford, Fla. |
| 75 | Dale MacKenzie | T | 19 | 6-2 | 220 | So. | Clearwater, Fla. |
| 76 | Max Andrews | T | 21 | 6-1 | 198 | So. | Dothan, Ala. |
| 79 | Mike Blazovich | T | 21 | 6-0 | 225 | Sr. | Utica, N. Y. |
| 80 | John Wachtel | E | 20 | 6-0 | 205 | Jr. | Massillon, O. |
| 81 | Don Floyd | E | 20 | 6-1 | 204 | So. | Madison, Fla. |
| 82 | Jim Causey | E | 21 | 6-1 | 210 | So. | Miami, Fla. |
| 83 | Bill Dawson | E | 19 | 6-3 | 214 | So. | Valdosta, Ga. |
| 84 | Hank Sytsma | E | 20 | 6-3 | 195 | So. | Sarasota, Fla. |
| 85 | Fred Biletnikoff | E | 19 | 6-1 | 183 | So. | Erie, Pa. |
| 87 | Terry Garvin | E | 19 | 5-11 | 194 | So. | Pensacola, Fla. |
| 88 | Cliff Gunter | E | 20 | 6-3 | 190 | Jr. | Dothan, Ala. |
| 89 | J. McConaughay | E | 20 | 6-0 | 195 | Sr. | Ocala, Fla. |

Page Twenty-two

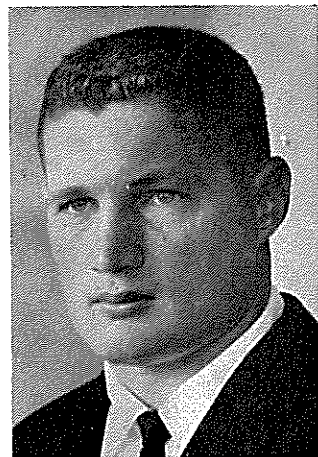


GUESS WHO MADE THE MOST YARDS RUSHING AND PASSING, SCORED MOST, AND WON THE GAME?
GUESS WHO JUST BOUGHT A NEW SUPER TORQUE 1963 FORD GALAXIE?

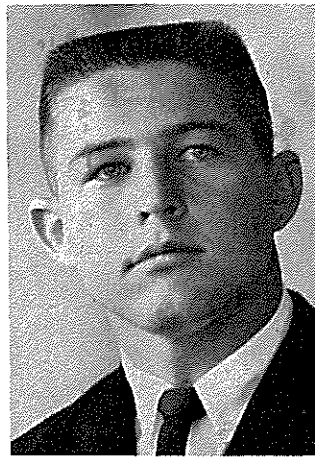
FOR THE ANSWER SEE YOUR FRIENDLY NEIGHBORHOOD FORD DEALER

A PRODUCT OF  MOTOR COMPANY

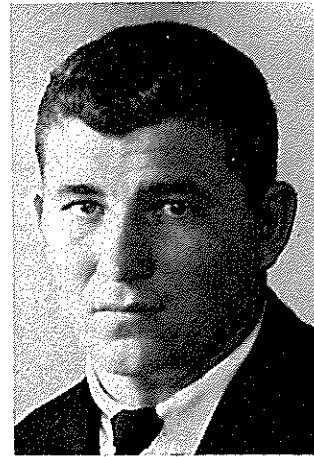
FANS—WATCH THE EXCITING NCAA COLLEGE FOOTBALL GAMES AND NFL PRO GAMES ON TV . . . THEY'RE BROUGHT TO YOU BY FORD.
CHECK NEWSPAPER FOR TIME AND STATION.



JIM CAUSEY
End



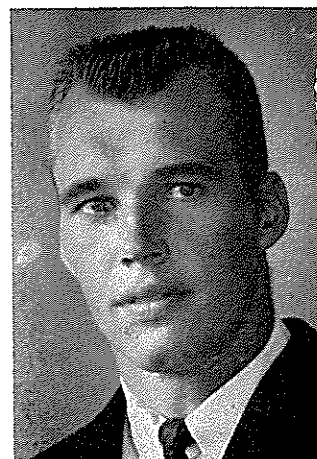
CHARLIE CALHOUN
Quarterback



GENE ROBERTS
Fullback

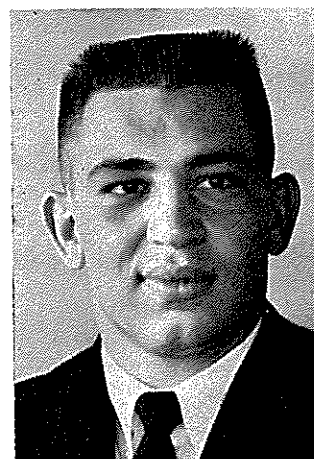


MIKE BLAZOVICH
Tackle

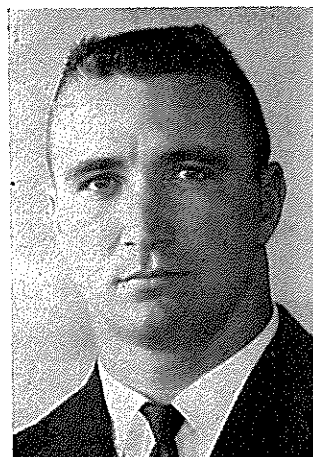


CLIFF GUNTER
End

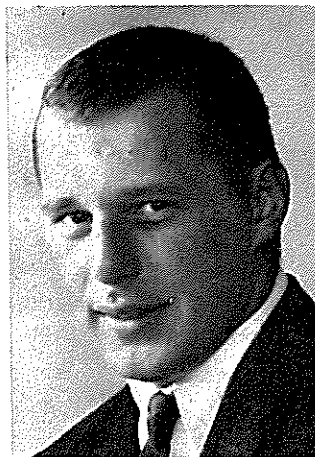
F. S. U. PLAYERS



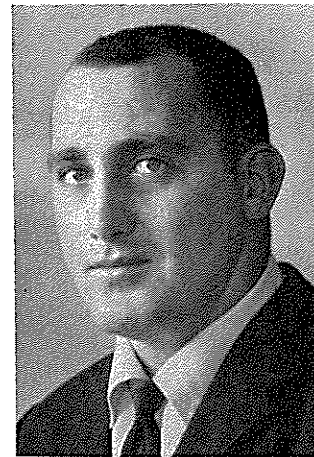
TOM SLICKER
Tackle



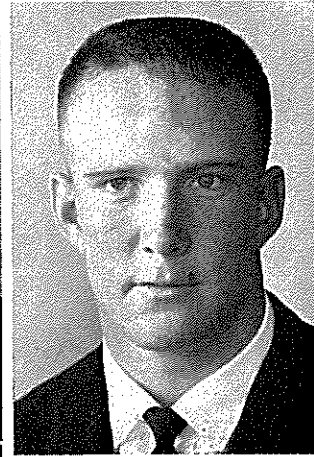
DON FLOYD
End



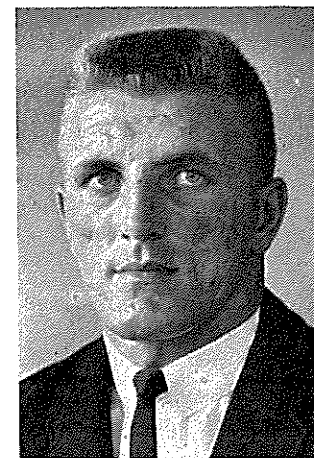
JIM SIMS
Tackle



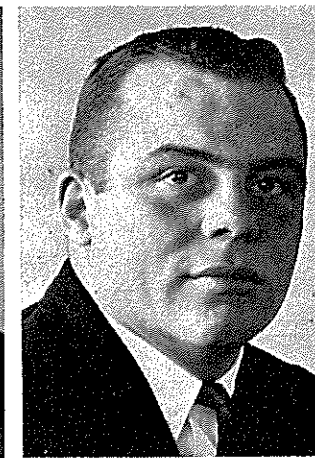
CHUCK ROBINSON
Guard



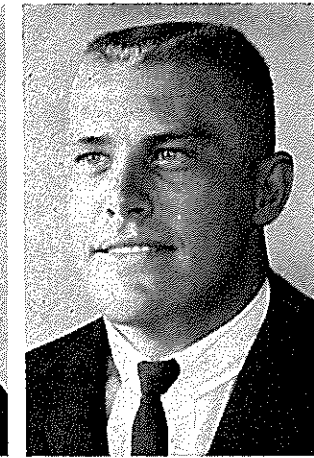
BILL DAWSON
End



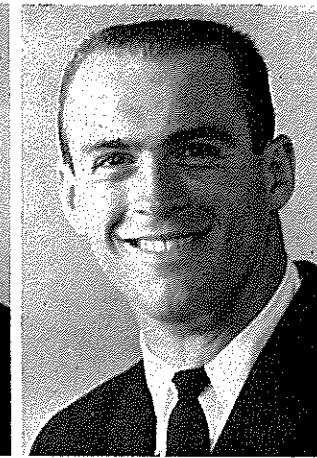
HANK SYTSMA
End



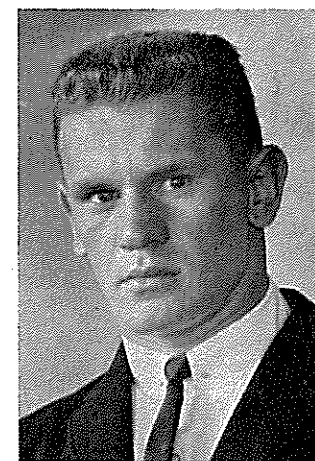
KEITH KINDERMAN
Halfback



AVERY SUMNER
Tackle

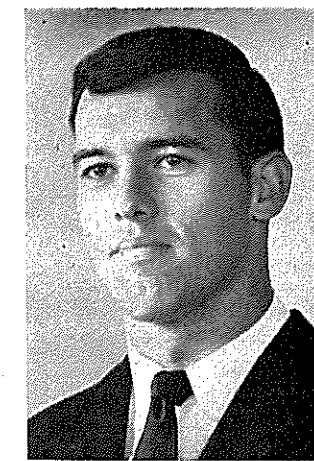


LARRY BRINKLEY
Halfback

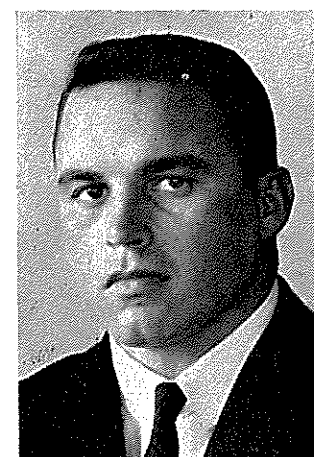


JOHN WACHTEL
End

F. S. U. PLAYERS



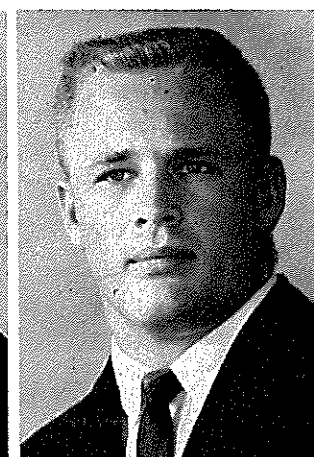
KEN RUSSOM
Halfback



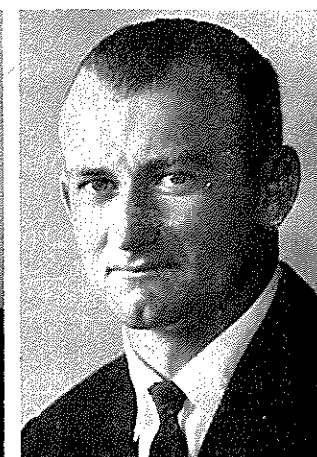
EDDIE FEELY
Quarterback



GENE McDOWELL
Guard



BRUCE DARSEY
Center



MARION ROBERTS
Fullback



SCORES EVERYTIME!

Hardee's
DELICIOUS
CHARCO-BROILED
15¢ HAMBURGERS

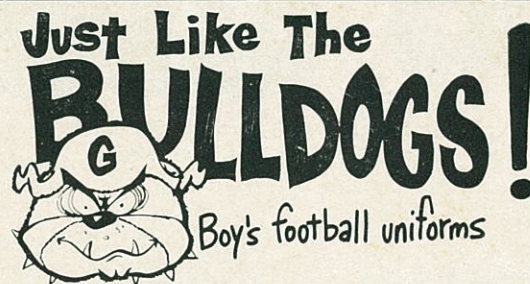
STOP IN AFTER THE GAME FOR:

| | |
|-----------------------------------|------------------------------------|
| Hamburgers—Charco Broiled.....15¢ | Cheeseburgers—Meltin' Good.....20¢ |
| Milk Shakes—Extra Thick.....20¢ | Soft Drinks—Frosty Cold.....10¢ |
| French Fries—Golden Crisp.....10¢ | |

LOCATED DIRECTLY ACROSS FROM THE
UNIVERSITY OF GEORGIA CAMPUS—FINNELLY and BAXTER STS.



Hardee's
JET SERVICE
DRIVE-IN



Just Like The
BULLDOGS!
Boy's football uniforms

Boys' football uniforms, authentic in every detail . . . Real protective equipment . . .
IDEAL CHRISTMAS GIFTS . . . ORDER YOURS TODAY . . . Sold in complete uniforms or separate pieces.

Please ship the following GEORGIA football uniform for boys:

| | | |
|----------------|---|-----------|
| JERSEYS: | White with Black and Scarlet Sleeve Stripes, Scarlet Numbers. Sizes: S (26), M (30), L (34), XL (36) | \$3.95 ea |
| PANTS: | Silver Grey with Built-in Hip, Thigh and Knee Pads Waist Sizes: 22, 24, 26, 28, 30 | 6.25 ea |
| HELMETS: | White with Double Face Bar Attached Sizes: S, M, L | 5.95 ea |
| SHOULDER PADS: | SRN Cantilever Pad . . . Real Protection — | 3.95 ea |

I enclose \$_____ (Check or money order). Please include 3% state sales tax plus 35c for postage and handling.

NAME _____ St. No. _____

City _____ State _____

Reeder & McGaughey, Inc.

"Specialists in Sports"
52 Broad Street, N. W.
Atlanta, Georgia

BILL PETERSON

Head Coach

Florida State University

For the most part Florida State's head football coach, Bill Peterson, is a modest, soft-spoken gentleman with a talent for blending personal warmth and wit into just the right mixture for the occasion. On the gridiron he undertakes his job—winning football games—in a deliberate and conscientious manner. He demands of his players and assistants nothing more than he, himself, is willing to give: the full measure of ability and devotion.

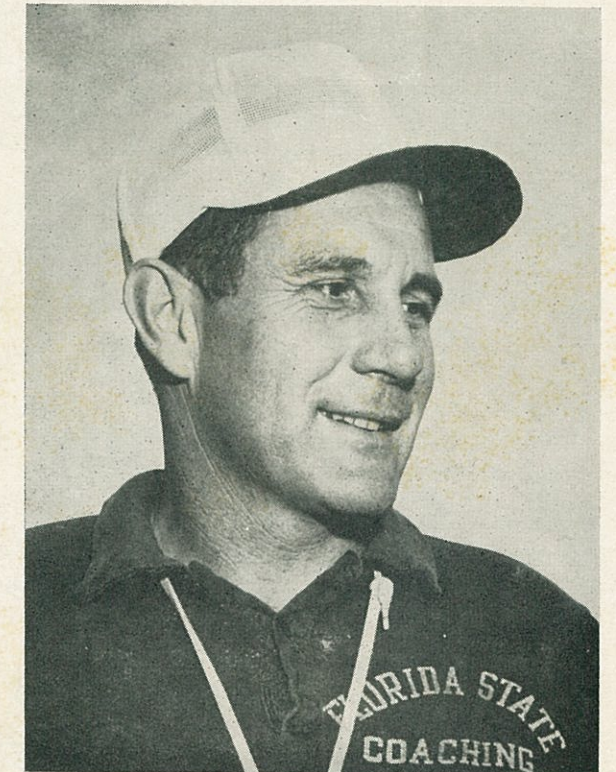
"I don't care how great a football player is supposed to be," Peterson once said. "If he doesn't have desire to play hard all the way, and if he doesn't take pride in what he is doing, he won't help you when the chips are down."

When Peterson was named FSU's fifth modern-day head coach on Dec. 7, 1959, one of his first statements went something like this: "We have to build pride and the will to win at Florida State, and we're going to do it."

In only two seasons at FSU, Peterson's teams have impressed Seminole followers with their spirit and desire while playing some of the most formidable opponents in the University's history.

A former offensive line coach at Louisiana State University, coach "Pete," as he is affectionately known by fans and fellow coaches, continues to impress Sunshine State football fanciers from Pensacola to Miami in the endless chain of personal appearances he makes.

A 1946 graduate of Ohio Northern University—he was a standout end and captain in his senior year—he coached, O., to a combined 51-22-3 record over 10 years. Two of his Mansfield elevens won Ohio state high school championships.



While an assistant at LSU, Peterson was credited with obtaining many of the players who boosted LSU into college football's top ranks. LSU's 1958 team won the national championship and defeated Clemson in the 1959 Sugar Bowl.

What has really characterized Peterson's personality during his two-year sojourn at FSU has been his remarkable vivaciousness and devotion to duty. A positive thinker all the way, Peterson mirrored one aspect of his football philosophy in this comment:

"Good team morale is more important than a good system of play. You don't put on morale like a good suit of clothes. If you have proper morale, you'll win some games that you aren't supposed to win."

Coach Peterson has done graduate work at both West Virginia and LSU. A native of Toronto, O., he is active in the Methodist Church. He and his wife, Marjorie, have five sons: Ronnie, 19; Tommy, 13; Jon, 9; Billy, 6; and David, 3 1/2.

DAVIS HOUSE OF FINE FOODS

Fast Cafeteria Style Service
Caterers For Banquets & Parties

Macon Hwy. 441 Athens
LI 3-5923

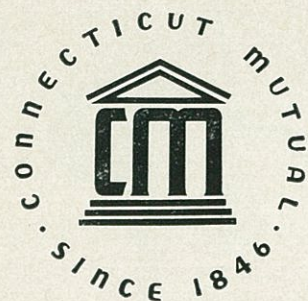
COLLEGE BOOK STORE, Inc.

Complete Line of
College Text Books
Supplies
and

Ag Engineering and
Landscaping Materials
1202 Lumpkin Athens

ATHENS BOWL O MAT

Just off The Atlanta Highway
On Alps Road



Complete and Competent Life Insurance for Personal Protection
Business Insurance
Estate Conservation and Taxation Pension and Profit Sharing Plans

The BEALY SMITH Agency

General Agent for Georgia

11 Pryor Street, S. W.
Atlanta 3, Georgia JA 2-5455

Connecticut Mutual Life
INSURANCE COMPANY



Charlie A. Evans

REALTORS



**Evans &
Mitchell inc.**

595 S. Milledge Ave.

546-1406

John H. Mitchell, Jr.



after the Hooraw is over Ole Tex asts you to
stampede out quietly
& head fer the Nearest



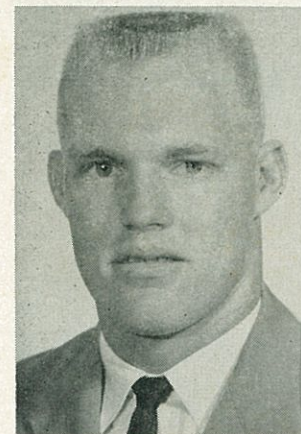
RESTERANT

171 College Ave.

A Athens Instatution since Aug. 10, 1962 A.D.

P.S. If our Athens Resterant is Two Full, it Aint but 65 Miles to the Ones in Atlanta

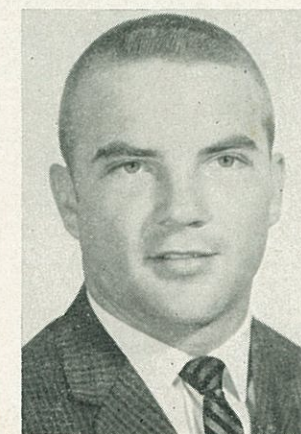
GEORGIA BULLDOGS



BENNY BOYD
Left Tackle
Haines City, Fla.



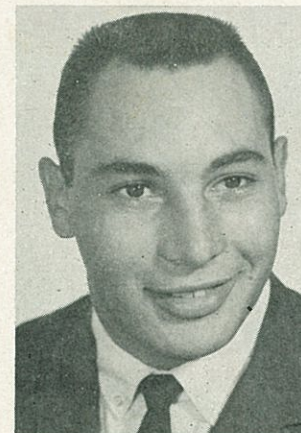
BRIGHAM WOODWARD
Safety
Augusta, Ga.



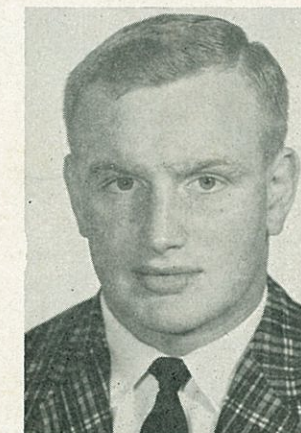
RICHARD BOYKIN
R. & L. Halfback
Sylvania, Ga.



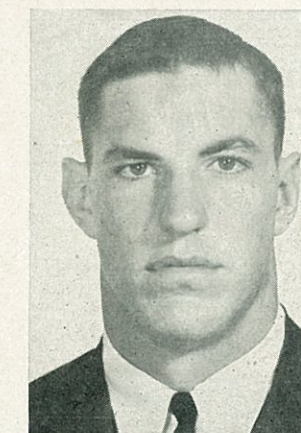
RAY CLARK
Left End
Coral Gables, Fla.



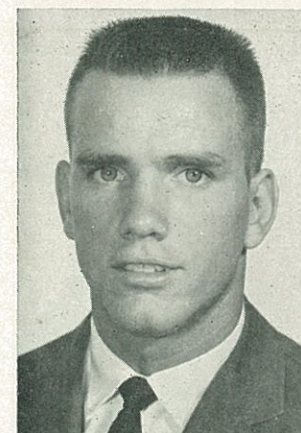
WALLY WILLIAMSON
Right Guard
Coral Gables, Fla.



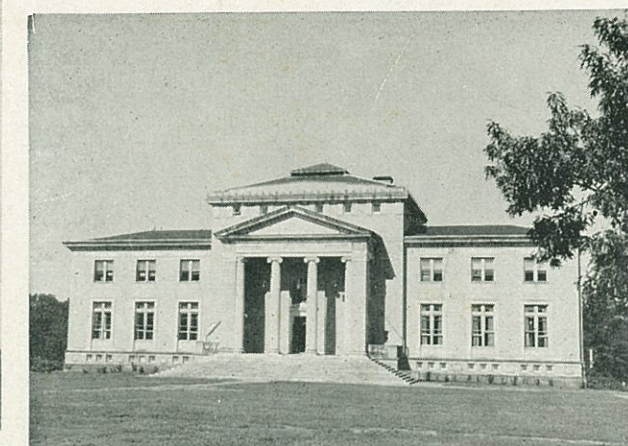
GARY GLOVER
Fullback
Waynesboro, Ga.



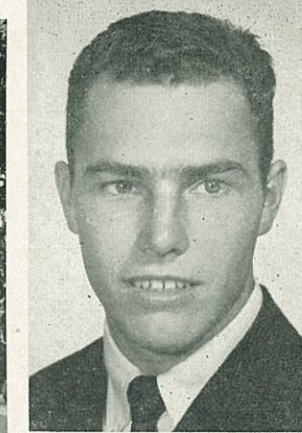
PAUL HOLMES
Right Tackle
Atlanta, Ga.



RALPH WESTMORELAND
Linebacker
Griffin, Ga.



MEMORIAL HALL



PAT HUNNICUTT
Safety
LaGrange, Ga.

GEORGIA BULLDOGS



JIM WILSON
Right Tackle
Pittsburgh, Pa.



WAYNE SWINFORD
Left Halfback
Munford, Ala.



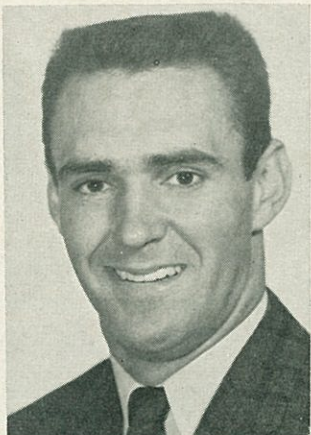
GERALD WINSETT
Left Tackle
Auburndale, Fla.



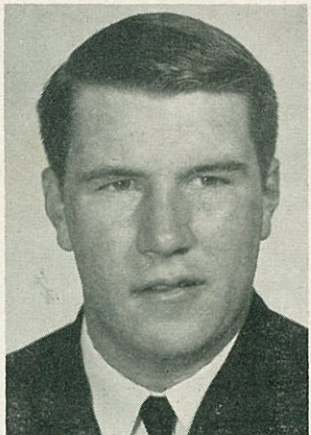
LEON ARMBRESTER
Fullback
Childersburg, Ala.



LeROY DUKES
Linebacker
Patterson, Ga.



DOUG McFALLS
Right Halfback
Rome, Ga.



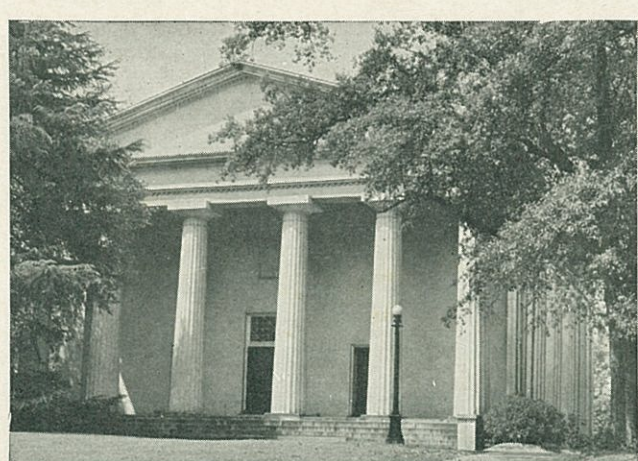
RAY CRAWFORD
Right End
Columbus, Ga.



BOBBY COLEMAN
Center
Roswell, Ga.



JOE BURSON
Left Halfback
Newnan, Ga.



CHAPEL



PETE DICKENS
Quarterback
Athens, Ga.

GEORGIA Songs and Yells

ALMA MATER

From the hills of Georgia's northland
Beams thou noble brow!
And the sons of Georgia rising
Pledge with sacred vow!
Alma Mater, thee we'll honor,
True and loyal be
Ever crowned with praise and glory,
Georgia, hail to thee.

I WANT TO GO BACK

I want to go back to U. G. A.
Back to dear ole Athens town
Back to where I spend my check
Back to where it's "To Hell with Tech"
Want to go back to U. G. A.
Back to dear ole Athens town
Want-a go back, got-a go back
To U. G., U. G., G-E-O-R-G-I-A!

SOUND OFF CHORUS

Cheerleader: Appropriate verse
Says: Sound Off!
Students: Georgia!
Cheerleader: Hit it again!
Students: Bulldogs!
All: G-E-O-R-G-I-A!

CHANT YELL

Georgia Fight!
Georgia Fight!
Geor-gia Fight, Fight!

BULLDOG MARCHING SONG

Geor-gia, Geor-gia! Hear the Bulldogs growl!
Scrap-ping, snap-ping, listen to him howl!
Here he comes a-running to the field
Geor-gia's team is never to yield—
Win or lose the other fellows knows
Georgia fights until the whistle blows!
Red and Black waves on for Var-si-ty
And Georgia's vic-to-ry!

HAIL TO GEORGIA

Hail to Georgia down in Dixie, a college honored,
fair and true.
The Red and Black is her standard, proudly it
waves,
Streaming today as the ages through.
She's the fairest in the South-land
We'll pledge our love to her for aye
To our college dear, we'll raise a cheer
All hail to dear ole U. G. A.

LOCOMOTIVE

Cheerleaders: Is everybody happy?
Students: Hell yes!
Cheerleaders: Is anybody sad?
Students: Hell no!
Cheerleaders: Take a locomotive and take it slow
G-E-O-R-G-I-A, G-E-O-R-G-I-A,
G-E-O-R-G-I-A
Yea, Georgia!

U - G - A

U - G - A
Bulldogs
Fight!

PUSH 'EM BACK

Push 'em Back,
Push 'em Back,
Way Back!

BAND YELL

Interval by band—
Students: Fight Georgia, Fight Georgia, Fight, Fight!
Band
Students: Push'em back, push'em back, way back!
Band
Students: Charge!

GOING BACK

Going back, going back, going back to Athens town
Going back, going back to the best ole place around
Going back, going back, just to hear that grand ole
sound
Of the Chapel bell, and the Georgia yell
Going back to Athens town!

HARRY'S

"House of Fine Foods"

Steak and Chicken Dinners
Seafoods, Barbecue, Short Orders

Orders to Carry Out

1655 S. Lumpkin LI 3-5024



Neighbors To a Thousand Pretty Girls . . .

The

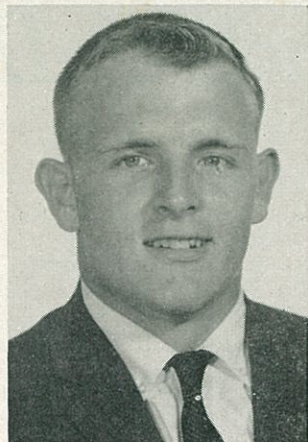
LYONS
Pharmacy

Lyons Apartments Across
From Myers Hall
LI 3-3621

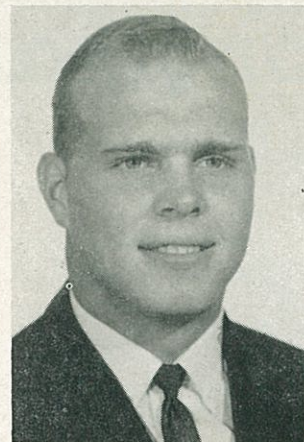
GEORGIA BULLDOGS



TERRY SCOTT
Left Guard
Atlanta, Ga.



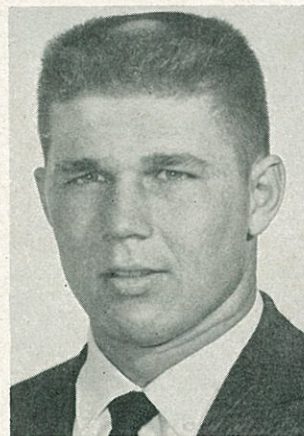
JOHNNY WELLS
Right Guard
Savannah, Ga.



MELVIN CROOK
Left Guard
Enka, N. C.



BILL IVEY
Right Guard
Albany, Ga.



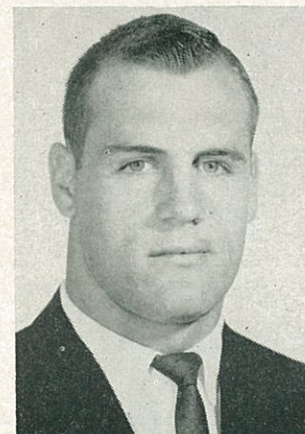
BOBBY ALLEN
Center
Columbus, Ga.



DON BLACKBURN
L. & R. Halfback
Smyrna, Ga.



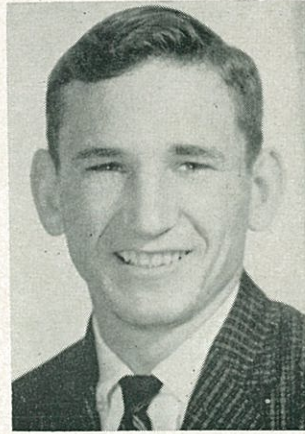
RAY MADDOX
Right Tackle
Miami, Fla.



LEN HAUSS
Center
Jesup, Ga.



ARCH



MACK FAIRCLOTH
Fullback
Moultrie, Ga.

THE UNIVERSITY OF GEORGIA DEPARTMENT OF MUSIC

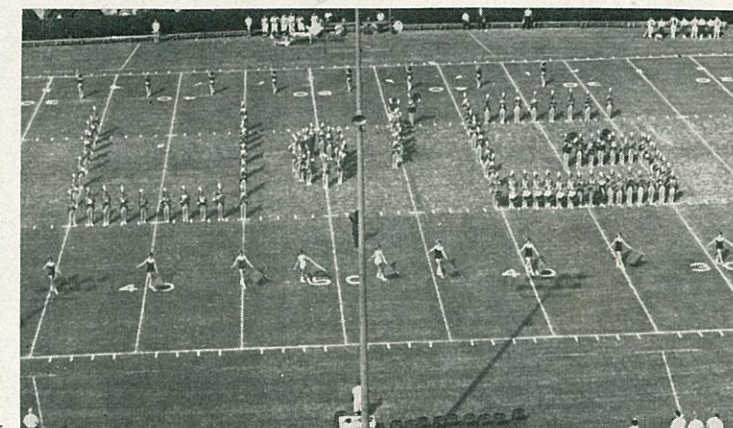
Edwin Gerschefski, Director

Presents

THE UNIVERSITY OF GEORGIA "DIXIE REDCOAT BAND"



JAMES WILLOUGHBY
Drum Major



ROGER L. DANCZ, Director
DONALD T. HALL, Band Captain
JAMES WILLOUGHBY, Drum Major



BARBARA E. VANN
Miss Majorette of
America 1960, Solo
Twirler



THE FABULOUS GEORGETTES



THE FAMOUS DANCING MAJORETTES

KARLA SAENGER and **DOROTHY INGRAHAM**, Georgette Co-Captains
JACKIE DAVIS, Majorette Captain
Choreography prepared under the supervision of **PHYLLIS DANCZ**

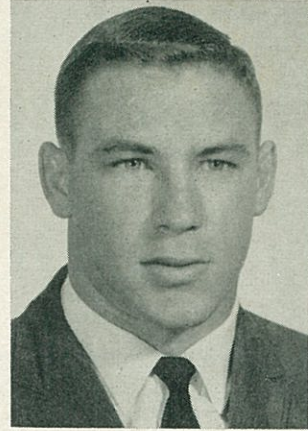
GEORGIA BULLDOGS



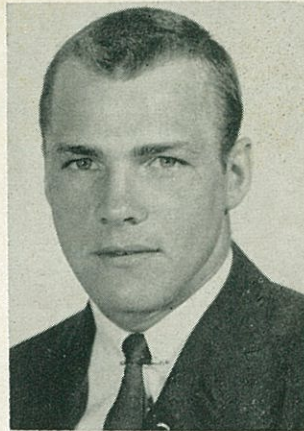
MICKEY BABB
Right End
Atlanta, Ga.



DON PORTERFIELD
Left Halfback
Moultrie, Ga.



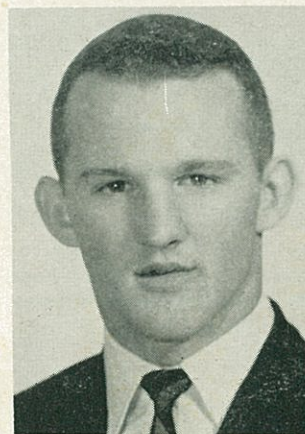
BILLY KNOWLES
Right Halfback
Ozark, Ala.



LARRY RAKESTRAW
Quarterback
Atlanta, Ga.



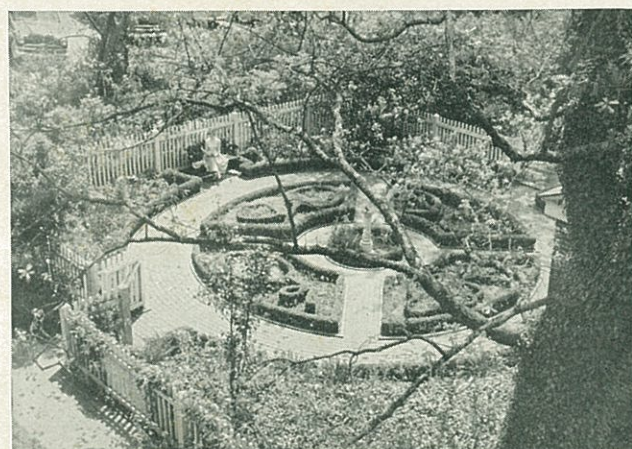
JAKE SAYE
Quarterback
Rutledge, Ga.



CARLTON GUTHRIE
Right Halfback
Blue Ridge, Ga.



KENNETH VANN
Left Guard
Columbus, Ga.



FOUNDER'S MEMORIAL GARDEN

Compliments

Athens' Oldest Dealer



C. A. TRUSSELL MOTOR CO.

Pulaski at the Foot of Clayton

FARMERS HARDWARE

Building Materials

Paints Farm Supplies

582 E. Broad Street

Phone LI 3-3681

TOUCHDOWN SERVICE!



GENERAL OFFICES

2090 Jonesboro Road, S.E., Atlanta 15, Georgia



Refresh with
Milk!
Nature's Lift!

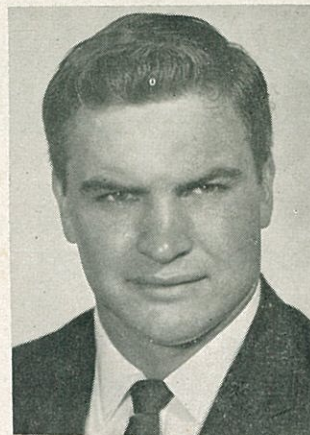
BETTER MAID DAIRIES, INC.

Athens - Gainesville - Toccoa - Elberton

GEORGIA BULLDOGS



GEORGE NOWICKI
Right End
Miami, Fla.



JOEL DARDEN
Center
LaGrange, Ga.



FRED BARBER
Fullback
Bainbridge, Ga.



RAY RISSMILLER
Left Tackle
Easton, Pa.



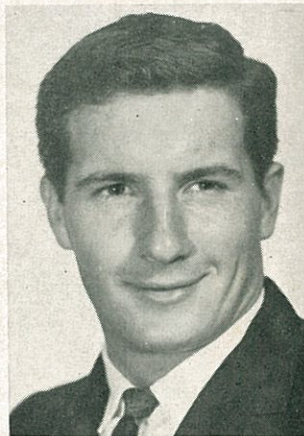
GRADY LUCKEY
Right Halfback
Augusta, Ga.



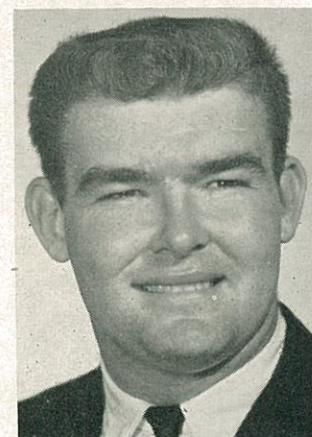
MIKE COLE
Left Tackle
Austell, Ga.



BARRY WILSON
Left End
Savannah, Ga.



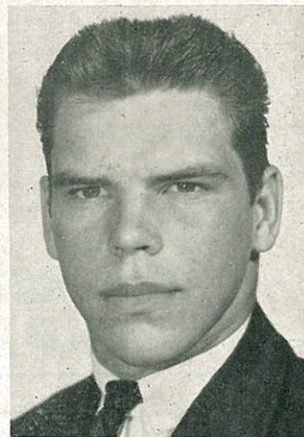
MIKE CAHOON
Right End
Rome, Ga.



JIMMY WHITEHEAD
Right Tackle
Augusta, Ga.



REED HALL



FRANK LANKEWICZ
Left Halfback
Butler, Pa.



1962-63 GEORGIA CHEERLEADERS

Girls, l-r: June Orr, junior, East Point, Ga.; Diane Yow, junior, Martin, Ga.; Captain Linda Jo Clements, junior, Waycross, Ga.; Patti Tumlin, sophomore, Marietta, Ga.; Norma Wrigley, junior, Atlanta, Ga.; Joan Hester, sophomore, East Point, Ga.

Boys, l-r: Ivan Simmons, sophomore, Athens, Ga.; Teri Barton, junior, Decatur, Ga.; Charles McDougald, co-captain, senior, Americus, Ga.; Ray Pinkerton, sophomore, Sycamore, Ga.; Frank Brookins, sophomore, Columbus, Ga. Not in photo: Jolaine Wood, junior, Atlanta, Ga.

WHEN IN ATLANTA...



Polynesian Lounge

SOUTH SEA VOLUPTUOUSNESS
EXQUISITE BEVERAGES
AND DELICACIES

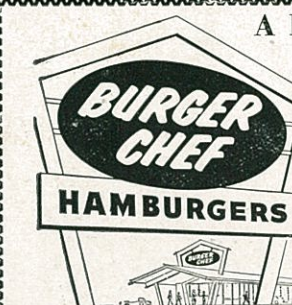
ALSO

- * RENDEZ-VOUS LOUNGE
After the game tete-a-tete.
- * THE BILTMORE CAFETERIA
Table service or cafeteria.
- * THE EMPIRE ROOM
Dining, dancing, entertainment.
- * THE SNACK BAR
Twenty-four hour service.



Atlanta Biltmore

A Delicious Meal



for
only **45c**

Broiled hamburger of
100% pure ground beef
— smooth, extra-thick
milk shake, golden crisp
French fries! M-m-m,
nothing else so good in
town!

Home of the World's Greatest 15c Hamburger
Alps Road at Beechwood

BULLDOG BOWLING LANES

Across From Main University of Georgia Campus

AMF AUTOMATICS

Enjoy Bowling At Its Best

Phone LI 8-3939 for Reservations

The Greatest Kickers in S.E.C. History

Georgia can rightfully lay claim to having had the two greatest kickers in the history of the SEC in the sensational south Georgians, Bobby Walden of Cairo and Durward Pennington of Albany.

Pennington led Georgia scorers three years and his Magic Toe provided the margin of victory in seven games: 1959—Auburn, 14-13; 1960—Miss. State, 20-17; Kentucky, 17-14; Ga. Tech, 7-6; 1961—South Carolina, 17-14; Miss. State, 10-7, and Kentucky, 16-15.

He holds two SEC PAT records: best percentage of 92.9 (minimum of 25 PATs made) with 26x28 in 1959 and 20 straight PATs (16 in 1960 and four in 1961). He also set a Georgia school record for career field goals: 13, and longest field goal: 52 yards vs. Kentucky in 1961.

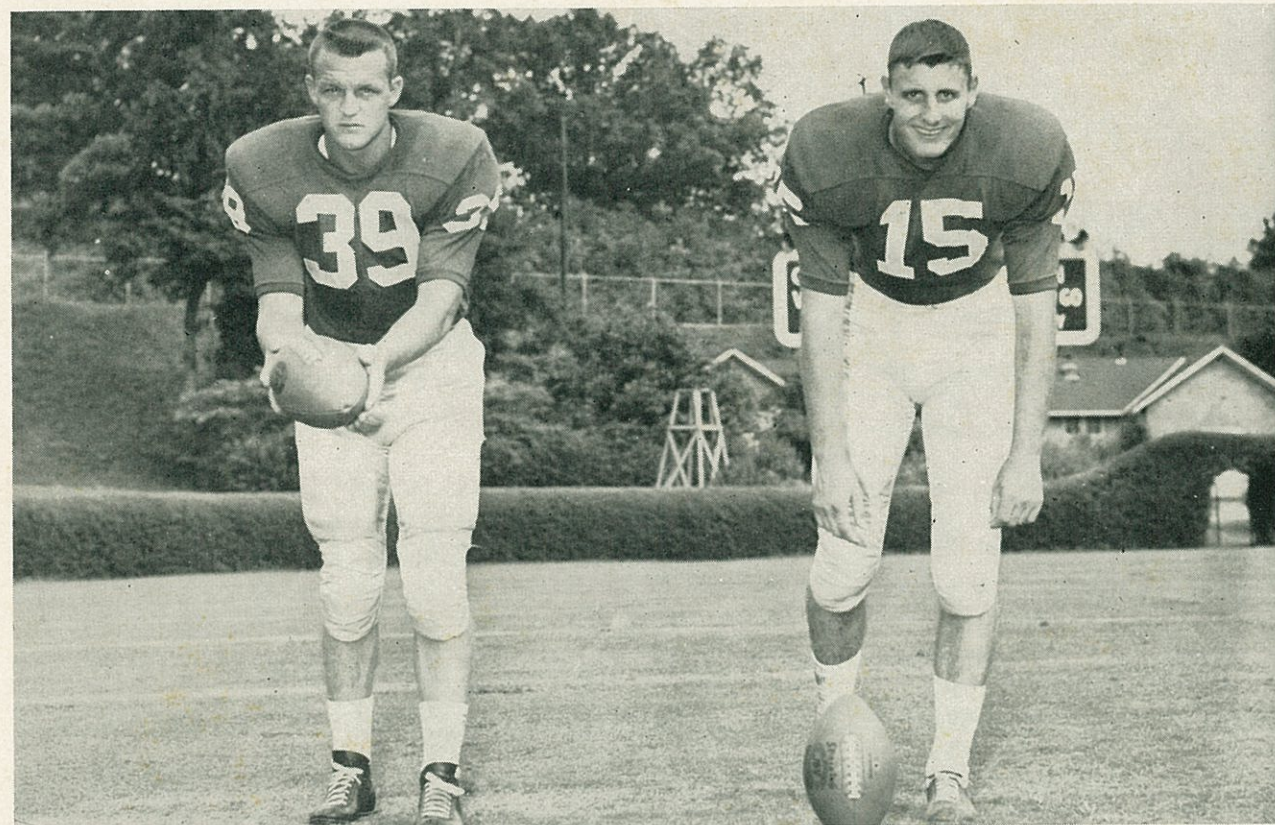
His complete varsity record:

| <i>Year</i> | <i>PATs</i> | <i>Field Goals</i> | <i>Points</i> |
|-------------|-------------|--------------------|---------------|
| 1959 | 26x28 | 2x 3 | 32 |
| 1960 | 16x18 | 8x12 | 40 |
| 1961 | 9x10 | 3x10 | 18 |
| Totals | 51x56 | 13x25 | 90 |

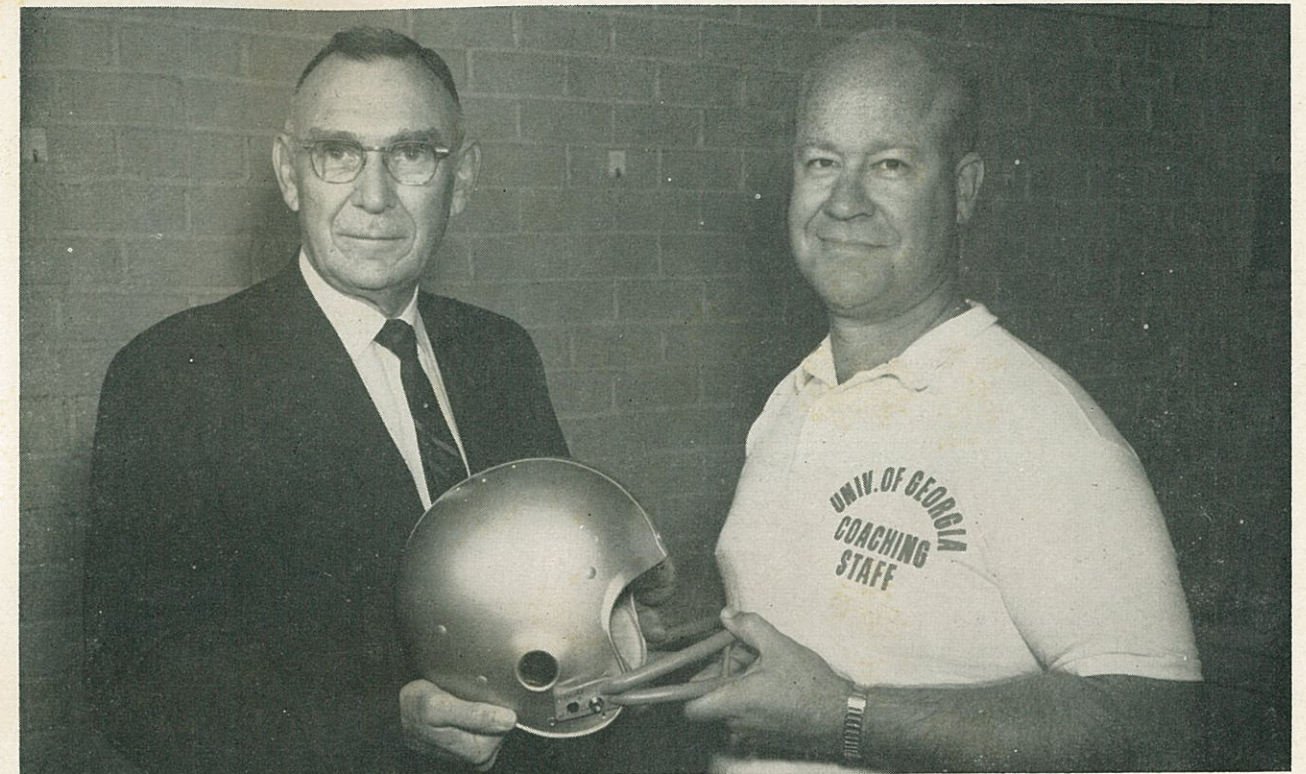
Walden led the NCAA in punting average as a sophomore in 1958 with a 45.3 average (all-time SEC and Georgia school record). He averaged 40.3 in 1959 and again led the SEC in 1960 with a 43.6 mark.

He set an Orange Bowl record against Missouri in 1961 with 46.9 on seven punts.

In the 1961 Senior Bowl at Mobile he set an all-time bowl record with a 49.8 average on five punts.



The Big Toe and The Automatic Toe



Dr. M. A. Hubert, University of Georgia Football Team Physician for 25 Years and Sam Richwine, Trainer for 14 Years.

Julian Cox — Bill Stroud — Don Shelnutt

Jake Hutchins — Julian Cox, Jr.

Hutchins, Cox & Stroud

Real Estate and Insurance

"Since 1890"

265 E. Hancock

Athens, Ga.

CHOKES

Dry Cleaning & Laundry Village

Baxter Street LI 3-4341

- New coin-op laundry
- New coin-op dry cleaning with professional advice
- New branch post office
- One hour dry cleaning service at no extra charge

ALL UNDER ONE ROOF

The
Georgian
Hotel & Coffee Shop

Special weekly and monthly rates

100 % Air Conditioned

The University Stores

Memorial Hall

*Welcome all Students—Alumni and
Guests*

For your convenience we will be open immediately following every home football game.

1962 Southeastern Conference Football Schedule

| | Sept. 22 | Sept. 29 | Oct. 6 | Oct. 13 | Oct. 20 | Oct. 27 | Nov. 3 | Nov. 10 | Nov. 17 | Nov. 24 | Dec. 1 |
|-------------|---------------------------|--------------------------|---------------------------|-----------------------------|---------------------------|---------------------------|-----------------------------|--------------------------|---------------------------|-------------------------|-------------------------|
| Alabama | Georgia* Birmingham | Tulane Sept.28,N.O. | Vanderbilt* Birmingham | Houston Tuscaloosa | Tennessee Knoxville | Tulsa Tuscaloosa | Miss. State Starkville | Miami Tuscaloosa | Ga. Tech Atlanta | | Auburn Birmingham |
| Auburn | | Tennessee Birmingham | Kentucky* Lexington | Chattanooga Auburn | Ga. Tech Birmingham | Clemson Clemson | Florida Gainesville | Miss. State Auburn | Georgia Auburn | Fla. State Auburn | Alabama Birmingham |
| Florida | Miss. State* Jackson | Ga. Tech. Gainesville | Duke Jacksonville | Texas A&M Gainesville | Vanderbilt Gainesville | L. S. U.* Baton Rouge | Auburn Gainesville | Georgia Jacksonville | Fla. State Gainesville | | Miami* Miami |
| Georgia | Alabama* Birmingham | Vanderbilt* Nashville | S. Carolina* Columbia | Clemson Clemson | Fla. State Athens | Kentucky Athens | N. C. State Athens | Florida Jacksonville | Auburn Auburn | | Ga. Tech Athens |
| Ga. Tech | Clemson Atlanta | Florida Gainesville | L. S. U. Atlanta | Tennessee Atlanta | Auburn Birmingham | Tulane Atlanta | Duke Durham | Fla. State Atlanta | Alabama Atlanta | | Georgia Athens |
| Kentucky | Fla. State* Lexington | Mississippi* Jackson | Auburn* Lexington | Detroit Detroit | L. S. U.* Lexington | Georgia Athens | Miami* Nov.2, Miami | Vanderbilt Lexington | Xavier Lexington | Tennessee Knoxville | |
| L. S. U. | TexasA&M* Baton Rouge | Rice* Baton Rouge | Ga. Tech Atlanta | Miami* Baton Rouge | Kentucky* Lexington | Florida* Baton Rouge | Mississippi* Baton Rouge | T. C. U.* Baton Rouge | Miss. State* Jackson | Tulane New Orleans | |
| Mississippi | Mem. St.* Memphis | Kentucky* Jackson | Houston Oxford | | Tulane* Jackson | Vanderbilt* Memphis | L. S. U.* Baton Rouge | Chattanooga Oxford | Tennessee Knoxville | | Miss. State Oxford |
| Miss. State | Florida* Jackson | Tampa Starkville | Tennessee Memphis | Tulane* Oct.12,N.O. | Houston* Houston | Memphis St. Starkville | Alabama Starkville | Auburn Auburn | L. S. U.* Jackson | | Mississippi Oxford |
| Tennessee | | Auburn Birmingham | Miss. State Memphis | Ga. Tech Atlanta | Alabama Knoxville | Chattanooga Knoxville | Wake Forest Knoxville | Tulane Knoxville | Mississippi Knoxville | Kentucky Knoxville | Vanderbilt Nashville |
| Tulane | Stanford* Sept.21,N.O. | Alabama* Sept.28,N.O. | Texas* Austin | Miss. State* Oct.12,N.O. | Mississippi* Jackson | Ga. Tech Atlanta | V. P. I. New Orleans | Tennessee Knoxville | Vanderbilt Nashville | L. S. U. New Orleans | |
| Vanderbilt | West. Va. Morgantown | Georgia* Nashville | Alabama* Birmingham | Citadel* Nashville | Florida Gainesville | Mississippi* Memphis | Boston Col. Nashville | Kentucky Lexington | Tulane Nashville | | Tennessee Nashville |

* Night Games



WELCOME ABOARD the Airline that is growing with the South
fly Southern to 65 Cities and connections with the World

The McGregor Company

ATHENS, GEORGIA



Stationers
Office and
School
Supplies and
Equipment

Serving the schools
and business firms
in Georgia since 1888

I'VE SEEN 'EM ALL

Over 50 Years of Georgia Football
By Charles E. Martin
Byron, Georgia
\$2.50
On Sale at McGregor's
Mail Orders Filled

COMMERCIAL PRINTING