

FLORIDA STATE vs. TECH

BLACKSBURG, VIRGINIA OCTOBER 10, 1959
VIRGINIA TECH OFFICIAL PROGRAM 50¢



Ronnie, Mary Ann and Suzanne Harman model Harman Mink Stole, Jacket and Cape.

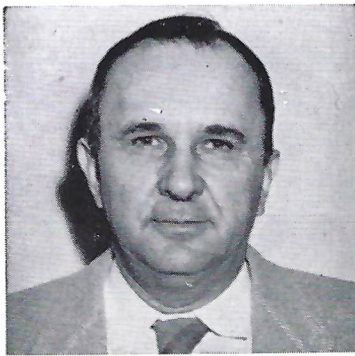
Since 1927 Harman Fur Farms have become one of the Nation's largest producers of fine mink and fox furs. These furs have earned a high reputation on the fur Markets of the World.

Standard colors and rare new color types that are distinctive and beautiful. These furs in stoles, coats or capes, made by the most skilled craftsmen are available at our Retail Shop on U. S. Highway 11 at Christiansburg. Come and see them.

HARMAN FUR FARMS
CHRISTIANSBURG, VIRGINIA

LOC
EN
HIS
ATI
STA
CO
NIC
BA
SCH
STU

the
trav
out.
func
plan
men
anti
per
gree
gove



DR. LOUIS A. PARDUE



DR. WALTER S. NEWMAN



FRANK O. MOSELEY



DR. CLARENCE P. MILES

Dr. Louis A. Pardue, Chairman, Athletic Association Board—Dr. Walter S. Newman, President of Va. Tech—Frank O. Moseley, Athletic Director

Dr. Clarence P. Miles, Chairman, Faculty Committee; Athletics—W. L. Younger, Business Manager



W. L. YOUNGER

Facts on the College

LOCATION: Blacksburg, Virginia; population: 7,200; 2100 feet above sea level; 38 miles west of Roanoke.

ENROLLMENT: 5000, including 200 women. In 85 years has grown to the largest undergraduate enrollment of any college in the state.

HISTORY: Established in 1872 as the Virginia Agricultural and Mechanical College, under provisions of the Land-Grant Act of 1862. School opened on Oct. 1, 1872, with 132 students.

ATHLETIC CONFERENCE: NCAA and a charter member of the Southern Conference.

STADIUM: Miles Stadium, built in 1926, with bleachers can seat 16,000.

COLORS: Orange and Maroon.

NICKNAMES: Gobblers, Techmen, Orange & Maroon, and Hokies.

BAND: "Highty Tighties"; 120 members.

SCHOOL PAPER: The Virginia Tech.

SCHOOL YEARBOOK: The Bugle.

STUDENT RADIO STATION: WUVT.

VIRGINIA TECH

Under a new \$14-million development program announced last year, Virginia Tech will become an even more vital cog in the state's educational system.

"Recent world events, particularly the epoch-making development and application of atomic energy, electronics and space travel, are presenting a serious challenge to our colleges of science and engineering," Dr. Walter S. Newman, Tech president, pointed out.

"To meet this challenge more effectively, VPI must have a minimum endowment of \$7,000,000 and supplementary building fund of an additional \$7,000,000."

The campus at present comprises 78 major buildings, including the \$2,000,000 Carol M. Newman Library. The total physical plant is valued at \$30,000,000.

The new development program is aimed at completion by 1972 to coincide with the centennial celebration of the establishment of Tech as a Land-Grant college.

Since 1872, the college has fostered some 20,000 alumni and now has the state's largest undergraduate enrollment, with an anticipated registration this Fall of some 5,000 students.

Tech comprises three schools: Agriculture, Engineering, and Applied Science and Business Administration. More than 65 per cent of the students are enrolled in one of the 14 departments of engineering. Students may work toward the B.S. or M.S. degrees in any of the available curricula, and toward the Ph.D., in many of them.

About one-third of the student body belong to the Corps of Cadets, which provides reserve officer training under its own governing body and honor system. Civilian students have their own separate government.

*If you decide to
change your name (as ladies often do)*

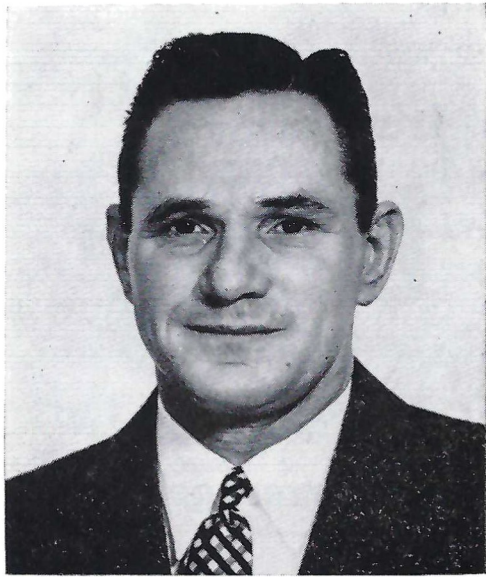
First, you will need wedding invitations or announcements. Then, new visiting cards . . . stationery bearing the address of your new home . . . notes for the acknowledgment of gifts.

Call on us. We will take pleasure in helping you with all your stationery problems. Brides for several generations have come to us for their wedding stationery.

THE
STONE PRINTING
AND MANUFACTURING
COMPANY

ROANOKE, VIRGINIA





Athletic Director and Head Football Coach

It's hard for any football coach to wax very optimistic in late August or early September, but Frank Moseley, as football coach, is realistically hopeful for a winning grid season in 1959, and, as athletic director, is encouraged about the prospects for Tech's overall intercollegiate athletic program in 1959-60.

Moseley would settle for "a winning season," but the Gobblers with some breaks could provide Mose's 50th victory at Tech. The record now: 42-34-4.

In August, Moseley served as a guest lecturer at Alabama's annual coaching clinic, where he not only revisited his alma mater but also got together with his former boss, Paul (Bear) Bryant, under whom Mose served as assistant at Maryland and Kentucky.

A native of Montgomery, Ala., he is married to the former Edythe Alphin, of Lexington, Va. They have a son, Ruffy, and a daughter, Alene.

FRANK O. MOSELEY
Head Football Coach

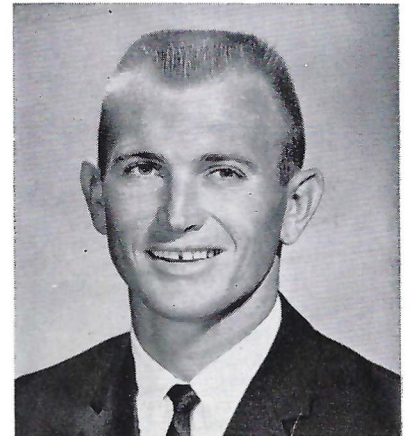
VARSIITY STAFF



MACAULEY McEVER
Asst. Coach



GEORGE "BUCK" CHAPMAN
Asst. Coach



DON WATSON
Asst. Coach



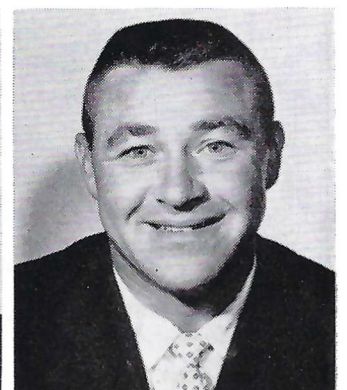
CHARLES BENTLEY
Asst. Coach



DICK REDDING
Asst. Coach



WILLIAM CONDE
Asst. Coach



FLOYD (BREEZY) REID
Asst. Coach



It's . . .

WRNL

**For
Complete Sports
Coverage**

Frank Messer and Frank Soden TEAM-UP for Sports Coverage at its **best**, bringing you play-by-play and color commentary of all the VIRGINIA TECH Football Games. If you cannot attend the VIRGINIA TECH games, listen to them when in Richmond on WRNL, the originating station for **all** VIRGINIA TECH games for the VIRGINIA TECH Football Network.

910 AM — WRNL — 102.1 FM



Through these portals
pass the most important
people in the world . . .

OUR CUSTOMERS

THE NATIONAL BANK of BLACKSBURG
BLACKSBURG, VIRGINIA

Member Federal Deposit Insurance Corporation

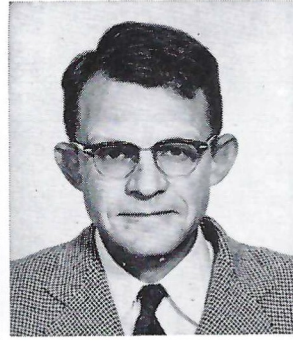
FR
C. V.
GEO
MA
WIL
DIC
FLC
DO
G. I
CHU
ation
inter
well
who
deav
is c



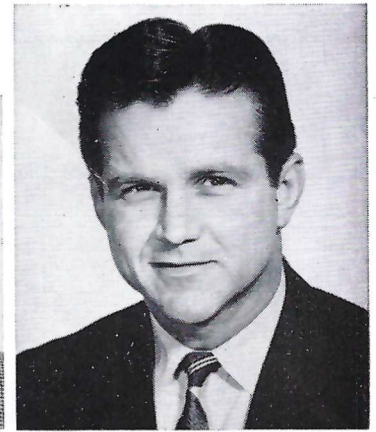
G. F. "RED" LAIRD, *Baseball*



ED MOTLEY, *Trainer*



PRESTON NEWMAN, *Golf*



CHUCK NOE, *Basketball*



FRANK TESKE, *Wrestling*



DR. EMORY IRVIN, *Physician*



LUKE LINDON, *Equipment*



BILL BUCHANAN, *Tennis*

Athletic Staff

C. W. (CHARLIE) BENTLEY—Assistant football
 GEORGE (BUCK) CHAPMAN—Assistant football
 MACAULEY (MAC) McEVER—Assistant football
 WILLIAM F. (MOON) CONDE—Assistant football
 DICK REDDING—Assistant football
 FLOYD (BREEZY) REID—Assistant football
 DON WATSON—Assistant football
 G. F. (RED) LAIRD—Baseball, assistant football and basketball
 CHUCK NOE—Basketball, assistant football and baseball

BILL MATTHEWS—Assistant basketball
 PRESTON NEWMAN and O. W. ADDINGTON—Golf
 CAPT. J. D. CHASTAIN—Rifle
 BILL BUCHANAN—Tennis
 DOUG DIVERS—Track
 FRANK TESKE—Wrestling
 ED MOTLEY—Trainer
 LUKE LINDON—Equipment manager
 WENDELL WEISEND—Director Athletic Publicity

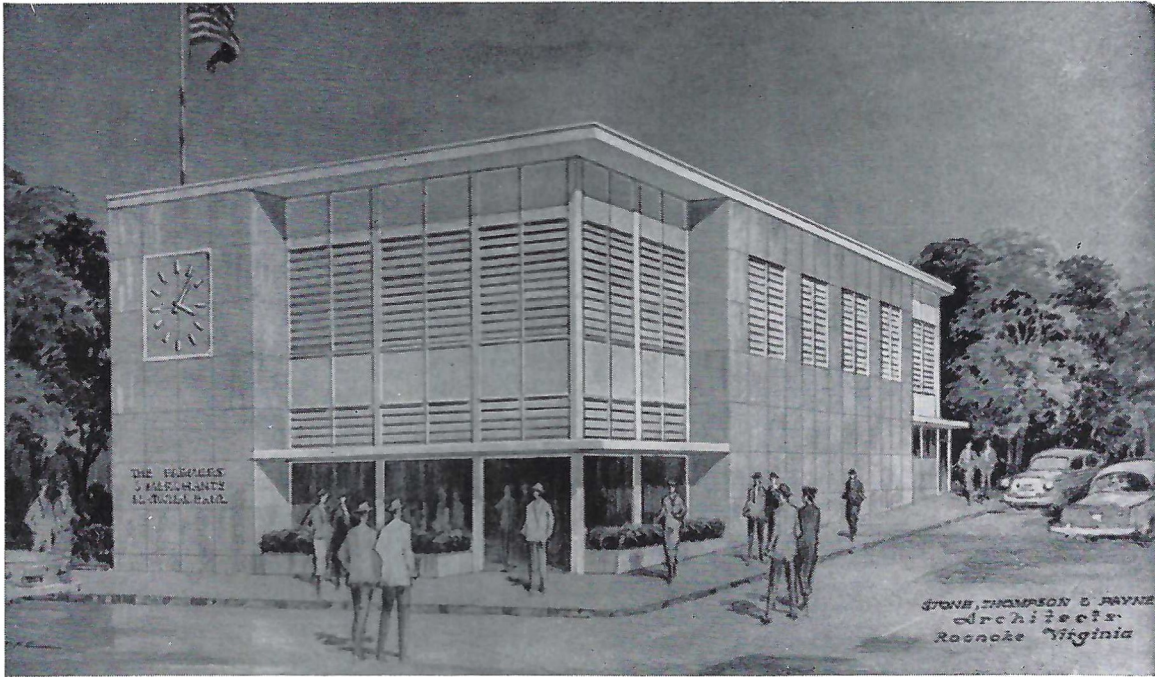
TECH STUDENT AIDERS

When "Mac" McEver, executive secretary, turns out the next letter to members of the Virginia Tech Student Aid Association, it will be mailed to more than 2,800 alumni and friends who lend financial, as well as moral, support to maintaining a sound intercollegiate athletic program at Tech.

Within the Association membership is a "scholarship group," comprised of those who make the most sizeable monetary as well as time-and-effort contributions to the program.

Since the Virginia Tech Athletic Association is financially independent of the college, the Student Aid Association, with the whole-hearted endorsement of the College administration and the Alumni Association, is the backbone of Tech's athletic endeavors.

Service to members, which has included the Gridiron Guide and periodic letters from Coach Frank Moseley and McEver, is constantly expanding and in 1959-60 will include more frequent inside information on the Gobblers' athletic fortune.



HOME OF
FARMERS AND MERCHANTS NATIONAL BANK

"The Friendly Bank"

Blacksburg, Virginia

Phone PR 2-8241

925 KEYS TO UNLIMITED HOSPITALITY!

THE HOTEL ASSOCIATION OF ROANOKE, VIRGINIA

"The Star City of the South"

HOTEL ROANOKE

425 rooms. "A Modern Air-Conditioned Version of an Old English Inn"
 Kenneth R. Hyde - Geo. L. Denison, Associate Managers

HOTEL PATRICK HENRY

300 rooms
 All public space and 125 bedrooms
 Air-Conditioned
 John A. Shires, General Manager

HOTEL PONCE DE LEON

200 rooms Completely Air-Conditioned
 Located in the Heart of Downtown Roanoke
 Free Parking Lot adjoining hotel
 Garland W. Miller, Manager

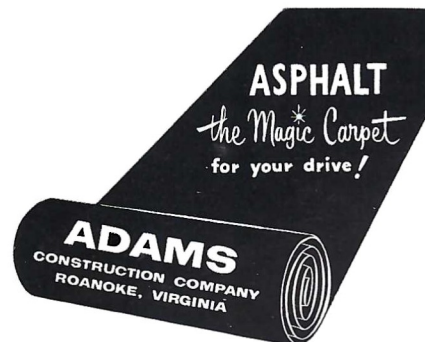
There is no charge for children under the age of twelve at the above hotels.

A SPECIALIZED, MODERN EQUIPPED ASPHALT AND MACADAM PAVING COMPANY . . . MAKING IT POSSIBLE FOR HOME OWNERS AND BUSINESSES TO INEXPENSIVELY ADD VALUE, EYE APPEAL AND CONVENIENCE TO DRIVES AND PARKING AREAS.



ROANOKE PHONE: Diamond 3-2409

RADFORD PHONE: NEptune 9-5151



FL
 A n
 wor
 CH
 in '3
 City
 Ala.
 GEO
 Aug
 form
 WI
 at I
 Lou
 MA
 cont
 He l
 mon
 Stov
 DO
 Tec
 was
 duri
 Boo
 H. F
 half
 burg
 G. F
 the
 Carr
 ED
 year
 Fiel
 LUI
 He s
 ager
 WE
 mas
 thre

Officials of the College

Vice-President
DR. LOUIS A. PARDUE

Business Manager
STUART K. CASSELL

*Dean of Applied Science and Business
Administration*
DR. G. BURKE JOHNSTON

Dean of Engineering
JOHN W. WHITTEMORE

Dean of Agriculture
L. B. DIETRICK

Faculty Chairman of Athletics
C. P. MILES

Athletic Department

FRANK O. MOSELEY—Athletic Director and Head Football Coach
W. L. (MONK) YOUNGER—Business Manager

The Assistant Coaches

FLOYD (Breezy) REID (Georgia, 1950)

Breezy has just joined the Tech staff after six seasons as fullback and two years as scout and coach for the Green Bay Packers. A native of Hamilton, O., he won honors as a back at the University of Georgia and while playing service ball in Germany. He will work with the Gobbler offense.

CHARLES WILLIAM (Charlie) BENTLEY (Kentucky, 1950)

A native of Alabama City, Ala., Bentley played college ball as an end at Kentucky in the late 40s. He coached at Jenkins High in '50, Everts High (Harlan County), 1951-54, Manuel High (Louisville), 1955, and at his alma mater, Emma Sanson High (Alabama City), 1956-58. He was in the army for three years before entering Kentucky. He is married to the former Frances Burke, of Gadsden, Ala. They have one child. Bentley will work primarily as defensive end coach at Tech.

GEORGE (Buck) CHAPMAN (Georgia, 1935)

"Buck," an all-time Georgia fullback, is Tech's end coach and chief recruiter. He coached at Staunton Military Academy, Augusta Military Academy and the University of Kentucky before accompanying Moseley to Blacksburg in 1951. He is married to the former Doris Malone of Atlanta, and they have two sons: Chappie and Tommy.

WILLIAM F. (Moon) CONDE (Kentucky, 1952)

A native of Charleston, W. Va., Conde played guard on Kentucky's bowl teams of '49, '50 and '51. His first coaching job was at Lanier High in Montgomery, Ala. He also coached at several high schools in Kentucky before going to duPont Manual High, Louisville, last year. He also served a three-year navy hitch. Conde will work primarily with the Gobblers' defensive line.

MACAULEY (Mac) McEVER (Va. Tech, 1929)

A former three-sport star and a member of Tech's heralded "pony" backfield of the late 20s. "Mac" has been associated almost continuously with Tech since he matriculated in 1925. He serves as backfield coach and secretary of the Student Aid Association. He began his coaching career at Tech and was co-coach of the 1942 team and head coach in 1945. He became manager of the Richmond Arrows professional football team in 1946, but returned to Tech with Moseley in 1951. He is married to the former Eleanor Stover of Bristol. They have a daughter, Frances, and two sons, Buddy and Bill.

DONALD (Don) WATSON (Texas A&M, 1957)

A backfield star and honorable mention All-American of the Aggies' 1956 Southwest Conference champions, Don joined the Tech Staff in the Spring of '57 as assistant backfield coach. A 160-pound halfback who ran the 100 in 9.6 and the 220 in 20.9, Don was a standout in the 1956 Blue-Gray game. He missed Tech's '58 Spring drills, putting in a six-month army tour at Fort Benning, during which time he graduated number one in his paratrooper training class. A native of Franklin, Tex., he is married to the former Boots Berry, of Sinton, Tex.

H. RICHARD (Dick) REDDING (Springfield, 1940)

Formerly an assistant at Davidson, Dick came to Tech in 1953. A native of Auburn, Me., he was a navy pilot for four and a half years and tried his hand at pro football before joining the coaching ranks. He is married to the former Elva DeLaBarre of Blacksburg. They have a son, Dickie.

G. F. (Red) LAIRD (Davidson, 1926)

A former all-around star at Davidson, Laird is Tech's baseball coach, and assistant in football and basketball. He has been on the Tech staff since 1939, except for a navy hitch during World War II. A native of Atlanta, he is married to the former Naomi (Sis) Carrigan of Salisbury, N. C.

ED MOTLEY (Wm. & Mary)—Trainer

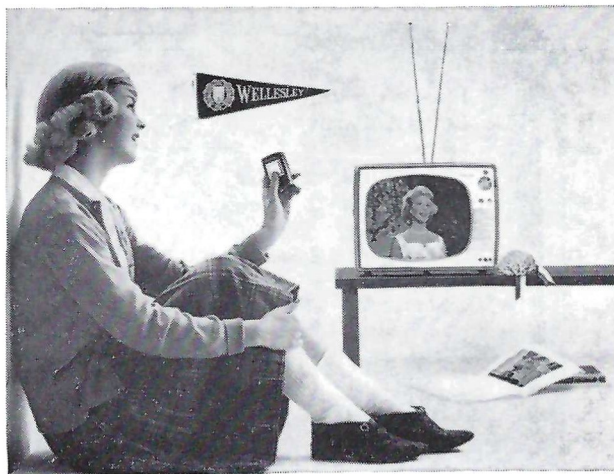
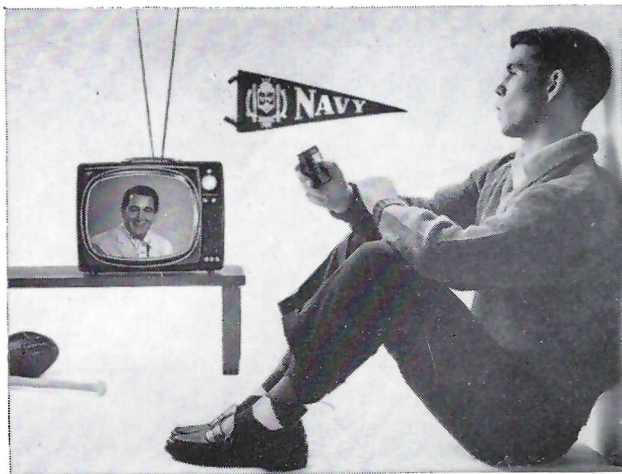
A native of Petersburg and a backfield star at Wm. & Mary in the late 30s, Ed coached high school football in the state for 10 years before becoming a trainer at his alma mater in 1951. He joined the Tech staff in 1952. During World War II, he served with the Field Artillery.

LUKE LINDON (Kentucky)—Equipment Manager

Big Luke, a former Kentucky and Detroit Lions lineman, is one of the most colorful characters associated with college football. He spins tales of his native Kentucky as smoothly and authoritatively as he handles a multitude of jobs, including the care and management of equipment for all Gobbler athletic teams.

WENDELL (Wendy) WEISEND (Ohio Wesleyan, 1948)—Publicity Director

A native of Youngstown, O., joined the staff in 1956, after five years as a medical and science writer at Duke. He received a master's degree in journalism from Northwestern in 1951. He is married to the former Ann Boggs, of Kingsport, Tenn. They have three children.



They're the
perfect portables
—they tune by
wireless remote
control!
The Thin Twins
by RCA Victor



Now **RCA Victor** adds the convenience of remote control to the finest portables ever built. You get the picture and sound of a big set at the push of a button—change channels, turn picture on or off. The “Wireless Wizard” remote control in the non-breakable

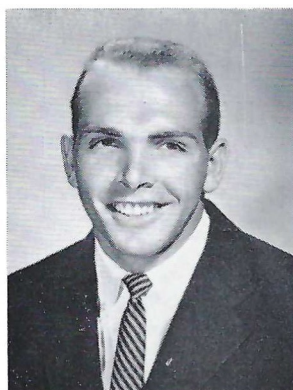
“IMPAC”[®] case is available with both Thin Twins—the *Sportable* (left, with fold-flat handle), the *Tote-Able* (right, with recessed handgrips). Both sets have 17” tube (overall diagonal), 156 sq. in. picture.

WYATT-CORNICK, INC.

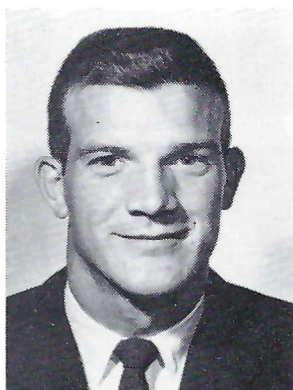
Distributor

Ask Your RCA Victor Dealer For A Demonstration

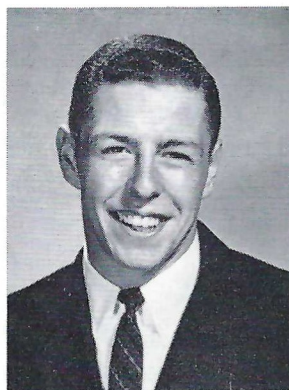
1959 TECH SENIORS



CARROLL DALE



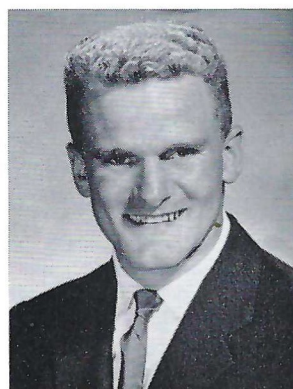
ALGER PUGH



ED BARTRUG



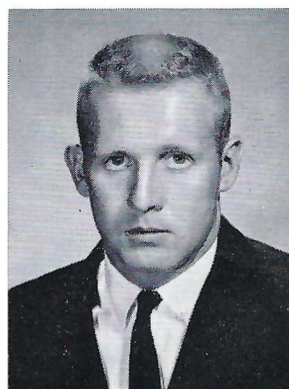
CHUCK STEPHENS



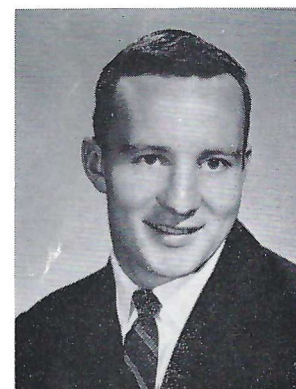
SAM SHAFFER



KEN BYRD



DICKIE SNEAD



BEN HUNTER



HARRY PARRISH
Manager



Va. Tech Mascots

Parks Brothers of Bluefield, W. Va., are two of Tech's most ardent fans. Kyle (No. 10) is now 11 years old—he's quarterbacking this operation. Ralph (No. 77) is 4 years old.

Today's Game

By WENDY WEISEND
Athletic Publicity Director

Win is a win, is a win . . . that's a headline in this week's Tech Sports, a publication for Student Aid members . . . the headline embraces sentiments of both the squad and the coaching staff after last Saturday's win over Wm. & Mary . . . the Techmen didn't exactly scalp the Indians . . . but the Gobblers at least picked up their first victory of the campaign, 20-14.

Today the Gobblers will run into a different brand of Indian, the Florida State Seminoles, a tribe that not only will sneak up on you . . . but also is capable of belaboring opponents with speed, quickness and fight.

The Seminoles this year have a new chief, Perry Moss . . . but some of the individual arrow-slingers will look plenty familiar to the Gobblers . . . halfback Fred Pickard has been a thorn in the side of Tech for the last two seasons . . . and fullback Jack Espenship, end Tony Romeo and guard Al Ulmer have had their moments against Tech . . . Espenship, Romeo and quarterback Joe Majors each scored a TD in last year's game . . . and Pickard broke up the 1957 contest with an 80-yard TD run on the first scrimmage play of the second half.

The series stands even at 2-2, with all four games having been played on the Seminoles' reservation at Tallahassee. Today is a rubber game since the series will be broken off until 1961 or 1962.

The Gobblers, who have fluttered their wings but haven't really begun to strut yet this season, will be making their first appearance before TV cameras . . . the game will be carried by 26 or more stations from Washington, D. C., to Florida . . . and the Techmen will be laying their Homecoming record on the line . . . Tech has lost only one Homecoming game during the last six years . . . that a 13-7 decision to George Washington in 1955 . . . Wm. & Mary tied the Gobblers, 7-7, in 1954.

Somehow, the Techmen have come up with their best performances for *the old grads* since Coach Frank Moseley has been here. The year-by-year record:

1951—Tech.	14—N. C. State.	19
1951—Tech.	0—Geo. Washington.	6

1953—Tech.	32—W&L.	12
1954—Tech.	7—Wm. & Mary.	7
1955—Tech.	7—Geo. Washington.	13
1956—Tech.	34—Wm. & Mary.	7
1957—Tech.	21—Villanova.	14
1958—Tech.	27—Wm. & Mary.	15

Despite injuries and a "thin" squad, the Gobblers are expected to improve as the season progresses . . . but they'll have to show marked improvement today because FSU, with virtually the same personnel that prevailed, 28-0, last season, probably represents Tech's toughest Homecoming opponent since 1947 when Maryland topped the Techmen here, 21-19.

The Seminoles and the Gobblers have at least one thing in common this season . . . each blew a lead in bowing to Wake Forest's fourth-quarter drive . . . Wake 22, FSU 20 . . . Wake 27, Tech 18 . . . FSU stomped Citadel, 47-6, and lost a tough one, 7-6, to powerful Miami by barely missing a two-point conversion which would have brought them victory over the Hurricanes.

The Techmen let victory slip through their grasp, 15-13, in the fourth quarter against North Carolina State . . . let the Deacons out of the bag . . . and nearly let Wm. & Mary's Indians get away . . . but if the Gobblers can put together some of their bright performances, today's game could turn out to be as crowd-pleasing as has been the previous meetings with the Seminoles.

Senior halfback Alger Pugh finally has blossomed into a full-fledged star . . . junior Mike Zeno might well become the greatest of all Tech linemen . . . several sophomores, including at least four in the starting lineup, are beginning to show their wares . . . and captain Carroll Dale is emboldening his indelible mark as one of the South's alltime greats . . .

Despite these bright spots, Moss' "Finesse Drive" attack is a major obstacle . . . but maybe the Techmen can finesse the Seminoles enough for another old grads' celebration.

What would you think of a quarterback who took a few drinks before attempting to direct his team? Yet so many people will attempt to drive their automobiles under these conditions. A mistake on the field can cost a game. A mistake on the highway can cost lives.

BY
(Mar
right
season
team

DA
(Apr.
exper
playe
last 2

2
S
V

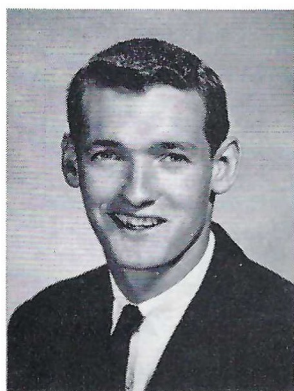
T

T

A

Great
by my

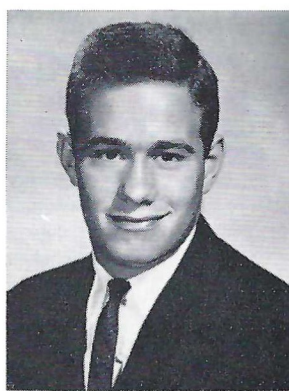
1959 TECHMEN



MAC KINCAID



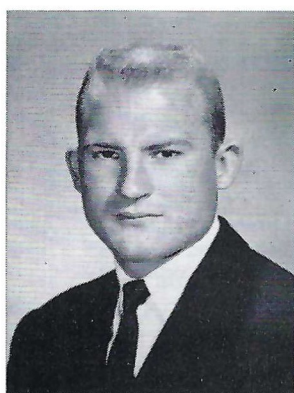
BILL ROBERTSON



ANDY BECKSTOFFER



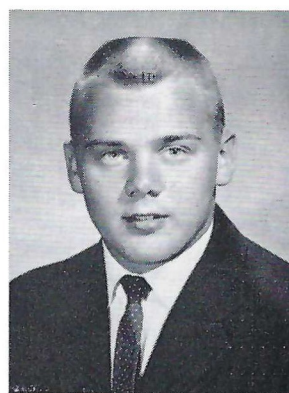
HAROLD JONES



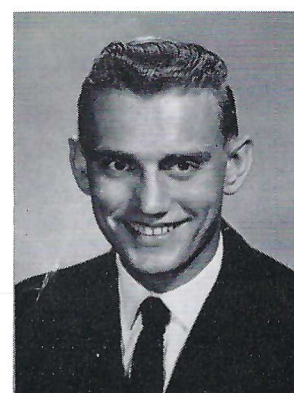
DON JENSEN



HAROLD WARD



CHARLES HINES



RAY MASSIE

VA. TECH PLAYER SKETCHES (According To Position)

ENDS

BYRD, Kenneth Arnold . . . (Ken) . . . Sr., 21 (Mar. 4, 1938), 6-1, 190, Durham, N. C. . . . offensive right end, defensive halfback during much of '58 season . . . named to Southern Conference All-Scholastic team . . . good speed, fine receiver.

DALE, Carroll Wayne . . . (Carroll) . . . Sr., 21 (Apr. 24, 1938), 6-1, 195, Wise, Va. . . . probably as experienced as any college player in the nation—has played in 30 consecutive varsity games (started the last 29) . . . the record speaks for itself:

2nd team AP All-American, 1958
 Southern Conference Player of the Year, 1958
 Winner of the Jacobs Blocking Trophy for Southern Conference, 1958
 Unprecedented two-time winner of the Roanoke Touchdown Club's Lineman of the Year in Virginia
 Tech's number one punter

As an offensive end at Tech:

Cgt.	Yds.	TDs
50	787	9

Greatest thrill of his career? "Being named captain by my team-mates."

BLANKENSHIP, Charles Philip . . . (Charlie) . . . Jr., 21 (Mar. 5, 1938), 6-0, 176, Bluefield, W. Va. . . . captain of Beaver High's 1955 team . . . QB candidate until Spring practice . . . could make the traveling squad.

FARR, James Baxter . . . (Jim) . . . Jr., 21 (Sept. 12, 1938), 6-1, 188, Knoxville, Tenn. . . . former captain at Knoxville's Fulton High School . . . won number two left end spot in 1958 Spring practice . . . and proved capable replacement for Dale during '58 season.

HARRIS, Walter Milton . . . (Walt) . . . Soph., 21 (Oct. 4, 1938), 6-0, 183, Richmond . . . played on two championship teams at Hermitage High School . . . was a green-shirt last year . . . but a sure bet for this year's traveling squad.

WHITTIER, Allen . . . (Al, Allen) . . . Jr., 20 (May 11, 1939), 6-2, 205, Norfolk . . . a rugged defenseman . . . will battle Byrd for starting right end post . . . one of the Gobblers' best football players.

WOMELDORPH, Donald Eugene . . . (Don) . . . Soph., 19 (June 15, 1940), 6-3, 198, Wilmington, Del. . . . captain and All-State at P. S. duPont . . . did good defensive job for '58 frosh . . . could make the varsity.

Virginia Tech's 1959 Football Roster

No.	Name	Pos.	Class	Age	Wt.	Ht.	Home Town
80	Charlie Blankenship	E	Junior	21	176	6-0	Bluefield, W. Va.
81	**Ken Byrd	E	Senior	21	190	6-1	Durham, N. C.
84	**Carroll Dale	E	Senior	21	195	6-1	Wise, Va.
82	*Jim Farr	E	Junior	21	188	6-1	Knoxville, Tenn.
86	Walt Harris	E	Sophomore	20	183	6-1	Richmond, Va.
	Mac Kincaid	E	Sophomore	20	170	5-11	Portsmouth, Va.
	Bill Robertson	E	Sophomore	19	205	6-2	Waynesboro, Va.
83	Leon Tomblin	E	Sophomore	20	195	6-1	Berryville, Va.
	Don Womeldorph	E	Sophomore	19	198	6-3	Wilmington, Del.
72	John Farmer	T	Sophomore	20	195	6-2	Tazewell, Va.
77	*Bob Harris	T	Junior	20	230	6-3	Galax, Va.
72	Bill McGinnis	T	Senior	21	210	6-3	Charleston, W. Va.
70	*Joe Moss	T	Junior	21	225	6-4	Burkes Garden, Va.
71	*Don Oakes	T	Junior	21	240	6-3	Salem, Va.
75	*Bernie Vishneski	T	Junior	21	235	6-4	Spring Hill, Pa.
76	*Allen Whittier	T	Junior	20	205	6-2	Norfolk, Va.
31	Ray Barile	G	Sophomore	19	210	5-11	Baldwin, N. Y.
73	**Ed Bartrug	G	Senior	21	190	6-1	Charleston, W. Va.
	Andy Beckstoffer	G	Sophomore	19	200	6-0	Richmond, Va.
65	*Bloice Davison	G	Junior	20	205	5-10	Hagerstown, Md.
67	Gerald Holbrook	G	Sophomore	19	205	5-11	Raysal, W. Va.
	Don Jensen	G	Sophomore	18	178	5-10	Silver Spring, Md.
63	Harold Jones	G	Junior	22	212	5-10	Madison, Va.
66	Jim Paine	T	Sophomore	20	205	6-1	Portsmouth, Va.
68	*Mike Zeno	G	Junior	20	230	5-11	Akron, Ohio
	Dave Gillespie	C	Sophomore	19	200	6-0	Bristol, Tenn.
53	Charles Hines	C	Sophomore	18	205	6-0	Huntington, W. Va.
	Warren Morris	C	Sophomore	20	190	6-2	Ronceverte, W. Va.
51	*Chuck Stephens	C	Senior	20	193	5-10	Roanoke, Va.
52	Rickey Tolley	C	Sophomore	19	205	6-0	Mullens, W. Va.
12	*Frank Eastman	QB	Junior	22	183	6-0	Richmond, Va.
11	Charlie Price	QB	Sophomore	18	167	5-10	Miami, Fla.
10	Elmer Reed	QB	Sophomore	19	172	6-0	Rochester, Pa.
13	Charlie Speck	QB	Sophomore	19	200	6-3	Pittsburgh, Pa.
	Harold Ward	QB	Sophomore	21	172	5-11	Dublin, Va.
33	Warren Maccaroni	FB	Sophomore	19	210	6-1	Waterford, N. J.
44	Art Pruett	FB	Sophomore	19	180	6-0	Canebrake, W. Va.
42	**Sam Shaffer	FB	Senior	22	177	5-10	Williamsport, Pa.
30	*Don Vaught	FB	Junior	21	179	5-11	Roanoke, Va.
	Herb Bowling	HB	Sophomore	19	166	5-9	Roanoke, Va.
43	Bob Crabtree	HB	Sophomore	19	190	6-0	Saltville, Va.
24	Ben Hunter	HB	Senior	21	169	5-9	Johnson City, Tenn.
23	*Pat Henry	HB	Junior	19	175	5-9	Hagerstown, Md.
41	Ray Massie	HB	Sophomore	18	160	5-9	Appomattox, Va.
27	Buddy Perry	HB	Sophomore	20	165	5-11	Salem, Va.
22	**Alger Pugh	HB	Senior	22	179	5-11	Fredericksburg, Va.
21	**Dickie Snead	HB	Senior	22	173	5-10	Covington, Va.
45	Terry Strock	HB	Sophomore	19	170	5-10	Hagerstown, Md.
40	*Johnny Watkins	HB	Junior	21	162	5-7	Norfolk, Va.

*Indicates number of monograms earned.

OFFICIALS FOR TODAY'S GAME

Referee—Nelson Harvey (G-W)

Field Judge—R. W. Gaston

Umpire—S. P. Eaves

Back Judge—G. K. Husser (Catawba)

Lineman—J. W. Jelks (Wake Forest)

Clock Operator—C. L. Ellington (VMI)

Be Really Refreshed



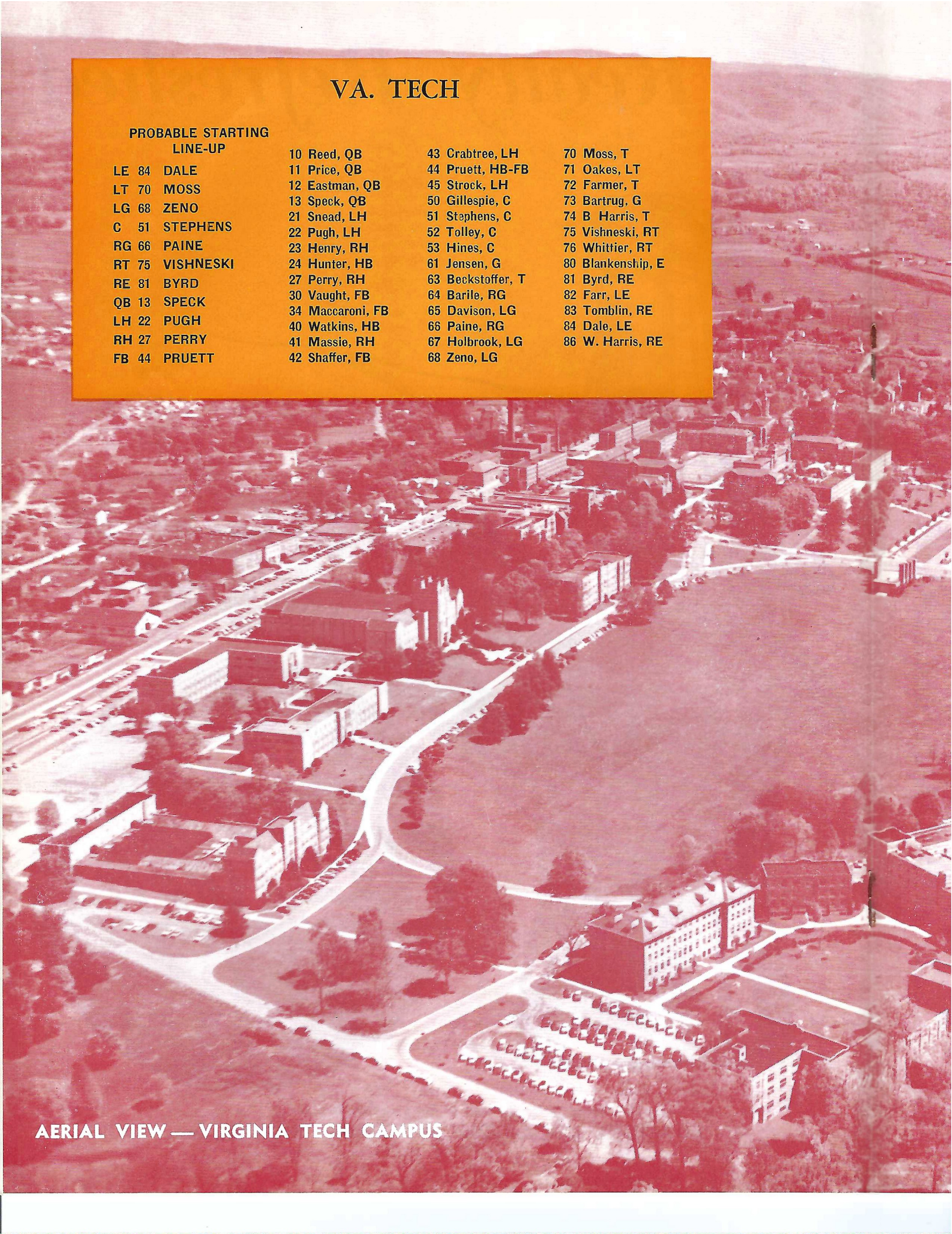
Bottled Under Authority of the Coca-Cola Company By
ROANOKE COCA-COLA BOTTLING WORKS, Inc.

VA. TECH

PROBABLE STARTING LINE-UP

LE 84	DALE	10	Reed, QB	43	Crabtree, LH	70	Moss, T
LT 70	MOSS	11	Price, QB	44	Pruett, HB-FB	71	Oakes, LT
LG 68	ZENO	12	Eastman, QB	45	Strock, LH	72	Farmer, T
C 51	STEPHENS	13	Speck, QB	50	Gillespie, C	73	Bartrug, G
RG 66	PAINE	21	Snead, LH	51	Stephens, C	74	B. Harris, T
RT 75	VISHNESKI	22	Pugh, LH	52	Tolley, C	75	Vishneski, RT
RE 81	BYRD	23	Henry, RH	53	Hines, C	76	Whittier, RT
QB 13	SPECK	24	Hunter, HB	61	Jensen, G	80	Blankenship, E
LH 22	PUGH	27	Perry, RH	63	Beckstoffer, T	81	Byrd, RE
RH 27	PERRY	30	Vaught, FB	64	Barile, RG	82	Farr, LE
FB 44	PRUETT	34	Maccaroni, FB	65	Davison, LG	83	Tomblin, RE
		40	Watkins, HB	66	Paine, RG	84	Dale, LE
		41	Massie, RH	67	Holbrook, LG	86	W. Harris, RE
		42	Shaffer, FB	68	Zeno, LG		

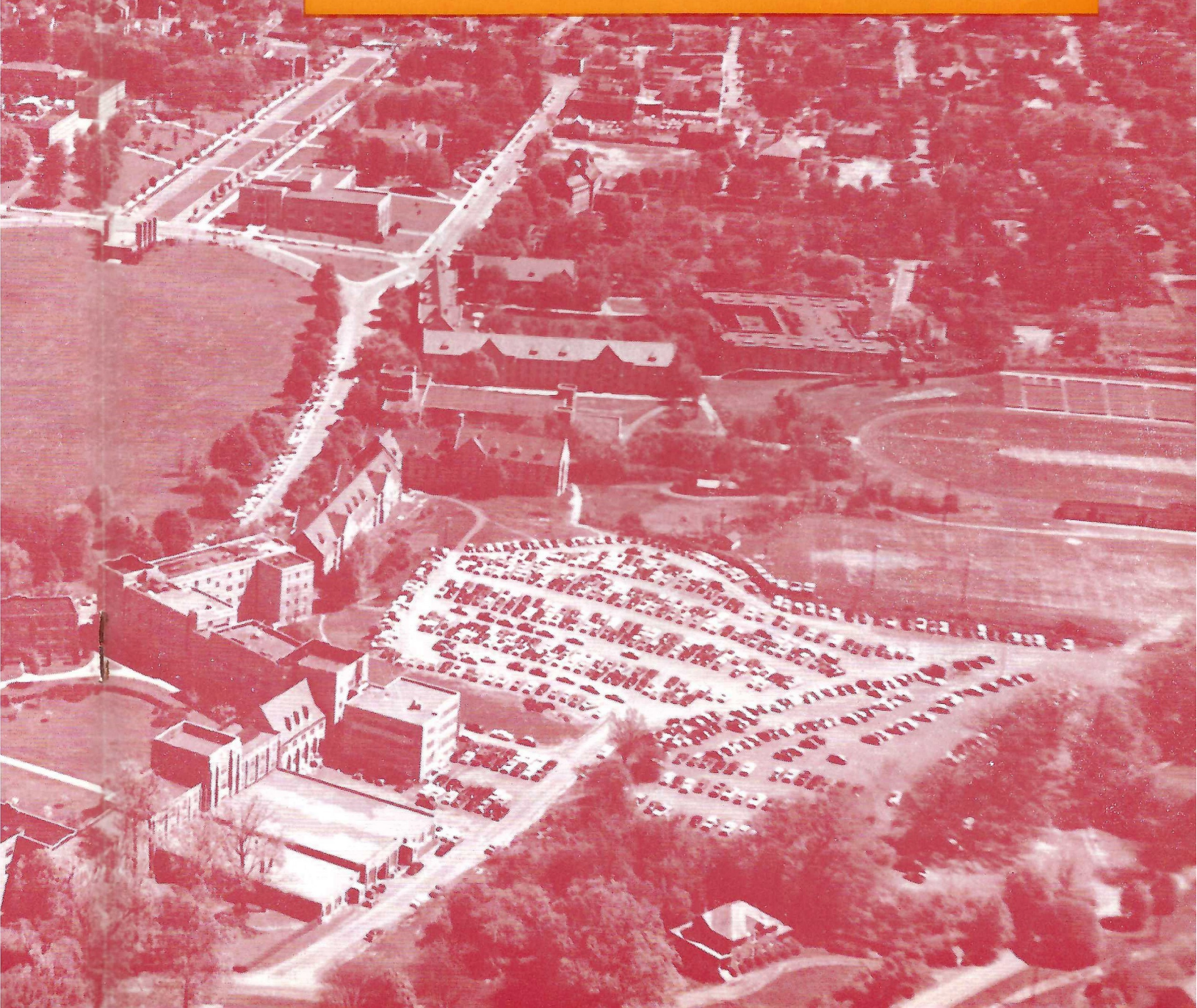
AERIAL VIEW — VIRGINIA TECH CAMPUS



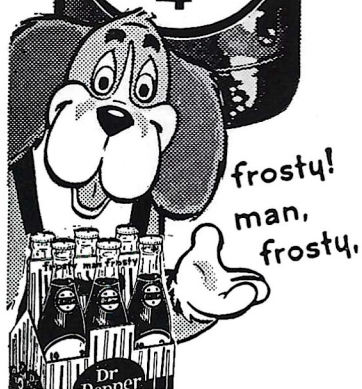
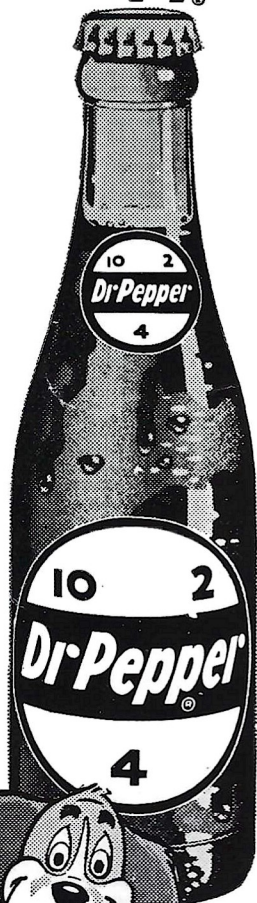
FLORIDA STATE

PROBABLE STARTING LINE-UP

LE 86 DANIEL	12 McCormick, B	50 Brown, C	75 Donatelli, T
LT 73 KLESIOUS	13 Majors, B	51 Worthington, C	77 Spivey, T
LG 62 ULMER	15 Bickford, B	53 Rogers, C	78 Verbinski, T
C 53 ROGERS	20 W. Whitehead, B	54 Hardy, C	80 Romeo, E
RG 63 MORAN	21 Mustain, B	60 DeFrancesco, G	82 Slaton, E
RT 77 SPIVEY	24 Cone, B	61 Tyre, G	83 Sellers, E
RE 85 GRIMES	26 B. Whitehead, B	62 Ulmer, G	84 Ehlers, E
QB 13 MAJORS	27 Espenship, B	63 Moran, G	85 Grimes, E
LH 26 WHITEHEAD	29 Hinson, B	64 Lamb, G	86 Daniel, E
RH 43 PICKARD	41 Schou, B	66 Kestner, G	87 Bigbie, E
FB 27 ESPENSHIP	42 Andrews, B	70 Morrow, T	88 Hooks, E
	43 Pickard, B	71 Swoszowski, T	89 Alvarez, E
	44 Calhoun, B	73 Klesius, T	



Drink *Dr Pepper*



frosty!
man,
frosty.



DISTRIBUTORS OF



**(DAY and NIGHT
DELIVERY SERVICE)**

AUTOMATIC DELIVERY
DEGREE DAY PLAN

Phone DI 5-8866

2677 ROANOKE AVE., S. W.
ROANOKE, VA.

John Norman, Inc.

*Fine Clothes
for Younger Men*

*

117 COLLEGE AVENUE
BLACKSBURG, VA.

505 SOUTH JEFFERSON STREET
ROANOKE, VA.

No.
12
13
15
20
21
24
26
27
29
41
42
43
44
50
51
53
54
60
61
62
63
64
66
70
71
73
75
77
78
80
82
83
84
85
86
87
88
89

1959 Florida State Football Roster

No.	Name	Pos.	Age	Ht.	Wt.	Class	Home Town
12	*Gene McCormick.....	QB	23	5-9	150	Junior	Miami
13	**Joe Majors.....	QB	22	6-0	171	Senior	Huntland, Tenn.
15	Roy Bickford.....	QB	19	5-11	177	Sophomore	Miami
20	Willie Whitehead.....	LH	18	5-10	165	Sophomore	Marianna
21	Don Mustain.....	LH	19	6-0	168	Junior	Miami, Okla.
24	Ken Cone.....	LH	20	6-1	180	Junior	Lakeland
26	*Bud Whitehead.....	LH	20	5-11	178	Junior	Marianna
27	*Jack Espenship.....	FB	20	6-3	195	Junior	Lake City
29	*Ron Hinson.....	RH	21	6-0	191	Junior	Waycross, Ga.
41	Denny Schou.....	RH	20	5-9	180	Sophomore	Fort Lauderdale
42	Paul Andrews.....	FB	18	5-10	186	Sophomore	Greenville
43	**Fred Pickard.....	RH	21	5-9	165	Senior	Columbia, Tenn.
44	Jim Calhoon.....	FB	25	6-1	188	Junior	Winslow, Ariz.
50	*Bill Brown.....	C	24	6-0	215	Senior	Orlando
51	Jim Worthington.....	C	21	6-2	198	Sophomore	Oak Ridge, Tenn.
53	*Ramon Rogers.....	C	21	5-11	187	Senior	Pensacola
54	*Jack Hardy.....	C	20	5-10	192	Junior	Miami
60	Frank DeFrancesco.....	RG	19	5-10	200	Sophomore	Miami
61	Bill Tyre.....	RG	19	6-1	198	Sophomore	Sanford
62	**Al Ulmer.....	LG	20	5-10	178	Senior	Clearwater
63	*Terry Moran.....	RG	19	5-9	180	Junior	New Orleans, La.
64	*Ray Lamb.....	LG	21	6-0	180	Junior	Atlanta, Ga.
66	*Ken Kestner.....	LG	21	5-10	190	Junior	Cleveland, O.
70	Bob Morrow.....	RT	23	5-10	194	Sophomore	Miami
71	*Bob Swoszowski.....	LT	19	6-3	196	Junior	Orlando
73	Steve Klesius.....	LT	18	6-1	210	Sophomore	St. Petersburg
75	Don Donatelli.....	RT	18	6-2	210	Sophomore	Pittsburgh, Pa.
77	**John Spivey.....	RT	22	6-2	202	Senior	Panama City
78	Joe Verbinski.....	LT	21	6-1	210	Sophomore	Willow Grove, Pa.
80	*Tony Romeo.....	RE	21	6-1	200	Junior	Tampa
82	John Slaton.....	RE	20	6-1	188	Sophomore	Miami
83	Don Sellers.....	LE	25	6-2	198	Junior	Barberton, O.
84	George Ehlers.....	RE	21	6-2	190	Junior	Moss Point, Miss.
85	Fred Grimes.....	RE	19	6-1	184	Sophomore	Hialeah
86	Jim Daniel.....	LE	20	6-4	185	Sophomore	Atlanta, Ga.
87	*Abner Bigbie.....	RE	21	5-10	185	Junior	West Palm Beach
88	**Jim Hooks.....	LE	24	5-8	175	Senior	West Palm Beach
89	Jim Alvarez.....	LE	20	6-1	195	Junior	Jacksonville

*—Denotes letters won.

Football players are inevitably injured from time to time but it is seldom these injuries are serious. Our Governor's Highway Safety Committee warns us that traffic injuries were extremely serious for 15,000 people in Virginia last year and fatal for 861 more.



DR. ROBERT M. STROZIER
President

FLORIDA STATE UNIVERSITY



PERRY MOSS
Director of Athletics, Head Coach

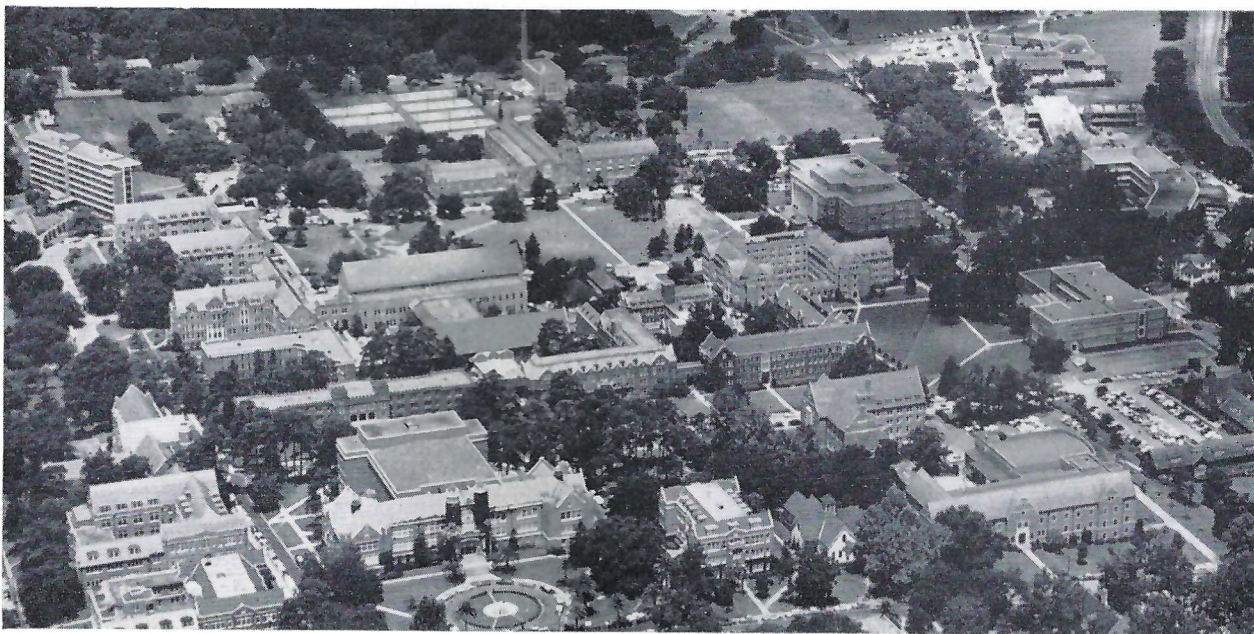
Located in Tallahassee, Florida State University is one of the fastest growing universities in the country. Already it is bursting at its seams with a present enrollment of 8,052 students.

The main campus of 300 acres, stretching for a half-mile along U. S. Highway 90, includes a cluster of older buildings of Tudor Gothic architecture, with many newer buildings of functional design to the west of these. There is an 11-story dormitory for men and work is being completed on a second 11-story dormitory to house 563 more men students. A new eight-story women's dormitory housing 270 is being put into use this year.

There is a new library, School of Education and School of Business buildings, along with a new million-dollar physical education building, Tully Gymnasium.

Among the newer structures are underground vaults with thick concrete walls which are housing two nuclear accelerators the university is installing this year. The larger of the accelerators is the third of its type to be installed on this continent and scientists, already with more than a million dollars in contracts for nuclear research, are planning to use these and other new tools in a bold program of basic research.

Authorized by the 1851 Legislature, the institution was first established as the "Seminary West of the Suwannee," and was opened on a portion of its present campus. The name was changed to "Florida State College" in 1901 and the school remained coeducational until 1905. Then it became the "Florida Female College" and was renamed in 1909, "The Florida State College for Women." By act of the 1947 Legislature, the institution again became coeducational as The Florida State University.



AERIAL VIEW—FLORIDA STATE UNIVERSITY

THE SEMINOLES



FRED PICKARD



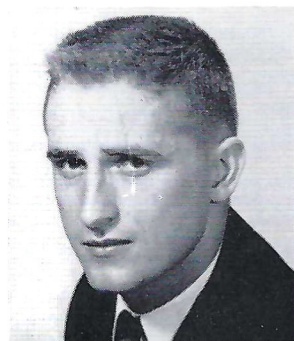
RAY LAMB



FRANK DEFRANCESCO



JIM WORTHINGTON



WILLIE WHITEHEAD



ROY BICKFORD



ABNER BIGBIE



JIM DANIEL



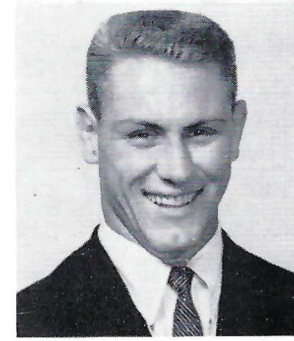
RAMON ROGERS



JOHN SLATON



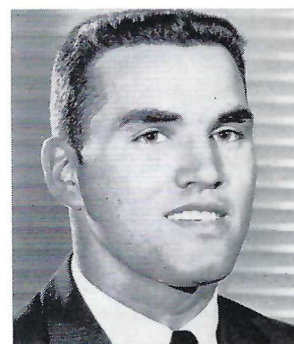
KEN KESTNER



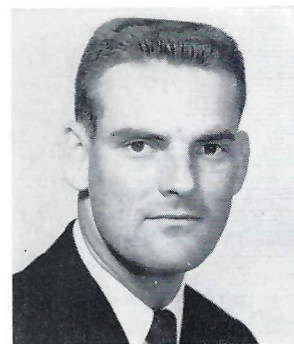
DENNY SCHOU



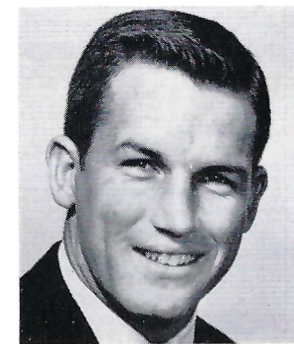
JOE VERBINSKI



TERRY MORAN



GENE MCCORMICK



JOE MAJORS

THE SEMINOLES



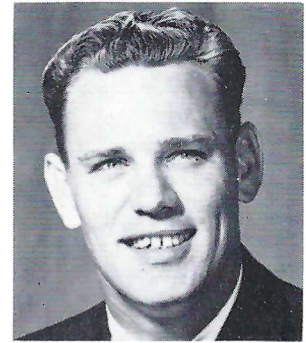
AL ULMER



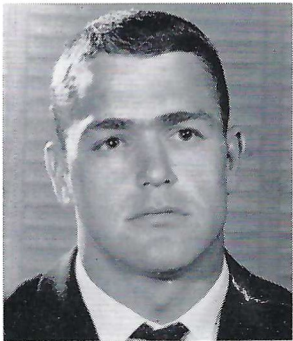
JACK ESPENSHIP



DON DONATELLI



BILL BROWN



JIM CALHOON



BILL TYRE



JOHN SPIVEY



JIM HOOKS



BUD WHITEHEAD



PAUL ANDREWS



KEN CONE



RON HINSON



FRED GRIMES



STEVE KLESIOUS



JACK HARDY



TONY ROMEO

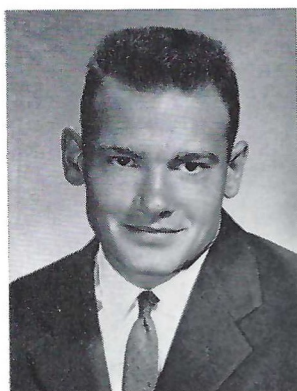
FA
(Feb.
end t
chan

HA
230,
ment
this y

OA
(July
ence
good
ing j
wrest

VI
(Jun
mate
splitt
fensi

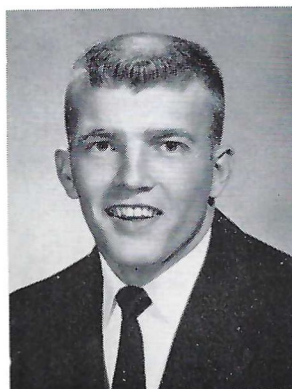
1959 TECHMEN



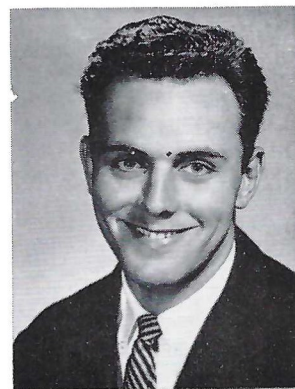
PAT HENRY



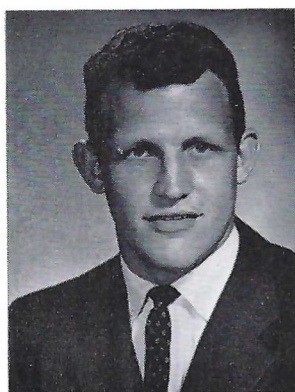
JOHNNY WATKINS



CHARLIE BLANKENSHIP



JIM FARR



BOB HARRIS



JOE MOSS



DON OAKES



BERNIE VISHNESKI

VA. TECH PLAYER SKETCHES (According To Position)

TACKLES

FARMER, John Daniel . . . (John) . . . Soph., 20 (Feb. 2, 1939), 6-2, 195, Tazewell . . . switched from end to tackle as green-shirt last year . . . might have chance at varsity spot this year.

HARRIS, Robert Virgil . . . (Bob) . . . Jr., 20, 6-3, 230, Galax . . . letterman in '58 . . . continued improvement could be a vital factor in Tech's line strength this year.

OAKES, Donald Sherman . . . (Don) . . . Jr., 21 (July 22, 1938), 6-3, 240, Salem . . . the most experienced of the Gobbler tackles . . . will have to have good season because he'll be pushed by Moss for starting job on left side . . . Tech's number one heavyweight wrestler . . . a good competitor.

VISHNESKI, Bernard . . . (Bernie) . . . Jr., 21 (June 11, 1938), 6-4, 235, Spring Hill, Pa. . . a teammate of Don Oakes at Fork Union . . . lettered while splitting time with Jim Burks in '58 . . . can be a defensive giant.

McGINNIS, William Roderick . . . (Rod) . . . Sr., 21 (July 8, 1938), 6-3, 210, Charleston, W. Va. . . has seen limited action during last two seasons . . . should make '59 traveling squad.

MOSS, Joseph Stafford . . . (Joe) . . . Jr., 22 (Sept. 28, 1937), 6-4, 225, Burkes Garden . . . '58 letterman . . . hits good initial lick . . . will see plenty of action again this year.

PAINE, James Albert . . . (Jim) . . . Soph., 20 (Jan. 31, 1939), 6-1, 205, Portsmouth . . . 1956 captain at Woodrow Wilson High . . . whether put at tackle or guard will make a good bid for '59 varsity spot.

ROBERTSON, William Cody . . . (Bill, Robby) . . . Soph., 19 (June 13, 1940), 6-2, 205 . . . two-year captain at Waynesboro . . . end on '58 Goblets . . . might take a while to adjust to new position.

ZENO, Michael G. . . . (Mike) . . . Jr., 20 (Feb. 28, 1939), 5-11, 230, Akron, O., . . . starting left guard in '58 . . . looks certain to be shifted to tackle for '59 . . . has ability to be Tech's best defenseman.

Chas. P. Lunsford
W. Bolling Izard

Associates:
R. R. McLelland
Harold N. Hoback

James J. Izard
J. Irving Slaydon

CHAS. LUNSFORD SONS & IZARD



GENERAL INSURANCE
AND BONDS



Colonial-American National Bank Building

DIAL Diamond 3-1778

ROANOKE, VIRGINIA

BA
21 (A
two-y
line, 1
to tim

BE
Soph.
green.
comer

DA
17, 19
most
won t

JEL
28, 19
slim f

JOI
20, 19
last se

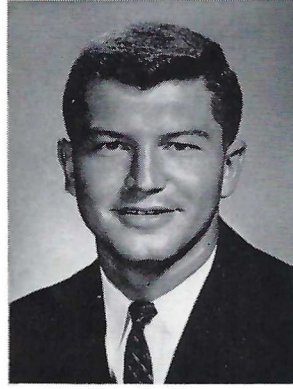
1959 TECHMEN



MIKE ZENO



ALLEN WHITTIER



BLOICE DAVISON



FRANK EASTMAN



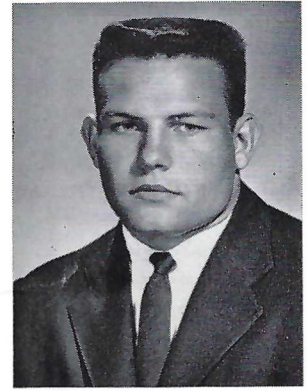
DON VAUGHT



ART PRUETT



CHARLIE SPECK



RICKEY TOLLEY

VA. TECH PLAYER SKETCHES (According To Position)

GUARDS

BARTRUG, Edwin Marshall . . . (Ed, Barty) . . . Sr., 21 (Aug. 26, 1938), 6-1, 190, Charleston, W. Va. . . . two-year letterman and the "swing man" of Tech's line, playing guard or tackle on either side from time to time . . . likely will be used the same way in '59.

BECKSTOFFER, William Andrew . . . (Andy) . . . Soph., 19 (Nov. 28, 1939), 6-0, 200, Richmond . . . a green-shirt last year . . . might beat out some newcomers for a varsity spot in September.

DAVISON, Bloice C. . . . (Bloice) . . . Jr., 20 (Jan. 17, 1939), 5-10, 205, Hagerstown, Md. . . . one of the most outstanding performers in Spring practice . . . won the starting left guard role and should hold it.

JENSEN, Donald F. . . . (Don) . . . Soph., 19 (June 28, 1940), 5-10, 178, Silver Spring, Md. . . . chances slim for varsity service in '59.

JONES, Harold Wayne . . . (Jake) . . . Jr., 22 (Mar. 20, 1937), 5-10, 212, Madison . . . saw limited action last season . . . may be in same role in '59.

HOLBROOK, Robert Gerald . . . (Gerald) . . . Soph., 19 (May 30, 1940), 5-11, 205, Raysal, W. Va. . . . captain and All-State at Big Creek . . . rated number two left guard at the end of Spring practice . . . should see varsity action this year.

CENTERS

GILLESPIE, David William . . . (Dave) . . . Soph., 19 (Oct. 22, 1939), 6-0, 200, Bristol, Tenn. . . . co-captain at Tennessee High . . . number one center for '58 Goblets . . . could win a traveling berth in '59.

HINES, Charles Franklin . . . (Charlie) . . . Soph., 19 (Oct. 7, 1940), 6-0, 205, Huntington, W. Va. . . . captain at Huntington East . . . played plenty for '58 frosh . . . gained plenty of ground in Spring practice toward a varsity spot this Fall.

STEPHENS, John Marvin . . . (Chuck) . . . Sr., 20 (Mar. 12, 1939), 5-10, 193, Roanoke . . . a halfback on the '56 frosh . . . saw some varsity action as center in '57 . . . and then divided time with Nick Mihalas last season . . . only letterman at the pivot post.

**WALKER
MACHINE AND FOUNDRY
CORPORATION**



FOUNDRY AND
MACHINE WORK



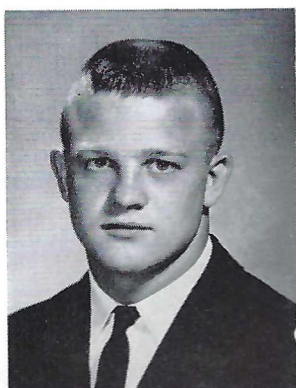
ROANOKE, VIRGINIA

TC
(Jan.
and
State
man
varsi

TC
Soph
good
green

SF
Soph
voter
ball
Pa.
varsi
Sprin
most
ing l

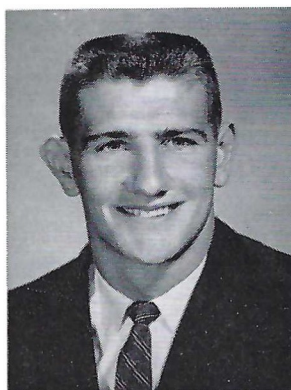
1959 TECHMEN



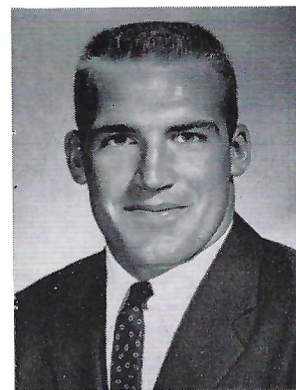
GERALD HOLBROOK



DAVE GILLESPIE



WALT HARRIS



WARREN MACCARONI



ELMER REED



TERRY STROCK



WARREN MORRIS



RAY BARILE

VA. TECH PLAYER SKETCHES (According To Position)

CENTERS (Continued)

TOLLEY, Rickey Dale . . . (Rickey) . . . Soph., 19 (Jan. 6, 1940), 6-0, 205, Mullens, W. Va. . . . captain and tackle at Mullens and also captain of the All-State team . . . probably the hardest-hitting defenseman on the green-shirts last year . . . should earn a varsity spot.

TOMBLIN, Amos Leon, . . (Leon, Goose) . . . Soph., 20 (Oct. 8, 1938), 6-1, 195, Berryville . . . did good job of blocking as fullback on '57 frosh . . . was a green-shirt last year.

QUARTERBACKS

SPECK, Charles Francis . . . (Charlie, Sparky) . . . Soph., 19 (Mar. 11, 1940), 6-3, 200, Pittsburgh, Pa. . . . voted most valuable player in both football and basketball in the league while at Langley High, Sheridan, Pa. . . . led '58 frosh in scoring . . . held number one varsity job until sustaining a broken finger during Spring practice . . . a blue ribbon prospect and the most likely of the sophomores to crack Tech's starting lineup in '59.

EASTMAN, Frank Hobson . . . (Frank) . . . Jr., 22 (Jan. 1, 1937), 6-0, 183, Richmond . . . lettered as a fullback in '57 . . . missed '58 season after being injured in pre-season practice . . . shared number one job with Charlie Speck in Spring practice . . . could be the starter this Fall.

PRICE, Charles Warren . . . (Charlie) . . . Soph., 19 (Oct. 15, 1940), 5-10, 167, Miami, Fla. . . . a halfback at Miami Edison and on the '58 Goblets . . . became a bright prospect with his running on the option play after being switched to QB slot during Spring practice.

REED, Elmer Ted . . . (Elmer) . . . Soph., 19 (Apr. 27, 1940), 6-0, 172, Rochester, Pa. . . . a fine all-around athlete at Rochester . . . split the QB job with Charlie Speck on '58 Goblets . . . capable of winning a varsity spot.

WARD, Harold Wayne . . . (Harold) . . . Soph., 18 (June 22, 1940), 6-0, 165, Dublin . . . overshadowed by Speck and Reed as a frosh . . . improved in Spring practice . . . will find varsity tough to crack this year.



Stop! Look, listen and read

Keep abreast of the
sports world through the
Times-World Corporation's
three media!

See it and hear it over WDBJ Television and WDBJ Radio. On-the-spot action coverage of the best in sports is yours whether you listen at 960 on your dial or tune to Channel 7 Day and night, they'll keep you well informed!

And for sports results locally, statewide, nationally, and from around the world, you get the details that mean so much to a real sports fan with The Roanoke Times every morning in the week and The Roanoke World-News, each afternoon.

WDBJ Radio
WDBJ Television

THE ROANOKE TIMES
The Roanoke World-News



BO
(Mar.
but h
Goble

HE
1939),
year,
scorin
375 yd
4.8 a
one o
season
coach
Davis

HU
Johns
seen li
looked

KIN
21, 5-
star . .
varsity

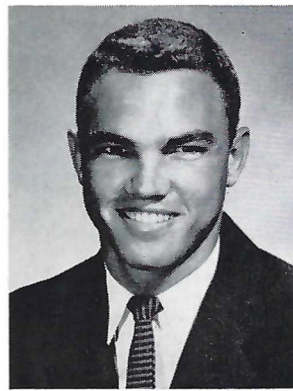
1959 TECHMEN



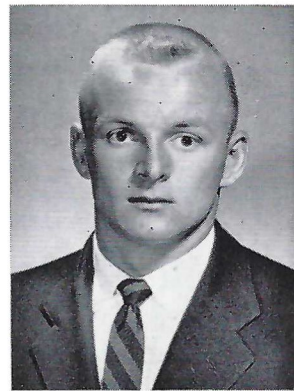
BUDDY PERRY



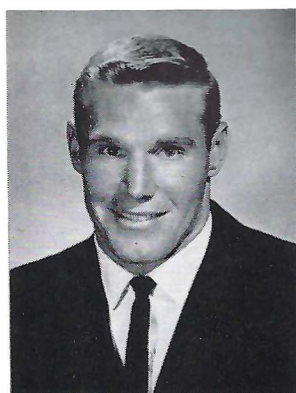
BOB CRABTREE



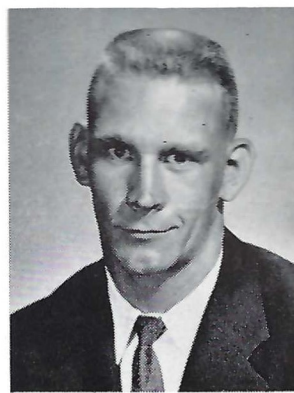
CHARLIE PRICE



HERB BOWLING



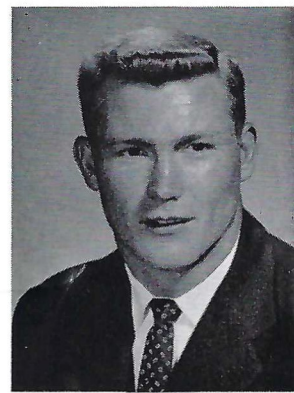
JIM PAINE



JOHN FARMER



DON WOMELDORPH



LEON TOMBLIN

VA. TECH PLAYER SKETCHES (According To Position)

HALFBACKS

BOWLING, Herb Eugene . . . (Herb) . . . Soph., 19 (Mar. 12, 1940), 5-9, 166, Roanoke . . . an unspectacular but hard knocker . . . played considerably for the Goblets as HB and FB . . . can "keep 'em honest."

HENRY, Patrick M. . . . (Pat) . . . Jr., 20 (Oct. 6, 1939), 5-9, 175, Hagerstown, Md. . . . as soph last year, led Gobblers in several offensive departments: scoring (7 TDs, 44 pts.); rushing (78 carries, netted 375 yds., longest run from scrimmage, 65, best average, 4.8 a carry); punt returns (7 for 142 yards, including one of 74 for Tech's only punt-return TD of the season) . . . son of a former Tech star, Mel Henry, now coach at North Hagerstown High, from whence cometh Davison, Henry and Strock.

HUNTER, Ben . . . (Ben) . . . Sr., 21, 5-9, 169, Johnson City, Tenn. . . . a green-shirt in '56 . . . has seen limited varsity action during last two seasons . . . looked good at times during Spring practice.

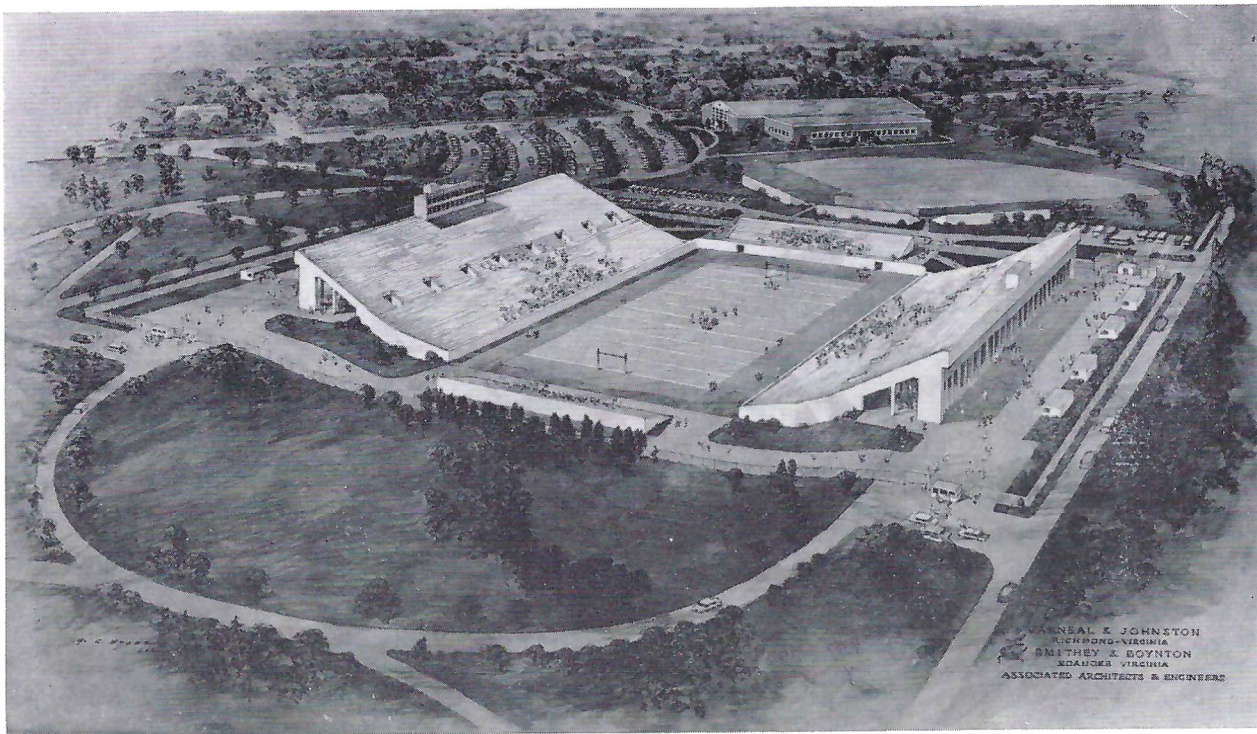
KINCAID, Forrest McConihay . . . (Mac) . . . Soph., 21, 5-11, 170, Portsmouth . . . former Craddock High star . . . a green-shirt in '58 . . . has the speed to vie for a varsity job.

MASSIE, Raymond Pershing . . . (Ray) . . . Soph., 18 (Dec. 27, 1940), 5-9, 160, Appomattox . . . captain of Appomattox's '57 district champs . . . gained considerable stature with defensive play in Spring practice . . . a definite contender for the right half spot.

PERRY, Noah Redding . . . (Buddy) . . . Soph., 20 (Mar. 5, 1939), 5-11, 165, Salem . . . a fine football and track man at Andrew Lewis . . . excellent speed . . . good ball carrier and defenseman . . . will be heard from.

PRUETT, Arthur Emory . . . (Art, Otto) . . . Soph., 19 (Aug. 20, 1940), 6-0, 180, Canebrake, W. Va. . . . captain and all-everything at Big Creek High, which won 28, lost 1, during his three varsity years . . . a solid citizen and a gritty football player . . . capable of winning the left half job.

PUGH, William Alger . . . (Algie) . . . Sr., 23 (Oct. 1, 1936), 5-11, 179, Fredericksburg . . . an all-around star at Spotsylvania High and Staunton Military . . . won Southern Conference high hurdles championship as a freshman . . . missed '56 season due to pre-season injury . . . has never reached the peak of his tremendous potential as runner and passer . . . still a real threat anytime he gets his hands on the ball.



SKETCH OF PROPOSED STADIUM — VIRGINIA TECH

VA. TECH PLAYER SKETCHES (According To Position)

HALFBACKS (Continued)

SNEAD, William Howard . . . (Dickie) . . . Sr., 22, 5-10, 175, Covington . . . passed up Spring practice, led the Gobbler baseball team in hitting . . . should be fresh this Fall . . . has the speed and wrinkles to make a difference in the Gobbler offense.

STROCK, Terry Lee . . . (Terry) . . . Soph., 20 (Mar. 12, 1939), 5-10, 170, Hagerstown, Md. . . . a green-shirt last year . . . has speed and will keep all right half candidates hustling.

WATKINS, John Albert . . . (Johnny) . . . Jr., 21 (Sept. 3, 1938), 5-7, 162, Norfolk . . . outstanding high school player in Virginia in '56 . . . chalked up 3.7 carrying average last season . . . just back from 6-months army hitch . . . an all-the-way threat who should see plenty of action again this year.

FULLBACKS

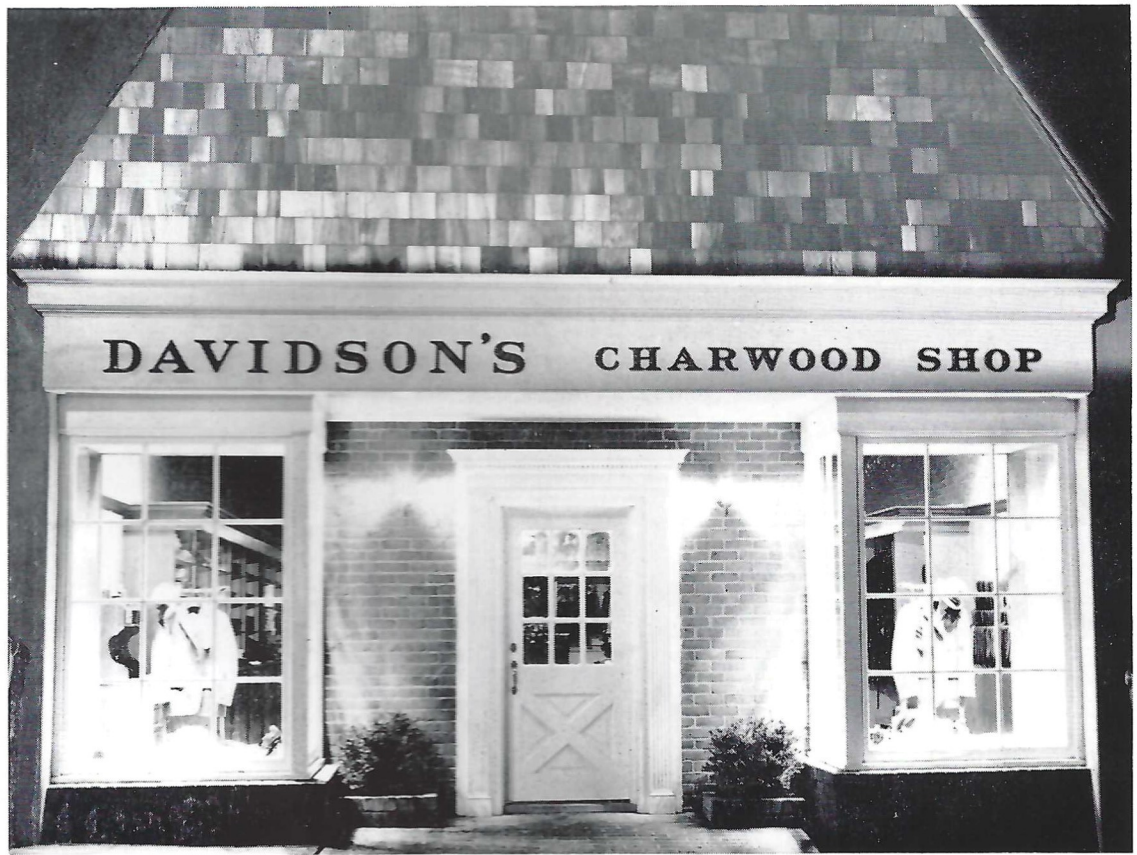
BARILE, Raymond Joseph . . . (Ray) . . . Soph., 19 (Jan. 28, 1940), 5-11, 210, Baldwin, N. Y. . . . a QB in high school . . . switched to FB on '58 frosh . . . a hard hitter who will play somewhere before he's through.

MACCARONI, Warren I. . . . (Warren, Horse) . . . Soph., 19 (Feb. 20, 1940), 6-1, 210, Waterford, N. J. . . . outstanding back in two All-American high school games in '58 . . . workhorse and leading groundgainer of the '58 Goblet backfield . . . a power runner who should get plenty of work this Fall.

MORRIS, Paul Warren . . . (Warren) . . . Soph., 20 (Jan. 10, 1939), 6-2, 190, Ronceverte, W. Va. . . . a QB on '57 frosh . . . played QB, FB and End as green-shirt last season . . . could earn a varsity spot.

SHAFFER, Samuel D. . . . (Sam) . . . Sr., 22, 5-10, 172, Williamsport, Pa. . . . lettered in '57 . . . but finally won number one job with blocking and hard work last season . . . a hard tackler who has come a long way since his green-shirt days of '56 . . . could win honors with his blocking in '59.

VAUGHT, Donald Ray . . . (Don) . . . Jr., 21 (June 6, 1938), 5-11, 179, Roanoke . . . a HB on the '56 frosh . . . missed '57 season due to injury . . . earned a monogram last year . . . helps give Tech its best FB depth in three years.



**TRADITIONAL CLOTHING, FURNISHINGS, AND GIFTS
FOR MEN AND YOUNG MEN**

Alas—"Charwood", a name associated with distinctive men's apparel for over thirty years, has moved to Blacksburg.

The door's open and the welcome mat spread at 108 North Main, where DAVIDSON'S CHARWOOD SHOP invites all Techmen to shop in the casual and friendly atmosphere, to be found there.

Your Charwood wardrobe will always be abreast of authentic campus fashions.

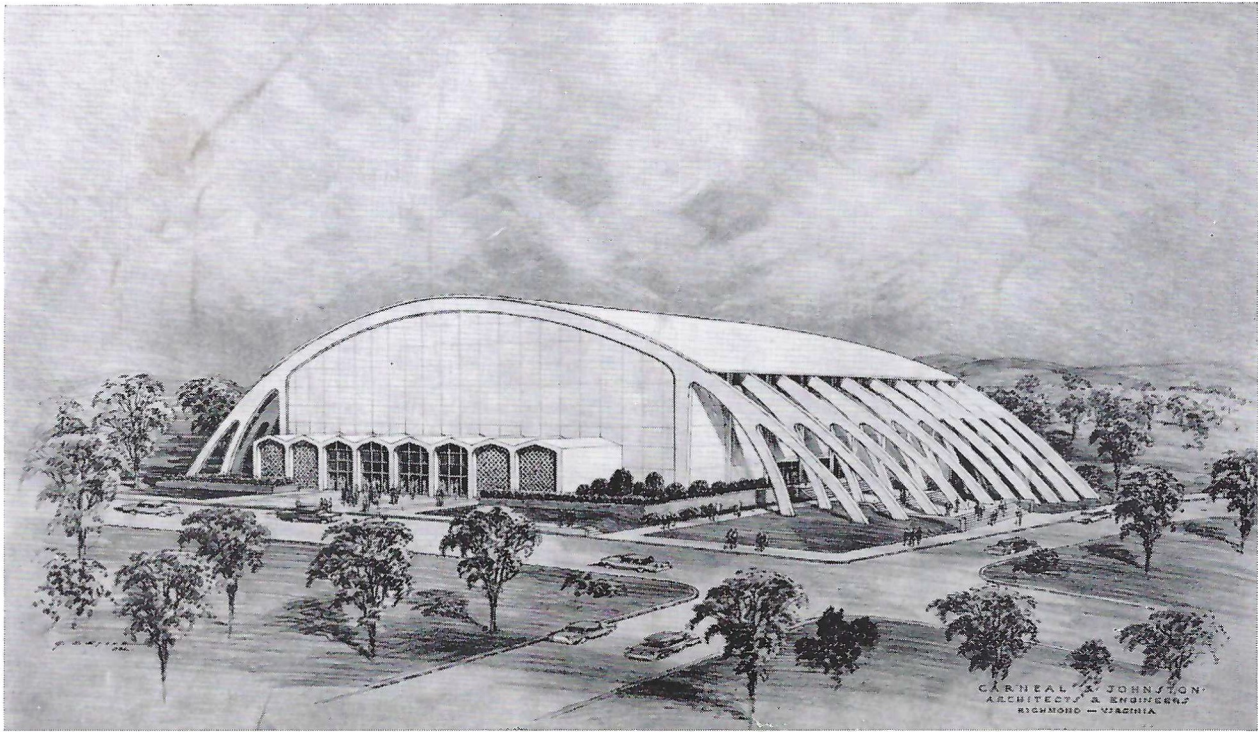
"Jimbo", Dave, Phil, Joe and Fred say:

"Come one, come all — Dress Charwood this fall"



**DAVIDSONS
CHARWOOD SHOP**

BLACKSBURG, VIRGINIA



SKETCH OF PROPOSED FIELD HOUSE — VIRGINIA TECH

TECH BOOSTERS

Blacksburg Motors

Guynn Department Store

Blacksburg Esso

Gates Furniture Co.

Lyric Theatre

Miller-Ledford & Pierce

Silvey Ford Motors

Midway Service Station

Carver Furniture Co.

Epperley Pontiac