

764



TAMPA

VS.

FLORIDA STATE

DECEMBER 5, 1953 • PHILLIPS FIELD

LUCKIES TASTE BETTER!

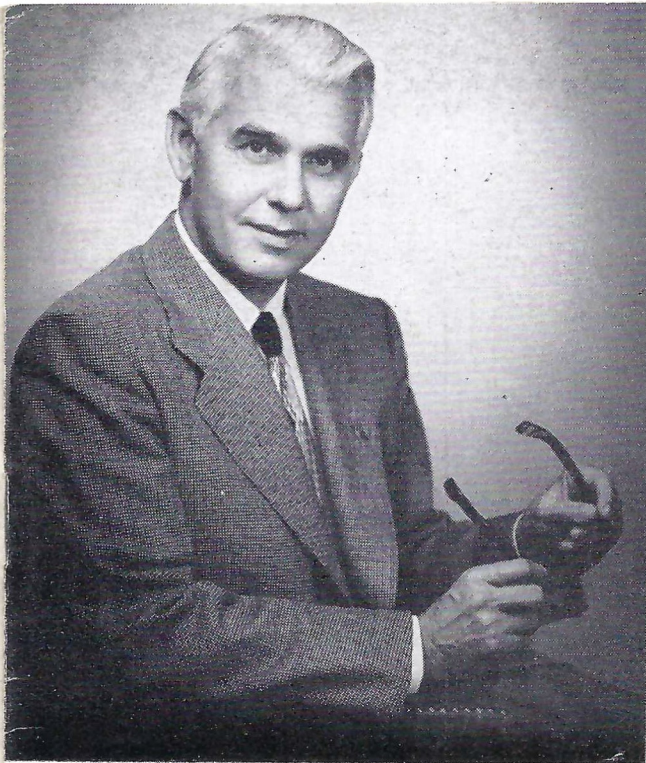
Cleaner, Fresher,
Smoother!

Be Happy

GO LUCKY!



COPR., THE AMERICAN TOBACCO COMPANY



GREETINGS

from

DR. ELLWOOD C. NANCE,
President

The University of Tampa has "become of age" this year and we are celebrating this significant event by initiating a TWENTY-FIRST ANNIVERSARY EXPANSION PROGRAM which calls for the erection of a new class-room building, a gymnasium and a student-union building which includes offices and meeting rooms for our Alumni, Fraternities, Sororities, Independent Clubs, Trustees and Religious Organizations.

Our TWENTY-FIRST ANNIVERSARY EXPANSION PROGRAM also calls for enlargement, improvement and extensive modernization of our present campus and physical facilities and also the enlargement of our endowment fund.

A university is more than masonry and steel; it is a spirit, an intellectual outlook. Therefore, there will always be at the University of Tampa a constant up-grading in every department including varsity sports.

Elsewhere in this program you will find a brief outline of Curricula and a Summary of the University's progress during the past eight years. Take this program with you and share it with a neighbor.

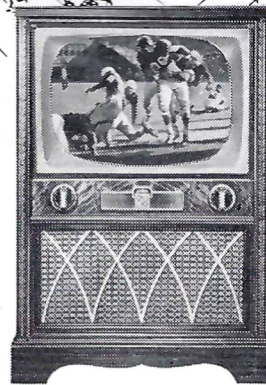
A city is never larger or better than the hearts and dreams of its people. Let us dream big dreams for Tampa and support those dreams with our resources.

MAKE

DuMont Television

YOUR GOAL

for the best football season of your life!

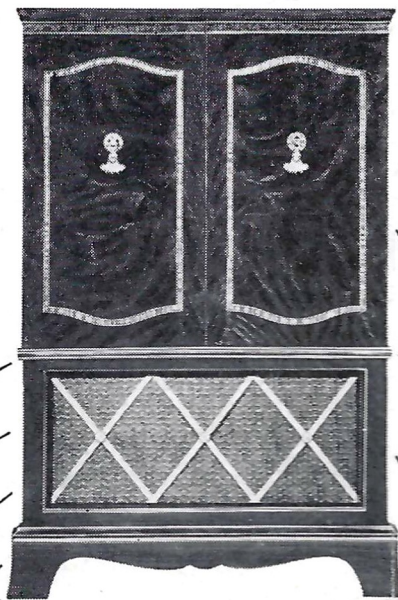


DuMont de Luxe BRADFORD
English Traditional cabinet, mahogany finish. 21-inch DuMont Selfocus* tube. Phono jack. Built-in UHF-VHF antenna. Optional 82-channel tuning.

DuMont Invites
COMPLETE*
COMPARISON

...feature by feature

...at every price!



Be as proud and happy as the man with seats on the 50-yard line! Follow the game, close up, to either goal! You'll never see better football on television than you see with the new DuMont — first to match or surpass every other set in every feature at every price!

★New Clear-Picture Power
High-resolution picture tubes!

★DuMont Selfocus* Tube
First with automatic focus!

★Optional 82-Channel Tuning
Most sensitive tuning in television!

★Fringe Area Excellence
Best reception everywhere!

★Truer Tone
Finer circuits, choice woods!

DuMont de Luxe WINDSOR
21-inch DuMont Selfocus* tube. Fine 18th Century cabinet on casters, hand-rubbed mahogany finish. Phono jack. 82-channel tuning optional. Built-in UHF-VHF antenna.

★Custom-Crafted Cabinets
Famous design, finish, construction!

★Quality Controls
— of materials, parts, production!

★Thrifter Ownership
Save on set operation... servicing
...trade-ins!

Imagine owning **DU MONT**[®] ...from \$199⁹⁵**
QUALITY TELEVISION

*Trade Mark

(for 17" table model, not illustrated)

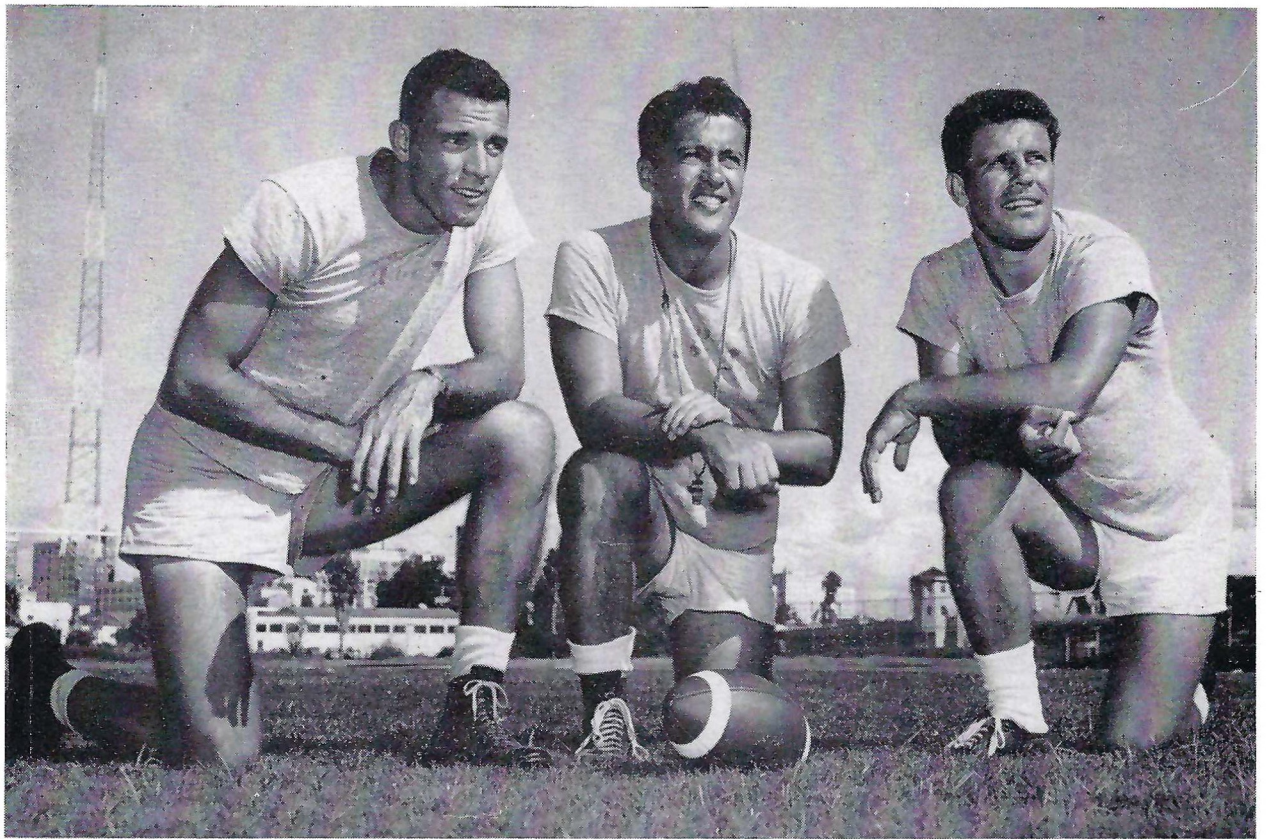
**NO EXTRA CHARGES for full-year picture tube Warranty, 90-day parts Warranty, Federal Excise Tax, built-in UHF-VHF antenna, or mahogany finish. Lined oak or blond finish slightly higher.

AT YOUR AUTHORIZED DU MONT DEALER'S NOW!

THE SOUTH'S OLDEST IN

FROST Television

207 FRANKLIN 2-4794 2-4795



Coaches: Left: Sam Bailey, Line Coach
Center: Marcelino Huerta, Head Coach
Right: John Vardian, Backfield Coach



*Elegance
In Leisurely Dining*

Bartke's

OF NEW YORK

Tampa International Airport

For Reservations
Phone
80-3631 - 80-1081

Tropical Terrace-Treasure Island

For Reservations
Phone
St. Pete 2-5451 - 2-6901



1953 Spartans:

Here are the members of the 1953 University of Tampa football squad. Left to right, front row—Bob Phillips, Joe Zalupski, John Vouvalis, Guy Amuso, Fred Chicado, Nick Waytovich, Bill Minahan, Tom Spack, Milt Green, Reuben Espinola, Charles Scott, Joe Slovenski, Ed Peck; second row—Mike

Skar
Hillier,
Colvard

GUARANTEED ELECTRICAL WORK

You are reading this program under the "brighter lights of Phillips Field" engineered by

**MEADOWS
AND
ROBISON
ELECTRICAL
CONTRACTORS**



1206 GRAND CENTRAL AVE. TAMPA, FLA.

408



row—
Minahan,
v—Mike

Skaroulis, Charlie Harris, Jim Mathis, Ted Greene, Ken Nuznoff, Julius Nagy, Bill Hovance, Norvel Trulock, Larry Gnagy, Lamar Lipsey, Henry Garcia, Bob Hillier, Mario Maffeo; third row—Harland McGill, Al Leathers, Nello Rimoldi, John Hull, Francis Fuchek, Frank Stefanik, Jess Davis, Pete McLeod, Reggie Colvard, Joe Onderko, Bill Sefcik, Ralph Frazier. Ken Belleaveau, Bobby Gambrell, H. L. Hiers and Baxton Pounders missed the picture.

COMMERCIAL AND PUBLICATION PRINTING OF ALL KINDS!

WE'RE BEHIND YOU, TAMPA!

Tickets!

- RESERVED SEAT
- STRIP
- SPECIAL NUMBERED PRINTING

RINALDI PRINTING CO.

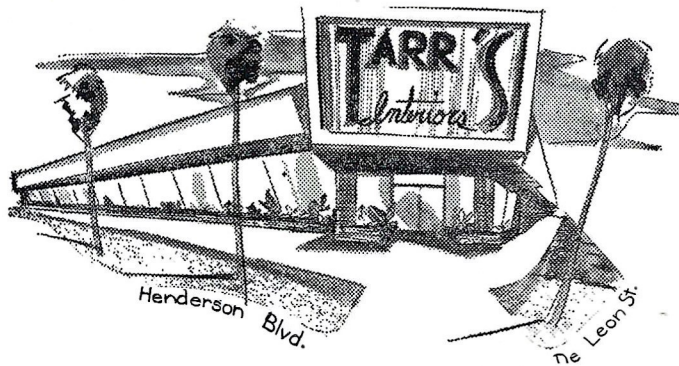
ESTABLISHED 1905

408 N. HOWARD AVENUE

TAMPA, FLORIDA

A.

FINE FURNITURE,
CARPETS AND
DRAPERIES



INTERIOR
DECORATORS

3410 HENDERSON BLVD.

TAMPA, FLORIDA

PHONES 88-1161 - 86-9321

“A TRIAL IS ALL WE ASK”

**GO
GET 'EM,
SPARTANS!**

Compliments of

**OAK PARK
CLEANERS**

**AND
LAUNDRY**

PHONE 4-4197

3210 E. 7th AVENUE

SIMON'S STUDIO

4602 FLORIDA AVE.

DISTINCTIVE PORTRAITS

AT HOME OR IN OUR STUDIO

**WEDDINGS, CHILDREN, and
COMMERCIAL PHOTOGRAPHY**

ANYWHERE, ANYTIME, ANYPLACE

PHONE 35-8721

IF NO ANSWER CALL 25-6051

“ G O S P A R T A N S ”

SHEA & PRANGE PHARMACY

TWO
LOCATIONS

3001 FLORIDA AVENUE
Telephone 2-3333

702 GRAND CENTRAL AVENUE
Telephone 8-5384

... G O S P A R T A N S



Tri-Captains:

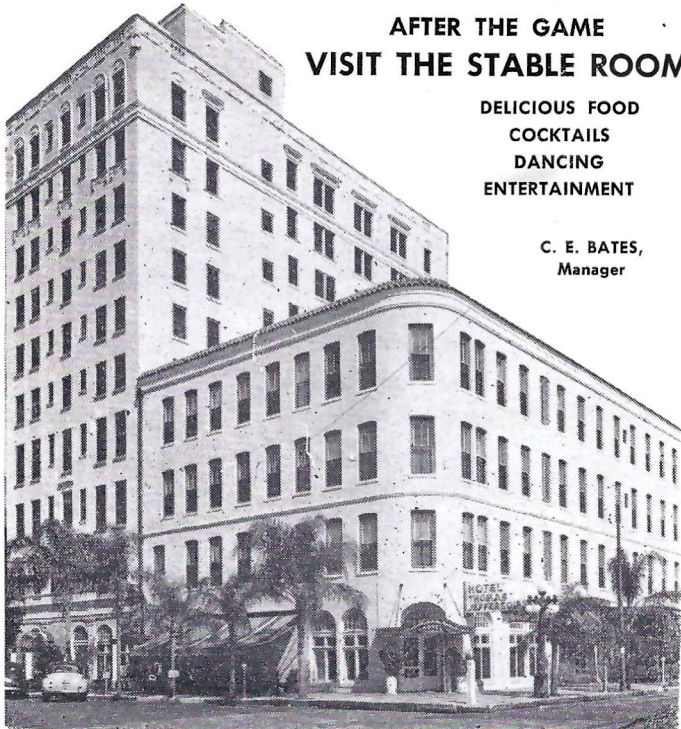
Joe Zalupski, Guard
 Nick Waytovich, Guard
 Charlie Harris, Halfback

Thomas JEFFERSON
 FRANKLIN AT WASHINGTON • TAMPA

AIR CONDITIONED ROOMS
 AFTER THE GAME
 VISIT THE STABLE ROOM

DELICIOUS FOOD
 COCKTAILS
 DANCING
 ENTERTAINMENT

C. E. BATES,
 Manager



GOOD LUCK, SPARTANS

Martin's PLANT PARK **Pharmacy**

Prescription Druggist

Restaurant Service

446 W. LAFAYETTE STREET

ACROSS FROM UNIVERSITY OF TAMPA

PHONE 8-1269

TAMPA, FLA.

Complete Spartan Squad-1953

No.	Name	Wt.	Ht.	Class	Hometown	Position
54	HIERS, H. L.	200	6'4"	Senior	Bartow, Fla.	End
51	McLEOD, PETE	190	6'1"	Junior	Pensacola, Fla.	End
52	ONDERKO, JOE	205	6'1"	Sophomore	Warren, Fla.	End
53	RIMOLDI, NELLO	200	6'1"	Freshman	Tirehill, Pa.	End
55	STEFANIK, FRANK	195	6'3"	Sophomore	Johnstown, Pa.	End
57	SEFCIK, WILLIAM	195	6'3"	Freshman	Johnstown, Pa.	End
	BELLIVEAU, KEN	205	6'2"	Junior	Springfield, N.J.	End
40	FUCHEK, FRANCIS	210	6'1"	Sophomore	Brooksville, Fla.	Tackle
41	NAGY, JULIUS	190	6'1"	Junior	Stuebenville, Ohio	Tackle
42	TRULUCK, NORVEL	210	6'	Freshman	Branford, Fla.	Tackle
43	COLVARD, REGGIE	250	6'1"	Junior	Hartwell, Ga.	Tackle
44	POUNDERS, BRAXTON	260	6'6"	Sophomore	Sawyerwood, Ohio	Tackle
45	FRAZIER, RALPH	215	6'1"	Freshman	Groveland, Fla.	Tackle
46	GNAGY, LARRY	225	6'2"	Sophomore	Johnstown, Pa.	Tackle
34	DAVIS, JESS	230	6'2"	Sophomore	Miami, Fla.	Tackle
30	ZALUPSKI, JOE	195	6'	Junior	Conemaugh, Pa.	Guard
31	ASH, DWIGHT	200	6'	Freshman	Sarasota, Fla.	Guard
32	ESPINOLA, RUEBEN	185	5'9"	Freshman	Tampa, Fla.	Guard
33	WAYTOVICH, NICK	195	5'10"	Junior	Johnstown, Pa.	Guard
34	MAFFEO, MARIO	240	5'10"	Freshman	Tampa, Fla.	Guard
35	SLOVENSKI, JOE	215	5'11"	Freshman	Central City, Pa.	Guard
36	QUANNE, JIM	195	6'	Sophomore	Endicott, N.Y.	Guard
37	GARCIA, HENRY	210	6'1"	Freshman	Tampa, Fla.	Guard
20	GREENE, TED	195	6'1"	Sophomore	Endicott, N.Y.	Center
21	HILLIER, BOB	180	6'	Senior	AuTrain, Mich.	Center
22	LAMPE, CHRIS	180	6'	Sophomore	Pittsburgh, Pa.	Center
60	PECK, ED	170	6'	Junior	Erie, Pa.	Quarterback
61	SKAROULIS, MIKE	185	5'11"	Freshman	Tarpon Springs, Fla.	Quarterback
63	MINAHAN, BILL	175	5'9"	Sophomore	Johnstown, Pa.	Quarterback
73	HULL, JOHN	170	6'	Freshman	Brooksville, Fla.	Quarterback
81	GREEN, MILT	148	5'8"	Sophomore	Johnstown, Pa.	Halfback
82	AMUSO, GUY	180	5'8"	Sophomore	Sarasota, Fla.	Halfback
83	LIPSEY, LAMAR	175	5'11"	Freshman	Tarpon Springs, Fla.	Halfback
84	HARRIS, CHARLEY	175	6'	Senior	Endicott, N.Y.	Halfback
85	LEATHERS, AL	185	6'1"	Sophomore	Belle Glade, Fla.	Halfback
87	NUZNOFF, KEN	165	6'	Sophomore	Detroit, Mich.	Halfback
88	CHICADO, FRED	170	5'10"	Freshman	Central City, Pa.	Halfback
	BOUCHER, BOB	175	5'10"	Junior	Pittsburgh, Pa.	Halfback
70	SPACK, TOM	205	5'7"	Sophomore	Johnstown, Pa.	Fullback
71	MATHIS, JIM	190	6'	Junior	Ft. Pierce, Fla.	Fullback
75	GARCIA, ERNEST	180	5'11"	Junior	Tampa, Fla.	Fullback

FROM KICKOFF TO FINAL GUN

We Believe---

That each of us has a definite responsibility to get behind the athletic programs of our University of Tampa. The wholehearted support of each of us can do so much to aid in the building of today's youth — Tomorrow's citizens.

One of the few ways that we can do something really constructive is to give our wholehearted and sincere support to all sporting programs of our — yours and mine —

UNIVERSITY OF TAMPA

TAMPA ARMATURE WORKS

MYGRANT LUMBER CO.

Specializing in

CALIFORNIA REDWOOD



105 N. WILLOW AVENUE

Phone 8-3988

Host of the game



FLORIDA STATE UNIVERSITY

PROBABLE STARTING LINE-UP

LE Taylor 31	LT Makowiecki 62	LG Jacobs 24	C Kalenich 35	RG Pacifco 54	RT Boyer 55	RE Bryant 12
			QB Massey 37			
LHB Fiveash 28			FB Griner 21		RHB Graham 27	

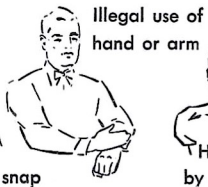
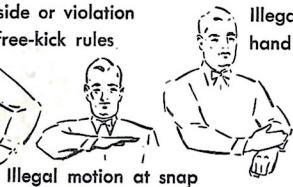
SQUAD LIST

11—Corso, qb
12—*Bryant, re
13—Harper, qb
14—Price, le
16—*Mann, le
18—Metts, lh
19—Grenn, r., fb
20—Holden, lg
21—*Griner, lh
22—Grenn, c., rh
23—Titus, rt
24—*Jacobs, lg
25—Holt, fb
26—Jacobs, c., rg
27—Graham, rh

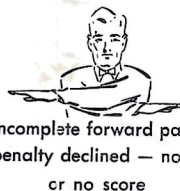
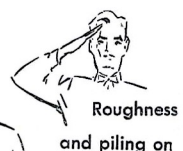
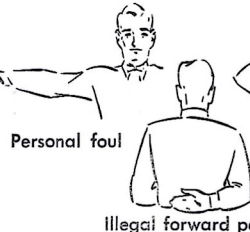
28—*Fiveash, lh
31—*Taylor, le
32—Twomey, re
33—Pacetti, rh
34—Lane, le
35—*Kalenich, c
37—Massey, qb
39—*Johnson, e
40—Phillips, lt
41—Fancher, rt
43—Barber, rt
44—Leonard, re
45—Bates, rg
46—*Dobosz, rh
48—Swantic, qb

49—Shroyer, rt
50—Rooks, qb
51—*Powell, lt
52—*Messinese, lh
53—Hathcock, rt
54—Pacifco, rg
55—*Boyer, rt
56—Feamster, re
57—*King, fb
59—*Crenshaw, c
60—Olsen, lt
62—Makowiecki, lt
63—Manning, re
64—Staab, rg
*—Letterman

REFEREE'S SIGNALS



Crawling, pushing or helping runner





TAMPA

PROBABLE STARTING LINE-UP

LE Onderko 52	LT Gnagy 46	LG Waytovich 33	C Greene 20	RG Lampe 22	RT Colvard 43	RE Hiers 54
			QB Minahan 63			
LHB Leathers 85					RHB Harris 84	
						FB Spack 70

SQUAD LIST

20—Greene, c	37—H. Garcia, g	53—Rimoldi, e	71—Mathis, fb
21—Hillier, c	40—Fuchek, t	54—Hiers, e	73—Hull, qb
22—Lampe, g	41—Nagy, t	55—Stefanik, e	75—E. Garcia, fb
30—Zalupski, g	42—Truluck, t	56—Hovance, e	81—Green, hb
31—Ash, g	43—Colvard, t	57—Sefcik, e	82—Amuso, hb
32—Espinola, g	44—Pounders, t	Belliveau, e	83—Lipsey, hb
33—Waytovich, g	45—Frazier, t	60—Peck, qb	84—Harris, hb
34—Davis, t	46—Gnagy, t	61—Skaroulis, qb	85—Leathers, hb
35—Slovenski, g	51—McLeod, e	63—Minahan, qb	87—Nuznoff, hb
36—Quanne, g	52—Onderko, e	70—Spack, fb	88—Chicado, hb

SCORE	1	2	3	4	TOTAL
TAMPA					
FLORIDA STATE					

refresh

DRINK

Coca-Cola

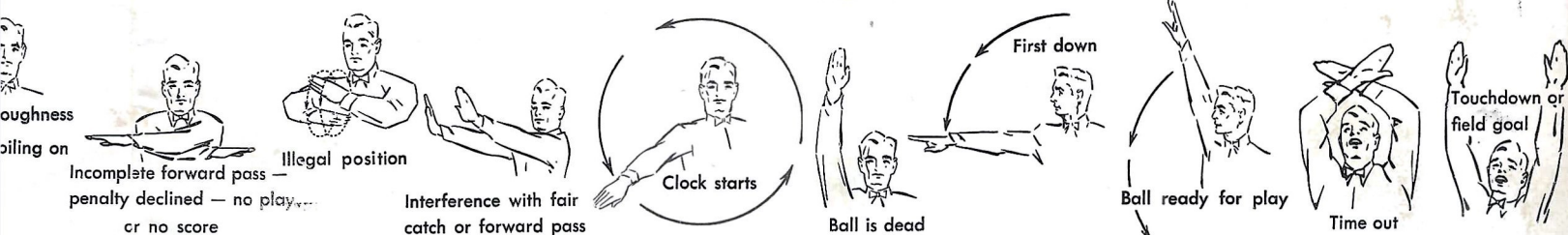
REG. U.S. PAT. OFF.

IN BOTTLES

OFFICIALS

Referee—P. T. Rahaim, Georgetown
 Umpire—L. Arnold, Stetson
 Field Judge—B. Gruetzmacher, Florida
 Head Linesman—F. Groves, Florida
 Time Keeper—G. Straus, Stetson

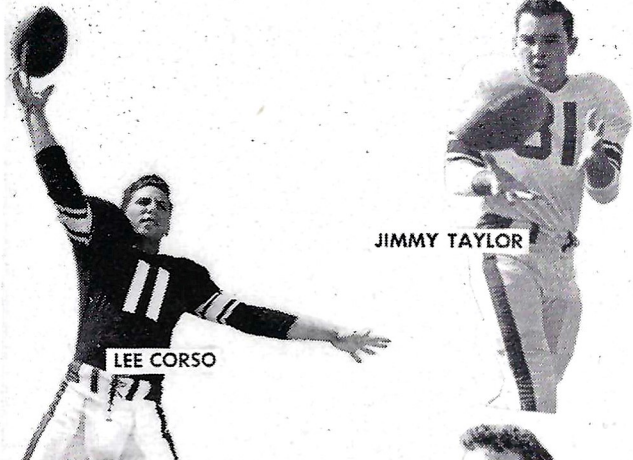
COPYRIGHT 1953, THE COCA-COLA COMPANY



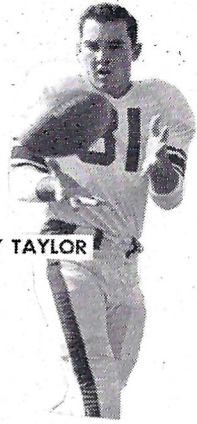
Florida State University

No.	Name	Pos.	Ht.	Wt.	Yr.	Home Town
11	Corso, L.	QB	5'10"	165	1	Miami, Fla.
12	*Bryant, B.	RE	6'3"	190	4	Perry, Fla.
13	Harper, W. L.	QB	6'	151	1	Cairo, Ga.
14	Price, T.	LE	6'	193	1	Miami, Fla.
16	*Mann, Ed	LE	6'1"	190	2	Ashford, Ala.
18	Metts, T.	LH	5'10"	170	1	Sanford, Fla.
19	Grenn, R.	FB	6'1"	181	3	Brookhaven, Miss.
20	Holden, W.	LG	5'11"	170	1	Atlanta, Ga.
21	*Griner, J.	LH	5'11"	170	2	Jacksonville, Fla.
22	Grenn, C.	RH	5'10"	175	3	Brookhaven, Miss.
23	Titus, Ed	RT	6'	190	1	Tomasville, Ga.
24	*Jacobs, J.	LG	6'	195	2	South Bend, Ind.
25	Holt, Joe	FB	5'10"	181	1	Graham, N. C.
26	Jacobs, C.	RG	5'8"	178	2	Miami, Fla.
27	Graham, B.	RH	6'	183	2	Bogalusa, La.
28	*Fiveash, B.	LH	5'11"	180	3	Bainbridge, Ga.
31	*Taylor, J.	LE	5'9"	185	3	Tampa, Fla.
32	Twomey, F.	RE	6'1"	183	1	Gloucester, Mass.
33	Pacetti, B.	RH	6'1"	170	1	St. Augustine, Fla.
35	*Kalenich, S.	C	5'11"	193	4	Akron, Ohio
37	Massey, H.	QB	5'10"	185	3	Canton, Miss.
39	*Johnson, E.	E	5'11"	198	2	Charleston, W. Va.
40	Phillips, E.	LT	6'1"	200	1	Belle Glade, Fla.
41	Fancher, B.	RT	5'11"	200	1	Alabama City, Ala.
43	Barber, B.	RT	6'	210	1	Belle Glade, Fla.
44	Leonard, B.	RE	6'	182	1	Ocala, Fla.
45	Bates, Bob	RG	5'11"	205	3	Bogalusa, La.
46	*Dobosz, S.	RH	5'9"	185	2	East Chicago, Ind.
48	Swantic, L.	QB	5'11"	178	1	Columbus, Ga.
49	Shroyer, B.	RT	6'1"	185	1	Valdosta, Ga.
50	Rooks, G.	QB	5'9"	170	1	Orlando, Fla.
51	*Powell, D.	LT	6'	214	2	Birmingham, Ala.
52	*Messinese, J.	LH	5'10"	175	4	Jacksonville, Fla.
53	Hathcock, M.	RT	6'5"	250	1	Alabama City, Ala.
54	Pacifico, Al	RG	5'8"	206	1	Altoona, Pa.
55	*Boyer, G.	RT	6'2"	220	2	Jacksonville, Fla.
57	*King, R.	FB	6'1"	205	3	Daytona Beach, Fla.
59	*Grenshaw, B.	C	5'9"	188	2	Miami, Fla.
60	Olsen, J.	LT	6'3"	220	2	Tallahassee, Fla.
62	Makowiecki, Al	LT	6'	200	2	Manaca, Pa.
63	Manning, L.	RE	5'11"	190	1	Delray Beach, Fla.
64	Staab, R.	RG	6'1"	195	1	Charleston, W. Va.

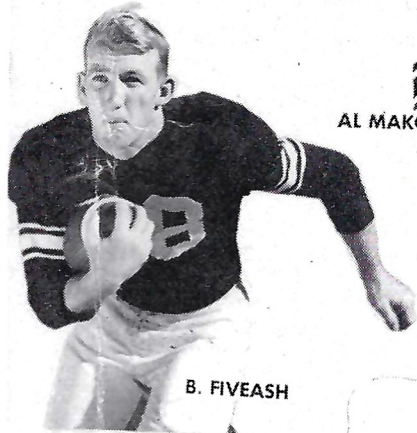
*—denotes lettermen



LEE CORSO



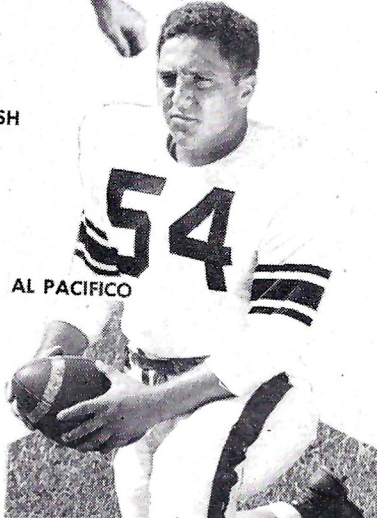
JIMMY TAYLOR



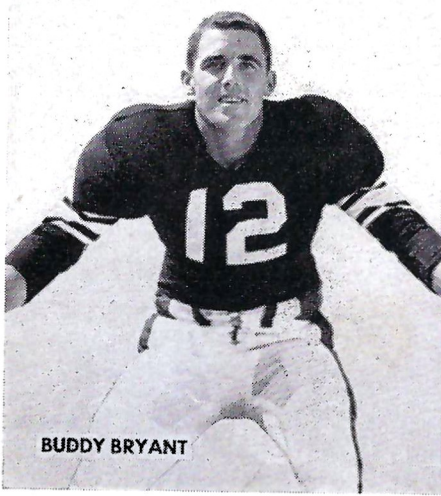
B. FIVEASH



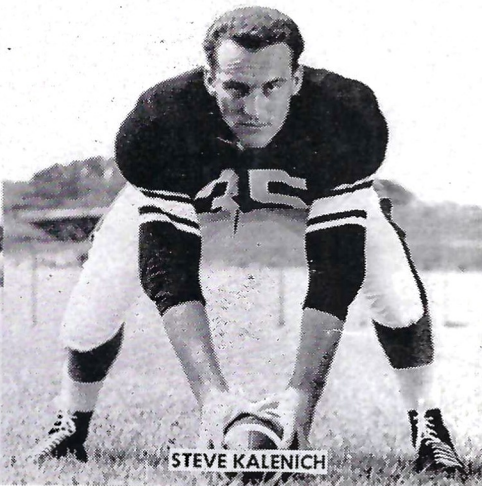
AL MAKOWIECKI



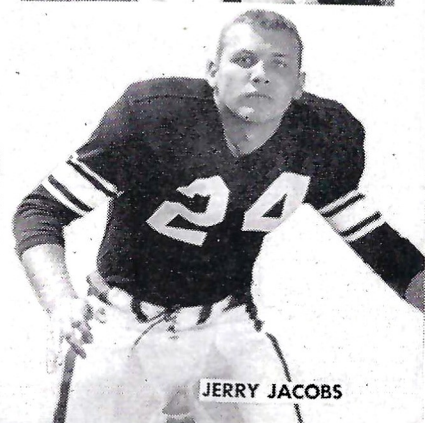
AL PACIFICO



BUDDY BRYANT



STEVE KALENICH



JERRY JACOBS

THE GOOD

 BORDEN'S

 AL PACINO

 G

 C

 35



REPLACEMENT OR A REFUND OF MONEY
Guaranteed by
Good Housekeeping
IF NOT AS ADVERTISED THEREIN

**IF IT'S BORDEN'S IT'S
GOT TO BE GOOD!**



FASHION CLEANERS and FURRIERS

WE CALL FOR AND DELIVER

**COLD STORAGE FOR FURS
AND WINTER GARMENTS**

Alterations and Repairs

ALL WORK INSURED AND GUARANTEED

PHONE 8-1112

104 N. HOWARD AVE.

"GOOD LUCK, SPARTANS"

AIRDROME PARK, INC., COR. POLK AND MARION STS.

PARK 'N SHOP, COR. POLK AND TAMPA STS.

**"TAMPA'S MOST CONVENIENT and POPULAR
PARKING SPOTS"**

"GOOD LUCK, UNIVERSITY OF TAMPA SPARTANS"

CAPRI

One of Tampa's Famous Restaurants

Specializing in

Italian, Spanish and American Foods

AIR CONDITIONED BAR and
COCKTAIL LOUNGE

STOP IN AFTER THE GAME

PHONE 8-8591

3518 HENDERSON BLVD.

"SEE US FOR YOUR ATHLETIC EQUIPMENT"

Foster-Moye, Inc.

(Wholesale — Retail)

- ATHLETIC EQUIPMENT
- SPORTING GOODS

PHONE 2-2502

117 E. LAFAYETTE STREET

CHECK THE RECORD

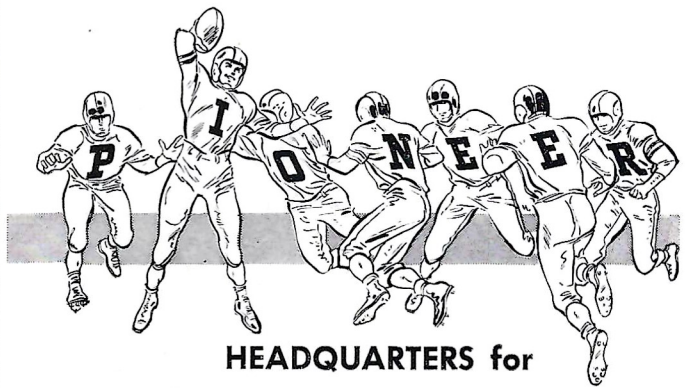
SPARTAN'S 1953 FOOTBALL SCHEDULE

(WITH SCORE OF LAST MEETING)

DATE	1953 OPPONENT	YEAR	LAST MEETING		OPP.
			T		
Sept. 18	* Troy State	'52	7		0
Sept. 25	So. Georgia	'52	66		0
Oct. 3	* Miss. Southern	'52	25		52
Oct. 10	Jax Navy	'42	0		26
Oct. 17	* Stetson	'52	6		6
Oct. 24	* McNeece	'52	20		42
Oct. 30	Sam Houston				
Nov. 7	East Carolina				
Nov. 14	Arkansas Tech				
Nov. 21	Appalachian	'52	19		0
Nov. 28	Delta State	'50	34		7
Dec. 5	Florida State	'52	39		6

	WON	LOST	TIED
1952 RECORD	8	3	1

* Away



HEADQUARTERS for



EVINRUDE MOTORS
BOATS AND TRAILERS
FISHING TACKLE
HUNTING EQUIPMENT
EASY TERMS

Open Week Days 8 A.M. to 6 P.M. • Monday Nights Until 9

PIONEER

TAMPA AT
WASHINGTON



PHONE
2-1951

28 YEARS OF GROWTH WITH TAMPA

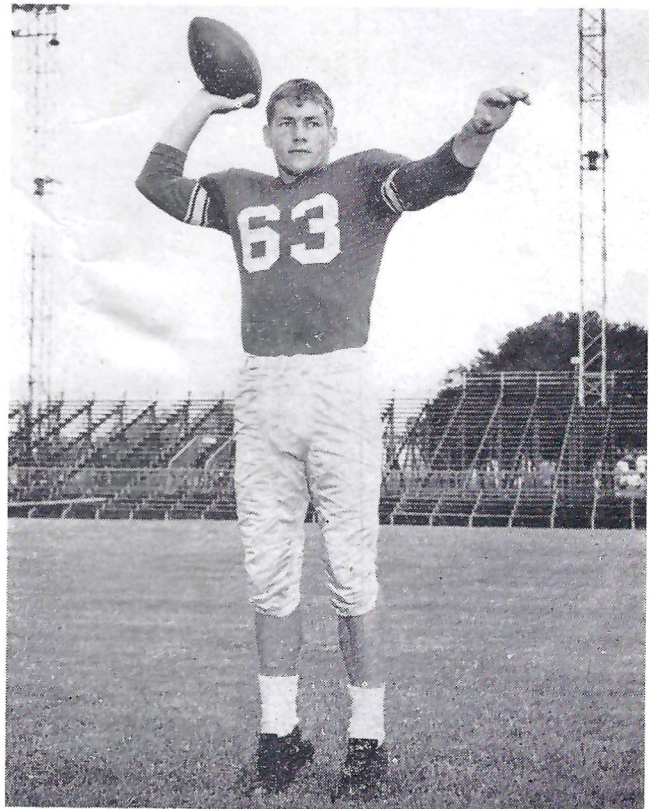
PARTS - SERVICE
STUDEBAKER
CARS - TRUCKS

FELLOWS MOTOR CO.

GENE CHAIRES & SON

TAMPA, FLORIDA

813 GRAND CENTRAL AVE.



Bill Minahan, Quarterback

• Fc
R
N

71

E

36

Florida Sporting Goods Supply Co.

TAMPA'S OLDEST

- For your needs see:

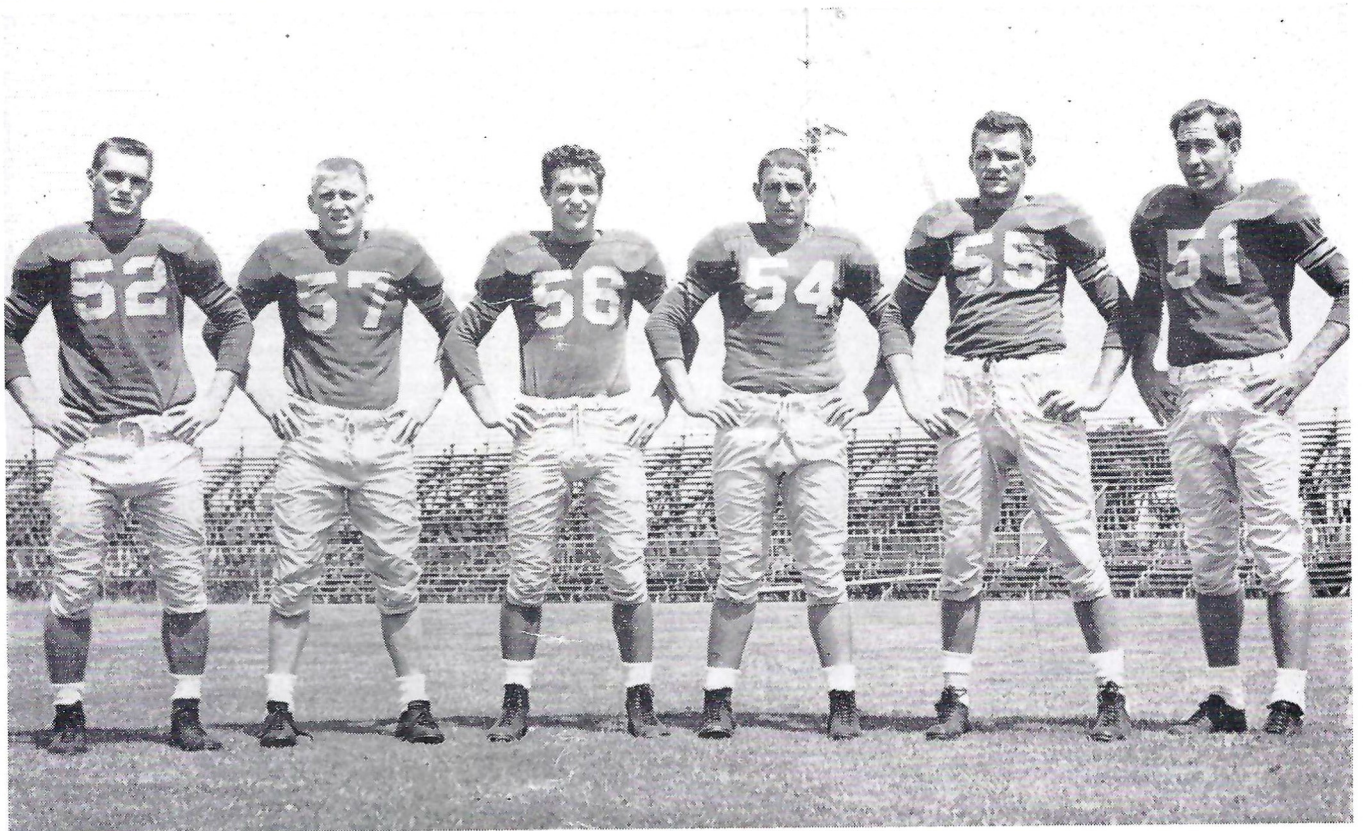
RUDY, JACK, SHERMAN,
NEWT, MIRO & MISS AIDA

Our complete line of quality, reasonably-priced sporting goods serve Florida schools and individuals — and serve them well.

GOOD
LUCK,
SPARTANS!

711 TAMPA STREET

PHONE 2-6770



Ends:

Joe Onderko, Bill Sefcik
Bill Hovance, Nello Rimoldi
Frank Stefanik, Pete McLeod

Edward L. Bolding Construction Co., Inc.

Building Contractor

"See Us Before You Build"

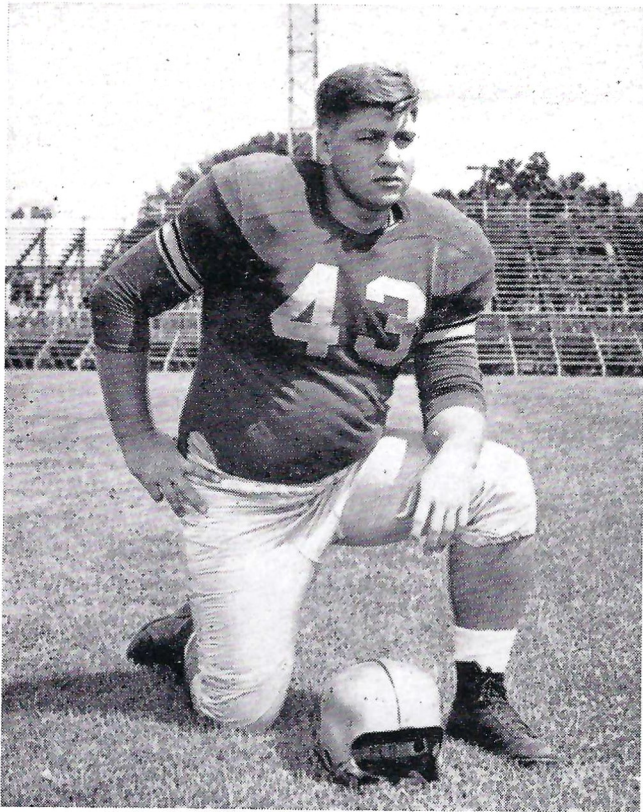
All Types of Construction

SPARTANS' BOOSTER

● WE BUILD TO BUILD AGAIN

3644 HENDERSON BLVD.

PHONE 8-3727



Reggie Colvard, Tackle

. . . for football see
the spartans

. . . for furniture
and accessories see

florida house

furniture and interior design
1906 so. dale mabry ph. 8-2105

All the Way,
SPARTANS!

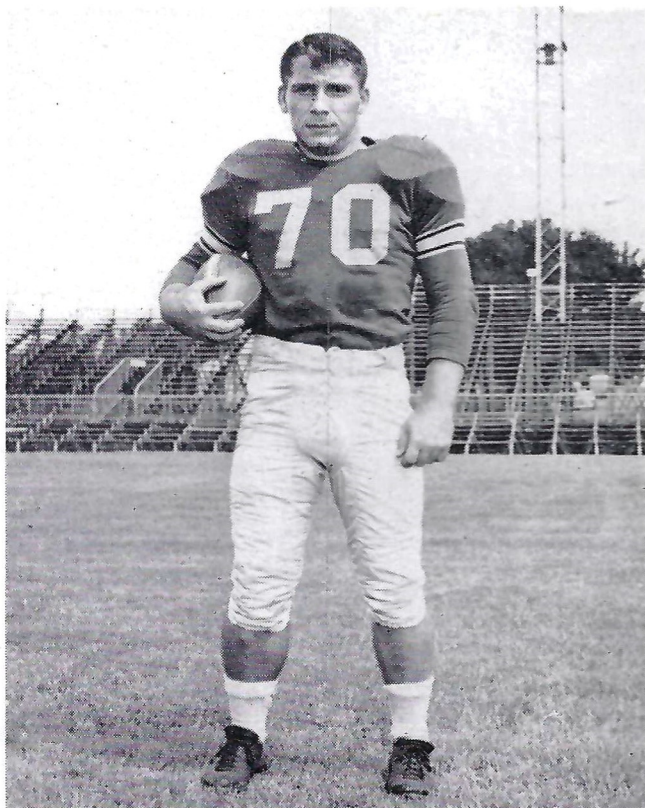


I. W. PHILLIPS
and COMPANY

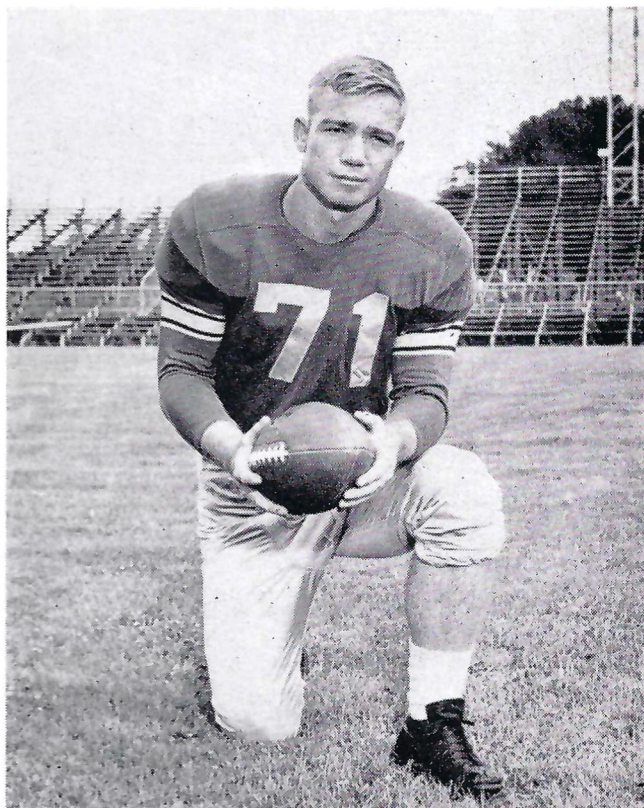


Ted Greene, Center

Tamp
•
South
•
Anth
•
Atlan
•



Tom Spack, Fullback



Jim Mathis, Fullback

GOOD LUCK, SPARTANS!

Compliments Of Beer Industry of Tampa

Tampa Florida Brewery

- TROPICAL ALE and BEER

Southern Brewing Company

- SILVER BAR ALE and BEER

Anthony Distributors

- MILLER HI LIFE BEER

Atlantic Company

- ATLANTIC BEER AND ALE

Swed Distributing Company

- BUDWEISER BEER

Red Cap Distributors

- CARLINGS RED CAP ALE

G. Ferlita & Sons

- SCHLITZ BEER

Peninsular Beer Dist. Company

- PABST BLUE RIBBON

Gator Distributing Company

- FALSTAFF BEER

A METROPOLITAN UNIVERSITY

("In The Heart of Tampa")

CURRICULA

The University offers curricula leading to two academic degrees; namely, Bachelor of Arts and Bachelor of Science. Courses of instruction are grouped under four headings as follows:

Division 1.

HUMANITIES

Art, Fine and Industrial
English, Speech, Radio, Journalism and
Library Science
Modern Languages
Music
Philosophy
Religion

(Majors: Art, English, Modern Languages, Music)

Division 3.

SOCIAL STUDIES

Business, Commerce, Economics,
and Secretarial Science
Geography
History and Political Science
Sociology

(Majors: Business Administration,
History and Political Science)

Specific requirements for individual majors will be found under departmental headings in the general catalogue of the University.

EVENING CREDIT COURSES

The University also offers a broad program of late afternoon and evening classes, carrying college credit, to meet the needs of public school teachers and others who are unable to carry a regular day schedule of college courses. It is now possible to get a minimum full time load of 12 semester hours per semester. A degree may be earned in evening college.

ADULT EDUCATION

The Adult Education Center of the University of Tampa is maintained and conducted as a service to the citizens of the West Coast of Florida to provide educational opportunity in a wide variety of subjects at convenient hours. While the courses offered do not convey academic credits, a continuing effort is put forth to make them of real value to those who may have been denied earlier opportunity to develop their interests and skills. All courses meet at least once each week for ten successive weeks. The only requisite for enrollment in any course is an interest in the subject and the payment of the necessary tuition. The minimum age for registration in any course is sixteen years.

Upon the satisfactory completion of a course, and upon the recommendation of the instructor of that course, the student will be issued a Certificate of Satisfactory Completion.

Division 2.

PURE AND NATURAL SCIENCES

Biology
Chemistry
General Science
Geology
Mathematics
Physics

(Majors: Mathematics and any of the Natural Sciences, except General Science and Geology)

Division 4.

EDUCATION

Education, Elementary and Secondary
Health and Physical Education
Home Economics
Psychology

(Majors: Elementary Education, Physical Education)

versit
exclu
thous
comm
full c

Adult
and f

degre
unive
its te

I
many
televi

—don

RECO

ing o

It is a
Public
aviati

I
new c
eighty
prope
this g

\$
than
\$28,0
in ser
years
dents.

I
1945
Unive
and d

\$
facilit
ment
great
great
and F

A
includ
sorori
presen
progr
libera
impor
a Uni
gettin

* From
** Statis
of th

GROWTH OF THE UNIVERSITY OF TAMPA

SINCE THE YEAR 1945[☆]

The University has become a great, Economic Asset to Tampa and West Coast Florida:**

Since 1945, through its enrollment of 13,982 students, in regular sessions and Summer Schools, the University has brought \$13,982,000 in new money into Tampa and Central West Coast Florida. Fall enrollment, 1953 excluded. Figure based on conservative estimate, after canvas of students and parents, that on an average of a thousand dollars per college year is spent by and on each student for all purposes. The money has gone into the commercial veins of this Community. (Nine Summer School enrollments, total enrollment 4,439, equivalent of two full college years).

Since 1945 the University has spent in Tampa, for goods, services and salaries, a total of \$2,500,000.

Enrollments have increased from 195 to 1945 to an average of more than one thousand per year, excluding Adult Education courses in the night college: The University has enrolled students from every state in the Union and fifteen foreign countries.

Faculty and Staff have grown from thirty members in 1945 to seventy in 1953. The Faculty members hold degrees, including twenty Ph.D.'s and thirty-three Masters, from more than seventy outstanding colleges and universities of the world. The University has called more new professors in the past two years than it had on its teaching staff in 1945.

In 1945 the University offered 94 courses. In 1953 the University offered 220 courses for credit, including many of the "pre-" courses, such as pre-nursing, pre-medicine, etc., and many non-credit evening courses, including television, languages and speech.

The University owns and operates the best equipped College F.M. Broadcasting Station in the South (WTUN—donated by Tampa Daily Times, WFLA and Paul Smith Construction Company).

RECOGNITION

The University of Tampa is approved by the Florida State Board of Education. It is a member of the following organization:

The Florida Association of Colleges and Universities	The Florida Chamber of Commerce
The Florida Academy of Sciences	The Association of American Colleges
The Southern Association of Science and Industry	The Association of Urban Universities
The American College Public Relations Association	The National Council on Education
The Southern Association of Colleges and Secondary Schools	Pan-American Commission

It is approved by the Veterans Administration for the training of veterans under Public Law 16, Public Law 346, Public Law 550 and Public Law 894. Its credits are also accepted by the Army, the Navy, and the Air Force for aviation cadet or officer cadet training.

In the past eight years the University has increased its own wealth, in invested funds, endowment funds, new equipment, acquired land, etc., by approximately \$850,000.00, including its radio station. One hundred eighty seven thousand dollars of this is in new equipment. This figure does not include \$57,000.00 raised for property improvements; and \$50,000.00 in improvements on stadium. **The President and Trustees are grateful for this growing confidence in our home town institution of higher learning.**

Since 1945, President Nance has publicized the University from coast to coast through his writings; and more than 400 lectures. Lecture fees and donations from organizations to which he has spoken have totaled more than \$28,000.00, which has been used to help 175 students through college—who in turn worked out their scholarships in services to the University. Scholarship monies donated by local individuals and organizations in the past eight years have amounted to \$7,506.50. There is never enough scholarship money to meet requests of needy students. There is a long waiting list now.

In the past eight years faculty salaries have been increased from five to seven times. The minimum salary of 1945 has been doubled; the maximum salary of 1945 has been increased by \$1,900.00. Every employee of the University is covered, without cost to him, by Group Life Insurance. Benefits include hospitalization, medical fees and death benefits to families of the insured.

Since 1945 Varsity Sports including football, basketball and crew have been increased and improved; new facilities added; staff increased. New fame has been earned by the Spartans. Intramural sports and the Department of Physical Education have been increased, enlarged and greatly improved. The Alumni has become a greater force in support of Varsity Sports. The Spartans' growth has been due largely to the support of such great friends as Ben Darby, Warren's De Soto and White Way Laundry and Dry Cleaning Industry President, and Frank Traynor, Vice President of the Florida Portland Cement Company.

An expansion program has been approved by the Trustees. Program calls for erection of three new buildings, including a class-room building, a gymnasium and a Student Union Center where all religious groups, social clubs, sororities, fraternities and Alumni may have offices, meeting rooms, etc. Program also calls for improvement of present properties; enlargement of endowment fund and a retirement pension system for Faculty and Staff. This program is a challenge to the generosity of all friends of youth and higher education. We hope many will respond liberally to this challenge, because, in so doing, we will be doing something for Tampa and ourselves. Most important thing of all we will be building up the economic and cultural life of this community. Because we have a University in Tampa thousands of young people, whose parents cannot afford to send them elsewhere, are getting a college education.

[☆] From President Nance's Annual Report to the Trustees — 1953.

^{**} Statistics from University Business Office audited by Russel Bogue Co., Tampa. University Treasurer, Charles Blake, prominent Tampa Attorney and Trustee of the University; and Mrs. Johnny Pate, Assistant Treasurer of the University.

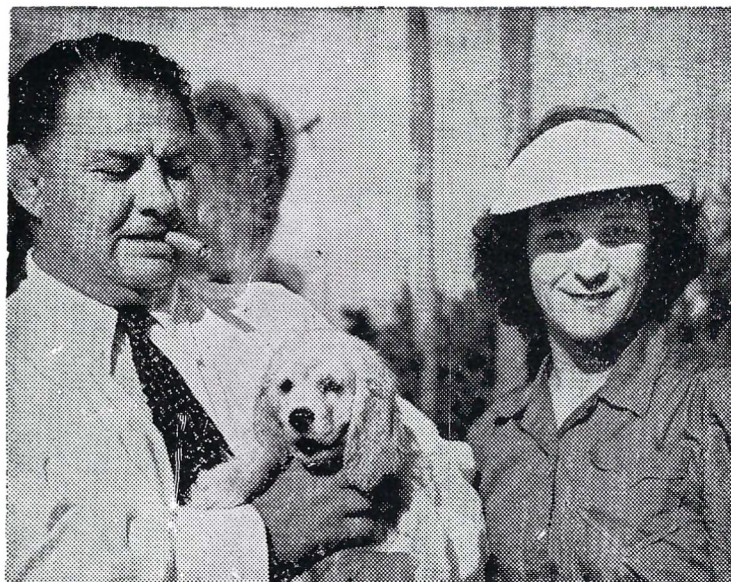
Tampa Golf and Country Club

HOME OF

**GEORGE and "BABE"
ZAHARIAS**

"Pro"-LLOYD DILLARD

18 Hole Golf Course



DINNING ROOM and COCKTAIL LOUNGE

Best Wishes To The Tampa "Spartans"

Here's a job for BEN DARBY!

When our Spantans *listed here* do the job cut out for them tonight
there's bound to be a soiled shirt or two.

Ben Darby, also, can be counted upon to do a job . . . for YOU.

DARBY-NIZED dry cleaning and laundering restores
the immaculate newness of all your clothes . . .

from grimy gridiron garb to the most delicate fabrics.

Let *us* try out for YOUR team . . . soon?

White Way

Cleaners & Laundry

Phone 8-5391

and

WARREN'S DE SOTO

CLEANERS - DYERS - LAUNDRY



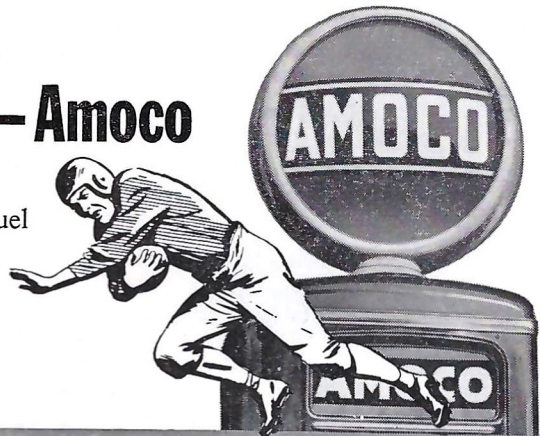
Phone 2-8054

Do you know your nearest branch location? 50 separate stores makes DARBY-NIZING "just around the corner" for everyone! Pick-up and delivery service brings DARBY-NIZING to your doorstep anywhere . . . fast! CALL US! "In by 9:00—Out by 5:00" SERVICE AT NO EXTRA CHARGE!



Best distance gainer — Amoco

AMOCO-GAS — the original special motor fuel
outstanding for power and mileage.
Amoco-Gas burns cleanly in combustion
chambers, leaves no metallic deposit!



Best wear-blocker — Permalube

PERMALUBE MOTOR OIL — cleans as it
lubricates, protects against dirt and friction.
So new, so advanced, it's the oil of the future!



Best line anywhere

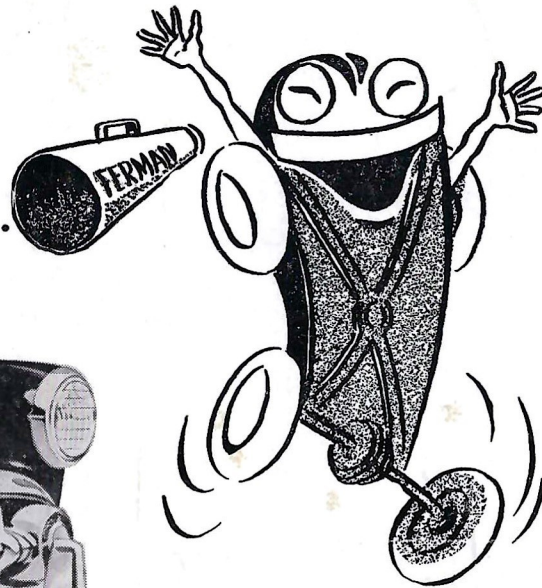
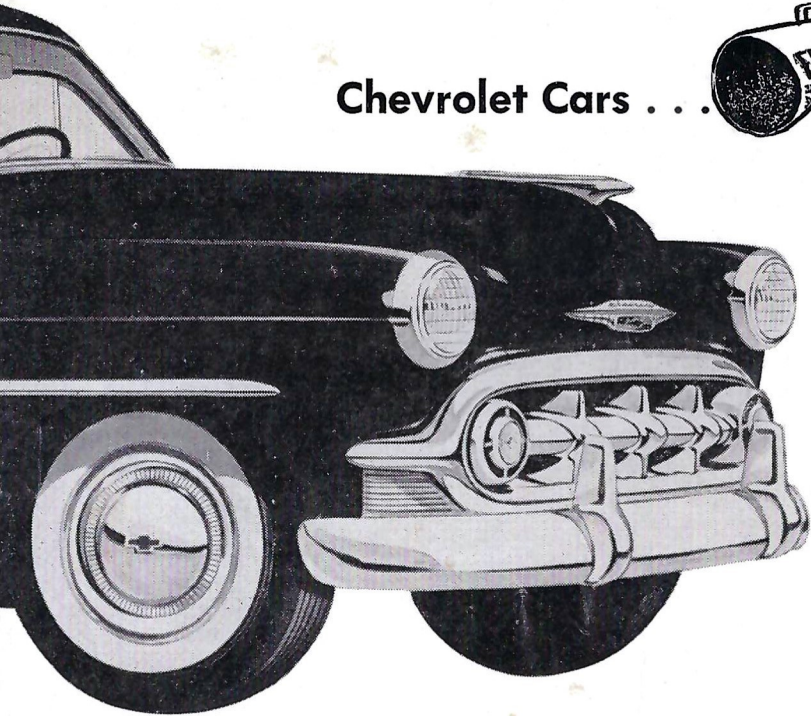
Stop at the sign of greater values

AMERICAN OIL COMPANY from Maine to Florida



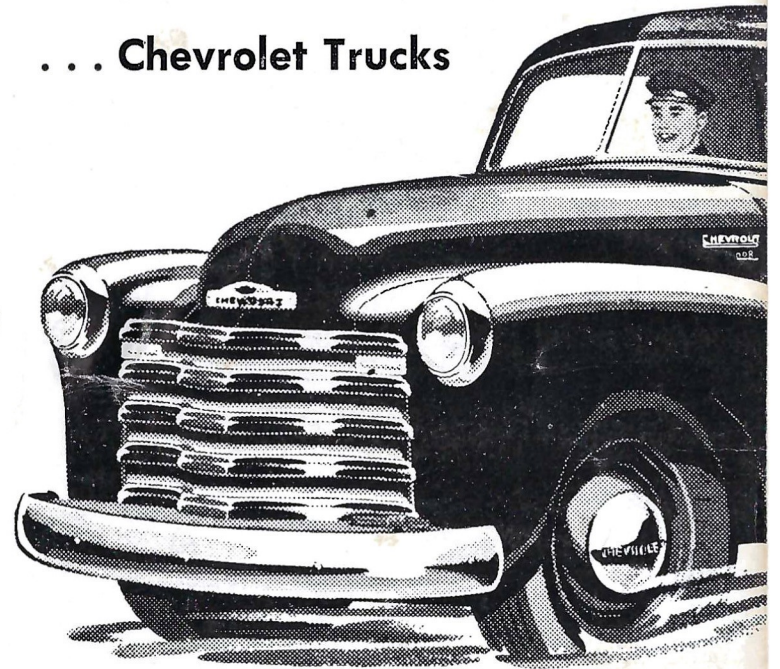
Teammates

Chevrolet Cars . . .



...In Tampa

. . . Chevrolet Trucks



As versatile and speedy as the Spartan backs . . . the Ferman Chevrolet Automobile! As rugged and powerful as Marcelino Huerta's forward wall . . . the Ferman Chevrolet truck! Perfect mates in popularity among typical Tampans . . . the cheers are for Chevrolet!

FERMAN

407 JACKSON

Tampa

CHEVROLET COMPANY

Sales and Service

PHONE 2-2902

Florida