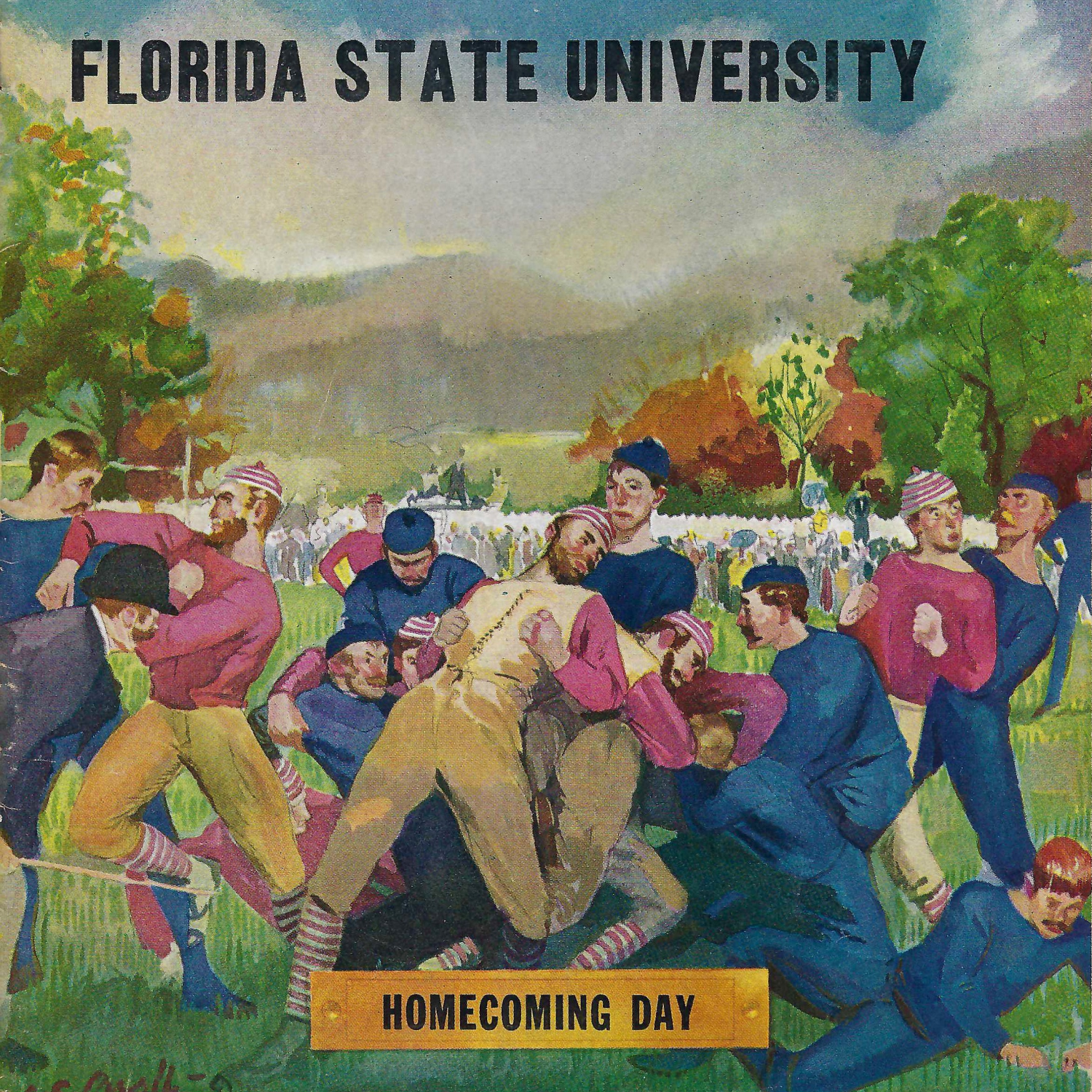


OFFICIAL PROGRAM • TWENTY-FIVE CENTS

MISSISSIPPI SOUTHERN

FAULKNER FIELD • NOVEMBER 7 • 1953

FLORIDA STATE UNIVERSITY



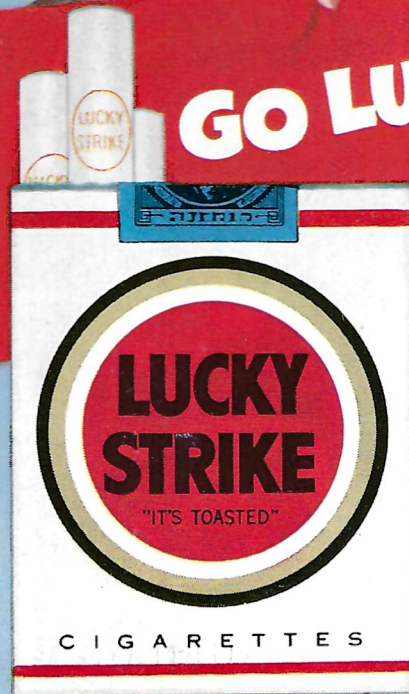
HOMECOMING DAY

LUCKIES TASTE BETTER!

Cleaner, Fresher,
Smoother!

Be Happy

GO LUCKY!



COPR. THE AMERICAN TOBACCO COMPANY

R. A.
Por
W.
J. B.
Enr
Loc
Typ



THE ADMINISTRATION BUILDING

Mississippi Southern College

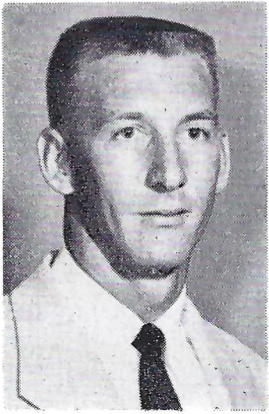
"The Friendly College"

ADMINISTRATIVE OFFICERS

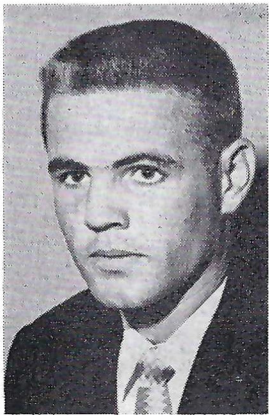
| | | | |
|---|---|---|------------------------------|
| R. A. McLemore, B.A., M.A., Ph.D. | Dean of College | R. C. Cook, B.S., M.A., Ed.D. | President |
| Porter L. Fortune, Jr., A.B., M.A., Ph.D. | Dean of Basic College | O. N. Darby, B.S., M.A. | Registrar |
| W. H. Sumrall, B.S., B.A., M.A., Ph.D. | Dean of The Graduate Division | C. O. Smalling, B.S. | Financial Secretary |
| J. R. Switzer, B.S., M.A., Ed.D. | Director of Student Welfare and Dean of Men | Lena Y. Gough, B.S., M.A. | Dean of Women |
| | | Dorothy Lenoir | Director of Placement Bureau |
| | | Anna M. Roberts, B.A., M.A., B.S. in L.S. | Librarian |
| | | Murray Kenna, B.S., M.A., Ed.D. | Director of Admissions |
| | | Powell Ogletree | Alumni Secretary |

VITAL STATISTICS

| | | | |
|---------------|--------------------|-------------|-------------------|
| Enrollment | 2600 | Nickname | "The Southerners" |
| Location | Hattiesburg, Miss. | Stadium | 15,000 |
| Type School | State-Owned | Field House | 3200 |
| School Colors | Black and Gold | | |



BILLY JARRELL 10
 QB Senior
 5-10 165
 Picayune, Miss.



FRED SMALLWOOD 11
 FB-HB Sophomore
 5-10 166
 Laurel, Miss.

THE HOME TEAM

Are you for the home team — flying the banner for the free enterprise system — the capitalistic system? Those who are for the home team must have the courage to “speak out” for the greatest economic system the world has ever known. We must have the will power to “speak out” against Federal money when the purposes for which it is to be used are unsound uneconomical, and socialistic.

Faulkner Concrete Pipe Company

Hattiesburg, Mississippi

Compliments

EVANS-DRUMMOND DRUG STORE

HATTIESBURG, MISSISSIPPI

For A Greater Hattiesburg and Its Surroundings

We Give You

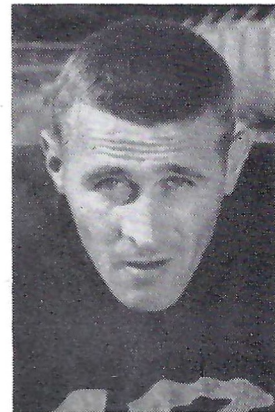
A COMPLETE SPORTING GOODS STORE

SMOKIE'S

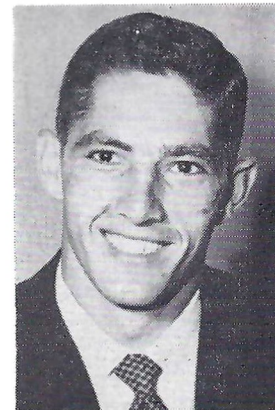
Broadway Drive and West Pine Street

PHONE JU 3-0922

JIMMIE MASON 12
 HB Junior
 5-6 160
 Columbia, Miss.

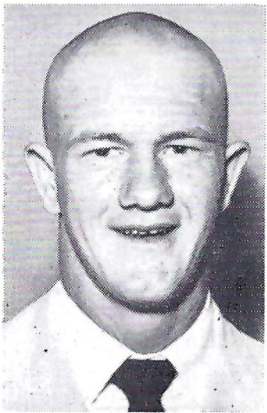


JIM DAVENPORT 13
 QB Sophomore
 5-10 160
 Siluria, Ala.





LEEMON McHENRY 15
 QB Junior
 5-11 164
 Lucedale, Miss.



BO DICKENSON 20
 FB Freshman
 6-1 190
 Hattiesburg, Miss.

Foremost Hotel

HATTIESBURG, MISSISSIPPI

150 ROOMS

150 BATHS

VISIT OUR COFFEE SHOP

also

Catering to Private Banquets

and

Private Luncheons and Dinners

Wishing You A Successful
 Season

Magnolia Paper Company

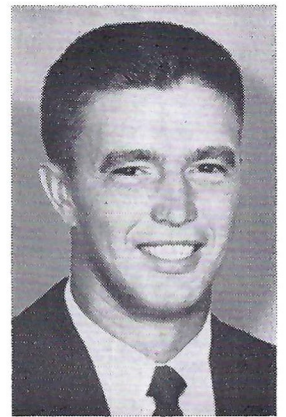
- Wholesale -

Paper - Twine and
 Janitor Supplies

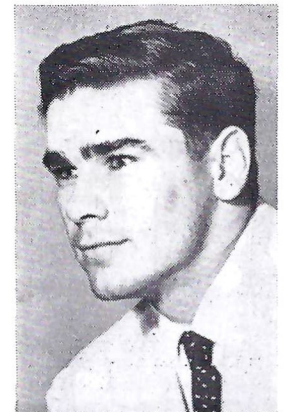
307 McLeod Street

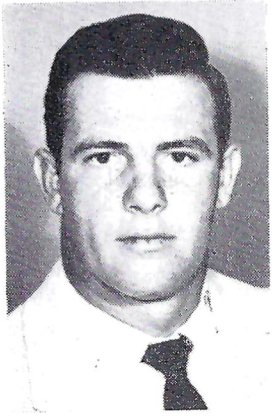
Hattiesburg, Miss.

BUCKY McELROY 22
 FB Senior
 6-0 200
 Monroe, La.

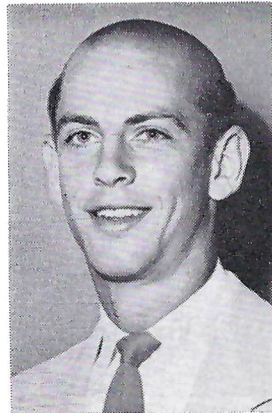


JACKIE HOWARD 24
 HB Senior
 6-0 179
 Purvis, Miss.





EDDIE CARDENAS 25
 FB Freshman
 5-11 198
 Pensacola, Fla.



DOUG BARFIELD 28
 QB Freshman
 6-0 165
 Grove Hill, Ala.

Enjoy the Game tonite; tomorrow, when
 looking over your home, think of—

JONES SUPPLY CO., Inc.

BUILDING MATERIALS

DIAL JU 3-1727

Corner Southern Ave. and Southern Railway

EMILE'S DRIVE-INN

"The South's Finest"

SEA FOODS - STEAKS - FRIED CHICKEN
SANDWICHES - DINNERS

- Air-Conditioned -

303 Hardy Street

Hattiesburg, Miss.

*We Are Boosters of
 Southern*

DONAVAN-LANE


ERNEST HIGGASON

- Distributor -

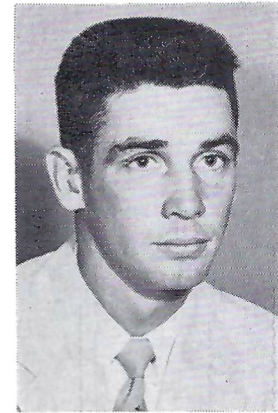
Tom's Toasted Peanuts

Tom's Peanut Butter Sandwiches

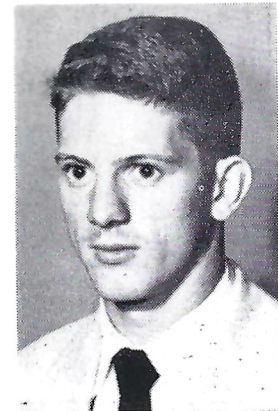
Tom's Delicious Candies

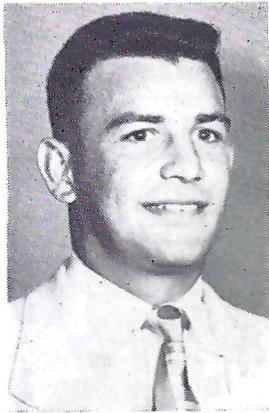
HATTIESBURG, MISSISSIPPI

BROOKS TISDALE 31
 HB Junior
 5-10 185
 Moselle, Miss.

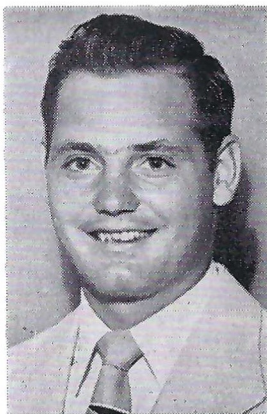


BILLY MONTGOMERY 33
 HB Senior
 5-7 139
 Hattiesburg, Miss.





JIM BRASHIER 35
 HB Senior
 6-0 175
 El Dorado, Ark.



TOMMIE WOOD 38
 HB Senior
 5-10 196
 Laurel, Miss.

Smitty's Market Street Bakery

- Delicious -

BREAD - ROLLS
 and CAKES

Telephone JU 4-8372 129 Market St.
 Across from Coca-Cola Plant

GOOD LUCK!

McINNIS'
 MEN'S WEAR

Main at Pine

Phone JU 3-4852

BOBBY POSEY 41
 HB Senior
 5-11 183
 Philadelphia, Miss.

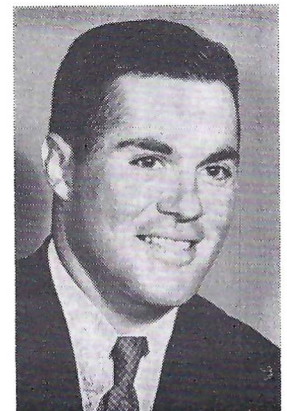


HATTIESBURG'S

Quality Jewelers

Rollings
 JEWELRY STORE

HUGH L. PEPPER 42
 HB Junior
 5-11 191
 Benton, Miss.





PEDDY WALKER 45
 HB Freshman
 5-8 171
 Hattiesburg, Miss.



JIMMIE COX 47
 HB Freshman
 5-10 163
 Memphis, Tenn.

**LET'S GO
 SOUTHERNERS**

Compliments of

The Diamond SHOP
Mississippi's Largest Diamond Merchants

Mississippi's Largest Diamond Merchants

HATTIESBURG LAUREL

**ADLER FURNITURE
 COMPANY**

Authorized Dealer

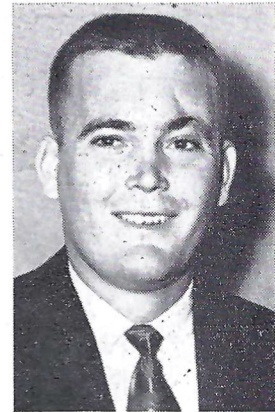
GENERAL ELECTRIC

Opposite Post Office Phone JU 3-1387

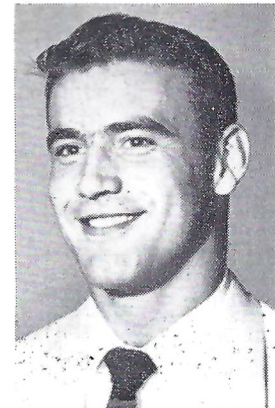
COMPLIMENTS

**BROADWAY DRIVE-IN
 THEATRE**

BILL WARD 51
 C Junior
 6-2 204
 Booneville, Miss.



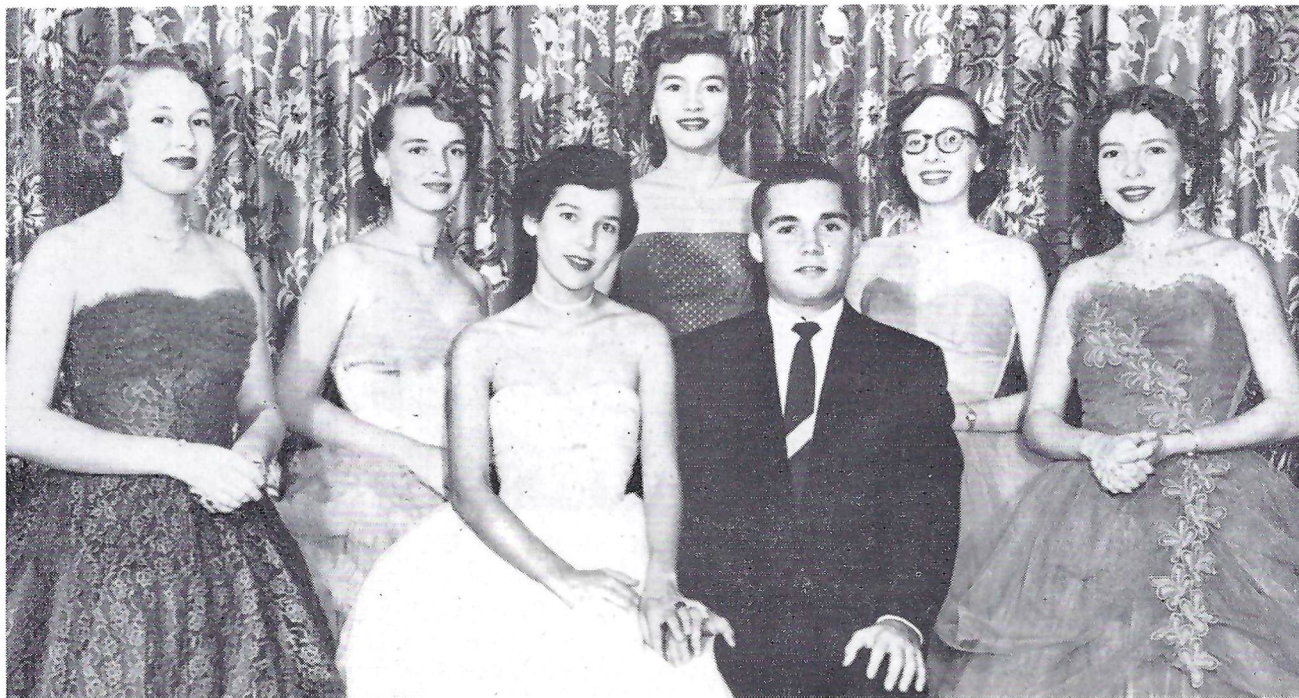
J. T. SHEPHERD 52
 G Senior
 6-1 198
 Moss Point, Miss.



Back
 Front

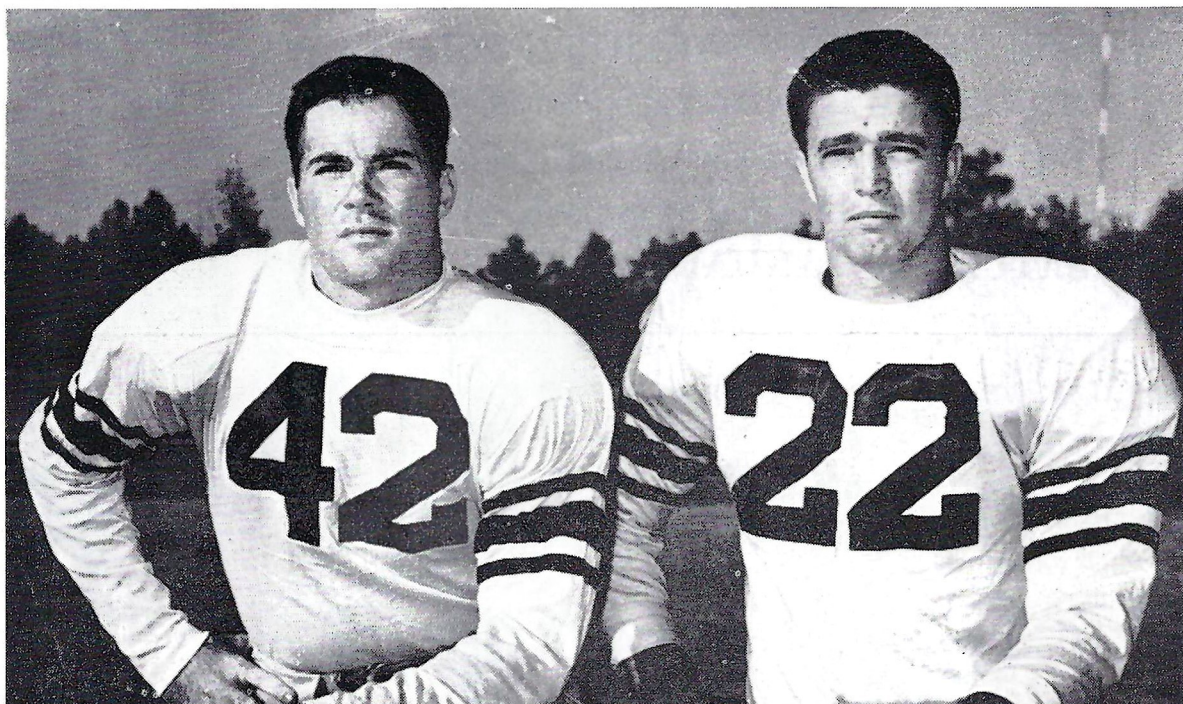
tonig
 back
 Knig
 play
 Harv
 Tide
 will
 Univ
 their

HOMECOMING ROYALTY



Back Row: Joan Courtney, Sophomore Maid; Ruth Blackledge, Junior Maid; Jessie Wynn Morgan, Student Body Maid; Jeanette Hogue, Senior Maid; Nancy Potter, Freshman Maid.
Front Row: Mary Frances Easom, Homecoming Queen and Archie Hughes, General "Nat".

THE GREAT ONE-TWO PUNCH OF MISSISSIPPI SOUTHERN



Hugh Laurin Pepper and Bucky McElroy, Mississippi Southern's great one-two punch make their final Faulkner Field appearance together tonight as Pie Vann's Southerners battle the Florida State Seminoles in the 1953 Homecoming Game.

The Pepper-McElroy era is one of the brightest spots in Mississippi Southern's comparative brief athletic history. The two great running backs will go down in the college's history as two of the finest gridgers ever turned out at the Hattiesburg senior college.

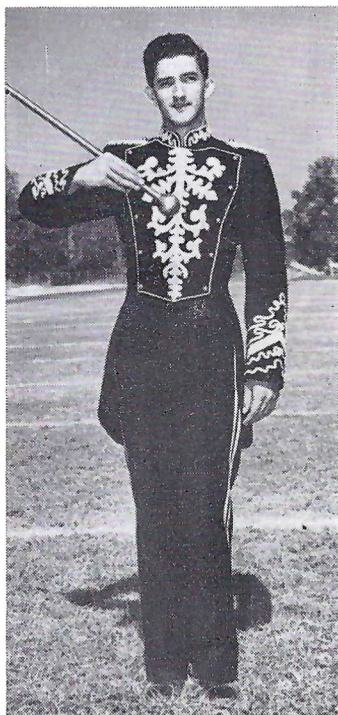
To date, McElroy in three seasons has rushed for 2228 yards, while Pepper in two years has zipped for 1630 yards. The 200-pound Black Knight has scored 150 points, while Pepper, the 195-pound jet-propelled Benton Bomber, has racked up 126 points.

Not only are these fine running backs two of the greatest Mississippi Southern has ever had, they are two of the most colorful backs to play modern collegiate football, helping spring the biggest upset of the football world since 1919 when Centre went East and downed mighty Harvard. Pepper and McElroy scored three of the four touchdowns in the shocking 25-19 conquest of Alabama—and that is still the Crimson Tide's only setback of the season at this writing.

McElroy and Pepper paced the Southerners to ten straight victories last year and a spot in the 18th annual Sun Bowl Classic in El Paso. Tonight is their last appearance together at Faulkner Field, for McElroy is a senior, Pepper a junior. Their ground-gaining partnership will continue through three more regular season games, however, for the Southerners will still play Louisiana Tech, University of Georgia and University of Chattanooga after tonight's Homecoming Classic with the Florida State Seminoles.

And both William Murray (Bucky) McElroy and Hugh Laurin Pepper are expected to add impressively to their statistics—and victories for their ball club—Mississippi Southern.

At Halftime

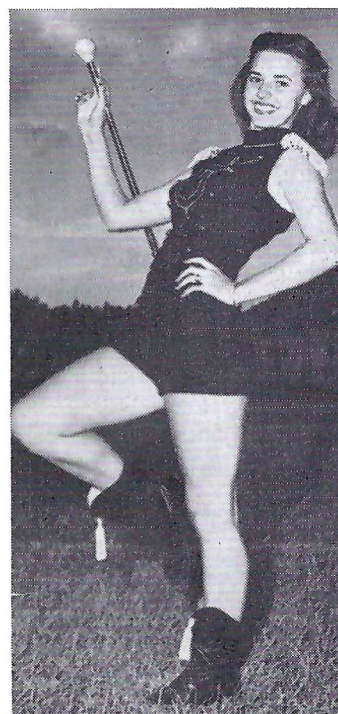


DRUM MAJOR
ANTHONY JIMINEZ
of Biloxi



RAYMOND MANNONI

Professor Raymond Mannoni of Rose Bowl Pageantry and Tulsa Golden Hurricane Band renown, is the director of Mississippi Southern's colorful band. He will also direct the Mississippi Lion's All-State Band next year.

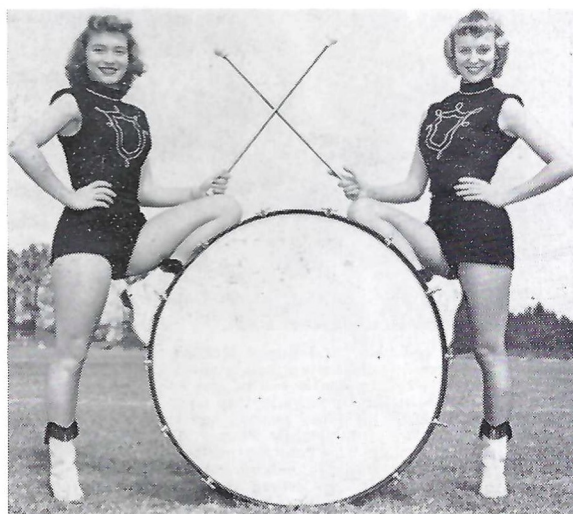


DRUM MAJORETTE
DOT TULLOS
of Jackson

THE MISSISSIPPI SOUTHERN COLLEGE 100 PIECE MARCHING BAND—THE PRIDE OF THE SOUTH—WILL BE THE OFFICIAL SENIOR BOWL BAND IN THE ANNUAL GRID CLASSIC AT MOBILE, ALA., SATURDAY, JANUARY 9, 1954.



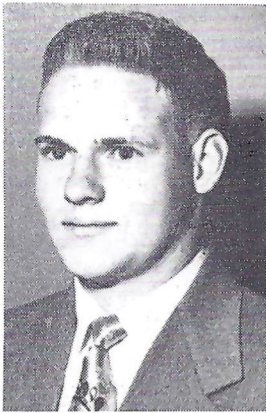
From left to right: Mary Brown Nowell of Philadelphia; Ann Miller of Lucedale; Vivian Jones of Lucedale; and Barbara Rhodes of Rolling Fork.



Jessie Wynn Morgan of Newton and Ann Lynch of Brookhaven



JIM DAVIS 53
T Sophomore
6-5 234
Ellijay, Ga.



LES CLARK 54
C Sophomore
6-0 186
Belzoni, Miss.

Hulett Funeral Home

ALBERT C. HULETT, Manager

SHOP AT SEARS AND SAVE

***SEARS
ROEBUCK AND COMPANY***

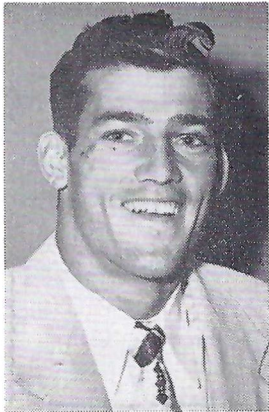
HATTIESBURG, MISS.

TELEPHONE JU 4-7511

Always Plenty of FREE Parking



JACK SPERACINO 55
 C Junior
 6-2 186
 Pittsburgh, Pa.



HUEY HUSSER 56
 C Freshman
 6-2 190
 Franklinton, La.

COMPLIMENTS

*Citizens Bank
 of Hattiesburg*

Member F. D. I. C.—Federal Reserve System

HATTIESBURG, MISSISSIPPI

BE A WINNER!



BUMPER TO BUMPER SERVICE

Be sure  with Pure

The Pure Oil Company

“Southerners”

SPORTSMANSHIP

SPIRIT



Hattiesburg's Most Complete Department Store

QUALITY

SERVICE

Route your freight shipments - WEST - in any direction
Over Two Hundred Modern Pieces of Equipment to Serve You Better
Daily Service Since 1930



A Complete Motor Freight Transportation, Since 1930

- Terminals -

Biloxi - Gulfport - Hattiesburg - Jackson - Laurel
Meridian - McComb - Mobile, Ala. - New Orleans, La.
and all intermediate points

TWO GOOD TEAMS IN THEIR FIELD

West Bros., Inc.

Mississippi Southern College

Both Are Hattiesburg Organizations

BEST WISHES

For A

Successful Season

★

FINE BROS.-MATISON

Hattiesburg's Quality Department Store

Main Street

Phone JU 4-6232

First Federal Savings & Loan Association

Resources Over—

TWELVE MILLION DOLLARS

INSURED SAVINGS AND FAVORABLE
REAL ESTATE LOANS

Serving Over Ten Thousand People

A Mutual Savings and Home
Financing Institution



1100 HARDY STREET

Mississippi's Finest Food Center

"Often Imitated — Seldom Duplicated"



About Mississippi Southern . . .

One of the Most Progressive Senior Colleges in This Great Nation

The man who has done more than anyone else in building Mississippi Southern into the Magnolia State's newest great senior college is Dr. R. C. Cook, who has more or less made a mountain out of a mole hill.

For when Captain Cook, U. S. Army, received his service discharge in 1945, the college enrollment hovered around the 500-student mark. Today, Mississippi Southern boasts a 2000-plus enrollment for the sixth consecutive year, and the demand for attending Southern has become so great that "growing pains" and crowded conditions have been the natural result.

Dr. Cook recently released a 15-year development plan for Southern and the blue prints call for ample dormitory and class room facilities to accommodate some 3000 students.

With the shift in population in recent years in Mississippi from the Northern sector to the South, it was inevitable that an outstanding senior college develop, and Dr. Cook, a man with abundant energy, took advantage of the strategic location and assembled a talented faculty and staff in aiding the growth of the college since World War II's end.

The only state supported institution in South Mississippi, Mississippi Southern's rise to prominence has meant keeping more students "at home" in Mississippi. In the past, the majority of students in this sector have cast their lot with neighboring universities and colleges. But no more.

In finding the best man available for each job, Dr. Cook, like the captain of a good ship, has realized the value of an able crew. The popular president, who can call most students by their first name before they graduate, knows only too well the value of a fine athletic program. And when the school's growth could no longer be regarded as a freak or flash-in-the-pan, Dr. Cook named long time head coach Reed Green full-time athletic director, with line coach Thaddeus Vann moving up to the grid-mentor's chair.

Academically, Mississippi Southern is administered through the following teaching-service organizations: Biological Science, Education and Psychology, Fine Arts, Health and Physical Education, Home Economics, Language and Literature, Physical Sciences and Mathematics, Speech Arts, Practical Arts, Graduate Studies, Extension and Correspondence, Social Studies, Commerce and Guidance.

Academically, Southern is a member of the American Council of Education, Association of American Colleges, Association of Urban Universities, National Commission of Accrediting, Conference of Deans of Southern Graduate Schools, Mississippi Association of Colleges and is accredited by the American Association of Colleges for Teacher Education, Southern Association of Colleges and Secondary Schools and the National Association of Schools of Music.

Athletically, Mississippi Southern is a member in good standing of the NCAA and SIAA. Although Independents following their four-year dominating period of the Gulf States Conference, Mississippi Southern abides by the powerful NCAA and SIAA eligibility rules.

1953 marks the beginning of the 42nd academic year at Mississippi Southern. During the legislative session of 1910, an enabling act was passed establishing Mississippi Normal College. In September, 1912, the college opened with an enrollment of 220 students and a faculty of eight men and ten women headed by President Joe Cook.

The original course of study, prescribed by legislative enactment, consisted of a certificate course and a diploma course. In 1922, the legislature authorized the college to grant degrees and in 1924 the name was changed to State Teachers College. With a broadening of the fields of study and greater development in certain divisions, the growth of the college was further emphasized in 1940 with the changing of the name to Mississippi Southern College.

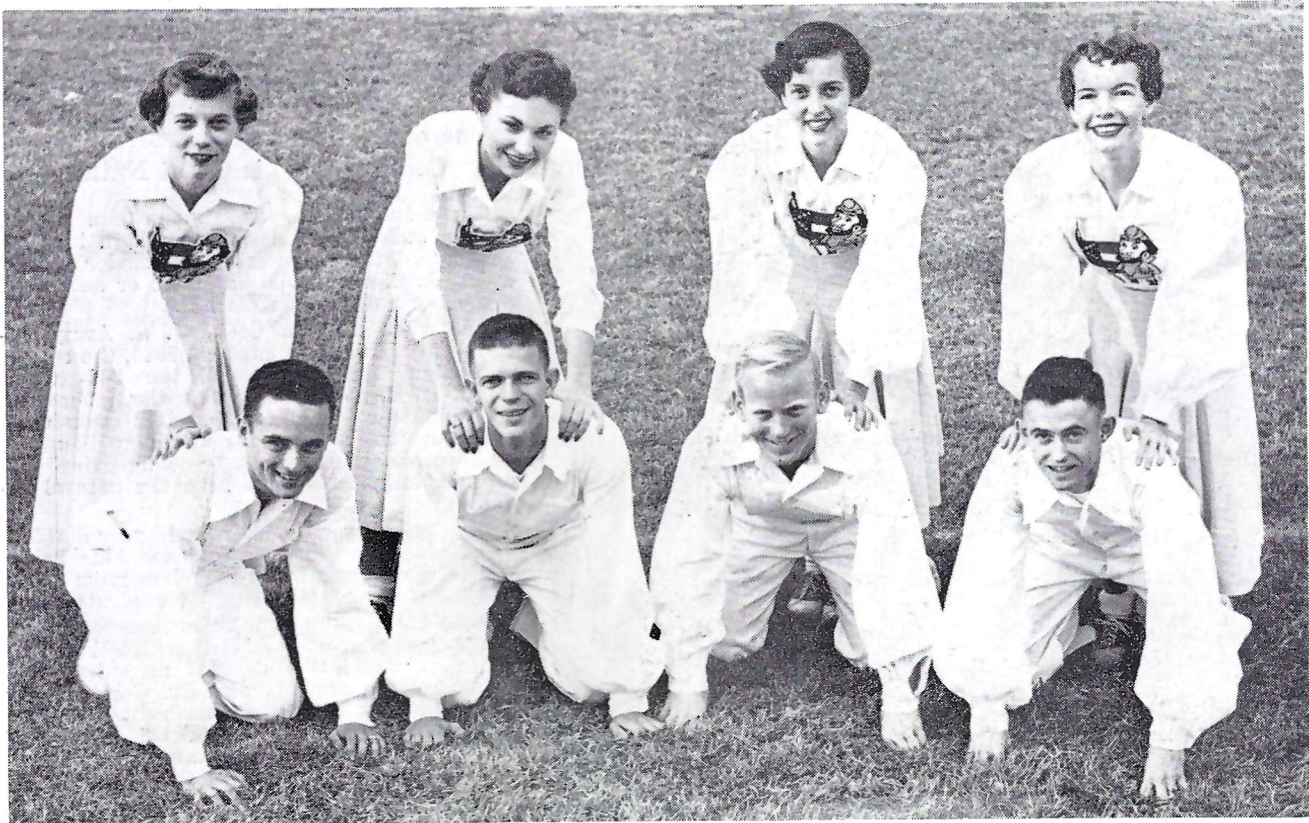
At the close of the second World War, and the inauguration of the present administration, the college entered upon its fourth great period of development. In 1946 authority was granted to award Master of Arts degrees. Two new divisions, Speech Arts and Practical Arts, have recently been added.

The latest addition to the college curriculum is a volunteer unit of the senior division Reserve Officers' Training Corps, which offers training in Field Artillery. This unit was authorized by the Department of Army on April 3, 1950, after a long and careful study of the college, its standards and facilities.

Factors which make the location ideal include the excellent transportation facilities—rail, bus, and plane—and the spirit of cooperation existing between the citizens of Hattiesburg and Mississippi Southern College. The backing given the college as well as other industries in the area, by the many civic and service organizations is unsurpassed.

Small wonder that South Mississippians hold so much respect and reverence for Dr. Robert Cecil Cook—the man who has made Mississippi Southern the state of Mississippi's new pride and joy—a college destined for greatness.

SOUTHERN CHEERLEADERS



Back Row—Jerry Stevenson, Columbia; Patsy Wells, Brookhaven; Joyce Jamison, Vicksburg; Kay Coker, Jackson.
Front Row—Wallace Majors, Gulfport; Pete Rogers, Hattiesburg; Jimmy Beach, Laurel; Junie Andres, Natchez.

OFFICIAL WATCH FOR THIS GAME



Longines



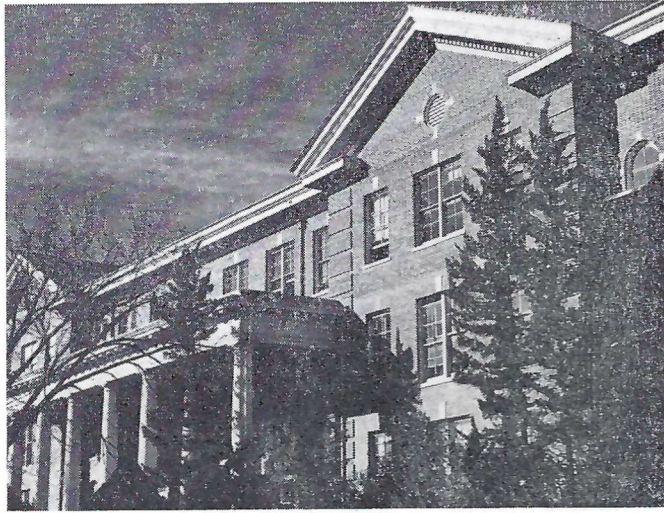
The World's Most Honored Watch



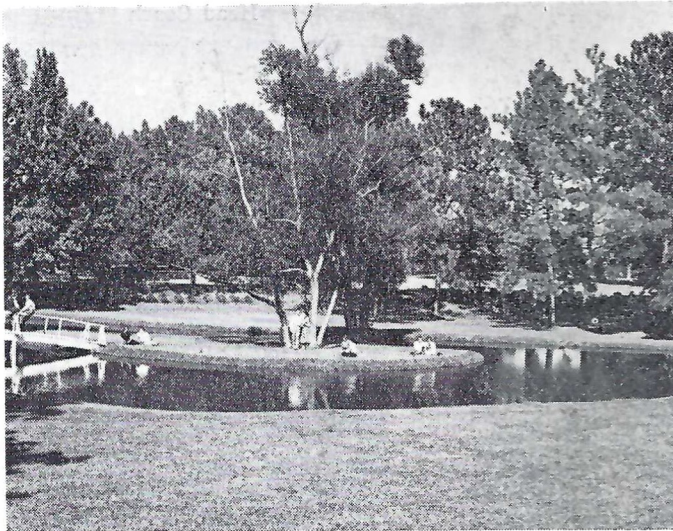
LONGINES WATCHES ARE OFFICIAL
FOR TIMING
CHAMPIONSHIP SPORTS IN ALL
FIELDS THROUGHOUT THE WORLD

*Product of
Longines-Wittnauer Watch Company*

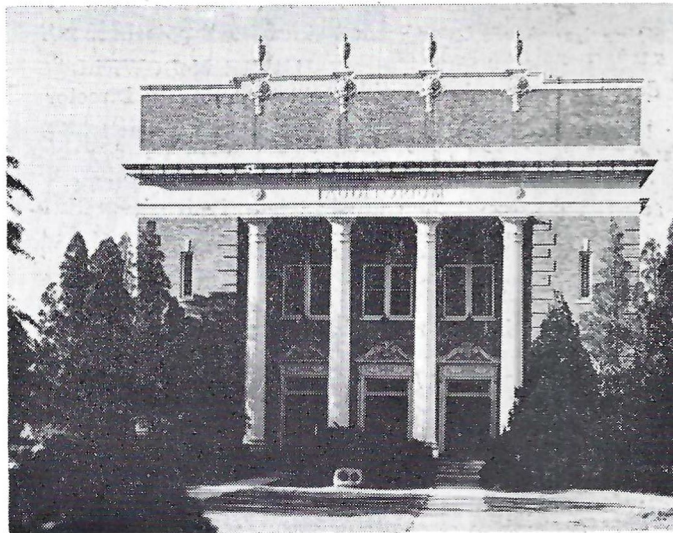
ON THE SOUTHERN CAMPUS



COLLEGE HALL



LAKE BYRON



THE AUDITORIUM

Tonight's Game

By JIMMIE McDOWELL
Athletic Publicity Director
Mississippi Southern

MISSISSIPPI SOUTHERN ALUMNI are hereby welcomed to the annual Homecoming Classic tonight at Faulkner Field as two of 1953's top Deep South Independent teams, once-defeated Mississippi Southern and fast-improving Florida State clash here at Faulkner Field.

The Sunshine State Seminoles, under their new coach, Tom Nugent, inventor of the typewriter huddle, the "I" formation, etc., are fresh from victory over VMI, while the Magnolia Staters are trying to gather back their lost pride and prestige in their embarrassing 27-13 defeat by Memphis State.

Tonight's game is the last home appearance of 13 seniors, who will serve as co-captains for the battle. They are Ends Jackson Brumfield, Richard Caldwell and Erskon Toomey; Tackle Douglas Mims; Guards John Neill, Charley Corne and Jon T. Shepherd, and Backs Billy Jarrell, Billy Hugh Montgomery, Tommie Wood, Bobby Posey, Jim Brashier and Bucky McElroy.

The Southerners were the last of the perfect record teams in the Deep South to fall, and they did so magnificently. Statistically they dominated the play throughout, almost two to one, but in touchdowns Pie Vann's Southerners were suffering with the shorts. They didn't have the payoff punch quite often enough, for no less than five times did the Mississippians wilt by fumble or otherwise inside the enemy ten. Spirited Memphis State won going away in the final quarter on a pair of knockout payoff runs—77 and 85 yards.

Florida State, bolstered by a fine array of ex-Mississippi prep and Junior College talent, and Mississippi Southern both have long range programs in athletics and it is an established fact that these two colleges are being regarded as two of the most promising institutions—academically and athletically—in all the South. Both colleges have made tremendous gains since the termination of World War II in enrollment and prestige.

The Vannmen will try to rebound with a vengeance tonight, for prior to their first reversal they carried a top spot in the weekly Associated Press ratings. The conquerors of Alabama also boasted a 15-game regular season winning streak that came to an end.

It's Florida State, Louisiana Tech in Ruston, University of Georgia in Jackson and University of Chattanooga in Chattanooga Thanksgiving Day during the last half of the campaign, and each and every opponent will be more than ready for the Modern Grid Giant-Killers, who shocked the football world with their conquest of Alabama—still the only setback on the Red Elephant's record this year.

The Florida State eleven, operating out of the "I" formation, will be out to avenge last year's 50-21 setback.

The fine Florida State band and the colorful Mississippi Southern Band, the official Senior Bowl Band for the 1954 grid classic in Mobile January 9, will provide the halftime entertainment for the Old Grads and fans.

MISSISSIPPI SOUTHERN FOOTBALL PROGRAM

Edited by Jimmie McDowell
Photos by Marion Trikosko

MISSISSIPPI SOUTHERN COLLEGE

Represented for National Advertising by DON SPENCER COMPANY, INC., 271 Madison Ave., New York City.

The Southern Staff

•



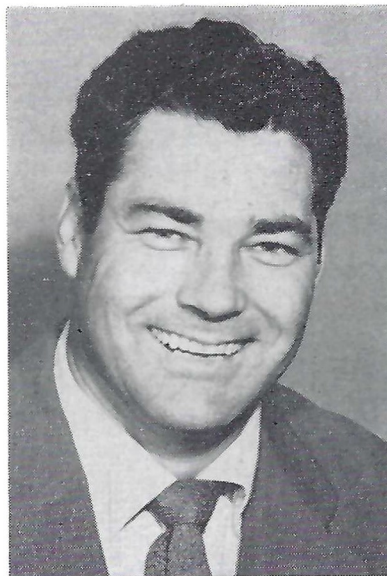
REED GREEN
Director of Athletics



THAD VANN
Head Coach



CLYDE STUART
Backfield Coach



H. A. SMITH
Line Coach



JIMMIE McDOWELL
Athletic Publicity Director



LEE FLOYD
Basketball Coach



DR. C. E. McCARVER
Track Coach



Dr. J. L. MILAM
Chairman Athletic Committee

Hattiesburg

*“The Hub of
South Mississippi”*

wishes to take this opportunity to thank you, the citizens of Hattiesburg, for your loyal support of the Mississippi Southern College football team and to extend to our visitors a hearty welcome. We hope your visit with us will be pleasant and that you will return.

•

MISSISSIPPI

The Progress State

•

HATTIESBURG

The City of Progress

MISSISSIPPI SOUTHERN ROSTER

| No. | | Yr. | Pos. | Age | Ht. | Wt. | Hometown |
|-----|---------------|-----|------|-----|-------|-----|--------------------|
| 10 | Jarrell | '54 | B | 22 | 5'10" | 165 | Picayune |
| 11 | Smallwood | '56 | B | 20 | 5'10" | 166 | Laurel |
| 12 | Mason | '55 | B | 22 | 5'6" | 160 | Columbia |
| 13 | Davenport | '56 | B | 20 | 5'10" | 160 | Siluria, Ala. |
| 15 | McHenry | '55 | B | 21 | 5'11" | 164 | Lucedale |
| 20 | Dickenson | '57 | B | 19 | 6'1" | 190 | Hattiesburg |
| 22 | McElroy | '54 | B | 23 | 6' | 200 | Monroe, La. |
| 24 | Howard | '54 | B | 21 | 6' | 179 | Purvis |
| 25 | Cardenas | '57 | B | 20 | 5'11" | 198 | Pensacola, Fla. |
| 31 | Tisdale | '55 | B | 22 | 5'10" | 185 | Moselle |
| 33 | Montgomery | '54 | B | 22 | 5'7" | 139 | Hattiesburg |
| 35 | Brashier | '54 | B | 22 | 6' | 175 | El Dorado, Ark. |
| 38 | Wood | '54 | B | 22 | 5'10" | 196 | Laurel |
| 41 | Posey | '54 | B | 21 | 5'11" | 178 | Philadelphia |
| 42 | Pepper | '55 | B | 22 | 5'11" | 191 | Benton |
| 45 | Walker | '57 | B | 19 | 5'8" | 171 | Hattiesburg |
| 47 | Cox | '57 | B | 18 | 5'10" | 163 | Memphis, Tenn. |
| 48 | Barfield | '57 | B | 17 | 6' | 165 | Grove Hill, Ala. |
| 51 | Ward | '55 | C | 22 | 6'2" | 204 | Booneville |
| 52 | Shepherd | '54 | G | 22 | 6'1" | 198 | Moss Point |
| 53 | Davis | '56 | T | 24 | 6'5" | 234 | Ellijay, Ga. |
| 54 | Clark, L. | '56 | C | 20 | 6' | 186 | Belzoni |
| 55 | Speracino | '55 | C | 22 | 6'2" | 186 | Pittsburgh Pa. |
| 56 | Husser | '57 | C | 22 | 6'2" | 190 | Franklinton, La. |
| 61 | Bethea | '57 | G | 18 | 6' | 180 | Memphis, Tenn. |
| 62 | Brinson | '57 | G | 20 | 6'1" | 197 | Prentiss |
| 63 | Rich | '57 | G | 18 | 6' | 195 | Pell City, Ala. |
| 64 | Labella | '57 | G | 20 | 6' | 205 | Indianola |
| 65 | Fitzgerald | '57 | G | 19 | 5'11" | 184 | McKeesport, Pa. |
| 68 | Cook | '55 | G | 20 | 5'11" | 188 | Georgiana, Ala. |
| 69 | Herrmann | '55 | G | 21 | 5'10" | 202 | Mobile, Ala. |
| 70 | Bishop | '57 | T | 19 | 6'2" | 243 | Memphis, Tenn. |
| 71 | Shattles | '55 | T | 22 | 6'1" | 204 | Moss Point |
| 73 | Mitchell | '56 | T | 22 | 6'5" | 219 | Picayune |
| 74 | Neill | '54 | G-T | 22 | 6' | 204 | Philadelphia, Pa. |
| 75 | Corne | '55 | T-G | 22 | 5'11" | 199 | New Orleans, |
| 76 | Clark, W. | '56 | T | 20 | 6' | 251 | Belzoni |
| 77 | Mims | '54 | T | 22 | 6' | 205 | Greenwood |
| 78 | Owens | '57 | T | 21 | 6'6" | 255 | St. Louis, Mo. |
| 79 | Brumfield, D. | '57 | T | 19 | 6' | 206 | Franklinton, La. |
| 80 | Taylor | '57 | E | 17 | 6' | 170 | Columbia |
| 81 | Williams | '56 | E | 21 | 6'2" | 200 | Jacksonville, Fla. |
| 83 | Caldwell | '54 | E | 21 | 6' | 193 | Columbus |
| 84 | Linton | '57 | E | 19 | 6'3" | 184 | Hattiesburg |
| 85 | Brumfield, J. | '54 | E | 22 | 6' | 216 | Franklinton, La. |
| 86 | Toomey | '54 | E | 21 | 6'3" | 204 | Hattiesburg |
| 87 | Waters | '55 | E | 21 | 6' | 192 | Benton |
| 89 | Boling | '55 | E | 21 | 6'4" | 206 | Aliceville, Ala. |

The City of Hattiesburg

MORAN M. POPE, Mayor

N. V. CARPENTER, Commissioner

FEWELL THOMPSON, Commissioner



DELICIOUS



MISSISSIPPI SOUTHERN LINEUP

| | | | | | | | |
|----------------------|-------------------|---------------------|---------------------|----------------------|-------------------|--------------------------|--------------------|
| LE Caldwell 83 | LT Davis 53 | LG Herrman 69 | C L. Clark 54 | RG Shepherd 52 | RT Owens 78 | RE J. Brumfield 85 | LE Taylor 31 |
|----------------------|-------------------|---------------------|---------------------|----------------------|-------------------|--------------------------|--------------------|

QB
Jarrell
10

LHB
Pepper
42

RHB
Brashier
35

FB
McElroy
22

10 Jarrell
11 Smallwood
12 Mason
13 Davenport
15 McHenry
20 Dickenson
22 McElroy
24 Howard
25 Cardenas
28 Barfield
31 Tisdale
33 Montgomery
35 Brashier
38 Wood
41 Posey
42 Pepper

45 Walker
47 Cox
51 Ward
52 Shepherd
53 Davis
54 Clark, L.
55 Speracino
56 Husser
61 Bethea
62 Brinson
63 Rich
64 Labella
65 Fitzgerald
68 Cook
69 Herrmann
70 Bishop

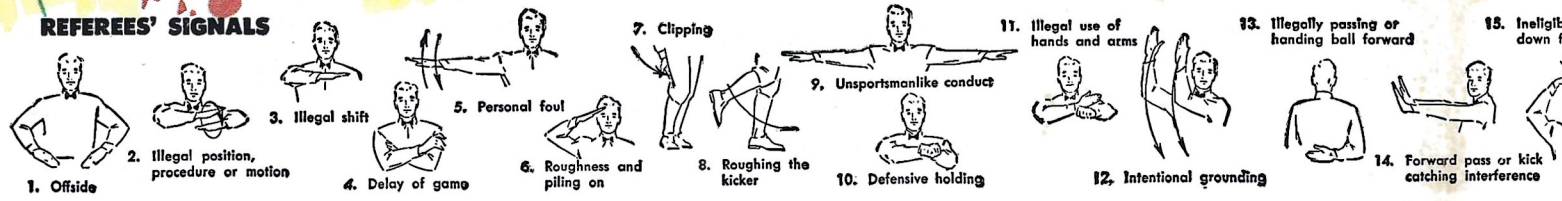
71 Shattles
73 Mitchell
74 Neill
75 Corne
76 Clark, W.
77 Mims
78 Owens
79 Brumfield, D.
80 Taylor
81 Williams
83 Caldwell
84 Linton
85 Brumfield, J.
86 Toomey
87 Waters
89 Boling

11 C
12 B
13 H
14 P
16 M
18 M
19 G
20 H
21 G
22 G
23 T
24 J
25 H
26 J

HATTIESBURG COCA-COLA BO

HATTIESBURG, MISSISS

REFEREES' SIGNALS



REFRESHING



FLORIDA STATE LINEUP

| | | | | | | | |
|---------------|--------------|-------------|------------------|----------------|----------------|-------------|--------------|
| RE | LE | LT | LG | C | RG | RT | RE |
| umfield 85 | Taylor 31 | Olsen 60 | Jacobs, J. 24 | Crenshaw 59 | Pacifico 54 | Boyer 55 | Bryant 12 |

QB
Massey
37

LHB
Fiveash
28

RHB
Graham
27

FB
Griner
21

11 Corso
12 Bryant
13 Harper
14 Price
16 Mann
18 Metts
19 Grenn, B.
20 Holden
21 Griner
22 Grenn, C.
23 Titus
24 Jacobs, J.
25 Holt
26 Jacobs, C.

27 Graham
28 Fiveash
31 Taylor
32 Twomey
33 Pacetti
35 Kalenich
37 Massey
39 Johnson
40 Phillips
43 Barber
44 Leonard
45 Bates
46 Dobosz
48 Swantic

49 Shroyer
50 Rooks
51 Powell
52 Messinese
53 Hathcock
54 Pacifico
55 Boyer
57 King
59 Crenshaw
60 Olsen
61 Osha
62 Makowiecki
63 Manning
64 Staab



COCA-COLA BOTTLING COMPANY
MATTIESBURG, MISSISSIPPI

ally passing or
ling ball forward

15. Ineligible receiver
down field on pass

17. Incomplete forward pass,
penalty declined, no
play or no score

19. Ball dead; if hand
is moved from side
to side; touchback

21. Safety

23. First down

Ball ready-for-play
25.

14. Forward pass or kick
catching interference

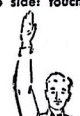
16. Ball illegally touched,
kicked or batted

18. Crawling, helping the
runner or interlocked
interference

20. Touchdown
or field goal

22. Time-out

24. Start the clock or no
more time-outs allowed



Forrest County Welcomes! You!

We appreciate our home-folks and wish them success in all their worthy activities, and we desire to help them in every way possible.

We welcome and enjoy the company of our visitors, and we want to do all we can to contribute to their happiness.

Let's have a good time together.

FLORIDA STATE U. ROSTER

| No. | Name | Pos. | Ht. | Wt. | Yr. | Hometown |
|-----|----------------|------|-------|-----|-----|---------------------|
| 11 | Corso, L. | QB | 5'10" | 165 | 1 | Miami, Fla. |
| 12 | Bryant, B. | RE | 6'3" | 190 | 4 | Perry, Fla. |
| 13 | Harper, W. L. | QB | 6' | 151 | 1 | Cairo, Ga. |
| 14 | Price, T. | LE | 6' | 193 | 1 | Miami, Fla. |
| 16 | Mann, Ed | LE | 6'1" | 190 | 2 | Ashford, Ala. |
| 18 | Metts, T. | LH | 5'10" | 170 | 1 | Sanford, Fla. |
| 19 | Grenn, R. | FB | 6'1" | 181 | 3 | Brookhaven, Miss. |
| 20 | Holden, W. | LG | 5'11" | 170 | 1 | Atlanta, Ga. |
| 21 | Griner, J. | LH | 5'11" | 170 | 2 | Jacksonville, Fla. |
| 22 | Grenn, C. | RH | 5'10" | 175 | 3 | Brookhaven, Miss. |
| 23 | Titus, Ed | RT | 6' | 190 | 1 | Thomasville, Ga. |
| 24 | Jacobs, J. | LG | 6' | 195 | 2 | South Bend, Ind. |
| 25 | Holt, Joe | FB | 5'10" | 181 | 1 | Graham, N. C. |
| 26 | Jacobs, C. | RG | 5'8" | 178 | 2 | Miami, Fla. |
| 27 | Graham, B. | RH | 6' | 183 | 2 | Bogalusa, La. |
| 28 | Fiveash, B. | LH | 5'11" | 180 | 3 | Bainbridge, Ga. |
| 31 | Taylor, J. | LE | 5'9" | 185 | 3 | Tampa, Fla. |
| 32 | Twomey, F. | RE | 6'1" | 183 | 1 | Gloster, Mass. |
| 33 | Pacetti, B. | RH | 6'1" | 170 | 1 | St. Augustine, Fla. |
| 35 | Kalenich, S. | C | 5'11" | 193 | 4 | Akron, Ohio |
| 37 | Massey, H. | QB | 5'10" | 185 | 3 | Canton, Miss. |
| 39 | Johnson, E. | E | 5'11" | 198 | 2 | Charleston, W. Va. |
| 40 | Phillips, E. | LT | 6'1" | 200 | 1 | Belle Glade, Fla. |
| 41 | Fancher, B. | RT | 5'11" | 200 | 1 | Alabama City, Fla. |
| 43 | Barber, B. | RT | 6' | 210 | 1 | Belle Glade, Fla. |
| 44 | Leonard, B. | RE | 6' | 182 | 1 | Ocala, Fla. |
| 45 | Bates, Bob | RG | 5'11" | 205 | 3 | Bogalusa, La. |
| 46 | Dobosz, S. | RH | 5'9" | 185 | 2 | East Chicago, Ind. |
| 48 | Swantic, L. | QB | 5'11" | 178 | 1 | Columbus, Ga. |
| 49 | Shroyer, B. | RT | 6'1" | 185 | 1 | Valdosta, Ga. |
| 50 | Rooks, G. | QB | 5'9" | 170 | 1 | Orlando, Fla. |
| 51 | Powell, D. | LT | 6' | 214 | 2 | Birmingham, Ala. |
| 52 | Messinese, J. | LH | 5'10" | 175 | 4 | Jacksonville, Fla. |
| 53 | Hathcock, M. | RT | 6'5" | 250 | 1 | Alabama City, Fla. |
| 54 | Pacifico, Al | RG | 5'8" | 206 | 1 | Altoona, Pa. |
| 55 | Boyer, G. | RT | 6'2" | 220 | 2 | Jacksonville, Fla. |
| 57 | King, R. | FB | 6'1" | 205 | 3 | Daytona Beach |
| 59 | Crenshaw, B. | C | 5'9" | 188 | 2 | Miami, Fla. |
| 60 | Olsen, J. | LT | 6'3" | 220 | 2 | Tallahassee, Fla. |
| 62 | Makowiecki, Al | LT | 6' | 200 | 2 | Manaca, Pa. |
| 63 | Manning, L. | RE | 5'11" | 190 | 1 | Delray Beach, Fla. |
| 64 | Staab, R. | RG | 6'1" | 195 | 1 | Charleston, W. Va. |

Forrest County Board of Supervisors

SELBY C. BOWLING, President
Beat Three

H. H. BELL
Beat One

LUTHER G. LEE
Beat Two

J. A. P. CARTER, JR
Beat Four

HERBERT H. LEE
Beat Five

FLORIDA STATE UNIVERSITY



BUD LEONARD, R.E.
Pascagoula, Miss.



TOM NUGENT
Head Football Coach



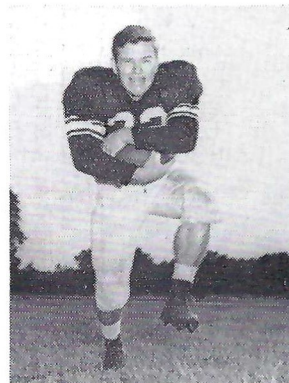
JIMMY LEE TAYLOR
Starting L.E.



ROBERT GRENN, F.B.
Brookhaven, Miss.



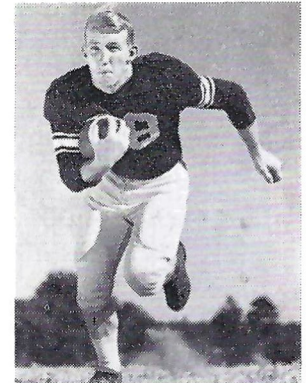
HARRY MASSEY, Q.B.
Canton, Miss.



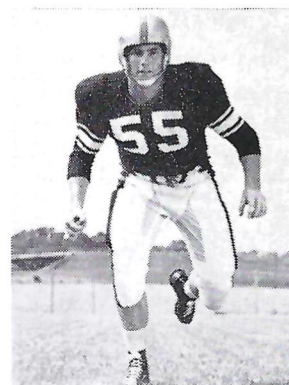
STAN DOBOSZ, R.H.
East Chicago, Ind.



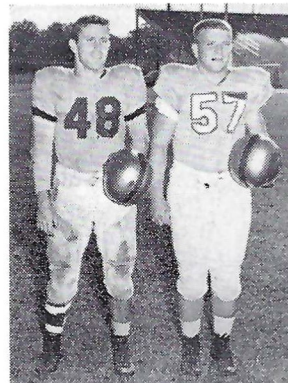
DR. HOWARD DANFORD
Athletic Director



BOBBY FIVEASH
Starting L.H.



GEORGE BOYER
Starting R.T.



BILLY GRAHAM, R.H.
BOB BATES, R.G.
Bogalusa, La.



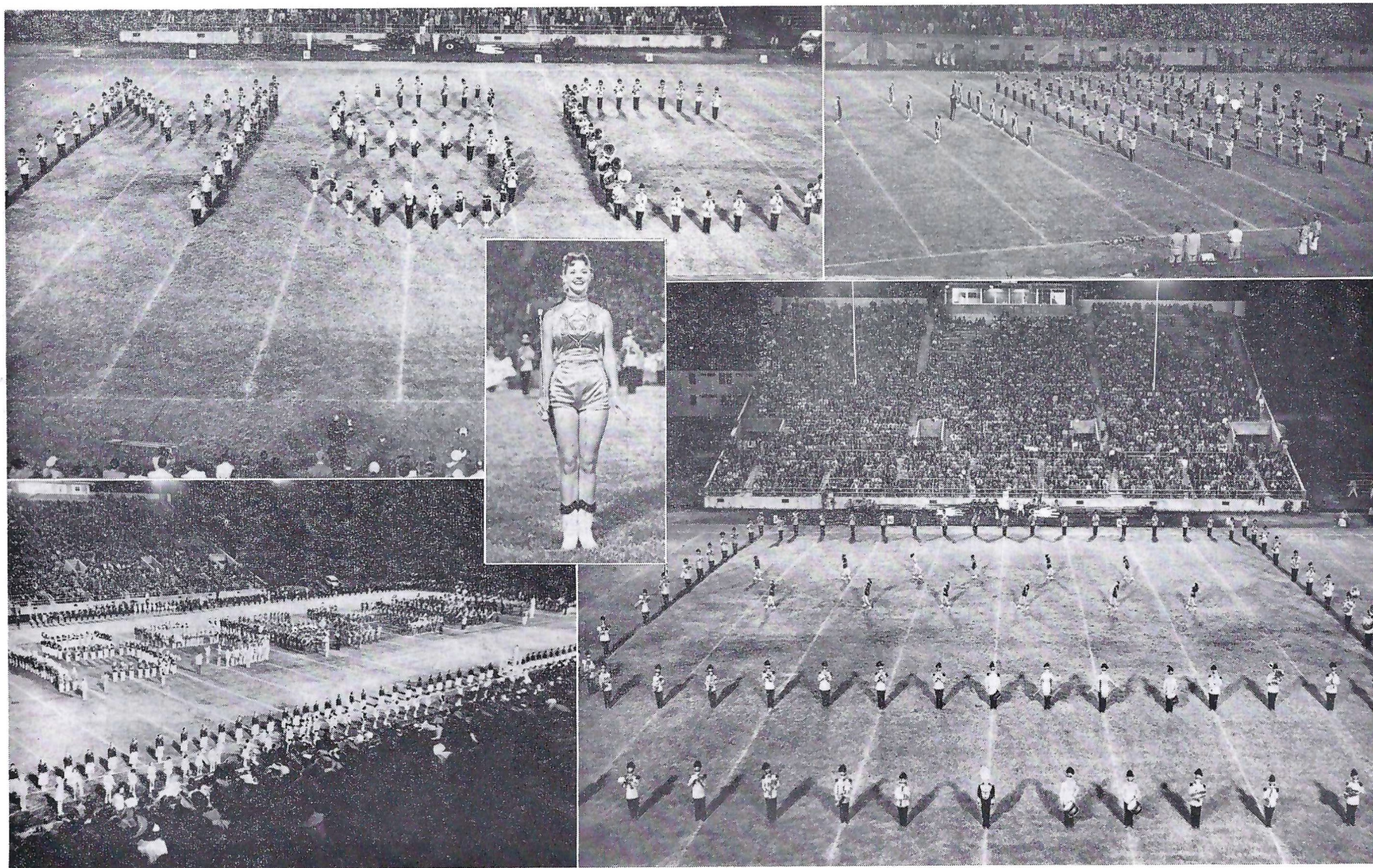
CARL GRENN, L.G.
Brookhaven, Miss.

They Lead . . . "The Best Band In The Land"



From left, they are Dot Tullos of Jackson, head majorette; Jane Hurlbert, Hazlehurst; Ann Miller of Lucedale, Mississippi's 1952-53 forestry queen; Mildred Ladner, Lumberton; Jessie Wynn Morgan, Newton, assistant head majorette; Vivian Jones, Lucedale; Ann Lynch, Brookhaven; Barbara Rhodes, Rolling Fork; Pat Harvey, Liberty; Ann Bond, Moss Point; Willie Mae Ritchie and Mary Brown Nowell, both of Philadelphia; and Billie Jean Wilkerson, McComb.

The Pride of The South



THE 100-PIECE MISSISSIPPI SOUTHERN MARCHING BAND

GOOD LUCK, SOUTHERNERS!



109 E. Pine Street

Hattiesburg

C. C. SULLIVAN

Agent

STANDARD OIL COMPANY

GEIGER

Printing & Office Supply Company

"Everything for the Office"

Filing Cabinets - Wood and
Steel Desks

Duplicating Machines
and Supplies

Smith-Corona Typewriters
and Adding Machines

Sales and Service

ORDER YOUR CHRISTMAS CARDS
AND 1953 CALENDAR PADS NOW

Yes, We Printed This Program

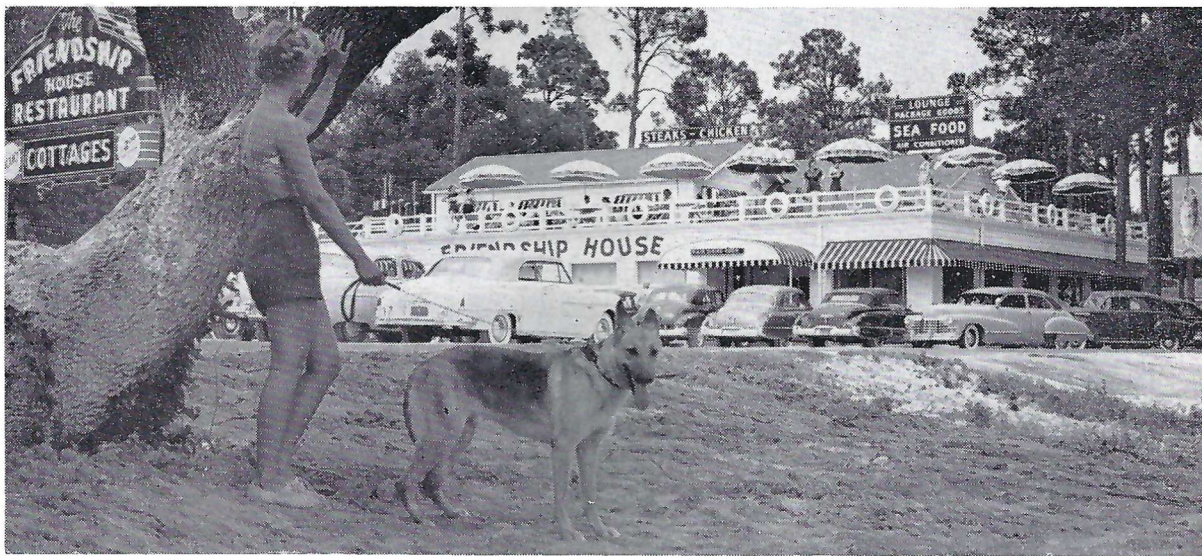
208-10 West Pine

Telephone JU 3-2601

COMPLIMENTS OF

FRIENDSHIP HOUSE

HOST OF THE GULF COAST



HALF WAY BETWEEN GULFPORT AND BILOXI

HIGHWAY 90, MISSISSIPPI CITY

Telephones: Gulfport—4151 and 9146; Biloxi—7722

OWL DRUG STORE

Corner Front & Main Streets

DIAL JU 3-3591

HATTIESBURG, MISSISSIPPI

Before or After the Game enjoy

"Food At Its Finest"

Marco RESTAURANT

Highway 11, South
Just 1/2 minute South of the Cloverleaf

McMULLAN MOTORS, Inc.

- Your -

CHRYSLER - PLYMOUTH DEALER
in Hattiesburg

"Quality Plus Service"

1504 N. Main St.

Telephone JU 3-3576

MERCHANTS COMPANY

Wholesale Food Distributors

Main Office
HATTIESBURG

Plants at
Jackson - Vicksburg - Gulfport
Bogalusa, La.

COMPLIMENTS

Jimmy Faughn's Restaurants

•
COLLEGIAN CAFE
3000 Hardy Street

•
LA FAUGHN'S RESTAURANT
2704 Hardy Street

•
JIMMY FAUGHN'S RESTAURANT
Broadway Drive at Corinne



We're
For You!

FEMININE
ASHIONS
OR
OOTBALL
ANS

EISMAN'S
Fashion Center of Hattiesburg



Barron Motor Company

•
"South Mississippi's Ford Home"

•
111-113 HARDY STREET

CASH AND CARRY DRY CLEANERS

Guaranteed Mothproofing Free
**DRI-SHEEN PROCESS OF
DRY CLEANING**

- 1 DAY SERVICE -

107 Walnut Street Hattiesburg, Miss.

Compliments

BUILDER'S SUPPLY CO.

Everything For The Builder

by

FRANK FORD, JR.

Laurel Avenue

Phone JU 3-4345

AT SINCLAIR DEALERS ONLY

PATENTED ANTI-RUST GASOLINE

Sinclair
H-C and Ethyl
Gasoline

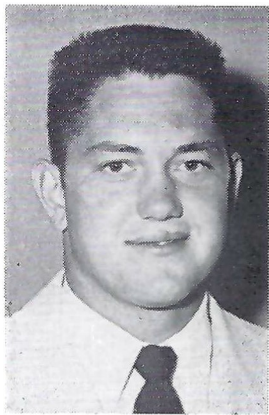


Goodyear
Tires - Tubes
Batteries &
Accessories

PECK OIL COMPANY, Inc., Distributors



CARL BETHEA 61
 G Freshman
 6-0 180
 Memphis, Tenn.



TERRY BRINSON 62
 G Freshman
 6-1 197
 Prentiss, Miss.

Farrior Motor Company

•
 Better Buy Buick

•
 SALES WITH SERVICE

•
 400 West Pine St.

Phone 4-7571

Compliments of

**MURRAY ENVELOPE
 CORPORATION**

ANNETTE STEMME

Member F. T. D.

“SAY IT WITH FLOWERS”

ANNETTE AND JOHN STEMME
 PERCY REEVES AND BILL STEMME

Always Glad to Serve You

Phone JU 4-7752
 125 West Front

Phone JU 2-1401
 Night, Sunday & Holidays
 Greenhouse 812 Hall Ave.

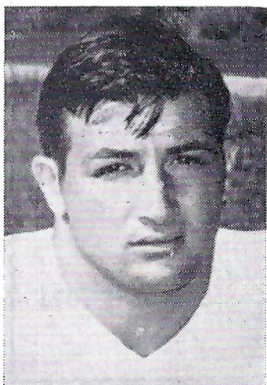


Smith's Bakery

Telephone JU 3-4366



LARRY RICH 63
 G Freshman
 6-0 195
 Pell City, Ala.



LOUIS LABELLA 64
 G Freshman
 6-0 205
 Indianola, miss.

COMPLIMENTS

OF

*First National
 Bank*



Member Federal Deposit Insurance Corp.

Hold That Line!

All freedom-loving Americans should take an active and responsible part in an effort to "hold the line" against all forms of National Socialism that would destroy our individual competitive enterprise system and our republican form of government.

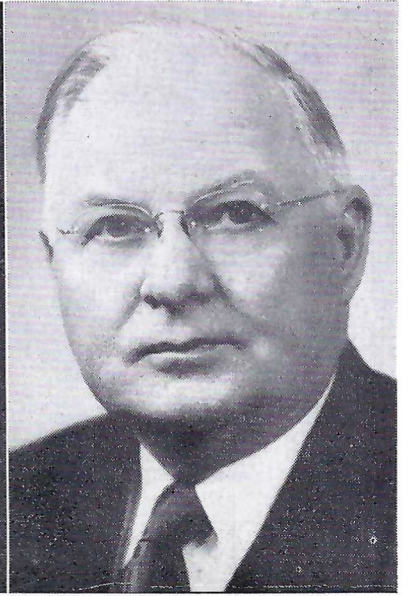
Too often our precious "ball of freedom" is in the hands of those who are running around left end and leading us down the road to bankruptcy and socialism.

The only thing that will save us, materially speaking, is an aroused public opinion created by the freedom-loving people of this great nation of ours. Those who would help to preserve our Constitution and the Bill of Rights must have the courage to speak out against all forms of National Socialism, thereby help create public opinion—the most powerful material force in our form of government.



MISSISSIPPI CENTRAL RAILROAD CO.

L. E. FAULKNER, President
 HATTIESBURG, MISSISSIPPI



FLORIDA STATE UNIVERSITY

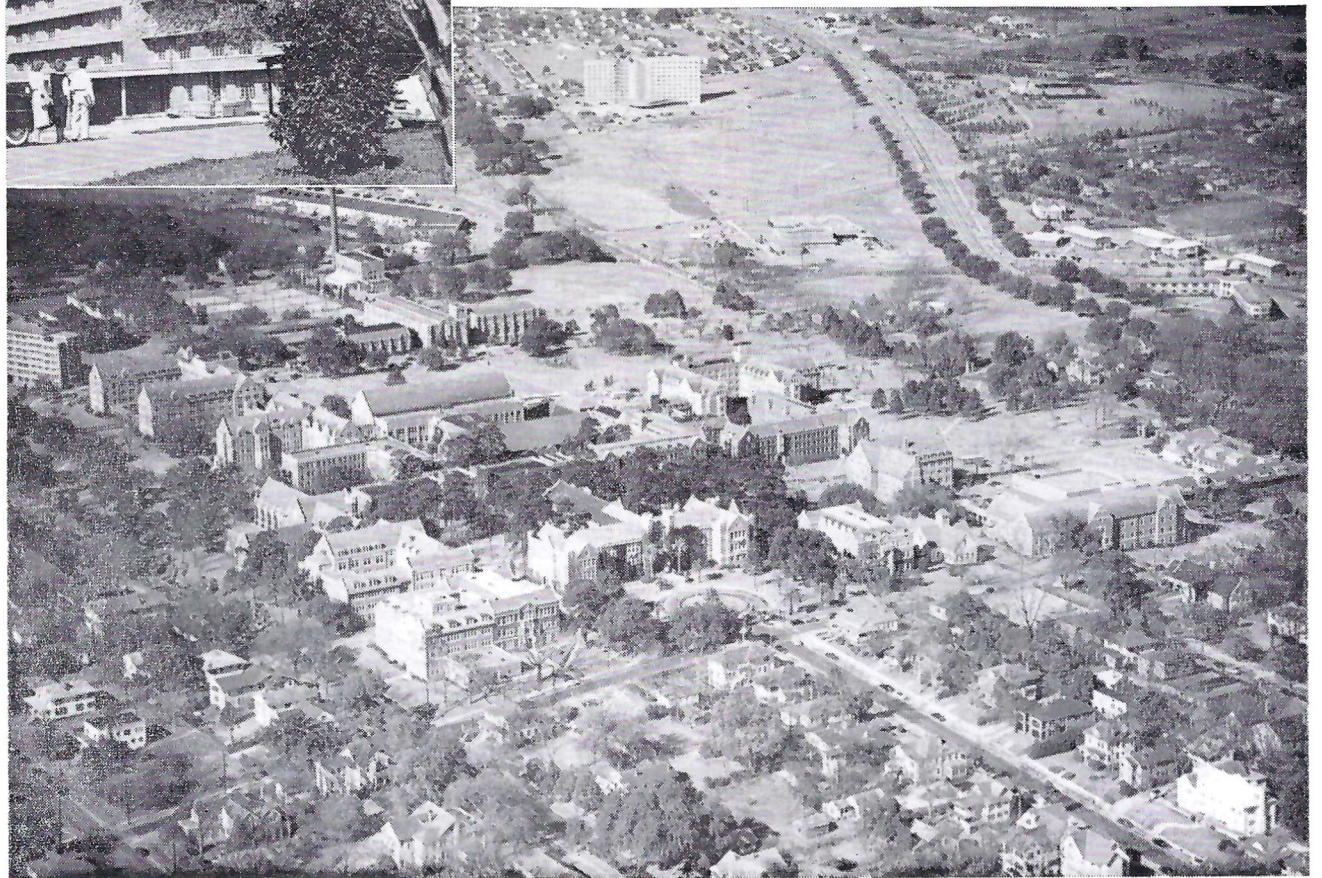
TALLAHASSEE, FLORIDA

Top Right—Dr. Doak S. Campbell, President

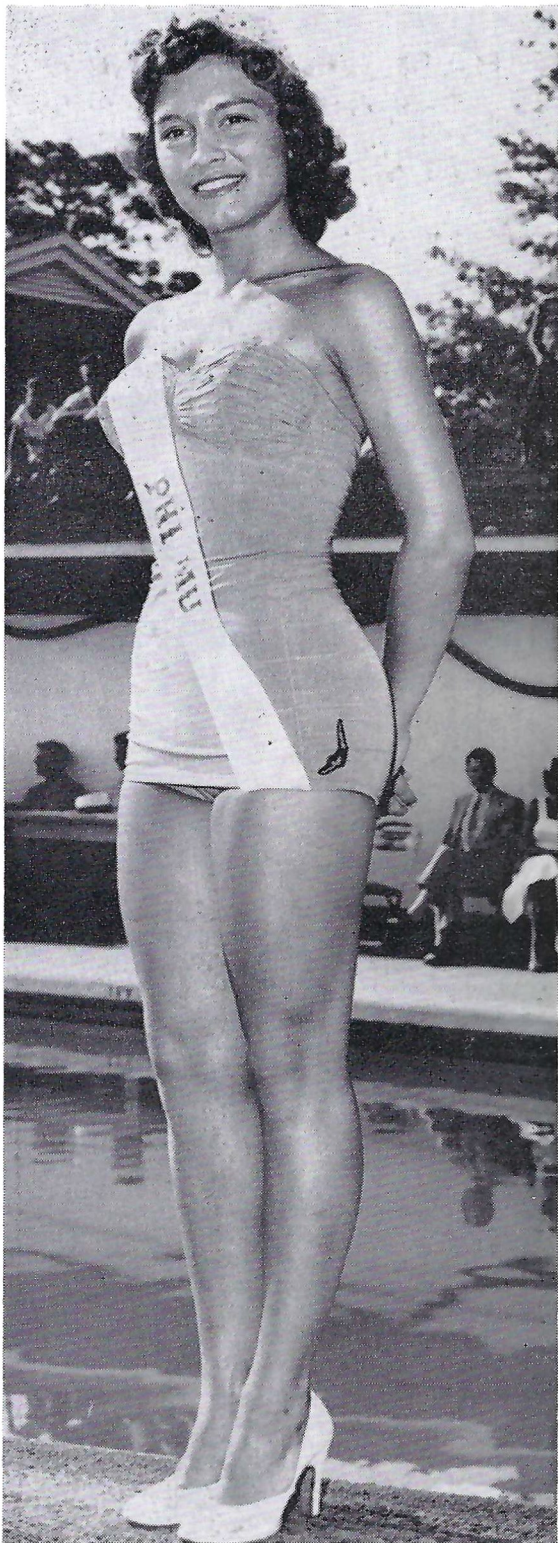
Top Left—Westcott Administration Building

Center Left—Eight Story Men's Dormitory

Below—Aerial View of Campus, F.S.U.



STILL THE CHAMP



JESSIE WYNN MORGAN
of Newton
MISS MISSISSIPPI OF 1951
MISSISSIPPI SOUTHERN'S
BATHING BEAUTY QUEEN
of 1953
and
STUDENT BODY HOMECOMING MAID
of 1953

BASKETBALL AT SOUTHERN

- SEE -

MISSISSIPPI SOUTHERN'S GREAT CAGERS IN ACTION

Battling Such Powers as
Hamline, Xavier, Loyola, East Texas, REA
and Memphis State
at Home

Playing in
The Annual Xmas Tournament
at Kansas City

The First Senior Bowl Tournament
at Mobile

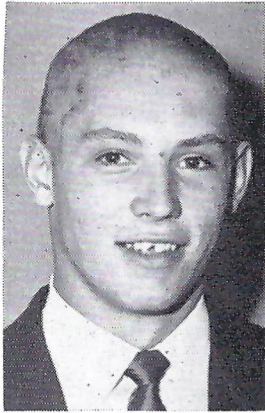
See the sensational
NICK (The Cat) REVON
in action

One of the greatest college cagers
in the country.

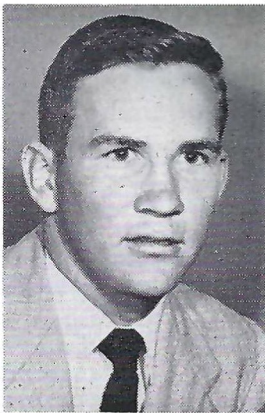
Watch Revon, Mickey Harrington, Mutt Watts, Jersey John O'Keefe, Bobby Weathers, Vaughn Jones, Ronnie Rabin, Wayne Lee, Sam Hollingsworth and Lee Luckey lead the Mississippi Southerners to the 1953-54 cage wars under the fine young basketball coach, Lee Floyd.

THE SCHEDULE

- Nov. 27—Howard at Laurel
- Nov. 28—Belmont at Hattiesburg
- Dec. 1—SLI at Lafayette
- Dec. 4—Hamline at Hattiesburg
- Dec. 5—Hamline at Hattiesburg
- Dec. 12—Southeastern at Hattiesburg
- Dec. 14—Culver-Stockton at Hattiesburg
- Dec. 17-18-19—NAIA Christmas Tournament at Kansas City
- Jan. 4-5—Senior Bowl Tournament at Mobile—Mississippi Southern—Spring Hill—North Texas State and Stetson University
- Jan. 7—North Texas State at Hattiesburg
- Jan. 14—Spring Hill at Mobile
- Jan. 16—REA at Hattiesburg (March of Dimes)
- Jan. 18—Loyola at Hattiesburg
- Jan. 21—East Texas State at Hattiesburg
- Jan. 28—Memphis State at Jackson
- Jan. 29—Louisiana Tech at Hattiesburg
- Jan. 30—SLI at Hattiesburg
- Feb. 2—Southeastern at Hammond
- Feb. 5—Georgia Teachers at Hattiesburg
- Feb. 6—Xavier University at Hattiesburg
- Feb. 9—Centenary at Hattiesburg
- Feb. 12—Louisiana Tech at Ruston
- Feb. 13—Centenary at Shreveport
- Feb. 15—North Texas State at Denton
- Feb. 19—Loyola of the South at New Orleans
- Feb. 20—Northeast Louisiana at Natchez
- Feb. 23—Spring Hill at Hattiesburg



DAVE FITZGERALD 65
 G Freshman
 5-11 184
 McKeesport, Pa.



HAMP COOK 68
 G Junior
 5-11 188
 Georgiana, Ala.

THE HATTIESBURG POLICE DEPARTMENT

WISHES TO CONGRATULATE
 MSC FOOTBALL PLAYERS



On November 6, 1953, we are having our Policemen's Benefit Ball. We wish to thank you in advance for making this ball possible each year, proceeds of which go to the Policemen's Benefit Fund.

Sponsored, Arranged and Directed Solely by
 Police Department Personnel

Mail all contributions to:
 H. E. ELLINGTON, Chairman
 Benefit Fund

SARPHIE JEWELRY CO.

SHOP AT OUR *Gift Mart*

LIST YOUR PATTERN SELECTION WITH US!

SILVER — CHINA — CRYSTAL

KIRKWOOD FURNITURE STORE

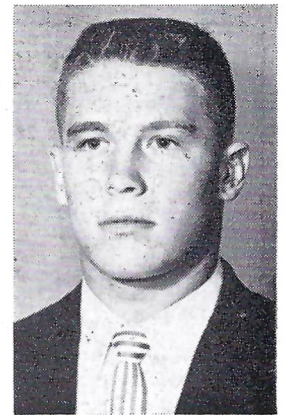
"The Court House Is Next to US!"

Your Norge and Bendix Appliance Dealer

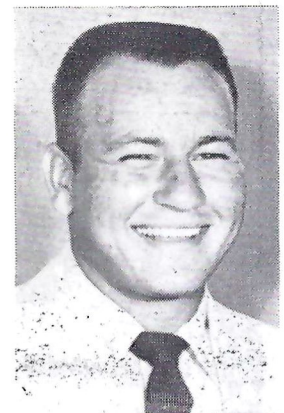
COMPLETE HOUSEHOLD FURNISHINGS

Telephone JU 3-2315 614 Main Street

L. T. HERRMANN 69
 G Junior
 5-10 202
 Mobile, Ala.



BILL BISHOP 70
 T Freshman
 6-2 242
 Memphis, Tenn.





OTIS SHATTLES 71
 G-T Junior
 6-1 204
 Moss Point, Miss.



J. HUGH MITCHELL 73
 T Sophomore
 6-5 219
 Picayune, Miss.

Bufkin's
 HATTIESBURG, MISS.

MEN'S WEAR

114 West Front Street

Best Wishes for the Season

HUB PRINTING CO.

PHONE JU 3-3001

Corner Agnes and Buschman Streets

PERSONAL LOANS

Convenient Installments

WHITE SYSTEM

OF HATTIESBURG, Inc.

Compliments of

J. E. JOHNSON, Agent

INSURANCE AND BONDS

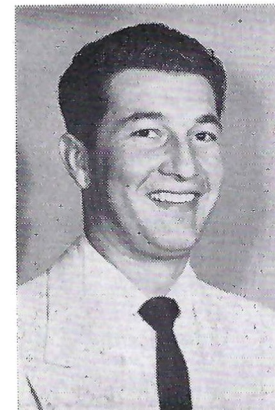
Established 1910

Telephone JU 4-5337 Hattiesburg, Miss.

JOHN NEILL 74
 G Senior
 6-0 204
 Philadelphia, Pa.

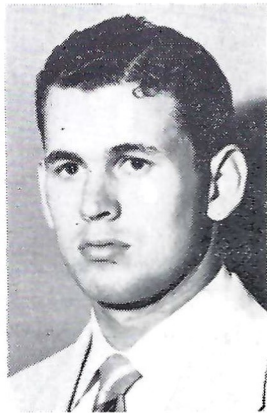


CHARLEY CORNE 75
 G Junior
 5-11 199
 New Orleans, La.





BUZZY CLARK 76
 T Sophomore
 6-0 251
 Belzoni, Miss.



DOUG MIMS 77
 T Senior
 6-0 205
 Greenwood, Miss.

WELCOME!
**BEVERLY DRIVE-IN
 THEATRE**

TELEPHONE JU 3-1914

Highway 49, S. At Intersection of By-Pass

SOUTHLAND FLORIST



FLOWERS FOR ALL OCCASIONS

BETTY AND PAUL WRIGHT

Phone JU 4-7541

**STANDARD DRUG
 STORE, Ltd.**

•
 Your Complete Drug Service
 •

619 Main Street

Phone JU 3-4381

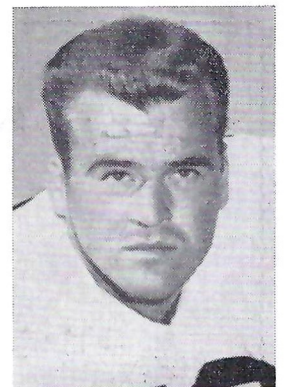
**C & E
 SANDWICH SHOP**

•
 After the Game drive to the—
 C & E Sandwich Shop on Highway 11
 •

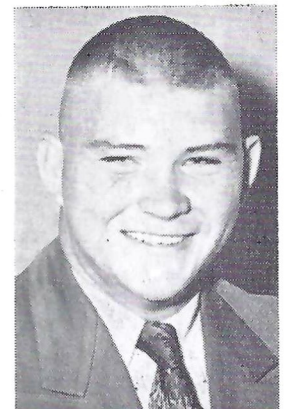
Broadway Drive

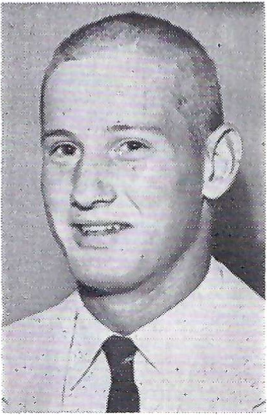
Highway 11, South

DON OWENS 78
 T Freshman
 6-6 255
 St. Louis, Mo.

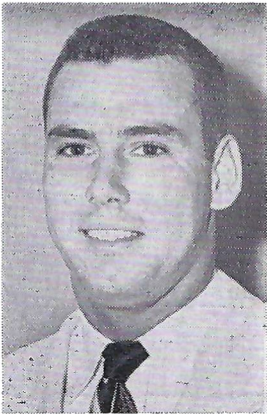


DENMAN BRUMFIELD 79
 T Freshman
 6-0 206
 Franklinton, La.





JERRY TAYLOR 80
 E Freshman
 6-0 170
 Columbia, Miss.



LEONARD WILLIAMS 81
 E Sophomore
 6-2 200
 Jacksonville, Fla.



Always Complete Stock of
USED CARS AND TRUCKS



McArthur
Chevrolet Company

HATTIESBURG, MISS.

**Willmut Gas &
 Oil Company**

Hattiesburg, Mississippi

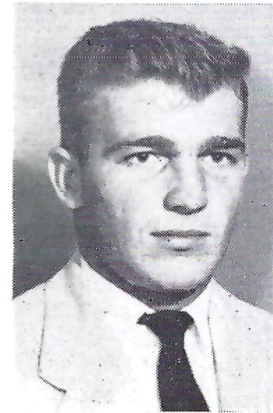


Distributors of

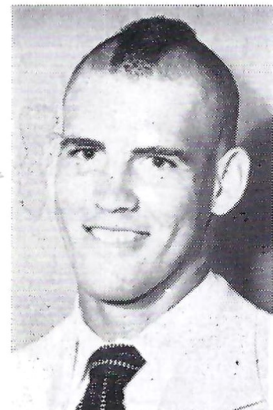
NATURAL GAS

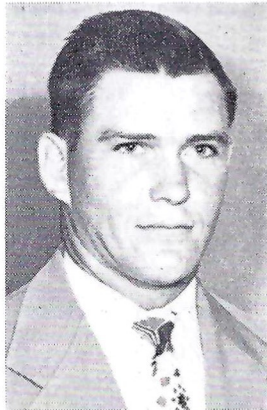
the Economical Fuel

RICHARD CALDWELL 83
 E Senior
 6-0 193
 Columbus, Miss.



LLOYD LINTON 84
 E Freshman
 6-3 184
 Hattiesburg, Miss.





JACKSON BRUMFIELD 85
 E Senior
 6-0 216
 Franklinton, La.



ERSKON TOOMEY 86
 E Senior
 6-3 204
 Hattiesburg, Miss.

Compliments of

Joe Morris Motors

DeSoto - Plymouth
 GMC Trucks

AND

**Jim Bomboy's
 Service**

Your Complete Line
 Philco Dealers

Broadway Drive Hiway 11, South

ROGERS JEWELERS

WELCOMES YOUR ACCOUNT

| | |
|--------------------|--------------------|
| Elgin Watches | Community Silver |
| Gruen Watches | Sunbeam Shavers |
| Bulova Watches | Remington Shavers |
| Longine Watches | Schick Shavers |
| Wittnauer Watches | Sunbeam Appliances |
| Parker Pens | Westinghouse |
| Sheaffer Pens | Appliances |
| Ronson Lighters | |
| Speidel Bands | |
| Flex-Let Bands | |
| Forstner Bands | |
| 1881 Rogers Silver | |
| 1847 Rogers Silver | |

LOVEBRIGHT
 GUARANTEED
 DIAMONDS

ROGERS FOR THE NAMES YOU KNOW

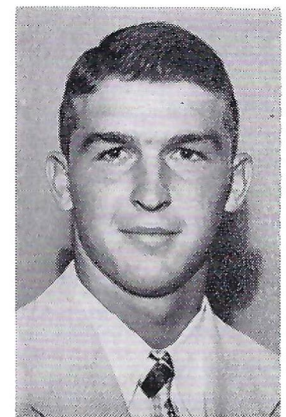
ROGERS

JEWELERS

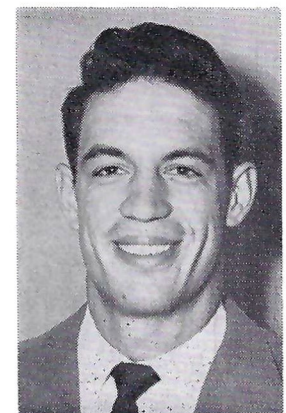
Diamonds - Watches - Silverware - Gifts

606 Main Street Hattiesburg, Miss.

HUB WATERS 87
 E Junior
 6-0 192
 Benton, Miss.



BILL BOLING 89
 E Junior
 6-4 206
 Aliceville, Ala.



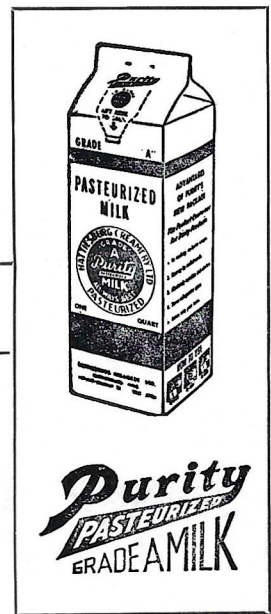
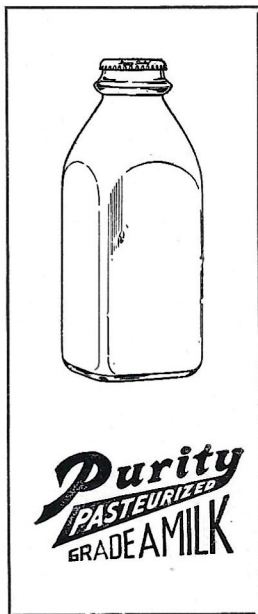
Compliments

Perry County

Plywood

Corporation

BEAUMONT, MISSISSIPPI



The BEST

in

Dairy Products

HATTIESBURG CREAMERY

117-119 Walnut Street

Telephone JU 3-2646

CAMEL

America's most popular cigarette!



*So Mild -
So Flavorful!*