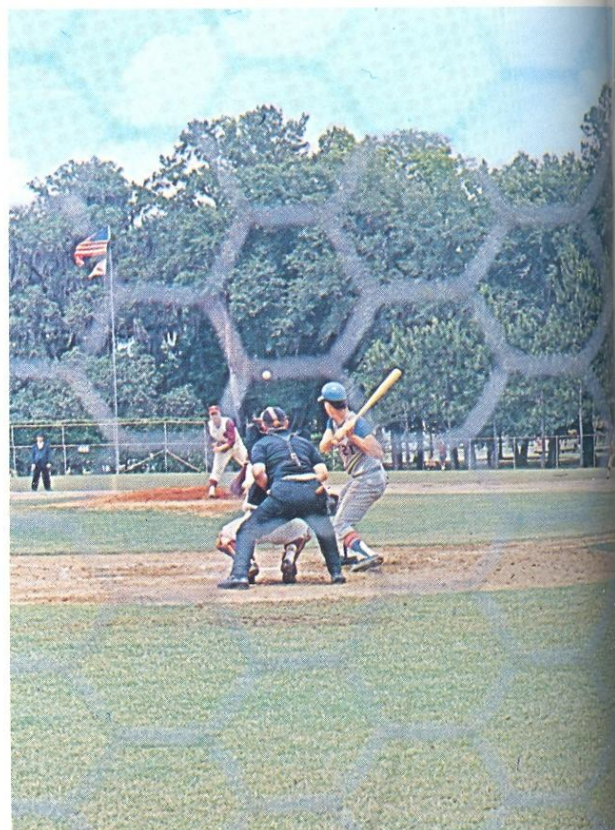


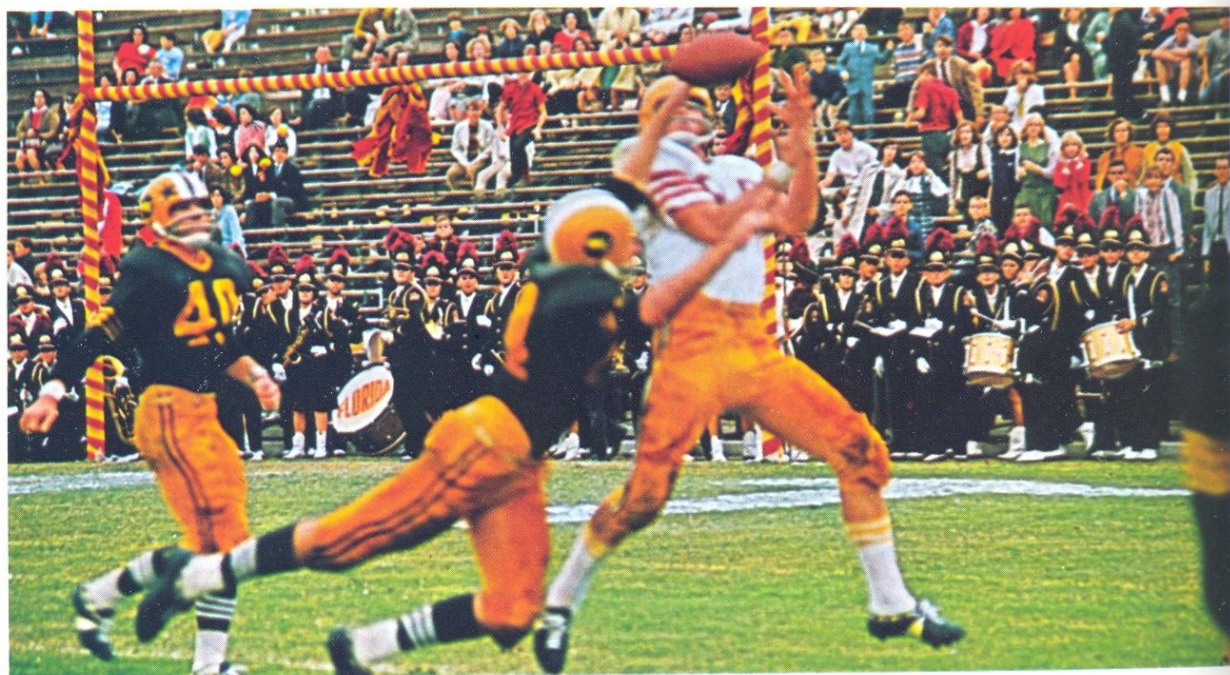
Sports Highlights



SEMINOLE STAR GARY SCHULL sinks two of the 1,122 points scored in his career as fifth highest scorer in FSU basketball history.



THE SEMINOLE BASEBALL TEAM played an outstanding season winning 36 and losing 11.



TEAM CO-CAPTAIN MAX WETTSTEIN CATCHES ED PRITCHETT'S FIRST LONG BOMB FOR SIX POINTS



TOP SEMINOLE PITCHER Wayne Vincent prepares to warm up as the rest of the Tribe takes the field. At the end of the season the FSU team was ranked second in the nation.



PETE ROBERTS, Seminole place-kicker and high scorer, boots another of his score-changing goals.



OUR FOOTBALL TEAM MOVED UP TO THE BIG LEAGUE THIS YEAR



THE FSU BASKETBALL TEAM SCORED A WINNING SEASON IN '66

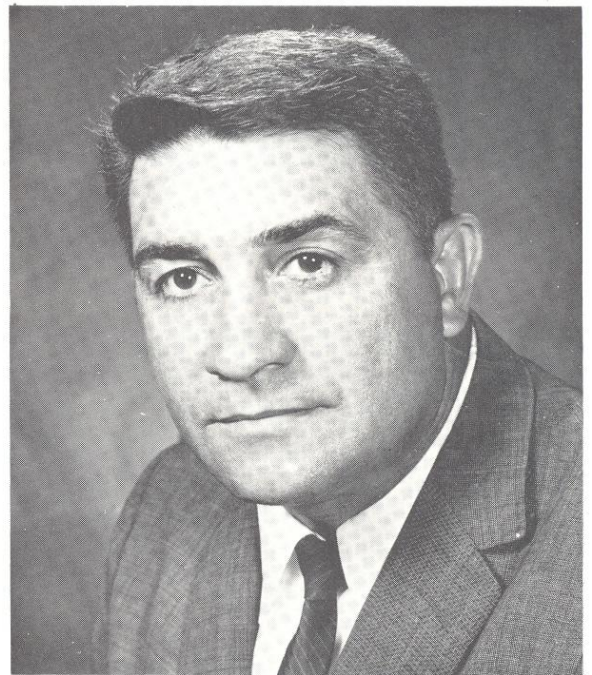
Tribe Draws Tough Season

Florida State's football team came through the season with only a 4-5-1 record but the statistics do not tell the whole story. The Seminoles could never quite jell. Every home game made it look as though "they had found themselves," but on the road the new found strength could not hold up.

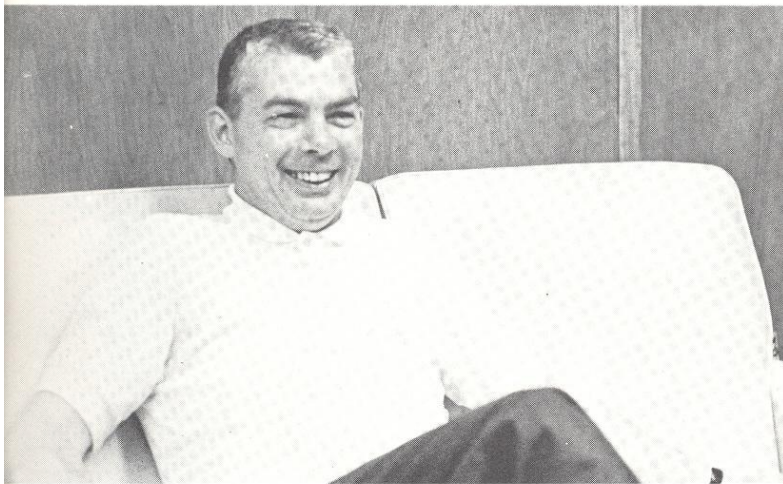
It was also the season of the clash with some of the nation's top football teams on the opponent's home field. It was a very difficult season as every team the Seminoles met was playing at its peak.



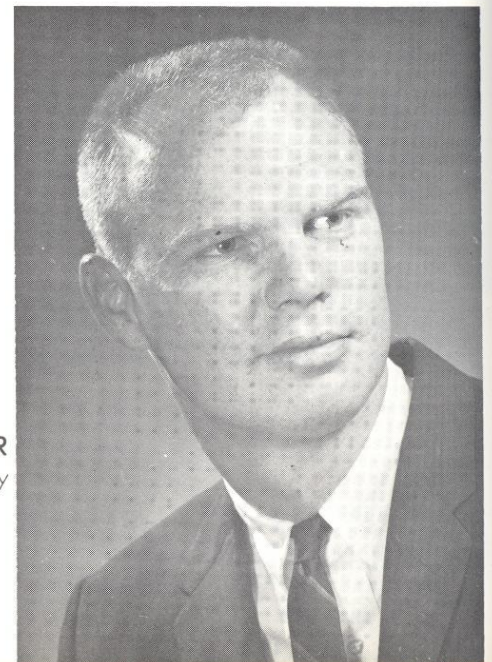
BILL PETERSON
Head Coach



VAUGHN MANCHA
Director of Athletics



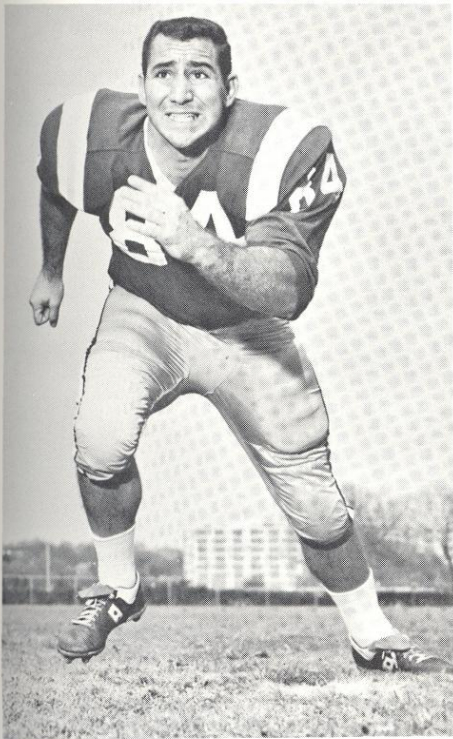
DON FAULS
Athletic Trainer



BILL BUNKER
Director of Sports Publicity



COACHING STAFF: Front row: Don James, Bill Peterson, Bill Crutchfield, Bob Bowden. Row two: Bob Harbison, Neil Schmidt, William Proctor, Don Powell.

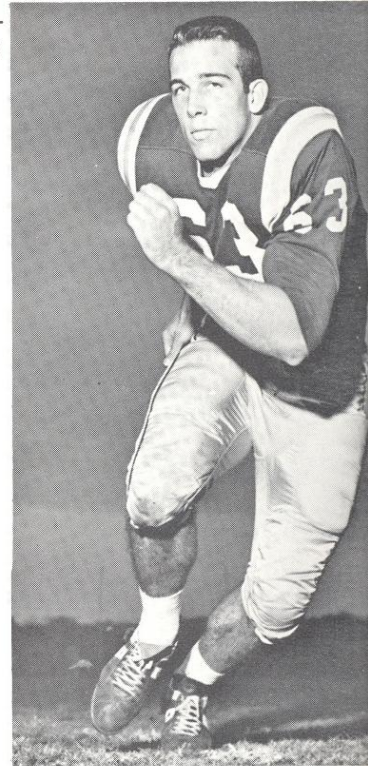


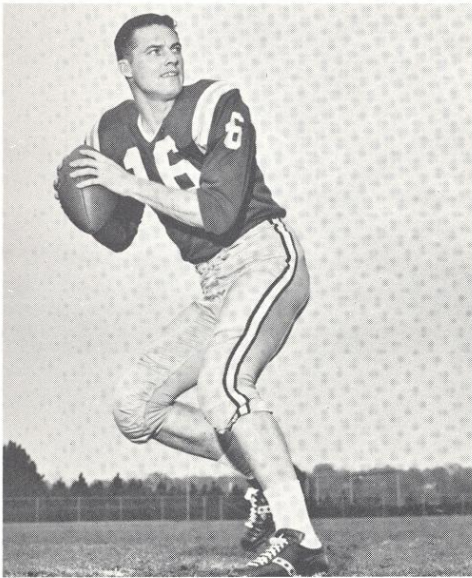
GEORGE D'ALESSANDRO
Co-Captain

MAX WETTSTEIN
Co-Captain

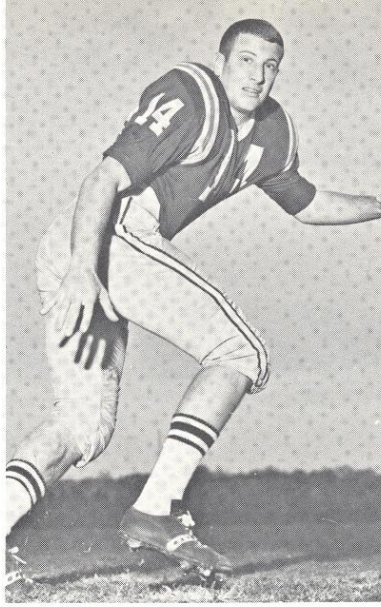


BILL MCDOWELL
Co-Captain

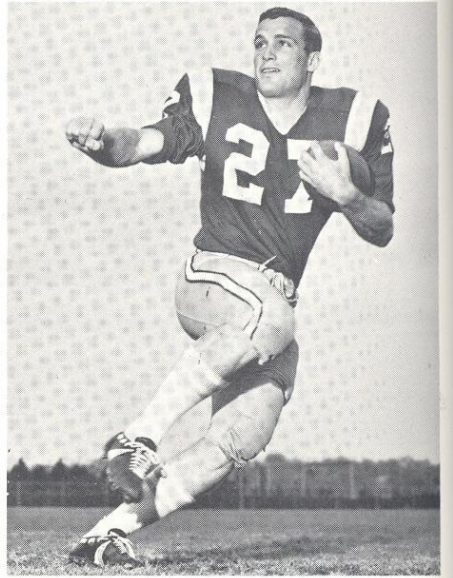




ED PRITCHETT
Quarterback

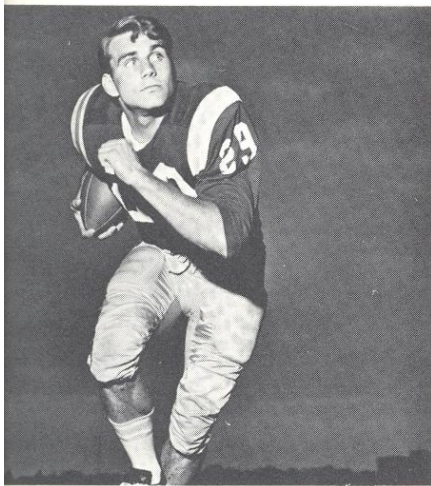


JIM MASSEY
Safety

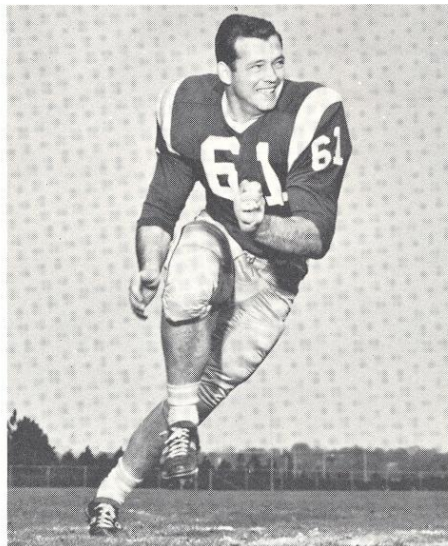


PHIL SPOONER
Half Back

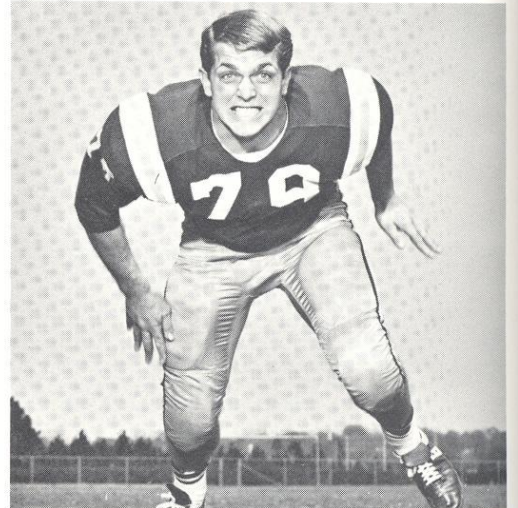
Seniors Add Experience



JOE PETKO
Fullback



JACK SHINHOLSER
Middle Guard

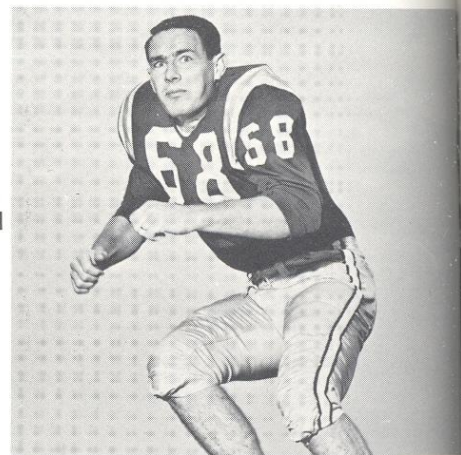


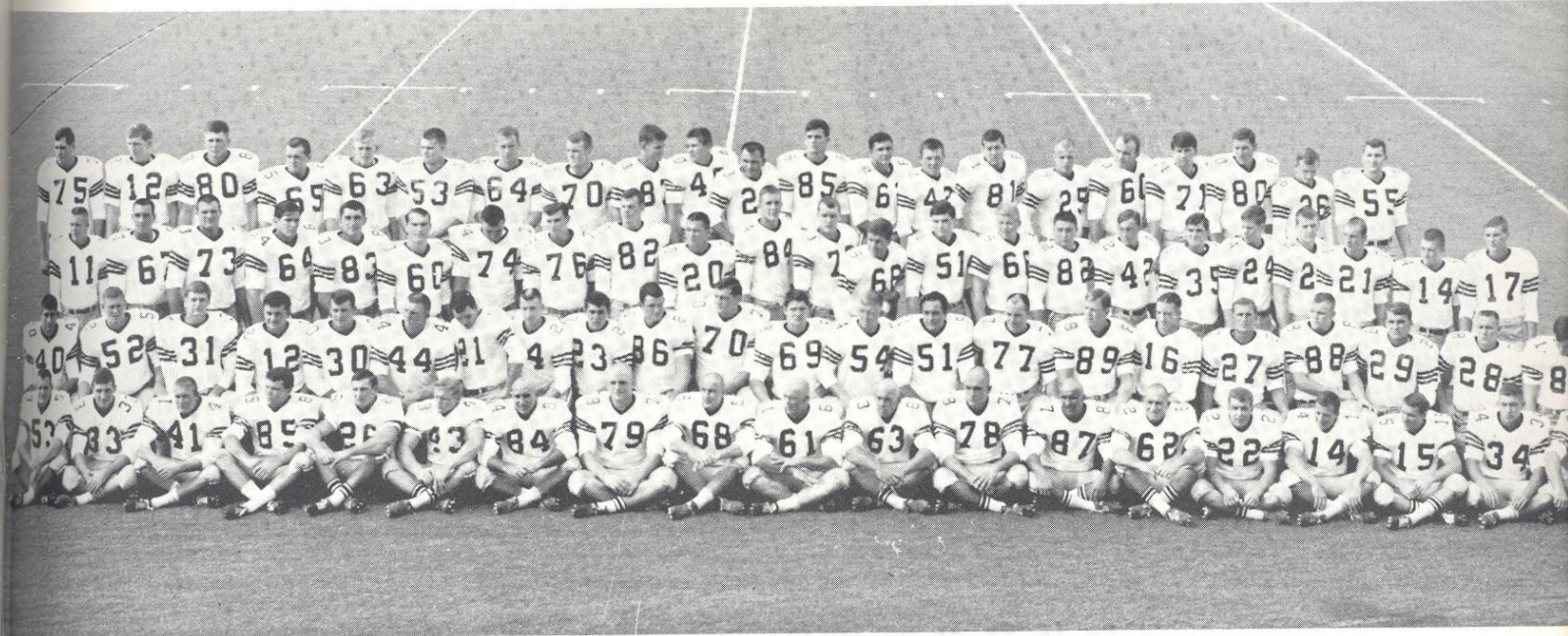
FRANK PENNIE
Tackle



JOE AVEZZANO
Guard

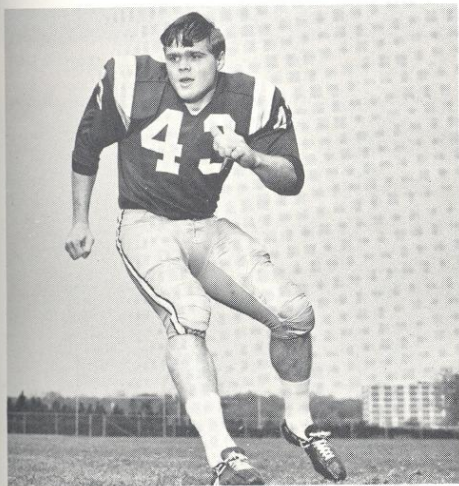
JOE PARRISH
Linebacker



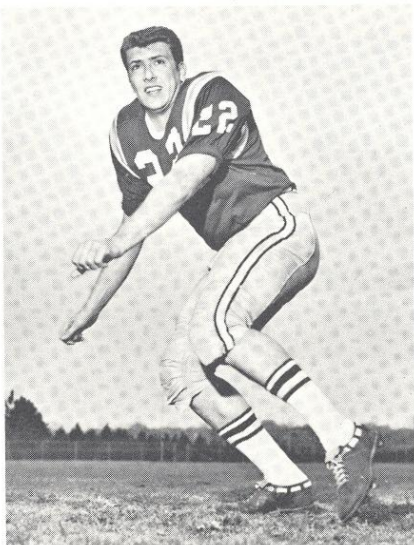


Front Row: David Pitts, Butch Riser, Bob Menendez, Pete Roberts, Bill Campbell, Howard Ehler, George D'Alessandro, Frank Pennie, Joe Parrish, Jack Shinholser, Bill McDowell, Charles Pennie, Terry Garvin, Howard Lurie, Maury Bibent, Jim Massey, Pat Conway, Frank Loner, Bill Richardson. **Row two:** Mike Blatt, Wayne McDuffie, Bill Cox, Tony Gero, Bill Moreman, Jim Mankins, Donovan Jones, Elton Revell, Wayne Giordano, Buddy Blankenship, Del Williams, Edwin Pope, John Stephens, Joe Avezanno, Bob Mangan, Max Wettstein, Ed Priichett, Phil Spooner, Jerry Jones, Joe Petko, T.K. Wetherell, H.T. Waller. **Row three:** Kim Hammond, Mike Bugar, Larry Kissam, Dave Braggins, Thurston Taylor, Larry Williamson, Jay MacMathews, Donnie Ellers, Jack Fenwick, Jack Fenwick, Dave Nelson, Larry Kissam, Charlie McNeil, Joe Avezanno, David Hall, Jack Fenwick, Alan LaMarche, John Hosack, Elton Revell, Maury Bibent, Donovan Jones, Jim Massey, Marty Kolbus. **Row four:** Rommy Vistart, Tony Gero, Del Williams, Ken Hart, David Hall, Bill McDowell, David Pitts, Dave Braggin, Thurston Taylor, Mike Blatt, Wayne Giordano, Pete Roberts, Howard Lurie, Alan LaMarche, H.T. Waller, Elton Revell, Larry Williamson, Ken Johnson, Stan Croley, Bill Campbell, Bob Ulrich.

MAURY BIBENT
Defensive Back

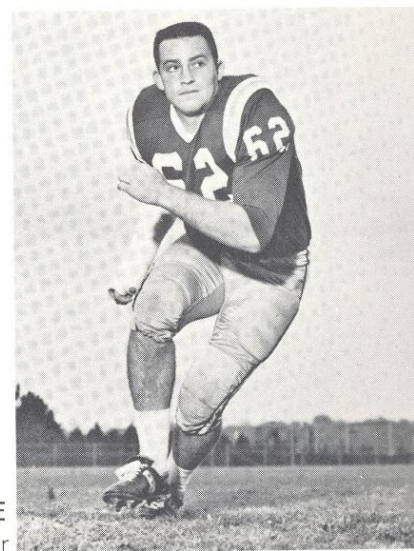
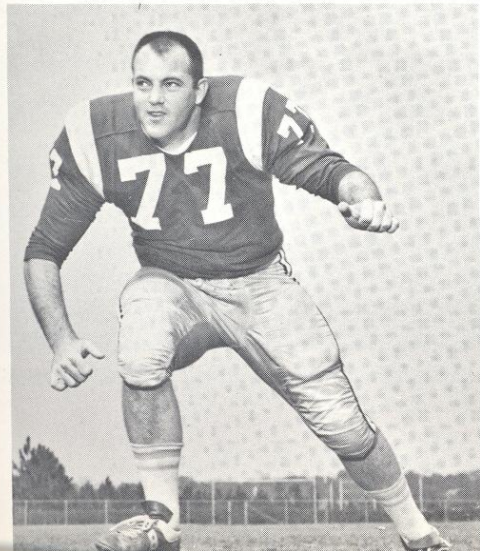


HOWARD EHLER
Defensive Back

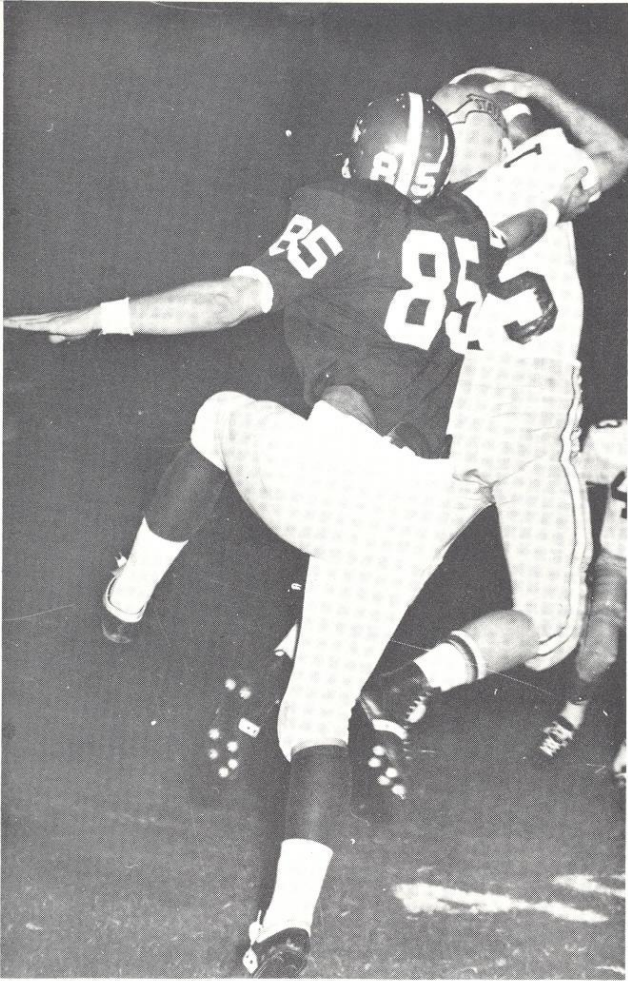


TERRY GARVIN
Defensive End

BOB MANGAN
Tackle



HOWARD LURIE
Linebacker



INTERCEPTING A TCU PASS intended for Charles Campbell (85) is defensive back Pat Conway (15).

Seminoles Lose 7-3 In Opener With TCU

Mistakes were the order of the day September 25 when the Seminoles dropped the season's opener against Texas Christian University in Fort Worth.

After a scoreless first quarter Bill Campbell recovered a Horned Frog fumble on the TCU 45-yard line. Quarterback Ed Pritchett moved the Tribe to the 13 in five plays. In a fourth down situation Pete Roberts put the ball through the uprights to give FSU a 3-0 lead at halftime.

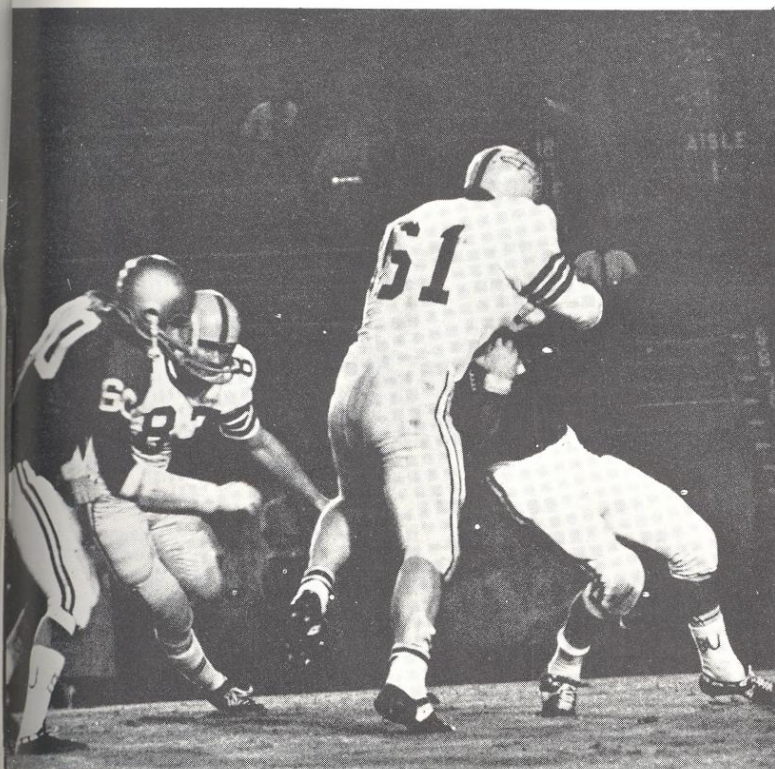
In the third quarter an intercepted pass from Pritchett set up an 11 play series that ended with Kenneth Post's diving in for a TCU touchdown. The conversion was good, and the Frogs moved ahead 7-3.

With 32 seconds remaining, FSU's Bill McDowell recovered a fumble on the Horned Frog 12-yard line. Making a final attempt to save the game, Pritchett ran the ball to the four-yard line. Before another play could begin, the whistle signalled the game's end and killed all hopes of a last second victory.



GOING FOR BIG YARDAGE IS FSU'S FULLBACK JIM MANKINS (44) WHILE DOYLE JOHNSON (82) TACKLES

Tribe Squeaks By Baylor 9-7



THROWN FOR A BIG LOSS behind the line of scrimmage by Jack Shinholser (61) is Baylor's quarterback Terry Southall.

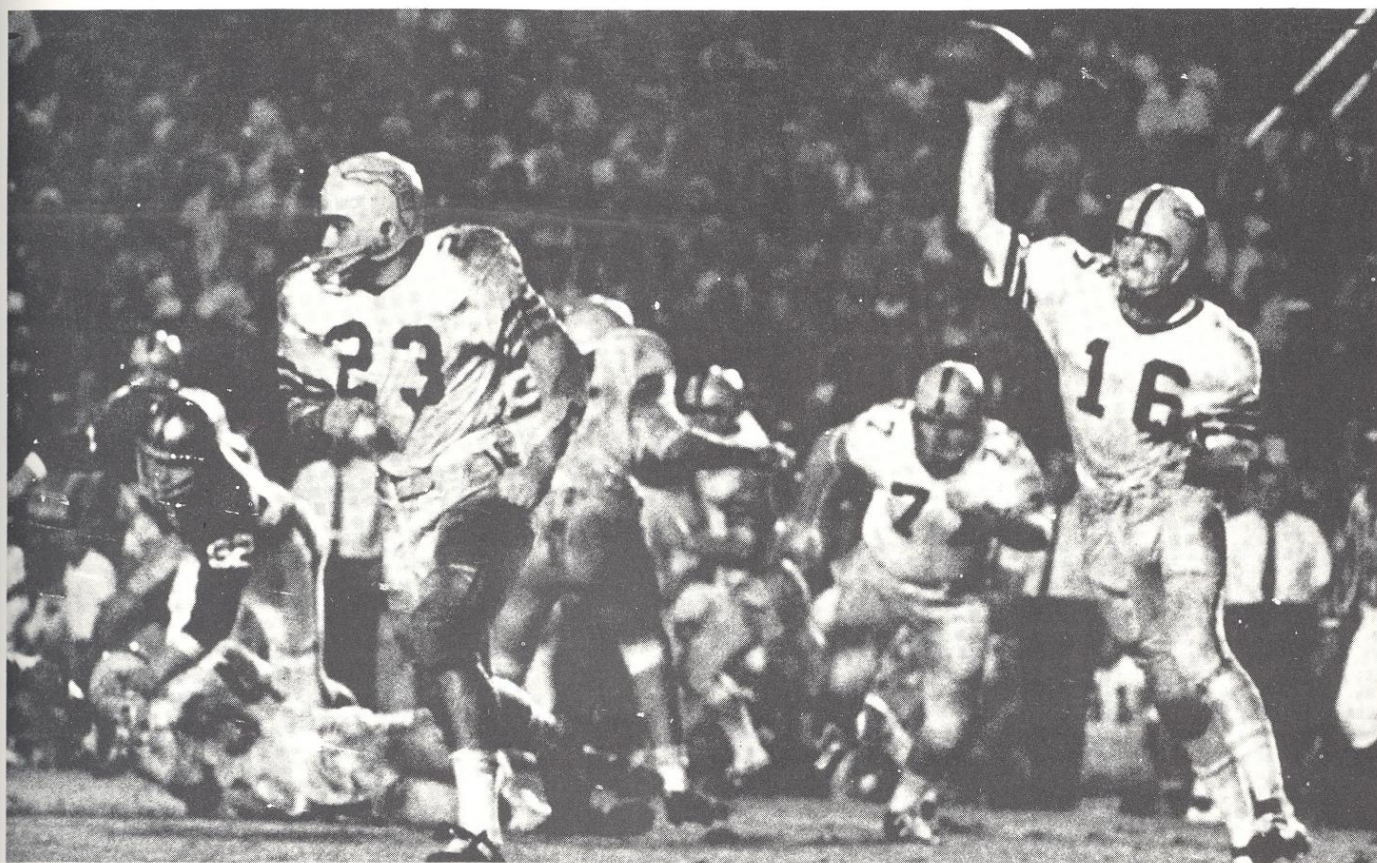
Offensive luck, defensive skill and home crowd pep gave the Seminoles their first win of the season by defeating nationally ranked Baylor 9-7.

The Bears were severely handicapped early in the game when their highly-touted quarterback Terry Southall sustained a broken ankle. Due to an 18-yard loss on the play Baylor was forced to punt on a fourth and 23 situation.

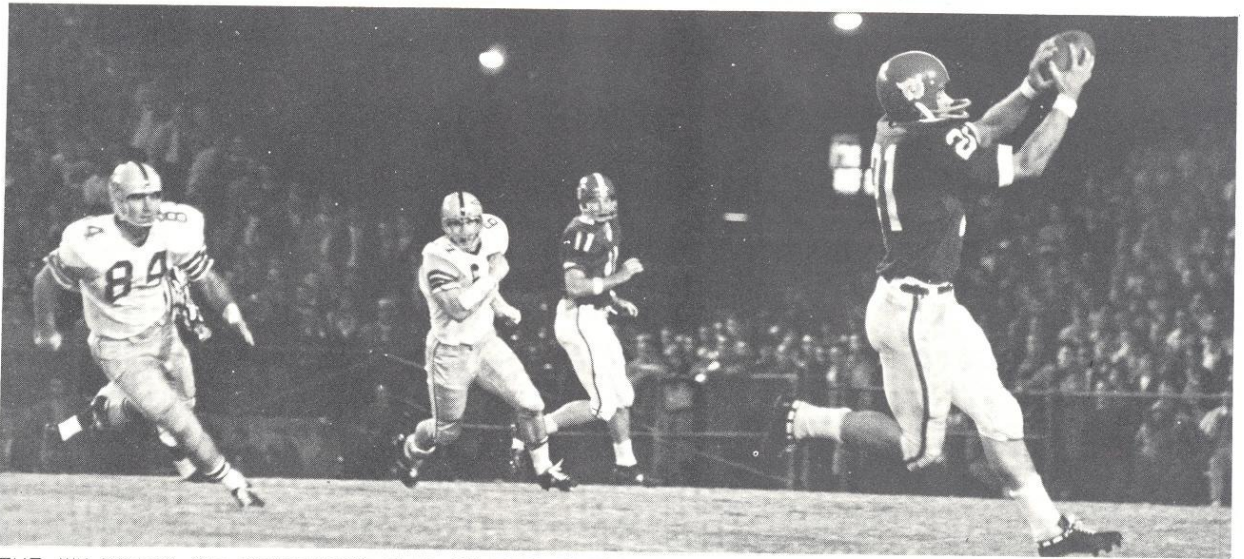
Taking advantage of the break, the Tribe began an eight-play series that ended with the 32-yard field goal by Pete Roberts.

With the Seminoles ahead 3-0, Baylor quarterback Roger Marshall led the Bears 62 yards in nine plays. On the next play Marshall connected with halfback George Cheshire in the end-zone for a 20-yard TD pass. The extra point was good and Baylor moved ahead 7-3.

Only five minutes remained in the game when FSU quarterback Ed Pritchett unloaded his 59-yard bomb on flankerback T. K. Wetherell putting the Seminoles in the winner's column, 9-7.



QB ED PRITCHETT (16) ROLLS OUT ON A TRAIL CLEARED FOR HIM BY SEMINOLE FULLBACK WAYNE GIARDINO (23)



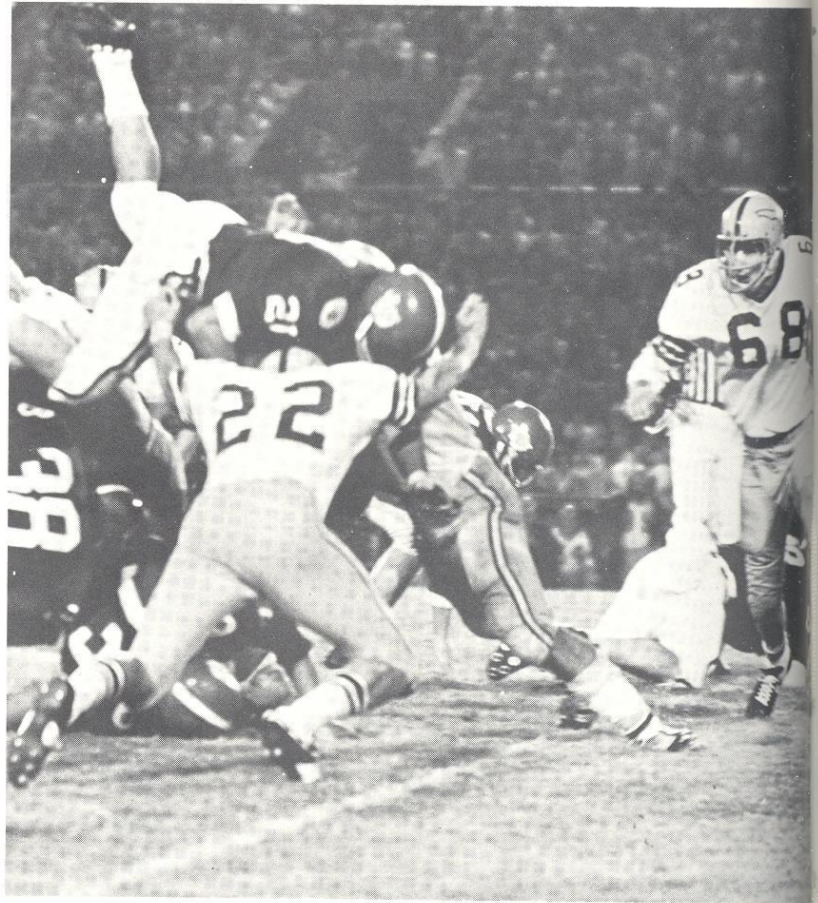
THE WILDCATS OF KENTUCKY PUT ON THE PRESSURE TO GET REVENGE FOR LAST YEARS DEFEAT

Wildcats Edge Seminoles 26-24

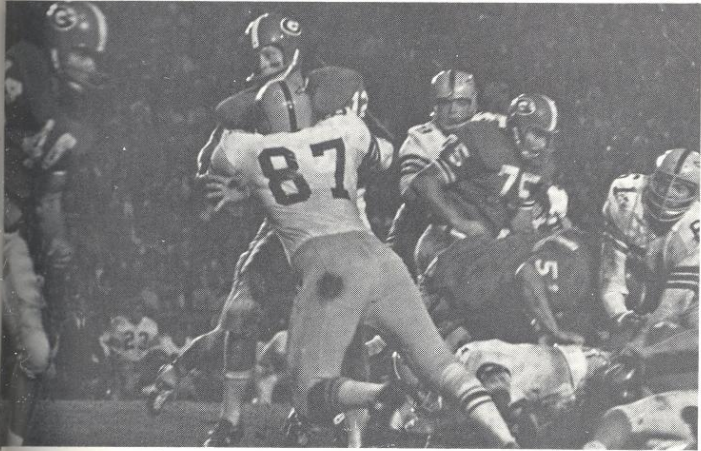
FSU's offense, thought to be dead in the first two games of the season, was resurrected at Lexington against the Wildcats of Kentucky. The effort was in vain, however, as a two-point spread put another black mark on the Seminole records for 1965.

The play that had the 37,000 fans standing on their seats came with one minute left in the first quarter. Following an 83-yard drive which grabbed the kickoff at the one-yard line and raced to the 13, where it appeared the play would end. Kentucky was in for a surprise, though, as Moremen flipped the ball to T. K. Wetherell, who ran the remaining 87 yards down the right sideline for the touchdown.

The lead changed hands three more times, and with five and one half minutes left in the game, the Tribe led 24-20. Kentucky, still bloodthirsty for revenge after last year's 48-6 defeat, was not finished. In 11 plays the 'Cats moved in for the score that gave them their 26-24 victory.



WITH A STRONG RALLY for the Seminoles to bring them back against the Wildcats, the Chiefs still fail to stop their TD.



GEORGIA'S OFFENSE is held by the Magnificent Seven, who allowed entrance into FSU territory only twice.

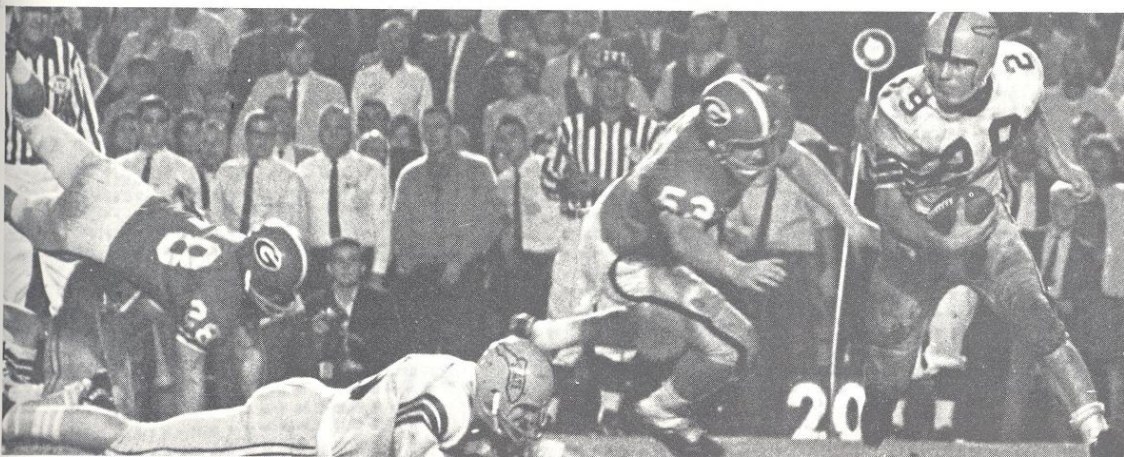
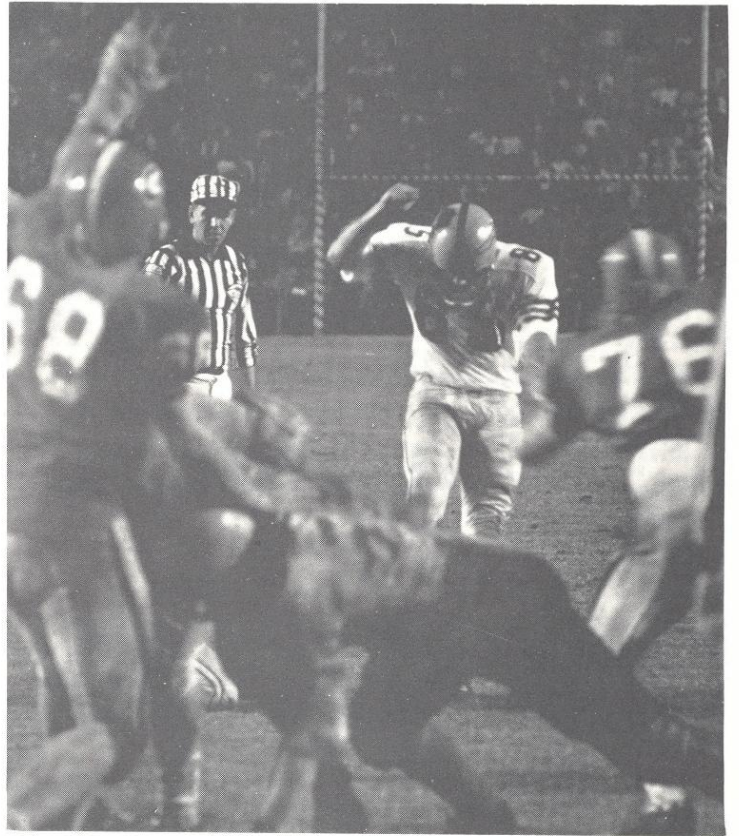
Florida State University's iconoclastic, though inconsistent, football team came through with a 10-3 upset over the University of Georgia October 16 in Tallahassee and toppled the Bulldogs from their number five national ranking. While it was Georgia's first loss of the season, it was the Seminole's greatest win.

Georgia's lone score came on a lucky break late in the second quarter. Lynn Hughes intercepted a Seminole pass on the FSU 20 yard-line and raced down to the 12. After three ineffective plays the Bulldogs got three points off the toe of Bobby Etter.

The Seminoles scored twice. The first tally came in the final quarter when FSU Fullback Bill Moreman sprinted 20 yards for a TD. Tribe placekicker Pete Roberts put the remaining points on the board by booting an extra point and a 31-yard field goal.

Seminoles Dump Unbeaten Bulldogs

PETE ROBERTS kicks a 31-yard field goal in the fourth quarter to give FSU a 10-3 win over fifth-ranked Georgia.



GEORGIA'S DAVIS IS BLOCKED AS FSU'S PETKO SWEEPS AROUND LEFT END FOR A BIG GAIN

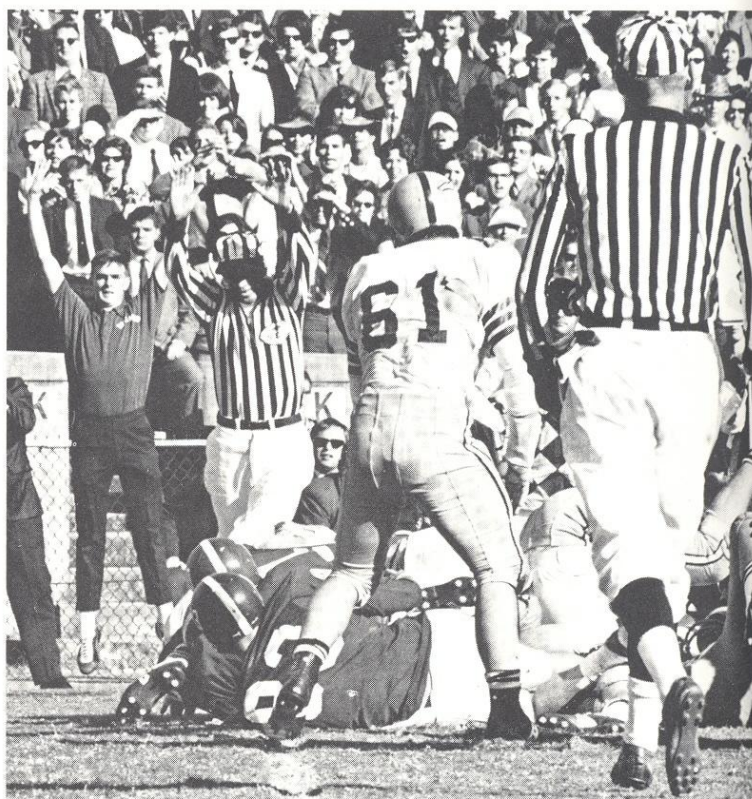
Crimson Tide Takes Seminoles

Coming out of the Georgia game with high hopes of salvaging a good season's record, the Seminoles invaded Tuscaloosa October 23 and met the Alabama Crimson Tide head on.

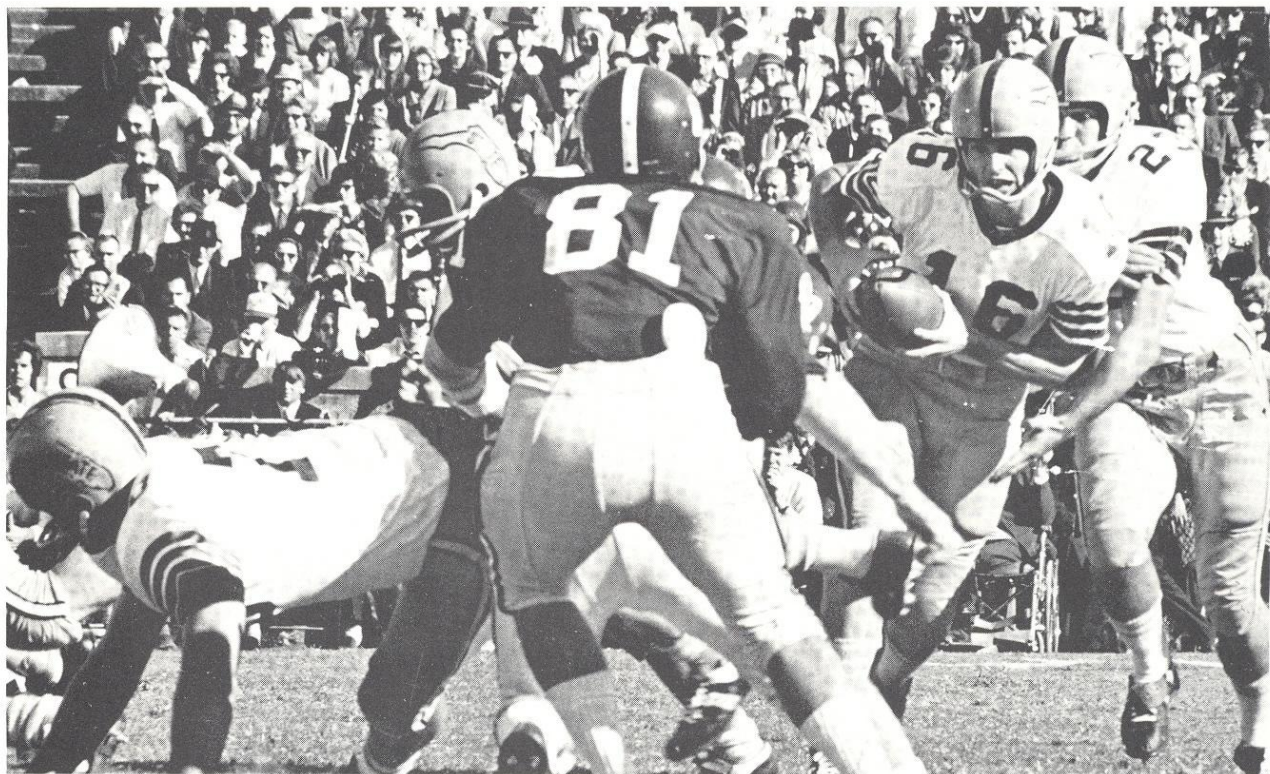
The job proved to be too much for the Tribe to handle as Alabama rolled to a 21-0 victory before a homecoming crowd of 43,000.

Following the game Head Coach Bill Peterson said, "It just wasn't our day," and described the Crimson Tide as the "best team we've played."

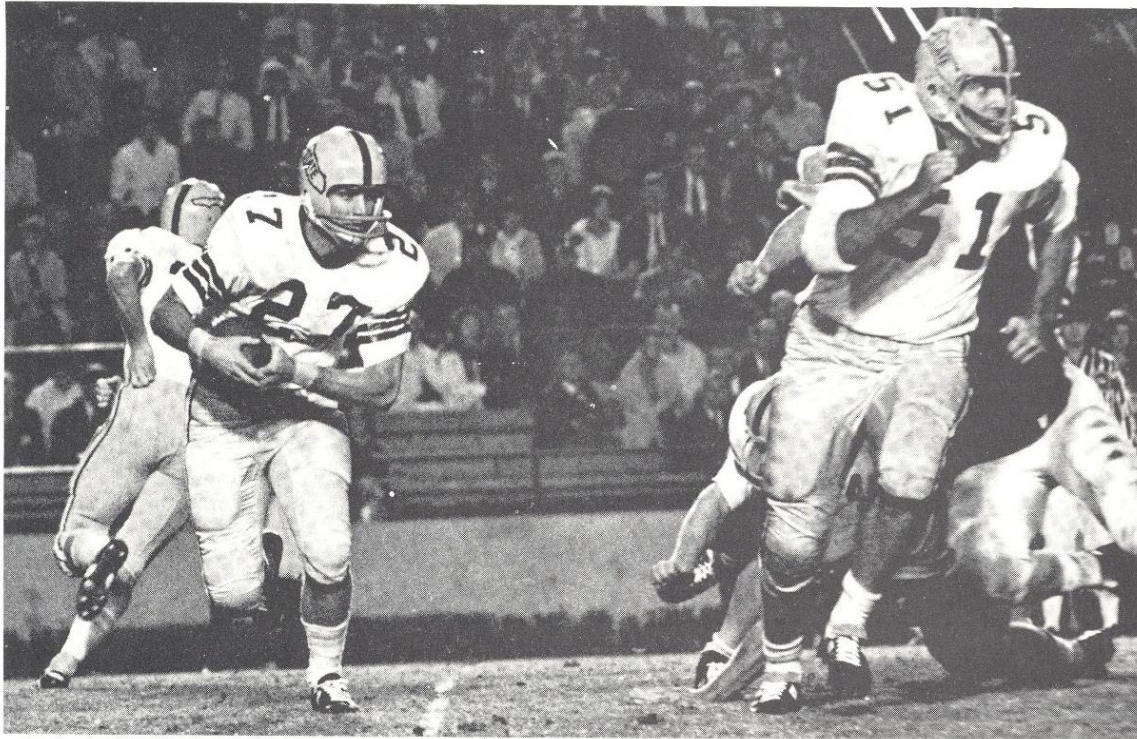
Peterson's analysis of Bear Bryant's charges was an accurate one. The Crimson Tide flooded Nebraska in the Orange Bowl New Year's night and was subsequently titled the Number One Team in the Nation for the second year in a row.



ALABAMA'S halfback crashes over one yard line to score TD against FSU by inches in first quarter of play at Tuscaloosa.

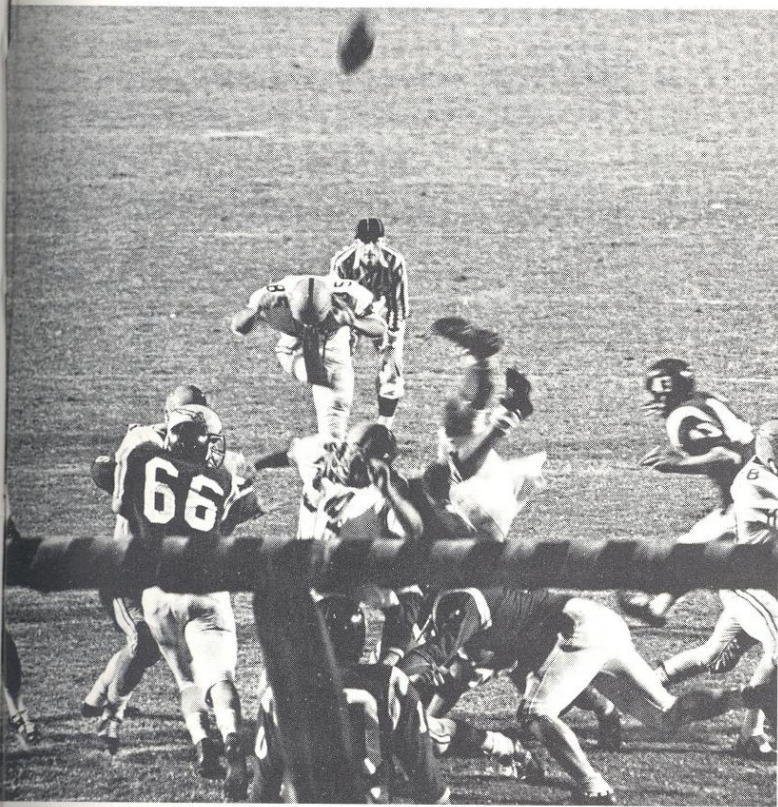


ED PRITCHETT (16) FAKES HAND OFF TO WAYNE GIARDINO (23) AND KEEPS THE BALL FOR SHORT GAIN



SPOONER (27) SWEEPS THE END AGAINST VPI WHILE AVEZZANO (51) LEADS INTERFERENCE

Tribe Knocks Off Gobblers



WITH THE PRESSURE ON, Seminole place kicker **Pete Roberts** (85) boots for the extra point that beat VPI by a score of 7-6.

Virginia Polytechnic Institute, long time jinx to Florida State and sole victor over the hot 1964 team, came to Tallahassee October 30 hoping to beat the Seminoles for the third year in a row. Their dreams were not realized, however, and the Tribe came through with a slim 7-6 win.

On the first series of downs the Seminoles had possession, the ball was fumbled three times in four plays. The Gobblers recovered the third one on their own 44-yard line.

It wasn't until the second half that either team was able to reach pay dirt. In the third quarter Halfback Bill Moreman scampered around left end for an FSU TD from the two yard line. Pete Roberts booted the extra point and FSU led 7-0.

VPI was unable to put a scoring drive together until the fourth quarter. Owing to a poor snap from center, the Gobblers were forced to go for a two point conversion which was unsuccessful.

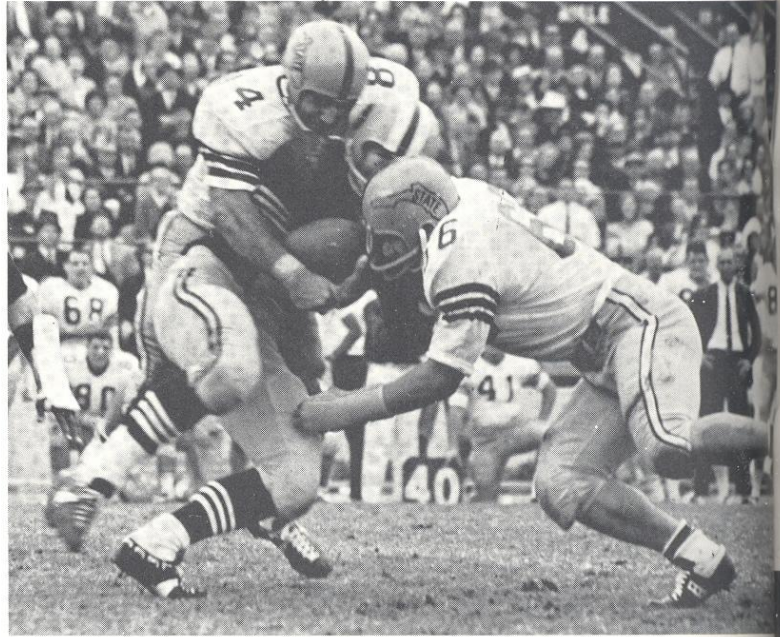
Seminoles Win At Homecoming

An explosive offense plus a strong defense gave the Seminoles their greatest win of the season November 6 when the Wake Forest Demon Deacons came to Tallahassee for Homecoming 1965.

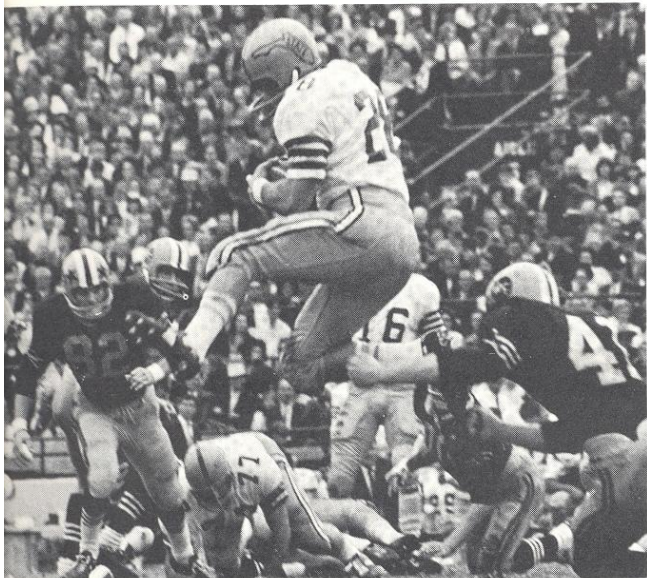
The returning grads got their money's worth as the Tribe staged a dazzling display of gridiron excellence. At game's end the scoreboard showed Florida State had chalked up an impressive 35-0 victory.

Quarterback Ed Pritchett stole the afternoon show by passing a 40-yard touchdown "bomb" to Tight End Max Wettstein, completing 10 of 18 passing attempts, and even scoring a TD on a run from the 12 yard line.

Seminole Defensive Back Bill Campbell provided some late-in-the-game excitement when he returned a Demon Punt 70 yards to put the final tally on the board--Florida State 35, Wake Forest 0.



CLOSING IN HARD ON a fast Deacon runner are FSU's George D'Alessandro and Charlie McNeil.



FLYING THROUGH the air to elude a defender is FSU's quick running back T.K. Wetherell.



ANOTHER OUTSTANDING run by halfback Wayne Giardino (23) is helped by blocking from Seminoles Larry Kissam and Johnny Stephens.



GEORGE D'ALESSANDRO LATCHES A RUNNER WHILE PAT CONWAY AND FRANK PENNIE COME TO HELP



MAKING SURE this Wolfpack ball carrier goes no further is Seminole defensive back Maury Bibent.

N.C. State Dumps Seminoles 3-0

Defensive showmanship coupled with offensive mediocrity gave the Seminoles their fourth loss of the season when they met the Wolfpack of North Carolina State University November 13 in Raleigh, North Carolina.

A Seminole fumble near midfield early in the third period gave NC State the game's only score. Capitalizing on Florida State's mistake the Wolfpack marched to the Seminole 25 yard line before calling in placekicker Howard Deters to put three points on the board.

In the final analysis the Tribe seemed unable to cope with the determined Wolfpack. By game's end Seminole Quarterback Ed Pritchett had been dumped for 67 yards in losses, completed 10 of 21 passes, and netted a total of -39 yards. The final score showed the Tribe blanked by a margin of 3-0.

FSU Plays Houston To 16-16 Tie

Missed field goals and disappointment characterized the Tribe's last home game of the season as the University of Houston Cougars battled the Seminoles to a 16-16 tie November 20.

Seminole Fullback Jim Mankins had the crowd on its feet early in the first period, when he raced 27 yards to the Houston one-yard line in spite of being hit by Cougar linemen and secondary all the way. The tremendous Seminole effort was nullified, however, as the kickoff after the touchdown was returned 92 yards for a TD by Houston speedster Warren McVea.

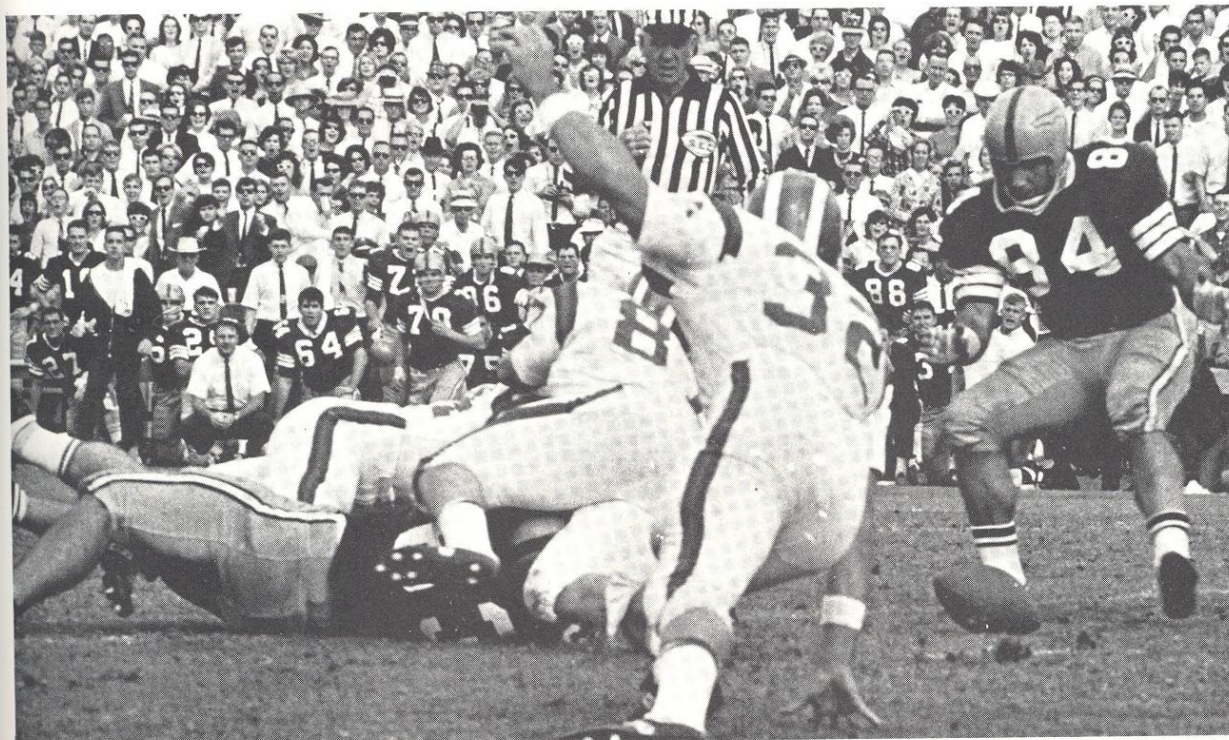
In the waning seconds of the game FSU missed on two field goal attempts and Houston missed on one, leaving the final score a disappointing 16-16.



SLIPPING PAST a Houston defender is FSU's **Bill Moreman** while **T.K. Wetherell (28)** blocks another tackle attempt.



QUARTERBACK ED PRITCHETT ROLLS OUT TRYING TO FIND A RECEIVER IN THE GAME'S LAST FEW MINUTES



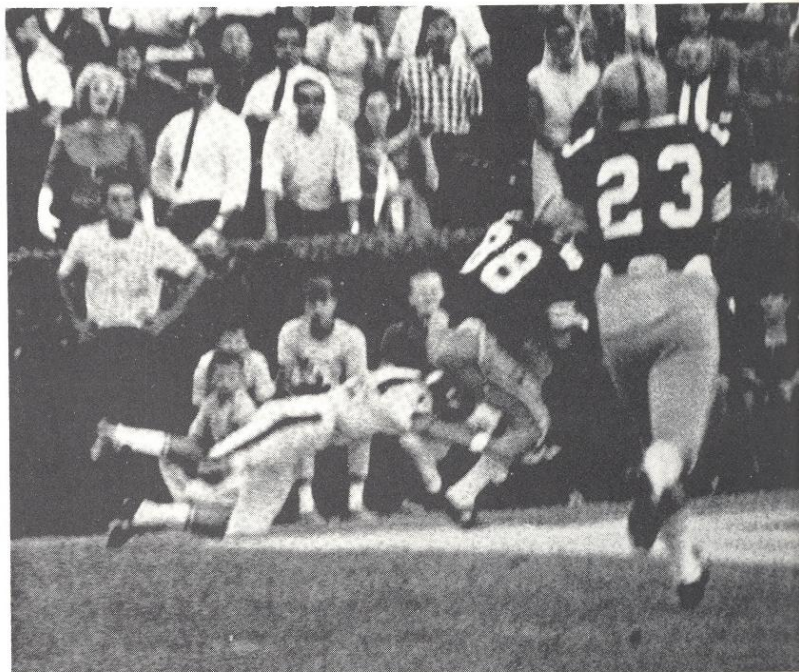
FSU'S GEORGE D'ALESSANDRO PREPARES TO POUNCE ON A LOOSE FOOTBALL THE GATORS HAD FUMBLER

Gators Top Seminoles 30-17

Quarterback Steve Spurrier and End Charles Casey, the University of Florida's top stars, got together and came up with a TD in the last two minutes of the November 27 game that ended all hopes of FSU's finishing the season with a winning record.

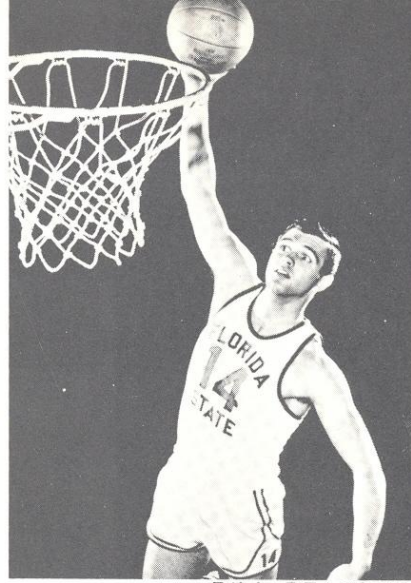
In the last quarter of the game the Seminoles moved ahead of the arch-rival Gators 17-16, and FSU fans went wild. Their joy was short lived as the Spurrier-to-Casey combination went to work. In just 58 seconds the Gators were again on top with a score of 23-17.

Not content with this margin, Florida defender Alan Trammel picked off a desperation pass from Seminole Quarterback Ed Pritchett and raced 46 yards into the end zone. The final gun sounded with the scoreboard showing Florida 30 and FSU 17.



RACING INTO the end zone to give FSU a happy but short lived lead over the Gators is Seminole Jerry Jones (88).

J. K. (BUD) KENNEDY
Head Basketball Coach



BILL PEACOCK
Forward



GARY SCHULL
Center

Stars Spark Winning Season



Front Row: Coach Kennedy, Brian Murphy, Ken Leakey, John Bloodworth, Bill Peacock, Charles Fairchild, Darrell Stewart, Jim Lyttle, Russ Forkey, Assistant Coach Hugh Durham. Row two: Manager Girard, Ron Malmen, Don Biggs, Jim Wallace, Ken Doyle, Dick Danford, Bill Phillips, Gary Schull, Bill Glenn, Coach Rufus Ashworth.

A pair of seasoned seniors and a couple of hot sophomore upstarts provided the necessary spark to shoot the FSU basketball team to its fifth winning season in six years.

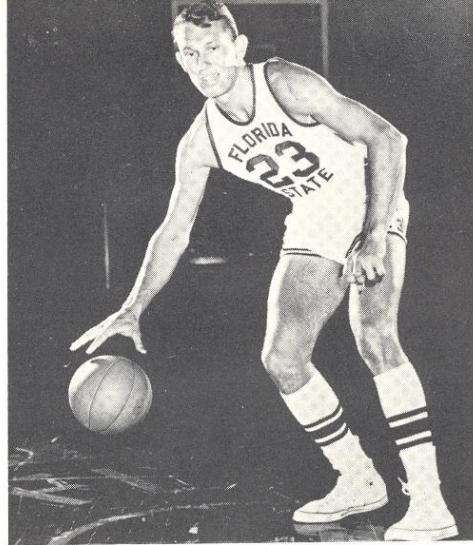
Seniors Gary Schull and Bill Peacock led the Seminoles to 15 victories. It was the first season in FSU basketball history that more games were played at home than on the road.

Schull, standing a tall 6'7", averaged an outstanding 19 points per game. He became the Tribe's fifth all-time high scorer with a total of 1,122 points scored at FSU. He was the sixth Seminole to break the 1,000 point career mark.

Peacock, who came into his own as a senior, kept Florida State in the ball game with his long one-handed baskets from 20 feet or more.

Sophomore Guards Jim Lyttle and Darrel Stewart provided plenty of excitement through their playful, though proficient antics on the court. Lyttle was the team's second leading scorer with 320 points for the season. Stewart's ball hawking defensive maneuvers kept the opponents off balance all season.

The Seminoles started the season fairly well, including a 121-57 win over Tampa, but the road trips were disastrous. They won only two of the 11 games played on foreign campuses.

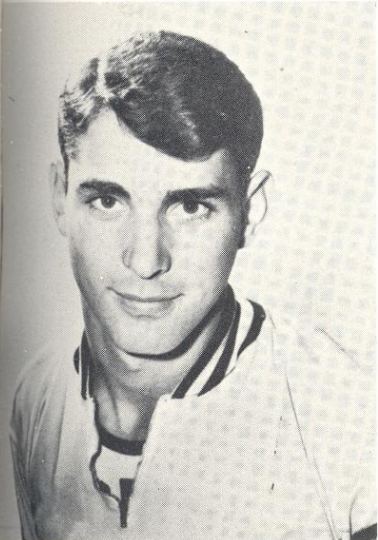


RON MALMEN
Guard

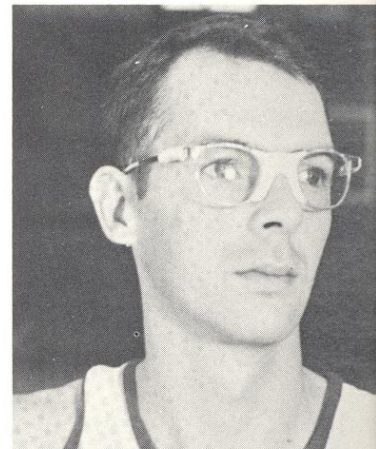


KEN LEAHEY
Guard

DARRELL STEWART
Guard



BILL PHILLIPS
Center

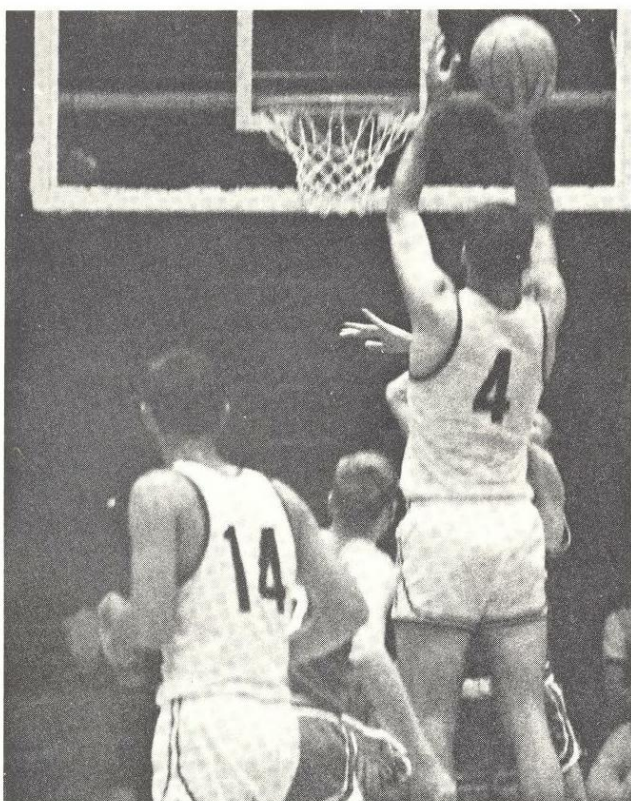


CHARLES FAIRCHILD
Forward

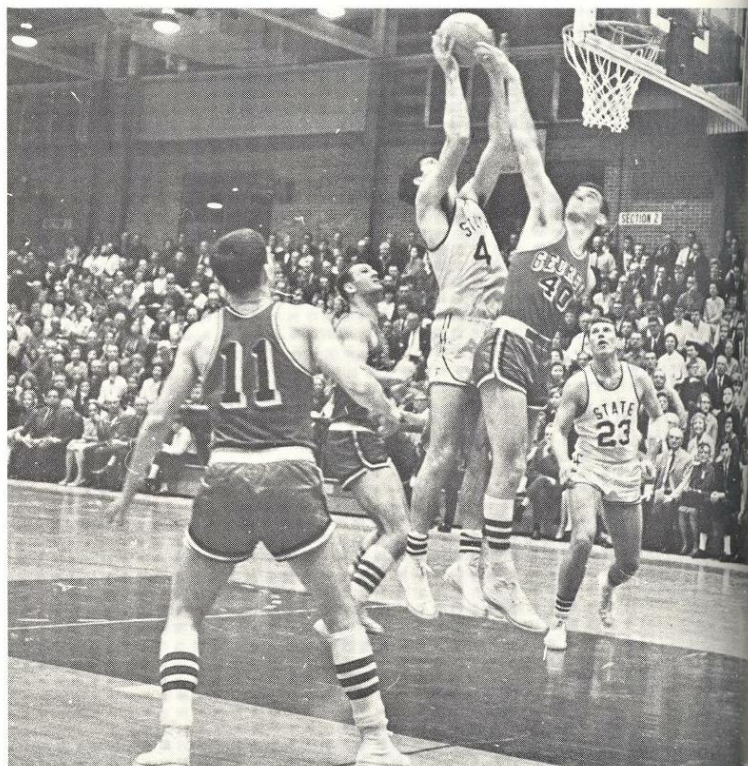
JIM LYTTLE
Guard



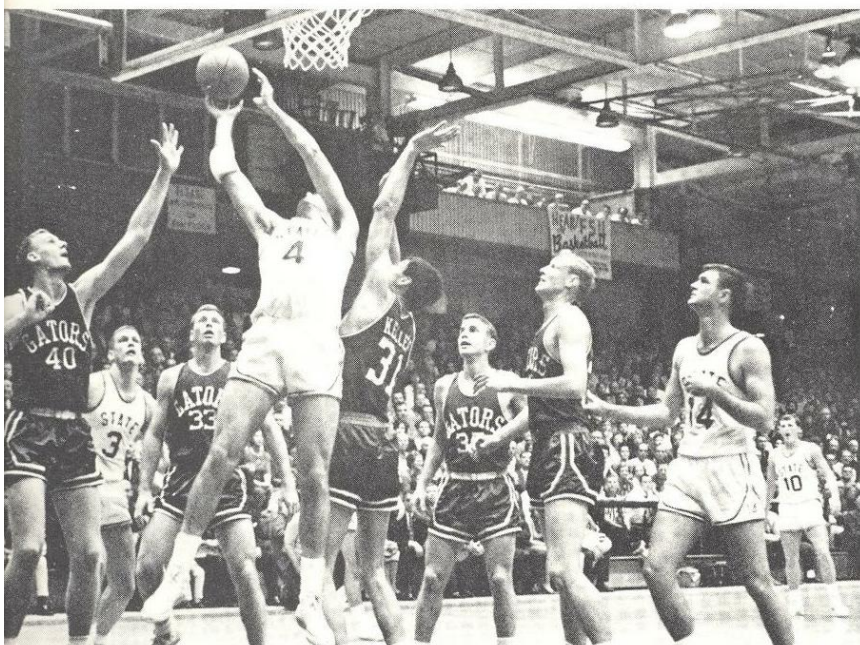
Schull Tops 1,000 Points



UP FOR HIS 1000TH POINT is Gary Schull. Schull is the sixth man in FSU history to score 1000 points.

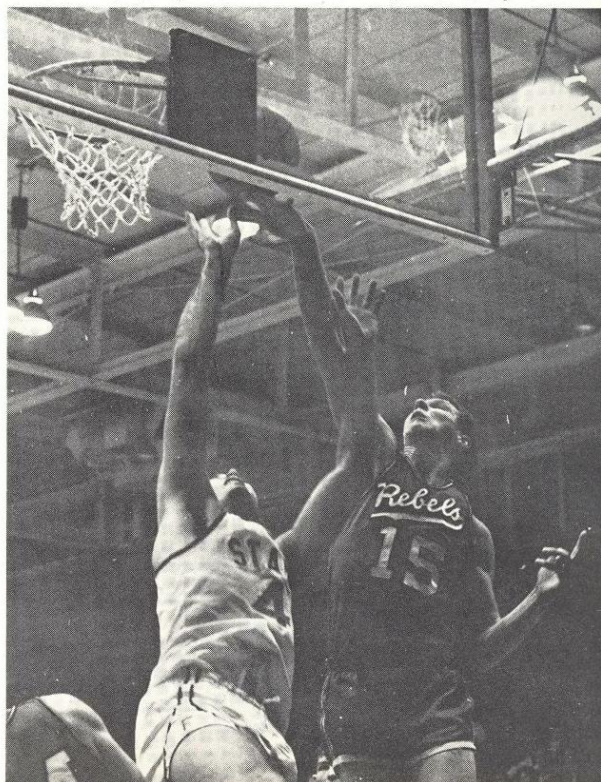


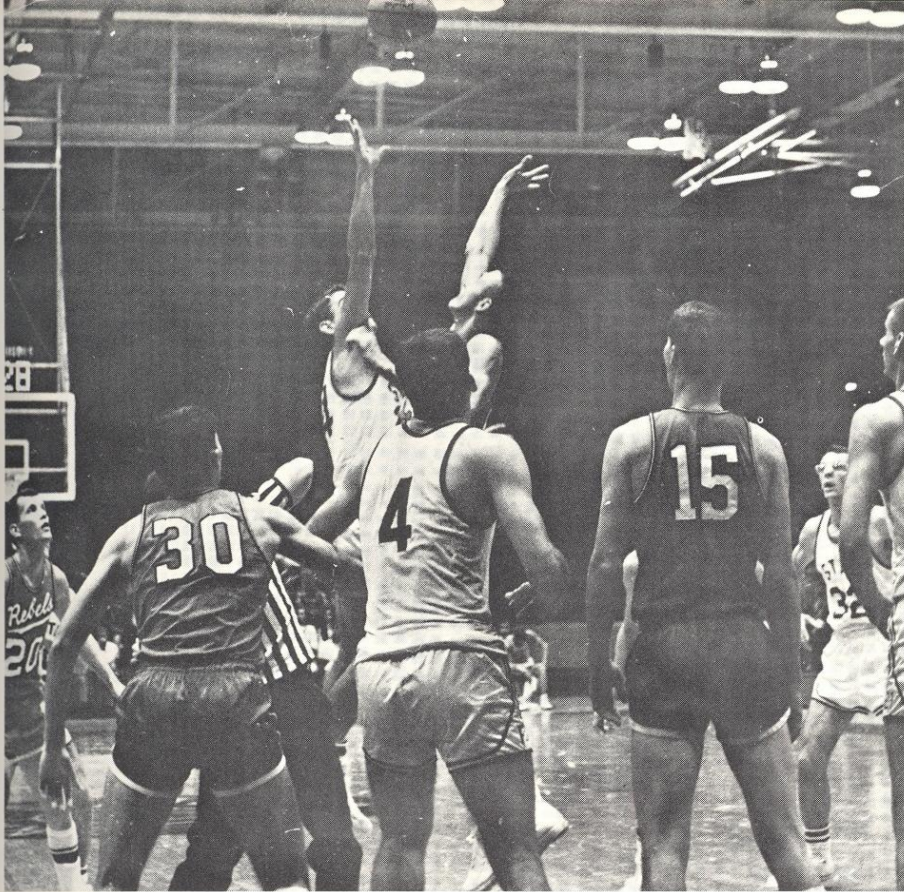
SCHULL is up for another of his 1,122 points scored at FSU. He is the fifth highest scorer in FSU's history.



FIGHTING FOR THE TWO POINTS IS SEMINOLE ACE GARY SCHULL

BLOCKING AN OPPONENTS FIELD GOAL is FSU's top player of the 65-66 year, Gary Schull.

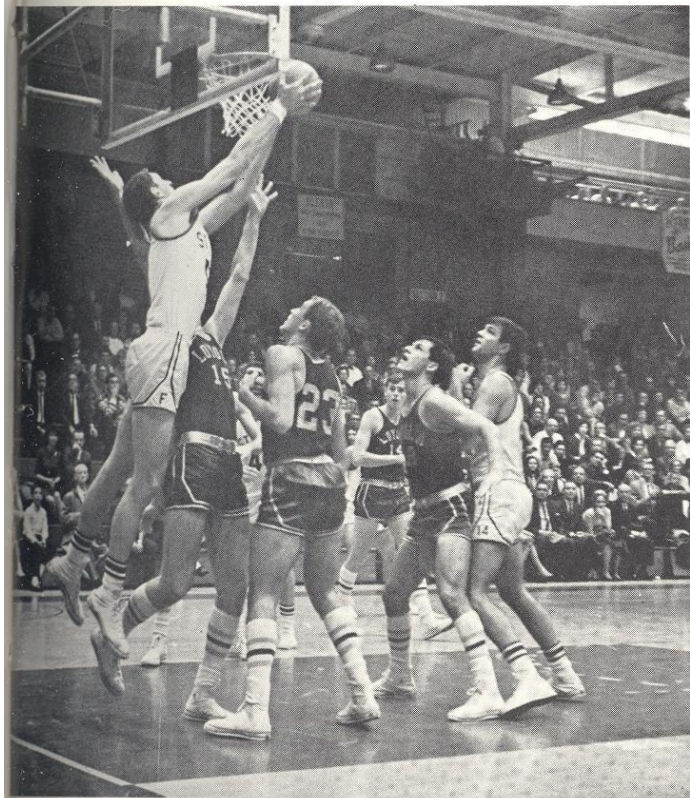




THE TIP-OFF FOR A SEASON THAT SAW MORE GAMES AT HOME THAN AWAY



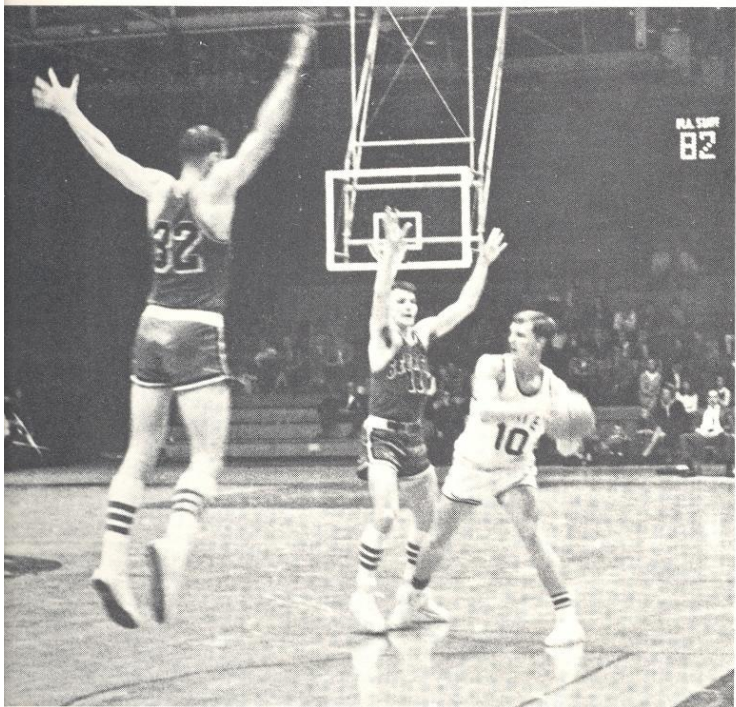
Cagers Play Great Season



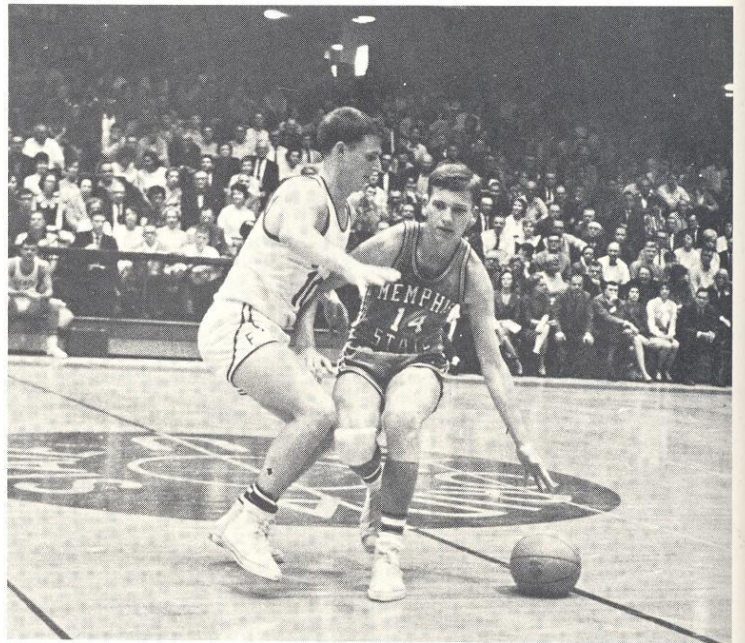
WORKING HARD FOR EVERY POINT against Loyola was worth it as the Tribe took another win at home.

IT WAS A FOUL ON SEMINOLE CENTER Bill Phillips who let sportsman enthusiasm get the best of him during the game.

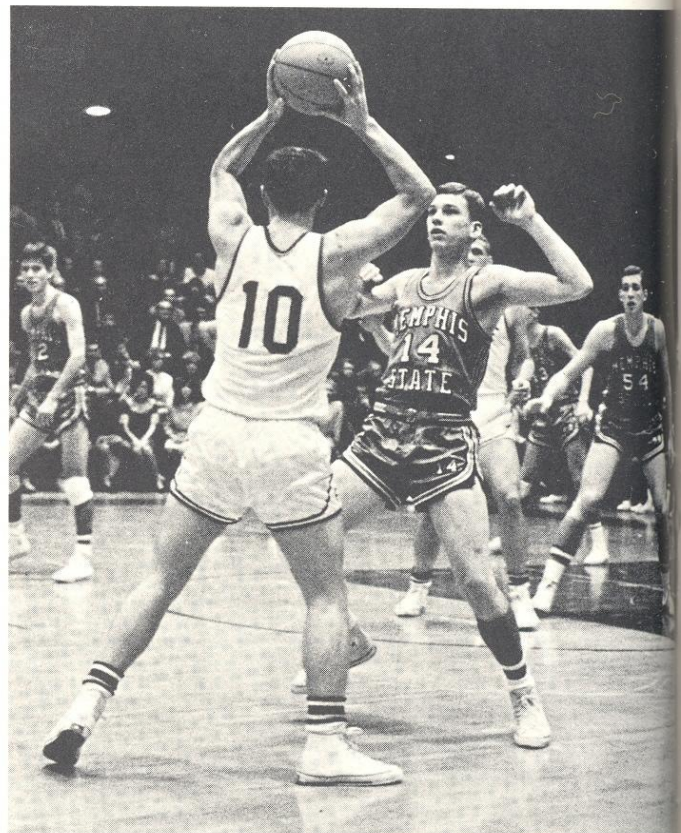




SOPHOMORE STANDOUT Jim Lyttle makes another of his fine offensive plays during the winning 65-66 season.



TACKLING A PANAMANIAN PROBLEM IS GUARD KEN LEAKEY

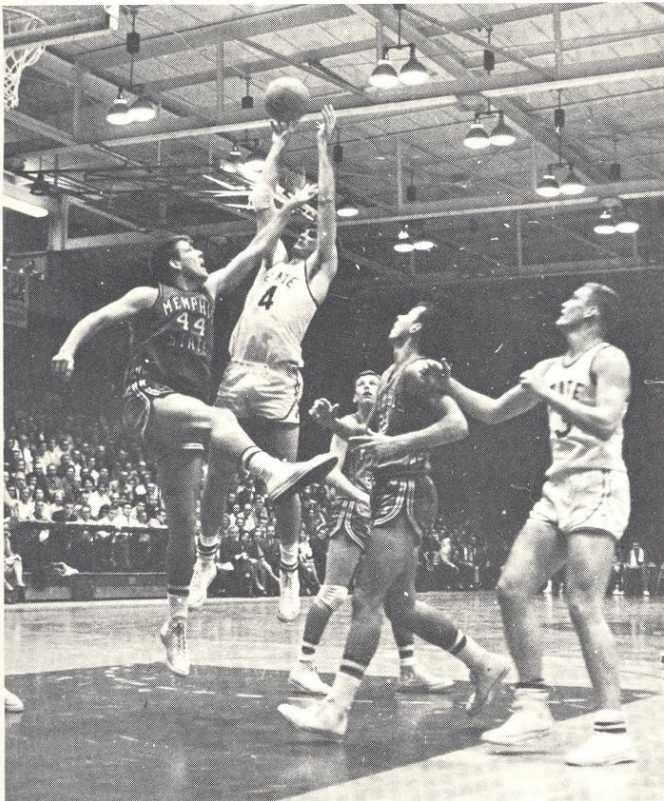


THROWING A QUICK PASS over the head of a Memphis State defender is Seminole Guard Jim Lyttle.

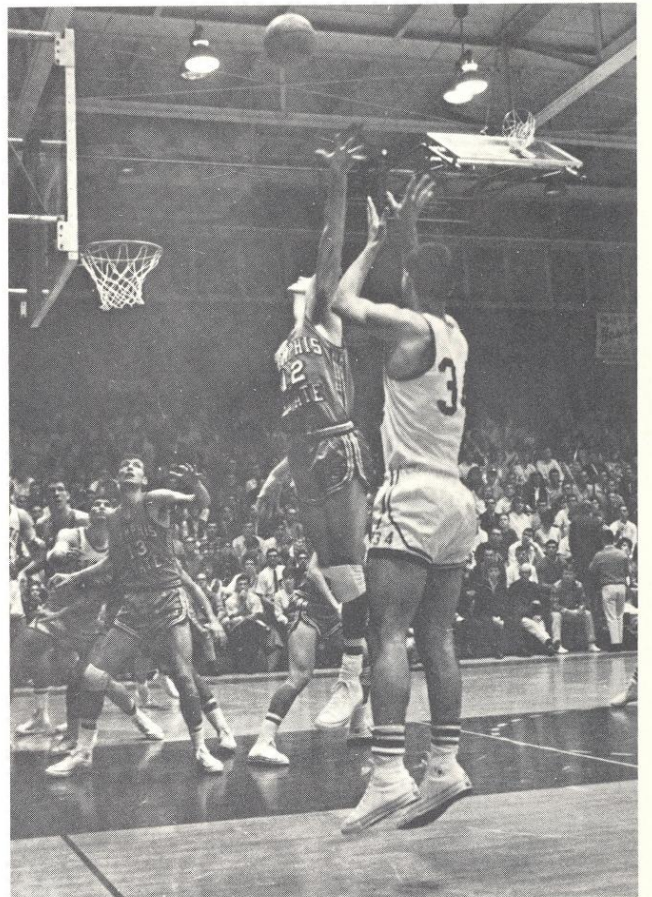


GIVING DIRECTIONS TO PLAYERS ON THE FLOOR IS ASSISTANT COACH AND CHIEF PROMPTER HUGH DURHAM

Seminoles Win 15 of 26



GARY SCHULL makes another difficult shot and leads the way for a slim Seminole win over Memphis State 67-63.



SOPHOMORE Darrel Stewart makes a 10 foot field goal from side; he had an outstanding season this year.

Sluggers Ranked Sixth In Nation



FSU'S SCRAPPY SECOND BASEMAN DICK FERNANDEZ WAS THE BASEBALL TEAM LEADER ON THE FIELD

This was to be Florida State's year in baseball. The Seminoles returned virtually the same team that had gone to the College World Series the year before, and the only two changes in the starting lineup promised to make the team even stronger than ever. Coach Fred Hatfield's men were the pre-season pick as the team to beat, and throughout the regular season they lived up to every expectation by winning 36 and losing only 11 games.

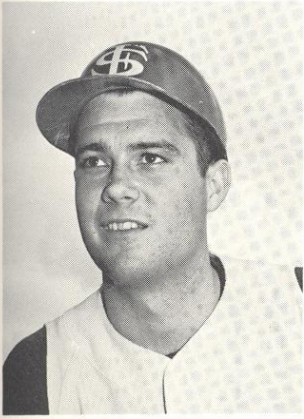
All season long the Seminoles were only a few points from being in the number one spot in the national press poll.

Florida State showed a lot of ability as it went into the District III tournament at Gastonia, N.C. with all but one regular player batting over .300 and a team batting average of .305. It turned out that the Tribe did not get a crack at the College World Series as it was downed in the last game of the double elimination tournament.

In the final baseball poll Florida State ranked sixth in the nation and had a record of 39-13.



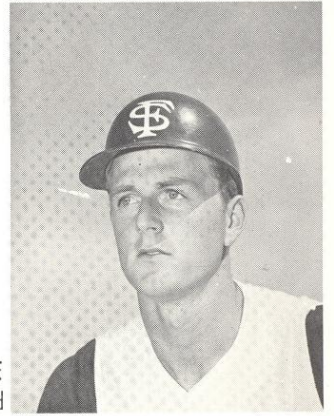
FRED HATFIELD
Baseball Coach



TOM THOMAS
Left Field



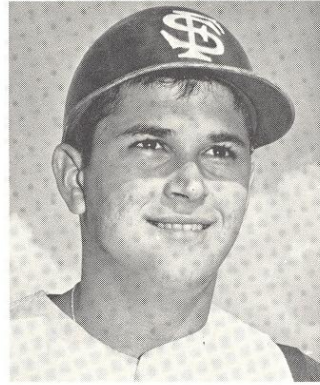
MIKE MARTIN
Centerfield



JIM LYTTLE
Right Field



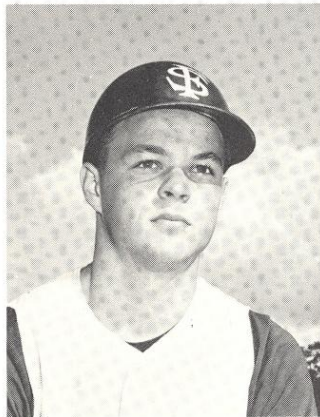
GARY SPRAGUE
Shortstop



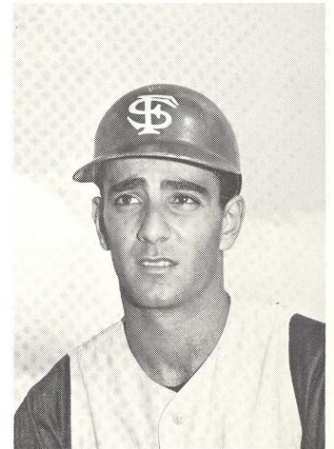
DICK FERNANDEZ
Second Base



MAURY HOPKINS
Third Base



MARY STRINGFELLOW
Pitcher

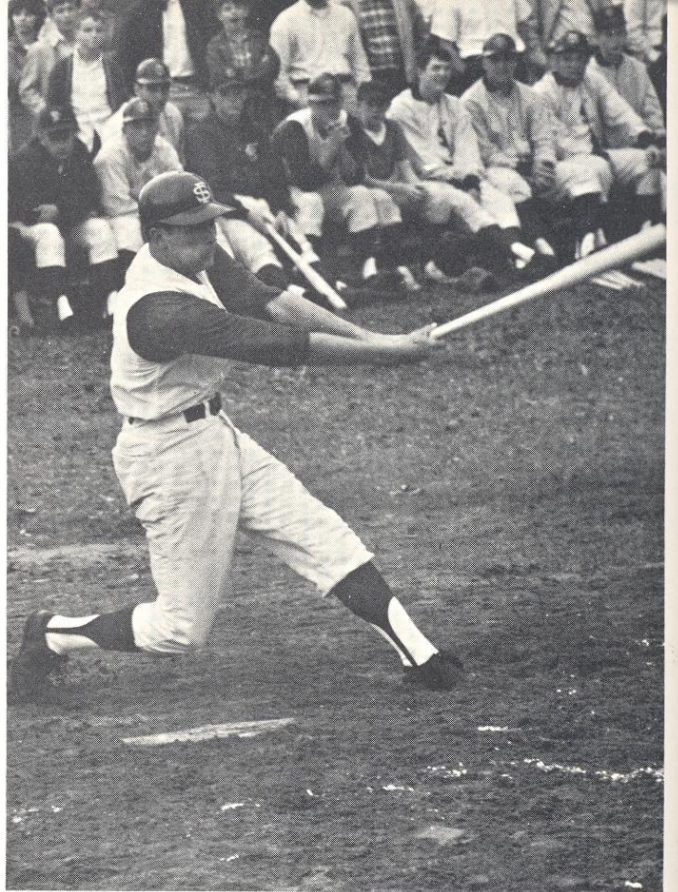


PETE SARRON
First Base



RANDY BROWN
Catcher

FIRST TEAM ALL-AMERICAN outfielder Jim Lyttle had only one season with FSU before signing a pro contract.



FINISHING the season with 50 runs batted in was scrappy and dependable Seminole secondbaseman Dick Fernandez.



GETTING OFF to a slow start early in the season and catching on later, Gary Sprague had a .379 batting average overall.



SECOND IN the home run department was left-fielder Tom Thomas who had a total of seven.



HARDHITTING LEFTFIELDER TOM THOMAS GETS A GOOD HIT IN AGAINST THE GATORS

Power at the plate was the Florida State by-word. The Seminoles as a team finished the year with a .294 batting average. Five of the eight regular players topped the .300 mark. In addition they rapped out 51 home runs, 29 triples, and 79 doubles. The Tribe averaged eight runs a ball game, and out hit their opponents 541 to 376.

A MAN WITH a mean swing is Seminole centerfielder Mike Martin who finished with a .372 batting average.



A SWING AND A MISS FOR SEMINOLE PETE SARRON



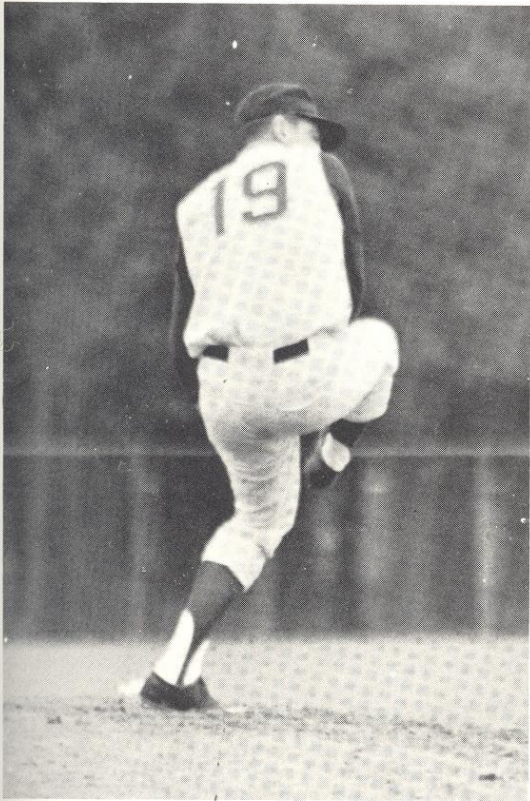
SCOOPING UP a long throw for another out is Florida State first baseman **Pete Sarron**.



SEMINOLE SHORTSTOP **GARY SPRAGUE** HAS PLENTY OF TIME TO TAG THIS WOULD BE BASE STEALER



HARD PITCHING **ED HOWELL** LEANS INTO ANOTHER FASTBALL ENROUTE TO ONE OF HIS SEVEN WINS



LEADING THE TRIBE with 11 wins is lefty **Wayne Vincent** who has a variety of pitches.



UNCOILING ANOTHER delivery for the Tribe is junior southpaw **Marty Brooks** who appeared in 13 games and had a 3-0 record in the season.



FSU FIRST BASEMAN **PETE SARRON** SLIDES INTO SECOND UNDER A LATE TAG BY A FLORIDA SHORTSTOP



HOOKSLIDING past the Clemson secondbaseman is FSU ace Shortstop and hot player **Gary Sprague**.



LOOKING LIKE a Russian dancer rather than a baseball player, Ed Yarnell slides into second attempting to stop a double play.

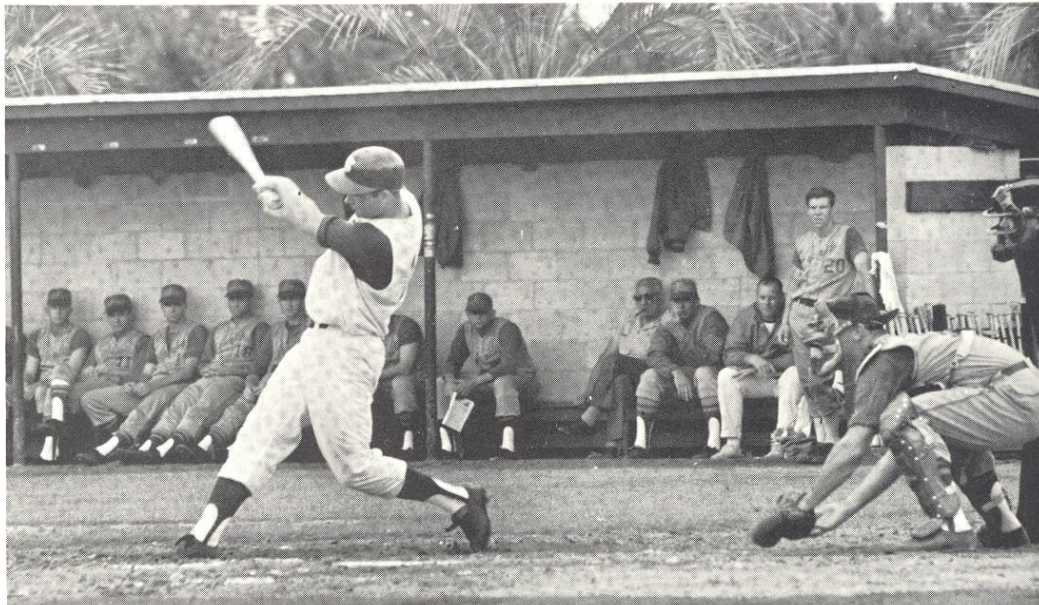


PREPARING TO send this pitch into distant parts of the field and boost the FSU batting average is catcher **Randy Brown**.



Seminole Sluggers Cap Season

FSU	9	Kentucky	4	FSU	10	Miami	2
FSU	19	Kentucky	3	FSU	15	Furman	2
FSU	7	Kentucky	0	FSU	2	LSU	3
FSU	20	Kentucky	1	FSU	0	LSU	1
FSU	7	Tennessee	8	FSU	3	Loyola	0
FSU	8	Tennessee	6	FSU	5	Loyola	0
FSU	24	Mississippi State	2	FSU	3	Spring Hill	2
FSU	6	Auburn	3	FSU	14	Spring Hill	2
FSU	9	Ole Miss	8	FSU	9	Georgia Southern	4
FSU	9	Ole Miss	4	FSU	9	Georgia Southern	1
FSU	11	Ole Miss	10	FSU	16	Florida	4
FSU	5	Ole Miss	3	FSU	0	Florida	4
FSU	5	Michigan State	0	FSU	10	Georgia Southern	0
FSU	6	Michigan State	7	FSU	10	Georgia Southern	9
FSU	14	Wake Forest	12	FSU	15	Jacksonville	5
FSU	5	Michigan State	4	FSU	3	Jacksonville	1
FSU	18	Rutgers	10	FSU	1	Florida	0
FSU	3	Wake Forest	4	FSU	4	Florida	0
FSU	2	Auburn	7	FSU	11	Clemson	5
FSU	2	Auburn	6	FSU	4	Clemson	3
FSU	18	Spring Hill	3	FSU	3	Clemson	4
FSU	13	Spring Hill	6	FSU	3	Mississippi State	4
FSU	15	North Carolina	7	FSU	6	East Carolina	3
FSU	4	North Carolina	6	FSU	7	Mississippi State	0
FSU	1	Miami	6	FSU	6	North Carolina	5
FSU	4	North Carolina	1	FSU	4	North Carolina	6



HARDHITTING SEMINOLE CATCHER **RANDY BROWN** WAS ALSO THE TEAM'S STOLEN BASE CHAMP WITH 24 STEALS



HUSTLING BACK to first base to thwart a pick off play is Seminole second baseman **Dick Fernandez**.



HELPING THE UMPIRE make the call on a Seminole base runner sliding in home is third baseman **Gary Lawrence**.



STRAINING TO BEAT OUT THE INFIELD HIT IS SEMINOLE JIM LYTTLE

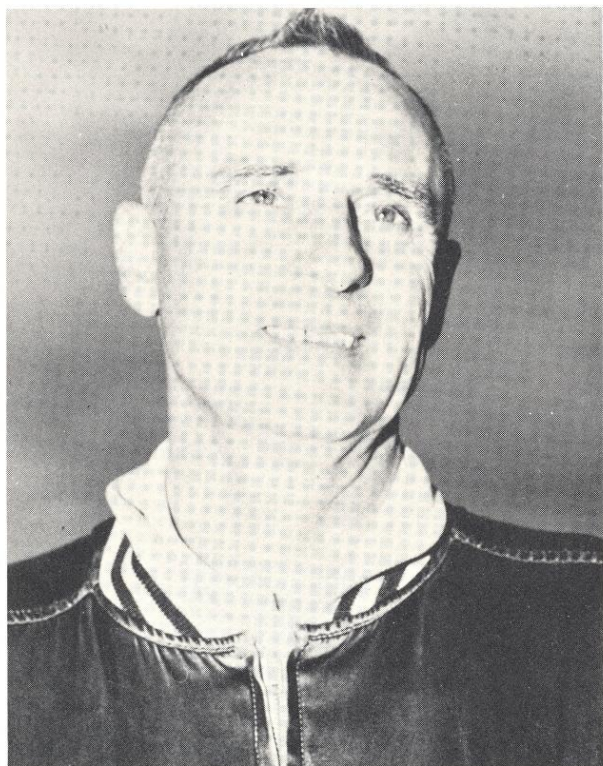


RANDY BROWN PULLS THE BALL DOWN THE FOUL LINE



TYING INTO A PITCH and sending the ball over the left field fence is Florida State's centerfielder Mike Martin.

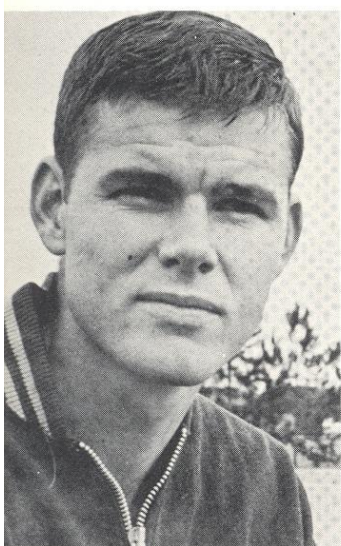
Trackmen Capture Honors



MIKE LONG
Track coach

Track coach Mike Long's team made a stronger showing in the season than most people realized or expected. The dual meet was not impressive, but several of the individual performers made impressive showings in the larger meets.

The track team got off to an early start when the cross country runners took to the trails in the fall. Later the field men competed in winter indoor meets and then moved outdoors with spring.



JOHN BROGLE
Middle distance



ROSS WINTER
Middle distance



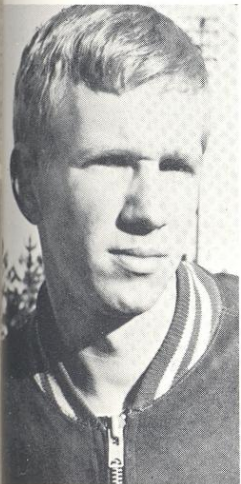
KEN WHITE
Sprinter



KEN WHITE LEADS THE WAY IN THE FINISH OF THE 100 YARD DASH



KICKING HIGH to clear a hurdle and win a close race is FSU sprinter Charley Vickers.



BILL NELSON
Distance

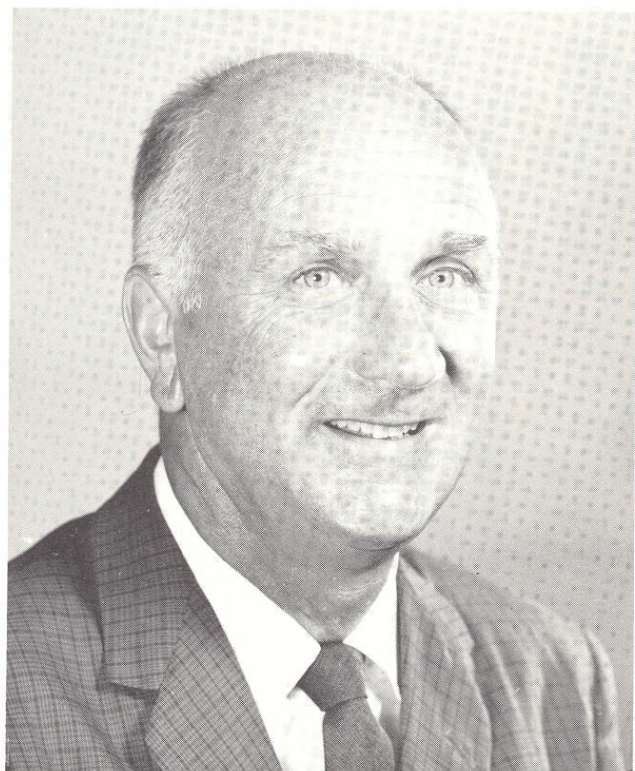


BILL CAMPBELL
Sprints



TOM GRAHAM RUNS BOTH CROSS COUNTRY AND DISTANCE

Swimmers Win Seven of Eight



BIM STULTS
Head Swimming Coach

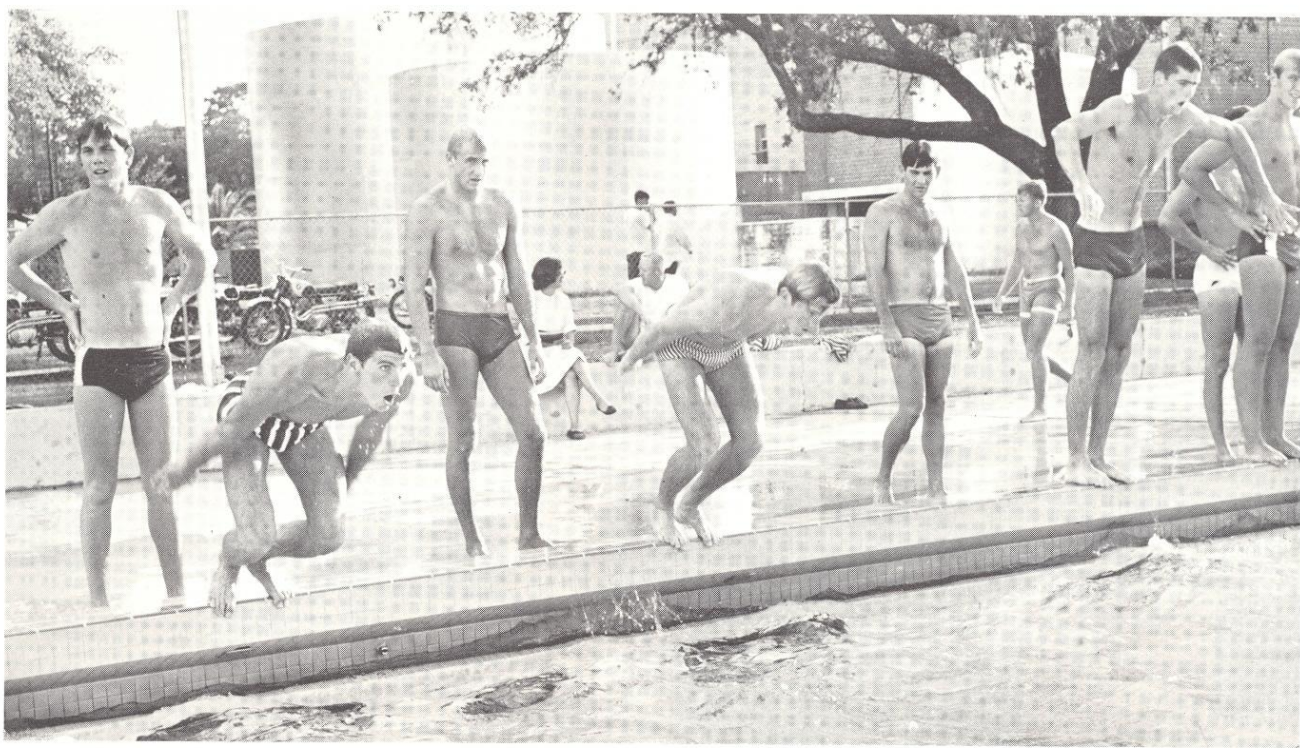
Head Coach Bim Stults brought the Florida State swimming team through another outstanding season. The Seminole tankers rolled up a very impressive seven wins against only one loss for the season.

Included in the Florida State victories were two wins over the University of Florida Gators. Both wins were accomplished with identical 70-25 scores.

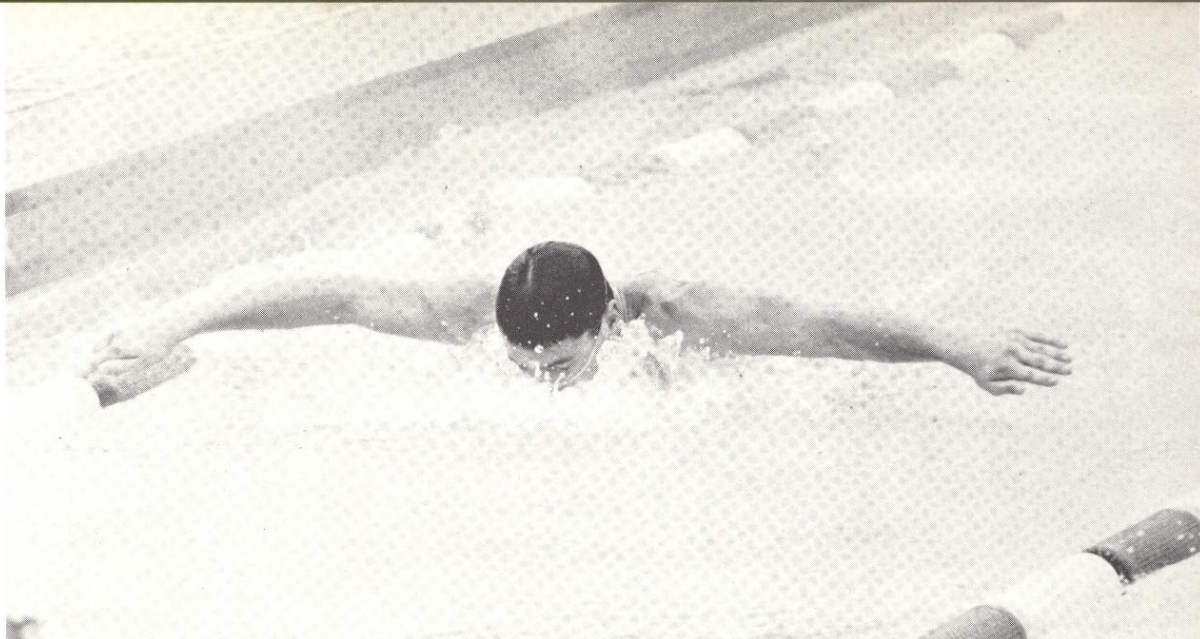
The die-hard Seminoles suffered their only loss of the season to the Wolfpack of North Carolina State. Stults' crew came out on the short end of a 59-36 score. It was probably the most difficult meet of the season due to a blizzard that left eight inches of snow on the ground in Raleigh, N.C.

However most of the other scores were not quite so disappointing for the Seminoles. The Tribe beat the Georgia Tech Yellow Jackets 50-33 just prior to the encounter with North Carolina State. Bouncing back after the loss, the Seminoles beat East Carolina 59-36 and went on for four more victories.

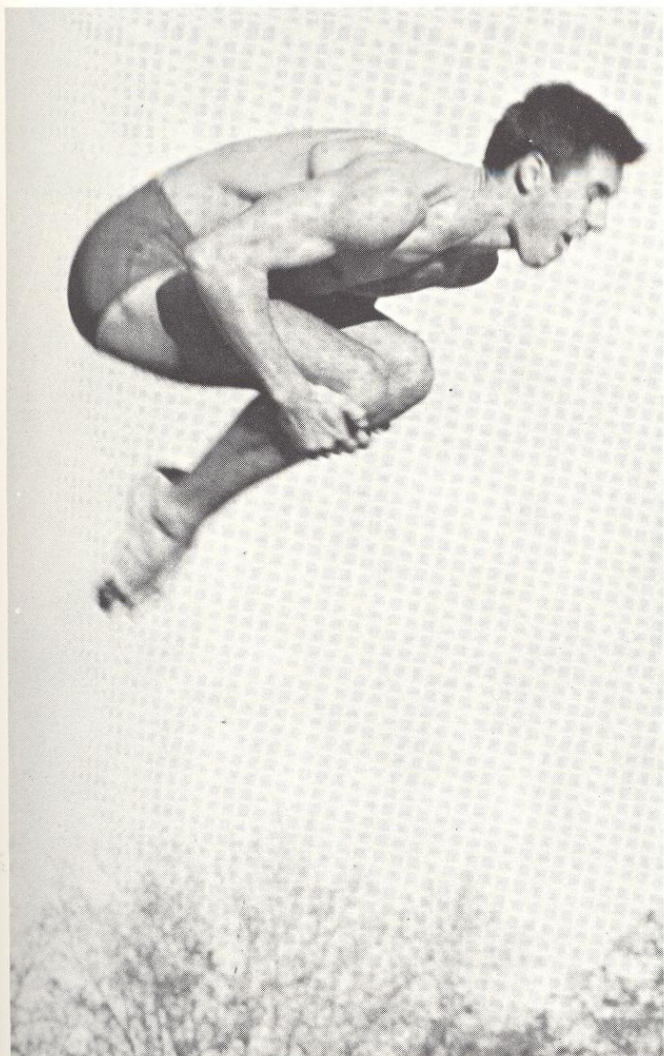
Many of the scores belie the Tribe power as Stults swam his younger and less experienced swimmers against opponents that seemed to be weaker.



PRACTICE, PRACTICE, AND MORE PRACTICE CHARACTERIZES THE EFFORTS OF THE FSU SWIMMING TEAM

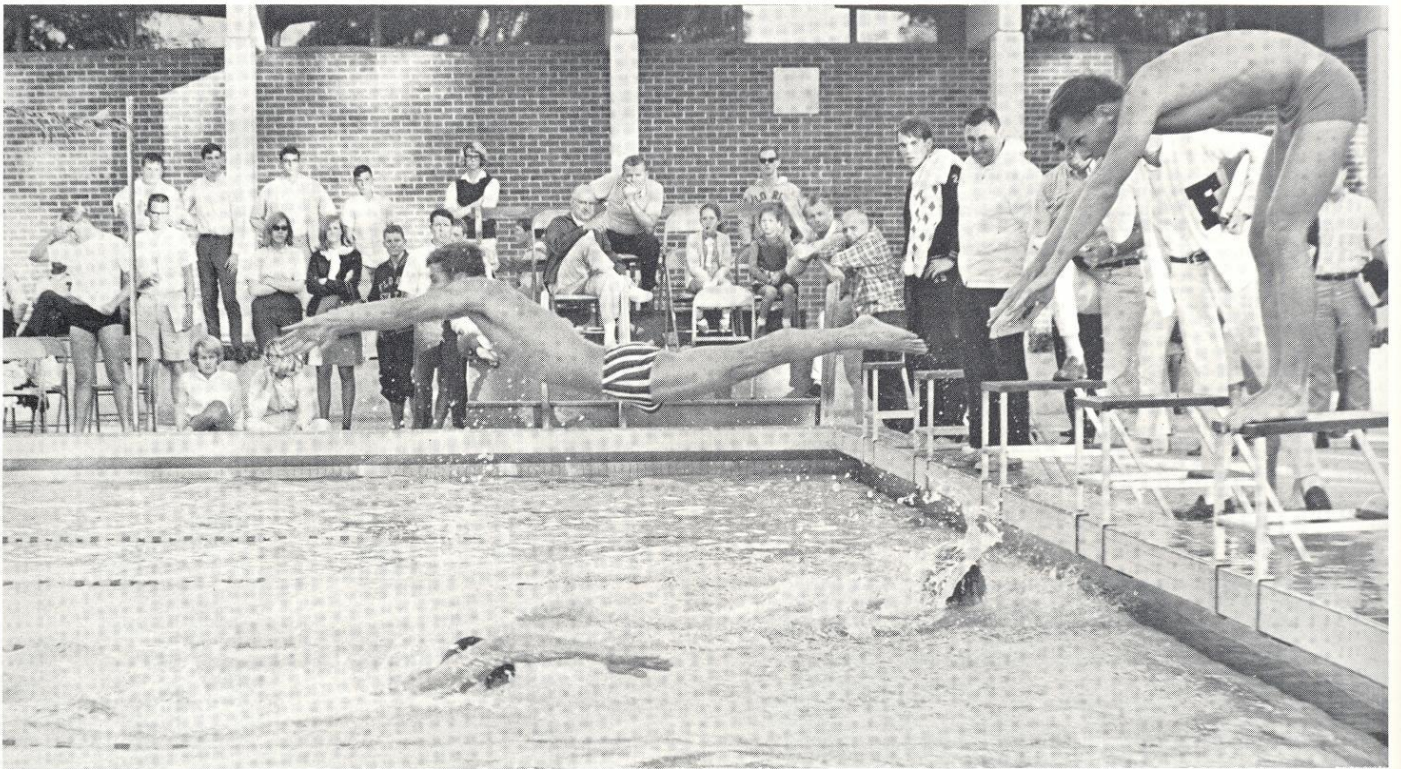


MASTERING THE BUTTERFLY STROKE HAS ENABLED FSU SWIMMERS TO WIN SEVERAL CLOSE MATCHES



FLORIDA STATE'S TALENTED SPRING board divers added many valuable points to boost team scores.

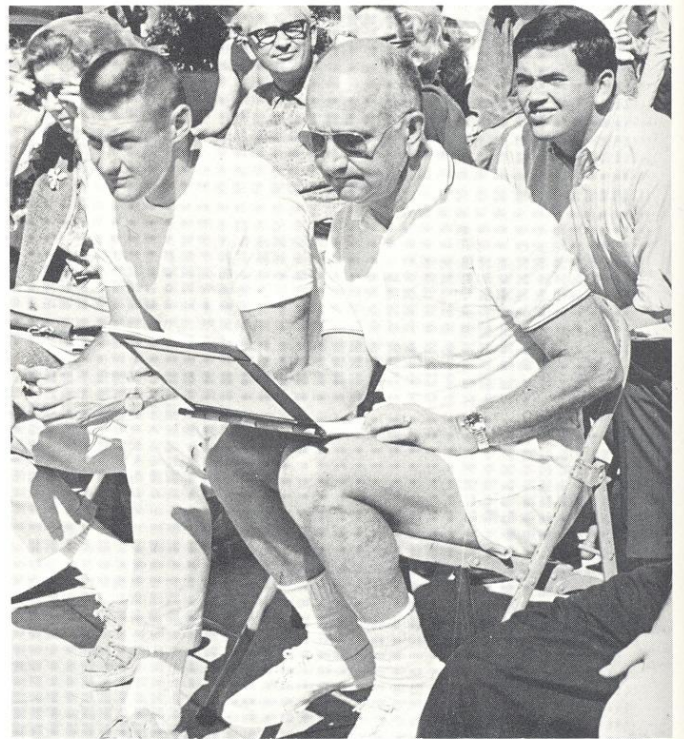
70	FLORIDA	25
50	GEORGIA TECH	33
36	N.C. STATE	59
59	EAST CAROLINA	36
67	NORTH CAROLINA	28
49	TULANE	45
61	ALABAMA	34
70	FLORIDA	25



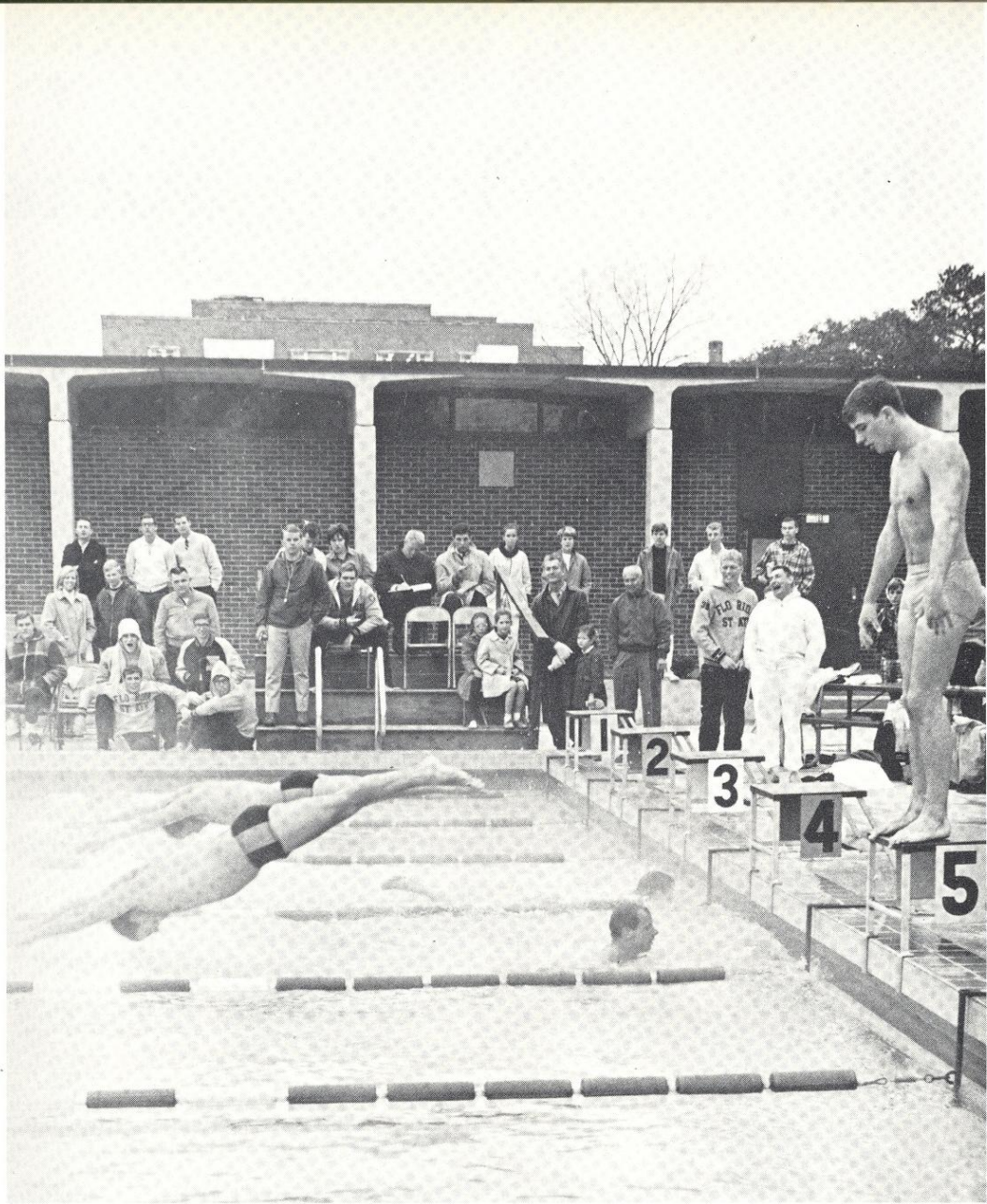
THE FSU SWIMMERS GOT OFF TO A GOOD START EARLY IN THE SEASON AND WON SEVEN OF EIGHT MEETS



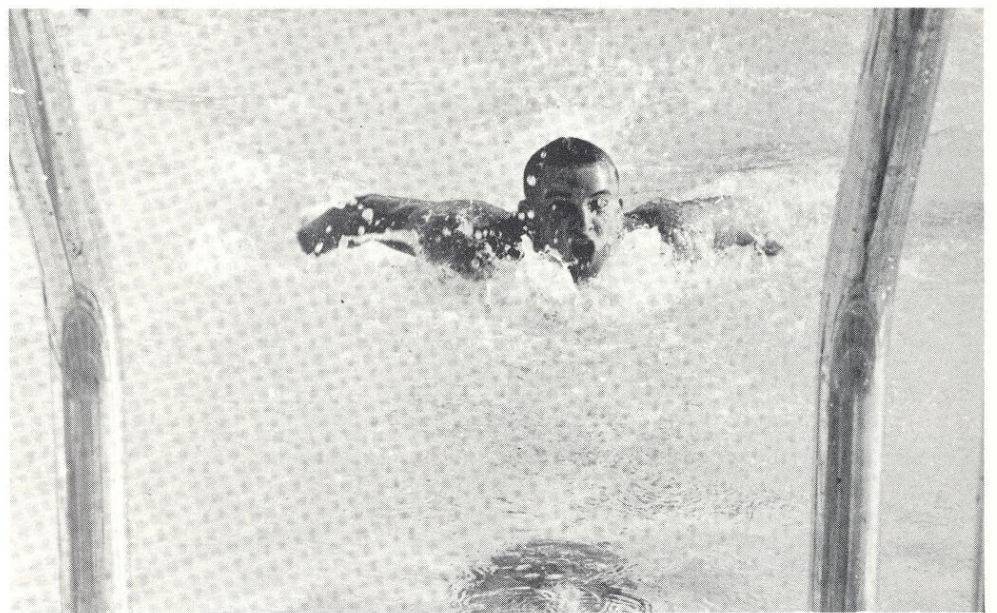
HEADING INTO THE FINAL turn-around in the butterfly event is Florida State swimmer Donald Hartke.



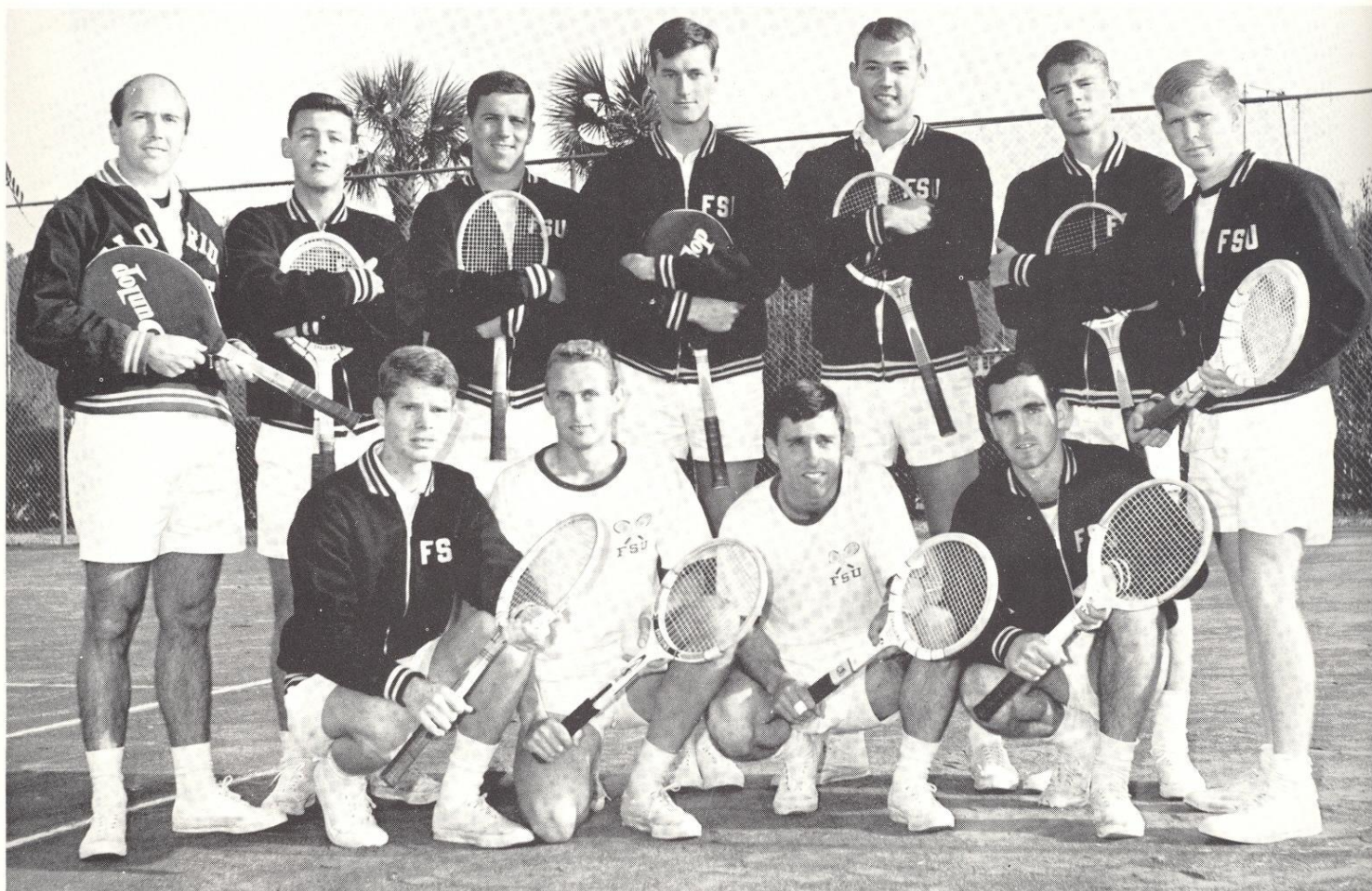
KEEPING RECORD OF THE TIMES for each heat in a swimming meet is FSU Head Coach **Bim Stults**.



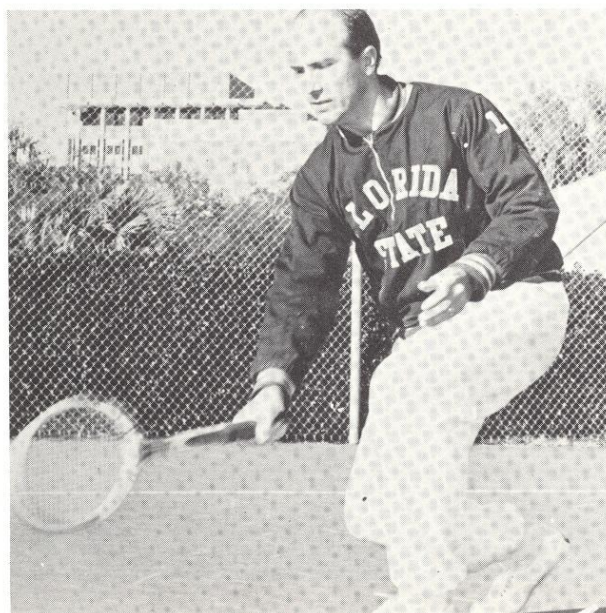
TRYING TO PICK UP SEVEN POINTS ON A RELAY EVENT ARE TWO FSU TANKERS



Net Year Is Big Success



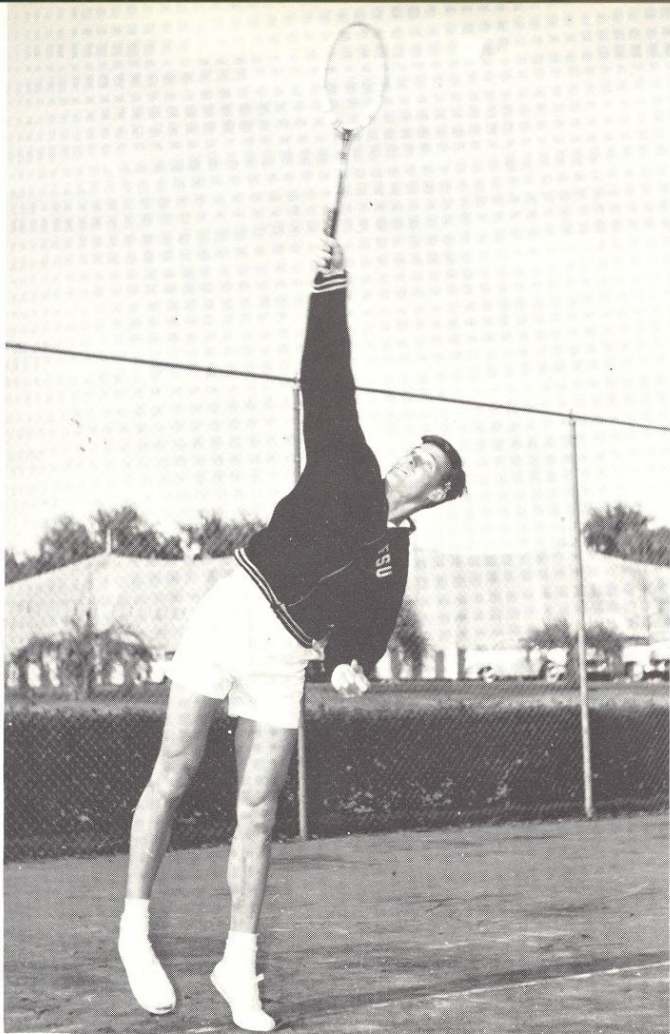
THE 1966 FLORIDA STATE UNIVERSITY TENNIS TEAM



LEX WOOD
Tennis Coach

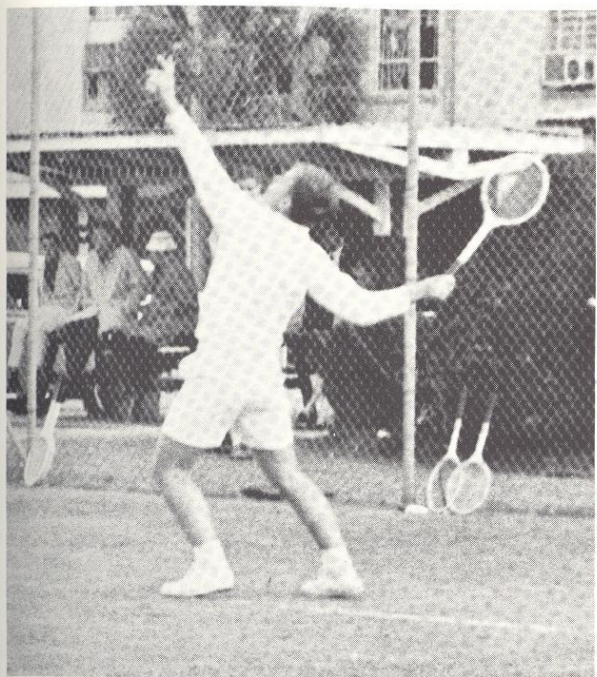
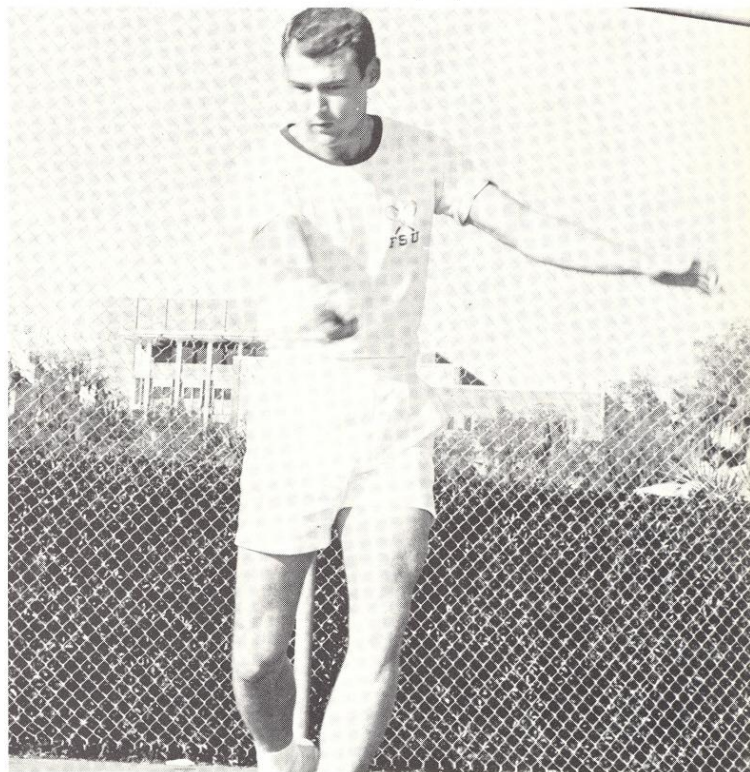
Lex Wood's tennis team used balance and strength to carry them through another fine season. Again playing some of the nation's toughest college teams the Florida State netters came out looking strong.

Among the Seminole opponents were nationally acclaimed Mississippi State and Miami. Leading the netters was senior Paul DeZeeuw who filled the number one spot for the Tribe. Co-captains for the year were Terry Poore and Steve Guse.

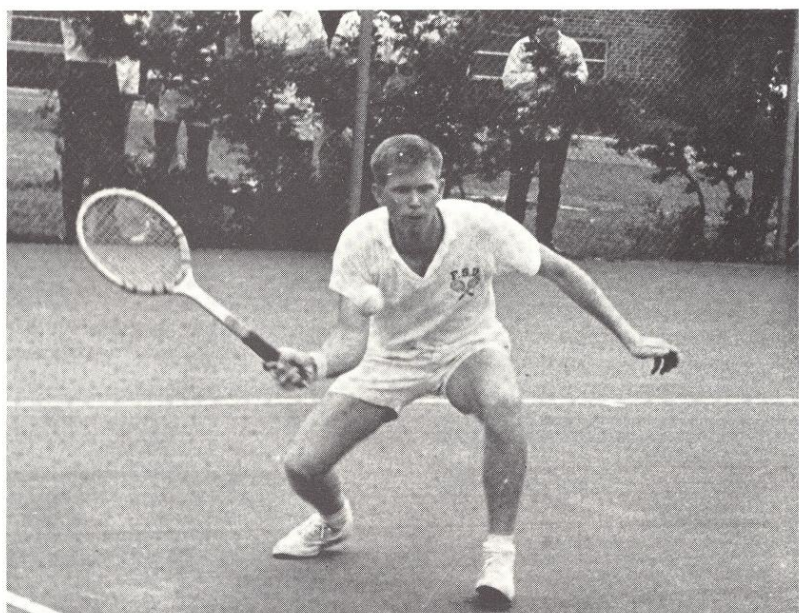


REACHING HIGH for a serve is Florida State tennis star Paul De Zeeuw who won many matches for the Tribe.

RETURNING A VOLLEY for the Seminoles is tennis team co-captain and consistant player Steve Guse.



STRENGTH TO overpower his opponents is the key to Stew Bruner's success on the tennis courts.



DIVERSITY IS THE SECRET WEAPON OF FSU'S RUSS LANGSTROTH

Golfers Have Winning Season

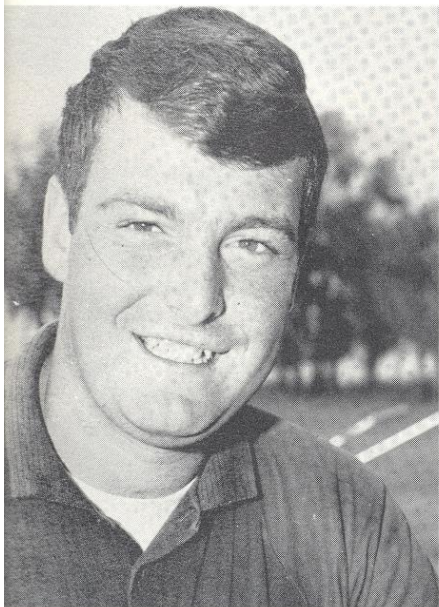
The Seminole golfers under the direction of Coach Hugh Durham had another fine season. Durham's men played fewer dual matches and more tournaments in the season. They responded to the change very well. Leading the team again was senior Denny Lyons. All home matches were played at the new FSU course.



HUGH DURHAM
Golf Coach

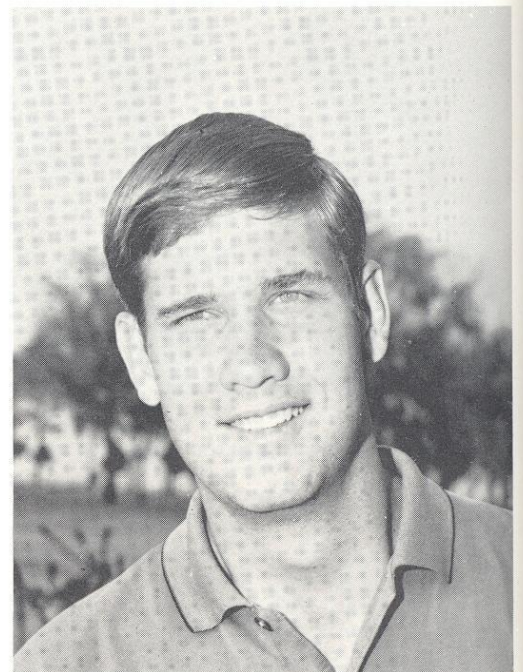


DENNY LYONS



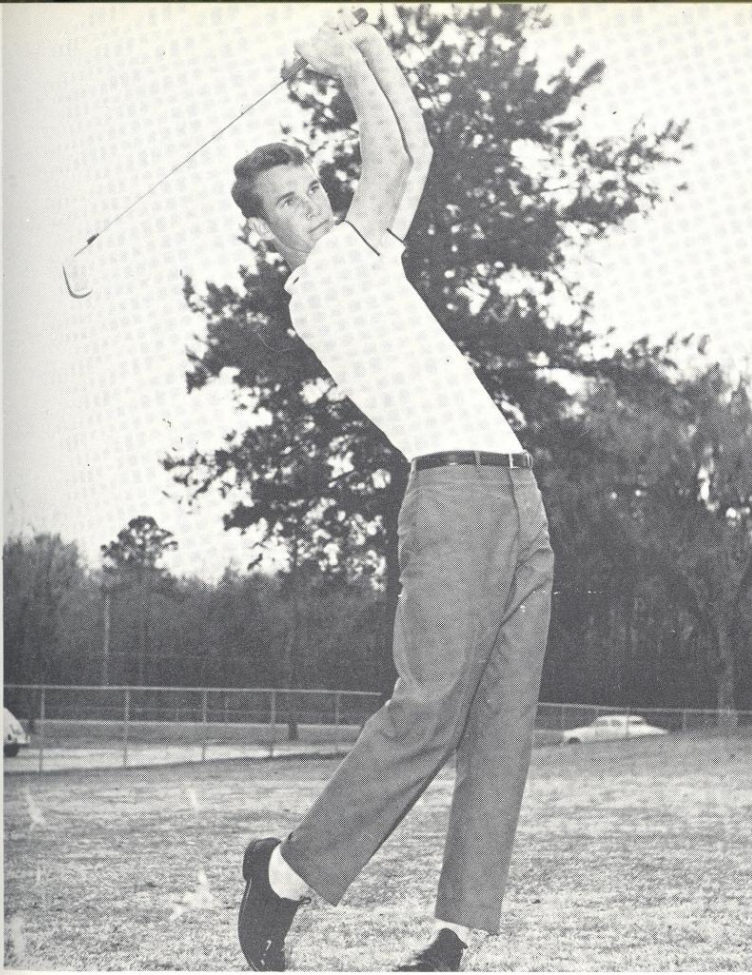
CARL DICESARE

BILL BOUTWELL

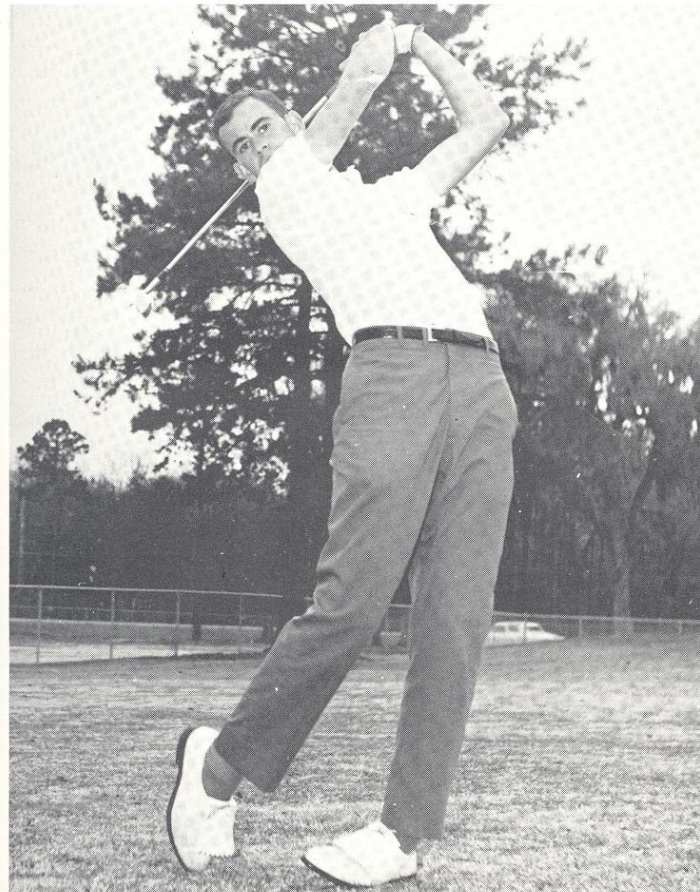


TERRY MOORE

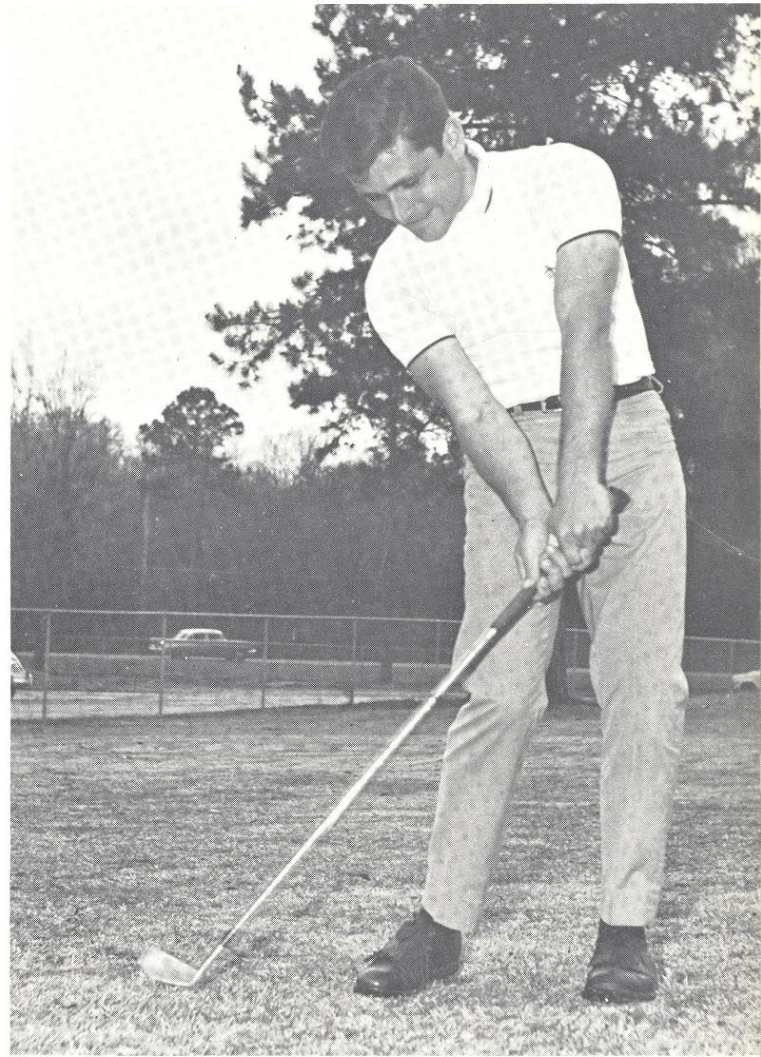




SEMINOLE GOLFER HUGH GREEN WORKS OUT WITH AN IRON



JIM CONACE HITS A LONG SHOT WITH ONE OF HIS IRONS



JAY MORELLI WARMING UP PRIOR TO A TOURNAMENT