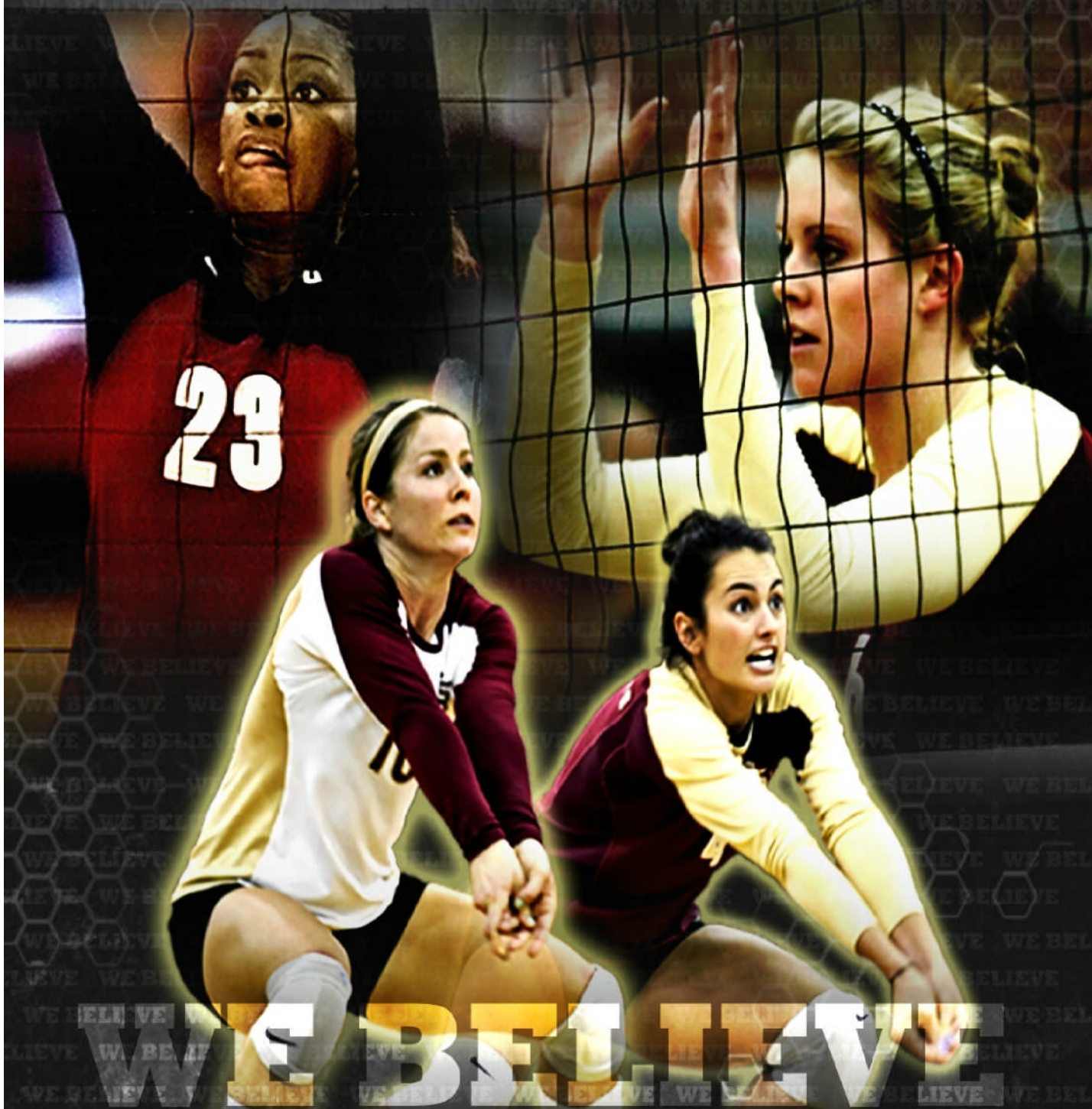


# FLORIDA STATE

## VOLLEYBALL | 10



# WE BELIEVE



# VOLLEYBALL | 10



## Table of Contents

### FSU Volleyball

Table of Contents.....	1
Commitment to the Community.....	2
Student-Athlete Success.....	3
Lucy McDaniel Court.....	4
Strength and Conditioning.....	5
Florida State University.....	6
City of Tallahassee.....	7
FSU Volleyball on Seminoles.com.....	8
FSU Volleyball on Seminoles All-Access.....	9

### 2010 Season Information

FSU Volleyball Quick Facts.....	10
Team Roster and Pronunciation Guide.....	11
Team Photo Roster.....	12
2010 Schedule.....	13
Support Staff.....	14

### 2010 Florida State Seminoles..... 15

Head Coach Chris Poole.....	16
Associate Head Coach Holly Watts.....	16
Assistant Coach Gokhan Yilmaz.....	16



FSU Seniors.....	17
Stephanie Neville.....	18
Jenna Romanelli.....	19
Taylor Wilson.....	20
Lauren Young.....	21
FSU Juniors.....	22
Visnja Djurdjevic.....	23
Patricia Figueiredo.....	24
Rachael Morgan.....	25
Jekaterina Stepanova.....	26
FSU Sophomores.....	27
Duygu Duzceler.....	28
Sareea Freeman.....	29
Marija Milosavljevic.....	30
Amanda Saxton.....	31
Fatma Yildirim.....	32
FSU Freshmen.....	33
Kaitlin Mosher.....	34
Ashley Neff.....	35

### Looking Back

2009 - A Season to Remember.....	36
Elite Eight Journey.....	37

## CREDITS

The 2010 Florida State Volleyball Media Guide is a publication of the FSU Sports Information Office. Written and edited by Steve Stone and Brandon Mellor with additional editing by Chuck Walsh, Tina Dechausay and Maryjane Gardner. Covers, page template and headers designed by Aaron Steele. Page layout by Steve Stone. Featured photographers: FSU Photo Lab (Ryals Lee, Bill Lax and Michele Edmunds), Larry Noney, Ross Obley, Mike Olivella, Steve Musco and Ryals Lee.

# VOLLEYBALL | 10

## COMMITMENT TO THE COMMUNITY

Known as one of the nation's fastest growing programs, the Florida State University women's volleyball team fully understands its role in the community. Its immense visibility throughout the Tallahassee area allows the squad to become focal figures on campus. As a result, the Seminoles do their share to reciprocate the general public's gracious support through community service initiatives, helping to better the lives of those who may not be as fortunate.

Over the last calendar year, the Seminoles sacrificed several hours by participating in an array of worthy events that were for a tremendous cause. The team had a 100 percent participation rate and completed an astounding 289 hours of community service in the following events:

- Relay for Life
- Dance Marathon
- Special Olympics
- Thanksgiving Holiday Food Drive
- Red Ribbon Week (Say No to Drugs week)
- The Boys and Girls Club
- National Student-Athlete Day
- Early Childhood Volunteering
- Peers Helping Athletes Transition (PHAT Tuesday's)
- Commit to be Fit

**PAINT IT PINK**  
FLORIDA STATE UNIVERSITY



During the 2010 season, the Seminoles will also run two separate "Paint it Pink" clinics following their matches on Oct. 10 and Nov. 21, with all the proceeds going to Tallahassee Memorial Sharon Ewing Walker Breast Health Center. FSU's "Paint it Pink" match will occur on Oct. 24 at 1 p.m. against Duke at Tully Gym.



## STUDENT-ATHLETE SUCCESS



Senior defensive specialist Taylor Wilson (L) is just one of several shining examples of how the Florida State volleyball program molds its student-athletes toward career excellence. Wilson, an interior design major, has twice been named to the *ESPN The Magazine* Academic All-District Team, and has been a Golden Torch recipient for three consecutive years.



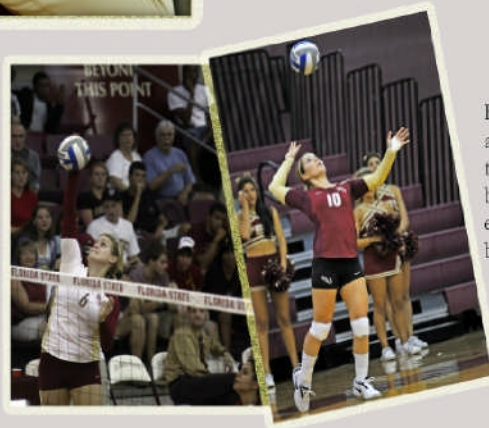
Former Garnet and Gold standout Brianna Barry is more than just the 2009 ACC Player of the Year. She is a two-time academic all-district recipient and a four-time All-ACC Academic Team member.



Extraordinary reactions like former senior Jordana Price's (Above) are rather ordinary on senior night at FSU. A student-athlete's long-term diligence in the classroom combined with tremendous time management skills culminates with a final home performance in front of a raucous crowd at Tully Gym.

### FSU Volleyball Touts ...

- One Academic All-American
- One ACC Postgraduate Scholarship Recipient
- One "Most Inspiring Collegiate Athlete" Award Winner
- One *Rolling Stone* Wonderwoman of Sport Winner
- Eight Academic All-District Members
- Eight All-ACC Academic Team Members since 2005
- 112 ACC Academic Honor Roll Recipients since 1991



Returning seniors Stephanie Neville (L) and Jenna Romanelli (R) are each two-time ACC Academic Honor Roll members. Last season, the Seminoles boasted nine Academic Honor Roll members.

# VOLLEYBALL | 10

## LUCY MCDANIEL COURT AT TULLY GYM

Tully Gymnasium has been home to Florida State volleyball for many years. Overall, the friendly confines of the gymnasium have been good to the Seminoles, as they have accumulated a record of 352-126 on their home court (including a 16-1 mark in 2009) for a winning percentage of .736 in the past 34 years in the facility.

The facility, which was constructed in 1956, was named for the late Robert Henry (Bobby) Tully; a 1952 FSU graduate and football player. Active on campus, Tully was a member of Gold Key, ODK, the Arnold Air Society and Alpha Tau Omega fraternity. He died in May of 1954 after battling an illness.

With a capacity of 1,162, the gymnasium has undergone several renovations in recent years. Prior to the 2004 season, the playing floor was replaced with a new state-of-the-art Nike Shox floor. New lighting was added before the 1999 season. Tully Gymnasium features new arena-style padded seating with armrests which were installed to create a more comfortable atmosphere for Seminole fans while watching Florida State volleyball.

On Nov. 2, 2000 in a special ceremony, Florida State dedicated the floor of Tully Gymnasium to Lucy McDaniel, the first woman in the state of Florida to donate more than one million dollars to a women's athletic program.

The facility became known as the Lucy McDaniel Volleyball Court at Tully Gymnasium prior to the 2001 season, in honor of the wonderful gifts and support that McDaniel has provided to the Seminole volleyball program and Florida State athletics.

The dedication ceremony included an address from former Athletic Director Dave Hart, Jr., as well as an appearance by former FSU president and Florida State volleyball fan, Sandy D'Alemberte. Former head coach Dr. Cecile Reynaud said a few words regarding the magnificent gift, which was followed by a touching tribute by FSU volleyball players Kristin Frye and Martha Hamilton. Frye presented McDaniel with a ball signed by all the players followed by a poem written by Hamilton about the relationship of the 2000 squad with McDaniel.

McDaniel first gave \$100,000 to endow volleyball scholarships at Florida State and later donated another \$50,000 so the team could take a European tour in May of 2000. McDaniel wanted to do more, so she asked her accountant to run through her financial statements to see what she would be able to give now and later in her will. After gathering the information from her accountant, she called Seminole Boosters' Planned Giving Director Joel Padgett and started the process.

### TULLY GYM RECORD

Year	Record
1976	5-2
1977	2-3
1978	4-2
1979	7-1
1980	10-1
1981	19-3
1982	13-5
1983	8-0
1984	8-4
1985	8-8
1986	11-3
1987	12-4
1988	11-0
1989	17-1
1990	15-1
1991	8-7
1992	11-2
1993	13-2
1994	11-6
1995	6-8
1996	8-6
1997	13-3
1998	14-1
1999	6-11
2000	15-5
2001	10-3
2002	12-2
2003	10-5
2004	11-5
2005	7-8
2006	9-6
2007	11-2
2008	11-5
2009	16-1
Overall	352-126 (.736)

### Directions From Interstate 10 - Westbound

Head SE on Exit 209A to Mahan Dr/US-90 W  
Merge on Mahan Dr/SR-10 W/US-90 W  
Continue to follow SR-10 W/US-90 W  
Turn left at Bryan St  
Continue on Stadium Dr W  
Turn left at Spirit Way

### Directions From Interstate 10 - Eastbound

Head E on Exit 196  
Follow Reg. Air./SR-263 S, merge on Cap. Cir. NW  
Turn left at SR-10 E/W Tennessee St/US-90 E  
Turn right at Bryan St  
Continue on Stadium Dr W  
Turn left at Spirit Way

### Directions From Airport

Head W on Cap. Cir. SW to General Aviation  
Turn right at W Pensacola St/SR-20 E/SR-366E  
Slight right at W Pensacola St / SR-366 E  
Turn left at Stadium Dr W  
Turn right at Spirit Way

### Directions From Hwy. 90 West (Quincy)

Head SE on US-90 to S McArthur St  
Continue to follow US-90  
Turn right at Bryan St  
Continue on Stadium Dr W  
Turn left at Spirit Way

### Directions From Route 319 (Thomasville Rd)

Head SW on Thomasville Rd/US-319 S to Rhea Rd  
Continue to follow SR-61 S  
Turn right at SR-10/E Tennessee St/US-90  
Turn left at Bryan St  
Continue on Stadium Dr W  
Turn left at Spirit Way



# VOLLEYBALL | 10

## STRENGTH AND CONDITIONING

### TOTAL ATHLETIC DEVELOPMENT

The Florida State University Strength & Conditioning Program is dedicated to pursuing excellence. The staff is committed to developing the finest strength and conditioning program in the nation. This includes developing the best professional staff, facilities, and administering the most comprehensive, efficient and effective collegiate program.

Each program is designed to improve athletic performance through an individualized regimen of stretching, lifting, speed, power, agility, flexibility, nutrition and conditioning drills.

The goal is to maximize the athletic potential of each student-athlete by:

- Providing an expert staff educated in and determined to render the most up-to-date and effective strength and conditioning procedures to FSU athletes.
- Developing individualized programs based on scientifically proven principles tailored to enhance each athlete's needs.
- Administering comprehensive programs which address: strength, power, acceleration, speed, agility, core development, flexibility, conditioning, nutrition and are designed to develop the total athlete.
- Monitoring team and individual progress on a daily basis.
- Reduce the risk of injury by strengthening weaknesses and working closely with team doctors and trainers through the rehab process.
- Enhance each student-athlete's self-confidence, sense of well-being and overall physical health, while instilling a strong work ethic which will carry over during competition and in life.

### NUTRITION

Laurel Wentz, RD and FSU Sports Dietitian, provides each student-athlete with a plan that specifically outlines their needs of calories, protein, vitamins and minerals.



### ROGER HOLLER CHAMPIONS TRAINING COMPLEX

- Lifting area of 14,000 square feet
- More than 20,000 pounds of free weights
- 20,000 square feet of functional training space
- Custom-built FSU equipment, platforms and weights
- 24 self-contained powerlift work stations each containing 500 pounds of free weights



## FLORIDA STATE UNIVERSITY

One of the nation's elite research universities, Florida State University — with the Carnegie Foundation's highest designation: Doctoral/Research University-Extensive — offers a distinctive academic environment built on its cherished values and unique heritage, a welcoming campus on the oldest continuous site of higher education in Florida, championship athletics, and a prime location in the heart of the state capital.

Combining traditional strength in the arts and humanities with recognized leadership in the sciences, Florida State University provides unmatched opportunities for students and faculty through challenging academics, cultural discovery and community interaction.

Underlying and supporting the educational experience at Florida State University is the development of new generations of citizen leaders, based on the concepts inscribed in our seal: *Vires, Artes, Mores — Strength, Skill and Character.*

Epitomized by recently named Rhodes Scholars Garrett Johnson and Myron Rolle — elite athletes and scholars committed to public service — and Joseph O'Shea — a campus and community leader as well as a top scholar — Florida State's 40,000 students are dedicated to academic excellence and providing leadership in our complex world.

Florida State University's 15 colleges offer more than 275 undergraduate, graduate, doctoral, professional and specialist

degree programs, including medicine and law, covering a broad array of disciplines critical to society today. Each year the University awards over 2,000 graduate and professional degrees.

With its impressive breadth of leading graduate, professional and undergraduate programs, Florida State University is a demanding, intellectually stimulating, yet warm and caring environment for students and faculty. Recognized nationally for its commitment to diversity, Florida State University is a national leader in the number of doctorates awarded to African-American students and in the graduation rate of African-American undergraduates. Its College of Medicine and College of Law are ranked in the nation's Top 10 for Hispanic students.

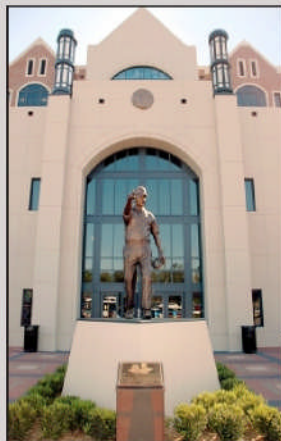
Florida State University's arts programs — dance, film, music and theatre — rank among the finest in the world, offering an arts education comparable to leading conservatories. Its creative writing program is ranked among the nation's best and is home to the most consistently honored and published student body in the United States. Florida State is responsible

for governance of the John and Mable Ringling Museum of Art and associated arts programs, one of the largest museum/university complexes in the nation.

Other programs consistently included in the top public university list include physics, chemistry, political science, psychology, criminology, public administration, library science, information, human sciences, business and law.

At the Ph.D. level, interdisciplinary programs draw on notable research faculty strengths that transcend the traditional disciplines, including neuroscience, molecular biophysics, computational science, materials science and research at the National High Magnetic Field Laboratory—home to the world's most powerful magnets.

Based on forward-thinking research through innovative interdisciplinary academic clusters, the campus-wide Pathways of Excellence initiative, a plan adopted in 2005, characterizes the university's aspirations and commitment to the future.



# VOLLEYBALL | 10

## CITY OF TALLAHASSEE

Tallahassee boasts diverse heritage and is flourishing with many cultures, rhythms and flavors. Museums, festivals, cuisine, arts and crafts, and year-round events honor and celebrate a diversity of heritage in the Tallahassee area. Florida's Capital City played a big role in the story of Florida, and in American history and we are still making history today.

Tallahassee through time weaves a fascinating tapestry of politics and cultures, agriculture and innovation, higher education and religion, and liberty and justice. You don't have to be a history buff to experience and appreciate the depth and diversity of Tallahassee's history and heritage.

After Florida became a territory of the United States in 1822, both St. Augustine and Pensacola competed to become the State Capital. Unable to come to an agreement, it was decided to locate the Capital at a point between the two cities. Tallahassee's beauty attracted the search party and in 1824 the City of Tallahassee was created with a log cabin as the first Capitol building.

The Tallahassee area, long known as "the red hills" region, was a land of rich agriculture and consequently many large plantations were built with crops primary of cotton, corn and sweet potatoes. In fact, America's largest concentration of original plantations - 71 plantations, 300,000 acres - exists between Tallahassee and Thomasville, Ga., just 28 miles away, and several are open to the public.

During the Civil War, a small battle was waged at Natural Bridge, south of Tallahassee, where a makeshift army of locals fought off an attack by Union troops. Tallahassee was the only Confederate city east of the Mississippi that did not fall to Union troops.

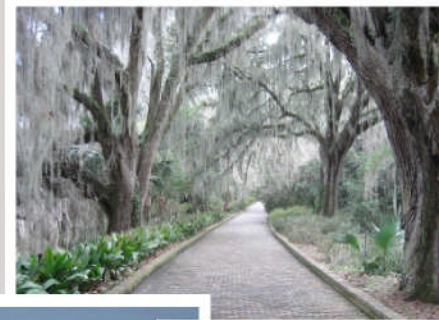
Higher learning has long been a jewel in the crown of Tallahassee. Florida State University had its early beginning in 1851, became Florida State College for Women in 1909 and finally Florida State University (FSU), again co-ed, in 1947. Established in 1887 as the Florida State Normal College for Colored Students, Florida Agricultural and Mechanical University (FAMU) is the oldest historic black public university in Florida.

The Capital area's beautiful environment is a continuous inspiration for the many visual arts that call Tallahassee home:

- Arrive on a First Friday and you can join the monthly Gallery Hop at the eclectic world called Railroad Square. Begin at the sculpture garden and walk your way through and see artists working in their studios and tending their exhibits to visitors.
- In the northeast, visit the galleries and shoppes clustered around Market Street.
- Up and coming Midtown is an exciting area with an array of galleries to explore and an array of cafes, restaurants and wine bars to socialize at with friends.
- Downtown is filled with history, government and museums. The Museum of History and Mary Brogan Museum of Arts & Sciences, host exhibits of regional and national prominence and historical significance.
- Our colleges all provide theatre seasons with a chance to see soon-to-be stars' first performances right here in Tallahassee. A year's worth of touring theatre packs a busy calendar at the local civic center.

As cool, crisp air give way to warm summer days, Tallahassee buzzes with electricity. Festivities such as the Downtown GetDown jumpstart the sporting season with a helping heap of team spirit.

From colorful celebrations of the spectacular spring to festive incarnations of football spirit, Tallahassee is the center of amusement year round. Amid a dazzling panorama of fiery azaleas and lush landscaping, Tallahassee and the Capital Region indulge in a spring season abloom with cheerful events and lively diversions.





# VOLLEYBALL | 10

## SEMINOLES ON THE WEB

How will YOU follow the Seminoles? **AUCTIONS** \$40.00

OFFICIAL ATHLETIC SITE OF FLORIDA STATE UNIVERSITY  
**SEMINOLES.COM**

SPORTS | SCHEDULE & SCORES | TICKETS | ATHLETICS DEPARTMENT | MULTIMEDIA | FAN ZONE | FACILITIES | SHOP HERE

### VOLLEYBALL

SPORT HOME | ROSTER | SCHEDULE | STATS | NEWS | ARCHIVES

**Poole Announces Signing Of 4**  
FSU head coach Chris Poole announced Thursday the signing of four volleyball players to National Letters of Intent, including two highly-touted Junior College All-Americans.

**MORE VOLLEYBALL NEWS**

- See FSU in Action On Saturday!
- Spring Schedule Off To A Bang
- Spring Side Starts Saturday
- Seminole Celebrate 2009 Season...
- ACC Postgraduate Scholars
- Scholar-Athlete Of The Year
- 2010 Volleyball Camp Info
- Volleyball Banquet Information

**OFFICIAL STORE**

PERFORMANCE

**ALL ACCESS**  
LAUNCH VIDEO PLAYER

- Women's Volleyball - Sareea Freeman Highlight Reel
- Women's Volleyball - Rachael Morgan Highlight Reel
- Women's Volleyball - Stephanie Haville Highlight Reel

**MEDIA GUIDE**

- BLOGS
- FACEBOOK / TWITTER
- RECRUITS

**3 GAME MINI PACK ONLY \$156**

The Official Athletics Website of Florida State University

# SEMINOLES.COM

At Seminole.com you can be the first to get breaking news & updates... order tickets...check the rosters & scoreboard...listen to sporting events with live audio streaming...download free desktop wallpapers...see what the Seminoles are doing in the classroom and in the community...access a stadium seating diagram to see where your tickets are located...take a 360 degree virtual tour of Florida State facilities...purchase high quality Florida State pictures...and much MORE!



# VOLLEYBALL | 10

## SEMINOLES ALL-ACCESS



SEMINOLES ALL-ACCESS VIDEOS PRESENTED BY: at&t

Login | Subscribe



- MORE VIDEOS**
- Football Fall Practice Report: October 13
  - FSU - w-soccer - video ... FSU Ready to Renew Rivalry with Tar Heels
  - Soccer Reliving a Classic
  - Football Hitting the Mark
  - Seminole.com Daily Report: October 13
  - Football Fall Practice Report: October 13

VIEW BY: MOST RECENT SPORT CHANNEL FEATURED LIVE EVENTS [Back to SEMINOLES.COM](#)

**LIVE EVENTS!**

- Florida State Football vs. ...
- Florida State Football vs. ...
- Florida State Football vs. ...
- Jim Fisher ...

**ONLINE STORE**

SHOP NOW at the Official Online Store

Miss Florida State Seminoles (FSU) Genet Smooth Vicer **\$15.95**

**Customer Service**

- Customer Service Inquiries
- Privacy Policy
- Terms & Conditions

**MOST RECENT**

- ◆ Game Highlights
- ◆ Player & Coaches Video Interviews
- ◆ Watch & Listen to Games
- ◆ Video Features

Follow Seminoles.com On Popular Social Media Sites



# FLORIDA STATE

## 2010 VOLLEYBALL QUICK FACTS

Location .....Tallahassee, Fla.  
 Founded .....1851  
 Enrollment .....40,255  
 Symbol .....Seminoles  
 Colors .....Garnet and Gold  
 Conference .....Atlantic Coast Conference  
 President .....Dr. Eric J. Barron  
 Athletics Director .....Randy Spetman  
 Deputy AD/SWA .....Dr. Allison Rich  
 Assistant AD (VBall) .....Brandi Stuart

Head Coach .....Chris Poole  
 Alma Mater .....Arkansas Tech, '83  
 Career Record .....602-242/23 years  
 FSU Record .....52-12/2 years  
 Associate Head Coach .....Holly Watts  
 Alma Mater .....Texas, '94  
 Assistant Coach .....Gokhan Yilmaz  
 Alma Mater .....Istanbul, '02  
 Volleyball Office .....850.644.3003

Home Court .....Lucy McDaniel Court  
 Home Venue .....Tully Gymnasium  
 Capacity .....1,162  
 Press Row .....850.644.4192

First Year of Volleyball .....1972  
 All-Time Record .....897-444 (.663)  
 ACC Record .....169-139 (.521)  
 ACC Titles .....2 (1998 and 2009)  
 NCAA Appearances .....12  
 NCAA Tournament Record .....4-11

2009 .....31-3 (.912)  
 2009 ACC Record .....19-1 (.950)  
 2009 ACC Finish .....1st

Starters R/L .....3/4  
 Letterwinners R/L .....8/5  
 Newcomers .....6

SID .....Tina Dechusay  
 Volleyball SID .....Steve Stone  
 SID Office .....850.644.4836  
 SID Office Fax .....850.644.3820  
 Web site .....seminoles.com  
 Mailing Address .....403 Stadium Drive W.  
 .....Tallahassee, Fla. 32306

### SEMINOLES BY STATE

**Florida (4)**  
 Kaitlin Mosher .....Fort Myers  
 Jenna Romanelli .....Lighthouse Point  
 Amanda Saxton .....Orlando  
 Taylor Wilson .....Clearwater

**Turkey (2)**  
 Duygu Duzceler .....Istanbul  
 Fatma Yildirim .....Istanbul

**Georgia (1)**  
 Ashley Neff .....Kennesaw

**California (1)**  
 Sareea Freeman .....Fresno

**Texas (1)**  
 Lauren Young .....Ben Wheeler

**Canada (1)**  
 Stephanie Neville .....Cambridge, Ont.

**New Zealand (1)**  
 Rachael Morgan .....Tauranga

**Brazil (1)**  
 Patricia Figueiredo .....Rio de Janeiro

**Latvia (1)**  
 Jekaterina Stepanova .....Riga

**Serbia (2)**  
 Visnja Djurdjevic .....Zitiste  
 Marija Milosavljevic .....Bajina Basta

### SEMINOLES BY POSITION

**Setter (2)**  
 Duygu Duzceler, Patricia Figueiredo

**Outside Hitter (6)**  
 Visnja Djurdjevic, Rachael Morgan,  
 Stephanie Neville, Amanda Saxton,  
 Jekaterina Stepanova, Fatma Yildirim

**Middle Blocker (4)**  
 Sareea Freeman, Marija Milosavljevic,  
 Ashley Neff, Lauren Young

**Defensive Specialist (3)**  
 Kaitlin Mosher, Jenna Romanelli,  
 Taylor Wilson

### SEMINOLES BY CLASS

**Seniors (4)**  
 Stephanie Neville, Jenna Romanelli,  
 Taylor Wilson, Lauren Young

**Juniors (4)**  
 Visnja Djurdjevic, Patricia Figueiredo,  
 Rachael Morgan, Jekaterina Stepanova

**Sophomores (5)**  
 Duygu Duzceler, Sareea Freeman,  
 Marija Milosavljevic, Amanda Saxton,  
 Fatma Yildirim

**Freshmen (2)**  
 Ashley Neff, Kaitlin Mosher

No.	Name	Pos.	Ht.	Yr.	Hometown/Previous School
1	Rachael Morgan	OH	6-2	Jr.	Tauranga, New Zealand/Otumoetai College
2	Kaitlin Mosher	L/DS	5-9	Fr.	Fort Myers, Fla./Bishop Verot HS
3	Jekaterina Stepanova	OH	6-2	Jr.	Riga, Latvia/Missouri St.-West Plains
4	Taylor Wilson	L/DS	5-7	Sr.	Clearwater, Fla./Countryside HS
6	Stephanie Neville	OH	6-3	Sr.	Cambridge, Ont./Jacob Hespeler Secondary
7	Fatma Yildirim	OH	6-0	So.	Istanbul, Turkey/Yuzuil Isil
8	Patricia Figueiredo	S	5-9	Jr.	Rio de Janeiro, Brazil/Missouri St.-West Plains
9	Visnja Djurdjevic	OH	6-1	Jr.	Zitiste, Serbia/Tulane
10	Jenna Romanelli	L/DS	5-4	Sr.	Lighthouse Point, Fla./Cardinal Gibbons HS
12	Marija Milosavljevic	MB	6-4	So.	Bajina Basta, Serbia/Tulane
14	Ashley Neff	MB	6-3	Fr.	Kennesaw, Ga./North Cobb HS
15	Amanda Saxton	MB/OH	6-0	So.	Orlando, Fla./Lake Highland Prep
20	Duygu Duzceler	S	5-10	So.	Istanbul, Turkey/Private Bahcesehir
22	Sareea Freeman	MB	6-4	So.	Fresno, Calif./Sunnyside HS
23	Lauren Young	MB	6-2	Sr.	Ben Wheeler, Texas/Van HS
	<b>Head Coach</b>				Chris Poole
	<b>Associate Head Coach</b>				Holly Watts
	<b>Assistant Coach</b>				Gokhan Yilmaz

# VOLLEYBALL | 10

## FSU VOLLEYBALL ROSTER

### NUMERICAL

No.	Name	Pos.	Ht.	Yr.	Hometown/Previous School
1	Rachael Morgan	OH	6-2	Jr.	Tauranga, New Zealand/Otumoetai College
2	Kaitlin Mosher	L/DS	5-9	Fr.	Fort Myers, Fla./Bishop Verot HS
3	Jekaterina Stepanova	OH	6-2	Jr.	Riga, Latvia/Missouri St.-West Plains
4	Taylor Wilson	L/DS	5-7	Sr.	Clearwater, Fla./Countryside HS
6	Stephanie Neville	OH	6-3	Sr.	Cambridge, Ont./Jacob Hespeler Secondary
7	Fatma Yildirim	OH	6-0	So.	Istanbul, Turkey/Yuzyil Isil
8	Patricia Figueiredo	S	5-9	Jr.	Rio de Janeiro, Brazil/Missouri St.-West Plains
9	Visnja Djurdjevic	OH	6-1	Jr.	Zitiste, Serbia /Tulane
10	Jenna Romanelli	L/DS	5-4	Sr.	Lighthouse Point, Fla./Cardinal Gibbons HS
12	Marija Milosavljevic	MB	6-4	So.	Bajina Basta, Serbia/Tulane
14	Ashley Neff	MB	6-3	Fr.	Kennesaw, Ga./North Cobb HS
15	Amanda Saxton	MB/OH	6-0	So.	Orlando, Fla./Lake Highland Prep
20	Duygu Duzceler	S	5-10	So.	Istanbul, Turkey/Private Bahcesehir
22	Sareea Freeman	MB	6-4	So.	Fresno, Calif./Sunnyside HS
23	Lauren Young	MB	6-2	Sr.	Ben Wheeler, Texas/Van HS

**Head Coach** Chris Poole  
**Associate Head Coach** Holly Watts  
**Assistant Coach** Gokhan Yilmaz

### ALPHABETICAL

No.	Name	Pos.	Ht.	Yr.	Hometown/Previous School
9	Visnja Djurdjevic	OH	6-1	Jr.	Zitiste, Serbia /Tulane
20	Duygu Duzceler	S	5-10	So.	Istanbul, Turkey/Private Bahcesehir
8	Patricia Figueiredo	S	5-9	Jr.	Rio de Janeiro, Brazil/Missouri St.-West Plains
22	Sareea Freeman	MB	6-4	So.	Fresno, Calif./Sunnyside HS
12	Marija Milosavljevic	MB	6-4	So.	Bajina Basta, Serbia/Tulane
1	Rachael Morgan	OH	6-2	Jr.	Tauranga, New Zealand/Otumoetai College
2	Kaitlin Mosher	L/DS	5-9	Fr.	Fort Myers, Fla./Bishop Verot HS
14	Ashley Neff	MB	6-3	Fr.	Kennesaw, Ga./North Cobb HS
6	Stephanie Neville	OH	6-3	Sr.	Cambridge, Ont./Jacob Hespeler Secondary
10	Jenna Romanelli	L/DS	5-4	Sr.	Lighthouse Point, Fla./Cardinal Gibbons HS
15	Amanda Saxton	MB/OH	6-0	So.	Orlando, Fla./Lake Highland Prep
3	Jekaterina Stepanova	OH	6-2	Jr.	Riga, Latvia/Missouri St.-West Plains
4	Taylor Wilson	L/DS	5-7	Sr.	Clearwater, Fla./Countryside HS
7	Fatma Yildirim	OH	6-0	So.	Istanbul, Turkey/Yuzyil Isil
23	Lauren Young	MB	6-2	Sr.	Ben Wheeler, Texas/Van HS

**Head Coach** Chris Poole  
**Associate Head Coach** Holly Watts  
**Assistant Coach** Gokhan Yilmaz

### PRONUNCIATION GUIDE

Jekaterina Stepanova - Jeh-Ka-Tur-Ina Step-Uh-Nova  
 Fatma Yildirim - Fat-Ma Yeal-Dur-Um  
 Figueiredo - Fig-Gay-Air-Doe  
 Visnja Djurdjevic - Veesh-nuh Jer-Jore-Vich  
 Marija Milosavljevic - Muh-ria Me-Low-Sav-Leh-Vich  
 Duygu Duzceler - Doy-Goo Dooz-Chuh-Lar

# VOLLEYBALL | 10

## FSU VOLLEYBALL PHOTO ROSTER



**1**  
RACHAEL MORGAN  
OH • 6-2 • Jr.  
Tauranga, New Zealand  
Otumoctai College



**2**  
KAITLIN MOSHER  
L/DS • 5-9 • Fr.  
Fort Myers, Fla.  
Bishop Verot HS



**3**  
JEKATERINA STEPANOVA  
OH • 6-2 • Jr.  
Riga, Latvia  
Missouri St.-West Plains



**4**  
TAYLOR WILSON  
L/DS • 5-7 • Sr.  
Clearwater, Fla.  
Countryside



**6**  
STEPHANIE NEVILLE  
OH • 6-3 • Sr.  
Cambridge, Ontario  
Jacob Hespeler Secondary



**7**  
FATMA YILDIRIM  
OH • 6-0 • So.  
Istanbul, Turkey  
Yuzyl Isil



**8**  
PATRICIA FIGUEIREDO  
S • 5-9 • Jr.  
Rio de Janeiro, Brazil  
Missouri St.-West Plains



**9**  
VISNJA DJURDJEVIC  
OH • 6-1 • Jr.  
Zitiste, Serbia  
Tulane



**10**  
JENNA ROMANELLI  
L/DS • 5-4 • Sr.  
Lighthouse Point, Fla.  
Cardinal Gibbons



**12**  
MARIJA MILOSAVLJEVIC  
MB • 6-4 • So.  
Bajina Basta, Serbia  
Tulane



**14**  
ASHLEY NEFF  
MB • 6-3 • Fr.  
Kennesaw, Georgia  
North Cobb



**15**  
AMANDA SAXTON  
MB/OH • 6-0 • So.  
Orlando, Fla.  
Lake Highland Prep



**20**  
DUYGU DUZCELER  
S • 5-10 • So.  
Istanbul, Turkey  
Private Bahcesehir



**22**  
SAREEA FREEMAN  
MB • 6-4 • So.  
Fresno, Calif.  
Sunnyside



**23**  
LAUREN YOUNG  
MB • 6-2 • Sr.  
Ben Wheeler, Texas  
Van



CHRIS POOLE  
Head Coach



HOLLY WATTS  
Associate Head Coach



GOKHAN YILMAZ  
Assistant Coach

# VOLLEYBALL | 10

# FLORIDA STATE 2010 VOLLEYBALL SCHEDULE

Date..... Opponent ..... Location ..... Time

*FSU Invitational*

08/27/10.....	*New Mexico State.....	Tallahassee, Fla.....	7 p.m. ET
08/28/10.....	Florida International.....	Tallahassee, Fla.....	12 p.m. ET
08/28/10.....	*South Florida.....	Tallahassee, Fla.....	7 p.m. ET

*Houston Tournament*

09/03/10.....	Houston.....	Houston, Texas.....	6:30 p.m. ET
09/04/10.....	Tennessee.....	Houston, Texas.....	10 a.m. ET
09/04/10.....	Oklahoma.....	Houston, Texas.....	5 p.m. ET

*University of Kentucky Tournament*

09/10/10.....	Kansas State.....	Lexington, Ky.....	11 a.m. ET
09/10/10.....	Kentucky.....	Lexington, Ky.....	6 p.m. ET
09/11/10.....	VCU.....	Lexington, Ky.....	3 or 5 p.m. ET

09/18/10.....	Miami.....	Coral Gables, Fla.....	7 p.m. ET
09/22/10.....	Florida.....	Tallahassee, Fla.....	7 p.m. ET
09/24/10.....	*Virginia.....	Tallahassee, Fla.....	7 p.m. ET
09/26/10.....	Virginia Tech.....	Tallahassee, Fla.....	1 p.m. ET
09/30/10.....	North Carolina.....	Chapel Hill, NC.....	7 p.m. ET
10/01/10.....	North Carolina State.....	Raleigh, NC.....	7 p.m. ET
10/08/10.....	Clemson.....	Tallahassee, Fla.....	7 p.m. ET
10/10/10.....	^Georgia Tech.....	Tallahassee, Fla.....	1 p.m. ET
10/15/10.....	Boston College.....	Chesnut Hill, Mass.....	7 p.m. ET
10/17/10.....	Maryland.....	College Park, Md.....	1 p.m. ET
10/22/10.....	*Wake Forest.....	Tallahassee, Fla.....	7 p.m. ET
10/24/10.....	Duke.....	Tallahassee, Fla.....	1 p.m. ET
10/29/10.....	Virginia Tech.....	Blacksburg, Va.....	7 p.m. ET
10/31/10.....	Virginia.....	Charlottesville, Va.....	1 p.m. ET
11/05/10.....	Georgia Tech.....	Atlanta, Ga.....	7 p.m. ET
11/06/10.....	Clemson.....	Clemson, SC.....	6 p.m. ET
11/12/10.....	North Carolina.....	Tallahassee, Fla.....	7 p.m. ET
11/14/10.....	North Carolina State.....	Tallahassee, Fla.....	1 p.m. ET
11/19/10.....	Maryland.....	Tallahassee, Fla.....	7 p.m. ET
11/21/10.....	^Boston College.....	Tallahassee, Fla.....	1 p.m. ET
11/26/10.....	*Miami.....	Tallahassee, Fla.....	1 p.m. ET
11/27/10.....	&Florida A&M.....	Tallahassee, Fla.....	12 p.m. ET

\*Seminoles.com All-Access

^FOX Sports Florida

&Match played at Florida A&M

All Times are Eastern

# VOLLEYBALL | 10

## SUPPORT STAFF



Danita Townsend  
*Academics*



Myra Atwell  
*Equipment*



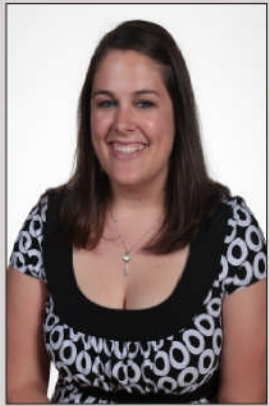
Titus Queen  
*Facilities*



Steve Stone  
*Sports Information*



Justin Slaton  
*Marketing*



Emily Hutcherson  
*Athletic Training*



Caitlin Quinn  
*Strength & Conditioning*



Michael Bracken  
*Video*



Jill Hoomes  
*Administrative Assistant*



Sarah Griffin  
*Business Office*



Brandi Stuart  
*Volleyball Oversight*

# VOLLEYBALL | 10

## THE 2010 SEMINOLES





# VOLLEYBALL | 10

## COACHING STAFF

Head Coach Chris Poole

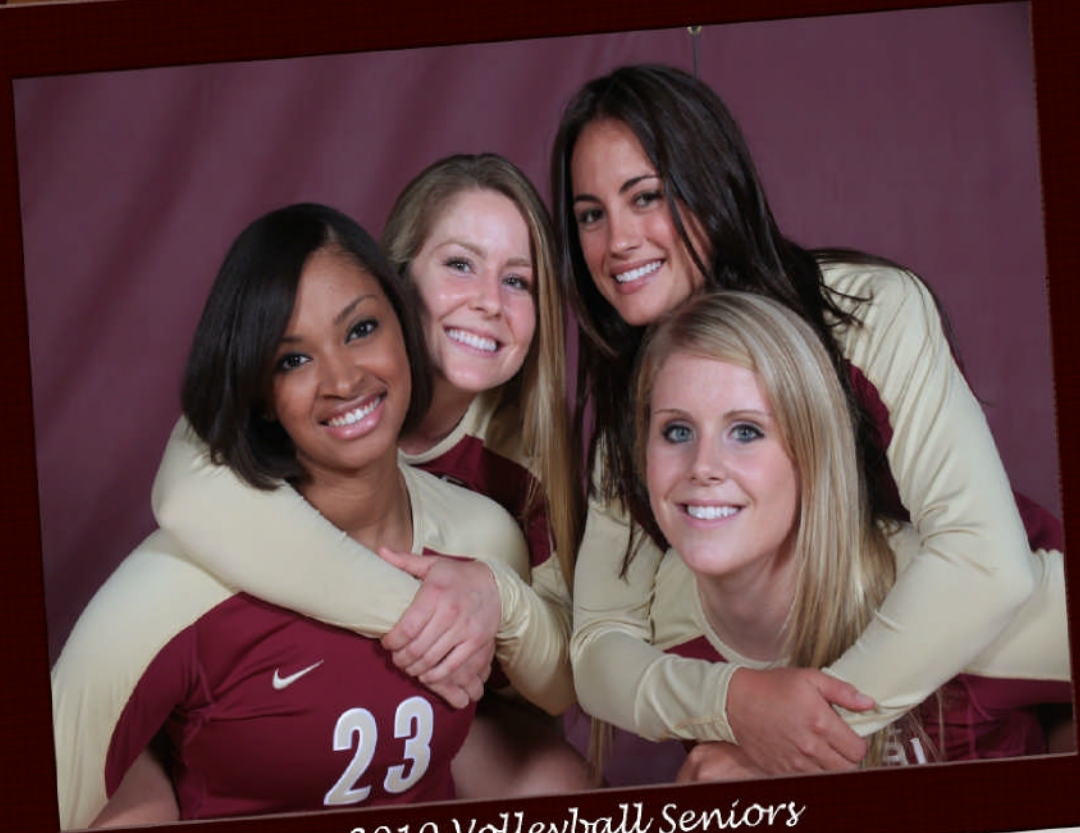
Associate Head Coach Holly Watts

Assistant Coach Gokhan Yilmaz



WE BELIEVE WE BELIEVE WE BELIEVE WE BELIEVE WE BELIEVE WE BELIEVE WE BELIEVE  
**VOLLEYBALL | 10**

# *Seniors*



*2010 Volleyball Seniors*



# Stephanie Neville #6





# Taylor Wilson #4



# Lauren Young #23



23

Lauren

Young







# Visnja Djurdjevic #9







# Patricia Figueiredo #8



Patricia

Figueiredo



# Rachael Morgan #1



**VOLLEYBALL | 10**

***Jekaterina  
Stepanova #3***



WE BELIEVE WE BELIEVE WE BELIEVE WE BELIEVE WE BELIEVE WE BELIEVE WE BELIEVE WE BELIEVE WE BELIEVE  
**VOLLEYBALL | 10**

# *Sophomores*



VOLLEYBALL | 10

# Duygu Duzceler #20



Duygu

Duzceler



VOLLEYBALL | 10

Sareea  
Freeman #22



Sareea  
Freeman



VOLLEYBALL | 10

**Marija**  
*Milosavljevic #12*



# Amanda Saxton #15





# Fatma Yildirim #7



WE BELIEVE WE BELIEVE WE BELIEVE WE BELIEVE WE BELIEVE WE BELIEVE WE BELIEVE WE BELIEVE  
**VOLLEYBALL | 10**

# *Freshmen*





WE BELIEVE WE BELIEVE WE BELIEVE WE BELIEVE WE BELIEVE WE BELIEVE WE BELIEVE WE BELIEVE  
**VOLLEYBALL | 10**  
WE BELIEVE WE BELIEVE WE BELIEVE WE BELIEVE WE BELIEVE WE BELIEVE WE BELIEVE WE BELIEVE

**Ashley**  
*Neff #14*



# VOLLEYBALL | 10

## 2009 - A SEASON TO REMEMBER



# VOLLEYBALL | 10

## ELITE EIGHT JOURNEY



It was a season that not many envisioned, as second-year head coach Chris Poole willed his ball-club from relative obscurity to an out-of-nowhere, out-of-this-world group that dominated the Atlantic Coast Conference. Granted, the Seminoles had at least some lofty expectations coming into the season after being picked second in the ACC preseason coaches poll, but the journey they experienced perhaps was unforeseen.

The Seminoles, who hadn't advanced to the NCAA postseason since 2002, finished a remarkable 31-3, and won a school-record 19 conference matches. Led by four stalwarts in middle blockers Brianna Barry and Jordana Price and outside hitters Mira Djuric and Rachael Morgan, FSU capped its memorable run with a school-record No. 11 national ranking in the final American Volleyball Coaches Association poll.

Not only did FSU take the ACC by storm, its fast rise among the nation's best caught the attention of many around campus. Tully Gym became an intimidating atmosphere once again for the opposition, widespread media coverage reached its peak with ESPN even taking note of the fast turnaround and both individual and team accolades were only so common in a cherished season that many will never forget.

Although the 2008 season marked a rapid improvement in Poole's first year, it is 2009 that may very well be the most significant year in program history. Blinded by all the new milestones attained, the 2009 season could very well be the starting point that creates the permanent ascension of a historically-rich and well-respected program.



VOLLEYBALL | 10

WE BELIEVE

STATE

