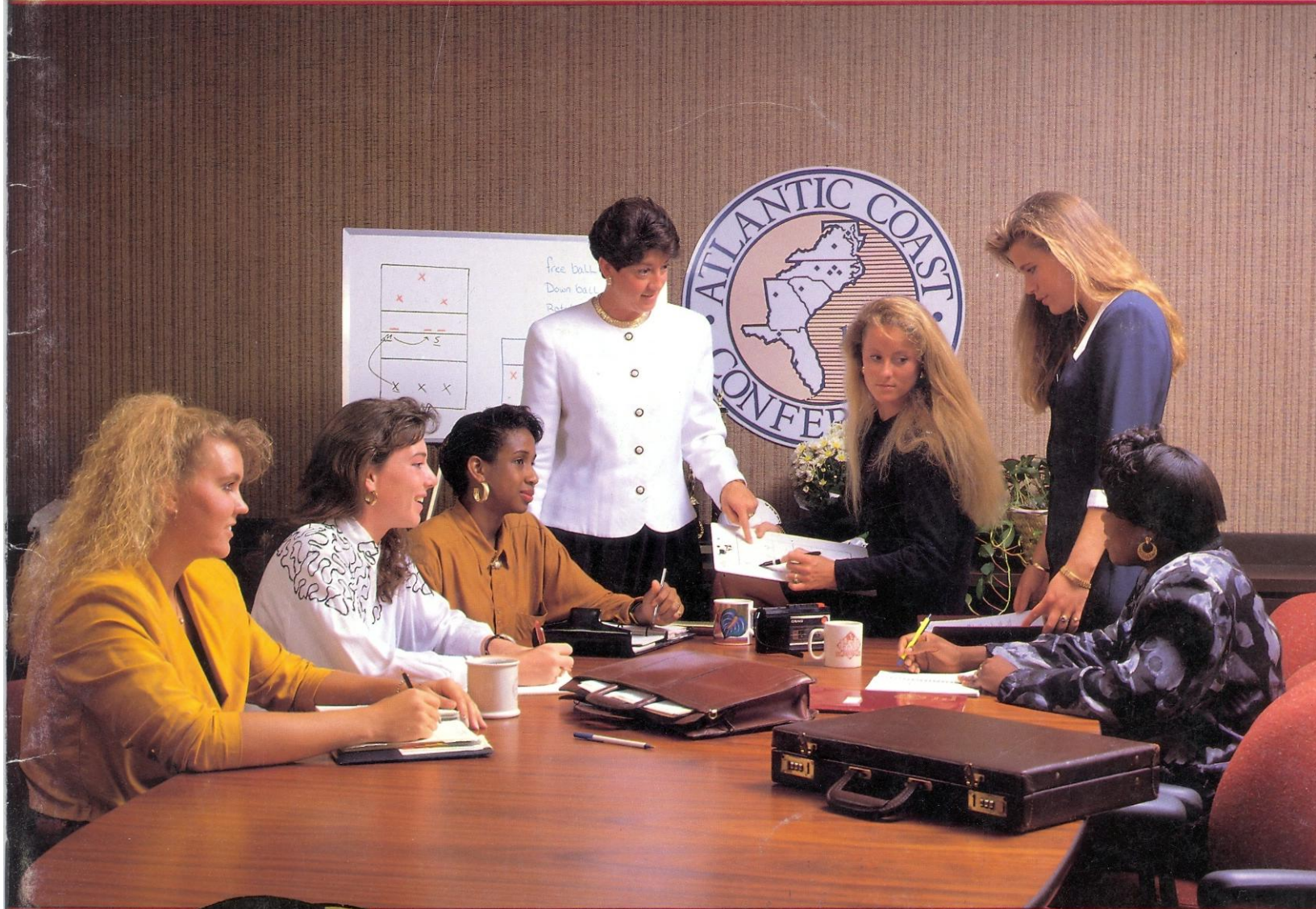


Florida State University
1991 VOLLEYBALL



**In Conference
With The**

ACC

ATLANTIC COAST CONFERENCE



Kim McWilliams

The 1991 Florida State Volleyball Media Guide was written and designed by Assistant Sports Information Director, Kimberly McWilliams. Editorial assistance was provided by Donna Turner and Cecile Reynaud. Graphic design by Peter Mitchell & Associates, Tallahassee, photography provided by the University Photo Lab. Cover photo by Scott Brouwer.

SPORTS INFORMATION STAFF

Director.....Wayne Hogan
 Office Phone(904) 644-1403
 Volleyball SID.....Kimberly McWilliams
 Office Phone(904) 644-1091
 Home Phone(904) 385-4876
 SID Fax.....(904) 644-3451

**FSU QUICK FACTS
 AT A GLANCE**

LocationTallahassee, Florida
 Founded1857
 Enrollment.....28,300
 PresidentDr. Dale Lick
 NicknameLady Seminoles
 Home ArenaTully Gym (3,525)
 AffiliationNCAA Division I
 ConferenceAtlantic Coast

ATHLETIC ADMINISTRATION

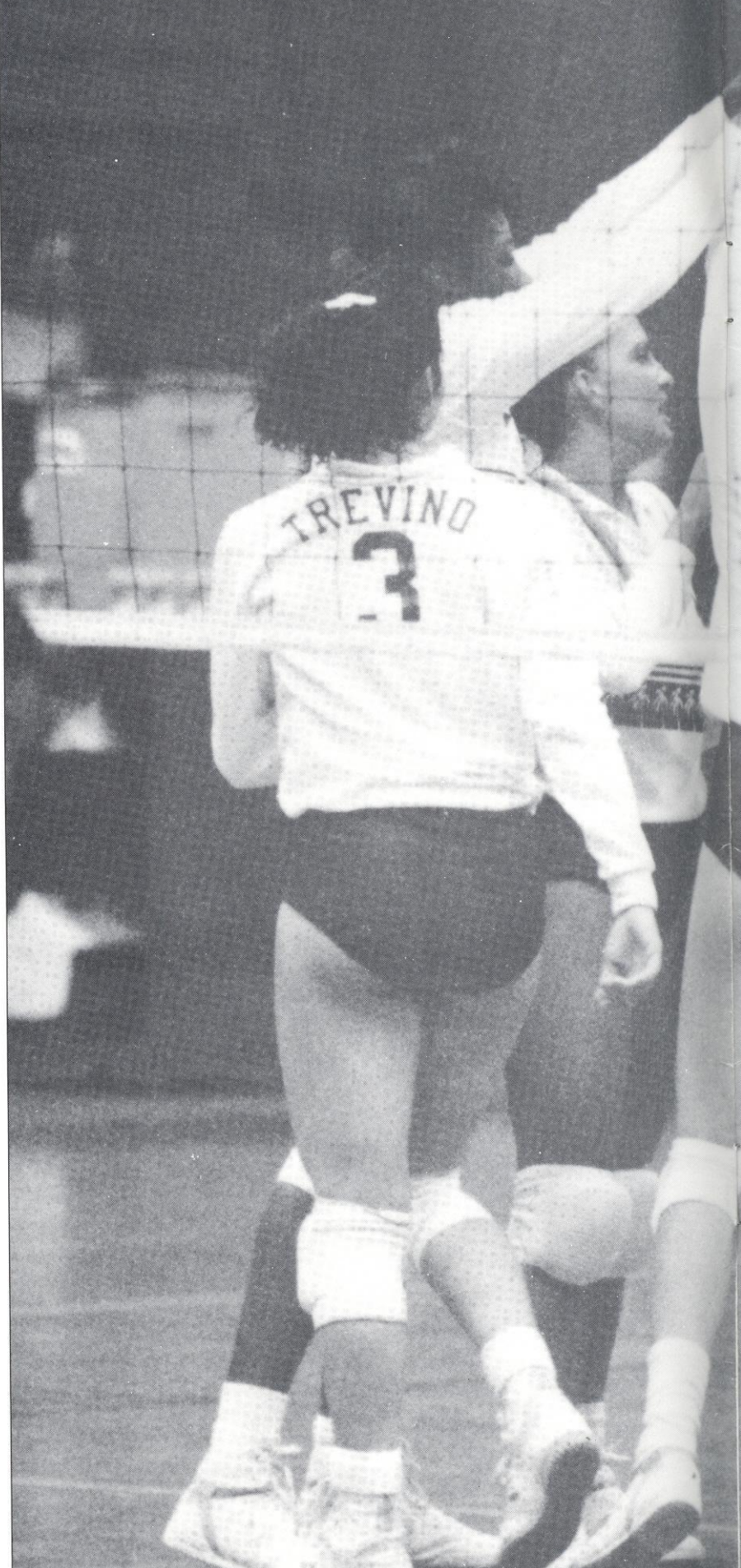
Athletic DirectorBob Goin
 Assistant DirectorDr. Janice Stocker
 (Women's Administrator)
 Athletic Director Phone(904) 644-1079
 Assistant Director Phone(904) 644-1091

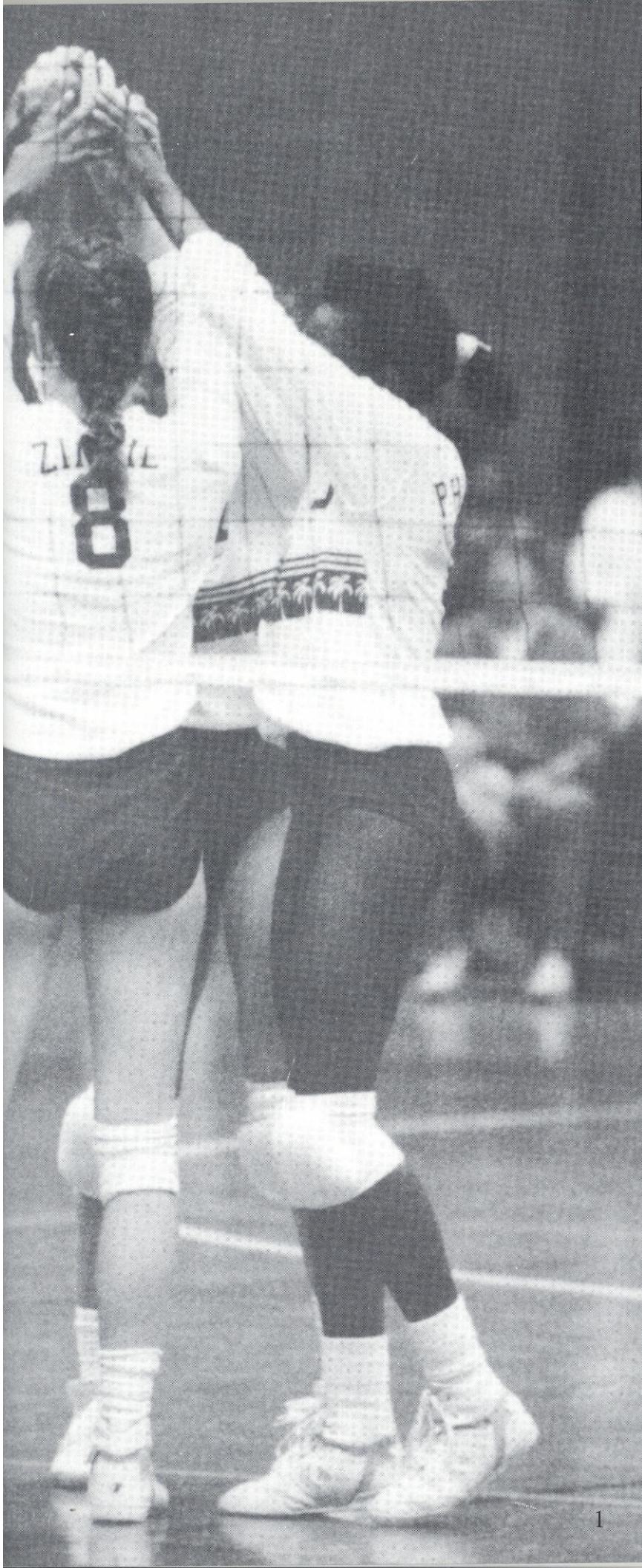
VOLLEYBALL STAFF

Head CoachCecile Reynaud
 Years at FSUEntering 16th
 Record at FSU.....433-173 (.715)
 Volleyball Office Phone(904) 644-1091
 Head Athletic TrainerRobin Gibson
 Training Room Phone(904) 644-1091

1990 SEASON RESULTS

Record25-10
 ConferenceMetro
 Conference Record.....7-2
 Conference Place3rd
 NCAA FinishLost 1st round
 Starters Returning/Lost3/3
 Letterwinners Returning6
 Newcomers5





CONTENTS

Welcome to Tallahassee	2
The University	4
Student Athletes at FSU	6
1991 Outlook	8
Coaches' Profiles	10
Players' Profiles	12
1990 Review	16
1990 Match-By-Match Results	17
1990 Statistics For All Games	18
A Look at the ACC	19
Non-Conference Opponents	21
Series Records	24
All-Time Letterwinners	25
Career Records	25
Individual and Team Records	26
FSU Volleyball History	27
Former Seminoles	28
Team Roster	Inside Back Cover



WELCOME TO TALLAHASSEE . . .

Just a few blocks from Florida State University is the towering capitol building located in the center of the city. Tallahassee, the political nerve center of one of the fastest growing states in the nation, offers a clean industry, southern hospitality, cultural diversity and academic excellence.

More than 192,000 people live in Tallahassee and in the surrounding Leon County area. Residents enjoy subtropical summers, colorful foliage in the spring and autumn, and cool winters.

Go in any direction from Tallahassee and find action-packed recreation. Fishing on Lake Jackson, canoeing, water skiing or sailing at the University's Reservation, sunning on nearby Gulf of Mexico beaches, bird-watching at Wakulla Springs and St. Marks are all a special part of Tallahassee's appeal.

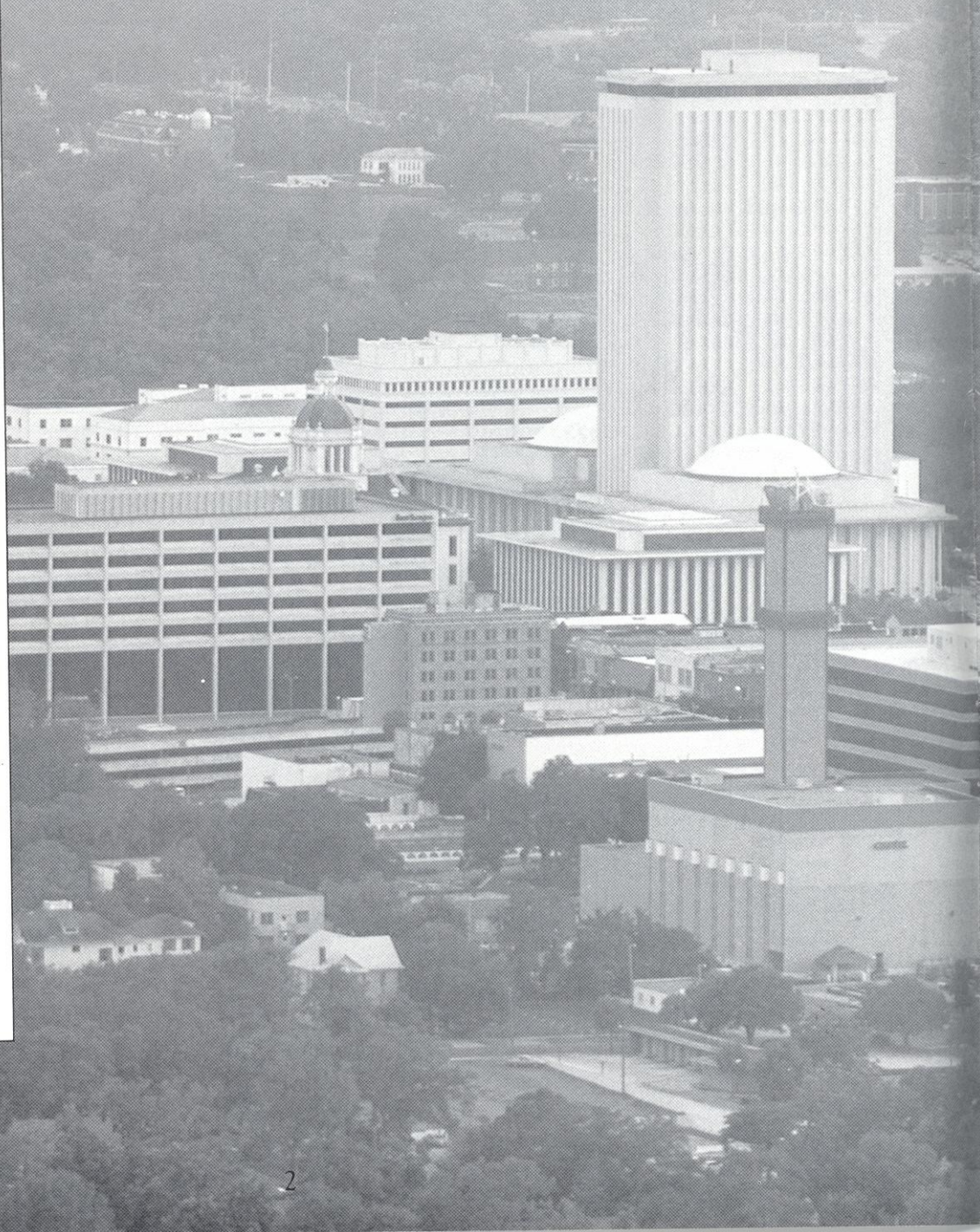
Annual events in Tallahassee are a big part of the community involvement. Springtime Tallahassee draws a crowd of more than 200,000 during its four-week jubilee in March and April. A downtown parade, festival in the park, city-wide race and balloon rally all make Springtime Tallahassee great fun for everyone.

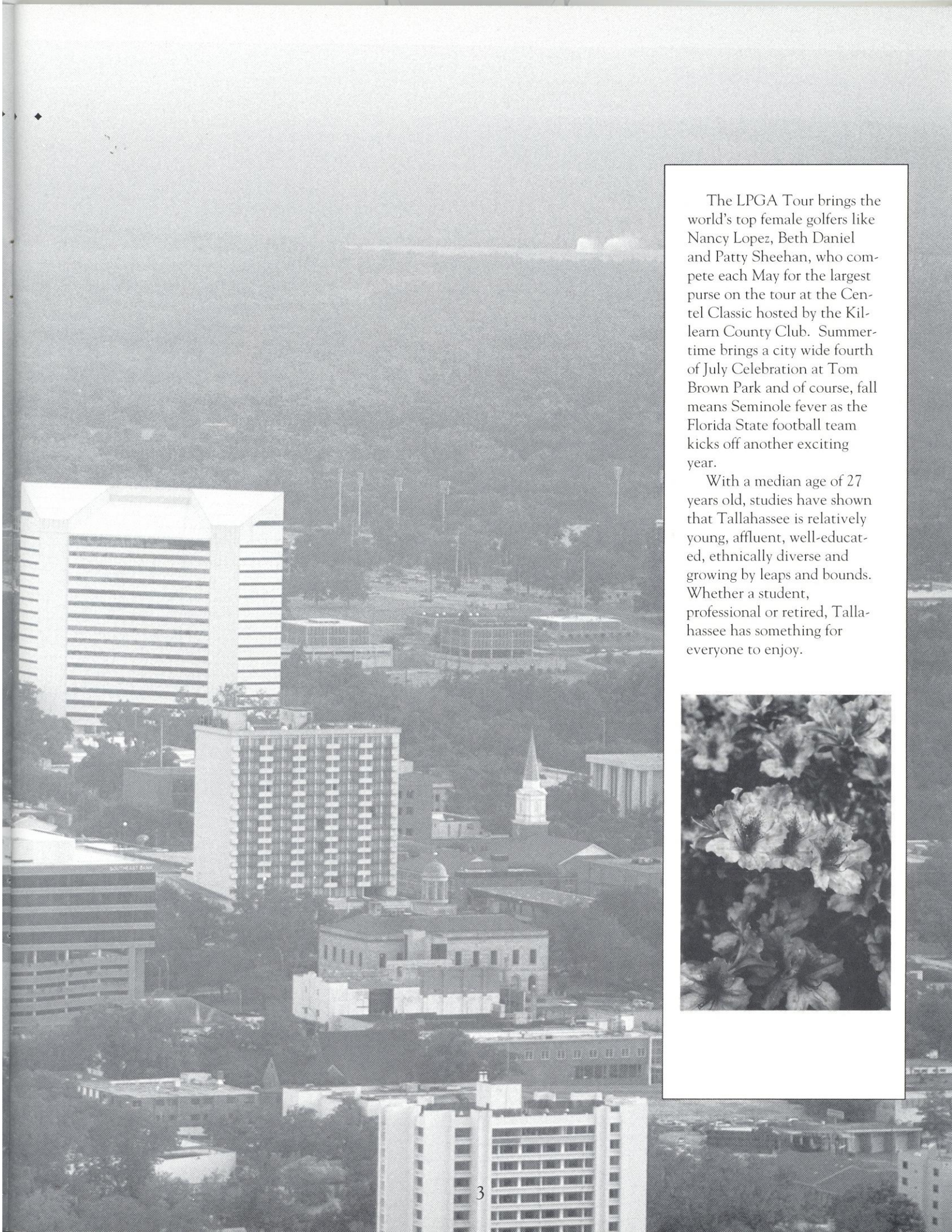
Residents also look forward to the Celebration of Lights in December when the Civic Center parking lot is turned into an ice skating rink along with lighting festivities and a 3K run in the downtown area.



I knew from my recruiting trip that Tallahassee was a great place. It feels like the whole city supports FSU."

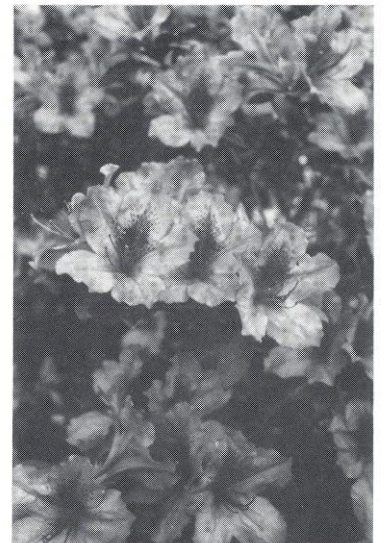
— Jen McCall
Sophomore





The LPGA Tour brings the world's top female golfers like Nancy Lopez, Beth Daniel and Patty Sheehan, who compete each May for the largest purse on the tour at the Centel Classic hosted by the Killbuck County Club. Summer-time brings a city wide fourth of July Celebration at Tom Brown Park and of course, fall means Seminole fever as the Florida State football team kicks off another exciting year.

With a median age of 27 years old, studies have shown that Tallahassee is relatively young, affluent, well-educated, ethnically diverse and growing by leaps and bounds. Whether a student, professional or retired, Tallahassee has something for everyone to enjoy.



THE UNIVERSITY



From its beginning as “The Seminary West of the Suwannee” in 1857, Florida State University has grown to stretch across 347 acres of rolling oak and pine-covered hills to comprise a campus which has educated millions of students over the last century.

Florida State University has boasted a heritage of service and scholarship since the beginning when the legislature passed an act authorizing two state colleges — one east (now University of Florida) and one west of the meandering Suwannee River.

Starting with a 130-member coed enrollment in 1857, the Seminary survived the Civil War, reconstruction, radical social changes, and a variety of name changes to emerge in 1909 as the Florida State College for Women.

It was helped back into coed status in 1947 by a legislature anxious to open up the state’s educational resources to thousands of degree-seeking ex-GI’s from World War II. It also was granted a new name “Florida State University.” The university’s expanse and complexity today contrast vividly with its beginning. Sixteen schools and colleges within the University serve more than 28,300 students who are enrolled in the 276 graduate and undergraduate degree programs and live and work among 1,300 faculty and 2,600 staff members. About 5,000 degrees are awarded every year.



"Not only did I receive a good education from Florida State University, but I also had the opportunity to work and participate with a variety of people and programs giving me experiences that have become invaluable to me in the work force."

– Shelly Birkholz
1986 graduate, 1989 Masters Recipient
Currently the FSU Assistant Volleyball Coach

In the past several years, the University has joined an elite group of universities in the United States which produce more than 200 doctoral graduates annually. Emphasis on graduate research and study at the University continues to grow, and today more than 4,000 graduate students pursue a variety of degrees.

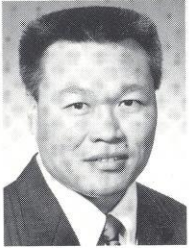
Student life at Florida State University also offers young people ample opportunity to acquire leadership skills and to apply their classroom learning in student government, residence hall government, Greek social organizations, honors programs, departmental organizations and more than 200 other registered student organizations active on campus. The FSU Artist Series, the Distinguished Lecture Series and outstanding music, theater and dance productions provide enjoyable evenings for the entire community.

Being a student at Florida State University means stepping into a tradition of more than 130 years of higher education. From its Flying High Circus to its Supercomputer Computations Research, Florida State provides a panorama of excitement, blending the educational and social sides of campus life.

(provided by the Information Center on the Florida State Campus)



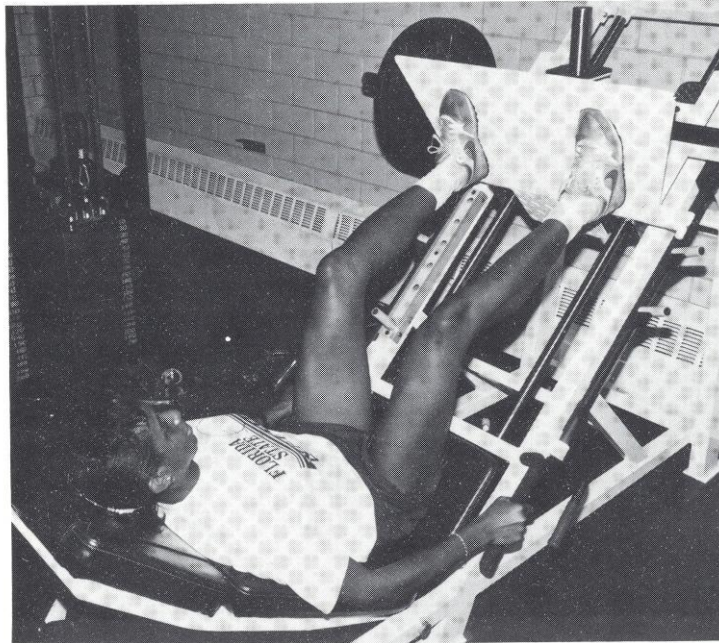
STUDENT-ATHLETES AT FSU ...



"We may follow a basic program at FSU, but what makes us different is that we

treat each athlete individually, from customizing their programs to the way we motivate them."

*— Gei-Nam Lim
Strength Coach*



"Our office encourages, guides and monitors every athlete from when they come in as freshmen until they graduate."



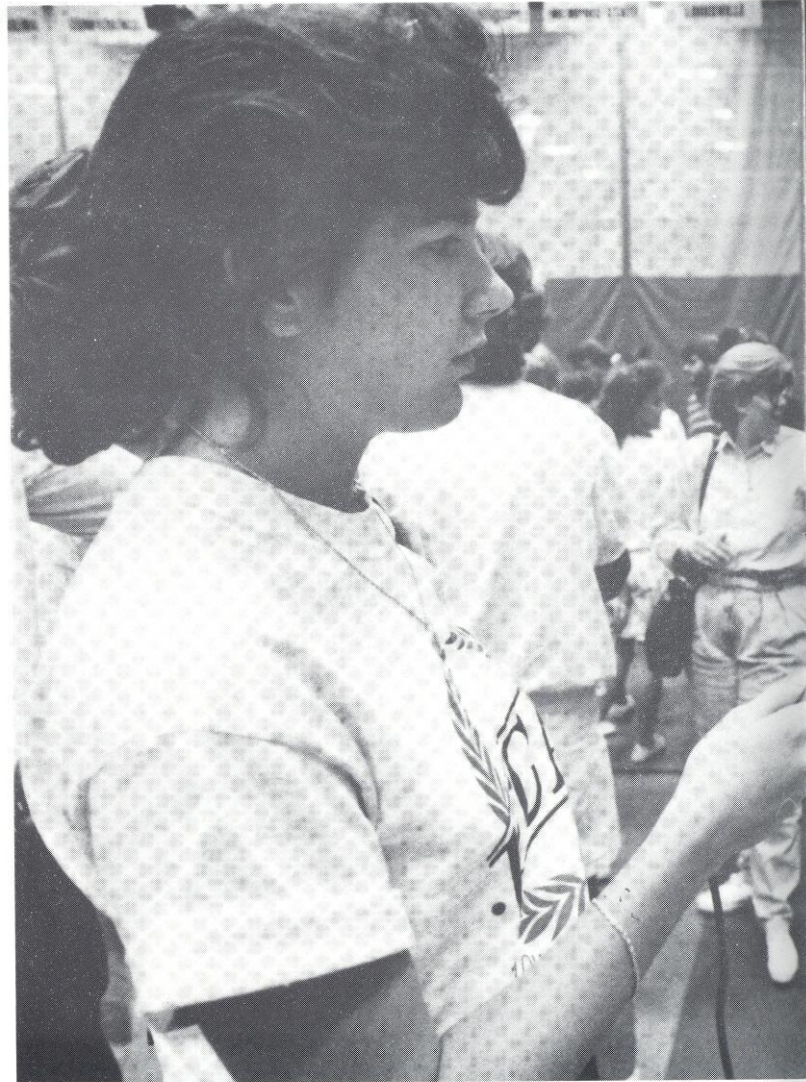
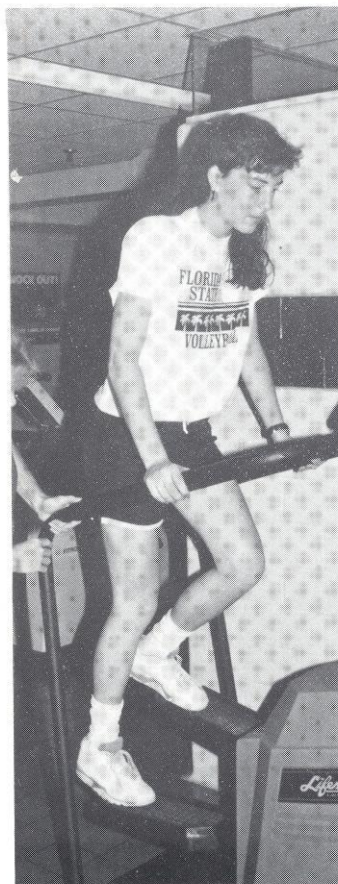
*— Academic Advisor,
Trudy Raybun*

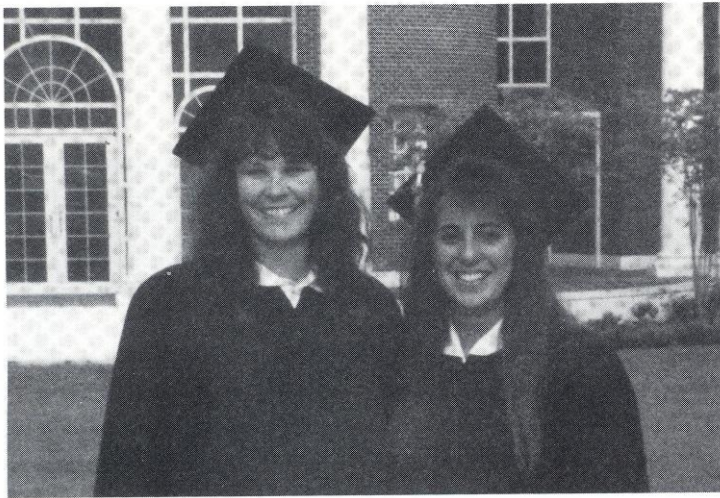
STRENGTH TRAINING AND CONDITIONING

Strength training and conditioning is an important part of an athlete's performance on the court or on the field. At Florida State, a supervised program is developed for each sport, emphasizing the objectives of not building bodies, but strengthening and conditioning them. Strength coach Gei-Nam Lim individually customizes programs for each of the athletes beginning with pre-conditioning before the season gets underway. A combination of weight training on Body Master, Nautilus and free weights along with pool workouts, improve each individual's body composition and increases muscle strength.

Once in season, Lim works with the players to improve their strength by concentrating on the same muscle groups. The off-season includes track work-outs combined with plyometrics and weights which

continue to build and condition. FSU takes pride in customizing the programs to help student-athletes reach their maximum potential.





ACADEMIC ADVISING

The primary concern of being a student-athlete at Florida State University is getting an education and taking advantage of the many opportunities offered to assist play-

ers. Trudy Raybun's Office of Academic Advising aids students who participate in all of the non-revenue sports with their admissions, class schedules, registration process, and the normal progress towards a degree. Raybun and her two graduate assistants also moni-

tor each athlete in their class performance and recommend tutors when necessary.

Academic Support is supervised by Nick Menacof, who oversees the study hall area and tutorials his office provides. As student-athletes learn to juggle practicing 20 hours a week and making six road trips during their season, plus a full class load, they find comfort in knowing there is a support staff to help them accomplish the ultimate goal of receiving a quality education.

PREVENTION CARE AND TREATMENT

Being an athlete at Florida State University means receiving the best care and treatment possible. All of the student-athletes undergo pre-season screening so a certified trainer can detect any potential injuries an athlete may incur. If a problem is detected, the athlete is placed on a prevention care program which may include any kind of treatment from icing to exercising. The program is closely monitored by Head Trainer Robin Gibson or one of her nine staff members.

Rehabilitation is another important component of the Seminole training room. Even though preventing injuries is the main objective, they are unavoidable for the 125 athletes who participate in the non-revenue sports. More serious injuries and illnesses are referred to the Seminole team physicians at Haney, Henderson, & Stowers who, for many years, have worked in conjunction with the FSU training room in successfully rehabilitating numerous athletes after an injury.

Body fat, weight control and drug testing are all responsibilities of the athletic training team which is dedicated to providing the best care possible for all FSU student-athletes.



We work closely with the coaches and the athletes to care for many problems

before they occur. Rehabilitation, prevention and treatment are our main objectives."

— Head Trainer, Robin Gibson, A.T.,C.



1991 OUTLOOK . . .

The Florida State Lady Seminole volleyball team enters a new realm in 1991 that could very possibly be the most challenging season ever. After dominating the Metro conference by taking six championships over the last 10 years, FSU will change gears and compete in the Atlantic Coast Conference this year.

Head coach Cecile Reynaud feels this move to the ACC is a positive and popular one in every way.

"We're really excited about the new challenge and looking forward to some great ACC competition," says Coach Reynaud. "I think this is a very positive move for our program and the university. The ACC schools have an excellent reputation for being both academically and athletically sound."

Even though ACC opponents have not been regulars on the Seminole's schedule, all but Georgia Tech have met up with Florida State in the past. FSU has lost only three matches to their now conference rivals (Duke, 1986; UNC, 1987, N.C. State, 1987), but several years, along with coaching changes, have taken place since the last meeting with these teams.

"There have been a lot of coaching changes in the ACC within the last year or so," explains Coach Reynaud. "This is the second year for both the Virginia and North Carolina coaches, and the first year for Georgia Tech's coach. I expect to see some major changes in most of these programs in the next year or so."

Another new challenge Coach Reynaud is facing this season — five freshmen who will take the place of five four-year letter winners who have

been the heart and soul of the Lady Seminoles for many years. Maggie Philgence and Gabrielle Reece's absence will be the hardest blow offensively. Both were ranked nationally, Philgence with her career kills and Reece for her life-time blocks.

Senior, Kristine Cousins is expected to pick up some of the slack left by the graduates. Cousins recorded 421 kills and 440 digs in the 1990 season. The junior college transfer from Miami-Dade is a consistent and reliable player that will be depended upon for the Seminole's offensive power on the outside.

Coming on in the last part of the season was two-time letter winner Bianca Stevens. The 6-1 Virgin Islands native recorded 99 kills in the 19 matches she played in in 1990. Stevens's strongest asset is her long arms that will be a blocking threat against her opponents. Reynaud predicts that her junior middle hitter will continue to develop into one of the strongest middle hitters to play at FSU in the last several years.

Running the plays on the court this season will be sophomore setter, Jen McCall. McCall, who recently recovered from knee surgery, stepped in as a freshman last season to record 893 assist. At 5-11, she also served as a strong blocker on the right side. She is sure to provide a solid backbone for the Seminoles this year.

Returning to the team after being red shirted for an illness, Vicki Zinkil brings strength and experience to the squad. Zinkil had a strong freshman year, totalling 157 kills and 168 blocks. She was the leader in the Metro and was ranked 15th in the nation



with her 1.68 blocks per game. Jennifer Cichy and Brandi Cumin are also returning to the fall roster as sophomores.

The weight of the 1991 season may very well rest on the shoulders of the five newcomers who will be making their college debut at Florida State. Most coaches would probably be a little concerned after replacing half the team with recent high school graduates, but Coach Reynaud feels this year will just be another challenge.

"The freshmen that we are bringing in this year have the solid ball control skills and intensity that every coach looks for. They all come from good club teams and they play

with a lot of desire which will make the transition to college volleyball even smoother."

The 1991 season promises to be more exciting than ever for the Lady Seminoles. After two home game premieres, FSU will head to the West Coast for a tournament hosted by University of California-Irvine and in October they will travel to Texas for a bout with South regional strengths Texas A&M and Houston. The Seminoles will finish out the regular season play in Charlottesville, Virginia at the Atlantic Coast Conference Championship tournament where they hope to be the first team from Florida State to capture an ACC title.



1991 ALPHABETICAL ROSTER

NO.	PLAYER	YR.	HOMETOWN	HT.	POSITION
11	Deanna Bosschaert	Fr	Dundas, Ontario	5-10	Outside Hitter
3	Jennifer Cichy	So	Rockville, MD	5-10	Def. Specialist
4	Adria Ciraco	Fr	E. Quogue, NY	5-10	Outside Hitter
1	Kristine Cousins	Sr	Kingston, Jamaica	5-9	Outside Hitter
2	Brandi Cumin	So	San Clemente, CA	5-8	Setter
9	J.J. Jones	Fr	Austin, TX	5-11	Middle Hitter
5	Catie Lotarski	Fr	Chicago, IL	5-10	Outside Hitter
13	Jennifer McCall	So	Littleton, CO	5-11	Setter
12	Luiza Ramos	Fr	Fortaleza, Brazil	5-8	Outside Hitter
14	Bianca Stevens	Jr	St. Croix, V.I	6-1	Middle Hitter
8	Vicki Zinkil	So	Stevensville, MI	6-1	Middle Hitter

AT A GLANCE ...

HEAD COACH: Cecile Reynaud (16th Year)

ASSISTANT COACH: Shelly Birkholz (5th Year)

GRADUATE ASSISTANT: Kris Grunwald (1st Year)

LETTERWINNERS LOST: Six (6) - Gabrielle Reece, Maggie Philgence,

Marybeth Sutcliffe, Debbie Meyer, Jennifer Marraffino, Amy Bronson

RETURNING: Six (6) - Kristine Cousins, Bianca Stevens, Vicki Zinkil,

Jen McCall, Brandi Cumin, Jennifer Cichy

NEWCOMERS: Five (5) - Deanna Bosschaert, Adria Ciraco,

J.J. Jones, Catie Lotarski, Luiza Ramos

BREAKDOWN BY CLASS: Seniors (1) - Cousins; Juniors (1) - Stevens;

Sophomores (4) - McCall, Zinkil, Cumin, Cichy; Freshmen (5) -

Bosschaert, Ciraco, Jones, Lotarski, Ramos.



PROFILES . . . MEET THE COACHES



Cecile Reynaud
SW Missouri State, 1975
433-173 (.715)
16th Season

Volleyball at Florida State and Cecile Reynaud have both enjoyed great success over the last 16 years. The 1991 season will bring a new challenge to the team as they exit from the Metro Conference, which they have dominated for years, and enter the competitive world of the Atlantic Coast Conference.

Reynaud enters her 16th season at the helm of the Lady Seminole volleyball squad in 1991. During her tenure, the Lady Seminoles have yet to encounter a losing season and have averaged 29 wins a year. With a 433-173 overall record, Reynaud is undoubtedly one of the most successful coaches in volleyball today. The Lady Seminoles have captured six Metro Conference championships and have participated in the 32-team NCAA tournament for the past four seasons, totaling six appearances overall.

Florida State's success as a team has earned Reynaud individual awards as well. She has been chosen as Metro Conference Coach of the Year

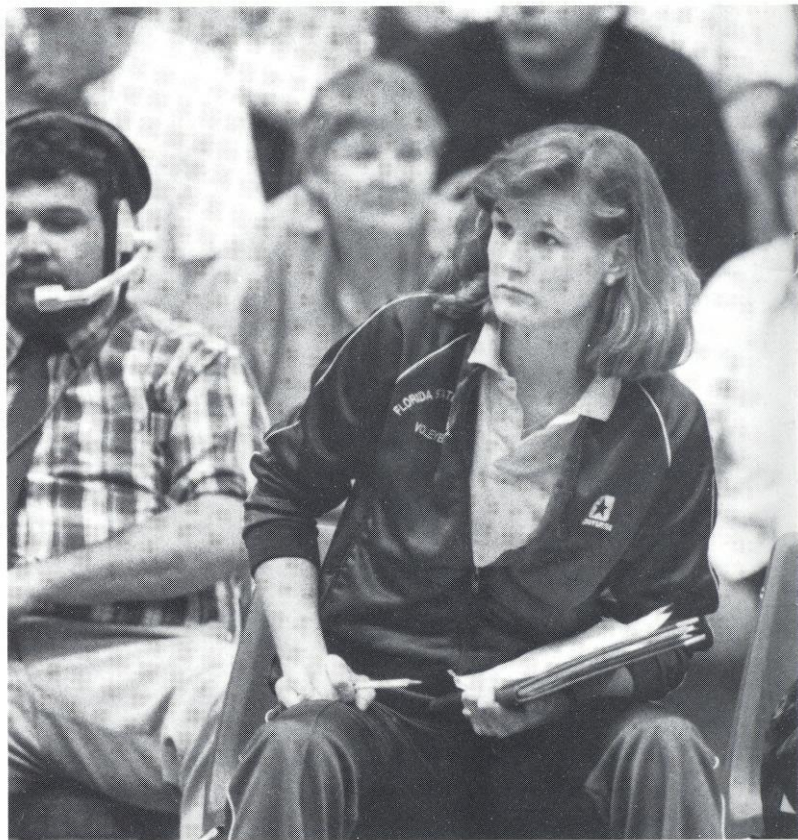
twice and was also honored as AVCA South Region Coach of the Year in 1989. In 1983, she served as the assistant coach at the World University Games, and went on to the international level where she was head coach for the United States Junior National Team which toured Japan and China in 1985.

Reynaud participated in the 1990 Goodwill Games as the technical secretary and is past-president of the American Volleyball Coaches Association. Currently, she is active on the USVBA Board of Directors and serves as the volleyball commissioner for the United States Olympic Festival.

As an expert on the game, Reynaud has been a technical consultant for several volleyball films and also edited a book on power volleyball. Reynaud appears frequently as a guest speaker at various clinics across the nation and hosts her own camp each year which attracts nearly 500 young volleyball players from as far away as Canada and the Virgin Islands.

A 1975 graduate of Southwest Missouri State, Reynaud enjoyed an outstanding athletic career on the volleyball team. Her success on and off the court since then led to her induction into the Southwest Missouri State Hall of Fame in 1983.

(Information prepared by student assistant Geoff Davis)





Assistant Coach
Shelly Birkholz
Florida State, 1986
5th Season



Graduate Assistant
Kris Grunwald
George Mason, 1991
1st Season

After a year's absence from the Florida State coaching staff, Shelly Birkholz returns to her duties as assistant coach for the 1991 season. In 1990, Birkholz took a position as the Indiana women's coordinator for the Fellowship of Christian Athletes where she traveled as a speaker and representative for FCA. Previously, Birkholz was the assistant to Cecile Reynaud for the 1986 through 1989 seasons, during which the Lady Seminoles made three appearances in the NCAA tournament.

After a standout prep career at Hononegah High School in Roscoe, Illinois, Birkholz accepted a volleyball scholarship at FSU. Knee surgery side-lined her college career, however Birkholz continued to play an important role on the Lady Seminole team for the next three years.

Birkholz graduated from FSU with a degree in leisure services in 1986 and earned her Master's degree in 1988 while coordinating a majority of the recruiting duties, monitoring the academic progress of the players and providing Reynaud with input on daily practices and matches.

Kris Grunwald joins the Lady Seminoles after a successful academic and athletic career at George Mason University. Last spring, he completed an impressive four-year stint on the nationally ranked men's volleyball team while holding down a 3.6 GPA in Mathematics.

While at GMU, Grunwald was twice selected First Team All-East and Honorable Mention All-American as well as being named to the Dean's List three times and to the Athletic Honor Roll four times. He is a veteran of five Empire State Games, the State Games of New York, and the 1987 Olympic Festival Team. His 1988 GMU squad participated in the NCAA Volleyball Finals.

Grunwald will pursue his Master's Degree in Education at FSU while assisting Reynaud and Birkholz with the team's practices, games, as well as work as the statistician during the matches for the Lady Seminoles this season.



PLAYERS' PROFILES . . .

#1, KRISTINE COUSINS-5-8 SENIOR, OUTSIDE HITTER KINGSTON, JAMAICA (MIAMI SUNSET SENIOR HIGH)



"Kristine looked strong this spring. She really is our most exciting player offensively and defensively."

Made quite a first impression last season as a transfer student from junior college power house Miami Dade-South ... expected to emerge as a strong leader this year ... enters the 1991 season as the cannon for the Florida State offense ... **AS A JUNIOR:** accumulated 421 kills in her first season at FSU, second only to All-America candidate, Maggie Philgence ... was named to the All-Tournament team at the Georgia Classic and MVP of the Florida Four Tournament last season ... led the Metro Conference with 440 digs defensively ... **JUNIOR COLLEGE:** helped Miami Dade-South to its 20th Florida Community College Activities Association State Championship and 21st consecutive South Conference title ... named AVCA Junior College Player of the Year and MVP of the championship tournament ... **HIGH SCHOOL:** earned seven varsity letters during her high school career ... helped Miami Sunset High to the volleyball state championship in 1987 ... **PERSONAL:** enjoys dancing and meeting new people ... majoring in social work ... born May 10, 1970.

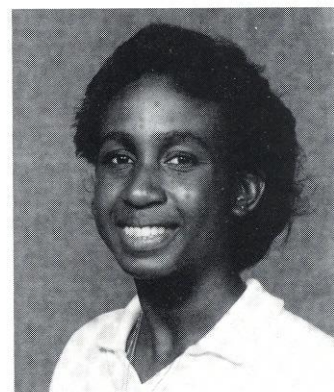
COUSINS AT FSU ...

<u>YEAR</u>	<u>MP</u>	<u>GP</u>	<u>K</u>	<u>E</u>	<u>TA</u>	<u>PCT</u>	<u>SA</u>	<u>BS</u>	<u>BA</u>	<u>BE</u>	<u>DG</u>
1990	35	131	421	157	1149	229	49	11	39	11	440

#14 BIANCA STEVENS -6-1 JUNIOR, MIDDLE HITTER ST. CROIX, V.I. (CENTRAL HIGH)

"Bianca is very intimidating player on the court . . . she really came on strong the last season and we expect a lot out of her this year"

One of the most powerful players to play at Florida State ... took over a starting position the last part of her sophomore year ... **AS A SOPHOMORE:** named the Most Improved Player on the 1990 Lady Seminole squad ... had a game high of 12 kills against George Washington ... hit .600 against Florida and tallied eight block assists in the Cincinnati match ... will be an explosive hitter in the middle position this season ... **HIGH SCHOOL:** spotted in the Virgin Islands when Reynaud was recruiting Maggie Philgence ... attended several FSU camps while in high school at Central ... also a talented basketball player ... **PERSONAL:** enjoys reading and movies ... majoring in interior design ... born June 10, 1971.



STEVENS AT FSU ...

<u>YEAR</u>	<u>MP</u>	<u>GP</u>	<u>K</u>	<u>E</u>	<u>TA</u>	<u>PCT</u>	<u>SA</u>	<u>BS</u>	<u>BA</u>	<u>BE</u>	<u>DIG</u>
1989	5	3	3	2	9	111	*	*	1	3	7
1990	19	60	99	47	261	199	12	17	53	70	84
TOTAL	24	63	102	9	270	155	12	17	54	73	91



#13, JENNIFER McCALL-5-11 SOPHOMORE, SETTER LITTLETON, CO (HERITAGE)

"Jen has the best work ethic of any player I've ever coached."

Coming off of knee surgery in the spring ... is expected to be back at 100 percent by the fall ... **AS A FRESHMAN:** played in 34 of 35 matches for the Seminoles last fall ... a physically conditioned player who fills the "quarterback role" on the court ... recorded 63 set assists against Louisville in November and 20 digs against Memphis State ... **HIGH SCHOOL:** three-time Continental League first team selection ... played in All-State games in Colorado after her senior year ... named MVP on her Heritage team in both her junior and senior years ... earned All-Tournament honors at a 20-team Overland Tournament ... played club ball for Sudden Impact of Denver ... member of the National Honor Society ... president of the tutoring committee ... received the Randy Cambell Award for Academic and Athletic excellence while a student at Heritage ... **PERSONAL:** inherited physical strength from her father who is a football coach... majoring in physical education ... born February 10, 1972.

McCALL AT FSU ...

<u>YEAR</u>	<u>MP</u>	<u>GP</u>	<u>K</u>	<u>E</u>	<u>TA</u>	<u>PCT</u>	<u>AST</u>	<u>SA</u>	<u>BS</u>	<u>BA</u>	<u>DG</u>
1990	34	117	100	37	283	.222	893	34	5	62	228

#8, VICKI ZINKIL-6-1 SOPHOMORE, MIDDLE HITTER STEVENSVILLE, MI (LAKESHORE)

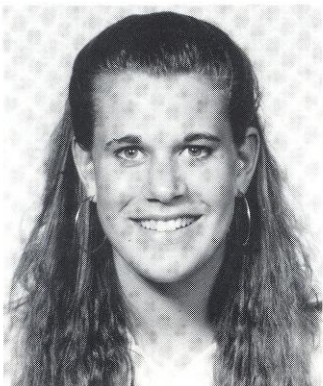
"Vicki is excited to be back. We expect her to be even more physically mature and ready to contribute."

Declared a medical redshirt after a bout with mononucleosis four matches into the 1990 season ... expected to come back physically more mature ... **AS A FRESHMAN:** totalled 157 kills and 168 blocks in the 1989 season ... one of three players to reach triple digits in both categories ... missed five mid-season matches due to a knee injury which led to arthroscopic surgery ... returned for a weekend road trip where she totaled 17 blocks and 14 kills in matches against Cincinnati, Louisville and Purdue ... named to the Florida Eight Classic All-Tournament Team ... ranked among Metro Conference and national leaders with 1.68 blocks per game ... had a season-high 14 kills against California in the NCAA Tournament ... season high of 13 blocks against Florida in the Florida Eight Classic ... **HIGH SCHOOL:** played for the Michigan Class B State championship team as a junior at Lakeshore High School ... competed with the Kalamazoo Junior AAU team... named on All-Conference and second team All-State squads ... **PERSONAL:** enjoys water sports, chess and sewing in her free time ... majoring in accounting and plans to continue on to law school ... born October 24, 1971.



ZINKIL AT FSU...

<u>YEAR</u>	<u>MP</u>	<u>GP</u>	<u>K</u>	<u>E</u>	<u>TA</u>	<u>PCT</u>	<u>SA</u>	<u>BS</u>	<u>BA</u>	<u>BE</u>	<u>DG</u>
1989	2	100	157	80	433	177	19	41	127	11	106



#3, JENNIFER CICHY-5-10 SOPHOMORE, DEF. SPECIALIST ROCKVILLE, MD (THOMAS S. WOOTON)

"Jennifer is a real team player and an emotional leader for the Lady Seminoles"

A freshman last season who stepped in as an emotional leader with true team spirit ... academically sound student-athlete ... outgoing personality on and off the court ... **HIGH SCHOOL:** a four-year letter-winner at Thomas S. Wooton High School ... led her team in taking seven consecutive state titles ... MVP of her high school team her senior year ... selected first team All-Metropolitan by the *Washington Post* and first team All-County by the *Montgomery County Journal* ... played five years on the Capital Volleyball club team ... played at the first World Women's Youth Volleyball Cup in Brazil in 1989 ... **PERSONAL:** Collects clowns for a hobby ... enjoys country music and making friends ... majoring in hotel management ... born February 25, 1972.

CICHY AT FSU ...

<u>YEAR</u>	<u>MP</u>	<u>GP</u>	<u>K</u>	<u>E</u>	<u>TA</u>	<u>PCT</u>	<u>SA</u>	<u>BS</u>	<u>BA</u>	<u>BE</u>	<u>DIG</u>
1990	10	11	*	1	2	.500	*	*	*	*	12

**#2, BRANDI CUMIN-5-8 SOPHOMORE, SETTER
SAN CLEMENTE, CA (SAN CLEMENTE)**

"Brandi shows her teammates the extent to which they can push themselves physically."

A physically talented player with outstanding endurance ... earned quality playing time last year as a freshman ... **AS A FRESHMAN:** recorded a high of eight digs against Wyoming and Loyola Marymount ... had 12 assists against Georgia Southern ... awarded "Most Conditioned Athlete" at the end of the season ... also FSU's Intramural Champion in the two mile run event ... **HIGH SCHOOL:** the first California native to sign with the Lady Seminoles ... lettered in volleyball and swimming at San Clemente ... voted MVP and All-South Coast League in both her junior and senior year ... played club volleyball for Cal Juniors of Huntington Beach ... inducted into Who's Who and National Honor Society ... named American Air Force Scholar Athlete ... still holds swimming records at San Clemente ... **PERSONAL:** enjoys surfing, aerobics and beach volleyball ... an L.A. Lakers fan ... born September 10, 1972.



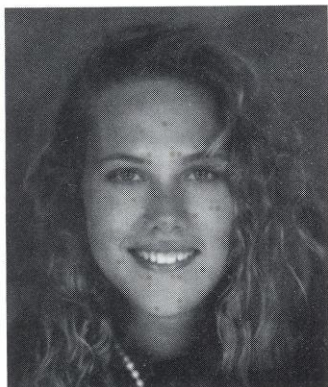
CUMIN AT FSU ...

<u>YEAR</u>	<u>MP</u>	<u>GP</u>	<u>K</u>	<u>E</u>	<u>TA</u>	<u>PCT</u>	<u>SA</u>	<u>BS</u>	<u>BA</u>	<u>BE</u>	<u>DG</u>
1990	20	43	2	5	14	214	2	*	2	*	35

**#11, DEANNA BOSSCHAERT-5-10 FRESHMAN, OUTSIDE HITTER
DUNDAS, ONTARIO (BERKELEY PREP)**

"Deanna is a great all-around player who will open up our offense with some new options."

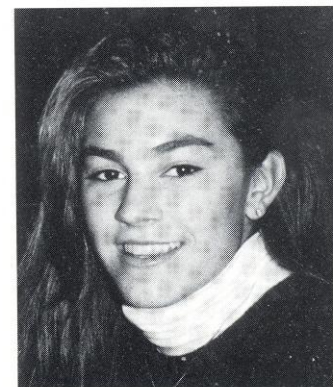
Expected to open up offensive options for the Lady Seminoles this season ... likely to be a big addition to the starting line-up ... **HIGH SCHOOL:** originally from Ontario where she played for Parkside High School in Dundas ... played on the Ontario Volleyball Midget All-Star team her freshman year ... club team took the Province championship and fifth place in the national tournament ... named MVP at the McMaster University High School Tournament ... Provincial Volleyball Club team placed fourth at Nationals her junior year ... moved to Tampa her senior year and played for Randy Dagostino at Berkeley which won Class 1A State Championship in 1990 ... named All-Star at the state tournament ... *St. Petersburg Times* and *Tampa Tribune*'s Volleyball Player of the Year ... named All-County and All-Conference ... **PERSONAL:** plays beach volleyball and basketball ... enjoys photography ... majoring in chemical engineering ... born November 10, 1973.



**#4, ADRIA CIRACO-5-10 FRESHMAN, OUTSIDE HITTER
EAST QUOGUE, NY (WESTHAMPTON BEACH)**

"Adria is a great defensive passer and will be an asset to us with her experience of hitting in the middle and outside."

A great all-around player who will compete for a starting position at either the middle or outside position ... **HIGH SCHOOL:** finished an impressive prep career at Westhampton Beach H.S. where she excelled in volleyball, basketball and tennis ... named Most Valuable Player of her '91 volleyball squad and a two-time MVP in tournament competition ... a four-time All-League winner with three All-Conference honors ... led her Long Island Big Apple club team to two regional championships and an East Coast title ... club team won the New York State Silver Medal at the Empire Games in 1989 ... participated in the National Jr. Olympics in 1990 and 1991 ... also selected All-League and All-Conference in tennis ... named Outstanding Senior Athlete by the Westhampton Beach Coaches Association ... **PERSONAL:** enjoys skiing and shopping ... would one day like to be a sportscaster ... majoring in communications ... born April 30, 1973.





#9, J.J. JONES-5-11 FRESHMAN, MIDDLE HITTER AUSTIN, TX (JOHN H. REAGAN)

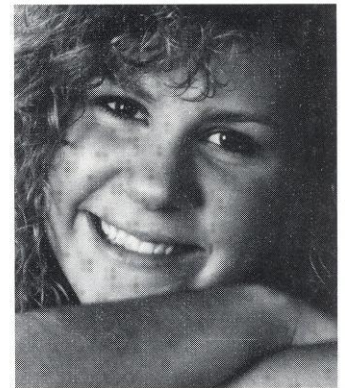
"J.J. is experienced in both the middle and outside positions which will be a big asset to us this fall."

A strong player with experience at both the outside and middle positions ... brings depth to the Seminole squad ... outstanding server ... **HIGH SCHOOL:** earned four letters at Reagan and played six years for the Austin Volleyball Association club team ... selected to the All-Central Texas team last season ... three-time All-District team member... led Reagan to Class 4A state finals in '91 ... holds high school record for number of service aces (82) in a season ... club team finished second at the Lone Star Classic Championship ... named Best All-Around and Best Playset Attacker at San Diego State University camp ... served as president of student council ... member of Who's Who ... **PERSONAL:** sister is a middle blocker at San Diego State ... sent a singing telegram to Reynaud to accept her scholarship ... enjoys horses, soccer and computers ... born August 10, 1973.

#5, CATIE LOTARSKI-5-10 FRESHMAN, OUTSIDE HITTER CHICAGO, IL (ST. FRANCIS)

"Catie hammers the ball. Her Circus club team background will be a benefit to us right away."

Expected to be an immediate contributor to the Lady Seminoles ... brings years of experience and a strong background in volleyball ... **HIGH SCHOOL:** a six-year varsity letterwinner at St. Francis ... three-time Academic All-Conference in both volleyball and basketball ... named to the All-Area team for volleyball and basketball ... All-State first team in basketball and honorable mention in volleyball ... *Sun Times* and *Daily Herald*'s Basketball Player of the Week ... Most Improved Player on the volleyball team ... played for Circus club team of Chicago ... MVP of the St. Francis basketball team ... **PERSONAL:** enjoys all sports and working with young children ... majoring in elementary education ... born February 5, 1973.



#12, LUIZA RAMOS-5-8 FRESHMAN, OUTSIDE HITTER FORTALEZA, BRAZIL (FT. MYERS)

"Luiza's ability to hit back row and her solid ball control skills give her a lot of flexibility for us this season."

Will add experience and finesse to the 1991 Seminole team ... a versatile player who has also worked as a setter ... **HIGH SCHOOL:** an outstanding athlete after only playing one year at Ft. Myers ... selected 1990 Mizuno All-American (second team) by *USA Today* ... led her Ft. Myers high school team to the 3A Florida State Championship ... named to the Florida All-State and All-Star teams ... selected All-Conference in 1990 ... *Ft. Myers News-Press* named her Player of the Year ... also named to the All-Southwest Florida team ... **PERSONAL:** came to America as an exchange student and would like to return to Brazil after graduation from FSU ... enjoys the movies ... majoring in computer science ... born February 14, 1973.

1990 REVIEW

The 1990 Florida State volleyball squad enjoyed one their most successful seasons finishing with an outstanding 25-10 record. Great team work and senior leadership, combined with national offensive stand-outs Maggie Philgence and Gabrielle Reece, kept FSU on top all year. Even though FSU did not bring home a Metro championship for the first time in five years, Reynaud felt the team learned and accomplished a lot.

"I don't think they realized how much we lost when our starting setter, Nancy (Gaspadarek) graduated," Reynaud said. "She really had a rapport with the team and her competitiveness kept them on their feet. We also had problems with injuries last year, which we are usually fortunate enough to avoid."

The Seminoles took six of their 10 losses last season in five-game matches which, was frustrating to the players as well as the coaches.

After two five-game losses early in the season, Reynaud tried motivating her team by making a pact - everyone gave up one favorite item until they won a five-game situation. The players sacrificed things such as chocolate, coke, butter, and their walkmen as Reynaud gave up her beloved coffee. It took three weeks, but the Lady Seminoles won the last two five-game matches of the regular season prior to the Metro Conference Championship. There, they once again fell to a five-game jinx.

"We went into the Metro and met up with a red-hot Louisville team," explained Reynaud. "They were ready to win and we played very average. It was

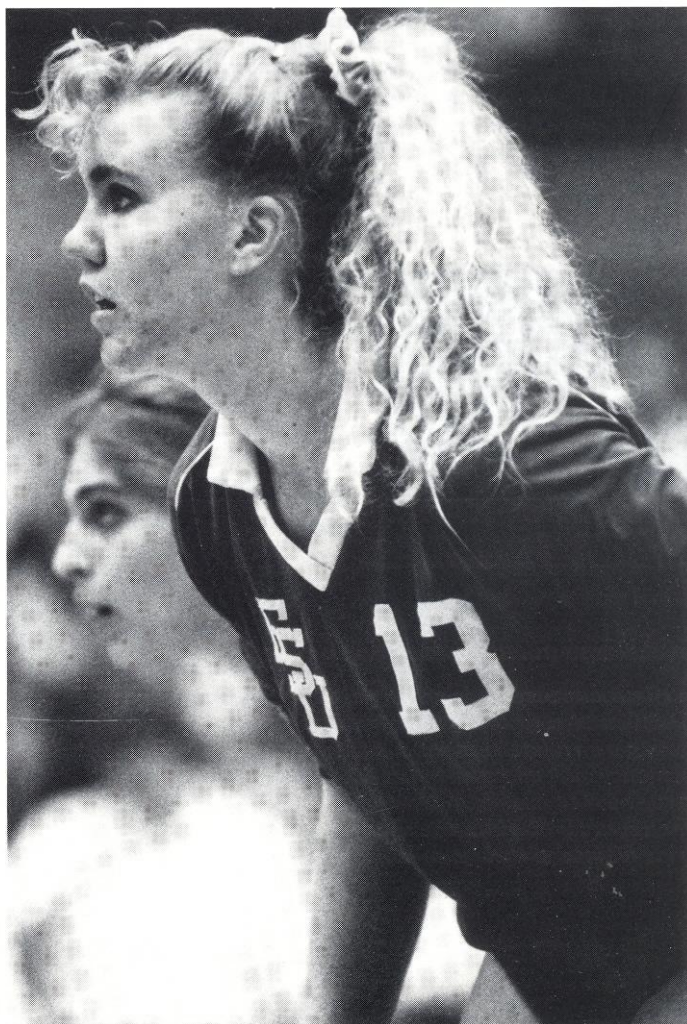


Athletic Director Bob Goin and Cecile Reynaud congratulate Philgence after a record breaking 2,000 kills.

disappointing to lose in the fifth game again 14-16, but exciting to still have an opportunity to redeem ourselves by being invited to play in the NCAA tournament at Kentucky."

But luck did not follow the Lady Seminoles to Lexington. Starting setter, Jen McCall fell to a knee injury in practice the night before the match which changed the game plan. Florida State made an impressive effort and took Kentucky to four games before losing 12-15, 10-15, 15-10, 10-15. The Lady Seminoles ended their season for the sixth time in the NCAA first round.

The team looks forward to starting up another season in Tully Gym after enjoying much success at home. Fans cheered Florida State to 15 victories and only one loss in 1990. The average attendance was 495 and hit a high of 1,014 when FSU played and defeated the Florida Gators.



1990 LADY SEMINOLE MATCH-BY-MATCH RESULTS

Overall Record.....25-10 (.714)
 Metro Conference7-2 (.778)
 Home Record.....15-1 (.938)
 Away Record.....5-6 (.714)
 Neutral Record5-3 (.625)

Game Record.....86-37 (.699)
 Tournament Record8-7 (.533)
 In Three-Game Matches18-0
 In Four-Game Matches5-3
 In Five-Game Matches2-7

UNIVERSITY OF GEORGIA TOURNAMENT, ATHENS GA (2ND PLACE)

8/31	Alabama-Birmingham	W	3-0	15-7, 15-13, 15-11
9/1	Butler	W	3-1	13-15, 15-9, 15-10, 15-3
9/1	Georgia	L	3-2	15-10, 15-12, 11-15, 8-15, 14-16
9/2	Eastern Washington	W	3-1	9-15, 15-5, 15-3, 15-3
9/10	Southern Mississippi	W	3-0	15-8, 15-9, 15-5

FLORIDA CLASSIC, MIAMI, FL (1ST PLACE)

9/14	South Florida	W	3-0	15-5, 15-11, 15-5
9/15	Florida	L	3-2	11-15, 16-14, 11-15, 15-5, 12-15
9/15	Florida International	W	3-0	16-14, 15-9, 15-1
9/16	Georgia Southern	W	3-0	15-2, 15-1, 15-7

COLORADO CLASSIC, BOULDER, CO (4TH PLACE)

9/21	Wyoming	L	3-2	16-14, 11-15, 15-6, 2-15, 13-15
9/22	Loyola-Marymount	L	3-2	7-15, 15-9, 4-15, 15-13, 6-15
9/22	Colorado	L	3-1	4-15, 5-15, 15-9, 5-15
9/28	at SW Texas State	W	3-0	15-8, 15-6, 15-6
9/29	at Texas	L	3-2	8-15, 15-11, 9-15, 15-9, 5-15
10/1	Tulane	W	3-0	15-8, 15-7, 15-12
10/5	Virginia Tech	W	3-0	15-4, 15-4, 15-5
10/6	South Carolina	W	3-0	15-5, 15-8, 15-6
10/7	South Florida	W	3-1	11-15, 15-10, 15-4, 15-12
10/9	at Florida	W	3-1	15-12, 10-15, 15-4, 15-12
10/13	at Memphis State	L	3-2	16-14, 15-11, 8-15, 8-15, 11-15
10/16	Florida A & M	W	3-0	15-1, 15-2, 15-4
10/19	Baylor	W	3-0	15-5, 15-7, 15-4
10/20	Florida International	W	3-0	15-10, 15-4, 15-3
10/21	Auburn	W	3-0	15-7, 15-6, 15-3
10/23	Jacksonville	W	3-0	15-4, 15-2, 15-7
10/28	Georgia	W	3-0	15-4, 15-6, 15-12
10/30	Florida	W	3-0	15-5, 15-6, 15-12
11/2	at Cincinnati	W	3-2	15-8, 14-16, 15-4, 15-17, 15-9
11/3	at Louisville	W	3-0	15-13, 15-3, 15-13

FLORIDA STATE CLASSIC

11/9	Fresno State	L	3-1	15-7, 11-15, 4-15, 15-17
11/10	George Washington	W	3-2	15-2, 16-18, 15-6, 3-15, 15-3
11/10	Houston	W	3-1	15-6, 12-15, 15-10, 15-4

METRO CONFERENCE, LOUISVILLE, KY (3RD PLACE)

11/16	Virginia Tech	W	3-0	15-11, 15-9, 15-4
11/17	Louisville	L	3-2	15-3, 6-15, 14-16, 15-10, 14-16

FIRST ROUND NCAA TOURNAMENT, LEXINGTON, KY

11/30	Kentucky	L	3-1	12-15, 10-15, 15-10, 10-15
-------	----------	---	-----	----------------------------

1990 STATISTICS FOR ALL GAMES

Record (W-L): 25-10 (15-1 Home; 5-6 Away; 5-3 Neutral; 7-2 Metro)

Player	MP	MS	GP	K	KPG	E	TA	PCT	AST	BHE	SA	BS	BA	TB	BPG	DG	RE	BE	SE
Philgence, M.	35	35	131	579	4.41	157	1265	.333	17	5	26	13	64	77	0.58	399	48	23	18
Cousins, K.	35	35	131	421	3.21	157	1149	.229	29	11	49	11	39	50	0.38	440	49	11	54
Reece, G.	34	1	126	328	2.60	122	727	.283	21	1	7	68	121	189	1.50	110	0	25	5
Zinkil, V.	4	4	16	31	1.93	8	66	.348	6	0	1	12	18	30	1.87	6	1	0	0
Bronson, A.	33	33	124	228	1.83	80	629	.235	50	8	44	19	85	104	0.83	305	42	24	47
Stevens, B.	19	15	60	99	1.65	47	261	.199	8	6	12	17	53	70	1.16	84	11	9	22
McCall, J.	34	23	117	100	0.85	37	283	.222	893	34	34	5	62	67	0.57	228	6	11	19
Sutcliffe, M.	30	29	112	60	0.53	28	201	.159	47	6	19	3	27	30	0.26	252	18	4	31
Marraffino, J.	35	15	101	10	0.09	7	40	.075	498	22	11	2	10	12	0.11	126	5	2	12
Cumin, B.	20	0	43	2	0.04	5	14	.214	37	2	2	0	2	2	0.04	35	10	0	7
Meyer, D.	35	21	126	3	0.02	7	30	.133	13	1	12	0	1	1	0.00	184	25	0	18
Cichy, J.	10	0	11	0	0.00	1	2	.500	1	0	0	0	0	0	0.00	12	1	0	0
FSU	35	35	131	1861	14.21	656	4667	.258	1620	102	217	150	482	632	2.98	2181	216	109	233
Opponents	35	35	131	1708	13.04	828	4900	.180	1512	92	216	126	332	458	2.23	2267	214	104	316



1990 HONORS

TEAM

- University of Georgia Tournament (Second Place)
- Florida Four Classic (First Place)
- Metro Conference Regular Season (Second Place)
- Metro Conference Championship (Third Place)
- Participated in the NCAA Tournament
- Ranked First in Metro Blocks Per Game

INDIVIDUAL

- Jennifer Marraffino**
Metro Conference Commissioner's List for Academic Excellence
- Debbie Meyer**
Metro Conference Commissioner's List for Academic Excellence
- Maggie Philgence**
UGA All-Tournament Team
Florida Four All-Tournament Team
Colorado Classic
All-Tournament Team
Florida State Classic
All-Tournament Team
Metro Conference
Player of the Week, (twice)
All-Metro Conference Team

- Metro All-Tournament Team
- AVCA All-South Region Team
- 1991 Olympic Festival Team
- Ranked Fourth in Metro Hitting Percentage (.333)
- Ranked Fifth in Metro Kills Per Game (4.41)
- Ranked Fifth in NCAA for Career Kills (2,110)
- Broke FSU's Record for Most Kills (2,110)
- Broke FSU's Record for Hitting Percentage (.333)
- 1990 Florida State MVP

Gabrielle Reece

- Florida State Classic
All-Tournament Team
- Metro Conference Player of the Week
- All-Metro Conference Team
- Ranked First in Metro for Blocks Per Game (1.50)
- Ranked Fifth in NCAA for Career Blocks (748)
- Broke FSU's Record for Solo Blocks (240)
- Broke FSU's Record for Total Blocks (748)

Kristine Cousins

- UGA All-Tournament Team
- Florida Four All-Tournament Team
- Ranked Second in Metro for Digs Per Game (3.36)

A LOOK AT THE ACC . . .

UNIVERSITY OF
VIRGINIA
SEPT. 26, 7 P.M.



"I'm very excited about FSU joining our conference. They have an experienced coach who is widely recognized and an excellent facility. They will definitely help bring the ACC to the front of the volleyball world."

– Karen Uhler, Head Coach.

Over the past several years, the Virginia Cavaliers have been an under-dog, always waiting to upset the unsuspecting opponent. They play a die-hard defense and are a determined team on the court. Second-year coach Karen Uhler will certainly bring motivation to the 1991 squad as they look to continue their success.

Location: Charlottesville, VA

Enrollment: 18,137

Nickname: Cavaliers

Colors: Orange and Blue

1990 Record: 17-14

Conference Record: 2-4

Conference Finish: 5th

Starters Returning: 3

Head Coach: Karen Uhler

Record at School:

17-14 after 1 year

Players to Watch:

Greta Jansson (OH, 6-1, Sr.),

NORTH CAROLINA
STATE UNIVERSITY
OCT. 11 @ UNC



"Florida State is a welcome addition to the ACC. They are extremely competitive and will raise the level of competition within the conference. Florida State is widely respected throughout the nation and will be a strong contender, now and in the future."

– Judy Martino, Head Coach

With a 21-10 record along with an ACC Championship in 1987 and 21-11 record in 1988, the Wolfpack of N.C. State has enjoyed some outstanding success. But after suffering the loss of five four-year starters in 1989, Coach Judy Martino is building the program back up from a 9-19 1990 season and is expecting a lot of her maturing squad. With two seniors and five juniors, the Wolfpack may be back full force for the 1991 season.

Location: Raleigh, NC

Enrollment: 24,514

Nickname: Wolfpack

Colors: Red and White

1990 Record: 9-19

Conference Record: 3-3

Conference Finish: 4th

Starters Returning: 5

Head Coach: Judy Martino

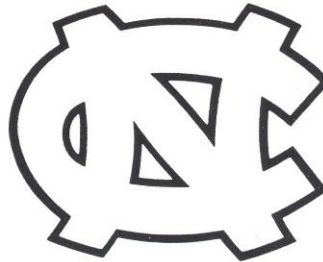
Record at School:

130-122 after 8 years

Players to Watch:

Kim Scroggins (S, 5-11, Sr.)

UNIVERSITY OF
NORTH CAROLINA
OCT. 12 @ UNC



"Adding Florida State will definitely improve the level of play in the ACC. Cecile Reynaud has an outstanding program and, despite graduating five players, will find a way to be very competitive again this year."

– Joe Sagula, Head Coach

After his first year at UNC-Chapel Hill, Joe Sagula is expected continue the Carolina tradition of top-notch volleyball. North Carolina took the ACC title in 1988 and in 1989 and has consistently been ranked in the top of the Regional rankings. After going 4-2 in the conference last year, the Tar Heels are certainly an up-and-coming team to watch this season.

Location: Chapel Hill, NC

Enrollment: 23,592

Nickname: Tar Heels

Colors: Carolina Blue & White

1990 Record: 14-18

Conference Record: 4-2

Starters Returning: 3

Head Coach: Joe Sagula

Record at School:

14-18 after 1 year

Players to Watch:

Melissa Mroczek (OH, 5-10, Sr.)

UNIVERSITY OF
MARYLAND
OCT. 18, 7 P.M.



"When you add a team that has been as successful as Florida State to the ACC, you obviously strengthen our league. FSU has a history of doing well in the NCAA tournament and that is the kind of team we need to bring to the ACC."

– Janice Kruger, Head Coach

Maryland will be the defending ACC champions at the 1991 tournament. In her three years at Maryland, Head Coach Janice Kruger has led the Terrapins from an 11-22 season in 1988 to a 22-12 record in 1990 along with the first ACC championship for Maryland. Since the Terrapins will return five of their six starters next season, they are sure to be strong competition for ACC rivals.

Location: College Park, MD

Enrollment: 26,863

Nickname: Terrapins

Colors: Red, White, Black and Gold

1990 Record: 22-12

Conference Record: 5-1

Conference Finish: 1st

Starters Returning: 5

Head Coach: Janice Kruger

Record at School: 56-49 after

3 years

Players to Watch: Colleen

Hurley (OH, 5-11, Sr.)

SID Contact: TBA

SID Phone: (804) 982-5126

SID Contact: Asleigh Keener

SID Phone: (919) 737-3826

SID Contact: Sheri West

SID Phone: (919) 962-2123

SID Contact: Ivan Meltzer

SID Phone: (301) 314-7008

DUKE
UNIVERSITY
OCT. 20, 2 P.M.



"I feel that the addition of Florida State from a volleyball standpoint is a positive one. They will add a nationally competitive team to our conference and help broaden our spectrum recruiting-wise. FSU is a positive addition to the ACC."

- Jon Wilson, Head Coach

Duke currently holds the most ACC titles in volleyball. Head Coach Jon Wilson finished his 11th year with the Blue Devils in 1990 and is aided by his wife and assistant coach Susan Wilson. Duke finished first in the conference regular season play in 1990 and continues to be a contender for the championship title.

Location: Durham, NC
Enrollment: 6,300
Nickname: Blue Devils
Colors: Royal Blue and White
1990 Record: 21-9
Conference Record: 5-1
Conference Finish: 1st
Starters Returning: 4
Head Coach: Jon Wilson
Record at School:
195-166 after 11 years
Players to Watch:
Karen Greiner (S, 5-8, Sr.),

SID Contact: Richard Kilwien
SID Phone: (919) 684-2120

CLEMSON
UNIVERSITY
NOV. 8 @ CLEMSON



"Clemson is excited that Florida State is now a member of the ACC. They bring a rich tradition of excellence in volleyball to our conference and we welcome them"

- Linda White, Head Coach

After a five year history at Clemson, Head Coach Linda White has led the Tiger squad to become an exciting team in the Atlantic Coast Conference. Clemson has produced a number of Academic All-Americans and All-ACC players from their volleyball squad. The three strong returning starters should lead the Tigers to another successful season.

Location: Clemson, SC
Enrollment: 16,303
Nickname: Lady Tigers
Colors: Orange and Purple
1990 Record: 23-14
Conference Record: 2-4
Conference Finish: Tied for 5th
Starters Returning: 3
Head Coach: Linda White
Record at Clemson:
116-69 after 5 years
Players to Watch:
Heidi Kahl (OH, 6-0, Jr.),

SID Contact: Sam Blackman
SID Phone: (803) 656-2101

GEORGIA
TECH
NOV. 10 @ GEORGIA TECH



"Florida State has made a tremendous commitment to their women's sports programs. I believe their entry into the ACC will have a positive impact, not only on women's volleyball, but on our entire women's sports programs in the ACC"

- Shelton Collier, Head Coach

Former assistant coach for the United States National team, Shelton Collier comes to Georgia Tech to accept a challenge in the 1991 season. The Yellow Jackets finished 0-6 in the conference last year and had an 8-30 overall season record. Collier brings reputable volleyball experience to Georgia Tech and could turn the Yellow Jackets around in the next few years.

Location: Atlanta, GA
Enrollment: 12,000
Nickname: Lady Jackets
Colors: Old Gold and White
1990 Record: 8-30
Conference Record: 0-6
Conference Place: 7th
Starters Returning: 3
Head Coach: Shelton Collier
Record at School: 1st year
Players to Watch:
Wendy Malins (OH, 5-10, Sr.)

SID Contact: Terri Washington
SID Phone: (404) 894-5453

NON-CONFERENCE OPPONENTS

**NORTHEAST
LOUISIANA**
Sept. 5, 7 pm



Location: Monroe, LA
Enrollment: 10,686
Nickname: Lady Indians
Colors: Maroon and Gold
Conference: Southland
1990 Record: 16-17
Head Coach: Rosemary Holloway
Top Returnee: Lisa Hawkins (5-11, Sr.)
SID Contact: Leigh Ann Danzey
SID Phone: (318) 342-5406

**LOYOLA
MARYMOUNT**
Sept. 13 @ Irvine, CA



Location: Los Angeles, CA
Enrollment: 3,900
Nickname: Lions
Colors: Crimson, Gray & Columbia Blue
Conference: West Coast
1990 Record: 21-16
Head Coach: Steve Stratos
Top Returnee: Stacy Trapp (5-9, Sr.)
SID Contact: Ross Vitale
SID Phone: (213) 338-7638

IDAHO
Sept. 14 @ Irvine, CA



Location: Moscow, ID
Enrollment: 12,499
Nickname: Vandals
Conference: Big Sky
Colors: Silver and Gold
1990 Record: 14-15
Head Coach: Tom Hilbert
Top Returnee: Nancy Wicks (6-0, So.)
SID Contact: Roger McAfee
SID Phone: (208) 885-0245

**FLORIDA
INTERNATIONAL**
Sept. 21, 1 pm



Location: Philadelphia, PA
Enrollment: 30,000
Nickname: Lady Owls
Colors: Cherry and White
Conference: Atlantic 10
1990 Record: 13-22
Location: Miami, FL
Enrollment: 20,000
Nickname: Golden Panthers
Colors: Navy and Yellow
Conference: New South/Trans America
1990 Record: 18-15
Head Coach: John Trojaniak
Top Returnee: Shannon Gray (6-0, So.)
SID Contact: Stu Davidson
SID Phone: (305) 348-2759

CENTRAL FLORIDA
Sept. 7, 4:30 pm



Location: Orlando, FL
Enrollment: 22,000
Nickname: Lady Knights
Colors: Black and Gold
Conference: American South
1990 Record 14-17
Head Coach: Laura Smith
Top Returnee: Shannon Pack (6-0, Sr.)
SID Contact: TBA
SID Phone: (407) 823-2257

UC IRVINE
Sept. 14 @ UC Irvine



Location: Irvine, CA
Enrollment: 16,700
Nickname: Anteaters
Colors: Blue and Gold
Conference: Big West
1990 Record: 9-21
Head Coach: Mike Puritz
Top Returnee: Kris Puttler (5-11, Jr.)
SID Contact: Stacey King
SID Phone: (714) 856-7218

FLORIDA
Sept. 20, 7 pm
Nov. 19 @ Florida



Location: Gainesville, FL
Enrollment: 34,000
Nickname: Gators
Colors: Blue and Orange
Conference: SEC
1990 Record: 15-16
Head Coach: Mary Wise
Top Returnee: Steffi Legall (5-11, Sr.)
SID Contact: TBA
SID Phone: (904) 375-4683

SOUTH FLORIDA
Sept. 21, 7 pm



Location: Tampa, FL
Enrollment: 32,630
Nickname: Bulls
Colors: Green and Gold
Conference: Metro
1990 Record: 18-24
Head Coach: Perri Hankins
Top Returnee: Galina Fouks (5-11", Jr.)
SID Contact: Lana Brady
SID Phone: (813) 974-2125

RICE
Sept. 28, 7 pm



Head Coach: Debbie Sokol
Top Returnee: Cheryl Dell (5-10, Jr.)
SID Contact: Mark Sanders
SID Phone: (713) 527-4034

TEXAS A&M
Oct. 5 @ Texas A&M



Location: College Station, TX
Enrollment: 40,492
Nickname: Lady Aggies
Colors: Maroon and White
Conference: Southwest
1990 Record: 18-19
Head Coach: Al Givens
Top Returnee: Elizabeth Edmiston (5-10, Jr.)
SID Contact: Debbie Darrah
SID Phone: (409) 844-5725

FLORIDA A&M
Oct. 8 @ Florida A&M



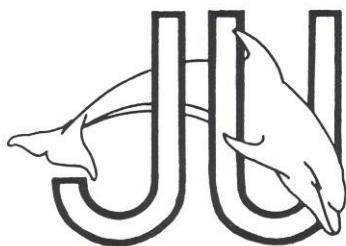
Location: Tallahassee, FL
Enrollment: 8,200
Nickname: Rattlerettes
Colors: Orange and Green
Conference: MEAC/TAAC
1990 Record: 25-19
Head Coach: Pamela Reilly
Top Returnee: Valarie King (5-8, Sr.)
SID Contact: Al Hollins
SID Phone: (904) 561-2194

GEORGIA
Oct. 26, 5 pm
Nov. 9 @ Georgia



Location: Athens, GA
Enrollment: 27,000
Nickname: Lady Bulldogs
Colors: Red and Black
Conference: SEC
1990 Record: 29-14
Head Coach: Jim Iams
Top Returnee: Jill Moore (5-8, Sr.)
SID Contact: Jeremy Glowacki
SID Phone: (404) 542-7915

JACKSONVILLE
Oct. 1, @ Jacksonville



Location: Jacksonville, FL
Enrollment: 2,500
Nickname: Dolphins
Colors: Green and Gold
Conference: Sun Belt
1990 Record: 15-18
Head Coach: Mike Lopriore
Top Returnee: Farley Snow (6-0, Jr.)
SID Contact: Felicia Sass
SID Phone: (904) 744-3950

HOUSTON
Oct. 6 @ Houston



Location: Houston, TX
Enrollment: 33,116
Nickname: Cougars
Colors: Scarlet and White
Conference: Southwest
1990 Record: 24-15
Head Coach: Bill Walton
Top Returnee: Karen Bell (5-9, Sr.)
SID Contact: John Sullivan
SID Phone: (713) 749-2657

SOUTHWEST TEXAS
Oct. 13 @ N.C. State



Location: San Marcos, TX
Enrollment: 21,000
Nickname: Bobcats
Colors: Maroon and Gold
Conference: Southland
1990 Record: 21-18
Head Coach: Karen Chisum
Top Returnee: Deanna Limbrick (5-10, Sr.)
SID Contact: Jeff Honeycutt
SID Phone: (512) 245-2298

HOFSTRA
Nov. 1, 7 pm



Location: Hempstead, NY
Enrollment: 12,000
Nickname: Flying Dutchwomen
Colors: Blue, White and Gold
Conference: East Coast
1990 Record: 26-12
Head Coach: Fran Kalafer
Top Returnee: Jeanne Asper (6-0, Sr.)
SID Contact: Lisa Galeano
SID Phone: (516) 463-6750

WILLIAM & MARY
Nov. 2, 7 pm



Location: Williamsburg, VA
Enrollment: 5,300
Nickname: Tribe
Colors: Green, Gold and Silver
Conference: Colonial
1990 Record: 21-12
Head Coach: Debbie Hill
Top Returnee: Jennifer Torns (5-9, Sr.)
SID Contact: Jean Elliot
SID Phone: (804) 221-3344

PITTSBURGH
Nov. 15, 7 pm



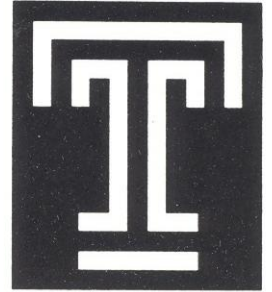
Location: Pittsburgh, PA
Enrollment: 13,600
Nickname: Lady Panthers
Colors: Blue and Gold
Conference: Big East
1990 Record: 32-6
Head Coach: Sue Woodstra
Top Returnee: Dee MacAulay (6-0, Sr.)
SID Contact: Sam Sciuolo
SID Phone: (412) 648-8336

ALABAMA-
BIRMINGHAM
Nov. 16, 11 am

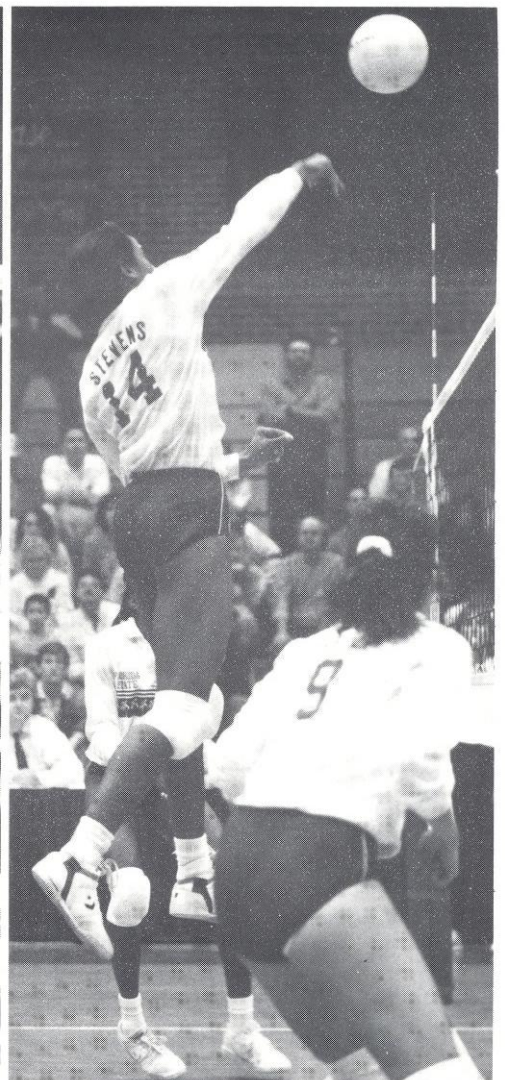


Location: Birmingham
Enrollment: 15,023
Nickname: Lady Blazers
Colors: Green and Gold
Conference: Great Midwest
1990 Record: 32-16
Head Coach: Brenda Williams
Top Returnee: Mellissa Cobb (6-0, Sr.)
SID Contact: Reid Adair
SID Phone: (205) 934-6014

TEMPLE
Nov. 16, 7 pm



Location: Philadelphia, PA
Enrollment: 30,000
Nickname: Lady Owls
Colors: Cherry and White
Conference: Atlantic 10
1990 Record: 13-22
Head Coach: Jackie Nunez
Top Returnee: Leslie Brandt (511, So.)
SID Contact: Craig Cotton
SID Phone: (215) 787-6289



SERIES RECORDS VS. OPPONENTS

Team	Last Meeting	W-L	Team	Last Meeting	W-L
Alabama	1981	8-10	Mississippi College for Women	1980	7-5
ALABAMA-BIRMINGHAM	1990	6-0	Montevallo	1980	2-0
Appalachian State	1981	2-0	Morehead State	1989	4-0
Arizona	1985	0-3	Nebraska	1982	0-2
Arizona State	1984	0-1	New Mexico	1986	0-1
Arkansas State	1979	1-1	New Orleans	1984	6-0
Auburn	1990	6-0	Nicholls State	1981	4-0
Baylor	1990	2-0	North Alabama	1976	1-0
Berry College	1976	2-1	NORTH CAROLINA	1987	9-1
Brigham Young	1989	1-4	North Carolina-Greensboro	1976	1-0
Butler	1990	1-0	NORTH CAROLINA STATE	1987	3-1
Cal-Berkeley	1989	1-1	North Florida Junior College	1979	2-0
CENTRAL FLORIDA	1988	20-7	North Texas State	1978	0-1
Cincinnati	1990	15-2	Northern Arizona	1989	1-0
CLEMSON	1983	4-0	Northwestern	1985	1-1
College of Charleston	1977	0-1	NORTHWEST LOUISIANA	1977	1-0
Colorado	1990	0-1	Ohio State	1981	0-1
Colorado State	1988	0-1	Oklahoma	1979	1-1
Columbus College	1978	2-0	Oklahoma State	1980	1-0
DUKE	1989	3-1	Penn State	1988	1-1
East Tennessee State	1981	2-0	Pepperdine	1978	0-1
Eastern Kentucky	1988	3-4	PITTSBURGH	1986	1-1
Eastern Washington	1990	1-0	Portland State	1981	0-1
Flagler College	1981	4-0	Purdue	1989	2-2
FLORIDA	1990	19-7	RICE	1988	2-0
FLORIDA A&M	1990	11-0	Rhode Island	1983	1-0
FLORIDA INTERNATIONAL	1990	8-4	Rollins College	1981	1-0
Florida Junior College	1980	2-0	Rutgers	1982	0-2
Florida Institute of Technology	1987	1-0	San Diego State	1983	0-1
Florida Southern	1982	4-1	Sam Houston State	1981	2-1
Fresno State	1990	0-1	South Alabama	1989	10-0
George Washington	1990	1-1	South Carolina	1990	16-7
Georgetown	1989	1-0	South Carolina-Spartanburg	1980	1-0
GEORGIA	1990	10-6	SOUTH FLORIDA	1990	26-1
Georgia Southern	1990	1-0	Southeast Louisiana	1979	1-0
Georgia State	1978	2-0	Southern University	1983	1-0
Gulf Coast Community College	1979	2-0	Southern Illinois	1985	1-1
HOFSTRA	1984	1-0	Southern Mississippi	1990	13-0
HOUSTON	1990	2-6	Southwest Missouri State	1982	1-5
Illinois	1986	0-1	SOUTHWEST TEXAS STATE	1990	2-1
Illinois-Chicago	1987	2-1	Southwestern Louisiana	1977	1-0
Illinois State	1989	4-1	St. Louis University	1980	0-2
Indiana-Evansville	1984	1-0	Stetson University	1983	1-0
Indian River Community College	1981	1-0	Tampa	1988	1-0
Iowa	1984	0-1	Tennessee	1989	8-6
Iowa State	1979	1-0	Tennessee-Chattanooga	1983	4-0
JACKSONVILLE	1990	13-0	Tennessee Tech	1982	1-0
Kentucky	1990	4-5	Texas	1990	0-5
Lake City Community College	1980	6-0	TEXAS A&M	1984	1-3
Lamar	1988	2-0	Texas-Arlington	1985	1-3
Long Beach State	1987	0-1	Texas Tech	1986	4-1
Louisiana State	1989	9-7	Tulane	1990	9-1
Louisville	1990	9-5	Tuskegee Institute	1976	1-0
LOYOLA MARYMOUNT	1990	0-1	UCLA	1979	0-2
MARYLAND	1976	1-0	Utah State	1981	0-1
Memphis State	1990	15-2	Valdosta State	1977	1-0
Miami	1981	11-8	VIRGINIA	1988	2-0
Miami Dade-North CC	1976	1-0	Virginia Tech	1990	13-0
Miami Dade-South CC	1980	3-4	West Georgia State	1977	2-0
Michigan State	1986	1-1	West Virginia	1988	1-0
Middle Tennessee State	1981	1-0	WILLIAM & MARY	1988	1-0
Milligan College	1977	1-0	Winthrop College	1980	2-0
Minnesota	1989	5-5	Wyoming	1990	0-1
Mississippi	1986	3-0	Xavier	1985	1-0
Mississippi State	1982	6-			

1991 OPPONENTS IN BOLD CAPS

ALL-TIME LETTERWINNERS

A-B-C-D

Barbara Barnes	1978-79
Shelly Birkholz	1982-85
Joy Blanchard	1978-82
Kim Britt	1984-86
Amy Bronson	1988-90
Julie Brown	1979-83
Cordelia Campbell	1978
Jennifer Cichy	1990
Kristine Cousins	1990
Cathy Copeland	1987
Alicia Cross	1979-82
Brandi Cumin	1990
Camy Davies	1979-82
Laura Davis	1973-76

E-F-G-H-I

Carol Forsten	1981-84
Lynne Fullhart	1985
Nancy Gaspadarek	1986-89
Pam Griffin	1973-76
Barbara Harris	1974-77
Valene Harris	1985
Colette Housh	1983
Terry Hume	1973-76
Janice Hunt	1977-78
Michele Hurd	1974-77

J-K-L-M-N

Jametta Jackson	1984
Linda Johnson	1978
Deanne Kaleta	1985-88
Shannon Kelly	1987-88
Donna Krai	1982-85
Jamie Kuhn	1979-80
Shannon Lages	1980-83
Maria Magoulas	1986-89
Wendy Markham	1985
Jennifer Marraffino	1987-90
Charlotte Martin	1974-77
Jennifer McCall	1990
Gloria McIntosh	1981
Barbara Mellen	1979-81
Debbie Meyer	1987-90
Stacy Moneymaker	1983
Joan Morris	1983-86
Gina Muensterman	1985-86

O-P-Q-R

Candi Orsini	1974-77
Karyn Palgut	1981-84
Maggie Philgence	1987-90
Rhonda Petty	1980-81
Julie Plattner	1986
Marci Rard	1987
Gabrielle Reece	1987-90
Yolanda Restrepo	1976-80

S-T-U-V

Marie Sanders	1980-83
Lisa Smith	1983-84
Sherry Smith	1984
Margaret Stephens	1977-80
Bianca Stevens	1989-90
Sally Summer	1980-83
Marybeth Sutcliffe	1987-90
Marianne Tobolski	1985
Julie Todd	1984-87
Nancy Townsend	1977-80
Sonia Trevino	1988-89
Sue Usher	1976-80

W-X-Y-Z

Twanna Walker	1985-89
Lisa Warman	1981-84
Margie Wessel	1977-80
Rebecca White	1988
Mary Williams	1981-83
Velma Wright	1978-79
Jackie Young	1981-84
Vicki Zinkil	1989-90

Bold indicates players on the 1990 Florida State roster

CAREER RECORDS

MATCHES PLAYED

1. Sally Summer	189	1980-83
2. Alicia Cross	188	1979-82
3. Marie Sanders	164	1980-83
4. Karyn Palgut	153	1981-84
5. Maggie Philgence	138	1987-90

KILL ATTEMPTS

1. Maggie Philgence	4,793	1987-90
2. Julie Todd	3,470	1984-87
3. Deanne Kaleta	3,191	1985-88
4. Joan Morris	3,189	1983-86
5. Sally Summer	2,790	1980-83
6. Karyn Palgut	2,737	1981-84

KILLS

1. Maggie Philgence	2,110	1987-90
2. Julie Todd	1,515	1984-87
3. Joan Morris	1,285	1983-86
4. Karyn Palgut	1,228	1981-84
5. Deanne Kaleta	1,195	1985-88
6. Gabrielle Reece	1,179	1987-90

HITTING PERCENTAGE

1. Maggie Philgence	.308	1987-90
2. Karyn Palgut	.285	1981-84
3. Julie Todd	.266	1984-87
3. Gabrielle Reece	.266	1987-90

SERVICE ACES

1. Donna Krai	188	1982-85
2. Karyn Palgut	132	1981-84
3. Deanne Kaleta	131	1985-88
4. Julie Todd	119	1984-87
5. Joan Morris	110	1983-86

SOLO BLOCKS

1. Gabrielle Reece	240	1987-90
2. Julie Todd	126	1984-87
3. Julie Brown	125	1979-83
4. Deanne Kaleta	116	1985-88
5. Alicia Cross	86	1979-82

BLOCK ASSISTS

1. Julie Todd	609	1984-87
2. Gabrielle Reece	507	1987-90
3. Deanne Kaleta	402	1985-88
4. Maggie Philgence	315	1987-90
5. Julie Brown	270	1979-83

TOTAL BLOCKS

1. Gabrielle Reece	748	1987-90
2. Julie Todd	735	1984-87
3. Deanne Kaleta	518	1985-88
4. Julie Brown	504	1979-83
5. Maggie Philgence	384	1987-90

SET ASSISTS

1. Nancy Gaspadarek	4,804	1986-89
2. Marie Sanders	2,815	1980-83
3. Donna Krai	2,050	1982-85
4. Barb Mellen	1,584	1979-81
5. Jennifer Marraffino	1,054	1987-90

DIGS

1. Maggie Philgence	1,185	1987-90
2. Nancy Gaspadarek	1,150	1986-89
3. Deanne Kaleta	1,038	1985-88
4. Joan Morris	985	1983-86
5. Julie Todd	908	1984-87

INDIVIDUAL SINGLE SEASON RECORDS

KILL ATTEMPTS

1. Joan Morris	1,389	1986
2. Maggie Philgence	1,305	1989
3. Maggie Philgence	1,265	1990
4. Maggie Philgence	1,217	1988
5. Julie Todd	1,135	1986

KILLS

1. Maggie Philgence	579	1990
2. Joan Morris	571	1986
3. Maggie Philgence	571	1989
4. Maggie Philgence	546	1988
5. Julie Todd	513	1986

HITTING PERCENTAGE (min. 300 attempts)

1. Margie Wessel	.420	1980
2. Julie Brown	.360	1981
3. Shannon Lages	.360	1980
4. Alicia Cross	.356	1981
5. Julie Todd	.351	1987

KILLS PER GAME

1. Maggie Philgence	4.41	1990
2. Maggie Philgence	4.32	1989
3. Joan Morris	4.26	1986
4. Maggie Philgence	4.16	1988
5. Julie Todd	3.85	1987

SERVICE ACES

1. Donna Krai	90	1983
2. Karyn Palgut	55	1981
3. Karyn Palgut	54	1982
4. Marie Sanders	53	1983
5. Alicia Cross	52	1982

SOLO BLOCKS

1. Gabrielle Reece	69	1989
2. Gabrielle Reece	68	1990
2. Julie Brown	62	1981
3. Julie Brown	61	1983
4. Gabrielle Reece	60	1988

BLOCK ASSISTS

1. Julie Todd	223	1987
2. Julie Todd	199	1986
3. Gabrielle Reece	143	1989
4. Deanne Kaleta	137	1988
5. Julie Brown	134	1983

TOTAL BLOCKS

1. Cordelia Campbell	286	1979
2. Alicia Cross	270	1979
3. Julie Todd	273	1987
4. Julie Todd	238	1986
5. Gabrielle Reece	212	1989

BLOCKS PER GAME

1. Julie Todd	2.26	1987
2. Julie Todd	1.76	1986
3. Vicki Zinkil	1.68	1989
4. Gabrielle Reece	1.65	1989
3. Gabrielle Reece	1.64	1987

SET ASSISTS

1. Nancy Gaspadarek	1,410	1989
2. Nancy Gaspadarek	1,216	1986
3. Nancy Gaspadarek	1,159	1987
4. Marie Sanders	1,112	1982
5. Nancy Gaspadarek	1,019	1988

DIGS

1. Joan Morris	460	1986
2. Kristine Cousins	440	1990
3. Sonia Trevino	403	1989
4. Nancy Gaspadarek	364	1986
5. Karyn Palgut	327	1988

TEAM RECORDS*

*since 1976

TEAM ACHIEVEMENT

BEST OVERALL RECORD: 30-5 (.857), 1989

MOST WINS: 43, 1981

WORST RECORD: 20-13 (.606), 1984

MOST LOSSES: 19, 1979

BEST RECORD IN CONFERENCE PLAY: 10-0 (1983, 1989)

BEST CONFERENCE FINISH: 1st (1983, 1985, 1986, 1987, 1988, 1989)

CONSECUTIVE GAMES WON: 35 (1981)

CONSECUTIVE MATCHES: 21 (1981)

HIGHEST AIAW NATIONAL TOURNAMENT FINISH: 4th (1981)

HIGHEST NCAA RANKING: 15th (1983)

TEAM MATCH RECORDS

BEST ATTACK: 61% vs. Florida A&M (1981)

MOST DIGS: 116 vs. Memphis State (1990)

MOST BLOCK ASSISTS: 48 vs. Illinois-Chicago (1987)

MOST SOLO BLOCKS: 12 vs. South Florida (1985, 1989)

MOST SET ASSISTS: 75 vs. Kentucky (1981)

MOST SERVICE ACES: 17 vs. Florida A&M (1990)

INDIVIDUAL RECORDS

SERVE

MOST ACES IN A MATCH: 9, Bronson vs. Northern Arizona (1989)

MOST KILLS IN A MATCH: 35, Morris vs. Sam Houston State (1986)

MOST DIGS IN A MATCH: 32, Morris vs. Cal-Berkeley (1986)

MOST BLOCK ASSISTS IN A MATCH: 17, Todd vs. Tulane (1987)

MOST SOLO BLOCKS IN A MATCH: 8, Kaleta vs. South Florida (1987)

MOST ASSISTS IN A MATCH: 68, Gaspadarek vs. Florida (1987)

MOST CONSECUTIVE GAMES PLAYED: 391, Kaleta (1986-88)

MOST CONSECUTIVE MATCHES PLAYED: 189, Summer (1980-83)

TEAM SINGLE SEASON RECORDS

MOST KILL ATTEMPTS: 4,876 (1988)

MOST KILLS: 1,883 (1988)

BEST ATTACK PERCENTAGE: .330 (1980)

MOST SERVICE ACES: 333 (1983)

MOST SOLO BLOCKS: 159 (1989)

MOST BLOCK ASSISTS: 709 (1987)

MOST DIGS: 2,241 (1986)

FSU VOLLEYBALL ... A WINNING TRADITION

Cecile Reynaud is known by volleyball fans for having built a winning tradition with the Lady Seminole teams since she came to FSU 16 years ago. But there was a time, prior to the Reynaud era, when volleyball at Florida State was completely different than playing today. Coaches salaries, separate team sweatsuits and scholarship athletes were nonexistent. Nevertheless, the meaning of winning was very much the same.

The first organized volleyball team at Florida State University started in 1968 under assistant professor Martha "Pat" Moore. After three years of revolving new head coaches, Dr. Billie Jones, who had coached the team one year in 1970 while a doctoral student, volunteered to take the reigns for both the volleyball and the softball teams.

"It was a completely different kind of team then," said Dr. Jones, who was also teaching and advising students full-time. "Most of the women were from Florida and physical education majors. They were here because of Florida State's reputation. There was no recruiting or scholarships involved ... we even shared warm-up suits with the women's basketball and swim teams."

Between 1973-1975, the Lady Seminoles accumulated a 107-22 record (.829 win percentage). The teams played in five or six tournaments during the year, all on weekends. FSU made its AIAW national tournament debut in 1971, and revisited the tournament again two years later. One of the teams they beat at the 1973 championship was Southwestern Missouri State

where Cecile Reynaud was a star player.

After 23 years, Florida State has built an impressive reputation on the volleyball court. They made seven appearances in the AIAW national tournament prior to joining the NCAA and the Metro Conference in 1982. Since that big change, the Seminoles have remained a strong competitor capturing six Metro Championships and advancing to the NCAA first round six times. Coaches salaries, sweatsuits, training equipment, scholarships and recruiting have all been drastically changed over the years, but the winning tradition of Florida State volleyball remains intact.



1973 Florida State Volleyball Squad

FSU VOLLEYBALL COACHES

1968 - Martha "Pat" Moore
 1969 - Dr. Judy Blucker
 1970 - Dr. Billie Jones
 1971 - Dr. Linda Warren
 1972 - 1975 Dr. Billie Jones (107-22)*
 1976 - 1991 Cecile Reynaud (433-173)

* Does not include 1972 season

FLORIDA COMMISSION OF INTERCOLLEGIATE ATHLETICS FOR WOMEN (FCIAW) STATE CHAMPIONS

1973, 1974, 1975, 1977, 1978, 1980, 1981

SOUTHEASTERN REGIONAL TOURNAMENT CHAMPIONS

1973, 1978, 1979, 1981,

QUALIFIED FOR AIAW NATIONAL CHAMPIONSHIP TOURNAMENT

1971, 1973, 1974, 1975, 1978, 1979, 1981

NCAA CHAMPIONSHIPS

YEAR	SITE	RESULT	SCORE
1983	(Tallahassee)	Lost to Tennessee	15-12, 15-12, 1-15, 10-15, 8-15
1985	(Athens)	Lost to Georgia	6-15, 1-15, 11-15
1987	(Austin)	Lost to Texas	6-15, 11-15, 9-15
1988	(Tallahassee)	Lost to Colorado State	3-15, 5-15, 15-9, 7-15
1989	(Tallahassee)	Lost to California	15-11, 11-15, 13-15, 13-15
1990	(Lexington)	Lost to Kentucky	12-15, 10-15, 15-10, 10-15

FORMER SEMINOLES

Florida State is proud of its student-athletes who have gone on to become a success after graduating FSU. Cecile Reynaud has encouraged her athletes to discipline themselves off the court and in the classroom, which no doubt has paid off for many former volleyball players. Since 1982, the volleyball team has graduated 65 percent of its players, almost 20 percent higher than the university's graduation rate.* Athletes who train and play under Reynaud learn to take pride in their performance in every capacity.

* The graduation rate figures take into account the 29 scholarship athletes who participated on the volleyball team since the 1982-83 season. Since 1976, only one athlete who completed four years of eligibility has not graduated at FSU.



Donna Krai (1982-85) has been a consultant at Andersen Consulting firm in Tampa since she graduated with two degrees and her Master's from FSU.



Marie Sanders Molitor (1980-83) is district manager for a retail store, Westminster Lace. She and her husband, Clay, have been married for three years and live in the Boston area.



Terry Hume (1973-76) is currently the marketing director for all sports at Florida State University. She previously worked as an assistant to the Women's Athletic Director at FSU.



Lisa Warman Gunning (1981-84) worked for the Sunshine Network as a commentator and is now in Orlando with her husband. They are expecting their first child in the fall.



Barbara Harris (1974-77) is the Editor-in-Chief at *Shape Magazine*. She joined the company in 1987 and lives in California.

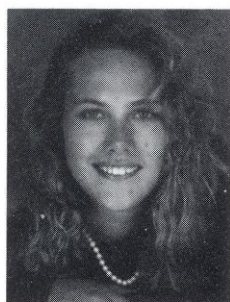


Sally Summer Rozanski (1980-83) is a volleyball coach at North Miami High School.

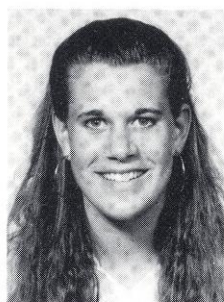


Jennifer Marraffino (1987-89) has been accepted to the University of Florida's Veterinary School in Gainesville this fall.

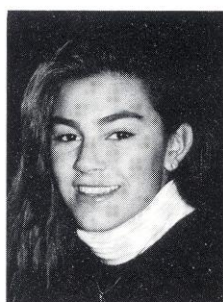
1991 ALPHABETICAL ROSTER



#11 Deanna Bosschaert
5-10 Outside Hitter



#3 Jennifer Cichy
5-10 Def. Specialist



#4 Adria Ciraco
5-10 Outside Hitter



#1 Kristine Cousins
5-9 Outside Hitter



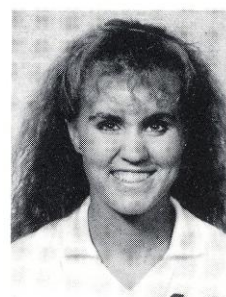
#2 Brandi Cumin
5-8 Setter



#9 J.J. Jones
5-11 Middle Hitter



#5 Catie Lotarski
5-10 Outside Hitter



#13 Jennifer McCall
5-11 Setter



#12 Luiza Ramos
5-8 Outside Hitter



#14 Bianca Stevens
6-1 Middle Hitter



#8 Vicki Zinkil
6-1 Middle Hitter

1991 NUMERICAL ROSTER

NO.	PLAYER	YR.	HOMETOWN	HT	POSITION
1	Kristine Cousins	Sr	Kingston, Jamaica	5-9	Outside Hitter
2	Brandi Cumin	So	San Clemente, CA	5-8	Setter
3	Jennifer Cichy	So	Rockville, MD	5-10	Def. Specialist
4	Adria Ciraco	Fr	E. Quogue, NY	5-10	Outside Hitter
5	Catie Lotarski	Fr	Chicago, IL	5-10	Outside Hitter
8	Vicki Zinkil	So	Stevensville, MI	6-1	Middle Hitter
9	J.J. Jones	Fr	Austin, TX	5-11	Middle Hitter
11	Deanna Bosschaert	Fr	Dundas, Ontario	5-10	Outside Hitter
12	Luiza Ramos	Fr	Fortaleza, Brazil	5-8	Outside Hitter
13	Jennifer McCall	So	Littleton, CO	5-11	Setter
14	Bianca Stevens	Jr	St. Croix, V.I.	6-1	Middle Hitter

1991 VOLLEYBALL SCHEDULE

SEPT. 5	NORTHWEST LOUISIANA	7:00 PM	HOME
SEPT. 7	CENTRAL FLORIDA	4:30 PM	HOME
SEPT. 13	LOYOLA MARYMOUNT	5:00 PM	AWAY
SEPT. 14	UC-IRVINE	12:00 PM	AWAY
SEPT. 14	IDAHO	5:00 PM	AWAY
SEPT. 20	FLORIDA	7:00 PM	HOME
SEPT. 21	FLORIDA INTERNATIONAL	1:00 PM	HOME
SEPT. 21	SOUTH FLORIDA	7:00 PM	HOME
SEPT. 26	VIRGINIA	7:00 PM	HOME
SEPT. 28	RICE	7:00 PM	HOME
OCT. 1	JACKSONVILLE	7:00 PM	AWAY
OCT. 5	TEXAS A & M	7:00 PM	AWAY
OCT. 6	HOUSTON	1:00 PM	AWAY
OCT. 8	FLORIDA A & M	7:00 PM	AWAY
OCT. 11	NORTH CAROLINA STATE	7:30 PM	AWAY
OCT. 12	NORTH CAROLINA	6:00 PM	AWAY
OCT. 13	SOUTHWEST TEXAS STATE	1:00 PM	AWAY
OCT. 18	MARYLAND	7:00 PM	HOME
OCT. 20	DUKE	2:00 PM	HOME
OCT. 26	GEORGIA	5:00 PM	HOME
NOV. 1	HOFSTRA	7:00 PM	HOME
NOV. 2	WILLIAM & MARY	7:00 PM	HOME
NOV. 8	CLEMSON	7:00 PM	AWAY
NOV. 9	GEORGIA	7:30 PM	AWAY
NOV. 10	GEORGIA TECH	2:00 PM	AWAY
NOV. 15	PITTSBURGH	7:00 PM	HOME
NOV. 16	ALABAMA-BIRMINGHAM	11:00 AM	HOME
NOV. 16	TEMPLE	7:00 PM	HOME
NOV. 19	FLORIDA	7:00 PM	AWAY
NOV. 23-25	ACC TOURNAMENT	TBA	AWAY
NOV. 29	NCAA FIRST ROUND		
DEC. 6-7	NCAA REGIONALS		
DEC. 12	NCAA SEMI-FINALS	LOS ANGELES CA	
DEC. 14	NCAA FINALS	LOS ANGELES CA	

