



Now
Serving

**FLORIDA STATE
VOLLEYBALL
1989**

TABLE OF CONTENTS

FSU Facts, 1989 Schedule, Credits	IFC
1989 Lady Seminole Volleyball Outlook	1
Lady Seminole Coaching and Support Staff	2
Lady Seminole Player Bios	3-6
Bronson, Gaspardarek, Kelly	3
Magoulas, Marraffino, Meyer	4
Philgence, Reece, Stevens	5
Sutcliffe, Trevino, Walker, Zinkil	6
1989 Lady Seminole Roster	7
1988 Team and Individual Honors	7
1988 In Review, Match-by-Match Results	8
1988 Lady Seminole Statistics and Season Highs	9
Series Records vs. Opponents	10
All-time Letterwinners	11
FSU in Metro and NCAA Tournaments	11
Match and Single Season Records	12
Career Records	13
Year-by-Year Lady Seminole Results	14-15
1989 Opponent Directory	16
This is FSU	IBC

ON THE COVER

In keeping with the 1989 theme, this year's volleyball guide features the Now Serving: Florida State Volleyball photo on the cover. This photo also appears on the 1989 Lady Seminole Volleyball schedule poster, with hopes it will prove as successful as last season's poster. The photo was taken by Ann Dickinson of Dickinson-Brouwer Photography and the 1956 Ford Sunliner was provided by Paul Dirks. Featured left to right are; Gabrielle Reece (with ball), Maggie Philgence, Nancy Gaspardarek (at wheel), Maria Magoulas, Marybeth Sutcliffe, Shannon Kelly, Twanna Walker and Sonia Trevino.

CREDITS

The 1989 Florida State volleyball brochure was written and designed by Nick Gandy, assistant sports information director. Graphic assistance and layout by Phil and Cindy Bunnell of Vision Marketing, Inc., Tallahassee. Editorial assistance provided by Donna Turner, assistant sports information director, and head coach Cecile Reynaud. Photography provided by Ann Dickinson, Sam Lewis, Sue Ogrocki, Steve Spencer and the FSU Photo Lab.

FSU QUICK FACTS

Location	Tallahassee, FL
Founded	1857
Enrollment	26,000
President	Dr. Bernard F. Sliger
Nickname	Lady Seminoles
Arena	Tully Gymnasium (3,525)
Affiliation	NCAA Division I
Conference	Metro

ATHLETIC ADMINISTRATION

Athletic Director	C.W. "Hootie" Ingram
Associate Director	Bob Goin
Assistant Director	Dr. Jan Stocker
Promotions	Terry Hume
Academic Advisors	Trudy Raybun
	Dr. Beverly Yerg
Athletic Dir. Phone	(904) 644-1060
Stocker Phone	(904) 644-1091

VOLLEYBALL STAFF INFORMATION

Head Coach	Cecile Reynaud
Years at FSU	Enters 14th
Record at FSU	378-158
Assistant Coach	Shelly Birkholz
Graduate Assistant	Rex Welch
Athletic Trainer	Angela Sehgal
Volleyball Office Phone	(904) 644-1091

SPORTS INFORMATION STAFF

Director	Wayne Hogan
SID Office Phone	(904) 644-1060
Volleyball SID	Nick Gandy
Gandy Office Phone	(904) 644-1091
Gandy Home Phone	(904) 877-0668
SID Fax Phone	(904) 644-3820

1989 FLORIDA STATE VOLLEYBALL SCHEDULE

DATE	OPPONENT	TIME
@ GEORGE WASHINGTON LABOR DAY FESTIVAL, WASHINGTON, DC		
9/1	Northern Arizona	7:30 p.m.
9/2	Georgetown	12:30 p.m.
9/2	Minnesota	8:00 p.m.
9/3	Semi-Finals	1:00 p.m.
9/3	Finals	5:00 p.m.
9/12	FLORIDA	7:00 p.m.
@ FLORIDA EIGHT CLASSIC, TAMPA, FL		
9/15	Florida A&M	7:00 p.m.
9/16	Stetson/Jacksonville	12:00 p.m.
9/16	Finals	5:00 p.m.
9/22	ILLINOIS STATE	7:00 p.m.
9/23	MOREHEAD STATE	4:00 p.m.
9/24	ILLINOIS STATE	1:00 p.m.
9/29	KENTUCKY	7:00 p.m.
9/30	TENNESSEE	7:00 p.m.
10/3	at Florida A&M	7:00 p.m.
10/6	SOUTHERN MISSISSIPPI	7:00 p.m.
10/7	TULANE	7:00 p.m.
10/9	at Jacksonville	7:00 p.m.
10/13	at Louisville	7:30 p.m.
10/14	at Cincinnati	6:00 p.m.
10/15	at Purdue	4:00 p.m.
10/20	SOUTH ALABAMA	3:00 p.m.
10/20	SOUTH FLORIDA	7:00 p.m.
10/21	ALABAMA-BIRMINGHAM	11:00 a.m.
10/25	at Memphis State	7:00 p.m.
10/27	LOUISIANA STATE	7:00 p.m.
11/3	SOUTH CAROLINA	7:00 p.m.
11/4	VIRGINIA TECH	11:00 a.m.
11/6	at Florida	7:00 p.m.
@ KENTUCKY WILDCAT CLASSIC, LEXINGTON, KY		
11/10	Brigham Young	6:00 p.m.
11/11	Kentucky/Syracuse	TBA
11/17-19	METRO CONFERENCE TOURNAMENT, TALLAHASSEE, FL	
12/1	NCAA First Round	TBA
12/8-9	NCAA Regionals	TBA
12/14-16	at NCAA Final Four	TBA

1989 VOLLEYBALL OUTLOOK

“**W**e’ve finally got a team of veterans,” said FSU head coach Cecile Reynaud, when speaking of her 1989 volleyball squad. “This is the first time in several years we’ve had

more than one senior on the roster.”

At first glance, Reynaud’s statement about a veteran team would lead people to think that for the past several years she’s had a group of bumbling rookies on the court. Not so. The 1989 Lady Seminole volleyball team will attempt to win a fifth consecutive Metro Conference Championship and a third consecutive trip to the NCAA Tournament.

Certainly the Florida State teams have been young over the past few seasons, but the players brought a wealth of pre-college experience with them to Tallahassee. “Over the past few years, we’ve recruited players who have played volleyball year round,” said Reynaud. “They have been successful as younger players, and should they keep on the current path they will have continued success here at Florida State.”

After three years with only one senior on each squad, the 1989 Florida State roster is loaded with upperclassmen, four seniors and six juniors. Because of this experience, Reynaud believes the Lady Seminoles will feature more ball control and be able to run a more complex

offense than in the past. Running this complex offense for FSU from the setter position will be three-year starter, Nancy Gaspadarek. Already the career assist leader for Florida State with 3,394, Gaspadarek runs the court with the utmost confidence. Besides knowing the abilities of the hitters, she plays an all-around game with the ability to drop in a quick tip and provide blocking assistance.

“When Nancy takes charge of a game, the rest of the players respond,” said Reynaud. Providing backup at the setter position is junior Jennifer Marraffino. In a twelve-match absence of Gaspadarek last season, Marraffino proved effective with a .409 assist percentage. Her playing time increased her confidence and allowed her to become comfortable with her role, according to Reynaud.

The sets of Gaspadarek and Marraffino will go to an array of capable hitters as evidence by the nationally-ranked .286 attack percentage compiled by the Lady Seminoles last season. The top hitter is 5-10 junior Maggie Philgence with a pair of 400-kill seasons under her belt. With her 30-inch vertical leap and ability to find the open spots on the court, Philgence could become one of the

premier offensive threats in the country over the next two years.

A quartet of six-footers will also test their hitting abilities as junior Gabrielle Reece checks in at 6-3, and senior Twanna Walker and freshmen Bianca Stevens and Vicki Zinkil measure 6-1. Not to be forgotten in the FSU offensive attack are 5-10 sophomore Amy Bronson and a pair of 5-8 hitters, senior Sonia Trevino and junior Shannon Kelly.

Florida State possesses a varied offensive attack. From the power of Philgence to the finesse of Kelly, the ability to attack is ready and waiting.

The saying goes

back many years, it holds true in volleyball. Offense packs the stands but defense wins games. Reynaud keeps that in mind when the Lady Seminoles’ blocking abilities are mentioned, and the wealth of tall blockers on her 1989 squad provide plenty of defense.

“I think we saw what a good blocking team can do in our match against Colorado State,” Reynaud said. In the first round of the NCAA Tournament last season, the Rams frustrated the Lady Seminole’s offensive attack with four players above six feet to return everything sent over the net.

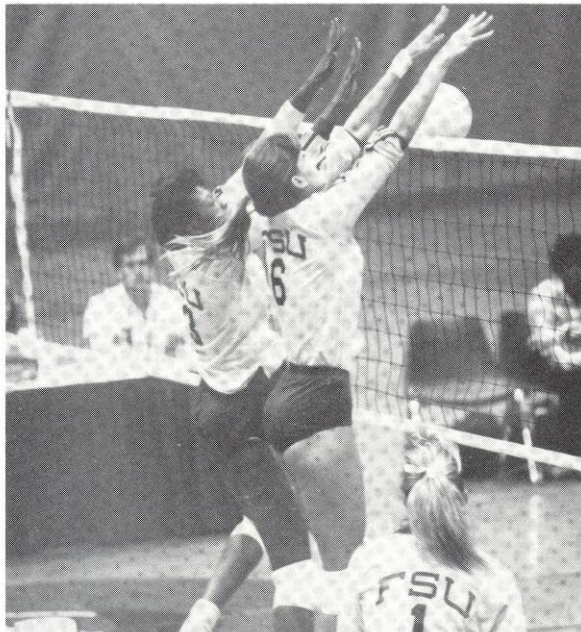
The leading blocker from 1988, Gabrielle Reece, returns after collecting 171 total blocks for an average of 1.28 per game. Increased playing time should provide Twanna Walker the opportunity to be a blocking force for the Lady Seminoles. “She has the ability to influence the opponent’s offense and force them to make changes,” Reynaud said. Freshmen Bianca Stevens and Vicki Zinkil come from strong volleyball backgrounds and can be expected to contribute early.

As for the intangibles, serving and passing, Florida State is covered in that respect. Providing defensive skills are senior Maria Magoulas and junior Marybeth Sutcliffe. Magoulas, perhaps the quickest player on the team, had 135 digs and 21 service aces playing strictly in the back row. Sutcliffe, with an excellent serve, led the team in aces two years ago and provided 143 digs last season. Though she is considered the best passer on the team, she may see action at the outside hitter position this season.

The 1989 Florida State volleyball schedule is, quite possibly, the toughest one to date. Besides its seven-match Metro Conference schedule, FSU will face top-ten ranked regional opponents; Kentucky, Tennessee, South Florida, Louisiana State and Florida. The Lady Seminoles will travel to three tournaments during the 1989 season. The George Washington Labor Day Festival in Washington, DC kicks off the season, and FSU will compete in the Florida Eight Classic in Tampa and defend its tournament championship at the Kentucky Wildcat Classic in Lexington, KY. The Lady Seminoles will also be the host team of the Metro Conference Tournament to be held in Tallahassee, November 17-19.

“No doubt, we’ve got a strong schedule,” Reynaud said. “Week after week, we’re consistently playing great teams. But when you play a higher caliber opponent it brings out the best in your players. The strong schedule will not scare our players. If anything, it should raise the level of their game.”

A veteran team with a strong schedule.... should make for an exciting season.



Twanna Walker (left) and Gabrielle Reece (right) will be FSU's leading blockers in 1989.

FLORIDA STATE VOLLEYBALL 1989

LADY SEMINOLE COACHING AND SUPPORT STAFF



**HEAD COACH
CECILE REYNAUD**
(SOUTHWEST MISSOURI
STATE, 1975)
ENTERS 14TH SEASON AT FSU
378-158 (.705)

Since the Metro Conference introduced volleyball as one of its league sports in 1980, Florida State has captured the crown five times and the last four years running. No other women's coach at Florida State can boast as many Metro Conference titles.

Entering her 14th season at the FSU helm, Barbara Cecile Reynaud has never encountered a losing season. Since 1976 her teams have averaged 29 wins per season and have won over 70 percent of their matches. Nine times, the Lady Seminoles have advanced into post-season play. Prior to the 1983 season, Florida State competed in AIAW post-season five times and twice reached the national tournament. FSU had its highest AIAW finish in 1981, placing fourth. Since joining NCAA action, the Lady Seminoles have moved into the prestigious tournament four times.

The success of the Lady Seminole team has earned Reynaud individual awards as well. Last season, she was voted Metro Conference Coach of the Year for the first time. The 35-year-old Reynaud has proven to be a winner beyond the collegiate ranks with experience coaching several international teams. In 1983, she served as an assistant coach at the World University Games. She took her biggest step in international coaching when she served as the head coach for the 1985 United States Junior National team which traveled and competed in Japan and China. For two years, she has served as East Zone coordinator at the U.S. Olympic Festival and is currently serving as the commissioner for volleyball.

An authority on the game, Reynaud has served as technical consultant for several volleyball films and also edited a book on power volleyball. She appears frequently as a guest speaker at various clinics across the nation. The yearly Cecile Reynaud Volleyball Camp attracts several hundred young volleyball players from the state of Florida and the nation.

Reynaud came to Florida State in 1976 following a standout athletic career at Southwest Missouri State in Springfield, Missouri. Her outstanding playing and coaching career led to her induction into Southwest Missouri State's Hall of Fame in 1983.

After serving as an officer of the American Volleyball

Coaches Association (AVCA) board, she was voted President for a two-year term and writes a monthly column in the AVCA Newsletter. She is also a member of the United States Volleyball Association (USVBA) Board of Directors.

THE REYNAUD FILE (YEAR-BY-YEAR)

YEAR	RECORD	PCT.	TEAM MVP
1976	33-14	.702	Pam Griffin
1977	25-13	.658	Terry Hume
1978	28-14	.620	Margie Wessel
1979	31-19	.620	Margie Wessel
1980	43-14	.754	Margie Wessel
1981	43-8	.843	Barb Mellen
1982	27-17	.610	Karyn Palgut
1983	31-6	.838	Marie Sanders
1984	20-13	.606	Carol Forsten
1985	22-10	.688	Donna Krai
1986	25-11	.694	Joan Morris
1987	22-11	.667	Julie Todd
1988	28-8	.778	Deanne Kaleta

13 Years 378-158 .705



**ASSISTANT COACH
SHELLY BIRKHOLZ**
(FLORIDA STATE, 1986)

The role of assistant coach in any sport is always hard to define. After close examination of the long hours, tedious duties and hardships, one comes to the conclusion that the assistant coach is merely an extension of the head coach.

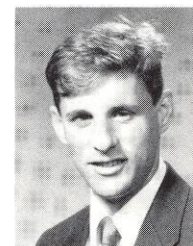
Entering her fourth season, assistant coach Shelly Birkholz typifies the above-mentioned role model. After a knee injury sidelined her Florida State volleyball playing career following the 1984 season, Birkholz rejoined the FSU program prior to the 1986 campaign.

Splitting duties between the office and the court, Birkholz coordinates the recruiting process and monitors the academic progress of the players. When on the court, she provides input during daily practices and matches.

A veteran of various summer camps, Birkholz assists in

the yearly Cecile Reynaud Volleyball camp and has recently traveled to work summer camps in Illinois and North Carolina. She also is a member of Fellowship of Christian Athletes and is a distinguished speaker for the organization.

A standout at Hononegah High School prior to her collegiate career, Birkholz also competed with the Sports Performance Volleyball Club team of Chicago. The 25-year-old native of Roscoe, Illinois graduated from Florida State with a degree in leisure services in May, 1986 and added a master's degree in education in May of 1989.



**GRADUATE ASSISTANT
REX WELCH**
(UNIVERSITY OF NEBRASKA-
OMAHA, 1986)

Now in his second season as a graduate assistant coach on Cecile Reynaud's staff, Rex Welch has practically become a member of the sports information staff.

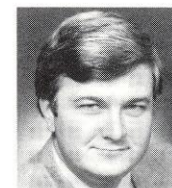
Putting aside the fact that his daily activities in the volleyball office include scheduling matches and officials, travel arrangements and daily practice setup, Welch also keeps match statistics. Using a computer software stats package, he sets up a lap top system and goes to work compiling numbers once the match begins.

A member of the Nebraska-Omaha men's volleyball team for three seasons at setter, Welch also competes for a traveling club sponsored by Chase Manhattan Bank, the New York Patriots earning numerous all-tournament honors. He regularly provides his expertise in summer camps around the country and ventured into the world of television as he provided color commentary on the Sunshine Network's coverage of Florida State Volleyball last season.

A 1986 graduate of the University of Nebraska-Omaha with a degree in recreation administration, the 25-year-old Welch is presently seeking a master's degree from Florida State in athletic administration.



Angela Sehgal
Athletic Trainer



Nick Gandy
Sports Information

NOW SERVING . . . 1989 LADY SEMINOLES



#12

AMY BRONSON
5-11, SOPHOMORE,
MIDDLE HITTER
MIAMI, FL
(Westminster Christian)

... the lone freshman of 1988 made an impact with 26 starts in 29 matches... bothered with nagging back injury throughout the season... sat out five matches at the end of the regular season and Metro Conference Tournament... a healthy Bronson would be "an added bonus to the 1989 team," according to Reynaud... did not compete in spring drills due to back injury... **1988:** tallied 155 kills and 98 total blocks in 29 matches... had the third highest attack percentage of FSU regulars with a .287 average... committed only 39 attack errors in 404 total attempts... her 98 total blocks also checked in at third among team leaders... ranked ninth among final Metro Conference blockers with an 0.95 block per game average, highest among Metro freshmen... selected to the Florida Eight Classic All-Tournament team after a 14 kill, 19 block tournament performance... rebounded from injury and enjoyed a season-high 12 kills in first round NCAA Tournament loss to Colorado State... **HIGH SCHOOL:** collected almost every honor available her senior season at Westminster Christian... earned All-Dade, All-South Dade, All-County and All-State honors in leading Westminster to the Class 1A finals... a high school teammate of Shannon Kelly... inducted to Westminster High School Hall of Fame this year... **PERSONAL:** a nursing major... born May 31, 1970... daughter of Dan and Jan Bronson...

BRONSON AT FSU...

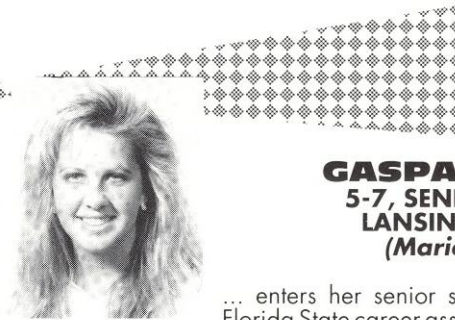
	MP	K	E	TA	PCT	TB	BPG	DG
1988	29	155	39	404	.287	98	0.95	109

CAREER HIGHS

KILLS	12, vs. Georgia and Colorado State (1988)
ATTACKS	28, vs. Georgia (1988)
HITTING PERCENTAGE	.500, (5-0-10), vs. Va. Tech and S. Miss (1988)
SERVICE ACES	2, vs. Colorado State (1988)
SOLO BLOCKS	3, vs. Texas-Arlington and South Florida (1988)
BLOCK ASSISTS	7, vs. Florida and Lamar (1988)

DIGS
SET ASSISTS

13, vs. Cincinnati (1988)
6, vs. Louisville (1988)



#1

NANCY GASPADAREK
5-7, SENIOR, SETTER
LANSING, ILLINOIS
(Marion Catholic)

... enters her senior season as the Florida State career assist leader with 3,394 total assists... as co-captain of the 1988 team, Gaspadarek missed eight matches with a broken bone in her hand... playing with a taped hand for the latter part of the season, her return keyed a 14-match win streak en route to the Metro Tournament championship... will captain the 1989 team... "a calming force for the team when she's on the court," says Reynaud... ranks among career leaders with 852 digs... **1988:** broke her hand in season-opener against Alabama-Birmingham, but played four matches before diagnosis was confirmed... Gaspadarek still managed to earn AVCA All-Southeast region, All-Metro and Metro Conference Tournament honors... averaged 10.29 sets per game and tallied 1,019 in 28 matches... following a one-week period in which Florida State competed in, and won, five matches, Gaspadarek collected Metro Conference Volleyball Player of the Week... during that stretch she collected 257 assists and 60 digs... surpassed Marie Sanders' mark of 2,815 career assists in a five-game win over Cincinnati... **1987:** earned a spot on the AVCA Southeast Region team and All-Metro team and was selected to the Metro Conference All-Tournament team... collected 1,159 set assists in 33 matches for an average of 9.58 per game... set FSU record with 68 assists in a five-game loss to the University of Florida... set a career high with 27 digs against Houston... **1986:** selected Metro Conference Rookie of the Year... set an FSU single-season record with 1,216 set assists in 36 matches... earned a spot on the Metro Conference All-Tournament team... collected 35 service aces and 364 digs as a freshman... **HIGH SCHOOL:** led her club team, the Chicago Power, to a third place finish in the USVBA and AAU Junior National Tournament in 1986... named to all-state team as a senior in high school... **PERSONAL:** carries the nickname, "Gaspo"... named to the Metro Conference Commissioner's List for Academic Excellence for her performance during the 1988-89 academic year...

a psychology major... born December 7, 1968... daughter of Robert and Jackie Gaspadarek...

GASPADAREK AT FSU ...

	MP	ASST	TA	PCT	APG	K	SA	DG
1986	36	1,216	3,084	.394	9.14	143	35	364
1987	33	1,159	2,967	.391	9.58	93	18	272
1988	28	1,019	2,449	.416	10.29	73	17	216
	97	3,394	8,500	.399	9.61	309	70	852

CAREER HIGHS

KILLS	9, on two occasions
ATTACKS	33, vs. Florida (1987)
HITTING PERCENTAGE	.545 (6-0-11) vs. Penn State (1988)
SERVICE ACES	5, vs. South Florida (1986) and Cincinnati (1988)
SOLO BLOCKS	3, vs. Alabama-Birmingham (1988)
BLOCK ASSISTS	7, vs. North Carolina (1986)
DIGS	27, vs. Houston (1987)
SET ASSISTS	68, vs. Florida (1987)

GASPADAREK HONORS

1986	Metro Conference Rookie-of-the-Year Metro Conference All-Tournament Team
1987	Tampa Showcase All-Tournament All-Metro Conference Metro Conference All-Tournament Team AVCA Southeast Region Team
1988	Metro Conference Volleyball Player of the Week All-Metro Conference Metro Conference All-Tournament Team AVCA Southeast Region Team Metro Conference Commissioner's List



#2

SHANNON KELLY
5-8, JUNIOR, OUTSIDE HITTER
MIAMI, FL
(Westminster Christian)

...a multi-talented player with the ability to play both outstanding offense and defense... had a hand in all statistical categories during 1988

season... played in all 36 matches for the Lady Seminoles in 1988 and drew 27 starts... a finesse player, according to Reynaud... "since she does not have a height advantage, she uses a tip or off-speed attack to her advantage," ... **1988:** in 128 games, totalled 189 kills, 31 service aces and 270 digs, second highest total on the team... showed improvement from freshman year, establishing new career highs in kills, attacks, hitting percentage, service aces, solo blocks and digs... her six service aces against Jacksonville tied a school match record... had an outstanding road trip through Virginia with 23 kills and 22 digs as Florida State defeated Virginia and Virginia Tech... 18 kills and 23 digs in a five-game win over South Florida in Tampa established new career highs... **1987:** impact player as a freshman as she worked her way into the starting lineup... contributed 95 kills and 77 assists along with 174 digs... had season-high 11 kills and 18 digs in five-game loss to Florida... **HIGH SCHOOL:** named Player of the Year by the *Miami Herald* in 1986 after leading her team to a state runner-up finish... had such a successful high school career at Westminster Christian, she was inducted into the school's Hall of Fame... member of the Gold Coast USVBA Club along with Debbie Meyer and Jennifer Marraffino... **PERSONAL:** Member of the Pi Beta Phi sorority... a business major... born July 6, 1969... daughter of Michael and Arwyn Kelly...

KELLY AT FSU...

	MP	K	E	TA	PCT	TB	DG	SA
1987	31	95	45	315	.159	83	174	8
1988	36	189	66	545	.225	40	270	31
	67	284	111	860	.201	123	444	39

CAREER HIGHS

KILLS	18, vs. South Florida (1988)
ATTACKS	33, vs. South Florida (1988)
HITTING PERCENTAGE	.583, (7-0-12), vs. Virginia Tech (1988)
SERVICE ACES	6, vs. Jacksonville (1988)
SOLO BLOCKS	2, vs. West Virginia and LSU (1988)
BLOCK ASSISTS	9, vs. Cincinnati (1987)
DIGS	23, vs. South Florida (1988)
SET ASSISTS	6, vs. Cincinnati (1987)



#15

MARIA MAGOULAS
5-8, SENIOR,
DEFENSIVE SPECIALIST
RIO PIEDRAS, PR (Antilles)

... over the past two seasons, Magoulas has become a defensive strategist... using her quick foot-speed and reaction reflexes, Magoulas checks

in for back row purposes... "Maria is a pivotal player in our passing and defensive scheme," says Reynaud... **1988:** played in 33 matches and 99 games, drawing 10 starting assignments... had 135 digs and 21 service aces... season-high 16 digs came against Penn State... served up four aces for a season-high against Central Florida... totalled over 10 digs on three occasions... **1987:** recorded 156 digs and 16 service aces in 32 matches... made to defensive position player... **1986:** recorded 279 digs, one of six players on the team to have over 200 digs... used at the outside hitter position and was successful on 32 kills in 130 attempts... posted a career-high 18 digs in a five-game loss to Sam Houston State... **HIGH SCHOOL:** lettered in three sports at Antilles High School... named Athlete of the Year as a senior... selected Academic All-American... **PERSONAL:** a three-time selection to the Metro Conference Commissioner's List for Academic Excellence... one of the team's most diligent students... a business major... an active participant in FSU's intramurals sporting events... for the second consecutive year, Magoulas will celebrate her October 14 birthday on the court as FSU visits Cincinnati on that date this season... daughter of Tony and Margie Magoulas...

MAGOULAS AT FSU ...

	MP	K	TA	DG	DPG	SA
1986	36	32	130	279	2.1	23
1987	32	1	9	156	1.4	16
1988	33	1	6	135	1.4	21
	101	34	145	570	1.8	60

CAREER HIGHS

KILLS	4, three times
ATTACKS	16, vs. Georgia (1986)
HITTING PERCENTAGE	.667 (4-0-6) vs. Jacksonville (1986)
SERVICE ACES	4, vs. Pittsburgh (1986) and Central Florida (1988)
SOLO BLOCKS	1, vs. North Carolina State (1986)
BLOCK ASSISTS	3, vs. Jacksonville (1986)
DIGS	18, vs. Sam Houston St. (1986)
SET ASSISTS	2, three times in 1986



#11

JENNIFER MARRAFFINO
5-5, JUNIOR, SETTER
BOCA RATON, FL
(Boca Raton)

... resumes her role as the backup setter entering her junior season...

started 12 matches last season when Nancy Gaspadarek fell to injuries... saw action in 19 matches overall in 1988... will be used this season in certain situations... is much more comfortable with herself as a setter, according to Reynaud... **1988:** chalked up 467 set assists in 19 matches... compiled a .409 assist percentage... her 8.34 assists per game was good enough for sixth in the final Metro Conference assists per game rankings... with extended playing time, Marraffino established new career highs in virtually every category... career-high 50 assist performances came against South Carolina and Rice... 14 digs against Georgia also established a new career high... **1987:** saw limited action, appearing in only 14 matches... converted on 40 of 119 assist attempts for a .336 percentage... season-high of nine assists came in a three-game win over Florida Institute of Technology... **HIGH SCHOOL:** first team all-conference at Boca Raton High where she was captain of the team her senior season... a member of the Gold Coast Volleyball Club along with Shannon Kelly and Debbie Meyer... **PERSONAL:** a two-time selection to the Metro Conference Commissioner's List for Academic Excellence... a pre-veterinary medicine major... born June 2, 1969... daughter of Leonard and Renee Marraffino...

MARRAFFINO AT FSU...

	MP	ASST	TA	PCT	APG	SA	DG
1987	14	40	119	.336	2.1	1	4
1988	19	467	1,140	.409	8.3	16	92
	33	487	1,259	.387	6.5	19	96

CAREER HIGHS

KILLS	2, vs. LSU (1988)
ATTACKS	6, vs. Georgia (1988)
HITTING PERCENTAGE	N/A
SERVICE ACES	3, vs. Florida (1988)
SOLO BLOCKS	N/A
BLOCK ASSISTS	2, on four occasions in 1988
DIGS	14, vs. Georgia (1988)
SET ASSISTS	50, vs. South Carolina and Rice (1988)



#9

DEBBIE MEYER
5-10, JUNIOR,
OUTSIDE HITTER
NORTH PALM BEACH, FL
(Cardinal Newman)

... used sparingly in 1988... will once again be used as a key reserve... an ideal team player who adds serving and passing strength to the team... **1988:** registered 13 digs and three service aces... most memorable moment of the season came against Cincinnati at FSU scratched out a 15-13 win in the fourth game and went on to win the match in the fifth game... **1987:** played in 24 matches as a freshman... touched in all statistical categories with 16 kills, eight assists, 39 digs, seven block assists and three service aces... **HIGH SCHOOL:** voted to the *Miami Herald* All-Area team as a senior... captained her Cardinal Newman team and was voted team MVP... a member of the USVBA Gold Coast summer volleyball team which produced other Lady Seminoles Shannon Kelly and Jennifer Marraffino... **PERSONAL:** earned a spot on the Metro Conference Commissioner's List for her Academic Excellence during the 1988-89 year... a business major... born March 10, 1969... daughter of William and Sandy Meyer...

MEYER AT FSU...

	MP	K	E	TA	PCT	DIG	SA
1987	24	16	7	51	.176	39	3
1988	8	1	0	2	.500	13	3
	32	17	7	53	.189	52	6

CAREER HIGHS

KILLS 6, vs. Florida Inst. of Technology (1987)
ATTACKS 11, vs. Florida Inst. of Technology (1987)
HITTING PERCENTAGE .540, (6-0-11) vs. Florida Inst. of Technology (1987)
SERVICE ACES 2, vs. Cincinnati (1988)
SOLO BLOCKS N/A
BLOCK ASSISTS 1, on several occasions in 1987
DIGS 12, vs. Florida Inst. of Technology (1987)
SET ASSISTS 3, vs. Alabama-Birmingham (1987)



#10

MAGGIE PHILGENCE
5-10, JUNIOR,
OUTSIDE HITTER
ST. CROIX, VI (Country Day)

... returns as the leading attacker for the Lady Seminoles in 1989... total- led over 400 kills in each of her previous two seasons... should Philgence duplicate the number of the last two seasons in 1989, she will move among the career leaders in all attack categories... has the ability to become one of the most dominating players in the country... possesses a 30-inch vertical leap... "When Maggie puts the ball down, there's not much chance of a return," says Reynaud... **1988:** led the team with 546 kills... not only posted impressive numbers, but did it effectively with a team-leading .329 hitting percentage... selected to the AVCA All-Southeast Region and All-Metro teams... following a 59 kill, 28 dig performance in the Metro Tournament, she was named to the all-tournament team... led Metro Conference final volleyball rankings in hitting percentage and 4.17 kills per game... amassed 29 double figure kill games, nine times she collected 20 kills or more and had 30 kills in a five-game win over Cincinnati... enjoyed a memorable performance in an upset win over Kentucky with 20 kills and five service aces... earned Metro Conference Volleyball Player of the Week following that performance... named to the all-tournament team at the Florida Eight Classic ...added 43 service aces and 264 digs to her already impressive totals... **1987:** fulfilled the high expectations placed upon her by earning the Metro Conference Rookie of the Year award... placed second on the team in most attack categories... had 414 kills for a .284 attack percentage and averaged 3.45 kills per game... named to the AVCA Southeast Region team at the conclusion of the season... garnered all-tournament honors in the Florida Eight Classic and the Volleyball Monthly Thanksgiving Tourney... had 21 service aces and 162 kills... **HIGH SCHOOL:** earned MVP honors at Country Day High School... competed as a member of the Virgin Islands National team before coming to FSU... **PERSONAL:** has ambitions of playing on the 1992 U.S. Olympic team... an english major... born October 23, 1968... daughter of William and Marie Philgence...

PHILGENCE AT FSU...

	MP	K	E	TA	PCT	KPG	DG	TB
1987	33	414	128	1006	.284	3.45	162	113
1988	35	546	145	1217	.329	4.17	264	82
	68	960	273	2223	.309	3.82	426	195

CAREER HIGHS

KILLS 30, vs. Cincinnati (1988)
ATTACKS 61, vs. Long Beach State (1987)
HITTING PERCENTAGE .727, (16-0-22) , vs. Alabama-Birmingham (1988)
SERVICE ACES 5, vs. Kentucky (1988)
SOLO BLOCKS 3, vs. Long Beach State (1987)
BLOCK ASSISTS 9, vs. Florida (1987)
DIGS 18, vs. West Virginia (1988)
SET ASSISTS 5, vs. North Carolina State (1987)



#6

GABRIELLE REECE
6-3, JUNIOR,
MIDDLE HITTER
SEMINOLE, FL
(Keswick Christian)

...Lady Seminole headliner who split time between the classroom, the court and the modeling world... at the conclusion of the 1988 season, Reece forfeited her athletic scholarship and embarked on a six-month modeling tour... has graced the pages of several fashion magazines over the past few months... an intimidating blocker who is among career leaders in all blocking categories after only two years... a tireless worker on the court... could reach full potential with a full 12 months on the court, according to Reynaud... **1988:** finished as the team's leading blocker... made 171 total blocks for an average of 1.28 per game... blocks per game total ranked second in the final Metro Conference individual rankings... 60 solo blocks were the third highest single-season total in FSU history... placed third on team with 340 kills for an average of 2.53 per game and a .269 hitting percentage... best outing of the season came in a five-game win over Memphis State when she converted on 18 kills in 24 attempts with no errors... earned all-tournament status in the Florida Eight Classic accumulating 25 kills and 17 total blocks... **1987:** the biggest surprise for the Lady Seminoles, earning the team's most improved player award... inserted into the starting lineup nine matches into the season and finished the year with 1.64 blocks per game... totalled 175 blocks and 178 kills... **HIGH SCHOOL:** named all-conference at Keswick Christian where she was also a standout basketball player... FSU's final signee prior to the 1987 season... **PERSONAL:** represented in her modeling career by the Eileen Ford Agency of New York... featured on the cover of the July, 1989 *In Fashion* magazine... the tallest player ever at FSU... majoring in business... born January 6, 1970... daughter of Theresa Beauchamp...

REECE AT FSU...

	MP	K	E	TA	PCT	KPG	TB	BPG
1987	31	178	79	425	.233	1.66	175	1.64
1988	36	340	113	842	.269	2.53	171	1.27
	67	518	193	1267	.257	2.14	346	1.44

CAREER HIGHS

KILLS	18, vs. Memphis State (1988)
ATTACKS	43, vs. South Florida (1988)
HITTING PERCENTAGE	.750, (18-0-24), vs. Memphis State (1988)
SERVICE ACES	1, vs. FIT (1987) and Cincinnati (1988)
SOLO BLOCKS	6, on three occasions in 1988
BLOCK ASSISTS	14, vs. Illinois-Chicago (1987)
DIGS	9, vs. South Carolina (1988)
SET ASSISTS	1, on four occasions



#14

BIANCA STEVENS
6-1, FRESHMAN,
OUTSIDE HITTER
ST. CROIX, VI (Central)

... an interesting story lies behind this native of the Virgin Islands... head coach Cecile Reynaud began the recruiting process of Stevens when she was in the tenth grade... at the time she was in the process of recruiting Maggie Philgence... at 6-1, Stevens is a welcome addition to the outside hitter position for the Lady Seminoles... "she's got long arms and long legs, all the right things for an excellent volleyball player," says Reynaud... attended the Cecile Reynaud Volleyball Camp prior to her senior season... also a talented basketball player... born June 10, 1971... daughter of Oclota Stevens... interested in majoring in business at FSU...



#7

MARYBETH SUTCLIFFE
5-10, JUNIOR,
OUTSIDE HITTER
CHICAGO, IL
(Mother McAuley)

... used in situations during the 1988 season but may see more action at the outside hitter

6 FLORIDA STATE VOLLEYBALL

position in 1989... a starter in the back row last season... enthusiastic player on the court, good for team morale... is critical to FSU's passing scheme, according to Reynaud... an excellent server... **1988:** saw action in 32 matches and 114 games... drew 19 starting assignments... substituted in and out of games with regularity... contributed 143 digs and 26 service aces... **1987:** made an immediate contribution her freshman season playing in all 33 matches... the team's best server with 34 aces... had a hand in all statistical categories with 31 kills, 19 assists, 223 digs and 16 total blocks... season-high 15 digs came against North Carolina State... served up three aces on five different occasions... **HIGH SCHOOL:** came to FSU following a very successful career at Mother McAuley High where she was part of a team which appeared in the Illinois state championships in 1984 and 1986... a member of the Windy City Volleyball Club which won several Junior Olympic National Championship titles... **PERSONAL:** an accounting major... born December 5, 1968... daughter of Warren and Barbara Sutcliffe...

SUTCLIFFE AT FSU...

	MP	K	SA	DIG	TB	AST
1987	33	31	34	223	16	19
1988	32	2	26	143	2	9
	65	33	60	366	18	28

CAREER HIGHS

KILLS	8, vs. Jacksonville (1987)
ATTACKS	20, vs. Jacksonville (1987)
HITTING PERCENTAGE	.420, (4-1-7) vs. South Florida (1987)
SERVICE ACES	3, six times
SOLO BLOCKS	1, vs. Minnesota and Georgia (1987)
BLOCK ASSISTS	2, vs. Florida (1987) and Cincinnati (1988)
DIGS	15, vs. North Carolina State (1987)
SET ASSISTS	3, vs. Florida (1987)



#3

SONIA TREVINO
5-8, SENIOR, OUTSIDE HITTER
MISSION, TX (San Jacinto JC)

... spent the 1988 season adjusting to Division I play after a transfer from the national championship San Jacinto JC team... played in certain situations to spark the team... "has the potential to dominate with her all-around abilities," says Reynaud... an intense player, a trait which coaches hope

will carry over to others... **1988:** saw action in 32 matches and started 11... registered 93 kills with a .230 attack percentage... displayed excellent defensive skills with 174 digs... scored a season-high 13 kills in the second match of the year against Jacksonville... had a .588 hitting percentage in that game, also a season-high... 14 digs against Georgia was a season-high... **JUNIOR COLLEGE:** named an NJCAA Reebok Player of the Year and NJCAA All-America as San Jacinto finished with a 39-7 record during its championship season of 1987... also an NJCAA All-America as a track athlete in the 400 meter hurdles... **PERSONAL:** earned a spot on the Metro Conference Commissioner's List for Academic Excellence majoring in biology... born October 10, 1967... daughter of Benito and Socorro Trevino...

TREVINO AT FSU...

	MP	K	E	TA	PCT	SA	TB	DIG
1988	32	93	28	282	.230	11	23	174

CAREER HIGHS

KILLS	13, vs. Jacksonville (1988)
ATTACKS	33, vs. Penn State (1988)
HITTING PERCENTAGE	.588, (13-3-17), vs. Jacksonville (1988)
SERVICE ACES	2, vs. Louisiana State (1988)
SOLO BLOCKS	1, vs. South Florida and Southern Miss (1988)
BLOCK ASSISTS	3, vs. Louisiana State (1988)
DIGS	14, vs. Georgia (1988)
SET ASSISTS	3, vs. Louisiana State (1988)



#13

TWANNA WALKER
6-1, SENIOR, MIDDLE HITTER
JACKSONVILLE, FL
(Sandalwood)

... made a spectacular return last season and was voted the most improved player of 1988... sat out the 1987 season due to academic difficulties... the fact she returned is a credit to her determination... joined the 1988 team as a walk-on and was later rewarded with a scholarship... her presence as a blocker could influence opponents to force changes in the offensive attack, according to Reynaud... **1988:** saw action in 26 matches and drew 11 starts late in the season... When Reynaud inserted her into the lineup using a different rotation in her hometown of Jacksonville, Walker responded to her first start of the season with 8 kills in 12

attempts... remained a regular fixture in the rotation for the rest of the season... finished the season with 34 total blocks... **1986:** played in 110 games and had 129 kills for a .201 hitting percentage... totalled 65 blocks and 53 digs... registered a career-high nine kills on two occasions... a season-high eight block assists came against Sam Houston State... **1985:** saw limited action, appearing in three matches... **HIGH SCHOOL:** lettered in three sports at Sandalwood... was all-conference and team MVP her senior year in volleyball... **PERSONAL:** born March 13, 1967 ... daughter of William and Odessa Walker... a psychology major...

WALKER AT FSU...

	MP	K	E	TA	PCT.	SA	TB	DIG
1985	3	3	3	10	.000	1	2	3
1986	33	129	62	334	.201	1	65	53
1988	26	39	15	111	.216	0	34	33
	62	171	80	455	.200	2	101	89

CAREER HIGHS

KILLS 9, vs. Memphis State, North Carolina (1986)
ATTACKS 33, vs. Sam Houston State (1986)
HITTING PERCENTAGE .583, (8-0-12) vs. Jacksonville (1988)
SERVICE ACES 1, vs. Xavier (1985), South Florida (1986)
SOLO BLOCKS 2, vs. Purdue (1986)
BLOCK ASSISTS 8, vs. Sam Houston State (1986)
DIGS 7, vs. North Carolina (1986), South Carolina (1988)
SET ASSISTS 3, vs. South Florida and Colorado State (1988)



#8
VICKI ZINKIL
6-1, FRESHMAN,
MIDDLE HITTER
STEVENSVILLE, MI (Lakeshore)

... another midwest signee which Florida State has become familiar with... coaches hope Zinkil will be able to step right in and improve Lady Seminole blocking... played on Michigan Class B State championship team as a junior at Lakeshore High School... as a senior, Lakeshore held the number one ranking... competed with the Kalamazoo Junior AAU team during the summer prior to her senior season... played with the Network club team of Indiana in the AAU National Championship this summer... brings to FSU a 3.67 high school grade point average... interested in a pre-law major... born October 24, 1971... daughter of George and Beverly Zinkil...

1989 FLORIDA STATE LADY SEMINOLE NUMERICAL VOLLEYBALL ROSTER

#	PLAYER	POSITION	HT	CL	HOMETOWN
1	Nancy Gaspadarek	Setter	5-7	Sr.	Lansing, IL
2	Shannon Kelly	Outside Hitter	5-8	Jr.	Miami, FL
3	Sonia Trevino	Outside Hitter	5-8	Sr.	Mission, TX
6	Gabrielle Reece	Middle Hitter	6-3	Jr.	Seminole, FL
7	Marybeth Sutcliffe	Outside Hitter	5-10	Jr.	Chicago, IL
8	Vicki Zinkil	Middle Hitter	6-1	Fr.	Stevensville, MI
9	Debbie Meyer	Outside Hitter	5-10	Jr.	N. Palm Beach, FL
10	Maggie Philgence	Outside Hitter	5-10	Jr.	St. Croix, VI
11	Jennifer Marraffino	Setter	5-5	Jr.	Boca Raton, FL
12	Amy Bronson	Outside Hitter	5-11	So.	Miami, FL
13	Twanna Walker	Outside Hitter	6-1	Sr.	Jacksonville, FL
14	Bianca Stevens	Outside Hitter	6-1	Fr.	St. Croix, VI
15	Maria Magoulas	Defensive Spc.	5-8	Sr.	Rio Piedras, PR

HEAD COACH: Cecile Reynaud
ASSISTANT COACH: Shelly Birkholz

GRADUATE ASSISTANT: Rex Welch
ATHLETIC TRAINER: Angela Sehgal

1988 TEAM AND INDIVIDUAL HONORS

TEAM HONORS

Florida Eight Classic (Second Place)
 Kentucky Wildcat Classic (First Place)
 Metro Conference Tournament (First Place)
 Selected to 32-team NCAA Division I Tournament
 Ranked 8th with .286 Hitting Percentage in AVCA rankings

INDIVIDUAL HONORS

AMY BRONSON

Florida Eight Classic All-Tournament team
 Ninth in final Metro Conference rankings with 0.95 Blocks Per Game

NANCY GASPADAREK

Metro Conference Volleyball Player of the Week
 1988 All-Metro team
 1988 Metro Conference All-Tournament team
 1988 AVCA All-Southeast Region
 1988-89 Metro Conference Commissioner's List for Academic Excellence
 Fifth in Final Metro Conference rankings with 10.29 Assists Per Game

DEANNE KALETA

Metro Conference Volleyball Player of the Week
 1988 All-Metro team
 1988 Metro Conference Tournament Most Outstanding Performer
 1988 AVCA All-Southeast Region
 Voted the 1988 Team MVP
 1988-89 Metro Conference Commissioner's List for Academic Excellence
 Second in final Metro Conference rankings with .319 Hitting Percentage
 Fifth in final Metro Conference rankings with 3.23 Kills Per Game
 Third in final Metro Conference rankings with 1.22 Blocks Per Game
 Tenth in final Metro Conference rankings with 2.42 Digs Per Game

MARIA MAGOULAS

1988-89 Metro Conference Commissioner's List for Academic Excellence

JENNIFER MARRAFFINO

1988-89 Metro Conference Commissioner's List for Academic Excellence
 Sixth in final Metro Conference rankings with 8.34 Assists Per Game

DEBBIE MEYER

1988-89 Metro Conference Commissioner's List for Academic Excellence

MAGGIE PHILGENCE

Florida Eight Classic All-Tournament team
 Metro Conference Volleyball Player of the Week
 1988 All-Metro Conference
 1988 Metro Conference All-Tournament team
 1988 AVCA All-Southeast Region
 First in final Metro Conference rankings with .329 Hitting Percentage
 First in final Metro Conference rankings with 4.17 Kills Per Game

GABRIELLE REECE

Florida Eight Classic All-Tournament team
 Fifth in final Metro Conference rankings with .269 Hitting Percentage
 Second in final Metro Conference rankings with 1.28 Blocks Per Game

SONIA TREVINO

1988-89 Metro Conference Commissioner's List for Academic Excellence

TWANNA WALKER

Voted team's Most Improved Player

REBECCA WHITE

1988-89 Metro Conference Commissioner's List for Academic Excellence

CECILE REYNAUD

1988 Metro Conference Coach of the Year

1988 IN REVIEW

It was the year of Simply Smashing.

As never seen before, the Florida State volleyball team was subjected to a multitude of pre-season hype. The Lady Seminoles were the talk of the town. The reason. It was Simply Smashing.

A sheet of paper, in the form of a poster, featuring the likeness of six Florida State volleyball players along with the 1988 home schedule had fans abuzz for the September 2 home opener against Alabama-Birmingham. Ticket buyers were stretched out of the Tully Gym lobby and many missed the first game win.

After a pair of home wins, the hype soon turned to despair. Following a grueling road schedule where the Lady Seminoles found themselves the visitors on five consecutive weekends, they were quickly mired in mediocrity with an 8-6 record.

Those quick to point a finger could have singled out a broken bone in the hand of one Nancy Gaspadarek, FSU's court leader from the setter position. But head coach Cecile Reynaud recalls that it was more of a team concern. "We (the coaching staff) were concerned about the desire of the team to win and the ability to be able to do something about it," she said.

The turning point, so to speak, came in a match played against Rice University in Houston. FSU was down 2-0 with a distinct possibility of dropping to 9-7 on the year. In the break between the second and third game, Reynaud said nothing to the team. She left it up to them to decide their own fate. "At that point, they knew what they had to do," Reynaud

recalls. The Lady Seminoles rallied to defeat Rice 15-6, 15-9 and 15-2 in the final game. "They were a different team from that point on. It was a very coachable and motivated team the remainder of the season."

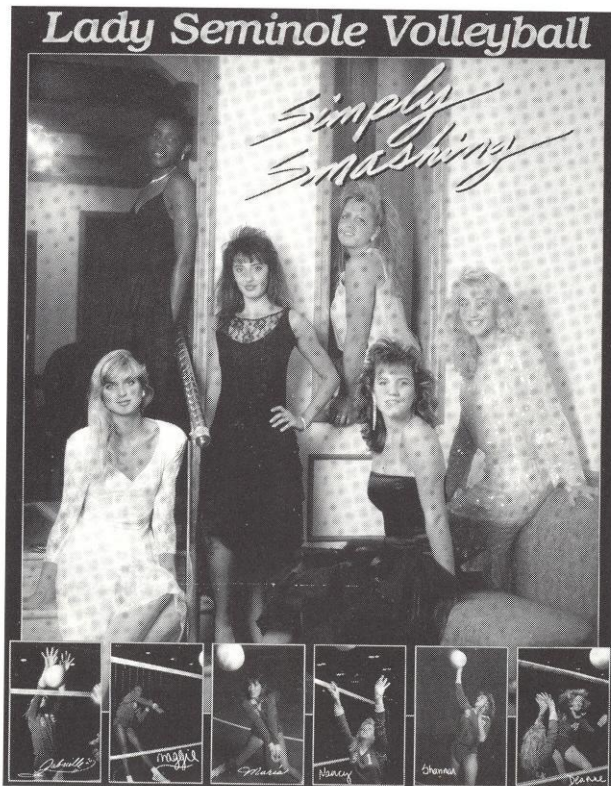
What followed was a 14-match win streak, the return of Gaspadarek, six five-game wins and a victory over in-state rival Florida in front of a record 1,200 fans at Tully Gym and the cameras of the Sunshine Network. "For as long as I stay in coaching, that will always be a win that I'll remember," Reynaud said. "It was so exciting to share that win with so many great fans."

Following an upset win over the ninth-ranked Kentucky Wildcats in their own tournament, Florida State had a full head of steam heading into the Metro Conference Tournament. Seeded second in the tourney, the Lady Seminoles

scored three-game wins over Southern Miss and South Carolina before taking their fourth consecutive conference crown from host-team Cincinnati in the finals. Departing senior Deanne Kaleta was honored as the tournament's most outstanding performer for her efforts. She also left FSU as the first volleyball player to be a part of a Metro Conference Championship team in all four of her years as a Lady Seminole.

FSU's Simply Smashing season came to a halt, as the Colorado State Rams charged into Tallahassee and defeated the Lady Seminoles in four games in the first round of the NCAA Tournament.

For those involved, and it is unanimous, the 1988 Florida State Volleyball season opened a new and exciting chapter in FSU sports.



1988 LADY SEMINOLE VOLLEYBALL MATCH-BY-MATCH RESULTS

Overall (28-8, .778); Home (12-1, .923); Away (9-4, .692); Neutral (7-3, .700); Metro (8-1, .889)

DATE	OPPONENT	W/L	RECORD	SCORES
9/2	Alabama-Birmingham	W	1-0	15-2, 15-5, 15-1
9/3	Jacksonville	W	2-0	15-10, 15-11, 15-12
9/9	Texas-Arlington *	L	2-1	4-15, 7-15, 11-15
9/10	Penn State *	L	2-2	15-13, 13-15, 8-15, 5-15
FLORIDA EIGHT CLASSIC, ORLANDO, FL (SECOND PLACE)				
9/16	Florida International	W	3-2	15-0, 15-1, 15-1
9/17	South Florida	W	4-2	15-13, 15-5, 15-8
9/17	Florida	L	4-3	16-14, 11-15, 13-15, 4-15
9/20	Florida A&M	W	5-3	15-6, 15-6, 15-7
9/23	at Georgia	W	6-3	15-8, 15-11, 12-15, 15-9
9/26	at Florida	L	6-4	10-15, 7-15, 11-15
9/30	at South Carolina	L	6-5	10-15, 13-15, 15-17
10/1	at Virginia	W	7-5	17-15, 15-11, 15-8
10/2	at Virginia Tech	W	8-5	15-6, 15-6, 15-7
10/7	at Houston	L	8-6	15-1, 5-15, 15-3, 3-15, 4-15
10/8	at Lamar	W	9-6	15-7, 10-15, 15-1, 15-4
10/8	at Rice	W	10-6	12-15, 11-15, 15-6, 15-9, 15-2
10/14	Memphis State	W	11-6	13-15, 15-1, 9-15, 15-5, 15-13
10/15	Central Florida	W	12-6	15-8, 15-0, 15-1
10/18	at Jacksonville	W	13-6	15-4, 15-8, 15-7
10/22	at Tampa	W	14-6	15-13, 15-3, 15-8
10/22	at South Florida	W	15-6	15-10, 12-15, 14-16, 15-13, 15-12
10/24	Florida	W	16-6	5-15, 15-3, 15-11, 15-10
10/28	Cincinnati	W	17-6	12-15, 15-13, 13-15, 15-13, 15-4
10/29	Louisville	W	18-6	15-7, 15-6, 15-5
10/30	William & Mary	W	19-6	15-3, 11-15, 15-10, 12-15, 15-10
10/30	South Florida	W	20-6	9-15, 15-5, 15-5, 12-15, 15-7
11/4	West Virginia	W	21-6	15-12, 15-8, 11-15, 14-16, 15-4
11/5	at Southern Mississippi	W	22-6	15-8, 15-6, 15-5
11/6	at LSU	L	22-7	10-15, 9-15, 22-20, 10-15
KENTUCKY WILDCAT CLASSIC, LEXINGTON, KY (FIRST PLACE)				
11/11	Eastern Kentucky	W	23-7	15-9, 15-13, 15-4
11/12	Kentucky	W	24-7	15-10, 16-14, 13-15, 15-12
11/14	Southwest Texas State	W	25-7	10-15, 18-16, 15-9, 13-15, 15-1
METRO CONFERENCE TOURNAMENT, CINCINNATI, OHIO (FIRST PLACE)				
11/18	Southern Mississippi	W	26-7	15-10, 15-5, 15-6
11/19	South Carolina	W	27-7	15-8, 15-13, 15-6
11/20	Cincinnati	W	28-7	10-15, 15-10, 15-7, 15-9
NCAA DIVISION I TOURNAMENT, FIRST ROUND (TALLAHASSEE, FL)				
12/4	Colorado State	L	28-8	3-15, 5-15, 15-9, 7-15

* Matches played in Gainesville, FL

1988 LADY SEMINOLE STATISTICS

RECORD (W-L): 28-8 (12-1 HOME; 9-4 AWAY; 7-3 NEUTRAL; 8-1 METRO)

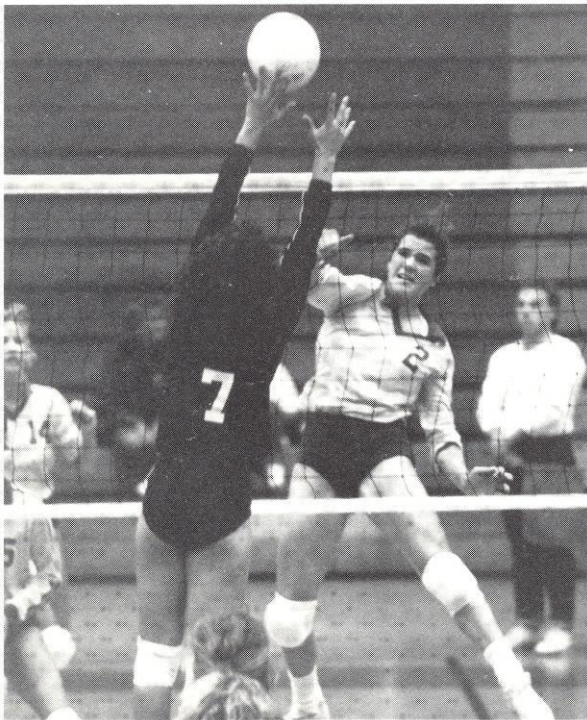
PLAYER	MP	MS	GP	K	KPG	E	TA	PCT	AST	ATT	PCT	SA	BS	BA	TB	BPG	DG	RE	BE	SE
Meyer, Debbie	8	0	10	1	0.10	0	2	.500	1	2	.500	3	0	0	0	0.00	13	2	0	0
Philgence, Maggie	35	35	131	546	4.16	145	1217	.329	15	58	.258	43	14	68	82	0.62	264	40	12	48
Kaleta, Deanne	36	36	135	436	3.22	104	1040	.319	38	138	.275	44	28	137	165	1.22	327	37	18	45
Bronson, Amy	29	26	103	155	1.50	39	404	.287	23	66	.348	12	14	84	98	0.95	109	19	24	28
Reece, Gabrielle	36	4	134	340	2.53	113	842	.269	4	25	.160	1	60	111	171	1.27	40	7	39	10
Gaspadarek, Nancy	28	23	99	73	0.73	13	226	.265	1019	2449	.416	17	5	27	32	0.32	216	0	4	8
Trevino, Sonia	32	11	99	93	0.93	28	282	.230	20	53	.377	11	2	21	23	0.23	174	17	4	10
Kelly, Shannon	36	27	128	189	1.47	66	545	.225	31	93	.333	31	10	30	40	0.31	270	29	6	49
Marraffino, Jennifer	19	12	56	8	0.14	3	23	.217	467	1140	.409	16	0	13	13	0.23	92	0	2	18
Walker, Twanna	26	11	60	39	0.65	15	111	.216	18	47	.382	0	3	31	34	0.56	33	3	4	1
Magoulas, Maria	33	10	99	1	0.01	0	6	.166	3	10	.300	21	0	0	0	0.00	135	21	0	15
Sutcliffe, Marybeth	32	19	114	2	0.01	6	23	-.173	9	31	.290	26	0	2	2	0.01	143	37	0	25
FSU	36		135	1883	13.95	532	4721	.286	1648	4112	.401	225	136	524	660	2.95	1816	212	113	257

1988 SEASON HIGHS (TEAM AND INDIVIDUAL)

	INDIVIDUAL	TEAM
KILLS		
3-games	22, Kaleta vs. S. Carolina (11-19)	69, vs. South Carolina (11-19)
4-games	22, Philgence vs. Cincinnati (11-20)	72, vs. LSU (11-6)
5-games	30, Philgence vs. Cincinnati (10-28)	87, vs. South Florida (10-22)
ATTACKS		
3-games	48, Philgence vs. South Carolina (9-30)	154, vs. South Carolina (9-30)
4-games	49, Kaleta vs. LSU (11-6)	196, vs. LSU (11-6)
5-games	55, Philgence vs. Cincinnati (10-28)	230, vs. South Florida (10-22)
3-games	.727, Philgence vs. Jacksonville (9-3)	.510, vs. Florida International (9-16)
HITTING PERCENTAGE (min. 10 attempts)		
3-games	.727, Philgence vs. Alabama-Birm. (9-2) (16K/OE/22TA)	.510, vs. Florida International (9-16) (29K/4E/49TA)
4-games	.615, Philgence vs. Lamar (10-8) (17K/1E/26TA)	.441, vs. Lamar, (10-8) (55K/10E/102TA)
5-games	.750, Reece, vs. Memphis State (10-14) (18K/0E/24TA)	.309, vs. Rice (10-8) (74K/22E/168TA)
SERVICE ACES		
3-games	6, Kelly vs. Jacksonville (10-18)	11, vs. Fla. International (10-16) and Virginia (10-1)
4-games	5, Philgence vs. Kentucky (11-11)	11, vs. Kentucky (11-11)
5-games	5, Gaspadarek vs. Cincinnati (10-28)	13, vs. Cincinnati (10-28)
SOLO BLOCKS		
3-games	6, Reece vs. Alabama-Birmingham (9-2)	7, vs. Texas-Arlington (9-9) and Eastern Kentucky (11-10)
4-games	3, Reece vs. Florida (9-17) and Kentucky (11-11); Kaleta vs. Kentucky	7, vs. Kentucky (11-11)
5-games	6, Reece vs. Rice (10-8) and Cincinnati (10-28)	9, vs. Cincinnati (10-28)
BLOCK ASSISTS		
3-games	6, Bronson vs. Jacksonville (9-3) and Virginia (10-1); Kaleta vs. Virginia Tech	20, vs. Jacksonville (9-3) and South Florida (9-17)
4-games	8, Kaleta vs. Lamar (10-8)	22, vs. Kentucky
5-games	9, Kaleta vs. William & Mary (10-30)	29, vs. William & Mary (10-30)
DIGS		
3-games	23, Kaleta vs. South Carolina (9-30)	56, vs. South Carolina (9-30)
4-games	21, Gaspadarek vs. LSU (11-6)	75, vs. Cincinnati (11-20)
5-games	18, Philgence vs. West Virginia (11-4)	93, vs. South Florida (10-22)
SET ASSISTS		
3-games	56, Gaspadarek vs. S. Carolina (11-19)	65, vs. South Carolina (11-19)
4-games	53, Gaspadarek vs. Florida (10-24)	61, vs. Florida (10-24)
5-games	62, Gaspadarek vs. South Florida (10-22)	73, vs. South Florida (10-22)



Junior Maggie Philgence is nearing the 1,000 kill mark in her career.



Junior Shannon Kelly is a valuable member of the Lady Seminole offense.

SERIES RECORDS VS. OPPONENTS

Team	Last Meeting	W-L	Team	Last Meeting	W-L
Alabama	1981	8-10	Nebraska	1982	0-2
ALABAMA-BIRMINGHAM	1988	4-0	New Mexico	1986	0-1
Appalachian State	1981	2-0	New Orleans	1984	6-0
Arizona	1985	0-3	Nicholls State	1981	4-0
Arizona State	1984	0-1	North Alabama	1976	1-0
Arkansas State	1979	1-1	North Carolina	1987	9-1
Auburn	1980	5-0	North Carolina-Greensboro	1976	1-0
Baylor	1981	1-0	North Carolina State	1987	3-1
Berry College	1976	2-1	North Florida Junior College	1979	2-0
BRIGHAM YOUNG	1986	0-4	North Texas State	1978	0-1
Cal-Berkeley	1986	1-0	Northwestern	1985	1-1
Central Florida	1988	20-7	Northwest Louisiana	1977	1-0
CINCINNATI	1988	12-2	Ohio State	1981	0-1
Clemson	1983	4-0	Oklahoma	1979	1-1
College of Charleston	1977	0-1	Oklahoma State	1980	1-0
Colorado State	1988	0-1	Penn State	1988	1-1
Columbus College	1978	2-0	Pepperdine	1978	0-1
Duke	1987	2-1	Pittsburgh	1986	1-1
East Tennessee State	1981	2-0	Portland State	1981	0-1
Eastern Kentucky	1988	3-4	PURDUE	1986	1-2
Flagler College	1981	4-0	Rice	1988	2-0
FLORIDA	1988	15-5	Rhode Island	1983	1-0
FLORIDA A&M	1988	9-0	Rollins College	1981	1-0
Florida International	1988	5-4	Rutgers	1982	0-2
Florida Junior College	1980	2-0	San Diego State	1983	0-1
Florida Institute of Technology	1987	1-0	Sam Houston State	1981	2-1
Florida Southern	1982	4-1	South Alabama	1987	9-0
George Washington	1976	0-1	SOUTH CAROLINA	1988	14-7
Georgia	1988	9-5	South Carolina-Spartanburg	1980	1-0
Georgia State	1978	2-0	SOUTH FLORIDA	1988	23-0
Gulf Coast Community College	1979	2-0	Southeast Louisiana	1979	1-0
Hofstra	1984	1-0	Southern University	1983	1-0
Houston	1988	1-6	Southern Illinois	1985	1-1
Illinois	1986	0-1	SOUTHERN MISSISSIPPI	1988	10-0
Illinois-Chicago	1987	2-1	Southwest Missouri State	1982	1-5
ILLINOIS STATE	1984	2-1	Southwest Texas State	1988	1-1
Indiana-Evansville	1984	1-0	Southwestern Louisiana	1977	1-0
Indian River Community College	1981	1-0	St. Louis University	1980	0-2
Iowa	1984	0-1	STETSON UNIVERSITY	1983	1-0
Iowa State	1979	1-0	Tampa	1988	1-0
JACKSONVILLE	1988	11-0	TENNESSEE	1980	7-6
KENTUCKY	1988	2-4	Tennessee-Chattanooga	1983	4-0
Lake City Community College	1980	6-0	Tennessee Tech	1982	1-0
Lamar	1988	2-0	Texas	1987	0-4
Long Beach State	1987	0-1	Texas A&M	1984	1-3
LOUISIANA STATE	1988	8-7	Texas-Arlington	1985	1-3
LOUISVILLE	1988	6-4	Texas Tech	1986	4-1
Maryland	1976	1-0	TULANE	1987	7-1
MEMPHIS STATE	1988	14-1	Tuskegee Institute	1976	1-0
Miami	1981	11-8	UCLA	1979	0-2
Miami Dade-North CC	1976	1-0	Utah State	1981	0-1
Miami Dade-South CC	1980	3-4	Valdosta State	1977	1-0
Michigan State	1986	1-1	Virginia	1988	2-0
Middle Tennessee State	1981	1-0	VIRGINIA TECH	1988	10-0
Milligan College	1977	1-0	West Georgia State	1977	2-0
MINNESOTA	1987	5-3	West Virginia	1988	1-0
Mississippi	1986	3-0	William & Mary	1988	1-0
Mississippi State	1982	6-0	Winthrop College	1980	2-0
Mississippi College for Women	1980	7-5	Xavier	1985	1-0
Montevallo	1980	2-0			
MOREHEAD STATE	1982	3-0			

1989 OPPONENTS IN CAPS

ALL-TIME LETTERWINNERS

A-B-C-D

Barbara Barnes	1978-79
Shelly Birkholz	1982-85
Joy Blanchard	1978-82
Kim Britt	1984-86
Amy Bronson	1988-
Julie Brown	1979-83
Cordelia Campbell	1978
Cathy Copeland	1987
Alicia Cross	1979-82
Camy Davies	1979-82
Laura Davis	1973-76

E-F-G-H-I

Carol Forsten	1981-84
Lynne Fullhart	1985
Nancy Gaspadarek	1986-88
Pam Griffin	1973-76
Colette Housch	1983
Valene Harris	1985
Terry Hume	1973-76
Janice Hunt	1977-78
Michele Hurd	1974-77

J-K-L-M-N

Jametta Jackson	1984
Linda Johnson	1978
Deanne Kaleta	1985-88
Shannon Kelly	1987-88
Donna Krai	1982-85
Jamie Kuhn	1979-80
Shannon Lages	1980-83
Maria Magoulas	1986-88
Wendy Markham	1985
Jennifer Marraffino	1987-88
Charlotte Martin	1974-77
Gloria McIntosh	1981
Barbara Mellen	1979-81
Debbie Meyer	1987-88
Stacy Moneymaker	1983
Joan Morris	1983-86
Gina Muensterman	1985-86

O-P-Q-R

Candi Orsini	1974-77
Karyn Palgut	1981-84
Maggie Philgence	1987-88
Rhonda Petty	1980-81
Julie Plattner	1986
Marci Rard	1987
Gabrielle Reece	1987-88
Yolanda Restrepo	1976-80

S-T-U-V

Marie Sanders	1980-83
Lisa Smith	1983-84
Sherry Smith	1984

■ Margaret Stephens	1977-80
■ Sally Summer	1980-83
■ Marybeth Sutcliffe	1987-88
■ Marianne Tobolski	1985
■ Julie Todd	1984-87
■ Nancy Townsend	1977-80
■ Sonia Trevino	1988-
■ Sue Usher	1976-80

W-X-Y-Z

■ Twanna Walker	1985-88
■ Lisa Warman	1981-84
■ Margie Wessel	1977-80
■ Rebecca White	1988-
■ Mary Williams	1981-83
■ Velma Wright	1978-79
■ Jackie Young	1981-84

Bold indicates players on the 1989 Florida State roster

FLORIDA STATE IN NCAA TOURNAMENT

1983, at Tallahassee

lost to Tennessee; 15-12, 15-12, 1-15, 10-15, 8-15

1985, at Athens, GA

lost to Georgia; 6-15, 1-15, 11-15

1987, at Austin, TX

lost to Texas; 6-15, 11-15, 9-15

1988, at Tallahassee

lost to Colorado State; 3-15, 5-15, 15-9, 7-15



Cecile Reynaud offers instructions during a time out.

FLORIDA STATE IN METRO TOURNAMENTS

1982, at Tallahassee (Third Place)

defeated Tulane 15-5; 15-12
 defeated Memphis State; 15-7, 15-1
 lost to Cincinnati; 15-10, 13-15, 5-15
 defeated Southern Miss; 15-3, 15-2
 defeated Virginia Tech; 15-11, 15-3
 lost to Louisville; 13-15, 15-12, 12-15
 lost to Louisville; 12-15, 15-11, 16-14, 13-15, 13-15
 defeated Memphis State; 15-5, 15-5, 15-7

1983, at Louisville, KY (First Place)

defeated Southern Miss; 15-0, 15-0, 15-4
 defeated Cincinnati; 13-15, 15-12, 15-12, 15-9
 defeated South Carolina; 13-15, 15-8, 15-9, 10-15, 15-4

1984, at Columbia, SC (Third Place)

defeated Virginia Tech; 15-1, 15-6, 15-8
 lost to South Carolina; 11-15, 11-15, 11-15

1985, at Hattiesburg, MS (First Place)

defeated Southern Miss; 15-13, 15-13, 15-3
 defeated South Carolina; 15-1, 15-3, 13-15, 15-12

1986, at Blacksburg, VA (First Place)

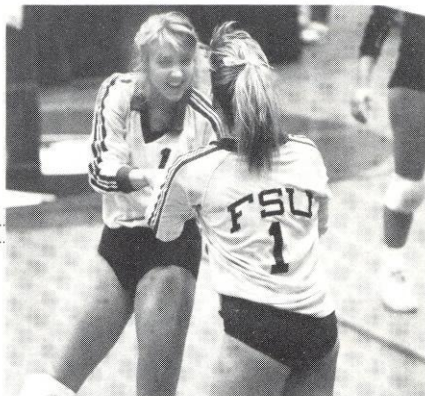
defeated Virginia Tech; 15-7, 16-14, 15-10
 defeated South Carolina; 7-15, 15-13, 15-3, 15-7

1987, at Memphis, TN (First Place)

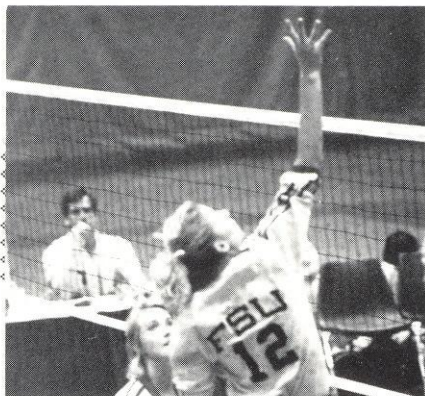
defeated South Carolina; 15-9, 15-4, 12-15, 15-8
 defeated Cincinnati; 15-4, 15-12, 6-15, 15-11

1988, at Cincinnati, Ohio (First Place)

defeated Southern Miss; 15-10, 15-5, 15-6
 defeated South Carolina; 15-8, 15-13, 15-6
 defeated Cincinnati; 10-15, 15-10, 15-7, 15-9



1988 Metro Tournament MVP Deanne Kaleta played in 391 consecutive games from 1986 to 1988.



As a freshman in 1988, Amy Bronson had 155 kills and a .287 hitting percentage.

INDIVIDUAL SINGLE SEASON RECORDS

KILL ATTEMPTS

1. Joan Morris	1,389	1986
2. Maggie Philgence	1,217	1988
3. Julie Todd	1,135	1986
4. Sally Summer	1,054	1982
5. Deanne Kaleta	1,040	1988

KILLS

1. Joan Morris	571	1986
2. Maggie Philgence	546	1988
3. Julie Todd	513	1986
4. Julie Todd	466	1987
5. Deanne Kaleta	436	1988

HITTING PERCENTAGE (min. 300 attempts)

1. Margie Wessel	.420	1980
2. Julie Brown	.360	1981
3. Shannon Lages	.360	1980
4. Alicia Cross	.356	1981
5. Julie Todd	.351	1987

KILLS PER GAME

1. Joan Morris	4.26	1986
2. Maggie Philgence	4.16	1988
3. Julie Todd	3.85	1987
4. Julie Todd	3.80	1986
5. Maggie Philgence	3.45	1987

SERVICE ACES

1. Donna Krai	90	1983
2. Karyn Palgut	55	1981
3. Karyn Palgut	54	1982
4. Marie Sanders	53	1983
5. Alicia Cross	52	1982

SOLO BLOCKS

1. Julie Brown	62	1981
2. Julie Brown	61	1983

3. Gabrielle Reece	60	1988
4. Julie Todd	50	1987
5. Deanne Kaleta	47	1986

BLOCK ASSISTS

1. Julie Todd	223	1987
2. Julie Todd	199	1986
3. Deanne Kaleta	137	1988
4. Julie Brown	134	1983
5. Julie Brown	132	1981

TOTAL BLOCKS

1. Cordelia Campbell	286	1979
2. Alicia Cross	270	1979
3. Julie Todd	273	1987
4. Julie Todd	238	1986
5. Julie Brown	195	1983

BLOCKS PER GAME

1. Julie Todd	2.26	1987
2. Julie Todd	1.76	1986
3. Gabrielle Reece	1.64	1987
4. Julie Brown	1.55	1983
5. Julie Brown	1.50	1981

SET ASSISTS

1. Nancy Gaspardarek	1,216	1986
2. Nancy Gaspardarek	1,159	1987
3. Marie Sanders	1,112	1982
4. Nancy Gaspardarek	1,019	1988
5. Donna Krai	994	1985

DIGS

1. Joan Morris	460	1986
2. Nancy Gaspardarek	364	1986
3. Karyn Palgut	335	1984
4. Deanne Kaleta	327	1988
5. Joan Morris	309	1985

TEAM RECORDS

TEAM ACHIEVEMENT

- BEST OVERALL RECORD: 43-8 (.843), 1981
- MOST WINS: 43, 1981
- WORST RECORD: 20-13 (.606), 1984
- MOST LOSSES: 19, 1979
- BEST RECORD IN CONFERENCE PLAY: 10-0 (1983); 8-0 (1986, 1987)
- BEST CONFERENCE FINISH: 1st (1983, 1985, 1986, 1987, 1988)
- CONSECUTIVE GAMES WON: 35 (1981)
- CONSECUTIVE MATCHES: 21 (1981)
- HIGHEST AIAW NATIONAL TOURNAMENT FINISH: 4th (1981)
- HIGHEST NCAA RANKING: 15th (1983)
- HIGHEST NCAA NATIONAL TOURNAMENT FINISH: 17th (1983, 1985)

TEAM MATCH RECORDS

- BEST ATTACK: 61% vs. Florida A&M (1981)
- MOST DIGS: 93 vs. South Florida (1988)
- MOST BLOCK ASSISTS: 48 vs. Illinois-Chicago (1987)
- MOST SOLO BLOCKS: 12 vs. South Florida (1985)
- MOST SET ASSISTS: 75 vs. Kentucky (1981)
- MOST SERVICE ACES: 13 vs. Cincinnati (1988)

INDIVIDUAL RECORDS

SERVE

- MOST ACES IN A MATCH: 6, Forsten vs. Baylor (1981); Fullhart vs. Tulane (1985); Kelly vs. Jacksonville (1988)
- MOST KILLS IN A MATCH: 35, Morris vs. Sam Houston State (1986)
- MOST DIGS IN A MATCH: 32, Morris vs. Cal-Berkeley (1986)
- MOST BLOCK ASSISTS IN A MATCH: 17, Todd vs. Tulane (1987)
- MOST SOLO BLOCKS IN A MATCH: 8, Kaleta vs. South Florida (1987)
- MOST ASSISTS IN A MATCH: 68, Gaspardarek vs. Florida (1987)
- MOST CONSECUTIVE GAMES PLAYED: 391, Kaleta (1986-88)
- MOST CONSECUTIVE MATCHES PLAYED: 189, Summer (1980-83)

TEAM SINGLE SEASON RECORDS

- MOST KILL ATTEMPTS: 4,876 (1988)
- MOST KILLS: 1,883 (1988)
- BEST ATTACK PERCENTAGE: .330 (1980)
- MOST SERVICE ACES: 333 (1983)
- MOST SOLO BLOCKS: 156 (1987)
- MOST BLOCK ASSISTS: 709 (1987)
- MOST DIGS: 2,241 (1986)

CAREER RECORDS

MATCHES PLAYED

1. Sally Summer	189	1980-83
2. Alicia Cross	188	1979-82
3. Marie Sanders	164	1980-83
4. Karyn Palgut	153	1981-84
5. Deanne Kaleta	137	1985-88

KILL ATTEMPTS

1. Julie Todd	3,470	1984-87
2. Deanne Kaleta	3,191	1985-88
3. Joan Morris	3,189	1983-86
4. Sally Summer	2,790	1980-83
5. Karyn Palgut	2,737	1981-84

KILLS

1. Julie Todd	1,515	1984-87
2. Joan Morris	1,285	1983-86
3. Karyn Palgut	1,228	1981-84
4. Deanne Kaleta	1,195	1985-88
5. Sally Summer	1,059	1980-83

HITTING PERCENTAGE

1. Maggie Philgence	.309	1987-88
2. Karyn Palgut	.285	1981-84
3. Julie Todd	.266	1984-87

SERVICE ACES

1. Donna Krai	188	1982-85
2. Karyn Palgut	132	1981-84
3. Deanne Kaleta	131	1985-88
4. Julie Todd	119	1984-87
5. Joan Morris	110	1983-86

SOLO BLOCKS

1. Julie Todd	126	1984-87
2. Julie Brown	125	1979-83
3. Deanne Kaleta	116	1985-88
4. Gabrielle Reece	103	1987-88
5. Alicia Cross	86	1979-82

BLOCK ASSISTS

1. Julie Todd	609	1984-87
2. Deanne Kaleta	402	1985-88
3. Julie Brown	270	1979-83
4. Karyn Palgut	254	1981-84
5. Gabrielle Reece	243	1987-88

TOTAL BLOCKS

1. Julie Todd	735	1984-87
2. Deanne Kaleta	518	1985-88
3. Julie Brown	504	1979-83
4. Gabrielle Reece	346	1987-88
5. Alicia Cross	324	1979-82

SET ASSISTS

1. Nancy Gaspardarek	3,394	1986-88
2. Marie Sanders	2,815	1980-83
3. Donna Krai	2,050	1982-85
4. Barb Mellen	1,584	1979-81
5. Kim Britt	750	1983-86

DIGS

1. Deanne Kaleta	1,038	1985-88
2. Joan Morris	985	1983-86
3. Julie Todd	908	1984-87
4. Nancy Gaspardarek	852	1986-88
5. Karyn Palgut	577	1981-84

YEAR-BY-YEAR LADY SEMINOLE RESULTS

OPPONENT	W/L	SCORES
1976 (33-14)		
HEAD COACH: Cecile Reynaud		
MUW INVITATIONAL		
LSU	L	2-15, 15-7, 14-16
Montevallo	W	15-3, 15-9
North Alabama	W	15-8, 15-12
MUW	W	15-0, 15-3
Mississippi	L	13-15, 15-8, 9-15
Berry College	W	15-11, 6-15, 19-17
UNC-GREENSBORO INVITATIONAL		
Eastern Kentucky	W	10-15, 15-5, 15-12
UNC-Greensboro	W	15-9, 14-16, 15-6
George Washington	L	11-15, 15-7, 10-15
Miami-Dade South	L	3-15, 7-15
Maryland	W	15-3, 1-15, 15-13
Illinois-Chicago	L	5-15, 3-15
FSU INVITATIONAL (3rd Place)		
Auburn	W	15-13, 15-9
MUW	W	17-5, 15-13
North Carolina	W	11-15, 15-10, 15-13
Flagler	W	15-4, 15-9
Central Florida	W	15-9, 15-9
Alabama	L	10-15, 11-15
MUW	L	15-7, 8-15, 13-15
GEORGIA INVITATIONAL (1st Place)		
Auburn	W	10-15, 15-6, 15-4
West Georgia	W	15-6, 15-11
Tenn-Chattanooga	W	15-11, 15-2
Berry College	L	15-1, 6-15, 6-15
South Carolina	W	15-7, 13-15, 15-11
Mississippi St.	W	15-7, 15-10
Berry College	W	18-16, 15-4
WEST GEORGIA INVITATIONAL (2nd Place)		
Tuskegee	W	15-1, 15-6
Tennessee	W	6-15, 15-6, 16-14
FIU	L	11-15, 12-15
Tennessee	W	15-5, 15-8
MUW	L	16-18, 11-15
South Florida	W	15-8, 15-5
Tennessee	W	15-6, 15-4
FIU	W	15-8, 15-13
MUW	W	14-16, 7-15
FLAGLER INVITATIONAL (2nd Place)		
Lake City CC	W	15-8, 15-8
Central Florida	W	15-4, 15-12
Miami-Dade North	W	15-12, 6-15, 15-2
South Florida	W	15-5, 15-5
Jacksonville	W	15-3, 15-12
Flagler	W	15-8, 15-12
Miami-Dade South	L	15-17, 7-15
STATE TOURNAMENT (2nd Place)		
Florida	W	15-0, 15-7
FIU	L	7-15, 9-15
Florida	W	15-3, 9-15, 15-1
FIU	W	13-15, 15-3, 15-13
FIU	L	6-15, 8-15
1977: (25-13)		
HEAD COACH: Cecile Reynaud		
MUW INVITATIONAL		
Nicholls State	W	16-14, 10-15, 15-9
Mississippi	W	7-15, 17-15, 15-8
Columbus College	W	15-2, 15-10
Alabama	L	10-15, 3-15
MUW	L	15-6, 10-15, 11-15
LSU	L	1-15, 11-15
NEW ORLEANS INVITATIONAL (3rd Place)		
South Alabama	W	15-8, 15-5
Tulane	W	15-8, 15-13
SW Louisiana	W	15-8, 15-6
Northwestern St.	W	15-1, 8-15, 15-3
Central Florida	L	8-15, 15-13, 10-15
Nicholls State	W	15-5, 15-3
FSU INVITATIONAL (5th Place)		
Georgia	W	16-14, 15-10
Central Florida	L	6-15, 4-15
Tenn-Chattanooga	W	15-10, 15-3
South Carolina	L	11-15, 15-11, 12-15
Miami-Dade South		
GEORGIA INVITATIONAL		
South Carolina	L	9-15, 15-7, 8-15
West Georgia	W	15-10, 15-0
Tenn.-Chattanooga	W	15-13, 15-11
Georgia State	W	15-4, 15-7
Mississippi St.	W	15-8, 15-17, 15-4
College of Charleston		
WEST GEORGIA INVITATIONAL (2nd Place)		
Valdosta State	W	15-2, 15-4
Milligan College	W	15-3, 15-7
Georgia	W	9-15, 15-2, 15-7
Appalachian St.	W	15-11, 15-2
E. Tennessee St.	W	15-9, 15-1
South Carolina	L	15-7, 9-15
STATE TOURNAMENT (1st Place)		
Florida	W	10-15, 15-13, 15-7
South Florida	W	15-11, 10-15, 15-13
South Florida	W	2-15, 15-11, 17-15
REGIONAL TOURNAMENT (4th Place)		
Mississippi St.	W	15-1, 15-10
Florida	W	11-15, 15-10, 15-13
Alabama	L	9-15, 10-15
South Florida	W	15-12, 15-0, 11-15, 16-14
Alabama	L	3-15, 14-16, 15-11, 9-15
MUW	L	10-15, 13-15, 15-5, 15-7, 17-19
1978: (28-14)		
HEAD COACH: Cecile Reynaud		
MUW INVITATIONAL		
Arkansas St.	L	15-5, 17-19, 15-17
Columbus College	W	15-1, 15-0
Memphis State	W	15-11, 15-3
MUW	W	15-2, 15-11
New Orleans	W	15-3, 15-13
Mississippi	L	10-15, 15-8, 3-15, 15-5, 11-15
MIAMI-DADE INVITATIONAL (2nd Place)		
Florida Southern	W	16-14, 15-10
South Florida	W	15-10, 15-7
Miami-Dade South	W	11-15, 16-14, 17-15
South Florida	W	12-15, 15-9, 15-9
Miami-Dade South	W	7-15, 15-6, 15-12
Florida Tech	L	14-16, 5-15
FIU	W	15-6, 16-14
Florida Tech	L	9-15, 7-15
FSU INVITATIONAL		
New Orleans	W	15-5, 15-3
Florida Southern	W	16-14, 15-6
South Carolina	W	16-14, 15-13
Tennessee	L	12-15, 8-15
Miami	W	15-3, 15-4
South Carolina	L	15-7, 8-15, 10-15
SW MISSOURI ST. INVITATIONAL		
Illinois State	W	15-12, 15-12
Texas A&M	W	15-10, 16-14
Cincinnati	W	15-12, 15-11, 15-12
Nebraska	L	12-15, 15-10, 12-15
North Texas St.	L	5-15, 10-15
ALABAMA INVITATIONAL		
Alabama	L	7-15, 10-15, 11-15
Mississippi	W	5-15, 15-12, 15-8, 15-11
Cincinnati	W	15-12, 15-11, 15-12
MUW	W	15-6, 11-15, 8-15, 15-10, 15-5
STATE TOURNAMENT (1st Place)		
South Florida	W	15-5, 7-15, 15-9
Miami	W	15-5, 13-15, 15-7
REGIONAL TOURNAMENT (1st Place)		
Georgia State	W	15-4, 15-4
Mississippi St.	W	15-9, 15-2
Alabama	W	15-3, 15-2
Alabama	W	15-13, 15-13, 15-4
Mississippi	W	15-12, 10-15, 15-11, 13-15, 15-2
NATIONAL AIAW TOURNAMENT		
SW Missouri St.	L	15-12, 11-15, 6-15
Arizona	L	11-15, 16-14, 1-15
Texas A&M	L	9-15, 8-15
Pepperdine	L	5-15, 15-12, 3-15
UCLA	L	2-15, 15-12, 7-15

1979: (31-19)**HEAD COACH: Cecile Reynaud****ALABAMA INVITATIONAL (3rd Place)**

South Carolina	W	15-10, 3-15, 15-8
MUW	W	15-12, 15-7
Central Florida	L	2-15, 15-7, 8-15
Miami	W	15-10, 16-14
Alabama	L	9-15, 11-15
Oklahoma	W	15-7, 7-15, 16-14

MUW INVITATIONAL (1st Place)

Arkansas St.	W	15-10, 15-8
SE Louisiana	W	15-4, 15-5
Nicholls State	W	15-6, 20-18
MUW	W	15-9, 15-12
Memphis State	W	15-8, 13-15, 15-12, 15-8
Alabama	W	15-7, 15-6, 15-10

CENTRAL FLORIDA INVITATIONAL

Oklahoma	L	9-15, 12-15
Alabama	L	11-15, 15-8, 5-15
Miami-Dade South	L	8-15, 11-15
LSU	W	15-6, 13-15, 15-13
Auburn	W	15-5, 15-7
Central Florida	L	7-15, 6-15
Miami	L	9-15, 15-10, 14-16
N. Florida JC	W	15-2, 15-5, 14-16, 15-12
Lake City CC	W	15-8, 15-5, 15-11

FSU INVITATIONAL

South Florida	W	15-8, 15-7
Auburn	W	15-6, 15-10
North Carolina	W	15-10, 10-15, 15-12
Florida Southern	W	15-8, 15-8
Miami	L	12-15, 15-7, 12-15
North Carolina	W	15-11, 15-12
South Alabama	W	15-6, 16-14
Gulf Coast CC	W	15-1, 15-5

SW MISSOURI ST. INVITATIONAL

SW Missouri St.	L	2-15, 3-15
Houston	L	5-15, 13-15
Iowa State	W	15-1, 15-6
Minnesota	L	15-9, 12-15, 7-15
Cincinnati	L	11-15, 9-15
Gulf Coast CC	W	15-2, 15-2
N. Florida JC	W	15-8, 15-2, 15-1
Lake City JC	W	15-11, 15-0, 18-16

STATE TOURNAMENT (2nd Place)

Miami	W	10-15, 14-16, 7-15
-------	---	--------------------

REGIONAL TOURNAMENT (1st Place)

Georgia	W	6-15, 15-7, 15-6
Alabama	L	13-15, 15-13, 12-15
Mississippi St.	W	15-6, 15-11
Alabama	W	15-13, 15-6
Miami	L	9-15, 18-16, 8-15
Alabama	W	14-16, 15-11, 15-10
Miami	W	15-9, 4-15, 15-9
Miami	W	8-15, 15-6, 15-12

NATIONAL TOURNAMENT

Brigham Young	L	16-14, 7-15, 7-15
Houston	L	9-15, 8-15
UCLA	L	9-15, 5-15
Purdue	L	14-16, 14-16

1980: 43-14**HEAD COACH: Cecile Reynaud**

Tennessee	L	15-4, 7-15, 10-15, 8-15
-----------	---	-------------------------

ALABAMA INVITATIONAL

Central Florida	L	8-15, 8-15
Texas Tech	W	15-6, 10-15, 15-10
Alabama-Birm.	W	15-9, 15-4
Memphis State	L	13-15, 8-15

METRO CONFERENCE TOURNAMENT (2nd Place)

Louisville	W	15-7, 15-9
Virginia Tech	W	13-15, 15-4, 15-2
Memphis State	W	15-8, 15-9
St. Louis	L	17-15, 12-15, 11-15
Tulane	W	15-11, 16-14
Cincinnati	W	15-6, 16-14
Memphis State	W	10-15, 15-12, 15-10
St. Louis	L	12-15, 15-7, 6-15
Flagler	W	15-1, 15-2
Jacksonville	W	15-4, 15-9
Florida JC	W	15-1, 15-1

CENTRAL FLORIDA INVITATIONAL (4th Place)

FIU	L	10-15, 9-15
Miami	W	15-10, 15-7
Central Florida	W	15-11, 15-10
South Carolina-Spartanburg	W	15-2, 15-3

LSU	W	15-7, 15-4
Miami	L	10-15, 13-15
LSU	W	15-13, 15-5
Alabama	L	10-15, 7-15
South Alabama	W	15-5, 15-1
Lake City CC	W	15-7, 15-6

FSU INVITATIONAL

MUW	W	15-10, 15-9
South Florida	W	15-0, 15-2
Oklahoma State	W	15-6, 15-7
Jacksonville	W	15-0, 15-5
Miami	W	15-13, 17-15
Tennessee	L	15-8, 3-15, 11-15
South Alabama	W	15-12, 15-12, 15-9

JACKSONVILLE INVITATIONAL (1st Place)

Lake City CC	W	15-5, 15-9
Central Florida	W	16-14, 15-11
Montevallo	W	15-0, 15-4
Winthrop College	W	15-6, 15-11
Winthrop College	W	16-14, 15-2
Central Florida	W	15-0, 15-5
Miami	W	17-15, 10-15, 15-7

MIAMI INVITATIONAL (3rd Place)

Florida Southern	W	15-8, 16-14
FIU	W	9-15, 16-14, 15-3
Central Florida	W	15-1, 15-3
Miami	L	10-15, 15-13, 9-15
Miami-Dade South	W	15-10, 15-12
Miami	L	8-15, 8-15
Jacksonville	W	15-6, 15-4, 15-5
Lake City CC	W	15-5, 15-11, 15-11
Florida JC	W	15-8, 15-1
Florida A&M	W	15-1, 16-14

STATE TOURNAMENT (1st Place)

Miami	W	15-10, 9-15, 15-8, 16-14
-------	---	--------------------------

AIW REGIONAL TOURNAMENT (3rd Place)

South Alabama	W	15-5, 15-5
Auburn	W	15-1, 15-2
Mississippi	L	15-1, 9-15, 14-16
Mississippi	W	15-8, 15-6
Alabama	L	14-16, 15-11, 11-15
Miami	L	13-15, 4-15

1981: 43-8**HEAD COACH: Cecile Reynaud**

Central Florida	W	17-15, 15-13
Ohio State	L	12-15, 9-15

ALABAMA INVITATIONAL (1st Place)

Georgia	W	14-16, 15-8, 15-11
Baylor	W	15-4, 15-1
Minnesota	W	15-12, 7-15, 15-11
Alabama	W	15-9, 15-7
Miami	W	15-10, 15-2
Texas Tech	W	8-15, 15-2, 15-8
Minnesota	W	15-8, 15-12
Georgia	W	16-14, 15-9, 15-3

SW MISSOURI ST. INVITATIONAL

SW Missouri St.	L	4-15, 13-15
Northwestern	L	7-15, 8-15
Houston	W	15-5, 15-11
Minnesota	L	12-15, 7-15
Purdue	W	15-7, 16-14

FSU INVITATIONAL (1st Place)

Jacksonville	W	15-1, 15-5
South Carolina	W	15-8, 15-4
Alabama-Birm.	W	15-6, 15-11
Alabama	W	15-7, 15-4
North Carolina	W	15-2, 15-11
Alabama	W	15-10, 15-10
Clemson	W	15-10, 15-5
Central Florida	W	15-5, 15-2, 15-4

TENNESSEE INVITATIONAL (1st Place)

Middle Tenn. St.	W	15-7, 15-3, 15-8
Rollins College	W	15-9, 15-0, 15-4
E. Tennessee St.	W	15-2, 15-6, 15-11
Memphis State	W	15-13, 15-13, 15-4
Appalachian St.	W	15-1, 15-8, 15-8
Tennessee	W	15-9, 15-11, 10-15, 15-12
Eastern Kentucky	W	15-3, 3-15, 15-4, 15-10
Kentucky	W	15-8, 4-15, 15-13, 12-15, 16-14

LSU INVITATIONAL (3rd Place)

Nicholls State	W	15-3, 15-3
Tennessee	W	15-10, 15-3
Sam Houston	W	15-13, 15-10
New Orleans	W	6-15, 15-4, 15-7
LSU	L	15-8, 9-15, 7-15
Sam Houston	W	15-9, 15-9

Indian River CC	W	15-5, 15-8, 16-14
Flagler	W	15-4, 15-10
Florida A&M	W	15-1, 15-2

FAIAW STATE CHAMPIONSHIP (1st Place)

Central Florida	W	15-7, 15-3, 16-14
-----------------	---	-------------------

AIW REGION III TOURNAMENT (1st Place)

Mississippi	W	15-3, 15-8
Miami	W	15-8, 15-12
Central Florida	W	15-12, 15-9
Georgia	W	15-1, 15-5

AIW NATIONAL CHAMPIONSHIP (4th Place)

North Carolina	W	15-5, 15-10, 15-1
Portland State	L	15-7, 9-15, 10-15, 18-20
Minnesota	W	15-6, 15-13, 15-11
Texas	L	15-12, 3-15, 15-5, 11-15, 15-12
Texas-Arlington	W	15-11, 18-20, 15-11
Utah State	L	9-15, 15-13, 10-15

1982: (27-17)**HEAD COACH: Cecile Reynaud****LSU INVITATIONAL (1st Place)**

Tulane	W	15-2, 15-10, 15-13
LSU	W	15-8, 15-8, 15-8
South Alabama	W	15-4, 11-15, 15-11, 15-8
New Orleans	W	15-0, 15-4, 15-0
Central Florida	W	15-9, 15-3, 15-10

SW MISSOURI ST. INVITATIONAL

Illinois State	W	15-13, 15-4, 13-15, 15-8
Texas Tech	W	15-7, 15-2, 15-4
SW Missouri St.	W	15-8, 15-8, 7-15, 15-9
Nebraska	L	9-15, 5-15, 15-3, 15-12, 7-15
Texas-Arlington	L	7-15, 15-8, 15-2, 7-15, 11-15
Morehead St.	W	15-9, 15-1, 8-15, 15-10

FSU INVITATIONAL (2nd Place)

Mississippi St.	W	15-4, 15-6
Illinois	W	15-4, 15-6
Jacksonville	W	15-7, 15-12
Eastern Kentucky	L	15-17, 1-15
South Florida	W	15-2, 15-7
North Carolina	W	15-9, 15-6
Minnesota	W	15-11, 8-15, 15-13
Eastern Kentucky	L	15-2, 10-15, 3-15

Rutgers

Rutgers	L	13-15, 9-15
Central Florida	W	15-10, 15-7
Rutgers	L	9-15, 13-15
Florida Southern	W	12-15, 15-13, 12-15
Florida A&M	W	15-4, 15-10, 15-6
Texas	L	15-8, 2-15, 15-17, 15-4, 12-15

TEXAS A&M CLASSIC

SW Missouri St.	L	8-15, 15-8, 14-16, 12-15
Texas A&M	L	5-15, 16-14, 6-15, 12-15
LSU	W	15-10, 13-15, 15-4, 15-3
Kentucky	L	8-15, 15-10, 14-16, 15-3, 11-15
SW Missouri St.	L	15-4, 7-15, 15-5, 5-15, 13-15

MOREHEAD STATE INVITATIONAL (1st Place)

Morehead State	W	15-10, 15-7
Memphis State	W	15-7, 15-10
Eastern Kentucky	L	8-15, 10-15
Tennessee Tech	W	15-10, 15-10
Morehead State	W	15-12, 13-15, 10-15, 15-6, 15-8
Kentucky	L	15-4, 7-15, 9-15, 15-12, 3-15

METRO CONFERENCE CHAMPIONSHIP (3rd Place)

Tulane	W	15-5, 15-12
Memphis State	W	15-7, 15-1
Cincinnati	L	15-10, 13-15, 15-15
Southern Miss.	W	15-3, 15-2
Virginia Tech	W	15-11, 15-3
Louisville	L	13-15, 15-12, 12-15
Louisville	L	12-15, 15-11, 16-14, 13-15, 13-15
Memphis State	W	15-5, 15-5, 15-7

1983: (31-6)**HEAD COACH: Cecile Reynaud****LSU INVITATIONAL (1st Place)**

Clemson	W	15-7, 15-0, 15-4
Rice	W	15-13, 15-9, 15-7
New Orleans	W	15-9, 15-5, 15-4
Southern	W	15-8, 15-4, 15-2
LSU	W	13-15, 15-11, 8-15, 15-10, 15-8

PITT INVITATIONAL (3rd Place)

Pittsburgh	L	13-15, 5-15, 15-11, 9-15
Penn State	W	15-12, 15-7, 13-15, 15-6
Louisville	L	10-15, 13-15, 15-12, 6-15
Louisville	W	15-1, 15-10, 15-3
Virginia Tech	W	14-16, 15-4, 15-9, 15-5
Cincinnati	W	12-15, 15-11, 15-12, 15-12
South Florida	W	15-5, 15-9, 15-5

FSU INVITATIONAL (1st Place)

Tenn.-Chattanooga	W	15-3, 15-3, 15-9
South Carolina	W	15-12, 15-8, 15-4
Clemson	W	15-8, 15-7, 15-4
South Florida	W	15-6, 15-3, 15-10
North Carolina	W	15-7, 15-5, 15-12
Memphis State	W	15-1, 15-8, 8-15, 15-11
Southern Miss.	W	15-2, 15-1, 15-4
South Carolina	W	13-15, 15-4, 9-15, 15-8, 16-14
Tulane	W	15-13, 15-5, 15-3
Florida A&M	W	15-2, 15-6, 15-8
Stetson	W	15-3, 15-2, 15-7

LONGHORN INVITATIONAL (3rd Place)

Texas	L	6-15, 13-15, 3-15
LSU	W	15-6, 15-4, 15-10
San Diego State	L	11-15, 7-15, 11-15
Houston	L	15-11, 8-15, 8-15, 8-15, 14-16
Clemson	W	15-17, 15-11, 15-7, 15-9

NORTH CAROLINA INVITATIONAL (1st Place)

Duke	W	15-9, 11-15, 15-8, 15-8
Georgia	W	15-5, 15-7, 15-12
North Carolina	W	15-13, 15-12, 15-10
North Carolina St.	W	15-6, 15-3, 15-7
Rhode Island	W	15-12, 10-15, 15-3, 12-15, 15-10

METRO CONFERENCE TOURNAMENT (1st Place)

Southern Miss.	W	15-0, 15-0, 15-4
Cincinnati	W	13-15, 15-12, 15-12, 15-9
South Carolina	W	13-15, 15-8, 15-9, 10-15, 15-4

NCAA PLAYOFF 1st Round

Tennessee	L	15-12, 15-12, 1-15, 10-15, 8-15
-----------	---	---------------------------------

1984: (20-13)**HEAD COACH: Cecile Reynaud**

Minnesota	W	8-15, 15-10, 15-13, 15-9
Lamar	W	15-11, 15-6, 15-11
Illinois State	L	1-15, 6-15, 4-15
Texas A&M	L	4-15, 1-15, 16-14, 11-15
Southern Illinois	L	13-15, 15-12, 14-16, 15-17

LSU

LSU	W	11-15, 12-15, 15-8, 15-13, 15-8
Houston	L	15-12, 8-15, 7-15, 11-15

Central Florida	W	15-13, 15-2, 15-4
Tulane	W	15-9, 15-2, 15-10
New Orleans	W	8-15, 15-3, 15-10, 15-2
Southern Miss.	W	15-8, 15-3, 15-8
Florida	W	15-11, 15-9, 15-11
Tennessee	L	8-15, 7-15, 9-15
Memphis State	W	15-2, 16-14, 15-7
Florida A&M	W	15-1, 15-2, 15-7
South Florida	W	15-11, 16-14, 15-7
Virginia Tech	W	15-10, 15-11, 15-10
South Carolina	W	7-15, 15-6, 15-10, 13-15, 16-14

Central Florida	W	15-3, 15-9, 15-8
North Carolina St.	W	15-5, 15-9, 15-11
Louisville	L	6-15, 8-15, 11-15
Cincinnati	W	15-7, 13-15, 15-5, 15-11
Eastern Kentucky	L	14-16, 7-15, 12-15
Hofstra	W	9-15, 15-11, 15-13, 9-15, 15-12

Georgia	L	10-15, 15-13, 13-15, 15-5, 13-15
---------	---	----------------------------------

METRO CONFERENCE TOURNAMENT

Virginia Tech	W	15-1, 15-6, 15-8
South Carolina	L	11-15, 11-15, 11-15
Evansville	W	15-8, 15-4, 15-4
LSU	L	11-15, 15-12, 9-15, 13-15
Brigham Young	L	14-16, 0-15, 2-15
Arizona State	L	10-15, 7-15, 4-15
Iowa	L	3-15, 2-15, 12-15

1985: (22-10)**HEAD COACH: Cecile Reynaud**

Georgia	L	4-15, 10-15, 6-15
Florida	L	15-1, 15-4, 6-15, 1-15, 15-17
Florida	W	15-8, 12-15, 15-7, 4-15, 17-15
Central Florida	W	15-10, 15-5, 15-8
South Florida	W	17-15, 8-15, 15-9, 15-3
Florida	W	4-15, 15-7, 9-15, 15-6, 15-7
Memphis State	W	15-5, 15-13, 12-15, 15-2
Xavier	W	15-3, 15-7, 15-10
Southern Illinois	W	15-6, 3-15, 5-15, 15-12, 15-13
Florida A&M	W	15-9, 15-4, 15-2
South Florida	W	15-9, 15-4, 15-2
South Carolina	L	9-15, 15-6, 7-15, 15-3, 13-15
Virginia Tech	W	15-6, 15-13, 15-6
Mississippi	W	7-15, 15-10, 13-15, 15-1, 15-4

South Alabama	W	15-12, 15-0, 15-7
Arizona	L	7-15, 4-15, 7-15
Tennessee	W	8-15, 15-11, 15-11, 16-14
Central Florida	W	15-10, 15-9, 15-3
Kentucky	L	14-16, 18-16, 17-15, 13-15, 7-15
Southern Miss.	W	15-6, 15-7, 15-8
Tulane	W	15-8, 13-15, 15-10, 15-9
Texas-Arlington	L	4-15, 14-16, 2-15
Louisville	W	16-14, 15-6, 15-5
Cincinnati	W	15-3, 15-9, 15-7
Northwestern	W	9-15, 16-14, 8-15, 15-9, 15-11
LSU	L	13-15, 16-14, 15-9, 7-15, 8-15
Florida	W	15-8, 15-8, 15-7

METRO CONFERENCE TOURNAMENT (1st Place)

Southern Miss.	W	15-13, 15-13, 15-3
South Carolina	W	15-1, 15-3, 13-15, 15-12
Brigham Young	L	2-15, 6-15, 5-15
Georgia	L	9-15, 16-14, 7-15, 11-15

NCAA TOURNAMENT (1st Round)

Georgia	L	6-15, 1-15, 11-15
---------	---	-------------------

1986: (25-11)**HEAD COACH: Cecile Reynaud**

Florida	W	15-11, 9-15, 15-7, 13-15, 15-10
Michigan State	W	15-10, 11-15, 15-13, 15-8
Illinois	L	11-15, 10-15, 0-15
Central Florida	W	15-3, 15-8, 15-2
Michigan State	L	13-15, 13-15, 4-15
Georgia	L	12-15, 15-13, 5-15, 4-15
South Florida	W	8-15, 15-11, 9-15, 15-4, 15-3

Florida	W	9-15, 15-1, 15-6, 15-8
Central Florida	W	15-9, 15-8, 15-8
New Mexico	L	2-15, 13-15, 13-15
LSU	L	8-15, 0-15, 6-15
Sam Houston St.	L	15-13, 6-15, 14-16, 15-9, 14-16

Mississippi	W	15-13, 15-11, 15-7
Southern Miss.	W	15-1, 15-2, 15-5
South Alabama	W	15-4, 15-5, 15-7
South Florida	W	13-15, 15-5, 15-12, 15-13
South Carolina	W	6-15, 15-8, 15-8, 15-8
Virginia Tech	W	15-7, 15-3, 15-11
Florida A&M	W	15-2, 15-6, 15-4
Memphis State	W	15-10, 15-8, 13-15, 10-15, 15-4
North Carolina St.	W	15-10, 15-3, 15-9

Tennessee	L	10-15, 15-7, 15-4, 13-15, 10-15
Jacksonville	W	15-12, 15-4, 11-15, 6-15, 15-7
Purdue	L	9-15, 10-15, 13-15
Tennessee	W	13-15, 15-9, 16-14, 15-6
Pittsburgh	W	15-12, 17-15, 11-15, 5-15, 15-13
Cincinnati	W	15-8, 15-8, 15-3
Louisville	W	15-11, 15-12, 17-15
North Carolina	W	9-15, 7-15, 16-14, 15-8, 15-6
Texas Tech	L	10-15, 12-15, 12-15
Duke	L	10-15, 14-16, 12-15
Florida	W	8-15, 15-5, 15-1, 15-9

METRO CONFERENCE TOURNAMENT (1st Place)

Virginia Tech	W	15-7, 16-14, 15-10
South Carolina	W	7-15, 15-13, 15-3, 15-7
Brigham Young	L	9-15, 7-15, 15-9, 5-15
Cal-Berkeley	W	15-12, 15-9, 11-15, 4-15, 15-9

1987: (22-11)**HEAD COACH: Cecile Reynaud**

S. Alabama	W	15-5, 15-7, 15-1
Minnesota	L	12-15, 6-15, 14-16
Alabama-Birmingham	W	15-5, 15-4, 15-4
South Florida	W	15-2, 16-14, 15-3
Georgia	W	16-14, 15-8, 15-11

FLORIDA EIGHT TOURNAMENT

Jacksonville	W	15-5, 15-3, 15-11
Florida	L	3-15, 15-8, 15-6, 10-15, 8-15
Florida Tech	W	15-4, 15-0, 15-2
South Carolina	W	15-9, 15-12, 13-15, 11-15, 15-4
Virginia Tech	W	15-5, 15-9, 15-8
Florida A&M	W	15-2, 15-12, 15-6
Florida	W	15-3, 10-15, 15-9, 15-13
Southern Miss	W	15-7, 15-0, 15-5
Jacksonville	W	15-12, 15-3, 15-10
Tulane	L	15-1, 15-12, 11-15, 16-18, 13-15
South Florida	W	15-6, 15-4, 15-10
Virginia	W	15-10, 15-6, 15-12
Southwest Texas St.	L	15-6, 12-15, 7-15, 11-15
Louisville	W	15-7, 15-12, 15-10
Cincinnati	W	15-12, 15-10, 7-15, 7-15, 15-8
Illinois-Chicago	W	15-10, 15-4, 15-5
Memphis State	W	15-7, 15-2, 15-9
Kentucky	L	13-15, 7-15, 4-15
Central Florida	W	15-4, 15-13, 15-4
Florida	L	15-8, 12-15, 11-15, 17-15, 9-15
Duke	W	15-12, 15-6, 11-15, 15-5
North Carolina State	L	9-15, 15-11, 12-15, 15-3, 6-15

North Carolina State

North Carolina State	L	7-15, 9-15, 15-13, 3-15
----------------------	---	-------------------------

North Carolina METRO CONFERENCE TOURNAMENT

South Carolina	W	15-9, 15-4, 12-15, 15-8
Cincinnati	W	15-4, 15-12, 6-15, 15-11
Houston	L	15-7, 15-3, 11-15, 8-15, 11-15
Long Beach State	L	10-15, 17-15, 15-2, 9-15, 11-15

NCAA TOURNAMENT

Texas	L	6-15, 11-15, 9-15
-------	---	-------------------

1989 OPPONENT DIRECTORY

OPPONENT, MATCH DATE AND SITE	HEAD COACH AND PHONE NUMBER	SID FOR VB AND PHONE NUMBER	1988 RECORD CONFERENCE	ALL-TIME RECORD VS. FSU
AT GEORGE WASHINGTON LABOR DAY FESTIVAL, WASHINGTON, DC				
Northern Arizona 9/1 at Washington, DC	Steve Hellman (602) 523-5649	TBA (602) 523-6330	12-13 8-8, Big Sky	First Meeting
Georgetown 9/2 at Washington, DC	Nila Poribio-Straka (202) 687-2401	TBA (202) 687-2492	24-12 5-2, Big East	First Meeting
Minnesota 9/2 at Washington, DC	Stephanie Schleuder (612) 624-6032	Karen Smith (612) 624-3335	21-10 11-7, Big Ten	5-3, FSU leads
Florida 9/12 @ Tallahassee 11/6 @ Gainesville	Marilyn McReavy (904) 375-4683 Ext. 5500	Toni Waters (904) 375-4683 Ext. 6130	23-14 5-2, SEC	15-5, FSU leads
Florida A&M 9/15 @ Orlando 10/3 @ FAMU	Pamela Reilly (904) 599-3272	Tyrone E. Clark (904) 599-3200	26-8 7-3, NSWAC	9-0, FSU leads
Stetson University 9/16 @ Orlando Florida Eight Classic	Janiece Holder (904) 734-4121 Ext. 555	Ted Gumbart (904) 734-4121 Ext. 632	18-23 7-5, NSWAC	1-0, FSU leads
Jacksonville University 9/16 @ Orlando 10/9 @ Jacksonville	Mike Lopriore (904) 744-3950, Ext. 3400	Matt Swierad (904) 744-3950, Ext. 3402	24-12 Sun Belt	11-0, FSU leads
Illinois State 9/22 @ Tallahassee 9/24 @ Tallahassee	Julie Morgan (309) 438-2567	TBA (309) 438-5631	25-9 10-1, Gateway Conf.	1-2, FSU trails
Kentucky 9/29 @ Tallahassee 11/11 @ Kentucky Wildcat Classic	Kathy DeBoer (606) 257-8604	TBA (606) 257-3838	26-7 7-0, SEC	2-4, FSU trails
Tennessee 9/30 @ Tallahassee	Sandy Lynn (615) 974-4275	Eric Trainer (615) 974-4275	23-12 5-2, SEC	7-6, FSU leads
Southern Mississippi 10/6 @ Tallahassee	Helen Grant (601) 266-5636	Shirley Jones-Hill (601) 266-4503	15-18 0-6, Metro	10-0, FSU leads
Tulane 10/7 @ Tallahassee	Sonya Hanson (504) 865-5570	Jeff Seal (504) 865-5505	18-10 Metro	7-1, FSU leads
Louisville 10/13 @ Louisville	Don Hardin (502) 588-7801	Nancy Smith (502) 588-6581	16-15 3-3, Metro	6-4, FSU leads
Cincinnati 10/14 @ Cincinnati	Darrell Morken (513) 556-7762	Brian Teter (502) 556-5191	27-7 5-1, Metro	12-2, FSU leads
Purdue 10/15 @ West Lafayette	Carol Dewey (317) 494-5853	Kenna Belgie (317) 494-3200	19-15 9-9, Big Ten	1-2, FSU trails
South Alabama 10/20 @ Tallahassee	Ritchie Ponquinette (205) 460-7121	TBA (205) 460-7035	20-19 Sun Belt	9-0, FSU leads
South Florida 10/20 @ Tallahassee	Debbie Richardson (813) 974-2125	Jack Heilig (813) 974-2125	25-10 Sun Belt	23-0, FSU leads
Alabama-Birmingham 10/21 @ Tallahassee	Brenda Williams (205) 934-6014	Calli Theisen (205) 934-7253	20-26 Sun Belt	4-0, FSU leads
Memphis State 10/25 @ Memphis	Mike Lingenfelter (901) 678-2315	Sherilyn Fiveash (901) 678-2337	24-18 3-3, Metro	14-1, FSU leads
Louisiana State 10/27 @ Tallahassee	Scott Luster (504) 388-5050	Robert McCann (504) 388-8226	22-13 5-2, SEC	8-7, FSU leads
South Carolina 11/3 @ Tallahassee	Bonnie Kenny (803) 777-3829	Rona Simon (803) 777-5204	24-12 4-2, Metro	14-7, FSU leads
Virginia Tech 11/4 @ Tallahassee	John Pierce (703) 231-5037	TBA (703) 231-6726	11-22, 1-5, Metro	10-0, FSU leads
AT KENTUCKY WILDCAT CLASSIC, LEXINGTON, KY				
Brigham Young 11/11 @ Lexington, KY	Elaine Michaelis (801) 378-4226	Patricia Knoell (801) 378-4908	26-11 9-3, High Country	0-4, FSU trails
Syracuse 11/12 @ Lexington, KY	Dan Schulte (315) 443-4149	Kimberly Bouck (315) 443-2053	29-13 12-2, Big East	First Meeting

THIS IS FLORIDA STATE UNIVERSITY

Florida State University, expanding on its long-standing reputation in the performing arts, will soon be the professional training ground for one of the state's fastest growing industries—the motion picture and television industry.

Keeping pace with professional film studios opening this year in Florida, FSU is embarking on a new project that will eventually train 150 graduate and undergraduate students each year—putting jobs in Florida films in the hands of Florida residents. Admitting its first students this fall, the new School of Motion Picture, Television and Recording Arts will offer a bachelor of fine arts degree program in film production and management at the Tallahassee campus and a master of fine arts degree program at the FSU Motion Picture, Television and Recording Arts Conservatory at the Asolo Performing Arts Center in Sarasota.

Florida State's entry into film education complements both its commitment to nationally respected programs in music, dance and theater, led by highly credited faculty and well-known professional artists-in-residence, and to its high standing as a research institution.

Florida State is a public, coeducational university with more than 26,000 students enrolled. A senior member of the State University System, FSU was founded in 1851 by a legislative act that provided for two institutions of higher learning, one east and one west of the Suwannee River, and began operating in Tallahassee with its first students in 1857.

Today, the main campus is spread over 347 acres in Tallahassee; the University owns a total of 1,167 acres in Leon, Bay and Franklin counties.

Florida State's operating budget is \$323 million. Faculty and administrators generate more than \$50 million annually in external funding to supplement state-sponsored research, and the private, non-profit FSU Foundation raised \$15 million in private gifts during the past fiscal year to support academics.

The University's academic programs are divided among eight colleges—Arts and Sciences, Business, Communication, Education, Engineering, Human Sciences (formerly Home Economics), Law and Social Sciences—and seven schools—Criminology, Library and Informational Studies, Music, Nursing, Social Work, Theatre, and Visual Arts and Dance. FSU offers more than 275 graduate and undergraduate degree programs.

With 1,450 members, the FSU faculty boasts renowned scholars, and has included four Nobel laureates. It currently includes four members of the National Academy of Sciences and four members of the American Academy of Arts and Sciences. The faculty is backed by 2,750 administrative, professional and support staffers.

Library holdings at Florida State include 1.7 million book titles, 18,000 serials, and 3.1 million microforms. The main library facility, the Robert M. Strozier Library, is linked via a computerized information system to other campus libraries and other state university research centers, as well as to the nation's outstanding research centers. Opened in fall 1988, the Paul A. M. Dirac Science Center Library places scientific library resources close by the university's main science research complex.

On the top floor of the Dirac Library is the Supercomputer Computations Research Institute, a multidisciplinary program that brings together some 50 scientists, engineers and technicians to develop computational techniques using high-performance computers. Electronically linked to an off-campus research complex, SCRI is home to two of the world's fastest and most powerful supercomputers, including the ETA10, which is capable of performing 10 billion calculations per second. Faculty members and graduate students in a variety of disciplines, as well as visitors from other universities around the world, are attracted to the research possibilities of these computing dynamos. Examples of supercomputing applications are underground pollution studies, weather forecasting, the motion of DNA molecules, and probabilities in the state lottery.

Also providing unique research opportunities is the Tandem Van de Graaff Superconducting Accelerator Laboratory in the department of physics. It houses two powerful atom smashers and is ranked among the top four such laboratories in the nation by the National Science Foundation.

FSU extends its reach far outside of Florida by means of international study programs in England, Italy, Switzerland, Yugoslavia, France, Panama, Costa Rica and the West Indies. Within the state, it spreads 45 miles south to its marine laboratory on the Gulf of Mexico, west to its 20-acre campus in Panama City, and south to its professional

programs at the Asolo State Theater in Sarasota and the Burt Reynolds Institute for Theatre Training in Jupiter.

The Center for Professional Development and Public Service, housed in the Florida State Conference Center located on the edge of the main campus, last year extended the University's services in credit and non-credit continuing education activities to 78,000 participants from Pensacola to Miami.

Recent growth during Dr. Bernard F. Sliger's 12-year presidency at FSU includes the student union complex expansion, the building for the joint Florida A&M University/Florida State University College of Engineering, the Village Green project at the College of Law, and the new FSU Panama City Campus, which offers students in Florida's Panhandle the opportunity to pursue bachelor's and master's degrees. Recent renovation projects include the Westcott Building, Ruby Diamond Auditorium, and Dodd and Bryan halls. Currently under construction is a new student recreation center.

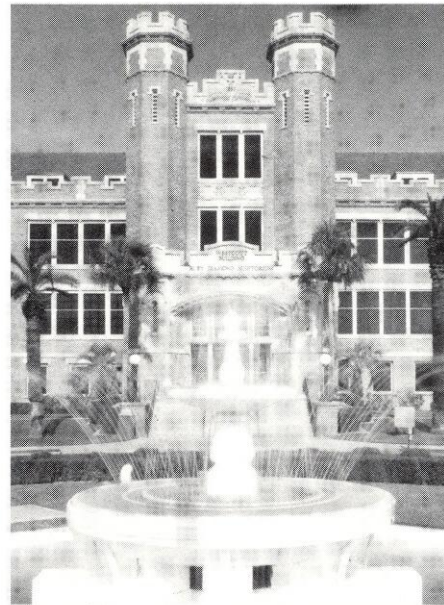
The needs and interests of all its students rate high on the priority list at Florida State. Recognized as one of the nation's top universities in minority retention, FSU is among the 22 percent of colleges and universities that account for nearly 80 percent of all bachelor's degrees awarded to minority students. Indeed, Florida State's performance in retaining black students has

been such that the University was selected by the U. S. Department of Education for a study of successful minority-retention policies and practices.

The one-of-a-kind, all-collegiate Flying High Circus, where students in every major may become stars on the high wire or trapeze, is but one of many extracurricular activities available to students at Florida State. The Honors and Scholars program, student government and intramural sports are among more than 200 organizations in which students can participate. Additionally, programs such as the FSU Artist Series and Distinguished Lecture Series, which bring top-caliber performers and well-known personalities to the campus, serve to broaden the horizons of Florida State students.

Florida State bonds the educational and social aspects of campus life, just as it blends Gothic and modern styles of architecture with the oaks, pines, palms, azaleas and dogwood of North Florida and with the thriving capital city, Florida's hub of state government.

Florida State remains a growing institution—from its roots as the Seminary West of the Suwannee, through the early 20th century as the academically respected Florida State College for Women, to its coeducational status as a university in 1947, and its modern development as an acclaimed research institution, a top-ranked competitor in athletics and as a standard-setter in the performing arts. In all areas of teaching, research and service, Florida State University continues to build on its national stature.



A view of the newly renovated Westcott Building and fountain at the entrance of campus.