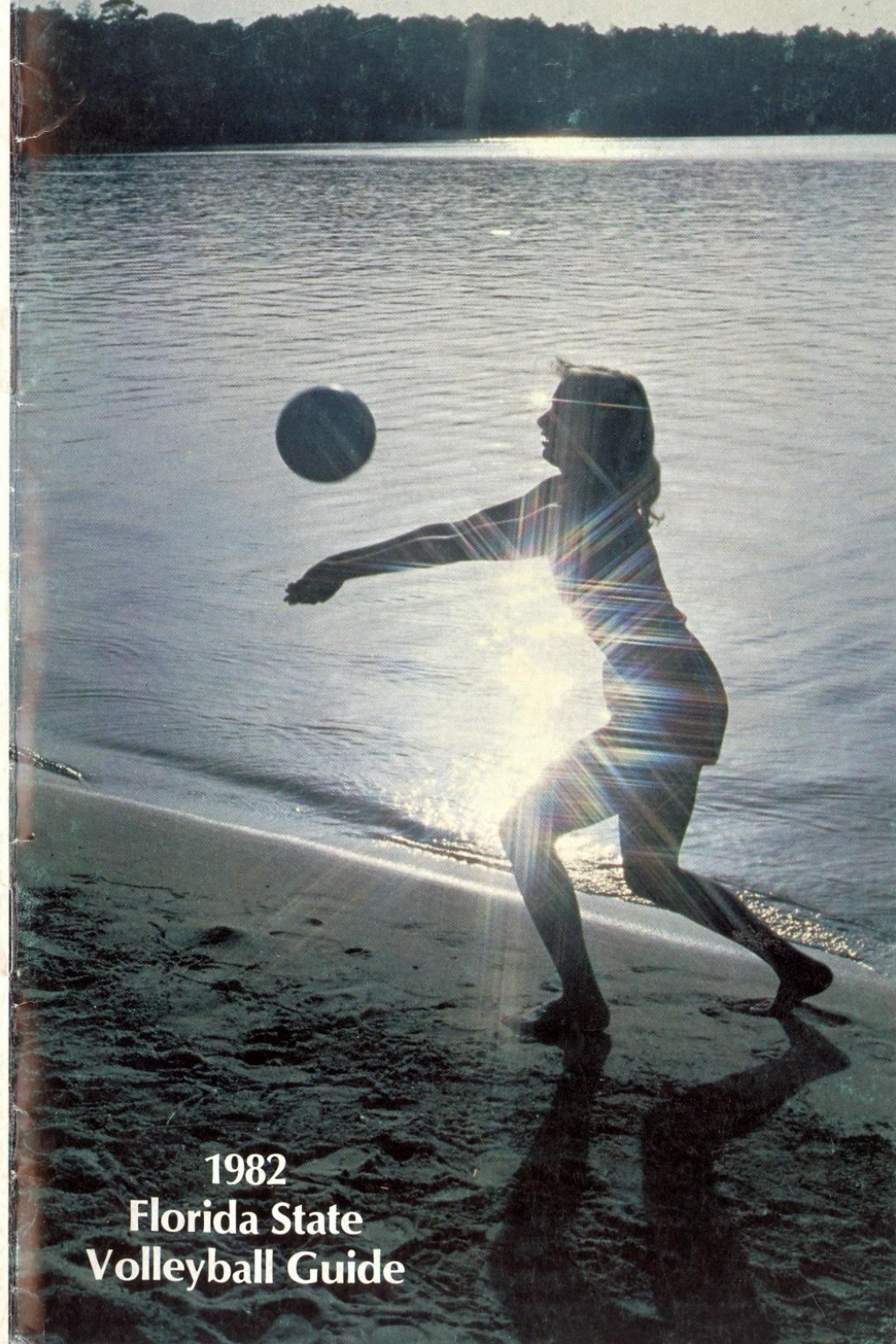


## 1982 Florida State Volleyball Schedule

Date	Event	Site	Time
17-18 Sept.	LSU Invitational	Baton Rouge, La.	All Day
21 Sept.	Central Florida	Tully Gym	7:30 p.m.
1-2 Oct.	Southwest Missouri State Invitational	Springfield, Mo.	All Day
6 Oct.	Morehead State	Tully Gym	7:30 p.m.
8-9 Oct.	Lady Seminole Invitational	Tully Gym	All Day
15 Oct.	Rutgers, Central Florida	Orlando, Fla.	5:30 p.m.
16 Oct.	Rutgers, Florida Southern	Orlando, Fla.	9:00 a.m.
19 Oct.	Florida A & M	Tallahassee, Fla. (@ FAMU)	7:30 p.m.
28 Oct.	Texas	Austin, Tex.	7:30 p.m.
29-30 Oct.	Texas A & M Classic	College Station, Tex.	All Day
5-6 Nov.	Morehead State Invitational	Morehead, Ky.	All Day
21-23 Nov.	Metro Conference Championships	Tully Gym	All Day
3-4 Dec.	NCAA Playoffs (1st Round)	TBA	TBA
10-11 Dec.	NCAA Regionals	Houston, Texas	TBA
17-18 Dec.	NCAA Finals	Stockton, Calif.	TBA



## 1982 Florida State Volleyball Guide



## Women's Volleyball Staff

118 N. Woodward Avenue

Cecile Reynaud, Head Coach .....	644-1216
Joan French, Assistant Coach .....	644-1216
Lisa Warman, Manager .....	644-1216
Tammy Sexton, Secretary .....	644-1216
Nancy Watson, Trainer .....	644-5017

## Athletic Staff

Tully Gymnasium

C. W. "Hootie" Ingram, Athletic Director .....	644-2793
Bob Goin, Associate Athletic Director .....	644-2793
Barbara Palmer, Associate Athletic Director .....	644-2087
Claude Thigpen, Assistant to the Director .....	644-2793
Larry Pendleton, Assistant to the Director .....	644-2793
Jo Heath, Women's Administrative Assistant .....	644-1013
Terry Hume, Women's Administrative Assistant .....	644-1441
Janice Yecco, Women's Special Events Coordinator .....	644-2087
Charlotte Glover, Secretary .....	644-2087

## Sports Information

113 Wildwood St.

Wayne Hogan, Director .....	644-4038
Lisa Morton, Assistant Director .....	644-4038
Dan Pearson, Assistant-Volleyball .....	644-4038

## All Area Codes 904

## Media Information

Florida State's 1982 Volleyball Guide has been designed for use by the media, perspective athletes, and for friends of the University. Any questions not covered in this brochure should be directed to the Sports Information Office, Post Office Drawer 2195, Tallahassee, Fla. 32304. Additional information, such as feature material and photographs, will be made available upon request.

## On the Cover

The cover shot features senior Camy Davies at the Seminole Reservation. The photograph is the work of freelance photographer Courtland Richards.

## Credits

The 1982 media guide was written and edited by Dan Pearson. Photography by the University Photo Lab with action photography by Bucky Parrish and Karl Hook.

1982 Florida State

# VOLLEYBALL GUIDE

## Table of Contents

FSU Athletic Staff Directory .....	IFC
Florida State Facts .....	1
1982 Outlook .....	2
Head Coach Cecile Reynaud .....	3
Assistant Coach Joan French .....	4
Alphabetical Roster .....	5
Numerical Roster .....	5
Player Profiles .....	6-9
1981 Statistics .....	10
Statistical Explanation .....	11
Year-By-Year Results .....	12-14
Series Records .....	15
FSU Volleyball Records .....	16
Year-By-Year Records .....	16
This is Florida State .....	IBC
1982 Schedule .....	BC

## Florida State Facts

Location .....	Tallahassee, Fla.
Enrollment .....	22,500
Founded .....	1857
Nickname .....	Lady Seminoles
Colors .....	Garnet and Gold
University President .....	Dr. Bernard F. Sliger
Athletic Director .....	C. W. "Hootie" Ingram
Home Court .....	Tully Gymnasium (3,000)
Conference .....	Metro
Affiliation .....	NCAA



## 1982 Outlook: Looking Forward

After winning 43 of 51 matches and finishing fourth in the AIAW National Championship, one wonders what the Florida State volleyball team could possibly do for an encore. Here was a team that not only won 21 matches and 36 consecutive games during the regular season, but also took AIAW national champion Texas to five sets in the semi-finals of the national tournament.

Most seasons like the one Florida State enjoyed last year are reserved for veteran teams, usually loaded with talented senior athletes that have played together for a number of years. What usually follows from a team of this nature is a down year or a rebuilding year.

But such is not the case with the 1982 Lady Seminoles. With the squad losing just one starting senior in Barb Mellen from last season's squad, FSU head coach Cecile Reynaud is anxiously awaiting the start of the 1982 season.

"We have experienced players returning at every position on our squad," Reynaud says. "With the addition of two outstanding recruits, I believe we are potentially as strong if not stronger than last season."

A close review of Reynaud's team verifies the Lady Seminoles are deep at almost every position. Returning in the middle hitter position are seniors Julie Brown and Alicia Cross. One of the most devastating spiking combinations in the south, Cross and Brown combined for 648 kills last season. Both players earned all-state and all-region honors for their play.

At setter, Florida State suffers its biggest loss with the graduation of MVP Barb Mellen. The team's sparkplug in 1982, Mellen led the Lady Seminoles with 978 set assists. FSU is fortunate however, to return junior Marie Sanders at this position.

A native of LaPorte, Ind., Sanders was listed as the number one setter going into the season before a series of injuries caused her to miss about half the season. Senior Joy Blanchard, a three-time letter winner and freshman Donna Krai will provide quality depth at setter.

Senior Camy Davies returns to give the Tribe an excellent defensive specialist. Davies topped all players with a 62 percent rating in the serve receive category last season. Jackie Young, a sophomore, is the heir apparent to Davies and just needs experience to turn into an excellent player.

The outside hitter position is the one where FSU is perhaps the youngest but most talented. Sophomores Karyn Palgut and Carol Forsten return as the starters after exceptional freshman years. Palgut, a native of Broadview Heights, Ohio, returns with 309 kills to her credit. Her play during the regular season and during the club season, earned her a position on the East's squad for the National Sports Festival. Palgut can also play the middle hitter position if necessary.

Forsten, a native of Australia, had 275 kills last year to round out the front line. In addition to the USVBA club season, Forsten also returns with additional experience — having toured overseas with Athletes' in Action this summer.

Sally Summer, a junior, returns as co-captain. A team leader in every sense, Summer can play a number of positions. Summer recorded 271 kills last season to go along with a 60.4 percent rating in the serve receive category.

Freshman Shelly Birkholz will provide backup at the outside hitter position, as will reserves Shannon Lages and Mary Williams.

As always, the Tribe will play a tough regional schedule with the Lady Seminoles slated to appear in several top invitationals. After a year of a split championship, all teams in the country will compete under the NCAA banner this season.

"I'm pleased that everyone will be playing for one national title this year," Reynaud says. "I believe if one championship would have been held last year we would have finished at least in the top 15 and possibly the top 10. I am looking forward to the opportunity of trying to achieve that level."



### Head Coach Cecile Reynaud

If there was ever a person who exemplifies the philosophy that hard work and success come hand-in-hand, it's Florida State's volleyball coach Cecile Reynaud. Since taking over the Lady Seminole program in 1976 as a graduate student-head coach, Reynaud has built Florida State into a national power.

In just six short seasons under Reynaud, Florida State has won 203 games against just 82 losses. Included in

this incredible record is a fourth place finish at the 1981 AIAW Nationals, two additional trips to the national championship, three regional titles, four state titles and seven invitational team championships.

Without a doubt, the 1981 season was the most impressive testimonial to Reynaud's coaching ability. With just one senior in the starting lineup, Reynaud coached her squad to a 43-8 record and the fourth place AIAW finish.

With the finish at nationals, Reynaud earned volleyball Coach of the Year honors from the Florida Association for Intercollegiate Athletics for Women.

Reynaud came to Florida State following a standout athletic career at Southwest Missouri State University. At SMSU, Reynaud lettered four times and led the Bears to several appearances in the national championship tournament. One of those squads finished sixth in the nation. In addition to volleyball, Cecile lettered twice in field hockey and was named an Outstanding Athlete in America on two separate occasions.

After graduation with a bachelor's degree in physical education in 1975, Reynaud taught physical education and coached four sports — softball, volleyball, basketball and track — at Steelville High School in Missouri.

One year later, she was named head volleyball coach at Florida State as a graduate student and became FSU's first full-time volleyball coach in 1978. She received her master's degree from Florida State in 1979.

In addition to her coaching duties with the varsity squad, Reynaud annually holds a successful summer camp for prep players, with 1982's camp drawing over 200 players from the southeast region.

During the past six years, Reynaud has been the feature speaker at numerous coaching clinics and has served on the staff of several prestigious volleyball camps.

A holder of USVBA Level I National Certification for Coaching Volleyball, Reynaud was selected as technical consultant for two power volleyball films by The Athletic Institute. She also serves as a member of the NCAA Advisory Committee on Volleyball after holding a similar position with the AIAW for three years.

### Reynaud at FSU

YEAR	RECORD	PCT.	COMMENTS
1976	33-14-0	.702	State runner-up
1977	25-13-0	.658	State Champion, 4th Regionals
1978	28-14-0	.666	State Champion, 1st Regionals 20th Nationals
1979	31-19-0	.620	State runner-up, 1st Regionals 18th Nationals
1980	43-14-1	.754	State Champion, 3rd Regionals
1981	43- 8-0	.843	State Champion, 1st Regionals 4th Nationals

6 seasons    203-82-1    .712





### Assistant Coach Joan French

Joan French has become the newest member of the Lady Seminole coaching staff, as she begins her first season as assistant volleyball coach. As a member of Cecile Reynaud's staff, French will be in charge of a conditioning program for the players. In addition, she will serve as technique specialist.

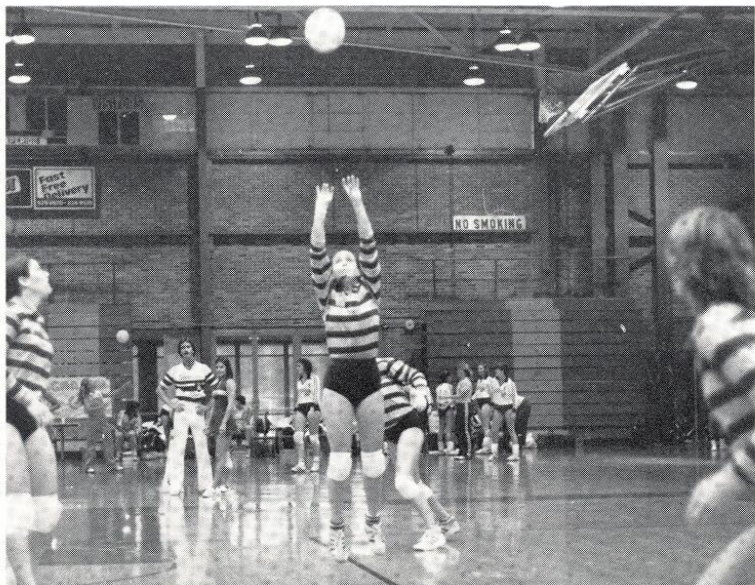
French brings to Florida State a wealth of both athletic and teaching experience. A graduate of Southwest Missouri State University, Joan lettered in four different sports and was a teammate of Reynaud's.

As a member of the Bears' volleyball team, French led Southwest Missouri to four consecutive AIAW Region IV Championships and four trips to the national tournament. As a player, her squad finished seventh in the national championships on two different occasions. She also participated in basketball, softball and track.

Following graduation in 1978, French earned a position on the United States Olympic volleyball team and trained at the U.S. Olympic Center in Colorado for two years.

French later went on to play for the Dallas Diamonds of the Women's Professional Basketball League for two seasons. Her teaching credentials include a one-year teaching and coaching stint at Central High School in Missouri and one year at The American School of London High School.

Joan was selected the Outstanding Young Woman of Missouri in 1981.



## Florida State Volleyball Alphabetical Roster

No.	Name	Position	Height	Class	Hometown
10	Shelly Birkholz	Hitter	5-10	Fr.	Roscoe, Ill.
2	Joy Blanchard	Setter	5-5	Sr.	Charleston, S.C.
11	Julie Brown	Hitter	6-1	Sr.	Mobile, Ala.
7	Alicia Cross	Hitter	5-10	Sr.	Indianapolis, Ind.
1	Camy Davies	Defensive Spec.	5-4	Sr.	Coral Springs, Fla.
6	Carol Forsten	Hitter	5-8	So.	Somerton Park, Australia
9	Donna Krai	Setter	5-7	Fr.	Broadview Heights, Ohio
13	Shannon Lages	Hitter	5-11	Jr.	Foster City, Calif.
5	Karyn Palgut	Hitter	5-8	So.	Broadview Heights, Ohio
3	Marie Sanders	Setter	5-4	Jr.	LaPorte, Ind.
14	Sally Summer	Hitter	5-8	Jr.	Miami, Fla.
8	Mary Williams	Hitter	5-10	Jr.	Detroit, Mich.
12	Jackie Young	Defensive Spec.	5-5	So.	Antilles, Netherlands

## Numerical Roster

No.	Name	Position	Height	Class	Hometown
1	Camy Davies	Defensive Spec.	5-4	Sr.	Coral Springs, Fla.
2	Joy Blanchard	Setter	5-5	Sr.	Charleston, S.C.
3	Marie Sanders	Setter	5-4	Jr.	LaPorte, Ind.
5	Karyn Palgut	Hitter	5-8	So.	Broadview Heights, Ohio
6	Carol Forsten	Hitter	5-8	So.	Somerton Park, Australia
7	Alicia Cross	Hitter	5-10	Sr.	Indianapolis, Ind.
8	Mary Williams	Hitter	5-10	Jr.	Detroit, Mich.
9	Donna Krai	Setter	5-7	Fr.	Broadview Heights, Ohio
10	Shelly Birkholz	Hitter	5-10	Fr.	Roscoe, Ill.
11	Julie Brown	Hitter	6-1	Sr.	Mobile, Ala.
12	Jackie Young	Defensive Spec.	5-5	So.	Antilles, Netherlands
13	Shannon Lages	Hitter	5-11	Jr.	Foster City, Calif.
14	Sally Summer	Hitter	5-8	Jr.	Miami, Fla.



# Player Profiles



**Shelly Birkholz**  
Freshman, 5-10, Roscoe, Ill.

Comes to Florida State from Hononegah High School where she lettered three seasons under head coach Sherry Diamond . . . earned unanimous all-conference honors three consecutive years . . . selected MVP in 1979 and 1981 . . . projected to play the outside hitter position at Florida State . . . played for Sports Performance, an outstanding open division team in Illinois . . . will major in business management at FSU.

**Joy Blanchard**  
Senior, 5-5, Charleston, S.C.

Three-time letter winner at Florida State . . . granted extra season of eligibility after receiving medical red-shirt in 1980 with shoulder injury . . . topped 1981 team in serving efficiency with a 62 percent rating on 65 attempts . . . selected to All-Sunshine region squad by the USVBA in 1979 . . . earned all-conference and all-state honors at Bishop England High School . . . majoring in child development.



**Julie Brown**  
Senior, 6-1, Mobile, Ala.

One of FSU's most dominating players, Brown recorded a team leading 131 block assists and 61 solo blocks in 1981 . . . earned all-state and all-AIAW Region III honors last season . . . had 318 kills last season, second highest on team . . . attended Julius Wright High School where she earned all-county honors in both volleyball and basketball . . . received Golden Spike Award at Wright as volleyball MVP . . . major is food and nutrition.



**Alicia Cross**  
Senior, 5-10, Indianapolis, Ind.

One of Florida State's all-time leading spikers, Cross recorded a team high 330 kills last season . . . also recorded 40 solo blocks and 103 block assists . . . named first team all-state and first team AIAW Region III last year for second consecutive season . . . selected to numerous all-tournament teams during her career . . . started and lettered all three seasons at Florida State . . . achieved all-county status in volleyball at Ben Davis High School . . . a child development major.



**Camy Davies**  
Senior, 5-4, Coral Springs, Fla.

FSU's top defensive specialist . . . saw action in all 51 of the Lady Seminole matches last season . . . Camy's 34 defensive saves was fourth highest on team . . . recorded a 62% efficiency rating for service return in 1981, highest on squad . . . former intramural champion in doubles division in tennis, racquetball and badminton . . . former all-state player at collegiate level . . . served as team captain twice at Coral Springs High School . . . a communications major.

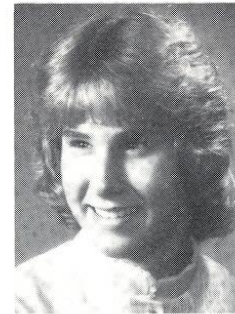
**Carol Forsten**  
Sophomore, 5-8, Somerton Park, Australia

Stepped in as a freshman to earn starting position at outside hitter . . . recorded 47 defensive saves in 1981, most on squad . . . toured the past summer with Athletes in Action . . . previous participant in the World Cup tournament as a member of the Australian National team . . . in 1979, Carol captained her high school team to the Australian national championship and also served as captain for the national high school all-star team . . . majoring in leisure studies.



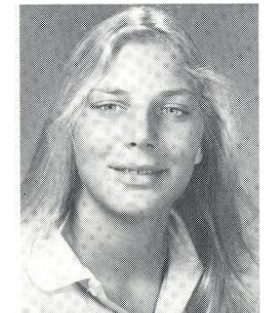
**Donna Krai**  
Freshman, 5-7, Broadview Heights, Ohio

One of two incoming recruits for Florida State . . . projected as a setter . . . earned 11 letters in three sports at Brecksville High School . . . teammate of FSU starter Karyn Palgut at Brecksville from 1979-80 . . . earned all-Northeast Ohio honors in 1981 . . . all-conference for three seasons and conference MVP in junior and senior seasons . . . all-state in track in three different events . . . will major in interior design.



**Shannon Lages**  
Junior, 5-11, Foster City, Calif.

A top reserve, Shannon appeared in 27 matches for FSU in 1981 . . . recorded a 51 percent efficiency rating on her serve last season, fourth highest on squad . . . lettered as a freshman and was third on that team in kills with 179 . . . earned all-Metro honors in 1980 . . . paced Osbourne High School to three consecutive district championships . . . majoring in biology.







**Karyn Palgut**  
Sophomore, 5-8, Broadview Heights, Ohio

Started and earned letter as a freshman last season . . . attack efficiency (.350) and receiving efficiency (.620) ranked among top three on squad . . . made several all-tournament teams as freshman from her outside hitter position . . . former teammate of FSU freshman Donna Krai at Brecksville High School . . . paced Brecksville to second place finish at 1980 Ohio state championships . . . earned Northern Ohio Player of the Year honors during senior year . . . a member of the East squad for the 1982 National Sports Festival . . . a physical education major.



**Jackie Young**  
Sophomore, 5-5, Antilles, Netherlands

Defensive specialist with bright future . . . although only appearing in two matches in 1981, Jackie should see considerable action as the number two defensive specialist behind Camy Davies . . . majoring in hotel and restaurant management.

**Marie Sanders**  
Junior, 5-4, LaPorte, Ind.

Had a disappointing sophomore season after missing about half the season with various injuries . . . recorded 192 assists, second highest on squad, despite playing in only 30 matches . . . school record holder in assist category . . . won six letters at LaPorte High School . . . two-time all-conference selection in high school . . . a business major.



**Lisa Warman**  
Team Manager, Edgewood, Ky.

Injured in pre-season, Lisa Warman will serve as team manager this season after playing with the Lady Seminoles last year . . . Warman appeared in two matches for FSU last year, recording two kills . . . will have three years remaining when she returns to active duty next season . . . as manager, Warman will be responsible for statistical information and helping with practices . . . majoring in physical education.



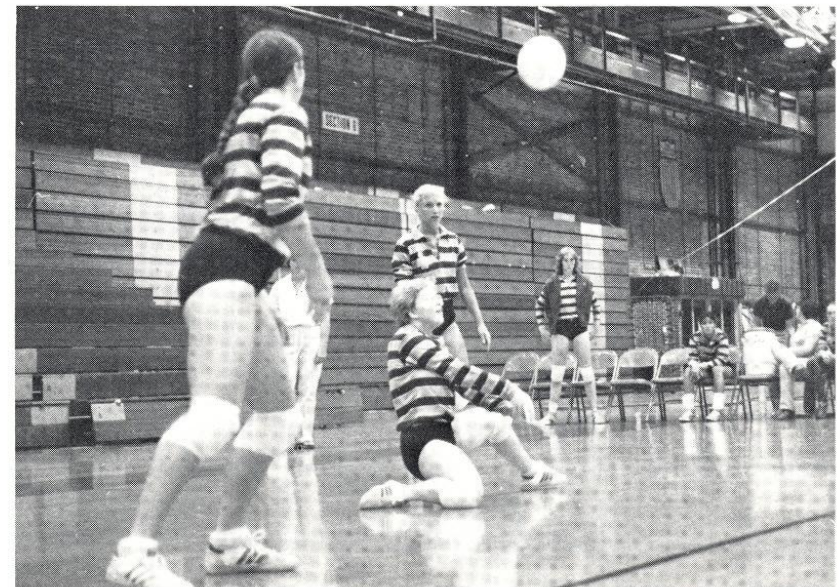
**Sally Summer**  
Junior, 5-8, Miami, Fla.

Excellent all-around player . . . lettered first two seasons at FSU . . . recorded 40 defensive saves last season, the second highest total on squad . . . placed fifth in kills with 271 . . . teamed with Camy Davies to win several intramural doubles championships in racquet sports in 1980 . . . attended North Miami High School where she earned Carnation Prep All-American honors in volleyball . . . earned a total of 15 varsity letters in high school as well as scholar athlete of the year honors . . . a social science major.



**Mary Williams**  
Junior, 5-10, Detroit, Mich.

Earned position on squad last season after transferring from Wayne State in 1980 . . . earned fourth team all-state honors at Wayne . . . appeared in 14 matches last season for Lady Seminoles . . . earned three volleyball letters at Marion High School . . . named all-district senior season at Marion . . . majoring in secondary education.



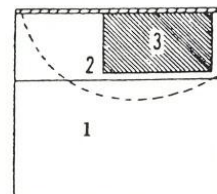


# 1981 VOLLEYBALL STATISTICS

NAME	MATCHES	GAMES	SERVE RECEIVE (ATT., PCT.)	SERVE (ATT., PCT.)	ATTACK (ATT., PCT.)	KILLS	BHE	DEF. SAVES	BLOCKS		SET ASSISTS	
									SOLO-ASSISTS	ERRORS		
Joy Blanchard	22	28	0/.000	65/.619	14/.714	10	25	1	1	5	0	116
Julie Brown	51	129	42/.529	56/.428	591/.382	318	142	3	62	132	34	7
Alicia Cross	49	119	395/.572	441/.480	634/.356	330	181	17	40	101	23	46
Camy Davies	51	132	451/.624	525/.510	9/.000	1	23	35	0	2	0	26
Carol Forsten	51	131	343/.586	588/.653	693/.261	272	106	47	7	62	15	56
Shannon Lages	27	32	16/.517	21/.512	43/.256	17	8	1	0	7	2	0
Gloria McIntosh	1	1	3/.416	5/.400	5/.400	1	0	0	0	0	0	0
Barb Mellen	51	119	0/.000	426/.483	419/.313	189	133	30	7	61	6	984
Karyn Paigut	51	132	438/.611	407/.506	677/.305	309	148	30	8	64	3	38
Rhonda Petty	45	78	94/.587	135/.481	227/.322	113	25	6	8	28	4	16
Marie Sanders	30	55	0/.000	115/.541	20/.300	9	12	10	0	2	0	197
Sally Summer	51	132	347/.603	436/.487	661/.253	267	89	42	8	51	8	82
Lisa Warman	1	1	3/.500	1/.000	3/.333	2	0	0	0	0	0	0
Mary Williams	14	16	8/.437	10/.526	19/.105	5	4	0	0	0	1	2
Jackie Young	2	2	5/.550	3/.500	0/.000	0	0	0	0	0	0	0
TEAMS TOTALS	51	132	2145/.597	3234/.501	4012/.308	1840	896	222	141	517	96	1570

## Statistics Explanation

**PASSING:** Each athlete is rated on a four-point scale (4 is the highest score) for each pass she makes throughout the match (see chart).



**SERVING:** Efficiency is based on the difficulty of the opponents being able to pass the serve. An athlete is rated on a four-point scale (4 is the highest score) for the effectiveness of each serve (see chart).

**PASSING:** Efficiency  
 4 = ball passed over net for side out  
 3 = ball passed to shaded area #3  
 2 = ball passed to #2 area  
 1 = pass setter can't get to but a teammate sets  
 0 = pass resulting in point for opponent  
 \*Formula: total points/attempts ÷ 4 = efficiency percentage

**SERVING:** Efficiency  
 4 = ace or directly resulting in point  
 3 = opponent passes it but setter is unable to set it  
 2 = opponent passes it to #2 area  
 1 = opponent passes it to #3 area  
 0 = illegal serve  
 \*Formula: total points/attempts ÷ 4 = efficiency percentage

## Definitions

**Kill:** A spike that directly results in a point or side out for the player's own team.

**Attack:** A spike that went into the court, but was not a kill.

**Defensive Save:** Saving a hard spike or dink which would have otherwise hit the floor.

**Ball Handling Error (BHE):** Any play after the initial serve reception where the player is called for an illegal set, pass, double hit or illegal lift.

**Solo Block:** A block at the net by one person on a spiking attempt that results directly in a point or side out for the blocker's team.

**Assist Block:** When two or three people combine to block a ball for a point or side out.

**Block Error:** A violation during the course of a blocking action that causes a point or sideout.

**Set Assist:** A set for an attacker which directly results in a point or side out for the player's own team.

## Year by Year Volleyball Results

1976 — (33-14)

Coach: Cecile Reynaud

### MUW Invitational

Louisiana State	L	2-15, 15-7, 14-16
Montevallo	W	15-3, 15-9
North Alabama	W	15-8, 15-12
MUW	W	15-0, 15-3
Ole Miss	L	13-15, 15-8, 9-15
Berry College	W	15-11, 6-15, 19-17

### North Carolina-Greensboro Invitational

Eastern Kentucky	W	10-15, 15-5, 15-12
North Carolina-Greensboro	W	15-9, 14-16, 15-6
George Washington	L	11-15, 15-7, 10-15
Miami-Dade C. C.-South	L	3-15, 7-15
Maryland	W	15-3, 1-15, 15-13
Illinois-Chicago Circle	L	5-15, 3-15

### Florida State Invitational (3rd place)

Auburn	W	15-13, 15-9
MUW	W	17-15, 15-13
North Carolina-Chapel Hill	W	11-15, 15-10, 15-13
Flagler College	W	15-4, 15-9
Central Florida	W	15-9, 15-9
Alabama	L	10-15, 11-15
MUW	L	15-7, 8-15, 13-15

### Georgia Invitational (1st place)

Auburn	W	10-15, 15-6, 15-9
West Georgia College	W	15-6, 15-11
Tennessee-Chattanooga	W	15-11, 15-2
Berry College	L	15-1, 6-15, 6-15
South Carolina	W	15-7, 13-15, 15-11
Mississippi State	W	15-7, 15-10
Berry College	W	18-16, 15-4

### West Georgia College Invitational (2nd place)

Tuskegee Institute	W	15-1, 15-6
Tennessee-Knoxville	W	6-15, 15-6, 16-14
Florida International	L	11-15, 12-15
Tennessee-Knoxville	W	15-5, 15-8
MUW	L	16-18, 11-15
South Florida	W	15-8, 15-5
Tennessee-Knoxville	W	15-6, 15-4
Florida International	W	15-8, 15-13
MUW	L	14-16, 7-15

### Flagler College Invitational (2nd place)

Lake City C. C.	W	15-8, 15-8
Central Florida	W	15-4, 15-12
Miami Dade C. C. North	W	15-12, 6-15, 15-2
South Florida	W	15-5, 15-5
Jacksonville	W	15-3, 15-12
Flagler College	W	15-8, 15-12
Miami-Dade C. C. South	L	15-17, 7-15

### State Tournament (Large College) (2nd place)

Florida	W	15-0, 15-7
Florida International	L	7-15, 9-15
Florida	W	15-3, 9-15, 15-1
Florida International	W	13-15, 15-3, 15-13
Florida International	L	6-15, 8-15

1977 — (25-13)

Coach: Cecile Reynaud

### MUW Invitational

Nicholls State	W	16-14, 10-15, 15-9
Ole Miss	W	7-15, 17-15, 15-8
Columbus College	W	15-2, 15-10
Alabama	L	10-15, 3-15
MUW	L	15-6, 10-15, 11-15
Louisiana	L	1-15, 11-15

### New Orleans Invitational (3rd place)

South Alabama	W	15-8, 15-5
Tulane	W	15-8, 15-13
SW Louisiana	W	15-8, 15-6

NW Louisiana State	L	15-1, 9-15, 15-3
Central Florida	L	8-15, 15-3, 4-15
Nicholls State	W	15-5, 15-3

### Florida State University (5th place)

Georgia	W	16-14, 15-10
Central Florida	L	6-15, 4-15
Tennessee-Chattanooga	W	15-10, 15-3
South Carolina	L	11-15, 15-11, 12-15
Miami-Dade C. C. South	L	10-15, 2-15

### Georgia Invitational (3rd place)

South Carolina	L	9-15, 15-7, 8-15
West Georgia College	W	15-10, 15-0
Tennessee-Chattanooga	W	15-13, 15-11
Georgia State	W	15-4, 15-7
Mississippi State	W	15-8, 15-17, 15-4
College of Charleston	L	12-15, 15-7, 7-15

### West Georgia College Invitational (2nd place)

Valdosta State	W	15-2, 15-4
Milligan College	W	15-3, 15-7
Georgia	W	9-15, 15-2, 15-7
Appalachian State	W	15-11, 15-2
East Tennessee	W	15-9, 15-1
South Carolina	L	15-17, 9-15

### State Tournament (1st place)

Florida	W	10-15, 15-3, 15-7
South Florida	W	15-11, 10-15, 15-13
South Florida	W	2-15, 15-11, 17-15

### Regional Tournament (4th place)

Mississippi State	W	15-1, 15-10
Florida	W	11-15, 15-10, 15-13
Alabama	L	9-15, 10-15
South Florida	W	15-12, 15-0, 11-15, 16-14
Alabama	L	3-15, 14-16, 15-11, 9-15
MUW	L	10-15, 13-15, 15-5, 15-7, 17-19

1978 — (28-14)

Coach: Cecile Reynaud

### MUW Invitational

Arkansas State	L	15-5, 17-19, 15-17
Columbus College	W	15-1, 15-0
Memphis State	W	15-11, 15-3
MUW	W	15-2, 15-11
New Orleans	W	15-3, 15-13
Ole Miss	L	10-15, 15-8, 3-15, 15-5, 11-15

### Miami Dade Invitational (2nd place)

Florida Southern	W	16-14, 15-10
South Florida	W	15-10, 15-7
Miami-Dade C. C. South	W	11-15, 16-14, 17-15
South Florida	L	12-15, 15-9, 15-9
Miami Dade C. C. South	W	7-15, 15-6, 15-12
Central Florida	L	14-16, 5-15
Central Florida	W	15-6, 16-14
Central Florida	L	9-15, 7-15

### Florida State Invitational

New Orleans	W	15-3, 15-5
Florida Southern	W	16-14, 15-6
South Carolina	W	16-14, 15-13
Tennessee-Knoxville	L	12-15, 8-15
Miami	W	15-3, 15-4
South Carolina	L	15-7, 8-15, 10-15

### SW Missouri State Invitational

Illinois State	W	15-12, 15-12
Texas A & M	W	15-10, 16-14
Cincinnati	W	15-11, 15-11
Nebraska	L	12-15, 15-10, 12-15
North Texas State	L	5-15, 10-15

### Alabama Invitational

Alabama	L	7-15, 10-15, 11-15
Ole Miss	W	5-15, 15-12, 15-8, 15-11
Cincinnati	W	15-12, 15-11, 15-12
MUW	W	15-6, 11-15, 8-15, 15-10, 15-5

### State Tournament (1st place)

South Florida	W	15-5, 7-15, 15-9
Miami	W	15-4, 15-9
Florida	W	15-5, 13-15, 15-7

### Regional Tournament (1st place)

Georgia State	W	15-4, 15-4
Mississippi State	W	15-9, 15-2
Alabama	W	15-3, 15-2
Alabama	W	15-13, 15-13, 15-4
Ole Miss	W	15-12, 10-15, 15-11, 13-15, 15-2

### National Tournament

SW Missouri State	L	15-12, 11-15, 6-15
Arizona	L	11-15, 16-14, 1-15
Texas A & M	L	9-15, 8-15
Pepperdine	L	5-15, 15-12, 3-15
UCLA	L	2-15, 15-12, 7-15

1979 — (31-19)

Coach: Cecile Reynaud

### Alabama Invitational (3rd place)

South Carolina	W	15-10, 3-15, 15-8
MUW	W	15-12, 15-7
Central Florida	L	2-15, 15-7, 8-15
Miami	W	15-10, 16-14
Alabama	L	9-15, 11-15
Oklahoma	W	15-7, 7-15, 16-14

### MUW Invitational (1st place)

Arkansas State	W	15-10, 15-6
SE Louisiana	W	15-4, 15-5
Nicholls State	W	15-6, 20-18
MUW	W	15-8, 15-12
Memphis State	W	15-8, 13-15, 15-12, 15-8
Alabama	W	15-7, 15-6, 15-10

### Central Florida Invitational

Oklahoma	L	9-15, 12-15
Alabama	L	11-15, 15-8, 5-15
Miami-Dade C. C. South	L	8-15, 11-15
Louisiana State	W	15-6, 13-15, 15-13
Auburn	W	15-5, 15-7
Central Florida	L	7-15, 6-15
Miami	L	9-15, 15-10, 14-16
North Florida J. C.	W	15-2, 15-5, 14-16, 15-12
Lake City C. C.	W	15-8, 15-5, 15-11

### Florida State Invitational (3rd place)

South Florida	W	15-8, 15-7
Auburn	W	15-6, 15-10
North Carolina-Chapel Hill	W	15-10, 10-15, 15-12
Florida Southern	W	15-8, 15-6
Miami	L	12-15, 15-7, 12-15
North Carolina-Chapel Hill	W	15-11, 15-12
South Alabama	W	15-5, 16-14
Gulf Coast C. C.	W	15-1, 15-5

### SW Missouri State Invitational

SW Missouri State	L	2-15, 3-15
Houston	L	5-15, 13-15
Iowa State	W	15-1, 15-6
Minnesota	L	15-9, 12-15, 7-15
Cincinnati	L	11-15, 9-15
Gulf Coast C. C.	W	15-2, 15-2
North Florida J. C.	W	15-8, 15-2, 15-1
Lake City C. C.	W	15-11, 15-0, 18-16

### State Tournament (2nd place)

Miami	L	10-15, 14-16, 7-15
-------	---	--------------------

### Regional Tournament (1st place)

Georgia	W	6-15, 15-7, 15-6
Alabama	L	13-15, 15-13, 12-15
Mississippi State	W	15-6, 15-11

Alabama	W	15-13, 15-6
Miami	L	9-15, 18-16, 8-15
Alabama	L	14-16, 15-11, 15-10
Miami	W	15-9, 4-15, 15-9
Miami	W	8-15, 15-6, 15-12

### National Tournament

Brigham Young	L	16-14, 7-15, 7-15
Houston	L	9-15, 8-15
UCLA	L	9-15, 5-15
Purdue	L	14-16, 14-16

1980 — (43-14-1)

Coach: Cecile Reynaud

Tennessee	L	15-4, 7-15, 10-15, 8-15
-----------	---	-------------------------

### Alabama Invitational

Central Florida	L	8-15, 8-15
Texas Tech	W	15-6, 10-15, 15-10
Alabama-Birmingham	W	15-9, 15-4
Memphis State	L	13-15, 8-15

### Metro Conference Tournament (2nd place)

Louisville	W	15-7, 15-9
Virginia Tech	W	13-15, 15-4, 15-2
Memphis State	W	15-8, 15-9
St. Louis	L	17-15, 12-15, 11-15
Tulane	W	15-11, 16-14
Cincinnati	W	15-6, 16-14
Memphis State	W	10-15, 15-10, 15-10
St. Louis	L	12-15, 15-7, 6-15
Flagler College	W	15-1, 15-2
Jacksonville	W	15-4, 15-9
Florida Junior College	W	15-1, 15-1

### Central Florida Invitational (4th place)

Florida International	L	10-15, 9-15
Miami	W	15-10, 15-7
Central Florida	W	15-11, 15-10
S. Carolina-Spartanburg	W	15-2, 15-2
Louisiana State	W	15-7, 15-4
Miami	L	10-15, 13-15
Louisiana State	W	15-13, 15-5
Alabama	L	10-15, 7-15
South Alabama	W	15-4, 15-1
Lake City Community College	W	15-7, 15-6

### Florida State Invitational (2nd place)

MUW	W	15-10, 15-9
South Florida	W	15-0, 15-2
Oklahoma State	W	15-6, 15-7
Jacksonville	W	15-0, 15-5
Miami	W	15-13, 17-15
Tennessee	L	15-8, 3-15, 11-15
South Alabama	W	15-12, 15-12, 15-9

### Jacksonville Invitational (1st place)

Lake City Community Col.	W	15-5, 15-9
Central Florida	W	16-14, 15-11
Miami	T	15-6, 10-15, (tie)
Montevallo	W	15-0, 15-4
Winthrop College	W	15-6, 15-11
Winthrop College	W	16-14, 15-2
Central Florida	W	15-0, 15-5
Miami	W	17-15, 10-15, 15-7

### Miami Invitational (3rd place)

Florida Southern	W	15-8, 16-14
Florida International	W	9-15, 16-14, 15-3
Central Florida	W	15-1, 15-3
Miami	L	10-15, 15-3, 8-15
Miami Dade South	W	15-7, 15-12
Miami	L	6-15, 8-15
Jacksonville	W	15-6, 15-4, 15-5
Lake City Community Col.	W	15-5, 15-11, 15-11
Florida Junior College	W	15-2, 15-10
Florida A & M	W	15-1, 16-14

### State Tournament (1st place)

Miami	W	15-10, 9-15, 15-8, 16-14
-------	---	--------------------------



**AIAW Regionals (3rd place)**

South Alabama	W	15-5, 15-5
Auburn	W	15-1, 15-2
Ole Miss	L	15-1, 9-15, 14-16
Ole Miss	W	15-8, 15-8
Alabama	L	14-16, 15-11, 11-15
Miami	L	13-15, 4-15

**1981 — (43-8)**
**Coach: Cecile Reynaud**

Ohio State	L	12-15, 9-15
Central Florida	W	17-15, 15-13

**Alabama Invitational (1st place)**

Georgia	W	14-16, 15-8, 15-11
Baylor	W	15-4, 15-1
Minnesota	W	15-12, 7-15, 15-1
Alabama	W	15-7, 15-9
Miami	W	15-10, 15-2
Texas Tech	W	7-15, 15-2, 15-8
Minnesota	W	15-8, 15-12
Georgia	W	16-14, 15-9, 15-3

**Southwest Missouri Invitational**

Southwest Missouri	L	5-15, 13-15
Northwestern	L	7-15, 8-15
Houston	W	15-5, 15-11
Minnesota	L	12-15, 7-15
Purdue	W	15-7, 16-14

**Florida State Invitational (1st place)**

South Carolina	W	15-4, 15-8
Jacksonville	W	15-1, 15-5
Alabama-Birmingham	W	15-8, 15-5
Alabama	W	15-7, 15-4
North Carolina	W	15-4, 15-11
Alabama	W	15-10, 15-10
Clemson	W	15-10, 15-5
Central Florida	W	15-2, 15-4, 15-6

**Tennessee Invitational (1st place)**

Middle Tennessee St.	W	15-7, 15-3, 15-8
Rollins	W	15-9, 15-0, 15-4
East Tennessee St.	W	15-2, 15-6, 15-11
Memphis State	W	15-3, 15-3, 15-4
Appalachian State	W	15-13, 15-13, 15-4
Tennessee	W	15-3, 3-15, 15-4, 15-10
Eastern Kentucky	W	15-3, 3-15, 15-4, 15-10
Kentucky	W	15-8, 4-15, 15-10, 12-15, 16-14

**LSU Invitational (3rd place)**

Nicholls State	W	15-3, 15-3
Tennessee	W	15-10, 15-3
Sam Houston	W	15-13, 15-10
New Orleans	W	6-15, 15-4, 15-7
LSU	L	15-8, 9-15, 7-15
Sam Houston	W	15-9, 15-9
Indian River C. C.	W	15-5, 15-9, 16-14
Flagler	W	15-4, 15-10
Florida A & M	W	15-1, 15-2

**FAIAW State Championship (1st place)**

Central Florida	W	15-7, 15-3, 16-14
-----------------	---	-------------------

**AIAW Region III Tournament (1st place)**

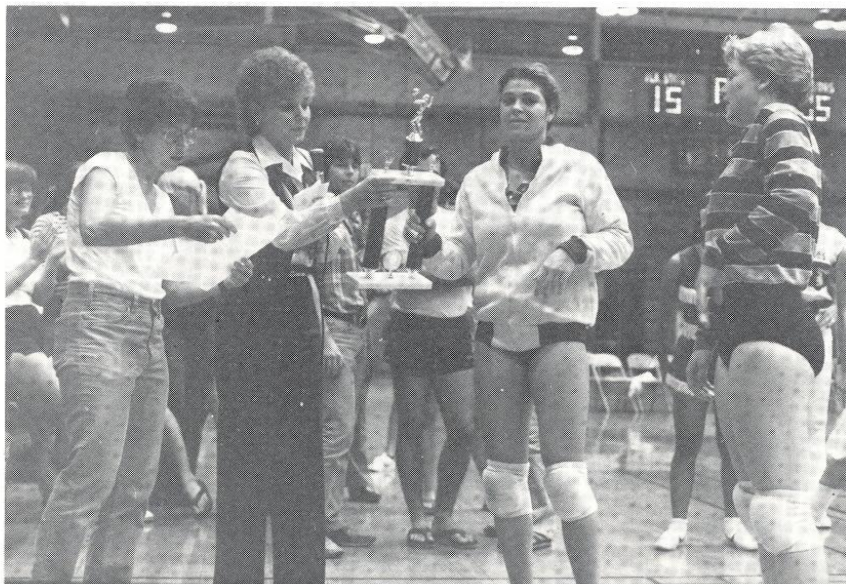
Ole Miss	W	15-3, 15-8
Miami	W	15-9, 15-12
Central Florida	W	15-12, 15-9
Georgia	W	15-1, 15-5

**AIAW National Championship (4th place)**

North Carolina	W	15-5, 15-10, 15-1
Portland State	L	15-7, 9-15, 10-15, 18-20
Minnesota	W	15-13, 15-11, 15-6
Texas	L	15-8, 3-15, 15-5, 11-15, 12-15
Texas-Arlington	W	15-11, 18-20, 15-11
Utah State	L	9-15, 15-13, 10-15

## SERIES RECORDS WITH OPPONENTS

Opponent	Last	W	L	Opponent	Last	W	L
Alabama	1981	8	10	Mississippi	1981	5	3
Alabama-Birmingham	1981	2	0	Mississippi State	1979	5	0
Appalachian State	1981	2	0	Mississippi — Women (MUW)	1980	7	5
Arizona	1978	0	1	Montevallo	1980	2	0
Arkansas State	1979	1	1	Nebraska	1978	0	1
Auburn	1980	5	0	New Orleans	1981	3	0
Baylor	1981	1	0	Nicholls State	1981	4	0
Berry College	1976	2	1	North Alabama	1976	1	0
Brigham Young	1979	0	1	North Carolina	1981	5	0
Central Florida	1981	10	7	North Carolina — Greensboro	1976	1	0
Cincinnati	1980	3	1	North Florida J. C.	1979	2	0
Clemson	1981	1	0	North Texas State	1978	0	1
College of Charleston	1977	0	1	Northwestern	1981	0	1
Columbus College	1978	2	0	Northwestern Louisiana	1977	1	0
Eastern Kentucky	1981	2	0	Ohio State	1981	0	1
East Tennessee State	1981	2	0	Oklahoma	1979	1	1
Flagler College	1981	4	0	Oklahoma State	1980	1	0
Florida	1978	5	0	Portland State	1981	0	1
Florida International	1980	4	4	Pepperdine	1978	0	1
Florida Southern	1980	4	0	Purdue	1981	1	1
Florida A & M	1981	2	0	Rollins	1981	1	0
Florida J. C.	1980	2	0	Sam Houston	1981	2	0
George Washington	1976	0	1	South Alabama	1980	5	0
Georgia	1981	6	0	South Carolina	1981	4	4
Georgia State	1978	2	0	South Carolina — Spartanburg	1980	1	0
Gulf Coast C. C.	1979	2	0	Southeastern Louisiana	1979	1	0
Houston	1981	1	2	South Florida	1980	10	0
Illinois-Chicago Circle	1976	0	1	Southwestern Louisiana	1977	1	0
Illinois State	1978	1	0	Southwest Missouri State	1981	0	3
Indian River C. C.	1981	1	0	St. Louis	1980	0	2
Iowa State	1979	1	0	Tennessee	1981	5	3
Jacksonville	1981	5	0	Tennessee — Chattanooga	1977	3	0
Kentucky	1981	1	0	Texas	1981	0	1
Lake City C. C.	1980	6	0	Texas — Arlington	1981	1	0
Louisiana State	1981	3	3	Texas A & M	1978	1	1
Louisville	1980	1	0	Texas Tech	1981	2	0
Maryland	1976	1	0	Tulane	1980	2	0
Memphis State	1981	5	1	Tuskegee Institute	1976	1	0
Miami	1981	11	8	UCLA	1979	0	2
Miami Dade — North C. C.	1976	1	0	Utah State	1981	0	1
Miami Dade — South C. C.	1980	3	4	Valdosta State	1977	1	0
Middle Tennessee State	1981	1	0	Virginia Tech	1980	1	0
Milligan College	1977	1	0	West Georgia State	1977	2	0
Minnesota	1981	3	2	Winthrop College	1980	2	0





## Florida State Volleyball Records

### Team Match Records

- Best passing efficiency — 67% vs. Kentucky (1981)
- Best serving efficiency — 67% vs. Baylor (1981)
- Best attack efficiency — 61% vs. Florida A & M (1981)
- Most defensive saves — 15 vs. Georgia (1981)
- Most block assists — 27 vs. Kentucky (1981)
- Most solo blocks — 9 vs. Kentucky (1981)
- Most set assists — 75 vs. Kentucky (1981)

### Individual Records

#### Passing:

- Most 3's in match — 22, Camy Davies vs. Texas (1981)
- Most consecutive 3's in match — 15, Sally Summer vs. Kentucky (1981)
- Most consecutive 3's in season — 26, Karyn Palgut (Alabama-Birmingham to Alabama in 1981)
- Most 3's in a perfect match — 10, Camy Davies vs. Minnesota (1981)

#### Serving:

- Most aces in match — 6, Carol Forsten vs. Baylor (1981)
- Most consecutive serves without a miss — 110, Marie Sanders (Alabama to Miami, 1980)

#### Hitting:

- Most kills in one match — 17, Julie Brown vs. Kentucky (1981); Rhonda Petty vs. Miami (1980); Margie Wessel vs. Miami (1980); Julie Brown vs. Ole Miss (1980)
- Consecutive kills in one match — 10, Sally Summer vs. Alabama (1980)
- Most kills in a perfect match — 8, Alicia Cross vs. Winthrop (1980); Rhonda Petty vs. Winthrop (1980)

#### Defensive Saves:

- Most in one match — 5, Camy Davies vs. Georgia (1981); Carol Forsten vs. Portland State (1981)

#### Blocking:

- Most block assists in match — 10, Julie Brown vs. Kentucky (1981); Julie Brown vs. Texas-Arlington (1981)
- Most solo blocks in match — 5, Julie Brown vs. Texas Tech (1981); Alicia Cross vs. Kentucky (1981)

#### Assists:

- Most assists in match — 46, Marie Sanders vs. Miami (1980)

### Team Achievements

- Best record in state competition — 10-0 (1981)
- Best record in regional competition — 19-0 (1981)
- Consecutive matches without loss — 21 (1981)
- Consecutive games without a loss — 36 (1981)
- Highest National Finish — 4th, 1981 AIAW Nationals

## Year-By-Year Records

Year	Coach	MVP	Record	Pct.
1976	Cecile Reynaud	Pam Griffin	33-14-0	.702
1977	Cecile Reynaud	Terry Hume	25-13-0	.658
1978	Cecile Reynaud	Margie Wessel	28-14-0	.666
1979	Cecile Reynaud	Margie Wessel	31-19-0	.620
1980	Cecile Reynaud	Margie Wessel	43-14-1	.754
1981	Cecile Reynaud	Barb Mellen	43-8-0	.843
Totals			203-82-1	.712



## This Is Florida State

Florida State University — the home of more than 20,000 Seminoles — has a campus that starts at the top of one of Tallahassee's famed seven hills, and rolls gently downward and westward across 340-odd acres of pines, palms and pecan trees.

From the Gothic towers of Westcott at the eastern entrance to the campus, to the modern glass and steel structures of its Science Complex to the west, Florida State University has moved forward in time and growth more rapidly than many of its newer counterparts in the State University System. Its enrollment has quadrupled since it became coeducational in 1947, following nearly half a century as the Florida State College for Women.

Today, its 14 schools and colleges are spread through \$150 million worth of buildings, its annual budget exceeds \$100 million and it attracts more than \$18 million a year in research contracts and grants. Students can pick and choose from more than 100 career options, offered in arts and sciences, business, communication, criminology, dance, education, home economics, law, library science, music nursing, social sciences, social work, theatre and visual arts programs.

The location of FSU in the Capital City of Florida offers unusual opportunities for study and research in the social and policy sciences, and an optimum environment for internships and on-the-job learning experiences for students in many fields of study.

A city within a city, Florida State has 1,200 faculty members, more than 6,000 additional employees and a construction program that exceeds \$50 million.