

FILE COPY — DO NOT REMOVE

1981 Florida State Volleyball Guide

1981 FLORIDA STATE VOLLEYBALL SCHEDULE

| Date | Event | Site | Time |
|-------------|---------------------------------------|----------------------|------------------------|
| Sept. 14 | Ohio State Central Florida | Orlando, Fla. | 4:00 p.m. 6:00 p.m. |
| Sept. 18-19 | Alabama Invitational | Tuscaloosa, Ala. | All Day |
| Sept. 25 | Georgia | Tallahassee, Fla. | 7:30 p.m. |
| Sept. 27 | Brazilian Junior National Team | Tallahassee, Fla. | 4:00 p.m. |
| Oct. 2-3 | Southwest Missouri State Invitational | Springfield, Mo. | All Day |
| Oct. 9-10 | Florida State Invitational | Tallahassee, Fla. | All Day |
| Oct. 13 | Central Florida | Tallahassee, Fla. | 7:30 p.m. |
| Oct. 23-24 | Tennessee Invitational | Knoxville, Tn. | All Day |
| Oct. 26 | Kentucky | Lexington, Ky. | 7:30 p.m. |
| Oct. 30-31 | LSU Invitational | Baton Rouge, La. | All Day |
| Nov. 2 | Indian River Community College | Tallahassee, Fla. | 7:30 p.m. |
| Nov. 4 | Florida A & M Flagler College | Tallahassee, Fla. | 7:00 p.m. 8:00 p.m. |
| Nov. 13-14 | FALAW State Championships | Ft. Lauderdale, Fla. | All Day |
| Nov. 20-21 | AIAW Region III Championship | Tallahassee, Fla. | All Day |
| Dec. 10-12 | AIAW National Championships | Tallahassee, Fla. | All Day |

All home matches are played at Tully Gymnasium.

Women's Volleyball Staff

118 N. Woodward Avenue

| | |
|-----------------------------------|----------|
| Cecile Reynaud, Head Coach | 644-1216 |
| Joy Becker, Assistant Coach | 644-1216 |
| Tammy Sexton, Secretary | 644-1216 |

Women's Athletic Staff

Tully Gymnasium

| | |
|--|----------|
| Barbara Palmer, Women's Athletic Director | 644-2087 |
| Jo Heath, Administrative Assistant | 644-1013 |
| Terry Hume, Administrative Assistant | 644-1441 |
| Trudy Raybun, Academic Counselor | 644-1258 |
| Janice Yecco, Special Events Coordinator | 644-2087 |
| Judy Spainhour, Equipment/Travel Coordinator | 644-2087 |
| Nancy Watson, Athletic Trainer | 644-5017 |
| Tamra Oliner, Athletic Trainer | 644-5017 |
| Charlotte Glover Secretary | 644-2087 |
| Edith Yancey, Secretary | 644-1441 |

Sports Information Staff

113 Wildwood Avenue

| | |
|---|----------|
| Mark Carlson, Director | 644-4038 |
| Glenn Greenspan, Assistant Director | 644-4038 |
| Lisa Morton, Assistant Director | 644-4038 |
| Judy Greve, Secretary | 644-4038 |

All Area Codes are 904

Media Information

Florida State's 1981 Volleyball Guide has been designed for use by the media, prospective athletes and friends of the University. Any questions not covered in this brochure may be directed to the Sports Information Office, 113 Wildwood Avenue, Florida State University, Tallahassee, Florida 32306. Additional information, such as feature material and photos, will be provided to the media upon request.

On the Cover

The cover shot was photographed by freelance photographer Courtland Richards at the Florida State University Reservation.

Credits

The 1981 Volleyball Guide was compiled by Assistant Sports Information Director Lisa Morton. All photography was the work of the University Photo Lab and freelance photographer Courtland Richards.

1981 Florida State VOLLEYBALL GUIDE

Table of Contents

| | |
|-------------------------------------|-------|
| Staff Directory | IFC |
| Fingertip Facts | 1 |
| 81 Outlook | 2 |
| Coaching Staff | 3 |
| Player Profiles | 4-7 |
| Statistics | 8-9 |
| Rosters | 10 |
| Year by Year Results | 11-13 |
| Year by Year Records | 13 |
| Series Records with Opponents | 14 |
| Women's Athletic Director | 15 |
| This is Florida State | 16 |
| Schedule | BC |

Florida State Fingertip Facts

| | |
|----------------------------|--------------------------|
| Location | Tallahassee, Fla. |
| Enrollment | 22,500 |
| Founded | 1857 |
| Nickname | Seminoles |
| Colors | Garnet and Gold |
| University President | Dr. Bernard F. Slinger |
| Athletic Director | C. W. "Hootie" Ingram |
| Home Court | Tully Gymnasium (3,000) |
| Conference | Metro |
| Other Affiliations | AIAW (Region III), FAIAW |

1981 Volleyball Outlook

Last season, Florida State recorded a 43-14-1 record, best in the school's history. The Seminoles finished first in the state of Florida. Unfortunately, that's where the season ended for head coach Cecile Reynaud's squad as it finished third in the region and broke a two year string of attendance at the national tournament.

That's why Reynaud is anxious to get the season underway. She wants to get back to the familiar ways that have made Florida State a Southern power.

"We've had a one year absence from the national tournament," says Reynaud, "and that's where we want it to end. We're looking forward to a good season with hopes of getting back into the national limelight."

Gone from last year's squad are three letterwinners, including three-year MVP Margie Wessel, but Reynaud has more than balanced the losses with the acquisition of two fine freshmen.

Five players who were starters at one time or another in '80 return to form the nucleus of the Seminole team. Foremost is all-state and all-region selection Alicia Cross, who will be a junior when the season begins. A two-year starter, Cross has developed into a fine all-around player in addition to being the Tribe's number one spiker.

Most Cross spikes are at the end of sets from Marie Sanders. As a freshman, Sanders set the school record for assists, was elected to every all-tournament team and earned all-state and all-Metro honors.

Joining Cross and Sanders from last year's lineup are senior Rhonda Petty and sophomores Shannon Lages and Sally Summer. Summer was an all-around player while Lages and Petty provided power at the net.

Juniors Camy Davies and Julie Brown also saw much action. While Davies was used as a defensive specialist, Brown — the squad's tallest player at 6-1 — became a force at the net and will be a contender for a starting slot this fall.

Rounding out the experienced corp are senior setter Barbara Mellen and red-shirt Joy Blanchard.

"We have a great group returning," says the sixth year coach. "We lost a lot of leadership but we think that our new group of seniors can pick up the responsibility in that area. We had an excellent USVBA season with these young ladies — we won two major tournaments and won two matches at the national championship. We think that's a good indication of good things to come for us."

Reynaud spent much of her recruiting season seeking out height for the Seminole front line. "We would have liked to sign a few BIG girls," she says, "but we're happy to have signed two outstanding talents who have quickness and international experience."

Freshmen-to-be Karyn Palgut and Carol Forsten are two reasons why Reynaud is happy. Palgut is a 5-8 springboard while Forsten, a native of Australia, brings international experience to Florida State. Gloria McIntosh, a junior transfer from Ontario, should also figure in the Seminole plans.

International competition is in store for the Seminoles as they will entertain the Brazilian Junior National team in an exhibition match to kick off the home season. The Florida State Invitational will also come early in the season in Tallahassee and in November, FSU will play host to the AIAW Region III tournament: For the first time FSU will hold the AIAW Division I Nationals on its campus in December.

"This schedule is probably the toughest we've put together," says Reynaud. "On the road, we'll be taking part in the Alabama, Southwest Missouri State, Tennessee and LSU Invitionals. We'll see top midwest teams in the Southwest Missouri event and we also have some single games with folks like Kentucky, Georgia, Florida A&M, Central Florida and Ohio State."

A good season, especially against such a strong schedule, could catapult Florida State in the national limelight once again.

Head Volleyball Coach Cecile Reynaud

Cecile Reynaud, one of the veterans of Florida State's women's coaching staff, begins her sixth year at the helm of the FSU volleyball program.



During her tenure at Florida State, Reynaud has compiled a 160-74-1 record, a .683 winning percentage. Included have been three state championships, two regional championships and two national rankings. The highest ranking—18th—came in 1979.

Reynaud received her bachelor's degree in physical education from Southwest Missouri in 1975. While lettering four years in volleyball, she was on squads ranked as high as sixth nationally. Reynaud also lettered twice in field hockey and was named an Outstanding College Athlete in America twice.

After graduation in 1975, she taught physical education and coached four sports — softball, volleyball, basketball and track—at Steelville High School in Missouri. A year later, Keynaud was named head volleyball coach at Florida State. She completed her master's degree at FSU in 1978.

Reynaud is the director and head instructor of Florida State's annual summer volleyball camp. She also serves on the staff of Sports Camps International, a position which finds her traveling throughout the nation to instruct at numerous volleyball camps.

Last year, Reynaud was elected chairperson of Region III of the AIAW, and recently, she was elected to the National Volleyball Division I Committee.

REYNAUD'S RECORD AT FLORIDA STATE

| Year | Record | Pct. |
|----------------|-----------------|-------------|
| 1976 | 33-14-0 | .702 |
| 1977 | 25-13-0 | .658 |
| 1978 | 28-14-0 | .666 |
| 1979 | 31-19-0 | .620 |
| 1980 | 43-14-1 | .754 |
| Totals: | 160-74-1 | .683 |

Assistant Volleyball Coach Joy Becker

Joy Becker begins her second season as Florida State's assistant volleyball coach.



Becker came to Florida State from Maclay High School in Tallahassee where she taught and coached three sports — volleyball, basketball and softball.

During a five year period, Becker led her teams to three state championships, one state runner-up and 16 other championships. She was named Class A Coach of the Year three times in volleyball and basketball.

Becker received her associate's degree from Palm Beach Junior College and her bachelor's degree from Florida State in 1975.

While at Palm Beach, she played volleyball and softball for two years. She played softball one season at Florida State.

Seminole Profiles



JOY BLANCHARD
Senior, 5-5, Hitter/Setter, Charleston, S.C.

... two-year letterwinner at Florida State ... was redshirted last season due to a shoulder injury ... should be ready to see action when the '81 season commences ... was All-Sunshine region in USVBA volleyball two years ago ... attended Bishop England High School ... was all-area, all-conference and all-state as well as captain of the volleyball team there ... majoring in child development ...

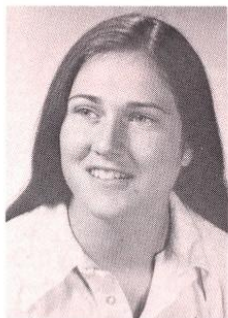
JULIE BROWN
Junior, 6-1, Hitter, Mobile, Ala.

... became a starter late in the 1980 collegiate season and improved tremendously during the USVBA season as a middle hitter/blocker ... also lettered as a freshman ... recorded 26 kills last year ... squad's tallest player ... attended Julius T. Wright High School where she was all-county in volleyball and basketball ... received the Golden Spike Award for volleyball ... a biology major ...

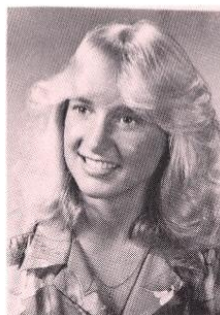


ALICIA CROSS
Junior, 5-10, Hitter, Indianapolis, Ind.

... leading returning spiker on FSU's roster ... had 188 kills in '80 ... named all-state and all-region and made several all-tournament teams ... extremely talented middle hitter/blocker ... a two-year starter at Florida State ... came out of a strong high school program at Ben Davis High School where she achieved all-county status in volleyball ... was also high school MVP ... majoring in physical education ...



Seminole Profiles



CAMY DAVIES
Junior, 5-4, Hitter/Defense, Coral Springs, Fla.

... played in 46 of the squad's 58 matches as a sophomore ... she lettered as a freshman too ... all-state defensive specialist ... had 18 defensive saves in '80 ... won the FSU intramural doubles crowns in racquetball, tennis and badminton ... named all-county in volleyball and served as captain for two years at Coral Springs High School ... father is a sales representative for Converse ... a public relations major ...

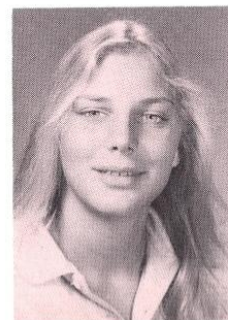
CAROL FORSTEN
Freshman, 5-8, Hitter, Somerton Park, Australia

... one of three newcomers to sign with Florida State ... and one of two foreigners on the team ... has participated in the World Cup tournament and the National Club Championships as a member of the Australian national team ... in 1979, she captained her high school team to the national championship and also served as captain for the national high school all-star team that year ... will provide much experience ...



SHANNON LAGES
Sophomore, 5-11, Hitter, Marietta, Ga.

... a part-time starter as a freshman ... was third on the team in kills (179) last season ... named to the Metro all-tournament team as FSU placed second in the event ... developing into a fine all-around player ... strong hitter who has played USVBA volleyball since junior high ... captained her high school volleyball squad and was MVP ... high school was district champ three years ... major is undecided ...



Seminole Profiles



GLORIA McINTOSH
Junior, 5-8, Mississauga, Ontario

... transferred to FSU from Sheridan College in Ontario where she played volleyball the last two seasons ... her team won their province championship ... MVP of that team as a freshman and captain of it both seasons ... attended Clarkson Secondary School where she played four sports as a prep ... the volleyball team won the region championship ... schoolmate there of Gale Grant, who is on FSU's track team ... majoring in physical education ...

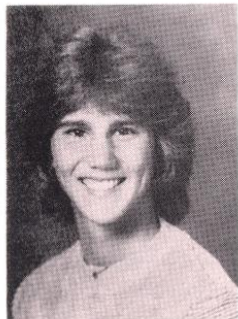
BARBARA MELLEEN
Senior, 5-6, Hitter/Setter, New City, N.Y.

... Florida State's number two setter ... recorded 113 setting assists last year in that role ... as a soph at FSU, led the team with 492 ... also a strong hitter at the net ... transferred to FSU after one year at West Chester Community College ... a lefty ... attended Clarkstown North High School where she was all-county in volleyball two seasons ... majoring in biology at Florida State ...



KARYN PALGUT
Freshman, 5-8, Hitter, Broadview Heights, Ohio

... Cecile Reynaud's first signee for '81 ... plays the front line where she has great leaping ability ... attended Becksville High School where she led her team to three consecutive Pioneer Conference championships and a second place finish in the state in 1980 ... selected 1980 Northern Ohio Player of the Year ... also a fine basketball player ... plans to major in physical education ...



Seminole Profiles

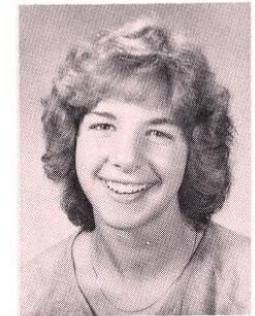


RHONDA PETTY
Senior, 5-8, Hitter, Peoria, Ill.

... had 149 kills last season as a part-time starter for the Seminoles ... also had 39 blocks at the net ... strong left side hitter ... has a 28-inch vertical jump ... came to Florida State from Illinois Central Community College ... lettered in basketball, track and volleyball at Manual High School before attending Illinois Central ... majoring in physical education ...

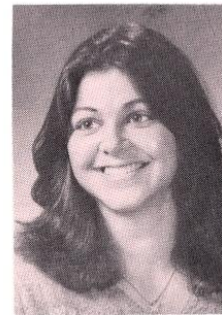
MARIE SANDERS
Sophomore, 5-4, Setter, LaPorte, Ind.

... had an excellent freshman season ... named to four all-tournament teams in '80 while breaking the school record for setting assists (565) ... was second in defensive saves with 40 ... asked to try out for the East team of the National Sports Festival ... won six letters at LaPorte High School ... two years all-conference and also conference MVP ... major is undecided ...



SALLY SUMMER
Sophomore, 5-8, Hitter, Miami, Fla.

... provided leadership as a freshman starter ... a fine all-around player ... was fourth on the team in kills (150) and third in defensive saves (37) ... teamed up with Camy Davies to win FSU's intramural doubles in badminton, tennis and racquetball ... attended North Miami High School .. Carnation Prep All-American in volleyball ... won 15 letters ... was her high school's scholar athlete ... a communications major ...

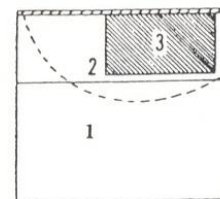


1980 FINAL VOLLEYBALL STATISTICS

| Name | Matches | Games | Serve Receive (No., Pct.) | Serve (No., Pct.) | Attack (No., Pct.) | Kills | BHE | Def. Saves | Solo Blocks | Assist Blocks | Block Errors | Set Assists |
|--------------------|-----------|------------|---------------------------|-------------------|--------------------|-------------|------------|------------|-------------|---------------|--------------|-------------|
| Joy Blanchard | 5 | 6 | 1/.000 | 22/.660 | 5/.800 | 4 | 0 | 1 | 0 | 0 | 0 | 21 |
| Julie Brown | 28 | 50 | 2/.750 | 9/.610 | 42/.480 | 26 | 10 | 2 | 2 | 0 | 0 | 0 |
| Alicia Cross | 53 | 119 | 95/.540 | 178/.480 | 293/.520 | 188 | 78 | 26 | 23 | 45 | 12 | 19 |
| Camy Davies | 46 | 90 | 43/.620 | 35/.410 | 10/.400 | 0 | 10 | 18 | 0 | 0 | 0 | 5 |
| Jamie Kuhn | 27 | 40 | 25/.400 | 22/.440 | 36/.060 | 11 | 5 | 3 | 0 | 0 | 0 | 0 |
| Shannon Lages | 42 | 80 | 97/.530 | 234/.500 | 365/.360 | 179 | 69 | 12 | 6 | 16 | 7 | 8 |
| Barbara Mellen | 34 | 50 | 5/.750 | 66/.510 | 38/.470 | 21 | 37 | 7 | 0 | 1 | 1 | 113 |
| Rhonda Petty | 55 | 116 | 135/.530 | 162/.490 | 305/.320 | 149 | 57 | 19 | 6 | 33 | 13 | 6 |
| Marie Sanders | 53 | 116 | 0/.000 | 227/.540 | 44/.480 | 27 | 66 | 40 | 3 | 16 | 7 | 565 |
| Margaret Stephens | 30 | 41 | 14/.340 | 20/.610 | 3/.330 | 2 | 3 | 2 | 0 | 0 | 0 | 0 |
| Sally Summer | 57 | 130 | 231/.600 | 264/.450 | 296/.400 | 150 | 83 | 37 | 1 | 18 | 6 | 25 |
| Nancy Townsend | 39 | 84 | 62/.470 | 80/.450 | 144/.260 | 65 | 42 | 5 | 4 | 14 | 3 | 7 |
| Margie Wessel | 56 | 126 | 236/.600 | 189/.400 | 375/.420 | 200 | 84 | 44 | 2 | 20 | 6 | 27 |
| TEAM TOTALS | 58 | 134 | 946/.560 | 1508/.490 | 1956/.330 | 1022 | 544 | 216 | 47 | 163 | 55 | 796 |

Statistics Explanation

PASSING: Each athlete is rated on a four-point scale (4 is the highest score) for each pass she makes throughout the match (see chart).



SERVING: Efficiency is based on the difficulty of the opponents being able to pass the serve. An athlete is rated on a four-point scale (4 is the highest score) for the effectiveness of each serve (see chart).

PASSING: Efficiency
 4 = ball passed over net for side out
 3 = ball passed to shaded area #3
 2 = ball passed to #2 area
 1 = pass setter can't get to but a teammate sets
 0 = pass resulting in point for opponent
 *Formula: total points/attempts ÷ 4 = efficiency percentage

SERVING: Efficiency
 4 = ace or directly resulting in point
 3 = opponent passes it but setter is unable to set it
 2 = opponent passes it to #2 area
 1 = opponent passes it to #3 area
 0 = illegal serve
 *Formula: total points/attempts ÷ 4 = efficiency percentage

Definitions

Kill: A spike that directly results in a point or side out for the player's own team.

Attack: A spike that went into the court, but was not a kill.

Defensive Save: Saving a hard spike or dink which would have otherwise hit the floor.

Ball Handling Error (BHE): Any play after the initial serve reception where the player is called for an illegal set, pass, double hit or illegal lift.

Solo Block: A block at the net by one person on a spiking attempt that results directly in a point or side out for the blocker's team.

Assist Block: When two or three people combine to block a ball for a point or side out.

Block Error: A net violation during the course of a blocking action that causes a point or sideout.

Set Assist: A set for an attacker which directly results in a point or side out for the player's own team.

Florida State Volleyball Numerical Roster

| No. | Name | Position | Hgt. | Cl. | Hometown |
|-----|-----------------|---------------|------|-----|--------------------------|
| 1 | Camy Davies | Defense | 5-4 | Jr. | Coral Springs, Fla. |
| 2 | Joy Blanchard | Hitter/Setter | 5-5 | Sr. | Charleston, S.C. |
| 3 | Marie Sanders | Setter | 5-4 | So. | LaPorte, Ind. |
| 5 | Karyn Palgut | Hitter | 5-8 | Fr. | Broadview Hghts., Ohio |
| 6 | Carol Forsten | Hitter | 5-8 | Fr. | Somerton Park, Australia |
| 7 | Alicia Cross | Hitter | 5-10 | Jr. | Indianapolis, Ind. |
| 8 | Barbara Mellen | Hitter/Setter | 5-6 | Sr. | New City, N.Y. |
| 10 | Rhonda Petty | Hitter | 5-8 | Sr. | Peoria, Ill. |
| 11 | Julie Brown | Hitter | 6-1 | Jr. | Mobile, Ala. |
| 13 | Shannon Lages | Hitter | 5-11 | So. | Marietta, Ga. |
| 14 | Sally Summer | Hitter | 5-8 | So. | Miami, Fla. |
| 15 | Gloria McIntosh | Hitter | 5-8 | Jr. | Mississauga, Ontario |

Florida State Volleyball Alphabetical Roster

| No. | Name | Position | Hgt. | Cl. | Hometown |
|-----|-----------------|---------------|------|-----|--------------------------|
| 2 | Joy Blanchard | Hitter/Setter | 5-5 | Sr. | Charleston, S.C. |
| 11 | Julie Brown | Hitter | 6-1 | Jr. | Mobile, Ala. |
| 7 | Alicia Cross | Hitter | 5-10 | Jr. | Indianapolis, Ind. |
| 1 | Camy Davies | Defense | 5-4 | Jr. | Coral Springs, Fla. |
| 6 | Carol Forsten | Hitter | 5-8 | Fr. | Somerton Park, Australia |
| 13 | Shannon Lages | Hitter | 5-11 | So. | Marietta, Ga. |
| 15 | Gloria McIntosh | Hitter | 5-8 | Jr. | Mississauga, Ontario |
| 8 | Barbara Mellen | Hitter/Setter | 5-6 | Sr. | New City, N.Y. |
| 5 | Karyn Palgut | Hitter | 5-8 | Fr. | Broadview Hgts., Ohio |
| 10 | Rhonda Petty | Hitter | 5-8 | Sr. | Peoria, Ill. |
| 3 | Marie Sanders | Setter | 5-4 | So. | LaPorte, Ind. |
| 14 | Sally Summer | Hitter | 5-8 | So. | Miami, Fla. |

Year by Year Volleyball Results

1976 — (33-14)

Coach: Cecile Reynaud

MUW Invitational

| | | |
|-----------------|---|--------------------|
| Louisiana State | L | 2-15, 15-7, 14-16 |
| Montevallo | W | 15-3, 15-9 |
| North Alabama | W | 15-8, 15-12 |
| MUW | W | 15-0, 15-3 |
| Ole Miss | L | 13-15, 15-8, 9-15 |
| Berry College | W | 15-11, 6-15, 19-17 |

North Carolina-Greensboro Invitational

| | | |
|---------------------------|---|--------------------|
| Eastern Kentucky | W | 10-15, 15-5, 15-12 |
| North Carolina-Greensboro | W | 15-9, 14-16, 15-6 |
| George Washington | L | 11-15, 15-7, 10-15 |
| Miami-Dade C.C.-South | L | 3-15, 7-15 |
| Maryland | W | 15-3, 1-15, 15-13 |
| Illinois-Chicago Circle | L | 5-15, 3-15 |

Florida State Invitational (3rd place)

| | | |
|----------------------------|---|---------------------|
| Auburn | W | 15-13, 15-9 |
| MUW | W | 17-15, 15-13 |
| North Carolina-Chapel Hill | W | 11-15, 15-10, 15-13 |
| Flagler College | W | 15-4, 15-9 |
| Central Florida | W | 15-9, 15-9 |
| Alabama | L | 10-15, 11-15 |
| MUW | L | 15-7, 8-15, 13-15 |

Georgia Invitational (1st place)

| | | |
|-----------------------|---|--------------------|
| Auburn | W | 10-15, 15-6, 15-9 |
| West Georgia College | W | 15-6, 15-11 |
| Tennessee-Chattanooga | W | 15-11, 15-2 |
| Berry College | L | 15-1, 6-15, 6-15 |
| South Carolina | W | 15-7, 13-15, 15-11 |
| Mississippi State | W | 15-7, 15-10 |
| Berry College | W | 18-16, 15-4 |

West Georgia College Invitational (2nd place)

| | | |
|-----------------------|---|-------------------|
| Tuskegee Institute | W | 15-1, 15-6 |
| Tennessee-Knoxville | W | 6-15, 15-6, 16-14 |
| Florida International | L | 11-15, 12-15 |
| Tennessee-Knoxville | W | 15-5, 15-8 |
| MUW | L | 16-18, 11-15 |
| South Florida | W | 15-8, 15-5 |
| Tennessee-Knoxville | W | 15-6, 15-4 |
| Florida International | W | 15-8, 15-13 |
| MUW | L | 14-16, 7-15 |

Flagler College Invitational (2nd place)

| | | |
|-----------------------|---|-------------------|
| Lake City C.C. | W | 15-8, 15-8 |
| Central Florida | W | 15-4, 15-12 |
| Miami Dade C.C. North | W | 15-12, 6-15, 15-2 |
| South Florida | W | 15-5, 15-5 |
| Jacksonville | W | 15-3, 15-12 |
| Flagler College | W | 15-8, 15-12 |
| Miami-Dade C.C. South | L | 15-17, 7-15 |

State Tournament (Large College) (2nd place)

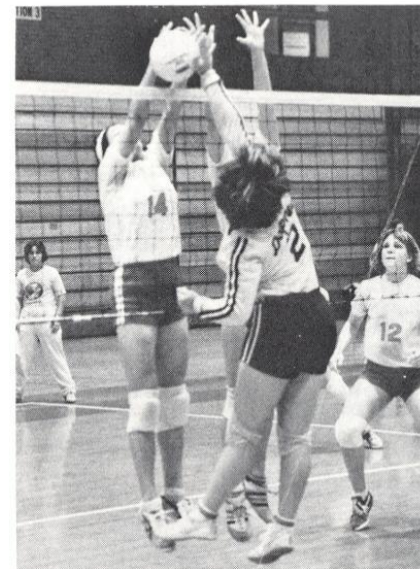
| | | |
|-----------------------|---|--------------------|
| Florida | W | 15-0, 15-7 |
| Florida International | L | 7-15, 9-15 |
| Florida | W | 15-3, 9-15, 15-1 |
| Florida International | W | 13-15, 15-3, 15-13 |
| Florida International | L | 6-15, 8-15 |

1977 — (25-13)

Coach: Cecile Reynaud

MUW Invitational

| | | |
|------------------|---|--------------------|
| Nicholls State | W | 16-14, 10-15, 15-9 |
| Ole Miss | W | 7-15, 17-15, 15-8 |
| Columbus College | W | 15-2, 15-10 |
| Alabama | L | 10-15, 3-15 |
| MUW | L | 15-6, 10-15, 11-15 |
| Louisiana State | L | 1-15, 11-15 |



New Orleans Invitational (3rd place)

| | | |
|--------------------|---|-------------------|
| South Alabama | W | 15-8, 15-5 |
| Tulane | W | 15-8, 15-13 |
| SW Louisiana | W | 15-8, 15-6 |
| NW Louisiana State | L | 15-1, 9-15, 15-3 |
| Central Florida | L | 8-15, 15-13, 4-15 |
| Nicholls State | W | 15-5, 15-3 |

Florida State University (5th place)

| | | |
|-----------------------|---|---------------------|
| Georgia | W | 16-14, 15-10 |
| Central Florida | L | 6-15, 4-15 |
| Tennessee-Chattanooga | W | 15-10, 15-3 |
| South Carolina | L | 11-15, 15-11, 12-15 |
| Miami-Dade C.C. South | L | 10-15, 2-15 |

Georgia Invitational (3rd place)

| | | |
|-----------------------|---|-------------------|
| South Carolina | L | 9-15, 15-7, 8-15 |
| West Georgia College | W | 15-10, 15-0 |
| Tennessee-Chattanooga | W | 15-13, 15-11 |
| Georgia State | W | 15-4, 15-7 |
| Mississippi State | W | 15-8, 15-17, 15-4 |
| College of Charleston | L | 12-15, 15-7, 7-15 |

West Georgia College Invitational (2nd place)

| | | |
|-------------------|---|------------------|
| Valdosta State | W | 15-2, 15-4 |
| Milligan College | W | 15-3, 15-7 |
| Georgia | W | 9-15, 15-2, 15-7 |
| Appalachian State | W | 15-11, 15-2 |
| East Tennessee | W | 15-9, 15-1 |
| South Carolina | L | 15-17, 9-15 |

State Tournament (1st place)

| | | |
|---------------|---|---------------------|
| Florida | W | 10-15, 15-3, 15-7 |
| South Florida | W | 15-11, 10-15, 15-13 |
| South Florida | W | 2-15, 15-11, 17-15 |

Regional Tournament (4th place)

| | | |
|-------------------|---|---------------------------------|
| Mississippi State | W | 15-1, 15-10 |
| Florida | W | 11-15, 15-10, 15-13 |
| Alabama | L | 9-15, 10-15 |
| South Florida | W | 15-12, 15-0, 11-15, 16-14 |
| Alabama | L | 3-15, 14-16, 15-11, 9-15 |
| MUW | L | 10-15, 13-15, 15-5, 15-7, 17-19 |

1978 — (28-14)

Coach: Cecile Reynaud

MUW Invitational

| | | |
|------------------|---|--------------------------------|
| Arkansas State | L | 15-5, 17-19, 15-17 |
| Columbus College | W | 15-1, 15-0 |
| Memphis State | W | 15-11, 15-3 |
| MUW | W | 15-2, 15-11 |
| New Orleans | W | 15-3, 15-13 |
| Ole Miss | L | 10-15, 15-8, 3-15, 15-5, 11-15 |

Miami Dade Invitational (2nd place)

| | | |
|-----------------------|---|---------------------|
| Florida Southern | W | 16-14, 15-10 |
| South Florida | W | 15-10, 15-7 |
| Miami-Dade C.C. South | W | 11-15, 16-14, 17-15 |
| South Florida | L | 12-15, 15-9, 15-9 |
| Miami Dade C.C. South | W | 7-15, 15-6, 15-12 |
| Central Florida | L | 14-16, 5-15 |
| Central Florida | W | 15-6, 16-14 |
| Central Florida | L | 9-15, 7-15 |

Florida State Invitational

| | | |
|---------------------|---|-------------------|
| New Orleans | W | 15-3, 15-5 |
| Florida Southern | W | 16-14, 15-6 |
| South Carolina | W | 16-14, 15-13 |
| Tennessee-Knoxville | L | 12-15, 8-15 |
| Miami | W | 15-3, 15-4 |
| South Carolina | L | 15-7, 8-15, 10-15 |

SW Missouri State Invitational

| | | |
|-------------------|---|---------------------|
| Illinois State | W | 15-12, 15-12 |
| Texas A & M | W | 15-10, 16-14 |
| Cincinnati | W | 15-11, 15-11 |
| Nebraska | L | 12-15, 15-10, 12-15 |
| North Texas State | L | 5-15, 10-15 |

Alabama Invitational

| | | |
|------------|---|--------------------------------|
| Alabama | L | 7-15, 10-15, 11-15 |
| Ole Miss | W | 5-15, 15-12, 15-8, 15-11 |
| Cincinnati | W | 15-12, 15-11, 15-12 |
| MUW | W | 15-6, 11-15, 8-15, 15-10, 15-5 |

State Tournament (1st place)

| | | |
|---------------|---|-------------------|
| South Florida | W | 15-5, 7-15, 15-9 |
| Miami | W | 15-4, 15-9 |
| Florida | W | 15-5, 13-15, 15-7 |

Regional Tournament (1st place)

| | | |
|-------------------|---|----------------------------------|
| Georgia State | W | 15-4, 15-4 |
| Mississippi State | W | 15-9, 15-2 |
| Alabama | W | 15-3, 15-2 |
| Alabama | W | 15-13, 15-13, 15-4 |
| Ole Miss | W | 15-12, 10-15, 15-11, 13-15, 15-2 |

National Tournament

| | | |
|-------------------|---|--------------------|
| SW Missouri State | L | 15-12, 11-15, 6-15 |
| Arizona | L | 11-15, 16-14, 1-15 |
| Texas A & M | L | 9-15, 8-15 |
| Pepperdine | L | 5-15, 15-12, 3-15 |
| UCLA | L | 2-15, 15-12, 7-15 |

1979 — (31-19)

Coach: Cecile Reynaud

Alabama Invitational (3rd place)

| | | |
|-----------------|---|-------------------|
| South Carolina | W | 15-10, 3-15, 15-8 |
| MUW | W | 15-12, 15-7 |
| Central Florida | L | 2-15, 15-7, 8-15 |
| Miami | W | 15-10, 16-14 |
| Alabama | L | 9-15, 11-15 |
| Oklahoma | W | 15-7, 7-15, 16-14 |

MUW Invitational (1st place)

| | | |
|----------------|---|-------------|
| Arkansas State | W | 15-10, 15-6 |
| SE Louisiana | W | 15-4, 15-5 |
| Nicholls State | W | 15-6, 20-18 |

| | | |
|---------------|---|--------------------------|
| MUW | W | 15-8, 15-12 |
| Memphis State | W | 15-8, 13-15, 15-12, 15-8 |
| Alabama | W | 15-7, 15-6, 15-10 |

Central Florida Invitational

| | | |
|-----------------------|---|--------------------------|
| Oklahoma | L | 9-15, 12-15 |
| Alabama | L | 11-15, 15-8, 5-15 |
| Miami-Dade C.C. South | L | 8-15, 11-15 |
| Louisiana State | W | 15-6, 13-15, 15-13 |
| Auburn | W | 15-5, 15-7 |
| Central Florida | L | 7-15, 6-15 |
| Miami | L | 9-15, 15-10, 14-16 |
| North Florida J.C. | W | 15-2, 15-5, 14-16, 15-12 |
| Lake City C.C. | W | 15-8, 15-5, 15-11 |

Florida State Invitational (3rd place)

| | | |
|----------------------------|---|---------------------|
| South Florida | W | 15-8, 15-7 |
| Auburn | W | 15-6, 15-10 |
| North Carolina-Chapel Hill | W | 15-10, 10-15, 15-12 |
| Florida Southern | W | 15-8, 15-6 |
| Miami | L | 12-15, 15-7, 12-15 |
| North Carolina-Chapel Hill | W | 15-11, 15-12 |
| South Alabama | W | 15-5, 16-14 |
| Gulf Coast C.C. | W | 15-1, 15-5 |

SW Missouri State Invitational

| | | |
|--------------------|---|--------------------|
| SW Missouri State | L | 2-15, 3-15 |
| Houston | L | 5-15, 13-15 |
| Iowa State | W | 15-1, 15-6 |
| Minnesota | L | 15-9, 12-15, 7-15 |
| Cincinnati | L | 11-15, 9-15 |
| Gulf Coast C.C. | W | 15-2, 15-2 |
| North Florida J.C. | W | 15-8, 15-2, 15-1 |
| Lake City C.C. | W | 15-11, 15-0, 18-16 |

State Tournament (2nd place)

| | | |
|-------|---|--------------------|
| Miami | L | 10-15, 14-16, 7-15 |
|-------|---|--------------------|

Regional Tournament (1st place)

| | | |
|-------------------|---|---------------------|
| Georgia | W | 6-15, 15-7, 15-6 |
| Alabama | L | 13-15, 15-13, 12-15 |
| Mississippi State | W | 15-6, 15-11 |
| Alabama | W | 15-13, 15-6 |
| Miami | L | 9-15, 18-16, 8-15 |
| Alabama | W | 14-16, 15-11, 15-10 |
| Miami | W | 15-9, 4-15, 15-9 |
| Miami | W | 8-15, 15-6, 15-12 |
| Brigham Young | L | 16-14, 7-15, 7-15 |
| Houston | L | 9-15, 8-15 |
| UCLA | L | 9-15, 5-15 |
| Purdue | L | 14-16, 14-16 |

1980 — (43-14-1)

Coach: Cecile Reynaud

| | | |
|----------------------|---|-------------------------|
| Tennessee | L | 15-4, 7-15, 10-15, 8-15 |
| Alabama Invitational | | |
| Central Florida | L | 8-15, 8-15 |
| Texas Tech | W | 15-6, 10-15, 15-10 |
| Alabama-Birmingham | W | 15-9, 15-4 |
| Memphis State | L | 13-15, 8-15 |

Metro Conference Tournament (2nd Place)

| | | |
|------------------------|---|---------------------|
| Louisville | W | 15-7, 15-9 |
| Virginia Tech | W | 13-15, 15-4, 15-2 |
| Memphis State | W | 15-8, 15-9 |
| St. Louis | L | 17-15, 12-15, 11-15 |
| Tulane | W | 15-11, 16-14 |
| Cincinnati | W | 15-6, 16-14 |
| Memphis State | W | 10-15, 15-10, 15-10 |
| St. Louis | L | 12-15, 15-7, 6-15 |
| Flagler College | W | 15-1, 15-2 |
| Jacksonville | W | 15-4, 15-9 |
| Florida Junior College | W | 15-1, 15-1 |

Central Florida Invitational (4th Place)

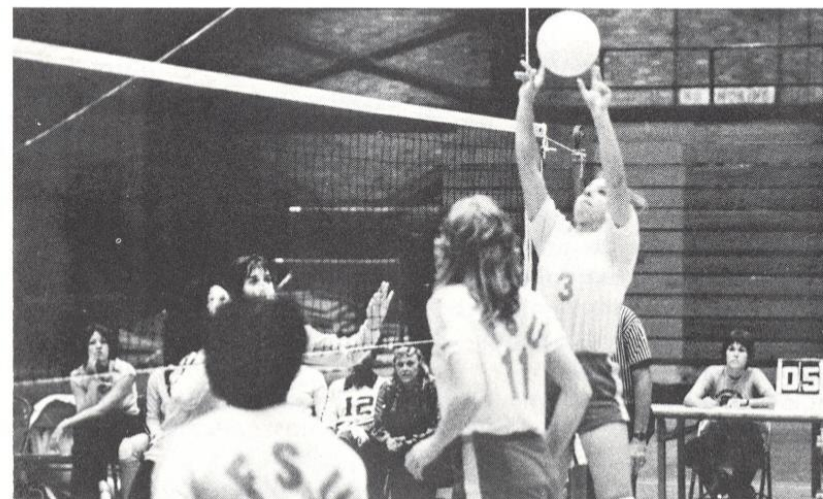
| | | |
|-----------------------|---|--------------|
| Florida International | L | 10-15, 9-15 |
| Miami | W | 15-10, 15-7 |
| Central Florida | W | 15-11, 15-10 |

| | | |
|--|---|--------------------|
| South Carolina-Spartanburg | W | 15-2, 15-2 |
| Louisiana State | W | 15-7, 15-4 |
| Miami | L | 10-15, 13-15 |
| Louisiana State | W | 15-13, 15-5 |
| Alabama | L | 10-15, 7-15 |
| South Alabama | W | 15-4, 15-1 |
| Lake City Community College | W | 15-7, 15-6 |
| Florida State Invitational (2nd Place) | | |
| MUW | W | 15-10, 15-9 |
| South Florida | W | 15-0, 15-2 |
| Oklahoma State | W | 15-6, 15-7 |
| Jacksonville | W | 15-0, 15-5 |
| Miami | W | 15-13, 17-15 |
| Tennessee | L | 15-8, 3-15, 11-15 |
| South Alabama | W | 15-12, 15-12, 15-9 |
| Jacksonville Invitational (1st Place) | | |
| Lake City Community College | W | 15-5, 15-9 |
| Central Florida | W | 16-14, 15-11 |
| Miami | T | 15-6, 10-15, (tie) |
| Montevallo | W | 15-0, 15-4 |
| Winthrop College | W | 15-6, 15-11 |
| Winthrop College | W | 16-14, 15-2 |

| | | |
|--------------------------------|---|--------------------------|
| Central Florida | W | 15-0, 15-5 |
| Miami | W | 17-15, 10-15, 15-7 |
| Miami Invitational (3rd Place) | | |
| Florida Southern | W | 15-8, 16-14 |
| Florida International | W | 9-15, 16-14, 15-3 |
| Central Florida | W | 15-1, 15-3 |
| Miami | L | 10-15, 15-3, 8-15 |
| Miami Dade South | W | 15-7, 15-12 |
| Miami | L | 6-15, 8-15 |
| Jacksonville | W | 15-6, 15-4, 15-5 |
| Lake City Community College | W | 15-5, 15-11, 15-11 |
| Florida Junior College | W | 15-2, 15-10 |
| Florida A & M | W | 15-1, 16-14 |
| State Tournament (1st Place) | | |
| Miami | W | 15-10, 9-15, 15-8, 16-14 |
| AIAW Regionals (3rd Place) | | |
| South Alabama | W | 15-5, 15-5 |
| Auburn | W | 15-1, 15-2 |
| Ole Miss | L | 15-1, 9-15, 14-16 |
| Ole Miss | W | 15-8, 15-8 |
| Alabama | L | 14-16, 15-11, 11-15 |
| Miami | L | 13-15, 4-15 |

YEAR BY YEAR RECORDS

| Year | Coach | MVP | Record | Pct. |
|---------------|----------------|---------------|-----------------|-------------|
| 1976 | Cecile Reynaud | Pam Griffin | 33-14-0 | .702 |
| 1977 | Cecile Reynaud | Terry Hume | 25-13-0 | .658 |
| 1978 | Cecile Reynaud | Margie Wessel | 28-14-0 | .666 |
| 1979 | Cecile Reynaud | Margie Wessel | 31-19-0 | .620 |
| 1980 | Cecile Reynaud | Margie Wessel | 43-14-1 | .754 |
| Totals | | | 160-74-1 | .683 |



SERIES RECORDS WITH OPPONENTS

| School | Won | Lost | Last Mtg. |
|---------------------------------|-----|------|-----------|
| Alabama | 5 | 10 | 1980 |
| Alabama-Birmingham | 1 | 0 | 1980 |
| Appalachian State | 1 | 0 | 1977 |
| Arizona | 0 | 1 | 1978 |
| Arkansas State | 1 | 1 | 1979 |
| Auburn | 5 | 0 | 1980 |
| Berry College | 2 | 1 | 1976 |
| Brigham Young | 0 | 1 | 1979 |
| Central Florida | 6 | 7 | 1980 |
| Cincinnati | 3 | 1 | 1980 |
| College of Charleston | 0 | 1 | 1977 |
| Columbus College | 2 | 0 | 1978 |
| Eastern Kentucky | 1 | 0 | 1976 |
| East Tennessee State | 1 | 0 | 1977 |
| Flagler College | 3 | 0 | 1980 |
| Florida | 5 | 0 | 1978 |
| Florida International | 4 | 4 | 1980 |
| Florida Southern College | 4 | 0 | 1980 |
| Florida A & M | 1 | 0 | 1980 |
| Florida Junior College | 2 | 0 | 1980 |
| George Washington | 0 | 1 | 1976 |
| Georgia | 3 | 0 | 1979 |
| Georgia State | 2 | 0 | 1978 |
| Gulf Coast Community College | 2 | 0 | 1979 |
| Houston | 0 | 2 | 1979 |
| Illinois-Chicago Circle | 0 | 1 | 1976 |
| Illinois State | 1 | 0 | 1978 |
| Iowa State | 1 | 0 | 1979 |
| Jacksonville | 4 | 0 | 1976 |
| Lake City Community College | 6 | 0 | 1980 |
| Louisiana State | 3 | 2 | 1980 |
| Louisville | 1 | 0 | 1980 |
| Maryland | 1 | 0 | 1976 |
| Memphis State | 4 | 1 | 1980 |
| Miami | 9 | 8 | 1980 |
| Miami Dade C.C.-North | 1 | 0 | 1976 |
| Miami Dade C.C.-South | 3 | 4 | 1980 |
| Milligan College | 1 | 0 | 1977 |

Bold type denotes 1981 opponents

| School | Won | Lost | Last Mtg. |
|-----------------------------------|-----|------|-----------|
| Minnesota | 0 | 1 | 1979 |
| Mississippi | 4 | 3 | 1980 |
| Mississippi State | 5 | 0 | 1979 |
| MUW | 7 | 5 | 1980 |
| Montevallo | 2 | 0 | 1980 |
| Nebraska | 0 | 1 | 1978 |
| New Orleans | 2 | 0 | 1978 |
| Nicholls State | 3 | 0 | 1979 |
| North Alabama | 1 | 0 | 1976 |
| North Carolina-Chapel Hill | 3 | 0 | 1979 |
| North Carolina-Greensboro | 1 | 0 | 1976 |
| North Florida Junior College | 2 | 0 | 1979 |
| North Texas State | 0 | 1 | 1978 |
| Northwestern Louisiana | 1 | 0 | 1977 |
| Oklahoma | 1 | 1 | 1979 |
| Oklahoma State | 1 | 0 | 1980 |
| Pepperdine | 0 | 1 | 1978 |
| Purdue | 0 | 1 | 1979 |
| South Alabama | 5 | 0 | 1980 |
| South Carolina | 3 | 4 | 1979 |
| South Carolina-Spartanburg | 1 | 0 | 1980 |
| Southeastern Louisiana | 1 | 0 | 1979 |
| South Florida | 10 | 0 | 1980 |
| Southwestern Louisiana | 1 | 0 | 1977 |
| Southwest Missouri State | 0 | 2 | 1979 |
| St. Louis | 0 | 2 | 1980 |
| Tennessee-Chattanooga | 3 | 0 | 1977 |
| Tennessee-Knoxville | 3 | 3 | 1980 |
| Texas A & M | 1 | 1 | 1978 |
| Texas Tech | 1 | 0 | 1980 |
| Tulane | 2 | 0 | 1980 |
| Tuskegee Institute | 1 | 0 | 1976 |
| UCLA | 0 | 2 | 1979 |
| Valdosta State | 1 | 0 | 1977 |
| Virginia Tech | 1 | 0 | 1980 |
| West Georgia College | 2 | 0 | 1977 |
| Winthrop College | 2 | 0 | 1980 |

Women's Athletic Director Barbara Palmer

Determination. Dedication. Enthusiasm. Each of these words has been used to describe Florida State women's athletic director Barbara Palmer at one time or another. Never has one individual had such a dynamic impact on a program in such a short period of time.



Since Palmer was hired in August of 1977, Florida State has developed one of the top programs in the nation. Only one women's team at Florida State had a losing season last year while two other teams — softball and golf — won their respective national championships. The track team finished third in the nation, swimming finished 14th and cross country was 21st.

"It is and always has been our goal to build a national-caliber program here at Florida State," says Palmer. "We are committed to that goal and we will not accept anything short of it. But at the same time, we are concerned with the academic achievement of our athletes. We're building winners in all aspects of personal and professional growth."

Palmer's duties as athletic director include the hiring of coaches, preparation of budgets, monitoring of scheduling and travel and fund-raising.

The Lady Seminoles Booster Club is yet another area where Palmer has directed much of her energy. "The development of the Boosters Club has meant a great deal to our program," she says. "There are a lot of people out there interested in the Lady Seminoles and they let us know that. They're behind us 100 percent." Recently, the Boosters fund drive netted \$65,000 for women's athletics at Florida State.

Palmer is directly responsible for the funding Florida State will receive each year from the state for women's athletics, making Florida the first state in the nation to come into full compliance with Title IX. It was Palmer's lobbying that pushed the bill through the 1980 Legislature to make it law.

Additionally, she was instrumental in the hiring of full-time coaches for each of FSU's eight women's sports. More recently, full-time assistant coaches have been added to the growing staff.

Palmer joined the Florida State staff after serving four years as executive director of a private leisure education and recreation services organization. Prior to that, she served as administrator of Camp Indian Springs, program director for Wakulla County and recreation supervisor of Merritt Island.

A long time Tallahassee, Fla. resident, Palmer received her bachelor's degree in recreation from FSU in 1970 and earned her master's degree in leisure services and studies in 1974.

Palmer is presently the president of the southeast region, region III, of the AIAW.

THIS IS FLORIDA STATE

Florida State University—the home of more than 20,000 Seminoles—has a campus that starts at the top of one of Tallahassee's famed seven hills, and rolls gently downward and westward across 340-odd acres of pines, palms and pecan trees.

Founded in 1857 as the Seminary West of the Suwannee, its heritage is evidenced in the wide range of architectural struggles to preserve history and keep up with modern times and air conditioning. Yet it still ranks as one of the South's last, few bastions of campus greenery — the kind that combines the blossoms of camellias, azaleas and dogwoods with moss-hung oaks that are, in some cases, as old as the University itself, if not older.

From the Gothic towers of Westcott at the eastern entrance to the campus, to the modern glass and steel structures of its Science Complex to the west, Florida State University has moved forward in time and growth more rapidly than many of its newer counterparts in the State University System. Its enrollment has quadrupled since it became coeducational in 1947, following nearly half a century as the Florida State College for Women.

Today, its 14 schools and colleges are spread through \$150 million worth of buildings, its annual budget exceeds \$100 million and it attracts more than \$18 million a year in research contracts and grants. Students can pick and choose from more than 100 career options offered in arts and sciences, business, communication, criminology, dance, education, home economics, law, library science, music, nursing, social sciences, social work, theater and visual arts programs.

The location of FSU in the Capitol City of Florida offers unusual opportunities for study and research in the social and policy sciences, and an optimum environment for internships and on-the-job learning experiences for students in many fields of study.

A city within a city, Florida State has 1,200 faculty members, more than 6,000 additional employees and a construction program that will exceed \$50 million before the end of 1981.

