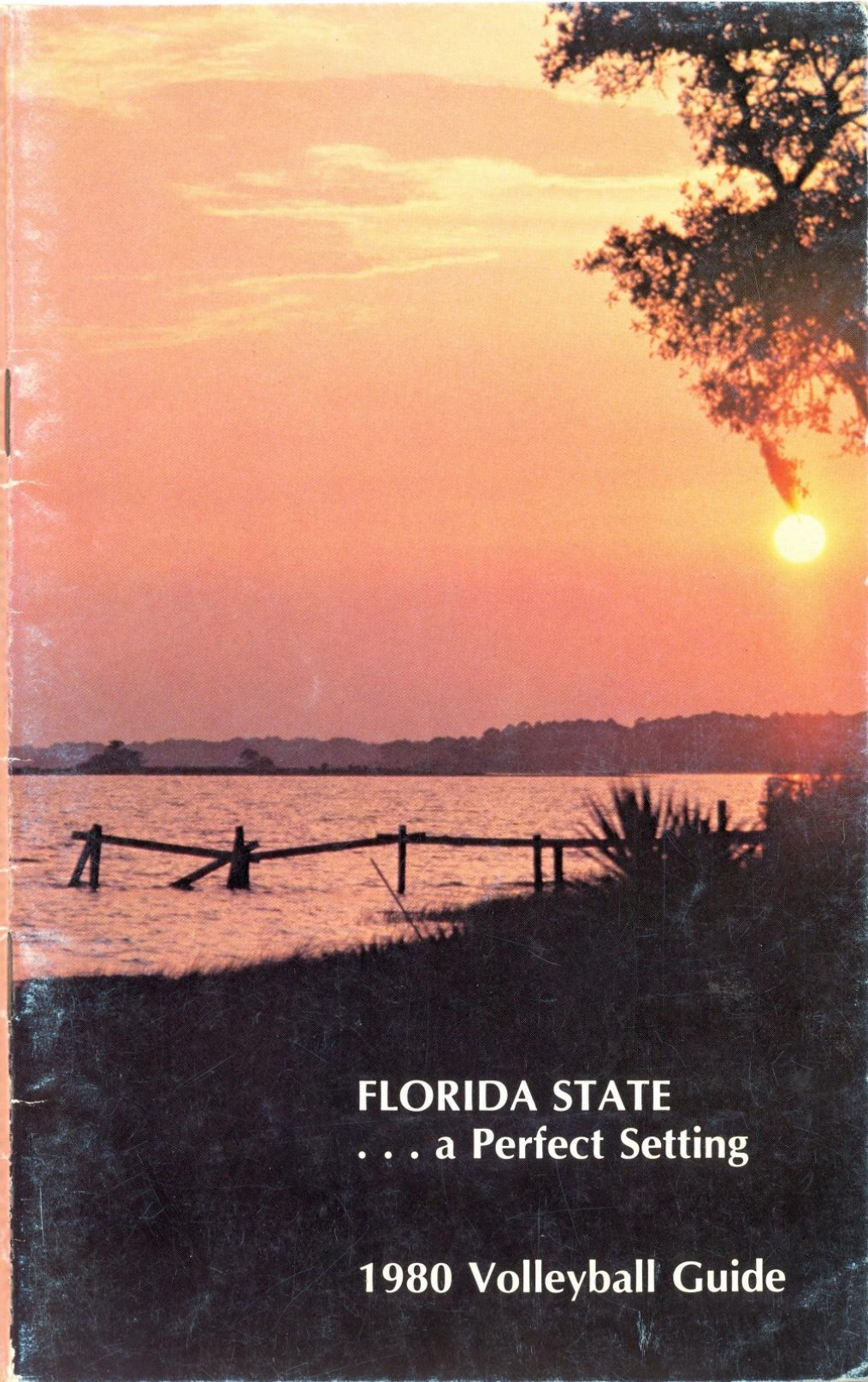


1980 FLORIDA STATE VOLLEYBALL SCHEDULE

<u>Date</u>	<u>Opponent</u>	<u>Site</u>	<u>Time</u>
Sept. 17	Tennessee	Knoxville, Tenn.	7:00 p.m.
19-20	Alabama Invitational	Tuscaloosa, Ala.	All day
26-27	Metro Conference Tournament	Memphis, Tenn.	All day
Oct. 1	Jacksonville	Jacksonville, Fla.	6:00 p.m.
	Flagler College		7:00 p.m.
3-4	Florida Junior College		8:00 p.m.
7	Central Florida Invitational		All day
	South Alabama		6:00 p.m.
10-11	Lake City Community College	Orlando, Fla.	All day
	Florida State Invitational	Tallahassee, Fla.	6:00 p.m. CST
16	South Alabama	Mobile, Ala.	All day
24-25	Jacksonville Invitational	Jacksonville, Fla.	All day
Oct. 31-Nov. 1	Miami Invitational	Miami, Fla.	All day
Nov. 4	Jacksonville	Tallahassee, Fla.	6:00 p.m.
5	Lake City Community College	Lake City, Fla.	7:00 p.m.
11	Florida Junior College	Tallahassee, Fla.	6:00 p.m.
	Florida A & M		
15	FAIAW State Championships	Lakeland, Fla.	1:00 p.m.
	(Florida Southern College)		
20-22	AIAW Region III Championships	Orlando, Fla.	All day
	(Central Florida)		
Dec. 11-13	AIAW National Championships	Santa Barbara, Cal.	All day
	(Univ. of California at Santa Barbara)		

All home matches are played at Tully Gymnasium.



FLORIDA STATE
... a Perfect Setting

1980 Volleyball Guide

VOLLEYBALL STAFF All Offices at 118 N. Woodward

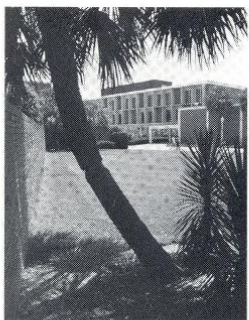
Head Coach	Cecile Reynaud
Assistant Coach	Joy Becker
Student Manager	Lee Camberg

ATHLETIC STAFF FOR WOMEN'S VOLLEYBALL All Offices in Tully Gymnasium

Phillip R. Fordyce, <i>Acting Athletic Director</i>	644-2790
Barbara Palmer, <i>Women's Athletic Director</i>	644-2087
Charlotte Glover, <i>Women's Athletics Secretary</i>	644-2087
Terry Hume, <i>Assistant To The Director</i>	644-1013
Trudy Raybun, <i>Academic Counselor</i>	644-1013
Judy Spainhour, <i>Equipment and Travel Manager</i>	644-6871
Lisa Morton, <i>Assistant Sports Information Director</i>	644-4038
Robin Gandler, <i>Student Trainer</i>	644-5107

All Area Codes are 904

FLORIDA STATE FINGERTIP FACTS



Location	Tallahassee, Fla.
Enrollment	22,000
Nickname	Seminoles
Colors	Garnet and Gold
University President	Bernard F. Sliger
Acting Athletic Director	Phillip R. Fordyce
Intercollegiate Sports	16
Women's Sports	8
Men's Sports	8

On the Cover: the cover photograph of a Florida countryside scene was shot by free lance photographer Paula Dean.

1980 FLORIDA STATE VOLLEYBALL GUIDE

published by the
Department of Intercollegiate Athletics
for media and friends of the University

TABLE OF CONTENTS

	Pages
Coaching Staff	3
Equipment	11
Florida State Fingertip Facts	Inside Front Cover
Outlook	2
Phone Directory	Inside Front Cover
Rosters (alphabetical and numerical)	8
Schedule	Back Cover
Seminole Profiles	4-7
Series Records with Opponents	14
Sports Information Staff	Inside Back Cover
Statistics (Final 1979)	9
Statistics Explanation	10
This is Florida State	16
Women's Athletic Staff	15
Year by Year Records	11
Year by Year Results	12-13

VOLLEYBALL OUTLOOK

Last season, the volleyball squad won the Region III championship, earned a berth in the national tournament and finished 18th in the nation.

Only one starter was lost to graduation from that 31-19 team. With a good nucleus returning, one can only wonder what lies ahead for head coach Cecile Reynaud's squad.

"I feel we've got the right people in the right positions at this point," says Reynaud. "We had a very good recruiting year, getting several freshmen who should develop into outstanding players. They all have winning attitudes."

Reynaud, in her recruiting efforts, has gone more to the all-around player each year. "I like the player with the all-around ability — someone who can play defense in the back row and can come up to the front row as an attacker. I feel our team has that type of player," she says.

Reynaud's 'veterans' are led by two-time team MVP Margie Wessel. The 5'7" senior from Miami, an all-region selection, will be a co-captain this season. She is joined by returning all-stater and co-captain Nancy Townsend, junior Barbara Mellen and sophomore Alicia Cross.

The incoming player to watch is Rhonda Petty, according to Reynaud. The 5'8" junior college transfer has a 28-inch vertical jump to go along with polished skills. "Rhonda can come in and help us in the front row," says the fifth year coach. "She has two years of experience going for her."

Also waiting in the wings are freshmen Sally Summer, a 5'8" hitter from Miami, Shannon Lages, a 5'11" hitter from Marietta, Ga. and Marie Sanders, a 5'4" setter from LaPorte, Ind.

The Seminole offense will be working out of a 6-2 or 5-1 alignment, depending on which system develops and produces the best chemistry within the squad.

While Reynaud cites defense and service reception as two key strengths of her 1980 squad, she is looking for more blocking power up front and a quicker front line attack. "We need work blocking against a super quick offense," she says. "Improving that area just might be the key to us having a very successful season. We also need some shoring up on the quickness of OUR attack at the net," she adds.

The 1980 schedule will keep the Seminoles mostly in the South, within Florida State's region. One exception may be the biggest tournament of the year, the Metro Conference tournament, which will be held at Memphis State. "It's extremely early in the year," says Reynaud, noting the Sept. 26-27 dates. "I look for it to be our toughest challenge. But overall, we're going to concentrate on winning tournaments in our region. We came in second or third in these tournaments last year so we want to improve on that. We will also see some teams outside our region participating in these tournaments — that should give us a look of how we stack up nationally.

"Next year we are going to expand outside our region and travel to some of the other tournaments around the country.

"But," she emphasizes, "our goal right now is to form a solid team and beat other teams in our region consistently."

Head Volleyball Coach Cecile Reynaud



Two state championships, two regional championships, two trips to the national tournament. In four short years as Florida State volleyball coach, Cecile Reynaud has put Florida State on the map. A national volleyball magazine listed FSU as "the powerhouse of the South." Indeed, during Reynaud's tenure, her teams have put together some impressive credentials. A four-year record of 117-60 (a .661 winning percentage) has been matched only by last season's 18th in the nation finish.

Reynaud received her bachelor's degree in physical education from Southwest Missouri in 1975. While lettering four years in volleyball, she was on squads ranked as high as sixth nationally. Reynaud also lettered twice in field hockey and was named an Outstanding College Athlete in America twice.

After graduation in 1975, she taught physical education and coached four sports — softball, volleyball, basketball and track — at Steelville High School in Missouri. A year later, Reynaud was named head volleyball coach at Florida State. She completed her master's degree at FSU in 1978.

Reynaud is the director and head instructor of Florida State's annual summer volleyball camp. She also serves on the staff of Sports Camps International, a position which finds her traveling to areas throughout the nation to instruct at various volleyball camps.

Reynaud recently was named Region III Chairman for volleyball. Her duties include overseeing plans for the fall regional tournament in Orlando and correspondence with the national AIAW Committee.

REYNAUD'S RECORD AT FLORIDA STATE

Year	Record	Pct.
1976	33-14	.702
1977	25-13	.658
1978	28-14	.666
1979	31-19	.620
Totals:	117-60	.661

Assistant Volleyball Coach Joy Becker



Joy Becker, a native of Springfield, Ohio, is entering her first season as Florida State's assistant volleyball coach.

Becker received her associate's degree from Palm Beach Junior College and her bachelor's degree from Florida State in 1975.

While at Palm Beach, she played volleyball and softball for two years. She played softball one season at Florida State.

Most recently, Becker has taught and coached three sports — volleyball, basketball and softball — at Maclay High School in Tallahassee. All told, she has led her teams to three state championships, one state runner-up and 16 other championships over a five-year period. She was

named Class A Coach of the Year three times in volleyball and basketball.

SEMINOLE PROFILES

Joy Blanchard, Junior, 5'5", Setter, Charleston, S.C.



... two year letterwinner at Florida State ... has developed as a player the past two years, according to Reynaud ... was All-Sunshine region in USVBA competition ... played in 26 of the squad's 50 matches last season ... attended Bishop England High School ... was all-area, all-conference and all-state as well as captain of the volleyball team ... majoring in physical education ...

Julie Brown, Sophomore, 6'1", Hitter, Mobile, Ala.

... lettered last season as a freshman ... played in 44 of the squad's 50 matches ... improved steadily ... recorded 68 kills and 107 stuff blocks ... a strong blocker ... attended Julius T. Wright High School where she was all-county in volleyball and basketball ... received the Golden Spike Award for volleyball ... college major is undecided ...



Alicia Cross, Sophomore, 5'8", Hitter/Setter, Indianapolis, Ind.



... earned a letter as a freshman ... started and played in all 50 matches ... most powerful player on the team ... had 128 kills ... was second on the team in stuff blocks with 270 ... potential to be the best player in the region, according to Reynaud ... USVBA regional all-star ... attended Ben Davis High where she was all-county in volleyball ... was also team MVP there ... came out of a strong high school program led by Coach Priscilla Dillow ... majoring in physical education ...

SEMINOLE PROFILES

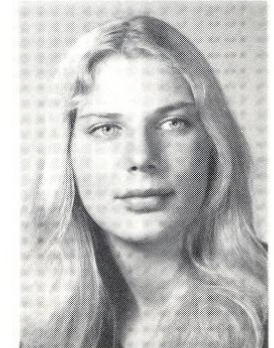
Camy Davies, Sophomore, 5'4", Hitter/Defense, Coral Springs, Fla.



... played in 45 of the squad's 50 matches while lettering as a freshman ... a defensive specialist with quick reactions ... needs more experience to realize full potential ... made 30 defensive saves ... named all-county in volleyball and served as captain for two years at Coral Springs High School ... coach was Angie Matamoros ... father is a sales representative for Converse Rubber Company ... major is undecided ...

Shannon Lages, Freshman, 6'0", Hitter, Marietta, Ga.

... has the potential to be a great one according to Coach Reynaud ... played under Coach Judy Galt at Osborne High School ... strong hitter who has played USVBA volleyball since junior high ... captained her high school volleyball squad ... MVP of the squad ... high school was district champion for three years ... participated in the Junior Olympics in 1979 ... plans to major in biology ...



Barbara Mellen, Junior, 5'6", Hitter/Setter, New City, N.Y.



... lettered one year at Florida State after transferring from West Chester Community College ... was in the starting lineup last season ... the only lefty on the squad ... strength is in setting where she recorded a team-high 492 assists ... was second on the team in defensive saves with 84 ... also a powerful hitter ... attended Clarkstown North High School where she was all-county in volleyball two seasons ... college major is medical technology ...

SEMINOLE PROFILES

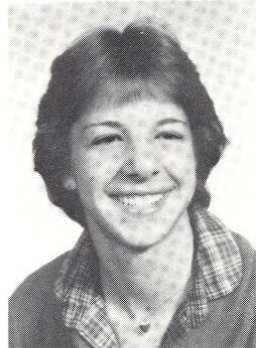
Rhonda Petty, Junior, 5'8", Hitter, Peoria, Ill.



... 28-inch vertical jump ... strong all-around player with great strength at the net ... two-year letterwinner at Illinois Central Community College ... lettered in basketball, track and volleyball at Manual High School ... will major in physical education at Florida State ...

Marie Sanders, Freshman, 5'4", Setter, LaPorte, Ind.

... small, but quick player with potential to be a great setter ... won six letters at LaPorte High School ... two years all-conference ... MVP of high school team ... also conference MVP as a senior ... coach was Debbie Parry ... plans to major in business at Florida State ...



Margaret Stephens, Senior, 5'1", Defense, Winter Park, Fla.



... has won two letters under Cecile Reynaud ... a defensive specialist ... sees a lot of backcourt action ... played in all but four matches last season ... made 54 defensive saves ... one of six Floridians on the squad ... played volleyball for Coach Dana Pillalis at Winter Park High School ... won three letters there ... also participates in intramurals at FSU ... majoring in computer science ...

SEMINOLE PROFILES

Sally Summer, Freshman, 5'8", Hitter, Miami, Fla.



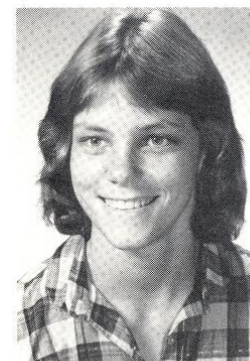
... one of three freshmen recruited to Florida State ... good all-around athletic ability ... attended North Miami High School ... was Dade County's Player of the Year in volleyball ... first team all-city ... Carnation Prep All-America ... was her high school's Scholar Athlete ... won 15 letters ... will major in communication and history at Florida State ...

Nancy Townsend, Senior, 6'0", Hitter/Setter, Tampa, Fla.

... has won seven letters at FSU ... three in volleyball ... will co-captain this year's squad ... started every match in 1979 ... led the team in kills with 273 ... showed her versatility by also recording 434 setting assists, second on the team ... named all-region and all-state ... also on the track team ... placed sixth in the javelin at the AIAW nationals and third at the 1978 National Sports Track Festival ... named to Who's Who Among American College Students ... Athlete of the Year in 1976 as a senior at Robinson High School ... president of the physical education honorary at FSU ... majoring in criminology and physical education ...



Margie Wessel, Senior, 5'7", Hitter, Miami, Fla.



... three-year letterwinner and starter ... team's spark plug ... will co-captain the squad this year ... ability to play any position ... led the team in serving (515), service receiving (547) and defensive saves (192) ... fourth in stuff blocks with 133 and third in kills with 182 ... all-region in 1980 ... two-time Seminole MVP ... played at Pace High School ... named all-city in volleyball by the MIAMI HERALD ... a government major ...

Alphabetical Roster

No.	Name	Position	Ht.	Cl.	Hometown
2	Joy Blanchard	Hitter/Sitter	5'5"	Jr.	Charleston, S.C.
11	Julie Brown	Hitter	6'1"	So.	Mobile, Ala.
7	Alicia Cross	Hitter	5'10"	So.	Indianapolis, Ind.
1	Camy Davies	Hitter/Defense	5'4"	So.	Coral Springs, Fla.
5	Jamie Kuhn	Hitter	5'7"	Jr.	Ft. Myers, Fla.
13	Shannon Lages	Hitter	5'11"	Fr.	Marietta, Ga.
8	Barbara Mellen	Hitter/Setter	5'6"	Jr.	New City, N.Y.
10	Rhonda Petty	Hitter	5'8"	Jr.	Peoria, Ill.
3	Marie Sanders	Setter	5'4"	Fr.	LaPorte, Ind.
9	Margaret Stephens	Defense	5'1"	Sr.	Winter Park, Fla.
14	Sally Summer	Hitter	5'8"	Fr.	Miami, Fla.
*15	Nancy Townsend	Hitter/Setter	6'0"	Sr.	Tampa, Fla.
*12	Margie Wessel	Hitter	5'7"	Sr.	Miami, Fla.

*Co-Captains

Numerical Roster

No.	Name	Position	Ht.	Cl.	Hometown
1	Camy Davies	Hitter/Defense	5'4"	So.	Coral Springs, Fla.
2	Joy Blanchard	Hitter/Setter	5'5"	Jr.	Charleston, S.C.
3	Marie Sanders	Setter	5'4"	Fr.	LaPorte, Ind.
5	Jamie Kuhn	Hitter	5'7"	Jr.	Ft. Myers, Fla.
7	Alicia Cross	Hitter	5'10"	So.	Indianapolis, Ind.
8	Barbara Mellen	Hitter/Setter	5'6"	Jr.	New City, N.Y.
9	Margaret Stephens	Defense	5'1"	Sr.	Winter Park, Fla.
10	Rhonda Petty	Hitter	5'8"	Jr.	Peoria, Ill.
11	Julie Brown	Hitter	6'1"	So.	Mobile, Ala.
*12	Margie Wessel	Hitter	5'7"	Sr.	Miami, Fla.
13	Shannon Lages	Hitter	5'11"	Fr.	Marietta, Ga.
14	Sally Summer	Hitter	5'8"	Fr.	Miami, Fla.
*15	Nancy Townsend	Hitter/Setter	6'0"	Sr.	Tampa, Fla.

*Co-captains

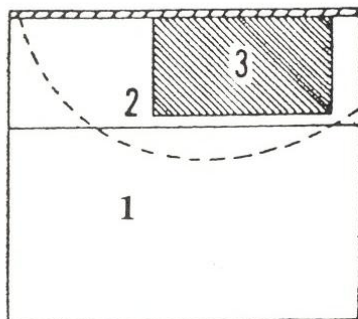
1979 FINAL VOLLEYBALL STATISTICS

Name	Games	Serve Receive Attempts	Serve Receive (No., Pct.)	Serve Attempts	Serve (No., Pct.)	Attack (Total)	Kills (No., Pct.)	Hits (No., Pct.)	Defense Saves	Stuff Blocks	Block Errors	Set Errors	Set Assists
Joy Blanchard	21	2	6/.750	61	122/.500	12	0/-.080	5/.333	8	2	8	24	76
Julie Brown	39	26	60/.580	3	4/.333	318	68/.003	96/.090	4	107	69	4	3
Cordelia Campbell	45	206	476/.580	138	236/.430	467	156/.120	208/.230	23	286	228	6	15
Alicia Cross	45	262	704/.670	134	223/.420	394	128/.190	176/.310	35	270	189	7	7
Camy Davies	40	267	806/.750	328	636/.480	—	—	—	30	—	—	2	7
Miranda Davis	4	5	15/.75	6	9/.380	5	1/.200	1/.200	—	1	—	—	—
Jamie Kuhn	14	33	85/.640	35	67/.480	29	2/-.340	6/-.210	5	1	4	—	1
Barbara Mellen	45	30	11/.930	381	691/.450	123	26/-.020	41/.100	84	27	13	96	492
Margaret Stephens	41	277	696/.630	227	460/.510	—	—	—	54	3	1	1	—
Nancy Townsend	45	81	194/.600	405	799/.490	773	273/.230	385/.370	62	132	75	95	434
Sue Usher	45	438	1251/.710	378	792/.520	680	221/.160	256/.220	81	137	100	8	21
Margie Wessel	44	547	1710/.780	515	933/.450	541	182/.180	209/.230	192	133	85	5	49
Team Totals*	45	2174	6169/.710	2611	4972/.480	3342	1057/.150	1383/.250	578	1099	772	248	1105

*Stats not available on five matches

Statistics Explanation

PASSING: Each athlete is rated on a four-point scale (4 is the highest score) for each pass she makes throughout the match (see chart).



SERVING: Efficiency is based on the difficulty of the opponents being able to pass the serve. An athlete is rated on a four-point scale (4 is the highest score) for the effectiveness of each serve (see chart).

PASSING: Efficiency
 4 = ball passed over net for side out
 3 = ball passed to shaded area #3
 2 = ball passed to #2 area
 1 = pass setter can't get to but a teammate sets
 0 = pass resulting in point for opponent
 *Formula: total points/attempts ÷ 4 = efficiency percentage

SERVING: Efficiency
 4 = ace or directly resulting in point
 3 = opponent passes it but setter is unable to set it
 2 = opponent passes it to #2 area
 1 = opponent passes it to #3 area
 0 = illegal serve
 *Formula: total points/attempts ÷ 4 = efficiency percentage

DEFINITIONS:
Kill: a spike that directly results in a point or side out for the player's own team.
Hit: a spike that went into the court, but was not a kill.
Defensive Save: saving a hard spike or dink which would have otherwise hit the floor.
Stuff Block: a block which results in a point or side-out for the player's own team.
Set Error: any time a player is called for a setting error or violation.
Set Assist: a set for an attacker which directly results in a point or side-out for the player's own team.

YEAR BY YEAR RECORDS

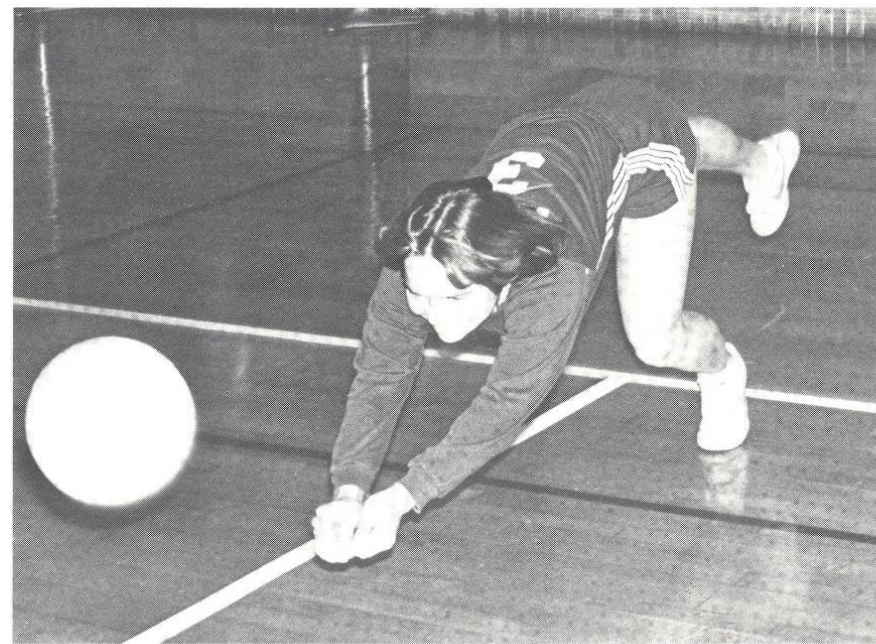
<u>Year</u>	<u>Coach</u>	<u>MVP</u>	<u>Record</u>	<u>Pct.</u>
1976	Cecile Reynaud	Pam Griffin	33-14	.702
1977	Cecile Reynaud	Terry Hume	25-13	.658
1978	Cecile Reynaud	Margie Wessel	28-14	.666
1979	Cecile Reynaud	Margie Wessel	31-19	.620
			117-60	.661

EQUIPMENT

The volleyball team, like all intercollegiate athletic teams at Florida State, trains, practices and plays with the best equipment made.

Weight training, which begins when the team arrives on campus in the fall, continues for most of the year. The Nautilus, one of the best known isokinetic machines, is just a part of FSU's available weight training system.

Another isokinetic machine, the Leaper, is used to increase vertical jump. Both machines are used extensively by the volleyball program.



Year by Year Volleyball Results

1976 — (33-14)

Coach: Cecile Reynaud

MUW Invitational

Louisiana State	L	2-15, 15-7, 14-16
Montevallo	W	15-3, 15-9
North Alabama	W	15-8, 15-12
MUW	W	15-0, 15-3
Ole Miss	L	13-15, 15-8, 9-15
Berry College	W	15-11, 6-15, 19-17

North Carolina-Greensboro Invitational

Eastern Kentucky	W	10-15, 15-5, 15-12
North Carolina-Greensboro	W	15-9, 14-16, 15-6
George Washington	L	11-15, 15-7, 10-15
Miami-Dade C.C.-South	L	3-15, 7-15
Maryland	W	15-3, 1-15, 15-13
Illinois-Chicago Circle	L	5-15, 3-15

Florida State Invitational (3rd place)

Auburn	W	15-13, 15-9
MUW	W	17-15, 15-13
North Carolina-Chapel Hill	W	11-15, 15-10, 15-13
Flagler College	W	15-4, 15-9
Central Florida	W	15-9, 15-9
Alabama	L	10-15, 11-15
MUW	L	15-7, 8-15, 13-15

Georgia Invitational (1st place)

Auburn	W	10-15, 15-6, 15-9
West Georgia College	W	15-6, 15-11
Tennessee-Chattanooga	W	15-11, 15-2
Berry College	L	15-1, 6-15, 6-15
South Carolina	W	15-7, 13-15, 15-11
Mississippi State	W	15-7, 15-10
Berry College	W	18-16, 15-4

West Georgia College Invitational (2nd place)

Tuskegee Institute	W	15-1, 15-6
Tennessee-Knoxville	W	6-15, 15-6, 16-14
Florida International	L	11-15, 12-15
Tennessee-Knoxville	W	15-5, 15-8
MUW	L	16-18, 11-15
South Florida	W	15-8, 15-5
Tennessee-Knoxville	W	15-6, 15-4
Florida International	W	15-8, 15-13
MUW	L	14-16, 7-15

Flagler College Invitational (2nd place)

Lake City C.C.	W	15-8, 15-8
Central Florida	W	15-4, 15-12
Miami Dade C.C. North	W	15-12, 6-15, 15-2
South Florida	W	15-5, 15-5
Jacksonville	W	15-3, 15-12
Flagler College	W	15-8, 15-12
Miami-Dade C.C. South	L	15-17, 7-15

State Tournament (Large College) (2nd place)

Florida	W	15-0, 15-7
Florida International	L	7-15, 9-15
Florida	W	15-3, 9-15, 15-1
Florida International	W	13-15, 15-3, 15-13
Florida International	L	6-15, 8-15

1977 — (25-13)

Coach: Cecile Reynaud

MUW Invitational

Nicholls State	W	16-14, 10-15, 15-9
Ole Miss	W	7-15, 17-15, 15-8
Columbus College	W	15-2, 15-10
Alabama	L	10-15, 3-15
MUW	L	15-6, 10-15, 11-15
Louisiana State	L	1-15, 11-15

New Orleans Invitational (3rd place)

South Alabama	W	15-8, 15-5
Tulane	W	15-8, 15-13
SW Louisiana	W	15-8, 15-6
NW Louisiana State	L	15-1, 9-15, 15-3
Central Florida	L	8-15, 15-13, 4-15
Nicholls State	W	15-5, 15-3

Florida State University (5th place)

Georgia	W	16-14, 15-10
Central Florida	L	6-15, 4-15
Tennessee-Chattanooga	W	15-10, 15-3
South Carolina	L	11-15, 15-11, 12-15
Miami-Dade C.C. South	L	10-15, 2-15

Georgia Invitational (3rd place)

South Carolina	L	9-15, 15-7, 8-15
West Georgia College	W	15-10, 15-0
Tennessee-Chattanooga	W	15-13, 15-11
Georgia State	W	15-4, 15-7
Mississippi State	W	15-8, 15-17, 15-4
College of Charleston	L	12-15, 15-7, 7-15

West Georgia College Invitational (2nd place)

Valdosta State	W	15-2, 15-4
Milligan College	W	15-3, 15-7
Georgia	W	9-15, 15-2, 15-7
Appalachian State	W	15-11, 15-2
East Tennessee	W	15-9, 15-1
South Carolina	L	15-17, 9-15

State Tournament (1st place)

Florida	W	10-15, 15-3, 15-7
South Florida	W	15-11, 10-15, 15-13
South Florida	W	2-15, 15-11, 17-15

Regional Tournament (4th place)

Mississippi State	W	15-1, 15-10
Florida	W	11-15, 15-10, 15-13
Alabama	L	9-15, 10-15
South Florida	W	15-12, 15-0, 11-15, 16-14
Alabama	L	3-15, 14-16, 15-11, 9-15
MUW	L	10-15, 13-15, 15-5, 15-7, 17-19

1978 — (28-14)

Coach: Cecile Reynaud

MUW Invitational

Arkansas State	L	15-5, 17-19, 15-17
Columbus College	W	15-1, 15-0
Memphis State	W	15-11, 15-3
MUW	W	15-2, 15-11
New Orleans	W	15-3, 15-13
Ole Miss	L	10-15, 15-8, 3-15, 15-5, 11-15

Miami Dade Invitational (2nd place)

Florida Southern	W	16-14, 15-10
South Florida	W	15-10, 15-7
Miami-Dade C.C. South	W	11-15, 16-14, 17-15
South Florida	L	12-15, 15-9, 15-9
Miami Dade C.C. South	W	7-15, 15-6, 15-12
Central Florida	L	14-16, 5-15
Central Florida	W	15-6, 16-14
Central Florida	L	9-15, 7-15

Florida State Invitational

New Orleans	W	15-3, 15-5
Florida Southern	W	16-14, 15-6
South Carolina	W	16-14, 15-13
Tennessee-Knoxville	L	12-15, 8-15
Miami	W	15-3, 15-4
South Carolina	L	15-7, 8-15, 10-15

SW Missouri State Invitational

Illinois State	W	15-12, 15-12
Texas A & M	W	15-10, 16-14
Cincinnati	W	15-11, 15-11
Nebraska	L	12-15, 15-10, 12-15
North Texas State	L	5-15, 10-15

Alabama Invitational

Alabama	L	7-15, 10-15, 11-15
Ole Miss	W	5-15, 15-12, 15-8, 15-11
Cincinnati	W	15-12, 15-11, 15-12
MUW	W	15-6, 11-15, 8-15, 15-10, 15-5

State Tournament (1st place)

South Florida	W	15-5, 7-15, 15-9
Miami	W	15-4, 15-9
Florida	W	15-5, 13-15, 15-7

Regional Tournament (1st place)

Georgia State	W	15-4, 15-4
Mississippi State	W	15-9, 15-2
Alabama	W	15-3, 15-2
Alabama	W	15-13, 15-13, 15-4
Ole Miss	W	15-12, 10-15, 15-11, 13-15, 15-2

National Tournament

SW Missouri State	L	15-12, 11-15, 6-15
Arizona	L	11-15, 16-14, 1-15
Texas A & M	L	9-15, 8-15
Pepperdine	L	5-15, 15-12, 3-15
UCLA	L	2-15, 15-12, 7-15

1979 — (31-19)

Alabama Invitational (3rd place)

South Carolina	W	15-10, 3-15, 15-8
MUW	W	15-12, 15-7
Central Florida	L	2-15, 15-7, 8-15
Miami	W	15-10, 16-14
Alabama	L	9-15, 11-15
Oklahoma	W	15-7, 7-15, 16-14

MUW Invitational (1st place)

Arkansas State	W	15-10, 15-6
SE Louisiana	W	15-4, 15-5
Nicholls State	W	15-6, 20-18
MUW	W	15-8, 15-12
Memphis State	W	15-8, 13-15, 15-12, 15-8
Alabama	W	15-7, 15-6, 15-10

Central Florida Invitational

Oklahoma	L	9-15, 12-15
Alabama	L	11-15, 15-8, 5-15
Miami-Dade C.C. South	L	8-15, 11-15
Louisiana State	W	15-6, 13-15, 15-13
Auburn	W	15-5, 15-7
Central Florida	L	7-15, 6-15
Miami	L	9-15, 15-10, 14-16
North Florida J.C.	W	15-2, 15-5, 14-16, 15-12
Lake City C.C.	W	15-8, 15-5, 15-11

Florida State Invitational (3rd place)

South Florida	W	15-8, 15-7
Auburn	W	15-6, 15-10
North Carolina-Chapel Hill	W	15-10, 10-15, 15-12
Florida Southern	W	15-8, 15-6
Miami	L	12-15, 15-7, 12-15
North Carolina-Chapel Hill	W	15-11, 15-12
South Alabama	W	15-5, 16-14
Gulf Coast C.C.	W	15-1, 15-5

SW Missouri State Invitational

SW Missouri State	L	2-15, 3-15
Houston	L	5-15, 13-15
Iowa State	W	15-1, 15-6
Minnesota	L	15-9, 12-15, 7-15
Cincinnati	L	11-15, 9-15
Gulf Coast C.C.	W	15-2, 15-2
North Florida J.C.	W	15-8, 15-2, 15-1
Lake City C.C.	W	15-11, 15-0, 18-16

State Tournament (2nd place)

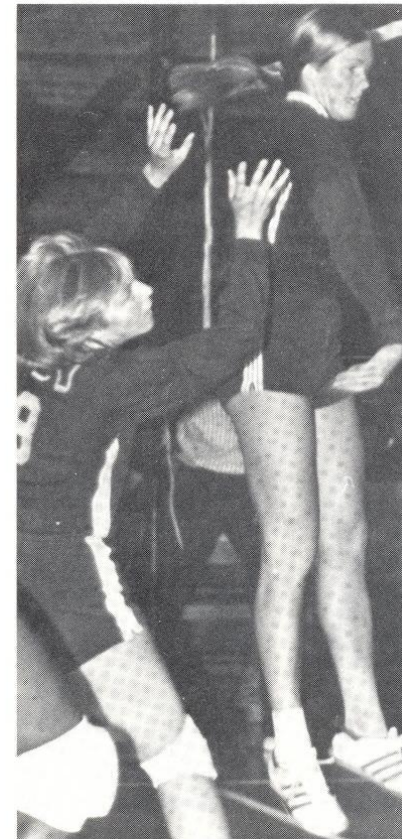
Miami	L	10-15, 14-16, 7-15
-------	---	--------------------

Regional Tournament (1st place)

Georgia	W	6-15, 15-7, 15-6
Alabama	L	13-15, 15-13, 12-15
Mississippi State	W	15-6, 15-11
Alabama	W	15-13, 15-6
Miami	L	9-15, 18-16, 8-15
Alabama	W	14-16, 15-11, 15-10
Miami	W	15-9, 4-15, 15-9
Miami	W	8-15, 15-6, 15-12

National Tournament

Brigham Young	L	16-14, 7-15, 7-15
Houston	L	9-15, 8-15
UCLA	L	9-15, 5-15
Purdue	L	14-16, 14-16



SERIES RECORDS WITH OPPONENTS

School	W	L	Last Meeting
Alabama	5	8	1979
Appalachian State	1	0	1977
Arizona	0	1	1978
Arkansas State	1	1	1979
Auburn	4	0	1979
Berry College	2	1	1976
Brigham Young	0	1	1979
Central Florida	2	6	1979
Cincinnati	2	1	1979
College of Charleston	0	1	1977
Columbus College	2	0	1978
Eastern Kentucky	1	0	1976
East Tennessee State	1	0	1977
Flagler College	2	0	1976
Florida	5	0	1978
Florida International	3	3	1978
Florida Southern College	3	0	1979
George Washington	0	1	1976
Georgia	3	0	1979
Georgia State	2	0	1978
Gulf Coast Community College	2	0	1979
Houston	0	2	1979
Illinois — Chicago Circle	0	1	1976
Illinois State	1	0	1978
Iowa State	1	0	1979
Jacksonville	1	0	1976
Lake City Community College	3	0	1979
Louisiana State	1	2	1979
Maryland	1	0	1976
Memphis State	2	0	1979
Miami	5	4	1979
Miami Dade Community College — North	1	0	1976
Miami Dade Community College — South	2	4	1979
Milligan College	1	0	1977
Minnesota	0	1	1979
Mississippi	3	2	1978
Mississippi State	5	0	1979
Mississippi Univ. for Women	6	5	1979
Montevallo	1	0	1976
Nebraska	0	1	1978
New Orleans	2	0	1978
Nicholls State	3	0	1979
North Alabama	1	0	1976
North Carolina — Chapel Hill	3	0	1979
North Carolina — Greensboro	1	0	1976
North Florida Junior College	2	0	1979
North Texas State	0	1	1978
Northwestern Louisiana	1	0	1977
Oklahoma	1	1	1979
Pepperdine	0	1	1978
Purdue	0	1	1979
South Alabama	2	0	1979
South Carolina	3	4	1979
Southeastern Louisiana	1	0	1979
South Florida	9	0	1979
Southwestern Louisiana	1	0	1977
Southwest Missouri State	0	2	1979
Tennessee — Chattanooga	3	0	1977
Tennessee — Knoxville	3	1	1978
Texas A & M	1	1	1978
Tulane	1	0	1977
Tuskegee Institute	1	0	1976
UCLA	0	2	1979
Valdosta State	1	0	1977
West Georgia College	2	0	1977

Bold type denotes 1980 opponents

Women's Athletic Director Barbara Palmer



Determination. Dedication. Enthusiasm. Each of these words has been used to describe Florida State women's athletic director Barbara Palmer at one time or another. Never has one individual had such a dynamic impact on a program in such a short period of time.

Since Palmer was hired in August of 1977, Florida State has developed one of the top programs in the nation.

"It is and always has been our goal to build a national-caliber program here at Florida State," says Palmer. "We are committed to that goal and we will not accept anything short of it. But at the same time, we are concerned with the academic achievement of our athletes. We're building winners in all aspects of personal and professional growth."

Palmer's duties as athletic director include the hiring of coaches, preparation of budgets, monitoring of scheduling and travel and fund-raising.

The Lady Seminoles Booster Club is yet another area where Palmer has directed much of her energy. "The development of the Booster Club has meant a great deal to our program," she says. "There are a lot of people out there interested in the Lady Seminoles and they let us know that. They're behind us 100 percent."

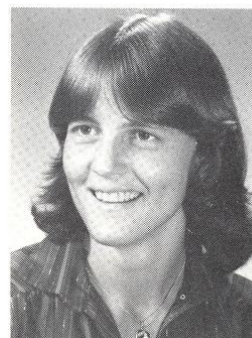
Palmer is directly responsible for the funding Florida State will receive each year from the state for women's athletics, making Florida the first state in the nation to come into full compliance with Title IX. It was Palmer's lobbying that pushed the bill through the 1980 Legislature to make it law.

Additionally, she was instrumental in the hiring of full-time coaches for each of FSU's eight women's sports. More recently, full-time assistant coaches have been added to the growing staff.

Palmer joined the Florida State staff after serving four years as executive director of a private leisure education and recreation services organization. Prior to that, she served as administrator of Camp Indian Springs, program director for Wakulla County and recreation supervisor of Merritt Island.

A long time Tallahassee, Fla. resident, Palmer received her bachelor's degree in recreation at FSU in 1970 and earned her master's degree in leisure services and studies in 1974.

Palmer is presently the president of the southeast region, region III, of the AIAW.



Terry Hume
Assistant to the Director



Trudy Raybun
Academic Advisor



Judy Spainhour
Travel/Equipment

THIS IS FLORIDA STATE

Florida State University — the home of more than 20,000 Seminoles — has a campus that starts at the top of one of Tallahassee's famed seven hills, and rolls gently downward and westward across 340-odd acres of pines, palms and pecan trees.

Founded in 1857 as the Seminary West of the Suwannee, its heritage is evidenced in the wide range of architectural struggles to preserve history and keep up with modern times and air conditioning. Yet it still ranks as one of the South's last, few bastions of campus greenery — the kind that combines the blossoms of camellias, azaleas and dogwoods with moss-hung oaks that are, in some cases, as old as the University itself, if not older.

From the Gothic towers of Westcott at the eastern entrance to the campus, to the modern glass and steel structures of its Science Complex to the west, Florida State University has moved forward in time and growth more rapidly than many of its newer counterparts in the State University System. Its enrollment has quadrupled since it became coeducational in 1947, following nearly half a century as the Florida State College for Women.

Today, its 14 schools and colleges are spread through \$150 million worth of buildings, its annual budget exceeds \$100 million and it attracts more than \$18 million a year in research contracts and grants. Students can pick and choose from more than 100 career options offered in arts and sciences, business, communication, criminology, dance, education, home economics, law, library science, music, nursing, social sciences, social work, theater and visual arts programs.

The location of FSU in the Capital City of Florida offers unusual opportunities for study and research in the social and policy sciences, and an optimum environment for internships and on-the-job learning experiences for students in many fields of study.

A city within a city, Florida State has 1,200 faculty members, more than 6,000 additional employees and a construction program that will exceed \$50 million between now and 1981. The construction of a new civic center and a center for continuing education — both near the State Capitol — are destined for completion by the fall of 1980.



NOTE TO THE MEDIA

For assistance in your coverage of the volleyball team, please contact the Sports Information Office or Lisa Morton at home (904/878-1531). Requests in writing should be addressed to: Sports Information Office, 200 Tully Gym, Florida State University, Tallahassee, Florida 32306.

NOTE TO THE PROSPECTIVE ATHLETE

To apply for admission to Florida State University or to obtain information about admission, please write to: Undergraduate Admissions Office, Florida State University, Tallahassee, Florida 32306

SPORTS INFORMATION STAFF

200 Tully Gym

Mark Carlson, Director
Glenn Greenspan, Assistant Director
Lisa Morton, Assistant Director
Tom Vogelgesang, Assistant
Judy Greve, Secretary
Juanita Duncan, Secretary

Office Phones: (904) 644-4038

The 1980 Volleyball Guide was written and edited by Assistant Sports Information Director Lisa Morton. Pictures were supplied by the University Photo Lab and by Joyce Harper.

