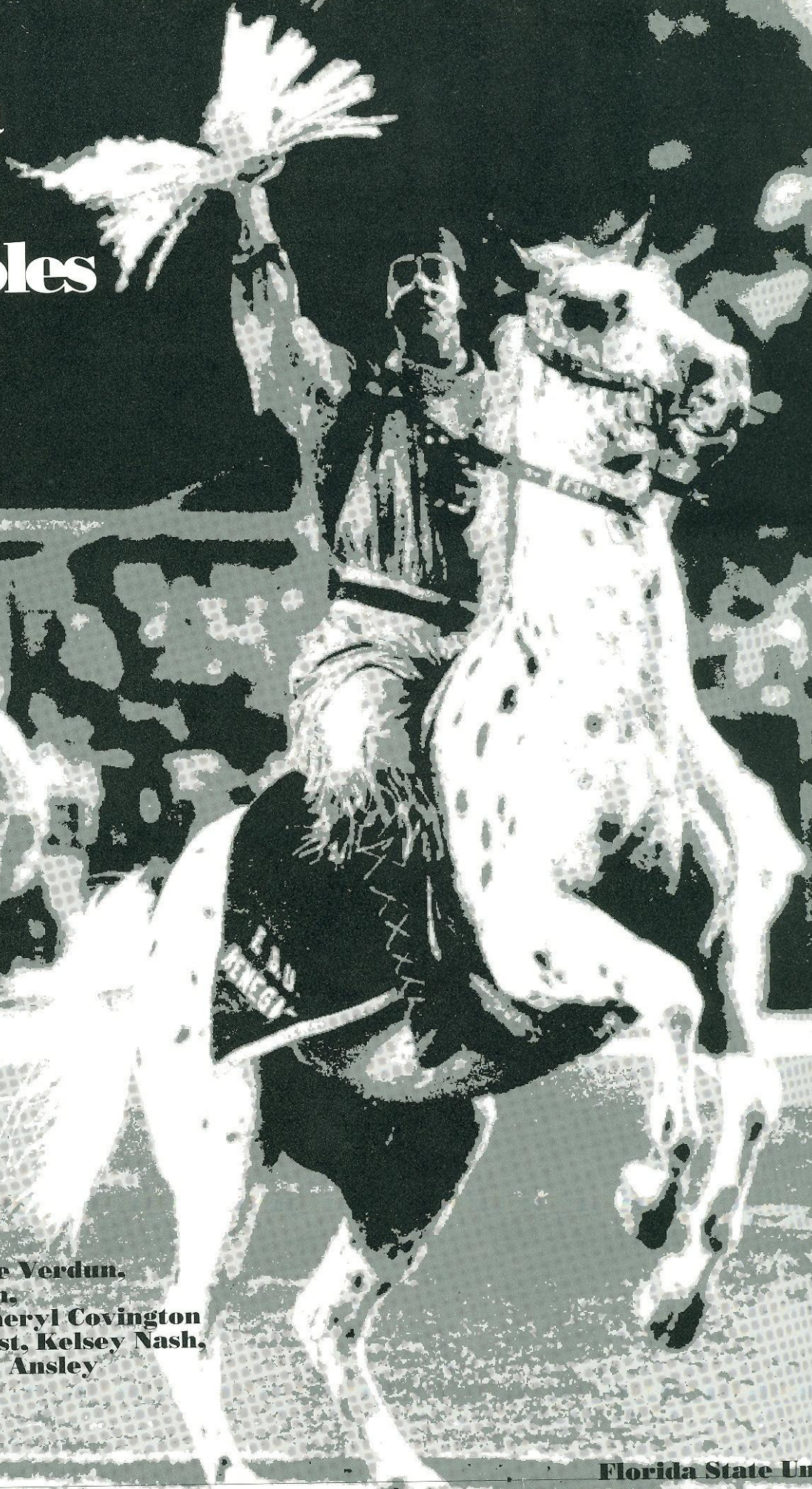


# TAKING OFF

1993 FSU TRACK & FIELD MEDIA GUIDE



# Florida State Seminoles



**ON THE COVERS:**

**LADIES - Patrice Verdun,  
Trinette Johnson,**

**Karla Severs, Sheryl Covington  
MEN - Kevin Crist, Kelsey Nash,  
Jeff Bray, Kevin Ansley**

**1993**

**Florida State University**

# This Is Florida State



**F**lorida State University, nearing its golden anniversary as a coeducational graduate research institution, is poised on the brink of joining the nation's academic elite.

Located on the oldest continuous site of higher education in Florida and building rapidly on the framework of a highly-regarded liberal arts college for women, the university has emerged over the past 45 years as an institution of national and international esteem.

Florida State has begun the 1990s with exceptional strength, energy and vision for the future. Under the leadership of the university's 11th president, Dr. Dale W. Lick, FSU continues to build on the foundation of its long history of excellence in scholarship, research and service.

A public institution and a senior member of the nine-member State University System (SUS), FSU was founded as an institution of higher learning in 1851 by legislative act and began operating in Tallahassee with its first students in 1857.

Today, Florida State's operating budget is \$412 million. Faculty and administrators generate more than \$100 million annually in external funding to supplement state-sponsored research.

The main campus is spread over 396 acres in Tallahassee; FSU, which has the smallest campus in the SUS, acquired about 49 acres in 1991-92 after many years of being landlocked at 347 acres. The university owns a total of 1,172 acres in Leon, Bay and Franklin counties.

Within the state, FSU maintains facilities at its 25-acre campus in Panama City, its Marine Laboratory on the Gulf of Mexico and the Appleton Museum in Ocala. The university's theater and film professional-training programs are both located in the Asolo Performing Arts Center in Sarasota.

For years, FSU has reached far beyond Florida through international programs in Switzerland, Yugoslavia, France, Panama, Costa Rica and the Caribbean. FSU's study centers in Florence, Italy, and London, England, are considered by many the nation's best in Europe.

Florida State offers 274 graduate and undergraduate degree programs through its eight colleges — Arts and Sciences; Business; Communication; Education; Engineering (operated jointly with Florida A&M University, a historically black institution); Human Sciences; Law; and Social Sciences (which also incorporates the School of Public Administration and Policy) — and eight schools — Criminology and Criminal Justice; Library and Information Studies; Motion Picture, Television and Recording Arts; Music; Nursing; Social Work; Theatre; and Visual Arts

and Dance.

With 1,577 members, the FSU faculty currently includes five members of the National Academy of Sciences and four of the American Academy of Arts and Sciences, and has included five Nobel laureates.

On the top floor of the Paul Dirac Science Center Library is the headquarters of the Supercomputer Computations Research Institute, a multidisciplinary, multinational program established in 1984 that brings together some 50 scientists, engineers and technicians. SCRI is electronically linked to an off-campus research complex and the university's two supercomputers.

Also providing unique research opportunities is the physics department's tandem Van de Graaff Superconducting Accelerator Laboratory, which houses two powerful atom smashers and is ranked among the top four nuclear research centers in the nation by the National Science Foundation.

Graduate students, who number more than 5,500, pursue advanced degrees in fields as diverse as business administration and theoretical particle physics. A majority of research done at FSU is the direct result of student effort.

FSU, a residential campus, places a high priority on its 28,600 students and their needs and interests. The Honors and Scholars program, the Distinguished Lecture Series, Student Government, the all-collegiate Flying High Circus and intramural sports are among more than 200 organizations and activities in which students participate.

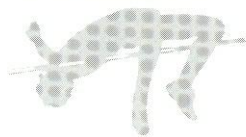
Situated in the heart of the state's thriving capital city, Florida State's main campus blends Gothic and modern styles of architecture with the oaks, pines, dogwoods, palms and azaleas of North Florida.

Florida State continues to progress and grow — from its pre-Civil War foundation as the Seminary West of the Suwannee, through the early 20th century as the academically-respected Florida State College for Women, returning to coeducational status as a university in 1947, to its modern development as an acclaimed research institution, a top-ranked competitor in intercollegiate athletics and as a standard-setter in the basic sciences and the performing arts.

In all areas of its mission of excellence in teaching, research and public service, Florida State University is advancing boldly into the 21st century.



# '93 Women's Preview



**T**he 1993 Lady Seminole Track and Field team is **Taking Off!** This year's squad has given an indication of being a well balanced squad. The team is talented

Another All-American, junior Carla Severs, is back in the middle and long distances.

The coaching staff was very impressed with the overall quality of the women athletes at the ACC Championships last season. FSU will have to move to a higher level in '93 if they want to contend for the conference crown. Coaches have asked for more effort and thus far the team has responded admirably. Improvement is expected (possibly April 17th will result in its awards).



**Trinette Johnson**

in all areas. All-Americans and Olympic Trials Qualifiers Sheryl Covington, Trinette Johnson and Patrice Verdun return in top form.

**SPRINTS**—Here lies possibly the strongest area on the Lady Seminole squad. Returning to the sprint corps are All-Americans Patrice Verdun (100m and 200m), Sheryl Covington (100m, 200m and 400m) and Trinette Johnson (100m). These three athletes are the heart of the Florida State sprint squad this season. FSU has gained national distinction by advancing to the NCAA Championships 4x400m relay final an unprecedented 12 consecutive years.

Joining Covington, Johnson and Verdun are freshmen Deleeta Bradley, Karen Joseph, Kelly Rouse and Anetrice Strobles. Shawn Clark, a

sophomore, will be manning 400m dash and relay duties. Senior Tracey Ray should also contribute in those events.

**MIDDLE AND LONG DISTANCE**—All-America Karla Severs will lead FSU in the middle and long distance events this spring. Joining Severs will be juniors Lisa Beck, Stacey Bowrosen and Tracy Pepoon. Freshmen standouts Kerry White and Erin Wilder also figure to be competitive. Multi-talented Kim Stephens can also contribute in the distance events if called upon. The 4x800m relay team will feature both Severs and sprinter Shawn Clark this indoor season.

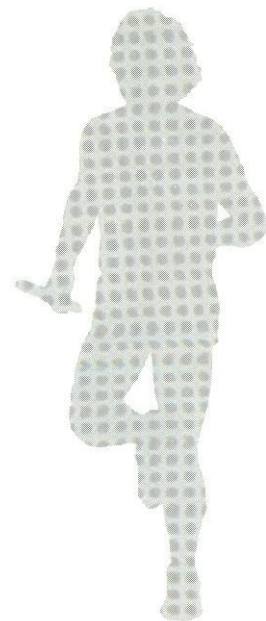
**THROWS**—Sophomore Catherine Erickson leads a group of young throwers. Freshman Shannon Cook has demonstrated a great deal of talent during fall practice. Cook and Erickson should fare well together at the ACC Championships. Milette Thurston will also throw this season. Senior Kim Stephens was an ACC runner-up in the javelin in 1992. She figures to contend for individual honors in '93.

**JUMPS**—The 1993 jumpers possess a great deal of ability. This group is highlighted by ACC outdoor long jump champion and All-American Trinette Johnson (21' 4"). Supporting Johnson in the long and triple jump is redshirt freshman



**Kim Stephens**

Felicia Evans. Sophomore Tracey Ray should also figure to make a contribution in the jumps this spring, along with freshmen Kelly Rouse and Tina Moultry. Leading a strong high jump contingent will be junior Indy Henry (5' 10.75"). Both sophomore Peggy Armand and freshman Susan Newall-Rothell have shown outstanding ability in the high jump this pre-season.



# '93 Women's Roster



NAME	EVENT	HT	WT	CL	HOMETOWN
Peggy Armand	H	6-0	148	SO	Tampa
Lisa Beck	D	5-4	106	JR	West Palm Beach
Stacy Bowrosen	D	5-4	108	JR	Port Orange
Deletea Bradley	S	5-5	118	FR	Pensacola
Shawn Clark	MD	5-9	133	SO	University Heights, OH
Shannon Cook	T	5-7	175	FR	Lake Mary
Sheryl Covington	S	5-7	125	JR	Winter Haven
Cathy Erickson	T	6-0	210	SO	Hastings, NE
Felicia Evans	J/H	5-6	120	SO	Largo
Indianne Henry	HJ	6-0	145	JR	Tallahassee
Holly Higgins	D	5-8	117	JR	Gainesville
Karen Joseph	S	5-7	118	FR	New York, NY
Trinette Johnson	LJ	5-4	128	SR	Detroit, MI
Jennifer Mendelson	D	5-6	126	SO	Newport Beach, CA
Petena Moultrie	S/J	5-7	120	FR	Jacksonville
Susan Newell-Rothell	HJ	5-9	130	FR	Springfield, IL
Tracey Pepoon	D	5-4	110	JR	Fort Walton Beach
Monica Pfeifer	D	5-4	115	FR	Fort Lauderdale
Tracey Ray	S	5-5	119	SR	Lakeland
Stephanie Redding	S/J	5-6	117	FR	West Palm Beach
Kelly Rouse	S	5-8	119	FR	West Palm Beach
Karla Severs	MD	5-5	115	JR	Titusville
Amy Sindler	D	5-4	107	FR	Sorrento
Kim Stephens	ME	5-7	118	SR	Lake Worth
Anetrice Strobles	S	5-6	118	FR	Micanopy
Radhiya Teagle	H	6-0	138	FR	Philadelphia, PA
Milette Thurston	T	5-7	210	SO	Lauderhill
Patrice Verdun	S	5-5	125	SR	Flint, MI
Kerry White	MD	5-7	125	FR	Warsaw, IN
Erin Wilder	D	5-4	110	FR	Miami

J-Jumps; S-Sprints; ME-Multi Events; MD-Middle Distance; T-Throws; HJ-High Jump; D-Distance; LJ-Long Jump

## Indoor Records

55m Dash	Michelle Finn	6.72	1986
55m Hurdles	Kim Batten	7.67	1991
200m Dash	Lisa Horton	23.89	1989
400m Dash	Janet Davis	54.21	1984
800m Run	Angela Harris	2:07.24	1991
Mile Run	Margaret Coomber	4:45.79	1984
3,000m Run	Gale Grant	9:55.90	1981
1,600m Relay	Janet Davis, Janet Levy, Brenda Cliette, Dwyer Brown	3:37.47	1984
3,200m Relay	Nancy Rettie, Chris Mackey, Kelley Hackler, Brenda Moore	8:38.34	1985
Long Jump	Sonya Blades	21' 8.5"	1990
Triple Jump	Esmeralda Garcia	44' 4"	1985
High Jump	Holly Kelly	6' .25"	1989
Shot Put	Vickie Smith	46' 10"	1977



# Women's Bios

## Peggy Armand

**6-0, 148, Sophomore**

**Tampa, FL**

**(Leto HS)**

**Collegiate Bests: 100HH (14.00), 400HH (1:04.34), High Jump (5-5)**

Very hard worker and greatly improved this year...has come back stronger and faster this year after a great summer of training... should score at ACC's in hurdles and high jump...fast becoming a national caliber athlete...**1992:** ran team best (14.00) in the 100HH... **PREP:** all-county, all-conference and all-region at Leto HS...advanced to state 4A track meet... **PERSONAL:** plans to major in multi-national business...born July 2, 1973.

## Lisa Beck

**5-4, 106, Junior**

**West Palm Beach, FL**

**(Cardinal Newman HS)**

**Collegiate Bests: 3000m (10:08.67), 5000m (17:28.59)**

Steadily improved since coming to Florida State...increasingly consistent performer...has the talent and experience to make a contribution at the conference meet, both indoor and outdoor... three-time letter-winner in cross country...**1992:** ran collegiate best times in 3000m (10:08.67) and 5000m (17:28.59)...**1991:** placed seventh at the Metro Championships in the 3000m...**PREP:** class 3A state champion in the mile and two-mile...all-area, all-state and all-conference in both cross country and track at Cardinal Newman HS...**PERSONAL:** currently enrolled in FSU's undergraduate studies program...born October 12, 1971.

## Stacey Bowrosen

**5-4, 108, Junior**

**Port Orange, FL**

**(Father Lopez HS)**

**Collegiate Bests: 800m (2:18.41), 1500m (4:40.79)**

Will compete in the 1500m and 3000m this year...slated to run the 4x800m...should do well, if she stays healthy...an outstanding talent, could be one of the sleepers at the conference meet...has three letters in cross country...**1992:** improved collegiate bests in 800m and 1500m...**PREP:** all-area, all-conference, and all-state at Father Lopez HS... **PERSONAL:** majoring in nutrition...born November 17, 1971.

## Shawn Clark

**5-9, 133, Sophomore**

**University Heights, OH**

**(Cleveland Heights HS)**

**Collegiate Bests: 400m (57.97)**

A competitor of outstanding character... hard work has enabled her to make significant progress since coming to FSU...will run the 400m and 800m this year...expected to score at the conference meets...has the physical tools to reach the next level...**PREP:** ran a 55.98 400m at Cleveland Heights HS...**PERSONAL:** plans to major in advertising...born July 17, 1973.



**Peggy Armand**



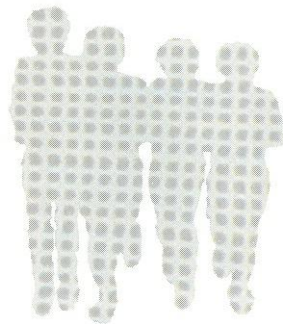
**Lisa Beck**



**Stacey Bowrosen**



**Shawn Clark**





**Shannon Cook**

## **Shannon Cook**

**5-7, 175, Freshman  
Lake Mary, FL  
(Lake Mary HS)**

Great physical potential...with improved technique, she figures to be very competitive in the ACC...a versatile athlete, will also compete in the Heptathlon...**PERSONAL:** plans to major in veterinary medicine...born January 20, 1974.



**Sheryl Covington**



**Cathy Erickson**



**Felicia Evans**



## **All-American**

### **Sheryl Covington**

**5-7, 125, Junior  
Winter Haven, FL  
(Winter Haven HS)  
Collegiate Bests: 100m (11.41),  
200m (23.49), 400m (53.32)**

If she can get stronger and stay healthy, has potential to be an elite athlete...extremely versatile and talented...capable of running at the national level in all three sprints...team leader and true competitor...two-time All-American... one of the best to ever run at Florida State...**1992:** placed 4th in the 400m at the ACC Championships... NCAA Championships 400m semifinalist...improved 400m time by

almost a second (54.22 to 53.32)...mainstay on 4x100m relay team that placed 7th at the NCAA Championships...**1991:** made first trip to NCAA's and competed in three events... national semifinalist in the 100m...ran anchor leg for FSU's 400m relay team that placed 6th nationally...Metro Conference 100m champion and runner-up in the 200m...**PREP:** Florida 4A state champion in both the 100- and 200-meters...set the state record in the 100m with an 11.84...**PERSONAL:** a social work major... born March 3, 1971.

### **Cathy Erickson**

**6-0, 210, Sophomore  
Hastings, NE  
(Hastings HS)  
Collegiate Bests: Discus (132-7),  
Shot Put (40-8.25)**

Determined and motivated athlete...member of the Lady Seminole basketball team...basketball duties curtailed training schedule...improved conditioning from hoops should enhance performance...expected to score in ACC competition...**1992:** placed seventh in shot put at the ACC Championships...**PREP:** Dual Class A throwing champ (shot and discus) in the state of Nebraska as a senior...broke school record in the shot put...track and field MVP at Hastings HS...selected to the All-Tribland track team... **PERSONAL:** majoring in criminology...born March 24, 1973.

### **Felicia Evans**

**5-6, 120, Sophomore  
Largo, FL  
(Seminole HS)  
Collegiate Bests: Long Jump (18-5.5),  
Triple Jump (38-0.5)**

Former Florida state champion... red-shirted as a freshman...tremendous talent in both the long and triple jumps...has potential to star in both events...FSU's only pure triple jumper...one of the keys to this year's



finish in the ACC...**PREP:** an all-county performer throughout high school...1990 state long jump champion at Seminole HS...**PERSONAL:** currently majoring in management information system...born October 22, 1973.

## Indy Henry

**6-0, 145, Junior**

**Tallahassee, FL**

**(Godby HS)**

**Collegiate Bests: High Jump (5-10.75)**

Improved greatly in 1992...should be a national level high jumper this year... returns as FSU's top high jumper in one of the ACC's most competitive events...a hard worker and excellent student...**1992:** finished 3rd in high jump at ACC Championships... an NCAA provisional qualifier...**1991:** placed second at the Metro meet in the high jump...**PREP:** three-year state qualifier in the high jump... class 3A state runner-up in the high jump as a senior at Godby HS...placed 6th at state meet as a junior...**PERSONAL:** plans a double major in accounting and marketing...born March 24, 1971.

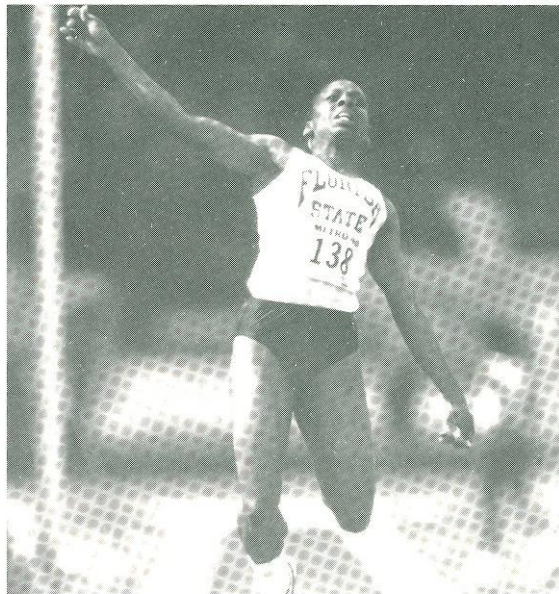
## Holly Higgins

**5-8, 120, Junior**

**Gainesville, FL**

**(Buchholz HS)**

Transfer to Florida State from UNC-Charlotte...returns after a one year hiatus...appears ready to compete in the ACC... two-time All-American at UNC-Charlotte... **1991:** All-American honors in the 4x3200m relay...**1990:** All-American in the 3000m...**PERSONAL:** majoring in elementary education... November 8, 1971.



## All-American

### Trinette Johnson

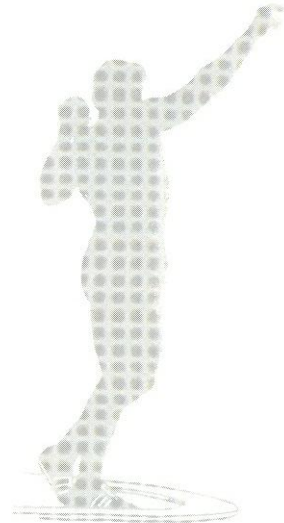
**5-4, 128, Senior**

**Detroit, MI**

**(Cass Tech)**

**Collegiate Bests: 100m (11.78), 200m (24.78), Long Jump (21-2)**

Defending ACC long jump champion...appears to be vastly improved this year...sprinting is better than ever... outstanding senior leader...continued focus in the weight room could make her an elite performer in several events...a U.S. Olympic trials finalist... an All-American since her freshman year...**1992:** ACC long jump champion...placed 5th in the 100m at the ACC Championships and was a semifinalist in the 200m...ran with 4x100m relay team that finished second at the ACC Championships and 7th at the NCAA's...placed 6th in the long jump at the NCAA Championships...**1990:** 1990 Indoor All-American after placing 8th in the long jump...ran with the 400m relay team that finished 4th nationally... Metro Champion in the long jump... **PREP:** a high school All-American long jumper out of Cass Tech HS...**PERSONAL:** majoring in chemical engineering...born February 8, 1971.



**Indy Henry**



**Holly Higgins**



**Trinette Johnson**  
All-American



**Tracy Pepon**



**Tracey Ray**



**Karla Severs**  
All-American

## Tracy Pepon

**5-4, 110, Junior**  
**Ft. Walton Beach, FL**  
**(Ft. Walton Beach HS)**  
**Collegiate Bests: 3000m (10:10.76),**  
**5000m (17:51.90), 10000m (38:01.27)**

Tough competitor who has improved tremendously throughout her career...strong team leader at meet time...a versatile performer... will run 3000m, 5000m and 10000m... finished 7th in first ever 10000m...also lettered in cross country...**1992:** placed ninth in 10000m at ACC Championships... **1991:** ran 4th in the 3000m at the Metro meet...**PREP:** a three-time cross country MVP at Ft. Walton Beach HS...all-northwest Florida... **PERSONAL:** a business management major...born November 1, 1971.

## Tracey Ray

**5-5, 119, Junior**  
**Lakeland, FL**  
**(Lake Gibson HS)**  
**Collegiate Bests: 100m (12.02),**  
**200m (25.31), Triple Jump (31-3.5)**

Excellent student-athlete... developing rapidly...expected to provide strength in sprints and jumps...greatly improved...has worked hard and really matured as an athlete... promising triple jumper...**PREP:** an All-City sprinter at Lake Gibson HS...**PERSONAL:** a member of the Marching Chiefs, Tracy is a majorette at Florida State... majoring in electrical engineering... born May 28, 1971.

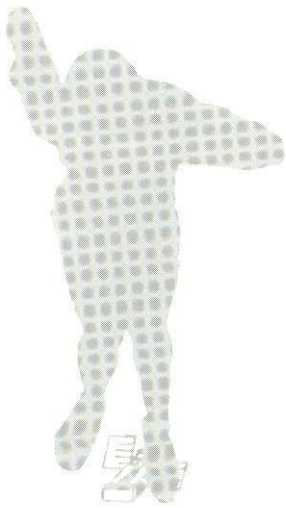


## All-American

### Karla Severs

**5-5, 115, Senior**  
**Titusville, FL**  
**(Astronaut HS)**  
**Collegiate Bests: 800m (2:09.00),**  
**1500m (4:39.07)**

A returning All-American...fiery competitor...team captain in cross country...if healthy, as good as anyone in the conference... red-shirted in 1991 with foot injury...ranks as one of the most experienced members of the middle distance group...a fine student... will work more in the 1500m and relays...**1992:** ran in ACC prelims in the 800m... **1991:** red-shirted... **1990:** an indoor All-American as a member of FSU's 3200m relay team that placed sixth nationally...Metro runner-up in the 800m...**PREP:** two-time Florida State champion in the 880-yard run... state runner-up in the mile of Astronaut HS...state 3A cross country runner-up...**PERSONAL:** a nursing major...born March 5, 1971.



## Kim Stephens

5-7, 118, Senior

Greenacres, FL

(Leonard HS)

Collegiate Bests: Heptathalon (5,251),  
Javelin (145-3), 400IM (58.98)

A tremendous competitor...one of the team's most versatile performers... will not only participate in the heptathalon, but is also considered FSU's top intermediate hurdler and javelin thrower...has potential to score in all three events...an outstanding student...1992: placed 3rd in the 400IH at ACC Championships and 4th in the 100HH...1991: Metro runner-up in the heptathalon for the second consecutive year... Kim's 5,251 points ranked 21st nationally... 1990: Metro Conference runner-up in the heptathalon (5,143)...placed 3rd in the javelin with a throw of 135-6... **PREP:** Florida heptathalon champion out of Leonard HS...state runner-up in the



330-yard hurdles... **PERSONAL:** formerly Kim Mann, is married to Jeff Stephens...active in Fellowship of Christian Athletes and FSU's "Say No to Drugs" campaign... a therapeutic recreation major...born June 18, 1971.

## All-American

### Patrice Verdun

5-5, 125, Senior

Flint MI

(Central HS)

Collegiate Bests: 100m (11.40),  
200m (23.24)

Three-time All-American, who's now a senior and ready for her best year ever... contender to win both the 100m and the 200m at the ACC Championships... one of the nation's outstanding sprinters...excels at the big meets... excellent student-athlete...ready to become one of the nation's elite track athletes...1992: a national semifinalist in 100m and 200m...placed 2nd in the 100m at the ACC Championships and 3rd in the 200m...also member of 400-meter relay team that placed 7th nationally...1991: competed in three events at the NCAA Championships (100, 200, 4x100)...ran on 400-meter relay team that placed sixth at NCAA's...made semifinals in 100m and 200m...Metro champion in the 200m (23.73)...runner-up to teammate Sheryl Covington in the 100m at conference meet...1990: an indoor All-American in the 55m and 200m...ran on 400-meter relay team that placed 4th nationally... national semifinalist in the 100m...Metro champion in the 100m and runner-up in the 200m...**PREP:** a prep All-American at Central HS... placed 5th at the Junior Nationals in the 200m...an all-state and all-Saginaw Valley choice... **PERSONAL:** a rehabilitation major...born June 9, 1971.



Kim Stephens



Patrice Verdun  
All-American



# Women's Records



EVENT	FSU OUTDOOR RECORD	MIKE LONG TRACK RECORD	ACC RECORD	COLLEGIATE RECORD
<b>100 Meter Dash</b>	11.20, 1986 Michelle Finn	11.27, 1984 Randy Givens, FSU	11.36, 1987 Sonja Fridy, Virginia	10.78, 1989 Dawn Sowell, LSU
<b>200 Meter Dash</b>	22.31, 1983 Randy Givens	23.08, 1986 Pauline Davis, Alabama	23.03, 1992 Kim Graham, Clemson	22.04, 1989 Dawn Sowell, LSU
<b>400 Meter Dash</b>	49.91, 1984 Marita Payne	52.37, 1987 Janet Davis, FSU	51.35, 1992 Nelrae Pasha, Georgia Tech	49.91, 1984 Marita Payne-Wiggins, FSU
<b>800 Meter Run</b>	2:04.6, 1982 Ovrill Dwyer-Brown	2:03.8, 1986 Linda Detiefesen, Athletics West	2:02.07, 1983 Tina Krebs, Clemson	1:58.33, 1985 Claudette Groenendaal, Oregon
<b>1500 Meter Run</b>	4:18.56, 1985 Nancy Rettie	4:16.42, 1988 Evelyn Adiru, Alabama	4:13.42, 1988 Rosalind Taylor, Maryland	4:05.81, 1991 Sonia O'Sullivan, Villa/IRL
<b>3000 Meter Run</b>	9:22.94, 1984 Margaret Coomber	8:47.73, 1984 Wendy Sly, Great Britain	8:59.79, 1983 Betty Springs, N.C. State	8:27.35, 1988 Vicki Huber, Villanova
<b>5000 Meter Run</b>	16:39.4, 1981 Darren Andreu	16:00.68, 1986 Patti S. Plumer, Puma Track Club	15:33.43, 1983 Betty Springs, N.C. State	15:07.56, 1985 Kathy Easker, Wisconsin
<b>10,000 Meter Run</b>	34:32.75, 1987 Kerrie Yenchak	34:27.75, 1987 Kerrie Yenchak, Edinboro	32:36.2, 1986 Kathy Ormsby, N.C. State	32:22.97, 1992 Carole Zajac, Villanova
<b>100 Meter Hurdles</b>	13.06, 1991 Kim Batten	12.92, 1988 Kim McKenzie, Mazda Track Club	13.38, 1991 Sharon Couch, North Carolina	12.61, 1988 Gail Devers, UCLA
<b>400 Meter Hurdles</b>	53.98, 1991 Kim Batten	56.08, 1984 Angela Wright-Scott, Bud Light TC	56.86, 1992 Rebecca Russell, North Carolina	53.41, 1984 Jancene Vickers, UCLA
<b>400 Meter Relay</b>	42.94, 1983 Wright, Payne, Cliette, Givens	43.9, 1984 Finn, Payne, Cliette, Givens, FSU	44.29, 1992 Johnson, Covington, Verdun, Lyons, FSU	42.50, 1989 Stanley, Sowell, Sheffield, Jones, Louisiana State
<b>1600 Meter Relay</b>	3:28.46, 1983 Givens, Cliette Wright, Payne	3:34.07, 1987 Levy, Thompson Davis, Curry, FSU	3:32.17, 1990 Russell, Pollard, Putnam, Mackey, North Carolina	3:27.53, 1992 Beasley, Freeman Mitchell, Howard, UF
<b>Long Jump</b>	21-8 1/2, 1990 Sonya Blades	21-6 3/4, 1986 Esmeralda Garcia, FSU	21-9 1/2, 1990 Dana Boone, Virginia	23-9, 1985, 1987 Jackie Joyner, UCLA
<b>Triple Jump</b>	44-10 3/4, 1986 Esmeralda Garcia	43-6 3/4, 1986 Esmeralda Garcia, FSU	43-10 1/2, 1987 Kathy Harrison, Georgia Tech	46-0 3/4, 1990 Sheila Hudson, California
<b>High Jump</b>	6-1 1/2, 1983 Wendy Markham Holly Kelly, 1991	6-0 1/2, 1984 Bridgette Reid, Canada	6-3 1/2, 1992 Tisha Waller, North Carolina	6-5.5, 1987 Lisa Bernhagen, Stanford Tanya Hughes, Arizona
<b>Shot Put</b>	46-10 1/2, 1977 Vicki Smith	49-2, 1988 Colleen Rosensteel, UF	55-9, 1983 Marita Walton, Maryland	62-3 3/4, 1983 Meg Ritchie, Arizona
<b>Discus</b>	150-5, 1992 Tanya Grannemann	189-3, 1986 Kathy Landry, Alabama	178-2, 1992 Lynda Lipson, North Carolina	221-5, 1983 Meg Ritchie, Arizona
<b>Javelin</b>	174-10, 1990 Kari Keith	182-8, 1985 Susie Ray, UF	183-8, 1989 Julia Solo, Virginia	211-5, 1981 Karin Smith, Cal Poly SLO
<b>Heptathlon</b>	5410, 1991 Carmellia Shivers	5402, 1990 Carmellia Shivers, FSU	5578, 1992 Nicky Hudson, North Carolina	6718, 1985 Jackie Joyner, UCLA

# '93 NCAA Women's Qualifying Marks

## OUTDOOR

EVENT	AUTOMATIC		PROVISIONAL	
	FAT	MT	FAT	MT
100 Meter Dash	11.43	—	11.70	—
200 Meter Dash	23.28	—	23.90	—
400 Meter Dash	52.80	52.5	54.40	54.1
800 Meter Run	2:05.50	2:05.2	2:08.50	2:08.2
1500 Meter Run <sup>#</sup>	4:18.00	4:17.7	4:24.20	4:23.9
Mile Run <sup>#</sup>	4:38.62	4:38.3	4:45.31	4:45.0
3000 Meter Run <sup>#</sup>	9:16.00	9:15.7	9:34.00	9:33.7
5000 Meter Run <sup>#</sup>	16:18.00	16:17.7	16:45.00	16:44.7
10,000 Meter Run <sup>#</sup>	34:00.00	33:59.7	35:15.00	35:14.7
100 Meter Hurdles	13.30	—	13.75	—
400 Meter Hurdles	57.65	57.4	59.80	59.5
400 Meter Relay	44.34	44.1	45.70	45.4
440 Yard Relay	44.54	44.3	45.90	45.6
1600 Meter Relay	3:34.00	3:33.7	3:40.00	3:39.7
Mile Relay	3:35.20	3:34.9	3:41.20	3:40.9
High Jump	1.87m	—	1.79m	—
Long Jump	6.50m	—	6.24m	—
Triple Jump	13.10m	—	12.60m	—
Shot Put	16.05m	—	14.60m	—
Discus	53.00m	—	48.50m	—
Javelin	52.00m	—	46.50m	—
Heptathlon	5,550	—	5,100	—

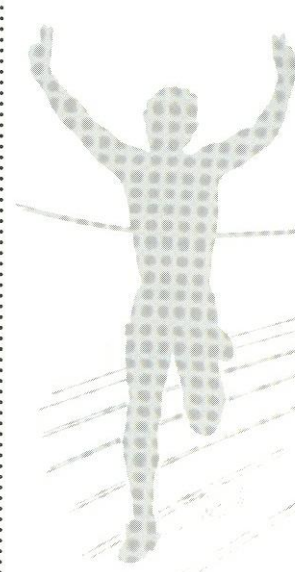
<sup>#</sup> - Altitude adjustment available

## INDOOR

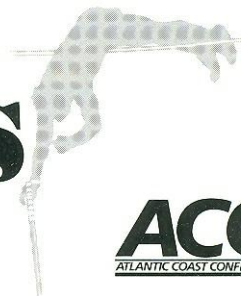
EVENT	AUTOMATIC		PROVISIONAL	
	FAT	MT	FAT	MT
55 Meters	6.86	—	6.96	—
55-Meter Hurdles	7.68	—	7.93	—
200 Meters	—	—	—	—
(Under 200m/220 yds)*	24.08	—	24.70	—
(200m/220 yds)*	23.88	—	24.50	—
(Over 200m/220 yds)*	23.58	—	24.20	—
400 Meters	—	—	—	—
(Under 200m/220 yds)*	54.10	53.8	55.70	55.4
(200m/220 yds)*	53.50	53.2	55.10	54.8
(Over 200m/220 yds)*	52.80	52.5	54.40	54.1
800 Meters	—	—	—	—
(200m/220 yds or less)*	2:07.10	2:06.8	2:10.10	2:09.8
(Over 200m/220 yds)*	2:06.30	2:06.0	2:09.30	2:09.0
Mile <sup>#</sup>	—	—	—	—
(200m/220 yds or less)*	4:43.00	4:42.7	4:50.50	4:50.2
(Over 200m/220 yds)*	4:41.60	4:41.3	4:49.10	4:48.8
3000 Meters <sup>#</sup>	—	—	—	—
(200m/220 yds or less)*	9:23.00	9:22.7	9:38.00	9:37.7
(Over 200m/220 yds)*	9:20.80	9:20.5	9:35.80	9:35.5
5000 Meters <sup>#</sup>	—	—	—	—
(200m/220 yds or less)*	16:18.00	16:17.7	16:48.00	16:47.7
(Over 200m/220 yds)*	16:14.90	16:14.6	16:44.90	16:44.6
1600-Meter Relay	—	—	—	—
(Under 200m/220 yds)*	3:41.85	3:41.6	3:47.60	3:47.3
(200m/220 yds)*	3:39.25	3:39.0	3:45.00	3:44.7
(Over 200m/220 yds)*	3:36.65	3:36.4	3:42.40	3:42.1
Mile Relay	—	—	—	—
(Under 200m/220 yds)*	3:43.10	3:42.8	3:48.85	3:48.6
(200m/220 yds)*	3:40.50	3:40.2	3:46.25	3:46.0
(Over 200m/220 yds)*	3:37.90	3:37.6	3:43.65	3:43.4
3200-Meter Relay	—	—	—	—
(Under 200m/220 yds or less)*	8:44.00	8:43.7	8:55.00	8:547.7
(Over 200m/220 yds)*	8:40.80	8:40.5	8:51.80	8:51.5
Two-Mile Relay	—	—	—	—
(Under 200m/220 yds or less)*	8:47.00	8:46.7	8:58.00	8:57.7
(Over 200m/220 yds)*	8:43.80	8:43.5	8:54.80	8:54.5
High Jump	1.87m	—	1.79m	—
Long Jump	6.38m	—	6.10m	—
Triple Jump	12.95m	—	12.40m	—
Shot Put	15.80m	—	14.65m	—

\* - Size of track.

<sup>#</sup> - Altitude adjustment available.



# Champions



## NCAA Championship

### Relay Teams

#### 1981 Indoor 300-Meter Relay

1:36.88 Esmeralda Garcia, Alice Bennett, Marita Payne, Randy Givens

#### 1981 Outdoor 400-Meter Relay

44.35 Esmeralda Garcia, Alice Bennett, Marita Payne, Randy Givens

#### 1982 Indoor Two-Mile Relay

8:47.27 Janette Wood, Ovril Dwyer-Brown, Carla Borovicka, Margaret Coomber

#### 1983 Outdoor 400-Meter Relay

42.94 Angela Wright, Marita Payne, Brenda Cliette, Randy Givens

#### 1984 Outdoor 1,600-Meter Relay

3:28.46 Angela Wright, Marita Payne, Brenda Cliette, Randy Givens

#### 1984 Outdoor 400-Meter Relay

43.72 Michelle Finn, Marita Payne, Brenda Cliette, Randy Givens

#### 1987 Outdoor 400-Meter Relay

43.19 Janet Levey, Andrea Thompson, Janet Davis, Michelle Finn

### Lady Seminoles In the Olympics

#### 1992-BARCELONA, SPAIN

Michelle Finn (United States), 400 Meter Relay (Gold Medal)

#### 1988-SEOUL, SOUTH KOREA

Marita Payne (Canada), 400 Meters

#### 1984-LOS ANGELES, CALIFORNIA

Marita Payne (Canada), 400 Meters (4th place), 400 Meter Relay (2nd place), 1600 Meter Relay (2nd place)

Randy Givens (United States), 200 Meters (6th place)

Esmeralda Garcia (Brazil), 100 Meters; Long Jump

Brenda Cliette (United States), 400 Meter Relay (alternate)

Angela Wright-Scott (United States)

Ovril Dwyer-Brown (Jamaica), 400 Meter Hurdles

### Individual NCAA Champions

Tonya Brown

1982 - Outdoor 400m IH

Michelle Finn

1985 - Indoor 55m Dash,

1985 - Outdoor 100m Dash

Esmeralda Garcia

1985 - Indoor Triple Jump

1985 - Outdoor Triple Jump

Randy Givens

1984 - Outdoor 100m Dash

1984 - Outdoor 200m Dash

Marita Payne

1982 - Outdoor 400m Run

1984 - Outdoor 400m Run

## 1992 Atlantic Coast Conference Championships

### Mike Long Track-Tallahassee, Florida

TEAM CHAMPION	RUNNERUP	OUTSTANDING ATHLETE
Men's		
North Carolina	Clemson	James Trapp (Clemson)
Women's		
North Carolina	Clemson	Kim Graham (Clemson) Claire Forbes (Virginia)

## Metro Conference

### Championship (Men's)

YEAR	TEAM CHAMPION	RUNNERUP	OUTSTANDING ATHLETE
1991	Florida State	South Carolina	Rob Circelli (Florida State)
1990	Florida State	South Carolina	Tim Covington (Virginia Tech)
1989	Florida State	South Carolina	Phillip Williams (S. Carolina)
1988	Florida State	South Carolina	Deion Sanders (FSU)
1987	Florida State	South Carolina	Anthony Brennan
1986	Florida State	Virginia Tech	Leander McKenzie (FSU)
1985	Florida State	Cincinnati	Leander McKenzie (FSU)
1984	Florida State	Virginia Tech	Leander McKenzie (FSU)
			Donnie Young (Southern Miss.)
1983	Florida State	Virginia Tech	Rodney Johnson (Cincinnati)
1982	Florida State	Virginia Tech	Ronnie Taylor (FSU)
1981	Florida State	Virginia Tech	Terron Wright (Memphis State)
1980	Florida State	Virginia Tech	Mike Roberson (FSU)
1979	Florida State	Memphis State	Terron Wright (Memphis State)
1978	Florida State	Georgia Tech	Walter McCoy (FSU)
1977	Florida State	Georgia Tech	John Walker (FSU)
1976	Georgia Tech*	Memphis State	Paul Bannon (Memphis State)

\*Florida State was not yet in Conference

## Metro Conference

### Championship (Women's)

YEAR	TEAM CHAMPION	RUNNERUP	OUTSTANDING ATHLETE
1991	Florida State	Memphis State	Kim Batten (FSU)
1990	Florida State	South Carolina	Kim Batten (FSU)
1989	Florida State	South Carolina	Kim Batten (FSU)

## The Lady Seminoles

### at the NCAA Championships

YEAR	OVERALL	YEAR	OVERALL	YEAR	OVERALL
1981	Third	1985	Runners-up	1989	DNS*
1982	Third	1986	14th	1990	13th
1983	Runners-up	1987	10th	1991	9th
1984	Champions	1988	12th	1992	15th

\*Did Not Score

# All-Americans

## CROSS COUNTRY

1981 Darien Andreau

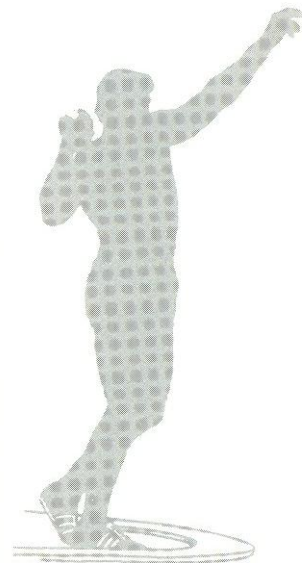
## INDOOR

- 1981 Darien Andreau - 5,000m (5th); Alice Bennett - long jump (4th); Esmeralda Garcia - long jump (2nd), 60m (2nd); Angela Wright - 400m (4th); Alice Bennett, Esmeralda Garcia, Randy Givens, Marita Payne - 4x200 (1st); Margaret Coomer - 1,000m (3rd); Scooby Golden, Debbie Moore, Marita Payne, Angela Wright - 4x400 (4th)
- 1982 Tonya Brown - 60-yd hurdles (7th); Ovrill Dwyer-Brown - 600 yards (5th); Margaret Coomer - 1,000 yards (8th); Carolyn Faison - 60-yd hurdles (6th); Randy Givens - 300 yards (2nd); Marita Payne - 60m (7th), 300 yards (4th); Angela Wright - 440 yards (6th); Carla Borovicka, Ovrill Dwyer-Brown, Margaret Coomer - 4x800 (1st); Alice Bennett, Randy Givens, Marita Payne, Janette Wood - 4x200 (2nd); Tonya Brown, Ovrill Dwyer-Brown, Scooby Golden, Angela Wright - 4x400 (6th)
- 1983 Wendy Markham - high jump (3rd)
- 1984 Carla Borovicka - 1,500m (6th); Margaret Coomer - 1,500m (5th); Michelle Finn - 55m (4th); Ovrill Dwyer-Brown, Brenda Cliette, Janet Davis, Janet Levy, 4x400 (2nd)
- 1985 Michelle Finn - 55m (1st); Esmeralda Garcia - triple jump (1st); Nancy Rettie - 1,000m (3rd); Kelly Hackler, Chris McKay, Brenda Moore, Nancy Rettie - 4x800 (5th)
- 1986 Michelle Finn - 55m (2nd); Esmeralda Garcia - long jump (2nd)
- 1987 Michelle Finn - 55m (2nd)
- 1989 Kim Batten - triple jump (5th)
- 1990 Kim Batten - triple jump (5th); Carrie Boyd - 4x800 (6th); Sonya Blades - long jump (9th); Carrie Boyd, Tracey Howze, Karla Severs, Angela Harris - 4x800 (6th); Holly Kelly - high jump (4th), Patrice Verdun - 200m (6th), 55m
- 1991 Holly Kelly - high jump (4th)  
Kim Batten - triple jump (5th)

## OUTDOOR

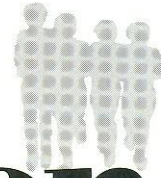
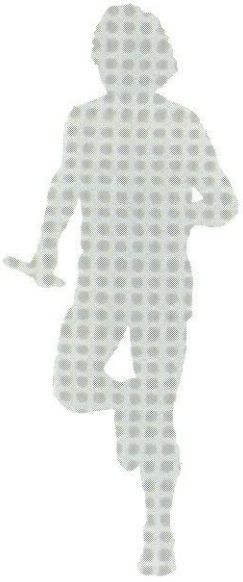
- 1981 Esmeralda Garcia - long jump (2nd), 100m (5th); Randy Givens - 200m (3rd); Marita Payne - 400m (2nd); Angela Wright - 400m (6th); Alice Bennett, Esmeralda Garcia, Randy Givens, Marita Payne - 4x100 (1st); Alice Bennett, Esmeralda Garcia, Randy Givens, Marita Payne - 800 medley relay (6th); Marita Payne, Angela Wright, Janette Wood - 4x400 (4th)
- 1982 Alice Bennett - long jump (8th); Tonya Brown - 100 hurdles (4th), 400m IM hurdles (1st); Margaret Coomer - 1,500m (7th), 200m (3rd); Wendy Markham - high jump (tied-5th); Marita Payne - 200m (4th), 400m (3rd); Angela Wright - 400m (7th); Ovrill Dwyer-Brown, Randy Givens, Marita Payne, Angela Wright - 4x400 (2nd); Alice Bennett, Randy Givens, Marita Payne, Angela Wright - 4x100 (2nd)
- 1983 Ovrill Dwyer-Brown - 400m IM hurdles (8th); Brenda Cliette - 100 (3rd), 200m (4th); Randy Givens - 100m (6th), 200m (3rd); Wendy Markham - high jump (2nd); Marita Payne - 200m (6th), 400m (5th); Angela Wright - 400m IM hurdles (3rd); Brenda Cliette, Randy Givens, Marita Payne, Angela Wright - 4x100 (1st); Brenda Cliette, Randy Givens, Marita Payne, Angela Wright - 4x400 (1st)

- 1984 Ovrill Dwyer-Brown - 400m IM hurdles (6th); Brenda Cliette - 100m (2nd), 200m (2nd); Janet Davis - 200m (6th); Michelle Finn - 100m (4th); Randy Givens - 100m (1st), 200m (6th); Marita Payne - 200m (3rd), 400m (1st); Brenda Cliette, Michelle Finn, Randy Givens, Marita Payne - 4x100 (1st); Brenda Cliette, Janet Davis, Randy Givens, Marita Payne - 4x400 (1st)
- 1985 Michelle Finn - 100m (1st), 200m (2nd); Esmeralda Garcia - triple jump (1st), long jump (5th), 100m (3rd); Michelle Finn, Esmeralda Garcia, Andrea Thompson, Janet Levy - 4x100 (3rd)
- 1986 Michelle Finn - 100m (5th), 200m (7th); Michelle Finn, Esmeralda Garcia, Janet Levy, Andrea Thompson - 4x400 (5th); Esmeralda Garcia - triple jump (2nd)
- 1987 Janet Davis - 400m (5th); Michelle Finn - 100m (4th), 200m (6th); Michelle Finn, Janet Davis, Janet Levy, Andrea Thompson - 4x100 (1st)
- 1990 Kari Keith - javelin (8th); Kim Batten - 100m (8th), 400m hurdles (2nd); Carmellia Shivers - heptathlon (9th); Patrice Verdun, Lisa Horton, Trinette Johnson, Batten - 4x100 (4th)
- 1991 Holly Kelly - high jump (4th); Carmellia Shivers - heptathlon (10th); Kim Batten - 100m (4th), 400m hurdles (3rd); Andi Lyons, Sheryl Covington, Verdun, Batten - 4x100 (6th)
- 1992 Trinette Johnson - long jump (6th); Patrice Verdun - 200m (9th); Trinette Johnson, Patrice Verdun, Andi Lyons, Sheryl Covington - 4x100 (7th)



Kim Batten, 1991 TAC National Champion

# The Florida State Experience



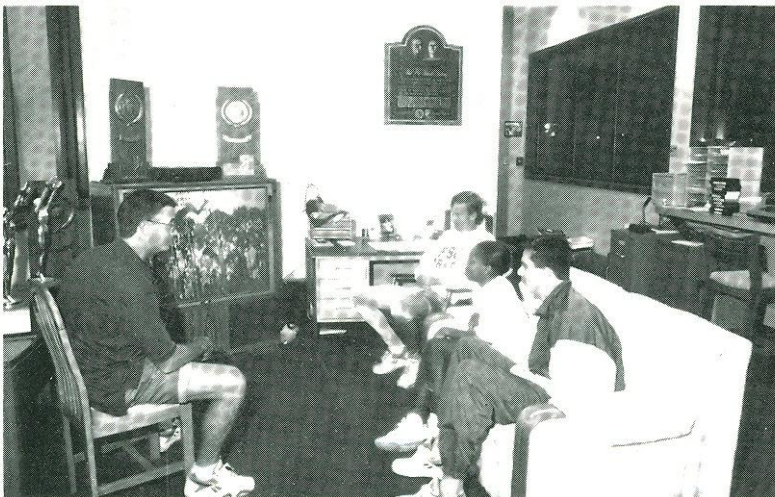
Clockwise from top: (1) Weight Room – Florida State’s Track & Field Strength Complex offers 3,000 square feet for athletes to improve strength and flexibility. (2) TV – Florida State University Track & Field athletes receive individual attention, concentrating on techniques, on the 48" television. (3) Campus – FSU’s southern location is ideal for strolls through the Tallahassee campus. (4) Study hall – Student-Athletes receive extra academic

attention in their own study hall. (5) Stair Master – the latest equipment is available for specialized training programs.

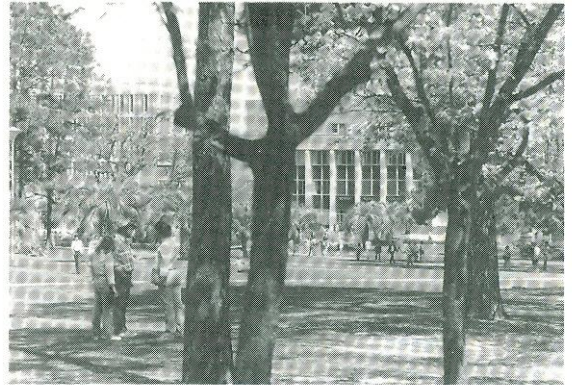
(1)



(2)



(3)



(4)



(5)





# ACC Opponents



## CLEMSON UNIVERSITY

Location: Clemson, SC  
Enrollment: 17,295  
President: Dr. Max Lennon  
Athletic Director: Bobby Robinson  
Track Facility: Rock Norman Track Complex  
Women's Head Coach: Wayne Coffman  
Men's Head Coach: Bob Pollock  
1992 Women's Conference Place: Indoor - 1st;  
Outdoor - 2nd  
1992 Women's NCAA Place: Indoor - 22nd;  
Outdoor - 17th  
1992 Men's Conference Place: Indoor - 1st;  
Outdoor - 2nd  
1992 Men's NCAA Place: Indoor - 2nd;  
Outdoor - 12th  
SID Contact: Annabelle Vaughan  
SID Office Phone: (803) 656-2114

## DUKE UNIVERSITY

Location: Durham, NC  
Enrollment: 6,095  
President: Dr. H. Keith Brodie  
Athletic Director: Tom Butters  
Track Facility: Wallace Wade Stadium Track  
Women's Head Coach: Mike Forbes  
Men's Head Coach: Al Buhler  
1992 Women's Conference Place: Outdoor - 9th  
1992 Women's NCAA Place: DNP  
1992 Men's Conference Place: Outdoor - 9th  
1992 Men's NCAA Place: DNP  
SID Contact: Lori Regnier  
SID Office Phone: (919) 684-2633

## WAKE FOREST UNIVERSITY

Location: Winston-Salem, NC  
Enrollment: 3,500  
President: Dr. Thomas K. Hearn, Jr.  
Athletic Director: Dr. Gene Hooks  
Track Facility: Wake Forest Campus Stadium  
Women's Head Coach: Francie Goodridge  
Men's Head Coach: John Goodridge  
1992 Women's Conference Place: Indoor - 8th;  
Outdoor - 6th  
1992 Women's NCAA Place: DNP  
1992 Men's Conference Place: Indoor - 5th;  
Outdoor - 6th  
1992 Men's NCAA Place: DNP  
SID Contact: Julie McClung  
SID Office Phone: (919) 759-5640

## UNIVERSITY OF NORTH CAROLINA

Location: Chapel Hill, NC  
Enrollment: 23,852  
President: Paul Hardin  
Athletic Director: John Swifford  
Track Facility: Irwin Belk Track/Feltzer Field  
Head Coach: Dennis Craddock  
1992 Women's Conference Place: Outdoor - 2nd  
1992 Women's NCAA Place: Outdoor - 26th  
1992 Men's Conference Place: Outdoor - 2nd  
1992 Men's NCAA Place: Outdoor - 7th  
SID Contact: Steve Kirschner, Mark Kautz  
SID Office Phone: (919) 962-2123, (919) 962-1376

## NORTH CAROLINA STATE UNIVERSITY

Location: Raleigh, NC  
Enrollment: 26,683  
President: Chancellor Larry K. Monteith  
Athletic Director: Todd Turner  
Track Facility: Paul Derr Track  
Head Coach: Rollie Geiger  
1992 Women's Conference Place: Indoor - 6th;  
Outdoor - 8th  
1992 Women's NCAA Place: DNP  
1992 Men's Conference Place: Indoor - 3rd;  
Outdoor - 5th  
1992 Men's NCAA Place: DNP  
SID Contact: Paul Pasco  
SID Office Phone: (919) 515-2102

## UNIVERSITY OF MARYLAND

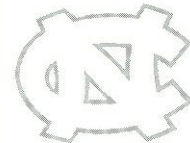
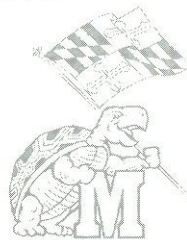
Location: College Park, MD  
Enrollment: 28,863  
President: Dr. William E. Kirwin  
Athletic Director: Andy Geiger  
Track Facility: TBA  
Head Coach: Bill Goodman  
1992 Women's Conference Place: Outdoor - 7th  
1992 Women's NCAA Place: Outdoor - 34th  
1992 Men's Conference Place: Outdoor - 8th  
1992 Men's NCAA Place: DNP  
SID Contact: Herb Hartnett  
SID Office Phone: (301) 314-7064

## UNIVERSITY OF VIRGINIA

Location: Charlottesville, VA  
Enrollment: 18,006  
President: John Casteen, III  
Athletic Director: Jim Copeland  
Track Facility: Lammigan Field  
Head Coach: Fred Binggeli  
1992 Women's Conference Place: Outdoor - 3rd  
1992 Women's NCAA Place: DNP  
1992 Men's Conference Place: Outdoor - 7th  
1992 Men's NCAA Place: DNP  
SID Contact: Tylee Smith/Angela Manalakas  
SID Office Phone: (804) 982-5500

## GEORGIA INSTITUTE OF TECHNOLOGY

Location: Atlanta, GA  
Enrollment: 12,800  
President: Dr. Patrick Creeine  
Athletic Director: Dr. Homer C. Rice  
Track Facility: George C. Griffin Track  
Head Coach: Buddy Fowlkes  
1992 Women's Conference Place: Indoor - 4th;  
Outdoor - 5th  
1992 Women's NCAA Place: Indoor - tie 7th;  
Outdoor - tie 29th  
1992 Men's Conference Place: Indoor - 6th;  
Outdoor - 4th  
1992 Men's NCAA Place: Indoor - tie 21st;  
Outdoor - tie 8th  
SID Contact: Teri Washington  
SID Office Phone: (404) 894-5445





# Women's All-Time Top Performances



**Marita Payne**  
1984 & 1988  
Olympian

## 100 Meters

1	Michelle Finn	11.20	1986
2	Randy Givens	11.27	1984
3	Brend Cliette	11.30	1983
4	Esmeralda Garcia	11.32	1985
5	Patrice Verdun	11.40	1992
6	Sheryl Covington	11.41	1991
7	Marita Payne	11.43	1983
8	Andrea Thompson	11.44	1989
9	Janet Davis	11.52	1985
10	Angela Curry	11.57	1986

## 200 Meters

1	Randy Givens	22.30	1983
2	Marita Payne	22.62	1983
3	Janet Davis	22.90	1987
4	Michelle Finn	22.95	1986
5	Patrice Verdun	23.24	1992
7	Sheryl Covington	23.50	1992
8	Lisa Horton	23.60	1989
9	Esmeralda Garcia	23.61	1985
10	Angela Curry	23.84	1986

## 400 Meters

1	Marita Payne	49.90	1984
2	Janet Davis	52.33	1987
3	Kim Batten	52.53	1991
4	Sheryl Covington	53.09	1992
5	Janet Levy	53.47	1985
6	Andi Lyons	53.88	1990
7	Caral Samuels	54.46	1985
8	Pamela Hawkins	54.48	1985
9	Samantha Green	54.50	1985

## 800 Meters

1	Orvill Dwyer-Brown	2:00.60	1982
2	Scooby Golden	2:06.60	1983
	Angela Harris	2:06.60	1992
4	Janet Wood	2:07.20	1981
	Kelley Hackler	2:07.20	1985
6	Rose Giampalmo	2:07.96	1978
7	Samantha Green	2:08.00	1985
8	Jennifer Jones	2:08.60	1986
9	Carrie Boyd	2:12.51	1991

## 1500 Meters

1	Nancy Rettie	4:18.56	1985
2	Margaret Coomber	4:19.60	1983
3	Carla Borovicka	4:19.92	1983
4	Carrie Boyd	4:23.28	1991
5	Jennie Messinese	4:23.50	1986
6	Brenda Moore	4:31.82	1985
7	Angela Harris	4:34.39	1991
8	Stacey Bowrosen	4:38.60	1992

## 3000 Meters

1	Margaret Coomber	9:22.94	1984
2	Carla Borovicka	9:36.50	1984
3	Darien Andreu	9:36.64	1981
4	Janie Regis	9:39.39	1985

5	Barbra Mathews	9:42.17	1988
6	Carrie Boyd	9:44.14	1989
7	Janet Bassford	9:46.00	1982
8	Colleen Curren	9:51.43	1983
9	Colleen O'Reilly	10:10.00	1986
10	Tracey Pepoon	10:16.48	1991

## 5000 Meters

1	Darien Andreu	16:39.40	1981
2	Janie Regis	16:43.50	1985
3	Barbra Mathews	17:42.38	1988
4	Michelle Farrell	17:56.78	1989

## 10,000 Meters

1	Kerrie Yenchak	34:32.05	1987
2	Darien Andreu	34:42.60	1981
3	Janie Regis	35:01.78	1985
4	Janet Bassford	35:52.20	1982
5	Barbra Mathews	36:11.70	1988
6	Michelle Farrell	37:04.90	1989

## 100 Meter Hurdles

1	Kim Batten	13.06	1991
2	Mary Hawkins	13.20	1988
	Andrea Thompson	13.20	1988
4	Tonja Brown	13.42	1982
5	Carmellia Shivers	13.62	1991
6	JoAnn Brown	13.71	1985
7	Ann Girvan	13.77	1986
8	Carolyn Faison	13.83	1982
9	Peggy Armand	14.04	1992
10	Kim Stephens	14.10	1992

## 400 Meter Intermediate Hurdles

1	Kim Batten	53.98	1991
2	Tonja Brown	56.46	1982
3	Angie Wright	56.74	1983
4	Orvill Dwyer-Brown	56.94	1983
5	Carmellia Shivers	58.55	1991
6	Kim Stephens	59.32	1992
7	Chris McKay	59.98	1983
8	Andrea Thompson	1:00.01	1988
9	Fran Gordon	1:01.65	1986
10	Candi Odom	1:01.81	1991

## Long Jump

1	Sonya Blades	21' 8 1/2"	6.61	1990
2	Esmeralda Garcia	21' 7 1/2"	6.59	1986
3	Trinette Johnson	21' 2"	6.45	1992
4	Kim Batten	20' 9"	6.32	1988
5	Alice Bennett	20' 6"	6.24	1983
6	Michelle Finn	20' 1/4"	6.10	1987
7	Carolyn Hightower	19' 2 1/2"	5.85	1988
8	Candi Odom	19' 2 1/4"	5.84	1991
9	Carmellia Shivers	17' 11 1/4"	5.46	1991

### Triple Jump

1 Esmeralda Garcia	44' 10 3/4"	13.68	1986
2 Kim Batten	42'	12.95	1989
3 Felicia Evans	38' 2 1/4"	11.64	1992
4 Janet Levy	37' 6"	11.43	1987
5 Sonya Blades	35' 3"	10.74	1989

### High Jump

1 Wendy Markham	6' 1 1/4"	1.86	1983
Holly Kelly	6' 1 1/4"	1.86	1989
3 Indianne Henry	5' 10 3/4"	1.80	1992
4 Carmellia Shivers	5' 9"	1.75	1990
5 Latashia Crews	5' 8"	1.73	1985
6 Peggy Armand	5' 7"	1.70	1992
7 Kim Stephens	5' 5"	1.65	1991
Candi Odom	5' 5"	1.65	1991

### Shot Put

1 Vicki Smith	46' 10 1/2"	14.28	1977
2 Donna Williams	46' 3"	14.09	1984
3 Eleanor Majors	45' 8"	13.92	NA
4 Tonya Grannemann	42' 3"	12.88	1992
5 Carolyn Darville	41' 10 1/2"	12.76	1983
6 Cathy Erickson	40' 8 1/4"	12.40	1992
7 Latoshia Crews	39' 2 1/2"	11.95	1986
8 Hiedi Hargett	36' 3"	11.05	1991
9 Carmellia Shivers	33' 9 1/2"	10.30	1991
10 Kim Stephens	32' 11 1/4"	10.04	1991

### Discus

1 Tonya Grannemann	150' 5"	45.86	1990
2 Donna Williams	148' 7"	45.30	1984
3 Rena Antanelis	145' 2"	44.26	1990
4 Kim Travers	140'	42.68	1976
5 Heidi Hargett	134' 9"	41.03	1991
6 Carolyn Darville	133' 2"	40.60	1983

### Javelin

1 Kari Kieth	174' 10"	53.30	1990
2 Cheryl Coker	167'	50.90	1985
3 Nancy Townsend	154' 9"	47.18	1980
4 Rena Antanelis	149' 8"	45.62	1983
5 Laura Gibbons	149' 6"	45.58	1972
6 Rosa Diaz	145' 6"	44.36	1989
7 Kim Stephens	145' 3"	44.28	1991
8 Candi Odom	111' 10"	34.10	1991
9 Carmellia Shivers	106' 4"	32.42	1991

### Heptathlon

1 Carmellia Shivers	5410	1991
2 Kim Stephens	5251	1991
3 Candi Odom	4911	1991
4 Latoshia Crews	4900	1985

### 4x100 Relay (NCAA Finalist 12 Consecutive Years)

1 Wright, Payne, Cliette, Givens	42.94	1982
2 Levy, Thompson, Davis, Finn	43.19	1987
3 Finn, Payne, Cliette, Givens	43.40	1984
4 Wright, Payne, Cliette, Givens	43.73	1983
5 Garcia, Finn, Thompson, Levy	43.98	1985
6 Levy, Finn, Thompson, Davis	44.12	1986
7 Johnson, Covington, Verdun, Lyons	44.27	1992
8 Batten, Horton, Verdun, Johnson	44.30	1990
9 Garcia, Payne, Bennett, Givens	44.35	1981
10 Batten, Verdun, Covington, Lyons	44.44	1991
10 Horton, Thompson, Holmes, Curry	44.58	1988

### 4x400 Relay

1 Givens, Cliette, Wright, Payne	3:28.46	1983
2 Wright, Dwyer-Brown, Givens, Payne	3:28.70	1982
3 Davis, Cliette, Givens, Payne	3:28.93	1984
4 Wright, Dwyer-Brown, Golden, Payne	3:34.06	1982
5 Levy, Thompson, Davis, Curry	3:34.07	1987
6 Wright, Golden, Wood, Payne	3:34.80	1981
7 Levy, Finn, Samuels, Davis	3:34.98	1986
8 Payne, Givens, Levy, Cliette	3:36.14	1984
9 Shivers, Lyons, Covington, Batten	3:37.51	1991

### 4x200 Relay

1 Givens, Cliette, Wright, Payne	1:33.20	1983
2 FSU (FSU relays)	1:36.02	1991

### 4x800 Relay

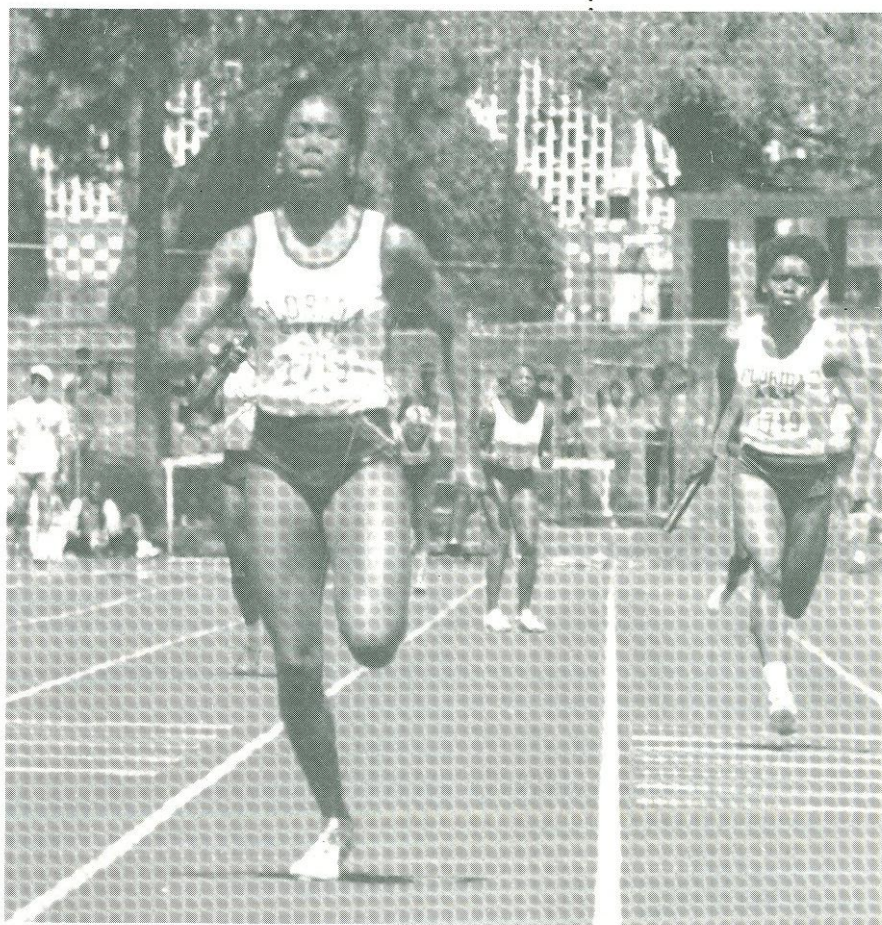
1 Coomber, Borovicka, Dwyer-Brown, Wood	8:42.00	1983
2 Stephens, Bowrosen, Severs, Harris	8:47.95	1992
3 Severs, Howze, Boyd, Harris	NA	1991

### Sprint Medley Relay

1 Garcia, Bennett, Givens, Payne	1:38.67	1981
2 FSU (FSU relays)	3:55.24	1991

### Distance Medley Relay

1 Borovicka, Payne, Dwyer-Brown, Coomber	11:28.95	1982
2 FSU	11:51.20	1991
3 FSU	12:24.30	1991



**Michelle Finn**  
1992 Olympian