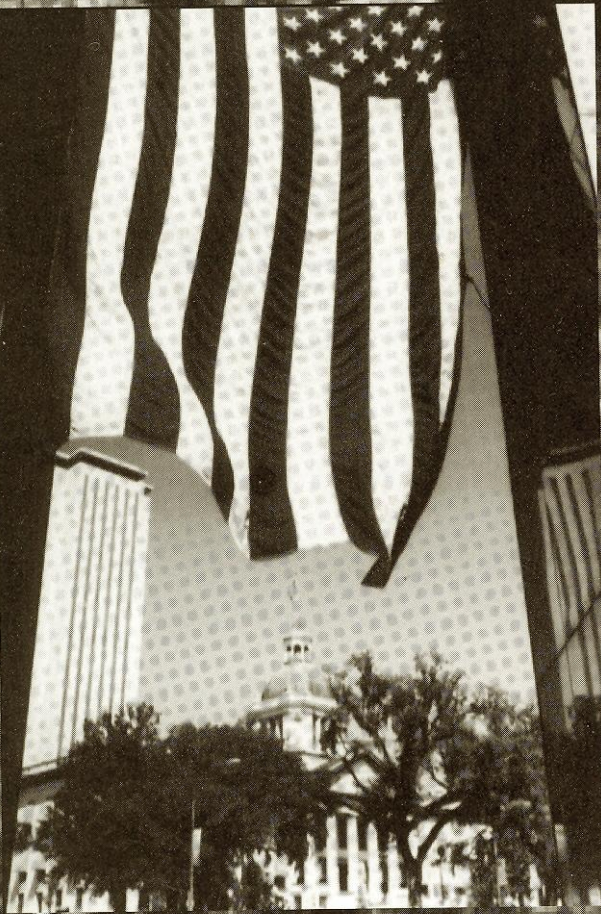


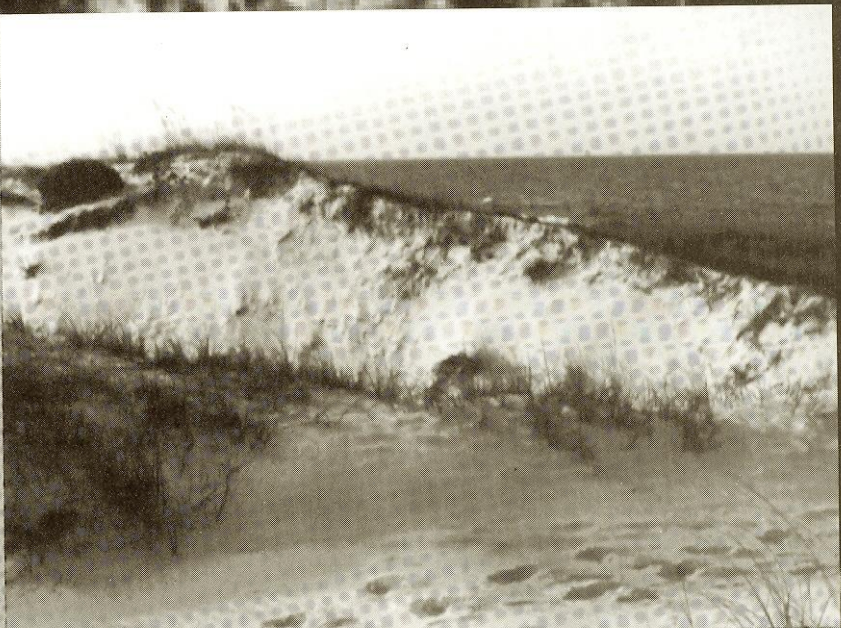
WOMEN'S TRACK & FIELD

1992 FLORIDA STATE UNIVERSITY MEDIA GUIDE





Canopy roads and tranquil surroundings — Tallahassee, Florida offers a unique combination of big city attractions, serene country charm and the pristine beaches of the nearby Gulf of Mexico. Tallahassee is the capital city of a state that soon will be the 3rd largest in the USA.



CREDITS: The 1992 Florida State Track and Field Media Guide was edited by student assistant Joey Ferolito with contributing writing and research by Steve Roogow and Sharon Line. Photos by Bucky Parrish, Ross Obley, Ryals Lee and Jerry Kutz. Design by Vision Marketing, Inc. Printing by Florida Printing, Inc. ON THE COVER: Women's: Angela Harris, Patrice Verdun, Trinette Johnson, Andi Lyons; Mens's: Jeff Bray, Kevin Crist, Eric Chambers.

THE UNIVERSITY

Florida State University, nearing its golden anniversary as a coeducational graduate research institution, is poised on the brink of joining the nation's academic elite.

Building rapidly from the framework of a highly regarded liberal arts college for women, located on the oldest continuous site of higher education in Florida, the University has emerged as an institution of national and international esteem, evidenced by a number of exciting recent additions to its record of excellence:

- FSU, selected over the Massachusetts Institute of Technology, attracted the National High Magnetic Field Laboratory to Florida's capital city. The National Science Foundation will establish the \$100 million, state-of-the-art magnet lab at FSU, which will be joined in the research by the Los Alamos National Laboratory and the University of Florida.

- At the forefront of super-computing since obtaining its first high-speed computer in 1985, FSU took yet another step in ultra-fast computing with the acquisition of two new supercomputers, the Thinking Machine Corp. Connection Machine and the Cray Y-MP. Both computers can be accessed from hundreds of locations in the United States and Europe.

- In 1991, Florida State ranked second in popularity nationwide among high school seniors, based on the number of students who request that their college entrance exam scores be sent to an institution. FSU was one of only three institutions among the top 15 choices of both black and white college bound students.

- FSU's high-tech program in structural biology in 1991 received the university's largest single foundation grant to date, \$4 million, to position it among the leaders in the field worldwide.

- Now the professional training ground for one of Florida's fastest growing industries, film production, FSU graduated its first class of film students from its School of Motion Picture, Television and Recording Arts in 1991.

- Construction of the \$75 million University Center is underway adjacent to Doak S. Campbell Stadium. When completed, the University Center will provide 550,000 square feet of classroom and office space and a centralized location for student services. The three-phase project will

include two eight-story buildings and three four-story buildings on the east and west sides of the stadium.

- And, in 1991, Florida State, after being courted by several national athletic conferences, joined the Atlantic Coast Conference as its ninth member, capping more than a decade of national prominence in intercollegiate athletics.

As this list attests, Florida State has begun the 1990s with exceptional strength, energy and vision for the future. Under the new leadership of the university's 11th president, Dr. Dale W. Lick, FSU will continue to build on the foundation of its long history of excellence in scholarship, research and humanity.

A public university and a senior member of the State University System, Florida State was founded as an institution of higher learning in 1851 by legislative act and began operating in Tallahassee with its first students in 1857.

The main campus is spread over 347 acres in Tallahassee; the University owns a total of 1,172 acres in Leon, Bay and Franklin counties. For many years, FSU has extended its reach far beyond Florida through international study programs in England, Italy, Switzerland, Yugoslavia, France, Panama, Costa Rica and the Caribbean.

These far-reaching programs are but a few of the 271 graduate and undergraduate degree programs offered through Florida State's eight independent colleges — Arts and Sciences; Business; Communication; Education; Engineering; Human Sciences; Law; and Social Sciences (incorporating the School of Public Administration and Policy) — and eight independent schools — Criminology and Criminal Justice; Library and Information Studies; Motion Picture, Television and Recording Arts; Music; Nursing; Social Work; Theatre; and Visual Arts and Dance.

With 1,533 members, the FSU faculty currently includes five members of both the National Academy of Sciences and the

American Academy of Arts and Sciences, and has included five Nobel laureates. The main library facility, the Robert M. Strozier Library, is linked via a computerized information system to other state university and national research libraries. The Paul A.M. Dirac Science Center Library places scientific resources close by the university's main science research complex.

On the top floor of the Dirac Library is the headquarters of the Supercomputer Computations Research Institute, a multidisciplinary, multinational program that brings together some 100 scientists, engineers and technicians. SCRI is electronically linked to an off-campus research complex and the university's two powerful supercomputers.

Also providing unique research opportunities is the physics department's Tandem Van de Graaff Superconducting Accelerator Laboratory, which houses two powerful atom smashers and is ranked among the top four in the nation by the National Science Foundation.

FSU places a high priority on its nearly 29,000 students, their needs and interests. The Honors and Scholars program, the FSU Distinguished Lecture Series, student government, the one-of-a-kind, all-collegiate Flying High Circus, and intramural sports are among more than 200 organizations and activities in which students can participate.

In the heart of the state's thriving capital city, Florida State bonds the educational and social aspects of campus life just as it blends Gothic and modern styles of architecture with the oaks, pines, dogwoods, palms and azaleas of North Florida.

In all areas of teaching, research and service, Florida State University is advancing boldly into the 21st century.



THIS IS FLORIDA STATE

PREVIEW



1992 Lady Seminoles.

The Lady Seminoles in a rebuilding year in track and field?

Say it ain't so.

Well, according to head coach Terry Long, 1992 — FSU's first in the extremely competitive Atlantic Coast Conference — will be a

rebuilding year. "The conference meets, the ACC is the best track conference in the country. It is far stronger than it has been in the past. And I feel like we will add some balance to the league."

"It will be quite a challenge to compete and it might take us a year to adjust. Our athletes are not in a

losses of Kim Batten and Holly Kelly, a pair of four-year NCAA qualifiers.

Heading the roster is another in a long line of talented sprinters at Florida State, sophomore Sheryl Covington. As a freshman, Covington qualified for the NCAA

"I believe that great athletes always rise to the occasion. We should see an overall higher level of performance (in the ACC)." – FSU Head Coach Terry Long

rebuilding year for Florida State.

"We are very definitely in a major rebuilding year," Long says. "It's safe to say some of the young people will have to step in and make significant contributions."

There is a load of raw talent but a lack of experience and depth. And the ACC is not the Metro Conference, where FSU dominated. Although it may be a struggle, Long welcomes the challenge.

"Based on the indoor confer-

ence they can dominate. I believe that great athletes always rise to the occasion. We should see an overall higher level of performance."

The 1992 Lady Seminoles will be balanced. Their strengths will lie in traditionally strong areas at FSU — sprints and jumps.

Three Lady Seminoles will return from last year's NCAA Championships, where FSU placed ninth with 19 points. Long will be hard-pressed to make up for the

Championships in the 100 and 200 and ran with FSU's 400-meter relay team that placed sixth nationally.

Joining Covington will be junior Patrice Verdun, who qualified for the NCAA's in the same events. With senior Andi Lyons, a semifinalist in the 400, FSU's sprint crew will be strong as usual, though not very deep.

Long thinks, overall, his group will somewhere in the middle of the pack in its initial season in the ACC.

Here's a look at each individual area for the Lady Seminoles.

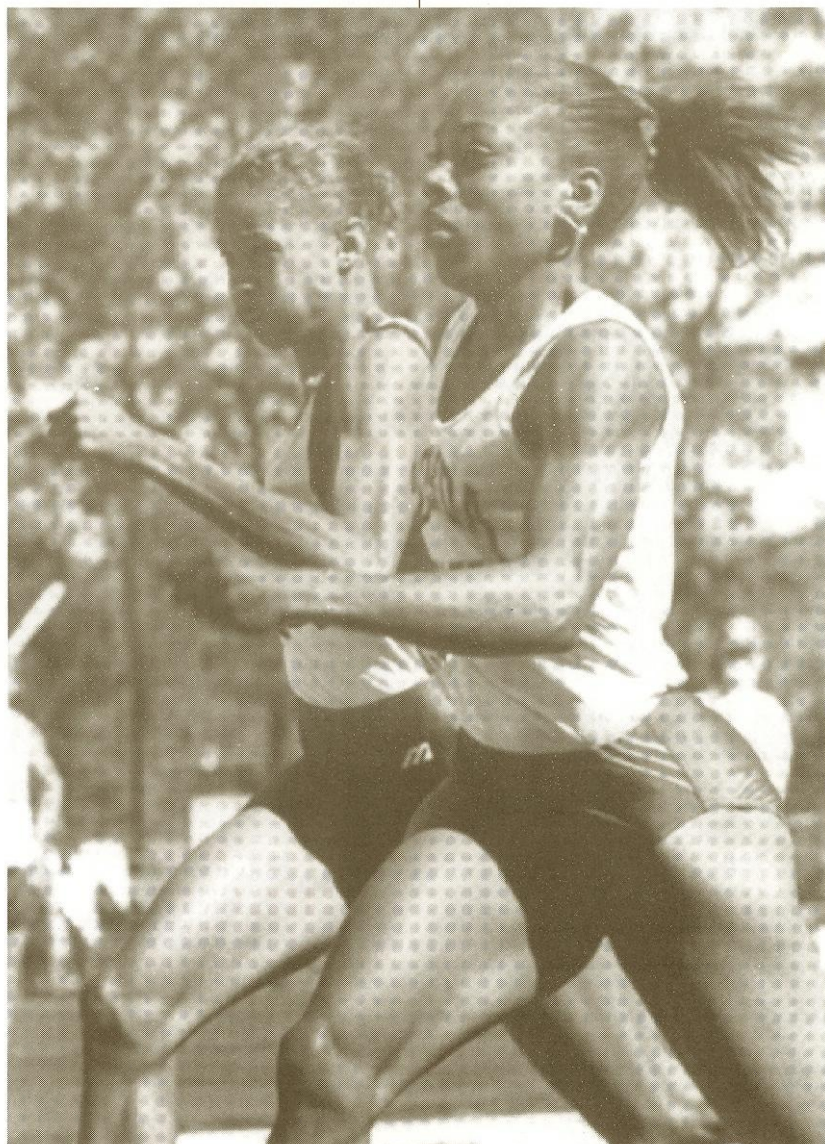
SPRINTS — Again FSU's strongest area. Covington is rapidly developing into one of the nation's elite sprinters. Covington qualified in both the 100- and 200-meters as a freshman and also ran with the 400-meter relay team that placed sixth nationally. The 4x1 team consists of four all-Americans. Verdun was a member of both the 1990 and 1991 teams that scored at the national meet. Verdun specializes in the 100 and 200. Senior Andi Lyons stepped in a year ago for injured Trinette Johnson and helped the 400-meter relay team to a season best 44.44 in the NCAA finals.

Lyons also made the semifinal in the 400. Johnson will run with the 4x1 team as well. Sophomore Natalie Douglas needs to step forward and fresh Shawn Clark will have to mature rapidly to make an impact at the conference level.

HURDLES — Traditionally one of its best events, FSU will need to have someone step forward here. Filling the shoes of Kim Batten will be nearly impossible. A pair of heptathletes will run both hurdle evens from time to time. Junior Kim Stephens and senior Candi Odom are the lone returnees in this area. Coaches feel both Odom and Stephens are potential scorers at the conference level. Freshman Peggy Armand will also be counted on in an area that represents one of the biggest needs in the future for the Lady Seminoles.

MIDDLE & LONG DISTANCE

— This area is extremely strong in the Atlantic Coast Conference. Senior Angela Harris and junior Karla Severs are the most experienced of the distance group, another thin area for the Lady Seminoles. Harris is an outstanding 800-meter runner. Severs is coming off a redshirt season due to a foot injury and will run both the 800 and 1500. Coaches are hoping she can return to her freshman form. Both Harris and Severs earned All-



Junior Trinette Johnson should return to the 4x1 team after an injury in 1991.

American honors with the indoor 3200-meter relay team in 1990. Sophomore Stacey Bowrosen will also add to the middle distance crew. Sophomore Lisa Beck and junior Tracy Pepoon have the ability to score in the 3000 and 5000.

THROWS — Tanya Granneman has been FSU's top thrower each of the past two seasons and returns for her senior year. Granneman is expected to lead FSU in both the shot and discus, hopefully among the conference leaders in the discus, her speciality. Freshman Cathy Erickson has the physical tools to have an impact. Erickson was a dual throwing champion in the Nebraska prep ranks a year ago. Junior javelin thrower Kim Stephens

also returns.

JUMPS — The loss of Holly Kelly, a four-time national outdoor qualifier and All-American high jumper, hurts here. As does the loss of Kim Batten. Trinette Johnson is consistent long jumper. Johnson was injured during the 1991 season, but appears to be recovered and should be one of the top long jumpers in the ACC. Sophomore high jumper Indianne Henry will be competing in one of the strongest events in the ACC. Henry benefited from a year with Kelly, and coaches feel that she will be one of the conference's outstanding jumpers as she has shown consistent improvement.

1992 ROSTER

NAME	EVENT	HT	WT	CL	EXP	HOMETOWN (HIGH SCHOOL)
Peggy Armand	H	6-0	148	Fr.	HS	Tampa (Leto)
Felicia Bernath	S/T	5-5	122	Jr.	HS	Coconut Creek (Coconut Creek)
Lisa Beck	D	5-4	106	So.	1L	West Palm Beach (Cardinal Newman)
Stacey Bowrosen	MD	5-4	108	So.	1L	Port Orange (Father Lopez)
Keri Campbell	D	5-8	135	Fr.	HS	Jacksonville (Wolfson)
Shawn Clark	MD	5-9	130	Fr.	HS	University Heights, OH (Cleveland Hghts.)
Sheryl Covington	S	5-7	125	So.	1L	Winter Haven (Winter Haven)
Natalie Douglas	S	5-4	118	So.	1L	Evanston, IL (Township)
Kathy Erickson	T	6-0	225	FR.	HS	Hastings, NE (Hastings)
Felicia Evans	J	5-5	115	Fr.	HS	Largo (Seminole)
Tanya Grannemann	T	6-0	180	Sr.	3L	Pompano Beach (Northeast)
Angela Harris	MD	5-6	116	Sr.	3L	Orange Park (Orange Park)
Indianne Henry	HJ	5-11	142	So.	1L	Tallahassee (Godby)
Trinette Johnson	LJ	5-5	126	Jr.	2L	Detroit, MI (Cass Tech)
Aundrea Lyons	S	5-5	121	Sr.	3L	Gahanna, OH (Lincoln)
Candi Odom	ME	5-5	124	Sr.	3L	Delray Beach (Atlantic)
Tracy Pepoon	D	5-4	110	So.	1L	Ft. Walton Beach (FWB)
Tracey Ray	S	5-6	112	Jr.	1L	Lakeland (Lakeland)
Karla Severs	MD	5-5	117	Jr.	1L	Titusville (Astronaut)
Kim Stephens	ME	5-6	117	Jr.	2L	Greenacres (Leonard)
Patrice Verdun	S	5-5	125	Jr.	2L	Flint, MI (Central)

J-Jumps; S-Sprints; ME-Multi Events MD-Middle Distance; T-Throws; HJ-High Jump; D-Distance; LJ-Long Jump

INDOOR RECORDS

55m Dash	Michelle Finn	6.72	1986
200m Dash	Lisa Horton	23.89	1989
400m Dash	Janet Davis	54.21	1984
800m Run	Angela Harris	2:07.24	1991
Mile Run	Margaret Coomber	4:45.79	1984
3,000m Run	Gale Grant	9:55.90	1981
1600m Relay	Janet Davis, Janet Levy, Dwyer-Brown, Brenda Cliette	3:37.47	1984
3,200m Relay	Hacker, Nancy Rettie, Brenda Moore, Chris McKay	8:38.34	1985
Long Jump	Sonya Blades	21'8.5"	1990
Triple Jump	Esmeralda Garcia	44'4"	1985
High Jump	Holly Kelly	6'1/4"	1989
Shot Put	Vickie Smith	46'10"	1977
55m Hurdles	Kim Batten	7.67	1991



LADY SEMINOLES



PEGGY ARMAND

6-0, 148, Freshman
Tampa, FL (Leto HS)
High School Bests: 100HH
(14.50)

With maturity and focus could become one of the conference's best multi-event athletes...coaches say she has all the physical tools and will develop more with experience...will run both the 100 and 400 hurdles...**PREP:** all-county, all-conference and all-region at Leto HS...advanced to state 4A track meet...**PERSONAL:** plans to major in multi-national business...born July 2, 1973.



LISA BECK

5-4, 106, Sophomore
West Palm Beach, FL
(Cardinal Newman HS)
Collegiate Bests: 3000m (10.14.2)

Emerging as one of the team's best middle distance runners...will be relied upon in the 3000 and 5000 this year...coaches feel Beck has the ability to score at the conference meet in the distance events...two-time letterwinner in cross country...**1991 AS A FRESH-MAN:** placed seventh at the Metro Championships in the 3000 (10:14.2)...**PREP:** class 3A state champion in the mile and two-mile...all-area, all-state and all-conference in both cross country and track at Cardinal Newman HS...**PERSONAL:** currently enrolled in FSU's undergraduate studies program...born October 12, 1971.



STACEY BOWROSEN

5-4, 108, Sophomore
Port Orange, FL
(Father Lopez HS)

Will be counted on to provide depth in the middle-distance group...has shown significant improvement this year...very team oriented...has two letters in cross country...**PREP:** all-area, all-conference and all-state at Father Lopez HS...**PERSONAL:** a nutrition major...born November 17, 1971.



SHAWN CLARK

5-9, 130
Freshman
University Heights, OH
(Cleveland Heights HS)
High School Bests: 400m (55.98)

Another freshman that lacks experience but has the physical tools...will run both the 400 and 800...will have to mature rapidly to make an impact at the conference level...**PERSONAL:** plans to major in advertising...born July 17, 1973.



Heptathlete Kim Stephens will be counted on heavily in a variety of individual events as well.

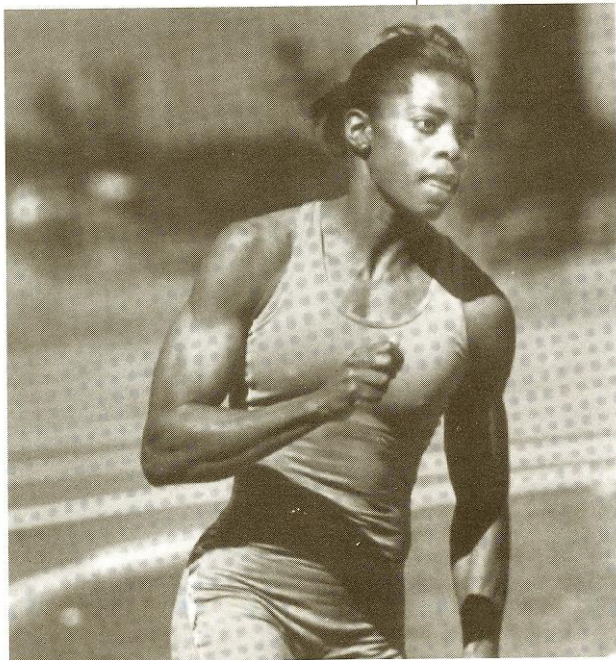


**SHERYL
COVINGTON**

**5-7, 125, Sophomore
Winter Haven, FL
(Winter Haven HS)**

Collegiate Bests: 100m (11.41),
200m (23.69), 400m (54.22)

Returning NCAA qualifier in the 100- and 200-meters, as well as FSU's 4x100 meter relay team...one of the nation's best...following in a long line of All-American sprinters at Florida State... very versatile, capable of running at the national level in all three sprint events... will also be a mainstay of FSU's traditionally strong 4x100 team... **1991 AS A FRESHMAN:** made her first trip to the NCAA Outdoor Championships and competed in three events... national semifinalist in the 100...qualified with a PR 11.41 at the Illinois



Andi Lyons made her first trip to the NCAA Championships in 1991.

Outdoor Track and Field Festival...ran the anchor leg for FSU's 400-meter relay team that placed sixth nationally with a season best time (44.44)...Metro Conference 100-meter champion and runner-up to teammate Patrice Verdun in the 200... **PREP:** Florida 4A state champion in both the 100- and 200-meters...set the state record in the 100-meters with an 11.84... **PERSONAL:** born March 3, 1971...a social work major.



**NATALIE
DOUGLAS**

**5-4, 118, Sophomore
Evanston, IL
(Township HS)**

Collegiate Bests: 100m (11.80),
200m (24.40)

A great talent... coaches feel Natalie can improve her performance by becoming more aggressive at meet time...needs to continue to develop to score at the conference level... **1991 AS A FRESHMAN:** placed third in both the 100 (12.02) and 200 (25.50) at the Metro Championships... **PREP:** listed as one of the top recruits in the state by *Track and Field News*... was forced out of the Illinois state track meet due to

an injury...the top ranked prep in the indoor 55-meters... **PERSONAL:** born November 22, 1972... will major in business.



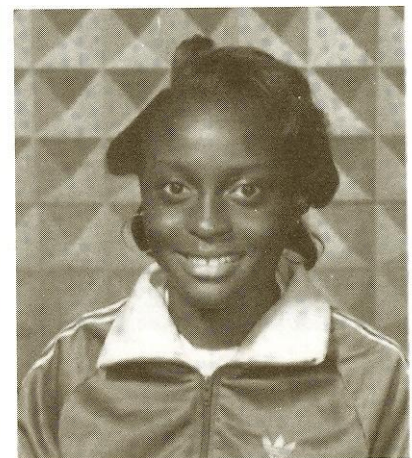
CATHY ERICKSON

**6-0, 225, Freshman
Hastings, NE**

(Hastings High School)

High School Bests:
Discus (130-0), Shot (40-0)

Should contribute immediately in both the shot and discus... a raw recruit who should contribute with improved conditioning... a very determined and motivated athlete... **PREP:** Dual Class A throwing champ (shot and discus) in the state of Nebraska as a senior... broke school shot put record... track and field MVP at Hastings HS... selected to the All-Tribland track team... **PERSONAL:** plans to major in criminology... born March 24, 1973.



FELICIA EVANS

**5-5, 115, Freshman
Largo, FL (Seminole HS)**

High School Bests: Long jump (19-7), Triple Jump (38-9)

A tremendous talent in both the long and triple jumps...will have to grow up in a hurry to handle the level of competition in the ACC...FSU's only true triple jumper...coaches feel Felicia has the ability to score at the conference meet as a freshman...**PREP:** 1990 state long jump champion at Seminole HS...**PERSONAL:** plans to major in computer science...born October 22, 1973.



TANYA GRANNEMAN
6-0, 180, Senior
Pompano Beach, FL
(Northeast HS)

Collegiate Bests: Discus (143-5), Shot Put (40-7)

Developing into one of the best discus throwers in the conference...senior leader of the throwing crew...FSU's top thrower each of the past two seasons... excellent physical tools... competed in the 1990 United States Olympic Festival...**1991 AS A JUNIOR:** Metro discus champion...placed seventh in the shot put...**1990 AS A SOPHOMORE:** Metro discus champion with a throw of 139-5...also placed second in the shot...**1989 AS A FRESHMAN:** placed second in both the shot and discus at the Metro Conference meet...**PREP:** district and regional champion in both the shot and discus as a senior at Northeast HS...All-County selection...also won academic honors...**PERSONAL:** a member of Kappa Alpha Theta sorority...also a member of the American Marketing Association...a marketing communications major...born July 27, 1990.

ACC

ATLANTIC COAST CONFERENCE



ANGELA HARRIS
5-6, 116, Senior
Orange Park, FL
(Orange Park HS)

Collegiate Bests: 800 (2:07.2)

The most experienced member of the middle distance group...an outstanding 800-meter runner, Angela will anchor the middle distance crew for Florida State... one of just four seniors on the squad...a very solid and versatile competitor...competed in the 1990 U.S. Olympic Festival...**1991 AS A JUNIOR:** took second in the 800 at the Metro Championships (2:13.96)...**1990 AS A SOPHOMORE:** an indoor All-American as a member of FSU's 3200-meter relay team that placed sixth nationally...Metro champion in the 800 (2:12.19)...**1989 AS A FRESHMAN:** placed second at the Metro meet in the 800 (2:12.68)...**PREP:** highly recruited out of Orange Park HS, where she was team captain...chose FSU over a number of schools...class 4A state 400-meter champion (54.1)...placed eighth at the state cross country meet to earn All-State honors...1988 Golden

South 400m medalist...**PERSONAL:** a member of Sigma Chi Iota honorary society and Alpha Kappa Alpha social sorority...a biology major...born December 1, 1970.



INDY HENRY
5-11, 142, Sophomore
Tallahassee, FL (Godby HS)
Collegiate Bests: High Jump (5-8)

Should develop into one of the conference's outstanding high jumpers... FSU's only high jumper, Indy will be competing in the ACC's strongest event...benefited from a year as understudy to former FSU All-American high jumper Holly Kelly...a hard worker and an outstanding student...**1991 AS A FRESHMAN:** placed second at the Metro meet in the high jump (5-5 3/4)...**PREP:** a three-year state qualifier in the high jump...class 3A state runner-up in the high jump as a senior at Godby HS...placed sixth at the state meet as a junior...**PERSONAL:** plans a double major in accounting and marketing...born March 24, 1971.



TRINETTE JOHNSON

5-5, 126, Junior
Detroit, MI (Cass Tech)
Collegiate Bests: 100 (11.78),
Long Jump (21-0)

One of the best horizontal jumpers ever to attend Florida State... should be one of the top long jumpers in the ACC...will also run with the 400-meter relay team... **1990 AS A FRESHMAN:** a two-time All-American as a freshman...the only freshman long jumper to make the field at both the NCAA Indoor and Outdoor Championships... 1990 Indoor All-American after placing eighth in the long jump...ran with the 400-meter relay team that placed fourth nationally...PR'd at 21-0 at the Seminole Twilight meet to qualify for the outdoor championships...Metro champion long jumper (20-7)...**PREP:** a high

school All-American long jumper out of Cass Tech HS...**PERSONAL:** majoring in chemical engineering...born February 8, 1971.



ANDI LYONS

5-5, 121, Senior
Gahanna, OH (Lincoln HS)
Collegiate Bests: 200 (24.51),
400 (53.88)

Senior leader of FSU's sprinters...made her first trip the NCAA Championships in 1991 as a qualifier in the 400... needs to be at that level or better to make an impact at the conference meet...will again run with the 400-meter relay team... **1991 AS A JUNIOR:** made the national semifinals in the 400-meter dash...replaced injured Trinette Johnson in FSU's 4x1 team and helped the Lady Seminoles to a sixth place finish at nationals... earned her first All-America certificate...also in on the

Metro 400-meter relay championship... **1990 AS A SOPHOMORE:** Metro champion in the 400 (55.85)... **1989 AS A FRESHMAN:** captured three championship ribbons at the conference meet...won the 400 and ran with both relay winners as well...also finished second in the 200 (25.21)...**PREP:** twice Ohio state division I 400-meter champion... honorable mention All-American as a freshman in 1985...**PERSONAL:** a communications major...born March 27, 1970.



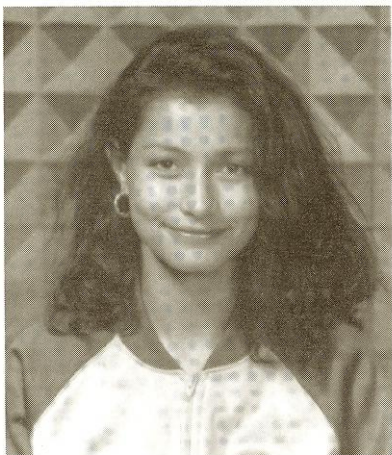
CANDI ODOM

5-5, 124, Senior
Delray Beach, FL
(Atlantic HS)
Collegiate Bests: Heptathlon
(4,764)

A fine all-around athlete and a superior student...predominantly a heptathlete, Candi will run both the 100- and 400-hurdles this year...a former National Junior Olympic champion heptathlete... participated in the 1990 U.S. Olymp-pic Festival... **1991 AS A JUNIOR:** finished third at the conference meet in the heptathlon (4,411)... **1990 AS A SOPHOMORE:** placed third at the Metro Championships in the heptathlon with a score of 4,754...also finished third in the 100- and 400-meter hurdles... **1989 AS A FRESHMAN:** won two state heptathlon championships and the 330-yard hurdles title... placed second at the TAC National Junior meet in 1989... highly recruited, Odom chose FSU over a number of schools, including Florida and Auburn... **PERSONAL:** a member of Delta Sigma Theta sorority and the Black Student Union...majoring in elementary education...born November 30, 1970.



Middle distance runner Angela Harris may run with the 4x1 team as well.



TRACY PEPOON

5-4, 101, Sophomore
Ft. Walton Beach, FL
(Ft. Walton Beach HS)

Will run both the 3000 and 5000 for the Lady Seminoles... coaches feel Tracy has the talent to break into the scoring in the distance-strong ACC... recovered from a stress fracture in time for the 1991 cross country season... **1991 AS A FRESHMAN:** placed fourth in the 3,000 at the Metro meet... **PREP:** a three-time cross country MVP at Ft. Walton Beach HS... all-northwest Florida... **PERSONAL:** a business management major... born November 1, 1971.



TRACY RAY

5-6, 112, Sophomore
Lakeland, FL (Lake Gibson HS)
Collegiate Bests: 100 (12.02),
200 (25.31)

Will add depth to FSU's sprinters... an extremely hard worker... **PREP:** an All-City sprinter at Lake Gibson HS... **PERSONAL:** a member of the Marching Chiefs, Tracy is a majorette at Florida State... plans to major in electrical engineering... born May 28, 1971.



KARLA SEVERS

5-5, 117, Junior
Titusville, FL (Astronaut HS)
Collegiate Bests: 800 (2:09.0)

Returns after a redshirt in 1991... coaches hope Karla can return to her freshman form after a foot injury sidelined her last year... ranks as one of the most experienced members of the middle distance group... an outstanding competitor and a great student... **1990 AS A FRESHMAN:** an indoor All-American as a member of FSU's 3200m relay team that placed sixth nationally... Metro runner-up in the 800-meters (2:13.26)... **PREP:** two-time Florida State champion in the 880-yard run (1987, '89)... state runner-up in the mile out of Astronaut HS... state 3A cross country runner-up... **PERSONAL:** a nursing major... born March 5, 1971.



KIM STEPHENS

5-6, 117, Junior
Greenacres, FL (Leonard HS)
Collegiate Bests: Heptathlon (5,251)

Will be quite busy during the spring, counted on for in several events... will not only participate in the heptathlon, but is considered FSU's top hurdler and javelin thrower... coaches feel Kim has

the potential to score in all three events at the conference meet... **1991 AS A SOPHOMORE:** Metro runner-up in the heptathlon for the second consecutive year... Kim's 5,251 points ranked 21st nationally... **1990 AS A FRESHMAN:** Metro Conference runner-up in the heptathlon (5,143)... placed third in the javelin with a throw of 135-6... **PREP:** Florida heptathlon champion out of John I. Leonard HS... state runner-up in the 330-yard hurdles... **PERSONAL:** formerly Kim Mann, was married to Jeff Stephens over the summer... active in the fellowship of Christian Athletes and FSU's "Say No to Drugs" campaign... a therapeutic recreation major... born June 18, 1971.



PATRICE VERDUN

5-5, 125, Junior
Flint, MI (Central HS)
Collegiate Bests: 100 (11.53),
200 (23.56)

One of the nation's outstanding sprinters... excels at high level meets... will specialize in the 100 and 200 and will run with the 400-meter relay team... a two-time outdoor All-American in the 400-meter relay... **1991 AS A SOPHOMORE:** made her second trip to the NCAA Outdoor Championships and competed in three events (100, 200, 4x1)... All-American in the 400-meter relay as the Lady Seminoles ran a season best 44.44 in the finals to place sixth... made the semifinals in the 100 and 200... Metro champion in the 200 (23.73)... placed second at the conference meet in the 100 (11.75) behind teammate Sheryl Covington... **1990 AS A FRESHMAN:** an indoor All-American honors with the 55- and 200-meters... also earned All-American honors with the 400-meter relay team that placed fourth nationally... qualified for the NCAA meet in the 100-meters and made the semifinals... Metro champion in the 100 (11.90) and runner-up in the 200... **PREP:** a prep All-American at Flint Central HS... placed fifth at the Junior Nationals in the 200... an all-state and all-Saginaw Valley choice... **PERSONAL:** a nursing major... born June 9, 1971.

RECORDS

EVENT	FSU OUTDOOR RECORD	MIKE LONG TRACK RECORD	ACC RECORD	COLLEGIATE RECORD
100 Meter Dash	11.20, 1986 Michelle Finn	11.27, 1984 Randy Givens, FSU	11.36, 1987 Sonja Fridy, Virginia	10.78, 1989 Dawn Sowell, LSU
200 Meter Dash	22.31, 1983 Randy Givens	23.08, 1986 Pauline Davis, Alabama	23.17, 1987 Sonja Fridy, Virginia	22.04, 1989 Dawn Sowell, LSU
400 Meter Dash	49.91, 1984 Marita Payne	52.37, 1987 Janet Davis, FSU	51.69, 1987 Sonja Fridy, Virginia	49.91, 1984 Marita Payne-Wiggins FSU
800 Meter Run	2:04.6, 1982 Ovrill Dwyer-Brown	2:03.8, 1986 Linda Detiefsen, Athletics West	2:02.07, 1983 Tina Krebs, Clemson	1:58.33, 1985 Claudette Groenendaal, Oregon
1500 Meter Run	4:18.56, 1985 Nancy Rettie	4:16.42, 1988 Evelyn Adiru, Alabama	4:13.42, 1988 Rosalind Taylor, Maryland	4:05.88, 1982 Leann Warren, Oregon
3000 Meter Run	9:22.94, 1984 Margaret Coomber	8:47.73, 1984 Wendy Sly, Great Britain	8:59.79, 1983 Betty Springs, N.C. State	8:27.35, 1988 Vicki Huber, Villanova
5000 Meter Run	16:39.4, 1981 Darien Andreu	16:00.68, 1986 Patti S. Plumer, Puma Track Club	15:33.43, 1983 Betty Springs, N.C. State	15:07.56, 1985 Kathy Easker, Wisconsin
10,000 Meter Run	34:32.75, 1987 Kerrie Yenchak	34:27.75, 1987 Kerrie Yenchak, Edinboro	32:36.2, 1986 Kathy Ormsby, N.C. State	32:28.57, 1988 Sylvia Mosqueda, Cal State-LA
100 Meter Hurdles	13.06, 1991 Kim Batten	12.92, 1988 Kim McKenzie, Mazda Track Club	13.38, 1991 Sharon Couch, North Carolina	12.61, 1988 Gail Devers, UCLA
400 Meter Hurdles	54.18, 1991 Kim Batten	56.08, 1984 Angela Wright-Scott, Bud Light TC	57.59, 1987 Kathy Harrison, Georgia Tech	53.41, 1984 Janeene Vickers, UCLA
400 Meter Relay	42.94, 1983 Wright, Payne, Cliette, Givens	43.9, 1984 Finn, Payne, Cliette, Givens, FSU	44.39, 1991 Dillard, Henderson, Fleetwood, Graham, Clemson	42.94, 1983 Wright, Payne, Cliette, Givens, FSU
1600 Meter Relay	3:28.46, 1983 Givens, Cliette Wright, Payne	3:34.07, 1987 Levy, Thompson Davis, Curry, FSU	3:32.17, 1990 Russell, Pollard, Putnam, Mackey, North Carolina	3:28.46, 1983 Givens, Cliette, Wright, Payne, FSU
Long Jump	21-8 1/2, 1990 Sohya Blades	21-6 3/4, 1986 Esmeralda Garcia, FSU	21-9 1/2, 1990 Dana Boone, Virginia	23-9, 1985, 1987 Jackie Joyner, UCLA
Triple Jump	44-10 3/4, 1986 Esmeralda Garcia	43-6 3/4, 1986 Esmeralda Garcia, FSU	43-10 1/2, 1987 Kathy Harrison, Georgia Tech	46-0 3/4, 1990 Sheila Hudson, California
High Jump	6-1 1/2, 1983 Wendy Markham	6-0 1/2, 1984 Bridgette Reid, Canada	6-3 1/2, 1983 Tisha Waller, North Carolina	6-5, 1985 Maryse Ewanje-Epu, Arizona
Shot Put	46-10 1/2, 1977 Vicki Smith	49-2, 1988 Colleen Rosensteel, UF	55-9, 1983 Marita Walton, Maryland	62-3 3/4, 1983 Meg Ritchie, Arizona
Discus	148-7, 1984 Donna Williams	189-3, 1986 Kathy Landry, Alabama	170-5, 1983 Marita Walton, Maryland	221-5, 1983 Meg Ritchie, Arizona
Javelin	174-10, 1990 Kari Keith	182-8, 1985 Susie Ray, UF	183-8, 1989 Julia Solo, Virginia	211-5, 1981 Karin Smith, Cal Poly SLO
Heptathlon	5410, 1991 Carmellia Shivers	5402, 1990 Carmellia Shivers, FSU	5514, 1991 Nicky Hudson, North Carolina	6718, 1985 Jackie Joyner, UCLA

QUALIFYING

1992 NCAA WOMEN'S QUALIFYING MARKS

OUTDOOR

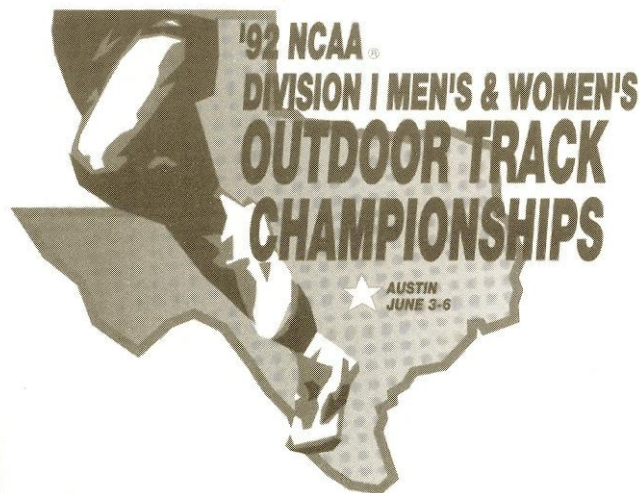
EVENT	AUTOMATIC		PROVISIONAL	
	FAT	MT	FAT	MT
100 Meter Dash	11.43	—	11.80	—
200 Meter Dash	23.28	—	23.90	—
400 Meter Dash	52.80	52.5	54.50	54.2
800 Meter Run	2:05.50	2:05.2	2:08.50	2:08.2
1500 Meter Run	4:17.50	4:17.2	4:23.20	4:22.9
Mile Run	4:38.10	4:37.8	4:44.20	4:43.9
3000 Meter Run	9:15.00	9:14.7	9:31.00	9:30.7
5000 Meter Run	16:16.00	16:15.7	16:45.00	16:44.7
10,000 Meter Run	34:00.00	33:59.7	35:15.00	35:14.7
100 Meter Hurdles	13.35	—	13.72	—
400 Meter Hurdles	57.60	57.3	59.80	59.5
400 Meter Relay	44.75	44.5	45.90	45.6
440 Yard Relay	44.95	44.7	46.10	45.8
1600 Meter Relay	3:34.00	3:33.7	3:39.80	3:39.5
Mile Relay	3:35.20	3:34.9	3:41.00	3:40.7
High Jump	1.87m	(6-1 1/2)	1.79m	(5-10 1/2)
Long Jump	6.50m	(21-4)	6.28m	(20-7 1/4)
Triple Jump	13.10m	(42-11 3/4)	12.60m	(41-4 1/4)
Shot Put	16.05m	(52-8)	14.80m	(48-6 3/4)
Discus	53.00m	(173-11)	48.50m	(159-1)
Javelin	53.00m	(173-11)	46.80m	(153.6)
Heptathlon	5,500	—	5,150	—

INDOOR

EVENT	AUTOMATIC		PROVISIONAL	
	FAT	MT	FAT	MT
55 Meters	6.86	—	6.98	—
55-Meter Hurdles	7.74	—	7.96	—
200 Meters				
(Under 200m/220 yds)*	24.20	—	24.70	—
(200m/220 yds)*	24.00	—	24.50	—
(Over 200m/220 yds)*	23.70	—	24.20	—
400 Meters				
(Under 200m/220 yds)*	54.15	53.9	55.90	55.6
(200m/220 yds)*	53.25	53.0	55.00	54.7
(Over 200m/220 yds)*	52.55	52.3	54.30	54.0
800 Meters				
(200m/220 yds or less)*	2:07.20	2:06.8	2:20.10	2:09.8
(Over 200m/220 yds)*	2:07.30	2:06.0	2:09.30	2:09.0
Mile#				
(200m/220 yds or less)*	4:43.00	4:42.7	4:50.50	4:50.2
(Over 200m/220 yds)*	4:42.60	4:41.3	4:49.10	4:48.8
3000 Meters#				
(200m/220 yds or less)*	9:23.00	9:22.7	9:34.00	9:33.7
(Over 200m/220 yds)*	9:20.50	9:20.5	9:32.80	9:31.5
5000 Meters#				
(200m/220 yds or less)*	16:18.00	16:17.7	16:45.00	16:44.7
(Over 200m/220 yds)*	16:14.90	16:14.6	16:41.90	16:41.6
1600-Meter Relay				
(Under 200m/220 yds)*	3:41.85	3:41.6	3:49.60	3:49.3
(200m/220 yds)*	3:39.25	3:39.0	3:45.00	3:44.7
(Over 200m/220 yds)*	3:36.65	3:36.4	3:42.40	3:42.2
Mile Relay				
(Under 200m/220 yds)*	3:43.10	3:42.8	3:48.85	3:48.6
(200m/220 yds)*	3:40.50	3:40.2	3:46.25	3:46.0
(Over 200m/220 yds)*	3:37.90	3:37.6	3:43.65	3:43.4
3200-Meter Relay				
(Under 200m/220 yds or less)*	8:47.00	8:46.7	8:58.00	8:57.7
(Over 200m/220 yds)*	8:43.80	8:43.5	8:54.80	8:54.5
Two-Mile Relay				
(Under 200m/220 yds or less)*	8:50.00	8:49.7	9:01.00	9:00.7
(Over 200m/220 yds)*	8:46.80	8:46.5	8:57.90	8:57.5
High Jump	1.85m		1.79m	
Long Jump	6.40m		6.15m	
Triple Jump	12.90m		12.50m	
Shot Put	16.00m		14.65m	

*—Size of track.

#—Altitude adjustment available.



CHAMPIONS

METRO CONFERENCE CHAMPIONSHIP (MEN'S)

YEAR	TEAM CHAMPION	RUNNERUP	OUTSTANDING ATHLETE
1991	Florida State	South Carolina	Rob Circelli (Florida State)
1990	Florida State	South Carolina	Tim Covington (Virginia Tech)
1989	Florida State	South Carolina	Phillip Williams (S. Carolina)
1988	Florida State	South Carolina	Deion Sanders (FSU)
1987	Florida State	South Carolina	Anthony Brennan
1986	Florida State	Virginia Tech	Leander McKenzie (FSU)
1985	Florida State	Cincinnati	Leander McKenzie (FSU)
1984	Florida State	Virginia Tech	Leander McKenzie (FSU)
1983	Florida State	Virginia Tech	Donnie Young (Southern Miss.)
1982	Florida State	Virginia Tech	Rodney Johnson (Cincinnati)
1981	Florida State	Virginia Tech	Ronnie Taylor (FSU)
1980	Florida State	Virginia Tech	Terron Wright (Memphis State)
1979	Florida State	Memphis State	Mike Roberson (FSU)
1978	Florida State	Georgia Tech	Terron Wright (Memphis State)
1977	Florida State	Georgia Tech	Walter McCoy (FSU)
1976	Georgia Tech*	Memphis State	John Walker (FSU)
			Paul Bannon (Memphis State)

*Florida State was not yet in Conference

METRO CONFERENCE CHAMPIONSHIP (WOMEN'S)

YEAR	TEAM CHAMPION	RUNNERUP	OUTSTANDING ATHLETE
1991	Florida State	Memphis State	Kim Batten (FSU)
1990	Florida State	South Carolina	Kim Batten (FSU)
1989	Florida State	South Carolina	Kim Batten (FSU)

THE LADY SEMINOLES AT THE NCAA OUTDOOR CHAMPIONSHIPS

YEAR	OVERALL	YEAR	OVERALL	YEAR	OVERALL
1981	Third	1985	Runners-up	1988	12th
1982	Third	1986	14th	1989	DNS
1983	Runners-up	1987	10th	1990	13th
1984	Champions			1991	9th

THE LADY SEMINOLES IN THE 400-METER RELAY

The Lady Seminoles have appeared in nine of the ten NCAA Outdoor Championship 400-meter relay finals, winning three times.

YEAR	TIME	PLACE	YEAR	TIME	PLACE
1982	43.73	2nd	1987	43.19	Champions
1983	43.94	Champions	1988	44.13	4th
1984	43.72	Champions	1990	44.43	4th
1985	43.98	3rd	1991	44.44	6th
1986	44.12	5th			

ALL-AMERICANS

CROSS COUNTRY

- 1981 Darien Andreau
- INDOOR**
- 1981 Darien Andreau - 5,000 meters (5th); Alice Bennett - long jump (4th); Esmeralda Garcia - long jump (2nd) and 60 meters (2nd); Angela Wright - 400 meters (4th); Alice Bennett, Esmeralda Garcia, Randy Givens, Marita Payne - 4x200 (1st); Margaret Coomer - 1,000 meters (3rd); Scooby Golden, Debbie Moore, Marita Payne, Angela Wright - 4x400 (4th)
- 1982 Tonya Brown - 60-yd hurdles (7th); Ovrill Dwyer-Brown - 600 yards (5th); Margaret Coomer - 1,000 yards (8th); Carolyn Faison - 60-yd hurdles (6th); Randy Givens - 300 yards (2nd); Marita Payne - 60 (7th) and 300 yards (4th); Angela Wright - 440 yards (6th); Carla Borovicka, Ovrill Dwyer-Brown, Margaret Coomer - 4x800 (1st); Alice Bennett, Randy Givens, Marita Payne, Janette Wood - 4x200 (2nd); Tonya Brown, Ovrill Dwyer-Brown, Scooby Golden, Kim Parrish, Angela Wright - 4x400 (6th)
- 1983 Wendy Markham - high jump (3rd)
- 1984 Carla Borovicka - 1,500 meters (6th); Margaret Coomer - 1,500 meters (5th); Michelle Finn - 55 meters (4th); Ovrill Dwyer-Brown, Brenda Cliette, Janet Davis, Janet Levy, 4x400 (2nd)
- 1985 Michelle Finn - 55 meters (1st); Esmeralda Garcia - triple jump (1st); Nancy Rettie - 1,000 meters (3rd); Kelly Hackler, Chris McKay, Brenda Moore, Nancy Rettie - 4x800 (5th)
- 1986 Michelle Finn - 55 meters (2nd); Esmeralda Garcia - long jump (2nd)
- 1987 Michelle Finn - 55 meters (2nd)
- 1989 Kim Batten - triple jump (5th)
- 1990 Kim Batten - triple jump (5th); Carrie Boyd - 4x800 (6th); Sonya Blades - long jump (9th); Carrie Boyd, Tracey Howze, Karla Severs, Angela Harris - 4x800 (6th); Holly Kelly - high jump (4th); Patrice Verdun - 200 (6th) and 55 meters.

OUTDOOR

- 1981 Esmeralda Garcia - long jump (2nd) and 100 meters (5th); Randy Givens - 200 meters (3rd); Marita Payne - 400 meters (2nd); Angela Wright - 400 meters (6th); Alice Bennett, Esmeralda Garcia, Randy Givens, Marita Payne - 4x100 (1st); Alice Bennett, Esmeralda Garcia, Randy Givens, Marita Payne - 800

medley relay (6th); Marita Payne, Angela Wright, Janette Wood - 4x400 (4th)

- 1982 Alice Bennett - long jump (8th); Tonya Brown - 100 hurdles (4th) and 400 IM hurdles (1st); Margaret Coomer - 1,500 (7th) and 200 meters (3rd); Wendy Markham - high jump (tied-5th); Marita Payne - 200 (4th) and 400 meters (3rd); Angela Wright - 400 meters (7th); Ovrill Dwyer-Brown, Randy Givens, Marita Payne, Angela Wright - 4x400 (2nd); Alice Bennett, Randy Givens, Marita Payne, Angela Wright - 4x100 (2nd)
- 1983 Ovrill Dwyer-Brown - 400 IM hurdles (8th); Brenda Cliette - 100 (3rd) and 200 meters (4th); Randy Givens - 100 (6th) and 200 meters (3rd); Wendy Markham - high jump (2nd); Marita Payne - 200 (6th) and 400 meters (5th); Angela Wright - 400 IM hurdles (3rd); Brenda Cliette, Randy Givens, Marita Payne, Angela Wright - 4x100 (1st); Brenda Cliette, Randy Givens, Marita Payne, Angela Wright - 4x400 (1st)
- 1984 Ovrill Dwyer-Brown - 400 IM hurdles (6th); Brenda Cliette - 100 (2nd) and 200 (2nd); Janet Davis - 200 meters (6th); Michelle Finn - 100 meters (4th); Randy Givens - 100 (1st) and 200 meters (6th); Marita Payne - 200 (3rd) and 400 meters (1st); Brenda Cliette, Michelle Finn, Randy Givens, Janet Levy, Marita Payne - 4x100 (1st); Brenda Cliette, Janet Davis, Randy Givens, Marita Payne - 4x400 (1st)
- 1985 Michelle Finn - 100 (1st) and 200 meters (2nd); Esmeralda Garcia - triple jump (1st), long jump (5th) and 100 meters (3rd); Michelle Finn, Esmeralda Garcia, Andrea Thompson - 4x400 (3rd)
- 1986 Michelle Finn - 100 (5th) and 200 meters (7th); Michelle Finn, Esmeralda Garcia - 4x400 (5th); Esmeralda Garcia - triple jump (2nd)
- 1987 Janet Davis - 400 meters (5th); Michelle Finn - 100 (4th) and 200 meters (6th); Michelle Finn - 4x100 (1st); Janet Davis, Janet Levy, Andrea Thompson - 4x400 (1st)
- 1990 Kari Keith - javelin (8th); Kim Batten - 100 (8th) and 400 hurdles (2nd); Carmellia Shivers - heptathlon (9th); Patrice Verdun, Lisa Horton, Trinette Johnson, Batten - 4x100 (4th)
- 1991 Holly Kelly - high jump (4th); Carmellia Shivers - heptathlon (10th); Kim Batten - 100 (4th) and 400 hurdles (3rd); Andi Lyons, Sheryl Covington, Verdun, Batten - 4x100 (6th)

NATIONAL CHAMPIONSHIP RELAYS

- 1981 INDOOR 800 METER RELAY**
1:36.88 Esmeralda Garcia, Alice Bennett, Marita Payne, Randy Givens
- 1981 OUTDOOR 400 METER RELAY**
44.35 Esmeralda Garcia, Alice Bennett, Marita Payne, Randy Givens
- 1982 INDOOR TWO-MILE RELAY**
8:47.27 Janet Wood, Ovrill Dwyer-Brown, Carla Borovicka, Margaret Coomer
- 1983 OUTDOOR 400 METER RELAY**
42.94 Angela Wright, Marita Payne, Brenda Cliette, Randy Givens
- 1984 OUTDOOR 1600 METER RELAY**
3:28.46 Angela Wright, Marita Payne, Brenda Cliette, Randy Givens
- 1984 OUTDOOR 400 METER RELAY**
43.72 Michelle Finn, Marita Payne, Brenda Cliette, Randy Givens
- 1984 OUTDOOR 1600 METER RELAY**
3:28.93 Janet Davis, Brenda Cliette, Randy Givens, Marita Payne
- 1987 OUTDOOR 400 METER RELAY**
43.19 Janet Levy, Andrea Thompson, Janet Davis, Michelle Finn

LADY SEMINOLES IN THE OLYMPICS

- 1988-SEOUL, SOUTH KOREA**
Marita Payne (Canada)
400 Meters
- 1984-LOS ANGELES, CALIFORNIA**
Marita Payne (Canada)
400 Meters (4th place)
400 Meter Relay (2nd place)
1600 Meter Relay (2nd place)
Randy Givens (United States)
200 Meters (6th place)
Esmeralda Garcia (Brazil)
100 Meters; Long Jump
Brenda Cliette (United States)
400 Meter Relay (alternate)
Angela Wright-Scott (United States)
Ovrill Dwyer-Brown (Jamaica)
400 Meter Hurdles

INDIVIDUAL NCAA CHAMPIONS

- Tonya Brown**
1982 - Outdoor 400m IH
- Michelle Finn**
1985 - Indoor 55m Dash
1985 - Outdoor 100m Dash
- Esmeralda Garcia**
1985 - Indoor Triple Jump
1985 - Outdoor Triple Jump
- Randy Givens**
1984 - Outdoor 100m Dash
1984 - Outdoor 200m Dash
- Marita Payne**
1982 - Outdoor 400m Run
1984 - Outdoor 400m Run

CROSS COUNTRY

1991 RESULTS

GEORGIA TECH, NORTH FLORIDA DOUBLE DUAL MEET at Tallahassee, FL (9-13)

Women: defeated Georgia Tech 22-34; defeated UNF 23-32

Men: defeated Georgia Tech 24-35; defeated UNF 20-39

Top FSU Finishers: Stacey Bowrosen (2nd), Michael Hampton (1st)

FLORIDA STATE INVITATIONAL at Tallahassee, FL (9-28)

Women: 5th of 9 Men: 3rd of 9

Top FSU Finishers: Stacey Bowrosen (11th), Philip Healy (8th)

BARNETT BANK INVITATIONAL at Gainesville, FL (10-5)

Women: 4th of 13 Men: 3rd of 19

Top FSU Finishers: Stacey Bowrosen (12th), Philip Healy (8th)

FLORIDA INTERCOLLEGIATE CHAMPIONSHIPS at Tampa, FL (10-18)

Women: 4th of 11 Men: 1st of 10

Top FSU Finishers: Stacey Bowrosen (12th), Philip Healy (3rd)

ATLANTIC COAST CONFERENCE CHAMPIONSHIPS at Chapel Hill, NC (11-2)

Women: 5th of 9 Men: 7th of 9

Top FSU Finishers: Angela Harris (22nd), Michael Hampton (34th)

NCAA DISTRICT III CHAMPIONSHIPS at Greenville, SC (11-16)

Women: 26th of 33 Men: 20th of 35

Top FSU Finishers: Angela Harris (78th), Michael Hampton (46th)

WOMEN

	GT/UNF DUAL (2-mi.)	FSU INVIT (5K)	BBANK INVIT (5K)	FLA CHAMPS (5K)	ACC CHAMPS (5K)	NCAA DIII (5K)
Bowrosen, S.	2/11:32	11/18:47	6/18:35	12/18:42	28/18:49	87/19:18
Harris, A.	4/11:54	17/19:03	9/19:03	18/19:08	22/18:27	78/19:06
Beck, L.	5/12:02	21/19:26	18/19:38	15/18:57	25/18:31	179/20:43
Pepoon, T.	10/12:53	30/19:54	27/20:01	16/19:02	35/18:57	125/19:48
Stephens, K.	8/12:32	40/20:56	35/20:57	35/20:28	44/19:31	183/20:56
Campbell, K.	15/13:52	55/22:48	66/23:23	—	61/22:57	228/23:58
Clark, S.	—	41/21:39	70/23:37	—	—	—

MEN

	GT/UNF DUAL (4-mi.)	FSU INVIT (8K)	BBANK INVIT (8K)	FLA CHAMPS	ACC CHAMPS (8K)	NCAA DIII (10K)
Hampton, M.	1/19:58	—	—	7/26:28	34/25:31	46/32:12
Healy, P.	3/20:14	8/24:49	8/26:07	3/25:48	41/26:28	87/32:58
Keeney, C.	5/20:41	36/26:29	—	8/26:30	51/26:56	190/35:02
Wilcox, S.	9/21:03	19/25:44	19/26:51	15/26:51	44/26:31	253/37:11
Winkler, J.	11/21:23	39/26:33	32/27:39	19/26:57	48/26:38	133/33:54
Culbertson, T.	12/21:33	23/26:01	13/26:35	4/25:58	38/26:04	169/34:35
Lucas, D.	13/21:37	42/26:52	—	—	—	—
O'Brien, B.	22/22:55	62/28:10	—	—	—	—
Circelli, R.	—	57/27:47	—	—	—	—
Kaiser, J.	—	35/26:25	56/28:58	14/26:50	—	—

ACC OPPONENTS

CLEMSON UNIVERSITY



Location: Clemson, SC
Enrollment: 16,303
President: Dr. Max Lennon
Athletic Director: Bobby Robinson
Track Facility: Littlejohn Coliseum (Indoor); Rock Norman Track (Outdoor)
Women's Head Coach: Wayne Coffman
Men's Head Coach: Bob Pollock
1991 Women's Conference Place: Indoor - 2nd; Outdoor - 1st
1991 Women's NCAA Place: Indoor - 35th; Outdoor - Tied 12th
1991 Men's Conference Place: Indoor - 1st; Outdoor - 1st
1991 Men's NCAA Place: Indoor - 44th; Outdoor - 13th
SID Contact: Annabelle Vaughan
SID Office Phone: (803) 656-2114

DUKE UNIVERSITY



Location: Durham, NC
Enrollment: 6,300
President: Dr. H. Keith Brodie
Athletic Director: Tom Butters
Track Facility: Wallace Wade Stadium
Women's Head Coach: Mike Forbes
Men's Head Coach: Al Buhler
1991 Women's Conference Place: Indoor - 8th; Outdoor - 8th
1991 Women's NCAA Place: Indoor - DNP; Outdoor - DNP
1991 Men's Conference Place: Indoor - 8th; Outdoor - 8th
1991 Men's NCAA Place: Indoor - DNP; Outdoor - DNP
SID Contact: Richard Kilwien
SID Office Phone: (919) 684-2633

WAKE FOREST UNIVERSITY



Location: Winston-Salem, NC
Enrollment: 3,500
President: Dr. Thomas K. Hearn
Athletic Director: Dr. Gene Hooks
Track Facility: Wake Forest Campus Stadium
Women's Head Coach: Francie Goodridge
Men's Head Coach: John Goodridge
1991 Women's Conference Place: Indoor - 6th; Outdoor - 7th
1991 Women's NCAA Place: Indoor - DNP; Outdoor - DNP
1991 Men's Conference Place: Indoor - 6th; Outdoor - 6th
1991 Men's NCAA Place: Indoor - DNP; Outdoor - DNP
SID Contact: Julie McClung
SID Office Phone: (919) 759-5640



UNIVERSITY OF NORTH CAROLINA



Location: Chapel Hill, NC
Enrollment: 23,852
President: Paul Hardin
Athletic Director: John Swifford
Track Facility: Belk Track/Feltzer Field
Head Coach: Dennis Craddock
1991 Women's Conference Place: Indoor - 1st; Outdoor - 2nd
1991 Women's NCAA Place: Indoor - 8th; Outdoor - Tied 10th
1991 Men's Conference Place: Indoor - 3rd; Outdoor - 3rd
1991 Men's NCAA Place: Indoor - 41st; Outdoor - DNP
SID Contact: Steve Kirschner
SID Office Phone: (919) 962-2123

NORTH CAROLINA STATE UNIVERSITY



Location: Raleigh, NC
Enrollment: 26,683
President: Chancellor Larry K. Monteith
Athletic Director: Todd Turner
Track Facility: Paul Derr Track
Head Coach: Rollie Geiger
1991 Women's Conference Place: Indoor - 4th; Outdoor - 5th
1991 Women's NCAA Place: Indoor - 11th; Outdoor - 18th
1991 Men's Conference Place: Indoor - 2nd; Outdoor - 2nd
1991 Men's NCAA Place: Indoor - 15th; Outdoor - 26th
SID Contact: Ashleigh Keener
SID Office Phone: (919) 515-2102

UNIVERSITY OF MARYLAND



Location: College Park, MD
Enrollment: 28,863
President: Dr. William E. Kirwan
Athletic Director: Andy Geiger
Track Facility: TBA
Head Coach: Bill Goodman
1991 Women's Conference Place: Indoor - 7th; Outdoor - 6th
1991 Women's NCAA Place: Indoor - DNP; Outdoor - DNP
1991 Men's Conference Place: Indoor - 7th; Outdoor - 7th
1991 Men's NCAA Place: Indoor - DNP; Outdoor - DNP
SID Contact: Sean Manion
SID Office Phone: (301) 314-7064

UNIVERSITY OF VIRGINIA



Location: Charlottesville, VA
Enrollment: 18,137
President: John Casteen, III
Athletic Director: Jim Copeland
Track Facility: Lannigan Field
Head Coach: Fred Binggeli
1991 Women's Conference Place: Indoor - 3rd; Outdoor - 3rd
1991 Women's NCAA Place: Indoor - DNP; Outdoor - 39th
1991 Men's Conference Place: Indoor - 4th; Outdoor - 4th
1991 Men's NCAA Place: Indoor - 32nd; Outdoor - DNP
SID Contact: Angela Manolakas
SID Office Phone: (804) 982-5500

GEORGIA INSTITUTE OF TECHNOLOGY



Location: Atlanta, GA
Enrollment: 12,000
President: Dr. Patrick Crecine
Athletic Director: Dr. Homer Rice
Track Facility: Griffin Track
Head Coach: Buddy Fowlkes
1991 Women's Conference Place: Indoor - 5th; Outdoor - 4th
1991 Women's NCAA Place: Indoor - DNP; Outdoor - 58th
1991 Men's Conference Place: Indoor - 5th; Outdoor - 5th
1991 Men's NCAA Place: Indoor - DNP; Outdoor - 26th
SID Contact: Terry Washington
SID Office Phone: (404) 894-5445