



2013

FLORIDA STATE WOMEN'S TENNIS



MEDIA GUIDE





QUICK FACTS AND TABLE OF CONTENTS

University

Location: Tallahassee, Fla.
 Enrollment: 41,710
 Founded: 1851
 Symbol: Seminoles
 Colors: Garnet & Gold
 President: Eric J. Barron

FSU Athletics

Affiliation: NCAA Division I
 Conference: Atlantic Coast
 Athletics Director: Randy Spetman
 Sport Oversight: Jon Jost
 Sports Information Director: Elliott Finebloom

SID Mailing Address: P.O. Box 2195
 Tallahassee, FL 32316
 SID Shipping Address: FSU Athletics
 403 Stadium Dr. W.
 Tallahassee, FL 32316

Facilities

Scott Speicher Tennis Center 121 Chieftan Way
 Tallahassee, FL 32306
 Indoor Tennis Courts 2566 Pottsdamer Rd.
 Tallahassee, FL 32316

Table of Contents

Season Outlook	2
2013 Seminoles	3
Head Coach Jennifer Hyde	4
Associate Head Coach	
Oliver Foreman	5
Seniors	6-7
Juniors	8
Sophomores	9-10
Facilities	11-12
Honors and Awards	13-14
Coaching History	15
Series Records	16
Year- By- Year	17-21
Post Season Records	22-23
Season and Career Records	24
Administration	25

Christa Salerno

Women's Tennis SID
Email: Csalerno@fsu.edu
Phone: 850-644-5653



Maxo Jean

Tennis Marketing Representative
Email: mjean@fsu.edu
Phone: 850-644-1350



Owen Long

Women's Tennis Team Manager



Ryan Soule

Women's Tennis Team Manager



Kaye Jaynes

Women's Tennis Team Athletic Trainer



The 2013 FSU women's tennis team in front of Heritage Tower.

2012 Year In Review

Record	13-11
Ranking	No.40
NCAA Postseason	First Round, L 4-3
.....	Washington State
ACC	W, Virginia Tech 4-0
.....	L, North Carolina 4-2
ACC Record	5-6
Players Lost	3
Players Returning	4
Players Gained	3



2013 OUTLOOK

After a 13-11 showing in 2012, the Florida State women's tennis team came back in the fall with a new mission – get back among the nation's elite. The Seminoles finished the 2012 season ranked 40th after losing their first round match to Washington State in the NCAA tournament- the teams sixth - straight appearance.

Ninth year head coach Jennifer Hyde and her eight member squad will start the season at No.38 with four ranked singles players, however the Seminoles have plenty of opportunities to climb in the standings.

This season, Florida State could face up to nine teams in the top 25, including No. 1 Florida – the two-time defending National Champions. Six of those nine are in the ACC (No. 3 Duke, No. 8 North Carolina, No. 9 Miami, No. 11 Virginia, No.20 Georgia Tech and No. 22 Clemson) while the remaining opponents will be seen at the ITA Kickoff Weekend in Waco, Tx. (No.15 Baylor and No.21 Texas Tech).

The Seminoles recorded one of the best pre-seasons in the history of FSU tennis in 2012, collectively posting a 40-26 record in singles over five fall tournaments. One of those events was the Riviera/ITA-All-American Championships in Los Angeles, Calif., where five players participated in the pre-qualifying and qualifying rounds of singles and doubles. As a result, sophomores Daneika Borthwick and Mia Vriens along with seniors Francesca Segarelli and Amy Sargeant are recognized in the ITA rankings for the spring.

New to the Seminole lineup, Borthwick will begin as the No.37 player in the nation. She made her debut in the Garnet and Gold with



Sophomore Daneika Borthwick made her FSU debut with a win over a Top 20 opponent.

a victory over No.18 Brynn Boren of Tennessee at the Furman Fall Classic. With a big time win in her first match, Borthwick continued her strong play as she knocked off three other ranked opponents before finishing with an overall singles record of 9-4. Borthwick will be a heavy contender in the top of the lineup for the Seminoles.

No. 48 Vriens showed vast improvement over the fall, capping it off with a victory over No. 29 Ecaterina Vasenina of USF in the State of Florida Championships. The Sydney, Australia native also earned the Sportsmanship Award for the tournament. She finished the fall with a record of 8-3. In 2011, Vriens played between the second and fourth courts and will look to contribute higher in the lineup this spring.

In her final season as a Seminole No. 73 Segarelli started off the fall playing some of her best tennis as she knocked off the No.1 seed in the qualifying draw of the Riviera/ITA All-American Championships. Segarelli took

down No. 26 Zoe De Bryucker before turning around hours later to defeat No. 56 Stefanie Tan of TCU. Segarelli ended the fall with a record of 7-7.

After completing her first full fall season in her career, No.100 Sargeant will start off the spring ranked for the second time in her four years. For the past two seasons, Sargeant has worked the majority of her matches from court six, serving as the backbone for the Seminoles, winning about 80 percent of her matches while playing at the post.

Also joining the lineup from the University of Colorado is junior Kristina Schleich. Schleich played in a few matches for the Seminoles, rolling to a singles record of 3-2. While with the Buffaloes, Schleich played the majority of her matches from court one against a stiff Pac-12 conference, swinging a career record of 32-37 in singles. Schleich was the co-MVP for the Buffaloes in 2012.

Coach Hyde added the two best junior college players during the offseason. Making the biggest impact this spring will be the arrival of sophomore Kerrie Cartwright, who was named as the ITA Player of the Year in the junior college ranks. As a freshman, Cartwright was crowned the NJCAA champion in singles and doubles in 2012. In addition to her individual triumphs, Cartwright helped capture the third-straight and 16th overall team title for the Apache.

Junior Laurence Porry contributed to putting the State College of Florida Manatee-Sarasota women's tennis team on the map as they were runner-up to Tyler Community College at the NJCAA championships in just their first year of existence. She was named as the FCCAA Tennis Player of the Year as the Manatee's won the 2012 state title.

Also returning for the Seminoles is sophomore Leyla Erkan. Erkan started her 2012-13 season by qualifying for the Riviera/ITA-All-American Championships in Los Angeles and finished the fall with a 4-5 record in singles. As a rookie, the Hilton Head S.C native worked out of court four before building her way up to the number one position. Off the court, Erkan earned the Golden Torch Award for the team.

With the revamped and deep line up, the Seminoles are expected to make a run for their first-ever ACC title despite being ranked the seventh best school in the ACC.



Senior Francesca Segarelli looks to lead the Seminoles to their first-ever ACC Championship after playing in the title match in 2011.

HEAD COACH JENNIFER HYDE



**Ninth Year
Alpharetta, Ga.
Florida State '95**

Hyde's Records at FSU

2012	13-11	.541
2011	16-9	.640
2010	16-11	.593
2009	17-8	.680
2008	19-8	.704
2007	16-8	.667
2006	9-13	.375
2005	11-12	.478
Totals:	117-72	.619

Jennifer Hyde enters her ninth season at the helm of the Florida State program. Hyde has led the Seminoles to six straight NCAA appearances, including their first ever Sweet 16 in 2010. With an exceptional list of accomplishments and milestones from her career at FSU, including an honor of ITA South Region Coach of the Year in 2011, Hyde looks to guide the Seminoles deep into the NCAA tournament in 2013.

At the start of the 2012-13 season, Hyde led five Seminoles to the Riviera/ITA-All-American Championships - the most to ever qualify for the event in Los Angeles in FSU history.

Hyde and the Seminoles continued to rewrite the history books in 2011-12 as the squad's six straight NCAA appearance marked the first time in school history the feat had been accomplished.

The Seminoles concluded the 2011 season with an eight-match winning streak, landing the Seminoles back to the ACC Title Match for just the second time in program history. The first time occurred in 1994 when Hyde was an athlete on the team. During that span, FSU recorded the most successful weekend of play in program history by beating No. 3 Duke and No. 4 UNC in back-to-back matches to close out the regular season. Using the momentum into the ACC Tournament, the Seminoles knocked off Wake Forest, No. 8 Virginia and No. 3 Duke for a second time. Hyde earning her 100th career victory.

In addition, the Seminoles jumped to No. 11 in the ITA National Rankings, breaking the previous high mark of No. 12 set by the 2007-08 team.

Just one season earlier, Hyde led the Seminoles to perhaps the most successful season in Florida State history taking her team to its first ever NCAA Sweet 16. After being selected to host the first and second rounds of the NCAA Championship for just the second time in program history, both under Hyde, the Seminoles dominated both North Florida and No. 17 South Carolina to punch their ticket to Athens, Ga., and to the highly coveted Sweet 16 round of the NAAs. Hyde also watched her first 'Nole earn ACC Freshman of the Year when Francesca Segarelli captured the honor in 2010.

The 2007-08 season welcomed several firsts for the program with Florida State hosting the first and second round of the NCAA Tournament. The Seminoles reached a No. 12 national ranking, the highest ranking in women tennis program history at the time. With the help of big wins against top ranked programs during the 2008 season, the Seminoles finished the year with an overall record of 19-7, the winningest season since 1999 and second winningest all-time at Florida State. Also, Hyde coached freshman Katie Rybakova to a top 20 national ranking in which Rybakova also received a bid to participate

in the NCAA Singles Championships as a freshman.

Off the court, Hyde athletes have continued their brilliance in the classroom by securing the Golden Torch Award eight times since her arrival, which is given to the Florida State athletic team with the highest GPA. In addition, numerous Seminoles have landed spots on the All-ACC Academic team, All-ACC Honor Roll and ITA Scholar-Athletes list in Hyde's eight years as head coach.

After graduating from FSU in 1995, Hyde began her coaching career as an assistant for the Seminoles prior to heading north to the University of Iowa in 1995. Hyde spent two years in the Midwest before returning to the south with an assistant coaching stint at the University of Alabama (1997-98).

Hyde moved onto on to coach at the University of North Carolina in 1998-99 where she established herself as one of the best young coaches in the sport. With her assistance, UNC enjoyed one of its best seasons in program history, moving from outside all the national polls to a top-25 ranking and the school's first NCAA tournament berth.

In 1999, Hyde accepted her first head coaching position at the University of Houston. Hyde spent five increasingly successful years with the Cougars before returning to Tallahassee, where she first started her collegiate tennis career.

The Alpharetta, Ga., native posted an impressive career with the Seminoles--establishing herself as a four-year letter winner, NCAA Tournament participant (1994) and ACC flight champion in doubles alongside teammate Jenny Graf. Hyde captained the 1994 Seminole squad whose No. 17 ranking previously stood for sixteen years as the highest year end ranking until 2010's No. 14 finish. Hyde earned a Masters Degree from Florida State in Sport Management.





ASSOCIATE HEAD COACH OLIVER FOREMAN



Eighth Year
East Sussex, United Kingdom
Middle Tennessee State University '02

Oliver Foreman begins his eighth season with Florida State as the associate head coach and one of collegiate tennis's top assistant coaches. Alongside head coach Jennifer Hyde, Foreman helped lead the Seminoles to a sixth straight NCAA appearance in 2012 in addition to the ACC Championship match in 2011 for just the second time in Florida State's history. From those achievements, Foreman was named the 2011 ITA South Region Assistant Coach of the Year.

During his career at Florida State, Foreman has contributed to building the powerful tennis era, surging the Seminoles back into the nation's elite. The Noles have finished five of the past six seasons ranked in the top 20, which is a drastic improvement since his arrival in 2005 when the team was ranked No. 72.

Last season, the Seminoles continued to rewrite their history by achieving their highest ranking ever at No. 11. They concluded with an impressive eight match winning streak, knocking off four top 10 opponents en route to Florida State's first ACC title match appearance since 1994. In addition, Katie Rybakova went onto the NCAA Singles Tournament marking the fourth straight year a student-athlete was represented at the event.

Along the way, FSU recorded the most successful weekend of play in program history by beating No. 3 Duke and No. 4 UNC in back-to-back matches to close out the regular season. Using the momentum into the ACC Tournament, the Seminoles knocked off Wake Forest, No. 8 Virginia and No. 3 Duke for a second time.

In 2009-10, Hyde and Foreman established another program mile-

stone when they led the Seminoles to their first ever NCAA Sweet 16 appearance.

A member of the Professional Tennis Tour from 2002-04, Foreman won the 2002 Irish National Open in both the doubles and singles competitions. He also made it to the final pre-qualifying round for Wimbledon in 1998 and 2000.

Prior to his professional career, Foreman competed at Middle Tennessee State where he was named to the Ohio Valley All-Conference team (1998, 99) and the Sunbelt All-Conference Team (2001, 02). He also made it as high as No. 5 in the national doubles rankings during his collegiate career. Among the highlights of his college accomplishments was a win in the consolation of the 2001 National Indoor Championships, regarded as the fifth leg of the college slams. Foreman also established himself in the top-100 collegiate singles rankings, the top-five collegiate doubles rankings and reached the quarterfinals of the ITA All-American Championships. In addition, he was a three-time NCAA qualifier.

Off the court, Foreman made a powerful impact at MTSU as well, serving on the Student Athlete Advisory Council (2001-02) and notching a spot on the Dean's List twice (2001-02). He is a native of East Sussex, United Kingdom.





2013 FLORIDA STATE SEMINOLES



Borthwick, Daneika
 Cartwright, Kerrie
 Erkan, Leyla
 Porry, Laurence
 Sargeant, Amy
 Schleich, Kristina
 Segarelli, Francesca
 Vriens, Mia

RS FR
 SO
 SO
 JR
 SR
 JR
 SR
 SO

Cumbria, England - Nelson Thomlinson School
 Nassau, Bahamas - Tyler Junior College
 Hilton Head, S.C. - Kaplan College Preparatory School
 Fort de France, Martinique - State College of Florida- Sarasota-Manatee
 Birmingham, England - St. Francis of Assisi
 Lilenthal, Germany - Colorado
 Rome, Italy - International School of Soussa
 Sydney, Australia - Galston High School



Seniors Francesca Segarelli and Amy Sargeant



Juniors Kristina Schleich and Laurence Porry



Sophomores Kerrie Cartwright, Mia Vriens, Daneika Borthwick and Leyla Erkan

AMY SARGEANT

Senior- Birmingham, England- St. Francis of Assisi



Senior 2012-13:

Spring: Will start the season ranked No.100 in singles.

Fall: In just her second fall season Sargeant went 7-2 in singles...finished out the fall season with an appearance in the finals of the State of Florida Championships in November in Tampa, Fla...played in the qualifying rounds of the ITA/Riviera All-American Championships in doubles with Francesca Segarelli...posted a doubles record of 4-5 for the fall.

Junior 2011-12:

Fall:Sat out the fall season due to injury.

Spring: Primarily working out of court six, Sargent rolled to a record of 16-6 over the spring season in singles...in doubles, Sargeant was 12-11 in the spring...was named a ITA Scholar Athlete for the year...made the ACC All-Academic team.

Sophomore 2010-2011:

Singles: After sitting out the fall and parts of the spring season, Sargaent finished the season strong as she was 12-6 in singles...defeated Marica Fuccillo 7-5, 6-2 after dropping a match to her just a month earlier in the victory over No. 11 Virginia during the second round of the ACC Championships...clinched the match-winning point in the victory over Wake Forest by defeating Brigita Bercyte 6-4, 6-0 in the first round of the ACC Championships...during the win against the No. 3 Duke Blue Devils she clinched the fourth and final point needed for the victory by defeating Duke's No. 79 nationally ranked Mary Clayton 7-6 (7-1), 6-7 (4-7), 6-3 and later earned ACC Performer of the week for her efforts.

Doubles: Took the court with Katie Ryba-

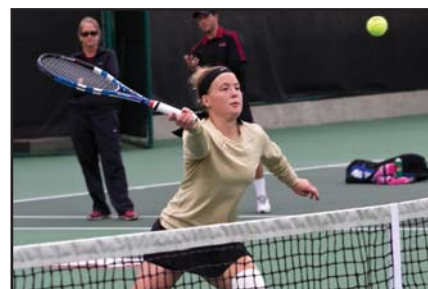
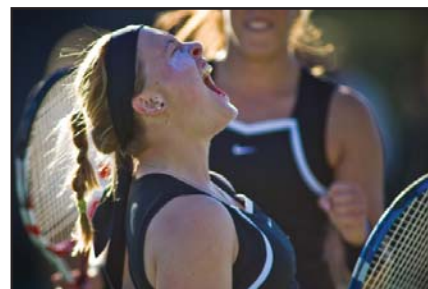
kova for 17 of her 19 doubles matches en route to a overall 12-7 record...went 3-0 in the ACC tournament with wins over teams from Wake Forest, Duke and North Carolina, while closing out the season on a five match winning streak.

Freshman 2009-2010:

Singles: Achieved a national ranking as high as No. 115 during the spring season...posted a notable 2-1 record at NCAA Championship that included victories over Victoria Krook of UNF 6-4, 6-0 and Miljana Jovic of the University of South Carolina 6-3, 6-2...clinched the match against No. 10 Tennessee at the ITA Indoor Championships with a win over Jennifer Meredith 2-6, 6-2, 6-1...defeated No. 125 Alexis Brown of FAMU at Wilson/ITA Southeast Regional Championship 6-0, 6-0...went undefeated at the Seminole Quad Tournament during fall with a 3-0 record...overall singles record of 16-17 (6-3 fall and 10-14 spring).

Doubles: Posted a record of 10-2 with partner Rybakova in the spring on court three...went on a six match winning streak with various partners...undefeated at NCAA Championships alongside Rybakova against Holton Krook of UNF (8-0), Pereira/Saari-Bystron of USC (8-1), and De Bruycker/Friend of UNC (8-2)...posted a 2-1 record at Furman Fall Classic with Sucupira...went 2-1 at Seminole Quad Tournament with Federica Seuss...went 2-1 in the fall and 3-4 spring with partner Sucupira on court three...record of 3-1 in fall with partner Federica Seuss...overall doubles record of 18-11 (5-3 fall and 13-8 spring).

Prep: Played against FSU's Noemie Scharle in doubles at the Bath Tournament is 2007...was a three-time County Champion in singles (2003-U16, 2005-U16 & U18) and two-time champion in doubles (2005 & 2006)...the 2008 British National Champion in doubles... a seven-time Junior Club National Champion (2001-07)... was a National Ladies Club Champion in 2006 & 2007...her highest career WTA ranking is 1018 in singles and 874 in doubles.



	Singles		Doubles	
2012-13	7-2	.777	4-5	.444
2011-12	16-6	.727	12-11	.522
2010-11	12-6	.666	12-6	.666
2009-10	16-17	.484	19-12	.704
Total	51.31	.622	47-34	.560



SENIORS

FRANCESCA SEGARELLI

Senior- Rome, Italy, International School of Soussa



Senior 2012-13:

Spring: Will start the 2013 season ranked No. 73 in singles.

Fall: Began the season ranked at No. 86....was selected to play in the qualifying rounds of the Riviera/ITA All-American Championships in Los Angeles...defeated two ranked opponents in one day during the tournament in No. 26 Zoe Debruycker (UNC) and No. 56 Stefanie Tan (TCU)... fell one win shy of the main draw of the event...posted a record of 7-6 in singles and 6-5 in doubles...while playing alongside teammate Amy Sargeant, the pair were ranked No.56 in doubles and also qualified for the Riviera Championships.

Junior 2011-12:

Spring: Segarelli concluded the 2011-12 season on a six-match singles winning streak notching three wins during post season play including one against Caroline Price from UNC in the ACC Championships...defeated No.59 Hanna Mar of Duke during the regular season...worked from positions one through four in the spring, notching a record of 15-6 in singles (16-11 overall)...played to a record of 23-9 for the year in doubles...was named to the ACC All-Academic team in addition to being a ITA Scholar Athlete.

Fall: Represented the Dominican Republic at the Pan American Games in Guadalajara, Mexico where she competed in singles and mixed doubles.

Sophomore 2010-2011:

Finished the 2011 season with a 13-15 singles records...defeated five ranked opponents over the course of the spring and

fall seasons...paired with Ruth Seaborne for the majority of the season in doubles, the pair reached their highest ranking of No.47 before finishing the season at No.51 with a 16-7 record...beat six ranked opponents in the spring of 2011, including a key win against the No. 51 Duke pair of Fahoum and Mar in the ACC Semifinals, moving the Seminoles on to their second ACC title match in school history...in the last month of the season, the duo finished with an 8-1 record.

Freshman 2009-2010:

Named the ACC Freshman of the Year... finished with a singles record of 18-16 and achieved a individual ranking as high as No.62...defeated five nationally-ranked opponents throughout fall and spring, including the No.10 player in Fani Chifchieva of Auburn in the fall...along with Lauren McCreless, the duo posted an overall 21-19 record during her freshman season, she contributed to two upsets over ranked teams in dual-match play in No. 40 Fraser and Stevens of Virginia and No. 38 Granson and Nze of Duke...the triumph over No. 38 Granson and Nze of Duke on court one helped FSU make its third-consecutive ACC semifinal appearance.

Prep: Won the Fed Cup in 2007...competed in the U.S. Open twice (2006 and 2008)...battled in the TIHTA-ITF Aruba and ITF Jamaica where she won both events... came out victorious in the 10,000 Managua doubles championships and made it to the semifinals of the singles championship... won the 10,000 La Havana, Cuba doubles championship...named to the honor roll.



	Singles	Doubles
2012-13	7-6 .538	6-5 .545
2011-12	16-11 .593	23-9 .719
2010-11	13-15 .464	19-10 .655
2009-10	18-16 .543	21-19 .525
Total	54-48 .529	69-43 .616



JUNIORS

LAURENCE PORRY

Junior- Fort de France, Martinique - State College of Florida - Sarasota - Manatee



Junior 2012-13:

Picked up her first win as a Seminole at the Roberta Alison Fall Classic and posted a record of 1-2 for the fall in singles...went 2-1 in doubles.

2010-2012:

Porry contributed to a team runner-up finish at the NJCAA championships in just their first year of existence...was named as the FCCAA Tennis Player of the Year as the Manatee's won the state title in both 2011 and 2012...had the highest GPA on the team both years.

Prep: Played in six international junior tournaments during 2007-2008 in singles...reached the championship match three times during that span of tennis...was coached by Betsy McCormack.



KRISTINA SCHLEICH

Junior - Lienthal, Germany - Colorado



Junior 2012-13

Fall: In her first matches as a Seminole, Schleich posted a 3-2 record in singles while going 4-2 in doubles on the fall.

2010-2012: Two-year letter winner at Colorado ...two-year win total was 32 singles matches and 18 doubles victories... as a sophomore won a team-best 16 singles matches during the year, eight of them during the spring ...won seven singles

matches at No. 1 position playing against the opponent's top player, the other win came at No. 2... played against nine nationally ranked opponents in the spring and upset No. 48 Liudmila Vasilieva (Washington State) in three sets after dropping the opening set ...named the team's Co-Most Valuable Player after her freshman year... CU's first freshman player at No. 1 singles since 2003-04 ...led the Buffaloes with eight dual match singles victories.

Prep and Junior: Member of the 2009 German Team Championship team...member of two state championship teams (2001, 2002) and a pair of runner up finishes (2003, 2005)... won the ITF junior doubles title in Spain in 2007.



	Singles		Doubles	
2012-13	3-2	.600	4-2	.666
AT COLORADO				
2011-12	16-18	.471	8-20	.286
2010-11	16-19	.457	8-23	.256
Total	35-39	.473	20-45	.444



SOPHOMORES

DANEIKA BORTHWICK

Sophomore - Cumbria, England - Nelson Thomlinson School



Sophomore 2012-13:

Spring: Will start the season ranked No. 37 in singles.

Fall: Without even playing a match as a Seminole, Borthwick was selected to play in the prequalifying rounds of the ITA/Riviera All-American Championships in singles and doubles...made her FSU debut by defeating No. 18 Brynn Boren of Tennessee at the Furman Fall Classic...defeated two more ranked opponents in No. 86 Chanelle Van Nguyen of UCLA and No. 49 Alex Cercone of Florida...rated the ninth-best newcomer according to the ITA...finished the fall with a 9-4 showing in singles while going 6-4 in doubles.

Championships at Wimbledon, advancing into the third round...was a member of the U-18 Great Britain team for the Moreen Conolly competition, which is set up as Great Britain vs. the U-18 American team...represented Great Britain during the U-16 IC tournament...Borthwick attended the Nelson Thomlinson School where she played netball, hockey, cross country and participated in athletics in addition to tennis.

Freshman 2011-12: Sat out the season.

Prep: In 2011, qualified for the Junior

	Singles		Doubles	
2012-13	9-4	.692	6-4	.600
Total	51.31	.692	47-34	.600

KERRIE CARTWRIGHT

Sophomore- Nassau, Bahamas- Tyler Junior College



2011-12 at Tyler Junior College:

Lost two singles matches all season as she led the Apache to their third-straight NJCAA championship...was crowned the champion in flight 1 at the NJCAA in both singles and doubles...has competed in the Fed Cup while representing the Bahamas during 2008-2011 where she's posted a 7-5 record in singles with six of those matches being played in the main draw...was also named the NJCAA Player of the Year in 2012.





SOPHOMORES

LEYLA ERKAN

Sophomore - Hilton Head, S.C. - Kaplan College Preparatory



got her first win against a ranked opponent in No.95 in Ale Granillo of Pepperdine while playing on court one...recorded a 13-17 showing in doubles on the year... was named as an ITA Scholar Athlete for the year.



Sophomore 2012-13:

Fall: Was selected to play in the prequalifying rounds of the ITA/Riviera All-American Championships in singles...posted a 4-5 record on the season in singles while splitting a 4-4 record in doubles for the fall.

Freshman 2011-12:

Spring:Started the spring season at position four and worked her way up to play the majority the matches on court one...

Fall: Went .500 in both singles and doubles during the fall season, earning a 7-7 record in singles and a 3-3 record in doubles.

Prep: Earned third place in doubles in the Girls U18 National Open in 2011...was a singles finalist in the Junior Smash Cup in 2011...accomplished berths in the singles finals of both the Panama Bowl ITF G4 and ITF World Ranking Event in 2009.



	Singles		Doubles	
2012-13	4-5	.444	4-4	.500
2011-12	14-20	.412	13-17	.433
Total	18-25	.419	17-21	.447

MIA VRIENS

Sophomore - Sydney, Australia - Galston High School



Freshman 2011-12:

Spring:Played on courts two, three and four in singles for the Seminoles...went 7-13 on the year in singles while playing to a 8-14 record in doubles.

Fall: Began her career as a Seminole with a 2-2 record in singles during the fall season.

High School: Vriens was ranked No. 63 in the senior rankings in Australia...her highest Junior ITF ranking was No. 42...has competed in junior international competitions since 2007...her winnings in 2008 include the Northern Territory Junior ITF in singles, the Darwin Junior ITF, the China Junior Open 2 and in doubles she took home the title at the Gallipoli Youth Tennis Cup...has represented several teams throughout the land of down under, including the 2006 Australian Junior World Cup Team and the 2008 Junior Fed Cup Team.



Sophomore 2012-13:

Spring: Will start the season ranked No. 48 in singles.

Fall: Was selected to play in doubles at the ITA/Riviera All-American Championships with Danieka Borthwick...earned her first win over a ranked opponent in No.29 Ecaterina Vasenina of USF at the State of Florida Championships...was awarded the Sportsmanship Award for the tournament as she made a semifinal appearance in the event...was 8-3 in singles for the fall while posting a record of 4-4 in doubles.



	Singles		Doubles	
2012-13	8-3	.727	4-4	.500
2011-12	7-13	.350	8-14	.364
Total	15-16	.484	12-18	.400



THE SCOTT SPEICHER TENNIS CENTER

With the first stage of construction completed in the summer of 1993, the Scott Speicher Tennis Center at the Donald Loucks Courts opened its gates to the public for the first time at a Children's Miracle Network charity tournament. Since then, many successful tournaments including the 1996 NCAA Women's Championships and 2007-2010 NCAA Regionals have graced the courts at one of Florida State University's premier athletic facilities.

Costing \$1.2 million to build and then another \$800,000 for recent additions, Florida State's Speicher Tennis Center has become an example of the increasing dedication and commitment the University has to all of its 19 varsity athletic programs.

The Speicher Tennis Center houses 12 lighted hard courts, over 1,000 court level seats, coaching offices, men's and women's locker rooms, equipment and storage rooms, a team lounge and a public address system. The growing pride Florida State has for its tennis program and its premier tennis center was honored just after it's opening in 1994, when the United States Tennis Association (USTA) awarded the structure with its "Top Notch" facility award.

The Speicher Tennis Center was named in honor of Lieutenant Commander Michael Scott Speicher, a graduate of Florida State University. Speicher was considered the first American casualty during Operation Desert Storm, but was later reclassified by the United State's government as missing in action in 2001 and missing or captured a year later. However, in 2009 Speicher's remains were found in the Anbar province of Iraq after a nearly 20-year search. The Scott Speicher family was later honored by Florida State at a home football game with a missing man formation fly-over from the Navy. By Presidential directive, the facility bears the name the "Scott Speicher Tennis Center."

In 1947, Loucks became Florida State's first basketball coach and a year later was named the school's first tennis coach. His tennis team was the first athletic team. The varsity tennis courts were named for Loucks in 1981. He served as Dean of men from 1957-1967 and was known as a servant of leadership, service and devotion to many worthy causes.

The Speicher Tennis Center was designed by EMO/Architects, Inc., a Tallahassee-based architectural firm, in collaboration with Global Consult Group, Inc., an internationally recognized Tennis Facility Design Consultant. The complex was funded by private sources and supervised through the state university system of Florida.

Through its 19 year existence, the Scott Speicher Tennis Center at the Donald Loucks Courts has served as the home courts for all Florida State men's and women's home dual matches, the annual Seminole Fall Classics, City of Tallahassee tennis championships, various USTA regional and zonal tournaments, the 1994 and 1995 Men's Intercollegiate tournament and the annual Children's Miracle Network Charity Invitational benefiting Shands Hospital in Gainesville. The tennis center has also been the site for the ITA Summer Circuit for men's and women's tennis in which high school and collegiate athletes participate in singles and double matches. The facility was resurfaced in the winter of 2012.





THE INDOOR TENNIS FACILITY

After breaking ground on construction in January of 2010, the Indoor Tennis Facility was completed in April of 2011. The multimillion dollar Indoor practice facility serves as an additional playing arena for the Florida State tennis teams. Since the completion in spring of 2011, the facility has served as both a site for training and competition.

The building hosts six regulation courts, locker rooms, athletic training room, equipment room, office and lobby. With this new facility, both Seminole Tennis teams are equipped with the tools to host both regional and national championships now and in the future. For the next phase, plans are in place to add spectator seating, team lounges, extended locker rooms, offices and a press box.

Besides use from the tennis programs the Multi-Purpose Educational Facility is used for academic classes, clinics and camps. The facility is the only indoor tennis facility approved for college competition in the state of Florida and only one of a few in the southeast.

Florida State Head Women's Tennis Coach Jennifer Hyde stated, "We are very excited about the indoor facility that is being built for the tennis programs. This facility will ensure a consistent training program, with weather never being an issue affecting our practice schedules and training regime. It will allow us to host conference, regional and national championships in the future, which will only bring about more positive attention to our program. This facility highlights the continued support for our Women's Tennis Program demonstrated by the administration at Florida State. We are very excited for the completion of this project."

The women's tennis team had its first practice on April 6, 2011 while the men practiced the next day on April 7. At the men's Seminole Invitational during September 2011, the back draws were played there for the facilities first competition. The first women's dual match was played on January 21, 2012 against UCF where Florida State won 6-1. The men's team played Furman on January 22, 2012 and came off the courts with a 7-0 victory.

The three million dollar building was designed by Lewis + Whitlock while construction was completed by Rippee Construction.

The facility is located adjacent to the Morcom Aquatics Facility and the Don Veller Seminole Golf Course and Club at 2566 Pottsdamer Rd. and is open to the public.





HONORS AND AWARDS

FSU Athletics Hall of Fame

Patti Henderson 1992
Buffy Baker 1997
Lori Sowell 2003
Audra Brannon 2007

Metro Conference Coach of the Year

Anne Rizza 1981, 1983 & 1984
Patti Henderson 1989
ACC Coach of the Year
Alice Reen 1994
Lise Gregory 1999, 2004

ITA South Region

Coach of the Year

Lise Gregory 2004
Jennifer Hyde 2007
Jennifer Hyde 2011

ITA South Region

Assistant Coach of the Year

Oliver Foreman 2009
Oliver Foreman 2011

ITA National

Assistant Coach of the Year

Oliver Foreman 2009

ITA/Arthur Ashe Jr. Award for

Leadership and

Sportsmanship

Audra Brannon 1993
Nanette Duxin 2001
Alida Gallovits 2002
Anca Dumitrescu 2004*
Mihaela Moldovan 2005
* - co-player
Jessica Sucupria, 2010
Federica Suess, 2011

ITA South Region

Senior Player of the Year

Anca Dumitrescu 2004
Lauren McCreless 2010

ITA South Region

Rookie of the Year

Mihaela Moldovan 2003

CoSIDA Academic All-American

Mihaela Moldovan 2004

ACC Weaver-James-Corrigan Award

Audra Brannon 1993
Kia Asberg 2000
Alida Gallovits 2002
Anca Dumitrescu 2004
Mihaela Moldovan 2005

Metro Conference Champions

1981, 1983, 1984 & 1989

Metro Conference Player of the Year

Suzanne Doumar 1981
Patti Henderson 1986
Keri Preng 1989
Buffy Baker 1991

ACC Player of the Year

Audra Brannon 1994

ACC Rookie of the Year

Lori Sowell 1994
Francesca Segarelli, 2010

All-American

Audra Brannon 1993 doubles
Laura Randmaa 1993 doubles
Lori Sowell 1995 singles & 1996 singles
Mihaela Moldovan 2005 singles

All-ACC Team

Audra Brannon 1992-94
Ann Olsson 1997
Elke Juul 1995-1996

Kia Asberg 1999-00
Laura Randmaa 1993
Alida Gallovits 1999-01
Lori Sowell 1994-97
Marina Raic 1999

Anca Dumitrescu 2003-04
Mihaela Moldovan 2004-05
Ania Rynarzewska 2006
Lauren Macfarlane 2007-08
Nicola Slater 2007
Katie Rybakova 2008, 2009, 2011

Noemie Scharle 2009
Francesca Segarelli, 2011

Metro Conference Tournament MVP

Patti Henderson 1986
Keri Preng 1989
Buffy Baker 1991
Metro Conference
All-Tournament Team
Buffy Baker 1988-91
Keri Preng 1988 -1989
Kirsten Turk 1989

Metro Conference Flight Champions

Suzanne Doumar 1981, No. 1 singles & No. 1 doubles
Jaime Kaplan 1981, No. 1 doubles

Lisa Erghott 1983, No. 5 singles
Patti Henderson 1983, No. 2 doubles
1984, No. 3 singles & No. 1 doubles

1985, No. 2 singles
Debbie Pollack 1983, No. 4 singles
Jenny Cerino 1984, No. 6 singles & No. 2 doubles

1985, No. 5 singles & No. 3 doubles
Sue Hatch 1984, No. 2 singles & No. 2 doubles
Lee McGuire 1984, No. 1

doubles
Buffy Baker 1989, No. 1 doubles;
1990, No. 1 doubles
1991, No. 1 singles & No. 1 doubles
Nicki Ivy 1989, No. 6 singles;
1991, No. 3 doubles
Kirsten Turk 1989, No. 3 singles
Keri Preng 1989, No. 1 doubles
Christina Tee 1991, No. 4 singles & No. 2 doubles
Robin Cifaldi 1991, No. 2 doubles
Audra Brannon 1991, No. 2 singles & No. 1 doubles
Ann Waggoner 1991, No. 3 doubles

ACC Flight Champions

Elke Juul 1993, No. 3 doubles
1994, No. 1 doubles
1996, No. 1 doubles
Sandi Ecclestone 1993, No. 3 doubles
Audra Brannon 1994, No. 1 singles & No. 1 doubles
Lori Sowell 1994, No. 2 singles
1996, No. 1 doubles
Ashley Delaney 1995, No. 3 doubles
Lori Junker 1995, No. 3 doubles
1996, No. 3 doubles
Ann Olsson 1996, No. 3 singles & No. 2 doubles
Sasha Hanna 1996, No. 2 doubles
Kylie Thompson 1996, No. 3 doubles
Ali Weber 1997, No. 5 singles
1999, No. 6 singles
2000, No. 6 singles & No. 3 doubles
Jessica Balbuena 2000, No. 3 doubles

Miscellaneous Honors

Kia Asberg
2000 Cissie Leary Sportsmanship Award (national winner)
Buffy Baker
1988 Roberta Allison Southern Intercollegiate (champion, No. 1 singles)
1989 Roberta Alison Southern Intercollegiate (champion, No. 1 singles)
1989 Women's Intercollegiate

Championships (champion, No. 1 singles)
Christina Denny
2003 Lady Seminole Fall Classic (Flight B - singles)
Anca Dumitrescu
2003 Lady Seminole Fall Classic (Flight A - singles)
Nanette Duxin
1998 Roberta Allison Invitational (Flight A - singles)
Alida Gallovits
1999 Lady Seminole Classic Champion (Flight A-singles)
2000 Georgia Tech Invite (Flight A-singles)
Hurricane Classic Champion (Flight A-singles)
ACC 50th Anniversary Team
Keri Preng
1988 Barnett Bank Women's Intercollegiate State Championships (champion, No. 6 singles)
Laura Sarkilahti
1988 Barnett Bank Women's Intercollegiate State Championships (champion, No. 5 singles)
Lori Sowell
1996 Lady Seminole Classic Champion (Flight A-singles)
Natalie Tirapelli
2003 Roberta Allison Fall Classic (Flight H-singles)
2009 ITA/ Cissie Leary Sportsmanship Award
Lauren McCreless (Macfarlane) 2009
Federica Suess 2011 ACC Post-Graduate Scholarship
Katie Rybakova 2012 ACC Post-Graduate Scholarship
Francesca Segarelli 2012 ITA/ Southeast Region Cissie Leary Sportsmanship Award
Mia Vriens 2012 State of Florida Championships Sportsmanship Award
Team MVP's
1997 Lori Sowell
1998 Ali Weber
1999 Marina Raic and Kia Asberg
2000 Kia Asberg
2001 Alida Gallovits



HONORS AND AWARDS

2002 Christina Denny
 2003 Anca Dumitrescu
 2004 Mihaela Moldovan
 2005` Mihaela Moldovan
 2006 Suzanna Mansour and Nicola Slater
 2007 Caroline Walter and Lauren Macfarlane
 2008 Caroline Walter and Federica Suess
 2009 Jessica Sucupira and Ania Rynarzewska

POST SEASON

INVITATIONS

Association of Intercollegiate Athletics for Women

Team
 1984 AIAW National Championships - 6th Place
 Doubles
 Jaime Kaplan & Suzanne Doumar (1982) named to the AIAW All-Region II Team

NCAA

Team
 1994, 1996, 1997, 1998, 1999, 2000,2001, 2002, 2004, 2005, 2007, 2008, 2009, 2010, 2011, 2012

Singles

Jaime Kaplan 1983
 Audra Brannon 1993 -1994
 Lori Sowell 1994 - 1996
 Alida Gallovits 2000-01
 Anca Dumitrescu 2002, 2004
 Mihaela Moldovan 2005
 Katie Rybakova 2008, 2009, 2011
 Noemie Scharle 2009, 2011

Doubles

Jaime Kaplan 1983
 Lee McGuire 1983
 Patti Henderson 1985
 Sue Hatch - 1985
 Audra Brannon 1993 -1994
 Laura Randmaa 1993
 Elke Juul 1994 -1996
 Lori Sowell 1995-1996
 Mihaela Moldovan 2005
 Lindsay Deason 2005
 Lauren Macfarlane 2007
 Nicola Slater 2007

ACADEMIC HONORS

FSU's Golden Torch Award (Highest Team GPA)

1985, 1986, 1987, 1988, 1989, 1997,1998, 1999, 2000, 2001, 2002, 2003,2004, 2005, 2006, 2007, 2008, 2009, 2011, 2012

ITA All-Academic Team

2002, 2004, 2006, 2008, 2009, 2011, 2012

FSU's Golden Torch Award

(Highest Individual GPA)
 Nicki Ivy 1991
 Ashley Delaney 1994
 Kia Asberg 2000
 Alida Gallovits 2000
 Marina Raic 2000
 Mihaela Moldovan 2003
 Lisa Nystrom Skold 2006
 Katie Rybakova 2008, 2009

Metro Conference

Commissioner's List

Claudia Gaughf 1985
 Sue Hatch 1985, 1986
 Kirsten Turk 1986-89
 Chris Joyce 1986-1988
 Jill Urban 1986-1987
 Keri Preng 1989
 Kirsten Balsler 1989-1990
 Lori Webster 1990
 Shana Nozick 1990
 Christina Tee 1990

ACC Academic Honor Roll

Buffy Baker 1992
 Nicki Ivy 1992
 Chrissie Tee 1992
 Amy Hanby 1992-93
 Sandi Ecclestone 1994
 Laura Randmaa 1994
 Ashley Delaney 1994-97
 Lori Sowell 1994-97
 Lori Junker 1995-97
 Elke Juul 1996
 Kylie Thompson 1996-99
 Ann Olsson 1997
 Ali Weber 1997-00
 Helena Karlsson 1998
 Rakina Payne 1997-98
 Sasha Hanna 1997-98
 Kia Asberg 1998-00
 Natalie Carratalá 1998-99, 01
 Christy Travis 1998-99, 01
 Jessica Balbuena 1999-01
 Nanette Duxin 1999-02
 Alida Gallovits 1999, 01-02
 Marina Raic 1999-01
 Christina Denny 2000-04
 Beth Lawrence 2000-03
 Meredith Fish 2001-02
 Anca Dumitrescu 2001-04
 Lauren Walker 2001-02
 Brittany Veal 2001-03
 Alina Mihailescu 2002-04
 Mihaela Moldovan 2002-04
 Brooke Cordell 2002-04
 Natalie Tirapelli 2002-04
 Nicole Cercone 2004
 Lindsay Deason 2004
 Amberly Tantee 2004
 Ania Rynarzewska 2006-08
 Lauren Macfarlane 2007
 Nicola Slater 2007

Tapiwa Marobela 2008
 Katie Rybakova 2008-09
 Noemie Scharle 2009
 Jessica Sucupira (Wente) 2008
 Federica Suess 2008
 Caroline Walter 2008
 Francesca Segarelli 2012
 Leyla Erkan 2012
 Carolina De Los Santos 2012
 Ruth Seaborne 2012
 Amy Sargeant 2012

ITA Scholar-Athletes

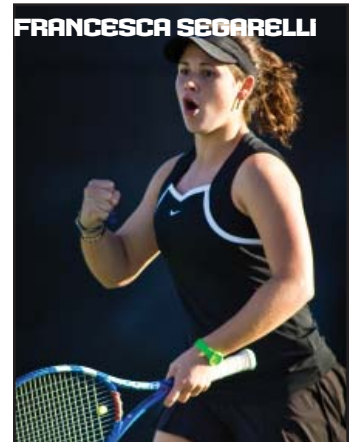
Brooke Cordell 2004
 Lindsay Deason 2004
 Christina Denny 2004
 Anca Dumitrescu 2004
 Miranda Foley 2006
 Alida Gallovits 2002
 Elizabeth Lawrence 2002
 Alina Mihailescu 2004, 2006
 Mihaela Moldovan 2004
 Lisa Nystrom-Skold 2006
 Ania Rynarzewska 2006, 2008, 2009
 Amber Tantee 2004
 Tapiwa Marobela 2008
 Katie Rybakova 2008, 2009, 2011
 Federica Suess 2008, 2011
 Jessica Sucupria 2009
 Noemie Scharle 2011, 2012
 Amy Sargeant 2012
 Carolina De Los Santos 2012
 Francesca Segarelli 2012
 Leyla Erkan 2012
CoSIDA Academic All-District III Team
 Mihaela Moldovan 2004, 2005
 All-ACC Academic Team
 Ania Rynarzewska 2006, 2008, 2009
 Lauren Macfarlane 2007
 Nicola Slater 2007
 Katie Rybakova 2008, 2009,2010, 2011
 Jessica Sucupria, 2010
 Federica Suess, 2011
 Noemie Scharle 2009, 2011
 Francesca Segarelli 2012
 Amy Sargeant 2012
 Carolina De Los Santos 2012



KATIE RYBAKOVA



FEDERICA SUESS



FRANCESCA SEGARELLI



LAUREN MCCRELESS



COACHING HISTORY

Anne Davis

1980-86 (8 seasons) (141-105, .573)

1980	21-11	.656 Metro (2nd)
1981	24-15	.615 Metro (1st)
#18		
1982	23-18	.561 Metro (2nd) AIAW Chmps. (6th)
NR		
1983	18-8	.692 Metro (1st)
1984	15-13	.608 Metro (1st)
1985	13-14	.481 Metro (2nd)
1986	17-10	.630 Metro (2nd)
1987 Patti Henderson	11-16	.407 Metro (2nd)

Notes: Was one of the first head coaches in the women's tennis program's history...Davis earned Metro Conference Coach of the Year honors in 1981...ranked in the top 20 in the nation during the 1982 preseason...former USF tennis standout who played on teams that finished a program high of 11th...led the Seminoles to its highest national finish - sixth place in 1982.

Patti Henderson

1987-91 (four seasons) (53-38, .582)

1988	Kim Philo	14-12	.538 Metro (2nd)
1989	Kim Philo	13-7	.650 Metro (1st)
1990	Shannon Krieger	13-9	.591 Metro (2nd)
1991	Lori Webster	13-10	.565 Metro (1st)

Notes: Only woman in Metro Conference history to earn MVP honors as a student-athlete and then conference coach of the year accolades...won two Metro Conference Team Championships in her four-year stint with the Seminoles...recruited and coached current Seminole head coach Jennifer Hyde... inducted into the Florida State Hall of Fame in 1992...during her four year playing career at FSU, she compiled a 68-36 singles record while accounting for 71 doubles wins...NCAA Championships qualifier in the doubles in 1985... first FSU women's tennis student-athlete to 20 singles wins in a season (a/o 1986)... was a graduate assistant for one year before taking the head coach position.

Alice Reen

1992-96 (five seasons) (60-50, .545)

1992	Buffy Baker	13-10	.565 ACC (3rd)
1993	Jenny Mainz	13-9	.591 ACC (3rd)
1994	Jenny Mainz	15-10	.600 ACC (2nd) NCAA Chmps. (19th)
#22			
1995	Jenny Mainz	11-10	.524 ACC (3rd) #31
1996	Michelle McMillen	8-11	.420 ACC (4th) NCAA Regionals (8th)

#35

Notes: Over five years, averaged 12 victories per season...coached current Seminole head coach Jennifer Hyde...led Florida State to its highest NCAA ranking in school history (No. 17 - 1994)...was the head coach at the University of Arkansas before taking over in Tallahassee...graduate of the University of Georgia...led the Seminoles to its highest finish in Atlantic Coast Conference history, finishing in second place in 1994...was named ACC Coach of the Year in 1994.

Lise Gregory

1996-2004 (eight seasons) (119-83, .589)

1997	Tim Bauer	12-11	.521 ACC (3rd) NCAA Regionals (8th) #37
1998	Tim Bauer	12-12	.500 ACC (8th) NCAA Regionals (8th) #49
1999	Tim Bauer	21-7	.750 ACC (3rd) NCAA Regionals (2nd) #23
2000	Dave Balogh	17-9	.654 ACC (5th) NCAA Regionals (2nd) #22
2001	Brian Burdette	14-11	.560 ACC (4th) NCAA Regionals (3rd) #36
2002	Brian Burdette	12-15	.444 ACC (8th) NCAA Regionals (3rd) #49
2003	Brian Burdette	13-10	.565 ACC (6th) #55
2004	Brian Burdette	18-8	.692 ACC (3rd) NCAA Regionals (2nd) #26

Notes: Gregory was the women's tennis head coach for eight seasons in Tallahassee...first Seminole head coach to earn Atlantic Coast Conference Coach of the Year honors twice (1999, 2004)...has the best winning percentage among all head coaches at .587...was named ITA South Region Coach of the Year in 2004.

Jennifer Hyde

2004 - Present(104-58 .642)

2005-06	Oliver Foreman	11-12	.478	ACC (8th) NCAA Regionals (1st) #43
2006-07	Oliver Foreman	9-13	.409	ACC (10th) #72
2007-08	Oliver Foreman	16-8	.667	ACC (5th) NCAA Regionals (2nd) #19
2008-09	Oliver Foreman	19-8	.704	ACC (6th) NCAA Regionals (2nd)#18
2009-10	Oliver Foreman	17-8	.688	ACC (5th) NCAA Round of 16 #14
2010-11	Oliver Foreman	16-9	.500	ACC (2nd) NCAA Regionals (2nd) #15
2011-12	Oliver Foreman	13-11	.579	ACC NCAA Regionals #40

Notes: Led her team to one of the most successful seasons in school history in 2010-2011 by taking the Seminoles to the ACC title match for the just the second time ever en route to No. 11 ranking during the season, which is the highest in FSU history..named 2007 ITA South Region Coach of the Year...returned to her alma matter in 2004 to lead the Seminole squad...captain of the 1994 team that finished at No. 17 in the nation...only the second alum to return to coach at Florida State...led the team to the postseason for the eleventh time in the last twelve seasons in her first year...hosted the first and second rounds of the NCAA Tournament for the first time in program history...pushed the Seminoles into the NCAA Tournament for the second time in her first three years as head coach...in the past eight of her nine seasons, Hyde has led the Seminoles to the Golden Torch Award and a six-straight NCAA appearance.



SERIES RECORDS

Alabama	7	5	1983	2005	Northwestern	0	6	1983	2010
Alabama-Birmingham	3	0	1988	2006	Northwest Louisiana	1	0	1982	1982
Arizona State	0	1	2009	2009	North Texas State	1	0	1982	1982
Arizona	0	3	1990	1994	Notre Dame	0	1	1996	1996
Auburn	11	1	1982	2012	Ohio State	4	0	1982	2012
Baylor	5	4	1986	2010	Oklahoma	1	0	1993	1993
Bethune-Cookman	2	0	2001	2006	Oklahoma State	1	2	1982	1984
Boston College	7	0	2006	2012	Penn State	1	0	2004	2004
California	0	1	1997	1997	Pepperdine	2	1	2001	2012
Cal-Irvine	0	1	1987	1987	Princeton	2	0	1982	2011
Cal-Santa Barbara	0	2	1987	1993	Purdue	3	0	1982	1987
Central Florida	7	0	2002	2012	Rice	9	4	1983	2008
Clemson	8	21	1982	2012	Rollins	12	6	1982	1993
College of Charleston	1	0	1983	1983	Samford	1	0	2008	2008
Columbia	1	0	1987	1987	San Diego	1	1	1995	2005
Duke	5	2	1983	2012	San Diego State	3	0	2001	2005
Flagler	2	2	1988	1992	Santa Fe	1	0	1990	1990
Florida	1	35	1982	2012	South Alabama	8	7	1982	2003
Florida A&M	9	0	1982	2008	South Carolina	2	13	1982	2010
Florida Atlantic	1	0	2002	2002	Southern Methodist	3	3	1982	2011
Florida International	15	5	1989	2012	South Florida	25	11	1982	2011
Florida Junior College	5	0	1983	1987	Southwestern Louisiana	3	0	1982	1993
Furman	4	0	1987	2009	Southwest Missouri	1	0	1986	1986
Georgia	5	8	1982	2010	Southern Miss	2	0	1999	1999
Georgia Southern	8	0	1995	2006	Stetson	8	0	1983	2008
Georgia State	6	0	1983	2011	Tennessee	4	3	1983	2010
Georgia Tech	18	10	1985	2012	Tennessee-Chattanooga	1	0	1984	1984
Harvard	2	0	1982	2002	Texas	0	3	1982	2008
Houston	5	6	1984	2007	Texas A&M	2	0	1994	1995
Illinois	6	1	1992	2010	Texas Christian	2	5	1982	2012
Indiana	0	3	1982	1988	Trinity	1	0	1991	1991
Iowa	3	1	1982	1999	Troy	1	0	2006	2006
Jacksonville	9	0	1989	2009	Tulane	8	4	1982	2005
Kansas	1	0	1999	1999	UCLA	0	1	2007	2007
Kansas State	1	0	1989	1989	U.S. International	0	1	1990	1990
Kentucky	0	1	1994	1994	Utah	1	0	2000	2000
Lamar	1	0	1989	1989	Vanderbilt	2	8	1983	2002
Louisiana State	9	6	1982	2010	Virginia Commonwealth	0	1	2002	2002
Louisiana Tech	2	0	1983	1990	Virginia	21	4	1992	2012
Louisville	3	0	1982	1988	Virginia Tech	14	1	1985	2012
Lynn (Boca Raton)	1	0	1990	1990	Wake Forest	13	19	1985	2012
Maryland	18	3	1993	2012	Wichita State	1	0	1985	1985
Memphis State	2	0	1985	1987	William & Mary	1	0	1987	1987
Miami, FL	4	23	1982	2012	Wisconsin	1	4	1986	1992
Miami, OH	1	1	1984	1987	Yale	0	1	1989	1989
Michigan	4	0	1990	1993					
Michigan State	3	0	2001	2002					
Mississippi	2	7	1982	2012					
Mississippi State	4	3	1984	1994					
Mississippi Univ. for Women	1	0	1982	1982					
Nevada Las Vegas (UNLV)	1	0	2008	2008					
New Mexico	3	0	1984	1990					
North Carolina	16	21	1982	2012					
North Carolina Greensboro	1	0	2009	2009					
North Carolina State	18	4	1992	2012					
North Florida	7	1	1985	2012					
Northeast Louisiana	6	0	1983	1991					

-Bold denotes a 2013 opponent





YEAR-BY-YEAR RECORDS

1982			Tennessee	W	6-3	South Florida	L	3-6
Head Coach: Anne Rizza			Northwestern	L	4-5	Miami, Fla.	L	1-8
Record: 23-17			Rollins	W	6-3	Rollins	W	7-2
Florida A&M	W	9-0	Florida	L	3-6	Mississippi	L	2-6
South Carolina	L	2-7	South Florida	L	3-6	Auburn	W	8-1
Oklahoma State	W	5-4	Florida	L	4-5	Memphis State	W	9-0
Texas Christian	W	6-3	Vanderbilt	W	8-1	Tulane	L	4-5
Tulane	W	9-0	Alabama	W	8-1			
South Florida	W	5-4	Tulane	W	5-4			
Florida A&M	W	8-0				1986		
Rollins	L	2-7				Head Coach: Anne Rizza		
Florida	L	1-7	1984			Record: 17-10		
Louisiana State	W	6-3	Head Coach: Anne Rizza			North Florida	W	6-3
Clemson	W	5-4	Record: 15-13			Florida Junior College	W	9-0
Auburn	W	9-0	Rollins	L	3-6	Florida	L	1-8
Southwest Louisiana	W	9-0	Tennessee	W	8-1	Southern Methodist	L	3-6
Northwest Louisiana	W	7-0	South Carolina	L	4-5	Rollins	W	8-1
Miss. Univ. for Women	W	8-0	Houston	L	4-5	Houston	L	3-6
North Carolina	W	6-3	Tennessee-Chattanooga	W	5-4	South Florida	W	5-4
South Carolina	L	3-5	Vanderbilt	W	8-0	Alabama	W	6-3
Mississippi	L	4-5	Auburn	W	7-2	Auburn	W	7-2
Purdue	W	7-1	Florida Junior College	W	8-1	Florida	L	1-8
Texas	L	0-8	Tulane	W	6-0	Purdue	W	6-3
Southern Methodist	W	6-2	Georgia	W	7-2	Baylor	W	9-0
Texas Christian	L	4-5	Northeast Louisiana	W	5-1	Mississippi	W	5-4
North Texas State	W	6-2	Alabama	W	7-2	South Alabama	L	2-7
Louisville	W	8-1	Oklahoma State	L	4-5	Southwest Missouri	W	8-1
Ohio State	W	9-0	South Alabama	W	7-2	Texas Christian	L	3-6
South Alabama	W	7-2	Florida	L	2-7	Clemson	L	0-9
Indiana	L	2-7	South Carolina	W	5-4	South Alabama	L	3-6
Harvard	W	8-1	Oklahoma State	L	4-5	Virginia Tech	W	9-0
Clemson	L	4-5	Georgia	W	6-3	Georgia Tech	W	7-2
South Florida	L	4-5	Mississippi	L	2-5	Wisconsin	W	5-4
Miami, Fla.	L	2-7	Mississippi State	W	9-0	Mississippi State	W	7-2
Florida	L	1-8	Rice	L	3-6	Stetson	W	9-0
Georgia	L	3-6	New Mexico	W	5-1	South Florida	L	2-7
Rollins	L	2-7	Miami, Ohio	W	6-3	Rollins	W	6-0
South Florida	L	4-5	Northwestern	L	1-8	Virginia Tech	W	8-1
North Carolina	L	1-8	Rollins	L	4-5	South Carolina	L	4-5
Iowa	W	7-2	Florida	L	1-8			
Georgia	W	5-4	Miami, Fla.	L	3-6	1987		
Princeton	W	5-4	South Florida	L	3-6	Head Coach: Patti Henderson		
North Carolina	L	0-5				(11-15)		
			1985			Vanderbilt	L	4-5
1983			Head Coach: Anne Rizza			Tennessee	L	4-5
Head Coach: Anne Rizza			Record: 13-14			William & Mary	W	5-4
Record: 18-8			Georgia Tech	W	6-1	South Carolina	L	0-5
Stetson	W	7-2	South Florida	L	1-8	Auburn	W	5-4
Florida Junior College	W	7-2	Alabama	W	6-3	Florida Junior College	W	7-2
Clemson	L	0-9	North Florida	W	7-2	North Florida	W	7-2
Auburn	W	8-1	Florida Junior College	W	9-0	Florida	L	0-9
College of Charleston	W	9-0	Rollins	W	5-4	Mississippi State	L	4-5
Rollins	L	1-8	Florida	L	1-8	Furman	W	6-3
Louisiana Tech	W	7-0	North Carolina	W	7-2	Purdue	W	7-2
Northeast Louisiana	W	8-1	Louisiana State	L	2-7	Columbia	W	8-1
Alabama	W	8-1	South Florida	L	0-8	South Florida	W	6-3
Rice	L	3-6	Wichita State	W	6-3	Miami, Ohio	L	4-5
South Florida	W	5-4	Wake Forest	W	7-2	North Carolina	L	2-7
Duke	W	6-3	Duke	L	4-5	Wake Forest	L	3-6
Indiana	L	2-7	North Carolina	L	2-7	Virginia Tech	W	8-1
Ohio State	W	9-0	Texas Christian	L	3-6	California - Irvine	L	3-6
Iowa	W	7-2	South Carolina	L	4-5	Rice	L	4-5
Georgia	W	6-3	Northwestern	L	3-6	California-Santa Barbara	L	2-7
Georgia State	W	9-0	Georgia	W	5-4	Southern Methodist	L	1-8
			Florida	L	1-8	Florida	L	0-9



YEAR-BY-YEAR RECORDS

Rollins	L	3-6	North Florida	W	8-1	North Carolina	W	5-4
Louisville	W	7-2	Florida	L	0-9	Duke	L	1-8
Memphis State	W	9-0	U.S. International	L	3-6	Georgia Tech	W	8-1
South Carolina	L	3-6	Arizona	L	4-5	Illinois	L	4-5

1988
Head Coach: Patti Henderson
Record: 14-12

Florida	L	1-8
Florida A&M	W	8-1
Alabama - Birmingham	W	7-2
North Florida	L	3-6
Northeast Louisiana	W	6-3
Houston	L	1-8
Mississippi	L	4-5
North Carolina	L	2-7
Furman	W	9-0
Louisiana State	L	4-5
Stetson	W	8-1
South Florida	W	5-4
Rollins	W	6-3
Auburn	L	3-6
Baylor	W	9-0
New Mexico	W	5-4
South Carolina	L	1-7
Indiana	L	1-8
Mississippi State	L	1-5
Georgia State	W	9-0
South Florida	W	5-4
Flagler	L	2-7
Southern Methodist	W	9-0
Louisville	W	9-0
South Carolina	L	0-6

1989
Head Coach: Patti Henderson
Record: 13-7

Tulane	W	8-1
South Florida	L	4-5
Florida	L	0-9
South Alabama	W	5-3
Jacksonville	W	9-0
Northeast Louisiana	W	6-0
Auburn	W	5-4
South Alabama	L	3-6
Florida International	W	9-0
Flagler	L	4-5
North Florida	W	6-3
Mississippi	L	3-6
Kansas State	W	5-1
Yale	L	4-5
South Florida	W	6-3
Wisconsin	L	1-8
Rollins	W	6-3
Clemson	W	5-4
Lamar	W	9-0
Houston	W	5-4

1990
Head Coach: Patti Henderson
Record: 17-8

South Florida	W	7-1
Rollins	W	8-1
Santa Fe	W	9-0

Rice	W	6-0
Northeast Louisiana	W	7-0
South Alabama	W	7-1
Houston	L	2-7
Mississippi	W	5-4
Georgia Tech	W	7-1
Louisiana Tech	W	7-2
Florida International	W	8-1
Louisiana State	L	4-5
Miami, Fla.	L	1-8
New Mexico	W	7-0
South Florida	W	7-2
Wisconsin	L	4-5
Rollins	W	8-1
Michigan	W	8-1
Wake Forest	W	5-4
South Carolina	L	2-6
Boca Raton	W	8-1

1991
Head Coach: Patti Henderson
Record: 13-9

Florida	L	0-9
North Carolina	L	2-7
Miami, Fla.	L	4-5
Tulane	W	9-0
Rice	W	7-2
Louisiana State	W	5-4
Northeast Louisiana	W	9-0
Auburn	W	7-2
South Florida	W	9-0
Alabama	W	6-3
Michigan	W	7-2
Rollins	W	9-0
Wake Forest	L	4-5
Mississippi State	W	7-2
Trinity	W	7-2
Houston	L	4-5
Texas Christian	L	3-6
Southwest Louisiana	W	8-1
Wisconsin	L	3-6
Northwestern	L	2-7
Flagler	W	7-2
Duke	L	1-6

1992
Head Coach: Alice Reen
Record: 13-10

Northwestern	L	3-6
Wisconsin	L	2-7
Alabama	L	0-6
Flagler	W	7-2
Rollins	W	8-1
Virginia	W	7-2
Michigan	W	6-3
South Florida	W	7-2
North Carolina State	W	9-0
Miami, Fla.	L	2-7
Southern Methodist	W	5-3
Mississippi State	L	4-5

Georgia Tech	W	8-1
Illinois	L	4-5
South Alabama	W	6-1
Florida International	W	6-3
Georgia	L	3-6
Clemson	L	3-6
Wake Forest	W	5-4
Virginia	W	6-0
Wake Forest	L	2-5

1993
Head Coach: Alice Reen
Record: 13-9

Georgia Tech	W	8-1
California-Santa Barbara	L	4-5
Rice	L	4-5
Arizona	L	2-6
Florida International	W	8-1
Miami, Fla.	L	2-7
Rollins	W	8-1
Michigan	W	6-3
South Florida	W	5-4
Clemson	L	4-5
North Carolina	W	7-2
Wake Forest	L	s4-5
Oklahoma	W	6-3
North Carolina State	W	6-0
Maryland	W	8-1
Tennessee	L	3-6
Virginia	W	5-4
Southwestern Louisiana	W	6-3
Georgia	L	2-5
South Alabama	W	5-4
North Carolina (ACC)	W	5-3
Clemson (ACC)	L	2-7

1994
Head Coach: Alice Reen
Record: 15-10

Georgia Tech	W	9-0
Miami, Fla.	L	4-5
Florida	L	1-8
Maryland	W	9-0
Kentucky	L	1-7
Tennessee	L	4-5
South Florida	W	5-4
Wake Forest	W	5-4
Clemson	L	3-6
Georgia	L	1-5
North Carolina State	W	7-2
Virginia	W	6-3
Mississippi State	W	5-1
Rice	W	7-2
Houston	W	5-1
Texas	L	3-6
Texas A&M	W	5-4
Florida International	W	5-1
North Carolina	W	7-2
Duke	L	4-5
South Alabama	W	7-2
N.C. State (ACC)	W	5-1
Clemson (ACC)	W	5-3



YEAR-BY-YEAR RECORDS

Duke (ACC)	L	0-5	Baylor	L	4-5	Duke	L	0-9
Arizona	L	3-5	Rice	W	5-4	North Carolina	W	6-3
			Houston	L	4-5	Georgia Tech	W	6-3
1995			Duke	L	1-7	Clemson	W	5-4
Head Coach: Alice Reen			North Carolina State	W	6-3	Virginia (ACC)	W	5-1
Record: 11-10			Wake Forest	L	2-6	Wake Forest (ACC)	L	4-5
Florida	L	1-7	Maryland	W	7-2	Iowa (NCAA)	L	4-5
Vanderbilt	L	4-5	Illinois	W	8-1			
Georgia Southern	W	8-0	Virginia	W	7-2	2000		
South Florida	L	4-5	South Florida	W	5-4	Head Coach: Lise Gregory		
North Carolina	W	5-4	Georgia Tech (ACC)	W	5-1	Record: 17-9		
Duke	L	1-6	Wake Forest (ACC)	L	1-5	Georgia Southern	W	8-1
Tennessee	W	5-4	Vanderbilt (NCAA)	L	0-5	Vanderbilt	L	1-8
Clemson	W	5-4				Iowa	W	5-4
Maryland	W	8-1	1998			Florida	L	1-5
Texas A&M	W	5-2	Head Coach: Lise Gregory			Auburn	W	6-3
Georgia	L	0-6	Record: 12-12			Jacksonville	W	9-0
Virginia	W	8-1	Georgia Southern	W	7-2	Southern Miss	W	6-3
South Carolina	L	3-6	Florida	L	1-8	LSU	W	5-4
Miami, Fla.	L	3-6	Georgia Tech	L	4-5	South Florida	W	7-2
Florida International	W	5-4	Clemson	L	4-5	Miami	W	5-1
San Diego	L	2-6	Maryland	L	4-5	Baylor	L	4-5
Georgia Tech	W	6-0	Virginia	W	5-4	Tulane	W	7-2
North Carolina State	W	5-4	South Florida	W	6-3	Maryland	W	9-0
Wake Forest	L	3-6	Houston	W	7-2	Virginia	W	7-2
Virginia (ACC)	W	5-3	Virginia Tech	L	4-5	North Carolina	W	5-2
Wake Forest (ACC)	L	2-5	Baylor	W	5-4	Wake Forest	L	1-8
			Wake Forest	L	3-6	North Carolina State	W	8-1
1996			NC State	L	4-5	Duke	L	2-7
Head Coach: Alice Reen			South Alabama	L	1-8	Utah	W	7-2
Record: 8-11			Auburn	W	6-3	Georgia Tech	L	4-5
Vanderbilt	L	0-8	Illinois	W	6-3	Clemson	L	4-5
Jacksonville	W	8-0	Jacksonville	W	7-0	Georgia Tech (ACC)	W	5-3
Miami, Fla.	W	5-3	Florida International	W	6-3	Wake Forest (ACC)	L	0-5
Georgia Southern	W	7-2	Duke	L	1-8	Illinois (NCAA)	W	5-3
Maryland	W	6-2	North Carolina	W	5-4	Florida (NCAA)	L	0-5
Clemson	W	5-4	North Carolina (ACC)	W	7-2			
Georgia	L	1-6	Duke (ACC)	L	5-0	2001		
Wake Forest	L	4-5	Vanderbilt (NCAA)	L	6-0	Head Coach: Lise Gregory		
North Carolina State	W	8-1				Record: 14-11		
Virginia	L	4-5	1999			Georgia State	W	7-0
Notre Dame	L	1-6	Head Coach: Lise Gregory			Bethune-Cookman	W	7-0
Mississippi	L	2-5	Record: 21-7			Alabama	L	3-4
North Carolina	L	4-5	Jacksonville	W	9-0	Florida	L	0-7
Duke	L	1-8	Illinois	W	5-1	Tulane	W	4-3
Florida	L	1-8	Southern Miss	W	9-0	LSU	L	3-4
Georgia Tech	W	8-1	Auburn	W	7-2	Miami	L	3-4
Virginia (ACC)	W	5-3	Georgia State	W	6-0	FIU	L	2-5
Duke (ACC)	L	0-6	Florida	L	1-8	South Florida	W	4-3
South Carolina (NCAA)	L	2-5	Georgia Southern	W	8-1	Michigan State	W	7-0
			South Florida	W	8-1	Marquette	W	6-1
1997			South Alabama	W	5-1	Pepperdine	L	3-4
Head Coach: Lise Gregory			Vanderbilt	L	4-5	Loyola Marymount	W	4-3
Record: 12-11			Miami	L	4-5	San Diego State	W	4-3
South Alabama	L	2-7	Florida International	W	7-2	NC State	W	6-1
Vanderbilt	L	0-9	Baylor	W	7-2	Wake Forest	L	3-4
Auburn	W	7-1	Houston	W	5-4	North Carolina	L	1-6
Miami, Fla.	L	3-6	Rice	W	6-3	Duke	L	0-7
Florida International	W	8-1	Tulane	W	5-4	Georgia Tech	W	6-1
Georgia Tech	W	8-1	Virginia	W	6-3	Clemson	W	5-2
California	L	2-7	Maryland	W	9-0	Maryland	W	5-2
Clemson	W	6-3	Kansas	W	6-3	Virginia	W	4-3
Florida	L	0-9	Wake Forest	L	4-5	Georgia Tech (ACC)	W	4-2
North Carolina	W	7-2	North Carolina State	W	9-0	Duke (ACC)	L	0-4



YEAR-BY-YEAR RECORDS

South Carolina (NCAA)	L	2-4	Record: 18-8			Troy State	W	4-3
			Ga. Southern	W	7-0	LSU	L	2-5
			Troy State	W	7-0	UAB	W	5-2
			Stetson	W	7-0	FIU	L	2-5
			Rice	W	5-1	Miami	L	0-7
			UCF	W	6-1	Boston College	W	4-2
			UAB	W	7-0	Maryland	L	3-4
			Alabama	L	2-5	North Carolina	L	1-6
			Florida	L	1-6	N.C. State	L	2-5
			LSU	L	3-4	Wake Forest	L	0-7
			USF	W	5-2	Clemson	L	3-4
			FIU	W	6-1	Georgia Tech	L	2-4
			Tulane	L	3-4	Virginia	L	1-6
			Michigan State	W	5-2	Virginia Tech	W	4-3
			Penn State	W	6-1	Duke	L	1-4
			Maryland	W	5-2	Wake Forest (ACC)	L	1-4
			Virginia	W	6-1			
			N.C. State	W	7-0	2007		
			Wake Forest	W	6-1	Head Coach: Jennifer Hyde		
			North Carolina	W	4-3	Record: 16-8		
			Duke	L	3-4	Jacksonville	W	6-1
			Georgia Tech	W	4-3	Georgia	L	1-6
			Clemson	L	3-4	Rice	W	6-1
			Wake (ACC)	W	4-2	Houston	W	5-1
			Duke (ACC)	L	1-4	Stetson	W	7-0
			Marshall (NCAA)	W	4-2	Florida A&M	W	7-0
			Vanderbilt (NCAA)	L	1-4	LSU	W	5-2
						Florida	L	3-4
			2005			Florida International	W	4-3
			Head Coach: Jennifer Hyde			Miami	L	3-4
			Record: 11-12			NC State	W	5-2
			Baylor	L	5-2	Wake Forest	W	4-3
			UCF	W	7-0	Clemson	L	2-5
			Alabama	W	5-2	Georgia Tech	L	1-6
			Florida	L	1-6	Virginia	W	4-3
			Tulane	L	3-4	Virginia Tech	W	7-0
			USF	W	4-3	North Carolina	L	0-7
			San Diego	W	4-3	Duke	W	4-3
			San Diego State	W	4-3	Boston College (ACC)	W	4-0
			Miami	L	2-5	Miami (ACC)	L	3-4
			FIU	L	2-5	San Diego State	W	4-0
			Virginia Tech	W	7-0	UCLA (NCAA)	L	2-4
			Maryland	W	6-1			
			Virginia	W	6-1	2008		
			N.C. State	W	7-0	Head Coach: Jennifer Hyde		
			Wake Forest	L	3-4	Record: 19-8		
			North Carolina	L	1-6	Rice University	W	7-0
			Duke	L	3-4	Illinois	W	7-0
			Georgia Tech	L	2-5	Stetson	W	7-0
			Clemson	L	0-7	UCF	W	7-0
			Florida A&M	W	7-0	FAMU	W	6-0
			Virginia (ACC)	W	4-3	Jacksonville	W	7-0
			Georgia Tech (ACC)	L	1-4	Auburn	W	5-2
			FIU (NCAA)	L	2-4	Florida	L	1-6
						LSU	W	8-1
			2006			Miami	W	5-2
			Head Coach: Jennifer Hyde			FIU	W	7-0
			Record: 9-13			Clemson	L	2-5
			Auburn	W	4-3	UNLV	W	7-0
			Bethune-Cookman	W	7-0	Virginia Tech	W	7-0
			FAMU	W	5-0	Virginia	L	3-4
			Stetson	W	6-1	UNC	W	4-3
			Florida	L	0-7	No. 6 Duke	L	3-4
			Georgia Southern	W	7-0	Georgia Tech	L	3-4
2002								
Head Coach: Lise Gregory								
Record: 12-15								
Florida A&M	W	6-1						
Georgia Southern	W	7-0						
Vanderbilt	L	0-7						
Central Florida	W	4-3						
Louisiana State	W	4-3						
Florida Atlantic	W	5-1						
Auburn	L	3-4						
Florida	L	1-5						
Jacksonville	W	5-1						
South Alabama	L	3-4						
Alabama	L	3-4						
Miami	L	3-4						
Harvard	W	5-2						
Michigan State	W	6-1						
Florida International	L	3-4						
South Florida	W	6-1						
Maryland	L	3-4						
Virginia	L	3-4						
North Carolina State	W	5-2						
Wake Forest	L	1-6						
North Carolina	L	1-6						
Duke	L	1-6						
Georgia Tech	W	6-1						
Clemson	L	3-4						
Maryland (ACC)	W	4-3						
North Carolina (ACC)	L	1-4						
VCU (NCAA)	L	0-4						
2003								
Head Coach: Lise Gregory								
Record: 13-10								
Florida A&M	W	7-0						
Stetson	W	7-0						
Georgia Southern	W	7-0						
Central Florida	W	6-1						
Tulane	L	3-4						
LSU	W	4-3						
Furman	W	6-1						
Florida	L	0-7						
Alabama	L	3-4						
South Florida	W	7-0						
Baylor	W	4-3						
Rice	W	4-3						
South Alabama	L	2-5						
FIU	W	4-3						
Virginia	L	3-4						
Wake Forest	W	4-3						
N.C. State	W	6-1						
Maryland	W	6-1						
North Carolina	L	1-6						
Duke	L	1-6						
Georgia Tech	L	2-5						
Clemson	L	1-6						
North Carolina (ACC)	L	0-4						
2004								
Head Coach: Lise Gregory								



YEAR-BY-YEAR RECORDS

Maryland	W	5-2
Boston College	W	6-1
Wake Forest	W	6-1
N.C. State	L	3-4
Boston College (ACC)	W	5-0
Miami (ACC)	W	4-2
Duke (ACC)	L	2-4
Samford (NCAA)	W	4-0
Texas (NCAA)	L	2-5

2009
Head Coach: Jennifer Hyde
Record: 17-8

Jacksonville	W	4-0
Arizona State	L	1-4
TCU	L	2-4
Georgia State	W	5-2
UNC-Greensboro	W	7-0
Furman	W	6-1
USF	W	6-0
LSU	W	5-2
Florida	W	5-2
Georgia Tech	L	2-5
Miami	L	0-7
Clemson	L	1-5
Duke	L	1-6
North Carolina	W	5-2
Virginia	W	4-3
Virginia Tech	W	5-2
Wake Forest	W	6-1
North Carolina State	W	6-1
Boston College	W	5-1
Maryland	W	7-0
NC State (ACC)	W	4-0
Georgia Tech (ACC)	W	4-3
Miami (ACC)	L	0-4
Auburn (NCAA)	W	4-0
Florida (NCAA)	L	2-4

2010
Head Coach: Jennifer Hyde
Record: 16-11

USF	L	2-5
Virginia	W	4-2
Ohio State	W	6-1
Illinois	W	4-3
Northwestern	L	0-7
Baylor	L	2-5
Georgia	L	1-6
Tennessee	W	4-3
LSU	W	6-1
Florida	L	0-7
Clemson	L	2-5
Pepperdine	W	6-1
Miami	L	2-5
Virginia	W	5-2
Virginia Tech	W	6-1
Wake Forest	W	4-3
NC State	W	7-0
Boston College	W	6-1
Maryland	W	7-0
Duke	L	0-4
North Carolina	L	0-4
Maryland (ACC)	W	4-0

Duke (ACC)	W	4-2
North Carolina (ACC)	L	0-4
North Florida (NCAA)	W	4-0
South Carolina (NCAA)	W	4-0
North Carolina (NCAA)	L	1-4

2011
Head Coach: Jennifer Hyde
Record: 16-9

Florida International	W	5-2
Princeton	W	5-2
Washington	L	3-4
Auburn	W	6-1
Miami	L	1-6
Georgia Tech	W	5-2
Florida	L	1-5
South Florida	L	2-5
Central Florida	W	6-1
Clemson	L	2-5
Georgia State	W	5-2
Virginia Tech	W	5-2
Virginia	L	2-5
North Carolina State	L	3-4
Wake Forest	W	6-1
Maryland	W	4-3
Boston College	W	4-3
North Carolina	W	4-2
Duke	W	4-2
Wake Forest (ACC)	W	4-0
Virginia (ACC)	W	4-3
Duke (ACC)	W	4-3
North Carolina (ACC)	L	3-4
Southern (NCAA)	W	4-0
SMU (NCAA)	L	3-4

2012
Head Coach: Jennifer Hyde
Record: 13-11

UCF	W	6-1
Ohio State	W	5-2
Ole Miss	L	3-4
UNF	W	5-0
Florida International	W	5-2
Auburn	W	5-2
USF	L	3-4
Miami	L	2-5
Florida	L	0-7
Pepperdine	W	5-2
Clemson	L	2-5
Georgia Tech	L	2-5
TCU	W	5-2
NCST	W	5-2
Wake Forest	W	5-2
Maryland	W	6-1
Boston College	W	5-2
North Carolina	L	0-4
Duke	L	2-4
Virginia Tech	W	7-0
Virginia	L	3-4
Virginia Tech (ACC)	W	4-0
North Carolina (ACC)	L	2-4
Washington State (NCAA)	L	3-4



COACH JENNIFER HYDE AND AMY SARGEANT



POSTSEASON RECORDS

ACC TOURNAMENT

1992		
Virginia	W	6-0
Wake Forest	L	2-5
1993		
North Carolina	W	5-3
Clemson	L	2-7
1994		
N.C. State	W	5-1
Clemson	W	5-3
Duke	L	0-5
1995		
Virginia	W	5-3
Wake Forest	L	2-5
1996		
Virginia	W	5-3
Duke	L	0-6
1997		
Georgia Tech	W	5-1
Wake Forest	L	1-5
1998		
North Carolina	W	7-2
Duke	L	0-5
1999		
Virginia	W	5-1
Wake Forest	L	4-5
2000		
Georgia Tech	W	5-3
Wake Forest	L	0-5
2001		
Georgia Tech	W	4-2
Duke	L	0-4
2002		
Maryland	W	4-3
North Carolina	L	1-4
2003		
North Carolina	L	0-4
2004		
Wake	W	4-2
Duke	L	1-4

2005		
Virginia	W	4-3
Georgia Tech	L	1-4
2006		
Wake Forest	L	4-1
2007		
Boston College	W	4-0
Miami	L	3-4
2008		
Boston College	W	5-0
Miami	W	4-2
Duke	L	2-4
2009		
NC State	W	4-0
Georgia Tech	W	4-3
Miami	L	0-4
2010		
Maryland	W	4-0
Duke	W	4-2
North Carolina	L	0-4
2011		
Wake Forest	W	4-0
Virginia	W	4-3
Duke	W	4-3
North Carolina	L	3-4
2012		
Virginia Tech	W	4-0
North Carolina	L	2-4

NCAA TOURNAMENT

1983	
Singles Championship	
Round 64	
Tracy Blumentritt (Rice) d. Jaime Kaplan (FSU) 3-6, 6-3, 6-0	
Doubles Championship	
Round 32	
Jamie Kaplan - Lee McGuire (FSU) d. Margaret Redfern - Joy Tacon (Houston) 7-6, 7-5, 6-4	
Round 16	
#1 Louise Allen - Gretchen Rush (Trinity) d. Jamie Kaplan - Lee McGuire (FSU) 6-1, 6-0	
1985	
Doubles Championship	
Round 32	
Kiki Rozwadowski - Lori MacGill (S. Florida) d. Sue Hatch - Patti Henderson (FSU) 6-2, 6-3	
1993	
Singles Championship	
Round 64	
Suzi Italiano (Southern Cal) d. Audra Brannon (FSU) 6-4, 7-6	
Doubles Championship	
Round 32	
Audra Brannon - Laura Randmaa (FSU) d. Danielle Paradine - Jody Yin (Indiana) 6-3, 6-1	
Round 16	
Audra Brannon - Laura Randmaa (FSU) d. Melissa Mazzotta - Maria Pilar Valls (Miami) 7-6 (6), 4-6, 6-1	
Round 8	
#3 Laxmi Poruri - Heather Willens (Stanford) d. Audra Brannon - Laura Randmaa (FSU) 7-6 (2) 6-3	
1994	
Team Championship	
Round 20	
#16 Arizona d. #19 FSU 5-3	
Singles Championship	
Round 64	
Marie-Laure Bougnol (Ole Miss) d. #9-16 Audra	





POSTSEASON RECORDS

Brannon (FSU) 6-4, 6-4
 Maggie Simkova (Southern Cal) d.
 Lori Sowell (FSU)
 1-6, 6-0, 6-4
 Doubles Championship
 Round 32
 Nicole Elliott - Vera Vitels (California)
 d. Audra
 Brannon - Elke Juul (FSU) 7-5, 6-2
1995
 Singles Championship
 Round 64
 Lori Sowell (FSU) d. #8 Katie Schluker-
 bir (Stanford) 6-
 4, 6-1
 Round 32
 Lori Sowell (FSU) d. Melissa Zimpfer
 (Tennessee) 7-5,
 6-4
 Round 16
 Lori Sowell (FSU) d. #14 Joelle Schad
 (Arizona State)
 6-0, 3-3, ret. Round 8
 #2 Keri Phebus (UCLA) d. Lori Sowell
 (FSU) 6-0, 6-2
1996
 NCAA South Regional
 South Carolina 5, Florida State 2
 Singles Championship
 Round 64
 Lori Sowell (FSU) d. #9-16 Farley
 Taylor (Texas) 7-5, 7-6
 Round 32
 Lori Sowell (FSU) def. Stephanie
 Sammaritano (Arizona) 6-4, 7-5
 Round 16
 #6 Ania Bleszynski (Stanford) d. Lori
 Sowell (FSU) 7-5, 6-3
 Doubles Championship
 Round 32
 #4 Paige Yaroshuk - Keri Phebus
 (UCLA) d. Lori Sowell - Elke Juul
 (FSU) 6-1, 6-1
1997
 NCAA Southeast Regional
 Vanderbilt 5, Florida State 1
1998
 NCAA Southeast Regional
 Vanderbilt 6, Florida State 0
1999
 NCAA Midwest Regional
 Iowa 5, Florida State 4
2000
 NCAA South Regional
 Florida State 5, Illinois 3
 Florida 5, Florida State 0
 Singles Championship

Round 64
 Bea Bielik (Wake Forest) d. Alida
 Gallovits (FSU)
2001
 NCAA South Regional
 South Carolina 4, Florida State 2
 Singles Championship
 Round 64
 #59 Alida Gallovits (FSU) d.
 #45 Maria Phillips (Oklahoma St.)
 7-6, 7-6
 #2 Ansley Cargill (Duke) d.
 #59 Alida Gallovits (FSU) 6-1, 6-0
2002
 NCAA South Regional Virginia Com-
 monwealth University (VCU) 4, FSU 0
 Singles Championship
 Round 64
 #5 Agara Cioroch (UGA) d
 Anca Dumitrescu (FSU) 6-2, 6-2
2004
 NCAA South Regional
 FSU 4, Marshall 2
 Vanderbilt 4, FSU 1
 Singles Championship
 Round 64
 #27 Megan Muth (William & Mary) d.
 Anca Dumitrescu (FSU), 6-2, 5-7, 7-6
2005
 NCAA South Regional
 FIU 4, FSU 2
 Singles Championship
 Round 64
 Chloe Carlotti (Mississippi) d. Mihaela
 Moldovan (FSU), 6-1, 7-5
 Doubles Championship
 Round 32
 Alice Barnes-Erin Burdette (Stanford)
 d.
 Mihaela Moldovan-Lindsay Deason
 (FSU), 6-3, 6-4
2007
 NCAA Regional
 FSU 4, San Diego State 0
 UCLA 4, FSU 2
 Doubles Championship
 Round 32
 Olga Borisova-Marianna Yuferova
 (Virginia Commonwealth) d. Nicola
 Slater-Lauren Macfarlane (FSU), 5-7,
 6-4, 6-4
2008
 NCAA Regional
 FSU 4, Samford 0
 No. 19 Texas 5, FSU 2
 Singles Championship
 Round of 64

Gabriela Niculescu (USC) d.
 Katie Rybakova (FSU) 6-4, 4-6, 7-6
 (10-8)
2009
 NCAA Regional
 FSU 4, Auburn 0
 Florida 4, FSU 2
 Singles Championship
 Round of 64
 Kristy Frilling (Notre Dame) d. Katie
 Rybakova (FSU) 6-1, 6-2
 Noemie Scharle (FSU) d.
 Jenni Heisner (San Francisco) 6-4,
 4-6, 6-2
 Round of 32
 Maria Mosolova (Northwestern) d.
 Noemie Scharle (FSU) 4-6, 5-5, 7-5
2010
 NCAA Regional
 FSU 4, North Florida 0
 FSU 4, South Carolina 0
 North Carolina 4, FSU 1
 Singles Championship
 Round of 64
 Lenka Broosova (Baylor) d.
 Lauren McCreless (FSU) 3-6, 6-1, 6-3
2011
 NCAA Regional
 FSU 4, Southern 0
 FSU 3, SMU 4
 Singles Championship
 Round of 64
 No. 41 Noelle Hickey (UCLA) d.
 Katie Rybakova (FSU) 6-2, 6-2
 No. 32 Kristi Boxx (Ole Miss) d.
 Noemie Scharle 6-2, 6-3
2012
 NCAA Regional
 FSU 3, WSU 4





RECORDS

SEASON

CAREER

Top 10 Singles Percentage

1. Miheal Moldovan	2004	33-4	89.2
2. Lisa Ehr Gott	1983	21-5	80.8
3. Buffy Baker	1988	28-7	80.0
Kia Asberg	2000	20-5	80.0
Natalie Tirapelli	2004	12-3	80.0
6. Samantha Schoeffel	2001	15-4	78.9
7. Carolin Walter	2008	29-8	78.4
Lauren McCreless	2007	29-8	78.4
9. Patti Henderson	1983	14-4	77.8
10. Federica Suess	2008	31-9	77.5
Marina Raic	1999	31-9	77.5

Top 10 Singles Percentage

1. Mihaela Moldovan	2003-05	76-19	80.0
2. Jaime Kaplan	1982-83	21-7	75.0
3. Carolin Walter	2006-08	56-21	72.7
4. Buffy Baker	1988-91	103-44	70.1
5. Claudia Gaughf	1983-86	32-14	69.6
6. Lauren McCreless	2007-10	103-46	69.1
7. Jessica Sucupira	2007-10	101-48	67.8
8. Lisa Ehr Gott	1981-84	35-17	67.3
9. Kia Asberg	1997-00	79-40	66.4
10. Keri Preng	1987-90	65-33	66.3

Top 10 Singles Wins

1. Mihaela Moldovan	2004	33-4
2. Federica Suess	2008	31-9
Marina Raic	1999	31-9
4. Kia Asberg	1999	30-8
5. Carolin Walter	2008	29-8
Lauren McCreless	2007	29-8
7. Audra Brannon	1991	28-15
Lori Sowell	1994	28-10
Katie Rybakova	2008	28-12
Buffy Baker	1988	28-7

Top 10 Singles Wins

1. Buffy Baker	1988-91	103-44
Lauren McCreless	2007-10	103-46
Katie Rybakova	2008-11	103-62
4. Federica Suess	2008-11	102-55
5. Jessica Sucupira	2007-10	101-48
6. Audra Brannon	1991-94	95-49
7. Lori Sowell	1994-97	92-55
8. Ali Weber	1997-00	87-56
9. Christina Denny	2001-04	80-47
10. Nicki Ivy	1989-92	79-59
Kia Asberg	1997-00	79-40

Top 10 Doubles Percentage

1. Jaime Kaplan	1983	23-5	82.1
Lee McGuire	1983	23-5	82.1
3. Suzanna Mansour	2007	9-2	81.8
4. Jessica Sucupira	2008	32-8	80.0
Lauren McCreless	2008	28-7	80.0
6. Tracey Smith	1989	18-5	78.3
7. Elke Juul	1995	21-6	77.8
Lori Sowell	1995	21-6	77.8
9. Federica Suess	2008	26-8	76.5
10. Tapiwa Marobela	2007	19-6	76.0

Top 10 Doubles Percentage

1. Jaime Kaplan	1982-83	23-5	82.1
2. Elke Juul	1993-96	69-26	72.6
3. Carolin Walter	2006-08	56-22	71.8
4. Lee McGuire	1982-84	45-18	71.4
5. Ruth Seaborne	2011-12	37-16	69.8
6. Sue Hatch	1984-87	81-36	69.2
7. Audra Brannon	1991-94	82-38	68.3
8. Lori Sowell	1994-97	67-32	67.7
9. Patti Henderson	1983-86	75-38	66.4
10. Lindsay Deason	2004-05	39-20	66.1

Top 10 Doubles Wins

1. Jessica Sucupira	2008	32-8
Nicola Slater	2007	32-12
3. Lauren McCreless	2008	28-7
Miranda Foley	2007	28-10
5. Carolin Walter	2008	27-12
6. Federica Suess	2008	26-8
7. Alida Gallovits	2000	25-17
8. Audra Brannon	1993	24-10
9. Laura Randmaa	1993	24-9
10. Jaime Kaplan	1983	23-5
Lee McGuire	1983	23-5

Top 10 Doubles Wins

1. Lauren McCreless	2007-10	96-62
2. Jessica Sucupira	2007-10	91-59
3. Audra Brannon	1991-94	82-38
4. Sue Hatch	1984-87	81-36
5. Buffy Baker	1988-91	77-41
Federica Suess	2008-11	77-77
7. Patti Henderson	1983-86	75-38
8. Jessica Balbuena	1999-02	73-44
9. Katie Rybakova	2008-11	71-63
10. Alida Gallovits	1999-02	70-50

**To be eligible, players must be on team for two seasons*



ADMINISTRATION

2012-13 FLORIDA STATE BOARD OF TRUSTEES



DR. ERIC J. BARRON
PRESIDENT



RANDY SPETMAN
DIRECTOR OF ATHLETICS



PAMELA L. PERREWE'
FACULTY ATHLETICS
REPRESENTATIVE



MONK BONASORTE
SENIOR ASSOCIATE
ATHLETIC DIRECTOR



VANESSA FUCHS
SENIOR ASSOCIATE
ATHLETIC DIRECTOR/SWA



KEVIN TERRY
SENIOR ASSOCIATE
ATHLETIC DIRECTOR/CFO



JON JOST
WOMEN'S TENNIS SPORT
OVERSIGHT







January

- 15 Troy 9am
- Florida A&M 3pm
- 19-21 UCF Invitational All Day
- 26-27 ITA Kick-Off Weekend
- Baylor U, Waco TX All Day

February

- 2 at U. Of South Florida 2pm
- 8-11 Nat. Team Indoors All Day
- 15 U. Of Central Florida 3pm
- 17 Georgia State 1pm
- 22 at FL International 12pm
- 23 at U. of Miami 11am



March

- 1 Clemson 1pm
- 6 Florida 4pm
- 10 at Georgia Tech 12pm
- 13 at UNLV 10am
- 28 Wake Forest 4pm
- 30 NC State 12pm

April

- 5 at Boston College 1pm
- 6 at Maryland 11am
- 12 Duke 5pm
- 14 North Carolina 12pm
- 20 at University of Virginia 11am
- 21 at Virginia Tech 11am
- 25-28 ACC Championships Cary, N.C. All Day

May

- 10-12 NCAA Championships
- Round Of 64/32 TBD
- 17-27 NCAA Championships All Day
- U. of Illinois
- Champaign-Urbana, IL.

