

# FLORIDA STATE



# WOMEN'S

2012

# TENNIS







## TABLE OF CONTENTS



Coaches Pages .....2-3  
 Roster Page/FSU .....4  
 Season Outlook.....5  
 Player Bio Pages .....6-10  
 Coaching History.....12  
 ACC Tournament .....13  
 NCAA Records .....14  
 All-Time Opponents .....15  
 Season Results .....16-20  
 Player Records.....21  
 Honors and Awards.....22-23  
 Facilities .....24  
 Athletic Administration  
 and FSU Board of Trustess .....26

Follow FSU Women's Tennis on Twitter:  
 @FSU\_Wtennis

## QUICK FACTS

### University

Location: Tallahassee, Fla.  
 Enrollment: 40,838  
 Founded: 1851  
 Symbol: Seminoles  
 Colors: Garnet & Gold  
 President: Eric J. Barron

### FSU Athletics

Affiliation:  
 Conference:  
 Athletics Director:  
 Sport Oversight (Women's Tennis):

### Sports Information

Sports Information Director:  
 Women's Tennis SID:  
 Email:  
 SID Office Phone:  
 SID Fax:  
 SID Mailing Address:

SID Shipping Address:

NCAA Division I  
 Atlantic Coast  
 Randy Spetman  
 Jon Jost

Elliott Finebloom  
 Christa Salerno  
 Csalerno@fsu.edu  
 850-645-2426  
 850-644-3820  
 P.O. Box 2195  
 Tallahassee, FL 32316  
 FSU Athletics  
 403 Stadium Dr. W.  
 Tallahassee, FL 32316



*Amy Sargeant*





## Jennifer Hyde

Head Coach - Eighth Year  
Alpharetta, Ga. - Florida State, '95

FSU Record: 104-58

2010-2011- ITA South Region Head Coach of the Year

2006-2007- ITA South Region Head Coach of the Year

Jennifer Hyde enters her eighth season at the helm of the Florida State program. Hyde has led the Seminoles to five straight NCAA appearances, including their first ever Sweet 16. With an exceptional list of accomplishments and milestones from her career at FSU, including her most recent honor as the ITA South Region Coach of the Year, Hyde looks to guide the Seminoles to another solid season in 2011-12.

Hyde and the Seminoles continued to rewrite the history books in 2011. Their most recent establishments occurred when she led the Seminoles to a fifth straight NCAA appearance, which marks the first time in school history the feat has been accomplished. In addition, senior Katie Rybakova qualified for the NCAA Singles Championship, marking the fourth-straight year a Seminole competed in the tournament.

The Seminoles concluded the 2011 season with an eight-match winning streak, landing the Seminoles back to the ACC Title Match for just the second time in program history. The first time occurred in 1994 when Hyde was an athlete on the team. During the span, the Seminoles knocked off four teams ranked inside the top 10 en route to Hyde earning her 100th career victory.

In addition, the Seminoles jumped to No. 11 in the ITA National Rankings, breaking the previous high mark of No. 12 set by the 2007-08 team.

Just one season earlier, Hyde led the Seminoles to perhaps the most successful season in Florida State history leading her team to its first ever NCAA Sweet 16 appearance. After being selected to host the first and second rounds of the NCAA Championship for just the second time in program history, both under Hyde, the Seminoles dominated both North Florida and No. 17 South Carolina to punch their ticket to Athens, Ga., and to the highly coveted Sweet 16 round of the NCAAs. Hyde also watched her first 'Nole earn ACC Freshman of the Year in Francesca Segarelli.

The 2007-08 season also welcomed several firsts for the program with Florida State hosting the first and second round of the NCAA Tournament. The Seminoles reached a No. 12 national ranking, the highest ranking in women tennis program history at the time. With the help of big wins against top ranked programs during the 2008 season, the Seminoles finished the year with an overall record of 19-7, the highest winning season since 1999 and second highest all-time at Florida State. Also, Hyde coached freshman Katie Rybakova to a top 20 national ranking in which Rybakova also received a bid to participate in the NCAA Singles Championships as a freshman.

Off the court, Hyde athletes have continued their brilliance in the classroom by securing the Golden Torch Award seven times since her arrival, which is given to the Florida State athletic team with the highest GPA. In addition, numerous Seminoles have landed spots on the All-ACC Academic team, All-ACC Honor Roll and ITA Scholar-Athletes list in Hyde's seven years as head coach.

After graduating from FSU in 1995, Hyde began her coaching career as an assistant for the Seminoles prior to heading north to the University of Iowa in 1995. Hyde spent two years in the Midwest before returning to the south with an assistant coaching stint at the University of Alabama (1997-98).

Hyde moved onto on to coach at the University of North Carolina in 1998-99 where she established herself as one of the best young coaches in the sport. With her assistance, UNC enjoyed one of its best seasons in program history, moving from outside all the national polls to a top-25 ranking and the school's first NCAA tournament berth.

In 1999, Hyde accepted her first head coaching position at the University of Houston. Hyde spent five increasingly successful years with the Cougars before returning to Tallahassee, where she first started her collegiate tennis career.

The Alpharetta, Ga., native posted an impressive career with the Seminoles--establishing herself as a four-year letter winner, NCAA Tournament participant (1994) and ACC flight champion in doubles alongside teammate Jenny Graf. Hyde captained the 1994 Seminole squad whose No. 17 ranking previously stood for sixteen years as the highest year end ranking until 2010's No. 14 finish.







## Oliver Foreman

*Associate Head Coach- Seventh Year  
East Sussex, United Kingdom- Middle Tennessee State- '02*

Oliver Foreman begins his seventh season with Florida State as the associate head coach and one of collegiate tennis's top assistant coaches. Alongside head coach Jennifer Hyde, Foreman helped lead the Seminoles to a fifth straight NCAA appearance last year in addition to the ACC Championship match for just the second time in Florida State's history. From those achievements, Foreman was named the ITA South Region Assistant Coach of the Year.

During his career at Florida State, Foreman has contributed to building the powerful tennis era, surging the Seminoles back into the nation's elite. The Noles have finished each of the past five seasons ranked in the top 20, which is a drastic improvement since his arrival in 2005 when the team was ranked No. 72. Since Foreman's arrival he has excelled as a technician in player development by displaying a challenging level of the game to the team.

Last season, the Seminoles continued to rewrite their history by achieving their highest ranking ever at No. 11. They concluded with an impressive eight match winning streak, knocking off four top 10 opponents en route to Florida State's first ACC title match appearance since 1994. In addition, Katie Rybakova went onto the NCAA Singles Tournament marking the fourth straight year a student-athlete was represented at the event.



Along the way, FSU recorded the most successful weekend of play in program history by beating No. 3 Duke and No. 4 UNC in back-to-back matches to close out the regular season. Using the momentum into the ACC Tournament, the Seminoles knocked off Wake Forest, No. 8 Virginia and No. 3 Duke for a second time.

In 2009-10, Hyde and Foreman established another proud moment when they led the Seminoles to their first ever NCAA Sweet 16 appearance.

Not only talented on the courts, the women's tennis team continued their prestigious reputation in the classroom. They've won the Golden Torch Award seven times since 2004, which is an honor given to the sports team with the highest GPA. In addition, the ladies established themselves as an ITA All-Academic Team in 2011.

A member of the Professional Tennis Tour from 2002-04, Foreman won the 2002 Irish National Open in both the doubles and singles competitions. He also made it to the final pre-qualifying round for Wimbledon in 1998 and 2000.



Prior to his professional career, Foreman competed at Middle Tennessee State where he was named to the Ohio Valley All-Conference team (1998, 99) and the Sunbelt All-Conference Team (2001, 02). He also made it as high as No. 5 in the national doubles rankings during his collegiate career. Among the highlights of his college accomplishments was a win in the consolation of the 2001 National Indoor Championships, regarded as the fifth leg of the college slams. Foreman also established himself in the top-100 collegiate singles rankings, the top-five collegiate doubles rankings and reached the quarterfinals of the ITA All-American Championships. In addition, he was a three-time NCAA qualifier.

Off the court, Foreman made a powerful impact at MTSU as well, serving on the Student Athlete Advisory Council (2001-02) and notching a spot on the Dean's List twice (2001-02). He is a native of East Sussex, United Kingdom.

- 2010-2011 ITA South Region Assistant Coach of the Year
- 2008-2009 ITA Southeastern Region Assistant Coach of the Year
- 2008-2009 ITA National Assistant Coach of the Year



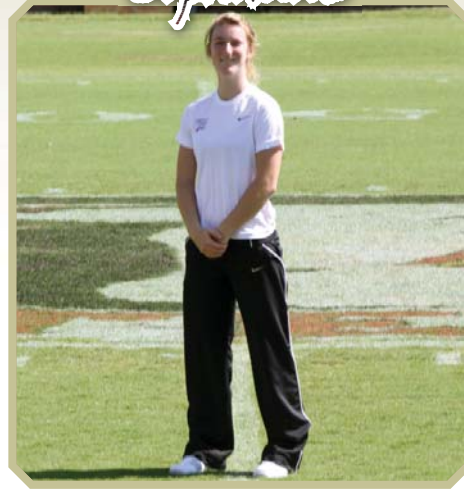
# SEMINOLE WOMEN'S TENNIS

## 2011-12 Roster

### Juniors



### Sophomore



### Freshmen



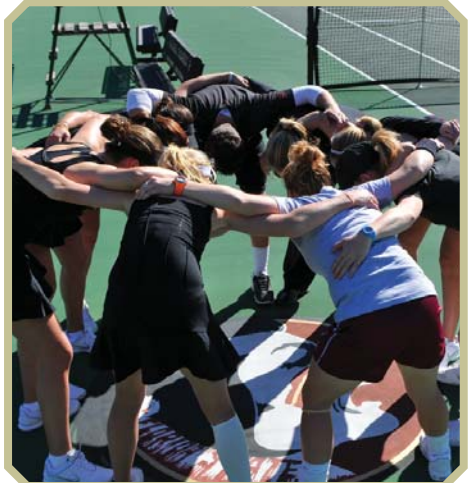
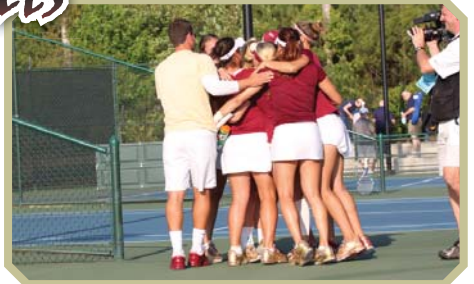
Borthwick, Daneika  
De los Santos, Carolina  
Erkan, Leyla  
Sanil, Sheena  
Sargeant, Amy  
Scharle, Noemie  
Seaborne, Ruth  
Segarelli, Francesca  
Simmons, Casey  
Vriens, Mia

FR  
JR  
FR  
JR  
JR  
RS JR  
SO  
JR  
JR  
FR

Cumbria, England - Nelson Thomlinson School  
Montevideo, Uruguay - Stetson University  
Hilton Head, S.C. - Kaplan College Preparatory School  
Plainsboro, N.J. - Spanish River  
Birmingham, England - St. Francis of Assisi  
Colmar-Berg, Luxembourg - Lycee Francais Vauban  
London, England - Richards Lodge  
Rome, Italy - International School of Sosua  
Gainesville, Fla. - Gainesville High  
Sydney, Australia - Galston High School

SEMINOLES

## This is FSU Tennis







## Outlook



Despite not having one senior or having any individuals ranked in singles or doubles at the start of the 2012 season, the Florida State Women's tennis team will begin their season ranked No.17. This ranking is the second highest pre-season ranking in school history, next to the No.15 spot the Seminoles received heading into the 2011 season.

Since the arrival of head coach Jennifer Hyde, the Seminoles have rewritten the history books and they're looking to continue that trend in 2012. With 17 of their 20 opponents being ranking in the top 75, the Noles will face one of the toughest schedules they've ever played. Twelve of those 17 are teams from the ACC, six of which are listed inside the top 15. The 2012 schedules includes top team in the nation in the Florida Gators.

In this first batch of rankings for 2012, the Seminoles are set to face 36 ranked players inside the top 125 in singles and 16 pairs of doubles teams ranked among the top 60.

Returning to the court this season for the Noles is redshirt Junior Noemie Scharle, junior Amy Sargaent, junior Francesca Segarelli and sophomore Ruth Seaborne. They will be joined by newcomers in junior Carolina De los Santos, freshman Mia Vriens and freshman Leyla Erkan.

After sitting out the fall season, Scharle is looking to improve upon her 19-12 singles record and 2011 NCAA singles tournament appearance. Before the fall season, Scharle earned a spot in the All-American Qualifying tournament in Malibu, Calif. as well as a No. 40 ranking, but didn't play due to injury.

Seaborne enters the preseason rankings at the No.99 spot in singles, but didn't compete during the fall season. She did compete in doubles alongside De Los Santos, where they posted a 5-2 record, including an appearance in the semi-finals of the main draw of the 2011 ITA Southeast Regional Championships. Last season, Seaborne finished the campaign 17-8 and on an 11 match winning streak. Over the summer, Seaborne competed in many tournaments and capped off her season with both a singles and doubles title in the British Junior National Championships.

Segarelli finished her fall season with a 1-3 record in singles and a 5-3 record in doubles. She was selected to represent the Dominican Republic at the 2011 Pan American Games in Guadalajara, Mexico.

Sargaent sat out the fall season due to injury, but is expected to return to the court sometime early in the spring season.

Joining the Seminoles from Stetson University is De Los Santos. In addition to her showing with Seaborne in doubles play, she posted a 4-3 record in singles this fall. While at Stetson, she was 44-19 and garnered first team All-Atlantic Sun honors in both her freshman and sophomore seasons in addition to the Atlantic Sun Conference freshman of the year.

### Top 20

-as of Jan.3, 2012

1. Florida\*
2. Stanford
3. Duke\*
4. North Carolina\*
5. UCLA
6. Baylor
7. Georgia
8. California
9. Virginia\*
10. Michigan
11. Miami (FL)
12. Northwestern
13. Georgia Tech\*
14. Clemson\*
15. Vanderbilt
16. Southern California
17. Florida State
18. Tennessee
19. Arizona State
20. Notre Dame

\*Indicates an Opponent

A native of Hilton Head, S.C, Erkan posted a 7-7 record during the falls season in singles. She played the most singles matches out of any of the Seminoles during the fall span. Prior to FSU, she was tabbed as a Blue Chip recruit which is the highest rank a recruit can receive by tennisrecruiting.net.

Another rookie, Vriens posted a 2-2 record in singles during the fall season and comes to Tallahassee from Sydney, Australia, where she has a current ranking of No.63 in the country and has climbed as high as No. 40 in the ITF World rankings.





## Noemie Scharle

*Redshirt Junior- Colmar-Berg Luxembourg  
Lycee Francais Vauban*



**Redshirt Junior-** Achieved a preseason singles ranking of No.40 before sitting out the fall season due to injury.

**Redshirt Sophomore Year (2010-2011)**

Singles: Began the 2011 season ranked No. 18 and finished 11-11 with four victories over ranked opponents...finished the season ranked No.56 and participated in the NCAA singles tournament...advanced to the third round of the singles qualifying tournament at the Riviera/ITA All-American Championships by defeating Fresno State's Jodoin (6-1, 6-4) and the 24th ranked player nationally in Duke's Fahoum (6-3, 6-4)...took home first place in her flight as she opened singles play at the Furman

Classic. Over the weekend she defeated Furman's Boyette (6-3, 6-1) Clemson's Ciolkowski (7-6, 6-2) and Vanderbilt's Preeg in the finals (6-1, 6-4)...captured All-ACC honors.

Doubles: Along with teammate Federica Suess, Scharle posted a 5-14 record during the spring season...two of their key wins were against No.14 Talbert/Duncan from Wake Forest(8-5) and No. 70 Krupina/Kilborn of Georgia Tech (8-6).

**Sophomore Year(2009-2010):**

Singles:Redshirted the spring season due to an ongoing wrist injury...nationally ranked as high as No. 24 in the fall season...defeated three nationally-ranked opponents during fall including No. 64 Monica Arguello of Furman, teammate No. 28 Rybakova and No. 43 Gilchrist of Florida...posted a record of 5-1 at the Wilson/ITA Southeast Regional Championships during fall...overall singles record of 8-8 (8-7 fall and 0-1 spring).

Doubles: Defeated Newman/Steinbauer of Vanderbilt University 8-5 at Furman Fall Classic with partner Katie Rybakova... upset Krupina/Ngo of Georgia Tech 9-7 at Wilson/ITA Southeast Regional Championships with partner Jessica Sucupira...overall doubles record was 2-6 (2-5 fall and 0-1 spring).

**Freshman Year (2008-09)**

Joined the Seminoles in the spring semester...earned All-ACC honors...named to the ACC Academic Honor Roll.

Singles: Went undefeated at the Northwestern Invitational with a 3-0 record including an upset of No. 23 Georgia Rose of Northwestern 6-1, 6-3. Scharle earned the ACC Performer of the Week for her win... defeated seven nationally-ranked opponents throughout the season...prevailed past Anastasia Revzina of Auburn at the NCAA Tournament 2-6, 6-2, 6-1...went on a seven-match winning streak during the dual-match season that includes wins over No. 53 Sanaz Marand of North Carolina, No. 78 Jennifer Stevens and No. 113 Berkley Brock...dual-match record was 16-6.

Doubles: Alongside Federica Suess, upset No. 36 Antunovic/Gambrell of DePaul at the Northwestern Invitational 8-6... defeated Auburn's Chifchieva/Schreimann 8-1 and Florida's Allen and Wolken 8-0...dual-match record was 7-15.

**High School:**

Graduated in the top ten percent of her class.

### Scharle's Career Statistics

	Singles	Doubles	
2011-12	1-0	1.00	----
2010-11	19-12	.613	10-20 .333
2009-10	8-8	.500	2-5 .286
2008-09	16-6	.727	7-15 .318
Total	44-26	.629	19-40 .322







## Amy Sargeant

Junior-Birmingham, England- St. Franci of Assisi

### Sophomore Year (2010-2011)

Singles: After sitting out the fall and parts of the spring season, Sargeant finished as she was 12-6 in singles...defeated Marica Fuccillo 7-5, 6-2 after dropping a match to her just a month earlier in the victory over No. 11 Virginia during the second round of the ACC Championships...clinched the match-winning point in the victory over Wake Forest by defeating Bercyte 6-4, 6-0 in the first round of the ACC Championships...during the win against the No. 3 Duke Blue Devils clinched the fourth and final

point needed for the victory by defeating Duke's No. 79 nationally ranked Clayton 7-6 (7-1), 6-7 (4-7), 6-3 and later earned ACC Performer of the week for her efforts. Doubles: Took the court with Rybakova for 17 of the 19 of her doubles matches en route to a overall 12-7 record...went 3-0 in the ACC tournament with wins over teams from Wake Forest, Duke and North Carolina, while closing out the season on a five match winning streak.

### Freshman Year (2009-2010)

Singles: Achieved a national ranking as high as No. 115 during the spring season...posted a notable 2-1 record at the NCAA Championships that included victories over Victoria Krook of UNF 6-4, 6-0 and Miljana Jovic of the University of South Carolina 6-3, 6-2...clinched the match against No. 10 Tennessee at the ITA Indoor Championships with a win over Jennifer Meredith 2-6, 6-2, 6-1...defeated No. 125 Alexis Brown of FAMU at Wilson/ITA Southeast Regional Championship 6-0, 6-0...went undefeated at the Seminole Quad Tournament during fall with a 3-0 record...overall singles record of 16-17 (6-3 fall and 10-14 spring).

Doubles: Posted a record of 10-2 with partner Rybakova in the spring on court three...went on a six match winning streak with various partners...grabbed wins at the NCAA Championship alongside Rybakova against Holton Krook of UNF (8-0), Pereira/Saari-Bystron of USC (8-1), and De Bruycker/Friend of UNC (8-2)... posted a 2-1 record at Furman Fall Classic with Sucupira...went 2-1 at Seminole Quad Tournament with Frederica Seuss...went 2-1 fall and 3-4 spring with partner Sucupira on court three...record of 3-1 in fall with partner Frederica Seuss...overall doubles record of 18-11 (5-3 fall and 13-8 spring).

### High School:

Played against FSU's Noemie Scharle in doubles at the Bath Tournament is 2007... was a three-time County Champion in singles (2003-U16, 2005-U16 & U18) and two-time champion in doubles (2005 & 2006)...the 2008 British National Champion in doubles... a seven-time Junior Club National Champion (2001-07)... was a National Ladies Club Champion in 2006 & 2007...her highest career WTA ranking is 1018 in singles and 874 in doubles.



SEMINOLES

### Sargeant's Career Statistics

	Singles		Doubles	
2011-12	-----		----	
2010-11	12-6	.666	12-7	.632
2009-10	16-17	.484	18-12	.600
Total	28-23	.549	30-19	.612





## Francesca Segarelli

*Junior-Rome, Italy  
International School of Sosua*

**Junior Year(2011-2012):**

Recorded an 1-3 singles record and a 3-2 doubles record while competing in limited tournemantes this fall.

**Sophomore Year (2010-2011):**

Finished the 2011 season with a 12-12 singles records...defeated five ranked opponents over the course of the spring and fall seasons...paired with Ruth Seaborne for the majority of the season in doubles, the pair reached their highest ranking of No.47 before finishing the season at No.51 with a 16-7 record...beat six ranked opponents in the spring of 2011, including a key win against the No. 51 Duke pair of Fahoum and Mar in the ACC Semifinals, moving the Seminoles on to their second ACC title match in school history...in the last month of the season, the duo finished with an 8-1 record.

**Freshman Year (2009-2010):**

Named the ACC Freshman of the Year...finished with a singles record of 19-16 and achieved a individual ranking as high as No.62...defeated five nationally-ranked opponents throughout fall and spring, including the No.10 player in Fani Chifchieva of Auburn in the fall...along with Lauren McCress, the duo posted an overall 21-18 record during her freshman season...she contributed to two upsets over ranked teams in dual-match play in No. 40 Fraser and Stevens of Virginia and No. 38 Granson and Nze of Duke...the triumph over No. 38 Granson and Nze of Duke on court one helped FSU make its third-consecutive ACC semifinal appearance.

**High School:**

Won the Fed Cup in 2007...competed in the U.S. Open twice (2006 and 2008)...battled in the TIHTA-ITF Aruba and ITF Jamaica where she won both tournaments..came out victorious in the 10,000 Managua doubles championships and made it to the semifinals of the singles championship...won the 10,000 La Havana, Cuba doubles championship...named to the honor roll.

SEMINOLES



### Segarelli's Career Statistics

	Singles		Doubles	
2011-12	1-3	.250	5-3	.625
2010-11	13-15	.464	19-12	.613
2009-10	19-16	.543	21-18	.538
Total	33-34	.493	43-33	.566



## Ruth Seaborne

Sophomore-London, England- Richards Lodge

### Sophomore Year: (2011-2012)

Received a preseason ranking of No.99 in singles...teamed up with Carolina De Los Santos and posted a 5-2 record in doubles during the fall season... advanced to the semifinals in the main draw of the ITA Southeast Region Championships...competed in a number of tournaments over the summer, including the Junior Championships at Wimbledon where she beat Georgia's Herring in the last round of qualifiers before winning her first round match... defended her crown in doubles at the British Junior National Championships in addition to capturing the singles title.

### Freshman Year: (2010-2011)

Singles: Finished her freshman season 17-8 in singles...ended the season with two wins at the NCAA Tournament against SMU's Heather Steinbauer 2-6, 6-4, 6-3 in the second round and Lisabeth Castaneda 6-0, 6-0 from Southern University en route to a eight match winning streak...defeated three ranked opponents in singles during her freshman campaign.


Doubles: Played the majority of the season with Francesca Segarelli and recorded an overall doubles record of 16-10 in the spring...over the course of the spring season, the duo defeated five ranked opponents...the pair reached their highest ranking of No.47 in the beginning of the season, fell to No.81, then finished strong climbing back up to No.51.

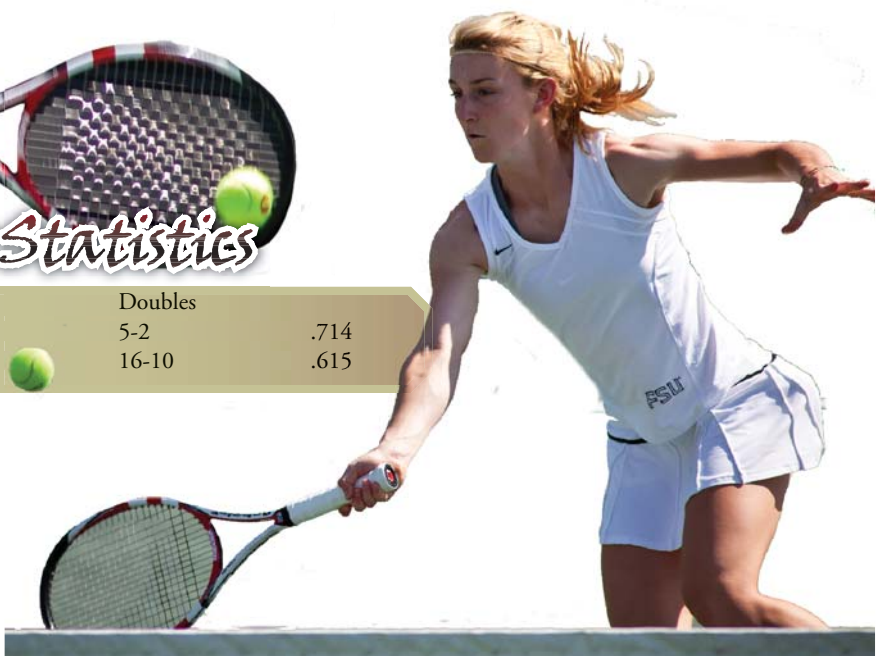
### High School:

Seaborne finished at Richards Lodge High School a year early, arriving on FSU's campus when she was 17...made the finals of singles in Nottingham ITF in 2010 and was crowned the champion in doubles play in week two...won the Edinburgh ITF Double championship...captured the doubles title at the 2010 British Junior National Championships in doubles...competed at the Junior Wimbledon Championships in 2010.



## Seaborne's Career Statistics

	Singles			Doubles	
2011-12	-----			5-2	.714
2010-11	17-8	.680		16-10	.615







## Carolina De Los Santos

Junior-Montevideo, Uruguay- Stetson

**Sophomore Year at Stetson(2010-11):** Achieved first team All-Atlantic Sun as well as Atlantic Sun All-Tournament honors...was a two-time player of the week during the course of the season...turned in a 15-3 singles record and a 18-4 doubles record.

**Freshman Year at Stetson(2009-10):** Was named the Atlantic Sun Conference Freshman of The Year...was named First Team All-Atlantic Sun...finished the season with a matching record of 18-7 in both singles and doubles matches...also a Atlantic Sun All-Academic team selection.

### De Los Santos' Career Statistics

	Singles		Doubles	
2011-12	4-3	.571	7-3	.700
2010-11	22-8	.733	26-6	.813
2009-10	20-11	.645	23-10	.697
Total	46-22	.676	56-19	.747



SEMINOLES



## Daneika Borthwick

Freshman- Cumbria, England- Nelson Thomlinson School

**High School:** In 2011, qualified for the Junior Championships at Wimbledon, advancing into the third round...was a member of the U-18 Great Britain team for the Moreen Conally competition, which is set up as Great Britain vs. the U-18 American team... represented Great Britain during the U-16 IC tournament...Borthwick attended the Nelson Thomlinson School where she played netball, hockey, and cross country in addition to tennis.





## Leyla Erkan

*Freshman-Hilton Head, S.C.-Kaplan College Preparatory School*

**Freshman Year (2011-2012):** Went .500 in both singles and doubles during the fall season, earning a 7-7 record in singles and a 3-3 record in doubles.

**High School:** Earned third place in doubles in the Girls U18 National Open in 2011...was a singles finalist in the Junior Smash Cup in 2011...accomplished berths in the singles finals of both the Panama Bowl ITF G4 and ITF World Ranking Event in 2009...trained at the Smith Starn Tennis Academy for three years...was labeled as a "Blue Chip" recruit on tennis recruiting.net, which is tabbed as the highest status.



## Mia Vriens

*Freshman- Sydney, Australia- Galston High School*

**Freshman Year (2011-2012):** Began her career as a Seminole with a 2-2 record in singles during the fall season.

**High School:** Vriens is currently ranked No. 63 in the senior rankings in Australia...her highest Junior ITF ranking was No. 42...has competed in junior international competitions since 2007...her winnings in 2008 include the Northern Territory Junior ITF in singles, the Darwin Junior ITF, the China Junior Open 2 and in doubles she took home the title at the Gallipoli Youth Tennis Cup...has represented several team throughout the land of down under, including the 2006 Australian Junior World Cup Team and the 2008 Junior Fed Cup Team.







# SEMINOLE WOMEN'S TENNIS

## COACHING HISTORY

### Anne Davis

1980-86 (8 seasons) (141-105, .573)

1980	21-11	.656 Metro (2nd)	
1981	24-15	.615 Metro (1st)	#18
1982	23-18	.561 Metro (2nd)	
		AIAW Chmps. (6th) NR	
1983	18-8	.692 Metro (1st)	
1984	15-13	.608 Metro (1st)	
1985	13-14	.481 Metro (2nd)	
1986	17-10	.630 Metro (2nd)	
1987 Patti Henderson	11-16	.407 Metro (2nd)	

**Notes:** Was one of the first head coaches in the women's tennis program's history...Davis earned Metro Conference Coach of the Year honors in 1981...ranked in the top 20 in the nation during the 1982 preseason...former USF tennis standout who played on teams that finished a program high of 11th...led the Seminoles to its highest national finish - sixth place in 1982.

### Patti Henderson

1987-91 (four seasons) (53-38, .582)

1988	Kim Philo	14-12	.538 Metro (2nd)
1989	Kim Philo	13-7	.650 Metro (1st)
1990	Shannon Krieger	13-9	.591 Metro (2nd)
1991	Lori Webster	13-10	.565 Metro (1st)

**Notes:** Only woman in Metro Conference history to earn MVP honors as a student-athlete and then conference coach of the year accolades...won two Metro Conference Team Championships in her four-year stint with the Seminoles...recruited and coached current Seminole head coach Jennifer Hyde... inducted into the Florida State Hall of Fame in 1992...during her four year playing career at FSU, she compiled a 68-36 singles record while accounting for 71 doubles wins...NCAA Championships qualifier in the doubles in 1985... first FSU women's tennis student-athlete to 20 singles wins in a season (a/o 1986)... was a graduate assistant for one year before taking the head coach position.

### Alice Reen

1992-96 (five seasons) (60-50, .545)

1992	Buffy Baker	13-10	.565 ACC (3rd)
1993	Jenny Mainz	13-9	.591 ACC (3rd)
1994	Jenny Mainz	15-10	.600 ACC (2nd)
			NCAA Chmps. (19th) #22
1995	Jenny Mainz	11-10	.524 ACC (3rd) #31
1996	Michelle McMillen	8-11	.420 ACC (4th)
			NCAA Regionals (8th) #35

**Notes:** Over five years, averaged 12 victories per season...coached current Seminole head coach Jennifer Hyde...led Florida State to its highest NCAA ranking in school history (No. 17 - 1994)...was the head coach at the University of Arkansas before taking over in Tallahassee...graduate of the University of Georgia...led the Seminoles to its highest finish in Atlantic Coast Conference history, finishing in second place in 1994...was named ACC Coach of the Year in 1994.

### Lise Gregory

1996-2004 (eight seasons) (119-83, .589)

1997	Tim Bauer	12-11	.521 ACC (3rd)	NCAA Regionals (8th) #37
1998	Tim Bauer	12-12	.500 ACC (8th)	NCAA Regionals (8th) #49
1999	Tim Bauer	21-7	.750 ACC (3rd)	NCAA Regionals (2nd) #23
2000	Dave Balogh	17-9	.654 ACC (5th)	NCAA Regionals (2nd) #22
2001	Brian Burdette	14-11	.560 ACC (4th)	NCAA Regionals (3rd) #36
2002	Brian Burdette	12-15	.444 ACC (8th)	NCAA Regionals (3rd) #49
2003	Brian Burdette	13-10	.565 ACC (6th) #55	
2004	Brian Burdette	18-8	.692 ACC (3rd)	NCAA Regionals (2nd) #26

**Notes:** Gregory was the women's tennis head coach for eight seasons in Tallahassee...first Seminole head coach to earn Atlantic Coast Conference Coach of the Year honors twice (1999, 2004)...has the best winning percentage among all head coaches at .587...was named ITA South Region Coach of the Year in 2004.

### Jennifer Hyde

2004 - Present(104-58 .642)

2005-06	Oliver Foreman	11-12	.478	ACC (8th)	NCAA Regionals (1st) #43
2006-07	Oliver Foreman	9-13	.409	ACC (10th) #72	
2007-08	Oliver Foreman	16-8	.667	ACC (5th)	NCAA Regionals (2nd) #19
2008-09	Oliver Foreman	19-8	.704	ACC (6th)	NCAA Regionals (2nd) #18
2009-10	Oliver Foreman	17-8	.688	ACC (5th)	NCAA Round of 16 #14
2010-11	Oliver Foreman	16-9	.500	ACC (2nd)	NCAA Regionals (2nd) #15

**Notes:** Led her team to one of the most successful seasons in school history in 2010-2011 by taking the Seminoles to the ACC title match for the just the second time ever en route to No. 11 ranking during the season, which is the highest in FSU history...named 2007 ITA South Region Coach of the Year... returned to her alma matter in 2004 to lead the Seminole squad...captain of the 1994 team that finished at No. 17 in the nation...only the second alum to return to coach at Florida State...Led the team to the postseason for the eleventh time in the last twelve seasons in her first year...hosted the first and second rounds of the NCAA Tournament for the first time in program history... pushed the Seminoles into the NCAA Tournament for the second time in her first three years as head coach...led the Seminoles to their ninth-consecutive Golden Torch Award in 2007 and has only missed the feat once during her seven seasons as head coach.

# SEMINOLE WOMEN'S TENNIS

11



12

## ACC TOURNAMENT RECORDS

**1992**  
Virginia W 6-0  
Wake Forest L 2-5

**1993**  
North Carolina W 5-3  
Clemson L 2-7

**1994**  
N.C. State W 5-1  
Clemson W 5-3  
Duke L 0-5

**1995**  
Virginia W 5-3  
Wake Forest L 2-5

**1996**  
Virginia W 5-3  
Duke L 0-6

**1997**  
Georgia Tech W 5-1  
Wake Forest L 1-5

**1998**  
North Carolina W 7-2  
Duke L 0-5

**1999**  
Virginia W 5-1  
Wake Forest L 4-5

**2000**  
Georgia Tech W 5-3  
Wake Forest L 0-5

**2001**  
Georgia Tech W 4-2  
Duke L 0-4

**2002**  
Maryland W 4-3  
North Carolina L 1-4

**2003**  
North Carolina L 0-4

**2004**  
Wake W 4-2  
Duke L 1-4

**2005**  
Virginia W 4-3  
Georgia Tech L 1-4

**2006**  
Wake Forest L 4-1

**2007**  
Boston College W 4-0  
Miami L 3-4

**2008**  
Boston College W 5-0  
Miami W 4-2  
Duke L 2-4

**2009**  
NC State W 4-0  
Georgia Tech W 4-3  
Miami L 0-4

**2010**  
Maryland W 4-0  
Duke W 4-2  
North Carolina L 0-4

**2011**  
Wake Forest W 4-0  
Virginia W 4-3  
Duke W 4-3  
North Carolina L 3-4



SEMINOLE STATE UNIVERSITY





## NCAA TOURNAMENT RECORDS

**1983**

Singles Championship  
Round 64

Tracy Blumentritt (Rice) d. Jaime Kaplan (FSU)  
3-6, 6-3, 6-0

Doubles Championship  
Round 32

Jamie Kaplan - Lee McGuire (FSU) d. Margaret Redfern - Joy Tacon (Houston) 7-6, 7-5, 6-4

Round 16

#1 Louise Allen - Gretchen Rush (Trinity) d. Jamie Kaplan - Lee McGuire (FSU) 6-1, 6-0

**1985**

Doubles Championship  
Round 32

Kiki Rozwadowski - Lori MacGill (S. Florida) d. Sue Hatch - Patti Henderson (FSU)  
6-2, 6-3

**1993**

Singles Championship  
Round 64

Suzi Italiano (Southern Cal) d. Audra Brannon (FSU)  
6-4, 7-6

Doubles Championship  
Round 32

Audra Brannon - Laura Randmaa (FSU) d. Danielle Paradine - Jody Yin (Indiana) 6-3, 6-1

Round 16

Audra Brannon - Laura Randmaa (FSU) d. Melissa Mazzotta - Maria Pilar Valls (Miami) 7-6 (6), 4-6, 6-1

Round 8

#3 Laxmi Poruri - Heather Willens (Stanford) d. Audra Brannon - Laura Randmaa (FSU) 7-6 (2) 6-3

**1994**

Team Championship  
Round 20

#16 Arizona d. #19 FSU 5-3

Singles Championship  
Round 64

Marie-Laure Bougnol (Ole Miss) d. #9-16 Audra Brannon (FSU) 6-4, 6-4

Maggie Simkova (Southern Cal) d. Lori Sowell (FSU)  
1-6, 6-0, 6-4

Doubles Championship  
Round 32

Nicole Elliott - Vera Vitels (California) d. Audra Brannon - Elke Juul (FSU) 7-5, 6-2

**1995**

Singles Championship  
Round 64

Lori Sowell (FSU) d. #8 Katie Schlukibir (Stanford)  
6-4, 6-1

Round 32

Lori Sowell (FSU) d. Melissa Zimpfer (Tennessee)  
7-5, 6-4

Round 16

Lori Sowell (FSU) d. #14 Joelle Schad (Arizona State)  
6-0, 3-3, ret. Round 8

#2 Keri Phebus (UCLA) d. Lori Sowell (FSU) 6-0, 6-2

**1996**

NCAA South Regional  
South Carolina 5, Florida State 2

Singles Championship  
Round 64

Lori Sowell (FSU) d. #9-16 Farley Taylor (Texas) 7-5, 7-6

Round 32

Lori Sowell (FSU) def. Stephanie Sammaritano (Arizona) 6-4, 7-5

Round 16

#6 Ania Bleszynski (Stanford) d. Lori Sowell (FSU)  
7-5, 6-3

Doubles Championship  
Round 32

#4 Paige Yaroshuk - Keri Phebus (UCLA) d. Lori Sowell - Elke Juul (FSU) 6-1, 6-1

**1997**

NCAA Southeast Regional  
Vanderbilt 5, Florida State 1

**1998**

NCAA Southeast Regional  
Vanderbilt 6, Florida State 0

**1999**

NCAA Midwest Regional  
Iowa 5, Florida State 4

**2000**

NCAA South Regional  
Florida State 5, Illinois 3

Florida 5, Florida State 0

Singles Championship  
Round 64

Bea Bieliek (Wake Forest) d. Alida Gallovits (FSU)

**2001**

NCAA South Regional  
South Carolina 4, Florida State 2

Singles Championship  
Round 64

#59 Alida Gallovits (FSU) d.

#45 Maria Phillips (Oklahoma St.)  
7-6, 7-6

#2 Ansley Cargill (Duke) d.

#59 Alida Gallovits (FSU) 6-1, 6-0

**2002**

NCAA South Regional Virginia Commonwealth University (VCU) 4, FSU 0

Singles Championship  
Round 64

#5 Agara Cioroch (UGA) d.

Anca Dumitrescu (FSU) 6-2, 6-2

**2004**

NCAA South Regional  
FSU 4, Marshall 2

Vanderbilt 4, FSU 1

Singles Championship  
Round 64

#27 Megan Muth (William & Mary) d. Anca Dumitrescu (FSU), 6-2, 5-7, 7-6

**2005**

NCAA South Regional  
FIU 4, FSU 2

Singles Championship  
Round 64

Chloe Carlotti (Mississippi) d. Mihaela Moldovan (FSU), 6-1, 7-5

Doubles Championship  
Round 32

Alice Barnes-Erin Burdette (Stanford) d.

Mihaela Moldovan-Lindsay Deason (FSU), 6-3, 6-4

**2007**

NCAA Regional

FSU 4, San Diego State 0

UCLA 4, FSU 2

Doubles Championship  
Round 32

Olga Borisova-Marianna Yuferova (Virginia Commonwealth) d. Nicola Slater-Lauren Macfarlane (FSU), 5-7, 6-4, 6-4

**2008**

NCAA Regional

FSU 4, Samford 0

No. 19 Texas 5, FSU 2

Singles Championship

Round of 64

Gabriela Niculescu (USC) d.

Katie Rybakova (FSU) 6-4, 4-6, 7-6 (10-8)

**2009**

NCAA Regional

FSU 4, Auburn 0

Florida 4, FSU 2

Singles Championship

Round of 64

Kristy Frilling (Notre Dame) d. Katie Rybakova (FSU) 6-1, 6-2

Noemie Scharle (FSU) d.

Jenni Heisner (San Francisco) 6-4, 4-6, 6-2

Round of 32

Maria Mosolova (Northwestern) d. Noemie Scharle (FSU) 4-6, 5-5, 7-5

**2010**

NCAA Regional

FSU 4, North Florida 0

FSU 4, South Carolina 0

North Carolina 4, FSU 1

Singles Championship

Round of 64

Lenka Broosova (Baylor) d.

Lauren McCreless (FSU) 3-6, 6-1, 6-3

**2011**

NCAA Regional

FSU 4, Southern 0

FSU 3, SMU 4

Singles Championship

Round of 64

No. 41 Noelle Hickey (UCLA) d.

Katie Rybakova (FSU) 6-2, 6-2

No. 32 Kristi Boxx (Ole Miss) d.

Noemie Scharle 6-2, 6-3

# SEMINOLE WOMEN'S TENNIS

11



12

## ALL-TIME OPPONENTS RECORDS

Alabama	7	5	1983	2005	<b>North Carolina State</b>	17	4	<b>1992</b>	<b>2011</b>
Alabama-Birmingham	3	0	1988	2006	<b>North Florida</b>	6	1	<b>1985</b>	<b>2010</b>
Arizona State	0	1	2009	2009	Northeast Louisiana	6	0	1983	1991
Arizona	0	3	1990	1994	Northwestern	0	6	1983	2010
<b>Auburn</b>	<b>10</b>	<b>1</b>	<b>1982</b>	<b>2009</b>	Northwest Louisiana	1	0	1982	1982
Baylor	5	4	1986	2010	North Texas State	1	0	1982	1982
Bethune-Cookman	2	0	2001	2006	Notre Dame	0	1	1996	1996
<b>Boston College</b>	<b>6</b>	<b>0</b>	<b>2006</b>	<b>2010</b>	<b>Ohio State</b>	<b>3</b>	<b>0</b>	<b>1982</b>	<b>2010</b>
California	0	1	1997	1997	Oklahoma	1	0	1993	1993
Cal-Irvine	0	1	1987	1987	Oklahoma State	1	2	1982	1984
Cal-Santa Barbara	0	2	1987	1993	Penn State	1	0	2004	2004
<b>Central Florida</b>	<b>6</b>	<b>0</b>	<b>2002</b>	<b>2011</b>	<b>Pepperdine</b>	<b>1</b>	<b>1</b>	<b>2001</b>	<b>2010</b>
<b>Clemson</b>	<b>8</b>	<b>19</b>	<b>1982</b>	<b>2011</b>	Princeton	2	0	1982	2011
College of Charleston	1	0	1983	1983	Purdue	3	0	1982	1987
Columbia	1	0	1987	1987	Rice	9	4	1983	2008
<b>Duke</b>	<b>5</b>	<b>25</b>	<b>1983</b>	<b>2011</b>	Rollins	12	6	1982	1993
Flagler	2	2	1988	1992	Samford	1	0	2008	2008
<b>Florida</b>	<b>1</b>	<b>34</b>	<b>1982</b>	<b>2011</b>	San Diego	1	1	1995	2005
Florida A&M	9	0	1982	2008	San Diego State	3	0	2001	2005
Florida Atlantic	1	0	2002	2002	Santa Fe	1	0	1990	1990
<b>Florida International</b>	<b>14</b>	<b>5</b>	<b>1989</b>	<b>2011</b>	South Alabama	8	7	1982	2003
Florida Junior College	5	0	1983	1987	South Carolina	2	13	1982	2010
Furman	4	0	1987	2009	Southern Methodist	3	3	1982	2011
Georgia	5	8	1982	2010	South Florida	25	11	1982	2011
Georgia Southern	8	0	1995	2006	Southwestern Louisiana	3	0	1982	1993
Georgia State	6	0	1983	2011	Southwest Missouri	1	0	1986	1986
<b>Georgia Tech</b>	<b>18</b>	<b>9</b>	<b>1985</b>	<b>2011</b>	Southern Miss	2	0	1999	1999
Harvard	2	0	1982	2002	Stetson	8	0	1983	2008
Houston	5	6	1984	2007	Tennessee	4	3	1983	2010
Illinois	6	1	1992	2010	Tennessee-Chattanooga	1	0	1984	1984
Indiana	0	3	1982	1988	Texas	0	3	1982	2008
Iowa	3	1	1982	1999	<b>Texas A&amp;M</b>	<b>2</b>	<b>0</b>	<b>1994</b>	<b>1995</b>
Jacksonville	9	0	1989	2009	Texas Christian	1	5	1982	2009
Kansas	1	0	1999	1999	Trinity	1	0	1991	1991
Kansas State	1	0	1989	1989	Troy	1	0	2006	2006
Kentucky	0	1	1994	1994	Tulane	8	4	1982	2005
Lamar	1	0	1989	1989	UCLA	0	1	2007	2007
Louisiana State	9	6	1982	2010	U.S. International	0	1	1990	1990
Louisiana Tech	2	0	1983	1990	Utah	1	0	2000	2000
Louisville	3	0	1982	1988	Vanderbilt	2	8	1983	2002
Lynn (Boca Raton)	1	0	1990	1990	Virginia Commonwealth	0	1	2002	2002
<b>Maryland</b>	<b>17</b>	<b>3</b>	<b>1993</b>	<b>2011</b>	<b>Virginia</b>	<b>21</b>	<b>3</b>	<b>1992</b>	<b>2011</b>
Memphis State	2	0	1985	1987	<b>Virginia Tech</b>	<b>12</b>	<b>1</b>	<b>1985</b>	<b>2011</b>
<b>Miami, FL</b>	<b>4</b>	<b>22</b>	<b>1982</b>	<b>2011</b>	<b>Wake Forest</b>	<b>12</b>	<b>19</b>	<b>1985</b>	<b>2011</b>
Miami, OH	1	1	1984	1987	Wichita State	1	0	1985	1985
Michigan	4	0	1990	1993	William & Mary	1	0	1987	1987
Michigan State	3	0	2001	2002	Wisconsin	1	4	1986	1992
<b>Mississippi</b>	<b>2</b>	<b>6</b>	<b>1982</b>	<b>1996</b>	Yale	0	1	1989	1989
Mississippi State	4	3	1984	1994					
Mississippi Univ. for Women 1	0	0	1982	1982					
Nevada Las Vegas (UNLV)	1	0	2008	2008					
New Mexico	3	0	1984	1990					
<b>North Carolina</b>	<b>16</b>	<b>19</b>	<b>1982</b>	<b>2011</b>					
North Carolina Greensboro 1	0	0	2009	2009					

**-Bold denotes a 2012 opponent**

**-Bold italics indicate teams participating in the ITA National Indoor Championships on Jan. 28 and Jan. 29 in Tallahassee, Fla.**





# SEMINOLE WOMEN'S TENNIS

## YEAR-BY-YEAR RECORDS

<b>1982</b>		Ohio State	W	9-0	Wake Forest	W	7-2	
<b>Head Coach: Anne Rizza</b>		Iowa	W	7-2	Duke	L	4-5	
<b>Record: 23-17</b>		Georgia	W	6-3	North Carolina	L	2-7	
Florida A&M	W	9-0	Georgia State	W	9-0	Texas Christian	L	3-6
South Carolina	L	2-7	Tennessee	W	6-3	South Carolina	L	4-5
Oklahoma State	W	5-4	Northwestern	L	4-5	Northwestern	L	3-6
Texas Christian	W	6-3	Rollins	W	6-3	Georgia	W	5-4
Tulane	W	9-0	Florida	L	3-6	Florida	L	1-8
South Florida	W	5-4	South Florida	L	3-6	South Florida	L	3-6
Florida A&M	W	8-0	Florida	L	4-5	Miami, Fla.	L	1-8
Rollins	L	2-7	Vanderbilt	W	8-1	Rollins	W	7-2
Florida	L	1-7	Alabama	W	8-1	Mississippi	L	2-6
Louisiana State	W	6-3	Tulane	W	5-4	Auburn	W	8-1
Clemson	W	5-4			Memphis State	W	9-0	
Auburn	W	9-0	<b>1984</b>		Tulane	L	4-5	
Southwest Louisiana	W	9-0	<b>Head Coach: Anne Rizza</b>					
Northwest Louisiana	W	7-0	<b>Record: 15-13</b>					
Miss. Univ. for Women	W	8-0	Rollins	L	3-6	<b>1986</b>		
North Carolina	W	6-3	Tennessee	W	8-1	<b>Head Coach: Anne Rizza</b>		
South Carolina	L	3-5	South Carolina	L	4-5	<b>Record: 17-10</b>		
Mississippi	L	4-5	Houston	L	4-5	North Florida	W	6-3
Purdue	W	7-1	Tennessee-Chattanooga	W	5-4	Florida Junior College	W	9-0
Texas	L	0-8	Vanderbilt	W	8-0	Florida	L	1-8
Southern Methodist	W	6-2	Auburn	W	7-2	Southern Methodist	L	3-6
Texas Christian	L	4-5	Florida Junior College	W	8-1	Rollins	W	8-1
North Texas State	W	6-2	Tulane	W	6-0	Houston	L	3-6
Louisville	W	8-1	Georgia	W	7-2	South Florida	W	5-4
Ohio State	W	9-0	Northeast Louisiana	W	5-1	Alabama	W	6-3
South Alabama	W	7-2	Alabama	W	7-2	Auburn	W	7-2
Indiana	L	2-7	Oklahoma State	L	4-5	Florida	L	1-8
Harvard	W	8-1	South Alabama	W	7-2	Purdue	W	6-3
Clemson	L	4-5	Florida	L	2-7	Baylor	W	9-0
South Florida	L	4-5	South Carolina	W	5-4	Mississippi	W	5-4
Miami, Fla.	L	2-7	Oklahoma State	L	4-5	South Alabama	L	2-7
Florida	L	1-8	Georgia	W	6-3	Southwest Missouri	W	8-1
Georgia	L	3-6	Mississippi	L	2-5	Texas Christian	L	3-6
Rollins	L	2-7	Mississippi State	W	9-0	Clemson	L	0-9
South Florida	L	4-5	Rice	L	3-6	South Alabama	L	3-6
North Carolina	L	1-8	New Mexico	W	5-1	Virginia Tech	W	9-0
Iowa	W	7-2	Miami, Ohio	W	6-3	Georgia Tech	W	7-2
Georgia	W	5-4	Northwestern	L	1-8	Wisconsin	W	5-4
Princeton	W	5-4	Rollins	L	4-5	Mississippi State	W	7-2
North Carolina	L	0-5	Florida	L	1-8	Stetson	W	9-0
			Miami, Fla.	L	3-6	South Florida	L	2-7
			South Florida	L	3-6	Rollins	W	6-0
<b>1983</b>					Virginia Tech	W	8-1	
<b>Head Coach: Anne Rizza</b>					South Carolina	L	4-5	
<b>Record: 18-8</b>								
Stetson	W	7-2	<b>1985</b>					
Florida Junior College	W	7-2	<b>Head Coach: Anne Rizza</b>					
Clemson	L	0-9	<b>Record: 13-14</b>					
Auburn	W	8-1	Georgia Tech	W	6-1	<b>1987</b>		
College of Charleston	W	9-0	South Florida	L	1-8	<b>Head Coach: Patti Henderson</b>		
Rollins	L	1-8	Alabama	W	6-3	<b>(11-15)</b>		
Louisiana Tech	W	7-0	North Florida	W	7-2	Vanderbilt	L	4-5
Northeast Louisiana	W	8-1	Florida Junior College	W	9-0	Tennessee	L	4-5
Alabama	W	8-1	Rollins	W	5-4	William & Mary	W	5-4
Rice	L	3-6	Florida	L	1-8	South Carolina	L	0-5
South Florida	W	5-4	North Carolina	W	7-2	Auburn	W	5-4
Duke	W	6-3	Louisiana State	L	2-7	Florida Junior College	W	7-2
Indiana	L	2-7	South Florida	L	0-8	North Florida	W	7-2
			Wichita State	W	6-3	Florida	L	0-9
					Mississippi State	L	4-5	
					Furman	W	6-3	

# SEMINOLE WOMEN'S TENNIS

11



12

Purdue	W	7-2
Columbia	W	8-1
South Florida	W	6-3
Miami, Ohio	L	4-5
North Carolina	L	2-7
Wake Forest	L	3-6
Virginia Tech	W	8-1
California - Irvine	L	3-6
Rice	L	4-5
California-Santa Barbara	L	2-7
Southern Methodist	L	1-8
Florida	L	0-9
Rollins	L	3-6
Louisville	W	7-2
Memphis State	W	9-0
South Carolina	L	3-6

**1988**

**Head Coach: Patti Henderson**

**Record: 14-12**

Florida	L	1-8
Florida A&M	W	8-1
Alabama - Birmingham	W	7-2
North Florida	L	3-6
Northeast Louisiana	W	6-3
Houston	L	1-8
Mississippi	L	4-5
North Carolina	L	2-7
Furman	W	9-0
Louisiana State	L	4-5
Stetson	W	8-1
South Florida	W	5-4
Rollins	W	6-3
Auburn	L	3-6
Baylor	W	9-0
New Mexico	W	5-4
South Carolina	L	1-7
Indiana	L	1-8
Mississippi State	L	1-5
Georgia State	W	9-0
South Florida	W	5-4
Flagler	L	2-7
Southern Methodist	W	9-0
Louisville	W	9-0
South Carolina	L	0-6

**1989**

**Head Coach: Patti Henderson**

**Record: 13-7**

Tulane	W	8-1
South Florida	L	4-5
Florida	L	0-9
South Alabama	W	5-3
Jacksonville	W	9-0
Northeast Louisiana	W	6-0
Auburn	W	5-4
South Alabama	L	3-6
Florida International	W	9-0
Flagler	L	4-5
North Florida	W	6-3
Mississippi	L	3-6
Kansas State	W	5-1
Yale	L	4-5
South Florida	W	6-3

Wisconsin	L	1-8
Rollins	W	6-3
Clemson	W	5-4
Lamar	W	9-0
Houston	W	5-4

**1990**

**Head Coach: Patti Henderson**

**Record: 17-8**

South Florida	W	7-1
Rollins	W	8-1
Santa Fe	W	9-0
North Florida	W	8-1
Florida	L	0-9
U.S. International	L	3-6
Arizona	L	4-5
Rice	W	6-0
Northeast Louisiana	W	7-0
South Alabama	W	7-1
Houston	L	2-7
Mississippi	W	5-4
Georgia Tech	W	7-1
Louisiana Tech	W	7-2
Florida International	W	8-1
Louisiana State	L	4-5
Miami, Fla.	L	1-8
New Mexico	W	7-0
South Florida	W	7-2
Wisconsin	L	4-5
Rollins	W	8-1
Michigan	W	8-1
Wake Forest	W	5-4
South Carolina	L	2-6
Boca Raton	W	8-1

**1991**

**Head Coach: Patti Henderson**

**Record: 13-9**

Florida	L	0-9
North Carolina	L	2-7
Miami, Fla.	L	4-5
Tulane	W	9-0
Rice	W	7-2
Louisiana State	W	5-4
Northeast Louisiana	W	9-0
Auburn	W	7-2
South Florida	W	9-0
Alabama	W	6-3
Michigan	W	7-2
Rollins	W	9-0
Wake Forest	L	4-5
Mississippi State	W	7-2
Trinity	W	7-2
Houston	L	4-5
Texas Christian	L	3-6
Southwest Louisiana	W	8-1
Wisconsin	L	3-6
Northwestern	L	2-7
Flagler	W	7-2
Duke	L	1-6

**1992**

**Head Coach: Alice Reen**

**Record: 13-10**

Northwestern	L	3-6
Wisconsin	L	2-7
Alabama	L	0-6
Flagler	W	7-2
Rollins	W	8-1
Virginia	W	7-2
Michigan	W	6-3
South Florida	W	7-2
North Carolina State	W	9-0
Miami, Fla.	L	2-7
Southern Methodist	W	5-3
Mississippi State	L	4-5
North Carolina	W	5-4
Duke	L	1-8
Georgia Tech	W	8-1
Illinois	L	4-5
South Alabama	W	6-1
Florida International	W	6-3
Georgia	L	3-6
Clemson	L	3-6
Wake Forest	W	5-4
Virginia	W	6-0
Wake Forest	L	2-5

**1993**

**Head Coach: Alice Reen**

**Record: 13-9**

Georgia Tech	W	8-1
California-Santa Barbara	L	4-5
Rice	L	4-5
Arizona	L	2-6
Florida International	W	8-1
Miami, Fla.	L	2-7
Rollins	W	8-1
Michigan	W	6-3
South Florida	W	5-4
Clemson	L	4-5
North Carolina	W	7-2
Wake Forest	L	5-4
Oklahoma	W	6-3
North Carolina State	W	6-0
Maryland	W	8-1
Tennessee	L	3-6
Virginia	W	5-4
Southwestern Louisiana	W	6-3
Georgia	L	2-5
South Alabama	W	5-4
North Carolina (ACC)	W	5-3
Clemson (ACC)	L	2-7

**1994**

**Head Coach: Alice Reen**

**Record: 15-10**

Georgia Tech	W	9-0
Miami, Fla.	L	4-5
Florida	L	1-8
Maryland	W	9-0
Kentucky	L	1-7
Tennessee	L	4-5
South Florida	W	5-4
Wake Forest	W	5-4
Clemson	L	3-6
Georgia	L	1-5
North Carolina State	W	7-2







# SEMINOLE WOMEN'S TENNIS

Virginia	W	6-3
Mississippi State	W	5-1
Rice	W	7-2
Houston	W	5-1
Texas	L	3-6
Texas A&M	W	5-4
Florida International	W	5-1
North Carolina	W	7-2
Duke	L	4-5
South Alabama	W	7-2
N.C. State (ACC)	W	5-1
Clemson (ACC)	W	5-3
Duke (ACC)	L	0-5
Arizona	L	3-5

**1995**  
**Head Coach: Alice Reen**  
**Record: 11-10**

Florida	L	1-7
Vanderbilt	L	4-5
Georgia Southern	W	8-0
South Florida	L	4-5
North Carolina	W	5-4
Duke	L	1-6
Tennessee	W	5-4
Clemson	W	5-4
Maryland	W	8-1
Texas A&M	W	5-2
Georgia	L	0-6
Virginia	W	8-1
South Carolina	L	3-6
Miami, Fla.	L	3-6
Florida International	W	5-4
San Diego	L	2-6
Georgia Tech	W	6-0
North Carolina State	W	5-4
Wake Forest	L	3-6
Virginia (ACC)	W	5-3
Wake Forest (ACC)	L	2-5

**1996**  
**Head Coach: Alice Reen**  
**Record: 8-11**

Vanderbilt	L	0-8
Jacksonville	W	8-0
Miami, Fla.	W	5-3
Georgia Southern	W	7-2
Maryland	W	6-2
Clemson	W	5-4
Georgia	L	1-6
Wake Forest	L	4-5
North Carolina State	W	8-1
Virginia	L	4-5
Notre Dame	L	1-6
Mississippi	L	2-5
North Carolina	L	4-5
Duke	L	1-8
Florida	L	1-8
Georgia Tech	W	8-1
Virginia (ACC)	W	5-3

Duke (ACC)	L	0-6
South Carolina (NCAA)	L	2-5

**1997**  
**Head Coach: Lise Gregory**  
**Record: 12-11**

South Alabama	L	2-7
Vanderbilt	L	0-9
Auburn	W	7-1
Miami, Fla.	L	3-6
Florida International	W	8-1
Georgia Tech	W	8-1
California	L	2-7
Clemson	W	6-3
Florida	L	0-9
North Carolina	W	7-2
Baylor	L	4-5
Rice	W	5-4
Houston	L	4-5
Duke	L	1-7
North Carolina State	W	6-3
Wake Forest	L	2-6
Maryland	W	7-2
Illinois	W	8-1
Virginia	W	7-2
South Florida	W	5-4
Georgia Tech (ACC)	W	5-1
Wake Forest (ACC)	L	1-5
Vanderbilt (NCAA)	L	0-5

**1998**  
**Head Coach: Lise Gregory**  
**Record: 12-12**

Georgia Southern	W	7-2
Florida	L	1-8
Georgia Tech	L	4-5
Clemson	L	4-5
Maryland	L	4-5
Virginia	W	5-4
South Florida	W	6-3
Houston	W	7-2
Virginia Tech	L	4-5
Baylor	W	5-4
Wake Forest	L	3-6
NC State	L	4-5
South Alabama	L	1-8
Auburn	W	6-3
Illinois	W	6-3
Jacksonville	W	7-0
Florida International	W	6-3
Duke	L	1-8
North Carolina	W	5-4
North Carolina (ACC)	W	7-2
Duke (ACC)	L	5-0
Vanderbilt (NCAA)	L	6-0

**1999**  
**Head Coach: Lise Gregory**  
**Record: 21-7**

Jacksonville	W	9-0
Illinois	W	5-1
Southern Miss	W	9-0
Auburn	W	7-2
Georgia State	W	6-0

Florida	L	1-8
Georgia Southern	W	8-1
South Florida	W	8-1
South Alabama	W	5-1
Vanderbilt	L	4-5
Miami	L	4-5
Florida International	W	7-2
Baylor	W	7-2
Houston	W	5-4
Rice	W	6-3
Tulane	W	5-4
Virginia	W	6-3
Maryland	W	9-0
Kansas	W	6-3
Wake Forest	L	4-5
North Carolina State	W	9-0
Duke	L	0-9
North Carolina	W	6-3
Georgia Tech	W	6-3
Clemson	W	5-4
Virginia (ACC)	W	5-1
Wake Forest (ACC)	L	4-5
Iowa (NCAA)	L	4-5

**2000**  
**Head Coach: Lise Gregory**  
**Record: 17-9**

Georgia Southern	W	8-1
Vanderbilt	L	1-8
Iowa	W	5-4
Florida	L	1-5
Auburn	W	6-3
Jacksonville	W	9-0
Southern Miss	W	6-3
LSU	W	5-4
South Florida	W	7-2
Miami	W	5-1
Baylor	L	4-5
Tulane	W	7-2
Maryland	W	9-0
Virginia	W	7-2
North Carolina	W	5-2
Wake Forest	L	1-8
North Carolina State	W	8-1
Duke	L	2-7
Utah	W	7-2
Georgia Tech	L	4-5
Clemson	L	4-5
Georgia Tech (ACC)	W	5-3
Wake Forest (ACC)	L	0-5
Illinois (NCAA)	W	5-3
Florida (NCAA)	L	0-5

**2001**  
**Head Coach: Lise Gregory**  
**Record: 14-11**

Georgia State	W	7-0
Bethune-Cookman	W	7-0
Alabama	L	3-4
Florida	L	0-7
Tulane	W	4-3
LSU	L	3-4
Miami	L	3-4
FIU	L	2-5



# SEMINOLE WOMEN'S TENNIS

11



12

South Florida	W	4-3
Michigan State	W	7-0
Marquette	W	6-1
Pepperdine	L	3-4
Loyola Marymount	W	4-3
San Diego State	W	4-3
NC State	W	6-1
Wake Forest	L	3-4
North Carolina	L	1-6
Duke	L	0-7
Georgia Tech	W	6-1
Clemson	W	5-2
Maryland	W	5-2
Virginia	W	4-3
Georgia Tech (ACC)	W	4-2
Duke (ACC)	L	0-4
South Carolina (NCAA)	L	2-4

**2002****Head Coach: Lise Gregory****Record: 12-15**

Florida A&M	W	6-1
Georgia Southern	W	7-0
Vanderbilt	L	0-7
Central Florida	W	4-3
Louisiana State	W	4-3
Florida Atlantic	W	5-1
Auburn	L	3-4
Florida	L	1-5
Jacksonville	W	5-1
South Alabama	L	3-4
Alabama	L	3-4
Miami	L	3-4
Harvard	W	5-2
Michigan State	W	6-1
Florida International	L	3-4
South Florida	W	6-1
Maryland	L	3-4
Virginia	L	3-4
North Carolina State	W	5-2
Wake Forest	L	1-6
North Carolina	L	1-6
Duke	L	1-6
Georgia Tech	W	6-1
Clemson	L	3-4
Maryland (ACC)	W	4-3
North Carolina (ACC)	L	1-4
VCU (NCAA)	L	0-4

**2003****Head Coach: Lise Gregory****Record: 13-10**

Florida A&M	W	7-0
Stetson	W	7-0
Georgia Southern	W	7-0
Central Florida	W	6-1
Tulane	L	3-4
LSU	W	4-3
Furman	W	6-1
Florida	L	0-7
Alabama	L	3-4
South Florida	W	7-0
Baylor	W	4-3
Rice	W	4-3

South Alabama	L	2-5
FIU	W	4-3
Virginia	L	3-4
Wake Forest	W	4-3
N.C. State	W	6-1
Maryland	W	6-1
North Carolina	L	1-6
Duke	L	1-6
Georgia Tech	L	2-5
Clemson	L	1-6
North Carolina (ACC)	L	0-4

**2004****Head Coach: Lise Gregory****Record: 18-8**

Ga. Southern	W	7-0
Troy State	W	7-0
Stetson	W	7-0
Rice	W	5-1
UCF	W	6-1
UAB	W	7-0
Alabama	L	2-5
Florida	L	1-6
LSU	L	3-4
USF	W	5-2
FIU	W	6-1
Tulane	L	3-4
Michigan State	W	5-2
Penn State	W	6-1
Maryland	W	5-2
Virginia	W	6-1
N.C. State	W	7-0
Wake Forest	W	6-1
North Carolina	W	4-3
Duke	L	3-4
Georgia Tech	W	4-3
Clemson	L	3-4
Wake (ACC)	W	4-2
Duke (ACC)	L	1-4
Marshall (NCAA)	W	4-2
Vanderbilt (NCAA)	L	1-4

**2005****Head Coach: Jennifer Hyde****Record: 11-12**

Baylor	L	5-2
UCF	W	7-0
Alabama	W	5-2
Florida	L	1-6
Tulane	L	3-4
USF	W	4-3
San Diego	W	4-3
San Diego State	W	4-3
Miami	L	2-5
FIU	L	2-5
Virginia Tech	W	7-0
Maryland	W	6-1
Virginia	W	6-1
N.C. State	W	7-0
Wake Forest	L	3-4
North Carolina	L	1-6
Duke	L	3-4
Georgia Tech	L	2-5
Clemson	L	0-7

Florida A&M	W	7-0
Virginia (ACC)	W	4-3
Georgia Tech (ACC)	L	1-4
FIU (NCAA)	L	2-4

**2006****Head Coach: Jennifer Hyde****Record: 9-13**

Auburn	W	4-3
Bethune-Cookman	W	7-0
FAMU	W	5-0
Stetson	W	6-1
Florida	L	0-7
Georgia Southern	W	7-0
Troy State	W	4-3
LSU	L	2-5
UAB	W	5-2
FIU	L	2-5
Miami	L	0-7
Boston College	W	4-2
Maryland	L	3-4
North Carolina	L	1-6
N.C. State	L	2-5
Wake Forest	L	0-7
Clemson	L	3-4
Georgia Tech	L	2-4
Virginia	L	1-6
Virginia Tech	W	4-3
Duke	L	1-4
Wake Forest (ACC)	L	1-4

**2007****Head Coach: Jennifer Hyde****Record: 16-8**

Jacksonville	W	6-1
Georgia	L	1-6
Rice	W	6-1
Houston	W	5-1
Stetson	W	7-0
Florida A&M	W	7-0
LSU	W	5-2
Florida	L	3-4
Florida International	W	4-3
Miami	L	3-4
NC State	W	5-2
Wake Forest	W	4-3
Clemson	L	2-5
Georgia Tech	L	1-6
Virginia	W	4-3
Virginia Tech	W	7-0
North Carolina	L	0-7
Duke	W	4-3
Boston College (ACC)	W	4-0
Miami (ACC)	L	3-4
San Diego State	W	4-0
UCLA (NCAA)	L	2-4

**2008****Head Coach: Jennifer Hyde****Record: 19-8**

Rice University	W	7-0
Illinois	W	7-0
Stetson	W	7-0
UCF	W	7-0





# SEMINOLE WOMEN'S TENNIS

FAMU	W	6-0
Jacksonville	W	7-0
Auburn	W	5-2
Florida	L	1-6
LSU	W	8-1
Miami	W	5-2
FIU	W	7-0
Clemson	L	2-5
UNLV	W	7-0
Virginia Tech	W	7-0
Virginia	L	3-4
UNC	W	4-3
No. 6 Duke	L	3-4
Georgia Tech	L	3-4
Maryland	W	5-2
Boston College	W	6-1
Wake Forest	W	6-1
N.C. State	L	3-4
Boston College (ACC)	W	5-0
Miami (ACC)	W	4-2
Duke (ACC)	L	2-4
Samford (NCAA)	W	4-0
Texas (NCAA)	L	2-5

LSU	W	6-1
Florida	L	0-7
Clemson	L	2-5
Pepperdine	W	6-1
Miami	L	2-5
Virginia	W	5-2
Virginia Tech	W	6-1
Wake Forest	W	4-3
NC State	W	7-0
Boston College	W	6-1
Maryland	W	7-0
Duke	L	0-4
North Carolina	L	0-4
Maryland (ACC)	W	4-0
Duke (ACC)	W	4-2
North Carolina (ACC)	L	0-4
North Florida (NCAA)	W	4-0
South Carolina (NCAA)	W	4-0
North Carolina (NCAA)	L	1-4



*Ruth Seaborne*



*Noemie Scharle*



*Francesca Segarelli*

### 2009

**Head Coach: Jennifer Hyde**  
**Record: 17-8**

Jacksonville	W	4-0
Arizona State	L	1-4
TCU	L	2-4
Georgia State	W	5-2
UNC-Greensboro	W	7-0
Furman	W	6-1
USF	W	6-0
LSU	W	5-2
Florida	W	5-2
Georgia Tech	L	2-5
Miami	L	0-7
Clemson	L	1-5
Duke	L	1-6
North Carolina	W	5-2
Virginia	W	4-3
Virginia Tech	W	5-2
Wake Forest	W	6-1
North Carolina State	W	6-1
Boston College	W	5-1
Maryland	W	7-0
NC State (ACC)	W	4-0
Georgia Tech (ACC)	W	4-3
Miami (ACC)	L	0-4
Auburn (NCAA)	W	4-0
Florida (NCAA)	L	2-4

### 2011

**Head Coach: Jennifer Hyde**  
**Record: 16-9**

Florida International	W	5-2
Princeton	W	5-2
Washington	L	3-4
Auburn	W	6-1
Miami	L	1-6
Georgia Tech	W	5-2
Florida	L	1-5
South Florida	L	2-5
Central Florida	W	6-1
Clemson	L	2-5
Georgia State	W	5-2
Virginia Tech	W	5-2
Virginia	L	2-5
North Carolina State	L	3-4
Wake Forest	W	6-1
Maryland	W	4-3
Boston College	W	4-3
North Carolina	W	4-2
Duke	W	4-2
Wake Forest (ACC)	W	4-0
Virginia (ACC)	W	4-3
Duke (ACC)	W	4-3
North Carolina (ACC)	L	3-4
Southern (NCAA)	W	4-0
SMU (NCAA)	L	3-4

### 2010

**Head Coach: Jennifer Hyde**  
**Record: 16-11**

USF	L	2-5
Virginia	W	4-2
Ohio State	W	6-1
Illinois	W	4-3
Northwestern	L	0-7
Baylor	L	2-5
Georgia	L	1-6
Tennessee	W	4-3

SEMINOLES

# SEMINOLE WOMEN'S TENNIS

11



12

## PLAYER RECORDS

### ALL-TIME DUAL MATCH ROSTER

#### FSU's Top 10 All-Time Single-Season Win Leaders

1. Mihaela Moldovan	33-4 .892	2003-04
2. Lauren Macfarlane	21-5 .808	2006-07
3. Kia Asberg	30-8 .789	1998-99
4. Kia Asberg	29-8 .784	1999-00
5. Marina Raic	31-9 .775	1998-99
Federica Suess	31-9 .775	2007-08
6. Caroline Walter	29-8 .763	2007-08
7. Jessica Sucupira	28-9 .756	2008-09
8. Buffy Baker	28-7 .750	1987-88
9. Buffy Baker	27-9 .750	1988-89
10. Roxanne Clarke	27-10 .730	2003-04
Christina Denny	27-10 .730	2003-04
Jessica Sucupira	27-10 .730	2009-10

### TOP 10 DUAL MATCH SINGLE SEASON WIN PERCENTAGE

1. Mihaela Moldovan	2004	26-0	1.000
2. Kia Asberg	1999	24-4	.857
3. Buffy Baker	1987	21-5	.808
Lauren Macfarlane	2007	21-5	.808
4. Kia Asberg	2000	20-5	.800
Keri Preng	1990	20-5	.800
Caroline Walter	2008	20-5	.800
5. Marina Raic	1999	22-6	.785
6. Federica Suess	2008	18-5	.783
7. Audra Brannon	1991	21-6	.777
8. Mihaela Moldovan	2005	17-5	.773
9. Jessica Sucupira	2009	20-6	.769
10. Buffy Baker	1989	16-5	.762

### SINGLE SEASON DUAL MATCH SINGLES WINS

1. Mihaela Moldovan	2004	26
2. Kia Asberg	1999	24
Katie Rybakova	2011	24
4. Marina Raic	1999	22
5. Buffy Baker	1988	21
Audra Brannon	1991	21
Jessica Balbuena	1999	21
Lauren Macfarlane	2007	21
9. Patti Henderson	1986	20
Keri Preng	1990	20
Kia Asberg	2000	20
Jessica Sucupira	2009	20
Federica Suess	2011	20

### CAREER SINGLES WINS

1. Federica Suess	2007-11	104
2. Katie Rybakova	2007-10	103
3. Lauren McCreless	2006-10	102
Jessica Sucupira	2006-10	102
6. Ali Weber	1997-00	94
7. Buffy Baker	1988-91	91
8. Kia Asberg	1997-00	88
9. Alida Gallovits	1999-01	77
10. Mihaela Moldovan	2003-05	76
11. Jessica Balbuena	1999-01	74

### CAREER DOUBLES WINS

1. Lauren McCreless	2006-10	94
2. Jessica Sucupira	2006-10	93
3. Jessica Balbuena	1999-01	73
4. Federica Suess	2007-11	71
5. Katie Rybakova	2007-11	70
6. Alida Gallovits	1999-01	63
7. Audra Brannon	1991-94	62
8. Lori Sowell	1994-97	61
Ali Weber	1997-00	61
10. Nicki Ivy	1989-92	58
11. Nanette Duxin	1998-01	57
12. Elke Juul	1992-96	55







## HONORS AND AWARDS

**FSU Athletics Hall of Fame**

Patti Henderson 1992  
Buffy Baker 1997  
Lori Sowell 2003  
Audra Brannon 2007

**Metro Conference Coach of the Year**

Anne Rizza 1981, 1983 & 1984  
Patti Henderson 1989

**ACC Coach of the Year**

Alice Reen 1994  
Lise Gregory 1999, 2004

**ITA South Region****Coach of the Year**

Lise Gregory 2004  
Jennifer Hyde 2007  
Jennifer Hyde 2011

**ITA South Region****Assistant Coach of the Year**

Oliver Forman 2009  
Oliver Forman 2011

**ITA National****Assistant Coach of the Year**

Oliver Foreman 2009, 2011

**ITA/Arthur Ashe Jr. Award for Leadership and Sportsmanship**

Audra Brannon 1993  
Nanette Duxin 2001  
Alida Gallovits 2002  
Anca Dumitrescu 2004\*

Mihaela Moldovan 2005

\* - co-player

Jessica Sucupria, 2010

Federica Suess, 2011

**ITA South Region****Senior Player of the Year**

Anca Dumitrescu 2004

Lauren McCreless 2010

**ITA South Region****Rookie of the Year**

Mihaela Moldovan 2003

**CoSIDA Academic All-American**

Mihaela Moldovan 2004

**ACC Weaver-James-Corrigan Award**

Audra Brannon 1993

Kia Asberg 2000

Alida Gallovits 2002

Anca Dumitrescu 2004

Mihaela Moldovan 2005

**Metro Conference Champions**

1981, 1983, 1984 & 1989

**Metro Conference****Player of the Year**

Suzanne Doumar 1981

Patti Henderson 1986

Keri Preng 1989

Buffy Baker 1991

ACC Player of the Year

Audra Brannon 1994

**ACC Rookie of the Year**

Lori Sowell 1994

Francesca Segarelli, 2010

**All-American**

Audra Brannon 1993 doubles

Laura Randmaa 1993 doubles

Lori Sowell 1995 singles

& 1996 singles

Mihaela Moldovan 2005 singles

**All-ACC Team**

Audra Brannon 1992-94

Ann Olsson 1997

Elke Juul 1995-1996

Kia Asberg 1999-00

Laura Randmaa 1993

Alida Gallovits 1999-01

Lori Sowell 1994-97

Marina Raic 1999

Anca Dumitrescu 2003-04

Mihaela Moldovan 2004-05

Ania Rynarzewska 2006

Lauren Macfarlane 2007-08

Nicola Slater 2007

Katie Rybakova 2008, 2009, 2010, 2011

Noemie Scharle 2009

Francesca Segarelli, 2011

Metro Conference Tournament MVP

Patti Henderson 1986

Keri Preng 1989

Buffy Baker 1991

**Metro Conference****All-Tournament Team**

Buffy Baker 1988-91

Keri Preng 1988 -1989

Kirsten Turk 1989

Ann Waggoner 1990

**Metro Conference Flight****Champions**

Suzanne Doumar 1981, No. 1 singles & No. 1 doubles

Jaime Kaplan 1981, No. 1 doubles

Lisa Erghott 1983, No. 5 singles

Patti Henderson 1983, No. 2 doubles

1984, No. 3 singles & No. 1 doubles

1985, No. 2 singles

Debbie Pollack 1983, No. 4 singles

Jenny Cerino 1984, No. 6 singles & No. 2 doubles

1985, No. 5 singles & No. 3 doubles

Sue Harch 1984, No. 2 singles & No. 2 doubles

Lee McGuire 1984, No. 1 doubles

Buffy Baker 1989, No. 1 doubles;

1990, No. 1 doubles

1991, No. 1 singles & No. 1 doubles

Nicki Ivy 1989, No. 6 singles;

1991, No. 3 doubles

Kirsten Turk 1989, No. 3 singles

Keri Preng 1989, No. 1 doubles

Christina Tee 1991, No. 4 singles & No. 2 doubles

Robin Cifaldi 1991, No. 2 doubles

Audra Brannon 1991, No. 2 singles

& No. 1 doubles

Ann Waggoner 1991, No. 3 doubles

**ACC Flight Champions**

Elke Juul 1993, No. 3 doubles

1994, No. 1 doubles

1996, No. 1 doubles

Sandi Ecclestone 1993, No. 3 doubles

Audra Brannon 1994, No. 1 singles &

No. 1 doubles

Lori Sowell 1994, No. 2 singles

1996, No. 1 doubles

Ashley Delaney 1995, No. 3 doubles

Lori Junker 1995, No. 3 doubles

1996, No. 3 doubles

Ann Olsson 1996, No. 3 singles

& No. 2 doubles

Sasha Hanna 1996, No. 2 doubles

Kylie Thompson 1996, No. 3 doubles

Ali Weber 1997, No. 5 singles

1999, No. 6 singles

2000, No. 6 singles & No. 3 doubles

Jessica Balbuena 2000, No. 3 doubles

**Miscellaneous Honors**

Kia Asberg

2000 Cissie Leary

Sportsmanship Award

(national winner)

Buffy Baker

1988 Roberta Allison Southern

Intercollegiate

(champion, No. 1 singles)

1989 Roberta Alison Southern

Intercollegiate

(champion, No. 1 singles)

1989 Women's Intercollegiate

Championships

(champion, No. 1 singles)

Christina Denny

2003 Lady Seminole Fall Classic

(Flight B - singles)

Anca Dumitrescu

2003 Lady Seminole Fall Classic

(Flight A - singles)

Nanette Duxin

1998 Roberta Allison Invitational

(Flight A - singles)

Alida Gallovits

1999 Lady Seminole Classic Champion

(Flight A-singles)

2000 Georgia Tech Invite

(Flight A-singles)

Hurricane Classic Champion

(Flight A-singles)

ACC 50th Anniversary Team

Keri Preng



## HONORS AND AWARDS

1988 Barnett Bank Women's  
Intercollegiate State Championships  
(champion, No. 6 singles)

Laura Sarkilahti

1988 Barnett Bank Women's  
Intercollegiate State Championships  
(champion, No. 5 singles)

Lori Sowell

1996 Lady Seminole Classic Champion  
(Flight A-singles)

Natalie Tirapelli

2003 Roberta Allison Fall Classic  
(Flight H-singles)

2009 ITA/ Cissie Leary Sportsmanship Award

Lauren McCreless (Macfarlane) 2009

Federica Suess 2011 ACC Post-Graduate  
Scholarship

### Team MVP's

1997 Lori Sowell

1998 Ali Weber

1999 Marina Raic and Kia Asberg

2000 Kia Asberg

2001 Alida Gallovits

2002 Christina Denny

2003 Anca Dumitrescu

2004 Mihaela Moldovan

2005` Mihaela Moldovan

2006 Suzanna Mansour and Nicola Slater

2007 Caroline Walter and Lauren Macfarlane

2008 Caroline Walter and Federica Suess

2009 Jessica Sucupira and Ania Rynarzewska

### POST SEASON

#### INVITATIONS

#### Association of Intercollegiate

#### Athletics for Women

#### Team

1984 AIAW National Championships  
6th Place

Doubles

Jaime Kaplan & Suzanne Doumar (1982)

named to the AIAW All-Region II Team

National Collegiate Athletic

Association

#### Team

1994, 1996, 1997, 1998, 1999, 2000,

2001, 2002, 2004, 2005, 2007, 2008,

2009, 2010, 2011

Singles

Jaime Kaplan 1983

Audra Brannon 1993 -1994

Lori Sowell 1994 - 1996

Alida Gallovits 2000-01

Anca Dumitrescu 2002, 2004

Mihaela Moldovan 2005

Katie Rybakova 2008, 2009, 2011

Noemie Scharle 2009, 2011

Doubles

Jaime Kaplan 1983

Lee McGuire 1983

Patti Henderson 1985

Sue Hatch - 1985

Audra Brannon 1993 -1994

Laura Randmaa 1993

Elke Juul 1994 -1996

Lori Sowell 1995-1996

Mihaela Moldovan 2005

Lindsay Deason 2005

Lauren Macfarlane 2007

Nicola Slater 2007

### ACADEMIC HONORS

#### FSU's Golden Torch Award

(Highest Team GPA)

1985, 1986, 1987, 1988, 1989, 1997,

1998, 1999, 2000, 2001, 2002, 2003,

2004, 2005, 2006, 2007, 2008, 2009, 2011

#### ITA All-Academic Team

2002, 2004, 2006, 2008

#### FSU's Golden Torch Award

(Highest Individual GPA)

Nicki Ivy 1991

Ashley Delaney 1994

Kia Asberg 2000

Alida Gallovits 2000

Marina Raic 2000

Mihaela Moldovan 2003

Lisa Nystrom Skold 2006

Katie Rybakova 2008, 2009

Noemie Scharle 2011

### Metro Conference

#### Commissioner's List

Claudia Gaughf 1985

Sue Hatch 1985, 1986

Kirsten Turk 1986-89

Chris Joyce 1986-1988

Jill Urban 1986-1987

Keri Preng 1989

Kirsten Balsler 1989-1990

Lori Webster 1990

Shana Nozick 1990

Christina Tee 1990

### ACC Academic Honor Roll

Kia Asberg 1998-00

Buffy Baker 1992

Jessica Balbuena 1999-01

Natalie Carratalá 1998-99, 01

Nicole Cercone 2004

Brooke Cordell 2002-04

Lindsay Deason 2004

Ashley Delaney 1994-97

Christina Denny 2000-04

Anca Dumitrescu 2001-04

Nanette Duxin 1999-02

Sandi Ecclestone 1994

Meredith Fish 2001-02

Alida Gallovits 1999, 01; 02

Amy Hanby 1992-93

Sasha Hanna 1997, 98

Nicki Ivy 1992

Elke Juul 1996

Lori Junker 1995-97

Helena Karlsson 1998

Beth Lawrence 2000-03

Lauren Macfarlane 2007

Tapiwa Marobela 2008

Alina Mihailescu 2002-04

Mihaela Moldovan 2002-04

Ann Olsson 1997

Rakina Payne 1997-98

Marina Raic 1999-01

Laura Randmaa 1994

Katie Rybakova 2008, 2009

Ania Rynarzewska 2006, 2007, 2008

Noemie Scharle 2009

Nicola Slater 2007

Lori Sowell 1994-97

Jessica Sucupira (Wente) 2008

Federica Suess 2008

Amberly Tantee 2004

Chrissie Tee 1992

Kylie Thompson 1996-99

Natalie Tirapelli 2002-04

Christy Travis 1998-99, 01

Lauren Walker 2001-02

Caroline Walter 2008

Ali Weber 1997-00

Brittany Veal 2001-03

ITA Scholar-Athletes

Brooke Cordell 2004

Lindsay Deason 2004

Christina Denny 2004

Anca Dumitrescu 2004

Miranda Foley 2006

Alida Gallovits 2002

Elizabeth Lawrence 2002

Alina Mihailescu 2004, 2006

Mihaela Moldovan 2004

Lisa Nystrom-Skold 2006

Ania Rynarzewska 2006, 2008

Amber Tantee 2004

Tapiwa Marobela 2008

Katie Rybakova 2008, 2011

Federica Suess 2008, 2011

Noemie Scharle 2011

CoSIDA Academic All-District III Team

Mihaela Moldovan 2004, 2005

All-ACC Academic Team

Ania Rynarzewska 2006, 2008, 2009

Lauren Macfarlane 2007

Nicola Slater 2007

Katie Rybakova 2008, 2009,2010, 2011

Jessica Sucupria, 2010

Federica Suess, 2011

Noemie Scharle 2009, 2011





## THE SCOTT SPEICHER TENNIS CENTER



With the first stage of construction completed in the summer of 1993, the Scott Speicher Tennis Center at the Donald Loucks Courts opened its gates to the public for the first time at a Children's Miracle Network charity tournament. Since then, many successful tournaments including the 1996 NCAA Women's Championships and 2007-2010 NCAA Regionals have graced the courts at one of Florida State University's premier athletic facilities.

Costing \$1.2 million to build and then another \$800,000 for recent additions, Florida State's Speicher Tennis Center has become an example of the increasing dedication and commitment the University has to all of its 19 varsity athletic programs.

The Speicher Tennis Center houses 12 lighted hard courts, over 1,000 court level seats, coaching offices, men's and women's locker rooms, equipment and storage rooms, a team lounge and a public address system. The growing pride Florida State has for its tennis program and its premier tennis center was honored just after its opening in 1994, when the United States Tennis Association (USTA) awarded the structure with its "Top Notch" facility award.



The Speicher Tennis Center was named in honor of Lieutenant Commander Michael Scott Speicher, a graduate of Florida State University. Speicher was considered the first American casualty during Operation Desert Storm, but was later reclassified by the United State's government as missing in action in 2001 and missing or captured a year later. However, in 2009 Speicher's remains were found in the Anbar province of Iraq after a nearly 20-year search. The Scott Speicher family was later honored by Florida State at a home football game with a missing man formation flyover from the Navy. By Presidential directive, the facility bears the name the "Scott Speicher Tennis Center."

In 1947, Loucks became Florida State's first basketball coach and a year later was named the school's first tennis coach. His tennis team was the first athletic team. The varsity tennis courts were named for Loucks in 1981. He served as Dean of men from 1957-1967 and was known as a servant of leadership, service and devotion to many worthy causes.



The Speicher Tennis Center was designed by EMO/Architects, Inc., a Tallahassee-based architectural firm, in collaboration with Global Consult Group, Inc., an internationally recognized Tennis Facility Design Consultant. The complex was funded by private sources and supervised through the state university system of Florida.

Through its 18 year existence, the Scott Speicher Tennis Center at the Donald Loucks Courts has served as the home courts for all Florida State men's and women's home dual matches, the annual Seminole Fall Classics, City of Tallahassee tennis championships, various USTA regional and zonal tournaments, the 1994 and 1995 Men's Intercollegiate tournament and the annual Children's Miracle Network Charity Invitational benefiting Shands Hospital in Gainesville. The tennis center has also been the site for the ITA Summer Circuit for men's and women's tennis in which high school and collegiate athletes participate in singles and double matches.







## THE INDOOR TENNIS FACILITY

After breaking ground on construction in January of 2010, the Indoor Tennis Facility was completed in April of 2011. The multimillion dollar Indoor practice facility serves as an additional playing arena for the Florida State tennis teams. Since the completion in spring of 2011, the facility has served as both a site for training and competition.

The building hosts six regulation courts, locker rooms, athletic training room, equipment room, office and lobby. With this new facility, both Seminole Tennis teams are equipped with the tools to host both regional and national championships now and in the future. For the next phase, plans are in place to add spectator seating, team lounges, extended locker rooms, offices and a press box.

Besides use from the tennis programs the Multi-Purpose Educational Facility is used for academic classes, clinics and camps. The facility is the only indoor tennis facility approved for college competition in the state of Florida and only one of a few in the southeast.

Florida State Head Women's Tennis Coach Jennifer Hyde stated, "We are very excited about the indoor facility that is being built for the tennis programs. This facility will ensure a consistent training program, with weather never being an issue affecting our practice schedules and training regime. It will allow us to host conference, regional and national championships in the future, which will only bring about more positive attention to our program. This facility highlights the continued support for our Women's Tennis Program demonstrated by the administration at Florida State. We are very excited for the completion of this project."

The women's tennis team had its first practice on April 6, 2011 while the men practiced the next day on April 7. At the men's Seminole Invitational during September 2011, the back draws were played there for the facilities first competition. The first women's dual match was played on January 21, 2012 against UCF where Florida State won 6-1. The men's team played Furman on January 22, 2012 and came off the courts with a 7-0 victory.

The three million dollar building was designed by Lewis and Whitlock while construction was completed by Rippee Construction.

The facility is located adjacent to the Morcom Aquatics Facility and the Don Veller Seminole Golf Course and Club at 2566 Pottsdamer Rd.







## ATHLETIC ADMINISTRATION



**Dr. Eric J. Barron**  
President



**Randy Spetman**  
Director of Athletics



**Pamela L. Perrewe'**  
Faculty Athletics  
Representative



**Monk Bonasorte**  
Senior Associate Athletics Director



**Kevin Terry**  
Senior Associate Athletics  
Director/CFO



**Jon Jost**  
Women's Tennis Oversight



**Avi Assidon**



**Allan Bense**



**Edward E. "Ed" Burr**



**Susie Busch-Transou**



**Joseph L. Camps**



**Emily Fleming Duda**



**Joseph Gruters**



**WM. Andrew Haggard, Chair**

### Florida State 2011-2012 Board of Trustees



**James E. Kinsey, Jr.**



**Sandra Lewis**



**Mark Hillis**



**Margaret A. "Peggy" Rolando**



**Brent W. Sembler**