

FLORIDA STATE

TENNIS | 2010-11



UNITE



1. COVER

2. TABLE OF CONTENTS

3-4. THIS IS FLORIDA STATE TENNIS

5. THIS IS FLORIDA STATE

6. THIS IS TALLAHASSEE

7. COMMUNITY SERVICE

8. FACILITIES

9. SEASON PREVIEW | SCHEDULE

10. ROSTER | TEAM PHOTO

11. JENNIFER HYDE

12. OLIVER FOREMAN

13. SUPPORT STAFF

TABLE OF CONTENTS

The 2010-11 Florida State women's tennis yearbook was written by Matt Mendelson with additional editing by Matt Mendelson. Photographs are courtesy of Ryals Lee, Matt Mendelson, Jennifer Novoy, Elliott Finebloom, Mike Olivella, and the Florida State Tennis Team. The yearbook guide was designed by Matt Mendelson.



BLE F ENTS

ennis virtual guide was edited by Zach
Maryjane Gardner and Elliott Finebloom.
e, Jr., FSU Photo Lab, Ross Obley, Larry
, Steve Musco and Bill Kallenberg. This
d by Aaron Steele.

14. KATIE RYBAKOVA

15. FERDERICA SUESS

16. NOEMIE SCHARLE

17. FRANCESCA SEGARELLI

18. AMY SARGEANT

19. MANON VELDMAN

20. RUTH SEABORNE

21. SEASON REVIEW

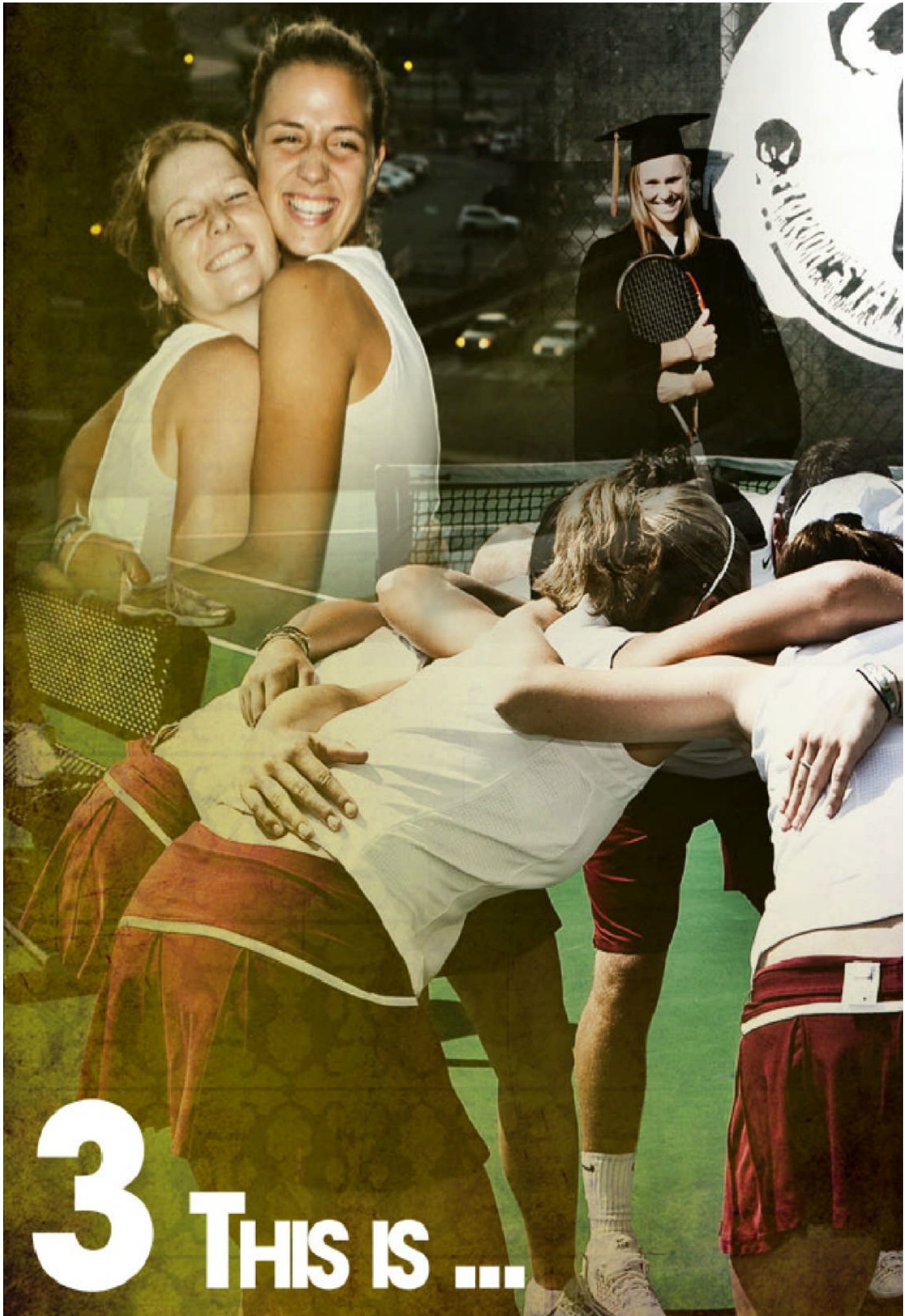
22. TOP SEMINOLES

23. SEMINOLE RECORDS

24. SEMINOLE AWARDS

25. HISTORY





3 THIS IS ...





4 FLORIDA STATE TENNIS



THIS IS FLORIDA STATE

University I

Location: Tall

Founde

Enrollme

Symbol: S

Colors: Garn

Conference: Atlanti

President: Dr.

Athletics Director

Women's Tenn

Head Coach: Jenn

Record at FSU/

Career Record/Y

Associate Head Coach: C

Tennis Office Pho

Office Fax: 8

Home Facility: Scott S

2009-10 Seas

2009 Rec

2009 ACC Record/F

Final ITA R

Letterwinn

Newco



Eric Baron
University President

5

One of the nation's elite rese
State University — with the C
designation: Doctoral/Rese
offers a distinctive academi
cherished values and unic
campus on the oldest contin
in Florida, championship ath
in the heart of th

Information
Tallahassee, Fla.
Founded: 1851
Enrollment: 40,255
Seminole
Silver and Gold
Florida Coastal Conference
Head Coach: Eric J. Barron
Assistant Coach: Randy Spetman

Additional Information
Head Coach: Jennifer Hyde (FSU '95)
Years: 88-60/6
Years: 143-116/13
Head Coach: Oliver Foreman (MTSU '02)
Phone: 850-644-1893
850-644-3451
Weber Tennis Center

Season In Review
Record: 16-11
Finish: 6-4/5th place
Ranking: 14
W/L: 5/3
Comers: 2

Research universities, The Florida
Carnegie Foundation's highest
Research University-Extensive —
Athletic environment built on its
unique heritage, a welcoming
historic site of higher education
athletics, and a prime location
near the state capital.



Randy Spetman
Director of Athletics

6 THIS IS TALLAHASSEE

Tallahassee boasts diverse heritage and is flourishing with many cultural rhythms and flavors. Museums, festivals, cuisine, arts and crafts, and round events honor and celebrate a diversity of heritage in the Tallahassee area. Florida's Capital City played a big role in the story of Florida and American history, and it still makes history today.

Tallahassee Up Close

- Tallahassee is home to more than 60,000 college students between Florida State University, Florida A&M University and Tallahassee Community College.
- Nearly 60 percent of Tallahassee's population is between the ages of 18-44.
- The average maximum temperature in Tallahassee is 78 degrees and almost 25 percent of the year the temperature is above 90 degrees.
- The capital of the State of Florida has been located in Tallahassee since 1823.
- The Gulf of Mexico is just 20 miles south of Tallahassee and the Georgia border is just 14 miles to the north.
- America's largest concentration of original plantations - 300,000 acres of plantations - exists between Tallahassee and Thomasville, Georgia, just 100 miles away.

ures,
year-
hassee
nd in

n Florida
College.

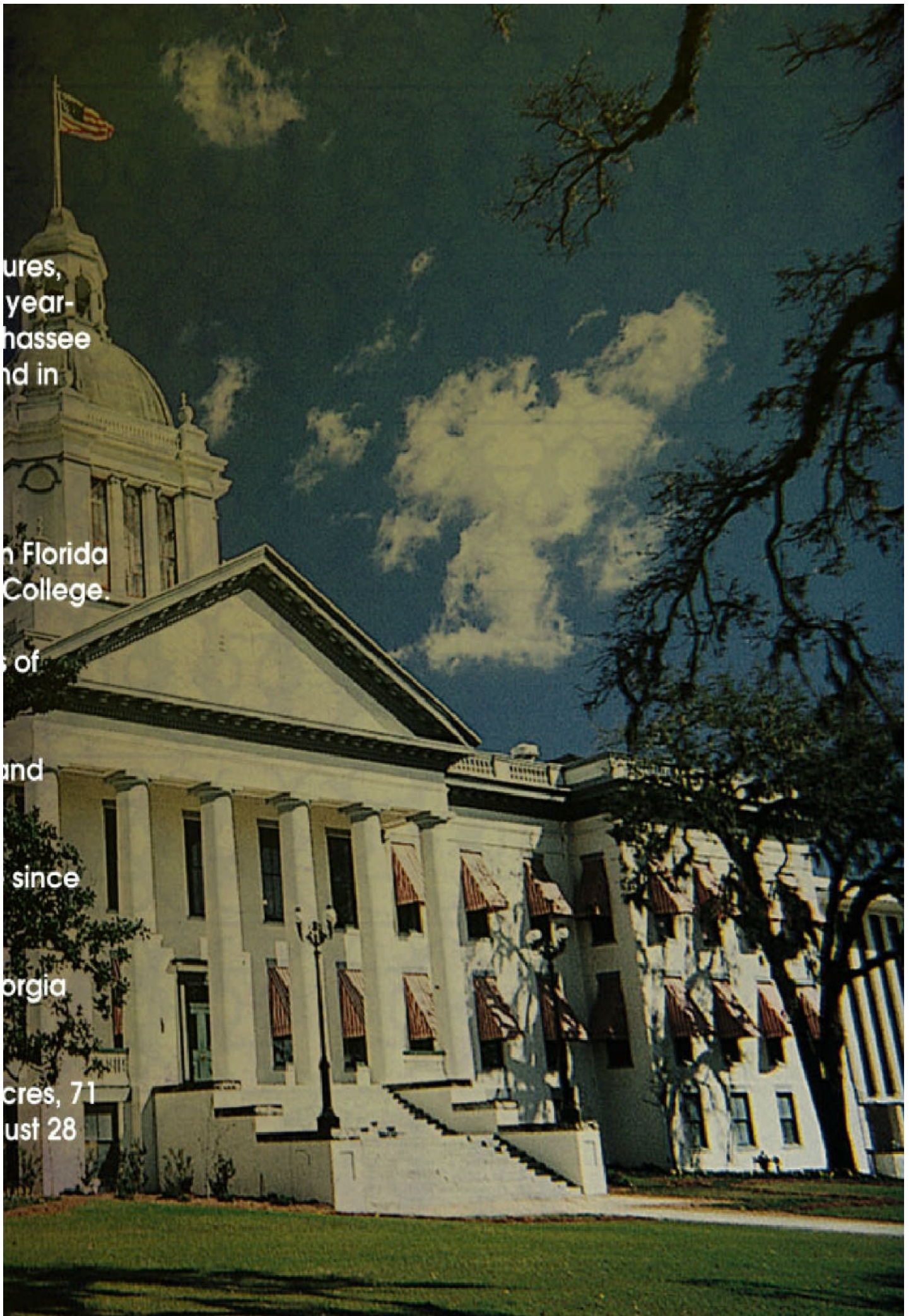
s of

and

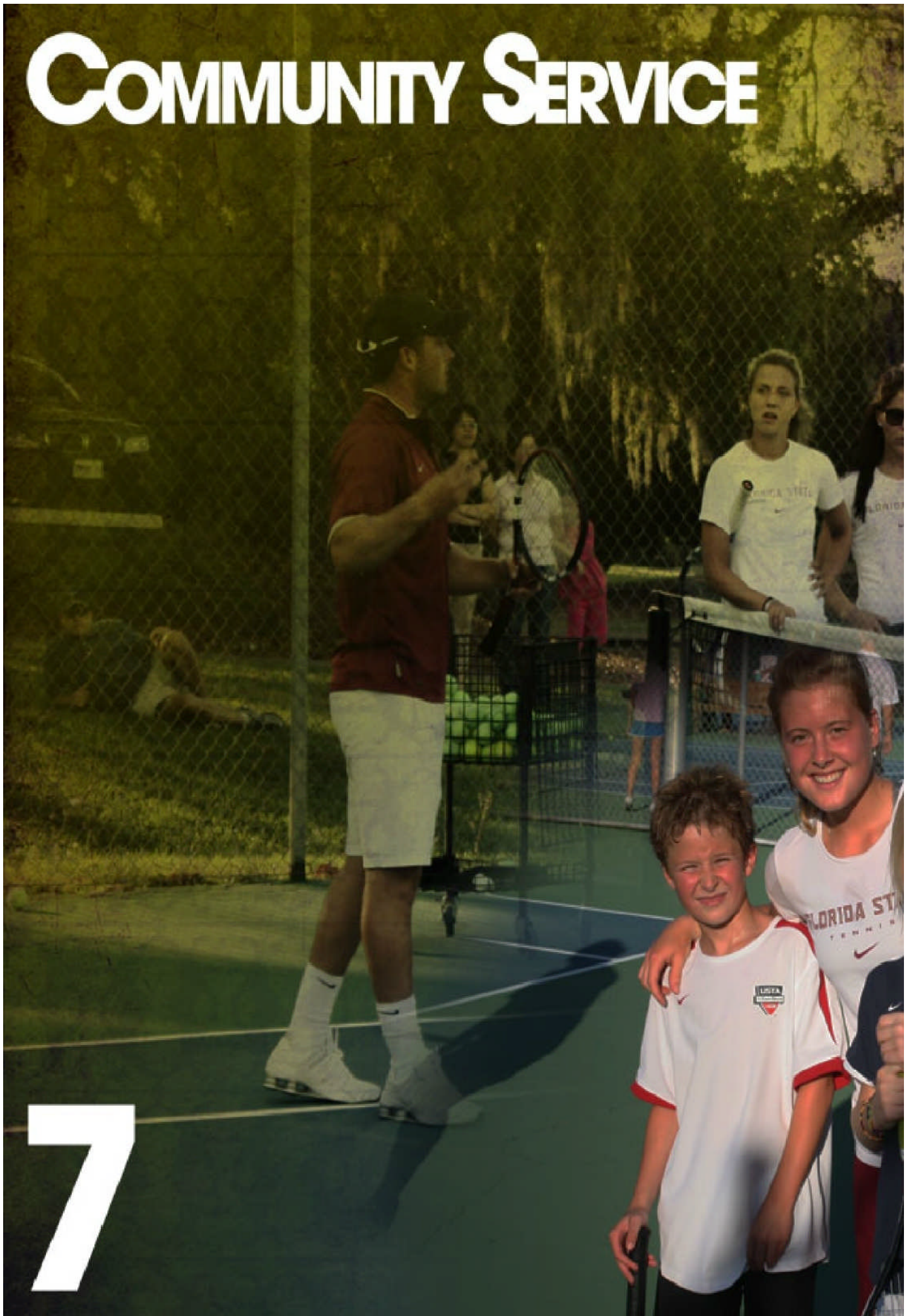
since

orgia

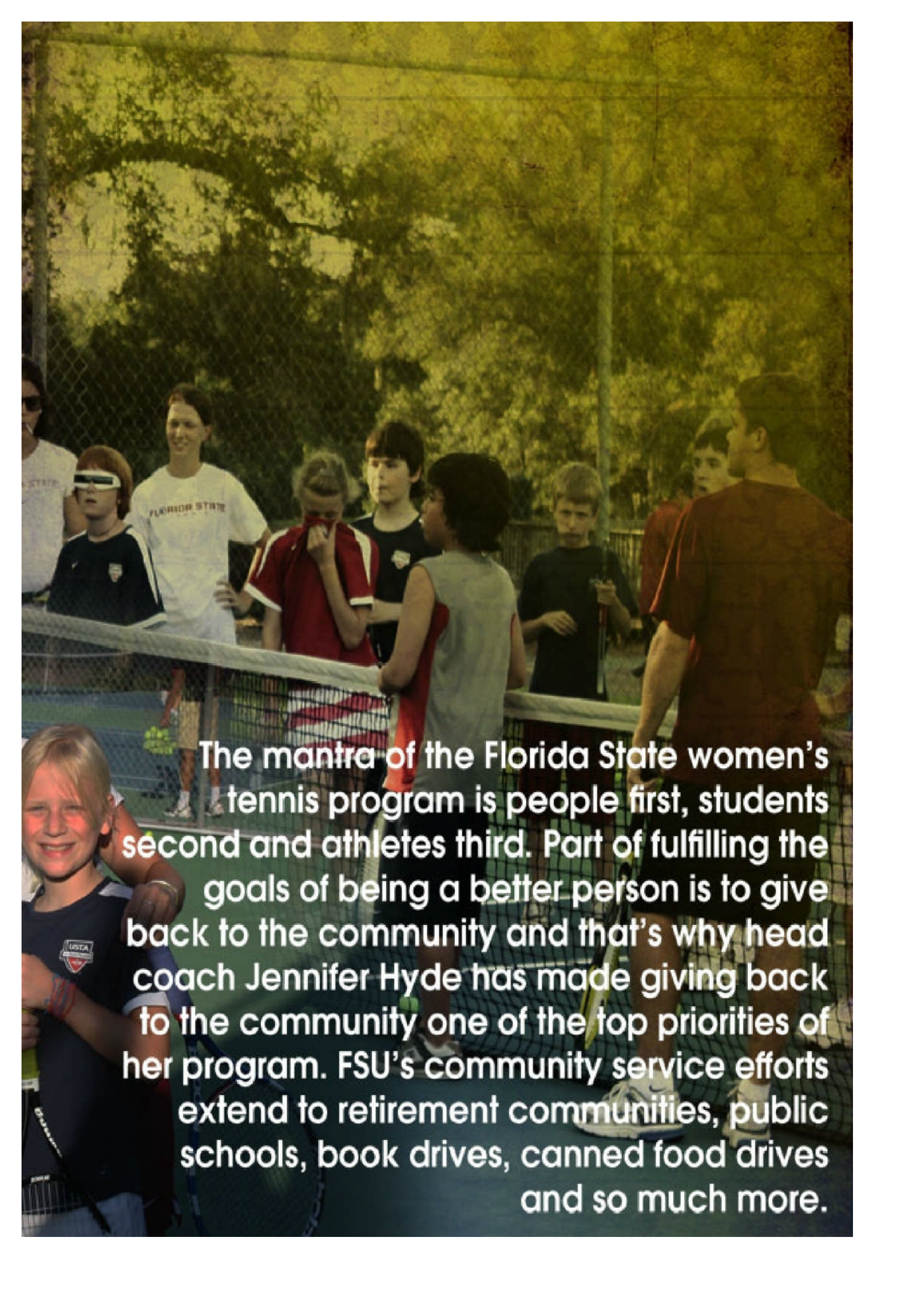
res, 71
ust 28



COMMUNITY SERVICE



7

A photograph of a tennis court at night. In the foreground, a young boy with blonde hair, wearing a dark blue USA tennis shirt, is smiling. Behind him, a group of people, including several young women in white and red tennis attire, are gathered around a tennis net. One woman in a white shirt has "FLORIDA STATE" printed on it. A man in a dark red shirt is seen from the back, talking to the group. The background shows a chain-link fence and trees illuminated by stadium lights.

The mantra of the Florida State women's tennis program is people first, students second and athletes third. Part of fulfilling the goals of being a better person is to give back to the community and that's why head coach Jennifer Hyde has made giving back to the community one of the top priorities of her program. FSU's community service efforts extend to retirement communities, public schools, book drives, canned food drives and so much more.

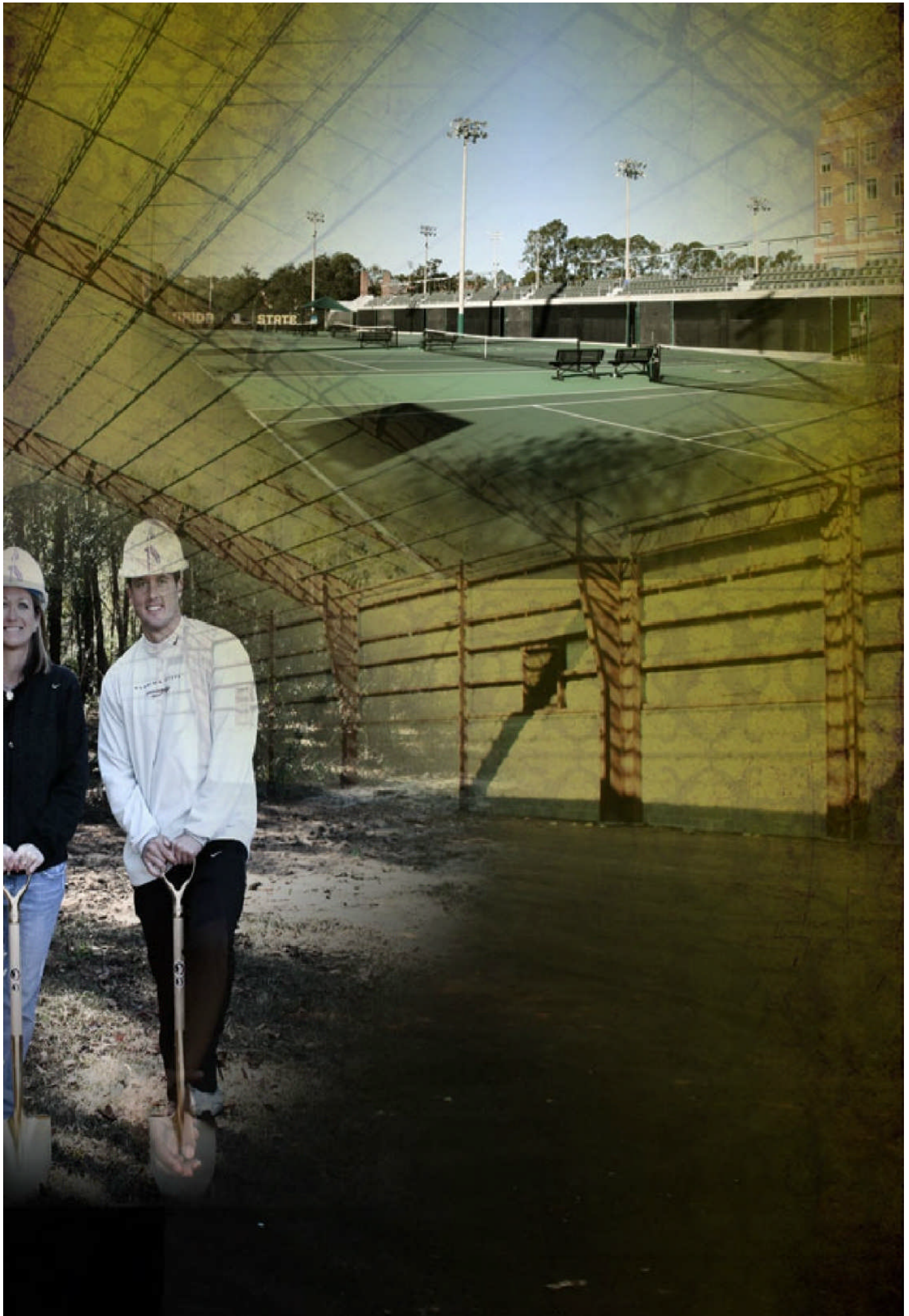
8 FACILITIES

42,350 Square Feet
Six Indoor Courts
Team Locker Rooms
Team Lounge
Seating For ~ 500

First phase expected to be completed this Spring and will serve as a practice facility and inclimate weather match facility in 2011.

"We are very excited about the indoor facility that is being built for the tennis programs. This facility will ensure a consistent training program, with weather never being an issue affecting our practice schedules and training regime. It will allow us to host conference, regional and national championships in the future, which will only bring about more positive attention to our program. This facility highlights the continued support for our Women's Tennis Program demonstrated by the administration at Florida State. We are very excited for the completion of this project."

- Head Coach Jennifer Hyde





Alabama
Tallahassee, FL
1.15.11



Auburn
Tallahassee, FL
2.11.11

SEAS
PREV



UCF
Tallahassee, FL
1.16.11 & @ 3.9.11



Miami
@ Miami, FL
2.13.11



USF
@ Tampa, FL
3.6.11



Iowa
Tallahassee, FL
1.17.11



Georgia Tech
@ Atlanta, GA
2.26.11



Clemson
Tallahassee, FL
3.13.11



FIU
Tallahassee, FL
1.22.11



Florida
Tallahassee, FL
3.1.11



Georgia
Tallahassee, FL
3.17.11



Virginia Tech
@ Blacksburg, VA
3.26.11



Maryland
@ College Station, MD
4.8.11



Virginia
@ Arlington, VA
3.27.11



Boston College
@ Boston, MA
4.10.11



NC State
Tallahassee, FL
4.1.11



UNC
Tallahassee, FL
4.15.11



Wake Forest
Tallahassee, FL
4.3.11



Duke
Tallahassee, FL
4.17.11

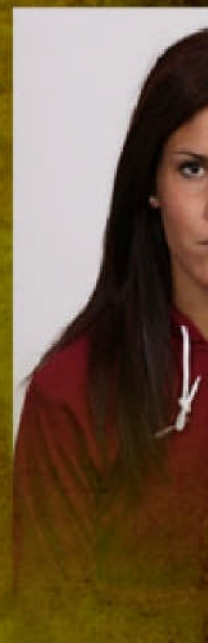
10 MEET THE SEMINOL



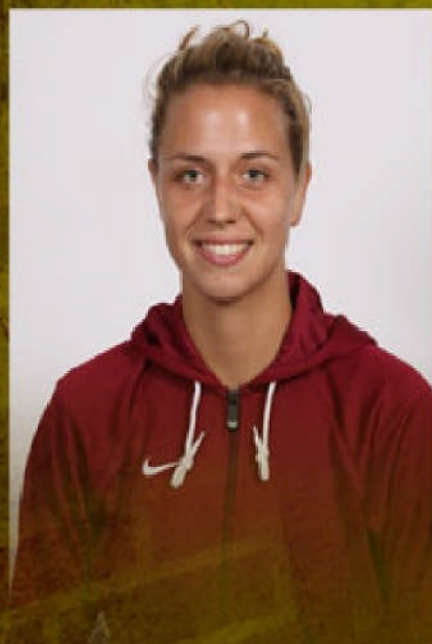
Katie Rybakova (SR)
Coral Springs, FL



Amy Sargeant (SO)
Walsall, England



Noemie Sa
Colmar-Berg,



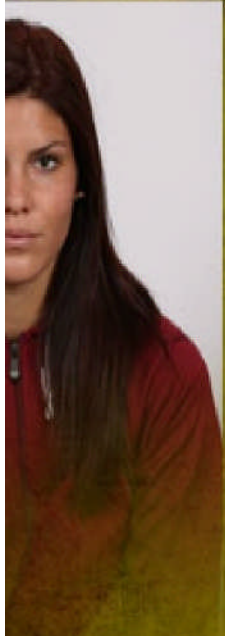
Federica Suess (SR)
Ludwigshafen, Germany



Manon Veldman (FR)
Reuver, The Netherlands



ES



Charle (SO)
Luxembourg



Ruth Seaborne (FR)
London, England



Francesca Segarelli (SO)
Rome, Italy



Jennifer Hyde
Head Coach



Oliver Foreman
Associate Head Coach

Head

JENNIFER HYDE

What was your first car? A 1986 Midnight Blue Jeep CJ7 Renegade. It had big headers on it, sounded like a tank coming down the street. It was huge and the coolest car I have ever had.

Your favorite movie? Shawshank Redemption.

Favorite meal? I love Thai food, French food and thin crust pizza.

Something people may not know about you? I am finishing my masters degree on April 30th in Sports Management.

Most memorable moment at FSU? I have had so many truly memorable moments, but the one that stands out the most is when Jessie clinched the fourth point to beat South Carolina so this team could go to the Sweet 16 for the first time.

11

Coach



Jennifer Hyde enters her seventh season as the Florida State Head Coach with an 88-60 all-time record.

A former Seminole, Hyde was a four-year letter winner and captain of the 1994 Florida State tennis team which finished the year ranked No. 17, the highest ranking in school history (at the time).

Hyde has coached FSU to four consecutive seasons ranked in the ITA top 20 final rankings, and four consecutive appearances in the semifinals of the ACC Tournament.

In 2009-10 FSU was selected to host the first and second rounds of the NCAA Championship for just the second time in program history.

Hyde led the Seminoles to its first ever NCAA Round of 16 appearance in the 2009-10 season. Florida State finished No. 14, the highest ranking in school history.

Was named the 2006-07 ITA South Region Coach of the Year.

Associate Ho

OLIVER FOREMAN

Any interesting hobbies? Golf, golf, and more golf

Something most people don't know about you? I'm engaged

Best memory (on or off the courts) while at FSU? Making sweet 16 for the 1st time ever

Favorite meal? Mother's Christmas Roast

Favorite movie? The Insider and Shawshank Redemption

12

Head Coach



Oliver Foreman enters his sixth season as the Associate Head Coach

In 2009 Coach Foreman was awarded the ITA National Assistant Coach of the Year and the ITA South Region Assistant Coach of the Year

Promoted from Assistant Coach to Associate Head Coach

Foreman has coached FSU to four consecutive seasons ranked in the ITA top 20 final rankings, and four consecutive appearances in the semifinals of the ACC Tournament, and as recent as last year took the Noles through to the Sweet 16 for the first time in program history, and an all time high end of year ranking of #14.

A member of the Professional Tennis Tour from 2002-04, Foreman won the 2002 Irish National Open in both the doubles and singles competitions. He also made it to the final pre-qualifying round for Wimbledon in 1998 and 2000

Foreman competed at Middle Tennessee State where he was named to the Ohio Valley All-Conference team (1999, 2000) and the Sunbelt All-Conference Team (2001, 2002).

13 SUPPORT STAFF

Tami Brown
Team Secretary

Rachel Tullius
Team Manager



Allison Rich
Senior Associate
Athletics Director



Kevin Terry
Senior Associate
Athletics Director



Monk Bonasorte
Senior Associate
Athletics Director



Stuart Pearce
Assistant Director of
Event Management

Dave Plett
Strength and Conditioning

Paul Tschida
Team Trainer



Jon Jost
Sports Oversight



Nicole Haves
Marketing



Ryan Soule
Team Stringer



Zach Mendelsen
Media Relations

KATIE RYBAKOVA

A background image of a tennis player, Katie Rybakova, in a pink and white outfit, captured in the middle of a tennis swing on a court. The image is slightly blurred and has a dark, textured overlay.

1. Favorite book?

Eat, Pray, Love by Elizabeth Gilbert.

2. Song/artist you are currently listening to on your iPod? Lil Wayne.

3. Favorite movie?

The Hangover

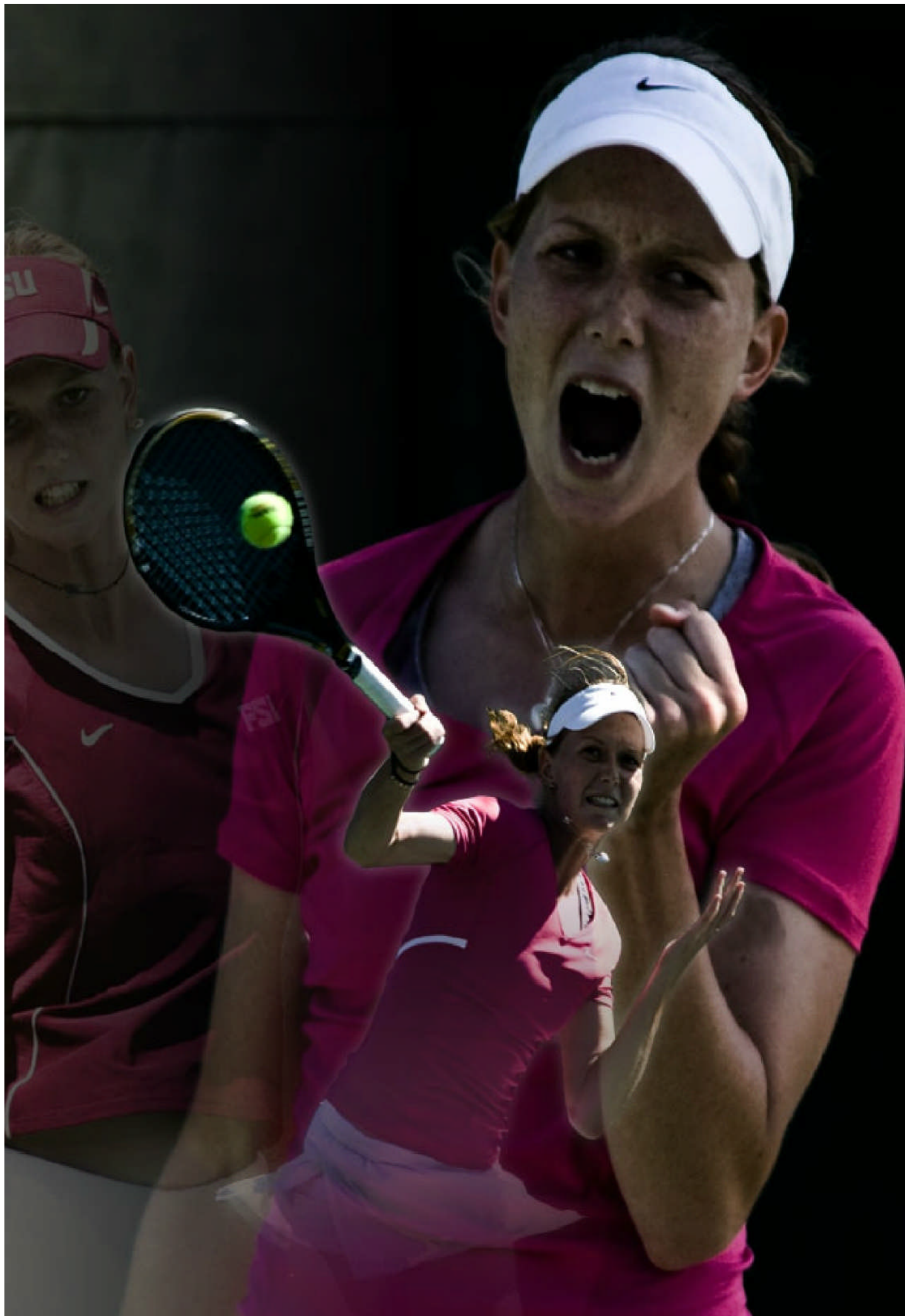
4. Want to be remembered for?

Being a good friend.

5. Proudest moment?

Last year at the FSU courts when we made it to the Sweet 16.

14



FEDERICA SUESS

1. Favorite book?

Sidarta by Herman Herse.

2. Person in sports would you most like to meet?

Rafael Nadal.

3. How many languages do you speak?

Four - Spanish, Italian, English and German.

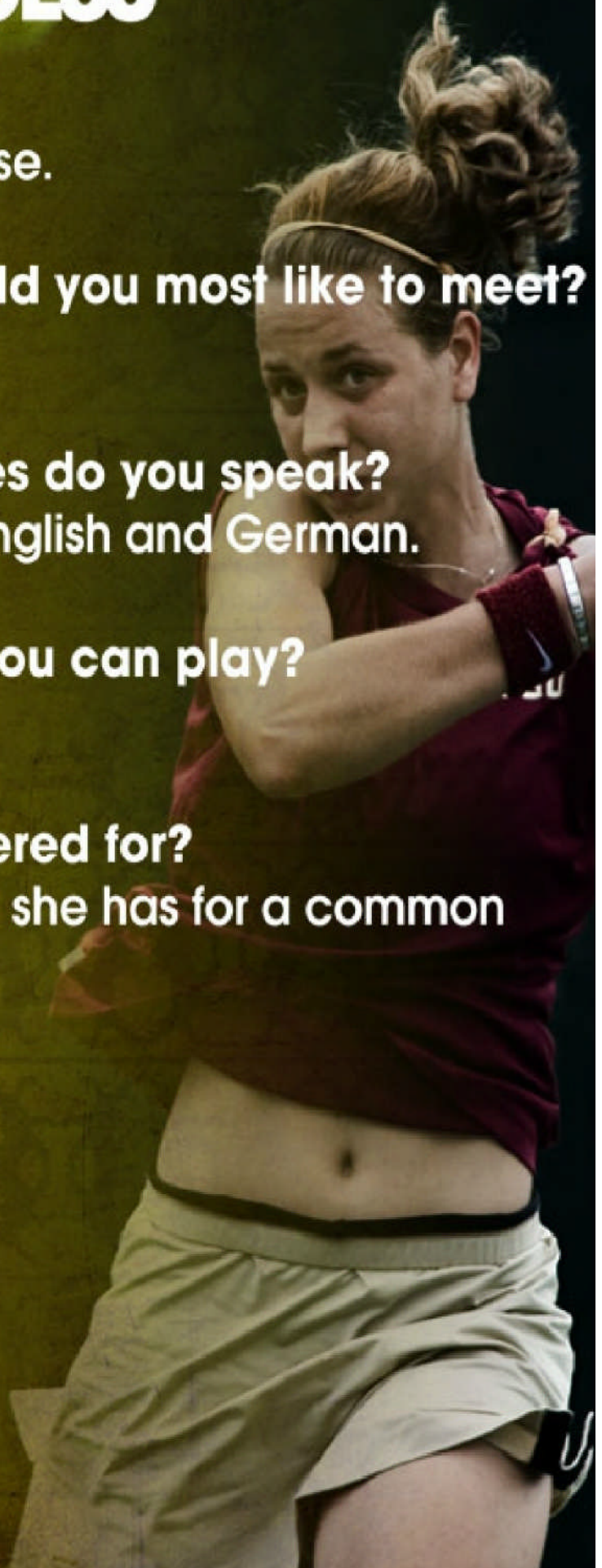
4. Musical instrument you can play?

The piano.

5. Want to be remembered for?

Somebody that gives all she has for a common goal.

15





NOEMIE SCHARLE



1. Favorite book?

Angels and Demons.

2. Currently listening to on your iPod?

Smooth Criminal by Michael Jackson.

3. How many languages do you speak?

Four - Luxemburgish, French, English and German.

4. Musical instrument you can play?

Guitar with my tennis racket.

5. Want to be remembered for?

To always be there for my team.

16



FRANCESCA SEGARELLI

A photograph of Francesca Segarelli, a tennis player, wearing a white visor, a white Nike tank top, and a red tennis skirt. She is captured in a dynamic pose, looking intently towards the camera with her mouth slightly open, as if during a match or practice.

1. What is your favorite movie?

Gladiator.

2. How many languages do you speak?

Three - English, Italian and Spanish.

3. Favorite home cooked meal?

Spaghetti alla matriciana.

4. What other sports did you play in high school? Volleyball, soccer and track and field.

5. Most want to be remembered for?

For always playing with passion.

17



AMY SARGEANT

1. Favorite movie?

Notting Hill.

2. Currently listening to on your iPod?

Alicia Keys, Empire State of Mind.

3. Favorite professional team?

Manchester United.

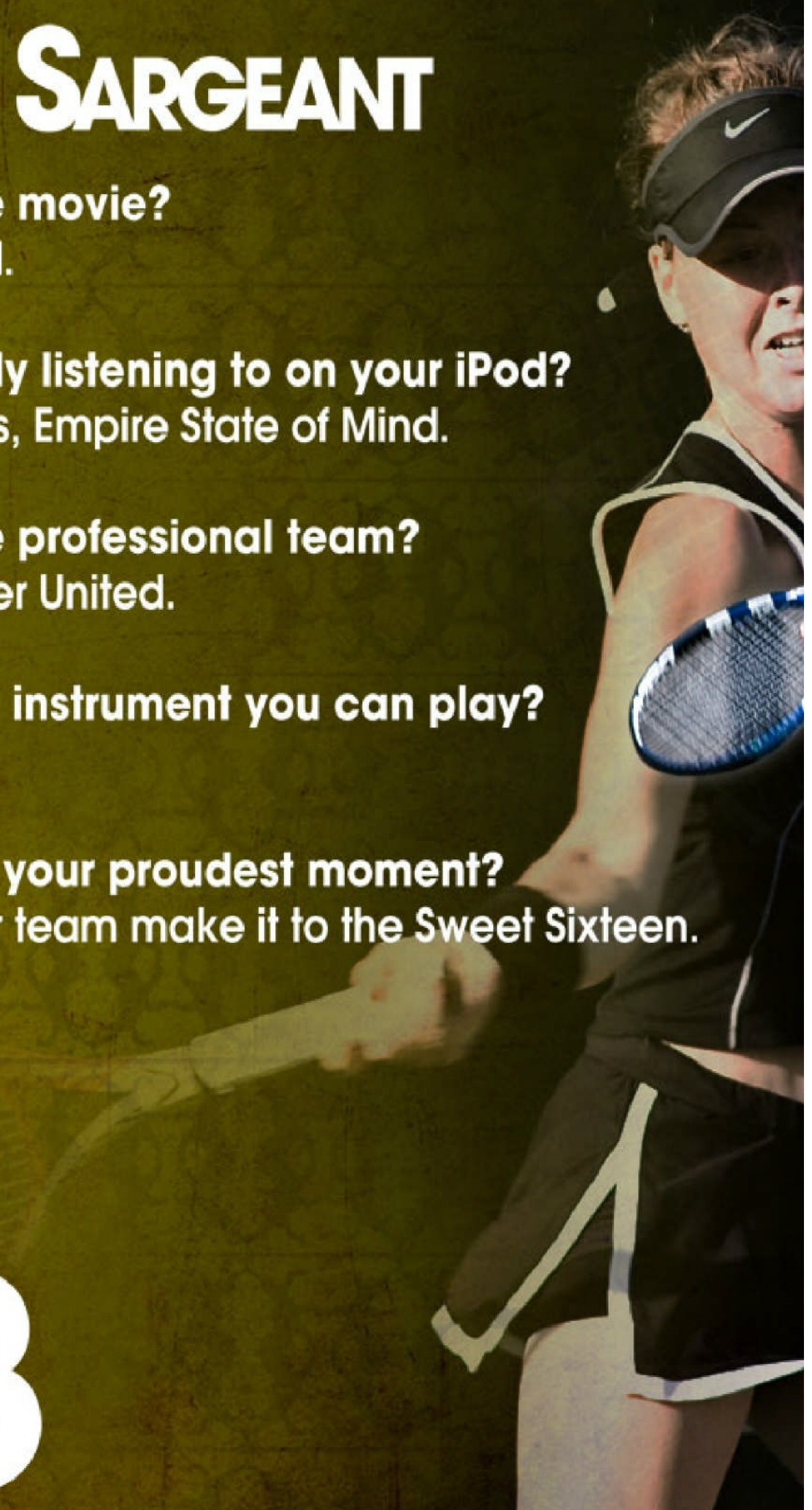
4. Musical instrument you can play?

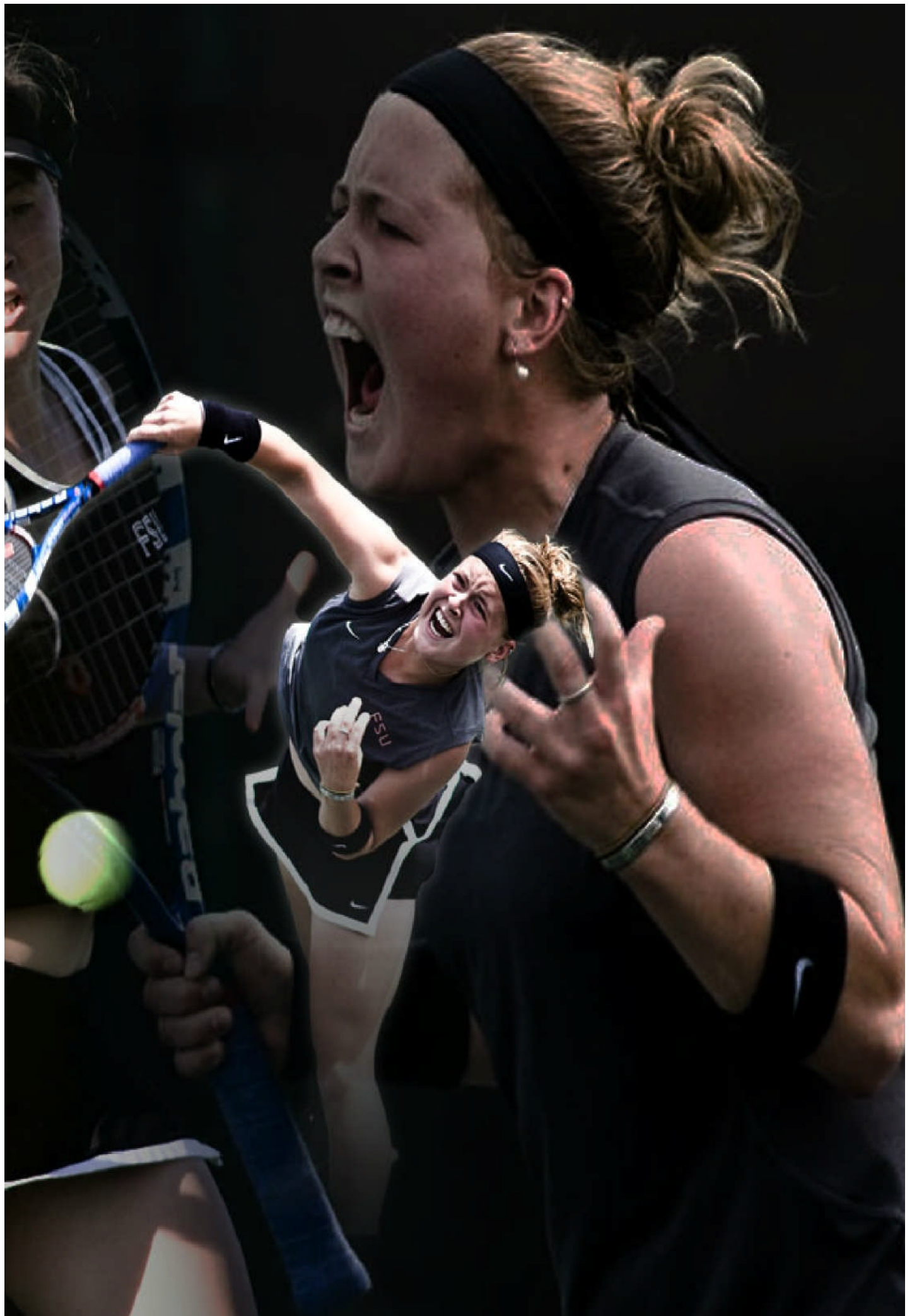
The violin.

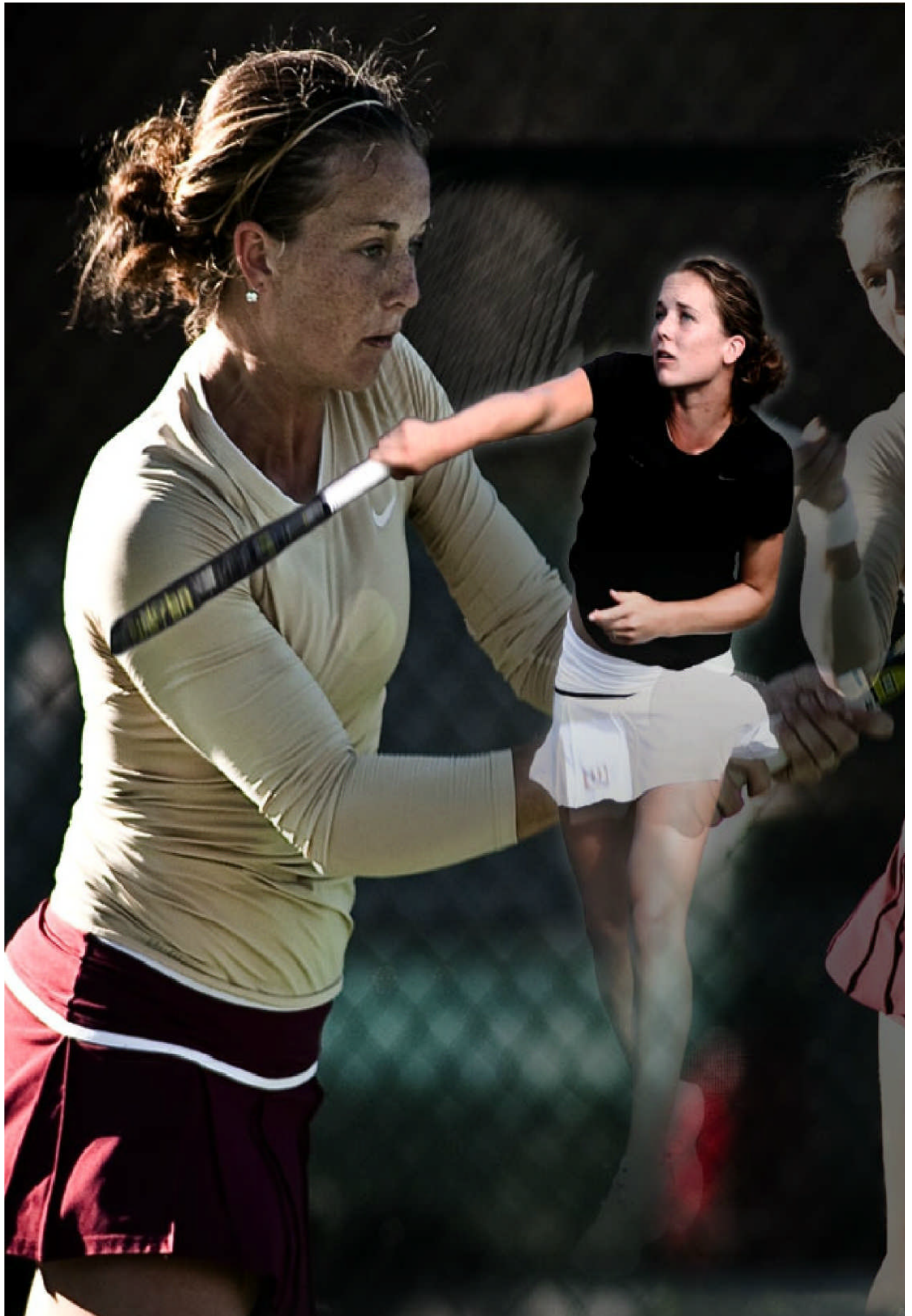
5. What is your proudest moment?

Seeing our team make it to the Sweet Sixteen.

18







A woman in a white tennis shirt and red shorts is shown from the waist up, standing on a tennis court. The background is a textured, olive-green color.

MANON VELDMAN

1. Favorite movie?
Lord of the Rings.

2. Person in sports would you must like to meet?
Roger Federer.

3. Musical instrument you can play?
The clarinet.

4. Currently listening to on your I Pod?
John Mayer.

5. Favorite flavor of ice cream?
Stratchiatella.

19



RUTH SEABORNE

1. Favorite movie?
Matilda and Ace Ventura.

2. Can you play a musical instrument?
Acoustic Guitar.

3. What is your favorite book?
Harry Potter.

4. Person in sports would you most like to meet?
Kim Clijsters, she is my idol.

5. What is your proudest moment?
Playing main draw junior Wimbledon.



20

FLORIDA STATE SEASON REVIEW



Hosted the first two rounds of the NCAA Tournament and advanced to the Sweet Sixteen for the first time in program history

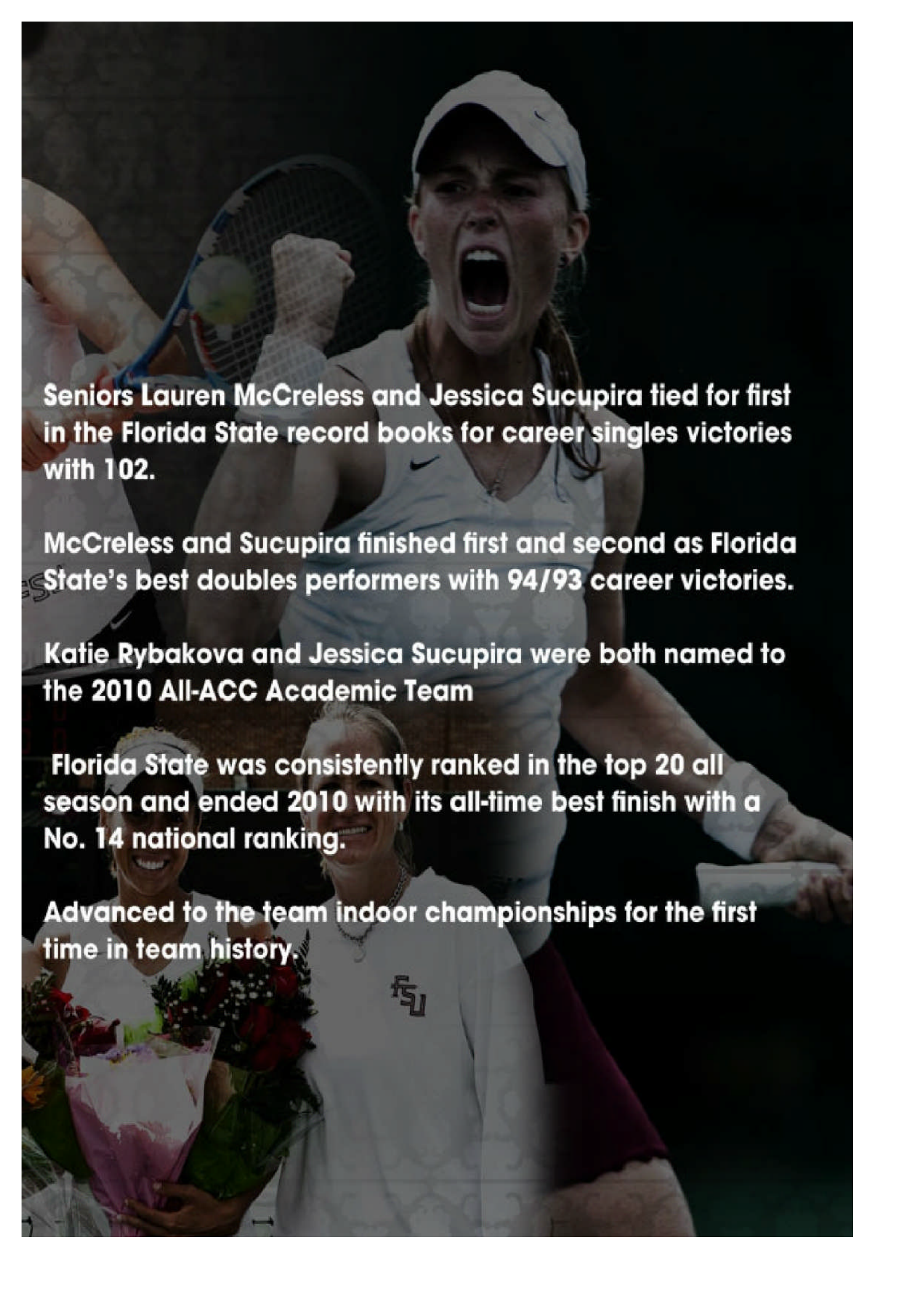
Newcomer Francesca Segarelli was honored by the conference as the 2010 ACC Freshman of the Year.

Senior Lauren McCreless and junior Katie Rybakova were each named to the All-ACC Team for the third time in their careers.

Defeated defending National Champions Duke 4-2 in the ACC Tournament, preventing the Blue Devils from advancing to the ACC semifinals for the first time since 1986.

Made its third-consecutive ACC semifinal appearance, and fourth overall, in program history.

21



Seniors Lauren McCreless and Jessica Sucupira tied for first in the Florida State record books for career singles victories with 102.

McCreless and Sucupira finished first and second as Florida State's best doubles performers with 94/93 career victories.

Katie Rybakova and Jessica Sucupira were both named to the 2010 All-ACC Academic Team

Florida State was consistently ranked in the top 20 all season and ended 2010 with its all-time best finish with a No. 14 national ranking.

Advanced to the team indoor championships for the first time in team history.



Patti Henderson 1982-1986

Patti was a three-time winner of the College Tennis Coaches Association National Championship. During her time at Florida State she won 68 singles matches and 71 doubles matches. After her playing career she was named the Head Coach in 1988. She is the only woman to have been named the Metro Conference's Most Valuable Player (1986), and Coach of the Year (1989 and 1991). She was inducted into the FSU Athletics Hall of Fame in 1992.



Buffy Baker 1987-1991

Buffy posted 94 singles win and won three consecutive Metro Conference titles in Doubles (1989-1991). She was a four-time All-Metro Conference selection. Buffy finished her Metro Conference career in 1991 by winning conference titles in singles and doubles, earning her the conference's Most Valuable Player. She led Florida State to a first place finish in the Metro Conference. She was inducted into the FSU Athletics Hall of fame in 1997.

22 TOP SEMINOLES



Audra Brannon 1990-1994

In just her second season, 1991, won the Metro Conference Flight Championships in doubles and garnered All-ACC honors. During her junior season she received All-ACC honors, named an All-American and received the ITA/Arthur Ashe Jr. Award for Leadership and Sportsmanship. Audra capped off her senior season by being named the ACC Player of the Year and advanced to the NCAA Round of 8 in doubles with partner Laura Randmaa. She was inducted into the FSU Athletics Hall of Fame in 2007.v



Lori Sowell 1994-1997

During her freshman year she compiled a season record of 24-9, winning ACC Rookie of the Year and All-ACC honors. She finished with 62 singles wins and 61 double wins for her career. She was a two-time All-American, four-time All-ACC, and four-time Academic All-ACC selection. She ended her career by advancing to the quarterfinals of the 1996 NCAA Tournament, further than any FSU women's player had before. She was inducted into the FSU Athletics Hall of Fame in 2003.

SEMINOLE RECORDS



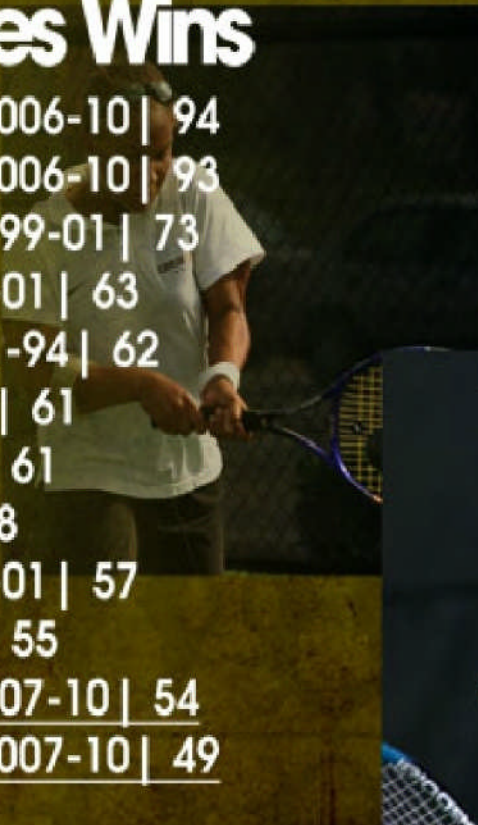
Career Singles Wins

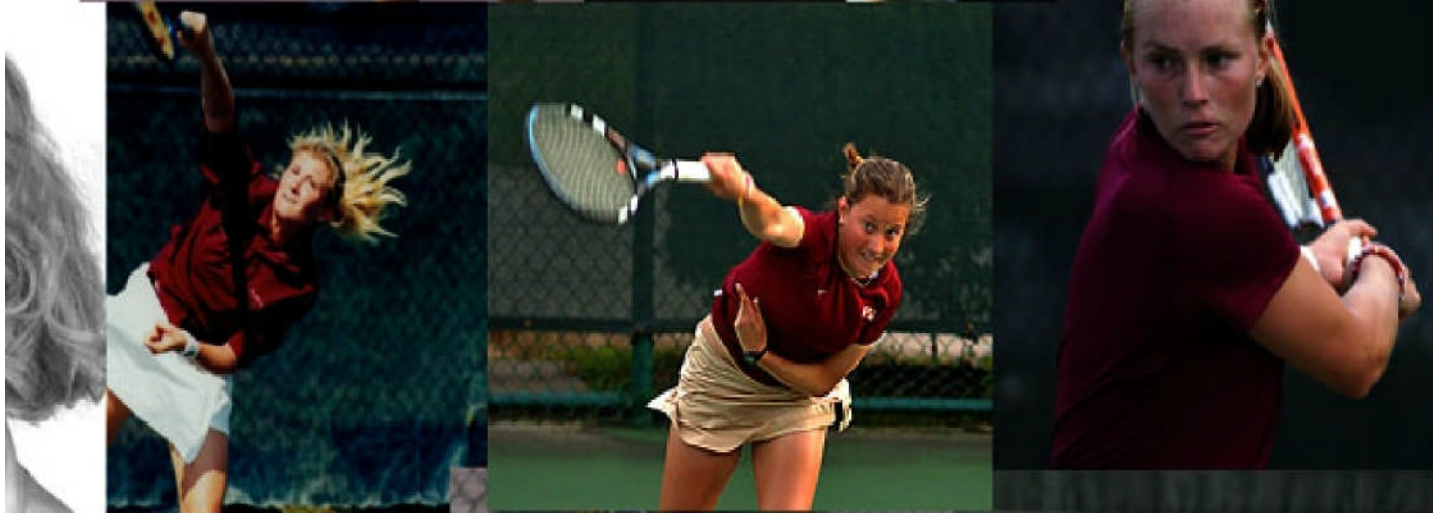
1. Jessica Sucupira | 2006-10 | 102
2. Lauren McCreless | 2006-10 | 102
3. Ali Weber | 1997-00 | 94
4. Buffy Baker | 1988-91 | 91
5. Kia Asberg | 1997-00 | 88
6. Federica Suess | 2007-10 | 84
7. Katie Rybakova | 2007-10 | 79
8. Alida Gallovits | 1999-01 | 77
9. Mihaela Moldovan | 2003-05 | 76
10. Jessica Balbuena | 1999-01 | 74



Career Doubles Wins

1. Lauren McCreless | 2006-10 | 94
2. Jessica Sucupira | 2006-10 | 93
3. Jessica Balbuena | 1999-01 | 73
4. Alida Gallovits | 1999-01 | 63
5. Audra Brannon | 1991-94 | 62
6. Lori Sowell | 1994-97 | 61
- Ali Weber | 1997-00 | 61
8. Nicki Ivy | 1989-92 | 58
9. Nanette Duxin | 1998-01 | 57
10. Elke Juul | 1992-96 | 55
11. Federica Suess | 2007-10 | 54
12. Katie Rybakova | 2007-10 | 49





SEMINOLE AWARDS

13th straight Golden Nole awards given to the women's program who has the highest grade point average.

Lauren McCreless ITA Southeast Region Senior Player of the Year and the Cissie Leary Sportsmanship Award.

Jessica Sucupira ITA/Arthur Ashe Sportsmanship and Leadership Award.

Francesca Segarelli ACC Freshman of the Year.

Katie Rybakova three-time ALL-ACC member and two time Golden Torch Award winner

Ania Rynarzewska honored with an ACC Post Graduate Scholarship and a first ever Jim McKay Post Graduate Scholarship recipient.

Coach Jennifer Hyde 2006-07 ITA South Region Coach of the Year

24







1960 FSU Racquettes



2002-03 Womens Tennis

20

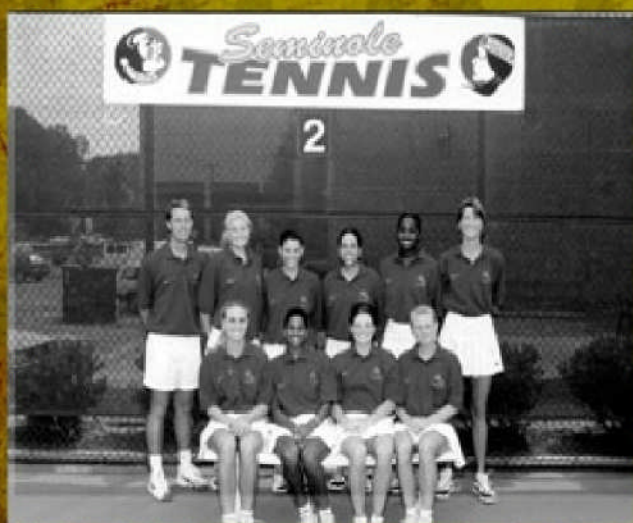


1975 -76 Womens Tennis



2004-05 Womens Tennis

20



1996 Womens Tennis



2005-06 Womens Tennis

20

HISTORY



1960 FSU Racquettes



2002-03 Womens Tennis



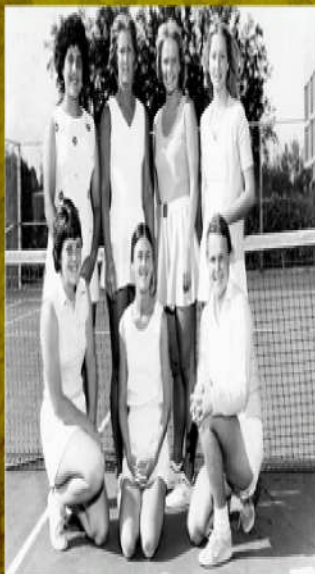
2006-07 Womens Tennis



Anne Davis
1980-86 (eight seasons)
(141-105, .573)



Lise Gregory
1996-2004 (eight seasons)
(119-83, .589)



1975-76 Womens Tennis



2004-05 Womens Tennis



2007-08 Womens Tennis



Patti Henderson
1987-91 (four seasons)
(53-38, .582)



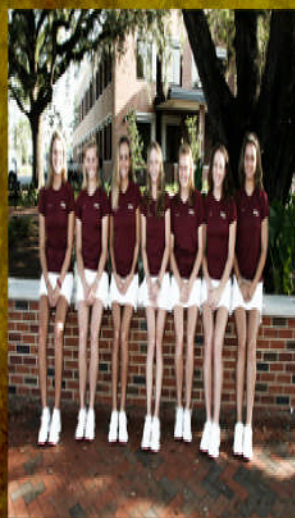
Jennifer Hyde
2004-Present
(88-60, .595)



1996 Womens Tennis



2005-06 Womens Tennis



2008-09 Womens Tennis



Alice Reen
1992-96 (five seasons)
(60-50, .545)

25

