

tennis

FLORIDA STATE

UNIVERSITY

1997 WOMEN'S

TENNIS

MEDIA GUIDE



LORI
SOWELL
- ALL AMERICAN



COACH
LISE
GREGORY

TABLE OF CONTENTS

Media Information	1	Support Services	18
This is Tallahassee	2	Speicher Tennis Center	19
This is Florida State	4	Year by Year Results	20
This is FSU Tennis	6	Honors and Awards	22
Coach Biographies	8	Conference Records	24
Player Biographies	10	All-Time Records	25
1996 in Review	14	Around the ACC	26
1996 Statistics	15	1997 Opponents	28
All-Time Roster	17	1996-97 Roster	IBC

FLORIDA STATE UNIVERSITY QUICK FACTS

Location	Tallahassee, Florida
Enrollment	30,200
Founded	1857
Nickname	Lady Seminoles
Colors	Garnet and Gold
Conference	Atlantic Coast
Affiliation	NCAA Division I
President	Talbot "Sandy" D'Alemberte
Home Courts	Don Loucks Varsity Courts at the Scott Speicher Tennis Center
Athletic Director	Dave Hart, Jr.
Assistant Athletic Director	Kim Record
Sports Information Director	Rob Wilson
SID Office Phone	(904) 644-1403
Tennis SID	Joe Hornstein
Tennis SID Phone	(904) 644-5656
Tennis SID Home Phone	(904) 575-0451
SID Fax Phone	(904) 644-3820
SID Mailing Address	P.O. Box 2195 Tallahassee, FL 32316
Head Coach	Lise Gregory
Overall Record/Years at FSU	First Season
Assistant Coach	Tim Bauer
Tennis Office Phone	(904) 644-1092
1995-96 Record/Conference	8-11/4-4 (3rd)
1995 Final Ranking	No. 35 ITA/Rolex
Players Returning/Lost	6/2
Newcomers	2

MEDIA INFORMATION

A NOTE TO THE MEDIA, FANS AND OPPONENTS

Seminole Tennis publicist Joe Hornstein of the Florida State University Sports Information Office are ready to assist you with any questions or requests you may have about the 1996 Seminole Tennis program, media guide, coaches and student-athletes. Please do not hesitate to phone, fax or write a letter to the sports information office at P.O. Box 2195; Tallahassee, FL 32316; (904) 644-1403 PHONE; (904) 644-3820 FAX, if we can further assist you.

HOW TO COVER THE SEMINOLES

Members of the media are supplied with weekly press releases, including updated individual tournament and career statistics, as well as conference and national rankings and information on upcoming matches or events. Results and statistics may be obtained in the sports information office or off the Atlantic Coast Conference's faxback system. Pertinent team and player information will also be available at the Scott Speicher Tennis Center for all home matches. If you would like to schedule personal interviews with the coaches or players contact Hornstein in the FSU Sports Information office at least 24 hours in advance. Head Coach Lise Gregory is generally available in her office during weekday mornings

WHERE THE HOME MATCHES WILL BE

All 1996 Seminole Tennis home matches take place at the Scott Speicher Tennis Center (capacity 1000). The courts are located off of Chieftain Way directly behind the Bobby E. Leach Center. Parking for the facility is located to the west of the site. Media members will be provided parking passes and will be seated in a designated area. Please notify the sports information office prior to home matches for credentials to be assigned. Any accredited photographer wishing to shoot the matches must check in with Hornstein prior to gameday so proper credentials can be assigned.

ACC FAXBACK SYSTEM

ACC tennis standings and statistics are available on ACC FaxBack each Tuesday morning. Call (910) 854-5859, from the handset of your fax machine, and follow the directions. The ACC code for the tennis release is 6350. The FSU tennis release can be found on the system under code 32350, Tuesday afternoons.

FLORIDA STATE UNIVERSITY MEDIA OUTLETS

Newspapers:

TALLAHASSEE DEMOCRAT

P.O. Box 990; Tallahassee, FL 32302

PHONE: (904) 599-2166 FAX: (904) 599-2301

THE FLAMBEAU

P.O. Box 20287; Tallahassee, FL 32316

PHONE: (904) 681-6695 FAX: (904) 681-3577

FSVIEW

P.O. Box 20331; Tallahassee, FL 32316

PHONE: (904) 561-6653 FAX: (904) 561-6578

THE OSCEOLA

402 Dunwoody Street; Tallahassee, FL 32304

PHONE: (904) 222-7733 FAX: (904) 224-3627

FLORIDA TIMES-UNION

One Riverside Avenue, Suite 304; Tallahassee, FL 32301

PHONE: (904) 224-7515 FAX: (904) 681-2961

ORLANDO SENTINEL

336 East College Avenue, Suite 303; Tallahassee, FL 32301

PHONE: (904) 222-5564 FAX: (904) 224-0979

Television/Radio:

WCTV - TV

P.O. Box 3048; Tallahassee, FL 32315

PHONE: (904) 893-2126 FAX: (904) 668-3851

WTVL - TV

8927 Thomasville Road; Tallahassee, FL 32312

PHONE: (904) 893-1313 FAX: (904) 668-3851

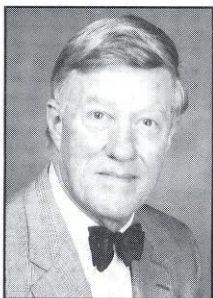
WNLS - SPORTS RADIO 1270 AM

325 John Knox Road, Suite E-200; Tallahassee, FL 32303

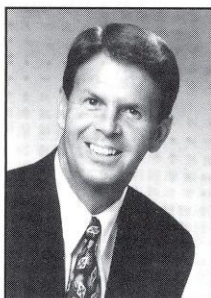
PHONE: (904) 386-6143 FAX: (904) 385-8789

MEDIA GUIDE CREDITS

The 1996 Seminole Tennis media guide is a publication of the Florida State University Sports Information Office. Edited and written by **Joe Hornstein**, with research assistance by **Dianne Felter**, **Greg Hulen**, **Carrie McCannell** and **Joe Merritt**. Designed by **Marsiglio & Murphy Design Group, Inc.** Photography by **Landa Oz Photography**, **Ross Obley** and the **Florida State University Photo Lab**. Printing by **Durra Print**.



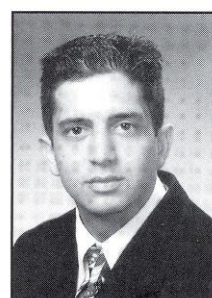
SANDY D'ALEWERBERTE
FSU PRESIDENT



DAVE HART
ATHLETICS DIRECTOR



KIM RECORD
ASSOCIATE ATHLETICS DIRECTOR



JOE HORNSTEIN
TENNIS PUBLICIST

THIS IS TALLAHASSEE

Near, but far from the glaring strips of neon amusement, and the castles and crowds of Disney, lies another magical place in the Sunshine State — one of pow-wows, plantations, politics and great pride. Often described as “The Other Florida” with its deep-rooted history, rolling hills, canopy roads of moss-draped oaks, cool climate and Southern-style hospitality; it is a Florida few have seen. It is Tallahassee — Florida with a Southern accent.

Best known as Florida’s capital, Tallahassee is an intimate neo-metropolitan city where the power of state government, the academic and the artistic are complemented by subtle, old-fashioned charm. It is the perfect two- or three-day diversion for the more than 41 million annual visitors to Florida and 13 million residents.

Tallahassee touts a menagerie of sights including one of the world’s deepest freshwater springs, site of America’s first Christmas, a wildlife habitat, Capitol buildings, fascinating museums of history, sprawling plantations, highly acclaimed fishing and hunting adventures and nearby beaches. Spirited area festivals range from celebrations of Tallahassee’s spectacular spring and swamp stomps to genuine rattlesnake roundups and seafood festivals.

With the Gulf of Mexico just 20 miles south and the Georgia border only 14 miles north, Tallahassee rests between the foothills of the Appalachian Mountains and the juncture of Florida’s panhandle and peninsula. Nearer in miles to Atlanta than to Miami, Tallahassee more closely resembles its Southern neighbors than Florida in topography, climate and lifestyle.

Accentuating Tallahassee’s Southern persona are lush rolling hills, likened to the seven hills of Rome, and five “official” canopy roads of patriarch oaks. The fertile, rich soil and four distinct, yet pleasant, seasons breed floral brilliance and natural vitality year-round.

Like the city itself, the story of how Tallahassee was chosen as the state capital is rich in history. In 1823, two explorers set out — one on horseback from St. Augustine and the other by boat from Pensacola — to find a permanent, central location for the Legislature to convene. The two met at a beautiful site that the Creek and Seminole Indians called “tallahassee” — derived from the words “talwa” meaning town and “ahasee” meaning old. The rendezvous

point remains Florida’s capital.

The “old town” has undergone many changes, but one thing remains the same — it is still a government town fiercely proud and dedicated to preserving its heritage. The Capitol buildings, both old and new, epitomize Tallahassee’s perseverance.

The 22nd floor of the New Capitol provides a panoramic scope of a sophisticated Southern city awash in a sea of flowering azaleas, snowy dogwoods, towering pines, fragrant magnolias, and hundreds of shimmering lakes, springs, swamps, rivers and sink holes. Special legislative viewing galleries are open during the legislative session.

Below, in the shade of giant live oaks, proudly stands the Old Capitol, originally constructed in 1845 and restored to its 1902 splendor complete with red-and-white candy-striped awnings, a dome adorned with stained glass, antique furnishings and political memorabilia.

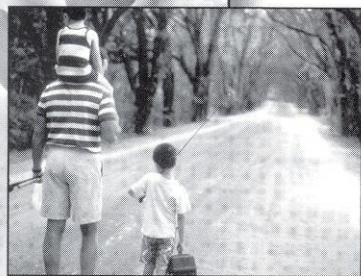
Across from the Old Capitol are the 40-foot twin granite towers of the Vietnam Veteran’s Memorial, and the blue stone Union Bank, Florida’s oldest surviving financial institution. The nostalgic Old Town Trolley, a replica turn-of-the-century street car, carries passengers through restored Adams Street Commons to numerous other historical downtown shops for *free* — unheard of even 100 years ago.

Minutes from downtown lies the Governor’s Mansion, which resembles the home of Florida’s military hero Andrew Jackson; and the 52-acre natural animal habitat and 1880s farm of the Tallahassee Museum of History and Natural Science, which provide the rare chance to walk and talk with native Florida animals.

Tallahassee remains firmly linked with the past as evidenced by the unearthed 1539 winter encampment of Spanish Hernando de Soto, the site of the first Christmas celebration in America. Visitors travel back through time as they stand in the shadow of a giant 12,000-year-old American Mastodon at the Museum of Florida History or explore other historical spots including The Knott House that Rhymes, The Columns, San Luis Mission, Lake Jackson State Archaeological Site, Natural Bridge Battlefield, First Presbyterian Church, Brokaw-McDougall House, Goodwood Plantation and Adams Street Commons.

Nearby, alligators lazing in the sunshine and anhinga “snake birds” perched on twisted cypress branches are seen at Wakulla Springs, one of the world’s deepest freshwater springs and site of many underwater scenes in the “Tarzan” movies with Johnny Weissmuller and Maureen O’Sullivan. Safaris aboard glass-bottomed and jungle cruise boats whisk visitors within arm’s length of “The Other Florida.”

Outdoor enthusiasts enjoy adventures including boating and fishing on area lakes, rivers, ponds and the Gulf — just 30 minutes away. Lakes Seminole, Jackson and Talquin



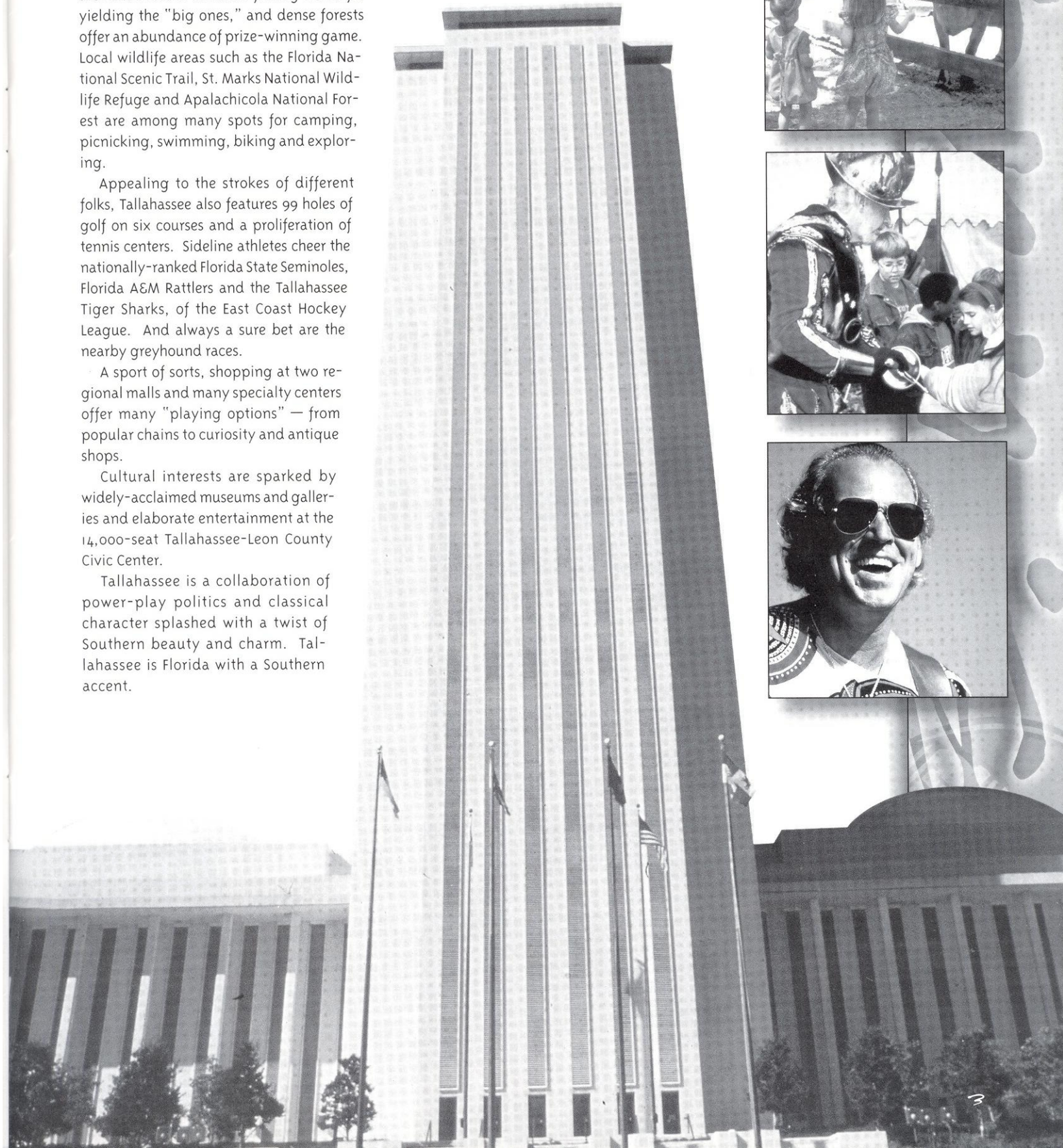
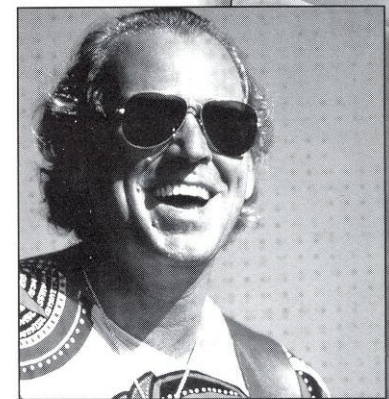
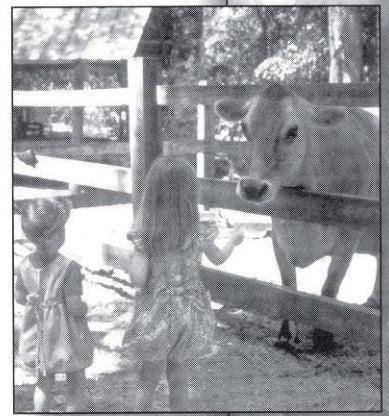
are renowned in the bass fishing world for yielding the "big ones," and dense forests offer an abundance of prize-winning game. Local wildlife areas such as the Florida National Scenic Trail, St. Marks National Wildlife Refuge and Apalachicola National Forest are among many spots for camping, picnicking, swimming, biking and exploring.

Appealing to the strokes of different folks, Tallahassee also features 99 holes of golf on six courses and a proliferation of tennis centers. Sideline athletes cheer the nationally-ranked Florida State Seminoles, Florida A&M Rattlers and the Tallahassee Tiger Sharks, of the East Coast Hockey League. And always a sure bet are the nearby greyhound races.

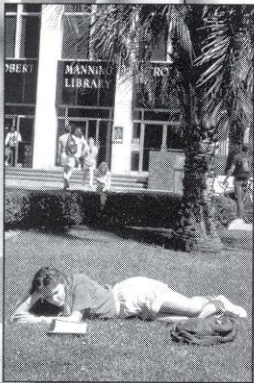
A sport of sorts, shopping at two regional malls and many specialty centers offer many "playing options" — from popular chains to curiosity and antique shops.

Cultural interests are sparked by widely-acclaimed museums and galleries and elaborate entertainment at the 14,000-seat Tallahassee-Leon County Civic Center.

Tallahassee is a collaboration of power-play politics and classical character splashed with a twist of Southern beauty and charm. Tallahassee is Florida with a Southern accent.



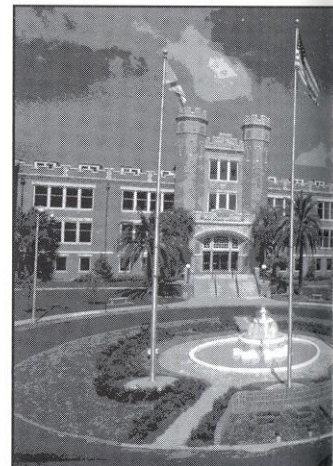
THIS IS FSU

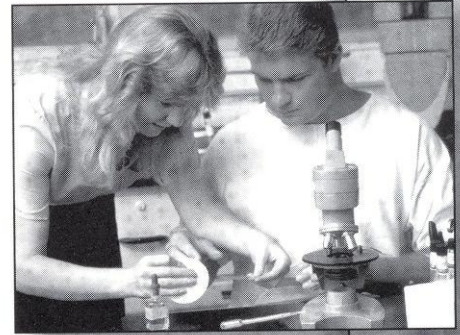


Florida State University, which will mark its golden anniversary as a coeducational graduate research institution in 1997, has joined the nation's elite in both academics and athletics.

Located on the oldest continuous site of higher education in Florida and building rapidly on the framework of a highly regarded liberal arts college for women, the University has emerged over the past 49 years as an institution of national and international esteem. Its stature is evidenced by a number of additions to its record of excellence in the 1990s:

- In 1994, Florida State was classified a "Research University I" by the Carnegie Foundation, placing it among the nation's top research universities.
- In 1994, the college referral service, "Who's Who Among American High School Students," placed FSU among its top 10 — with such universities as Harvard, Duke, Stanford, North Carolina-Chapel Hill, Michigan-Ann Arbor and Yale — of most frequent choices of more than 100,000 of the nation's best and brightest high school students who asked that a specific college be notified of their recognition in "Who's Who."
- Vice President of the United States Al Gore spoke at the dedication of the National High Magnetic Field Laboratory at Florida State in 1994. The National Science Foundation established the \$100 million magnet lab at FSU, which is partnered in research with the Los Alamos National Laboratory and the University of Florida, in 1990. A Nobel laureate in physics and a top Russian physicist were among the first scholars drawn to the facility. The world's largest magnet — two stories high and capable of generating 45 tesla or 1 million times the Earth's magnetic field — was installed in 1995 at the NHMFL, located in the off-campus research complex, Innovation Park. In 1996, the NSF renewed and increased by 50 percent the NHMFL's funding for another five years.
- FSU created the first multipurpose student identification/banking card. The Card Application Technology Center is a national leader in "smart card" systems.
- At the forefront of supercomputing since obtaining its first high speed computer in 1985, FSU took yet another step in ultrafast and parallel computing in 1990 when it acquired two supercomputers, the Thinking Machine Corp. Connection Machine and the Cray Y-MP.
- In fall 1994, the first tenants moved into the east side of the \$100 million University Center, a classroom-and-office facility at Doak Campbell Stadium; the stadium's south end zone was also enclosed and the adjacent Moore Athletic Center expanded. When the west side is completed in 1996, University Center will provide 550,000 square feet of much needed academic space and a centralized location for student services.
- One of the first academic areas to make its home in University Center, was the FSU School of Motion Picture, Television and Recording Arts. Offering training for one of Florida's fastest growing industries, FSU conferred its first master's degree in film in 1991 and it's first bachelor's in film in 1993. The film school's students have already produced national and international award-winning films.
- The Center for Civic Education and Service was established in 1994 aimed at promoting community involvement and civic responsibility as integral elements of a liberal arts education at FSU. The center supports such service-learning programs as Project Amistades, which provides educational services to migrant farmworkers. Through ServScript, student's service may be recorded on their official academic transcript.
- In 1990, Florida State ranked second in popularity nationwide among high school seniors, based on the number of students who request that their Scholastic Aptitude Test (SAT) scores be sent to an institution. FSU was the only institution listed among the top 10 choices of both black and white college-bound students.
- FSU's high-tech program in structural biology in 1991 received the University's largest single foundation grant, \$4 million.
- Capping more than a decade of national prominence in intercollegiate athletics, Florida State's athletic teams, nicknamed "Seminoles," joined the Atlantic Coast Conference as its ninth member in 1990. The FSU football team won the 1993 National Championship and its quarterback, Charlie Ward, won the University's first Heisman Trophy.
- To better understand the world's cultural diversity, FSU undergraduate students are required to complete at least two courses that focus on diverse traditions beyond Western civilization. The multicultural study requirement, in effect since 1991, complements a long-established liberal studies program at Florida State.
- The Dr. Bobby E. Leach Center, a state-of-the-art student recreation facility, with a pool, saunas, basketball and racquet-sport courts, was completed in 1991.
- The Appleton Museum of Art in Ocala, its vast art collection and an eminent scholar chair were donated to FSU and Central Florida Community College in 1990.
- FSU ranked 20th in the nation for 1990-91 in the number of black Ph.D. students it graduates. Over the five years, 1986 to 1990, FSU ranked eighth nationally by granting doctorates to 70 African-Americans.
- FSU acquired the Asolo Performing Arts Center in Sarasota, home to the graduate theater program, the FSU/Asolo Conservatory of Professional Actor Training.





As this list of highlights attests, Florida State is excelling in the 1990's with exceptional strength, energy and vision for the future. Under the leadership of the University's 12th president, Talbot "Sandy" D'Alemberte, who took office in January 1994, FSU will continue to build on the foundation of its history of excellence in scholarship, research and service.

A senior member of the 10-member State University System, FSU was founded as an institution of higher learning in 1851 by legislative act and began in Tallahassee with its first students in 1857.

Today, FSU's operating budget is \$452.5 million. Faculty and administrators generate more than \$99.9 million annually in external funding to supplement state-sponsored research. Three direct-support organizations serve to bolster the University; FSU Foundation, which raises millions in private gifts to support academics, Seminole Boosters and FSU Alumni Association.

The main campus is spread over 450.6 acres in Tallahassee; FSU, which has one of the smallest campuses in the SUS, has been actively acquiring land in the 1990s after years of being landlocked at 847 acres. FSU owns 1,303 acres in Leon, Bay, Franklin and Sarasota counties.

Within the state, the University maintains facilities at its 25-acre campus in Panama City, its Marine Laboratory on the Gulf of Mexico, the Appleton Museum in Ocala and the Asolo Performing Arts Center in Sarasota. The Center for Professional Development and Public Service, housed in the Augustus B. Turnbull III Florida State Conference Center on the edge of the campus, provides extensive credit and non-credit continuing education programs statewide.

For years FSU has reached far beyond Florida through international programs in Switzerland, France, Panama, Costa Rica and the Caribbean. FSU's study centers in Florence, Italy and London, England are considered by many to be the nation's best in Europe.

Florida State offers 283 graduate and undergraduate degree programs through its eight colleges — Arts and Sciences; Business; Communication; Education; Engineering (operated jointly with Florida A&M University, a historically black institution); Human Sciences; Law; and Social Sciences (which also incorporates the Reubin Askew School of Public Administration and Policy) — and eight schools — Criminology and Criminal Justice; Library and Information Studies; Motion Picture, Television and Recording Arts; Music; Nursing; Social Work; Theatre; and Visual Arts and Dance.

With 1,671 members, the FSU faculty has five National Academy of Sciences members and eight

American Academy of Arts and Sciences members, and has included five Nobel laureates. It is backed by 2,990 administrative/professional and support staff.

Library holdings at Florida State include 2.1 million book titles, 18,296 serials and 4.4 million microforms. The main library facility, the Robert M. Strozier Library, is linked by computer to other state university and national research libraries. The Paul A.M. Dirac Science Center Library is located at the heart of the University's science research complex. FSU also maintains extensive music, library science and law libraries.

On the top floor of the Dirac Library is the headquarters of the Supercomputer Computations Research Institute, a multidisciplinary, multinational program established in 1984 that brings together some 50 scientists, engineers and technicians.

Also providing research opportunities is the tandem Van de Graff Superconducting Accelerator Laboratory, which houses two powerful atom smashers and has been ranked among the top four nuclear research centers in the nation by the National Science Foundation.

Graduate students, who number more than 5,856, pursue advanced degrees in fields as diverse as business administration and theoretical particle physics. A majority of research done at FSU is the direct result of student effort, culminating in numerous books, monographs and journal articles relating to the whole spectrum of intellectual interests and the practical needs of society.

FSU, a residential campus, places a high priority on its 30,268 students and their needs and interests (of the student population: 45 percent are male; 55 percent are female; 18.5 percent are minorities; and 2.4 percent are foreign students). The University Honors Program, Disabled Student Services, International Student Center, Student Government, Flying High Circus and intramural sports are among more than 200 organizations and activities in which students can participate.

Situated in the heart of the state's thriving capital city, Florida State's main campus blends Gothic and modern styles of architecture with the oaks, pines, dogwoods, palms and azaleas of North Florida.

Florida State continues to progress and grow from its pre-Civil War foundation as the Seminary West of the Suwannee, through the early 20th century as the academically respected Florida State College for Women, returning to coeducational status as a university in 1947, to its modern development as an acclaimed research institution, a top-ranked competitor in intercollegiate athletics and as a standard-setter in the basic sciences and the performing arts.

In all areas of its mission — excellence in teaching, research and public service — Florida State University is advancing boldly toward the 21st century.



THIS IS FSU TENNIS

The 1997 dual match season will be surrounded with a new atmosphere of confidence, experience and determination as the upcoming season brings a new head coach, a new assistant coach, new direction, new goals and some new players.

As '96 head coach Alice Reen and assistant coach Michelle McMillen leave the program to pursue personal endeavors enter new head coach Lise Gregory and assistant Tim Bauer.

Gregory, a former seven-time All-American and NCAA champion at the University of Miami, has served as the assistant coach for women's tennis at Vanderbilt for the 1996 season. She assisted Commodore head coach Geoff Macdonald in guiding the program to it's second consecutive NCAA Championship appearance. She has also held additional coaching experience on the private level and as assistant tennis professional at two Connecticut country clubs. The highlight of her professional career was a No. 4 world doubles ranking in 1990.

"Lise Gregory best fit our profile for the coach that we wanted to take Florida State women's tennis to the next level," FSU Associate Athletic Director Kim Record, who headed the search. "She has competed and won at the highest level, both collegiately and professionally. She has been associated with a college pro-

gram which has built a reputation and tradition of excellence. Lise is an excellent role model for our student-athletes."

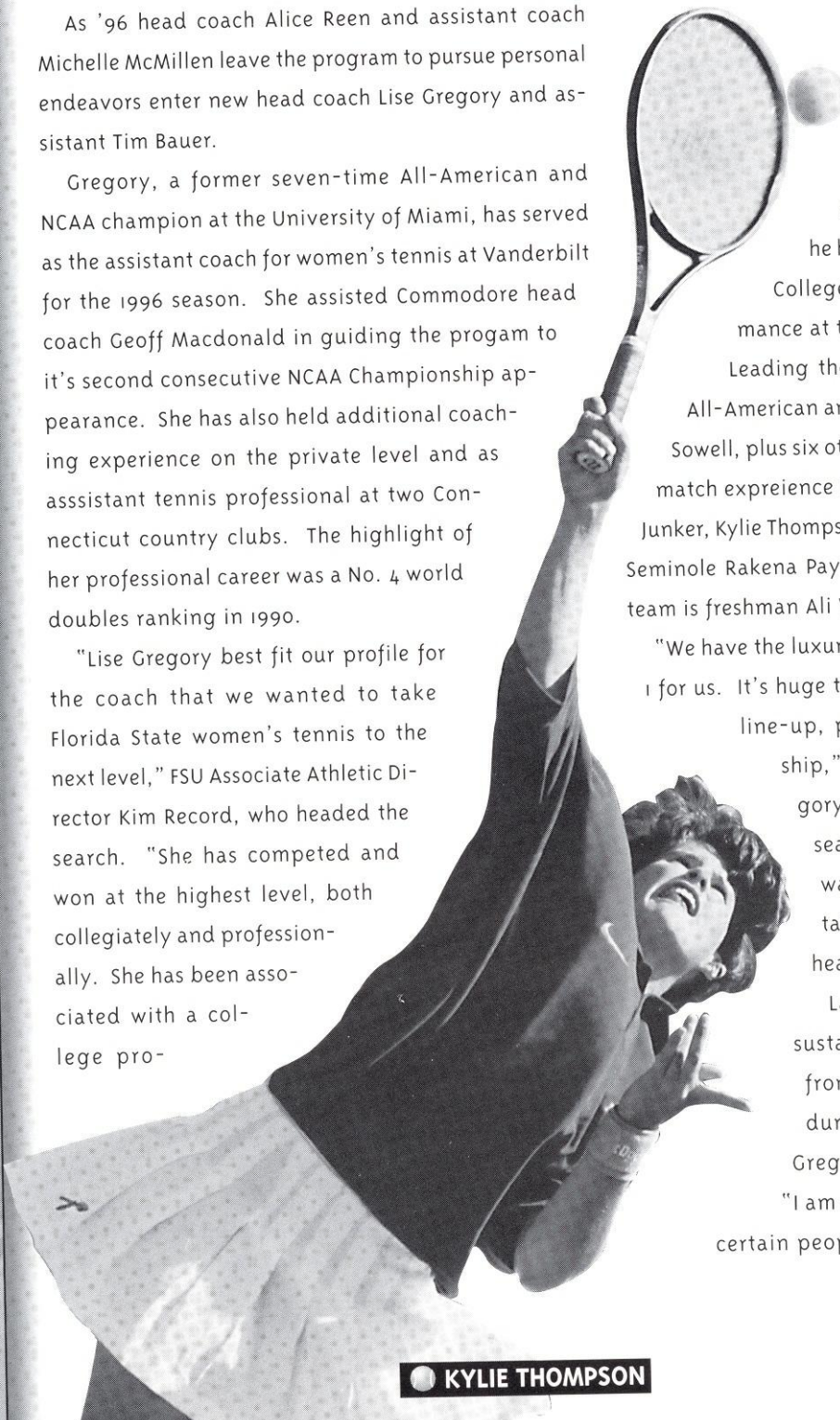
Tim Bauer, a former player at Furman University in the early 1990's, was added to the staff this past August. Prior to FSU, Bauer served as a professional consultant to several WTA and ATP touring professionals. His involvement has brought him to several tour events, including three U.S. Opens. Also he has worked as an instructor in the College of Health and Human Performance at the University of Florida.

Leading the squad will be two-time NCAA All-American and three-time All-ACC player Lori Sowell, plus six other individuals who all have dual match experience in Ann Olsson, Sasha Hanna, Lori Junker, Kylie Thompson, Ashley Delaney and 1995 Lady Seminole Rakena Payne. The lone true rookie on the team is freshman Ali Weber of Clermont.

"We have the luxury of an all-american playing No. 1 for us. It's huge to have stability at the top of the line-up, plus she provides great leadership," said first year head coach Gregory. "One of the biggest keys to the season is staying injury free. That was a problem last season. So we're taking all the steps necessary to stay healthy."

Last season several team members sustained injuries that sidelined them from competition a couple of times during the season. This has forced Gregory to take a different approach.

"I am making allowances and not push certain people too hard, because we've had



● KYLIE THOMPSON

a couple of injuries that haven't healed yet," Gregory said.

This year's Lady 'Noles know they are stronger, more experienced and ready. Again, last season the team wasn't as healthy as anticipated and at times lacked depth, keeping the team from reaching their potential. The athletic program brought in Gregory to use her skills for on- and off-court training and mental preparation in guiding the program to a national ranking, consisting of NCAA tournament qualifiers, not to mention NCAA Division I All-Americans.

The 1997 season will be a strong coming out for the newly refocused Lady Seminoles. To go along with their extremely talented depth and returning veterans, the schedule is jam-packed with plenty of opportunities for the women to forge ahead both individually and as a team.

In the fall, the Lady Seminoles will test their skills at six notable invitationals and tournaments, including their very own Lady Seminole Classic in October. The national and regional exposure the women will endure should be an excellent tune up for one of the toughest seasons the Tribe has ever faced.

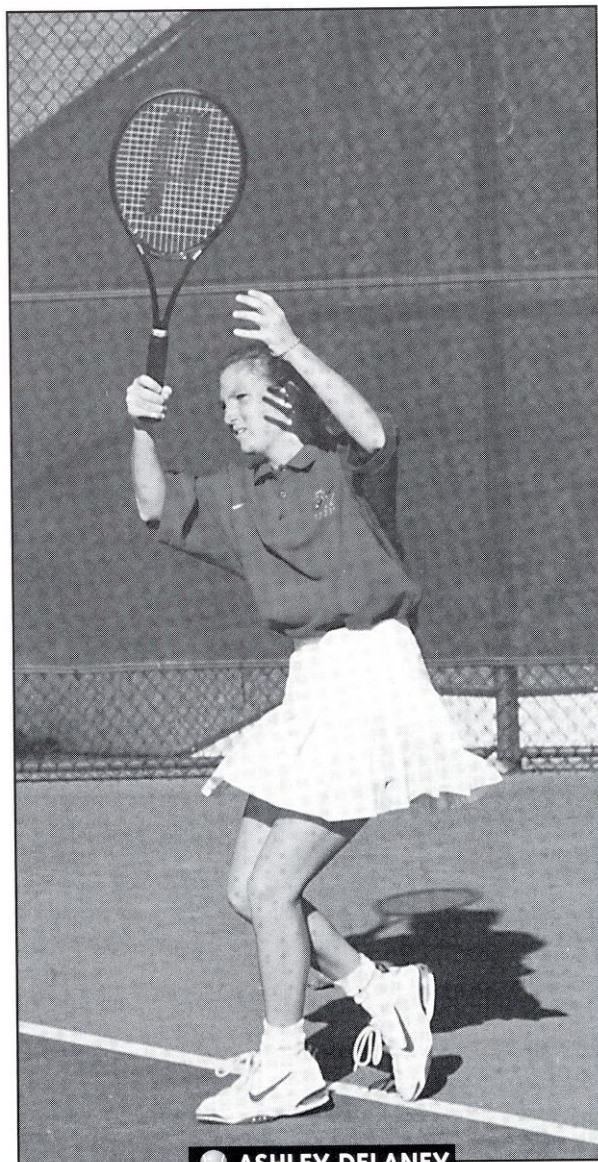
The Lady Seminoles begin the dual match season on the road with a double in Tennessee, meeting Southeastern Conference foe and Gregory's prior school Vanderbilt and then Sun Belt member South Alabama. A three-match road swing in Miami follows, highlighted with perennial Big East champion Miami.

After FSU's first five matches on the road the team returns home to the Scott Speicher Tennis Center versus ACC rivals Georgia Tech, Clemson and North Carolina and the probable No. 1-ranked squad in the nation and reigning NCAA champ, Florida. Following that tough road swing and even harder home stint is a four-match tour of Texas, including Big 12 powers Baylor, Rice and Texas A&M, plus Conference USA talent Houston.

To round out the month of March the 'Noles meet ACC

schools Wake Forest, N.C. State, and Maryland, featuring perennial ACC champion Duke, plus matches with continental west coast representative Cal-Berkeley and Big Ten standout Illinois. FSU will then be back on the road for the remaining two matches, highlighted by conference ACC-rival Virginia and South Florida of Conference USA.

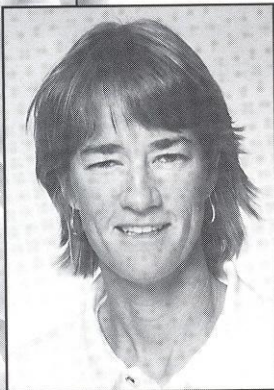
Less than a week after the regular season's completion, the Lady Seminoles will battle the ACC field once again at the ACC tournament in Atlanta, Georgia.



● ASHLEY DELANEY



COACH BIOS



LISE GREGORY

HEAD COACH
UNIVERSITY OF MIAMI, 1987

Within the first week at her new post as head coach of the Florida State women's tennis team, Lise Gregory set a new goal, direction and sight for the program.

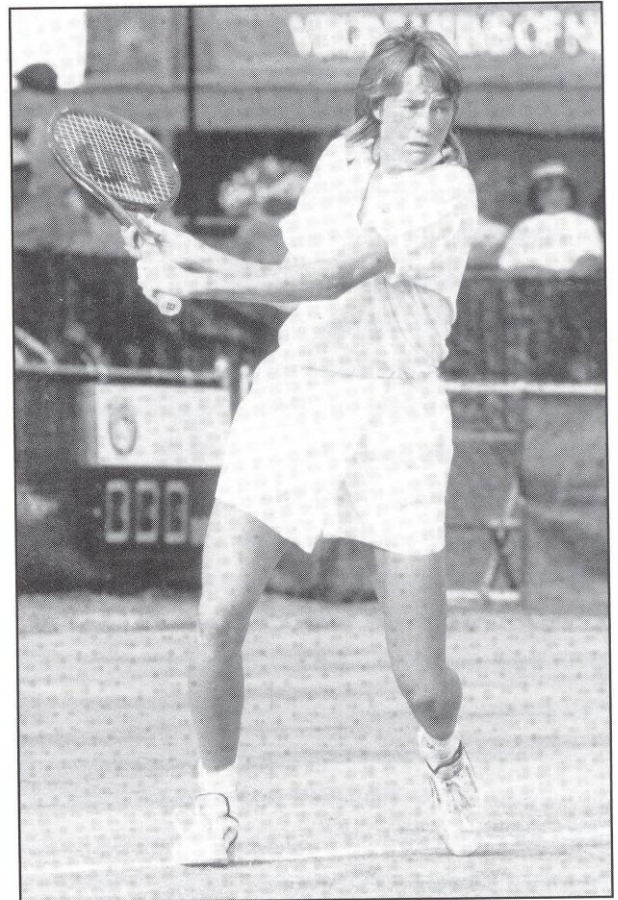
"Florida State has always been a good team, but I would really like to see us be in the Top 10 or Top 5 in the country in the next three to four years," Gregory said.

"If things happen faster, that would be fantastic."

Gregory takes over a program that finished 8-11 overall and ranked in the top 35 in the nation throughout the season.

"I can't say we will be in the Top 10 in the country next year," said Gregory. "Ultimately, that's my goal but it's a tough thing to do. It's not easy to turn things around that quickly."

Gregory, a former seven-time All-American and NCAA champion at the University of Miami, served as the assistant coach for women's tennis at Vanderbilt University for the 1996 season. She assisted Commodore head coach Geoff Macdonald in guiding the program to its second consecutive NCAA Championship appearance and a Top 10 ranking. She has also had additional coaching experience on the private level and as a USTA Area Training Center coach. The highlight of her professional career was a No. 4 world doubles ranking in 1990 with partner Gretchen Magers. She was ranked No. 18 individually.



As a player for the Hurricanes, Gregory earned an amazing seven NCAA All-America honors for her singles and doubles play as well as an NCAA doubles championship in 1986 with teammate Ronnie Reis. Together, they compiled an impressive 84-10 record over four years, while consistently being ranked among the nation's top five singles and doubles players throughout. She was named to *Tennis Magazine's* All-Star team as a senior in 1987 and as a junior in 1986.

As a professional, Gregory won nine tournament titles in 16 finals appearances, including seven Virginia Slims doubles championships on the way to a career-high No. 18 world doubles ranking in 1990. She was a doubles quarterfinalist at the 1991 Australian Open, a Grand Slam event, as well as one of the top eight teams in the world that participated in the year-ending Virginia Slims Championship.

"I really care about the players. I think they can sense that," said Gregory. "I had a coach at Miami, (Fla.) that showed that he really cared about us and it made us give that little bit extra. Plus, I have the playing experience and coaching skills to help them become better tennis players."

THE GREGORY FILE

- World ranked 18th in doubles
- World ranked 4th as a doubles team in 1990
- World ranked 167th in singles
- Nine professional doubles titles and seven final appearances
- Named All-American seven times (three singles, four doubles) in four year career in Miami
- NCAA doubles champion and ITCA National Indoor champion in 1986
- Teaching professional for two and a half years.

"Lise Gregory best fit our profile for the coach that we wanted to take Florida State women's tennis to the next level," FSU Associate Athletic Director Kim Record, who headed the search. "She has competed and won at the highest level, both collegiately and professionally. She has been associated with a college program which has built a reputation and tradition of excellence. Lise is an excellent role model

for our student-athletes."

"I always wanted to be a college coach," said Gregory. "I had a wonderful experience when I was in college and if I can give someone else that same experience, that would be great."

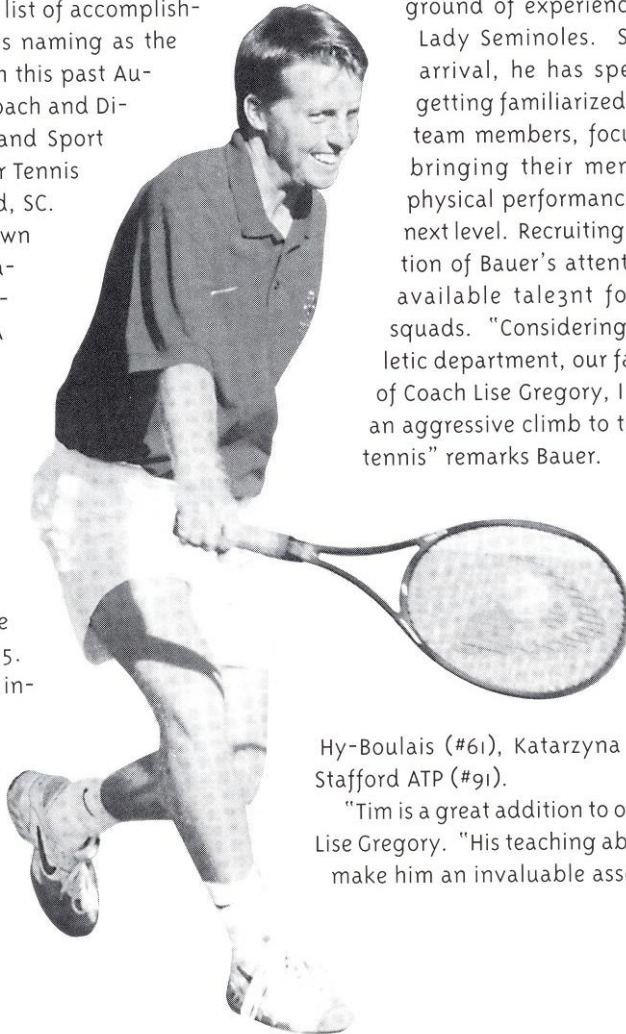
TIM BAUER

ASSISTANT COACH
FURMAN - 1993
FLORIDA - 1995



Tim Bauer's dedication to training of elite tennis players can be seen in his long list of accomplishments in the field. Prior to his naming as the assistant women's tennis coach this past August, Bauer served as both a coach and Director of Exercise Physiology and Sport Psychology at the Van der Meer Tennis Academy on Hilton Head Island, SC. Additionally, Tim directs his own summer junior camps on his native Long Island, NY. Bauer's involvement with ATP and WTA touring professionals has brought him to several tour events including three U.S. Opens.

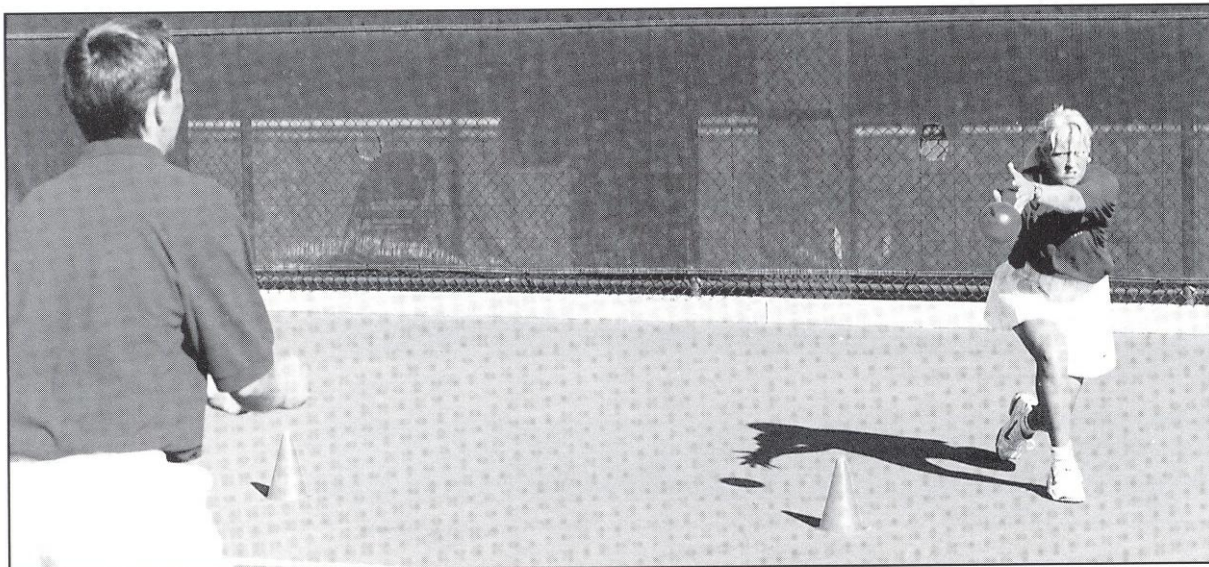
A former player at Furman University in Greenville, SC from 1990-93, Bauer completed a Master's Degree in Exercise and Sport Science at the University of Florida in 1995. While at Florida, Bauer was an instructor in the College of Health and Human Performance and continues to be an invited speaker on topics of elite athletic performance and talent detection.



Bauer brings a diverse background of experience to the Lady Seminoles. Since his arrival, he has spent time getting familiarized with the team members, focusing on bringing their mental and physical performances to the next level. Recruiting also receives a large portion of Bauer's attention, as he evaluates the available talent for future Lady Seminole squads. "Considering the support of our athletic department, our facilities and the addition of Coach Lise Gregory, I feel FSU is ready to start an aggressive climb to the top of NCAA women's tennis" remarks Bauer.

Bauer maintains contact with the pro tour and has served as a professional consultant to several players world ranked in the Top 100, including WTA players Patricia Hy-Boulais (#61), Katarzyna Nowak (#65) and Grant Stafford ATP (#91).

"Tim is a great addition to our staff," said Head Coach Lise Gregory. "His teaching ability and love of the game make him an invaluable asset to this program."





PLAYER BIOS



ASHLEY DELANEY
SENIOR • LAKE CITY, FLORIDA (COLUMBIA)

"Ashley's had some very tough breaks, health-wise, but shows a ton of internal strength in persisting, despite those breaks," said Lise Gregory. She has a great attitude and will be invaluable to us in doubles this year." **1995-96:** Sat out the majority of the Spring season with a stress fracture ...joined teammate Lori Junker for the final six dual matches at No. 3 doubles, going 4-2 and 3-0 in ACC matches. **1994-95:** Was 14-5 in dual match competition at No. 2, 3, 4 and 5 singles, 19-9 overall ...played majority of the season at No. 3 singles, where she was 9-3 ...was 6-1 against ACC singles opponents ...defeated nationally ranked Patty Murren of Wake Forest ...as the No. 3 seed, won the consolation bracket flight at the 1995 ITA Collegiate Summer Circuit (southeast regional site) ...reached the quarterfinals of the 1995 USTA Amateur Championships at Kiamesha Lake, NY (faced teammate, No. 2 seed, Lori Sowell in the first round)... won No. 3 doubles flight at the 1995 ACC Tennis Championships with Junker ...was 10-3 at No. 2 and 3 doubles with Junker, 11-5 overall ...was 6-0 against ACC doubles opponents ...as the No. 1 seed, advanced to the finals of the 1995 ITA Collegiate Summer Circuit in doubles (southeast regional site) ...made the 1995 All-ACC Academic Honor Roll. **1993-94:** Played through a painful stress fracture in her leg throughout the season ...posted a 6-6 record at the No. 4, 5, and 6 singles, 9-9 overall ...made the 1994 All-ACC Academic Honor Roll. **High School and other accomplishments:** Ranked as high as No. 3 by the USTA in the state girls U-18 singles ...nationally ranked No. 24 by the USTA in girls U-18 singles ...defeated WTA tennis-star Chanda Rubin at the age of 15 ...named *Gainesville Sun's* Player of the Year for three consecutive years ...was the team MVP her sophomore, junior, and senior years ...a member of the Gateway Conference team her senior year ...undefeated in district play throughout her high school career ...received the Sportsmanship Award at Nationals ...graduated among the top 3 percent of her high school class. **Personal:** Born September 3, 1975 ...majoring in Nutrition and Fitness ...is right handed ...a member of Florida State's Phi Eta Sigma, national honor society ...named Florida State's recipient of the Golden Torch Award ...she once played and won a five and half hour match at the Florida Open, the longest in the amateur tournament's history ...daughter of Carolyn Delaney.

DELANEY CAREER STATISTICS

Singles									
Year	w1	w2	w3	w4	w5	w6	Duals	Fall	Total
1993-94				1-0	1-2	4-4	6-6	3-3	9-9
1994-95		0-1	9-3	5-0	0-1		14-5	5-4	19-9
1995-96							0-0	2-7	2-7
		0-1	9-3	6-0	1-3	4-4	20-11	10-14	30-25

Doubles									
Year	w1	w2	w3	Duals	Fall	Total			
1993-94			7-7	7-7	1-1	8-8	w/ Laura Randmaa		
1994-95		2-0	8-4	10-3	1-2	11-5	w/ Lori Junker and Rakena Payne		
1995-96			4-2	4-2	4-5	8-7	w/ Junker		
		2-0	19-13	21-12	6-8	27-20			



SASHA HANNA
SOPHOMORE • MONTEGO BAY, JAMAICA (STRATFORD/HOUSTON, TX)

"Sasha's a great athlete with a good feel for the game," said Lise Gregory. "She's not afraid to comfort her weakness and this allows Tim and I to do a lot for her." **1995-96:** Played at No.'s 3, 4 and 5 singles ...defeated dual match opponents from Jacksonville, Georgia Southern, Maryland and Georgia Tech ...started off the fall season with six straight wins ...won the Flight C championship at the 1995 Lady Seminole Classic over teammate Ann Olsson ...went 5-3 in ACC doubles competition with Olsson at No. 2 ...won the Flight 3 regular season ACC doubles championship ...won the Flight C doubles championship at the 1995 Lady Seminole. **High School and other accomplishments:** Ranked as the No. 1 junior and No. 2 senior player in her native country of Jamaica by the Jamaican Lawn Tennis Association ...held a junior world ranking by the International Tennis Federation (ITF) in singles and doubles ...at age 14, won the Phillips Trophy (Caribbean Ladies title), the youngest player to do so ...a participant in the 1992 and 1993 U.S. Junior Open ...represented Jamaica in the 1992 and 1993 Federation Cup ...played for the 1995 Jamaican Federation Cup team in which she won both singles and doubles. **Personal:** Trained in Houston, TX prior to coming to FSU ...born April 18, 1977 ...Daughter of Dalkeith and Jennifer Hanna.

HANNA CAREER STATISTICS

Singles									
Year	w1	w2	w3	w4	w5	w6	Duals	Fall	Total
1995-96				0-1	4-12	0-2	4-15	7-5	11-20
				0-1	4-12	0-2	4-15	7-5	11-20

Doubles									
Year	w1	w2	w3	Duals	Fall	Total			
1995-96		7-4		7-4	4-2	11-6	w/ Ann Olsson and Lori Junker		
		7-4		7-4	4-2	11-6			

LORI JUNKER

JUNIOR • LONGWOOD, FLORIDA (LAKE MARY)



"We've made a few changes to Lori's game this fall, and I think we'll see a big return on those changes," said Lise Gregory. "I respect the fact that she is willing to try something new at this stage of her career." **1995-96:** Played at No. 4 and 5 singles ...defeated regionally ranked opponents from Clemson and Georgia ...had a 4-6 ACC singles record ...made the 1996 ACC Honor Roll, second straight year ...played most of the dual match season with Kylie Thompson at No. 3 doubles ...won the ACC Flight 3 regular season doubles championship with Thompson ...defeated nationally ranked Zawacki and Caparis of Wake Forest ...started the dual match season with Ashley Delaney at No. 3 doubles, before Delaney sustained injury, then rejoined Delaney for the remaining five matches of the season, going 4-1, 3-0 in ACC doubles. **1994-95:** Played at No. 4, 5 and 6 singles ...won the No. 3 doubles flight at the 1995 ACC Tennis Championship with Ashley Delaney ...was 11-4 overall with Delaney ...was 6-0 against ACC doubles opponents ...as the No. 1 seed, won the 1995 ITA Collegiate Summer Circuit (southeast regional site) doubles championship with Delaney over FSU teammates Sowell and Thompson...made the 1995 All-ACC Academic Honor Roll ...voted Most Improved Player on the team. **High School and other accomplishments:** Ranked No. 8 by the USTA in Florida girls U-18 singles ...nationally ranked in the Top 75 by the USTA in the girls U-18 singles ...advanced to the finals in doubles at the 1994 5A Florida State High School Championships ...was her teams MVP her junior and senior years ...Orlando Sentinel Player of the Year her junior and senior years. **Personal:** Born December 20, 1975 ...majoring in Communications ...is right-handed ...graduated high school in the top three percent of her senior class ...daughter of Betty and Richard Junker.

JUNKER CAREER STATISTICS

Singles

Year	@1	@2	@3	@4	@5	@6	Duals	Fall	Total
1994-95				1-2	2-10	1-3	4-13	2-1	6-16
1995-96				1-2	7-9		8-11	7-8	15-19
				2-4	9-19	1-3	12-24	9-9	21-35

Doubles

Year	@1	@2	@3	Duals	Fall	Total	
1994-95		2-3	8-4	10-7	2-1	12-8	w/ Ashley Delaney, Mary Thym and Samantha Greenspan
1995-96			9-5	9-5	4-6	13-11	w/ Delaney, Kylie Thompson and Sasha Hanna
		2-3	17-9	19-12	6-7	25-19	

ANN OLSSON

SENIOR • VANERSBORG, SWEDEN (BIRGERSJOBBERG GYMNASIET)



"She is probably one of the hardest workers I ever worked with," said Lise Gregory. "Anytime you move up a level, whether it is from junior college to division I or college to the pros, there is an adjustment period. She has adjusted well and has developed a truly balanced game." **1995-96:** Saw some action at No. 2 singles, but played most of the season at No. 3 ...had a 6-4 ACC singles record, claiming the No. 3 singles flight championship ...she also claimed the No. 2 doubles championship with Sasha Hanna ...defeated nationally ranked Nicola Kaiwai of Wake Forest and Alexandra Cornejo of Jacksonville ...advanced to the finals of the 1996 Lady Seminole Fall Classic against teammate Hanna ...went 4-1 in the month of February ...had a 7-4 overall and a 5-3 ACC doubles record ...won the C Draw championship at the Lady Seminole. **North Central Texas Junior College:** Named to the junior college All-American team in singles and doubles in 1993-94 ...named to the ITA All-American team in 1994 ...named "Player to Watch" in the ITA/Rolex Junior rankings ...had an overall record of 71-24 at No. 1 singles during her two years at NCTJC ...had an overall record of 59-26 at No. 1 doubles during her two years at NCTJC ...at No. 1 doubles, won the Seventh Annual ITA National Junior College Indoor Tennis Championship with Gisella Kaltenecker, the first time a tandem from NCTJC had won an indoor national championship ...advanced to the finals in singles of the Seventh Annual ITA National Junior College Indoor Championship ...helped NCTJC reach the Final Four of the 1995 National Junior College Tennis Championships ...finished the 1995 season nationally ranked No. 6 in singles by the ITA/Rolex Junior College Rankings ...finished the 1995 season nationally ranked No. 3 in doubles with Kaltenecker by the ITA/Rolex Junior College Rankings ...helped her team to a final season No. 3 national ranking by the ITA/Rolex Junior College Rankings ...member of the 1994 All-Academic American team (G.P.A. 3.65). **Personal:** Born June 10, 1974 ...majoring in Marketing ...is right-handed ...also participated in women's soccer, running, and indoor badminton ...member of Phi Theta Kappa, national honor society ...father played professional soccer ...daughter of Bjorn and Berit Olsson.

OLSSON CAREER STATISTICS AT NCTJC & FSU

Singles

Year	@1	@2	@3	@4	@5	@6	Duals	Fall	Total
1993-94	22-9						22-9	14-4	36-13
1994-95	22-8						22-8	13-3	35-11
1995-96		1-0	8-9				9-9	7-6	16-15
	44-17	1-0	8-9				53-26	34-13	87-39

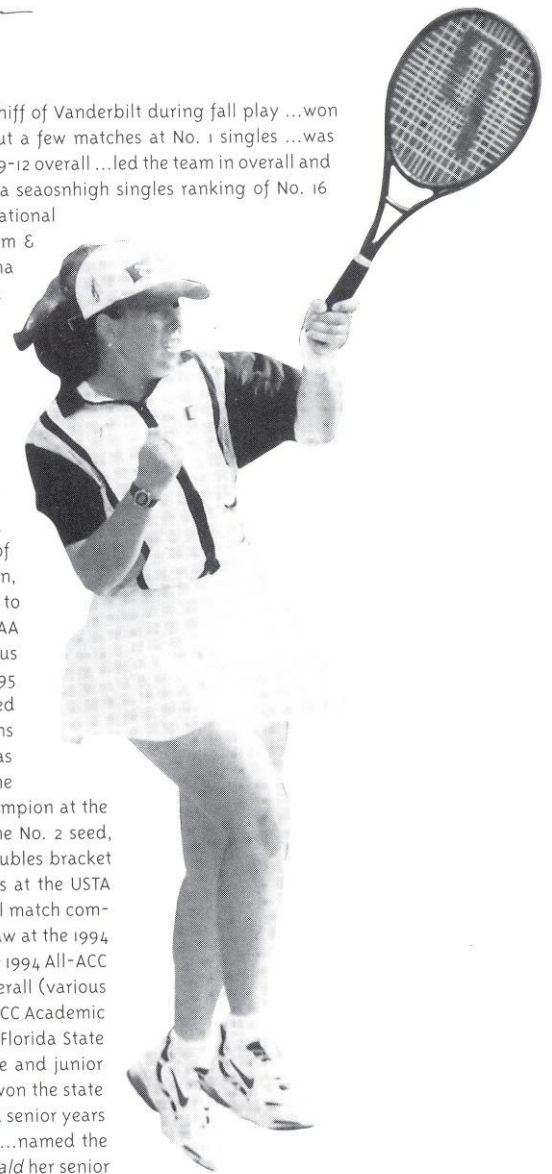
Doubles

Year	@1	@2	@3	Duals	Fall	Total	
1993-94	16-7			16-7	10-5	26-12	w/ Gisella Kaltenecker
1994-95	16-11			16-11	17-3	33-14	w/ Gisella Kaltenecker
1995-96		7-5		7-4	5-1	12-6	w/ Sasha Hanna and Kylie Thompson
	32-18	7-5		39-22	32-9	61-32	



LORI SOWELL — ALL-AMERICAN —
 SENIOR • FT. LAUDERDALE, FLORIDA (ST. THOMAS AQUINAS)

Defeated nationally ranked Thea Ivanisevic of Maryland and Kim Schiff of Vanderbilt during fall play ...won her flight at the Lady Seminole Fall Classic. **1995-96:** Played all but a few matches at No. 1 singles ...was nationally ranked all season ...had a 12-7 dual match singles record, 19-12 overall ...led the team in overall and dual match singles wins ...named to the 1996 All-ACC team ...had a seasonshigh singles ranking of No. 16 ...had a No. 7 Southeast Region singles ranking ...defeated several national ranked opponents opponents, including Lauren Nickolaus of William & Mary, Sophie Woorons of Clemson, Stephanie Sammaritano of Arizona and Farley Taylor of Texas ...advanced to the third round of the NCAA Singles Championship ...earned her second consecutive All-American honor for her singles run at the championships ...played No. 1 doubles with Elke Juul, compiling a 13-6 overall record, 10-5 in dual match play ...went an impressive 8-1 in ACC competition ...nationally ranked as high as No. 10 in the nation, while holding a ranking most of the season ...doubles victories were highlighted by wins over Woorons/Barrett (#8) of Clemson, Cohen/Fiers (#9) of Virginia and Fix/Zifer (#5) of Duke. **1994-95:** Played all but three matches at the No. 1 singles position where she compiled a 17-8 dual match record, 25-15 overall ...defeated nationally ranked opponents Dawn Buth of Florida and Margie Lepsi of Tennessee ...nationally ranked all season, as high as No. 40 ...was 6-2 against ACC singles opponents ...named to the 1995 All-ACC team ...advanced to the quarterfinals of the 1995 NCAA Singles Championship against eventual singles champion Keri Phebus of UCLA (the highest a Lady Seminole has ever reached) ...named a 1995 Division I All-American following her championship performance ...led the team in singles wins (25) ...co-leader (with Juul) in doubles wins (21) ...was 12-2 in dual match competition, 21-6 overall with Juul ...was 5-1 against ACC doubles opponents ...nationally ranked all but one week in doubles and as high as No. 16 ...was the No. 1 seed and champion at the 1995 ITA Collegiate Summer Circuit (southeast regional site) ...as the No. 2 seed, advanced to the finals of the 1995 ITA Collegiate Summer Circuit doubles bracket with new Kylie Thompson ...advanced to the championship rounds at the USTA Satellite Circuit of Hilton Head Island, SC. **1993-94:** Was 18-6 in dual match competition at No. 2 singles, 24-9 overall ...participated in the main draw at the 1994 SkyTel National Claycourt Tournament in Jackson, MS ...named to the 1994 All-ACC Team ...was 11-6 in dual match competition with Jen Hyde, 17-8 overall (various partners) ...was named ACC Rookie of the Year ...made the 1994 All-ACC Academic Honor Roll. **High School and other accomplishments:** Won the 3A Florida State High School Championships at No. 1 singles in both her sophomore and junior years ...led her team to the state championships her senior year ...won the state doubles title three consecutive years ...team captain, her junior and senior years ...named the Player of the Year (MVP) her junior and senior years ...named the Player of the Year by the Ft. Lauderdale Sun Sentinel and Miami Herald her senior year ...nationally ranked No. 32 and No. 5 in Florida by the USTA in the girl's U-18 singles ...nationally ranked No. 3 by the USTA in the girl's U-18 doubles ...a member of the National Honor Society. **Personal:** Born on July 5, 1975 ...majoring in Sports Management ...is left-handed ...daughter of Sigrid Sowell.



SOWELL CAREER STATISTICS

<i>Singles</i>									
Year	w1	w2	w3	w4	w5	w6	Duals	Fall	Total
1993-94		18-6					18-6	6-3	24-9
1994-95	10-7	4-0					14-7	11-8	25-15
1995-96	7-7	4-0	1-0				12-7	7-5	19-12
	17-14	26-6	1-0				44-20	24-16	68-36
<i>Doubles</i>									
Year	w1	w2	w3	Duals	Fall	Total			
1993-94	0-1	11-5		11-6	6-2	17-8	w/ Jen Hyde		
1994-95	12-2			12-2	9-4	21-6	w/ Elke Juul		
1995-96	10-5			10-5	3-1	13-6	w/ Elke Juul		
	22-8	11-5		33-13	18-7	51-20			

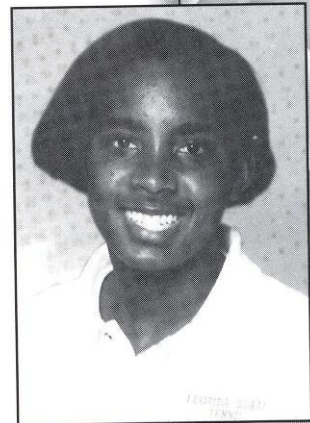
RAKENA PAYNE
 JUNIOR • CHICAGO, ILLINOIS (ST. IGNATIUS)

Coach Gregory notes her as the fastest and strongest player on the 1996-97 team. **1994-95:** Competed during the 1995 dual match season for the Seminoles ...had one singles match and two doubles matches, one of which was with 1996-97 teammate Ashley Delaney. **High school and other accomplishments:** Ran track at the University of Florida during her freshman year ...played in various U-14 and U-16 national tournaments as a junior. **Personal:** Born January 4, 1975 ...majoring in Marketing.

PAYNE CAREER STATISTICS

Singles									
Year	@1	@2	@3	@4	@5	@6	Duals	Fall	Total
1994-95						0-1	0-1	0-0	0-1
						0-1	0-1	0-0	0-1

Doubles									
Year	@1	@2	@3	Duals	Fall	Total			
1994-95		0-1	0-1	0-2	0-0	0-2	w/ Ashley Delaney and Samantha Greenspan;		
	0-1	0-1	0-2	0-0	0-2				



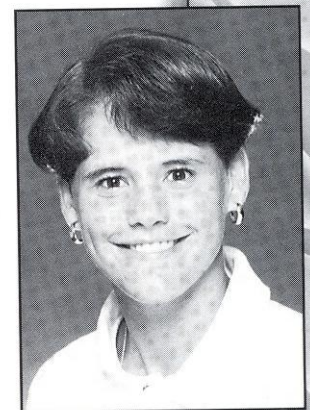
KYLIE THOMPSON
 FRESHMAN • HONEA PATH, SOUTH CAROLINA (BELTON-HONEA PATH)

"Kylie has quick hands and is an excellent doubles player," said Lise Gregory. "She has loads of potential. With some attention to her footwork and preparation she will improve in leaps." **1995-96:** Played entire dual match season at No. 6 singles and No. 3 doubles with Lori Junker ...defeated regionally ranked Nadine van de Walle of Georgia at the Georgia Invitational ...played most of the dual match season with a fracture in her wrist ...had two ACC singles victories over Laura Cowman of N.C. State and Brandy Kirchner of Georgia Tech ...was 5-3 at No. 3 doubles with Junker ...won the No. 3 regular season doubles flight. **High school and other accomplishments:** Won the 1990, 1991 and 1993 South Carolina Junior Singles Championships ...won the backdraw at the 1994 Outback Gator Bowl Tournament in Ponte Vedre Beach, Florida ...named to the All-Region team 1990-94 ...named region's Player of the Year 1992-94 ...team's MVP 1992 to 1994 ...named to the All-State team 1992 to 1994 ...selected as a member of the South Carolina Junior Wightman Cup Team ...named the most improved junior girls player by the South Carolina Tennis Association in 1991 ...named high school's most outstanding female athlete for 1995 ...as the No. 2 seed, advanced to the finals of the 1995 ITA Collegiate Summer Circuit (southeast regional site) doubles flight with Sowell ...also lettered in basketball. **Personal:** Born June 19, 1978 ...majoring in Religion/English ...member of the National Honor Society and Beta Club student council ...skipped her junior year of high school and completed her senior year early to attend FSU ...daughter of Mike and Angie Thompson.

THOMPSON CAREER STATISTICS

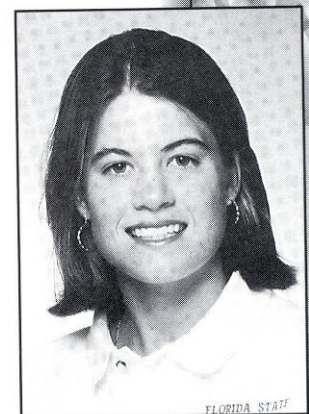
Singles									
Year	@1	@2	@3	@4	@5	@6	Duals	Fall	Total
1995-96					0-1	3-15	3-16	1-3	4-19
					0-1	3-15	3-16	1-3	4-19

Doubles									
Year	@1	@2	@3	Duals	Fall	Total			
1995-96	1-0	0-1	5-3	6-4	1-0	7-3	w/ Lori Junker, Ann Olsson and Elke Juul		
	1-0	0-1	5-3	6-4	1-0	7-3			



ALI WEBER
 FRESHMAN • CLERMONT, FLORIDA (SOUTH LAKE)

"Ali is like a sponge," said Lise Gregory. "She wants to learn and is soaking up any information we give her. She's putting in a lot of time in the weight room too, and it's showing in her recent performances." ...during a six match win streak, she won her flight at the 1996 Lady Seminole Fall Classic. **High school and other accomplishments:** Won the Flight "C" singles championship at the 1996 Lady Seminole Fall Classic ...held a No. 44 national ranking in U-14 singles, No. 7 in the state ...earned a No. 12 state ranking for U-16's singles ...was a doubles finalist at the U-14 national claycourts ...a fast, scrappy player with good groundstrokes ...had a top ten singles ranking or better in Florida 12-18 age groups ...high school district champion sophomore through junior years. **Personal:** Born August 28, 1978 ...majoring in Sports Management.



1996 IN REVIEW

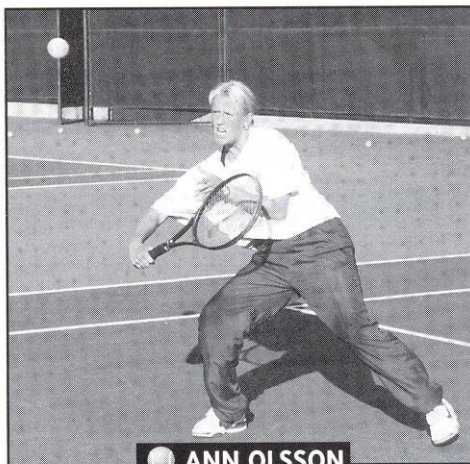
Due to a rugged 1996 dual match season schedule and some quality wins, the Lady Seminoles were able to keep their ITA/Rolux national ranking all season. Of that '96 schedule, 15 out of 19 matches were against nationally-ranked opponents and wins occurred versus nationally ranked squads such as Miami, Fla., Clemson, North Carolina State and Virginia. It was those victories that kept the Lady Seminoles among the Southeast's finest.

As far as the 1996 Atlantic Coast Conference competition was concerned, Florida State was among the league's best. The Lady Seminoles had back-to-back victories over Maryland and Clemson, with more to follow against Georgia Tech and N.C. State. The Tribe also avenged a regular season loss to Virginia and defeated the Cavaliers in the first round of the ACC Tournament to round out its ACC third place finish behind nationally-prominent Duke and Wake Forest.

The ACC had nearly every team nationally ranked during some point of the 1996 season and had five teams, including FSU, nationally ranked all season.

For the first time since joining the ACC in 1992, all three doubles tandems won their respective flight championships, while Ann Olsson won the Flight 3 singles championship.

Duplicating her all-american feat from the previous season and remaining on top of her game once again was Lori



● ANN OLSSON

Sowell. Playing at No. 1 singles for her second straight year, she earned all conference honors, earning a repeat trip to the NCAA Championships for singles and doubles.

At the Championships, held in Tallahassee, she marched all the way to the third round where she finally bowed out to semifinalist Ania Bleszynski of Stanford. This spectacular feat marked the second straight year a Lady Seminole moved past the first round. Her truly remarkable

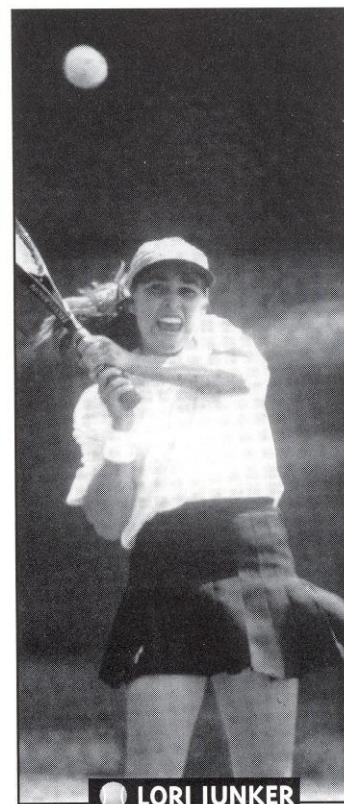
season culminated in 1996 All-American honors.

With team captain Elke Juul, the tandem qualified for doubles by way of their top ten regular season national ranking, but were knocked out in the first round by fourth seeded and eventual finalist Keri Phebus and Paige Yaroshuk of UCLA.

"Lori's got so many weapons," said Head Coach Lise Gregory. "She's got a ton of talent. It's just a case of getting her to use her weapons at the right time. Lori has really quick feet and some of the best hands in college tennis. She can do anything with the ball."

Off the court, the Lady Seminoles valued academics as high a priority as their play. As proof of this, last year's squad had one of the highest grade point average of any Florida State women's team. The ACC recognized the Lady Seminoles on their 1996 All-ACC Academic team with three-time performances by Ashley Delaney of Lake City and two-time representative Lori Junker of Longwood, with Juul and Kylie Thompson earning their first honors.

"We have a team that works hard, which is key," said Gregory. "All I ask of them is that they give 100% every time they step on the court, whether it's practice or a match."



● LORI JUNKER



● SASHA HANNA

1995-96 STATISTICS

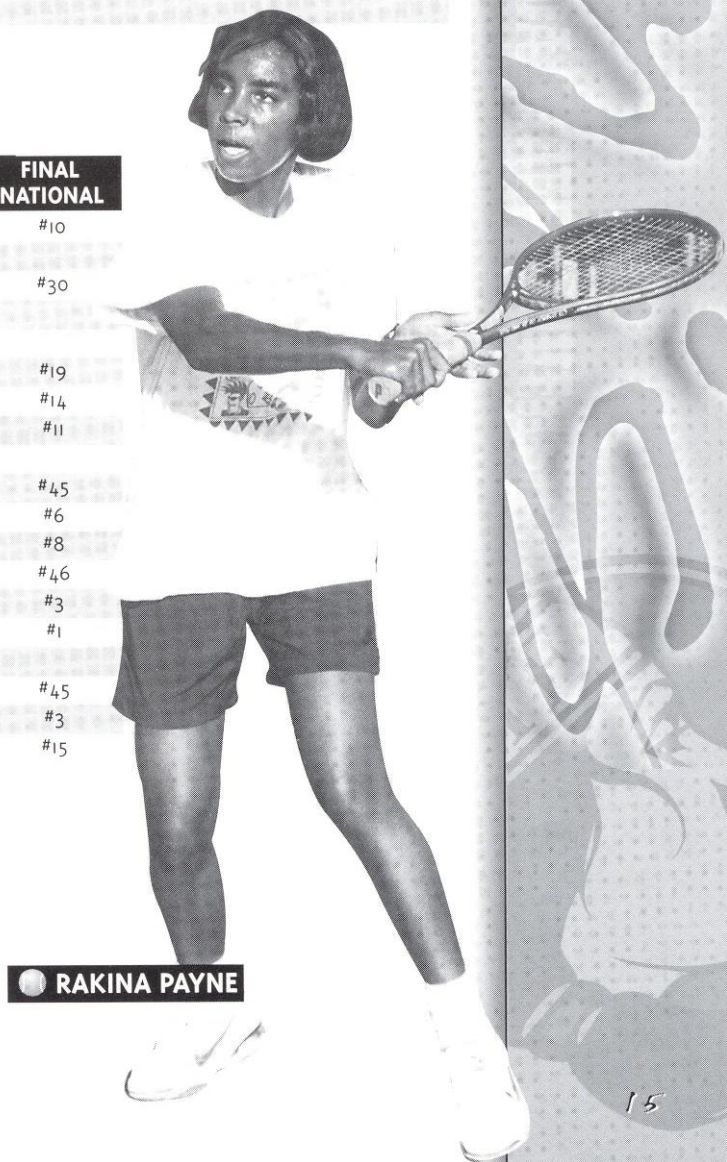
SINGLES	OVERALL	DUAL	STREAK	ACC	@1	@2	@3	@4	@5	@6
Lori Sowell	19-12	12-7	L 1	6-4	7-7	4-0	1-0			
Elke Juul	14-12	9-9	W 1	6-3	2-2	7-7				
Ann Olsson	16-15	9-9	L 2	6-4		1-0	8-9			
Sasha Hanna	11-20	4-15	L 3	2-8			0-1	4-12	0-2	
Lori Junker	15-19	8-11	L 5	4-6				1-2	7-9	
Kylie Thompson	4-19	3-16	L 3	2-8					0-1	3-15
Ashley Delaney	2-7	0-0	L 2	0-0						
Mary Thym	2-3	0-0	L 1	0-0						

DOUBLES	OVERALL	DUAL	STREAK	ACC	@1	@2	@3
Juul - Sowell	13-6	10-5	L 1	8-1	10-4		
Hanna - Olsson	11-5	7-4	W 1	5-3		7-4	
Junker - Delaney	8-7	4-2	L 1	3-0			4-2
Junker - Thompson	5-3	5-3	L 1	3-2			5-3
Juul - Thompson	1-0	1-0	W 1	0-0	1-0		
Olsson - Thompson	1-1	0-1	L 1	0-0		0-1	
Juul - Thym	1-0	0-0	W 1	0-0			
Hanna - Junker	0-1	0-0	L 1	0-0			

GAME BY GAME

DATE	OPPONENT	W - L	SCORE	REGIONAL	WHEN PLAYED NATIONAL	FINAL NATIONAL
2/2	Vanderbilt	L	0-8	#6	#17	#10
2/14	JACKSONVILLE	W	8-0			
2/18	MIAMI, FL	W	5-3	#8	#28	#30
2/19	GA. SOUTHERN	W	7-2	#11		
2/24	Maryland	W	6-2			
3/2	Clemson	W	5-4	#5	#29	#19
3/3	Georgia	L	1-6	#2	#4	#14
3/10	WAKE FOREST	L	4-5	#2	#7	#11
3/12	N.C. STATE	W	8-1	#8	#46	
3/14	VIRGINIA	L	4-5			#45
3/15	NOTRE DAME	L	1-6	#1	#8	#6
3/17	MISSISSIPPI	L	2-5	#4	#21	#8
3/30	North Carolina	L	4-5	#9		#46
3/31	Duke	L	1-8	#1	#4	#3
4/4	Florida	L	1-8	#1	#1	#1
4/13	Georgia Tech	W	8-1			
4/19	Virginia #	W	5-3		#35	#45
4/20	Duke #	L	0-6	#1	#3	#3
5/3	South Carolina*	L	2-5	#4	#14	#15

- ACC Championships (Greenwood, SC)
 * - NCAA Southeast Regional (Columbia, SC)



● RAKINA PAYNE

1996 STATISTICS

1996 MISCELLANEOUS STATISTICS

PLAYERS	3 SETTERS	TIE BREAKERS
Lori Sowell	2-3	3-1
Elke Juul	2-3	5-0
Ann Olsson	2-2	1-0
Sasha Hanna	0-9	1-2
Lori Junker	4-4	2-2
Kylie Thompson	1-4	1-2
Ashley Delaney	1-1	0-0
Mary Thym	1-0	0-1
Total	13-26	13-8

THREE SETTERS - TIE BREAKERS - PRO SETS

TANDEM	3 SETTERS	TIE BREAKERS	PRO SETS
Juul - Sowell	1-0	1-2	3-2
Hanna - Olsson	2-1	1-0	3-2
Junker - Thompson	1-0	3-0	2-1
Delaney - Junker	0-2	0-2	5-1
Juul - Thym	1-0	1-1	0-0
Junker - Hanna	0-1	0-0	0-1
Olsson - Thompson	0-0	1-0	0-0
Juul - Thompson	1-0	0-1	0-0
Total	6-4	7-6	13-7

MISCELLANEOUS WINS-LOSS RECORDS

All Matches	8-11	.421
Home Matches	5-5	.500
Away Matches	2-6	.250
Neutral Matches	1-2	.333
ACC Matches	5-5	.500
ACC Home Matches	1-2	.333
ACC Away Matches	3-2	.600
ACC Neutral Matches	1-1	.500
vs. Ranked Opponents	4-9	.308
vs. Top 25 Opponents	0-8	.000
vs. Top 10 Opponents	0-5	.000
vs. South Region Opps.	4-3	.571
February	4-1	.800
March	2-7	.222
April	2-2	.500
May	0-1	.000
Indoors	1-2	.333
Outdoors	6-9	.400

RECORD WHEN FSU WINS:

6 Singles Matches	1-0	1.000
5 Singles Matches	2-0	1.000
4 Singles Matches	3-0	1.000
3 Singles Matches	2-0	1.000
2 Singles Matches	0-4	.000
1 Singles Match	0-3	.000
0 Singles Matches	0-4	.000
3 Doubles Matches	3-1	.750
2 Doubles Matches	4-3	.571
1 Doubles Match	1-1	.500
0 Doubles Matches	0-5	.000

AGAINST RANKED OPPONENTS

PLAYERS	NATIONAL	TOP 50	TOP 25	TOP 10	REGIONAL
Lori Sowell	9-11	4-9	2-5	0-3	9-11
Elke Juul	3-8	1-5	0-3	0-1	5-9
Ann Olsson	1-3	0-2	0-1	—	3-8
Sasha Hanna	0-5	0-1	—	—	0-10
Lori Junker	0-5	0-1	—	—	2-7
Kylie Thompson	0-2	—	—	—	1-5
Ashley Delaney	0-2	—	—	—	0-4
Mary Thym	0-1	0-1	—	—	0-1
Total	13-37	5-19	2-9	0-4	20-55

TANDEM NATIONAL TOP 50 TOP 25 TOP 10 REGIONAL

Juul - Sowell	6-4	6-4	4-4	3-4	9-3
Hanna - Olsson	0-2	0-2	—	—	0-2
Delaney - Junker	0-1	0-1	0-1	—	0-1
Juul - Thym	1-0	1-0	—	—	1-0
Juul - Thompson	—	—	—	—	—
Junker - Thompson	1-0	—	—	—	1-0
Junker - Hanna	0-1	0-1	—	—	0-1
Olsson - Thompson	—	—	—	—	—
Total	7-8	7-8	4-5	3-4	11-7

ROLEX COLLEGIATE RANKINGS

TEAM	POLL DATE	RANK	
Florida State	Sept. 26, 1995	32	
	Dec. 7, 1995	32	
	March 5, 1996	28	
	March 19, 1996	25	
	April 2, 1996	31	
	April 16, 1996	34	
Lori Sowell	April 30, 1996	33	
	May 31, 1996	35	
	Elke Juul /Lori Sowell	Sept. 26, 1995	16
		Dec. 7, 1995	81
		March 5, 1996	81
Match 19, 1996		41	
April 2, 1996		24	
April 16, 1996	27		
April 30, 1996	31		
May 31, 1996	24		
March 5, 1996	21		
March 19, 1996	11		
April 2, 1996	13		
April 16, 1996	13		
April 30, 1996	10		
May 31, 1996	13		

TRACKING OPPONENTS IN THE ROLEX COLLEGIATE RANKINGS

OPPONENTS	PRESEASON	FALL	SPRING 1	SPR. 2	SPR. 3	SPR. 4	SPR. 5	FINAL
Vanderbilt	14	17	14	13	13	10	8	10
Jacksonville	—	—	—	—	—	—	—	—
Miami, Fla.	20	28	34	—	39	29	26	30
Georgia Southern	—	—	—	—	—	50	—	—
Maryland	—	—	—	—	—	—	48	—
Clemson	35	29	25	20	14	22	20	19
Georgia	4	4	13	16	17	17	18	14
Wake Forest	9	8	7	9	11	12	5	11
N.C. State	46	46	46	—	—	—	—	—
Virginia	—	—	—	—	40	35	47	45
Notre Dame	18	16	8	6	8	6	10	6
Mississippi	23	20	21	12	12	9	12	8
North Carolina	—	—	—	—	45	48	—	46
Duke	5	5	5	4	3	3	3	3
Florida	1	1	1	1	1	1	1	1
Georgia Tech	—	—	—	—	—	—	—	—
South Carolina	11	12	19	27	16	14	14	15

INDIVIDUAL DOUBLES RECORDS

PLAYERS	OVERALL	DUALS
Lori Sowell	13-6 .684	10-4 .714
Elke Juul	15-6 .714	12-4 .750
Ann Olsson	12-6 .667	7-5 .583
Sasha Hanna	11-6 .647	7-4 .636
Lori Junker	13-11 .541	9-5 .643
Kylie Thomspn	7-4 .636	6-4 .600
Ashley Delaney	8-7 .533	4-2 .667
Mary Thym	1-0 1.000	0-0 .000

ALL-TIME ROSTER

ALL-TIME DUAL MATCH SEASON ROSTER (1978-CURRENT)

Leslee Abisch, 1978
 Elizabeth "Buffy" Baker, 1988-91
 Kirsten Balsler, 1988-90
 Mary Beck, 1978
 Gigi Boesch, 1981
 Audra Brannon, 1990-94
 Bresha Byrd, 1993
 Jenny Cerino, 1983-86
 Robin Cifaldi, 1991-92
 Beth Clay, 1981-83
 Cheryl Cordes, 1981
 Beth Corn, 1987
Ashley Delaney, 1994-
 Debbie Deluccia, 1978
 Suzanne Doumar, 1983
 Sandi Ecclestone, 1993-94
 Lisa Ehrgott, 1981-84
 Darlene Finnegan, 1985
 Laura Jo Garcia, 1978
 Kristen Getz, 1981
 Jenny Graf, 1992-94
 Yvonne Gsteiger, 1978
 Claudia Gaughf, 1983-86
 Jenny Green, 1986
 Amy Hanby, 1992-93

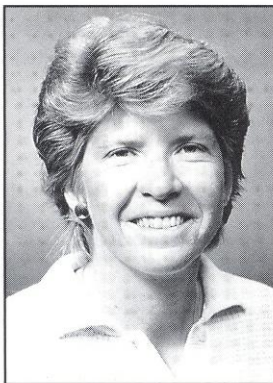
Sasha Hanna, 1995-
 Dee Ann Hansel, 1981
 Jean Harrington, 1978
 Sue Hatch, 1984-87
 Patti Henderson, 1983-86
 Elizabeth Hinson, 1978
 Jennifer Hyde, 1991-94
 Leslie Ivy, 1991-92
 Nicki Ivy, 1989-90
 Chris Joyce, 1986-89
Lori Junker, 1994-
 Elke Juul, 1992-96
 Jaime Kaplan, 1983
 Darlene Kennedy, 1984
 Claudette Laliberte, 1978
 Sharon MacPhee, 1990
 Lee McGuire, 1983-84
 Dana Medalie, 1983-84
 Melissa Miller, 1978
 Laurie Mueller, 1981
 Susan Mueller, 1981-84
 Penne Nieporte, 1981
 Shana Nozick, 1989-90
 Josephine O'Gorman, 1987
Ann Olsson, 1995-
 Sharon Ondrula, 1978

Rakena Payne, 1995, 1997-
 Anna Polihrom, 1978
 Debbie Pollack, 1983-84
 Keri Preng, 1987-90
 Tanya Racoobian, 1988
 Diane Ramsey, 1978
 Laura Randmaa, 1993-94
 Laura Ribovich, 1986
 Valerie Rive, 1986
 Laura Sarkilahti, 1989-91
 Sherry Shores, 1978
 Tracey Smith, 1987-89
Lori Sowell, 1993-
 Christina Tee, 1990-92
 Kim Temples, 1985-87
Kylie Thompson, 1995-
 Mary Thym, 1993-95
 Kirsten Turk, 1987-89
 Jill Urban, 1987-89
 Ann Waggoner, 1990-91
Ali Weber 1997-
 Lori Webster, 1990
 Paula Whitebrook, 1983-86
 Mary Ellen Wilkinson, 1978
 Mary Wood, 1986-87



● ALI WEBER

ALL-TIME WOMEN'S COACHING HISTORY



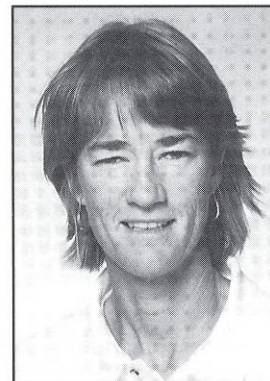
ANNE REZZA
 1982-86 (86-62)



ALICE REEN
 1992-96 (60-50)



PATTI HENDERSON
 1987-91 (68-51)



LISE GREGORY
 1996-

SUPPORT SERVICES

AN OVERVIEW OF AN ACADEMIC SUPPORT PROGRAM ON THE RISE

Academic, personal and professional support are essential to college success. At Florida State University, we have developed an outstanding support program which enables student-athletes to reach their full potential.

Our philosophy is "to offer an academic support program integrated with the total university that will assist all student-athletes with the transition into college and provide continued support in all phases of academic and professional development culminating with graduation, job placement or graduate school."

To accomplish this goal we have developed an academic environment which facilitates the academic success of student-athletes. Student success is encouraged through competent academic counseling, career exploration, planning and placement and academic assistance through tutorial programs.

Our program operates on a "proactive" rather than "reac-

tive" approach. At Florida State, our academic staff does not wait for academic crises to occur. We gather important background information and build an academic profile on all student-athletes to assess their needs in advance. We also stay informed on the daily progress of each student-athlete.

Our academic support staff includes a director, five counselors, and three graduate interns forming a group of professionals serving the needs of all our student-athletes. The director, Dr. Roger Grooters, is starting his fourth year as the director of the program, coming to FSU after developing a premier program at the University of Nebraska.

In 1994, the academic programs moved to the state-of-the-art University Center and are located on the 6th floor of the \$126,000,000 facility. It includes private study carrels, a tutorial study area and a computer lab outfitted with 16 new IBM computers and laser printers. In addition, athletic sky boxes are utilized for group and individualized tutorial instruction sessions.

STRENGTH, CONDITIONING, MEDICAL CARE AND TREATMENT

Strength training and conditioning is an important part of an athlete's performance on the field. At Florida State, a specially designed program is developed for women's tennis, emphasizing the objectives of strengthening and conditioning the athletes. Strength coach Ron Miller, M.S., C.S.C.S., and staff individually customize programs for each of the athletes, beginning with pre-conditioning, before the season even gets underway.

Miller, who holds professional memberships in the National Strength and Conditioning Association and Aerobics and Fitness Association, works with the players in sport specific training which includes strengthening the major muscle groups used in tennis.

This season, Miller is customizing a sound workout for the women's tennis team. The workout is instrumental in improving muscular endurance, strength

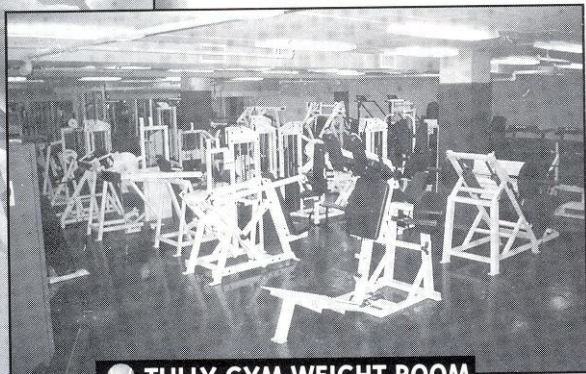
and cardiovascular conditioning on the field. The coaches believe so strongly in the program that they even participate themselves. FSU takes pride in customizing the programs to help student athletes reach their maximum potential.

Miller has proven to be an asset to the University's athletic program, where he was a four-year letterman on the Seminole basketball team. On that team, Miller was selected the Top-Conditioned athlete all four years. During the 1991-92 season he was team captain and awarded the 1992 ACC Senior Scholarship Athlete of the Year.

Athletes at Florida State University receive the best care and treatment possible. All of the student athletes undergo a preseason examination in order to prevent and detect any potential injuries that an athlete may incur. If a problem is detected, the athlete is placed on a prevention care program which may include any kind of treatment from icing to exercising. Graduate Assistant Janet Brown, A.T.C., will handle the athletic training duties for the tennis team.

Though preventing injuries is the main objective, they are sometimes a part of participating in athletics. Rehabilitation is another important component of the Seminole training room. The FSU trainers will work with the athlete and provide an intense rehabilitation schedule that will allow the athlete to successfully rehabilitate after an injury. More serious injuries and illnesses are referred to the Seminole team physicians at the Tallahassee Orthopedic Center, who for many years have worked in conjunction with the FSU training room in successfully rehabilitating numerous athletes after an injury.

Nutrition counseling and drug testing are also responsibilities of the athletic training team which is dedicated to providing the best care possible for all FSU student-athletes.



TULLY GYM WEIGHT ROOM

SPEICHER TENNIS CENTER

With the first stage of construction completed in the Summer of 1993, the Scott Speicher Tennis Center at the Donald Loucks Courts opened its gates to the public for the first time at a Children's Miracle Network charity tournament. Since then, many successful and admirable tournaments have graced the courts at one of Florida State University's premier athletic facilities.

Costing \$1.2 million to build and then another \$800,000 for recent additions, Florida State's Speicher Tennis Center has become an example of the increasing dedication and commitment the University has to all of its 17 varsity athletic programs.

The Speicher Tennis Center houses 12 lighted hard courts, over 1,000 court level seats, coaching offices, men's and women's lockerrooms, a equipment and storage rooms and an public address system. The growing pride Florida State has for its tennis program and its premier tennis center was honored just after its opening in 1994, when the United States Tennis Association (USTA) awarded the structure with its "Top Notch" facility award.

The Speicher Tennis Center was named in honor of Lieutenant Commander Michael Scott Speicher, a graduate of Florida State University and the first American casualty during Operation Desert Storm. By Presidential directive, the facility bears the name the "Scott Speicher Tennis Center."

H. Donald Loucks was the program's first tennis coach and is aptly known as the pioneer of Florida State tennis. He began his coaching career in 1936 at the University School of Florida State College for Women where he coached all sports. This was the beginning of an association with Florida State which crossed six decades, 1936 - 1980, ending in his retirement as Professor Emeritus of Physical Education. In 1942, while serving as an officer in the Army,

Loucks was stationed at West Point where he coached plebe basketball and tennis teams.

In 1947, Loucks became Florida State's first basketball coach and a year later was named the schools' first tennis coach. His tennis team was the first athletic team to have

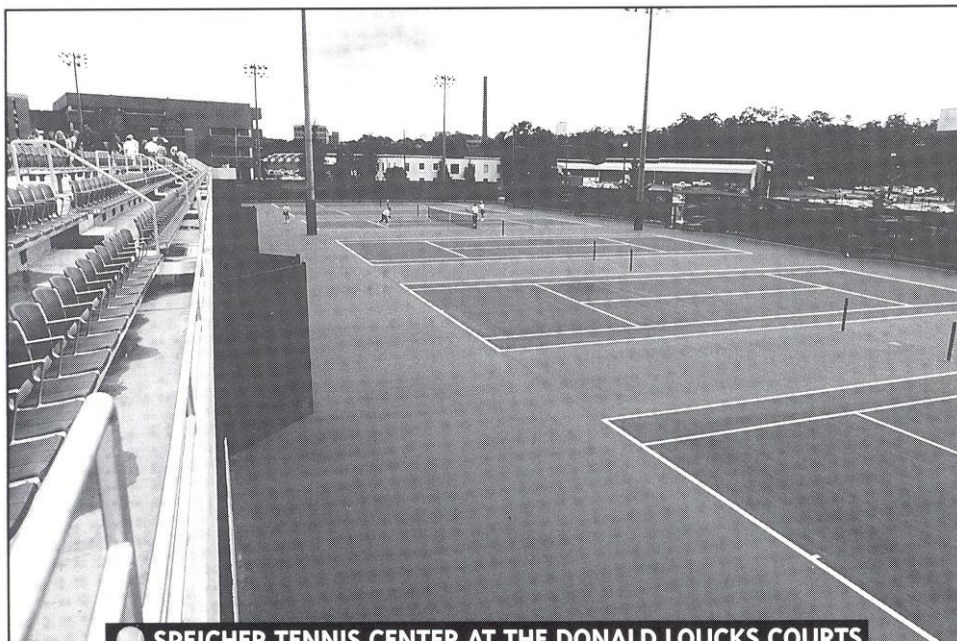


● SPEICHER CENTER DEDICATION

a winning season. The varsity tennis courts were named for him in 1981. He served as Dean of Men from 1957 - 1967 and was known as a servant of leadership, service and devotion to many worthy causes.

The Speicher Tennis Center was designed by EMO/Architects, Inc., a Tallahassee-based architectural firm, in collaboration with Global Consult Group, Inc., an internationally recognized Tennis Facility Design Consultant. The complex was funded by private sources and supervised through the state university system of Florida.

Through its short three year existence, the Scott Speicher Tennis Center at the Donald Loucks Courts has served as the home courts for all Florida State men's and women's home dual matches, the annual Seminole Fall Classics, City of Tallahassee tennis championships, various USTA regional and zonal tournaments, the 1994 and 1995 Men's intercollegiate men's tournament and the annual Children's Miracle Network Charity Inviational benefitting Shands Hospital in Gainesville.



● SPEICHER TENNIS CENTER AT THE DONALD LOUCKS COURTS

YEAR BY YEAR RESULTS

● 1982 - ANNE RIZZA (23-17)

Florida A&M	W	9-0
South Carolina	L	2-7
Oklahoma State	W	5-4
Texas Christian	W	6-3
Tulane	W	9-0
South Florida	W	5-4
Florida A&M	W	8-0
Rollins	L	2-7
Florida	L	1-7
Louisiana State	W	6-3
Clemson	W	5-4
Auburn	W	9-0
Southwest Louisiana	W	9-0
Northwest Louisiana	W	7-0
Mississippi University for Women	W	8-0
North Carolina	W	6-3
South Carolina	L	3-5
Mississippi	L	4-5
Purdue	W	7-1
Texas	L	0-8
Southern Methodist	W	6-2
Texas Christian	L	4-5
North Texas State	W	6-2
Louisville	W	8-1
Ohio State	W	9-0
South Alabama	W	7-2
Indiana	L	2-7
Harvard	W	8-1
Clemson	L	4-5
South Florida	L	4-5
Miami, Fla.	L	2-7
Florida	L	1-8
Georgia	L	3-6
Rollins	L	2-7
South Florida	L	4-5
North Carolina	L	1-8
Iowa	W	7-2
Georgia	W	5-4
Princeton	W	5-4
North Carolina	L	0-5

● 1983 - ANNE RIZZA (18-8)

Stetson	W	7-2
Florida Junior College	W	7-2
Clemson	L	0-9
Auburn	W	8-1
College of Charleston	W	9-0
Rollins	L	1-8
Louisiana Tech	W	7-0
Northeast Louisiana	W	8-1
Alabama	W	8-1
Rice	L	3-6
South Florida	W	5-4
Duke	W	6-3
Indiana	L	2-7
Ohio State	W	9-0
Iowa	W	7-2
Georgia	W	6-3
Georgia State	W	9-0
Tennessee	W	6-3
Northwestern	L	4-5
Rollins	W	6-3
Florida	L	3-6
South Florida	L	3-6
Florida	L	4-5
Vanderbilt	W	8-1
Alabama	W	8-1
Tulane	W	5-4

● 1984 - ANNE RIZZA (15-13)

Rollins	L	3-6
Tennessee	W	8-1
South Carolina	L	4-5
Houston	L	4-5
Tennessee - Chattanooga	W	5-4
Vanderbilt	W	8-0
Auburn	W	7-2
Florida Junior College	W	8-1
Tulane	W	6-0
Georgia	W	7-2
Northeast Louisiana	W	5-1
Alabama	W	7-2
Oklahoma State	L	4-5
South Alabama	W	7-2
Florida	L	2-7
South Carolina	W	5-4
Oklahoma State	L	4-5
Georgia	W	6-3
Mississippi	L	2-5
Mississippi State	W	9-0
Rice	L	3-6
New Mexico	W	5-1
Miami, Ohio	W	6-3
Northwestern	L	1-8
Rollins	L	4-5
Florida	L	1-8
Miami, Fla.	L	3-6
South Florida	L	3-6

● 1985 - ANNE RIZZA (13-14)

Georgia Tech	W	6-1
South Florida	L	1-8
Alabama	W	6-3
North Florida	W	7-2
Florida Junior College	W	9-0
Rollins	W	5-4
Florida	L	1-8
North Carolina	W	7-2
Louisiana State	L	2-7
South Florida	L	0-8
Wichita State	W	6-3
Wake Forest	W	7-2
Duke	L	4-5
North Carolina	L	2-7
Texas Christian	L	3-6
South Carolina	L	4-5
Northwestern	L	3-6
Georgia	W	5-4
Florida	L	1-8
South Florida	L	3-6
Miami, Fla.	L	1-8
Rollins	W	7-2
Mississippi	L	2-6
Auburn	W	8-1
Memphis State	W	9-0
Tulane	L	4-5
Virginia Tech	W	7-2

● 1986 - ANNE RIZZA (17-10)

North Florida	W	6-3
Florida Junior College	W	9-0
Florida	L	1-8
Southern Methodist	L	3-6
Rollins	W	8-1
Houston	L	3-6
South Florida	W	5-4
Alabama	W	6-3
Auburn	W	7-2
Florida	L	1-8

Purdue	W	6-3
Baylor	W	9-0
Mississippi	W	5-4
South Alabama	L	2-7
Southwest Missouri	W	8-1
Texas Christian	L	3-6
Clemson	L	0-9
South Alabama	L	3-6
Virginia Tech	W	9-0
Georgia Tech	W	7-2
Wisconsin	W	5-4
Mississippi State	W	7-2
Stetson	W	9-0
South Florida	L	2-7
Rollins	W	6-0
Virginia Tech	W	8-1
South Carolina	L	4-5

● 1987 - PATTI HENDERSON (11-15)

Vanderbilt	L	4-5
Tennessee	L	4-5
William & Mary	W	5-4
South Carolina	L	0-5
Auburn	W	5-4
Florida Junior College	W	7-2
North Florida	W	7-2
Florida	L	0-9
Mississippi State	L	4-5
Furman	W	6-3
Purdue	W	7-2
Columbia	W	8-1
South Florida	W	6-3
Miami, Ohio	L	4-5
North Carolina	L	2-7
Wake Forest	L	3-6
Virginia Tech	W	8-1
California - Irvine	L	3-6
Rice	L	4-5
California - Santa Barbara	L	2-7
Southern Methodist	L	1-8
Florida	L	0-9
Rollins	L	3-6
Louisville	W	7-2
Memphis State	W	9-0
South Carolina	L	3-6

● 1988 - PATTI HENDERSON (14-12)

Florida	L	1-8
Florida A&M	W	8-1
Alabama - Birmingham	W	7-2
North Florida	L	3-6
Northeast Louisiana	W	6-3
Houston	L	1-8
Mississippi	L	4-5
Virginia Tech	W	5-4
North Carolina	L	2-7
Furman	W	9-0
Louisiana State	L	4-5
Stetson	W	8-1
South Florida	W	5-4
Rollins	W	6-3
Auburn	L	3-6
Baylor	W	9-0
New Mexico	W	5-4
South Carolina	L	1-7
Indiana	L	1-8
Mississippi State	L	1-5
Georgia State	W	9-0
South Florida	W	5-4
Flagler	L	2-7

Southern Methodist	W	9-0
Louisville	W	9-0
South Carolina	L	0-6

● 1989 - PATTI HENDERSON (13-7)

Tulane	W	8-1
South Florida	L	4-5
Florida	L	0-9
South Alabama	W	5-3
Jacksonville	W	9-0
Northeast Louisiana	W	6-0
Auburn	W	5-4
South Alabama	L	3-6
Florida International	W	9-0
Flagler	L	4-5
North Florida	W	6-3
Mississippi	L	3-6
Kansas State	W	5-1
Yale	L	4-5
South Florida	W	6-3
Wisconsin	L	1-8
Rollins	W	6-3
Clemson	W	5-4
Lamar	W	9-0
Houston	W	5-4

● 1990 - PATTI HENDERSON (17-8)

South Florida	W	7-1
Rollins	W	8-1
Santa Fe	W	9-0
North Florida	W	8-1
Florida	L	0-9
U.S. International	L	3-6
Arizona	L	4-5
Rice	W	6-0
Northeast Louisiana	W	7-0
South Alabama	W	7-1
Houston	L	2-7
Mississippi	W	5-4
Georgia Tech	W	7-1
Louisiana Tech	W	7-2
Florida International	W	8-1
Louisiana State	L	4-5
Miami, Fla.	L	1-8
New Mexico	W	7-0
South Florida	W	7-2
Wisconsin	L	4-5
Rollins	W	8-1
Michigan	W	8-1
Wake Forest	W	5-4
South Carolina	L	2-6
Boca Raton	W	8-1

● 1991 - PATTI HENDERSON (13-9)

Florida	L	0-9
North Carolina	L	2-7
Miami, Fla.	L	4-5
Tulane	W	9-0
Rice	W	7-2
Louisiana State	W	5-4
Northeast Louisiana	W	9-0
Auburn	W	7-2
South Florida	W	9-0
Alabama	W	6-3
Michigan	W	7-2
Rollins	W	9-0
Wake Forest	L	4-5
Mississippi State	W	7-2
Trinity	W	7-2
Houston	L	4-5
Texas Christian	L	3-6
Southwest Louisiana	W	8-1
Wisconsin	L	3-6
Northwestern	L	2-7
Flagler	W	7-2
Duke	L	1-6

● 1992 - ALICE REEN (13-10)

Northwestern	L	3-6
Wisconsin	L	2-7
Alabama	L	0-6
Flagler	W	7-2
Rollins	W	8-1
Virginia	W	7-2
Michigan	W	6-3
South Florida	W	7-2
North Carolina State	W	9-0
Miami, Fla.	L	2-7
Southern Methodist	W	5-3
Mississippi State	L	4-5
North Carolina	W	5-4
Duke	L	1-8
Georgia Tech	W	8-1
Illinois	L	4-5
South Alabama	W	6-1
Florida International	W	6-3
Georgia	L	3-6
Clemson	L	3-6
Wake Forest	W	5-4
Virginia	W	6-0
Wake Forest	L	2-5

● 1993 - ALICE REEN (13-9)

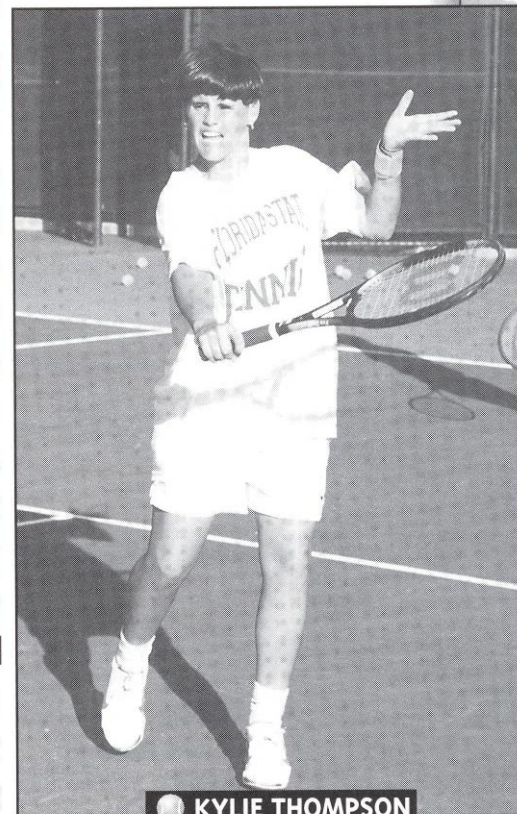
Georgia Tech	W	8-1
California - Santa Barbara	L	4-5
Rice	L	4-5
Arizona	L	2-6
Florida International	W	8-1
Miami, Fla.	L	2-7
Rollins	W	8-1
Michigan	W	6-3
South Florida	W	5-4
Clemson	L	4-5
North Carolina	W	7-2
Wake Forest	L	4-5
Oklahoma	W	6-3
North Carolina State	W	6-0
Maryland	W	8-1
Tennessee	L	3-6
Virginia	W	5-4
Southwestern Louisiana	W	6-3
Georgia	L	2-5
South Alabama	W	5-4
North Carolina	W	5-3
Clemson	L	2-7

● 1994 - ALICE REEN (15-10)

Georgia Tech	W	9-0
Miami, Fla.	L	4-5
Florida	L	1-8
Maryland	W	9-0
Kentucky	L	1-7
Tennessee	L	4-5
South Florida	W	5-4
Wake Forest	W	5-4
Clemson	L	3-6
Georgia	L	1-5
North Carolina State	W	7-2
Virginia	W	6-3
Mississippi State	W	5-1
Rice	W	7-2
Houston	W	5-1
Texas	L	3-6
Texas A&M	W	5-4
Florida International	W	5-1
North Carolina	W	7-2
Duke	L	4-5
South Alabama	W	7-2
North Carolina State	W	5-1
Clemson	W	5-3
Duke	L	0-5
Arizona	L	3-5

● 1995 - ALICE REEN (11-10)

Florida	L	1-7
Vanderbilt	L	4-5
Georgia Southern	W	8-0
South Florida	L	4-5
North Carolina	W	5-4
Duke	L	1-6
Tennessee	W	5-4
Clemson	W	5-4
Maryland	W	8-1
Texas A&M	W	5-2
Georgia	L	0-6
Virginia	W	8-1
South Carolina	L	3-6
Miami, Fla.	L	3-6
Florida International	W	5-4
San Diego	L	2-6
Georgia Tech	W	6-0
North Carolina State	W	5-4
Wake Forest	L	3-6
Virginia	W	5-3
Wake Forest	L	2-5



● KYLIE THOMPSON

● 1996 - ALICE REEN (8-11)

Vanderbilt	L	0-8
Jacksonville	W	8-0
Miami, Fla.	W	5-3
Georgia Southern	W	7-2
Maryland	W	6-2
Clemson	W	5-4
Georgia	L	1-6
Wake Forest	L	4-5
North Carolina State	W	8-1
Virginia	L	4-5
Notre Dame	L	1-6
Mississippi	L	2-5
North Carolina	L	4-5
Duke	L	1-8
Florida	L	1-8
Georgia Tech	W	8-1
Virginia	W	5-3
Duke	L	0-6
South Carolina	L	2-5

HONORS AND AWARDS

The 1995-96 season was no exception to the long and illustrious history of honors and awards received by the Florida State University women's tennis program. What makes a special team are players who can be victors on the court, in the classroom and in life. Sewing all these fragmented roles together must be a coach who can harness this talent and create an all around successful squad.

New Lady Seminole head coach Lise Gregory is dedicated in keeping that winning tradition alive. She's no stranger to winning as she holds numerous all-america honors and an NCAA doubles title, as well as accolades in the classroom.

In 1993, FSU swept many of the awards categories in just their second year in the ACC, including Coach of the Year, Player of the Year and Rookie of the Year. With many of the players on the All-ACC team and Academic Honor Roll,

1993 was a renewal of the success the 'Noles had in their previous Metro Conference days.

To no surprise the 1995-96 season had the same generous fortune. The Lady Seminoles were able to bring home more acclaim that would further support former head coach Alice Reen's lofty standards.

Lori Sowell, a member of the 1994 and 1995 All-ACC teams and the 1994 ACC Rookie of the Year continued her solid play, and was named to the 1996 All-ACC team. She was invited once again into the NCAA singles competition at the 1996 NCAA Division I Women's Tennis Championships held in Tallahassee. At this prestigious collegiate

tournament Sowell reached the third round, earning her second straight all-america honor.

Elke Juul was also named to the 1996 conference elite, the All-ACC team. She was also invited to the NCAA Championships with Sowell in doubles, the tandems second consecutive invite.

Ashley Delaney and Lori Junker are no strangers to excelling in the classroom, as the two graduated in the top three percent of their high school classes. A much more applaudable feat was transcending their academic pro-

ess to a higher level and being named to the 1996 All-ACC Academic Honor Roll. This is Delaney's third year on the ACC Honor Roll and Junker's second. Joining those two on the honor roll were Sowell, Juul and Kylie Thompson.

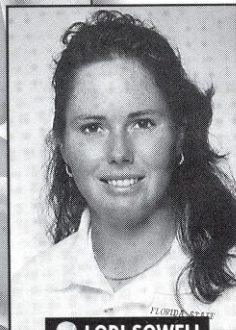
As a team, the Lady Seminoles were able to remain a nationally ranked squad throughout the entire 1996 season by the ITA/Rolax rankings. They also received one of the highest grade point average among FSU's women's athletic teams.



AUDRA BRANNON



LAURA RANDMAA



LORI SOWELL



FORMER ASSISTANT COACH JENNY MAINZ, AUDRA BRANNON, LAURA RANDMAA, AND FORMER HEAD COACH ALICE REEN.

A HISTORY OF HONORS AND AWARDS

METRO CONFERENCE COACH OF THE YEAR

Anne Rizza - 1981, 1983 & 1984

Patti Henderson - 1989

ACC COACH OF THE YEAR

Alice Reen - 1994

METRO CONFERENCE CHAMPIONS

1981, 1983, 1984 & 1989

METRO CONFERENCE PLAYER OF THE YEAR

Suzanne Doumar - 1981

Patti Henderson - 1986

Keri Preng - 1989

Buffy Baker - 1991

ACC PLAYER OF THE YEAR

Audra Brannon - 1994

ACC ROOKIE OF THE YEAR

Lori Sowell - 1994

ALL AMERICAN

Audra Brannon - 1993 (doubles)

Laura Randmaa - 1993 (doubles)

Lori Sowell - 1995 (singles) & 1996 (singles)

ALL-ACC

Audra Brannon - 1992-94
Elke Juul - 1995 & 1996
Laura Randmaa - 1993
Lori Sowell - 1994-96

METRO CONFERENCE TOURNAMENT MVP

Patti Henderson - 1986
Keri Preng - 1989
Buffy Baker - 1991

METRO CONFERENCE ALL-TOURNAMENT TEAM

Buffy Baker - 1988-91
Keri Preng - 1988 & 1989
Kirsten Turk - 1989
Ann Waggoner - 1990

METRO CONFERENCE FLIGHT CHAMPIONS

Suzanne Doumar - 1981, No. 1 singles & No. 1 doubles
Jaime Kaplan - 1981, No. 1 doubles
Lisa Erghott - 1983, No. 5 singles
Patti Henderson - 1983, No. 2 doubles; 1984, No. 3 singles & No. 1 doubles; 1985, No. 2 singles
Debbie Pollack - 1983, No. 4 singles
Jenny Cerino - 1984, No. 6 singles & No. 2 doubles; 1985, No. 5 singles & No. 3 doubles
Sue Hatch - 1984, No. 2 singles & No. 2 doubles
Lee McGuire - 1984, No. 1 doubles
Buffy Baker - 1989, No. 1 doubles; 1990, No. 1 doubles; 1991, No. 1 singles & No. 1 doubles
Nicki Ivy - 1989, No. 6 singles; 1991, No. 3 doubles
Kirsten Turk - 1989, No. 3 singles
Keri Preng - 1989, No. 1 doubles
Christina Tee - 1991, No. 4 singles & No. 2 doubles
Robin Cifaldi - 1991, No. 2 doubles
Audra Brannon - 1991, No. 2 singles & No. 1 doubles
Ann Waggoner - 1991, No. 3 doubles

ACC FLIGHT CHAMPIONS

Elke Juul - 1993, No. 3 doubles; 1994, No. 1 doubles; 1996, No. 1 doubles
Sandi Ecclestone - 1993, No. 3 doubles
Audra Brannon - 1994, No. 1 singles & No. 1 doubles
Lori Sowell - 1994, No. 2 singles; 1996, No. 1 doubles
Ashley Delaney - 1995, No. 3 doubles
Lori Junker - 1995, No. 3 doubles; 1996, No. 3 doubles
Ann Olsson - 1996, No. 3 singles & No. 2 doubles
Sasha Hanna - 1996, No. 2 doubles
Kylie Thompson - 1996, No. 3 doubles

MISCELLANEOUS HONORS

Buffy Baker - 1988 Roberta Alison Southern Intercollegiate (champion, No. 1 singles); 1989 Roberta Alison Southern Intercollegiate (champion, No. 1 singles); 1989 Women's Intercollegiate Championships (champion, No. 1 singles)
Keri Preng - 1988 Barnett Bank Women's Intercollegiate State Championships (champion, No. 6 singles)
Laura Sarkilahti - 1988 Barnett Bank Women's Intercollegiate State Championships (champion, No. 5 singles)
Audra Brannon - 1993 Arthur Ashe Award Recipient

POST SEASON INVITATIONS

ASSOCIATION OF INTERCOLLEGIATE ATHLETICS FOR WOMEN

1982 team - AIAW National Championships, 6th Place

DOUBLES

Jaime Kaplan - 1982; named to the AIAW all-region II team
Suzanne Doumar - 1982

NATIONAL COLLEGIATE ATHLETICS ASSOCIATION

1994 team - NCAA Championships, First Round

SINGLES

Jamie Kaplan - 1983
Audra Brannon - 1993 & 1994
Lori Sowell - 1994, 1995 & 1996

DOUBLES

Jamie Kaplan - 1983
Lee McGuire - 1983
Patti Henderson - 1985
Sue Hatch - 1985
Audra Brannon - 1993, 1994
Laura Randmaa - 1993
Elke Juul - 1994, 1995 & 1996
Lori Sowell - 1995 & 1996

ACADEMIC HONORS

FSU'S GOLDEN TORCH AWARD (HIGHEST G.P.A.)

1985, 1986, 1987, 1988 & 1989 team

Nicki Ivy - 1991
Ashley Delaney - 1994

FSU DEAN'S LIST

Claudia Gaughf - 1984
Debbie Pollack - 1984
Lori Webster - 1990

METRO CONFERENCE COMMISSIONER'S LIST

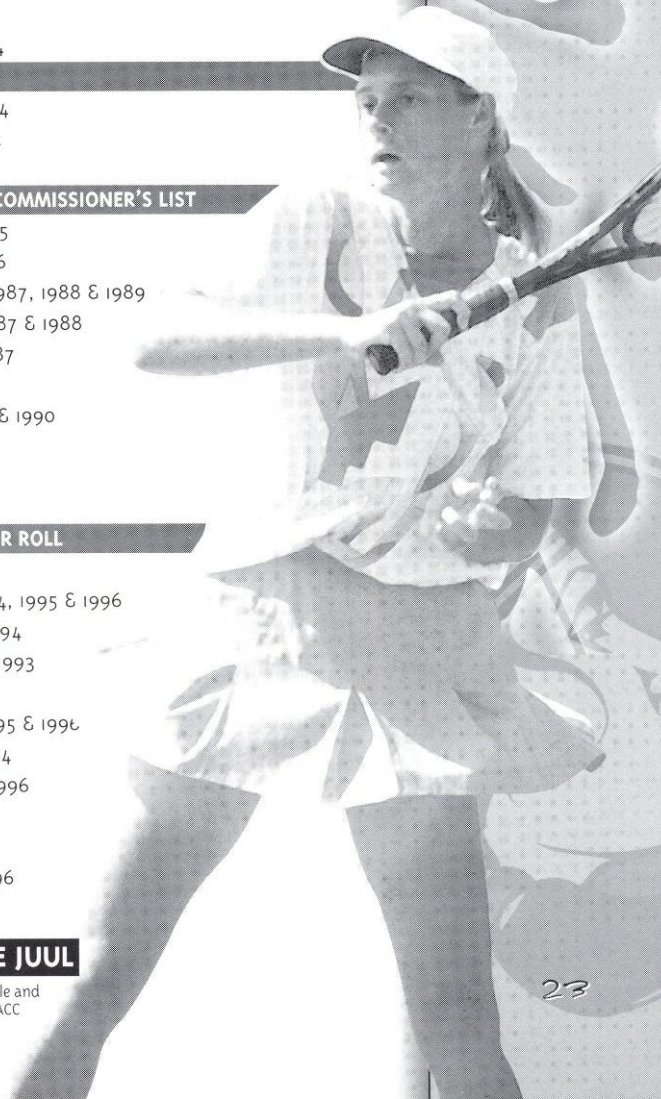
Claudia Gaughf - 1985
Sue Hatch - 1985, 1986
Kirsten Turk - 1986, 1987, 1988 & 1989
Chris Joyce - 1986, 1987 & 1988
Jill Urban - 1986 & 1987
Keri Preng - 1989
Kirsten Balser - 1989 & 1990
Lori Webster - 1990
Shana Nozick - 1990
Christina Tee - 1990

ACC ACADEMIC HONOR ROLL

Buffy Baker - 1992
Ashley Delaney - 1994, 1995 & 1996
Sandi Ecclestone - 1994
Amy Hanby - 1992 & 1993
Nicki Ivy - 1992
Lori Junker - 1994, 1995 & 1996
Laura Randmaa - 1994
Lori Sowell - 1994 & 1996
Chrissie Tee - 1992
Elke Juul - 1996
Kylie Thompson - 1996

ELKE JUUL

Former Seminole and two-time All-ACC performer



CONFERENCE RECORDS

METRO CONFERENCE HISTORY

The Metro Conference, originally tabbed the Metro Six, was formed on June 13, 1975.

It's charter members included the Cincinnati, Georgia Tech, Louisville, Memphis State, St. Louis and Tulane.

Expansion was soon on the horizon, as the league membership increased to its size to seven schools when the Florida State University was admitted on July 28, 1976.

After Georgia Tech left the conference following the 1978 season, Virginia Tech quickly filled the void. Then St. Louis left the Metro. But waiting in the wings was the University of South Caro-

lina who joined in 1983 to increase the membership to eight schools. However, Tulane forfeited its membership when its basketball program was discontinued following the 1984-85 season.



YEAR	SITE	TEAM CHAMPION	INDIVIDUAL CHAMPION
1981	Tallahassee, Florida	Florida State	Suzanne Doumar, Florida State
1982	Memphis, Tennessee	Tulane	Andrea Fink, Virginia Tech
1983	New Orleans, Louisiana	Florida State	Lisa Askanase, Virginia Tech
1984	New Orleans, Louisiana	Florida State	Johna Chafin, South Carolina
1985	Memphis, Tennessee	South Carolina	Rita Winebarger, South Carolina
1986	Columbia, South Carolina	South Carolina	Patti Henderson, Florida State
1987	Hattiesburg, Mississippi	South Carolina	Rita Winebarger, South Carolina
1988	Tallahassee, Florida	South Carolina	Paulette Roux, South Carolina
1989	Cincinnati, Ohio	Florida State	Keri Preng, Florida State
1990	Louisville, Kentucky	South Carolina	Nathalie Rodriguez, South Carolina
1991	Memphis, Tennessee	Florida State	Buffy Baker, Florida State

FLORIDA STATE IN THE NCAA'S

1983

SINGLES CHAMPIONSHIP

Round 64

Tracy Blumentritt (Rice) d. Jaime Kaplan (FSU) 3-6, 6-3, 6-0

DOUBLES CHAMPIONSHIP

Round 32

Jamie Kaplan - Lee McGuire (FSU) d. Margaret Redfern - Joy Tacon (Houston) 7-6, 7-5, 6-4

Round 16

#1 Louise Allen - Gretchen Rush (Trinity) d. Jamie Kaplan - Lee McGuire (FSU) 6-1, 6-0

1985

DOUBLES CHAMPIONSHIP

Round 32

Kiki Rozwadowski - Lori MacGill (S. Florida) d. Sue Hatch - Patti Henderson (FSU) 6-2, 6-3

1993

SINGLES CHAMPIONSHIP

Round 64

Suzi Italiano (Southern Cal) d. Audra Brannon (FSU) 6-4, 7-6

DOUBLES CHAMPIONSHIP

Round 32

Audra Brannon - Laura Randmaa (FSU) d. Danielle Paradine - Jody Yin

(Indiana) 6-3, 6-1

Round 16

Audra Brannon - Laura Randmaa (FSU) d. Melissa Mazzotta - Maria Pilar Valls (Miami) 7-6 (6), 4-6, 6-1

Round 8

#3 Laxmi Poruri - Heather Willens (Stanford) d. Audra Brannon - Laura Randmaa (FSU) 7-6 (2) 6-3

1994

TEAM CHAMPIONSHIP

Round 20

#16 Arizona d. #19 FSU 5-3

SINGLES CHAMPIONSHIP

Round 64

Marie-Laure Bougnol (Ole Miss) d. #9-16 Audra Brannon (FSU) 6-4, 6-4
Maggie Simkova (Southern Cal) d. Lori Sowell (FSU) 1-6, 6-0, 6-4

DOUBLES CHAMPIONSHIP

Round 32

Nicole Elliott - Vera Vitels (California) d. Audra Brannon - Elke Juul (FSU) 7-5, 6-2

1995

SINGLES CHAMPIONSHIP

Round 64

Lori Sowell (FSU) d. #8 Katie Schlukebir (Stanford) 6-4, 6-1

Round 32

Lori Sowell (FSU) d. Melissa Zimpfer (Tennessee) 7-5, 6-4

Round 16

Lori Sowell (FSU) d. #14 Joelle Schad (Arizona State) 6-0, 3-3, ret.

Round 8

#2 Keri Phebus (UCLA) d. Lori Sowell (FSU) 6-0, 6-2

1996

SINGLES CHAMPIONSHIP

Round 64

Lori Sowell (FSU) d. #9-16 Farley Taylor (Texas) 7-5, 7-6

Round 32

Lori Sowell (FSU) def. Stephanie Sammaritano (Arizona) 6-4, 7-5

Round 16

#6 Ania Bleszynski (Stanford) d. Lori Sowell (FSU) 7-5, 6-3

Doubles Championship

Round 32

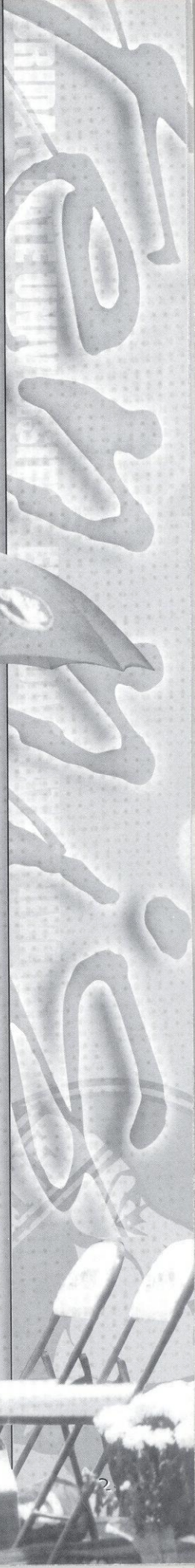
#4 Paige Yaroshuk - Keri Phebus (UCLA) d. Lori Sowell - Elke Juul (FSU) 6-1, 6-1

WOMEN'S TENNIS ALL-TIME RECORDS VS. OPPONENTS 1981-96

OPPONENT	W	L	FIRST	LAST
Alabama	6	1	1983	1992
Alabama-Birmingham	1	0	1988	1988
Arizona	0	3	1990	1994
Auburn	8	1	1982	1991
Baylor	2	0	1986	1988
Cal-Irvine	0	1	1987	1987
Cal-Santa Barbara	0	2	1987	1993
Clemson	5	7	1982	1996
College of Charleston	1	0	1983	1983
Columbia	1	0	1987	1987
Duke	1	8	1983	1996
Flagler	2	2	1988	1992
Florida	0	19	1982	1996
Florida A&M	3	0	1982	1988
Florida International	6	0	1989	1995
Florida Junior College	5	0	1983	1987
Furman	2	0	1987	1988
Georgia	5	6	1982	1996
Georgia Southern	2	0	1995	1996
Georgia State	2	0	1983	1988
Georgia Tech	8	0	1985	1996
Harvard	1	0	1982	1982
Houston	2	5	1984	1994
Illinois	0	1	1992	1992
Indiana	0	3	1982	1988
Iowa	2	0	1982	1983
Jacksonville	2	0	1989	1996
Kansas State	1	0	1989	1989
Kentucky	0	1	1994	1994
Lamar	1	0	1989	1989
Louisiana State	2	3	1982	1991
Louisiana Tech	2	0	1983	1990
Louisville	3	0	1982	1988
Lynn (Boca Raton)	1	0	1990	1990
Maryland	4	0	1993	1996
Memphis State	2	0	1985	1987
Miami, FL	1	9	1982	1996
Miami, OH	1	1	1984	1987
Michigan	4	0	1990	1993
Mississippi	2	6	1982	1996
Mississippi State	4	3	1984	1994
Mississippi Univ. for Women	1	0	1982	1982
New Mexico	3	0	1984	1990
North Carolina	7	7	1982	1996
North Carolina State	6	0	1992	1996
North Florida	5	1	1985	1990
Northeast Louisiana	6	0	1983	1991
Northwestern	0	5	1983	1992
Northwest Louisiana	1	0	1982	1982
North Texas State	1	0	1982	1982
Notre Dame	0	1	1996	1996
Ohio State	2	0	1982	1983
Oklahoma	1	0	1993	1993
Oklahoma State	1	2	1982	1984
Princeton	1	0	1982	1982
Purdue	3	0	1982	1987
Rice	3	5	1983	1994
Rollins	12	6	1982	1993
San Diego	0	1	1995	1995
Santa Fe	1	0	1990	1990
South Alabama	7	3	1982	1994
South Carolina	1	12	1982	1996
Southern Methodist	3	2	1982	1992
South Florida	13	10	1982	1995
Southwestern Louisiana	3	0	1982	1993
Southwest Missouri	1	0	1986	1986
Stetson	3	0	1983	1988
Tennessee	3	3	1983	1995
Tennessee-Chattanooga	1	0	1984	1984
Texas	0	2	1982	1994
Texas A&M	2	0	1994	1995
Texas Christian	1	4	1982	1991
Trinity	1	0	1991	1991
Tulane	5	1	1982	1991
U.S. International	0	1	1990	1990
Vanderbilt	2	3	1983	1996
Virginia	7	1	1992	1996
Virginia Tech	5	0	1985	1988
Wake Forest	4	7	1985	1996
Wichita State	1	0	1985	1985
William & Mary	1	0	1987	1987
Wisconsin	1	4	1986	1992
Yale	0	1	1989	1989



FSU Hosted the
NCAA Divison I
Women's Tennis
Championships in 1996



AROUND THE ACC

The Atlantic Coast Conference has long been a paramount of women's tennis. With its above average academic standard intact and sound fundamental beliefs in tennis, these nine programs: Clemson, Duke, Florida State, Georgia Tech, Maryland, North Carolina, North Carolina State, Virginia and Wake Forest have all excelled beyond the point of expectation.

Long known for its talented depth, the ACC has been no stranger to the national scope as eight programs during the 1995-96 season were nationally ranked in the Top 50, with Duke and Wake Forest surfacing in the Top 10. With players scattered throughout the national rankings from No. 1 to 100, the ACC had four ITA All-Americans in FSU's Lori Sowell, Clemson's Sophie Woorons and Duke's Vanessa Webb and Diana Spadea. The FSU women were well represented as ACC regular season champions in '96, as the Seminoles swept all three doubles categories and senior Ann Olsson the No. 3 singles champion. Sowell and former 'Nole Elke Juul were also named to the All-ACC team. It was Sowell's third consecutive honor and Juul's second.

At the 1996 ACC Championships, the Lady Seminoles were seeded fourth behind Duke, Wake Forest and Clemson. The Lady Semi-

noles faced No. 5 Virginia in the first round. Avenging a regular season upset to the Cavaliers, FSU won 5-3 and a chance to face top-seeded Duke in the semifinals. Duke defeated the 'Noles 6-0 on their way to an amazing ninth consecutive conference crown.

Although the Blue Devils have been the team to beat in ACC women's tennis the last few seasons, the league has witnessed streaks of champions. North Carolina had the most success in the early years, winning championships from 1977 to 1980. From 1981 to 1987, Clemson strung together seven consecutive titles. Duke was the team to snap that snapped the Lady Tigers winning streak in 1988, and have been on top of the ACC women's tennis scene ever since.

The 1996 season will be the 19th year of women's tennis competition for the Atlantic Coast Conference. Beginning in 1977, the ACC started crowning a conference champion. This process has not been without its changes during the past 19 years though. In 1982, the tournament was held in the spring for the first time. In 1990, the tournament determined the ACC team champion while the singles and doubles champions were determined during regular season play.

ACC TOURNAMENT HISTORY (SINCE FSU'S JOINING IN 1992)

TEAM COMPETITION

YEAR	TEAM CHAMPION	HEAD COACH	RUNNER UP	SITE
1992	Duke	Geoff Macdonald	Wake Forest	Charlotte, North Carolina
1993	Duke	Geoff Macdonald	Clemson	Charlotte, North Carolina
1994	Duke	Geoff Macdonald	Florida State	Charlotte, North Carolina
1995	Duke	Jody Hayden	Wake Forest	Greenwood, South Carolina
1996	Duke	Jody Hayden	Wake Forest	Greenwood, South Carolina

ATLANTIC COAST CONFERENCE HONORS

YEAR	ACC TOURNAMENT MVP	COACH OF THE YEAR	PLAYER OF THE YEAR	ROOKIE OF THE YEAR
1992	Susan Sommerville, Duke	Geoff Macdonald, Duke	Cinda Gurney, UNC	
1993	Christine Neuman, Duke	Andy Johnston, Clemson	Cinda Gurney, UNC	
1994	Wendy Lyons, Duke	Alice Reen, Florida State	Audra Brannon, FSU	Lori Sowell, FSU
1995	Wendy Lyons, Duke	Lew Gerrard, WFU	Monica Mraz, Duke	Laura Zifer, Duke
1996	Laura Zifer, Duke	Jim Laitta, Maryland	Sophie Woorons, Clemson	Vanessa Webb, Duke

SINGLES & DOUBLES RESULTS

NO. 1 SINGLES

1992	Cinda Gurney, Duke
1993	Cinda Gurney, Duke
1994	Audra Brannon, Florida State
1995	Wendy Lyons, Duke
1996	Sophie Woorons, Clemson

NO. 2 SINGLES

1992	Angela Bernal, North Carolina
1993	Christine Neuman, Duke
1994	Lori Sowell, Florida State
1995	Wendy Lyons, Duke
1996	Jan Barrett, Clemson

NO. 3 SINGLES

1992	Liz Barker, Wake Forest
1993	Amy Young, Clemson
1994	Emma Peetz, Clemson
1995	Cristina Caparis, Wake Forest
1996	Ann Olsson, Florida State

NO. 4 SINGLES

1992	Diane McKeon, Wake Forest
1993	Shannon King, Clemson
1994	Jan Barrett, Clemson
1995	Karen O-Sullivan, Duke
1996	Devrin Carr, Clemson

NO. 5 SINGLES

1992	Tracey Hiete, Duke
1993	Alison Cohen, Virginia
1994	Maggie Harris, Wake Forest
1995	Wendy Fix, Duke
1996	Stacy Gingold, Virginia

NO. 6 SINGLES

1992	Scotti Thomas, North Carolina
1993	Tracey Zawacki, Wake Forest
1994	Kim Schiff, Duke
1995	Maggie Harris, Wake Forest
1996	Alison Levy, North Carolina

NO. 1 DOUBLES

1992	Cinda Gurney/Alisha Portnoy, North Carolina
1993	Janice Durden/Shannon King, Clemson
1994	Audra Brannon/Elke Juul, Florida State
1995	Wendy Lyons/Monica Mraz, Duke
1996	Elke Juul/Lori Sowell, Florida State

NO. 2 DOUBLES

1992	Wendy Lyons/Monica Mraz, Duke
1993	Alison Cohen/Ly-Lan Schofield, Virginia
1994	Maggie Harris/Patty Murren, Wake Forest
1995	Wendy Fix/Laura Zifer, Duke
1996	Sasha Hanna/Ann Olsson, Florida State

NO. 3 DOUBLES

1992	Hillary McKinney/Meredith Lukoff, Duke
1993	Elke Juul/Sandi Ecclestone, Florida State
1994	Wendy Fix/Kim Schiff, Duke
1995	Ashley Delaney/Lori Junker, Florida State
1996	Lori Junker/Kylie Thompson, Florida State

1996 ACC STATS

SINGLES	1	2	3	4	5	6	TOURN.	TOTAL	STREAK
Lori Sowell	5-4	1-0	-	-	-	-	1-1	6-4	L 1
Elke Juul	-	6-3	-	-	-	-	1-1	6-3	L 1
Ann Olsson	-	-	6-4	-	-	-	1-1	6-4	L 1
Sasha Hanna	-	-	-	2-8	-	-	0-2	2-8	L 2
Lori Junker	-	-	-	-	4-6	-	0-2	4-6	L 4
Kylie Thompson	-	-	-	-	-	2-8	0-2	2-8	L 2

DOUBLES	1	2	3	TOURN.	TOTAL	STREAK
Juul - Sowell	8-1	-	-	1-0	8-1	W 3
Hanna - Olsson	-	5-3	-	-	5-3	W 1
Delany - Junker	-	-	3-0	1-0	3-0	W 3
Junker - Thompson	-	-	3-2	-	3-2	W 3

GAME BY GAME

#32 Florida State 6
Maryland 3
FEBRUARY 24, 1996 • COLLEGE PARK, MD

No. 1 singles, Maryland def. FSU by default; **No. 2**, #81 Lori Sowell (FSU) def. Bresha Byrd (UM) 6-4, 6-3; **No. 3**, Ann Olsson (FSU) def. Meg Griffin (UM) 6-4, 6-2; **No. 4**, Sasha Hanna (FSU) def. Adrienne Pavelko (UM) 6-3, 6-3; **No. 5**, Lori Junker (FSU) def. Elizabeth Henkin (UM) 6-1, 6-3; **No. 6**, Tatjana Dulic (UM) def. Kylie Thomsson (FSU) 6-2, 2-6, 6-3; **No. 1 doubles**, Sowell - Elke Juul (FSU) def. Byrd - Sarah Salam (UM) 6-3, 6-2; **No. 2**, Olsson - Hanna (FSU) def. Griffin - Pavelko (UM) 6-3, 6-2; **No. 3**, Dulic - Thea Ivanisevic (UM) def. Junker - Thompson (FSU) 6-2, 6-3.

#32 Florida State 5
#29 Clemson 4
MARCH 2, 1996 • CLEMSON, SOUTH CAROLINA

No. 1 singles, #81 Lori Sowell (FSU) def. #27 Sophie Woorons (CU) 7-5, 5-7, 7-6; **No. 2**, Elke Juul (FSU) def. Jan Barrett (CU) 4-6, 6-4, 6-4; **No. 3**, Ann Olsson (FSU) def. Melissa Odom (CU) 7-5, 6-4; **No. 4**, Devrin Carr (CU) def. Sasha Hanna (FSU) 4-6, 7-5, 6-1; **No. 5**, Lori Junker (FSU) def. Annie Trepanier (CU) 3-6, 6-2, 6-2; **No. 6**, Christine Cerratani (CU) def. Kylie Thomsson (FSU) 6-4, 2-6, 6-3; **No. 1 doubles**, Sowell - Juul (FSU) def. #8 Woorons - Barrett (CU) 7-6, 6-4; **No. 2**, Cerratani - Trepanier (CU) def. Olsson - Hanna (FSU) 7-5, 2-5, def.; **No. 3**, Odom - Kate-Maree Mair (CU) def. Junker - Thompson (FSU) 7-5, 6-4.

Virginia 5
#28 Florida State 4
MARCH 14, 1996 • TALLAHASSEE, FLORIDA

No. 1 singles, Alison Cohen (UVA) def. #81 Lori Sowell (FSU) 7-5, 6-0; **No. 2**, Elke Juul (FSU) def. Jen Fiers (UVA) 6-4, 6-4; **No. 3**, Emily Hill (UVA) def. Ann Olsson (FSU) 6-4, 6-2; **No. 4**, Paige Boyko (UVA) def. Sasha Hanna (FSU) 3-6, 6-0, 6-3; **No. 5**, Stacy Gingold (UVA) def. Lori Junker (FSU) 7-6, 5-7, 6-0; **No. 6**, Kendall White (UVA) def. Kylie Thomsson (FSU) 7-6, 7-5; **No. 1 doubles**, #21 Sowell - Juul (FSU) def. #9 Cohen - Fiers (UVA) 6-3, 6-2; **No. 2**, Olsson - Hanna (FSU) def. Whitney Sharp - Hill (UVA) 8-6; **No. 3**, Junker - Thompson (FSU) def. Pam Carton - White (UVA) 8-3.

#7 Wake Forest 5
#28 Florida State 4
MARCH 10, 1996 • TALLAHASSEE, FLORIDA

No. 1 singles, #15 Terry Ann Zawacki (WF) def. #81 Lori Sowell (FSU) 6-2, 6-3; **No. 2**, Elke Juul (FSU) def. #36 Patty Murren (WF) 7-6, 6-0; **No. 3**, Ann Olsson (FSU) def. #84 Nicola Kaiwai (WF) 6-4, 6-4; **No. 4**, Maggie Harris (WF) def. Sasha Hanna (FSU) 6-0, 6-4; **No. 5**, Cristina Caparis (WF) def. Lori Junker (FSU) 6-2, 6-0; **No. 6**, Lule Aydin (WF) def. Kylie Thomsson (FSU) 6-4, 6-1; **No. 1 doubles**, #21 Sowell - Juul (FSU) def. #33 Harris - Kaiwai (WF) 6-3, 4-6, 6-1; **No. 2**, Murren - Aydin (WF) def. Olsson - Hanna (FSU) 7-5, 2-6, 6-4; **No. 3**, Junker - Thompson (FSU) def. #52 Zawacki - Caparis (WF) 6-3, 6-7, 6-2.

#28 Florida State 8
North Carolina State 1
MARCH 12, 1996 • TALLAHASSEE, FLORIDA

No. 1 singles, #81 Lori Sowell (FSU) def. Blair Sutton (NCS) 6-3, 6-4; **No. 2**, Elke Juul (FSU) def. Chastity Chandler (NCS) 6-3, 6-1; **No. 3**, Ann Olsson (FSU) def. Mina Scinicariello (NCS) 6-1, 6-1; **No. 4**, Nena Bonacic (WF) def. Sasha Hanna (FSU) 6-3, 7-5; **No. 5**, Lori Junker (FSU) def. Carey Causway (NCS) 6-1, 6-4; **No. 6**, Kylie Thomsson (FSU) def. Laura Cowman (NCS) 7-5, 6-0; **No. 1 doubles**, #21 Sowell - Juul (FSU) def. Sutton - Chandler (NCS) 9-8; **No. 2**, Olsson - Hanna (FSU) def. Scinicariello - Causway (NCS) 9-7; **No. 3**, Junker - Thompson (FSU) def. Cowman - Bonacic (NCS) 8-2.

North Carolina 5
#25 Florida State 4
MARCH 30, 1996 • CHAPEL HILL, NC

No. 1 singles, #41 Lori Sowell (FSU) def. Ariana Cervenka (UNC) 6-3, 7-6; **No. 2**, Marianna Land (UNC) def. Elke Juul (FSU) 2-6, 6-4, 6-2; **No. 3**, J.C. Biber (UNC) def. Ann Olsson (FSU) 6-4, 6-3; **No. 4**, Sarah Hawkins (UNC) def. Sasha Hanna (FSU) 6-1, 4-6, 6-4; **No. 5**, Lori Junker (FSU) def. Robyn Gurney (UNC) 6-2, 6-1; **No. 6**, Alison Levy (UNC) def. Kylie Thomsson (FSU) 6-0, 4-6, 6-4; **No. 1 doubles**, Cervenka - Levy (UNC) def. #11 Sowell - Juul (FSU) 7-6, 6-4; **No. 2**, Olsson - Hanna (FSU) def. Biber - Hawkins (UNC) 2-6, 6-3, 7-5; **No. 3**, Ashley Delaney - Junker (FSU) def. Kim Diehl - Levy (UNC) 6-2, 6-0.

Duke 8
#25 Florida State 1
MARCH 31, 1996 • DURHAM, NORTH CAROLINA

No. 1 singles, #3 Vanessa Webb (DU) def. #41 Lori Sowell (FSU) 6-4, 6-2; **No. 2**, #53 Laura Zifer (DU) def. Elke Juul (FSU) 6-0, 6-3; **No. 3**, #70 Kristin Sanderson (DU) def. Ann Olsson (FSU) 6-3, 6-3; **No. 4**, Wendy Fix (DU) def. Sasha Hanna (FSU) 6-0, 6-0; **No. 5**, Diana Spadea (DU) def. Lori Junker (FSU) 6-2, 6-1; **No. 6**, Ellen McCance (DU) def. Kylie Thompson (FSU) 6-3, 6-1; **No. 1 doubles**, #11 Sowell - Juul (FSU) def. #5 Fix - Zifer (DU) 8-2; **No. 2**, #46 Webb - Sanderson (DU) def. Olsson - Hanna (FSU) 8-3; **No. 3**, Duke def. FSU by default. #4

#31 Florida State 8
Georgia Tech 1
APRIL 13, 1996 • ATLANTA, GEORGIA

No. 1 singles, #24 Lori Sowell (FSU) def. Heather Wimberley (GT) 6-4, 6-2; **No. 2**, Elke Juul (FSU) def. Xenia Uy (GT) 6-4, 6-2; **No. 3**, Ann Olsson (FSU) def. Sybi Parker (GT) 6-4, 6-0; **No. 4**, Sasha Hanna (FSU) def. Autumn Richards (GT) 6-1, 6-1; **No. 5**, Tiffany Schwartz (GT) def. Lori Junker (FSU) 1-6, 6-1, 6-1; **No. 6**, Kylie Thompson (FSU) def. Brandy Kirchner (GT) 6-7, 6-0, 6-1; **No. 1 doubles**, #13 Sowell - Juul (FSU) def. Wimberley - Uy (GT) 8-3; **No. 2**, Olsson - Hanna (FSU) def. Richards - Lynne Borowsky (GT) 8-4; **No. 3**, Junker - Ashley Delaney (FSU) def. Parker - Strippling (GT) 8-1.

#34 Florida State 5
#35 Virginia 3
APRIL 19, 1996 • ACC CHAMPIONSHIPS GREENWOOD, SC

No. 1 singles, #27 Lori Sowell (FSU) def. #66 Alison Cohen (UVA) 6-2, 6-2; **No. 2**, Elke Juul (FSU) def. Jen Fiers (UVA) 6-3, 6-1; **No. 3**, Ann Olsson (FSU) def. Emily Hill (UVA) 5-7, 7-5, 6-1; **No. 4**, Paige Boiko (UVA) def. Sasha Hanna (FSU) 6-4, 6-4; **No. 5**, Stacy Gingold (UVA) def. Lori Junker (FSU) 6-3, 6-4; **No. 6**, Kendall White (UVA) def. Kylie Thomsson (FSU) 6-3, 7-5; **No. 1 doubles**, #13 Juul - Sowell (FSU) def. #11 Cohen - Fiers 6-3, 6-4; **No. 3**, Junker - Ashley Delaney (FSU) def. Hill - Gingold (UVA) 6-4, 7-5.

#3 Duke 6
#34 Florida State 0
APRIL 20, 1996 • ACC CHAMPIONSHIPS GREENWOOD, SC

No. 1 singles, #3 Vanessa Webb (DU) def. #27 Lori Sowell (FSU) 5-7, 6-3, 6-2; **No. 2**, #70 Kristen Sanderson (DU) def. Elke Juul (FSU) 6-0, 6-1; **No. 3**, Diane Spadea (DU) def. Ann Olsson (FSU) 6-0, 6-0; **No. 4**, #74 Laura Zifer (DU) def. Sasha Hanna (FSU) 6-0, 6-1; **No. 5**, Luanne Spadea (DU) def. Lori Junker (FSU) 6-0, 6-1; **No. 6**, Wendy Fix (DU) def. Kylie Thomsson (FSU) 6-1, 6-1.

1997 OPPONENTS

SOUTH ALABAMA LADY JAGUARS

Location: Mobile, Alabama
 Head Coach: Scott Novak
 1996 Record: 14-5/Sun Belt 1st
 Tennis Contact: Mike Nicholson
 Office Phone: (334) 460-7035



FLORIDA GATORS

Location: Gainesville, Florida
 Head Coach: Andy Brandi
 1996 Record: 31-0/14-0 SEC 1st
 Tennis Contact: Kathy Cafazzo
 Office Phone: (352) 375-4683, ext.6133



NORTH CAROLINA STATE WOLFPACK

Location: Raleigh, North Carolina
 Head Coach: Jenny Garrity
 1996 Record: 7-14/1-7 ACC 8th
 Tennis Contact: Joan Von Thron
 Office Phone: (919) 515-2102



VANDERBILT COMMODORES

Location: Nashville, Tennessee
 Head Coach: Geoff Macdonald
 1996 Record: 24-7/11-3 SEC 2nd
 Tennis Contact: Joe Jasper
 Office Phone: (615) 322-4121



NORTH CAROLINA TARHEELS

Location: Chapel Hill, North Carolina
 Head Coach: Kitty Harrison
 1996 Record: 11-11/3-5 ACC 7th
 Tennis Contact: Matt Bowers
 Office Phone: (919) 962-1376



WAKE FOREST DEMON DEACONS

Location: Winston-Salem, North Carolina
 Head Coach: Lew Gerrard
 1996 Record: 20-7/7-1 ACC 2nd
 Tennis Contact: John Justus
 Office Phone: (910) 759-5640



AUBURN TIGERS

Location: Auburn, Alabama
 Head Coach: Randy Holden
 1996 Record: 16-9/6-7 SEC 6th
 Tennis Contact: Burton Dunn
 Office Phone: (334) 844-9806



BAYLOR LADY BEARS

Location: Waco, Texas
 Head Coach: Dave Luedtke
 1996 Record: 15-7/5-2 SWC T2nd
 Tennis Contact: Jason King
 Office Phone: (817) 755-2743



CALIFORNIA GOLDEN BEARS

Location: Berkeley, California
 Head Coach: Jan Brogan
 1996 Record: 10-15/1-9 PAC-10 T5th
 Tennis Contact: Mike Schoback
 Office Phone: (510) 642-5363



MIAMI HURRICANES

Location: Coral Gables, Florida
 Head Coach: Kim Sands
 1996 Record: 11-13/Big East 2nd
 Tennis Contact: Sam Henderson
 Office Phone: (305) 284-3244



RICE OWLS

Location: Houston, Texas
 Head Coach: Paul Blankenship
 1996 Record: 12-10/4-3 SWC 3rd
 Tennis Contact: Dwayne Leach
 Office Phone: (713) 737-5637



MARYLAND TERRAPINS

Location: College Park, Maryland
 Head Coach: Jim Laitta
 1996 Record: 9-9/4-4 ACC 5th
 Tennis Contact: Andy Kraus
 Office Phone: (301) 314-7064



FLORIDA INTERNATIONAL GOLDEN PANTHERS

Location: Miami, Florida
 Head Coach: Peter Lehman
 1996 Record: 11-8/3-1 TAAC 3rd
 Tennis Contact: Darin Darst
 Office Phone: (305) 348-3164



HOUSTON COUGARS

Location: Houston, Texas
 Head Coach: Stina Mosvold
 1996 Record: 10-11/3-4 SWC 3rd
 Tennis Contact: Andrew Ferraro
 Office Phone: (713) 743-9404



ILLINOIS FIGHTING ILLINI

Location: Champaign-Urbana, Illinois
 Head Coach: Jennifer Roberts
 1996 Record: 12-14/6-6 Big Ten 7th
 Tennis Contact: Barbara Butler
 Office Phone: (217) 333-1391



GEORGIA TECH YELLOW JACKETS

Location: Atlanta, Georgia
 Head Coach: Sue Hutchinson
 1996 Record: 9-13/0-8 ACC 9th
 Tennis Contact: Jennifer Lehr
 Office Phone: (404) 894-5445



TEXAS A&M LADY AGGIES

Location: College Station, Texas
 Head Coach: Bobby Kleinecke
 1996 Record: 20-6/5-2 SWC T2nd
 Tennis Contact: Stephen Miller
 Office Phone: (409) 845-5725



VIRGINIA CAVALIERS

Location: Charlottesville, Virginia
 Head Coach: Phil Rogers
 1996 Record: 7-9/4-4 ACC 4th
 Tennis Contact: Michael Colley
 Office Phone: (804) 982-5500



CLEMSON TIGERS

Location: Clemson, South Carolina
 Head Coach: Andy Johnston
 1996 Record: 15-10/5-3 ACC 3rd
 Tennis Contact: Sam Blackman
 Office Phone: (803) 656-1924



DUKE BLUE DEVILS

Location: Durham, North Carolina
 Head Coach: Jody Hyden
 1996 Record: 25-4/8-0 ACC 1st
 Tennis Contact: Tom Kosempa
 Office Phone: (919) 684-2633



SOUTH FLORIDA BULLS

Location: Tampa, Florida
 Head Coach: Sherry Bedingfield
 1996 Record: 17-6/2-1 C-USA 1st
 Tennis Contact: Zack Bolno
 Office Phone: (813) 974-4087



1996-97 ROSTER



1996-97 Women's Tennis Team

NAME	CLASS	MAJOR	HOMETOWN
Ashley Delaney	SR	Nutrition & Fitness	Lake City, Florida
Sasha Hanna	SO	undecided	Montego Bay, Jamaica
Lori Junker	JR	Communication	Longwood, Florida
Ann Olsson	SR	Marketing	Vanersborg, Sweden
Rakena Payne	JR	Marketing	Chicago, Illinois
Lori Sowell	SR	Sports Management	Ft. Lauderdale, Florida
Kylie Thompson	SO	Psychology	Honea Path, South Carolina
Ali Weber	FR	Undecided	Clermont, Florida

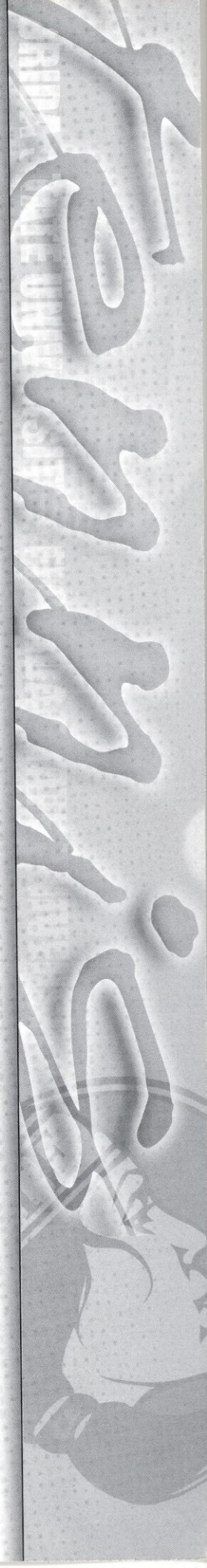
Head Coach: Lise Gregory (1st Season)
Assistant Coach: Tim Bauer (1st Season)

State and Country Breakdown...

Florida	4
Illinois	1
South Carolina	1
Jamaica	1
Sweden	1

Pronunciations...

Lori Junker	YUN - ker
Ann Olsson	OLE - sun
Rakena Payne	Rah - KEEN - nuh
Lori Sowell	Sole
Kylie Thompson	KYE - lee
Ali Weber	AL - lee
Lise Gregory	LEE - suh



FLORIDA STATE UNIVERSITY WOMEN'S TENNIS TEAM



1996-97 FLORIDA STATE WOMEN'S TENNIS SCHEDULE

FALL

Sept. 20 - 22	Roberta Allison Inv.	Tuscaloosa, AL	All Day
Sept. 26 - 29	ITA Clay Courts	Baltimore, MD	All Day
Oct. 18 - 20	Lady Seminole Classic	Tallahassee, FL	All Day
Oct. 25 - 27	Gator Fall Classic	Gainesville, FL	All Day
Oct. 24 - 27	Riviera All-American	Los Angeles, CA	All Day
Nov. 1 - 4	ITA Regionals	Jackson, MS	All Day

SPRING

Jan. 27 - 29	ACC Indoors	Chapel Hill, NC	All Day
Feb. 8	South Alabama	Nashville, TN	11:00 AM
Feb. 9	Vanderbilt	Nashville, TN	12:00 PM
Feb. 15	Auburn	Miami, FL	TBA
Feb. 16	Miami, Fla.	Miami, FL	11:00 AM
Feb. 17	Florida International	Miami, FL	12:00 PM
Feb. 22	Georgia Tech	Tallahassee, FL	12:00 PM

March 1	Clemson	Tallahassee, FL	12:00 PM
March 5	Florida	Tallahassee, FL	2:00 PM
March 8	North Carolina	Tallahassee, FL	12:00 PM
March 11	Baylor	Waco, TX	TBA
March 13	Rice	Houston, TX	TBA
March 14	Houston	Houston, TX	TBA
March 15	Texas A&M	College Station, TX	10:00 AM
March 18	Duke	Tallahassee, FL	1:00 PM
March 21	N.C. State	Raleigh, NC	2:00 PM
March 22	Wake Forest	Winston-Salem, NC	11:00 AM
March 24	Cal - Berkley	Tallahassee, FL	2:00 PM
March 25	Maryland	Tallahassee, FL	2:00 PM
March 28	Illinois	Tallahassee, FL	2:00 PM
April 5	Virginia	Charlottesville, VA	11:00 AM
April 10	South Florida	Tampa, FL	2:00 PM
April 17-20	ACC Championships	Atlanta, GA	All Day