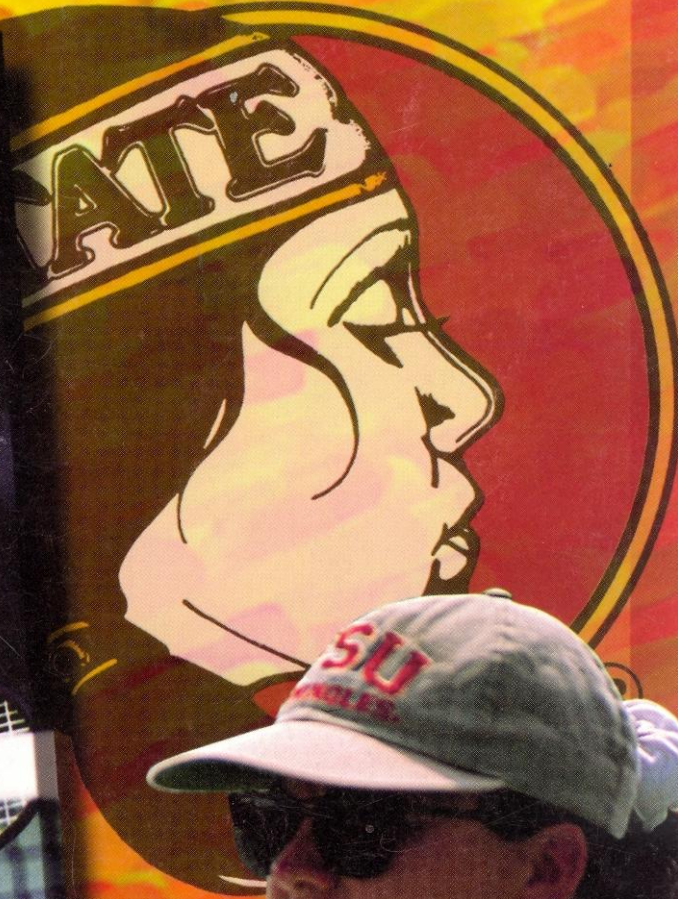
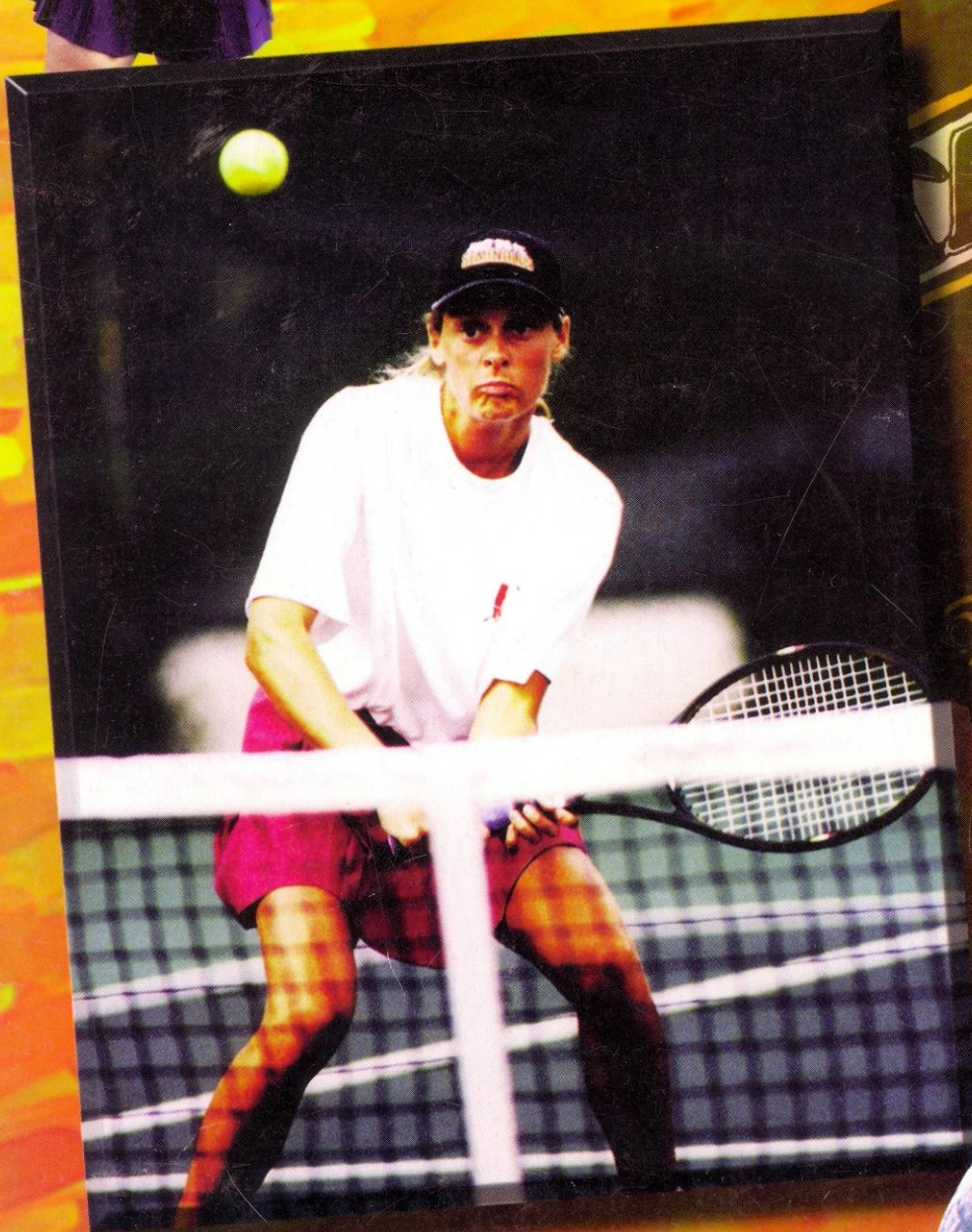
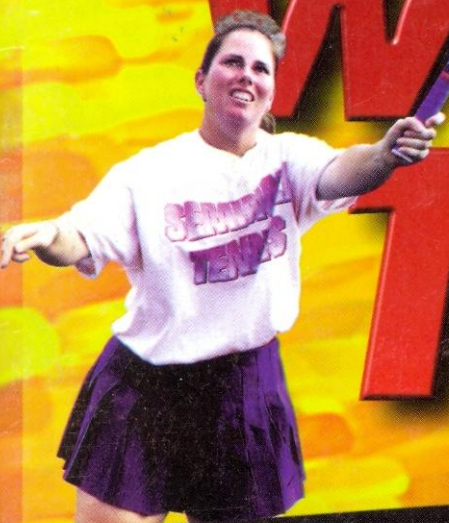


1995-1996 WOMEN'S TENNIS

FLORIDA STATE UNIVERSITY



FLORIDA
TEN

1995-96 LADY SEMINOLES



L to R: Coach Alice Reen, Lori Sowell, Asst. Coach Michelle McMillen, Elke Juul, Ashley Delaney, Mary Thym, Kylie Thompson, Ann Olsson, Lori Junker, Sasha Hanna

NAME	CLASS	MAJOR	HOMETOWN
Ashley Delaney	Jr.	Nutrition & Fitness	Lake City, Florida
Sasha Hanna	Fr.	undecided	Montego Bay, Jamaica
Lori Junker	So.	Communication	Longwood, Florida
Elke Juul	Sr.	Nutrition & Fitness	Collaroy Beach, Australia
Ann Olsson	Jr.	Marketing	Vanersborg, Sweden
Lori Sowell	Jr.	Sports Management	Ft. Lauderdale, Florida
Kylie Thompson	Fr.	Psychology	Honea Path, South Carolina
Mary Thym	So.	undecided	Nashville, Tennessee

HEAD COACH: Alice Reen (5th Season)

ASSISTANT COACH: Michele McMillen (1st Season)

PRONUNCIATIONS...

Lori Junker YUN - ker
 Elke Juul ELL-kee JOOL
 Ann Olsson OLE - sun
 Lori Sowell Sole
 Kylie Thompson KYE - lee
 Mary Thym TIM

STATE AND COUNTRY BREAKDOWN...

Florida 3
 South Carolina 1
 Tennessee 1
 Australia 1
 Jamaica 1
 Sweden 1

TABLE OF CONTENTS

Information	1
This is Tallahassee	2-3
This is FSU	4-5
This is FSU Women's Tennis	6-7
Speicher Tennis Center	8
'95-'95 Women's Tennis Schedule	9
Support Services	10-11
Honors & Awards	12-13
Alice Reen	14
Michele McMillen / The Spirit Spear	15
Ashley Delaney	16
Sasha Hanna	17
Lori Junker	18
Elke Juul	19
Ann Olsson	20
Lori Sowell	21
Kylie Thompson	22
Mary Thym	23
ACC Tournament History	24
NCAA Champions History	25
All Time Record vs. Opponents	26
1995 Women's Tennis Results	27
'95-'96 FSU Opponents	28x

FLORIDA STATE UNIVERSITY QUICKFACTS

Location	Tallahassee, Florida
Enrollment	28,500
Founded	1857
Nickname	Seminoles
Colors	Garnet and Gold
Conference	Atlantic Coast
Affiliation	NCAA Division I
President	Talbot "Sandy" D'Alemberte
Home Courts	Don Loucks Varsity Courts at the Scott Speicher Tennis Center
Athletic Director	Dave Hart, Jr.
Associate Athletic Director	Kim Record
Sports Information Director	Rob Wilson
SID Office Phone	(904) 644-1403
Tennis SID	Joe Hornstein
SID Home Phone	(904) 575-0451
SID Fax Phone	(904) 644-3820
SID Mailing Address	P.O. Box 2195 Tallahassee, FL 32316
Head Coach	Alice Reen
Overall Record/Years at FSU	52-39/Five
Assistant Coach	Michele McMillen
Years at FSU	First year
Tennis Office Phone	(904) 644-1091
1994-95 Record/Conference	11-10/6-2 (3rd)
1995 Final Ranking	No. 31 ITA/Rolax
Players Returning/Lost	5/4
Newcomers	3

INFORMATION

Media Guide Credits

The 1995-96 Florida State University women's tennis media guide is a publication of the Florida State University Sports Information Office. Edited and written by Joe Hornstein. Designed by Marsiglio & Murphy Design Group, Inc. Further editorial assistance by Tina Thomas, Ed Meadows, Joanna Sparkman and Kelly Drinkwine. Photography by Ross Obley, Ryals Lee and the University Photo Lab.

A Note to the Fans and the Media

Joe Hornstein in the FSU Sports Information Office is ready to assist you with any questions you may have about the 1995-96 tennis team. Please do not hesitate to phone, fax, or write a letter to the sports information office at PO Box 2195; Tallahassee, FL 32316; (904) 644-3820 fax; (904) 644-1403 phone, if we can further assist you.

Media credentials for FSU tennis tournaments and dual matches may be obtained by contacting Joe Hornstein in the sports information office. Credentials may be picked up the day of the match at the Scott Speicher Tennis Center. Please call the sports information office for alternate assistance.

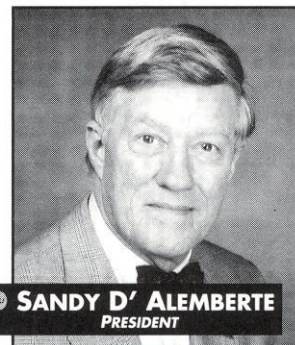
Press Services

Members of the media are supplied with regular press releases, including updated individual tournament and career statistics as well as conference and national rankings and information on upcoming matches. Results may be obtained in the sports information office or off the FSU faxback system.

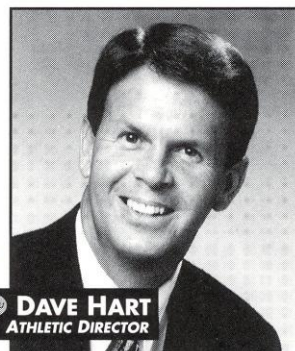
Interviews

All athlete interviews must be coordinated with the sports information office and requests should be submitted at least 24 hours in advance. Phone interviews with out-of-town media are encouraged and can also be arranged. Coach Reen is generally available in her office during weekday mornings.

The Florida State University offers equal opportunity in its employment and educational activities in compliance with Title IX, Section 5-4 of the Rehabilitation Act of 1973 and other civil rights laws.



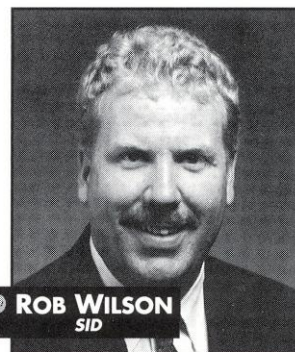
SANDY D' ALEMBERTE
PRESIDENT



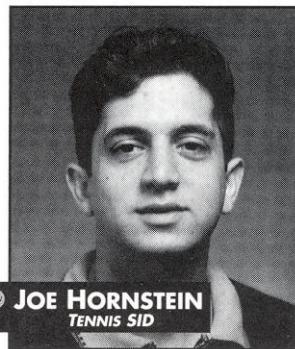
DAVE HART
ATHLETIC DIRECTOR



KIM RECORD
ASSOCIATE ATHLETIC DIRECTOR



ROB WILSON
SID



JOE HORNSTEIN
TENNIS SID

THIS IS TALLAHASSEE



Near, but far from the glaring strips of neon amusement, and the castles and crowds of Disney, lies another magical place in the Sunshine State — one of pow-wows, plantations, politics and great pride. Often described as “The Other Florida” with its deep-rooted history, rolling hills, canopy roads of moss-draped oaks, cool climate and Southern-style hospitality; it is a Florida few have seen. It is Tallahassee — Florida with a Southern accent.

Best known as Florida’s capital, Tallahassee is an intimate neometropolitan city where the power of state government, the academic and the artistic are complimented by subtle, old-fashioned charm.

Tallahassee — derived from the words “talwa” meaning town and “ahasee” meaning old — has undergone many changes, but one thing remains the same — it is still a government town fiercely proud and dedicated to preserving its heritage.

The famous Gulf beaches and major metropolitan areas of the South are a short trip from Tallahassee. As Florida’s capital city, Tallahassee offers the grace and charm of a small city, while Atlanta, Jacksonville, Tampa, Orlando and New Orleans are within easy driving distance.

The Capitol buildings, both old and new, epitomize Tallahassee’s perseverance. With the 22-story New Capitol towering overhead since 1977, the Old Capitol, erected in 1845, has been restored to its 1902 appearance complete with red-and-white candy-striped awnings and a gracious dome adorned with stained glass. The 22nd floor of the New Capitol reveals a spectacular view of the rolling hills of Leon County all the way to the shimmering Gulf of Mexico. Chambers of the House and Senate buzz with political zeal during the March through May legislative session.

CLIMATE:

Tallahassee enjoys four distinct seasons with an average annual temperature of 67 degrees. Weather conditions are mild and moist due to close proximity to the Gulf. Summer temperatures are subtropical with an average of 83 degrees while winters average a pleasant 50 degrees.



The first Christmas mass celebrated in the United States was held in Tallahassee.



Standing nine feet tall, Herman, a skeletal prehistoric mastodon — originally weighing about five tons — was pulled from Wakulla Springs in the 1930s. The Museum of Florida History also features the Prehistoric Florida Exhibit, Spanish treasures, war relics and even a riverboat.



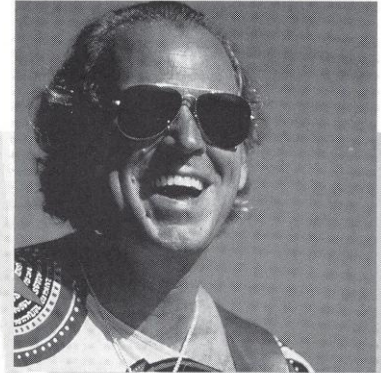
Downtown Tallahassee grew as a trade center with Florida’s first railroad — a simple mule-drawn, rail trolley epitomizing the leisurely pace of Southern life — connecting Tallahassee and St. Marks. The 16-mile railroad has now been paved as the St. Mark’s Bike Trail, and the Old Trolley remains a stylish way to get around.



Red wolves, Florida panthers, alligators and other fascinating wildlife in a 52-acre habitat highlight the Tallahassee Museum of History and Natural Science.



The Winter Festival and Celebration of Lights, an outdoor celebration of holiday lights, music and the arts with activities including a night glow parade, Jingle Bell Run and Santa's Enchanted Forest has become a popular wintertime event in Tallahassee.



As one of the largest arenas in Florida, the Tallahassee-Leon County Civic Center, situated on 22 downtown acres, provides the ideal setting for "star-studded" events. The Civic Center Arena was the site of the 1995 NCAA Basketball Southeast Regional while Jacksonville native Jimmy Buffet makes regular visits to Tallahassee.

What Others Are Saying About Tallahassee:

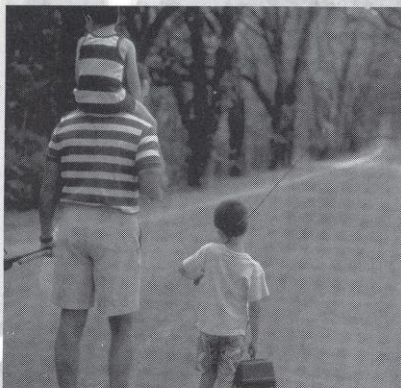
"WHERE ELSE IN THE SUNSHINE STATE CAN YOU PRETEND TO BE THE GOVERNOR, PERUSE PIRATES' PLUNDER, AND PEER BREATHLESSLY AT A DARING YOUNG MAN ON A FLYING TRAPEZE — ALL IN THE SAME DAY?"
— **SOUTHERN LIVING**

"AFTER A VISIT TO TALLAHASSEE, YOU'LL LEAVE FLORIDA WITH A WHOLE NEW IMAGE OF THE MAGIC KINGDOM — AND YOU WON'T HAVE TO WORRY ABOUT MOUSE EARS GETTING SMASHED IN YOUR SUITCASE."
— **DISCOVERY**

"TALLAHASSEE, FLORIDA'S CAPITAL CITY, HAS CHARM WITH A DISTINCTLY SOUTHERN ACCENT..."
— **BOSTON HERALD**



Only 13 miles from the Capitol, amid alligators, aningas and tranquility is the 2,900-acre Wakulla Springs State Park. Visitors can drift lazily aboard a jungle cruise boat on Wakulla Springs while the alligators sun on the shore. Tallahassee's underwater passages have intrigued adventurers from around the world — even National Geographic magazine attempts to uncover the hidden mysteries of the springs in many issues.



Low sprawling oaks, draped with Spanish moss create dramatic emerald tunnels of dancing sunlight on Tallahassee's famous Canopy Roads.



Noted for water sports, including sailing and wind surfing, Shell Point Resort is located just 25 miles south of Tallahassee.



Springtime Tallahassee has blossomed over 25 years into a four-week jubilee with parades, festivals, contests, crafts and amusement.

THIS IS FLORIDA STATE



A senior member of the 10-member State University System, FSU was founded as an institution of higher learning in 1852 by legislative act and began in Tallahassee with its first students in 1857. Today, Florida State's operating budget is \$442 million. Faculty and administrators generate more than \$95 million annually in external funding to supplement state-sponsored research. Three direct-support organizations serve to bolster the University: the FSU Foundation, which raises millions in private gifts to support academics, the Seminole Boosters and the FSU Alumni Association.

Florida State continues to progress and grow — from its pre-Civil War foundation as the Seminary West of the Suwannee, through the early 20th century as the academically respected Florida State College for Women, returning to coeducational status as a university in 1947, to its modern development as an acclaimed research institution, a top-ranked competitor in intercollegiate athletics and as a standard-setter in the basic sciences and the performing arts.



With 1,568 members, the FSU faculty currently includes five members of the National Academy of Sciences and eight members of the American Academy of Arts and Sciences, and has included five Nobel laureates. It is backed by 2,987 administrative/professional and support staff.



The Dr. Bobby E. Leach Center, a state-of-the-art student recreation facility, with an indoor pool, saunas, basketball and racquet-sport courts, was completed in 1991. And in June, a 2300 square foot free weight area was completed.

Florida State University, nearing its golden anniversary as a co-educational graduate research institution, has joined the nation's elite in both academics and athletics. Located on the oldest continuous site of higher education in Florida and building rapidly on the framework of a highly regarded liberal arts college for women, the University has emerged over the past 48 years as an institution of national and international esteem.



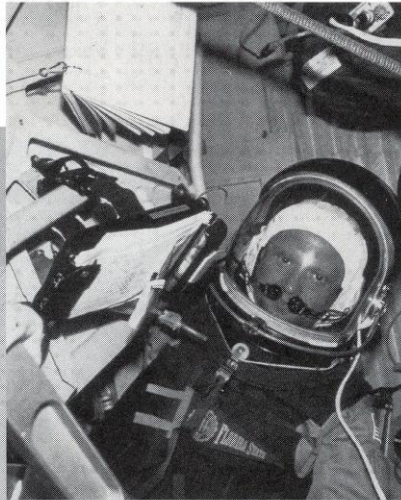
FSU ranked 20th in the nation for 1990-91 in the number of black Ph.D. students it graduates. Over the five years from 1986 to 1990, FSU ranked eighth nationally by granting doctorates to 70 African-Americans.



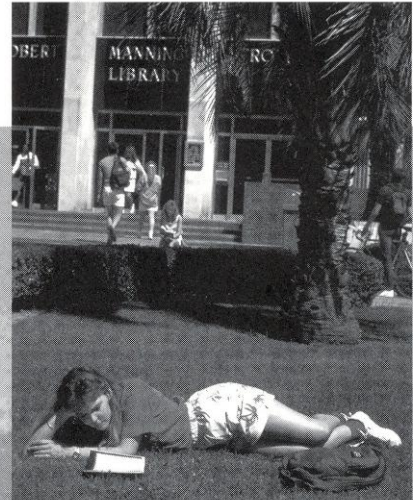
FSU's high-tech program in structural biology in 1991 received the University's largest single foundation grant, \$4 million, to position it among the leaders in the field worldwide.



Vice President of the United States Al Gore spoke at the dedication of the National High Magnetic Field Laboratory at Florida State in October 1994. The National Science Foundation established the \$100 million magnet lab at Florida State, which is partnered in research with the Los Alamos National Laboratory and the University of Florida, in 1990. A Nobel laureate in physics and a top Russian physicist were among the first scholars drawn to the faculty by the magnet lab. The world's largest magnet — two stories high and capable of generating 45 tesla or 1 million times the Earth's magnetic field — is to be installed in 1995 at the NHMFL, located in the off-campus research complex, Innovation Park.



Florida State University alumnus, Dr. Norman Thaggard ended the longest space flight in U.S. history in July after a historic mission on the Russian space station Mir. Thaggard who received his undergraduate degree in engineering at FSU in 1965 and his masters a year later, is an avid Seminole football fan and brought his cosmonaut counterparts to their first college football game in Tallahassee last year. Thaggard's Florida State pennant could be clearly seen in the space shuttle aboard Mir during press conferences. Thaggard has been on three space missions including the historic six-day flight on the Challenger in 1983 that included Sally Ride.



Library holdings at Florida State include 2.06 million book titles, 18,496 serials and 4.25 million microforms. The main library facility, the Robert M. Strozier Library, is linked via computerized information systems to other state university and national research libraries. The Paul A.M. Dirac Science Center Library is located at the heart of the University's science research complex. FSU also maintains extensive music, library science and law libraries, and the Mildred and Claude Pepper Library houses the personal and professional papers of one of Florida's best known political couples.



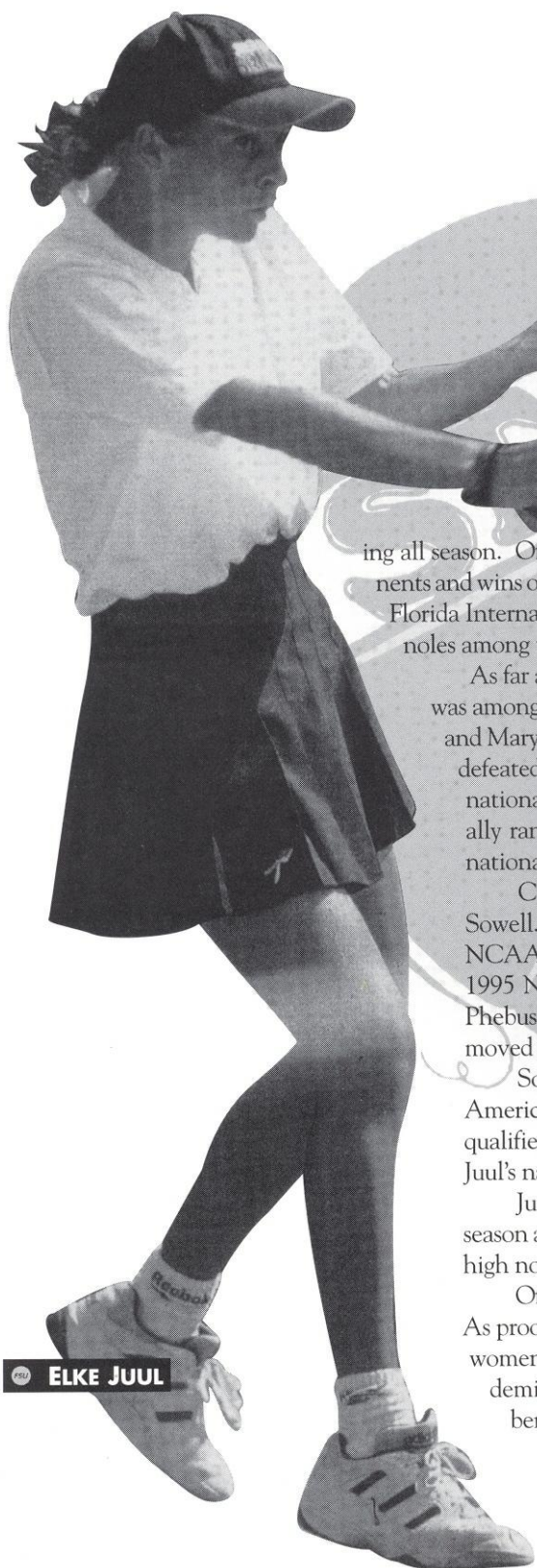
Florida State ranks first in popularity nationwide among high school seniors, based on the number of students who request their Scholastic Aptitude Test (SAT) and American College Test (ACT) scores be sent to an institution. FSU was the only institution listed among the top 10 choices of both black and white college-bound students. Florida State is also tops in the state for community college transfers as FSU admits over 3,000 transfer students every fall semester.



In fall 1994, the first tenants moved in to the east side of the \$82 million University Center, a classroom-and-office facility at Doak Campbell Stadium. The stadium's south end zone also was enclosed and the adjacent Moore Athletic Center expanded. When the west side is completed in 1996, the University Center will provide 550,000 square feet of much needed academic space and a centralized location for student services.

THIS IS FLORIDA STATE WOMEN'S TENNIS

FSU
TENNIS



FSU ELKE JUUL

As 1996's dual match season approaches, the 1996 Lady Seminoles know they are stronger, more experienced and ready. Last year, the team was young and showed signs of inexperience at times. Head coach Alice Reen used her skills for training, preparation and general tennis know-how to earn a national ranking with a team consisting of NCAA tournament qualifiers, not to mention an NCAA Division I IITA All-American.

Due to a tough 1995 dual match season schedule and some quality wins, the Lady Seminoles were able to keep their ITA/Rolux national ranking all season. Of that 1995 schedule, 15 out of 21 matches were against nationally-ranked opponents and wins occurred versus nationally ranked squads such as Tennessee, Clemson, Texas A&M, Florida International and North Carolina State. It was those victories that kept the Lady Seminoles among the nation's finest.

As far as the 1995 Atlantic Coast Conference competition was concerned, Florida State was among the league's best. The Lady Seminoles had back-to-back victories over Clemson and Maryland, with more to follow against Georgia Tech and N.C. State. Florida State also defeated North Carolina and Virginia to round out its ACC third place finish behind nationally-prominent Duke and Wake Forest. The ACC had almost every team nationally ranked during some point in the 1995 season and had five teams, including FSU, nationally ranked all season.

Climbing to the top of the ACC and the nation was Ft. Lauderdale native Lori Sowell. Sowell, playing the No. 1 singles position, earned 1995 All-ACC honors and a NCAA Championship invitation. Sowell marched all the way to the quarterfinals at the 1995 NCAA Championships where she finally bowed out to eventual-champion Keri Phebus of UCLA. This spectacular feat marked the first time a Lady Seminole has ever moved past the first round of the NCAA Championships.

Sowell's truly remarkable season culminated in her being named to the 1995 All-American team. Sowell, along with team captain Elke Juul of Collaroy Beach, Australia, qualified for doubles at the 1995 NCAA Championships, but were unable to play due to Juul's nagging elbow injury.

Juul and Sowell were the Lady Seminoles' top doubles squad. Nationally ranked all season and the majority of the season in the Top 20, the tandem's performance ended on a high note with an 1995 NCAA Championship bid.

Off the court, the Lady Seminoles valued academics as high a priority as their play. As proof of this, last year's squad had the highest grade point average of any Florida State women's team. The ACC recognized the Lady Seminoles on their 1995 All-ACC Academic team with repeat performances by 1994 All-ACC Academic Honor Roll members Ashley Delaney of Lake City and Lori Junker of Longwood.

"The young squad from last year is much more experienced," Reen said. "The 1994-95 team, although young, played a great competitive schedule and it should pay off in the approaching season."

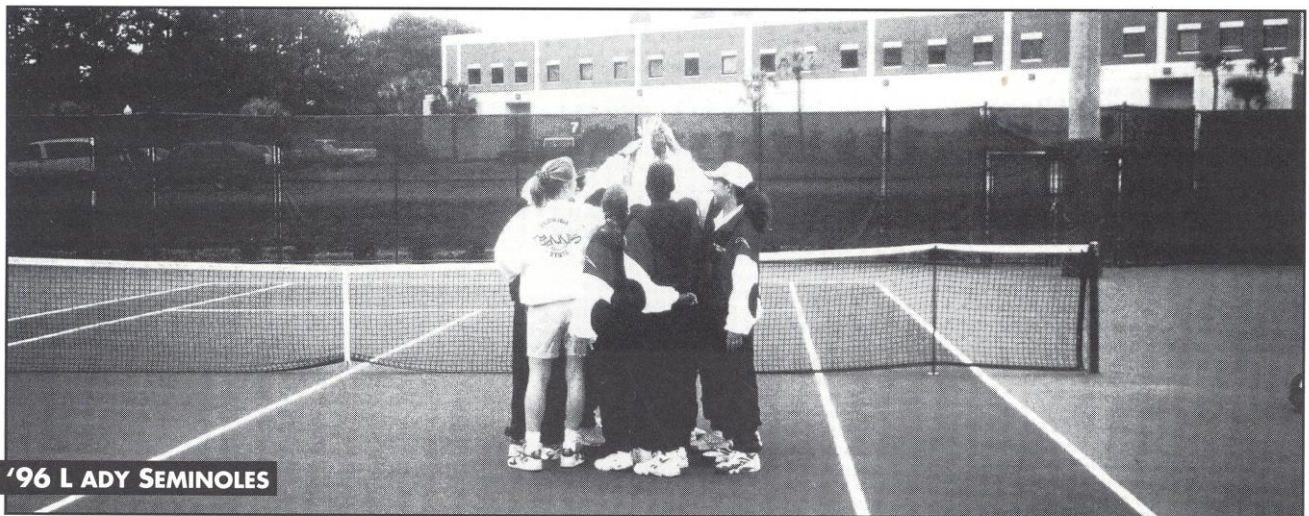
To follow up last year's unbridled success, Coach Reen has added depth to her veteran returnees. Returning are top players Sowell, Juul, Delaney, Junker and Mary Thym. The talented new Lady Seminoles are Kylie Thompson, Sasha Hanna and Ann Olsson.

Thompson, of Honea Path, South Carolina, graduated a year early from high school for the sole reason of joining the Lady Seminoles. She is a talented young freshman who brings numerous USTA championships and high rankings to the team, not to mention her above average academic standard.

Hanna, who originally hails from the tropical island paradise of Jamaica, spent the last five years training and finishing school in Houston, Texas. She brings a long list of Caribbean championships, including the Caribbean Ladies title (Phillips Trophy) which she won at the age of 14, the youngest ever to do so.

Olsson, of Vanersborg, Sweden, is no stranger to winning. At North Central Texas Junior College, she played No. 1 singles and doubles. She was nationally ranked in the Top 10 in singles and doubles all season by the ITA/Rolux Junior College rankings, and held a back-to-back All-American status in 1994 and 1995 while guiding her team to No. 2 in the nation.

The 1996 season will be a strong coming out for the newly remodeled Lady Seminoles. To go along with their extremely



'96 LADY SEMINOLES

talented depth and returning veterans, the schedule is jam-packed with plenty of opportunities for the women to forge ahead both individually and as a team.

In the fall, the Lady Seminoles will test their skills at seven notable invitationals and tournaments, including their very own Lady Seminole Classic in September. The national and regional exposure the women will endure should be an excellent tune up for the toughest season Coach Reen has ever faced.

"Last year my team was 80 percent underclassmen," Reen said. "The experience they gained from last year's tough schedule will help them a lot this season. I schedule as many top 20 teams as I can, because in order to get to the top you've got to play the top teams and possibly upset a few on the way."

The Lady Seminoles begin the season on the road with a double in Tennessee, meeting Southeastern Conference foes Vanderbilt and Tennessee. A three-match home stand at the Scott Speicher Tennis Center follows, highlighted with perennial Big East champion University of Miami. The team returns to the road versus ACC rivals Clemson and Maryland and the probable No. 1 ranked squad in the nation, Georgia. Following that tough road stint is a seven-match home streak, including ACC rivals Wake Forest, N.C. State, and Virginia, then a match with continental west coast representative Cal-Berkley. FSU will then be back on the road for three matches, highlighted by conference champions Duke of the ACC and Florida of the SEC. Next up for the Lady Seminoles is a young, but talented South Florida at home and a regular season finale against ACC mate Georgia Tech in Atlanta.

Less than a week after the regular season's completion, the Lady Seminoles will battle the ACC field once again at the ACC tournament in Greenwood, South Carolina. To highlight an eventful season, Florida State University has been given the distinct honor of playing host to the 1996 NCAA Division I Women's Tennis Championships. This will be the first time that Florida State has hosted a national championship of any kind. Florida State will do its best to make this event the most memorable women's tournament of any kind, packed with that Lady Seminole pride!

SM

SPEICHER TENNIS CENTER



Completed in the summer of 1993, the Scott Speicher Tennis Center at Donald Loucks Courts is one of the premier tennis facilities in the country. Costing over \$1.2 million to build, "Speicher" has become the newest focal point in Florida State's commitment to providing top-notch facilities for its athletes.

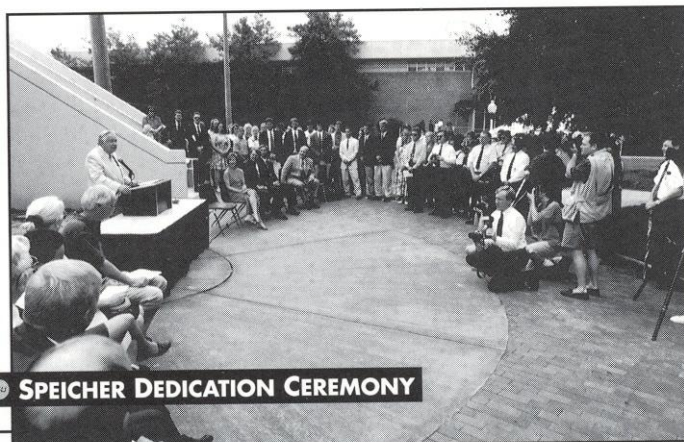
The tennis center houses 12 lighted tennis courts and over 1,000 court level seats. It is adjacent to the tennis offices, locker rooms and weight room in Tully Gym.

The facility was named in the honor of Lieutenant Commander Michael Scott Speicher, a graduate of Florida State University and the first American casualty during Operation Desert Storm. By Presidential directive, the facility bears the name the "Scott Speicher Tennis Center."

The facility was designed by EMO/Architects, Inc., a Tallahassee-based architectural firm, in collaboration with Global Consult Group, Inc., an internationally recognized Tennis Facility Design Con-

sultant. The complex was funded by private sources and supervised through the state university system of Florida.

This year the Scott Speicher Tennis Center serves as the home courts for all Florida State men's and women's home matches, the Children's Miracle Network Charity Invitational and the 1996 NCAA Division I Women's Tennis Championships in May.



SPEICHER DEDICATION CEREMONY

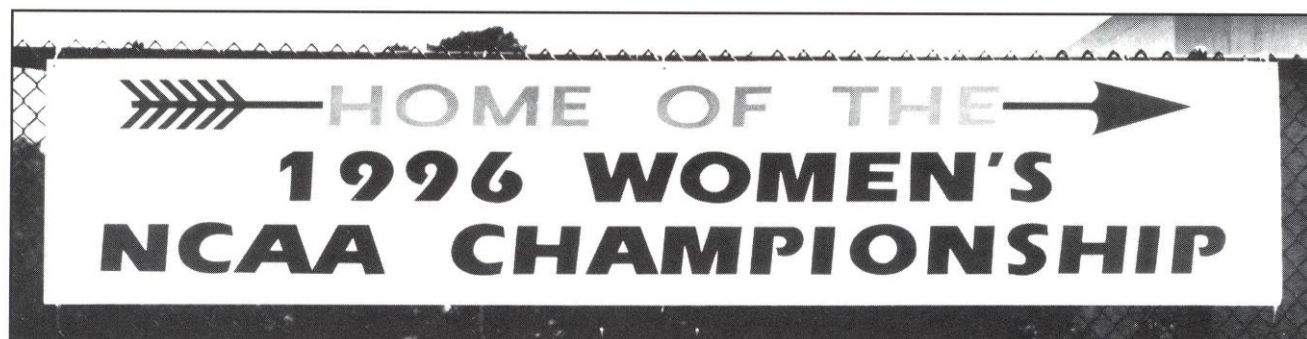


SPEICHER TENNIS CENTER

1995-96 FSU WOMEN'S SCHEDULE

Fall			
Sept. 29 - Oct. 1	ITA Championships	Jackson, MS	All Day
Sept. 29 - Oct. 1	Lady Seminole Classic	Tallahassee, FL	All Day
Oct. 13 - 15	Tampa Classic	Tampa, FL	All Day
Oct. 27 - 29	Riviera All-American	Los Angeles, CA	All Day
Oct. 27 - 29	San Destin	Destin, FL	All Day
Nov. 3 - 6	NCAA Regionals	Athens, GA	All Day
Spring			
Jan. 19 - 21	Georgia Invitational	Athens, GA	All Day
Jan. 27 - 29	ACC Indoors	Chapel Hill, NC	All Day
Feb. 2	Vanderbilt	Nashville, TN	2:30 pm
Feb. 3	Tennessee	Knoxville, TN	6:00 pm
Feb. 14	Jacksonville U.	Tallahassee, FL	2:00 pm
Feb. 18	Miami, Fla.	Tallahassee, FL	12:00 pm
Feb. 19	Georgia Southern	Tallahassee, FL	2:00 pm
Feb. 24	Maryland	College Park, MD	1:00 pm
March 2	Clemson	Clemson, SC	1:00 pm
March 3	Georgia	Athens, GA	2:00 pm
March 7	Rice	Tallahassee, FL	5:00 pm
March 10	Wake Forest	Tallahassee, FL	1:00 pm
March 12	North Carolina State	Tallahassee, FL	2:00 pm
March 14	Virginia	Tallahassee, FL	2:00 pm
March 15	Notre Dame	Tallahassee, FL	5:00 pm
March 17	Mississippi	Tallahassee, FL	10:00 am
March 26	Cal - Berkley	Tallahassee, FL	2:00 pm
March 30	North Carolina	Chapel Hill, NC	11:00 am
March 31	Duke	Durham, NC	12:00 pm
April 4	Florida	Gainesville, FL	3:00 pm
April 6	South Florida	Tallahassee, FL	11:00 am
April 13	Georgia Tech	Atlanta, GA	12:00 pm
April 18 - 21	ACC Championships	Greenwood, SC	All Day
May 3 - 5	NCAA Regionals	TBA	All Day
May 18 - 26	NCAA Championships	Tallahassee, FL	All Day

*Bold face indicates home matches

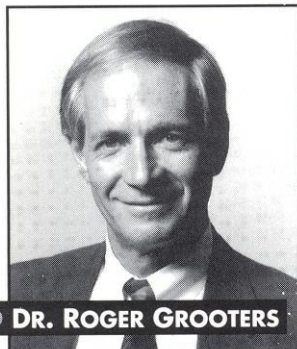


SUPPORT SERVICES



ACADEMIC SUPPORT

When asked to define the student athlete, Head Coach Alice Reen believes that each part - the student and the athlete - is equally important. While Reen is concerned with her player's competitive edge on the courts, she keeps a keen eye on their progress in the classroom as well.



DR. ROGER GROOTERS

"One of the first priorities I try to instill when an athlete arrives at Florida State is the need to strive for academic excellence," Reen said. "Their accomplishments in the classroom are a genuine concern for me and a responsibility that I gladly accept."

The women's tennis team consistently has one of the highest team grade point averages of all of the FSU athletic teams. With a team grade point average hovering around 3.0, the Lady Seminoles are among the top of the list concerning FSU athletic programs. In addition, Ashley Delaney and Lori Junker earned All-ACC Academic honors and were named to Florida State's Dean's list.

The Lady Seminole tennis program is just one example of Florida State's overall commitment to academic excellence. To support Seminole student athletes as they strive to meet their fullest potential both on and off the court, the athletic department has undertaken several projects to upgrade their academic support services and facilities. The physical plant expansion of the Coyle E. Moore Athletic Center as part of the University Center project means FSU student athletes have expanded access to a state of the art learning environment. This includes individual study areas, the latest in computer technology, and a study hall which also houses a research area.

Florida State student athletes also benefit from one of the premier academic support systems. A full-time staff helps all incoming student athletes adjust to their new campus environment and works with them throughout their academic careers at FSU.

Under the direction of Dr. Roger Grooters, the Academic Support Program is in place to meet the needs of FSU's student athletes. Grooters and his staff aid student athletes with admission, class scheduling, registration, and the normal progression towards a degree.

Regular class attendance is required in order to play tennis at FSU and attendance is closely monitored during the playing and practice seasons. Throughout the school year, nightly study halls and tutoring sessions help the student athlete "stay on course so they can stay on court." In addition, student athletes have unlimited access to mentors who provide one-on-one tutoring. The academic support staff works closely with the faculty members at Florida State and with the athletic department's own office of student services.



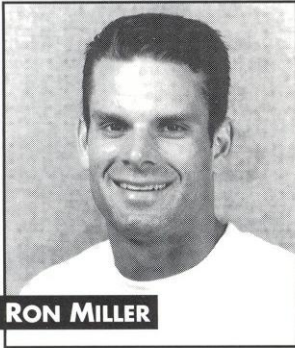
DELANEY, GOLDEN TOURCH WINNER
HIGHEST GRADE POINT AVERAGE



FSU ACADEMIC SUPPORT STAFF

STRENGTH, CONDITIONING, MEDICAL CARE AND TREATMENT

Strength training and conditioning is an important part of an athlete's performance on the court. At Florida State, a specially designed program is developed for tennis, emphasizing the objectives of strengthening and conditioning the athletes. Strength coach Ron Miller individually customizes programs for each of the athletes, beginning with pre-conditioning, before the season gets underway.



RON MILLER

Miller, who holds professional memberships in the National Strength and Conditioning Association and Aerobics and Fitness Association, works with the players in sport specific training which includes strengthening the major muscle groups used in tennis.

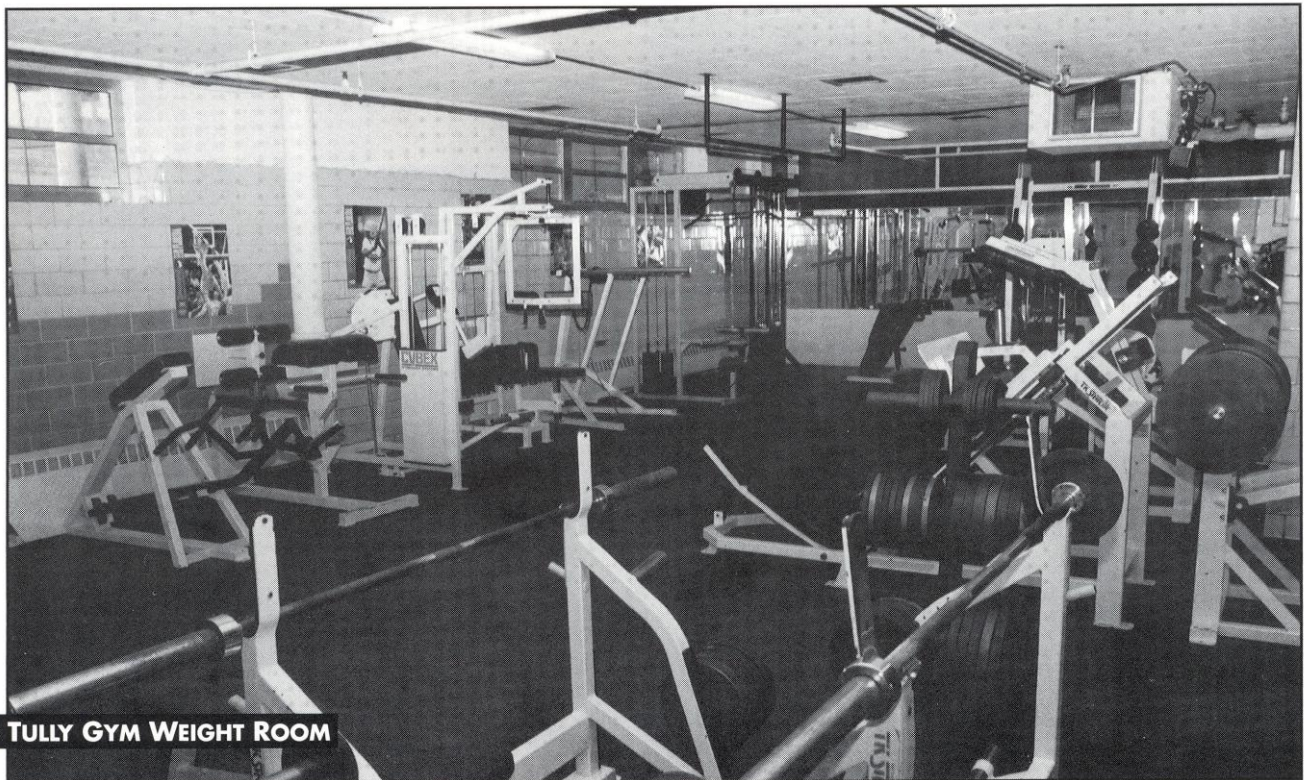
This season, Miller is customizing a sound workout for the women's tennis team. The workout is instrumental in improving muscular endurance, strength and cardiovascular conditioning on the court. The coaches believe so strongly in the program that they even participate them-

selves. FSU takes pride in customizing the programs to help student athletes reach their maximum potential.

Miller has proven to be an asset to the University's athletic program, where he was a four-year letterman with the Seminole basketball team. On that team, Miller was selected the Top-Conditioned athlete all four years. During the 1991-92 season he was team captain and awarded the 1992 ACC Senior Scholarship Athlete of the Year.

Athletes at Florida State University receive the best care and treatment possible. All of the student athletes undergo a preseason examination in order to prevent and detect any potential injuries that an athlete may incur. If a problem is detected, the athlete is placed on a prevention care program which may include any kind of treatment from icing to exercising.

Rehabilitation is another important component of the Seminole training room. Though preventing injuries is the main objective, they are sometimes a part of participating in athletics. More serious injuries and illnesses are referred to the Seminole team physicians at the Tallahassee Orthopedic Center, who for many years have worked in conjunction with the FSU training room in successfully rehabilitating numerous athletes after an injury.



TULLY GYM WEIGHT ROOM

1994-95 HONORS AND AWARDS

The 1994-95 season was no exception to the long and illustrious history of honors and awards received by the Florida State University women's tennis team. What makes a special team are players who can be victors on the court, in the classroom and in life. Sewing all these fragmented roles together must be a coach who can harness this talent and create an all around successful squad.

Two years ago, these high standards became apparent. The Lady Seminoles enjoyed successful players, students and individuals, while Coach Alice Reen was awarded ACC Coach of the Year honors for her successful efforts with the young FSU tennis program.

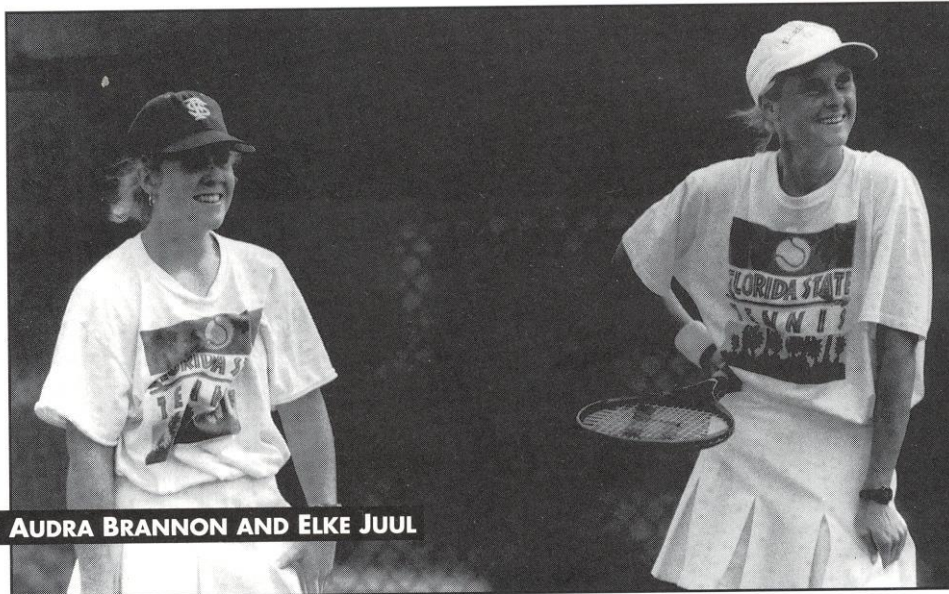
To no surprise the 1994-95 season had nearly the same generous fortune. The Lady Seminoles were able to bring home more acclaim that would further support Reen's lofty standards.

Lori Sowell, a member of the 1994 All-ACC team and the 1994 ACC Rookie of the Year continued her solid play, and was named to the 1995 All-ACC team. She was also a singles participant at the 1995 NCAA Division I Women's Tennis Championships. At this prestigious collegiate tournament Sowell reached the quarterfinals, the highest round a Lady Seminole has ever ventured. To cap off her most successful season so far, she was being named to college tennis' 1995 ITA All-American team.

Elke Juul was also named to the 1995 conference elite, the All-ACC team. She was also invited to the NCAA Championships with Sowell in doubles, but due to a nagging elbow injury was unable to compete.

Ashley Delaney and Lori Junker are no strangers to excelling in the classroom, as the two graduated in the top three percent of their high school classes. A much more applaudable feat was transcending their academic prowess to a higher level and being named to the 1995 All-ACC Academic Honor Roll. This is Delaney's second year on the ACC Honor Roll.

As a team, the Lady Seminoles were able to remain a nationally ranked squad throughout the entire 1995 season by the ITA/Rol ex rankings. They also received the honor of having the highest grade point average among FSU's women's athletic teams.



AUDRA BRANNON AND ELKE JUUL

HONORS & AWARDS SUMMARY



All American

Audra Brannon - 1993
 Laura Randmaa - 1993, 1994
 Lori Sowell - 1995

ACC Coach of the Year

Alice Reen - 1994

ACC Player of the Year

Audra Brannon - 1994

ACC Rookie of the Year

Lori Sowell - 1994

All-ACC Team

Audra Brannon - 1992, 1993, 1994
 Elke Juul - 1995
 Laura Randmaa - 1993
 Lori Sowell - 1994, 1995

ACC Champions

Elke Juul/Sandi Ecclestone - 1994
 at No. 3 doubles

ACC Academic Honor Roll

Buffy Baker - 1992
 Ashley Delaney - 1994, 1995
 Sandi Ecclestone - 1994
 Amy Hanby - 1992, 1993
 Nicki Ivy - 1992
 Lori Junker - 1994, 1995
 Laura Randmaa - 1994
 Lori Sowell - 1994
 Chrissie Tee - 1992

NCAA Invitations - Singles

Jamie Kaplan - 1983
 Audra Brannon - 1993
 Lori Sowell - 1995

NCAA Invitations - Doubles

Jamie Kaplan/Lee McGuire - 1983
 Patti Henderson/Sue Hatch - 1986
 Audra Brannon/Laura Randmaa - 1993
 Audra Brannon/Elke Juul - 1994
 Elke Juul/Lori Sowell - 1995



Alice Reen

**HEAD COACH
UNIVERSITY OF GEORGIA**

In the 1994-95 season, head coach Alice Reen's goal was to improve on her team's previous year success. A year which the team finished second in the conference and swept all the major ACC awards. According to Reen, this feat would be a great challenge.

Now looking back at this past season, not only did the Lady Seminoles remain nationally ranked throughout the entire season, but it consisted of All-ACC team members, All-ACC Academic Honor Roll members, NCAA participants, and an eventual ITA All-American. Undoubtedly, Reen has solidified FSU's place in collegiate women's tennis.

To start a successful program, the most important aspect a coach must take into consideration is recruiting. Reen has committed herself and Florida State to recruiting top-notch players every year who are both athletically and academically talented. And the 1995-96 season will be no different for the Lady Seminoles as FSU brings in three qualified student athletes.

The reason for Reen's successful recruiting is rooted in her philosophy. She believes that the main aim of the program is for a player to improve as a person while they are at Florida State. As a result, Reen keeps an open-door policy with her team that allows players to discuss anything that is on their minds anytime during the day.

A native of Orlando, Reen played collegiate tennis for the University of Georgia. When she arrived in Athens, the Lady Bulldogs were by no means a perennial powerhouse. Reen came in and was the number one doubles player all four years, and provided the needed lift for the Lady Bulldogs program. Four years later, Reen was Georgia's number one player, singles and doubles, and captain of the team

that was runner-up at the 1987 NCAA Tournament in Los Angeles.

Upon graduation, Reen stayed on with the Lady Bulldogs as an assistant before moving on to the Lady Volunteers at the University of Tennessee. Today it would be difficult to say that both schools did not benefit immensely from Reen, as both are continually ranked among the nation's top 20 teams in women's tennis.

In 1990, Reen earned her first head coaching position at the University of Arkansas. Not surprising, Reen enjoyed a very successful season in Fayetteville before accepting the head job at Florida State.

She has conducted seminars throughout the state on aspects surrounding college tennis. In 1992 and 1993, Reen coached the Florida Intersectional Team to consecutive National Championships.

Alice Reen's overall athleticism should be no surprise when considering her lineage. Her father was a three-sport letterman for the University of Florida and her brother is the General Manager of the Cleveland Indians. Reen will complete a Masters Degree in Sports Administration this summer at Florida State.



FSU COACH ALICE REEN

REEN YEAR BY YEAR

1991	13-10
1992	13-10
1993	13-09
1994	15-10
1995	11-10
TOTAL	65-49



MICHELE McMILLEN

**ASSISTANT COACH
UNIVERSITY OF TENNESSEE**

Michele McMillen has set high standards for not only herself, but for the rest of the Lady Seminoles to achieve in her first season as assistant women's tennis coach.

She is involved with numerous capacities surrounding the Lady Seminole tennis team, including administrative duties such as team travel itinerary and the organization of the Lady Seminole Classic. Working closely with the team in practices and matches, she will also be heavily involved in the recruiting. McMillen spent last summer getting familiarized with the current team's veterans and incoming freshman recruits.

A former University of Tennessee tennis standout,

McMillen was among the top in the nation as a Lady Vol. In her freshman year with the Lady Vols, she rose to No. 14 in the nation in the ITA/Rolex singles rankings. Her sophomore season saw her excel in doubles competition as she and fellow Lady Vol Debbie Moringiello were invited to the NCAA doubles championships and ended the season ranked No. 28. During her junior season, McMillen was named as an alternate to the NCAA singles championships draw, but settled on reaching the NCAA Championships doubles draw with Moringiello. McMillen and Moringiello also became UT's first ever two-time consecutive NCAA Championships doubles participants, while ending the 1992 contest ranked No. 38 nationally.

McMillen ended her collegiate career in 1993 with Academic All-SEC honors and ranked as the No. 82 singles player in the country. A native of East Palestine, Ohio, McMillen earned a degree in Sports Management from Tennessee in 1993.

THE SPIRIT SPEAR

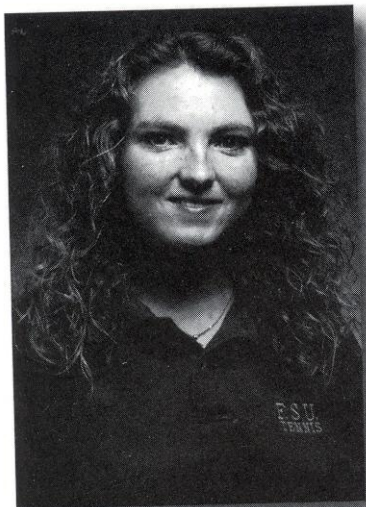
The Spirit Spear represents the women's fierce determination to win the Atlantic Coast Conference tournament and earn a bid to the NCAA Championships, in which Florida State hosts. The local tribe of Seminole Indians dedicated the spear earlier in the season at a private ceremony only the team could attend.

Made by actual Seminole Indians, the women's tennis team will hang a feather of the opponents school colors on the shaft of the spear upon victory over that team.

The Spirit Spear will be on display at the Scott Speicher Tennis Center during all home matches.



LADY SEMINOLES WITH SPIRIT SPEAR



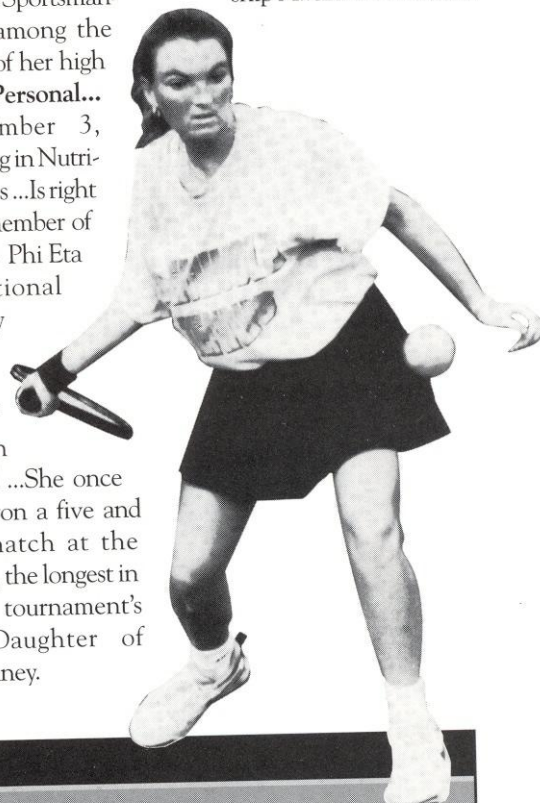
ASHLEY DELANEY

5'4" JUNIOR
LAKE CITY, FLORIDA (COLUMBIA)

1994-95...Was 14-5 in dual match competition at No. 2, 3, 4 and 5 singles, 19-9 overall ...Played majority of the season at No. 3 singles, where she was 9-3 ...Was 6-1 against ACC singles opponents ...Was 2-0 in three set matches ...Had win streaks of four twice ...Defeated nationally

ranked Patty Murren of Wake Forest ...As the No. 3 seed, won the consolation bracket flight at the 1995 Intercollegiate Tennis Association (ITA) Collegiate Summer Circuit (southeast regional site) ...Reached the quarterfinals of the 1995 United States Tennis Association (USTA) Amateur Championships at Kiamesha Lake, NY (faced teammate, No. 2 seed, Lori Sowell in the first round)... Won No. 3 doubles flight at the 1995 Atlantic Coast Conference (ACC) Tennis Championships with Lori Junker ...Was 10-3 at No. 2 and 3 doubles with Junker, 11-5 overall ...Was 6-0 against ACC doubles opponents ...As the No. 1 seed, advanced to the finals of the 1995 ITA Collegiate Summer Circuit in doubles (southeast regional site) ...Made the 1995 All-ACC Academic Honor Roll. **1993-94...**Played through a painful stress fracture in her leg throughout the season ...Posted a 6-6 record at the No. 4, 5, and 6 singles, 9-9 overall ...Made the 1994 All-ACC Academic Honor Roll. **High School and other accomplishments...**Ranked as high as No. 3 by the USTA in the state girls U-18 singles ...Nationally

ranked No. 24 by the USTA in girls U-18 singles ...Defeated professional tennis star Chanda Rubin at the age of 15 ...Named *Gainesville Sun's* Player of the Year for three consecutive years ...Was the team MVP her sophomore, junior, and senior years ...A member of the Gateway Conference team her senior year ...Undefeated in district play throughout her high school career ...Received the Sportsman-ship Award at Nationals ...Graduated among the top 3 percent of her high school class. **Personal...** Born September 3, 1975...Majoring in Nutrition and Fitness ...Is right handed ...A member of Florida State's Phi Eta Sigma, national honor society ...Named Florida State's recipient of the Golden Torch Award ...She once played and won a five and half hour match at the Florida Open, the longest in the amateur tournament's history ...Daughter of Carolyn Delaney.



DELANEY CAREER STATISTICS

Singles									
YEAR	@1	@2	@3	@4	@5	@6	DUALS	OTHER	TOTAL
1993-94				1-0	1-2	4-4	6-6	3-3	9-9
1994-95		0-1	9-3	5-0	0-1		14-5	5-4	19-9
		0-1	9-3	6-0	1-3	4-4	20-11	8-7	28-18
Doubles									
YEAR	@1	@2	@3	DUALS	OTHER	TOTAL			
1993-94			7-7	7-7	1-1	8-8	w/ LAURA RANDMAA		
1994-95		2-0	8-4	10-3	1-2	11-5	w/ LORI JUNKER; RAKINA PAYNE		
		2-0	15-11	17-10	2-3	19-13			



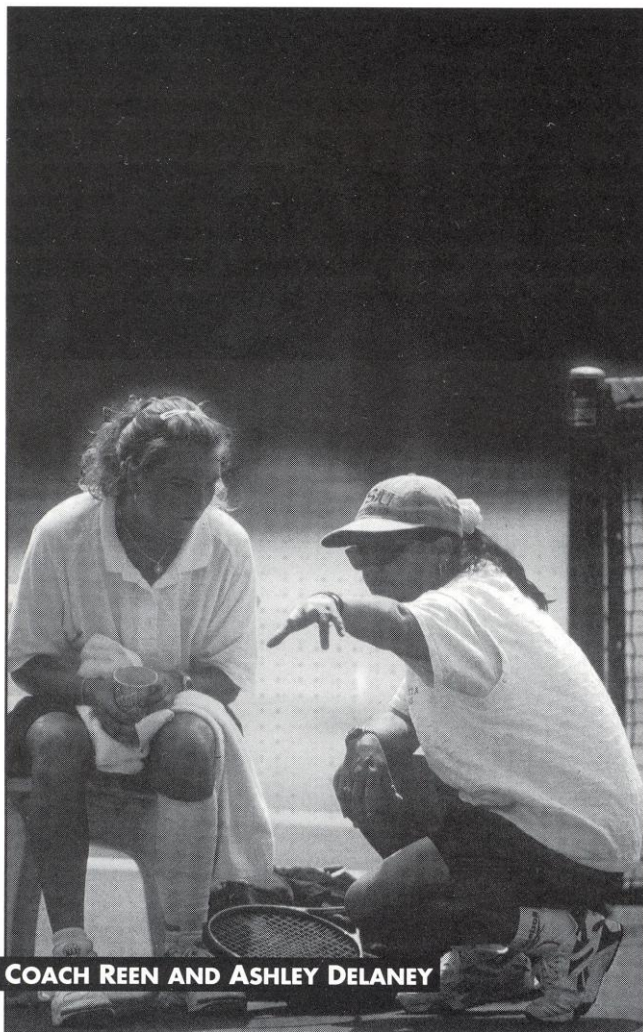
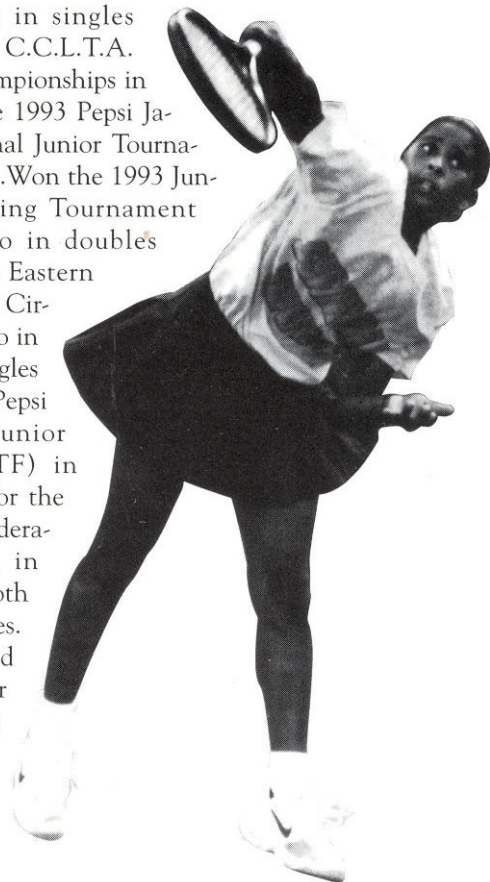
SASHA HANNA

5'5" FRESHMAN
MONTEGO BAY, JAMAICA (STRATFORD/HOUSTON, TX)

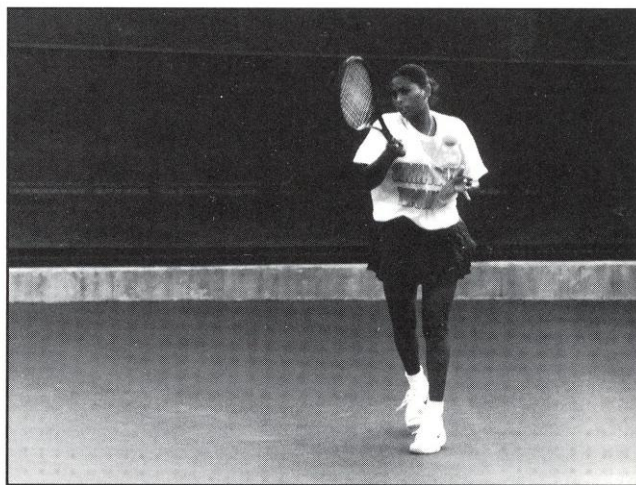
High School and other accomplishments... Ranked as the No. 1 junior and No. 2 senior player in her native country of Jamaica by the Jamaican Lawn Tennis Association ...Held a junior world ranking by the International Tennis Federation (ITF) in singles and doubles...At

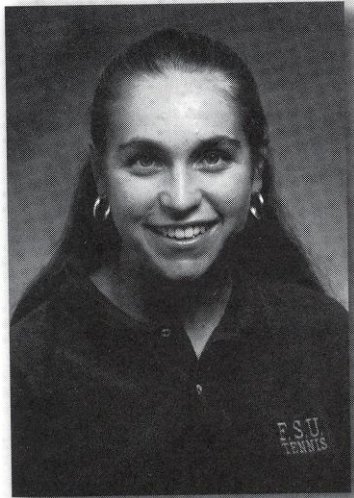
age 14, won the Phillips Trophy (Caribbean Ladies title), the youngest player to do so ...A participant in the 1992 and 1993 U.S. Junior Open ...Represented Jamaica in the 1992 and 1993 Federation Cup ...Led the Jamaican team to win

the 1989, 1990, 1991 and 1992 Commonwealth Caribbean Lawn Tennis Association Junior Team Championship (C.C.L.T.A.) ...In 1991, helped lead her team to the Phillips Trophy (Caribbean Ladies Title) ...Won the 1992 and 1993 Pepsi Jamaica International Junior Tournament in singles ...Won the 1992 C.C.L.T.A. Junior Team Championships in singles ...Won the 1993 Pepsi Jamaica International Junior Tournament in doubles ...Won the 1993 Junior World Ranking Tournament (ITF) at Mexico in doubles ...Won the 1993 Eastern Caribbean Junior Circuit at Puerto Rico in the girls U-16 singles ...Won the 1995 Pepsi International Junior Tournament (ITF) in singles ...Played for the 1995 Jamaican Federation Cup team in which she won both singles and doubles. **Personal...** Trained in Houston, TX for the past five years ...Daughter of Dalkeith and Jennifer Hanna.



COACH REEN AND ASHLEY DELANEY





LORI JUNKER
5'3"
SOPHOMORE
LONGWOOD, FLORIDA
(LAKE MARY)

1994-95...Played at No. 4, 5 and 6 singles ...Won the No. 3 doubles flight at the 1995 ACC Tennis Championship with Ashley Delaney ...Was 11-4 overall with Delaney ...Was 6-0 against ACC doubles opponents ...As the No. 1 seed, won the 1995 ITA Collegiate Summer Circuit (southeast regional site) doubles championship with Delaney over FSU teammates Sowell and Thompson...Made the 1995 All-ACC Academic Honor Roll ...Voted Most Improved Player on the team. **High School and other accomplishments...** Ranked No. 8 by the USTA in Florida girls U-18 singles ...Nationally ranked in the Top 75 by the USTA in the girls U-18 singles ...Advanced to the finals in doubles at the 1994 5A Florida State High School Championships ...Was her teams MVP her junior and senior years ...*Orlando Sentinel* Player of the Year her junior and senior years. **Personal...** Born December 20, 1975 ...Majoring in Communications ...Is right-handed ...Graduated high school in the top three percent of her senior class ...Daughter of Betty and Richard Junker.



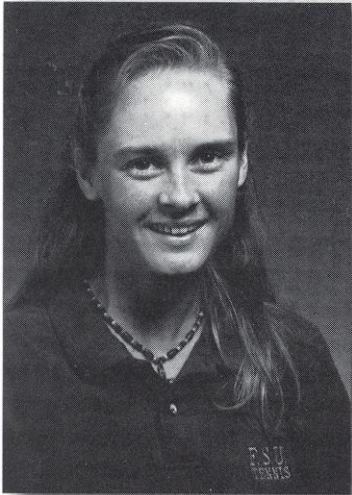
JUNKER CAREER STATISTICS

Singles

YEAR	@1	@2	@3	@4	@5	@6	DUALS	OTHER	TOTAL
1994-95				1-2	2-10	1-3		2-1	6-16
				1-2	2-10	1-3		2-1	6-16

Doubles

YEAR	@1	@2	@3	DUALS	OTHER	TOTAL	
1994-95		2-3	8-4	10-7	2-1	12-8	W/ASHLEY DELANEY; MARY THYM; SAMANTHA GREENSPAN
		2-3	8-4	10-7	2-1	12-8	



ELKE JUUL

5'10" SENIOR

COLLAROY BEACH, AUSTRALIA (BRIGIDINE)

1994-95...Captain of the 1995 Lady Seminoles ...Was 13-7 at No. 1 and 2 singles, 19-13 overall ...Was 6-2 against ACC singles opponents ...Was 2-1 against nationally ranked opponents ...Defeated nationally ranked Marianna Land of Georgia and Wendy

Lyons of Duke ...Was 5-2 in the month of April ...Was named to the 1995 All-ACC Team ...Was 2-1 at the 1995 Georgia Invitational ...Was 12-2 at No. 1 doubles with Lori Sowell, 21-6 overall ...With Sowell, led the team in doubles wins (21) and doubles winning percentage (.770) ...Had a nine-match win streak from February 17, 1995 to May 2, 1995 ...Was 5-1 against ACC doubles opponents ...No. 5 on FSU's all-time career singles victories list with (57) and FSU's all-time singles winning percentage (.625) ...No. 4 on FSU's all-time career doubles winning percentage list (.689) ...Advanced to the finals in No. 1 doubles at the 1995 ACC Tennis Championships with Sowell ...Nationally ranked by the ITA/Rolex rankings in doubles all but one week of the 1995 dual match season ...Ranked as high as No. 16 nationally in doubles ...Qualified for the 1995 NCAA Women's Tennis Championships in doubles, but withdrew due to an elbow injury. 1993-94...Played at No. 3 singles ...Was 5-3 against ACC singles opponents ...Finished the dual match season nationally ranked No. 18 in doubles by the ITA/Rolex rankings ...Participated in the 1994 NCAA Division I Women's Tennis Championships in doubles ...Went 15-5 at No. 1 and 2 doubles with Audra Brannon ...A member of the 1994 All-ACC Team.

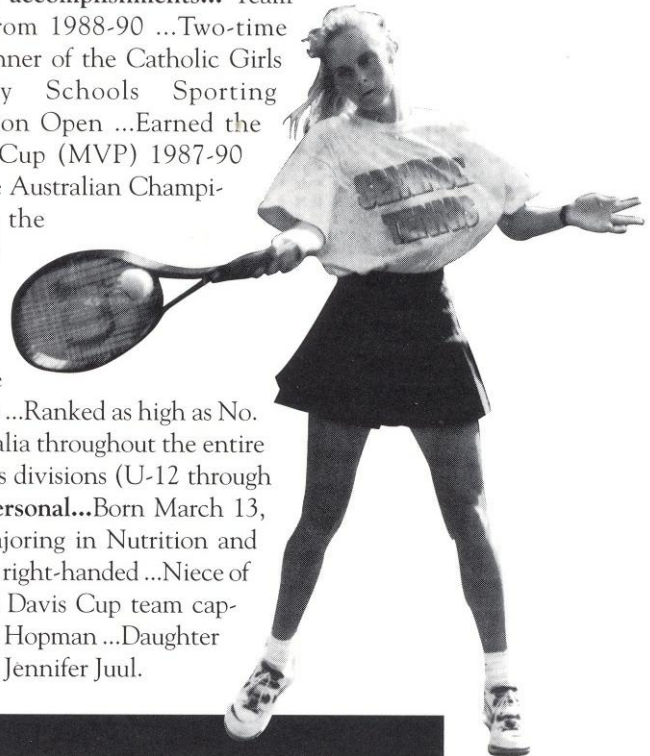
1992-93...Was 18-3 in dual match singles competition, 21-6 overall ...Became FSU's all-time dual match singles season winning percentage leader (.857) ...Enjoyed a 12-match win streak ...Was 7-1 against ACC singles opponents ...Led the team in singles winning percentage (.777). **High School and other accomplishments...** Team captain from 1988-90 ...Two-time singles winner of the Catholic Girls Secondary Schools Sporting Association Open ...Earned the Cardinal Cup (MVP) 1987-90 ...Won the Australian Championship in the girl's U-16 and U-18 singles ... Was also on the swim team ...Ranked as high as No. 3 in Australia throughout the entire girls singles divisions (U-12 through U-18). **Personal...**Born March 13, 1973 ...Majoring in Nutrition and Fitness ...Is right-handed ...Niece of Australian Davis Cup team captain, Harry Hopman ...Daughter of Ole and Jennifer Juul.

...Was 5-2 in the month of April ...Was named to the 1995 All-ACC Team ...Was 2-1 at the 1995 Georgia Invitational ...Was 12-2 at No. 1 doubles with Lori Sowell, 21-6 overall ...With Sowell, led the team in doubles wins (21) and doubles winning percentage (.770) ...Had a nine-match win streak from February 17, 1995 to May 2, 1995 ...Was 5-1 against ACC doubles opponents ...No. 5 on FSU's all-time career singles victories list with (57) and FSU's all-time singles winning percentage (.625) ...No. 4 on FSU's all-time career doubles winning percentage list (.689) ...Advanced to the finals in No. 1 doubles at the 1995 ACC Tennis Championships with Sowell ...Nationally ranked by the ITA/Rolex rankings in doubles all but one week of the 1995 dual match season ...Ranked as high as No. 16 nationally in doubles ...Qualified for the 1995 NCAA Women's Tennis Championships in doubles, but withdrew due to an elbow injury.

1993-94...Played at No. 3 singles ...Was 5-3 against ACC singles opponents ...Finished the dual match season nationally ranked No. 18 in doubles by the ITA/Rolex rankings ...Participated in the 1994 NCAA Division I Women's Tennis Championships in doubles ...Went 15-5 at No. 1 and 2 doubles with Audra Brannon ...A member of the 1994 All-ACC Team.

1992-93...Was 18-3 in dual match singles competition, 21-6 overall ...Became FSU's all-time dual match singles season winning percentage leader (.857) ...Enjoyed a 12-match win streak ...Was 7-1 against ACC singles opponents ...Led the team in singles winning percentage (.777). **High School and other accomplishments...** Team captain from 1988-90 ...Two-time singles winner of the Catholic Girls Secondary Schools Sporting Association Open ...Earned the Cardinal Cup (MVP) 1987-90 ...Won the Australian Championship in the girl's U-16 and U-18 singles ... Was also on the swim team ...Ranked as high as No. 3 in Australia throughout the entire girls singles divisions (U-12 through U-18). **Personal...**Born March 13, 1973 ...Majoring in Nutrition and Fitness ...Is right-handed ...Niece of Australian Davis Cup team captain, Harry Hopman ...Daughter of Ole and Jennifer Juul.

...Was 5-2 in the month of April ...Was named to the 1995 All-ACC Team ...Was 2-1 at the 1995 Georgia Invitational ...Was 12-2 at No. 1 doubles with Lori Sowell, 21-6 overall ...With Sowell, led the team in doubles wins (21) and doubles winning percentage (.770) ...Had a nine-match win streak from February 17, 1995 to May 2, 1995 ...Was 5-1 against ACC doubles opponents ...No. 5 on FSU's all-time career singles victories list with (57) and FSU's all-time singles winning percentage (.625) ...No. 4 on FSU's all-time career doubles winning percentage list (.689) ...Advanced to the finals in No. 1 doubles at the 1995 ACC Tennis Championships with Sowell ...Nationally ranked by the ITA/Rolex rankings in doubles all but one week of the 1995 dual match season ...Ranked as high as No. 16 nationally in doubles ...Qualified for the 1995 NCAA Women's Tennis Championships in doubles, but withdrew due to an elbow injury.



JUUL CAREER STATISTICS

Singles

YEAR	@1	@2	@3	@4	@5	@6	DUALS	OTHER	TOTAL
1992-93			16-3	1-0	1-0		18-3	5-3	23-6
1993-94			11-11	2-1			13-12	2-2	15-14
1994-95	1-3	12-4					13-7	6-6	19-13

1-3 12-4 27-14 3-1 1-0 44-22 13-11 57-33

Doubles

YEAR	@1	@2	@3	DUALS	OTHER	TOTAL
1992-93		1-0	3-3	4-3	0-4	4-7 w/ BRESHA BOYD
1993-94			11-3	11-3	7-3	18-6 w/ SANDI ECCLESTONE
1994-95	12-2			12-2	9-4	21-6 w/ LORI SOWELL

12-2 1-0 14-6 27-8 16-11 43-19



ANN OLSSON

5'6" JUNIOR

VANERSBORG, SWEDEN (BIRGERSJOBORG GYMNASIET)

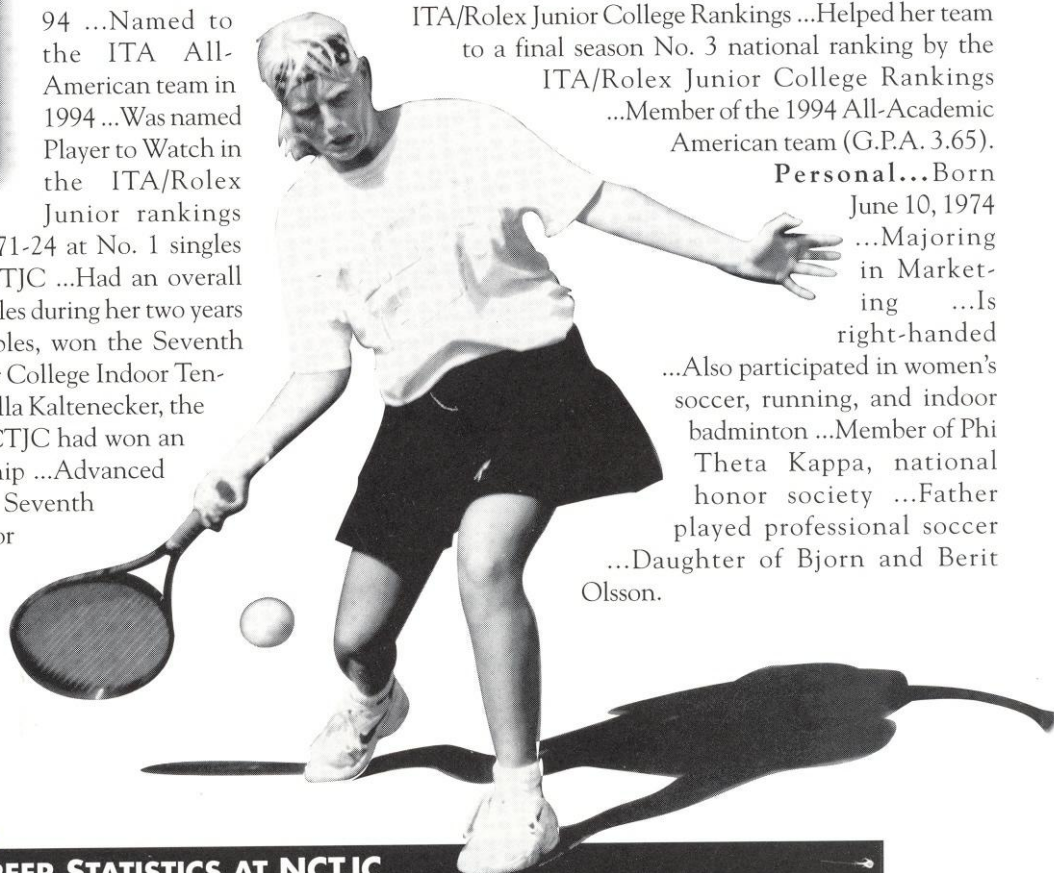
North Central Texas Junior College...Named to the junior college All-American team in singles and doubles in 1993-94 ...Named to the ITA All-American team in 1994 ...Was named Player to Watch in the ITA/Rolex Junior rankings

...Had an overall record of 71-24 at No. 1 singles during her two years at NCTJC ...Had an overall record of 59-26 at No. 1 doubles during her two years at NCTJC ...At No. 1 doubles, won the Seventh Annual ITA National Junior College Indoor Tennis Championship with Gisella Kaltenecker, the first time a tandem from NCTJC had won an indoor national championship ...Advanced to the finals in singles of the Seventh Annual ITA National Junior College Indoor Champion-

ship ...Helped NCTJC reach the Final Four of the 1995 National Junior College Tennis Championships ...Finished the 1995 season nationally ranked No. 6 in singles by the ITA/Rolex Junior College Rankings ...Finished the 1995 season nationally ranked No. 3 in doubles with Kaltenecker by the ITA/Rolex Junior College Rankings ...Helped her team to a final season No. 3 national ranking by the ITA/Rolex Junior College Rankings ...Member of the 1994 All-Academic American team (G.P.A. 3.65).

Personal... Born June 10, 1974

...Majoring in Marketing ...Is right-handed ...Also participated in women's soccer, running, and indoor badminton ...Member of Phi Theta Kappa, national honor society ...Father played professional soccer ...Daughter of Bjorn and Berit Olsson.



OLSSON CAREER STATISTICS AT NCTJC

Singles

YEAR	@1	@2	@3	@4	@5	@6	DUALS	OTHER	TOTAL
1993-94	22-9						22-9	14-4	36-13
1994-95	22-8						22-8	13-3	35-11

44-17

44-17 27-7 71-24

Doubles

YEAR	@1	@2	@3	DUALS	OTHER	TOTAL	
1993-94	16-7			16-7	10-5	26-12	w/GISELLA KALTENECKER
1994-95	16-11			16-11	17-3	33-14	w/GISELLA KALTENECKER

32-18

32-18 27-8 59-26

LORI SOWELL —ALL-AMERICAN—

5'8" JUNIOR

FT. LAUDERDALE, FLORIDA (ST. THOMAS AQUINAS)

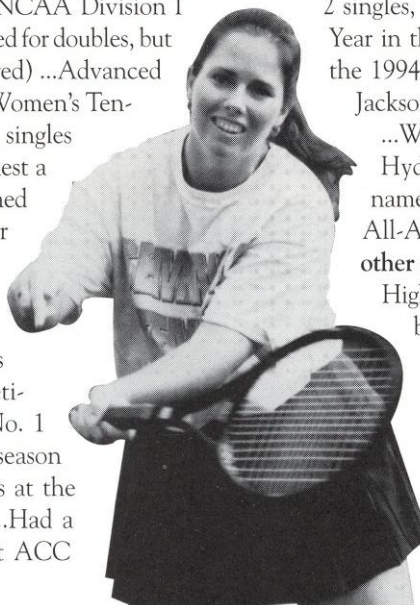


1994-95...Played all but three matches at the No. 1 singles position where she compiled a 17-8 dual match record, 25-15 overall ...Defeated nationally ranked opponents Dawn Buth of Florida and Margie Lepsi of Tennessee ...Was nationally ranked all season by the ITA/Rolux rankings, as high as

doubles opponents ...Was 2-1 against nationally ranked opponents ...Nationally ranked all but one week in doubles and as high as No. 16 ...Was the No. 1 seed and champion on the 1995 ITA Collegiate Summer Circuit (southeast regional site) ...As the No. 2 seed, advanced to the finals of the 1995 ITA Collegiate Summer Circuit doubles bracket with new Lady Seminole Kylie Thompson ...Advanced to the championship rounds at the USTA Satellite Circuit of Hilton Head Island, SC ...No. 5 on FSU's all-time single season winning percentage list (.727) ...No. 1 on FSU's all-time career doubles winning percentage list (.725) ...No. 4 on FSU's career singles winning percentage list (.671) and singles season victories (25/1994-95) ...No. 2 on the single season doubles winning percentage list (.770/1994-95).

No. 40 ...Was 6-2 against ACC singles opponents ...Was named to the 1995 All-ACC Team ...Was 5-2 in three-set matches ...Participated in the singles flight of the 1995 NCAA Division I Women's Tennis Championships (also invited for doubles, but withdrew when partner, Elke Juul, was injured) ...Advanced to the quarterfinals of the 1995 Division I Women's Tennis singles championships against eventual singles champion Keri Phebus of UCLA (the highest a Lady Seminole has ever reached) ...Was named a 1995 Division I All-American following her championship performance ...Led the team in singles wins (25), singles winning percentage (.625), doubles winning percentage (.770) ...Co-leader (with Juul) in doubles wins (21) ...Was 12-2 in dual match competition, 21-6 overall with Juul ...Played at No. 1 doubles with Juul throughout the entire season ...Advanced to the finals in No. 1 doubles at the ACC Tennis Championships with Juul ...Had a nine-match win streak ...Was 5-1 against ACC

1993-94...Was 18-6 in dual match competition at No. 2 singles, 24-9 overall ...Was named Freshman of the Year in the ACC ...Participated in the main draw at the 1994 SkyTel National Claycourt Tournament in Jackson, MS ...Named to the 1994 All-ACC Team ...Was 11-6 in dual match competition with Jen Hyde, 17-8 overall (various partners) ...Was named ACC Rookie of the Year ...made the 1994 All-ACC Academic Honor Roll. **High School and other accomplishments...** Won the 3A Florida State High School Championships at No. 1 singles in both her sophomore and junior years ...Led her team to the state championships her senior year ...Won the state doubles title three consecutive years ...Team captain, her junior and senior years ...Named the Player of the Year (MVP) her junior and senior years ...Named the Player of the Year by the *Ft. Lauderdale Sun Sentinel* and *Miami Herald* her senior year



...Nationally ranked No. 32 and No. 5 in Florida by the USTA in the girl's U-18 singles ...Nationally ranked No. 3 by the USTA in the girl's U-18 doubles ...A member of the National Honor Society. **Personal...** Born on July 5, 1975 ...Majoring in Sports Management ...Is left-handed ...Daughter of Sigrid Sowell.

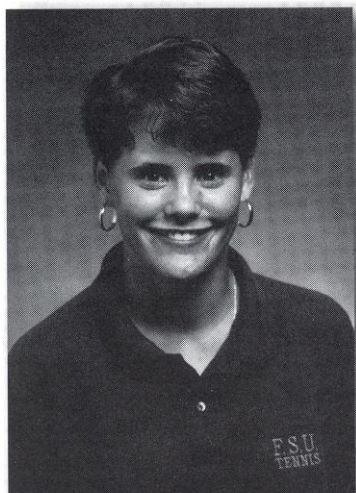
SOWELL CAREER STATISTICS

SINGLES

YEAR	@1	@2	@3	@4	@5	@6	DUALS	OTHER	TOTAL
1993-94		18-6					18-6	6-3	24-9
1994-95	10-7	4-0					14-7	11-8	25-15
	10-7	22-6					32-13	17-11	49-24

Doubles

YEAR	@1	@2	@3	DUALS	OTHER	TOTAL	
1993-94	0-1	11-5		11-6	6-2	17-8	w/ JEN HYDE
1994-95	12-2			12-2	9-4	21-6	w/ ELKE JUUL
	12-3	11-5		23-8	15-6	38-14	



KYLIE THOMPSON

5'5" FRESHMAN

HONEA PATH, SOUTH CAROLINA (BELTON-HONEA PATH)

High School and other accomplishments... Won the 1990, 1991 and 1993 South Carolina Junior Singles Championships ...Also champion of the 1988, 1990, 1992 and 1993 South Carolina Doubles

Championships ...Won the 1990, 1992, 1993, 1994 and 1995 Southern Qualifier Doubles Championships ...Won 1994 girls U-16 Southern Sectional Doubles Championship ...Won the backdraw at the 1994 Outback Gator Bowl Tournament in Ponte Vedre Beach, Florida ...Named to the All-Region team 1990-94 ...Named region's Player of the Year 1992-94 ...Team's MVP 1992 to 1994 ...Named to the All-State team 1992 to 1994 ...Selected as a member of Team

Southern by the Southern Tennis Association for USTA Zonal Championships in Lansing, Michigan, 1989-90; Asheville, North Carolina, 1991-1992; Austin, Texas, 1994 ...Selected as a member of the South Carolina Junior Wightman Cup Team ...Named the most improved junior girls player by the South Carolina Tennis Association in 1991 ...Named high school's most outstanding female athlete for 1995 ...As the No. 2 seed, advanced to the finals of the 1995 ITA Collegiate Summer Circuit (southeast regional site) doubles flight with Sowell ...Also lettered in basketball. **Personal...** Born June 19, 1978 ...Majoring in Psychology ...Member of the National Honor Society ...Skipped her junior year of high school and completed her senior year early to attend FSU ...Tied for most doubles wins at the Palmetto Doubles Championships ...Daughter of Mike and Angie Thompson.





MARY THYM

5'9"

SOPHOMORE

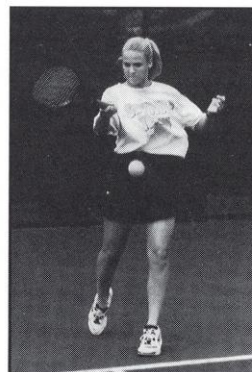
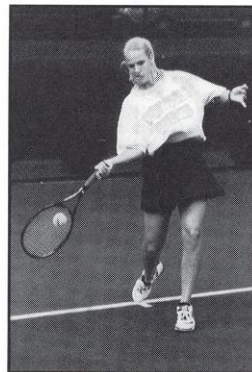
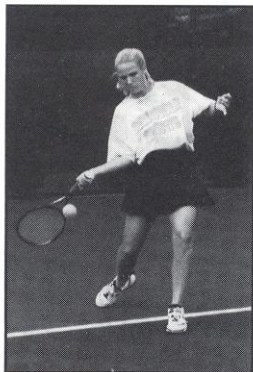
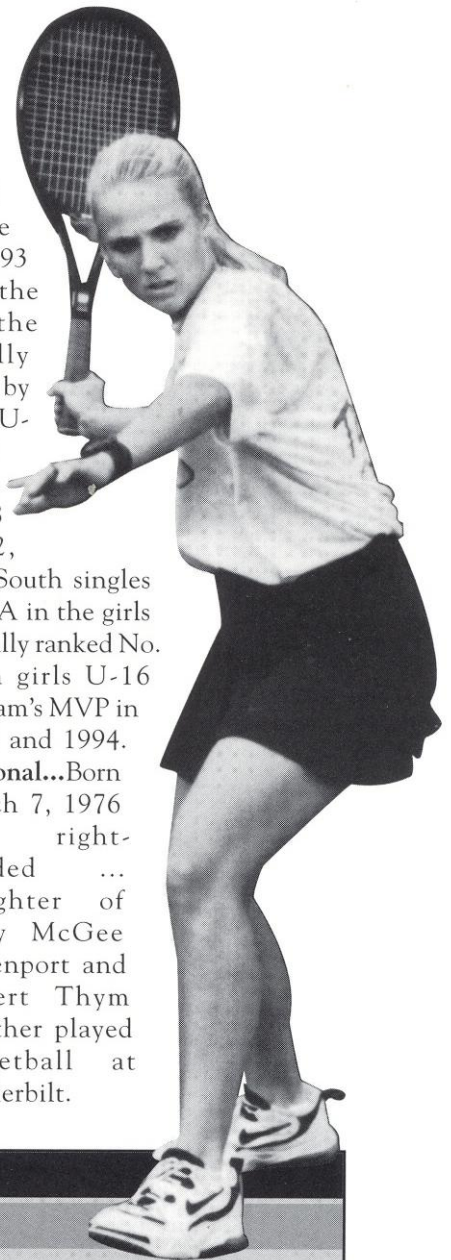
NASHVILLE, TENNESSEE (HILLSBORO)

1994-95...Played at No. 3, 4, 5 and 6 singles ...Was 9-12 in dual match competition, 10-13 overall ...Defeated ACC opponents from Georgia Tech, Clemson, and Maryland ...Was 2-1 at

No. 4 singles ...As the No. 4 seed, advanced to the semi-finals of the 1995 ITA Collegiate Summer Circuit (southeast regional site) against eventual champion and fellow FSU teammate, No. 1 seed, Lori Sowell ...Paired with Kathy Herring to reach the second round of the 1995 ITA Collegiate Summer Circuit (southeast regional site) doubles bracket. **High School and other accomplishments...** Named to the Tennessee All-State

Team in 1993 and 1994 ...Mid-State Player of the Year in 1993 ...Ranked No. 8 in the South singles by the USTA ...Nationally ranked in the top 100 by the USTA in the girls U-18 singles ...Nationally ranked No. 15 by the USTA in girls U-18 doubles ...In 1992, ranked No. 8 in the South singles and No. 2 by the USTA in the girls U-16 singles ...Nationally ranked No. 12 by the USTA in girls U-16 doubles ...Voted her team's MVP in 1993 and 1994.

Personal...Born March 7, 1976 ...Is right-handed ... Daughter of Mary McGee Davenport and Robert Thym ...Father played basketball at Vanderbilt.



THYM CAREER STATISTICS

Singles

YEAR	@1	@2	@3	@4	@5	@6	DUALS	OTHER	TOTAL
1994-95			0-1	2-1	0-4	6-6	8-12	2-1	10-13

0-1 2-1 0-4 6-6 8-12 2-1 10-13

DOUBLES

YEAR	@1	@2	@3	DUALS	OTHER	TOTAL
1994-95		0-8	1-3	1-11		1-11

w/ LORI JUNKER; JENNY GRAF;
SAMANTHA GREENSPAN

0-8 1-3 1-11 1-11

THIS IS THE ACC



(Since FSU's joining in 1992)

The Atlantic Coast Conference has long been a paragon of women's tennis. With its above average academic standard intact and sound fundamental beliefs in tennis, these nine programs: Clemson, Duke, Florida State, Georgia Tech, Maryland, North Carolina, North Carolina State, Virginia and Wake Forest have all excelled beyond the point of expectation.

Long known for its talented depth, the ACC has been no stranger to the national scope as six programs during the 1994-95 season were nationally ranked in the Top 50, with Duke and Wake Forest surfacing in the Top 10. With players scattered throughout the national rankings from No. 5 to 100, the ACC had three ITA All-Americans in FSU's Lori Sowell and Duke's Wendy Lyons and Monica Mraz.

At the 1995 ACC Championships, the Lady Seminoles were seeded third for the fourth consecutive year behind Duke and Wake Forest. The Lady Seminoles faced No. 6

Virginia in the first round. Defeating the Lady Cavaliers, FSU bowed out to No. 2 Wake Forest in the semifinals. Duke won the conference crown for the eighth consecutive year last season.

Although the Blue Devils have been the team to beat in ACC women's tennis the last few seasons, the league has witnessed streaks of champions. North Carolina had the most success in the early years, winning championships from 1977 to 1980. From 1981 to 1987, Clemson strung together seven consecutive titles. Duke was the team that snapped the Lady Tigers winning streak in 1988, and have been on top of the ACC women's tennis scene ever since.

The 1996 season will be the 19th year of women's tennis competition for the Atlantic Coast Conference. Beginning in 1977, the ACC started crowning a conference champion. This process has not been without its changes during the past 19 years, though. In 1982, the tournament was

held in the spring for the first time. In 1990, the tournament determined the ACC team champion while the singles and doubles champions were determined during regular season play.

The Lady Seminoles will compete at the ACC Indoor in Chapel Hill, N.C., on January 27-29, and will travel to Greenwood, S.C., on April 18-21 to compete in the ACC Championships.

Team Competition

Year	Team Champion	Head Coach	Runner Up	Site
1992	Duke	Geoff Macdonald	Wake Forest	Charlotte, North Carolina
1993	Duke	Geoff Macdonald	Clemson	Charlotte, North Carolina
1994	Duke	Geoff Macdonald	Florida State	Charlotte, North Carolina
1995	Duke	Jody Hayden	Wake Forest	Greenwood, South Carolina

Atlantic Coast Conference Honors

Year	ACC Tournament MVP	Coach of the Year	Player of the Year	Rookie of the Year
1992	Susan Sommerville, Duke	Geoff Macdonald, Duke	Cinda Gurney, UNC	
1993	Christine Neuman, Duke	Andy Johnston, Clemson	Cinda Gurney, UNC	
1994	Wendy Lyons, Duke	Alice Reen, Florida State	Audra Brannon, FSU	Lori Sowell, FSU
1995	Wendy Lyons, Duke	Lew Gerrard, WFU	Monica Mraz, Duke	Laura Zifer, Duke

Singles & Doubles Results

No. 1 Singles		No. 2 Singles		No. 3 Singles	
1992	Cinda Gurney, Duke	1992	Angela Bernal, North Carolina	1992	Liz Barker, Wake Forest
1993	Cinda Gurney, Duke	1993	Christine Neuman, Duke	1993	Amy Young, Clemson
1994	Audra Brannon, Florida State	1994	Lori Sowell, Florida State	1994	Emma Peetz, Clemson
1995	Wendy Lyons, Duke	1995	Wendy Lyons, Duke	1995	Cristina Caparis, Wake Forest
No. 4 Singles		No. 5 Singles		No. 6 Singles	
1992	Diane McKeon, Wake Forest	1992	Tracey Hiete, Duke	1992	Scotti Thomas, North Carolina
1993	Shannon King, Clemson	1993	Alison Cohen, Virginia	1993	Tracey Zawacki, Wake Forest
1994	Jan Barrett, Clemson	1994	Maggie Harris, Wake Forest	1994	Kim Schiff, Duke
1995	Karen O'Sullivan, Duke	1995	Wendy Fix, Duke	1995	Maggie Harris, Wake Forest
No. 1 Doubles		No. 2 Doubles			
1992	Cinda Gurney/Alisha Portnoy, North Carolina	1992	Wendy Lyons/Monica Mraz, Duke		
1993	Janice Durden/Shannon King, Clemson	1993	Alison Cohen/Ly-Lan Schofield, Virginia		
1994	Audra Brannon/Elke Juul, Florida State	1994	Maggie Harris/Patty Murren, Wake Forest		
1995	Wendy Lyons/Monica Mraz, Duke	1995	Wendy Fix/Laura Zifer, Duke		
No. 3 Doubles					
1992	Hillary McKinney/Meredith Lukoff, Duke				
1993	Elke Juul/Sandi Ecclestone, Florida State				
1994	Wendy Fix/Kim Schiff, Duke				
1995	Ashley Delaney/Lori Junker, Florida State				



THIS IS THE NCAA

NCAA TEAM CHAMPIONS

Year	Champion	Site
1982	STANFORD	SALT LAKE CITY, UT
1983	SOUTHERN CAL	ALBUQUERQUE, NM
1984	STANFORD	LOS ANGELES, CA
1985	SOUTHERN CAL	OKLAHOMA CITY, OK
1986	STANFORD	AUSTIN, TX
1987	STANFORD	LOS ANGELES, CA
1988	STANFORD	LOS ANGELES, CA
1989	STANFORD	GAINESVILLE, FL
1990	STANFORD	GAINESVILLE, FL
1991	STANFORD	STANFORD, CA
1992	FLORIDA	STANFORD, CA
1993	TEXAS	GAINESVILLE, FL
1994	GEORGIA	ATHENS, GA

NCAA SINGLES CHAMPIONS

Year	Champion	School
1982	ALYCIA MOULTON	STANFORD
1983	BETH HERR	SOUTHERN CAL
1984	LISA SPAIN	GEORGIA
1985	LINDA GATES	STANFORD
1986	PATTY FENDICK	STANFORD
1987	PATTY FENDICK	STANFORD
1988	SHAUN STAFFORD	FLORIDA
1989	SANDRA BIRCH	STANFORD
1990	DEBBIE GRAHAM	STANFORD
1991	SANDRA BIRCH	STANFORD
1992	LISA RAYMOND	FLORIDA
1993	LISA RAYMOND	FLORIDA
1994	ANGELA LETTIERE	GEORGIA
1995	KERI PHEBUS	UCLA

NCAA DOUBLES CHAMPIONS

Year	Champion	School
1982	HEATHER LUDLOFF LYNN LEWIS	UCLA
1983	LOUISE ALLEN GRETCHEN RUSH	TRINITY
1984	ELISE BURGIN LINDA GATES	STANFORD
1985	LEIGH ANN ELDRIDGE LINDA GATES	STANFORD
1986	LISA GREGORY RONNI RIES	MIAMI
1987	KATRINA ADAMS DIANE DONNELLY	NORTHWESTERN
1988	ALLYSON COOPER STELLA SAMPRAS	UCLA
1989	JACKIE HOLDEN CLAIRE POLLARD	MISSISSIPPI STATE
1990	MEREDITH McGRATH TERI WHITLINGER	STANFORD
1991	JILLIAN ALEXANDER NICOLE ARENDT	FLORIDA
1992	MAMIE CENIZA IWALANI McCALLA	UCLA
1993	ALIX CREEK MICHELLE OLDHAM	ARIZONA
1994	REBECCA JENSEN NORA KOVES	KANSAS
1995	KERI PHEBUS SUSIE STARRETT	UCLA

1996 NCAA DIVISION I WOMEN'S TENNIS CHAMPIONSHIPS

Florida State University will be the proud host of the NCAA Division I Women's Tennis Championships at the Scott Speicher Tennis Center, May 18-26. After thorough consideration by the NCAA Site Selection Committee, Florida State was bestowed with the honor of hosting this prestigious event.

The women's tennis program at Florida State has made every moment of its short 11 years of existence successful. The privilege to host a tournament of this magnitude is proof of that fact. This will be the first time that Florida State has hosted a national championship of any kind.

"The program is honored to be given an event such as this



one," said Coach Reen. "I believe that it is a reflection of the strides Florida State has made in collegiate women's tennis in these 11 years."

According to the NCAA Championship Tennis format, the Division I team championships shall comprise of 20

teams; individual championships shall consist of 64 singles players and 32 doubles teams.

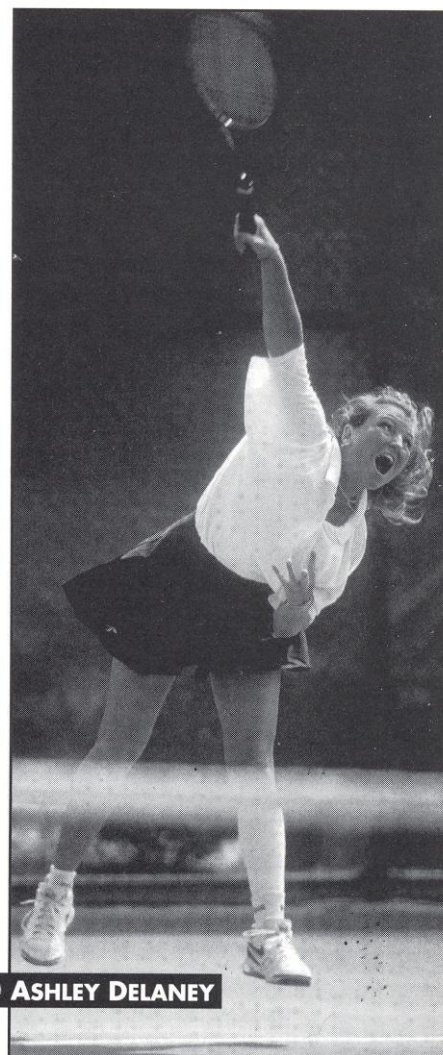
The 20 teams play a single-elimination tournament to determine the national champion. A team will be chosen from each of the six geographic regions and the remaining will be selected at-large.

In the individual draw, all matches will be the best of three sets, all of standard scoring. 36 of the 64 individual invitations will go to players who are not competing in the team competition.

ALL TIME RECORD VS. OPPONENTS

SERIES RECORD (1983- 1995)

OPPONENT	Win	Loss	OPPONENT	Win	Loss
Alabama	5	1	Mississippi State	4	3
Alabama-Birm.	1	0	New Mexico	3	0
Arizona	0	3	North Carolina	6	4
Auburn	7	1	North Carolina St.	5	0
Baylor	2	0	NE Louisiana	6	0
Boca Raton	1	0	North Florida	5	1
California-Irvine	0	1	Northwestern	0	5
Cal-Santa Barbara	0	2	Ohio State	1	0
Clemson	3	7	Oklahoma	1	0
Coll. of Charleston	1	0	Oklahoma State	0	2
Columbia	1	0	Purdue	2	0
Duke	1	6	Rice	3	4
Flagler	2	2	Rollins	12	4
Florida	0	16	San Diego	0	1
Florida A&M	1	0	Santa Fe	1	0
Florida International	6	0	South Alabama	7	3
Florida Junior Coll.	5	0	South Carolina	1	9
Furman	2	0	South Florida	13	8
Georgia	4	4	Southern Methodist	1	2
Georgia Southern	1	0	Southern Mississippi	1	0
Georgia State	2	0	SE Louisiana	2	0
Georgia Tech	7	0	SW Missouri	1	0
Houston	2	5	Stetson	3	0
Indiana	0	2	Tennessee	3	3
Illinois	0	1	TN-Chattanooga	1	0
Iowa	1	0	Texas	0	1
Jacksonville	1	0	Texas A&M	2	0
Kansas State	1	0	Texas Christian	0	3
Kentucky	0	1	Trinity	1	0
Lamar	1	0	Tulane	4	2
Louisiana State	1	3	U.S. Inter. Univ.	0	1
Louisiana Tech	2	0	Vanderbilt	2	2
Louisville	2	0	Virginia	6	0
Maryland	3	0	Virginia Tech	5	0
Memphis State	2	0	Wake Forest	4	6
Miami	0	8	Wichita State	1	0
Miami of Ohio	1	1	William & Mary	1	0
Michigan	4	0	Wisconsin	1	5
Mississippi	2	4	Yale	0	1



ASHLEY DELANEY

LADY SEMINOLE YEARLY RESULTS SINCE 1980

Year	Coach	W-L-T	PCT.
1980	Anne Rizza	21-11	.656
1981	Anne Rizza	24-15	.615
1982	Anne Rizza	23-18	.561
1983	Anne Rizza	18-8	.692
1984	Anne Rizza	15-13	.608
1985	Anne Rizza	13-14	.481
1986	Anne Rizza	17-10	.630
1987	Patti Henderson	11-16	.407
1988	Patti Henderson	14-12	.538
1989	Patti Henderson	13-7	.650
1990	Patti Henderson	13-9	.591
1991	Alice Reen	13-10	.565
1992	Alice Reen	13-10	.565
1993	Alice Reen	13-9	.591
1994	Alice Reen	15-10	.600
1995	Alice Reen	11-10	.524

247-182

.576

1995 WOMEN'S TENNIS RESULTS



<u>OPPONENT</u>	<u>DATE</u>	<u>RANK</u>	<u>W/L</u>	<u>SCORE</u>	<u>REC.</u>	<u>ACC</u>
Florida	Feb. 15	#2	L	1-7	0-1	0-0
H Vanderbilt	Feb. 17	#16	L	4-5	0-2	0-0
H Georgia Tech	Feb. 18			Rained Out	0-2	0-0
H Georgia Southern	Feb. 19	#50	W	8-0	1-2	0-0
South Florida	Feb. 26	#37	L	4-5	1-3	0-0
H South Alabama	March 1	#27		Rained Out	1-3	0-0
H North Carolina	March 5		W	5-4	2-3	1-0
H Duke	March 16	#7	L	1-6	2-4	1-1
H Tennessee	March 18	#12	W	5-4	3-4	1-1
H Clemson	March 19	#38	W	5-4	4-4	2-1
H Maryland	March 20		W	8-1	5-4	3-1
H Texas A & M	March 26	#36	W	5-2	6-4	3-1
H Georgia	March 29	#3	L	0-6	6-5	3-1
Virginia	March 31		W	8-1	7-5	4-1
H South Carolina	April 2	#11	L	3-6	7-6	4-1
Miami, Fla.	April 7	#19	L	3-6	7-7	4-1
Florida Int'l	April 8		W	5-4	8-7	4-1
San Diego	April 9	#24	L	2-6	8-8	4-1
Georgia Tech	April 11		W	6-0	9-8	5-1
North Carolina State	April 14	#41	W	5-4	10-8	6-1
Wake Forest	April 15	#10	L	3-6	10-9	6-2
Virginia	April 21		W	5-3	11-9	7-2
Wake Forest	April 22	#10	L	2-5	11-10	7-3

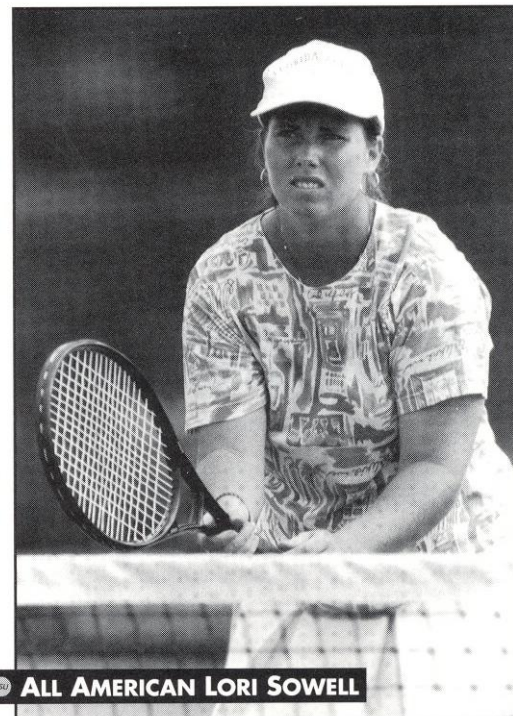
[6-4]

*Final season Rankings

INDIVIDUAL SINGLES/DOUBLES RESULTS

<u>INDIVIDUAL</u>	<u>#1</u>	<u>#2</u>	<u>#3</u>	<u>#4</u>	<u>#5</u>	<u>#6</u>	<u>Other</u>	<u>Total</u>
Lori Sowell	10-7	4-0					11-8	25-15
Elke Juul	1-3	12-4					6-6	19-13
Ashley Delaney		0-1	9-3	5-0	0-1		5-4	19-9
Jenny Graf			2-4	4-5				6-9
Lori Junker				1-2	2-10	1-3	2-1	6-16
Mary Thym			0-1	2-1	0-4	6-6	2-1	10-13
Samantha Greenspan				0-2	0-1	0-2	0-2	0-7
Rakina Payne							0-1	0-1

<u>INDIVIDUAL</u>	<u>#1</u>	<u>#2</u>	<u>#3</u>	<u>Other</u>	<u>Total</u>
Sowell/Juul	12-2			9-4	21-6
Thym/Junker	0-1	0-1			0-2
Greenspan/Payne			0-1		0-1
Delaney/Payne		0-1			0-1
Delaney/Junker		2-0	8-3	1-1	11-4
Graf/Thym		0-4	1-2		1-6
Greenspan/Thym		0-3			0-3
Greenspan/Graf		0-1			0-1
Greenspan/Junker		0-2			0-2



ALL AMERICAN LORI SOWELL

1995-96 FSU OPPONENTS



CALIFORNIA GOLDEN BEARS

Location: Berkeley, CA
 Head Coach: Jan Brogan
 Record: 332-124/17 years
 1995 Record: 15-6/6-4 Pac Ten 2nd
 Tennis Contact: Melissa Horton
 Office Phone: (510) 642-5363



GEORGIA SOUTHERN EAGLES

Location: Statesboro, GA
 Head Coach: Gary Glassman
 Record: 36-31/4 years
 1995 Record: 14-3/7-0 Southern 1st
 Tennis Contact: Julie Ciekowski
 Office Phone: (912) 681-5448



CLEMSON TIGERS

Location: Clemson, SC
 Head Coach: Andy Johnston
 Record: 233-136/13 years
 1995 Record: 8-13/5-3 ACC 4th
 Tennis Contact: Sam Blackman
 Office Phone: (803) 656-1926



GEORGIA TECH YELLOW JACKETS

Location: Atlanta, GA
 Head Coach: Sue Hutchinson
 Record: 84-43/7th year
 1995 Record: 10-11/0-8 ACC 9th
 Tennis Contact: Allison George
 Office Phone: (404) 894-5445



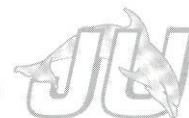
DUKE BLUE DEVILS

Location: Durham, NC
 Head Coach: Jody Hyden
 Record: 22-6/1 year
 1995 Record: 22-6/8-0 ACC 1st
 Tennis Contact: Tom Kosempa
 Office Phone: (919) 684-2633



JACKSONVILLE DOLPHINS

Location: Jacksonville, FL
 Head Coach: Bill Macom
 Record: 1st year
 1995 Record: 13-9/2-3 Sun Belt 7th
 Tennis Contact: Brian Fremund
 Office Phone: (904) 745-7402



FLORIDA GATORS

Location: Gainesville, FL
 Head Coach: Andy Brandi
 Record: 291-34/11 years
 1995 Record: 27-3/14-0 SEC 1st
 Tennis Contact: Steven Shaff
 Office Phone: (904) 375-4683, ext. 6100



MARYLAND TERRAPINS

Location: College Park, MD
 Head Coach: Jim Laitta
 Record: 42-122/5 years
 1995 Record: 5-11/1-7 ACC T5th
 Tennis Contact: TBA
 Office Phone: (301) 314-7064



GEORGIA BULLDOGS

Location: Athens, GA
 Head Coach: Jeff Wallace
 Record: 232-52/10 years
 1995 Record: 23-4/12-2 SEC 2nd
 Tennis Contact: Christopher Lakos
 Office Phone: (706) 542-1621



MIAMI HURRICANES

Location: Coral Gables, FL
 Head Coach: Kim Sands
 Record: 63-44/5 years
 1995 Record: 14-8/1st Big East
 Tennis Contact: Sam Henderson
 Office Phone: (305) 284-2344



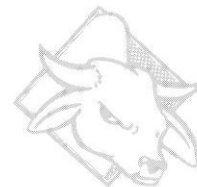
MISSISSIPPI REBELS

Location: Oxford, MI
Head Coach: Terry Montgomery
Record: 125-76/8 years
1995 Record: 11-10/6-7 SEC 7th
Tennis Contact: Kim Bremer
Office Phone: (601) 232-7522



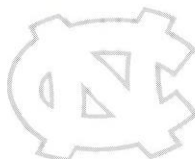
SOUTH FLORIDA BULLS

Location: Tampa, FL
Head Coach: Sherry Bedingfield
Record: 255-189/16 years
1995 Record: 13-8/1st Metro
Tennis Contact: Zack Bolno
Office Phone: (813) 974-2125



NORTH CAROLINA TARHEELS

Location: Chapel Hill, NC
Head Coach: Kitty Harrison
Record: 336-185/19 years
1995 Record: 10-13/2-6 ACC T5th
Tennis Contact: TBA
Office Phone: (919) 962-2123



TENNESSEE VOLUNTEERS

Location: Knoxville, TN
Head Coach: Mike Patrick
Record: 123-84/8 years
1995 Record: 16-8/8-3 SEC 3rd
Tennis Contact: Marc Gesualdo
Office Phone: (615) 974-4275



NORTH CAROLINA STATE WOLFPACK

Location: Raleigh, NC
Head Coach: Jen Garrity
Record: 1st year
1995 Record: 15-6/4-4 ACC 3rd
Tennis Contact: Wedi McLendon
Office Phone: (919) 515-2102



VANDERBILT COMMODORES

Location: Nashville, Tennessee
Head Coach: Geoff Macdonald
Record: 131-43/7 years
1995 Record: 16-8/8-4 SEC 4th
Tennis Contact: Andrew Maraniss
Office Phone: (615) 322-4121



NOTRE DAME FIGHTING IRISH

Location: South Bend, IN
Head Coach: Jay Louderback
Record: 93-54/6 years
1995 Record: 14-10/Independent
Tennis Contact: Mike Enright
Office Phone: (219) 631-7516



VIRGINIA CAVALIERS

Location: Charlottesville, VA
Head Coach: Phil Rogers
Record: 147-126/13 years
1995 Record: 7-10/3-5 ACC T5th
Tennis Contact: Michael Colley
Office Phone: (804) 982-5500



RICE OWLS

Location: Houston, TX
Head Coach: Paul Blankenship
Record: 196-114/15 years
1995 Record: 16-6/7-2 SWC 2nd
Tennis Contact: Dwayne Leach
Office Phone: (713) 527-4034



WAKE FOREST DEMON DECONS

Location: Winston-Salem, NC
Head Coach: Lew Gerrard
Record: 128-69/8 years
1995 Record: 21-5/7-1 ACC 2nd
Tennis Contact: Dan Zacharis
Office Phone: (910) 759-5640



HOME OF THE
**1996 WOMEN'S
 NCAA CHAMPIONSHIP**

3



1996 WOMEN'S HOME TENNIS SCHEDULE

Feb. 14	Jacksonville U.	2:00 pm
Feb. 18	Miami, Fla.	12:00 pm
Feb. 19	Georgia Southern	2:00 pm
March 7	Rice	5:00 pm
March 10	Wake Forest	1:00 pm
March 12	North Carolina State	2:00 pm
March 14	Virginia	2:00 pm
March 15	Notre Dame	5:00 pm
March 17	Mississippi	10:00 am
March 26	Cal - Berkley	2:00 pm
April 6	South Florida	11:00 am
May 18 - 26	NCAA Championships	All Day