

women's **TENNIS** *1994-95*



1



***Florida
State***

This Is FSU

Florida State University is leading the way toward a new century—exploring science through supercomputing, pioneering in Florida's growing film industry, and scouting new avenues of cultural exchange in a world opening the paths to freedom.

Florida State offers graduate and undergraduate degree programs through its eight colleges (Arts and Sciences, Business, Communication, Education, Engineering, Human Sciences, Law, and Social Sciences) and eight schools (Criminology, Library and Information Studies, Music, Nursing, Social Work, Theater, Visual Arts and Dance, and Motion Picture, Television and Recording Arts.) The University awards approximately 5,000 degrees every year.

Florida State is a public, coeducational university and a senior member of the State University System. Florida State was founded as an institution of higher learning in 1851 by legislative act, and began operating in Tallahassee with its first students in 1857.

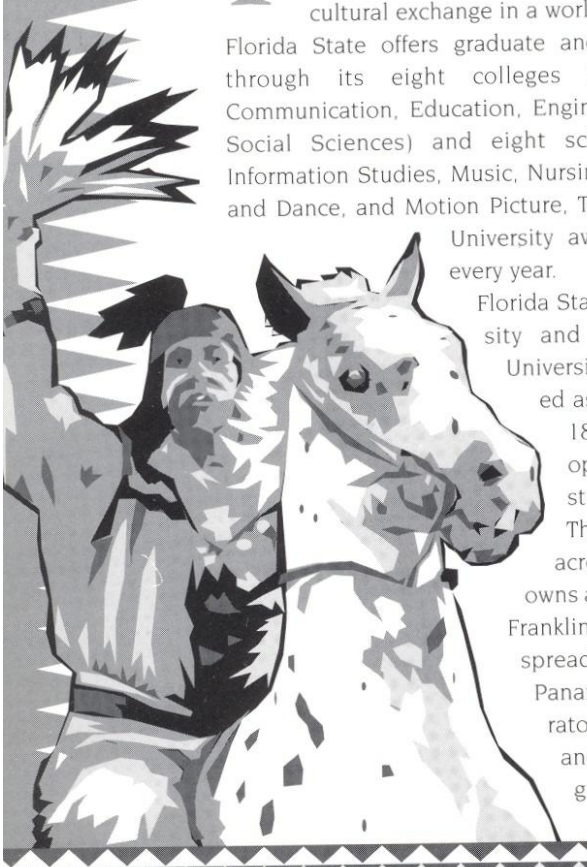
The main campus is spread over 347 acres in Tallahassee. The University owns a total of 1,167 acres in Leon, Bay and Franklin counties. Within the state, FSU spreads west to its 20-acre campus in Panama City and south to its marine laboratory on the Gulf of Mexico and its film and theater professional-training programs in Sarasota. In 1990, through a generous gift to the Foundation, the University acquired the Appleton Art Museum in Ocala,

which will become a study center for the visual arts. Student activities at FSU create an important balance between the classroom experience and the personal life of the individual scholar.

The sixteen schools and colleges make up the roughly 29,000 students who are enrolled in the 276 graduate and undergraduate degree programs and live and work among 1,558 faculty and 2,600 staff members. In the past several years, the University has gained national recognition for its accomplishments as an educational institution. In 1994, FSU was among the elite few schools in the country to be selected as a Research Level One University. FSU also boasts one of only three High Magnetic Laboratory's research centers in the world.

Florida State offers ample opportunity for students to acquire leadership skills. Whether it is through Student Government, Greek social organizations, Honors programs, or departmental organizations, Florida State offers over 350 active registered student organizations. Furthermore, the Flying High Circus, the world's only all-collegiate circus makes its home here.

Florida State remains a growing institution. From its roots as the Seminary West of the Suwannee, through the early 20th century as the academically respected Florida State College for Women and then achieving its coeducational status in 1947, to its modern development as an acclaimed research institution and a top-ranked competitor in intercollegiate athletics and as a standard-setter in the basic sciences and the performing arts, and in all areas of teaching, research and service, Florida State University continues to be a pathfinder into the 21st century.



FINGERTIP FACTS

LocationTallahassee, FL
 Enrollment29,000
 Founded1857
 NicknameSeminoles
 ColorsGarnet and Gold
 ConferenceAtlantic Coast
 AffiliationNCAA Division I
 PresidentTalbot "Sandy" D'Alemberte
 Home Courts Scott Speicher Tennis Center
 at Don Loucks Courts

ATHLETIC ADMINISTRATION

Athletic Director (Interim)Wayne Hogan
(904) 644-7330
 Asst. Athletic Director (Interim) Cecile Reynaud
(904) 644-1091

SPORTS INFORMATION STAFF

DirectorRob Wilson
 SID Office Phone(904) 644-1403
 Tennis SIDScott Wherley
 SID Home Phone(904) 224-3318
 SID Fax Phone(904) 644-3820
 SID Mailing AddressP.O. Box 2195
Tallahassee, FL 32316

TENNIS STAFF INFORMATION

Head CoachAlice Reen
 Years at FSUFour
 Assistant CoachJenny Mainz
 Years at FSUThree
 Tennis Office Phone(904) 644-1091

1993-94 SEASON RESULTS

Record15-10
 Regular Season Conference Record6-2
 Conference Place2nd
 Final National Ranking22nd
 Starters Returning/Lost3/3
 Newcomers3

CREDITS

EditorScott Wherley
 Contributing WritersFSU Media Relations
 ResearchAndrew Mercer
Meredith Heins
 Photography Ross Obley, University Photo Lab
 DesignPeter Mamatey
 PrinterRapid Press

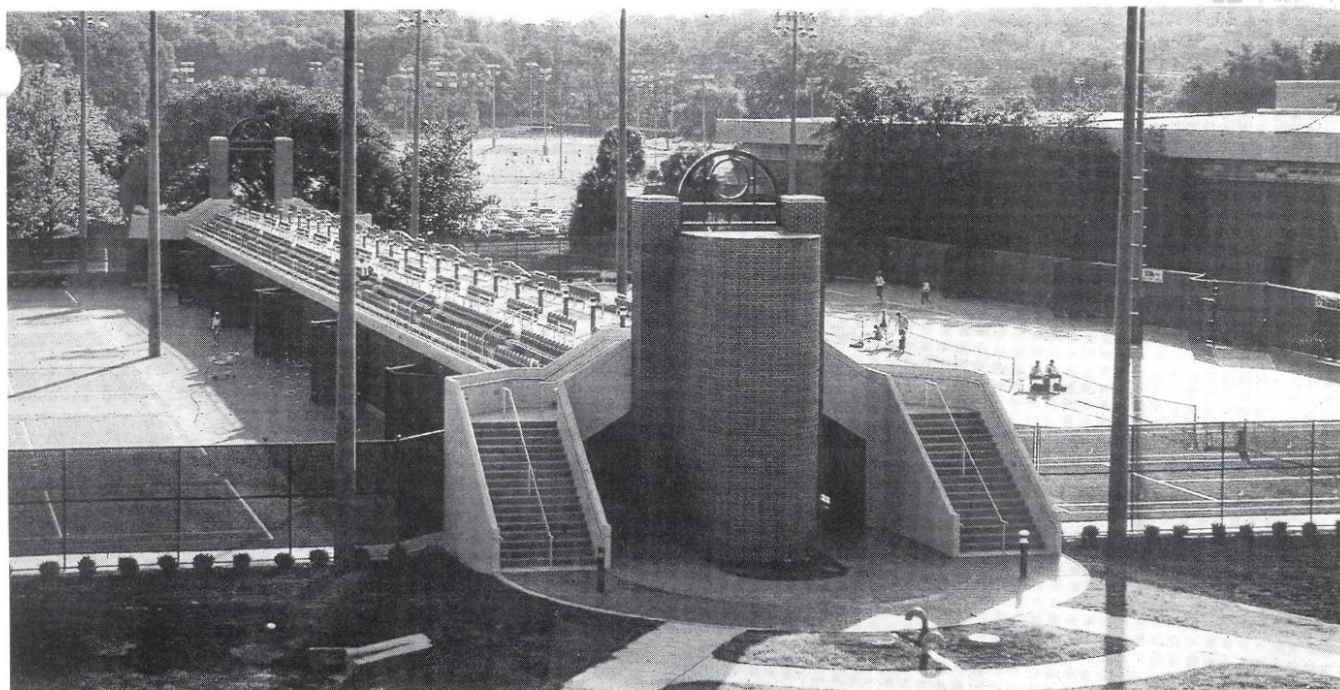


Wayne Hogan
 Interim
 Athletic Director



Cecile Reynaud
 Associate
 Athletic Director

SCOTT SPEICHER TENNIS CENTER at Donald Loucks Courts



Completed in the Summer of 1993, the Scott Speicher Tennis Center at Donald Loucks Courts is one of the premier tennis facilities in the country. Costing over 1.2 million dollars to build, the Center has become the newest focal point in Florida State's commitment to providing top-notch facilities for its athletes.

The Center houses 12 lighted tennis courts and over 1,000 court level seats. It is adjacent to the tennis offices, lockerooms and weight room in Tully Gym.

The Center was named in the honor of Lieutenant Commander Michael Scott Speicher, a graduate of Florida State University and the first American casualty during Operation Desert Storm. By Presidential Directive, the Facility bears the name the "Scott Speicher Tennis Center."

The Facility was designed by EMO/Architects, Inc., a Tallahassee based Architectural firm, in collaboration with Global Consult Group, Inc. an internationally recognized tennis facility design consultant. The complex was funded by a private source in the State University System of Florida.

Florida State's Scott Speicher Tennis Center was also selected for the USTA Outstanding Tennis Facility Award for its design, construction and for its maintenance capabilities.

1994-95 SCHEDULE

Fall

Sept. 30 -	Lady Seminole Classic	TALLAHASSEE, FL	All Day
Oct. 2	Furman Fall Classic	Greenville, SC	All Day
Oct. 7-9	San Destin Invitational	Destin, FL	All Day
Oct. 21-23	Riveria All-American	Los Angeles, CA	All Day
Oct. 26-30	ITCA Regional	Jackson, MS	All Day

Spring

Jan. 20-22	Georgia Invitational	Athens, GA	All Day
Jan. 28-30	ACC Indoors	Chapel Hill, NC	All Day
Feb. 11	Florida	TALLAHASSEE, FL	1:00 PM
Feb. 17	Vanderbilt	TALLAHASSEE, FL	2:00 PM
Feb. 18	Georgia Tech	TALLAHASSEE, FL	12:00 PM
Feb. 19	Georgia Southern	TALLAHASSEE, FL	2:00 PM
Feb. 26	South Florida	Tampa, FL	11:00AM
March 1	South Alabama	TALLAHASSEE, FL	1:30 PM
March 5	North Carolina	TALLAHASSEE, FL	1:00 PM
March 16	Duke	TALLAHASSEE, FL	2:00 PM
March 18	Tennessee	TALLAHASSEE, FL	11:00 PM
March 19	Clemson	TALLAHASSEE, FL	12:00 PM
March 20	Maryland	TALLAHASSEE, FL	11:00 AM
March 25	Texas A&M	TALLAHASSEE, FL	1:00 PM
March 29	Georgia	TALLAHASSEE, FL	2:00 PM
March 31	Virginia	Charlottesville, VA	1:00 PM
April 2	South Carolina	TALLAHASSEE, FL	1:00 PM
April 7	Miami	Miami, FL	1:00 PM
April 8	Florida International	Miami, FL	11:00 AM
April 9	San Diego State	Miami, FL	10:00 AM
April 14	North Carolina State	Raleigh, NC	2:00 PM
April 15	Wake Forest	Winston-Salem, NC	11:00 AM
April 20-23	ACC Championships	Greenwood, SC	All Day
May 12-20	NCAA Championships	Malibu, CA	All Day

SEASON REVIEW

Heading into the 1994 season, the Lady Seminoles knew that they had their work cut out for them. On the schedule were tennis powerhouse programs such as Florida, Georgia, and ACC foe, Duke. The Lady Seminoles fared very well against this tough schedule, finishing as runners-up in the ACC, and qualifying for the NCAA's, the first team in Seminole tennis history to accomplish this feat.

The Lady Seminoles began their season with five of their first six matches on the road, facing three top-25 teams during that span. The Lady Seminoles opened the 1994 campaign in Tallahassee, handing an overwhelmed Georgia Tech squad a 9-0 defeat. From there, Head Coach Alice Reen took her squad on the road to face opponents from the Big East, SEC, and ACC. This road test proved to be a character check for the Lady Seminoles as they dropped four of the five matches, losing to #16 Miami, #4 Florida, #25 Tennessee, and Kentucky. The only bright spot was a 9-0 trouncing of conference foe Maryland on Feb 19.

The tough beginning might have sent some clubs reeling, but Reen's squad rebounded nicely in their next two matches. Defending their home courts, the Lady Seminoles pulled through and showed their character as they

eked out tough 5-4 victories over South Florida, and #20 Wake Forest. The #1 double tandem of Audra Brannon and Elke Juul, along with the #2 tandem of Jen Hyde and Lori Sowell proved to be very vital, as both teams won their matches to push the Lady Seminoles over the top to the 5-4 victory.

The Lady Seminoles knew that home court advantage could not last for long as they set out for a two match road swing facing #15 Clemson and #4

Georgia in their next two matches. The Lady Seminoles played well

but came away with two tough losses in Clemson and Athens, leaving their overall record at 4-6.

At this point in their young season, the lady netters evaluated their performance and decided now was as good a time as any to make a solid showing. The Lady Seminoles had five of their next nine matches at home, the four away matches being a tough road trip through the state of Texas.

FSU responded with winning colors. They proceeded to run off five straight victories, and eight of their next nine matches. The streak began with a 7-2 victory over ACC rival N.C. State, and continued with key victories over #24 Virginia, #50 Mississippi State, #46 Rice and Houston. Now deep into their Texas trip, the Lady 'Noles made a stop in Austin to face-off with the #4 Lady Longhorn from the University of Texas. FSU played very determined, but came away with a tough 6-3





loss, a defeat in which had a few points fallen the Seminoles way, could have produced one of the biggest upsets in FSU women's tennis history.

Realizing they were on a roll and able to play with anyone in the country, the Lady Noles ran off three straight victories, over opponents who were all ranked nationally, to improve their record to 12-7.

FSU finished its regular season against #10 Duke and #27 South Alabama. The Lady Seminoles lost a hard fought 5-4 decision to the Lady Blue Devils but rebounded to defeat South Alabama 7-2. Thus the regular season had ended for FSU at 13-8, but the real challenge still lay ahead.

In the first round of the ACC Championships in Charlotte, NC, FSU faced N.C. State and defeated the Lady Wolfpack 5-1, advancing the Lady Noles to the semifinals. There FSU upset #9 Clemson 5-3

to advance to the finals against seven-time defending champion Duke. The Lady Blue Devils proved to be too much for the Lady Seminoles as Duke defeated FSU 5-0.

All was not lost in Charlotte, though, as the Lady Seminoles qualified for the NCAA tournament for the first time in their history.

At the NCAA's, Florida State drew #26 Arizona. Inexperience may have hurt the Lady Seminoles as they bowed out in the first round losing to the Lady Wildcats 5-3. But the experience gained can only be a building block for the seasons to come. Florida State finished the season with a 15-10 record and were ACC runners-up.

The Lady 'Noles also swept the ACC accolades. Lori Sowell came away with ACC Freshman of the Year honors, Audra Brannon was ACC Player of the Year and Head Coach Alice Reen was ACC Coach of the Year. Audra Brannon also became a singles All-American with her #9 seed in the NCAA tournament.

1994 will be remembered as the year the Florida State Lady Seminole tennis program stepped securely into national prominence. The future looks bright for the women's tennis program and in the years to come the 1994 squad will be remembered as the squad that established their tennis reputation.



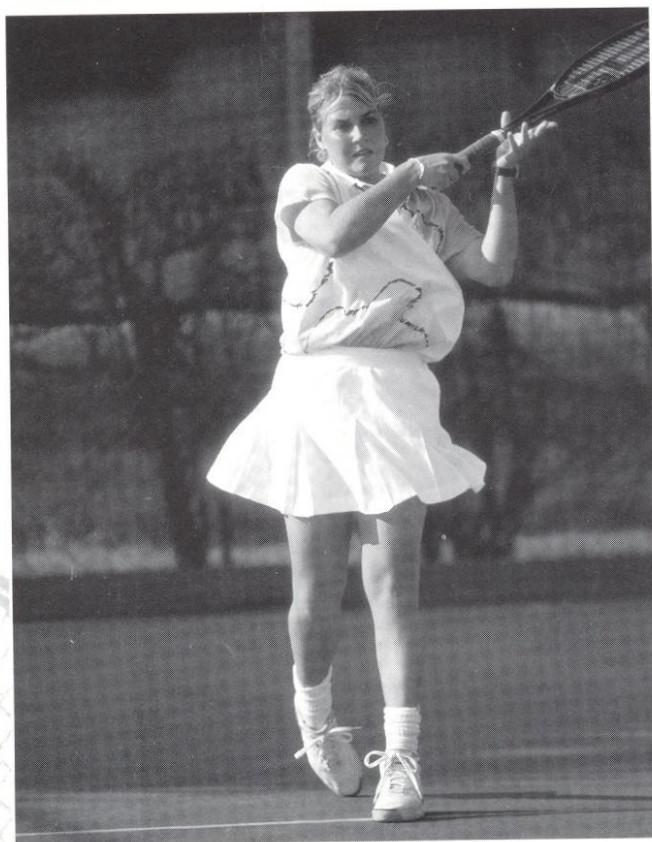
[8-0]

RESULTS

1994 Team Results

Opponent	Date	Site	W/L	Score	Record
Georgia Tech	2/5	H	W	9-0	1-0
Miami #16	2/11	A	L	5-4	1-1
Florida #4	2/12	A	L	8-1	1-2
Maryland	2/19	A	W	9-0	2-2
Kentucky	2/25	A	L	7-1	2-3
Tennessee #24	2/26	A	L	5-4	2-4
South Florida	3/5	H	W	5-4	3-4
Wake Forest #	203/7	H	W	5-4	4-4
Clemson #15	3/11	A	L	6-3	4-5
Georgia #4	3/12	A	L	5-1	4-6
N.C. State	3/13	H	W	7-2	5-6
Virginia #24	3/15	H	W	6-3	6-6
Miss. State #T50	3/18	H	W	5-1	7-6
Rice #46	3/21	A	W	7-2	8-6
Houston	3/22	A	W	5-1	9-6
Texas #4	3/24	A	L	6-3	9-7
Texas A&M #27	3/26	A	W	5-4	10-7
FIU #34	4/2	H	W	5-1	11-7
N. Carolina #43	4/9	A	W	7-2	12-7
Duke #10	4/10	A	L	5-4	12-8
S. Alabama #27	4/16	H	W	7-2	13-8
N.C. State #36	4/22	N	W	5-1	14-8
Clemson #9	4/23	N	W	5-3	15-8
Duke #7	4/24	N	L	5-0	15-9
Arizona #26	5/13	N	L	5-3	15-10

FSU Runners-Up of ACC Championships



Individual Results

ACC	INDIVIDUAL	#1	#2	#3	#4	#5	#6	NCAA	Record
1-0	Audra Brannon	18-7						0-1	18-8*
	Lori Sowell		18-6					0-1	18-7
	Elke Juul			11-11	2-1				13-12
2-0	Ashley Delaney			1-0	1-2	4-4			6-6
	Jen Hyde				2-2	10-11			12-13
	Laura Randmaa		3-1	9-7	1-0	2-2			15-10

*Audra Brannon became a singles All-American when she was seeded 9-16 in the NCAA Tournament

Doubles

Doubles	#1	#2	#3	NCAA	Record
Brannon/Juul	14-4		1-0	0-1	15-5
Hyde/Sowell	0-1		11-5		11-6
Delaney/Randmaa				7-7	7-7
Randmaa/Ecclestone				0-2	0-2

ACC Records

Individual	#1	#2	#3	#4	#5	#6	Record
Audra Brannon	7-1						7-1
Lori Sowell		7-1					7-1
Elke Juul			4-2	1-1			5-3
Ashley Delaney			1-0	1-0	0-2		2-2
Jen Hyde				1-0	3-4		4-4
Laura Randmaa		2-0	3-1		2-0		7-1

ACC Doubles

Doubles	#1	#2	#3	Record
Brannon/Juul	8-0			8-0
Hyde/Sowell		6-2		6-2
Delaney/Randmaa			3-2	3-2

ACC Tournament

Singles	Individual	#1	#2	#3	#4	#5	#6	Record
Audra Brannon	1-2							1-2
Lori Sowell		2-0						2-0
Elke Juul			1-2					1-2
Laura Randmaa				2-1				2-1
Jen Hyde					1-2			1-2
Ashley Delaney						1-2		1-2

Doubles	Team	#1	#2	#3	Record
Brannon/Juul	1-0				1-0
Sowell/Hyde		1-0			1-0

ACADEMICS

In her definition of the student-athlete, Head Coach Alice Reen believes that each part - the student and the athlete - is equally important. While Reen is concerned with her player's competitive edge on the courts, she keeps a keen eye on their progress in the classroom as well.

"One of the first priorities I try to instill when an athlete arrives at Florida State is the need to strive for academic excellence. Their accomplishment in the classroom is a genuine concern for me and a responsibility I gladly accept," says Reen.

The women's tennis team always has one of the highest team grade point averages of all of the FSU sports. With a team G.P.A. hovering around a 3.0, the Lady Netters are consistently among the top of the list of Seminole athletic programs. In addition, Ashley Delaney, Lori Sowell, Laura Randmaa, and Sandi Ecclestone, were All-ACC Academic selections.

The Lady Seminole Tennis program is just one example of Florida State's overall commitment to academic excellence. Ashley Delaney and teammate Sandi Ecclestone were both named to the Dean's list for academic accomplishments last year.

To support Seminole student-athletes as they strive to meet their fullest potential both on and off the field, the athletic department has undertaken several projects to upgrade both their academic support services and facilities. The physical plant expansion of the Moore Athletic Center as part of the University Center project, means FSU student-athletes have expanded access to a state-of-the-art learning environment, which includes individual study areas, the latest in computer technology and a study hall which also includes a research area.

STRENGTH and TRAINING

Strength training and conditioning is an important part of an athlete's performance on the court. At Florida State, a specially designed program is developed for tennis, emphasizing the objectives of strengthening and conditioning the athletes. Strength coach Matt Hamparian individually customizes programs for each of the athletes beginning with pre-conditioning before the season gets underway.

Hamparian works with the players in sport specific training which includes conditioning the major muscle groups used in tennis. Last Season, Hamparian customized a sand workout for the women's tennis team. The workout, which the squad will again participate in this season, was instrumental in improving quickness and cardiovascular conditioning on the court. The coaches believe so strongly in the program that they even participate themselves. FSU takes pride in customizing the programs to help student-athletes reach their maximum potential.

Athletes at Florida State University receive the best care and treatment possible. All of the student-athletes undergo a pre-season examination in order to prevent and detect any potential injuries an athlete may incur. If a problem is detected, the athlete is placed on a prevention care program which may include any kind of treatment from icing to exercising. The program is closely monitored by Head Trainer Robin Gibson or one of her nine staff members.

Rehabilitation is another important component of the Seminole training room. Though preventing injuries is the main objective, they are sometimes a part of participating in athletics. More serious injuries and illnesses are referred to the Seminole team physicians at the Tallahassee Orthopedic Center, who for many years have worked in conjunction with the FSU training room in successfully rehabilitating numerous athletes after an injury.

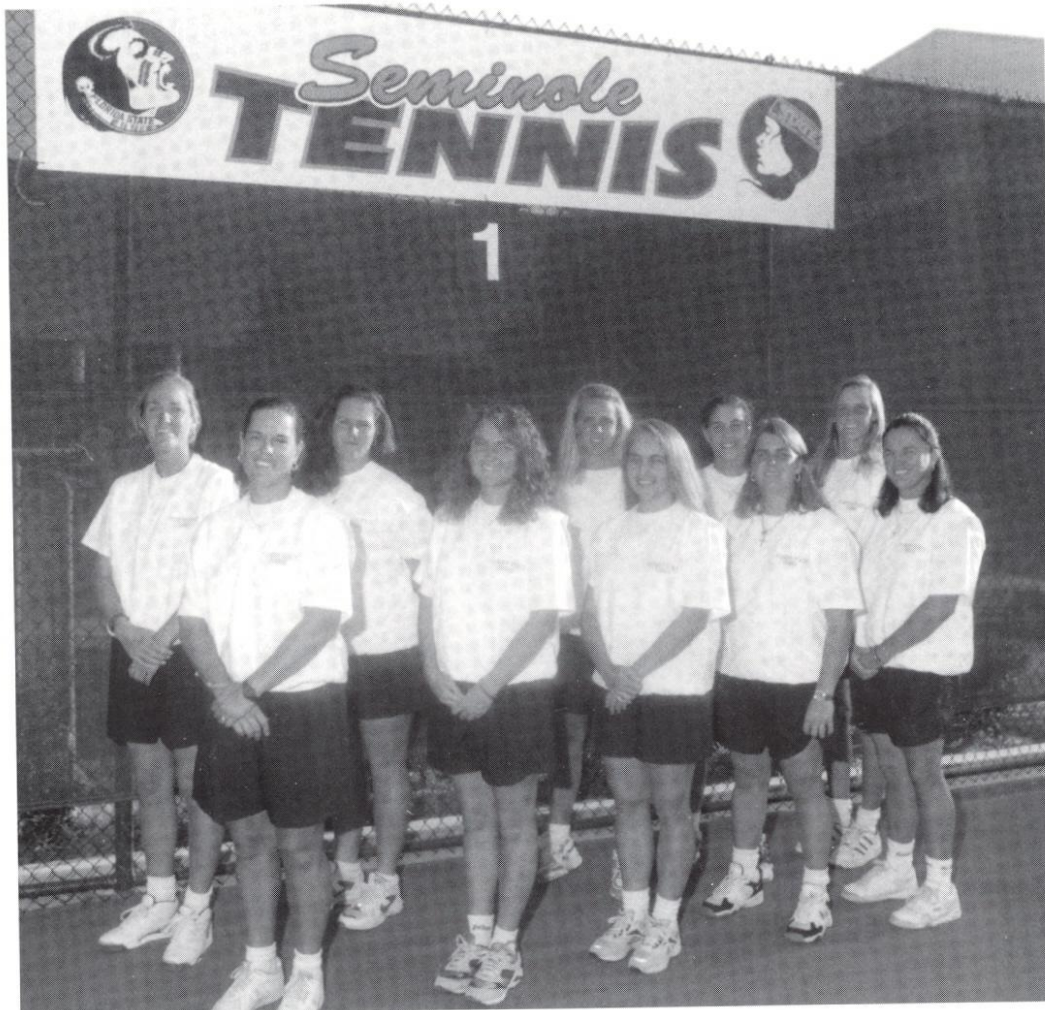
Florida State student-athletes also benefit from one of the premier academic support systems. A full-time staff assists all incoming student-athletes in adjusting to their new campus environment and works with them throughout their academic careers at FSU.

Under the direction of Dr. Roger Grooters the Academic Support Program is in place to meet the needs of FSU's student-athletes. Grooters and his staff aid student-athletes with admission, class scheduling, registration, and the normal progression towards a degree.

Regular class attendance is required in order to play tennis at FSU, and is closely monitored during the playing and practice seasons. Throughout the school year, nightly study halls and tutoring sessions help the student-athlete stay on course. Student-athletes have unlimited access to mentors who provide one-on-one tutoring. The academic support staff works closely with the faculty members at Florida State as well as with the athletic department's own office of student services.



OUTLOOK



Front row (l to r):
Jenny Mainz, Ashley Delaney,
Lori Junker, Jenny Graf,
Coach Reen

Back row (l to r):
Jen Hyde, Lori Sowell, Mary
Thyme, Samantha Greenspan,
Elke Juul

The Florida State women's tennis team is coming off the most successful season in Seminole tennis history. The Lady Seminoles finished 2nd in the Atlantic Coast Conference last season, but on top of that, they swept the ACC awards. Coach of the Year: **Alice Reen**; Player of the Year: **Audra Brannon**; and Freshman of the Year: **Lori Sowell**.

Coach Reen is returning for her fourth season at the helm of the Lady Seminoles and she returns Sowell along with plenty of other young talent. The Lady Seminoles, though, must replace three seniors off a team which finished 15-10. Last year's squad was also the first team in school history to advance to the NCAA Tournament and finished with an impressive 22nd ranking in the country.

Even though the Lady Seminoles tennis roster only contains two upper-classmen, Coach Reen is excited about the group of young talent she has to work with. "We want to continue to improve as players and continue building a strong tennis program here at Florida State," said Reen.

Sowell will obviously be the target of many opponents this season. After a tremendous freshman campaign which earned her many honors, she returns as the #1 singles player after posting an 18-6 record in the #2 slot last season. Sowell will also be asked to step up as a leader on the young squad and fill the vital role left vacant by the exiting seniors.

Sowell's doubles partner, Elke Juul, will also be an integral part of this year's team chemistry. Juul, who compiled 13-12 record in singles and a 15-4 record in doubles, looks to find herself competing for one of the top spots on the Lady Seminole roster. The native of Australia hopes to build on a strong fall season.

Senior Jenny Graf returns to compete for the Seminoles after sitting out a redshirt year due to reconstructive shoulder surgery. Graf was a solid performer in the middle positions for the Seminoles after arriving at Florida State in 1991 from Texas A&M.

The heart of the Seminole lineup will consist of very young nucleus of talent. Sophomore Ashley Delaney returns after a very solid freshman campaign in

which she posted a 6-6 record. The Lady Seminoles bring in three freshmen, Samantha Greenspan, Lori Junker, and Mary Thym. Coach Reen has high marks for all three and believes they will have an immediate impact on this year's squad. "We don't have the experience last year's squad did, but we have the talent and a strong work ethic to once again be a strong contender."

This season Reen will once again be assisted by Jenny Mainz. Coach Mainz, in her third year on the Lady Seminole staff, completes the cohesive unit which makes up this season's squad.

As in recent years, one of the primary strengths of this season's squad will be in the area of doubles play. "If the young players can step in and perform like we hope they can, we should be very strong in our doubles," Reen admits. Sowell and Juul began the fall season by qualifying in the doubles competition for the ITCA Rolex Southern Regional in Oxford, MS. Juul and Sowell worked their way through the qualifying portion of the All-American Tournament to make it into the main draw where they upset several top twenty doubles teams. They start 1995 with a ranking of #15.

Florida State will again have a top-notch schedule to compete against. One priority since Reen's arrival at FSU has been to play as many top-twenty teams as possible. It did not take long for this entity to show up on the schedule. The Lady Seminoles will take on the tra-

ditionally tough ACC opponents, as well as out of conference foes Miami and Georgia.

"We believe we can compete and beat any team we face. It's a philosophy we instill in our players," explains Reen. She goes on to say, "Making our players believe they can compete and beat top teams and top players is one thing we really try to focus on. We try to create an atmosphere where these players can improve through hard work, all the while creating a team atmosphere where the players can pull together."



Improvement by the underclassmen, and leadership by the upperclassmen, will help continue to build the tradition that the Florida State University women's tennis program is establishing. Reen believes that, "Hard work and knowing that each person plays an important role in the future of our program is an important aspect we tell our players and I feel we are building a quality program with the quality players and quality people we bring in."

But the quality of Florida State does not end with its people and players. The facilities FSU has created is just another reason the Seminoles are successful. The Lady Seminoles proved that their new tennis facility was more than a nice addition to the FSU campus, it provided a distinct home-court advantage. The Lady Seminoles compiled an undefeated 8-0 record while playing at the Speicher Tennis Center. Reen sums the season's expectations by stating, "If the returning players have seasons as good as they did last year, and the newcomers fill our holes and play up to their potential, I think we will have a great season."



COACHES



Alice Reen

Head Coach
University of Georgia

In 1994-95, Head Coach Alice Reen will be charged with the task of improving on the most successful season in Florida State tennis history. Last year's squad finished as the ACC runner-up and was ranked 22nd in the final ITA poll. Coach Reen was also named Coach of the Year for the ACC, along with having the ACC Freshman of the Year and the ACC Player of the Year. In only her fourth season at FSU, Coach Reen has already put the Lady Seminoles on the tennis map.

To start a successful program, the most important aspect a coach must take into consideration is recruiting. Reen has committed Florida State to recruiting top-notch players who are both athletically and academically talented every year. And this season is no different for the Lady Seminoles as they bring in three well qualified student-athletes.

The reason for Reen's successful recruiting is rooted in her philosophy. She believes the main aim of the program is for a player to improve as a person while at Florida State. As a result, Reen keeps an open-door policy with her team that allows players to discuss anything on their minds anytime during the day.

A native of Orlando, Reen played collegiate tennis for the University of Georgia. When she arrived in Athens, the Lady Bulldogs were by no means a perennial powerhouse. Reen came in and was the number one doubles player all four years and provided the needed lift for the Lady Bulldogs' program. Four years later, Reen was Georgia's number one player, singles and doubles, and captain of the team that was runner-up at the 1987 NCAA Tournament in Los Angeles.

Upon graduation, Reen stayed on with the Lady Bulldogs as an assistant before moving on to the Lady Volunteers at the University of Tennessee. Today it would be difficult to say that both schools did not benefit immensely from Reen, as both are continually ranked among the nation's top 20 teams and belong to the nation's elite in women's tennis.

In 1990, Alice Reen earned her first head coaching position at the University of Arkansas. Not surprising to anyone, Reen enjoyed a very successful season in Fayetteville before accepting the head job at Florida State.

Reen has conducted seminars throughout the state on aspects surrounding college tennis. For two years, 1992 & 1993, Reen coached the Florida Intersectional Team to consecutive National Championships.

Alice Reen is a great overall athlete which should be no surprise when you consider her lineage. Her father was a three-sport letterman for the University of Florida and her brother is the General Manager of the Cleveland Indians.

Jenny Mainz

Assistant Coach
University of Houston



Entering her third season as the Florida State Women's Assistant Tennis Coach, Jenny Mainz will be concerned with administrative and coaching responsibilities. Besides office duties, which include team travel itinerary and the organization of Booster Play Day, Mainz also works closely with the team in practices and matches. She is heavily involved in recruiting and spent her summer traveling to numerous summer tournaments.

A former star for the University of Houston, Mainz won a number of awards during her career, one of which included being named a GTE Academic All-America. In addition, she was voted captain of her team three years and was tabbed a member of the All-Southwest Conference Team for two consecutive seasons. Mainz was also ranked as high as #12 in the country for doubles in 1990.

A native of San Antonio, Mainz received her undergraduate degree in Kinesiology from the University of Houston. She is currently working on her Master's Degree in Athletic Administration.



Audra Brannon

Student Assistant

Brannon is involved in daily practices for the Seminoles. After a stellar career at Florida State, Brannon played in professional tournaments this past summer. Upon graduation this spring, Brannon plans to play on the Women's Tour.

Brannon has been the most accomplished player to come out of Florida State's tennis program. She was a three-time All-ACC player and a two-time All-American in singles and in doubles. Brannon was also tabbed Player of the Year in the Atlantic Coast Conference last season.



Jen Hyde

Student Assistant

Hyde was a valuable member of Alice Reen's squad last season. Compiled a 12-13 record last season before graduating with a degree in Recreation Management. Hyde currently travels with the team, helps out with daily operations and is looking into a career in the field of coaching tennis. Hyde will finish an internship in Campus Recreation while continuing to assist the team this Spring.



Ashley Delaney

Sophomore
Lake City, FL (Columbia)

One of the returning Lady Seminoles who is coming off a very successful freshman campaign. Ashley is the "Heart and Soul" of the squad who played through a painful stress fracture in her leg throughout last season. A solid baseliner, who is very intelligent on the court, Delaney also proves vital when competing in doubles play ...**1993-94:** a valuable newcomer to a squad that finished second in ACC play. Delaney posted a 6-6 record (2-2 ACC) playing in the 4th, 5th, and 6th positions ...made the ACC Honor Roll ...**High School:** Ranked seventh in the state girl's 18 and under division ...named the Gainesville Sun's Player of the Year for three consecutive years...honored with her teams MVP award during her sophomore, junior, and senior years...a member of the All-Gateway Conference team her senior year...undefeated in district play during her high school career...tabbed to the all-area squad...won the American Legion Award two straight years for academics ...earned the Sportsmanship award for her national team ...named the recipient of the Bible Scholar Award ...graduated eleventh in a class of 365 at Columbia High School...**Personal:** Born September 3, 1975...is pursuing a major in Business ...is right handed ...recently initiated into Florida State's National Honor Society, Phi Eta Sigma ...named Florida State's recipient of the Golden Torch Award.

Delaney Career Stats

Year	#1	#2	#3	#4	5	#6	Total
				1-0	1-2	4-4	6-6
Totals				1-0	1-2	4-4	6-6

Doubles:

Year	Partner	#1	#2	#3	Total
1993-94	Laura Randmaa			7-7	7-7
Totals				7-7	7-7



Jenny Graf

Senior
Clearwater, FL (Thom Howard Academy)

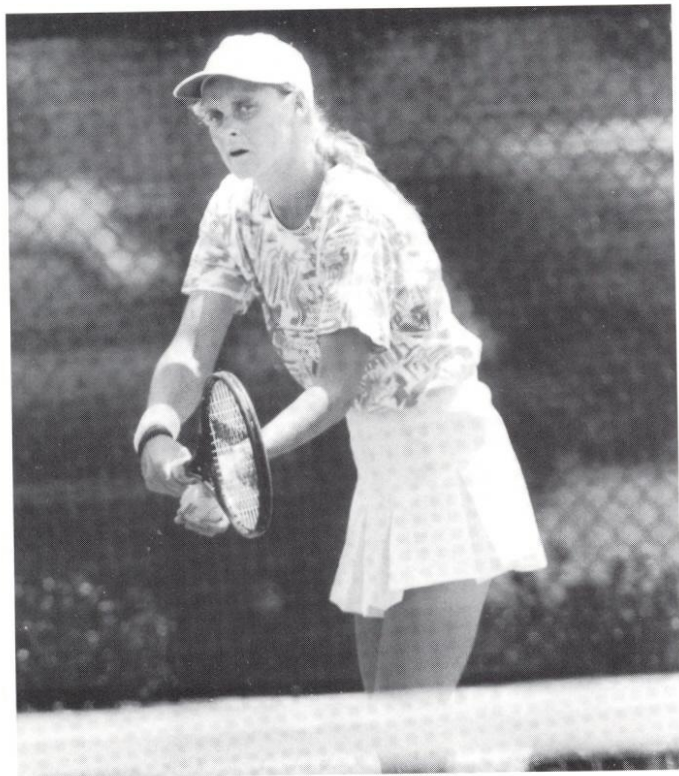
Will be counted on for team leadership this season ...has all the tools to be one of the top players in the conference ...helps maintain a level of levity on the team ...expected to have her best year this season as a senior ...has been a very consistent, reliable player for the Lady Seminoles in the middle of the lineup during seasons past...has recovered from shoulder surgery which held her out all of last season ...**1993-94:** Red-shirted last season after reconstructive shoulder surgery...**1992-93:** Totaled eleven wins against eight losses playing at number three and four... recorded a 15-11 mark ... most impressive singles win came over Alisha Portnoy of North Carolina, after losing the first set 0-6, rallied back to win 0-6, 6-2,7-6... competed in the qualifying round of the Riviera All-American Championships ...compiled an impressive 14-8 record in doubles ...named the ACC runner-up flight champion at number two doubles ...compiled a 6-3 record versus ACC competition ...missed matches early in the season due to ankle injuries ...**1991-92:** First year on the Lady Seminoles team after transferring from Texas A&M ...played mostly at number two and three ...amassed an overall 16-12 record which included a span of six consecutive victories ...one of her most impressive victories came over Stacy Sheppard of Georgia, Volvo's 47th ranked player at the time ...teamed with Robin Cifaldi at No. 2 doubles ...**1990-91:** played for Texas A&M ...**High School:** ranked in the top 20 in both the 16 and 18 age groups in the state of Florida ...**Personal:** Born July 5, 1972 ...majoring in Leisure Studies ...is right-handed

Graf Career Stats

Year	#1	#2	#3	#4	#5	#6	Total
1990-91	Played at Texas A&M						
1991-92		5-3	6-5	1-2	1-0		13-10
1992-93		1-1	10-7	1			1-9
1993-94	Redshirted						
TOTALS		5-3	7-6	11-9	1-0		24-19

Doubles:

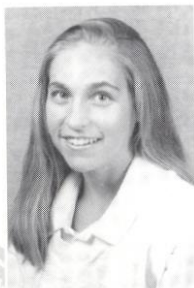
Year	Partner	Fall	#1	#2	#3	Total
1990-91	Played at Texas A&M					
1991-92	Audra Brannon		3-1			3-1
1991-92	Robin Cifaldi				11-8	11-8
1991-92	Nicki Ivy		0-1			0-1
1992-93	Jennifer Hyde		2-2		12-6	14-8
Totals			5-4		23-14	28-18



Samantha Greenspan

Freshman
Orlando, FL (*Lake Highland*)

Walk-on for Florida State this year...strong work ethic...should be a vital player on this season's roster...hopes to contribute in both singles and doubles play ...**High School:** Ranked 48th overall in the state of Florida...was chosen Athlete of the Year at Lake Highland High School...won the state High School Championships as a Senior ...**Personal:** Born June 27, 1976...undecided on a major...is right-handed.



Lori Junker

Freshman
Longwood, FL (*Lake Mary*)

Will be a successful Collegiate athlete due to her strong work ethic and discipline both on and off the court...Quality person - the type of person you need in a team atmosphere ...**High School:** Ranked 8th in the state of Florida girls 18's...ranked number 71 in the nation in girls 18's ...Graduated from Lake Mary High School Summa Cum Laude ...top 10 in her class out of 560 ...High School state finalist in doubles ...**Personal:** Born December 20, 1975...majoring in Communications...is right-handed.



Elke Juul

Junior
Callaroy Beach, Australia

Captain of the team this season, and will be looked upon to step up her play...Extremely talented player that has made a substantial impact in her two years at FSU...dependable player that is counted on to win points...**1993-94:** Played at number three in singles last season...finished last season ranked #18 in the country in doubles which earned her a trip to the NCAA Tournament...Finished last season with a record of 13-12 (5-3 ACC) at the number three and four spots ...**1992-93:** Acclimated quickly to the level of play in college and stepped right into the FSU line-up...had a great Spring playing mostly at the number three position...put together a 16-3 record that included a 12 match win streak...compiled a 21-7 overall singles record and a 7-1 mark against ACC opponents ...**High School:** Her school's team captain from 88-90...school champion for six consecutive years...two-time winner of the Catholic Girls Secondary Schools Sporting Association Open in singles...earned the Cardinal Cup from 1987-90...claimed the State Championship trophy in the 16 and 18 age groups ...**Personal:** Niece of legendary Australian Davis Cup Coach Harry Hopman...born March 13, 1973...majoring in Nutrition and Fitness...right handed.

Juul Career Stats

Year	#1	#2	#3	#4	#5	#6	Totals
1992-93			16-3	1-0	1-0		18-3
1993-94			11-11	2-1			13-12
TOTALS			27-14	3-1	1-0		31-15

Doubles:

Year	Partner	#1	#2	#3	NCAA	Totals
1992-93	Bresha Boyd		1-0	3-3		4-3
1992-93	Sandi Ecclestone			11-3		11-3
1993-94	Audra Brannon	14-4	1-0		0-1	15-5
TOTALS		14-4	2-0	14-6	0-1	30-11

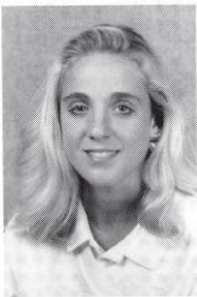




Lori Sowell

Sophomore
Ft. Lauderdale, FL (St. Thomas Aquinas)

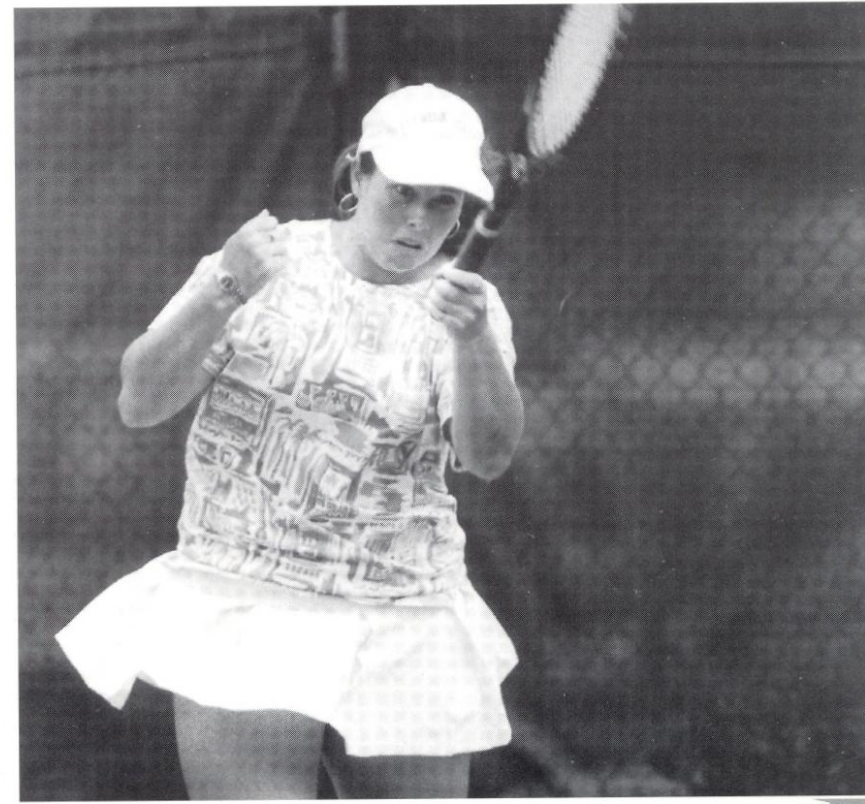
Should step up to play at number one for the Lady Seminoles this season...Powerful player who possesses an all-court game... strong doubles player... anticipated to step up in the FSU lineup in both singles and doubles... is known for her strong work habits and intensity on the court ...**1993-94:** played consistently at number two, compiling an impressive 18-6 record... was the Freshman of the Year in the ACC...played in the main draw at the SkyTel National Claycourt Tournament in Jackson, MS...played with Jen Hyde to compile an overall record of 11-6...Made ACC Academic Honor Roll ...**High School:** Florida 3A High School State #1 singles champion in both her sophomore and junior years... helped lead her team to the State Championship her senior year...won the State doubles title three consecutive years... captain of the team her junior and senior years...named the Player of the Year the last two seasons of high school...tabbed the Player of the Year by both the Ft. Lauderdale Sun-Sentinel and the Miami Herald in...1992-93 named to the All-District team...ranked 32nd in the nation and fifth in Florida in the girl's 18-and-under division...in doubles, ranked third in the country ...a member of the National Honor Society...**Personal:** born on July 5, 1975 ...majoring in Sports Management...plays left-handed.



Mary Thym

Freshman
Nashville, TN

Extremely talented athlete, who has shown the potential to become a great college player...her skills will make a definite and immediate impact in both singles and doubles play...will be asked to step in and fill a vital spot on this year's roster ...**High School:** named to the 1994 Tennessee All-State team...mid-state player of the year and member of the All-State Team in 1993...also in 1993 was ranked number 8 in the South, number 92 in U.S. singles while upholding a number 15 ranking in U.S. doubles...in 1992 finished second in the girl's 16 age group, number 8 in the South, and number 65 in U.S. singles as well as a number 12 ranking in doubles ...**Personal:** Born March 7, 1976...undecided on major...is right-handed.



Sowell Career Stats

Year	#1	#2	#3	#4	#5	#6	Totals
1993-94		18-6					18-6
TOTALS		18-6					18-6

Doubles

Year	Partner	#1	#2	#3	Totals
1993-94	Jennifer Hyde	0-1	11-5		11-6
TOTALS		0-1	11-5		11-6





HONORS IN FSU TENNIS HISTORY

ACC COACH OF THE YEAR:

1994 Alice Reen

ALL AMERICANS:

1993 Audra Brannon

1993 Laura Randmaa

1994 Audra Brannon

1995 *Wor. Sowell*

NCAA COMPETITORS:

Singles:

1983 Jamie Kaplan

1993 Audra Brannon

Doubles:

1983 Kaplan/Lee McGuire

1986 Patti Henderson/Sue Hatch

1993 Brannon/Laura Randmaa

1994 Brannon/Elke Juul

J.

ALL-ATLANTIC COAST CONFERENCE:

1992 Audra Brannon

1993 Audra Brannon

Laura Randmaa

1994 Audra Brannon

Lori Sowell

ACC FLIGHT CHAMPIONS *and* RUNNERS- UP:

1992 #1 Singles Runner- Up: Audra Brannon

#2 Doubles Runner- Up: Robin Cifaldi/ Jenny Graf

#3 Doubles Runner- Up: Jen Hyde/ Nicki Ivy

1993 #3 Doubles Flight Champions:

Elke Juul/ Sandi Ecclestone

#2 Singles Runner-Up: Laura Randmaa

#1 Doubles Runner- Up: Brannon/Randmaa

#2 Doubles Runner- Up: Graf/Hyde

1994 #1 Singles ~~Runner-Up~~: Audra Brannon

#2 Singles ~~Runner-Up~~: Lori Sowell

#1 Doubles Runner-Up: *Winner Brannon/Sowell*

ACC ACADEMIC HONOR ROLL:

1992 Buffy Baker

Amy Hanby

Nicki Ivy

Chrissie Tee

1993 Amy Hanby

1994 Ashley Delaney

Sandi Ecclestone

Laura Randmaa

Lori Sowell

FSU & THE ACC

The Atlantic Coast Conference has long been known for the success of its athletic programs and ACC tennis is further proof of this fact. Last Season the conference ranked five teams in the top twenty-five at one time or another during the season. Wake Forest, Clemson, Virginia, and Duke joined FSU in this elite group of teams.

The Lady Seminoles finished as runners-up in the ACC last season, improving on consecutive third place finishes the previous two seasons. The Lady Seminoles defeated N.C. State, and upset then #9 Clemson before falling to #7 Duke in the finals of the ACC Tournament.

Duke won the conference crown for the seventh consecutive year last season. The Lady Blue Devils claimed the title with a 5-0 victory over the Lady Seminoles last April.

Although the Lady Blue Devils have been the team to beat in women's tennis the last few seasons, the ACC has witnessed streaks of champions. North Carolina had the most success in the early years, winning championships from 1977-80. From 1981-87, Clemson was the team to beat stringing seven consecutive titles. Duke was the team to snap the Lady Tigers winning streak in 1988 and have been on top of the ACC women's tennis scene ever since.

The 1995 season will be the 18th year of women's tennis competition in the Atlantic Coast Conference. Beginning in 1977, the ACC started crowning a conference champion. This process has not been without its changes during these 17 years though. In 1982 the tournament was held in the spring for the first time. In 1990 the tournament determined the ACC team champion while the singles and doubles champions were determined during regular-season play. For the second consecutive season, the ACC will host an indoor event, as well as the outdoor tournament, in April.

Florida State plays in the ACC Indoor in Chapel Hill, N.C. on January 27-29, and will travel to Greenwood, S.C. on April 20-23 to compete in the ACC Championships.

1996 NCAA CHAMPIONSHIPS

The women's tennis program here at Florida State has made tremendous progress in its short 11 years in existence. As proof of this, Florida State University has been selected as the host site for the 1996 NCAA Women's Tennis Championships. This will be the first time that Florida State has hosted a national championship of any kind. Florida State is very excited and very honored to be the host of this tournament, and we are looking forward to seeing everyone in 1996.

Boosters

The following have made contributions to the Women's tennis restricted fund within the past two years:

Richard & Jovita Ashton
 Thurman D. Baker
 Bob Ballard
 Sybil M. Ballard
 Kirsten Balser
 Ben Balson
 Robin Cifaldi
 Ron & Erica Clark
 Mildred S. Dadisman
 Turner M. Gaughf
 John J. Hanby, Jr.
 Sue Hatch
 Charles W. Hines
 Joe R. Hughes III
 Donald Hyde
 Stephen B. King
 Art Knightly
 Joan T. MacMillian
 Kim Philo
 Craig & Mary Ramsey
 Anne Reen
 Dana L. Vaill
 Harold & Ellen Waggoner
 Jimmy & Gail Webster
 Carolyn Yon
 Pam Warren
 Bonnie Stines
 Mary Frances
 Carl Weathington
 Kay and Jon Fons
 Cinda Frazier
 Marie Caroley
 Nan Tenney
 Angela and Jim McCloy
 Judy Bakstran
 Donna Jaks
 Jane Whitfield
 Randy Hock
 Cliff Holler
 Roger and Pam Shields
 Don Vodicka
 Mike Tartaglia

Building A Tradition



- *Rookie of the Year 1993-94*
- *Player of the Year 1993-94*
- *Coach of the Year 1993-94*
- *First appearance in NCAA Team Tournament*
- *Two players in NCAA Tournament, one doubles team*
- *One All-American Singles Player*
- *One All-American Doubles team*
- *Host of the 1996 NCAA's*
- *Eight ACC Academic Honor Roll student-athletes*