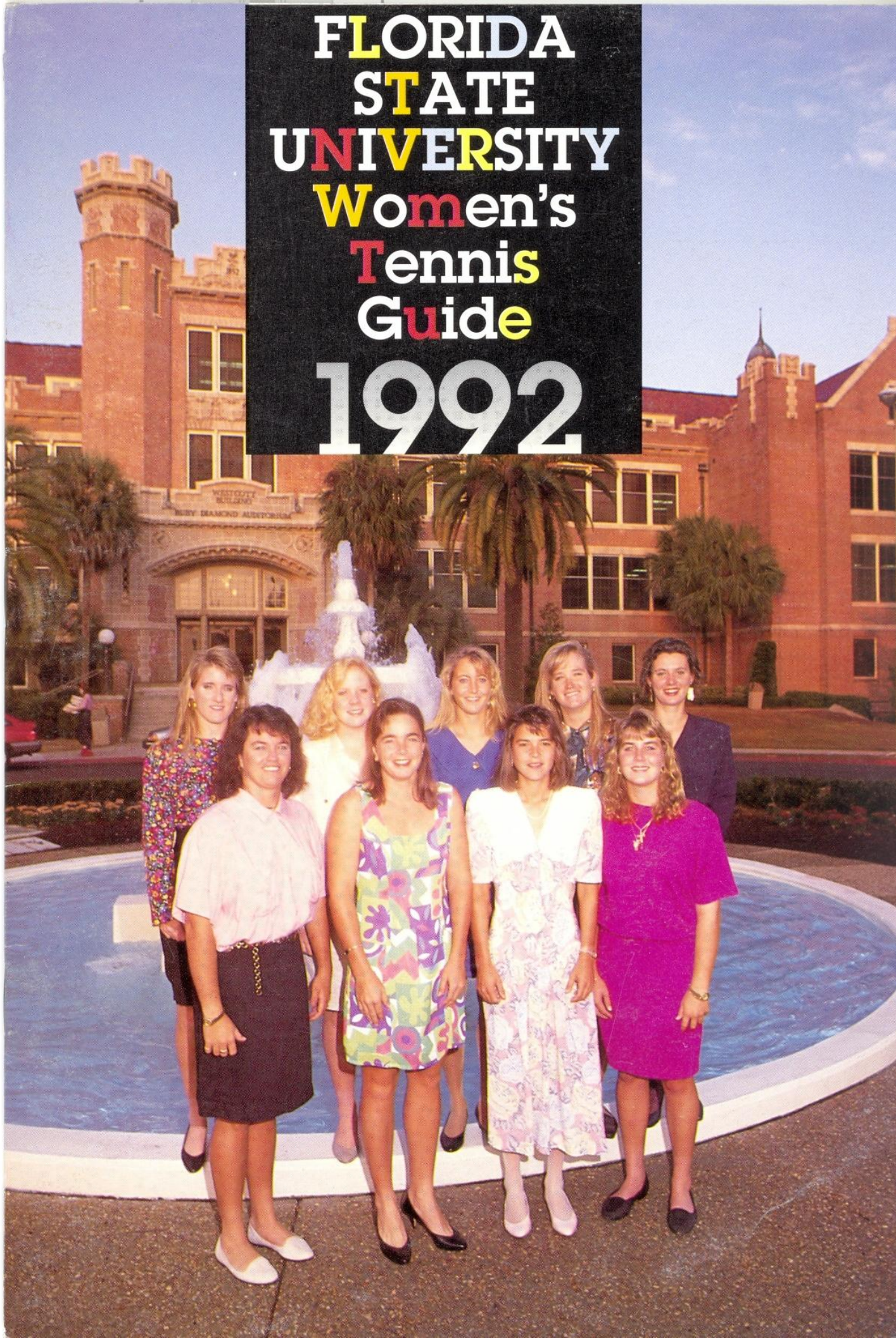


**FLORIDA  
STATE  
UNIVERSITY  
Women's  
Tennis  
Guide  
1992**





## TABLE OF CONTENTS

Outlook .....	2
Team Roster .....	3
Boosters .....	3
Coaching Staff .....	4
Player Bios .....	5-6
Administration .....	7
Results .....	8-9
Atlantic Coast Conference .....	10
Tennis Facilities .....	10
Academics .....	11
Bobby E. Leach Center .....	11
This is FSU .....	12
1991-92 Schedule .....	INSIDE BACK COVER

## CREDITS

Editor .....	Meredith Heins
Editorial Assistance .....	Jessica Reo, Donna Turner
Photography .....	Ross Obley, Ryals Lee, University Photo Lab
Design .....	Vision Marketing, Inc.

## ON THE COVER

The 1991-92 Women's Tennis Team



# 1992 WOMEN'S TENNIS OUTLOOK

**T**he Florida State women's tennis team has undergone a facelift of sorts. The former leader of the Lady Seminoles, Patty Henderson resigned to serve on the staff of the Canadian National tennis team. Her vacated position was filled by a coach with a list of accomplishments a mile long under her belt. Alice Reen, the former head tennis coach at the University of Arkansas has become the head of Florida State women's tennis.

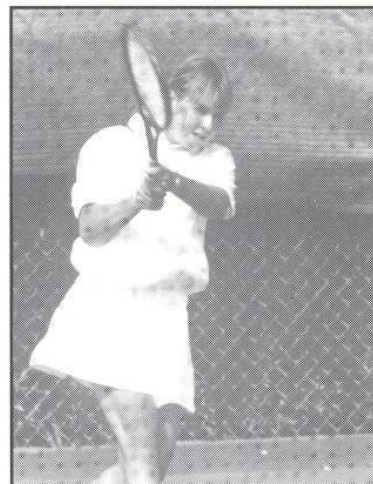
A former #1 player at the University of Georgia, Reen is an enthusiastic coach with the knowledge of what it takes to get a program in the top of the NCAA standings. She was an assistant at both the University of Tennessee and University of Georgia and each of these programs have been listed in the NCAA's top 20. In fact, Reen's alma mater, Georgia, is this year's #2 preseason ranked team and the part of this is due to Alice Reen.

The season itself will have a different focus on it than in the past. With the move out of the Metro Conference and the entrance into the Atlantic Coast Conference, the ACC matches will become key focal points during the season. As Reen says, "Going into the ACC is much different than the Metro. The ACC has scrappier teams- teams that are always verging on breaking into the top 20." Indeed the ACC schedule proves to be a great challenge to FSU with two of the schools, Duke and Clemson, already securing preseason spots in the top 25. The non-conference matches will also test the team. With tennis powerhouses such as Florida, Miami and Georgia garnering FSU's schedule, the competition is sure to be fierce. Reen believes that the scheduling of top ten teams will be very beneficial to the program. She adds, "Playing at this level gets the players ready. You have to play the best to beat the best." By continuing to schedule more and more top ranked teams from year to year Reen will have Florida State playing on a very competitive level.

Personnel wise, Reen has the right group of players to change the face of FSU tennis. With three seniors, Chrissie Tee, Nicki Ivy and Robin Cifaldi, the team is match-hardened and experienced. They will lead the team and set the momentum for the future. Last year's #1 and #3 players graduated so this season some players will be forced to move up. But this is where Reen's philosophy of "you have to play the best to beat the best" comes in. The remainder of the team consists of a junior and three sophomores. Amy Hanby, a junior walk-on will add depth to the team. The sophomores, Audra Brannon, Jennifer Hyde and Jenny Graf will become the nucleus of the program's future top 20 bid.

Reen also has the help of two other factors that will serve as a boost to the tennis program. The first such thing is the new tennis center that will grace the Florida State campus in the next year. This 1.2 million dollar tennis center with its 12 lighted courts, locker rooms and a 1,000 seat stadium will rival the best tennis facilities in the country. Another aspect that will work to the benefit of Florida State tennis is the city of Tallahassee. In July, 1991's Tennis Magazine, Tallahassee was judged one of the top 50 tennis towns in the United States. With the community behind Seminole tennis, the results will surely be fruitful.

Florida State has always had a great winning tradition in athletics. With superior coaching, talented players, the community and a new tennis facility, the women's tennis team looks to put their mark in FSU's great competitive history. With a little more cosmetic surgery, the facelift will be complete and Florida State will show its new look in the national collegiate standings. ■



# 1992 WOMEN'S TENNIS ROSTER

## 1991-92 LADY SEMINOLE TENNIS TEAM



(Top, Left to Right) Head Coach Alice Reen, Chrissie Tee, Assistant Coach Buffy Baker, (Second Row) Audra Brannon, Jennifer Hyde, (Third Row) Robin Cifaldi, Amy Hanby, (Fourth Row) Jenny Graf, Nicki Ivy

---

### FLORIDA STATE UNIVERSITY

Robin Cifaldi	Senior	Hilton Head, South Carolina
Nicki Ivy	Senior	Jackson, Mississippi
Chrissie Tee	Senior	Cobham, Surrey, England
Jennifer Hyde	Sophomore	Alpharetta, Georgia
Audra Brannon	Sophomore	Hixson, Tennessee
Amy Hanby	Junior	Houston, Texas
Jenny Graf	Sophomore	Clearwater, Florida

Head Coach: Alice Reen

Last year's record 13-9

First Place Finish in the Metro Conference

---

### TENNIS BOOSTERS

Richard & Jovita Ashton	Thomas D. Baker	Bob Ballard
Sybil M. Ballard	Ben Balson	Debbie P. Bernstein
Robin Cifaldi	Ron & Erica Clark	Mildred S. Dadisman
Turner M. Gaughf	Sue Hatch	Charles W. Hines
Joe R. Hughes III	Donald Hyde	Stephen B. King    Joan T.
MacMillian	Kim Philo	Craig & Mary Ramsey
Dana L. Vaill	Harold & Ellen Waggoner	Hal & Ellen Wagoner
Jimmy & Gail Webster	Carolyn Yon	

# 1992 WOMEN'S COACHING STAFF



**ALICE REEN**  
UNIVERSITY OF GEORGIA

Although new to Florida State, Alice Reen brings an extensive coaching background to her position as head women's tennis coach. A former head coach at the University of Arkansas, Reen has been involved in literally every level of tennis.

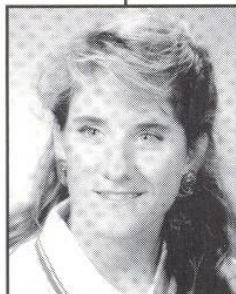
A former player herself, Reen played on the collegiate level for the University of Georgia. She was one of the major reasons for the growth of the University of Georgia into a major tennis powerhouse. When she first entered school at UGA, the team was far from being a national contender. Four years later Reen was Georgia's number one player and the team captain on the 1987 team that was runner-up at the NCAA Tournament in Los Angeles.

Upon her graduation from Georgia, Reen continued her association with successful tennis programs by working as an assistant coach at both the University of Georgia and the University of Tennessee. Today, both of these schools have nationally ranked programs and much of their success is due to Alice Reen. Thanks to her recruiting and coaching efforts, Georgia and Tennessee now both belong to the upper echelon of college tennis.

In 1990, Alice Reen became a head coach when she took over the position at the University of Arkansas. After a successful year, Reen left Arkansas to become Florida State's head women's tennis coach. Although only at FSU for a short time, Reen already has plans for the women's tennis program.

Through her great career, Reen has learned the requirements to take a program to the top 20. With this knowledge and her energetic, positive attitude working to her benefit, Reen has aspirations of taking Florida State to the top of collegiate tennis.

Alice Reen comes from a great sporting background. Her father was a former University of Florida football player and her brother is the general manager of the Cleveland Indians. In her spare time, Reen likes playing all types of sports, especially biking, fishing and playing golf.



**BUFFY BAKER**  
GRADUATE ASSISTANT

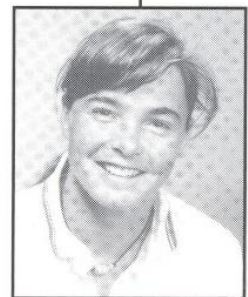
Buffy Baker, a former number one player for Florida State, brings her knowledge of tennis and her enthusiasm to the position of assistant coach. Baker's experience with the FSU team and college tennis will be very beneficial to the 1992 squad. A player on the Lady Seminole tennis team last year, Baker culminated a successful senior year with a first place finish in the Metro Conference in singles and doubles. She was the leader of the team that finished first in the Metro Conference over South Carolina. Her four year career at Florida State saw her become one of FSU's finest all time tennis players. She was runner-up in Metro singles championships in '88-'89 and '89-'90. Because of her play she was named to the All-Metro tennis squad four years in a row. Currently Buffy Baker is working on a degree in Corporate Fitness and Leisure Studies.



**CHRISTINA TEE**  
SENIOR  
COBHAM, SURREY ENGLAND

Head Coach Alice Reen says of Chrissie Tee, "Chrissie has a great game. She's explosive and aggressive and she covers the court well." Tee's style of play has led to success at Florida State. Last year she played in the #3 and #4 singles positions. At the #4 spot she won the Metro Conference title. In doubles, she also had similar end-season results. She and her partner, Robin Cifaldi were crowned Metro Conference Champions in the #2 doubles position. In 1990, Tee was rewarded with being named to the Metro Commissioner's List for her academic achievements. Chrissie has a rich tennis background that began in her native England. She's a former top ten player in the under 18's in England. Chrissie Tee is a Business Management major.

**ROBIN CIFALDI**  
SENIOR  
HILTON HEAD, SC



Robin Cifaldi began her career at Florida State as a junior after she transferred from Trinity University in Texas last year. She stepped into the FSU lineup and played in the same position that she did at Trinity holding down the #5 singles spot. Her first year as a Lady Seminole was a successful one and she finished second in the Metro Conference at #5 singles. Cifaldi and her partner, Chrissie Tee teamed up to win the Metro Conference at the #2 doubles position. Cifaldi's tennis history is extensive and she has been ranked nationally since she was in the 14-year-old age group. In high school she was her team's Most Valuable Player her junior and senior year. Head Coach Reen says this experience in the junior and college level will help her this year. Cifaldi came to Florida State partially because of the university's film program. Her interest in film has been demonstrated in her direction of Trinity University's "A Street Car Named Desire" which earned her considerable recognition.



**NICKI IVY**  
SENIOR  
JACKSON, MS

Nicki Ivy is a smart player who will provide leadership to this year's squad. She has played singles at the #3, 4, 5 and 6 positions in the past three years. She also played at the #3 doubles spot every year for Florida State. Last year, she and her partner, Ann Waggoner culminated a successful doubles season with a first place finish at the Metro Championships at the #3 position. Over the summer, Ivy added another accomplishment to her name by placing second in the Adult Southern Open. Nicki Ivy is also a model student-athlete. She was honored at the Golden Torch Gala for her academic achievements. She is currently serving on the Captain's Council as the representative for women's tennis. Coach Reen says Ivy is, "smart on the court as off. She is willing to stay out in long matches. She's on the way to a great senior year."

# 1992 SEMINOLE BIOS

## AMY HANBY JUNIOR HOUSTON, TX

A junior walk-on, Amy Hanby's collegiate tennis career has been marred by injuries. Due to severe tendonitis in her hand, Hanby has seen limited playing time for two years. As a high school player in Houston, Texas, Hanby made it to the semifinals in the Texas regionals in singles and doubles. She was also named most valuable player of her tennis team. In addition, Hanby carried a 4.0 grade point average during all four years of high school.



## AUDRA BRANNON SOPHOMORE HIXSON, TN

Audra Brannon, an outstanding high school player, has had little trouble in adjusting to the level of play in college. In her first year at Florida State, Audra played in the #2 singles position and finished with a remarkable 21-6 record and the Metro Conference singles title. She competed on the #1 doubles team which also finished first in the Metro. As a high school player she was an All-American and finished second in the state in Tennessee. She was Tennessee's #1 singles player and was ranked 7th in the South and 70th in the nation. The ability to play tennis runs in her family- her sister Kim was one of Auburn's all-time finest players. Coach Reen says of Audra, "She is on the verge of coming out as a great player. She is mentally tough and she knows what she has to do. She's very talented and she will be one of the players that will be the nucleus of the team in the future."

## JENNY GRAF SOPHOMORE CLEARWATER, FL

Only a sophomore, Jenny Graf will be one of the players who will help serve as part of the future core of the Florida State team. Already this fall she has demonstrated her ability as a player by defeating Volvo's 47th ranked player, Stacy Sheppard of Georgia, in the Rolex Southern Women's Intercollegiate Tennis Championships. Before coming to FSU from Clearwater, Florida, Graf was ranked in the top 20 in both the 16 and 18 age groups. In fact, her highest ranking was 12th which she held in both age groups. Her work ethic and quickness on the court will be a valuable asset to the FSU team. As Coach Reen says, "All Jenny needs is to get match hardened and she will be well on her way." Graf is an Early Childhood Education major who loves all sports.

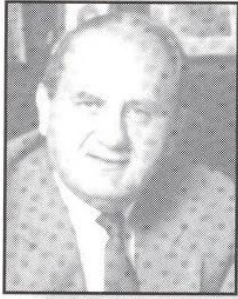


## JENNIFER HYDE SOPHOMORE ATLANTA, GA

With a year of experience under her belt, Jennifer Hyde looks to further improve on her Florida State tennis career this season. As a freshman, Hyde played in 21 singles matches and posted a winning doubles record. She is a natural athlete and as Coach Reen says, "She hasn't competed a lot but she has raw talent and she is eager to learn." In high school, Jennifer was the most valuable player on her tennis team for three years and a basketball and softball MVP. Hyde was also a top tennis player in the state of Georgia. She is a Resort and Recreation major.



# SEMINOLE ADMINISTRATION



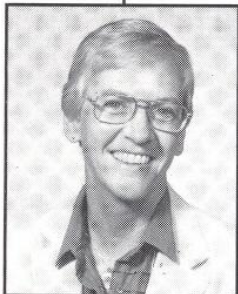
**BOB GOIN**  
Athletic Director

Bob Goin, FSU associate athletic director for the past nine years, was named the athletic director in January of 1990. He had served as the acting director for the previous three months, taking over when former director C. W. "Hootie" Ingram left to take the same position at Alabama.

Before coming to Tallahassee in July of 1981, Goin spent two years as athletic director at California (PA) State College, where he was credited with expanding the athletic department. Prior to taking the California post, Goin served as athletic director at West Virginia for three years where he again was involved in several expansion projects, including construction of a new stadium and athletic facility. From 1960-1976 Goin worked at Bethany College, where he held a variety of positions. He was an associate professor and chairman of physical education and athletics at Bethany, as well as taking coaching assignments in football, basketball, and baseball.

Goin is a recipient of a number of coaching honors and currently serves on many university-wide committees. As a member of the Compliance Committee, Goin has developed and implemented a program which protects the integrity of the university by making sure each and every regulation governing intercollegiate athletics is followed. He is also on the Recreational Facilities Study Committee and the Recreational Facilities Study Committee and the Campus Alcohol and Drug Information Center Committee.

Goin and his wife, Nancy, have four children and two grandchildren.

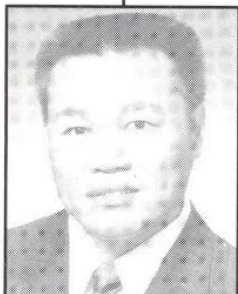


**DR. JANICE STOCKER**  
Associate Athletic Director

Dr. Janice Stocker is in her sixth year with the Florida State athletic administration, and is in her 26th year as a collegiate athletic administrator. In addition to serving as the primary women's administrator for the Seminoles, she oversees the operation of several sports programs including volleyball, women's basketball, softball, swimming and tennis.

From coaching to teaching to administration, Stocker has worked in almost every area of athletics. She has been a member of athletic administrations at four universities and one conference.

A native of Muncie, Ind., Stocker received her bachelor's degree from Earlham College in Richmond, Ind., in 1954 and earned her master's degree from Ball State soon afterward. She completed her doctoral studies at Temple University in 1972.



## *Special Thanks*

**GEI-NAM LIM**  
Women's Strength Coach

**TRAINING ROOM STAFF**  
ROBIN GIBSON, Head Athletic Trainer  
ANGELA SEHGAL, Assistant Athletic Trainer  
MELINDA CORBETT, Graduate Assistant

# 1991 LADY SEMINOLES RESULTS

## TEAM RESULTS — WOMEN'S 1991 LADY SEMINOLES

SPRING	OPPONENT	SITE	W/L	SCORE	RECORD
2/1/91	University of Florida	Tallahassee, FL	L	9-0	0-1
2/09/91	University of North Carolina	Miami, FL	L	7-2	0-2
2/10/91	University of Miami	Miami, FL	L	5-4	0-3
2/16/91	Tulane University	New Orleans, LA	W	9-0	1-3
2/17/91	Rice University	New Orleans, LA	W	7-2	2-3
2/18/91	Louisiana State University	Baton Rouge, LA	W	5-4	3-3
2/22/91	Northeast Louisiana	Tallahassee, FL	W	9-0	4-3
2/23/91	Auburn University	Tallahassee, FL	W	7-2	5-3
2/24/91	University of South Florida	Tallahassee, FL	W	9-0	6-3
3/1/91	University of Alabama	Tallahassee, FL	W	6-3	7-3
3/3/91	University of Michigan	Tallahassee, FL	W	7-2	8-3
3/9/91	Rollins College	Tallahassee, FL	W	9-0	9-3
3/12/91	Wake Forest	Tallahassee, FL	L	5-4	9-4
3/14/91	Mississippi State	Tallahassee, FL	W	7-2	10-4
3/20/91	Trinity	San Antonio, TX	W	7-2	11-4
3/22/91	Houston	Houston, TX	L	5-4	11-5
3/24/91	Texas Christian University	Ft. Worth, TX	L	6-3	11-6
3/27/91	S. W. Louisiana	Tallahassee, FL	W	8-1	12-6
3/29/91	Wisconsin	Tampa, FL	L	6-3	12-7
3/30/91	Northwestern	Tampa, FL	L	7-2	12-8
3/31/91	S. Florida	Tampa, FL	CANCELLED DUE TO WEATHER		
4/6/91	Flagler	Tallahassee, FL	W	7-2	13-8
4/14/91	Duke	Gainesville, FL	L	6-1	13-9
4/19-21	METRO TOURNAMENT	MEMPHIS STATE	1st PLACE OVER SOUTH CAROLINA		

## INDIVIDUAL RESULTS

NAME	#1	#2	#3	#4	#5	#6	Total
Buffy Baker	17-10						17-10
Audra Brannon	0-1	21-6					21-6
Chrissie Tee			6-5	8-6			14-11
Ann Waggoner		1-0	4-7	8-4			13-11
Nicki Ivy					8-4	7-4	15-8
Jennifer Hyde						3-5	3-5
Robin Cifaldi				0-1	7-6	4-1	11-8

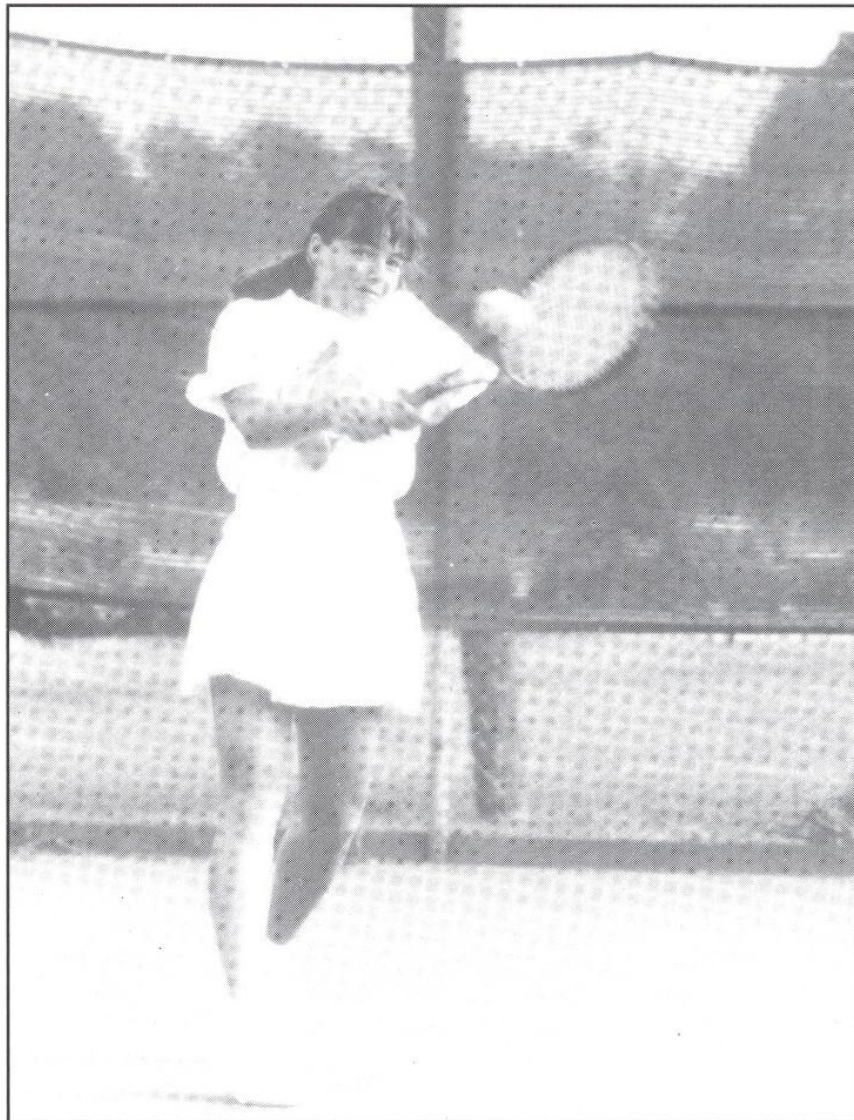
## DOUBLES RESULTS

NAME	#1	#2	#3	Total
Baker/Brannon	19-6			19-6
Tee/Waggoner		3-3		3-3
Hyde/Ivy			2-5	2-5
Hyde/Brannon	1-0	1-0		2-0
Tee/Cifaldi	1-0	11-3		12-3
Ivy/Waggoner			16-2	16-2
Hyde/Tee		2-0		2-0

# YEAR BY YEAR RESULTS

## FSU YEAR BY YEAR RESULTS

YEAR	COACH	W-L-T	PCT
1980-81	Anne Rizza	21-11-0	.656
1981-82	Anne Rizza	24-15-0	.615
1982-83	Anne Rizza	23-18-0	.561
1983-84	Anne Rizza	18-8-0	.692
1984-85	Anne Rizza	15-13-0	.608
1985-86	Anne Rizza	13-14-0	.481
1986-87	Anne Rizza	17-10-0	.630
1987-88	Patti Henderson	11-16-0	.407
1988-89	Patti Henderson	14-12-0	.538
1989-90	Patti Henderson	13-7-0	.650
1990-91	Patti Henderson	13-9-0	.633



# FLORIDA STATE AND THE ACC

Last year's first place finish in the Metro Conference marked the end of Florida State's participation in that conference. On July 1, 1991, Florida State officially joined the Atlantic Coast Conference. FSU, the ninth member, joins Clemson, Duke, Georgia Tech, Maryland, North Carolina, North Carolina State, Virginia and Wake Forest in competition for the conference crown.

The 1992 season will be the 15th year of women's tennis in the Atlantic Coast Conference. Beginning in 1977, the ACC started crowning a conference champion. This process has gone through many changes throughout the years. In 1982 the tournament was held in the spring for the first time. Beginning in 1990, the tournament determined the ACC team champion while the singles and doubles champions were determined in regular-season play.

Throughout the years, three teams have dominated the team champion category. North Carolina finished first four years in a row from 1977-1980. Clemson then put together a string of victories by becoming champions from 1981-1987. In recent years, Duke has become the team to beat. They have won the conference crown the last four years in a row. Florida State will compete in the ACC Championships in Charlotte, North Carolina April 16-19.

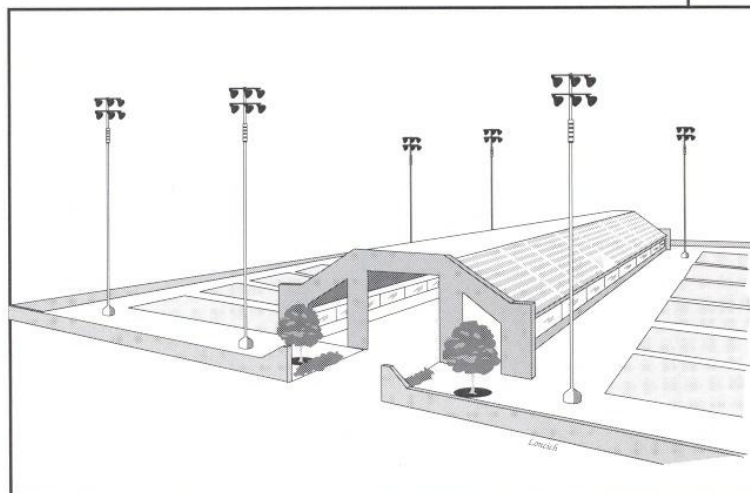
## SCOTT SPEICHER TENNIS CENTER AT DON LOUCKS COURTS

To support the future of Florida State tennis, a \$1.5 million tennis center will grace the FSU campus in the next year. The center, which was partially donated by a tennis enthusiast promises to become one of the premier tennis facilities in the country.

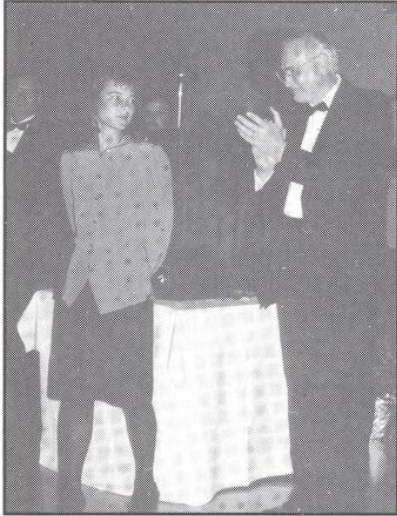
The center, named after a Florida State University graduate, Scott Speicher, is a statement of excellence. Scott Speicher Tennis Center at Don Loucks Courts will house 12 lighted tennis courts. Each side of the court will have court-level seating allowing 1,000 fans to cheer on the Seminole tennis team. In addition, the center will have locker rooms so the players will have a place to go before and after matches.

The center dons the name of Scott Speicher, a Florida State alumni who died during the Desert Storm operation. Speicher, a pilot from Jacksonville, Florida was shot down on a mission over Iraq. He was the first United States casualty in the war. The center, a future point of

excellence on the Florida State campus is justly named after the heroic FSU graduate who gave his life in the service of his country. Construction on the Scott Speicher Tennis Center at Don Loucks courts will begin in May, 1992, and will be completed in December.



Alice Reen, head coach of the women's team, demands academic excellence from her athletes. Reen encourages her student-athletes to work equally as hard in the classroom as on their game in order to achieve success both on and off the courts.



*Nicki Ivy is honored with the Golden Torch Award for her academic achievements*

The tennis team, as well as every student-athlete at Florida State has the advantage of one of the strongest academic support systems in the country. A full-time staff of four helps incoming student-athletes adjust to campus life and aids them throughout their academic careers. This staff holds nightly study halls in Moore Athletic Center and makes tutors available during the school year. They work closely with the faculty of each school and college in the University to ensure each student-athlete makes satisfactory progress toward a degree.

The study hall itself has every advantage for an area conducive for studying. Complete with study carols, computers and basic reference materials, the study hall provides a quiet work area where students can meet their tutors or study on their own. As Bob Goin says, "We want to provide the best opportunity for our coaches

and student-athletes to achieve academic and athletic success. Doing that, we'll be setting a precedent of excellence. "

## **STRENGTH TRAINING AND THE BOBBY E. LEACH STUDENT CENTER**

The women's tennis team has the opportunity to further add to their training routine through a specially designed program by strength coach, Gei-Nam Lim, or through use of the facilities at the brand new Bobby E. Leach Student Recreation Center. Both of these give the athlete access to some of the best training equipment in the nation.

Strength training and conditioning is an important part of an athlete's performance on the court. At Florida State, a supervised program is developed for each sport, emphasizing the objectives of not building bodies, but strengthening and conditioning them. Strength coach Gei-Nam Lim individually customizes programs for each of the athletes beginning with pre-conditioning before the season gets underway. A combination of weight training on Body Master, Nautilus and free weights along with pool workouts improve each individual's body composition. Once in season, Lim works with players to improve their strength by working on the same muscle groups. FSU takes pride in customizing the programs to help student-athletes reach their maximum potential.

The Bobby E. Leach Student Center provides a variety of training equipment and recreation facilities to Florida State students. Among these are a fitness area, six racquetball and squash courts, an Olympic size swimming pool, a multi-purpose gymnasium with three basketball/volleyball courts, and a three lane jogging track above the pool. In addition to these fitness areas, the Center has locker rooms, jacuzzi's, steam rooms, and sauna rooms.

# THIS IS FLORIDA STATE



At the dawn of a new decade, Florida State University is trailblazing toward a new century-exploring science through supercomputing, pioneering in Florida's growing film industry and scouting new avenues of cultural exchange in a world opening the paths to freedom. FSU has a total of 276 graduate and undergraduate degree programs offered through Florida State's eight colleges- Arts and Sciences, Business, Communication, Education, Engineering, Human Sciences, Law, and Social Sciences and eight schools- Criminology, Library and Information Studies, Music, Nursing, Social Work, Theatre, Visual Arts and Dance, and Motion Picture, Television and Recording Arts.

Florida State is a public, coeducational university and a senior member of the State University System founded as an institution of higher learning in 1851 by legislative act. It began operating in Tallahassee with its first students in 1857.

The main campus is spread over 347 acres in Tallahassee; the University owns a total of 1,167 acres in Leon, Bay and Franklin counties. Within the state, FSU spreads west to its 20-acre campus in Panama City and south to its marine laboratory on the Gulf of Mexico and its film and theatre professional-training programs in Sarasota. In 1990, through a generous gift to the Foundation, the University acquired the Appleton Art Museum in Ocala, which will become a study center for the visual arts. Student activities at FSU create an important balance between the classroom experience and the personal life of the individual scholar. Honors programs, student government, intramural sports and more than 200 organizations are available for student involvement. Furthermore, the Flying High Circus, the world's only all-collegiate circus makes its home here.

Recent growth during Dr. Bernard F. Sliger's 13-year presidency at FSU includes the student union expansion, the building for the joint Florida A&M University/ Florida State University College of Engineering, the Dirac Library, the Village Green project at the College of Law and the FSU Panama City Campus. Currently under construction adjacent to Tully Gym is a \$12 million state-of-the-art student recreation center, which will include a multipurpose gymnasium and indoor pool. And Florida State is managing its growth through the planned University Center, an office and classroom complex to be built adjacent to Doak Campbell Stadium. The building is expected to meet many of FSU's administrative and classroom needs and provide a centralized location for many student services.

Florida State remains a growing institution-from its roots as the Seminary West of the Suwannee, through the early 20th century as the academically respected Florida State College for Women and its coeducational status in 1947,

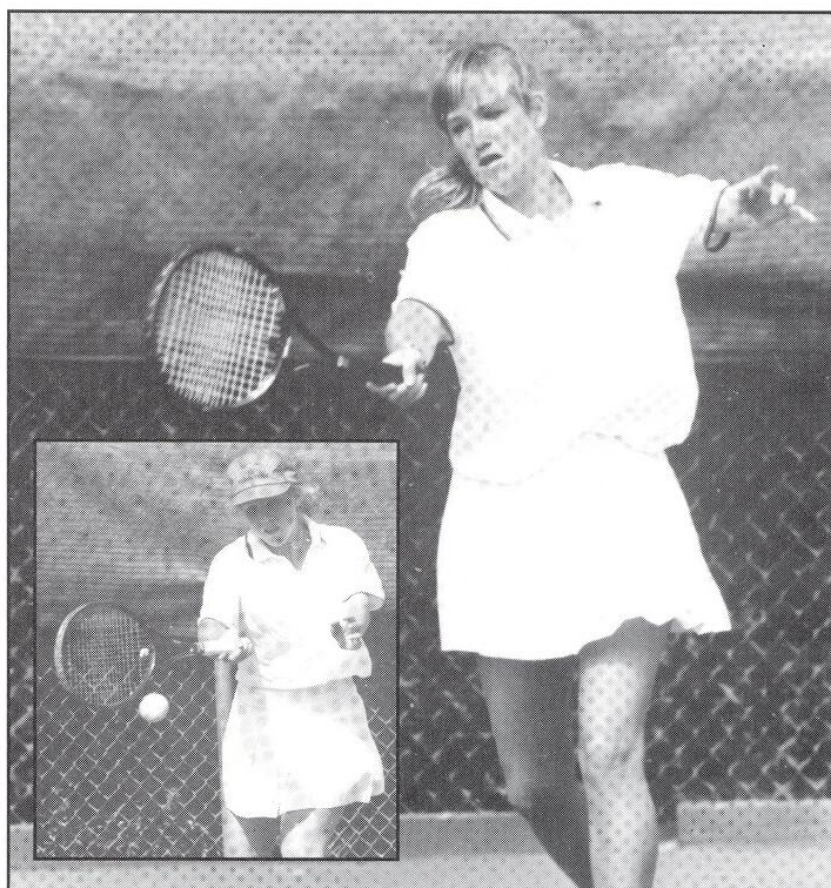


to its modern development as an acclaimed research institution, a top-ranked competitor in intercollegiate athletics and as a standard-setter in the basic sciences and the performing arts. In all areas of teaching, research and service, Florida State University continues to be a pathfinder into the 21st century. ■

# 1991-92 WOMEN'S TENNIS SCHEDULE

## SPRING

Feb. 1	University of Florida	Gainesville, FL	1:00 PM
Feb. 7-9	Wisconsin Quad	Madison, WI	
Feb. 7	Northwestern	Madison, WI	12:00 PM
Feb. 8	Wisconsin	Madison, WI	9:30 AM
Feb. 9	Alabama	Madison, WI	9:30 AM
Feb. 14	Flagler College	Tallahassee, FL	2:00 PM
Feb. 18	Rollins	Winter Park, FL	3:00 PM
Feb. 28	Virginia	Tallahassee, FL	1:00 PM
Feb. 29	Michigan	Tallahassee, FL	10:00 AM
March 1	South Florida	Tallahassee, FL	10:00 AM
March 3	North Carolina State	Tallahassee, FL	2:00 PM
March 13	Miami	Tallahassee, FL	10:00 AM
March 14	Southern Methodist	Tallahassee, FL	1:00 PM
March 15	Mississippi State	Tallahassee, FL	11:00 AM
March 22	North Carolina	Chapel Hill, NC	1:00 PM
March 23	Duke	Durham, NC	1:00 PM
March 27	Georgia Tech	Tallahassee, FL	1:00 PM
April 3	Illinois	Tallahassee, FL	2:00 PM
April 4	South Alabama	Tallahassee, FL	1:00 PM
April 5	Florida International	Tallahassee, FL	1:00 PM
April 10	Georgia	Athens, GA	2:00 PM
April 11	Clemson	Clemson, SC	1:00 PM
April 12	Wake Forest	Winston-Salem, NC	10:00 AM
April 16-19	ACC CHAMPIONSHIPS	CHARLOTTE, NC	ALL DAY
MAY 6-14	NCAA CHAMPIONSHIPS	STANFORD, CA	ALL DAY



Florida State Women's Tennis Guide  
Women's Tennis Guide Florida State Women's  
State Women's Tennis Guide Florida  
Women's Tennis Guide Florida State Women's  
Florida State Women's Tennis Guide  
Tennis Guide Florida State Women's Te



State Women's Tennis Guide Florida  
Women's Tennis Guide Florida State Women's  
Florida State Women's Tennis Guide  
Tennis Guide Florida State Women's Te  
da State Women's Tennis Guide Flor  
omen's Tennis Guide Florida State W