



SEMINOLE TENNIS 1989-90
FLORIDA STATE WOMEN'S TENNIS GUIDE

CREDITS

The 1989-90 Florida State Women's Tennis Guide was written and designed by Kendra Koblenzer and Priscilla Proctor, Assistant Sports Information Directors. Page design and layout by Mediatype, Inc. of Tallahassee and printing by Artcraft, Tallahassee, inside photography by Sam Lewis and the University Photo Lab. Please contact Kendra Koblenzer of the FSU Sports Information Department for information not covered in the guide (904) 644-1091.

FLORIDA STATE QUICK FACTS

LOCATION Tallahassee, FL
FOUNDED 1857
ENROLLMENT 29,000
PRESIDENT Dr. Bernard F. Sliger
NICKNAME Seminoles
HOME COURTS Don Loucks
Varsity Courts
AFFILIATION NCAA Division I
CONFERENCE Metro

ATHLETIC ADMINISTRATION

ATHLETIC DIRECTOR Bob Goin
ASSISTANT DIRECTOR . Dr. Janice Stocker
PROMOTIONS Terry Hume
ACADEMIC ADVISORS Trudy Raybun
ATHLETIC DIR. PHONE (904) 644-1060
STOCKER PHONE (904) 644-1091

TENNIS STAFF INFORMATION

HEAD COACH Patti Henderson
Florida State University/86
YEARS AT FSU Two
RECORD AT FSU 27-19
ASSISTANT COACH Shannon Krieger
TENNIS OFFICE PHONE (904) 644-1091

SPORTS INFORMATION STAFF

DIRECTOR Wayne Hogan
SID OFFICE PHONE (904) 644-1403
TENNIS CONTACT Kendra Koblenzer
KOBLENZER OFFICE PHONE . (904) 644-1403
KOBLENZER HOME PHONE (904) 576-6631
SID FAX PHONE NUMBER.. (904) 644-3820
SID MAILING ADDRESS..... P.O. Box 2195
Tallahassee, FL 32316

1989-90 SEMINOLE TENNIS SCHEDULE

DATE	OPPONENT	TIME	PLACE
FALL SCHEDULE			
Sept. 29-Oct. 1	Roberta Allison	All Day	Tuscalooca, AL
Oct. 6-8	Gator Classic	All Day	Gainesville
Oct. 20-22	Samford Sandestin Invitational	All Day	Destin
Oct. 27	University of South Florida	1 PM	Tampa
Oct. 28	Rollins	10 AM	Tampa
Nov. 10-12	Rolex Regional Qualifying	All Day	Tallahassee
Nov. 17-19	Dupont National Intercollegiate Clay Court Championships	All Day	Hilton Head Island, SC
SPRING SCHEDULE			
Jan. 20	Sante Fe Community College (Exhibition)	Noon	Tallahassee
Jan. 27	University of North Florida	1:30 PM	Jacksonville
Jan. 28	University of Florida	1 PM	Gainesville
Feb. 2-4	Arizona Invitational	All Day	Tuscon, AZ
Feb. 16-18	Lady Seminoles Quad (FSU, Tulane, N.E. Louisiana)	TBA	Tallahassee
Feb. 22-25	Lady Seminole Invitational	All Day	Tallahassee
March 1	LA. Tech	2:00	Tallahassee
March 6	FIU	2:00	Tallahassee
March 10	LSU	11 AM	Tallahassee
March 11	Miami	10 AM	Gainesville
March 13	University of New Mexico	1 PM	Tallahassee
March 21	South Florida	TBA	Tampa
March 22	Wisconsin	TBA	Tampa
March 24	Rollins	11 AM	Winter Park
March 25	University of Michigan	10 AM	Winter Park
April 6	UNC-Chapel Hill	2 PM	Chapel Hill, SC
April 7	Wake Forest	TBA	Chapel Hill, SC
April 8	South Carolina	11 AM	Columbia, SC
April 14	College of Boca Raton	TBA	Tallahassee
April 20-22	METRO CONFERENCE CHAMPIONSHIPS	All Day	Louisville, KY
May 9-17	NCAA CHAMPIONSHIPS	All Day	Gainesville



1989-90 TENNIS OUTLOOK

Highlighting last years 13-7 record, was capturing the Metro Conference Championship crown for the first time since 1985. It was an exciting last day of competition in which the Lady 'Noles won seven of nine matches to edge South Carolina 44-42. It will be no easy task for the Lady 'Noles to duplicate with the loss of three fine starters. However, with the addition of several solid and experienced players, the Lady 'Noles are looking to defend their title and achieve a top 25 ranking. Finding the most effective doubles combinations will be critical for the team's success.

Continuing with an impressive sophomore year, Buffy Baker went 27-9 and will be called upon once again to lead the Lady Seminoles.

Senior Keri Preng will be expected to provide leadership for the team, while at the same time fighting for a position in the singles lineup. She will be battling it out with the likes of sophomore Nicki Ivy, who had a good freshman year and will continue to provide the squad with support.

If sophomore Laura Sarkilahti can maintain her health, she will be a definite strength for the team. Sarkilahti displayed moments of brilliance last year, but was unable to get match tough due to injury and illness.

Glancing through the new forces, you are immediately drawn to Ann

Waggoner, who transferred to Florida State from Tennessee where she played #3 singles for a top 25 team. Waggoner combines the experience, desire and ability to make an immediate contribution to the top of the lineup.

Additionally, the experience of NAIA All-American Lori Webster will only be a push for the team with her gritty competitiveness. Rounding out the lineup is Chrissie Tee, one of England's top ten players, a definite impact player in singles and doubles.

Providing the necessary depth will be senior Kirsten Balser, sophomore Shana Nozick and freshman Sharon MacPhee.

All in all, this year's team is expected to get better with each match played, and if the Lady 'Noles can capitalize on certain match opportunities, they will be a top 25 squad.

Coach Henderson says, "The ability is there, the desire is there, the cohesiveness is there, and the experience and confidence that will take us there will be a result of practice routine and match play. They are an exciting team of young ladies to watch. We have the ingredients, it's just finding the right combinations to produce a nationally ranked team."



SEMINOLE COACHING STAFF



PATTI HENDERSON
HEAD COACH
THIRD SEASON (27-19)
FLORIDA STATE, (1986)

Patti Henderson enters her third season at Florida State with an aspiring team that she feels will produce a very strong showing.

For Henderson, the highlight of last years season was capturing the Metro Conference Championship over South Carolina in a thrilling final day of matches ending 44-42.

Hailing from Toronto, Ontario, Canada, Henderson has made Tallahassee, Florida her home since arriving to play for the Lady Seminoles in 1982. She became the graduate assistant coach her first year out of college, followed by the Head Coaching position.

During her four year career at Florida State, Henderson compiled a strong singles record of 68-36 and 71 doubles victories.

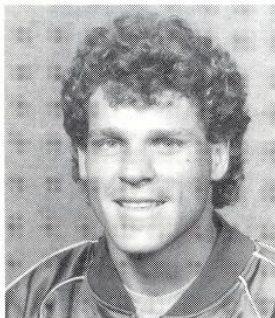
Henderson had teamed with former Lady 'Nole, Sue Hatch, for a 39-13 doubles record and a spot in the NCAA's.

Her season year she earned the MVP for the Metro Conference Tournament.

Henderson's competitive nature, enthusiasm and experience account for her being one of the most promising young coaches in the country.

Still maintaining an active part in tennis, Coach Henderson has won the ITCA Coaches Tournament the past 3 years and previously toured Europe with the Rhein-Lahn Tennis club of West Germany.

She has a bachelors degree from Florida State in Sports Management and is currently completing work for a Masters in Athletic Administration.



SHANNON KRIEGER
ASSISTANT COACH
FIRST SEASON
FLORIDA STATE UNIVERSITY

Shannon Krieger is experiencing the other side of collegiate tennis this year. Last year he was the men's assistant at Florida State where he also competed for the 'NOLES from 84-88.

Shannon is a native of Slidell, Louisiana, where he built much of his teaching and coaching foundation. He brings great enthusiasm, motivation and experience to the Lady 'Noles.

LADY SEMINOLE BIOS



BUFFY BAKER **5-6, JUNIOR** **NASHVILLE, TN**

...continuing last year's success, Baker gave another strong performance in '89 ... narrowly missed a bid to the NCAA and is entering the 89-90 campaign ranked 13th on the Volvo Tennis Regional Rankings ... finished the 1989 season ranked #79 in the ITCA National rankings ... won the #1 singles flight of the Roberta Allison Southern Intercollegiate in Tuscaloosa, Alabama and the Florida Women's Intercollegiate Championship in St. Augustine, Florida ... played #1 for the Lady Seminoles in the 1989 season ... had a combined 27-9 record for fall and spring ... went 14-4 in the spring dual matches, while all four of her losses came from opponents ranked in the Collegiate Top 100 ... teamed up with Keri Preng for a combined 18-6 record of the #1 doubles spot in 1989 ... ranked in top 40 throughout most of the year in the collegiate doubles rankings ... named to Metro Conference All-Tournament Team after Florida State's first place finish ... voted MVP of Lady Seminoles squad ... a Prince All-American selection in high school ... held the #1 ranking for 18-and-under girls ... played USTA National Amateur Circuit this past summer to stay in tune with the competition ... had an outstanding victory over #49 ranked Carla Cassa ... is a Nutrition and Fitness major.



KERI PRENG **5-7, SENIOR** **DALLAS, TX**

... returns for her final season after an excellent junior year ... won six out of last seven matches ... won singles and doubles flight at Metro Conference ... played between the #4 and #6 spot for the Lady Seminoles In '89 ... had her most wins at #5 singles holding a 9-2 record ... finished the 88-89 season with 21 singles wins ... teamed with Baker for a fine doubles record, 18-6 at the #1 spot ... held the honors of MVP and All-Tournament Team at the Metro Conference Tournament for her #5 singles and #1 doubles championships ... Coach Henderson comments, "Keri is a good competitor who is always match tough" ... had a strong season finish with 7 straight wins ... will be counted on for senior leadership in 1989-90 as the only three year veteran ... had a very productive high school tennis career at Lake Highlands in Dallas, TX ... was ranked ninth in the state of Texas for 18-and-under girls ... named to Metro Conference Commissioner's list this past year for academic excellence ... a leisure services major ... hobbies include water and snow skiing.



NICKI IVY **5-4, SOPHOMORE** **JACKSON, MS**

... had a strong freshman year making an immediate contribution to the squad ... compiled an overall 17-13 record in the 4-6 positions ... placed second at the #3 position in the Roberta Allison Southern Intercollegiate Tournament in Tuscaloosa, Alabama ... helped lead the Lady Seminoles to Metro Conference title by placing first at the #6 position ... a hard worker ... will concentrate efforts in weight room to increase strength ... should continue to add to the team in 1990 with her all-court game ... saw action at the #2 and #3 doubles ... with further improvement and the right partner, will again fit into the lineup ... teamed with Baker on a national level prior to Florida State ... very active in high school at Jackson Prep School ... named Most Athletic and served as the Student Council Treasurer ... fielded a good summer with a first place finish in the Mississippi State Open Championships ... a runner-up in the Southern Open Championships ... enjoys water and snow skiing ... is a nutrition and fitness major.

LADY SEMINOLE BIOS



KIRSTEN BALSER
5-4, SENIOR
SUNRISE, FL

... a third year walk-on who undoubtedly deserved the team Most Improved Player Award in the 88-89 season ... saw some action at the #6 position and #3 doubles ... a good team motivator and a hard worker ... has outstanding off-court performance as well, holding the highest GPA of the team ... elected to the Metro Conference Commissioner's List ... was ranked in the top 50 of the 18-and-under category in the state of Florida while at Piper High School ... helped lead Piper to a district tournament championship for her last two years ... an accounting major.



SHANA NOZICK
5-5, SOPHOMORE
MARGATE, FL

... returns for her second year on the squad, she will add much depth to the squad ... picked up a big win in her first collegiate match at the #6 position ... noted by Henderson to be a very deceiving player ... team MVP for four years at Peachtree High School ... a psychology major.

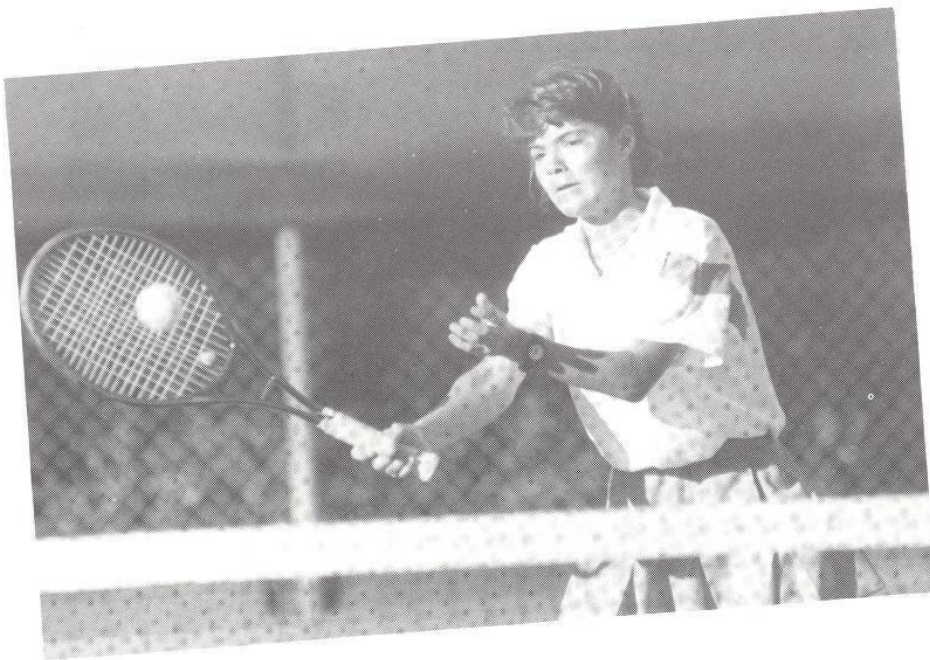
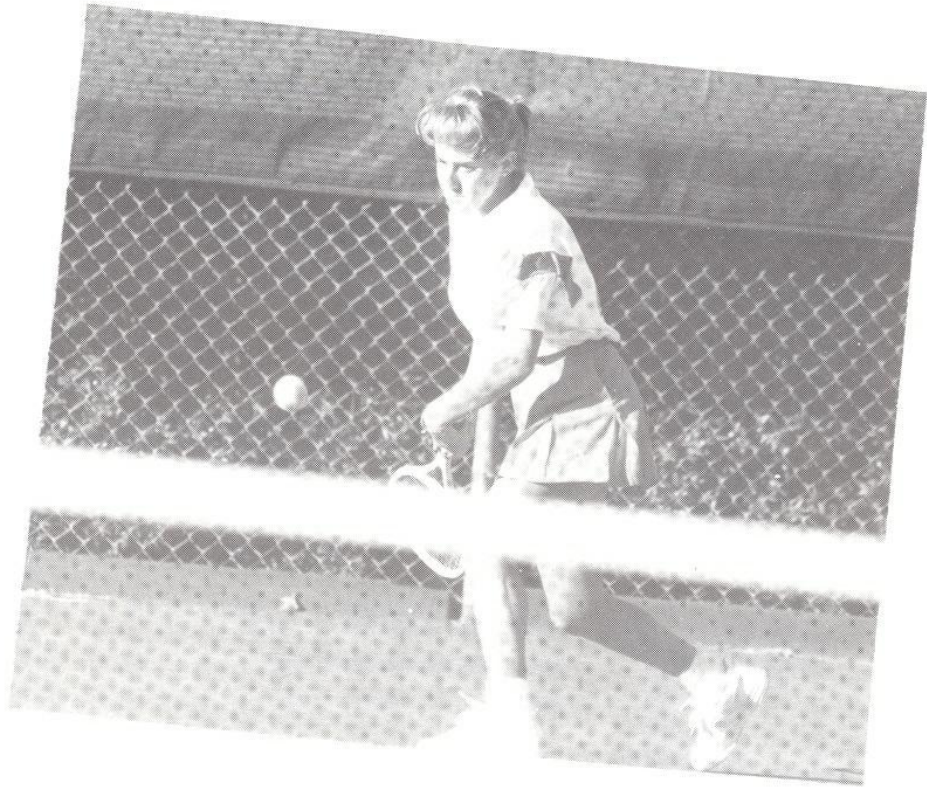


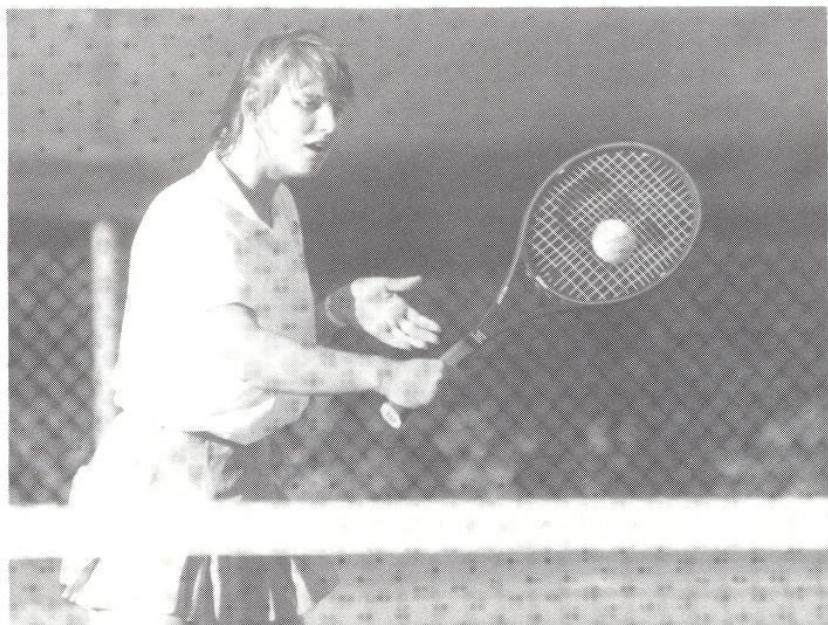
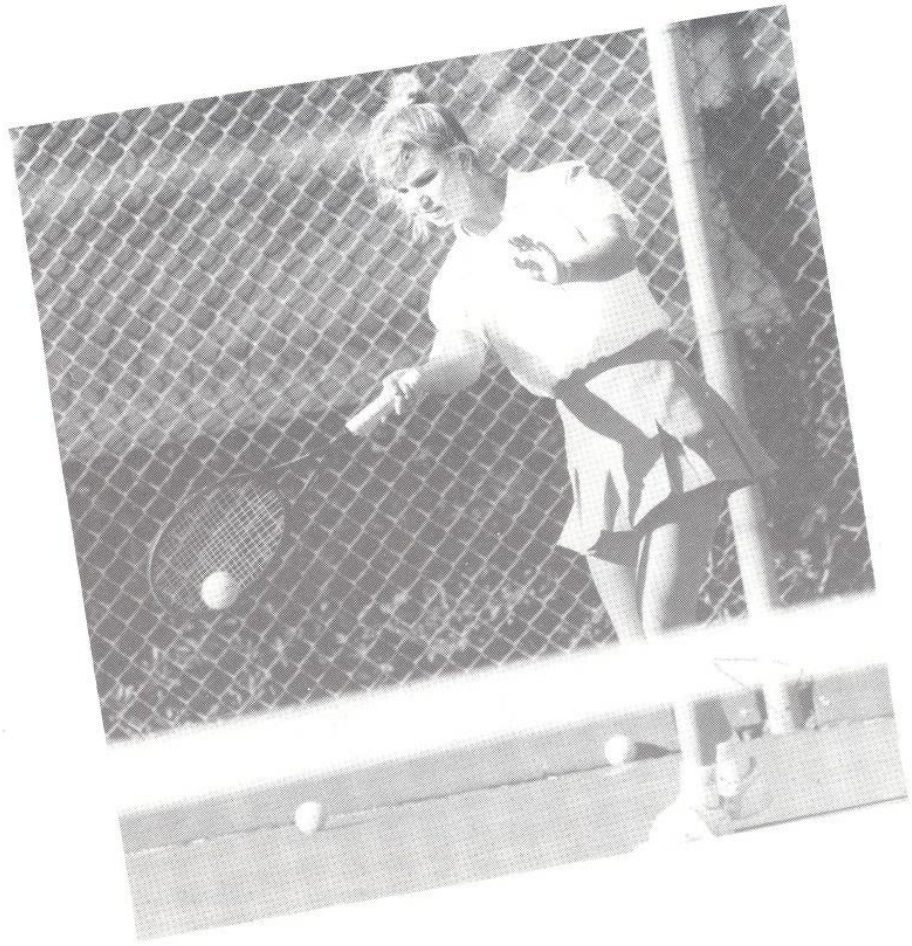
LAURA SARKILAHTI
5-6, SOPHOMORE
ESPOO, FINLAND

... returning for her second year at FSU, she is expected to have a strong season ... with her great athletic ability and hard work she could play in one of the top positions ... her freshman year she played in the #3 position where she posted 14 wins ... playing with illness and injury, she was never able to reach her peak performance ... she teamed with Tracey Smith for a tremendous effort of 9 wins and only 2 losses ... Henderson says, "they were a tough team to beat." ... won the Florida Intercollegiate Tennis Championships in St. Augustine at the #5 position ... has a lot of international experience playing both in the United States and Europe ... was ranked 2nd in the 18-and-under girls for Finland ... held the #4 ranking among the women's ranks in Finland before coming to Florida State ... a nutrition/fitness major.

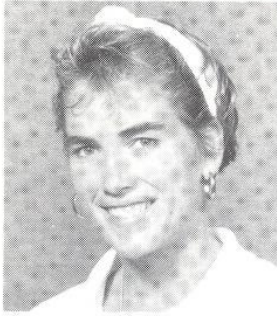


In Action...





LADY SEMINOLE BIOS



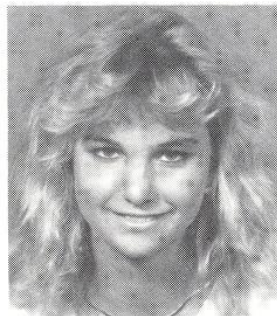
LORI WEBSTER
5-6, SENIOR
BOYNTON BEACH, FL

... transfer student from the University of North Florida where she played #1 single and double all three years ... last year was NAIA semi-finalist in singles and a finalist in doubles ... was an Honorable-Mention All-American in '87 and '88, and an All-American in '89 ... with her experience and ability, she will be a contributing force for the Lady 'Noles ... capable of playing anywhere in the lineup ... a player who certainly does not like to lose ... an education major.



SHARON MACPHEE
5-11, FRESHMAN
AUBURNDALE, FL

... had a successful high school career in Auburndale ... family has strong ties to Florida State, and her brother, David, was a walk-on for the men's basketball team ... a naturally aggressive player with a good serve/volley style of play.



ANN WAGGONER
5-6, JUNIOR
HUNTSVILLE, AL

... a transfer from the University of Tennessee, where she played #2 and #3 singles ... was an SEC semi-finalist both years at Tennessee ... reached a ranking as high as #78 in the ITCA Collegiate rankings during the spring of '88 ... as a junior player, was consistently ranked in the top 60 nationally and top five in the Southern Section ... has the experience and the ability to challenge Buffy Baker for positioning at the top of the lineup ... a gritty and tenacious player ... was the Alabama State Champion and Prince Honorable All-American ... a business management major.



CHRISSIE TEE
5-9, SOPHOMORE
SURREY, ENGLAND

... top 10 junior player in London, England ... has a great attitude that is contagious throughout the team ... hard worker and very self-disciplined ... Chrissie should immediately contribute in both singles and doubles ... a natural doubles player with her aggressive net play ... major is undecided.

1989-90 WOMEN'S TENNIS ROSTER



Buffy Baker	JR	5- 6	Nashville, TN
Kirsten Balser	JR	5- 4	Sunrise, FL
Nicki Ivy	SO	5- 4	Jackson, MS
Sharon MacPhee	FR	5-11	Auburndale, FL
Shana Nozick	SO	5- 5	Margate, FL
Keri Preng	SR	5- 7	Dallas, TX
Laura Sarkilahti	SO	5- 6	Espoo, Finland
Chrissie Tee	SO	5- 9	Surrey, England
Ann Waggoner	JR	5- 6	Huntsville, AL
Lori Webster	SR	5- 6	Boynton Beach, FL

HEAD COACH: Patti Henderson
ASSISTANT: Shannon Krieger

1988-89 SEMINOLE TENNIS RESULTS

SINGLES	#1	#2	#3	#4	#5	#6	Fall	Spring	Overall
Buffy Baker	15-6	1-0					11-4	16-5	27-9
Tracey Smith	0-1	13-7		2-0			3-4	12-8	17-12
Kirsten Turk		1-1	8-2	1-1	1-0	4-1	1-2	14-4	16-7
Laura Sarkilahti			5-6	1-1			8-5	6-7	14-12
Nicki Ivy			1-1	3-3	2-4	7-2	7-3	12-9	20-13
Keri Preng				2-2	12-2	0-2	7-2	12-6	21-8
Jill Urban				3-4	1-0	2-3	0-3	5-6	6-10
Chris Joyce					1-0		0-1	1-0	1-1
Shana Nozick						1-0		1-0	1-0
Kirsten Balser							1-2		1-2
	15-7	15-8	14-9	12-11	17-6	14-8	37-26	78-45	124-74

DOUBLES	#1	#2	#3	Fall	Spring	Overall
Preng-Baker	14-4			5-1	14-4	19-5
Preng-Urban	0-2			1-1	0-1	1-3
Urban-Turk		5-7			5-7	5-7
Turk-Ivy		0-1			0-1	0-1
Urban-Ivy		2-5		3-2	2-4	5-7
Baker-Ivy		1-0		3-2	2-4	5-7
Smith-Turk			2-0	3-0		5-0
Sarkilahti-Balser			1-0	0-1	1-0	1-1
Ivy-Smith			3-2		3-2	3-2
Sarkilahti-Smith			9-2		9-2	9-2
Smith-Ivy			1-1		1-1	1-1
Ivy-Balser				1-1		1-1
Turk-Baker				0-1		0-1
	14-6	8-13	16-5	16-9	37-26	55-38

1988 DUAL MATCH RESULTS

OPPONENT	W/L	SCORE	RECORD
Tulane	W	8-1	1-0
South Florida	L	5-4	1-1
Florida	L	9-0	1-2
South Alabama	W	5-3	2-2
Jacksonville	W	9-0	3-2
Northeast Louisiana	W	6-0	4-2
Auburn	W	5-4	5-2
South Alabama	L	6-3	5-3
Florida International	W	9-0	6-3
Flagler	L	5-4	6-4
North Florida	W	6-3	7-4
Ole Miss	L	6-3	7-5
Kansas State	W	5-1	8-5
Yale	L	5-4	8-6
South Florida	W	6-3	9-6
Wisconsin	L	8-1	9-7
Rollins	W	6-3	10-7
Clemson	W	5-4	11-7
Lamar	W	9-0	12-7
Houston	W	5-4	13-7
METRO CONFERENCE TOURNAMENT	FIRST PLACE		44 POINTS

FSU AND THE METRO CONFERENCE

The Metro Conference, originally called the Metro Six, was formed on June 13, 1975. Charter members included the University of Cincinnati, Georgia Tech, the University of Louisville, Memphis State University, St. Louis University and Tulane University.

Expansion was on the horizon. League membership increased to seven as Florida State University was admitted on July 28, 1976. After Georgia Tech left the conference following the 1977-78 season, Virginia Tech quickly filled the void. When St. Louis left the Metro, the University of South Carolina joined in 1983 to increase the membership to eight schools. However, Tulane forfeited its membership when its basketball program was discontinued following the 1984-85 season.

At the present, 13 league championships are decided. Men's sports include baseball, basketball, cross country, golf, swimming, tennis and track. Women participate in basketball, cross country, golf, swimming, tennis and volleyball.

The Metro Conference has come a long way in 14 short years. Effective leadership and aggressive promotion have become the trademarks of its administration while the accomplishments of its athletic teams are now recognized in all sports.

METRO CONFERENCE CHAMPIONSHIP RESULTS 1976-1989

YEAR	SITE	TEAM CHAMPION	INDIVIDUAL CHAMPION
1981	Tallahassee, FL	Florida State	Suzanne Doumar, Florida St.
1982	Memphis, TN	Tulane	Andrea Fink, V. Tech
1983	New Orleans, LA	Florida State	Lisa Askanase, V. Tech
1984	New Orleans, LA	Florida State	Johna Chafin, S. Carolina
1985	Memphis, TN	South Carolina	Rita Winebarger, S. Carolina
1986	Columbia, SC	South Carolina	Patti Henderson, Florida St.
1987	Hattiesburg, MS	South Carolina	Rita Winebarger, S. Carolina
1988	Tallahassee, FL	South Carolina	Paulette Roux, S. Carolina
1989	Cincinnati, OH	Florida State	Keri Preng, Florida St.

FSU CROWNED IN METRO CONFERENCE

Florida State's women, who became the first team in five years to defeat South Carolina in Metro play, narrowly edged the Lady Gamecocks for the first time, 44-42. Keri Preng of Florida State was selected as the Most Valuable Player, while Preng, Kirsten Turk and Buffy Baker, all of Florida State, walked away as All-Metro Selections.

THIS IS FSU

Florida State University, home of the world's fastest supercomputer, is setting the pace as higher education in the state prepares to enter the 21st century. The FSU Supercomputer Computations Research Institute attracts international attention with scientists from many nations using the University's two powerful supercomputers in their research.

Located in Tallahassee, the capital of Florida, FSU is a public, coeducational university and a senior member of the State University System. More than 29,000 students are enrolled, representing all 50 states and 100 foreign countries. The University offers more than 250 graduate and undergraduate degrees in its 15 schools and colleges. Outstanding programs in the colleges of arts and sciences, business, communication, education, engineering, home economics, law and social sciences combine with the schools of criminology, library and information studies, music, nursing, social work, theater and visual arts to make Florida State a nationally acclaimed university.

The Florida State campus, located just blocks away from the state capitol, is beautiful in all seasons. Its 347 acres mirror the picturesque features of the surrounding North Florida region. The buildings are nestled among evergreen live oaks, pines and palms, as well as hardwoods that provide fall color, and dogwoods and azaleas that are covered with a profusion of springtime blossoms.

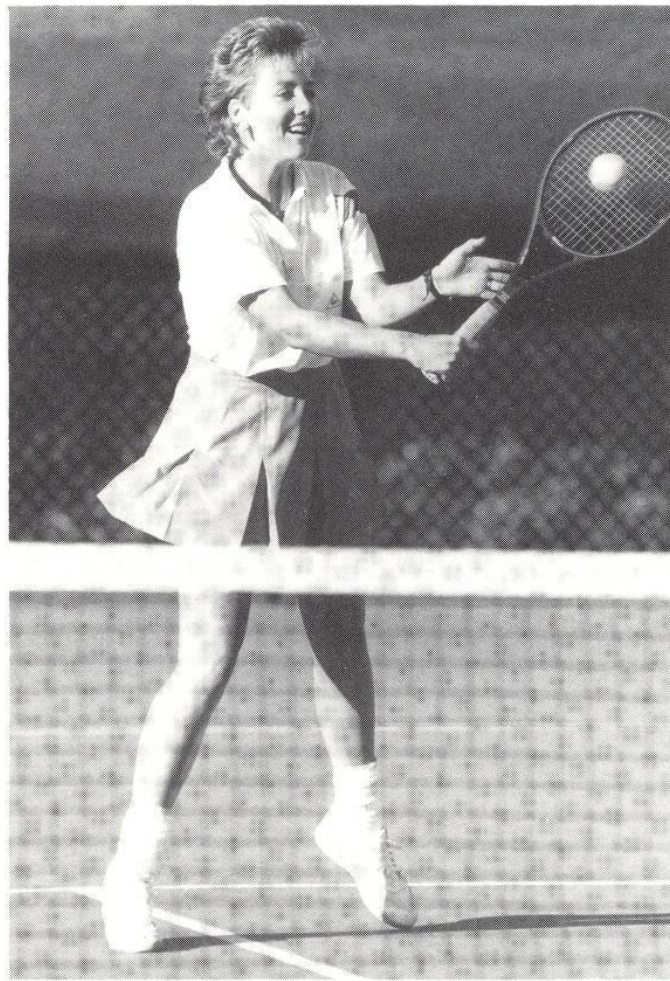
Programs in music, dance and theater at Florida State have earned well-deserved national recognition. The visual and performing arts exhibited and produced on campus offer students and the community a wealth of enrichment opportunities.

Student activities at FSU create an important balance between the classroom experience and the personal life of the individual scholar. Honors programs, student government, intramural sports and more than 200 organizations are available for student involvement. Furthermore, the Flying High Circus, the world's only all-collegiate circus makes its home here.

Florida State academic programs extend well beyond Tallahassee. The FSU Marine Laboratory is located on the Gulf of Mexico, 45 miles away. Students participate in professional training programs at the Asolo State Theater in Sarasota and the Burt Reynolds Institute for Theatre Training in Jupiter. The Panama City Campus of Florida State offers upper-level courses which lead to bachelors and masters degrees. The Center for Professional Development and Public Service, housed in the Florida State Conference Center on the edge of the main campus, manages educational outreach activities from Pensacola to Miami.

It is not only the academic programs and facilities of Florida State, but also the people — students, faculty, alumni, administrators and staff — who make this University such a proud monument to learning.

*Congratulations to the
1989 Lady Seminoles —
Metro Conference Champions*



Keri Preng, Tournament MVP
Kirsten Turk & Buffy Baker, All Metro Conference Team

1989-90 SEMINOLE TENNIS SCHEDULE

DATE	OPPONENT	TIME	PLACE
FALL SCHEDULE			
Sept. 29-Oct. 1	Roberta Allison	All Day	Tuscalooca, AL
Oct. 6-8	Gator Classic	All Day	Gainesville
Oct. 20-22	Samford Sandestin Invitational	All Day	Destin
Oct. 27	University of South Florida	1 PM	Tampa
Oct. 28	Rollins	10 AM	Tampa
Nov. 10-12	Rolex Regional Qualifying	All Day	Tallahassee
Nov. 17-19	Dupont National Intercollegiate Clay Court Championships	All Day	Hilton Head Island, SC

SPRING SCHEDULE

Jan. 20	Sante Fe Community College (Exhibition)	Noon	Tallahassee
Jan. 27	University of North Florida	1:30 PM	Jacksonville
Jan. 28	University of Florida	1 PM	Gainesville
Feb. 2-4	Arizona Invitational	All Day	Tuscon, AZ
Feb. 16-18	Lady Seminoles Quad (FSU, Tulane, N.E. Louisiana)	TBA	Tallahassee
Feb. 22-25	Lady Seminole Invitational	All Day	Tallahassee
March 1	LA. Tech	2:00	Tallahassee
March 6	FIU	2:00	Tallahassee
March 10	LSU	11 AM	Tallahassee
March 11	Miami	10 AM	Gainesville
March 13	University of New Mexico	1 PM	Tallahassee
March 21	South Florida	TBA	Tampa
March 22	Wisconsin	TBA	Tampa
March 24	Rollins	11 AM	Winter Park
March 25	University of Michigan	10 AM	Winter Park
April 6	UNC-Chapel Hill	2 PM	Chapel Hill, SC
April 7	Wake Forest	TBA	Chapel Hill, SC
April 8	South Carolina	11 AM	Columbia, SC
April 14	College of Boca Raton	TBA	Tallahassee
April 20-22	METRO CONFERENCE CHAMPIONSHIPS	All Day	Louisville, KY
May 9-17	NCAA CHAMPIONSHIPS	All Day	Gainesville