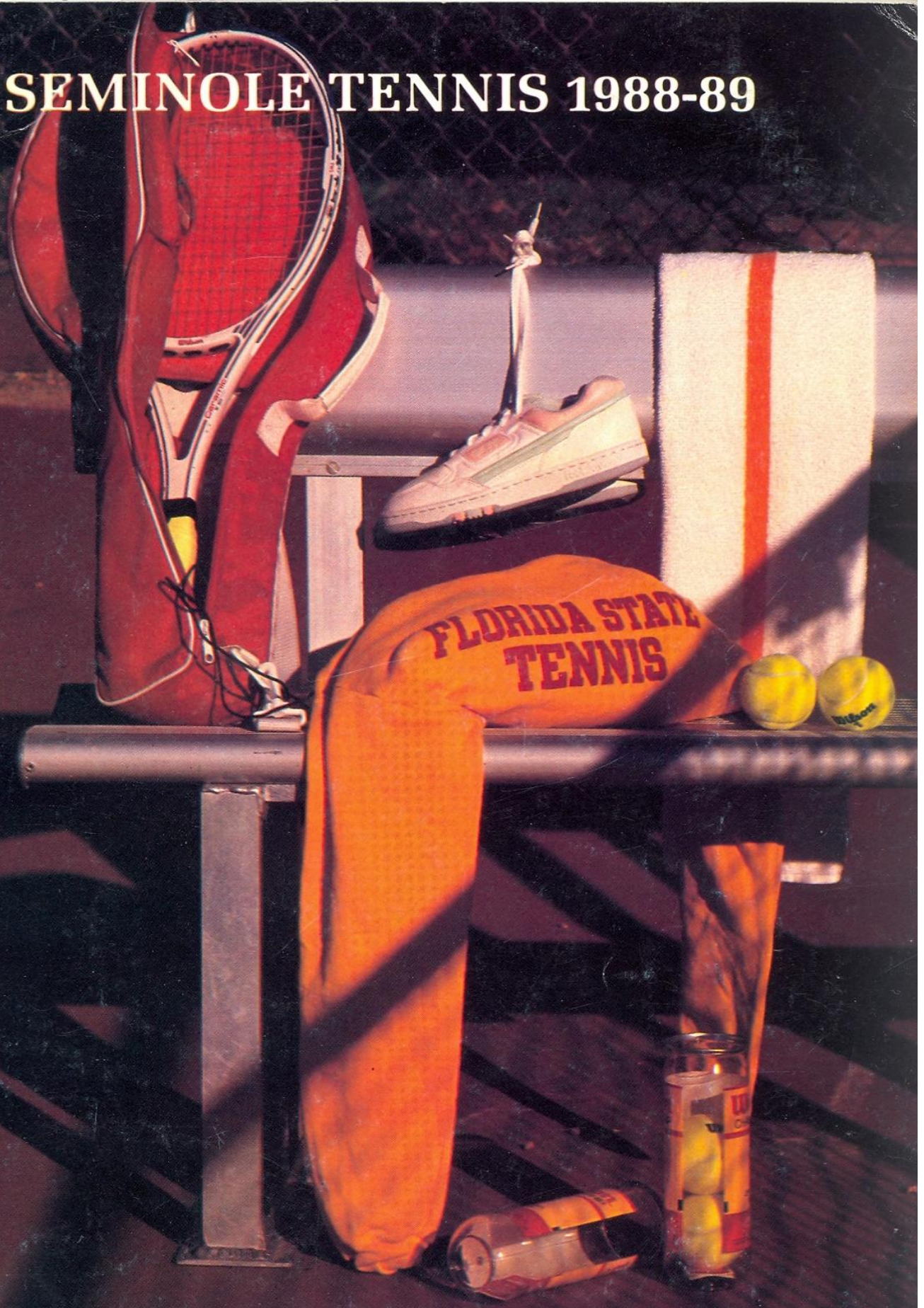


# SEMINOLE TENNIS 1988-89



FLORIDA STATE WOMEN'S TENNIS GUIDE



## TABLE OF CONTENTS

Florida State  
Quick Facts ..... IFC  
1988-89 Schedule ..... 1  
1989 Outlook ..... 2-3  
Florida State  
Coaching Staff ..... 4  
Seminole Tennis Bios .. 5-9  
Team Picture and Roster 10  
1987-88 Results ..... 11  
The Metro Conference .. 12  
This is Florida State .. IBC

## CREDITS

The 1988-89 Florida State Women's Tennis Guide was written and designed by Nick Gandy, Assistant Sports Information Director. Page design and layout by MediaType, Inc. of Tallahassee and printing by Florida Printing, Tallahassee. Inside photography by Sam Lewis and the University Photo Lab. Please contact Nick Gandy of the FSU Sports Information Department for information not covered in the guide (904) 644-1091.

## FLORIDA STATE QUICK FACTS

LOCATION ..... Tallahassee, FL  
FOUNDED ..... 1857  
ENROLLMENT ..... 26,000  
PRESIDENT ..... Dr. Bernard F. Sliger  
NICKNAME ..... Lady Seminoles  
HOME COURTS ..... Don Loucks  
Varsity Courts  
AFFILIATION ..... NCAA Division I  
CONFERENCE ..... Metro

## ATHLETIC ADMINISTRATION

ATHLETIC DIRECTOR .. C.W. 'Hootie' Ingram  
ASSOCIATE DIRECTOR ..... Bob Goin  
ASSISTANT DIRECTOR .. Dr. Janice Stocker  
PROMOTIONS ..... Terry Hume  
ACADEMIC ADVISORS ..... Trudy Raybun  
Greg Padgett  
ATHLETIC DIR. PHONE ..... (904) 644-1060  
STOCKER PHONE ..... (904) 644-1091

## TENNIS STAFF INFORMATION

HEAD COACH ..... Patti Henderson  
YEARS AT FSU ..... One (1)  
RECORD AT FSU ..... 14-12 (.538)  
ASSISTANT COACH ..... Kim Philo  
TENNIS OFFICE PHONE ..... (904) 644-1091

## SPORTS INFORMATION STAFF

DIRECTOR ..... Wayne Hogan  
SID OFFICE PHONE ..... (904) 644-1060  
TENNIS CONTACT ..... Nick Gandy  
GANDY OFFICE PHONE ..... (904) 644-1091  
GANDY HOME PHONE ..... (904) 877-0668  
SID FAX PHONE NUMBER .. (904) 644-3820  
SID MAILING ADDRESS ..... P.O. Box 2195  
Tallahassee, FL 32316

# 1988-89 LADY SEMINOLE TENNIS SCHEDULE

DATE	OPPONENT	TIME	PLACE
Jan. 8-9	Milwaukee Classic	Daily	Milwaukee, WI
Jan. 27-31	Georgia Invitational	All Day	Athens, GA
Feb. 2	University of Florida	2 PM	Tallahassee
Feb. 4	South Alabama	1 PM	Mobile, AL
Feb. 5	Louisiana State	1 PM	Baton Rouge
Feb. 18	Jacksonville	2 PM	Tallahassee
Feb. 23-25	Lady Seminole Invitational (Auburn, Rollins, South Florida, South Alabama, Mississippi, Tulane Northeast Louisiana, FSU)		Tallahassee
March 3	Florida International	2 PM	Tallahassee
March 10	Flagler College	2 PM	Tallahassee
March 11	North Florida	Noon	Tallahassee
March 12	Southern Mississippi	10 AM	Tallahassee
March 15	Mississippi	2 PM	Tallahassee
March 16	Kansas State	1 PM	Tallahassee
March 22	Yale	TBA	Tampa
March 23	Wisconsin	1 PM	Tampa
March 24	South Florida	1 PM	Tampa
March 26	Rollins	Noon	Winter Park
April 1	Clemson	9 AM	Gainesville
April 6-8	Houston Invitational	All Day	Houston, TX
April 21-23	Metro Conference Tournament		Cincinnati, OH
May	NCAA Championships		Gainesville, FL





## 1989 WOMEN'S TENNIS OUTLOOK

### THEY'RE ALL BACK!

Consider what Patti Henderson is facing on the verge of the 1989 season. Her whole team from last season, which finished with a 14-12 record in dual matches, is returning with the addition of three new freshmen.

"We lost no players from last year," said Henderson. "But we are gaining three new faces that will be able to contribute right off."

Not a bad deal for the second year coach who was seemingly in a bad position going into her initial year as head coach for the Lady Seminoles with no seniors on an inexperienced team.

Leading the way of talented returnees is sophomore Buffy Baker. Baker burst upon the collegiate tennis scene in 1988 and won a total of 28 singles matches. She finished the year ranked 37th in the Volvo Collegiate Tennis Poll and began the 1988-89 season at 26th in pre-season rankings. The Lady Seminoles feature three seniors, Kirsten Turk, Jill Urban and Chris Joyce, who will close out their FSU careers in 1989.

Turk, a mainstay of the Florida State lineup for the past three seasons, saw action in the top three singles positions last season but her biggest contribution came in doubles. Teaming with Baker, they formed what Henderson called, "the most consistent doubles team of last season." Urban, who completed her second season with FSU,

turned in 16 singles wins and teamed with Keri Preng for 13 doubles wins. Joyce, a four-year walkon, saw the most playing time of her career last season and will once again vie for a spot in the top six singles.

The FSU roster also boasts a trio of talented juniors. Keri Preng of Dallas, TX, rebounded from injuries and had a fine sophomore campaign with 19 singles wins playing at the #5 spot. Tracey Smith, a native of Miami, enters her junior year as a more disciplined player, according to Henderson. Smith has accumulated 37 singles wins in her two previous seasons at FSU. Kirsten Balser of Sunrise, FL, joined the team last season and saw action at the #6 singles position. Balser will, once again, add depth to the 1989 Lady Seminoles.

FSU's three talented newcomers include Nicki Ivy, the number one 18-and-under player from the state of Mississippi. Henderson says that Ivy has the skills to be competitive at the collegiate level, and hopes that her freshman season will give her the confidence and experience needed for a strong future. Laura Sarkalahti, a freshman from Finland, will bring her international experience to Florida State and is an early projection in one of the top singles slots. Rounding out the newcomers is Shana Nozick of Margate, FL.

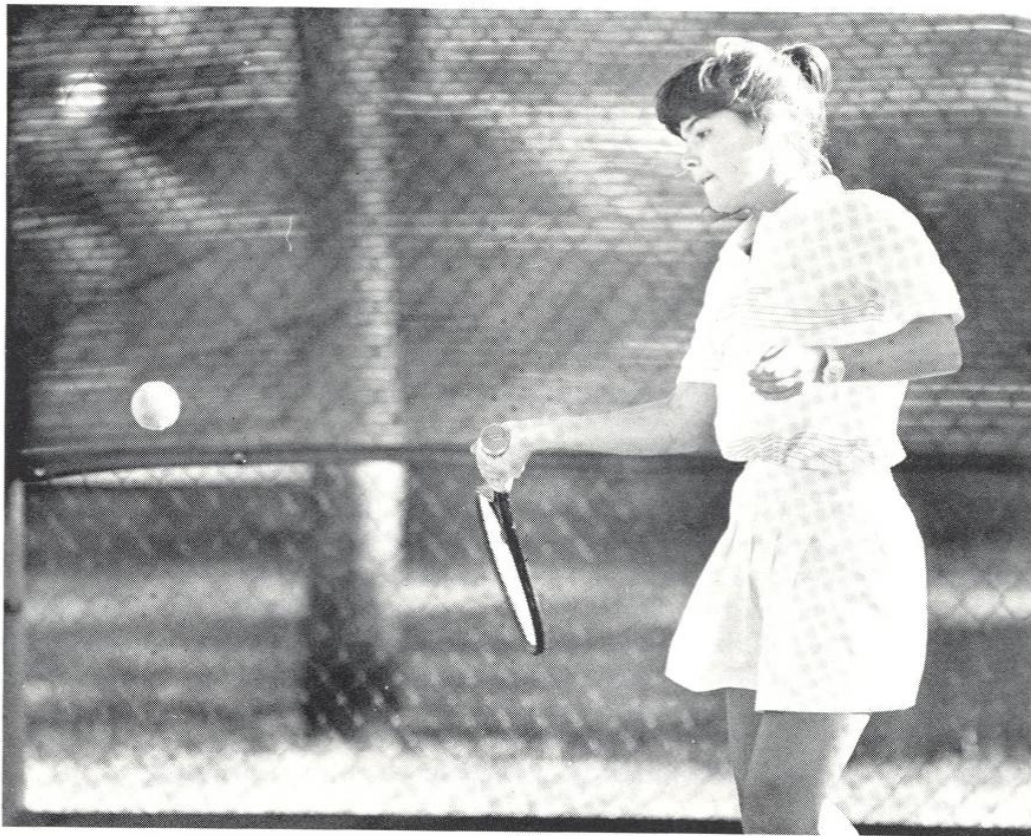


## 1989 WOMEN'S TENNIS OUTLOOK

For the 1989 season, Henderson will present this group before a competitive schedule, which she says features teams that are "nationally recognized." Florida State will meet Florida, Mississippi State, Wisconsin and Clemson in dual matches and will travel to tournaments to face Houston and South Carolina. Once again, Florida State will host the eight-team 26th Annual Lady Seminole Invitational featuring Auburn, Rollins, South Florida, South Alabama, Mississippi, Tulane and Northeast Louisiana. Those teams will converge on Tallahassee the weekend of February 23 through 25.

Henderson enters her second season as Florida State's head coach excited, but apprehensive. "This is my second group of players to bring in," she said. "I'm apprehensive because the team is still so young. But the nucleus gained invaluable experience last year. There should be some shuffling done in the lineup and all the doubles teams could be reworked. All the people on the roster can play, there's no doubt about that. I just have to find out what to do with them."

They're all back. They're experienced so finding out what to do with them should come naturally.



Nicki Ivy

## LADY SEMINOLE COACHING STAFF



### **PATTI HENDERSON**

HEAD COACH, SECOND SEASON  
(FLORIDA STATE, 1987)

Patti Henderson enters her second season at Florida State with a bright future and aspiring team to work with.

Henderson went into her first season with a team which lost three players in the top six and featured no seniors. She led them to a 15-11 finish and now that same bunch, with new faces returns. A more promising picture for the Canadian head coach.

Hailing from Ontario, Canada, Henderson has made the Florida State campus her home for the last six years. She came to Tallahassee in 1983 to play for the Lady Seminoles, was a graduate assistant coach her first year out of college before accepting the head coach position.

During her four-year playing career with FSU, Henderson compiled a 68-36 singles record while accounting for 71 doubles wins. In her junior and senior years, she teamed with Sue Hatch for a 39-13 doubles record and in 1985, the duo qualified for the NCAA Championships. In her last competition as a Lady Seminole, the 1986 Metro Conference Championships, Henderson was named the MVP of the tournament.

Henderson still keeps an active hand in the tennis game. For the past two years, she has won the ITCA Coaches Singles Tournament and during the summers of 1987 and 1988, she toured Europe with the Rhein-Lahn Tennis Club of West Germany.

With a bachelor's degree from FSU in physical education behind her, Henderson is working toward a graduate degree in athletic administration while fulfilling coaching duties.

### **KIM PHILO**

ASSISTANT COACH, SECOND SEASON

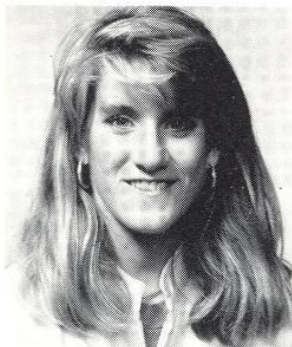
After playing with Patti Henderson for the Lady Seminoles, Kim Philo returns for her second season as an assistant coach with Henderson.

Philo, a three-year letterwinner for Florida State (1984-87), won a total of 32 singles matches while teaming for 34 doubles wins. Her best season came as a senior in 1987 when she tallied 13 singles wins and teamed with Kirsten Turk for 14 doubles wins.

Philo holds a bachelor of arts degree from FSU in psychology and is a member and certified professional of the United States Professional Tennis Association.



# LADY SEMINOLE BIOS



**BUFFY BAKER**  
**5-6, SOPHOMORE**  
**NASHVILLE, TN**

... FSU's most pleasant surprise of the 1988 season ... enters the 1988-89 campaign ranked 26th on the Volvo Tennis Collegiate Rankings ... finished the 1988 season ranked #37 in the ITCA rankings ... played well in the fall of 1988 compiling a 9-2 record ... won the #1 singles flight of the 1988 Roberta Alison Southern Intercollegiate in Tuscaloosa, AL ... began the 1988 spring season playing in the #3 position, moved into the #2 slot and finished the season as FSU's #1 singles player ... had a combined 28-7 record for fall and spring ... went 20-4 in spring dual matches ... all four of her spring dual losses came to opponents ranked in the collegiate top 100 ... teamed with Kirsten Turk for a combined 15-11 doubles record in 1988 ... head coach Patti Henderson said that Baker's biggest improvement of the 1988 spring season came in doubles competition ... began the spring season undefeated through 13 singles matches ... named to the Metro Conference All-Tournament team after FSU's second place finish ... a Prince All-America selection in high school ... held the number one ranking for 18-and-under girls in the state of Tennessee and was ranked number eight of the Southern section in that category ... also held a #83 ranking nationally among 18-and-under girls ... is undecided on a major

## BAKER AT FSU

	SINGLES		DOUBLES	
1987-88	28-7	.800	15-11	.577



**KIRSTEN BALSER**  
**5-4, JUNIOR**  
**SUNRISE, FL**

... earned good playing experience last season playing at the #6 position, according to Henderson ... picked up four wins at the position, including one in the Metro Conference Tournament ... teamed with Tracey Smith at the #3 doubles position ... a good motivator who could find time at the #6 slot again this year ... was ranked in the top 50 of the 18-and-under category in the state of Florida while at Piper High School ... helped lead Piper to a district tournament championship her last two years at Piper ... an accounting major, who posted a 4.0 GPA last spring

## BALSER AT FSU

	SINGLES		DOUBLES	
1987-88	4-10	.286	6-11	.353

# LADY SEMINOLE BIOS



**NICKI IVY**  
**5-4, FRESHMAN**  
**JACKSON, MS**

... brings a number one singles ranking from the state of Mississippi to Florida State ... was also ranked #15 in the South and 150 in the United States ... has the skills to be a competitive player on the collegiate level, but needs to build her confidence during her freshman season, according to Henderson ... a fine doubles player, who teamed with Buffy Baker on a national level prior to Florida State ... "will add depth to the team in both singles and doubles," said Henderson ... very active in high school at Jackson Prep School ... named most athletic, homecoming queen and served as the Student Council Treasurer ... is undecided on a major



**CHRIS JOYCE**  
**5-6, SENIOR**  
**PITTSBURGH, PA**

... returns for her fourth season for the Lady Seminoles ... saw the most action of her career last year playing in the #6 singles position ... posted a big three-set, singles win over Heidi Robison of Southern Miss in the Metro Tournament ... also saw action at the #3 doubles slot, teaming with Tracey Smith ... according to Henderson, Joyce is a good team motivator who helps to push others ... a four-year letterwinner at Upper St. Clair High School in Pittsburgh, PA ... named to the Metro Conference Commissioners list for Academic Excellence all three years at FSU ... a media communications major

**JOYCE AT FSU**

	SINGLES		DOUBLES	
1986-87	1-0	1.000	1-1	.500
1987-88	5-11	.313	1-6	.143
TOTALS	6-11	.353	2-7	.222



**SHANA NOZICK**  
**5-5, FRESHMAN**  
**MARGATE, FL**

... one of Florida State's heralded newcomers for the 1989 season ... a top 10 player in the state of Georgia while playing at Peachtree HS ... a very deceiving player who exploits opponents weaknesses, according to Henderson ... team MVP for four years at Peachtree ... a good student who graduated high school with a 3.5 grade point average ... a psychology major



# LADY SEMINOLE BIOS



**KERI PRENG**  
**5-7, JUNIOR**  
**DALLAS, TX**

... avoided injuries her sophomore season and responded with a fine year in both singles and doubles ... is off to a good start for the 1988-89 season after winning the #6 flight championship of the Barnett Bank Women's Intercollegiate State Championships ... named the Lady Seminoles' Most Improved Player after the 1988 season ... was named to the Metro Conference All-Tournament team after two singles wins and two doubles wins ... played at the #5 singles position and chalked up 19 wins, second highest total on the team ... teamed with Jill Urban at the #1 doubles position for 13 wins ... is once again expected to contribute in the FSU singles lineup and in doubles ... "Keri is a fierce competitor who will not be intimidated," says Henderson ... injuries limited her playing time to only six singles matches in her freshman year ... also saw action in doubles her freshman season ... had a very productive high school tennis career at Lake Highlands HS in Dallas, TX ... was ranked ninth in the state of Texas for 18-and-under girls ... a leisure services major

**PRENG AT FSU**

	SINGLES		DOUBLES	
1986-87	2-4	.333	7-13	.350
1987-88	19-10	.655	13-14	.481
TOTALS	21-14	.600	20-27	.426

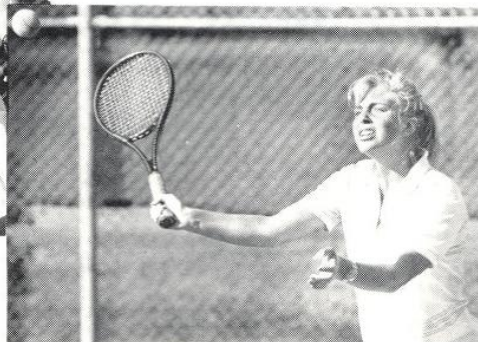


**LAURA SARKILAHTI**  
**5-6, FRESHMAN**  
**ESPOO, FINLAND**

... this Scandanavian will bring an international flavor to the Lady Seminole lineup ... as a 21-year old freshman, she could contribute immediately ... Henderson says that if she can stay healthy, she should be in contention for one of the top singles spots ... has much international experience ... played in both Europe and the United States ... won the #5 flight of the Barnett Bank Women's Intercollegiate State Championships in St. Augustine during the fall 1988 season ... was ranked second in the 18-and-under girls for Finland ... held a number 4 ranking among the women's ranks in Finland before coming to FSU ... a physical education major

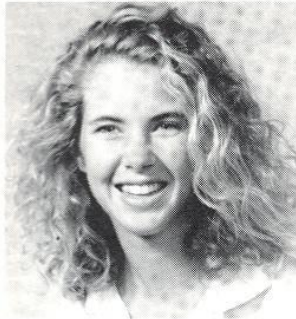


Keri Preng



Kirsten Turk

# LADY SEMINOLE BIOS



**TRACEY SMITH**  
**5-11, JUNIOR**  
**MIAMI, FL**

... enters her junior year with 37 career singles wins to her credit ... played between the #1 and #3 spot for the Lady Seminoles in 1988 and should do the same in 1989 ... had her most wins, 11, playing at #3 singles ... finished the 87-88 season with 18 singles wins ... teamed for seven doubles wins last season at the #3 spot ... enters the 1989 campaign as a more disciplined player, according to Henderson ... "Tracey

has the ability to play anywhere in the lineup," says Henderson ... in her freshman season, Smith posted 19 singles wins to tie for the team lead ... had an impressive high school career at South Miami High School ... was ranked in the top 10 Florida 18-and-under rankings ... a social studies major

## SMITH AT FSU

	SINGLES		DOUBLES	
1986-87	19-14	.527	0-3	.000
1987-88	18-15	.545	7-15	.318
TOTALS	37-29	.560	7-18	.280



**KIRSTEN TURK**  
**5-7, SENIOR**  
**PITTSBURGH, PA**

... will have the most experience at FSU of any other member of the roster ... has been a fixture in both the singles and doubles lineup for the past three years ... will be counted on for senior leadership in 1989 ... played most of her matches at the #1 position last season and also saw action at #2 and #3 ... teamed with Buffy Baker for what Henderson calls "the most consistent doubles team." ... the duo had a 13-7 spring

dual match record and teamed for 15 victories over the course of fall and spring ... her sophomore season, Turk won 15 matches playing between #2 and #3 singles ... also competed at the #2 doubles slot ... named the most outstanding freshman in 1986 after an 11-7 singles record and teaming for 14 doubles wins ... has earned a spot on the Metro Conference Commissioner's List for academic excellence for the past three years ... an honorable mention Prince All-American choice during her senior year of high school ... a multinational business major

## TURK AT FSU

	SINGLES		DOUBLES	
1985-86	11-7	.611	14-12	.538
1986-87	15-19	.441	14-18	.438
1987-88	13-19	.406	15-12	.555
TOTALS	39-45	.464	43-42	.506



# LADY SEMINOLE BIOS



**JILL URBAN**  
**5-9, SENIOR**  
**MIDDLETOWN, OHIO**

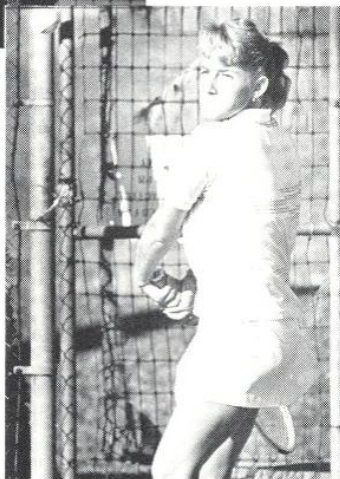
... will close out her three-year FSU career this year after a transfer from Louisiana Tech prior to the 1986-87 season ... has played consistently at the #4 singles spot for the past two seasons ... had 16 singles wins over the 1987-88 year ... teamed with Keri Preng to form the #1 doubles team ... will be expected to take a leadership role this season as one of three seniors on the team ... as a sophomore, Urban contributed 17 singles wins and 18 doubles wins teaming with Sue Hatch ... transferred to FSU from Louisiana Tech where she played the #1 singles position as a freshman ... had a perfect 35-0 singles record at Middletown High School ... was ranked fourth in the state of Ohio for doubles in her senior year ... has earned a spot on the Metro Commissioner's List for Academic Excellence both her sophomore and junior years ... a marketing major

## URBAN AT FSU

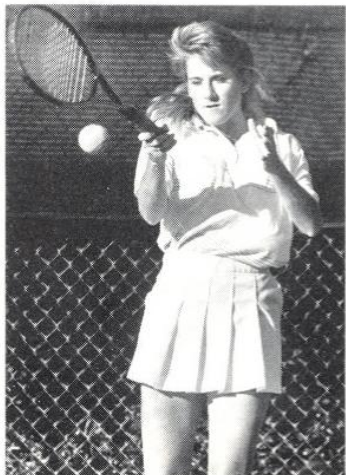
	SINGLES		DOUBLES	
1986-87	17-16	.515	18-9	.667
1987-88	16-17	.485	13-13	.500
TOTALS	33-33	.500	31-22	.585



Jill Urban



Kirsten Balser



Buffy Baker

## 1988-89 LADY SEMINOLE TENNIS ROSTER

Buffy Baker	5-6	SO	Nashville, TN
Kirsten Balser	5-4	SO	Sunrise, FL
Nicki Ivy	5-4	FR	Jackson, MS
Chris Joyce	5-6	SR	Pittsburgh, PA
Shana Nozick	5-5	FR	Margate, FL
Keri Preng	5-7	JR	Dallas, TX
Laura Sarkilahti	5-6	FR	Espoo, Finland
Tracey Smith	5-11	JR	Miami, FL
Kirsten Turk	5-7	SR	Pittsburgh, PA
Jill Urban	5- 9	SR	Middletown, OH

HEAD COACH: Patti Henderson, second year

ASSISTANT COACH: Kim Philo, second year



Front Row (l-r): Chris Joyce, Kirsten Balser, Buffy Baker, Nicki Ivy. Back Row (l-r): Shana Nozick, Tracey Smith, Jill Urban, Keri Preng, Kirsten Turk, Laura Sarkilahti



# 1988 LADY SEMINOLE TENNIS RESULTS

SINGLES	#1	#2	#3	#4	#5	#6	Fall	Spring	Overall
Kirsten Turk	5-10	4-6	1-0				3-3	10-16	13-19
Tracey Smith	1-2	2-4	11-6				3-4	14-12	17-16
Buffy Baker	6-2	8-2	7-1				7-2	21-5	28-7
Jill Urban				12-13			4-4	12-13	16-17
Keri Preng					17-8		2-2	17-8	19-10
Chris Joyce						3-9	2-2	3-9	5-11
Kirsten Balsler						4-10		4-10	4-10
	12-4	14-12	19-7	12-13	17-8	7-19	21-17	81-73	102-90

DOUBLES	#1	#2	#3	Fall	Spring	Overall
Urban-Preng	10-10			3-3	10-10	13-13
Urban-Turk	1-0				1-0	1-0
Turk-Baker		13-7		2-5	13-7	15-12
Smith-Joyce		0-1	0-4	0-2	1-4	1-6
Smith-Balsler			6-11		6-11	6-11
Preng-Baker			0-1		0-1	0-1
	11-0	14-7	6-16	5-10	31-33	36-43

## 1987 DUAL MATCH RESULTS

OPPONENT	W/L	SCORE	RECORD
Florida	L	8-1	0-1
Florida A&M	W	8-1	1-1
Alabama-Birmingham	W	7-2	2-1
North Florida	L	6-3	2-2
Northeast Louisiana	W	6-3	3-2
Houston	L	8-1	3-3
Mississippi	L	5-4	3-4
Virginia Tech	W	5-4	4-4
North Carolina	L	2-7	4-5
Furman	W	9-0	5-5
Louisiana State	L	5-4	5-6
Stetson	W	8-1	6-6
South Florida	W	5-4	7-6
Rollins	W	6-3	8-6
Auburn	L	6-3	8-7
Baylor	W	9-0	9-7
New Mexico	W	5-4	10-7
South Carolina	L	7-1	10-8
Indiana	L	8-1	10-9
Mississippi State	L	5-1	10-10
Georgia State	W	Forfeit	11-10
South Florida	W	5-4	12-10
Flagler	L	7-2	12-11
Southern Miss.†	W	9-0	13-11
Louisville†	W	9-0	14-11
South Carolina†	L	6-0	14-12



Chris Joyce

† Metro Conference Tournament.

## FSU AND THE METRO CONFERENCE

The Metro Conference, originally called the Metro Six, was formed on June 13, 1975. Charter members included the University of Cincinnati, Georgia Tech, the University of Louisville, Memphis State University, St. Louis University and Tulane University.

Expansion was on the horizon. League membership increased to seven as Florida State University was admitted on July 28, 1976. After Georgia Tech left the conference following the 1977-78 season, Virginia Tech quickly filled the void. When St. Louis left the Metro, the University of Southern Mississippi joined the league in 1982. The University of South Carolina joined in 1983 to increase the membership to eight schools. However, Tulane forfeited its membership when its basketball program was discontinued following the 1984-85 season.

At the present, 13 league championships are decided. Men's sports include baseball, basketball, cross country, golf, swimming, tennis and track. Women participate in basketball, cross country, golf, swimming, tennis and volleyball.

The Metro Conference has come a long way in 12 short years. Effective leadership and aggressive promotion have become the trademarks of its administration while the accomplishments of its athletic teams are now recognized in all sports.



### METRO CONFERENCE CHAMPIONSHIP RESULTS 1976-1988

YEAR	SITE	TEAM CHAMPION	OUTSTANDING ATHLETE
1981	Tallahassee, FL	Florida State	Suzanne Doumar, FSU
1982	Memphis, TN	Tulane	Andrea Fink, V. Tech
1983	New Orleans, LA	Florida State	Lisa Askanase, Tulane
1984	New Orleans, LA	Florida State	Johnna Chafin, SC
1985	Memphis, TN	South Carolina	Rita Winebarger, SC
1986	Columbia, SC	South Carolina	Patti Henderson, FSU
1987	Hattiesburg, MS	South Carolina	Rita Winebarger, SC
1988	Tallahassee, FL	South Carolina	Paulette Roux, SC



## THIS IS FSU

Florida State University, home of the world's fastest supercomputer, is setting the pace as higher education in the state prepares to enter the 21st century. The FSU Supercomputer Computations Research Institute attracts international attention with scientists from many nations using the University's two powerful supercomputers in their research.

Located in Tallahassee, the capital of Florida, FSU is a public, coeducational university and a senior member of the State University System. More than 26,000 students are enrolled, representing all 50 states and 100 foreign countries. The University offers more than 250 graduate and undergraduate degrees in its 15 schools and colleges. Outstanding programs in the colleges of arts and sciences, business, communication, education, engineering, home economics, law and social sciences combine with the schools of criminology, library and information studies, music, nursing, social work, theater and visual arts to make Florida State a nationally acclaimed university.

The Florida State campus, located just blocks away from the state capitol, is beautiful in all seasons. Its 347 acres mirror the picturesque features of the surrounding North Florida region. The buildings are nestled among evergreen live oaks, pines and palms, as well as hardwoods that provide fall color, and dogwoods and azaleas that are covered with a profusion of springtime blossoms.

Programs in music, dance and theater at Florida State have earned well-deserved national recognition. The visual and performing arts exhibited and produced on campus offer students and the community a wealth of enrichment opportunities.

Student activities at FSU create an important balance between the classroom experience and the personal life of the individual scholar. Honors programs, student government, intramural sports and more than 200 organizations are available for student involvement. Furthermore, the Flying High Circus, the world's only all-collegiate circus makes its home here.

Florida State academic programs extend well beyond Tallahassee. The FSU Marine Laboratory is located on the Gulf of Mexico, 45 miles away. Students participate in professional training programs at the Asolo State Theater in Sarasota and the Burt Reynolds Institute for Theatre Training in Jupiter. The Panama City Campus of Florida State offers upper-level courses which lead to bachelor's and master's degrees. The Center for Professional Development and Public Service, housed in the Florida State Conference Center on the edge of the main campus, manages educational outreach activities from Pensacola to Miami.

It is not only the academic programs and facilities of Florida State, but also its people — students, faculty, alumni, administrators and staff — who make this University such a proud monument to learning.





## 1988-89 LADY SEMINOLE TENNIS SCHEDULE

DATE	OPPONENT	TIME	PLACE
Jan. 8-9	Milwaukee Classic	Daily	Milwaukee, WI
Jan. 27-31	Georgia Invitational	All Day	Athens, GA
Feb. 2	University of Florida	2 PM	Tallahassee
Feb. 4	South Alabama	1 PM	Mobile, AL
Feb. 5	Louisiana State	1 PM	Baton Rouge
Feb. 18	Jacksonville	2 PM	Tallahassee
Feb. 23-25	Lady Seminole Invitational (Auburn, Rollins, South Florida, South Alabama, Mississippi, Tulane Northeast Louisiana, FSU)		Tallahassee
March 3	Florida International	2 PM	Tallahassee
March 10	Flagler College	2 PM	Tallahassee
March 11	North Florida	Noon	Tallahassee
March 12	Southern Mississippi	10 AM	Tallahassee
March 15	Mississippi	2 PM	Tallahassee
March 16	Kansas State	1 PM	Tallahassee
March 22	Yale	TBA	Tampa
March 23	Wisconsin	1 PM	Tampa
March 24	South Florida	1 PM	Tampa
March 26	Rollins	Noon	Winter Park
April 1	Clemson	9 AM	Gainesville
April 6-8	Houston Invitational	All Day	Houston, TX
April 21-23	Metro Conference Tournament		Cincinnati, OH
May	NCAA Championships		Gainesville, FL