

Florida State University



FLORIDA STATE UNIVERSITY
WOMEN'S ATHLETICS
TEAM ACADEMIC AWARD

1987-88 Women's Tennis

87-88 Outlook

"This team must turn to each other for support. There is no one standout who can be counted on to win every match. This group must mature and come together as a team."

These are the thoughts of Lady Seminole head coach Patti Henderson on the verge of her inaugural season at Florida State.

Reflecting upon the earlier statement, Henderson realizes that her 1987-88 Lady Seminoles have no seniors included in the returning five players from last season's 11-16 club. But the talent is there, and if assembled properly, a turnaround is in order.

Leading the way for FSU will be a pair of juniors who saw considerable action last season. Kirsten Turk, a native of Mt. Lebanon, Pa., enters her third season as the heir apparent to the leadership role. Henderson says that she hopes teammates will learn from Turk's excellent court temperament. After a slow start in the 1986-87 season, Turk regained her confidence and finished the season with 15 singles match wins. Jill Urban, who enters her second season at FSU, showed signs of promise after winning 14 singles matches and teaming with Sue Hatch for 19 doubles wins at the #1 doubles spot.

Backing up the junior duo will be sophomores Tracey Smith and Keri Preng. Smith contributed more than was expected during her freshman season for the Lady Seminoles. The Miami native won 19 singles matches to lead the team, a feat most pleasing to the coaching staff. "While most freshmen start at the #5 or #6 positions," Henderson says. "Tracey came right in and moved all the way up to the #2 position." Another sophomore, Texan Keri Preng, will be counted on to reach her full potential after a disappointing freshman campaign.

In 1987 she saw limited time due to illness and injury. Henderson has faith she will bounce back. "Keri is probably the best athlete on the team," she says. "Once she becomes mentally focused, she will be fine. She is never intimidated on the court."

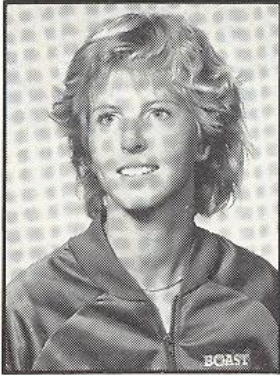
Once again, walk on Chris Joyce will add depth to the Lady Seminole lineup. Entering her junior season, Joyce has seen little playing time, but this fall Henderson believes Joyce could make a difference. "Chris has matured both on the court and off," she said. "Her fall play could hinge on possible spring playing time."

Heralded newcomer Buffy Baker joins the Lady Seminole lineup for the 1987-88 season. The Nashville, TN native has held the number one ranking of 18 and under girls in the state of Tennessee. Henderson looks for her to make an immediate contribution. Also adding depth to the squad will be Miami native Tanya Racoobian and Kirsten Balser of Ft. Lauderdale.

Henderson will go through the fall season with a roster of eight. She is hoping to add two more players to the team in January. This move will limit her to transfers or foreign players.

In the 1988 spring season, the Lady Seminoles will have 10 home matches played at Don Loucks Varsity Courts. In those home matches FSU will face two SEC opponents, LSU and Mississippi State along with Metro Conference foe Virginia Tech. Besides the 9th Annual Lady Seminole Invitational featuring eight teams, Florida State will be the host team for the Metro Conference Tournament, which will be played April 22-24. The last time the Lady Seminoles hosted the Metro Tournament was in its initial year of 1981. Incidentally, Florida State took the Metro crown that year.





PATTI HENDERSON

Head Coach

Patti Henderson just can't seem to get away from Florida State University.

After four years as an outstanding player for the Lady Seminoles and one more as a graduate assistant coach, Henderson takes over the helm of the women's tennis program.

Quite a challenge faces the Ontario, Canada native. She inherits a team that lost three seniors from the first six positions. There are no seniors on Henderson's first squad. But a look at her record at FSU shows

that she is a proven winner and will do the best with the talent before her.

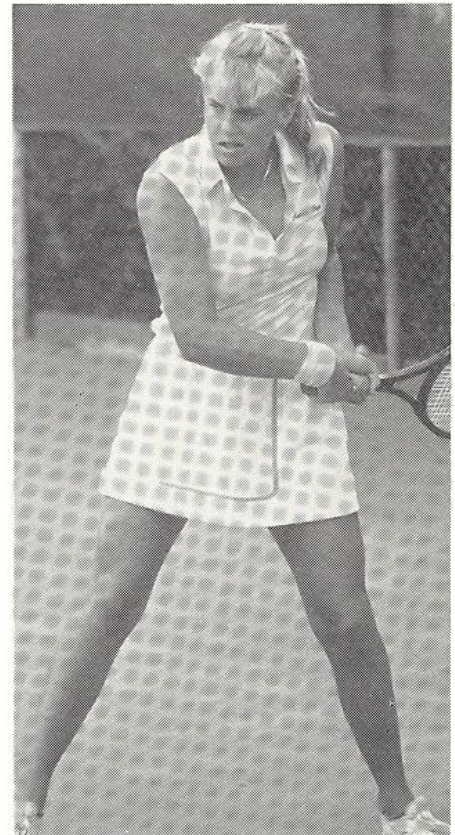
During her four-year playing career with the Lady Seminoles, Henderson compiled a 68-36 singles record while accounting for 71 doubles wins. In her junior and senior seasons, she teamed with Sue Hatch for a 39-13 doubles record and in 1985, the duo qualified for the NCAA Championships. In her last competition as a Lady Seminole, the 1986 Metro Conference Championships, Henderson was named the MVP of the tournament.

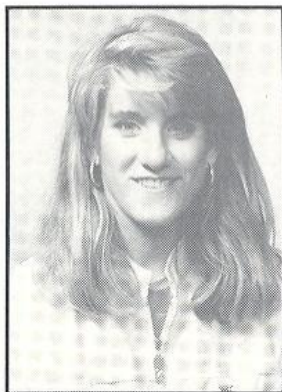
Most recently, she toured Europe with the Rhein-Lahn Tennis Club of West Germany for one month during the summer of 1987.

Henderson earned her bachelor's degree from FSU in physical education and will continue to work toward a graduate degree in motor learning and sports psychology while fulfilling coaching duties.

WOMEN'S TENNIS QUICK FACTS

Head Coach	Patti Henderson
Record at FSU	None
Years at FSU	First
1987 Spring Record	11-16
1987 Metro Finish	Second
Metro Champions	1981, 1983, 1984
Highest National Finish	Sixth, 1982 (AIAW)
Home Facility	Don Loucks Varsity Courts
Women's Tennis Office Phone	(904) 644-1091
Athletic Director	C.W. "Hootie" Ingram
Associate Athletic Director	Bob Goin
Assistant Athletic Director	Dr. Janice Stocker
Sports Information Director	Wayne Hogan
Women's Tennis SID	Nick Gandy
Sports Information Phone	(904) 644-1060
Mailing Address	P.O. Box 2195 Tallahassee, FL 32316





BUFFY BAKER

**Freshman,
Nashville, TN**

... is expected to make an immediate contribution to this year's club ... has a long list of honors from the state of Tennessee ... held the number one rank of 18-and-under girls in Tennessee her junior year in high school ... most recently was ranked in the top 15 of the Southern section 18- and- under girls ... qualified for the Junior Nationals in both singles and doubles based on her finishes in USTA tournaments ... she decided not to participate to ready herself for collegiate tennis ... undecided on a major ...



KERI PRENG

**Sophomore,
Dallas, TX**

... was used sparingly in 1987 but has plenty of potential to improve ... played in only six dual singles matches in 1986-87, going 2-4 in the sixth position ... began the season teaming with fellow freshman Josephine O'Gorman at #3 doubles where the two went 6-7 ... finished the season with partner Mary Wood and combined for a 1-7 record ... saw most of her singles action toward the end of the season when injuries depleted the FSU lineup ... picked up a win over Robyn Stern of Memphis State at the Metro Conference Tournament ... had a very productive high school tennis career in Dallas ... will be counted on to anchor a position in the lineup this season ... majoring in physical education ...



CHRIS JOYCE

**Junior,
Pittsburgh, PA**

... this returning walk on could be a valuable asset to the Lady Seminoles in 1987 ... has seen limited action in her first two years ... played in only one singles match during spring 1987, defeating Suzanne Bell of Florida Junior College at the #6 position ... also competed in two doubles matches with Jill Urban, splitting the two decisions ... according to Henderson, Joyce is a good team motivator who helps to push others ... Metro Conference Commissioner's List for Spring '87 ... very dedicated ... was a four-year letterwinner at Upper St. Clair High School in Pittsburgh ... a communications major ...

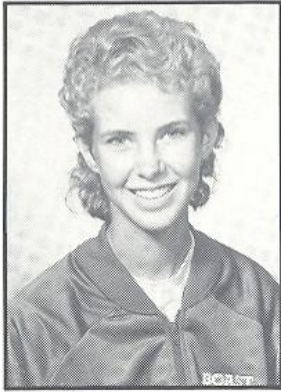


TANYA RACOBIAN

**Freshman,
Miami, FL**

... A walk on from Miami's illustrious Killian High School where she competed in doubles ... will provide the squad with good depth ... a hard worker and good athlete who may only need the discipline and consistency that collegiate practice demands to reach her potential ... a two-year letterwinner in tennis at Killian ... undecided on a major ...





**TRACEY
SMITH**
Sophomore,
Miami, FL

... came upon the Lady Seminole tennis scene with a bang, tying for the most wins of the '87 squad ... had a 14-10 spring campaign with 11 wins coming at #2 and three at #3 ... had 19 wins over the course of fall and spring ... played in the #1 position during Metro Conference final against South Carolina ... look for her to occupy one of the top slots for FSU in her next three years ... had an impressive high school career at South Miami High School ... was ranked in the top 10 Florida 18-and-under rankings ... still needs to gain more strength ... plans to major in communications ...



**KIRSTEN
TURK**
Junior,
Mt. Lebanon, PA

... held down the number three spot for the Lady Seminoles for the better part of the 1987 season ... after winning only three of nine fall matches, Turk rebounded to win 12 spring matches while losing 13 ... finished the season with three Metro Conference Tournament wins ... teamed with Kim Temples in 1987 for a 13-15 record at #2 doubles ... played a tough 7-6, 6-4 match in a losing effort against eventual NCAA singles finalist Shaun Stafford of the University of Florida ... has been in the top six singles and top three doubles positions both her years at FSU ... had an 11-7 singles

campaign in 1986 and teamed with Jenny Cerino for a 14-11 doubles record that spring ... an honorable mention Prince All-American choice during her senior year of high school ... has made Metro Conference Commissioner's List for the past two years ... majoring in business ...



**JILL
URBAN**
Junior,
Middletown, Ohio

... will be one of the elder members of the FSU squad this season ... occupied the number four position for the Lady Seminoles after her transfer from Louisiana Tech where she played at the #1 singles position ... tied with Tracey Smith for the top total of wins during the spring season with 14 ... combined for 17 wins over the fall and spring seasons ... teamed with Sue Hatch at the #1 doubles position and finished the season with 19 wins against nine losses ... former coach Anne Rizza felt the duo deserved consideration for a post-season NCAA bid ... scored big win over Evert-Christensen of SMU to close out four-match sweep during road trip to Texas ... only lefthander on the team ... had a perfect 35-0 record at Middletown High School ... majoring in accounting ... an outstanding student who made the Metro Conference Commissioner's List in Spring '87.

The Florida State Women's Tennis Guide was written and edited by Nick Gandy with graphics by Joey Ring. The cover shot of the Women's Team Academic Trophy was taken by Jon Lewis.



Roster / Results

Buffy Baker	Fr.	5-5	Nashville, TN
Kirsten Balsler	So.	5-6	Ft. Lauderdale, FL
Chris Joyce	Jr.	5-4	Pittsburgh, PA
Keri Preng	So.	5-7	Dallas, TX
Tanya Racoobian	Fr.	5-7	Miami, FL
Tracey Smith	So.	5-9	Miami, FL
Kirsten Turk	Jr.	5-6	Mt. Lebanon, PA
Jill Urban	Jr.	5-9	Middletown, Ohio



Head Coach: Patti Henderson, first season

Player	#1	#2	#3	#4	#5	#6	Fall dual	Fall Tour	Spring	OVER- ALL
Sue Hatch	13-12	0- 1					3- 2	3- 2	13-13	19-17
Tracey Smith	0- 1	11- 9	3- 0				3- 2	2- 2	14-10	19-14
Kirsten Turk		1- 3	11-10				1- 4	2- 2	12-13	15-19
Jill Urban		0- 1	1- 0	11-10	2- 0		2- 3	1- 2	14-11	17-16
Kim Temples				2- 2	10- 8		0- 5	1- 3	12-10	13-18
Mary Wood				1- 0	1- 3	9-10	2- 1	0- 1	11-13	13-15
Keri Preng						2- 3	0- 1	—	2- 3	2- 4
Josephine O'Gorman					0- 1	0- 1	1- 0	—	0- 2	1- 2
Beth Corn					1- 0		—	—	1- 0	1- 0
Chris Joyce						1- 0	—	—	1- 0	1- 0
	13-13	12-14	15-10	14-12	14-12	12-14	12-17	8-12	80-75	108-104

Doubles Teams

Hatch-Urban	15- 8							4- 1	15- 8	19- 9
Turk-Temples	1- 0	8-13					2- 1	3- 1	9-13	14-15
Turk-Smith		0- 3							0- 3	0- 3
Preng-O'Gorman			6- 6						6- 6	6- 6
Wood-Preng		0- 1	1- 6						1- 7	1- 7
O'Gorman-Wood			2- 1						2- 1	2- 1
O'Gorman-Smith			0- 1						0- 1	0- 1
Urban-Joyce	0- 1		1- 0						1- 1	1- 1
	16- 9	8-17	10-15				2- 1	7- 2	33-39	42-43



Schedule

FALL 1986 DUAL MATCHES

Opponent	Score	W/L	Record
Wisconsin	6-3	L	0- 1
Clemson	9-0	L	0- 2
South Alabama	6-3	W	1- 2
Tulane	7-2	L	1- 3
South Florida	5-3	W	2- 3

SPRING 1987 DUAL MATCHES

			Overall	Spring
Vanderbilt	5-4	L	2- 4	0- 1
Tennessee	5-4	L	2- 5	0- 2
William & Mary	5-4	W	3- 5	1- 2
South Carolina	5-0	L	3- 6	1- 3
Auburn	5-4	W	4- 6	2- 4
Florida JC	7-2	W	5- 6	3- 4
North Florida	7-2	W	6- 6	4- 4
Florida	9-0	L	6- 7	4- 5
Mississippi St.	5-4	L	6- 8	4- 6
Furman	6-3	W	7- 8	5- 6
Purdue	7-2	W	8- 8	6- 6
Columbia	8-1	W	9- 8	7- 6
South Florida	6-3	W	10- 8	8- 6
Miami of Ohio	5-4	L	10- 9	8- 7
North Carolina	7-2	L	10-10	8- 8
Wake Forest	6-3	L	10-11	8- 9
Virginia Tech	8-1	W	11-11	9- 9
California-Irvine	6-3	L	11-12	9-10
Rice	5-4	L	11-13	9-11
Cal.-Santa Barbara	7-2	L	11-14	9-12
Southern Methodist	8-1	L	11-15	9-13
Florida	9-0	L	11-16	9-14
Rollins	6-3	L	11-17	9-15
Louisville*	7-2	W	12-17	10-15
Memphis State*	9-0	W	13-17	11-15
South Carolina*	6-3	L	13-18	11-16

*Metro Conference Tournament

Lady Seminoles excel in class

The Florida State women's tennis team takes pride in its performance both on and off the court. For three years running, the Lady Seminoles have captured the women's athletics team Academic Award for the women's sport with the highest cumulative grade point average.

The cumulative GPA for the 1984-85 season was 2.778, and it was 2.894 during 1985-86. Last season, a 2.882 GPA bought the trophy home for a third consecutive year.

The trophy, featured on the cover of the brochure, is a point of pride for the squad, according to Coach Patti Henderson. "It's a very coveted trophy," she says. "I try to instill a sense of pride in academics in all our

tennis players from the beginning."

The coaching staff has obviously succeeded in its efforts. For the three years the team has won the academic trophy, the Lady Seminoles have placed 14 players on the Metro Conference Commissioner's List for Academic Excellence. Athletes who achieve a GPA of 3.0 or above for the school year are awarded this honor.

Junior Kirsten Turk has been named to the Commissioner's List in each of her two seasons with the team while majoring in business. Other returnees who were named to the list last spring are juniors Chris Joyce and Jill Urban.



Schedule

FALL 1987

Date	Opponent	Site	Time
Oct. 9	Tulane	Tallahassee, FL	2:00 PM
Oct. 10	South Florida	Tallahassee, FL	10:00 AM
Oct. 31-Nov. 1	Sandestin Invitational	Sandestin, FL	Daily
Nov. 6-8	Women's Intercollegiate Championship	St. Augustine, FL	Daily
Nov. 13-15	Southeastern Region ITCA Tournament	Gainesville, FL	Daily



SPRING 1988

Jan. 28	Florida	Gainesville, FL	2:00 PM
Jan. 29	FLORIDA A&M	Tallahassee, FL	2:00 PM
Jan. 30	ALABAMA-BIRMINGHAM	Tallahassee, FL	11:00 AM
Feb. 5	South Alabama	Mobile, AL	11:00 AM
Feb. 6	Tulane	New Orleans, LA	1:00 PM
Feb. 7	Southwestern Louisiana	New Orleans, LA	10:00 AM
Feb. 14	NORTH FLORIDA	Tallahassee, FL	1:00 PM
Feb. 20	JACKSONVILLE	Tallahassee, FL	2:00 PM
Feb. 25-28	LADY SEMINOLE INVITATIONAL (Florida State, South Florida, Rollins, Mississippi, Houston, Tulane, South Alabama, Northeast Louisiana)	Tallahassee, FL	Daily
March 4	VIRGINIA TECH	Tallahassee, FL	2:00 PM
March 6	Rollins	Winter Park, FL	11:00 AM
March 11	Auburn	Auburn, AL	1:30 PM
March 12	Baylor	Auburn, AL	10:00 AM
March 16	NEW MEXICO	Tallahassee, FL	2:00 PM
March 18-20	South Carolina Quad	Columbia, SC	Daily
March 22	Furman	Greenville, SC	1:00 PM
March 27	LOUISIANA STATE	Tallahassee, FL	1:00 PM
April 1	MISSISSIPPI STATE	Tallahassee, FL	1:00 PM
April 4	GEORGIA STATE	Tallahassee, FL	11:00 AM
April 10	South Florida	Tampa, FL	11:00 AM
April 16	FLAGLER	Tallahassee, FL	10:00 AM
April 22-24	METRO CONFERENCE TOURNAMENT	Tallahassee, FL	Daily

