



FLORIDA STATE ATHLETIC STAFF

All Area Codes 904

C.W. "Hootie" Ingram, Athletic Director	644-1060
Bob Goin, Associate Athletic Director	644-1060
Barbara Palmer, Associate Athletic Director	644-1091
Jo Messer, Assistant Athletic Director	644-1091
Larry Pendleton, Assistant Athletic Director	644-1060
Claude Thigpen, Assistant Athletic Director	644-1060
John Sheffield, Assistant to the Athletic Director	644-1060
Joe Labat, Athletic Business Manager	644-1060
Terry Hume, Women's Promotions Director	644-1091
Brian Mand, Men's Academic Advisor	644-1060
Trudy Raybun, Women's Academic Advisor	644-1091

SPORTS INFORMATION STAFF

Office Phone Number	644-1060
After Hours	644-1403
Wayne Hogan, Sports Information Dir.	386-5359(H)
Lisa Morton, Assoc. Sports Info. Dir.	575-4773(H)
Dan Pearson, Asst. Sports Info. Dir.	562-4628(H)
Judy Greve, Sports Information Secretary	

FSU Tennis Schedule

Fall 1985

Date	Event	Site
Oct. 24-26	Lady Tiger Invitational	Baton Rouge, La.
Nov. 3	Oklahoma	Gainesville, Fla.
Nov. 15-17	ITCA Indoor Qualifying Tourn.	Miami, Fla.
Nov. 22	TULANE	Tallahassee, Fla.
Nov. 24	SOUTH FLORIDA	Tallahassee, Fla.

Spring 1986

Date	Opponent	Site
Feb. 8	NORTH FLORIDA	Tallahassee, Fla.
Feb. 13	N. FLORIDA JC	Tallahassee, Fla.
Feb. 15	FLORIDA	Tallahassee, Fla.
Feb. 16	ROLLINS	Tallahassee, Fla.
Feb. 22-Mar. 3	LADY SEMINOLE INVITATIONAL	Tallahassee, Fla.
March 4	LOUISIANA TECH	Tallahassee, Fla.
March 7	Alabama	Gainesville, Fla.
March 8	Auburn	Gainesville, Fla.
March 9	FLORIDA	Gainesville, Fla.
March 11	PURDUE	Tallahassee, Fla.
March 12	MISSISSIPPI	Tallahassee, Fla.
March 14	SOUTH ALABAMA	Tallahassee, Fla.
March 15	SOUTHWEST MISSOURI	Tallahassee, Fla.
March 16	TEXAS CHRISTIAN	Tallahassee, Fla.
March 19	South Carolina	Columbia, S.C.
March 21-23	Clemson Lady Tiger Invitational (FSU, Ole Miss, Indiana, Miami, South Carolina, South Florida, Rice)	Clemson, S.C.
March 24	VIRGINIA TECH	Tallahassee, Fla.
March 26	GEORGIA TECH	Tallahassee, Fla.
March 27	Wisconsin	Tampa, Fla.
April 6	STETSON	Tallahassee, Fla.
April 11	South Florida	Tampa, Fla.
April 12	Miami	Tampa, Fla.
April 13	Rollins	Winter Park, Fla.
April 17-19	Metro Conference Championships	Columbia, S.C.
May 16-23	NCAA Championships	Austin Tx.

All Home Matches In CAPS

Credits

The 1986 Florida State women's tennis guide is published by the Florida State Department of Intercollegiate Athletics, C.W. "Hootie" Ingram, Director, for use by media, faculty, prospective student-athletes and friends of the university.

The guide was written and edited by Donna Turner, former Sports Information Assistant, with editorial assistance from Associate Director, Lisa Morton. Photography by Kal Lunt and the University photo lab.

For more information on the 1986 FSU tennis team, please contact the Sports Information Office, P.O. Drawer 2195, Tallahassee, Fla. 32316, (904) 644-1060 or (904) 644-1403 (after hours).



FSU Facts

Location	Tallahassee, Florida
Enrollment	21,500
Founded	1857
Nickname	Seminoles
Colors	Garnet and Gold
Conference	Metro
President	Dr. Bernard F. Sliger
Athletic Director	C.W. "Hootie" Ingram

Women's Tennis Information

Head Coach	Anne Rizza
Record at FSU	114-79
Years at FSU	Enters Seventh Season
1985 Metro Finish	Third
Metro Champions	1981, 1983, 1984
Highest National Finish	Sixth (1982 - AIAW)
1985 Record	13-14
Home Facility	Don Loucks Varsity Courts
Tennis Phone	(904) 644-1091

1985-86 Outlook

Although Florida State lost only two players off its 1985 women's tennis squad, head coach Anne Rizza did not sit back during the off-season. As a result, the team will have a different look in 1986. With the mixture of six seasoned collegiate tennis players and six outstanding newcomers, FSU will field a better team than it has in years.

"We have the nucleus for a strong team and with some hard work during the fall we could surprise people," Rizza said. "We're solid at the top and bottom of our line-up; the big question mark will be getting consistency in the middle positions."

Only number three singles player Debbie Pollack is gone from the 1985 singles line-up while six players return, including the top two singles players and number one doubles team.

The same two players, junior Sue Hatch and senior Patti Henderson, will fight for the top singles positions. Both struggled through losing seasons in 1985, but Rizza says the experience gained last year can help FSU now.

"I expect big things from Sue and Patti this year," Rizza said. "They proved they can compete with the best players in the country. Now it's a matter of turning those three-set losses into wins."

In addition to battling each other, Hatch and Henderson will be looking over their shoulders at freshman standout Christie Wood. The second-ranked junior in the northeast, Wood will challenge the veterans for a spot in the top three.

"Christie is one of the best freshmen to come here in years," Rizza said. "We are extremely fortunate to have her. She's going to give a huge boost to our program."

Behind those three, Rizza expects a group of returnees and newcomers to fight for the fourth through sixth positions. Among the returnees are last year's four, five and six players, Kim Temples, Jenny Cerino and Claudia Gaughf. While only Gaughf had a winning record in 1985, all three improved over the summer, especially Temples who had great success on the National Amateur Circuit.

Like Hatch and Henderson, neither Temples, Cerino nor Gaughf has a position locked down. Five freshmen will challenge them, including highly-regarded Kirsten Turk of Mt. Lebanon, Pa. In the freshmen pack along with Turk are walk-ons Jenny Green, Chris Joyce, Laura Ribovich and Valerie Rive, any one of whom could break into the top six.

"Any returning player who doesn't come back a little scared will be in trouble," Rizza said. "Everyone is going to be pushed in every practice and you can't help but get better when the competition is that tough."

One other familiar face returns for Rizza, Paula Whitebrook. Whitebrook, who was FSU's seventh player last season, had an excellent summer playing tennis in Europe and will join Temples, Gaughf, Cerino and the freshmen in the hunt for a spot in the top six.

With depth from top to bottom in the singles line-up, Rizza does not expect to have any trouble finding three strong doubles teams. Henderson and Hatch, last year's top duo, went 20-7, received a bid to the NCAA Championships and finished the season ranked 20th. They return and Rizza expects to pair freshmen with returnees to find two other strong teams.

"We have many good doubles players, but we're going to have to work hard and fast on developing good two and three doubles teams," Rizza said. "There is more pressure on our freshmen to perform right away, but I think they can handle it. If they come through, we have a chance to work our way into the top 20 this season."

"Any returning player who doesn't come back a little scared will be in trouble," Rizza said. "Everyone is going to be pushed in every practice and you can't help but get better when the competition is that tough."

In order to do that, FSU will once again have to perform well against top 20 teams on its schedule. Rizza has scheduled dual matches with some of the southeast's toughest teams, including South Florida, Florida, Ole Miss, Georgia and South Carolina. FSU will also host the 23rd Annual Lady Seminole Invitational in March and a tournament in Houston may be added to the schedule.

Despite last season's sub-500 record and the inexperience of the six newcomers, Rizza set lofty goals for her 1986 squad.

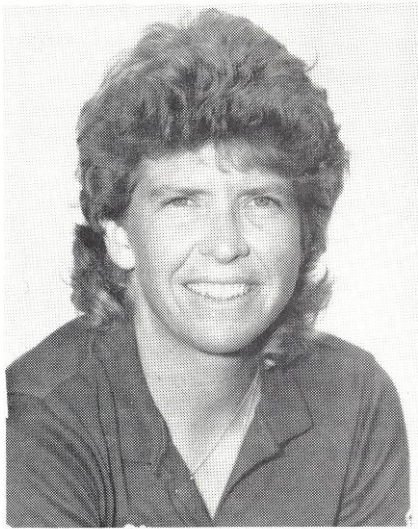
"We want to get back into the top 20," she said. "We want to regain the Metro Conference title and we want to establish some of our singles players in the top 50."

With a combination of experience from the returning players, enthusiasm from the newcomers, hard work and a little bit of luck, the 1986 edition of the Florida State women's tennis team could turn out to be FSU's best ever.

1986 FSU Roster

Name	Cl.	Hgt.	Hometown
Jenny Cerino	Sr.	5-5	Lighthouse Point, Fla.
Claudia Gaughf	Sr.	5-4	Macon, Ga.
Jenny Green	Fr.	5-3	Ft. Lauderdale, Fla.
Sue Hatch	Jr.	5-4	Lambeth, Ontario, Can.
Patti Henderson	Sr.	5-7	Thornhill, Ontario, Can.
Chris Joyce	Fr.	5-4	Pittsburgh, Pa.
Laura Ribovich	Fr.	5-6	Alpharetta, Ga.
Valerie Rive	Fr.	5-9	Palm Springs, Fla.
Kim Temples	Jr.	5-2	Ponte Vedra Beach, Fla.
Kirsten Turk	Fr.	5-6	Mt. Lebanon, Pa.
Paula Whitebrook	Jr.	5-8	Miami Beach, Fla.
Christie Wood	Fr.	5-4	Groveland, Mass.





Head Coach
Anne Rizza

Rizza's Record

Year	Record	Pct.
1980	21-11	.656
1981	24-15	.615
1982	23-18	.561
1983	18- 8	.692
1984	15-13	.536
1985	13-14	.481
Total	114-79	.591

Anne Rizza enters her seventh season as Florida State women's tennis coach in 1985, having compiled a 114-79 record in her first six campaigns with the Lady Seminoles. During her six-year tenure, Florida State has won three Metro Conference crowns, earning Rizza three Metro Coach-of-the-Year awards, achieved its first top 20 ranking in 1983 (18th), and sent five athletes to the NCAA Tennis Championships.

Rizza is one of only a handful of FSU coaches to have 100 wins at Florida State. She reached that milestone in 1984. Last year, FSU battled several of the nation's top 20 schools and injuries to its own players to record a 13-14 season and third place at the Metro Conference Tournament, while the squad's number one doubles pair received a bid to the NCAA Championships.

Rizza came to Florida State after serving one year as assistant tennis coach at her alma mater, South Florida. In that position, she helped guide the Brahms to an 11th place national finish.

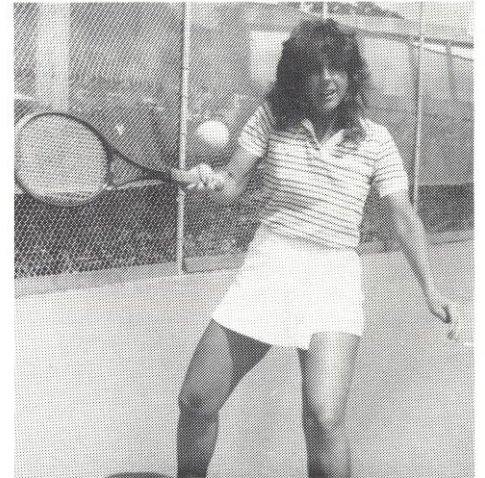
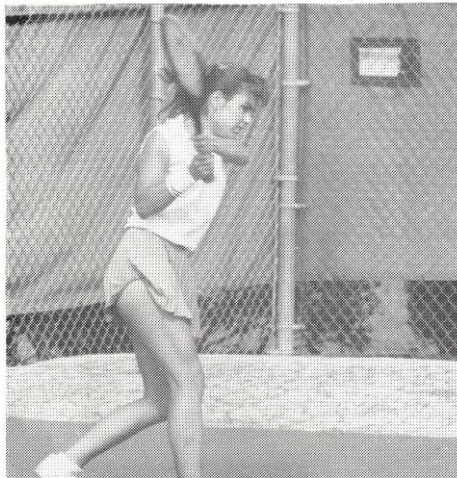
From 1975-78, Rizza's contribution to the USF tennis program was on the court where she was a top four singles player each season. In doubles, she was one-half of South Florida's number one pair which led USF to a number 11 national ranking.

Rizza is a member of and has held posts in several different coaching associations. Currently she is on the Women's Operating Committee of the Intercollegiate Tennis Coaches Association (ITCA).

A 1978 graduate of USF in marketing, Rizza went on to complete her master's degree in guidance and counseling at the Tampa school. In addition to coaching at Florida State, she serves as assistant academic counselor to FSU women athletes.

Rizza, formerly Anne Davis, was married during the 1984-85 season.

1986 Seniors



Metro Conference Championship Results 1981-85

Year	Team Champ.	Outstanding Athlete
1985	South Carolina	Rita Winebarger, South Carolina
1984	Florida State	Johnna Chafin, South Carolina
1983	Florida State	Lisa Askanase, Tulane
1982	Tulane	Andrea Fink, Virginia Tech
1981	Florida State	Suzanne Doumar, Florida State

metro
CONFERENCE

Seminole Returnees

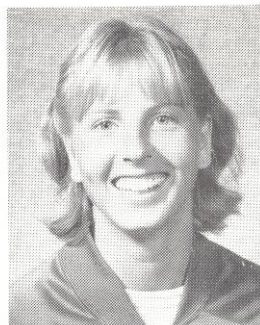


Jenny Cerino
Senior
Lighthouse Point, Florida

Career Statistics

Year	Record	Pct.
1983	8-3	.727
1984	18-4	.818
1985	12-13	.480
Total	38-20	.655

FSU's number five player in 1985 ... will be challenged for that position this season ... will try to improve on her 12-13 mark of a year ago ... MVP of the 1984 squad as she led the team in winning percentage ... was also a Metro Conference champ in singles and doubles that year ... made improvements in her doubles game in 1985 and could be a doubles factor this season ... played at number three doubles slot with Debbie Pollack and compiled a 12-9 record ... experience will help her in 1986 ... extremely competitive player who always gives 100 percent ... a fashion merchandising major ...

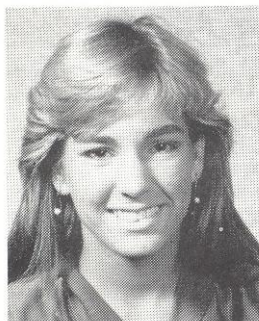


Patti Henderson
Senior
Thornhill, Ontario, Canada

Career Statistics

Year	Record	Pct.
1983	14-4	.778
1984	21-9	.700
1985	13-14	.481
Total	48-27	.640

Experience gained at number two singles last year will help her fight for the top spot in 1986 ... showed last season that she can play with anybody in the country ... one of the most talented individuals on the team ... when she puts it all together "no one can beat her" according to Rizza ... led the squad in wins in 1984 and also won a Metro Conference singles title ... key to her success in 1986 will be an improved mental game, says Rizza ... an excellent doubles player ... she and Sue Hatch qualified for the NCAA Championships in doubles ... their 20-7 record topped the squad in 1985 ... during the summers of 1984 and 1985 the pair qualified for the Canadian Open ... a south-paw ... former finalist at the Canadian National Championship ... a physical education major ...



Claudia Gaughf
Senior
Macon, Georgia

Career Statistics

Year	Record	Pct.
1983	3-0	1.000
1984	4-0	1.000
1985	13-7	.650
Total	20-7	.741

One of only two players on the team to finish last season with a winning record ... stepped in when injuries hit the squad and did a fantastic job ... played at number six singles and also teamed with Kim Temples at the second doubles slot ... experience and confidence gained last year will help her compete for a place in the starting six in 1986 ... won several important matches for FSU last season, including three at the Metro Conference Championship ... in doubles, she and Temples were 7-9 ... a two-time Georgia state high school champ ... former top-ranked player in Georgia and in the South ... named to the Metro Conference Commissioner's List for attaining over a 3.0 grade point average over the 1984-85 school year ... majoring in biology/pre-med ...

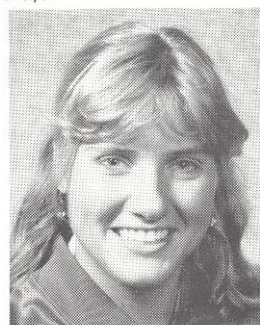


Kim Temples
Junior
Ponte Vedra Beach, Florida

Career Statistics

Year	Record	Pct.
1985	8-19	.296

Had a rough season last year after injuries to other players had her playing at three and four singles ... boosted her confidence over the summer with successes on the National Amateur Circuit ... played extremely well on the circuit and if that carries into the season, she could be the surprise of the 1986 team ... sat out 1984 as a transfer from Virginia Tech ... played number two doubles last season with Claudia Gaughf ... they compiled a 7-9 record and had several important wins ... aggressive player who performs well under pressure and in big points ... has a great attitude and is one of the hardest workers on the squad ... MVP of tennis team at Fletcher High School her senior year ... Florida Times Union Female Athlete-of-the-year in 1982 ... majoring in fashion merchandising ...

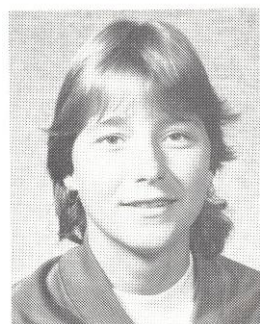


Sue Hatch
Junior
Lambeth, Ontario, Canada

Career Statistics

Year	Record	Pct.
1984	15-14	.517
1985	10-17	.370
Total	25-31	.446

As a sophomore, she posted a 10-17 record at number one singles ... is the early favorite to win that position again ... experience gained in 1985 will help ... of her 17 losses, 10 were decided in three sets ... has shown the ability to compete with the best players in the country ... competition for the number one spot will be tight and Rizza expects challenges from Patti Henderson and Christie Wood to help Hatch's game ... won Metro titles at number two singles and doubles in 1984 ... excellent doubles player ... she and partner Henderson qualified for the NCAA tourney in doubles last season ... during the year, they were FSU's top doubles combo with a 20-7 record and finished the season ranked 20th ... the pair qualified for the Canadian Open doubles championships in 1984 and 1985 ... a former Canadian national champion in singles and doubles ... major is physical education ...



Paula Whitebrook
Junior
Miami Beach, Florida

Career Statistics

Year	Record	Pct.
1984	redshirted	
1985	2-5	.286

Florida State's number seven player in 1985 ... performed well when called on ... saw spot duty in singles and doubles ... played in Europe over the summer ... experience gained there should help her confidence and enable her to come back and challenge for a spot in the top six ... redshirted in 1984 with a knee injury ... spent part of last season getting back into tennis again ... one of most dedicated and hardest working players on the team ... good doubles player who could help in that area in 1986 ... major is leisure services ...

1986 NEWCOMERS



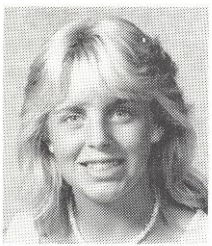
Jenny Green
Freshman
Ft. Lauderdale, Florida

Walk-on who could be the big surprise among the year's newcomers ... has all the tools to develop into a solid collegiate player ... plays an aggressive baseline game ... ranked in the top 20 in the state among girls 18-and-under ... played tennis for Piper High School in Ft. Lauderdale where she was named first team all-county as a senior ... also honored as one of Broward County's scholar-athletes of the year in 1985 ... a criminology major ...



Chris Joyce
Freshman
Pittsburgh, Pennsylvania

Another walk-on who helps give FSU depth for the first time in years ... hard-working player willing to put in the time and effort to make it to the top six ... may be a year away from breaking into the starting line-up ... played her high school tennis at Upper St. Clair High in Pittsburgh ... plans to major in communication at Florida State ...



Kirsten Turk
Freshman
Mt. Lebanon, Pennsylvania

One of six freshmen and two Pennsylvanians on the 1986 squad ... ranked in the top 105 juniors in the country and one of the top 10 players in the Middle States region ... will challenge for a top six position immediately and may also contribute in doubles ... with practice, competition and training, she could be a top player for FSU for years to come ... good doubles player ... an honorable mention All-American choice during her senior year of high school ... majoring in business ...

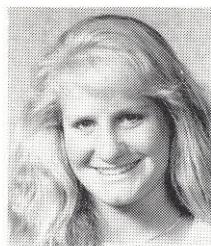
1985 Statistics

Singles (Pos.)	Won/Lost	Pct.
Jenny Cerino (5)	12-13	.480
Darlene Finnegan (2/3)	2-4	.333
Claudia Gaughf (6)	13-7	.650
Sue Hatch (1)	10-17	.370
Patti Henderson (2/3)	13-14	.481
Debbie Pollack (4/3)	16-6	.727
Kim Temples (3/4)	8-19	.296
Paula Whitebrook (6)	2-5	.286
Total	76-85	.472
Doubles (Pos.)	Won/Loss	Pct.
Cerino-Pollack (3)	12-9	.571
Cerino-Whitebrook (3)	1-4	.200
Finnegan-Temples (2)	2-3	.400
Gaughf-Temples (2)	7-9	.437
Hatch-Henderson (1)	20-7	.741
Temples-Whitebrook (3)	2-3	.400
Total	44-35	.557



Valerie Rive
Freshman
Palm Springs, Florida

Late edition to the 1986 squad who could be a "sleeper" ... a good athlete with solid tennis fundamentals ... all-area, all-conference and all-county tennis player at John I. Leonard High School in Palm Beach ... also made the all-area academic team and was named MVP of her high school squad ... should show great improvement in her initial year of collegiate tennis ... sister of former FSU men's star Joey Rive ... plans to major in accounting ...



Christie Wood
Freshman
Groveland, Massachusetts

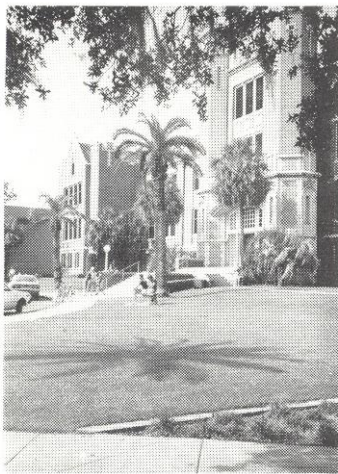
Top freshman recruit of 1986 and one of the best players to arrive at FSU in years, says Rizza ... ranked second in the Northeast and 63rd nationally among girls 18-and-under ... Massachusetts state high school champion in singles in 1985 ... also named to the Prince All-American tennis team ... Rizza expects her to challenge veterans Sue Hatch and Patti Henderson immediately for one of the top three spots ... can also play in the top three doubles ... top-ranked in the Northeast in doubles for the past three years ... has much tournament experience ... chose FSU over Indiana, South Carolina, Boston College and South Florida ... MVP of her Pentucket High School squad after completing her high school career undefeated over four years ... a business major ...

1985 Results

Won 13, Lost 14

Opponent	Score	W/L
Georgia Tech	6-1	W
South Florida	1-8	L
Alabama	6-3	W
North Florida	7-2	W
Florida JC	9-0	W
Rollins	5-4	W
Florida	1-8	L
North Carolina	7-2	W
Louisiana State	2-7	L
South Florida	0-8	L
Wichita State	6-3	W
Wake Forest	7-2	W
Duke	4-5	L
North Carolina	2-7	L
Texas Christian	3-6	L
South Carolina	4-5	L
Northwestern	3-6	L
Georgia	5-4	W
Florida	1-8	L
South Florida	3-6	L
Miami	1-8	L
Rollins	7-2	W
Mississippi	2-6	L
Auburn	8-1	W
*Memphis State	9-0	W
*Tulane	4-5	L
*Virginia Tech	7-2	W
*Metro Conference Tournament		3rd

This is Florida State



Florida State University, a coeducational institution with an enrollment of 21,500 students, is located in Tallahassee, the capital of Florida.

The beautiful 345-acre campus is wrapped in greenery that combines the blossoms of camellias, azaleas and dogwoods with palm trees and moss-hung oaks. The campus looks enough like Ivy League schools, particularly around its older, Gothic buildings, that several times each winter New York

advertising agencies fake summer scenes supposedly shot at Princeton or Harvard. On the west side of campus, the scene is dominated by the contemporary, high-rise science complex.

There are more than 1,300 faculty including four members of the National Academy of Sciences. Florida State is one of only five universities in the nation to have its own supercomputer.

Academic programs in the sciences (notably physics, chemistry, biology and meteorology) and the performing arts (music, theater, visual arts and dance) have high national rankings. Other strong departments among the 15 schools and colleges include criminology, hospitality administration, accounting, statistics and interior design. FSU's pre-med program has a much higher than average medical school placement rate for its graduates.

Today, FSU offers students the opportunity to choose from more than 100 career options in arts and sciences, business, communication, criminology, education, home economics, law, library and information studies, music, nursing, social sciences, social work, theater, visual arts and engineering, which operates in cooperation with Florida A&M University. The most popular majors at FSU are business, biology, computer science and communication.

Florida State has honors programs for its top students. Overseas study program in fields ranging from law to hotel and restaurant administration are offered in Florence, Italy; Oxford and London, England; Switzerland, Costa Rica, Yugoslavia and the Panama Canal Zone.

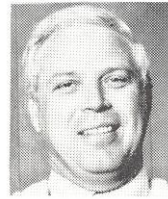
Social life for many centers around 24 fraternities and 20 sororities. Wind surfing, swimming and sunning are among the activities to be enjoyed at FSU's convenient lakeside "Reservation" or along the sandy beaches of nearby coasts.

A unique extracurricular activity is the Flying High Circus, the nation's only all-collegiate circus. Students from every academic major can become stars on the flying trapeze, on the highwire or in clown acts.

Fine entertainment is provided year-round by the FSU Schools of Music and Theater and the Department of Dance.

Student Campus Entertainment presents concerts, movies, lectures and other activities throughout the year and the Artist Series brings professional entertainers to campus.

Student government at FSU is one of the most powerful in the country. Elected students spend an annual budget of about \$1.7 million. Student government funds intramurals, activities at the Student Union and more than 200 interest organizations.



C.W. "HOOTIE" INGRAM *Athletic Director*

Cecil Ingram, known to most of his friends and associates as simply "Hootie," has headed the Florida State athletic department since 1981 after serving as associate commissioner of the Southeastern Conference for eight years.

Since his arrival in Tallahassee, Ingram has initiated a \$10 million dollar building program for athletic facilities, including the Moore Athletic Center - home of Florida State athletics.

A native of Tuscaloosa, Ala., Ingram played for the Crimson Tide from 1951 to 1954 and led the nation in interceptions as a sophomore. He also lettered in baseball as an infielder. Following a stint in the army, Ingram turned to coaching. After several years of high school coaching, Ingram moved into collegiate athletics; making assistant coaching stops at Wake Forest, Virginia Tech, Georgia and Arkansas.



BOB GOIN *Associate Athletic Director*

A member of the Florida State athletic staff since 1981, Bob Goin begins his fifth full year as Associate Athletic Director.

All men's non-revenue coaches report to Goin and he also assists in the day-to-day operations of the department. A large portion of football, basketball and baseball game-day operations fall under his leadership.

A 1959 graduate of Bethany College, Goin received his master's degree from West Virginia in 1961. From 1960-76, Goin served Bethany in several administrative and coaching capacities before moving on to West Virginia as an assistant athletic director. He was named athletic director at California (Pa.) State College in 1980, where he formed that institution's first scholarship fund for athletics and the college's first booster club.



BARBARA PALMER *Associate Athletic Director*

Barbara Palmer has been with the Florida State athletic program since 1977. As Associate Athletic Director, Palmer is in charge of the women's athletic program and also holds the title of women's athletic director.

Since her arrival, the Florida State Lady Seminole program has been recognized as one of the strongest in the country with five national championship teams in the last five years (indoor track, 1985; outdoor track, 1984; softball, 1981-82; and golf 1981). In 1982, all eight varsity sports went to national tournaments - one of only two schools to make the claim nationwide.

A 1970 graduate of Florida State, Palmer has been recognized as the driving force behind FSU's climb toward national excellence in women's athletics. Palmer headed a lobbying effort that pushed Title IX legislation through state government and she is directly responsible for state funding of women's athletics each year.