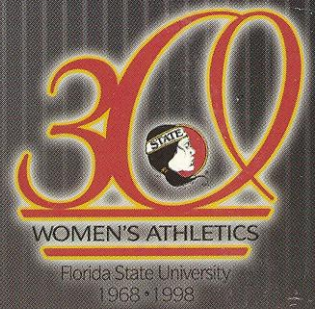


1998 LADY SEMINOLE

# Soccer



building a  
tradition



# A New Beginning...



## 1998 Florida State QUICK Facts

### UNIVERSITY INFORMATION

**Location:** Tallahassee, Fla.  
**Founded:** 1857  
**Enrollment:** 30,519  
**Home Field (Capacity):** FSU Soccer/Softball Facility/1,000  
**Symbol:** Seminoles  
**Colors:** Garnet and Gold  
**Conference:** Atlantic Coast Conference  
**President:** Talbot "Sandy" D'Alemberte  
**Athletics Director:** David Hart, Jr.  
**Senior Woman Administrator/Associate Athletics Director:** Kim Record

### SOCCER INFORMATION

**Head Coach:** Heather Kerby-Nelson (Saskatchewan '91)  
**Record at School/Years:** 24-33-2/3 years  
**Career Record/Years:** same  
**Office Phone:** (850) 644-7724  
**Best Times to Contact:** weekday afternoons  
**Assistant Coaches:** Kerry Dziczkaniec (George Washington '93)  
Paul Nelson (Vancouver 86ers, ASL; Vancouver Whitecaps, NASL)  
**Athletic Trainer:** Angel Sehgal, A.T.C.  
**1997 Record:** 8-12-0  
**1997 Conference Record/Finish:** 0-8-0/Eighth  
**Letterwinners Returning/Lost:** 13/4  
**Starters Returning/Lost:** 9/2  
**Top Returnees:** (name, year, stats)  
Alexandra Osorio, Sr., F, 3 goals, 6 assists, 12 points  
Jill Ford, Sr., F, 5 goals, 1 assists, 11 points  
Janine Lavoie, Sr., D  
Melissa Juhl, Sr., GK, 62 saves, 2.58 GAA  
**Top Newcomers:** (name, position, hometown)  
Jordan Sims, MF, Bradenton, FL  
Maren Vik Edvardsen, F, Oslo, Norway  
Marte Vik Edvardsen, CMF, Oslo, Norway

### SPORTS INFORMATION

**Sports Information Director:** Rob Wilson  
**Women's Soccer SID:** Mandi Copeland  
**Home Phone:** (850) 893-7355 **Work Phone/Fax:** (850) 644-5656/(850) 644-3820  
**Copeland's E-mail:** Mandiec@aol.com or acc6664@garnet.fsu.edu  
**Mailing Address:** PO Box 2195; Tallahassee, FL 32316  
**Overnight Address:** Moore Athletic Center; Corner of Pensacola and Stadium Drive; Tallahassee, FL 32303  
**ACC FaxBack Phone:** (336) 854-5859  
**ACC FaxBack Codes:** FSU Release - 31650; FSU Schedule/Roster - 31654  
**Florida State Athletics Website:** www.seminoles.com



# Media Information

## Florida State University Media Outlets

### NEWSPAPERS

#### Tallahassee Democrat

P.O. Box 990; Tallahassee, Florida 32302  
phone: (850) 599-2166 fax: (850) 599-2301

#### FSView

P.O. Box 20331; Tallahassee, Florida 32316  
phone: (850) 561-6653 fax: (850) 561-6578

#### The Osceola

402 Dunwoody Street; Tallahassee, Florida 32304  
phone: (850) 222-7733 fax: (850) 224-3627

#### Florida Times-Union

One Riverside Avenue, Suite 304; Tallahassee, Florida 32301  
phone: (850) 224-7515 fax: (850) 681-2961

#### Orlando Sentinel

336 East College Avenue, Suite 303; Tallahassee, Florida 32301  
phone: (850) 222-5564 fax: (850) 224-0979

### TELEVISION/ RADIO

#### WCTV - TV (CBS affiliate)

P.O. Box 3048; Tallahassee, Florida 32315  
phone: (850) 893-2126 fax: (850) 668-3851

#### WTVL - TV (ABC affiliate)

8927 Thomasville Road; Tallahassee, Florida 32312  
phone: (850) 893-1313 fax: (850) 668-3851

#### WTWC - TV (NBC affiliate)

8440 Deerlake Road; Tallahassee, Florida 32312  
phone: (850) 893-9892 fax: (850) 893-3646

#### WNLS - Sports Radio 1270 AM

325 John Knox Road, Suite E-200; Tallahassee, Florida 32303  
phone: (850) 386-6143 fax: (850) 385-8789

## A Note to the Media, Fans and Opponents

Lady Seminole Soccer contact Mandi Copeland of the Florida State University Sports Information Office is ready to assist you with any questions or requests you may have about the 1998 Seminole Soccer program, media guide, coaches and student-athletes. Please do not hesitate to phone, fax or write a letter to the sports information office at P.O. Box 2195; Tallahassee, Florida 32316; (850) 644-1403 phone; (850) 644-3820 fax, if we can further assist you.

### HOW TO COVER THE SEMINOLES

Members of the media are supplied with weekly press releases, including updated individual tournament and career statistics, as well as conference and national rankings and information on upcoming matches or events. Results and statistics may be obtained in the sports information office or off the Atlantic Coast Conference's faxback system. Pertinent team and player infor-

FSU Quick Facts .....	IFC	Player Biographies .....	18-23
Media Information .....	1	Newcomers Biographies .....	24-25
This is Tallahassee .....	2	1997 Game by Game .....	26-27
This is FSU .....	4	FSU Statistics .....	28
1998 Season Outlook .....	6	All-Time Statistics .....	29
Position Breakdown .....	7-8	All-Time Roster and Stats .....	30
1997 Season in Review .....	9	ACC Stats .....	31
30th Anniversary of Women's Sports .....	10-11	FSU Supportive Services .....	32
1998 Soccer Roster .....	12	Strength and Conditioning .....	33
Positions and Hometowns .....	13	Life Skills .....	34
Game Rules .....	14	NCAA Information .....	35
Coaching Staff .....	15	1998 Opponents .....	36
Assistant Coaches .....	16	Speed Chart .....	IBC
Team Managers .....	17	1998 Soccer Schedule .....	BC

mation will also be available at the site of Seminole Soccer/ Softball Complex for all home matches. If you would like to schedule personal interviews with the coaches or players, contact Copeland in the FSU Sports Information office at least 24 hours in advance. Coach Kerby-Nelson is generally available in her office during weekday afternoons.

### WHERE HOME MATCHES WILL BE

All 1998 Seminole Soccer home matches will take place at the site of Seminole Soccer/Softball Complex (capacity 1000). The soccer field is located just south of the FSU football practice field off Stadium Drive. Media members will be provided parking passes and will be seated in a designated area. Please notify the sports information office prior to home matches for credentials to be assigned. Any accredited photographer wishing to shoot the matches must check in with Copeland prior to gameday so proper credentials can be assigned.

### JUST A NOTE OF INTEREST

When figuring out the FSU goalkeepers' goals against attempted average take the number of goals scored against the FSU goalie, multiply the figure by 90, then divide by the goalkeeper's minutes played (goals scored \* 90/minutes played). In order to figure out the goalie save percentage, divide the FSU goalkeeper's number of saves by that same number of saves plus goals scored against her (saves/saves + goals).

### ACC FAXBACK SYSTEM

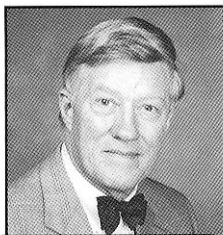
ACC soccer standings and statistics are available on ACC FaxBack each Tuesday morning, Call (336) 854-5859, from the handset of your fax machine, and follow the directions. The ACC code for the soccer release is 5650. The FSU soccer release can be found on the system under code 31650, Tuesday afternoons.

### MEDIA GUIDE CREDITS

The 1998 Seminole Soccer media guide is a publication of the Florida State University Sports Information Office. Edited and written by Mandi Copeland. Designed by Marsiglio & Murphy Design Group, Inc., Photography by Steve Leukanach, Landa Oz Photography, Ross Obley, Ryals Lee and the University Photo Lab. Printing by Rapid Press.

The Florida State University offers equal opportunity in its employment and educational activities in compliance with Title IX, Section 5-4 of the Rehabilitation Act of 1973 and other civil rights laws.

This document is available upon request in alternate formats for individuals with print related disabilities. Contact the ADA office, 301 Westcott Administration Building, for more information.



**Sandy D'Alemberte**  
FSU President



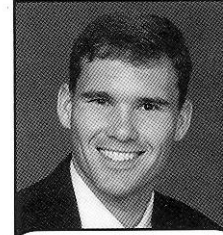
**Dave Hart**  
Athletics Director



**Kim Record**  
Associate Athletics Dir.

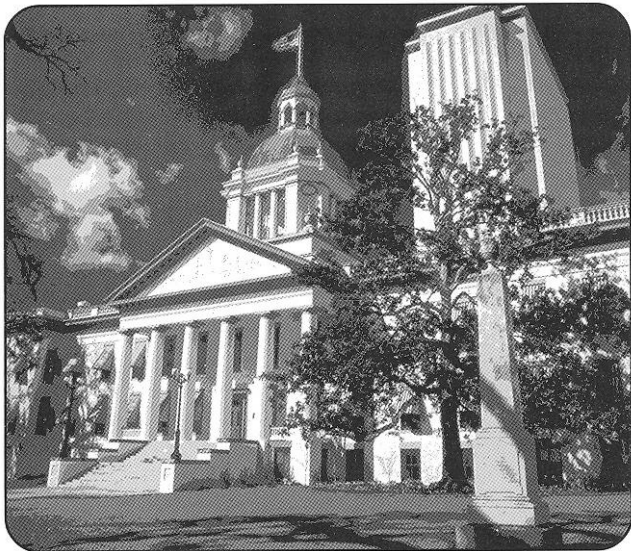


**Mandi Copeland**  
Soccer SID



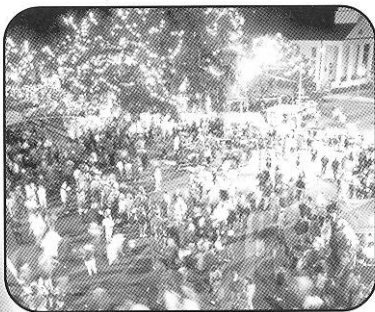
**Stacy Hall**  
Sports Marketing

# This is Tallahassee



Near, but far from the glaring strips of neon amusement, and the castles and crowds of Disney, lies another magical place in the Sunshine State — one of powwows, plantations, politics and great pride. Often described as “The Other Florida” with its deep-rooted history, rolling hills, canopy roads of moss-draped oaks, cool climate and Southern-style hospitality; it is a Florida few have seen. It is Tallahassee — Florida with a Southern accent.

Best known as Florida’s capital, Tallahassee is an intimate neo-metropolitan city where the power of state government, the academic and the artistic are complemented by subtle, old-fashioned charm. It is the perfect two- or three-day diversion for the more than 41 million annual visitors to Florida and 13 million residents.



Tallahassee touts a menagerie of sights including one of the world’s deepest freshwater springs, site of America’s first Christmas, a wildlife habitat, Capitol buildings, fascinating museums of history, sprawling plantations, highly acclaimed fishing and hunting

adventures and nearby beaches. Spirited area festivals range from celebrations of Tallahassee’s spectacular spring and swamp stomps to genuine rattlesnake round-ups and seafood festivals.

With the Gulf of Mexico just 20 miles south and the Georgia border only 14 miles north, Tallahassee rests between

the foothills of the Appalachian Mountains and the juncture of Florida’s panhandle and peninsula. Nearer in miles to Atlanta than to Miami, Tallahassee more closely resembles its Southern neighbors than Florida in topography, climate and lifestyle.

Accentuating Tallahassee’s Southern persona are lush rolling hills, likened to the seven hills of Rome, and five “official” canopy roads of patriarch oaks. The fertile, rich soil and four distinct, yet pleasant, seasons breed floral brilliance and natural vitality year-round.

Like the city itself, the story of how Tallahassee was chosen as the state capital is rich in history. In 1823, two explorers set out — one on horseback from St. Augustine and the other by boat from Pensacola — to find a permanent, central location for the Legislature to convene. The two met at a beautiful site that the Creek and Seminole Indians called “Tallahassee” — derived from the words “talwa” meaning town and “ahasee” meaning old. The rendezvous point remains Florida’s capital.

The “old town” has undergone many changes, but one thing remains the same — it is still a government town fiercely proud and dedicated to preserving its heritage. The Capitol buildings, both old and new, epitomize Tallahassee’s perseverance.

The 22nd floor of the New Capitol provides a panoramic scope of a sophisticated Southern city awash in a sea of flowering azaleas, snowy dogwoods, towering pines, fragrant magnolias, and hundreds of shimmering lakes, springs, swamps, rivers and sink holes. Special legislative viewing galleries are open during the legislative session.

Below, in the shade of giant live oaks, proudly stands the Old Capitol, originally constructed in 1845 and restored to its 1902 splendor complete with red-and-white candy-striped awnings, a dome adorned with stained glass, antique furnishings and political memorabilia.

Across from the Old Capitol are the 40-foot twin granite towers of the Vietnam Veteran’s Memorial, and the blue stone Union Bank, Florida’s oldest surviving financial institution. The nostalgic Old Town Trolley, a replica turn-of-the-century street car, carries passengers through restored Adams Street Commons to numerous







other historical downtown shops for free — unheard of even 100 years ago.

Minutes from downtown lies the Governor's Mansion, which resembles the home of Florida's military hero Andrew Jackson; and the 52-acre natural animal habitat and 1880s farm of the Tallahassee Museum of History and Natural Science, which provide the rare chance to walk and talk with native Florida animals.

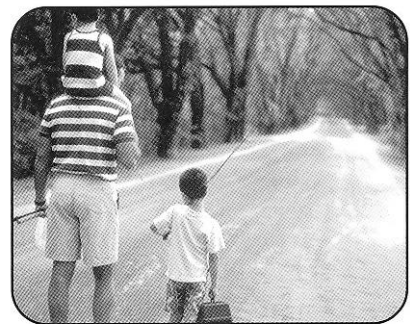
Tallahassee remains firmly linked with the past as evidenced by the unearthed 1539 winter encampment of Spanish Hernando de Soto, the site of the first Christmas celebration in America. Visitors travel back through time as they stand in the shadow of a giant 12,000-year-old American Mastodon at the Museum of Florida History or explore other historical spots including The Knott House that Rhymes, The Columns, San Luis Mission, Lake Jackson State Archaeological Site, Natural Bridge Battlefield, First



Presbyterian Church, Brokaw-McDougall House, Goodwood Plantation and Adams Street Commons.

Nearby, alligators lazing in the sunshine and anhinga "snake birds" perched on twisted cypress branches are seen at Wakulla Springs, one of the world's deepest fresh water springs and site of many underwater scenes in the "Tarzan" movies with Johnny Weissmuller and Maureen O'Sullivan. Safaris aboard glass-bottomed and jungle cruise boats whisk visitors within arm's length of "The Other Florida."

Outdoor enthusiasts enjoy adventures including boating and fishing on area lakes, rivers, ponds and the Gulf — just 30 minutes away. Lakes Seminole, Jackson and Talquin are renowned in the bass fishing world for yielding the "big ones," and dense forests offer an abundance of prize-winning game. Local wildlife areas such as the Florida National Scenic Trail, St. Marks National Wildlife Refuge and Apalachicola National Forest are among many spots for camping, picnicking, swimming, biking and exploring.



Appealing to the strokes of different folks, Tallahassee also features 99 holes of golf on six courses and a proliferation of tennis centers. Sideline athletes cheer the nationally-ranked Florida State Seminoles, Florida A&M Rattlers and the Tallahassee Tiger Sharks, of the East Coast Hockey League. And always a sure bet are the nearby greyhound races.

A sport of sorts, shopping at two regional malls and many specialty centers offer many "playing options" — from popular chains to curiosity and antique shops.

Cultural interests are sparked by widely-acclaimed museums and galleries and elaborate entertainment at the 14,000-seat Tallahassee-Leon County Civic Center.

Tallahassee is a collaboration of power-play politics and classical character splashed with a twist of Southern beauty and charm. Tallahassee is Florida with a Southern accent.



# This is Florida State



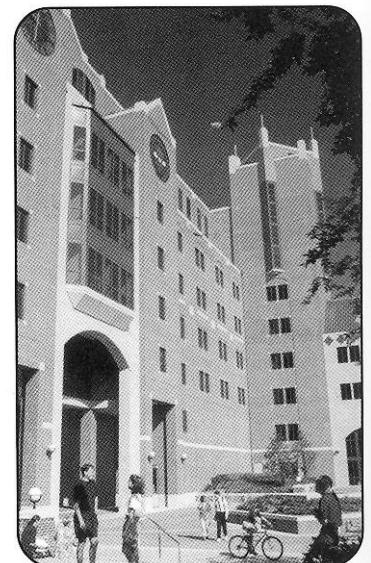
**F**lorida State University, recently celebrating its golden anniversary as a coeducational graduate research institution in 1997, has joined the nation's elite in both academics and athletics.

**Located on the oldest continuous site of higher education in Florida** and building rapidly on the framework of a highly regarded liberal arts college for women, the University has emerged over the past 50 years as an institution of national and international esteem. Its stature is evidenced by a number of additions to its record of excellence in the 1990s:

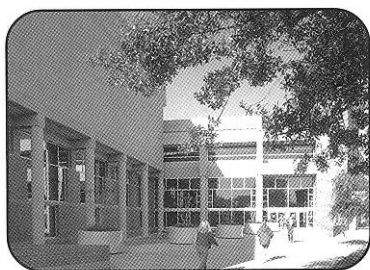
- In 1994, Florida State was classified a "**Research University I**" by the Carnegie Foundation, placing it among the nation's top research universities.
- In 1994, the college referral service, "Who's Who Among American High School Students," placed FSU among its top 10 — with such universities as Harvard, Duke, Stanford, North Carolina-Chapel Hill, Michigan-Ann Arbor and Yale — of most frequent choices of more than 100,000 of the nation's best and brightest high school students who asked that a specific college be notified of their recognition in "Who's Who."
- Vice President of the United States Al Gore spoke at the dedication of the **National High Magnetic Field Laboratory** at Florida State in 1994. The National Science Foundation established the \$100 million magnet lab in 1990 at FSU, which is partnered in research with the Los Alamos National Laboratory and the University of Florida. A Nobel laureate in physics and a top Russian physicist were among the first scholars drawn to the faculty. The **world's largest magnet** — two stories high and capable of generating 45 tesla or 1 million times the Earth's magnetic field — was installed in 1995 at the NHMFL, located in the **off-campus research complex**, Innovation Park. In 1996,

the NSF renewed and increased by 50 percent the NHMFL's funding for another five years.

- FSU created the first multipurpose student identification/banking card. The **Card Application Technology Center** is a national leader in "smart card" systems.
- At the forefront of supercomputing since obtaining its first high-speed computer in 1985, FSU took yet another step in ultrafast and parallel computing in 1990 when it acquired **two supercomputers**, the Thinking Machine Corp. Connection Machine and the Cray Y-MP.
- In fall 1994, the first tenants moved into the east side of the \$100 million **University Center**, a classroom-and-office facility at Doak Campbell Stadium; the stadium's south end zone also was enclosed and the adjacent Moore Athletic Center expanded. With the completion of the west side in 1996, University Center now provides 550,000 square feet of much needed academic space and a centralized location for student services.
- In 1990, Florida State **ranked second in popularity nationwide** among high school seniors, based on the number of students who request that their Scholastic Aptitude Test (SAT) scores be sent to an institution. FSU was the only institution listed among the top 10 choices of both black and white college-bound students.
- FSU's high-tech program in **structural biology** in 1991 received the University's largest single foundation grant, \$4 million.
- Capping more than a decade of national prominence in intercollegiate athletics, Florida State's athletic teams, nicknamed "**Seminoles**," joined the **Atlantic Coast Conference** as its ninth member in 1990. The FSU football team won the **1993 National Championship** and its quarterback, Charlie Ward, won the University's first **Heisman Trophy**.
- The **Dr. Bobby E.**







**Leach Center**, a state-of-the-art student recreation facility, with a pool, saunas, basketball and racquet-sport courts, was completed in 1991.

• **FSU ranked**

**20th in the nation for 1990-91 in the number of black Ph.D. students it graduates.** Over the five years, 1986 to 1990, FSU ranked eighth nationally by granting doctorates to 70 African Americans.

As this list of highlights attests, Florida State is excelling in the 1990s with exceptional strength, energy and vision for the future. Under the leadership of the University's 12th president, **Talbot "Sandy" D'Alemberte**, who took office in January 1994, FSU will continue to build on the foundation of its history of excellence in scholarship, research and service.

A senior member of the 10-member **State University System**, FSU was founded as an institution of higher learning in 1851 by legislative act and began in Tallahassee with its first students in 1857.

Today, FSU's operating budget is **\$474.3 million**. Faculty and administrators generate more than **\$102 million** annually in external funding to supplement state-sponsored research. Three direct-support organizations serve to bolster the University: **FSU Foundation**, which raises millions in private gifts to support academics, **Seminole Boosters** and **FSU Alumni Association**.

The main campus is spread over **451.6 acres in Tallahassee**; FSU, which has one of the smallest campuses in the SUS, has been actively acquiring land in the 1990s after years of being landlocked at 347 acres. FSU owns 1,281 acres in Leon, Bay, Franklin and Sarasota counties.

Within the state, the University maintains facilities at its **25-acre campus in Panama City**, its **Marine Laboratory** on the Gulf of Mexico, the Appleton Museum in Ocala and the Asolo Performing Arts Center in Sarasota. The **Center for Professional Development and Public Service**, housed in the **Augustus B. Turnbull III Florida State Conference Center** on the edge of the campus, provides extensive credit and non-credit continuing education programs statewide.

Florida State offers **286 graduate and undergraduate degree programs** through its **eight colleges** — Arts and Sciences; Business; Communication; Education; En-

gineering (operated jointly with Florida A&M University, a historically black institution); Human Sciences; Law; and Social Sciences (which also incorporates the Reubin Askew School of Public Administration and Policy) — and **eight schools** — Criminology and Criminal Justice; Information Studies; Motion Picture, Television and Recording Arts; Music; Nursing; Social Work; Theatre; and Visual Arts and Dance.

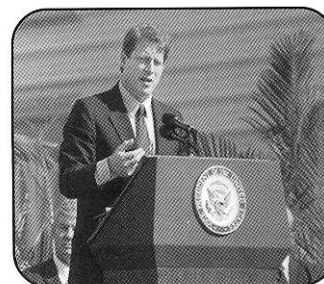
With 1,655 members, the FSU faculty has included **nine National Academy of Sciences elected members, nine American Academy of Arts and Sciences fellows** and **five Nobel laureates**. It is backed by 2,887 administrative/professional and support staff.

Library holdings at Florida State include **2.1 million book titles, 16,384 serials and 4.5 million micro-forms**. The main library facility, the **Robert M. Strozier Library**, is linked by computer to other state university and national research libraries. The **Paul A.M. Dirac Science Center Library** is located at the heart of the University's science research complex. FSU also maintains extensive music, library science and law libraries.

**Graduate students, who number more than 5,929**, pursue advanced degrees in fields as diverse as business administration and theoretical particle physics. A majority of research done at FSU is the direct result of student effort, culminating in numerous books, monographs and journal articles relating to the whole spectrum of intellectual interests and the practical needs of society.

FSU, a residential campus, places a high priority on its **30,519 students** and their needs and interests (of the student population: 45 percent are male; 55 percent are female; 20.1 percent are minorities; and 2.5 percent are foreign students). The **University Honors Program, Disabled Student Services, International Student Center, Student Government, Flying High Circus** and intramural sports are among more than 200 organizations and activities in which students may participate.

In all areas of its mission — excellence in teaching, research and public service — **Florida State University** is advancing boldly toward the 21<sup>st</sup> century.





# 1998 Season Outlook

The 1998 season will be a season of change for the Florida State soccer program. A change for the better as six members of the inaugural team return for their senior year, leading a young program into a new era of Seminole soccer.

The most obvious change for the FSU soccer program will be the team's playing venue. After three seasons playing at the university's Intramural Field, the Seminoles will move into their new home as Florida State completes the Seminole Soccer/Softball complex. The new facility will include, offices, locker rooms, a press box and 1,000 seating capacity.

"It's nice to finally have a place we can call home," Head Coach Heather Kerby-Nelson said. "Last year we felt like our home was on the road."

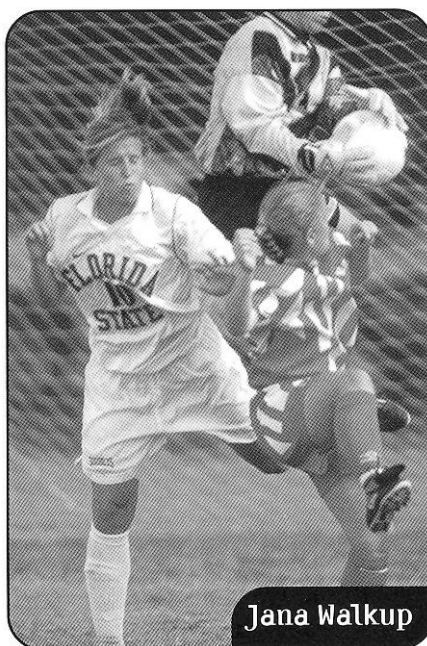
With eight new faces and six returning sophomores donning the majority of the team's make-up, Kerby-Nelson will look to her veterans to pave the way for the Seminoles. Despite losing six players from the 1997 season, Florida State returns eight seniors, seven of whom were members of the inaugural team. The Seminole lineup includes many experienced players. Melissa Juhl, a 1996 All-ACC and All-Region goalkeeper, returns along with Alex Osorio, who leads the team with 12 goals and 12 assists. Also returning for their fourth year are Janna Walkup, who led the team in goals last year; Lauren Lynch, with 10 career goals, and veteran defender Janine Lavoie, who has started 54 games throughout her career.

Eight outstanding newcomers will highlight the 1998 roster. The freshman newcomers include Marte and Maren Vik Edvardsen, twins from Norway who were members of the Part-of-Country team, an equivalent

to the Olympic Developmental Program Regional team in the United States, Jordan Sims, a member of the 1998 Florida State Cup Champion team and Christy Peacock, an all-county player from Georgia. Rounding out the newcomers is a group of sophomores, including local standout Kim Johnson, a transfer from Elon College, Sarah Deacon and Heather Dyche, both transfers from the University of Nebraska.

The Seminoles will once again face a challenging schedule as they take on the experienced laden, nationally ranked members of the Atlantic Coast Conference as well as other top ranked teams across the country. The Seminoles will face four of their ACC opponents at home and look to improve on their ACC record. In the past three seasons, Kerby-Nelson has come to respect the strength of the ACC. Seven of the eight soccer programs rank among the top 20 in the nation with six elite schools in the Top 10 over the past four years and perennial National Champion North Carolina leading the way.

"Winning the ACC is equivalent to winning the national championship," Kerby-Nelson said. "Our conference is the training ground for future Olympians and National Team players and coaches."



Janna Walkup

The 1998 schedule adds four new teams to the Seminole slate. FSU will face Syracuse at the University of Georgia Tournament, Florida International at home, and Mercer and Central Florida on the road. Florida State doubles its ACC home games playing host to four of their seven Atlantic Coast Conference opponents at the Seminole Soccer Complex in 1998, including National Champion North Carolina and nationally ranked Clemson and Virginia. Other home opponents include nationally ranked Florida and highly touted SEC opponent Auburn.



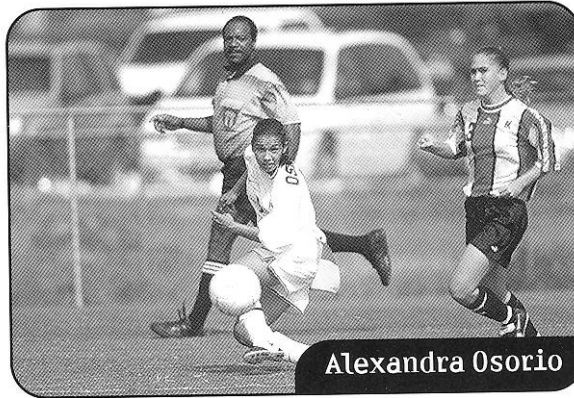
# Position Breakdown

## Here is a look at the Position Breakdown:

### Forwards:

The Seminoles return a veteran line up at the front line.

**Alexandra Osorio** leads the Seminoles at the striker position. Osorio scored three goals and one game winning goal in the 1997 season and leads the team with a career 12 goals. Osorio started nine of the first 12 games in 1997 before breaking her arm in the Stetson game. She re-entered the game but missed three games before returning to the lineup against South Florida, where she had the game winning assist.



Alexandra Osorio

Seniors **Jill Ford** and **Janna Walkup** return to the striker position. As co-leaders in scoring, each looks to better her five goal performance. After a stellar first year, scoring five goals off of a team-high 31 shots for the year, Ford led the team in scoring and had the game winning goal against South Florida. Walkup continues as a forward and a marking back. She started 19 of her 20 games last year after missing much of 1996 due to injury. Walkup scored five goals from the marking back position and recorded game winning goals against Wofford, South Alabama and Alabama-Birmingham. Sophomores **April Murphy** and **Sally Shelgren** add speed and depth to the Seminole attack.

Joining the team at the forward position is **Maren Vik Edvardsen**, a freshman from Oslo, Norway. Her speed and natural goalscoring ability earned her a spot with Norway's Youth National Pool.

### Midfielders:

The midfield position has great depth this season. With five returning faces and three newcomers, the midfield is the strongest in FSU's history.

Four-year veterans **Jessica Driscoll** and **Lauren Lynch** look to lead the Seminoles in the midfield. Driscoll played in 14 games in the 1997 season, and scored three goals including the game winning goal against Louisiana State. Lynch started in 16 of her 20 game appearances last year.

Juniors **Angela Bonaffino** and **Leslie Del Rio** return for their third season with the Seminoles. Bonaffino played in 13 games last year with six starts and re-

corded two goals, including the game winning goal against Stetson. Del Rio played in nine games and scored against Louisiana State. Sophomore **Rachael Watkin** will split time between the central midfield and sweeper position. She scored one goal against Elon College and added the game winning assist against South Alabama.

Three newcomers round out the field, including sophomore transfer **Sarah Deacon**, who brings ball handling skills and execution from the University of Nebraska. Freshman **Marte Vik Edvardsen** brings excellent vision and a strong tactical understanding of the game to the central midfield. **Jordan Sims**, from Bollettieri Sports Academy, adds depth to the midfield and sweeper position after playing for the Ohio Olympic Developmental Program State team and Countryside Lightning of Clearwater.

### Defenders:

Heading up the defense will be a team of sophomores and three, four-year veterans. Four year veteran **Janine Lavoie** started in 15 of her 18 game appearances and four year veteran **Molly Nye** played in 11 games.

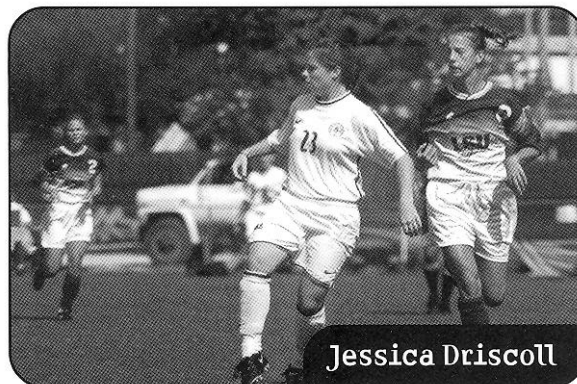
The sophomore team begins with **Ashley Halter**, who played in 19 games and started in five. She had 10 shots on goal, scoring against Wofford, and had the game winner assist against Louisiana State. **Rachael Watkin** started in all of the tribe's 19 games last season. Her defensive abilities were best recognized by her teammates voting her "Rookie of the Year" and "Defender of the Year." **Stephanie Dietrich** started



# Position Breakdown

in seven of her 11 game appearances and scored against nationally ranked Duke. **Danielle Foard**, who was named to the All-Freshman Southeast team, played in 19 games, starting in 12.

Rounding out the defense are three newcomers. Sophomore transfer **Heather Dyche** comes to the Seminoles from the University of Nebraska, bringing intensity and experience to the team. **Kim Johnson**, a local standout, comes to FSU after spending a year starting for Elon College. Johnson will play as a marking back. Also joining FSU is **Christy Peacock**, an all-around defensive player from the Georgia State Team.



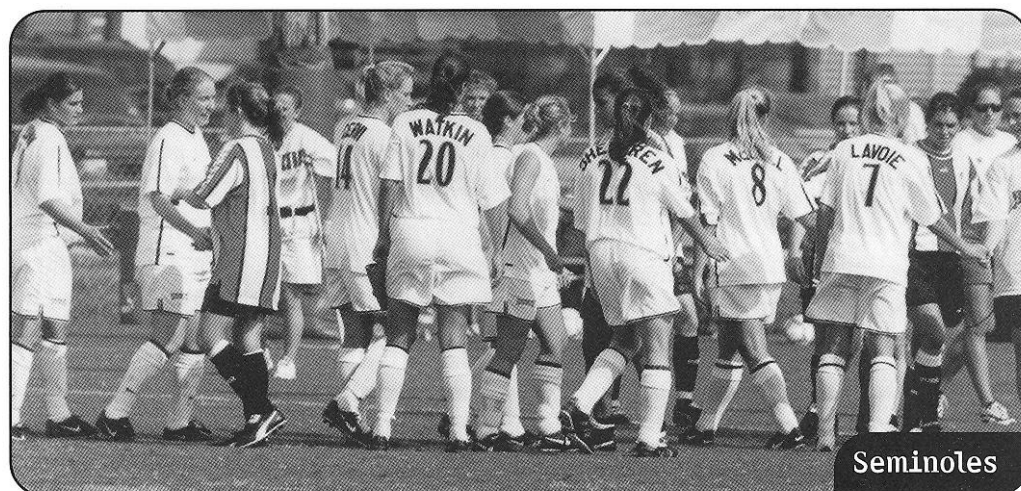
Jessica Driscoll

## Goalkeepers:

The Seminoles are fortunate to return two goalkeepers with experience. Four year veteran **Melissa Juhl** and junior **Jamie Gurtov** will defend the Seminole goal this season. Juhl started all 20 games, recorded four shutouts and had 62 saves off of 224 shots with a 2.58 goals against average. Gurtov brings added experience and adds assurance to the goaltending. Gurtov appeared in seven games, recorded two assisted shutouts with 14 saves on 35 shots, and recorded a 1.30 goals against average.



Melissa Juhl



Seminole



# 1997

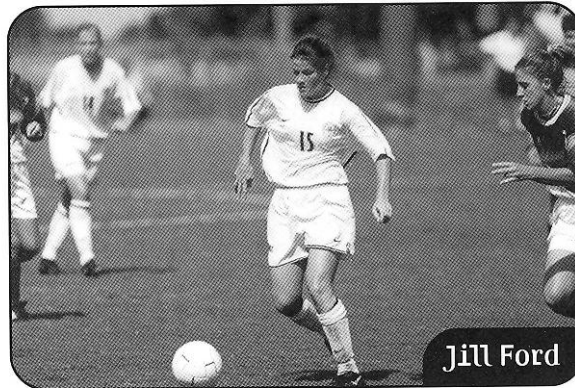
## Season in Review

**F**lorida State women's soccer team concluded its third season in the same fashion as the previous two campaigns, against No. 1-ranked North Carolina in the first round of the ACC Women's Soccer Championships. Although the Seminoles were defeated by the 15-time National Champion Tar Heels 5-0, FSU saw progress emerging from within.

The young program faced a challenging schedule in 1997. The slate included eight nationally ranked teams, six of which they faced away. Against four of those teams, the Noles held a tie until the final minutes of the game, including one overtime game. FSU held four of the teams to within one goal and took nationally ranked Duke to overtime.

The Seminoles opened their season on the road and fared well, starting the season 3-2. The Seminoles proved they could play with some of the nation's finest. FSU played nationally ranked #10 Maryland at home and took on nationally ranked #10 Clemson on the road. The Seminoles held the Clemson Tigers to 1-1 until the last few minutes of the game when Clemson scored on a long ball and won 2-1.

The Seminoles capped a four game road trip with their first of three shutouts, beginning with a 3-0 win over Elon College, starting a three game winning streak. The streak included home victories over Stetson and Loui-



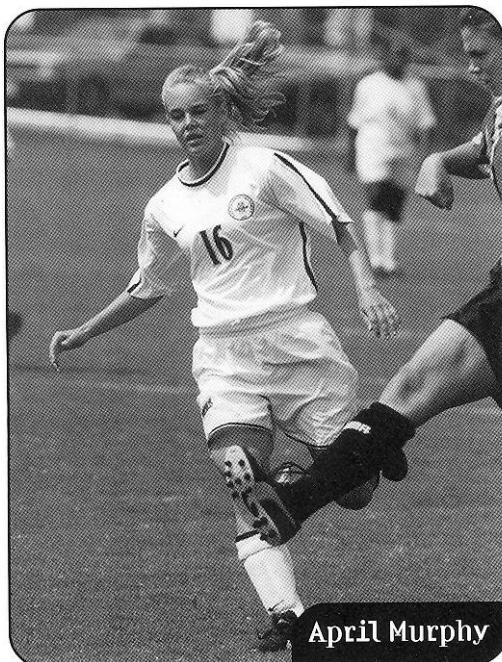
Jill Ford

siana State. FSU then faced a three game road trip including two nationally ranked programs. The Seminoles held #6 Virginia until the final minutes of the game before the Cavaliers scored the winning goal and completed their road trip with a shutout win over South Florida.

The Seminoles' final home game and ACC matchup of the season was against #7 Duke. Despite the driving rain, FSU scored in the last minutes of the first half to tie the game and held the Blue Devils all through the second half. As the game went to overtime, FSU fought a tough match before Duke scored nine minutes into the overtime period, winning the game 3-2.

The Seminoles' headed for Knoxville, Tennessee for their final regular season games against Tennessee and Alabama-Birmingham. FSU split the trip which included a shutout against Alabama-Birmingham. After a hard fought season, the Noles headed to Winston-Salem, North Carolina for the ACC Tournament. The Seminoles took on top ranked National Champion North Carolina. The Tar Heels led 4-0 at halftime but FSU held them to only one goal late in the second half before UNC took the win 5-0.

With a 8-12-0 record, the Seminoles showed they can hang in with the tough games and are ready to win the big ones. With only four players graduating, a team of veterans, and a new facility, the 1998 season could be the year of the big ones.



April Murphy







The Florida State **track and field** team brought home the NCAA Outdoor National Title in 1984 and the NCAA Indoor National Title in 1985.

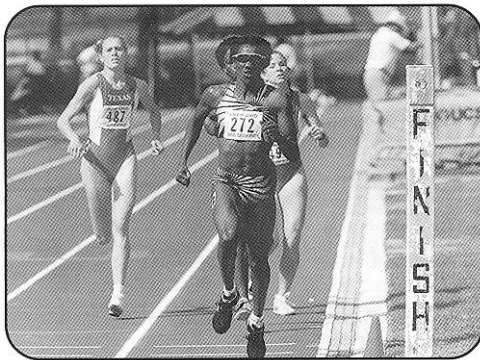
In 1987, **All-American Tiffany Daniels** led the Lady Seminoles to their first College World Series.

## 1989-1993



**Volleyball** won five Metro Conference Tournaments, three during the career of standout Gabrielle Reece. Reece has gone on to captain Team Nike in the Bud Light Four-Woman Tour.

**Kim Batten** established herself as one of the finest **track** athletes in school history. The nine-time All-American set the world record in the 400-meter hurdles in 1995 and won the Silver Medal

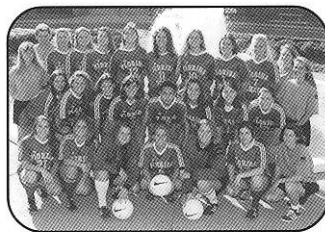


in the 1996 Summer Olympics in Atlanta, Ga.

Florida State **golf's Kathy Grant** won the 1990 Metro Conference Individual championship title in 1990.

The 1990-91 **women's basketball** team placed first at the 1991 Metro Conference Tournament and went on to record its first win in NCAA Tournament play and advanced to the tournament's second round.

In 1992 the Lady Seminole **softball** team earned its first of six ACC Tournament titles (to date) on its way to recording a program best 63-9 record.

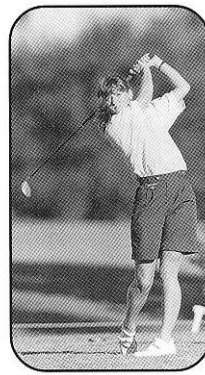


## 1994-1998

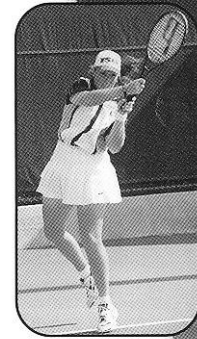
A new era of Florida State athletics began in 1995 with the addition of **women's soccer**.



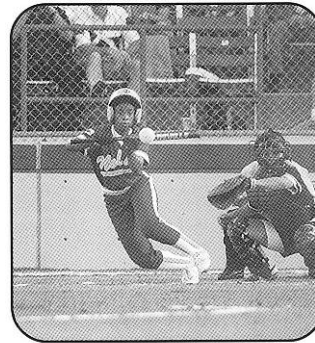
These 1995 ACC Individual champions are just a glimpse of the success that the FSU women's **swimming** team has had.



All-American **Lori Sowell** gave FSU its best-ever individual performance at the NCAA Division I **Tennis** Championships when she reached the third round at the 1996 Championships which was hosted by Florida State.



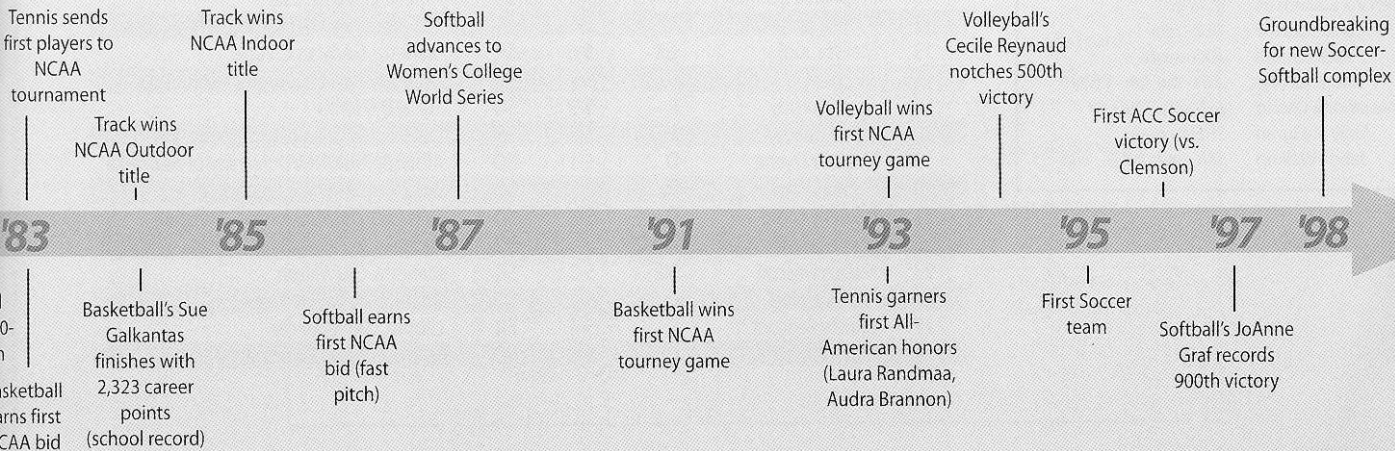
**Shamalene Wilson** began her **softball** career as ACC Rookie of the Year and four years later concluded with ACC Player of Year honors as well as First Team All-American accolades.



In 1997, softball's **Dr. JoAnne Graf** became just the second coach in NCAA Division I softball history to amass **900 victories**.



Groundbreaking ceremonies for Florida State's new **state-of-the-art soccer/softball complex** were held in the spring of 1998.





# 1998 Florida State Soccer Roster



## 1998 Alphabetical Team Roster

NO.	NAME	POS.	HT.	YR.	HOMETOWN/PREVIOUS SCHOOL
12	Angela Bonaffino	MF	5-5	JR	St. Catherines, ONT, Canada/Holy Cross
18	Sarah Deacon	MF	5-4	SO	Omaha, NE/University of Nebraska
2	Leslie Del Rio	MF	5-3	JR	Miami Springs, FL/Miami Springs
11	Stephanie Dietrich	MF/D	5-9	SO	Amelia, OH/Glen Este
23	Jessica Driscoll	MF	5-2	SR	Marietta, GA/Walton
19	Heather Dyche	D	5-11	SO	Albuquerque, NM/University of Nebraska
9	Maren Vik Edvardsen	F	5-8	FR	Oslo, Norway/Wang Academy
8	Marte Vik Edvardsen	CMF	5-9	FR	Oslo, Norway/Wang Academy
21	Danielle Foard	D	5-5	SO	Falls Church, VA/George C. Marshall
15	Jill Ford	F	5-7	SR	Orange Park, FL/George Mason Univ.
01	Jamie Gurtov	GK	5-7	JR	Plantation, FL/Plantation
24	Ashley Halter	D	5-10	SO	Atlanta, GA/Lovett School
26	Kim Johnson	D	5-6	SO	Tallahassee, FL/Elon College
13	Melissa Juhl	GK	5-6	SR	Marietta, GA/Alan C. Pope
7	Janine Lavoie	D	5-6	SR	Saskatoon, SK, Canada/Bishop Mahoney
6	Lauren Lynch	MF	5-3	SR	Kennesaw, GA/Harrison
16	April Murphy	F	5-5	SO	Tulsa, OK/Jenks
3	Molly Nye	D	5-2	SR	Wesley Chapel, FL/Tampa Prep
5	Alexandra Osorio	F	5-6	SR	Miami, FL/G.H. Braddock
25	Christy Peacock	D	5-4	FR	Lilburn, GA/Parkview
22	Sally Shelgren	MF/D	5-5	SO	Niceville, FL/Niceville
4	Jordan Sims	MF	5-6	FR	Bradenton, FL/Bollettieri Sports Academy
10	Janna Walkup	F	5-9	SR	Orlando, FL/Edgewater
20	Rachael Watkin	D	5-10	SO	Boca Raton, FL/Boca Raton



Angela Bonaffino

## 1998 Numerical Team Roster

**Head Coach:** Heather Kerby-Nelson (Saskatchewan '91)

**Assistant Coaches:** Kerry Diczkaniec, Paul Nelson

**Team Managers:** Kelley Poole, Justina Torres

### Roster Pronunciations

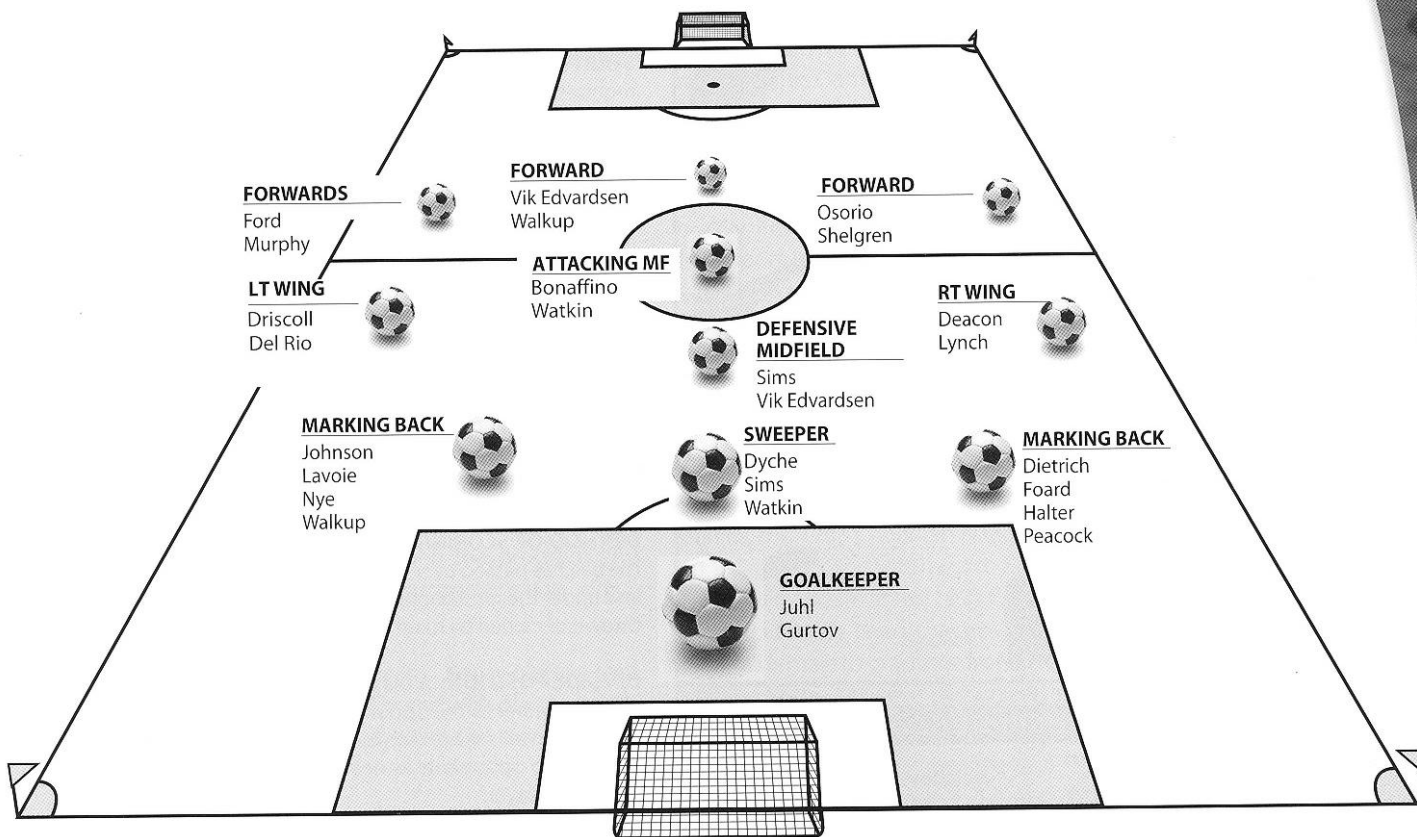
Angela Bonaffino	<i>bon - nuh - FEE - no</i>
Leslie Del Rio	<i>del REE - oh</i>
Stephanie Dietrich	<i>DEE - trick</i>
Danielle Foard	<i>FORD</i>
Kerry Diczkaniec	<i>dis - SCON - iss</i>
Marte Vik Edvardsen	<i>Mar-TA</i>
Maren Vik Edvardsen	<i>MAR-en</i>
Jamie Gurtov	<i>GER - tahv</i>
Melissa Juhl	<i>JOO - wuhl</i>
Janine Lavoie	<i>JUH - nin luh - VWAH</i>
Alexandria Osorio	<i>AH - sore - ree - oh</i>
Sally Shelgren	<i>SHELL - gren</i>
Janna Walkup	<i>JAN - nuh WALL - cup</i>

NO.	NAME	POS.	HT.	YR.	HOMETOWN/PREVIOUS SCHOOL
01	Jamie Gurtov	GK	5-7	JR	Plantation, FL/Plantation
2	Leslie Del Rio	MF	5-3	JR	Miami Springs, FL/Miami Springs
3	Molly Nye	D	5-2	SR	Wesley Chapel, FL/Tampa Prep
4	Jordan Sims	MF	5-6	FR	Bradenton, FL/Bollettieri Sports Academy
5	Alexandra Osorio	F	5-6	SR	Miami, FL/G.H. Braddock
6	Lauren Lynch	MF	5-3	SR	Kennesaw, GA/Harrison
7	Janine Lavoie	D	5-6	SR	Saskatoon, SK, Canada/Bishop Mahoney
8	Marte Vik Edvardsen	CMF	5-9	FR	Oslo, Norway/Wang Academy
9	Maren Vik Edvardsen	F	5-8	FR	Oslo, Norway/Wang Academy
10	Janna Walkup	F	5-9	SR	Orlando, FL/Edgewater
11	Stephanie Dietrich	MF/D	5-9	SO	Amelia, OH/Glen Este
12	Angela Bonaffino	MF	5-5	JR	St. Catherines, ONT, Canada/Holy Cross
13	Melissa Juhl	GK	5-6	SR	Marietta, GA/Alan C. Pope
15	Jill Ford	F	5-7	SR	Orange Park, FL/George Mason Univ.
16	April Murphy	F	5-5	SO	Tulsa, OK/Jenks
18	Sarah Deacon	MF	5-4	SO	Omaha, NE/University of Nebraska
19	Heather Dyche	D	5-11	SO	Albuquerque, NM/University of Nebraska
20	Rachael Watkin	D	5-10	SO	Boca Raton, FL/Boca Raton
21	Danielle Foard	D	5-5	SO	Falls Church, VA/George C. Marshall
22	Sally Shelgren	MF/D	5-5	SO	Niceville, FL/Niceville
23	Jessica Driscoll	MF	5-2	SR	Marietta, GA/Walton
24	Ashley Halter	D	5-10	SO	Atlanta, GA/Lovett School
25	Christy Peacock	D	5-4	FR	Lilburn, GA/Parkview
26	Kim Johnson	D	5-6	SO	Tallahassee, FL/Elon College



# Positions and Hometowns

## 1998 Seminole Soccer Positional Chart



### State and Region Breakdowns

#### UNITED STATES (20)

##### FLORIDA (10)

Boca Raton  
Bradenton  
Miami  
Miami Springs  
Niceville  
Orange Park  
Orlando  
Plantation  
Tallahassee  
Wesley Chapel

Rachael Watkin  
Jordan Sims  
Alexandra Osorio  
Leslie Del Rio  
Sally Shelgren  
Jill Ford  
Janna Walkup  
Jamie Gurtov  
Kim Johnson  
Molly Nye

##### GEORGIA (5)

Atlanta  
Kennesaw  
Lilburn  
Marietta

Ashley Halter  
Lauren Lynch  
Christy Peacock  
Melissa Juhl, Jessica Driscoll

##### NEBRASKA (1)

Omaha

Sarah Deacon

##### NEW MEXICO

Albuquerque

Heather Dyche

##### OHIO (1)

Amelia

Stephanie Dietrich

##### OKLAHOMA (1)

Tulsa

April Murphy

##### VIRGINIA (1)

Falls Church

Danielle Foard

##### CANADA (2)

ONTARIO (1)  
St. Catherines

Angela Bonaffino

##### SASKATCHEWAN (1)

Saskatoon

Janine Lavoie

##### NORWAY (2)

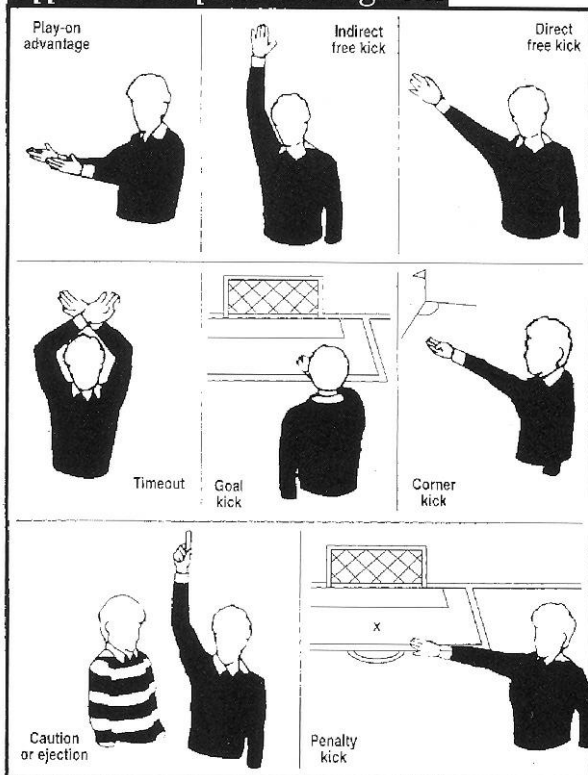
Oslo

Maren Vik Edvardsen,  
Marte Vik Edvardsen



# Game Rules

## Official Referee's Signals



**LENGTH OF GAME:** An NCAA soccer game is 90 minutes consisting of two equal halves of 45 minutes. The halftime interval is 10 minutes. If at the end of regulation time, the score is tied, the teams will play two extra periods of 15 minutes each.

**STARTING THE GAME:** The game is started by a kickoff which requires a player to kick the ball into the opponent's half of the field. A goal may not be scored directly from a kickoff. Kickoffs are used to restart the game following a goal or any halftime or overtime interval.

**BALL IN AND OUT OF PLAY:** The ball is designated out of play when the entire ball has crossed outside the entire boundary line. The ball is put back into play by one of the following:

- A. Corner kick** - Put into play by attacking team when ball is last touched by defending team.
- B. Goal kick** - Put into play by defending team when ball is last touched by attacking team.
- C. Throw-in** - Put into play by team that did not last touch ball.

**METHOD OF SCORING:** A goal is scored when the whole of the ball has passed over the goal line, between the goal posts and under the crossbar, provided it has not been intentionally thrown or carried by hand by a player on the attacking team.

**OFFSIDE POSITION:** A player is in an offside position if that player is nearer to the opponent's goal line than the ball, unless the player is in her own half of the field or play, or there are at least two opponents as near to their own goal line as the opposing player.

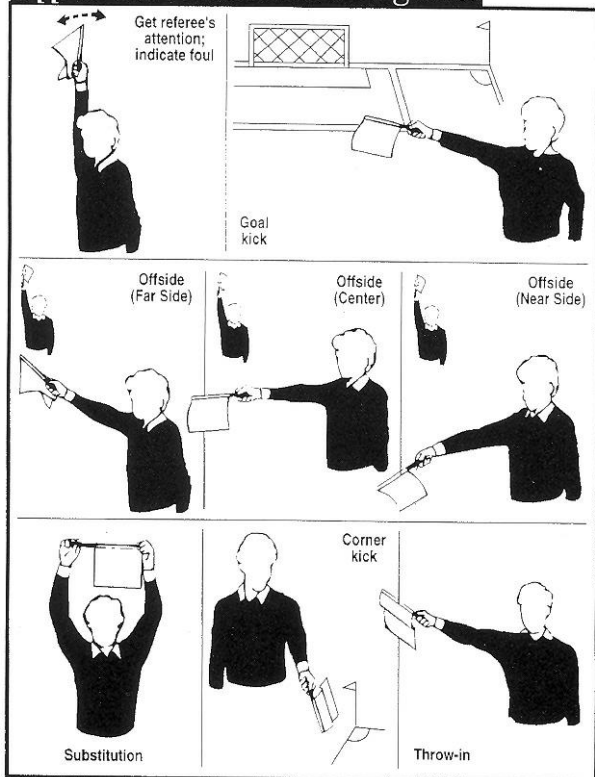
**WHEN OFFSIDE:** A player shall be declared offside and penalized for being in an offside position only if at the moment the ball touches or is played by a teammate, the player is, in the opinion of the referee, interfering with play, or seeking to gain an advantage by being in that position.

**VIOLATIONS AND MISCONDUCTS:** A player shall be penalized if she intentionally handles the ball, holds or pushes an opponent, violent or dangerous charging, fouling a goalkeeper or any dangerous play. A player shall be penalized if that player intentionally spits, kicks, strikes, attempts to kick or strike, uses blood or bleeding injuries improperly against an opponent, or jumps at an opponent.

**NUMBER OF PLAYERS:** The game is played by two teams of 11 players each, one of whom is the goalkeeper.

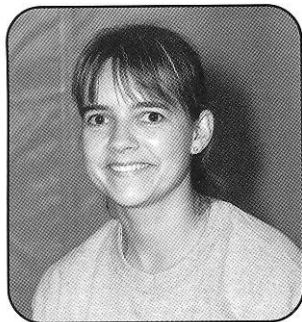
**SUBSTITUTIONS:** Either team can substitute up to 11 players at a time. Either team may substitute on a goal kick, corner kick, after a goal has been scored, between periods, when a player has been cautioned, when a player has been ordered off the field for an equipment change and in the event of an injury.

## Official Linesman's Signals





# Coaching Staff



## Heather Kerby-Nelson

### Head Coach

University of  
Saskatchewan- 1991  
University of Victoria- 1992  
4th season at FSU

"This is the year of new beginnings," FSU Head Coach Heather Kerby-Nelson said.

Although this is the fourth year for Kerby-Nelson and Seminole soccer, 1998 will serve as a year of new beginnings for the young program. With a new state-of-the-art soccer complex complete with offices, locker rooms, a press box and 1,000 seating capacity in the final stages of completion, Kerby-Nelson is ready to seize the long awaited opportunity to strengthen the program and take it to the level of national prominence in which Florida State so richly enjoys.

"This is a big step for our program," Kerby-Nelson said. "We finally have a place to call home with our own field, stadium and team building. It is time to start building tradition at Florida State."

Always keeping her eye on the program's future, the Vancouver, British Columbia native continues to lead the team in a direction that will compliment the high level of success Florida State and the ACC is accustomed.

"My philosophy is two-fold," Kerby-Nelson said. "For a player to succeed in our conference, they must have a love for the game and a burning desire to compete. Myself and my staff try to encourage the development of these qualities by providing a fun yet intense practice environment. The best way of creating this competitive atmosphere is by keeping score of every aspect that relates to the game in practice. Because players love to compete, they are constantly challenged to be their best and enjoy doing so."

Kerby-Nelson boasts an extraordinary Division I playing career. As a four year starter and captain for the University of Saskatchewan Huskies, she earned Canada-West honors. She was also named captain of the 1987 and 1991 Western Canada Games team. Her highest playing achievement was a selection to the first Canadian National Team program in 1987.

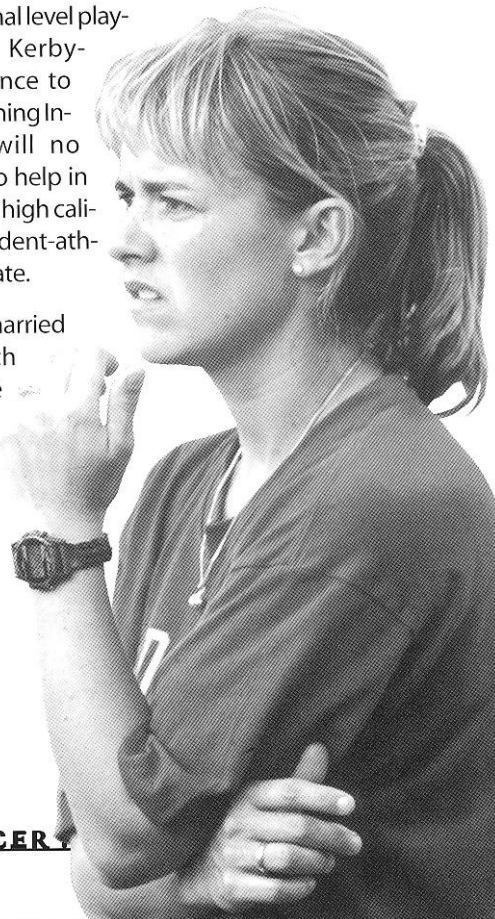
Her experience with women's soccer over the years has been diverse with stints at nearly all levels. She began coaching mini-soccer at the age of 17 and a few years later, accepted the Under-14 Girls Saskatchewan Games Team. Under her guidance, the team took the gold medal at the Games. Her next coaching positions included a Staff Coach position at Sask Soccer and the assistant coaching position at the University of Saskatchewan.

In 1992, Kerby-Nelson moved to Canada's west coast for the opportunity to continue her playing career and advance her coaching ability. While attending the National Coaching Institute, Kerby-Nelson guided the Victoria Gorge Soccer Club to the British Columbia Championships, as a player/coach. In addition to attending the National Coaching Institute, she became a Staff Coach for British Columbia Soccer and the National Training Center.

From 1993-94, Kerby-Nelson played for the Vancouver Marlins, the 1993 Canadian National Champions. In the summer of '93, she returned to Saskatchewan to coach the Sask First Team at the 1993 Canada Games. As one of only two female head coaches at the Games and only the third female to graduate from the National Coaching Institute, Kerby-Nelson is recognized as one of the top female coaches in Canada.

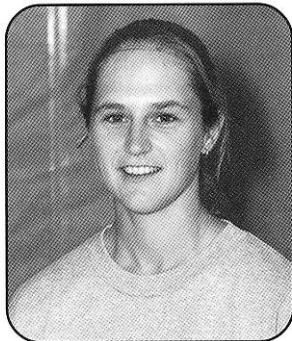
Exposure to national level players came with Kerby-Nelson's acceptance to the National Coaching Institute, which will no doubt continue to help in her quest to bring high caliber Division I student-athletes to Florida State.

Kerby-Nelson is married to assistant coach Paul Nelson. The two have a one-year old daughter, Jordan.





# Assistant Coaches



## Kerry Dziczkaniec

Assistant Coach  
George Washington- 1993  
3rd season at FSU

Entering into her third full season with the Florida State women's soccer program, Assistant Coach Kerry Dziczkaniec will use her knowledge of the game to serve as recruiting coordinator as well as the goalkeepers coach. Along with her on and off the field soccer duties, she will be charged with monitoring the student-athletes academic progress with the Universities' Academic Support Staff.

Prior to joining the Florida State staff, Dziczkaniec served for two seasons as an assistant coach on the Virginia women's soccer staff under former Cavalier head coach Lauren Gregg, who now serves with the United States national team.

While Dziczkaniec was at Virginia, the Cavaliers posted two top 10 finishes, as their goalkeepers were among the highest-rated in the Atlantic Coast Conference. For the 1995 season she had just one sophomore and two freshman to work with in the goal, still posting identical successful numbers as with a group of seasoned veterans.

In addition to the instructing and conditioning of the Cavalier keepers, Dziczkaniec's responsibilities at Virginia included monitoring the academic progress of the student-athletes, recruitment of prospective players as well as assisting with administrative affairs, including management of summer camp activities.

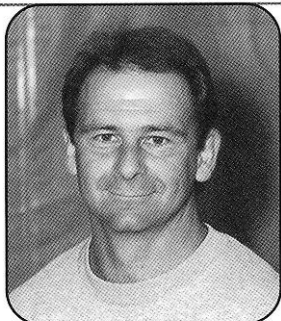
A 1993 graduate of George Washington University, she earned a degree in exercise and sports science. While attending George Washington, Dziczkaniec was a goalkeeper on the Colonial's women's soccer team. She earned team MVP honors in 1991, while being named team captain for two seasons (1991-92).

With solid experience as a Division I collegiate player, as well as coaching experience within ACC, Dziczkaniec brings unique perspective to a young Seminole soccer program.

Dziczkaniec was a member of the Virginia and Maryland Olympic Development Program coaching staffs from 1992-95. She holds a United States Soccer Federation "C" coaching license.

She has further playing experience with the United States Women's Inter Regional Soccer League's Baltimore Lady Bays and the Maryland Pride.

Among her accomplishments were playing with the 1996 Women's Amateur Division National Championship team, the Virginia-based, Soccer Academy United. They beat J.B. Marine of St. Louis, Mo. 6-0. She was also a starter on the championship squad with the Maryland Pride as they won the USISL "W" league 1996 National Championship and was selected to the all-tournament team at nationals.



## Paul Nelson

Assistant Coach  
Vancouver 86er's- ASL  
Vancouver Whitecaps- NASL  
Shamrock Rovers- Irish  
Premier League  
4th season at FSU

Assistant Coach Paul Nelson brings to the Florida State soccer program extensive playing and coaching experience from nearly every level, juniors to professional. His knowledge of women's soccer is a much valued asset to the FSU.

His professional experience and thorough understanding of what it takes to compete at the highest level will serve the purpose of continuing the challenge of building a nationally-recognized collegiate soccer program in Tallahassee and at Florida State.

Nelson first entered into the professional ranks back in 1977 and enjoyed seven competitive seasons at that level. He competed in the once-heralded North American Soccer League, indoor and outdoor seasons, and in Europe as well as Canadian National Team duties until 1985.

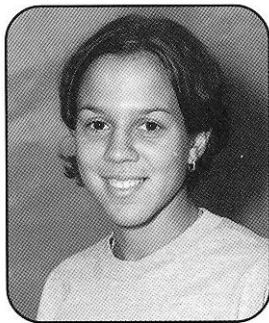
Recognized as one of the best players to be produced by the Canadian Soccer Association, his professional experience began at a young age. Nelson signed with the Vancouver Whitecaps of the NASL at the age of 18 and had the opportunity to play with and against some of



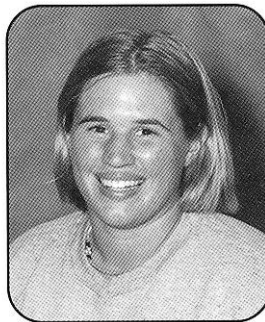


# Team Managers

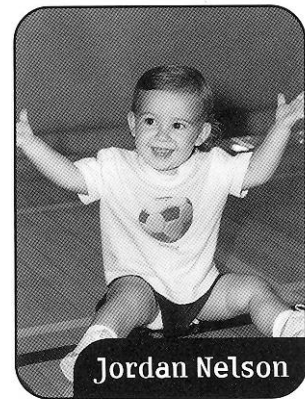
**Justina Torres**  
Team Manager



**Kelly Poole**  
Team Manager



**Soccer Staff**



**Jordan Nelson**

## Paul Nelson continued...

the best players in the world, including hall of famers, Pele, Johan Cryoff and Franz Beckenbauer.

One of the most memorable highlights of Nelson's professional career was eliminating the NASL's Northern Division powerhouse, the New York Cosmos, in the semi-finals of the Soccer Bowl, and a week later, defeating the Southern Division's equal, the Tampa Bay Rowdies, in Giant Stadium, to earn the 1979 league championship.

During the NASL's off season, Nelson played for the Dublin-based Shamrock Rovers of the Irish Premier League. The Rovers won both an Irish Cup and League Cup title during Nelson's tenure there. These victories qualified the Rovers to compete in Europe's Winners Cup and other European Cup competitions.

As a staff coach for British Columbia Soccer, the Canadian province national organization, Nelson boasted one

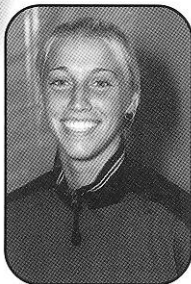
of the best amateur coaching records. His coaching successes have included two gold medal finishes, guiding British Columbia men's teams to the 1991 Western Canadian and the 1993 Canada Games championships. No other provincial men's coach can claim such a feat. In 1991, Nelson served as coach of the American Soccer League's Vancouver 86ers reserve team and was the assistant coach for the 86ers in 1992.

Prior to accepting the assistant coaching position at Florida State, Nelson spent two years coaching at the Canadian National Training Center and served as assistant coach for the Canadian Olympic squad in 1994.

Coach Nelson and Coach Heather Kerby-Nelson are the proud parents of Jordan (1).



# Player Biographies



## Angela Bonaffino

"Boff"

Midfielder 5-5, Junior  
St. Catherines, Ontario, Canada (Holy Cross)

### Bonaffino Career Statistics...

Year	MP/MS	Shots	Goals	Assists	Points	GWG	GWA
1996	20/20	30	4	4	12	0	1
1997	13/6	13	2	1	5	1	0
<b>Total</b>	<b>33/26</b>	<b>43</b>	<b>6</b>	<b>5</b>	<b>17</b>	<b>1</b>	<b>1</b>

**1997:** Appeared in 13 matches, starting in six...scored the game winning goal against Stetson...had 13 shots on goal. **1996:** Started in all 20 games...had four goals and four assists...named the team's "Rookie of the Year"...had the game winning assist against NC State...tied for third on the team with 12 points...had a goal and an assist against NC State and Tennessee. **High School:** Played five years with her school's varsity soccer team...was a three-time team captain...named "Rookie of the Year" as a freshman...named the team's MVP during junior and senior seasons...was a two-time all-state soccer player...named the school's Female Athlete of the Year upon graduation...head captain for the under-19 Ontario Provincial team in 1996...invited to the under-20 Canadian national team try-outs...one of the youngest carded athletes for the Canadian National Program...also played basketball and hockey. **Olympic Development Program:** Team Ontario, 1990-97...Canadian National Pool 1995-97. **Club Team:** Canadian Soccer Academy. **Personal:** Majoring in Education...born February 9, 1977.



## Leslie Del Rio

"Chia"

Midfielder/Defender 5-3, Junior  
Miami Springs, Florida (Miami Springs)

### Del Rio Career Statistics...

Year	MP/MS	Shots	Goals	Assists	Points	GWG	GWA
1996	3/2	5	0	0	0	0	0
1997	9/0	6	1	0	2	0	0
<b>Total</b>	<b>12/2</b>	<b>11</b>	<b>1</b>	<b>0</b>	<b>2</b>	<b>0</b>	<b>0</b>

**1997:** Played in nine matches...scored the final goal against Louisiana State...had six shots on goal. **1996:** Appeared in the first three games of the season, while starting against Appalachian State and Virginia...injured for the remainder of the season during the Virginia game...had five shots on goal in three matches, four against ASU. **High School:** A four-year varsity letterwinner...named team captain for her junior and senior seasons...an All-Dade County selection for four straight years...received all-state honors in '95...an Honor Roll student...a member of the Sorota Service Club...1995-96 All-Dade County Player of the Year. **Olympic Development Program:** Florida State Team, 1993-96...active member of the Region III pool. **Club Team:** Shasta Blitz. **Personal:** Born October 12, 1978...majoring in Business.



## Stephanie Dietrich

"Deats"

Defender, 5-9, Sophomore  
Amelia, Ohio (Glen Estes)

### Dietrich Career Statistics

Year	MP/MS	Shots	Goals	Assists	Points	GWG	GWA
1997	11/7	6	1	1	3	0	0

**1997:** Started in seven of her 11 appearances...strong defender...had six shots on goal...scored her single goal against #7 Duke. **High School:** Was named an NSCAA/Umbro Regional All-American...as a senior, named an all-Ohio, all-city of Cincinnati and all-conference selection...lettered all four years...honored with the Scholar Athlete of the Year Award in 1996...named to the all-conference team for basketball...nicknamed "the Hammer." **Olympic Development Program:** Member of the ODP Region II Team (1993-97)...competed and attended U.S. ODP Youth National Camp for three years, most recently in San Diego...competed internationally with her ODP team (Denmark, 1995). **Personal:** Born November 8, 1978...enrolled in FSU's undergraduate studies program.



# Player Biographies

## Driscoll Career Statistics...

Year	MP/MS	Shots	Goals	Assists	Points	GWG	GWA
1995	14/6	8	3	2	8	0	0
1996	9/0	1	1	0	2	0	0
1997	14/0	6	3	1	7	1	0
Total	37/6	15	7	3	17	1	0

## Jessica Driscoll

"Granola"

Midfielder, 5-9, Senior  
Marietta, Georgia (Walton)



**1997:** Appeared in 14 matches...recorded six shots...scored three goals including the game winner Louisiana State. **1996:** Appeared in nine games...had a goal on her lone shot of the season against Jacksonville State. **1995:** Played in 14 matches, while starting six...had eight shots on goals, scoring three times...had two scores in a 11-0 triumph over Jacksonville...had the opening goal at the 16:34 mark in FSU's 4-1 win over Iowa State. **High School:** Lettered all four years in high school...also played basketball...named to her high school's honor roll. **Club Team:** Top Hatters and Blackburn. **Personal:** Majoring in Nutrition and Fitness...born January 20, 1976.

## Foard Career Statistics

Year	MP/MS	Shots	Goals	Assists	Points	GWG	GAA
1997	19/12	3	0	1	1	0	0

## Danielle "Dee" Foard

"Dee"

Defender, 5-5, Sophomore  
Falls Church, Virginia (George C. Marshall)



**1997:** Started in 12 of her 19 matches appearances...had three shots on goal...was named to the All-Freshman Southeast team by Soccer Buzz. **High School:** An all-region player all four years in high school...also lettered in softball, tennis and basketball...named her school's top female athlete in 1997...a scholar award winner 1994-97...an honor roll student...member of the college partnership program...voted class vice president for junior year. **Olympic Development Program:** Member of ODP Region I Team (1994-97)...competed internationally with her ODP team (Europe, 1996; China, 1997)...attended U.S. Youth National Camp, August 1995. **Club Team:** Gunston Legend. **Personal:** Born October 19, 1979...majoring in Biology.

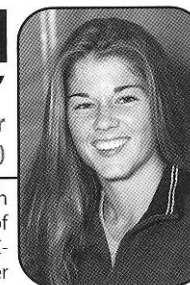
## Ford Career Statistics...

Year	MP/MS	Shots	Goals	Assists	Points	GWG	GWA
1997	20/18	31	5	1	11	1	1

## Jill Ford

"BQ"

Forward/Midfielder, 5-7, Senior  
Orange Park, Florida (George Mason Univ.)



**1997:** Played in all 20 matches and started in 18...co-leader in scoring with five goals...scored the game winning goal against South Florida...led the team in shots with 31...had the game winning assist against Alabama-Birmingham. **George Mason:** Started 20 out of 21 matches as a sophomore...scored four goals and two assists for 10 points in 1996...had the game winning goal against UNC-Wilmington in '96...saw action in 20 of 21 games as a freshman, starting in 13...had five goals and two assists for 12 points in 1995...her 12 points was third highest on the team...scored against American University in the first round of the NCAA Tournament during her freshman season. **High School:** Named Florida high school female "Player of the Year" and the Florida 6A "Player of the Year" as a senior at Orange Park High School...scored 52 goals and 22 assists in her final year and 59 goals and 26 assists as a sophomore...injured during junior season...two-time all state performer...named County and Florida Times-Union "Player of the Year" in 1995...**Personal:** Born April 23, 1977...majoring in Nutrition and Fitness.



# Player Biographies



## Jamie Gurtov

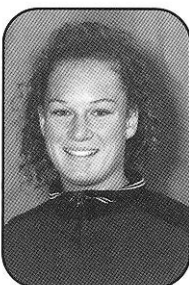
"Gurty"

Goalkeeper, 5-7, Junior  
Plantation, Florida (Plantation)

### Gurtov Career Statistics...

Year	MP/MS	Min	Sh	Svs	GA	GAA	GS%	SO	Rec
1996	4/0	147	10	3	3	1.83	50%	0.5	0-0-0
1997	7/0	276	35	14	4	1.30	78%	2	0-0-0
<b>Total</b>	<b>11/0</b>	<b>423</b>	<b>45</b>	<b>17</b>	<b>7</b>	<b>1.49</b>	<b>71%</b>	<b>2.5</b>	<b>0-0-0</b>

**1997:** Appeared in seven matches...played in goal against Wofford, Elon College, Stetson, Louisiana State, Alabama-Birmingham, Tennessee and North Carolina...had 14 saves and a 1.30 goals against average...recorded assisted shutouts against Louisiana State and Alabama-Birmingham. **1996:** Appeared in four matches all season as back up to Melissa Juhl in goal...saw time against Jacksonville, North Florida and North Carolina (twice)...on 10 shots, had three saves and three goals against...had an assisted shut out against Jacksonville...recorded a season-high three saves against UNF. **High School:** A four-year letterwinner for the Colonels...three-time team captain...named team MVP two years...named the Outstanding Senior Female Athlete of the Year upon graduation...named to the all-Broward County soccer team three straight years...received 1995 all-state honorable mention honors...also a three-year letterwinner in softball...member of the student council...an Honor Roll student. **Olympic Development Program:** Florida State Team, 1993-97. **Club Team:** Shasta Blitz. **Personal:** Majoring in Criminology...born March 15, 1978.



## Ashley Halter

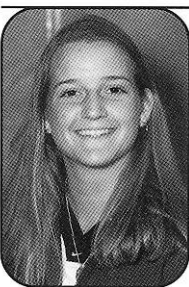
"Crash"

Defender, 5-10, Sophomore  
Atlanta, Georgia (The Lovett School)

### Halter Career Statistics

Year	MP/MS	Shots	Goals	Assists	Points	GWG	GWA
1997	19/5	10	1	1	3	0	1

**1997:** Appeared in 19 matches and started five...recorded 10 shots...had the game winning assist against Louisiana State...scored her one goal against Wofford. **High School:** Named to the all-city team in her junior and senior years...also the team's MVP after her senior season...member of the Georgia state team (1993-97)...club team state champions (1995-96, 1996-97), regional finalists (1995-96), Texas Cup champions (1995)...member of the National Honor Society...also played varsity basketball all four years **Club Team:** Tophatters '97 Gold. **Personal:** Born January 28, 1979...majoring in Biology



## Melissa Juhl

"Juhl's"

Goalkeeper, 5-6, Senior  
Marietta, Georgia (Alan C. Pope)

### Juhl Career Statistics...

Year	MP/MS	Min	Sh	Svs	GA	GAA	GS%	SO	Rec
1995	15/15	1,266	277	154	36	3.06	81%	1	4-11-1
1996	20/20	1,713	191	76	32	1.68	70%	7.5	12-7-1
1997	20/20	1,533	224	62	44	2.58	58%	4	8-12-0
<b>Total</b>	<b>55/55</b>	<b>4,512</b>	<b>692</b>	<b>293</b>	<b>111</b>	<b>2.21</b>	<b>735</b>	<b>12.5</b>	<b>24-30-2</b>

**1997:** Started in goal all 20 matches...recorded 62 saves off of 224 shots...had a 2.58 goals against average...recorded four shutouts and had an 8-12-0 record...**1996:** Started all 20 matches in goal for the Seminoles...recorded 76 saves off of 191 shots...had a 1.68 goals against average...recorded 7.5 shut out on the year...named to the All-ACC and All-Southeast Region second team...earned a spot on Soccer America's Team of the Week after a shutout of then-10th-ranked Clemson...also named the ACC Player of the Week on October 21st...had a season-high 13 saves against Mississippi...recorded 10 saves against Florida. **1995:** Appeared and started 15 matches, before sustaining a season-ending injury at the Georgia Tournament against the Bulldogs...led the conference with her 155 saves, which also broke the ACC single season record and helped the Tribe break the single season record for team goalie saves (197)...selected the team's MVP for defense...broke a bone in her pinky finger in the final minutes of FSU's 5-4 loss to Georgia...recorded 155 saves, with 43 goals against for a 3.06 goals allowed average...held Jacksonville scoreless for the Tribe's lone shutout on the season...was sixth in the ACC with a .783 save percentage...recorded an impressive 16 saves in her collegiate debut in against Florida...recorded a season-high 21 saves against Duke. **High School:** Lettered all four years...garnered all-state team honors as a junior and senior...a four-time all-city team selection...member of the Soccer Scene All-State Team...pegged the team's Best Defensive Player...twice led squad to a first place regional finish...also played volleyball...involved in the Environmental Club and PRIDE. **Olympic Development Program:** under-19 Georgia State Team, 1988-96. **Club Team:** Cobb Union Fury...club team was the 1994 Georgia state champions. **Personal:** Majoring in Education...born April 13, 1977.



# Player Biographies

## Lavoie Career Statistics...

Year	MP/MS	Shots	Goals	Assists	Points	GWG	GWA
1995	19/19	5	3	1	7	0	0
1996	20/20	15	0	1	1	0	1
1997	18/15	0	0	1	1	0	0
<b>total</b>	<b>57/54</b>	<b>40</b>	<b>3</b>	<b>3</b>	<b>9</b>	<b>0</b>	<b>1</b>

## Janine Lavoie

**"Nindiana"**

**Defender, 5-6, Senior**  
Saskatoon, Saskatchewan, Canada  
(Bishop James Mahoney)



**1997:** Started in 15 of her 18 matches appearances...recorded an assist against Wofford. **1996:** Started all 20 games...had 15 shots on goal...recorded the game-winning assist against Jacksonville State...provides highly experienced leadership in the backfield. **1995:** Appeared and started in all 19 matches...named the team's MVP for the programs inaugural 1995 season...with only five shots on goal, recorded three scores and one assist...earned seven points to lead all defenders...will go down in history for scoring the program's first regular season goal at exactly 10 minutes into the match in a 5-1 victory against West Florida, also the program's first home goal...recorded FSU's lone goal against top-ranked North Carolina, which put the Seminoles in the lead against the Tar Heels. **High School:** Four year member of senior girls soccer...two time team captain...selected the squad's Most Outstanding/Valuable Player throughout her high school career...also played basketball for four seasons...recipient of the Senior Girls Basketball Leadership Award...named school's Female Athlete of the Year...a member of Saskatchewan's Women's (under 23) Jeux Du Canada Games soccer team in 1992-93...named the 1993 Saskatchewan Soccer Provincial Youth Female Athlete of the Year...played as a Junior National Pool Player for the Canadian Soccer Association...an honor roll student...a member of the Student Representative Council. **Club Team:** Hollandia F.C. **Personal:** Majoring in Criminology...born March 29, 1976.

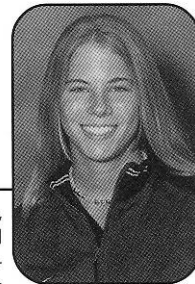
## Lynch Career Statistics...

Year	MP/MS	Shots	Goals	Assists	Points	GWG	GWA
1995	19/12	38	6	2	14	0	0
1996	18/7	22	4	2	10	1	2
1997	20/16	13	0	4	4	0	0
<b>total</b>	<b>57/35</b>	<b>73</b>	<b>10</b>	<b>8</b>	<b>28</b>	<b>1</b>	<b>2</b>

## Lauren Lynch

**"Shake n' Bake"**

**Forward, 5-3, Senior**  
Kennesaw, Georgia (Harrison)

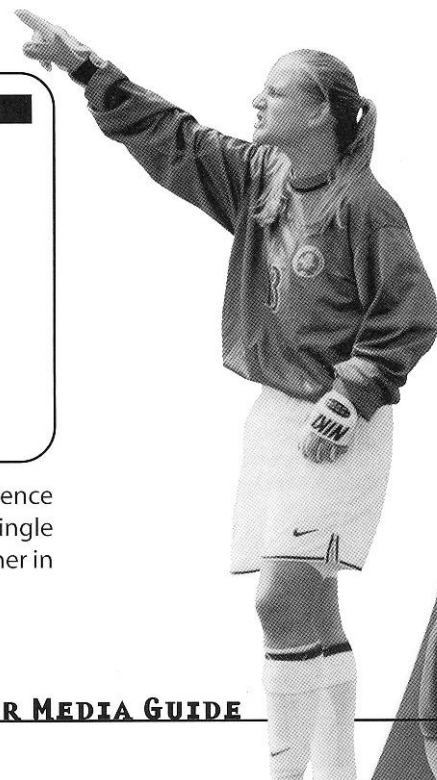


**1997:** Played in all 20 matches and started in 16...recorded 13 shots on goal...had four assists. **1996:** Appeared in 18 matches, starting in seven...placed fourth on the team with 10 points...had the third most goals (4) on the team...had one game winning goal and two game winning assists...scored the game winner against 10th-ranked Clemson...had game-winning assists against Tennessee and Furman...second all-time with 10 career goals. **1995:** Appeared in all 19 matches, starting 12...led the team with 38 shots on goal and tied for the team scoring lead with six goals...also recorded two assists...placed second on the squad with 14 points...had a goal in FSU's first-ever competition, a 3-0 preseason win over Florida Atlantic...tallied a three-goal hat trick against Georgia. **High School:** A four-year letterwinner...garnered All-Cobb County Team honors four years...pegged squad's Best Offensive Player four years...a three-time All-Star selection...earned Athlete of the Week honors...an honor roll student. **Olympic Development Program:** Under-19 Georgia State Team, 1991-93. **Club Team:** Cobb Union Fury. **Personal:** Played organized soccer since the age of five...also played indoor soccer since 1985...majoring in Education...born March 27, 1977.

## Melissa Juhl's Record Breaking 1995 Season

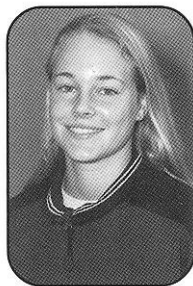
Opponent	Saves	Total	Opponent	Saves	Total
Florida	16	16	Iowa State	5	102
West Florida	2	18	Nebraska	15	117
Maryland	7	25	Virginia	8	125
Jacksonville	2	27	North Carolina	17	142
Memphis	3	30	N.C. State	1	143
Louisiana State	13	43	Georgia	12	155
Duke	21	64	Auburn	DNP	155
Georgia Southern	10	74	Wake Forest	DNP	155
Clemson	12	82	North Carolina	DNP	155
Marquette	15	97			

Melissa Juhl's 155 saves in a singles season broke the Atlantic Coast Conference record and helped Florida State break the team record for goalie saves in a single season (197). Her 155 saves was 57 more saves than the second place finisher in that category, N.C. State's Katherine Mertz's 98.





# Player Biographies



## April Murphy

"Ape"

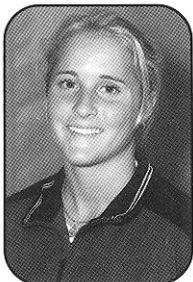
Midfielder, 5-5, Sophomore  
Tulsa, Oklahoma (Jenks)

### Murphy Career Statistics...

Year	MP/MS	Shots	Goals	Assists	Points	GWG	GWA
1997	20/13	26	3	0	6	0	0

**1997:** Appeared in all 20 matches, starting in 13...second on the team with 26 shots...was one of three players with three goals on the season, including goals against Wofford, South Alabama, and UNC-Greensboro. **High School:** Became the all-time leading scorer during her senior year at Jenks High School...named to the all-state team as a senior...an all-conference and district member all four years...won the state championship with her club team all four years...an honor roll student. **Olympic Development Program:** Member of ODP Region III Pool (1996-97)...part of the ODP program for five years. **Club Team:** BlackWatch. **Personal:**

Born April 2, 1979...has played soccer competitively for 12 years...majoring in English.



## Molly Nye

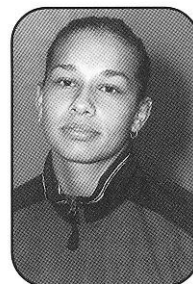
"Sly"

Defender, 5-2, Senior  
Wesley Chapel, Florida (Tampa Prep)

### Nye Career Statistics...

Year	MP/MS	Shots	Goals	Assists	Points	GWG	GWA
1995	17/15	5	0	0	0	0	0
1996	18/7	1	0	0	0	0	0
1997	11/0	6	0	0	0	0	0
total	46/22	6	0	0	0	0	0

**1997:** Appeared in 11 matches during the season. **1996:** A superb defender...appeared in 18 matches, starting seven...had a shot on goal against 10th-ranked Clemson...along with Allison Hogan, named the team's "Most Improved Player." **1995:** Appeared in 17 matches, earning a starting role in 15 of those matches. **High School:** Named to the All-Hillsborough County team as a junior and senior...also played volleyball, track and tennis...past President of the Key Club...named to the Honor Roll as a junior and senior...was a Junior Olympian in gymnastics. **Club Team:** Countryside Lightning. **Personal:** Born September 24, 1976...majoring in Business.



## Alexandra Osorio

"Alex"

Forward, 5-6, Senior  
Miami, Florida (G.H. Braddock Senior)

### Osorio Career Statistics...

Year	MP/MS	Shots	Goals	Assists	Points	GWG	GWA
1995	19/19	31	6	3	15	1	1
1996	20/20	31	3	3	9	1	1
1997	17/12	23	3	6	12	1	1
total	56/51	85	12	12	36	3	3

**1997:** Started 12 of her 17 match appearances...injured early in match against Stetson but reentered...missed three matches due to the injury...had 23 shots on goal...scored three goals including the game winning goal against Elon College...had a game winning assist against South Florida. **1996:** Started all 20 matches during the season...has started every match the last two years...recorded 31 shots on goal, third most on the team...had three goals and three assists for a total of nine points...had one game-winning goal (against Appalachian State) and one game-winning assist (against East Carolina)...scored FSU's lone goal against top-10 ranked Virginia...second among returning players with nine career goals...tied for first with six career assists. **1995:** One of two players to appear and start all 19 matches...second on the team with 31 shots on goal...tied for the team scoring lead with six goals and led the team with three assists...was the overall team leader with 15 points...scored the game winning goal against West Florida...tallied a hat trick in a 11-0 drubbing of Jacksonville...struck first in a 1-1 tie against Louisiana State...had a goal in FSU's first-ever competition, a 3-0 preseason win over Florida Atlantic...just six matches into the season her 12 points placed her fifth among the highly-talented ACC competitors. **High School:** Lettered four years...named squad's Most Valuable Player three years...was the leading scorer for Dade County...garnered all-county honors three years...selected the Miami Herald's Player of the Year...earned Rookie of the Year honors as a freshman...an honor roll student. **Club Team:** Braddock S.C. **Personal:** Born August 5, 1976...majoring in Criminology.





# Player Biographies

## Shelgren Career Statistics

Year	MP/MS	Shots	Goals	Assists	Points	GWG	GWA
1997	16/4	10	0	0	0	0	0

## Sarah "Sally" Shelgren

"Sally"

Midfielder, 5-5, Sophomore  
Niceville, Florida (Niceville)



**1997:** Appeared in 16 matches and started four...recorded 10 shots on goal. **High School:** A four year letterwinner while playing at three high schools...named an all-conference player while playing for the boy's varsity squad at Izmir High School in Turkey...also a team captain while in Turkey...named the team captain at Niceville High School...an honor roll student...member of the drama club, aeroclub and band. **Club Team:** Women's Turkish League. **Olympic Development Program:** Member of the ODP Region III Pool...competed with ODP in Alabama, 1996. **Personal:** Born December 24, 1978...has played soccer for over 13 years...daughter of Roxy and Harold Shelgren...enrolled in FSU's undergraduate studies program.

## Walkup Career Statistics...

Year	MP/MS	Shots	Goals	Assists	Points	GWG	GWA
1995	17/15	10	3	0	6	0	0
1996	17/17	7	2	0	4	0	0
1997	17/12	23	3	6	11	1	1
total	51/44	40	8	6	21	1	1

## Janna Walkup

"Animal"

Midfielder, 5-9, Senior  
Orlando, Florida (Edgewater)



**1997:** Appeared in all 20 matches, starting 19...had 19 shots on goal...led the team with five goals and three game winning goals...scored the game winning goals against Wofford, South Alabama and Alabama-Birmingham...had a game winning assist against Appalachian State. **1996:** Appeared and started in 17 matches...missed a few matches due to injury...had two goals off of just seven shots...scored the first goal of the season against West Florida and had another one later against Furman. **1995:** Appeared in 17 matches, while starting 15...with 10 shots on goal scored three times against Maryland, Jacksonville and Memphis. **High School:** Lettered four years...three-time team Most Valuable Player...team captain two years...was twice named All-Metro Player of the Year...received all-county honors all four seasons...also competed in softball, cross country, tennis and volleyball...named the 1994 and 1995 school Athlete of the Year...an honor roll student...ranked 15th out of a class of 416...recipient of the Downtown Athletic Club of Orlando Female Scholar/Athletic Award sponsored by the *Orlando Sentinel*...served as Student Body Vice President...1994 Homecoming Queen. **Club Team:** Seminole Blaze. **Personal:** Majoring Nutrition and Fitness...born May 17, 1977.

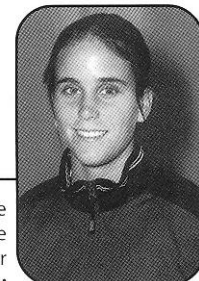
## Watkin Career Statistics

Year	MP/MS	Shots	Goals	Assists	Points	GWG	GWA
1997	19/19	6	1	1	3	0	1

## Rachael Watkin

"Wats"

Defender, 5-10, Sophomore  
Boca Raton, Florida (Boca Raton)



**1997:** Started in all 19 of her match appearances...recorded six shots on goal...scored her single goal against Elon College...had a game winning assist against South Alabama. **High School:** Named a 1995 all-state sweeper and a 1996 all-state midfielder...member of the Boca Select team (1992-97)...a member of the Boca Raton U17 Select team...named to the all-state team sophomore through senior seasons...named her team's MVP and captain junior and senior years...also lettered in softball. **Olympic Development Program:** Member of the Florida ODP Team (1994-95). **Club Team:** Team Boca. **Personal:** Born October 10, 1979...enrolled in FSU's undergraduate studies program.

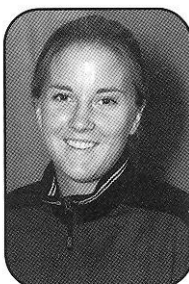
# Newcomers Biographies



## Sarah Deacon

Midfielder, 5'1, Sophomore  
Omaha, Nebraska (University of Nebraska)

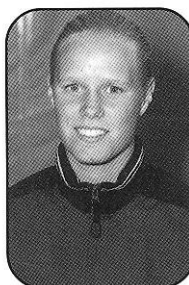
Excellent ball handling skills and field sense...a confident and composed player...will add depth to midfield and forward positions. **At Nebraska:** Played one year at the University of Nebraska...**Olympic Developmental Program:** Region II Pool Team member for the U-17. **High School:** All-Metro team three years...was an all-state and captain her senior year...member of Shrine Bowl All-Star team senior year...honor roll student all four years...member of National Honor Society and Principal's Advisory Board...President of Physics club...all-state honorable mention two years for basketball. **Personal:** Born August 30, 1978...majoring in biology.



## Heather Dyche

Defender, 5'11, Sophomore  
Albuquerque, New Mexico (University of Nebraska)

Brings in intensity and great communications skills that will hinder opponents scoring drive...experience and strong skills will solidify defense. **At Nebraska:** Played one year for the University of Nebraska. **High School:** Played four years...all-city, all-district, and all-state all four years...district Player of the Year as a junior or a senior...Defensive Player of the Year as a senior...Honorable Mention All-American her senior year...honor roll student...member of Young Life...also played basketball all four years...All-City, All-District, and All-State for three years as well as a 2nd team All-American her senior year. **Personal:** Born September 30, 1978...majoring in elementary education.



## Maren Vik Edvardsen

Forward, 5'8, Freshman  
Oslo, Norway (Wang)

A quick player who will be a thrill to watch...speed and strong ball handling skills make her a threat on the goal. **Club:** Selected for Part of Country Team (15-16), an equivalent to the Olympic Developmental Program Regional Team...member of the Regional Team of Oslo, also an Olympic Developmental Program equivalent state team...participated in Norway's U-18 National Team Camp...currently with KFUM Club. **Personal:** Among the top 50 cross country skiers in Norway...twin sister Marte also playing for FSU...plays piano and loves landhockey...born January 17, 1979...enrolled in FSU undergraduate studies.



## Marte Vik Edvardsen

Central Midfield, 5'9, Freshman  
Oslo, Norway (Wang)

Strong player both physically and mentally...will be an offensive threat out of the air and in the midfield. **Club:** Selected and served as captain for the Part of Country Team (15-16), an equivalent to the Olympic Developmental Program Regional Team...member of the Regional Team of Oslo, an equivalent to the Olympic Developmental Program state team...played club for ASKER and I.L. Koll...currently with KFUM Club. **Personal:** Among the top 50 cross country skiers in Norway...was third best in the country in orienteering when she was 15...twin sister Maren also playing for FSU...born January 17, 1979...enrolled in FSU undergraduate studies.

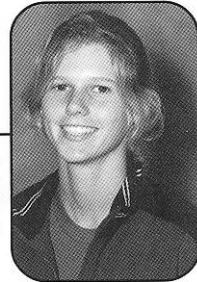




# Newcomers Biographies

## Kim Johnson

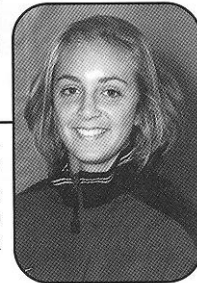
Defender, 5-6, Sophomore  
Tallahassee, Florida (Elon College)



Transfer from Elon College...played high school soccer in Tallahassee at Maclay...will be an asset to the defense as a marking back. **At Elon:** played one year at Elon College...made the Dean's List in 1998. **High School:** played four years for Maclay...was All-Big Bend, All-District, and All-State her junior and senior years...was the Most Valuable Player her senior year...a member of the 1997 Florida All-Star Soccer Team...also ran track four years in high school, finishing 4th in the state in the 100-meter hurdles her senior year. **Personal:** A member of the Pre-Law Society...born November 9, 1977...majoring in political science.

## Christy Peacock

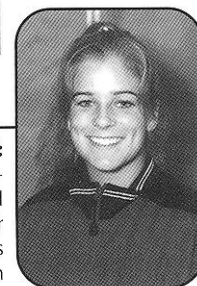
Defender, 5'4, Freshman  
Lilburn, Georgia (Parkview)



Strong defender who will add depth to the marking back position. **High School:** Lettered all four years...was named Most Valuable Player as a junior and senior...member of state high school champion team as a junior...team ranked 9th nationally in 1997 and 6th in 1998...Gwinnett Post All-County Team and Atlanta Journal/Constitution All-County Team as a senior...honor roll student all four years...Academic letter and varsity soccer scholar athlete for four years...graduated with honors. **Club:** Member of the '80 Steamers for 10 seasons...U-14 and U-16 Georgia Open Cup Champions in 1994 and 1996 respectively. **Personal:** Loves to cook and water ski...born September 27, 1979...enrolled in FSU undergraduate studies.

## Jordan Sims

Midfielder, 5'6, Freshman  
Bradenton, Florida (Bradenton Academy/Adidas Soccer Academy)



High work ethic...technical strength and ballwinning ability...will add depth to midfield and sweeper positions. **High School:** Trained full-time at Bollettieri Sports Academy...received Best Work Ethic Award 1996-98...honor roll student...member of the National Honor Society...President of Student Council and Leadership speaker at graduation...played basketball in high school and was on the All-Area All-Star team as well as a 1st Team All-County in 1997 and 1998. **Olympic Developmental Program:** member of Ohio South State Team 1993-1997. **Club:** Member of Hammer F.C. team in Cincinnati, Ohio 1995-97...played on the U-17 Adidas Soccer Academy Men's team 1996-1997...member of Countryside Lightning her senior year...assisted the championship goal on the 1998 Florida State Cup Champion team...member of the semifinalist team in the 1998 Southern Regionals. **Personal:** Born August 26, 1979...majoring in sports marketing or pre-medicine.

# 1997 Game By Game



## Florida State 1, Wake Forest 2

Friday, August 29, Spry Stadium, Winston-Salem, NC

Attendance: 847

### Scoring:

Florida State • Grimsley (Osorio), 0:41 (1-0, FSU)

Wake Forest • Shropshire (Snyder), 20:22 (1-1, FSU-Wake Forest)

Wake Forest • Schiling (Shropshire), 32:11 (2-0 Wake Forest)

Score by Periods	1	2	F
Florida State	1	0	1
Wake Forest	2	0	2

**Corner Kicks:** Wake Forest 7, Florida State 4

**Total Shots:** Wake Forest 17, Florida State 9

**Fouls:** Wake Forest 10, Florida State 12

**Goalie Saves:** Wake Forest 8 (Klein 8), Florida State 8 (Juhl 8)

## Florida State 2, Appalachian State 0

Sunday, August 31, Kidd Brewer Stadium, Boone, NC

Attendance: 150

### Scoring:

Florida State • Grimsley (Walkup), 27:00 (1-0, FSU)

Florida State • Walkup (Osorio), 89:00 (2-0, FSU)

Score by Periods	1	2	F
Appalachian State	0	0	0
Florida State	1	1	2

**Corner Kicks:** Florida State 7, Appalachian State 6

**Total Shots:** Florida State 8, Appalachian State 3

**Fouls:** Florida State 13, Appalachian State 18

**Goalie Saves:** Florida State 2 (Juhl 2), Appalachian State 4 (4)

## Florida State 5, Wofford 1

Friday, September 5, SISC, Tallahassee

Attendance: 878

### Scoring:

Wofford • Boyce (Meadows), 15:41 (1-0 Wofford)

Florida State • Grimsley (Torres), 23:00 (1-1 FSU-Wofford)

Florida State • Walkup (unassisted), 28:00 (2-1, FSU)

Florida State • Ford (Osario), 29:00 (3-1, FSU)

Florida State • Murphy (Lynch), 51:00 (4-1 FSU)

Florida State • Halter (Lavoie), 75:00 (5-1 FSU)

Score by Periods	1	2	F
UVa	1	0	1
Florida State	3	2	5

**Corner Kicks:** Florida State 0, Wofford 7

**Total Shots:** Florida State 5, Wofford 24

**Fouls:** Florida State 18, Wofford 18

**Goalie Saves:** Florida State 6 (Juhl 6), Wofford 3 (Muschos 3)

## Florida State 0, North Carolina 9

Sunday, September 7, Robert A. Fetzer Field, Chapel Hill, NC

Attendance: 2,456

### Scoring:

North Carolina • McDonald (Roberts), 9:47 (1-0 UNC)

North Carolina • Schwoy (Roberts), 12:28 (2-0 UNC)

North Carolina • Florance (Confer), 24:06 (3-0 UNC)

North Carolina • Stoecker (Fettig), 33:06 (4-0 UNC)

North Carolina • Fair (Karvelsson), 40:52 (5-0 UNC)

North Carolina • Parlow (unassisted), 55:21 (6-0 UNC)

North Carolina • Confer (Parlow), 58:36 (7-0 UNC)

North Carolina • Schwoy (Karvelsson), 83:24 (8-0 UNC)

North Carolina • Fettig (unassisted), 84:52 (9-0 UNC)

Score by Periods	1	2	F
Florida State	0	0	0
North Carolina	5	4	9

**Corner Kicks:** North Carolina 18, Florida State 0

**Total Shots:** North Carolina 31, Florida State 2

**Fouls:** North Carolina 5, Florida State 17

**Goalie Saves:** North Carolina 1 (Overgaard 1), Florida State 6 (Juhl 6)

## Florida State 2, South Alabama 1

Thursday, September 11, SISC, Tallahassee, FL

Attendance: 538

### Scoring:

South Alabama • Leahy (Thompson), 8:42 (1-0 South Alabama)

Florida State • Murphy (Osario), 75:18 (1-1 FSU-South Alabama)

Florida State • Walkup (Watkin), 79:00 (2-1 FSU)

Score by Periods	1	2	F
Florida State	0	2	2
Jacksonville	1	0	1

**Corner Kicks:** South Alabama 5, Florida State 10

**Total Shots:** South Alabama 8, Florida State 16

**Fouls:** South Alabama 16, Florida State 16

**Goalie Saves:** South Alabama 7 (Warnock 7), Florida State 5 (Juhl 5)

## Florida State 1, N.C. State 4

Sunday, September 14, Method Road Soccer Stadium, Raleigh, NC

Attendance: 219

### Scoring:

N.C. State • Boggs (Gallo/Ferguson), 47:56 (1-0 N.C. State)

N.C. State • Marsh (Gallo), 57:03 (2-0 N.C. State)

N.C. State • Christian (Gallo), 63:07 (3-0 N.C. State)

N.C. State • Blair (unassisted), 67:05 (4-0 N.C. State)

Florida State • Ford (Lynch/Grimsley), 71:33 (4-1 N.C. State)

Score by Periods	1	2	F
Florida State	0	1	1
North Florida	0	4	4

**Corner Kicks:** N.C. State 1, Florida State 5

**Total Shots:** N.C. State 16, Florida State 5

**Fouls:** N.C. State 16, Florida State 10

**Goalie Saves:** N.C. State 1 (Mertz 1), Florida State 4 (Juhl 4)

## Florida State 0, Maryland 4

Sunday, September 21, SISC, Tallahassee, FL

Attendance: 774

### Scoring:

Maryland • Basalyga (McCullough), 21:00 (1-0 Maryland)

Maryland • Sarver (Basalyga), 23:00 (2-0 Maryland)

Maryland • Mynarski (Basalyga), 38:00 (3-0 Maryland)

Maryland • McCullough (unassisted), 55:00 (4-0 Maryland)

Score by Periods	1	2	F
Florida State	0	0	0
East Carolina	3	1	4

**Corner Kicks:** Maryland 5, Florida State 2

**Total Shots:** Maryland 9, Florida State 6

**Fouls:** Maryland 14, Florida State 26

**Goalie Saves:** Maryland 5 (Serrin 5), Florida State 3 (Juhl 3)

## Florida State 1, Clemson 2

Friday, September 26, Riggs Field, Clemson, SC

Attendance: 838

### Scoring:

Florida State • Own goal off Massangale, 25:33 (1-0 FSU)

Clemson • Crawford (unassisted), 75:57 (1-1 FSU-Clemson)

Clemson • Burkett (unassisted), 78:01 (2-1 Clemson)

Score by Periods	1	2	F
Florida State	1	0	1
Duke	0	2	2

**Corner Kicks:** Clemson 7, Florida State 2

**Total Shots:** Clemson 14, Florida State 2

**Fouls:** Clemson 18, Florida State 24

**Goalie Saves:** Clemson 2 (Putnam 1, McCullom 1), Florida State 4 (Juhl 4)

## Florida State 1, Furman 2

Sunday, September 28, Eugene Stone, III Soccer Stadium

Attendance: 202

### Scoring:

Furman • Avre (Tollick), 40:30 (1-0 Furman)

Florida State • McCall (Foard), 81:30 (1-1 FSU-Furman)

Furman • Tollick (Sutton), 88:55 (2-1 Furman)

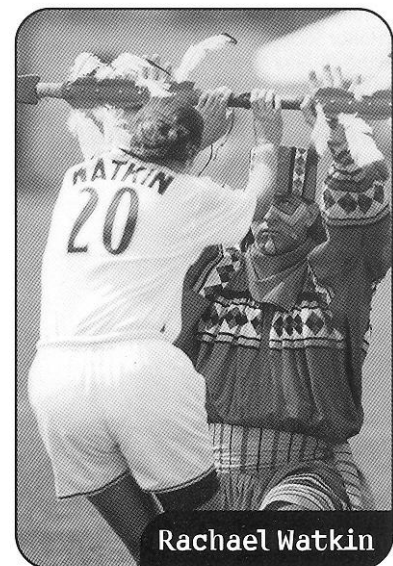
Score by Periods	1	2	F
Furman	1	1	2
Florida State	0	1	0

**Corner Kicks:** Florida State 7, Furman 1

**Total Shots:** Florida State 11, Furman 8

**Fouls:** Florida State 16, Furman 11

**Goalie Saves:** Florida State 3 (Juhl 3), Furman 3 (McNutt 3)



Rachael Watkin



# 1997 Game By Game

## Florida State 2, UNC-Greensboro 3

Friday, October 3, UNCG Soccer Stadium, Greensboro, NC

Attendance: 336

### Scoring:

UNC-Greensboro • Kantanen (Baker), 8:29 (1-0 UNCG)  
 Florida State • Osario (unassisted), 15:34 (1-1 FSU-UNCG)  
 Florida State • Murphy (Cervi), 39:50 (2-1, FSU)  
 UNC-Greensboro • Kantanen (Baker), 56:55 (2-2, FSU-UNCG)  
 UNC-Greensboro • Lord (Bullington), 88:25 (3-2 UNCG)

Score by Periods	1	2	F
UNC-Greensboro	1	2	3
Florida State	2	0	2

Corner Kicks: Florida State 0, UNCG 4

Total Shots: Florida State 7, UNCG 13

Fouls: Florida State 17, UNCG 11

Goalie Saves: Florida State 1 (Juhl 1), UNCG 1 (Domitrovits 1)

## Florida State 3, Elon 0

Sunday, October 5, Bakatsias Field, Elon College, NC

Attendance: 133

### Scoring:

Florida State • Osario (Sedgewick), 19:50 (1-0 FSU)  
 Florida State • Watkin (unassisted), 20:58 (2-0 FSU)  
 Florida State • Walkup (Osario), 54:43 (3-0 FSU)

Score by Periods	1	2	F
Elon	0	0	0
Florida State	2	1	3

Corner Kicks: Florida State 5, Elon 0

Total Shots: Florida State 27, Elon 8

Fouls: Florida State 8, Elon 5

Goalie Saves: Florida State 4 (Juhl 2, Gurtov 2), Elon 9 (Cork 9)

## Florida State 3, Stetson 0

Friday, October 10, SIS, Tallahassee, FL

Attendance: 441

### Scoring:

Florida State • Bonaffino (unassisted), 50:00 (1-0, FSU)  
 Florida State • Osario (Lynch), 73:00 (2-0 FSU)  
 Florida State • Driscoll (Dietrich), 90:00 (3-0, FSU)

Score by Periods	1	2	OT	OT	F
Florida State	0	3	0	0	3
Mississippi	0	0	0	0	0

Corner Kicks: Stetson 1, Florida State 3

Total Shots: Stetson 1, Florida State 21

Fouls: Stetson 15, Florida State 14

Goalie Saves: Stetson 12 (Roy 12), Florida State 3 (Juhl 3)

## Florida State 3, Louisiana State 0

Sunday, October 12, SIS, Tallahassee, FL

Attendance: 222

### Scoring:

Florida State • Driscoll (Halter), 39:00 (1-0 FSU)  
 Florida State • Ford (Driscoll), 46:00 (2-0 FSU)  
 Florida State • Del Rio (Lynch), 80:00 (3-0, FSU)

Score by Periods	1	2	F
Florida State	1	2	3
Louisiana State	0	0	0

Corner Kicks: Louisiana State 0, Florida State 6

Total Shots: Louisiana State 4, Florida State 19

Fouls: Louisiana State 8, Florida State 10

Goalie Saves: Louisiana State 6 (Lanclès 6), Florida State 2 (Juhl 2)

## Florida State 0, Florida 6

Wednesday, October 15, Percy Beard Stadium, Gainesville, FL

Attendance: 1,433

### Scoring:

Florida • Yohe (Olinyk) 6:09 (1-0 UF)  
 Florida • Sellers (Mitts), 12:48 (2-0 UF)  
 Florida • Pini (unassisted), 61:25 (3-0 UF)  
 Florida • Sellers (Pini), 61:43 (4-0 UF)  
 Florida • Pini (Bass), 65:27 (5-0 UF)  
 Florida • Brendel (Brady), 70:52 (6-0 UF)

Score by Periods	1	2	OT	F
Florida State	0	0	0	0
Florida	2	4	0	0

Corner Kicks: Florida State 3, Florida 6

Total Shots: Florida State 4, Florida 25

Fouls: Florida State 10, Florida 13

Goalie Saves: Florida State 4 (Juhl 4), Florida 3 (Harris 2, Pattishall 2)

## Florida State 1, Virginia 2

Saturday, October 18, Klockner Stadium, Charlottesville, VA

Attendance: 378

### Scoring:

Virginia • Kiladis (Botta), 47:10 (1-0 Virginia)  
 Florida State • Ford (unassisted), 61:24 (1-1 FSU-Virginia)  
 Virginia • Jovanovic (Hartwig), 84:38 (2-1 Virginia)

Score by Periods	1	2	F
Virginia	0	2	2
Florida State	0	1	1

Corner Kicks: Virginia 3, Florida State 0

Total Shots: Virginia 16, Florida State 2

Fouls: Virginia 11, Florida State 13

Goalie Saves: Virginia 1 (Boehm 1), Florida State 0

## Florida State 1, South Florida 0

Wednesday, October 22, USF Soccer Stadium, Tampa, FL

Attendance: 200

### Scoring:

Florida State • Ford (Osario), 89:32 (1-0, FSU)

Score by Periods	1	2	F
South Florida	0	0	0
Florida State	0	1	1

Corner Kicks: South Florida 4, Florida State 5

Total Shots: South Florida 10, Florida State 14

Fouls: South Florida 8, Florida State 7

Goalie Saves: South Florida 4 (Bostain 4), Florida State 4 (Juhl 4)

## Florida State 2, Duke 3

Sunday, October 26, SIS, Tallahassee, FL

Attendance: 211

### Scoring:

Florida State • Dietrich (Bonaffino), 10:00 (1-0 FSU)  
 Duke • Baggett (Melde), 27:00 (1-1 FSU-Duke)  
 Duke • Melde (unassisted), 34:00 (2-1 Duke)

Florida State • Driscoll (unassisted), 42:00 (2-2 FSU-Duke)

Duke • Baggett (unassisted), 99:00 (3-2 Duke)

Score by Periods	1	2	OT	F
Duke	2	0	1	3
Florida State	2	0	0	2

Corner Kicks: Duke 5, Florida State 4

Total Shots: Duke 7, Florida State 11

Fouls: Duke 22, Florida State 14

Goalie Saves: Duke 5 (Dallis 5), Florida State 0

## FSU 1, Univ. of Alabama-Birmingham

Friday, October 31, Birmingham, AL

Attendance: 95

### Scoring:

Florida State • Walkup (Ford) 79:17 (1-0 FSU)

Score by Periods	1	2	F
UAB	0	0	0
Florida State	0	1	1

Corner Kicks: UAB 2, Florida State 9

Total Shots: UAB 8, Florida State 12

Fouls: UAB 11, Florida State 10

Goalie Saves: UAB 6 (Braly 6), Florida State 6 (Juhl 6)

## Florida State 1, Tennessee 4

Sunday, November 3, Tennessee Soccer Complex, Knoxville, TN

Attendance: 786

### Scoring:

Florida State • Bonaffino (unassisted) 13:31 (1-0 FSU)  
 Tennessee • Lauter (Berrall), 29:12 (1-1 FSU-UT)  
 Tennessee • Michner (Rayburn), 55:21 (2-1 UT)  
 Tennessee • Markovich (unassisted), 55:59 (3-1 UT)  
 Tennessee • Lauter (Michner), 81:46 (4-1 UT)

Score by Periods	1	2	F
Tennessee	1	3	4
Florida State	1	0	1

Corner Kicks: Tennessee 9, Florida State 7

Total Shots: Tennessee 17, Florida State 10

Fouls: Tennessee 8, Florida State 10

Goalie Saves: Tennessee 5 (Shluly 5), Florida State 6 (Juhl 6)

## Florida State 0, North Carolina 5

Thursday, November 7, Winston-Salem, N.C.

ACC Tournament

### Scoring:

North Carolina • Stoecker (Falk), 10:06 (1-0 UNC)  
 North Carolina • Parlow (McDonald), 17:39 (2-0 UNC)  
 North Carolina • Whittier (Lawler), 25:04 (3-0 UNC)  
 North Carolina • Lawler (McDowell), 27:11 (4-0 UNC)  
 North Carolina • Murphy (unassisted) 84:53 (5-0 UNC)

Score by Periods	1	2	F
Florida State	0	0	0
North Carolina	4	1	5

Corner Kicks: Florida State 0, North Carolina 11

Total Shots: Florida State 1, North Carolina 34

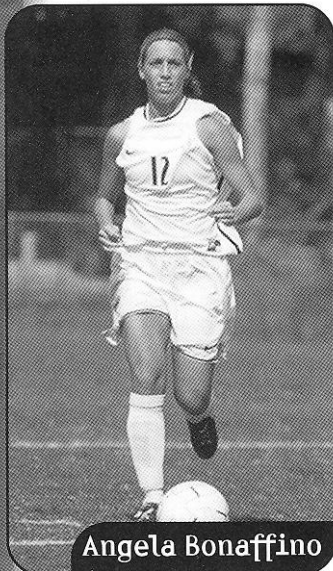
Fouls: Florida State 8, North Carolina 1

Goalie Saves: Florida State 12 (Juhl 8, Gurtov 4), North Carolina 1 (Mullinix 1)

# 1997 FSU Statistics



RECORD	1997	ALL-TIME
Overall	8-12-0	24-33-2
ACC	0-8-0	2-22-0
Home	4-2-0	12-9-0
Away	3-9-0	9-19-1
Neutral	1-1-0	3-5-1
Heather Kerby-Nelson 24-33-2- 3rd Season		
ATTENDANCE		
Home	3,064	
All Matches	<b>11,754</b>	
Home Avg.	511	
Total Avg.	<b>588</b>	



Angela Bonaffino

## FSU Women's Soccer Results

Date	Opponent (Attendance)	W/L/T	Score	Goals (Game Winner in Bold)	Record
8/29	at #15 Wake Forest (847)	L	2-1	Grimsley	0-1-0
8/31	at Appalachian State (204)	W	2-0	<b>Grimsley</b> , Walkup	1-1-0
9/5	WOFFORD (878)	W	5-1	Grimsley, <b>Walkup</b> , Ford, Murphy, Halter	2-1-0
9/7	at #1 North Carolina (2,456)	L	9-0	2-2-0	
9/11	SOUTH ALABAMA (538)	W	2-1	Murphy, <b>Walkup</b>	3-2-0
9/14	at North Carolina State (219)	L	4-1	Ford	3-3-0
9/21	#10 MARYLAND (774)	L	4-0	3-4-0	
9/26	at #10 Clemson (838)	L	2-1	Clemson own goal	3-5-0
9/28	at Furman (202)	L	2-1	McCall	3-6-0
10/3	at UNC-Greensboro (336)	L	3-2	Osorio, Murphy	3-7-0
10/5	at Elon College (133)	W	3-0	<b>Osorio</b> , Watkin, Walkup	4-7-0
10/10	STETSON (441)	W	3-0	<b>Bonaffino</b> , Osorio, Driscoll	5-7-0
10/12	LOUISIANA STATE (222)	W	3-0	<b>Driscoll</b> , Ford, Del Rio	6-7-0
10/15	at #9 Florida (1,433)	L	6-0		6-8-0
10/18	at #6 Virginia (378)	L	2-1	Ford	6-9-0
10/22	at South Florida (200)	W	1-0	<b>Ford</b>	7-9-0
10/26	#7 DUKE (211)	L	3-2 (OT)	Dietrich, Driscoll	7-10-0
10/31	at Alabama-Birmingham (95)	W	1-0	<b>Walkup</b>	8-10-0
11/2	at Tennessee (786)	L	4-1	Bonaffino	8-11-0
11/6	vs. #1 North Carolina* (563)	L	5-0		8-12-0

rankings - Soccer America  
\* - ACC Tournament

## Individual Statistics

## Career Totals

Name	MP/MS	Shots	Goals	Assists	Points	GWG	GWA	Cards	Shots	Goals	Assists	Points	GWG	GWA
Alex Osorio	17/12	23	3	6	12	1	1	1-Y/0-R	85	12	12	36	3	3
Jill Ford	20/18	31	5	1	11	1	1	1-Y/0-R	31	5	1	11	1	1
Janna Walkup	20/19	19	5	1	11	3	1	2-Y/0-R	36	10	1	21	3	1
Jessica Driscoll	14/0	6	3	1	7	1	0	0-Y/0-R	14	7	3	17	1	0
April Murphy	20/13	26	3	0	6	0	0	0-Y/0-R	26	3	0	6	0	0
Angela Bonaffino	13/6	13	2	1	5	1	0	0-Y/0-R	43	7	4	17	1	1
Lauren Lynch	20/16	13	0	4	4	0	0	0-Y/0-R	73	10	8	28	1	2
Ashley Halter	19/5	10	1	1	3	0	1	2-Y/0-R	10	1	1	3	0	1
Rachael Watkin	19/19	6	1	1	3	0	1	0-Y/0-R	6	1	1	3	0	1
Stephanie Dietrich	11/7	6	1	1	3	0	0	0-Y/0-R	6	1	1	3	0	0
Leslie Del Rio	9/0	6	1	0	2	0	0	0-Y/0-R	11	1	0	2	0	0
Nicole Sedgwick	15/12	11	0	1	1	0	1	1-Y/0-R	37	3	4	10	1	2
Danielle Foard	19/12	3	0	1	1	0	0	3-Y/0-R	3	0	1	1	0	0
Taryn Cervi	15/12	2	0	1	1	0	0	0-Y/0-R	2	0	1	1	0	0
Justina Torres	20/16	1	0	1	1	0	0	0-Y/0-R	3	0	1	1	0	0
Janine Lavoie	18/15	0	0	1	1	0	0	0-Y/0-R	16	3	3	9	0	1
Sally Shelgren	16/4	10	0	0	0	0	0	0-Y/0-R	10	0	0	0	0	0
Katie Lunn	5/1	1	0	0	0	0	0	0-Y/0-R	6	0	0	0	0	0
Molly Nye	11/0	0	0	0	0	0	0	0-Y/0-R	1	0	0	0	0	0
Allison Hogan	4/0	0	0	0	0	0	0	0-Y/0-R	18	3	1	7	0	1
*Erin Grimsley	10/6	15	3	1	7	1	0	1-Y/0-R	40	7	5	19	3	0
*Kasey McCall	12/7	16	1	0	2	0	0	0-Y/0-R	54	10	6	26	1	2
Opponent own goal			1		2					2		4		
<b>TOTALS</b>	<b>326/200</b>	<b>219</b>	<b>30</b>	<b>23</b>	<b>83</b>	<b>8</b>	<b>6</b>	<b>11-Y/0-R</b>						
OPPONENTS	305/200	259	48	44	139	12	11	8-Y/0-R						

\* - no longer on team

## GOALKEEPING

## CAREER TOTALS

NAME	MP/MS	Min	Sh	Svs	GA	GAA	GS%	SO	Rec	Min	Svs	GA	GAA	GS%	SO	Rec
Melissa Juhl	20/20	1,533	224	62	44	2.58	58%	4	8-12-0	4,512	293	111	2.21	73%	12.5	24-30-2
Jamie Gurtov	7/0	276	35	14	4	1.30	78%	2	0-0-0	423	17	7	1.49	71%	2.5	0-0-0
<b>TOTALS</b>	<b>27/20</b>	<b>1,809</b>	<b>259</b>	<b>76</b>	<b>48</b>	<b>2.38</b>	<b>61%</b>	<b>6</b>	<b>8-12-0</b>							
OPPONENTS	26/20	1,809	219	90	30	1.49	75%	3								





# All-Time Statistics

## Florida State Team Season Records

Most Victories	12 (1996)
Most Defeats	14 (1995)
Most Ties	1 (1995 & 1996)
Fewest Victories	4 (1995)
Fewest Defeats	7 (1996)
Fewest Ties	0 (1997)
Most Games Played	20 (1996 & 1997)
Fewest Games Played	19 (1995)
Longest Winning Streak	4 (1996)
Longest Unbeaten Streak	4 twice (1996)
Longest Losing Streak	8 (1995)
Longest Non-Winning Streak	8 (1995)
Most Home Field Victories	6 (1996)
Fewest Home Field Defeats	3 (1995)
Most Away Victories	6 (1996)
Fewest Away Defeats	2 (1996)
Most Neutral-Site Victories	2 (1995)
Most Neutral-Site Defeats	3 (1995)
Most Goals Scored	51 (1996)
Fewest Goals Scored	30 (1997)
Most Assists	27 (1996)
Fewest Assists	17 (1995)
Most Points	127 (1996)
Fewest Points	81 (1995)
Most Goals Allowed	61 (1995)
Fewest Goals Allowed	35 (1996)
Most Shutouts By	8 (1996)
Most Consecutive Shutouts By	3 (1997)
Most Shots	292 (1996)
Fewest Shots Allowed	201 (1996)

## Florida State Team Game Records

<b>Most Goals Scored</b>	<b>11</b>
(1995, vs. Jacksonville, 9/13; 1996, vs. Jacksonville, 9/15)	
<b>Most Goals Scored, Defeat</b>	<b>4</b>
(1995, vs. Georgia, 10/27)	
<b>Most Goals Allowed</b>	<b>9</b>
(1995 vs. North Carolina (ACC Trn.), 11/2; 1996 vs. North Carolina, 9/26; 1997 vs North Carolina 9/7)	
<b>Most Goals Allowed, Victory</b>	<b>1</b>
(1995, three times; 1996 vs. Virginia, 9/8; 1997 vs Wofford 9/15, vs South Alabama 9/11)	
<b>Most Goals Scored, Both Teams</b>	<b>11</b>
(1995, vs. Jacksonville, 9/13; 1996, vs. Jacksonville, 9/15)	
<b>Largest Margin of Victory</b>	<b>11</b>
(1995, vs. Jacksonville, 9/13; 1996, vs. Jacksonville, 9/15)	
<b>Largest Margin of Victory, Shutout</b>	<b>11</b>
(1995, vs. Jacksonville, 9/13; 1996, vs. Jacksonville, 9/15)	
<b>Largest Margin of Victory, Home</b>	<b>11</b>
(1995, vs. Jacksonville, 9/13)	
<b>Largest Margin of Victory, Away</b>	<b>3</b>
(1996, vs. Jacksonville, 9/15)	
<b>Largest Margin of Defeat</b>	<b>9</b>
(1995 vs. North Carolina (ACC Trn.), 1996 vs. North Carolina, 9/26; 1997 vs North Carolina 9/7)	
<b>Largest Margin of Defeat, Shutout</b>	<b>9</b>
(1995 vs. North Carolina (ACC Trn.), 1996 vs. North Carolina, 9/26; 1997 vs North Carolina 9/7)	
<b>Largest Margin of Defeat, Home</b>	<b>9</b>
(1996 vs. North Carolina, 9/26)	

<b>Largest Margin of Defeat, Away</b>	<b>9</b>
(1997 vs North Carolina 9/7)	
<b>Most Shots</b>	<b>36</b>
(1995, vs Jacksonville, 9/13; 1996, vs. Appalachian State, 9/16)	
<b>Most Shots Allowed</b>	<b>45</b>
(1995, at Nebraska, 10/8)	
<b>Fewest Shots</b>	<b>0</b>
(1995, two times)	
<b>Fewest Shots Allowed</b>	<b>1</b>
(1996, vs Jacksonville, 9/15; 1997 vs Stetson 10/10)	
<b>Quickest Goal, 1st Half</b>	<b>:41</b>
(Erin Grimsley, 1997, vs Wake Forest, 8/29)	
<b>Quickest Goal Allowed, 1st Half</b>	<b>:30</b>
(1996, Robin Confer, North Carolina, 9/26)	
<b>Quickest Goal, 2nd Half</b>	<b>46:00</b>
(1997, Jill Ford vs Louisiana State 10/12)	
<b>Quickest Goal Allowed, 2nd Half</b>	<b>46:41</b>
(1995, Dina Padula at Virginia, 10/13)	
<b>Quickest Goal Allowed, Overtime</b>	<b>94:28</b>
(1995, Debbie Keller at North Carolina, 10/20)	
<b>Shortest span between goals</b>	<b>:39</b>
(1996, vs South Alabama, 9/23)	
<b>Shortest span between goals allowed</b>	<b>:18</b>
(1997 vs Florida 10/15)	

## Florida State Individual Season Records

Most Points	29	(Kelley Poole, 1996)
Most Goals	14	(Kelley Poole, 1996)
Most Assists	6	(Kasey McCall, 1996, Alex Osario 1997)
Most Game Winning Goals	6	(Kelley Poole, 1996)
Most Shots	56	(Kelley Poole, 1996)
Most Goalie Saves	155	(Melissa Juhl, 1995)
Most Shutouts	7.5	(Melissa Juhl, 1996)
Lowest Goals Against Average	1.30	(Jamie Gurtov, 1997)
Fewest Goals Against	32	(Melissa Juhl, 1996)
Most Minutes in Goal	1,713	(Melissa Juhl, 1996)

## Florida State Individual Game Records

<b>Most Points</b>	<b>7</b>
(Kasey McCall at Jacksonville, Sept. 15, 1996)	
<b>Most 1st Half Points</b>	<b>4</b>
(Kelly McGrath, vs Jacksonville, Sept. 13, 1995; Alexandra Osorio, vs Jacksonville, Sept. 13, 1995)	
<b>Most 2nd Half Points</b>	<b>5</b>
(Kasey McCall at Jacksonville, Sept. 15, 1996)	
<b>Most Goals</b>	<b>3</b>
(Kelly McGrath, vs Jacksonville, Sept. 13, 1995; Alexandra Osorio, vs Jacksonville, Sept. 13, 1995; Lauren Lynch, at Georgia, Oct. 27, 1995; Kasey McCall at Jacksonville, Spet. 15, 1996)	
<b>Most 1st Half Goals</b>	<b>2</b>
(Kelly McGrath, vs Jacksonville, Sept. 13, 1995; Alexandra Osorio, vs Jacksonville, Sept. 13, 1995)	
<b>Most 2nd Half Goals</b>	<b>2</b>
(Lauren Lynch, at Georgia, Oct. 27, 1995; Kasey McCall at Jacksonville, Spet. 15, 1996)	
<b>Most Assists</b>	<b>3</b>
(Erin Grimsley at Jacksonville, Spet. 15, 1996)	
<b>Most 1st Half Assists</b>	<b>2</b>
(Jessica Driscoll, vs Jacksonville, Sept. 13, 1995)	
<b>Most 2nd Half Assists</b>	<b>3</b>
(Erin Grimsley at Jacksonville, Spet. 15, 1996)	
<b>Goalie Saves</b>	<b>21</b>
(Melissa Juhl, vs Duke, Sept. 24, 1995)	

# All-Time Roster and Stats

## 1997 Individual Leaders

### SCORING POINTS

Player	Goals	Assists	GWG	GWA	Points
1. Alexandra Osario	3	6	1	1	12
2. Jill Ford	5	1	1	1	11
Janna Walkup	5	1	3	1	11
4. Jessica Driscoll	3	1	1	0	7
5. April Murphy	3	0	0	0	6
6. Angela Bonaffino	2	1	1	0	5
7. Lauren Lynch	0	4	0	0	4
8. Ashley Halter	1	1	0	1	3
Rachael Watkin	1	1	0	1	3
Stephanie Dietrich	1	1	0	0	3



Lauren Lynch

### Assists

Player	Assists
1. Alex Osario	6
2. Lauren Lynch	4
3. Jill Ford	1
Janna Walkup	1
Jessica Driscoll	1
Angela Bonaffino	1
Ashley Halter	1
Rachael Watkin	1
Stephanie Dietrich	1
Nicole Sedgewick	1
Danielle Foard	1
Taryn Cervi	1
Justina Torres	1
Janine Lavoie	1

### Goals

Player	Goals
1. Jill Ford	5
Janna Walkup	5
3. Alex Osario	3
Jessica Driscoll	3
April Murphy	3
6. Angela Bonaffino	2
7. Ashley Halter	1
Rachael Watkin	1
Stephanie Dietrich	1
Leslie Del Rio	1

## All-Time Women's Soccer Roster

#	Name	Position	Year(s) Played
01	Jenni Roberts*	GK	1995
01	Jamie Gurtov**	GK	1996, '97, '98
1	Justina Torres**	D	1996, '97
1	Erin Vester	D	1995
2	Leslie Del Rio	MF	1996, '97
3	Molly Nye**	D	1995, '96, '97
4	Kelly McGrath*	F	1995
4	Nicole Sedgewick**	F/D	1996, '97
4	Jordan Sims	MF	1998
5	Alexandra Osorio***	F	1995, '96, '97, '98
6	Lauren Lynch***	F	1995, '96, '97, '98
7	Janine Lavoie***	D	1995, '96, '97, '98
8	Marte Vik Edvardsen	CMF	1998
8	Kasey McCall*	MF	1996, '97
9	Erin Grimsley*	MF/F	1996, '97
9	Maren Vik Edvardsen	F	1998
10	Janna Walkup***	MF	1995, '96, '97, '98
11	Erica Schuler*	MF/F	1995
11	Stephanie Dietrich*	D	1997, '98
12	Angela Bonaffino**	MF	1996, '97, '98
12	Jenni Sharpe*	D	1995
13	Melissa Juhl***	GK	1995, '96, '97, '98
14	Kelly Duffek*	D	1995, '96
14	Taryn Cervi*	MF/D	1997
15	Stephanie Byrd	D/MF	1995
15	Autumn Swofford*	D	1996
16	Shannon Smith*	D	1995
16	April Murphy*	MF	1997, '98
17	Allison Hogan**	MF	1995, '96, '97
18	Kelly Huff*	MF	1995, '96
18	Jill Ford*(15)	F/MF	1997, '98
18	Sarah Deacon	MF	1998
19	Heather Dyche	D	1998
19	Katie Lunn***	D/MF	1995, '96, '97
20	Rachael Watkin*	D	1997, '98
21	Danielle Foard*	D	1997, '98
21	Jennifer Yocca**	MF	1995, '96
22	Lizzie Easton*	MF	1995
22	Shelly Shelgren*	MF	1997, '98
22	Jacki Stradtman*	MF/F	1995, '96
23	Jessica Driscoll**	MF	1995, '96, '97, '98
24	Ashley Halter*	D	1997, '98
25	Shannon Stoutamire*	D	1995
25	Christy Peacock	D	1998
26	Kim Johnson	D	1998
27	Kelley Poole*	MF/F	1996

\* - letters earned

### Game Winning Goals

Player	GWG
1. Janna Walkup	3
2. Alex Osario	1
Jill Ford	1
Jessica Driscoll	1
Angela Bonaffino	1

### Game Winning Assists

Player	GWA
1. Alex Osario	1
Jill Ford	1
Janna Walkup	1
Ashley Halter	1
Rachael Watkin	1
Nicole Sedgewick	1



## 1997 ACC Final Standings

Team	CONFERENCE					OVERALL						
	Won	Lost	Tie	Pct.	For	Opp.	Won	Lost	Tie	Pct.	For	Opp.
North Carolina	7	0	0	1.000	31	2	27	0	1	.982	117	8
Duke	6	1	0	.857	18	10	14	6	1	.690	47	33
Maryland	4	3	0	.571	19	11	12	9	3	.583	52	37
Virginia	4	3	0	.571	11	12	14	5	2	.714	43	25
Clemson	4	3	0	.571	8	11	15	7	0	.682	47	26
NC State	2	5	0	.286	8	18	9	11	1	.452	31	36
Wake Forest	1	6	0	.143	5	16	11	8	2	.571	32	32
Florida State	0	7	0	.000	6	26	8	12	0	.400	30	48

VS. NON-ACC OPPONENTS: 23-18-3, .557

**ACC TOURNAMENT RESULTS (Clemson, SC., Nov. 7-8, & 10):** *First Round* - #1 North Carolina d. #8 Florida State 5-0; #5 Clemson d. #4 Virginia 1-0; #2 Duke t. #7 ot 2-2 (Duke advances via penalty kicks 4-3); #3 Maryland t. #6 N.C. State ot 1-1 (Maryland advances via penalty 4-3). *Semifinals*- Maryland d. Duke 2-1; North Carolina d. Clemson 3-1. *Finals*- North Carolina d. Maryland 4-0.

**ACC ALL-TOURNAMENT TEAM:** *Clemson (2)* - Sheri Bueter, Sara Burkett. *Duke (2)* - Samantha Baggett, Andi Melde. *Maryland (3)* - Abby Bausman, Emily Janss, Keri Sarver. *North Carolina (4)* - Rebekah McDowell, Cindy Parlow, Staci Wilson.

**TOURNAMENT MOST VALUABLE PLAYER:** Cindy Parlow, North Carolina.

**ALL-ATLANTIC COAST CONFERENCE:** *1st Team* - **F-** Robin Confer, North Carolina; **Angela Hucles, Virginia; Andi Melde, Duke; Cindy Parlow, North Carolina. M-** Sarta Burkett, Clemson; **Tiffany Roberts, North Carolina; Laurie Schwoy, North Carolina. D-**

**Karem Esteva, Virginia; Lorrie Fair, North Carolina; Nel Fettig, North Carolina. GK-** Megan Boehm, Virginia. *2nd Team* - **F-** Samantha Baggett, Duke; Sheri Bueter, Clemson; Keri Sarver, Maryland; **M-** Stefanie Mathews, Wake Forest; Robin McCullough, Maryland; Kristy Whelchel, Duke. **D-** Lauren Cyran, Duke; Emily Janss, Maryland; Lindsay Massangale, Clemson; Staci Wilson, North Carolina. **GK-** Meredith McCullen, Clemson.

**ACC PLAYER OF THE YEAR:** Andi Melde, Duke

**ACC ROOKIE OF THE YEAR:** Isis Dallis, Duke

**ACC COACH OF THE YEAR:** Bill Hempen, Duke

**ACC PLAYERS OF THE WEEK:** S1- Karli Schilling, Wake Forest; S8- Emily Feeney, Duke; S15- Keri Sarver, Maryland; S22- Stefanie Mathews, Wake Forest; S29- Sherrill Kester, Duke; O6- Jennifer Crawford, Clemson; O13- Cindy Parlow, North Carolina; O20- Andi Melde, Duke; O27- Robin Confer, North Carolina; N2- Staci Wilson, North Carolina and Jennifer Crawford, Clemson.

# FSU Support Services



## An Overview of an Academic Support Program on the Rise

**A**cademic, personal and professional support are essential to college success. At the Florida State University, we have developed an outstanding support program which enables student-athletes to reach their full potential.

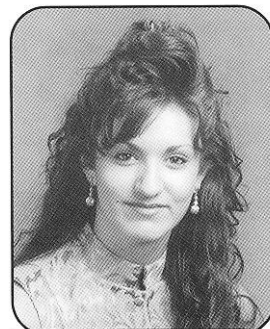
Our philosophy is "to offer an academic support program integrated with the total university that will assist all student-athletes with the transition into college and provide continued support in all phases of academic and professional development culminating with graduation, job placement or graduate school."

To accomplish this goal we have developed an academic environment which facilitates the academic success of student-athletes. Student success is encouraged through competent academic counseling, career exploration, planning and placement and academic assistance through tutorial programs.

Our program operates on a "proactive" rather than "reactive" approach. At Florida State, our academic staff does not wait for academic crises to occur. We gather important background information and build an academic profile on all student-athletes to assess their needs in advance. We also stay informed on

the daily progress of each student-athlete.

Our academic support staff includes a director, five counselors, and three graduate interns forming a group of professionals serving the needs of all our student-athletes. Mark Meleney is entering his second year as the director of the Athletics Academics Support after serving as one of the program's academic counselors for eight years prior. Academic Counselor Amy White will handle the women's soccer program duties in 1997.



**Amy White**  
Soccer Academic Counselor

In 1994, the academic programs moved to the state-of-the-art University Center and are located on the 6th floor of the \$126,000,000 facility. It includes private study carrels, a tutorial study area and a computer lab outfitted with 16 state-of-the-art IBM computers and laser printers. In addition, athletic sky boxes are utilized for group and individualized tutorial instruction sessions.





# Strength and Conditioning

## Strength, Conditioning, Medical Care and Treatment

Strength training, conditioning, medical care and treatment are a vital aspect of an athlete's performance on the field. At Florida State, a specially designed program is developed for women's soccer, emphasizing the objectives of strengthening and conditioning the athletes along with the proper medical attention.

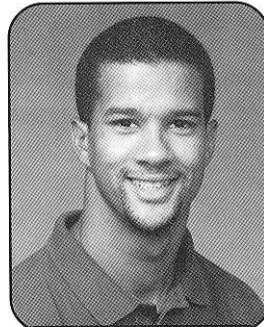
Strength and Conditioning coach Ron Miller, assistant Sterling Brown and staff individually customize programs for each of the athletes, beginning with preconditioning, before the season even gets underway. Assistant Athletic Trainer Angela Seghal, A.T.C., will handle the athletic training duties for the women's soccer team.

This season, Miller will be working with Sterling Brown in customizing a sound workout for the soccer team. The workout is instrumental in improving muscular endurance, strength and cardiovascular conditioning on the field. The coaches believe so strongly in the program that they even participate themselves. FSU takes pride in customizing the programs to help student athletes reach their maximum potential.

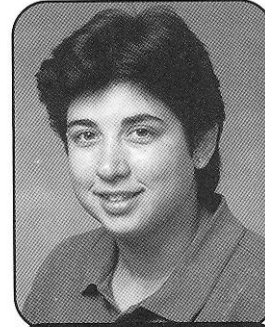
Miller, who holds professional memberships in the National Strength and Conditioning Association and Aerobics and Fitness Association, works with the players in sport specific training which includes strengthening the major muscle groups used in soccer.

Sterling Brown, a native of Fort Lee, New Jersey, was a four-year letterman for the University Richmond football team. As the starting wide receiver, Brown set numerous reception records for the Spiders. Along with women's soccer, Brown will also train the women's golf and softball teams.

Athletes at Florida State University receive the best care and treatment possible. All of the student athletes undergo a preseason examination in order to prevent and detect any potential injuries that an athlete may incur. If a problem is detected, the athlete is placed on a prevention care program which may include any kind of treatment from icing to exercising.



**Sterling Brown**  
Assistant Strength and  
Conditioning Coach



**Angel Seghal, A.T.C.**  
Athletic Trainer

Though preventing injuries is the main objective, they are sometimes a part of participating in athletics. Rehabilitation is another important component of the Seminole training room. Angela Seghal and the rest of the FSU training staff will work with the athlete and provide an intense rehabilitation schedule that will allow the athlete to successfully rehabilitate after an injury. More serious injuries and illnesses are referred to the Seminole team physicians at the Tallahassee Orthopedic Center, who for many years have worked in conjunction with the FSU training room in successfully rehabilitating numerous athletes after an injury.

Angela Seghal came to Florida State in 1988 as a graduate assistant athletic trainer after graduating from Anderson (Indiana) University with honors and a double major in athletic training and physical education. Seghal returned to FSU in 1991 after a short stint as a head athletic trainer at a high school in Virginia and has pursued her doctoral degree. She is a member of the National Athletic Trainers Association and is also a certified Red Cross CPR/First Aid instructor. She not only works closely with team physicians, but also provides evaluation and advanced first aid, injury prevention, rehabilitation, counseling and guidance, education and administration. Nutrition counseling and drug testing are also responsibilities of the athletic training team which is dedicated to providing the best care possible for all FSU student-athletes.

## The N.O.L.E.S. Program

**NEW OPPORTUNITIES FOR LEADERSHIP, EDUCATION AND SERVICE**

**D**eveloped by the Florida State University Department of Athletics, the NOLES program represents a commitment to the total growth and development of the student-athlete. This program establishes an administrative commitment to academic and athletic excellence. Those efforts will be supported with programs and services in personal development, career development and community service.

### PERSONAL DEVELOPMENT

Fostering the development of personal growth is a fundamental component of the NOLES program. These support programs ensure that the student-athlete will be provided opportunities to focus on personal growth issues such as values clarification, goal setting, fiscal planning, decision making and personal responsibility. Programming focuses on helping student-athletes develop a healthy lifestyle while they are at Florida State and habits that will benefit them for life.

### CAREER DEVELOPMENT

Preparing for life after college sports is a major focus of the NOLES Career Development program. The program is designed to work cooperatively with the University's Career Services to acquaint students with the job search process, provide networking opportunities and ultimately assist with job placement. This program places a priority on the development of the total person, with the goal of developing individuals who will have rewarding careers and productive lifestyles after they leave Florida State.

### COMMUNITY SERVICE

Serving the community is the focus of our Seminole Spirit program. Student-athletes are challenged to give service to our community and individuals who are in need. With a clearly defined program of service, student-athletes are given the opportunity to develop the foundation for a lifelong commitment to volunteerism. The Seminole Spirit Student-Athlete Speakers' Bureau enables student-athletes to improve their speaking skills, develop effective communication and impact the lives of others through their service as role models in our community.

### LEADERSHIP DEVELOPMENT

The Florida State University Department of Athletics is committed to developing programs of excellence that foster leadership development. The foundation of the leadership development program are the Seminole Leadership Institutes that are held four times a year. These Institutes offer student-athletes the opportunity to learn skills that will benefit them as students, as athletes, and as they pursue their goals after leaving Florida State. The Institutes are based on building communication skills. Students have the opportunity to use the values and work ethic taught by athletic participation as the framework for their leadership development. The Institutes attract outstanding guest speakers who challenge Seminole student-athletes to achieve their greatest potential and use their leadership skills to positively influence others.

The Student-Athlete Advisory Council (SAAC) serves as the advisory board to the NOLES program and the athletics administration. The prestigious board, comprised of two representatives of each athletic team at FSU, also recommends programming and serves as a liaison between student-athletes and the athletics administration. The Advisory Council plans and implements various events for student-athletes and serves as the department's most visible ambassadors. The SAAC hosted the annual Golden Nole banquet and planned such events as orientation for incoming student-athletes and the back-to-school picnic.





## Important Information for Prospective Student-Athletes

### **Who is a prospective student-athlete (prospect)?**

You are a prospect if you have started classes for the ninth grade. Before the ninth grade, you may become a prospect if a university provides you (or your family or friends) any financial aid or other benefit that is not usually provided to prospects.

### **How do I know I'm being recruited?**

A coach is recruiting you if they try to convince you directly, or through your family, to attend their school and participate in their intercollegiate athletics. There are several ways to be recruited: (1) the school may provide you with an official visit, (2) a coach may arrange an in-person, off-campus encounter with you, or (3) a coach or staff member may call you (or your family) on more than one occasion for the purpose of recruitment.

Coaches and authorized institutional staff members are the only individuals who may recruit you. Representatives of athletic interests (boosters) may not call, write or make in-person contact with you for the purpose of attending the Florida State University and participating in athletics.

### **When can a coach contact me?**

**Off campus contact:** A coach can arrange a face-to-face meeting, off the University's campus, with you beginning July 1st following the completion of your junior year in high school.

**Telephone calls:** Phone calls from a coach or institutional staff member may not be made until July 1st (August 15th for football) following the completion of your junior year in high school.

You may call a coach at your own expense at any time. However, unless it is after July 1st following your junior year, the coach may not return your call.

Generally, a coach may only call you (or your parents or legal guardians) once a week, however unlimited phone calls are permitted under the following circum-

stances: (1) during the five days before your official visit, (2) on the initial date for signing the National Letter of Intent and the two days following, (3) on the day of a coach's off-campus contact with you, and (4) in the sport of football only, unlimited phone calls may be made during permissible off-campus contact periods and during the two days before and after the initial signing date for the National Letter of Intent.

**Letters:** Letters and recruiting information may be sent to you starting September 1st at the beginning of your junior year in high school.

### **What can a school offer me to attend its university?**

You (or your family) may not receive any benefit, inducement or arrangement such as cash, clothing, cars, gifts or loans to encourage you to sign a National Letter of Intent or to attend a NCAA school.

The Florida State University may offer you a one-year scholarship that covers room and board, tuition and fees, and required course-related books, or any part of these. The institution can recommend that this aid is renewed each year, as is the general practice at the Florida State University. In addition, they can offer you quality academic and medical support, as well as, the opportunity to compete for one of the top programs in the country.

### **What can I do during this process?**

Enjoy your high school years, work hard both in the classroom and in your sport. At the beginning of your junior year, sign up for the NCAA Clearinghouse. Your high school guidance office can provide you with the information you need. An official visit to attend the Florida State University can not be arranged until after you have been approved by the NCAA Clearinghouse.

Should you have any questions regarding any NCAA rules or regulations, please contact our **Compliance Office at (850) 644-4272.**



# 1998 Oponents

## ACC Opponents

### VIRGINIA CAVALIERS

Location ..... Charlottesville, VA  
 Home Facility (Capacity) ..... Klockner Stadium (8,000)  
 Head Coach ..... April Heinrichs (UNC '86)  
 Record at School/Years ..... 26-12-4 (2 years)  
 Career Record/Years ..... 90-58-12 (8 years)  
 Assistant Coaches ..... Ron Raab, Missy Price  
 1997 Overall Record ..... 14-5-2  
 1997 ACC Record/Finish ..... 4-3 (Tied 3rd)  
 Soccer SID ..... Charlie Bare  
 SID Phone ..... (804)-982-5500  
 SID Fax ..... (804)-982-5525

### WAKE FOREST

Location ..... Winston-Salem, NC  
 Home Facility (Capacity) ..... Spry Stadium (3,000)  
 Head Coach (Alma Mater) ..... Tony da Luz (San Diego '84)  
 Record at School/Years ..... 11-8-2 (1 year)  
 Career Record/Years ..... 57-50-5 (6 years)  
 Assistant Coach ..... Kelly Walbert (Duke '97)  
 1997 Overall Record ..... 11-8-2  
 1997 ACC Record/Finish ..... 1-6 (7th)  
 Soccer SID ..... Chris Capo  
 SID Phone ..... (336)-758-5640  
 SID Fax ..... (336)-758-5140

### NORTH CAROLINA

Location ..... Chapel Hill, NC  
 Home Facility (Capacity) ..... Robert A. Fetzer Field (5,700)  
 Head Coach ..... Anson Dorrance (UNC '74)  
 Record at School/Years ..... 417-16-11 (19 years)  
 Career Record/Years ..... 417-16-11 (19 years)  
 Assistant Coaches ..... Bill Pallandino, Chris Ducar  
 1997 Overall Record ..... 27-0-1  
 1997 ACC Record/Finish ..... 7-0 (ACC Champions)  
 Soccer SID ..... Dave Lohse  
 SID Phone ..... (919)-962-7257  
 SID Fax ..... (919)-962-0612

### CLEMSON

Location ..... Clemson, SC  
 Home Facility (Capacity) ..... Riggs Field (6,500)  
 Head Coach ..... Tracey Leone (UNC '89)  
 Record at School/Years ..... 59-25-2 (4 years)  
 Career Record/Years ..... 59-25-2 (4 years)  
 Assistant Coaches ..... Ray Leone, Stacy Welp  
 1997 Overall Record ..... 15-7  
 1997 ACC Record/Finish ..... 4-3 (Tied for 3rd)  
 Soccer SID ..... Sam Blackman  
 SID Phone ..... (864)-656-1924  
 SID Fax ..... (864)-656-0299

### MARYLAND

Location ..... College Park, MD  
 Home Facility (Capacity) ..... Ludwig Field (2,500)  
 Head Coach ..... Alan Kirkup (Loughborough '71)  
 Record at School/Years ..... 31-14-7 (2 years)  
 Career Record/Years ..... 179-67-12 (12 years)  
 Assistant Coaches ..... Katherine Remy, Steve Oliver  
 1997 Overall Record ..... 12-9-3  
 1997 ACC Record/Finish ..... 4-3 (Tied for 3rd)  
 Soccer SID ..... Chuck Walsh  
 SID Phone ..... (301)-314-7065  
 SID Fax ..... (301)-314-9094

### DUKE

Location ..... Durham, NC  
 Home Facility (Capacity) ..... Duke Soccer Stadium (7,000)  
 Head Coach ..... Bill Hempen (Evansville '81)  
 Record at School/Years ..... 128-71-13 (11 years)  
 Career Record/Years ..... 128-71-13 (11 years)  
 Assistant Coaches ..... Carla Overbeck, Stephanie Poncher

1997 Overall Record ..... 14-6-1  
 1997 ACC Record/Finish ..... 6-1 (2nd)  
 Soccer SID ..... Joanna Sparkman  
 SID Phone ..... (919)-684-2633  
 SID Fax ..... (919)-684-2489

### NORTH CAROLINA STATE

Location ..... Raleigh, NC  
 Home Facility (Capacity) ..... Method Road Soccer Stadium (4,000)  
 Head Coach ..... Laura Kerrigan (NC State '89)  
 Record at School/Years ..... 1st year  
 Career Record/Years ..... 1st year  
 Assistant Coaches ..... Betsy Anderson, Danielle Dion, Monica Hall  
 1997 Overall Record ..... 9-11-1  
 1997 ACC Record/Finish ..... 2-5 (6th)  
 Soccer SID ..... Bruce Winkworth  
 SID Phone ..... (919)-515-2102  
 SID Fax ..... (919)-515-2898

### FURMAN

Head Coach ..... Brian Lee (Furman '93)  
 Soccer SID ..... Chris Colvin  
 SID Phone ..... (864)294-2061  
 SID Fax ..... (864)-294-3061

### SYRACUSE

Head Coach ..... April Kater (Massachusetts '91)  
 Soccer SID ..... Ken Dominski  
 SID Phone ..... (315)-443-2608  
 SID Fax ..... (315)-443-2076

### CENTRAL FLORIDA

Head Coach ..... Karen Richter (Central Florida '91)  
 Soccer SID ..... Derek Smolik  
 SID Phone ..... (407)-823-2729  
 SID Fax ..... (407)-823-5266

### GEORGIA

Head Coach ..... Bill Baker (Rollins College '75)  
 Soccer SID ..... Bucky Ware  
 SID Phone ..... (706)-542-1170  
 SID Fax ..... (706)-542-5224

### MERCER

Head Coach ..... Ian Hayley (Central Florida '92)  
 Soccer SID ..... Kevin Coulombe  
 SID Phone ..... (912)-752-2735  
 SID Fax ..... (912)-752-5350

### MIAMI

Head Coach ..... Jim Blankenship (Florida International '81)  
 Soccer SID ..... Phil de Montmollin  
 SID Phone ..... (305)-284-3244  
 SID Fax ..... (305)-284-2807

### FLORIDA INTERNATIONAL

Head Coach ..... Everton Edwards (FIU '82)  
 Soccer SID ..... J. Darin Darst  
 SID Phone ..... (305)-348-2084  
 SID Fax ..... (305)-348-2963

### SOUTH FLORIDA

Head Coach ..... Logan Fleck (Old Dominion '84)  
 Soccer SID ..... Trish Thomas  
 SID Phone ..... (813)-974-4086  
 SID Fax ..... (813)-974-5328

### STETSON

Head Coach ..... Bob Wilson (Stetson '86)  
 Soccer SID ..... Chris Tunno  
 SID Phone ..... (904)-822-8131  
 SID Fax ..... (904)-822-8132

### AUBURN

Head Coach ..... Bill Wilkins (St. Lawrence '77)  
 Soccer SID ..... Jennifer Cooper  
 SID Phone ..... (334)-844-9807  
 SID Fax ..... (334)-844-9708





# Speed Chart



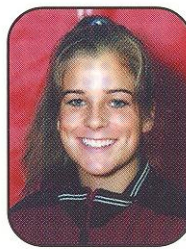
**#01**  
**Jamie Gurtov**  
Goalkeeper  
Sophomore  
Plantation, FL



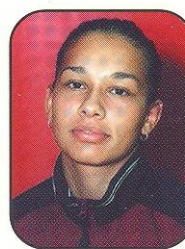
**#2**  
**Leslie Del Rio**  
Midfielder/Defender  
Sophomore  
Miami Springs, FL



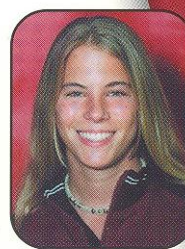
**#3**  
**Molly Nye**  
Defender  
Senior  
Wesley Chapel, FL



**#4**  
**Jordan Sims**  
Midfielder  
Freshman  
Bradenton, FL



**#5**  
**Alexandra Osorio**  
Forward  
Senior  
Miami, FL



**#6**  
**Lauren Lynch**  
Forward  
Senior  
Kennesaw, GA



**#7**  
**Janine Lavoie**  
Defender  
Senior  
Saskatoon,  
Saskatchewan, Canada



**#8**  
**Marte Vik Edvardsen**  
Forward  
Freshman  
Oslo, Norway



**#9**  
**Maren Vik Edvardsen**  
Central Midfield  
Freshman  
Oslo, Norway



**#10**  
**Janna Walkup**  
Midfielder  
Senior  
Orlando, FL



**#11**  
**Stephanie Dietrich**  
Defender  
Sophomore  
Amelia, OH



**#12**  
**Angela Bonaffino**  
Midfielder  
Junior  
St. Catherines, Ontario,  
Canada



**#13**  
**Melissa Juhl**  
Goalkeeper  
Senior  
Marietta, GA



**#15**  
**Jill Ford**  
Forward/Midfielder  
Senior  
Orange Park, FL



**#16**  
**April Murphy**  
Midfielder  
Sophomore  
Tulsa, Oklahoma



**#18**  
**Sarah Deacon**  
Midfielder  
Sophomore  
Omaha, Nebraska



**#19**  
**Heather Dyche**  
Defender  
Sophomore  
Albuquerque, NM



**#20**  
**Rachael Watkin**  
Defender  
Sophomore  
Boca Raton, FL



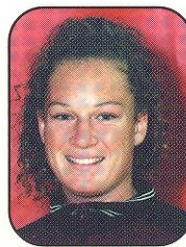
**#21**  
**Danielle Foard**  
Defender  
Sophomore  
Falls Church, VA



**#22**  
**Sally Shelgren**  
Midfielder  
Sophomore  
Niceville, FL



**#23**  
**Jessica Driscoll**  
Midfielder  
Senior  
Marietta, GA



**#24**  
**Ashley Halter**  
Defender  
Sophomore  
Atlanta, GA



**#25**  
**Christy Peacock**  
Defender  
Freshman  
Liburn, GA



**#26**  
**Kim Johnson**  
Defender  
Sophomore  
Tallahassee, FL





# 1998 LADY SEMINOLE Soccer



## 1998 Women's Soccer Schedule

DATE	Opponent	Time	Location
<b>Tues., Sept. 1</b>	<b>Furman</b>	<b>7:00 pm</b>	<b>Tallahassee, FL</b>
<b>UGA TOURNAMENT</b>			
Sat. Sept. 5	FSU vs Syracuse	2:00 pm	Athens, GA
	UCF vs UGA	4:00 pm	Athens, GA
Mon., Sept. 7	Losers	Noon	Athens, GA
Mon., Sept. 7	Winners	2:00 pm	Athens, GA
<b>Fri., Sept. 11</b>	<b>Virginia</b>	<b>7:00 pm</b>	<b>Tallahassee, FL</b>
Mon., Sept. 14	Mercer	4:00 pm	Macon, GA
<b>Fri., Sept. 18</b>	<b>Wake Forest</b>	<b>7:00 pm</b>	<b>Tallahassee, FL</b>
<b>Sun., Sept. 20</b>	<b>North Carolina</b>	<b>2:00 pm</b>	<b>Tallahassee, FL</b>
Wed., Sept. 23	Central Florida	4:00 pm	Orlando, FL
<b>Sun., Sept. 27</b>	<b>Clemson</b>	<b>2:00 pm</b>	<b>Tallahassee, FL</b>
<b>Tues., Sept. 29</b>	<b>Georgia State</b>	<b>7:00 pm</b>	<b>Tallahassee, FL</b>
Fri., Oct. 2	Miami	4:00 pm	Miami, FL
<b>Tues., Oct. 6</b>	<b>Florida International</b>	<b>2:00 pm</b>	<b>Tallahassee, FL</b>
<b>Fri., Oct. 9</b>	<b>South Florida</b>	<b>7:00 pm</b>	<b>Tallahassee, FL</b>
<b>Sat., Oct. 10</b>	<b>Jacksonville</b>	<b>7:00 pm</b>	<b>Tallahassee, FL</b>
<b>Tues., Oct. 13</b>	<b>Florida</b>	<b>7:00 pm</b>	<b>Tallahassee, FL</b>
Thurs., Oct. 15	Stetson	4:00 pm	DeLand, FL
Sun., Oct. 18	Maryland	2:00 pm	College Park, MD
Fri., Oct. 23	Duke	7:00 pm	Durham, NC
Sun., Oct. 25	North Carolina State	1:00 pm	Raleigh, NC
<b>Sun., Nov. 1</b>	<b>Auburn</b>	<b>2:00 pm</b>	<b>Tallahassee, FL</b>
Nov. 5-8	ACC Tournament	TBA	Disney-Wide World of Sports