

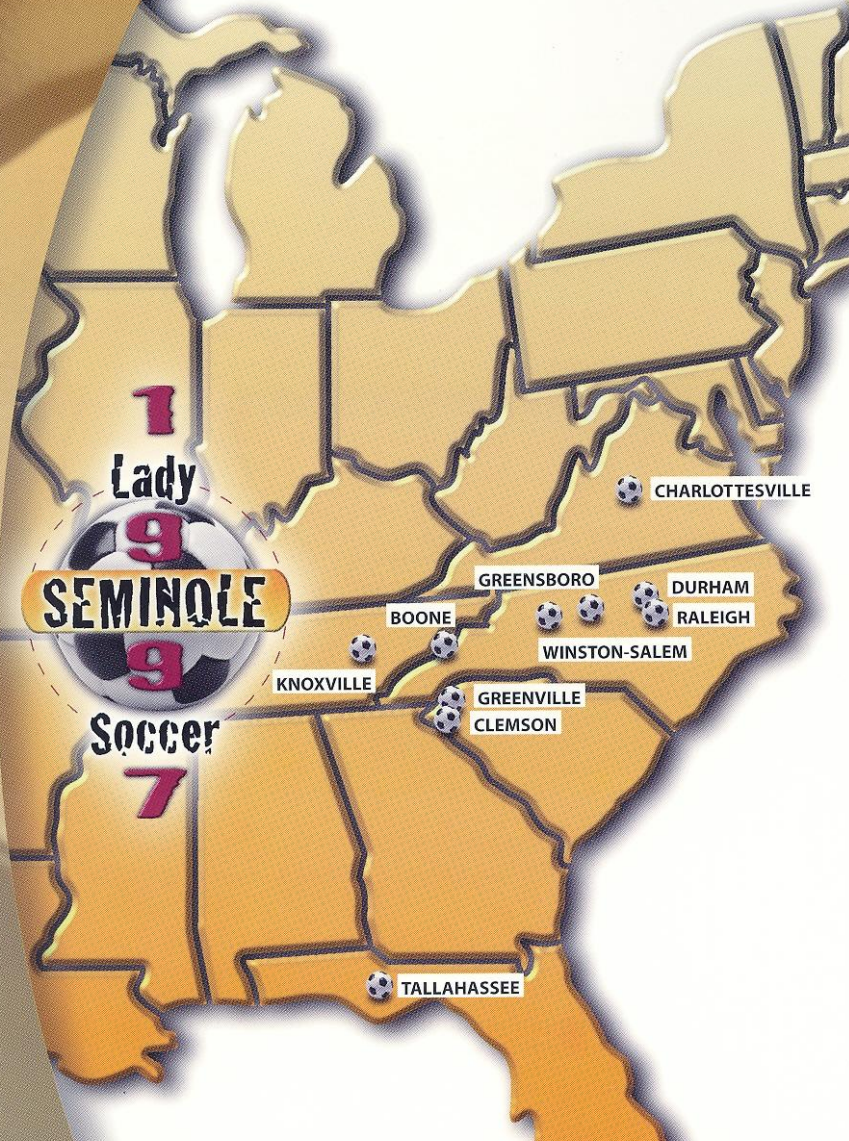
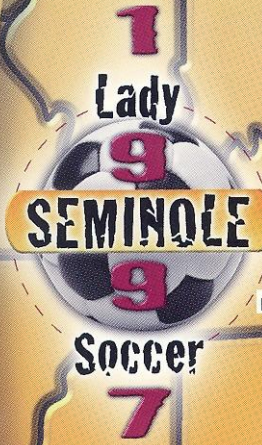
**1997 LADY SEMINOLE**

**Soccer**



**FLORIDA STATE  
UNIVERSITY MEDIA GUIDE**

# team travel



## Florida State University Quick Facts

Location ..... Tallahassee, Fla.  
 Enrollment ..... 30,200  
 Home Facility (Capacity) ..... Seminole Soccer Complex (1,000)  
 Symbol ..... Seminoles  
 Colors ..... Garnet and Gold  
 Conference ..... Atlantic Coast Conference  
 President ..... Talbot "Sandy" D'Alemberte  
 Athletics Director ..... David Hart, Jr.  
 Associate Athletics Director (Soccer) ..... Kim Record  
 Sports Information Director ..... Rob Wilson  
 Soccer Contact ..... Joe Hornstein  
 Contact Office Phone ..... (850) 644-1403  
 Contact Home Phone ..... (850) 575-0451  
 SID Fax Phone ..... (850) 644-3820  
 SID Mailing Address ..... PO Box 2195; Tallahassee, FL 32316  
 SID Overnight Address ..... Moore Athletic Center;  
 ..... Corner of Pensacola and Stadium Drive; Tallahassee, FL 32306  
 ACC FaxBack Phone ..... (910) 854-5859  
 ACC FaxBack Codes ... FSU Release - 31650; FSU Schedule/Roster - 31654  
 Head Coach ..... Heather Kerby-Nelson (Saskatchewan '91)  
 Record at School/Years ..... 16-21-2/two  
 Career Record/Years ..... 16-21-2/two  
 Office Phone ..... (850) 644-7724  
 Best Times to Contact ..... Weekday Afternoons  
 Assistant Coaches: ..... Kerry Dziczkaniec (George Washington '93)  
 ..... Paul Nelson (Vancouver 86ers, ASL; Vancouver Whitecaps, NASL)  
 Athletic Trainer ..... Janet Brown, A.T., C.  
 Team Managers ..... Jason Knowles, Kelley Poole  
 1996 Record ..... 12-7-1  
 1996 Conference Record/Finish ..... 2-6-0/Eighth  
 Final Regional Ranking ..... No. 10 Southeast NSCAA  
 Letterwinners Returning/Lost ..... 14/2  
 Starters Returning/Lost ..... 11/1  
 Top Returnees ..... Melissa Juhl (GK), Alexandra Osorio (F)  
 ..... Janine Lavoie (D), Nicole Sedgwick (D)  
 Top Newcomers ..... Jill Ford (MF), Danielle Foard (D)  
 ..... Stephanie Dietrich (D), Ashley Halter (D)

## Florida State Headquarters on the Road

### Wake Forest

August 28-29  
 Holiday Inn Express  
 5790 University Parkway  
 Winston-Salem, NC  
 (910) 767-9595

### North Carolina

September 6-7  
 Regal University Hotel  
 2800 Campus Walk Avenue  
 Durham, NC  
 (919) 383-8575

### Clemson

September 25-26  
 Comfort Inn  
 Highways 123 & 76  
 Clemson, SC  
 (864) 653-3600

### UNC-Greensboro & Elon College

October 2-5  
 Greensboro/Park Lane at  
 Four Seasons  
 3005 Highpoint Road  
 Greensboro, NC  
 (910) 294-4565

### Alabama-Birmingham & Tennessee

October 30-November 2  
 Knoxville/Holiday Inn  
 Select Downtown  
 525 Henley Street  
 Knoxville, TN  
 (423) 522-2800

### Appalachian State

August 30-31  
 Holiday Inn  
 1855 Blowing Rock Road  
 Boone, NC  
 (204) 264-2451

### NC State

September 13-14  
 Raleigh-Courtyard North  
 1041 Wake Towne Drive  
 Raleigh, NC  
 (919) 821-3400

### Furman

September 27-28  
 Greenville Hilton  
 45 West Orchard Park Drive  
 Greenville, SC  
 (864) 232-4747

### Virginia

October 17-19  
 Charlottesville/Omni  
 235 West Main Street  
 Charlottesville, VA  
 (804) 971-5500

### ACC Championships

November 5-9  
 Winston-Salem/Holiday Inn Select  
 5790 University Parkway  
 Winston-Salem, NC  
 (910) 767-9595



# media information

## Florida State University Media Outlets

### NEWSPAPER

#### Tallahassee Democrat

P.O. Box 990 • Tallahassee, Florida 32302  
Phone: (850) 599-2166 • Fax: (850) 599-2301

#### The Flambeau

P.O. Box 20287 • Tallahassee, Florida 32316  
Phone: (850) 681-6695 • Fax: (850) 681-3577

#### FSView

P.O. Box 20334 • Tallahassee, Florida 32316  
Phone: (850) 561-6653 • Fax: (850) 561-6578

#### The Osceola

402 Dunwoody Street • Tallahassee, Florida 32304  
Phone: (850) 222-7733 • Fax: (850) 224-3627

#### Florida Times-Union

One Riverside Ave Suite 304 • Tallahassee, Florida 32301  
Phone: (850) 224-7515 • Fax: (850) 681-2961

#### Orlando Sentinel

336 E. College Ave Suite 30 • Tallahassee, Florida 32301  
Phone: (850) 222-5564 • Fax: (850) 224-0979

### TELEVISION/RADIO

#### WCTV - TV (CBS affiliate)

P.O. Box 3048 • Tallahassee, Florida 32315  
Phone: (850) 893-2126 • Fax: (850) 668-3851

#### WTLX - TV (ABC affiliate)

8927 Thomasville Rd • Tallahassee, Florida 32316  
Phone: (850) 893-3127 • Fax: (850) 668-3851

#### WTWC - TV (NBC affiliate)

8440 Deerlake Road; Tallahassee, Florida 32312  
phone: (850) 893-9892 fax: (850) 893-3646

#### WNLS - Sports Radio 1270 AM

325 John Knox Road, Suite E-200; Tallahassee, Florida 32303  
phone: (850) 386-6143 fax: (850) 385-8789

### A NOTE TO THE MEDIA, FANS AND OPPONENTS

Lady Seminole Soccer contact Joe Hornstein of the Florida State University Sports Information Office is ready to assist you with any questions or requests you may have about the 1997 Seminole Soccer program, media guide, coaches and student-athletes. Please do not hesitate to phone, fax or write a letter to the sports information office at P.O. Box 2195; Tallahassee, Florida 32316; (850) 644-1403 phone; (850) 644-3820 fax, if we can further assist you.

## Florida State University Media Outlets

Team Travel .....	IFC	Player Biographies .....	16-19
Media Information .....	1	Newcomer Biographies .....	20-21
This is Tallahassee .....	2	1996 Game by Game .....	22-23
This is FSU .....	3	1996 FSU Statistics .....	24
1997 Season Outlook .....	4-6	All Time Roster & Stats .....	26
1996 Season Review .....	7	ACC Statistics .....	27
Year of Milestones .....	8-9	FSU Support Services .....	28
1997 Team Roster .....	10	Strength & Conditioning .....	29
Positions & Hometowns .....	11	Life Skills .....	30
Game Rules .....	12	NCAA Information .....	31
Coaching Staff .....	13	1997 Opponents .....	32
Assistant Coaches .....	14	Speed Chart .....	IBC
Team Managers .....	15	1997 Soccer Schedule .....	BC

### HOW TO COVER THE SEMINOLES

Members of the media are supplied with weekly press releases, including updated individual tournament and career statistics, as well as conference and national rankings and information on upcoming matches or events. Results and statistics may be obtained in the sports information office or off the Atlantic Coast Conference's faxback system. Pertinent team and player information will also be available at the Seminole Soccer Complex for all home matches. If you would like to schedule personal interviews with the coaches or players contact Hornstein in the FSU Sports Information office at least 24 hours in advance. Coach Kerby-Nelson is generally available in her office during weekday afternoons.

### WHERE THE HOME MATCHES WILL BE

All 1997 Seminole Soccer home matches take place at the Seminole Soccer Complex (capacity 1000). The field is located on Chieftain Way directly across from the Bobby E. Leach Center. Parking for the facility is located in between the two sites. Media members will be provided parking passes and will be seated in a designated area. Please notify the sports information office prior to home matches for credentials to be assigned. Any accredited photographer wishing to shoot the matches must check in with Hornstein prior to gameday so proper credentials can be assigned.

### JUST A NOTE OF INTEREST

When figuring out the FSU goalkeepers' goals against attempted average take the number of goals scored against the FSU goalie, multiply the figure by 90, then divide by the goalkeeper's minutes played (goals scored \* 90/minutes played). In order to figure out the goalie save percentage, divide the FSU goalkeeper's number of saves by that same number of saves plus goals scored against her (saves/saves + goals).

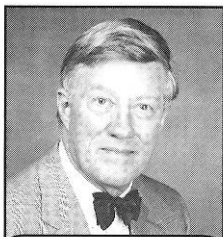
### ACC FAXBACK SYSTEM

ACC soccer standings and statistics are available on ACC FaxBack each Tuesday morning, Call (910) 854-5859, from the handset of your fax machine, and follow the directions. The ACC code for the soccer release is 5650. The FSU soccer release can be found on the system under code 31650, Tuesday afternoons.

### MEDIA GUIDE CREDITS

The 1997 Seminole Soccer media guide is a publication of the Florida State University Sports Information Office. Edited and written by **Joe Hornstein** with assistance from **Mandi Copeland**. Designed by **Marsiglio & Murphy Design Group, Inc.** Photography by **Landa Oz Photography, Ross Obley, Ryals Lee** and the **University Photo Lab**. Printing by **Rapid Press**

The Florida State University offers equal opportunity in its employment and educational activities in compliance with Title IX, Section 5-4 of the Rehabilitation Act of 1973 and other civil rights laws. This document is available upon request in alternate formats for individuals with print related disabilities. Contact the ADA office, 301 Westcott Administration Building, for more information.



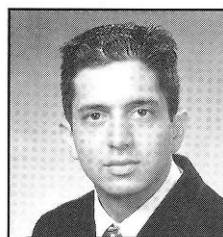
**Sandy D'Alemberte**  
FSU President



**Dave Hart**  
Athletics Director



**Kim Record**  
Associate Athletics Dir.

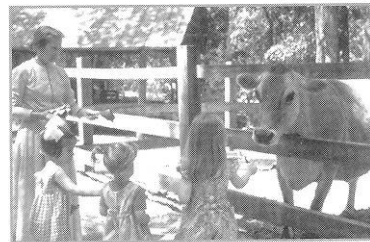


**Joe Hornstein**  
Soccer SID



# this is tallahassee

**N**ear, but far from the glaring strips of neon amusement, and the castles and crowds of Disney, lies another magical place in the Sunshine State - one of pow-wows, plantations, politics and great pride. Often described as "The Other Florida" with

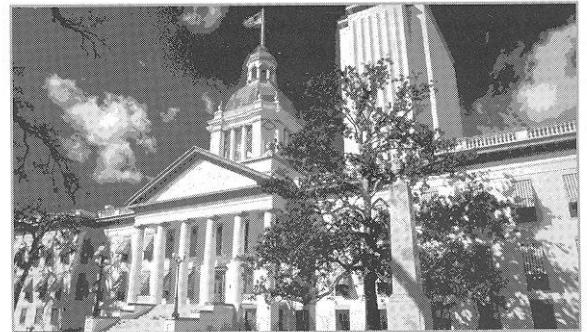


its deep-rooted history, rolling hills, canopy roads of moss-draped oaks, cool climate and Southern-style hospitality; it is a Florida few have seen. It is Tallahassee - Florida with a Southern accent. Best known as Florida's capital, Tallahassee is an intimate neo-metropolitan city where the power of state government, the academic and the artistic are complemented by subtle, old-fashioned charm. It is the perfect two- or three-day diversion for the more than 41 million annual visitors to Florida and 13 million residents.

Like the city itself, the story of how Tallahassee was chosen as the state capital is rich in history. In 1823, two explorers set out - one on horseback from St. Augustine and the other by boat from Pensacola - to find a permanent, central location for the Legislature to convene. The two met at a beautiful site that the Creek and Seminole Indians called "tallahassee" - derived from the words "talwa" meaning town and "ahasee" meaning old. The rendezvous point remains Florida's capital.

The "old town" has undergone many changes, but one thing remains the same - it is still a government town fiercely proud and dedicated to preserving its heritage. The Capitol buildings, both old and new, epitomize Tallahassee's perseverance.

The 22nd floor of the New Capitol provides a panoramic scope of a sophisticated Southern city awash in a sea of flowering azaleas, snowy dogwoods, towering pines, fragrant magnolias, and hundreds of shimmering lakes, springs, swamps,



rivers and sink holes. Special legislative viewing galleries are open during the legislative session.

Below, in the shade of giant live oaks, proudly stands the Old Capitol, originally constructed in 1845 and restored to its 1902 splendor complete with red-and-white candy-striped awnings, a dome adorned with stained glass, antique furnishings and political memorabilia.

Across from the Old Capitol are the 40-foot twin granite towers of the Vietnam Veteran's Memorial, and the blue stone Union Bank, Florida's oldest surviving financial institution. The nostalgic Old Town Trolley, a replica turn-of-the-century street car, carries passengers through restored Adams Street Commons to numerous other historical downtown shops for free - unheard of even 100 years ago.

Minutes from downtown lies the Governor's Mansion, which resembles the home of Florida's military hero Andrew Jackson; and the 52-acre natural animal habitat and 1880s farm of the Tallahassee Museum of History and Natural Science, which provide the rare chance to walk and talk with native Florida animals.

Appealing to the strokes of different folks, Tallahassee also features 99 holes of golf on six courses and a proliferation of tennis centers. Sideline athletes cheer the nationally-ranked Florida State Seminoles, Florida A&M Rattlers and the Tallahassee Tiger Sharks, of the East Coast Hockey League. And always a sure bet are the nearby greyhound races.

Cultural interests are sparked by widely-acclaimed museums and galleries and elaborate entertainment at the 14,000-seat Tallahassee-Leon County Civic Center.

Tallahassee is a collaboration of power-play politics and classical character splashed with a twist of Southern beauty and charm. Tallahassee is Florida with a Southern accent.

# this is florida state

**F**lorida State University, celebrating its golden anniversary as an coeducational graduate research institution in 1997, has joined the nation's elite in both academics and athletics. Located on the oldest continuous site of higher education in Florida and building rapidly on the framework of a highly regarded liberal arts college for women, the University has emerged over the past 50 years as an institution of national and international esteem. Its stature is evidenced by a number of additions to its record of excellence in the 1990s:

- In 1994, Florida State was classified a "Research University I" by the Carnegie Foundation, placing it among the nation's top research universities.
- The world's largest magnet - two stories high and capable of generating 45 tesla or 1 million times the Earth's magnetic field - was installed in 1995 at the NHMFL, located in the off-campus research complex, Innovation Park. In 1996, the NSF renewed and increased by 50 percent the NHMFL's funding for another five years.
- FSU created the first multipurpose student identification/banking card. The Card Application Technology Center is a national leader in "smart card" systems.
- At the forefront of supercomputing since obtaining its first high-speed computer in 1985, FSU took yet another step in ultrafast and parallel computing in 1990 when it acquired two supercomputers, the Thinking Machine Corp. Connection Machine and the Cray Y-MP.
- In fall 1994, the first tenants moved into the east side of the \$100 million University Center, a classroom-and-office facility at Doak Campbell Stadium; the stadium's south end zone also was enclosed and the adjacent Moore Athletic Center expanded. With the completion of the west side in 1996, University Center now provides 550,000 square feet of much needed academic space and a centralized location for student services.
- Capping more than a decade of national prominence in intercollegiate athletics, Florida State's athletic teams, nicknamed "Seminoles," joined the Atlantic Coast Conference as its ninth member in 1990. The FSU football team won the 1993 National Championship and its quarterback, Charlie Ward, won the University's first Heisman Trophy.
- The Dr. Bobby E. Leach Center, a state-of-the-art student recreation facility, with a pool, saunas, basketball and racquet-sport courts, was completed in 1991.

As this list of highlights attests, Florida State is excelling in the 1990s with exceptional strength, energy and vision for the future. Under the leadership of the

University's 12th president, Talbot "Sandy" D'Alemberte, who took office in January 1994, FSU will continue to build on the foundation of its history of excellence in scholarship, research and service.

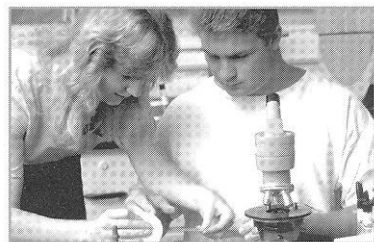
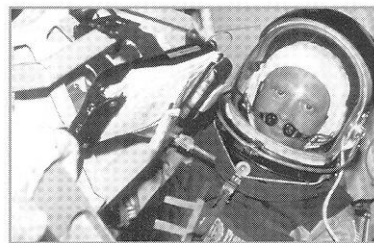
Today, FSU's operating budget is \$474.3 million. Faculty and administrators generate more than \$102 million annually in external funding to supplement state-sponsored research. Three direct-support organizations serve to bolster the University: FSU Foundation, which raises millions in private gifts to support academics, Seminole Boosters and FSU Alumni Association.

Graduate students, who number more than 5,929, pursue advanced degrees in fields as diverse as business administration and theoretical particle physics. A majority of research done at FSU is the direct result of student effort, culminating in numerous books, monographs and journal articles relating to the whole spectrum of intellectual interests and the practical needs of society.

FSU, a residential campus, places a high priority on its 30,264 students and their needs and interests (of the student population: 45 percent are male; 55 percent are female; 20.1 percent are minorities; and 2.5 percent are foreign students). The University Honors Program, Disabled Student Services, International Student Center, Student Government, Flying High Circus and intramural sports are among more than 200 organizations and activities in which students may participate.

Situated in the heart of the state's thriving capital city, Florida State's main campus blends Gothic and modern styles of architecture with the oaks, pines, dogwoods, palms and azaleas of North Florida.

In all areas of its mission - excellence in teaching, research and public service - Florida State University is advancing boldly toward the 21st century.



# 1997 season outlook

As the Florida State soccer program continues to grow, each new season brings about unprecedented experiences and challenges for the young Seminoles. The 1997 season will serve along these lines as there is only three returning seniors, yet the upperclassmen out-number the sophomore and freshmen for the first time in program history. When the program started just two short seasons ago, **Head Coach Heather Kerby-Nelson** put together a core of freshmen athletes who call 1997 their junior season.

The 1996 season saw Kerby-Nelson and the Seminole soccer program achieve what it had set out to do all along. Win! The 1997 season is no different as far as outlook is concerned. Just one starter from last season's 12-7-1 squad will not return as 1996 point and goal scoring leader **Kelley Poole** graduated. Coincidentally, she will re-join the team as it's manager for the '97 season.

Returning to bolster the Seminole lineup are a number of players with extensive starting experience: All-ACC and All-Region goalkeeper **Melissa Juhl**, Co-Team MVP **Nicole Sedgwick** and assist leader **Kasey McCall**, plus 20-game starters **Alex Osorio**, **Janine Lavoie**, **Angela Bonaffino** and **Justina Torres**. Osorio and Lavoie have also started in all 39 games of the program's two full seasons completed. In addition, the Seminoles return another group of players with several starts during the '96 season: **Janna Walkup** (17), **Erin Grimsley** (12), **Lauren Lynch** (7), **Molly Nye** (7), **Allison Hogan** (5), **Leslie Del Rio** (2) and **Katie Lunn** (2).

Eight outstanding athletes highlight the 1997 recruiting class in: transfers **Jill Ford** (George Mason) and **Taryn Cervi** (British Columbia), plus six freshman with all-region and state MVP honors, not to mention experience within the Olympic Development Program.

The incoming freshmen contingent contain four defenders and two midfielders. In that, the defenders are led by all-american defender **Stephanie Dietrich**, with all-region players **Danielle Foard**, **Rachael Watkin** and **Ashley Halter**. The midfielders are just as decorated with region stars **April Murphy** and **Sally Shelgren**.

Ford, a junior transfer from George Mason University, was a two-year starter for the Patriots. Prior to college she was the Florida High School Female Athlete of the Year and an All-American with Orange Park High School located near Jacksonville, Florida.

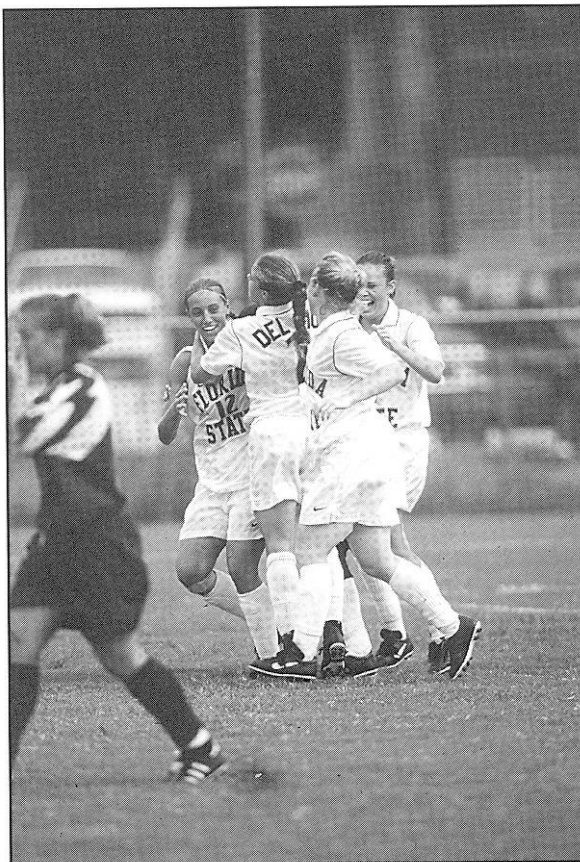
Cervi, a highly decorated Canadian senior transfer from the University of British Columbia continues the connection that Kerby-Nelson has with the "Great White North." This past June, Cervi was named to the Canadian National team and earned her first "cap" against the United States. She would be the fifth Canadian prep star to join the Seminoles in the past three seasons.

The Seminoles schedule in 1997, as always, pits the Tribe with highly experienced opponents from the nationally strong Atlantic Coast Conference, plus many more from around the southeast. While the Noles enjoyed an equal amount of home games as they had road games last season, just six of 20 games will

be played at the Seminole Soccer Complex in 1997.

Added to this year's schedule are six new non-conference opponents: Alabama-Birmingham, Elon, South Florida, Stetson, UNC-Greensboro and Wofford.

With the advantage of five home ACC games last season, FSU will play just two in Tallahassee in '97. The home games are highlighted by perennial Top 10-ranked Maryland and Duke, with regional opponent Stetson and SEC-foe Louisiana State added in.



# HERE IS A LOOK AT THE POSITION BREAKDOWN:

## Forwards

The Seminoles bring back a veteran frontline as they enter season number three. Last season most of the scoring came from the striker position, in which the team offense revolved around. Without having Poole in the line up, some players will need to step up into a more dominant role.

The most anticipated performance will come from **Erin Grimsley**. She came on strong as a true freshman in '96, starting most of the season at the left wing. She finished tied for third overall on the team with 12 points, adding four goals and four assists in 12 starts. She was second with two game-winning scores.

**Alexandra Osorio**, who is only one of two players to start in all of FSU's 39 matches will anchor the frontal attack. Osorio was among the team's leaders with a solid 31 shots on goal and nine points off of three goals and assists, culminating in the team's Red Dog and Coaches Awards. She endured throughout the summer to return to training camp stronger than ever, and will be a key asset in '97.

Junior transfer **Jill Ford** comes to town from George Mason University in Fairfax, Va., where she spent the first two years of her career. For the Patriots, Ford was a solid player and starter, scoring nine goals and four assists. Her NCAA tournament experience should offer the team maturity as the Seminoles look to gain national recognition.

Bolstering the attack will be **Kasey McCall**, who started in 19 of 20 games last season scoring a goal or and an assist in the season's first seven contests. She finished the season second on the team with 24 points off of nine goals and a team-leading six assists.

**Janna Walkup** returned to form in 1996 after a season-ending injury occurred during the '95 contest. One of the taller and stronger players on the team, FSU will depend upon Walkup's experience as she leads the Tribe into 1996. She scored two goals off of just seven shots last season.

Two newcomers to the Seminole attack are **April Murphy** and **Sally Shelgren**. Murphy comes to Tallahassee from Tulsa, Okla., where she excelled at the forward position earning all-state honors. Her speed and tenacity make her a significant asset to the program. Shelgren, a native of Niceville, might be the most raw player on the field. She brings speed, strength and natural ball-winning ability.

## Midfielders

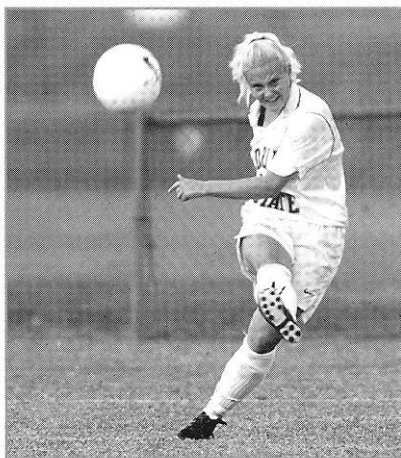
It seems like the Seminoles have stockpiled at this heavily demanding position. Most of Kerby-Nelson's recruiting over the last two seasons and some in '97 took place in the midfield.

When the 'Noles were in a must-score situation last season, Coach Kerby-Nelson inserted Canadian national team player and University of British Columbia transfer **Nicole Sedgwick** from her defensive post. Eventually, Sedgwick anchored the midfield where she finished the season with 26 shots on goal, while adding three goals and assists for a total of nine points. She also put in a game-winning score and an assist.

**Taryn Cervi**, a former teammate of Sedgwick's at UBC, will once again play together. She was recently named to the Canadian National team, earning her first "cap" in a match against the United States. Cervi's dominant style of play and Sedgwick's explosiveness will set the tempo for FSU Soccer in '97.

The flank attack will be anchored by **Justina Torres** and **Lauren Lynch**. Torres, who transferred into the program from St. Thomas University in Miami, was a 20-game starter last season for the 'Noles. Over the past two seasons Lynch has stepped in for 19 starts and has come off the bench in an overall 37 matches. With the a large amount of game-time experience the pair also bring to the flank great speed and impressive one-on-one skill.

Last season's Rookie of the Year, **Angela Bonaffino**, returns to fortify the Seminole midfield. The former



Canadian junior star started all 20 games for FSU in '96, finishing tied for third on the team with 12 points on four goals and assists. The left-footed center has one of the softest touches in the ACC and will prove beneficial in '97. She will be a force on set plays.

Although freshman **Sally Shelgren** enters her first season of major Division I-A soccer, she will compete for time in the central midfield. Her work rate and ball-winning ability will cease the opponent attack.

Adding depth to the midfield are **Katie Lunn, Jessica Driscoll** and **Leslie Del Rio**.

## Defenders

Coach Kerby-Nelson's recruiting in '97 focused on defense and will be seen within a new more aggressive philosophy. Four of the eight incoming players will find significant minutes in the Seminole backfield.

At marking back, will be returners **Janine Lavoie, Molly Nye** and **Janna Walkup**, with newcomer **Danielle Foard**. Freshman **Stephanie Dietrich** will serve as a stopper/defensive midfielder.

The 1995 season's MVP and 1996 20-game starter, Lavoie, will once again be a force in the backfield. She led all defenders with seven points along with her three goals and one assist in '95 and added valuable leadership throughout the 1996 season. Her lone assist of the year was a game-winner against Jacksonville State. She is only one of two players who have started all 39 games of FSU's soccer history.

Foard will be called on for significant playing time in '97. Her tenacity and speed make her a scoring threat from her defensive post. According to Coach Kerby-Nelson, Foard's "no fear" attitude will find a nice fit within FSU's aggressive defensive scheme.

Nye stepped up in 1996, as she was named the team's Co-Most Improved player. She had seven quality starts in 18 appearances last season. Walkup has the size, strength, speed and the ability to step and shut down some of the more talented players within the ACC.

Dietrich's role on the team is two-fold. She brings all-american experience to the defense. Her height, ability to dominate the air and mobility as a central defender will serve the 'Noles well in shutting down the opponent attack.

**Ashley Halter** and **Rachael Watkin** will share time at sweeper. The pair bring various styles of play to the Seminole backfield. Halter plays a simple one/two touch game, while Watkin is very smooth on the ball and enjoys attacking from the back.

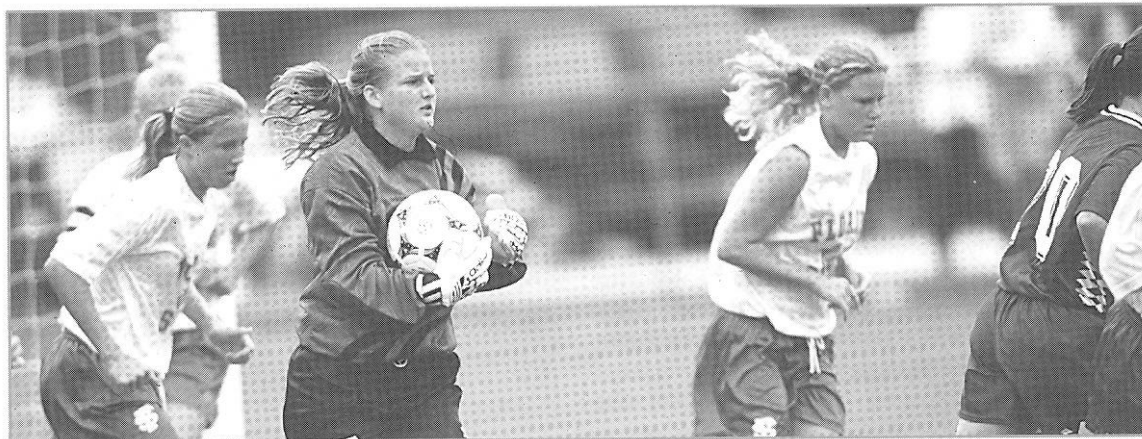
## Goalkeepers

After she captured the attention of opposing ACC coaches in the 1995 season. **Melissa Juhl** returned in '96 with another impressive performance.

In 1995, Juhl single handedly thwarted numerous scoring attempts. She helped put FSU's name into distinction with two conference records.

Following the 1996 season, Juhl was named to the All-ACC second team and then the NSCAA All-Southeast Region team. During the season, she earned a place on Soccer America's Team of the Week after FSU's shut out of 10th-ranked Clemson.

Returning keeper Jamie Gurtov brings back a season of experience that will provide insurance to the Seminole goal. Gurtov appeared in four matches in '96, recording three saves off of 10 shots.





# 1996 season review

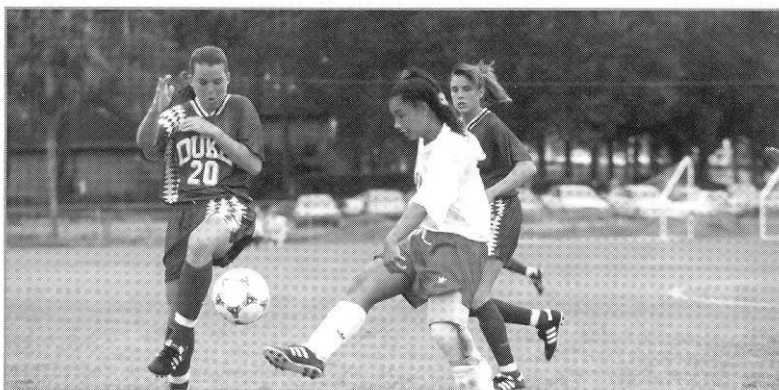
When the Lady Seminoles took to the field for the first time in their inaugural 1995 season, milestones were reached with the first game played, first goal and first win. Moreover, the 1995 season was one of "firsts" for the young Florida State women's soccer program.

The category of milestones head coach Heather Kerby-Nelson was looking for in her second season were much more lofty, yet very attainable.

On October 20, 1996 the Lady Seminoles earned that milestone and made program history when they shut out 10th-ranked Clemson 1-0 at the Seminole Soccer Complex. In the game's 68th minute forward Lauren Lynch, a sophomore from Kennesaw, GA, took a loose ball off the post and put in for the game's lone score. Not only was it the first win over a nationally ranked opponent for the Tribe, but also the program's first ACC win!

In the 'Noles next ACC match-up against 12th-ranked N.C. State on October 27th at the Seminole Complex, Florida State not only outshot, but outsaved the Wolfpack in a come-from-behind 4-2 win. FSU's second all-time conference win and second against a ranked opponent was impressive, as the 'Noles were forced to come from behind twice to pull out the crucial win. In the winning effort FSU outshot an ACC opponent for the first time, 12-9, and ACC Player of the Week goalkeeper Melissa Juhl, a sophomore from Marietta, held a 3-2 save advantage over her 'Pack counterpart. This was the first come-from-behind win in program history, let alone being down twice.

The two ACC wins combined can definitely make a claim as probably one of the finest back-to-back performances in the conference this season. Both teams were at a season-high ranking when they visited Tallahassee, but left knowing they were going to drop in the very next national poll. Statistically, the Lady 'Noles were split even 17-17 in shots on goal combined, but Juhl took the nod outsaving her counterparts 6-4. The only two assists to come in the milestone wins were from FSU's forwards Angela Bonaffino, a freshman from Ontario and Alexandra Osorio, a sophomore from Miami.



## PROGRAM "FIRSTS" WITHIN THE SECOND SEASON

### First appearance Southeast Region rankings:

October 7, 1996, also receiving votes

### Other SE regional appearances:

October 14, 1996 #10; October 21, 1996 #9;  
October 28, 1996 #7

### First National Ranking recognition:

October 28, 1996, ARV, Soccer America,  
NSCAA and Soccer News

### First ACC win:

October 20, 1996, Clemson University, 1-0

### First win over a nationally ranked opponent:

October 20, 1996, Clemson University, 1-0, #10 NSCAA, #13  
Soccer News and #14 Soccer America

### Other wins over nationally ranked opponents:

October 27, 1996, N.C. State, 4-2, #10 Soccer America, #12  
Soccer News, and #18 NSCAA

### First win over a regionally ranked opponent:

October 20, 1996, Clemson, 1-0, #3 NSCAA

### Other wins over regionally ranked opponents:

October 27, 1996, N.C. State, #4 NSCAA

### First player to receive "Player of the Week":

October 21, 1996, Melissa Juhl, goalkeeper,  
ACC Player of the Week

### Other "Player of the Week" honors:

October 21, 1996, Melissa Juhl, goalkeeper, Soccer America  
Team of the Week

October 28, 1996, Kelley Poole, midfielder,  
Soccer America Team of the Week

### First All-Conference honor:

Melissa Juhl, goalkeeper, ACC second team

### First All-Region honor:

Melissa Juhl, goalkeeper, All-Southeast second team

## LADY SEMINOLES FINISH UP THE SEASON 12-7-1

# A YEAR OF

**FSU AGAINST THE NCAA FIELD:** The Lady Seminoles have two wins against the field of 32 participating in the 1996 Division I Women's Soccer Championships. FSU defeated Clemson and N.C. State during the regular season, with losses to North Carolina, Duke, Wake Forest, Virginia, Maryland and Florida. Seven out of the eight ACC women's soccer teams advanced to the NCAA field of 32.

**GAME OF THE YEAR: FSU KNOCKS OFF CLEMSON FOR FIRST ACC WIN, PLUS!:** The Lady Seminoles' 1-0 win over then 10th-ranked Clemson was the program's first over a conference foe, not to mention the first over a nationally ranked squad. In the game's 68th minute Lauren Lynch knocked in an unassisted loose ball to clinch the highly defensive battle. It was Lynch's first game winner. Between the two schools, there was 31 total fouls, second highest total all season (32 with Furman and 31 with Georgia State). It was also the first shut out over an ACC opponent.

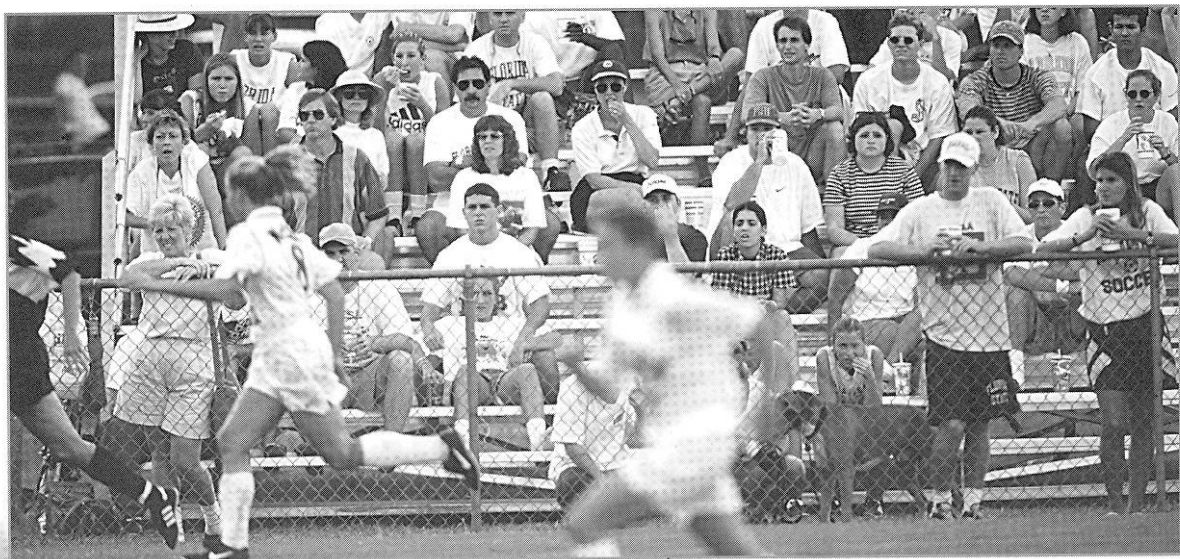
**GAME OF THE YEAR 2: SEMINOLES DOWN NO. 12 N.C. STATE:** The Lady Seminoles earned their second win in ACC history when they defeated No. 12 N.C. State 4-2 in Tallahassee. The win was the first come-from-behind victory for FSU ever, let alone coming from behind twice. N.C. State scored first and then added an own goal to tie the score at one a piece. It was the first time an opponent scored on FSU in the first half since the UNC game on 9/26. In a 14 minute span FSU probably played their best offensive soccer all season. An-

gela Bonaffino started the scoring by blasting a direct kick into the upper left corner of the goal, then teammate Kelley Poole headed in her sixth game winner of the season from a Bonaffino assist. Jennifer Yocca added the "icing on the cake" with her header of a Alex Osorio assist in the 88th minute to seal the win.

**SEMINOLES FALL TO WAKE FOREST 1-0 IN HEART-BREAKER:** Despite outshooting the Demon Deacons 18-8 with numerous scoring opportunities, FSU fell 1-0. WFU had the game's only score in the 11th minute when Norine Fernbach put in teammate Rachel Thomas's shot that went off goalkeeper Melissa Juhl. FSU also had a 7-3 corner kick advantage. It was the fourth shut out of the season to an ACC school.

**JUHL NAMED ACC PLAYER OF THE WEEK, LANDS ON SOCCER AMERICA'S TEAM OF THE WEEK:** For the first time in the program's two year history an FSU player was named ACC Player of the week. The award on October 21 went to Seminole goalkeeper Melissa Juhl. The sophomore from Marietta recorded two shut outs, one of them against 10th-ranked Clemson. She has 7.5 shut outs on the season. Her feat also landed her on Soccer America's team of the week (10/14-20), also a first for the program.

**POOLE LANDS ON SOCCER AMERICA'S TEAM OF THE WEEK, THAT'S TWO IN A ROW FOR THE 'NOLES:** Senior midfielder Kelley Poole was named to Soccer America's Team of the Week (10/21-27) for her game



# MILESTONES

winning performance against N.C. State. It was the second week in a row that this honor had been bestowed on an FSU player.

**PLAYING TOUGH IN THE FIRST HALF:** N.C. State's lone first half goal on October 27 broke FSU's eight game streak without an opponent scoring in the first half. The last time an opponent scored against the Seminoles in the first half was North Carolina on September 26. That streak included No. 10 Clemson and No. 8 Florida.

**DOWN TO SIX:** At the end of the 1996 season there were six players who started and played in all of FSU's 20 matches. The remaining six include Melissa Juhl, Kelley Poole, Angela Bonaffino, Nicole Sedgwick, Janine Lavoie and Justina Torres. Lavoie has started every match in the program's history, 39 matches. Also, sophomore forward Janna Walkup has started in all 17 matches she has appeared in this season. Alexandra Osorio started every match during the season, 19 matches, but missed her first match in program history when she was sidelined from first round competition at the 1996 ACC Championships.

**DOUBLING UP ON 1995:** Last season, FSU had three double figure point scorers (Osorio 15, Lynch 14 and Kelly McGrath 12). This season the Seminoles boast five double figure scorers. Two players led the team with six goals each in '95. Kelley Poole has 14 goals alone. The team had four game winners all season, Poole has six of her own. One player led the team with three assists in '95 to five players with that total or higher in '96. Last year's team had 32 goals all season to '96's 51 scores.

**POOLE EMERGED AS TEAM LEADER:** Senior midfielder Kelley Poole jumped past Kasey McCall on October 4 against Mississippi and leads the team with 29 points. She has scored a team leading 14 goals on a team leading 56 shots and six game winners.

**McCALL ALSO A TEAM LEADER:** Kasey McCall, a freshman midfielder from Richardson, TX, is in second place

with 24 offensive scoring points. Her six assists lead the team. She did not make the start at Georgia State, her first missed start of the season. She began the season recording a goal or an assist in the first seven matches, a team record in itself.

**GRIMSLEY HAVING HER WAY:** Freshman midfielder Erin Grimsley of Lenexa, KS has surged from the middle of the pack to third place on the team statistically with 12 points. In the 'Noles match with JU, Grimsley tallied three assists, a team record for assists in a game.

**BONAFFINO MOVES UP:** Freshman forward Angela Bonaffino's goal and assist against N.C. State moved her up to third on the team, tied with Grimsley, with 12 points. She had the game winning assist against the Wolfpack.

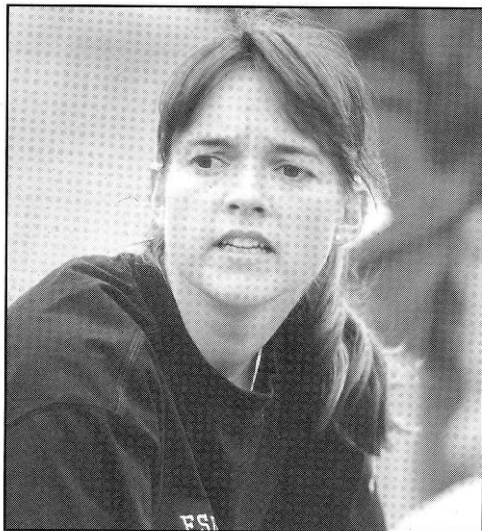
**LYNCH PROVED TO BE QUALITY DEPTH:** Lauren Lynch, a sophomore forward from Kennesaw, GA, is fourth on the team with 10 points (4 goals 2 assists) and started seven of 18 matches she has appeared.

Lynch hit the gamewinner over No. 10 Clemson.

**LARGEST ATTENDANCE:** The Florida game's attendance of 1,123 was the second time during the season that the all-time attendance record was broken. The UNC home game attendance of 917 broke the previous home attendance record of 903 set last season against Duke.

**FIRST LOSS OUTSIDE THE ACC THIS SEASON:** The 3-0 loss to Florida was the first loss outside the ACC this season. The only other non-conference non-win was a 2-2 tie with Mississippi. The Seminoles are 1-1-1 against the SEC, 2-0 against the Southern, 2-0 against the Sun Belt, 1-0 against the Colonial, 2-0 against the TAAC and 2-0 against Division II.

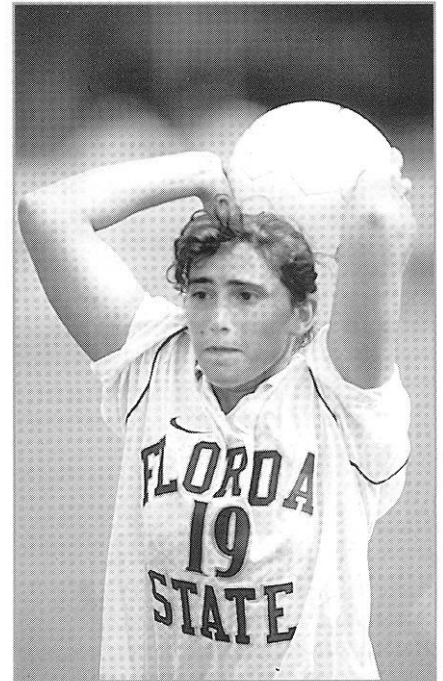
**SWEAT SHUT OUTS:** Florida State has eight shut outs this season, including a 1-0 win over 10th-ranked Clemson. Last season FSU notched just one. Three times this season FSU had back-to-back shut out wins.



# 1997 team roster

## 1996 Alphabetical Team Roster

No.	Name	Position	Height	Year	Hometown/High School
12	Angela Bonaffino	MF	5-5	SO	St. Catharines, Ontario, Canada/Holy Cross
14	Taryn Cervi	MF	5-10	SR	Vancouver, British Columbia, Canada/Univ. of British Columbia
2	Leslie Del Rio	MF	5-3	FR*	Miami Springs, FL/Miami Springs
11	Stephanie Dietrich	D/MF	5-9	FR*	Amelia, OH/Glen Este
23	Jessica Driscoll	MF	5-2	JR	Marietta, GA/Walton
21	Danielle Foard	D	5-5	FR	Falls Church, VA/George C. Marshall
15	Jill Ford	F	5-7	JR	Orange Park, FL/George Mason Univ.
9	Erin Grimsley	F	5-9	SO	Lenexa, KS/St. Thomas Aquinas
01	Jamie Gurtov	GK	5-7	SO	Plantation, FL/Plantation
24	Ashley Halter	D	5-10	FR	Atlanta, GA/Lovett School
17	Allison Hogan	MF	5-6	JR	Boca Raton, FL/Boca Raton
13	Melissa Juhl	GK	5-6	JR	Marietta, GA/Alan C. Pope
7	Janine Lavoie	D	5-6	JR	Saskatoon, Saskatchewan, Canada/Bishop Mahoney
19	Katie Lunn	MF	5-5	SR	Chattanooga, TN/Baylor
6	Lauren Lynch	MF	5-3	JR	Kennesaw, GA/Harrison
8	Kasey McCall	MF/F	5-6	SO	Richardson, TX/Berkner
16	April Murphy	F	5-5	FR	Tulsa, OK/Jenks
3	Molly Nye	D	5-2	JR	Wesley Chapel, FL/Tampa Prep
5	Alexandra Osorio	F	5-6	JR	Miami, FL/G.H. Braddock
4	Nicole Sedgwick	MF	5-3	SR	Delta, British Columbia, Canada/Univ. of British Columbia
22	Sally Shelgren	MF	5-5	FR	Niceville, FL/Niceville
1	Justina Torres	MF	5-2	SR	Miami, FL/G.H. Braddock
10	Janna Walkup	D/F	5-9	JR	Orlando, FL/Edgewater
20	Rachael Watkin	D	5-10	FR	Boca Raton, FL/Boca Raton



\* - RedShirted Freshman

**Head Coach:** Heather Kerby-Nelson

**Assistant Coaches:** Kerry Dziczkaniec, Paul Nelson

**Team Trainer:** Janet Brown, A.T., C.

**Team Strength Coach:** Sterling Brown

**Team Managers:** Jason Knowles, Kelley Poole

## 1996 Numerical Team Roster

No.	Name	Position	Height	Year	Hometown/High School
01	Jamie Gurtov	GK	5-7	SO	Plantation, FL/Plantation
1	Justina Torres	MF	5-2	SR	Miami, FL/G.H. Braddock St. Thomas Univ.
2	Leslie Del Rio	MF	5-3	FR*	Miami Springs, FL/Miami Springs
3	Molly Nye	D	5-2	JR	Wesley Chapel, FL/Tampa Prep
4	Nicole Sedgwick	MF	5-3	SR	Delta, British Columbia, Canada/Univ. of British Columbia
5	Alexandra Osorio	F	5-6	JR	Miami, FL/G.H. Braddock
6	Lauren Lynch	MF	5-3	JR	Kennesaw, GA/Harrison
7	Janine Lavoie	D	5-6	JR	Saskatoon, Saskatchewan, Canada/Bishop Mahoney
8	Kasey McCall	MF/F	5-6	SO	Richardson, TX/Berkner
9	Erin Grimsley	F	5-9	SO	Lenexa, KS/St. Thomas Aquinas
10	Janna Walkup	F	5-9	JR	Orlando, FL/Edgewater
11	Stephanie Dietrich	D/MF	5-9	FR	Amelia, OH/Glen Estes
12	Angela Bonaffino	MF	5-5	SO	St. Catharines, Ontario, Canada/Holy Cross
13	Melissa Juhl	GK	5-6	JR	Marietta, GA/Alan C. Pope
14	Taryn Cervi	MF	5-10	SR	Vancouver, British Columbia, Canada/Univ. of British Columbia
15	Jill Ford	F	5-7	JR	Orange Park, FL/George Mason Univ.
16	April Murphy	F	5-5	FR	Tulsa, OK/Jenks
17	Allison Hogan	MF	5-6	JR	Boca Raton, FL/Boca Raton
19	Katie Lunn	MF	5-5	SR	Chattanooga, TN/Baylor
20	Rachael Watkin	D	5-10	FR	Boca Raton, FL/Boca Raton
21	Danielle Foard	D	5-5	FR	Falls Church, VA/George C. Marshall
22	Sally Shelgren	MF	5-5	FR	Niceville, FL/Niceville
23	Jessica Driscoll	MF	5-2	JR	Marietta, GA/Walton
24	Ashley Halter	D	5-10	FR	Atlanta, GA/Lovett School

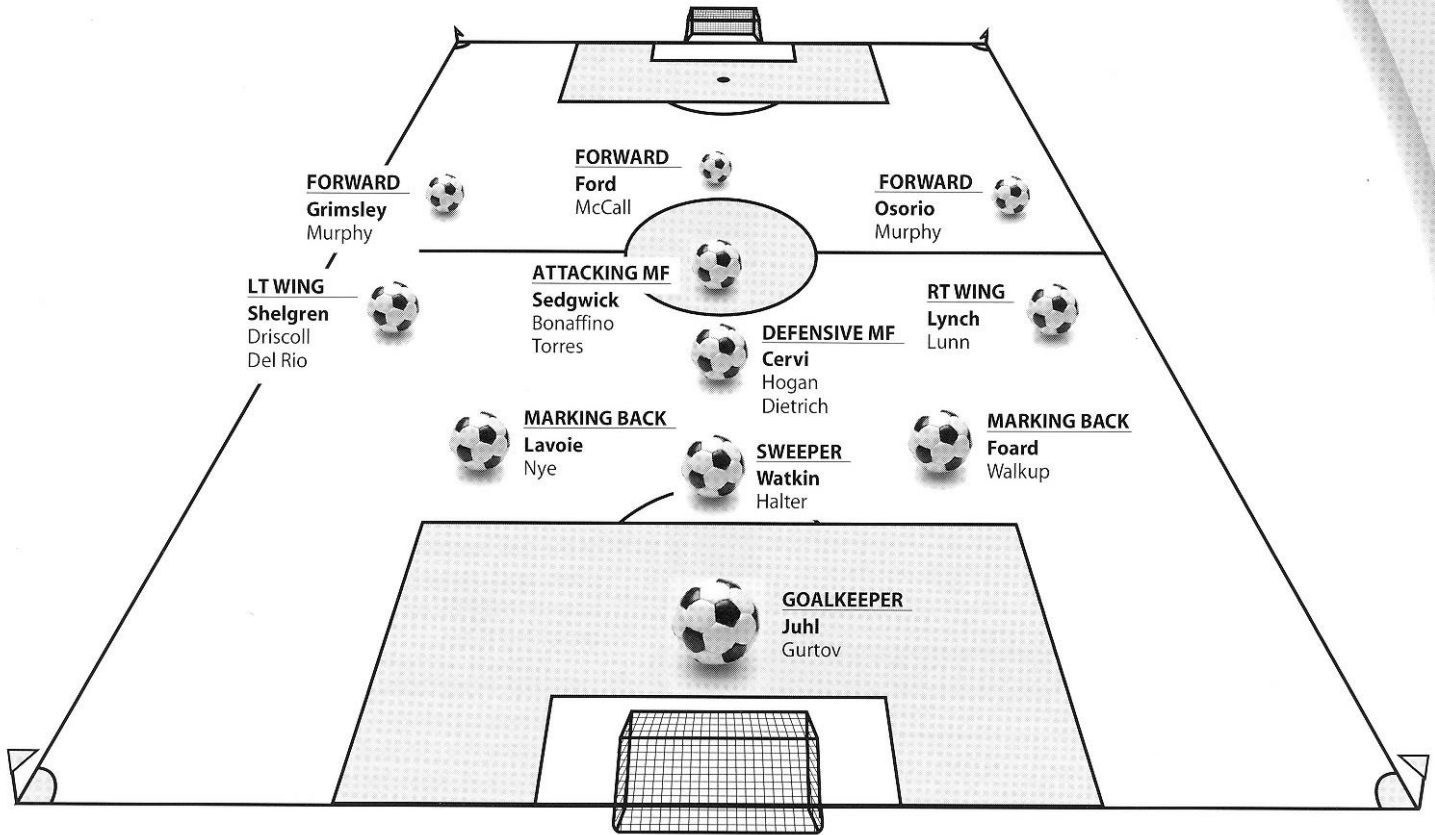
\* - RedShirted Freshman

## Roster Pronunciations

Angela Bonaffino	.....	bon - nuh - FEE - no
Taryn Cervi	.....	TARE - in SER - vee
Leslie Del Rio	.....	del REE - oh
Stephanie Dietrich	.....	DEE - trick
Danielle Foard	.....	FORD
Kerry Dziczkaniec	.....	dis - SCON - iss
Jamie Gurtov	.....	GER - tahv
Melissa Juhl	.....	JOO - wuhl
Janine Lavoie	.....	JUH - nin Iuh - VWAH
Alexandria Osorio	.....	AH - sore - ree - oh
Nicole Sedgwick	.....	SEDGE - wick
Sally Shelgren	.....	SHELL - gren
Justina Torres	.....	TORE - rez
Janna Walkup	.....	JAN - nuh WALL - cup

# positions & hometowns

## 1997 Seminole Soccer Positional Chart



### State and Region Breakdowns

#### UNITED STATES (20)

##### FLORIDA (10)

Boca Raton ..... Allison Hogan, Rachael Watkin  
 Miami ..... Alexandra Osorio, Justina Torres  
 Miami Springs ..... Leslie Del Rio  
 Niceville ..... Sally Shelgren  
 Orange Park ..... Jill Ford  
 Orlando ..... Janna Walkup  
 Plantation ..... Jamie Gurtov  
 Wesley Chapel ..... Molly Nye

##### GEORGIA (4)

Atlanta ..... Ashley Halter  
 Kennesaw ..... Lauren Lynch  
 Marietta ..... Melissa Juhl, Jessica Driscoll

##### KANSAS (1)

Lenexa ..... Erin Grimsley

##### OHIO (1)

Amelia ..... Stephanie Dietrich

##### OKLAHOMA (1)

Tulsa ..... April Murphy

##### TENNESSEE (1)

Chattanooga ..... Katie Lunn

##### TEXAS (1)

Richardson ..... Kasey McCall

##### VIRGINIA (1)

Falls Church ..... Danielle Foard

#### CANADA (4)

##### BRITISH COLUMBIA (2)

Delta ..... Nicole Sedgwick  
 Vancouver ..... Taryn Cervi

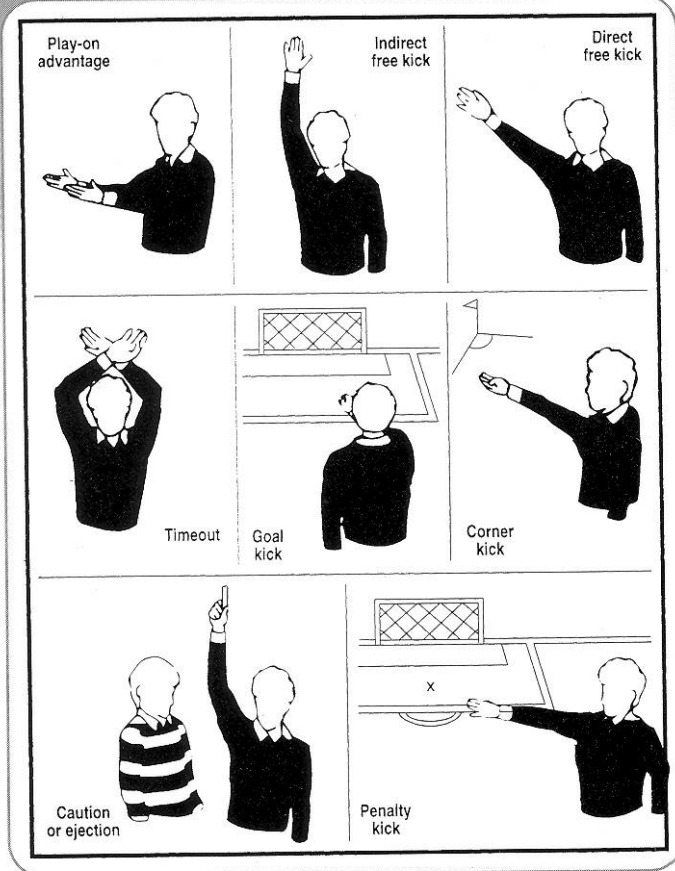
##### ONTARIO (1)

St. Catherines ..... Angela Bonaffino

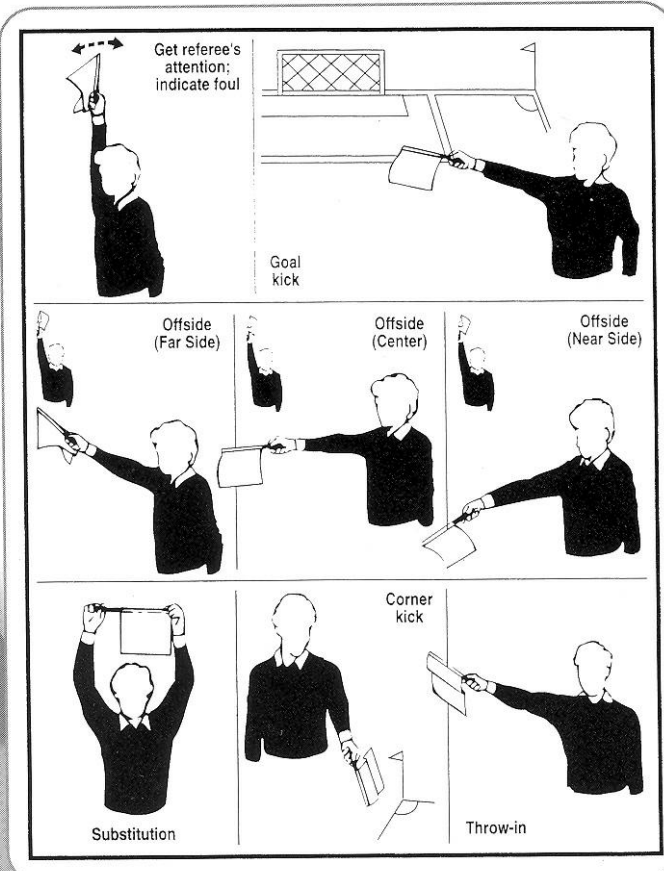
##### SASKATCHEWAN (1)

Saskatoon ..... Janine Lavoie

## Official Referee's Signals



## Official Linesman's Signals



## Game Rules

**LENGTH OF GAME:** An NCAA soccer game is 90 minutes consisting of two equal halves of 45 minutes. The half-time interval is 10 minutes. If at the end of regulation time, the score is tied, the teams will play two extra periods of 15 minutes each.

**STARTING THE GAME:** The game is started by a kickoff which requires a player to kick the ball into the opponent's half of the field. A goal may not be scored directly from a kickoff. Kickoffs are used to restart the game following a goal or any halftime or overtime interval.

**BALL IN AND OUT OF PLAY:** The ball is designated out of play when the entire ball has crossed outside the entire boundary line. The ball is put back into play by one of the following:

- Corner kick** - Put into play by attacking team when ball is last touched by defending team.
- Goal kick** - Put into play by defending team when ball is last touched by attacking team.
- Throw-in** - Put into play by team that did not last touch ball.

**METHOD OF SCORING:** A goal is scored when the whole of the ball has passed over the goal line, between the goal posts and under the crossbar, provided it has not been intentionally thrown or carried by hand by a player on the attacking team.

**OFFSIDE POSITION:** A player is in an offside position if that player is nearer to the opponent's goal line than the ball, unless the player is in her own half of the field or play, or there are at least two opponents as near to their own goal line as the opposing player.

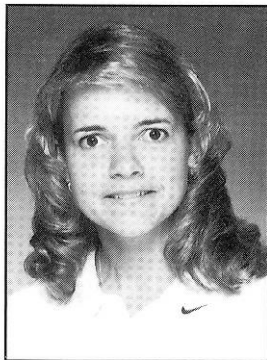
**WHEN OFFSIDE:** A player shall be declared offside and penalized for being in an offside position only if at the moment the ball touches or is played by a teammate, the player is, in the opinion of the referee, interfering with play, or seeking to gain an advantage by being in that position.

**VIOLATIONS AND MISCONDUCTS:** A player shall be penalized if she intentionally handles the ball, holds or pushes an opponent, violent or dangerous charging, fouling a goalkeeper or any dangerous play. A player shall be penalized if that player intentionally spits, kicks, strikes, attempts to kick or strike, uses blood or bleeding injuries improperly against an opponent, or jumps at an opponent.

**NUMBER OF PLAYERS:** The game is played by two teams of 11 players each, one of whom is the goalkeeper.

**SUBSTITUTIONS:** Either team can substitute up to 11 players at a time. Either team may substitute on a goal kick, corner kick, after a goal has been scored, between periods, when a player has been cautioned, when a player has been ordered off the field for an equipment change and in the event of an injury.

# coaching staff



## Heather Kerby-Nelson

HEAD COACH  
University of  
Saskatchewan - 1991  
University of Victoria - 1992  
3rd season at FSU

After being named the programs' first head coach prior to the 1995 season, Heather Kerby-Nelson has moved Florida State Women's Soccer closer into the Atlantic Coast Conference spotlight in just two seasons. In 1996, she guided an underclassmen-dominated roster to 12 wins, plus conference victories over perennial top 10 schools, Clemson and NC State.

"Overall, we had a strong performance from a very young team."

In her first season with FSU, Kerby-Nelson learned exactly what she was up against in the ACC. With 14-time national champion North Carolina leading the surge, the ACC had at least seven of its eight soccer-playing schools in the elite 20 and six within the nation's top 10.

"Winning the ACC is equivalent to winning the national championship."

Always keeping her eye on the program's future, the Vancouver, British Columbia native continues to lead the team in a direction that will compliment the high level of success Florida State and the ACC is accustomed to.

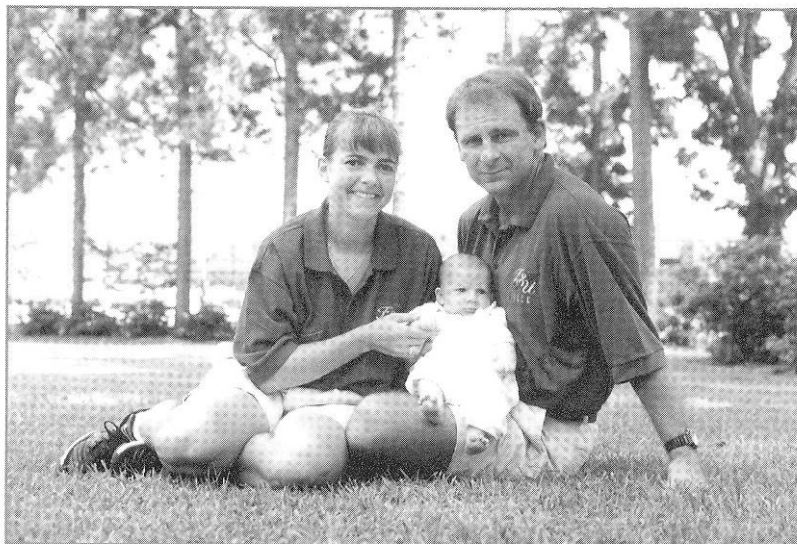
"My philosophy is two-fold. First, for a player to succeed in our conference they must have a love for the game. Myself and my staff try to instill this quality in our athletes at every practice. Second, the game is based on passing control. These are two skills that we continually work with our players on, so they can be creative and dominant."

Kerby-Nelson boasts an extraordinary Division I playing career. As a four year starter and captain for the University of Saskatchewan Huskies, she earned Canada-West honors. She was also named captain of the 1987 and 1991 Western Canada Games team. Her highest playing achievement was a selection to the first Canadian National Team program in 1987.

Her experience with women's soccer over the years has been diverse with stints at nearly all levels. She began coaching mini-soccer at the age of 17 and a few years later, accepted the Under-14 Girls Saskatchewan Games Team. Under her guidance, the team took the gold medal at the Games. Her next coaching positions included a Staff Coach position at Sask Soccer and the assistant coaching position at the University of Saskatchewan.

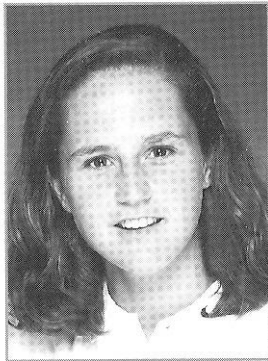
In 1992, Kerby-Nelson moved to Canada's west coast for the opportunity to continue her playing career and advance her coaching ability. While attending the National Coaching Institute, Kerby-Nelson guided the Victoria Gorge Soccer Club to the British Columbia Championships, as a player/coach. In addition to attending the National Coaching Institute, she became a Staff Coach for British Columbia Soccer and the National Training Center.

From 1993-94, Kerby-Nelson played for the Vancouver Marlins, the 1993 Canadian National Champions. In the summer of '93, she returned to Saskatchewan to coach the Sask First Team at the 1993 Canada Games. As one of only two female head coaches at the Games and only the third female to graduate from the National Coaching Institute, Kerby-Nelson is recognized as one of the top female coaches in Canada.



Heather, Paul and Jordan Nelson

# assistant coaches



## Kerry Dziczkaniec

Assistant Coach  
George Washington - 1993  
2nd Season at FSU

Entering into her second full season with the Florida State women's soccer program, Assistant Coach Kerry Dziczkaniec will use her knowledge of the game to serve as recruiting coordinator as well as the

goalkeepers coach. Along with her on and off the field soccer duties, she will be charged with monitoring the student-athletes academic progress with the Universities' Academic Support Staff.

Prior to joining the Florida State staff, Dziczkaniec served for two seasons as an assistant coach on the Virginia women's soccer staff under former Cavalier head coach Lauren Gregg, who now serves with the United States national team.

While she was at Virginia, the Cavaliers posted two top 10 finishes, as their goalkeepers were among the highest-rated in the Atlantic Coast Conference. For the 1995 season she had just one sophomore and two freshman to work with in the goal, still posting identical successful numbers as with a group of seasoned veterans.

In addition to the instructing and conditioning of the Cavalier keepers, Dziczkaniec's responsibilities at Virginia

included monitoring the academic progress of the student-athletes, recruitment of prospective players as well as assisting with administrative affairs, including management of summer camp activities.

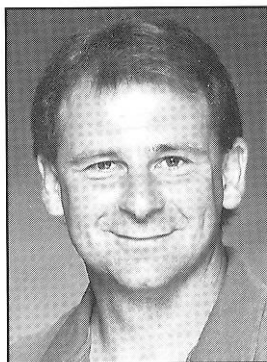
A 1993 graduate of George Washington University, she earned a degree in exercise and sports science. While attending George Washington, Dziczkaniec was a goalkeeper on the Colonial's women's soccer team. She earned team MVP honors in 1991, while being named team captain for two seasons (1991-92).

With solid experience as a Division I collegiate player, as well as coaching experience within ACC, Dziczkaniec brings unique perspective to a young Seminole soccer program.

Dziczkaniec was a member of the Virginia and Maryland Olympic Development Program coaching staffs from 1992-95. She holds a United States Soccer Federation "C" coaching license.

She has further playing experience with the United States Women's Inter Regional Soccer League's Baltimore Lady Bays and the Maryland Pride.

Among her accomplishments were playing with the 1996 Women's Amateur Division National Championship team, the Virginia-based, Soccer Academy United. They beat J.B. Marine of St. Louis, Mo. 6-0. She was also a starter on the championship squad with the Maryland Pride as they won the USISL "W" league 1996 National Championship and was selected to the all-tournament team at nationals.



## Paul Nelson

Assistant Coach  
Vancouver 86er's - ASL  
Vancouver Whitecaps - NASL  
Shamrock Rovers - Irish  
Premier League  
3rd season at FSU

Assistant Coach Paul Nelson brings to the Florida State soccer program extensive playing

and coaching experience from nearly every level, juniors to professional. His knowledge of women's soccer is a much valued asset to the FSU.

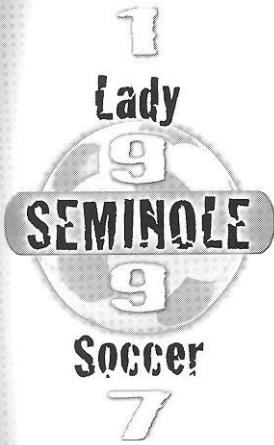
His professional experience and thorough understanding of what it takes to compete at the highest level will

serve the purpose of continuing the challenge of building a nationally-recognized collegiate soccer program in Tallahassee and at Florida State.

Nelson first entered into the professional ranks back in 1977 and enjoyed seven competitive seasons at that level. He competed in the once-heralded North American Soccer League, indoor and outdoor seasons, and in Europe as well as Canadian National Team duties until 1985.

Recognized as one of the best players to be produced by the Canadian Soccer Association, his professional experience began at a young age. Nelson signed with the Vancouver Whitecaps of the NASL at the age of 18 and had the opportunity to play with and against some of the best players in the world, including hall of famers, Pele, Johan Cryoff and Franz Beckenbauer.

One of the most memorable highlights of Nelson's pro-





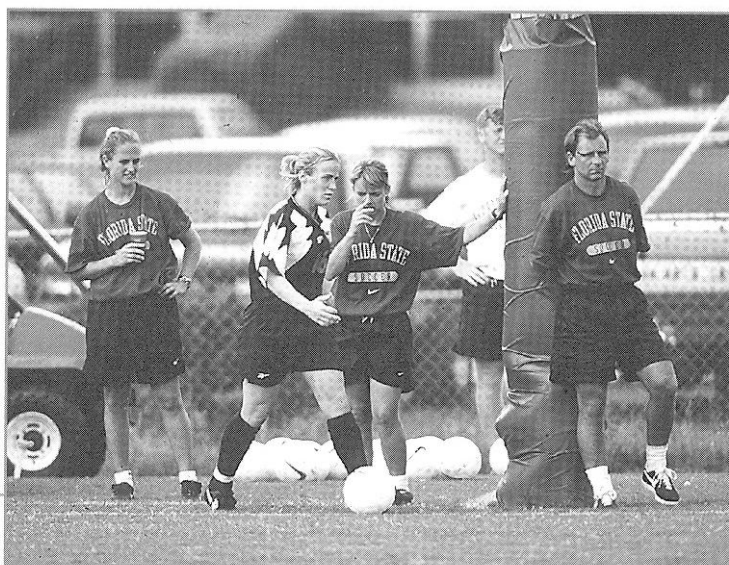
# team managers



**Jason Knowles**  
Team Manager



**Kelley Poole**  
Team Manager



fessional career was eliminating the NASL's Northern Division powerhouse, the New York Cosmos, in the semi-finals of the Soccer Bowl, and a week later, defeating the Southern Division's equal, the Tampa Bay Rowdies, in Giant Stadium, to earn the 1979 league championship.

During the NASL's off season, Nelson played for the Dublin-based Shamrock Rovers of the Irish Premier League. The Rovers won both an Irish Cup and League Cup title during Nelson's tenure there. These victories qualified the Rovers to compete in Europe's Winners Cup and other European Cup competitions.

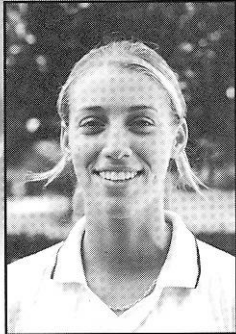
As a staff coach for British Columbia Soccer, the Canadian province national organization, Nelson boasted one of the best amateur coaching records. His coach-

ing successes have included two gold medal finishes, guiding British Columbia mens' teams to the 1991 Western Canadian and the 1993 Canada Games championships. No other provincial men's coach can claim such a feat. In 1991, Nelson served as coach of the American Soccer League's Vancouver 86ers reserve team and was the assistant coach for the 86ers in 1992.

Prior to accepting the assistant coaching position at Florida State, Nelson spent two years coaching at the Canadian National Training Center and served as assistant coach for the Canadian Olympic squad in 1994.

During the offseason Coach Nelson's wife, Heather, gave birth to a beautiful daughter, Jordan Nicole.

# player biographies



## Angela Bonaffino

Midfielder, 5-5, Sophomore  
St. Catherines, Ontario, Canada (Holy Cross)

### Bonaffino Career Statistics...

Year	MP/MS	Shots	Goals	Assists	Points	GWG	GWA
1996	20/20	30	4	4	12	0	1

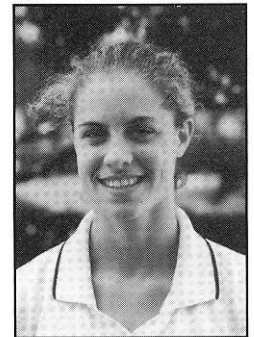
**1996:** Started in all 20 games...had four goals and four assists...named the team's "Rookie of the Year"...had the game winning assist against NC State...tied for third on the team with 12 points...had a goal and an assist against NC State and Tennessee. **High School:** Played five years with her school's varsity soccer team...was a three-time team captain...named "Rookie of the Year" as a freshman...named the team's MVP during junior and senior seasons...was a two-time all-state soccer player...named the school's Female Athlete of the Year upon graduation...head captain for the under-19 Canadian national team in 1996...invited to the under-20 Canadian national team try-outs...one of the youngest carded athletes for the Canadian National Program...also played basketball and hockey. **Olympic Development Program:** Team Ontario, 1990-97...under-19 Canadian National Team, 1995-97. **Club Team:** Canadian Soccer Academy. **Personal:** Majoring in Education...born February 9, 1977.

### Del Rio Career Statistics...

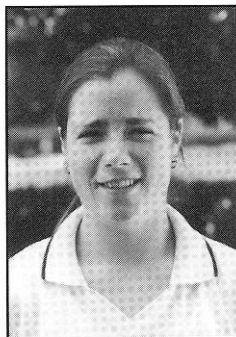
Year	MP/MS	Shots	Goals	Assists	Points	GWG	GWA
1996	3/2	5	0	0	0	0	0

## Leslie Del Rio

Midfielder, 5-3, Redshirt Freshman  
Miami Springs, Florida (Miami Springs)



**1996:** Appeared in the first three games of the season, while starting against Appalachian State and Virginia...injured for the remainder of the season during the Virginia game...had five shots on goal in those three matches, four against ASU. **High School:** A four-year varsity letterwinner...named team captain for her junior and senior seasons...an All-Dade County selection for four straight years...received All-State honors in '95. **Olympic Development Program:** Florida State Team, 1994-96...active member of the Region III pool. **Club Team:** Shasta Blitz. **Personal:** An Honor Roll student...a member of the Sorota Service Club...born October 12, 1978...majoring in Business.



## Jessica Driscoll

Midfielder, 5-9, Junior  
Marietta, Georgia (Walton)

### Driscoll Career Statistics...

Year	MP/MS	Shots	Goals	Assists	Points	GWG	GWA
1995	14/6	8	3	2	8	0	0
1996	9/0	1	1	0	2	0	0
Total	23/6	9	4	2	10	0	0

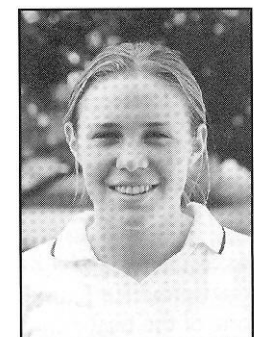
**1996:** Appeared in nine games...had a goal on her lone shot of the season against Jacksonville State. **1995:** Played in 14 matches, while starting six...had eight shots on goals, scoring three times...had two scores in a 11-0 triumph over Jacksonville...had the opening goal at the 16:34 mark in FSU's 4-1 win over Iowa State. **High School:** Lettered all four years in high school...also played basketball. **Club Team:** Top Hatters and Blackburn. **Personal:** Named to her high school's honor roll...majoring in Nutrition and Fitness.

### Grimsley Career Statistics...

Year	MP/MS	Shots	Goals	Assists	Points	GWG	GWA
1996	16/12	25	4	4	12	2	0

## Erin Grimsley

Forward, 5-7, Sophomore  
Lenexa, Kansas (St. Thomas Aquinas)



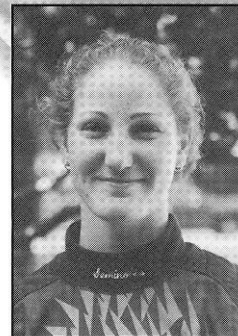
**1996:** Appeared in 16 matches, while starting 12...finished tied for the third with 12 points...had four goals and four assists...had the game winning goal against Appalachian State and North Florida. **High School:** Named an "all-everything" player (league, metro and state) for three straight years...tabbed her high school's team MVP following her junior season...named the "Best Offensive Player" for three straight years...led her team to the Kansas state championship three straight years...finished high school career as her school's all-time leading goal scorer and assists leader...also played basketball. **Club Team:** J.B. Marine...during the summer of 1996 her club team competed in the Open Age U.S. Women's Championships, advancing to the finals. **Personal:** An honor roll student...majoring in Studio Art...born September 16, 1978.

### Gurtov Career Statistics...

Year	MP/MS	Min	Sh	Svs	GA	GAA	GS%	SO	Rec
1996	4/0	147	10	3	3	1.83	50%	0.5	0-0-0

### Jamie Gurtov

Goalkeeper, 5-7, Sophomore  
Plantation, Florida (Plantation)



**1996:** Appeared in four matches all season as back up to Melissa Juhl in goal...saw time against Jacksonville, North Florida and North Carolina (twice)...on 10 shots, had three saves and three goals against...had an assisted shut out against Jacksonville...recorded a season-high three saves against UNF. **High School:** A four-year letterwinner for the Colonels...three-time team captain...named team MVP two years...named the Outstanding Senior Female Athlete of the Year upon graduation...named to the All-Broward County soccer team three straight years...received 1995 All-State Honorable Mention honors...also a three-year letter winner in softball. **Olympic Development Program:** Florida State Team, 1993-97. **Club Team:** Shasta Blitz. **Personal:** Member of the student council...an Honor Roll student...majoring in Criminology...born March 15, 1978.

### Hogan Career Statistics...

Year	MP/MS	Shots	Goals	Assists	Points	GWG	GWA
1995	11/1	5	0	0	0	0	0
1996	19/5	13	3	1	7	0	1
<b>Total</b>	<b>30/6</b>	<b>18</b>	<b>3</b>	<b>1</b>	<b>7</b>	<b>0</b>	<b>1</b>

### Allison Hogan

Midfielder, 5-6, Junior  
Boca Raton, Florida (Boca Raton)



**1996:** Appeared in 19 matches, while starting five...had three goals and one assist on 13 shots...along with Molly Nye, named the team's "Most Improved Player"...scored her first collegiate goal against Jacksonville...she had a game-winning assist against North Florida...had two goals against JU and one against UNF. **1995:** Appeared in 11 games...had one start against Florida, the school's inaugural match...recorded five shots on goal. **High School:** Lettered all four years...a three-time all-county selection while earning all-state honors in 1994 and '95...twice named the team's Most Valuable Defensive Player and earned the offensive honor in 1995...pegged the MVP at the All Star Senior Tournament, while being named to the all-tournament team at the Burger King Invite in '94...also played volleyball, softball and golf. **Olympic Development Program:** under-19 Florida State Team, 1993-95. **Club Team:** Team Boca. **Personal:** A member of the Future Business Leaders of America (FBLA)...served as a member of the Boca Alliance for Student Excellence...majoring in Criminology...born February 17, 1977.

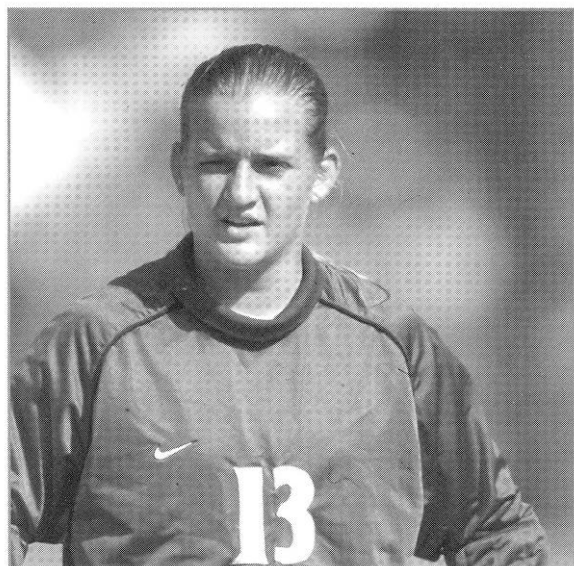
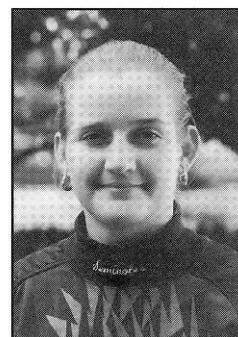
### Juhl Career Statistics...

Year	MP/MS	Min	Sh	Svs	GA	GAA	GS%	SO	Rec
1995	15/15	1,266	277	154	36	3.06	81%	1	4-11-1
1996	20/20	1,713	191	76	32	1.68	70%	7.5	12-7-1
<b>Total</b>	<b>35/35</b>	<b>2,979</b>	<b>468</b>	<b>230</b>	<b>68</b>	<b>2.05</b>	<b>77%</b>	<b>8.5</b>	<b>16-18-2</b>

**1996:** Started all 20 games in goal for the Seminoles...recorded 76 saves off of 191 shots...had a 1.68 goals against average...recorded 7.5 shut out on the year...named to the All-ACC and All-Southeast Region second team...earned a spot on Soccer America's Team of the Week after a shut out of then-10th-ranked Clemson...also named the ACC Player of the Week on October 21st...had a season-high 13 saves against Mississippi...recorded 10 saves against Florida. **1995:** Appeared and started 15 matches, before sustaining a season ending injury at the Georgia Tournament against the Bulldogs...led the the conference with her 155 saves, which also broke the ACC single season record and helped the Tribe break the single season record for team goalie saves (197)...selected the team's MVP for defense...broke a bone in her pinky finger in the final minutes of FSU's 5-4 loss to Georgia...recorded 155 saves, with 43 goals against for a 3.06 goals allowed average...held Jacksonville scoreless for the Tribe's lone shutout on the season...was sixth in the ACC with a .783 save percentage...recorded an impressive 16 saves in her collegiate debut against Florida...recorded a season-high 21 saves against Duke. **High School:** Lettered all four years...garnered all-state team honors as a junior and senior...a four-time all-city team selection...member of the Soccer Scene All-State Team...pegged the team's Best Defensive Player...twice led squad to a first place regional finish...also played volleyball. **Olympic Development Program:** under-19 Georgia State Team, 1988-96. **Club Team:** Cobb Union Fury...club team was the 1994 Georgia state champions. **Personal:** Involved in the Environmental Club and PRIDE...majoring in Education...born April 13, 1977.

### Melissa Juhl

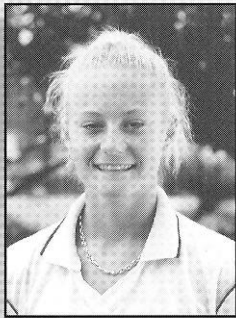
Goalkeeper, 5-6, Junior  
Marietta, Georgia (Alan C. Pope)



### Melissa Juhl's Record Breaking 1995 Season

Opponent	Saves	Total	Opponent	Saves	Total
Florida	16	16	Iowa State	5	102
West Florida	2	18	Nebraska	15	117
Maryland	7	25	Virginia	8	125
Jacksonville	2	27	North Carolina	17	142
Memphis	3	30	N.C. State	1	143
Louisiana State	13	43	Georgia	12	155
Duke	21	64	Auburn	DNP	155
Georgia Southern	10	74	Wake Forest	DNP	155
Clemson	12	82	North Carolina	DNP	155
Marquette	15	97			

**M**elissa Juhl's 155 saves in a singles season broke the Atlantic Coast Conference record and helped Florida State break the team record for goalie saves in a single season (197). Her 155 saves was 57 more saves than the second place finisher in that category, N.C. State's Katherine Mertz's 98.



## Janine Lavoie

Defender, 5-6, Junior  
Saskatoon, Saskatchewan, Canada (Bishop James Mahoney)

**1996:** Appeared and started all 20 games...has started in every game in the program's two-year history...had 15 shots on goal...recorded the game-winning assist against Jacksonville State...provides highly experienced leadership in the backfield. **1995:** Appeared and started in all 19 matches...named the team's MVP for the inaugural 1995 season...with only five shots on goal, recorded three scores and one assist...earned seven points to lead all defenders...will go down in history for scoring the program's first regular season goal at exactly 10 minutes into the match in a 5-1 victory against West Florida, also the program's first home goal...recorded FSU's lone goal against top-ranked North Carolina, which put the Seminoles in the lead against the Tar Heels. **High School:** Four year member of senior girls soccer...two time team captain...selected the squad's Most Outstanding/Valuable Player throughout her high school career...also played basketball for four seasons...recipient of the Senior Girls Basketball Leadership Award...named school's Female Athlete of the Year...a member of Saskatchewan's Women's (under 23) Jeux Du Canada Games soccer team in 1992-93...named the 1993 Saskatchewan Soccer Provincial Youth Female Athlete of the Year...played as a Junior National Pool Player for the Canadian Soccer Association. **Club Team:** Hollandia F.C. **Personal:** An honor roll student...a member of the Student Representative Council...majoring in Criminology...born March 29, 1976.

### Lavoie Career Statistics...

Year	MP/MS	Shots	Goals	Assists	Points	GWG	GWA
1995	19/19	5	3	1	7	0	0
1996	20/20	15	0	1	1	0	1
<b>total</b>	<b>39/39</b>	<b>20</b>	<b>3</b>	<b>2</b>	<b>8</b>	<b>0</b>	<b>1</b>

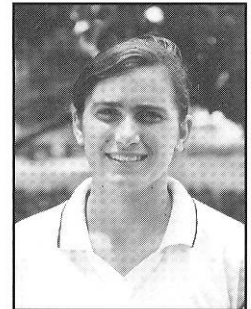
### Lunn Career Statistics...

Year	MP/MS	Shots	Goals	Assists	Points	GWG	GWA
1995	16/5	2	0	0	0	0	0
1996	13/2	3	0	0	0	0	0
<b>total</b>	<b>29/7</b>	<b>5</b>	<b>0</b>	<b>0</b>	<b>0</b>	<b>0</b>	<b>0</b>

**1996:** Saw action in 13 games, while starting two...had three shots on goal...started against South Alabama and West Florida. **1995:** Appeared in 16 matches, while starting five...had two shots on goal...won the "Red Dog" team award for the player with the most heart and dedication. **High School:** Earned All-City, All-Region and All-State honors throughout high school career...an impressive athlete who earned all-city, region and state honors in track, cross-country and basketball, too. **Personal:** Plans to major in Nutrition and Fitness...born June 28, 1976.

## Katie Lunn

Midfielder, 5-5, Senior  
Chattanooga, Tennessee (Baylor)



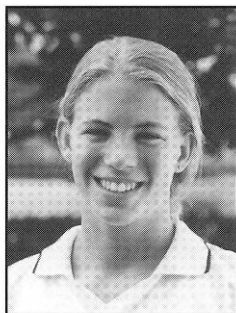
### Lynch Career Statistics...

Year	MP/MS	Shots	Goals	Assists	Points	GWG	GWA
1995	19/12	38	6	2	14	0	0
1996	18/7	22	4	2	10	1	2
<b>total</b>	<b>37/19</b>	<b>60</b>	<b>10</b>	<b>4</b>	<b>24</b>	<b>1</b>	<b>2</b>

## Lauren Lynch

Midfielder, 5-3, Junior  
Kennesaw, Georgia (Harrison)

**1996:** Appeared in 18 matches, starting in seven...placed fourth on the team with 10 points...had the third most goals (4) on the team...had one game winning goal and two game winning assists...scored the game winner against 10th-ranked Clemson...had game-winning assists against Tennessee and Furman...second all-time with 10 career goals. **1995:** Appeared in all 19 matches, starting 12...led the team with 38 shots on goal and tied for the team scoring lead with six goals...also recorded two assists...placed second on the squad with 14 points...had a goal in FSU's first-ever competition, a 3-0 preseason win over Florida Atlantic...tallied a three-goal hat trick against Georgia. **High School:** A four-year letterwinner...garnered All-Cobb County Team honors four years...pegged squad's Best Offensive Player four years...a three-time All-Star selection...earned Athlete of the Week honors. **Olympic Development Program:** under-19 Georgia State Team, 1991-93. **Club Team:** Cobb Union Fury. **Personal:** An honor roll student...played organized soccer since the age of five...also played indoor soccer since 1985...majoring in Education...born March 27, 1977.



### McCall Career Statistics...

Year	MP/MS	Shots	Goals	Assists	Points	GWG	GWA
1996	19/18	38	9	6	24	1	2

**1996:** Started in 18 of 19 matches she appeared in...placed second on the team with 38 shots on goal...also placed second with nine goals and 24 overall points...her six assists led the team...earned the team award for her team leading six assists...had a game-winning goal and two game-winning assists...began the season scoring in each of FSU's first seven contests...had three goals and an assist against Jacksonville, her first was the game winner...had game-winning assists against West Florida and East Carolina. **High School:** Named to the Texas All-State Team all four years in high school. **Olympic Development Play:** North Texas State Team, 1992-95...Region III Team, 1994-95. **Club Team:** Team Dallas. **Personal:** Majoring in Psychology...born October 22, 1977.

## Kasey McCall

Midfielder/Forward, 5-6, Sophomore  
Richardson, Texas (Berkner)



### Nye Career Statistics...

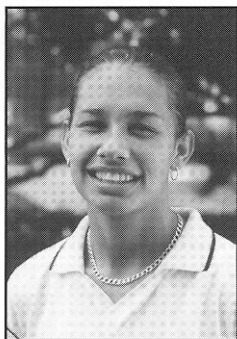
Year	MP/MS	Shots	Goals	Assists	Points	GWG	GWA
1995	17/15	5	0	0	0	0	0
1996	18/7	1	0	0	0	0	0
<b>total</b>	<b>35/22</b>	<b>6</b>	<b>0</b>	<b>0</b>	<b>0</b>	<b>0</b>	<b>0</b>

## Molly Nye

Defender, 5-2, Junior  
Wesley Chapel, Florida (Tampa Prep)

**1996:** A superb defender...appeared in 18 matches during the 1996 season, starting seven...had a shot on goal against 10th-ranked Clemson...along with Allison Hogan, named the team's "Most Improved Player." **1995:** Appeared in 17 matches, earning a starting role in 15 of those matches. **High School:** Named to the All-Hillsborough County team as a junior and senior. **Club Team:** Countryside Lightning. **Personal:** Also played volleyball, track and tennis...past President of the Key Club...named to the Honor Roll as a junior and senior...was a Junior Olympian in gymnastics...born September 24, 1976...majoring in Business.





## Alexandra Osorio

Forward, 5-6, Junior  
Miami, Florida (G.H. Braddock Senior)

### Osorio Career Statistics...

Year	MP/MS	Shots	Goals	Assists	Points	GWG	GWA
1995	19/19	31	6	3	15	1	1
1996	20/20	31	3	3	9	1	1
<b>total</b>	<b>39/39</b>	<b>62</b>	<b>9</b>	<b>6</b>	<b>24</b>	<b>2</b>	<b>2</b>

**1996:** Started all 20 games during the season...has started every game in the program's two-year history...recorded 31 shots on goal, third most on the team...had three goals and three assists for a total of nine points...had one game-winning goal (against Appalachian State) and one game-winning assist (against East Carolina)...scored FSU's lone goal against top-10 ranked Virginia...all-time points leader with 25...second among returning players with nine career goals...tied for first with six career assists. **1995:** One of two players to appear and start all 19 matches...second on the team with 31 shots on goal...tied for the team scoring lead with six goals and led the team with three assists...was the overall team leader with 15 points...scored the game winning goal against West Florida...tallied a hat trick in a 11-0 drubbing of Jacksonville...struck first blood in a 1-1 tie against Louisiana State...had a goal in FSU's first-ever competition, a 3-0 pre-season win over Florida Atlantic...just six matches into the season her 12 points placed her fifth among the highly talented ACC competitors. **High School:** Lettered four years...named squad's Most Valuable Player three years...was the leading scorer for Dade County...garned all-county honors three years...selected the Miami Herald's Player of the Year...earned Rookie of the Year honors as a freshman. **Club Team:** Braddock S.C. **Personal:** An honor roll student...born August 5, 1976...majoring in Criminology.

### Sedgwick FSU Career Statistics...

Year	MP/MS	Shots	Goals	Assists	Points	GWG	GWA
1996	20/20	26	3	3	9	1	1

**1996:** Started all 20 games during the season...had 26 shots on goal...recorded three goals and three assists...had the game-winning goal against West Florida and provided the game-winning assist against Georgia Southern...scored goals against West Florida, Tennessee and Jacksonville State...co-received the team's "Most Valuable Player" award for her leadership efforts. **University of British Columbia:** Named the University of British Columbia's Premier Athlete of the Year in 1993...named to the Canadian Intercollegiate Athletic Union All-Canadian Team and the Tournament All-Stars of Nationals in 1994 and '95...a member of the Canadian National Team since 1993...competed in the 1995 Women's World Cup in Sweden. **Olympic Development Program:** Canada National Team, 1993-97. **Club Team:** Surrey Marlins. **Personal:** Named to the Dean's List at the University of British Columbia...has played soccer for 18 years...majoring in Interdisciplinary Social Science...born January 19, 1974.

## Nicole Sedgwick

Midfielder, 5-3, Senior  
Delta, British Columbia,  
Canada (Univ. of British Columbia)



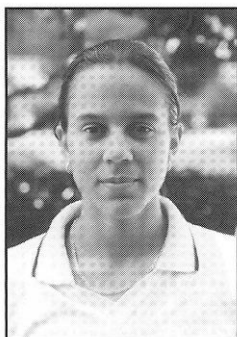
## Justina Torres

Midfielder, 5-2, Senior  
Miami, Florida  
(G.H. Braddock Senior/St. Thomas University)

### Torres Career Statistics...

Year	MP/MS	Shots	Goals	Assists	Points	GWG	GWA
1996	20/20	2	0	0	0	0	0

**1996:** Started all 20 matches of the season...highly skilled defensive player...immediately made an impact on the team after transferring...had two shots on goal, both in the season-opener against West Florida. **St. Thomas University:** Leading goal scorer in 1995-96...two-year letterwinner...named team MVP in 1995-96...also named to the all-conference team in 1996. **High School:** Was her high school's MVP in freshman through junior seasons...was the Dade County leading goal scorer as a sophomore...named to the All-Dade County soccer team as a sophomore and junior. **Club Team:** Blue Angels. **Personal:** Has played soccer for eight years...majoring in Food and Nutrition Science...born August 22, 1976.



### Walkup Career Statistics...

Year	MP/MS	Shots	Goals	Assists	Points	GWG	GWA
1995	17/15	10	3	0	6	0	0
1996	17/17	7	2	0	4	0	0
<b>total</b>	<b>34/32</b>	<b>17</b>	<b>5</b>	<b>0</b>	<b>10</b>	<b>0</b>	<b>0</b>

**1996:** Appeared and started in 17 matches...missed a few games due to injury...had two goals off of just seven shots...scored the first goal of the season against West Florida and had another one later on against Furman. **1995:** Appeared in 17 matches, while starting 15...with 10 shots on goal scored three times against Maryland, Jacksonville and Memphis. **High School:** Lettered four years...three-time team Most Valuable Player...team captain two years...was twice named All-Metro Player of the Year...received All-County honors all four seasons...was pegged the All Metro Player of the Year as a senior...also competed in softball, cross country, tennis and volleyball...named the 1994 and 1995 school Athlete of the Year. **Club Team:** Seminole Blaze. **Personal:** An honor roll student...ranked 15th out of a class of 416...recipient of the Downtown Athletic Club of Orlando Female Scholar/Athletic Award sponsored by the *Orlando Sentinel*...served as Student Body Vice President...1994 Homecoming Queen...majoring Nutrition and Fitness...born May 17, 1977.

## Janna Walkup

Forward/Defender, 5-9, Junior  
Orlando, Florida (Edgewater)



# newcomer biographies



## Taryn Cervi

Midfielder, 5-10, Senior

Vancouver, British Columbia, Canada (University of British Columbia)

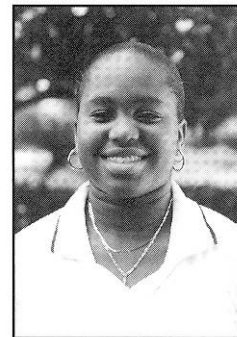
An extremely versatile player...strong one on one skills...a tremendous work rate...has the ability and leadership to make an immediate impact... **Prior to FSU:** National Team won the Canadian league Premier division (1996)...named MVP at the British Columbia Provincial Cup tournament...won the Silver Medal at the Canadian National Club Championships...named an 1995 C.I.A.U. All-Canadian. **Canadian Development Program:** Member of the Canadian National Team Pool (1995-present). **Club Team:** UBC Alumni. **Personal:** Born June 30, 1975...has played competitive soccer for 16 years...majoring in Sociology.

## Danielle "Dee" Foard

Defender, 5-5, Freshman

Falls Church, Virginia (George C. Marshall)

An explosive hard-nosed defender...makes strong and threatening overlapping runs. **High School:** Named to the first team all district sophomore through senior seasons...an all-region player all four years in high school...also lettered in softball, tennis and basketball...named her school's top female athlete in 1997...a scholar award winner 1994-97. **Olympic Development Program:** Member of ODP Region I Team (1994-97)...competed internationally with her ODP team (Europe, 1996; China, 1997)...attended U.S. Youth National Camp, August 1995. **Club Team:** Gunston Legend. **Personal:** Born October 19, 1979...an honor roll student...member of the college partnership program...voted class vice president for junior year...daughter of Queenie and Howard A. Foard, Jr...majoring in Biology.



## Jill Ford

Forward, 5-7, Junior

Orange Park, Florida (George Mason University)

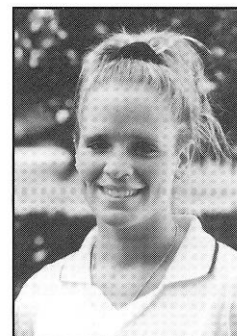
**George Mason:** Started 20 out of 21 games as a sophomore...scored four goals and two assists for 10 points in 1996...had the game winning goal against UNC-Wilmington in '96...saw action in 20 of 21 games as a freshman, starting in 13...had five goals and two assists for 12 points in 1995...her 12 points was third highest on the team...scored against American University in the first round of the CAA Tournament during her freshman season. **High School:** Named Florida high school female "Player of the Year" and the Florida 6A "Player of the Year" as a senior at Orange Park High School...scored 52 goals and 22 assists in her final year and 59 goals and 26 assists as a sophomore...injured during junior season...two-time all state performer...named County and Florida Times-Union "Player of the Year" in 1995. **Personal:** Born April 23, 1977...Daughter of Joyce and Bernard Ford...majoring in Nutrition and Fitness.

## Stephanie Dietrich

Midfielder/Defender, 5-9, Freshman

Amelia, Ohio (Glen Estes)

Strong and intimidating defender...nicknamed 'the hammer' in high school. **High School:** Was named an NSCAA/Umbro Regional All-American...as a senior, named an All-Ohio, All-City of Cincinnati and All-Conference selection...lettered all four years in high school...honored with the Scholar Athlete of the Year Award in 1996...named to the all-conference team for basketball. **Olympic Development Program:** Member of the ODP Region II Team (1993-97)...competed and attended U.S. ODP Youth National Camp for three years, most recently in San Diego...competed international with her ODP team (Denmark, 1995). **Personal:** Born November 8, 1978...daughter of Doug and Carol Dietrich...enrolled in FSU's undergraduate studies program.





## Ashley Halter

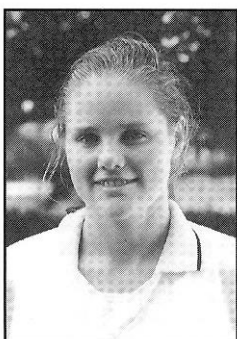
Defender, 5-10, Freshman  
Atlanta, Georgia (The Lovett School)

A strong two-touch player who reads the game well...brilliant in the air...threatening on set pieces. **High School:** Named to the All-City team in her junior and senior years...also the team's MVP after her senior season...member on the Georgia State team (1993-97)...club team state champions (1995-96, 1996-97), regional finalists (1995-96), Texas Cup champions (1995). **Club Team:** Tophatters '97 Gold. **Personal:** Born January 28, 1979...member of the National Honor Society...also played varsity basketball all four years...daughter of Sue and Vern Halter...majoring in Biology.

## April Murphy

Forward, 5-5, Freshman  
Tulsa, Oklahoma (Jenks)

Feisty, crafty one on one player with outstanding speed...a concern for the opposing defender. **High School:** Became the all-time leading scorer during her senior year at Jenks High School...named to the all-state team as a senior...an all-conference and district member all four years...won the state championship with her club team all four years in high school. **Olympic Development Program:** Member of ODP Region III Pool (1996-97)...part of the ODP program for five years. **Club Team:** BlackWatch. **Personal:** Born April 2, 1979...daughter of Sherri and Dave Murphy...an honor roll student...played soccer competitively for 11 years...majoring in English.



## Sarah "Sally" Shelgren

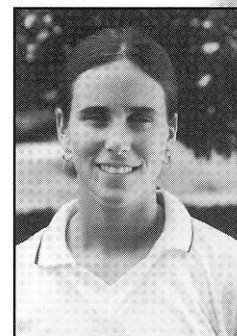
Midfielder, 5-5, Freshman  
Niceville, Florida (Niceville)

Has a ball-winning presence in the midfield...holds a high work ethic and the ability to win numerous headers. **High School:** A four year letterwinner while playing at three high schools...named an all-conference player while playing for the boy's varsity squad at Izmir High School in Turkey...also a team captain while in Turkey...named the team captain at Niceville High School. **Club Team:** Women's Turkish League. **Olympic Development Program:** Member of the ODP Region III Pool...competed with ODP in Alabama, 1996. **Personal:** Born December 24, 1978...an honor roll student...member of the drama club, aeroclub and band...played soccer for over 12 years...daughter of Roxy and Harold Shelgren...enrolled in FSU's undergraduate studies program.

## Rachael Watkin

Defender, 5-10, Freshman  
Boca Raton, Florida (Boca Raton)

Technical skill, composure under pressure, great field vision and strong distribution skills make her a constant threat. **High School:** Named a 1995 All-State Sweeper and a 1996 All-State Midfielder...member of the Boca Select Team (1992-97)...a member of the Boca Raton U17 Select team...named to the all-state team sophomore through senior seasons...named her team's MVP and captain junior and senior years...also lettered in softball. **Olympic Development Program:** Member of the Florida ODP Team (1994-95). **Club Team:** Team Boca. **Personal:** Born October 10, 1979...daughter Nathaniel and Cynthia Watkin...enrolled in FSU's undergraduate studies program.



# 1996 game by game

## Florida State 4, West Florida 1

Friday, August 31, UWF Soccer Stadium, Pensacola, Fla.

**Attendance:** 150

**Scoring:**

Florida State • Walkup (Bonaffino), 4:00 (1-0, FSU)  
 Florida State • Sedgwick (McCall), 10:00 (2-0, FSU)  
 Florida State • Poole (unassisted), 57:00 (3-0, FSU)  
 Florida State • McCall (Del Rio), 61:00 (4-0, FSU)  
 West Florida • Anderson (unassisted), 64:30 (4-1, FSU)

Score by Periods	1	2	F
Florida State	2	2	4
West Florida	0	1	1

**Corner Kicks:** West Florida 0, Florida State 6

**Total Shots:** West Florida 3, Florida State 20

**Fouls:** West Florida 4, Florida State 11

**Goalie Saves:** West Florida 2 (Webb 2), Florida State 1 (Juhl 1)

## Florida State 4, Appalachian State 0

Friday, September 6, SISC, Tallahassee

**Attendance:** 546

**Scoring:**

Florida State • Grimsley (Osorio), 20:00 (1-0, FSU)  
 Florida State • McCall (unassisted), 27:00 (2-0, FSU)  
 Florida State • McCall (unassisted), 30:00 (3-0, FSU)  
 Florida State • Lynch (unassisted), 69:00 (4-0, FSU)

Score by Periods	1	2	F
Appalachian State	0	0	0
Florida State	2	2	4

**Corner Kicks:** Florida State 6, Appalachian State 0

**Total Shots:** Florida State 36, Appalachian State 5

**Fouls:** Florida State 9, Appalachian State 6

**Goalie Saves:** Florida State 4 (Juhl 3), Appalachian State 12 (Gunn 12)

## Virginia 3, Florida State 4

Sunday, September 8, SISC, Tallahassee

**Attendance:** 777

**Scoring:**

UVa • Padula (unassisted), 18:27 (1-0, UVa)  
 Florida State • Osorio (McCall), 18:53 (1-1, FSU, UVa)  
 UVa • Hucles (unassisted), 35:00 (2-1, UVa)  
 UVa • Hucles (unassisted), 62:00 (3-1, UVa)

Score by Periods	1	2	F
UVa	2	1	3
Florida State	1	0	1

**Corner Kicks:** Florida State 0, UVa 5

**Total Shots:** Florida State 6, UVa 13

**Fouls:** Florida State 14, UVa 12

**Goalie Saves:** Florida State 8 (Juhl 8), UVa 3 (Tatar 2)

## Florida State 3, South Alabama 0

Friday, September 13, The Cage, Mobile, AL

**Attendance:** 105

**Scoring:**

Florida State • Poole (unassisted), 3:57 (1-0, FSU)  
 Florida State • McCall (Sedgwick), 79:32 (2-0, FSU)  
 Florida State • Lynch (unassisted), 80:11 (3-0, FSU)

Score by Periods	1	2	F
Florida State	1	2	3
South Alabama	0	0	0

**Corner Kicks:** South Alabama 3, Florida State 7

**Total Shots:** South Alabama 2, Florida State 12

**Fouls:** South Alabama 6, Florida State 16

**Goalie Saves:** South Alabama 5 (Satterfield 5), Florida State 1 (Juhl 1)

## Florida State 11, Jacksonville 0

Sunday, September 15, Brest Field, Jacksonville, FL

**Attendance:** 114

**Scoring:**

Florida State • McCall (unassisted), 20:14 (1-0, FSU)  
 Florida State • Bonaffino (unassisted), 36:29 (2-0, FSU)  
 Florida State • Poole (unassisted), 46:05 (3-0, FSU)  
 Florida State • Own Goal (unassisted), 51:08 (4-0, FSU)  
 Florida State • Lynch (unassisted), 54:08 (5-0, FSU)  
 Florida State • Huff (Grimsley), 58:44 (6-0, FSU)  
 Florida State • McCall (unassisted), 70:23 (7-0, FSU)  
 Florida State • Grimsley (McCall), 71:24 (8-0, FSU)  
 Florida State • McCall (Grimsley), 77:10 (9-0, FSU)  
 Florida State • Hogan (Grimsley), 82:45 (10-0, FSU)  
 Florida State • Hogan (unassisted), 86:21 (11-0, FSU)

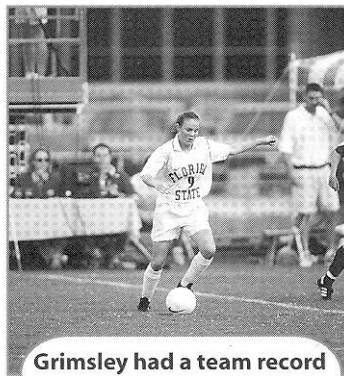
Score by Periods	1	2	F
Florida State	2	9	11
Jacksonville	0	0	0

**Corner Kicks:** Jacksonville 0, Florida State 3

**Total Shots:** Jacksonville 1, Florida State 31

**Fouls:** Jacksonville 10, Florida State 10

**Goalie Saves:** Jacksonville 12 (Schock 12), Florida State 1 (Gurtov 1)



**Grimsley had a team record 3 assists vs. the Dolphins**

## Florida State 4, North Florida 1

Tuesday, September 17, Osprey Field, Jacksonville, FL

**Attendance:** 70

**Scoring:**

Florida State • Poole (McCall), 9:55 (1-0, FSU)  
 Florida State • Grimsley (Hogan), 22:45 (2-0, FSU)  
 Florida State • Grimsley (unassisted), 30:05 (3-0, FSU)  
 North Florida • Tabor (Stultz), 66:43 (3-1, FSU)  
 Florida State • Hogan (unassisted), 82:55 (4-1, FSU)

Score by Periods	1	2	F
Florida State	3	1	4
North Florida	0	1	1

**Corner Kicks:** North Florida 2, Florida State 3

**Total Shots:** North Florida 14, Florida State 16

**Fouls:** North Florida 13, Florida State 17

**Goalie Saves:** North Florida 3 (Moran 3), Florida State 5 (Gurtov 3)

## Florida State 1, East Carolina 0

Friday, September 20, Bunting Field, Greensboro, NC

**Attendance:** 175

**Scoring:**

Florida State • Osorio (McCall), 36:43 (1-0, FSU)

Score by Periods	1	2	F
Florida State	1	0	1
East Carolina	0	0	0

**Corner Kicks:** East Carolina 3, Florida State 3

**Total Shots:** East Carolina 7, Florida State 16

**Fouls:** East Carolina 11, Florida State 18

**Goalie Saves:** East Carolina 9 (Morgridge 9), Florida State 4 (Juhl 4)

## Duke 3, Florida State 0

Sunday, September 22, Duke Soccer Stadium, Durham, NC

**Attendance:** 450

**Scoring:**

Duke • Melde (unassisted), 26:05 (1-0, DU)  
 Duke • Cyran (unassisted), 71:32 (2-0, DU)  
 Duke • Feeney (Daws, Cyran), 76:01 (3-0, DU)

Score by Periods	1	2	F
Florida State	0	0	0
Duke	1	2	3

**Corner Kicks:** Duke 7, Florida State 0

**Total Shots:** Duke 16, Florida State 2

**Fouls:** Duke 14, Florida State 14

**Goalie Saves:** Duke 1 (Piper 1), Florida State 6 (Juhl 6)

## North Carolina 9, Florida State 0

Thursday, September 26, SISC, Tallahassee, NC

**Attendance:** 917

**Scoring:**

North Carolina • Confer (Roberts), 30 (1-0, UNC)  
 North Carolina • Parlow (Schwoy), 10:00 (2-0, UNC)  
 North Carolina • Roberts (Parlow), 19:00 (3-0, UNC)  
 North Carolina • Keller (Fettig), 30:00 (4-0, UNC)  
 North Carolina • Roberts (Keller), 35:00 (5-0, UNC)  
 North Carolina • Falk (unassisted), 41:00 (6-0, UNC)  
 North Carolina • Karvelsson (Fettig), 43:00 (7-0, UNC)  
 North Carolina • Confer (unassisted), 58:00 (8-0, UNC)  
 North Carolina • Brallier (unassisted), 81:00 (9-0, UNC)

Score by Periods	1	2	F
North Carolina	7	2	9
Florida State	0	0	0

**Corner Kicks:** Florida State 0, North Carolina 13

**Total Shots:** Florida State 1, North Carolina 15

**Fouls:** Florida State 7, North Carolina 6

**Goalie Saves:** Florida State 0, North Carolina 3 (Mullinix 3)

## Florida State 4, Furman 0

Sunday, September 29, SISC, Tallahassee, FL

**Attendance:** 372



**Scoring:**

Florida State • Poole (Lynch), 1:30 (1-0, FSU)  
 Florida State • Poole (Yocca), 20:00 (2-0, FSU)  
 Florida State • McCall (unassisted), 43:00 (3-0, FSU)  
 Florida State • Walkup (Grimsley), 70:00 (4-0, FSU)

Score by Periods	1	2	F
Furman	0	0	0
Florida State	3	1	4

**Corner Kicks:** Florida State 5, Furman 0  
**Total Shots:** Florida State 24, Furman 2  
**Fouls:** Florida State 17, Furman 15  
**Goalie Saves:** Florida State 0, Furman 12 (McNutt 12)

**Florida State 5, Tennessee 0**

Tuesday, October 1, SISC, Tallahassee, FL

**Attendance:** 117

**Scoring:**

Florida State • Poole (Lynch), 57:00 (1-0, FSU)  
 Florida State • McCall (Bonaffino), 61:00 (2-0, FSU)  
 Florida State • Bonaffino (Poole), 64:00 (3-0, FSU)  
 Florida State • Sedgwick (unassisted), 78:00 (4-0, FSU)  
 Florida State • Huff (Yocca), 90:00 (5-0, FSU)

Score by Periods	1	2	F
Tennessee	0	0	0
Florida State	0	5	5

**Corner Kicks:** Florida State 7, Tennessee 3  
**Total Shots:** Florida State 21, Tennessee 4  
**Fouls:** Florida State 9, Tennessee 13  
**Goalie Saves:** Florida State 4 (Juhl 4), Tennessee 9 (Sweeney 6)

**Florida State 2, Mississippi 2**

Friday, October 4, Wade Parker Par, Atlanta, GA

**Attendance:** 117

**Scoring:**

Florida State • Poole (Bonaffino), 26:30 (1-0, FSU)  
 Florida State • Poole (Sedgwick), 43:00 (2-0, FSU)  
 Mississippi • Zegledi (Mart/Rutledge), 69:45 (2-1, FSU)  
 Mississippi • Comeaux (Mart), 77:15 (2-2, FSU-GSU)

Score by Periods	1	2	OT	OTF
Florida State	2	0	0	2
Mississippi	2	0	0	2

**Corner Kicks:** Mississippi 6, Florida State 5  
**Total Shots:** Mississippi 24, Florida State 24  
**Fouls:** Mississippi 7, Florida State 17  
**Goalie Saves:** Mississippi 4 (Coss 4), Florida State 13 (Juhl 13)

**Florida State 2, Georgia State 1**

Sunday, October 6, Wade Parker Par, Atlanta, GA

**Attendance:** 150

**Scoring:**

Florida State • Bonaffino (unassisted), 55:20 (1-0, FSU)  
 Georgia State • Fitzgerald (Wolff), 81:58 (1-1, FSU-GSU)  
 Florida State • Poole (Sedgwick), 83:11 (2-1, FSU)

Score by Periods	1	2	F
Florida State	0	2	2
Georgia State	0	1	1

**Corner Kicks:** Georgia State 1, Florida State 4  
**Total Shots:** Georgia State 11, Florida State 21  
**Fouls:** Georgia State 9, Florida State 23  
**Goalie Saves:** Georgia State 12 (Montana 12), Florida State 6 (Juhl 6)

**Florida State 0, Maryland 2 (OT)**

Sunday, October 13, 1996, College Park, MD

**Attendance:** 567

**Scoring:**

Maryland • Harbo (Salmon), 90:53 (1-0, MD)

Maryland • Harbo (Sarver), 96:38 (2-0, MD)

Score by Periods	1	2	OT	F
Florida State	0	0	0	0
Maryland	0	0	2	2

**Corner Kicks:** Florida State 0, Maryland 8  
**Total Shots:** Florida State 6, Maryland 16  
**Fouls:** Florida State 17, Maryland 12  
**Goalie Saves:** Florida State 6 (Juhl 6), Maryland 3 (Price 3)

**Florida State 4, Jacksonville State 0**

Friday, October 18, SISC

**Attendance:** 211

**Scoring:**

Florida State • Poole (Lavoie), 11:00 (1-0 FSU)  
 Florida State • Sedgwick (McCall), 55:00 (2-0 FSU)  
 Florida State • Osorio (unassisted), 74:00 (3-0 FSU)  
 Florida State • Driscoll (Osorio), 76:00

Score by Periods:	1	2	F
Jacksonville State	0	0	0
Florida State	1	3	4

**Corner Kicks:** Jacksonville State 0, Florida State 8  
**Total Shots:** Jacksonville State 2, Florida State 15  
**Fouls:** Jacksonville State 5, Florida State 10  
**Goalie Saves:** Jacksonville State 9 (Baier 9), Florida State 1 (Juhl 1)

**Florida State 1, Clemson 0**

Sunday, October 20, SISC

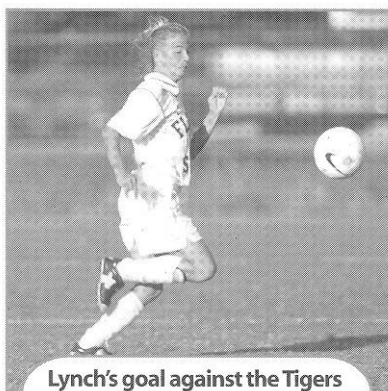
**Attendance:** 363

**Scoring:**

Florida State • Lynch (unassisted), 68:00 (1-0, FSU)

Score by Periods	1	2	F
Clemson	0	0	0
Florida State	0	1	1

**Corner Kicks:** Clemson 5, Florida State 3  
**Total Shots:** Clemson 8, Florida State 5  
**Fouls:** Clemson 17, Florida State 16  
**Goalie Saves:** Clemson 2 (Putnam 2), Florida State 3 (Juhl 3)



Lynch's goal against the Tigers gave FSU its 1st ACC win

**Florida State 0, Florida 3**

Wednesday, October 23, SISC

**Attendance:** 1123

**Scoring:**

Florida • Pini (unassisted), 61:00 (1-0 Florida)  
 Florida • Fotopoulos (unassisted), 78:00 (2-0 Florida)  
 Florida • Fotopoulos (Pini), 80:00

Score by Periods:	1	2	F
Florida	0	3	3
Florida State	0	0	0

**Corner Kicks:** Florida 7, Florida State 1  
**Total Shots:** Florida 19, Florida State 9  
**Fouls:** Florida 20, Florida State 5  
**Goalie Saves:** Florida 6 (Pattishaw 6), Florida State 10 (Juhl 10)

**Florida State 4, North Carolina State 2**

Sunday, October 27, SISC

**Attendance:** 263

**Scoring:**

NC State • Boggs (unassisted), 25:00 (1-0 NC State)  
 Florida State • own goal by NC State, 34:00 (1-1 FSU-NC State)  
 NC State • Jeidy (unassisted), 58:00 (2-1 NC State)  
 Florida State • Bonaffino (unassisted), 74:00 (2-2 FSU-NC State)  
 Florida State • Poole (Bonaffino), 85:00 (3-2 FSU)  
 Florida State • Yocca (Osorio), 88:00 (4-2 FSU)

Score by Periods:	1	2	F
North Carolina State	1	1	2
Florida State	1	3	4

**Corner Kicks:** NC State 6, Florida State 5  
**Total Shots:** NC State 9, Florida State 12  
**Fouls:** NC State 13, Florida State 9  
**Goalie Saves:** NC State 2 (Mertz 2), Florida State 3 (Juhl 3)

**Florida State 0, Wake Forest 1**

Sunday, November 3, SISC

**Attendance:** 417

**Scoring:**

Wake Forest • Fernbach (unassisted), 11:00 (1-0 Wake Forest)

Score by Periods:	1	2	F
Wake Forest	1	0	1
Florida State	0	0	0

**Corner Kicks:** Wake Forest 3, Florida State 7  
**Total Shots:** Wake Forest 8, Florida State 18  
**Fouls:** Wake Forest 16, Florida State 13  
**Goalie Saves:** Wake Forest 9 (Klein 9), Florida State 2 (Juhl 2)

**Florida State 1, North Carolina 7**

Thursday, November 7, Winston-Salem, N.C.

ACC Tournament

**Scoring:**

North Carolina • Confer (Fettig), 9:47 (1-0 NC)  
 North Carolina • Confer (unassisted), 16:16 (2-0 NC)  
 North Carolina • McDowell (Keller), 19:31 (3-0 NC)  
 North Carolina • Sheppard (unassisted), 34:08 (4-0 NC)  
 North Carolina • N.Roberts (unassisted), 44:17 (5-0 NC)  
 North Carolina • T.Roberts (unassisted), 56:07 (6-0 NC)  
 Florida State • Poole (unassisted), 63:59 (6-1 NC)  
 North Carolina • Karvelsson (Sheppard), 76:30 (7-1 NC)

Score by Periods	1	2	F
Florida State	0	1	1
North Carolina	5	2	7

**Corner Kicks:** Florida State 1, North Carolina 10  
**Total Shots:** Florida State 2, North Carolina 22  
**Fouls:** Florida State 19, North Carolina 25  
**Goalie Saves:** Florida State 3 (Juhl 3), North Carolina 0 (Mullinix 0)

# 1996 fsu statistics

## FSU WOMEN'S SOCCER RESULTS

Date	Opponent (Attendance)	W/L/T	Score	Goals (Game Winner in Bold)	Record
8/31	at West Florida (150)	W	4-1	Walkup, <b>Sedgwick</b> , Poole, McCall	1-0-0
9/6	APPALCHIAN STATE (546)	W	4-0	<b>Grimsley</b> , McCall (2), Lynch	2-0-0
9/8	#6 VIRGINIA (777)	L	1-3	Osorio	2-1-0
9/13	at South Alabama (105)	W	3-0	<b>Poole</b> , McCall, Lynch	3-1-0
9/15	at Jacksonville (114)	W	11-0	<b>McCall (3)</b> , Bonaffino, Poole, own goal Lynch, Huff, Grimsley, Hogan (2)	4-1-0
9/17	at North Florida (70)	W	4-1	Poole, <b>Grimsley (2)</b> , Hogan	5-1-0
9/20	at East Carolina (175)	W	1-0	<b>Osorio</b>	6-1-0
9/22	at #15 Duke (450)	L	0-3		6-2-0
9/26	#1 NORTH CAROLINA (917)	L	0-9		6-3-0
9/29	FURMAN (372)	W	4-0	<b>Poole (2)</b> , McCall, Walkup	7-3-0
10/1	TENNESSEE (117)	W	5-0	<b>Poole</b> , McCall, Bonaffino, Sedgwick, Huff	8-3-0
10/4	vs. Mississippi *(130)	T	2-2	(OT) Poole (2)	8-3-1
10/6	at Georgia State*(150)	W	2-1	Bonaffino, <b>Poole</b>	9-3-1
10/13	at #4 Maryland (567)	L	0-2	(OT)	9-4-1
10/18	JACKSONVILLE ST. (211)	W	4-0	<b>Poole</b> , Sedgwick, Osorio, Driscoll	10-4-1
10/20	#10 CLEMSON (363)	W	1-0	<b>Lynch</b>	11-4-1
10/23	#9 FLORIDA (1,123)	L	0-3		11-5-1
10/27	N.C. STATE (263)	W	4-2	own goal, Bonaffino, <b>Poole</b> , Yocca	12-5-1
11/3	#18 WAKE FOREST (417)	L	0-1		12-6-1
11/7	#1 North Carolina@ (882)	L	1-7	Poole	12-7-1

\* at TSI Women's Soccer Showcase (Atlanta, GA)

@ at Atlantic Coast Conference Tournament (Clemson, SC)

## 1996 FINAL STATISTICS

### ATTENDANCE

Home	5,106
All Matches	7,899
Home Average	511
Total Average	395

### RECORD

	1996	All-Time
Overall	12-7-1	16-21-2
ACC	2-6-0	2-14-0
Home	6-4-0	8-7-0
Away	6-2-0	6-10-1
Neutral	0-1-1	2-4-1
Ranking	#10 Southeast NSCAA	
Heather Kerby-Nelson	12-7-1	16-21-2 (2nd Season)



### INDIVIDUAL STATISTICS

Name	MP/MS	INDIVIDUAL STATISTICS						CAREER TOTALS					
		Shots	Goals	Assists	Points	GWG	GWA	Shots	Goals	Assists	Points	GWG	GWA
Kelley Poole	20/20	56	14	1	29	6	0	56	14	1	29	6	0
Kasey McCall	19/18	38	9	6	24	1	2	38	9	6	24	1	2
Erin Grimsley	16/12	25	4	4	12	2	0	25	4	4	12	2	0
Angela Bonaffino	20/20	30	4	4	12	0	1	30	4	4	12	0	1
Lauren Lynch	18/7	22	4	2	10	1	2	60	10	4	24	1	2
Nicole Sedgwick	20/20	26	3	3	9	1	1	26	3	3	9	1	1
Alexandra Osorio	20/20	31	3	3	9	1	1	62	9	6	25	2	2
Allison Hogan	19/5	13	3	1	7	0	1	18	3	1	7	0	1
Janna Walkup	17/17	7	2	0	4	0	0	17	5	0	10	0	0
Kelly Huff	13/0	9	2	0	4	0	0	21	3	2	8	1	0
Jennifer Yocca	16/7	7	1	2	4	0	0	10	1	2	4	0	0
Jessica Driscoll	9/0	1	1	0	2	0	0	8	4	2	10	0	0
Janine Lavoie	20/20	15	0	1	1	0	1	16	3	2	8	0	1
Justina Torres	20/20	2	0	0	0	0	0	2	0	0	0	0	0
Leslie Del Rio	3/2	5	0	0	0	0	0	5	0	0	0	0	0
Katie Lunn	13/2	3	0	0	0	0	0	5	0	0	0	0	0
Autumn Swofford	10/1	0	0	0	0	0	0	0	0	0	0	0	0
Kelly Duffek	10/0	1	0	0	0	0	0	7	1	0	2	0	0
Molly Nye	18/7	1	0	0	0	0	0	1	0	0	0	0	0
Own Goal (For FSU)			1										
TOTALS	303/200	292	51	27	127	12	10						
OPPONENTS	303/200	201	35	19	84	7	2						

### GOALKEEPING

Name	MP/MS	GOALKEEPING										CAREER TOTALS					
		Min	Sh	Svs	GA	GAA	GS%	SO	Rec	Min	Svs	GA	GAA	GS%	SO	Rec	
Melissa Juhl	20/20	1,713	191	76	32	1.68	70%	7.5	12-7-1	2,979	230	68	2.05	77%	8.5	16-18-2	
Jamie Gurtov	4/0	147	10	3	3	1.83	50%	0.5	0-0-0	147	3	3	1.83	50%	0.5	0-0-0	
Totals	24/20	1,860	201	79	35	1.69	69%	8	12-7-1								
Opponents	25/20	1,860	292	100	51	2.36	66%										

# all time statistics

## Florida State Team Season Records

Most Victories .....	12 (1996)
Most Defeats .....	14 (1995)
Most Ties .....	1 (1995 & 1996)
Fewest Victories .....	4 (1995)
Fewest Defeats .....	7 (1996)
Fewest Ties .....	1 (1995 & 1996)
Most Games Played .....	20 (1996)
Fewest Games Played .....	19 (1995)
Longest Winning Streak .....	4 (1996)
Longest Unbeaten Streak .....	4 twice (1996)
Longest Losing Streak .....	8 (1995)
Longest Non-Winning Streak .....	8 (1995)
Most Home Field Victories .....	6 (1996)
Fewest Home Field Defeats .....	3 (1995)
Most Away Victories .....	6 (1996)
Fewest Away Defeats .....	2 (1996)
Most Neutral-Site Victories .....	2 (1995)
Most Neutral-Site Defeats .....	3 (1995)
Most Goals Scored .....	51 (1996)
Fewest Goals Scored .....	32 (1995)
Most Assists .....	27 (1996)
Fewest Assists .....	17 (1995)
Most Points .....	127 (1996)
Fewest Points .....	81 (1995)
Most Goals Allowed .....	61 (1995)
Fewest Goals Allowed .....	35 (1996)
Most Shutouts By .....	8 (1996)
Most Consecutive Shutouts By .....	2 three times (1996)
Most Shots .....	292 (1996)
Fewest Shots Allowed .....	201 (1996)

## Florida State Team Game Records

<b>Most Goals Scored</b> .....	11
(1995, vs. Jacksonville, 9/13; 1996, vs. Jacksonville, 9/15)	
<b>Most Goals Scored, Defeat</b> .....	4
(1995, vs. Georgia, 10/27)	
<b>Most Goals Allowed</b> .....	9
(1995 vs. North Carolina (ACC Trn.), 11/2; 1996 vs. North Carolina, 9/26)	
<b>Most Goals Allowed, Victory</b> .....	1
(1995, three times; 1996 vs. Virginia, 9/8)	
<b>Most Goals Scored, Both Teams</b> .....	11
(1995, vs. Jacksonville, 9/13; 1996, vs. Jacksonville, 9/15)	
<b>Largest Margin of Victory</b> .....	11
(1995, vs. Jacksonville, 9/13; 1996, vs. Jacksonville, 9/15)	
<b>Largest Margin of Victory, Shutout</b> .....	11
(1995, vs. Jacksonville, 9/13; 1996, vs. Jacksonville, 9/15)	
<b>Largest Margin of Victory, Home</b> .....	11
(1995, vs. Jacksonville, 9/13)	
<b>Largest Margin of Victory, Away</b> .....	3
(1996, vs. Jacksonville, 9/15)	
<b>Largest Margin of Defeat</b> .....	9

(1995 vs. North Carolina (ACC Trn.), 1996 vs. North Carolina, 9/26)	
<b>Largest Margin of Defeat, Shutout</b> .....	9
(1995 vs. North Carolina (ACC Trn.), 1996 vs. North Carolina, 9/26)	
<b>Largest Margin of Defeat, Home</b> .....	9
(1996 vs. North Carolina, 9/26)	
<b>Largest Margin of Defeat, Away</b> .....	6
(1995, three times)	
<b>Most Shots</b> .....	36
(1995, vs Jacksonville, 9/13; 1996, vs. Appalachian State, 9/16)	
<b>Most Shots Allowed</b> .....	45
(1995, at Nebraska, 10/8)	
<b>Fewest Shots</b> .....	0
(1995, two times)	
<b>Fewest Shots Allowed</b> .....	1
(1996, vs Jacksonville, 9/15)	
<b>Quickest Goal, 1st Half</b> .....	1:30
(Kelly Poole, 1996, vs Furman, 9/29)	
<b>Quickest Goal Allowed, 1st Half</b> .....	:30
(1996, Robin Confer, North Carolina, 9/26)	
<b>Quickest Goal, 2nd Half</b> .....	46:05
(1996, Kelley Poole vs. Jacksonville, 9/16)	
<b>Quickest Goal Allowed, 2nd Half</b> .....	46:41
(1995, Dina Padula at Virginia, 10/13)	
<b>Quickest Goal Allowed, Overtime</b> .....	94:28
(1995, Debbie Keller at North Carolina, 10/20)	
<b>Shortest span between goals</b> .....	:39
(1996, vs South Alabama, 9/23)	
<b>Shortest span between goals allowed</b> .....	1:17

## Florida State Individual Game Records

<b>Most Points</b> .....	7
(Kasey McCall at Jacksonville, Sept. 15, 1996)	
<b>Most 1st Half Points</b> .....	4
(Kelly McGrath, vs Jacksonville, Sept. 13, 1995; Alexandra Osorio, vs Jacksonville, Sept. 13, 1995)	
<b>Most 2nd Half Points</b> .....	5
(Kasey McCall at Jacksonville, Sept. 15, 1996)	
<b>Most Goals</b> .....	3
(Kelly McGrath, vs Jacksonville, Sept. 13, 1995; Alexandra Osorio, vs Jacksonville, Sept. 13, 1995; Lauren Lynch, at Georgia, Oct. 27, 1995; Kasey McCall at Jacksonville, Spet. 15, 1996)	
<b>Most 1st Half Goals</b> .....	2
(Kelly McGrath, vs Jacksonville, Sept. 13, 1995; Alexandra Osorio, vs Jacksonville, Sept. 13, 1995)	
<b>Most 2nd Half Goals</b> .....	2
(Lauren Lynch, at Georgia, Oct. 27, 1995; Kasey McCall at Jacksonville, Spet. 15, 1996)	
<b>Most Assists</b> .....	3
(Erin Grimsley at Jacksonville, Spet. 15, 1996)	
<b>Most 1st Half Assists</b> .....	2
(Jessica Driscoll, vs Jacksonville, Sept. 13, 1995)	
<b>Most 2nd Half Assists</b> .....	3
(Erin Grimsley at Jacksonville, Spet. 15, 1996)	
<b>Goalie Saves</b> .....	21
(Melissa Juhl, vs Duke, Sept. 24, 1995)	

# all time roster & stats

## 1996 Individual Leaders

### SCORING POINTS

Player	Goals	Assists	GWG	GWA	Points
1. Kelley Poole	14	1	6	0	29
2. Kasey McCall	9	6	1	2	24
3. Erin Grimsley	4	4	2	0	12
Angela Bonaffino	4	4	0	1	12
5. Lauren Lynch	4	2	1	2	10
6. Nicole Sedgwick	3	3	1	1	9
Alex Osorio	3	3	1	1	9
8. Allison Hogan	3	1	0	1	7
9. Janna Walkup	2	0	0	0	4
Kelly Huff	2	0	0	0	4
Jennifer Yocca	1	2	0	0	4

### GOALS

Player	Goals
1. Kelley Poole	14
2. Kasey McCall	9
3. Erin Grimsley	4
Angela Bonaffino	4
Lauren Lynch	4
6. Nicole Sedgwick	3
Alex Osorio	3
Allison Hogan	3
9. Janna Walkup	2
Kelly Huff	2

### ASSISTS

Player	Assists
1. Kasey McCall	6
2. Erin Grimsley	4
Angela Bonaffino	4
4. Nicole Sedgwick	3
Alex Osorio	3
6. Lauren Lynch	2
Jessica Driscoll	2
8. Kelley Poole	1
Allison Hogan	1
Janine Lavoie	1

### GAME WINNING GOALS

Player	GWG
1. Kelley Poole	6
2. Erin Grimsley	2
3. Kasey McCall	1
Lauren Lynch	1
Nicole Sedgwick	1
Alex Osorio	1

### GAME WINNING ASSISTS

Player	GWA
1. Kasey McCall	2
Lauren Lynch	2
3. Angela Bonaffino	1
Nicole Sedgwick	1
Alex Osorio	1
Allison Hogan	1
Janine Lavoie	1

## All-Time Women's Soccer Roster

#	Name	Position	Year(s) Played
01	Jenni Roberts*	GK	1995
01	Jamie Gurtov*	GK	1996, '97
1	Justina Torres*	D/MF	1996, '97
1	Erin Vester	D	1995
2	Leslie Del Rio	MF	1996, '97
3	Molly Nye**	D	1995, '96, '97
4	Kelly McGrath*	F	1995
4	Nicole Sedgwick*	MF	1996, '97
5	Alexandra Osorio**	F	1995, '96, '97
6	Lauren Lynch**	MF/F	1995, '96, '97
7	Janine Lavoie**	D	1995, '96, '97
8	Kasey McCall*	MF/F	1996, '97
9	Erin Grimsley*	MF/F	1996, '97
10	Janna Walkup**	D/F	1995, '96, '97
11	Erica Schuler*	MF/F	1995
11	Stephanie Dietrich	D	1997
12	Angela Bonaffino*	MF	1996, '97
12	Jenni Sharpe*	D	1995
13	Melissa Juhl**	GK	1995, '96, '97
14	Kelly Duffek*	D	1995, '96
14	Taryn Cervi	MF	1997
15	Stephanie Byrd	D/MF	1995
15	Autumn Swofford*	D	1996
16	Shannon Smith*	D	1995
16	April Murphy	F	1997
17	Allison Hogan**	MF	1995, '96, '97
18	Kelly Huff*	MF	1995, '96
18	Jill Ford	F	1997
19	Katie Lunn**	MF	1995, '96, '97
20	Rachael Watkin	D	1997
21	Danielle Foard	D	1997
21	Jennifer Yocca**	MF	1995, '96
22	Lizzie Easton*	MF	1995
22	Sally Shelgren	MF	1997
22	Jacki Stradtman*	MF/F	1995, '96
23	Jessica Driscoll*	MF	1995, '96, '97
24	Ashley Halter	D	1997
25	Shannon Stoutamire*	D	1995
27	Kelley Poole*	F	1996

\* - letters earned

## Florida State Individual Season Records

Most Points .....	29 (Kelley Poole, 1996)
Most Goals .....	14 (Kelley Poole, 1996)
Most Assists .....	6 (Kasey McCall, 1996)
Most Game Winning Goals .....	6 (Kelley Poole, 1996)
Most Shots .....	56 (Kelley Poole, 1996)
Most Goalie Saves .....	155 (Melissa Juhl, 1995)
Most Shutouts .....	7.5 (Melissa Juhl, 1996)
Lowest Goals Against Average .....	1.68 (Melissa Juhl, 1996)
Fewest Goals Against .....	32 (Melissa Juhl, 1996)
Most Minutes in Goal .....	1,713 (Melissa Juhl, 1996)



# acc statistics

## 1996 ACC Final Standings

Team	CONFERENCE						OVERALL					
	Won	Lost	Tie	Pct.	For	Opp.	Won	Lost	Tie	Pct.	For	Opp.
North Carolina	7	0	0	1.000	30	2	25	1	0	.962	109	11
Duke	3	3	1	.500	13	10	10	10	3	.500	37	32
Clemson	3	3	1	.500	11	9	15	7	1	.674	58	26
NC State	3	3	1	.500	13	13	11	9	1	.548	44	43
Virginia	3	3	1	.500	10	14	12	7	2	.619	47	29
Maryland	2	3	2	.429	10	13	19	5	2	.769	65	23
Wake Forest	2	5	0	.286	5	17	14	8	0	.636	59	36
Florida State	2	5	0	.286	6	20	12	7	1	.625	51	35

VS. NON-ACC OPPONENTS: 85-20-4, .798

**ACC TOURNAMENT RESULTS (Clemson, SC., Nov. 7-8, & 10):** *First Round* - #1 North Carolina d. #8 Florida State 7-1; #7 Wake Forest d. #2 Duke 3-2; #3 Clemson d. #6 Maryland 2-1; #5 Virginia d. #4 NC State 4-1. *Semifinals* - Clemson d. Wake Forest 2-1; North Carolina d. Virginia 5-2. *Finals* - North Carolina d. Clemson 4-1.

**ACC ALL-TOURNAMENT TEAM:** *Clemson (3)* - Sheri Bueter, Sara Burkett, Lissa Mansberry. *North Carolina (4)* - Robin Confer, Lorrie Fair, Debbie Keller, Cindy Parlow. *Virginia (2)* - Angela Hucles, Jennifer Rawlings. *Wake Forest (2)* - Karli Schilling, Anne Shropshire.

**TOURNAMENT MOST VALUABLE PLAYER:** Robin Confer, North Carolina.

**ALL-ATLANTIC COAST CONFERENCE:** *1st Team* - **F** - Emmy Habo, Maryland; Angela Hucles, Virginia; Cindy Parlow, North Carolina; Stephanie Sanders, NC State. **MF** - Sara Burkett, Clemson; Sherrill Kester, Duke; Laurie Schwoy, North Carolina. **D** - Stacy Whelchel, Duke; Erin Taylor, Maryland; Staci Wilson, North Carolina. **GK** - Megan Boehm, Virginia. *2nd Team* - **F** - Robin Confer, North Carolina; Debbie Keller, North Carolina; Dina Padula, Virginia. **M** - Wendy Hartwig, Virginia; Beth Keller, Clemson; Robin McCullough, Maryland; Tiffany Roberts, North Carolina. **D** - Karem Esteva, Virginia; Nel Fettig, North Carolina; Samantha Baggett, Duke. **GK** - **Melissa Juhl, Florida State.**

**ACC PLAYER OF THE YEAR:** Erin Taylor, Maryland.

**ACC ROOKIE OF THE YEAR:** Laurie Schwoy, North Carolina.

**ACC CO-COACH OF THE YEAR:** Alvin Corneal, NC State & Anson Dorrance, North Carolina.

**ACC PLAYERS OF THE WEEK:** S2 - Laurie Schwoy, North Carolina. S9 - Emmy Harbo, Maryland. S16 - Suzanne Putnam, Clemson. S23 - Liz Burnette, Wake Forest. S30 - Robin Confer, North Carolina. O7 - Angela Hucles, Virginia. O14 - Emmy Harbo, Maryland. O21 - **Melissa Juhl, Florida State.** O28 - Laurie Schwoy, North Carolina. N4 - Cindy Parlow, North Carolina.

# fsu support services

## AN OVERVIEW OF AN ACADEMIC SUPPORT PROGRAM ON THE RISE

**A**cademic, personal and professional support are essential to college success. At the Florida State University, we have developed an outstanding support program which enables student-athletes to reach their full potential.

Our philosophy is "to offer an academic support program integrated with the total university that will assist all student-athletes with the transition into college and provide continued support in all phases of academic and professional development culminating with graduation, job placement or graduate school."

To accomplish this goal we have developed an academic environment which facilitates the academic success of student-athletes. Student success is encouraged through competent academic counseling, career exploration, planning and placement and academic assistance through tutorial programs.

Our program operates on a "proactive" rather than "reactive" approach. At Florida State, our academic staff does not wait for academic crises to occur. We gather important background information and build an academic profile on all student-athletes to assess their needs in advance. We also stay informed on the daily progress of each student-athlete.

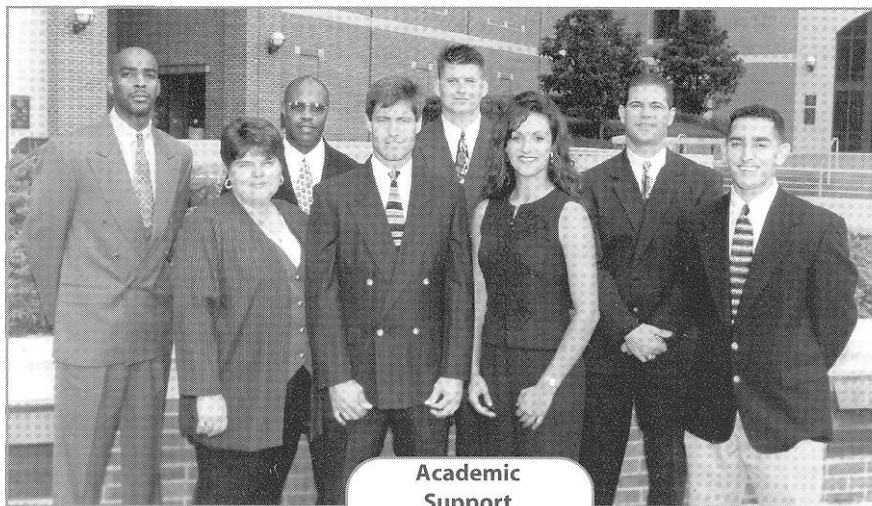
Our academic support staff includes a director, five counselors, and three graduate interns forming a group of professionals serving the needs of all our student-athletes. Mark Meleney is entering his second year as the director of the Athletics Academics Support after serving as one of the program's academic counselors for eight years prior. Academic Counselor Amy White will handle the soccer program duties in 1997.



**Amy White**  
Soccer  
Academic Counselor



In 1994, the academic programs moved to the state-of-the-art University Center and are located on the 6th floor of the \$126,000,000 facility. It includes private study carrels, a tutorial study area and a computer lab outfitted with 16 state-of-the-art IBM computers and laser printers. In addition, athletic sky boxes are utilized for group and individualized tutorial instruction sessions.



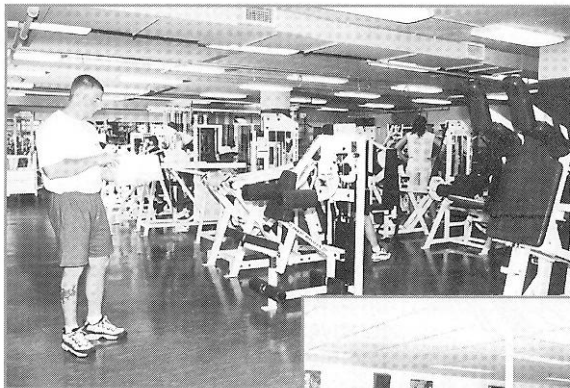
**Academic  
Support  
Staff**



# strength & conditioning

## STRENGTH, CONDITIONING, MEDICAL CARE AND TREATMENT

**S**trength training, conditioning, medical care and treatment are a vital aspect of an athlete's performance on the field. At Florida State, a specially designed program is developed for women's soccer, emphasizing the objectives of strengthening and conditioning the athletes along with the proper medical attention.



Strength and Conditioning coach Ron Miller, assistant Sterling Brown and staff individually customize programs for each of the athletes, beginning with pre-conditioning, before the season even gets underway. Assistant Athletic Trainer Janet Brown, A.T.C., will handle the athletic training duties for the women's soccer team.

This season, Miller will be working with Sterling Brown in customizing a sound workout for the soccer team. The workout is instrumental in improving muscular endurance, strength and cardiovascular conditioning on the field. The coaches believe so strongly in the program that they even participate themselves. FSU takes pride in customizing the programs to help student athletes reach their maximum potential.

Miller, who holds professional memberships in the National Strength and Conditioning Association and Aerobics and Fitness Association, works with the players in sport specific training which includes strengthening the major muscle groups used in soccer.

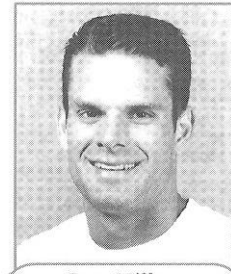
Sterling Brown, a native of Fort Lee, New Jersey, was a

four-year letterman for the University Richmond football team. As the starting wide receiver, Brown set numerous reception records for the Spiders. Along with women's soccer, Brown will also train the women's golf and softball teams.

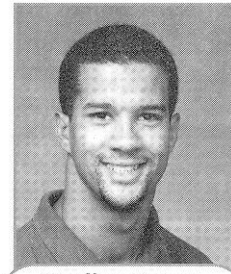
Athletes at Florida State University receive the best care and treatment possible. All of the student athletes undergo a preseason examination in order to prevent and detect any potential injuries that an athlete may incur. If a problem is detected, the athlete is placed on a prevention care program which may include any kind of treatment from icing to exercising.

Though preventing injuries is the main objective, they are sometimes a part of participating in athletics. Rehabilitation is another important component of the Seminole training room. Janet Brown and the rest of the FSU training staff will work with the athlete and provide an intense rehabilitation schedule that will allow the athlete to successfully rehabilitate after an injury. More serious injuries and illnesses are referred to the Seminole team physicians at the Tallahassee Orthopedic Center, who for many years have worked in conjunction with the FSU training room in successfully rehabilitating numerous athletes after an injury.

Janet Brown, a licensed certified athletic trainer in the state of Florida, came to FSU in the Fall of 1995 to pursue her Master's study in Sports Administration. This will be her third season with the women's soccer program after spending the first two seasons as the graduate assistant trainer. She not only works closely with team physicians, but also provides evaluation and advanced first aid, injury prevention, rehabilitation, counseling and guidance, education and administration. Nutrition counseling and drug testing are also responsibilities of the athletic training team which is dedicated to providing the best care possible for all FSU student-athletes.



**Ron Miller**  
Strength & Conditioning Coach



**Sterling Brown**  
Assistant Strength & Conditioning Coach



**Janet Brown, A.T.C.**  
Assistant Athletic Trainer

# life skills

Developed by the Florida State University Department of Athletics, the NOLES program represents a commitment to the total growth and development of the student-athlete. This program establishes an administrative commitment to academic and athletic excellence. Those efforts will be supported with programs and services in personal development, career development and community service.

## Personal Development

Fostering the development of personal growth is a fundamental component of the NOLES program. These support programs ensure that the student-athlete will be provided opportunities to focus on personal growth issues such as values clarification, goal setting, fiscal planning, decision making and personal responsibility. Programming focuses on helping student-athletes develop a healthy lifestyle while they are at Florida State and habits that will benefit them for life.

## Career Development

Preparing for life after college sports is a major focus of the NOLES Career Development program. The program is designed to work cooperatively with the University's Career Services to acquaint students with the job search process, provide networking opportunities and ultimately assist with job placement. This program places a priority on the development of the total person, with the goal of developing individuals who will have rewarding careers and productive lifestyles after they leave Florida State.

## Community Service

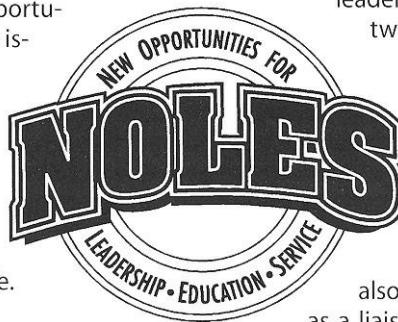
Serving the community is the focus of our Seminole Spirit program. Student-athletes are challenged to give service to our community and individuals who are in need. With a

clearly defined program of service, student-athletes are given the opportunity to develop the foundation for a lifelong commitment to volunteerism. The Seminole Spirit Student-Athlete Speakers' Bureau enables student-athletes to improve their speaking skills, develop effective communication and impact the lives of others through their service as role models in our community.

## Leadership Development

The Florida State University Department of Athletics is committed to developing programs of excellence that foster leadership development. The foundation of the leadership development program will be the two councils that represent the student-athletes at the University.

The Student-Athlete Advisory Council (SAAC) serves as the advisory board to the NOLES program and the athletics administration. The prestigious board, comprised of two representatives of each athletic team at FSU, also recommends programming and serves as a liaison between student-athletes and the athletics administration. The Advisory Council plans and implements various events for student-athletes and serves as the department's most visible ambassadors. The SAAC planned and hosted the annual Golden Nole banquet for the first time last year and have recently planned such events as orientation for incoming student-athletes and the back-to-school picnic.



Student Athletic Advisory Council





# ncaa information

The following information is provided by the Florida State Office of Compliance for prospective student athletes. It is intended as a guideline to introduce some of the rules governing NCAA athletic involvement.

## Who is permitted to recruit for FSU?

**Only Florida State University coaches** who have successfully completed the NCAA Recruiting Rules Examination on an annual basis may be involved in the recruitment process. Representatives of our athletics interests **may not** make any recruiting contacts. This includes letters, telephone calls or face-to-face contact on or off campus with a prospect or the prospect's parents.

## Key terms you should know

You become a **prospective student-athlete** if you have started classes for the ninth grade. Before the ninth grade, you become a prospective student-athlete if the college provides you (or your relatives or friends) any financial aid or other benefits that the college does not provide to prospective students generally.

A **contact** is any face-to-face encounter between a prospect or the prospect's legal guardian and an institutional staff member or athletic representative during which any dialogue occurs in excess of an exchange of greeting. NOTE: At the Division I level, athletic representatives (boosters) may not contact you for the purpose of recruiting. A college coach may contact you in person off the college campus beginning July 1 after completion of your junior year in high school.

An **evaluation** is any off-campus activity designed to assess your academic qualifications or athletic ability, including any visit to your high school (during which no contact occurs) or the observation of any practice or competition in which you participate.

During your senior year, you can have one expense-paid **official visit** to a particular campus. You may receive no more than five visits. During your official visit, which may not exceed 48 hours, you may receive round-trip transportation between your home and the campus, and you (and your parents) may receive meals, lodging and complimentary admission to campus athletics events.

### PHONE CALLS AND LETTERS

Phone calls from faculty members and coaches (but not boosters) are permitted beginning July 1 (August 15 for football) after completion of your junior year. A college coach or faculty member is limited to **one telephone call per week** except when it is:

- During the five days immediately before your official visit to the university
- On the day of a coach's off-campus contact with you
- During the time beginning with the initial National Letter of Intent signing date in your sport through the two days after signing date
- In the sport of football only, during the permissible off-campus contact periods and during the 48 hours prior to and 48 hours after 8:00 a.m. on the initial signing date for the National Letter of Intent.

Letters from coaches and faculty members (but not boosters) are not

permitted until September 1 at the beginning of your junior year in high school. A Division I university may provide you with the following printed materials:

- General correspondence, including letters, U.S. Postal Service postcards and institutional note cards
- Game programs which may not include posters and one Student Athlete Handbook can be provided only during official or unofficial visits to the university's campus
- NCAA educational information
- Pre-enrollment information subsequent to signing a National Letter of Intent with the university
- One athletic publication which may include only one color of printing inside the covers
- Official academic, admissions and student services publications published or videotapes produced by the institution and available to all students
- Schedule cards
- Questionnaires which may be provided prior to your junior year
- Summer camp brochures which may be provided prior to your junior year.

## Alumni and Boosters Do's and Don'ts

**You may** forward information about prospective student-athletes to the appropriate coaches.

**You may** have contact with a prospect regarding permissible pre-enrollment activities such as summer employment, provided the prospect has already signed a National Letter of Intent and the Compliance Office is aware that you are making these contacts in regard to employment.

**You may** have a telephone conversation with a prospect **only** if the prospect initiates the call. Such a call may not be prearranged by an institutional staff member and you are not permitted to have a recruiting conversation, but may exhibit normal civility. You must refer any questions about our athletics programs to an athletics department staff member/coach.

**You may** view a prospect's contest at your own initiative provided you do not contact the prospect or his/her parents. In addition, you may not contact a prospect's coach, principal, or counselor in an attempt to evaluate the prospect.

**You may** continue established family relationships with friends and neighbors. Contacts with sons and daughters of these families are permitted as long as they are not made for recruiting purposes or encouraged by Florida State University coaches.

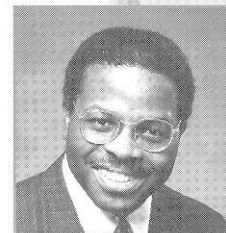
**You may not** become involved in making arrangements to receive money or financial aid of any kind for a prospect or the prospect's family and friends.

**You may not** make contact with a prospective student-athlete and his/her parents when the prospect is on campus for an official or unofficial recruiting visit.

**You may not** transport, pay or arrange for payment of transportation costs for a prospect, and his/her relatives or friends to visit campus (or elsewhere).

**You may not** pay or arrange for payment of summer camp registration fees for a prospect.

**You may not** provide **anything** to a prospect, the prospect's family or friends without prior approval from the athletics' Compliance Office.



**Robert Minnix**  
Assoc. AD for Compliance  
and Legal Affairs



**Brian Mand**  
Director  
of Compliance



**Sheila Benton**  
Assistant Director of  
Compliance

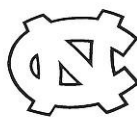
# 1997 Opponents

## ACC Opponents



### WAKE FOREST DEMON DEACONS

Location ..... Winston-Salem, North Carolina  
 Home Facility (Capacity) ..... Spry Stadium (3,000)  
 Head Coach ..... Tony da Luz - University of San Diego, '84  
 Record at school/years ..... First season  
 Career record/years ..... 45-41-3/5  
 Assistant Coach ..... Kelly Walbert - Duke, '97  
 Overall Record Last Year ..... 14-8  
 Conference Record/Finish ..... 2-5/7th  
 Soccer Contact ..... Chris Capo  
 Contact Office Phone ..... (910) 758-5640



### NORTH CAROLINA TAR HEELS

Location ..... Chapel Hill, North Carolina  
 Home Facility (Capacity) ..... Robert A. Fetzner Field (5,700)  
 Head Coach ..... Anson Dorrance - North Carolina, '74  
 Record at school/years ..... 390-16-10/18  
 Career record/years ..... 390-16-10/18  
 Assistant Coach ..... Bill Palladino - North Carolina, '73  
 Overall Record Last Year ..... 25-1  
 Conference Record/Finish ..... 7-0/1st  
 Soccer Contact ..... Dave Lohse  
 Contact Office Phone ..... (919) 962-7257



### NORTH CAROLINA STATE WOLFPACK

Location ..... Raleigh, North Carolina  
 Home Facility (Capacity) .. Method Road Soccer Stadium (4,000)  
 Head Coach ..... Alvin Corneal - Futineu College (Trinidad)  
 Record at school/years ..... 36-16-2/3  
 Career record/years ..... 36-16-2/3  
 Assistant Coaches ..... Alan Corneal, 1995 and  
 ..... Jamie Horowitz - N.C. State, '95  
 Overall Record Last Year ..... 11-9-1  
 Conference Record/Finish ..... 3-3-1/T-2nd  
 Soccer Contact ..... Bruce Winkworth  
 Contact Office Phone ..... (919) 515-2102



### VIRGINIA CAVALIERS

Location ..... Charlottesville, Virginia  
 Home Facility (Capacity) ..... Klockner Stadium (8,000)  
 Head Coach ..... April Heinrichs - North Carolina '86  
 Record at school/years ..... 12-7-2/1  
 Career record/years ..... 76-53-10/7  
 Assistant Coaches ..... Ron Raab - William & Mary '89 and  
 ..... Missy Price - Maryland '97  
 Overall Record Last Year ..... 12-7-2  
 Conference Record/Finish ..... 3-3-1/T-2nd  
 Soccer Contact ..... Charlie Bare  
 Contact Office Phone ..... (804) 982-5500



### DUKE BLUE DEVILS

Location ..... Durham, North Carolina  
 Home Facility (Capacity) ..... Duke Soccer Stadium (7,000)  
 Head Coach ..... Bill Hempen - Evansville, '81  
 Record at school/years ..... 114-65-12/10  
 Career record/years ..... 114-65-12/10  
 Assistant Coach ..... Carla Overbeck - North Carolina, '90  
 Overall Record Last Year ..... 10-10-3  
 Conference Record/Finish ..... 3-3-1/T-2nd  
 Soccer Contact ..... Tom Kosempa  
 Contact Office Phone ..... (919) 684-2633



### MARYLAND TERRAPINS

Location ..... College Park, Maryland  
 Home Facility (Capacity) ..... Ludwig Field (2,500)  
 Head Coach ..... Alan Kirkup - Loughborough, '71  
 Record at school/years ..... 19-5-2/1

Career record/years ..... 167-58-9/8  
 Assistant CoachesLynn Jarosi - Southern Methodist '93, Billy Warren  
 Overall Record Last Year ..... 19-5-2  
 Conference Record/Finish ..... 2-3-2/5th  
 Soccer Contact ..... Brian Krause  
 Contact Office Phone ..... (301) 314-7065



### CLEMSON LADY TIGERS

Location ..... Clemson, South Carolina  
 Home Facility (Capacity) ..... Riggs Field (6,500)  
 Head Coach ..... Tracey Leone - North Carolina, '89  
 Record at school/years ..... 44-18-2/3  
 Career record/years ..... 44-18-2/3  
 Assistant CoachesRay Leone - UNC Charlotte, '85 and Stacy Welp - Tulsa, '94  
 Overall Record Last Year ..... 15-7-1  
 Conference Record/Finish ..... 3-3-1/T-2nd  
 Soccer Contact ..... Sam Blackman  
 Contact Office Phone ..... (864) 656-1924

## Other Opponents

### APPALACHIAN STATE MOUNTAINEERS

Head Coach ..... Ben Popoola - Clemson, '79  
 Soccer Contact ..... David Jackson • (704) 262-2268

### WOFFORD LADY TERRIERS

Head Coach ..... Josef Lorenz - USC Spartanburg, '86  
 Soccer Contact ..... Bill English • (864) 597-4092

### SOUTH ALABAMA LADY JAGUARS

Head Coach ..... Mark Francis - Southern Methodist, '87  
 Soccer Contact ..... Matt Smith • (334) 460-7035, press 5

### FURMAN LADY PALADINS

Head Coach ..... Brian Lee - Furman, '92  
 Soccer Contact ..... Chris Colvin • (864) 294-3062

### UNC-GREENSBORO SPARTANS

Head Coach ..... Jack Poland - Messiah, '78  
 Soccer Contact ..... Jeremy Agor • (910) 334-5615

### ELON FIGHTIN' CHRISTIANS

Head Coach ..... Paul Webster - Florida '89  
 Soccer Contact ..... David Hibbard • (910) 584-2316

### STETSON HATTERS

Head Coach ..... Bob Wilson - Stetson '86  
 Soccer Contact ..... TBA • (904) 822-8130

### LOUISIANA STATE FIGHTING TIGERS

Head Coach ..... Greg Boggs - North Texas, '95  
 Soccer Contact ..... Fred Demarest • (504) 388-8226

### FLORIDA GATORS

Head Coach ..... Becky Burleigh - Methodist, 1989  
 Soccer Contact ..... Daryle Wong • (352) 336-4683 ext. 6171

### SOUTH FLORIDA BULLS

Head Coach ..... Logan Fleck - Old Dominion '84  
 Soccer Contact ..... Tracy Judd • (813) 974-4786

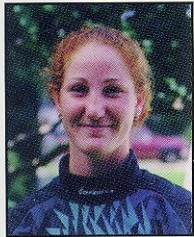
### ALABAMA-BIRMINGHAM BLAZERS

Head Coach ..... Paul Harbin - Mercer, '85  
 Soccer Contact ..... Chris Pika • (205) 934-0722

### TENNESSEE LADY VOLUNTEERS

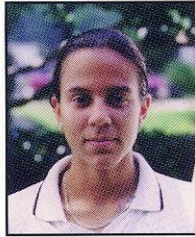
Head Coach ..... Charlie MacCabe - Brown '79  
 Soccer Contact ..... John Hines • (423) 974-4275

# roster speed chart



**#01**

**Jamie Gurtov**  
Goalkeeper  
Sophomore  
Plantation, FL



**#1**

**Justina Torres**  
Left Wing  
Senior  
Miami, FL



**#2**

**Leslie Del Rio**  
Left Wing  
Sophomore  
Miami Springs, FL



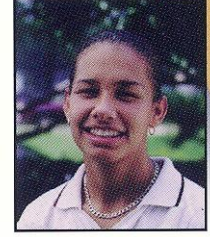
**#3**

**Molly Nye**  
Left Marking Back  
Junior  
Tampa, FL



**#4**

**Nicole Sedgwick**  
Central Midfielder  
Senior  
Delta, B.C., Canada



**#5**

**Alexandra Osorio**  
Right Forward  
Junior  
Miami, FL



**#6**

**Lauren Lynch**  
Right Wing  
Junior  
Kennesaw, GA



**#7**

**Janine Lavoie**  
Left Marking Back  
Junior  
Saskatchewan, Canada



**#8**

**Kasey McCall**  
Center Forward  
Sophomore  
Richardson, TX



**#9**

**Erin Grimsley**  
Left Forward  
Sophomore  
Lenexa, KS



**#10**

**Jenna Walkup**  
Left Marking Back  
Junior  
Orlando, FL



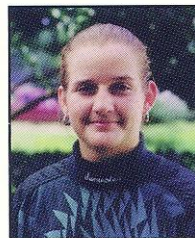
**#11**

**Stephanie Dietrich**  
Stopper/Def. Midfielder  
Freshman  
Amelia, OH



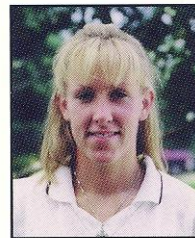
**#12**

**Angela Bonaffino**  
Central Midfielder  
Sophomore  
Ontario, Canada



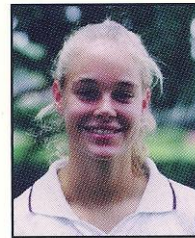
**#13**

**Melissa Juhl**  
Goalkeeper  
Junior  
Marietta, GA



**#14**

**Taryn Cervi**  
Stopper/Def. Midfielder  
Senior  
British Columbia, Canada



**#16**

**April Murphy**  
Right Wing  
Freshman  
Tulsa, OK



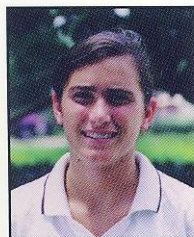
**#17**

**Allison Hogan**  
Def. Midfielder  
Junior  
Boca Raton, FL



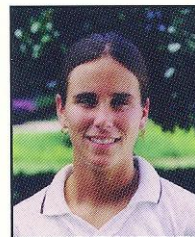
**#18**

**Jill Ford**  
Center Forward  
Junior  
Orange Park, FL



**#19**

**Katie Lunn**  
Right Wing  
Senior  
Chattanooga, TN



**#20**

**Rachael Watkin**  
Sweeper  
Freshman  
Boca Raton, FL



**#21**

**Danielle Foard**  
Right Marking Back  
Freshman  
Falls Church, VA



**#22**

**Sally Shelgren**  
Right Forward  
Freshman  
Niceville, FL



**#23**

**Jessica Driscoll**  
Left Wing  
Junior  
Marietta, GA



**#24**

**Ashley Halter**  
Sweeper  
Freshman  
Atlanta, GA



# 1997 SOCCER SCHEDULE

DATE	OPPONENT	SITE	TIME
------	----------	------	------

## AUGUST

29 (Fri.)	..... at Wake Forest*	Winston-Salem, NC	7:00 p.m.
31 (Sun.)	..... at Appalachian State	Boone, NC	12:00 p.m.

## SEPTEMBER

5 (Fri.)	..... Wofford	Tallahassee	7:00 p.m.
7 (Sun.)	..... at North Carolina*	Chapel Hill, NC	1:00pm
11 (Thur.)	..... South Alabama	Tallahassee	7:00 p.m.
14 (Sun.)	..... at North Carolina State*	Raleigh, NC	1:00 p.m.
21 (Sun.)	..... Maryland*	Tallahassee	2:00 p.m.
26 (Fri.)	..... at Clemson*	Clemson, SC	7:00 p.m.
28 (Sun.)	..... at Furman	Greenville, SC	12:00 p.m.

## OCTOBER

3 (Fri.)	..... at UNC-Greensboro	Greensboro, NC	7:00 p.m.
5 (Sun.)	..... at Elon College	Elon College, NC	1:00 p.m.
10 (Fri.)	..... Stetson	Tallahassee	7:00 p.m.
12 (Sun.)	..... Louisiana State	Tallahassee	2:00 p.m.
15 (Wed.)	..... at Florida	Gainesville, FL	7:00 p.m.
18 (Sat.)	..... at Virginia*	Charlottesville, VA	7:00 p.m.
22 (Wed.)	..... at South Florida	Tampa, FL	7:00 p.m.
26 (Sun.)	..... Duke*	Tallahassee	2:00 p.m.
31 (Fri.)	..... at Alabama-Birmingham	Knoxville, TN	6:00 p.m.

DATE	OPPONENT	SITE	TIME
------	----------	------	------

## NOVEMBER

2 (Sun.)	..... at Tennessee	Knoxville, TN	1:00 p.m.
5-9 (Wed.-Sun.)	..... Atlantic Coast Conference	Winston Salem, NC	TBA Championship

## NCAA TOURNAMENT

DATE	COMPETITION	LOCATION
------	-------------	----------

Nov. 15-16	..... First Round	TBA
Nov. 22-23	..... Second Round	TBA
Nov. 29-30	..... Quarterfinals	TBA
Dec. 5	..... Semifinals	UNC-Greensboro; Greensboro, NC
Dec. 7	..... Championship	UNC-Greensboro; Greensboro, NC

\* Atlantic Coast Conference Match  
 Home games in **GARNET** played at the Seminole Soccer Complex  
 All Times Local (E.T.)