

Lady Seminoles

FLORIDA STATE UNIVERSITY

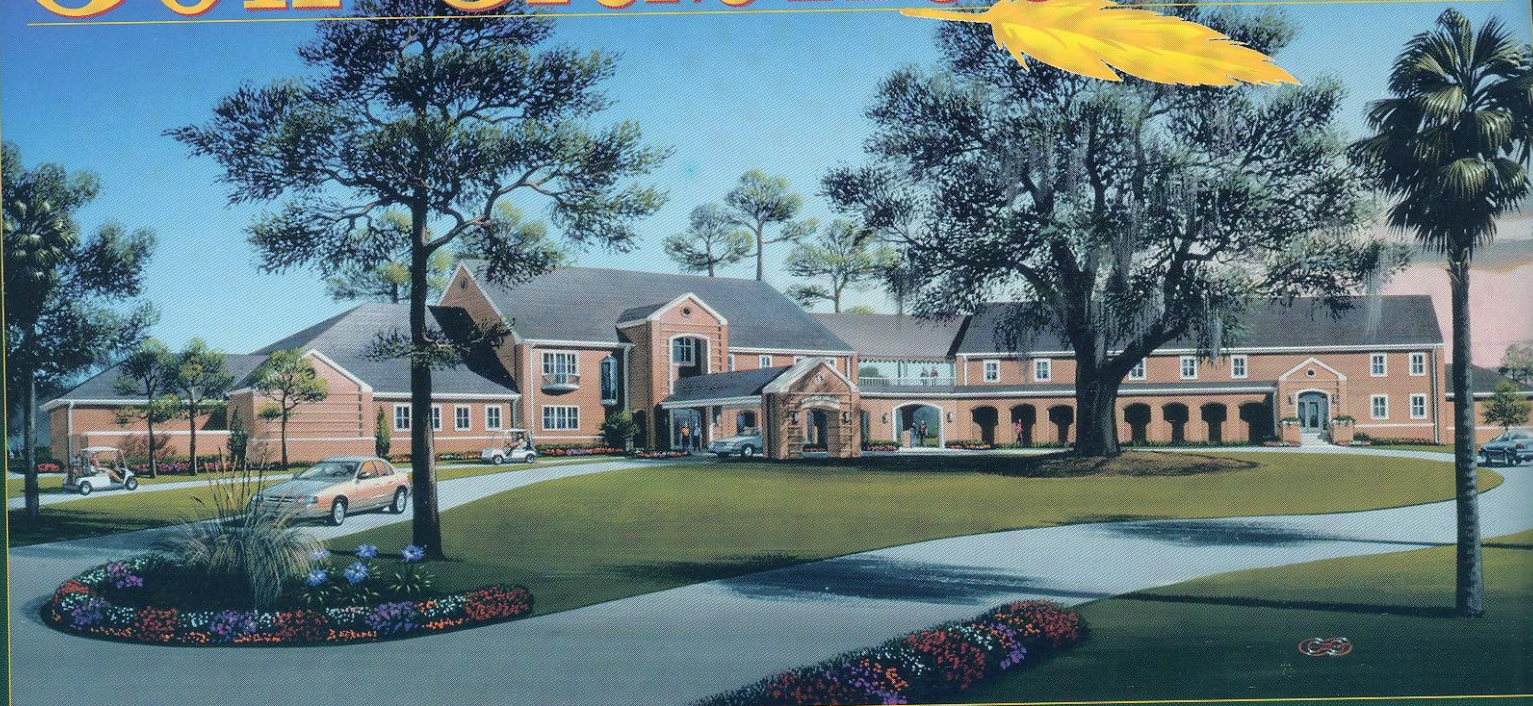
2000-2001 Women's Golf

Media Guide





The New Seminole Golf Clubhouse



This new state-of-the-art facility will be built on the newly renamed Don A. Veller Seminole Golf Course.

Don A. Veller Seminole Golf Course

The Don A. Veller Seminole Golf Course is named for Dr. Veller in recognition of his fifty years of dedication to Florida State Athletics and the Seminole golf program.

After excelling in Indiana Athletics, both as a coach and a player, Dr. Don Veller came to Tallahassee in 1948 as Florida State University's first full-time head football coach. Veller propelled his Seminole football team to their first bowl game in 1949 and their first undefeated season in 1950.

In 1953, his career and passion turned to golf and he became the Seminoles' head golf coach until his retirement in 1982. During his reign, Veller's teams were routinely among the country's best and went undefeated in 1957. Many from Veller's teams became PGA tour players such as Hubert Green, Paul Azinger, Jeff Sluman, Kenny Knox and Brian Kamm.

In addition to coaching, Dr. Veller has written golf columns and poems about golf for over fifty years, being published in *Golf Digest*, the *Tallahassee Democrat* and his own book "Fluffs, Muffs and Really Deep Rough."

Don and Fran Veller, who have already endowed scholarships for golf and football, have made plans to leave an additional \$2 million to those programs.

"We don't have any children, so we wanted to give it to a great cause like scholarships and facilities for Florida State golf and football," Don said.

The Seminole golf team and the entire Florida State community would like to thank Dr. Veller for his generous contribution to the golf program.



The Don A. Veller Seminole Golf Course was dedicated by Director of Athletics Dave Hart, Jr., head women's coach Debbie Dillman and head men's coach Nicky Goetze.

Media Information

FSU Quick Facts

Location: Tallahassee, FL
Enrollment: 34,500
Founded: 1851
Nickname: Lady Seminoles
Colors: Garnet & Gold
Conference: Atlantic Coast
President: Talbot "Sandy" D'Alemberte
Athletic Director: Dave Hart, Jr.
Associate Director of Athletics:
 Charlie Carr

FSU Women's Golf Quick Facts

Coach: Debbie Dillman
Assistant Coach: Sarah Capie
Coach's Phone: (850) 644-7290
Home Golf Course:
 Don A. Veller Seminole Golf Course
 (Par 72, 7033 yds.)
Golf Course Phone: (850) 644-2582

Sports Information Quick Facts

Women's Golf SID: Chuck Walsh
Sports Information Office:
 (850) 644-1077
Sports Information Fax:
 (850) 644-3820
Address: P.O. Box 2195
 Tallahassee, FL 32316
Overnight Address:
 118 Moore Athletic Center
 Pensacola St./Stadium Dr.
 Tallahassee, FL 32316

Notes to the Media

Media Team Link: Releases, standings, statistics and other sports information are available by accessing www.mediateamlink.com. The media can receive documents directly to their email and/or fax at the moment they are updated. The media can also view documents online. Media Teamlink is free to all accredited media. Simply log on to www.mediateamlink.com if you do not already have an account and click the "Sign Up Here" button and complete the short information form. Documents requested via fax will

incur a \$0.15 per page fee. This site is for accredited media only.

Sports Information Office: The Florida State Sports Information Office is located in room 118 of the Moore Athletic Center on the Florida State University campus. Chuck Walsh works with the women's golf team and is always happy to provide up-to-date information on the Seminoles. The most complete information on the team as well as pictures, feature story ideas and statistics are always available by contacting the Sports Information Office.

Interview Policy: All Florida State golfers and head coach Debbie Dillman are available for interviews with accredited members of the media throughout the season. All interview requests should be made through Chuck Walsh in the Sports Information Office. Player interviews can be conducted before practice and as class schedules permit. Golfers' phone numbers will not be provided. Head coach Dillman can be contacted in her office weekday mornings when the team is not traveling at (850) 644-7290.

World Wide Web

The media and general public can also obtain information on all of the Florida State University sports programs through the official Athletic Department web page on the World Wide Web. The address is <http://www.seminoles.com>. For more information on the site contact the the Florida State Sports Information Office.

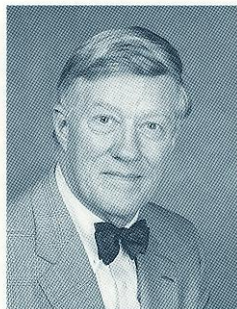
Credits

Editor: Chuck Walsh
Editorial Assistance: Ketsia Colimon,
 Chris Walker
Photography: Ross Obley, Ryals Lee,
 Pete Miles, Debbie
 Dillman, FSU Photo Lab
Design: J.S. Goodson & Partners Adv.
Printing: FSU Printing Services

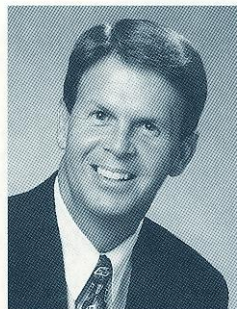
This document is available upon request in alternate formats for individuals with print-related disabilities. Contact the ADA office, 301 Westcott Administration Building, for more information.

Table Contents

Media Information	1	This Is Tallahassee.....	22
2000-01 Outlook.....	2	This Is Florida State	24
Head Coach.....	4	Academic Support Systems	26
Assistant Coach	5	NCAA Information	28
2000-01 Team Roster	6	Life Skills Program	29
2000-01 Players.....	7	A Closer Look At The ACC.....	30
1999-00 Year In Review.....	18	Strength & Conditioning.....	31
1999-00 Team Results	20	Florida State Golf	32
Seminole Golf Course.....	21		



Sandy D'Alemberte
 President



Dave Hart, Jr.
 Athletics Director



Chuck Walsh
 Golf SID

Outlook

A Strong Combination Of

Talent And Competitiveness



Senior Louise Wright is among the most experienced golfers in the Atlantic Coast Conference. She will be a team leader for the Seminoles in 2001.

As the Florida State women's golf team prepares for the 2001 season, Head Coach Debbie Dillman sees a strong combination of talent and competitiveness throughout her lineup as being the key for the upcoming season. The team will rely on one senior, Louise Wright, and a number of underclassmen, to lead the Seminoles to the NCAA Tournament.

"The fall season gave us a number of key finishes ranking-wise, but the spring will be the real test," said the 17th year head coach. "We fought off a lot of key injuries in the fall and I'm hoping that our conditioning program will allow us to play stronger this spring."

Senior Louise Wright and sophomore Kristin Tamulis are the Seminoles' two most experienced players. The two were the most consistent players for the Seminoles during the fall season and will be the team leaders again this spring.

Wright led the Seminoles with a career-low 77.21 stroke average in five tournaments in the fall. She earned five scores under 75 in 14 rounds and earned a low round of 73 at the Tar Heel Invitational. Wright has been among Florida State's most consistent golfers during the first three years of her career.

Tamulis participated in all five tournaments in the fall and was one of three Seminoles to finish the non-traditional season with an average in the 70's. She averaged 79.29 strokes per round in 14 rounds and shot a season-low 73 in finishing tied for 12th in the individual standings at the ACC/SEC Challenge in Destin, Fla.

"I'm looking for Louise and Kristin to have strong seasons," said Dillman. "Both players performed consistently well and led our team in the fall. For our team to be successful, those two must lead by example and play well during each round."

Alison Curdt, a freshman, also played consistently well during the fall season. She was the only newcomer to participate in all five tournaments and averaged 80.71 strokes in 14 rounds. Dillman needs Curdt to continue her learning and improvement curve for the Seminoles to reach post-season play for the third time in the last four years. She carded a first-season low of 76 in the final round of the Lady Paladin Invitational.

State," said Dillman. "I expect her to compete for playing time in each tournament this spring, and that will make us a much better team."

"Kelley gives us incredible depth at the No. 5 position and will allow us to be very flexible throughout the season," said Dillman. "I really like her competitive spirit and the fact that she has two

years of collegiate experience in her golf bag will benefit her individually and our team as a whole."

Junior Kristin Sanborn is one of

the Seminoles' hardest workers who is on the cusp of breaking into the lineup. She was a regular in the lineup during the 2000 spring season and participated in the ACC Tournament, finishing tied for 19th. Sanborn shot a career-low of 79 during the Lady Gator Invitational last spring.

"Kristin Sanborn is poised to make a run at the starting lineup and has worked hard on her all-around game," said Dillman. "I see her making great strides this spring and being an important member of our team."

Freshman Carrie Sordel is another player who has a bright future at Florida State. She played in one tournament during her first semester as a Seminole and displayed tremendous potential for a stellar collegiate career. She participated as an individual at the Auburn University Tiger Derby Invitational and finished with a score of 255 (+39). She shot an 81 in her best round during the tournament.

"Carrie is maturing in her game and will push others to make both herself and her teammates better players said Dillman. "She is learning that power isn't everything and could contend for a position in the starting five."

Freshman Lindsay Iding has displayed the future promise that will allow the Seminole program to flourish

well into the future. Winship joins Wright as the only seniors on the roster while Iding could challenge for playing time as a freshman. Both Iding and Winship have the credentials to help the Seminoles this season.

"I feel that we are more talented throughout the lineup and more competitive within the squad this season than we have been in the recent past," said Dillman. "Our talent and competitiveness should prove to be a good combination for this group of players to push us through a tough spring schedule and into the post-season."

Dillman has worked diligently over the years to upgrade the Seminoles' schedule to where it is now; one of the most competitive in the nation. This year's schedule is ranked as the 18th toughest in the nation and should provide the team with a very accurate barometer of how it compares to the other top teams in the nation.

"Playing our toughest schedule ever has helped us raise our own expectations and allows us to know exactly what we have to do in order to qualify for the NCAA Tournament," said Dillman. "While more teams will be included in post-season play, the format change makes it more challenging to achieve one of our annual goals."

The Seminoles' upcoming spring schedule includes the always-tough Lady Gator Invitational, The Ryder-Florida State Championship and the ACC Championship. All three tournaments included many of the nation's top teams and will provide tremendous challenges for Florida State.

Senior Kelley Winship is one of the most improved players on the squad.



eness

"Alison Curdt endured the typical period of adjustment that all freshman must go through," said Dillman. "She returned from the semester break on a real personal mission and I expect her to be very competitive this season. I see great things from Alison during her career at Florida State."

Juniors Allison Zimmer and Kelley Henderson bring added maturity and experience to the Seminoles. The pair will compete for the fourth and fifth spots in Florida State's starting five. Zimmer, in her third year in the program, and Henderson, a transfer, are both wonderful compliments who will help the team compete among the nation's elite throughout the spring.

Zimmer played in all five fall tournaments and shot a team-low round of 72 during the Lady Paladin Invitational. She shot 72 and 73 in the final two rounds of the tournament and finished with a career-low tournament score of 226 (+10).

Henderson competed in two tournaments during her first semester at Florida State and averaged 83.67 in six rounds. She shot her single-round low of 78 in the second round of the Lady Paladin Invitational.

"Alison Zimmer played terrific golf for us last fall and has been a solid performer throughout her career at Florida

Head Coach

Debbie Dillman Head Coach



Debbie Dillman
Head Coach

Debbie Dillman, who has successfully developed the Florida State women's golf program into one of the top programs in the nation, is in her 17th season as the Seminoles' head coach.

Dillman has developed a perennial national power at Florida State. Her teams consistently rank among the best in the Atlantic Coast Conference and the nation. Her 2001 squad enters the spring season ranked among the top 50 teams in the nation.

Florida State has played in the NCAA Tournament eight times and has

won 14 tournament championships since Dillman became head coach. In addition, nine different golfers have captured a total of 14 individual championships.

Dillman herself was honored as the Atlantic Coast Conference Coach-Of-The-Year in 1992, the Seminoles' first year in the conference. The Seminoles finished second in the conference tournament that season and finished only two strokes behind North Carolina for the team championship. Despite her success, Dillman refuses to rest on her laurels.

Florida State has played in the NCAA Tournament eight times and has won 14 tournament championships since Dillman became head coach. In addition, nine different golfers have captured a total of 14 individual championships.

The Davison, Mich., native grew up in an active golf family. Both of

Dillman's parents were involved in country club management. Dillman captained her high school golf team for four years and twice was runner-up at the Michigan State Championship. For three consecutive years she also captured the Flint Junior Golf Championship, considered one of the top junior tournaments in the state of Michigan.

Dillman brought her talents to Tallahassee where she attended Florida State as an undergraduate and played golf for the Seminoles from 1979-82. During that time she also worked at Seminole Golf Course, enabling her to

learn both the competitive and management sides of the sport.

Dillman's interests vary from the golf course to the farm. In her spare time she raises Tennessee walking horses on her farm just outside of Tallahassee. She also has a daughter, Anne Lynn, who is seven years old.

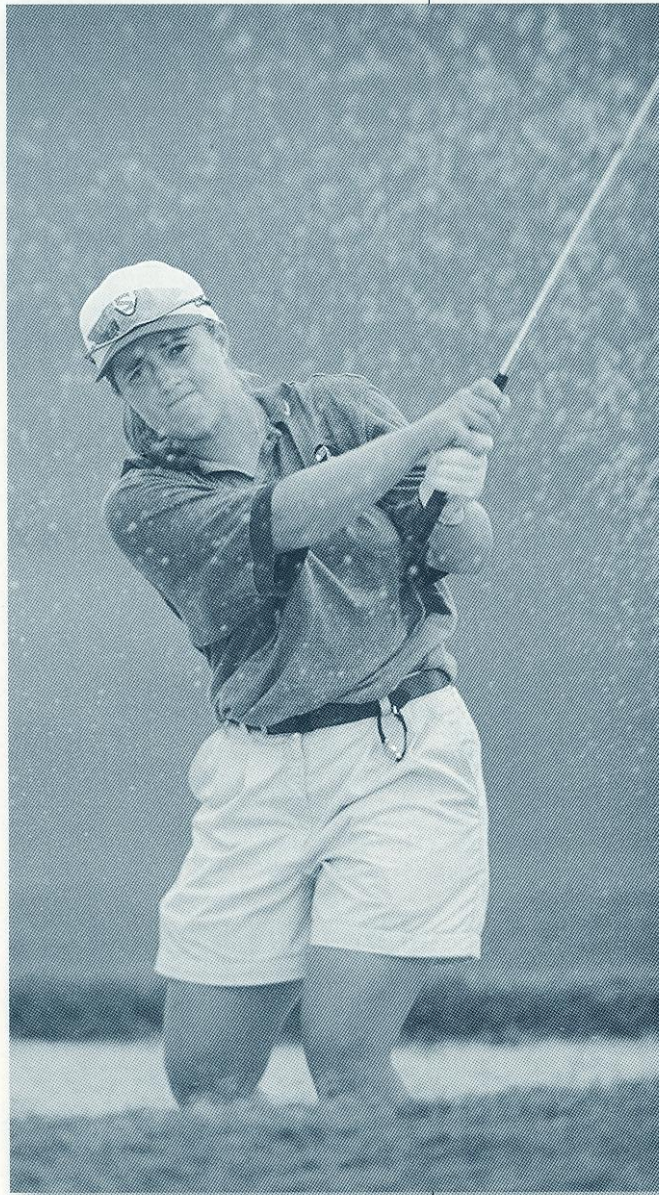


Head Coach
Debbie Dillman with
volunteer assistant
coach Molly Hudgins
(left) and assistant
coach Sarah Capie.

Assistant Coach

Sarah Capie Assistant Coach

Sarah Capie is in her second season as an assistant coach under Debbie Dillman at Florida State University. She was an Academic All-American and four-year letterwinner (1996-1999) during one of the most successful periods in the history of the Seminole golf program.



Capie assists Dillman with responsibilities ranging from administrative duties (team travel organization, equipment ordering and distribution and writing team correspondence) to hands-on coaching (coordination and instruction of team and individual practices). In addition, Capie also lends her expertise to tournament administration and recruiting.

Capie enjoyed her best collegiate season as a senior with a pair of top-10 finishes. She finished tied for 10th at the 1998 Lady Seminole Invitational and

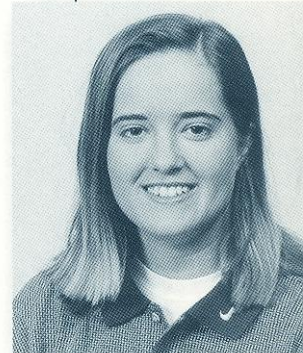
ninth in the 1998 Beacon Woods Invitational. Her top finish at the Lady Seminole Invitational helped lead Florida State to a second place team finish. Her strong outing at the Beacon Woods Invitational guided the Seminoles to a fourth place team finish.

Capie helped the Seminoles win the Ryder-Florida State Invitational Championship and finish second in the ACC Championships that year.

She shot her career-best round of 74 at the Lady Seminole Invitational as a sophomore (1996-97 season). Also that year, she earned her top ACC Championships finish, placing 13th. During her

career, she earned 10 top-20 individual finishes and led the Seminoles to 13 top-five team finishes.

Capie earned her bachelor's degree in sports management from Florida State in 1999. She earned her master's degree in sports administration and is working in the university's Athletic Compliance Office. Capie was a two-time high school All-State (Illinois) selection and she finished second in the State Tournament as a senior. Additionally, she was named the Southern Illinois Player-of-the-Year twice and lettered in three sports during her prep career.



Sarah Capie
Assistant Coach

Capie shot her career-best round of 74 at the Lady Seminole Invitational as a sophomore (1996-97 season). Also that year, she earned her top ACC Championships finish, placing 13th. During her career, she earned 10 top-20 individual finishes and led the Seminoles to 13 top-five team finishes.

Sarah Capie, who was a standout golfer for the Seminoles during her four-year career, is in her second season as an assistant coach at Florida State.

Team Roster

2000-01 Florida State Women's Golf Team



First Row (l to r): Louise Wright, Stephanie Harris, Beth McCumber, Kris Tamulis, Carrie Sordel, Alison Zimmer, Kelley Henderson. **Second Row:** Head Coach Debbie Dillman, Alison Curdt, Kelley Winship, Lindsay Iding, Carrie Sordel, Assistant Coach Sarah Capie.

Name	Class	Hometown/High School
Alison Curdt	Freshman	Ellisville, MO/Marquette
Kelley Henderson	Junior	Marietta, GA/Marietta
Lindsay Iding	Freshman	Lansing, MI/Lansing Central Catholic
Kristen Sanborn	Junior	Lee's Summit, MO/Lee's Summit North
Carrie Sordel	Freshman	Windermere, FL/West Orange
Kristin Tamulis	Sophomore	Naples, FL/Naples
Kelley Winship	Senior	Dunedin, FL/Dunedin
Louise Wright	Senior	Ipswich, England/Ipswich
Alison Zimmer	Junior	Tallahassee, FL/Lincoln
Head Coach: Debbie Dillman		Assistant Coach: Sarah Capie

Top Returner/Stroke Average

Louise Wright (78.06)

Key Losses/Stroke Average

Stacy Burgin (83.80) Laura Kowalski (82.91)

1999-00 Honor Roll

Stacy Burgin Kristen Sanborn Louise Wright

Seminoles By Class

Freshmen3 Juniors.....3
Sophomores.....1 Seniors.....2

Newcomers To Watch For

Alison Curdt Lindsay Iding Carrie Sordel

Seminoles By State/Country

England (1): Wright
Florida (4): Sordel, Tamulis, Winship, Zimmer
Missouri (2): Curdt, Sanborn
Georgia (1): Henderson
Michigan (1): Iding

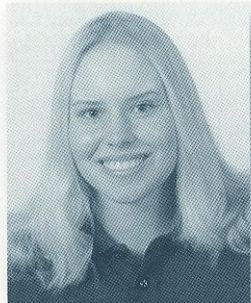
1999-00 Best Finish

Bryan National Collegiate, 8th of 15932
Ryder/Florida Women's Collegiate, 4th of 15.....945
Lady Gator Invitational, 13th of 15.....952

1999-00 ACC Finish

4th out of 5, 335-315-324.....974

Players



**Alison
Curdt**

Freshman • 5-9
Ellisville, MO/Marquette

On Curdt: Expected to earn a spot in the Seminoles' starting lineup during her first collegiate season ... A mature golfer who has competed at the highest levels during her prep and junior career ... Will be a tremendous asset to the program during her career ... Will help the Florida State program continue to compete nationally throughout her collegiate career.

Fall 2000: Became a member of the Seminoles' starting five during the first semester of her freshman season ... Shot her personal best single-round score of 76 twice during the NCAA Fall Preview and the Lady Paladin Invitational ... Her best three-round tournament score of 237 (+21) came in the final event of the fall season, the Lady Paladin Invitational ... Was the only event during her first collegiate season that she shot at least two of the three rounds with scores in the 70s ... Top individual finish was tied for 36th at the Tar Heel Invitational.

Before Florida State: Graduated from Marquette High School in 2000 ... Earned four varsity letters in golf, three in basketball and three in track and field ... A member of the U.S. Junior World Cup team in 2000 ... Played on the Metropolitan Amateur Golf Association Mid America Junior Cup team in 1999 ... A four-time participant in the Missouri State High School Girls Golf Championship ... Finished as the runner-up in both 1998 and 1999 and finished sixth in 1997 ... Three-time All-Metro first-team selection in 1997, 1998 and 1999 by the *St. Louis Post Dispatch* ... The St. Louis Women's District Golf Junior Champion in 1998 and 1999 ... The St. Louis Gateway PGA Maxfli Champion in 1997 and 1999 ... St. Louis Gateway PGA Champion three times during her junior career ... Golf coach at Marquette was Lou Coco.

Alison Curdt



Personal: Born Feb. 3, 1982 ... Alison is the daughter of Michele and Calvin Curdt ... Inducted into the National Honor Society ... A member of the math and science honor societies ... Received the Ace Award for leadership as a senior at Marquette High School ... Named to Who's Who Among American High School Students ... Greatest ambition is to play on the LPGA tour and the athlete she most admires is Annika Sorenstam.

Players

Why I chose to attend Florida State: "Florida State has a great golf tradition and will have one of the top facilities in the nation. It also grants me the most opportunities to pursue my academic aspirations and play golf in a wonderful environment."

Curdt at Florida State

Years	Events	Rounds	Strokes	Avg.	Low	Top 10
2000-2001	5	14	1,130	80.71	76	—
Totals	5	14	1,130	80.71	76	—

Fall 2000

Tournament	1-2-3	Par	Total	Place
Auburn Tiger Derby Invitational	81-81-83	+29	245	54
NCAA Fall Preview	82-76	+12	158	T50
Inaugural Dodge ACC/SEC Shootout	82-87-82	+38	251	T50
Tar Heel Invitational	81-77-81	+23	239	T36
Lady Paladin Invitational	82-79-76	+21	237	T63



Kelley Henderson

Junior • 5-6
Marietta, GA/Marietta

On Henderson: A transfer from Georgia State University who earned a varsity letter during the 1998-99 season as a member of the Lady Panther squad ... Played in two tournaments during the fall of 1999 ... Will add depth and challenge for a spot in the starting five as a first-year player at Florida State.

Fall 2000: Participated in the final two tournaments of the fall and averaged 83.67 strokes in six rounds ... Shot a season-low 78 in the second round of the Lady Paladin Invitational ... Earned her best tournament gross scores (241) and best tournament score vs. par (+25) at the Lady Paladin ... An 84 came in the first round of the Tar Heel Invitational during her first competitive round as a Seminole.

Spring 2000: A member of the varsity team at Georgia State but did not see any tournament action.

Fall 1999: A member of the varsity team at Georgia State ... Played in the College of Charleston Tournament and the University of Mississippi Tournament.

Spring 1999: Competed in three events including the Trans America Athletic Conference Championship Tournament

... Placed 23rd at the TAAC Championship while shooting a career-low tying 76 in the third round of the event ... Earned her top-career two-round tournament score of 161 at the TAAC Championship ... Also a member of the Lady Panthers' starting five at the Gamecock Classic and the Green Wave Women's Golf Classic ... Helped Georgia State win the team championship at the Gamecock Invitational ... Three of her seven rounds came in under 80 and she averaged 82.61 strokes per round for the season.

Fall 1998: Competed in two events during her first semester at Georgia State ... Finished 26th at the Lady Panther Invitational ... Shot a 77 in the first round of the tournament ... Averaged 82.00 strokes in six rounds played in two tournaments ... Also competed at the University of Arkansas at Little Rock Ladies Golf Classic.

Before Florida State: Graduated from Marietta High School in 1998 ... Named the 1998 Georgia State Golf Association Player of the Year ... Was the 1998 Georgia State Golf Association Girls Junior Champion ... Was a member of the varsity golf team for three seasons ... Played freshman and junior varsity basketball ... A four-year member of the varsity cheerleading squad ... Her high school coach was Russ Rainy.

Personal: Born Aug. 31, 1980 ... Kelley is the daughter of Kathy and Don Henderson ... Goal is to play professionally on the LPGA Tour ... Major is sports management.

Why I chose to attend Florida State: "I was very impressed with the coaching staff and the growing commitment to the sport of women's golf. I was also drawn to the tight-knit community of student-athletes at the school."

Henderson at Georgia State (1998-99), Florida State (2000-present)

Years	Events	Rounds	Strokes	Avg.	Low	Top 10
2000-2001	2	6	502	83.67	78	—
1998-1999	6	13	1061	81.61	76	—
Totals	8	19	1563	82.26	76	—

Fall 2000

Tournament	1-2-3	Par	Total	Place
Tar Heel Invitational	84-88-89	+45	261	84
Lady Paladin Invitational	82-78-81	+25	241	T78

Spring 1999

Tournament	1-2-3	Par	Total
4th Annual Gamecock Classic	89-79	+24	168
Green Wave Women's Golf Classic	82-82	+20	164
TAAC Championship	84-77-76	+21	237

Fall 1999

Tournament	1-2-3	Par	Total
College of Charleston	79-80	+15	159
Mississippi Invitational	82-83-76	+25	241

Players

Fall 1998			
Tournament	1-2-3	Par	Total
UALR Ladies Golf Classic	85-81-85	251	+35
Lady Panther Intercollegiate	77-81-83	241	+25



Lindsay Iding

Freshman • 5-9
Lansing, MI/Lansing Central Catholic

On Iding: Will challenge for playing time as a freshman ... Arrives at Florida State with all of the credentials to be a successful golfer on the collegiate level.

Fall 2000: A member of the squad but did not participate in any tournaments.

Before Florida State: Graduated from Lansing Central Catholic in 2000 ... A four-year member of the varsity golf team ... Earned All-State first-team honors as a junior and senior and was an All-State honorable mention selection as a sophomore ... An All-League first-team selection as a junior and senior and an All-League second-team selection as a freshman and sophomore ... Named as the team MVP as a junior and senior ... A member of the Lansing State Journal Dream Team as a junior and senior ... Golf coach at Lansing Central Catholic was Margaret Iding.

Personal: Born Oct. 3, 1981 ... Lindsay is the daughter of Margaret and James Iding ... Comes from a golfing family as her mother runs a golf pro shop and a sister, Erika, was a member of the women's golf team at Florida State from 1997-2000 ... A member of the National Honor Society during each of her four years of high school ... A member of the Latin Club and played intramural basketball for three years ... An astronomy buff ... Majoring in biology.

Why I chose to attend Florida State: "I chose to attend Florida State so I could compete at the highest level of collegiate golf. I also felt at home with all of the people at the school, especially the members of the women's golf team and coach Dillman."



The Florida State women's golf team is ranked among the top teams in the nation and will play one of the toughest schedules in college golf during the 2001 spring season.

Players

Kristen Sanborn



**Kristen
Sanborn**

Junior • 5-5

Lee's Summit, MO/Lee's Summit North

On Sanborn: One of the Seminoles' hardest workers who has entrenched herself in the starting lineup ... A consistent hitter who is very committed to the sport.

Fall 2000: A member of the squad but did not participate in any tournaments.

Spring 2000: A regular in the Seminoles' starting lineup ... Participated in five tournaments including the ACC Championship ... Her top career finish came at the ACC Championship as she finished in a tie for 19th place ... Her top career tournament outing was a 246 tournament score at the Lady Gator Invitational ... Also her best score vs. par (+30) came at the Lady Gator Invitational ... Her career-low round of 79 came in the third round of the Lady Gator Tournament and the second round of the Bryan National Collegiate Tournament ... Averaged 86.75 strokes per round in 12 rounds during five tournaments.

Fall 1999: Competed in one event as she returned from ACL surgery and rehabilitation ... Averaged 85.3 strokes per round in the three-round Lady Paladin Invitational at Furman Invitational ... Her low-round during the tournament was an 81 in the third round.

Spring 1999: Did not compete while recovering from a torn ACL.

Fall 1998: Participated in one event, the Lady Seminole Classic, before tearing her ACL ... Shot a low-round of 83 during her first collegiate tournament and a 257 total.

Before Florida State: Graduated from Lee's Summit North in 1998 ... Earned four varsity letters in golf and three in track and field ... A three-time All-State selection and a two-time All-Conference pick ... Her high school coach was Joyce Halsey.

Personal: Born Dec. 10, 1978 ... Kristen is the daughter of Kathy Vollmer and John Sanborn ... Is an accomplished violinist and enjoys showing quarter horses ... Her father, John, played football and golf at Northern Illinois ... A member of the National Honor Society ... Her greatest sports memory was shooting a hole-in-one during the Seminoles' trip to Scotland during the Summer of 2000.

Why I chose to attend Florida State: "I have always loved Florida State University and to be able to compete as a

Players

member of the women's golf team is a dream come true. The feeling of being a part of a family was very important to me and that's what I feel as a member of the team and a student-athlete at Florida State."

Sanborn at Florida State

Years	Events	Rounds	Strokes	Avg.	Low	Top 10
1999-2000	5	15	1,261	84.07	79	—
1998-1999	1	3	257	85.67	83	—
Totals	6	18	1,518	84.33	79	—

Spring 2000

Tournament	1-2-3	Par	Total	Finish
Lady Gator Invitational	85-79-82	+30	246	65
Casa De Campo Intercollegiate	88-94-84	+50	266	52
Bryan National Collegiate	81-79-87	+31	247	T67
Ryder/Florida Challenge	83-85-81	+33	249	T36
ACC Championships	83-88-82	+37	253	T19

Fall 1999

Tournament	1-2-3	Par	Total	Finish
Lady Paladin	89-86-81	+40	256	103



Carrie Sordel

Freshman • 5-4
Windermere, FL/West Orange

On Sordel: Has the ability to compete immediately for the Seminoles ... Will have a strong chance of cracking the starting lineup as a freshman ... Hits the ball well and far.

Fall 2000: Played as an independent in the Auburn University Tiger Derby Invitational ... Finished in 64th place with a score of 255 (+39) ... Shot her career-best round of 81 in the second round of the Auburn Invitational.

Before Florida State: Graduated from West Orange High School in 2000 ... Earned four varsity letters as a member of the golf team ... Named the 1999 Girls High School Player of the year in the Orlando area by the *Orlando Sentinel* ... Earned Athlete of the Week honors by the *Sentinel* during her senior season.

Personal: Born Feb. 21, 1982 ... Carrie is the daughter of Linda and Lynn Sordel ... A member of the National Honor Society ... Her greatest ambition is to have a short game like Phil Mickelson ... Has not decided on a major.

Why I chose to attend Florida State: "I have always dreamed about attending Florida State. Being a member of the women's golf team makes attending Florida State an even more wonderful experience."

Sordel at Florida State

Years	Events	Rounds	Strokes	Avg.	Low	Top 10
1999-2000	1	3	255	85.00	81	—
Career	1	3	255	85.00	81	—

Fall 2000

Tournament	1-2-3	Par	Total	Finish
Auburn University Tiger Derby	88-81-86	+39	255	64



Kristin Tamulis

Sophomore • 5-7
Naples, FL/Naples

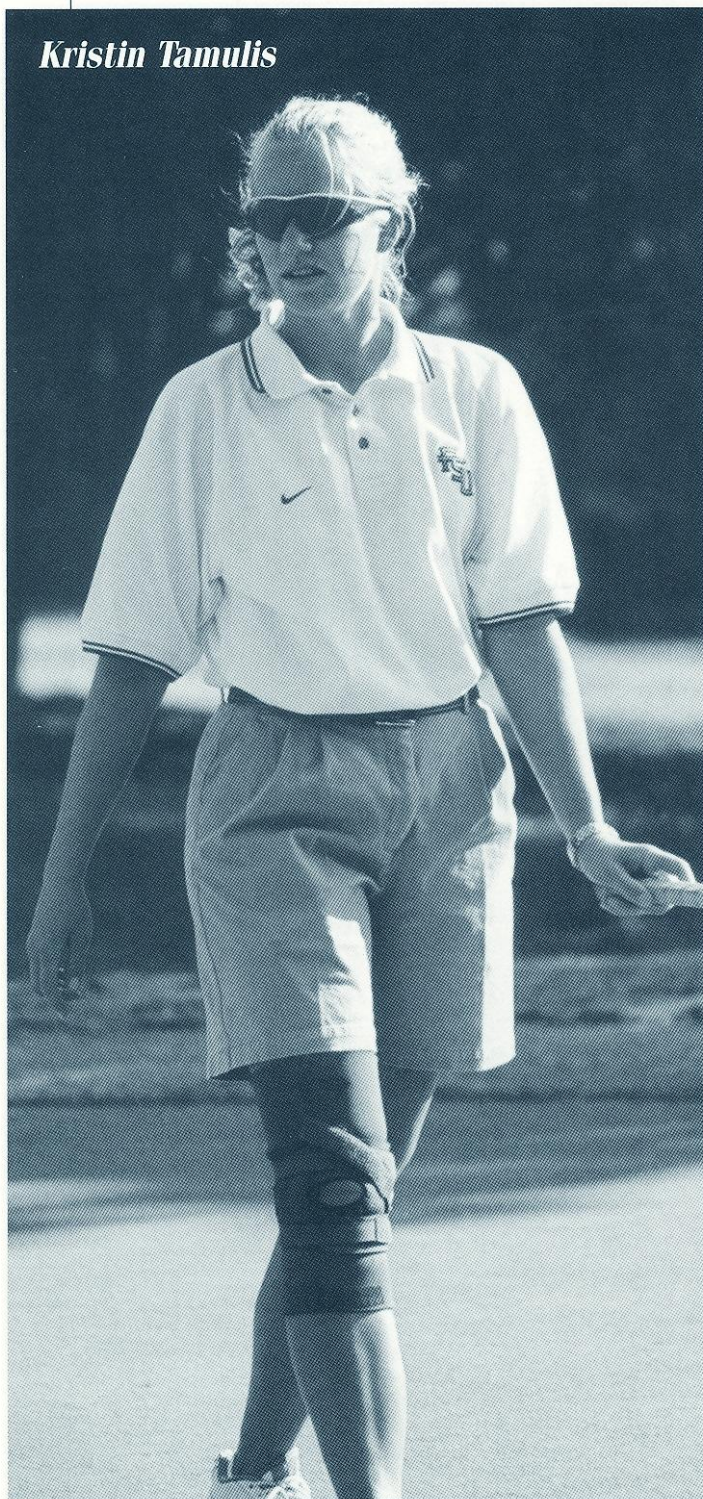
On Tamulis: Has earned a spot in Florida State's starting lineup and will be one of the team's top golfers as a sophomore ... Possesses great lengths on her drive and is a very talented athlete.

Fall 2000: A Seminole leader who averaged 79.29 strokes in 14 rounds during the fall season ... One of four golfers to participate in five events during the fall season ... Shot a season-low 73 in the second round of the Inaugural Dodge ACC/SEC Shootout ... Earned her fifth-career top-15 finish as she finished in a tie for 12th place at the ACC/SEC Challenge ... Her 231 gross score was the best of her career for a 54-hole tournament ... Finished among the Seminoles' top-three individual golfers in three of the five events ... Six of her 14 rounds were scored in the 70s.

Spring 2000: Earned a spot in Florida State's starting five and performed well throughout the season ... Was very consistent throughout the season and averaged a career-best 78.20 in five rounds and 15 tournaments ... Averaged 234.60 for each of the Seminoles' five spring tournaments with all her scores between 232 and 240 ... Season-low score of 75 in the third round of the Lady Gator Invitational ... Earned a pair of 11th place individual finishes, at the Ryder/Florida Challenge and the ACC Championships ... Nine of her 15 rounds scored in the 70s.

Players

Kristin Tamulis



Fall 1999: Immediately joined the Seminoles' starting lineup and was one of the teams top golfers ... Averaged 79.00 strokes per round during nine rounds in three tournaments ... her average was the second best on the team, behind Louise

Wright's 75.16 ... Finished third in her first-career tournament, the Lady Seminole Invitational, as she shot a six-over par 220 for the three-round event ... Her final round of the tournament was a two-under par 70 ... Her score of 70 in the Lady Seminole Invitational is her career-best round ... Her seventh place finish, 220 overall score and six-over par finish are also the best of her career ... Florida State's top-finisher, and 27th overall, at the Beacon Woods Invitational ... Earned Dean's List honors during her first semester.

Before Florida State: Graduated from Naples High School in 1999 ... Earned four varsity letters as a member of the golf team and three as a member of the volleyball team ... Played on the Power-Bilt Michigan Junior Golf Tour in 1999 ... Won the award for the lowest score on the tour during the 1999 season ... Also had the lowest score average on her high school team during each of her four varsity years ... Named the Naples Beach Hotel Golfer of the Year for 1998-99.

Personal: Born Dec. 29, 1980 ... Kristin is the daughter of Carol and Walter Tamulis ... Her dad is a golf pro and her mom is a golf course manager ... A member of the National Honor Society and earned Honor Roll honors during each of her four high school years ... Earned the Naples High School Scholar-Athlete award as a senior ... Majoring in multinational business and spanish.

Why I chose to attend Florida State: "Because everybody involved with the women's golf program made me feel at home. I felt most comfortable with Head Coach Debbie Dillman; not only is she a great person but she is also a great coach."

Tamulis at Florida State

Years	Events	Rounds	Strokes	Avg.	Low	Top 10
2000-2001	5	14	1,100	79.29	73	0
1999-2000	9	27	2,123	78.63	70	1
Totals	14	41	3,233	78.85	70	1

Fall 2000

Tournament	1-2-3	Par	Total	Finish
Auburn University Tiger Derby	79-82-81	+22	238	T39
NCAA Fall Preview	79-81	+14	160	T58
ACC/SEC Challenge	81-73-77	+18	231	T12
Tar Heel Invitational	82-80-81	+27	243	T55
Lady Paladin Invitational	76-82-80	+22	238	T61

Spring 2000

Tournament	1-2-3	Par	Total	Finish
Lady Gator Invitational	82-77-75	+18	234	T27
Casa Del Campo Intercollegiate	75-78-79	+16	232	T9
Bryan National Collegiate	77-80-83	+24	240	T50
Ryder/Florida Challenge	75-81-77	+17	233	11
ACC Championships	77-77-80	+18	234	11

Fall 1999

Tournament	1-2-3	Par	Total	Finish
Lady Seminole Classic	76-76-70	+6	222	7
Lady Buckeye Invitational	76-78-86	+24	240	T36
Beacon Woods Invitational	78-84-74	+20	236	27
Lady Paladin Invitational	84-80-88	+36	252	T93

Players



Kelley Winship

Senior • 5-5
Dunedin, FL/Dunedin

On Winship: One of only two seniors on the team (joining Louise Wright) who will provide leadership throughout the season ... Continues to improve each season and is expected to play her best golf as a senior ... A member of the ACC Academic Honor Roll during her freshman season ... Recorded a hole-in-one on the 17th hole at the Tarpon Springs golf course.

Fall 2000: A member of the team but did not participate in any tournaments.

Spring 2000: A member of the team but did not see any playing time.

Fall 1999: A member of the team but did not see any playing time.

Spring 1999: A member of the team but did not see any playing time.

Fall 1998: Participated in the Lady Seminole Classic where she carded a career-low tournament score of 271.

Spring 1998: A member of the team but did not see any playing time.

Fall 1997: Played in one tournament, the Lady Seminole Invitational, during her first fall season as a member of the team ... Recorded a three-round total of 278 with her low-round score of 88 coming in the first round.

Before Florida State: Graduated from Dunedin High School in 1997 ... Was a four-year varsity letter winner as a member of the golf team ... Golf team captain as a junior and senior ... The Golfer of the Year at Dunedin as a senior ... All-County first-team selection as a junior and senior ... Golf coach at Dunedin was Julie White

Personal: Born Oct. 18, 1978 ... Kelley is the daughter of Susie and Chuck Winship ... A member of the National Honor Society and graduated with honors.

Why I chose to attend Florida State: "I chose to attend Florida State because I fell in love with the school on my visit, felt a strong connection with my future teammates and wanted to play golf in the first-class facilities that we are able to play and practice on every day. Coach Dillman, who is a wonderful person as well as a tremendous coach, was also a strong factor in my decision to be a Seminole. I also am very confident that my degree in accounting will mean a great deal in the business world when I graduate from Florida State University."

Winship at Florida State

Years	Events	Rounds	Strokes	Avg.	Low	Top 10
1997-1998	2	6	549	91.50	88	—
Totals	2	6	549	91.50	88	—

Fall 1998

Tournament	1-2-3	Par	Total	Finish
Lady Seminole Classic	91-89-91	+55	271	103

Fall 1997

Tournament	1-2-3	Par	Total	Finish
Lady Seminole Classic	88-94-96	+62	278	83

Kelley Winship



Players



**Louise
Wright**

Senior • 5-5
Ipswich, England/Ipswich

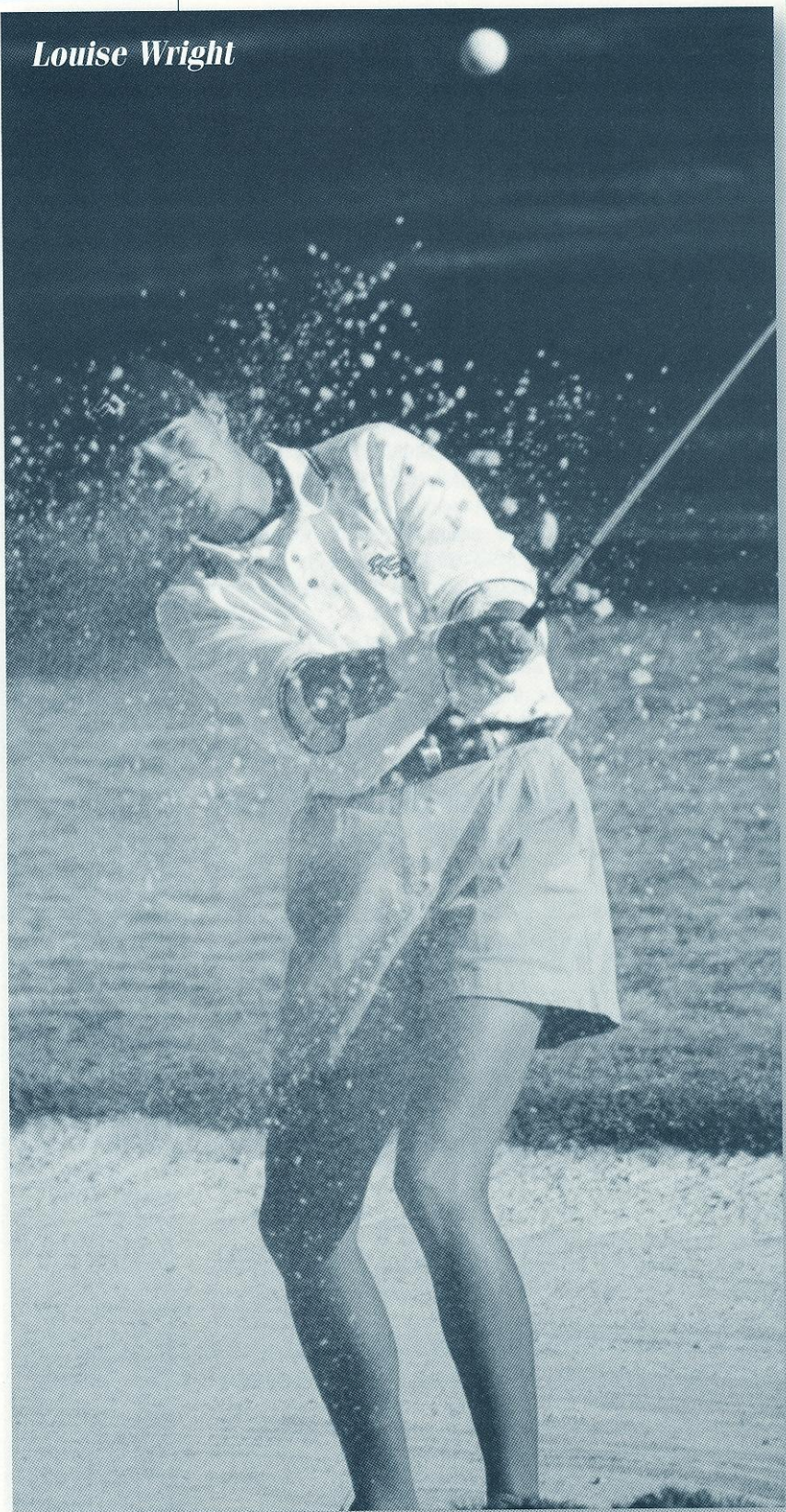
On Wright: Florida State's top golfer who is a great competitor ... Is a leader both on and off the course... Plays to great lengths and is a steady performer ... Continues to improve and refine her strengths.

Fall 2000: Competed in five events and earned the best stroke average among the Seminoles' starting five ... Averaged a strong 77.21 strokes per round in 14 rounds ... Shot her season's best score of 73 in the second round of the Tar Heel Invitational ... Her score of 73 marked the fifth time during her collegiate career that she shot 73 or below in a round during her collegiate career ... Tied her third-best personal tournament score with a 227 at the Lady Paladin Invitational ... It was her second season with all three round scores in the 70s ... Rivalled her personal-record 218 tournament score in the Lady Seminole Classic during the fall of 1999 ... Season-best individual placement of tied for 12th at the Auburn Tiger Derby Invitational ... Finished as the Seminole's top golfer in two of the five tournaments during the season.

Spring 2000: Top career finish of second place came at the Bryan National Collegiate Invitational with a six-over par score of 222 ... Three stellar rounds of 75-72-75 allowed for the second best tournament score of her career ... Also finished seventh at the Ryder/Florida State Championships with a score of 230 ... Six rounds with scores at par or within three strokes of par ... Averaged 79.13 strokes in 15 rounds.

Fall 1999: Participated in two events after being injured and earned a third

Louise Wright



Players

place finish at the Lady Seminole Classic ... Her three-round score at the Lady Seminole Classic included a two-under par 70 and a one-over par 73 ... Her scores of two-over par and 218 total for the tournament are her career best scores ... Averaged 75.16 strokes for six rounds.

Spring 1999: Qualified for the NCAA Championship and finished in a tie for 63rd place ... A stellar two-under par 70 in the second round of the NCAA Tournament ... Qualified for the NCAA Tournament with a strong showing at the NCAA East Regional Tournament ... Finished with three rounds in the 70s including a 75 in the first round of the Regional ...

Participated in a career-high six tournaments and recorded two top-15 finishes ... Finished in 13th place at the Ryder/Florida State Championship Tournament and 13th at the ACC Championship Tournament ... Averaged 79.00 strokes in a career-high 17 rounds.

Fall 1998: Among the Seminoles' top golfers, she participated in all four fall tournaments ... Lowest total score (227) came at the Lady Seminole Invitational ... Best round of the fall season (one-under par 71) came in the third round of the Lady Seminole Invitational ... Was six-over par at the Auburn Invitational (two-round total of 152) ... Averaged 77.55 strokes over the course of 11 rounds.

Spring 1998: Played in five tournaments during the spring season ... Earned her best score (228, 12-over par) at the Lady Gator Invitational ... Finished in a tie for 33rd place at the Lady Gator ... Tied her low-round score of 75 during the third round of the LSU Fairwood Invitational ... The only freshman to see action during the season ... Stroke average of 79.6 ranked fifth on the team.

Fall 1997: Played in two tournaments during her first fall season at Florida State ... Shot four of her six rounds in the 70s with her low score of 75 coming in the first round of the Lady Seminole Invitational ... The lowest score is her first season at Florida State (75) and came in the first round of her first tournament ... 77.16 stroke average in 16 rounds.

Before Florida State: Graduated from Ipswich School in 1997 ... Named to the England Elite squad ... A top-16 performer in England in 1996 and 1997 ... Fired a two-round score of 146 to capture the Prince of Wales Trophy at Woburn ... Suffolk Ladies Champion in 1997 ... A talented athlete, she played 27 seasons of four different sports ... Played seven years of golf, field hockey and rounders and six years of tennis ... Won three Club Championships at her home town Ipswich Club ... Won both Girls and Ladies State Championships ... Golf coach at Ipswich was Steve Whymark.

Personal: Born May 26, 1979 ... Louise is the daughter of Maureen and David Wright ... A two-time Coaches Association Academic All-American, 1998-99 and 1999-00 ... Her greatest ambition is to be a professional golfer ... Golden Force winner in 1998-99 and 1999-00 ... Is majoring in marketing, finance and multinational business.

Why I chose to attend Florida State: "Being away from home, I wanted to feel comfortable with the atmosphere at the institution I chose to attend. I immediately found that

Florida State was the place that provided that environment and it has proven a great place for me to study and play golf."

Wright at Florida State

Years	Events	Rounds	Strokes	Avg.	Low	Top 10
2000-2001	5	14	1,081	77.21	73	—
1999-2000	7	21	1,609	76.61	70	3
1998-1999	8	21	1,657	78.90	71	—
1997-1998	7	20	1,586	79.30	75	2
Totals	27	76	5,933	78.06	70	5

Fall 2000

Tournament	1-2-3	Par	Total	Finish
Auburn Tiger Derby Invitational	78-76-74	+12	228	T12
NCAA Fall Preview	74-77	+5	151	T17
Inaugural Dodge ACC/SEC Shootout	80-83-77	+27	240	T33
Tar Heel Invitational	78-73-84	+19	235	25
Lady Paladin Invitational	78-74-75	+11	227	T29

Spring 2000

Tournament	1-2-3	Par	Total	Finish
Lady Gator Invitational	75-80-82	+21	237	T35
Casa De Campo Intercollegiate	75-84-81	+24	240	T23
Bryan National Collegiate	75-72-75	+6	222	2
Ryder/Florida State Championships	80-73-77	+14	230	7
ACC Championships	86-72-80	+13	229	22

Fall 1999

Tournament	1-2-3	Par	Total	Finish
Lady Seminole Classic	75-73-70	+2	218	3
Lady Buckeye Invitational	77-77-79	+17	233	T18

Spring 1999

Tournament	1-2-3	Par	Total	Finish
Casa de Campo	82-77-87	+30	246	T23
Lady Gamecock Classic	86-76	+18	162	T49
Ryder/Florida State Championships	78-79-77	+18	234	T13
ACC Championships	81-76-78	+19	235	T13
NCAA East Regional	75-78-76	+13	229	T41
NCAA Women's Championships	76-79-82	+21	237	T63

Fall 1998

Tournament	1-2-3	Par	Total	Finish
Lady Seminole Invitational	80-76-71	—	227	T28
Auburn Tiger Invitational	74-78	+6	152	T25
Beacon Woods Invitational	83-81-75	+23	239	T32
Lady Paladin Invitational	81-77-77	+19	235	T28

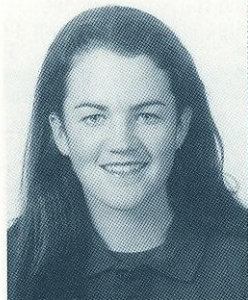
Spring 1998

Tournament	1-2-3	Par	Total	Finish
Lady Gator Invitational	75-77-76	+12	228	T33
LSU Fairwood Invitational	80-82-75	+21	237	T47
Lady Gamecock Classic	79-83-80	+26	242	T33
Ryder/Florida State Championships	84-82-81	+13	229	T39
ACC Championships	79-81-WD	—	—	—

Fall 1997

Tournament	1-2-3	Par	Total	Finish
Lady Seminole Invitational	75-77-79	+15	231	T35
Beacon Woods Invitational	78-80-82	+24	240	T36

Players



Alison Zimmer

Junior • 5-5
Tallahassee, FL/Lincoln

On Zimmer: Earned a starting spot in the Seminoles' starting lineup with her play during the fall 2000 season ... A very competitive and consistent athlete ... A Tallahassee native with a rich background in golf.

Fall 2000: One of the Seminoles' top golfers during the fall 2000 season ... The only Seminole golfer to shoot a round of even par or better (72 at the Lady Paladin Invitational) during the fall season ... Earned two of the top five lowest single round scores (72 and 73 at the Lady Paladin) during the season ... Best outing of her career came at the Lady Paladin Invitational as she finished in a career-best tie for 27th place ... Earned a career-best tournament score of 226, a career-best score vs. par of +10 and shot the top-two rounds of her collegiate career (72 and 73) as she paced the Seminoles to a 13th place finish on the Furman University Golf Course ... Shot scores in the 70s four times during the fall.

Spring 2000: A member of the squad who did not participate in any tournaments.

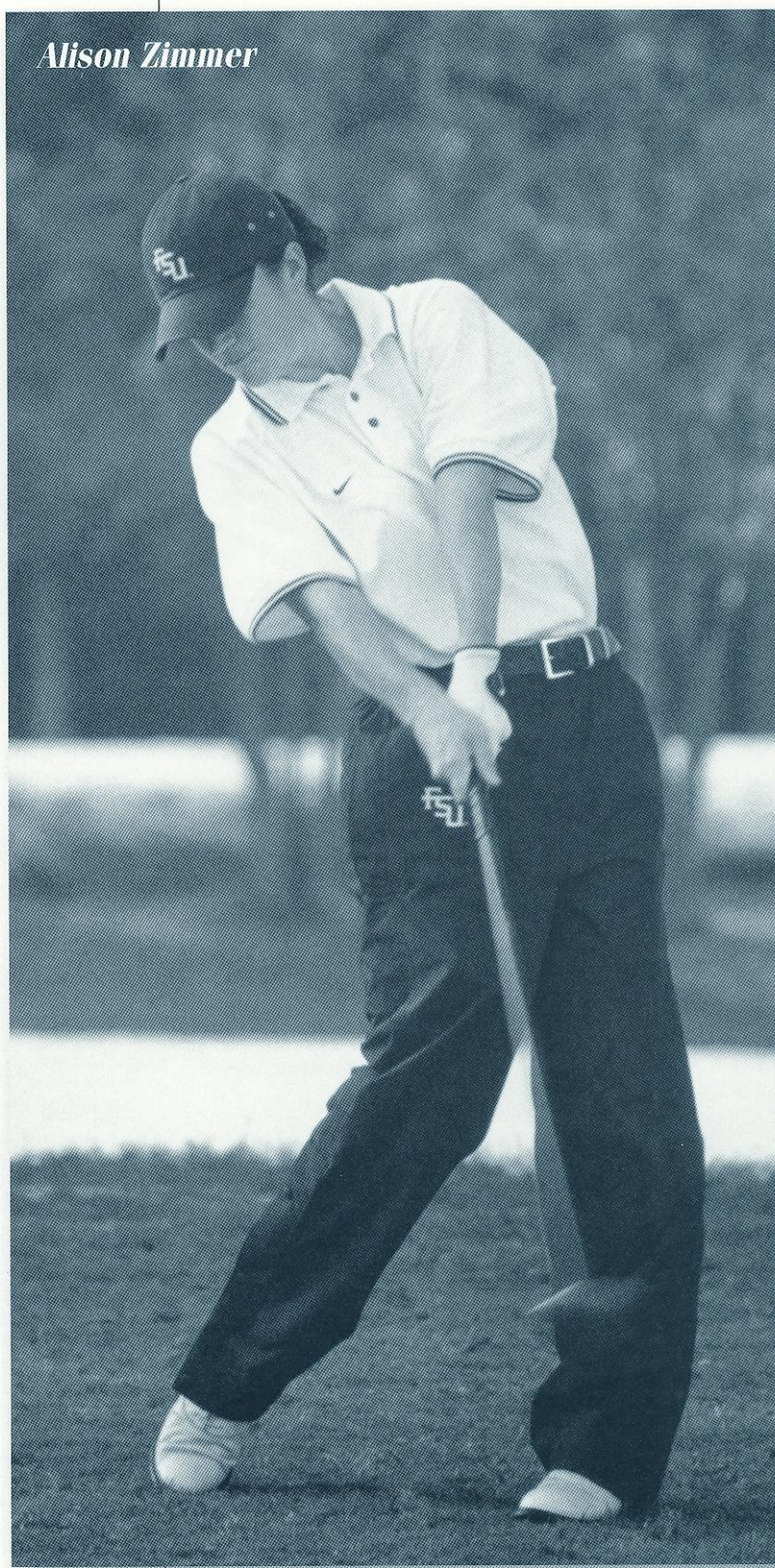
Fall 1999: Competed in the Lady Seminole Invitational as an individual ... Shot a three-round total of 242 and a low-round of 78.

Spring 1999: A redshirt season.

Fall 1998: A redshirt season.

Before Florida State: Graduated from Lincoln High School in 1998 ... Earned four varsity letters in golf and two in tennis ... Was the Tallahassee City Champion in 1996 as a member of the Lincoln High School team ... Finished second in the District Tournament as a sophomore and junior ... All-Big Bend first-team selection as a sophomore, junior and senior and an honorable-mention selection as a freshman ... Golf coach at Lincoln was Bill Zimmer.

Alison Zimmer



Players

Personal: Born Jan. 4, 1980 ... Alison is the daughter of Cookie and Bill Zimmer ... Her greatest sports memory is shooting a hole-in-one at the 2000 Lady Gator Invitational ... Was Treasurer of the student body as a senior in high school ... Majoring in sports medicine.

Why I chose to attend Florida State University: "I have always loved Florida State University, and, when I was making my college choices it was the best choice for me. Being a native of Tallahassee, it allows me to stay close to my family and friends something very important to me."

Zimmer at Florida State

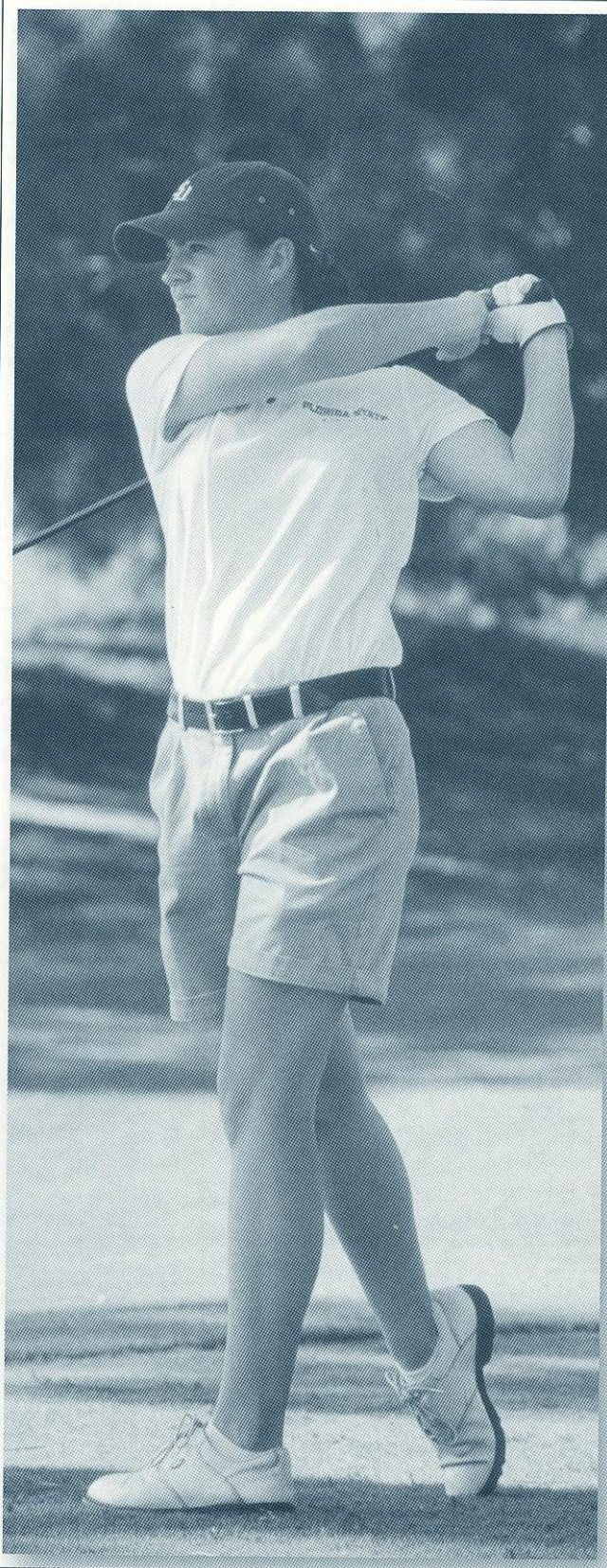
Years	Events	Rounds	Strokes	Avg.	Low	Top 10
2000-2001	5	14	1,130	80.71	72	0
1998-1999	1	3	242	80.66	78	0
Totals	6	17	1,372	80.71	72	0

Fall 2000

Tournament	1-2-3	Par	Total	Finish
Auburn Tiger Invitational	79-82-81	+26	242	T49
NCAA Fall Preview	80-87	+21	167	T90
ACC/SEC Challenge	90-79-84	+40	253	T52
Tar Heel Invitational	80-82-83	+29	245	T63
Lady Paladin Invitational	81-72-73	+10	226	T27

Fall 1998

Tournament	1-2-3	Par	Total	Finish
Lady Seminole Invitational	78-82-82	+26	242	T84



Alison Zimmer earned her way into the Seminoles' starting lineup and will be one the team's top golfers this season.

Review

Spring 2000 Results

Florida State Finishes In 13th At Lady Gator Invitational

GAINESVILLE, Fla. (Feb. 27) – The Florida State women's golf team finished 13th at the Lady Gator Invitational. The team shot a 315 in the final round to finish with a total score of 952. Freshman Kristin Tamulis moved up ten spots to finish the tournament in 27th place. Tamulis shot a 75, which was the team low round for the second straight day to finish with a total score of 234.

Junior Louise Wright had a score of 237 to finish in 35th place. Freshman Beth McCumber fired a 76 in the final round to finish in the 48th spot. Other Seminoles scores included sophomore Kristen Sanborn with a 246, and sophomore Alison Zimmer with a 248.

Tournament host Florida came from third place to capture the team title. South Carolina finished one stroke ahead of LSU to finish in second place. Furman's Jennifer Perri stayed one stroke ahead of South Carolina's Kristy McPherson to capture the individual title.

Individual	Round 1	Round 2	Round 3	Total
Kristin Tamulis	82	77	75	234
Louise Wright	75	80	82	237
Beth McCumber	82	81	76	239
Kristen Sanborn	85	79	82	245
Alison Zimmer	82	80	86	248

Florida State Takes 10th At Casa De Campo Intercollegiate

LA ROMANA, Dominican Republic (March 13, 2000) – The Florida State women's golf team finished in 10th place at the Casa De Campo Intercollegiate. Duke won the team title with a three-round total of 54-over par, 918. The Lady Seminoles finished 64 strokes back at 982. Kris Tamulis was FSU's top finisher, finishing in a tie for ninth place at 16-over, 232 (75-78-79). She was eight strokes behind tournament champion Kristen Bauer of Duke, who shot an eight-over, 224 (74-74-76).

Individual	Round 1	Round 2	Round 3	Total
Kristin Tamulis	75	78	79	232
Louise Wright	75	84	81	240
Beth McCumber	87	78	82	247
Kristin Sanborn	88	94	84	266
Alison Zimmer	91	91	86	268

FSU Women's Golf Finishes Eighth At Bryan National Collegiate

BROWN SUMMIT, N.C. (March 27) – The Florida State women's golf team finished in eighth place at the Bryan National Collegiate in Brown Summit, NC, with a total score of 932. The Lady Seminoles were 36 strokes behind tournament winner and ACC rival, Wake Forest.

Junior Louise Wright led Florida State with a second place finish. Wright carded a score of 222 (75-72-75) to finish three strokes behind North Carolina's Marcy Newton. It was the third top-ten finish for Wright this season. Alison Zimmer, a Tallahassee native, followed Wright with a 32nd place finish. Zimmer had a final score of 234 (76-80-78). Other Seminoles scores were: Beth McCumber (t-45, 21-over, 237), Kristin Tamulis (t-50, 24-over, 240), and Kristen Sanborn (t-67, 31-over, 247).

Individual	Round 1	Round 2	Round 3	Total
Louise Wright	75	72	75	222
Alison Zimmer	76	80	78	234
Beth McCumber	77	78	82	237
Kristin Tamulis	77	80	83	240
Kristen Sanborn	81	79	87	247

Florida State Places 4th At ACC Championship

CLEMMONS, N.C. (April 16) – Led by freshman individual champion Maria-Garcia Estrada, the Duke women's golf team won the Atlantic Coast Conference Championship by 36 strokes at the 6,355-yard, par-72 Salem Glen Country Club in Clemmons, N.C.

The Blue Devils 54-hole total of seven-over par 871 (295-286-290) broke the previous tournament record by 19 strokes. Duke was followed in the team standings by Wake Forest at 905 (310-300-295) and North Carolina, which finished third with a 918 (319-299-300). Florida State finished in fourth place with a three-day total of

974 (335-315-324) and Maryland rounded out the field in fifth place at 1026 (348-349-329).

Estrada became the third-straight freshman to capture the ACC individual title as she finished at 1-under-par 215 (76-67-72). She was followed in the standings by a pair of teammates – Beth Bauer (73-72-72) and Candy Hanneman (70-74-73) – who tied for second place at one-over 217. Florida State was led by Krisin Tamulis, who finished at 18-over par 234 (77-77-80) and tied for 11th place. Louise Wright took 15th place for the Lady Seminoles at 23-over, 239 (87-82-80) and Beth McCumber was 18th at 34-over, 250 (88-80-82). Kristen Sanborn, who tied for 19th (83-88-82-253,) and Alison Zimmer, who placed 22nd (90-86-82-258), rounded out FSU's individuals.

Individual	Round 1	Round 2	Round 3	Total
Kristin Tamulis	77	77	80	234
Louise Wright	87	72	80	239
Beth McCumber	88	80	82	250
Kristen Sanborn	83	88	82	253
Alison Zimmer	90	86	82	258

Fall 2000 Results

Florida State Finishes Seventh At Auburn Invitational

AUBURN, Ala. (Sept. 10) – Florida State's Louise Wright shot a two-over par 74 in the final round of the Auburn University Tiger Derby Women's Golf Invitational to move into a tie for 12th place and help the Seminoles to a seventh place finish in their first tournament of the fall season. Wright improved her score by two strokes each round and improved her individual place by 27 spots after she finished day one in a tie for 39th place. Wright finished the tournament tied for 12th with teammate Beth McCumber. McCumber was very consistent throughout the three-day tournament as she scored 75-76-77 to total a career-best 228. The 12th place finish was McCumber's highest during her Seminole career and her first career top-15 finish.

Sophomore Kristin Tamulis also shot well during the tournament. She finished in a tie for 39th place with a three-day

score of 238. She broke 80 during the second and third rounds with scores of 78 and 79.

Individual	Round 1	Round 2	Round 3	Total
Beth McCumber	75	76	77	228
Louise Wright	78	76	74	228
Kristin Tamulis	81	78	79	238
Alison Zimmer	79	82	81	242
Alison Curdt	81	81	83	245
Carrie Sordel	88	81	86	255

Florida State Finishes 11th At Shortened NCAA Fall Preview

HOWIE-IN-THE-HILLS, Fla. (Sept. 16) – The Florida State University women's golf team finished 11th at the rain-shortened NCAA Fall Preview Women's Golf Tournament hosted by Stetson University at Mission Inn's El Campeon Course. The event was shortened from three rounds to two because of rainy weather conditions.

The event was halted at 12:30 Saturday afternoon as heavy rains pounded the area. The round continued nearly three hours later but tournament officials decided to cancel the final round due to the impending threat of Hurricane Gordon. The hurricane was expected to dump up to seven inches of rain on the area, Sunday. Play finished Saturday in a driving rain storm. Senior Louise Wright led the Seminoles with a two-day total of 151. She finished in a tie for 17th place with a five-over par two-day total. She was followed by sophomore Beth McCumber who shot an 11-over par 157. Freshman Alison Curdt shot the best second round for the Seminoles as she shot a four-over par 76 on Saturday.

Individual	Round 1	Round 2	Round 3	Total
Louise Wright	74	77	151	
Beth McCumber	77	80	157	
Alison Curdt	82	76	158	
Kristin Tamulis	79	81	160	
Alison Zimmer	80	87	167	

Auburn Wins Inaugural Dodge ACC/SEC Women's Golf Invitational

DESTIN, Fla. (Oct. 2) – Celeste Troste earned medalist honors and she led the Auburn University women's golf team to the Championship of the Inaugural Dodge ACC/SEC Women's Golf Invitational at the Raven Course at the

Sandestin Golf and Beach Resort. Auburn's victory helped the SEC earn the team title for its conference as the six teams from the SEC combined to defeat the ACC team made up of four ACC teams plus Furman and Miami (Fla.). Troste shot a 54-hole total of 212 to win the event by three strokes. She shot 71-70-71 for the three-day event and was the only golfer to shoot at or below par in each of the three rounds. Anna Gertsson of runner-up Mississippi State finished in second place in the individual standings with a three-day total of 215.

Florida State was led by sophomore Kristin Tamulis who finished in a tie for 12th place with a score of 231. Her best single-round score of the tournament was a two-over par 73 in the second round. Tamulis and senior Louise Wright led the Seminoles during the third round as both players shot six-over par 77.

Individual	Round 1	Round 2	Round 3	Total
Kristin Tamulis	81	73	77	231
Beth McCumber	83	75	79	237
Louise Wright	80	83	77	240
Alison Curdt	82	87	82	251
Alison Zimmer	90	79	84	253

Seminoles Finish 14th At Tar Heel Invitational

CHAPEL HILL, N.C. (Oct. 8) – Senior Louise Wright finished in 25th place in the individual standings with a 19-over par score of 235 and the Florida State University women's golf team finished in 14th place at the Franklin Street Trust/Tar Heel Invitational at Finley Golf Course. Wright finished with her second best three-round tournament total of the fall season in leading the Seminoles. She shot a personal tournament-low 73 in the second round on Saturday. Wright averages a team low 77.63 strokes per round in 11 rounds this season.

Freshman Alison Curdt and sophomore Kristin Tamulis led the Seminoles during the third round as they both shot scores of 81. Curdt finished with a three-round score of 243 and Tamulis with a 245. Curdt's 243 score for the tournament is her career best.

Candy Hannemann and Leigh Anne Hardin of Duke shared individual medalist honors in leading the Blue Devils to the team title. Hannemann and Hardin shot identical scores of 73-72-75 for a four-over par total of 220 to tie for the tournament lead.

Individual	Round 1	Round 2	Round 3	Total
Louise Wright	78	73	84	235
Alison Curdt	81	77	81	239
Kristin Tamulis	82	80	81	243
Alison Zimmer	80	82	83	245
Kelley Henderson	84	88	89	261

Zimmer Leads Florida State With Career-Best Tournament

GREENVILLE, S.C. (Oct. 23) – Florida State junior Alison Zimmer earned her lowest career score and earned her top-individual finish in leading the Seminole women's golf team to a 13th place finish at the Lady Paladin Invitational at the Furman University Golf Course. Auburn University, led by individual medalist Celeste Troche, earned the team title. Zimmer, a Tallahassee, Fla., native shot a 73 in the third round, and finished with a 226 score for the tournament. She finished in a tie for 27th place. Her 73 single-round score was the second lowest of her career; the 226 tournament score was the lowest of her career and the individual placement was the highest of her career. Zimmer shot a career-best 72 in the second round of the tournament on Saturday.

Seminole senior Louise Wright finished one stroke behind Zimmer with a three-round score of 227. Wright shot a 74 in the first round and a 75 in the third round. Freshman Alison Curdt turned in an impressive third round score as she tied her career-low with a 76 and finished with a career-best tournament score of 237.

Individual	Round 1	Round 2	Round 3	Total
Alison Zimmer	81	72	73	226
Louise Wright	74	78	75	227
Alison Curdt	82	79	76	237
Kristin Tamulis	76	82	80	238
Kelley Henderson	82	78	81	241

Results

1999 (Fall)

Lady Seminole Invitational

Seminole Golf Course
Tallahassee, FL • September 24-26, 1999

2	Team Total	307	304	294	905	+41
3	Louise Wright	75	73	70	218	+2
7	Kristin Tamulis	76	76	70	222	+6
16	Laura Kowalski	77	77	75	229	+13
T22	Beth McCumber	79	78	79	236	+20
T26	Stacey Burgin	82	78	80	240	+24

Lady Buckeye Fall Invitational

OSU Scarlet Golf Course
Columbus, OH • October 2-4, 1999

12	Team Total	325	325	340	990	+126
T18	Louise Wright	77	77	79	233	+17
T36	Kristin Tamulis	76	78	86	240	+24
T58	Beth McCumber	84	85	87	256	+40
65	Stacey Burgin	88	87	88	263	+47
66	Laura Kowalski	90	85	95	270	+54

Beacon Woods Invitational

Beacon Woods Golf Club
Bayonet Point, FL • October 15-17, 1999

9	Team Total	320	323	309	952	+88
27	Kristin Tamulis	78	84	87	236	+20
T30	Beth McCumber	76	82	80	238	+22
T32	Laura Kowalski	85	77	77	239	+23
T43	Allison Zimmer	84	81	78	243	+27

Lady Paladin Invitational

Furman University Golf Course
Greenville, SC • October 29-31, 1999

22	Team Total	333	329	335	997	+133
T63	Beth McCumber	81	82	79	242	+26
103	Kristen Sanborn	89	86	81	256	+40
T104	Laura Kowalski	87	81	89	257	+41
T104	Allison Zimmer	81	89	87	257	+41

2000 (Spring)

Sun Trust Lady Gator Invitational

University of Florida Golf Course
Gainesville, FL • February 25-27, 2000

13	Team Total	321	316	315	952	+33
T27	Kristin Tamulis	82	77	75	234	+18
T35	Louise Wright	75	80	82	237	+21
T40	Beth McCumber	82	81	76	239	+23
65	Kristen Sanborn	85	79	82	246	+30
T67	Allison Zimmer	82	80	86	248	+32

Ladies Intercollegiate Tournament

Casa De Campo Resort
Dominican Republic • March 9-12, 2000

10	Team Total	325	331	326	982	+63
T9	Kristin Tamulis	75	78	79	232	+16
T23	Louise Wright	75	84	81	240	+24
T34	Beth McCumber	87	78	82	247	+31
52	Kristen Sanborn	88	94	84	266	+50
53	Allison Zimmer	91	91	86	268	+52

Bryan National Collegiate

Bryan Park Champions Golf Course
Brown Summit, NC • March 24-26, 2000

8	Team	305	309	318	932	+68
2	Louise Wright	75	72	75	222	+6
T32	Allison Zimmer	76	80	78	234	+18
T45	Beth McCumber	77	78	82	237	+21
T50	Kristin Tamulis	77	80	83	240	+24
T67	Kristen Sanborn	81	79	87	247	+31

Ryder/Florida Women's Collegiate Challenge

Don Shula's Gold Resort
Miami Lakes, FL • March 31-April 2, 2000

T4	Team	318	314	313	945	+81
7	Louise Wright	80	73	77	230	+14
11	Kristin Tamulis	75	81	77	233	+17
T20	Beth McCumber	83	80	78	241	+25
T22	Allison Zimmer	80	80	82	242	+26
T36	Kristen Sanborn	83	85	81	249	+33

Atlantic Coast Conference Championships

Salem Glen Country Club
Clemmons, NC • April 14-16, 2000

4	Team	335	315	324	974	+55
11	Kristin Tamulis	77	77	80	234	+18
15	Louise Wright	87	72	80	239	+23
18	Beth McCumber	88	80	82	250	+34
T19	Kristen Sanborn	83	88	82	253	+37
22	Allison Zimmer	90	86	82	258	+42

2000 (Fall)

Auburn Tiger Derby Invitational

Auburn University Club
Auburn, AL • September 8-9, 2000

7	Team Total	313	311	311	935	+71
T12	Beth McCumber	75	76	77	228	+12
T12	Louise Wright	78	76	74	228	+12
T39	Kristin Tamulis	81	78	79	238	+22

T49	Allison Zimmer	79	82	81	242	+26
54	Allison Curdt	81	81	83	245	+29
64	Carrie Sordel	88	81	86	255	+39

NCAA Fall Preview

Hosted By Stetson University
El Campeon Golf Course at Mission Hills
Howie-In-The-Hills, FL
September 8-10, 2000

11	Team Total	310	314	624	+40
T17	Louise Wright	74	77	151	+5
T50	Beth McCumber	77	80	157	+11
T57	Allison Curdt	82	76	158	+12
T58	Kristin Tamulis	79	81	160	+14
T90	Allison Zimmer	80	87	167	+21

Inaugural Dodge ACC/SEC Invitational Shootout

The Raven Course
Sandestin Beach and Golf Resort
Destin, FL • Sept. 29-Oct. 1, 2000

9	Team Total	326	319	315	951	+99
T12	Kristin Tamulis	81	73	77	231	+18
T27	Beth McCumber	83	75	79	237	+24
T33	Louise Wright	80	83	77	240	+27
T50	Allison Curdt	82	87	82	251	+38
T52	Allison Zimmer	90	79	84	253	+40

Franklin Street Trust/Tar Heel Invitational

Finley Golf Course
Chapel Hill, NC • October 6-8, 2000

14	Team Total	321	312	329	962	+98
25	Louise Wright	78	73	84	235	+19
T36	Allison Curdt	81	77	81	239	+23
T55	Kristin Tamulis	82	80	81	243	+27
T63	Allison Zimmer	80	82	83	245	+29
84	Kelley Henderson	84	88	89	261	+45

Lady Paladin Invitational

Furman University Golf Course
Greenville, SC • October 20-22, 2000

13	Team Total	313	307	304	924	+60
T27	Allison Zimmer	81	72	73	226	+10
T29	Louise Wright	74	78	75	227	+11
T63	Allison Curdt	82	79	76	237	+21
T61	Kristin Tamulis	76	82	80	238	+22
T78	Kelley Henderson	82	78	81	241	+25

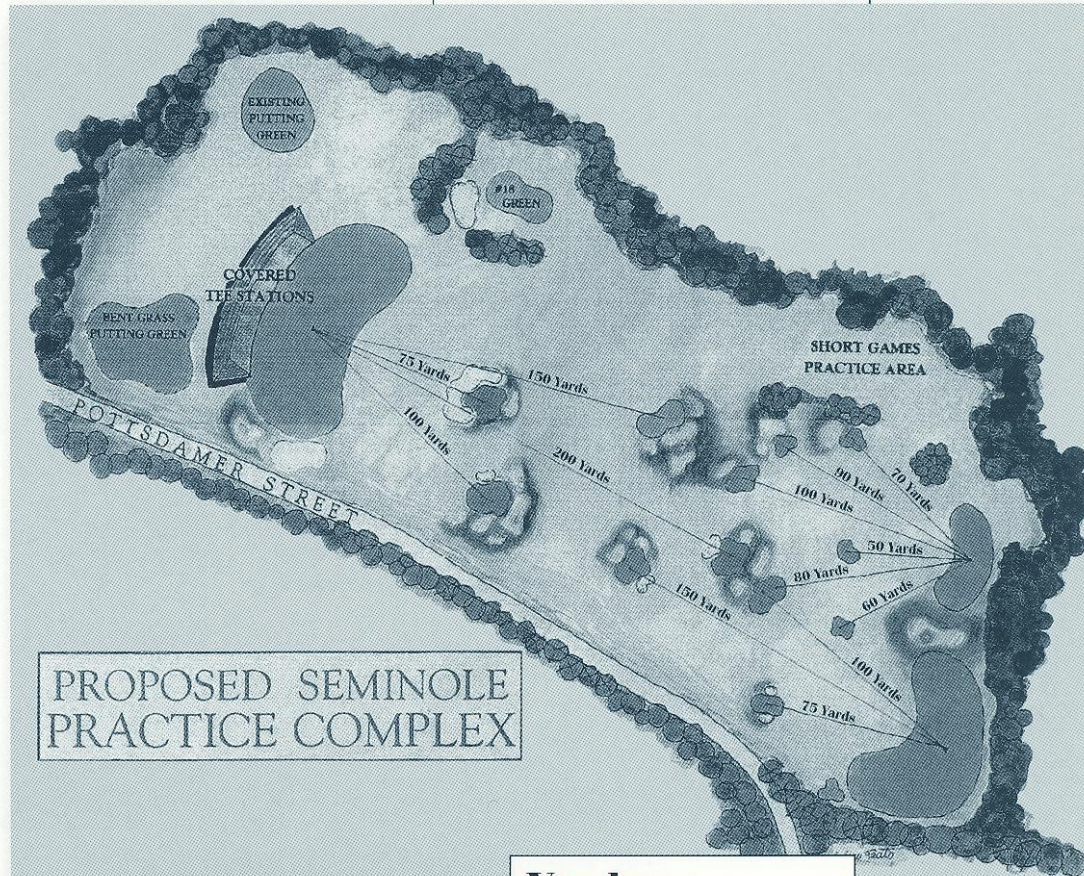
The Don A. Veller Seminole Golf Course

The Don A. Veller Seminole Golf Course is located approximately two miles west of the university campus. The course was designed by William W. Amick. The first nine holes were completed in 1963 and the completion of the additional nine in 1968.

The golf course measures 7,033 yards from the championship tees and is considered an excellent test of golf. The greens, TIFTON 328 (bermuda) are of medium size, approximately 6,200 square feet each. The course rating is 72.0.

The course and practice facilities are considered to be among the best in the country. The Don A. Veller Seminole Golf Course is now operated by Club Consultation and Management, a private golf course management firm. There have been many improvements made and within the next five years it should prove to be one of the finest courses in the area.

The Seminole golf team also has the luxury to play at many other courses in the Tallahassee area. The majority of Seminole practices take place at the Killlearn Country Club, Golden Eagle Country Club and Don A. Veller Seminole Golf Course. The team also practices at the Capital City Country Club.



Yardage

Hole #	Par	Yardage
1	5	537
2	4	407
3	4	400
4	3	227
5	4	343
6	5	545
7	4	455
8	3	185
9	5	601
Par 37		3700
10	4	374
11	4	415
12	4	387
13	5	564
14	4	401
15	3	203
16	4	368
17	3	168
18	4	453
Par 35		3333
Par 72		7033

The Capital City Country Club (left) is one of several courses in Tallahassee the Tribe use to practice.

The illustration above shows the proposed Seminole Practice Complex to be added to the Don A. Veller Seminole Golf Course.

This is Tallahassee

Near, but far from the glaring strips of neon amusement and the castles and crowds of Disney, lies another magical place in the Sunshine State – one of pow-wows, plantations, politics and great pride. Often described as “The Other Florida” with its deep-rooted history, rolling hills, canopy roads of moss-draped oaks, cool climate and Southern-style hospitality, it is a Florida few have seen. It is Tallahassee – Florida with a Southern accent.

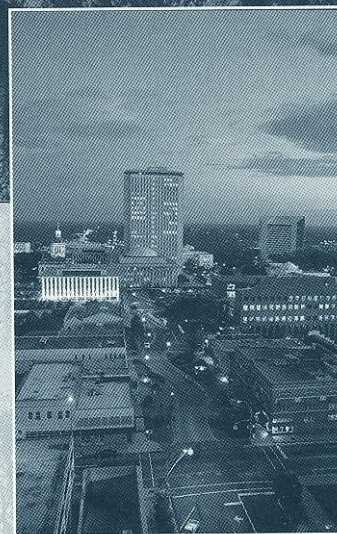
Best known as Florida’s capital, Tallahassee is an intimate neo-metropolitan city where the power of state government, the academic and the artistic are complemented by subtle, old-fashioned charm. It is the perfect two or three-day diversion for the more than 41 million annual visitors to Florida and 13 million residents.

Tallahassee touts a menagerie of sights including one of the world’s deepest freshwater springs, site of America’s first Christmas, a wildlife habitat, Capitol buildings, fascinating museums of history, sprawling plantations, highly acclaimed fishing and hunting adventures and nearby beaches. Spirited area festivals range from celebrations of Tallahassee’s spectacular spring and swamp stomps to genuine rattlesnake roundups and seafood festivals.

With the Gulf of Mexico just 20 miles south and the Georgia border only 14 miles north, Tallahassee rests between the foothills of the Appalachian Mountains and the juncture of Florida’s panhandle and peninsula. Nearer in miles to Atlanta than to Miami, Tallahassee more closely resembles its Southern neighbors than Florida in topography, climate and lifestyle.

Accentuating Tallahassee’s Southern persona are lush rolling hills, likened to the seven hills of Rome, and five “official” canopy roads of patriarch oaks. The fertile, rich soil and four distinct, yet pleasant, seasons breed floral brilliance and natural vitality year-round.

Like the city itself, the story of how Tallahassee was chosen as the state capital is rich in history. In 1823, two explorers set out – one on horseback from St. Augustine and the other by boat from Pensacola – to find a permanent, central location for the legislature to convene. The two met at a beautiful site that the Creek and Seminole Indians called “tallahassee” – derived from the words “talwa” meaning “town” and “ahasee” meaning “old.” The rendezvous point remains Florida’s capital.



Florida State University is located in Tallahassee – the capital city of the state of Florida.

The “old town” has undergone many changes, but one thing remains the same – it is still a government town fiercely proud and dedicated to preserving its heritage. The Capitol buildings, both old and new, epitomize Tallahassee’s perseverance.

The 22nd floor of the New Capitol provides a panoramic scope of a sophisticated Southern city awash in a sea of flowering azaleas, snowy dogwoods, towering pines, fragrant magnolias, and hundreds of shimmering lakes, springs, swamps, rivers and sink holes. Special legislative viewing galleries are open during the legislative session.

Below, in the shade of giant live oaks, proudly stands the Old Capitol, originally constructed in 1845 and restored to its 1902 splendor complete with red-and-white candy-striped awnings, a dome adorned with stained glass, antique furnishings and political memorabilia.

Across from the Old Capitol are the 40-foot twin granite towers of the Vietnam Veteran’s Memorial, and the blue stone Union Bank, Florida’s oldest surviving financial institution. The nostalgic Old Town Trolley, a replica turn-of-the-century street car, carries passengers through restored Adams Street Commons to numerous other historical

downtown shops for free – unheard of even 100 years ago.

Minutes from downtown lies the

Outdoor enthusiasts enjoy adventures including boating and fishing on area lakes, rivers, ponds and the Gulf – just 30 minutes away. Lakes Seminole, Jackson and Talquin are renowned in the bass fishing world for yielding the “big ones,” and dense forests offer an abundance of prize-winning game.

Local wildlife areas such as the Florida National Scenic Trail, St. Marks National Wildlife Refuge and Apalachicola National Forest are among many spots for camping, picnicking, swimming, biking and exploring.

Appealing to the strokes of different folks, Tallahassee also features 99 holes of golf on six courses and a proliferation of tennis centers. Sideline athletes cheer the nationally-ranked Florida State Seminoles, Florida A&M Rattlers and the Tallahassee Tiger Sharks, of the East Coast Hockey League. And always a sure bet are the nearby greyhound races.

A sport of sorts, shopping at

two regional malls and many specialty centers offer many “playing options” – from popular chains to curiosity and antique shops.

Cultural interests are sparked by widely-acclaimed museums and galleries and elaborate entertainment at the 14,000-seat Tallahassee-Leon County Civic Center.

Tallahassee is a collaboration of power-play politics and classical character splashed with a twist of Southern beauty and charm. Tallahassee is Florida with a Southern accent.



A perfect example is its famous “canopy roads” streets and thoroughfares lined with 200-year-old oaks draped with Spanish moss.

Governor’s Mansion – which resembles the home of Florida’s military hero Andrew Jackson – and the 52-acre natural animal habitat and 1880s farm of the Tallahassee Museum of History and Natural Science, which provide the rare chance to walk and talk with native Florida animals.

Tallahassee remains firmly linked with the past as evidenced by the unearthed 1539 winter encampment of Spanish Hernando de Soto, the site of the first Christmas celebration in America. Visitors travel back through time as they stand in the shadow of a giant 12,000-year-old American Mastodon at the Museum of Florida History or explore other historical spots including The Knott House that Rhymes, The Columns, San Luis Mission, Lake Jackson State Archaeological Site, Natural Bridge Battlefield, First Presbyterian Church, Brokaw-McDougall House, Goodwood Plantation and Adams Street Commons. Nearby, alligators lazing in the sunshine and anhinga “snake birds” perched on twisted cypress branches are seen at Wakulla Springs, one of the world’s deepest freshwater springs and site of many underwater scenes in the “Tarzan” movies with Johnny Weissmuller and Maureen O’Sullivan. Safaris aboard glass-bottomed and jungle cruise boats whisk visitors within arm’s length of “The Other Florida.”



WE WON!

Tallahassee’s an All-America City! On June 26, judges from the National Civic League named Tallahassee as one of 10 cities to win the prestigious All-America City (AAC) award from the 1999 All-America City conference in Philadelphia. The All-America City award is the most prestigious and coveted award a community can win. The annual award recognizes exemplary grassroots and problem-solving efforts of communities that cooperatively tackle challenges and achieve measurable results. Judging is based on the overall level of community involvement in solving critical local problems, including public-private partnerships.

“This is clearly one of the most exciting things to ever happen to Tallahassee,” said a jubilant Mayor Scott Maddox. “For those of us who call Tallahassee home, the All-America City award verifies what we’ve known for so long – that we have one of the greatest cities in all of America!”



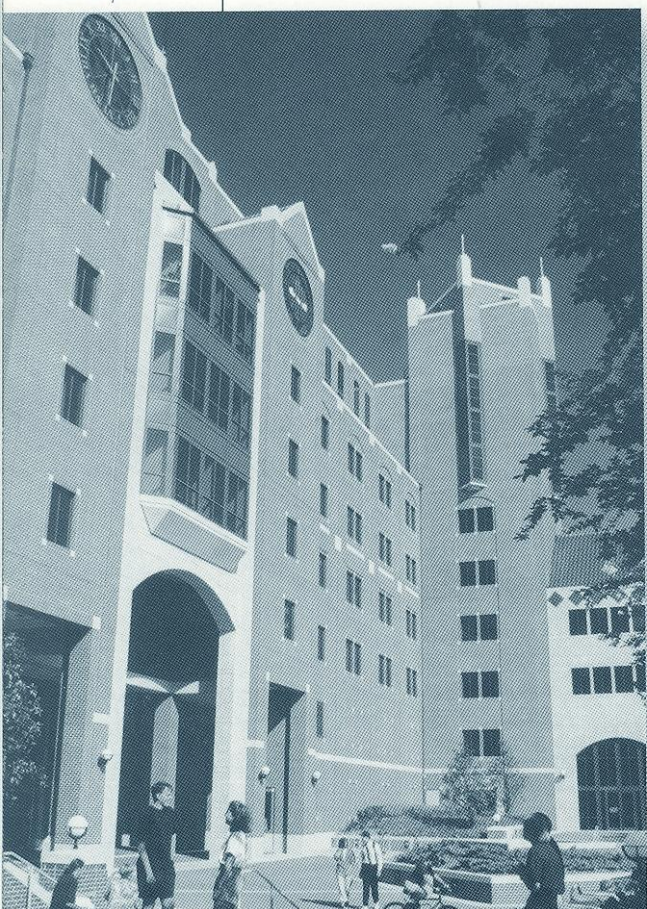
This is Florida State

Florida State University, a coeducational graduate research institution, stands among the nation's elite in both academics and athletics.

Located on the oldest continuous site of higher education in Florida and building rapidly on the framework of a highly regarded liberal arts college for women, the university has emerged over the past 52 years as an institution of national and international esteem. Its stature is evidenced by a number of additions to its record of excellence in the 1990s:

- In 1994, Florida State was classified a "Research University I" by the Carnegie Foundation, placing it among the nation's top research universities.
- In 1999, FSU was ranked as the most wired university in Florida, and 44th in the nation, in the "100 Most Wired Colleges" ranking by Yahoo! Internet Life magazine.
- FSU established the Bryan Hall Living-Learning Community in fall 1994, a unique academic residential program for freshmen designed to create a close-knit learning environment that benefits from the assets of a large research university. Building on the success of the Bryan Hall program, the Broward Hall Social Sciences Residential Program in Public and International Affairs was launched in fall 1999.

The University Center is one of the most popular buildings on the FSU campus.



- Vice President of the United States Al Gore spoke at the dedication of the National High Magnetic Field Laboratory at FSU in 1994. The National Science Foundation established the \$100 million magnet lab in 1990 at FSU, which runs the facility in partnership with the Los Alamos National Laboratory and the University of Florida. A Nobel laureate in physics and a top Russian physicist were among the first scholars drawn to the faculty. The world's largest magnet – two stories high and capable of generating 45 tesla or 1 million times the Earth's magnetic field – was installed in 1995 at the NHMFL, located in Innovation Park, an off-campus research complex.

- FSU created the first multipurpose student identification/banking card. The Card Application Technology Center is a national leader in "smart card" systems.

- In fall 1994, the first tenants moved into the east side of the \$85 million University Center, a classroom and office facility at Doak Campbell Stadium. With the completion of the west side in 1996, University Center now provides 550,000 square feet of much needed academic space and a centralized location for student services.

- In 1998, the FSU School of Motion Picture, Television and Recording Arts' graduate film program was ranked in the top 10 in the nation and third among public university film programs. Offering training for one of Florida's fastest growing industries, FSU conferred its first master's degrees in film in 1991 and its first bachelor's in film in 1993. The Film School's students have produced numerous national and international award-winning films.

- The Center for Civic Education and Service was established in 1994, aimed at promoting community involvement and civic responsibility as integral elements of the liberal arts education at FSU. The center supports such service-learning programs as Into the Streets, a one-day community service project for freshmen, and Gadsden ESL (English as a Second Language), which provides educational services to migrant farmworkers. Through ServScript, students' service may be recorded on their official academic transcript.

- Florida State ranked eighth in popularity nationwide among all prospective students, fifth among prospective African-American students and fourth among prospective Hispanic/Latino students, based on the number of students who request that their Scholastic Aptitude Test (SAT) scores be sent to an institution. FSU was the only institution listed among the top 10 choices of all three prospective student categories.

- FSU ranked 7th in the nation among public universities for 1993-97 in the number of African-American Ph.D. students it graduated.

- To better understand the world's cultural diversity, FSU undergraduate students are required to complete at least two courses that focus on diverse traditions beyond Western civilization. The multicultural study requirement, in effect since 1991, complements a long-established liberal studies program at FSU.

- In 1999, FSU created the Institute on War World II and the Human Experience to "save the memories of those who saved the world" by collecting letters, diaries, memoirs and photos from participants in the war effort, in order to preserve the materials for classroom teaching, scholarly research and public viewing.

- Capping more than a decade of national prominence in inter-collegiate athletics, Florida State's athletic teams, nicknamed "Seminoles," joined the Atlantic Coast Conference as its ninth member in 1990. The FSU football team won the 1993 National Championship and its quarterback, Charlie Ward, won the university's first Heisman Trophy.

- The Dr. Bobby E. Leach Center, a state-of-the-art student recreation facility, with weight-training facilities, a pool, saunas, basketball and racket-sport courts, was completed in 1991.

- The Appleton Museum of Art in Ocala, its vast art collection and an eminent scholar chair were donated to FSU and Central Florida Community College in 1990.

- FSU acquired the Asolo Performing Arts Center in Sarasota, home to the graduate theater program, the FSU/Asolo Conservatory of Professional Actor Training.

As this list of highlights attests, Florida State has excelled in the 1990s with exceptional strength, energy and vision for the future. Under the leadership of the university's 12th president, Talbot "Sandy" D'Alemberte, who took office in January 1994, FSU will continue to build on the foundation of its history of excellence in scholarship, research and service.

A senior member of the 10-member State University System, FSU was founded as an institution of higher learning in 1851 by legislative act and began in Tallahassee with its first students in 1857.

Today, FSU's operating budget is \$525 million. Faculty and administrators generate more than \$112 million annually in external funding to supplement state-sponsored research. Three direct-support organizations serve to bolster the university: the FSU Foundation, which raised \$301 million in private gifts during the university's first capital campaign, Seminole Boosters and the FSU Alumni Association.

The main campus is spread over 455.5 acres in Tallahassee; FSU, which has one of the smallest campuses in the SUS, has been actively acquiring land in the 1990s after years

of being landlocked at 347 acres. FSU owns 1,308 acres in Leon, Bay, Franklin and Sarasota counties.

Within the state, the university maintains facilities at its 25-acre campus in Panama City, its Marine Laboratory in the Gulf of Mexico, the Appleton Museum in Ocala and the Asolo Performing Arts Center in Sarasota. The Center for Professional Development and Public Service, housed in the Augustus B. Turnbull III Florida Conference Center on the edge of the campus, provides extensive credit and non-credit continuing education programs statewide.

For years, FSU has reached far beyond Florida through international programs in Switzerland, France, Panama, Costa Rica, Spain, Russia and the Caribbean. FSU's student centers in Florence, Italy, and London, England, are considered by many to be the nation's best in Europe.

Florida State offers 289 graduate and undergraduate degree programs through its

For years, FSU has reached far beyond Florida through international programs in Switzerland, France, Panama, Costa Rica, Spain, Russia and the Caribbean. FSU's student centers in Florence, Italy, and London, England, are considered by many to be the nation's best in Europe.

eight colleges – Arts and Sciences; Business; Communication; Education, Engineering (operated jointly with Florida A&M University, a historically black institution); Human Sciences, Law, and Social Sciences (which also incorporates the Reubin Askew School of Public Administration and Policy) – and eight schools – Criminology and Criminal Justice; Information Studies; Motion Picture, Television and Recording Arts; Music; Nursing; Social Work; Theatre; and Visual Arts and Dance.

With 1,731 members, the FSU faculty has included nine National Academy of Sciences elected members, nine American Academy of Arts and Sciences fellows and five Nobel laureates. It is backed by 3,002 administrative/professional and support staff.

Library holdings at Florida State include 2.2 million book titles, 16,384 serials and 4.7 million microforms. The main library facility, the Robert M. Strozier Library, is linked by

computer to other state university and national research libraries. The Paul A.M. Dirac Science Center Library is located at the heart of the university's science research complex. FSU also maintains extensive music, library science and law libraries. Also providing research opportunities is the tandem Van de Graaff Superconducting Accelerator Laboratory, which houses two powerful atom smashers.

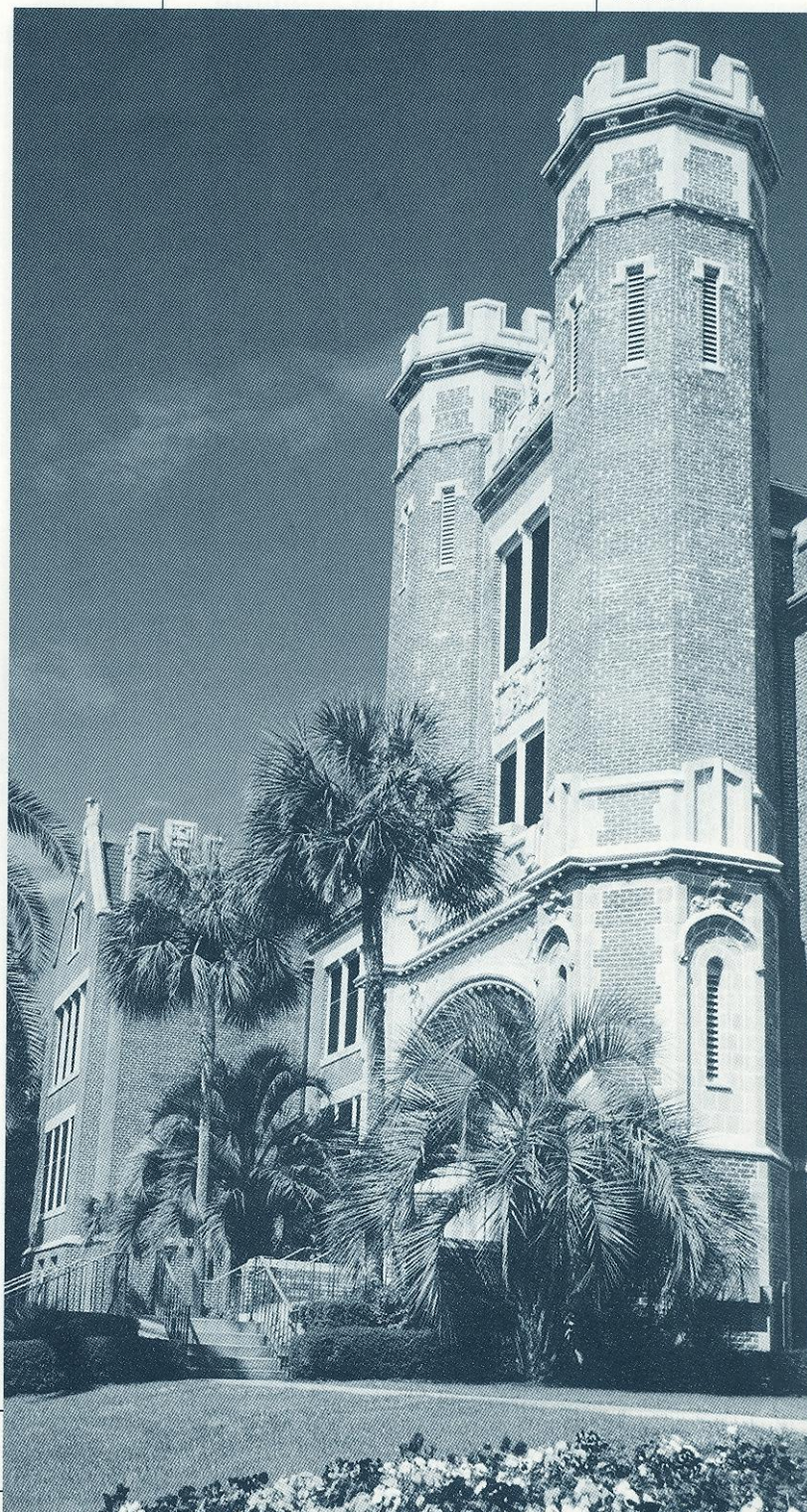
Graduate students, who number more than 5,685, pursue advanced degrees in fields as diverse as business administration and theoretical particle physics. A majority of research done at FSU is the direct result of student effort, culminating in numerous books, monographs and journal articles relating to the whole spectrum of intellectual interests and the practical needs of society.

FSU, a residential campus, places a high priority on its 31,193 students and their needs and interests (of the student population 45 percent are male, 55 percent are female, 21.7 percent are minorities, 2.6 percent are foreign students). The University Honors Program, Disabled Student Services, International Student and Scholar Center, Student Government Association, Flying High Circus and intramural sports are among more than 200 organizations and activities in which students may participate. Situated in the heart of the state's thriving capital city, Florida State's main campus blends Jacobean Revival and modern styles of architecture with the oaks, pines, dogwoods, palms and azaleas of North Florida. Florida State continues to progress and grow – from its pre-Civil War foundation as the Seminary West of the Suwannee, through the early 20th century as the academically respected Florida State College for Women, (returning to coeducational status as a university in 1947) to its modern develop-

ment as an acclaimed research institution, a top-ranked competitor in intercollegiate athletics and as a standard-setter in the basic sciences and the performing arts.

Florida State University enters the 21st century with excellence in all areas of its mission – teaching, research and public service.

The picturesque Florida State University campus is one of the most beautiful in the nation.



Academic Support Systems

One of the finest and most comprehensive academic support programs in America.

An Overview of An Award-Winning Academic Support Program

Academic, personal and professional support are essential to college success.

At The Florida State University, we have developed an outstanding support program which enables student-athletes to reach their full potential.

Director Mark Meleney states "Our philosophy is to offer an academic support program integrated

with the total University that will assist all student-athletes with the transition into college and provide continued support in all phases of academic and professional development, culminating with graduation, job placement or graduate school."

Our program operates on a "proactive" rather than "reactive" approach. Our academic staff does not wait for crises to occur. We gather important background information on each entering student athlete, build an academic profile and develop individualized support programs which are tailored to the unique needs of each student-athlete. We also stay informed on the daily progress of the student-athletes through consistent communication with our faculty.

The academic support unit is housed in the \$126 million dollar, state-of-the-art University Center Complex. It includes private study carrels, a tutorial study area, and a computer lab outfitted with 20 IBM compatible computers and laser jet printers. In addition, the athletic sky boxes are used for group and individualized tutorial instruction. The academic support staff is comprised of a Director, an Administrative Assistant, five academic counselors, several graduate assistants, individualized learning specialists and a cadre of approximately 50 tutors and mentors.

Mark Meleney was named the program's Director in 1997 and brings 12 years of advising experience to the position. Over the past six years, Meleney has played an integral role in the development of a comprehensive program of student-athlete support, which in 1996 won the "Program of Excellence" award from Athletic Management Magazine.

Academic Support Tutorial Program

The Athletic Department at Florida State University has made a commitment to providing our student-athletes with one of the finest and most comprehensive tutorial programs in the nation. The tutorial program is just one of several key support services that is available to all student athletes as they progress towards their ultimate goal of obtaining a college degree. We hire approximately 70 tutors a year, from a variety of academic departments, who are committed to providing a proactive, individualized approach in assisting student-athletes with course comprehension and study skills. The tutors are usually seniors or graduate level students who have outstanding academic backgrounds. Tutorial assistance is available for all academic course work and may be obtained by filling out a tutorial request form at the beginning of the semester, or as needed.

Mentor Program

Academic Mentors are academic role models who have demonstrated the ability to teach and give guidance in areas of academic developmental skills. Each semester, mentors begin the process by sitting down with their assigned student-athletes and assist them in identifying all of their academic responsibilities for that semester. A calendar is developed which becomes a visual blueprint of each course's academic requirements. This tool introduces the student-athlete to the concept of time management. Students learn to plan projects days and weeks in advance. Such planning aids them in developing strong study and organizational habits.

Mentors are also responsible for providing assistance in the development of skills such as note taking, test preparation and communication with faculty. In essence, mentors become an extension of the academic counselor as they keep the academic performance of their student athletes under close observation and report to the academic counselors each week.

Study Hall

In an effort to help ensure the academic success of the student-athletes, professionally supervised study sessions for each athletic team are organized. The main focus of the study hall program is to help students develop consistent and appropriate study patterns by providing a structured setting to work on class assignments and to provide tutorial assistance before academic problems arise. Although the criteria for study hall is left to the discretion of each academic counselor, typically most freshmen, first year transfers and upperclassmen who have not yet achieved a satisfactory cumulative grade point average are asked to attend study hall.

Academic Honors & Awards

Florida State University student-athletes have achieved great success in obtaining recognition for academic

excellence. More than \$135,000 in post-graduate monies have been granted to FSU's student-athletes over the past five years, as well as a number of other academic honors and awards. Florida State University had a record 183 student-athletes on the 1999 Atlantic Coast Conference Honor Roll and boasted a Weaver-James-Corrigan Postgraduate Award Winner, a NACDA Minority Postgraduate Scholarship Award Winner and two NCAA Postgraduate Scholarship Award Winners.

The academic support program is committed to recognizing the academic success of all student-athletes. The athletic department, in conjunction with Seminole Boosters, Inc., puts on the annual "Golden Torch Gala", a black-tie academic awards banquet, each fall. The ACC Honor Roll student-athletes, as well as the individuals with the highest GPA on their respective teams and the Men's & Women's Teams with the highest GPA are recognized at this event.

Team meetings are held each year, during which time student-athletes are notified of potential honors and awards and are encouraged to apply.

Combining a strong grade point average with athletic accomplishments, community service activities, and leadership experiences make for a student athlete capable of obtaining unlimited academic honors, awards and postgraduate opportunities.

Mark P. Meloney

Mark Meloney begins his fifth year as the Director of the Athletic Academic Support Program. He brings to the position 12 years of advising experience at FSU. Over the past six years, Mark has played an integral role in the development of a comprehensive program of student-athlete support, which in 1996 won an "Award of Excellence" from Athletic Management Magazine. Mr. Meloney directs a staff of five professional counselors, two graduate assistants and an administrative assistant.

In addition to his duties directing the Academic Support Program, Mr.

Meloney evaluates all recruits for their academic potential, monitors academic progress and eligibility for student athletes and serves as a liaison to the academic community. Mark also serves as a member of the administrative team for both the Athletic Department and the Division of Undergraduate Studies.

A native of Iowa, Meloney began his college education at Buena Vista College, where he earned varsity letters in football and baseball. Upon transferring to

Athletic Academic Support Mission Statement

The primary focus of the Athletic Academic Support Program is to provide an environment which facilitates the academic success of each student-athlete. Student success is encouraged through competent academic counseling, study skills development, individualized assessment and support and a wide array of tutorial services.

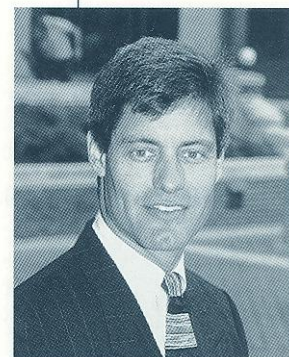
Florida State University, he earned bachelor's degrees in management and finance in 1986 and received his M.S. degree in athletic administration in April 1997. He is currently pursuing his Ph.D. in athletic Administration as well. A member of the National Association of Academic Advisors for Athletes (N4A), Meloney is married to the former Sarah Cawthon and they have a 7 year old daughter, Montana Shea.

Amy White

Amy is in her sixth year with the FSU Athletic Academic Support Staff. She was named the program's assistant director in 1999 and is responsible for program and staff development. Amy is also responsible for the academic advising of the baseball, softball, volleyball, and men's and women's golf teams.

She coordinates the support services for these student-athletes, monitoring their academic progress, and counseling them in the areas of course and major selection, NCAA eligibility requirements, study skills, time management and stress management.

In addition to her counseling duties, Amy is the coordinator of all academic honors, awards and postgraduate scholarships, as well as the annual Golden Torch Gala, a black-tie event that recognizes student-athletes' academic achievements. Amy is completing her Ph.D. in sports psychology and has served as the sports psychology consultant for all student-athletes at Florida State for the past five years.



Mark P. Meloney



Amy White

Schools & Colleges

- | | | |
|------------------|-------------------|-----------------------|
| Arts and Science | Human Sciences | Music |
| Business | Interdisciplinary | Nursing |
| Communication | Medical | Social Sciences |
| Criminology | Motion Picture, | Social Work |
| Education | Television, and | Theatre |
| Engineering | Recording Arts | Visual Arts and Dance |

Academic All-Americans

- | | | | |
|--------------|-------------------------|----------|-------------|
| 1990, 92, 93 | Kelly Pittman | 1997 | Aguri Okura |
| 1993, 94 | Tiffany Faucette | 1997, 98 | Sarah Capie |
| 1994, 95 | Mabel Pascual del Pobil | | |

2000 ACC Honor Roll

- | | | |
|--------------|-----------------|---------------|
| Stacy Burgin | Kristen Sanborn | Louise Wright |
|--------------|-----------------|---------------|

NCAA Information

The following information is provided by the Florida State Office of Compliance for prospective student-athletes. It is intended as a guideline to introduce some of the rules governing NCAA athletic involvement.

Who is permitted to recruit for FSU?

Only Florida State University coaches who have successfully completed the NCAA Recruiting Rules Examination on an annual basis may be involved in the recruitment process. Representatives of our athletics interests may not make any recruiting contacts. This includes letters, telephone calls or face-to-face contact on or off campus with a prospect or the prospect's parents.

Key terms you should know

You become a prospective student-athlete if you have started classes for the ninth grade. Before the ninth grade, you become a prospective student-athlete if the college provides you (or your relatives or friends) any financial aid or other benefits that the college does not provide to prospective students generally.

A contact is any face-to-face encounter between a prospect or the prospect's legal guardian and an institutional staff member or athletic representative during which any dialogue occurs in excess of an exchange of greeting. NOTE: At the Division I level, athletic representatives (boosters) may not contact you for the purpose of recruiting. A college coach may contact you in-person off the college campus beginning July 1 after completion of your junior year in high school.

An evaluation is any off-campus activity designed to access your academic qualifications or athletic ability, including any visit to your high school (during which no contact occurs) or the observation of any practice or competition in which you participate.

During your senior year, you can have one expense-paid official visit to a particular campus. You may receive no

more than five visits. During your official visit, which may not exceed 48 hours, you may receive round-trip transportation between your home and the campus, and you (and your parents) may receive meals, lodging and complimentary admission to campus athletic events.

Phone calls and letters

Phone calls from faculty members and coaches (but not boosters) are permitted beginning July 1 after completion of your junior year. A college coach or faculty member is limited to one telephone call per week except when it is:

- During the five days immediately before your official visit to the university
- On the day of a coach's off-campus contact with you
- During the time beginning with the initial National Letter of Intent signing date in your sport through the two days after signing date
- Letters from coaches and faculty members (but not boosters) are not permitted until September 1 at the beginning of your junior year in high school. A Division I university may provide you with the following printed materials:
 - General correspondence, including letters, U.S. Postal Service postcards and institutional note cards
 - Game programs which may not include posters and one Student Athlete Handbook can be provided only during official or unofficial visits to the university's campus
 - NCAA educational information
 - Pre-enrollment information subsequent to signing a National Letter of Intent with the university
 - One athletic publication which may include only one color of printing inside the covers
 - Official academic, admissions and student services publications published or videotapes produced by the institution and available to all students
 - Schedule cards
 - Questionnaires which may be provided prior to your junior year
 - Summer camp brochures which may be provided prior to your junior year.

Alumni and boosters do's and don'ts

You may forward information about prospective student-athletes to the appropriate coaches.

You may have contact with a prospect regarding permissible pre-enrollment activities such as summer employment, provided the prospect has already signed a National Letter of Intent and the Compliance Office is aware that you are making these contacts in regard to employment.

You may have a telephone conversation with a prospect only if the prospect initiates the call. Such a call may not be prearranged by an institutional staff member and you are not permitted to have a recruiting conversation, but may exhibit normal civility. You must refer any questions about our athletics programs to an athletics department staff member/coach.

You may view a prospect's contest at your own initiative provided you do not contact the prospect or his/her parents. In addition, you may not contact a prospect's coach, principal, or counselor in an attempt to evaluate the prospect.

You may continue established family relationships with friends and neighbors. Contacts with sons and daughters of these families are permitted as long as they are not made for recruiting purposes or encouraged by Florida State University coaches.

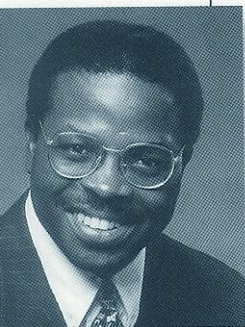
You may not become involved in making arrangements to receive money or financial aid of any kind for a prospect or the prospect's family and friends.

You may not make contact with a prospective student-athlete and his/her parents when the prospect is on campus for an official or unofficial recruiting visit.

You may not transport, pay or arrange for payment of transportation costs for a prospect, and his/her relatives or friends to visit campus (or elsewhere).

You may not pay or arrange for payment of summer camp registration fees for a prospect.

You may not provide anything to a prospect, the prospect's family or friends without prior approval from the athletics' Compliance Office.



Robert Minnix
Assoc. AD for
Compliance and
Legal Affairs



Pennie Parker
Director
of Compliance



Brian Battle
Assistant Director
of Compliance

Life Skills Program

Student Development/Life Skills

The N.O.L.E.S Program New Opportunities for Leadership, Education and Service

Developed by the Florida State University Department of Athletics, the NOLES program represents a commitment to the total growth and development of the student-athlete. This program establishes an administrative commitment to academic and athletic excellence. Those efforts will be supported with programs and services in personal development, career development and community service.

Personal Development

Fostering the development of personal growth is a fundamental component of the NOLES program. These support programs ensure that the student-athlete will be provided opportunities to focus on personal growth issues such as values clarification, goal setting, fiscal planning, decision making and personal responsibility. Programming focuses on helping student-athletes develop a healthy lifestyle while they are at Florida State and habits that will benefit them for life.

Career Development

Preparing for life after college sports is a major focus of the NOLES Career Development program. The program is designed to work cooperatively with the University's Career Services to acquaint students with the job search process, provide networking opportuni-

ties and ultimately assist with job placement. This program places a priority on the development of the total person, with the goal of developing individuals who will have rewarding careers and productive lifestyles after they leave Florida State.

Community Service

Serving the community is the focus of our Seminole Spirit program. Student-athletes are challenged to give service to our community and individuals who are in need. With a clearly defined program of service, student-athletes are given the opportunity to develop the foundation for a lifelong commitment to volunteerism. The Seminole Spirit Student-Athlete Speakers' Bureau enables student-athletes to improve their speaking skills, develop effective communication and impact the lives of others through their service as role models in our community.

Leadership Development

The Florida State University Department of Athletics is committed to developing programs of excellence that foster leadership development. The foundation of the leadership development program will be the two councils that represent the student-athletes at the University.

The Student-Athlete Advisory Council (SAAC) serves as the advisory board to the NOLES program and the athletics administration. The prestigious board, comprised of two representatives of each athletic team at FSU, also recommends programming and serves as a liaison between student-athletes and the athletics administration. The Advisory Council plans and implements various events for student-athletes and serves as the department's most visible ambassadors. The SAAC planned and hosted the annual Golden Nole banquet for the first time last year and recently planned such events as orientation for incoming student-athletes and the back to school picnic.



Florida State's Associate Athletic Director for Student Development, Pam Overton, received the prestigious Gene Hooks Award, given to the nation's premier student development program.

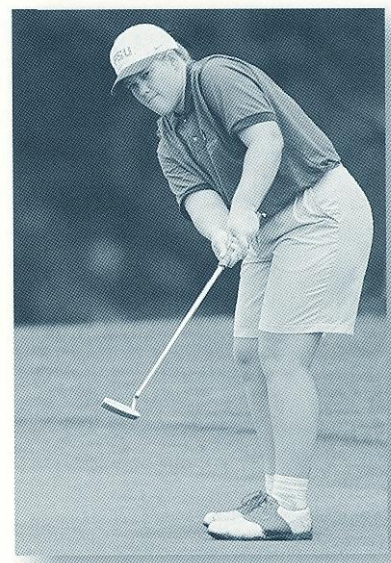
A Closer Look at the ACC

The Atlantic Coast Conference boasts a rich tradition of success in women's golf. Although only five conference schools have women's golf teams, Maryland being the latest, these five teams have made their mark on the national level.

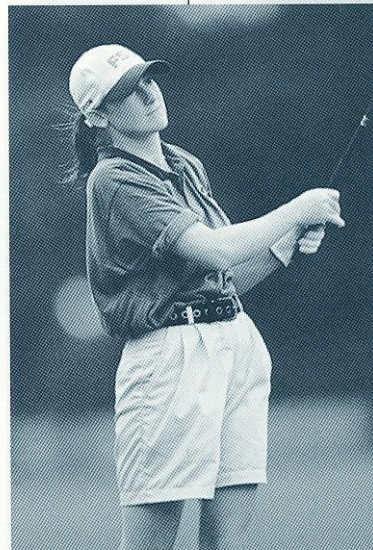
Since Florida State joined the ACC in 1991, the women's golf team has been a major contributor to FSU's success in the ACC. The Lady Noles have finished second in the conference three times, in 1992, 1995 and 1999. Coach Debbie Dillman was named ACC Coach of the Year in 1992, and former Seminoles Erica Firnhaber, Marie Josee Rouleau, Karen Stupples and Amy Bond have been All-ACC selections, with

Since Florida State joined the ACC in 1991, the women's golf team has been a major contributor to FSU's success in the ACC. The Lady Noles have finished second in the conference three times, in 1992, 1995 and 1999. Coach Debbie Dillman was named ACC Coach of the Year in 1992, and former Seminoles Erica Firnhaber, Marie Josee Rouleau, Karen Stupples and Amy Bond have been All-ACC selections, with Stupples attaining that honor in both 1994 and 1995.

Stupples attaining that honor in both 1994 and 1995. Florida State finished fourth at the 2000 ACC Championships which were held at the Salem Glen Country Club in Clemmons, NC. Kristin Tamulis led the Seminoles with an 11th-place finish and Louise Wright finished in 15th place. Duke University defended its title for the second straight year as it finished an incredible 34 strokes ahead of runner-up Wake Forest.



Amy Bond (above) is among several Seminole players who have earned All-ACC honors since Florida State joined the conference. Amy Spooner (left) led the Seminoles in the 1999 ACC Championships, finishing third after a final round of 69.



2000 ACC Tournament Results

Team Results

Duke	871	(1)
Wake Forest	905	(2)
North Carolina	918	(3)
Florida State	974	(4)
Maryland	1,026	(5)

Individual Results

Maria Garcia-Estrada, Duke	215	(1)
Beth Bauer, Duke	217	(T2)
Candy Hannermann, Duke	217	(T2)
Marta Prieto, Wake Forest	223	(T4)
Kalen Anderson, Duke	223	(T4)

FSU Results

Kristin Tamulis	234	(11)
Louise Wright	239	(15)
Beth McCumber	250	(18)
Kristen Sanborn	253	(T19)
Alison Zimmer	258	(22)

Player of the Year

Beth Bauer, Duke

Rookie of the Year

Maria-Garcia Estrada, Duke

Coach of the Year

Dan Brooks, Duke

2000 All Atlantic Coast Conference Team:

Beth Bauer, Duke
 Marci Newton, North Carolina
 Candy Hannermann, Duke
 Maria Garcia-Estrada, Duke
 Kalen Anderson, Duke
 Kristina Engstrom, Duke

Strength & Conditioning

"The strong shall survive" is the motto of the strength and conditioning staff at Florida State. It is this philosophy that has made Seminole athletes in all sports among the strongest, fastest and most fit in the nation.

Strength coach Jeffrey Brucker individually customizes programs for each of the Seminole golfers. His program begins long before the season starts and continues throughout the student-athletes' competitive season.

At Florida State, a supervised program has been developed for the women's golf team. The program emphasizes not only the building of bodies, but the strengthening and conditioning of them.

Strength Coach Jeffrey Brucker, who is in his first year as a member of the Florida State strength and conditioning staff, individually customizes programs for each of the Seminole golfers. His program begins long before the season starts and continues throughout the student-athletes' competitive season. The staff at Florida State takes great

pride in customizing and carrying-out programs to help the student-athletes realize their maximum potential.

In addition to his work with the Seminole women's golf team, Brucker also works with the men's and women's swimming teams at Florida State.

Brucker, who graduated from the University of Nevada-Las Vegas, is certified as a personal trainer by the American Council on Exercise and the National Strength and Conditioning Association.

While at UNLV, Brucker was a student-athletic train-

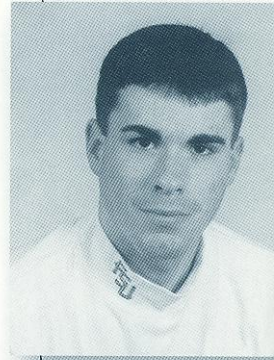
er for the football, women's volleyball and men's soccer teams. He was the recipient of the Most Outstanding Sports Medicine student award in 2000 and earned the Mitzi Hughes scholarship from the Department of Kinesiology in 1999. He earned Dean's List honors and graduated Magna Cum Laude with a degree in kinesiology. He had a 3.98 grade point average during his academic career.

Tully Gymnasium Weight Room

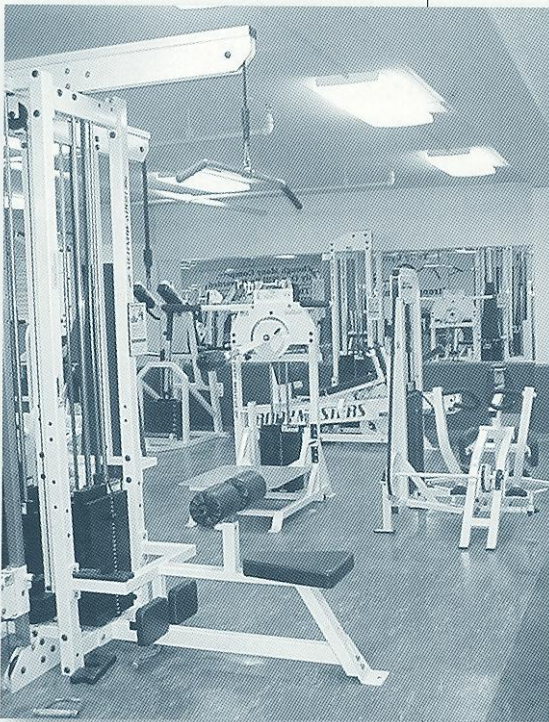
The Tully Gymnasium weight room, a 3,500 square foot facility, was completely renovated in 1996 and is considered to be one of the top facilities in the southeastern part of the United States. The facility was expanded by more than 2,000 feet and furnished with the top equipment available to create a state-of-the-art area in which to assist the Seminole student-athletes.

Over \$140,000 in new exercise equipment was added to the weight room. Among the added equipment were 16 cardiovascular pieces such as Life Fitness, Stairmaster and Textrix. In addition, a new stereo system, a dropped ceiling, enhanced lighting and mondo rubber flooring were installed.

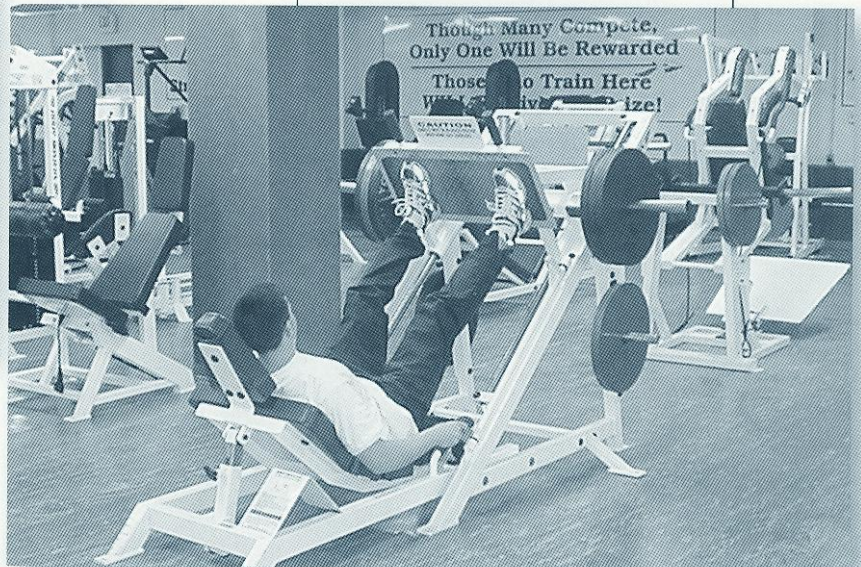
All of Florida State's female athletes train in this facility.



Jeff Brucker
Strength &
Conditioning Coach



The women's golf team follows a stringent strength and conditioning program.



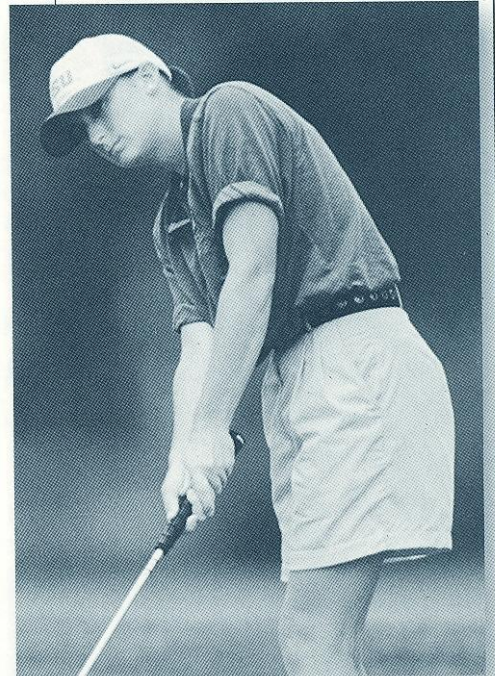
Florida State Golf

The Seminole women's golf program has a long and rich tradition of success. Since the spring of 1990, Florida State has won eight team championships – an average of nearly one title a year. Equally as impressive are the 50 top-five individual finishes the squad has compiled in just over 100 tournaments since the beginning of the decade.

Individual golfers have made their mark in the Seminole record book as well. Led by Karen Stupples (1993-95), who won two individual tournament championships, a total of six Seminole golfers earned medalist honors at different tournaments. Stupples earned All-America second-team honors in 1995.

Overall, 12 Florida State golfers have posted top-five finishes since 1990. Amy Bond, who completed her standout career in 1999, most recently captured the individual championship of the Ryder-Florida State Championship, defeating Riko Higshio of Florida by one stroke. Bond was an All-ACC selection as a senior.

Florida State made seven consecutive NCAA appearances from 1991-97 and again in 1999. The team qualified for the NCAA Tournament four times and made eight regional appearances during the decade of the 1990s.



Erika Iding (left) and Amy Spooner (above) helped continue the Seminoles' tradition with their outstanding play during their careers. Iding and Spooner were among the many golfers who helped raise the level of play and set higher standards for future Seminole golfers.

Florida State made seven consecutive NCAA appearances from 1991-97 and again in 1999. The team qualified for the NCAA Tournament four times and made eight regional appearances during the decade of the 1990s.

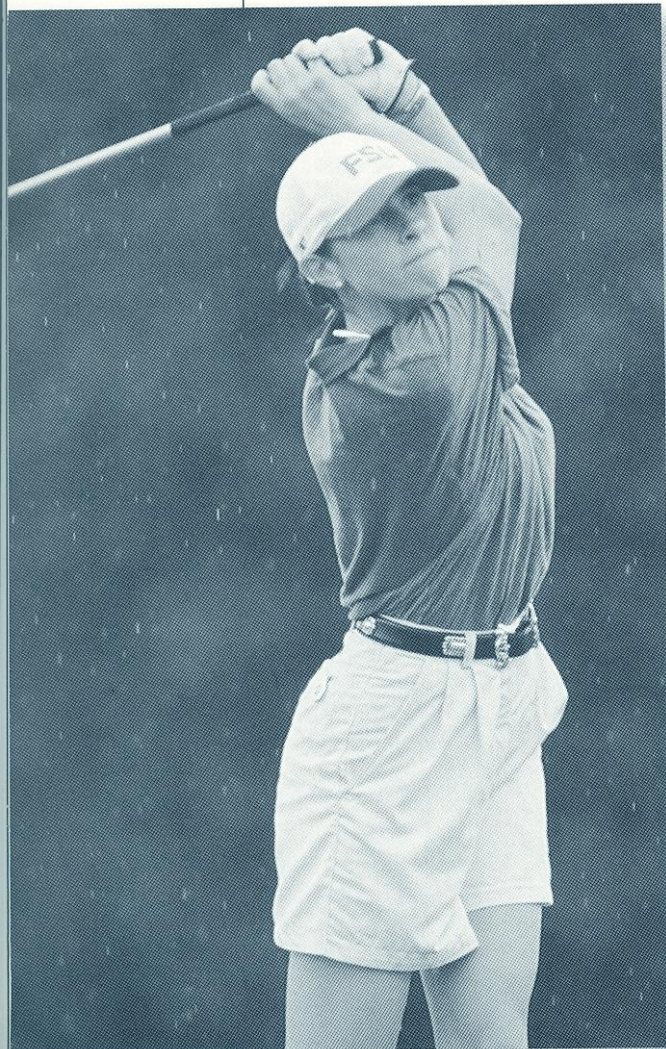
Team and Individual Titles in the '90s

Team Titles 1990-99

FIU-Pat Bradley Invitational (Fall 1990)
 Metro Conference Championship (Spring 1991)
 Lady Seminole Invitational (Fall 1991)
 Ryder/Florida State Championship (Spring 1992)
 Lady Seminole Invitational (Fall 1993)
 Spalding/Peggy Kirk Bell (Spring 1994)
 Beacon Woods Invitational (Fall 1994)
 Lady Gator Invitational (Spring 1995)
 Ryder-Florida State Championships (Spring 1999)

Individual Titles 1990-98

Kathy Grant, Metro Conference Championship (Spring 1990)
 Emma Rundle, Metro Conference Championship (Spring 1991)
 Mary Lee Cobick, Beacon Woods Invitational (Fall 1991)
 Erica Firnhaber, Lady Seminole Invitational (Fall 1991)
 Karen Stupples, Spalding/Peggy Kirk Bell (Spring 1994)
 Lady Gator Invitational (Spring 1995)
 Amy Bond, Ryder-Florida State Championships (Spring 1998)



2000-2001

Lady Seminoles



The Scotland Trip

The Seminole women's golf team enjoyed seven days in Scotland during the Summer of 2000. The team toured Carnoustie, St. Andrews, North Berwick and Narin. The players and coaches were able to enjoy some of the worlds finest golfing at all of their stops.



The team was treated to many of the local customs and was able to participate in many traditions and lifestyles of Scotland during their stay.



Florida State University

Sports Information

Moore Athletic Center

P.O. Drawer 2195

Tallahassee, FL 32316

(850) 644-1403

2000-2001 Women's Golf Team

Schedule

DATE	OPPONENT	LOCATION	OUTCOME/TIME
Sept. 9-10, 2000	The Derby Invitational	Auburn, Ala.	7th
Sept. 15-16, 2000	NCAA Preview	Howey-In-The-Hills, Fla.	11th
Sept. 29-Oct. 1, 2000	Lady Seminole/ACC-SEC Challenge	San Destin, Fla.	9th
Oct. 6-8, 2000	Tar Heel Invitational	Chapel Hill, N.C.	14th
Oct. 20-22, 2000	Lady Paladin Invitational	Greenville, S.C.	13th
Feb. 23-25, 2001	Lady Gator Invitational	Gainesville, Fla.	All Day
Mar. 30-Apr. 2, 2001	Ryder State Championship	Miami, Fla.	All Day
Apr. 6-8, 2001	Bryan National Collegiate	Greensboro, N.C.	All Day
Apr. 20-22, 2001	Atlantic Coast Conference Championship	Orlando, Fla.	All Day
May 10-12, 2001	NCAA Regional Championships	TBA	All Day
May 23-26, 2001	NCAA Championships	Howey-In-The-Hills, Fla.	All Day